

Data Path : Z:\SVOASRV\HPCHEM1\BNA_E\DATA\BE070819\
 Data File : BE100411.D
 Acq On : 8 Jul 2019 14:24
 Operator : JU/SJ
 Sample : K3561-04DL 5X
 Misc :
 ALS Vial : 6 Sample Multiplier: 1

Instrument :
 BNA_E
 ClientSampleId :
 PST-016-SW117-062519-1DL

Manual Integrations
 APPROVED

mohammad
 7/10/2019 9:03:54 AM

Quant Time: Jul 08 15:44:02 2019

Quant Method : Z:\SVOASRV\HPCHEM1\BNA_E\METHODS\8270-SIM-BE062819.M

Quant Title : ASP BNA STANDARDS FOR 5 POINT CALIBRATION

QLast Update : Mon Jul 08 15:19:44 2019

Response via : Initial Calibration

Internal Standards	R.T.	QIon	Response	Conc	Units	Dev(Min)
1) 1,4-Dichlorobenzene-d4	7.62	152	334	0.40	ng	0.00
7) Naphthalene-d8	10.42	136	1350	0.40	ng	0.00
13) Acenaphthene-d10	14.30	164	1134	0.40	ng	0.00
19) Phenanthrene-d10	17.04	188	4138	0.40	ng	0.00
27) Chrysene-d12	21.22	240	5994	0.40	ng	-0.01
34) Perylene-d12	23.63	264	7267	0.40	ng	-0.01

System Monitoring Compounds

4) 2-Fluorophenol	5.18	112	37	0.04	ng	0.00
5) Phenol-d6	6.85	99	22	0.02	ng	0.00
8) Nitrobenzene-d5	8.85	82	34	0.03	ng	0.04
11) 2-Methylnaphthalene-d10	12.04	152	99	0.04	ng	0.00
14) 2,4,6-Tribromophenol	15.80	330	42	0.05	ng	-0.01
15) 2-Fluorobiphenyl	12.93	172	190	0.04	ng	0.00
25) Fluoranthene-d10	19.07	212	1886	0.03	ng	-0.01
29) Terphenyl-d14	19.67	244	436	0.04	ng	-0.02

Target Compounds

					Qvalue	
9) Naphthalene	10.47	128	650	0.044	ng	# 75
12) 2-Methylnaphthalene	12.11	142	144	0.055	ng	# 86
16) Acenaphthylene	14.01	152	1499	0.275	ng	98
17) Acenaphthene	14.36	154	186	0.060	ng	94
18) Fluorene	15.34	166	824	0.181	ng	84
23) Phenanthrene	17.08	178	19703	1.965	ng	100
24) Anthracene	17.17	178	1417	0.157	ng	# 91
26) Fluoranthene	19.10	202	37520	2.349	ng	98
28) Pyrene	19.47	202	48207	3.038	ng	96
30) Benzo(a)anthracene	21.21	228	24791	1.258	ng	93
31) Chrysene	21.26	228	31238	1.578	ng	99
32) Bis(2-ethylhexyl)phthalate	21.12	149	27545	0.931	ng	# 97
33) Indeno(1,2,3-cd)pyrene	26.17	276	16329	0.624	ng	97
35) Benzo(b)fluoranthene	22.89	252	30752	1.561	ng	# 96
36) Benzo(k)fluoranthene	22.94	252	11228m	0.511	ng	
37) Benzo(a)pyrene	23.52	252	23475	1.189	ng	# 94
38) Dibenzo(a,h)anthracene	26.17	278	4198	0.204	ng	# 87
39) Benzo(g,h,i)perylene	26.95	276	18770	0.886	ng	98

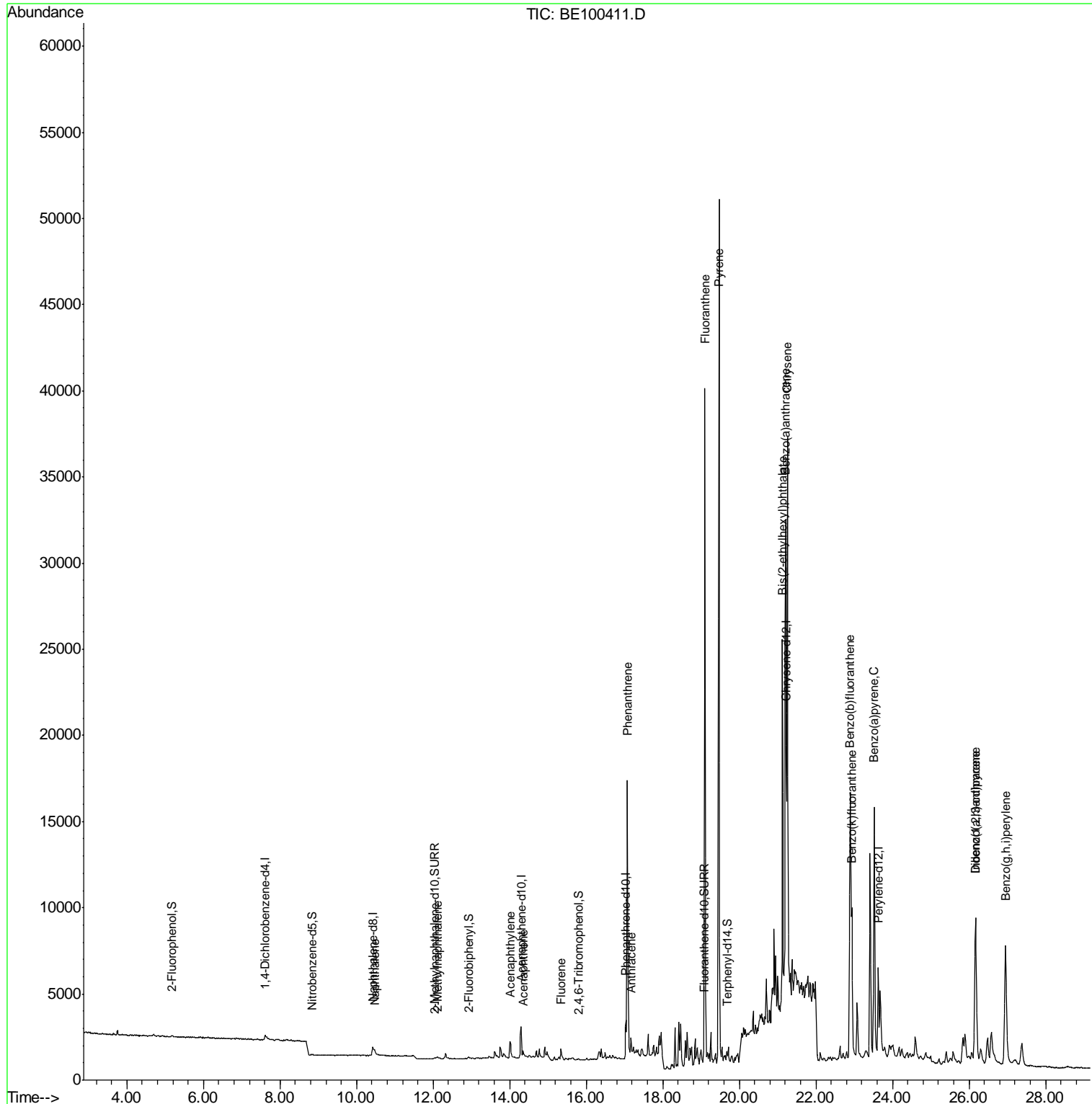
(#) = qualifier out of range (m) = manual integration (+) = signals summed

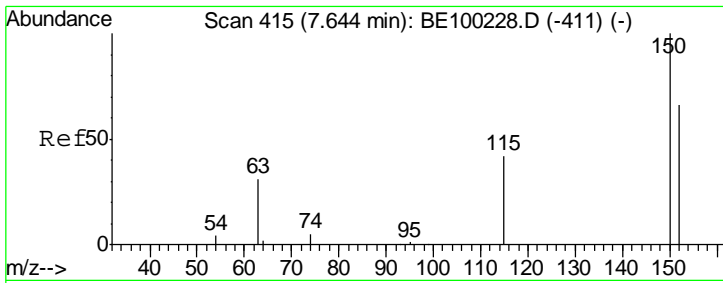
Data Path : Z:\SVOASRV\HPCHEM1\BNA_E\DATA\BE070819\
 Data File : BE100411.D
 Acq On : 8 Jul 2019 14:24
 Operator : JU/SJ
 Sample : K3561-04DL 5X
 Misc :
 ALS Vial : 6 Sample Multiplier: 1

Instrument :
 BNA_E
Client Sampled :
 PST-016-SW117-062519-1DL

Manual Integrations
APPROVED
 mohammad
 7/10/2019 9:03:54 AM

Quant Time: Jul 08 15:44:02 2019
 Quant Method : Z:\SVOASRV\HPCHEM1\BNA_E\METHODS\8270-SIM-BE062819.M
 Quant Title : ASP BNA STANDARDS FOR 5 POINT CALIBRATION
 QLast Update : Mon Jul 08 15:19:44 2019
 Response via : Initial Calibration





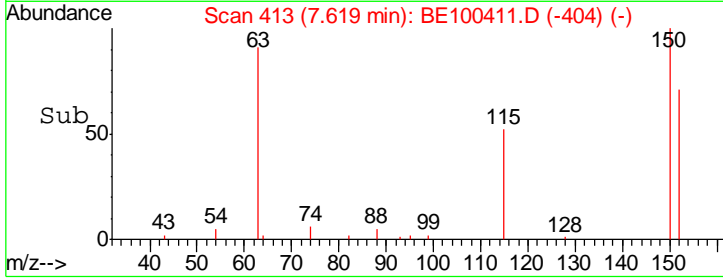
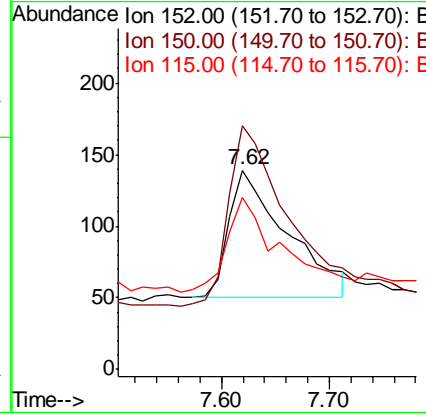
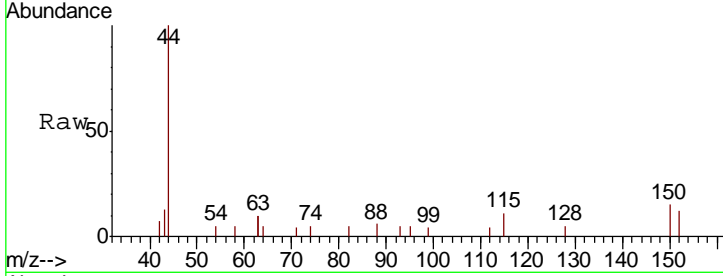
#1
 1,4-Dichlorobenzene-d4
 Concen: 0.400 ng
 RT: 7.62 min Scan# 413
 Delta R.T. 0.01 min
 Lab File: BE100411.D
 Acq: 8 Jul 2019 14:24

Instrument :
 BNA_E
ClientSampled :
 PST-016-SW117-062519-1DL

Tgt Ion	Resp	Lower	Upper
152	100		
150	122.3	99.6	149.4
115	86.3	61.4	92.0

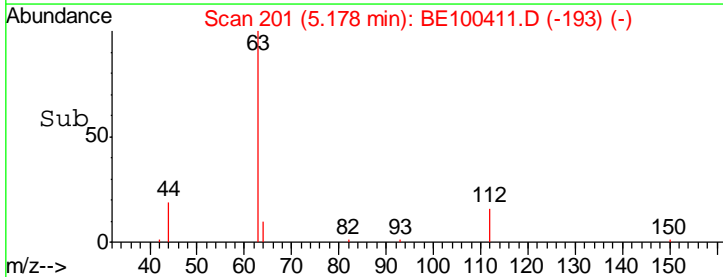
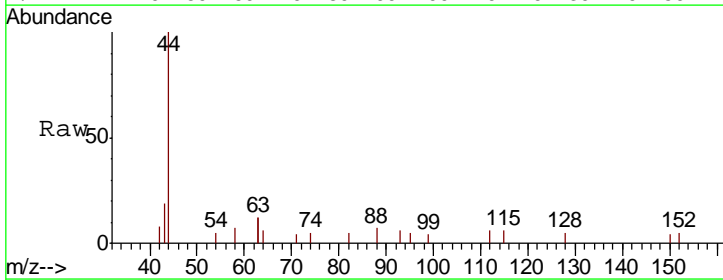
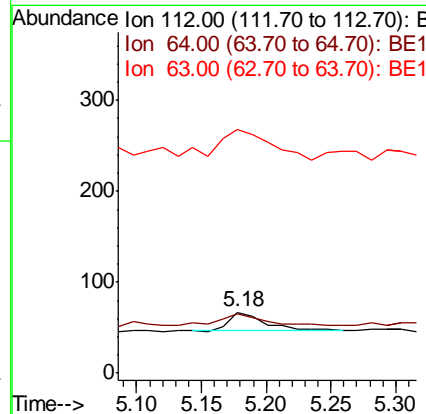
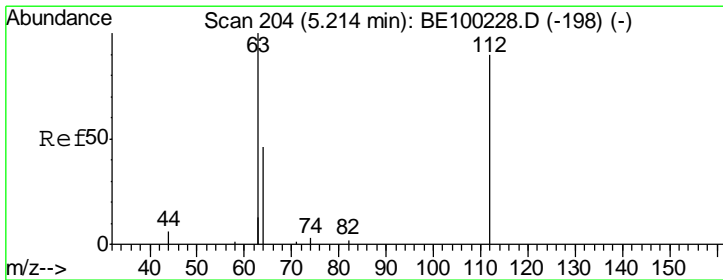
Manual Integrations
APPROVED

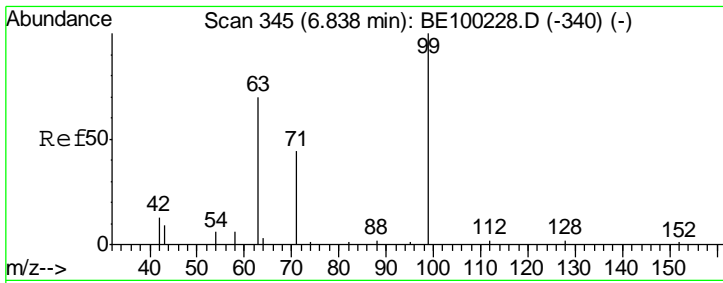
mohammad
 7/10/2019 9:03:54 AM



#4
 2-Fluorophenol
 Concen: 0.043 ng
 RT: 5.18 min Scan# 201
 Delta R.T. -0.00 min
 Lab File: BE100411.D
 Acq: 8 Jul 2019 14:24

Tgt Ion	Resp	Lower	Upper
112	100		
64	86.5	44.7	67.1#
63	270.3	89.9	134.9#





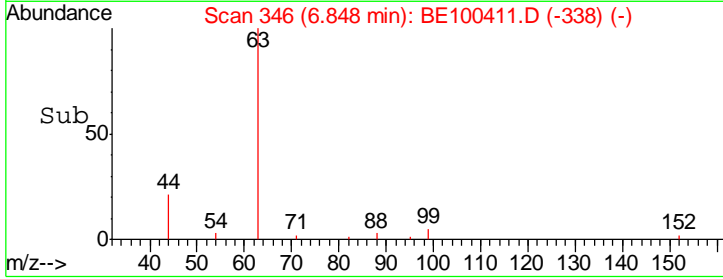
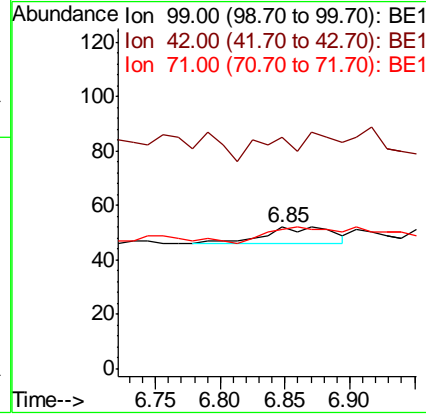
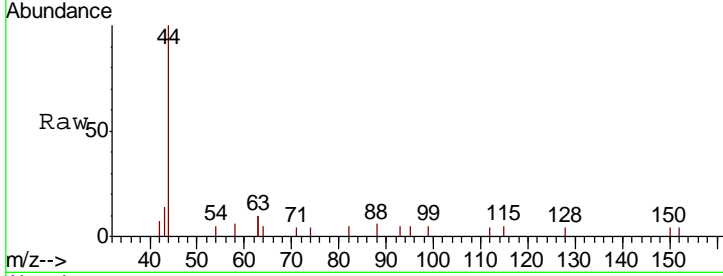
#5
 Phenol-d6
 Concen: 0.020 ng
 RT: 6.85 min Scan# 346
 Delta R.T. -0.00 min
 Lab File: BE100411.D
 Acq: 8 Jul 2019 14:24

Instrument :
 BNA_E
ClientSampled :
 PST-016-SW117-062519-1DL

Tgt Ion	Resp	Lower	Upper
99	100		
42	0.0	0.0	0.0
71	0.0	34.6	51.8#

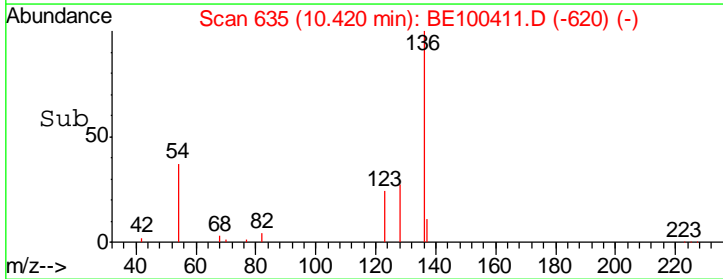
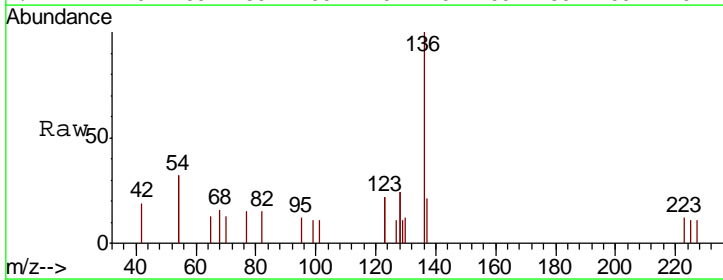
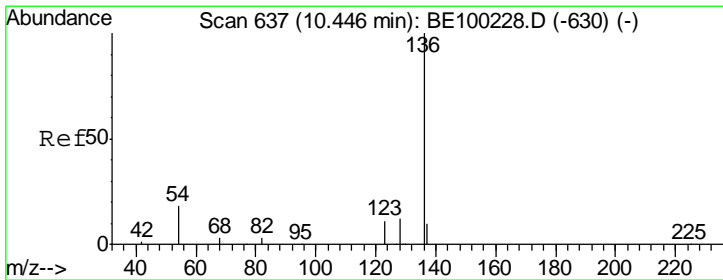
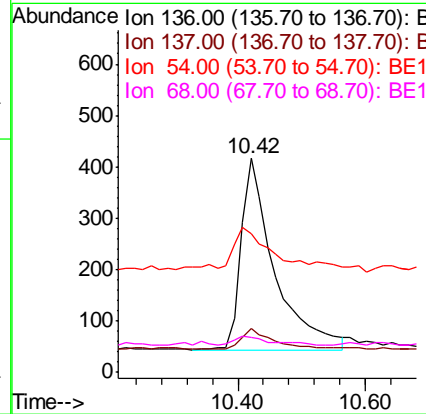
Manual Integrations
APPROVED

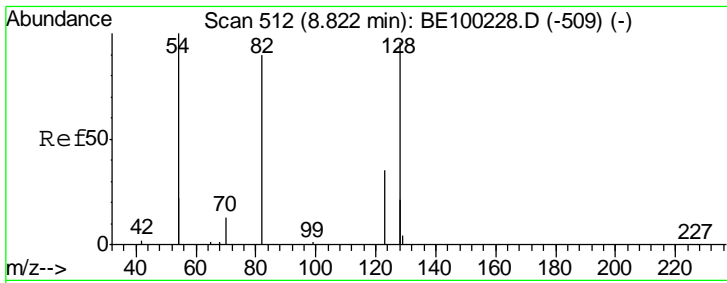
mohammad
 7/10/2019 9:03:54 AM



#7
 Naphthalene-d8
 Concen: 0.400 ng
 RT: 10.42 min Scan# 635
 Delta R.T. 0.00 min
 Lab File: BE100411.D
 Acq: 8 Jul 2019 14:24

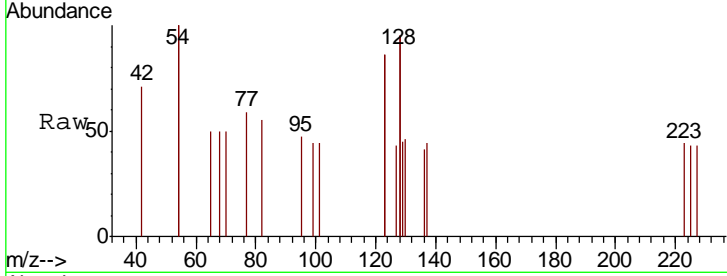
Tgt Ion	Resp	Lower	Upper
136	100		
137	20.7	17.4	26.2
54	64.9	59.0	88.4
68	16.1	14.0	21.0





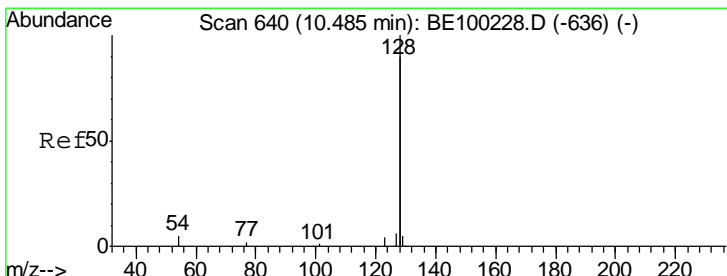
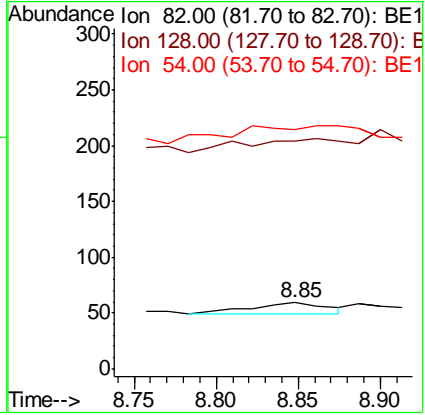
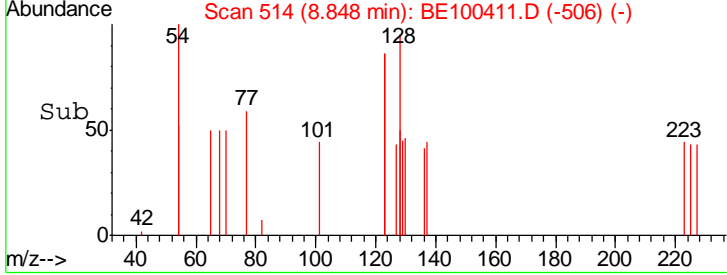
#8
 Nitrobenzene-d5
 Concen: 0.025 ng
 RT: 8.85 min Scan# 514
 Delta R.T. 0.04 min
 Lab File: BE100411.D
 Acq: 8 Jul 2019 14:24

Instrument :
 BNA_E
ClientSampled :
 PST-016-SW117-062519-1DL

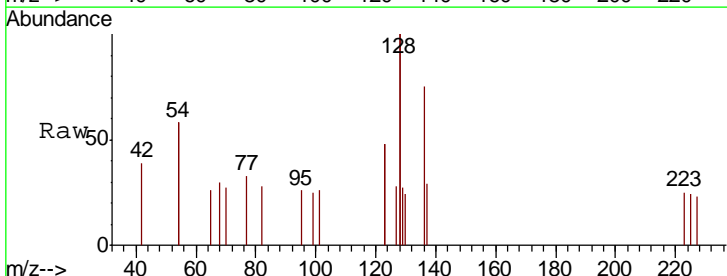


Tgt Ion	Resp	Lower	Upper
82	100		
128	345.8	190.6	285.8#
54	362.7	201.5	302.3#

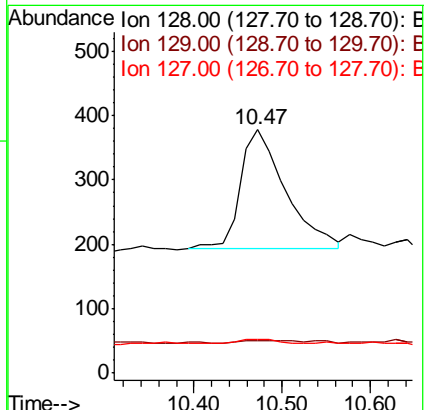
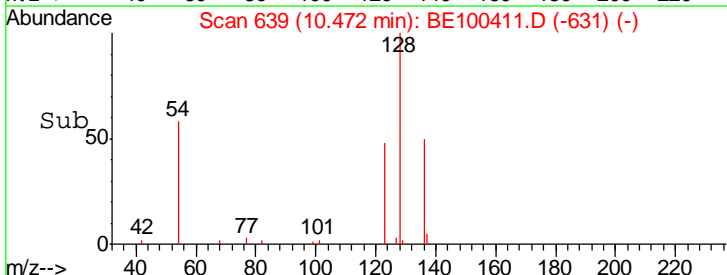
Manual Integrations
APPROVED
 mohammad
 7/10/2019 9:03:54 AM

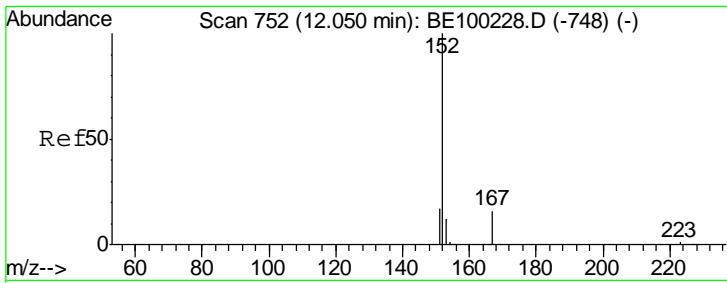


#9
 Naphthalene
 Concen: 0.044 ng
 RT: 10.47 min Scan# 639
 Delta R.T. 0.00 min
 Lab File: BE100411.D
 Acq: 8 Jul 2019 14:24



Tgt Ion	Resp	Lower	Upper
128	100		
129	13.5	4.2	6.2#
127	14.0	4.4	6.6#





#11
 2-Methylnaphthalene-d10
 Concen: 0.039 ng
 RT: 12.04 min Scan# 751
 Delta R.T. -0.00 min
 Lab File: BE100411.D
 Acq: 8 Jul 2019 14:24

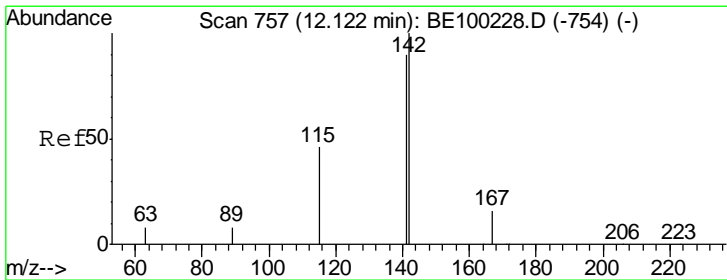
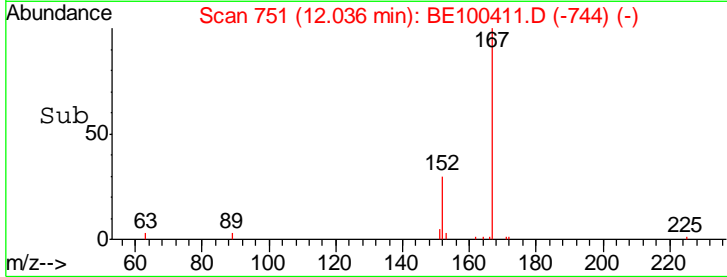
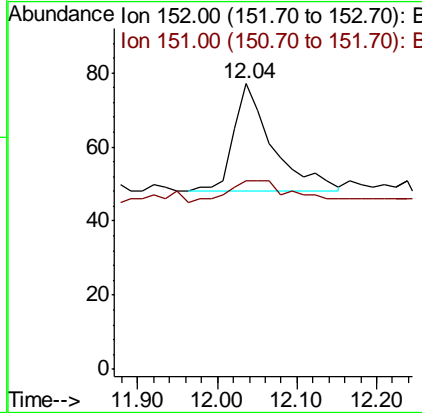
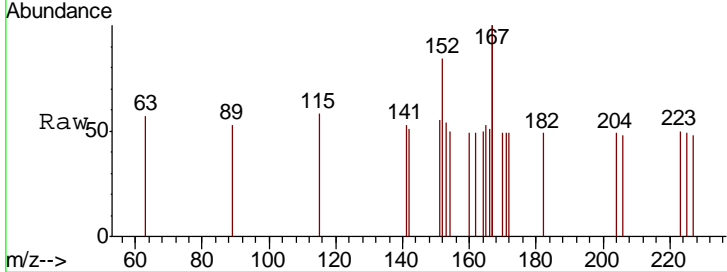
Instrument :
 BNA_E
ClientSampled :
 PST-016-SW117-062519-1DL

Tgt Ion: 152 Resp: 99

Ion	Ratio	Lower	Upper
152	100		
151	21.2	16.8	25.2

Manual Integrations
APPROVED

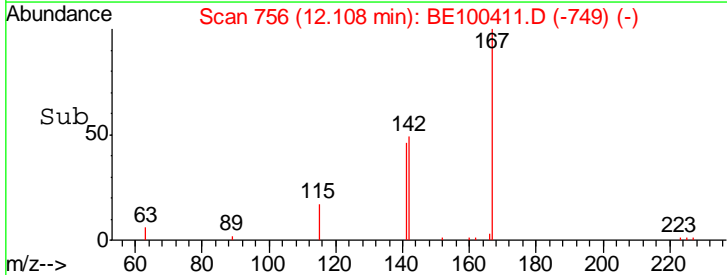
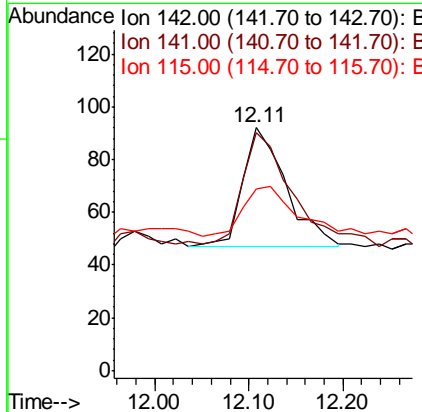
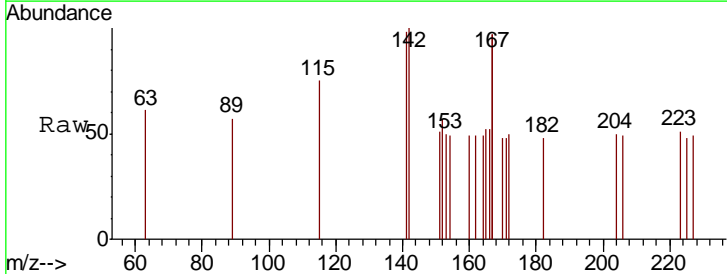
mohammad
 7/10/2019 9:03:54 AM

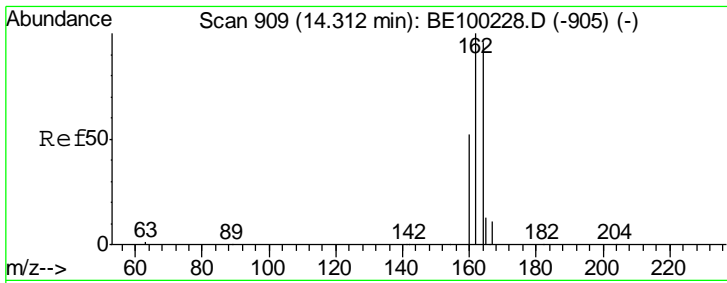


#12
 2-Methylnaphthalene
 Concen: 0.055 ng
 RT: 12.11 min Scan# 756
 Delta R.T. -0.00 min
 Lab File: BE100411.D
 Acq: 8 Jul 2019 14:24

Tgt Ion: 142 Resp: 144

Ion	Ratio	Lower	Upper
142	100		
141	97.8	71.3	106.9
115	75.0	47.4	71.0#



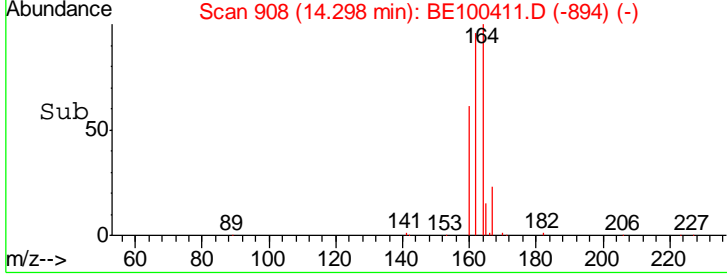
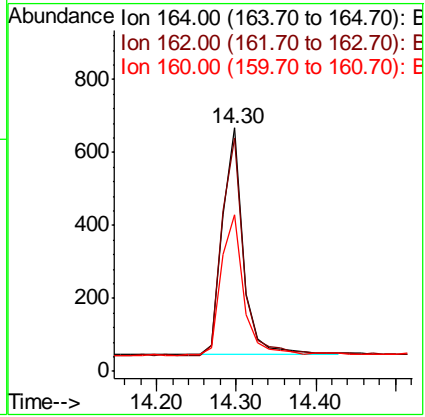
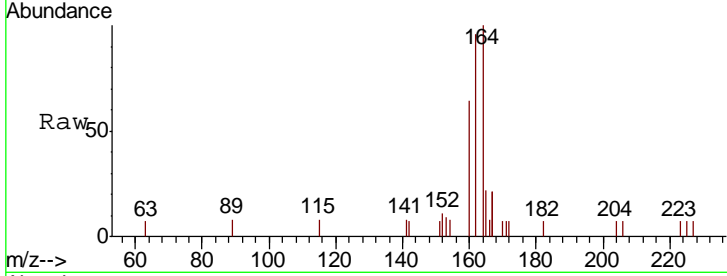


#13
 Acenaphthene-d10
 Concen: 0.400 ng
 RT: 14.30 min Scan# 908
 Delta R.T. -0.00 min
 Lab File: BE100411.D
 Acq: 8 Jul 2019 14:24

Instrument :
 BNA_E
ClientSampled :
 PST-016-SW117-062519-1DL

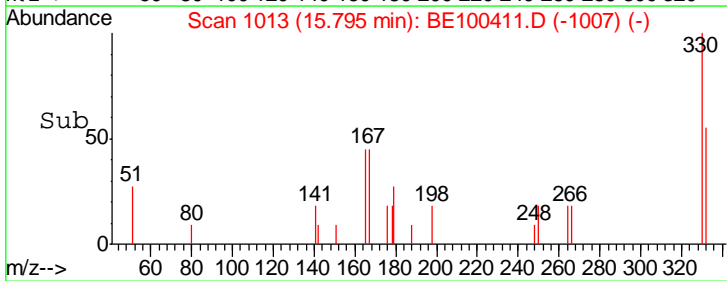
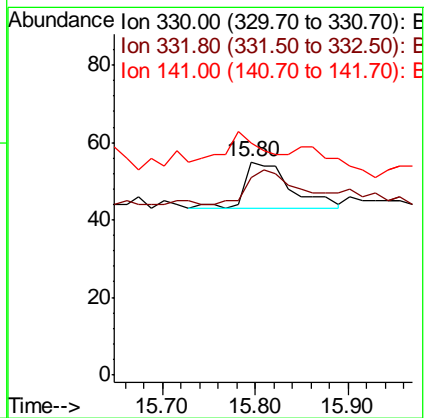
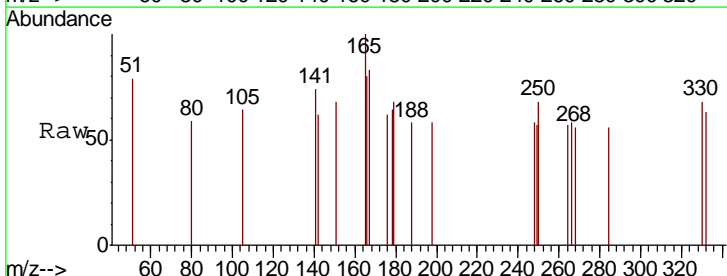
Tgt Ion	Ratio	Lower	Upper
164	100		
162	96.0	78.9	118.3
160	64.1	53.7	80.5

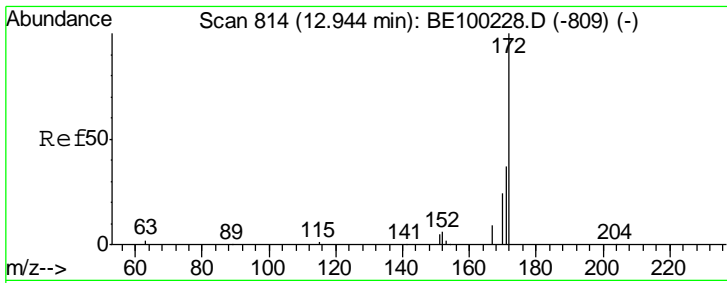
Manual Integrations
APPROVED
 mohammad
 7/10/2019 9:03:54 AM



#14
 2,4,6-Tribromophenol
 Concen: 0.053 ng
 RT: 15.80 min Scan# 1013
 Delta R.T. -0.01 min
 Lab File: BE100411.D
 Acq: 8 Jul 2019 14:24

Tgt Ion	Ratio	Lower	Upper
330	100		
332	78.6	75.0	112.4
141	0.0	19.0	28.6#





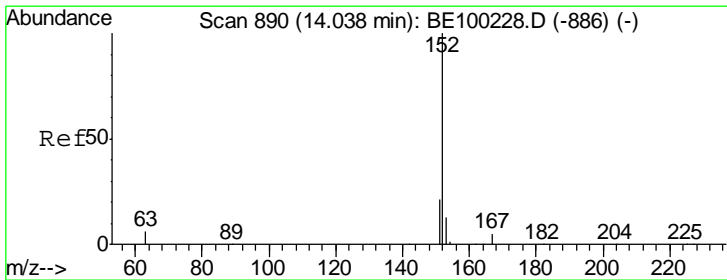
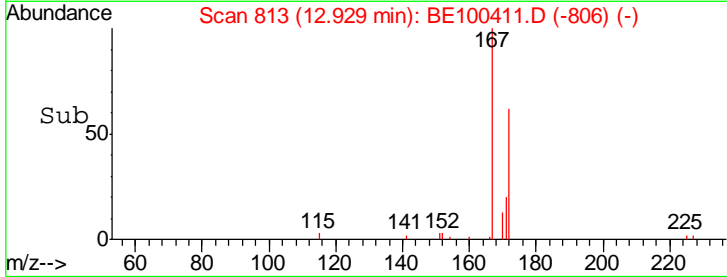
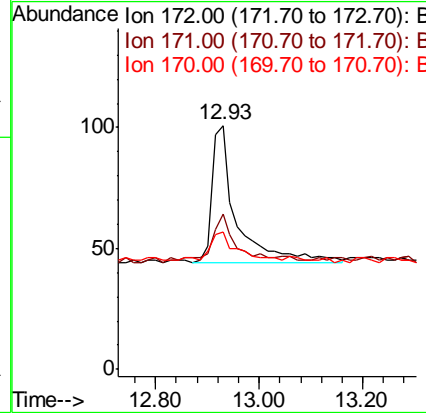
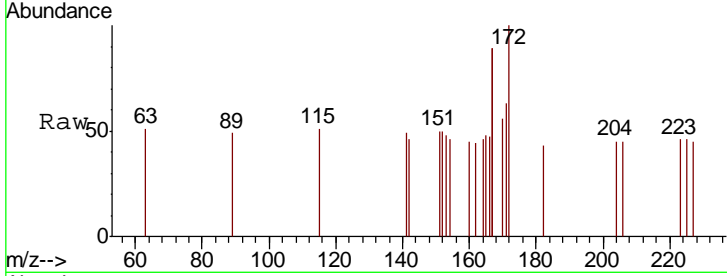
#15
 2-Fluorobiphenyl
 Concen: 0.043 ng
 RT: 12.93 min Scan# 813
 Delta R.T. -0.00 min
 Lab File: BE100411.D
 Acq: 8 Jul 2019 14:24

Instrument :
 BNA_E
ClientSampled :
 PST-016-SW117-062519-1DL

Tgt Ion	Resp	Lower	Upper
172	100		
171	63.4	33.2	49.8#
170	56.4	25.9	38.9#

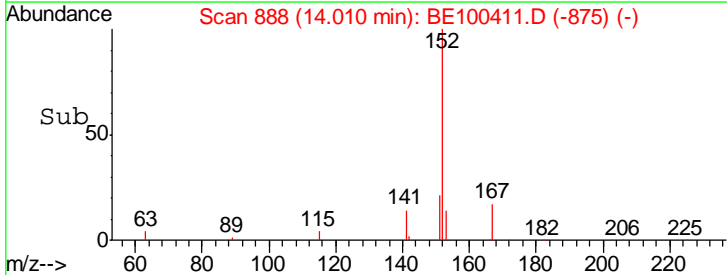
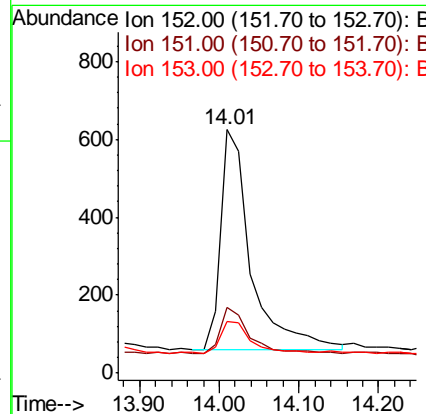
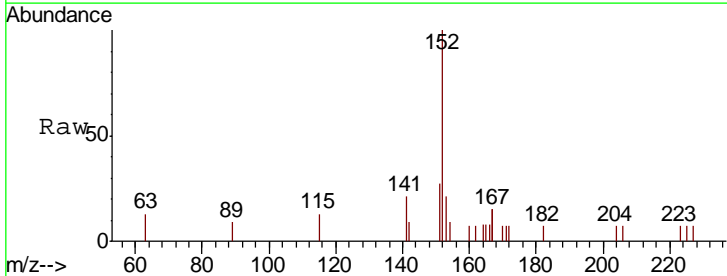
Manual Integrations
APPROVED

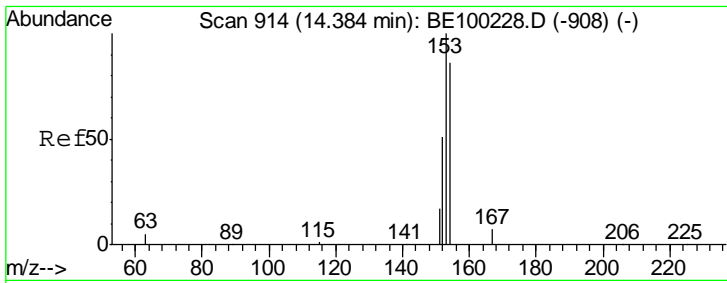
mohammad
 7/10/2019 9:03:54 AM



#16
 Acenaphthylene
 Concen: 0.275 ng
 RT: 14.01 min Scan# 888
 Delta R.T. -0.02 min
 Lab File: BE100411.D
 Acq: 8 Jul 2019 14:24

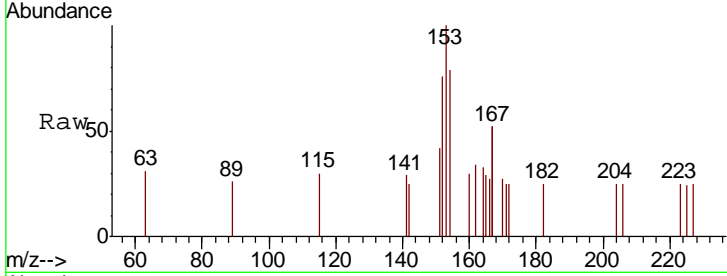
Tgt Ion	Resp	Lower	Upper
152	100		
151	19.9	17.0	25.6
153	13.4	11.2	16.8





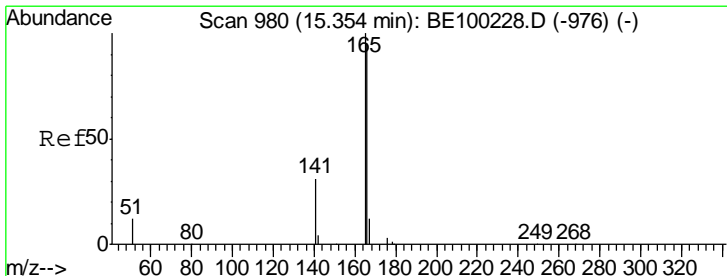
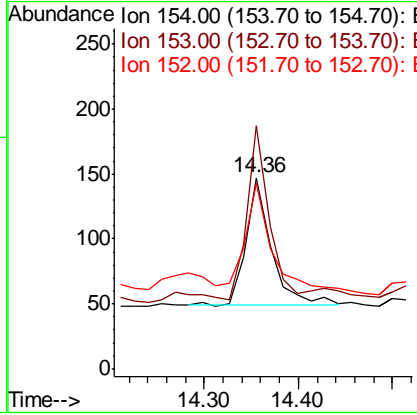
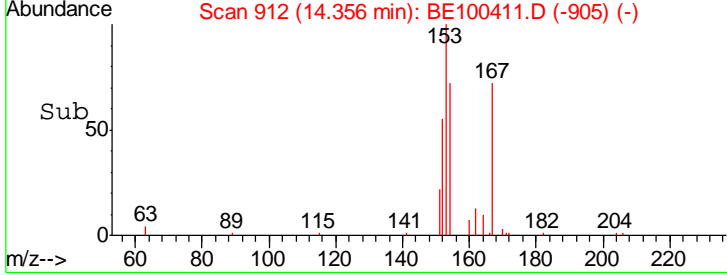
#17
 Acenaphthene
 Concen: 0.060 ng
 RT: 14.36 min Scan# 912
 Delta R.T. -0.00 min
 Lab File: BE100411.D
 Acq: 8 Jul 2019 14:24

Instrument :
 BNA_E
 ClientSampleId :
 PST-016-SW117-062519-1DL

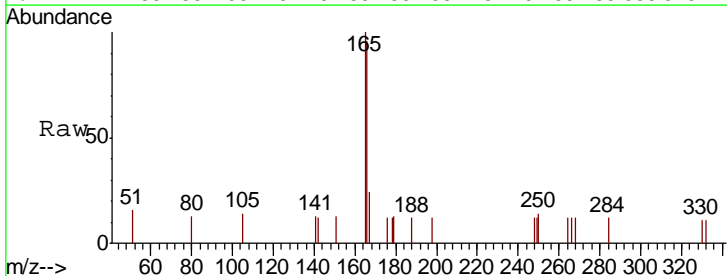


Tgt Ion	Resp	Lower	Upper
154	100		
153	115.1	99.5	149.3
152	78.0	63.7	95.5

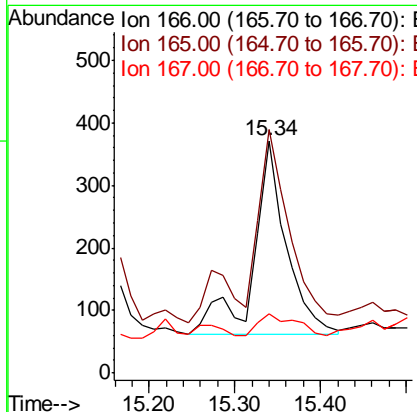
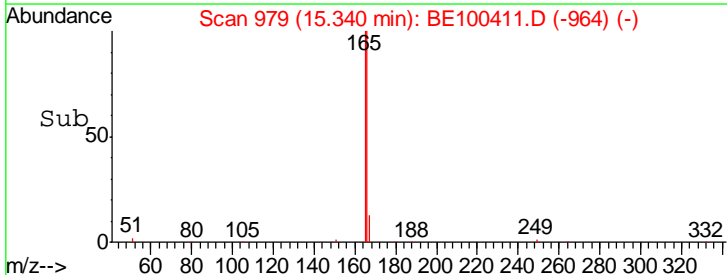
Manual Integrations
APPROVED
 mohammad
 7/10/2019 9:03:54 AM

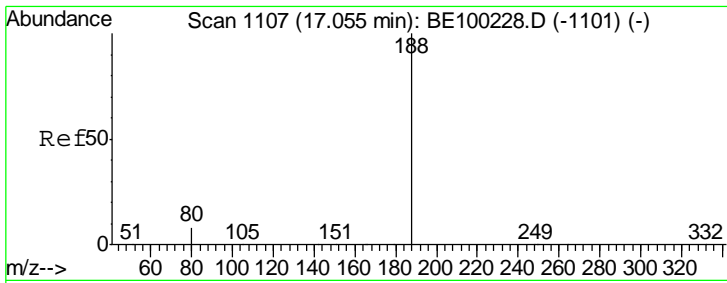


#18
 Fluorene
 Concen: 0.181 ng
 RT: 15.34 min Scan# 979
 Delta R.T. 0.00 min
 Lab File: BE100411.D
 Acq: 8 Jul 2019 14:24



Tgt Ion	Resp	Lower	Upper
166	100		
165	85.2	82.3	123.5
167	13.1	9.9	14.9





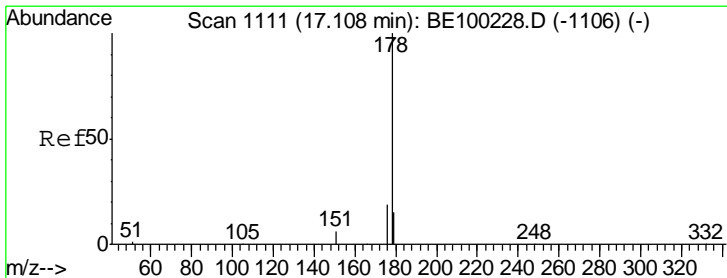
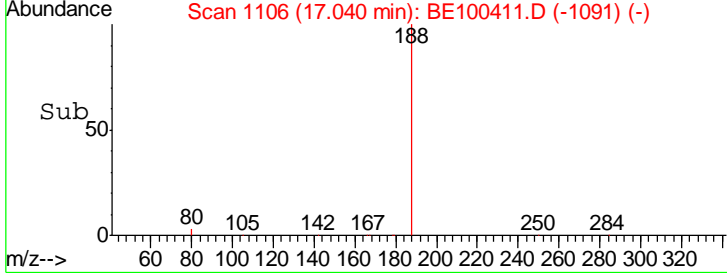
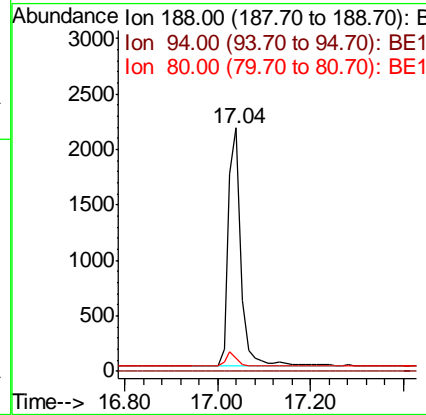
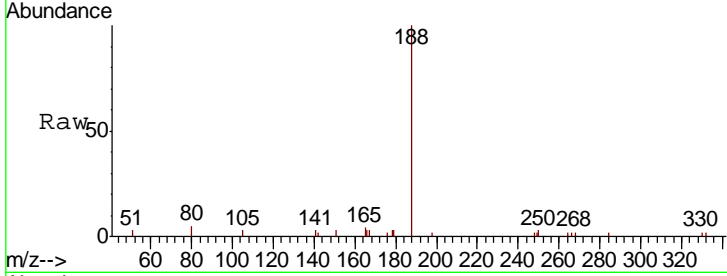
#19
 Phenanthrene-d10
 Concen: 0.400 ng
 RT: 17.04 min Scan# 1106
 Delta R.T. 0.00 min
 Lab File: BE100411.D
 Acq: 8 Jul 2019 14:24

Instrument :
 BNA_E
ClientSampled :
 PST-016-SW117-062519-1DL

Tgt Ion	Resp	Lower	Upper
188	4138		
94	0.0	0.0	0.0
80	5.3	8.8	13.2#

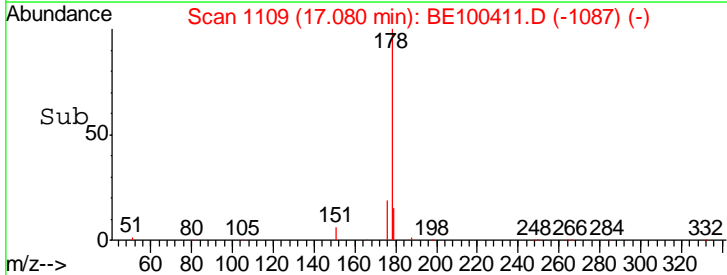
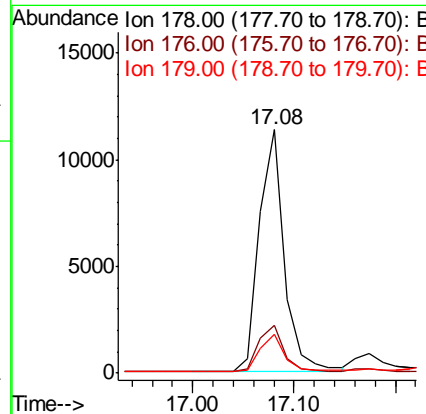
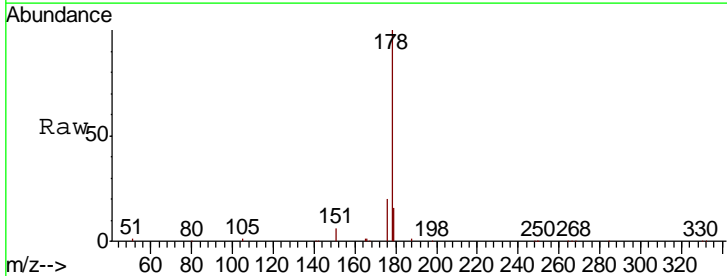
Manual Integrations
APPROVED

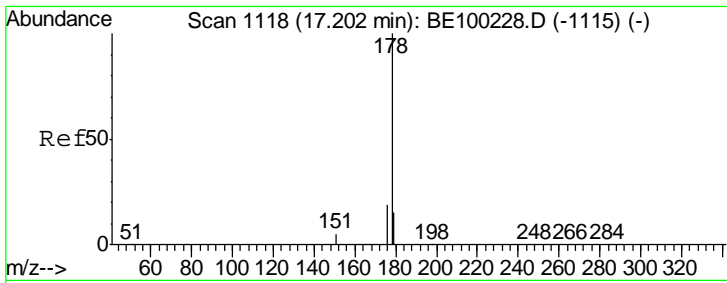
mohammad
 7/10/2019 9:03:54 AM



#23
 Phenanthrene
 Concen: 1.965 ng
 RT: 17.08 min Scan# 1109
 Delta R.T. 0.00 min
 Lab File: BE100411.D
 Acq: 8 Jul 2019 14:24

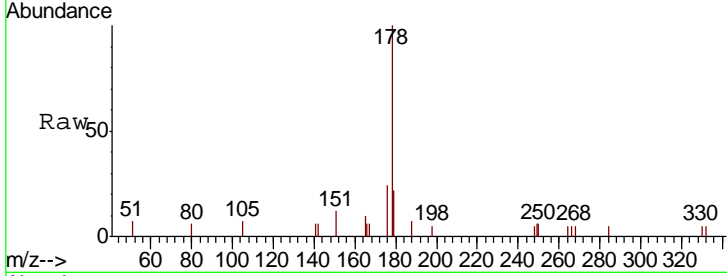
Tgt Ion	Resp	Lower	Upper
178	19703		
176	19.7	15.9	23.9
179	15.8	12.6	18.8





#24
 Anthracene
 Concen: 0.157 ng
 RT: 17.17 min Scan# 1116
 Delta R.T. -0.01 min
 Lab File: BE100411.D
 Acq: 8 Jul 2019 14:24

Instrument :
 BNA_E
ClientSampled :
 PST-016-SW117-062519-1DL

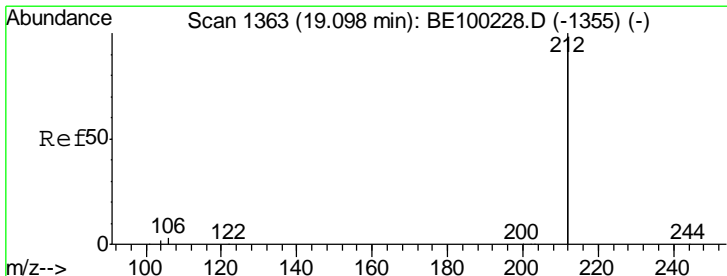
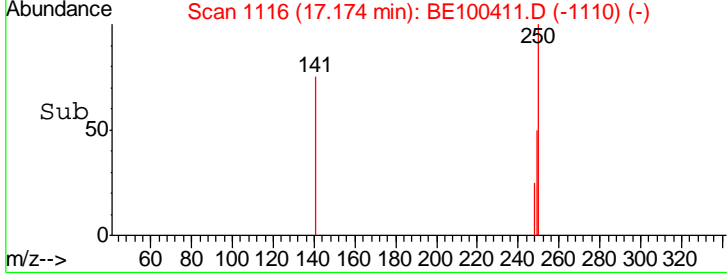
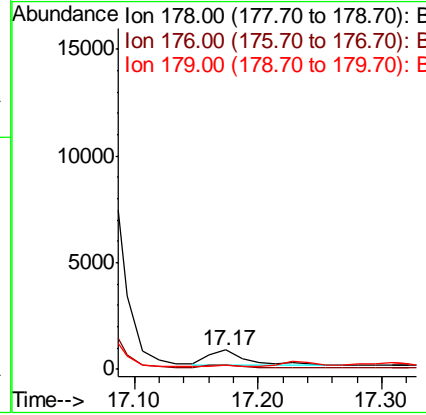


Tgt Ion: 178 Resp: 1417

Ion	Ratio	Lower	Upper
178	100		
176	19.2	14.5	21.7
179	7.6	11.6	17.4#

Manual Integrations
APPROVED

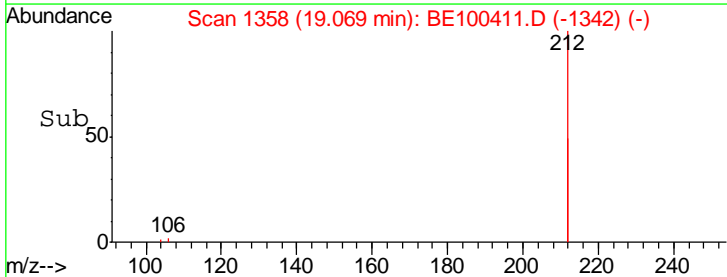
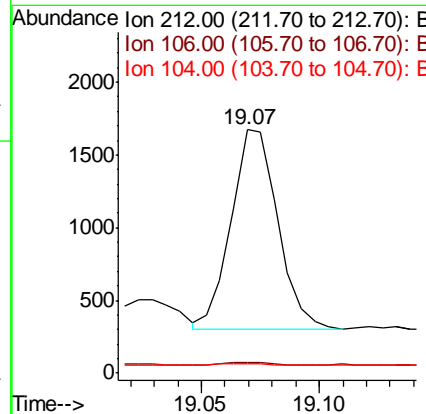
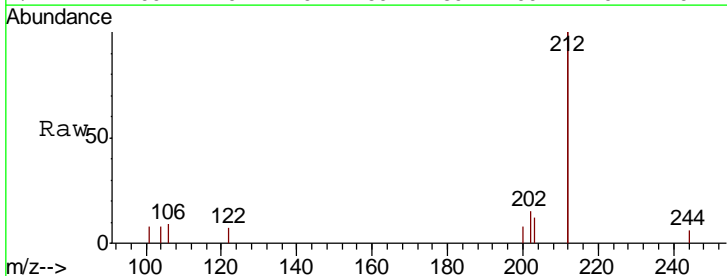
mohammad
 7/10/2019 9:03:54 AM

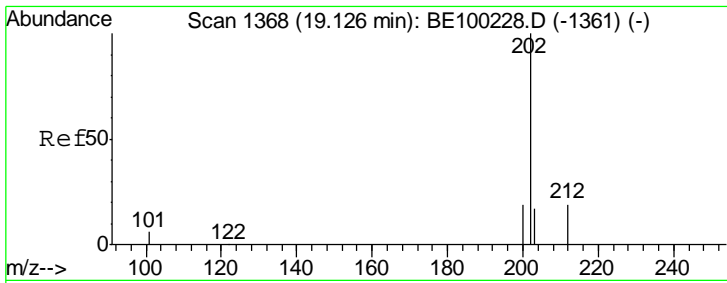


#25
 Fluoranthene-d10
 Concen: 0.031 ng
 RT: 19.07 min Scan# 1358
 Delta R.T. -0.01 min
 Lab File: BE100411.D
 Acq: 8 Jul 2019 14:24

Tgt Ion: 212 Resp: 1886

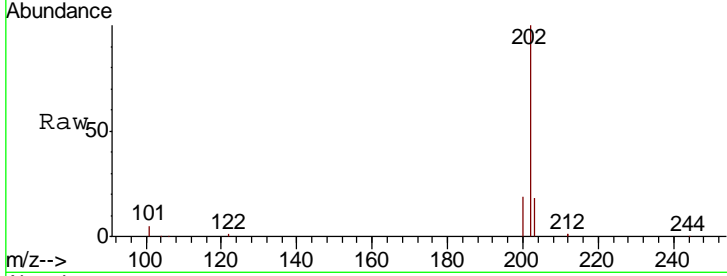
Ion	Ratio	Lower	Upper
212	100		
106	1.6	1.0	1.4#
104	0.8	0.6	1.0





#26
 Fluoranthene
 Concen: 2.349 ng
 RT: 19.10 min Scan# 1364
 Delta R.T. -0.01 min
 Lab File: BE100411.D
 Acq: 8 Jul 2019 14:24

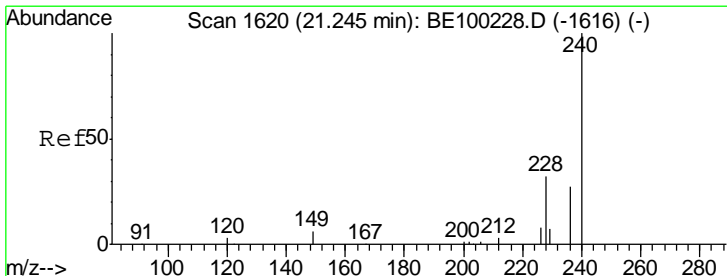
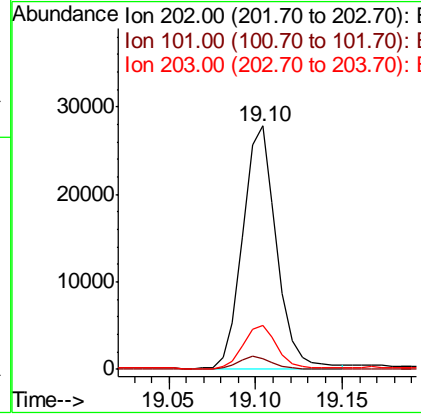
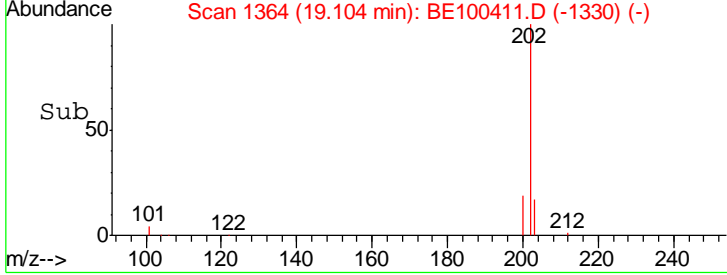
Instrument :
 BNA_E
 ClientSampled :
 PST-016-SW117-062519-1DL



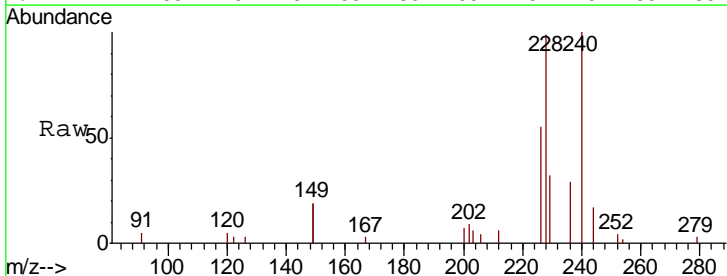
Tgt Ion: 202 Resp: 37520

Ion	Ratio	Lower	Upper
202	100		
101	5.0	4.2	6.2
203	17.9	13.7	20.5

Manual Integrations
 APPROVED
 mohammad
 7/10/2019 9:03:54 AM

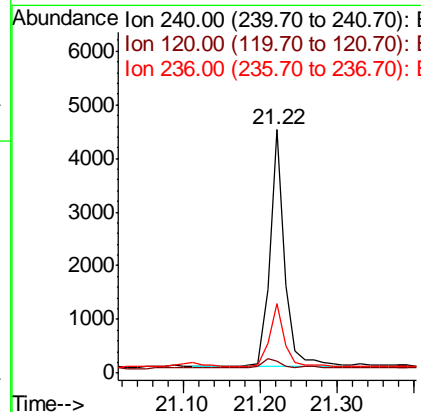
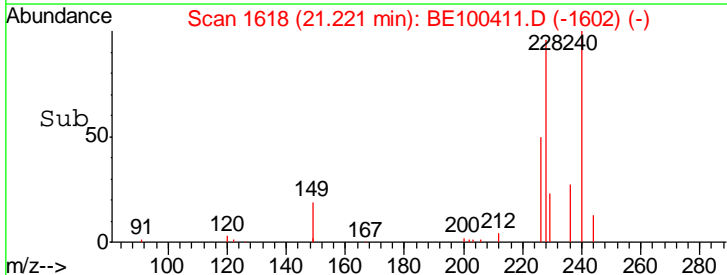


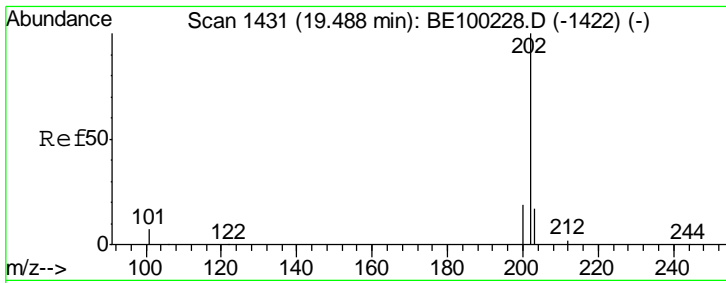
#27
 Chrysene-d12
 Concen: 0.400 ng
 RT: 21.22 min Scan# 1618
 Delta R.T. -0.01 min
 Lab File: BE100411.D
 Acq: 8 Jul 2019 14:24



Tgt Ion: 240 Resp: 5994

Ion	Ratio	Lower	Upper
240	100		
120	4.8	5.4	8.2#
236	28.8	23.2	34.8





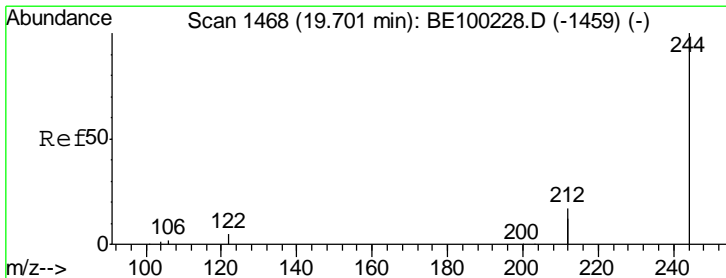
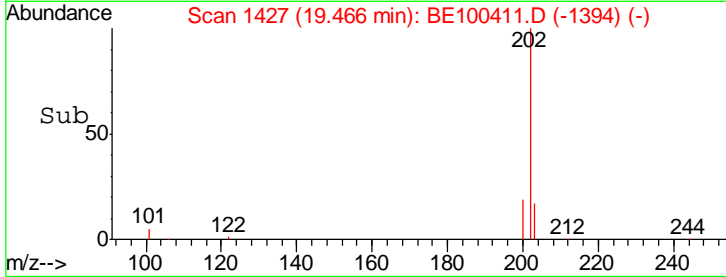
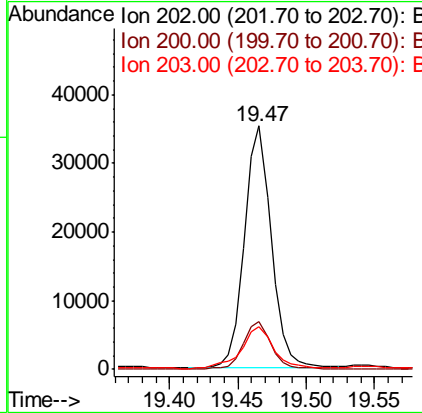
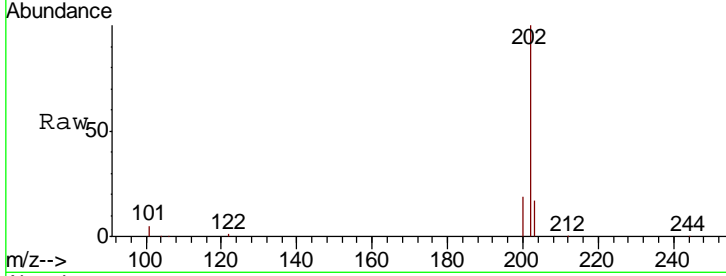
#28
 Pyrene
 Concen: 3.038 ng
 RT: 19.47 min Scan# 1427
 Delta R.T. -0.01 min
 Lab File: BE100411.D
 Acq: 8 Jul 2019 14:24

Instrument :
 BNA_E
 ClientSampleId :
 PST-016-SW117-062519-1DL

Tgt Ion	Resp	Lower	Upper
202	100		
200	19.7	15.2	22.8
203	20.1	14.1	21.1

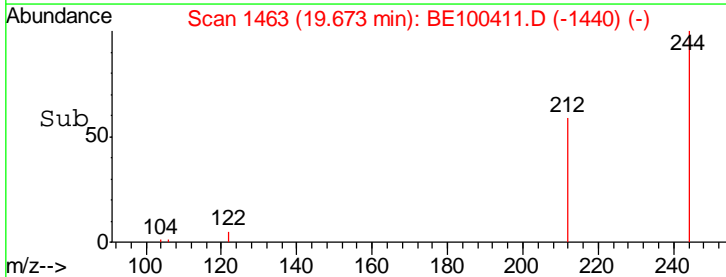
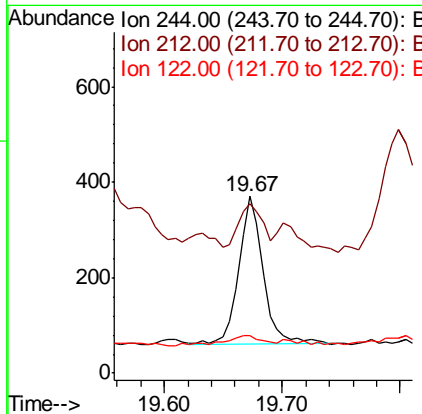
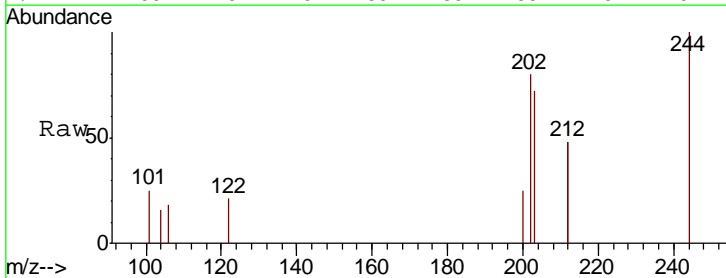
Manual Integrations
 APPROVED

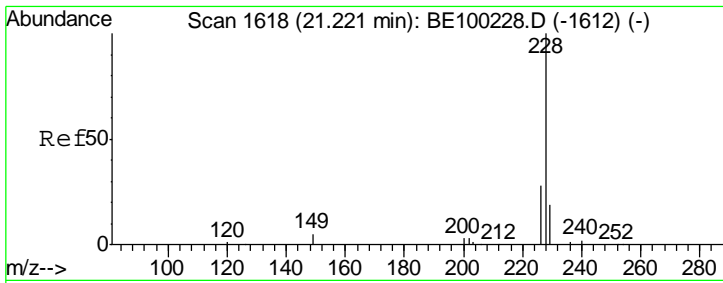
mohammad
 7/10/2019 9:03:54 AM



#29
 Terphenyl-d14
 Concen: 0.035 ng
 RT: 19.67 min Scan# 1463
 Delta R.T. -0.02 min
 Lab File: BE100411.D
 Acq: 8 Jul 2019 14:24

Tgt Ion	Resp	Lower	Upper
244	100		
212	96.2	33.0	49.6#
122	21.1	5.8	8.8#





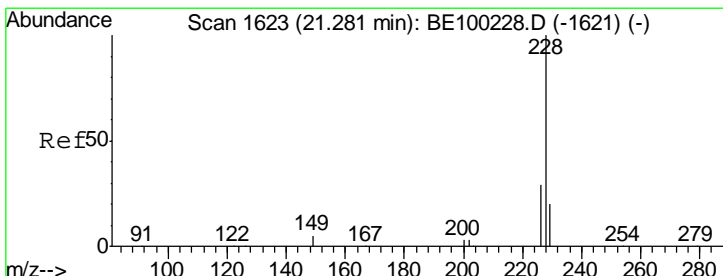
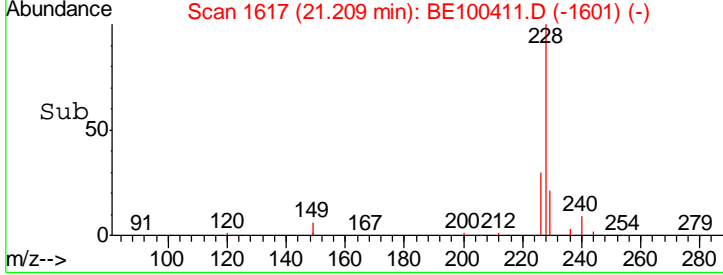
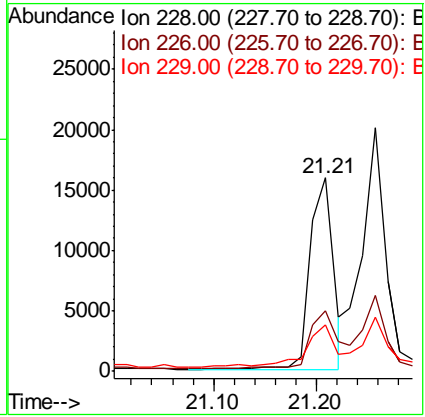
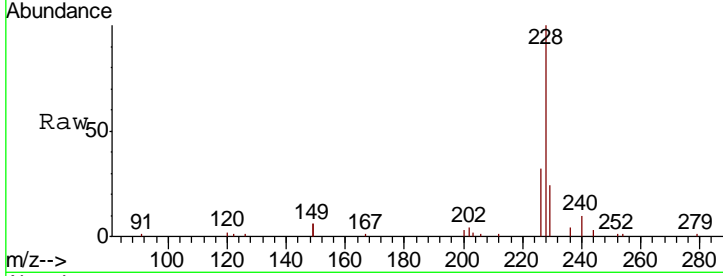
#30
 Benzo(a)anthracene
 Concen: 1.258 ng
 RT: 21.21 min Scan# 1617
 Delta R.T. -0.01 min
 Lab File: BE100411.D
 Acq: 8 Jul 2019 14:24

Instrument :
 BNA_E
ClientSampled :
 PST-016-SW117-062519-1DL

Tgt Ion: 228 Resp: 24791

Ion	Ratio	Lower	Upper
228	100		
226	31.6	22.0	33.0
229	24.0	17.4	26.0

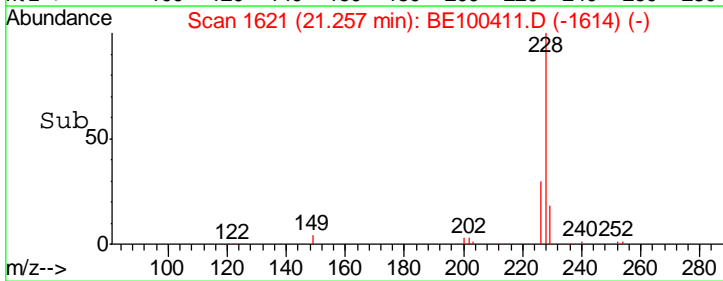
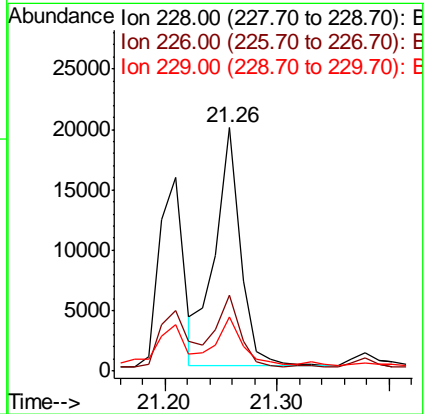
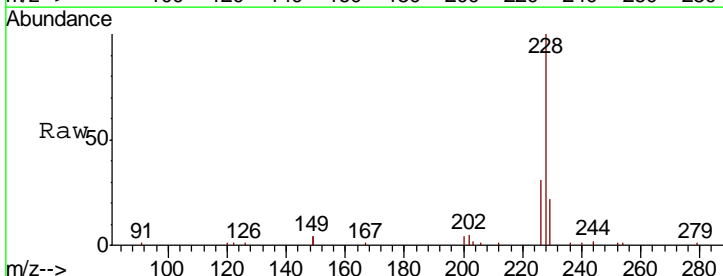
Manual Integrations
APPROVED
 mohammad
 7/10/2019 9:03:54 AM

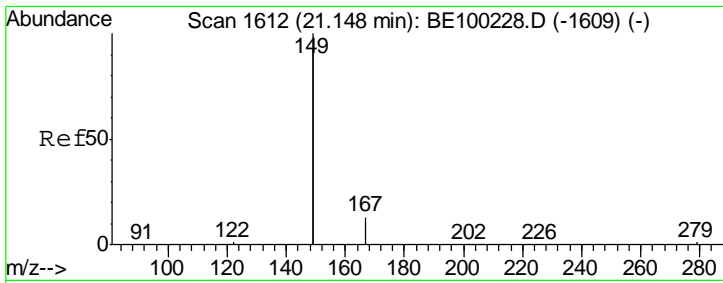


#31
 Chrysene
 Concen: 1.578 ng
 RT: 21.26 min Scan# 1621
 Delta R.T. -0.01 min
 Lab File: BE100411.D
 Acq: 8 Jul 2019 14:24

Tgt Ion: 228 Resp: 31238

Ion	Ratio	Lower	Upper
228	100		
226	31.4	25.0	37.6
229	22.3	16.9	25.3





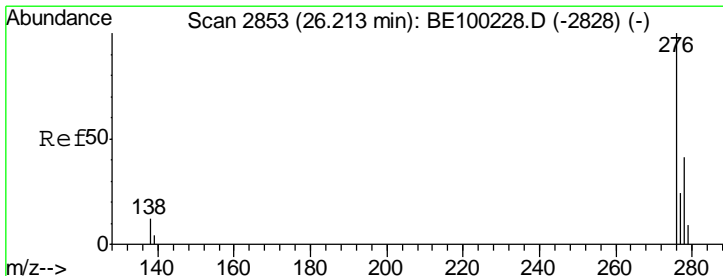
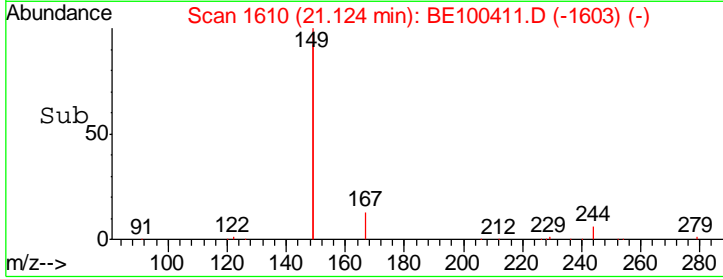
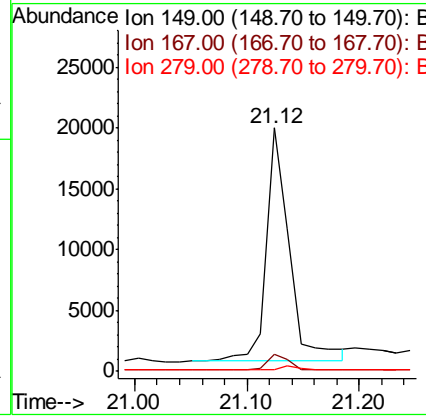
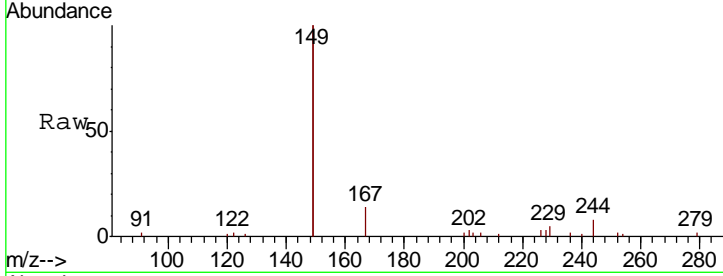
#32
 Bis(2-ethylhexyl)phthalate
 Concen: 0.931 ng
 RT: 21.12 min Scan# 1610
 Delta R.T. -0.01 min
 Lab File: BE100411.D
 Acq: 8 Jul 2019 14:24

Instrument :
 BNA_E
 ClientSampled :
 PST-016-SW117-062519-1DL

Tgt Ion	Resp	Lower	Upper
149	100		
167	6.0	5.7	8.5
279	1.3	1.4	2.0#

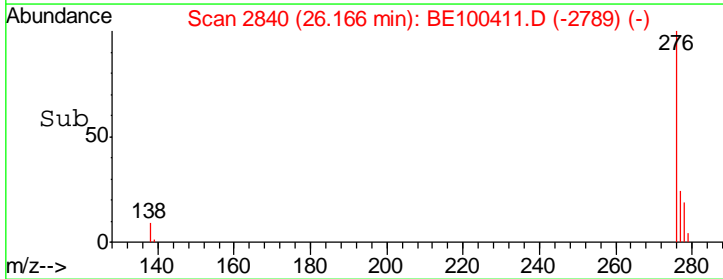
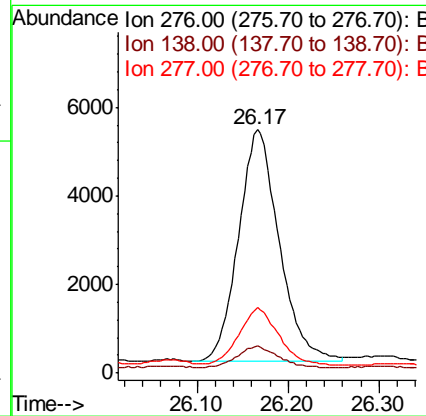
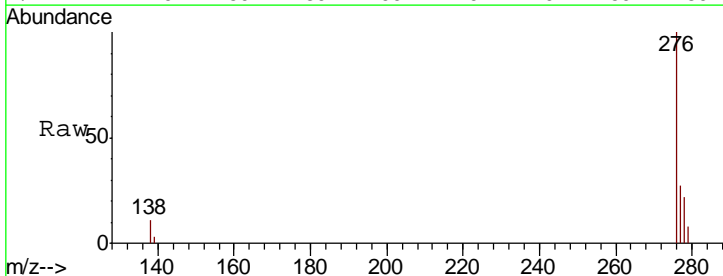
Manual Integrations
 APPROVED

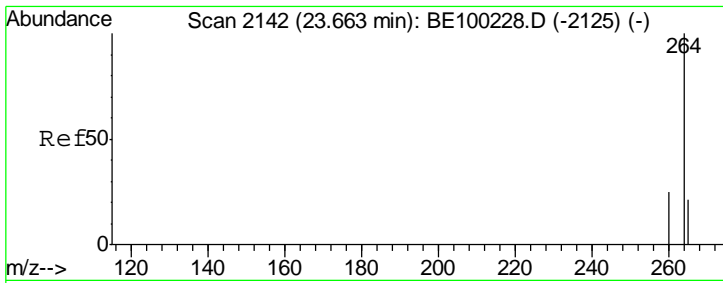
mohammad
 7/10/2019 9:03:54 AM



#33
 Indeno(1,2,3-cd)pyrene
 Concen: 0.624 ng
 RT: 26.17 min Scan# 2840
 Delta R.T. -0.02 min
 Lab File: BE100411.D
 Acq: 8 Jul 2019 14:24

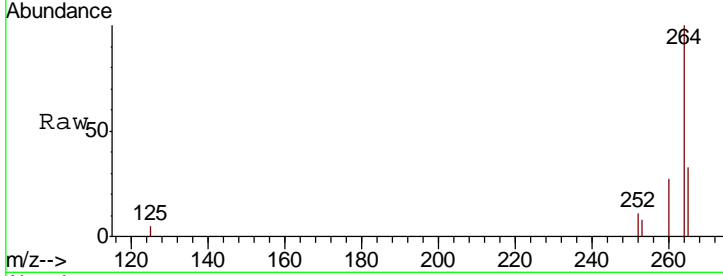
Tgt Ion	Resp	Lower	Upper
276	100		
138	8.7	7.6	11.4
277	23.2	20.0	30.0





#34
 Perylene-d12
 Concen: 0.400 ng
 RT: 23.63 min Scan# 2132
 Delta R.T. -0.01 min
 Lab File: BE100411.D
 Acq: 8 Jul 2019 14:24

Instrument : BNA_E
 ClientSampleId : PST-016-SW117-062519-1DL

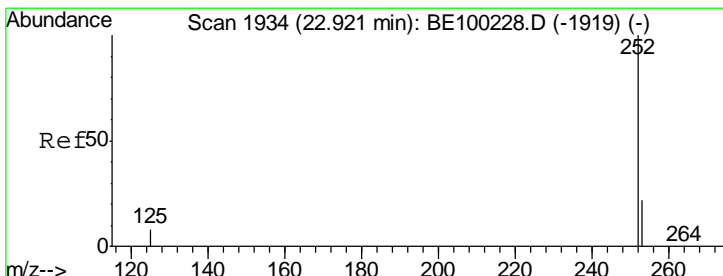
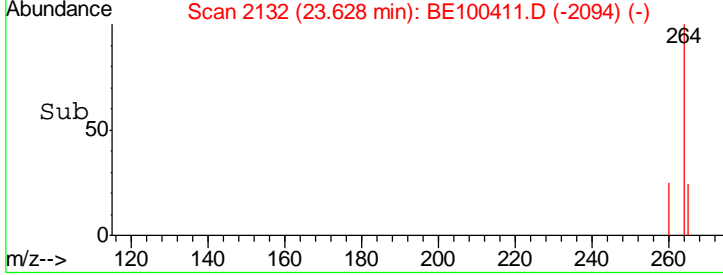
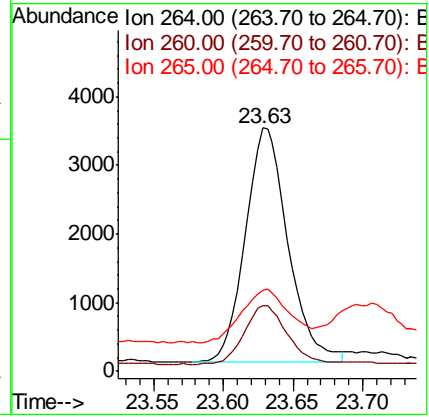


Tgt Ion: 264 Resp: 7267

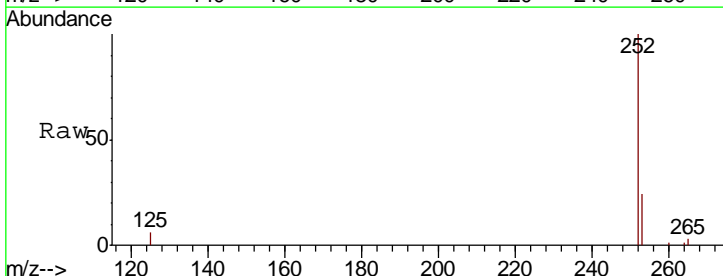
Ion	Ratio	Lower	Upper
264	100		
260	26.8	22.0	33.0
265	33.3	26.0	39.0

Manual Integrations
 APPROVED

mohammad
 7/10/2019 9:03:54 AM

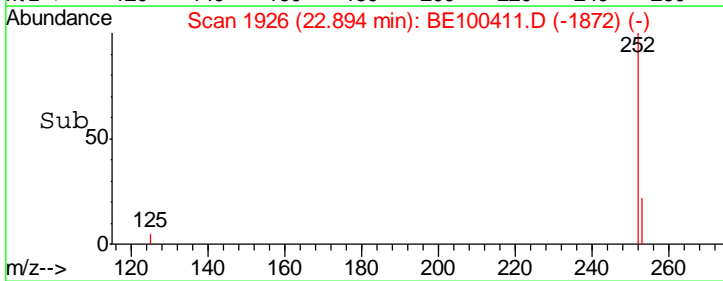
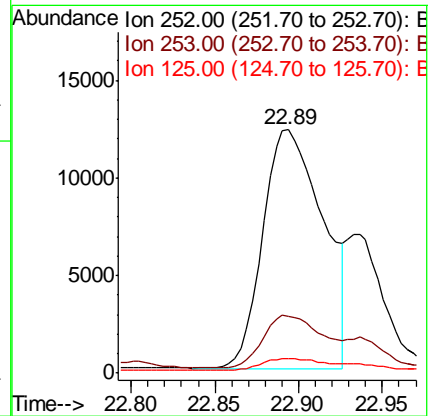


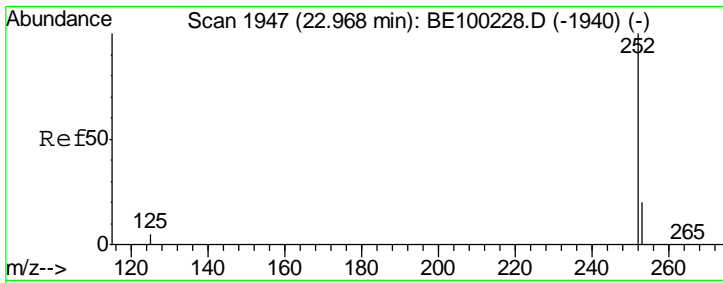
#35
 Benzo(b)fluoranthene
 Concen: 1.561 ng
 RT: 22.89 min Scan# 1926
 Delta R.T. -0.01 min
 Lab File: BE100411.D
 Acq: 8 Jul 2019 14:24



Tgt Ion: 252 Resp: 30752

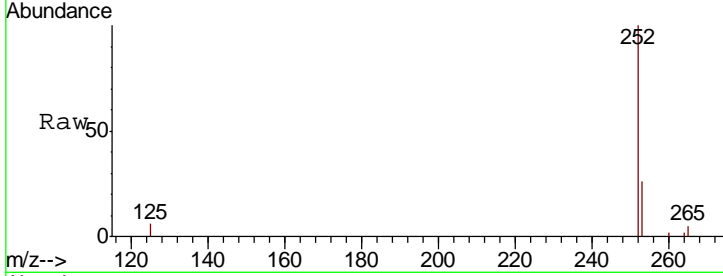
Ion	Ratio	Lower	Upper
252	100		
253	23.5	20.0	30.0
125	5.7	6.3	9.5#





#36
 Benzo(k)fluoranthene
 Concen: 0.511 ng m
 RT: 22.94 min Scan# 1938
 Delta R.T. -0.01 min
 Lab File: BE100411.D
 Acq: 8 Jul 2019 14:24

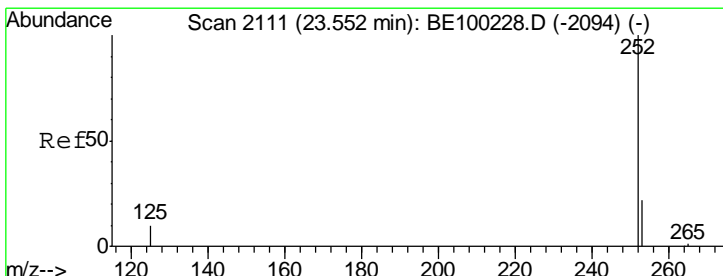
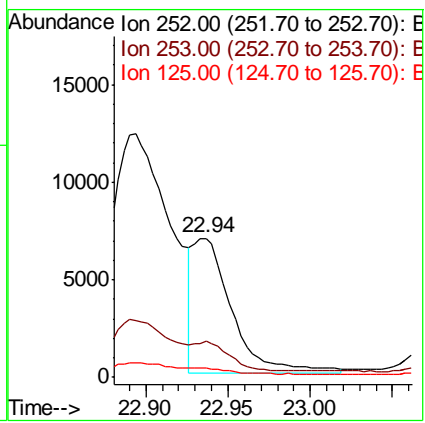
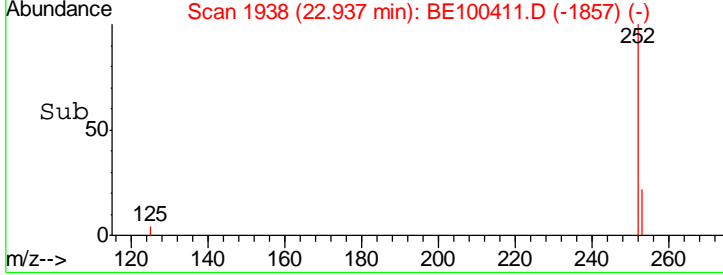
Instrument :
 BNA_E
ClientSampled :
 PST-016-SW117-062519-1DL



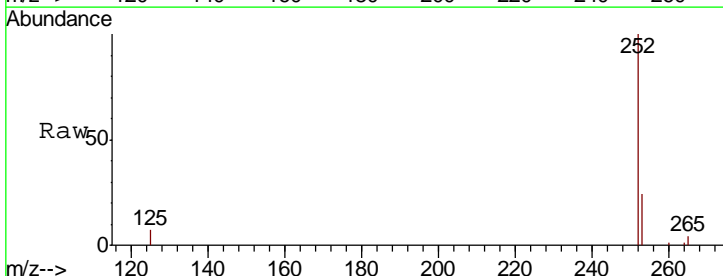
Tgt Ion: 252 Resp: 11228

Ion	Ratio	Lower	Upper
252	100		
253	25.8	19.5	29.3
125	6.5	5.4	8.0

Manual Integrations
APPROVED
 mohammad
 7/10/2019 9:03:54 AM

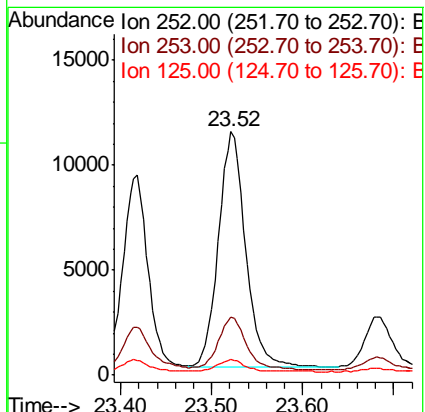
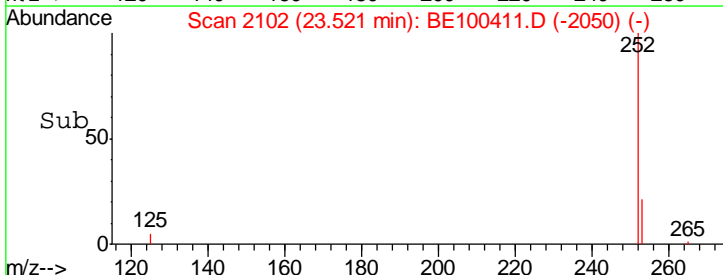


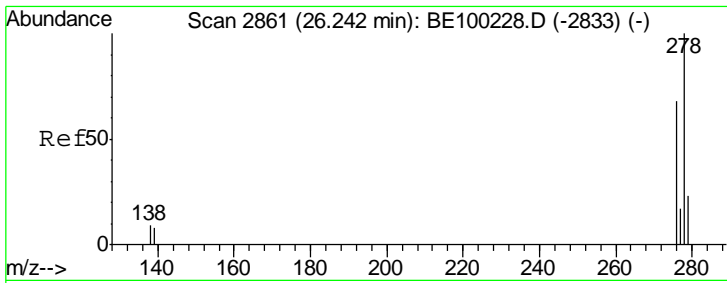
#37
 Benzo(a)pyrene
 Concen: 1.189 ng
 RT: 23.52 min Scan# 2102
 Delta R.T. -0.01 min
 Lab File: BE100411.D
 Acq: 8 Jul 2019 14:24



Tgt Ion: 252 Resp: 23475

Ion	Ratio	Lower	Upper
252	100		
253	24.0	21.0	31.6
125	6.6	7.8	11.8#





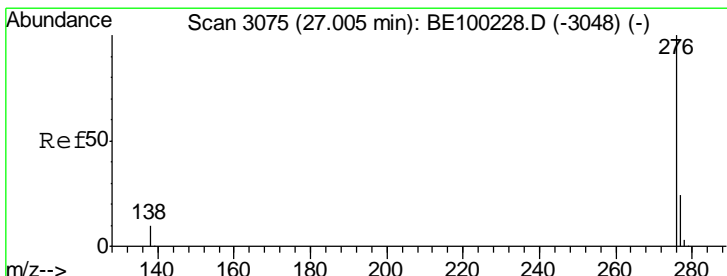
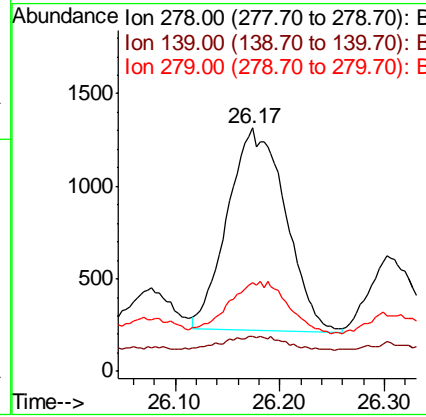
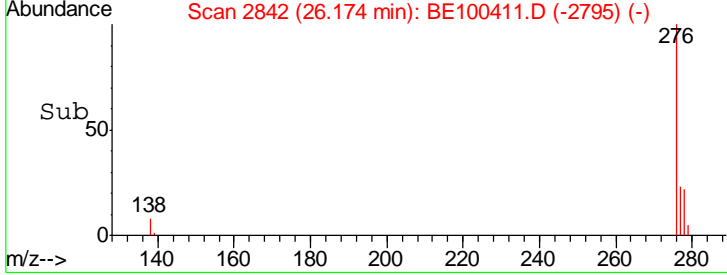
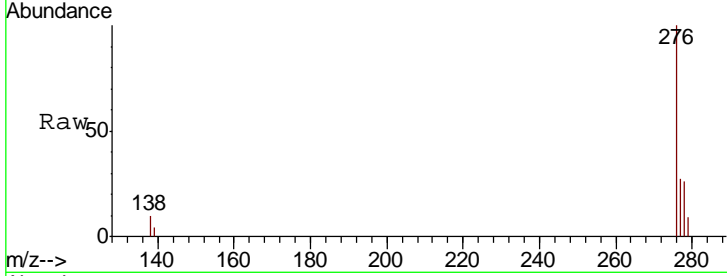
#38
 Dibenzo(a,h)anthracene
 Concen: 0.204 ng
 RT: 26.17 min Scan# 2842
 Delta R.T. -0.03 min
 Lab File: BE100411.D
 Acq: 8 Jul 2019 14:24

Instrument : BNA_E
 ClientSampleId : PST-016-SW117-062519-1DL

Tgt Ion	Resp	Lower	Upper
278	4198		
139	14.4	9.8	14.8
279	36.6	22.6	34.0

Manual Integrations
 APPROVED

mohammad
 7/10/2019 9:03:54 AM



#39
 Benzo(g,h,i)perylene
 Concen: 0.886 ng
 RT: 26.95 min Scan# 3060
 Delta R.T. -0.01 min
 Lab File: BE100411.D
 Acq: 8 Jul 2019 14:24

Tgt Ion	Resp	Lower	Upper
276	18770		
277	26.4	20.7	31.1
138	10.9	10.2	15.2

