

Data Path : Z:\SVOASRV\HPCHEM1\BNA E\DATA\BE010820\
 Data File : BE101002.D
 Acq On : 8 Jan 2020 14:00
 Operator : JU
 Sample : SSTDICC0.2
 Misc :
 ALS Vial : 3 Sample Multiplier: 1

Instrument :
 BNA_E
ClientSampled :
 SSTDICC0.2

Manual Integrations
APPROVED
 mohammad
 1/9/2020 12:12:50 PM

Quant Time: Jan 08 18:30:48 2020
 Quant Method : Z:\SVOASRV\HPCHEM1\BNA E\METHODS\8270-SIM-BE010820.M
 Quant Title : ASP BNA STANDARDS FOR 5 POINT CALIBRATION
 QLast Update : Wed Jan 08 18:14:32 2020
 Response via : Initial Calibration

Internal Standards	R.T.	QIon	Response	Conc	Units	Dev(Min)
1) 1,4-Dichlorobenzene-d4	7.74	152	3232	0.40	ng	0.00
7) Naphthalene-d8	10.51	136	14232	0.40	ng	0.01
13) Acenaphthene-d10	14.37	164	8777	0.40	ng	0.01
19) Phenanthrene-d10	17.09	188	19836	0.40	ng	0.00
27) Chrysene-d12	21.28	240	16459	0.40	ng	0.00
34) Perylene-d12	23.70	264	18156	0.40	ng	0.00

System Monitoring Compounds	R.T.	QIon	Response	Conc	Units	Dev(Min)
4) 2-Fluorophenol	5.34	112	1370	0.25	ng	0.00
5) Phenol-d6	6.92	99	1570	0.20	ng	0.00
8) Nitrobenzene-d5	8.89	82	1739	0.26	ng	0.01
11) 2-Methylnaphthalene-d10	12.11	152	5292	0.25	ng	0.00
14) 2,4,6-Tribromophenol	15.86	330	416	0.22	ng	0.01
15) 2-Fluorobiphenyl	13.00	172	6294	0.20	ng	0.00
25) Fluoranthene-d10	19.13	212	50051	0.21	ng	0.00
29) Terphenyl-d14	19.74	244	7854	0.21	ng	0.00

Target Compounds	R.T.	QIon	Response	Conc	Units	Qvalue
2) 1,4-Dioxane	3.29	88	1810	0.159	ng	# 88
3) n-Nitrosodimethylamine	3.61	42	1010	0.379	ng	# 67
6) bis(2-Chloroethyl)ether	7.17	93	2736m	0.234	ng	
9) Naphthalene	10.55	128	30420	0.201	ng	99
10) Hexachlorobutadiene	10.85	225	1340	0.200	ng	96
12) 2-Methylnaphthalene	12.18	142	4341	0.189	ng	96
16) Acenaphthylene	14.08	152	5955	0.182	ng	99
17) Acenaphthene	14.43	154	4661	0.196	ng	99
18) Fluorene	15.41	166	5682	0.191	ng	96
20) 4-Bromophenyl-phenylether	16.30	248	1652	0.190	ng	93
21) Hexachlorobenzene	16.41	284	2035	0.198	ng	94
22) Pentachlorophenol	16.76	266	370	0.241	ng	95
23) Phenanthrene	17.13	178	9729	0.190	ng	100
24) Anthracene	17.24	178	8976	0.174	ng	98
26) Fluoranthene	19.16	202	11952	0.171	ng	99
28) Pyrene	19.52	202	12101	0.210	ng	99
30) Benzo(a)anthracene	21.27	228	8324	0.207	ng	96
31) Chrysene	21.32	228	13961	0.186	ng	99
32) Bis(2-ethylhexyl)phthalate	21.20	149	13754	0.155	ng	100
33) Indeno(1,2,3-cd)pyrene	26.25	276	10189	0.180	ng	99
35) Benzo(b)fluoranthene	22.96	252	8598	0.225	ng	# 94
36) Benzo(k)fluoranthene	23.01	252	14025m	0.194	ng	
37) Benzo(a)pyrene	23.59	252	8049	0.180	ng	# 93
38) Dibenzo(a,h)anthracene	26.28	278	7218	0.179	ng	# 94
39) Benzo(g,h,i)perylene	27.02	276	9651	0.203	ng	95

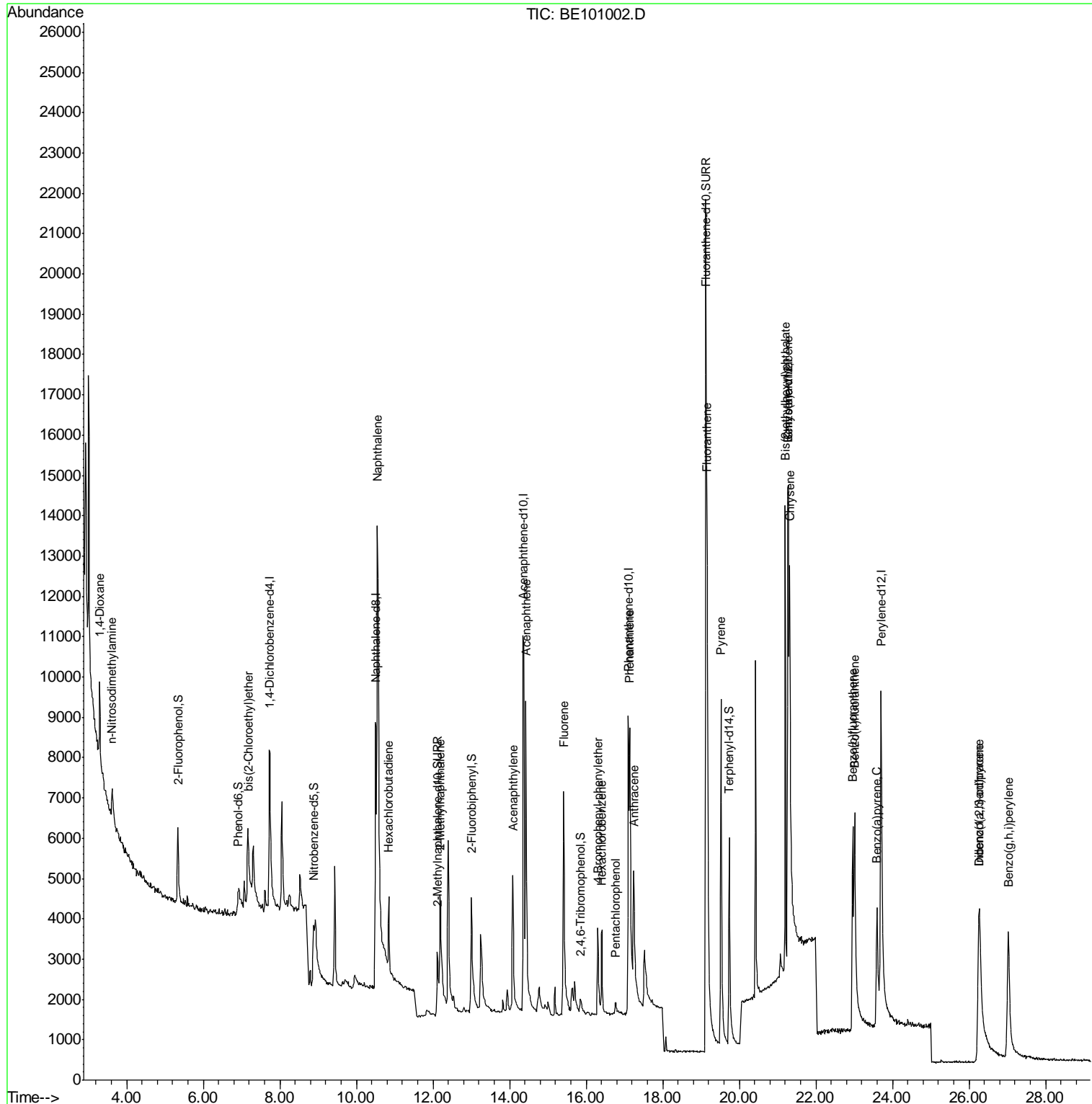
(#) = qualifier out of range (m) = manual integration (+) = signals summed

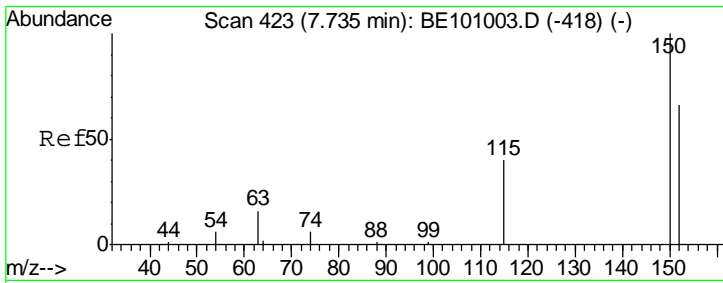
Data Path : Z:\SVOASRV\HPCHEM1\BNA E\DATA\BE010820\
 Data File : BE101002.D
 Acq On : 8 Jan 2020 14:00
 Operator : JU
 Sample : SSTDIC0.2
 Misc :
 ALS Vial : 3 Sample Multiplier: 1

Instrument :
 BNA_E
 Client Sampled :
 SSTDIC0.2

Manual Integrations
 APPROVED
 mohammad
 1/9/2020 12:12:50 PM

Quant Time: Jan 08 18:30:48 2020
 Quant Method : Z:\SVOASRV\HPCHEM1\BNA E\METHODS\8270-SIM-BE010820.M
 Quant Title : ASP BNA STANDARDS FOR 5 POINT CALIBRATION
 QLast Update : Wed Jan 08 18:14:32 2020
 Response via : Initial Calibration



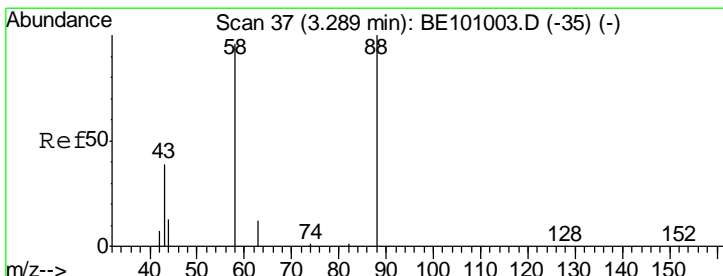
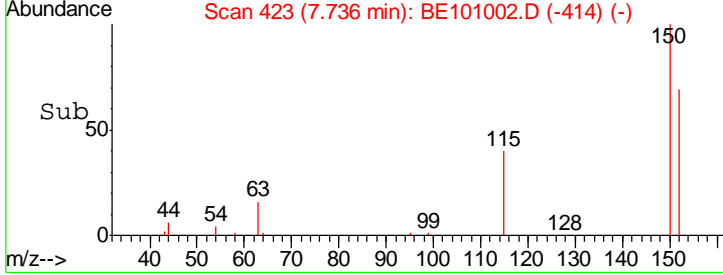
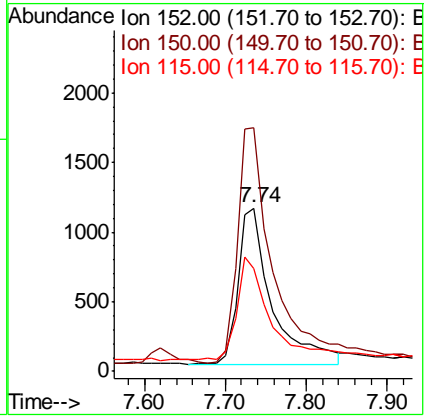
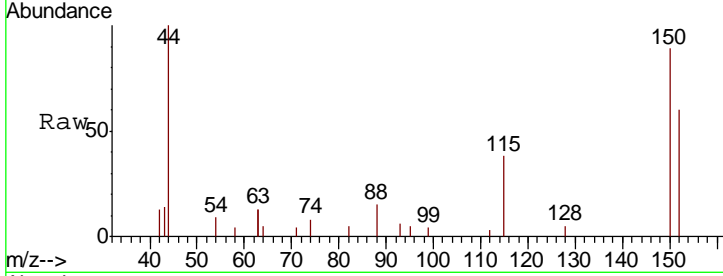


#1
 1,4-Dichlorobenzene-d4
 Concen: 0.400 ng
 RT: 7.74 min Scan# 423
 Delta R.T. 0.00 min
 Lab File: BE101002.D
 Acq: 8 Jan 2020 14:00

Instrument :
 BNA_E
ClientSampled :
 SSTDICC0.2

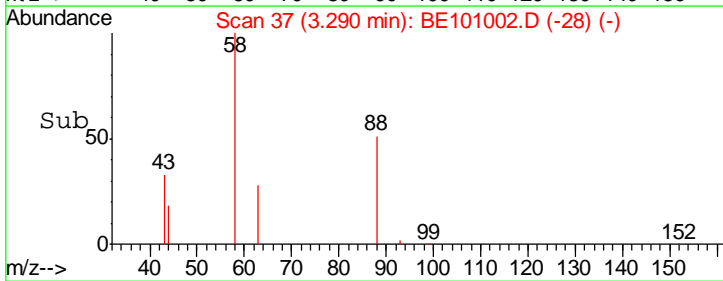
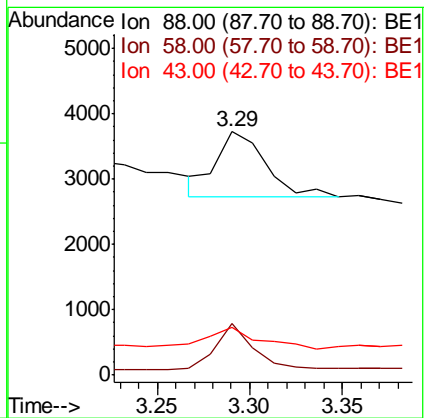
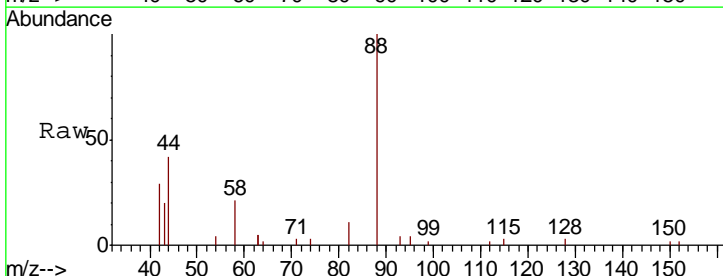
Tgt Ion	Resp	Lower	Upper
152	100		
150	149.0	120.3	180.5
115	63.2	51.7	77.5

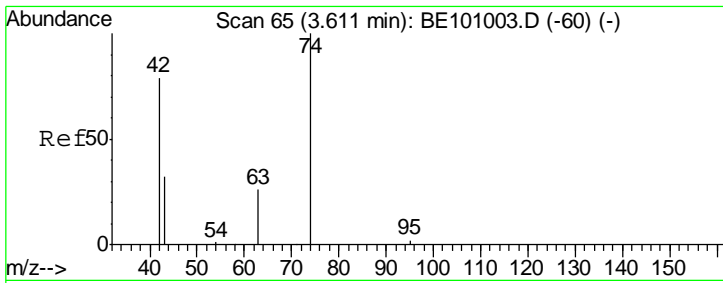
Manual Integrations
APPROVED
 mohammad
 1/9/2020 12:12:50 PM



#2
 1,4-Dioxane
 Concen: 0.159 ng
 RT: 3.29 min Scan# 37
 Delta R.T. 0.00 min
 Lab File: BE101002.D
 Acq: 8 Jan 2020 14:00

Tgt Ion	Resp	Lower	Upper
88	100		
58	56.3	53.0	79.4
43	35.6	23.4	35.2#





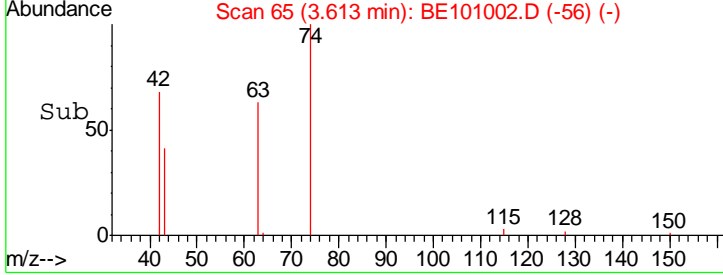
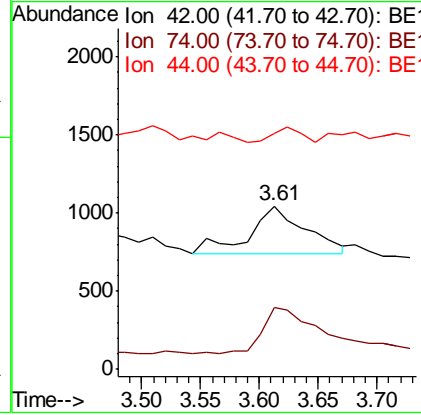
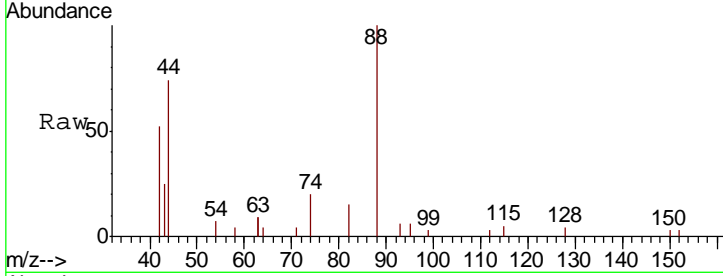
#3
 n-Nitrosodimethylamine
 Concen: 0.379 ng
 RT: 3.61 min Scan# 65
 Delta R.T. 0.00 min
 Lab File: BE101002.D
 Acq: 8 Jan 2020 14:00

Instrument :
 BNA_E
ClientSampled :
 SSTDICC0.2

Tgt Ion	Resp	Lower	Upper
42	1010		
42	100		
74	90.9	105.7	158.5#
44	16.5	10.0	15.0#

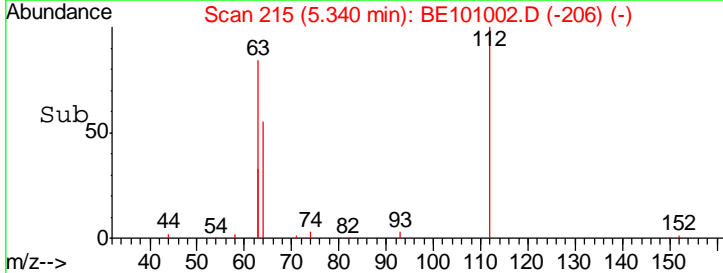
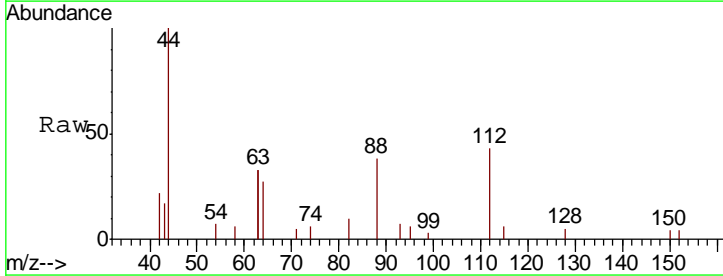
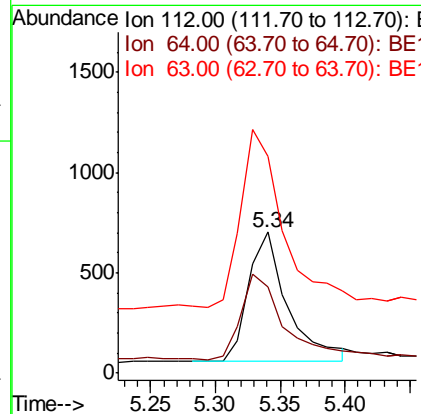
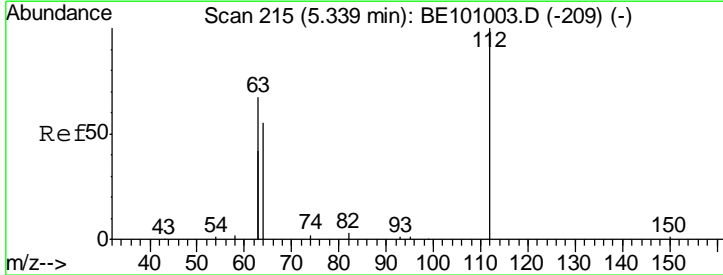
Manual Integrations
APPROVED

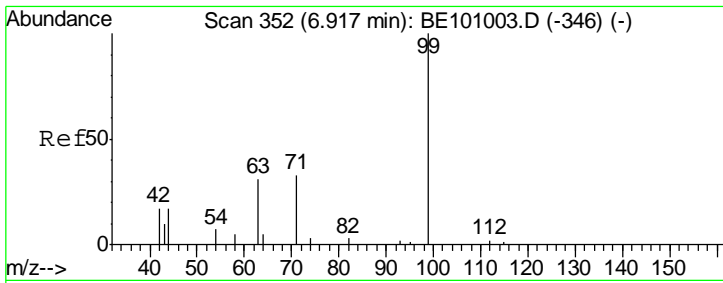
mohammad
 1/9/2020 12:12:50 PM



#4
 2-Fluorophenol
 Concen: 0.251 ng
 RT: 5.34 min Scan# 215
 Delta R.T. 0.00 min
 Lab File: BE101002.D
 Acq: 8 Jan 2020 14:00

Tgt Ion	Resp	Lower	Upper
112	1370		
112	100		
64	70.7	53.6	80.4
63	149.0	114.6	172.0





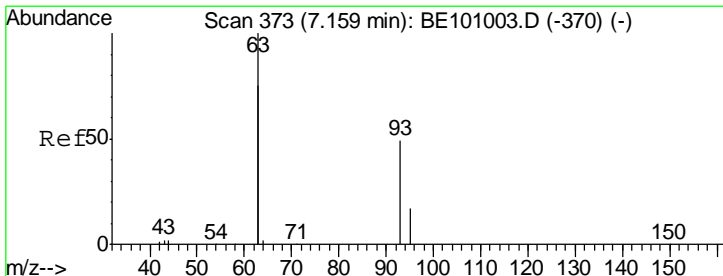
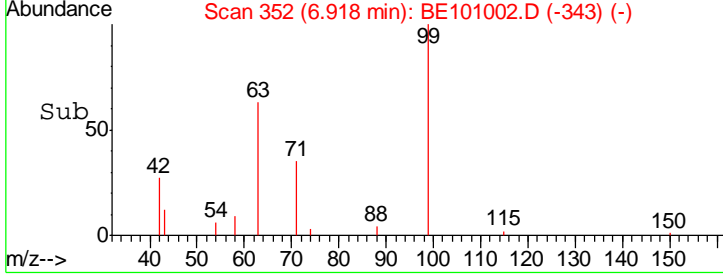
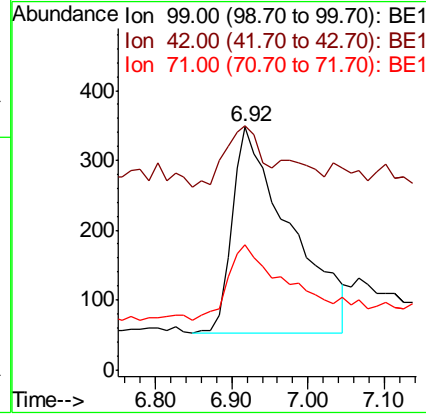
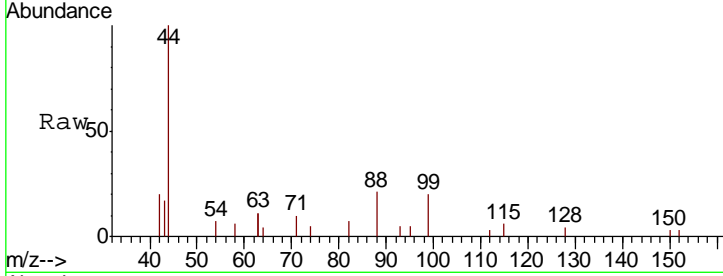
#5
 Phenol-d6
 Concen: 0.205 ng
 RT: 6.92 min Scan# 352
 Delta R.T. 0.00 min
 Lab File: BE101002.D
 Acq: 8 Jan 2020 14:00

Instrument :
 BNA_E
ClientSampled :
 SSTDICC0.2

Tgt Ion	Resp	Lower	Upper
99	1570		
99	100		
42	18.4	18.3	27.5
71	37.1	28.0	42.0

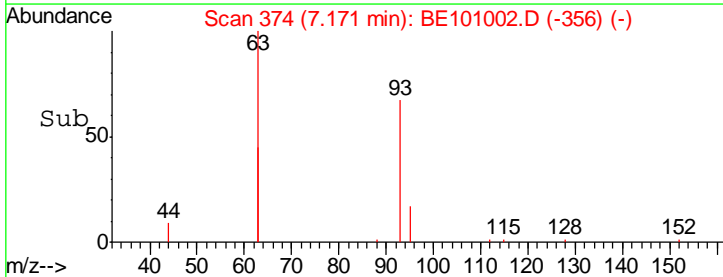
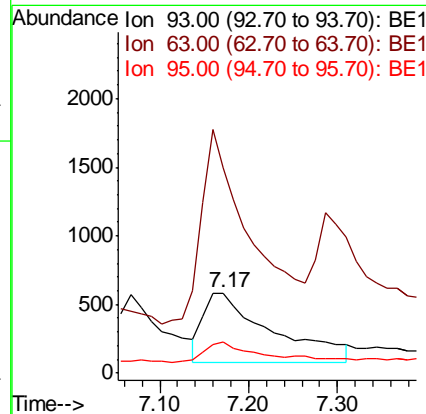
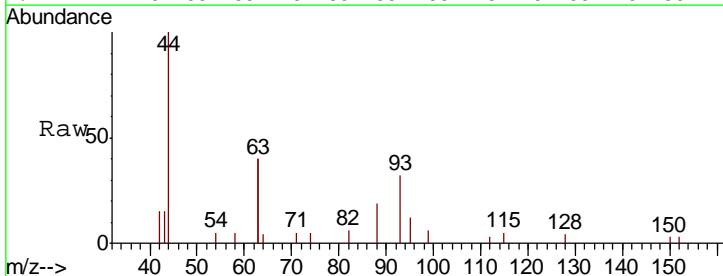
Manual Integrations
APPROVED

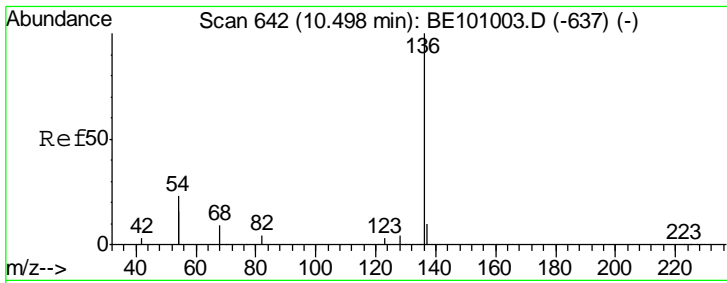
mohammad
 1/9/2020 12:12:50 PM



#6
 bis(2-Chloroethyl)ether
 Concen: 0.234 ng m
 RT: 7.17 min Scan# 374
 Delta R.T. 0.01 min
 Lab File: BE101002.D
 Acq: 8 Jan 2020 14:00

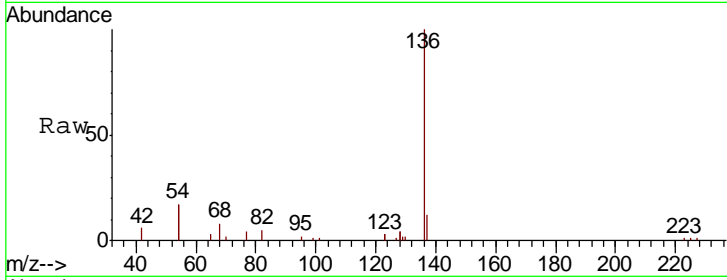
Tgt Ion	Resp	Lower	Upper
93	2736		
93	100		
63	197.1	233.9	350.9#
95	21.9	23.5	35.3#





#7
 Naphthalene-d8
 Concen: 0.400 ng
 RT: 10.51 min Scan# 642
 Delta R.T. 0.01 min
 Lab File: BE101002.D
 Acq: 8 Jan 2020 14:00

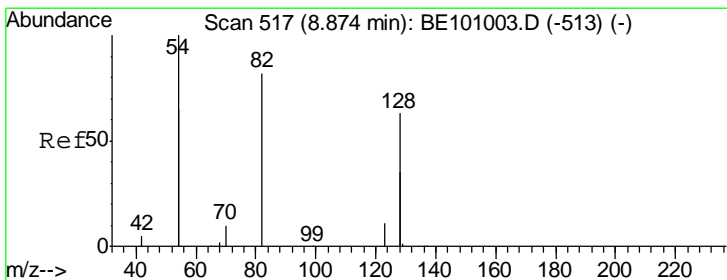
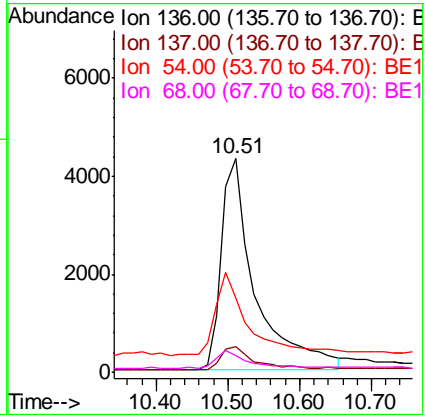
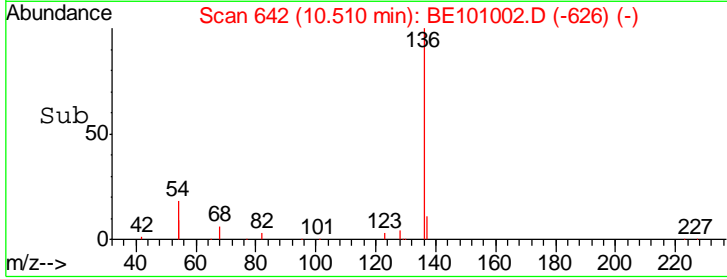
Instrument :
 BNA_E
ClientSampled :
 SSTDICC0.2



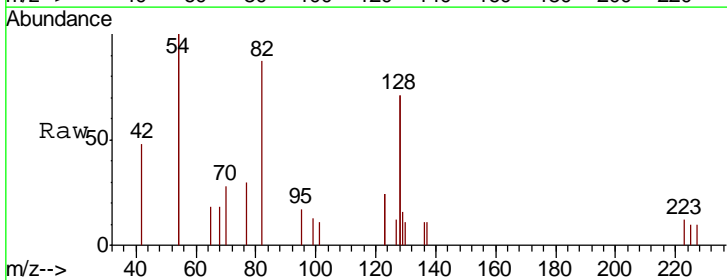
Tgt Ion: 136 Resp: 14232

Ion	Ratio	Lower	Upper
136	100		
137	11.9	9.3	13.9
54	34.8	36.8	55.2#
68	7.9	8.4	12.6#

Manual Integrations
APPROVED
 mohammad
 1/9/2020 12:12:50 PM

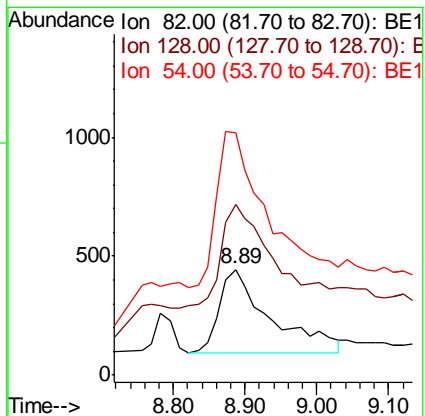
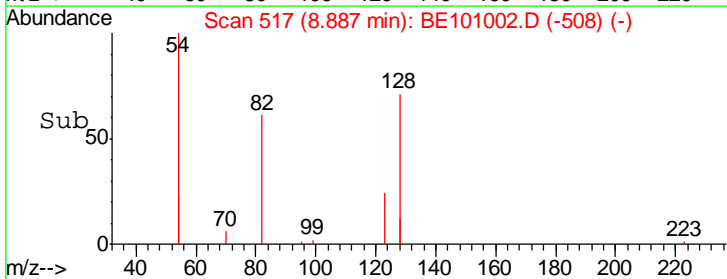


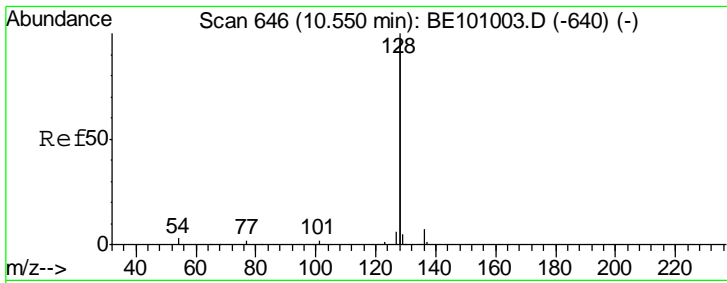
#8
 Nitrobenzene-d5
 Concen: 0.255 ng
 RT: 8.89 min Scan# 517
 Delta R.T. 0.01 min
 Lab File: BE101002.D
 Acq: 8 Jan 2020 14:00



Tgt Ion: 82 Resp: 1739

Ion	Ratio	Lower	Upper
82	100		
128	162.5	109.8	164.6
54	229.8	174.5	261.7





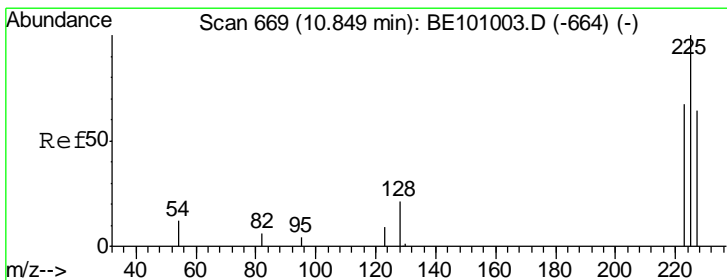
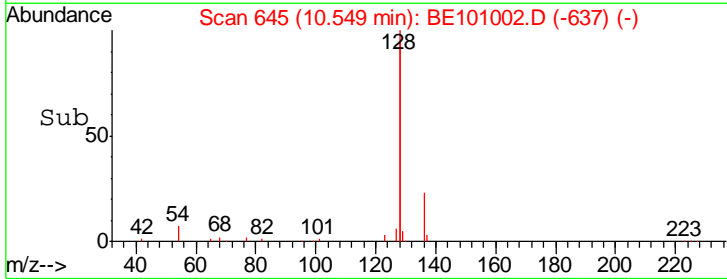
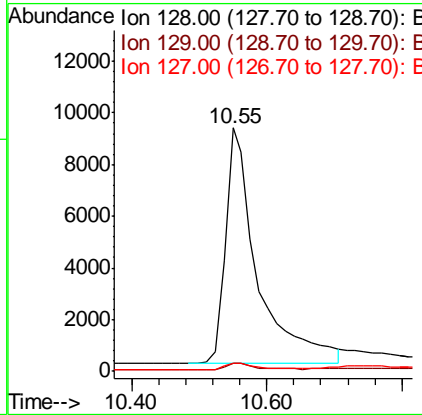
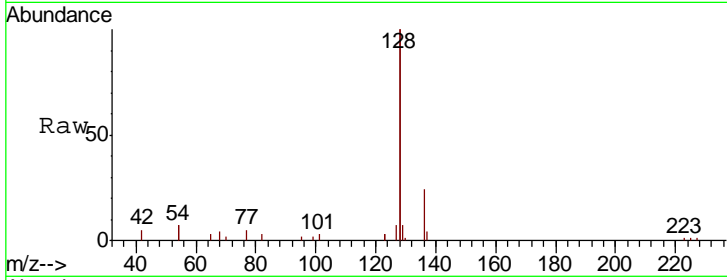
#9
 Naphthalene
 Concen: 0.201 ng
 RT: 10.55 min Scan# 645
 Delta R.T. -0.00 min
 Lab File: BE101002.D
 Acq: 8 Jan 2020 14:00

Instrument :
 BNA_E
 ClientSampled :
 SSTDICC0.2

Tgt Ion	Resp	Lower	Upper
128	100		
129	3.4	2.3	3.5
127	3.5	2.7	4.1

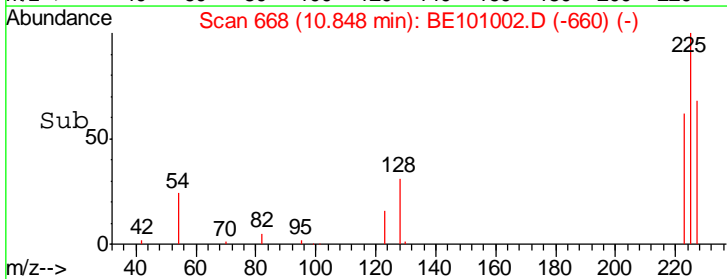
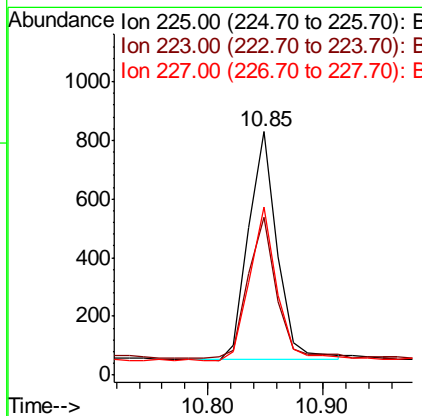
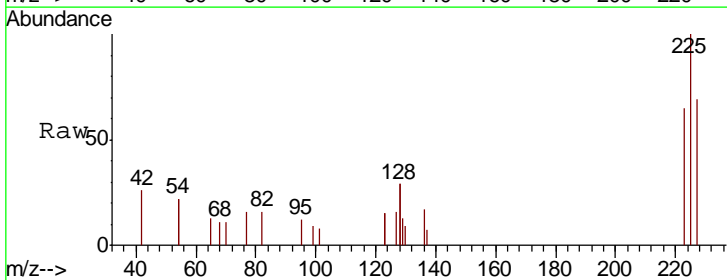
Manual Integrations
 APPROVED

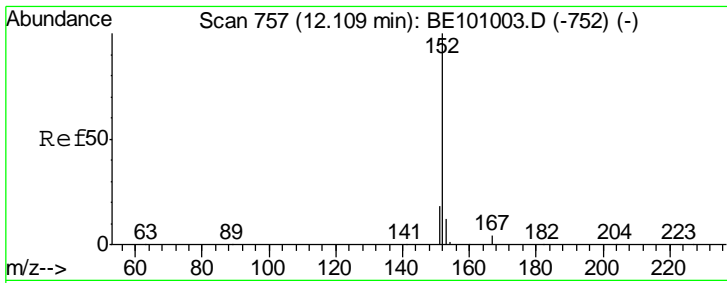
mohammad
 1/9/2020 12:12:50 PM



#10
 Hexachlorobutadiene
 Concen: 0.200 ng
 RT: 10.85 min Scan# 668
 Delta R.T. -0.00 min
 Lab File: BE101002.D
 Acq: 8 Jan 2020 14:00

Tgt Ion	Resp	Lower	Upper
225	100		
223	61.7	52.2	78.4
227	64.9	49.9	74.9





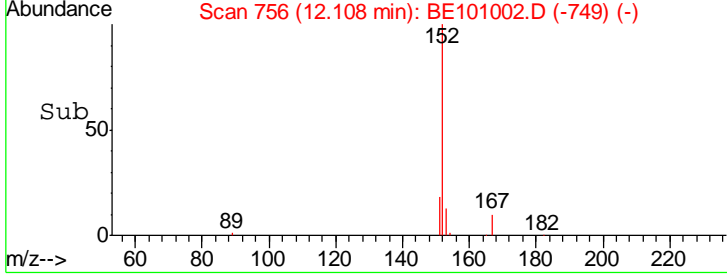
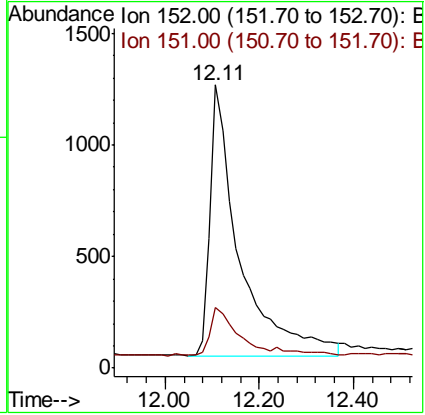
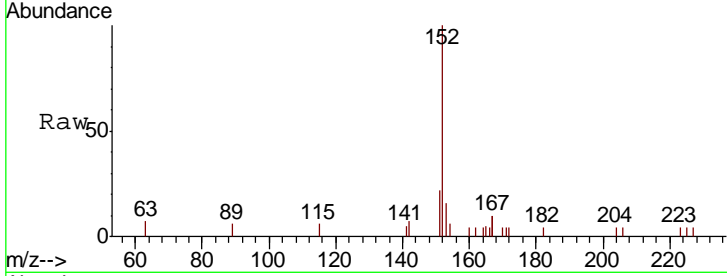
#11
 2-Methylnaphthalene-d10
 Concen: 0.253 ng
 RT: 12.11 min Scan# 756
 Delta R.T. -0.00 min
 Lab File: BE101002.D
 Acq: 8 Jan 2020 14:00

Instrument :
 BNA_E
ClientSampled :
 SSTDICC0.2

Tgt Ion	Resp	Lower	Upper
152	100		
151	15.7	15.0	22.6

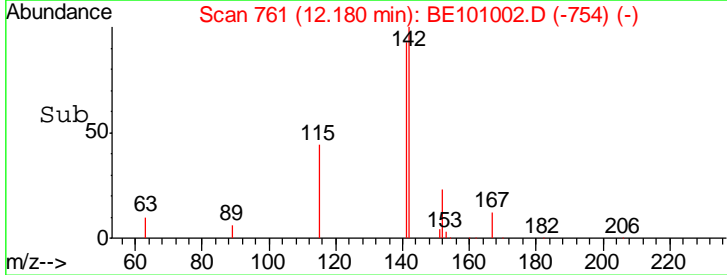
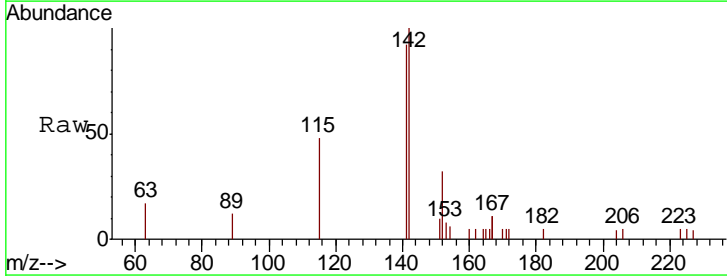
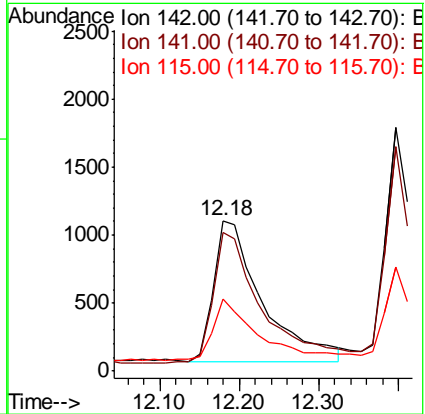
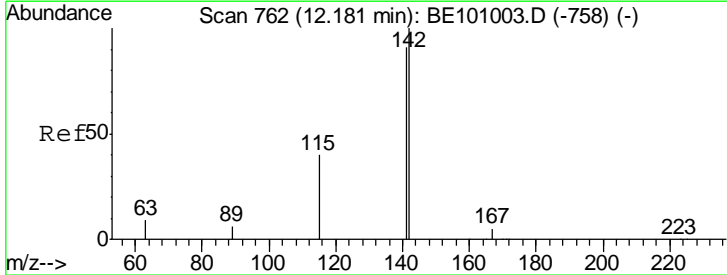
Manual Integrations
APPROVED

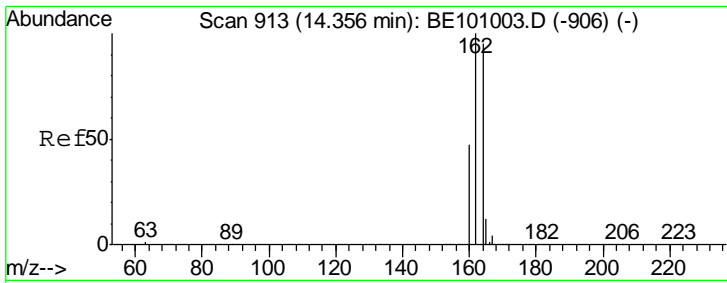
mohammad
 1/9/2020 12:12:50 PM



#12
 2-Methylnaphthalene
 Concen: 0.189 ng
 RT: 12.18 min Scan# 761
 Delta R.T. -0.00 min
 Lab File: BE101002.D
 Acq: 8 Jan 2020 14:00

Tgt Ion	Resp	Lower	Upper
142	100		
141	91.7	72.5	108.7
115	47.6	33.0	49.6





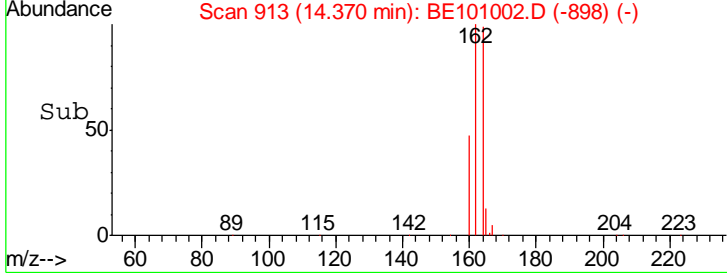
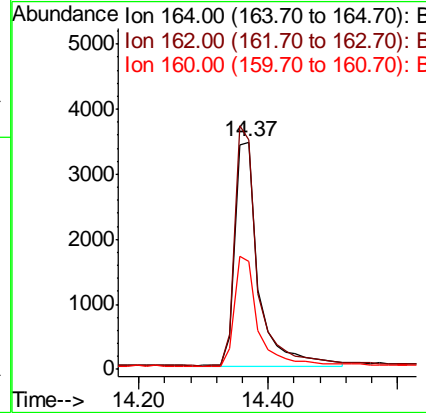
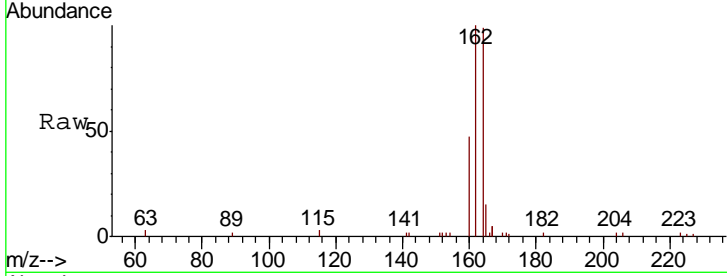
#13
 Acenaphthene-d10
 Concen: 0.400 ng
 RT: 14.37 min Scan# 913
 Delta R.T. 0.01 min
 Lab File: BE101002.D
 Acq: 8 Jan 2020 14:00

Instrument :
 BNA_E
ClientSampled :
 SSTDICC0.2

Tgt Ion	Resp	Lower	Upper
164	100		
162	101.0	84.1	126.1
160	47.8	40.4	60.6

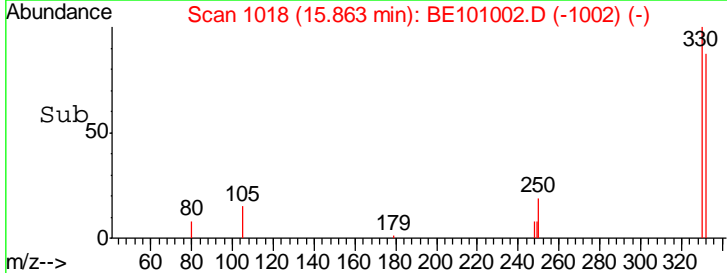
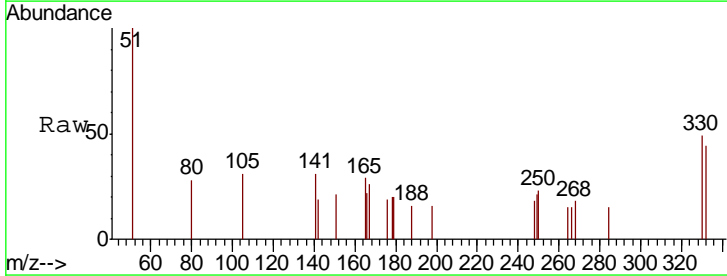
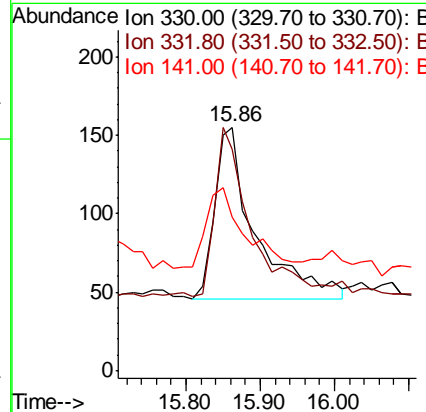
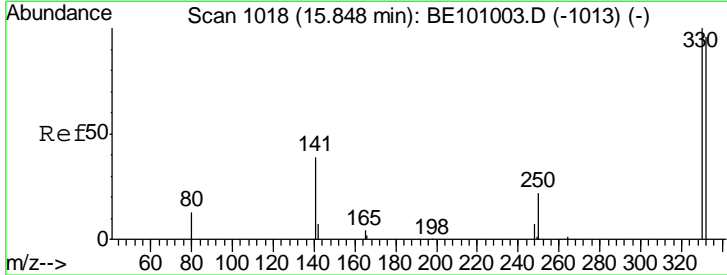
Manual Integrations
APPROVED

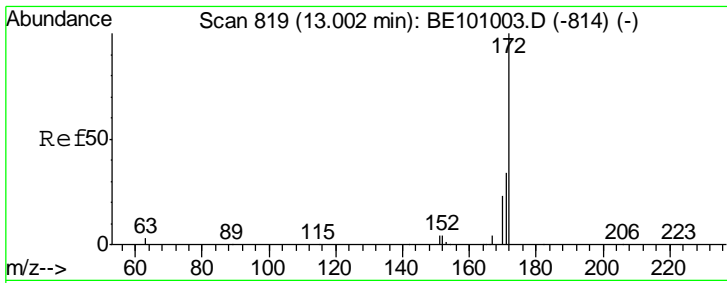
mohammad
 1/9/2020 12:12:50 PM



#14
 2,4,6-Tribromophenol
 Concen: 0.216 ng
 RT: 15.86 min Scan# 1018
 Delta R.T. 0.01 min
 Lab File: BE101002.D
 Acq: 8 Jan 2020 14:00

Tgt Ion	Resp	Lower	Upper
330	100		
332	90.6	78.4	117.6
141	45.0	37.0	55.4





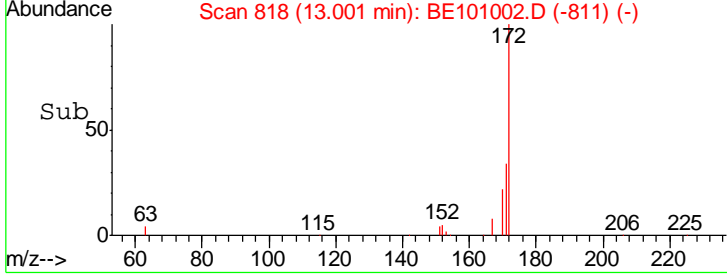
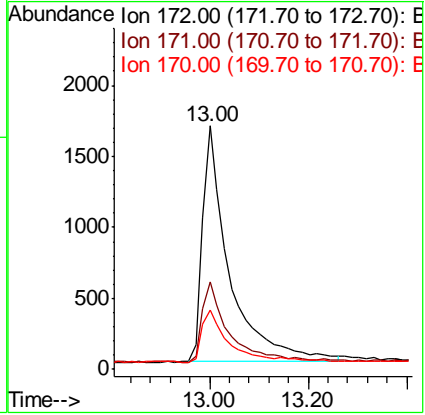
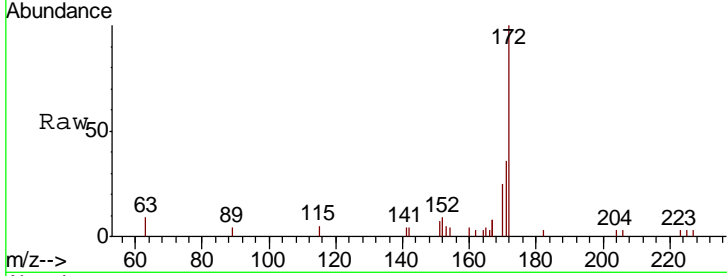
#15
 2-Fluorobiphenyl
 Concen: 0.202 ng
 RT: 13.00 min Scan# 818
 Delta R.T. -0.00 min
 Lab File: BE101002.D
 Acq: 8 Jan 2020 14:00

Instrument :
 BNA_E
ClientSampled :
 SSTDICC0.2

Tgt Ion	Resp	Lower	Upper
172	100		
171	36.0	28.2	42.2
170	24.5	18.9	28.3

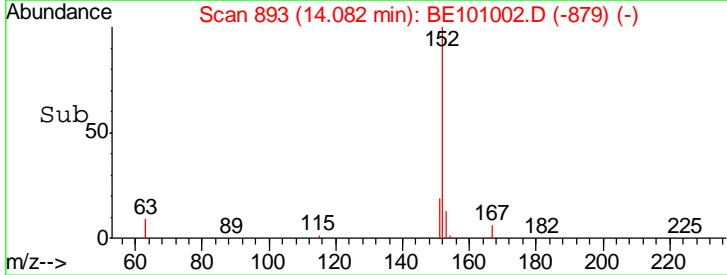
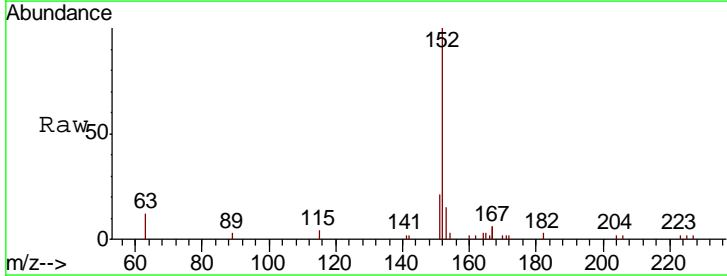
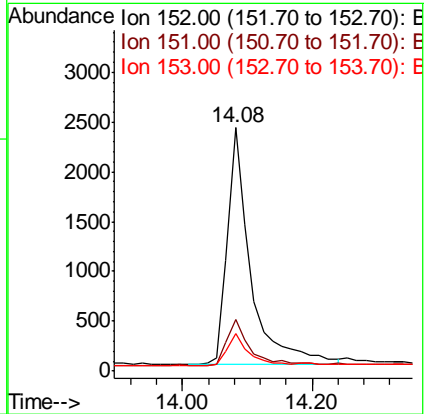
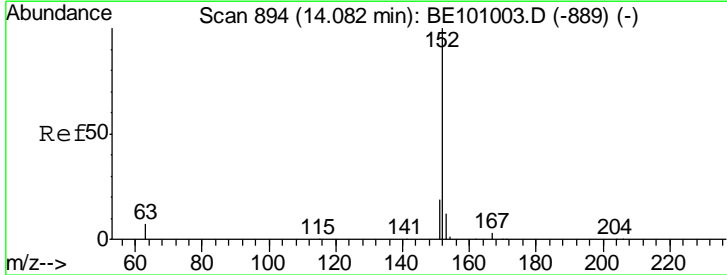
Manual Integrations
APPROVED

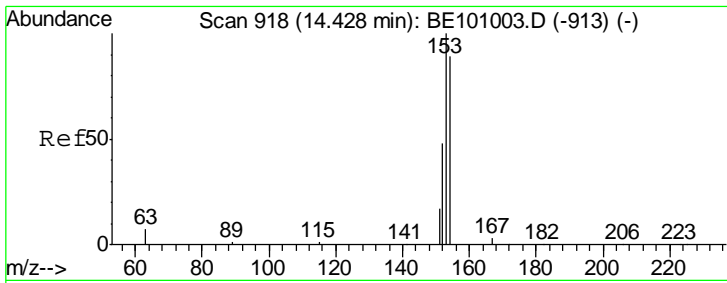
mohammad
 1/9/2020 12:12:50 PM



#16
 Acenaphthylene
 Concen: 0.182 ng
 RT: 14.08 min Scan# 893
 Delta R.T. -0.00 min
 Lab File: BE101002.D
 Acq: 8 Jan 2020 14:00

Tgt Ion	Resp	Lower	Upper
152	100		
151	19.3	15.5	23.3
153	13.5	10.4	15.6



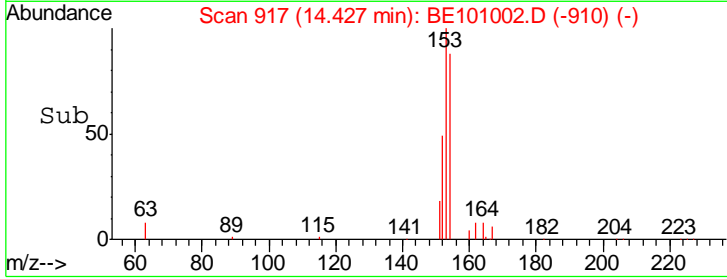
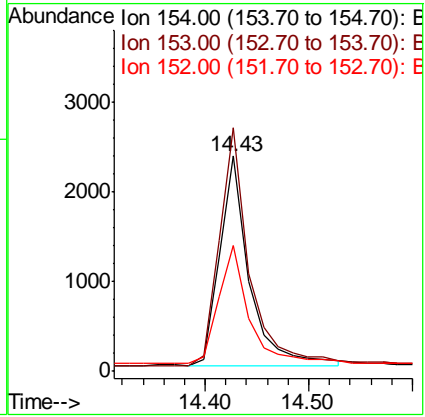
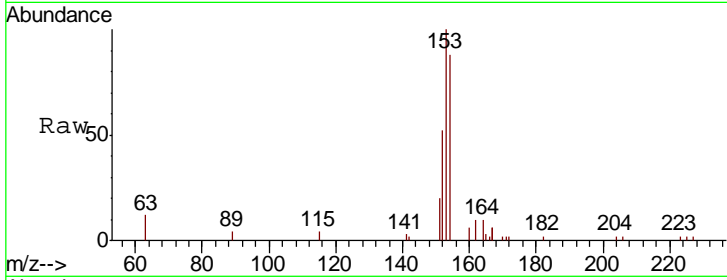


#17
 Acenaphthene
 Concen: 0.196 ng
 RT: 14.43 min Scan# 917
 Delta R.T. -0.00 min
 Lab File: BE101002.D
 Acq: 8 Jan 2020 14:00

Instrument :
 BNA_E
ClientSampled :
 SSTDICC0.2

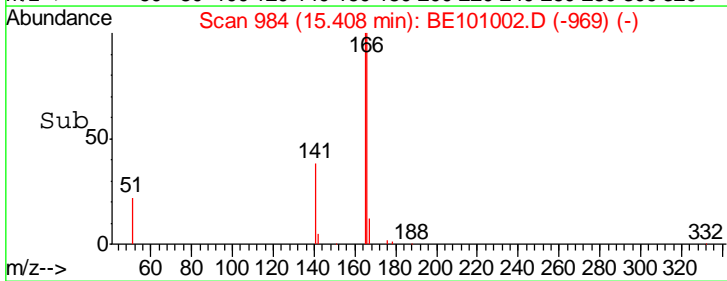
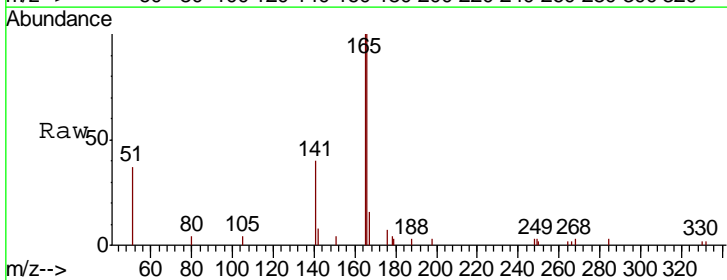
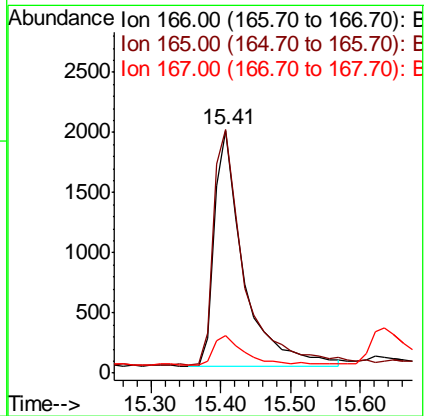
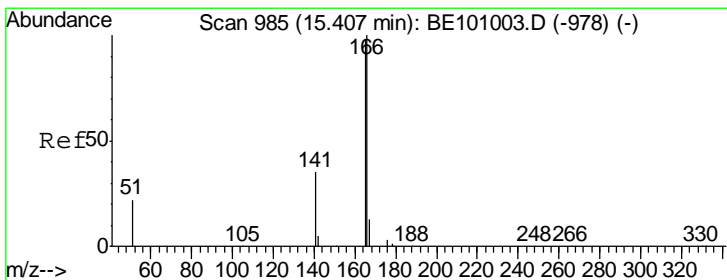
Tgt Ion	Resp	Lower	Upper
154	100		
153	115.9	93.6	140.4
152	57.9	46.3	69.5

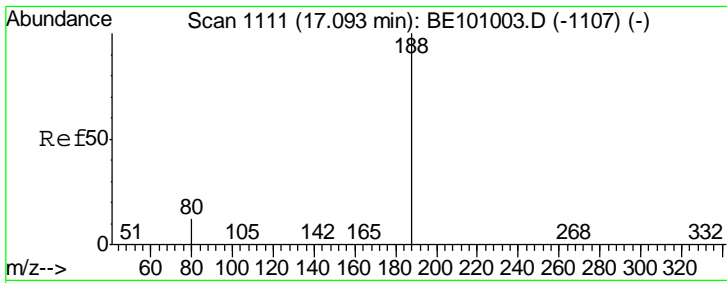
Manual Integrations
APPROVED
 mohammad
 1/9/2020 12:12:50 PM



#18
 Fluorene
 Concen: 0.191 ng
 RT: 15.41 min Scan# 984
 Delta R.T. 0.00 min
 Lab File: BE101002.D
 Acq: 8 Jan 2020 14:00

Tgt Ion	Resp	Lower	Upper
166	100		
165	103.8	79.8	119.8
167	14.1	11.0	16.6



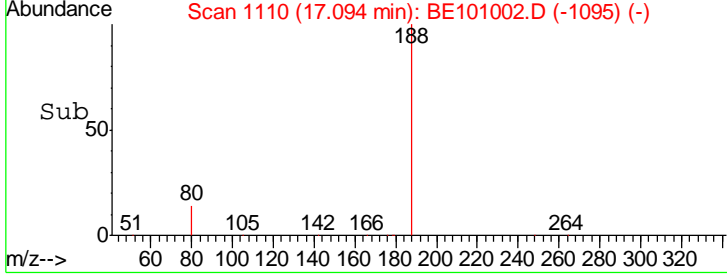
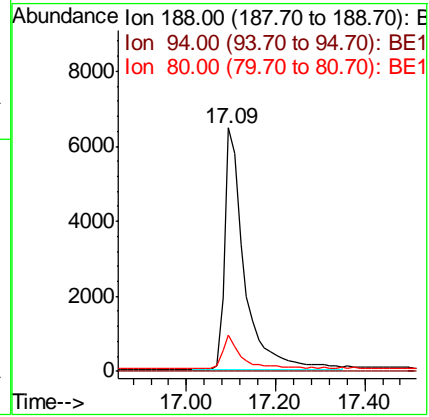
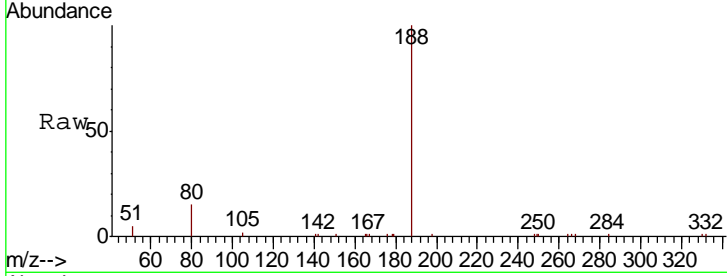


#19
 Phenanthrene-d10
 Concen: 0.400 ng
 RT: 17.09 min Scan# 1110
 Delta R.T. 0.00 min
 Lab File: BE101002.D
 Acq: 8 Jan 2020 14:00

Instrument :
 BNA_E
ClientSampled :
 SSTDICC0.2

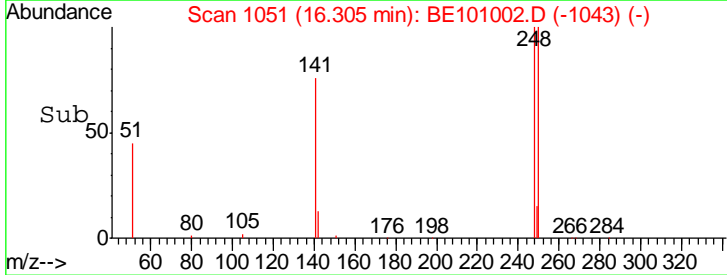
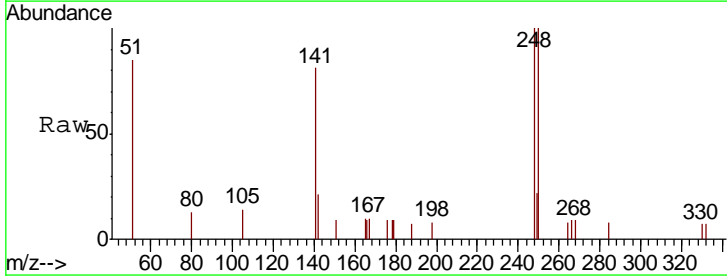
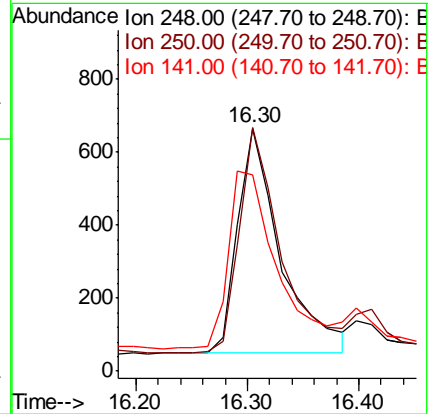
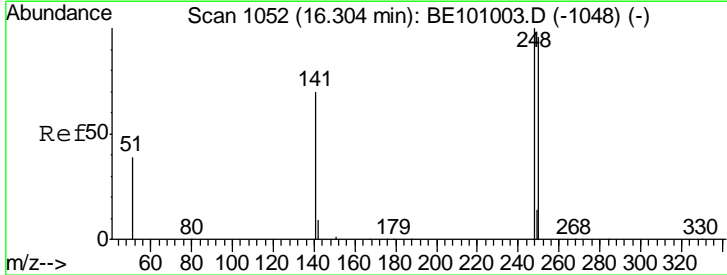
Tgt Ion	Resp	Lower	Upper
188	19836		
94	0.0	0.0	0.0
80	15.0	10.8	16.2

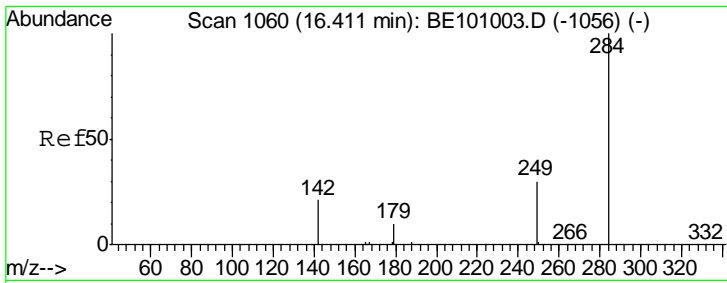
Manual Integrations
APPROVED
 mohammad
 1/9/2020 12:12:50 PM



#20
 4-Bromophenyl-phenylether
 Concen: 0.190 ng
 RT: 16.30 min Scan# 1051
 Delta R.T. 0.00 min
 Lab File: BE101002.D
 Acq: 8 Jan 2020 14:00

Tgt Ion	Resp	Lower	Upper
248	1652		
250	100.5	76.6	115.0
141	81.1	57.7	86.5





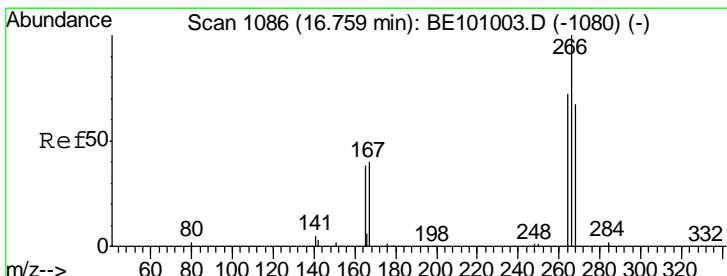
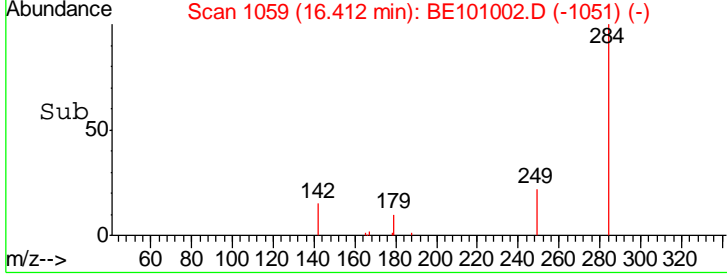
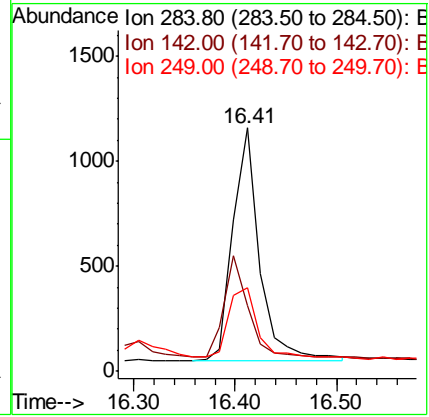
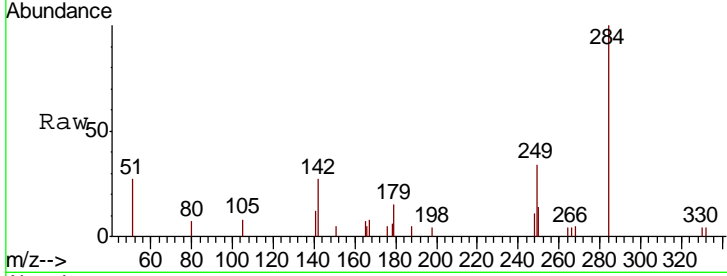
#21
Hexachlorobenzene
Concen: 0.198 ng
RT: 16.41 min Scan# 1059
Delta R.T. 0.00 min
Lab File: BE101002.D
Acq: 8 Jan 2020 14:00

Instrument :
BNA_E
ClientSampled :
SSTDIC0.2

Tgt Ion	Ratio	Lower	Upper
284	100		
142	39.0	34.0	51.0
249	31.7	28.2	42.4

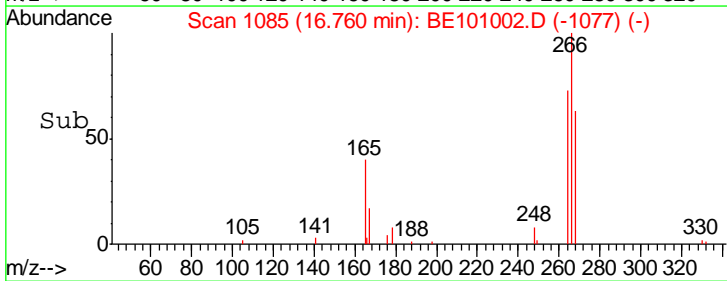
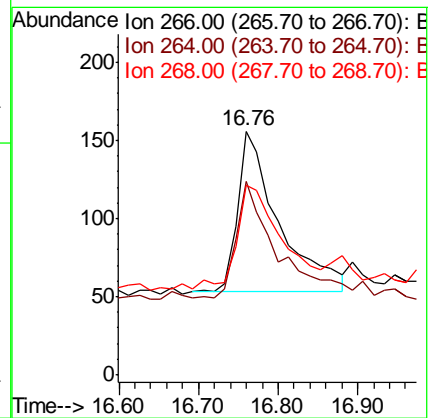
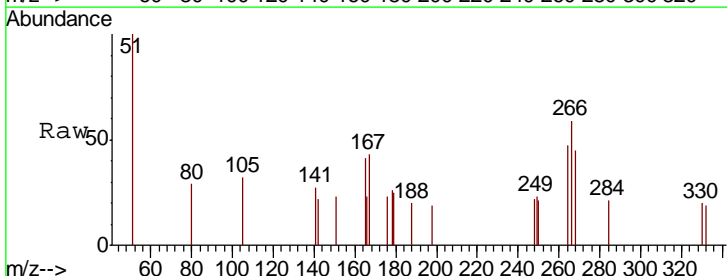
Manual Integrations
APPROVED

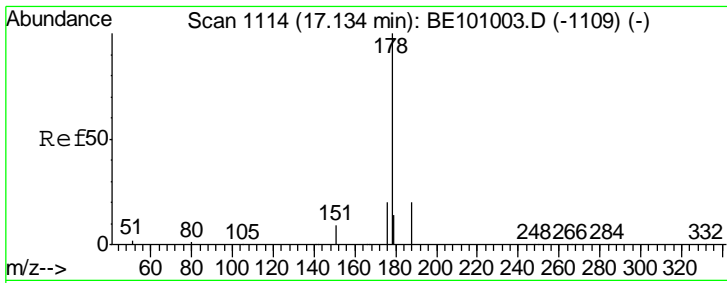
mohammad
1/9/2020 12:12:50 PM



#22
Pentachlorophenol
Concen: 0.241 ng
RT: 16.76 min Scan# 1085
Delta R.T. 0.00 min
Lab File: BE101002.D
Acq: 8 Jan 2020 14:00

Tgt Ion	Ratio	Lower	Upper
266	100		
264	79.5	61.0	91.4
268	77.6	58.5	87.7





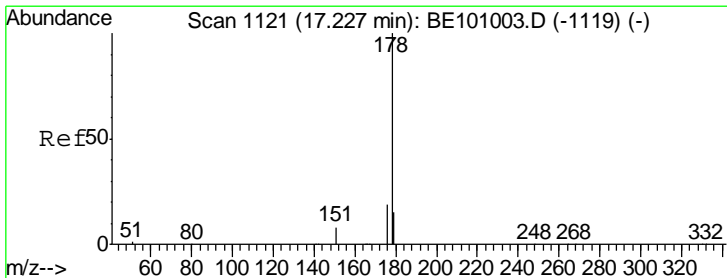
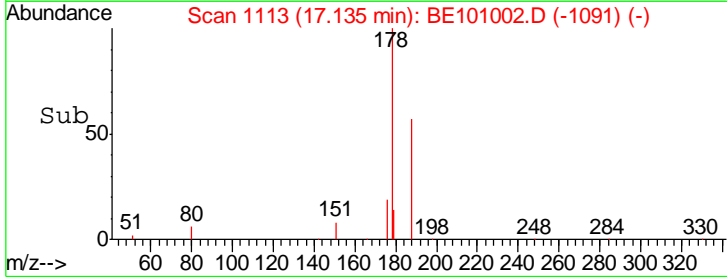
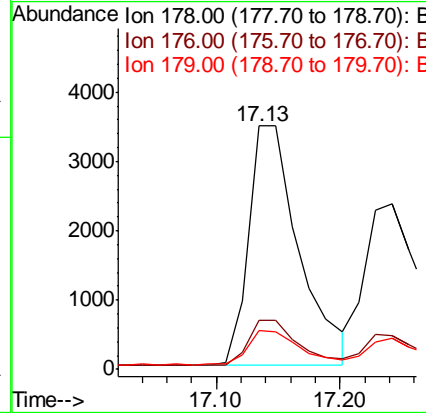
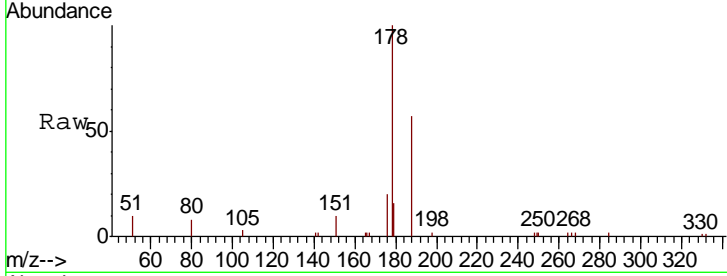
#23
 Phenanthrene
 Concen: 0.190 ng
 RT: 17.13 min Scan# 1113
 Delta R.T. 0.00 min
 Lab File: BE101002.D
 Acq: 8 Jan 2020 14:00

Instrument :
 BNA_E
 ClientSampled :
 SSTDICC0.2

Tgt Ion	Resp	Lower	Upper
178	100		
176	19.5	15.7	23.5
179	14.6	12.0	18.0

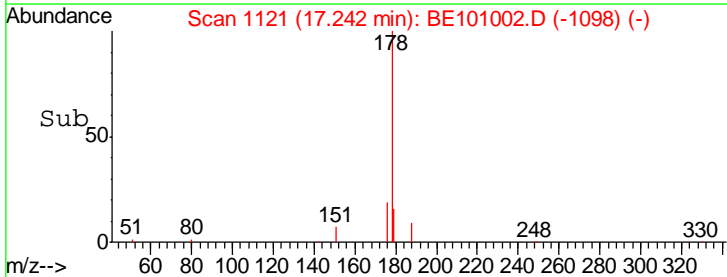
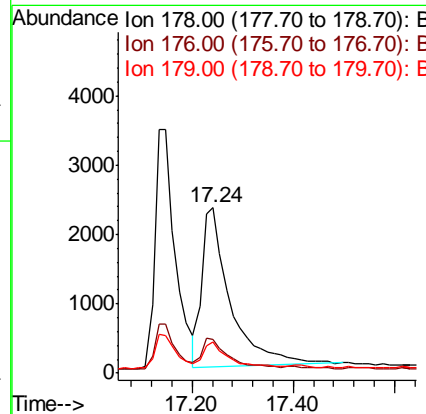
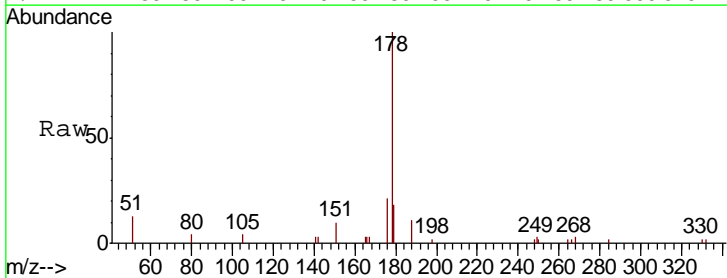
Manual Integrations
 APPROVED

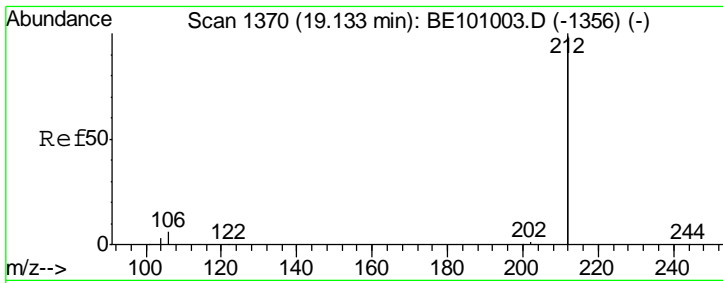
mohammad
 1/9/2020 12:12:50 PM



#24
 Anthracene
 Concen: 0.174 ng
 RT: 17.24 min Scan# 1121
 Delta R.T. 0.01 min
 Lab File: BE101002.D
 Acq: 8 Jan 2020 14:00

Tgt Ion	Resp	Lower	Upper
178	100		
176	17.5	14.8	22.2
179	14.3	12.4	18.6





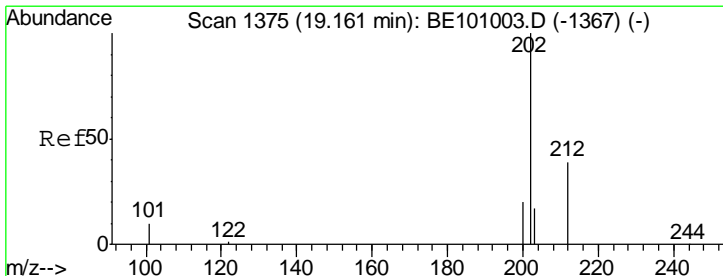
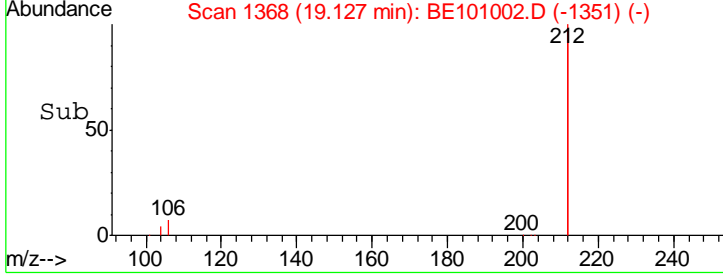
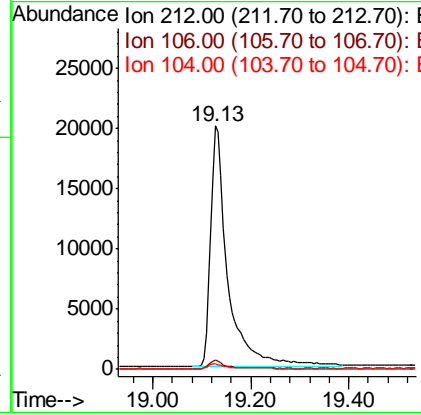
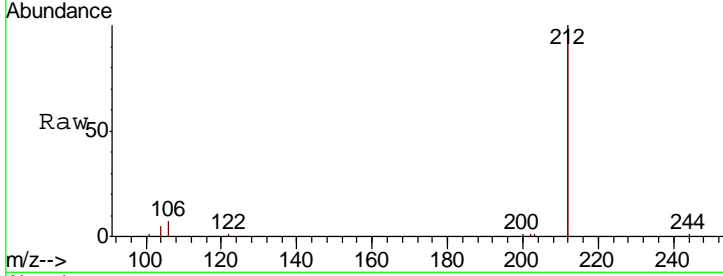
#25
 Fluoranthene-d10
 Concen: 0.208 ng
 RT: 19.13 min Scan# 1368
 Delta R.T. -0.01 min
 Lab File: BE101002.D
 Acq: 8 Jan 2020 14:00

Instrument :
 BNA_E
 ClientSampled :
 SSTDICC0.2

Tgt Ion	Resp	Lower	Upper
212	50051		
212	100		
106	3.3	2.6	3.8
104	1.9	1.4	2.0

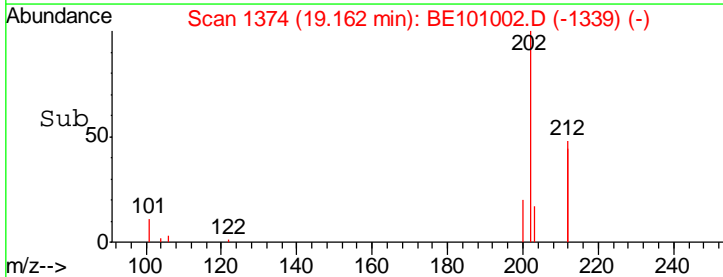
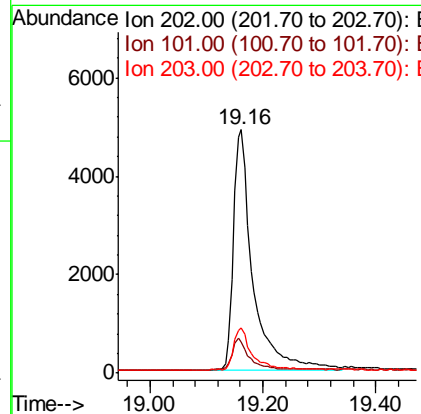
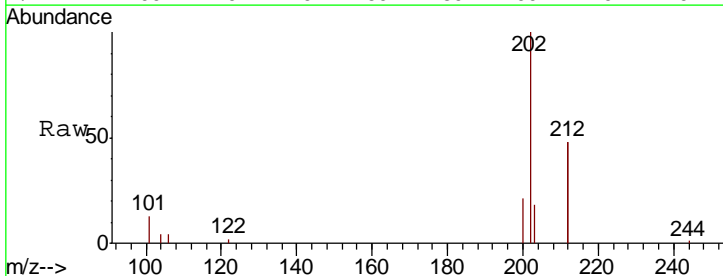
Manual Integrations
 APPROVED

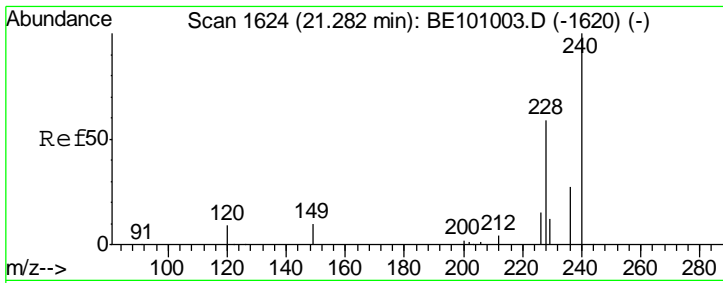
mohammad
 1/9/2020 12:12:50 PM



#26
 Fluoranthene
 Concen: 0.171 ng
 RT: 19.16 min Scan# 1374
 Delta R.T. 0.00 min
 Lab File: BE101002.D
 Acq: 8 Jan 2020 14:00

Tgt Ion	Resp	Lower	Upper
202	11952		
202	100		
101	11.7	9.6	14.4
203	16.4	13.8	20.6



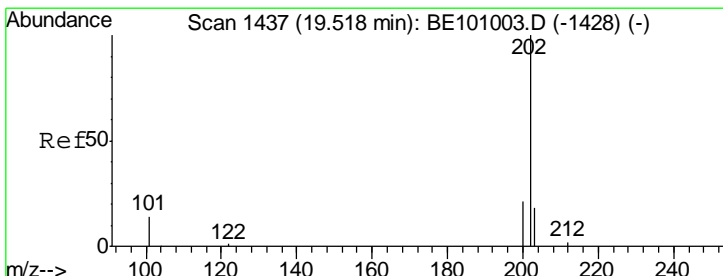
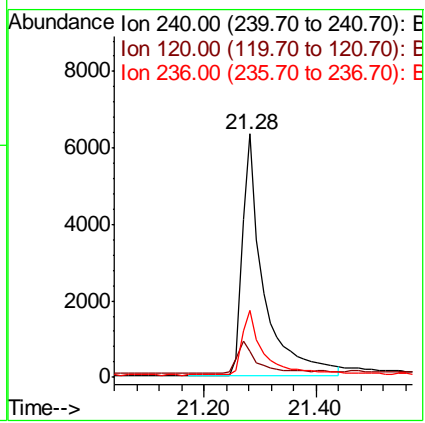
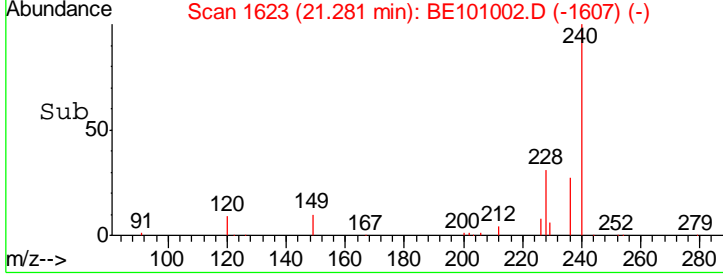
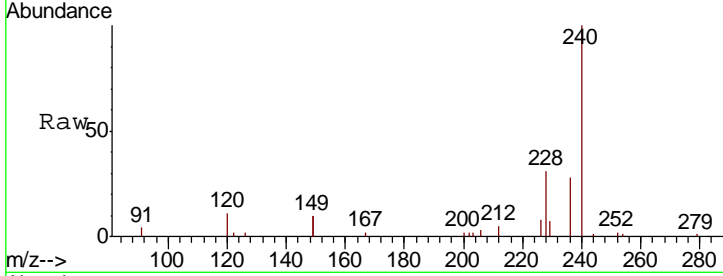


#27
 Chrysene-d12
 Concen: 0.400 ng
 RT: 21.28 min Scan# 1623
 Delta R.T. -0.00 min
 Lab File: BE101002.D
 Acq: 8 Jan 2020 14:00

Instrument :
 BNA_E
ClientSampled :
 SSTDICC0.2

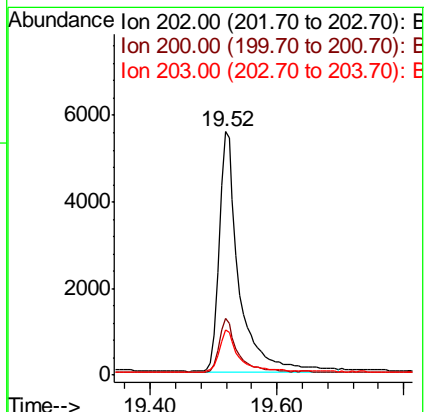
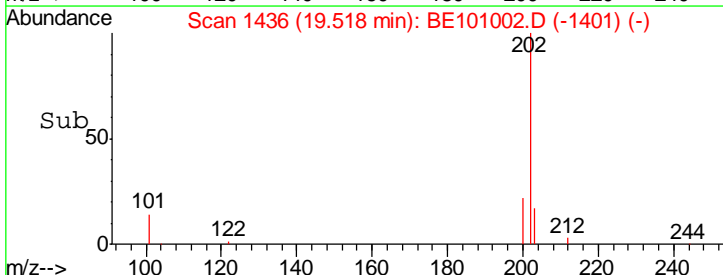
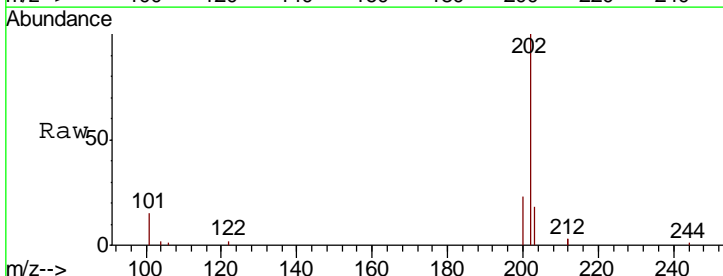
Tgt Ion	Resp	Lower	Upper
240	16459		
240	100		
120	10.6	8.6	13.0
236	27.6	22.2	33.4

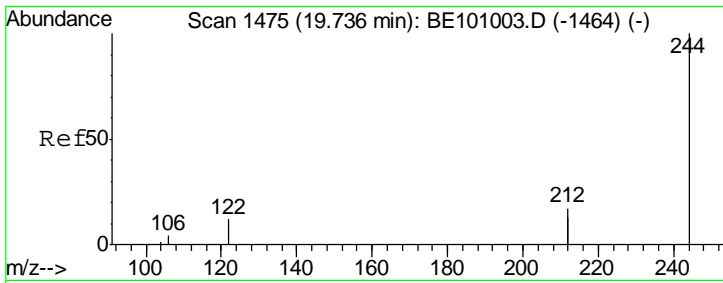
Manual Integrations
APPROVED
 mohammad
 1/9/2020 12:12:50 PM



#28
 Pyrene
 Concen: 0.210 ng
 RT: 19.52 min Scan# 1436
 Delta R.T. 0.00 min
 Lab File: BE101002.D
 Acq: 8 Jan 2020 14:00

Tgt Ion	Resp	Lower	Upper
202	12101		
202	100		
200	20.7	17.0	25.4
203	17.0	13.8	20.6



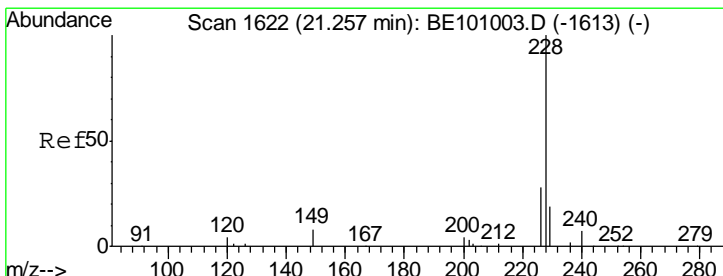
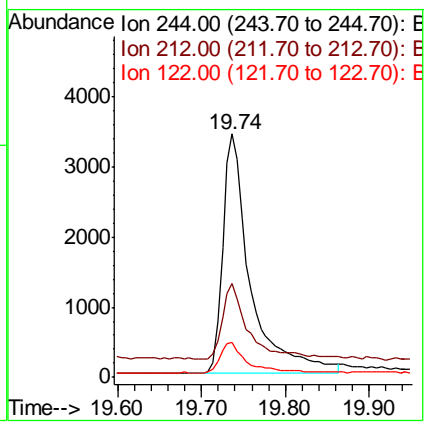
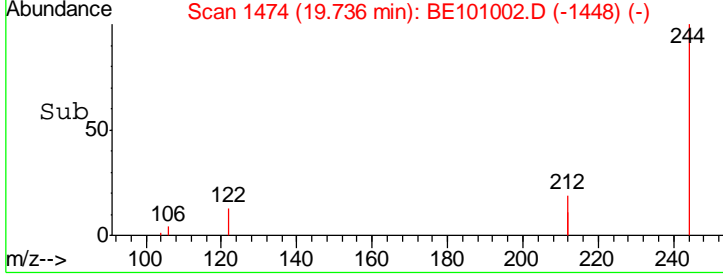
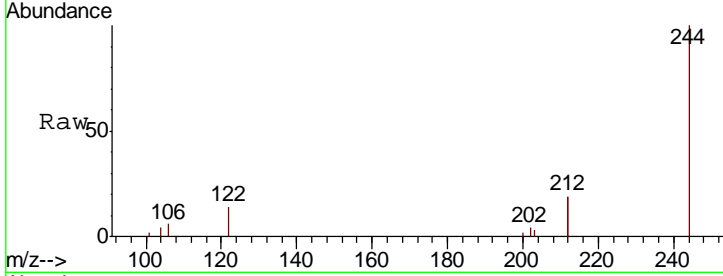


#29
 Terphenyl-d14
 Concen: 0.208 ng
 RT: 19.74 min Scan# 1474
 Delta R.T. 0.00 min
 Lab File: BE101002.D
 Acq: 8 Jan 2020 14:00

Instrument :
 BNA_E
ClientSampled :
 SSTDICC0.2

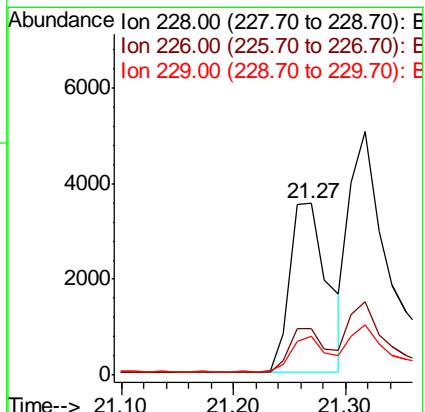
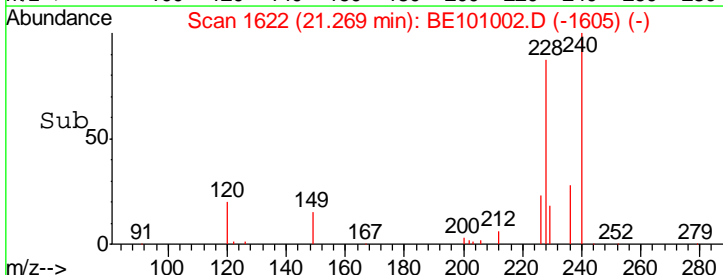
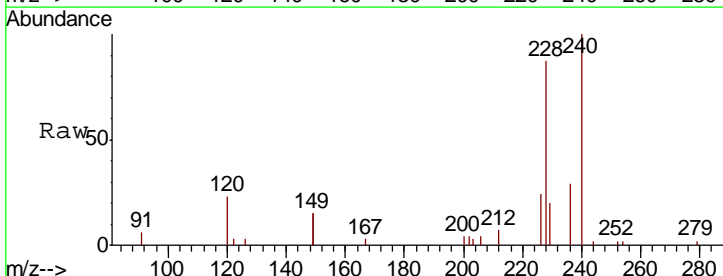
Tgt Ion	Resp	Lower	Upper
244	7854		
244	100		
212	38.3	27.2	40.8
122	14.5	9.8	14.8

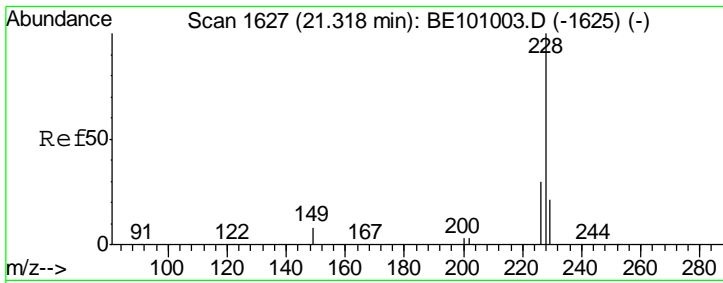
Manual Integrations
APPROVED
 mohammad
 1/9/2020 12:12:50 PM



#30
 Benzo(a)anthracene
 Concen: 0.207 ng
 RT: 21.27 min Scan# 1622
 Delta R.T. 0.01 min
 Lab File: BE101002.D
 Acq: 8 Jan 2020 14:00

Tgt Ion	Resp	Lower	Upper
228	8324		
228	100		
226	27.2	22.7	34.1
229	22.6	15.5	23.3





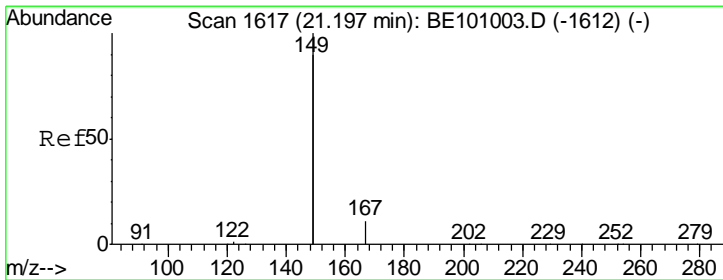
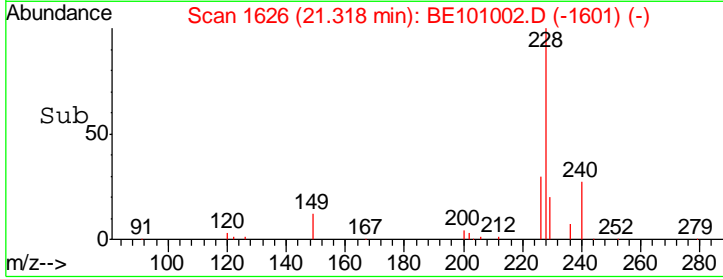
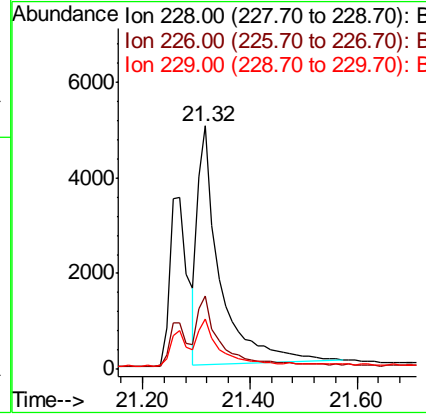
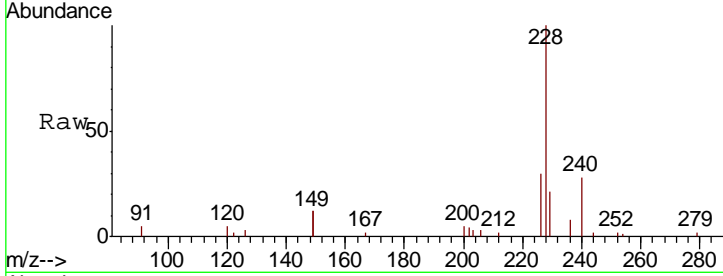
#31
 Chrysene
 Concen: 0.186 ng
 RT: 21.32 min Scan# 1626
 Delta R.T. -0.00 min
 Lab File: BE101002.D
 Acq: 8 Jan 2020 14:00

Instrument :
 BNA_E
 ClientSampled :
 SSTDICC0.2

Tgt Ion	Resp	Lower	Upper
228	13961		
226	30.3	23.5	35.3
229	20.9	16.7	25.1

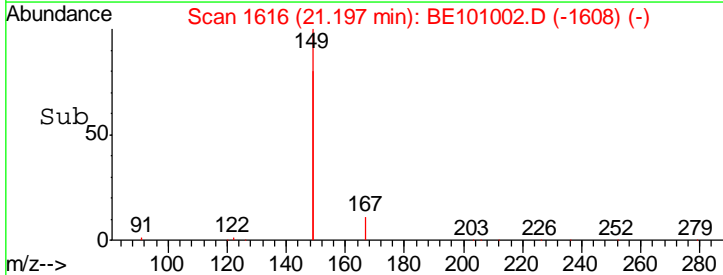
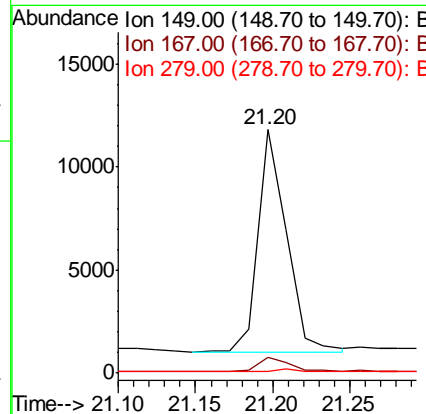
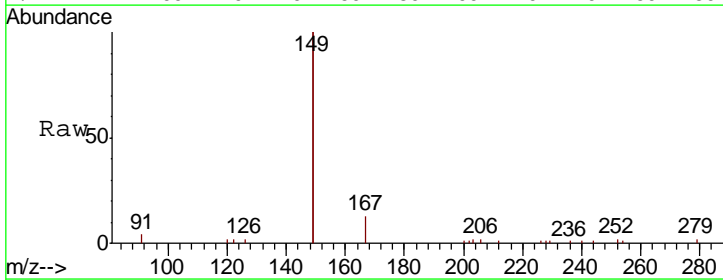
Manual Integrations
 APPROVED

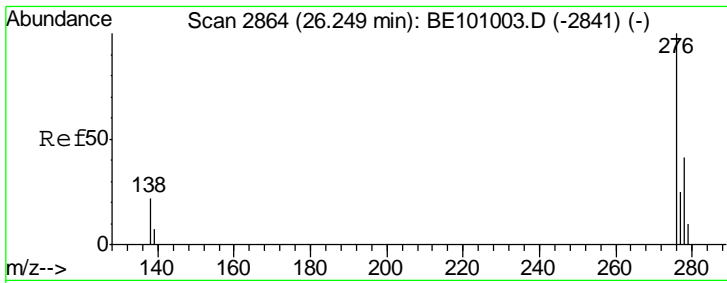
mohammad
 1/9/2020 12:12:50 PM



#32
 Bis(2-ethylhexyl)phthalate
 Concen: 0.155 ng
 RT: 21.20 min Scan# 1616
 Delta R.T. -0.00 min
 Lab File: BE101002.D
 Acq: 8 Jan 2020 14:00

Tgt Ion	Resp	Lower	Upper
149	13754		
167	6.6	5.2	7.8
279	1.0	0.8	1.2





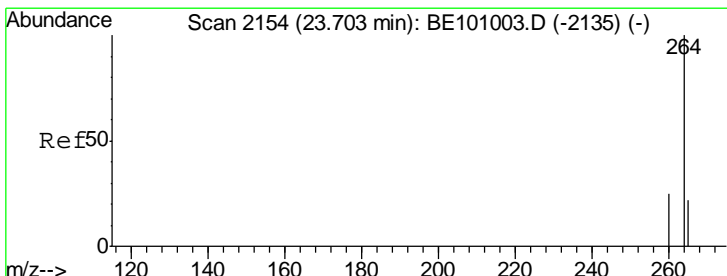
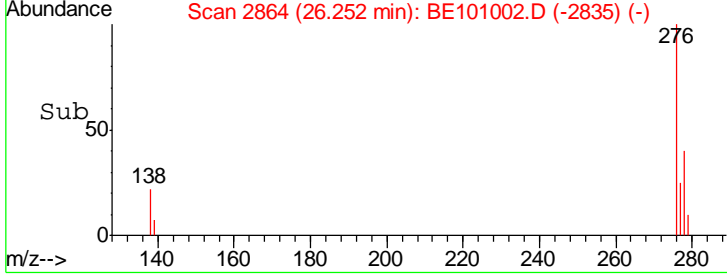
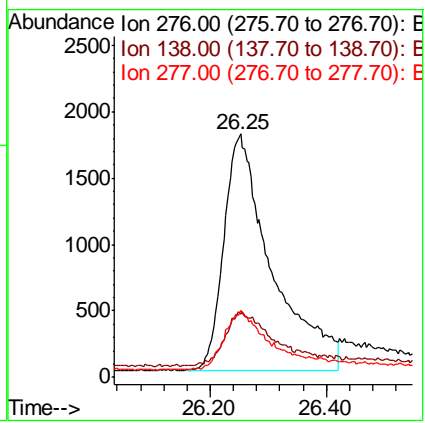
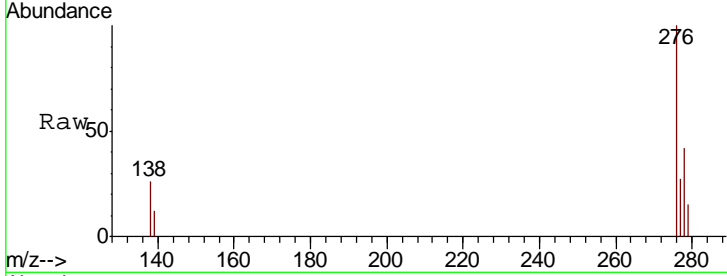
#33
 Indeno(1,2,3-cd)pyrene
 Concen: 0.180 ng
 RT: 26.25 min Scan# 2864
 Delta R.T. 0.00 min
 Lab File: BE101002.D
 Acq: 8 Jan 2020 14:00

Instrument :
 BNA_E
ClientSampled :
 SSTDICC0.2

Tgt Ion: 276 Resp: 10189

Ion	Ratio	Lower	Upper
276	100		
138	21.0	16.1	24.1
277	23.0	18.1	27.1

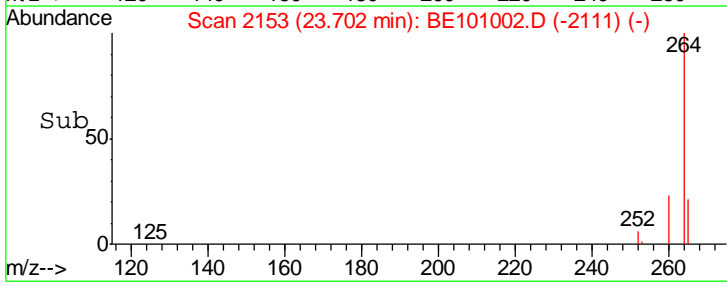
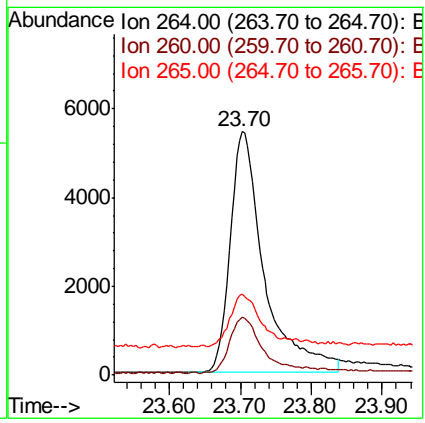
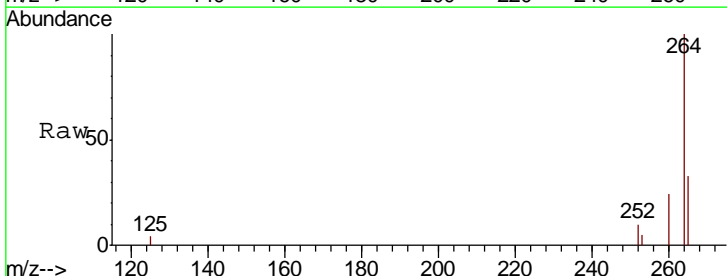
Manual Integrations
APPROVED
 mohammad
 1/9/2020 12:12:50 PM

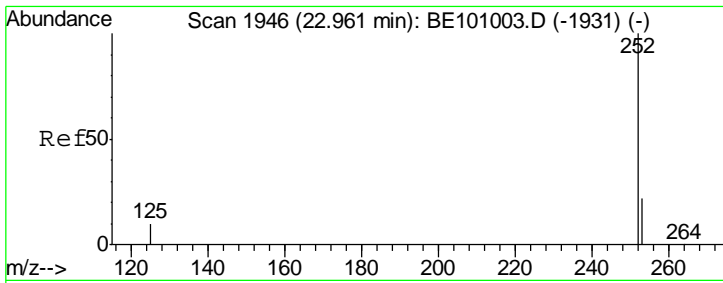


#34
 Perylene-d12
 Concen: 0.400 ng
 RT: 23.70 min Scan# 2153
 Delta R.T. -0.00 min
 Lab File: BE101002.D
 Acq: 8 Jan 2020 14:00

Tgt Ion: 264 Resp: 18156

Ion	Ratio	Lower	Upper
264	100		
260	23.9	20.3	30.5
265	33.3	27.0	40.4





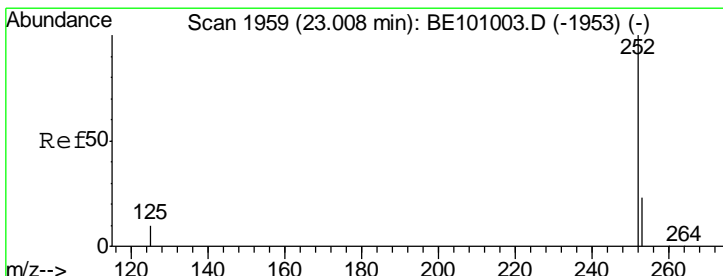
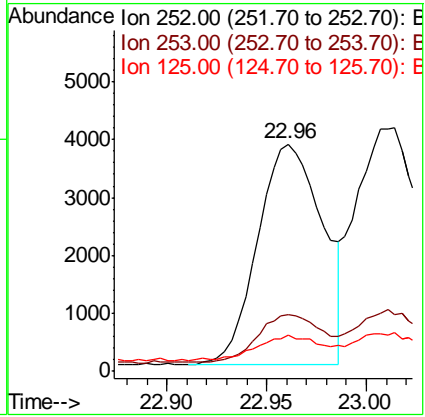
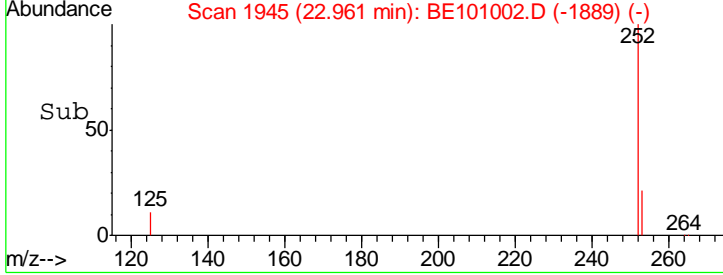
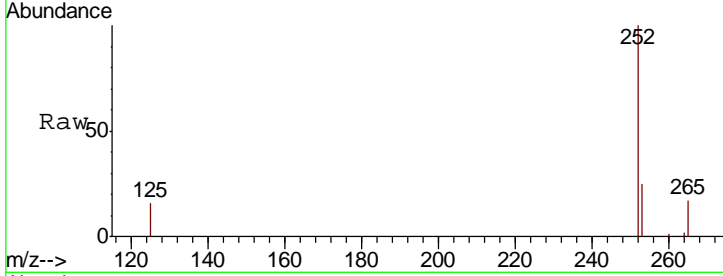
#35
 Benzo(b)fluoranthene
 Concen: 0.225 ng
 RT: 22.96 min Scan# 1945
 Delta R.T. -0.00 min
 Lab File: BE101002.D
 Acq: 8 Jan 2020 14:00

Instrument :
 BNA_E
 ClientSampled :
 SSTDICC0.2

Tgt Ion	Resp	Lower	Upper
252	100		
253	24.7	18.5	27.7
125	15.8	9.5	14.3#

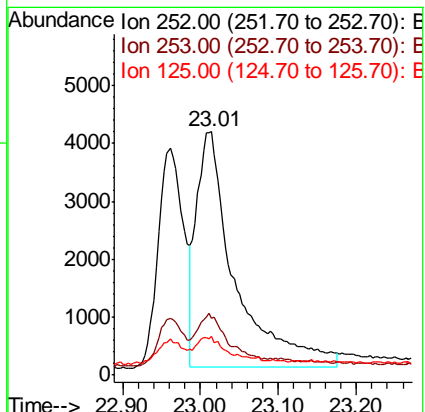
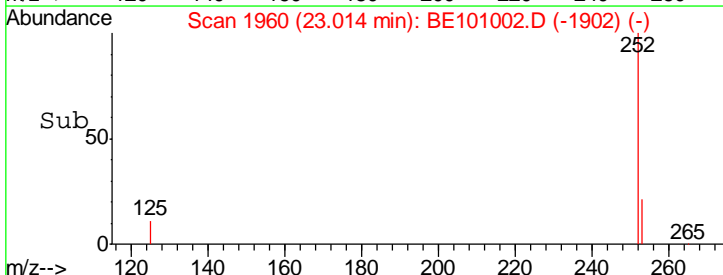
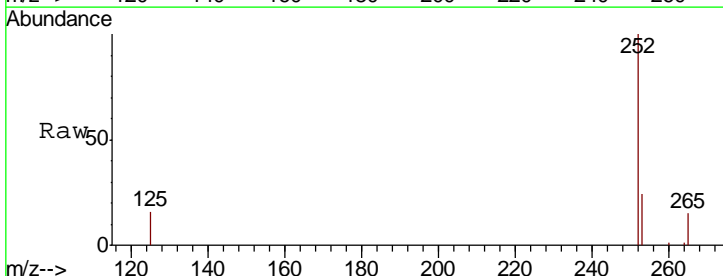
Manual Integrations
 APPROVED

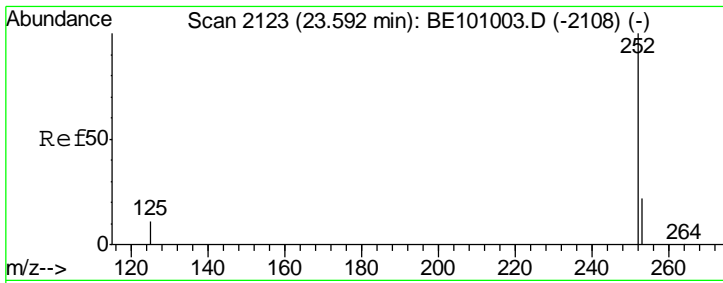
mohammad
 1/9/2020 12:12:50 PM



#36
 Benzo(k)fluoranthene
 Concen: 0.194 ng m
 RT: 23.01 min Scan# 1960
 Delta R.T. 0.01 min
 Lab File: BE101002.D
 Acq: 8 Jan 2020 14:00

Tgt Ion	Resp	Lower	Upper
252	100		
253	23.5	18.9	28.3
125	15.7	10.1	15.1#





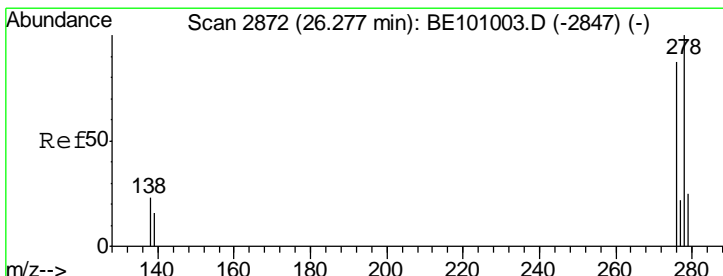
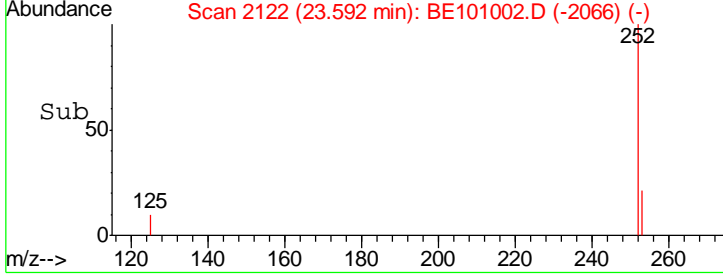
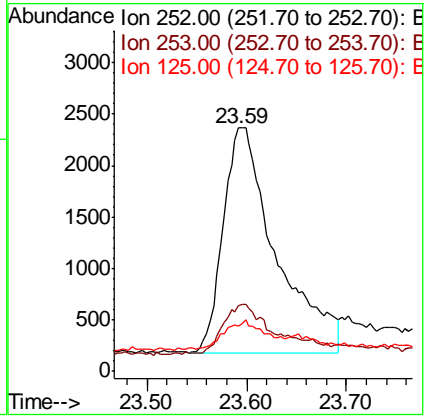
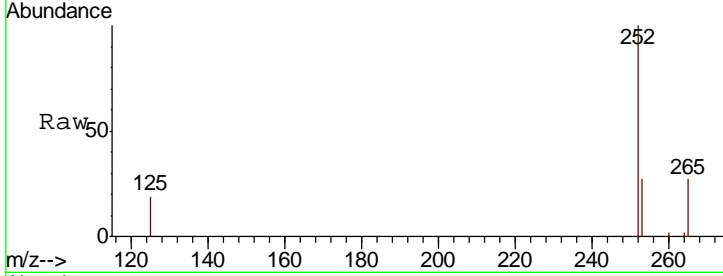
#37
 Benzo(a)pyrene
 Concen: 0.180 ng
 RT: 23.59 min Scan# 2122
 Delta R.T. -0.00 min
 Lab File: BE101002.D
 Acq: 8 Jan 2020 14:00

Instrument :
 BNA_E
 ClientSampled :
 SSTDICC0.2

Tgt Ion	Resp	Lower	Upper
252	100		
253	26.8	19.4	29.2
125	18.6	11.8	17.6

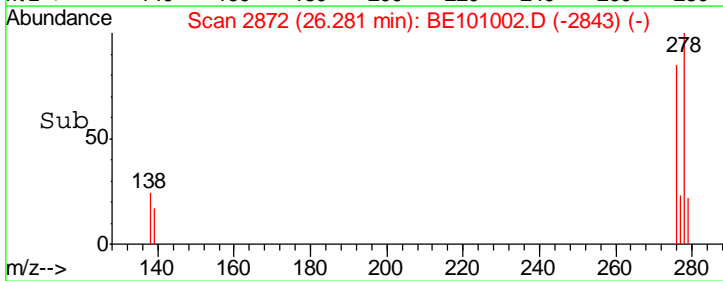
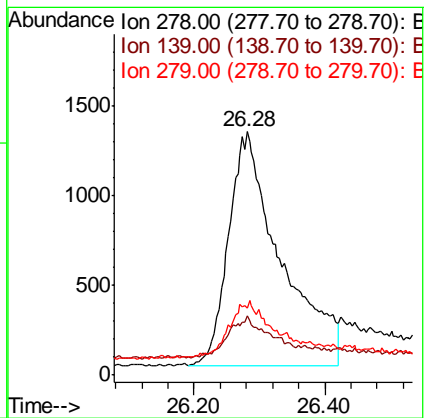
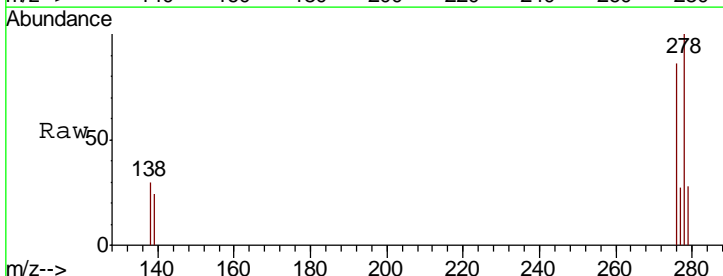
Manual Integrations
 APPROVED

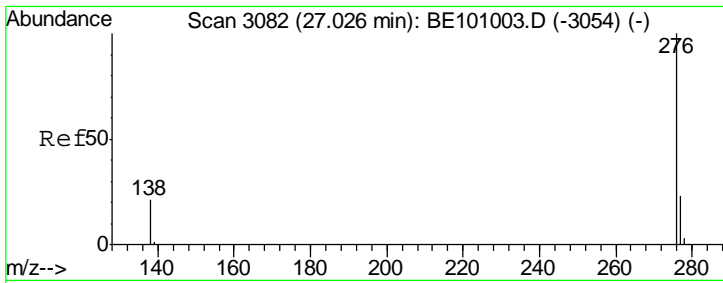
mohammad
 1/9/2020 12:12:50 PM



#38
 Dibenzo(a,h)anthracene
 Concen: 0.179 ng
 RT: 26.28 min Scan# 2872
 Delta R.T. 0.00 min
 Lab File: BE101002.D
 Acq: 8 Jan 2020 14:00

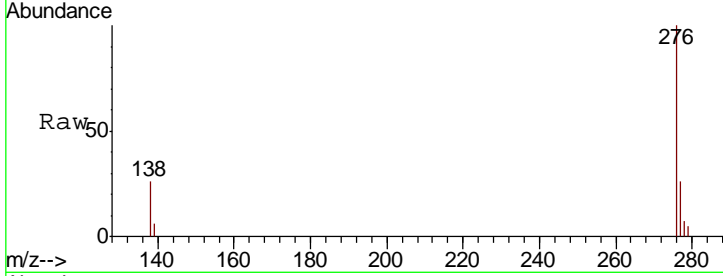
Tgt Ion	Resp	Lower	Upper
278	100		
139	24.3	15.0	22.4
279	27.5	22.6	33.8





#39
 Benzo(a,h,i)perylene
 Concen: 0.203 ng
 RT: 27.02 min Scan# 3080
 Delta R.T. -0.00 min
 Lab File: BE101002.D
 Acq: 8 Jan 2020 14:00

Instrument :
 BNA_E
ClientSampled :
 SSTDICC0.2



Tot Ion: 276 Resp: 9651

Ion	Ratio	Lower	Upper
276	100		
277	26.1	19.4	29.2
138	25.7	17.9	26.9

Manual Integrations
APPROVED
 mohammad
 1/9/2020 12:12:50 PM

