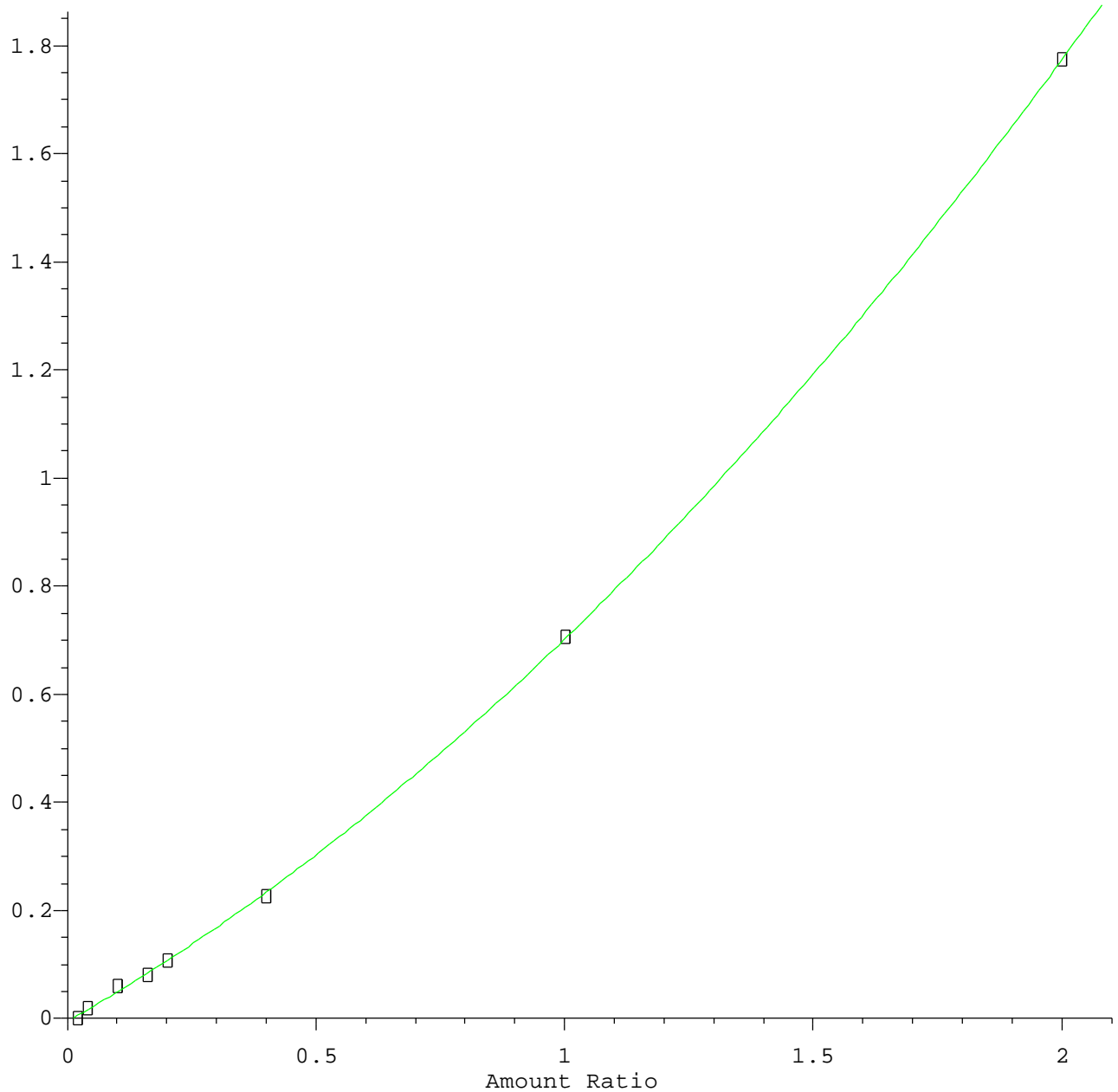


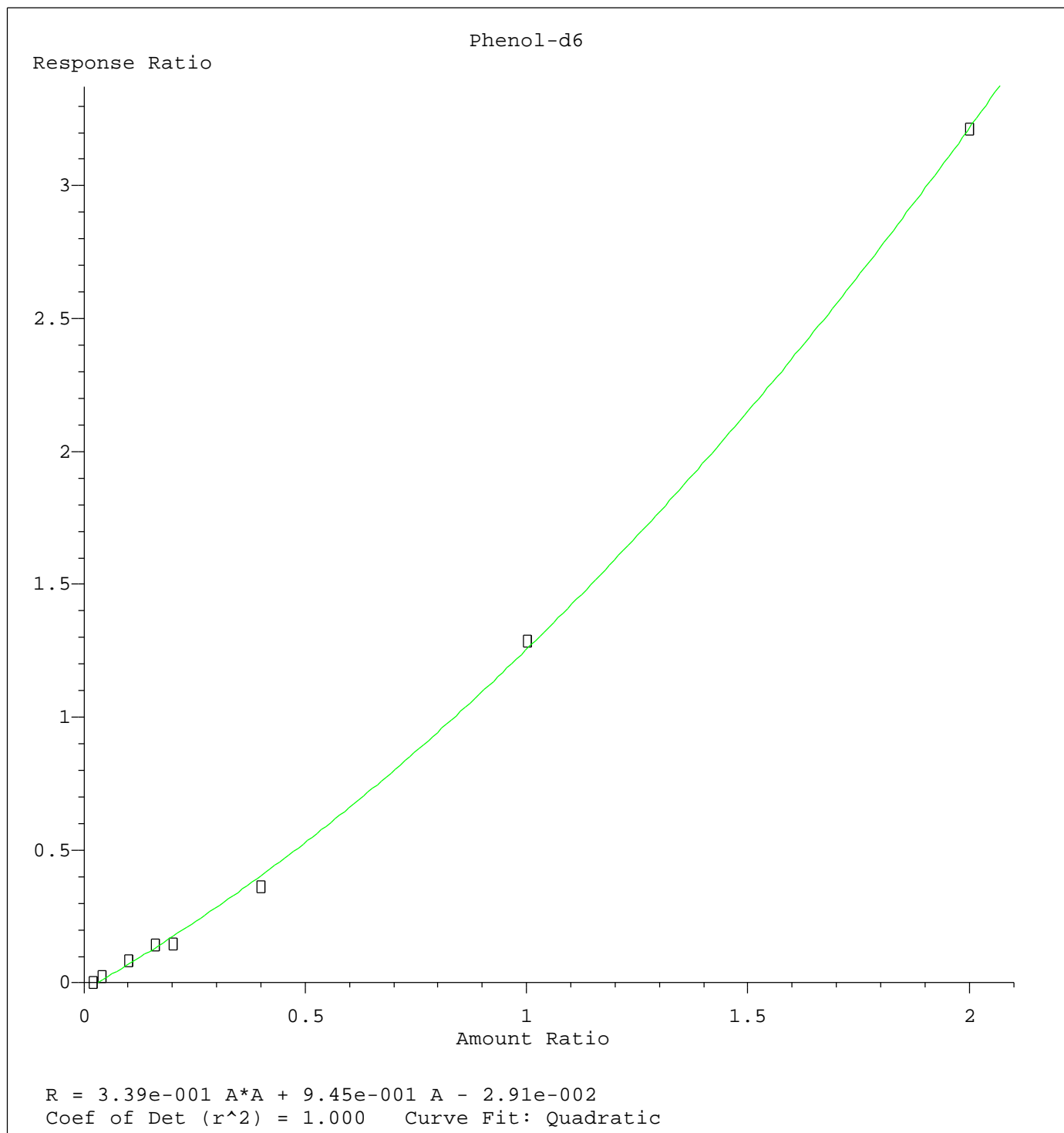
2-Fluorophenol

Response Ratio

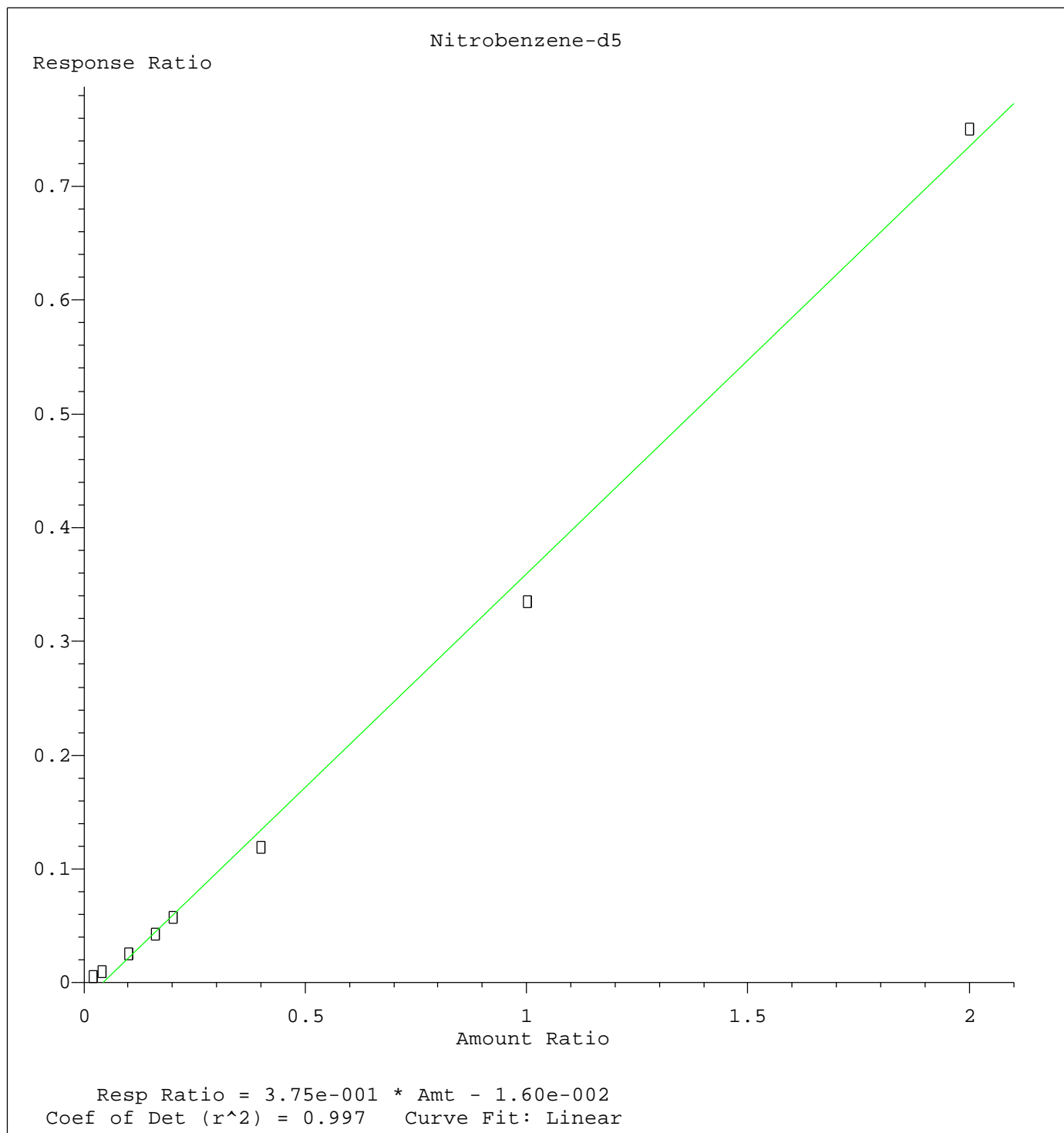


$R = 1.83e-001 A^2 + 5.25e-001 A - 5.21e-003$
Coef of Det (r^2) = 1.000 Curve Fit: Quadratic

Method Name: Z:\HPCHEM1\BNA_E\METHODS\8270-SIM-BE011416.M
Calibration Table Last Updated: Fri Jan 15 15:14:26 2016



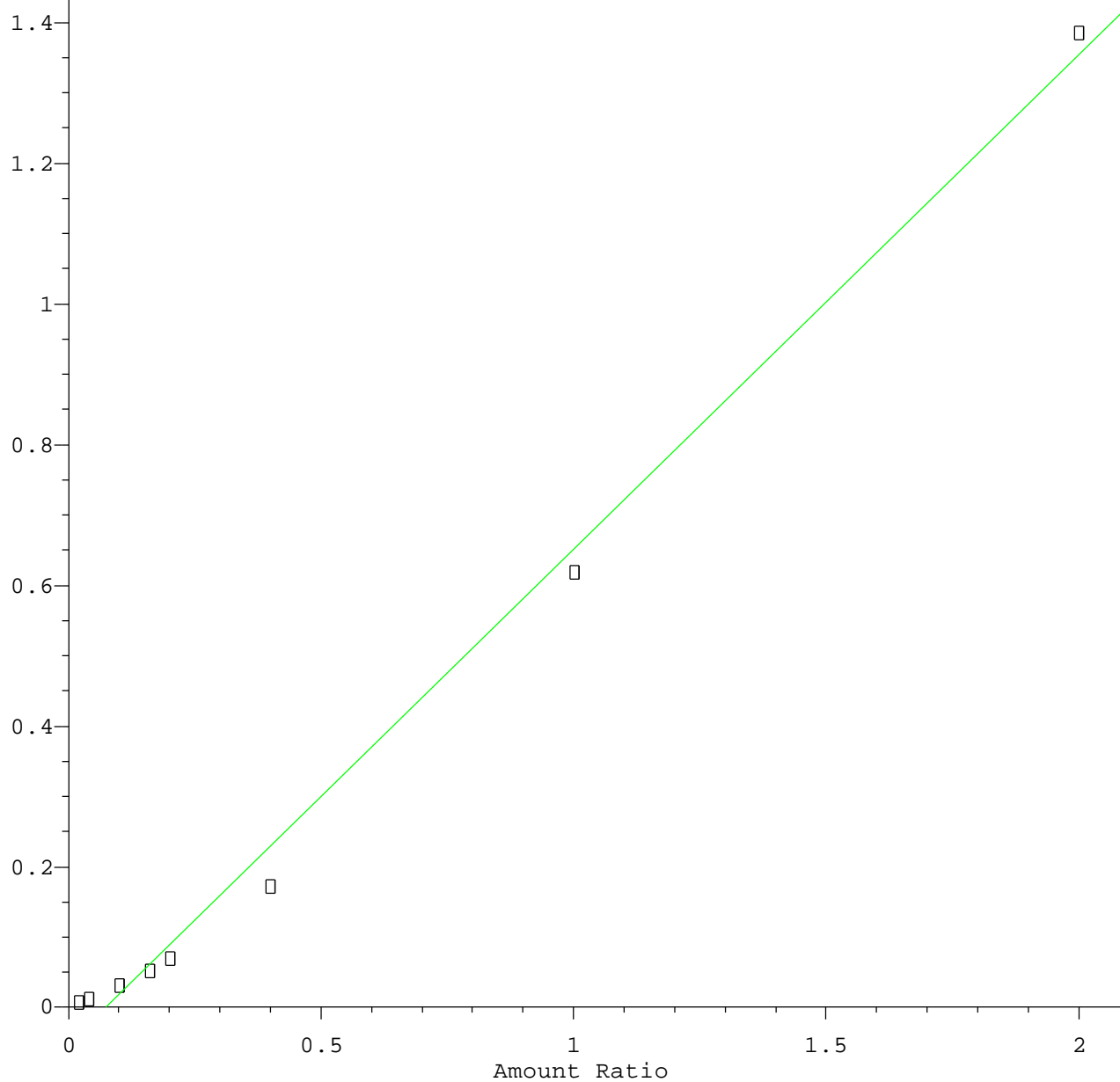
Method Name: Z:\HPCHEM1\BNA_E\METHODS\8270-SIM-BE011416.M
Calibration Table Last Updated: Fri Jan 15 15:14:26 2016



Method Name: Z:\HPCHEM1\BNA_E\METHODS\8270-SIM-BE011416.M
Calibration Table Last Updated: Fri Jan 15 15:14:26 2016

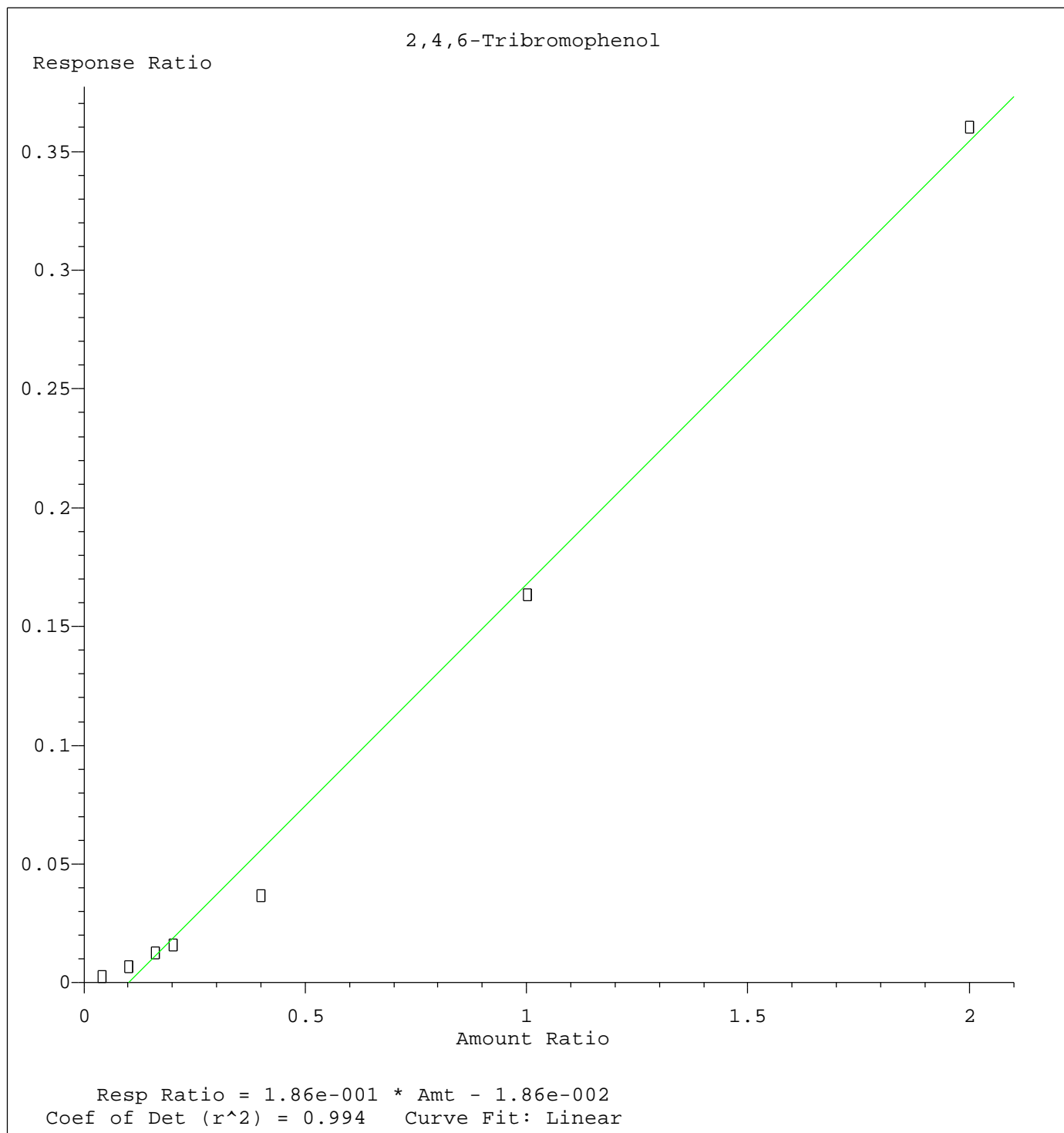
2-Methylnaphthalene

Response Ratio



Resp Ratio = $7.03 \times 10^{-1} \times \text{Amt} - 5.16 \times 10^{-2}$
Coef of Det (r^2) = 0.994 Curve Fit: Linear

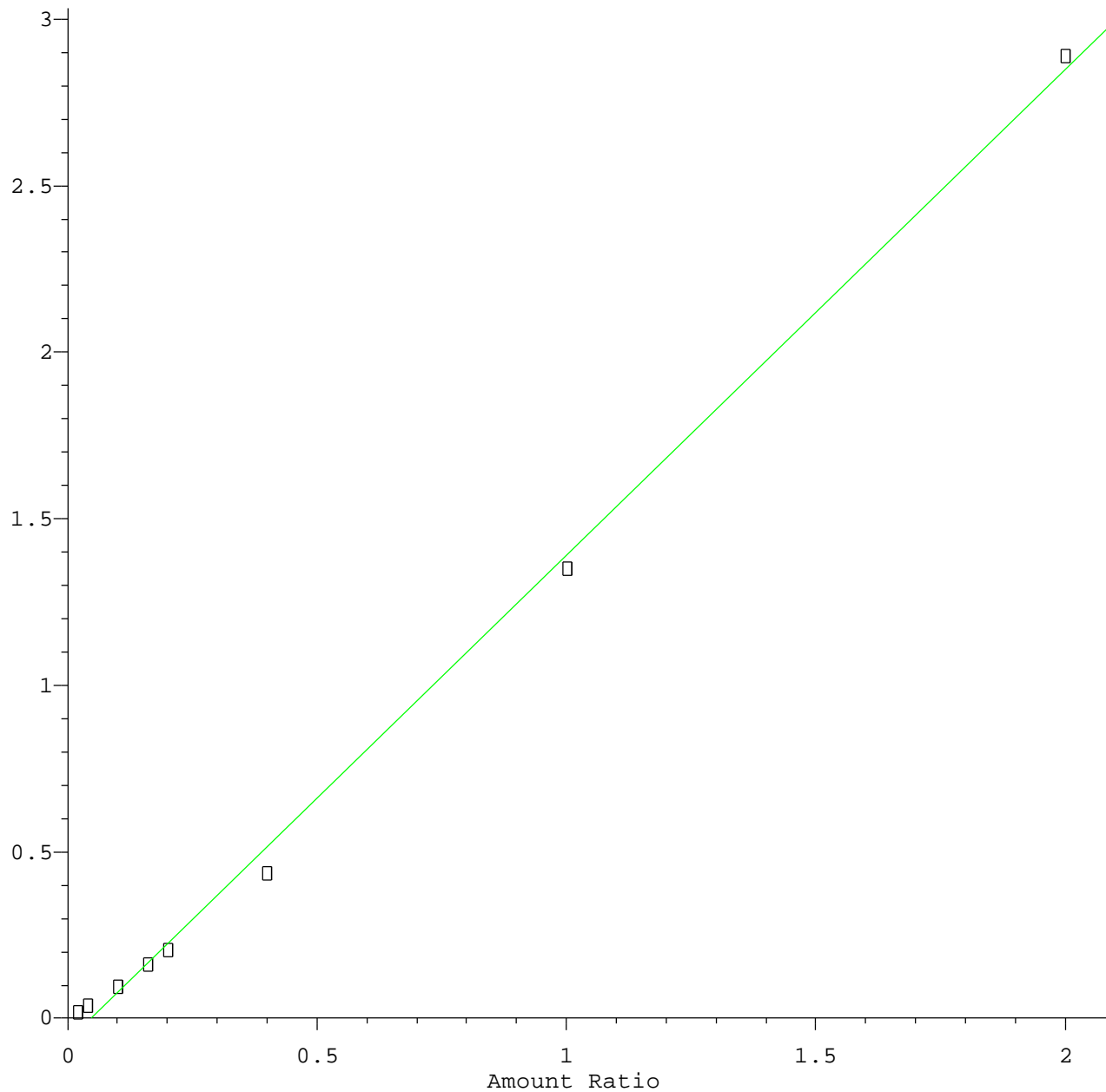
Method Name: Z:\HPCHEM1\BNA_E\METHODS\8270-SIM-BE011416.M
Calibration Table Last Updated: Fri Jan 15 15:14:26 2016



Method Name: Z:\HPCHEM1\BNA_E\METHODS\8270-SIM-BE011416.M
Calibration Table Last Updated: Fri Jan 15 15:14:26 2016

2-Fluorobiphenyl

Response Ratio

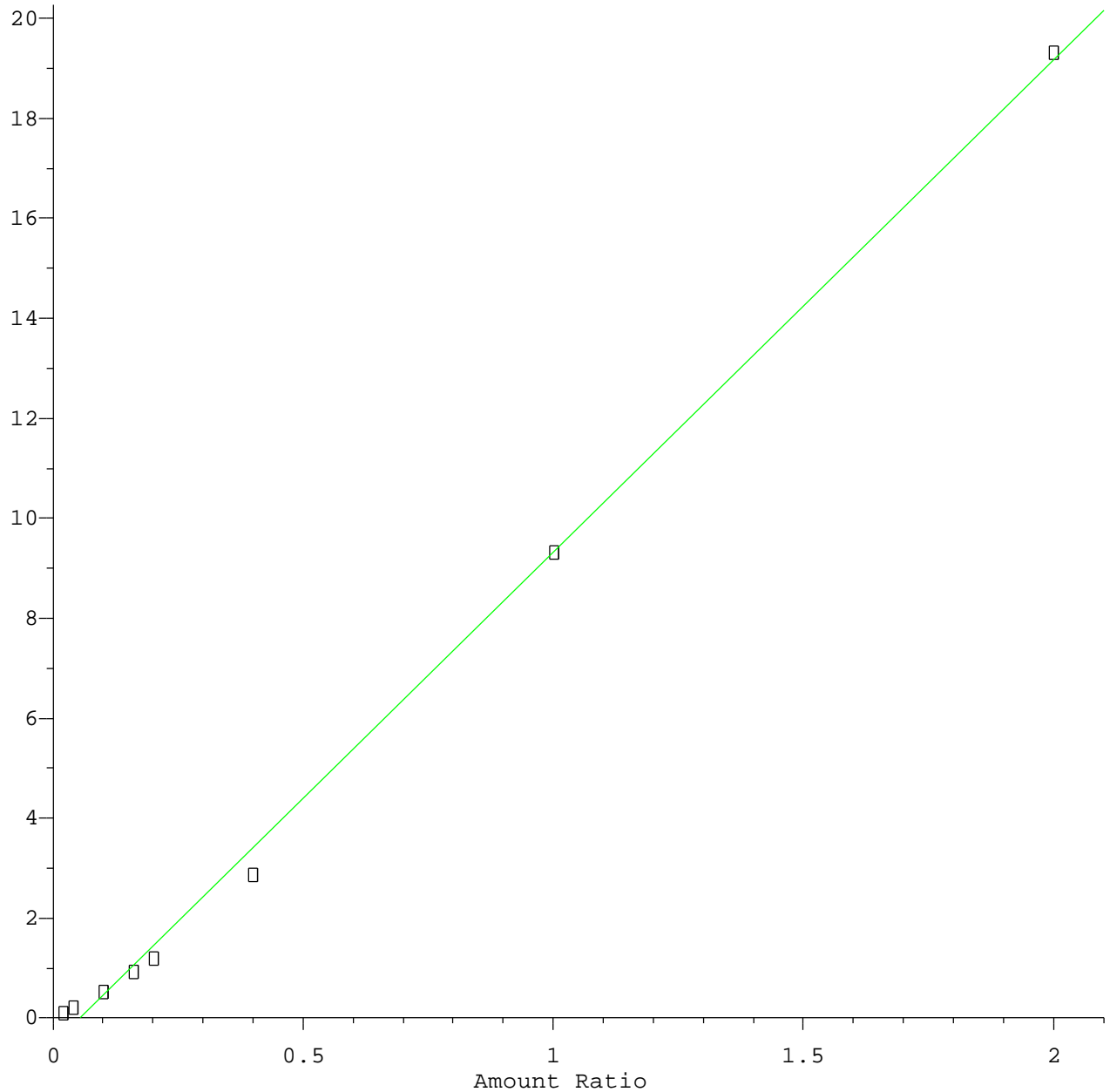


Resp Ratio = 1.46e+000 * Amt - 6.66e-002
Coef of Det (r^2) = 0.998 Curve Fit: Linear

Method Name: Z:\HPCHEM1\BNA_E\METHODS\8270-SIM-BE011416.M
Calibration Table Last Updated: Fri Jan 15 15:14:26 2016

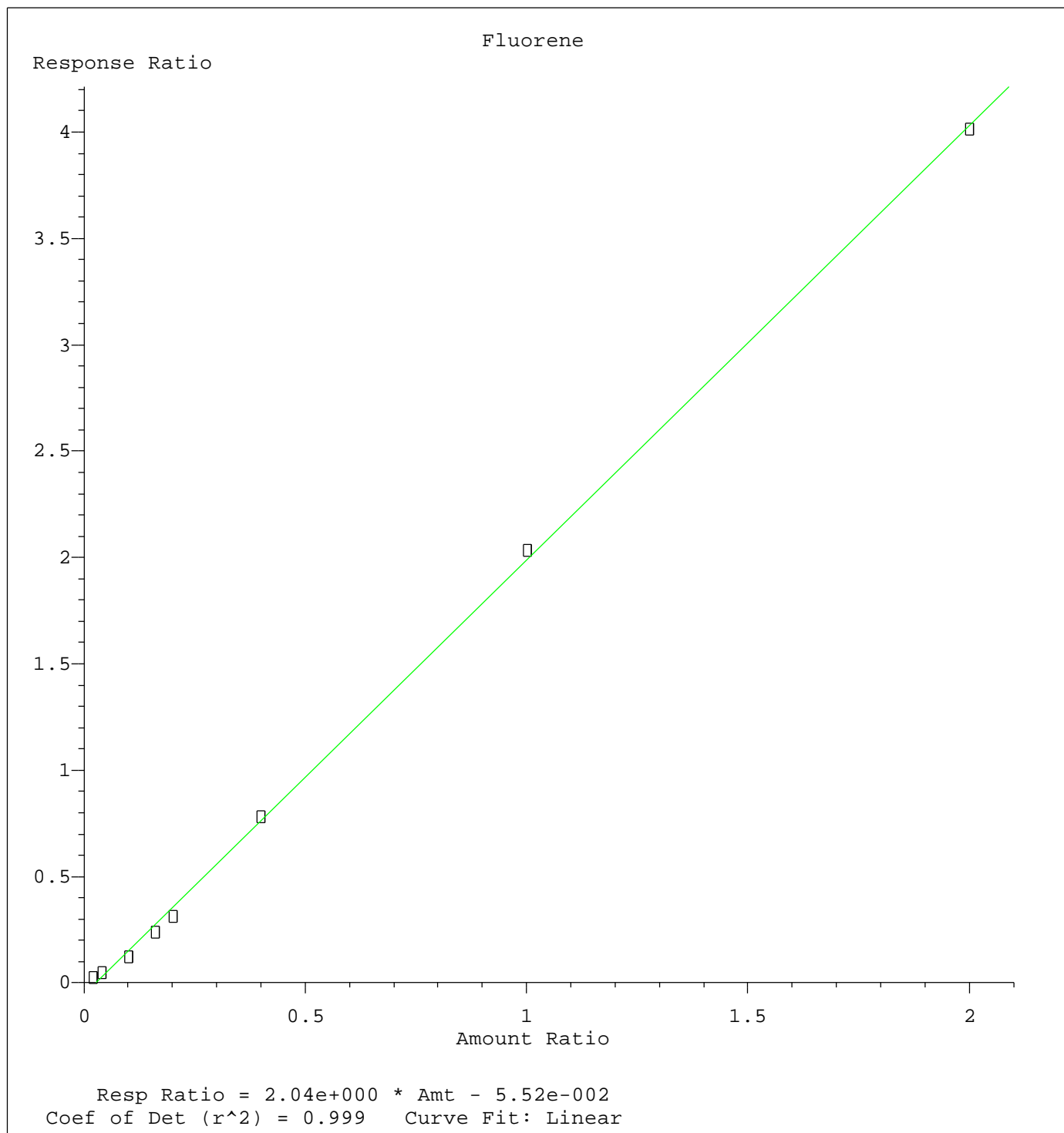
Acenaphthylene

Response Ratio



Resp Ratio = 9.84×10^0 * Amt - 5.32×10^{-1}
Coef of Det (r^2) = 0.998 Curve Fit: Linear

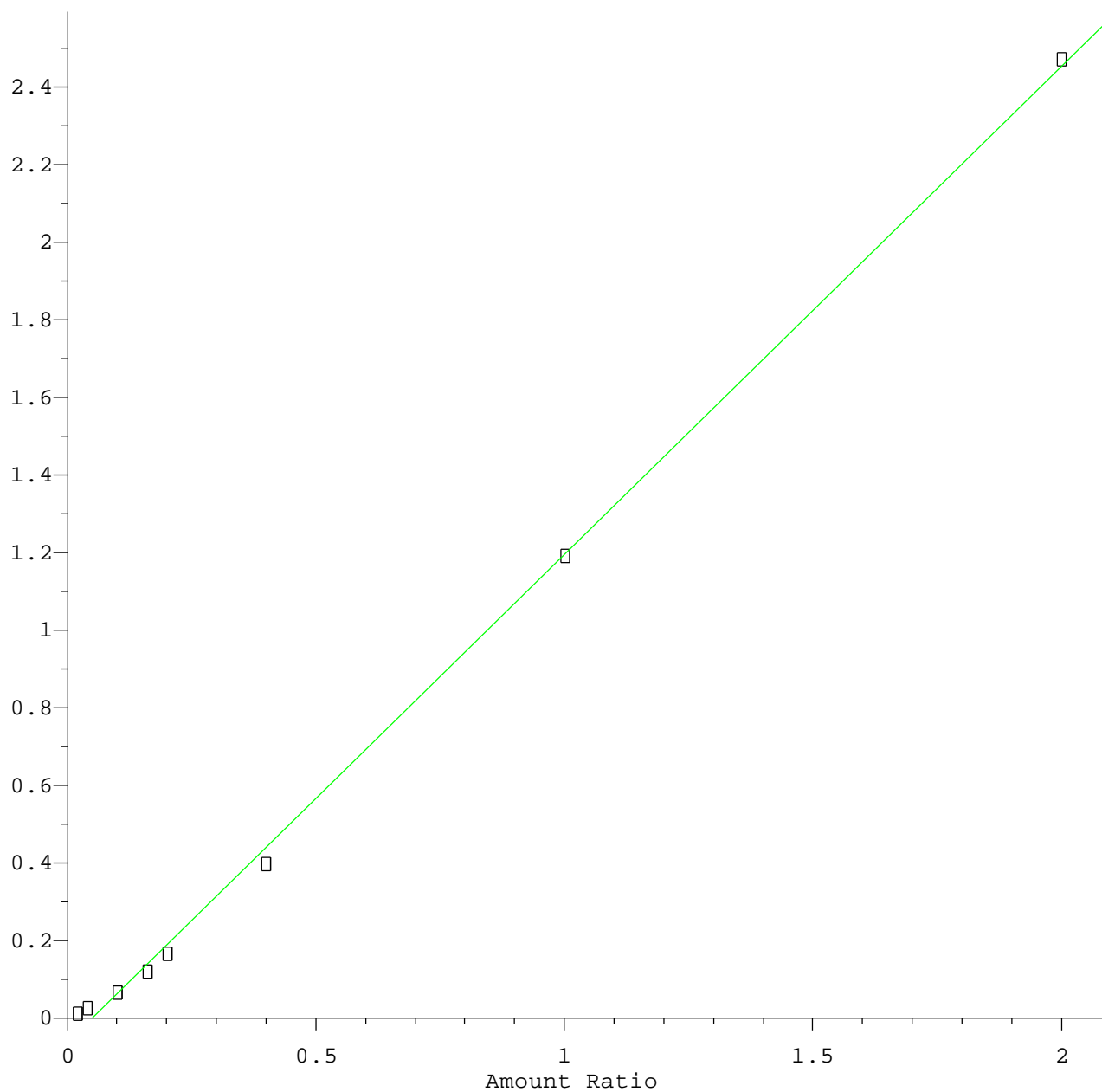
Method Name: Z:\HPCHEM1\BNA_E\METHODS\8270-SIM-BE011416.M
Calibration Table Last Updated: Fri Jan 15 15:14:26 2016



Method Name: Z:\HPCHEM1\BNA_E\METHODS\8270-SIM-BE011416.M
Calibration Table Last Updated: Fri Jan 15 15:14:26 2016

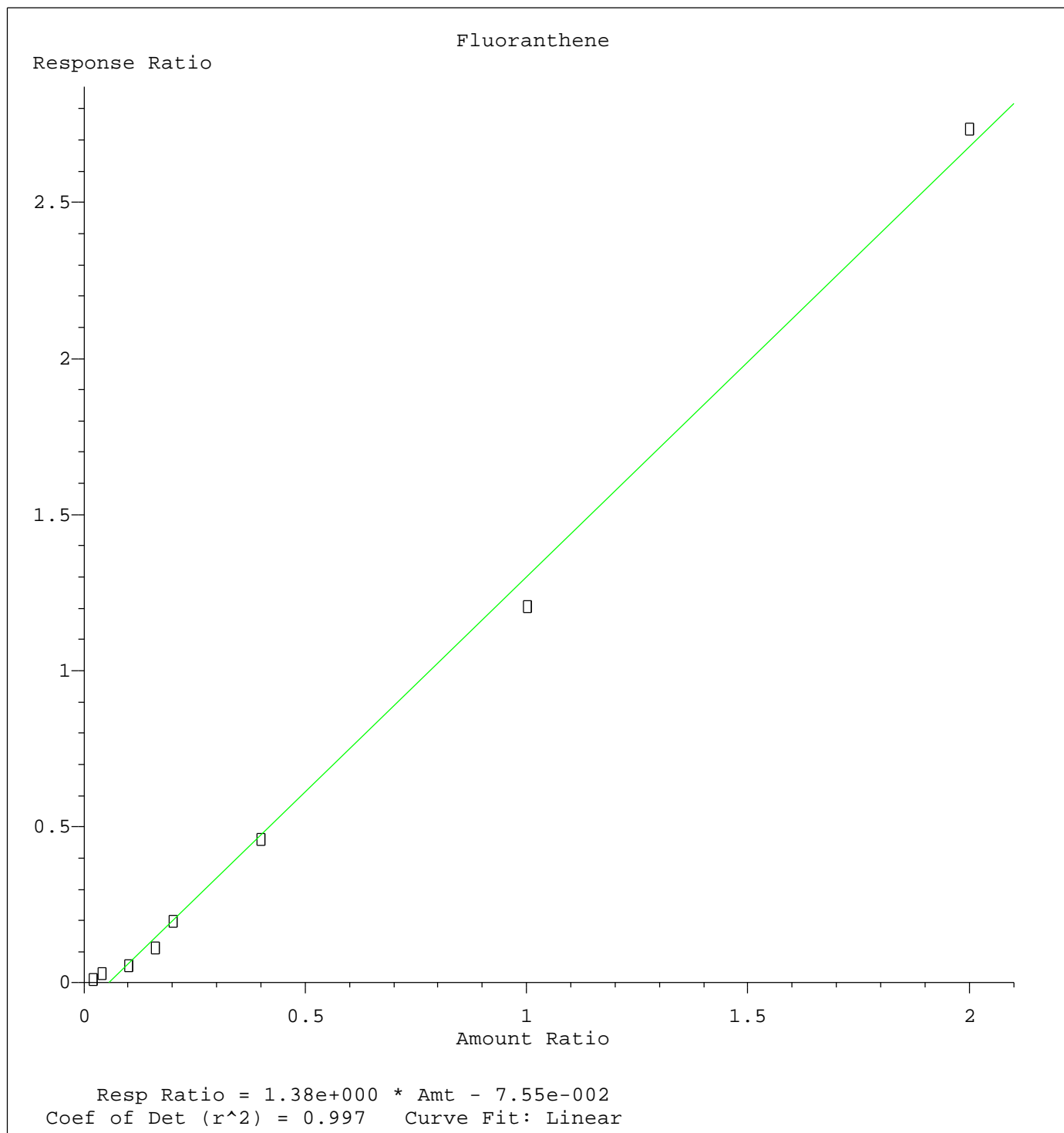
Anthracene

Response Ratio

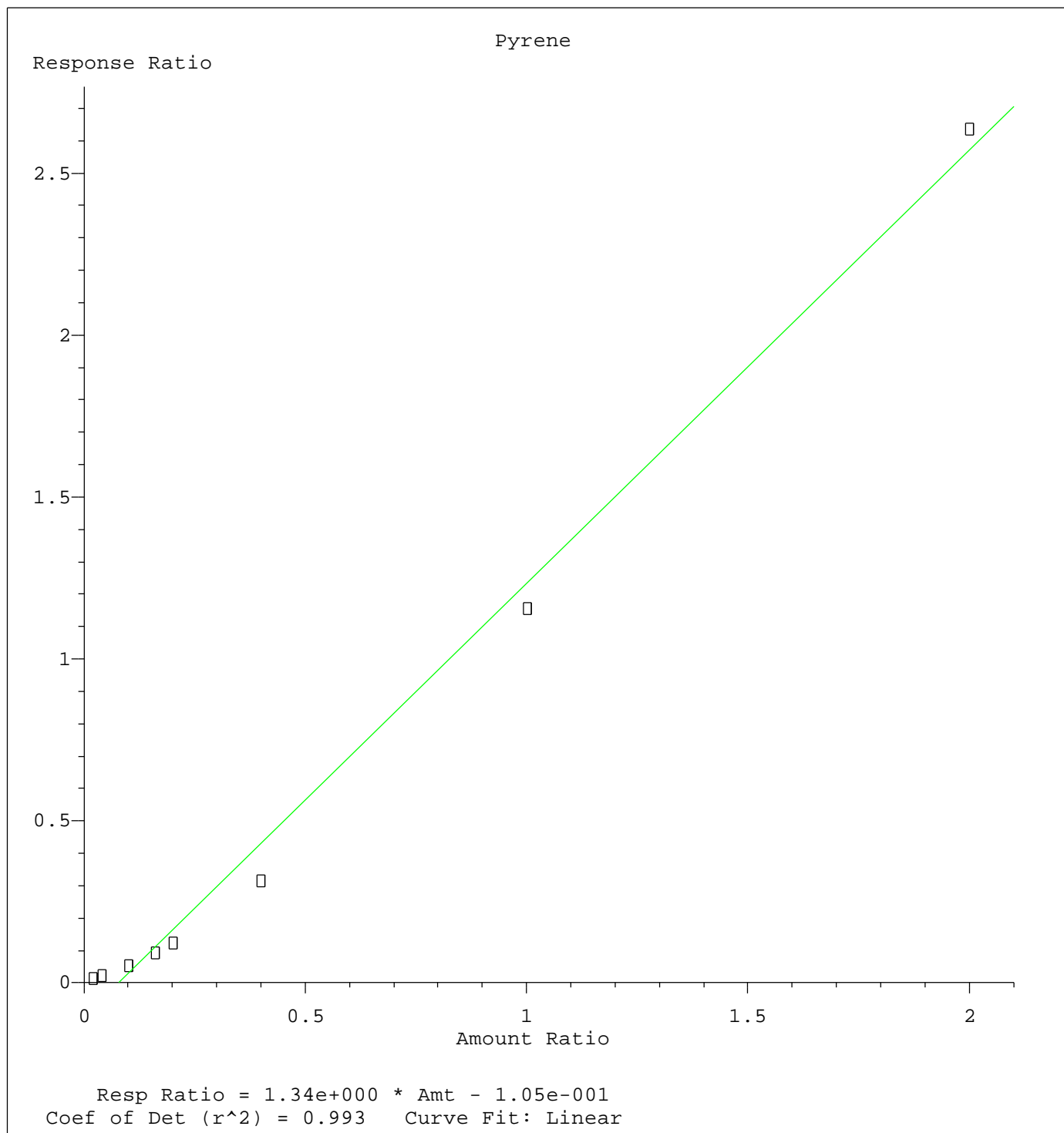


Resp Ratio = 1.26e+000 * Amt - 6.01e-002
Coef of Det (r^2) = 0.999 Curve Fit: Linear

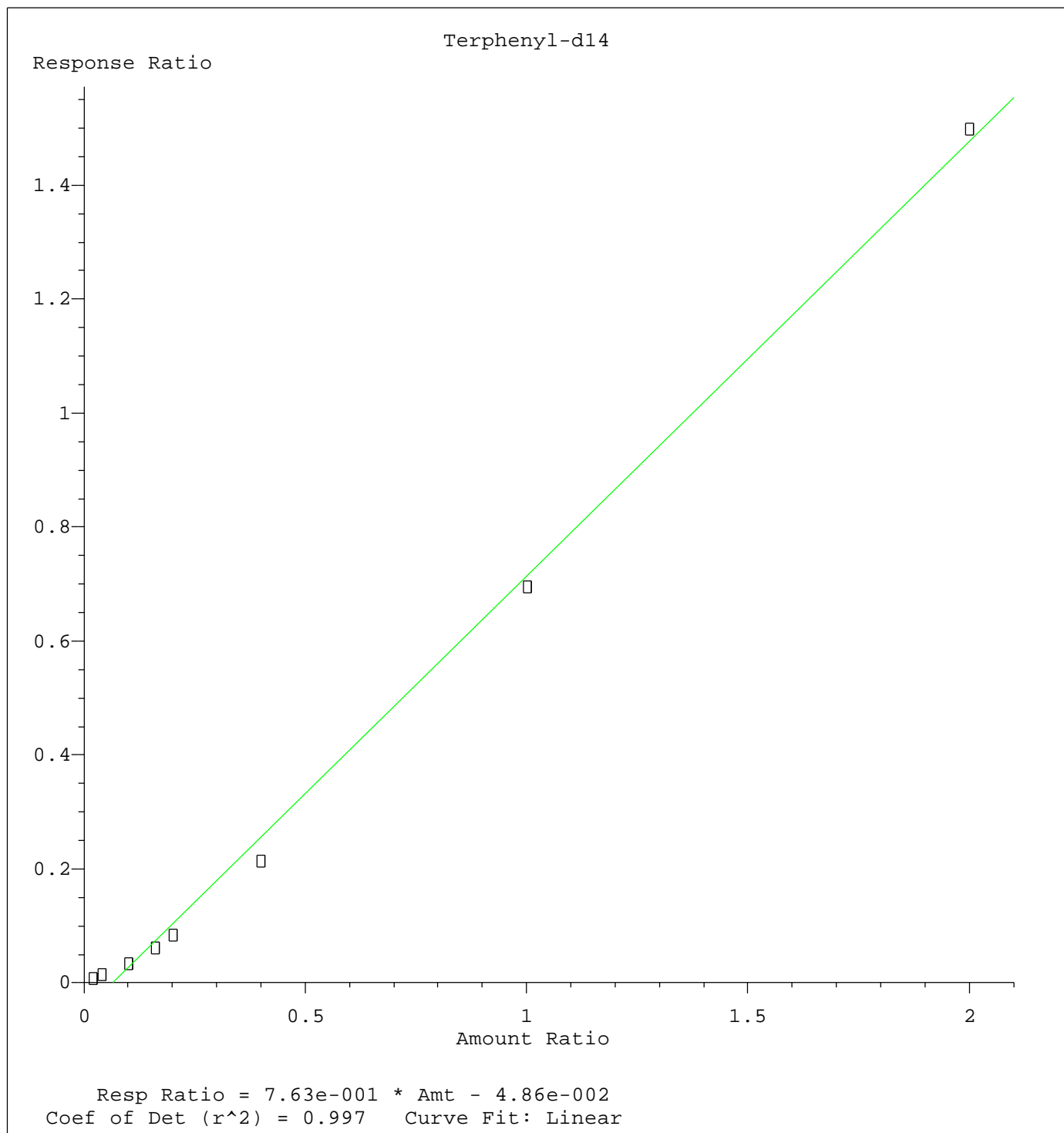
Method Name: Z:\HPCHEM1\BNA_E\METHODS\8270-SIM-BE011416.M
Calibration Table Last Updated: Fri Jan 15 15:14:26 2016



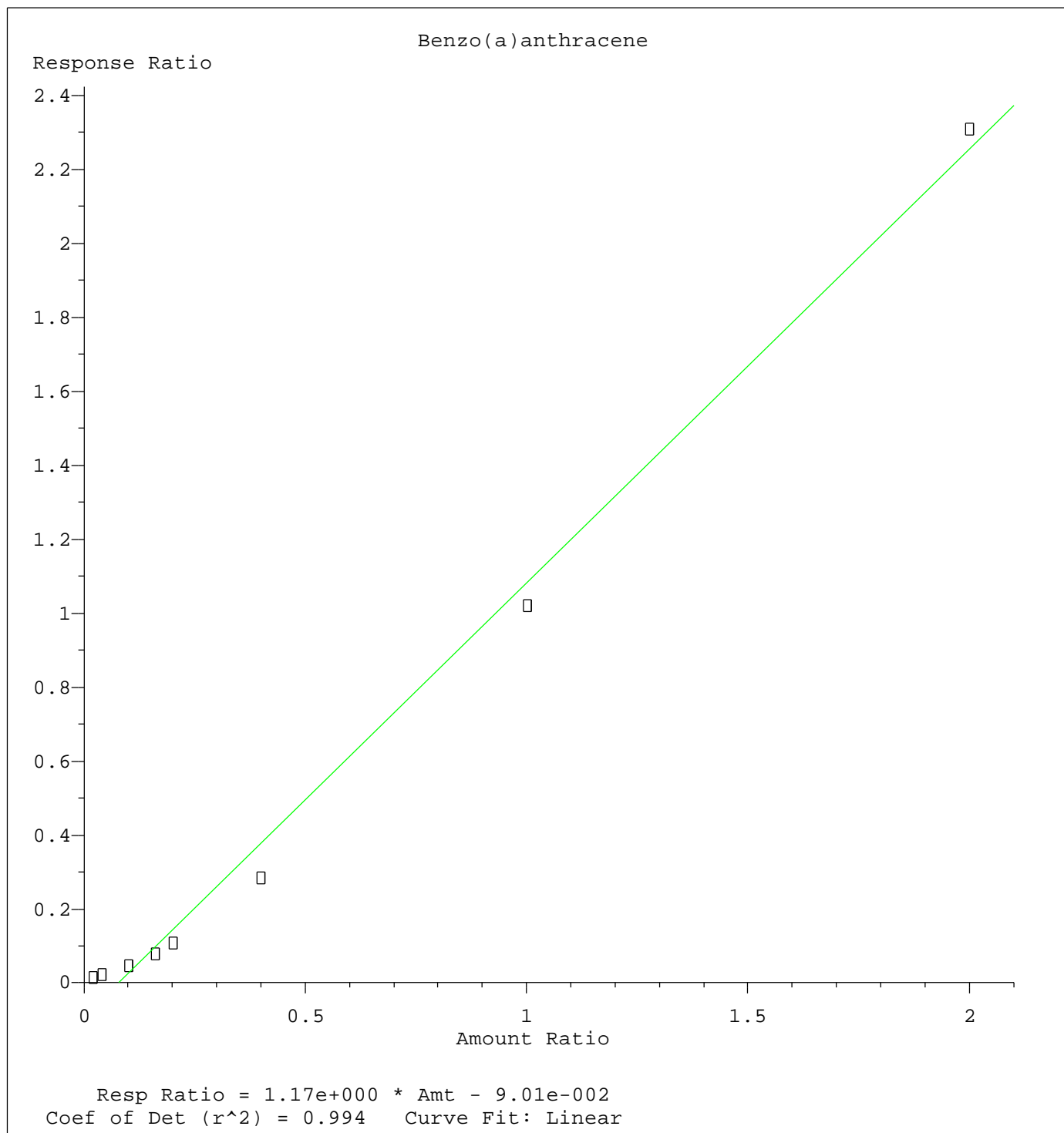
Method Name: Z:\HPCHEM1\BNA_E\METHODS\8270-SIM-BE011416.M
Calibration Table Last Updated: Fri Jan 15 15:14:26 2016



Method Name: Z:\HPCHEM1\BNA_E\METHODS\8270-SIM-BE011416.M
Calibration Table Last Updated: Fri Jan 15 15:14:26 2016



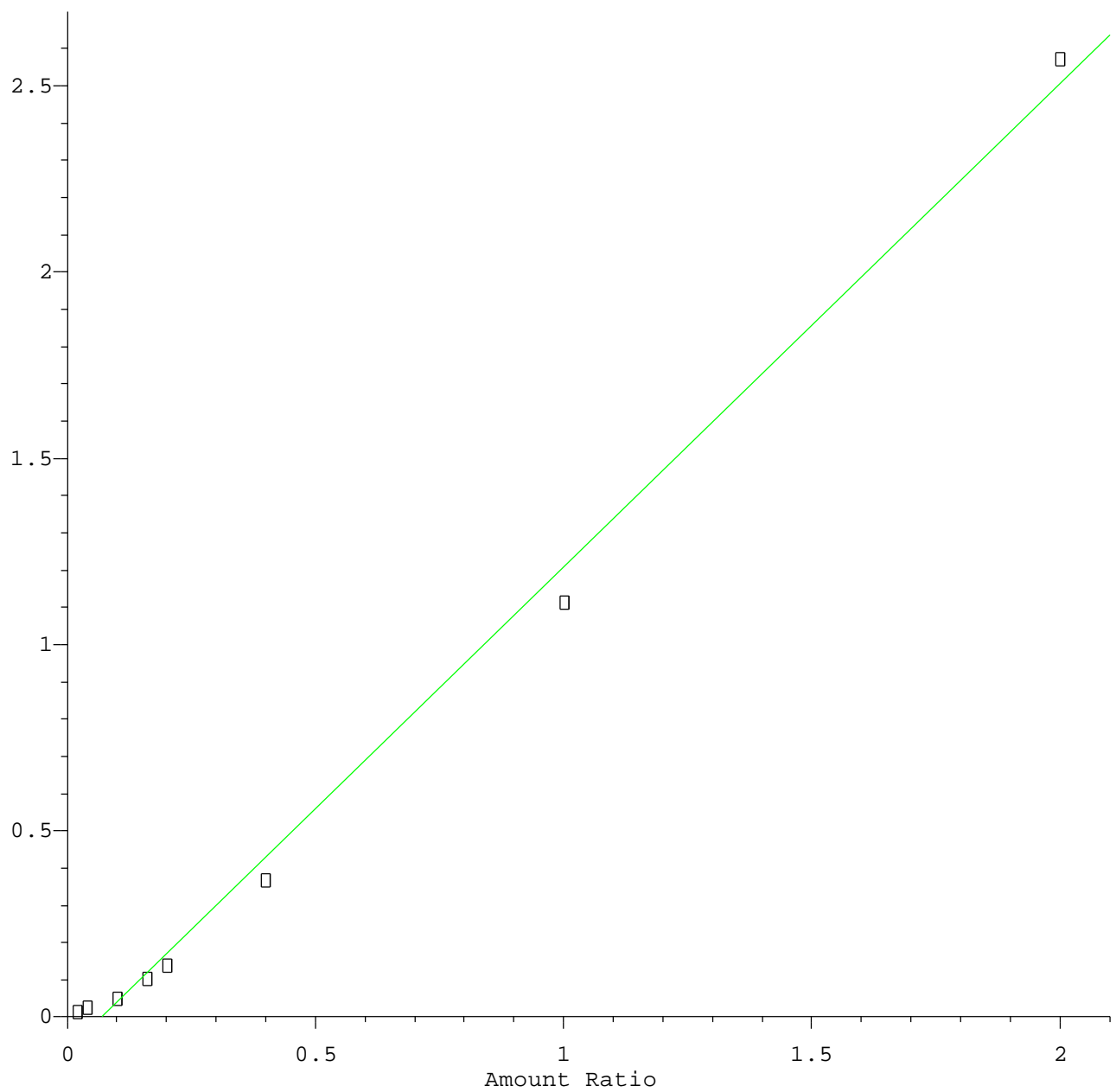
Method Name: Z:\HPCHEM1\BNA_E\METHODS\8270-SIM-BE011416.M
Calibration Table Last Updated: Fri Jan 15 15:14:26 2016



Method Name: Z:\HPCHEM1\BNA_E\METHODS\8270-SIM-BE011416.M
Calibration Table Last Updated: Fri Jan 15 15:14:26 2016

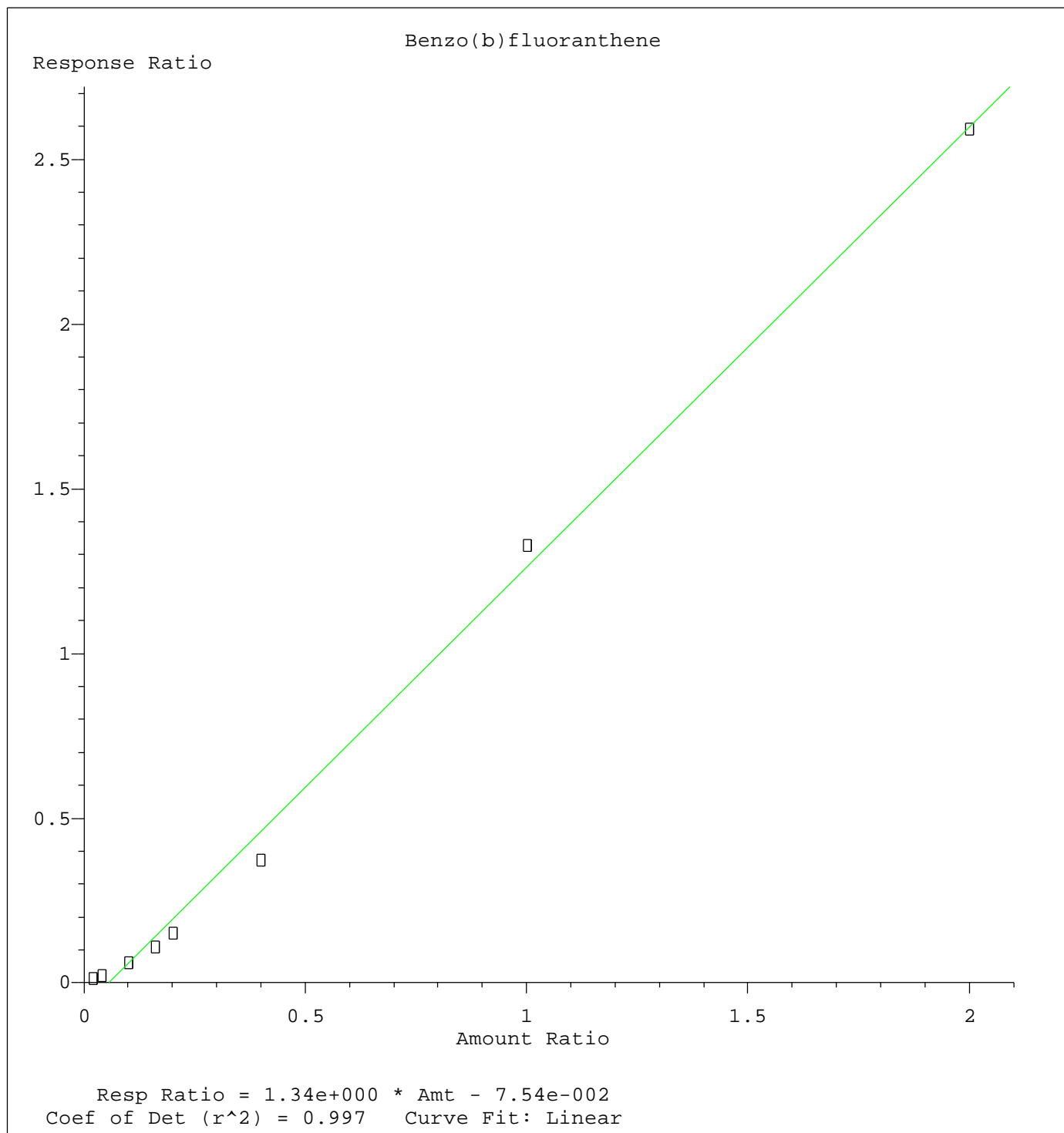
Indeno(1,2,3-cd)pyrene

Response Ratio

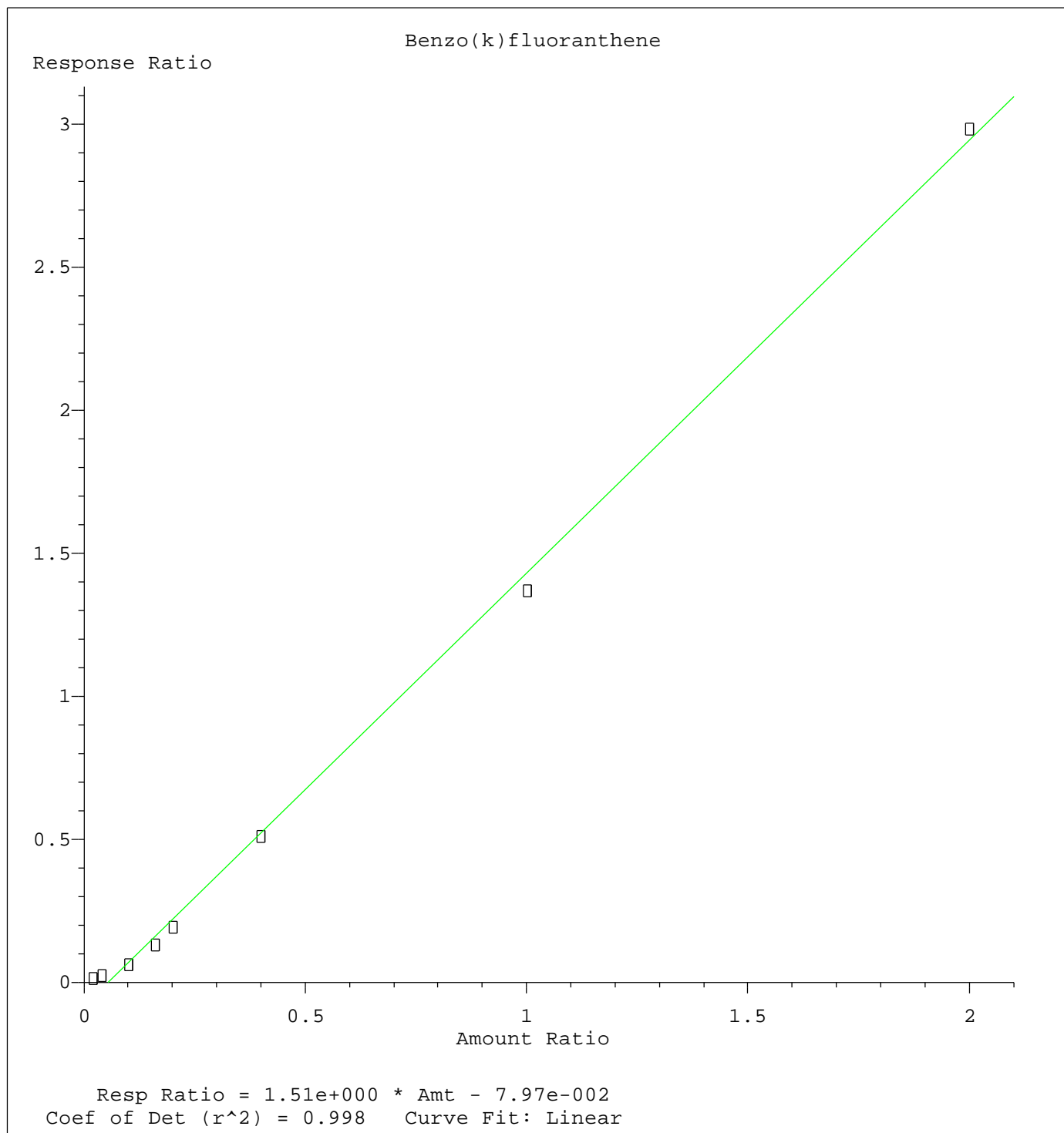


Resp Ratio = 1.30e+000 * Amt - 8.99e-002
Coef of Det (r^2) = 0.995 Curve Fit: Linear

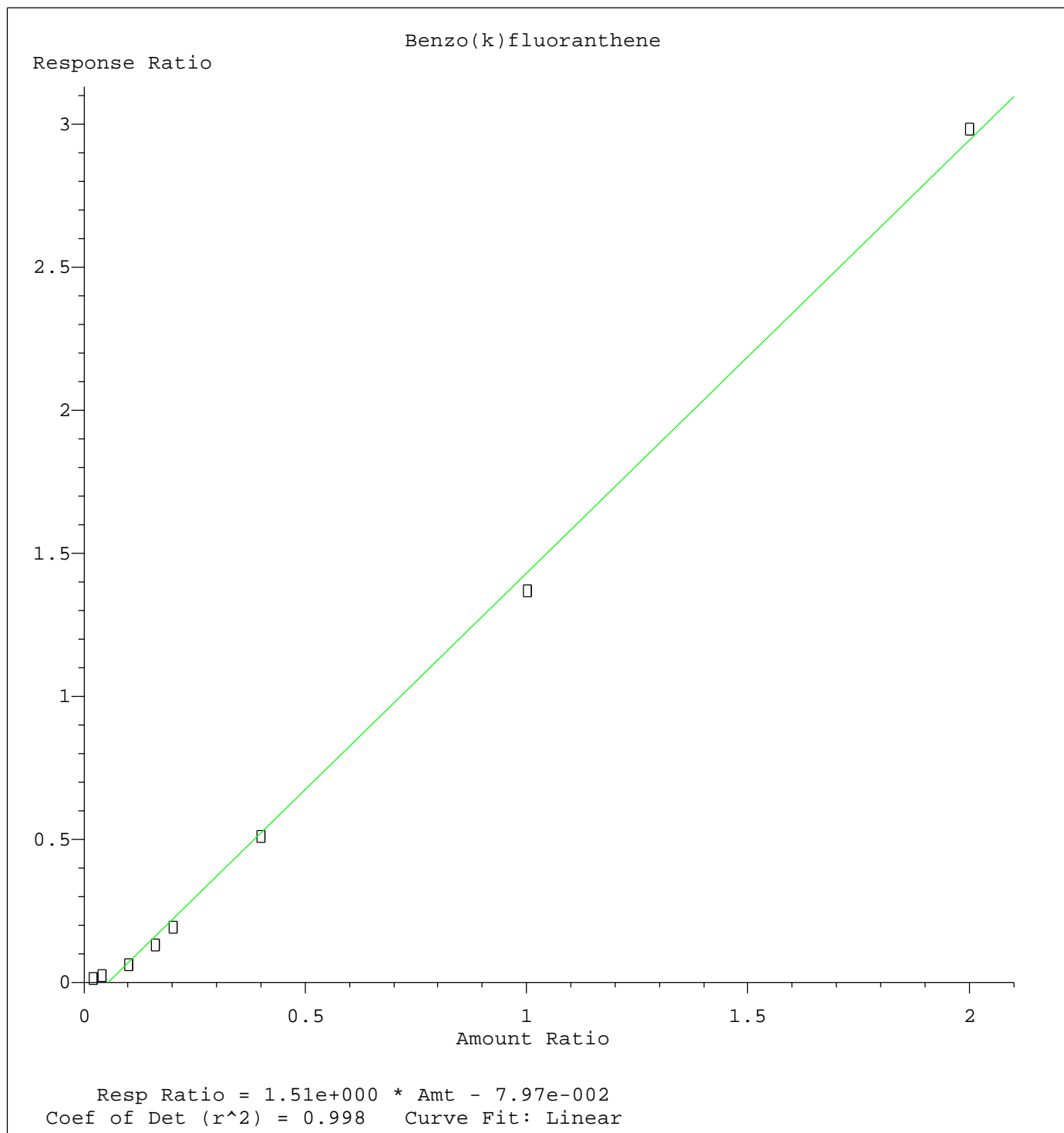
Method Name: Z:\HPCHEM1\BNA_E\METHODS\8270-SIM-BE011416.M
Calibration Table Last Updated: Fri Jan 15 15:14:26 2016



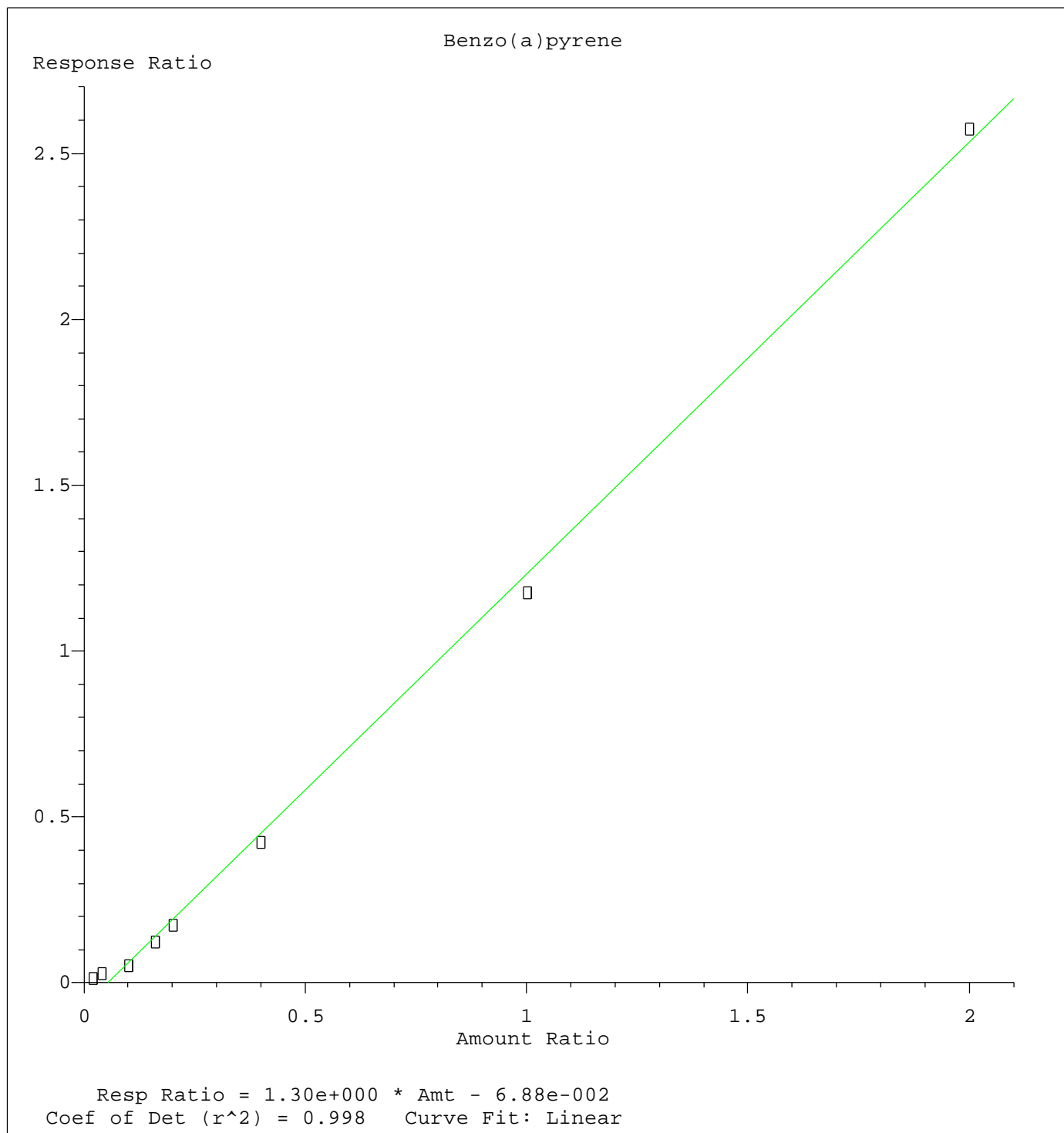
Method Name: Z:\HPCHEM1\BNA_E\METHODS\8270-SIM-BE011416.M
Calibration Table Last Updated: Fri Jan 15 15:14:26 2016



Method Name: Z:\HPCHEM1\BNA_E\METHODS\8270-SIM-BE011416.M
Calibration Table Last Updated: Fri Jan 15 15:14:26 2016



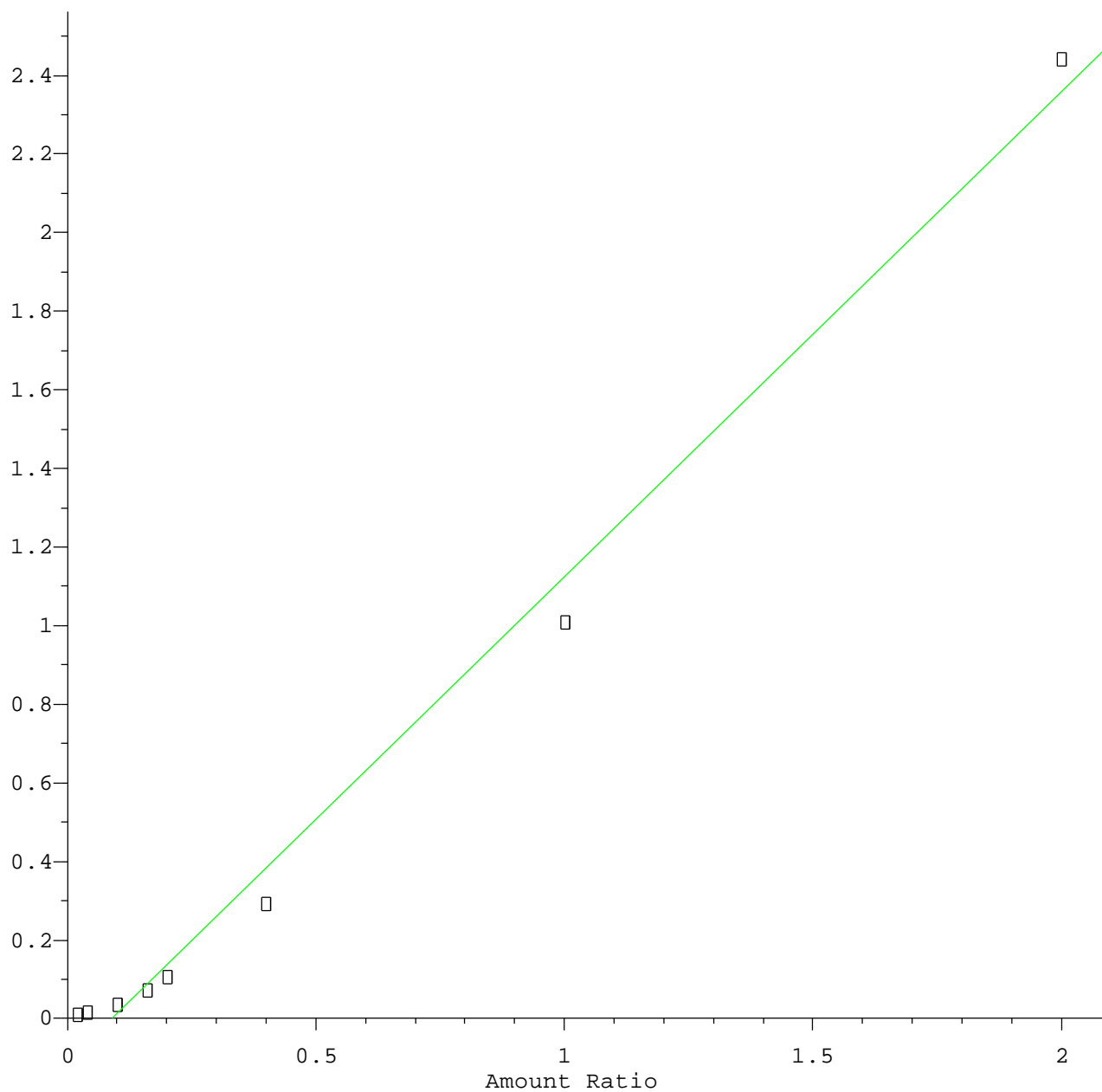
Method Name: Z:\HPCHEM1\BNA_E\METHODS\8270-SIM-BE011416.M
Calibration Table Last Updated: Fri Jan 15 15:14:26 2016



Method Name: Z:\HPCHEM1\BNA_E\METHODS\8270-SIM-BE011416.M
Calibration Table Last Updated: Fri Jan 15 15:14:26 2016

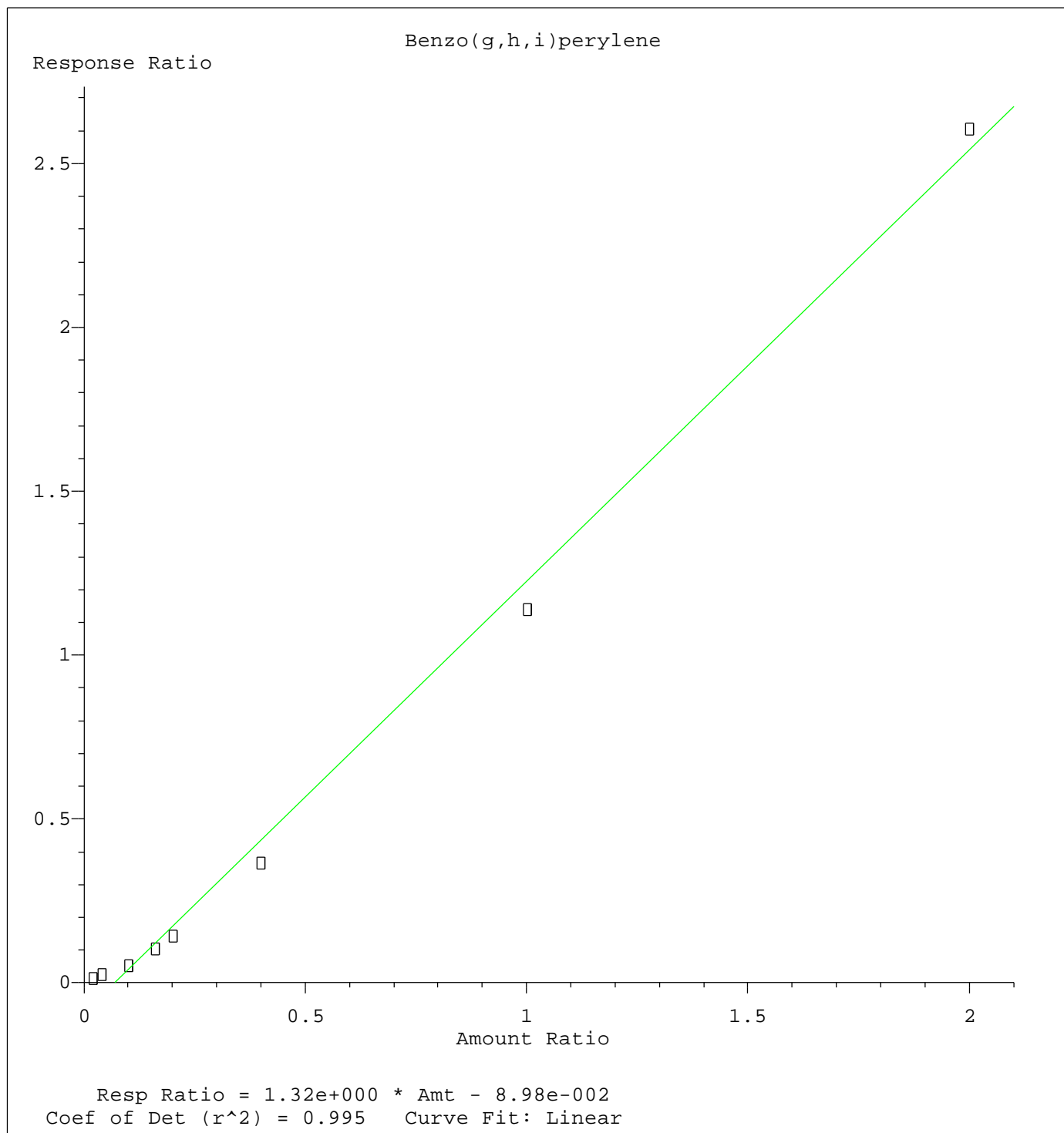
Dibenzo(a,h)anthracene

Response Ratio



Resp Ratio = 1.23e+000 * Amt - 1.08e-001
Coef of Det (r^2) = 0.991 Curve Fit: Linear

Method Name: Z:\HPCHEM1\BNA_E\METHODS\8270-SIM-BE011416.M
Calibration Table Last Updated: Fri Jan 15 15:14:26 2016



Method Name: Z:\HPCHEM1\BNA_E\METHODS\8270-SIM-BE011416.M
Calibration Table Last Updated: Fri Jan 15 15:14:26 2016