

Data Path : Z:\HPCHEM1\BNA E\DATA\BE012417\
 Data File : BE092677.D
 Acq On : 24 Jan 2017 22:18
 Operator : UM/SJ
 Sample : I1378-07 20X
 Misc :
 ALS Vial : 8 Sample Multiplier: 1

Instrument :
 BNA_E
ClientSampled :
 RVE-8

Manual Integrations
APPROVED

mohammad
 1/25/2017 4:53:19 PM

Quant Time: Jan 25 13:37:54 2017
 Quant Method : Z:\HPCHEM1\BNA E\METHODS\8270-SIM-BE011617.M
 Quant Title : ASP BNA STANDARDS FOR 5 POINT CALIBRATION
 QLast Update : Tue Jan 17 10:14:01 2017
 Response via : Initial Calibration

Internal Standards	R.T.	QIon	Response	Conc	Units	Dev(Min)
1) 1,4-Dichlorobenzene-d4	8.14	152	8899	5.00	ng	0.00
7) Naphthalene-d8	10.91	136	45899	5.00	ng	0.00
12) Acenaphthene-d10	14.78	164	30918	5.00	ng	0.00
18) Phenanthrene-d10	17.53	188	61861	5.00	ng	0.00
24) Chrysene-d12	21.72	240	64698	5.00	ng	0.00
31) Perylene-d12	24.07	264	64346	5.00	ng	0.00
System Monitoring Compounds						
4) 2-Fluorophenol	5.58	112	1	0.00	ng	-0.07
5) Phenol-d6	7.31	99	6	0.00	ng	-0.02
8) Nitrobenzene-d5	0.00	82	0	0.00	ng	
13) 2,4,6-Tribromophenol	16.32	330	42	0.18	ng	0.02
14) 2-Fluorobiphenyl	13.48	172	176	0.02	ng	0.06
26) Terphenyl-d14	20.17	244	248	0.03	ng	0.02
Target Compounds						
21) Phenanthrene	17.58	178	325	0.02	ng	# 78
23) Fluoranthene	19.59	202	4321	0.07	ng	96
25) Pyrene	19.95	202	5645	0.09	ng	# 89
27) Benzo(a)anthracene	21.70	228	5075m	0.08	ng	
28) Chrysene	21.75	228	3600m	0.05	ng	
29) Bis(2-ethylhexyl)phthalate	21.61	149	235	0.22	ng	# 76
30) Indeno(1,2,3-cd)pyrene	26.55	276	2675	0.03	ng	94
32) Benzo(b)fluoranthene	23.35	252	1218m	0.08	ng	
33) Benzo(k)fluoranthene	23.39	252	446m	0.03	ng	
34) Benzo(a)pyrene	23.96	252	948	0.06	ng	# 45
36) Benzo(a,h,i)perylene	27.31	276	4221	0.07	ng	# 63

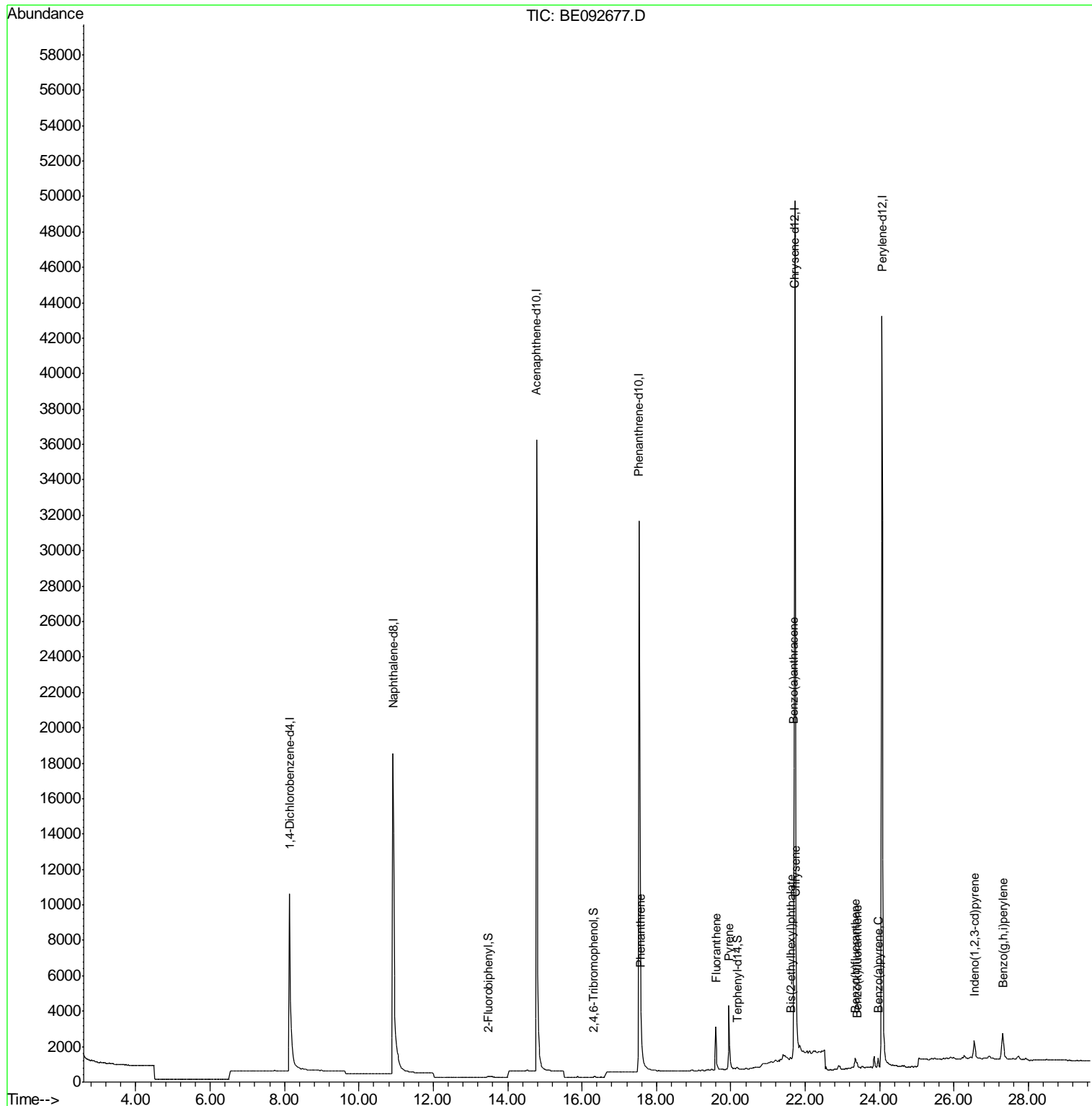
(#) = qualifier out of range (m) = manual integration (+) = signals summed

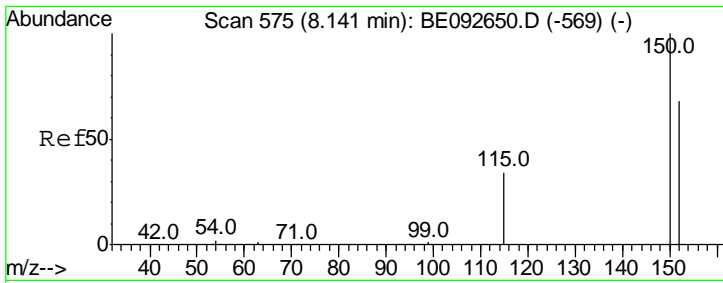
Data Path : Z:\HPCHEM1\BNA E\DATA\BE012417\
 Data File : BE092677.D
 Acq On : 24 Jan 2017 22:18
 Operator : UM/SJ
 Sample : I1378-07 20X
 Misc :
 ALS Vial : 8 Sample Multiplier: 1

Instrument :
 BNA_E
 ClientSampled :
 RVE-8

Manual Integrations
APPROVED
 mohammad
 1/25/2017 4:53:19 PM

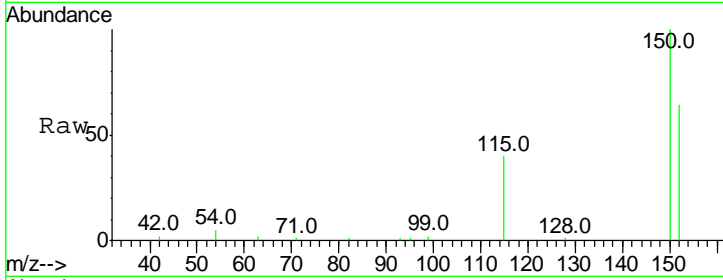
Quant Time: Jan 25 13:37:54 2017
 Quant Method : Z:\HPCHEM1\BNA E\METHODS\8270-SIM-BE011617.M
 Quant Title : ASP BNA STANDARDS FOR 5 POINT CALIBRATION
 QLast Update : Tue Jan 17 10:14:01 2017
 Response via : Initial Calibration





#1
 1,4-Dichlorobenzene-d4
 Concen: 5.00 ng
 RT: 8.14 min Scan# 575
 Delta R.T. 0.00 min
 Lab File: BE092677.D
 Acq: 24 Jan 2017 22:18

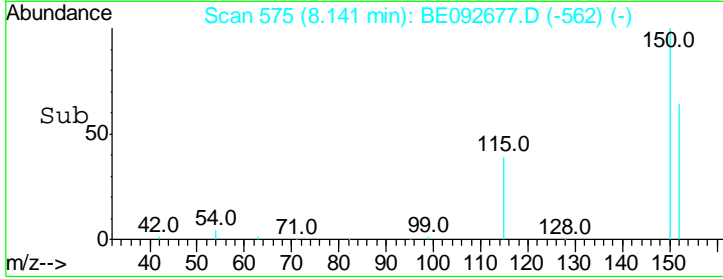
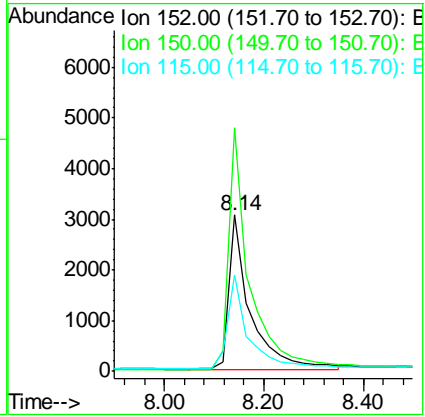
Instrument :
 BNA_E
ClientSampled :
 RVE-8



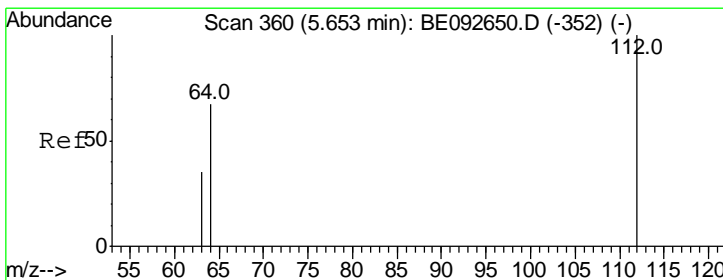
Tgt Ion: 152 Resp: 8899

Ion	Ratio	Lower	Upper
152	100		
150	155.9	106.0	159.0
115	61.7	31.2	46.8#

Manual Integrations
APPROVED
 mohammad
 1/25/2017 4:53:19 PM

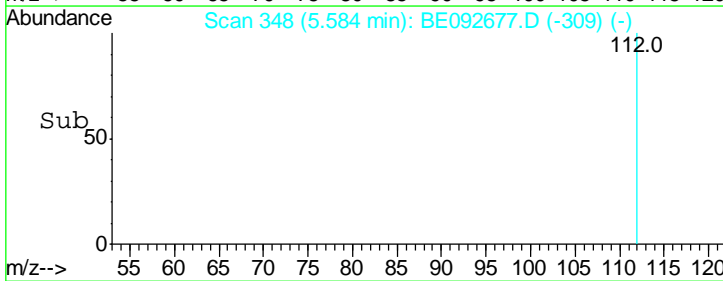
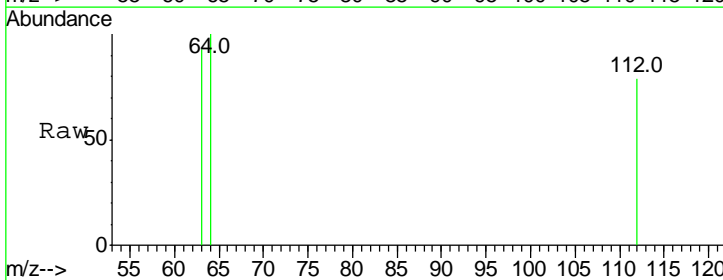
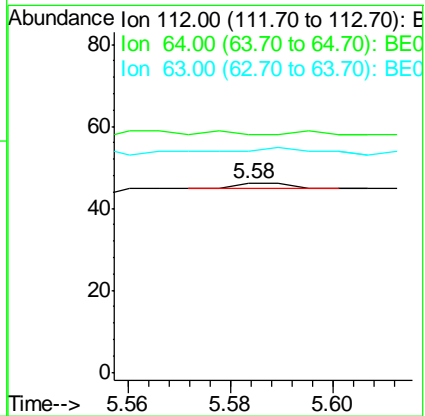


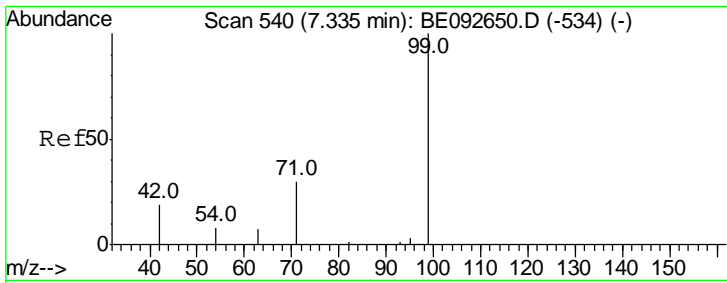
#4
 2-Fluorophenol
 Concen: 0.00 ng
 RT: 5.58 min Scan# 348
 Delta R.T. -0.07 min
 Lab File: BE092677.D
 Acq: 24 Jan 2017 22:18



Tgt Ion: 112 Resp: 1

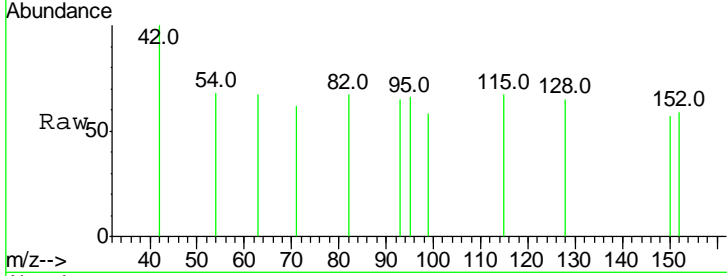
Ion	Ratio	Lower	Upper
112	100		
64	0.0	53.5	80.3#
63	200.0	27.9	41.9#





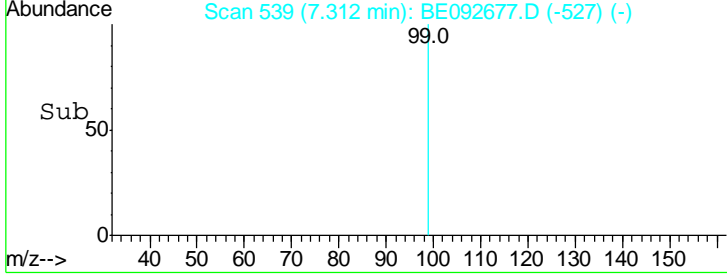
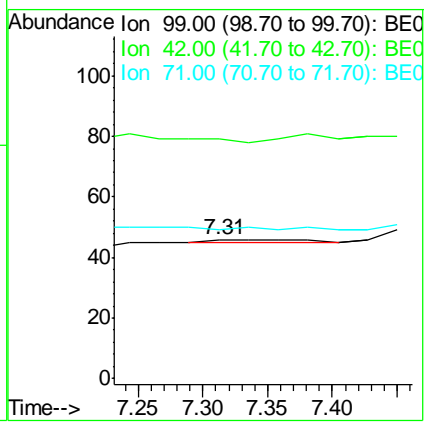
#5
 Phenol-d6
 Concen: 0.00 ng
 RT: 7.31 min Scan# 539
 Delta R.T. -0.02 min
 Lab File: BE092677.D
 Acq: 24 Jan 2017 22:18

Instrument :
 BNA_E
ClientSampled :
 RVE-8

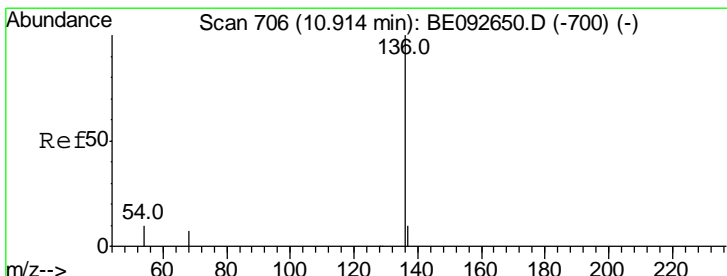


Tgt Ion	Ratio	Lower	Upper
99	100		
42	0.0	16.0	24.0#
71	0.0	30.6	45.8#

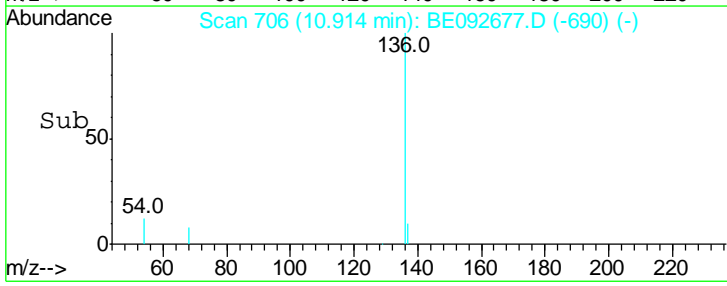
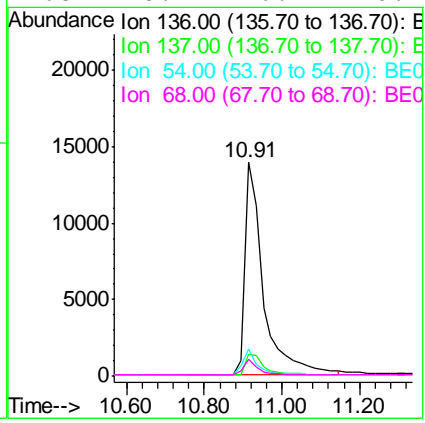
Manual Integrations
APPROVED
 mohammad
 1/25/2017 4:53:19 PM

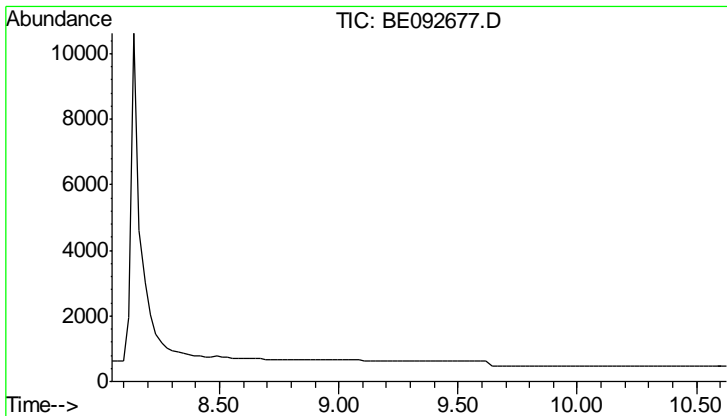


#7
 Naphthalene-d8
 Concen: 5.00 ng
 RT: 10.91 min Scan# 706
 Delta R.T. 0.00 min
 Lab File: BE092677.D
 Acq: 24 Jan 2017 22:18



Tgt Ion	Ratio	Lower	Upper
136	100		
137	10.4	8.2	12.4
54	12.3	9.6	14.4
68	8.1	6.7	10.1



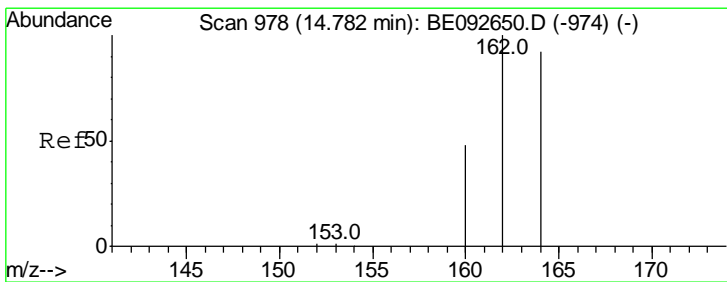
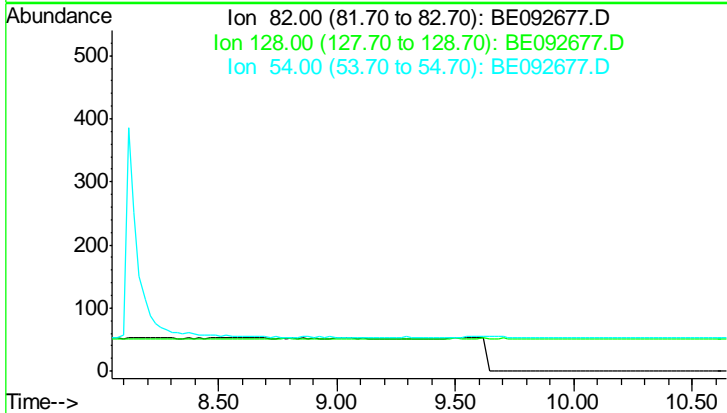


#8
 Nitrobenzene-d5
 Concen: 0.00 ng
 Expected RT: 9.34 min
 Lab File: BE092677.D
 Acq: 24 Jan 2017 22:18

Instrument :
 BNA_E
ClientSampled :
 RVE-8

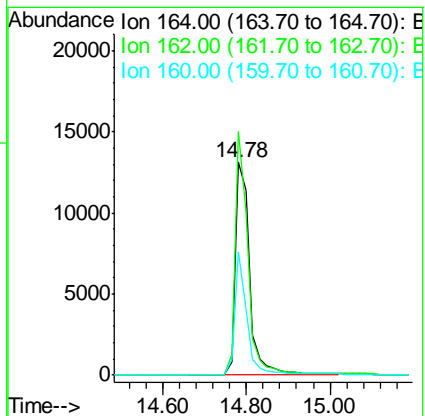
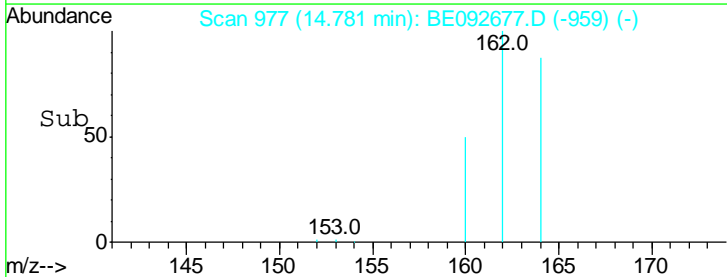
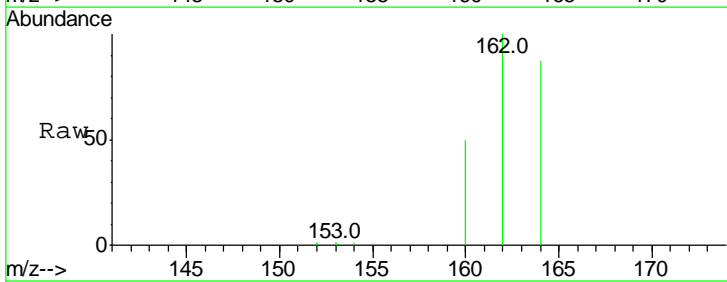
Tgt Ion	Exp Ratio
82	100
128	48.7
54	56.0

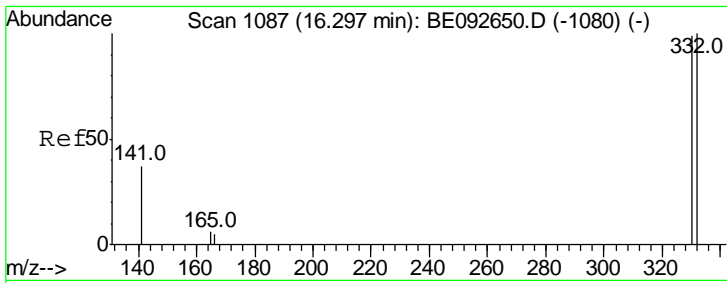
Manual Integrations
APPROVED
 mohammad
 1/25/2017 4:53:19 PM



#12
 Acenaphthene-d10
 Concen: 5.00 ng
 RT: 14.78 min Scan# 977
 Delta R.T. -0.00 min
 Lab File: BE092677.D
 Acq: 24 Jan 2017 22:18

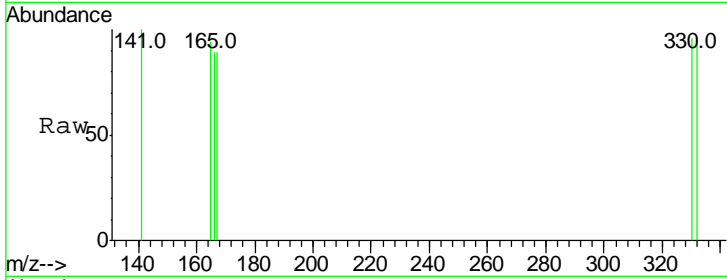
Tgt Ion	Resp	Lower	Upper
164	30918		
162	114.5	71.4	107.0#
160	57.7	27.4	41.2#





#13
 2,4,6-Tribromophenol
 Concen: 0.18 ng
 RT: 16.32 min Scan# 1088
 Delta R.T. 0.02 min
 Lab File: BE092677.D
 Acq: 24 Jan 2017 22:18

Instrument :
 BNA_E
 ClientSampled :
 RVE-8

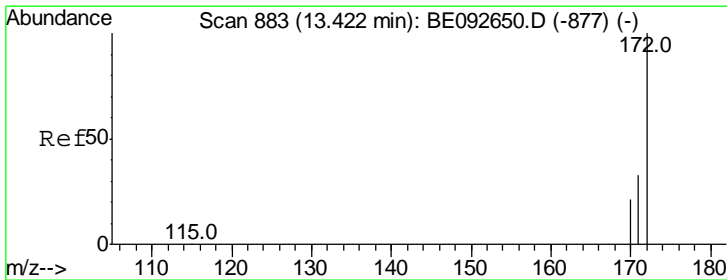
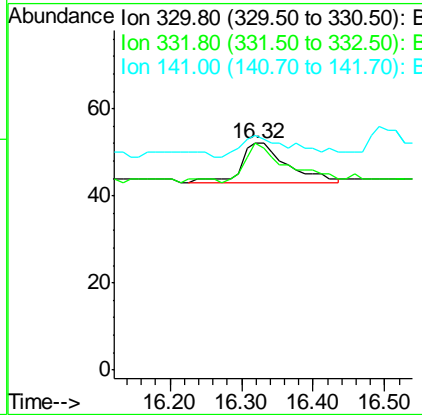
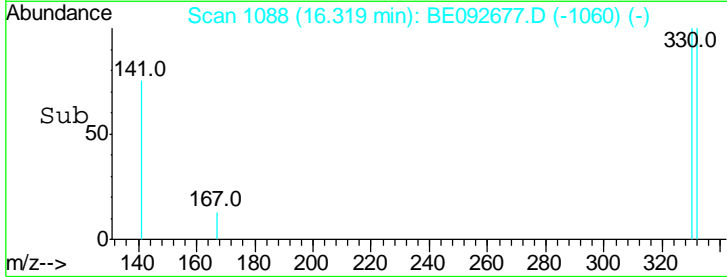


Tgt Ion: 330 Resp: 42

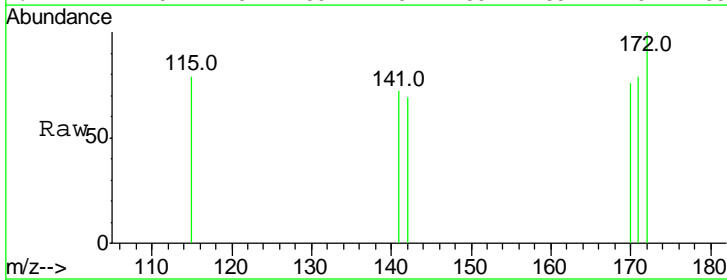
Ion	Ratio	Lower	Upper
330	100		
332	90.5	75.4	113.0
141	59.5	31.0	46.6#

Manual Integrations
 APPROVED

mohammad
 1/25/2017 4:53:19 PM

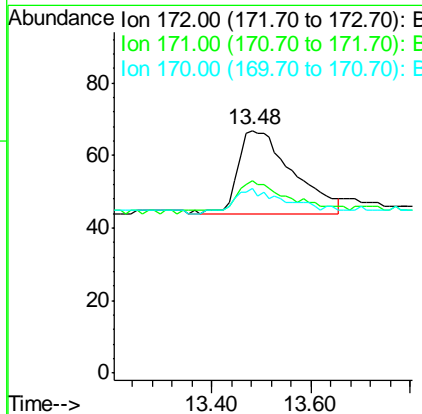
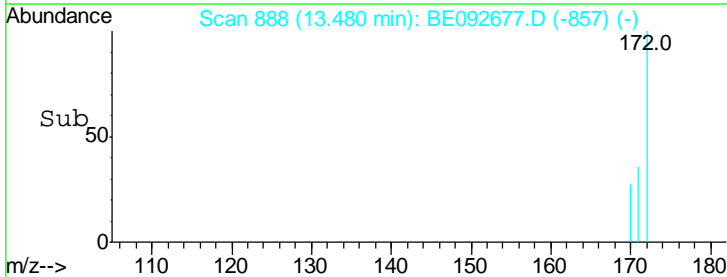


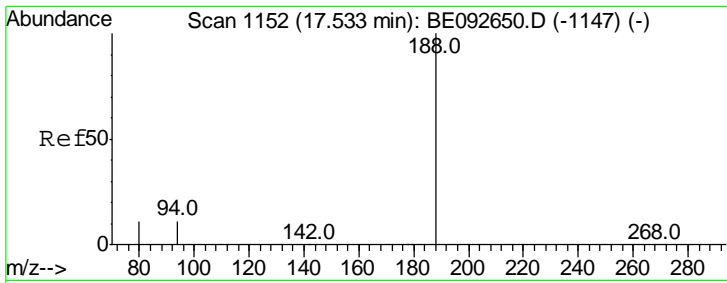
#14
 2-Fluorobiphenyl
 Concen: 0.02 ng
 RT: 13.48 min Scan# 888
 Delta R.T. 0.06 min
 Lab File: BE092677.D
 Acq: 24 Jan 2017 22:18



Tgt Ion: 172 Resp: 176

Ion	Ratio	Lower	Upper
172	100		
171	79.1	30.1	45.1#
170	76.1	21.8	32.6#



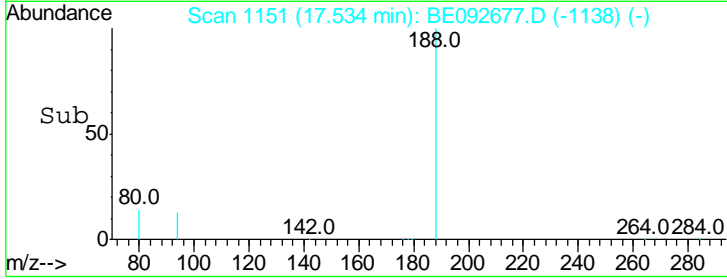
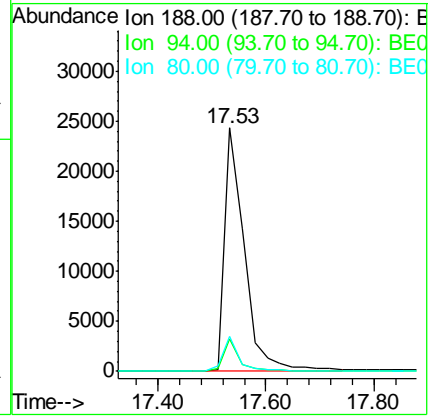
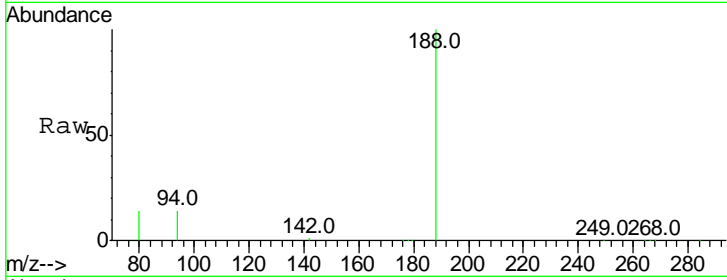


#18
 Phenanthrene-d10
 Concen: 5.00 ng
 RT: 17.53 min Scan# 1151
 Delta R.T. 0.00 min
 Lab File: BE092677.D
 Acq: 24 Jan 2017 22:18

Instrument :
 BNA_E
ClientSampled :
 RVE-8

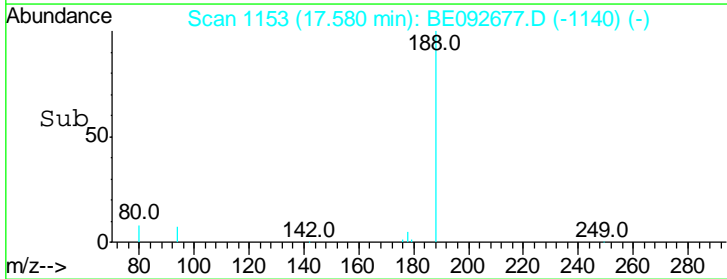
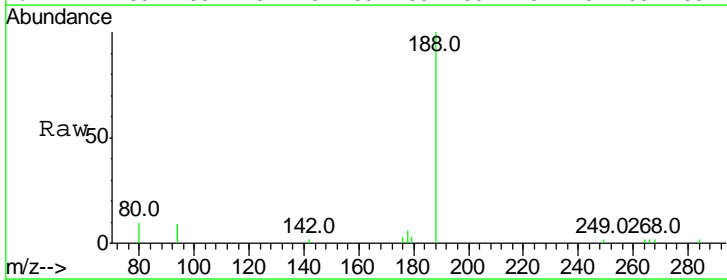
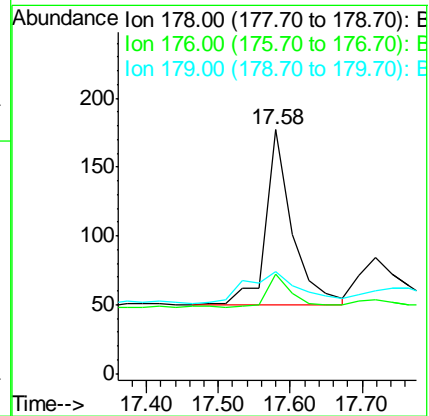
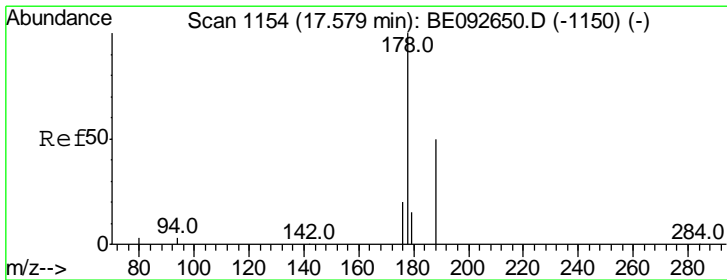
Tgt Ion	Resp	Lower	Upper
188	100		
94	13.6	3.2	4.8#
80	14.3	2.6	3.8#

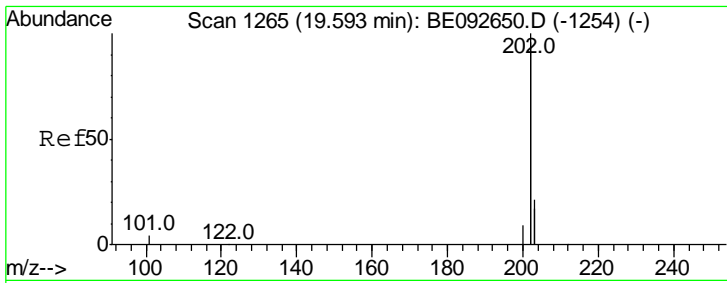
Manual Integrations
APPROVED
 mohammad
 1/25/2017 4:53:19 PM



#21
 Phenanthrene
 Concen: 0.02 ng
 RT: 17.58 min Scan# 1153
 Delta R.T. 0.00 min
 Lab File: BE092677.D
 Acq: 24 Jan 2017 22:18

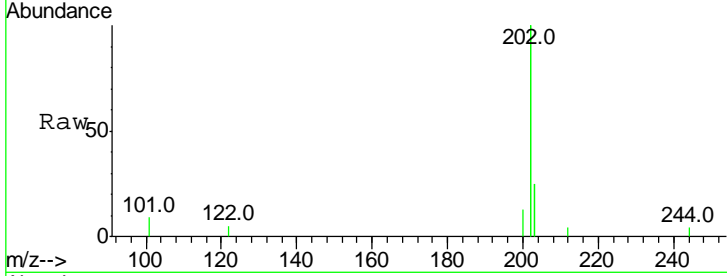
Tgt Ion	Resp	Lower	Upper
178	100		
176	17.8	15.8	23.8
179	37.8	16.0	24.0#





#23
 Fluoranthene
 Concen: 0.07 ng
 RT: 19.59 min Scan# 1264
 Delta R.T. 0.00 min
 Lab File: BE092677.D
 Acq: 24 Jan 2017 22:18

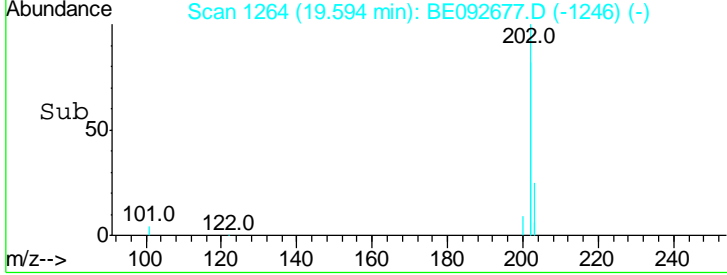
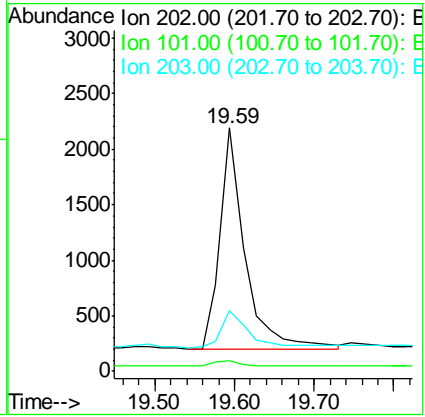
Instrument :
 BNA_E
ClientSampled :
 RVE-8



Tgt Ion: 202 Resp: 4321

Ion	Ratio	Lower	Upper
202	100		
101	2.8	2.2	3.4
203	18.9	13.7	20.5

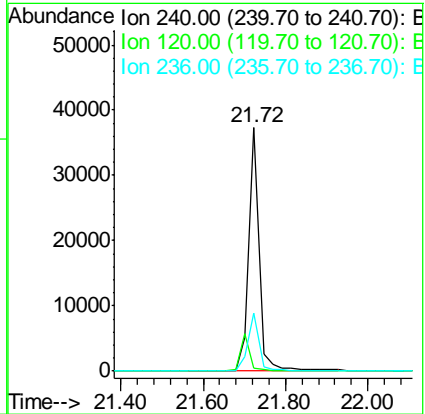
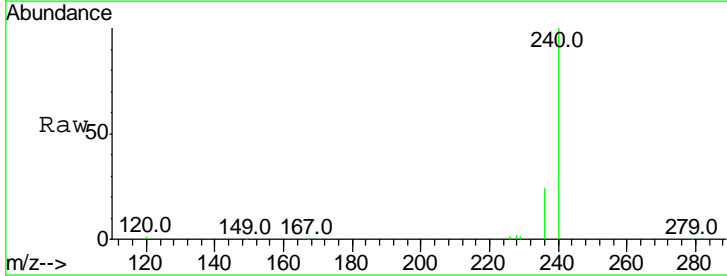
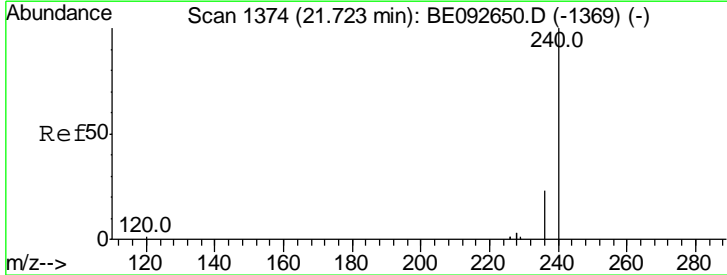
Manual Integrations
APPROVED
 mohammad
 1/25/2017 4:53:19 PM

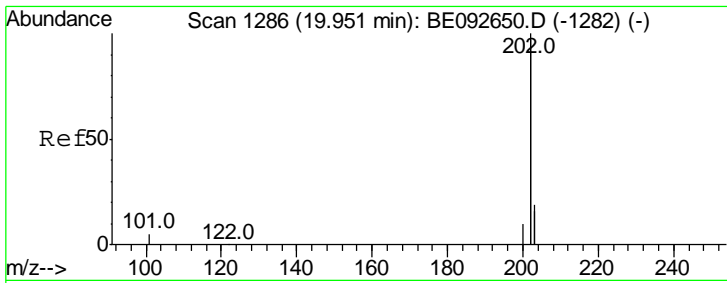


#24
 Chrysene-d12
 Concen: 5.00 ng
 RT: 21.72 min Scan# 1373
 Delta R.T. 0.00 min
 Lab File: BE092677.D
 Acq: 24 Jan 2017 22:18

Tgt Ion: 240 Resp: 64698

Ion	Ratio	Lower	Upper
240	100		
120	1.5	2.6	4.0#
236	23.8	24.6	37.0#





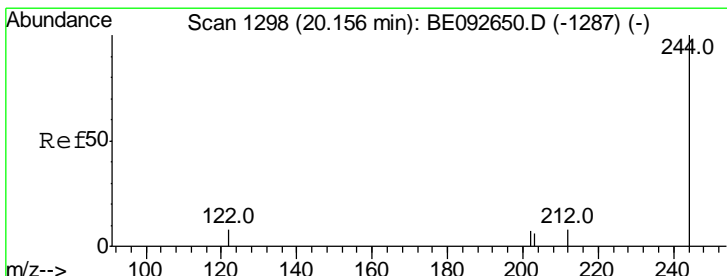
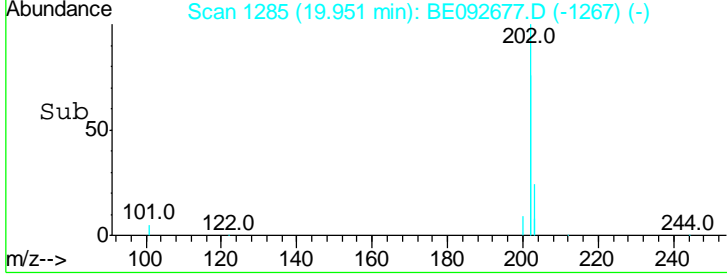
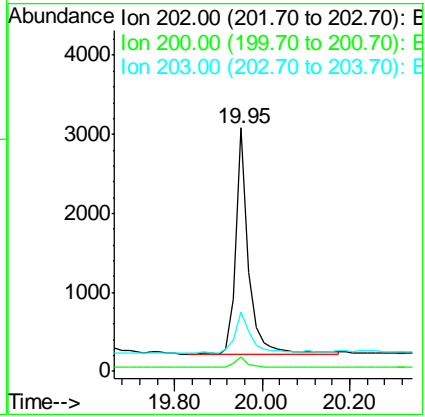
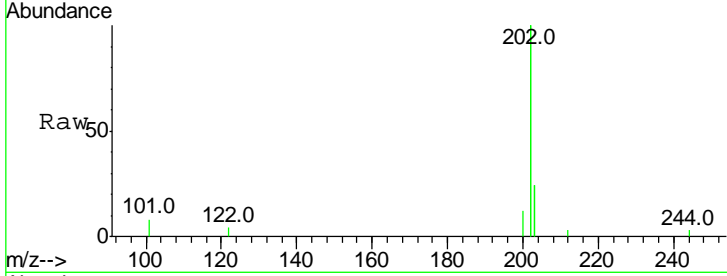
#25
 Pyrene
 Concen: 0.09 ng
 RT: 19.95 min Scan# 1285
 Delta R.T. 0.00 min
 Lab File: BE092677.D
 Acq: 24 Jan 2017 22:18

Instrument :
 BNA_E
ClientSampled :
 RVE-8

Tgt Ion: 202 Resp: 5645

Ion	Ratio	Lower	Upper
202	100		
200	5.2	4.2	6.4
203	23.7	13.9	20.9#

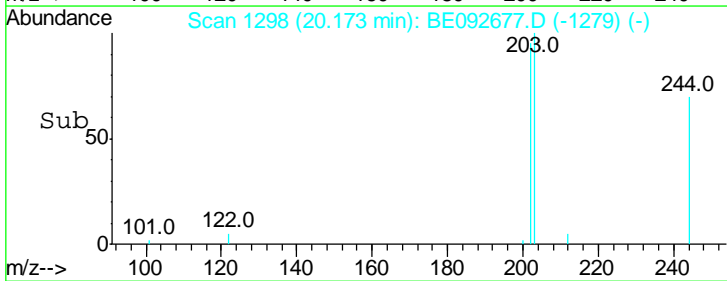
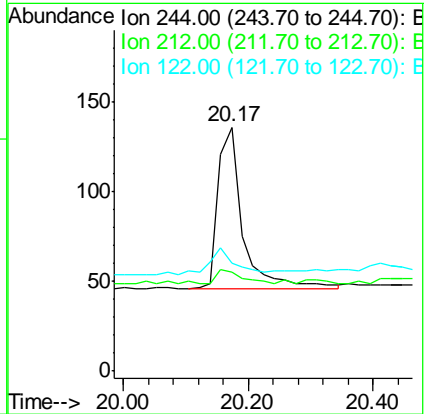
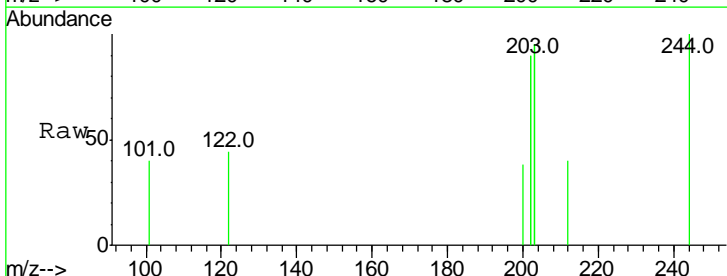
Manual Integrations
APPROVED
 mohammad
 1/25/2017 4:53:19 PM

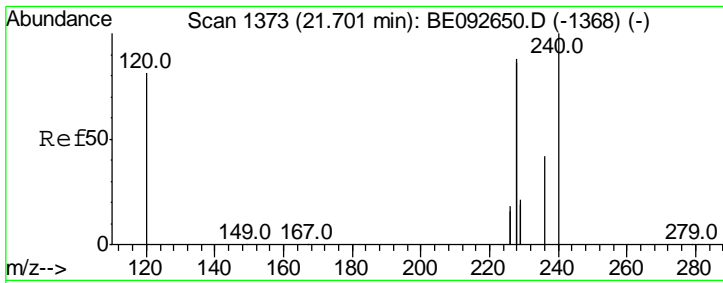


#26
 Terphenyl-d14
 Concen: 0.03 ng
 RT: 20.17 min Scan# 1298
 Delta R.T. 0.02 min
 Lab File: BE092677.D
 Acq: 24 Jan 2017 22:18

Tgt Ion: 244 Resp: 248

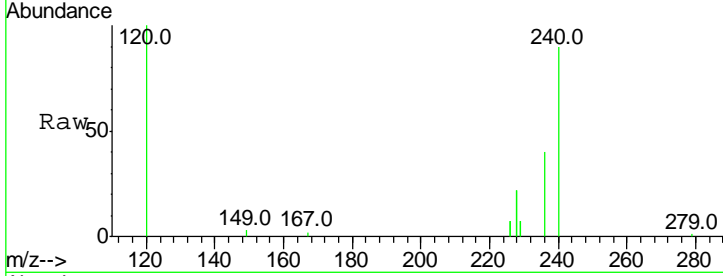
Ion	Ratio	Lower	Upper
244	100		
212	40.4	6.7	10.1#
122	44.1	3.6	5.4#





#27
 Benzo(a)anthracene
 Concen: 0.08 ng m
 RT: 21.70 min Scan# 1372
 Delta R.T. 0.00 min
 Lab File: BE092677.D
 Acq: 24 Jan 2017 22:18

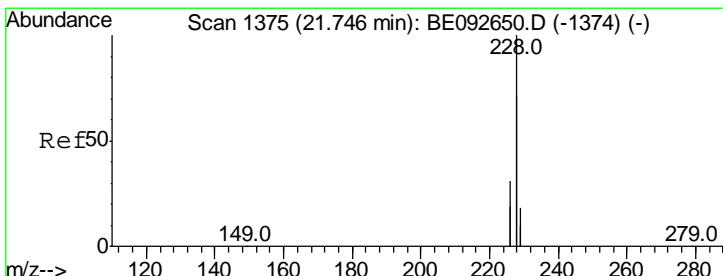
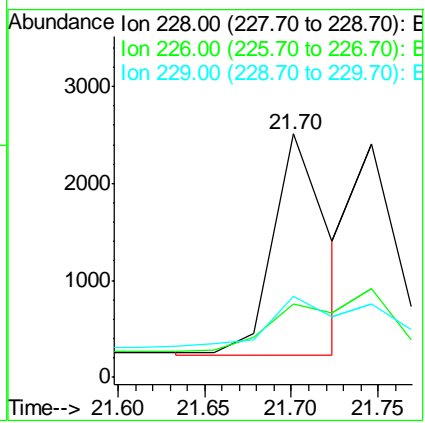
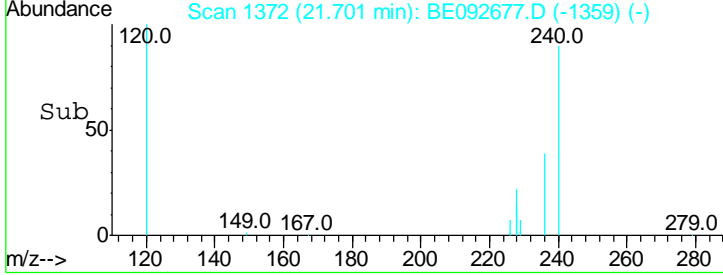
Instrument :
 BNA_E
 ClientSampled :
 RVE-8



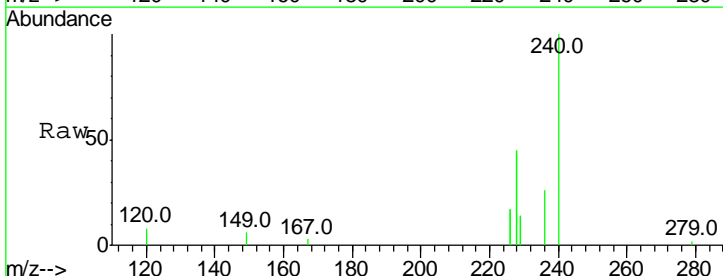
Tgt Ion: 228 Resp: 5075

Ion	Ratio	Lower	Upper
228	100		
226	30.1	23.6	35.4
229	33.4	13.3	19.9

Manual Integrations
 APPROVED
 mohammad
 1/25/2017 4:53:19 PM

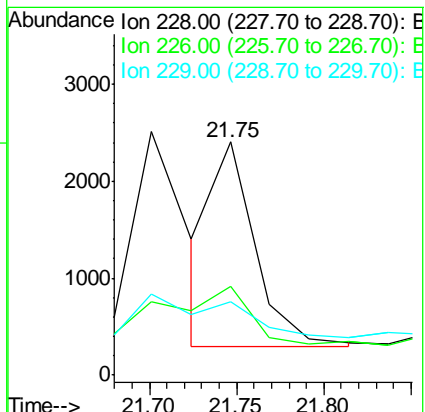
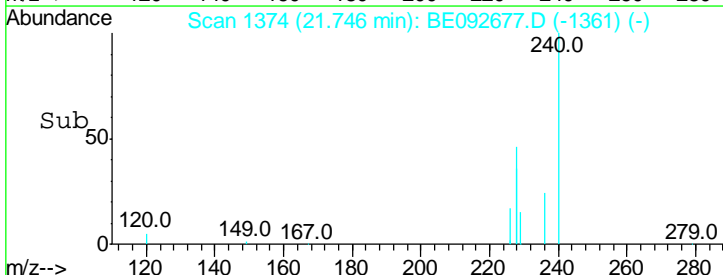


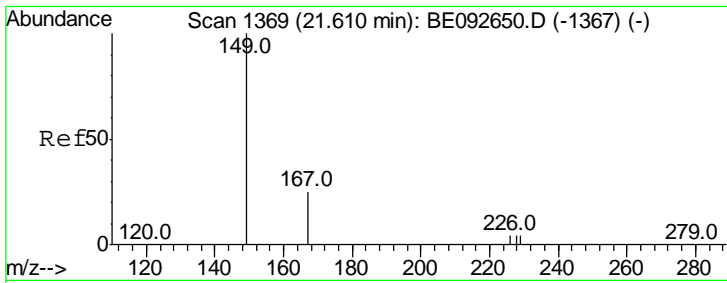
#28
 Chrysene
 Concen: 0.05 ng m
 RT: 21.75 min Scan# 1374
 Delta R.T. 0.00 min
 Lab File: BE092677.D
 Acq: 24 Jan 2017 22:18



Tgt Ion: 228 Resp: 3600

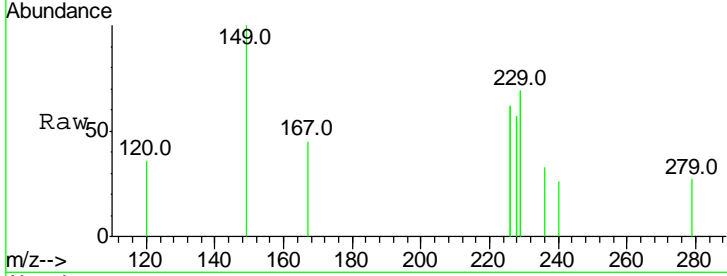
Ion	Ratio	Lower	Upper
228	100		
226	37.9	36.3	54.5
229	31.6	10.6	16.0





#29
 Bis(2-ethylhexyl)phthalate
 Concen: 0.22 ng
 RT: 21.61 min Scan# 1368
 Delta R.T. 0.00 min
 Lab File: BE092677.D
 Acq: 24 Jan 2017 22:18

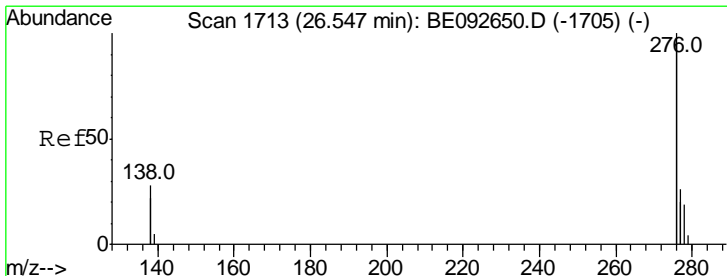
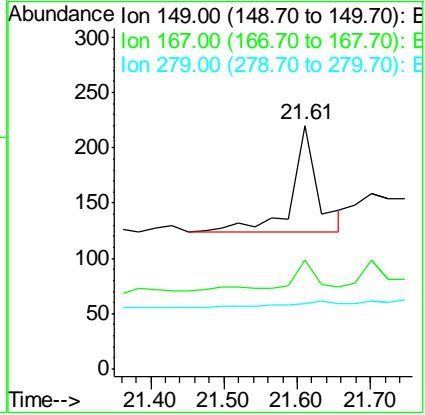
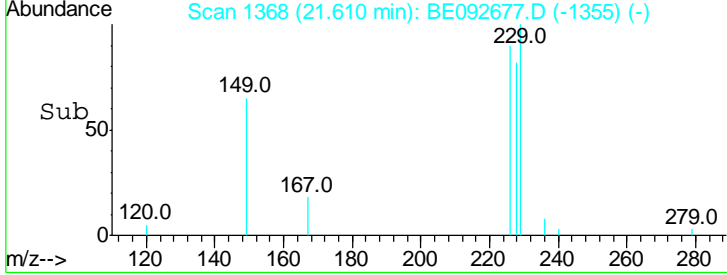
Instrument :
 BNA_E
 ClientSampled :
 RVE-8



Tgt Ion: 149 Resp: 235

Ion	Ratio	Lower	Upper
149	100		
167	17.9	16.0	24.0
279	0.0	16.0	24.0

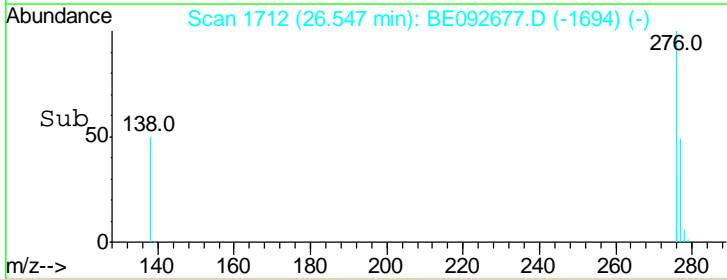
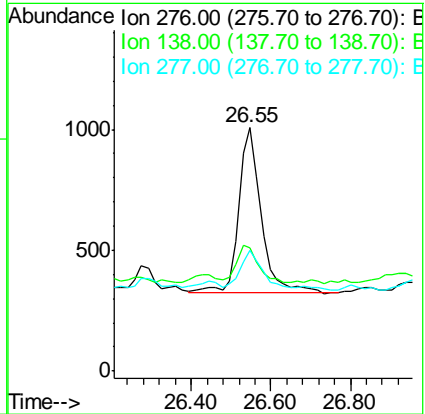
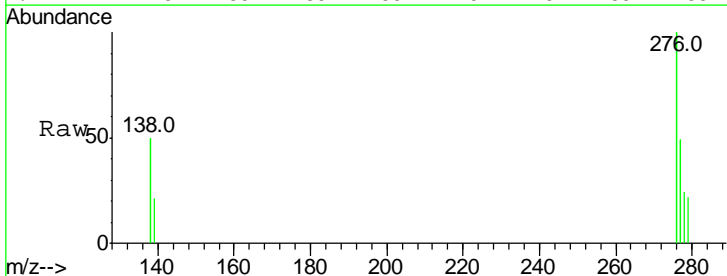
Manual Integrations
 APPROVED
 mohammad
 1/25/2017 4:53:19 PM

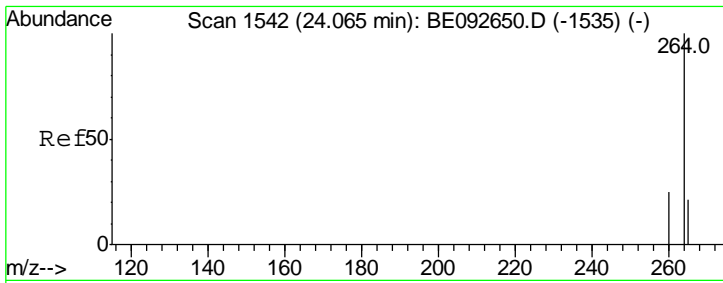


#30
 Indeno(1,2,3-cd)pyrene
 Concen: 0.03 ng
 RT: 26.55 min Scan# 1712
 Delta R.T. 0.00 min
 Lab File: BE092677.D
 Acq: 24 Jan 2017 22:18

Tgt Ion: 276 Resp: 2675

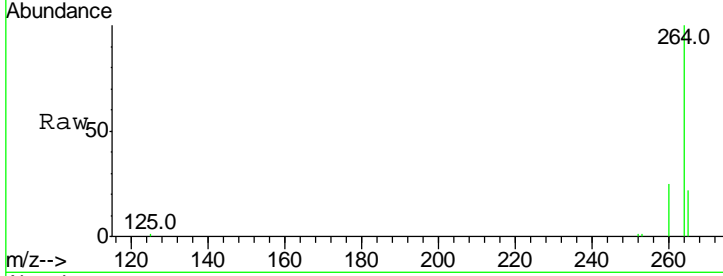
Ion	Ratio	Lower	Upper
276	100		
138	21.6	20.3	30.5
277	22.1	19.7	29.5





#31
 Perylene-d12
 Concen: 5.00 ng
 RT: 24.07 min Scan# 1541
 Delta R.T. 0.00 min
 Lab File: BE092677.D
 Acq: 24 Jan 2017 22:18

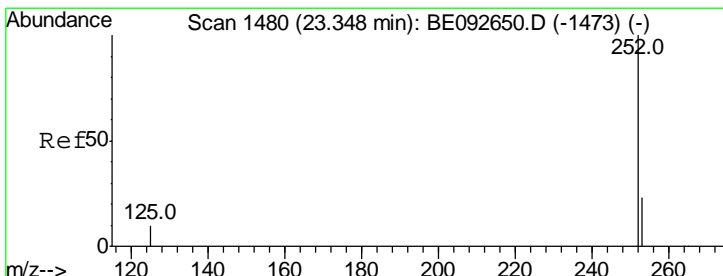
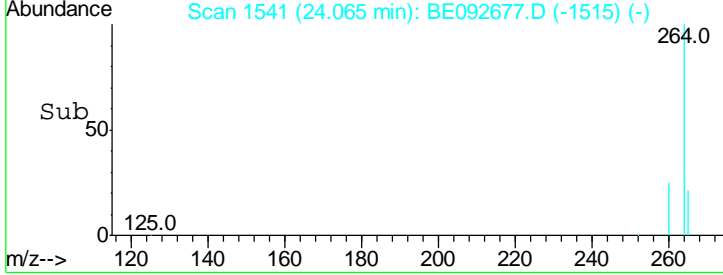
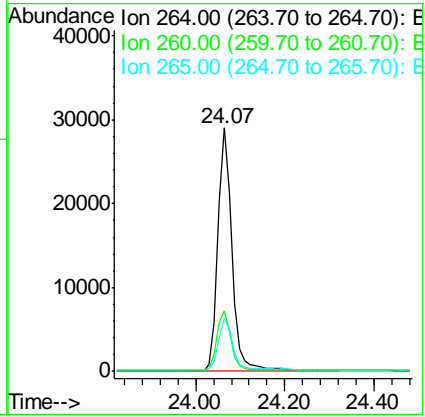
Instrument :
 BNA_E
 ClientSampled :
 RVE-8



Tgt Ion: 264 Resp: 64346

Ion	Ratio	Lower	Upper
264	100		
260	25.1	20.1	30.1
265	21.8	17.9	26.9

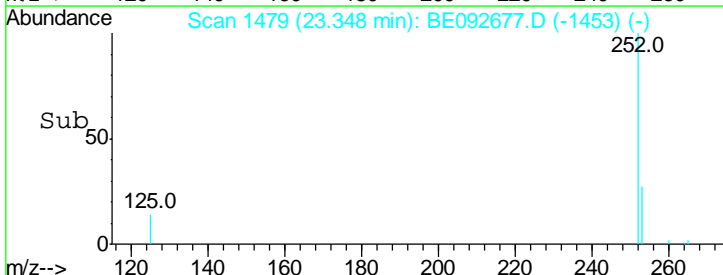
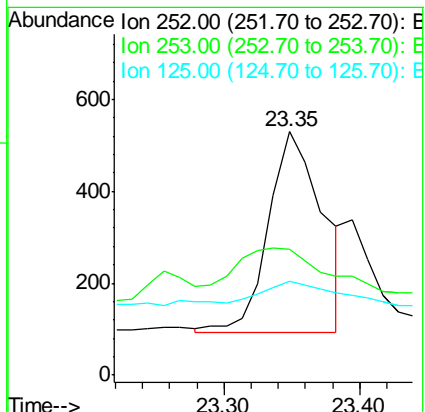
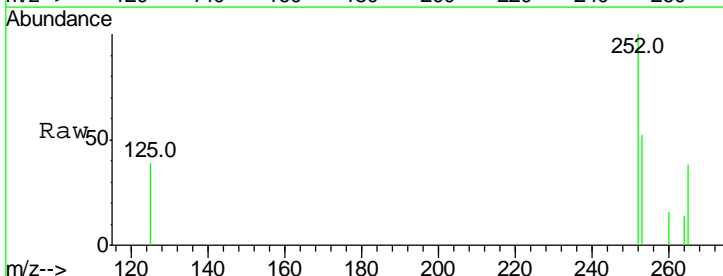
Manual Integrations
 APPROVED
 mohammad
 1/25/2017 4:53:19 PM

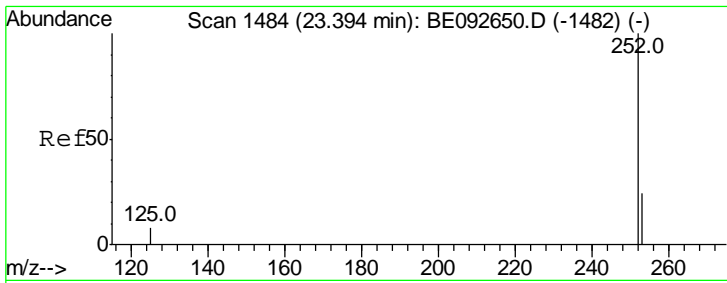


#32
 Benzo(b)fluoranthene
 Concen: 0.08 ng m
 RT: 23.35 min Scan# 1479
 Delta R.T. 0.00 min
 Lab File: BE092677.D
 Acq: 24 Jan 2017 22:18

Tgt Ion: 252 Resp: 1218

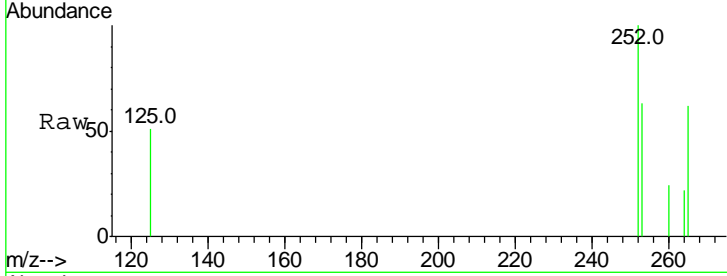
Ion	Ratio	Lower	Upper
252	100		
253	51.9	18.7	28.1#
125	38.7	10.5	15.7#





#33
 Benzo(k)fluoranthene
 Concen: 0.03 ng m
 RT: 23.39 min Scan# 1483
 Delta R.T. 0.00 min
 Lab File: BE092677.D
 Acq: 24 Jan 2017 22:18

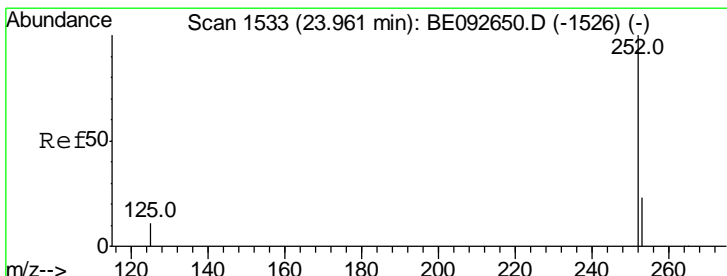
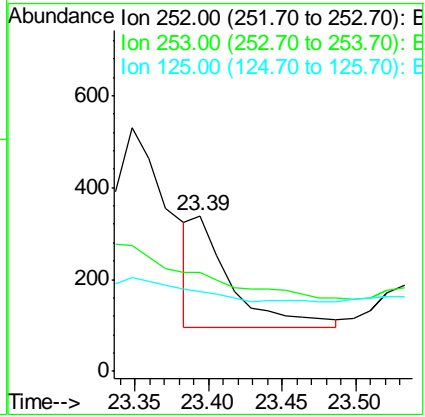
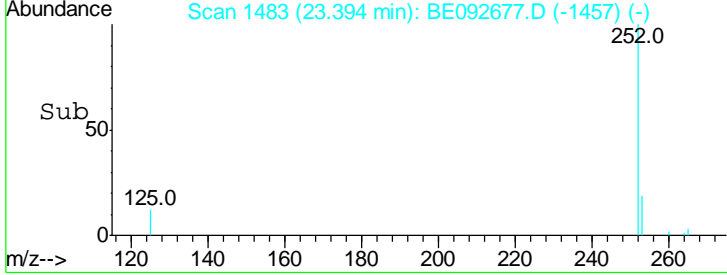
Instrument :
 BNA_E
 ClientSampled :
 RVE-8



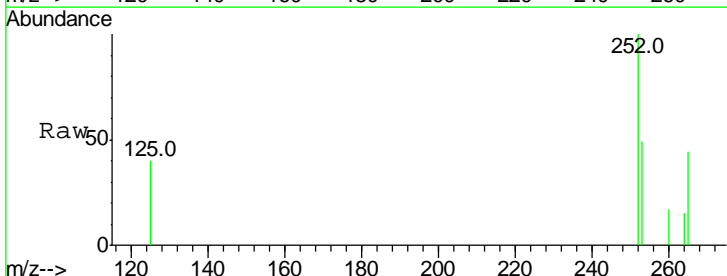
Tgt Ion: 252 Resp: 446

Ion	Ratio	Lower	Upper
252	100		
253	63.3	20.3	30.5#
125	51.5	9.6	14.4#

Manual Integrations
 APPROVED
 mohammad
 1/25/2017 4:53:19 PM

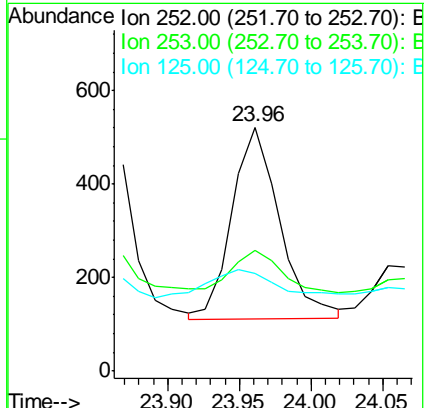
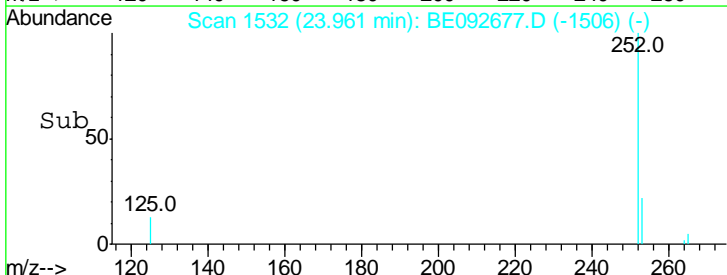


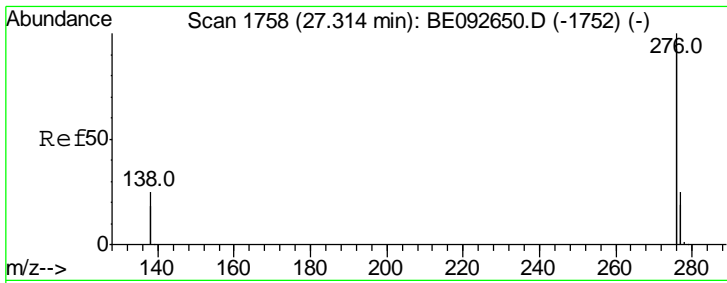
#34
 Benzo(a)pyrene
 Concen: 0.06 ng
 RT: 23.96 min Scan# 1532
 Delta R.T. 0.00 min
 Lab File: BE092677.D
 Acq: 24 Jan 2017 22:18



Tgt Ion: 252 Resp: 948

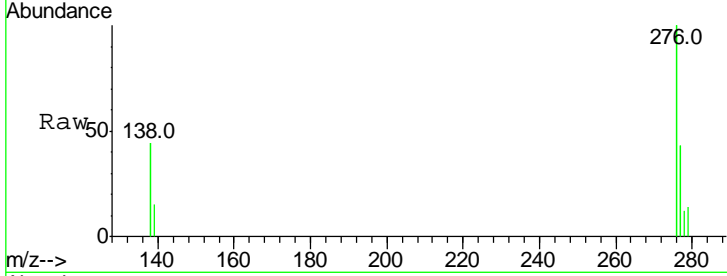
Ion	Ratio	Lower	Upper
252	100		
253	49.3	19.0	28.6#
125	40.1	11.8	17.8#





#36
 Benzo(a,h,i)perylene
 Concen: 0.07 ng
 RT: 27.31 min Scan# 1757
 Delta R.T. 0.00 min
 Lab File: BE092677.D
 Acq: 24 Jan 2017 22:18

Instrument :
 BNA_E
ClientSampled :
 RVE-8



Tot Ion: 276 Resp: 4221

Ion	Ratio	Lower	Upper
276	100		
277	42.8	19.8	29.8#
138	43.8	19.8	29.6#

Manual Integrations
APPROVED
 mohammad
 1/25/2017 4:53:19 PM

