

Data Path : Z:\HPCHEM1\BNA_E\DATA\BE012815\
 Data File : BE089395.D
 Acq On : 28 Jan 2015 19:13
 Operator : TP/IZ
 Sample : SSTDICCO.8
 Misc :
 ALS Vial : 5 Sample Multiplier: 1

Instrument :
 BNA_E
 LabSampleId :
 SSTDICCO.8

Quant Time: Jan 29 12:11:00 2015
 Quant Method : Z:\HPCHEM1\BNA_E\METHODS\SIM-BE012815.M
 Quant Title : ASP BNA STANDARDS FOR 5 POINT CALIBRATION
 QLast Update : Thu Jan 29 11:58:35 2015
 Response via : Initial Calibration

Internal Standards	R.T.	QIon	Response	Conc	Units	Dev(Min)
1) 1,4-Dichlorobenzene-d4	9.58	152	119094	5.00	ng	0.00
7) Naphthalene-d8	12.50	136	429231	5.00	ng	0.00
13) Acenaphthene-d10	16.68	164	178484	5.00	ng	0.00
17) Phenanthrene-d10	19.98	188	360691	5.00	ng	0.00
20) Chrysene-d12	23.84	240	428767	5.00	ng	0.00
27) Perylene-d12	25.55	264	440897	5.00	ng	0.00

System Monitoring Compounds

3) 2-Fluorophenol	6.73	112	28122	0.76	ng	0.00
4) Phenol-d6	8.84	99	35732	0.78	ng	0.00
8) Nitrobenzene-d5	10.84	82	23028	0.76	ng	0.00
14) 2,4,6-Tribromophenol	18.58	330	3208	0.02	ng	0.00
15) 2-Fluorobiphenyl	15.13	172	41387	0.02	ng	0.00
22) Terphenyl-d14	22.48	244	41189	0.87	ng	0.00

Target Compounds

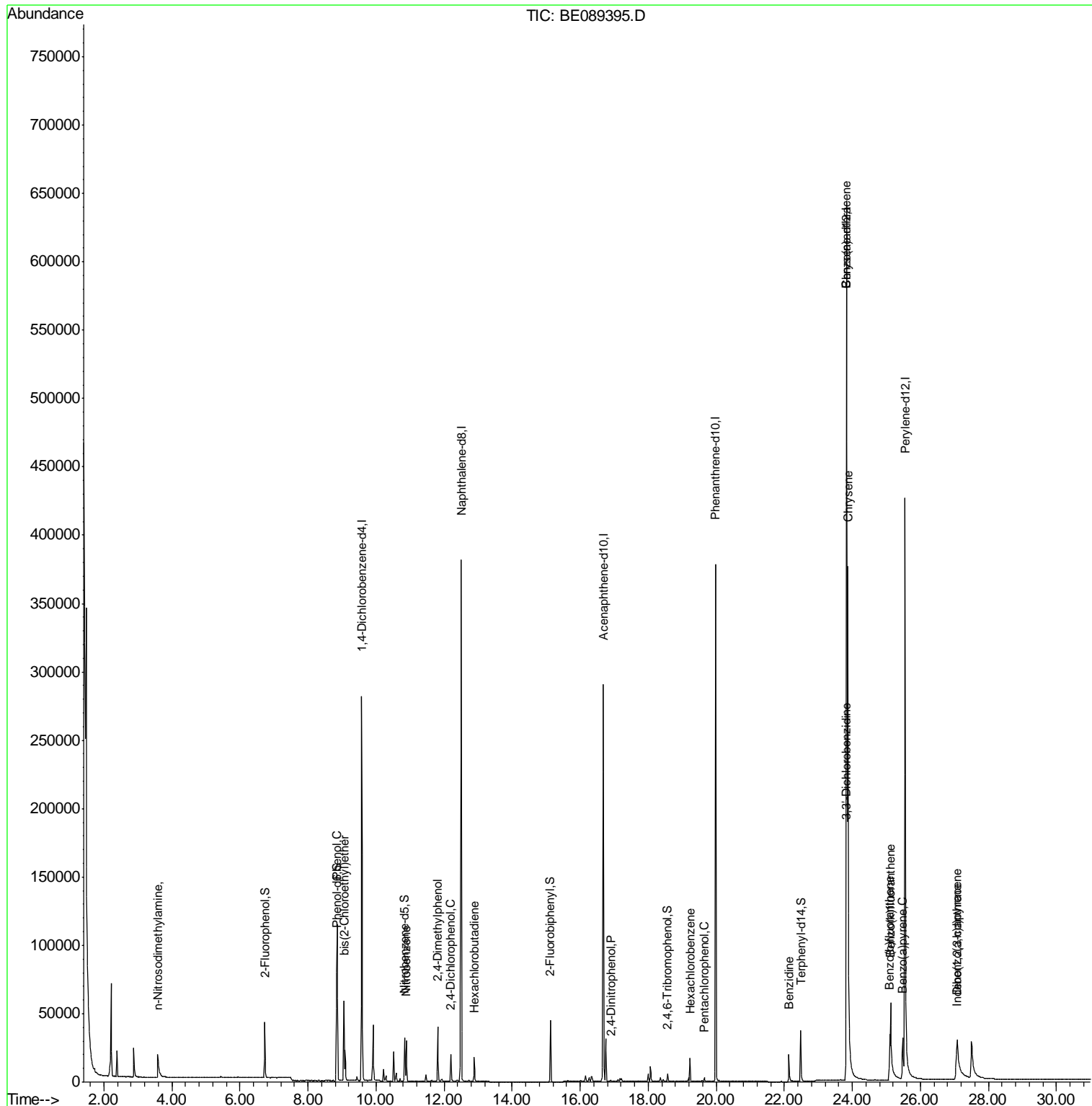
Target Compounds	R.T.	QIon	Response	Conc	Units	Qvalue
2) n-Nitrosodimethylamine	3.58	42	14472	0.68	ng	# 53
5) Phenol	8.86	94	38251	0.78	ng	100
6) bis(2-Chloroethyl)ether	9.06	93	28965	0.80	ng	# 100
9) Nitrobenzene	10.89	77	26293	0.77	ng	99
10) 2,4-Dimethylphenol	11.82	122	20139	0.77	ng	99
11) 2,4-Dichlorophenol	12.21	162	15604	0.78	ng	98
12) Hexachlorobutadiene	12.89	225	10862	0.76	ng	100
16) 2,4-Dinitrophenol	16.90	184	564	0.06	ng	96
18) Hexachlorobenzene	19.23	284	12746	0.77	ng	95
19) Pentachlorophenol	19.65	266	1796	0.56	ng	99
21) Benzidine	22.14	184	23722	0.47	ng	99
23) Benzo(a)anthracene	23.83	228	304482	0.77	ng	100
24) 3,3'-Dichlorobenzidine	23.81	252	21110	0.67	ng	99
25) Chrysene	23.87	228	383711	0.79	ng	100
26) Indeno(1,2,3-cd)pyrene	27.06	276	65781	0.58	ng	# 100
28) Benzo(b)fluoranthene	25.10	252	39768m	0.69	ng	
29) Benzo(k)fluoranthene	25.13	252	106923m	0.76	ng	
30) Benzo(a)pyrene	25.48	252	47690	0.70	ng	99
31) Dibenzo(a,h)anthracene	27.08	278	46756	0.65	ng	99

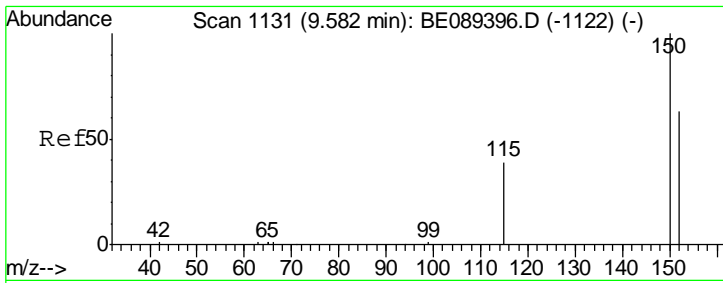
(#) = qualifier out of range (m) = manual integration (+) = signals summed

Data Path : Z:\HPCHEM1\BNA_E\DATA\BE012815\
 Data File : BE089395.D
 Acq On : 28 Jan 2015 19:13
 Operator : TP/IZ
 Sample : SSTDICC0.8
 Misc :
 ALS Vial : 5 Sample Multiplier: 1

Instrument :
 BNA_E
 LabSampleId :
 SSTDICC0.8

Quant Time: Jan 29 12:11:00 2015
 Quant Method : Z:\HPCHEM1\BNA_E\METHODS\SIM-BE012815.M
 Quant Title : ASP BNA STANDARDS FOR 5 POINT CALIBRATION
 QLast Update : Thu Jan 29 11:58:35 2015
 Response via : Initial Calibration

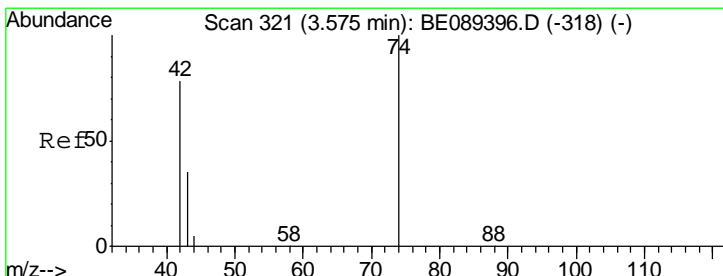
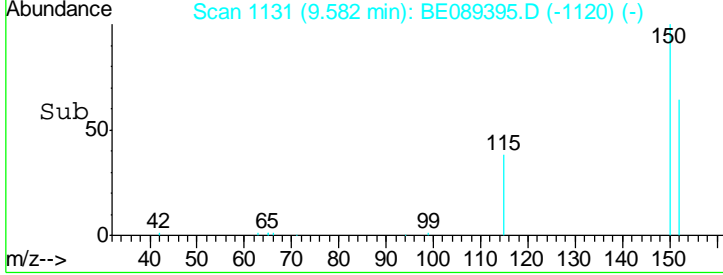
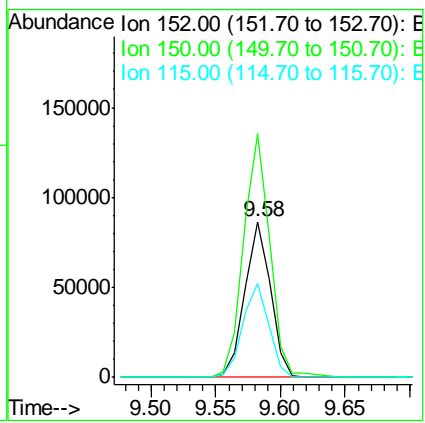
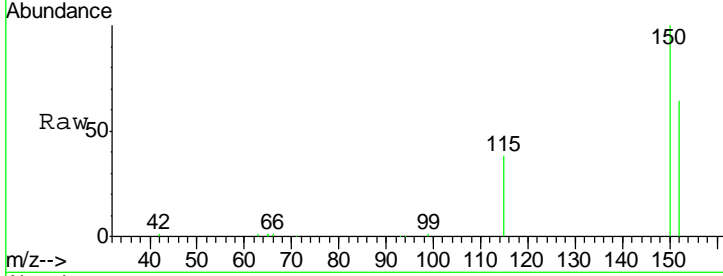




#1
 1,4-Dichlorobenzene-d4
 Concen: 5.00 ng
 RT: 9.58 min Scan# 1131
 Delta R.T. 0.00 min
 Lab File: BE089395.D
 Acq: 28 Jan 2015 19:13

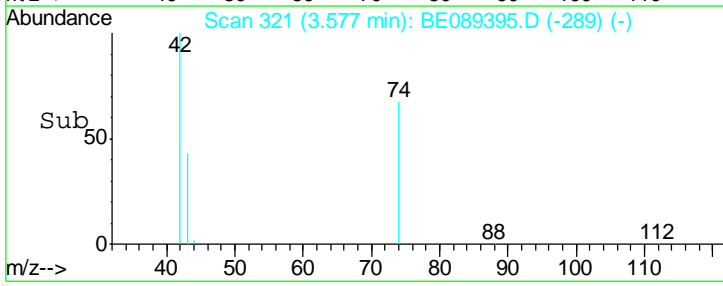
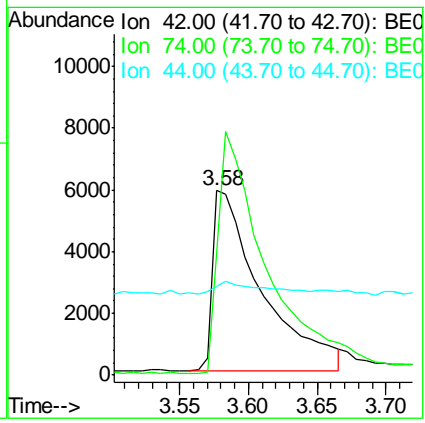
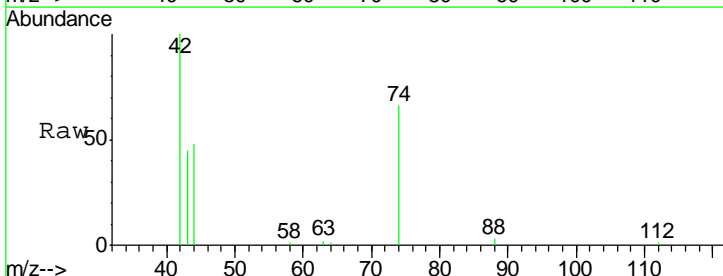
Instrument :
 BNA_E
LabSampleId :
 SSTDICC0.8

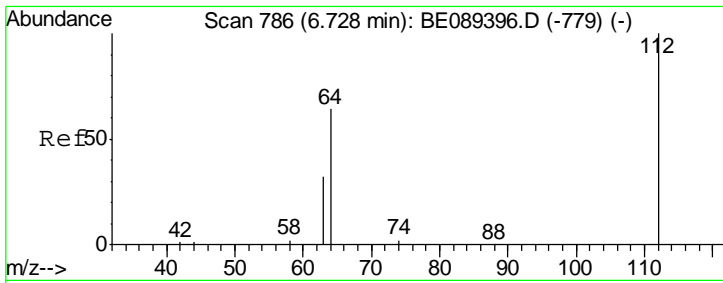
Tgt Ion	Resp	Lower	Upper
152	119094		
150	156.5	127.2	190.8
115	60.0	49.3	73.9



#2
 n-Nitrosodimethylamine
 Concen: 0.68 ng
 RT: 3.58 min Scan# 321
 Delta R.T. 0.02 min
 Lab File: BE089395.D
 Acq: 28 Jan 2015 19:13

Tgt Ion	Resp	Lower	Upper
42	14472		
74	66.0	101.2	151.8#
44	47.8	26.4	39.6#

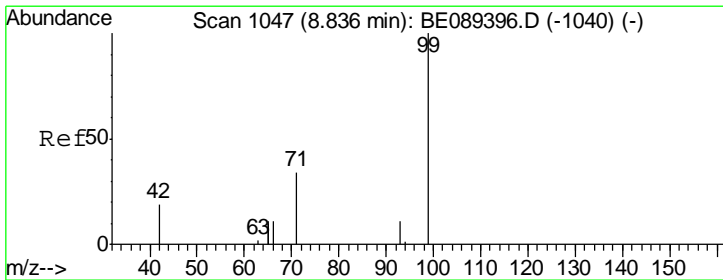
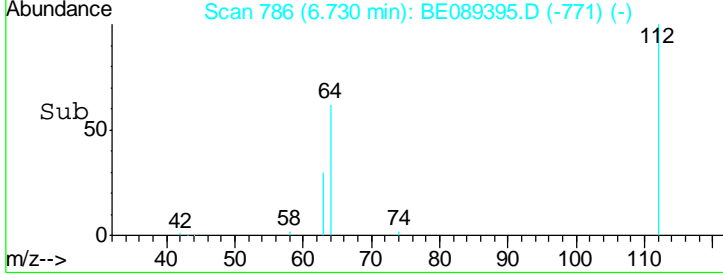
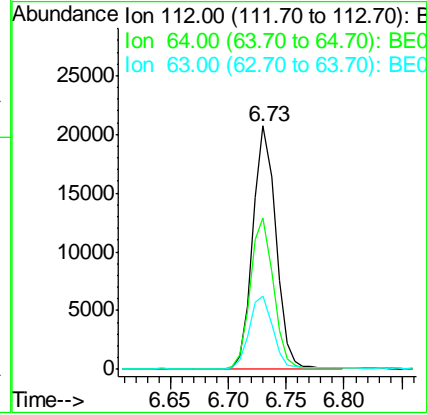
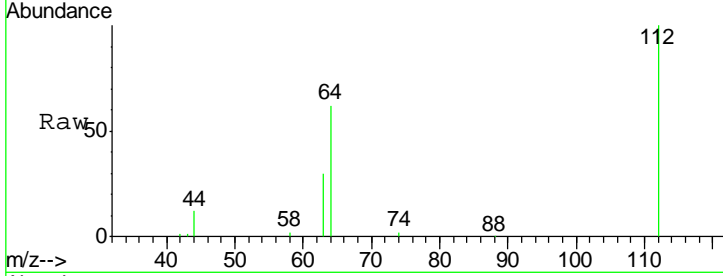




#3
 2-Fluorophenol
 Concen: 0.76 ng
 RT: 6.73 min Scan# 786
 Delta R.T. 0.00 min
 Lab File: BE089395.D
 Acq: 28 Jan 2015 19:13

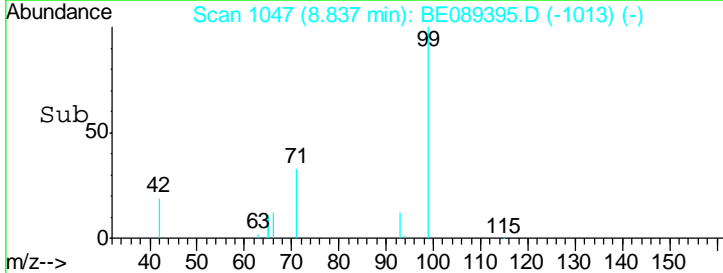
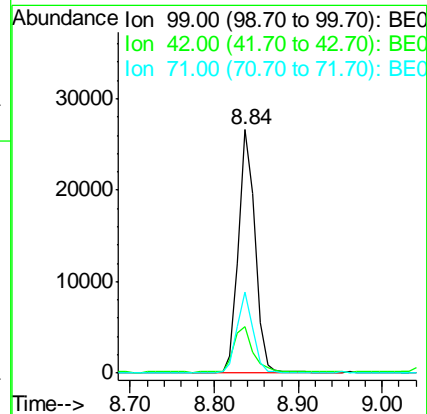
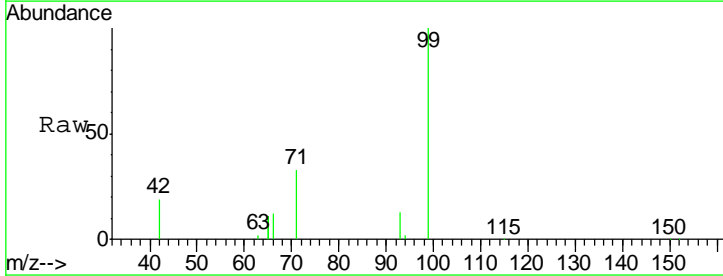
Instrument :
 BNA_E
 LabSampleId :
 SSTDICC0.8

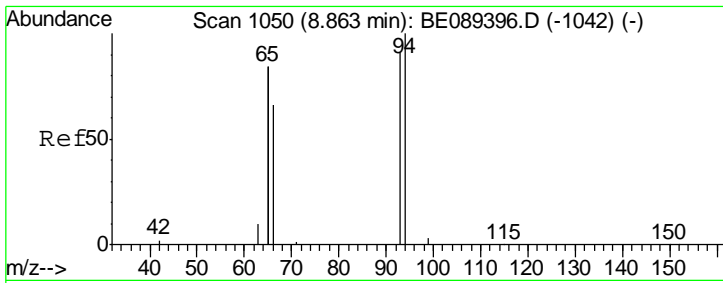
Tgt Ion	Resp	Lower	Upper
112	28122		
112	100		
64	62.2	51.7	77.5
63	30.1	25.7	38.5



#4
 Phenol-d6
 Concen: 0.78 ng
 RT: 8.84 min Scan# 1047
 Delta R.T. 0.00 min
 Lab File: BE089395.D
 Acq: 28 Jan 2015 19:13

Tgt Ion	Resp	Lower	Upper
99	35732		
99	100		
42	19.0	15.3	22.9
71	33.2	27.0	40.6

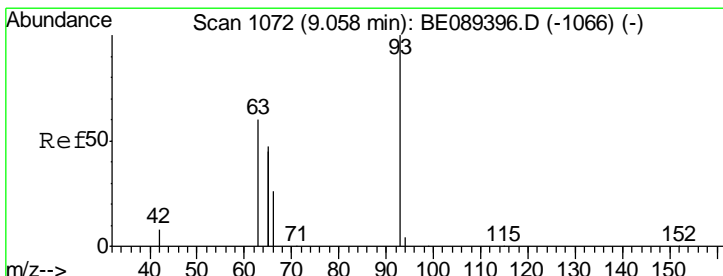
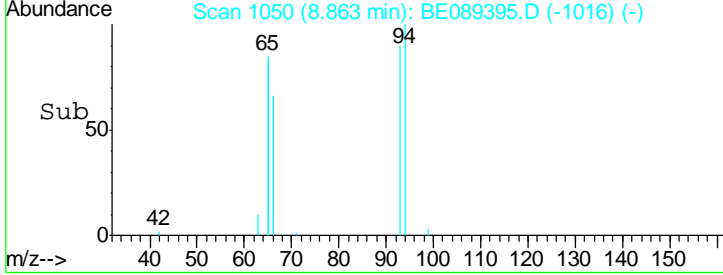
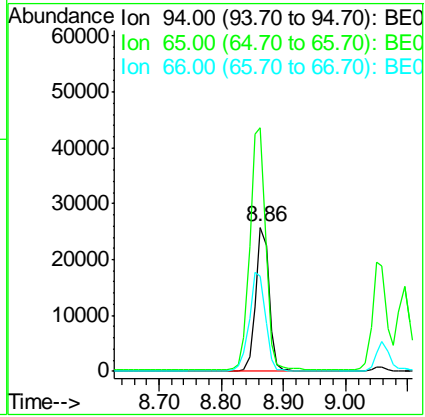
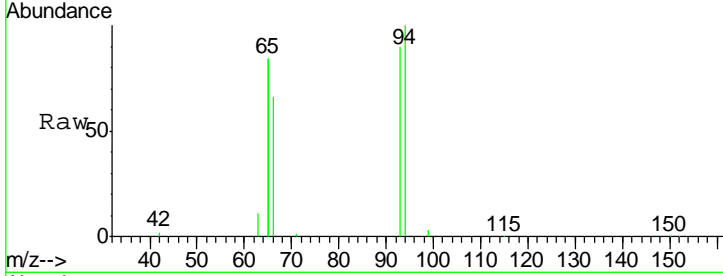




#5
 Phenol
 Concen: 0.78 ng
 RT: 8.86 min Scan# 1050
 Delta R.T. 0.00 min
 Lab File: BE089395.D
 Acq: 28 Jan 2015 19:13

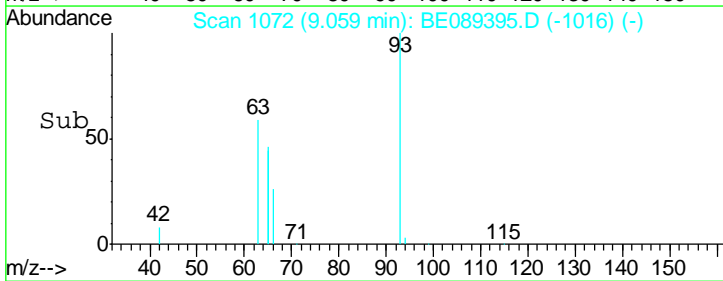
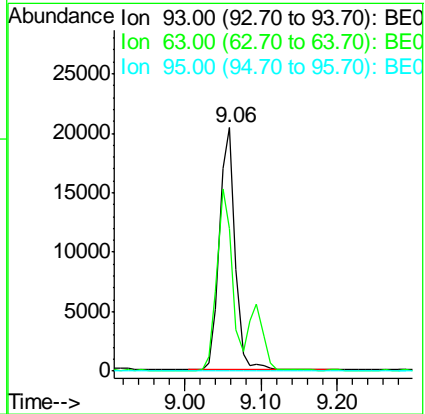
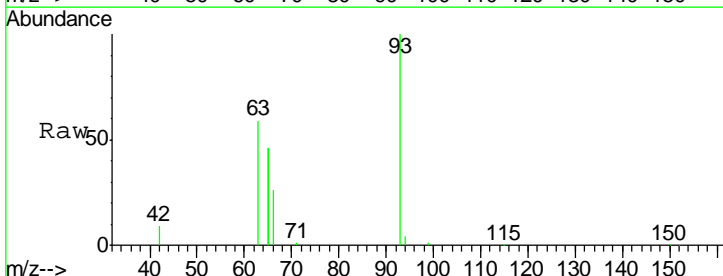
Instrument :
 BNA_E
LabSampleId :
 SSTDICC0.8

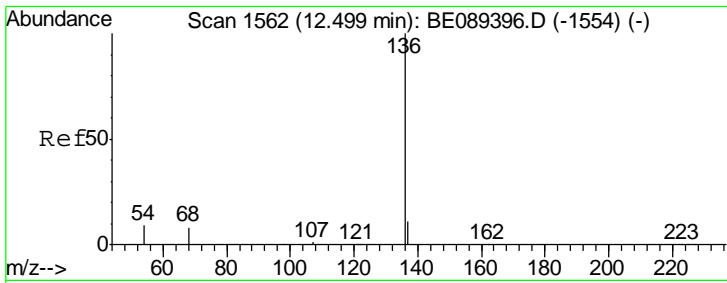
Tgt Ion	Resp	Lower	Upper
94	38251		
94	100		
65	168.9	148.6	188.6
66	65.9	46.2	86.2



#6
 bis(2-Chloroethyl)ether
 Concen: 0.80 ng
 RT: 9.06 min Scan# 1072
 Delta R.T. 0.00 min
 Lab File: BE089395.D
 Acq: 28 Jan 2015 19:13

Tgt Ion	Resp	Lower	Upper
93	28965		
93	100		
63	73.6	58.9	88.3
95	0.0	0.0	0.0

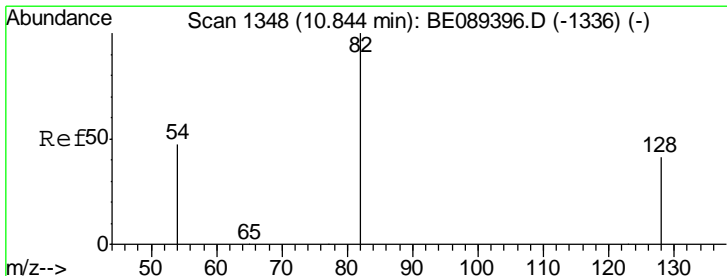
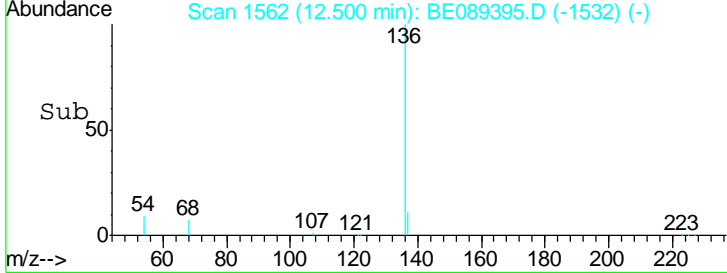
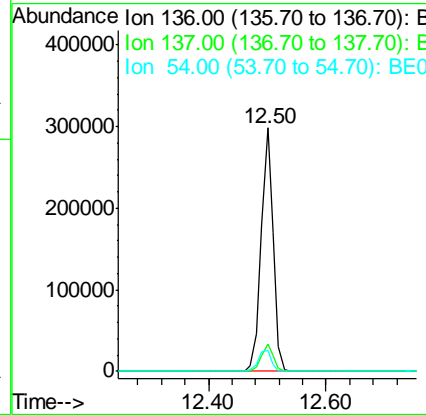
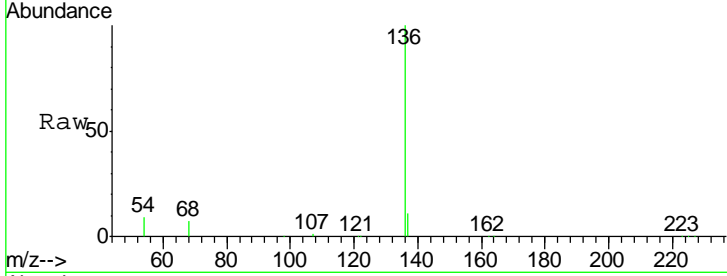




#7
 Naphthalene-d8
 Concen: 5.00 ng
 RT: 12.50 min Scan# 1562
 Delta R.T. 0.00 min
 Lab File: BE089395.D
 Acq: 28 Jan 2015 19:13

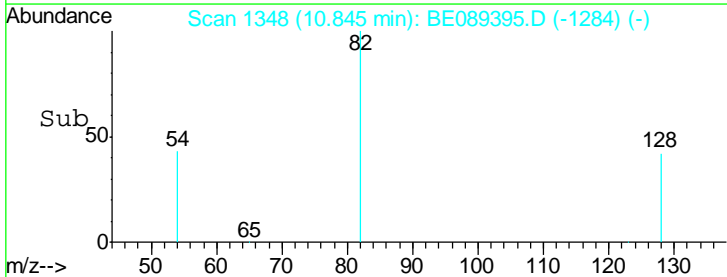
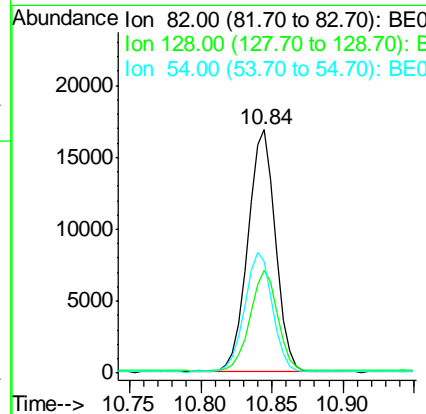
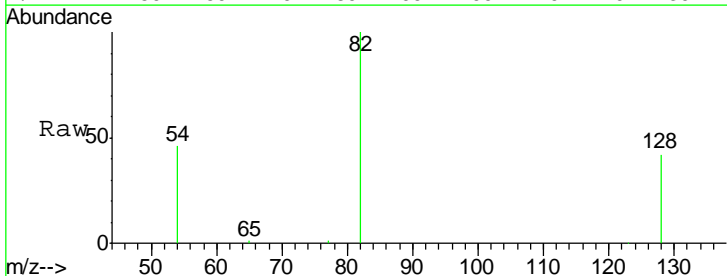
Instrument :
 BNA_E
 LabSampleId :
 SSTDICC0.8

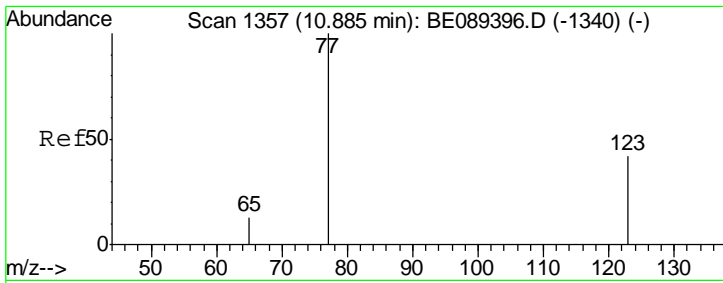
Tgt Ion	Resp	Lower	Upper
136	429231		
137	11.0	8.7	13.1
54	8.7	7.4	11.0



#8
 Nitrobenzene-d5
 Concen: 0.76 ng
 RT: 10.84 min Scan# 1348
 Delta R.T. 0.00 min
 Lab File: BE089395.D
 Acq: 28 Jan 2015 19:13

Tgt Ion	Resp	Lower	Upper
82	23028		
128	42.4	33.6	50.4
54	45.8	37.7	56.5

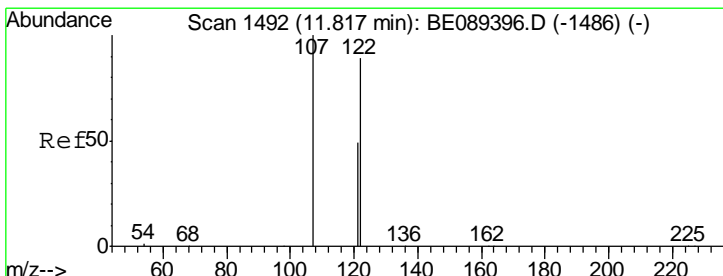
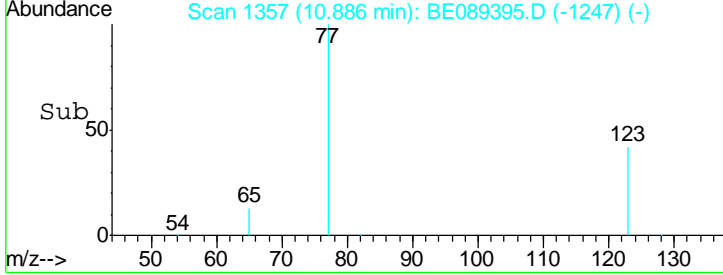
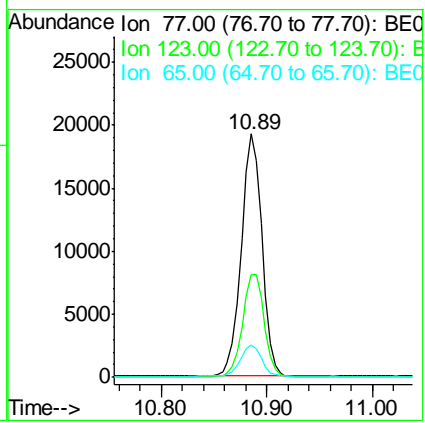
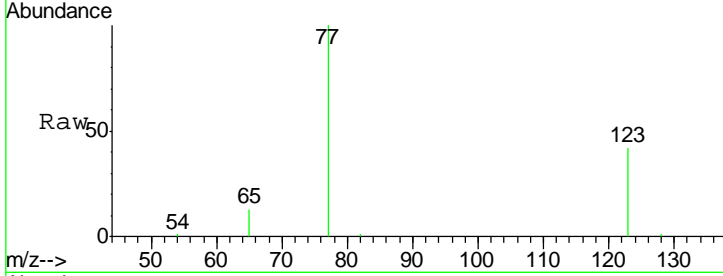




#9
 Nitrobenzene
 Concen: 0.77 ng
 RT: 10.89 min Scan# 1357
 Delta R.T. 0.00 min
 Lab File: BE089395.D
 Acq: 28 Jan 2015 19:13

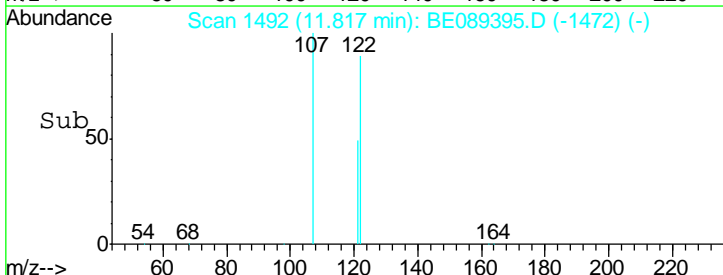
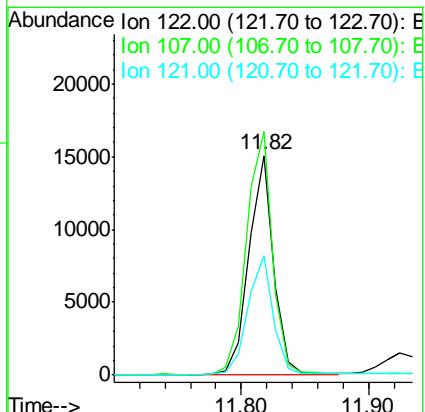
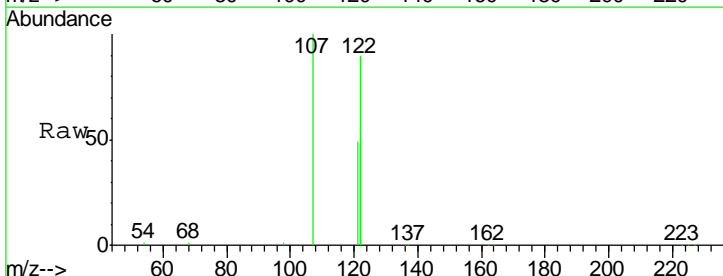
Instrument :
 BNA_E
LabSampleId :
 SSTDICC0.8

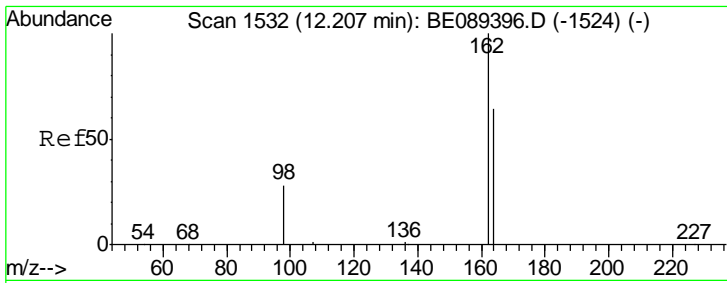
Tgt Ion	Resp	Lower	Upper
77	26293		
123	43.8	34.7	52.1
65	13.2	10.6	15.8



#10
 2,4-Dimethylphenol
 Concen: 0.77 ng
 RT: 11.82 min Scan# 1492
 Delta R.T. 0.00 min
 Lab File: BE089395.D
 Acq: 28 Jan 2015 19:13

Tgt Ion	Resp	Lower	Upper
122	20139		
107	110.8	89.4	134.2
121	54.3	43.6	65.4

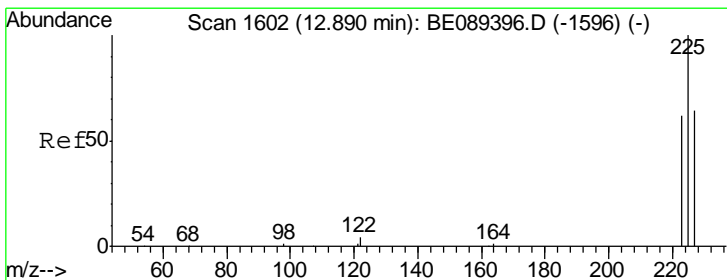
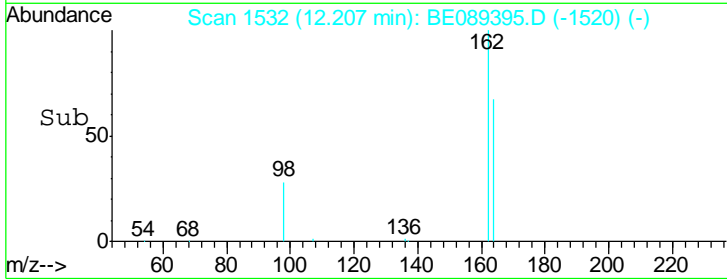
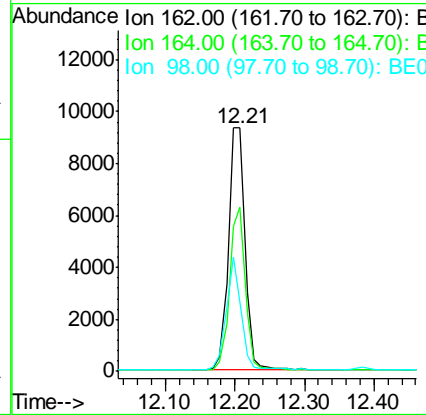
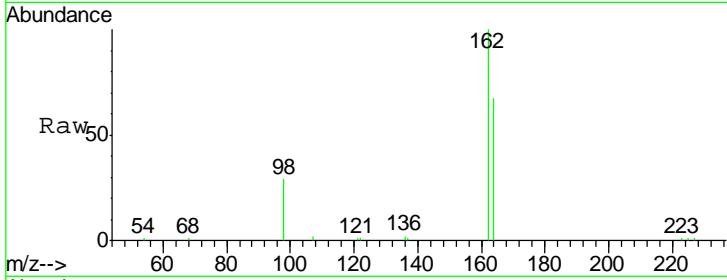




#11
 2,4-Dichlorophenol
 Concen: 0.78 ng
 RT: 12.21 min Scan# 1532
 Delta R.T. 0.00 min
 Lab File: BE089395.D
 Acq: 28 Jan 2015 19:13

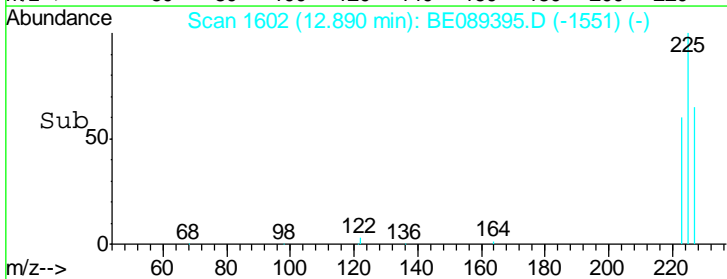
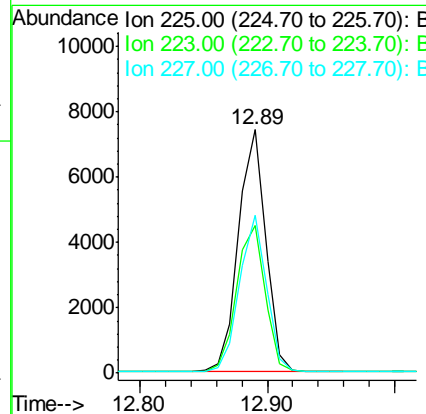
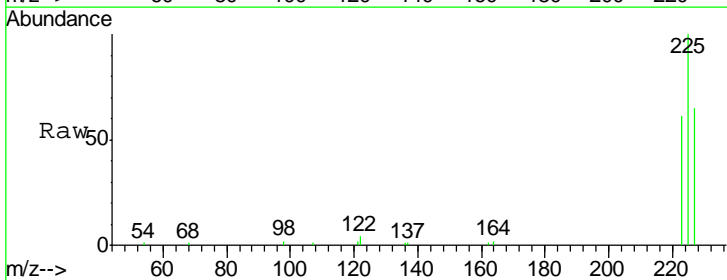
Instrument :
 BNA_E
 LabSampleId :
 SSTDICC0.8

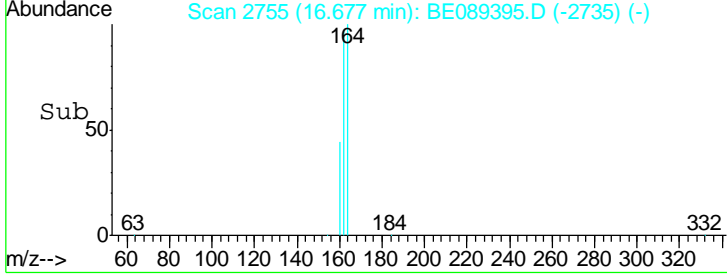
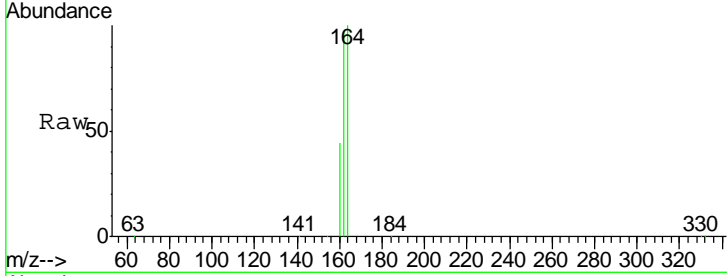
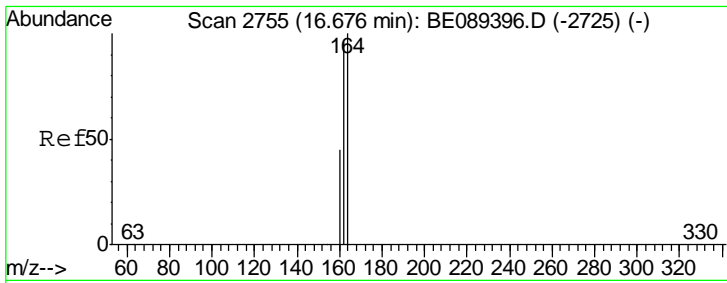
Tgt Ion	Resp	Lower	Upper
162	15604		
164	67.4	44.6	84.6
98	28.7	8.7	48.7



#12
 Hexachlorobutadiene
 Concen: 0.76 ng
 RT: 12.89 min Scan# 1602
 Delta R.T. 0.00 min
 Lab File: BE089395.D
 Acq: 28 Jan 2015 19:13

Tgt Ion	Resp	Lower	Upper
225	10862		
223	62.8	50.2	75.4
227	63.7	50.5	75.7

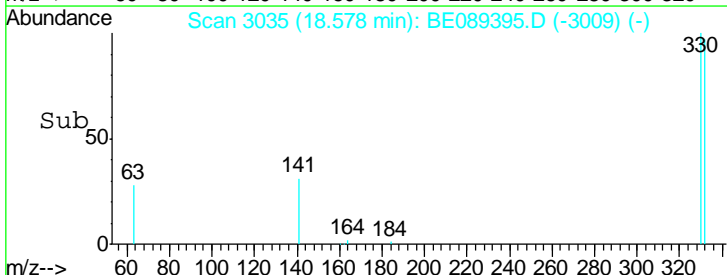
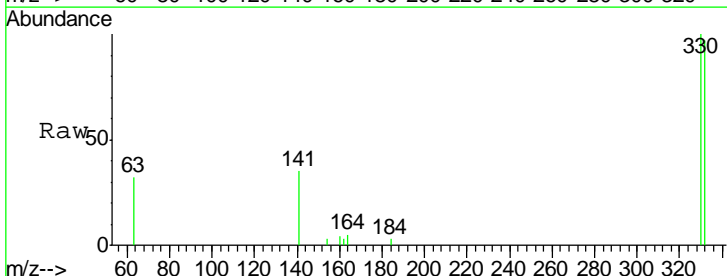
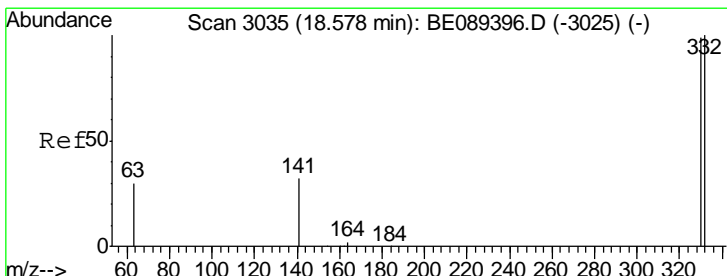
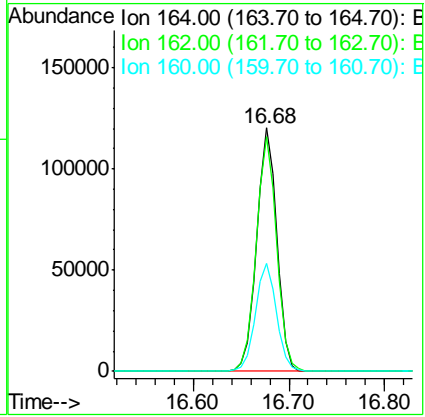




#13
 Acenaphthene-d10
 Concen: 5.00 ng
 RT: 16.68 min Scan# 2755
 Delta R.T. 0.00 min
 Lab File: BE089395.D
 Acq: 28 Jan 2015 19:13

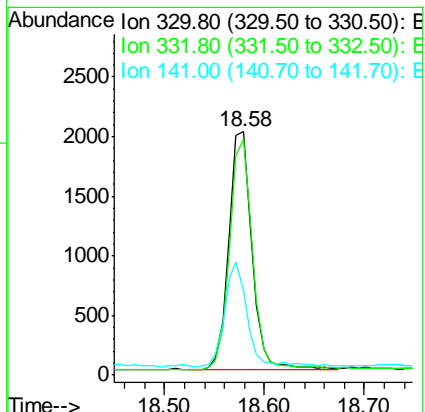
Instrument :
 BNA_E
 LabSampleId :
 SSTDICC0.8

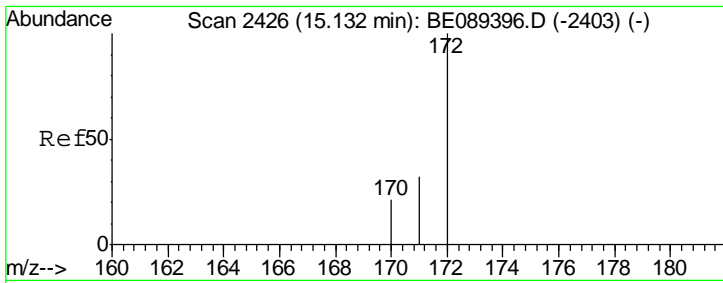
Tgt Ion	Resp	Lower	Upper
164	100		
162	96.5	123.9	185.9#
160	44.5	0.0	0.0#



#14
 2,4,6-Tribromophenol
 Concen: 0.02 ng
 RT: 18.58 min Scan# 3035
 Delta R.T. 0.00 min
 Lab File: BE089395.D
 Acq: 28 Jan 2015 19:13

Tgt Ion	Resp	Lower	Upper
330	100		
332	96.3	77.5	116.3
141	41.1	32.4	48.6

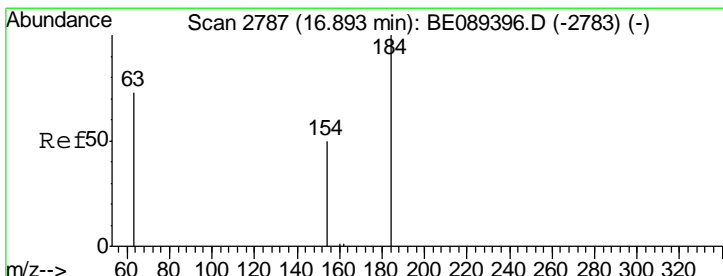
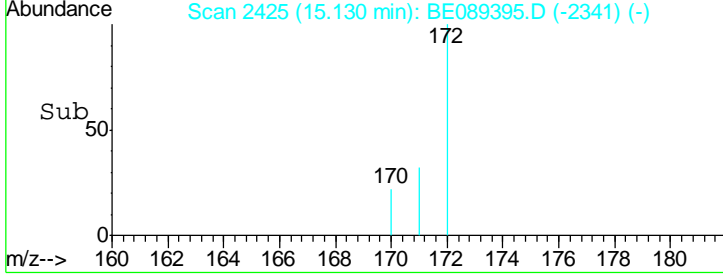
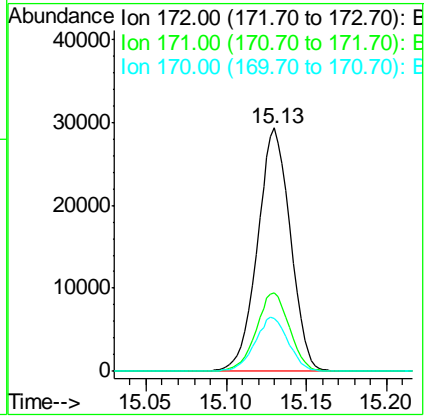
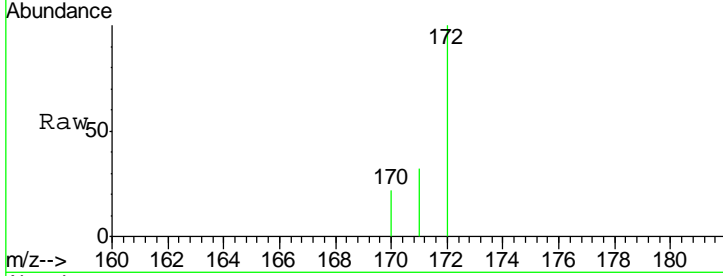




#15
 2-Fluorobiphenyl
 Concen: 0.02 ng
 RT: 15.13 min Scan# 2425
 Delta R.T. 0.00 min
 Lab File: BE089395.D
 Acq: 28 Jan 2015 19:13

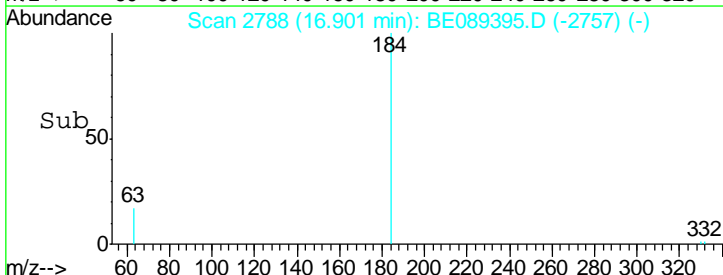
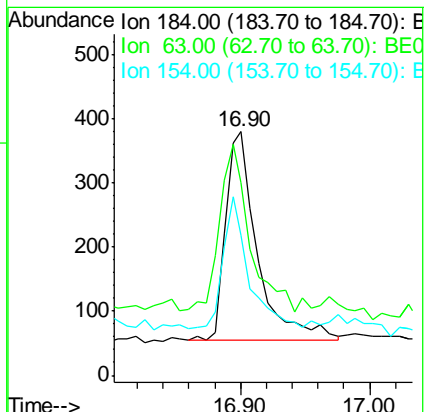
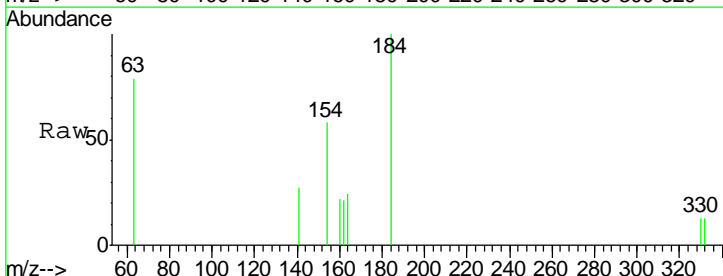
Instrument : BNA_E
 LabSampleId : SSTDICC0.8

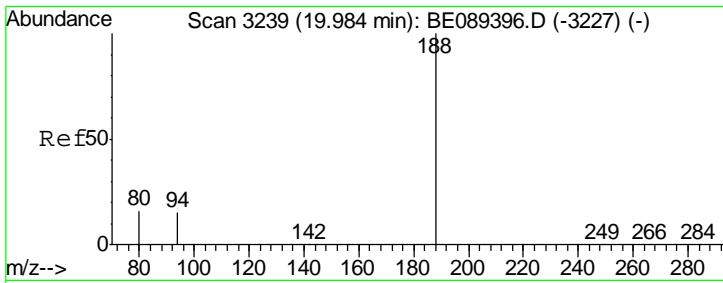
Tgt Ion	Resp	Lower	Upper
172	41387		
171	32.4	25.6	38.4
170	21.9	17.0	25.4



#16
 2,4-Dinitrophenol
 Concen: 0.06 ng
 RT: 16.90 min Scan# 2788
 Delta R.T. 0.01 min
 Lab File: BE089395.D
 Acq: 28 Jan 2015 19:13

Tgt Ion	Resp	Lower	Upper
184	564		
63	79.2	66.9	100.3
154	57.8	45.1	67.7

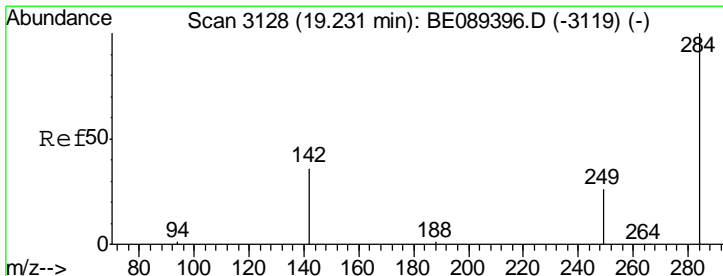
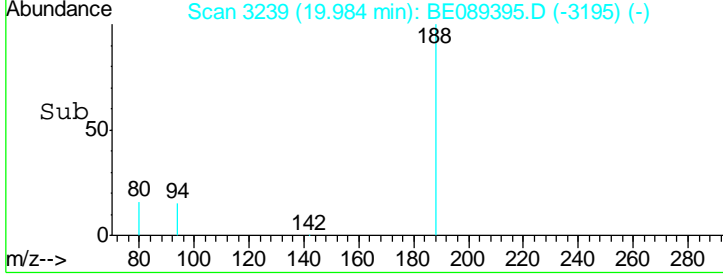
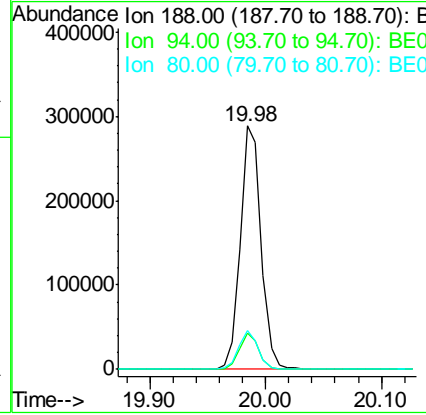
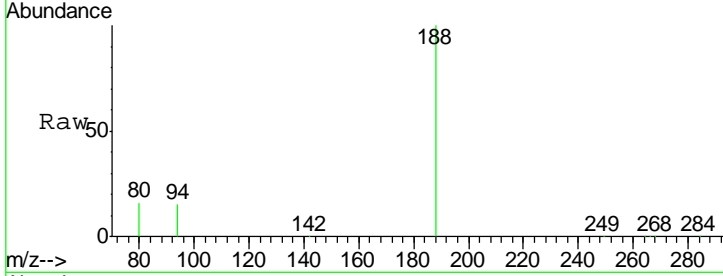




#17
 Phenanthrene-d10
 Concen: 5.00 ng
 RT: 19.98 min Scan# 3239
 Delta R.T. 0.00 min
 Lab File: BE089395.D
 Acq: 28 Jan 2015 19:13

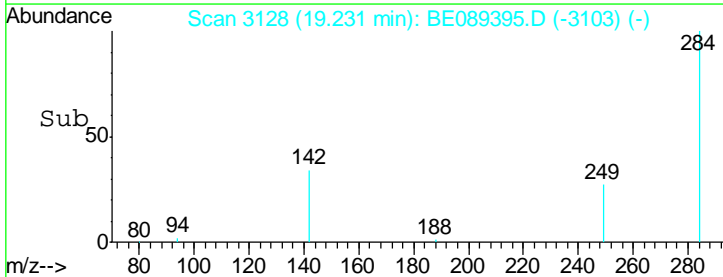
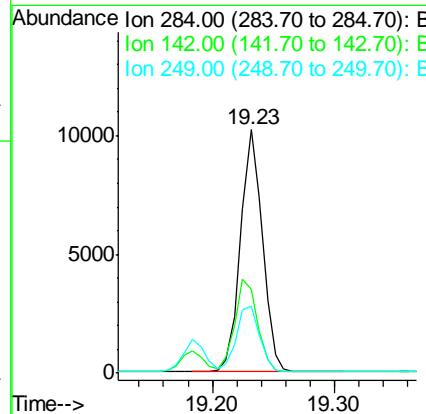
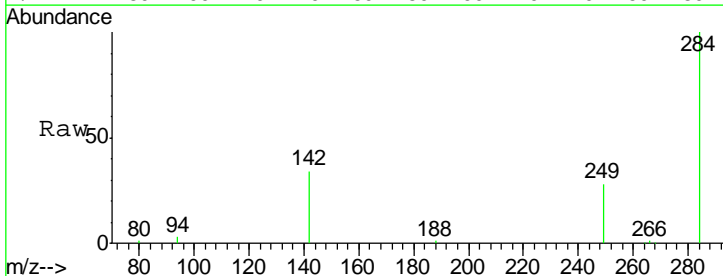
Instrument :
 BNA_E
 LabSampleId :
 SSTDICC0.8

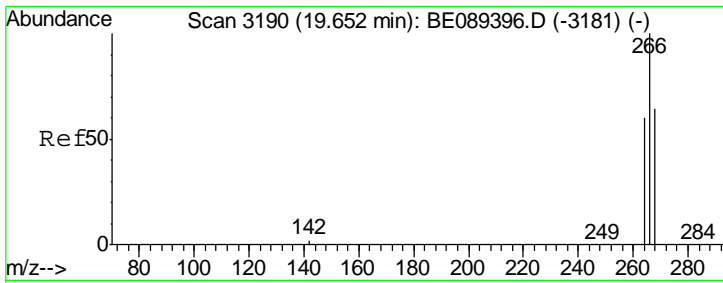
Tgt Ion	Resp	Lower	Upper
188	360691		
94	14.7	12.0	18.0
80	16.1	13.2	19.8



#18
 Hexachlorobenzene
 Concen: 0.77 ng
 RT: 19.23 min Scan# 3128
 Delta R.T. 0.00 min
 Lab File: BE089395.D
 Acq: 28 Jan 2015 19:13

Tgt Ion	Resp	Lower	Upper
284	12746		
142	34.3	30.7	46.1
249	27.6	23.4	35.2



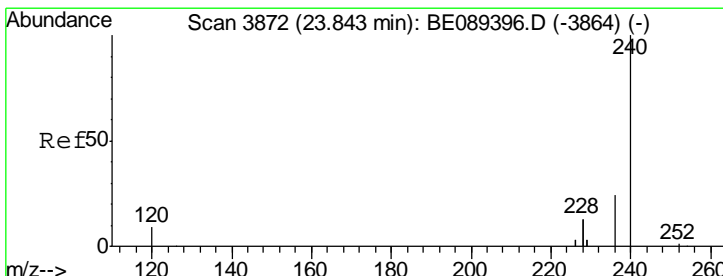
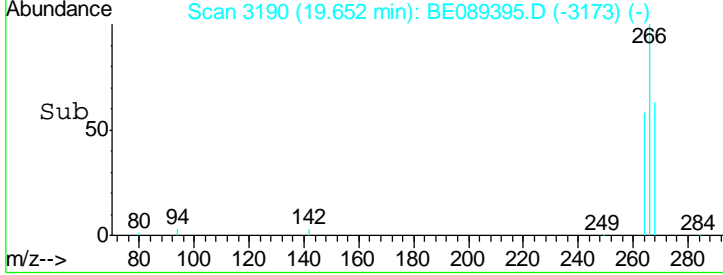
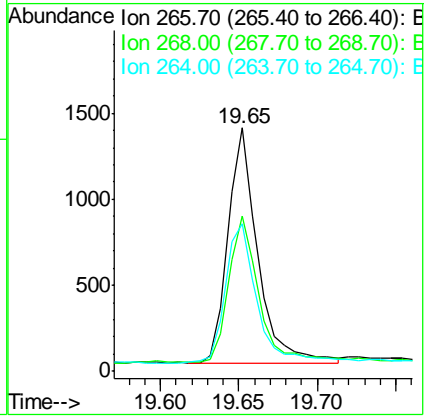
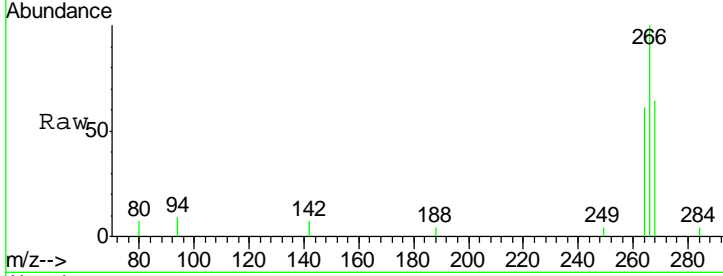


#19
 Pentachlorophenol
 Concen: 0.56 ng
 RT: 19.65 min Scan# 3190
 Delta R.T. 0.00 min
 Lab File: BE089395.D
 Acq: 28 Jan 2015 19:13

Instrument : BNA_E
 LabSampleId : SSTDICC0.8

Tgt Ion: 266 Resp: 1796

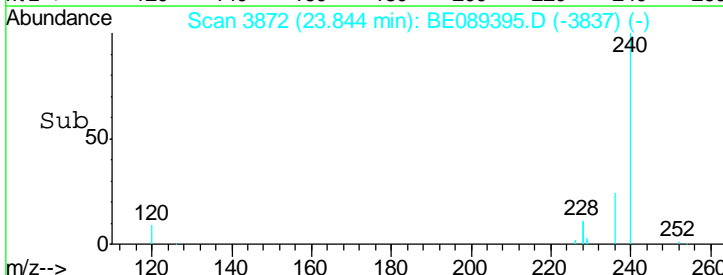
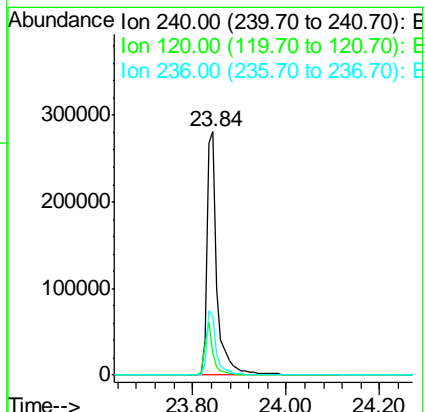
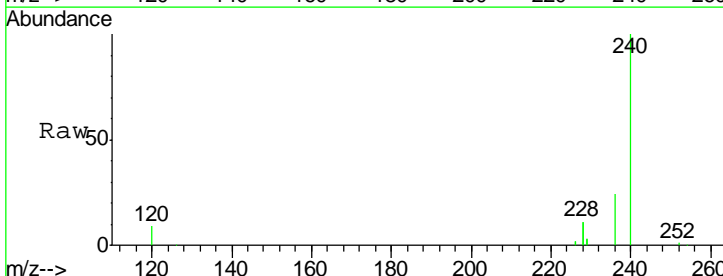
Ion	Ratio	Lower	Upper
266	100		
268	64.1	52.5	78.7
264	60.6	48.8	73.2

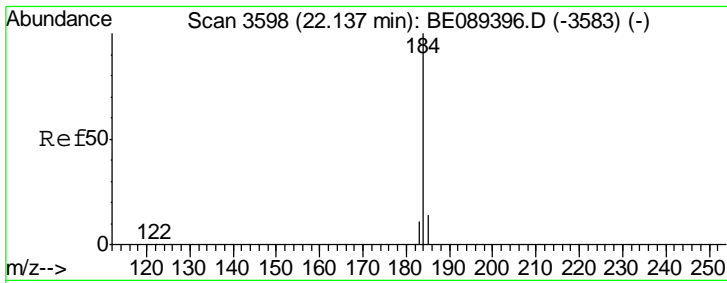


#20
 Chrysene-d12
 Concen: 5.00 ng
 RT: 23.84 min Scan# 3872
 Delta R.T. -0.00 min
 Lab File: BE089395.D
 Acq: 28 Jan 2015 19:13

Tgt Ion: 240 Resp: 428767

Ion	Ratio	Lower	Upper
240	100		
120	9.0	7.1	10.7
236	24.3	19.5	29.3



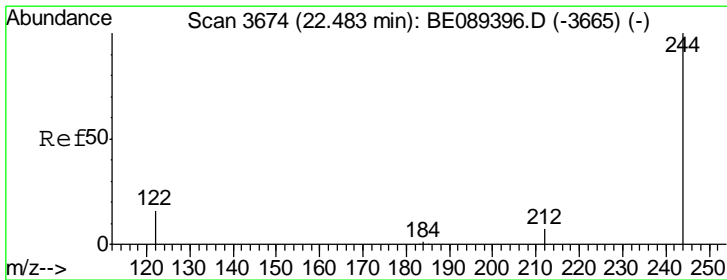
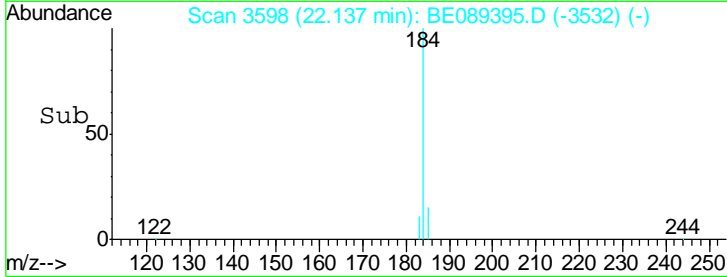
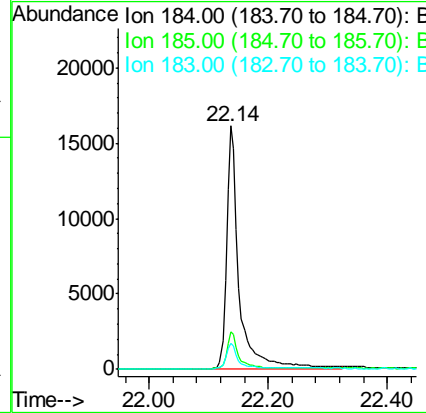
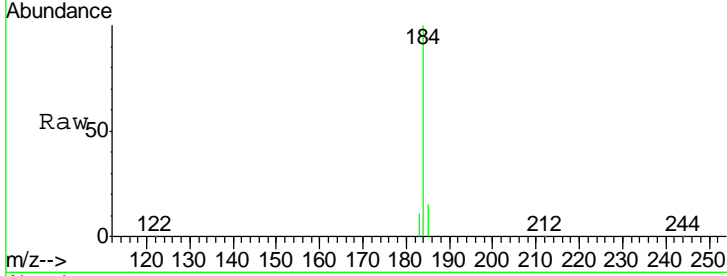


#21
Benzidine
Concen: 0.47 ng
RT: 22.14 min Scan# 3598
Delta R.T. 0.00 min
Lab File: BE089395.D
Acq: 28 Jan 2015 19:13

Instrument :
BNA_E
LabSampleId :
SSTDIC0.8

Tgt Ion: 184 Resp: 23722

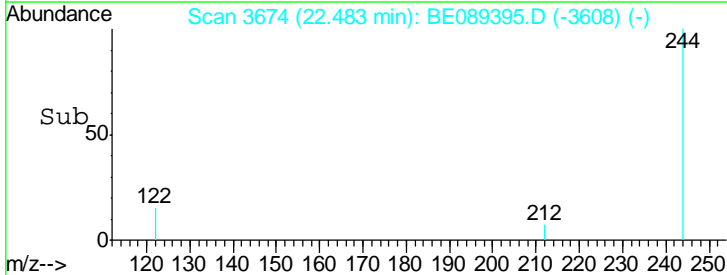
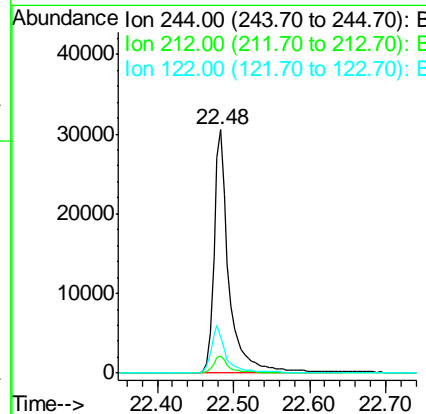
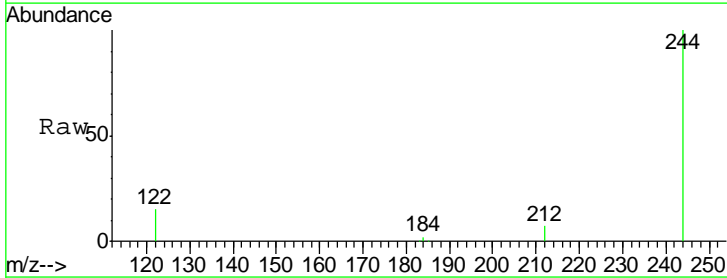
Ion	Ratio	Lower	Upper
184	100		
185	15.2	11.4	17.0
183	10.9	8.7	13.1

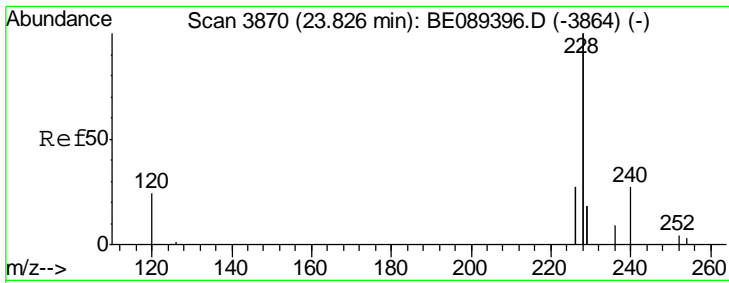


#22
Terphenyl-d14
Concen: 0.87 ng
RT: 22.48 min Scan# 3674
Delta R.T. 0.00 min
Lab File: BE089395.D
Acq: 28 Jan 2015 19:13

Tgt Ion: 244 Resp: 41189

Ion	Ratio	Lower	Upper
244	100		
212	7.2	5.9	8.9
122	15.0	12.8	19.2

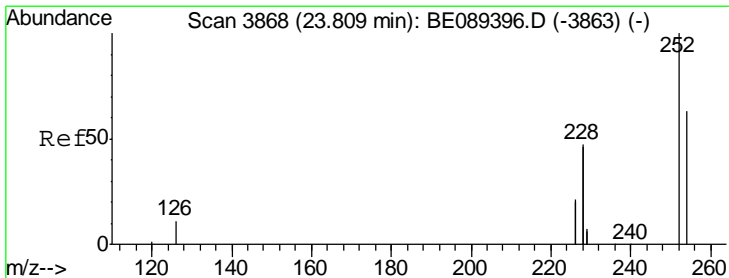
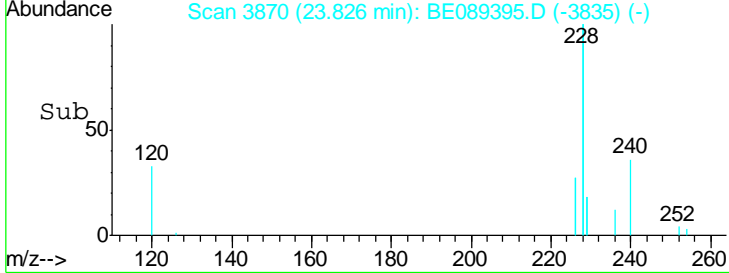
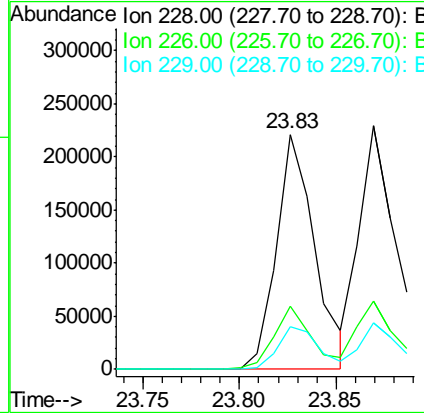
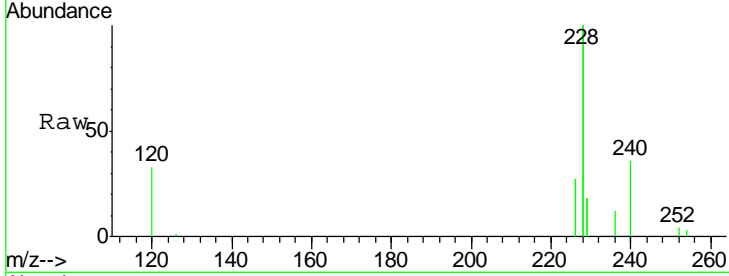




#23
 Benzo(a)anthracene
 Concen: 0.77 ng
 RT: 23.83 min Scan# 3870
 Delta R.T. -0.00 min
 Lab File: BE089395.D
 Acq: 28 Jan 2015 19:13

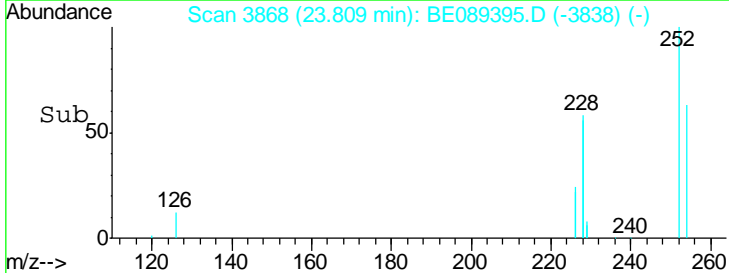
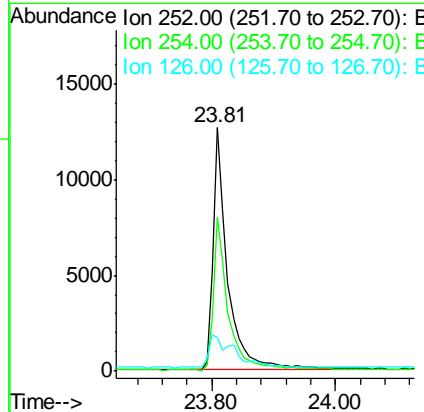
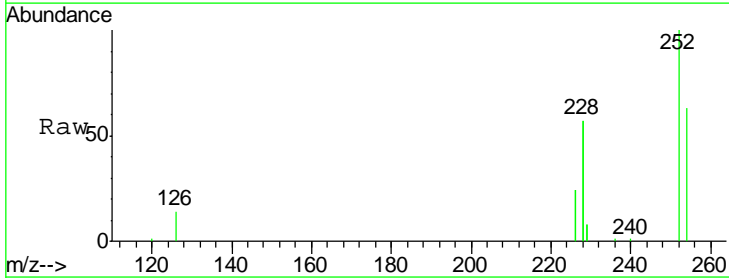
Instrument :
 BNA_E
 LabSampleId :
 SSTDICC0.8

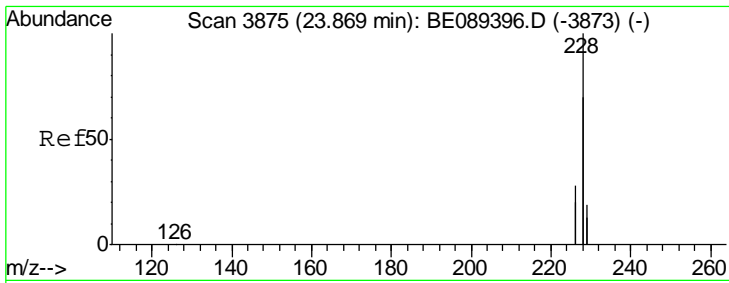
Tgt Ion	Resp	Lower	Upper
228	100		
226	27.0	21.8	32.6
229	18.4	14.5	21.7



#24
 3,3'-Dichlorobenzidine
 Concen: 0.67 ng
 RT: 23.81 min Scan# 3868
 Delta R.T. -0.00 min
 Lab File: BE089395.D
 Acq: 28 Jan 2015 19:13

Tgt Ion	Resp	Lower	Upper
252	100		
254	63.3	50.2	75.4
126	13.9	9.8	14.6

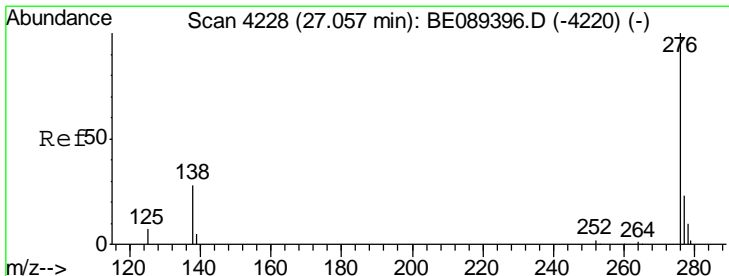
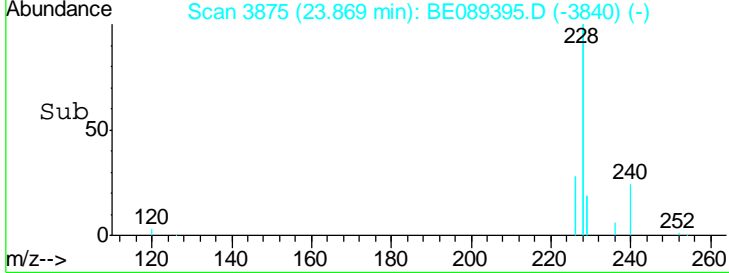
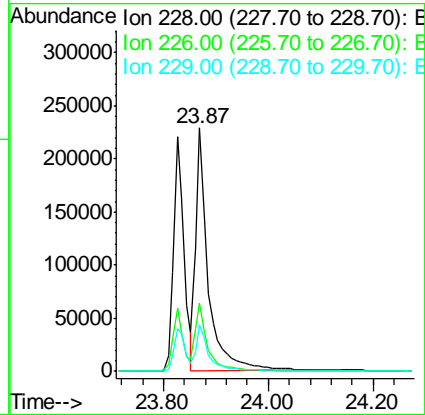
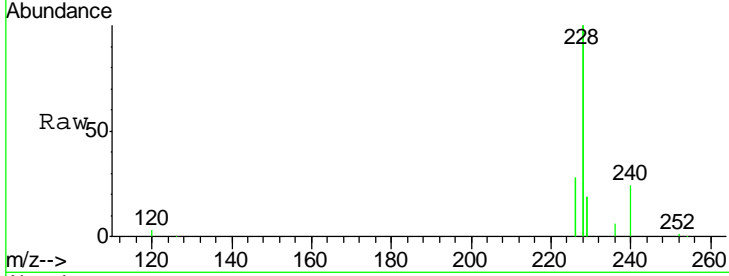




#25
 Chrysene
 Concen: 0.79 ng
 RT: 23.87 min Scan# 3875
 Delta R.T. -0.00 min
 Lab File: BE089395.D
 Acq: 28 Jan 2015 19:13

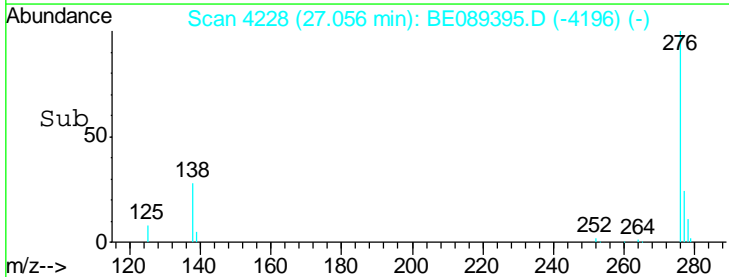
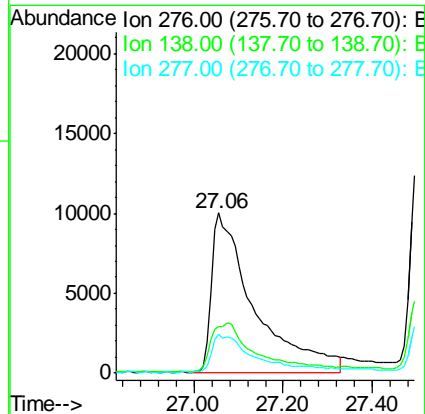
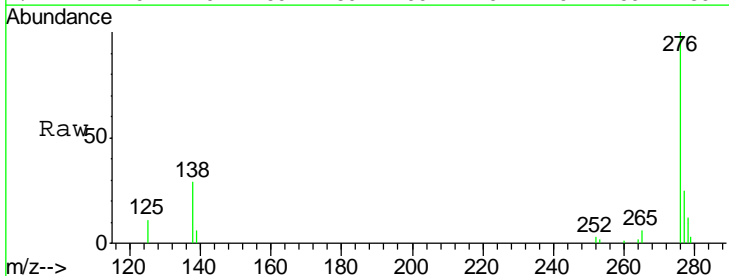
Instrument :
 BNA_E
 LabSampleId :
 SSTDICC0.8

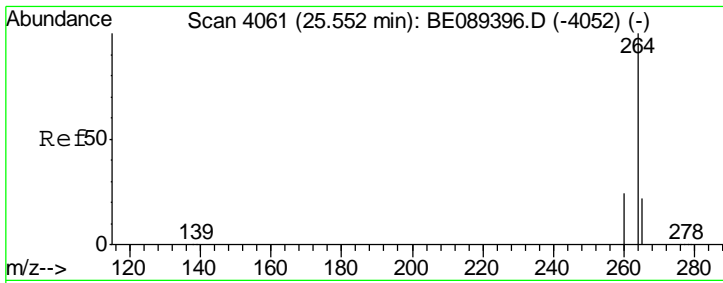
Tgt Ion	Resp	Lower	Upper
228	100		
226	28.3	22.7	34.1
229	19.1	15.2	22.8



#26
 Indeno(1,2,3-cd)pyrene
 Concen: 0.58 ng
 RT: 27.06 min Scan# 4228
 Delta R.T. -0.01 min
 Lab File: BE089395.D
 Acq: 28 Jan 2015 19:13

Tgt Ion	Resp	Lower	Upper
276	100		
138	32.3	0.0	0.0#
277	22.0	0.0	0.0#



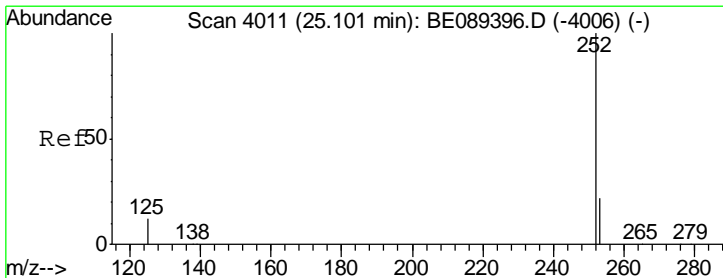
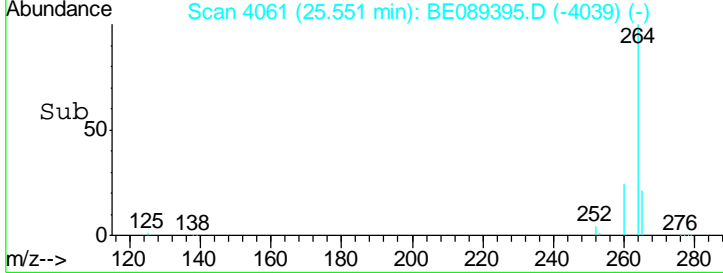
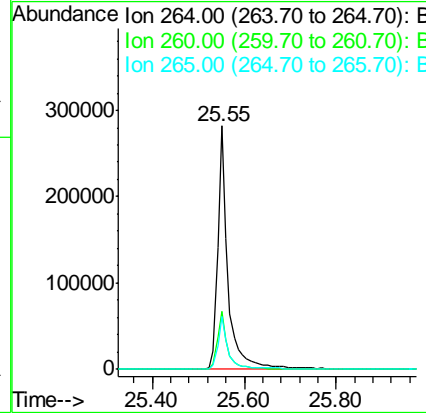
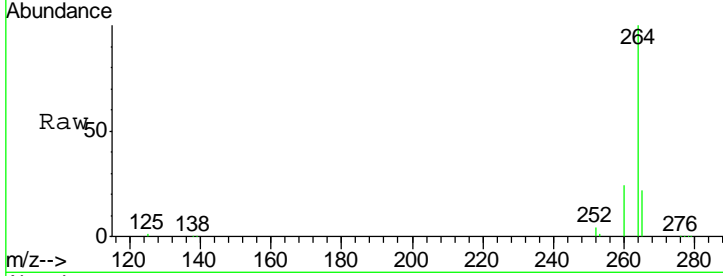


#27
 Perylene-d12
 Concen: 5.00 ng
 RT: 25.55 min Scan# 4061
 Delta R.T. -0.00 min
 Lab File: BE089395.D
 Acq: 28 Jan 2015 19:13

Instrument :
 BNA_E
 LabSampleId :
 SSTDICC0.8

Tgt Ion: 264 Resp: 440897

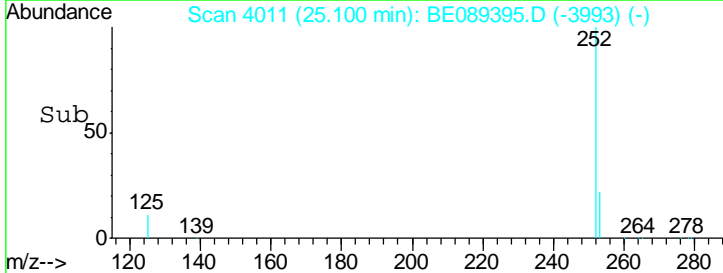
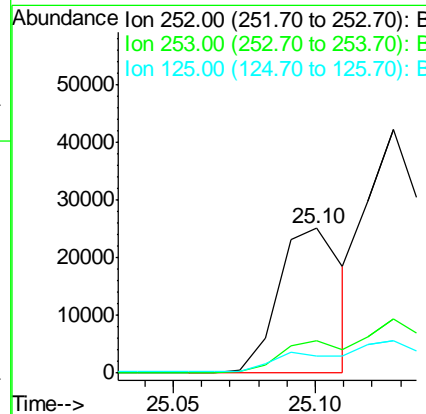
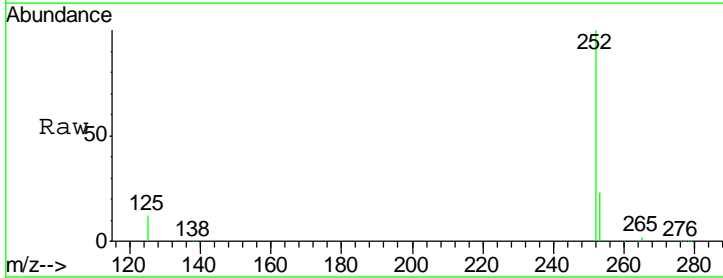
Ion	Ratio	Lower	Upper
264	100		
260	23.8	18.9	28.3
265	21.6	17.5	26.3

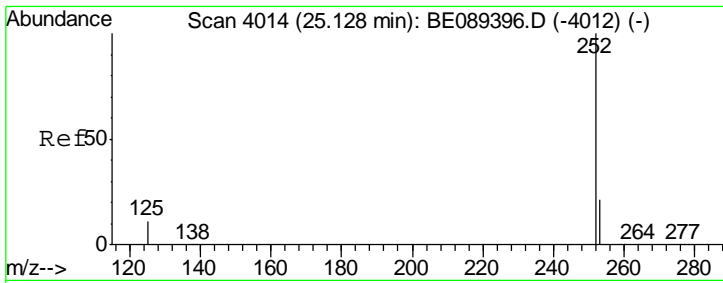


#28
 Benzo(b)fluoranthene
 Concen: 0.69 ng m
 RT: 25.10 min Scan# 4011
 Delta R.T. -0.00 min
 Lab File: BE089395.D
 Acq: 28 Jan 2015 19:13

Tgt Ion: 252 Resp: 39768

Ion	Ratio	Lower	Upper
252	100		
253	22.5	17.6	26.4
125	12.0	9.8	14.6



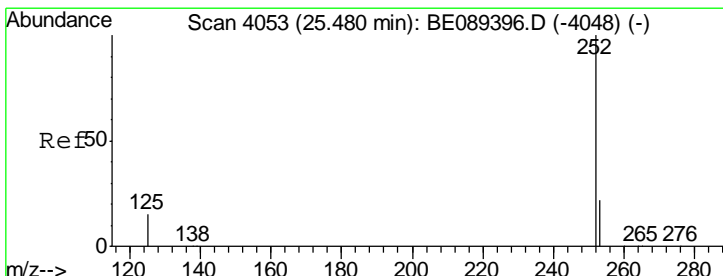
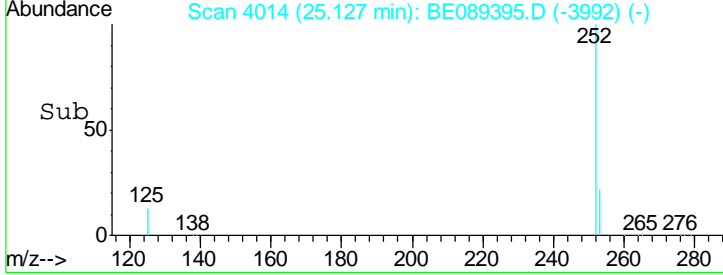
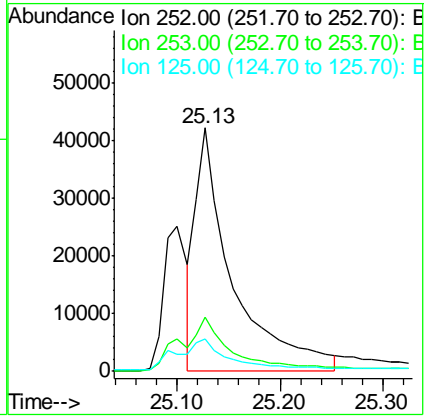
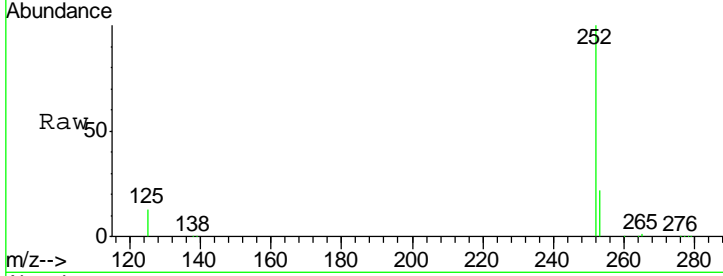


#29
 Benzo(k)fluoranthene
 Concen: 0.76 ng m
 RT: 25.13 min Scan# 4014
 Delta R.T. -0.00 min
 Lab File: BE089395.D
 Acq: 28 Jan 2015 19:13

Instrument :
 BNA_E
 LabSampleId :
 SSTDICC0.8

Tgt Ion: 252 Resp: 106923

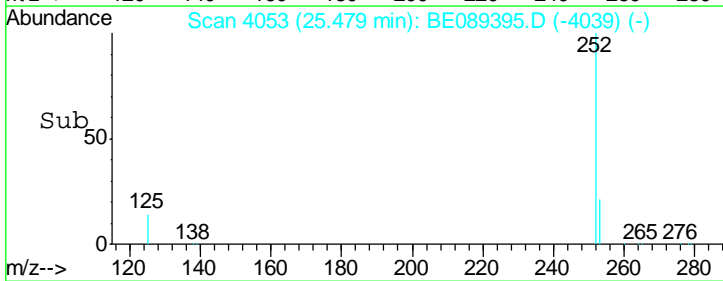
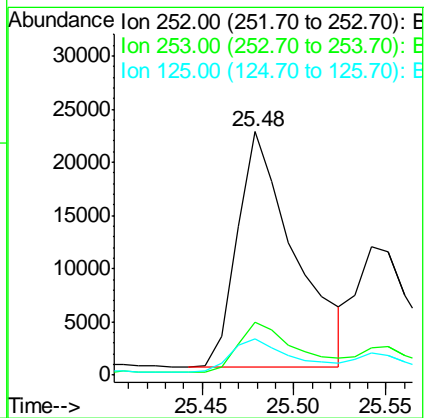
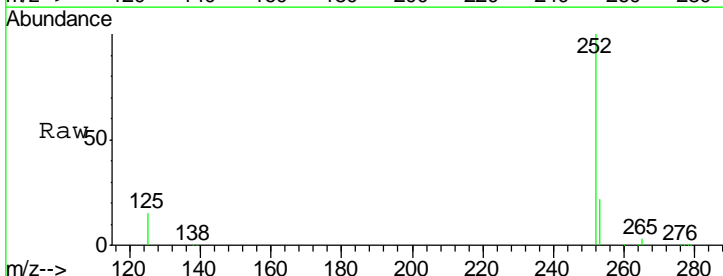
Ion	Ratio	Lower	Upper
252	100		
253	22.2	17.3	25.9
125	13.1	10.2	15.4

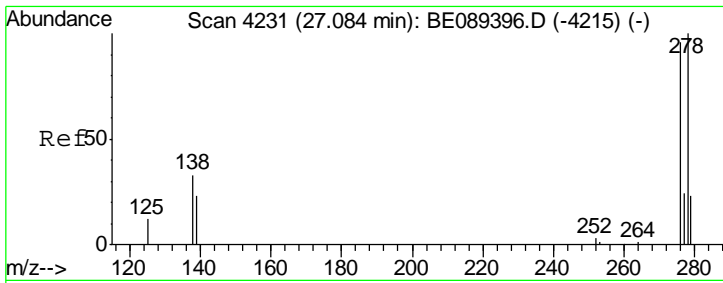


#30
 Benzo(a)pyrene
 Concen: 0.70 ng
 RT: 25.48 min Scan# 4053
 Delta R.T. -0.00 min
 Lab File: BE089395.D
 Acq: 28 Jan 2015 19:13

Tgt Ion: 252 Resp: 47690

Ion	Ratio	Lower	Upper
252	100		
253	21.7	17.5	26.3
125	15.0	12.2	18.4





#31
 Dibenzo(a,h)anthracene
 Concen: 0.65 ng
 RT: 27.08 min Scan# 4231
 Delta R.T. -0.00 min
 Lab File: BE089395.D
 Acq: 28 Jan 2015 19:13

Instrument :
 BNA_E
 LabSampleId :
 SSTDICC0.8

Tgt Ion	Resp	Lower	Upper
278	46756		
278	100		
139	22.3	18.5	27.7
279	23.1	18.6	28.0

