

Data Path : Z:\HPCHEM1\BNA_E\DATA\BE012915\
 Data File : BE089414.D
 Acq On : 29 Jan 2015 13:58
 Operator : TP/IZ
 Sample : SSTDIC002
 Misc :
 ALS Vial : 7 Sample Multiplier: 1

Instrument :
 BNA_E
 LabSampleId :
 SSTDIC002

Manual Integrations
 APPROVED

apatel
 1/30/2015 5:55:37 PM

Quant Time: Jan 30 03:01:40 2015
 Quant Method : Z:\HPCHEM1\BNA_E\METHODS\SIM-BE012915.M
 Quant Title : ASP BNA STANDARDS FOR 5 POINT CALIBRATION
 QLast Update : Fri Jan 30 02:34:28 2015
 Response via : Initial Calibration

Internal Standards	R.T.	QIon	Response	Conc	Units	Dev(Min)
1) 1,4-Dichlorobenzene-d4	9.58	152	119016	5.00	ng	0.00
7) Naphthalene-d8	12.50	136	438711	5.00	ng	0.00
13) Acenaphthene-d10	16.68	164	166556	5.00	ng	0.00
17) Phenanthrene-d10	19.99	188	331190	5.00	ng	0.00
20) Chrysene-d12	23.84	240	451988	5.00	ng	0.00
27) Perylene-d12	25.55	264	463111	5.00	ng	0.00

System Monitoring Compounds

3) 2-Fluorophenol	6.73	112	92519	2.42	ng	0.00
4) Phenol-d6	8.85	99	109117	2.34	ng	0.00
8) Nitrobenzene-d5	10.84	82	75215	2.38	ng	0.00
14) 2,4,6-Tribromophenol	18.58	330	10081	2.60	ng	0.00
15) 2-Fluorobiphenyl	15.13	172	98192	1.95	ng	0.00
22) Terphenyl-d14	22.48	244	116752	2.34	ng	0.00

Target Compounds

Target Compounds	R.T.	QIon	Response	Conc	Units	Qvalue
2) n-Nitrosodimethylamine	3.57	42	54783	2.70	ng	# 84
5) Phenol	8.87	94	120326	2.42	ng	99
6) bis(2-Chloroethyl)ether	9.06	93	89431	2.42	ng	# 99
9) Nitrobenzene	10.88	77	86524	2.43	ng	100
10) 2,4-Dimethylphenol	11.82	122	60706	2.26	ng	99
11) 2,4-Dichlorophenol	12.21	162	42856	2.09	ng	97
12) Hexachlorobutadiene	12.89	225	27984	1.93	ng	99
16) 2,4-Dinitrophenol	16.89	184	2536	2.25	ng	95
18) Hexachlorobenzene	19.23	284	33607	2.18	ng	94
19) Pentachlorophenol	19.65	266	7338	2.48	ng	95
21) Benzidine	22.14	184	66864	1.83	ng	98
23) Benzo(a)anthracene	23.83	228	721409	1.76	ng	99
24) 3,3'-Dichlorobenzidine	23.81	252	61543	1.88	ng	98
25) Chrysene	23.87	228	991110	1.96	ng	98
26) Indeno(1,2,3-cd)pyrene	27.08	276	187338	1.60	ng	# 100
28) Benzo(b)fluoranthene	25.10	252	106604m	1.82	ng	
29) Benzo(k)fluoranthene	25.13	252	320489m	2.41	ng	
30) Benzo(a)pyrene	25.48	252	133813	1.88	ng	99
31) Dibenzo(a,h)anthracene	27.09	278	138856	1.91	ng	96

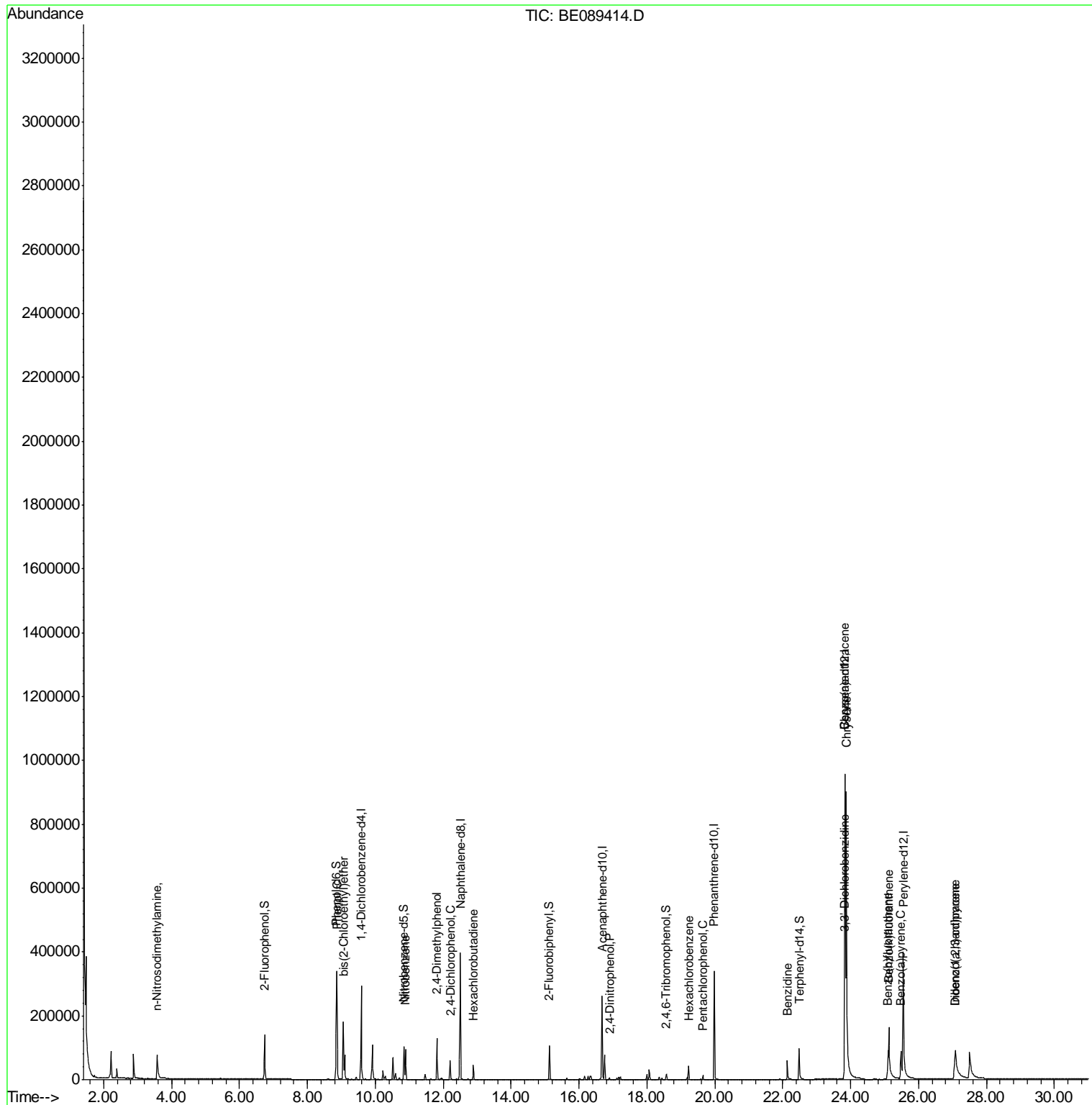
(#) = qualifier out of range (m) = manual integration (+) = signals summed

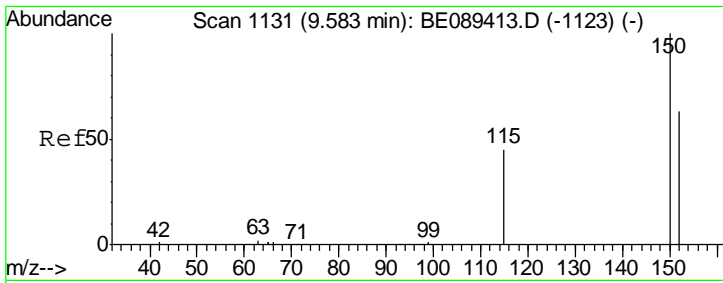
Data Path : Z:\HPCHEM1\BNA_E\DATA\BE012915\
 Data File : BE089414.D
 Acq On : 29 Jan 2015 13:58
 Operator : TP/IZ
 Sample : SSTDICC002
 Misc :
 ALS Vial : 7 Sample Multiplier: 1

Instrument :
 BNA_E
LabSampleId :
 SSTDICC002

Manual Integrations
APPROVED
 apatel
 1/30/2015 5:55:37 PM

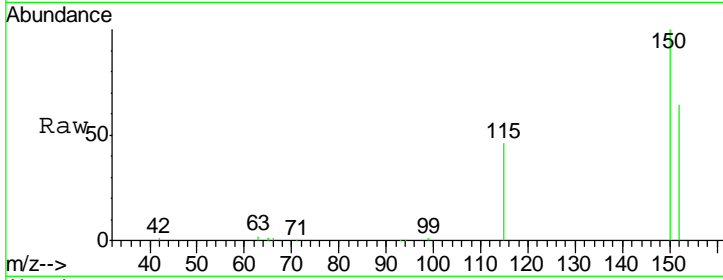
Quant Time: Jan 30 03:01:40 2015
 Quant Method : Z:\HPCHEM1\BNA_E\METHODS\SIM-BE012915.M
 Quant Title : ASP BNA STANDARDS FOR 5 POINT CALIBRATION
 QLast Update : Fri Jan 30 02:34:28 2015
 Response via : Initial Calibration





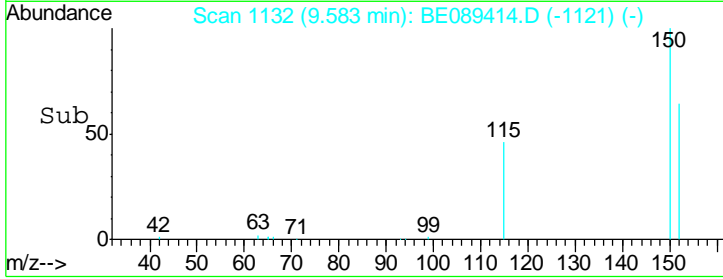
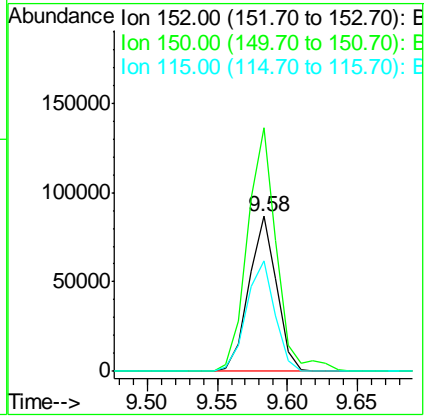
#1
 1,4-Dichlorobenzene-d4
 Concen: 5.00 ng
 RT: 9.58 min Scan# 1132
 Delta R.T. 0.00 min
 Lab File: BE089414.D
 Acq: 29 Jan 2015 13:58

Instrument :
 BNA_E
LabSampleId :
 SSTDICC002

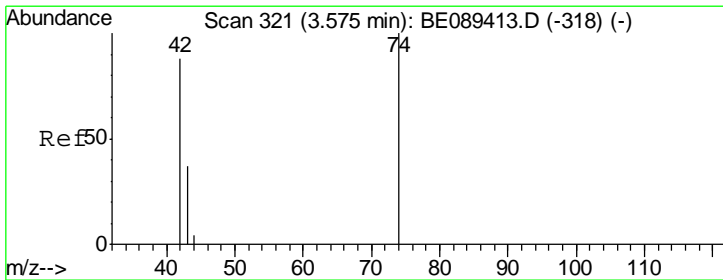


Tgt Ion	Resp	Lower	Upper
152	119016		
150	157.0	126.1	189.1
115	71.7	57.1	85.7

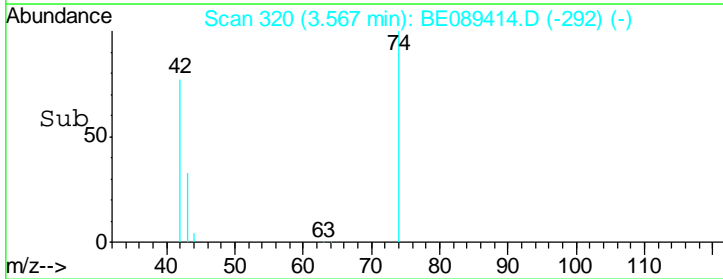
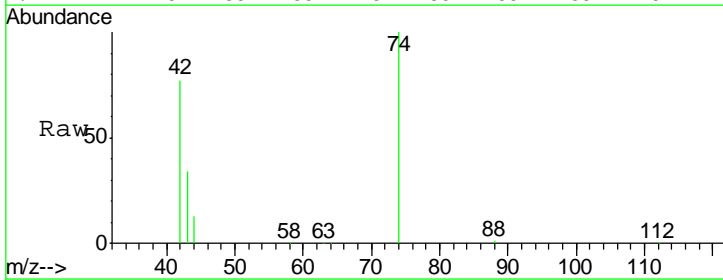
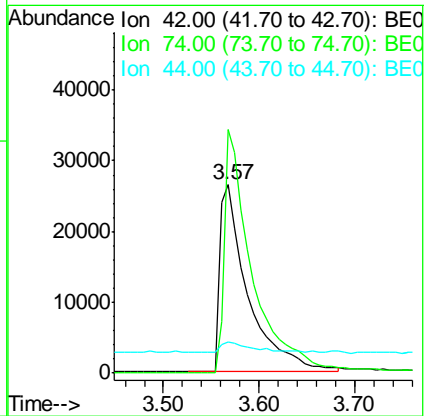
Manual Integrations
APPROVED
 apatel
 1/30/2015 5:55:37 PM

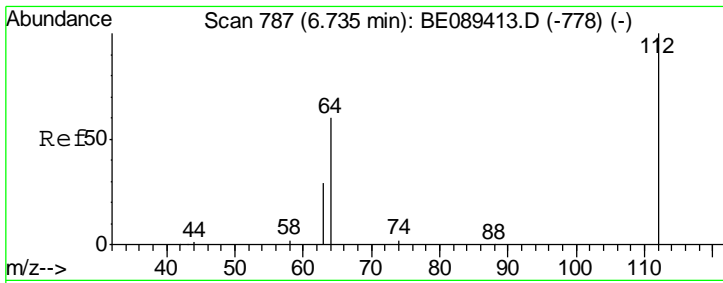


#2
 n-Nitrosodimethylamine
 Concen: 2.70 ng
 RT: 3.57 min Scan# 320
 Delta R.T. -0.01 min
 Lab File: BE089414.D
 Acq: 29 Jan 2015 13:58



Tgt Ion	Resp	Lower	Upper
42	54783		
74	129.5	90.2	135.2
44	16.8	19.4	29.2#



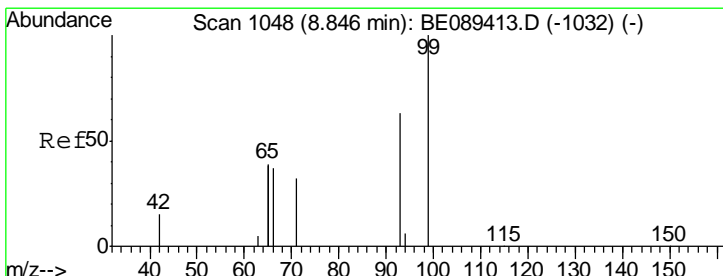
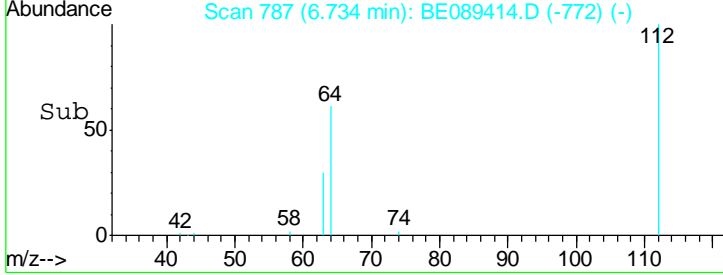
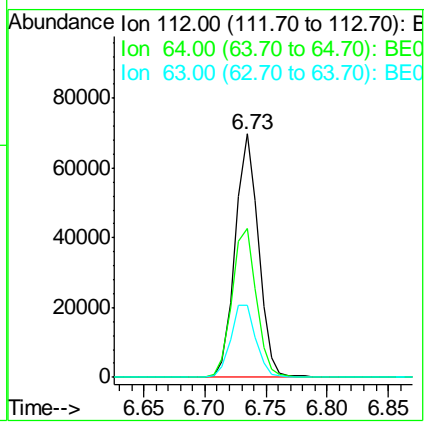
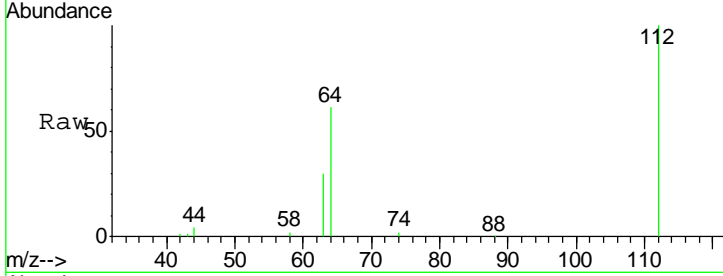


#3
 2-Fluorophenol
 Concen: 2.42 ng
 RT: 6.73 min Scan# 787
 Delta R.T. -0.00 min
 Lab File: BE089414.D
 Acq: 29 Jan 2015 13:58

Instrument :
 BNA_E
LabSampleId :
 SSTDICC002

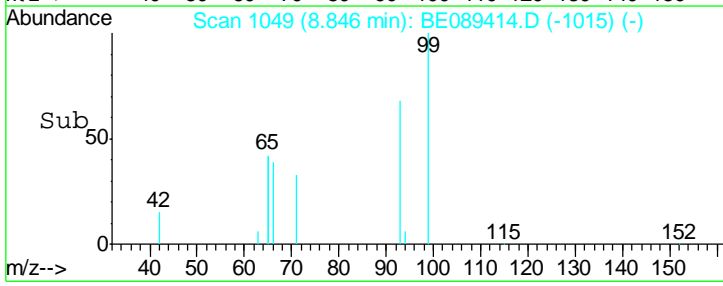
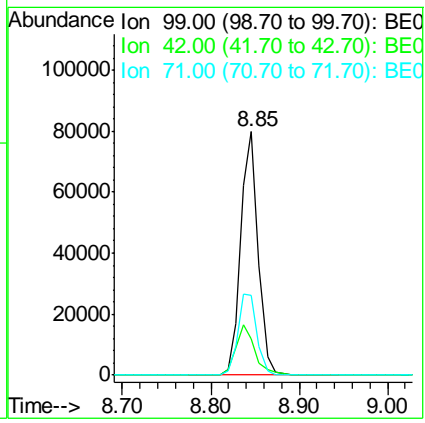
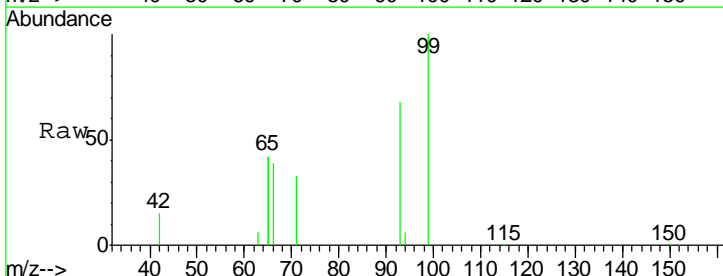
Tgt Ion	Resp	Lower	Upper
112	92519		
64	61.1	48.2	72.4
63	29.8	23.5	35.3

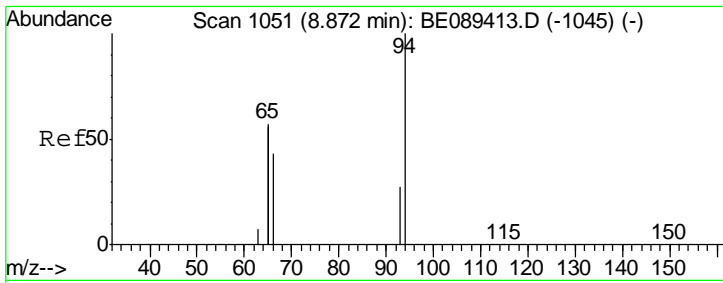
Manual Integrations
APPROVED
 apatel
 1/30/2015 5:55:37 PM



#4
 Phenol-d6
 Concen: 2.34 ng
 RT: 8.85 min Scan# 1049
 Delta R.T. 0.00 min
 Lab File: BE089414.D
 Acq: 29 Jan 2015 13:58

Tgt Ion	Resp	Lower	Upper
99	109117		
42	15.0	11.9	17.9
71	32.7	25.8	38.6



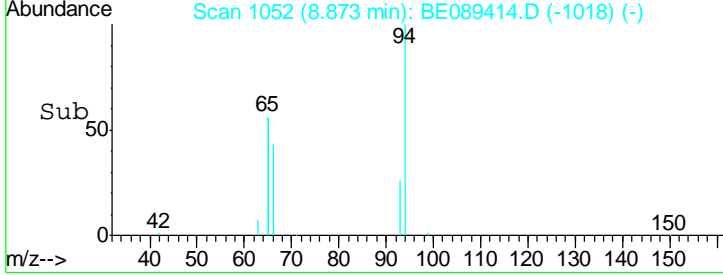
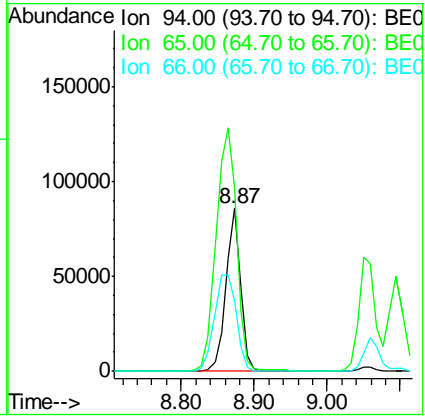
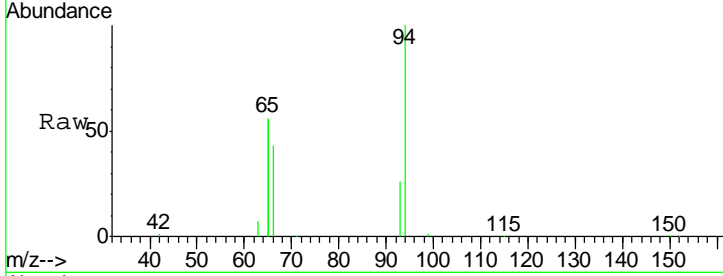


#5
 Phenol
 Concen: 2.42 ng
 RT: 8.87 min Scan# 1052
 Delta R.T. 0.00 min
 Lab File: BE089414.D
 Acq: 29 Jan 2015 13:58

Instrument :
 BNA_E
LabSampleId :
 SSTDICC002

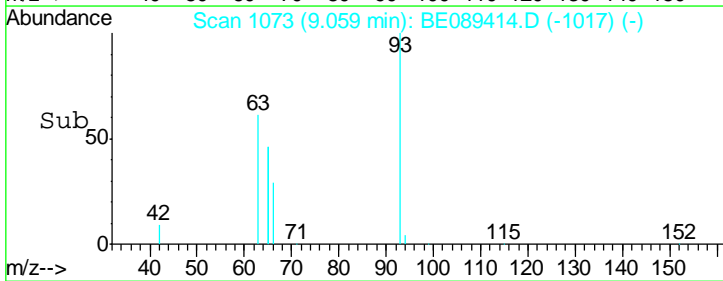
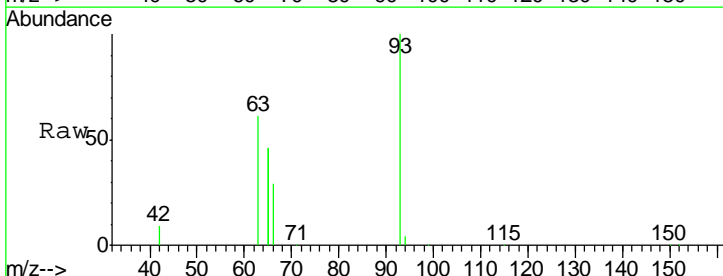
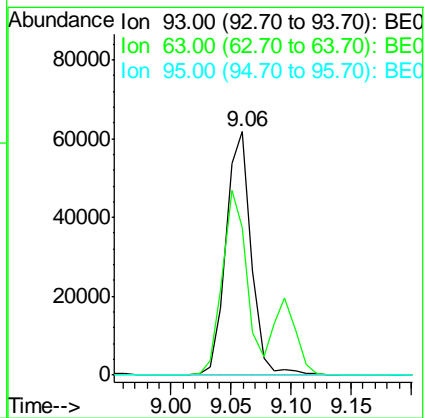
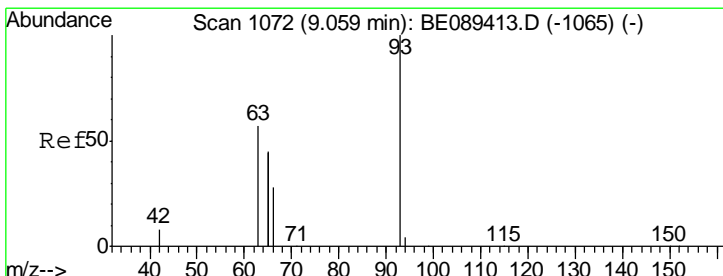
Tgt Ion	Resp	Lower	Upper
94	120326		
65	112.4	93.3	133.3
66	43.3	23.6	63.6

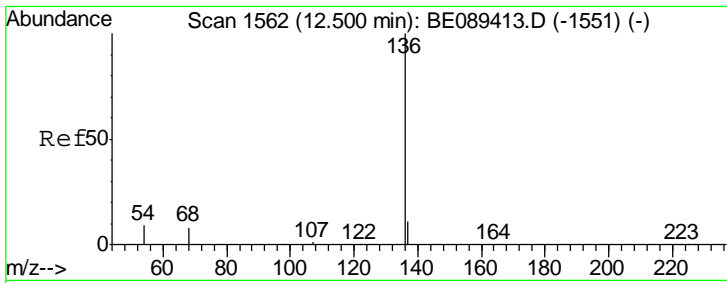
Manual Integrations
APPROVED
 apatel
 1/30/2015 5:55:37 PM



#6
 bis(2-Chloroethyl)ether
 Concen: 2.42 ng
 RT: 9.06 min Scan# 1073
 Delta R.T. 0.00 min
 Lab File: BE089414.D
 Acq: 29 Jan 2015 13:58

Tgt Ion	Resp	Lower	Upper
93	89431		
63	74.5	58.6	88.0
95	0.0	0.0	0.0



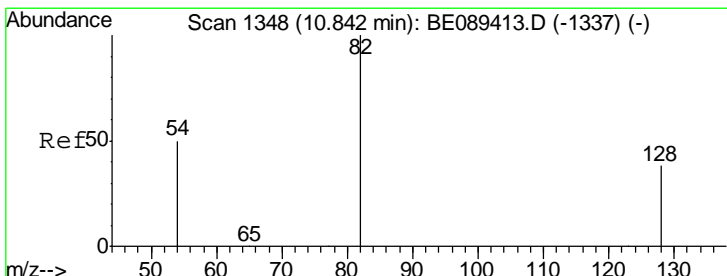
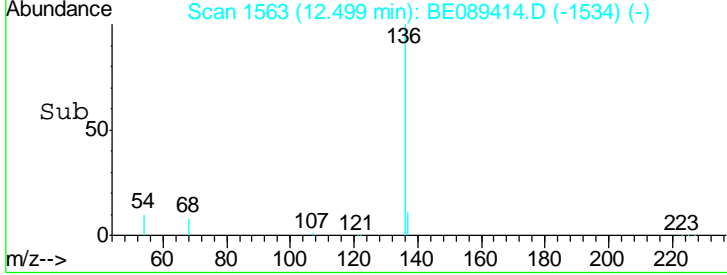
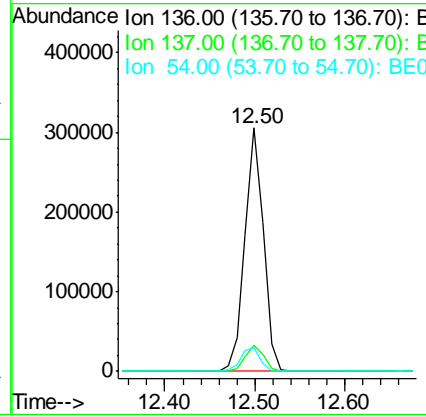
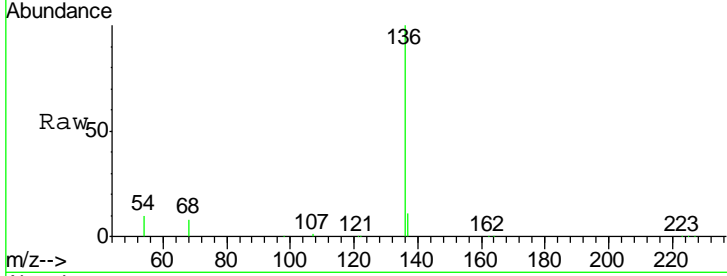


#7
 Naphthalene-d8
 Concen: 5.00 ng
 RT: 12.50 min Scan# 1563
 Delta R.T. -0.00 min
 Lab File: BE089414.D
 Acq: 29 Jan 2015 13:58

Instrument :
 BNA_E
 LabSampleId :
 SSTDICC002

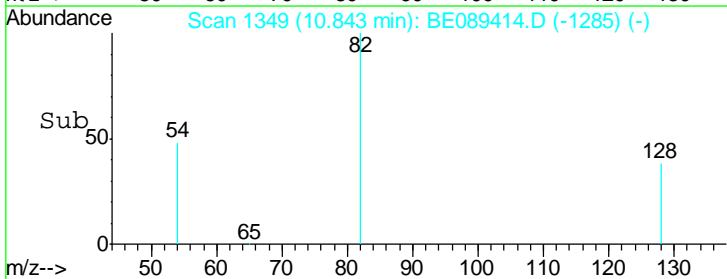
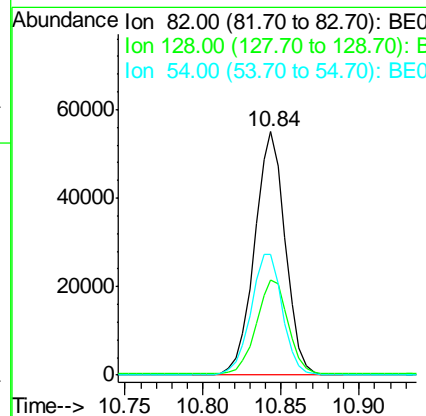
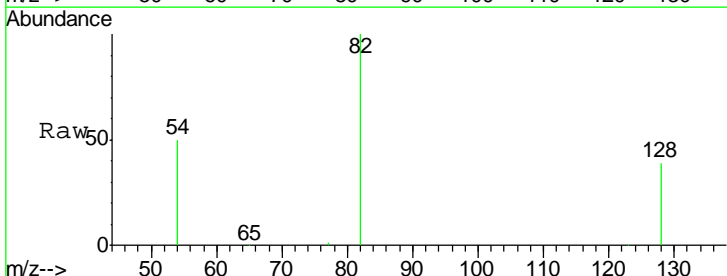
Tgt Ion	Resp	Lower	Upper
136	438711		
137	10.8	8.6	12.8
54	9.8	7.5	11.3

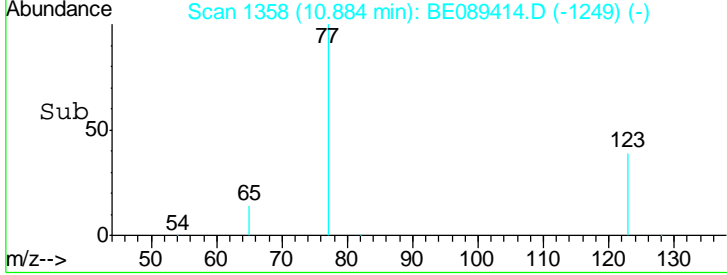
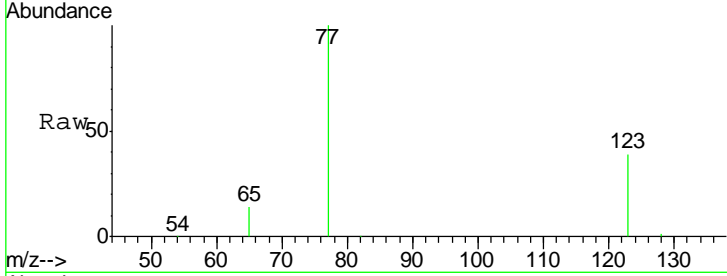
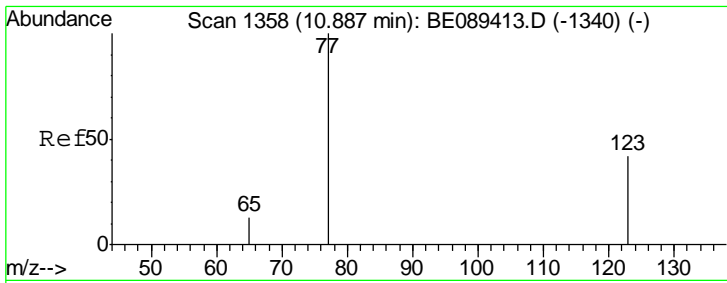
Manual Integrations
 APPROVED
 apatel
 1/30/2015 5:55:37 PM



#8
 Nitrobenzene-d5
 Concen: 2.38 ng
 RT: 10.84 min Scan# 1349
 Delta R.T. 0.00 min
 Lab File: BE089414.D
 Acq: 29 Jan 2015 13:58

Tgt Ion	Resp	Lower	Upper
82	75215		
128	39.0	31.0	46.4
54	49.6	39.8	59.6



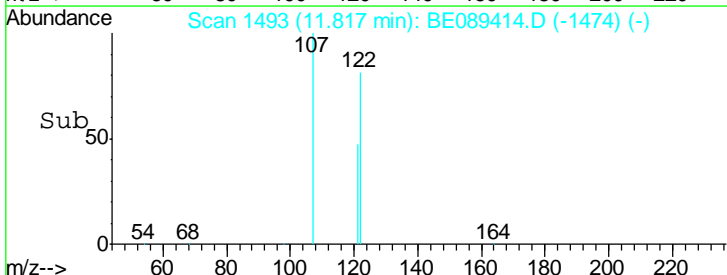
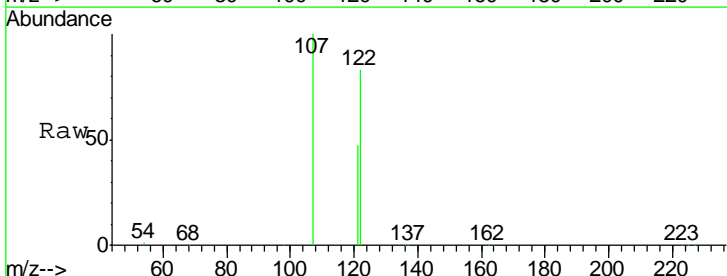
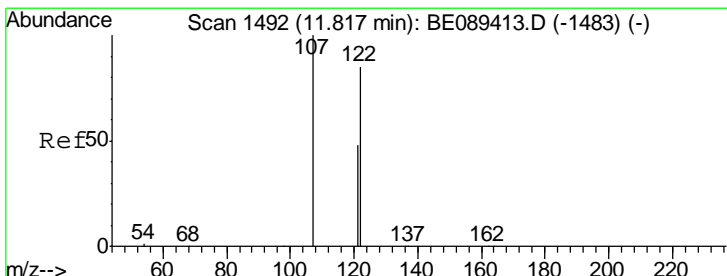
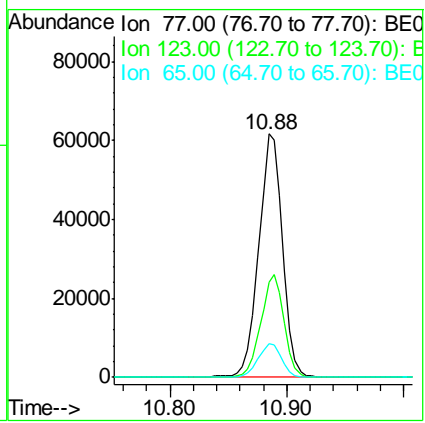


#9
 Nitrobenzene
 Concen: 2.43 ng
 RT: 10.88 min Scan# 1358
 Delta R.T. -0.00 min
 Lab File: BE089414.D
 Acq: 29 Jan 2015 13:58

Tgt Ion	Resp	Lower	Upper
77	100		
123	41.3	32.8	49.2
65	13.9	11.0	16.6

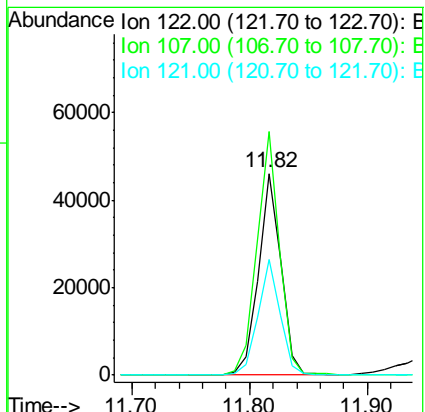
Instrument : BNA_E
 LabSampled : SSTDICC002

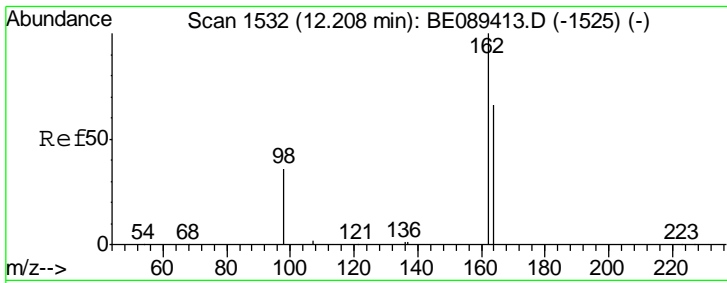
Manual Integrations
APPROVED
 apatel
 1/30/2015 5:55:37 PM



#10
 2,4-Dimethylphenol
 Concen: 2.26 ng
 RT: 11.82 min Scan# 1493
 Delta R.T. -0.00 min
 Lab File: BE089414.D
 Acq: 29 Jan 2015 13:58

Tgt Ion	Resp	Lower	Upper
122	100		
107	120.6	94.6	142.0
121	57.0	45.8	68.6



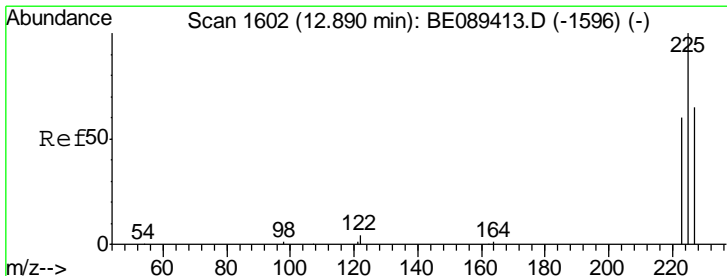
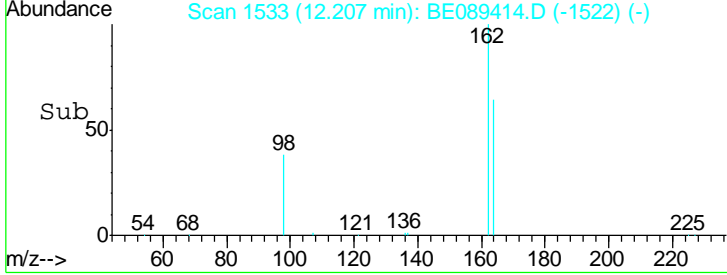
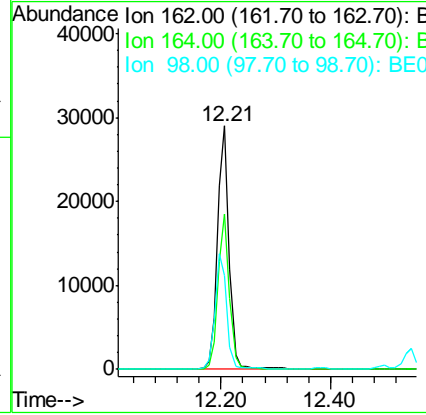
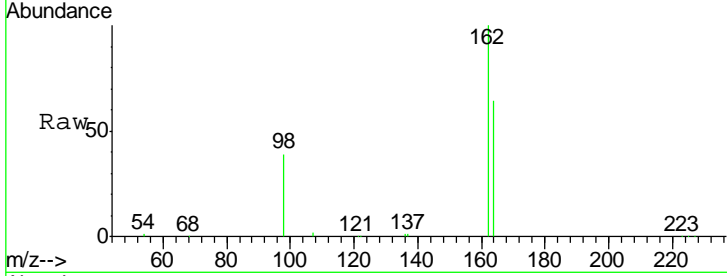


#11
 2,4-Dichlorophenol
 Concen: 2.09 ng
 RT: 12.21 min Scan# 1533
 Delta R.T. -0.00 min
 Lab File: BE089414.D
 Acq: 29 Jan 2015 13:58

Instrument :
 BNA_E
 LabSampleId :
 SSTDICC002

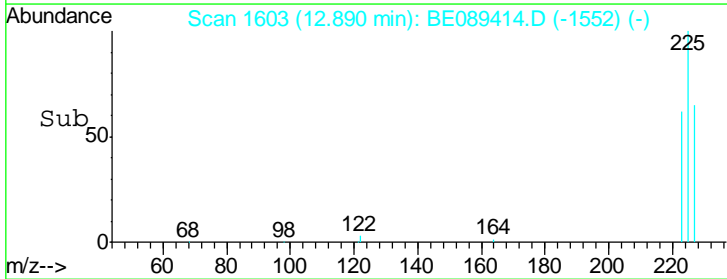
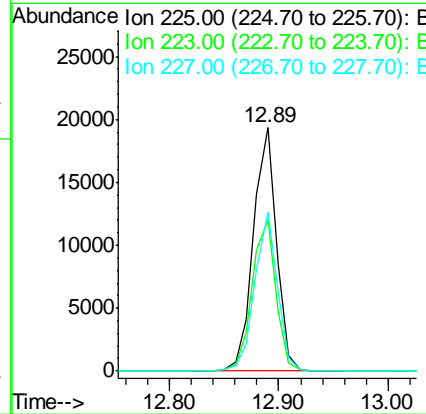
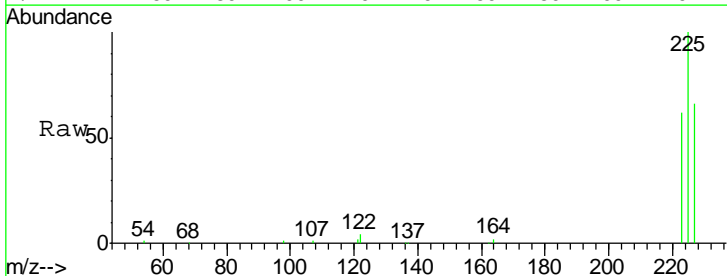
Tgt Ion	Resp	Lower	Upper
162	42856		
162	100		
164	64.0	46.1	86.1
98	38.6	16.2	56.2

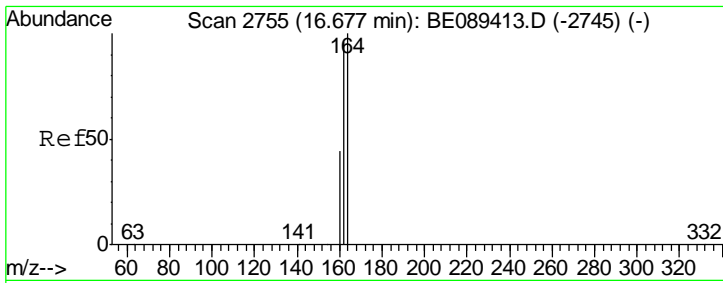
Manual Integrations
 APPROVED
 apatel
 1/30/2015 5:55:37 PM



#12
 Hexachlorobutadiene
 Concen: 1.93 ng
 RT: 12.89 min Scan# 1603
 Delta R.T. -0.00 min
 Lab File: BE089414.D
 Acq: 29 Jan 2015 13:58

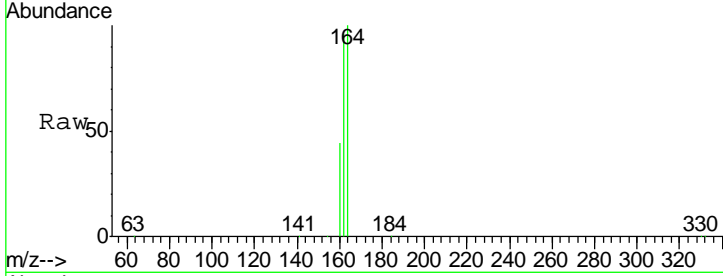
Tgt Ion	Resp	Lower	Upper
225	27984		
225	100		
223	63.7	50.4	75.6
227	63.6	50.2	75.2





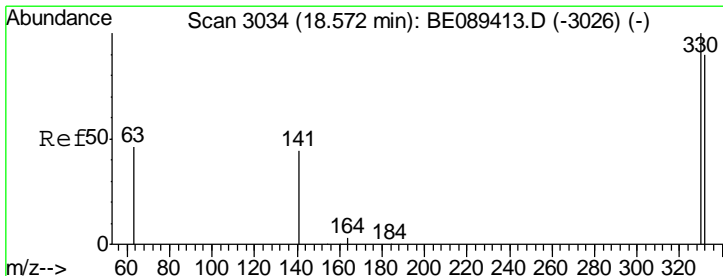
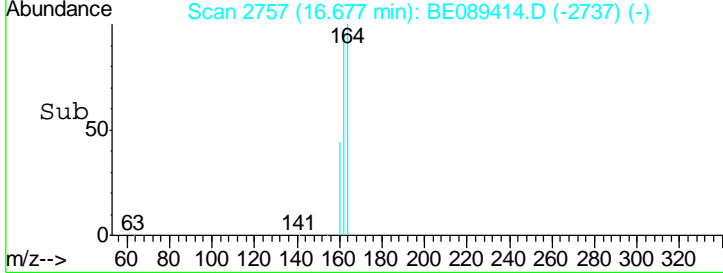
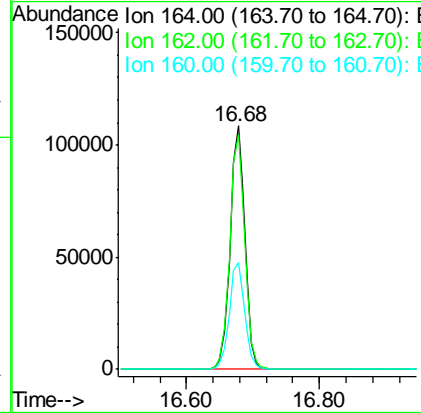
#13
 Acenaphthene-d10
 Concen: 5.00 ng
 RT: 16.68 min Scan# 2757
 Delta R.T. 0.00 min
 Lab File: BE089414.D
 Acq: 29 Jan 2015 13:58

Instrument :
 BNA_E
 LabSampleId :
 SSTDICC002



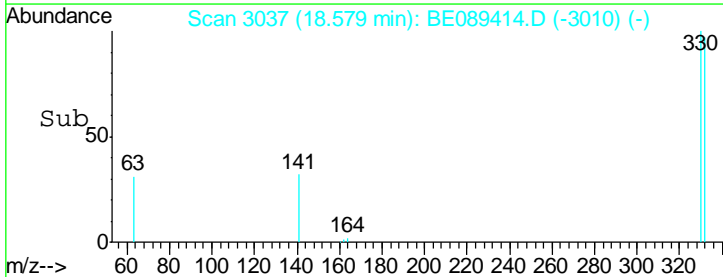
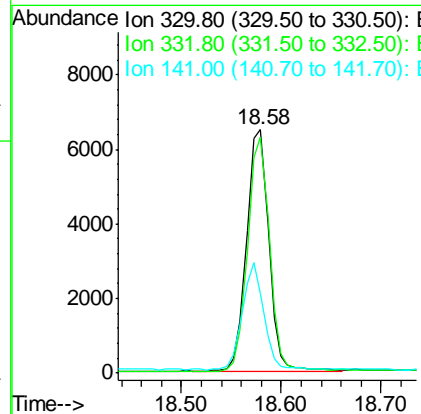
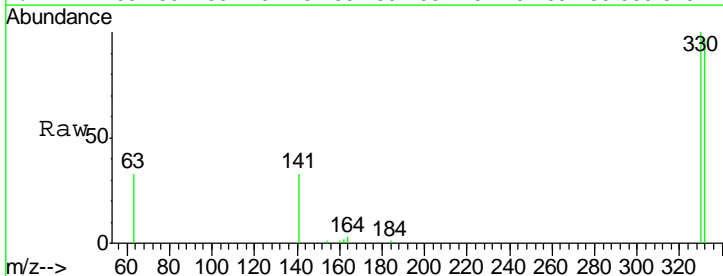
Tgt Ion	Resp	Lower	Upper
164	100		
162	96.2	77.0	115.6
160	43.7	35.0	52.4

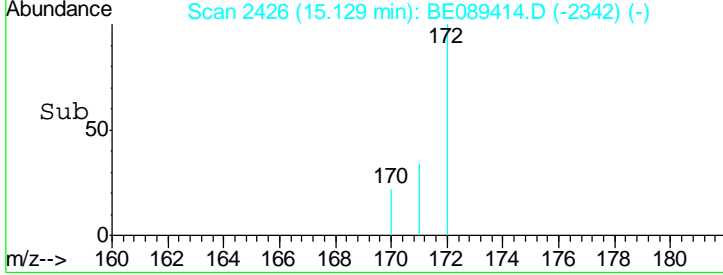
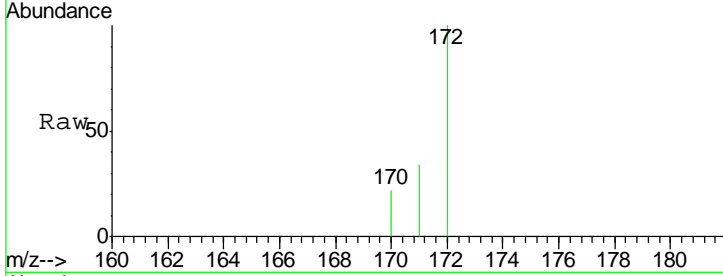
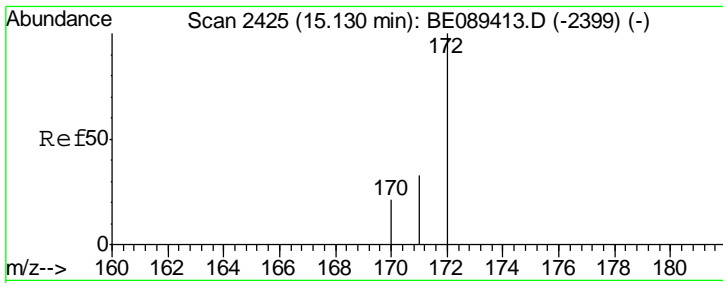
Manual Integrations
 APPROVED
 apatel
 1/30/2015 5:55:37 PM



#14
 2,4,6-Tribromophenol
 Concen: 2.60 ng
 RT: 18.58 min Scan# 3037
 Delta R.T. 0.01 min
 Lab File: BE089414.D
 Acq: 29 Jan 2015 13:58

Tgt Ion	Resp	Lower	Upper
330	100		
332	94.9	76.0	114.0
141	43.3	35.6	53.4



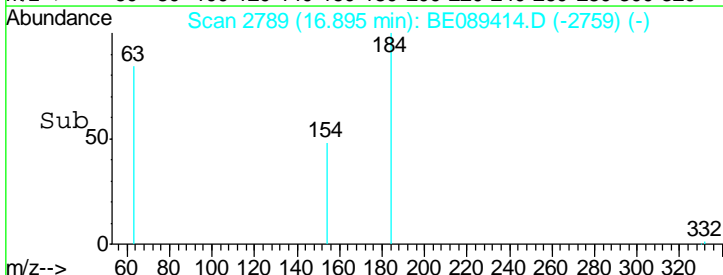
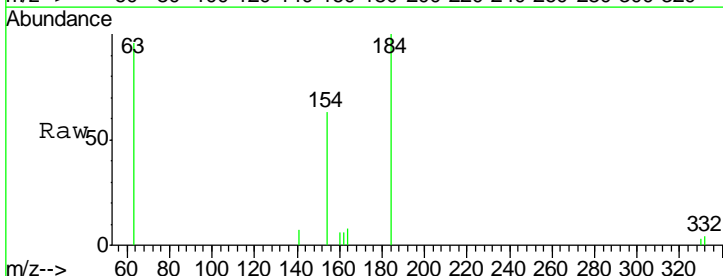
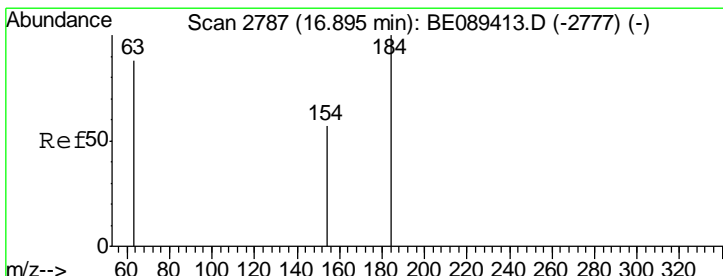
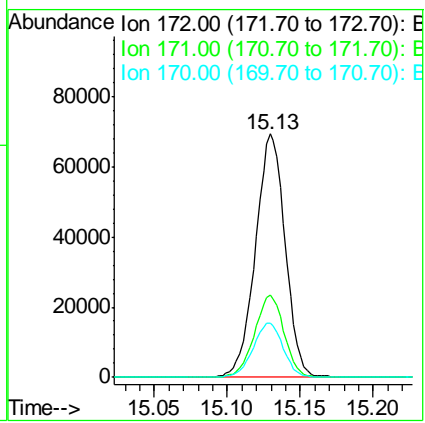


#15
 2-Fluorobiphenyl
 Concen: 1.95 ng
 RT: 15.13 min Scan# 2426
 Delta R.T. -0.00 min
 Lab File: BE089414.D
 Acq: 29 Jan 2015 13:58

Tgt Ion	Resp	Lower	Upper
172	98192		
172	100		
171	33.7	26.6	39.8
170	22.2	17.1	25.7

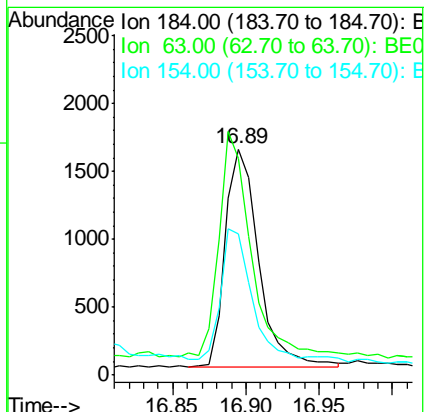
Instrument :
 BNA_E
 LabSampleId :
 SSTDICC002

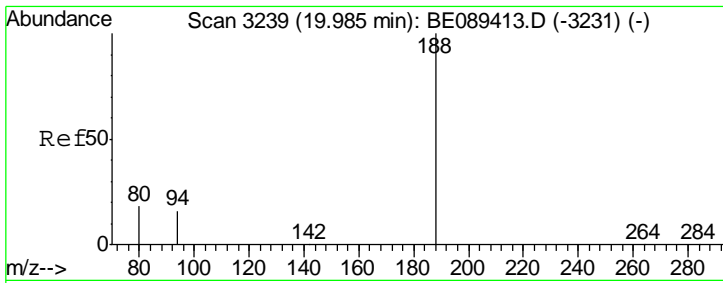
Manual Integrations
 APPROVED
 apatel
 1/30/2015 5:55:37 PM



#16
 2,4-Dinitrophenol
 Concen: 2.25 ng
 RT: 16.89 min Scan# 2789
 Delta R.T. 0.00 min
 Lab File: BE089414.D
 Acq: 29 Jan 2015 13:58

Tgt Ion	Resp	Lower	Upper
184	2536		
184	100		
63	96.1	79.0	118.4
154	62.7	55.8	83.6



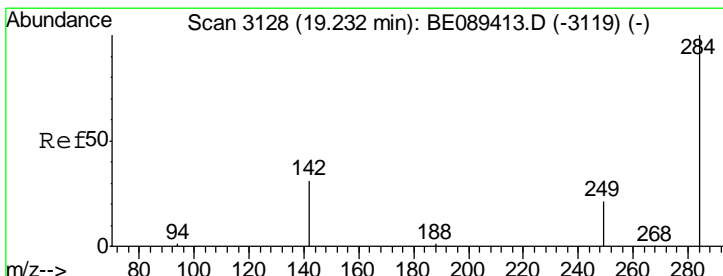
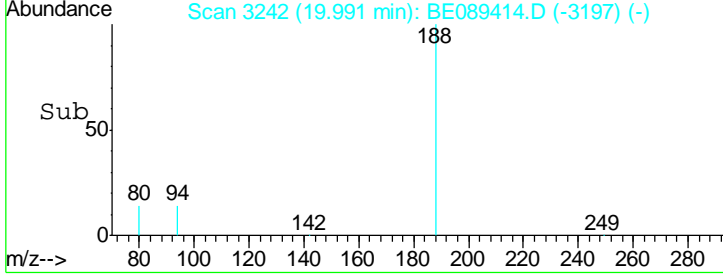
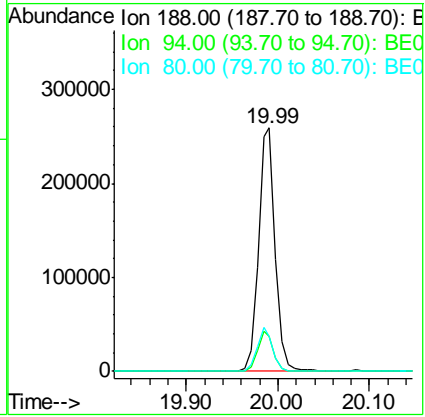
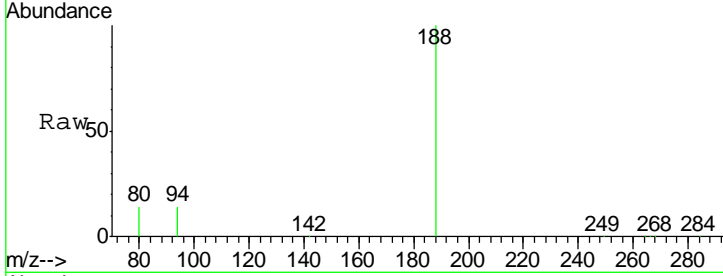


#17
 Phenanthrene-d10
 Concen: 5.00 ng
 RT: 19.99 min Scan# 3242
 Delta R.T. 0.01 min
 Lab File: BE089414.D
 Acq: 29 Jan 2015 13:58

Instrument :
 BNA_E
LabSampleId :
 SSTDICC002

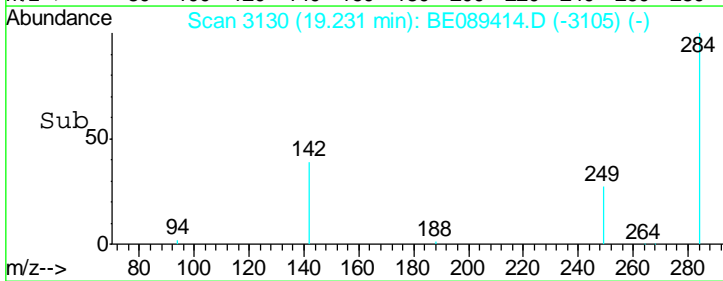
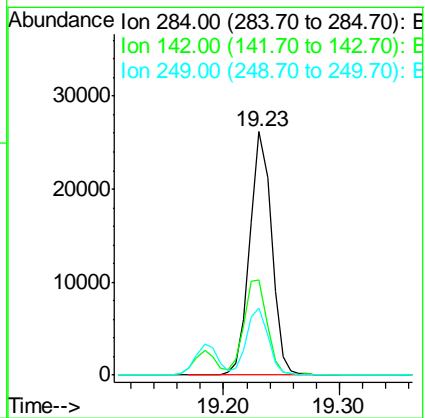
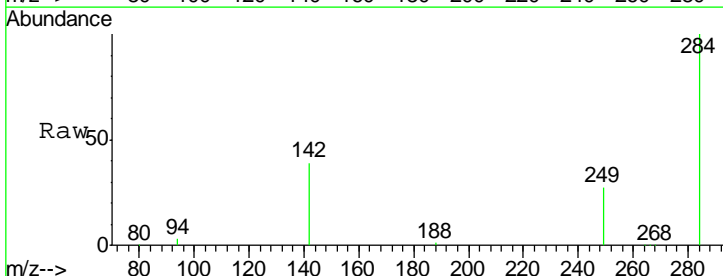
Tgt Ion	Resp	Lower	Upper
188	331190		
94	14.2	13.0	19.6
80	14.3	14.2	21.4

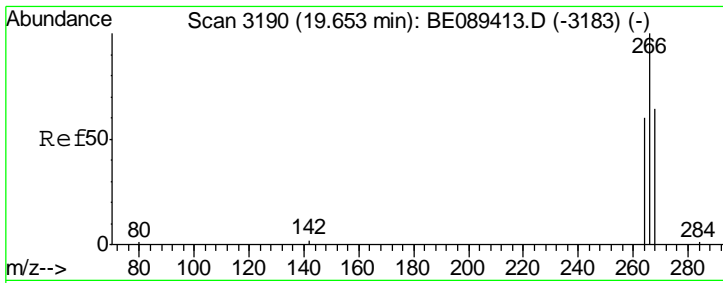
Manual Integrations
APPROVED
 apatel
 1/30/2015 5:55:37 PM



#18
 Hexachlorobenzene
 Concen: 2.18 ng
 RT: 19.23 min Scan# 3130
 Delta R.T. -0.00 min
 Lab File: BE089414.D
 Acq: 29 Jan 2015 13:58

Tgt Ion	Resp	Lower	Upper
284	33607		
142	39.1	28.3	42.5
249	27.4	19.9	29.9



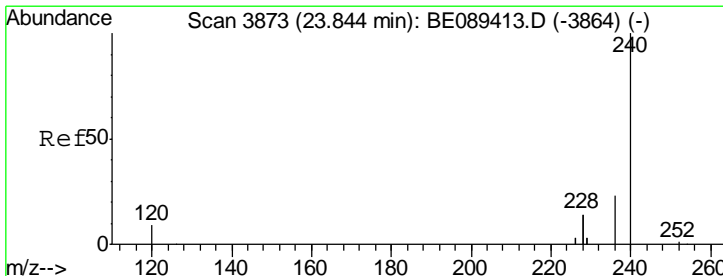
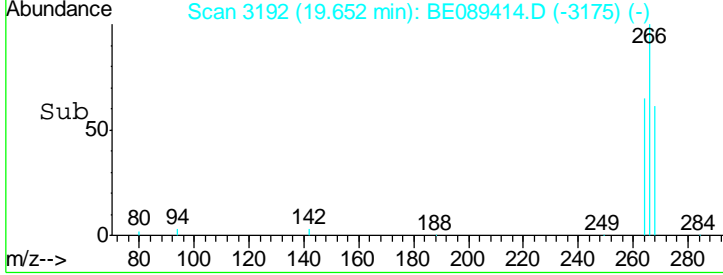
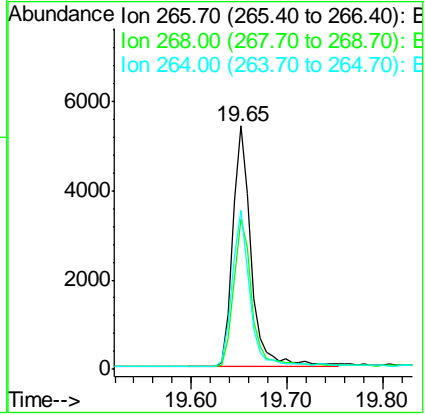
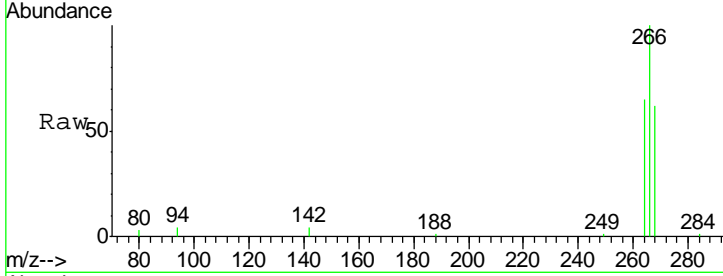


#19
 Pentachlorophenol
 Concen: 2.48 ng
 RT: 19.65 min Scan# 3192
 Delta R.T. -0.00 min
 Lab File: BE089414.D
 Acq: 29 Jan 2015 13:58

Instrument :
 BNA_E
 LabSampleId :
 SSTDICC002

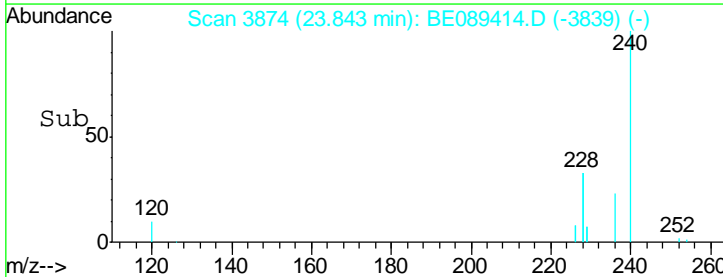
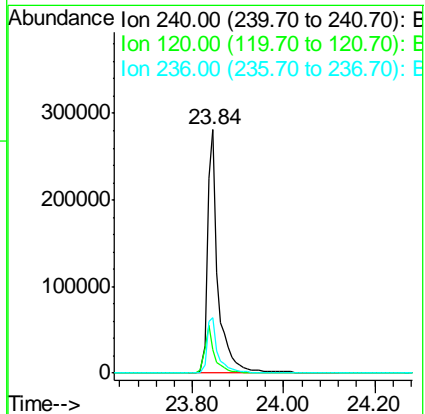
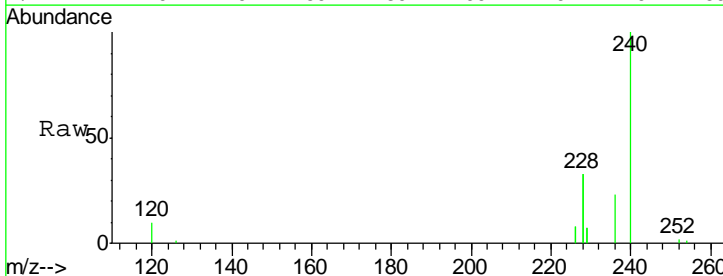
Tgt Ion	Ratio	Lower	Upper
266	100		
268	61.7	51.9	77.9
264	65.1	48.5	72.7

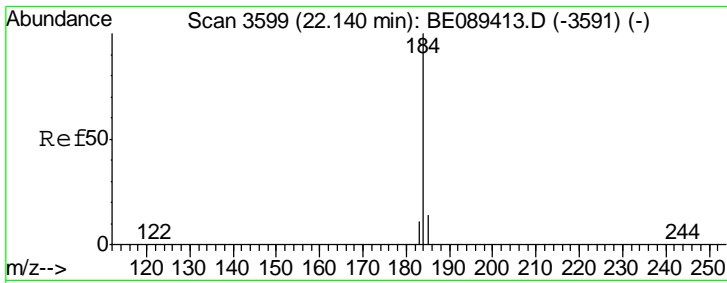
Manual Integrations
APPROVED
 apatel
 1/30/2015 5:55:37 PM



#20
 Chrysene-d12
 Concen: 5.00 ng
 RT: 23.84 min Scan# 3874
 Delta R.T. -0.00 min
 Lab File: BE089414.D
 Acq: 29 Jan 2015 13:58

Tgt Ion	Ratio	Lower	Upper
240	100		
120	9.6	6.9	10.3
236	22.8	18.2	27.2





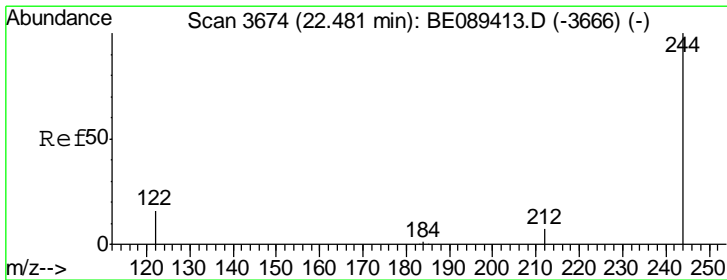
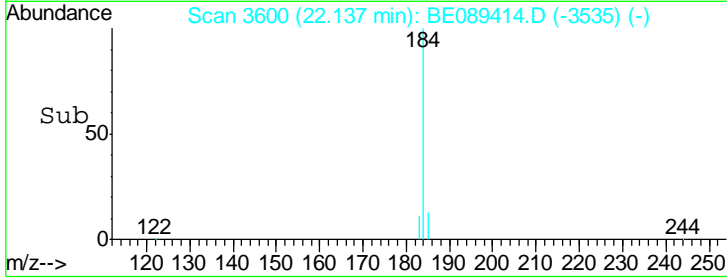
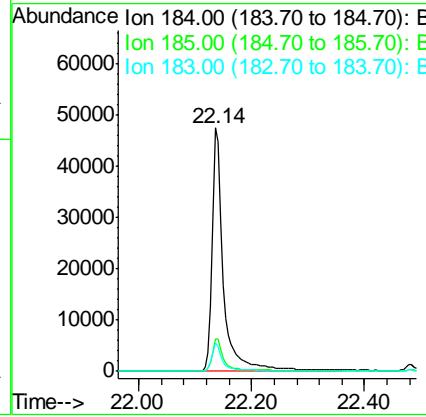
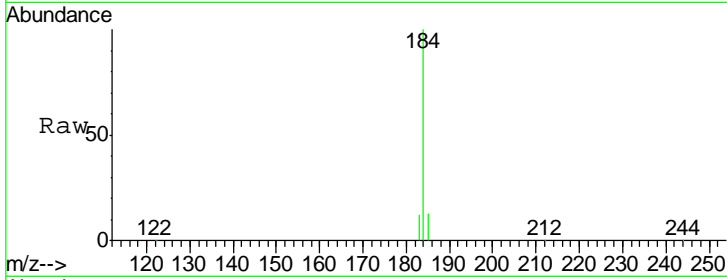
#21
Benzidine
Concen: 1.83 ng
RT: 22.14 min Scan# 3600
Delta R.T. -0.00 min
Lab File: BE089414.D
Acq: 29 Jan 2015 13:58

Instrument :
BNA_E
LabSampleId :
SSTDIC002

Tgt Ion: 184 Resp: 66864

Ion	Ratio	Lower	Upper
184	100		
185	13.2	11.0	16.6
183	11.6	8.6	13.0

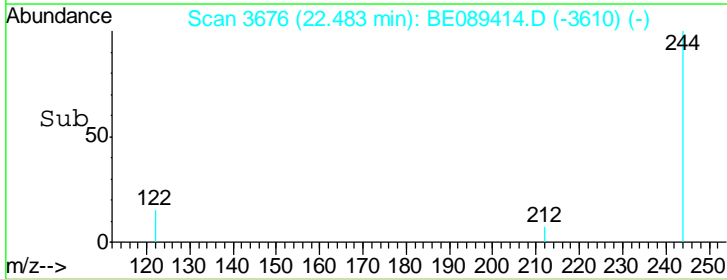
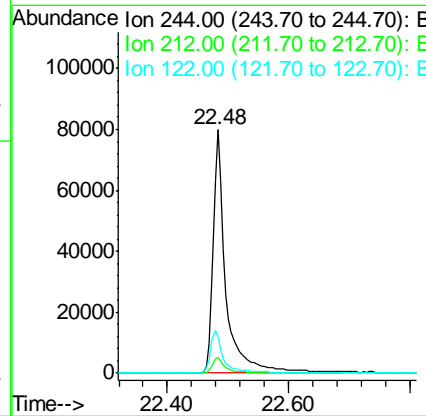
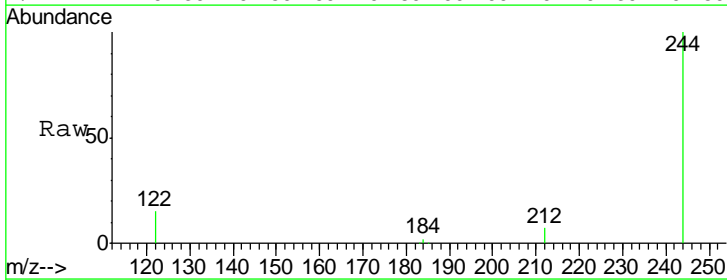
Manual Integrations
APPROVED
apatel
1/30/2015 5:55:37 PM

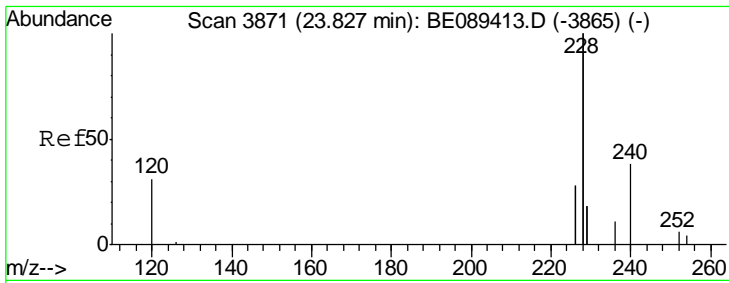


#22
Terphenyl-d14
Concen: 2.34 ng
RT: 22.48 min Scan# 3676
Delta R.T. 0.00 min
Lab File: BE089414.D
Acq: 29 Jan 2015 13:58

Tgt Ion: 244 Resp: 116752

Ion	Ratio	Lower	Upper
244	100		
212	6.7	5.4	8.0
122	15.1	13.2	19.8



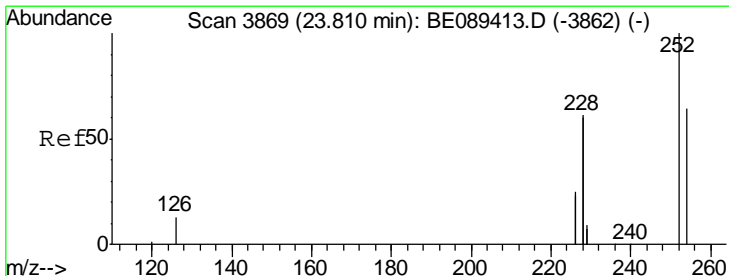
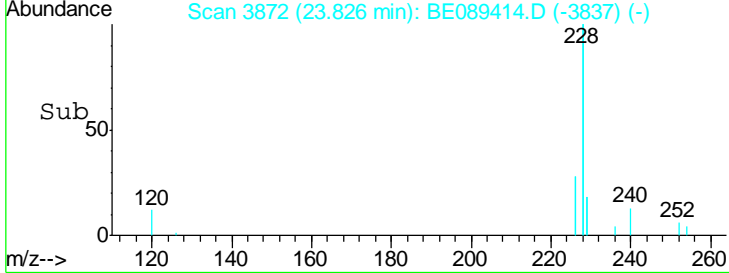
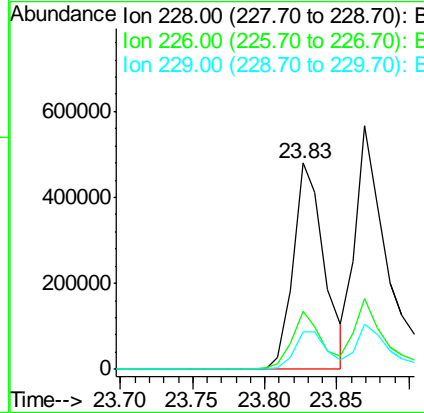
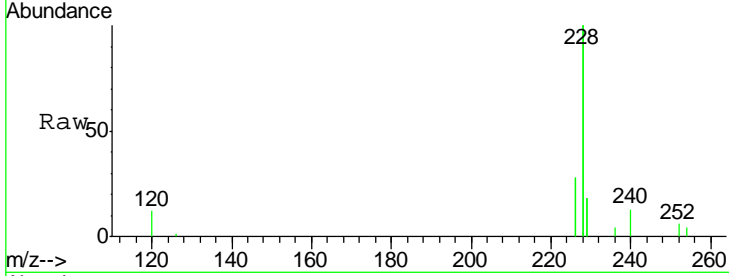


#23
 Benzo(a)anthracene
 Concen: 1.76 ng
 RT: 23.83 min Scan# 3872
 Delta R.T. -0.00 min
 Lab File: BE089414.D
 Acq: 29 Jan 2015 13:58

Instrument :
 BNA_E
 LabSampleId :
 SSTDICC002

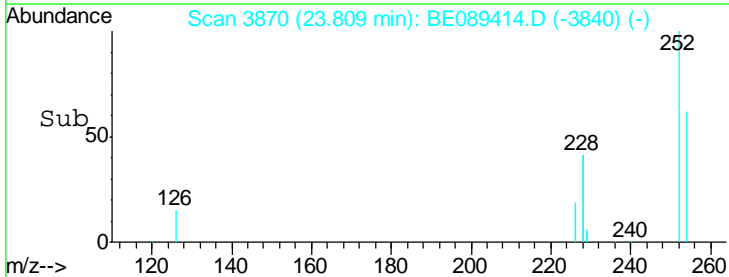
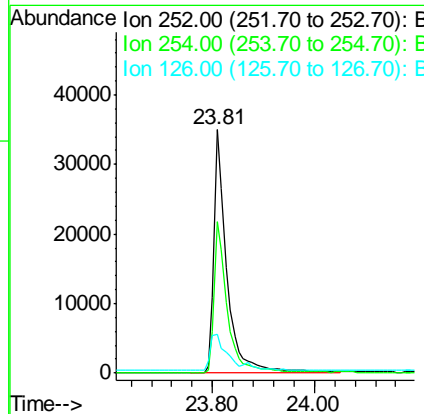
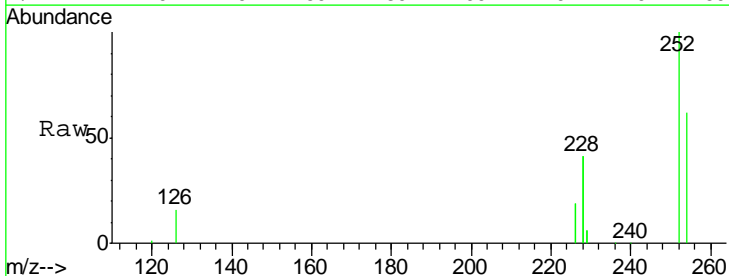
Tgt Ion	Resp	Lower	Upper
228	100		
226	27.9	22.6	33.8
229	18.2	14.5	21.7

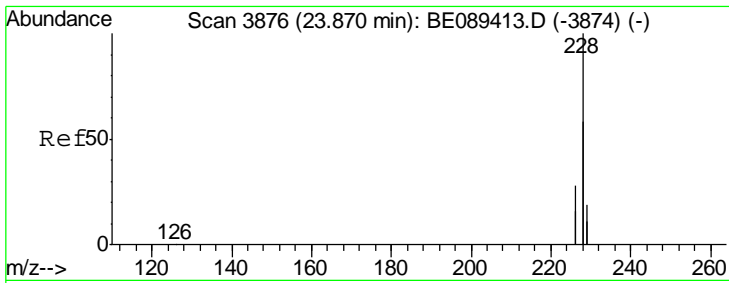
Manual Integrations
APPROVED
 apatel
 1/30/2015 5:55:37 PM



#24
 3,3'-Dichlorobenzidine
 Concen: 1.88 ng
 RT: 23.81 min Scan# 3870
 Delta R.T. -0.00 min
 Lab File: BE089414.D
 Acq: 29 Jan 2015 13:58

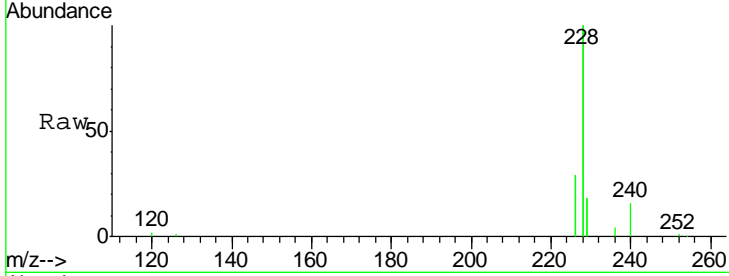
Tgt Ion	Resp	Lower	Upper
252	100		
254	62.3	51.1	76.7
126	15.7	11.5	17.3





#25
 Chrysene
 Concen: 1.96 ng
 RT: 23.87 min Scan# 3877
 Delta R.T. -0.00 min
 Lab File: BE089414.D
 Acq: 29 Jan 2015 13:58

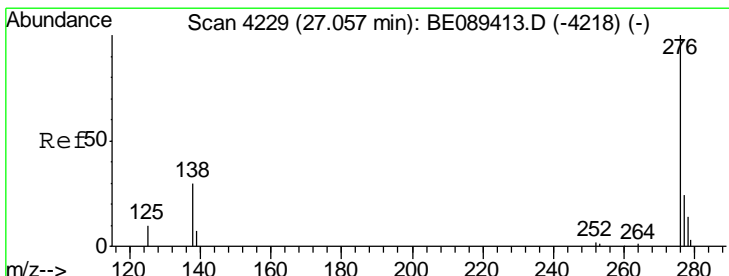
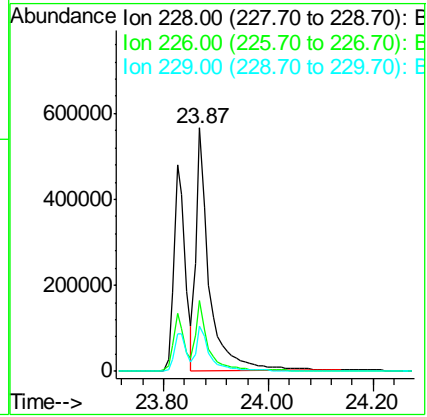
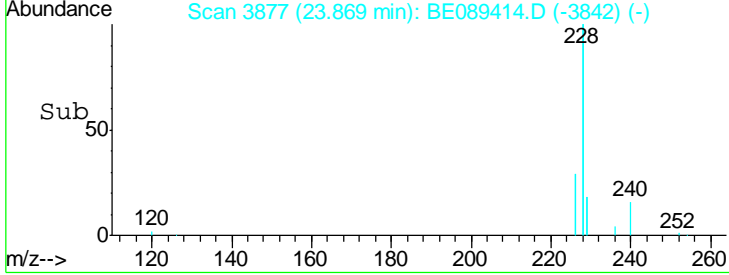
Instrument :
 BNA_E
 LabSampleId :
 SSTDICC002



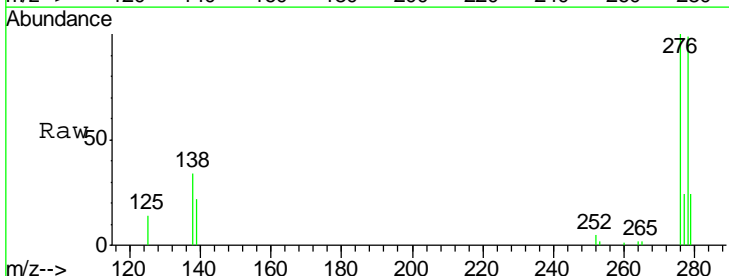
Tgt Ion: 228 Resp: 991110

Ion	Ratio	Lower	Upper
228	100		
226	29.0	22.6	33.8
229	18.5	15.5	23.3

Manual Integrations
 APPROVED
 apatel
 1/30/2015 5:55:37 PM

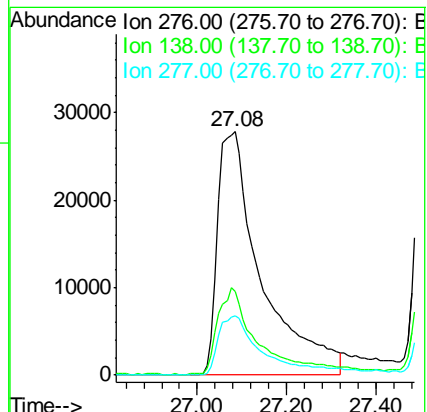
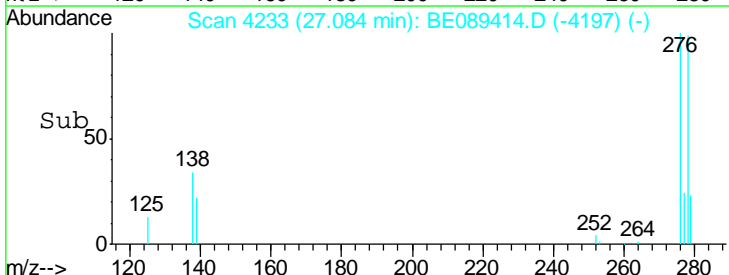


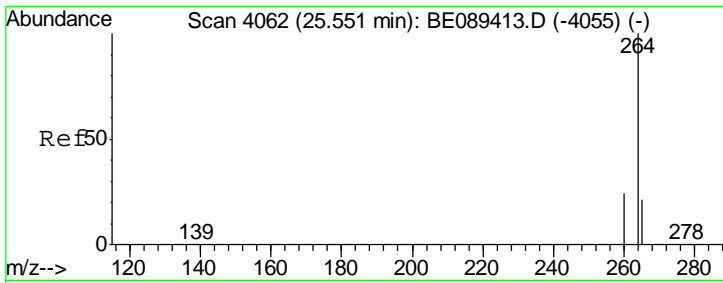
#26
 Indeno(1,2,3-cd)pyrene
 Concen: 1.60 ng
 RT: 27.08 min Scan# 4233
 Delta R.T. 0.03 min
 Lab File: BE089414.D
 Acq: 29 Jan 2015 13:58



Tgt Ion: 276 Resp: 187338

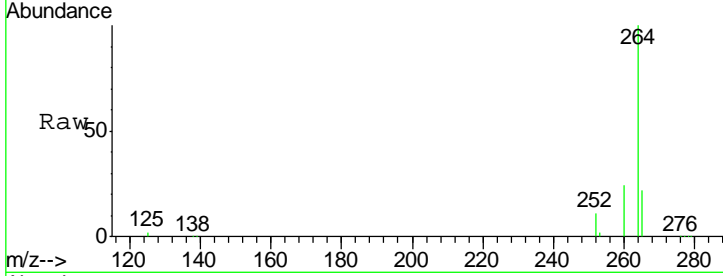
Ion	Ratio	Lower	Upper
276	100		
138	32.4	0.0	0.0#
277	24.1	0.0	0.0#





#27
 Perylene-d12
 Concen: 5.00 ng
 RT: 25.55 min Scan# 4063
 Delta R.T. 0.00 min
 Lab File: BE089414.D
 Acq: 29 Jan 2015 13:58

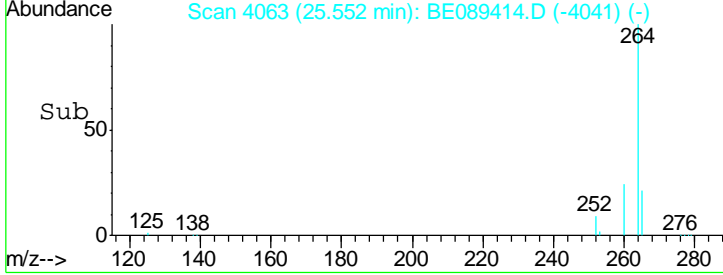
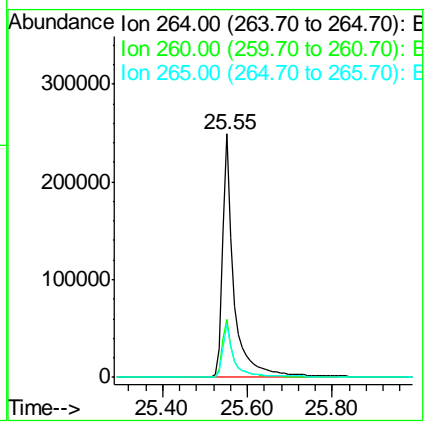
Instrument :
 BNA_E
LabSampleId :
 SSTDICC002



Tgt Ion: 264 Resp: 463111

Ion	Ratio	Lower	Upper
264	100		
260	23.7	19.4	29.0
265	21.6	17.1	25.7

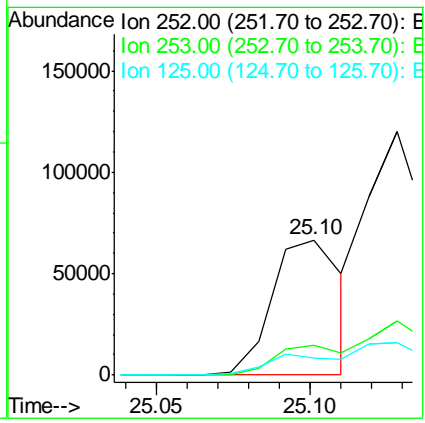
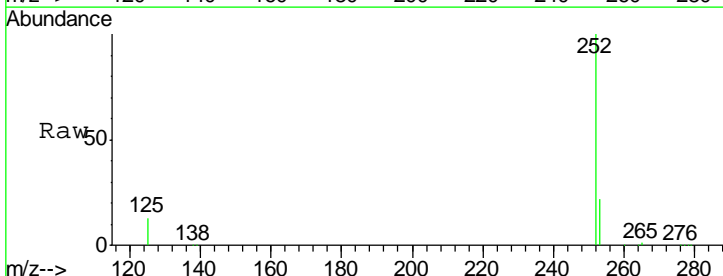
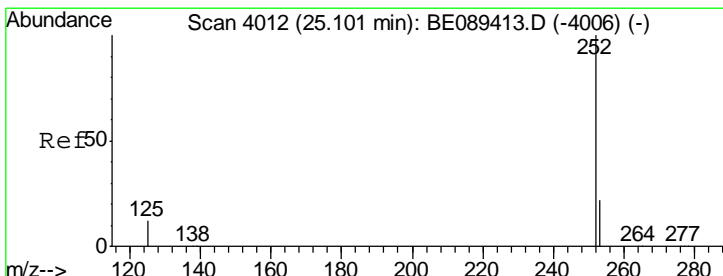
Manual Integrations
APPROVED
 apatel
 1/30/2015 5:55:37 PM

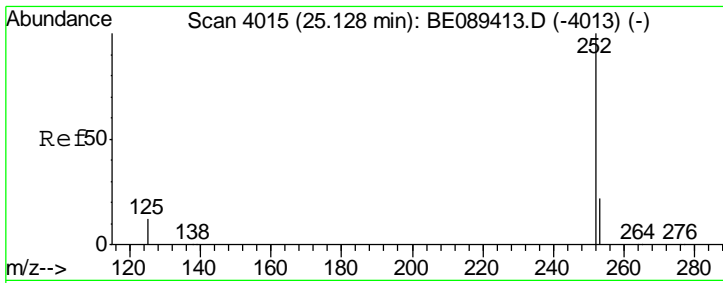


#28
 Benzo(b)fluoranthene
 Concen: 1.82 ng m
 RT: 25.10 min Scan# 4013
 Delta R.T. 0.00 min
 Lab File: BE089414.D
 Acq: 29 Jan 2015 13:58

Tgt Ion: 252 Resp: 106604

Ion	Ratio	Lower	Upper
252	100		
253	22.3	17.6	26.4
125	13.0	10.5	15.7



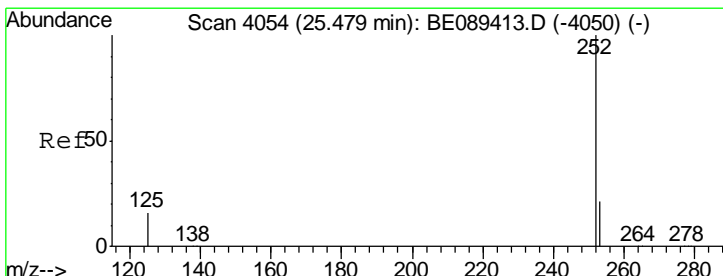
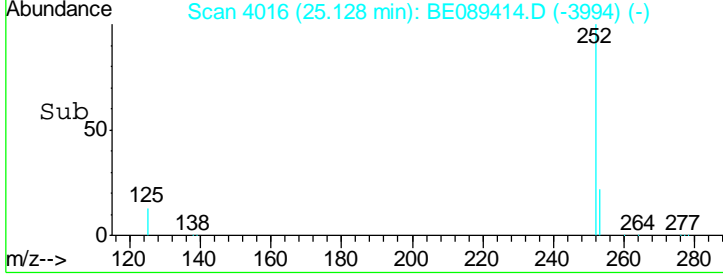
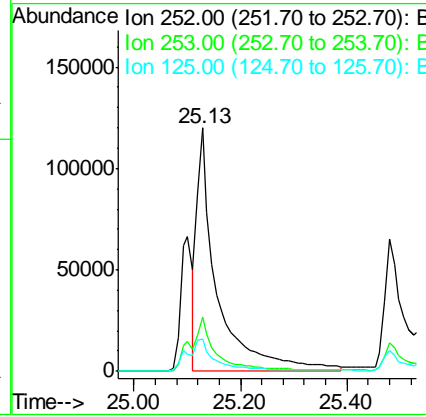
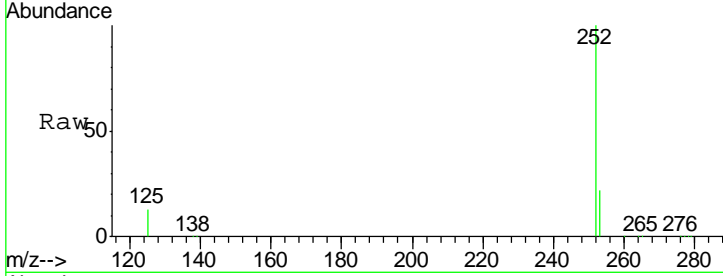


#29
 Benzo(k)fluoranthene
 Concen: 2.41 ng m
 RT: 25.13 min Scan# 4016
 Delta R.T. 0.00 min
 Lab File: BE089414.D
 Acq: 29 Jan 2015 13:58

Instrument :
 BNA_E
 LabSampleId :
 SSTDICC002

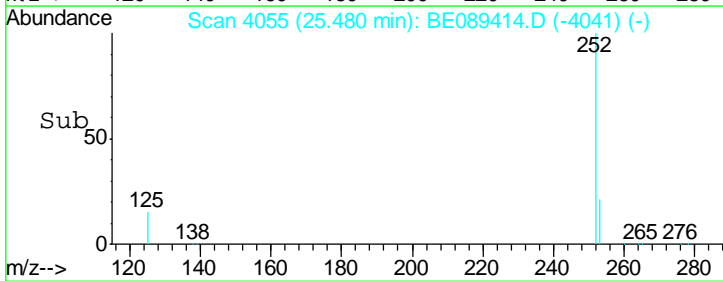
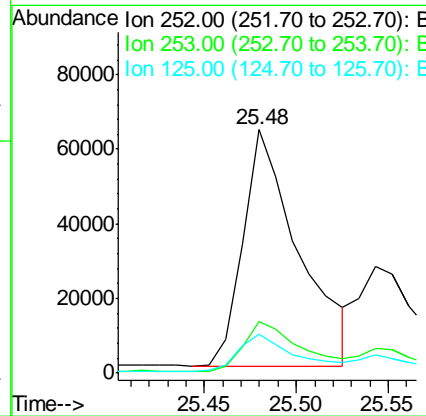
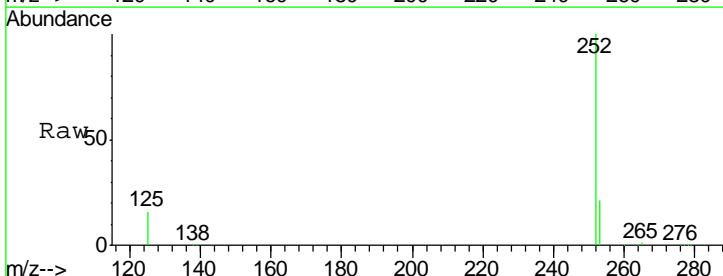
Tgt Ion	Resp	Lower	Upper
252	320489		
253	22.2	17.4	26.2
125	13.1	11.0	16.6

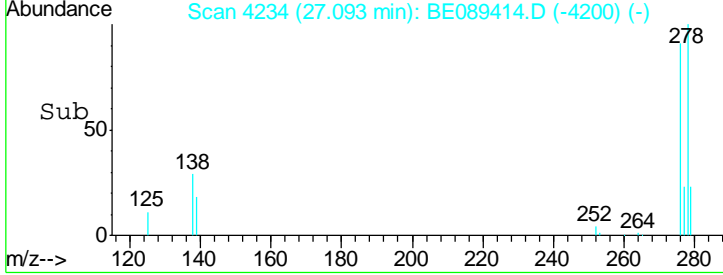
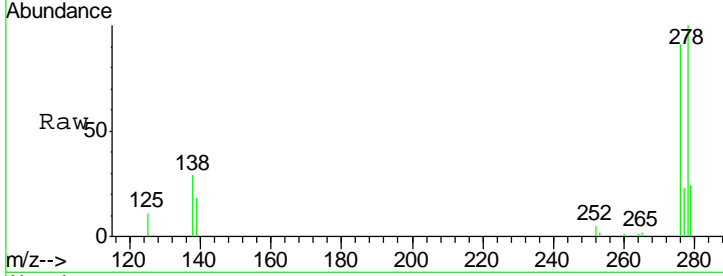
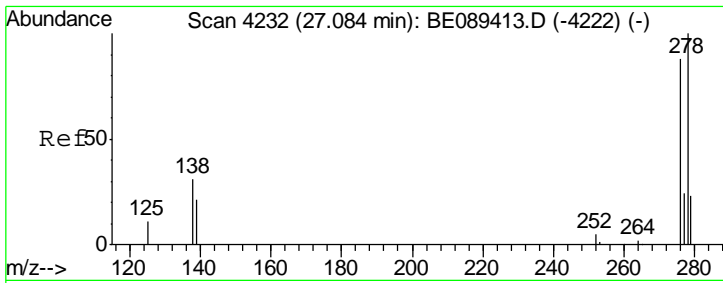
Manual Integrations
 APPROVED
 apatel
 1/30/2015 5:55:37 PM



#30
 Benzo(a)pyrene
 Concen: 1.88 ng
 RT: 25.48 min Scan# 4055
 Delta R.T. 0.00 min
 Lab File: BE089414.D
 Acq: 29 Jan 2015 13:58

Tgt Ion	Resp	Lower	Upper
252	133813		
253	21.2	17.3	25.9
125	15.7	13.0	19.6





#31
 Dibenzo(a,h)anthracene
 Concen: 1.91 ng
 RT: 27.09 min Scan# 4234
 Delta R.T. 0.01 min
 Lab File: BE089414.D
 Acq: 29 Jan 2015 13:58

Tgt Ion	Ion	Resp	Lower	Upper
278	100	138856		
139	17.9		17.2	25.8
279	23.6		19.2	28.8

Instrument :
 BNA_E
 LabSampleId :
 SSTDICC002

Manual Integrations
APPROVED
 apatel
 1/30/2015 5:55:37 PM

