

Data Path : Z:\HPCHEM1\BNA E\DATA\BE013118\  
 Data File : BE095327.D  
 Acq On : 31 Jan 2018 21:09  
 Operator : SJ/JU  
 Sample : J1245-04  
 Misc :  
 ALS Vial : 7 Sample Multiplier: 1

**Instrument :**  
 BNA\_E  
**ClientSampled :**  
 F6B65

**Manual Integrations**  
**APPROVED**  
 Sohil  
 2/1/2018 5:58:32 PM

Quant Time: Feb 01 04:28:13 2018  
 Quant Method : Z:\HPCHEM1\BNA E\METHODS\SOM-EPA-SIM-BE012618.M  
 Quant Title : ASP BNA STANDARDS FOR 5 POINT CALIBRATION  
 QLast Update : Thu Feb 01 04:05:22 2018  
 Response via : Initial Calibration

Internal Standards	R.T.	QIon	Response	Conc	Units	Dev(Min)
1) 1,4-Dichlorobenzene-d4	8.44	152	2192	0.40	ng/ul	0.00
2) Naphthalene-d8	11.26	136	7042	0.40	ng/ul	0.00
6) Acenaphthene-d10	15.02	164	4704	0.40	ng/ul	0.00
10) Phenanthrene-d10	17.71	188	9469m	0.40	ng/ul	0.00
16) Chrysene-d12	21.80	240	9567	0.40	ng/ul	0.00
20) Perylene-d12	24.44	264	8989m	0.40	ng/ul	0.00
<b>System Monitoring Compounds</b>						
4) 2-Methylnaphthalene-d10	12.81	152	3982	0.35	ng/ul	0.00
14) Fluoranthene-d10	19.70	212	10578	0.29	ng/ul	0.00
<b>Target Compounds</b>						
					Ovalue	
3) Naphthalene	11.31	128	1840	0.093	ng/ul#	88
5) 2-Methylnaphthalene	12.89	142	1622	0.123	ng/ul	99
8) Acenaphthene	15.08	153	1370	0.078	ng/ul#	93
9) Fluorene	16.03	166	1431m	0.079	ng/ul	
11) Pentachlorophenol	17.36	266	10650	5.807	ng/ul	95
12) Phenanthrene	17.75	178	6827	0.214	ng/ul#	88
13) Anthracene	17.85	178	1109	0.038	ng/ul#	84
15) Fluoranthene	19.72	202	2130	0.052	ng/ul	85
17) Pyrene	20.08	202	1260	0.039	ng/ul	93

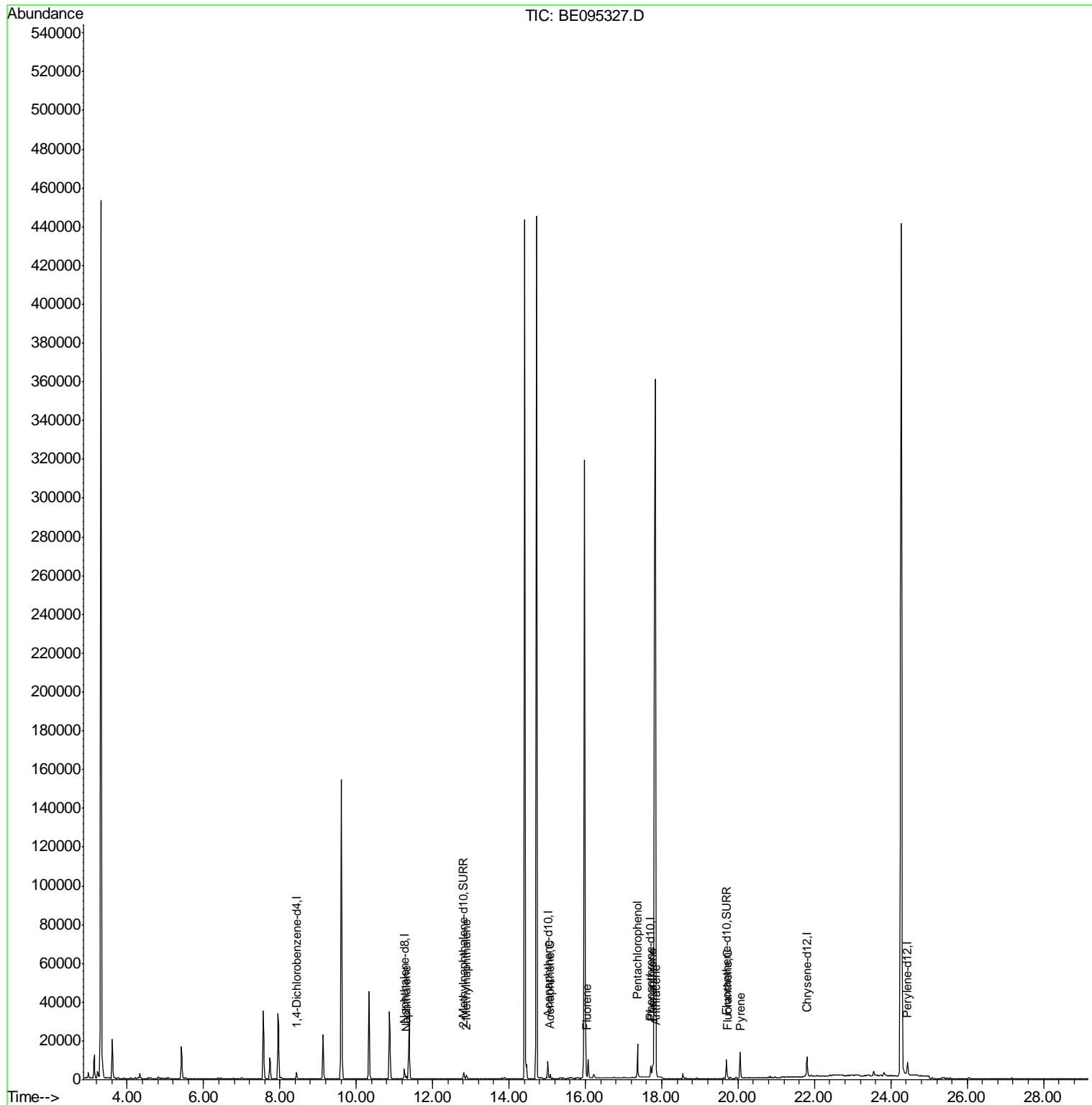
(#) = qualifier out of range (m) = manual integration (+) = signals summed

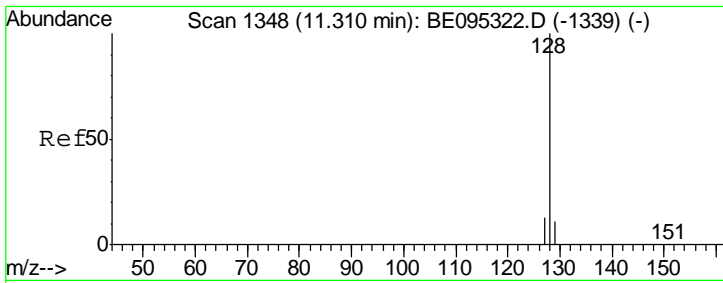
Data Path : Z:\HPCHEM1\BNA E\DATA\BE013118\  
 Data File : BE095327.D  
 Acq On : 31 Jan 2018 21:09  
 Operator : SJ/JU  
 Sample : J1245-04  
 Misc :  
 ALS Vial : 7 Sample Multiplier: 1

Instrument :  
 BNA\_E  
 ClientSampleId :  
 F6B65

Manual Integrations  
 APPROVED  
 Sohil  
 2/1/2018 5:58:32 PM

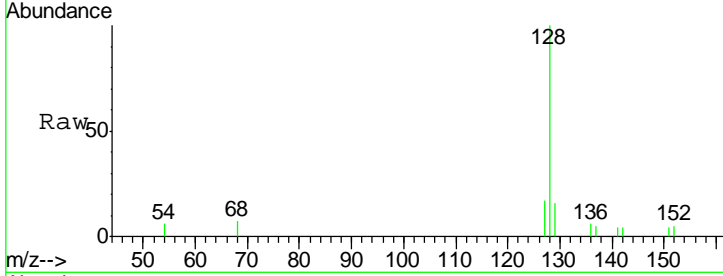
Quant Time: Feb 01 04:28:13 2018  
 Quant Method : Z:\HPCHEM1\BNA E\METHODS\SOM-EPA-SIM-BE012618.M  
 Quant Title : ASP BNA STANDARDS FOR 5 POINT CALIBRATION  
 QLast Update : Thu Feb 01 04:05:22 2018  
 Response via : Initial Calibration





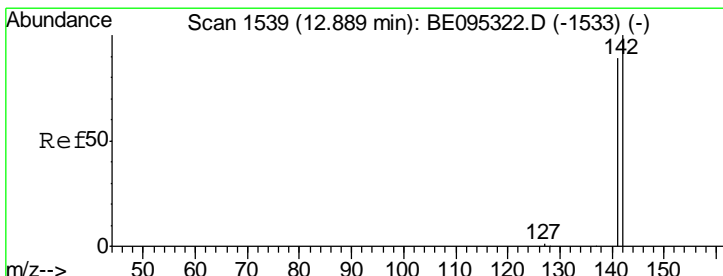
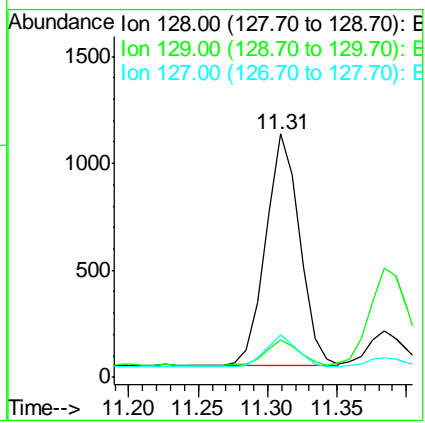
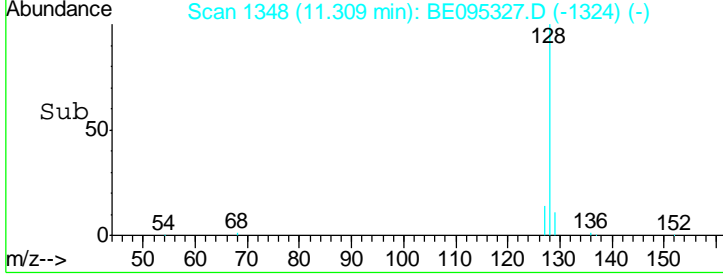
#3  
 Naphthalene  
 Concen: 0.093 ng/ul  
 RT: 11.31 min Scan# 1348  
 Delta R.T. -0.00 min  
 Lab File: BE095327.D  
 Acq: 31 Jan 2018 21:09

**Instrument :**  
 BNA\_E  
**ClientSampled :**  
 F6B65

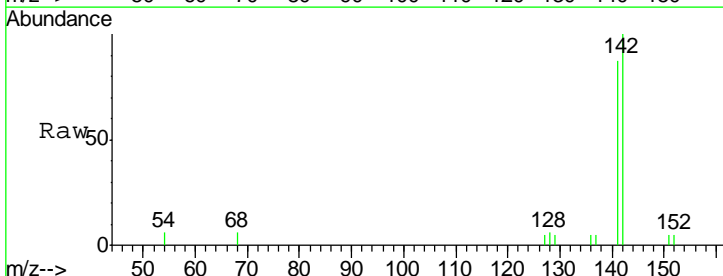


Tgt Ion	Resp	Lower	Upper
128	1840		
129	15.6	11.3	16.9
127	17.3	4.0	6.0

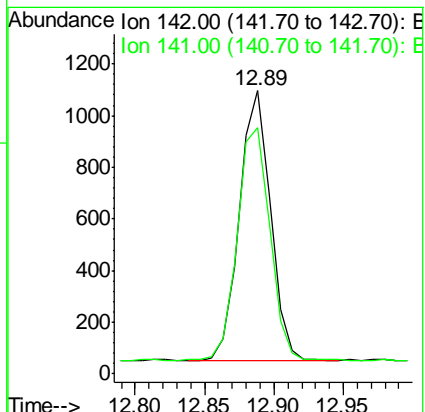
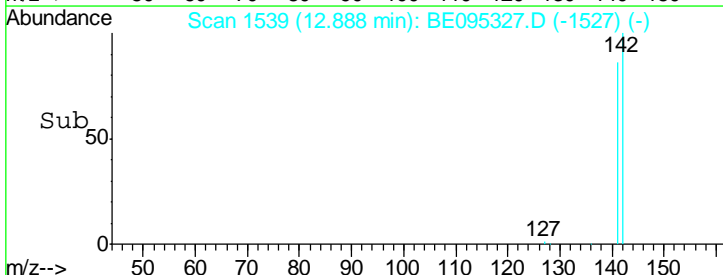
**Manual Integrations**  
**APPROVED**  
 Sohil  
 2/1/2018 5:58:32 PM

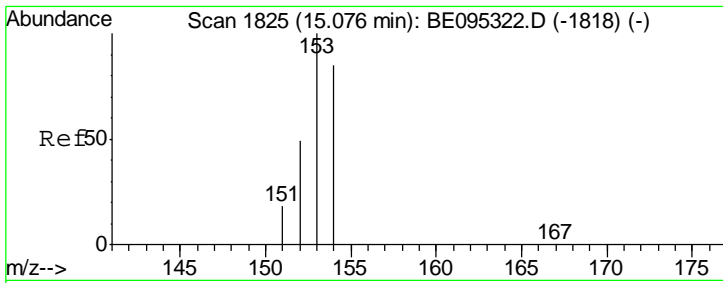


#5  
 2-Methylnaphthalene  
 Concen: 0.123 ng/ul  
 RT: 12.89 min Scan# 1539  
 Delta R.T. -0.00 min  
 Lab File: BE095327.D  
 Acq: 31 Jan 2018 21:09



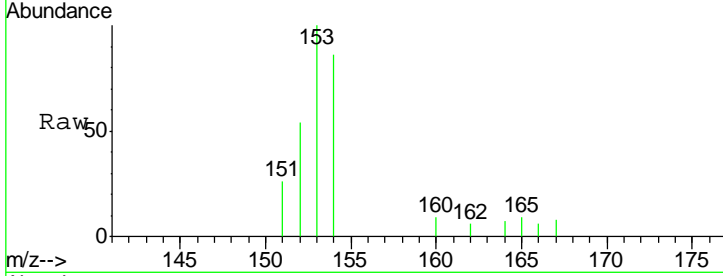
Tgt Ion	Resp	Lower	Upper
142	1622		
141	91.2	72.6	108.8





#8  
 Acenaphthene  
 Concen: 0.078 ng/ul  
 RT: 15.08 min Scan# 1825  
 Delta R.T. -0.00 min  
 Lab File: BE095327.D  
 Acq: 31 Jan 2018 21:09

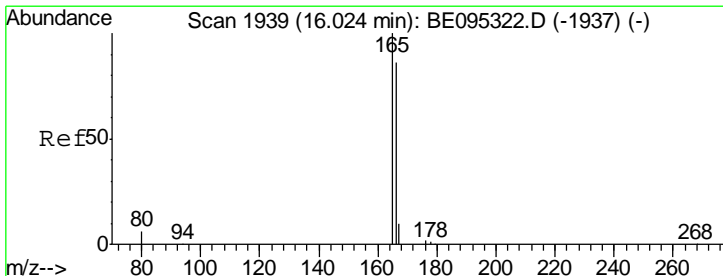
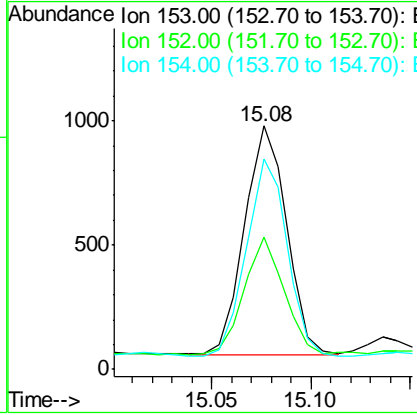
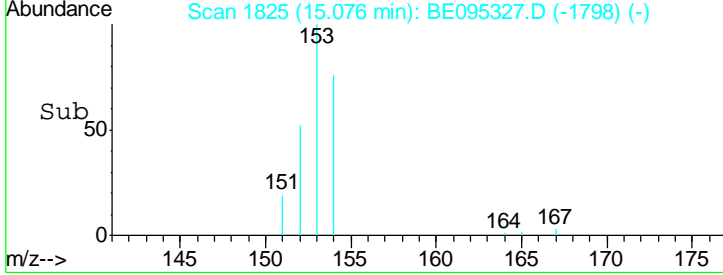
**Instrument :**  
 BNA\_E  
**ClientSampled :**  
 F6B65



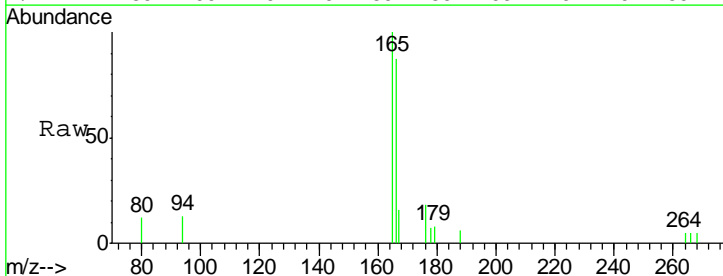
Tgt Ion: 153 Resp: 1370

Ion	Ratio	Lower	Upper
153	100		
152	54.3	36.0	54.0#
154	86.3	72.0	108.0

**Manual Integrations**  
**APPROVED**  
 Sohil  
 2/1/2018 5:58:32 PM

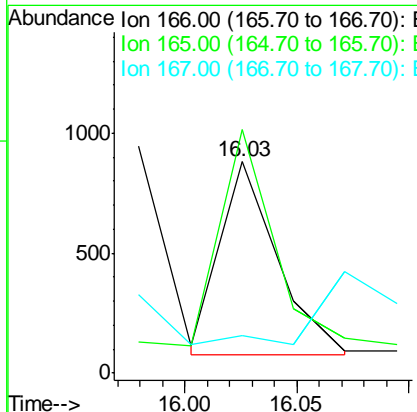
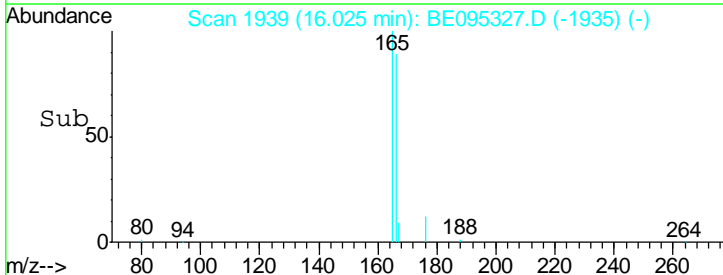


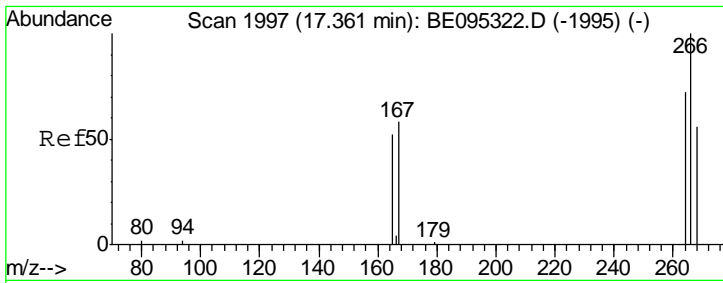
#9  
 Fluorene  
 Concen: 0.079 ng/ul m  
 RT: 16.03 min Scan# 1939  
 Delta R.T. 0.00 min  
 Lab File: BE095327.D  
 Acq: 31 Jan 2018 21:09



Tgt Ion: 166 Resp: 1431

Ion	Ratio	Lower	Upper
166	100		
165	115.2	73.4	110.2#
167	18.1	14.6	22.0





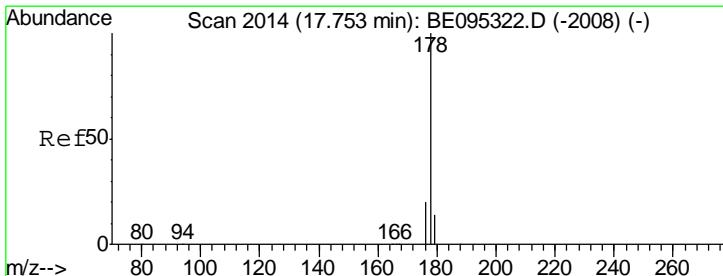
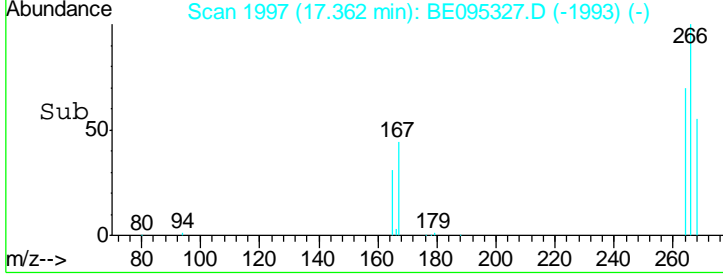
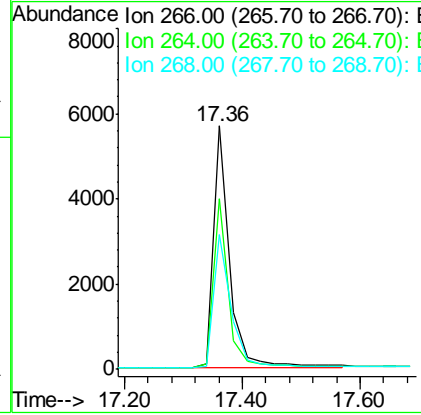
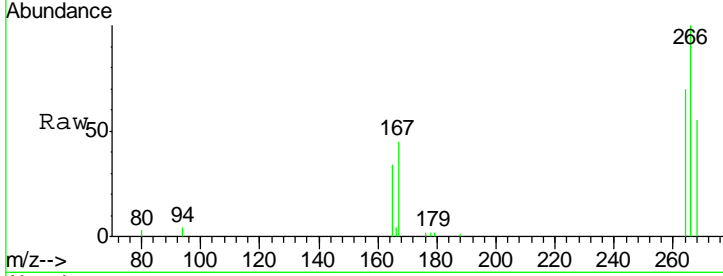
#11  
 Pentachlorophenol  
 Concen: 5.807 ng/ul  
 RT: 17.36 min Scan# 1997  
 Delta R.T. 0.00 min  
 Lab File: BE095327.D  
 Acq: 31 Jan 2018 21:09

Instrument :  
 BNA\_E  
 ClientSampled :  
 F6B65

Tgt Ion	Resp	Lower	Upper
266	10650		
264	65.7	47.9	71.9
268	59.8	49.8	74.8

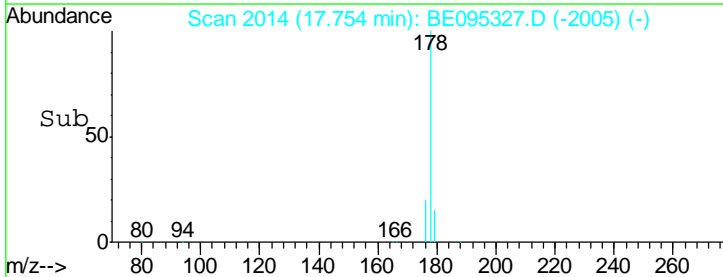
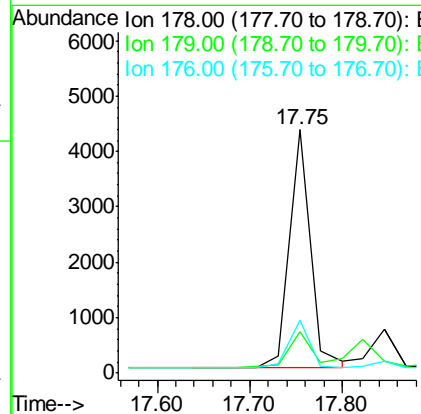
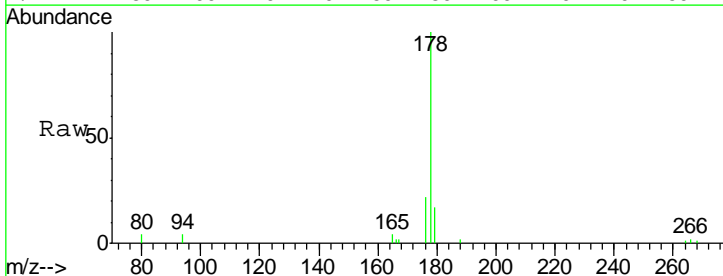
Manual Integrations  
 APPROVED

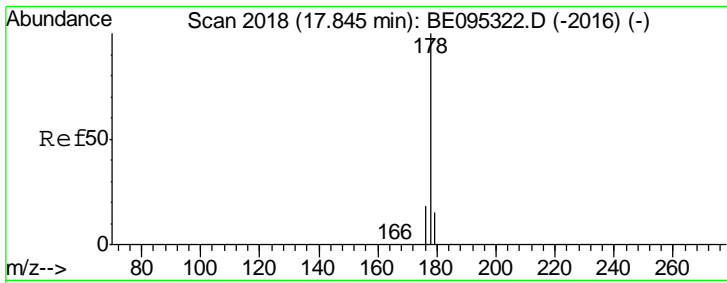
Sohil  
 2/1/2018 5:58:32 PM



#12  
 Phenanthrene  
 Concen: 0.214 ng/ul  
 RT: 17.75 min Scan# 2014  
 Delta R.T. 0.00 min  
 Lab File: BE095327.D  
 Acq: 31 Jan 2018 21:09

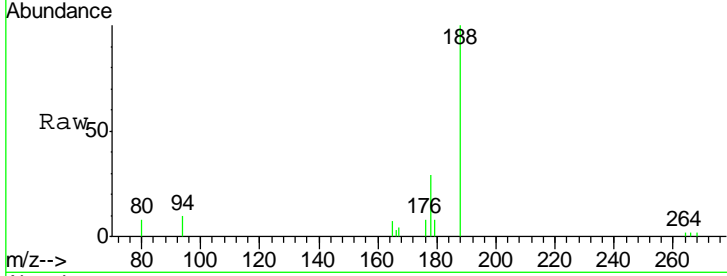
Tgt Ion	Resp	Lower	Upper
178	6827		
179	17.1	18.4	27.6#
176	21.6	13.6	20.4#





#13  
 Anthracene  
 Concen: 0.038 ng/ul  
 RT: 17.85 min Scan# 2018  
 Delta R.T. 0.00 min  
 Lab File: BE095327.D  
 Acq: 31 Jan 2018 21:09

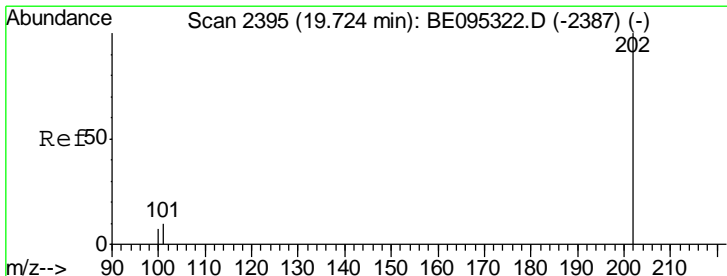
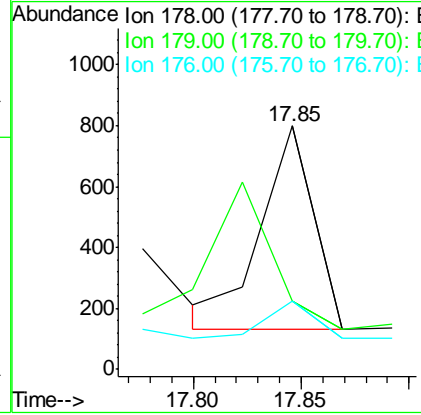
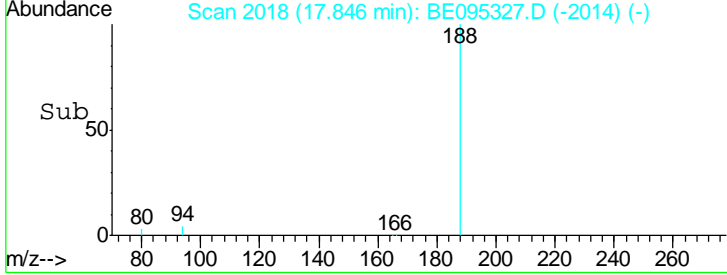
Instrument : BNA\_E  
 ClientSampled : F6B65



Tgt Ion	Resp	Lower	Upper
178	1109		
178	100		
179	28.0	18.1	27.1#
176	28.2	14.7	22.1#

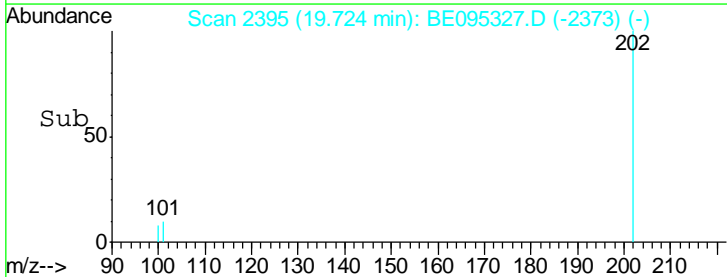
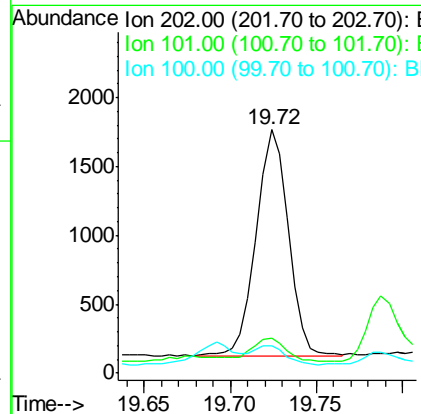
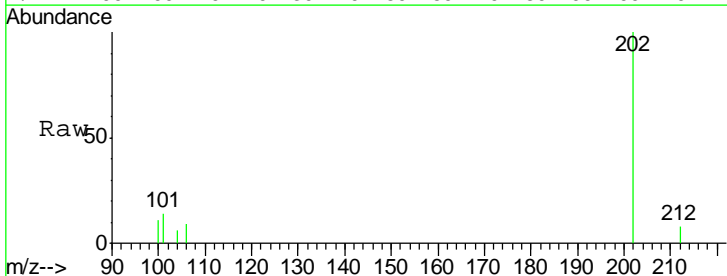
Manual Integrations  
 APPROVED

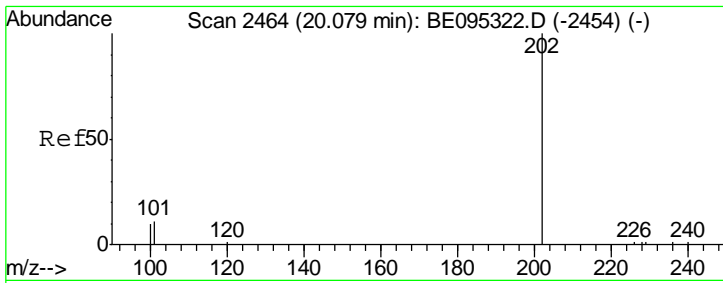
Sohil  
 2/1/2018 5:58:32 PM



#15  
 Fluoranthene  
 Concen: 0.052 ng/ul  
 RT: 19.72 min Scan# 2395  
 Delta R.T. -0.00 min  
 Lab File: BE095327.D  
 Acq: 31 Jan 2018 21:09

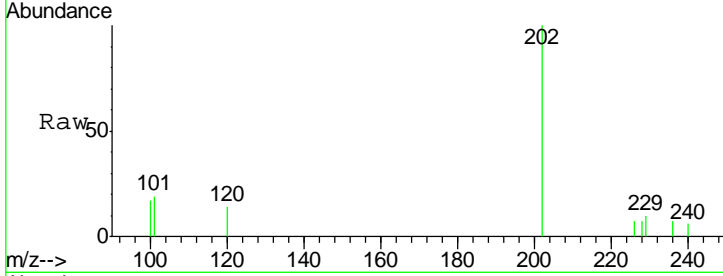
Tgt Ion	Resp	Lower	Upper
202	2130		
202	100		
101	14.4	0.0	30.3
100	11.4	0.0	39.5





#17  
 Pyrene  
 Concen: 0.039 ng/ul  
 RT: 20.08 min Scan# 2464  
 Delta R.T. -0.00 min  
 Lab File: BE095327.D  
 Acq: 31 Jan 2018 21:09

**Instrument :**  
 BNA\_E  
**ClientSampled :**  
 F6B65



Tot Ion: 202 Resp: 1260

Ion	Ratio	Lower	Upper
202	100		
101	18.5	18.2	27.4
100	17.4	15.6	23.4

**Manual Integrations**  
**APPROVED**  
 Sohil  
 2/1/2018 5:58:32 PM

