

Data Path : Z:\HPCHEM1\BNA\_E\DATA\BE020215\  
 Data File : BE089460.D  
 Acq On : 2 Feb 2015 17:49  
 Operator : TP/IZ  
 Sample : SSTDICCO.5  
 Misc :  
 ALS Vial : 7 Sample Multiplier: 1

Instrument :  
 BNA\_E  
 LabSampleId :  
 SSTDICCO.5

Quant Time: Feb 03 03:23:43 2015  
 Quant Method : Z:\HPCHEM1\BNA\_E\METHODS\SIM-BE020215.M  
 Quant Title : ASP BNA STANDARDS FOR 5 POINT CALIBRATION  
 QLast Update : Tue Feb 03 03:06:34 2015  
 Response via : Initial Calibration

Internal Standards	R.T.	QIon	Response	Conc	Units	Dev(Min)
1) 1,4-Dichlorobenzene-d4	9.58	152	35079	5.00	ng	0.00
7) Naphthalene-d8	12.49	136	126319	5.00	ng	0.00
13) Acenaphthene-d10	16.68	164	45506	5.00	ng	0.00
17) Phenanthrene-d10	19.99	188	77529	5.00	ng	0.00
20) Chrysene-d12	23.84	240	109410	5.00	ng	0.00
27) Perylene-d12	25.56	264	135189	5.00	ng	0.00

## System Monitoring Compounds

3) 2-Fluorophenol	6.75	112	5700	0.47	ng	0.00
4) Phenol-d6	8.87	99	6748	0.46	ng	0.00
8) Nitrobenzene-d5	10.85	82	4444	0.44	ng	0.00
14) 2,4,6-Tribromophenol	18.59	330	478	0.31	ng	0.00
15) 2-Fluorobiphenyl	15.13	172	6314	0.50	ng	0.00
22) Terphenyl-d14	22.49	244	5673	0.41	ng	0.00

## Target Compounds

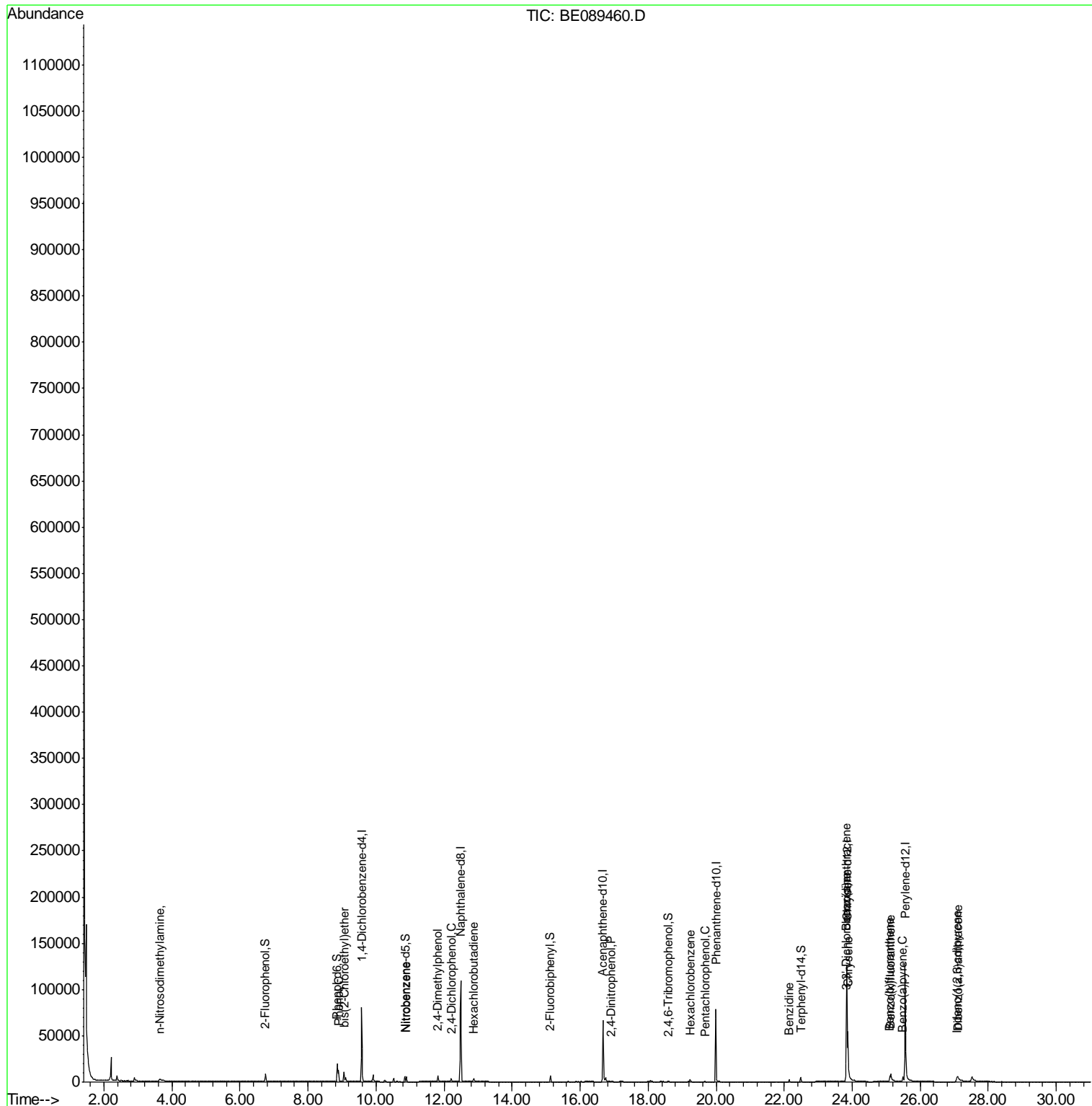
Target Compounds	R.T.	QIon	Response	Conc	Units	Qvalue
2) n-Nitrosodimethylamine	3.64	42	2499	0.40	ng	# 51
5) Phenol	8.90	94	7156	0.45	ng	92
6) bis(2-Chloroethyl)ether	9.06	93	5349	0.45	ng	# 96
9) Nitrobenzene	10.89	77	4964	0.42	ng	98
10) 2,4-Dimethylphenol	11.83	122	3596	0.43	ng	99
11) 2,4-Dichlorophenol	12.21	162	2596	0.42	ng	98
12) Hexachlorobutadiene	12.87	225	1995	0.48	ng	99
16) 2,4-Dinitrophenol	16.92	184	59	0.10	ng	# 59
18) Hexachlorobenzene	19.23	284	2068	0.50	ng	97
19) Pentachlorophenol	19.67	266	145	0.20	ng	# 80
21) Benzidine	22.14	184	3080	0.41	ng	96
23) Benzo(a)anthracene	23.83	228	39081	0.46	ng	98
24) 3,3'-Dichlorobenzidine	23.82	252	3262	0.51	ng	# 95
25) Chrysene	23.87	228	52934	0.48	ng	98
26) Indeno(1,2,3-cd)pyrene	27.07	276	13821m	0.78	ng	
28) Benzo(b)fluoranthene	25.10	252	5980m	0.49	ng	
29) Benzo(k)fluoranthene	25.13	252	17179m	0.47	ng	
30) Benzo(a)pyrene	25.49	252	7975	0.49	ng	# 93
31) Dibenzo(a,h)anthracene	27.10	278	9596	0.60	ng	93

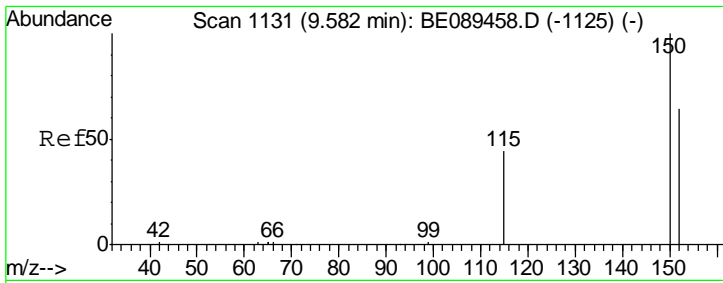
(#) = qualifier out of range (m) = manual integration (+) = signals summed

Data Path : Z:\HPCHEM1\BNA\_E\DATA\BE020215\  
 Data File : BE089460.D  
 Acq On : 2 Feb 2015 17:49  
 Operator : TP/IZ  
 Sample : SSTDICC0.5  
 Misc :  
 ALS Vial : 7 Sample Multiplier: 1

Instrument :  
 BNA\_E  
 LabSampleId :  
 SSTDICC0.5

Quant Time: Feb 03 03:23:43 2015  
 Quant Method : Z:\HPCHEM1\BNA\_E\METHODS\SIM-BE020215.M  
 Quant Title : ASP BNA STANDARDS FOR 5 POINT CALIBRATION  
 QLast Update : Tue Feb 03 03:06:34 2015  
 Response via : Initial Calibration

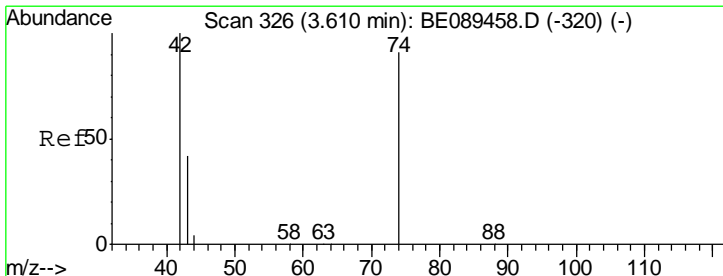
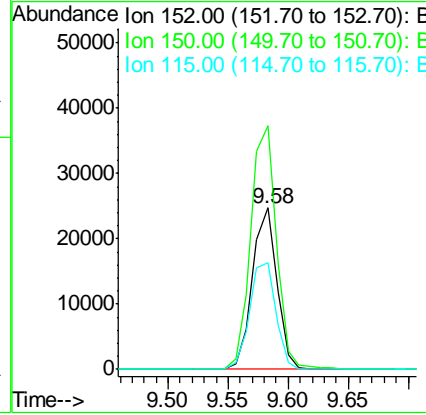
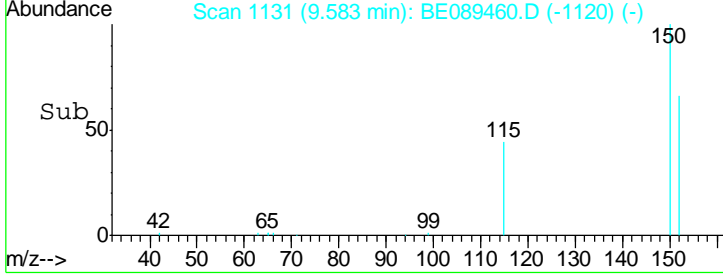
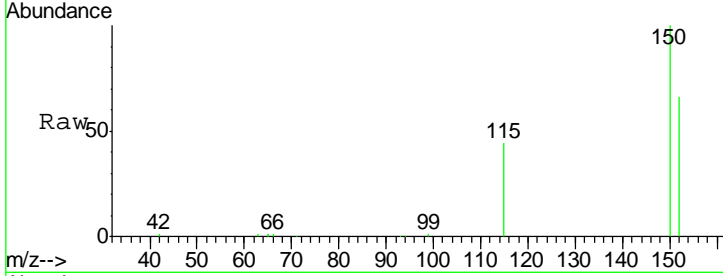




#1  
 1,4-Dichlorobenzene-d4  
 Concen: 5.00 ng  
 RT: 9.58 min Scan# 1131  
 Delta R.T. 0.00 min  
 Lab File: BE089460.D  
 Acq: 2 Feb 2015 17:49

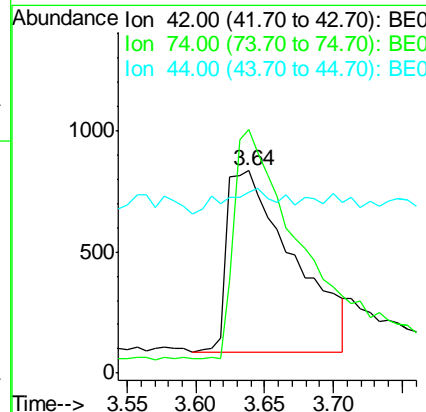
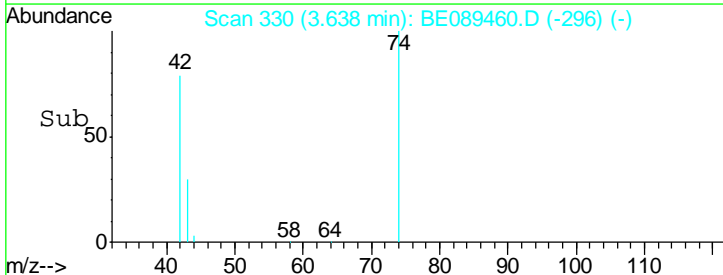
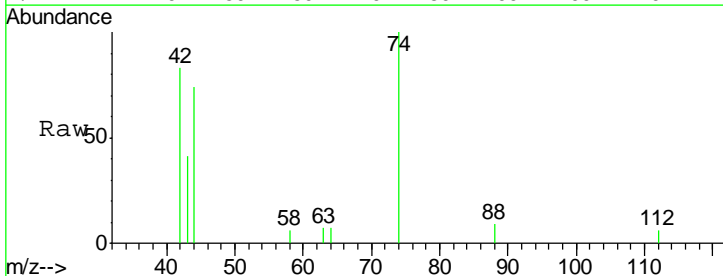
**Instrument :**  
 BNA\_E  
**LabSampleId :**  
 SSTDICC0.5

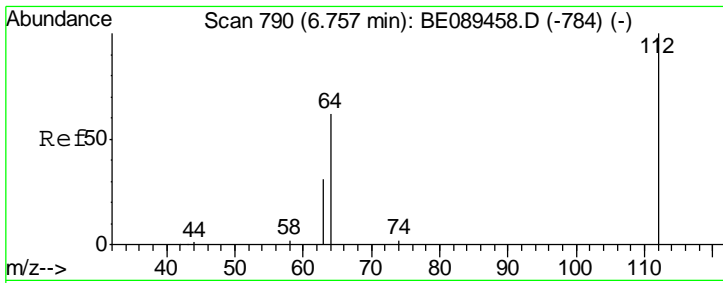
Tgt Ion	Resp	Lower	Upper
152	35079		
150	150.9	124.6	186.8
115	66.2	55.4	83.0



#2  
 n-Nitrosodimethylamine  
 Concen: 0.40 ng  
 RT: 3.64 min Scan# 330  
 Delta R.T. 0.03 min  
 Lab File: BE089460.D  
 Acq: 2 Feb 2015 17:49

Tgt Ion	Resp	Lower	Upper
42	2499		
74	120.2	72.1	108.1#
44	89.4	28.0	42.0#

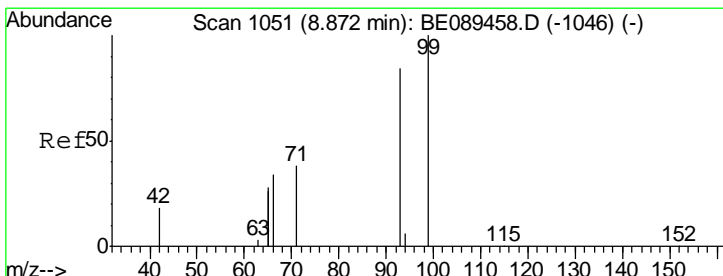
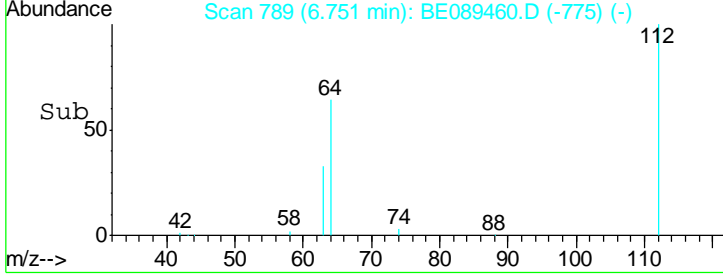
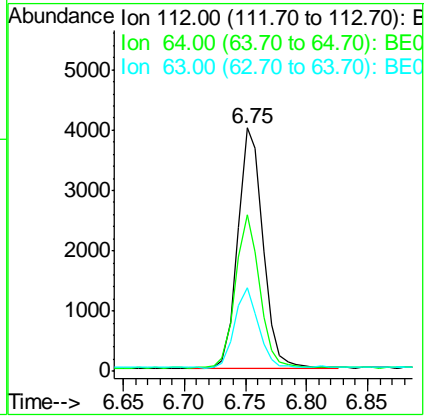
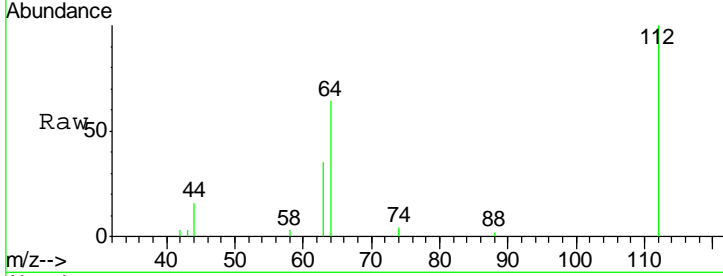




#3  
 2-Fluorophenol  
 Concen: 0.47 ng  
 RT: 6.75 min Scan# 789  
 Delta R.T. -0.01 min  
 Lab File: BE089460.D  
 Acq: 2 Feb 2015 17:49

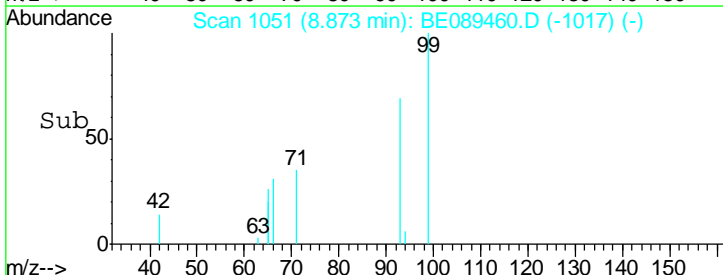
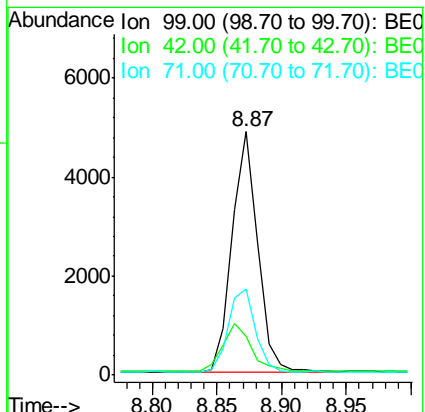
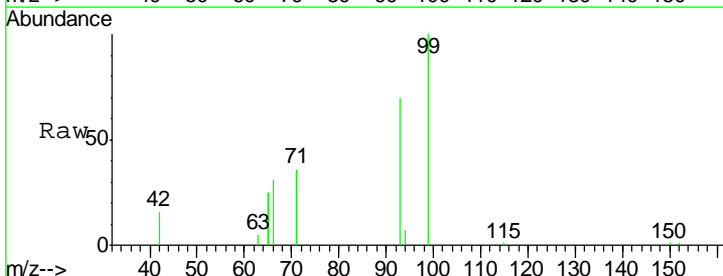
**Instrument :**  
 BNA\_E  
**LabSampleId :**  
 SSTDICC0.5

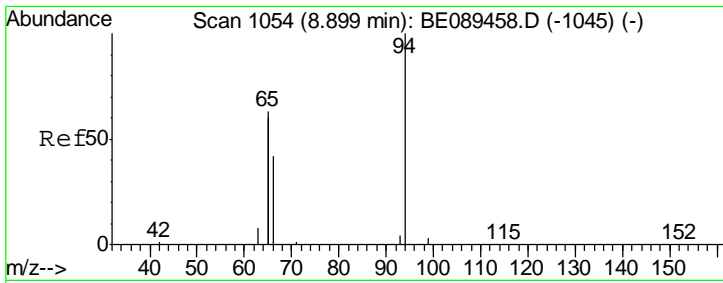
Tgt Ion	Resp	Lower	Upper
112	100		
64	64.2	49.8	74.8
63	34.6	24.9	37.3



#4  
 Phenol-d6  
 Concen: 0.46 ng  
 RT: 8.87 min Scan# 1051  
 Delta R.T. 0.00 min  
 Lab File: BE089460.D  
 Acq: 2 Feb 2015 17:49

Tgt Ion	Resp	Lower	Upper
99	100		
42	15.8	15.0	22.4
71	35.5	30.6	46.0

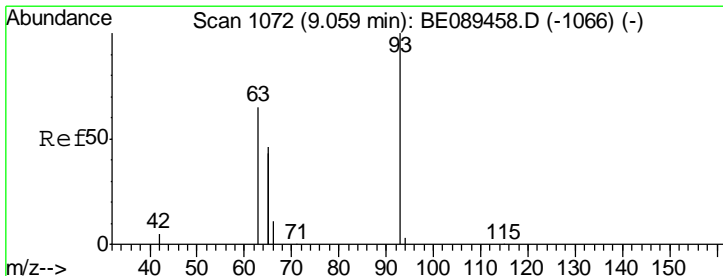
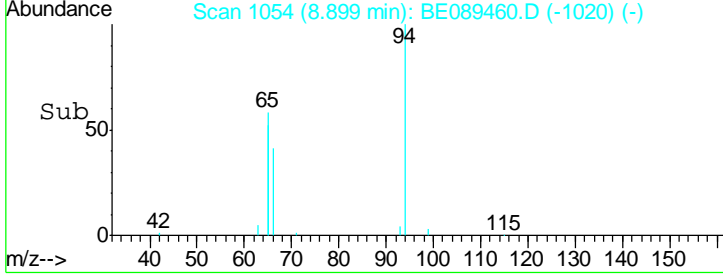
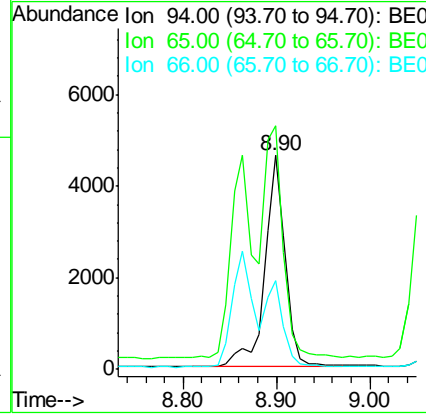
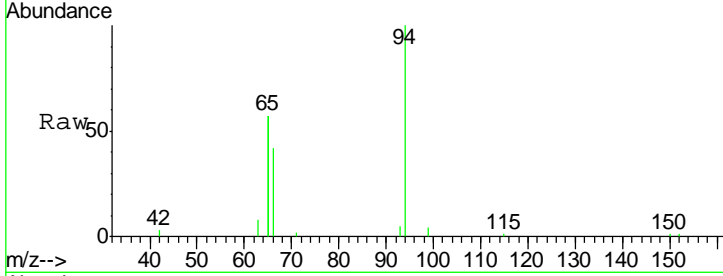




#5  
 Phenol  
 Concen: 0.45 ng  
 RT: 8.90 min Scan# 1054  
 Delta R.T. 0.00 min  
 Lab File: BE089460.D  
 Acq: 2 Feb 2015 17:49

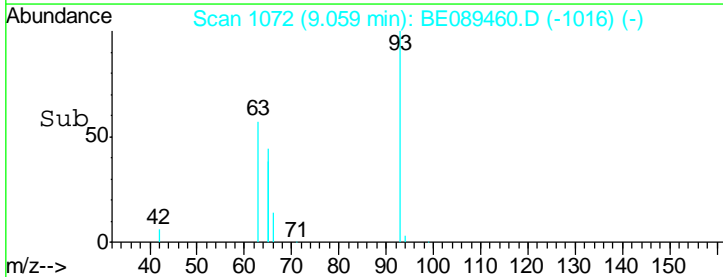
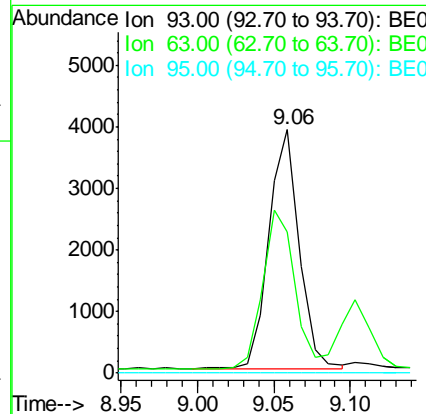
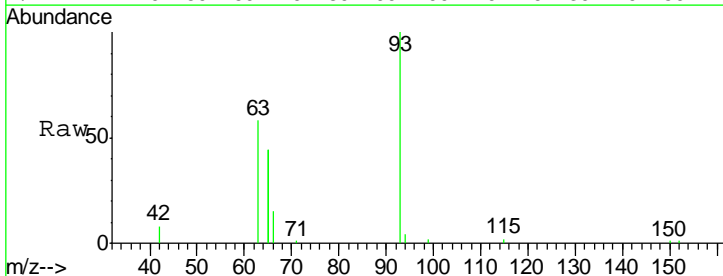
Instrument :  
 BNA\_E  
 LabSampleId :  
 SSTDICC0.5

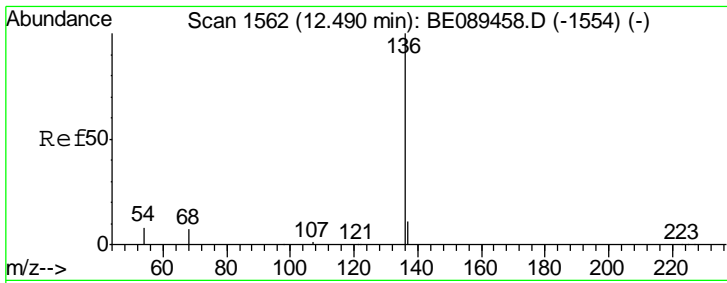
Tgt Ion	Resp	Lower	Upper
94	7156		
65	113.9	105.0	145.0
66	41.6	22.4	62.4



#6  
 bis(2-Chloroethyl)ether  
 Concen: 0.45 ng  
 RT: 9.06 min Scan# 1072  
 Delta R.T. 0.00 min  
 Lab File: BE089460.D  
 Acq: 2 Feb 2015 17:49

Tgt Ion	Resp	Lower	Upper
93	5349		
63	70.2	59.2	88.8
95	0.0	0.0	0.0

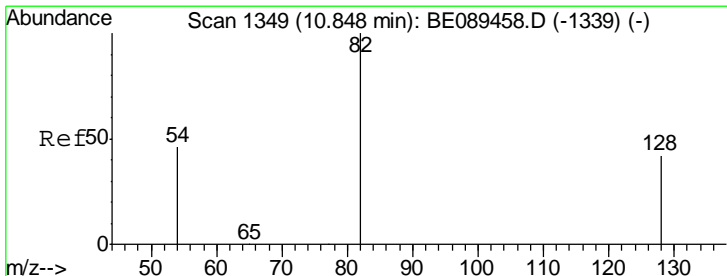
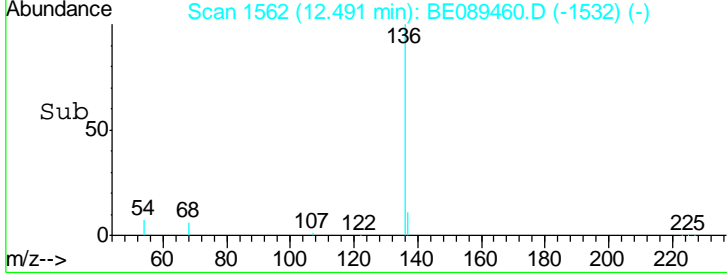
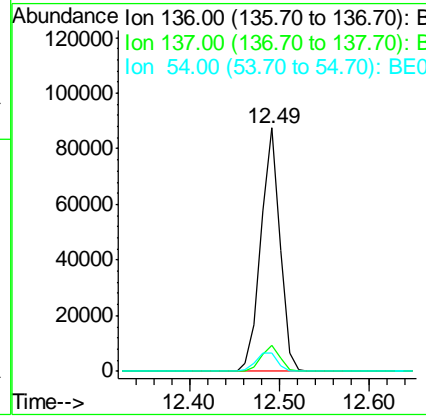
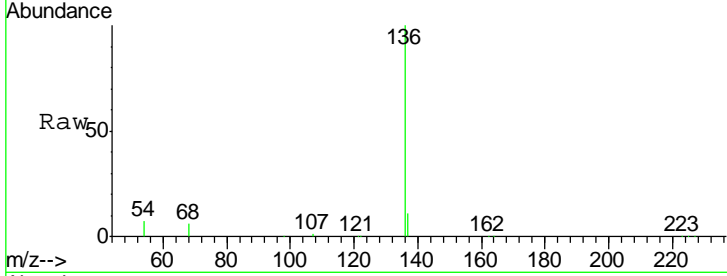




#7  
 Naphthalene-d8  
 Concen: 5.00 ng  
 RT: 12.49 min Scan# 1562  
 Delta R.T. 0.00 min  
 Lab File: BE089460.D  
 Acq: 2 Feb 2015 17:49

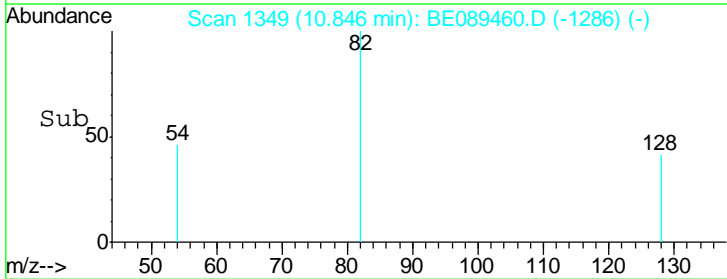
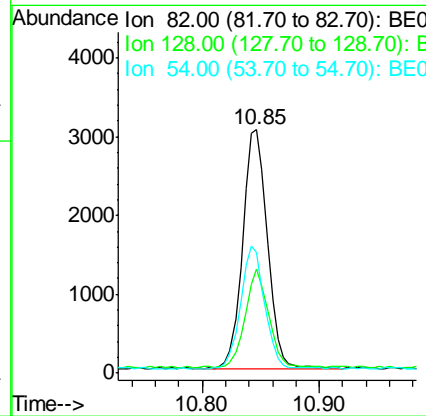
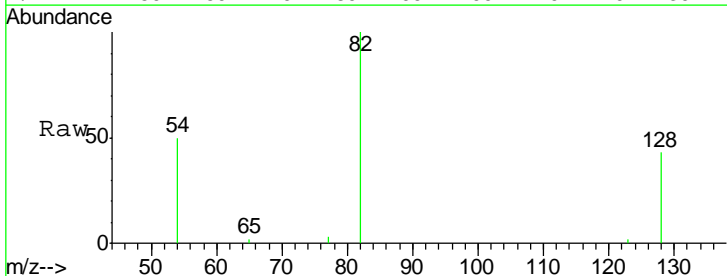
Instrument :  
 BNA\_E  
 LabSampleId :  
 SSTDICC0.5

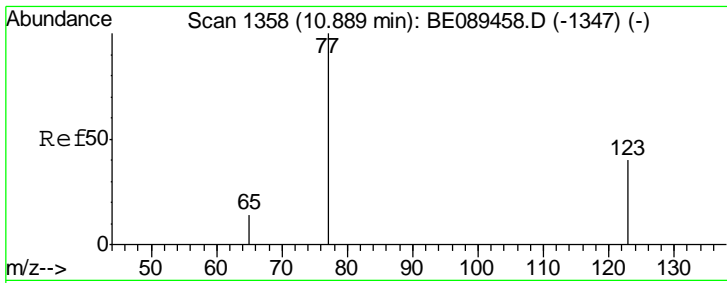
Tgt Ion	Resp	Lower	Upper
136	126319		
137	10.9	8.6	13.0
54	7.3	6.5	9.7



#8  
 Nitrobenzene-d5  
 Concen: 0.44 ng  
 RT: 10.85 min Scan# 1349  
 Delta R.T. -0.00 min  
 Lab File: BE089460.D  
 Acq: 2 Feb 2015 17:49

Tgt Ion	Resp	Lower	Upper
82	4444		
128	42.6	34.2	51.2
54	49.8	37.3	55.9

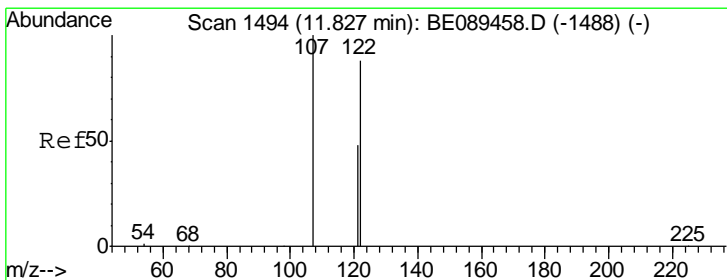
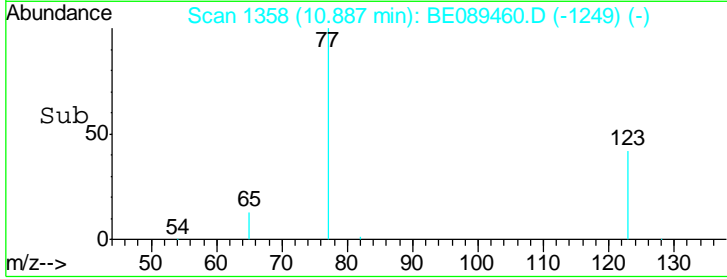
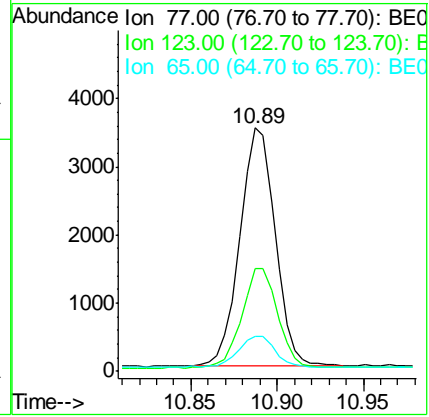
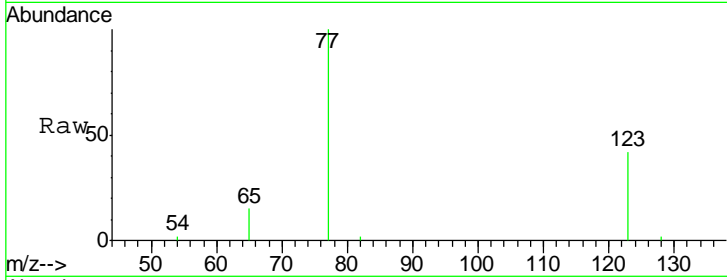




#9  
 Nitrobenzene  
 Concen: 0.42 ng  
 RT: 10.89 min Scan# 1358  
 Delta R.T. -0.00 min  
 Lab File: BE089460.D  
 Acq: 2 Feb 2015 17:49

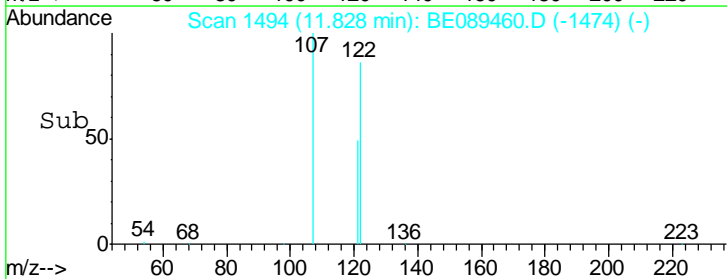
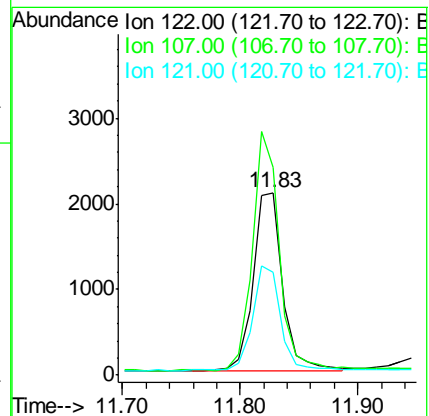
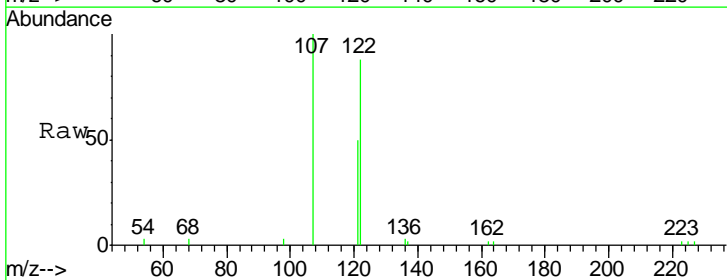
Instrument :  
 BNA\_E  
 LabSampleId :  
 SSTDICC0.5

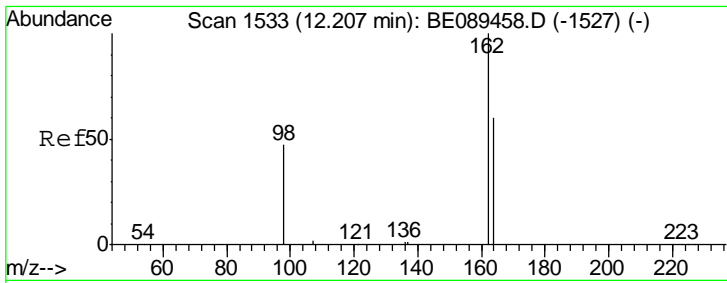
Tgt Ion	Resp	Lower	Upper
77	100		
123	43.1	33.6	50.4
65	13.3	11.0	16.6



#10  
 2,4-Dimethylphenol  
 Concen: 0.43 ng  
 RT: 11.83 min Scan# 1494  
 Delta R.T. 0.00 min  
 Lab File: BE089460.D  
 Acq: 2 Feb 2015 17:49

Tgt Ion	Resp	Lower	Upper
122	100		
107	113.6	90.6	136.0
121	56.5	43.7	65.5

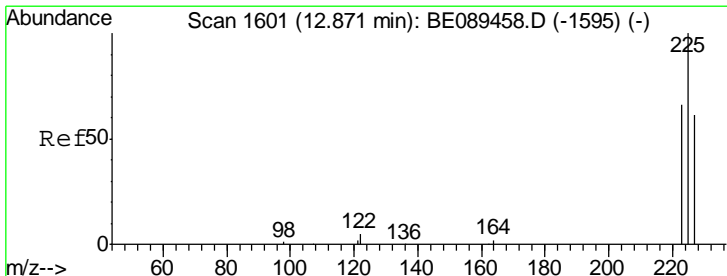
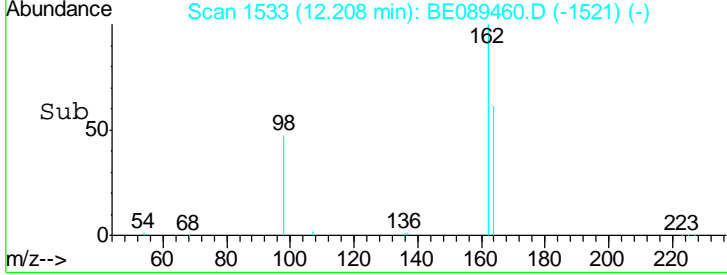
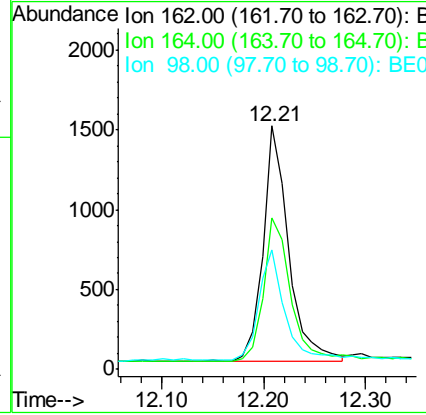
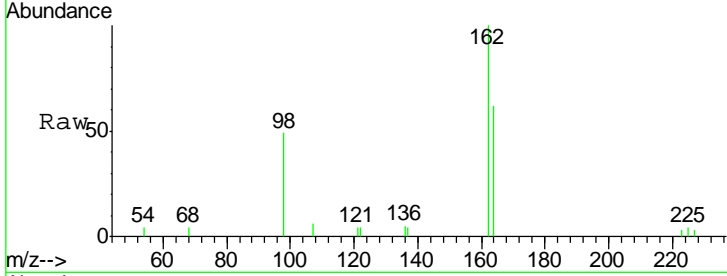




#11  
 2,4-Dichlorophenol  
 Concen: 0.42 ng  
 RT: 12.21 min Scan# 1533  
 Delta R.T. 0.00 min  
 Lab File: BE089460.D  
 Acq: 2 Feb 2015 17:49

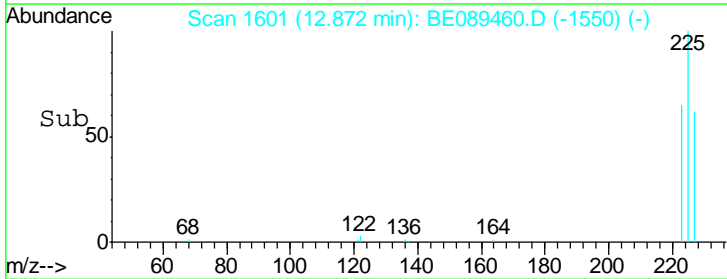
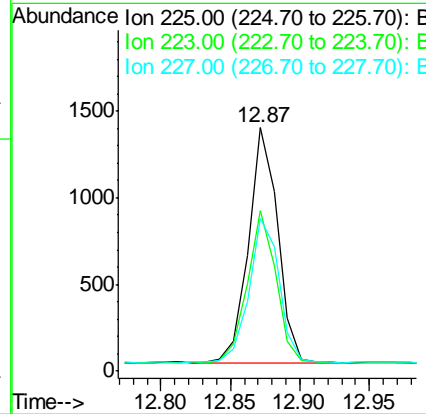
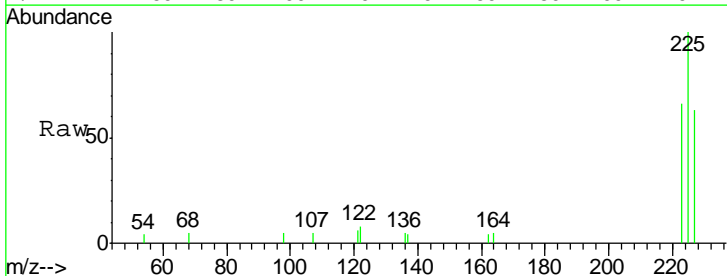
Instrument :  
 BNA\_E  
 LabSampleId :  
 SSTDICC0.5

Tgt Ion	Resp	Lower	Upper
162	100		
164	62.2	40.5	80.5
98	49.0	28.1	68.1

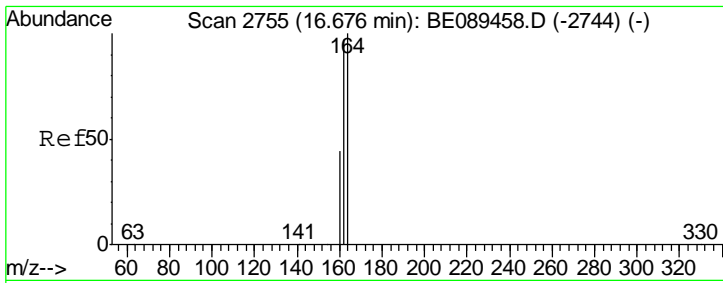


#12  
 Hexachlorobutadiene  
 Concen: 0.48 ng  
 RT: 12.87 min Scan# 1601  
 Delta R.T. 0.00 min  
 Lab File: BE089460.D  
 Acq: 2 Feb 2015 17:49

Tgt Ion	Resp	Lower	Upper
225	100		
223	63.4	50.2	75.2
227	62.8	49.9	74.9



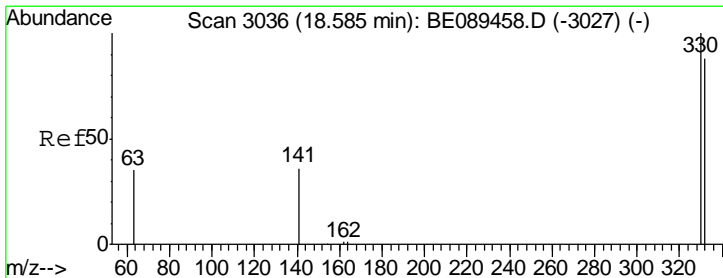
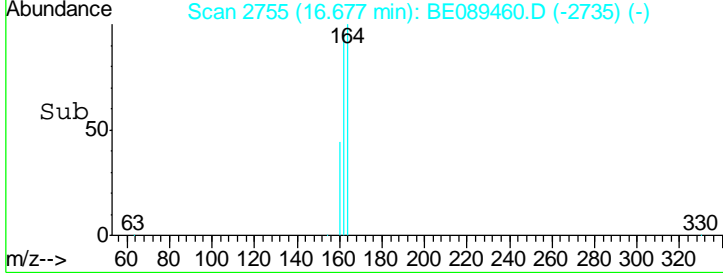
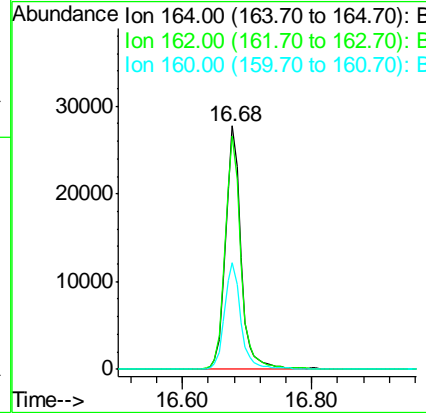
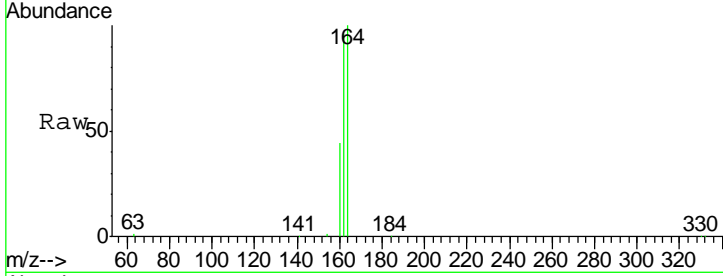




#13  
 Acenaphthene-d10  
 Concen: 5.00 ng  
 RT: 16.68 min Scan# 2755  
 Delta R.T. 0.00 min  
 Lab File: BE089460.D  
 Acq: 2 Feb 2015 17:49

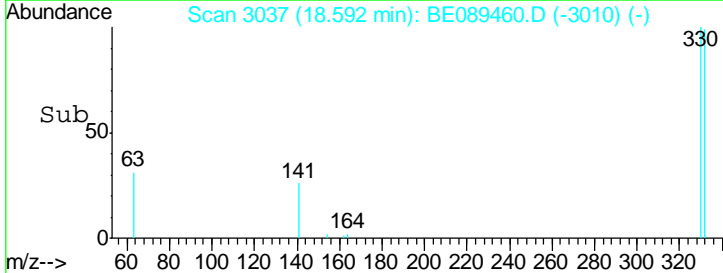
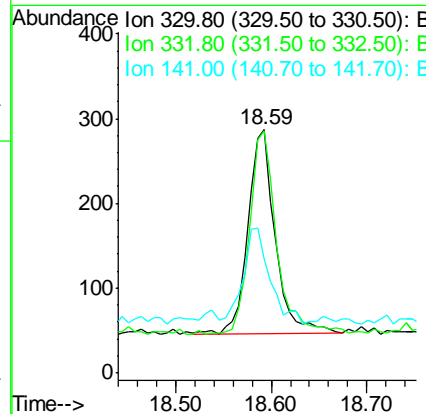
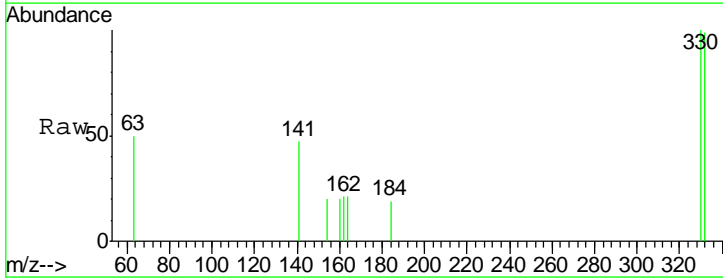
Instrument :  
 BNA\_E  
 LabSampleId :  
 SSTDICC0.5

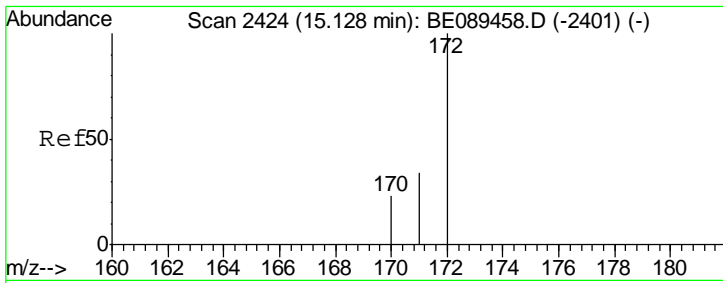
Tgt Ion	Resp	Lower	Upper
164	100		
162	95.7	77.4	116.2
160	43.7	35.5	53.3



#14  
 2,4,6-Tribromophenol  
 Concen: 0.31 ng  
 RT: 18.59 min Scan# 3037  
 Delta R.T. 0.01 min  
 Lab File: BE089460.D  
 Acq: 2 Feb 2015 17:49

Tgt Ion	Resp	Lower	Upper
330	100		
332	97.9	75.4	113.2
141	46.9	35.7	53.5



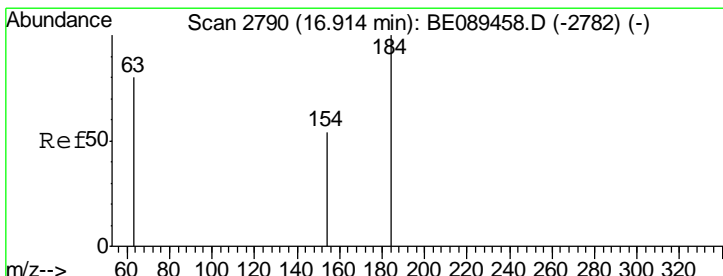
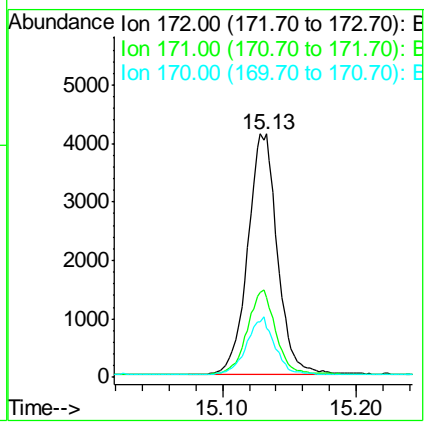
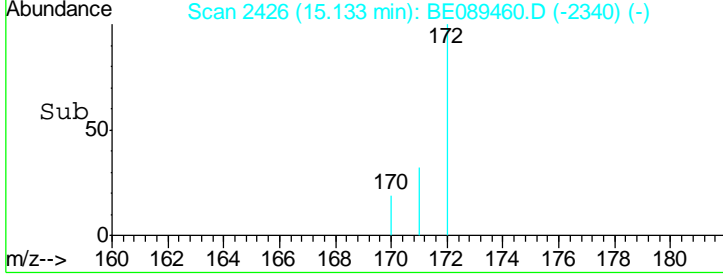
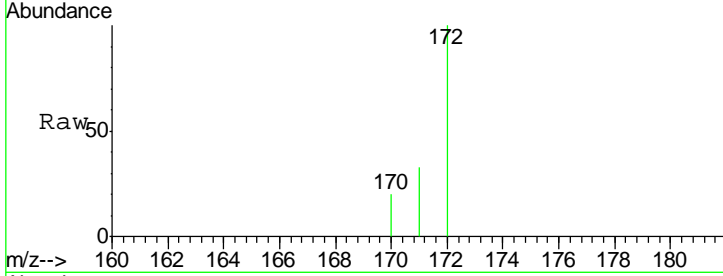


#15  
 2-Fluorobiphenyl  
 Concen: 0.50 ng  
 RT: 15.13 min Scan# 2426  
 Delta R.T. 0.01 min  
 Lab File: BE089460.D  
 Acq: 2 Feb 2015 17:49

Instrument : BNA\_E  
 LabSampleId : SSTDICC0.5

Tgt Ion: 172 Resp: 6314

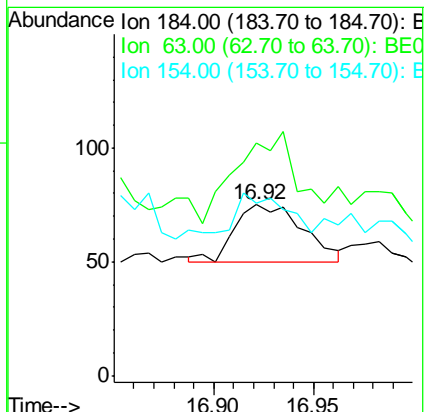
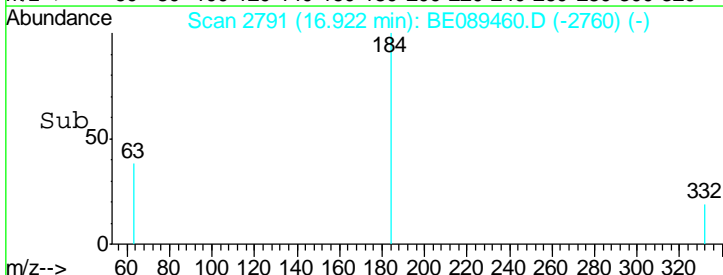
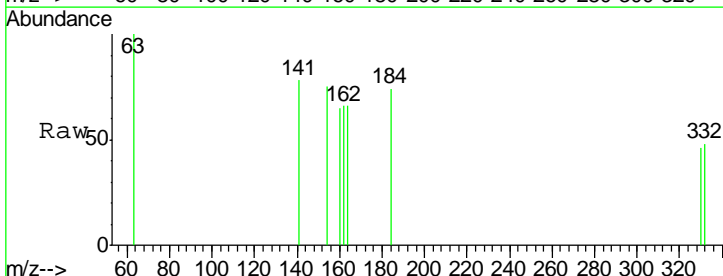
Ion	Ratio	Lower	Upper
172	100		
171	32.7	27.7	41.5
170	20.3	18.3	27.5

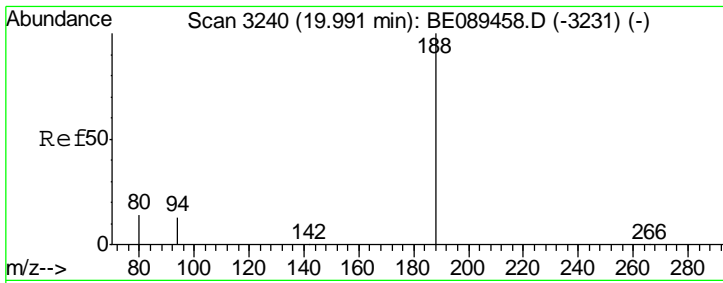


#16  
 2,4-Dinitrophenol  
 Concen: 0.10 ng  
 RT: 16.92 min Scan# 2791  
 Delta R.T. 0.01 min  
 Lab File: BE089460.D  
 Acq: 2 Feb 2015 17:49

Tgt Ion: 184 Resp: 59

Ion	Ratio	Lower	Upper
184	100		
63	136.0	77.0	115.6#
154	101.3	54.0	81.0#

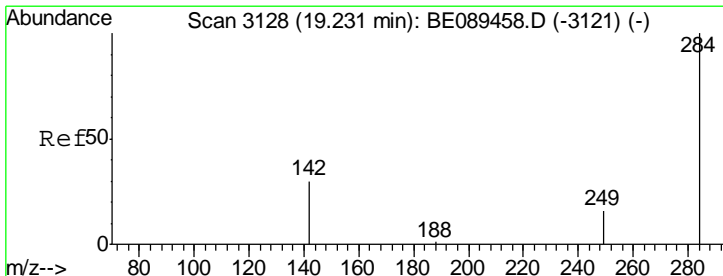
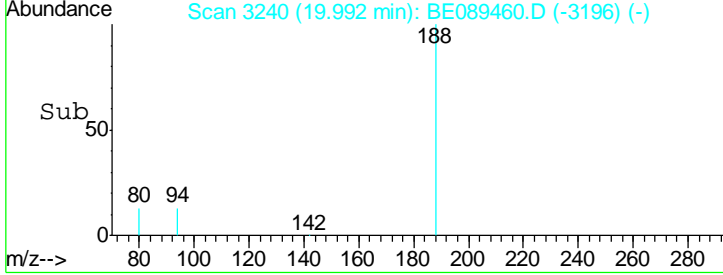
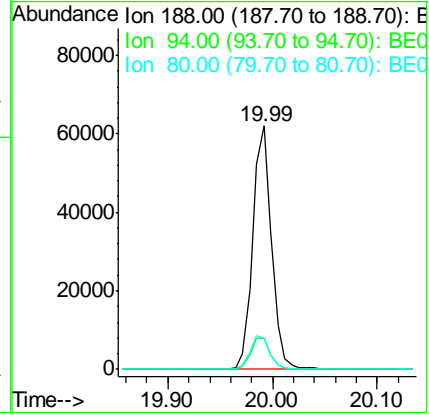
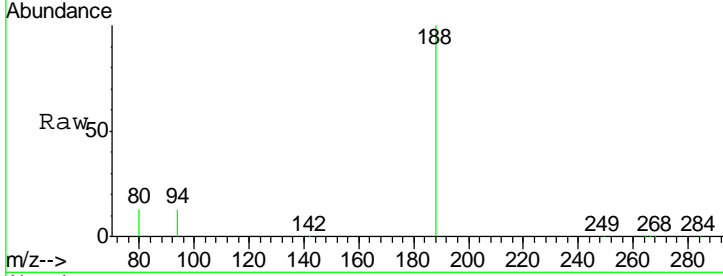




#17  
 Phenanthrene-d10  
 Concen: 5.00 ng  
 RT: 19.99 min Scan# 3240  
 Delta R.T. 0.00 min  
 Lab File: BE089460.D  
 Acq: 2 Feb 2015 17:49

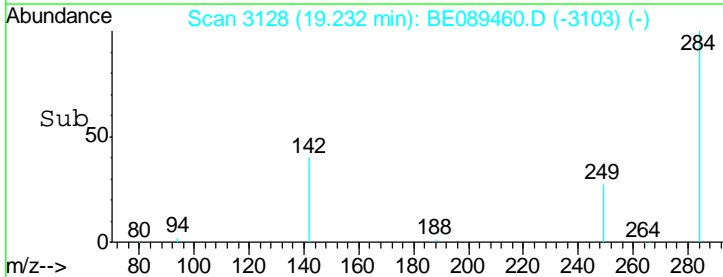
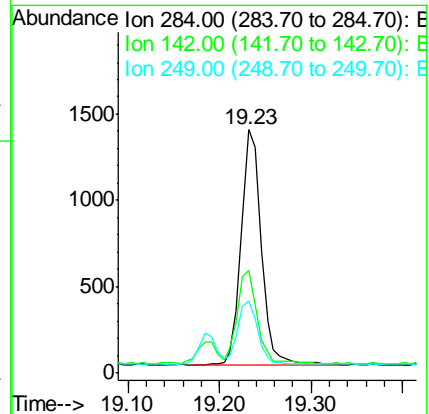
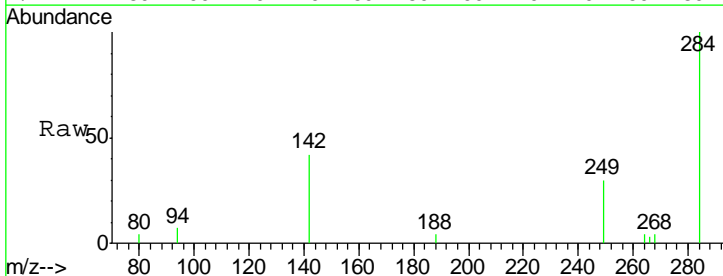
Instrument :  
 BNA\_E  
 LabSampleId :  
 SSTDICC0.5

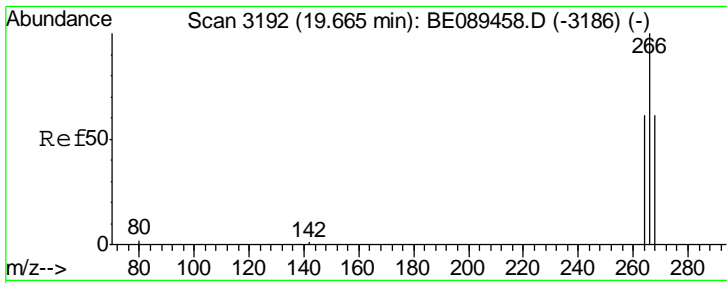
Tgt Ion	Resp	Lower	Upper
188	100		
94	12.8	10.2	15.4
80	13.0	10.9	16.3



#18  
 Hexachlorobenzene  
 Concen: 0.50 ng  
 RT: 19.23 min Scan# 3128  
 Delta R.T. 0.00 min  
 Lab File: BE089460.D  
 Acq: 2 Feb 2015 17:49

Tgt Ion	Resp	Lower	Upper
284	100		
142	42.3	31.8	47.8
249	29.6	23.5	35.3



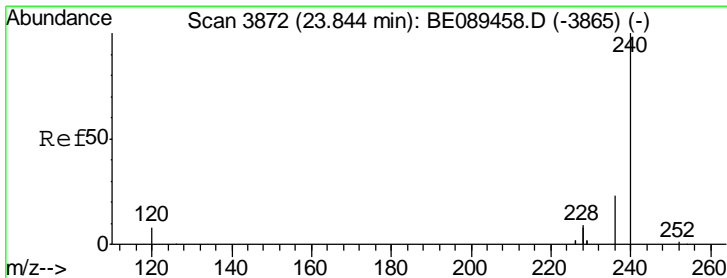
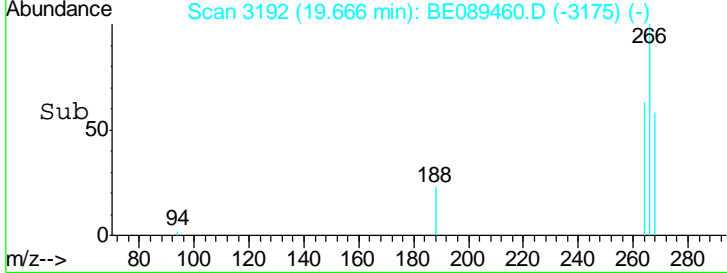
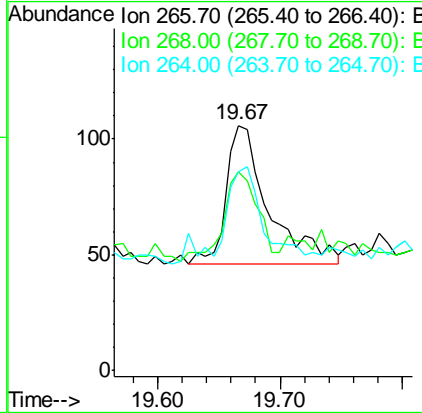
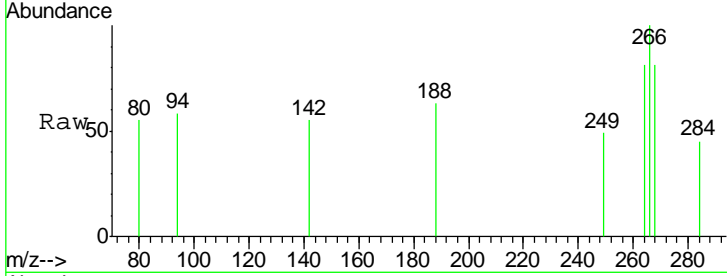


#19  
 Pentachlorophenol  
 Concen: 0.20 ng  
 RT: 19.67 min Scan# 3192  
 Delta R.T. 0.00 min  
 Lab File: BE089460.D  
 Acq: 2 Feb 2015 17:49

Instrument :  
 BNA\_E  
 LabSampleId :  
 SSTDICC0.5

Tgt Ion: 266 Resp: 145

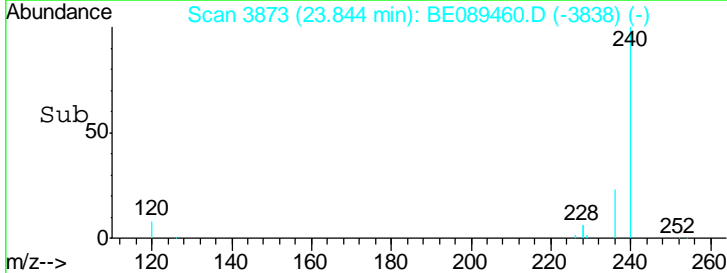
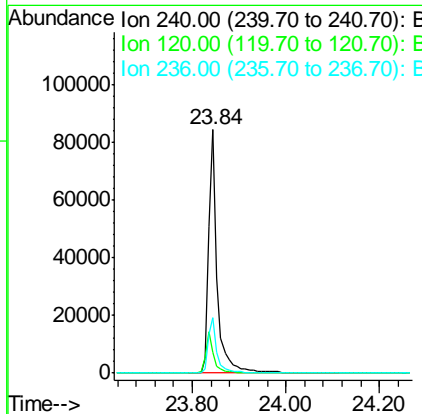
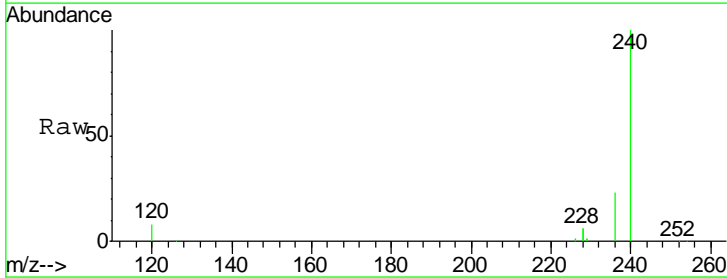
Ion	Ratio	Lower	Upper
266	100		
268	81.1	52.6	78.8#
264	81.1	52.2	78.2#

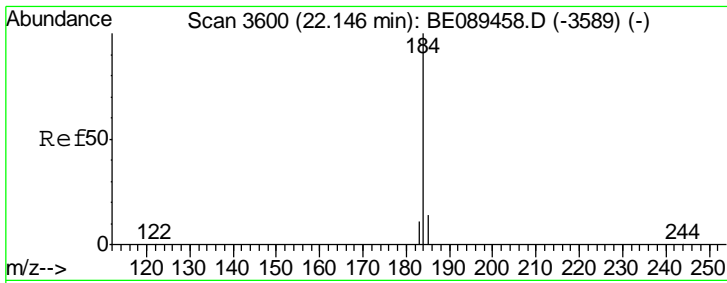


#20  
 Chrysene-d12  
 Concen: 5.00 ng  
 RT: 23.84 min Scan# 3873  
 Delta R.T. 0.00 min  
 Lab File: BE089460.D  
 Acq: 2 Feb 2015 17:49

Tgt Ion: 240 Resp: 109410

Ion	Ratio	Lower	Upper
240	100		
120	8.4	6.2	9.4
236	22.9	18.2	27.4



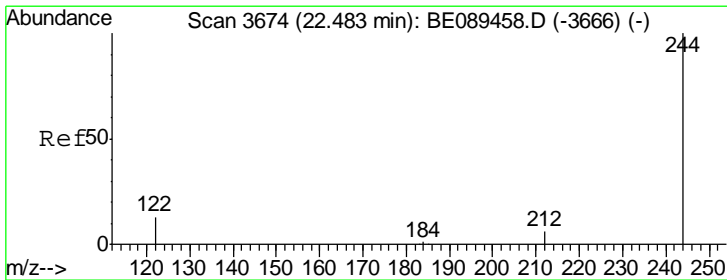
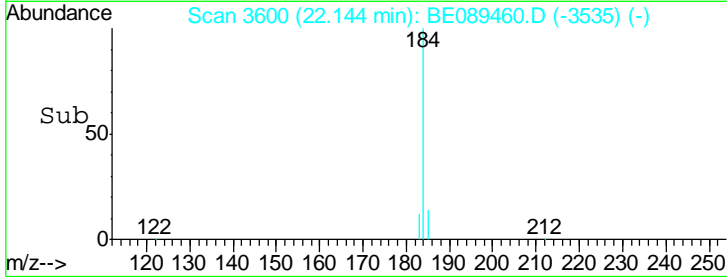
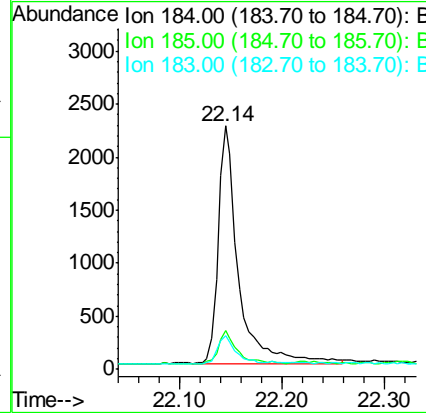
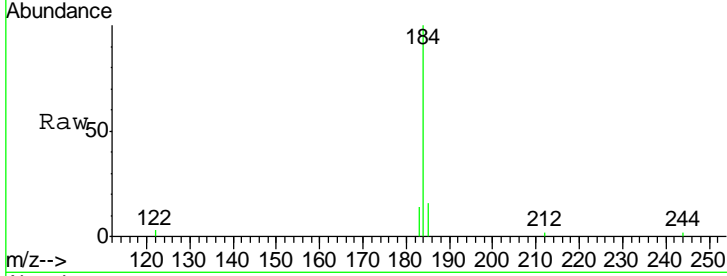


#21  
Benzidine  
Concen: 0.41 ng  
RT: 22.14 min Scan# 3600  
Delta R.T. -0.00 min  
Lab File: BE089460.D  
Acq: 2 Feb 2015 17:49

Instrument :  
BNA\_E  
LabSampleId :  
SSTDIC0.5

Tgt Ion: 184 Resp: 3080

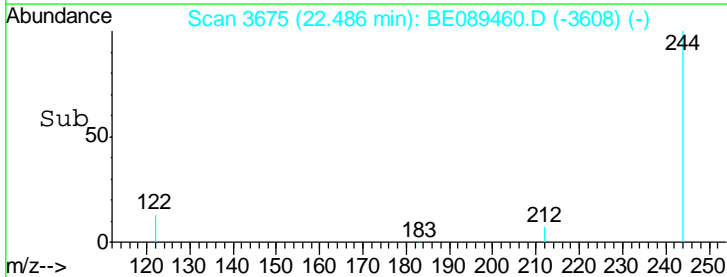
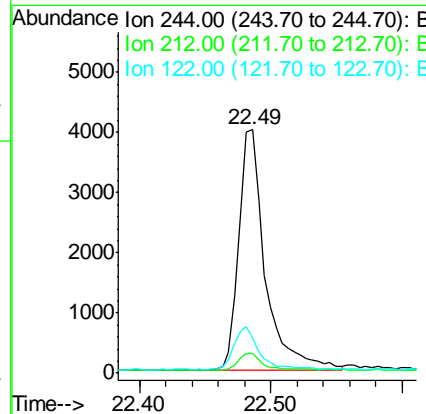
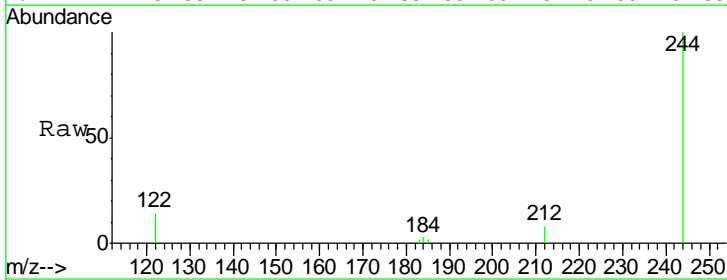
Ion	Ratio	Lower	Upper
184	100		
185	15.8	11.7	17.5
183	13.6	9.4	14.0

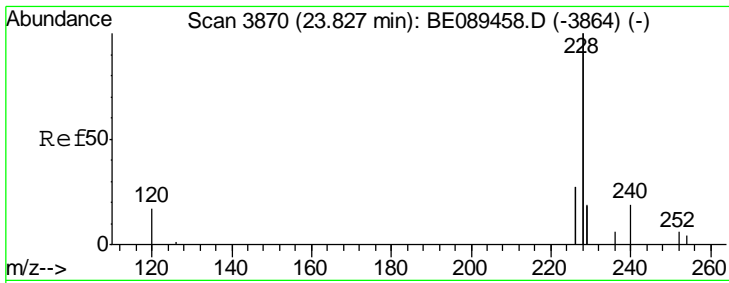


#22  
Terphenyl-d14  
Concen: 0.41 ng  
RT: 22.49 min Scan# 3675  
Delta R.T. 0.00 min  
Lab File: BE089460.D  
Acq: 2 Feb 2015 17:49

Tgt Ion: 244 Resp: 5673

Ion	Ratio	Lower	Upper
244	100		
212	8.0	5.3	7.9#
122	14.2	10.5	15.7



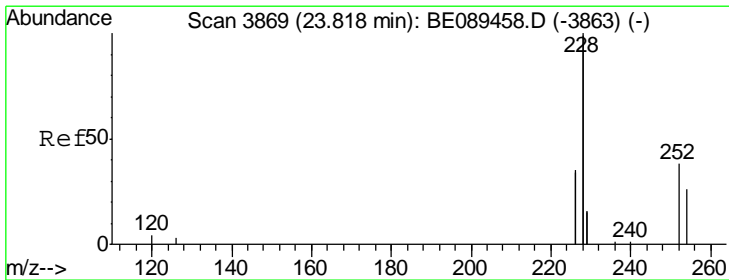
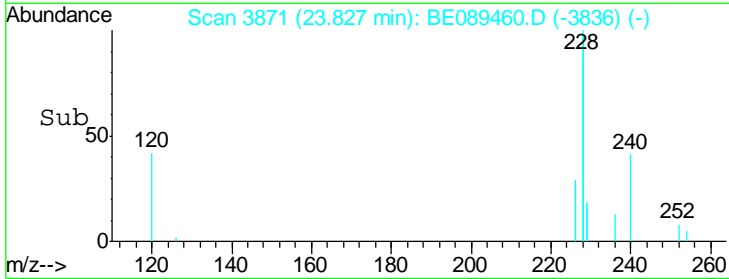
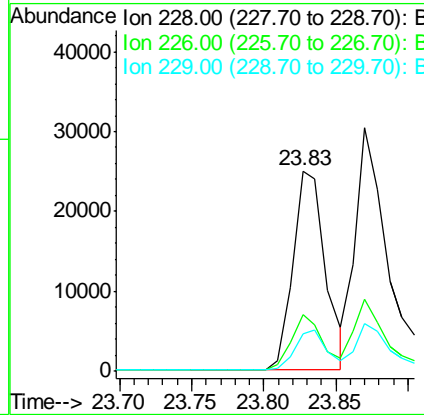
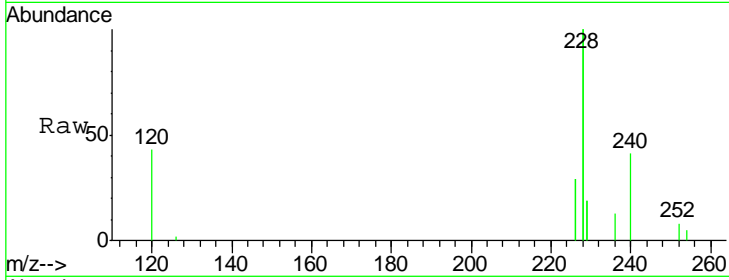


#23  
 Benzo(a)anthracene  
 Concen: 0.46 ng  
 RT: 23.83 min Scan# 3871  
 Delta R.T. 0.00 min  
 Lab File: BE089460.D  
 Acq: 2 Feb 2015 17:49

Instrument :  
 BNA\_E  
 LabSampleId :  
 SSTDICC0.5

Tgt Ion: 228 Resp: 39081

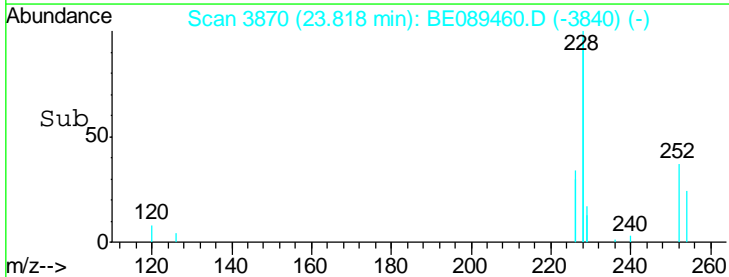
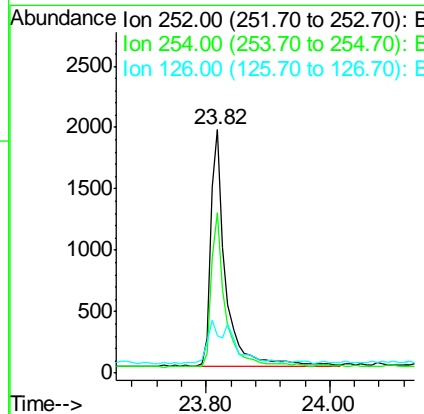
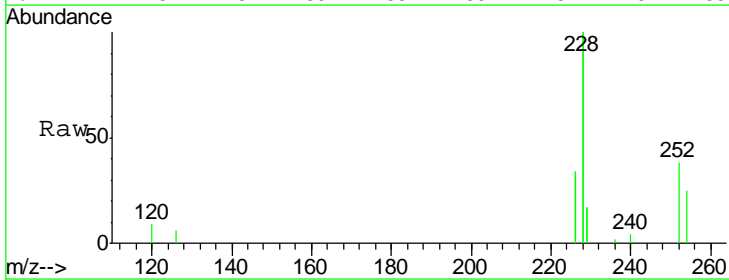
Ion	Ratio	Lower	Upper
228	100		
226	28.6	21.7	32.5
229	18.9	14.8	22.2

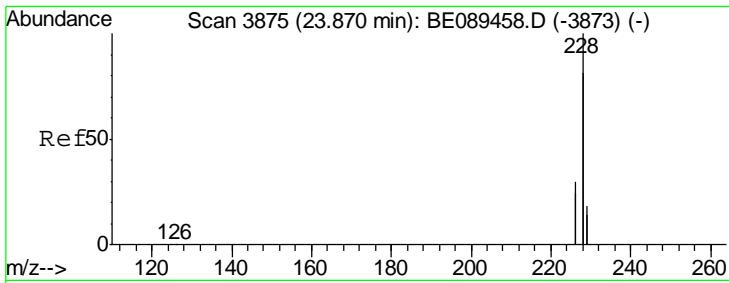


#24  
 3,3'-Dichlorobenzidine  
 Concen: 0.51 ng  
 RT: 23.82 min Scan# 3870  
 Delta R.T. 0.00 min  
 Lab File: BE089460.D  
 Acq: 2 Feb 2015 17:49

Tgt Ion: 252 Resp: 3262

Ion	Ratio	Lower	Upper
252	100		
254	65.7	54.6	82.0
126	15.6	8.0	12.0#

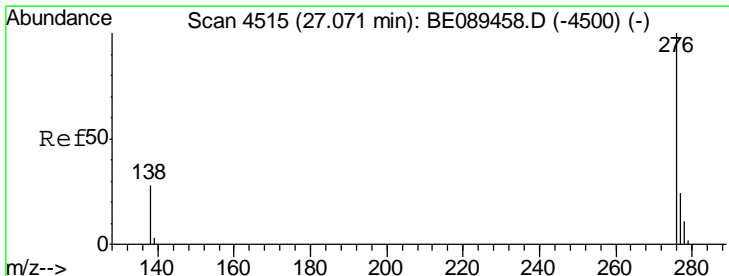
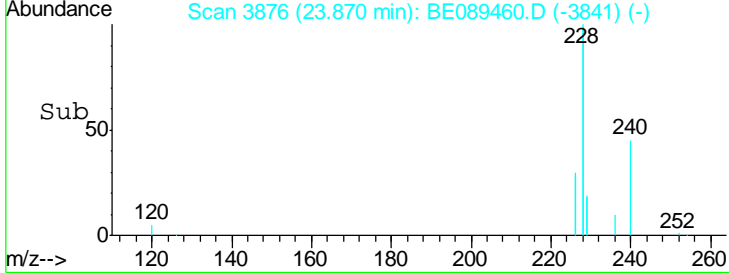
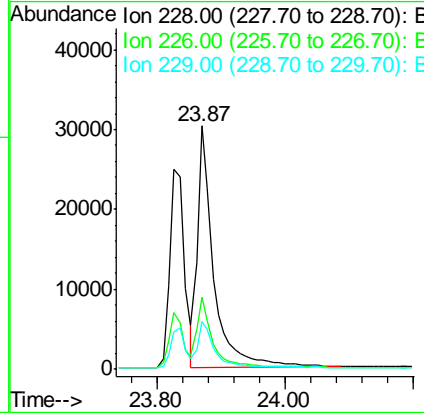
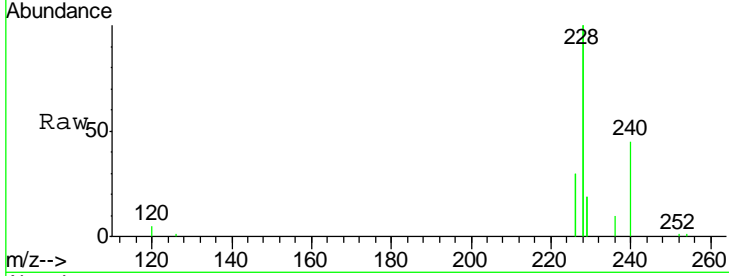




#25  
 Chrysene  
 Concen: 0.48 ng  
 RT: 23.87 min Scan# 3876  
 Delta R.T. 0.00 min  
 Lab File: BE089460.D  
 Acq: 2 Feb 2015 17:49

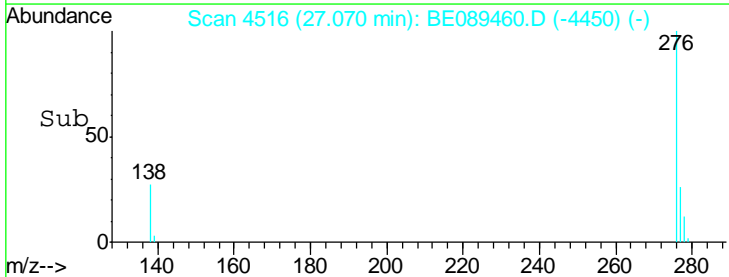
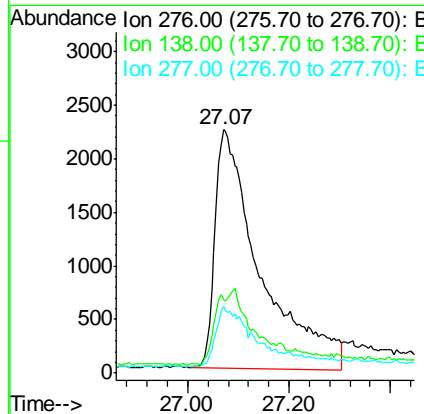
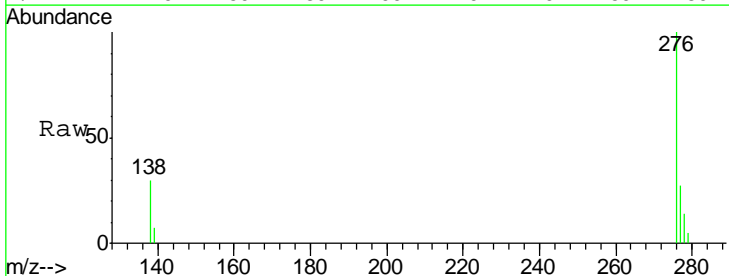
Instrument :  
 BNA\_E  
 LabSampleId :  
 SSTDICC0.5

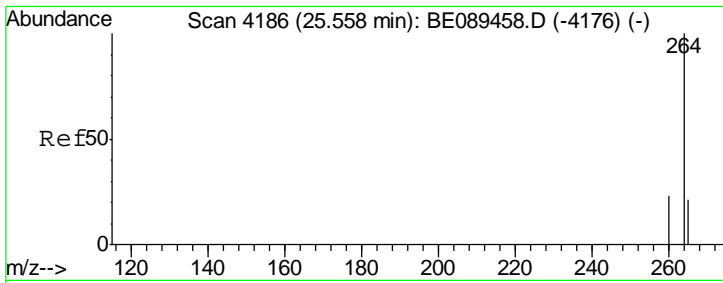
Tgt Ion	Resp	Lower	Upper
228	100		
226	29.6	23.8	35.8
229	19.4	14.3	21.5



#26  
 Indeno(1,2,3-cd)pyrene  
 Concen: 0.78 ng m  
 RT: 27.07 min Scan# 4516  
 Delta R.T. -0.00 min  
 Lab File: BE089460.D  
 Acq: 2 Feb 2015 17:49

Tgt Ion	Resp	Lower	Upper
276	100		
138	7.8	23.3	34.9#
277	20.3	19.0	28.4



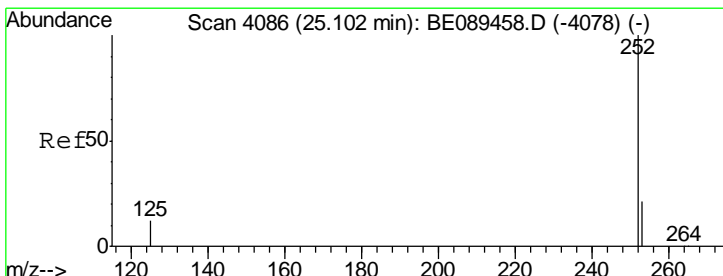
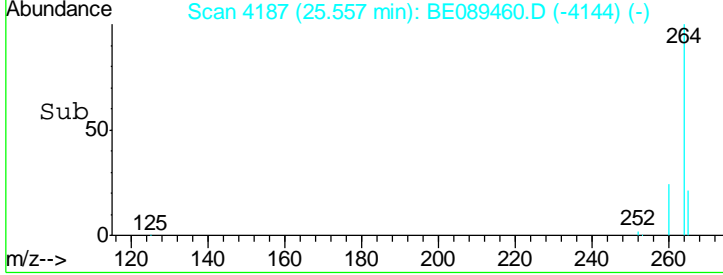
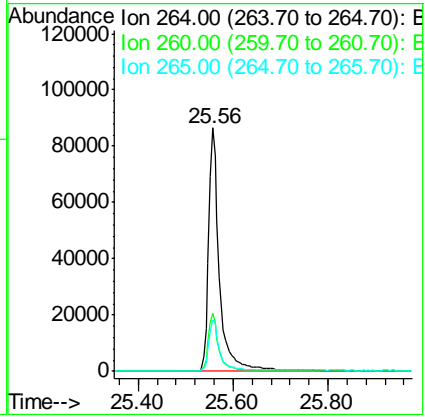
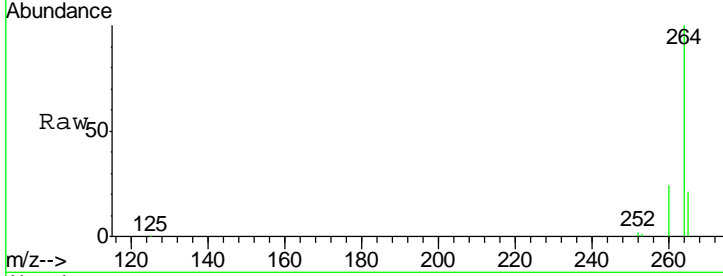


#27  
 Perylene-d12  
 Concen: 5.00 ng  
 RT: 25.56 min Scan# 4187  
 Delta R.T. -0.00 min  
 Lab File: BE089460.D  
 Acq: 2 Feb 2015 17:49

Instrument :  
 BNA\_E  
 LabSampleId :  
 SSTDICC0.5

Tgt Ion: 264 Resp: 135189

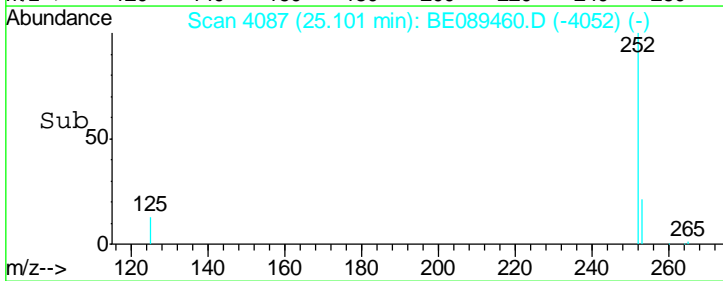
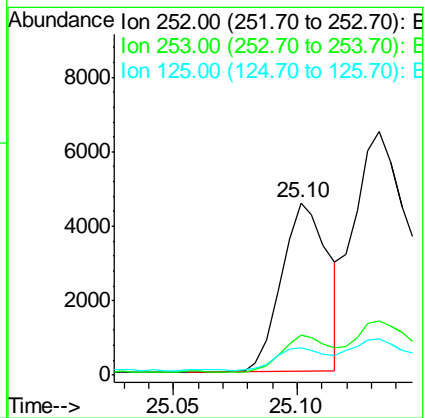
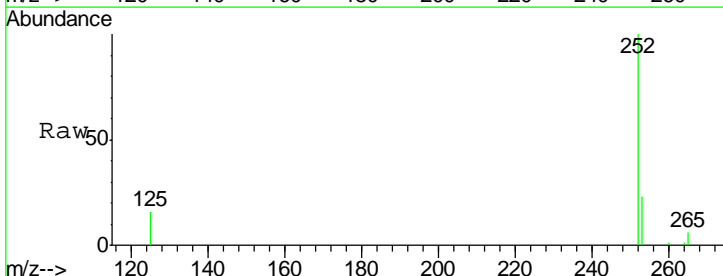
Ion	Ratio	Lower	Upper
264	100		
260	23.8	18.7	28.1
265	21.4	17.0	25.6



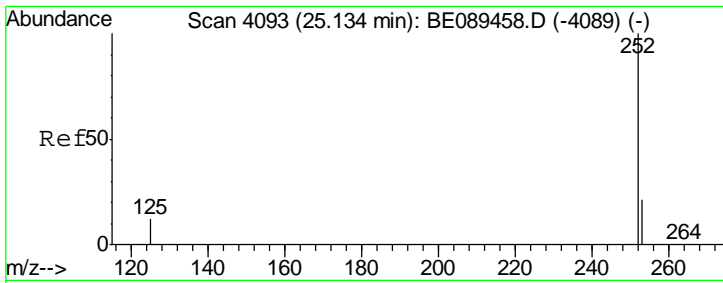
#28  
 Benzo(b)fluoranthene  
 Concen: 0.49 ng m  
 RT: 25.10 min Scan# 4087  
 Delta R.T. -0.00 min  
 Lab File: BE089460.D  
 Acq: 2 Feb 2015 17:49

Tgt Ion: 252 Resp: 5980

Ion	Ratio	Lower	Upper
252	100		
253	23.1	17.4	26.0
125	15.8	10.4	15.6#





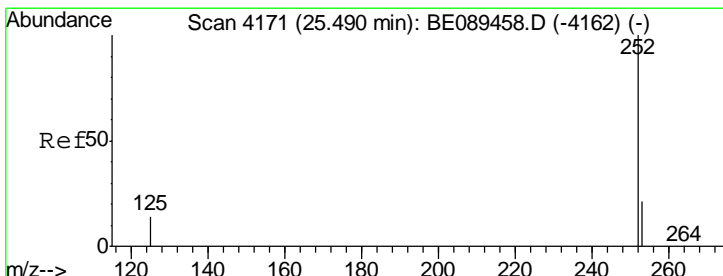
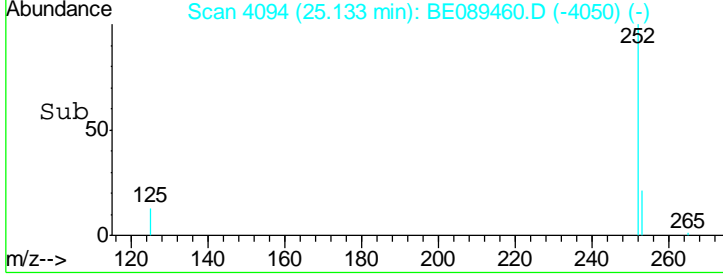
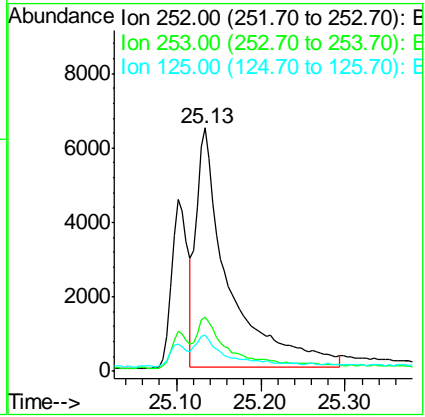
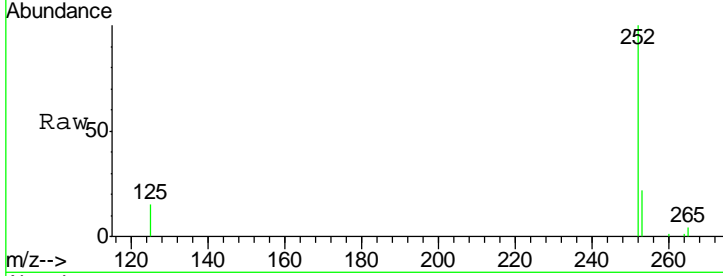


#29  
 Benzo(k)fluoranthene  
 Concen: 0.47 ng m  
 RT: 25.13 min Scan# 4094  
 Delta R.T. -0.00 min  
 Lab File: BE089460.D  
 Acq: 2 Feb 2015 17:49

Instrument :  
 BNA\_E  
 LabSampleId :  
 SSTDICC0.5

Tgt Ion: 252 Resp: 17179

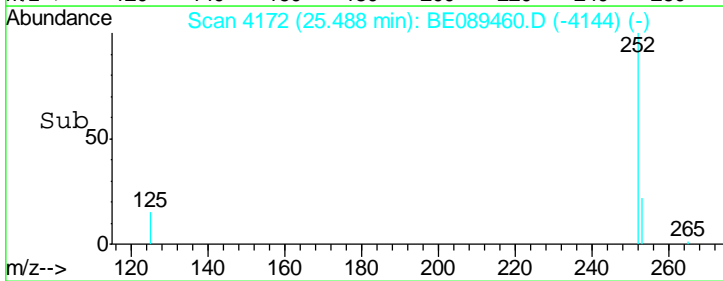
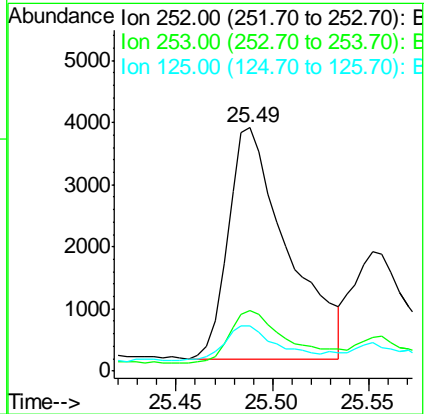
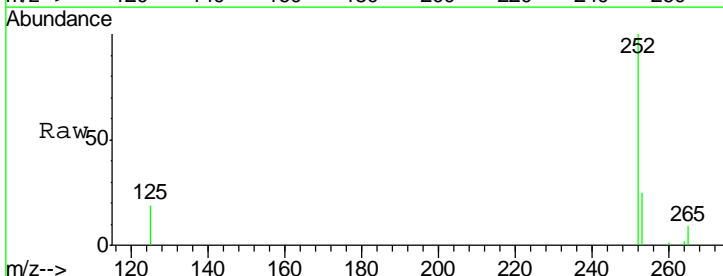
Ion	Ratio	Lower	Upper
252	100		
253	22.2	17.5	26.3
125	15.0	10.3	15.5

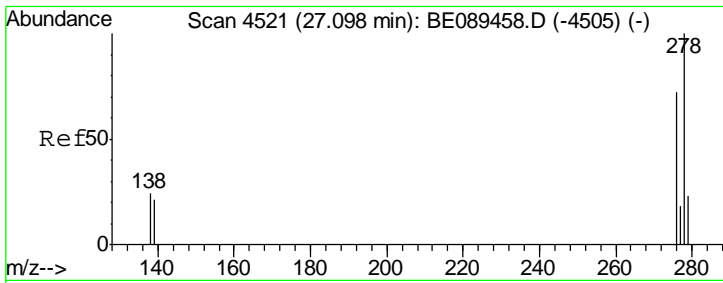


#30  
 Benzo(a)pyrene  
 Concen: 0.49 ng  
 RT: 25.49 min Scan# 4172  
 Delta R.T. -0.00 min  
 Lab File: BE089460.D  
 Acq: 2 Feb 2015 17:49

Tgt Ion: 252 Resp: 7975

Ion	Ratio	Lower	Upper
252	100		
253	24.7	17.5	26.3
125	18.7	11.8	17.8#





#31  
 Dibenzo(a,h)anthracene  
 Concen: 0.60 ng  
 RT: 27.10 min Scan# 4522  
 Delta R.T. -0.00 min  
 Lab File: BE089460.D  
 Acq: 2 Feb 2015 17:49

**Instrument :**  
 BNA\_E  
**LabSampleId :**  
 SSTDICC0.5

Tgt Ion	Resp	Lower	Upper
278	100		
139	24.9	17.1	25.7
279	26.4	18.8	28.2

