

Data Path : Z:\HPCHEM1\BNA_E\DATA\BE020615\
 Data File : BE089534.D
 Acq On : 6 Feb 2015 19:44
 Operator : TP/IZ
 Sample : PB81495BSD
 Misc :
 ALS Vial : 12 Sample Multiplier: 1

Instrument :
 BNA_E
 ClientSampleId :
 PB81495BSD

Quant Time: Feb 07 04:37:13 2015
 Quant Method : Z:\HPCHEM1\BNA_E\METHODS\SIMPAH-BE020615.M
 Quant Title : ASP BNA STANDARDS FOR 5 POINT CALIBRATION
 QLast Update : Sat Feb 07 04:07:57 2015
 Response via : Initial Calibration

Internal Standards	R.T.	QIon	Response	Conc	Units	Dev(Min)
1) 1,4-Dichlorobenzene-d4	9.43	152	34826	5.00	ng	0.00
2) Naphthalene-d8	12.33	136	132735	5.00	ng	0.00
6) Acenaphthene-d10	16.51	164	55042	5.00	ng	0.00
11) Phenanthrene-d10	19.85	188	101331	5.00	ng	0.00
16) Chrysene-d12	23.72	240	120220	5.00	ng	0.00
22) Perylene-d12	25.41	264	126153	5.00	ng	0.00

System Monitoring Compounds	R.T.	QIon	Response	Conc	Units	Dev(Min)
3) Nitrobenzene-d5	10.69	82	72941	8.28	ng	0.00
7) 2-Fluorobiphenyl	14.97	172	124362	8.47	ng	0.00
18) Terphenyl-d14	22.36	244	151722	9.57	ng	0.00

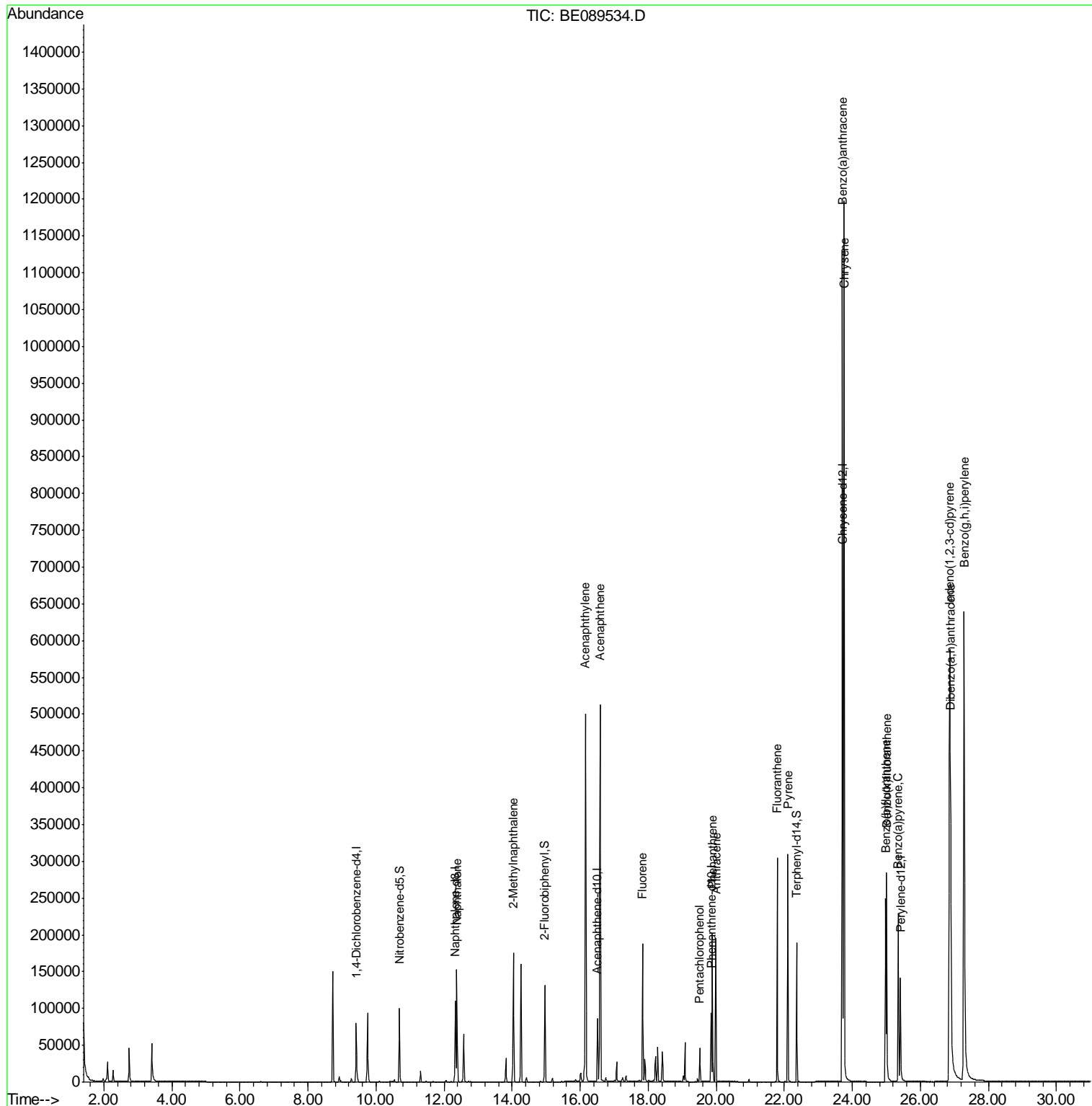
Target Compounds	R.T.	QIon	Response	Conc	Units	Qvalue
4) Naphthalene	12.38	128	184744	6.18	ng	99
5) 2-Methylnaphthalene	14.04	142	114776	6.76	ng	99
8) Acenaphthylene	16.16	152	704184	7.61	ng	99
9) Acenaphthene	16.59	154	103747	7.06	ng	98
10) Fluorene	17.84	166	122026	7.82	ng	99
12) Pentachlorophenol	19.52	266	24599	15.14	ng	88
13) Phenanthrene	19.89	178	189764	7.56	ng	99
14) Anthracene	19.99	178	189531	8.94	ng	100
15) Fluoranthene	21.79	202	197580	8.45	ng	99
17) Pyrene	22.10	202	214822	8.39	ng	99
19) Benzo(a)anthracene	23.71	228	843684	7.89	ng	97
20) Chrysene	23.75	228	869924	8.01	ng	97
21) Indeno(1,2,3-cd)pyrene	26.85	276	1114415	7.38	ng	99
23) Benzo(b)fluoranthene	24.98	252	214415	8.75	ng	98
24) Benzo(k)fluoranthene	25.01	252	251257	8.25	ng	99
25) Benzo(a)pyrene	25.35	252	226254	9.29	ng	98
26) Dibenzo(a,h)anthracene	26.89	278	248310	8.30	ng	97
27) Benzo(g,h,i)perylene	27.29	276	959168	7.86	ng	100

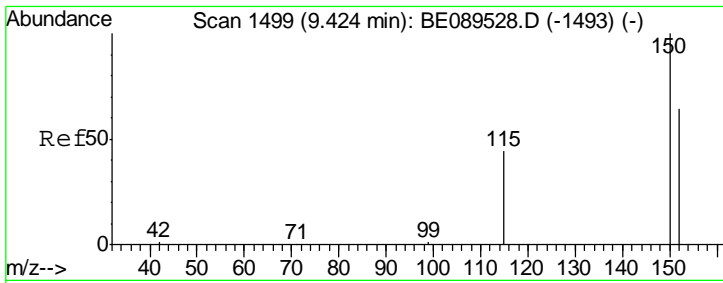
(#) = qualifier out of range (m) = manual integration (+) = signals summed

Data Path : Z:\HPCHEM1\BNA_E\DATA\BE020615\
 Data File : BE089534.D
 Acq On : 6 Feb 2015 19:44
 Operator : TP/IZ
 Sample : PB81495BSD
 Misc :
 ALS Vial : 12 Sample Multiplier: 1

Instrument :
 BNA_E
 Client Sampled :
 PB81495BSD

Quant Time: Feb 07 04:37:13 2015
 Quant Method : Z:\HPCHEM1\BNA_E\METHODS\SIMPAH-BE020615.M
 Quant Title : ASP BNA STANDARDS FOR 5 POINT CALIBRATION
 QLast Update : Sat Feb 07 04:07:57 2015
 Response via : Initial Calibration

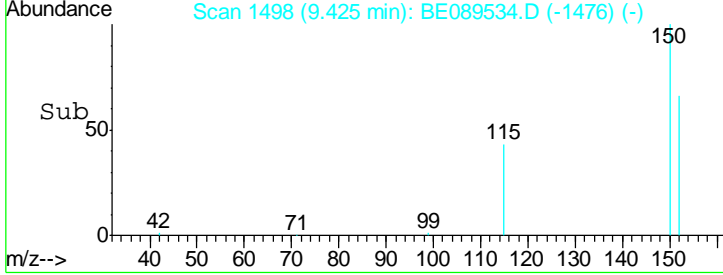
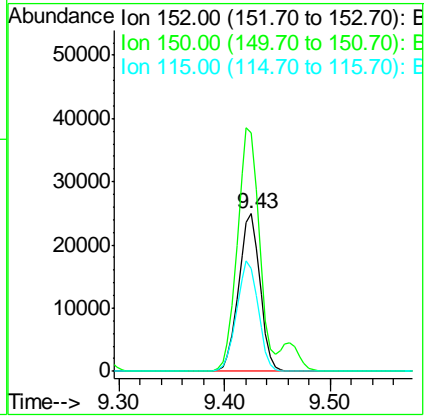
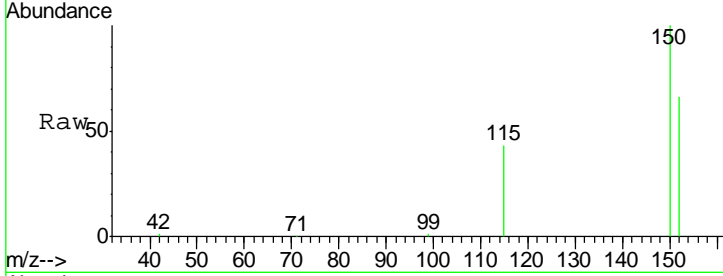




#1
 1,4-Dichlorobenzene-d4
 Concen: 5.00 ng
 RT: 9.43 min Scan# 1498
 Delta R.T. 0.00 min
 Lab File: BE089534.D
 Acq: 6 Feb 2015 19:44

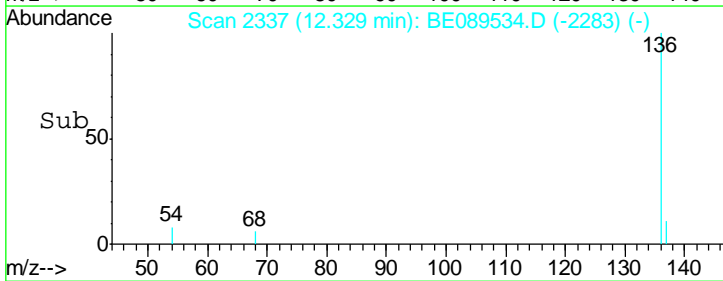
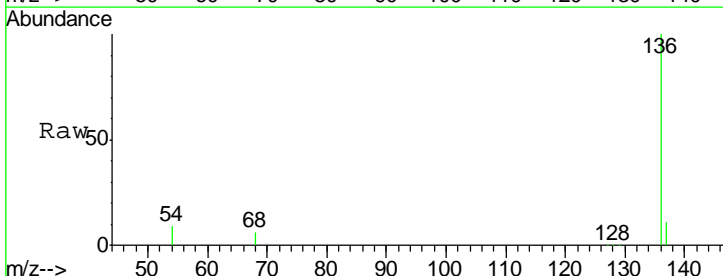
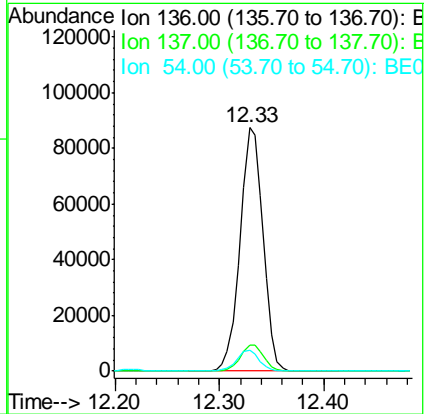
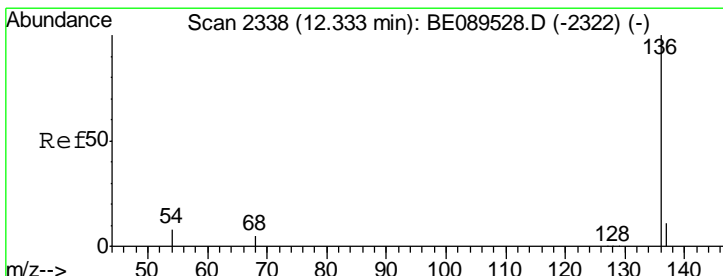
Instrument :
 BNA_E
ClientSampled :
 PB81495BSD

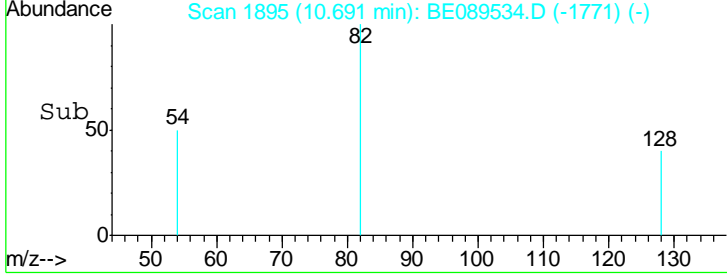
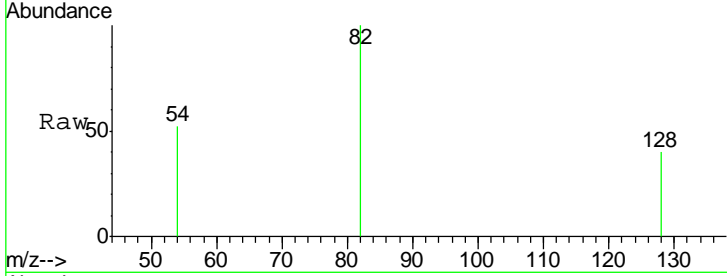
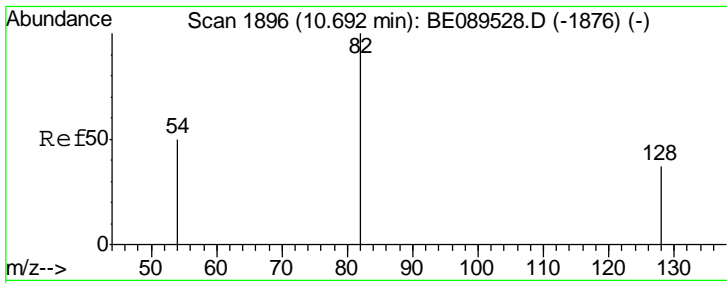
Tgt Ion	Resp	Lower	Upper
152	100		
150	151.2	125.7	188.5
115	65.6	55.6	83.4



#2
 Naphthalene-d8
 Concen: 5.00 ng
 RT: 12.33 min Scan# 2337
 Delta R.T. -0.00 min
 Lab File: BE089534.D
 Acq: 6 Feb 2015 19:44

Tgt Ion	Resp	Lower	Upper
136	100		
137	10.8	8.7	13.1
54	8.5	6.1	9.1

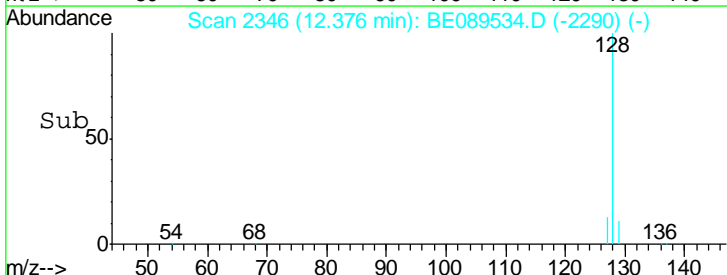
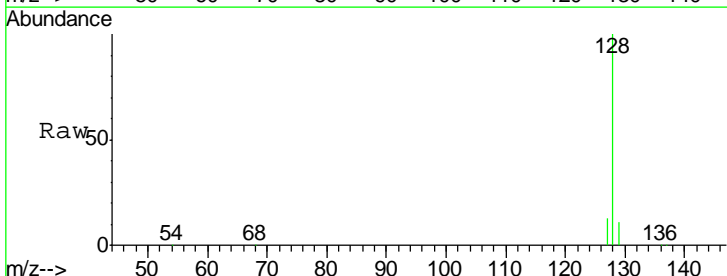
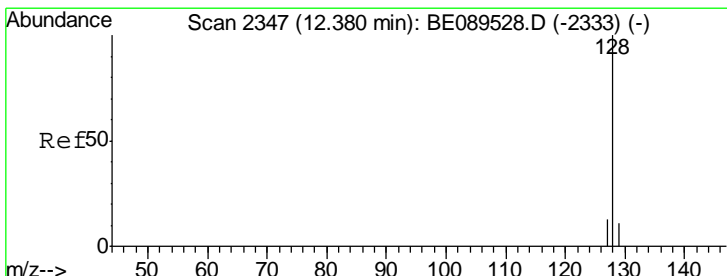
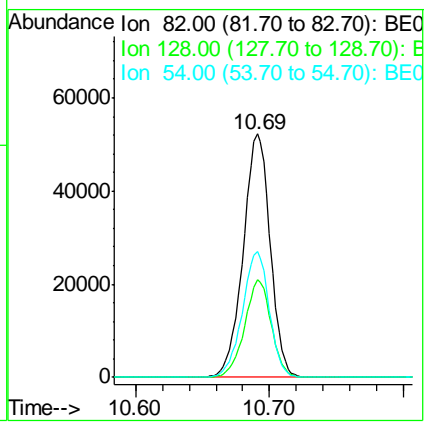




#3
 Nitrobenzene-d5
 Concen: 8.28 ng
 RT: 10.69 min Scan# 1895
 Delta R.T. -0.00 min
 Lab File: BE089534.D
 Acq: 6 Feb 2015 19:44

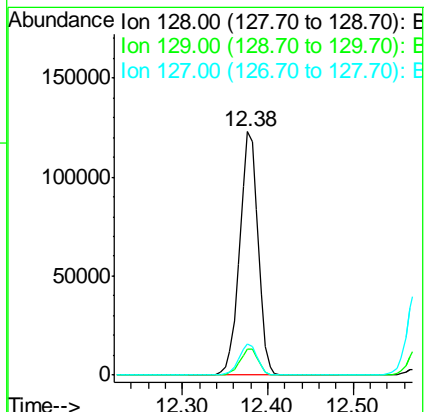
Instrument :
 BNA_E
 ClientSampled :
 PB81495BSD

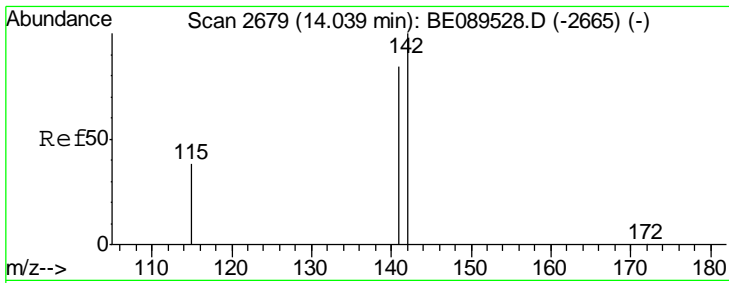
Tgt Ion	Resp	Lower	Upper
82	72941		
128	39.9	30.2	45.4
54	51.5	40.6	60.8



#4
 Naphthalene
 Concen: 6.18 ng
 RT: 12.38 min Scan# 2346
 Delta R.T. -0.00 min
 Lab File: BE089534.D
 Acq: 6 Feb 2015 19:44

Tgt Ion	Resp	Lower	Upper
128	184744		
129	10.7	9.1	13.7
127	13.0	10.5	15.7

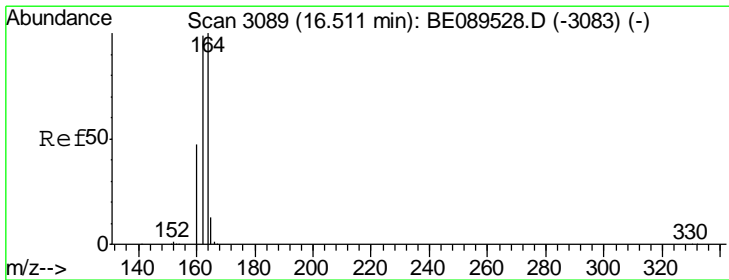
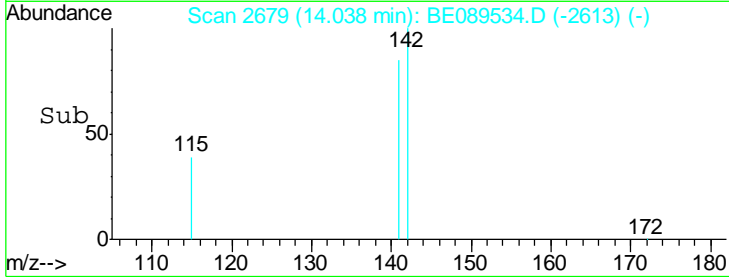
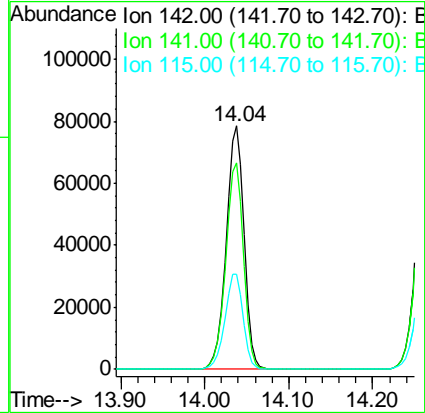
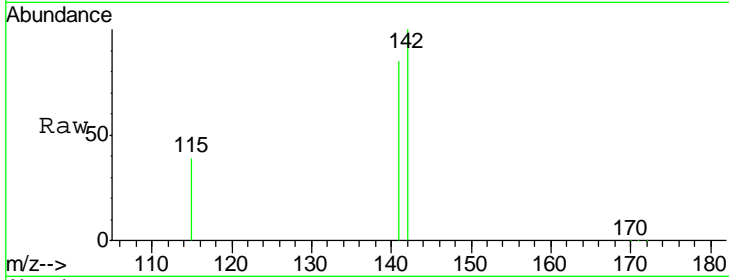




#5
 2-Methylnaphthalene
 Concen: 6.76 ng
 RT: 14.04 min Scan# 2679
 Delta R.T. -0.00 min
 Lab File: BE089534.D
 Acq: 6 Feb 2015 19:44

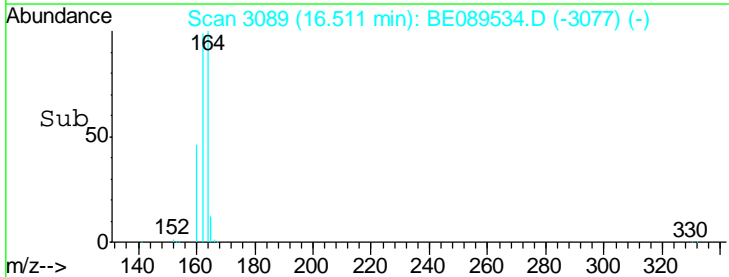
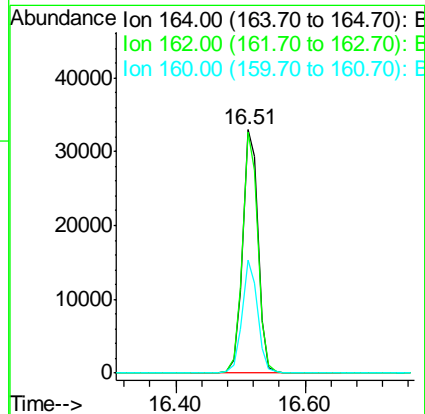
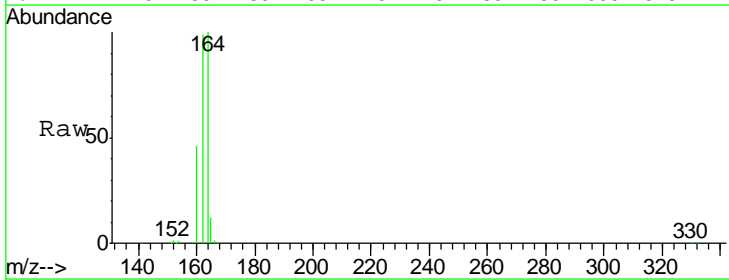
Instrument :
 BNA_E
 ClientSampleId :
 PB81495BSD

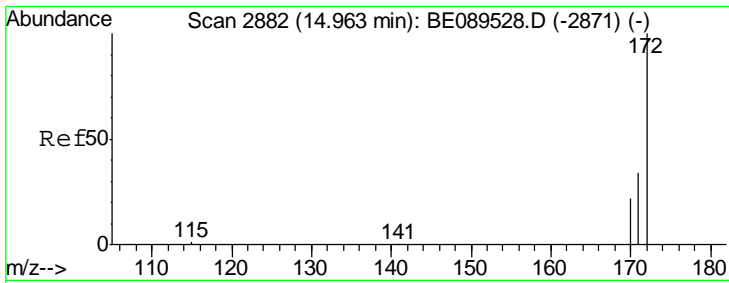
Tgt Ion	Resp	Lower	Upper
142	114776		
141	84.8	67.0	100.6
115	38.8	30.6	45.8



#6
 Acenaphthene-d10
 Concen: 5.00 ng
 RT: 16.51 min Scan# 3089
 Delta R.T. 0.00 min
 Lab File: BE089534.D
 Acq: 6 Feb 2015 19:44

Tgt Ion	Resp	Lower	Upper
164	55042		
162	99.2	79.5	119.3
160	46.4	37.6	56.4

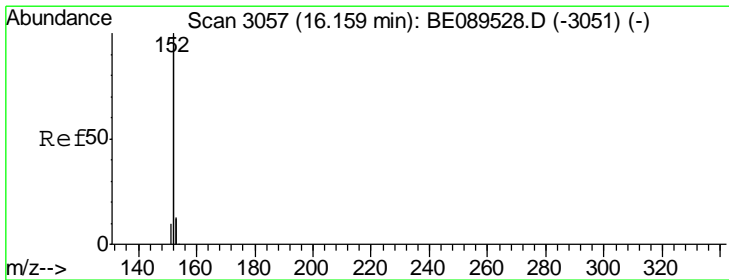
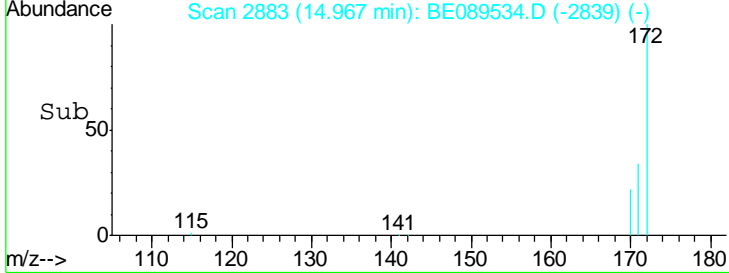
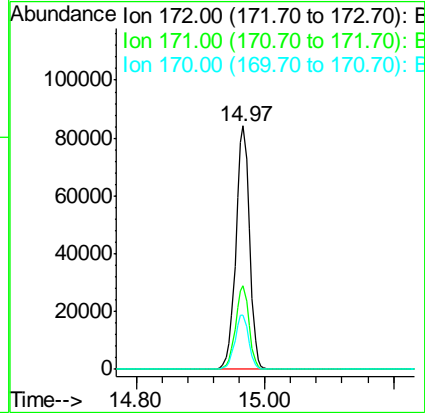
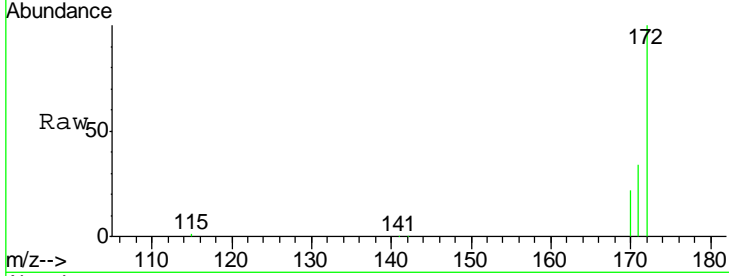




#7
 2-Fluorobiphenyl
 Concen: 8.47 ng
 RT: 14.97 min Scan# 2883
 Delta R.T. 0.00 min
 Lab File: BE089534.D
 Acq: 6 Feb 2015 19:44

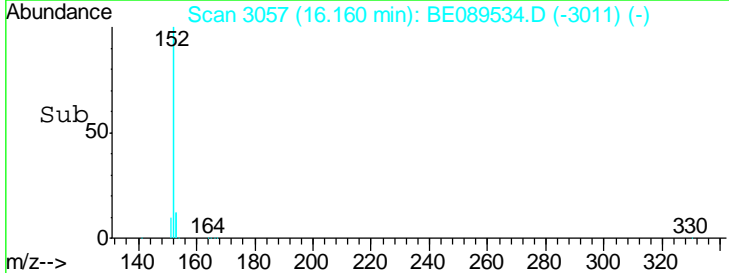
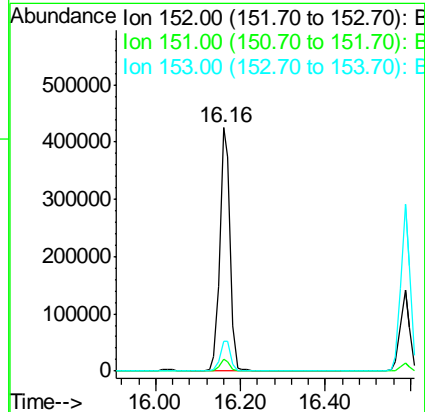
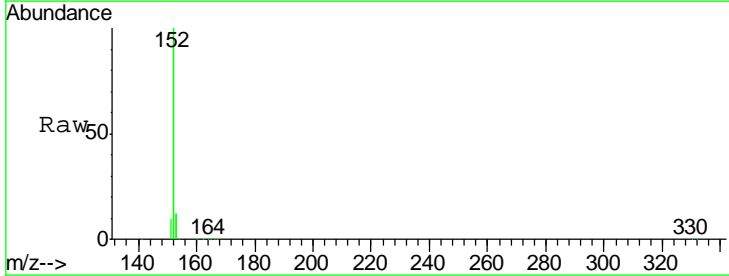
Instrument :
 BNA_E
 ClientSampled :
 PB81495BSD

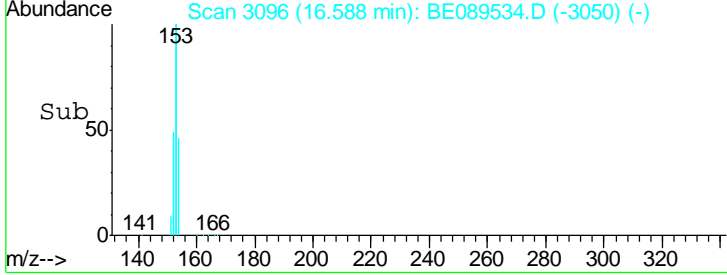
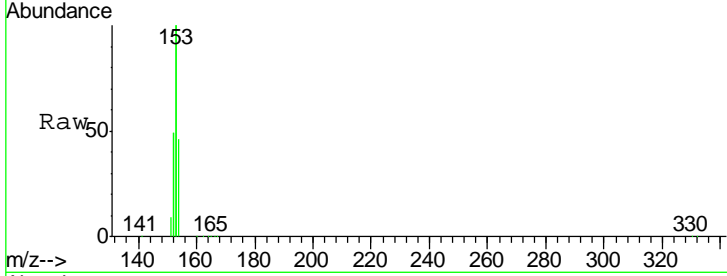
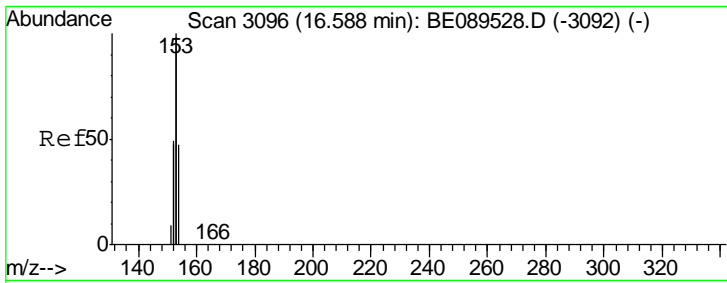
Tgt Ion	Resp	Lower	Upper
172	124362		
171	34.3	27.7	41.5
170	22.0	18.3	27.5



#8
 Acenaphthylene
 Concen: 7.61 ng
 RT: 16.16 min Scan# 3057
 Delta R.T. 0.00 min
 Lab File: BE089534.D
 Acq: 6 Feb 2015 19:44

Tgt Ion	Resp	Lower	Upper
152	704184		
151	4.9	4.0	6.0
153	12.9	10.6	15.8

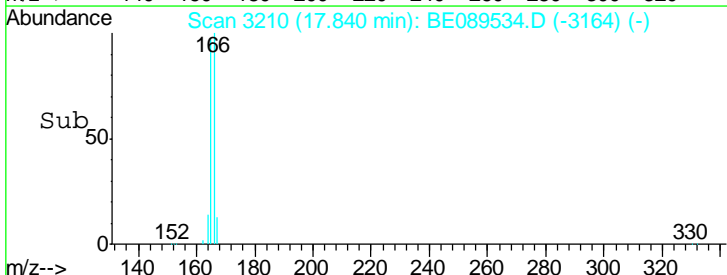
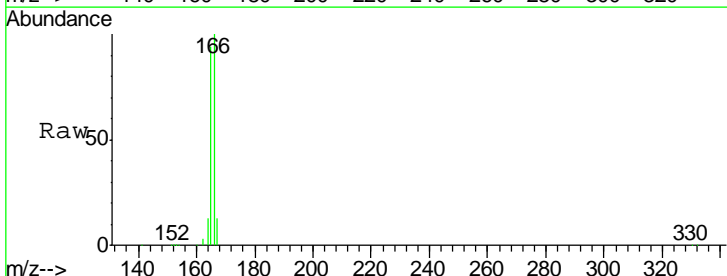
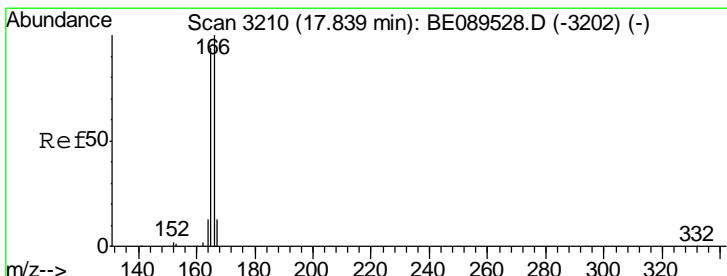
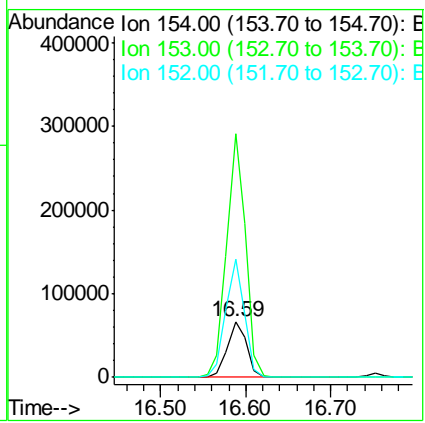




#9
 Acenaphthene
 Concen: 7.06 ng
 RT: 16.59 min Scan# 3096
 Delta R.T. 0.00 min
 Lab File: BE089534.D
 Acq: 6 Feb 2015 19:44

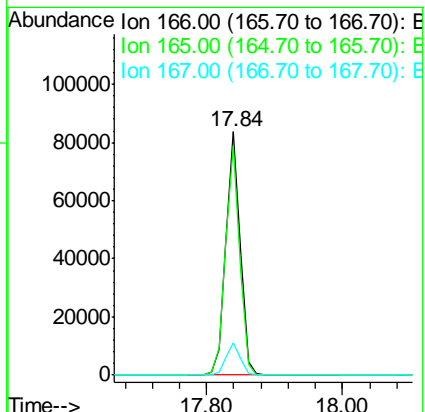
Instrument :
 BNA_E
 ClientSampleId :
 PB81495BSD

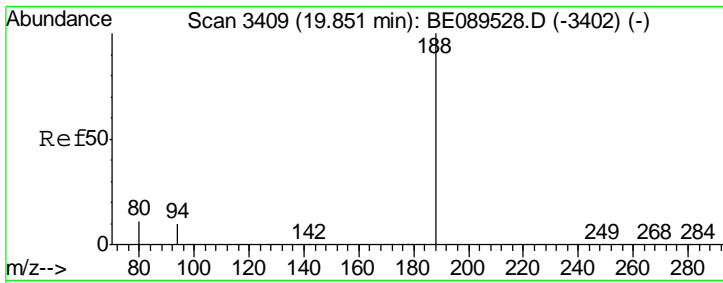
Tgt Ion	Resp	Lower	Upper
154	103747		
153	432.3	340.8	511.2
152	206.7	165.5	248.3



#10
 Fluorene
 Concen: 7.82 ng
 RT: 17.84 min Scan# 3210
 Delta R.T. 0.00 min
 Lab File: BE089534.D
 Acq: 6 Feb 2015 19:44

Tgt Ion	Resp	Lower	Upper
166	122026		
165	93.5	75.5	113.3
167	13.1	10.9	16.3

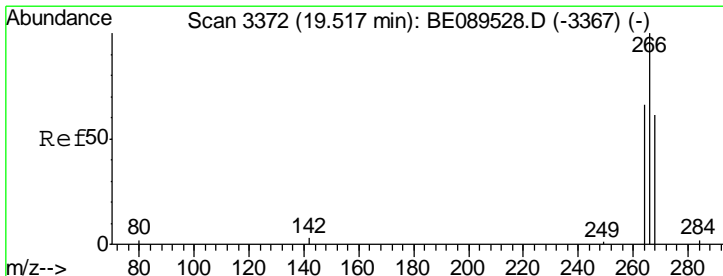
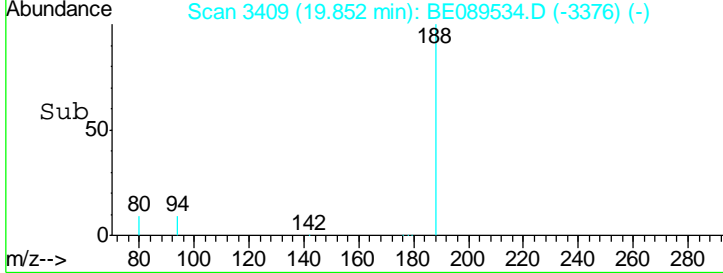
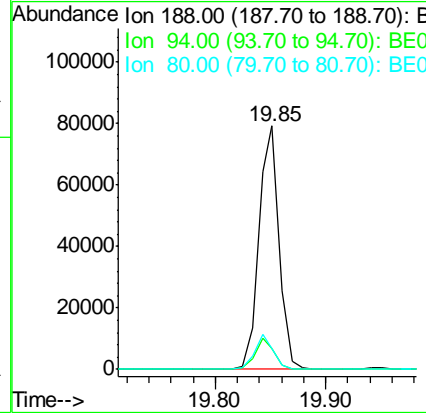
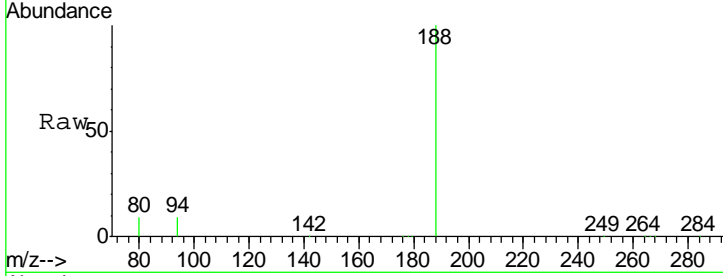




#11
 Phenanthrene-d10
 Concen: 5.00 ng
 RT: 19.85 min Scan# 3409
 Delta R.T. 0.00 min
 Lab File: BE089534.D
 Acq: 6 Feb 2015 19:44

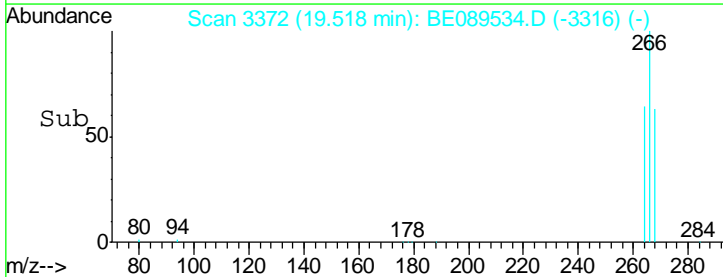
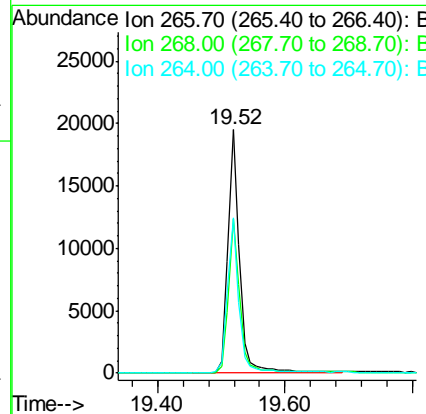
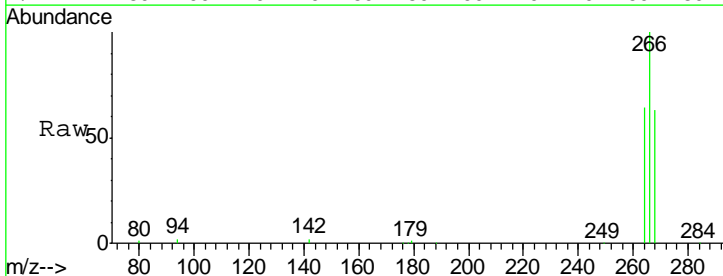
Instrument :
 BNA_E
 ClientSampled :
 PB81495BSD

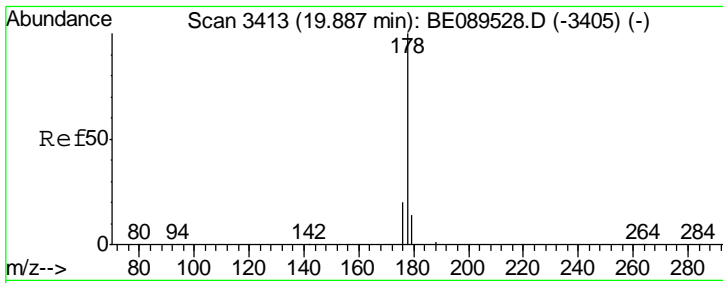
Tgt Ion	Resp	Lower	Upper
188	101331		
94	8.7	8.4	12.6
80	8.8	8.6	12.8



#12
 Pentachlorophenol
 Concen: 15.14 ng
 RT: 19.52 min Scan# 3372
 Delta R.T. 0.00 min
 Lab File: BE089534.D
 Acq: 6 Feb 2015 19:44

Tgt Ion	Resp	Lower	Upper
266	24599		
268	63.3	57.9	86.9
264	63.8	60.2	90.4



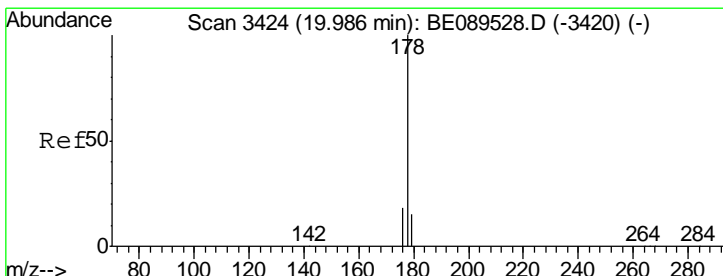
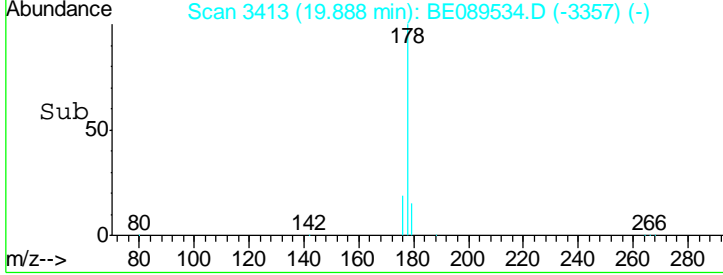
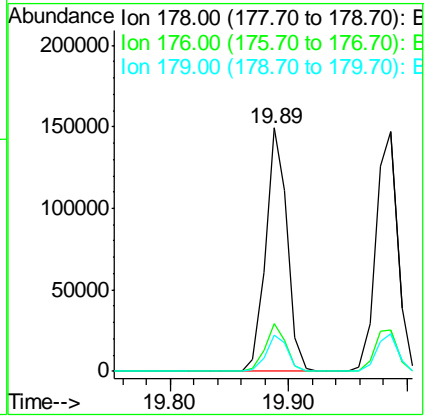
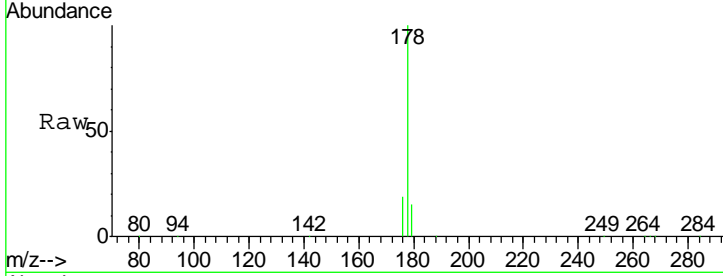


#13
 Phenanthrene
 Concen: 7.56 ng
 RT: 19.89 min Scan# 3413
 Delta R.T. 0.00 min
 Lab File: BE089534.D
 Acq: 6 Feb 2015 19:44

Instrument :
 BNA_E
 ClientSampleId :
 PB81495BSD

Tgt Ion:178 Resp: 189764

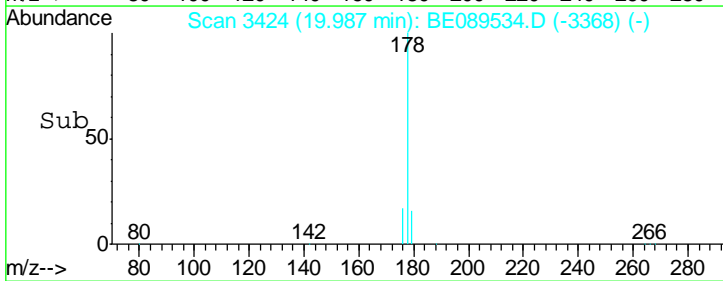
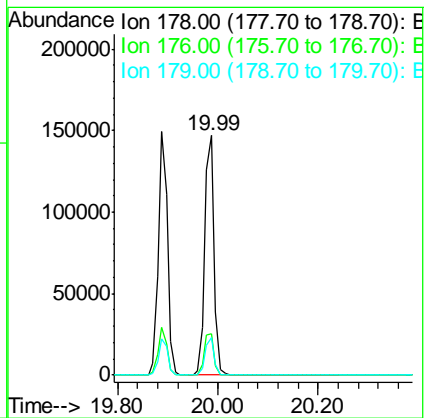
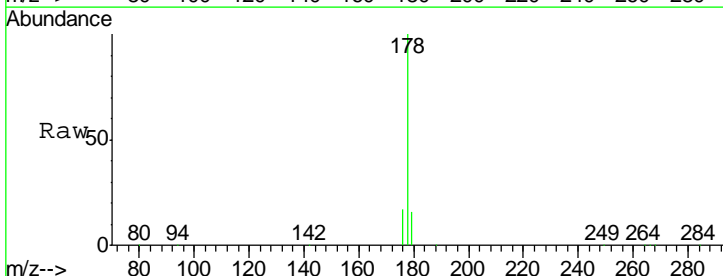
Ion	Ratio	Lower	Upper
178	100		
176	18.8	15.4	23.0
179	15.0	12.2	18.2

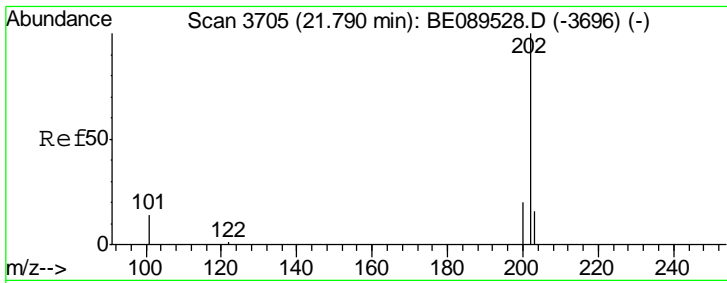


#14
 Anthracene
 Concen: 8.94 ng
 RT: 19.99 min Scan# 3424
 Delta R.T. 0.00 min
 Lab File: BE089534.D
 Acq: 6 Feb 2015 19:44

Tgt Ion:178 Resp: 189531

Ion	Ratio	Lower	Upper
178	100		
176	18.1	14.5	21.7
179	15.0	12.2	18.2



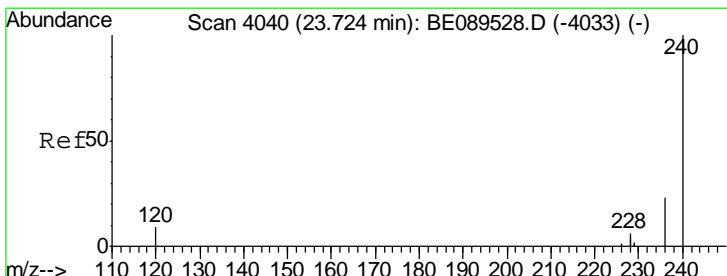
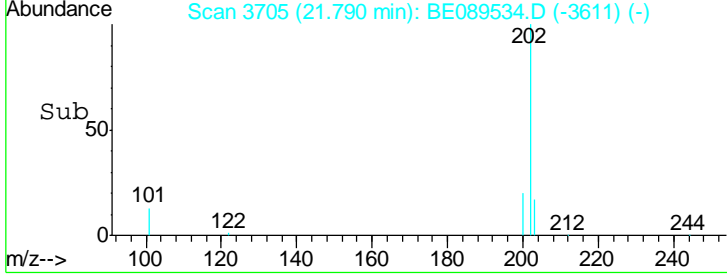
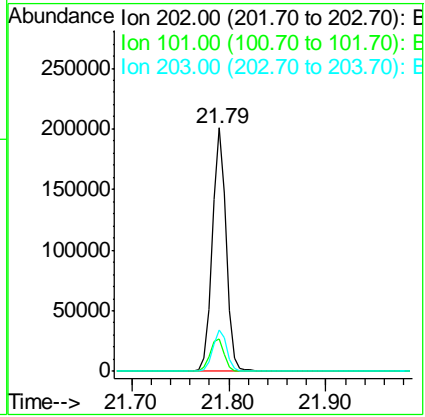
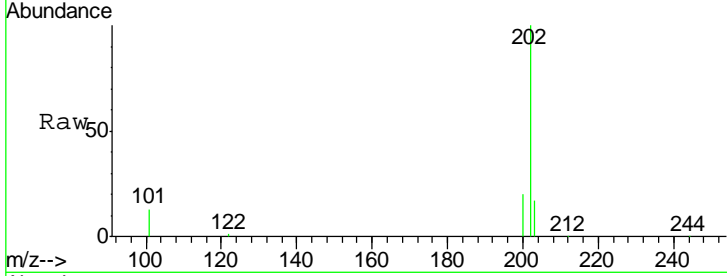


#15
 Fluoranthene
 Concen: 8.45 ng
 RT: 21.79 min Scan# 3705
 Delta R.T. 0.00 min
 Lab File: BE089534.D
 Acq: 6 Feb 2015 19:44

Instrument :
 BNA_E
 ClientSampled :
 PB81495BSD

Tgt Ion: 202 Resp: 197580

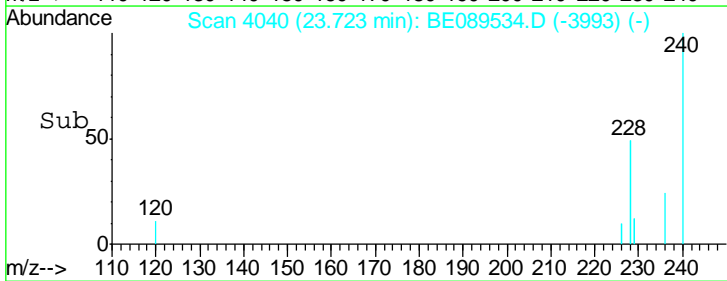
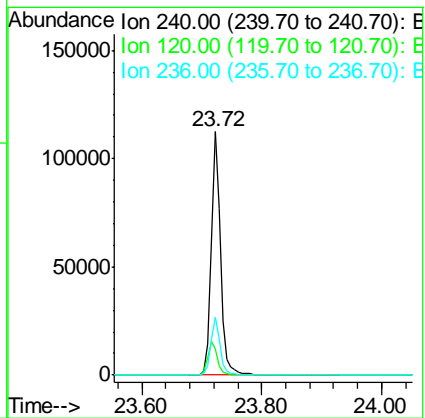
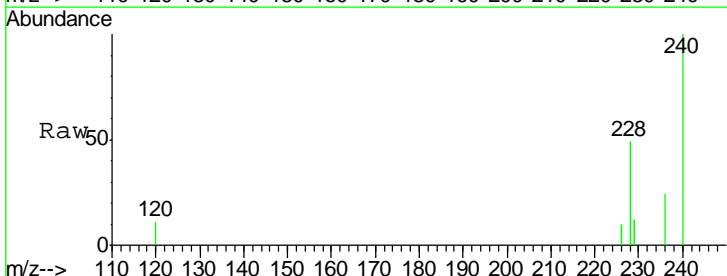
Ion	Ratio	Lower	Upper
202	100		
101	13.9	11.6	17.4
203	17.1	13.6	20.4

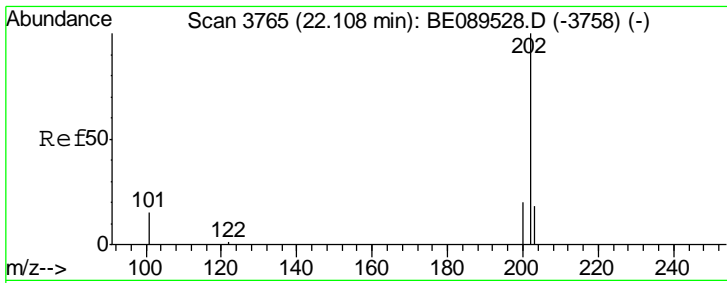


#16
 Chrysene-d12
 Concen: 5.00 ng
 RT: 23.72 min Scan# 4040
 Delta R.T. -0.00 min
 Lab File: BE089534.D
 Acq: 6 Feb 2015 19:44

Tgt Ion: 240 Resp: 120220

Ion	Ratio	Lower	Upper
240	100		
120	10.9	7.2	10.8#
236	24.0	18.5	27.7

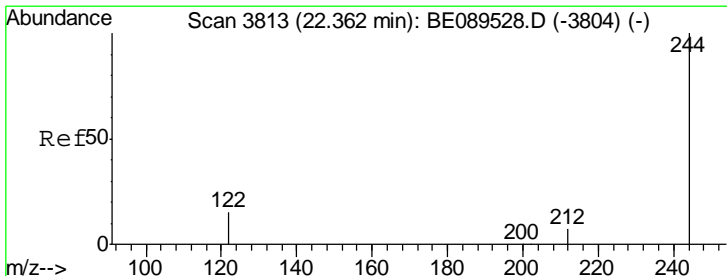
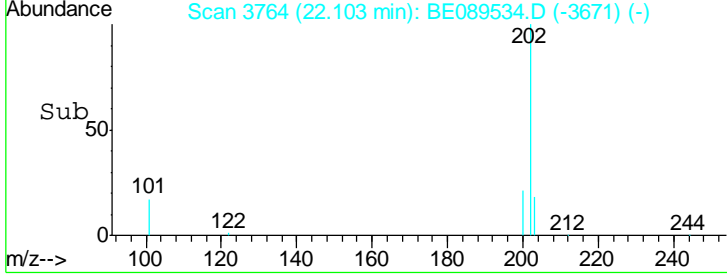
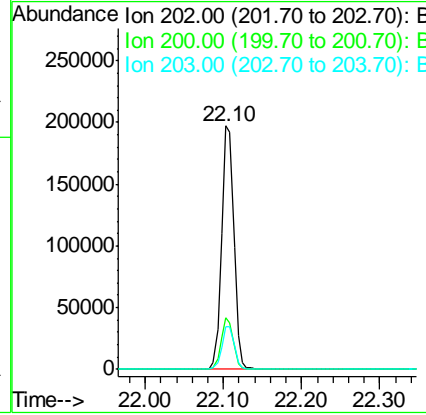
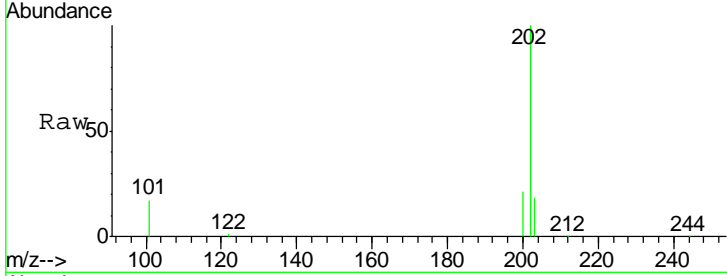




#17
 Pyrene
 Concen: 8.39 ng
 RT: 22.10 min Scan# 3764
 Delta R.T. -0.00 min
 Lab File: BE089534.D
 Acq: 6 Feb 2015 19:44

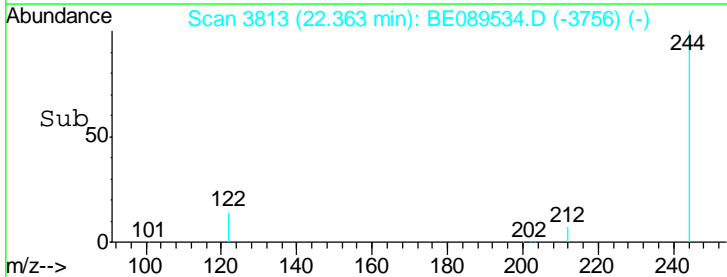
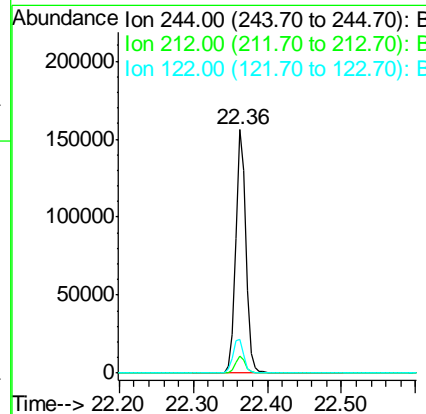
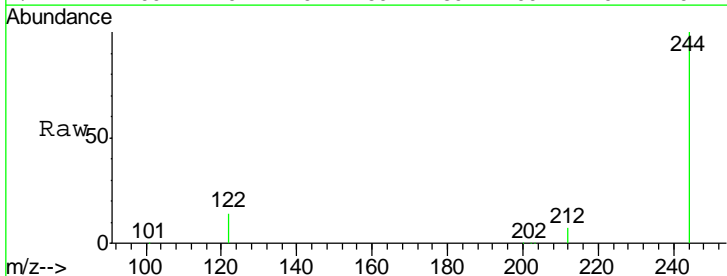
Instrument :
 BNA_E
 ClientSampled :
 PB81495BSD

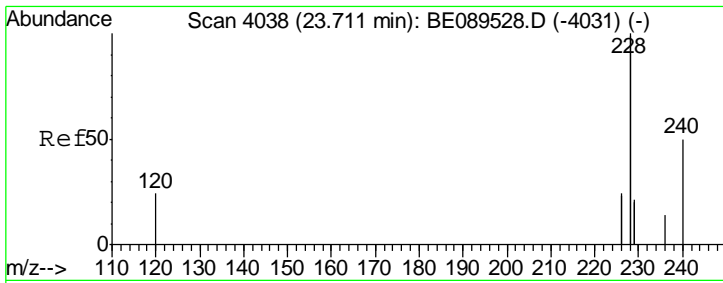
Tgt Ion	Resp	Lower	Upper
202	100		
200	20.6	16.3	24.5
203	17.8	13.5	20.3



#18
 Terphenyl-d14
 Concen: 9.57 ng
 RT: 22.36 min Scan# 3813
 Delta R.T. 0.00 min
 Lab File: BE089534.D
 Acq: 6 Feb 2015 19:44

Tgt Ion	Resp	Lower	Upper
244	100		
212	6.9	5.8	8.8
122	13.9	12.6	19.0



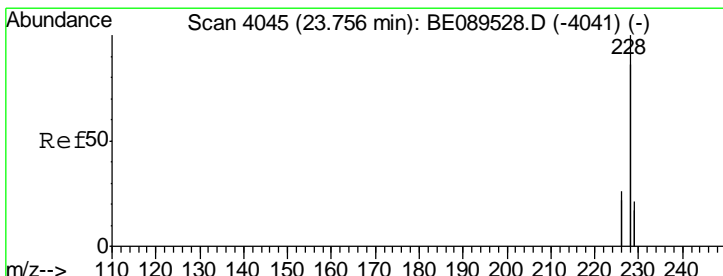
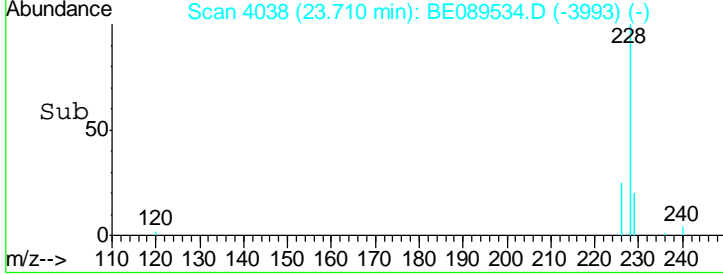
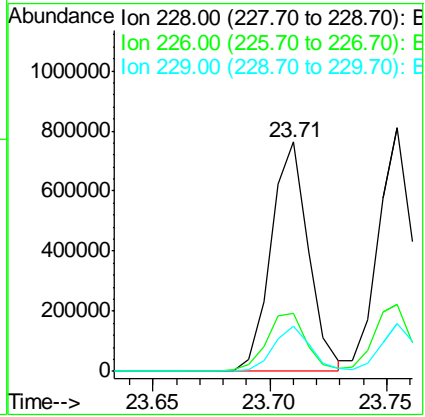
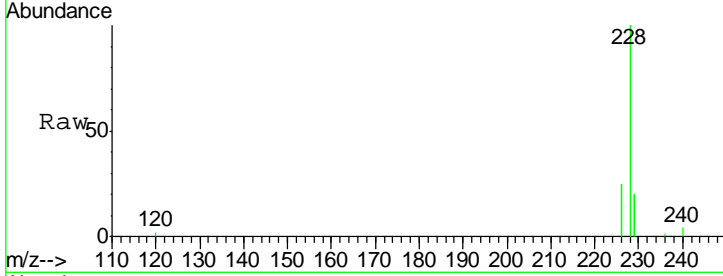


#19
 Benzo(a)anthracene
 Concen: 7.89 ng
 RT: 23.71 min Scan# 4038
 Delta R.T. -0.00 min
 Lab File: BE089534.D
 Acq: 6 Feb 2015 19:44

Instrument : BNA_E
 ClientSampled : PB81495BSD

Tgt Ion: 228 Resp: 843684

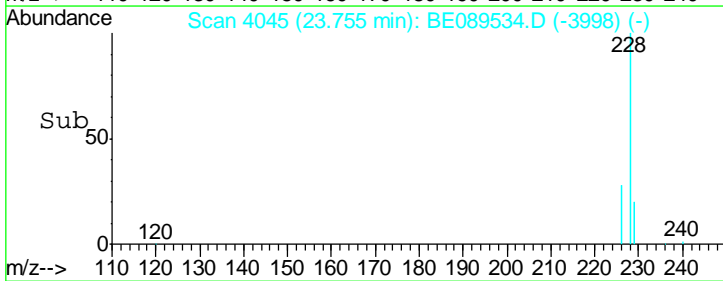
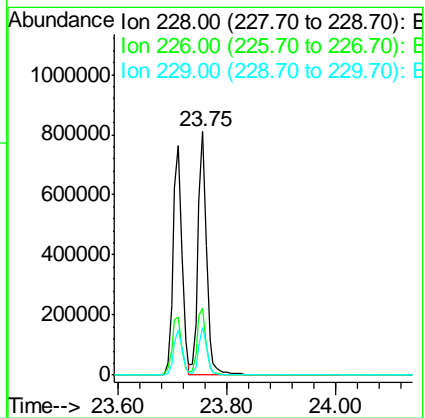
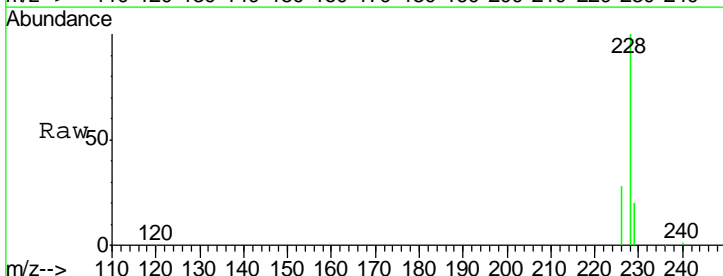
Ion	Ratio	Lower	Upper
228	100		
226	25.1	19.0	28.4
229	19.9	16.8	25.2

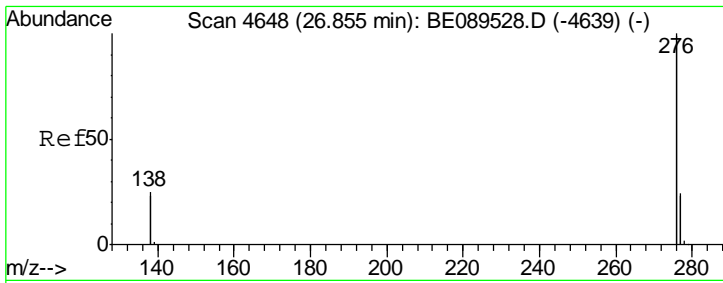


#20
 Chrysene
 Concen: 8.01 ng
 RT: 23.75 min Scan# 4045
 Delta R.T. -0.00 min
 Lab File: BE089534.D
 Acq: 6 Feb 2015 19:44

Tgt Ion: 228 Resp: 869924

Ion	Ratio	Lower	Upper
228	100		
226	27.7	21.0	31.4
229	19.7	16.7	25.1



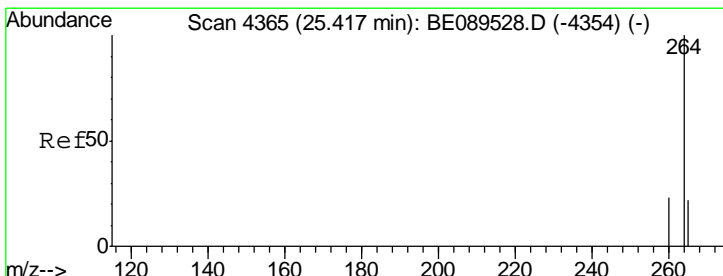
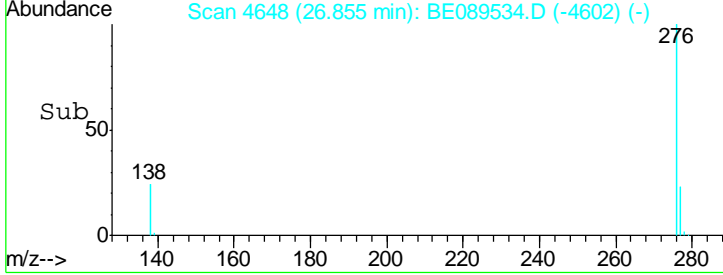
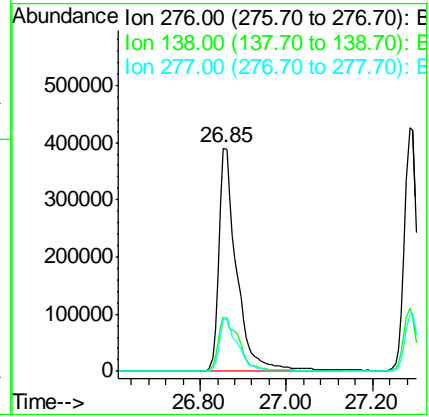
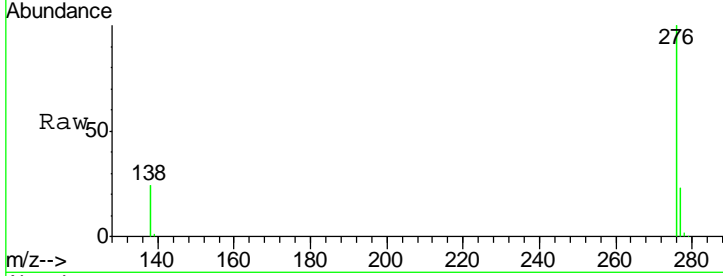


#21
 Indeno(1,2,3-cd)pyrene
 Concen: 7.38 ng
 RT: 26.85 min Scan# 4648
 Delta R.T. 0.00 min
 Lab File: BE089534.D
 Acq: 6 Feb 2015 19:44

Instrument : BNA_E
 ClientSampleId : PB81495BSD

Tgt Ion: 276 Resp: 1114415

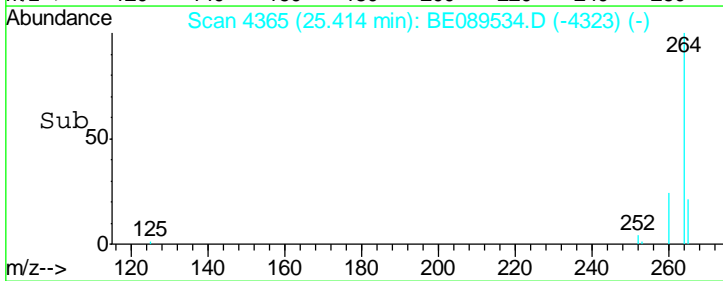
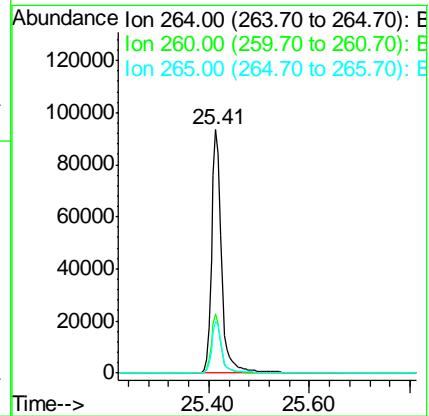
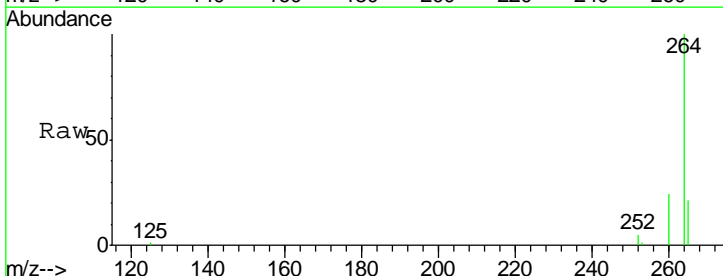
Ion	Ratio	Lower	Upper
276	100		
138	29.0	23.0	34.4
277	25.3	19.9	29.9

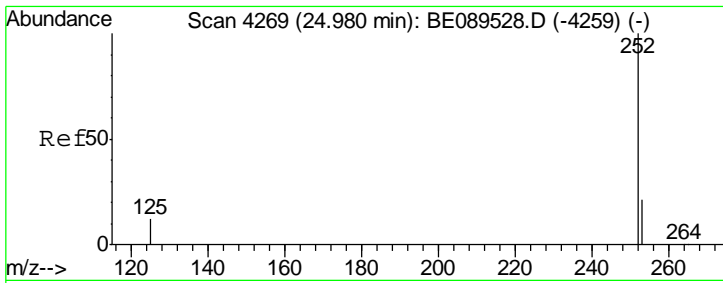


#22
 Perylene-d12
 Concen: 5.00 ng
 RT: 25.41 min Scan# 4365
 Delta R.T. -0.00 min
 Lab File: BE089534.D
 Acq: 6 Feb 2015 19:44

Tgt Ion: 264 Resp: 126153

Ion	Ratio	Lower	Upper
264	100		
260	24.2	18.7	28.1
265	21.4	17.5	26.3



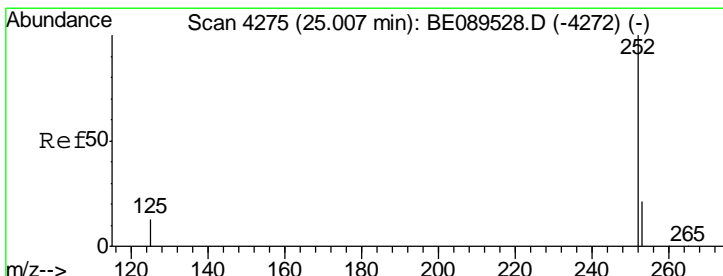
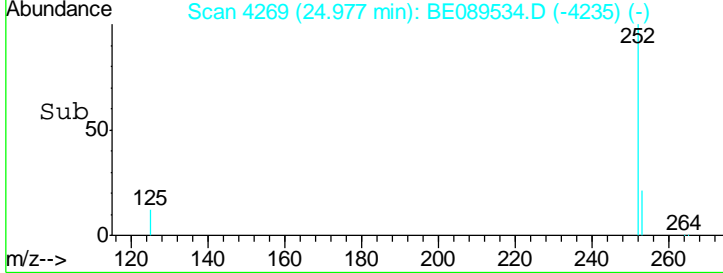
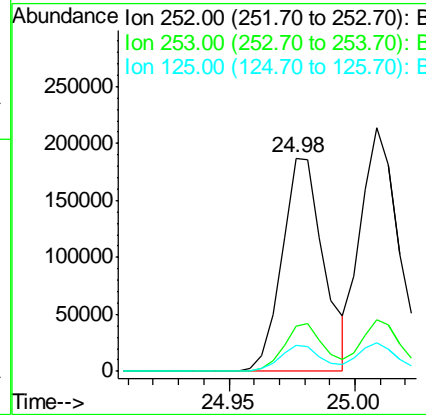
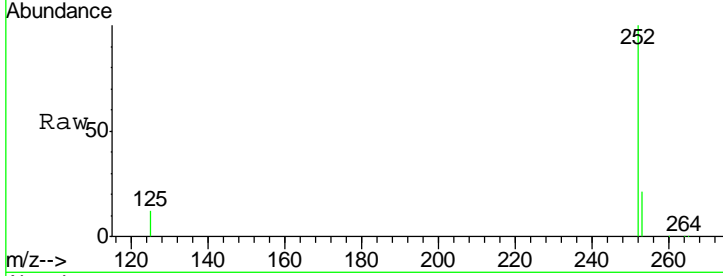


#23
 Benzo(b)fluoranthene
 Concen: 8.75 ng
 RT: 24.98 min Scan# 4269
 Delta R.T. -0.00 min
 Lab File: BE089534.D
 Acq: 6 Feb 2015 19:44

Instrument :
 BNA_E
 ClientSampleId :
 PB81495BSD

Tgt Ion: 252 Resp: 214415

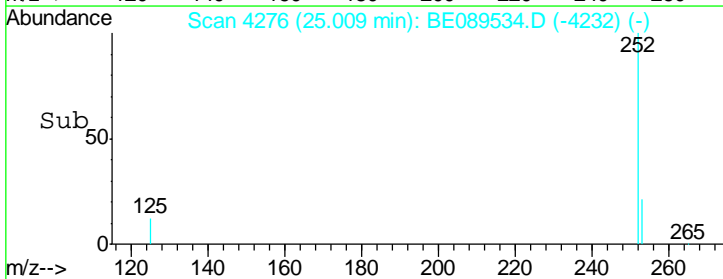
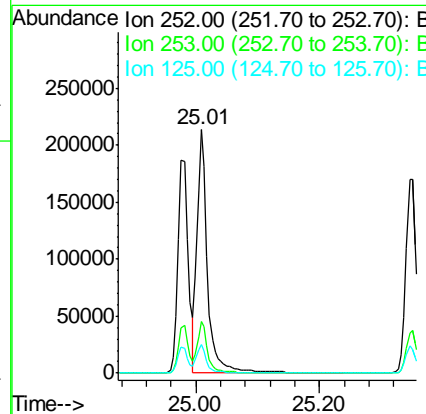
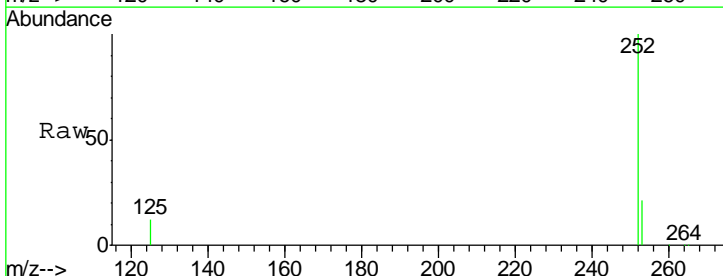
Ion	Ratio	Lower	Upper
252	100		
253	20.9	17.4	26.0
125	12.4	10.4	15.6

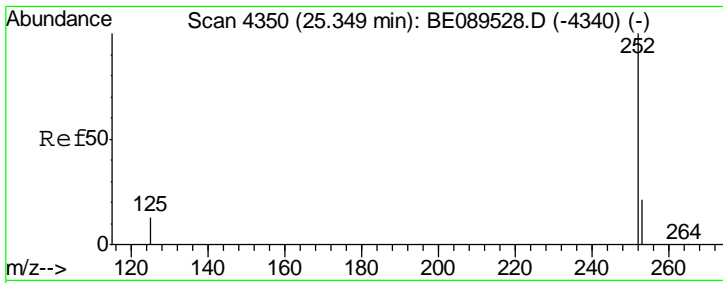


#24
 Benzo(k)fluoranthene
 Concen: 8.25 ng
 RT: 25.01 min Scan# 4276
 Delta R.T. 0.00 min
 Lab File: BE089534.D
 Acq: 6 Feb 2015 19:44

Tgt Ion: 252 Resp: 251257

Ion	Ratio	Lower	Upper
252	100		
253	21.4	17.2	25.8
125	11.8	10.6	15.8

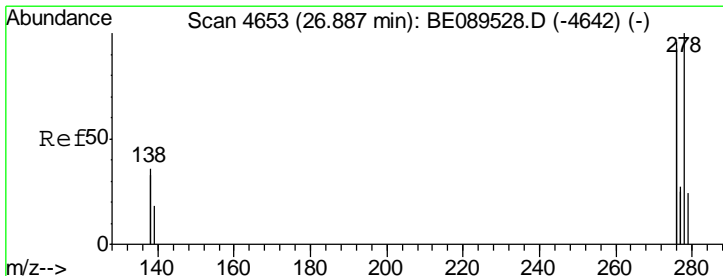
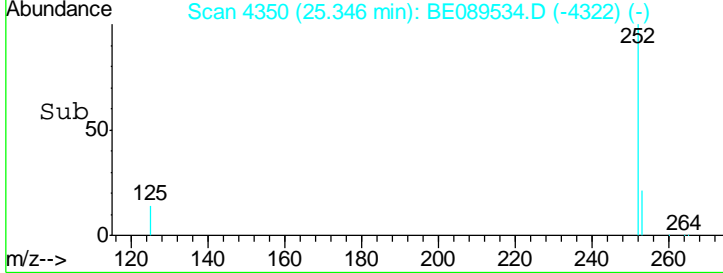
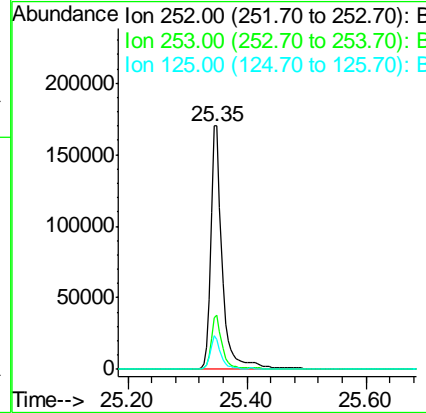
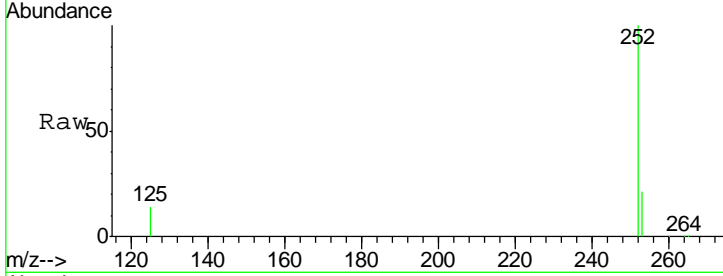




#25
 Benzo(a)pyrene
 Concen: 9.29 ng
 RT: 25.35 min Scan# 4350
 Delta R.T. -0.00 min
 Lab File: BE089534.D
 Acq: 6 Feb 2015 19:44

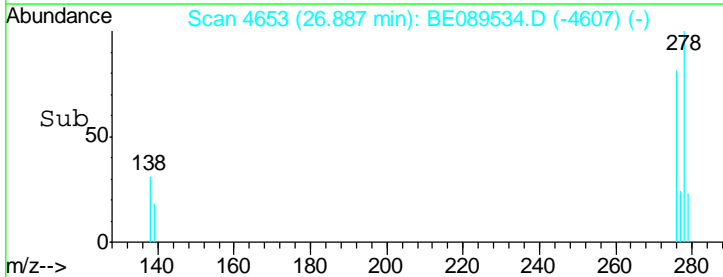
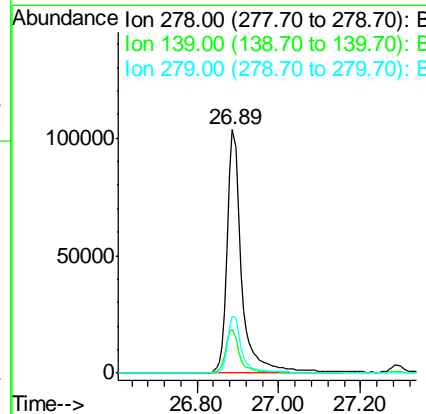
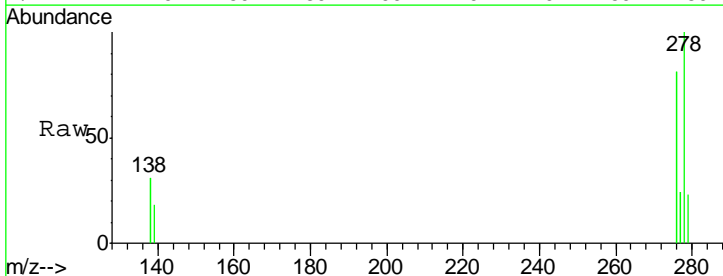
Instrument :
 BNA_E
 ClientSampled :
 PB81495BSD

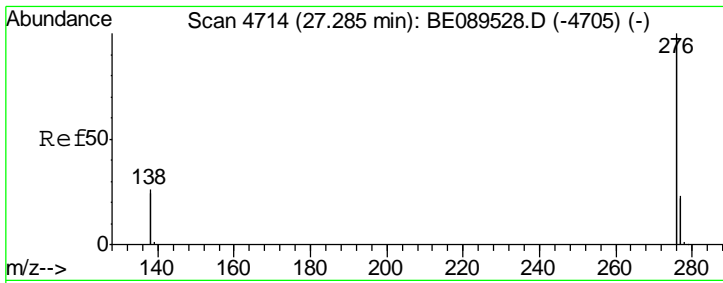
Tgt Ion	Resp	Lower	Upper
252	100		
253	21.0	17.8	26.6
125	13.8	11.4	17.2



#26
 Dibenzo(a,h)anthracene
 Concen: 8.30 ng
 RT: 26.89 min Scan# 4653
 Delta R.T. 0.00 min
 Lab File: BE089534.D
 Acq: 6 Feb 2015 19:44

Tgt Ion	Resp	Lower	Upper
278	100		
139	18.0	15.7	23.5
279	23.5	19.5	29.3





#27
 Benzo(g,h,i)perylene
 Concen: 7.86 ng
 RT: 27.29 min Scan# 4714
 Delta R.T. 0.00 min
 Lab File: BE089534.D
 Acq: 6 Feb 2015 19:44

Instrument :
 BNA_E
 ClientSampleId :
 PB81495BSD

Tgt Ion: 276 Resp: 959168

Ion	Ratio	Lower	Upper
276	100		
277	23.2	18.6	27.8
138	25.9	20.9	31.3

