

Data Path : Z:\HPCHEM1\BNA_E\DATA\BE020615\
 Data File : BE089546.D
 Acq On : 7 Feb 2015 4:50
 Operator : TP/IZ
 Sample : G1243-04
 Misc :
 ALS Vial : 21 Sample Multiplier: 1

Instrument :
 BNA_E
 ClientSampleId :
 MW-1

Quant Time: Feb 07 06:13:49 2015
 Quant Method : Z:\HPCHEM1\BNA_E\methods\SIMPAH-BE020615.M
 Quant Title : ASP BNA STANDARDS FOR 5 POINT CALIBRATION
 QLast Update : Sat Feb 07 04:07:57 2015
 Response via : Initial Calibration

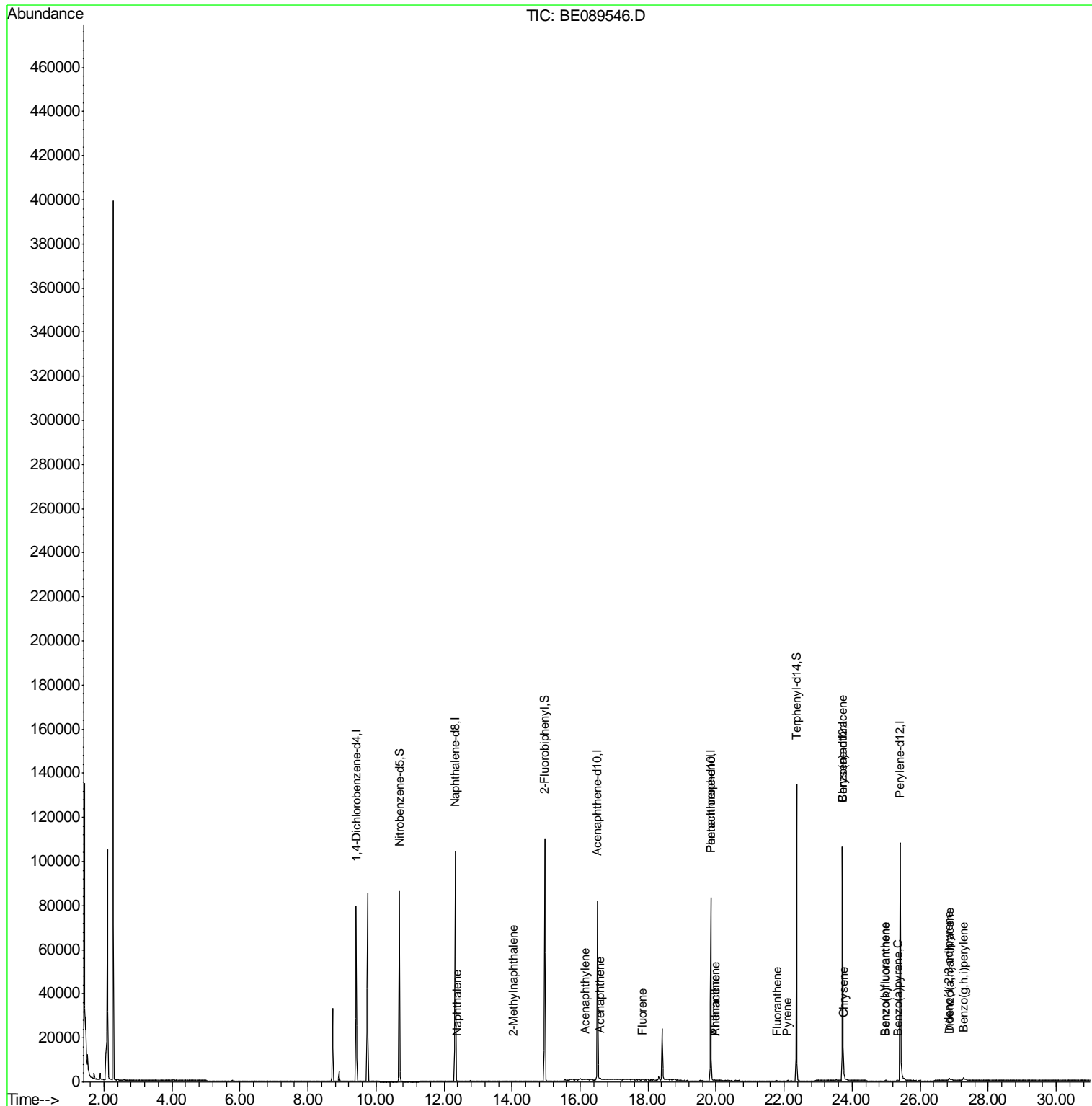
Internal Standards	R.T.	QIon	Response	Conc	Units	Dev(Min)
1) 1,4-Dichlorobenzene-d4	9.42	152	33630	5.00	ng	0.00
2) Naphthalene-d8	12.33	136	125805	5.00	ng	0.00
6) Acenaphthene-d10	16.51	164	48579	5.00	ng	0.00
11) Phenanthrene-d10	19.84	188	84583	5.00	ng	0.00
16) Chrysene-d12	23.72	240	95531	5.00	ng	0.00
22) Perylene-d12	25.41	264	108658	5.00	ng	0.00
System Monitoring Compounds						
3) Nitrobenzene-d5	10.69	82	63179	7.56	ng	0.00
7) 2-Fluorobiphenyl	14.96	172	103674	8.00	ng	0.00
18) Terphenyl-d14	22.36	244	114854	9.11	ng	0.00
Target Compounds						
4) Naphthalene	12.38	128	440	0.02	ng	# 63
5) 2-Methylnaphthalene	14.03	142	198	0.01	ng	# 84
8) Acenaphthylene	16.16	152	652	0.01	ng	# 90
9) Acenaphthene	16.59	154	109	0.01	ng	# 1
10) Fluorene	17.84	166	153	0.01	ng	# 81
12) Pentachlorophenol	19.84	266	26	0.57	ng	85
13) Phenanthrene	19.98	178	237	0.01	ng	93
14) Anthracene	19.98	178	237	0.01	ng	# 92
15) Fluoranthene	21.78	202	386	0.02	ng	# 89
17) Pyrene	22.10	202	380	0.02	ng	# 92
19) Benzo(a)anthracene	23.71	228	2871	0.03	ng	# 89
20) Chrysene	23.75	228	2586	0.03	ng	# 85
21) Indeno(1,2,3-cd)pyrene	26.85	276	1485	0.01	ng	94
23) Benzo(b)fluoranthene	24.98	252	363	0.02	ng	# 43
24) Benzo(k)fluoranthene	25.00	252	469	0.02	ng	# 53
25) Benzo(a)pyrene	25.34	252	363	0.02	ng	# 37
26) Dibenzo(a,h)anthracene	26.88	278	338	0.01	ng	# 44
27) Benzo(g,h,i)perylene	27.27	276	2396	0.02	ng	# 67

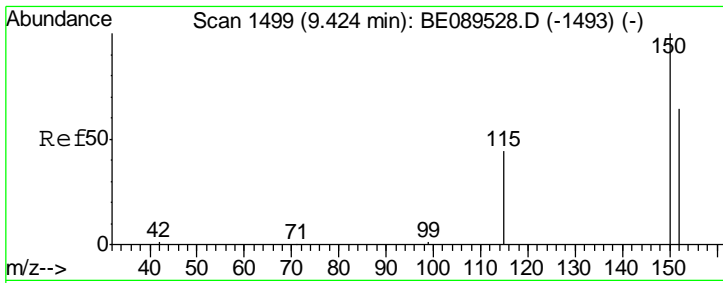
(#) = qualifier out of range (m) = manual integration (+) = signals summed

Data Path : Z:\HPCHEM1\BNA_E\DATA\BE020615\
 Data File : BE089546.D
 Acq On : 7 Feb 2015 4:50
 Operator : TP/IZ
 Sample : G1243-04
 Misc :
 ALS Vial : 21 Sample Multiplier: 1

Instrument :
 BNA_E
 Client Sampled :
 MW-1

Quant Time: Feb 07 06:13:49 2015
 Quant Method : Z:\HPCHEM1\BNA_E\methods\SIMPAH-BE020615.M
 Quant Title : ASP BNA STANDARDS FOR 5 POINT CALIBRATION
 QLast Update : Sat Feb 07 04:07:57 2015
 Response via : Initial Calibration



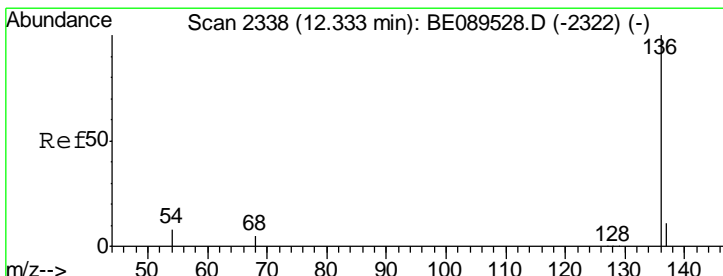
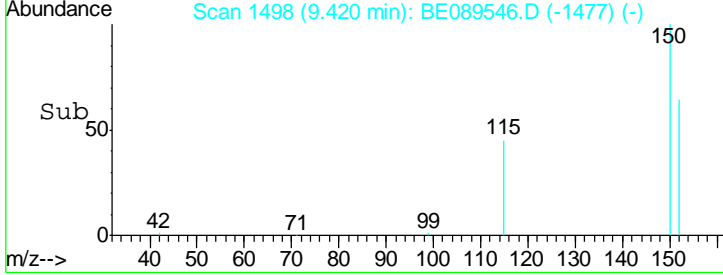
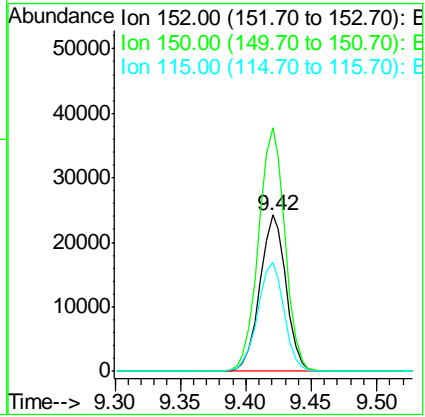
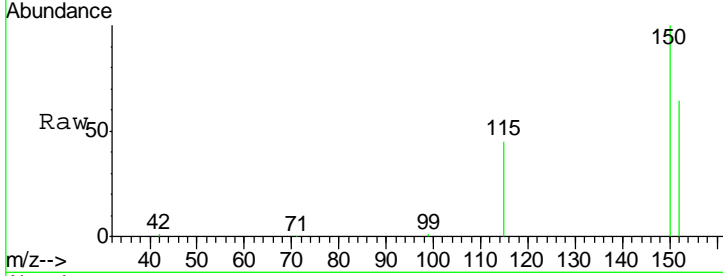


#1
 1,4-Dichlorobenzene-d4
 Concen: 5.00 ng
 RT: 9.42 min Scan# 1498
 Delta R.T. -0.00 min
 Lab File: BE089546.D
 Acq: 7 Feb 2015 4:50

Instrument :
 BNA_E
ClientSampled :
 MW-1

Tgt Ion:152 Resp: 33630

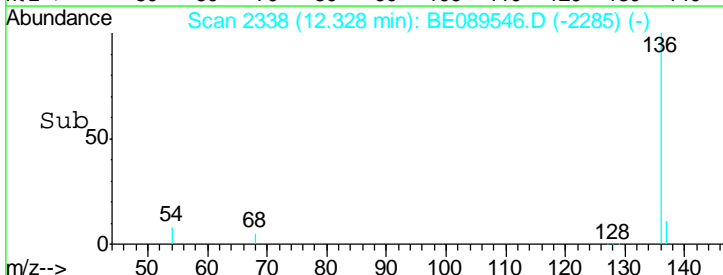
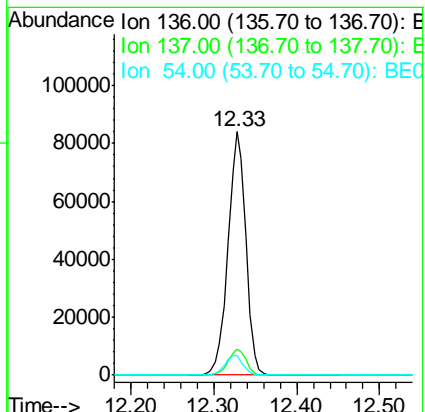
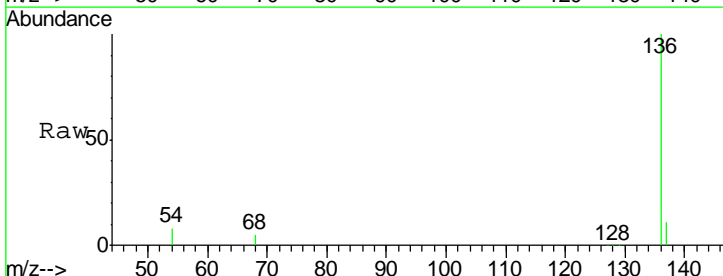
Ion	Ratio	Lower	Upper
152	100		
150	156.0	125.7	188.5
115	70.1	55.6	83.4

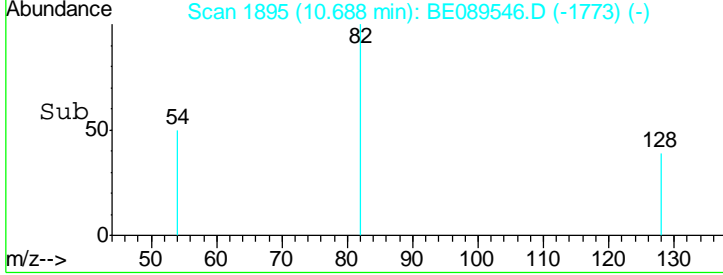
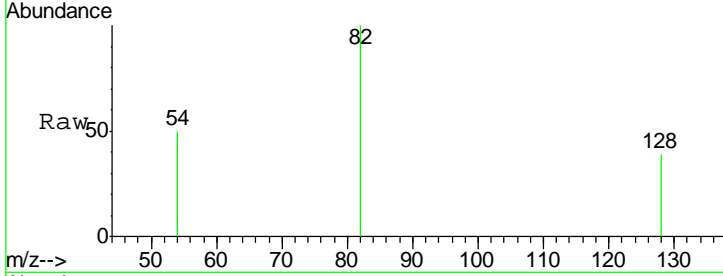
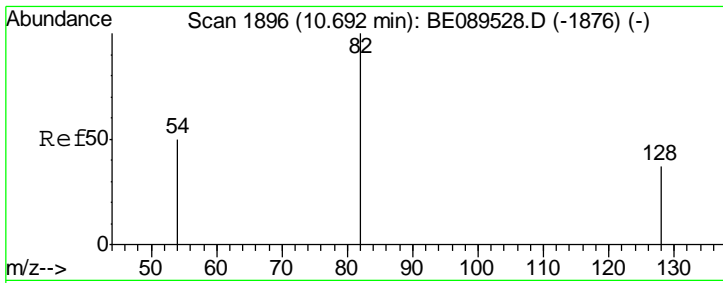


#2
 Naphthalene-d8
 Concen: 5.00 ng
 RT: 12.33 min Scan# 2338
 Delta R.T. -0.00 min
 Lab File: BE089546.D
 Acq: 7 Feb 2015 4:50

Tgt Ion:136 Resp: 125805

Ion	Ratio	Lower	Upper
136	100		
137	10.8	8.7	13.1
54	7.8	6.1	9.1

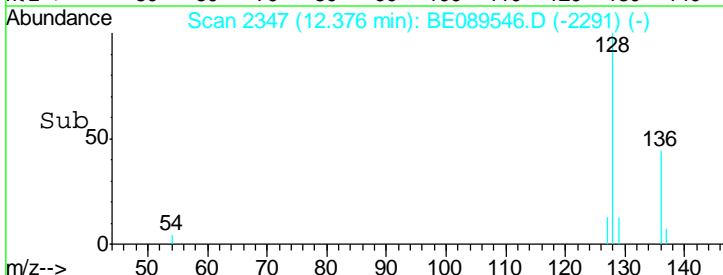
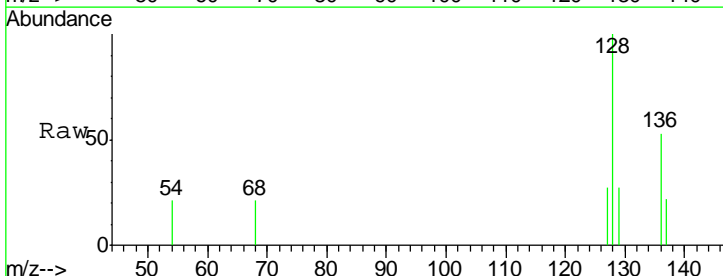
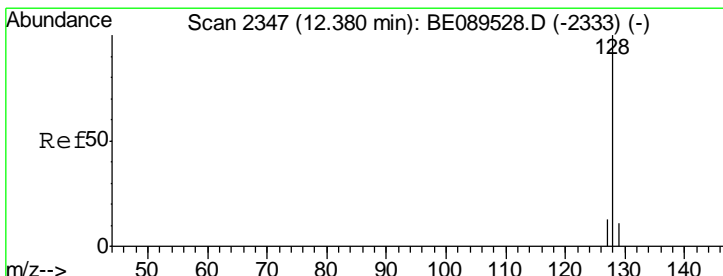
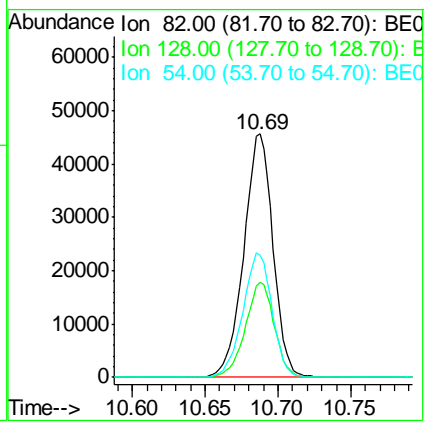




#3
 Nitrobenzene-d5
 Concen: 7.56 ng
 RT: 10.69 min Scan# 1895
 Delta R.T. -0.00 min
 Lab File: BE089546.D
 Acq: 7 Feb 2015 4:50

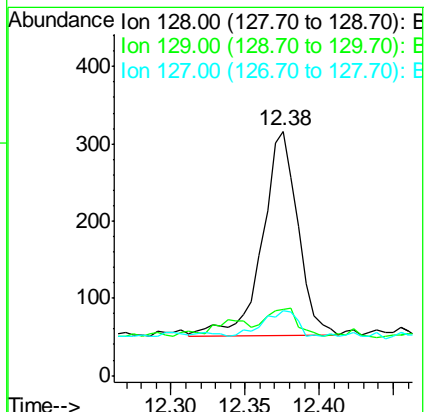
Instrument :
 BNA_E
 ClientSampleId :
 MW-1

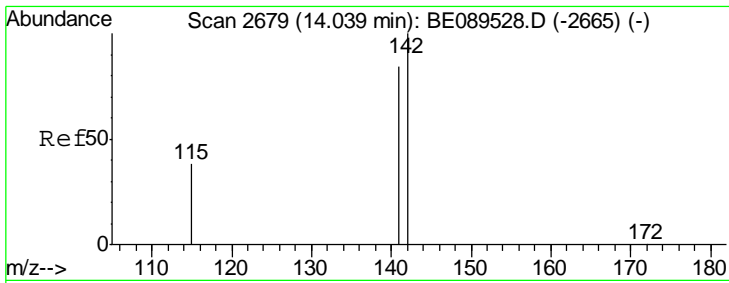
Tgt Ion	Resp	Lower	Upper
82	63179		
128	39.3	30.2	45.4
54	50.3	40.6	60.8



#4
 Naphthalene
 Concen: 0.02 ng
 RT: 12.38 min Scan# 2347
 Delta R.T. -0.00 min
 Lab File: BE089546.D
 Acq: 7 Feb 2015 4:50

Tgt Ion	Resp	Lower	Upper
128	440		
129	26.9	9.1	13.7#
127	26.6	10.5	15.7#

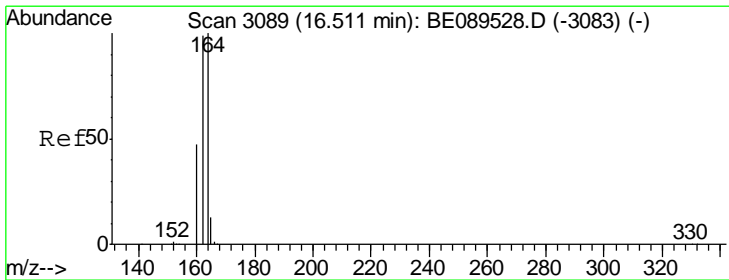
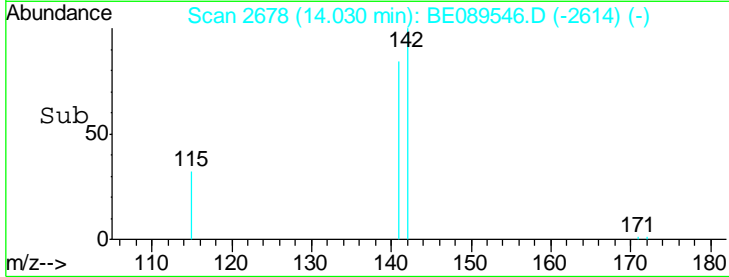
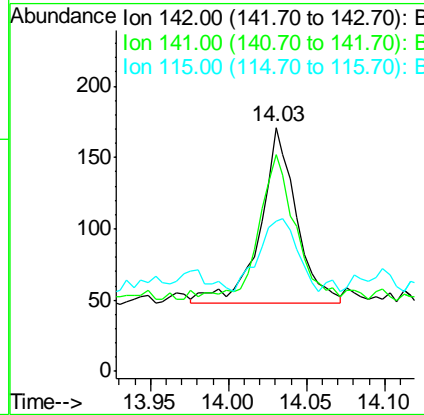
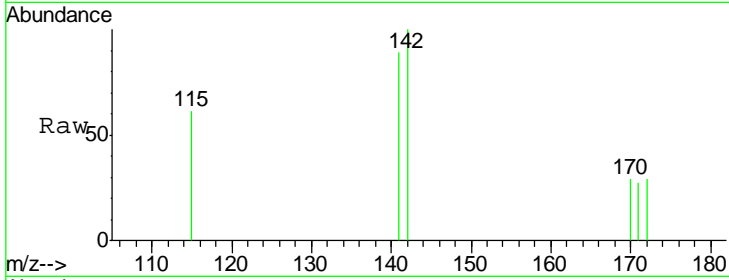




#5
 2-Methylnaphthalene
 Concen: 0.01 ng
 RT: 14.03 min Scan# 2678
 Delta R.T. -0.01 min
 Lab File: BE089546.D
 Acq: 7 Feb 2015 4:50

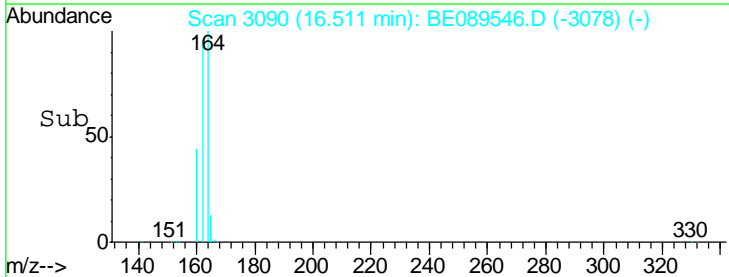
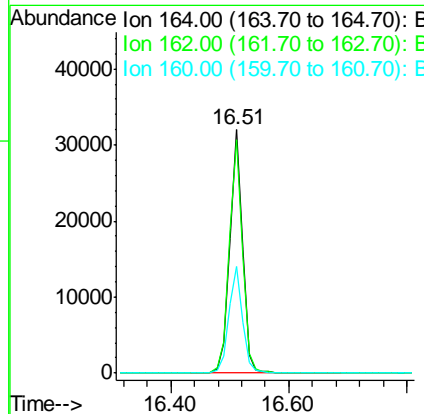
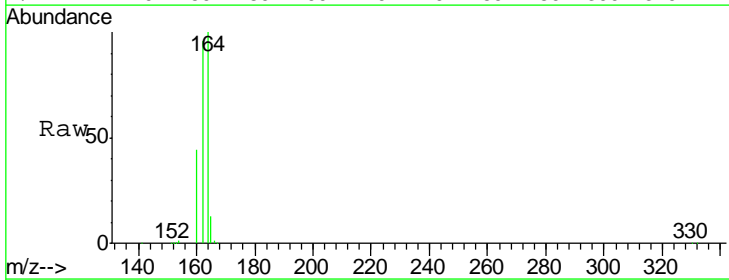
Instrument :
 BNA_E
 ClientSampled :
 MW-1

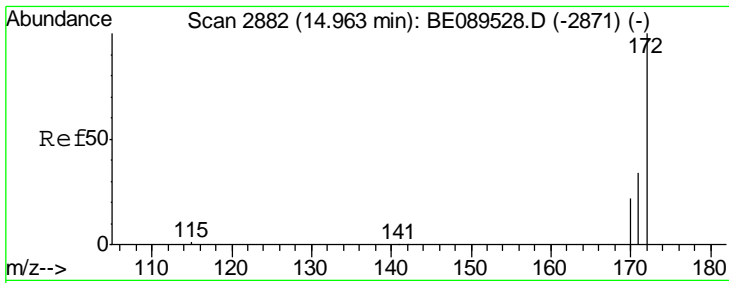
Tgt Ion	Resp	Lower	Upper
142	100		
141	88.9	67.0	100.6
115	61.4	30.6	45.8#



#6
 Acenaphthene-d10
 Concen: 5.00 ng
 RT: 16.51 min Scan# 3090
 Delta R.T. 0.00 min
 Lab File: BE089546.D
 Acq: 7 Feb 2015 4:50

Tgt Ion	Resp	Lower	Upper
164	100		
162	95.6	79.5	119.3
160	43.8	37.6	56.4

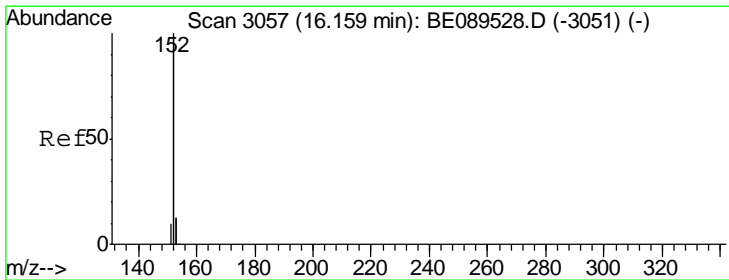
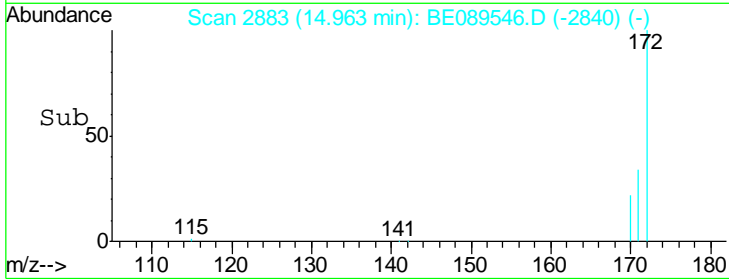
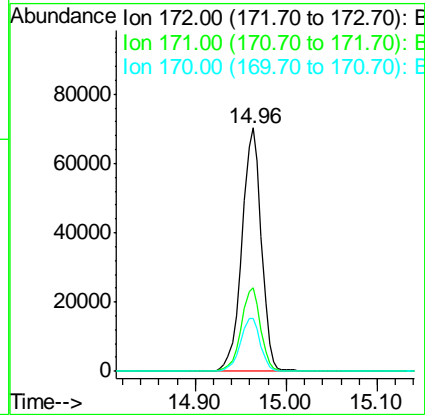
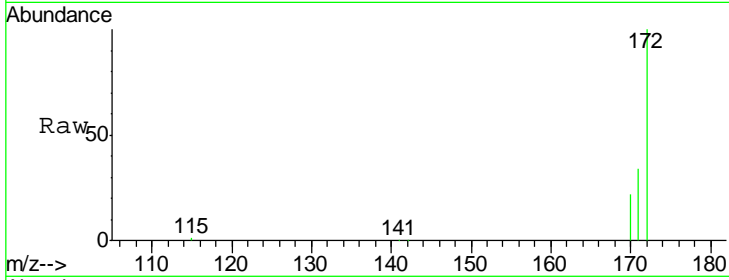




#7
 2-Fluorobiphenyl
 Concen: 8.00 ng
 RT: 14.96 min Scan# 2883
 Delta R.T. 0.00 min
 Lab File: BE089546.D
 Acq: 7 Feb 2015 4:50

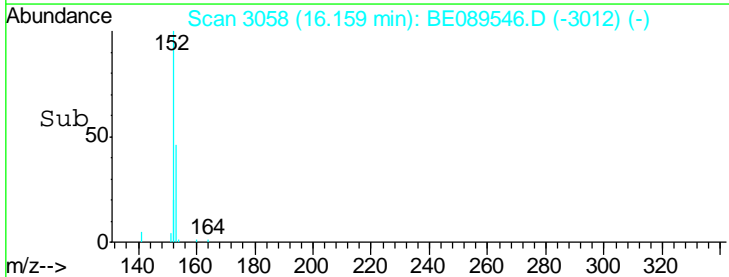
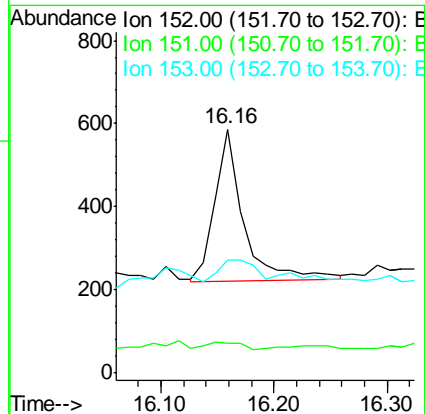
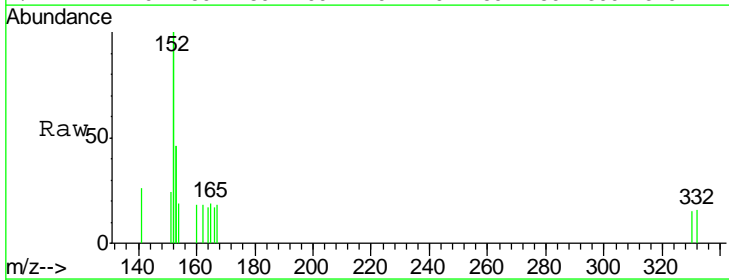
Instrument :
 BNA_E
 ClientSampled :
 MW-1

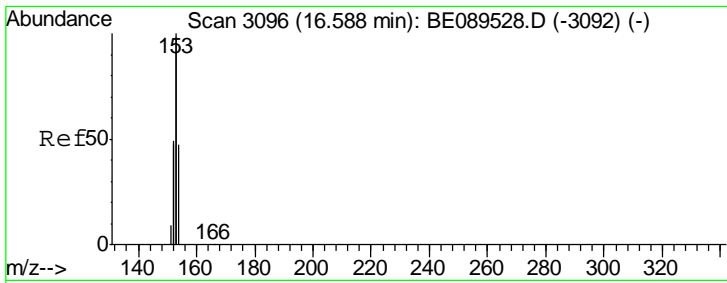
Tgt Ion	Resp	Lower	Upper
172	103674		
171	34.2	27.7	41.5
170	21.9	18.3	27.5



#8
 Acenaphthylene
 Concen: 0.01 ng
 RT: 16.16 min Scan# 3058
 Delta R.T. 0.00 min
 Lab File: BE089546.D
 Acq: 7 Feb 2015 4:50

Tgt Ion	Resp	Lower	Upper
152	652		
151	4.3	4.0	6.0
153	18.6	10.6	15.8#

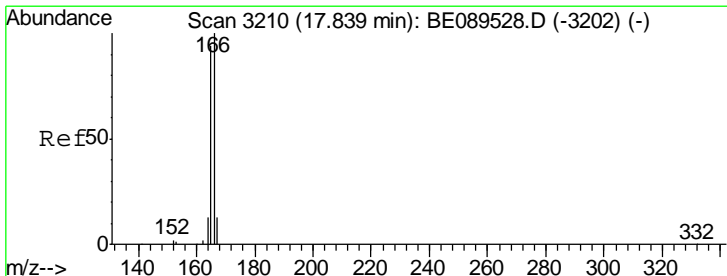
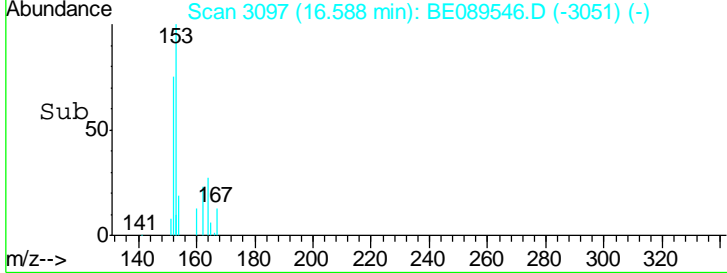
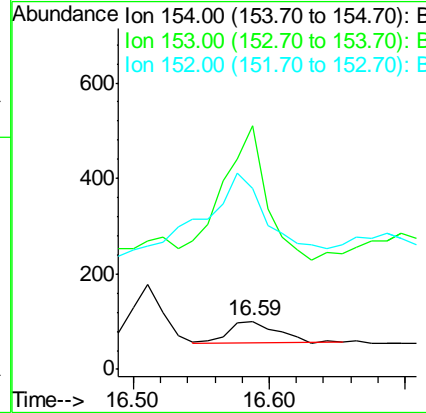
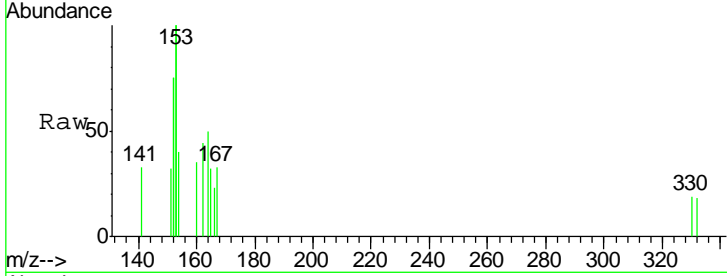




#9
 Acenaphthene
 Concen: 0.01 ng
 RT: 16.59 min Scan# 3097
 Delta R.T. 0.00 min
 Lab File: BE089546.D
 Acq: 7 Feb 2015 4:50

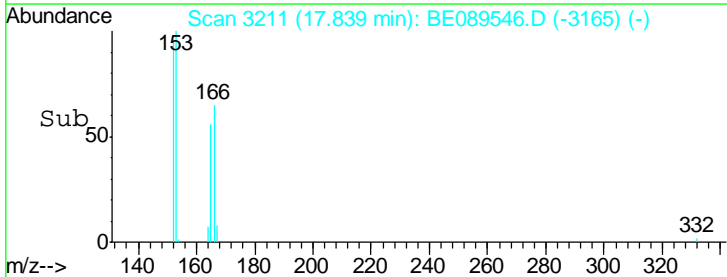
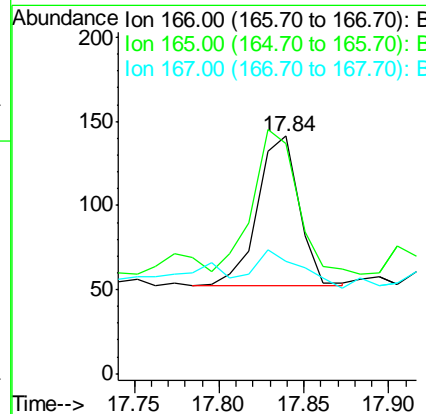
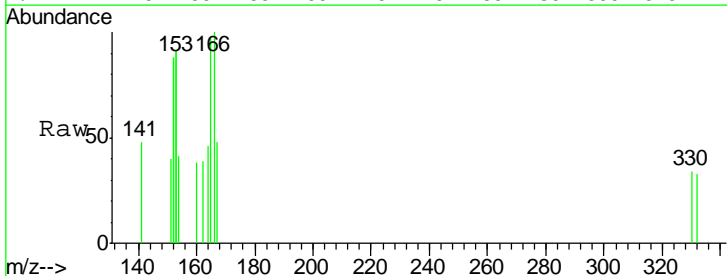
Instrument :
 BNA_E
 ClientSampled :
 MW-1

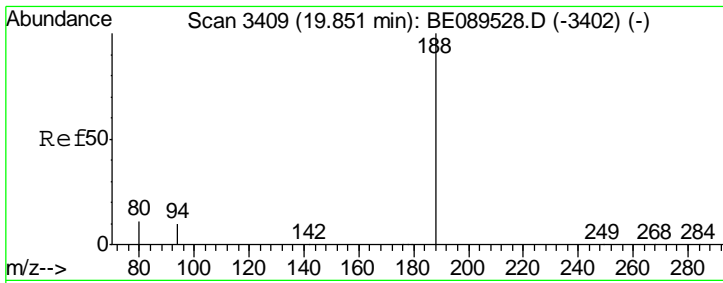
Tgt Ion	Resp	Lower	Upper
154	100		
153	578.9	340.8	511.2#
152	647.7	165.5	248.3#



#10
 Fluorene
 Concen: 0.01 ng
 RT: 17.84 min Scan# 3211
 Delta R.T. 0.00 min
 Lab File: BE089546.D
 Acq: 7 Feb 2015 4:50

Tgt Ion	Resp	Lower	Upper
166	100		
165	110.5	75.5	113.3
167	28.1	10.9	16.3#

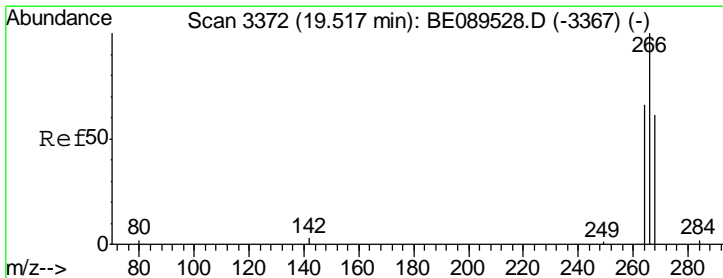
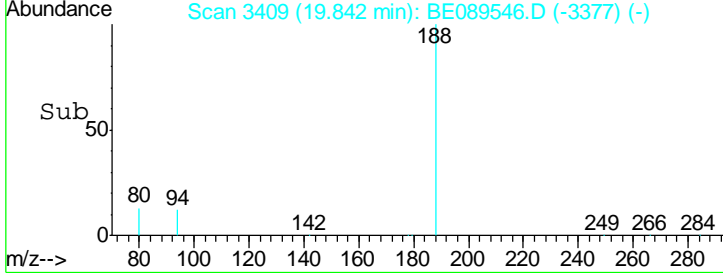
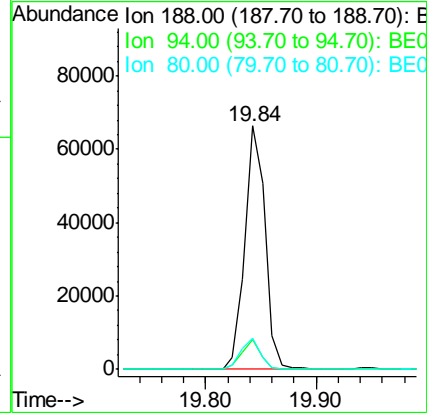
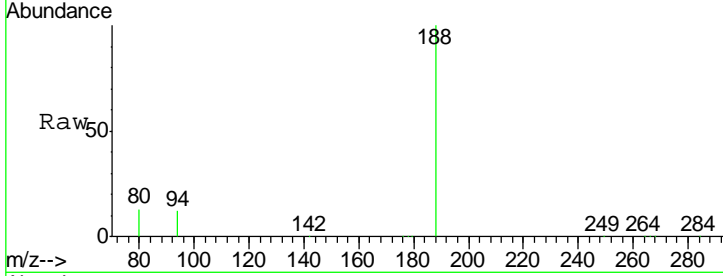




#11
 Phenanthrene-d10
 Concen: 5.00 ng
 RT: 19.84 min Scan# 3409
 Delta R.T. -0.01 min
 Lab File: BE089546.D
 Acq: 7 Feb 2015 4:50

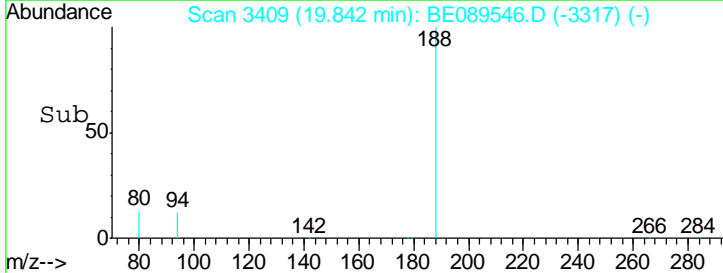
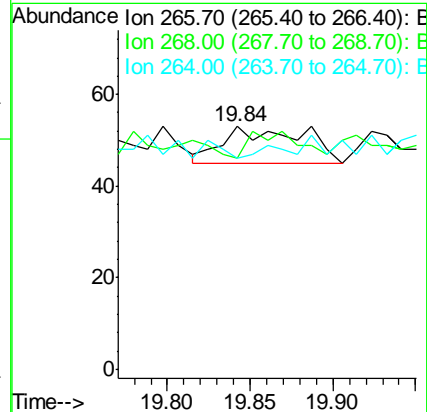
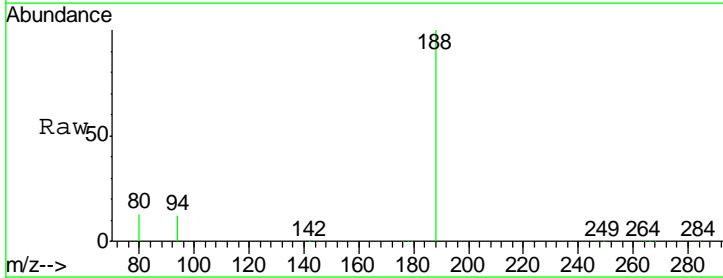
Instrument :
 BNA_E
 ClientSampled :
 MW-1

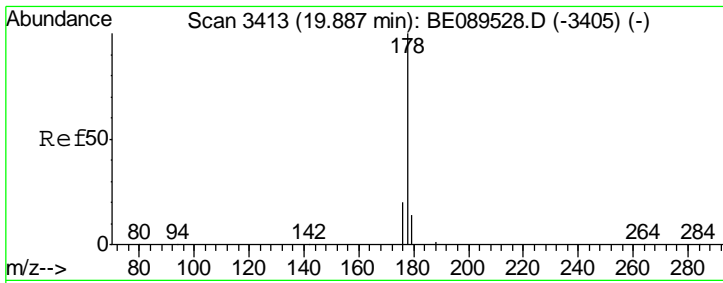
Tgt Ion	Resp	Lower	Upper
188	100		
94	12.3	8.4	12.6
80	12.7	8.6	12.8



#12
 Pentachlorophenol
 Concen: 0.57 ng
 RT: 19.84 min Scan# 3409
 Delta R.T. 0.33 min
 Lab File: BE089546.D
 Acq: 7 Feb 2015 4:50

Tgt Ion	Resp	Lower	Upper
266	100		
268	86.8	57.9	86.9
264	86.8	60.2	90.4



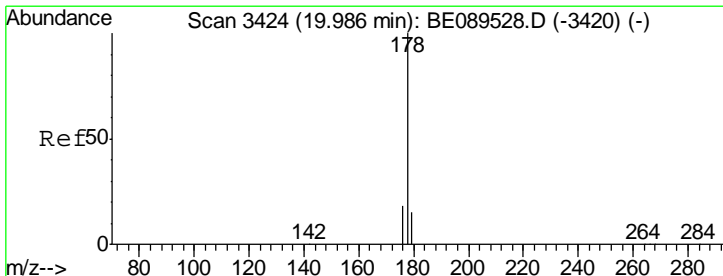
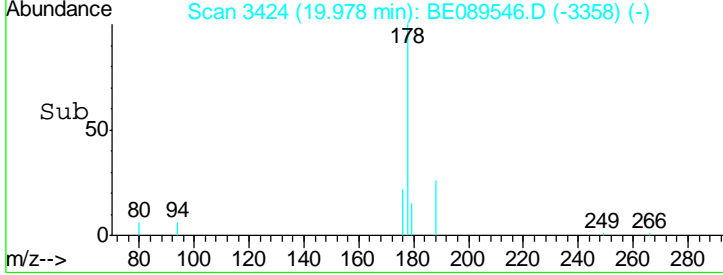
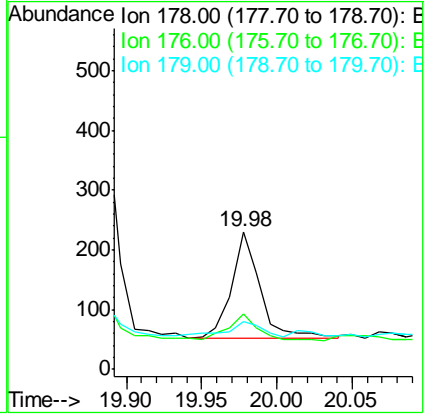
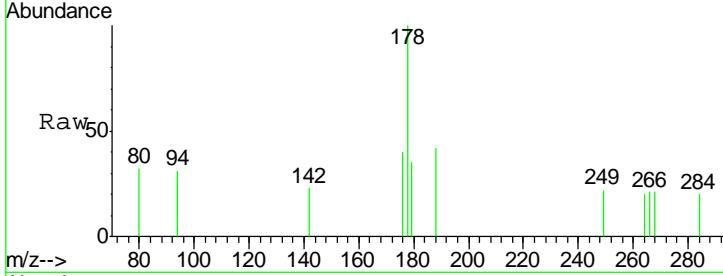


#13
 Phenanthrene
 Concen: 0.01 ng
 RT: 19.98 min Scan# 3424
 Delta R.T. 0.09 min
 Lab File: BE089546.D
 Acq: 7 Feb 2015 4:50

Instrument :
 BNA_E
 ClientSampled :
 MW-1

Tgt Ion:178 Resp: 237

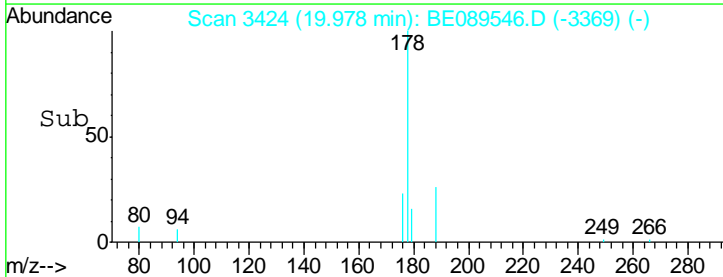
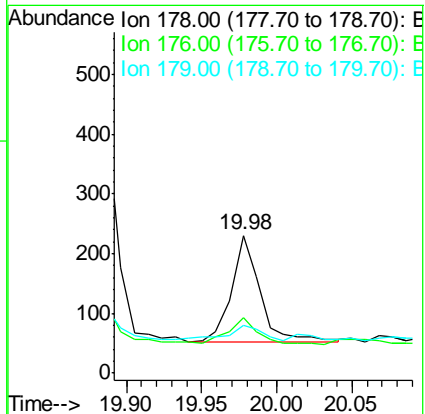
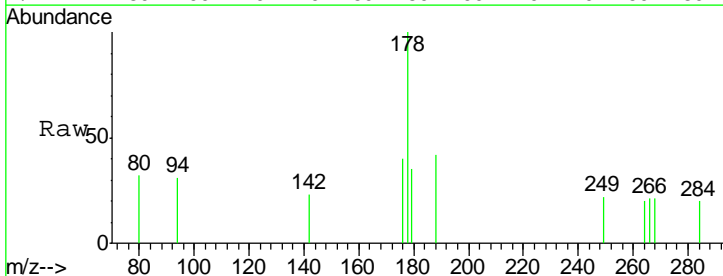
Ion	Ratio	Lower	Upper
178	100		
176	22.8	15.4	23.0
179	17.3	12.2	18.2

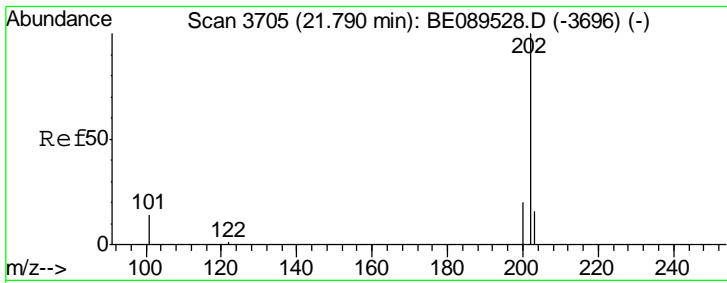


#14
 Anthracene
 Concen: 0.01 ng
 RT: 19.98 min Scan# 3424
 Delta R.T. -0.01 min
 Lab File: BE089546.D
 Acq: 7 Feb 2015 4:50

Tgt Ion:178 Resp: 237

Ion	Ratio	Lower	Upper
178	100		
176	22.8	14.5	21.7#
179	17.3	12.2	18.2

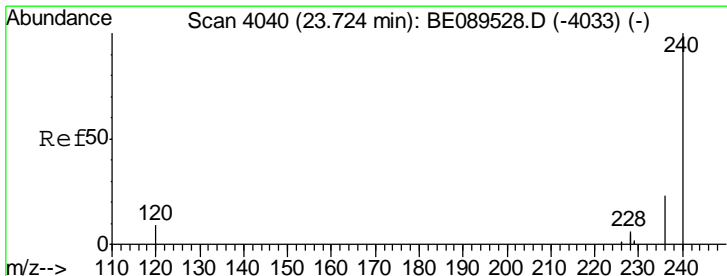
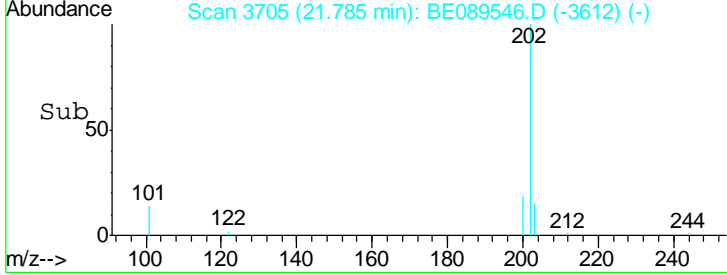
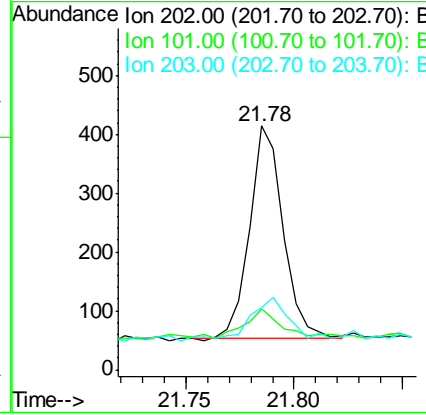
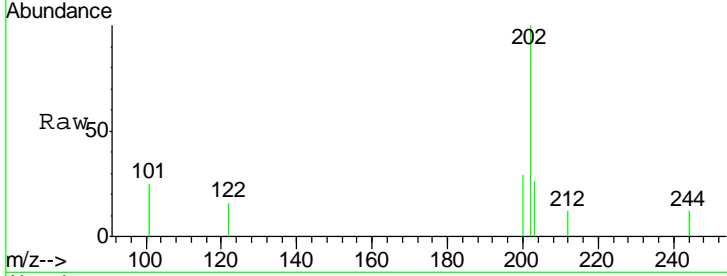




#15
 Fluoranthene
 Concen: 0.02 ng
 RT: 21.78 min Scan# 3705
 Delta R.T. -0.00 min
 Lab File: BE089546.D
 Acq: 7 Feb 2015 4:50

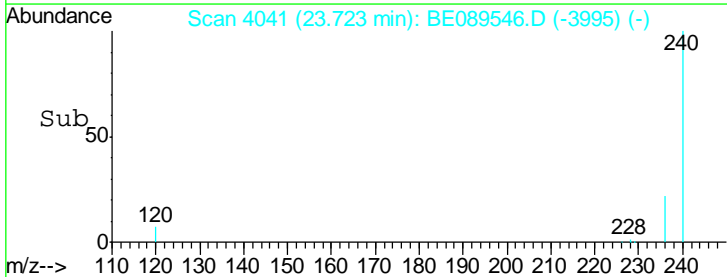
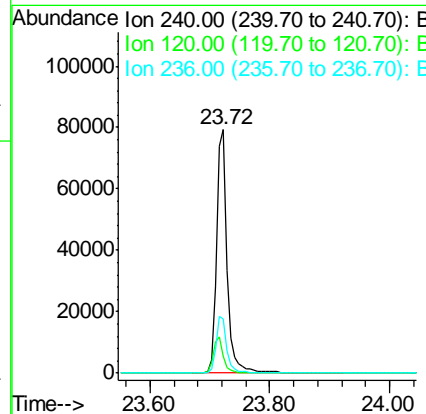
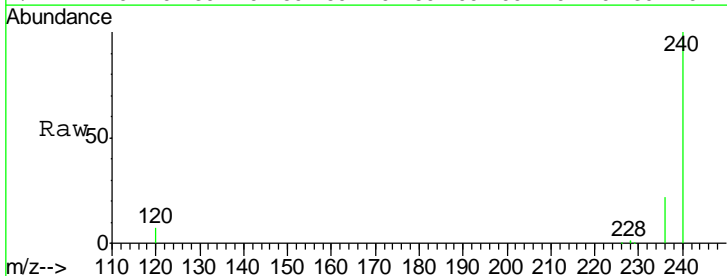
Instrument :
 BNA_E
 ClientSampled :
 MW-1

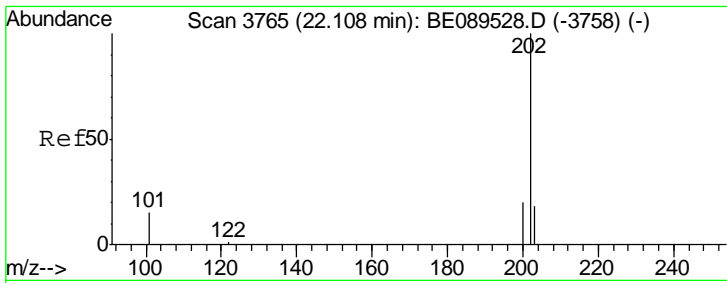
Tgt Ion	Resp	Lower	Upper
202	100		
101	13.7	11.6	17.4
203	25.1	13.6	20.4#



#16
 Chrysene-d12
 Concen: 5.00 ng
 RT: 23.72 min Scan# 4041
 Delta R.T. -0.00 min
 Lab File: BE089546.D
 Acq: 7 Feb 2015 4:50

Tgt Ion	Resp	Lower	Upper
240	100		
120	6.8	7.2	10.8#
236	22.2	18.5	27.7



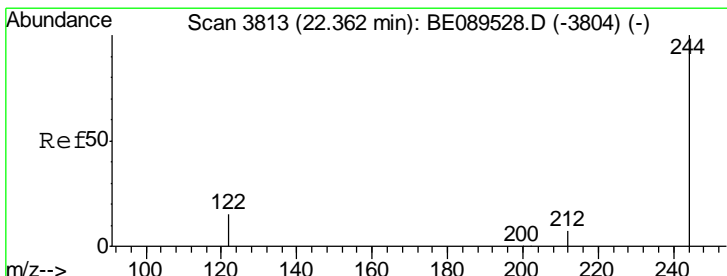
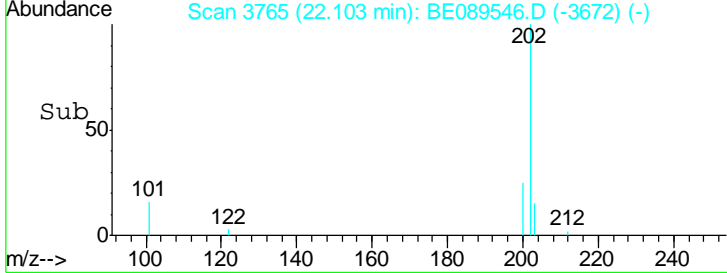
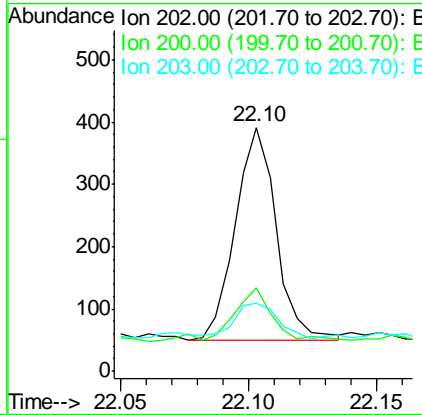
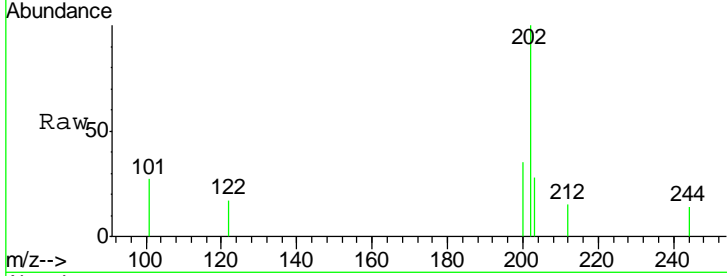


#17
 Pyrene
 Concen: 0.02 ng
 RT: 22.10 min Scan# 3765
 Delta R.T. -0.00 min
 Lab File: BE089546.D
 Acq: 7 Feb 2015 4:50

Instrument :
 BNA_E
 ClientSampled :
 MW-1

Tgt Ion: 202 Resp: 380

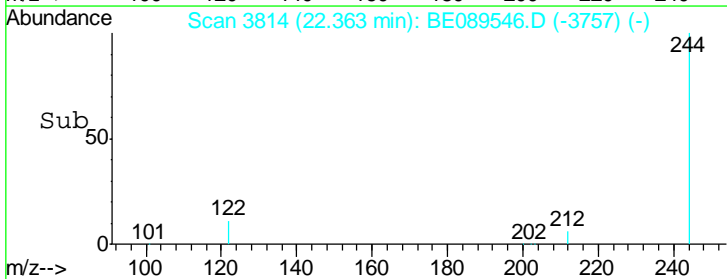
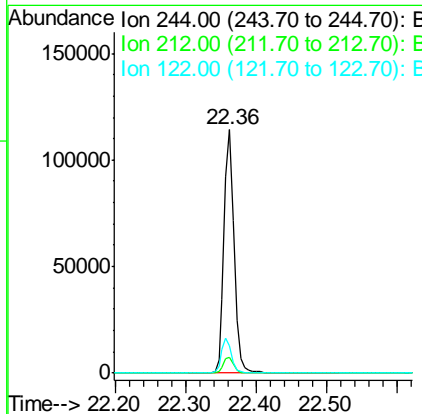
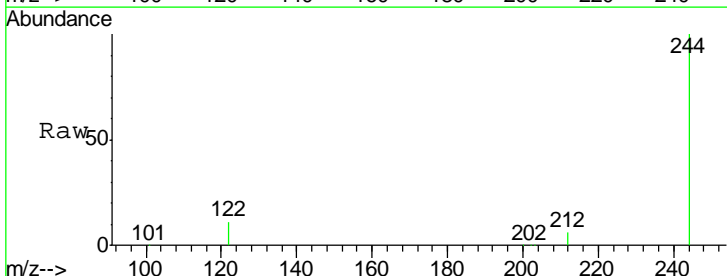
Ion	Ratio	Lower	Upper
202	100		
200	26.3	16.3	24.5#
203	16.1	13.5	20.3

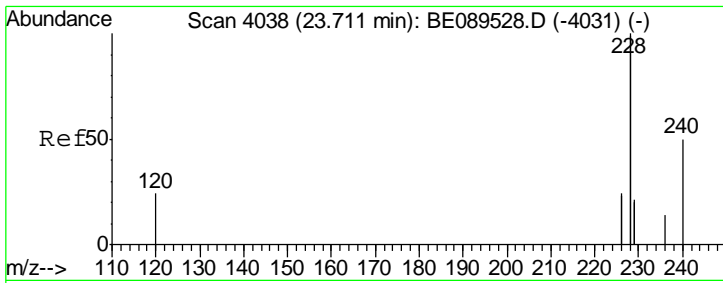


#18
 Terphenyl-d14
 Concen: 9.11 ng
 RT: 22.36 min Scan# 3814
 Delta R.T. 0.00 min
 Lab File: BE089546.D
 Acq: 7 Feb 2015 4:50

Tgt Ion: 244 Resp: 114854

Ion	Ratio	Lower	Upper
244	100		
212	6.4	5.8	8.8
122	11.2	12.6	19.0#



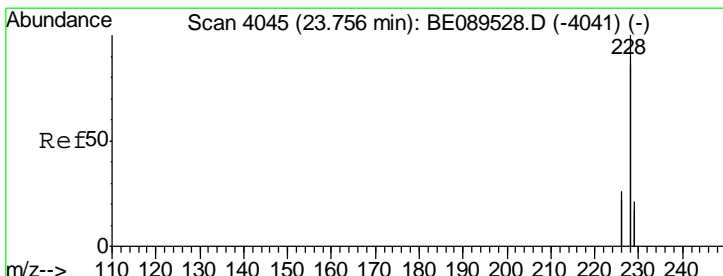
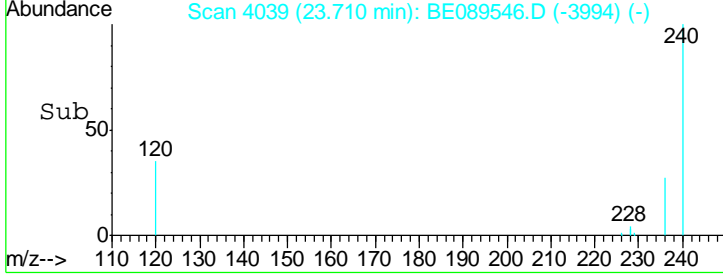
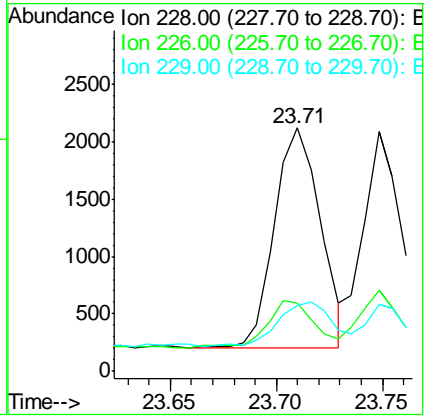
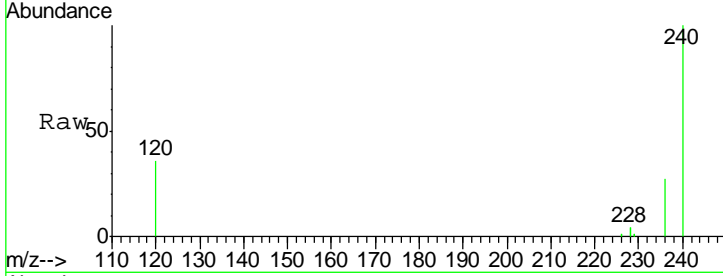


#19
 Benzo(a)anthracene
 Concen: 0.03 ng
 RT: 23.71 min Scan# 4039
 Delta R.T. -0.00 min
 Lab File: BE089546.D
 Acq: 7 Feb 2015 4:50

Instrument :
 BNA_E
 ClientSampled :
 MW-1

Tgt Ion: 228 Resp: 2871

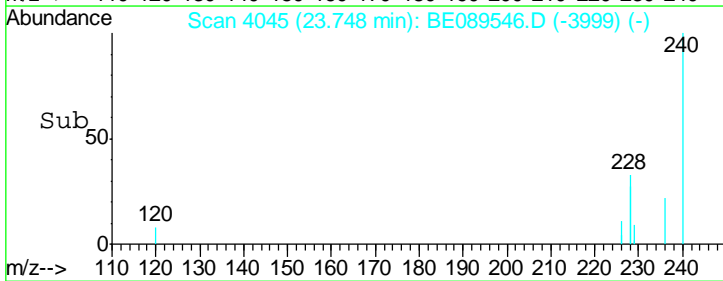
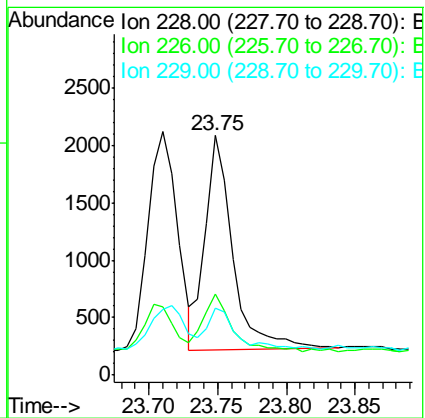
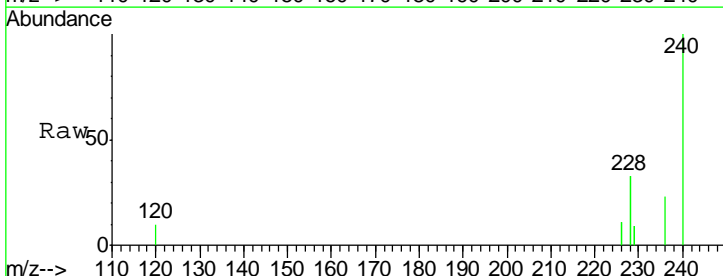
Ion	Ratio	Lower	Upper
228	100		
226	27.9	19.0	28.4
229	27.0	16.8	25.2#

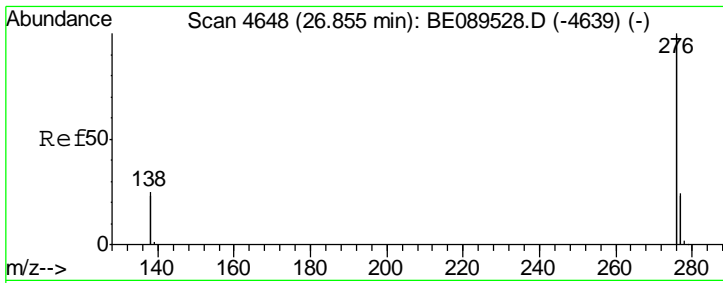


#20
 Chrysene
 Concen: 0.03 ng
 RT: 23.75 min Scan# 4045
 Delta R.T. -0.01 min
 Lab File: BE089546.D
 Acq: 7 Feb 2015 4:50

Tgt Ion: 228 Resp: 2586

Ion	Ratio	Lower	Upper
228	100		
226	33.7	21.0	31.4#
229	27.9	16.7	25.1#



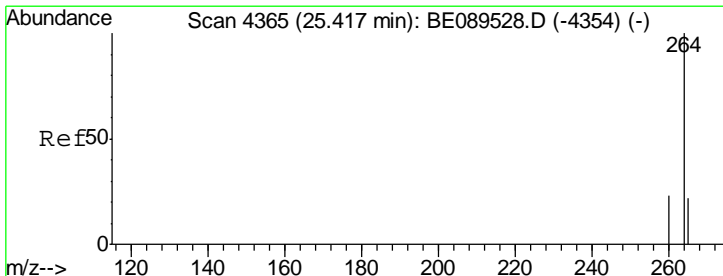
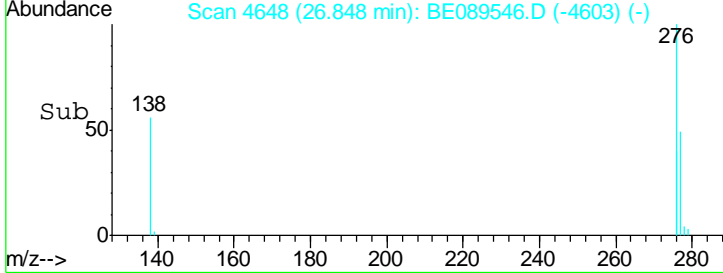
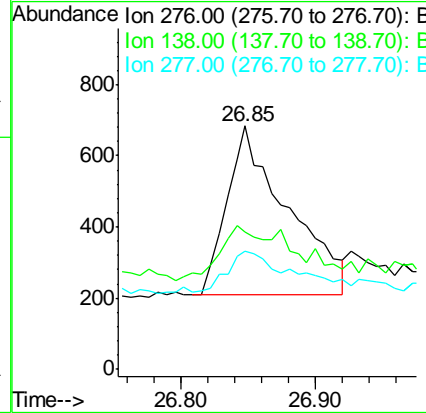
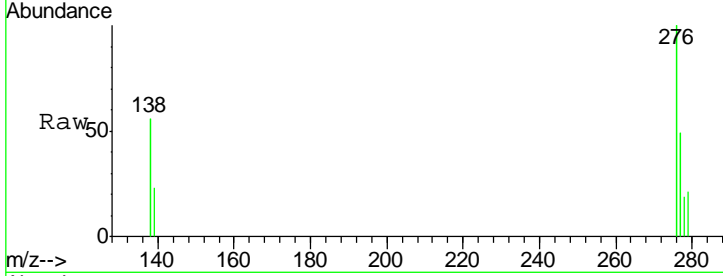


#21
 Indeno(1,2,3-cd)pyrene
 Concen: 0.01 ng
 RT: 26.85 min Scan# 4648
 Delta R.T. -0.01 min
 Lab File: BE089546.D
 Acq: 7 Feb 2015 4:50

Instrument :
 BNA_E
 ClientSampled :
 MW-1

Tgt Ion: 276 Resp: 1485

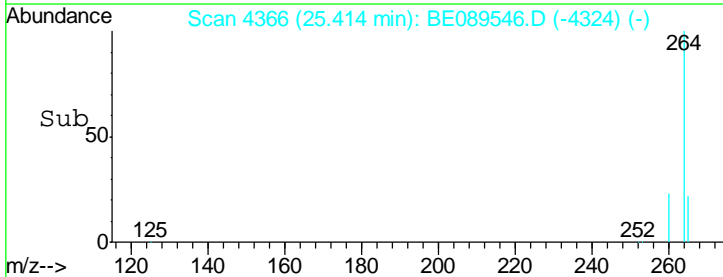
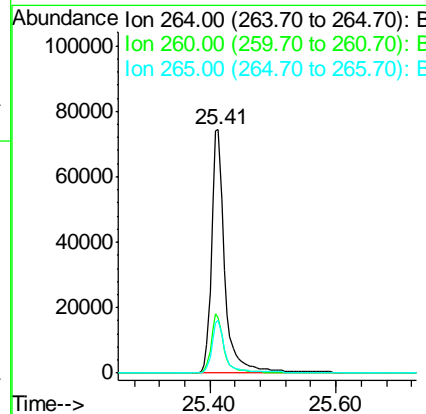
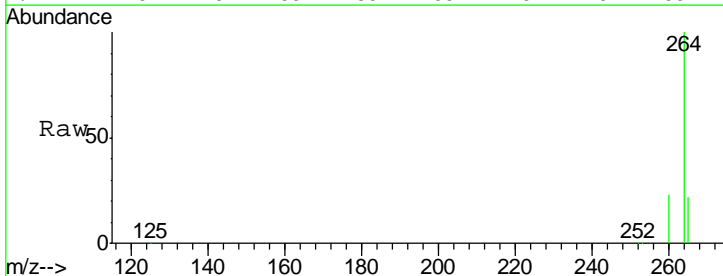
Ion	Ratio	Lower	Upper
276	100		
138	33.5	23.0	34.4
277	26.7	19.9	29.9

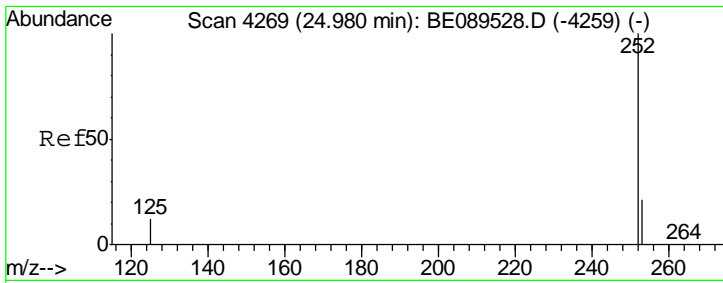


#22
 Perylene-d12
 Concen: 5.00 ng
 RT: 25.41 min Scan# 4366
 Delta R.T. -0.00 min
 Lab File: BE089546.D
 Acq: 7 Feb 2015 4:50

Tgt Ion: 264 Resp: 108658

Ion	Ratio	Lower	Upper
264	100		
260	23.0	18.7	28.1
265	21.8	17.5	26.3



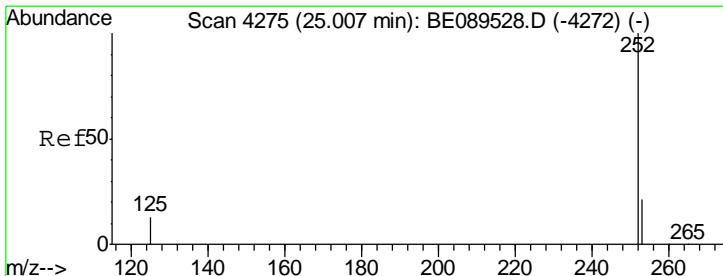
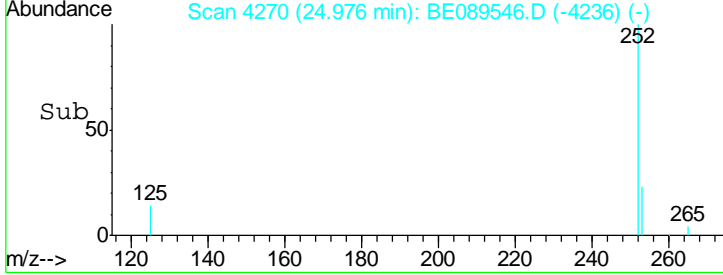
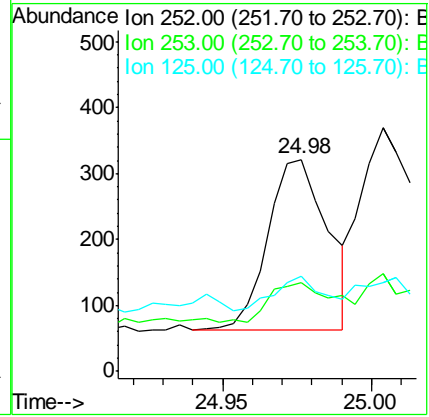
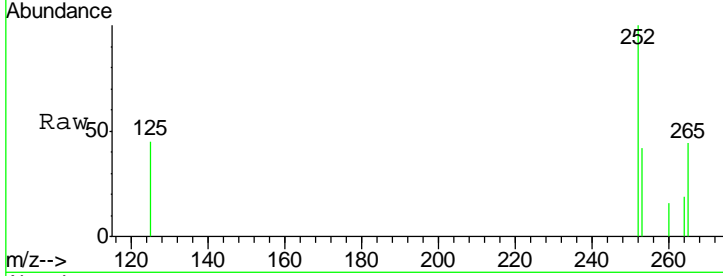


#23
 Benzo(b)fluoranthene
 Concen: 0.02 ng
 RT: 24.98 min Scan# 4270
 Delta R.T. -0.00 min
 Lab File: BE089546.D
 Acq: 7 Feb 2015 4:50

Instrument :
 BNA_E
 ClientSampled :
 MW-1

Tgt Ion: 252 Resp: 363

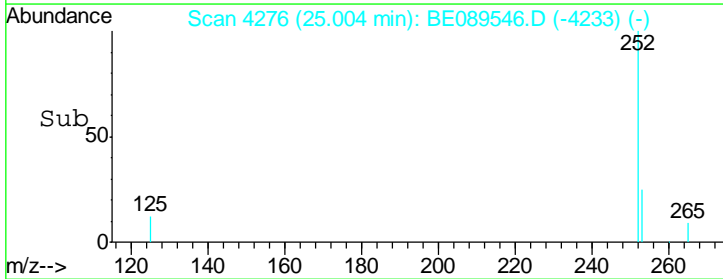
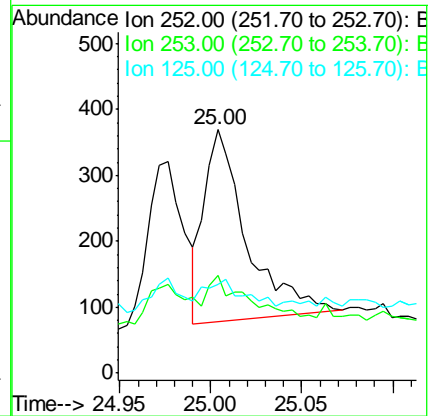
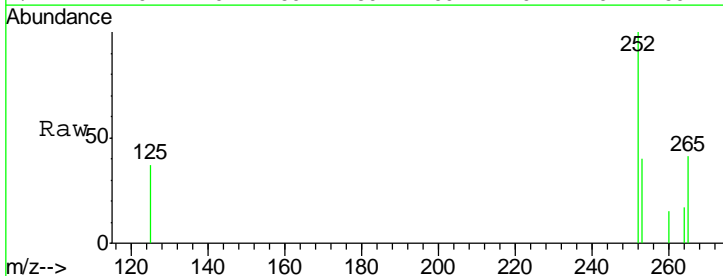
Ion	Ratio	Lower	Upper
252	100		
253	42.1	17.4	26.0#
125	44.9	10.4	15.6#

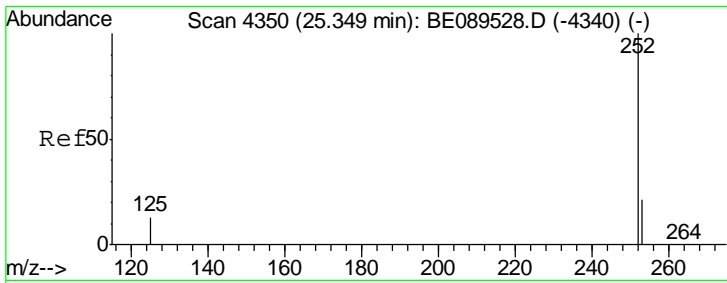


#24
 Benzo(k)fluoranthene
 Concen: 0.02 ng
 RT: 25.00 min Scan# 4276
 Delta R.T. -0.00 min
 Lab File: BE089546.D
 Acq: 7 Feb 2015 4:50

Tgt Ion: 252 Resp: 469

Ion	Ratio	Lower	Upper
252	100		
253	40.1	17.2	25.8#
125	36.6	10.6	15.8#

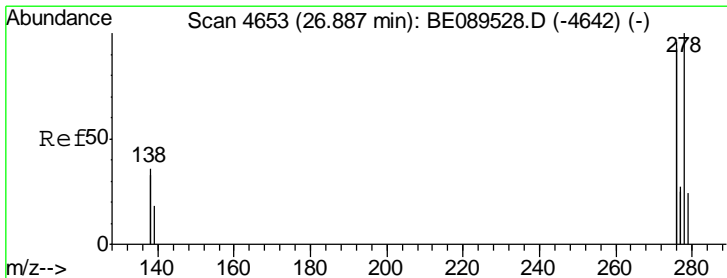
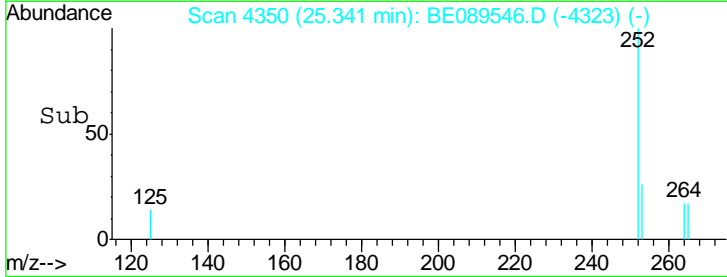
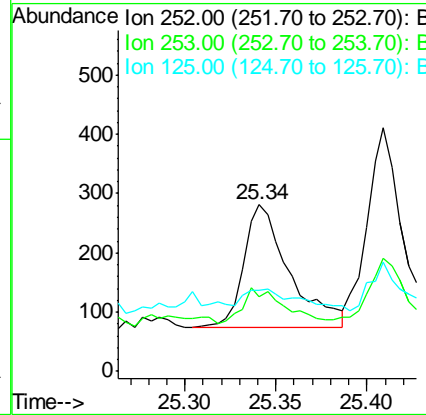
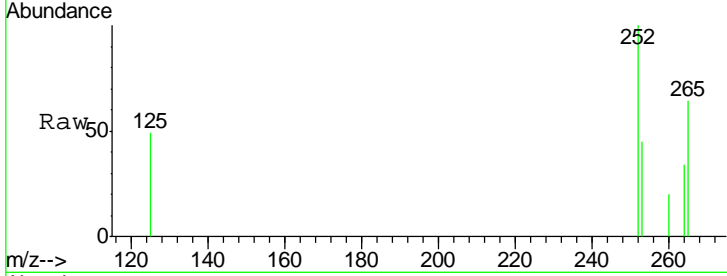




#25
 Benzo(a)pyrene
 Concen: 0.02 ng
 RT: 25.34 min Scan# 4350
 Delta R.T. -0.01 min
 Lab File: BE089546.D
 Acq: 7 Feb 2015 4:50

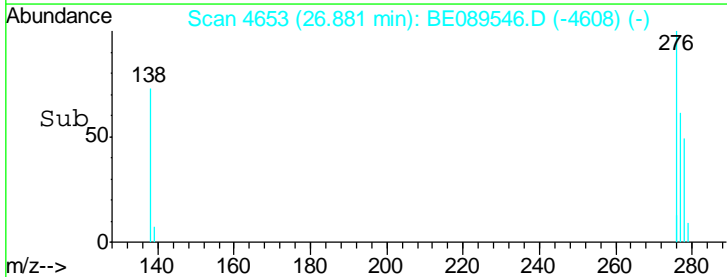
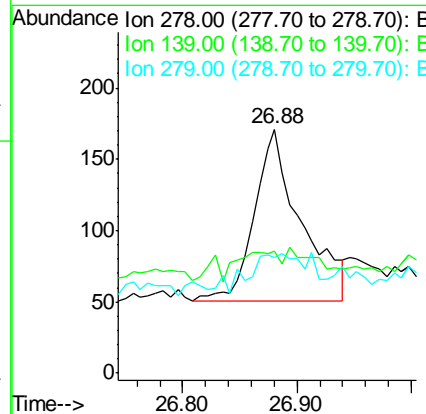
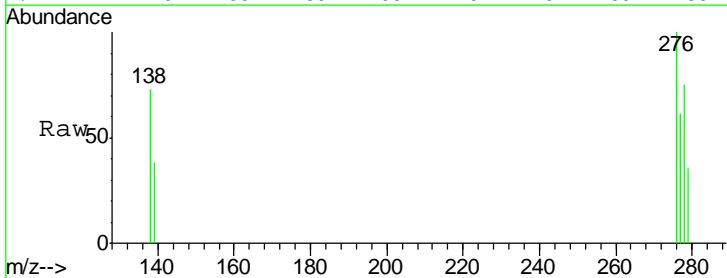
Instrument :
 BNA_E
 ClientSampled :
 MW-1

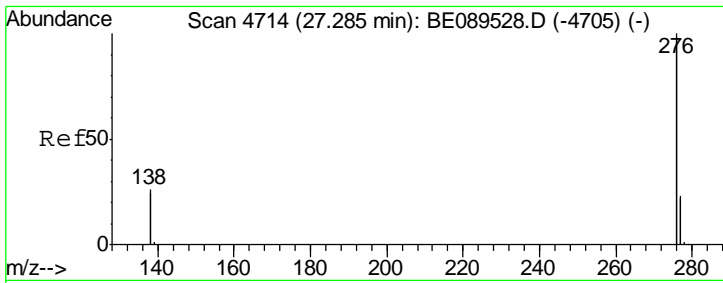
Tgt Ion	Resp	Lower	Upper
252	100		
253	45.2	17.8	26.6#
125	49.1	11.4	17.2#



#26
 Dibenzo(a,h)anthracene
 Concen: 0.01 ng
 RT: 26.88 min Scan# 4653
 Delta R.T. -0.01 min
 Lab File: BE089546.D
 Acq: 7 Feb 2015 4:50

Tgt Ion	Resp	Lower	Upper
278	100		
139	50.3	15.7	23.5#
279	47.4	19.5	29.3#





#27
 Benzo(g,h,i)perylene
 Concen: 0.02 ng
 RT: 27.27 min Scan# 4713
 Delta R.T. -0.01 min
 Lab File: BE089546.D
 Acq: 7 Feb 2015 4:50

Instrument :
 BNA_E
 ClientSampled :
 MW-1

Tgt Ion	Resp	Lower	Upper
276	2396		
277	38.3	18.6	27.8#
138	43.9	20.9	31.3#

