

Data Path : \\74.0.250.170\SVOASRV\HPCHEM1\BNA\_E\DATA\BE020918\  
 Data File : BE095612.D  
 Acq On : 9 Feb 2018 17:47  
 Operator : SJ/JU  
 Sample : J1339-11  
 Misc :  
 ALS Vial : 14 Sample Multiplier: 1

**Instrument :**  
 BNA\_E  
**ClientSampleId :**  
 F6D20

**Manual Integrations**  
**APPROVED**  
 Sohil  
 2/12/2018 11:38:53 AM

Quant Time: Feb 10 01:19:30 2018  
 Quant Method : Z:\HPCHEM1\BNA\_E\METHODS\SOM-EPA-SIM-BE012618.M  
 Quant Title : ASP BNA STANDARDS FOR 5 POINT CALIBRATION  
 QLast Update : Sat Feb 10 00:56:50 2018  
 Response via : Initial Calibration

Internal Standards	R.T.	QIon	Response	Conc	Units	Dev(Min)
1) 1,4-Dichlorobenzene-d4	8.43	152	1569	0.40	ng/ul	0.00
2) Naphthalene-d8	11.25	136	4498	0.40	ng/ul	0.00
6) Acenaphthene-d10	15.01	164	2981	0.40	ng/ul	0.00
10) Phenanthrene-d10	17.71	188	6742	0.40	ng/ul	0.00
16) Chrysene-d12	21.80	240	6205	0.40	ng/ul	0.00
20) Perylene-d12	24.43	264	5606m	0.40	ng/ul	0.00
<b>System Monitoring Compounds</b>						
4) 2-Methylnaphthalene-d10	12.81	152	2630	0.36	ng/ul	0.00
14) Fluoranthene-d10	19.69	212	6949	0.27	ng/ul	0.00
<b>Target Compounds</b>						
11) Pentachlorophenol	17.36	266	69517	53.235	ng/ul	98

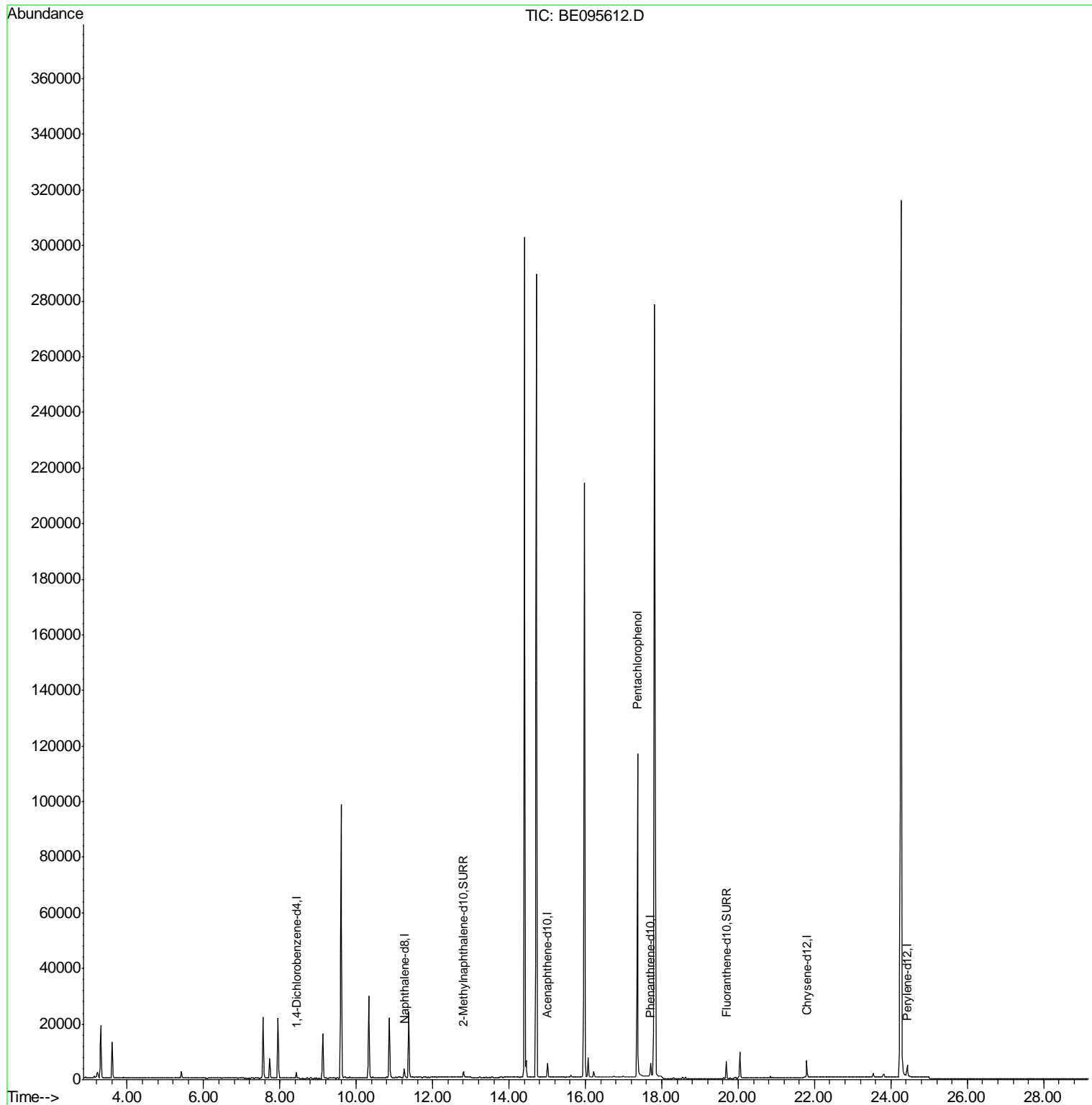
(#) = qualifier out of range (m) = manual integration (+) = signals summed

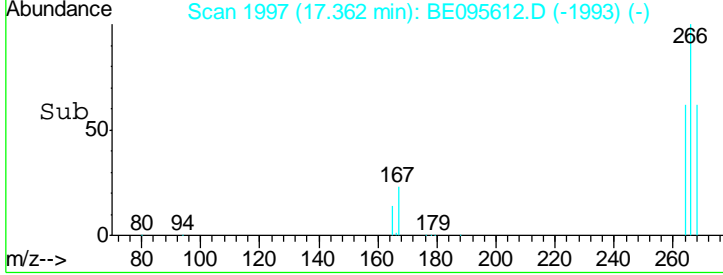
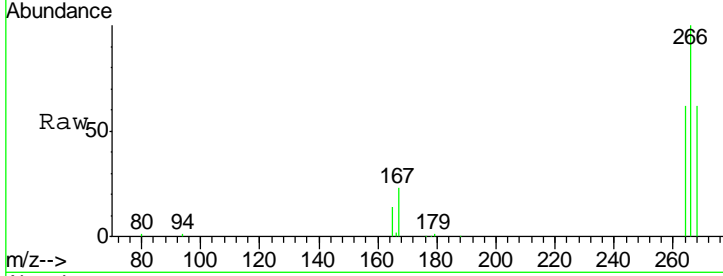
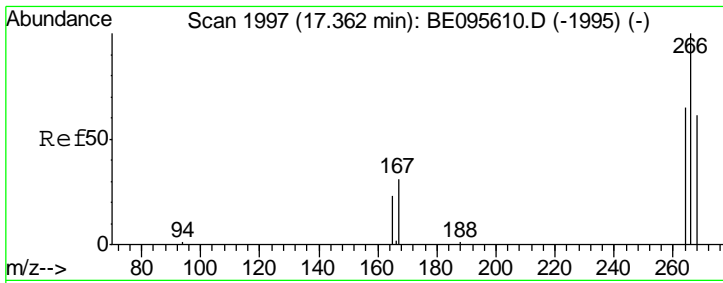
Data Path : \\74.0.250.170\SVOASRV\HPCHEM1\BNA\_E\DATA\BE020918\  
 Data File : BE095612.D  
 Acq On : 9 Feb 2018 17:47  
 Operator : SJ/JU  
 Sample : J1339-11  
 Misc :  
 ALS Vial : 14 Sample Multiplier: 1

**Instrument :**  
 BNA\_E  
**ClientSampleId :**  
 F6D20

**Manual Integrations**  
**APPROVED**  
 Sohil  
 2/12/2018 11:38:53 AM

Quant Time: Feb 10 01:19:30 2018  
 Quant Method : Z:\HPCHEM1\BNA\_E\METHODS\SOM-EPA-SIM-BE012618.M  
 Quant Title : ASP BNA STANDARDS FOR 5 POINT CALIBRATION  
 QLast Update : Sat Feb 10 00:56:50 2018  
 Response via : Initial Calibration





#11  
 Pentachlorophenol  
 Concen: 53.235 ng/ul  
 RT: 17.36 min Scan# 1997  
 Delta R.T. 0.00 min  
 Lab File: BE095612.D  
 Acq: 9 Feb 2018 17:47

Tgt Ion	Resp	Lower	Upper
266	100		
264	62.7	47.9	71.9
268	63.2	49.8	74.8

**Instrument :**  
 BNA\_E  
**ClientSampled :**  
 F6D20

**Manual Integrations**  
**APPROVED**  
 Sohil  
 2/12/2018 11:38:53 AM

