

Data Path : Z:\HPCHEM1\BNA_E\DATA\BE021715\
 Data File : BE089596.D
 Acq On : 17 Feb 2015 15:49
 Operator : TP/IZ
 Sample : SSTDICCO.5
 Misc :
 ALS Vial : 4 Sample Multiplier: 1

Instrument :
 BNA_E
 LabSampleId :
 SSTDICCO.5

Quant Time: Feb 18 01:10:54 2015
 Quant Method : Z:\HPCHEM1\BNA_E\METHODS\SIM-BE021715.M
 Quant Title : ASP BNA STANDARDS FOR 5 POINT CALIBRATION
 QLast Update : Wed Feb 18 00:56:39 2015
 Response via : Initial Calibration

Internal Standards	R.T.	QIon	Response	Conc	Units	Dev(Min)
1) 1,4-Dichlorobenzene-d4	9.34	152	56847	5.00	ng	0.00
7) Naphthalene-d8	12.24	136	223170	5.00	ng	0.00
13) Acenaphthene-d10	16.42	164	106357	5.00	ng	0.00
17) Phenanthrene-d10	19.77	188	208337	5.00	ng	0.00
20) Chrysene-d12	23.66	240	226882	5.00	ng	0.00
27) Perylene-d12	25.34	264	202710	5.00	ng	0.00

System Monitoring Compounds

3) 2-Fluorophenol	6.50	112	7125	0.45	ng	0.00
4) Phenol-d6	8.62	99	9288	0.44	ng	0.00
8) Nitrobenzene-d5	10.61	82	4206	0.46	ng	0.00
14) 2,4,6-Tribromophenol	18.31	330	788	0.36	ng	0.00
15) 2-Fluorobiphenyl	14.88	172	13895	0.49	ng	0.00
22) Terphenyl-d14	22.30	244	13922	0.45	ng	0.00

Target Compounds

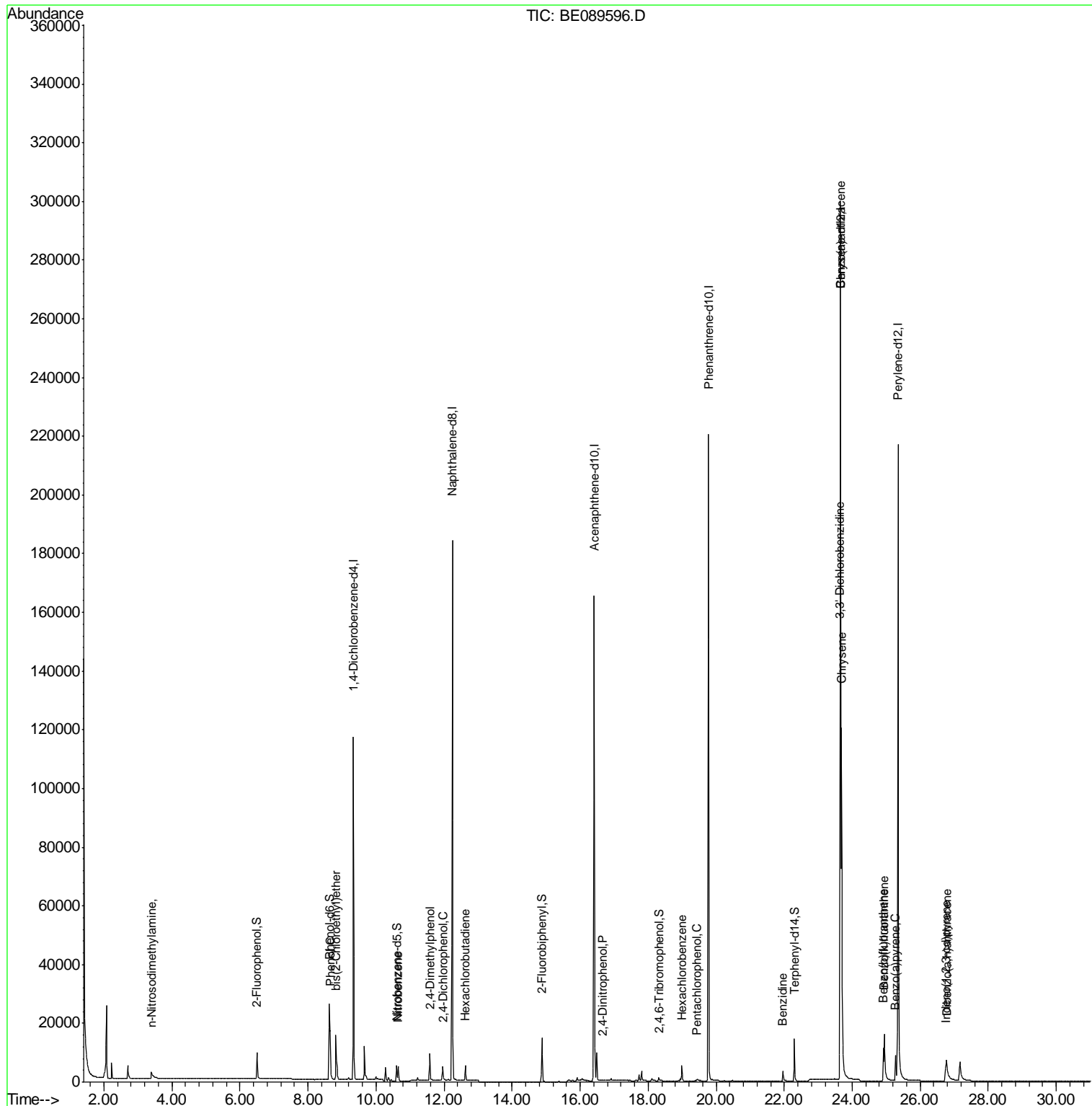
Target Compounds	R.T.	QIon	Response	Conc	Units	Qvalue
2) n-Nitrosodimethylamine	3.38	42	2501	0.31	ng	# 66
5) Phenol	8.65	94	10122	0.44	ng	92
6) bis(2-Chloroethyl)ether	8.83	93	8159	0.47	ng	# 99
9) Nitrobenzene	10.65	77	4986	0.46	ng	98
10) 2,4-Dimethylphenol	11.58	122	5176	0.41	ng	97
11) 2,4-Dichlorophenol	11.96	162	4140	0.42	ng	97
12) Hexachlorobutadiene	12.63	225	3350	0.49	ng	99
16) 2,4-Dinitrophenol	16.67	184	129	0.34	ng	# 82
18) Hexachlorobenzene	18.99	284	4350	0.49	ng	96
19) Pentachlorophenol	19.44	266	531	0.36	ng	95
21) Benzidine	21.96	184	5119	0.30	ng	98
23) Benzo(a)anthracene	23.64	228	85345	0.40	ng	99
24) 3,3'-Dichlorobenzidine	23.63	252	3485	0.25	ng	99
25) Chrysene	23.69	228	106918	0.49	ng	99
26) Indeno(1,2,3-cd)pyrene	26.74	276	15082	0.31	ng	# 97
28) Benzo(b)fluoranthene	24.92	252	11658	0.31	ng	99
29) Benzo(k)fluoranthene	24.94	252	25186	0.46	ng	99
30) Benzo(a)pyrene	25.28	252	11220	0.31	ng	99
31) Dibenzo(a,h)anthracene	26.78	278	11543	0.32	ng	98

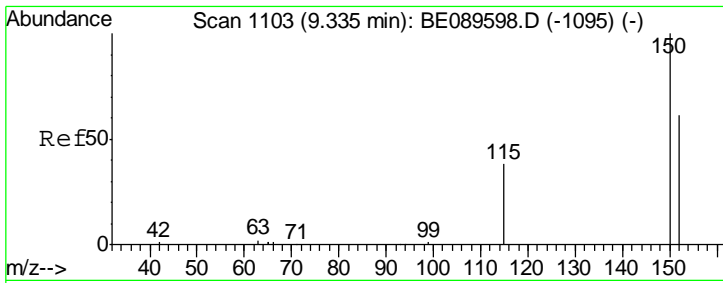
(#) = qualifier out of range (m) = manual integration (+) = signals summed

Data Path : Z:\HPCHEM1\BNA_E\DATA\BE021715\
 Data File : BE089596.D
 Acq On : 17 Feb 2015 15:49
 Operator : TP/IZ
 Sample : SSTDIC0.5
 Misc :
 ALS Vial : 4 Sample Multiplier: 1

Instrument :
 BNA_E
 LabSampleId :
 SSTDIC0.5

Quant Time: Feb 18 01:10:54 2015
 Quant Method : Z:\HPCHEM1\BNA_E\METHODS\SIM-BE021715.M
 Quant Title : ASP BNA STANDARDS FOR 5 POINT CALIBRATION
 QLast Update : Wed Feb 18 00:56:39 2015
 Response via : Initial Calibration

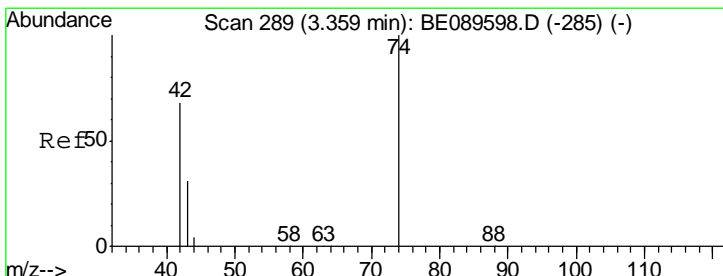
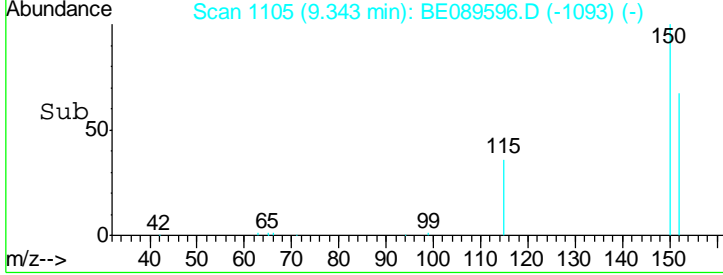
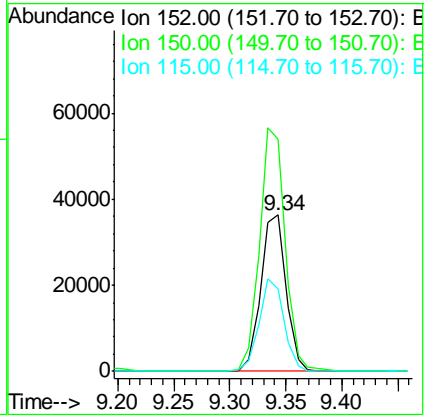
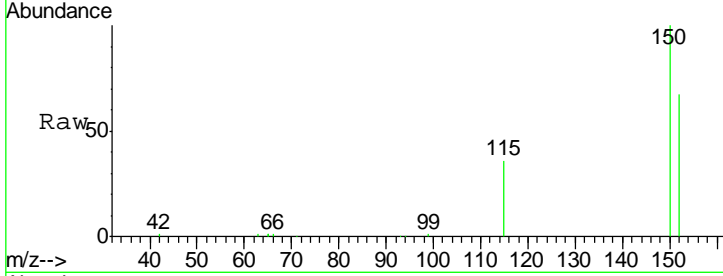




#1
 1,4-Dichlorobenzene-d4
 Concen: 5.00 ng
 RT: 9.34 min Scan# 1105
 Delta R.T. 0.01 min
 Lab File: BE089596.D
 Acq: 17 Feb 2015 15:49

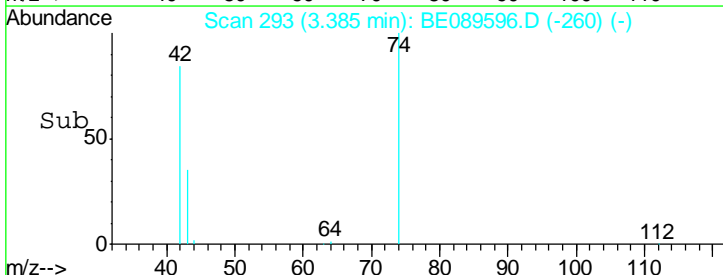
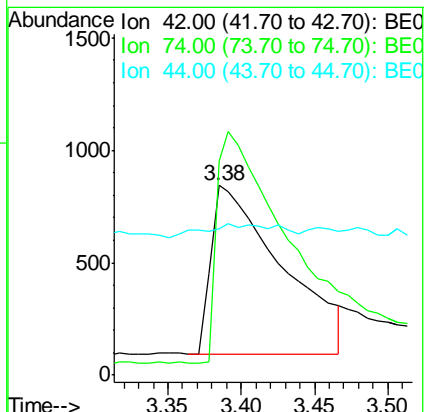
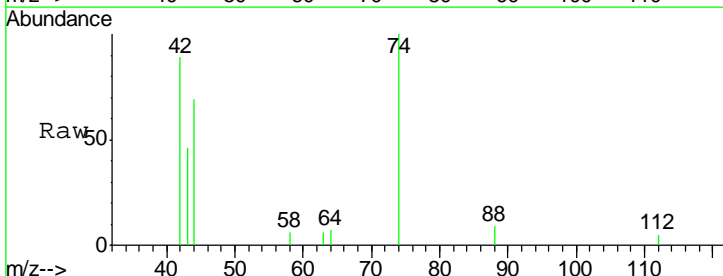
Instrument :
 BNA_E
LabSampleId :
 SSTDICC0.5

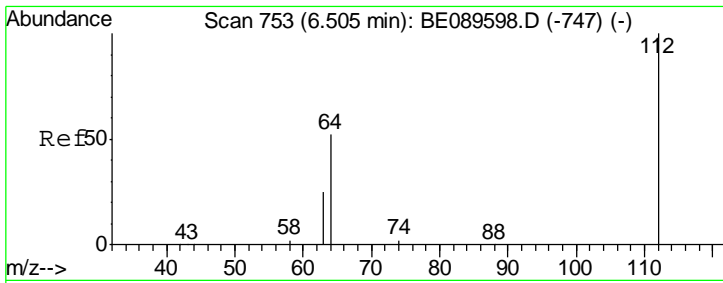
Tgt Ion	Resp	Lower	Upper
152	100		
150	148.4	130.7	196.1
115	52.8	49.6	74.4



#2
 n-Nitrosodimethylamine
 Concen: 0.31 ng
 RT: 3.38 min Scan# 293
 Delta R.T. 0.03 min
 Lab File: BE089596.D
 Acq: 17 Feb 2015 15:49

Tgt Ion	Resp	Lower	Upper
42	100		
74	112.7	114.6	171.8#
44	77.2	27.5	41.3#

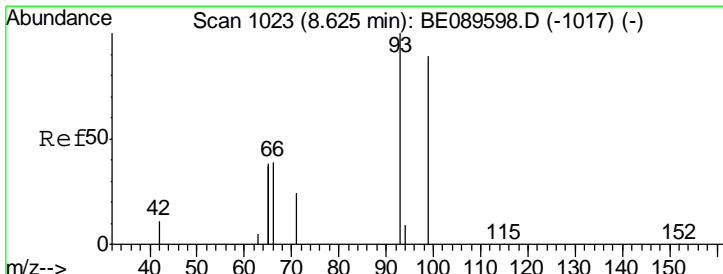
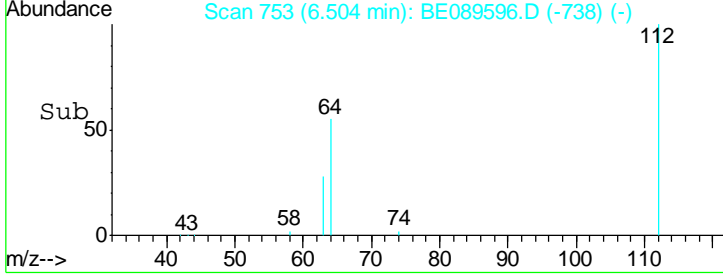
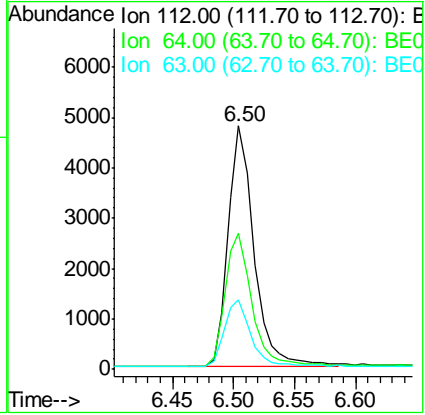
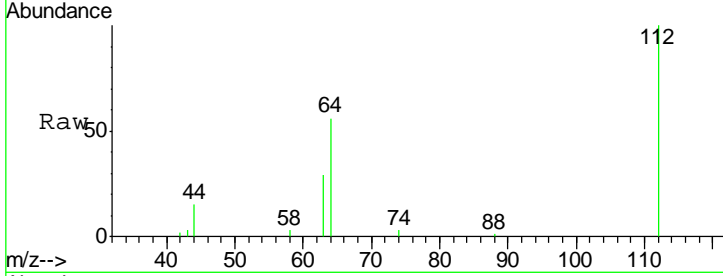




#3
 2-Fluorophenol
 Concen: 0.45 ng
 RT: 6.50 min Scan# 753
 Delta R.T. -0.00 min
 Lab File: BE089596.D
 Acq: 17 Feb 2015 15:49

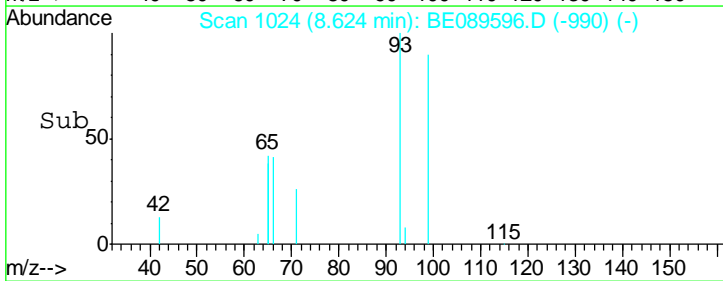
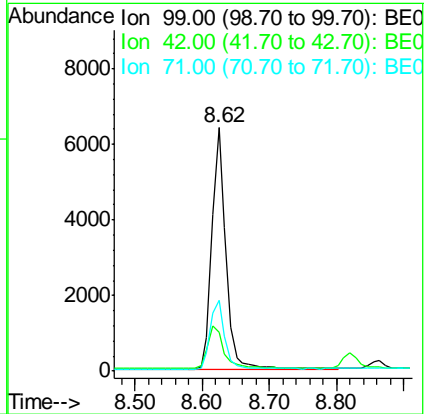
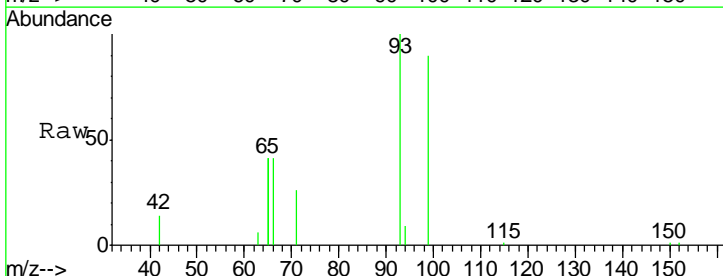
Instrument :
 BNA_E
LabSampleId :
 SSTDICC0.5

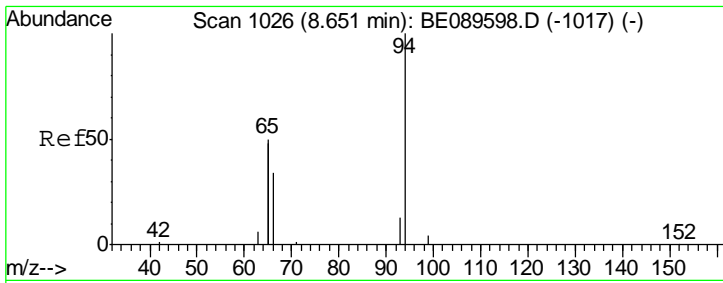
Tgt Ion	Resp	Lower	Upper
112	100		
64	56.0	41.7	62.5
63	28.6	20.3	30.5



#4
 Phenol-d6
 Concen: 0.44 ng
 RT: 8.62 min Scan# 1024
 Delta R.T. -0.00 min
 Lab File: BE089596.D
 Acq: 17 Feb 2015 15:49

Tgt Ion	Resp	Lower	Upper
99	100		
42	15.8	10.8	16.2
71	29.3	21.8	32.6

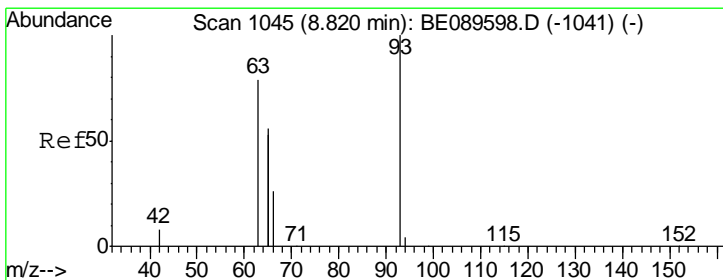
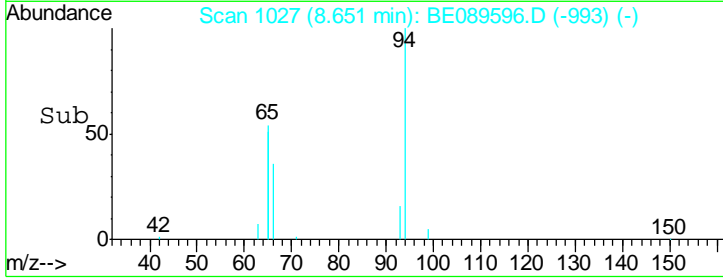
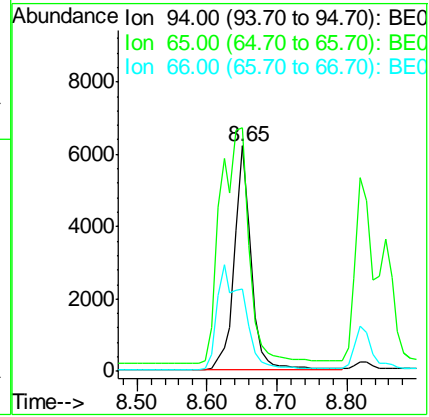
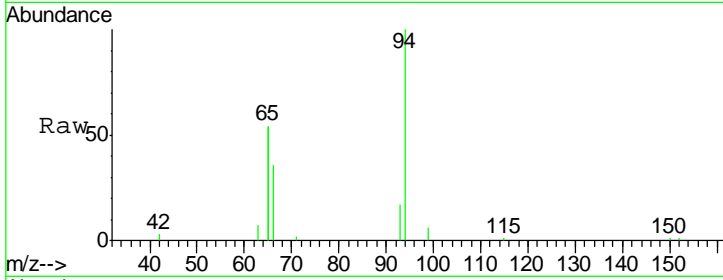




#5
 Phenol
 Concen: 0.44 ng
 RT: 8.65 min Scan# 1027
 Delta R.T. -0.00 min
 Lab File: BE089596.D
 Acq: 17 Feb 2015 15:49

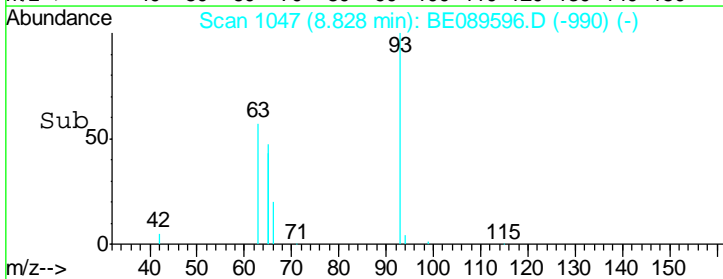
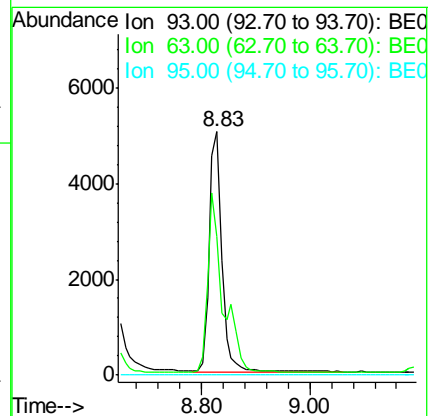
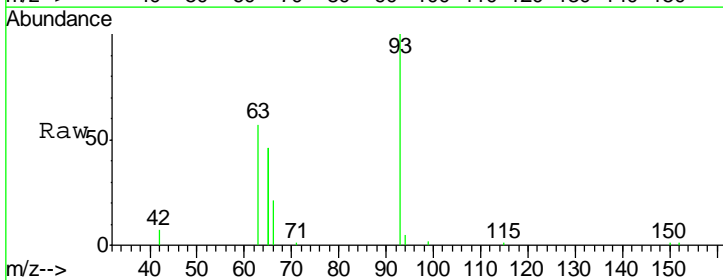
Instrument :
 BNA_E
 LabSampleId :
 SSTDICC0.5

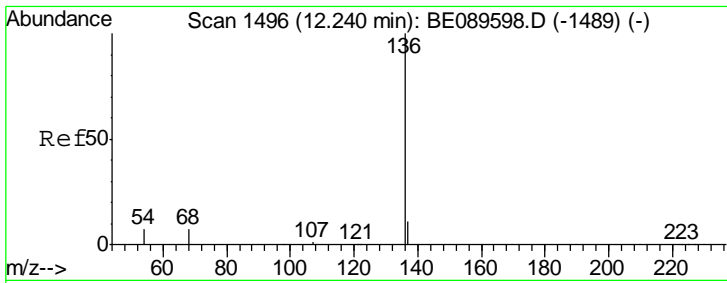
Tgt Ion	Resp	Lower	Upper
94	10122		
65	108.0	78.6	118.6
66	36.2	14.0	54.0



#6
 bis(2-Chloroethyl)ether
 Concen: 0.47 ng
 RT: 8.83 min Scan# 1047
 Delta R.T. 0.01 min
 Lab File: BE089596.D
 Acq: 17 Feb 2015 15:49

Tgt Ion	Resp	Lower	Upper
93	8159		
63	92.4	74.6	112.0
95	0.0	0.0	0.0



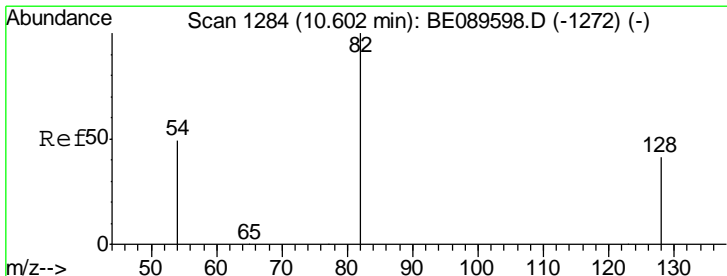
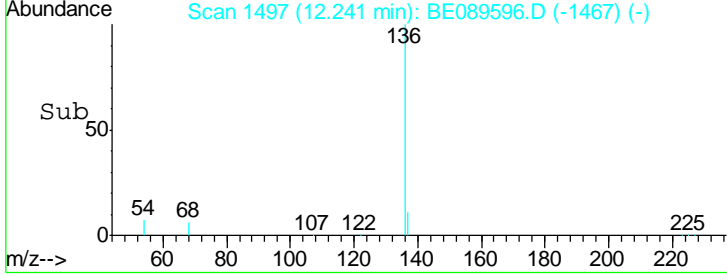
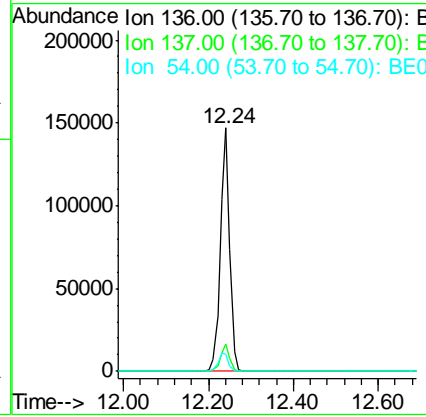
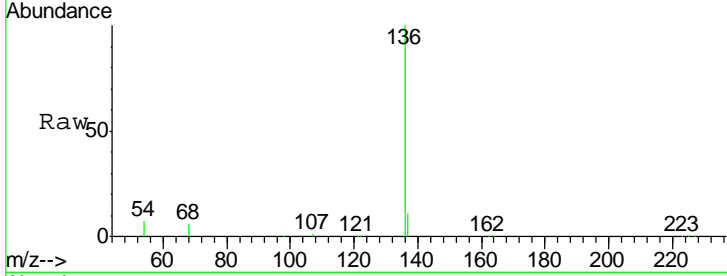


#7
 Naphthalene-d8
 Concen: 5.00 ng
 RT: 12.24 min Scan# 1497
 Delta R.T. 0.00 min
 Lab File: BE089596.D
 Acq: 17 Feb 2015 15:49

Instrument :
 BNA_E
 LabSampleId :
 SSTDICC0.5

Tgt Ion: 136 Resp: 223170

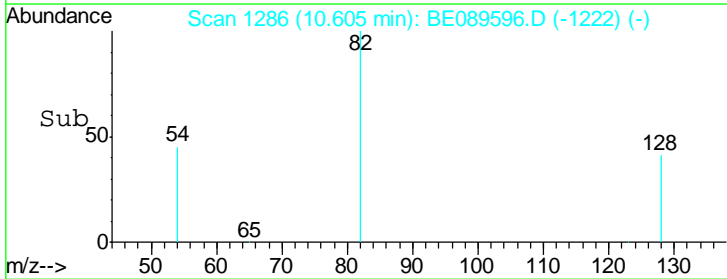
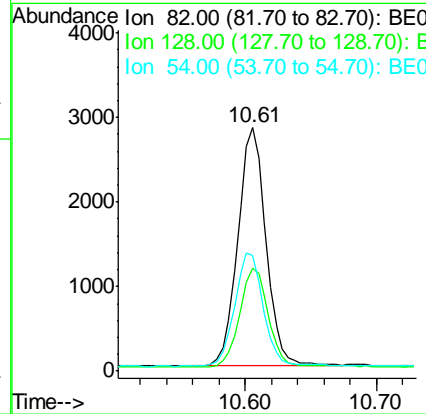
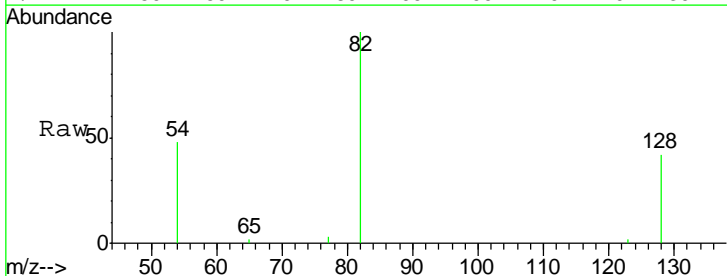
Ion	Ratio	Lower	Upper
136	100		
137	11.1	8.8	13.2
54	7.0	5.7	8.5

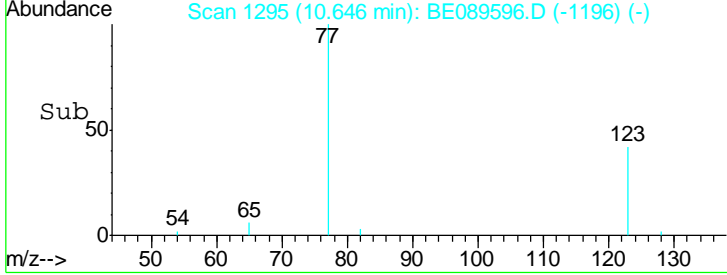
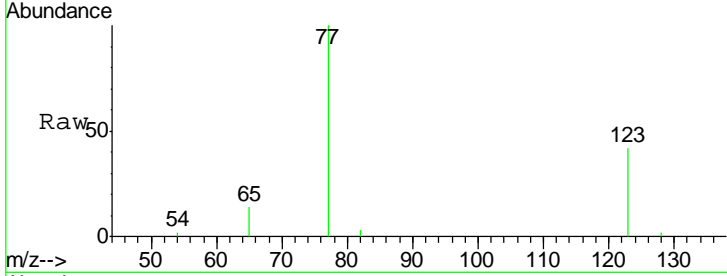
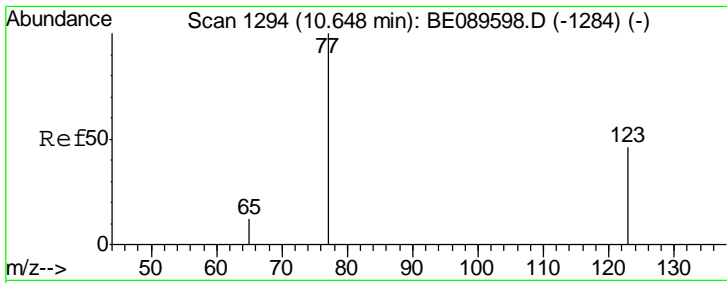


#8
 Nitrobenzene-d5
 Concen: 0.46 ng
 RT: 10.61 min Scan# 1286
 Delta R.T. 0.00 min
 Lab File: BE089596.D
 Acq: 17 Feb 2015 15:49

Tgt Ion: 82 Resp: 4206

Ion	Ratio	Lower	Upper
82	100		
128	42.3	33.2	49.8
54	47.7	39.6	59.4

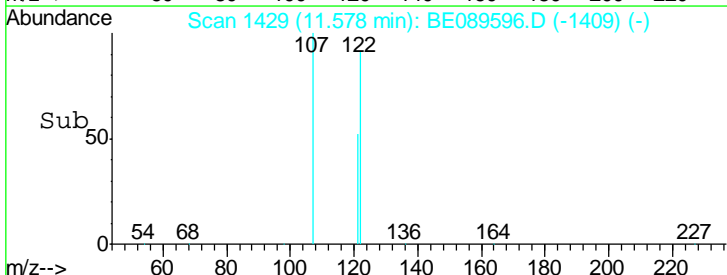
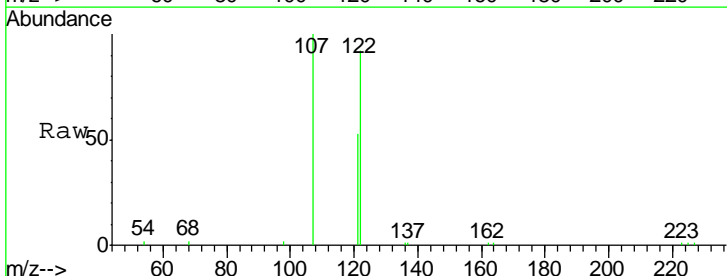
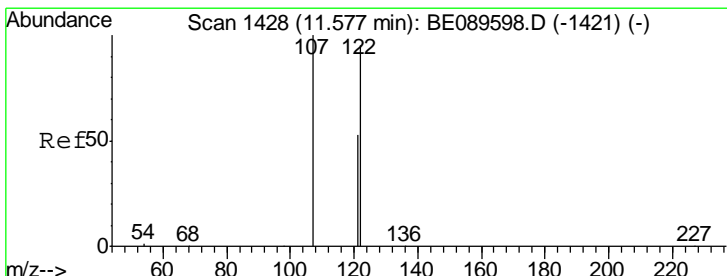
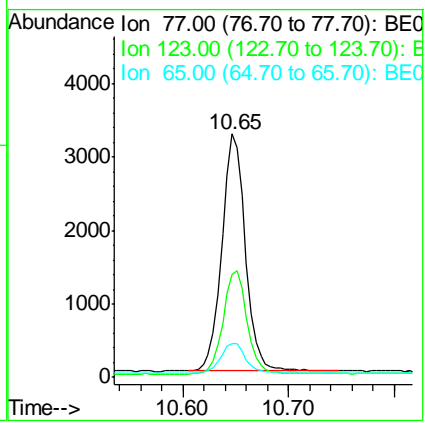




#9
 Nitrobenzene
 Concen: 0.46 ng
 RT: 10.65 min Scan# 1295
 Delta R.T. -0.00 min
 Lab File: BE089596.D
 Acq: 17 Feb 2015 15:49

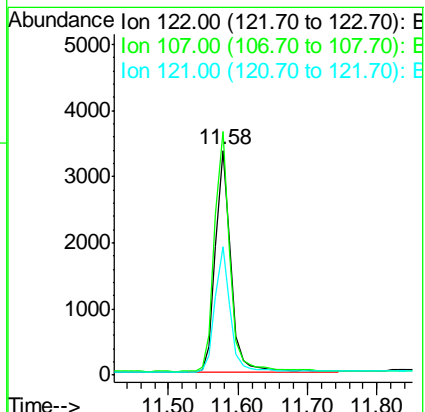
Instrument :
 BNA_E
 LabSampled :
 SSTDICC0.5

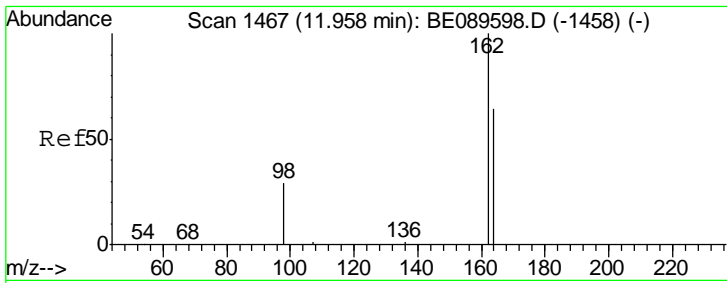
Tgt Ion	Resp	Lower	Upper
77	4986		
123	44.3	36.5	54.7
65	13.0	10.2	15.4



#10
 2,4-Dimethylphenol
 Concen: 0.41 ng
 RT: 11.58 min Scan# 1429
 Delta R.T. 0.00 min
 Lab File: BE089596.D
 Acq: 17 Feb 2015 15:49

Tgt Ion	Resp	Lower	Upper
122	5176		
107	108.2	83.9	125.9
121	57.1	44.9	67.3

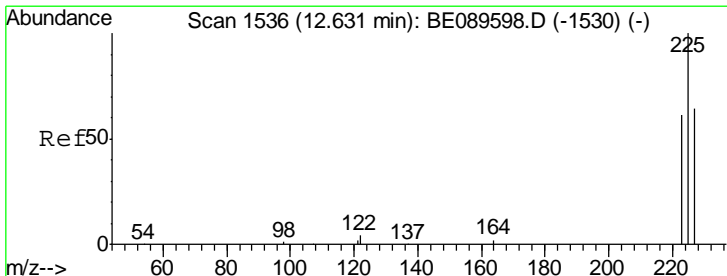
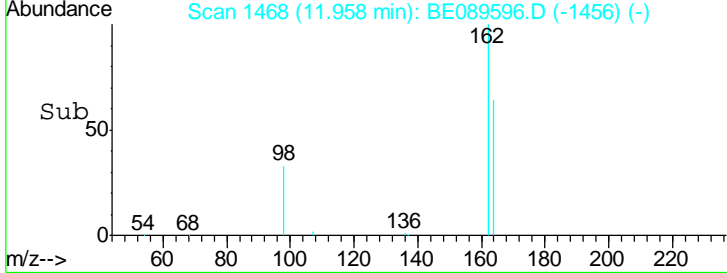
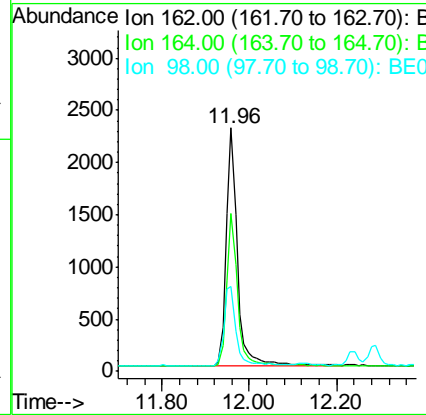
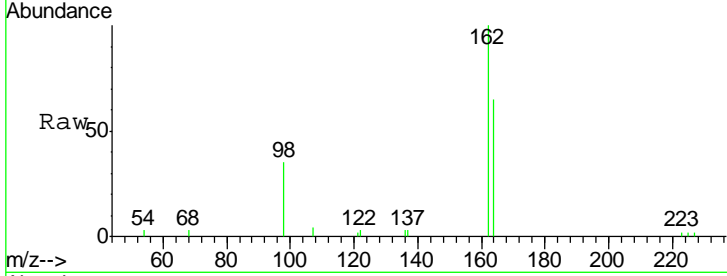




#11
 2,4-Dichlorophenol
 Concen: 0.42 ng
 RT: 11.96 min Scan# 1468
 Delta R.T. 0.00 min
 Lab File: BE089596.D
 Acq: 17 Feb 2015 15:49

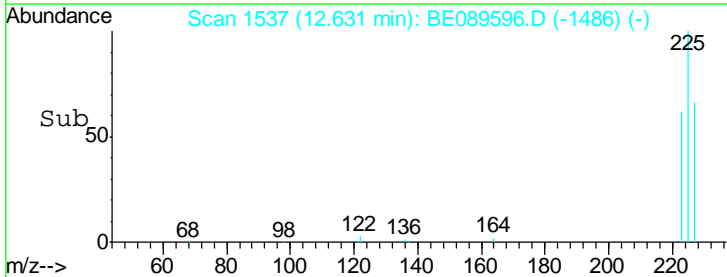
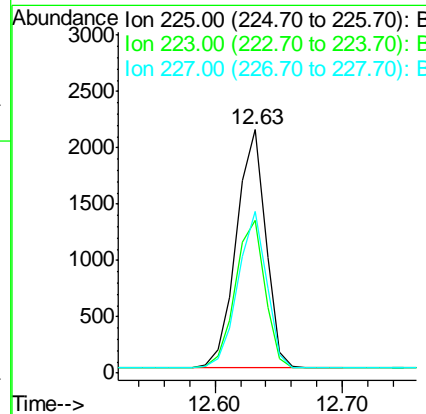
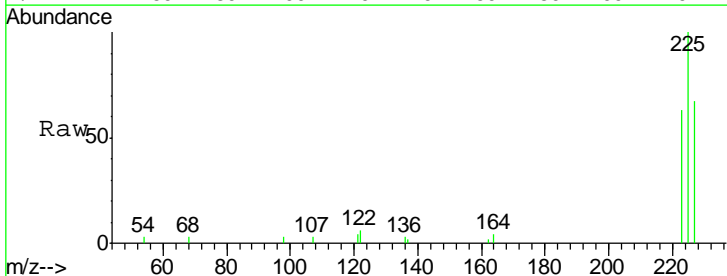
Instrument :
 BNA_E
 LabSampleId :
 SSTDICC0.5

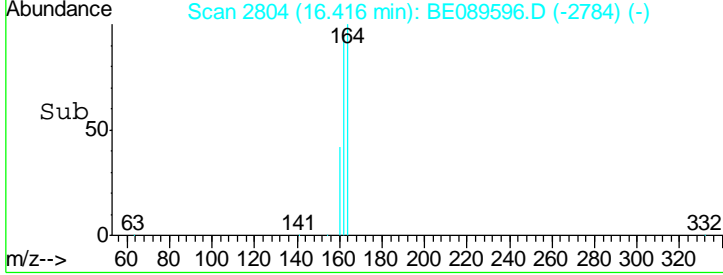
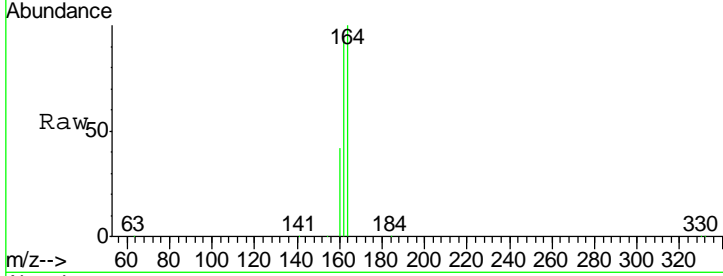
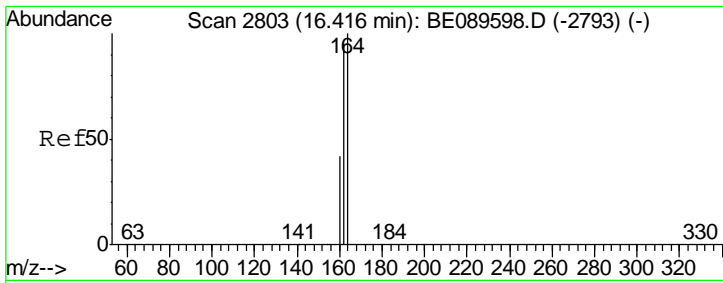
Tgt Ion	Resp	Lower	Upper
162	100		
164	64.8	44.7	84.7
98	34.8	10.3	50.3



#12
 Hexachlorobutadiene
 Concen: 0.49 ng
 RT: 12.63 min Scan# 1537
 Delta R.T. 0.00 min
 Lab File: BE089596.D
 Acq: 17 Feb 2015 15:49

Tgt Ion	Resp	Lower	Upper
225	100		
223	63.0	50.3	75.5
227	64.2	50.6	75.8



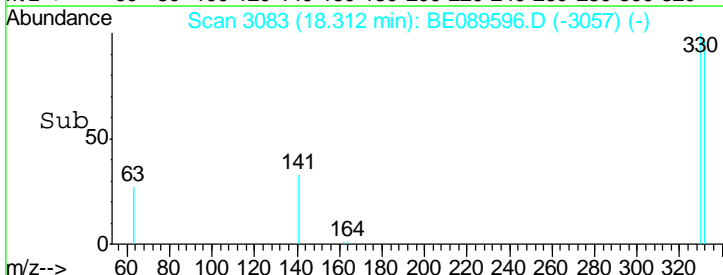
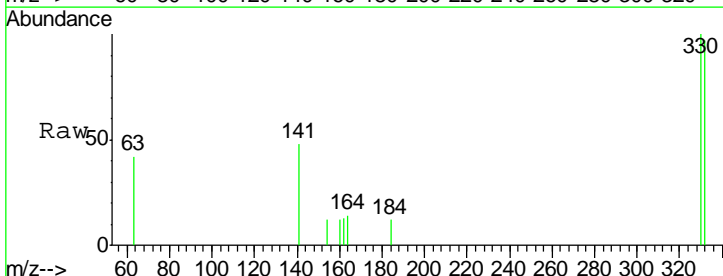
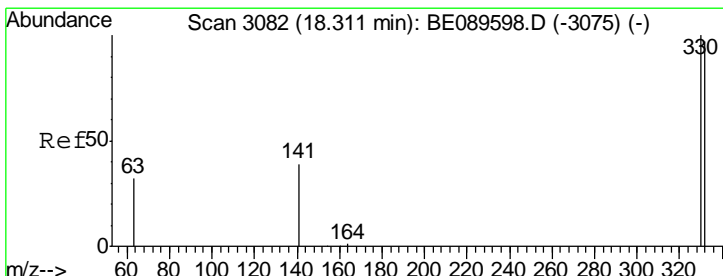
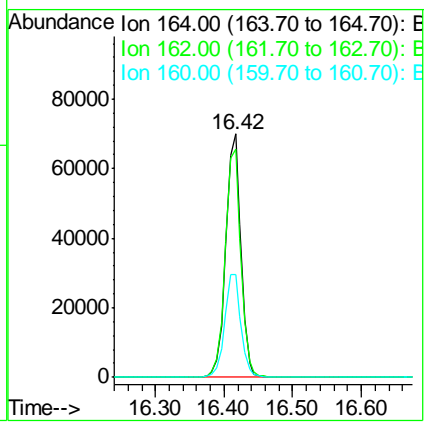


#13
 Acenaphthene-d10
 Concen: 5.00 ng
 RT: 16.42 min Scan# 2804
 Delta R.T. 0.00 min
 Lab File: BE089596.D
 Acq: 17 Feb 2015 15:49

Instrument : BNA_E
 LabSampleId : SSTDICC0.5

Tgt Ion: 164 Resp: 106357

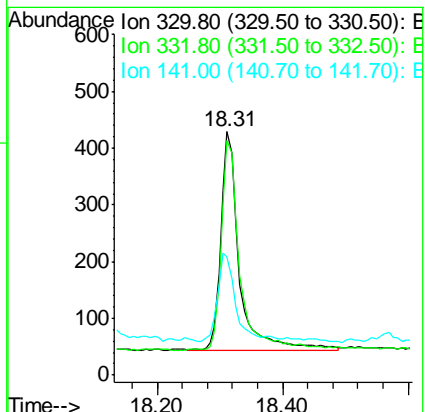
Ion	Ratio	Lower	Upper
164	100		
162	93.8	76.3	114.5
160	42.0	33.9	50.9

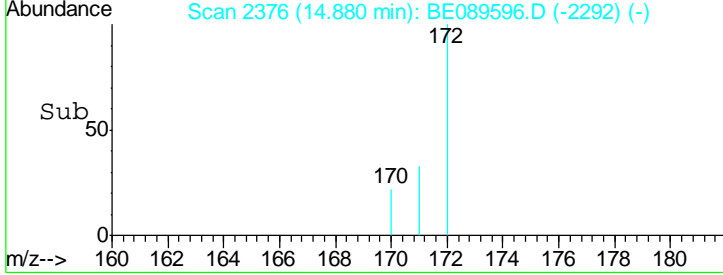
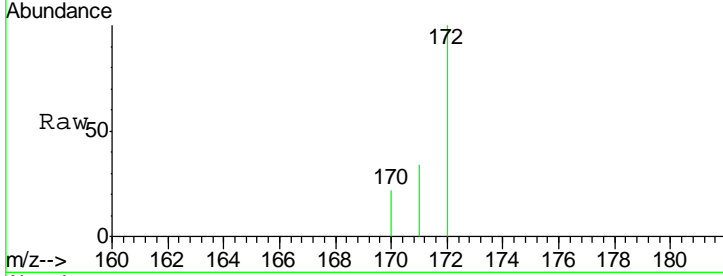
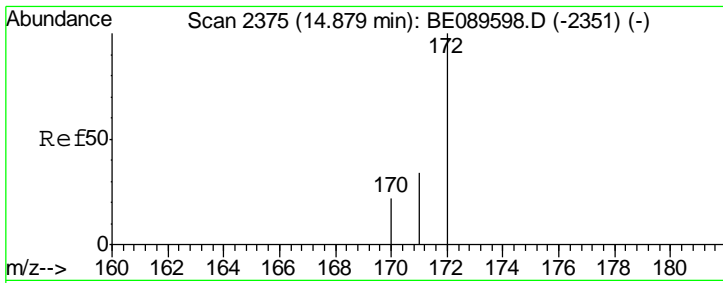


#14
 2,4,6-Tribromophenol
 Concen: 0.36 ng
 RT: 18.31 min Scan# 3083
 Delta R.T. 0.00 min
 Lab File: BE089596.D
 Acq: 17 Feb 2015 15:49

Tgt Ion: 330 Resp: 788

Ion	Ratio	Lower	Upper
330	100		
332	96.8	76.7	115.1
141	38.5	30.1	45.1

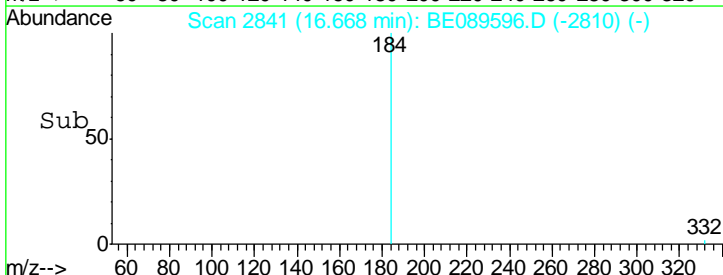
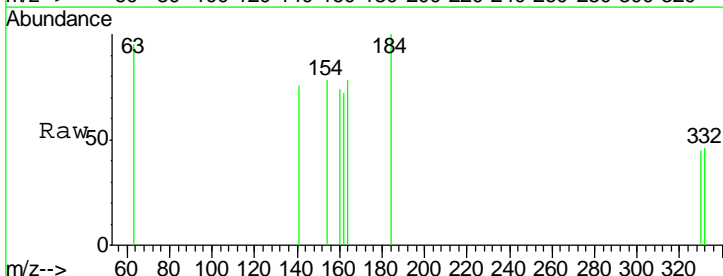
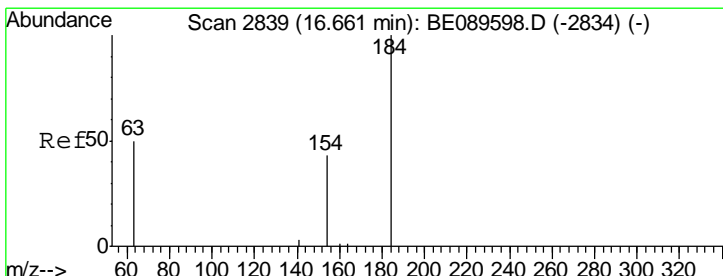
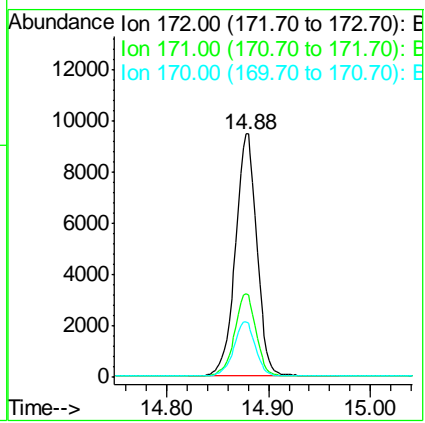




#15
 2-Fluorobiphenyl
 Concen: 0.49 ng
 RT: 14.88 min Scan# 2376
 Delta R.T. 0.00 min
 Lab File: BE089596.D
 Acq: 17 Feb 2015 15:49

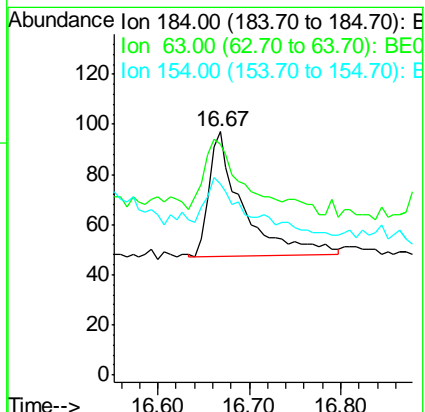
Instrument :
 BNA_E
 LabSampleId :
 SSTDICC0.5

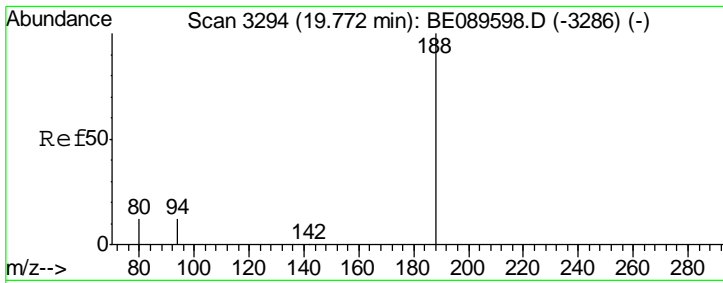
Tgt Ion	Resp	Lower	Upper
172	13895		
171	33.8	27.4	41.0
170	22.0	17.9	26.9



#16
 2,4-Dinitrophenol
 Concen: 0.34 ng
 RT: 16.67 min Scan# 2841
 Delta R.T. 0.01 min
 Lab File: BE089596.D
 Acq: 17 Feb 2015 15:49

Tgt Ion	Resp	Lower	Upper
184	129		
63	94.8	61.0	91.4#
154	78.4	53.4	80.0

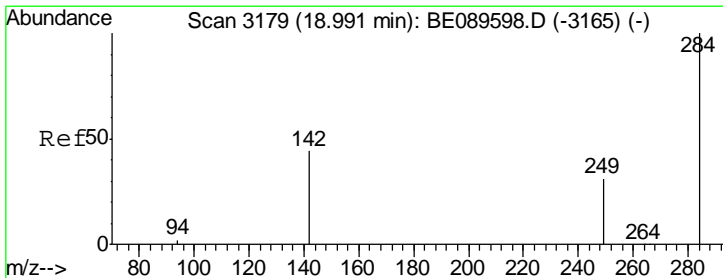
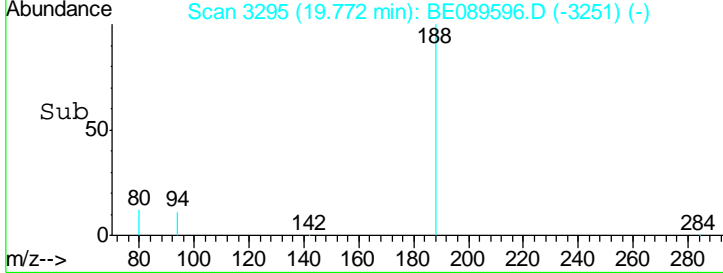
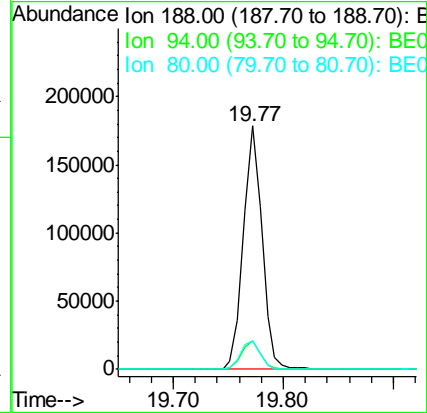
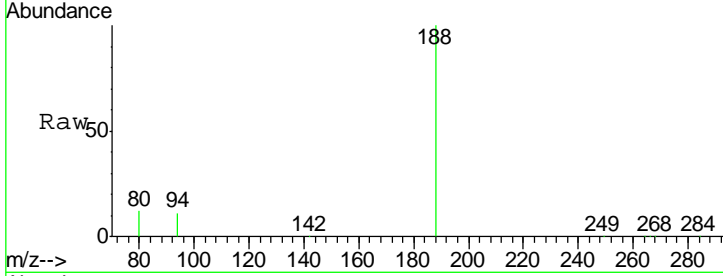




#17
 Phenanthrene-d10
 Concen: 5.00 ng
 RT: 19.77 min Scan# 3295
 Delta R.T. 0.00 min
 Lab File: BE089596.D
 Acq: 17 Feb 2015 15:49

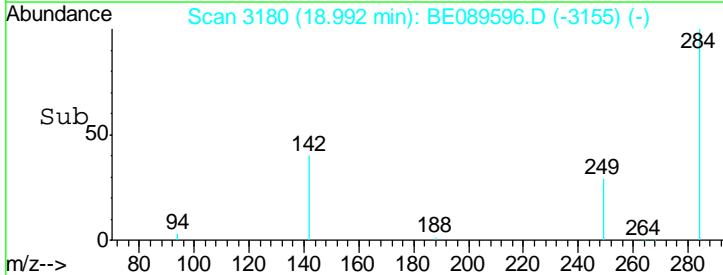
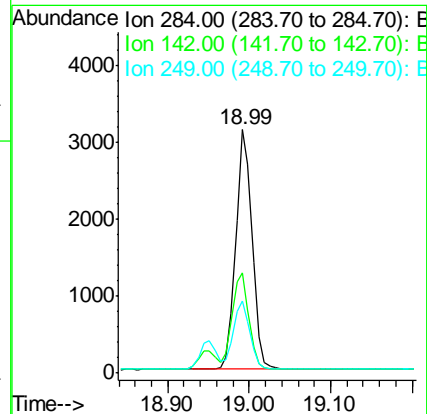
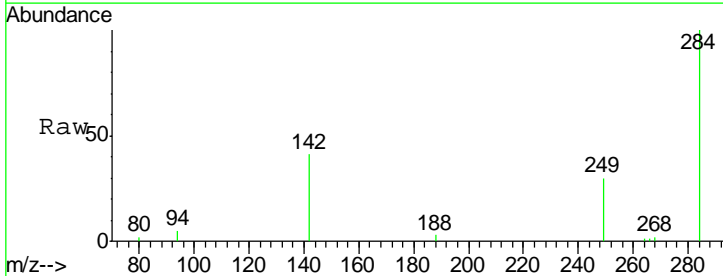
Instrument :
 BNA_E
 LabSampleId :
 SSTDICC0.5

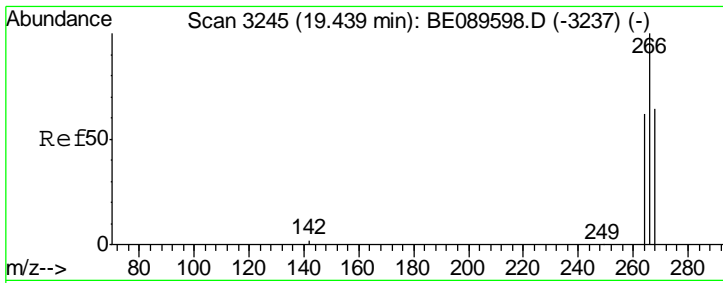
Tgt Ion	Resp	Lower	Upper
188	100		
94	11.5	9.4	14.2
80	11.8	9.8	14.8



#18
 Hexachlorobenzene
 Concen: 0.49 ng
 RT: 18.99 min Scan# 3180
 Delta R.T. 0.00 min
 Lab File: BE089596.D
 Acq: 17 Feb 2015 15:49

Tgt Ion	Resp	Lower	Upper
284	100		
142	41.0	35.6	53.4
249	29.8	25.2	37.8



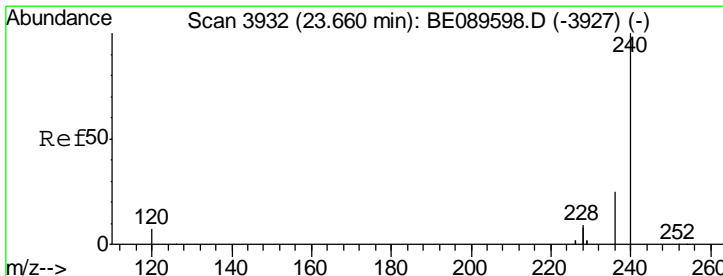
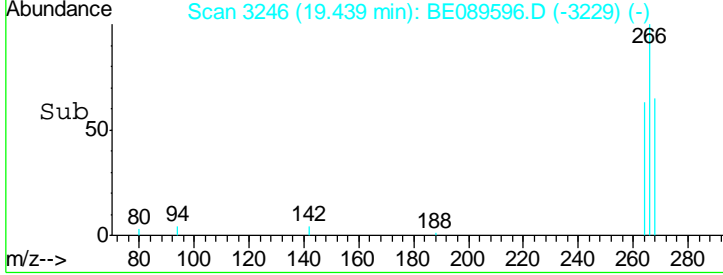
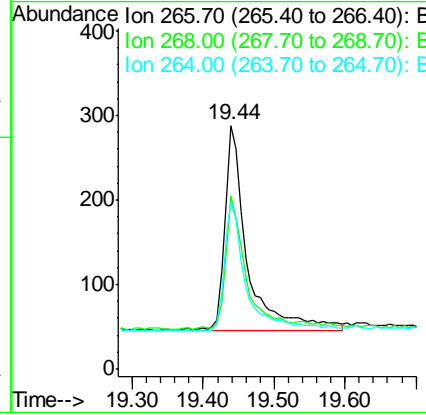
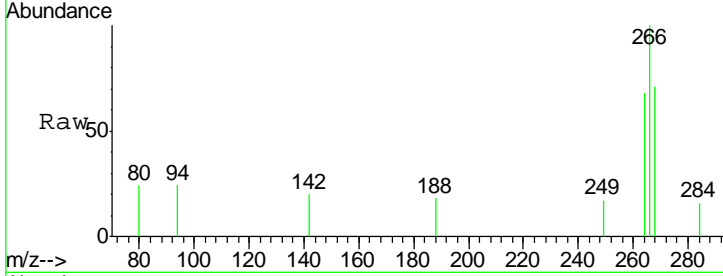


#19
 Pentachlorophenol
 Concen: 0.36 ng
 RT: 19.44 min Scan# 3246
 Delta R.T. 0.00 min
 Lab File: BE089596.D
 Acq: 17 Feb 2015 15:49

Instrument :
 BNA_E
 LabSampleId :
 SSTDICC0.5

Tgt Ion: 266 Resp: 531

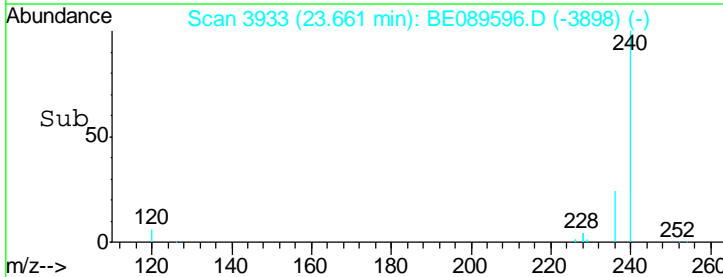
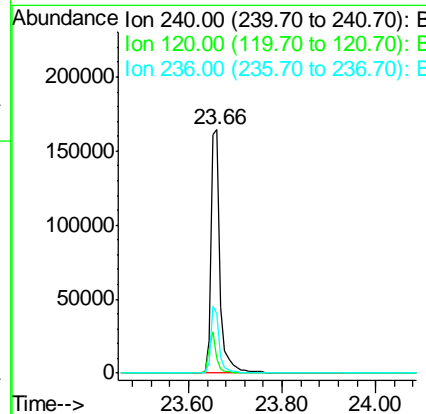
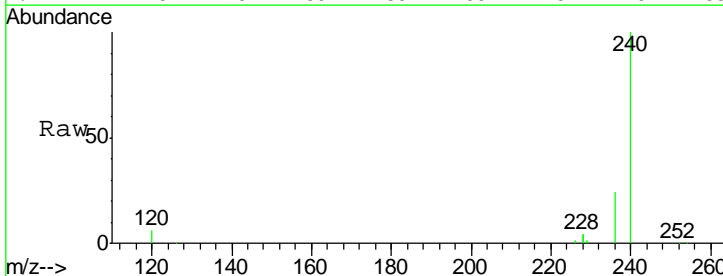
Ion	Ratio	Lower	Upper
266	100		
268	70.8	53.0	79.4
264	68.4	51.9	77.9

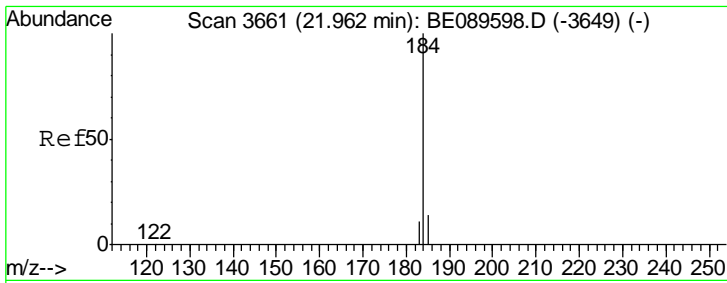


#20
 Chrysene-d12
 Concen: 5.00 ng
 RT: 23.66 min Scan# 3933
 Delta R.T. 0.00 min
 Lab File: BE089596.D
 Acq: 17 Feb 2015 15:49

Tgt Ion: 240 Resp: 226882

Ion	Ratio	Lower	Upper
240	100		
120	5.9	5.4	8.0
236	24.2	19.8	29.6

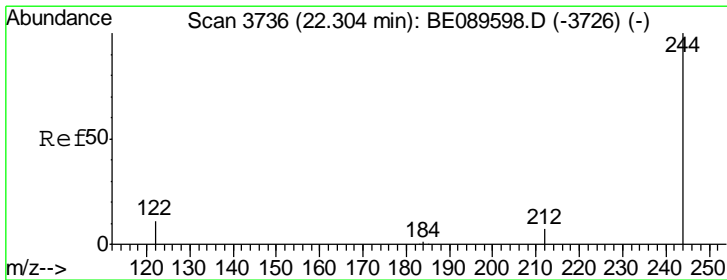
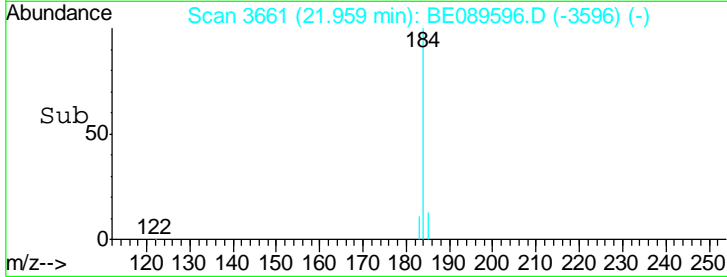
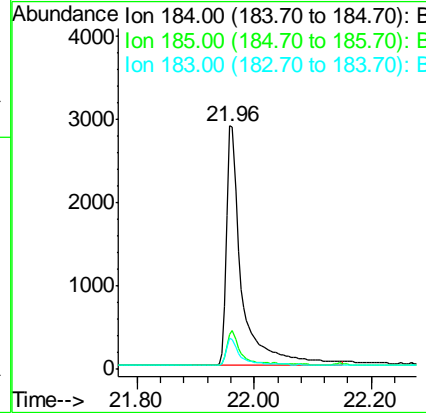
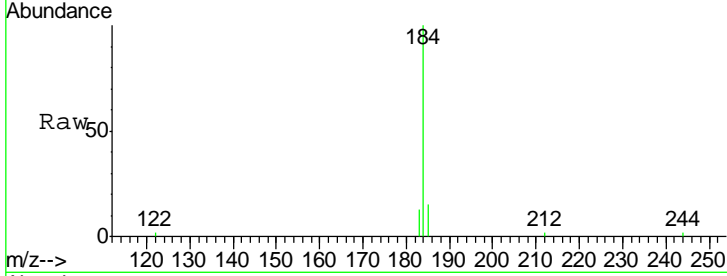




#21
Benzidine
Concen: 0.30 ng
RT: 21.96 min Scan# 3661
Delta R.T. -0.00 min
Lab File: BE089596.D
Acq: 17 Feb 2015 15:49

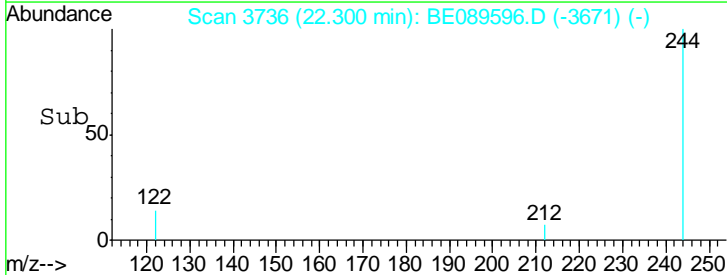
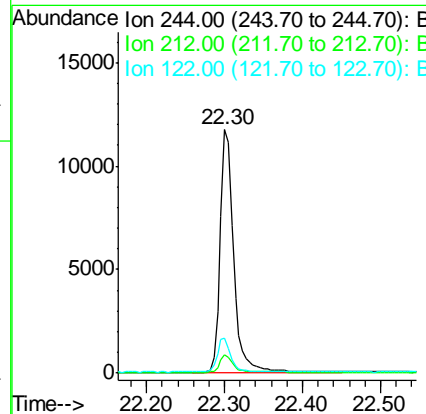
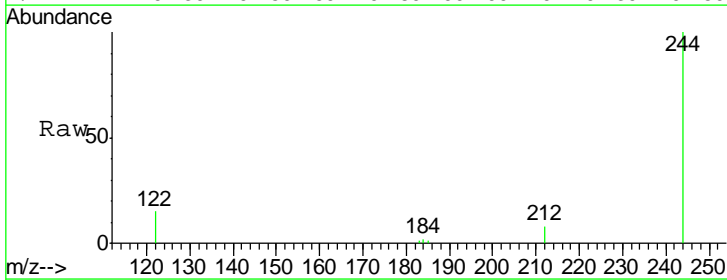
Instrument :
BNA_E
LabSampleId :
SSTDIC0.5

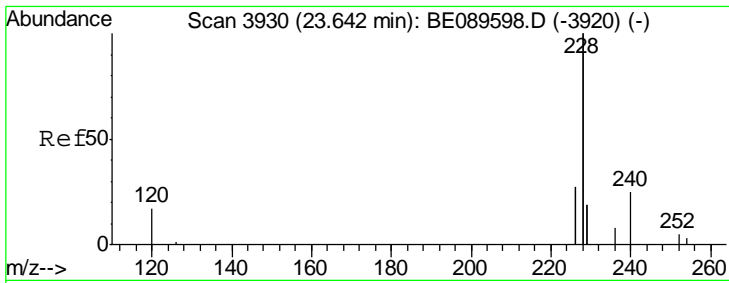
Tgt Ion	Resp	Lower	Upper
184	100		
185	14.6	11.8	17.8
183	12.8	9.3	13.9



#22
Terphenyl-d14
Concen: 0.45 ng
RT: 22.30 min Scan# 3736
Delta R.T. -0.00 min
Lab File: BE089596.D
Acq: 17 Feb 2015 15:49

Tgt Ion	Resp	Lower	Upper
244	100		
212	7.6	5.7	8.5
122	14.6	8.6	13.0#

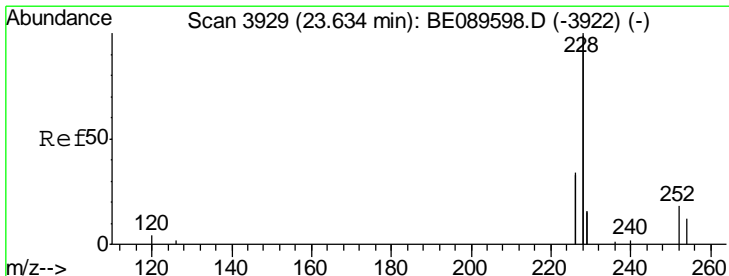
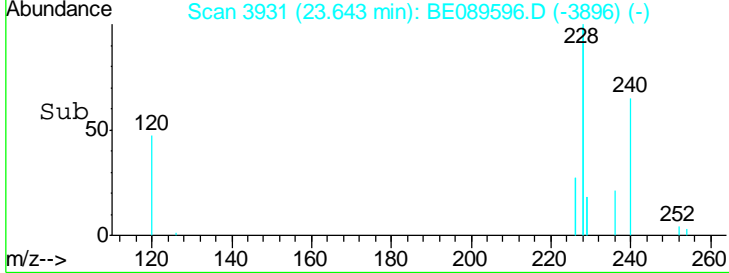
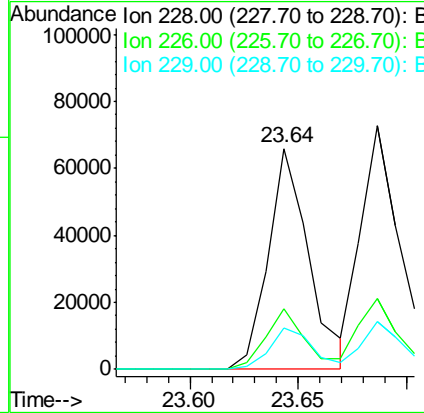
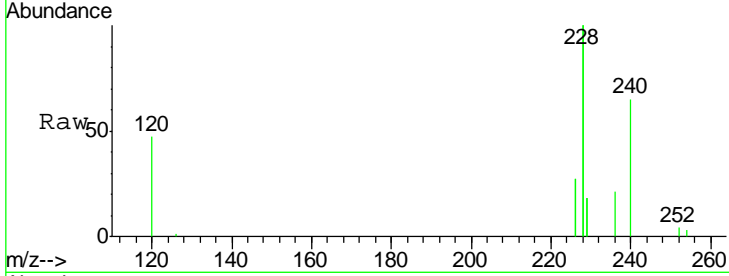




#23
 Benzo(a)anthracene
 Concen: 0.40 ng
 RT: 23.64 min Scan# 3931
 Delta R.T. 0.00 min
 Lab File: BE089596.D
 Acq: 17 Feb 2015 15:49

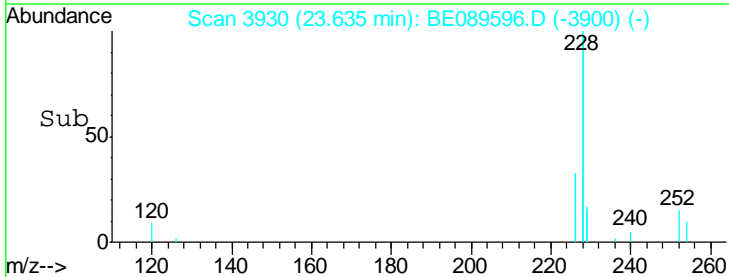
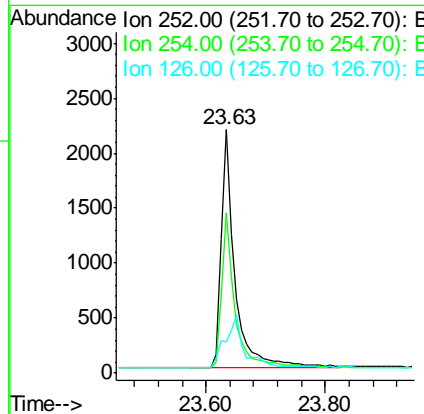
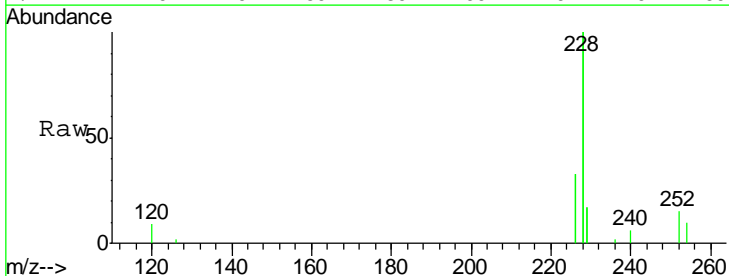
Instrument : BNA_E
 LabSampleId : SSTDICC0.5

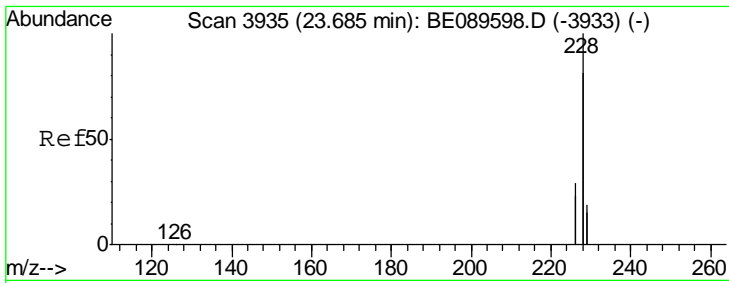
Tgt Ion	Resp	Lower	Upper
228	100		
226	27.2	21.5	32.3
229	18.5	15.0	22.6



#24
 3,3'-Dichlorobenzidine
 Concen: 0.25 ng
 RT: 23.63 min Scan# 3930
 Delta R.T. 0.00 min
 Lab File: BE089596.D
 Acq: 17 Feb 2015 15:49

Tgt Ion	Resp	Lower	Upper
252	100		
254	65.8	51.7	77.5
126	12.7	9.9	14.9

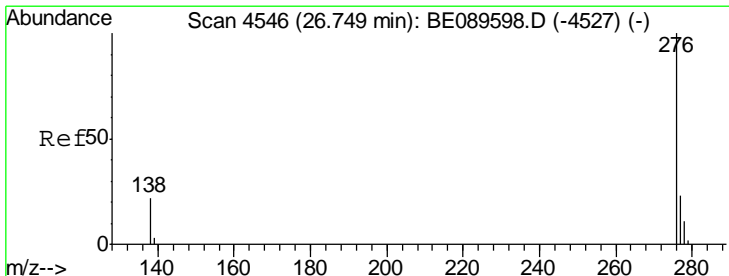
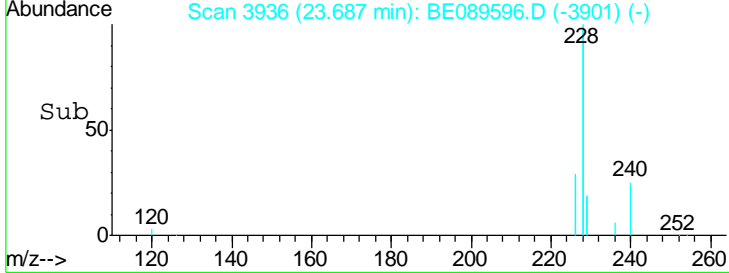
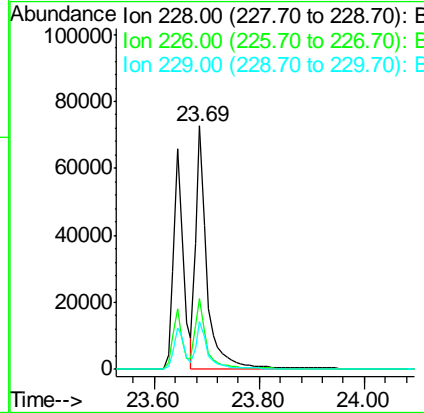
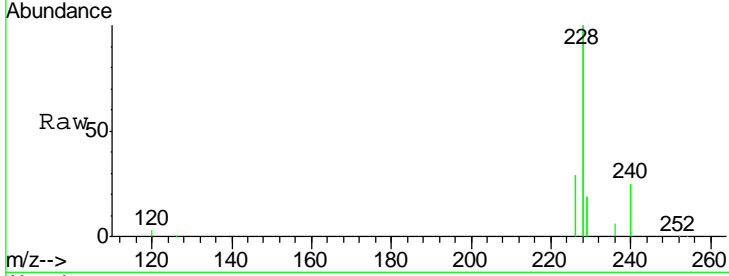




#25
 Chrysene
 Concen: 0.49 ng
 RT: 23.69 min Scan# 3936
 Delta R.T. 0.00 min
 Lab File: BE089596.D
 Acq: 17 Feb 2015 15:49

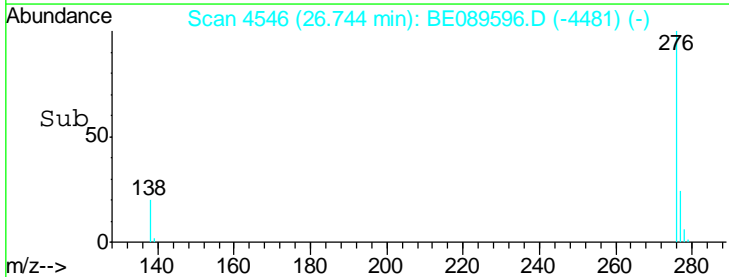
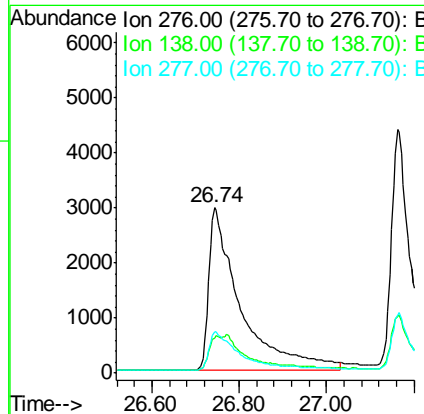
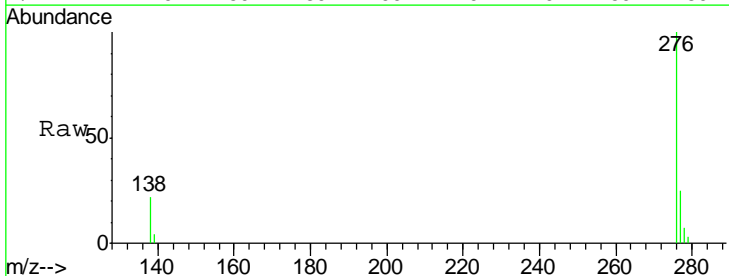
Instrument :
 BNA_E
 LabSampleId :
 SSTDICC0.5

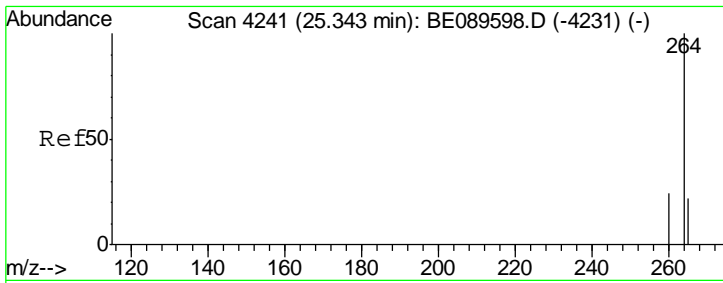
Tgt Ion	Resp	Lower	Upper
228	106918		
226	28.9	23.4	35.2
229	19.5	15.3	22.9



#26
 Indeno(1,2,3-cd)pyrene
 Concen: 0.31 ng
 RT: 26.74 min Scan# 4546
 Delta R.T. -0.01 min
 Lab File: BE089596.D
 Acq: 17 Feb 2015 15:49

Tgt Ion	Resp	Lower	Upper
276	15082		
138	7.6	0.0	0.0#
277	23.6	19.9	29.9



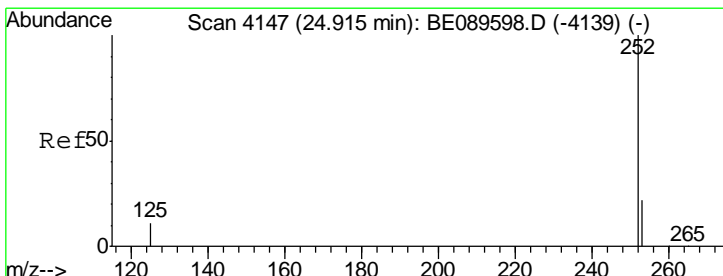
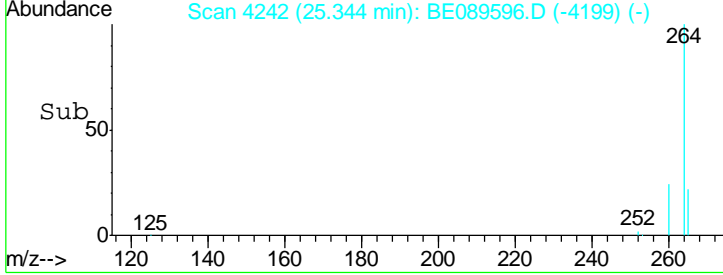
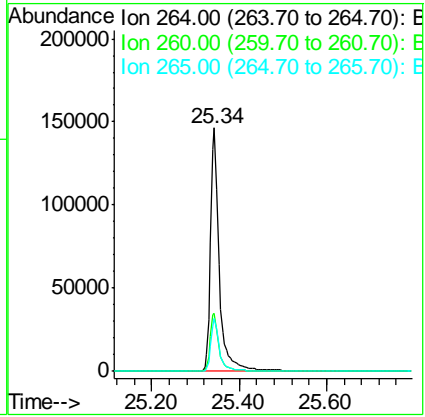
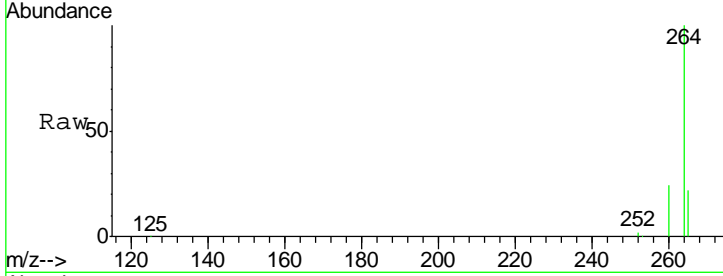


#27
 Perylene-d12
 Concen: 5.00 ng
 RT: 25.34 min Scan# 4242
 Delta R.T. 0.00 min
 Lab File: BE089596.D
 Acq: 17 Feb 2015 15:49

Instrument :
 BNA_E
 LabSampleId :
 SSTDICC0.5

Tgt Ion: 264 Resp: 202710

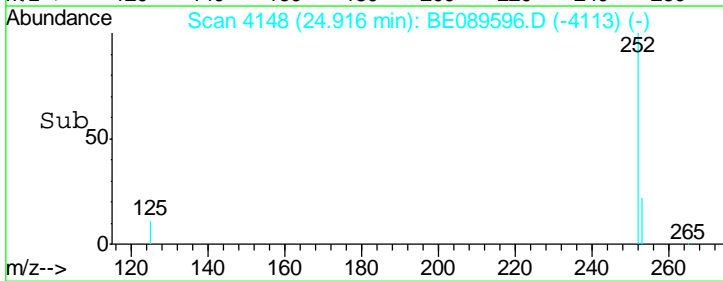
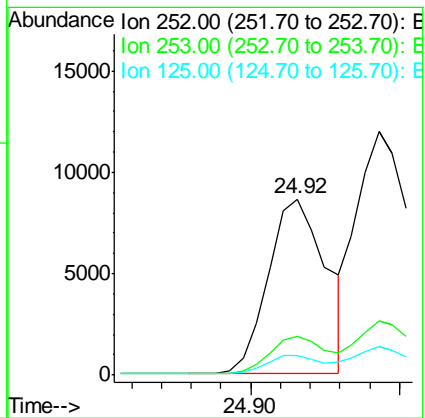
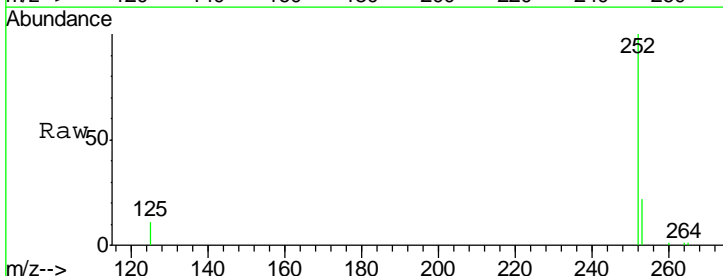
Ion	Ratio	Lower	Upper
264	100		
260	23.9	19.0	28.4
265	21.9	17.8	26.8

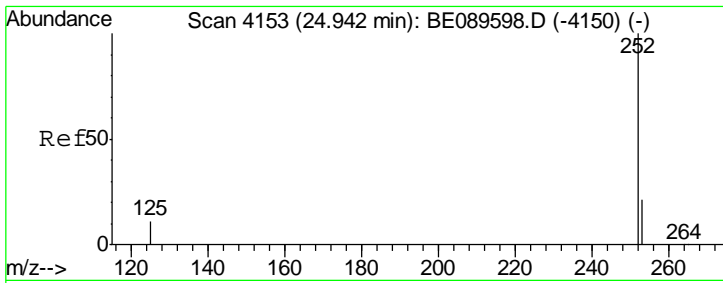


#28
 Benzo(b)fluoranthene
 Concen: 0.31 ng
 RT: 24.92 min Scan# 4148
 Delta R.T. 0.00 min
 Lab File: BE089596.D
 Acq: 17 Feb 2015 15:49

Tgt Ion: 252 Resp: 11658

Ion	Ratio	Lower	Upper
252	100		
253	22.1	17.8	26.8
125	11.4	8.9	13.3



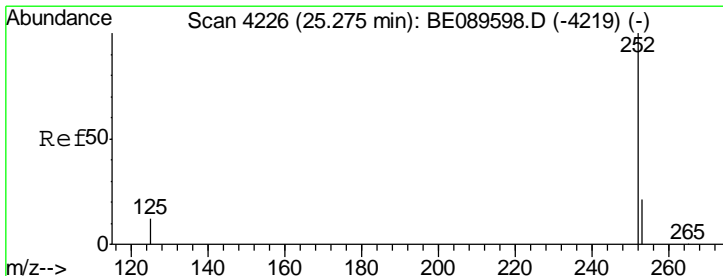
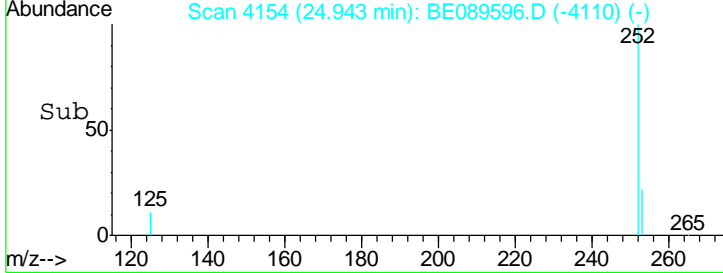
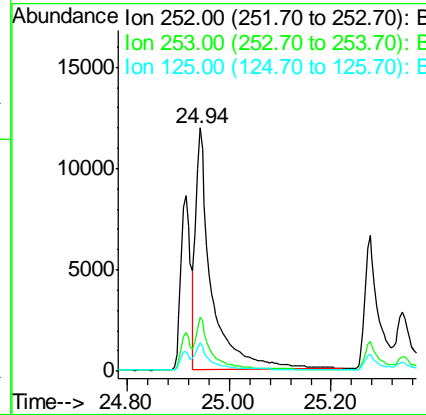
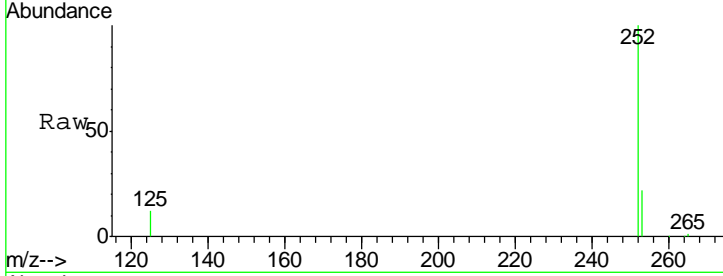


#29
 Benzo(k)fluoranthene
 Concen: 0.46 ng
 RT: 24.94 min Scan# 4154
 Delta R.T. 0.00 min
 Lab File: BE089596.D
 Acq: 17 Feb 2015 15:49

Instrument :
 BNA_E
 LabSampleId :
 SSTDICC0.5

Tgt Ion: 252 Resp: 25186

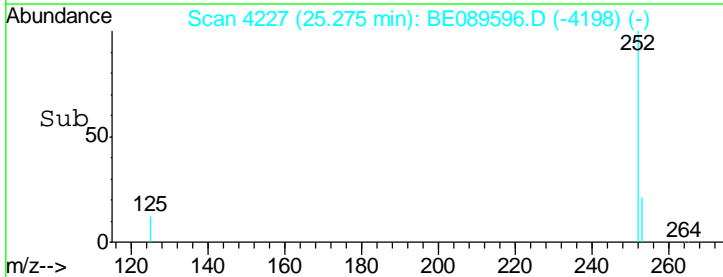
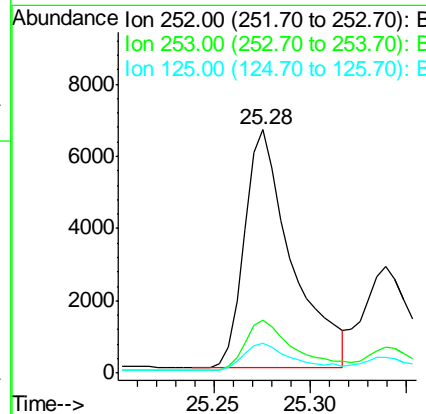
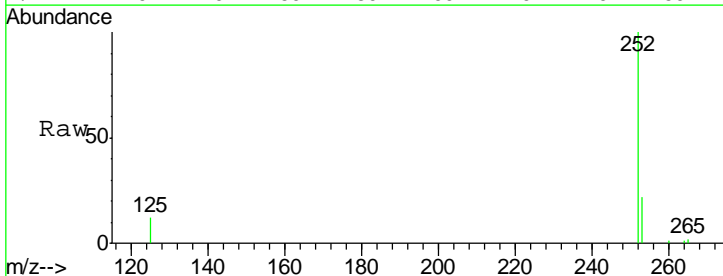
Ion	Ratio	Lower	Upper
252	100		
253	22.3	17.3	25.9
125	11.5	8.9	13.3

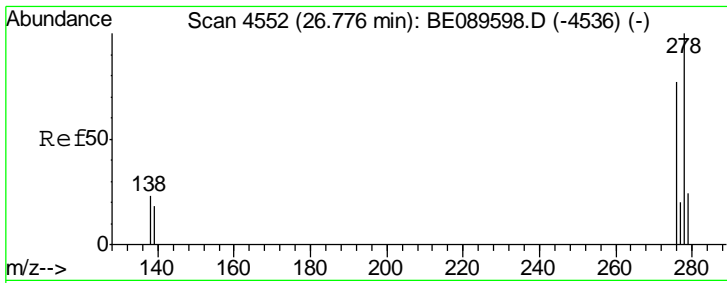


#30
 Benzo(a)pyrene
 Concen: 0.31 ng
 RT: 25.28 min Scan# 4227
 Delta R.T. 0.00 min
 Lab File: BE089596.D
 Acq: 17 Feb 2015 15:49

Tgt Ion: 252 Resp: 11220

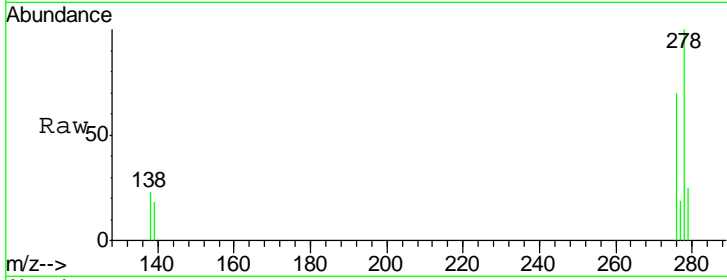
Ion	Ratio	Lower	Upper
252	100		
253	21.9	17.1	25.7
125	12.4	9.8	14.8





#31
 Dibenzo(a,h)anthracene
 Concen: 0.32 ng
 RT: 26.78 min Scan# 4553
 Delta R.T. -0.00 min
 Lab File: BE089596.D
 Acq: 17 Feb 2015 15:49

Instrument :
 BNA_E
 LabSampleId :
 SSTDICC0.5



Tgt Ion: 278 Resp: 11543

Ion	Ratio	Lower	Upper
278	100		
139	17.7	14.6	21.8
279	25.1	19.4	29.0

