

Data Path : Z:\HPCHEM1\BNA_E\DATA\BE021716\
 Data File : BE091405.D
 Acq On : 17 Feb 2016 15:40
 Operator : UM/IZ
 Sample : PB88398BL
 Misc :
 ALS Vial : 3 Sample Multiplier: 1

Instrument :
 BNA_E
 ClientSampleId :
 PB88398BL

Quant Time: Feb 17 23:59:12 2016
 Quant Method : Z:\HPCHEM1\BNA_E\METHODS\8270-SIM-BE020216.M
 Quant Title : ASP BNA STANDARDS FOR 5 POINT CALIBRATION
 QLast Update : Wed Feb 03 00:27:53 2016
 Response via : Initial Calibration

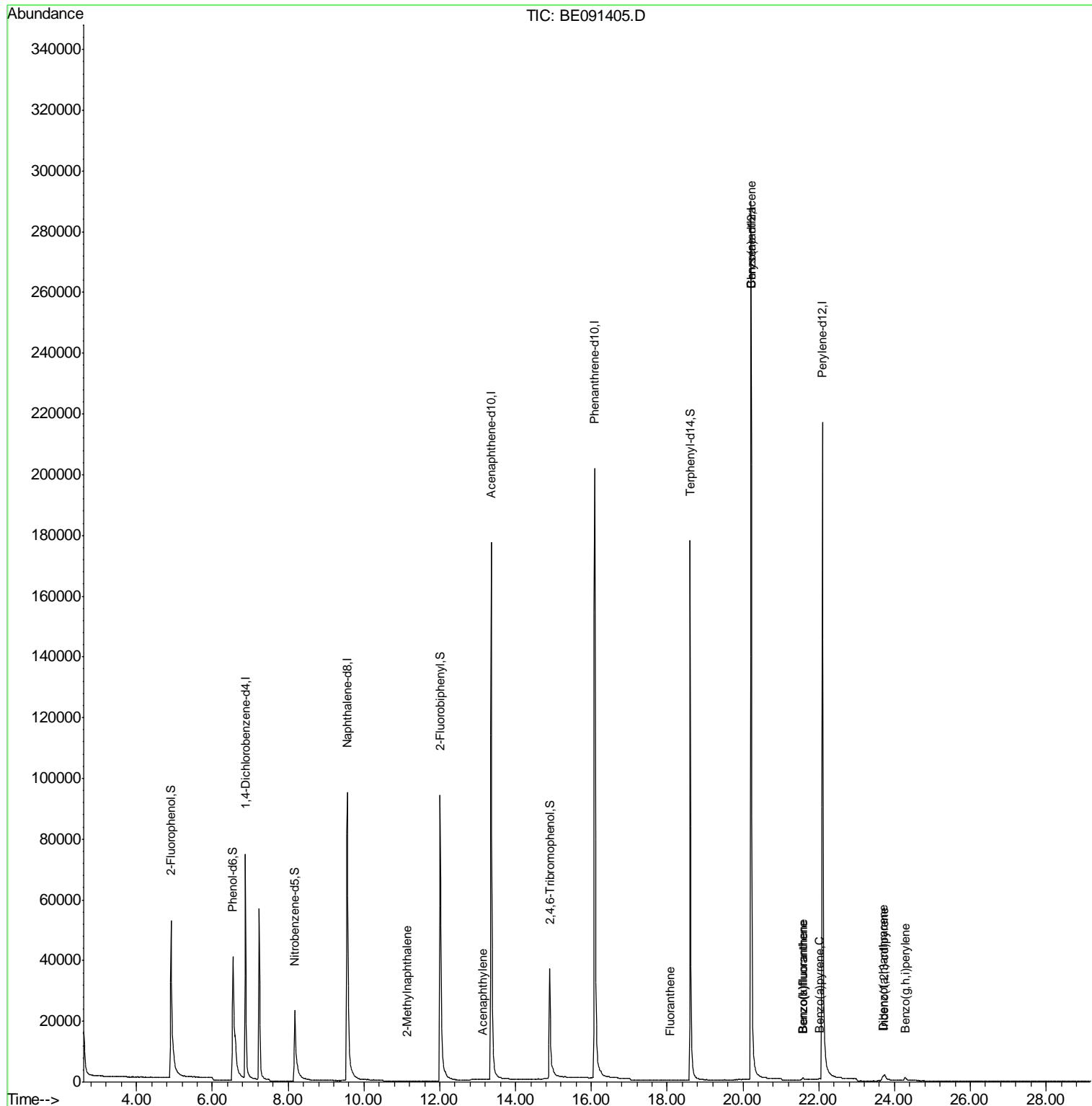
Internal Standards	R.T.	QIon	Response	Conc	Units	Dev(Min)
1) 1,4-Dichlorobenzene-d4	6.88	152	41688	5.00	ng	0.00
4) Naphthalene-d8	9.56	136	196686	5.00	ng	0.00
8) Acenaphthene-d10	13.36	164	131188	5.00	ng	0.00
14) Phenanthrene-d10	16.09	188	335025	5.00	ng	0.00
18) Chrysene-d12	20.22	240	339633	5.00	ng	0.00
24) Perylene-d12	22.10	264	300030	5.00	ng	0.00
System Monitoring Compounds						
2) 2-Fluorophenol	4.91	112	71185	7.21	ng	-0.04
3) Phenol-d6	6.54	99	97655	6.99	ng	-0.03
5) Nitrobenzene-d5	8.18	82	44681	3.52	ng	0.00
9) 2,4,6-Tribromophenol	14.91	330	29113	4.68	ng	0.00
10) 2-Fluorobiphenyl	12.01	172	149812	4.39	ng	0.00
20) Terphenyl-d14	18.62	244	241282	4.80	ng	0.00
Target Compounds						
7) 2-Methylnaphthalene	11.12	142	7	0.13	ng	# 52
11) Acenaphthylene	13.14	152	82	0.18	ng	# 6
17) Fluoranthene	18.08	202	6	0.12	ng	# 63
21) Benzo(a)anthracene	20.22	228	1277	0.19	ng	# 77
22) Chrysene	20.22	228	1277	Below Cal		# 74
23) Indeno(1,2,3-cd)pyrene	23.73	276	4403	0.22	ng	# 92
25) Benzo(b)fluoranthene	21.56	252	597	0.16	ng	# 43
26) Benzo(k)fluoranthene	21.59	252	1004	0.03	ng	# 60
27) Benzo(a)pyrene	22.01	252	920	0.18	ng	# 43
28) Dibenzo(a,h)anthracene	23.69	278	3983	0.31	ng	# 82
29) Benzo(g,h,i)perylene	24.28	276	3058	0.18	ng	# 83

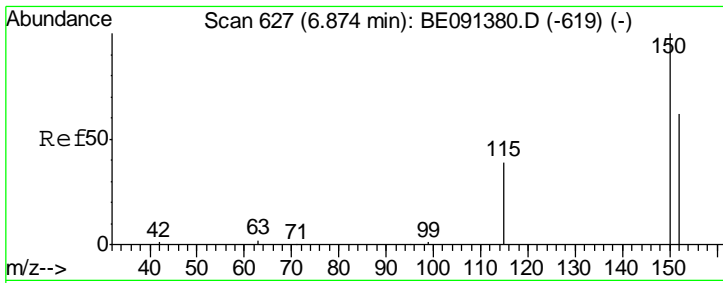
(#) = qualifier out of range (m) = manual integration (+) = signals summed

Data Path : Z:\HPCHEM1\BNA_E\DATA\BE021716\
 Data File : BE091405.D
 Acq On : 17 Feb 2016 15:40
 Operator : UM/IZ
 Sample : PB88398BL
 Misc :
 ALS Vial : 3 Sample Multiplier: 1

Instrument :
 BNA_E
 ClientSampleId :
 PB88398BL

Quant Time: Feb 17 23:59:12 2016
 Quant Method : Z:\HPCHEM1\BNA_E\METHODS\8270-SIM-BE020216.M
 Quant Title : ASP BNA STANDARDS FOR 5 POINT CALIBRATION
 QLast Update : Wed Feb 03 00:27:53 2016
 Response via : Initial Calibration



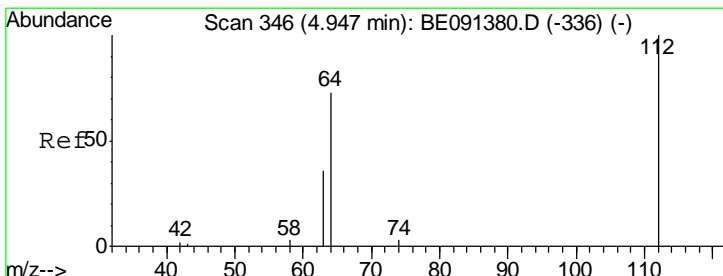
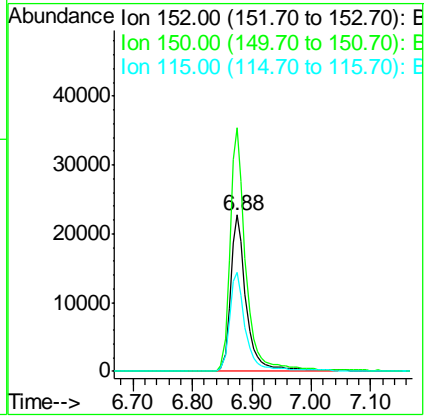
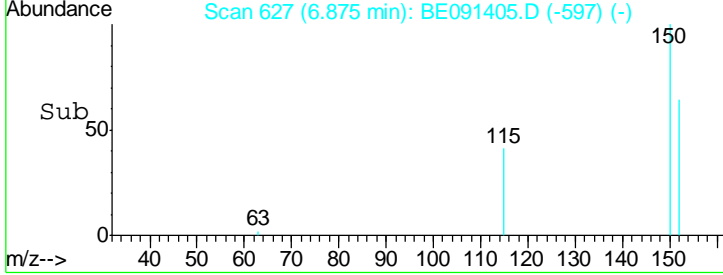
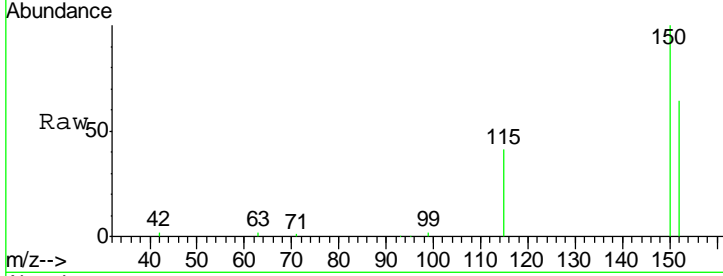


#1
 1,4-Dichlorobenzene-d4
 Concen: 5.00 ng
 RT: 6.88 min Scan# 627
 Delta R.T. 0.00 min
 Lab File: BE091405.D
 Acq: 17 Feb 2016 15:40

Instrument :
 BNA_E
ClientSampled :
 PB88398BL

Tgt Ion:152 Resp: 41688

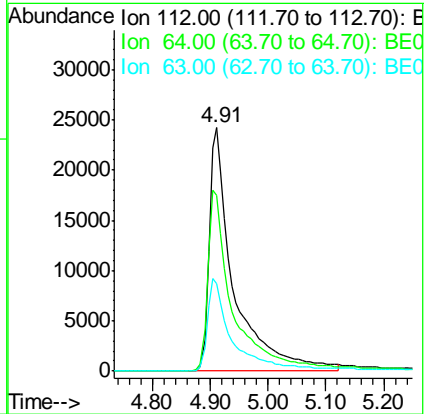
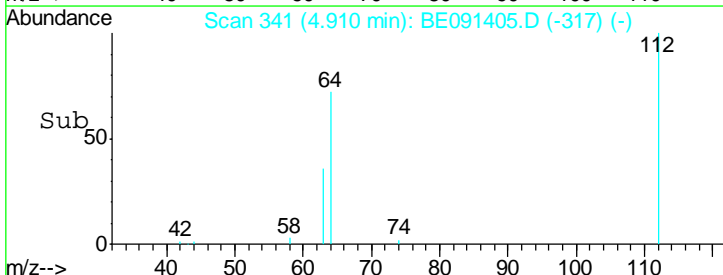
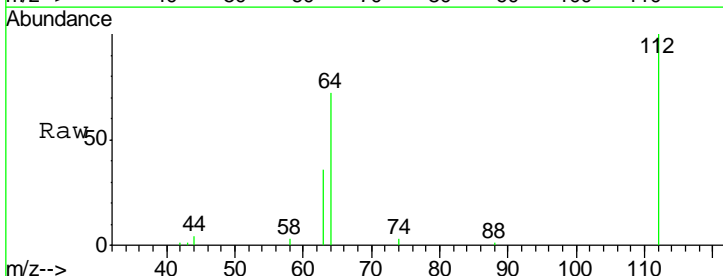
Ion	Ratio	Lower	Upper
152	100		
150	156.1	128.9	193.3
115	63.7	50.9	76.3

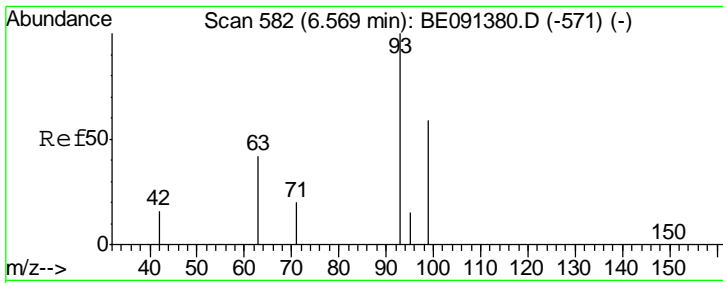


#2
 2-Fluorophenol
 Concen: 7.21 ng
 RT: 4.91 min Scan# 341
 Delta R.T. -0.04 min
 Lab File: BE091405.D
 Acq: 17 Feb 2016 15:40

Tgt Ion:112 Resp: 71185

Ion	Ratio	Lower	Upper
112	100		
64	75.1	60.5	90.7
63	37.7	29.8	44.8

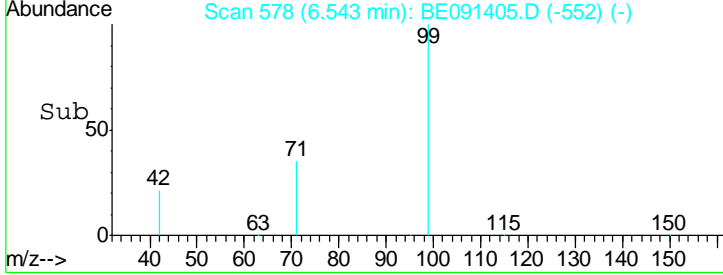
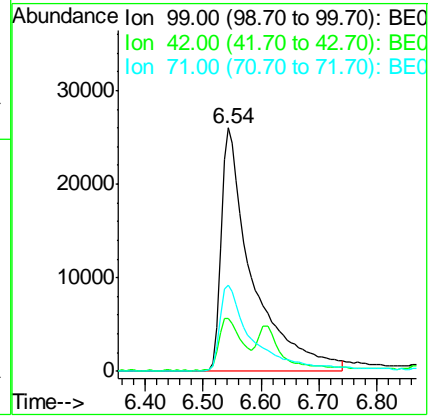
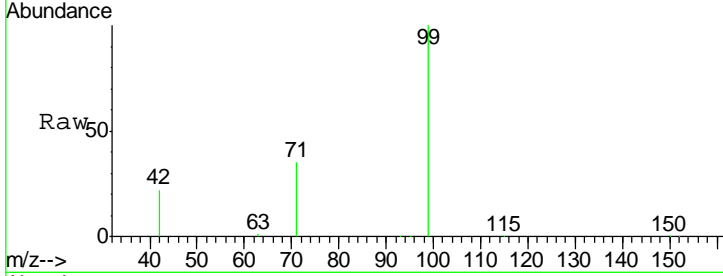




#3
 Phenol-d6
 Concen: 6.99 ng
 RT: 6.54 min Scan# 578
 Delta R.T. -0.03 min
 Lab File: BE091405.D
 Acq: 17 Feb 2016 15:40

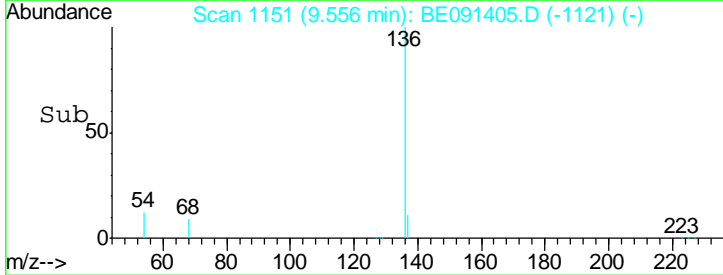
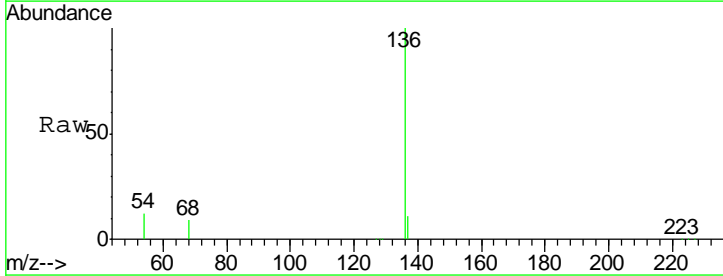
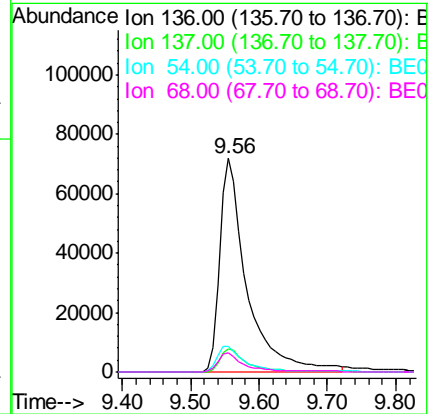
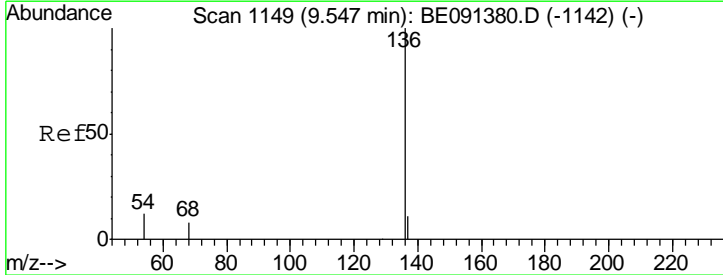
Instrument :
 BNA_E
ClientSampled :
 PB88398BL

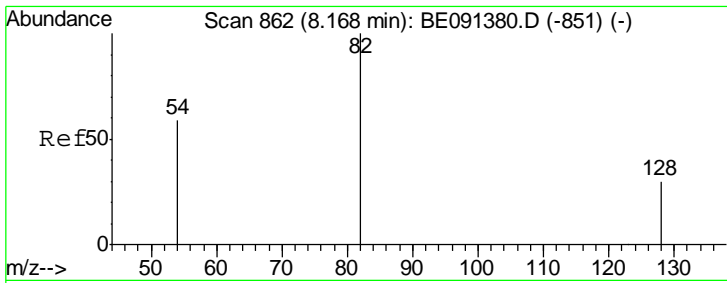
Tgt Ion	Resp	Lower	Upper
99	100		
42	15.6	13.3	19.9
71	36.2	25.6	38.4



#4
 Naphthalene-d8
 Concen: 5.00 ng
 RT: 9.56 min Scan# 1151
 Delta R.T. 0.01 min
 Lab File: BE091405.D
 Acq: 17 Feb 2016 15:40

Tgt Ion	Resp	Lower	Upper
136	100		
137	11.1	8.7	13.1
54	12.2	9.3	13.9
68	8.8	6.7	10.1

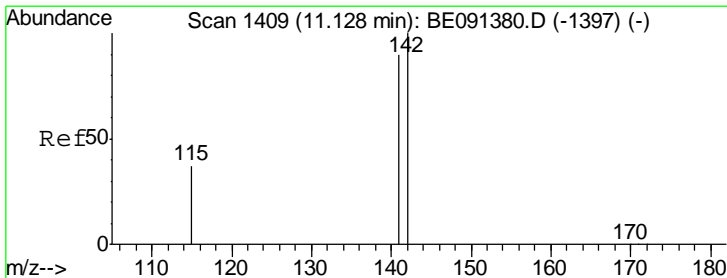
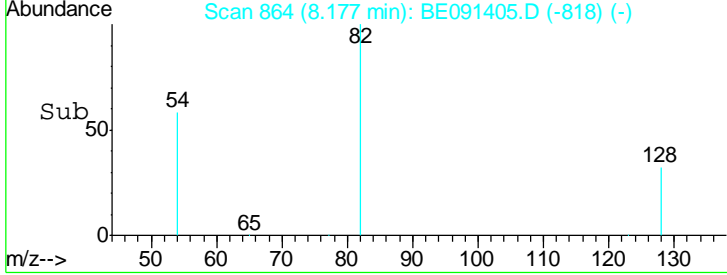
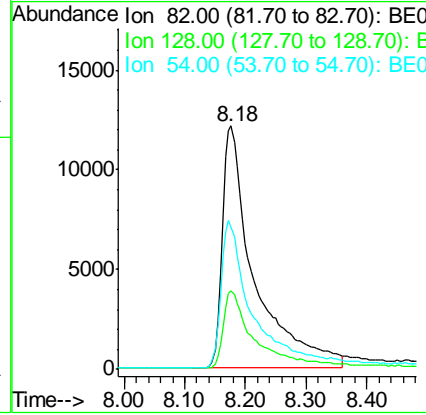
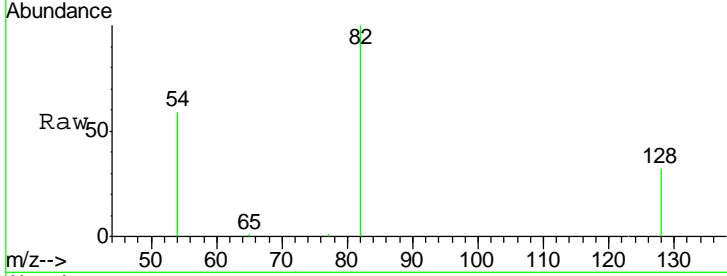




#5
 Nitrobenzene-d5
 Concen: 3.52 ng
 RT: 8.18 min Scan# 864
 Delta R.T. 0.01 min
 Lab File: BE091405.D
 Acq: 17 Feb 2016 15:40

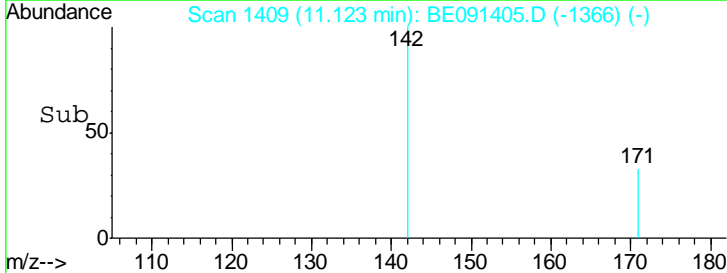
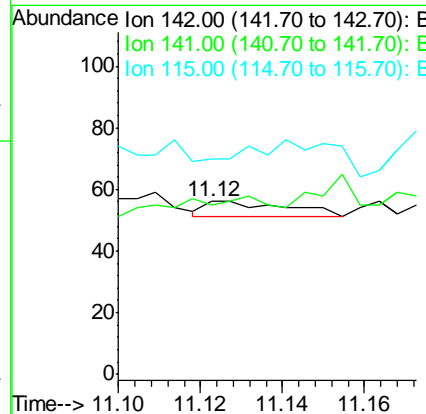
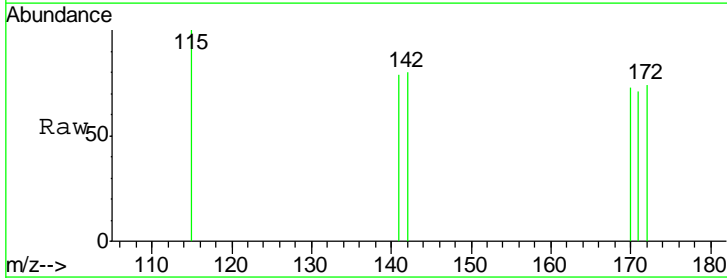
Instrument :
 BNA_E
ClientSampled :
 PB88398BL

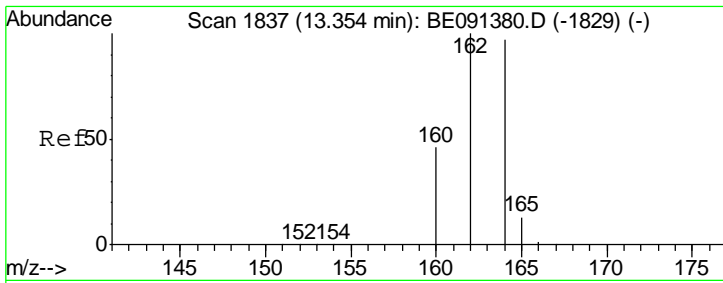
Tgt Ion	Resp	Lower	Upper
82	44681		
128	32.5	25.0	37.4
54	58.7	48.1	72.1



#7
 2-Methylnaphthalene
 Concen: 0.13 ng
 RT: 11.12 min Scan# 1409
 Delta R.T. -0.00 min
 Lab File: BE091405.D
 Acq: 17 Feb 2016 15:40

Tgt Ion	Resp	Lower	Upper
142	7		
141	98.2	72.3	108.5
115	125.0	30.5	45.7#

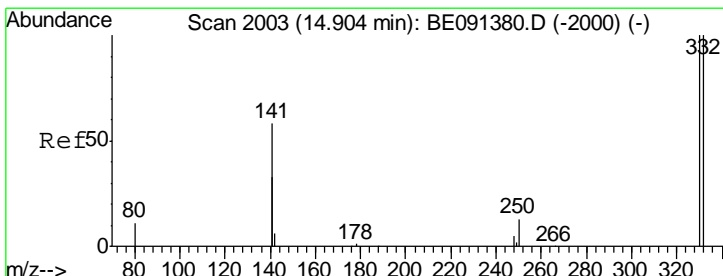
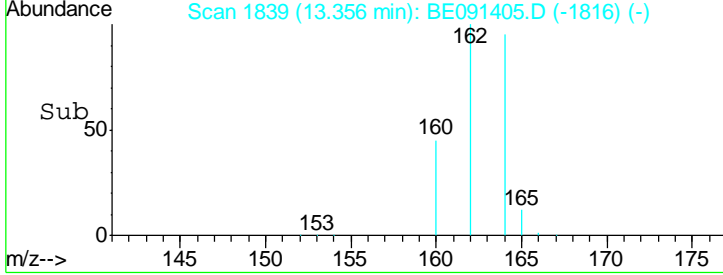
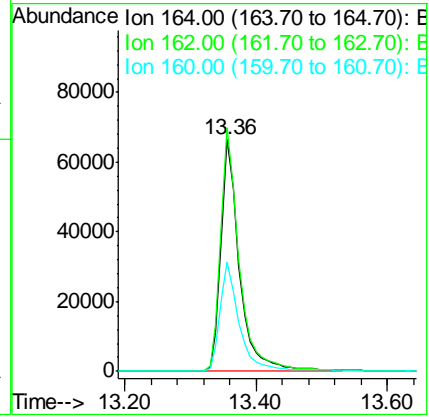
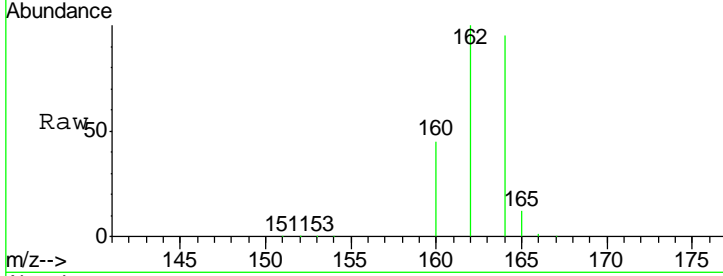




#8
 Acenaphthene-d10
 Concen: 5.00 ng
 RT: 13.36 min Scan# 1839
 Delta R.T. 0.00 min
 Lab File: BE091405.D
 Acq: 17 Feb 2016 15:40

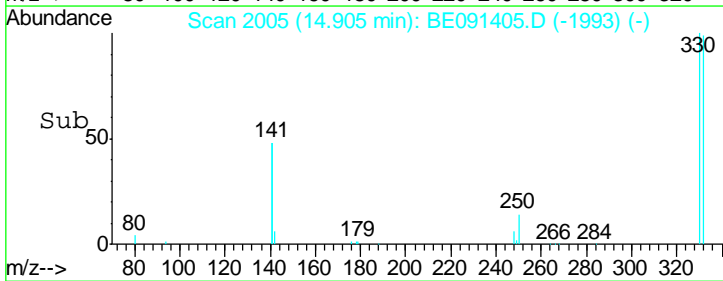
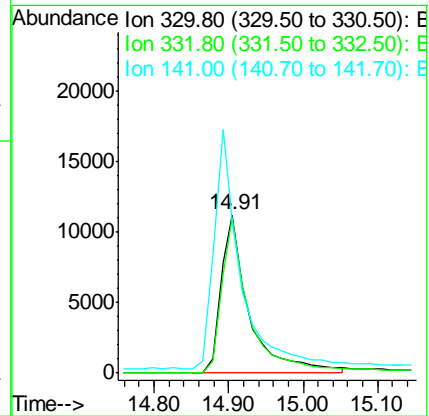
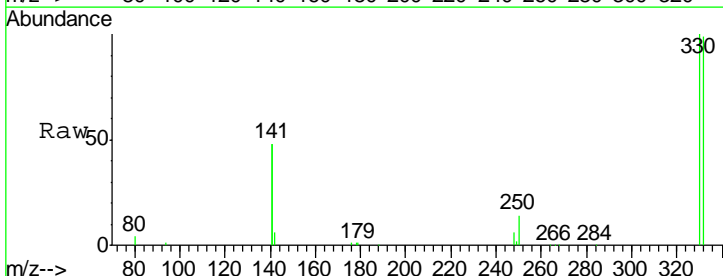
Instrument :
 BNA_E
 ClientSampled :
 PB88398BL

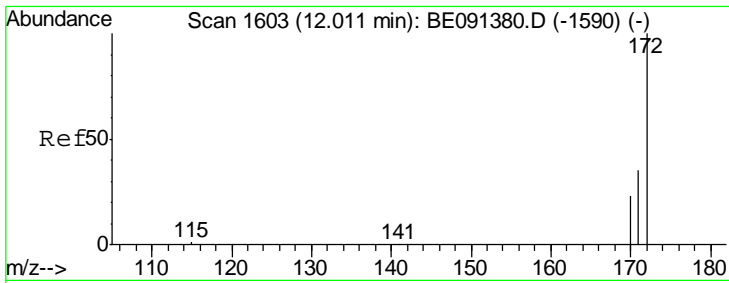
Tgt Ion	Resp	Lower	Upper
164	131188		
162	105.0	82.2	123.2
160	47.2	37.8	56.8



#9
 2,4,6-Tribromophenol
 Concen: 4.68 ng
 RT: 14.91 min Scan# 2005
 Delta R.T. 0.00 min
 Lab File: BE091405.D
 Acq: 17 Feb 2016 15:40

Tgt Ion	Resp	Lower	Upper
330	29113		
332	97.1	78.8	118.2
141	146.1	105.1	157.7

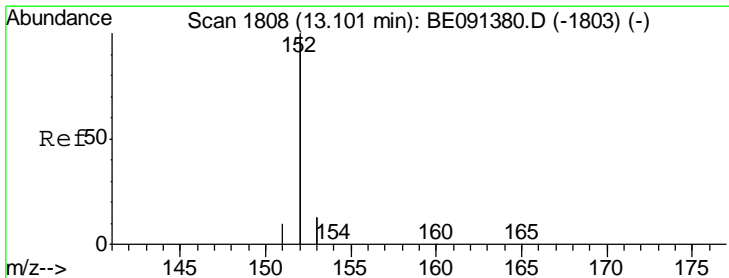
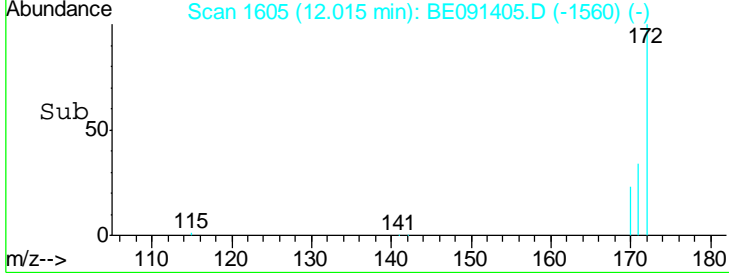
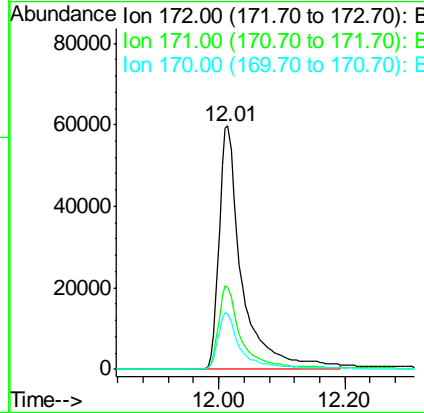
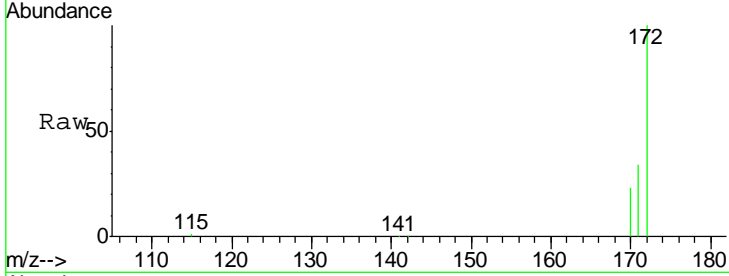




#10
 2-Fluorobiphenyl
 Concen: 4.39 ng
 RT: 12.01 min Scan# 1605
 Delta R.T. 0.00 min
 Lab File: BE091405.D
 Acq: 17 Feb 2016 15:40

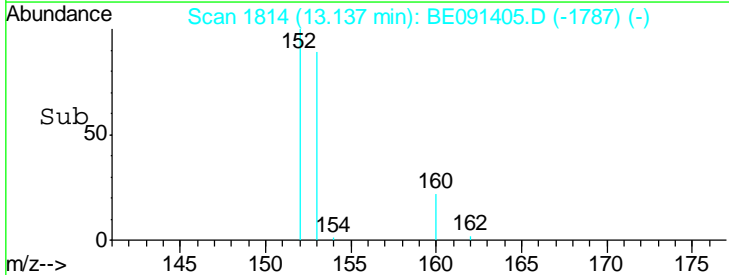
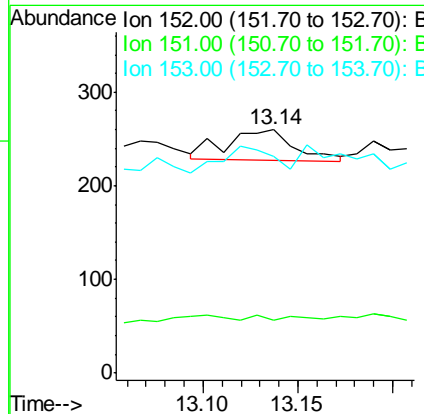
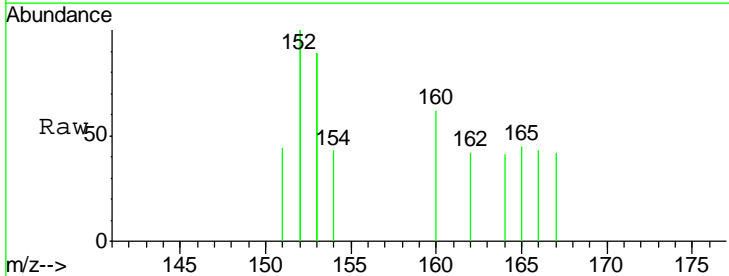
Instrument :
 BNA_E
 ClientSampled :
 PB88398BL

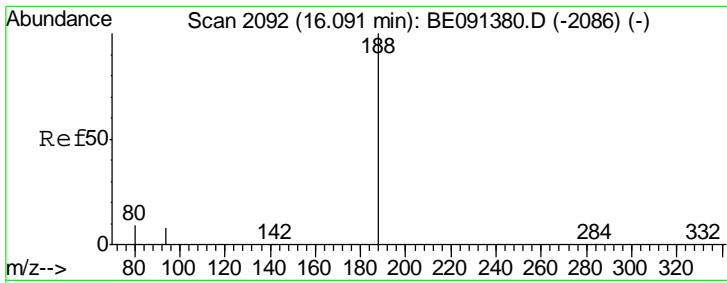
Tgt Ion	Resp	Lower	Upper
172	149812		
171	34.0	27.8	41.8
170	22.8	18.6	28.0



#11
 Acenaphthylene
 Concen: 0.18 ng
 RT: 13.14 min Scan# 1814
 Delta R.T. 0.04 min
 Lab File: BE091405.D
 Acq: 17 Feb 2016 15:40

Tgt Ion	Resp	Lower	Upper
152	82		
151	8.5	3.8	5.8#
153	62.2	10.2	15.4#

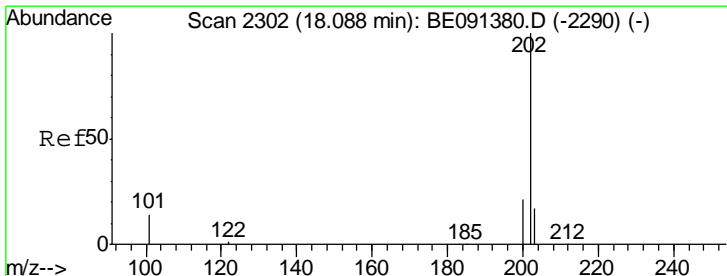
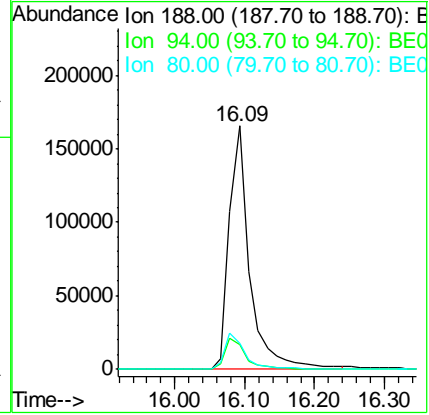
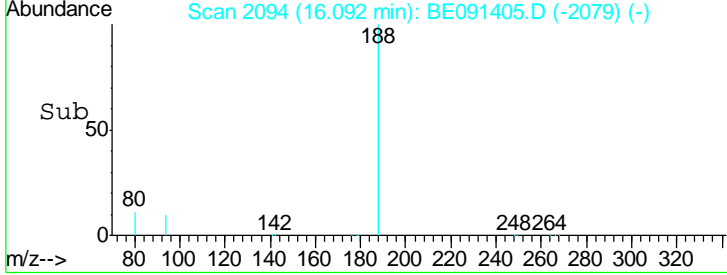
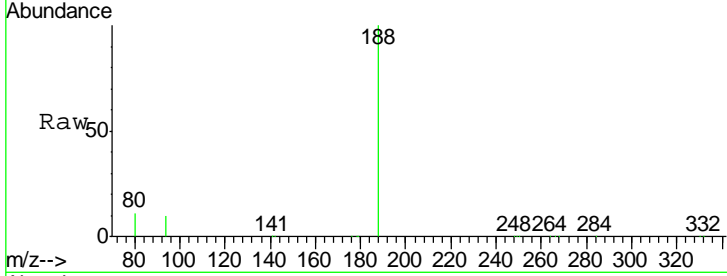




#14
 Phenanthrene-d10
 Concen: 5.00 ng
 RT: 16.09 min Scan# 2094
 Delta R.T. 0.00 min
 Lab File: BE091405.D
 Acq: 17 Feb 2016 15:40

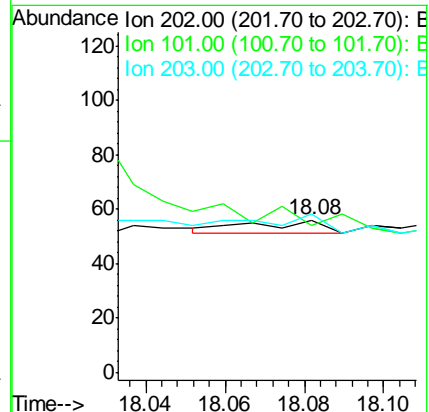
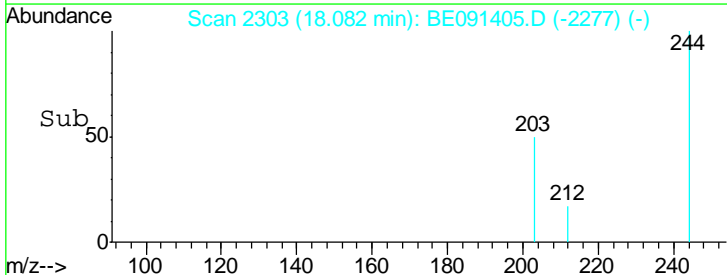
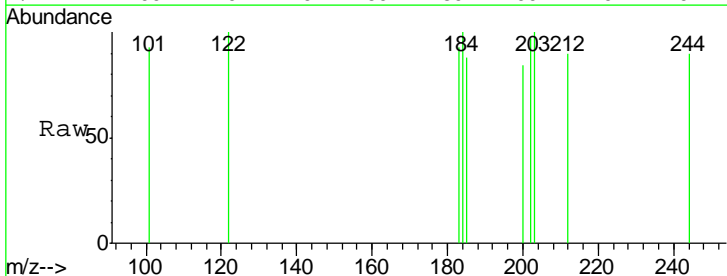
Instrument : BNA_E
 ClientSampled : PB88398BL

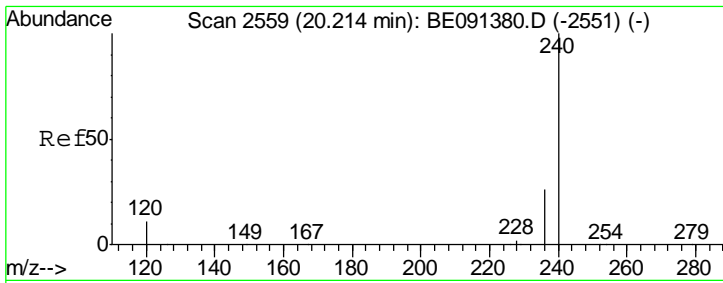
Tgt Ion	Resp	Lower	Upper
188	100		
94	10.0	6.6	10.0#
80	10.9	7.0	10.6#



#17
 Fluoranthene
 Concen: 0.12 ng
 RT: 18.08 min Scan# 2303
 Delta R.T. -0.01 min
 Lab File: BE091405.D
 Acq: 17 Feb 2016 15:40

Tgt Ion	Resp	Lower	Upper
202	100		
101	0.0	10.5	15.7#
203	0.0	13.9	20.9#

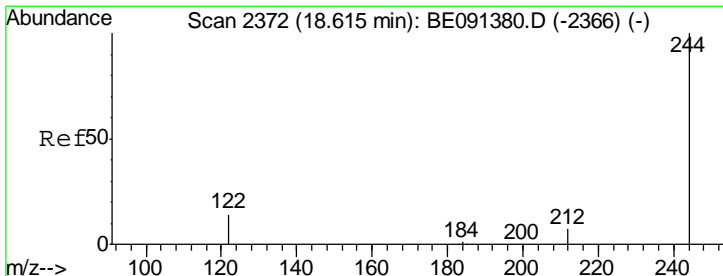
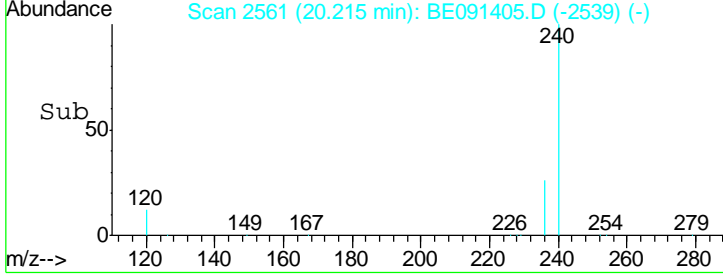
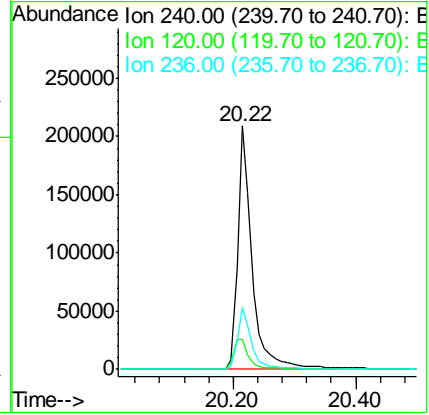
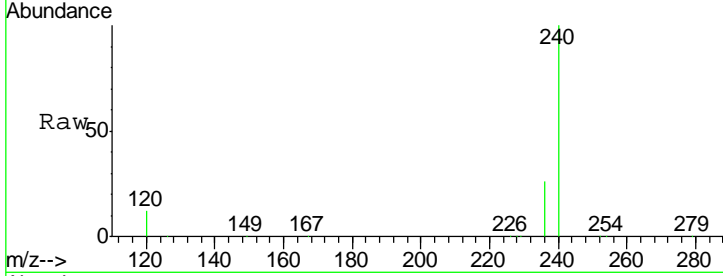




#18
 Chrysene-d12
 Concen: 5.00 ng
 RT: 20.22 min Scan# 2561
 Delta R.T. 0.00 min
 Lab File: BE091405.D
 Acq: 17 Feb 2016 15:40

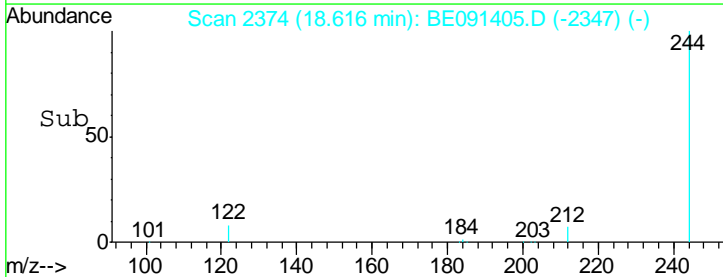
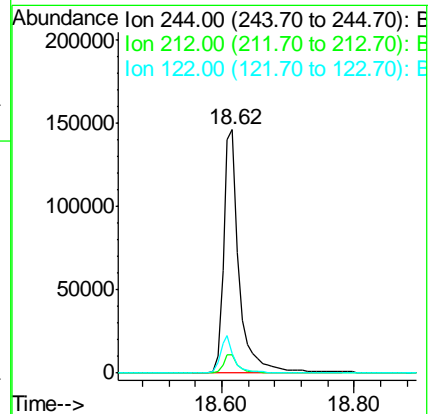
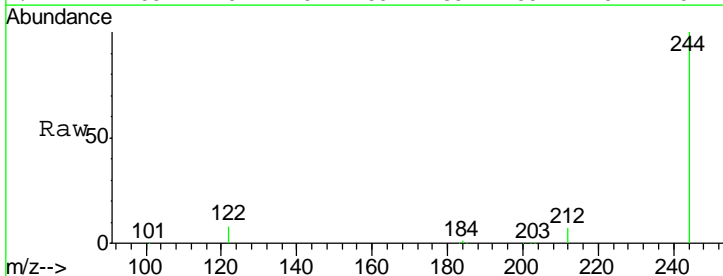
Instrument :
 BNA_E
 ClientSampled :
 PB88398BL

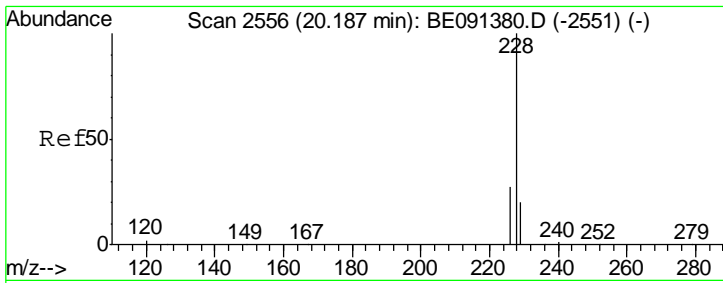
Tgt Ion	Resp	Lower	Upper
240	339633		
120	12.1	8.9	13.3
236	25.6	21.0	31.4



#20
 Terphenyl-d14
 Concen: 4.80 ng
 RT: 18.62 min Scan# 2374
 Delta R.T. 0.00 min
 Lab File: BE091405.D
 Acq: 17 Feb 2016 15:40

Tgt Ion	Resp	Lower	Upper
244	241282		
212	7.5	6.1	9.1
122	8.3	11.0	16.6#

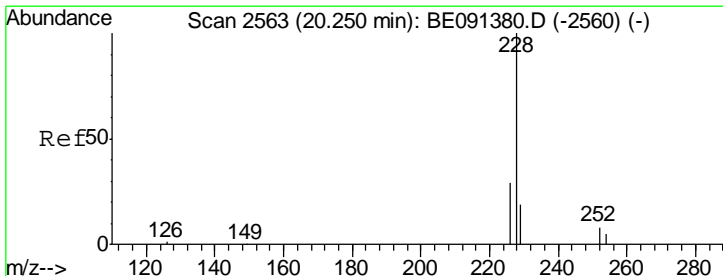
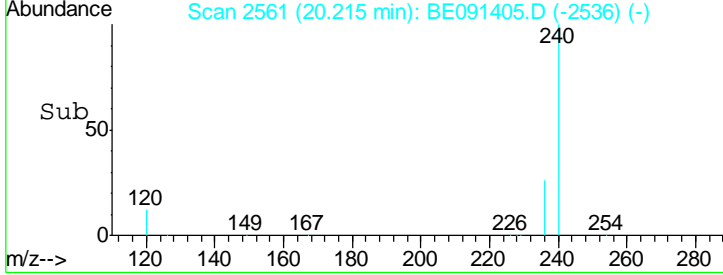
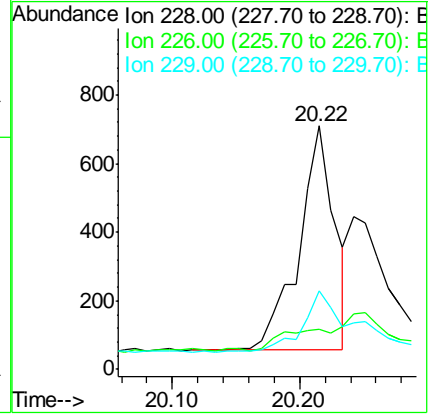
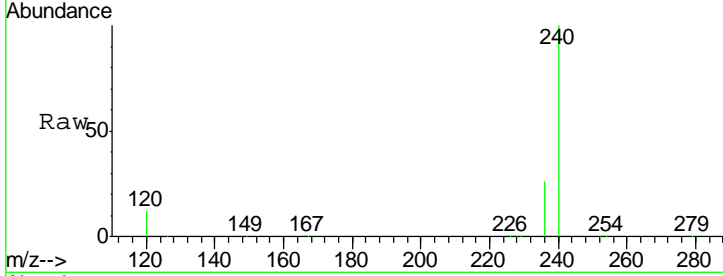




#21
 Benzo(a)anthracene
 Concen: 0.19 ng
 RT: 20.22 min Scan# 2561
 Delta R.T. 0.03 min
 Lab File: BE091405.D
 Acq: 17 Feb 2016 15:40

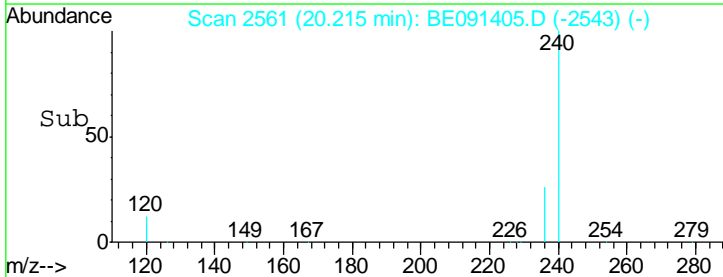
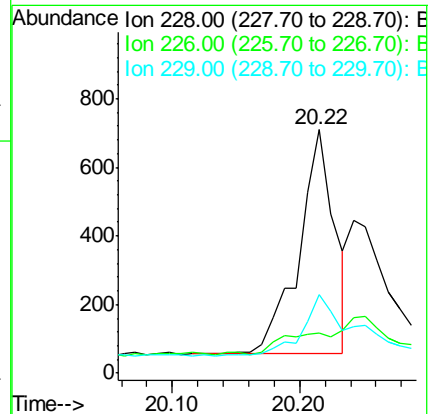
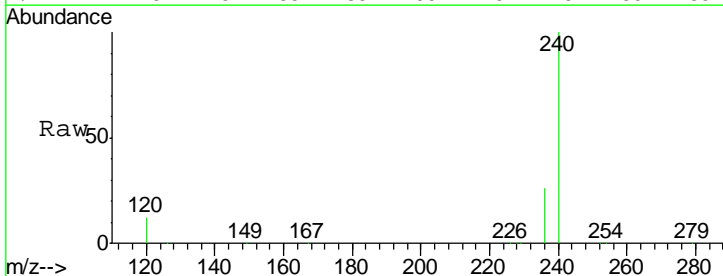
Instrument :
 BNA_E
 ClientSampled :
 PB88398BL

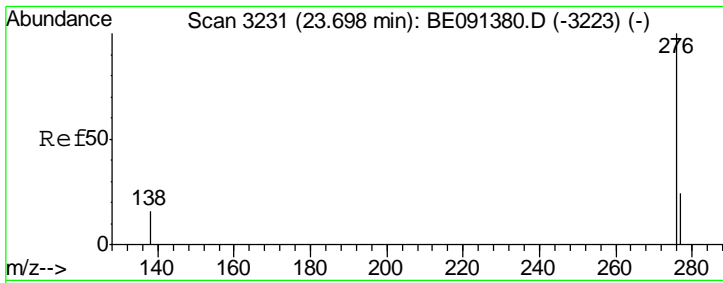
Tgt Ion	Resp	Lower	Upper
228	100		
226	16.5	21.7	32.5#
229	32.5	16.1	24.1#



#22
 Chrysene
 Concen: Below Cal
 RT: 20.22 min Scan# 2561
 Delta R.T. -0.03 min
 Lab File: BE091405.D
 Acq: 17 Feb 2016 15:40

Tgt Ion	Resp	Lower	Upper
228	100		
226	16.5	23.4	35.0#
229	32.5	15.7	23.5#

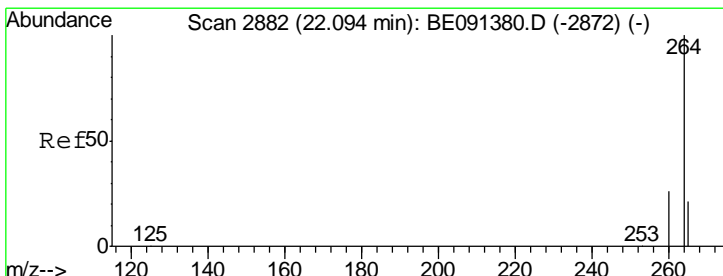
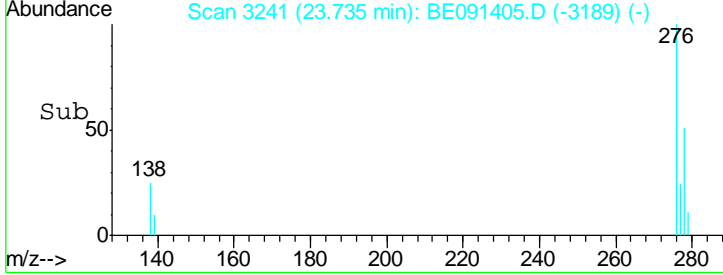
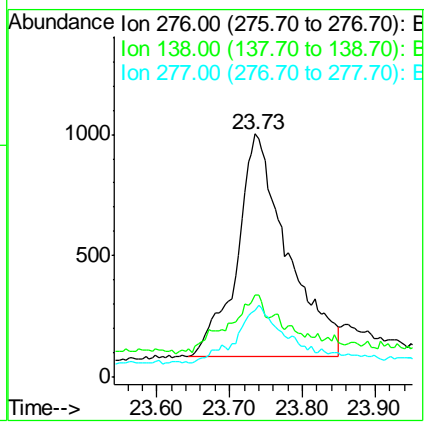
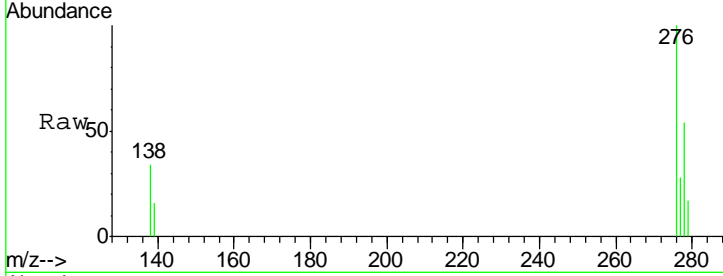




#23
 Indeno(1,2,3-cd)pyrene
 Concen: 0.22 ng
 RT: 23.73 min Scan# 3241
 Delta R.T. 0.04 min
 Lab File: BE091405.D
 Acq: 17 Feb 2016 15:40

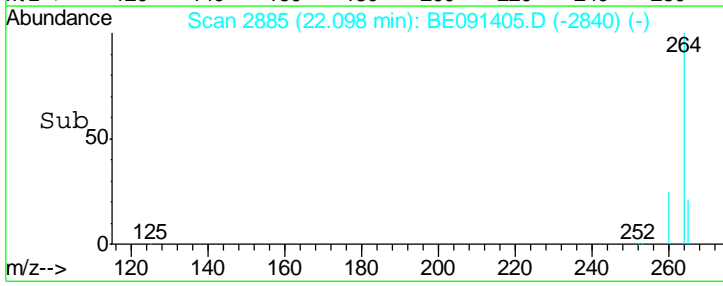
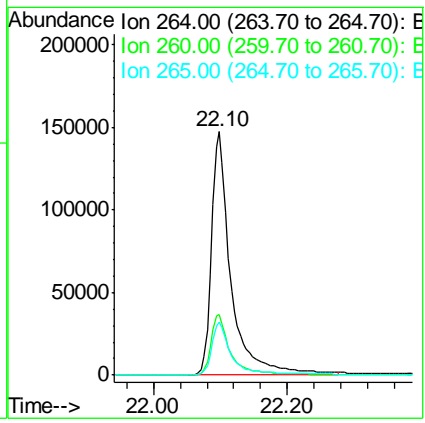
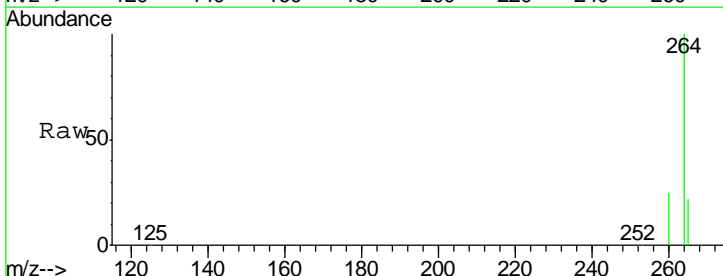
Instrument : BNA_E
 Client Sampled : PB88398BL

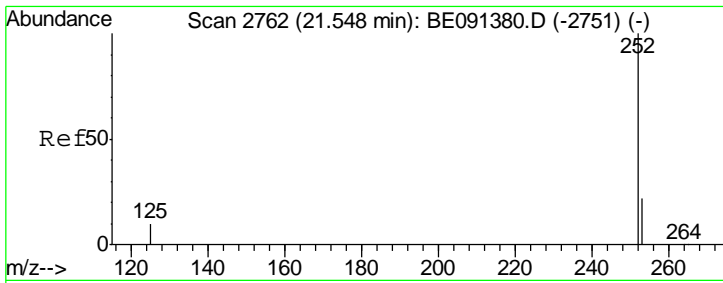
Tgt Ion	Resp	Lower	Upper
276	4403		
138	19.5	16.6	25.0
277	17.3	19.0	28.6#



#24
 Perylene-d12
 Concen: 5.00 ng
 RT: 22.10 min Scan# 2885
 Delta R.T. 0.00 min
 Lab File: BE091405.D
 Acq: 17 Feb 2016 15:40

Tgt Ion	Resp	Lower	Upper
264	300030		
260	24.8	20.7	31.1
265	21.6	17.2	25.8



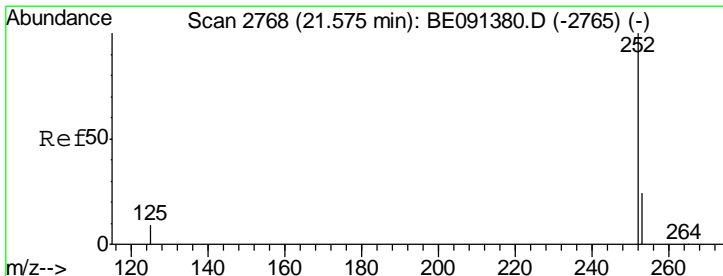
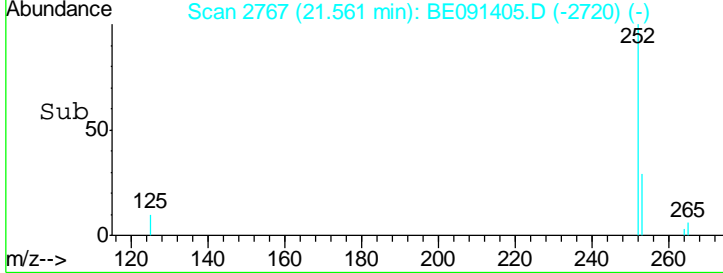
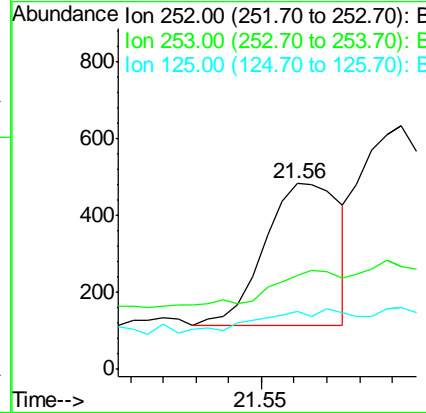
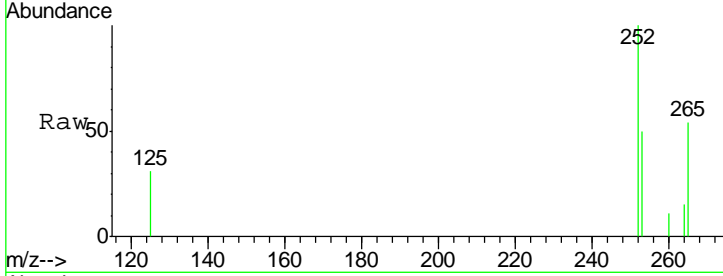


#25
 Benzo(b)fluoranthene
 Concen: 0.16 ng
 RT: 21.56 min Scan# 2767
 Delta R.T. 0.01 min
 Lab File: BE091405.D
 Acq: 17 Feb 2016 15:40

Instrument :
 BNA_E
 ClientSampled :
 PB88398BL

Tgt Ion: 252 Resp: 597

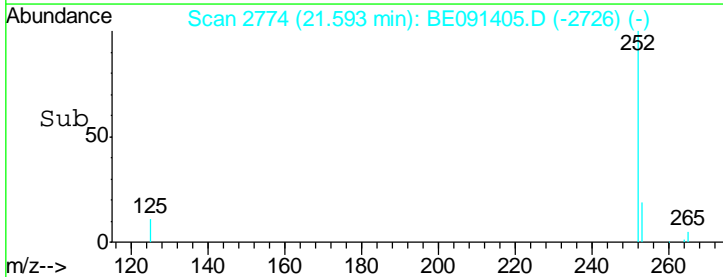
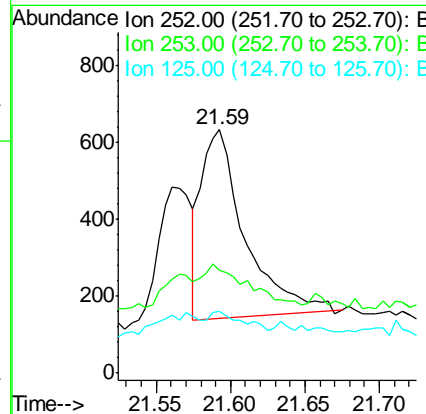
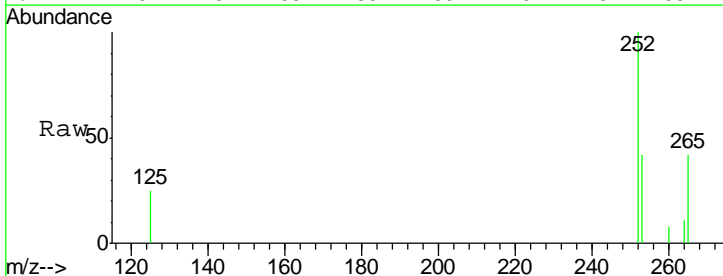
Ion	Ratio	Lower	Upper
252	100		
253	50.3	18.2	27.2#
125	31.3	8.3	12.5#

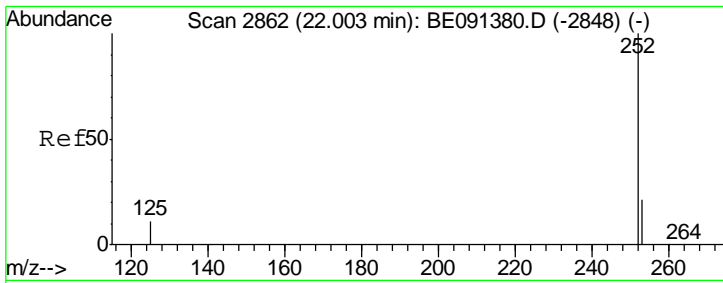


#26
 Benzo(k)fluoranthene
 Concen: 0.03 ng
 RT: 21.59 min Scan# 2774
 Delta R.T. 0.02 min
 Lab File: BE091405.D
 Acq: 17 Feb 2016 15:40

Tgt Ion: 252 Resp: 1004

Ion	Ratio	Lower	Upper
252	100		
253	42.0	18.1	27.1#
125	25.4	8.2	12.4#

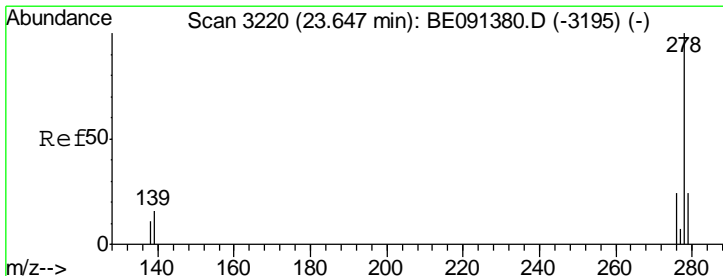
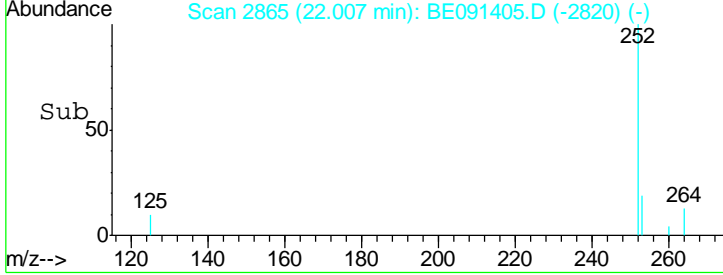
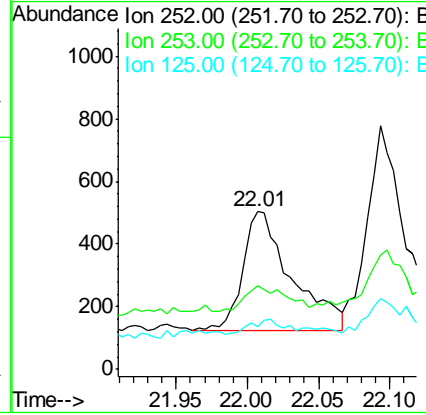
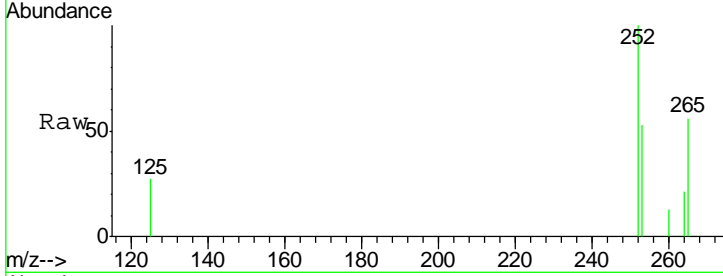




#27
 Benzo(a)pyrene
 Concen: 0.18 ng
 RT: 22.01 min Scan# 2865
 Delta R.T. 0.00 min
 Lab File: BE091405.D
 Acq: 17 Feb 2016 15:40

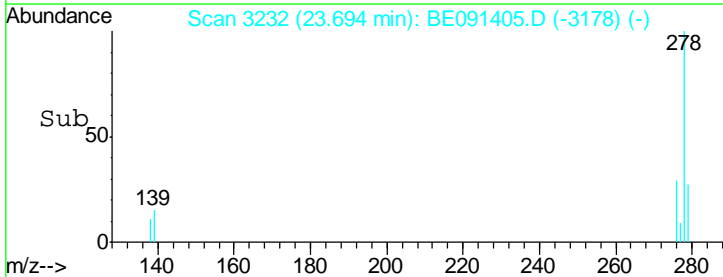
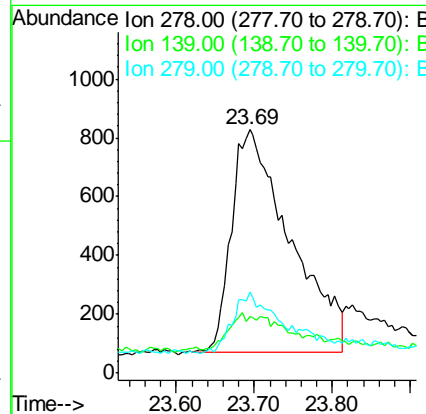
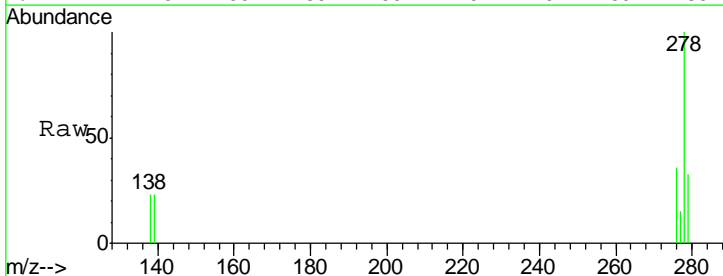
Instrument : BNA_E
 ClientSampled : PB88398BL

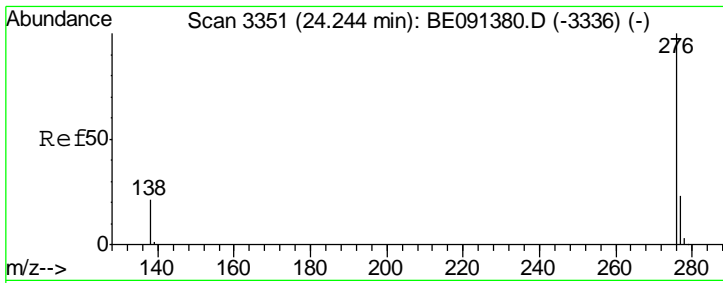
Tgt Ion	Resp	Lower	Upper
252	100		
253	53.5	17.5	26.3#
125	27.2	9.4	14.0#



#28
 Dibenzo(a,h)anthracene
 Concen: 0.31 ng
 RT: 23.69 min Scan# 3232
 Delta R.T. 0.05 min
 Lab File: BE091405.D
 Acq: 17 Feb 2016 15:40

Tgt Ion	Resp	Lower	Upper
278	100		
139	23.4	13.0	19.4#
279	33.1	19.2	28.8#





#29
 Benzo(g,h,i)perylene
 Concen: 0.18 ng
 RT: 24.28 min Scan# 3360
 Delta R.T. 0.03 min
 Lab File: BE091405.D
 Acq: 17 Feb 2016 15:40

Instrument :
 BNA_E
ClientSampleId :
 PB88398BL

Tgt Ion: 276 Resp: 3058

Ion	Ratio	Lower	Upper
276	100		
277	28.0	18.9	28.3
138	33.1	17.0	25.6

