

Data Path : Z:\svoasrv\HPCHEM1\BNA_E\Data\Be022119\
 Data File : BE098748.D
 Acq On : 21 Feb 2019 14:24
 Operator : JU/SJ
 Sample : K1540-04
 Misc :
 ALS Vial : 4 Sample Multiplier: 1

Instrument :
 BNA_E
 ClientSampleId :
 M2-T3-OZ(POST)

Quant Time: Feb 21 15:19:54 2019
 Quant Method : Z:\SVOASRV\HPCHEM1\BNA_E\METHODS\8270-SIM-BE012419.M
 Quant Title : ASP BNA STANDARDS FOR 5 POINT CALIBRATION
 QLast Update : Thu Jan 24 14:44:44 2019
 Response via : Initial Calibration

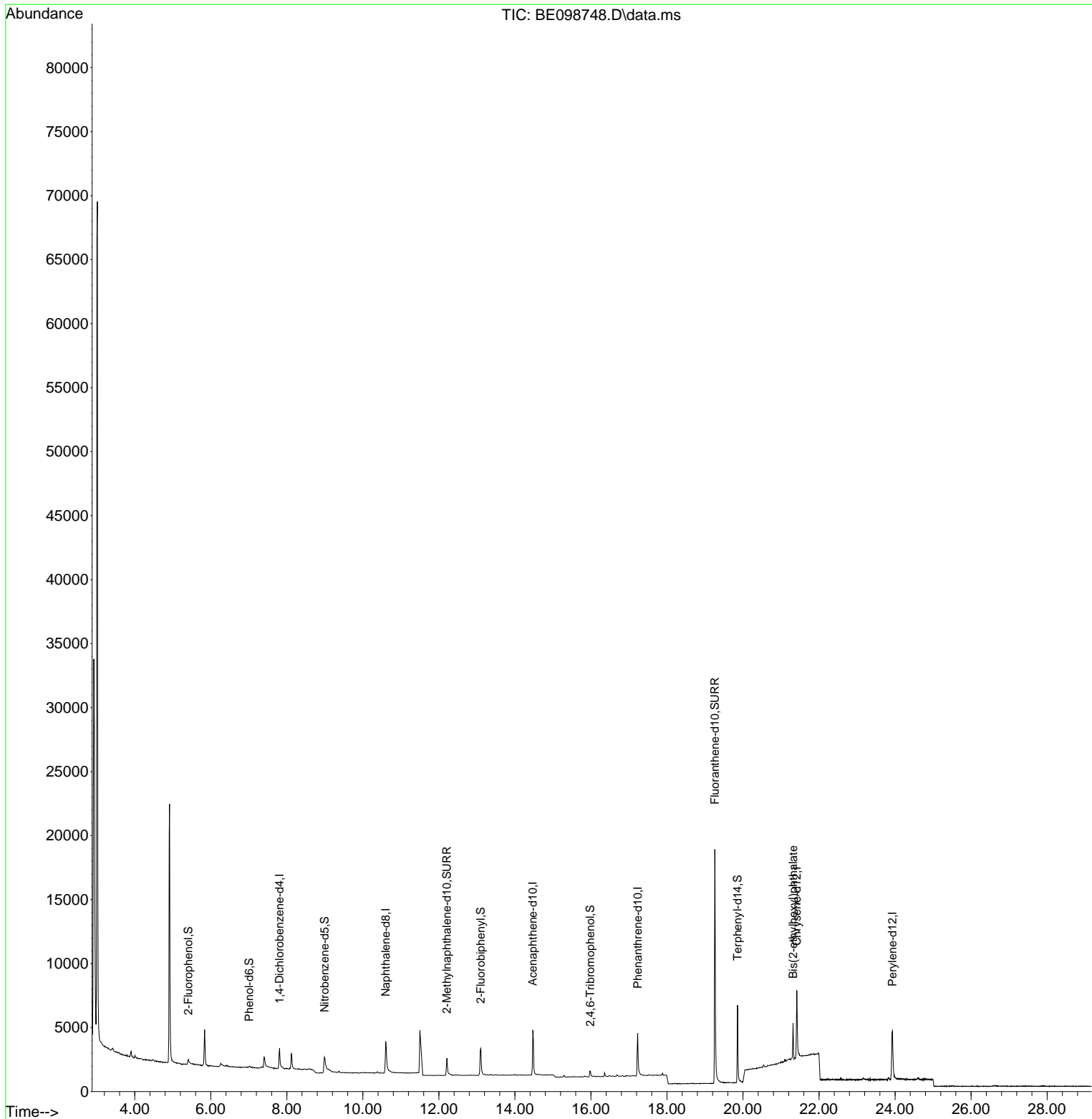
Compound	R.T.	QIon	Response	Conc	Units	Dev(Min)	
Internal Standards							
1) 1,4-Dichlorobenzene-d4	7.806	152	960	0.40	ng	0.00	
7) Naphthalene-d8	10.601	136	3773	0.40	ng	# 0.00	
13) Acenaphthene-d10	14.471	164	2594	0.40	ng	0.00	
19) Phenanthrene-d10	17.229	188	6160	0.40	ng	# 0.00	
27) Chrysene-d12	21.414	240	7032	0.40	ng	# 0.00	
34) Perylene-d12	23.927	264	6687	0.40	ng	# 0.00	
System Monitoring Compounds							
4) 2-Fluorophenol	5.411	112	371	0.13	ng	0.01	
5) Phenol-d6	7.011	99	270	0.06	ng	0.01	
8) Nitrobenzene-d5	8.991	82	1149	0.33	ng	0.01	
11) 2-Methylnaphthalene-d10	12.209	152	2405	0.33	ng	0.00	
14) 2,4,6-Tribromophenol	15.984	330	393	0.34	ng	0.00	
15) 2-Fluorobiphenyl	13.103	172	3032	0.27	ng	0.00	
25) Fluoranthene-d10	19.258	212	28717	0.33	ng	0.00	
29) Terphenyl-d14	19.856	244	6389	0.36	ng	0.00	
Target Compounds							Qvalue
32) Bis(2-ethylhexyl)phtha...	21.317	149	3554	0.09	ng	# 99	

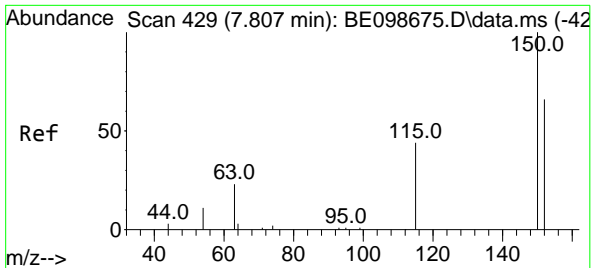
(#) = qualifier out of range (m) = manual integration (+) = signals summed

Data Path : Z:\svoasrv\HPCHEM1\BNA_E\Data\Be022119\
 Data File : BE098748.D
 Acq On : 21 Feb 2019 14:24
 Operator : JU/SJ
 Sample : K1540-04
 Misc :
 ALS Vial : 4 Sample Multiplier: 1

Instrument :
 BNA_E
 ClientSampleId :
 M2-T3-OZ(POST)

Quant Time: Feb 21 15:19:54 2019
 Quant Method : Z:\SVOASRV\HPCHEM1\BNA_E\METHODS\8270-SIM-BE012419.M
 Quant Title : ASP BNA STANDARDS FOR 5 POINT CALIBRATION
 QLast Update : Thu Jan 24 14:44:44 2019
 Response via : Initial Calibration



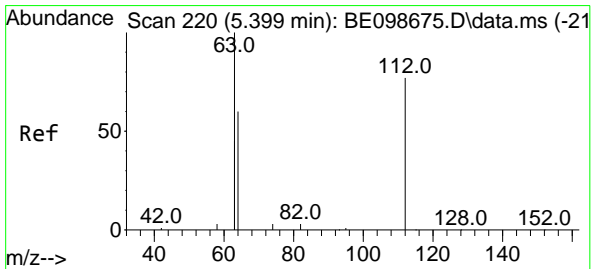
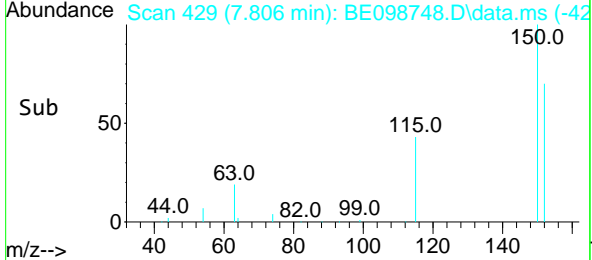
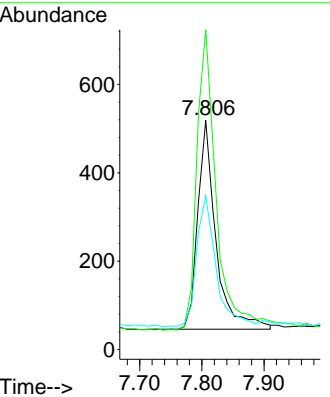
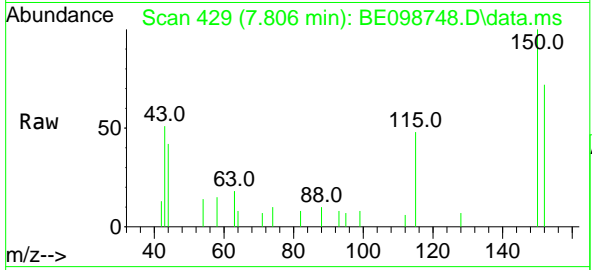


#1
 1,4-Dichlorobenzene-d4
 Concen: 0.40 ng
 RT: 7.806 min Scan# 429
 Delta R.T. -0.001 min
 Lab File: BE098748.D
 Acq: 21 Feb 2019 14:24

Instrument :
 BNA_E
ClientSampled :
 M2-T3-OZ(POST)

Tgt Ion:152 Resp: 960

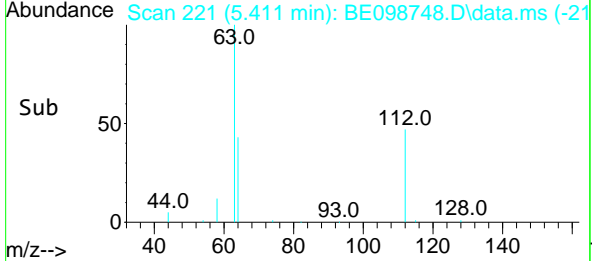
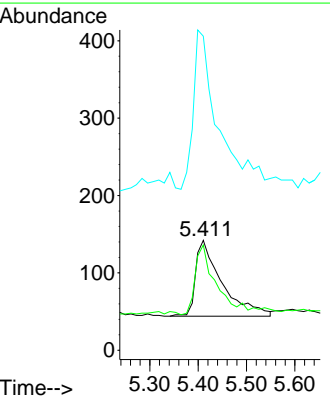
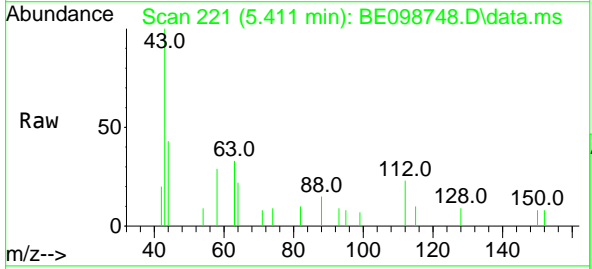
Ion	Ratio	Lower	Upper
152	100		
150	139.5	121.4	182.2
115	67.1	59.1	88.7

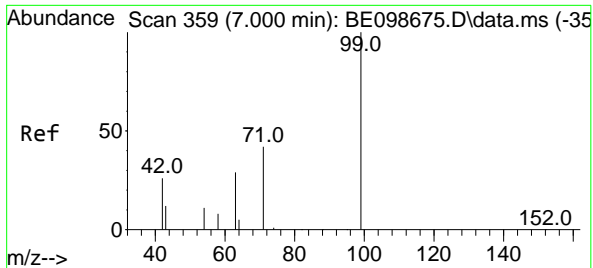


#4
 2-Fluorophenol
 Concen: 0.13 ng
 RT: 5.411 min Scan# 221
 Delta R.T. 0.012 min
 Lab File: BE098748.D
 Acq: 21 Feb 2019 14:24

Tgt Ion:112 Resp: 371

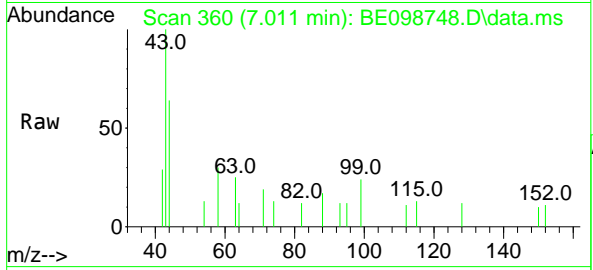
Ion	Ratio	Lower	Upper
112	100		
64	75.5	62.9	94.3
63	180.3	152.2	228.4



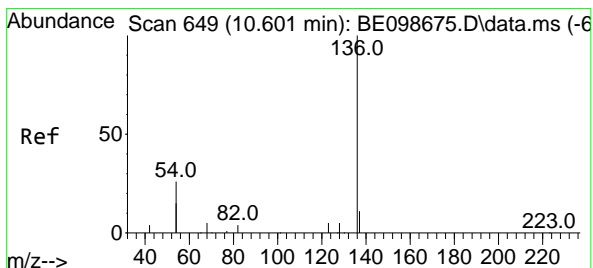
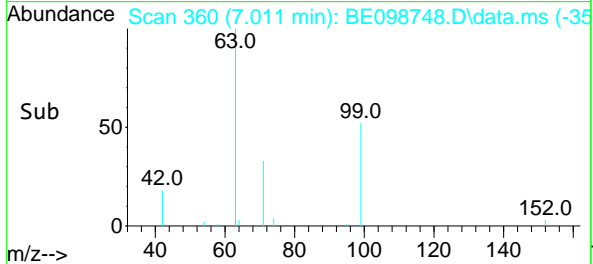
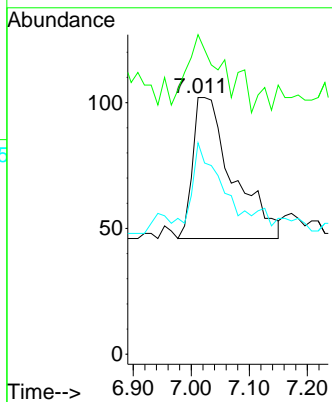


#5
 Phenol-d6
 Concen: 0.06 ng
 RT: 7.011 min Scan# 360
 Delta R.T. 0.011 min
 Lab File: BE098748.D
 Acq: 21 Feb 2019 14:24

Instrument :
 BNA_E
ClientSampleId :
 M2-T3-OZ(POST)

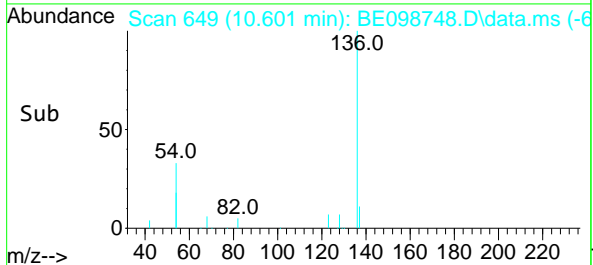
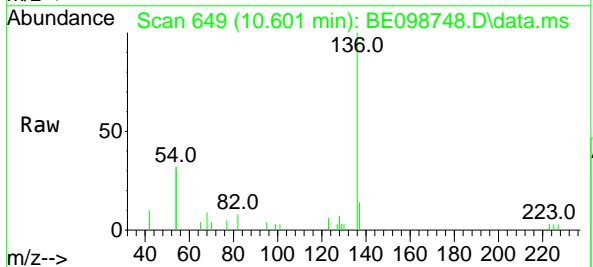
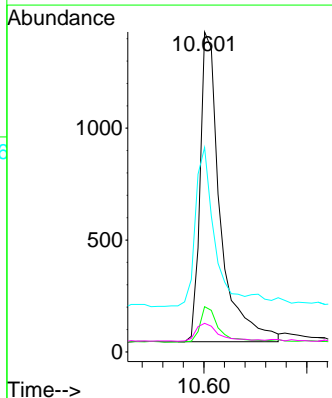


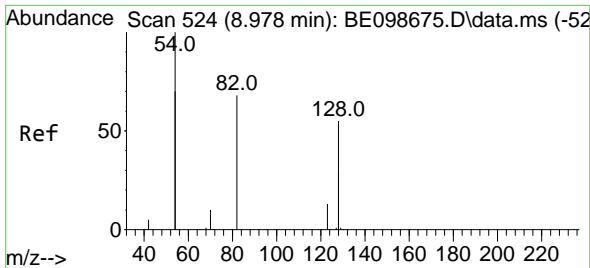
Tgt Ion	Resp	Lower	Upper
99	100		
42	35.6	24.6	37.0
71	40.0	35.1	52.7



#7
 Naphthalene-d8
 Concen: 0.40 ng
 RT: 10.601 min Scan# 649
 Delta R.T. 0.000 min
 Lab File: BE098748.D
 Acq: 21 Feb 2019 14:24

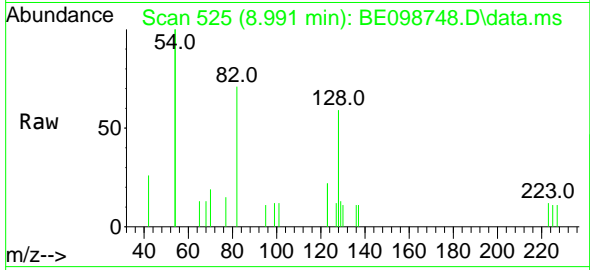
Tgt Ion	Resp	Lower	Upper
136	100		
137	14.1	9.7	14.5
54	63.9	35.5	53.3#
68	9.0	5.0	7.6#



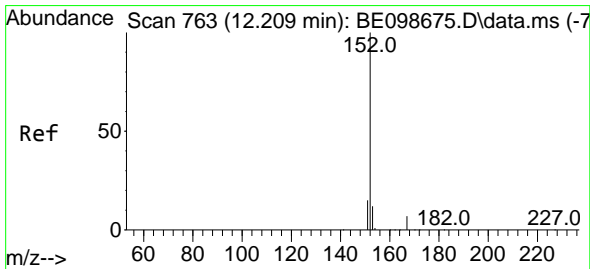
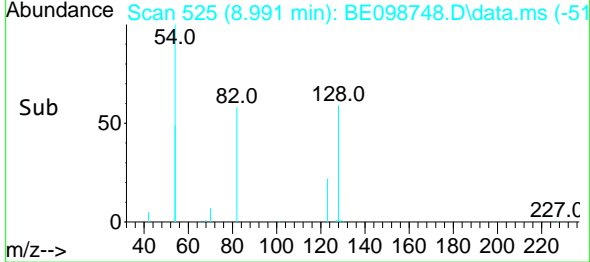
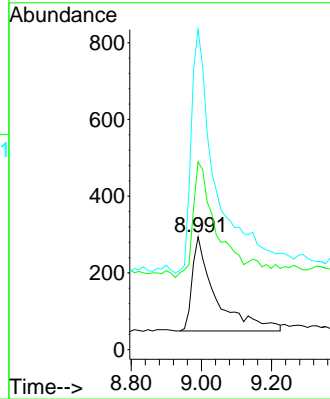


#8
 Nitrobenzene-d5
 Concen: 0.33 ng
 RT: 8.991 min Scan# 525
 Delta R.T. 0.013 min
 Lab File: BE098748.D
 Acq: 21 Feb 2019 14:24

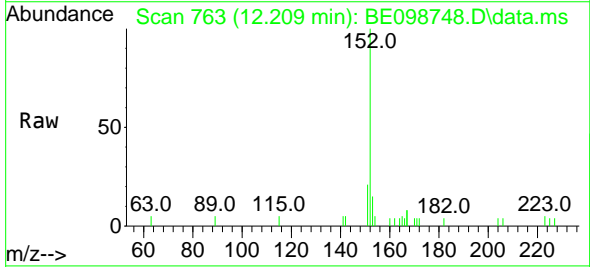
Instrument :
 BNA_E
 ClientSampled :
 M2-T3-OZ(POST)



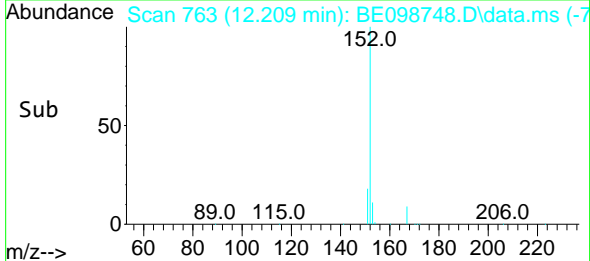
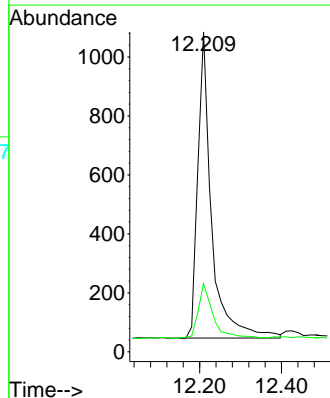
Tgt Ion: 82 Resp: 1149
 Ion Ratio Lower Upper
 82 100
 128 166.7 96.5 144.7#
 54 283.7 224.7 337.1

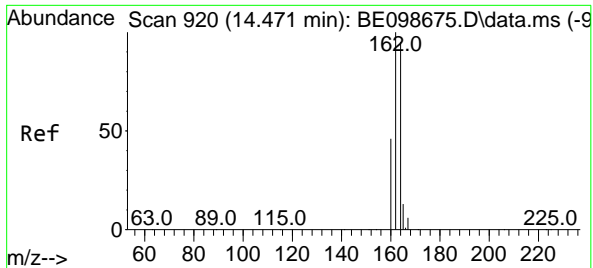


#11
 2-Methylnaphthalene-d10
 Concen: 0.33 ng
 RT: 12.209 min Scan# 763
 Delta R.T. 0.000 min
 Lab File: BE098748.D
 Acq: 21 Feb 2019 14:24



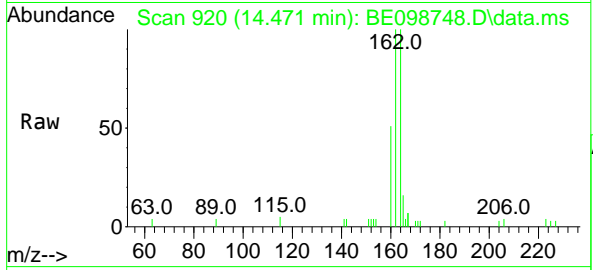
Tgt Ion: 152 Resp: 2405
 Ion Ratio Lower Upper
 152 100
 151 19.9 16.2 24.4





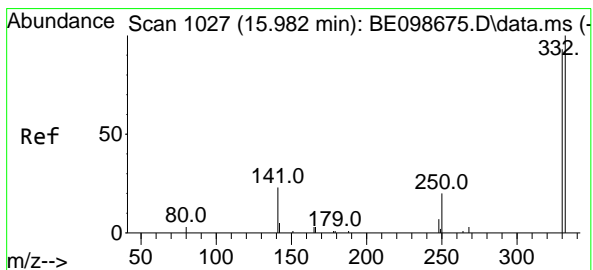
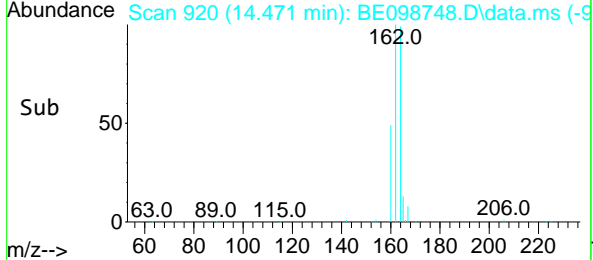
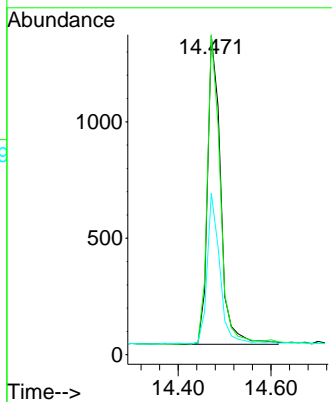
#13
 Acenaphthene-d10
 Concen: 0.40 ng
 RT: 14.471 min Scan# 920
 Delta R.T. 0.000 min
 Lab File: BE098748.D
 Acq: 21 Feb 2019 14:24

Instrument :
 BNA_E
 ClientSampled :
 M2-T3-OZ(POST)

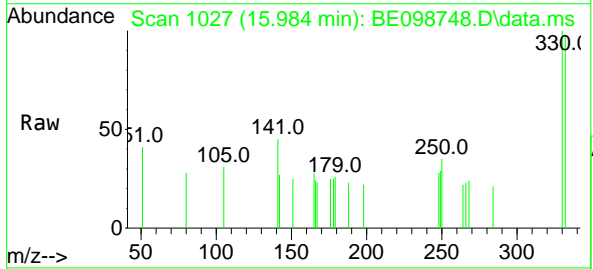


Tgt Ion:164 Resp: 2594

Ion	Ratio	Lower	Upper
164	100		
162	100.4	80.5	120.7
160	50.7	40.1	60.1

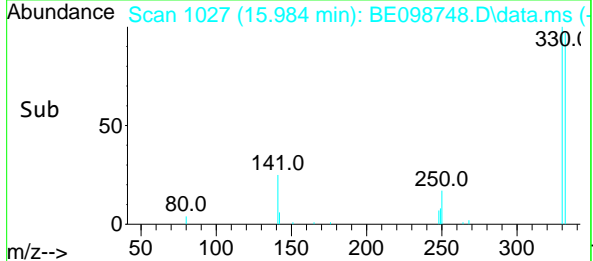
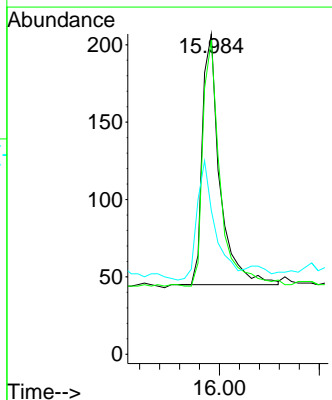


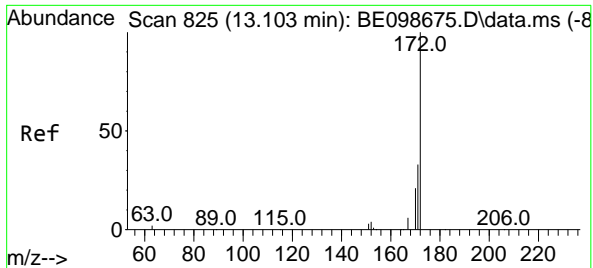
#14
 2,4,6-Tribromophenol
 Concen: 0.34 ng
 RT: 15.984 min Scan# 1027
 Delta R.T. 0.002 min
 Lab File: BE098748.D
 Acq: 21 Feb 2019 14:24



Tgt Ion:330 Resp: 393

Ion	Ratio	Lower	Upper
330	100		
332	99.0	73.3	109.9
141	50.4	33.1	49.7



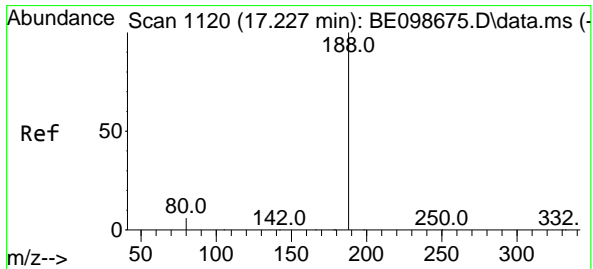
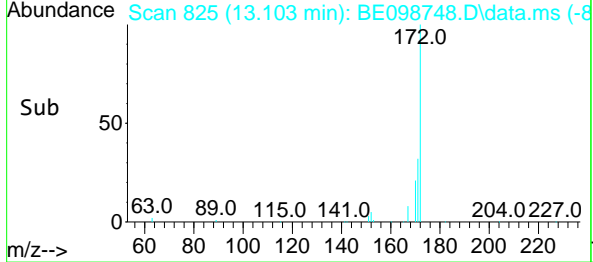
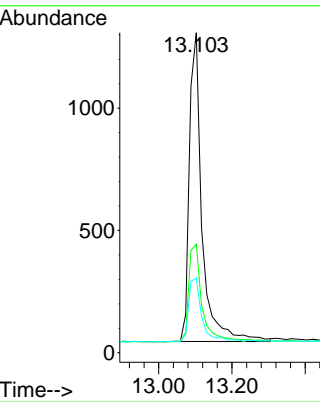
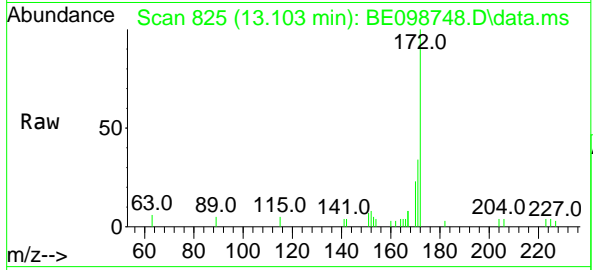


#15
 2-Fluorobiphenyl
 Concen: 0.27 ng
 RT: 13.103 min Scan# 825
 Delta R.T. -0.000 min
 Lab File: BE098748.D
 Acq: 21 Feb 2019 14:24

Instrument :
 BNA_E
ClientSampleId :
 M2-T3-OZ(POST)

Tgt Ion:172 Resp: 3032

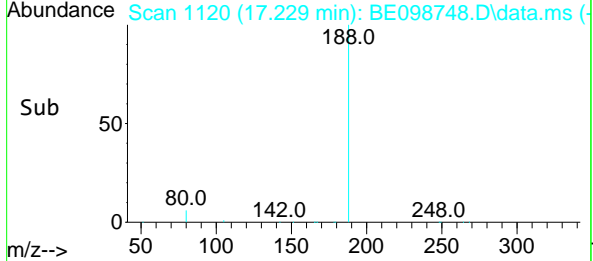
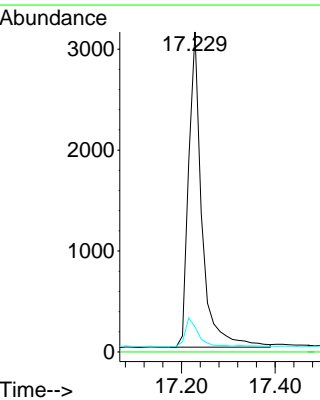
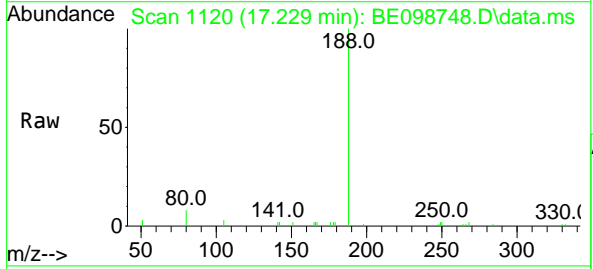
Ion	Ratio	Lower	Upper
172	100		
171	33.9	29.0	43.4
170	23.3	20.8	31.2

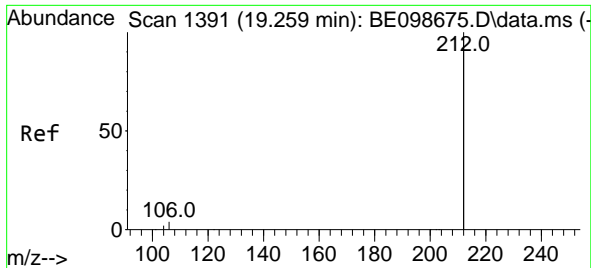


#19
 Phenanthrene-d10
 Concen: 0.40 ng
 RT: 17.229 min Scan# 1120
 Delta R.T. 0.002 min
 Lab File: BE098748.D
 Acq: 21 Feb 2019 14:24

Tgt Ion:188 Resp: 6160

Ion	Ratio	Lower	Upper
188	100		
94	0.0	0.0	0.0
80	7.9	4.7	7.1#



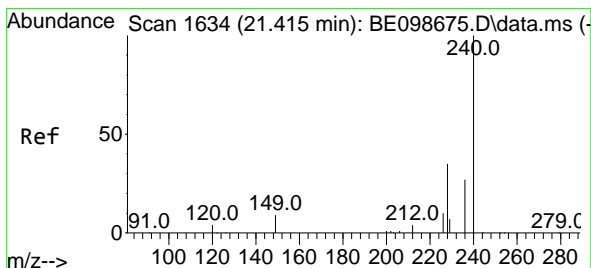
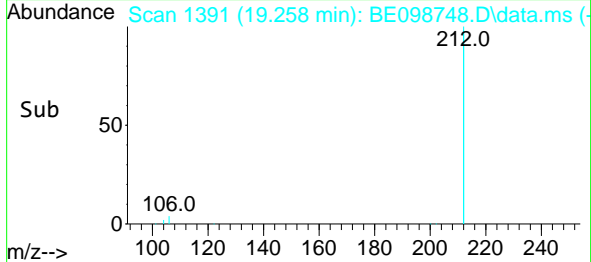
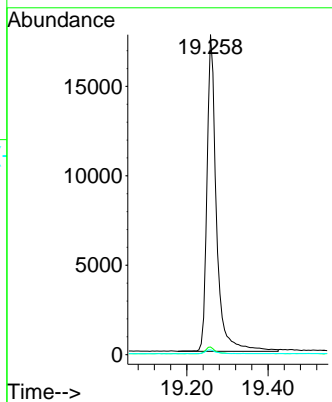
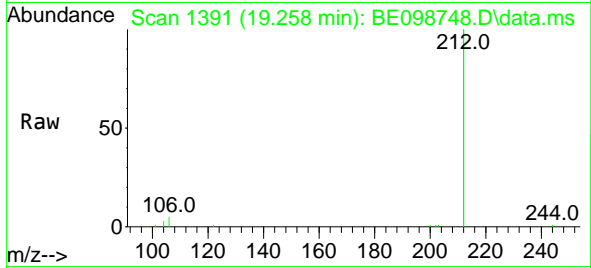


#25
 Fluoranthene-d10
 Concen: 0.33 ng
 RT: 19.258 min Scan# 1391
 Delta R.T. -0.001 min
 Lab File: BE098748.D
 Acq: 21 Feb 2019 14:24

Instrument :
 BNA_E
 ClientSampleId :
 M2-T3-OZ(POST)

Tgt Ion:212 Resp: 28717

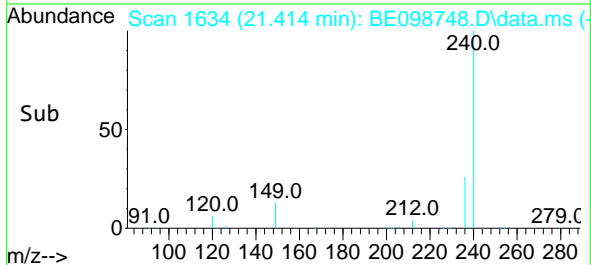
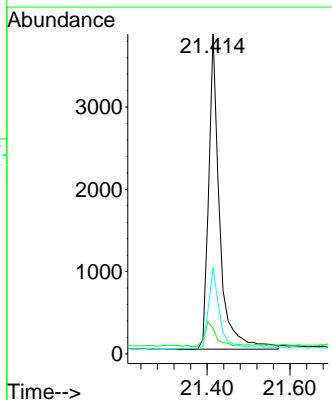
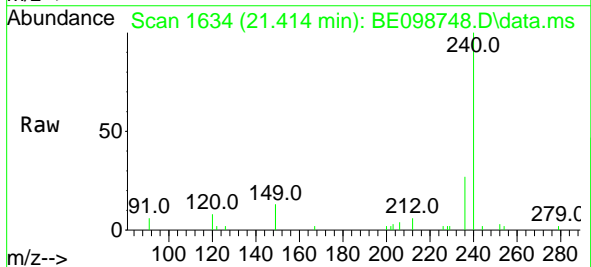
Ion	Ratio	Lower	Upper
212	100		
106	2.1	1.7	2.5
104	1.3	1.0	1.6

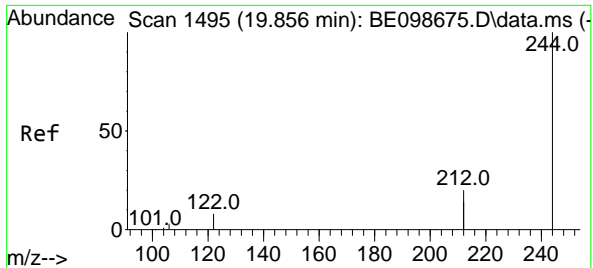


#27
 Chrysene-d12
 Concen: 0.40 ng
 RT: 21.414 min Scan# 1634
 Delta R.T. -0.001 min
 Lab File: BE098748.D
 Acq: 21 Feb 2019 14:24

Tgt Ion:240 Resp: 7032

Ion	Ratio	Lower	Upper
240	100		
120	8.0	4.7	7.1#
236	26.8	21.9	32.9

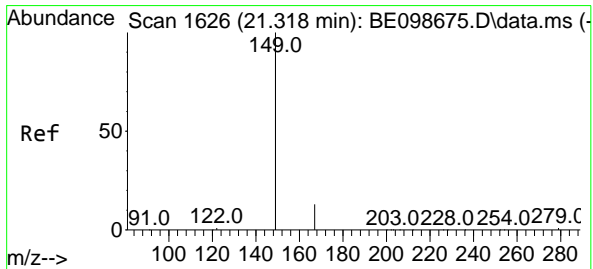
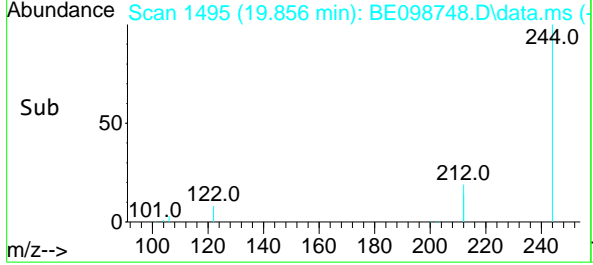
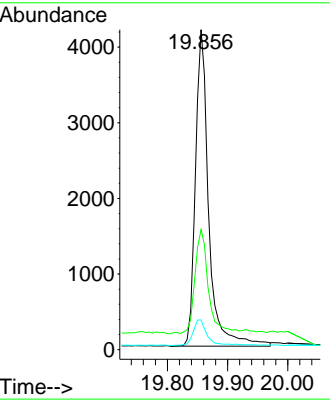
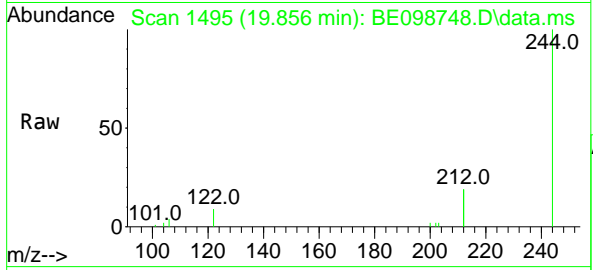




#29
 Terphenyl-d14
 Concen: 0.36 ng
 RT: 19.856 min Scan# 1495
 Delta R.T. -0.000 min
 Lab File: BE098748.D
 Acq: 21 Feb 2019 14:24

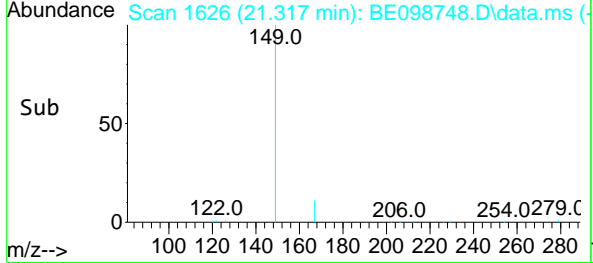
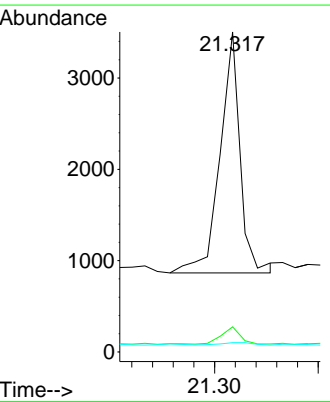
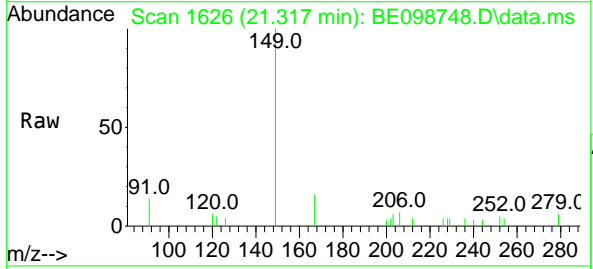
Instrument :
 BNA_E
ClientSampled :
 M2-T3-OZ(POST)

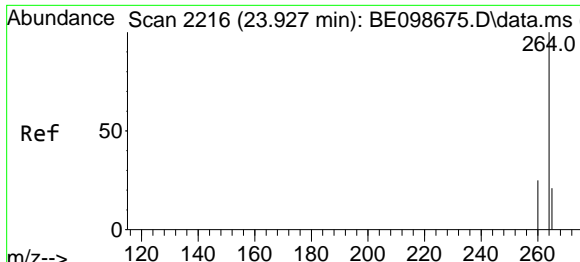
Tgt Ion	Resp	Lower	Upper
244	100		
212	37.5	29.4	44.2
122	9.3	7.1	10.7



#32
 Bis(2-ethylhexyl)phthalate
 Concen: 0.09 ng
 RT: 21.317 min Scan# 1626
 Delta R.T. -0.001 min
 Lab File: BE098748.D
 Acq: 21 Feb 2019 14:24

Tgt Ion	Resp	Lower	Upper
149	100		
167	6.6	5.4	8.2
279	1.7	1.0	1.4





#34
 Perylene-d12
 Concen: 0.40 ng
 RT: 23.927 min Scan# 2216
 Delta R.T. -0.000 min
 Lab File: BE098748.D
 Acq: 21 Feb 2019 14:24

Instrument :
 BNA_E
ClientSampled :
 M2-T3-OZ(POST)

Tgt Ion:264 Resp: 6687

Ion	Ratio	Lower	Upper
264	100		
260	26.4	20.5	30.7
265	36.2	22.3	33.5#

