

Data Path : Z:\SVOASRV\HPCHEM1\BNA E\DATA\BE031319\
 Data File : BE098911.D
 Acq On : 13 Mar 2019 14:40
 Operator : JU/SJ
 Sample : PB117852BSD
 Misc :
 ALS Vial : 4 Sample Multiplier: 1

Instrument :
 BNA_E
 ClientSampled :

Quant Time: Mar 14 06:55:25 2019
 Quant Method : Z:\SVOASRV\HPCHEM1\BNA E\METHODS\8270-SIM-BE030619.M
 Quant Title : ASP BNA STANDARDS FOR 5 POINT CALIBRATION
 QLast Update : Wed Mar 06 15:33:24 2019
 Response via : Initial Calibration

Internal Standards	R.T.	QIon	Response	Conc	Units	Dev(Min)
1) 1,4-Dichlorobenzene-d4	7.80	152	767	0.40	ng	0.00
7) Naphthalene-d8	10.59	136	3380	0.40	ng	0.00
13) Acenaphthene-d10	14.46	164	2272	0.40	ng	0.00
19) Phenanthrene-d10	17.21	188	6013	0.40	ng	0.00
27) Chrysene-d12	21.39	240	7101	0.40	ng	-0.01
34) Perylene-d12	23.90	264	6923	0.40	ng	0.00

System Monitoring Compounds

4) 2-Fluorophenol	5.40	112	785	0.34	ng	0.02
5) Phenol-d6	6.99	99	1354	0.42	ng	0.00
8) Nitrobenzene-d5	8.96	82	1624	0.46	ng	0.00
11) 2-Methylnaphthalene-d10	12.19	152	2385	0.38	ng	0.00
14) 2,4,6-Tribromophenol	15.97	330	418	0.36	ng	0.00
15) 2-Fluorobiphenyl	13.09	172	4742	0.50	ng	0.00
25) Fluoranthene-d10	19.24	212	32330	0.34	ng	0.00
29) Terphenyl-d14	19.84	244	8570	0.50	ng	0.00

Target Compounds

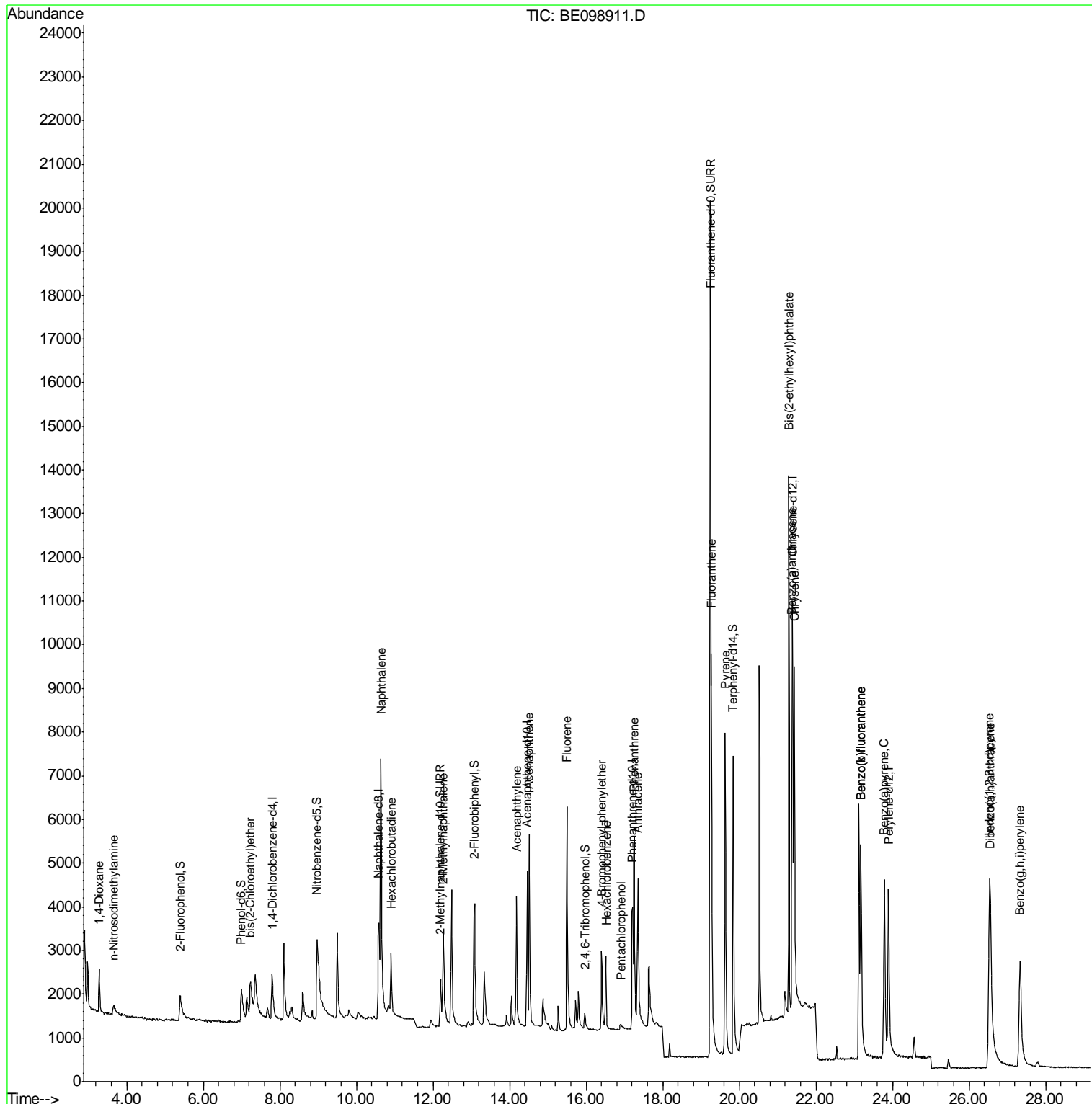
Target Compounds	R.T.	QIon	Response	Conc	Units	Qvalue
2) 1,4-Dioxane	3.28	88	657	0.452	ng	92
3) n-Nitrosodimethylamine	3.66	42	334	0.173	ng	# 14
6) bis(2-Chloroethyl)ether	7.23	93	793	0.317	ng	# 89
9) Naphthalene	10.64	128	15123	0.391	ng	99
10) Hexachlorobutadiene	10.91	225	1008	0.394	ng	98
12) 2-Methylnaphthalene	12.27	142	2395	0.381	ng	94
16) Acenaphthylene	14.18	152	4383	0.375	ng	98
17) Acenaphthene	14.51	154	2679	0.386	ng	98
18) Fluorene	15.50	166	3749	0.375	ng	99
20) 4-Bromophenyl-phenylether	16.40	248	1049	0.322	ng	93
21) Hexachlorobenzene	16.52	284	1442	0.372	ng	98
22) Pentachlorophenol	16.91	266	173	0.396	ng	100
23) Phenanthrene	17.25	178	6237	0.365	ng	99
24) Anthracene	17.35	178	4684	0.321	ng	99
26) Fluoranthene	19.27	202	8275	0.343	ng	99
28) Pyrene	19.63	202	8583	0.395	ng	99
30) Benzo(a)anthracene	21.38	228	8204	0.370	ng	100
31) Chrysene	21.44	228	8802	0.371	ng	98
32) Bis(2-ethylhexyl)phthalate	21.29	149	13947	0.296	ng	99
33) Indeno(1,2,3-cd)pyrene	26.53	276	9549	0.381	ng	98
35) Benzo(b)fluoranthene	23.18	252	9339	0.410	ng	96
36) Benzo(k)fluoranthene	23.18	252	9674	0.406	ng	98
37) Benzo(a)pyrene	23.79	252	8374	0.384	ng	# 93
38) Dibenzo(a,h)anthracene	26.56	278	7355	0.356	ng	97
39) Benzo(g,h,i)perylene	27.33	276	7944	0.368	ng	100

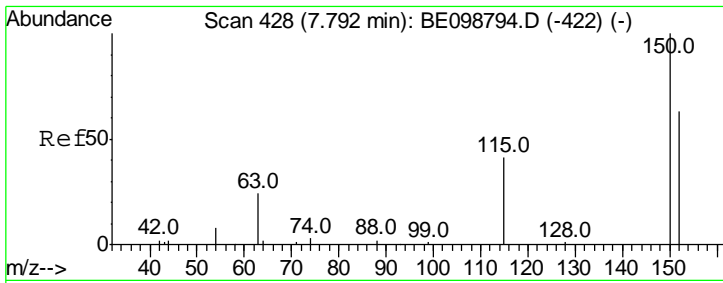
(#) = qualifier out of range (m) = manual integration (+) = signals summed

Data Path : Z:\SVOASRV\HPCHEM1\BNA E\DATA\BE031319\
 Data File : BE098911.D
 Acq On : 13 Mar 2019 14:40
 Operator : JU/SJ
 Sample : PB117852BSD
 Misc :
 ALS Vial : 4 Sample Multiplier: 1

Instrument :
 BNA_E
 ClientSampled :

Quant Time: Mar 14 06:55:25 2019
 Quant Method : Z:\SVOASRV\HPCHEM1\BNA E\METHODS\8270-SIM-BE030619.M
 Quant Title : ASP BNA STANDARDS FOR 5 POINT CALIBRATION
 QLast Update : Wed Mar 06 15:33:24 2019
 Response via : Initial Calibration

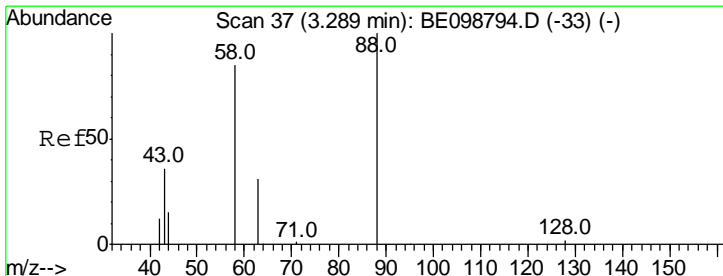
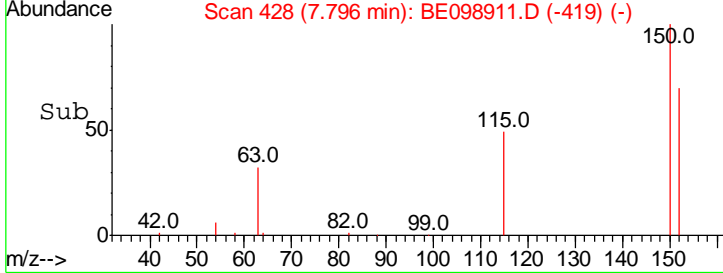
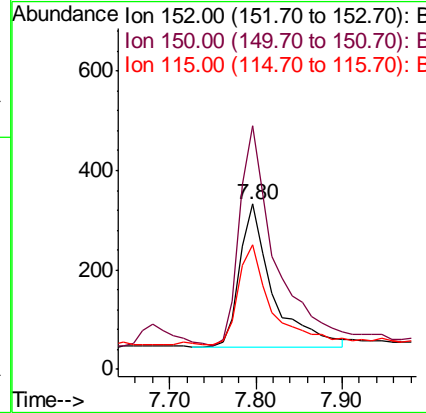
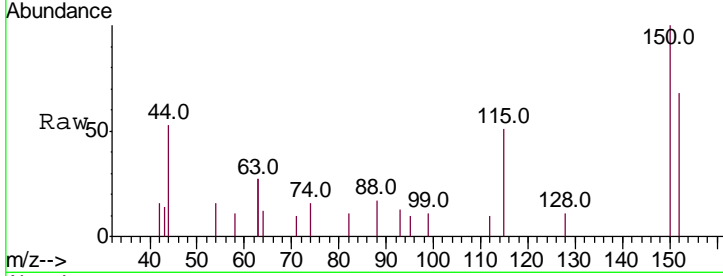




#1
 1,4-Dichlorobenzene-d4
 Concen: 0.400 ng
 RT: 7.80 min Scan# 428
 Delta R.T. 0.00 min
 Lab File: BE098911.D
 Acq: 13 Mar 2019 14:40

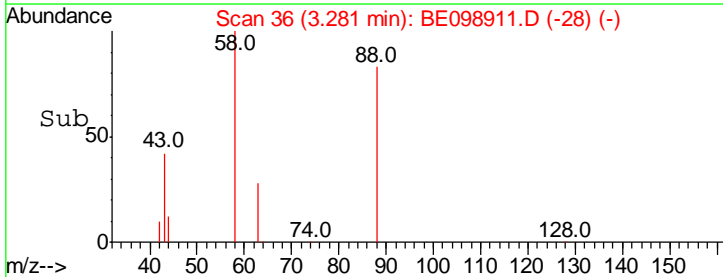
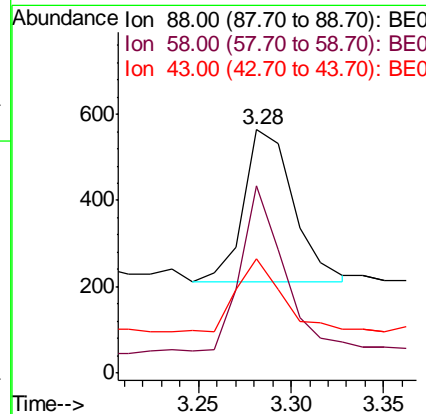
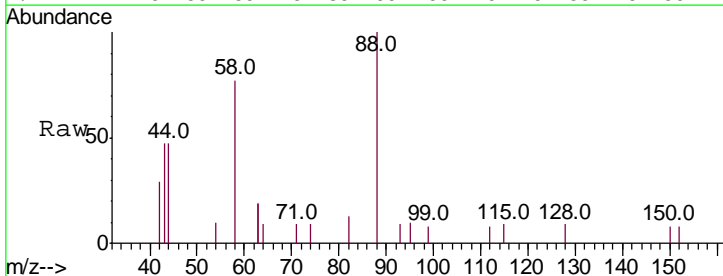
Instrument :
 BNA_E
 ClientSampled :

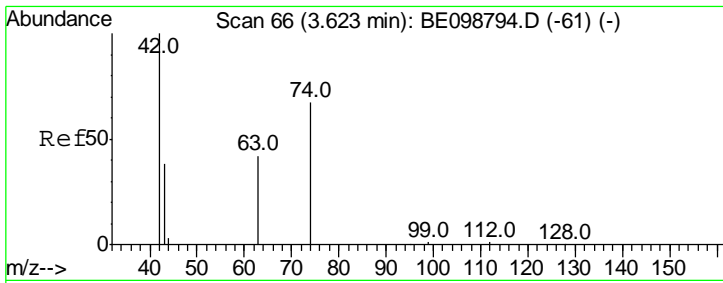
Tgt Ion	Resp	Lower	Upper
152	767		
152	100		
150	147.6	122.5	183.7
115	75.6	57.4	86.2



#2
 1,4-Dioxane
 Concen: 0.452 ng
 RT: 3.28 min Scan# 36
 Delta R.T. -0.01 min
 Lab File: BE098911.D
 Acq: 13 Mar 2019 14:40

Tgt Ion	Resp	Lower	Upper
88	657		
88	100		
58	100.8	75.8	113.6
43	44.0	41.8	62.8

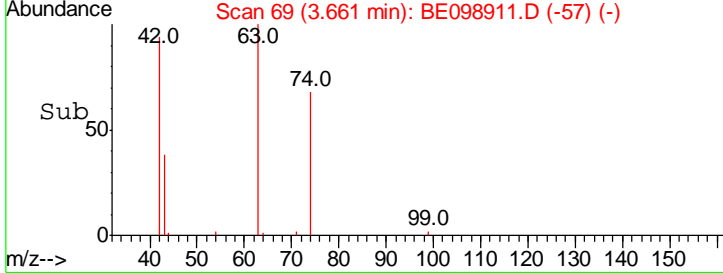
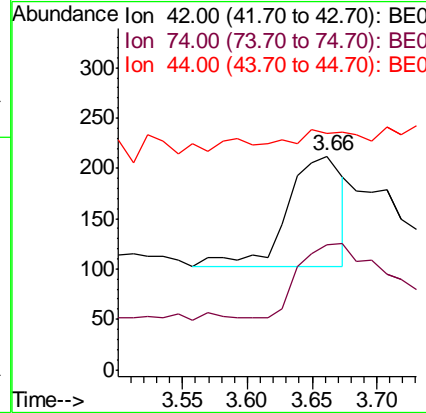
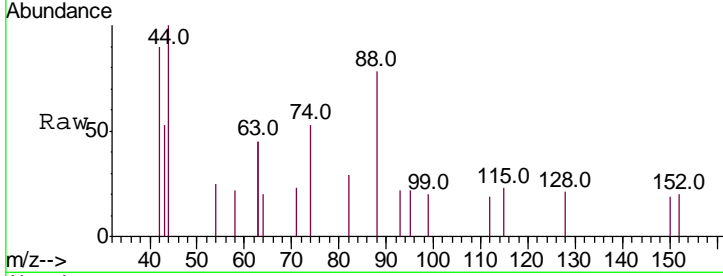




#3
 n-Nitrosodimethylamine
 Concen: 0.173 ng
 RT: 3.66 min Scan# 69
 Delta R.T. 0.04 min
 Lab File: BE098911.D
 Acq: 13 Mar 2019 14:40

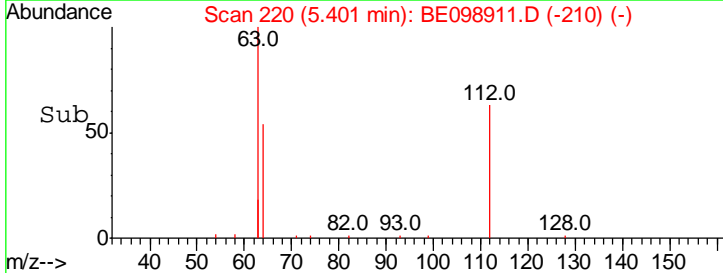
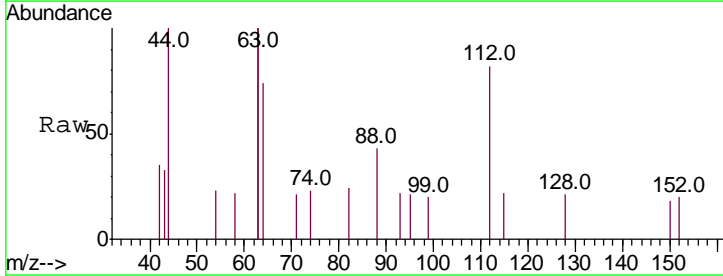
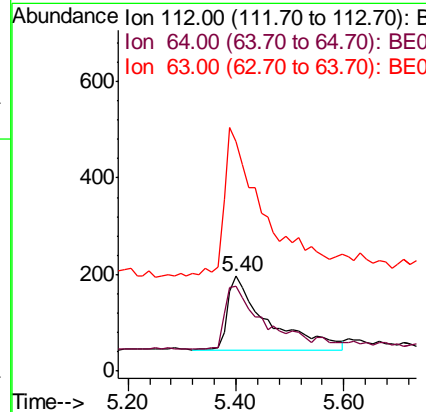
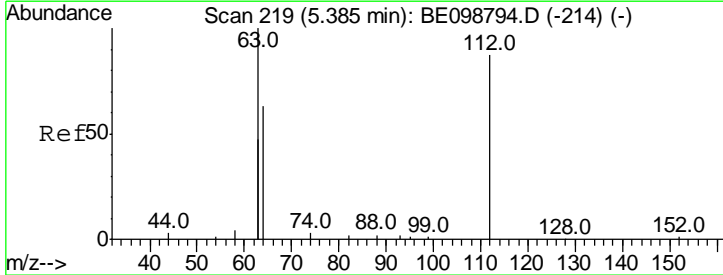
Instrument :
 BNA_E
 ClientSampleID :

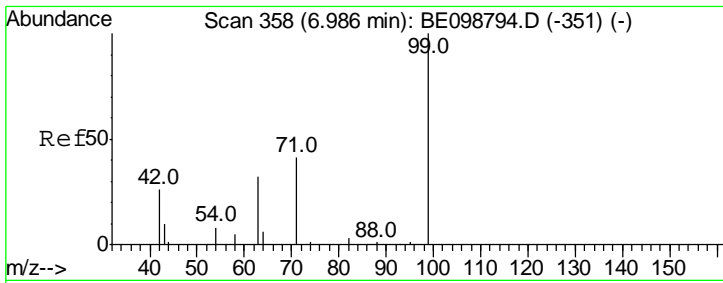
Tgt Ion	Ratio	Lower	Upper
42	100		
74	0.0	57.0	85.4#
44	6.3	0.0	0.0#



#4
 2-Fluorophenol
 Concen: 0.342 ng
 RT: 5.40 min Scan# 220
 Delta R.T. 0.02 min
 Lab File: BE098911.D
 Acq: 13 Mar 2019 14:40

Tgt Ion	Ratio	Lower	Upper
112	100		
64	83.1	57.9	86.9
63	198.5	158.3	237.5

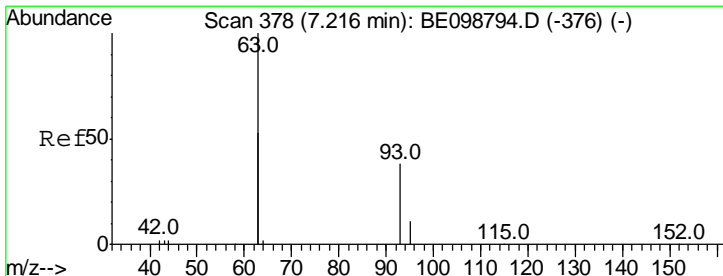
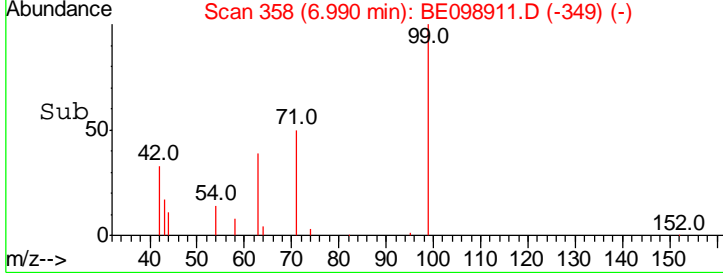
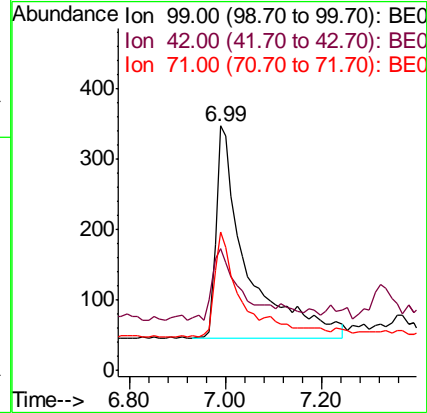
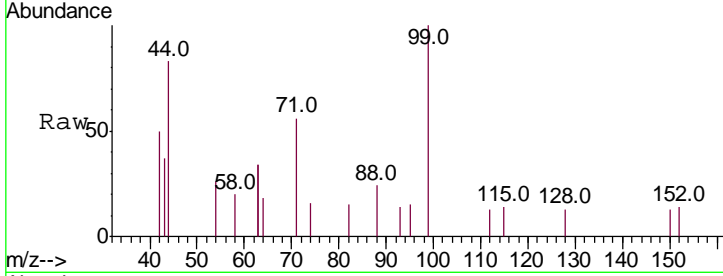




#5
 Phenol-d6
 Concen: 0.418 ng
 RT: 6.99 min Scan# 358
 Delta R.T. 0.00 min
 Lab File: BE098911.D
 Acq: 13 Mar 2019 14:40

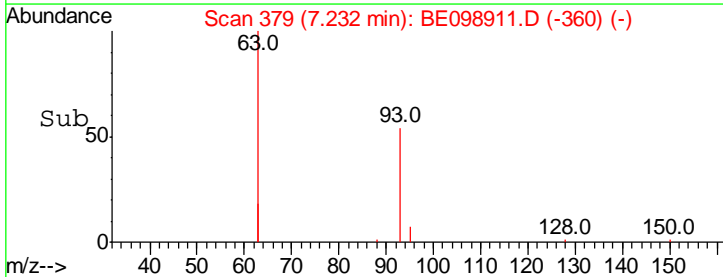
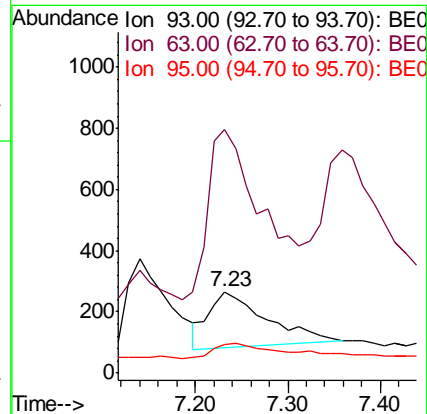
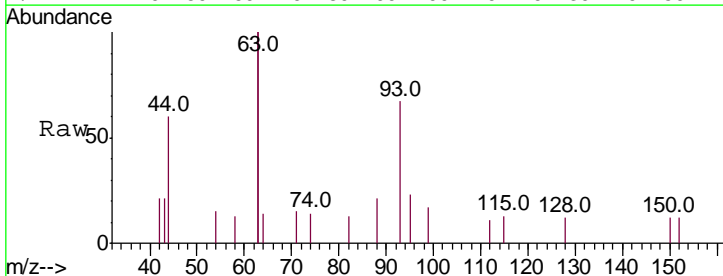
Instrument :
 BNA_E
 ClientSampled :

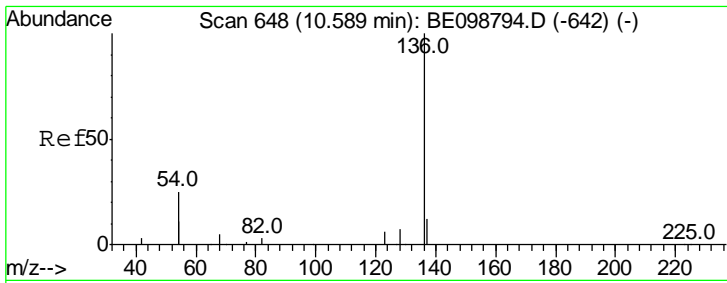
Tgt Ion	Resp	Lower	Upper
99	1354		
99	100		
42	30.6	24.2	36.2
71	44.8	35.7	53.5



#6
 bis(2-Chloroethyl)ether
 Concen: 0.317 ng
 RT: 7.23 min Scan# 379
 Delta R.T. 0.02 min
 Lab File: BE098911.D
 Acq: 13 Mar 2019 14:40

Tgt Ion	Resp	Lower	Upper
93	793		
93	100		
63	287.8	247.5	371.3
95	35.8	21.8	32.8#

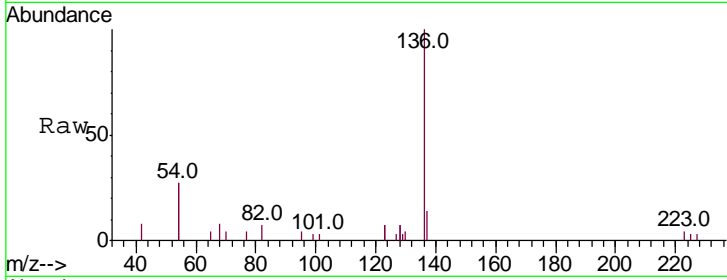




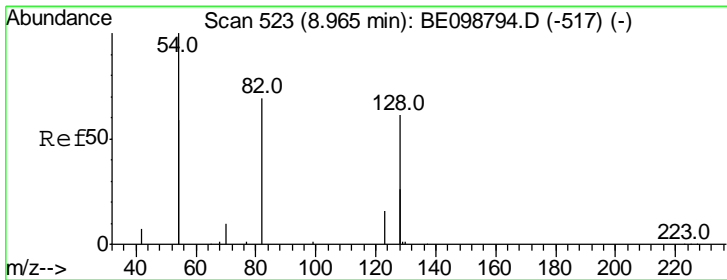
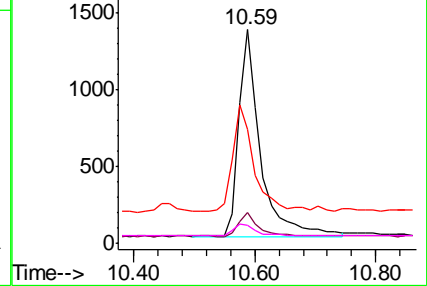
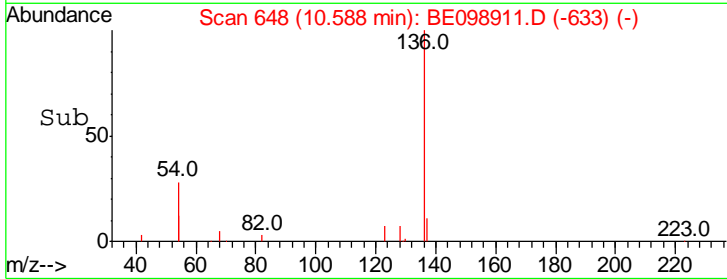
#7
 Naphthalene-d8
 Concen: 0.400 ng
 RT: 10.59 min Scan# 648
 Delta R.T. -0.00 min
 Lab File: BE098911.D
 Acq: 13 Mar 2019 14:40

Instrument :
 BNA_E
 ClientSampled :

Tgt Ion	Resp	Lower	Upper
136	100		
137	14.2	11.4	17.0
54	53.4	39.3	58.9
68	8.2	6.7	10.1

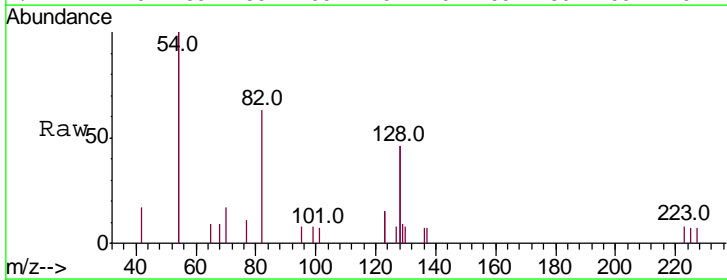


Abundance
 Ion 136.00 (135.70 to 136.70): E
 Ion 137.00 (136.70 to 137.70): E
 Ion 54.00 (53.70 to 54.70): BE
 Ion 68.00 (67.70 to 68.70): BE

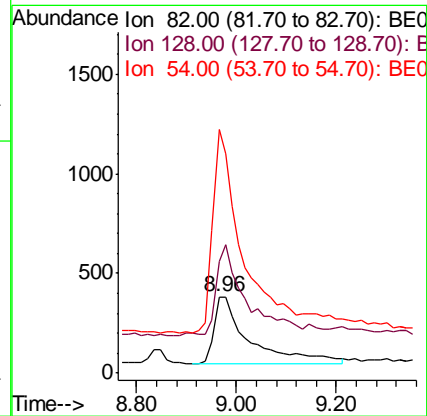
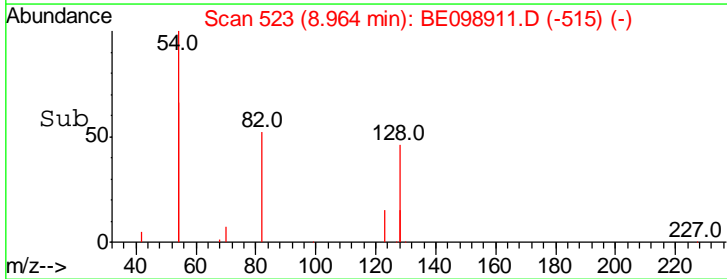


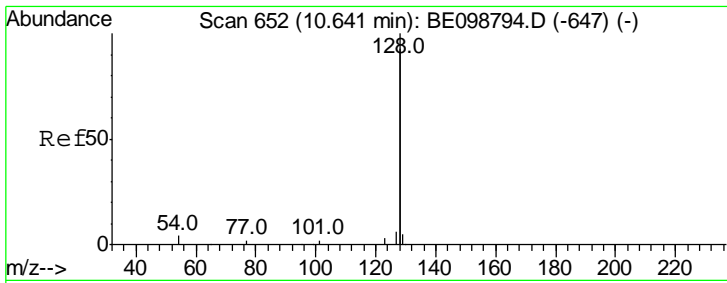
#8
 Nitrobenzene-d5
 Concen: 0.458 ng
 RT: 8.96 min Scan# 523
 Delta R.T. -0.00 min
 Lab File: BE098911.D
 Acq: 13 Mar 2019 14:40

Tgt Ion	Resp	Lower	Upper
82	100		
128	145.7	123.8	185.8
54	319.1	203.4	305.2#



Abundance
 Ion 82.00 (81.70 to 82.70): BE
 Ion 128.00 (127.70 to 128.70): E
 Ion 54.00 (53.70 to 54.70): BE

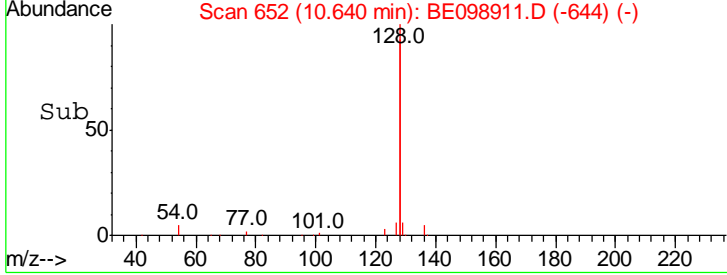
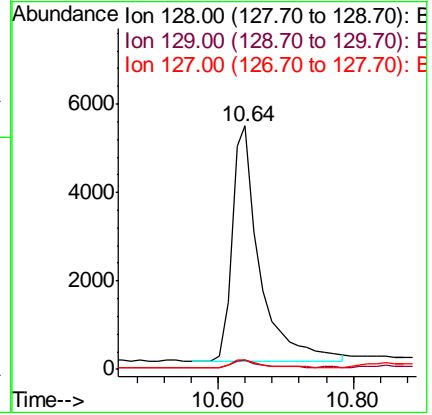
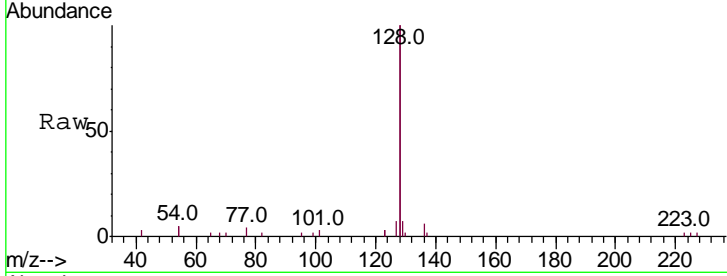




#9
 Naphthalene
 Concen: 0.391 ng
 RT: 10.64 min Scan# 652
 Delta R.T. -0.00 min
 Lab File: BE098911.D
 Acq: 13 Mar 2019 14:40

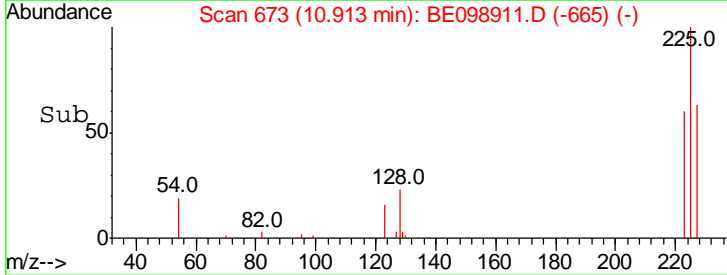
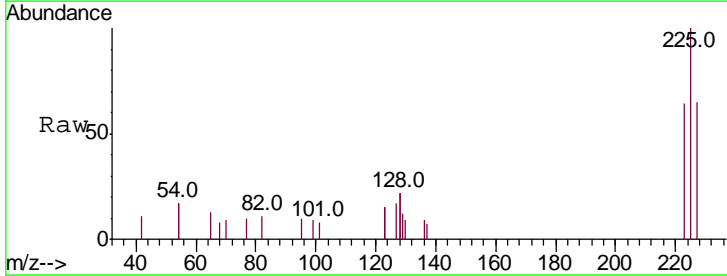
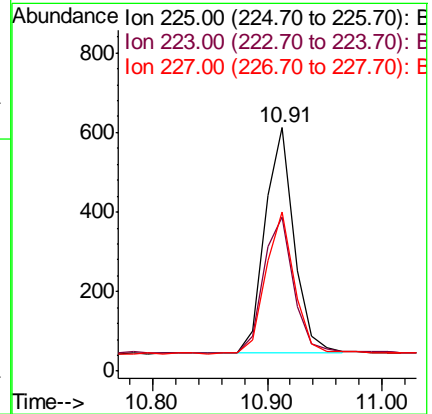
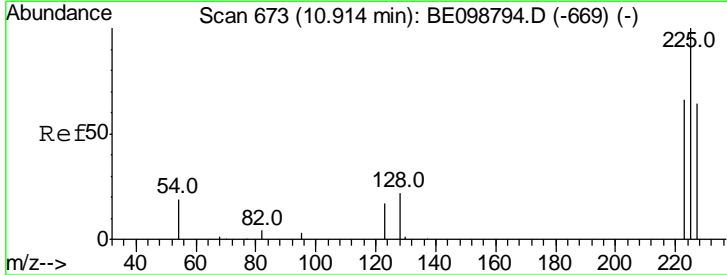
Instrument :
 BNA_E
 ClientSampled :

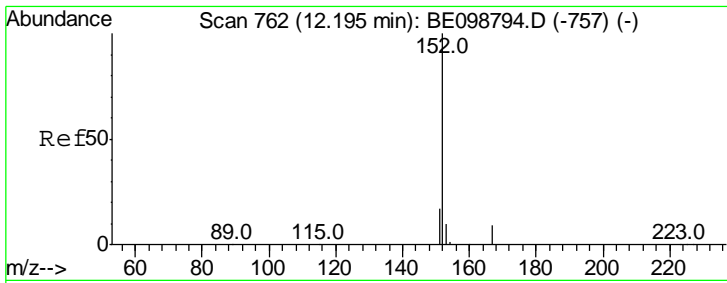
Tgt Ion	Resp	Lower	Upper
128	15123		
129	3.7	2.6	4.0
127	3.7	3.1	4.7



#10
 Hexachlorobutadiene
 Concen: 0.394 ng
 RT: 10.91 min Scan# 673
 Delta R.T. -0.00 min
 Lab File: BE098911.D
 Acq: 13 Mar 2019 14:40

Tgt Ion	Resp	Lower	Upper
225	1008		
223	62.8	51.1	76.7
227	62.2	51.6	77.4

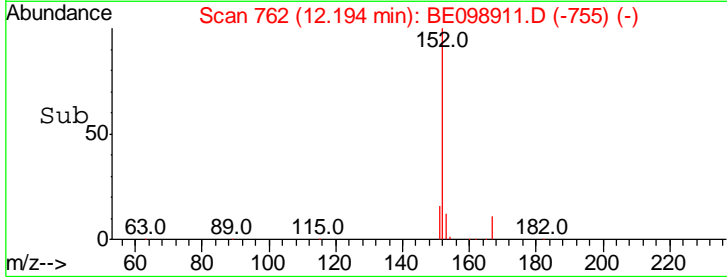
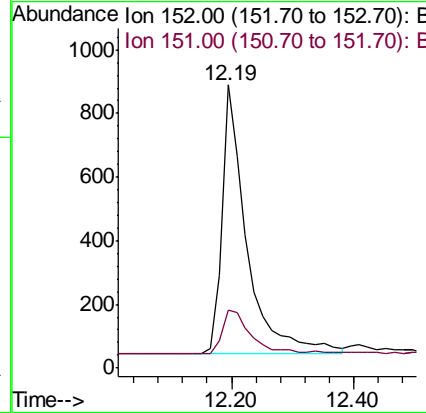
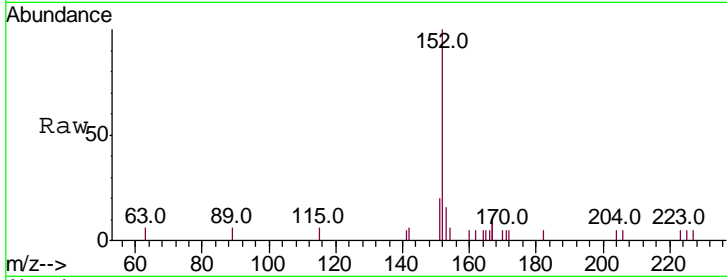




#11
 2-Methylnaphthalene-d10
 Concen: 0.382 ng
 RT: 12.19 min Scan# 762
 Delta R.T. -0.00 min
 Lab File: BE098911.D
 Acq: 13 Mar 2019 14:40

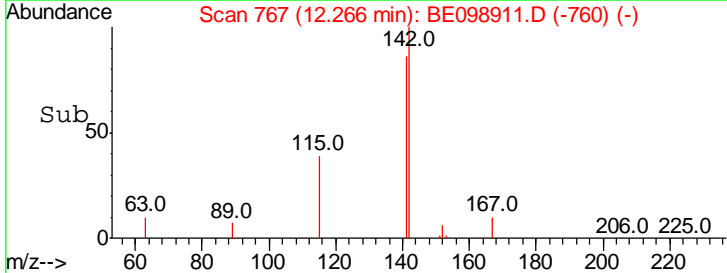
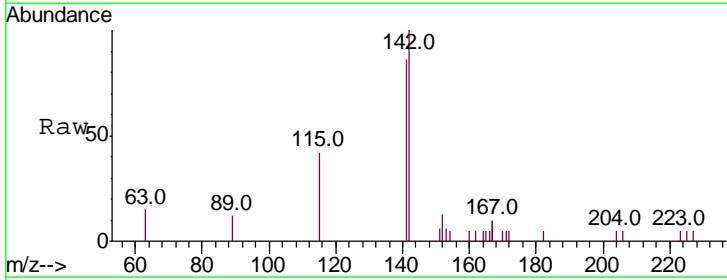
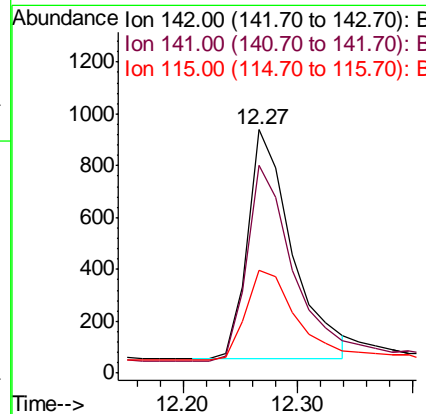
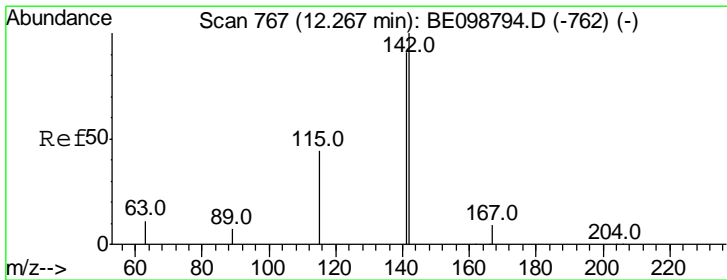
Instrument :
 BNA_E
 ClientSampled :

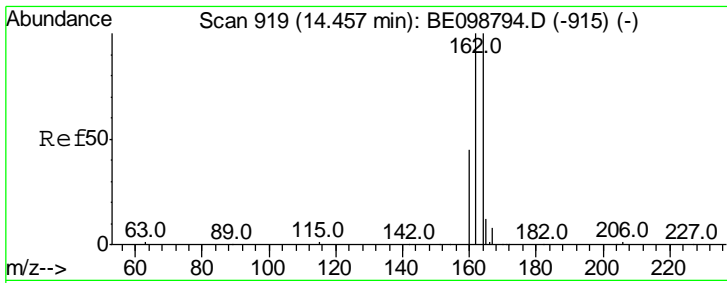
Tgt Ion	Resp	Lower	Upper
152	100		
151	20.0	16.5	24.7



#12
 2-Methylnaphthalene
 Concen: 0.381 ng
 RT: 12.27 min Scan# 767
 Delta R.T. -0.00 min
 Lab File: BE098911.D
 Acq: 13 Mar 2019 14:40

Tgt Ion	Resp	Lower	Upper
142	100		
141	85.6	72.6	108.8
115	42.4	37.4	56.2

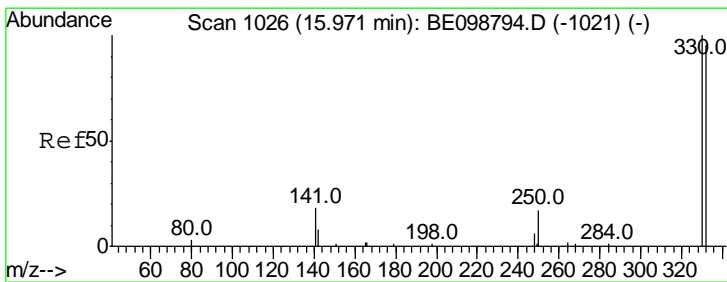
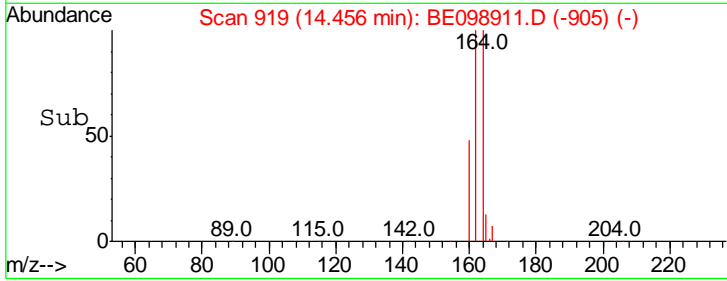
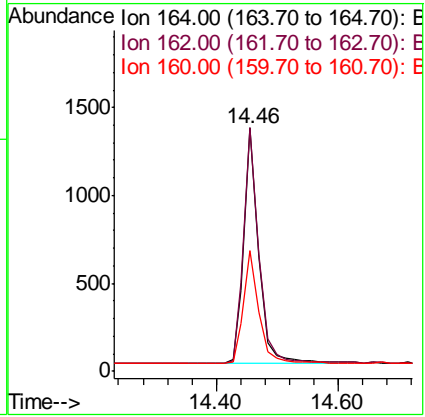
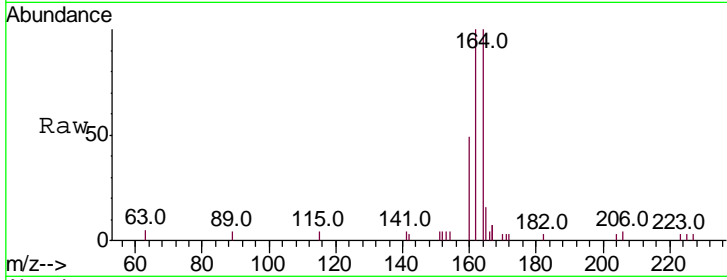




#13
 Acenaphthene-d10
 Concen: 0.400 ng
 RT: 14.46 min Scan# 919
 Delta R.T. -0.00 min
 Lab File: BE098911.D
 Acq: 13 Mar 2019 14:40

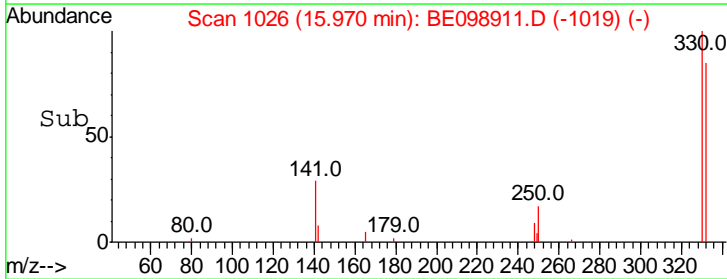
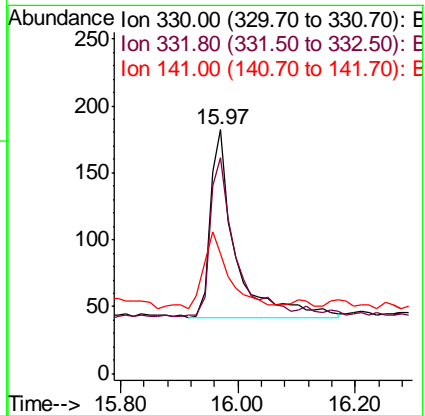
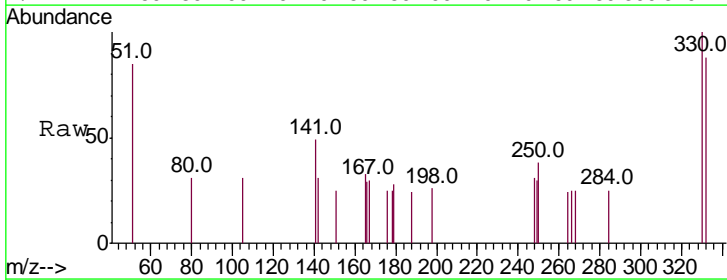
Instrument :
 BNA_E
 ClientSampled :

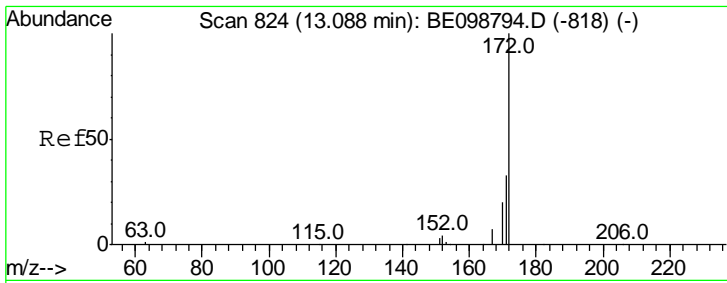
Tgt Ion	Resp	Lower	Upper
164	100		
162	99.9	80.2	120.2
160	49.5	37.8	56.8



#14
 2,4,6-Tribromophenol
 Concen: 0.365 ng
 RT: 15.97 min Scan# 1026
 Delta R.T. -0.00 min
 Lab File: BE098911.D
 Acq: 13 Mar 2019 14:40

Tgt Ion	Resp	Lower	Upper
330	100		
332	83.5	77.6	116.4
141	40.0	31.0	46.4



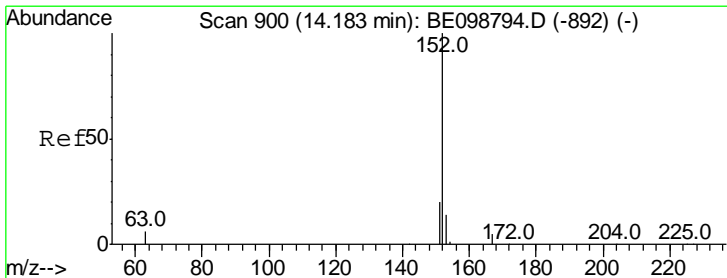
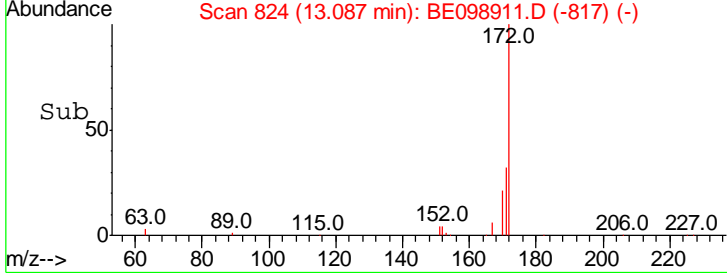
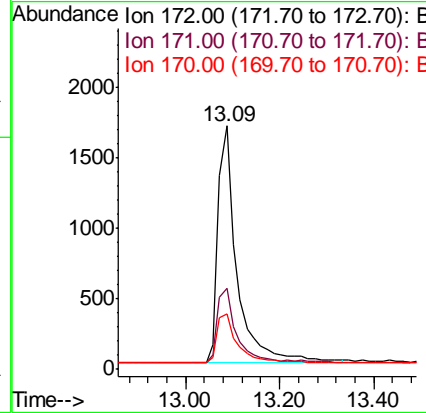
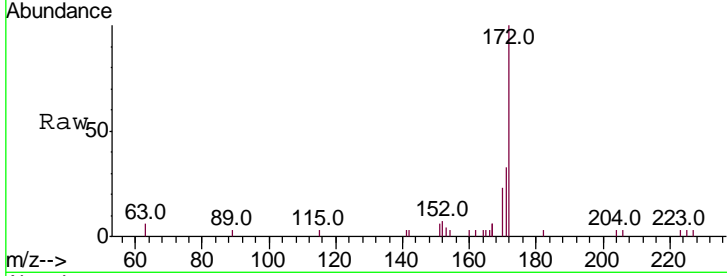


#15
 2-Fluorobiphenyl
 Concen: 0.504 ng
 RT: 13.09 min Scan# 824
 Delta R.T. -0.00 min
 Lab File: BE098911.D
 Acq: 13 Mar 2019 14:40

Instrument :
 BNA_E
 ClientSampled :

Tgt Ion:172 Resp: 4742

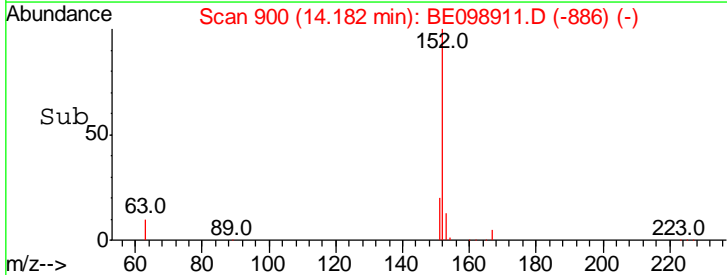
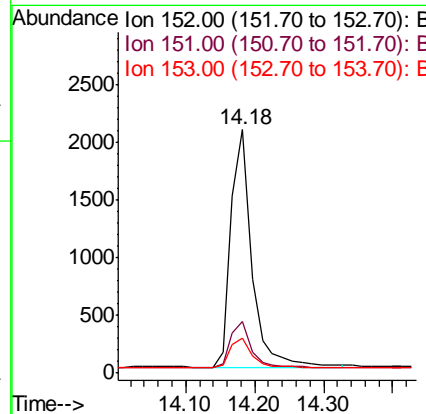
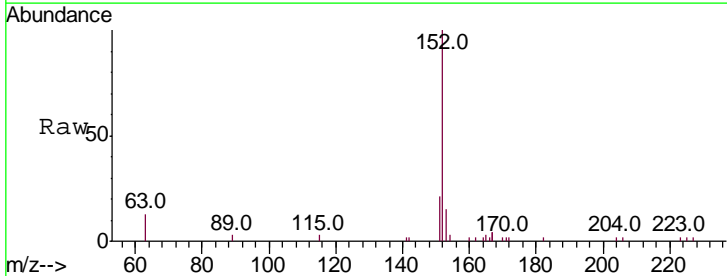
Ion	Ratio	Lower	Upper
172	100		
171	33.4	28.0	42.0
170	22.9	17.7	26.5

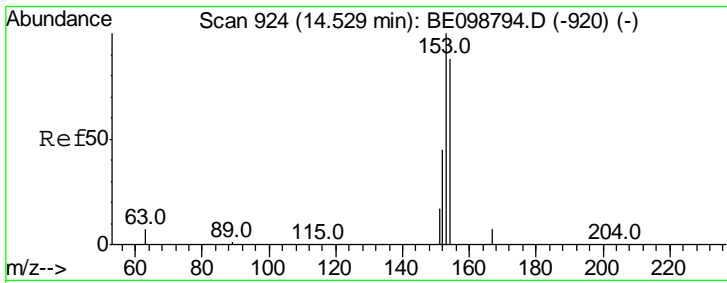


#16
 Acenaphthylene
 Concen: 0.375 ng
 RT: 14.18 min Scan# 900
 Delta R.T. -0.00 min
 Lab File: BE098911.D
 Acq: 13 Mar 2019 14:40

Tgt Ion:152 Resp: 4383

Ion	Ratio	Lower	Upper
152	100		
151	20.2	17.0	25.6
153	13.2	11.2	16.8



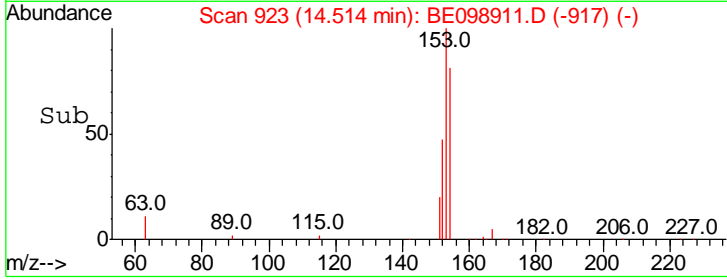
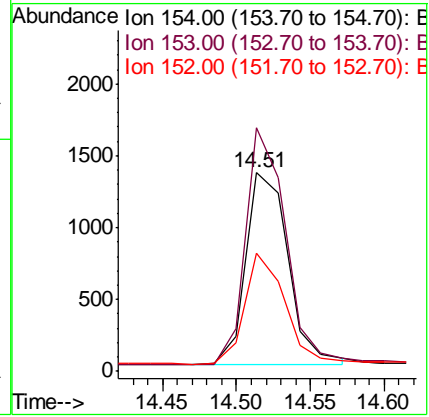
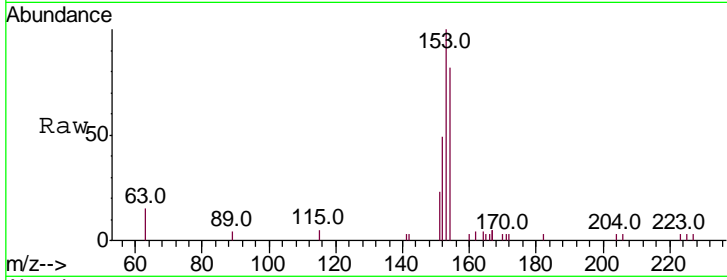


#17
 Acenaphthene
 Concen: 0.386 ng
 RT: 14.51 min Scan# 923
 Delta R.T. -0.01 min
 Lab File: BE098911.D
 Acq: 13 Mar 2019 14:40

Instrument :
 BNA_E
 ClientSampled :

Tgt Ion:154 Resp: 2679

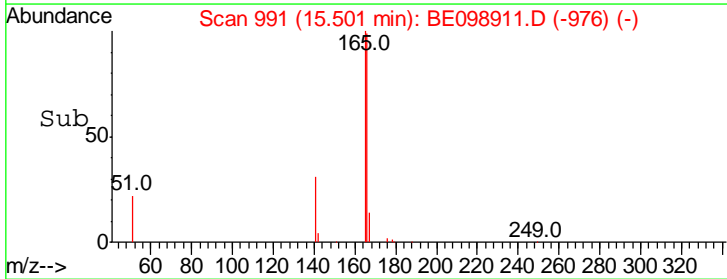
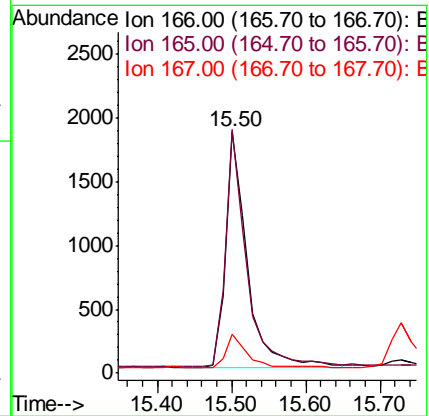
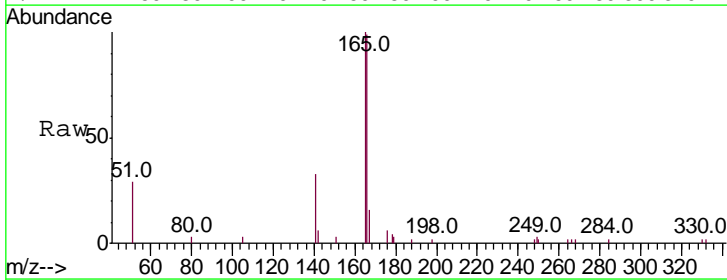
Ion	Ratio	Lower	Upper
154	100		
153	115.2	94.2	141.4
152	54.5	45.0	67.4

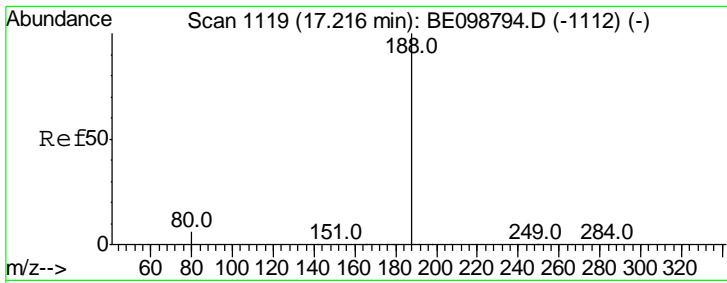


#18
 Fluorene
 Concen: 0.375 ng
 RT: 15.50 min Scan# 991
 Delta R.T. -0.00 min
 Lab File: BE098911.D
 Acq: 13 Mar 2019 14:40

Tgt Ion:166 Resp: 3749

Ion	Ratio	Lower	Upper
166	100		
165	98.6	79.3	118.9
167	13.4	10.5	15.7

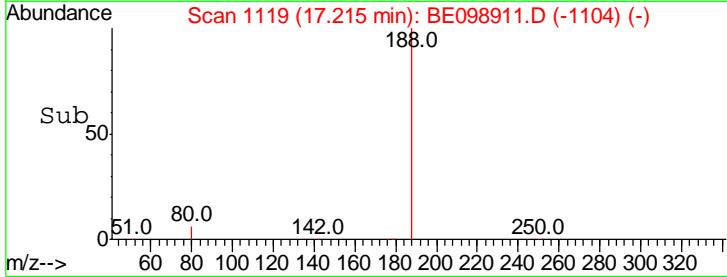
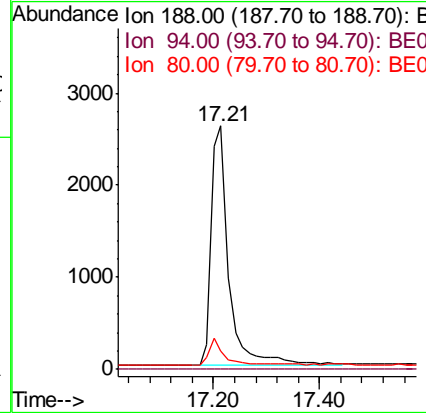
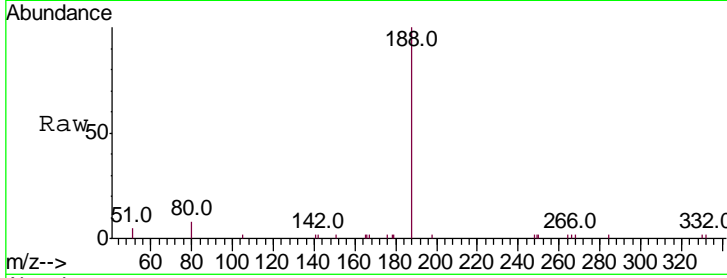




#19
 Phenanthrene-d10
 Concen: 0.400 ng
 RT: 17.21 min Scan# 1119
 Delta R.T. -0.00 min
 Lab File: BE098911.D
 Acq: 13 Mar 2019 14:40

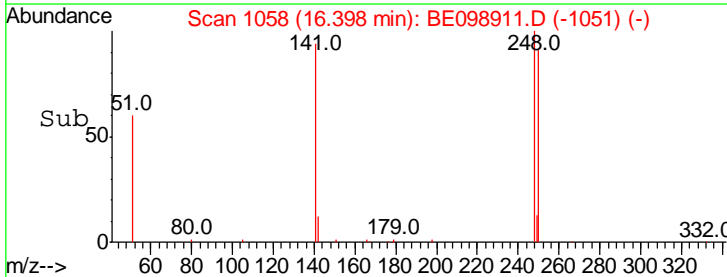
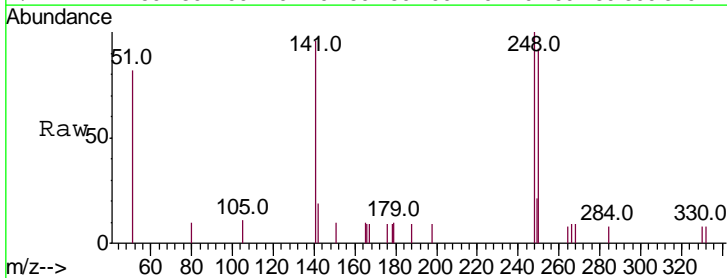
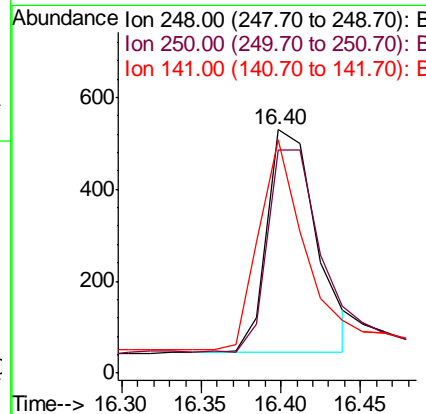
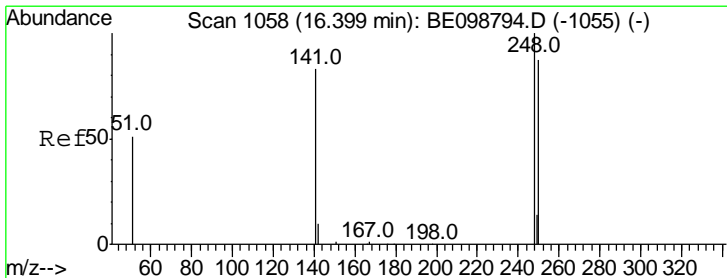
Instrument :
 BNA_E
 ClientSampled :

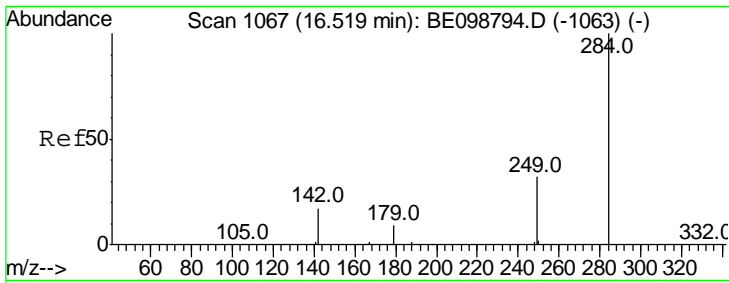
Tgt Ion	Resp	Lower	Upper
188	100		
94	0.0	0.0	0.0
80	7.8	6.3	9.5



#20
 4-Bromophenyl-phenylether
 Concen: 0.322 ng
 RT: 16.40 min Scan# 1058
 Delta R.T. -0.00 min
 Lab File: BE098911.D
 Acq: 13 Mar 2019 14:40

Tgt Ion	Resp	Lower	Upper
248	100		
250	91.9	70.6	105.8
141	95.8	68.6	102.8

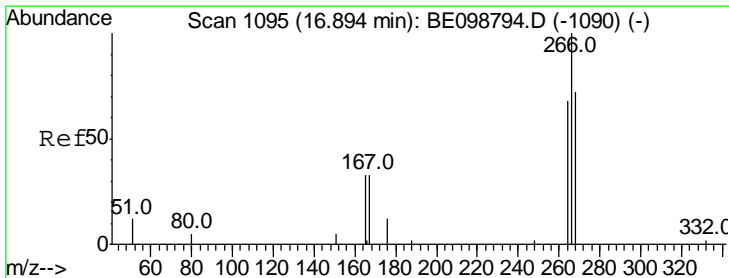
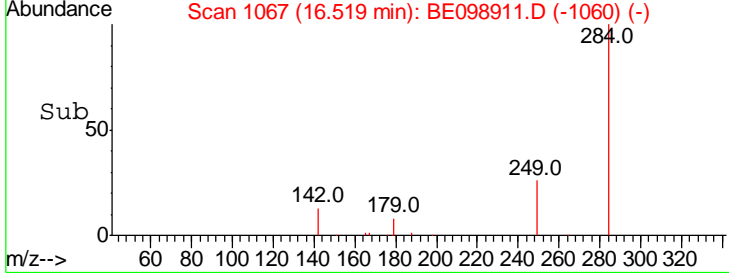
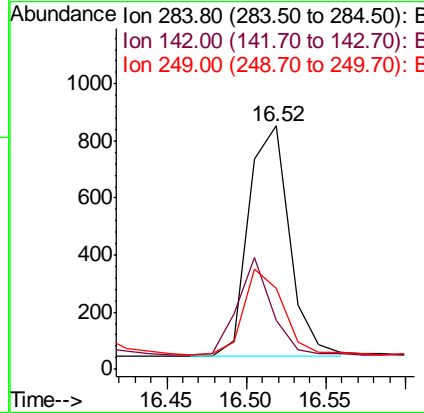
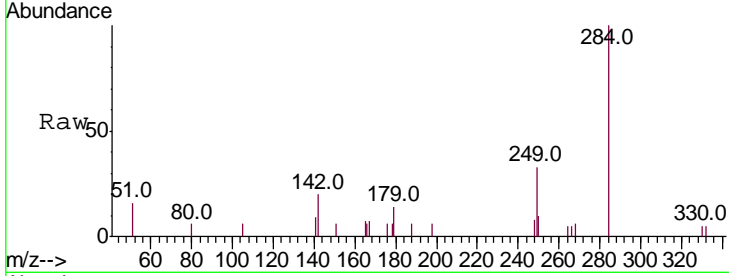




#21
 Hexachlorobenzene
 Concen: 0.372 ng
 RT: 16.52 min Scan# 1067
 Delta R.T. -0.00 min
 Lab File: BE098911.D
 Acq: 13 Mar 2019 14:40

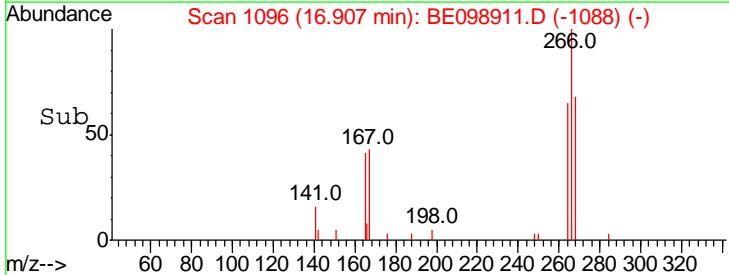
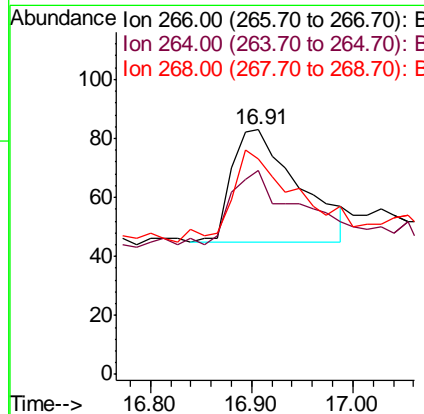
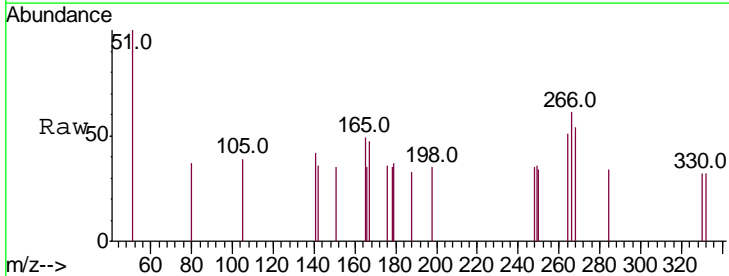
Instrument :
 BNA_E
 ClientSampled :

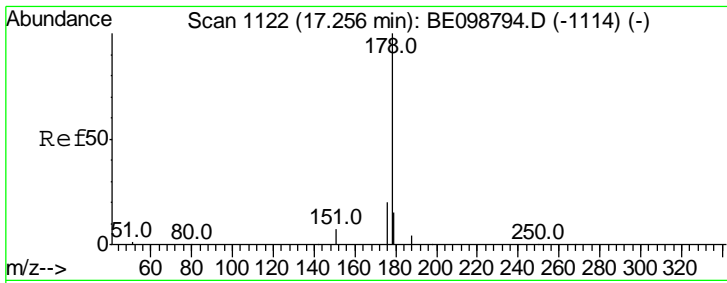
Tgt Ion	Resp	Lower	Upper
284	1442		
142	35.0	28.7	43.1
249	35.6	29.6	44.4



#22
 Pentachlorophenol
 Concen: 0.396 ng
 RT: 16.91 min Scan# 1096
 Delta R.T. 0.01 min
 Lab File: BE098911.D
 Acq: 13 Mar 2019 14:40

Tgt Ion	Resp	Lower	Upper
266	173		
264	83.1	66.6	100.0
268	88.0	69.8	104.8

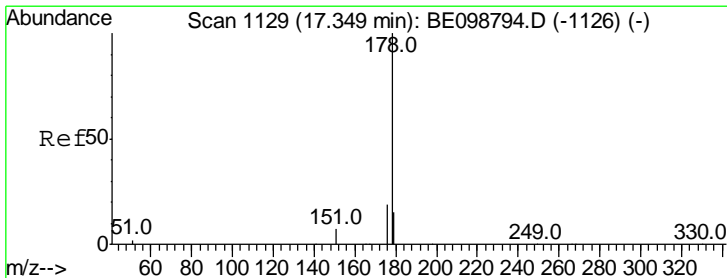
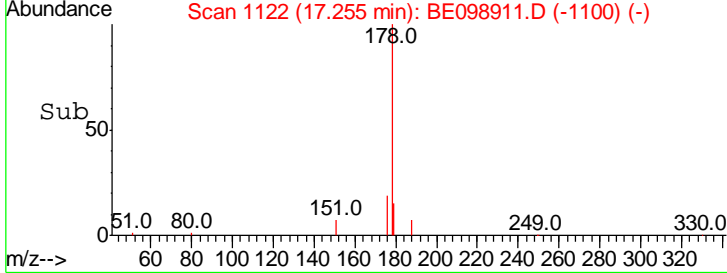
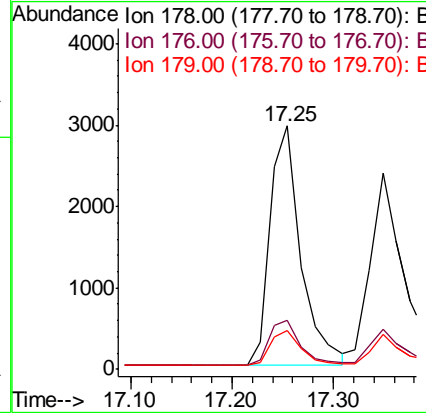
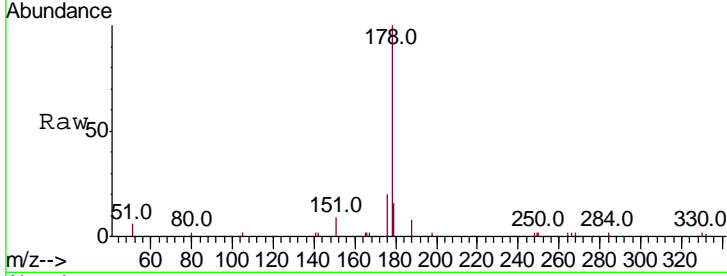




#23
 Phenanthrene
 Concen: 0.365 ng
 RT: 17.25 min Scan# 1122
 Delta R.T. -0.00 min
 Lab File: BE098911.D
 Acq: 13 Mar 2019 14:40

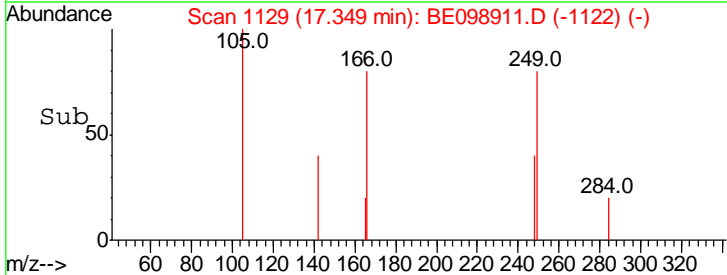
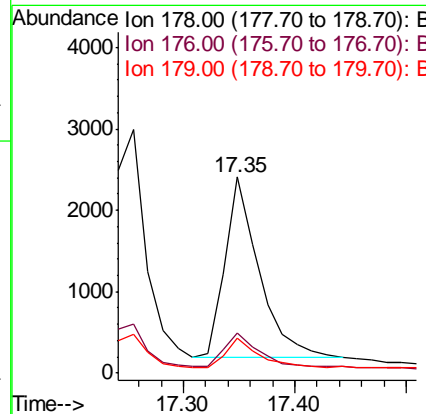
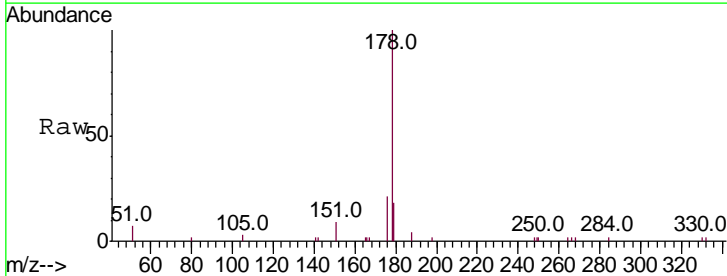
Instrument :
 BNA_E
 ClientSampled :

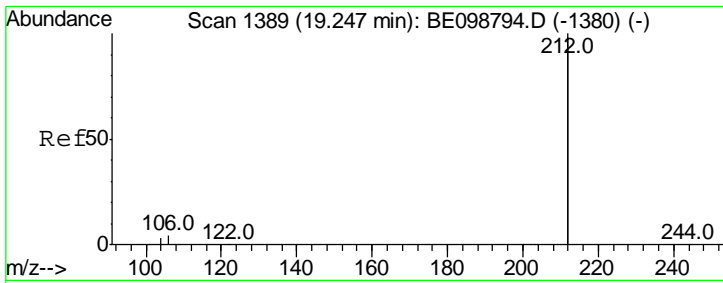
Tgt Ion	Resp	Lower	Upper
178	100		
176	19.2	16.0	24.0
179	14.9	12.1	18.1



#24
 Anthracene
 Concen: 0.321 ng
 RT: 17.35 min Scan# 1129
 Delta R.T. -0.00 min
 Lab File: BE098911.D
 Acq: 13 Mar 2019 14:40

Tgt Ion	Resp	Lower	Upper
178	100		
176	18.8	15.4	23.0
179	14.9	12.2	18.4

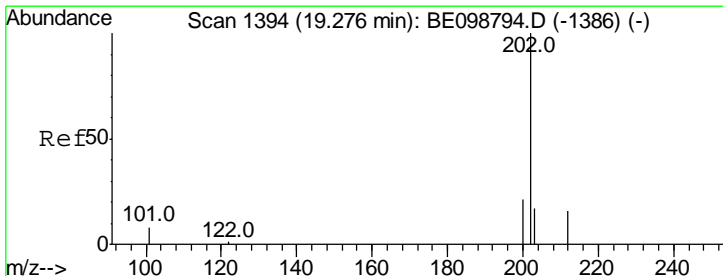
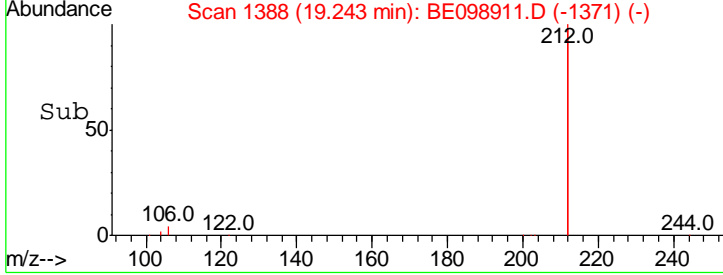
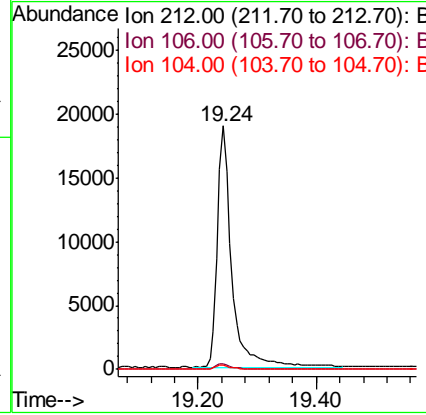
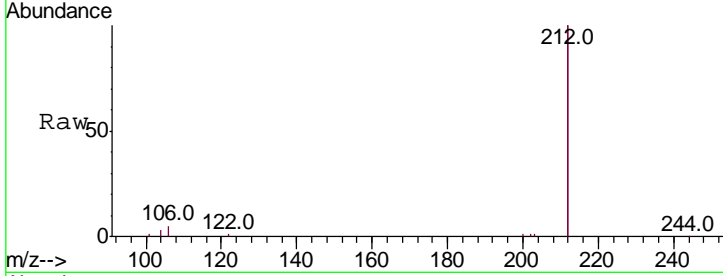




#25
 Fluoranthene-d10
 Concen: 0.337 ng
 RT: 19.24 min Scan# 1388
 Delta R.T. -0.00 min
 Lab File: BE098911.D
 Acq: 13 Mar 2019 14:40

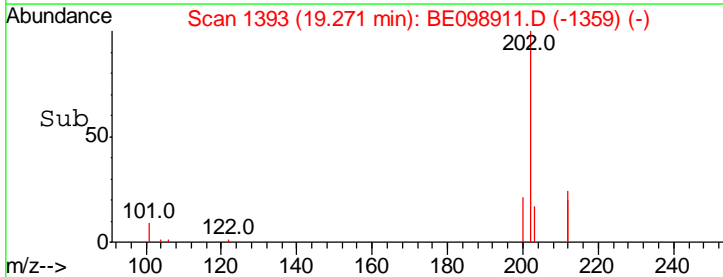
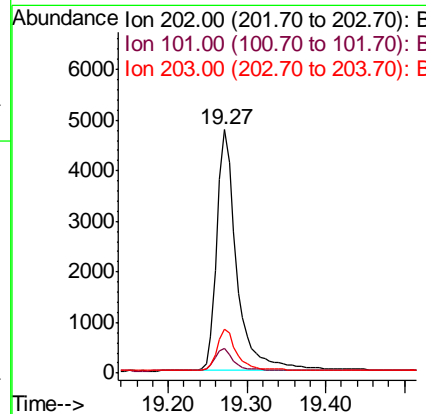
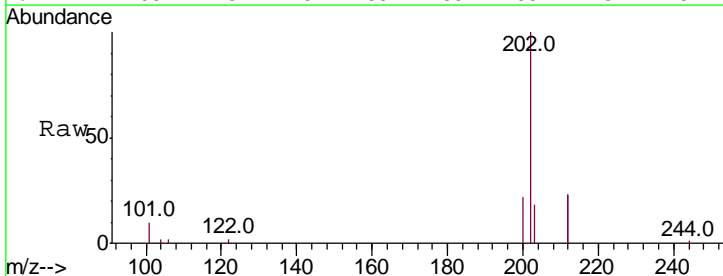
Instrument :
 BNA_E
 ClientSampled :

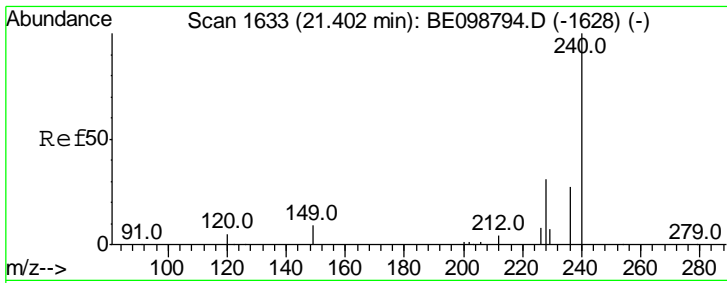
Tgt Ion	Resp	Lower	Upper
212	100		
106	2.2	1.8	2.8
104	1.4	1.0	1.6



#26
 Fluoranthene
 Concen: 0.343 ng
 RT: 19.27 min Scan# 1393
 Delta R.T. -0.00 min
 Lab File: BE098911.D
 Acq: 13 Mar 2019 14:40

Tgt Ion	Resp	Lower	Upper
202	100		
101	9.3	7.3	10.9
203	17.4	13.4	20.2

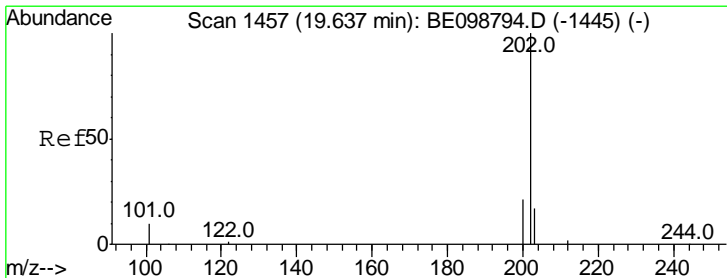
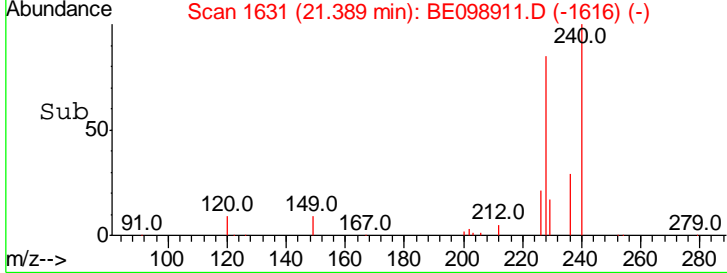
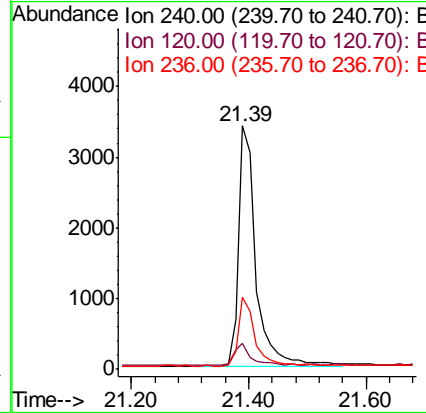
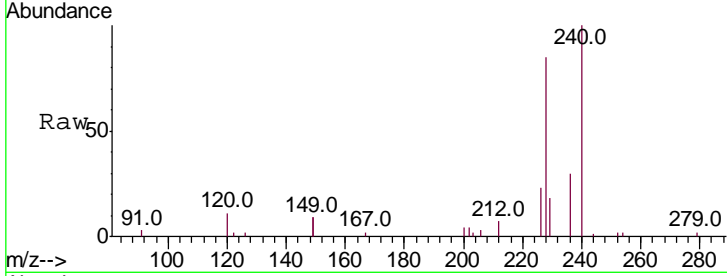




#27
 Chrysene-d12
 Concen: 0.400 ng
 RT: 21.39 min Scan# 1631
 Delta R.T. -0.01 min
 Lab File: BE098911.D
 Acq: 13 Mar 2019 14:40

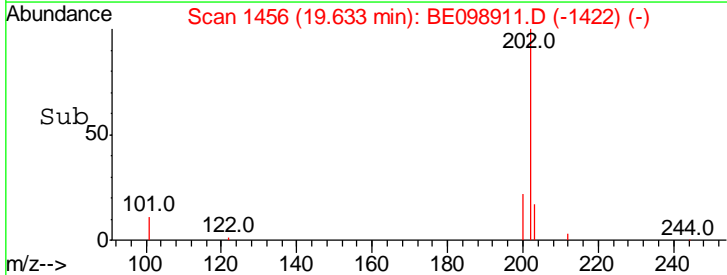
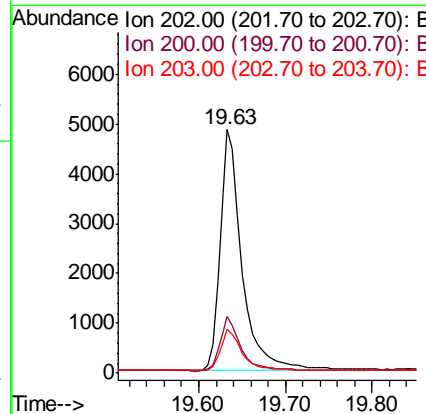
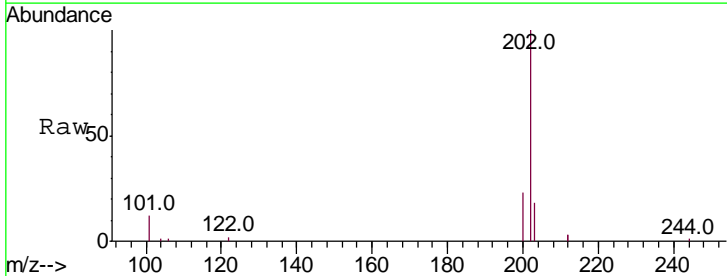
Instrument :
 BNA_E
 ClientSampled :

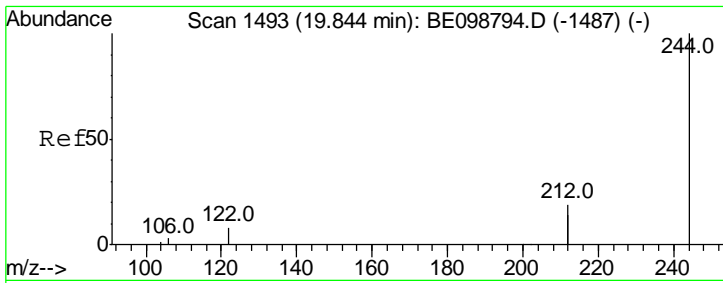
Tgt Ion	Resp	Lower	Upper
240	100		
120	10.9	5.0	7.4#
236	29.8	22.7	34.1



#28
 Pyrene
 Concen: 0.395 ng
 RT: 19.63 min Scan# 1456
 Delta R.T. -0.00 min
 Lab File: BE098911.D
 Acq: 13 Mar 2019 14:40

Tgt Ion	Resp	Lower	Upper
202	100		
200	21.7	17.0	25.6
203	17.2	14.2	21.2

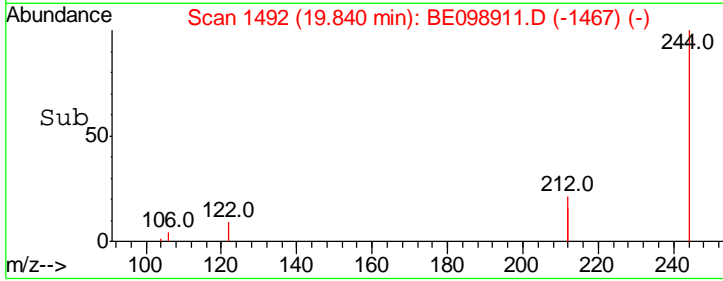
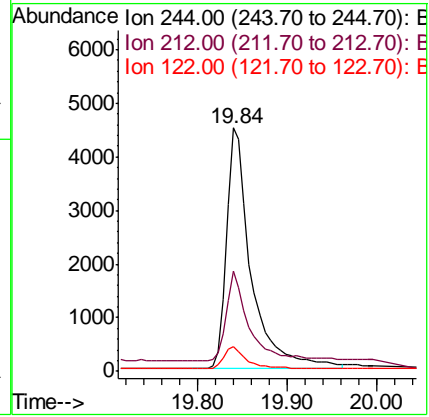
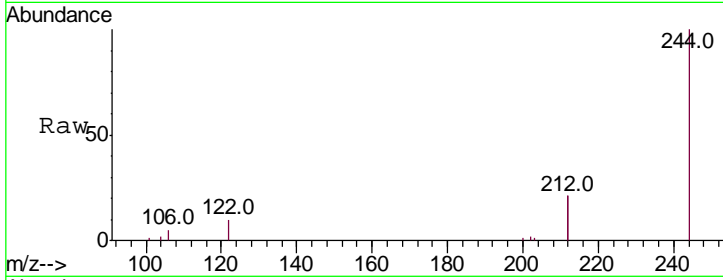




#29
 Terphenyl-d14
 Concen: 0.497 ng
 RT: 19.84 min Scan# 1492
 Delta R.T. -0.00 min
 Lab File: BE098911.D
 Acq: 13 Mar 2019 14:40

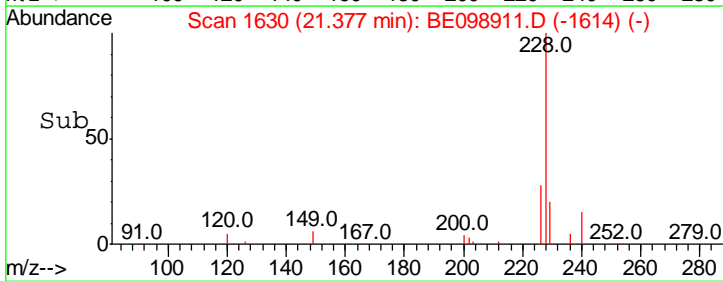
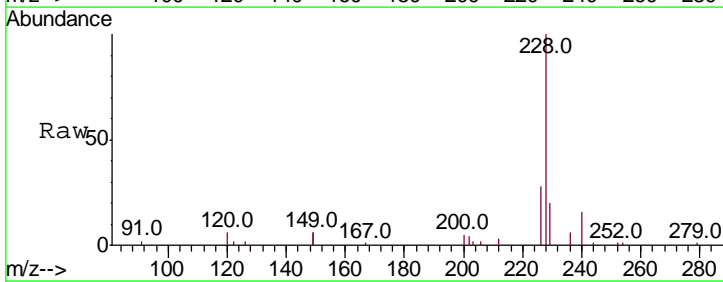
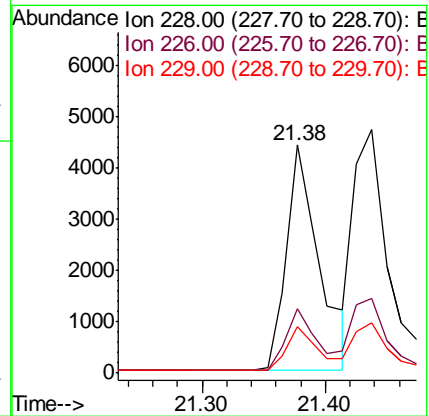
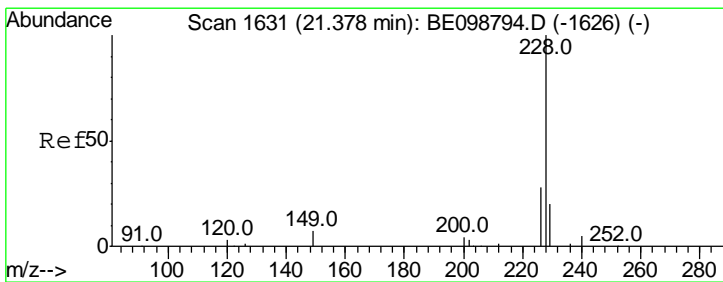
Instrument :
 BNA_E
 ClientSampled :

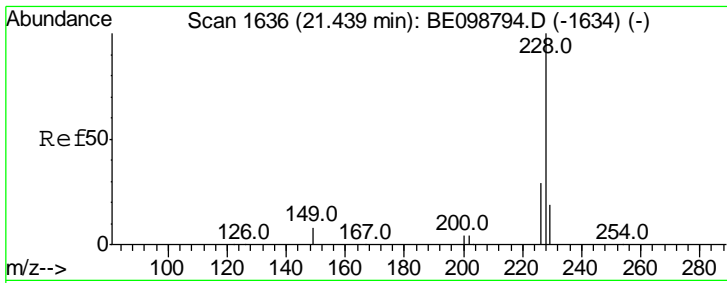
Tgt Ion	Resp	Lower	Upper
244	100		
212	41.1	29.4	44.2
122	10.3	7.1	10.7



#30
 Benzo(a)anthracene
 Concen: 0.370 ng
 RT: 21.38 min Scan# 1630
 Delta R.T. -0.00 min
 Lab File: BE098911.D
 Acq: 13 Mar 2019 14:40

Tgt Ion	Resp	Lower	Upper
228	100		
226	28.5	23.0	34.4
229	20.4	16.5	24.7



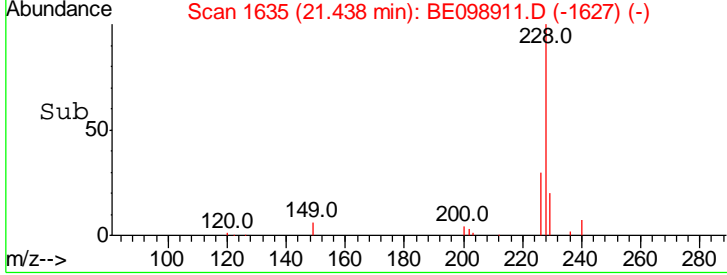
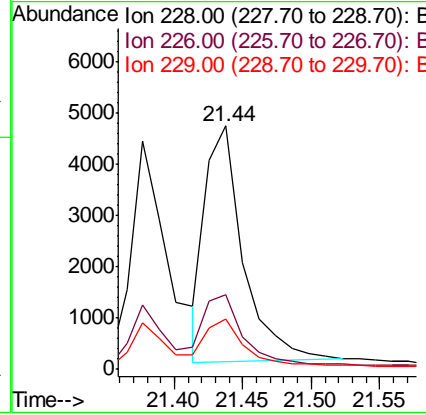
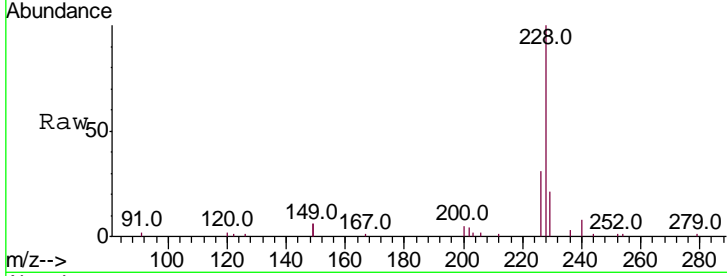


#31
 Chrysene
 Concen: 0.371 ng
 RT: 21.44 min Scan# 1635
 Delta R.T. -0.00 min
 Lab File: BE098911.D
 Acq: 13 Mar 2019 14:40

Instrument :
 BNA_E
 ClientSampled :

Tgt Ion: 228 Resp: 8802

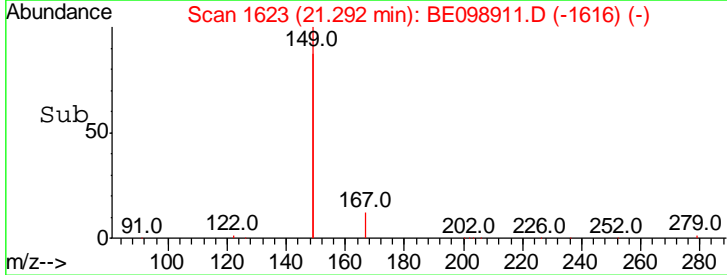
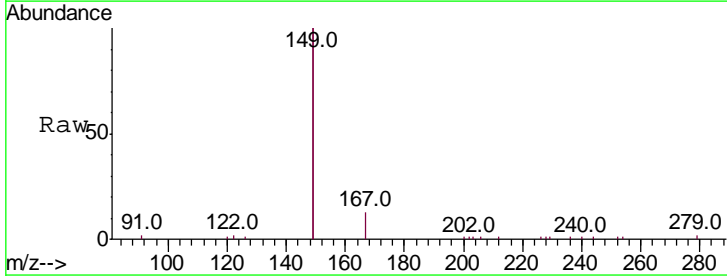
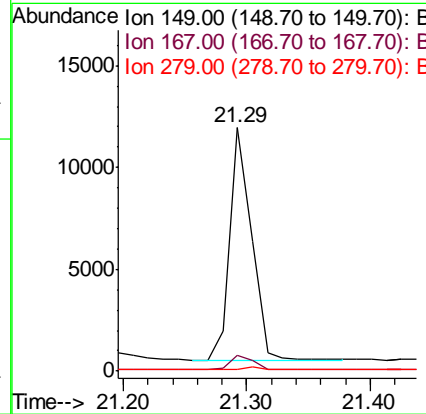
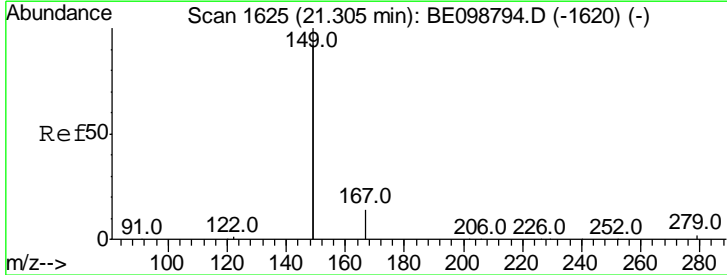
Ion	Ratio	Lower	Upper
228	100		
226	30.7	23.7	35.5
229	20.5	16.1	24.1

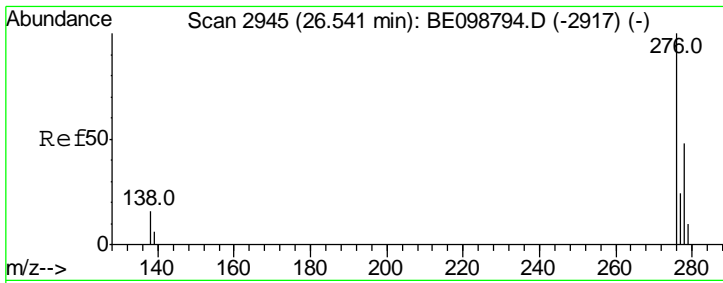


#32
 Bis(2-ethylhexyl)phthalate
 Concen: 0.296 ng
 RT: 21.29 min Scan# 1623
 Delta R.T. -0.01 min
 Lab File: BE098911.D
 Acq: 13 Mar 2019 14:40

Tgt Ion: 149 Resp: 13947

Ion	Ratio	Lower	Upper
149	100		
167	7.0	5.4	8.0
279	1.3	1.0	1.4

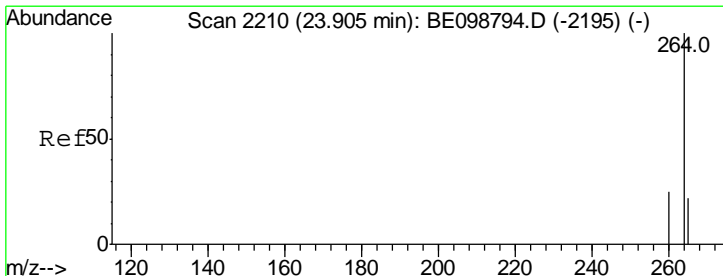
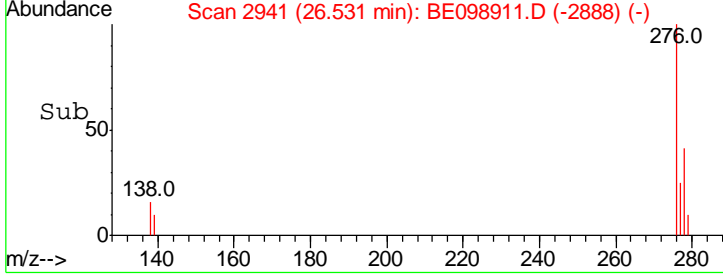
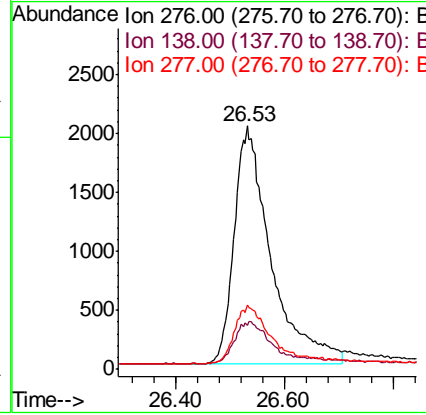
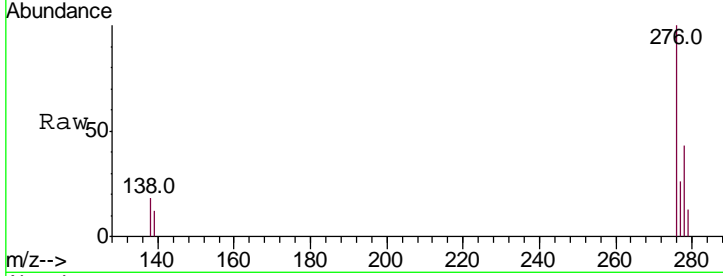




#33
 Indeno(1,2,3-cd)pyrene
 Concen: 0.381 ng
 RT: 26.53 min Scan# 2941
 Delta R.T. -0.01 min
 Lab File: BE098911.D
 Acq: 13 Mar 2019 14:40

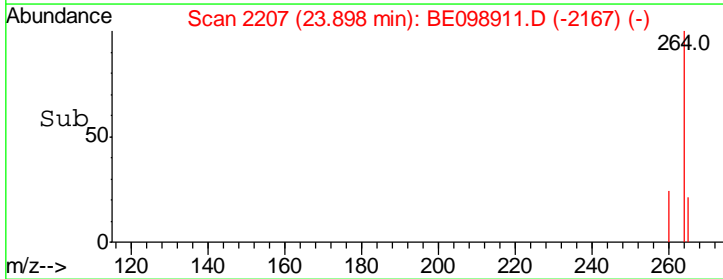
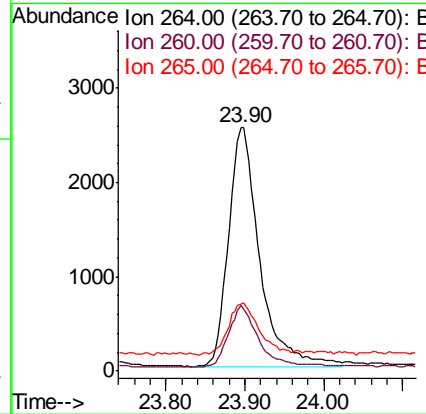
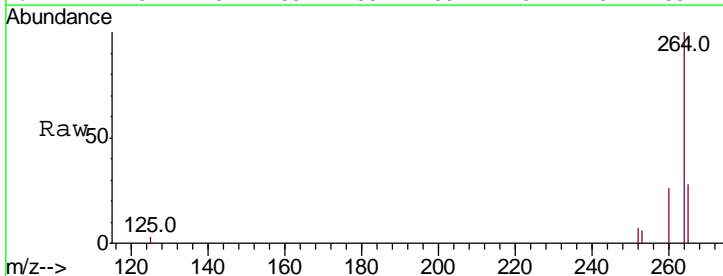
Instrument :
 BNA_E
 ClientSampled :

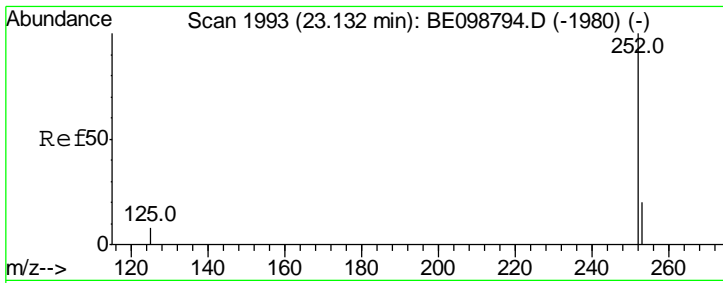
Tgt Ion	Resp	Lower	Upper
276	100		
138	17.1	13.8	20.8
277	22.9	19.5	29.3



#34
 Perylene-d12
 Concen: 0.400 ng
 RT: 23.90 min Scan# 2207
 Delta R.T. -0.01 min
 Lab File: BE098911.D
 Acq: 13 Mar 2019 14:40

Tgt Ion	Resp	Lower	Upper
264	100		
260	25.7	21.2	31.8
265	27.8	24.6	36.8



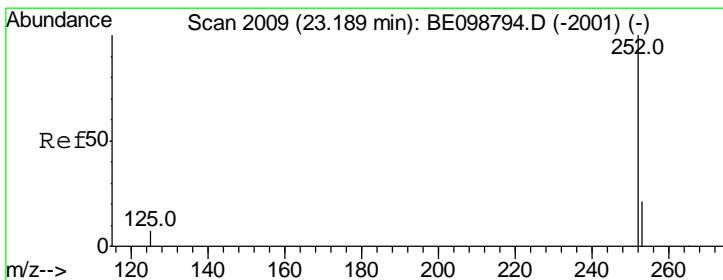
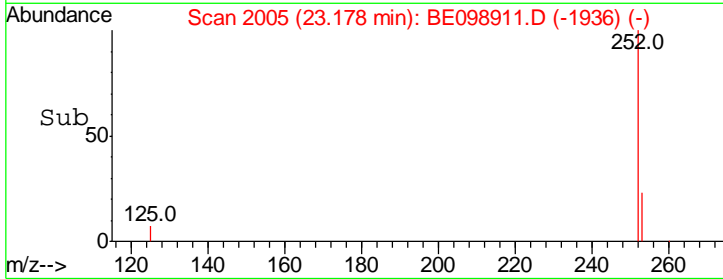
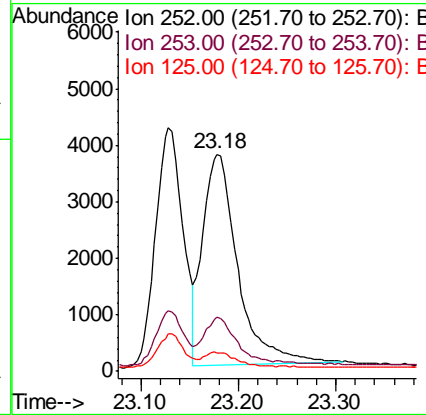
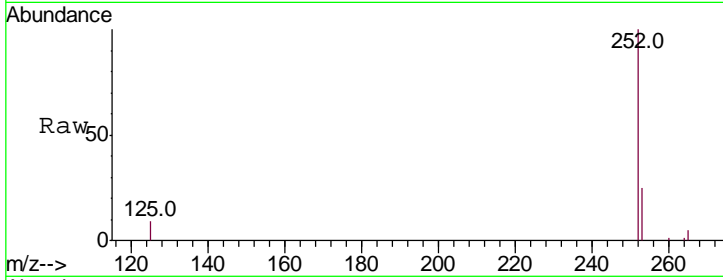


#35
 Benzo(b)fluoranthene
 Concen: 0.410 ng
 RT: 23.18 min Scan# 2005
 Delta R.T. 0.05 min
 Lab File: BE098911.D
 Acq: 13 Mar 2019 14:40

Instrument :
 BNA_E
 ClientSampled :

Tgt Ion: 252 Resp: 9339

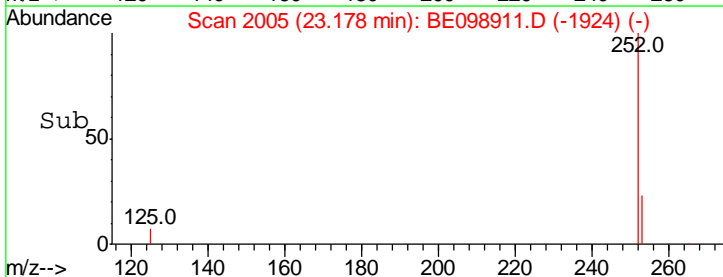
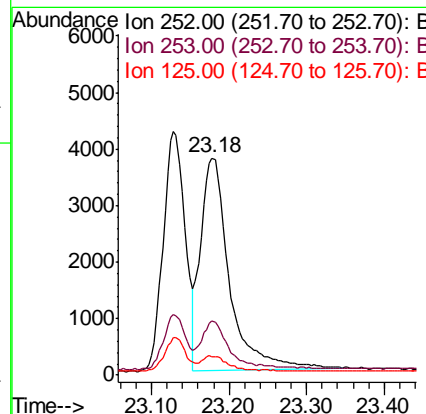
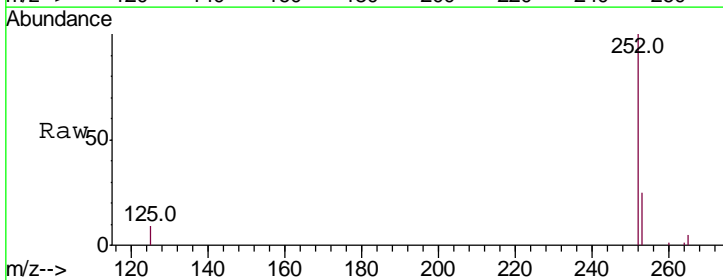
Ion	Ratio	Lower	Upper
252	100		
253	25.1	18.2	27.2
125	8.7	7.3	10.9

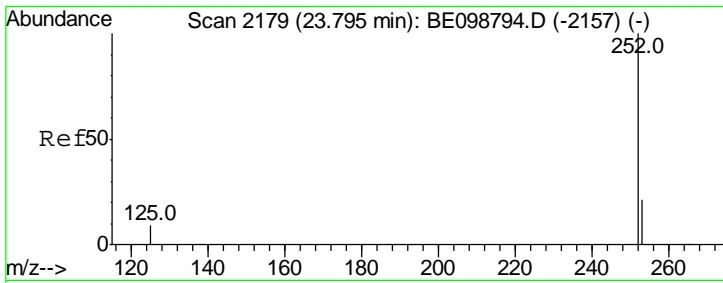


#36
 Benzo(k)fluoranthene
 Concen: 0.406 ng
 RT: 23.18 min Scan# 2005
 Delta R.T. -0.01 min
 Lab File: BE098911.D
 Acq: 13 Mar 2019 14:40

Tgt Ion: 252 Resp: 9674

Ion	Ratio	Lower	Upper
252	100		
253	25.1	19.3	28.9
125	8.7	7.5	11.3

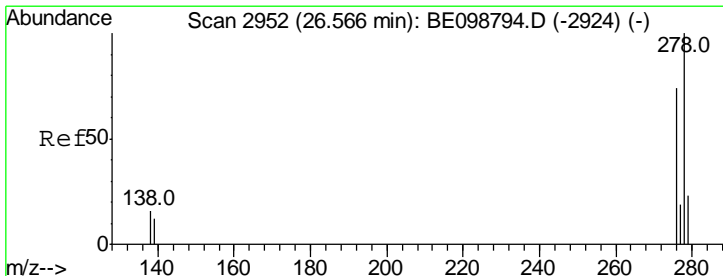
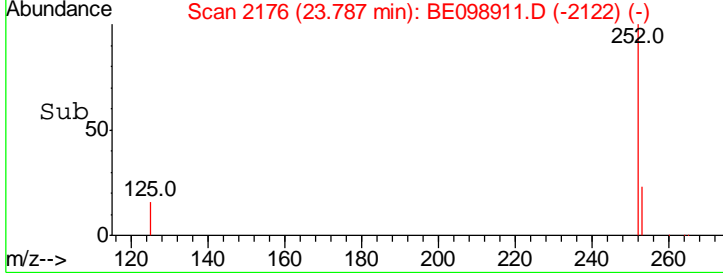
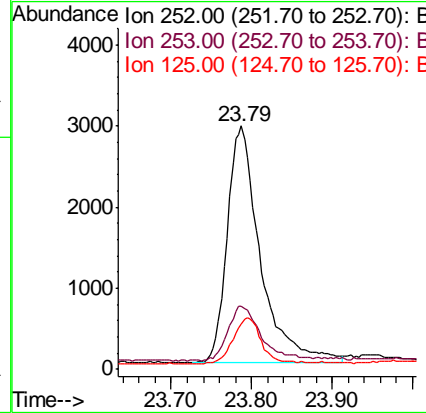
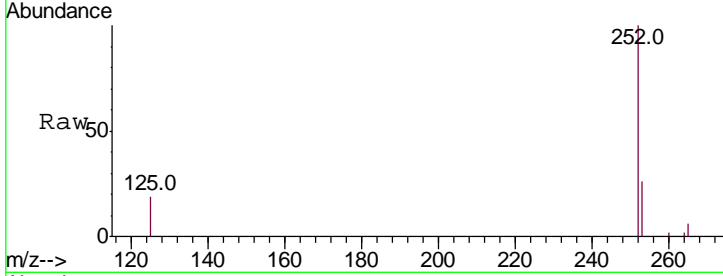




#37
 Benzo(a)pyrene
 Concen: 0.384 ng
 RT: 23.79 min Scan# 2176
 Delta R.T. -0.01 min
 Lab File: BE098911.D
 Acq: 13 Mar 2019 14:40

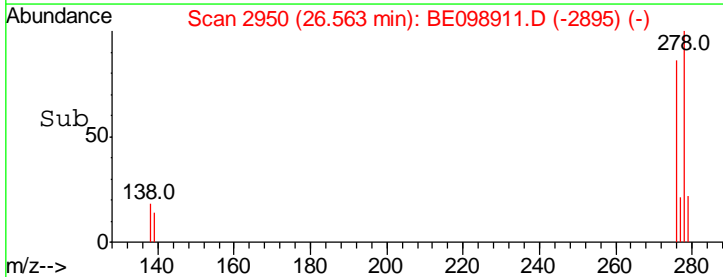
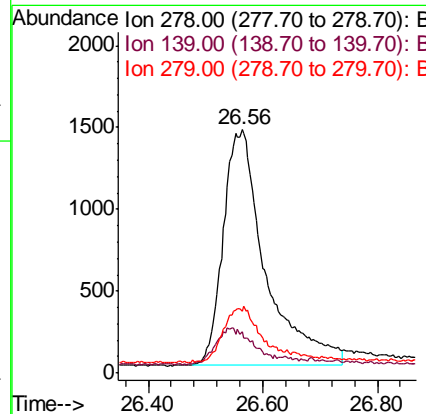
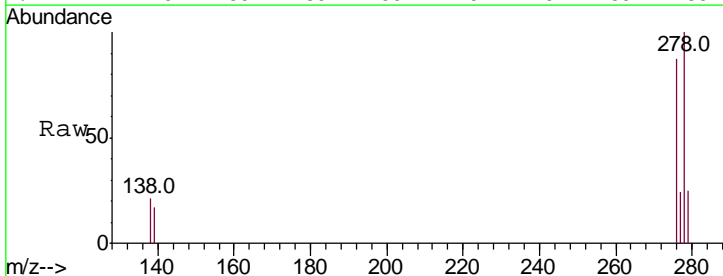
Instrument :
 BNA_E
 ClientSampled :

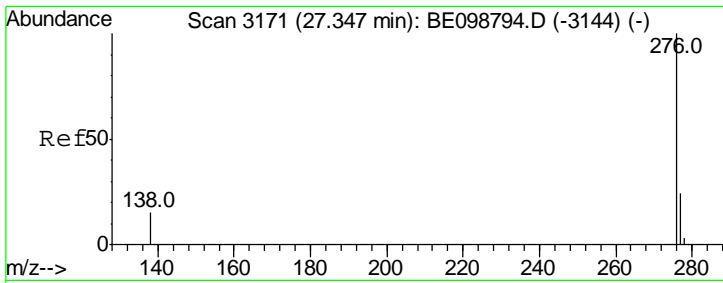
Tgt Ion	Resp	Lower	Upper
252	100		
253	25.8	19.9	29.9
125	18.5	9.0	13.4



#38
 Dibenzo(a,h)anthracene
 Concen: 0.356 ng
 RT: 26.56 min Scan# 2950
 Delta R.T. -0.00 min
 Lab File: BE098911.D
 Acq: 13 Mar 2019 14:40

Tgt Ion	Resp	Lower	Upper
278	100		
139	17.0	11.8	17.6
279	25.4	21.1	31.7





#39
 Benzo(a,h,i)perylene
 Concen: 0.368 ng
 RT: 27.33 min Scan# 3166
 Delta R.T. -0.01 min
 Lab File: BE098911.D
 Acq: 13 Mar 2019 14:40

Instrument :
 BNA_E
 ClientSampled :

Tot Ion: 276 Resp: 7944

Ion	Ratio	Lower	Upper
276	100		
277	25.5	20.4	30.6
138	17.1	13.6	20.4

