

Data Path : Z:\SVOASRV\HPCHEM1\BNA E\DATA\BE031319\
 Data File : BE098909.D
 Acq On : 13 Mar 2019 13:28
 Operator : JU/SJ
 Sample : SSTDCCC0.4
 Misc :
 ALS Vial : 2 Sample Multiplier: 1

Instrument :
 BNA_E
 ClientSampled :
 SSTDCCC0.4

Manual Integrations
 APPROVED

Sohil
 3/14/2019 11:09:11 AM

Quant Time: Mar 14 08:56:40 2019
 Quant Method : Z:\SVOASRV\HPCHEM1\BNA E\METHODS\8270-SIM-BE030619.M
 Quant Title : ASP BNA STANDARDS FOR 5 POINT CALIBRATION
 QLast Update : Wed Mar 06 15:33:24 2019
 Response via : Initial Calibration

Internal Standards	R.T.	QIon	Response	Conc	Units	Dev(Min)
1) 1,4-Dichlorobenzene-d4	7.79	152	730	0.40	ng	0.00
7) Naphthalene-d8	10.59	136	3247	0.40	ng	0.00
13) Acenaphthene-d10	14.46	164	2166	0.40	ng	0.00
19) Phenanthrene-d10	17.21	188	5413	0.40	ng	0.00
27) Chrysene-d12	21.39	240	6609	0.40	ng	-0.01
34) Perylene-d12	23.89	264	6546	0.40	ng	-0.01

System Monitoring Compounds

4) 2-Fluorophenol	5.40	112	648	0.30	ng	0.01
5) Phenol-d6	7.00	99	1142	0.37	ng	0.01
8) Nitrobenzene-d5	8.98	82	1112	0.33	ng	0.01
11) 2-Methylnaphthalene-d10	12.19	152	2248	0.37	ng	0.00
14) 2,4,6-Tribromophenol	15.97	330	329	0.30	ng	0.00
15) 2-Fluorobiphenyl	13.09	172	3361	0.37	ng	0.00
25) Fluoranthene-d10	19.24	212	30217	0.35	ng	0.00
29) Terphenyl-d14	19.85	244	5805	0.36	ng	0.00

Target Compounds

Target Compounds	R.T.	QIon	Response	Conc	Units	Qvalue
2) 1,4-Dioxane	3.29	88	583	0.414	ng	96
3) n-Nitrosodimethylamine	3.66	42	600m	0.327	ng	
6) bis(2-Chloroethyl)ether	7.23	93	691	0.290	ng	92
9) Naphthalene	10.64	128	14415	0.388	ng	99
10) Hexachlorobutadiene	10.91	225	974	0.396	ng	97
12) 2-Methylnaphthalene	12.27	142	2184	0.362	ng	97
16) Acenaphthylene	14.18	152	4176	0.375	ng	98
17) Acenaphthene	14.51	154	2509	0.380	ng	98
18) Fluorene	15.50	166	3505	0.368	ng	98
20) 4-Bromophenyl-phenylether	16.40	248	1123m	0.383	ng	
21) Hexachlorobenzene	16.52	284	1362	0.390	ng	97
22) Pentachlorophenol	16.91	266	165	0.403	ng	92
23) Phenanthrene	17.25	178	5661	0.368	ng	99
24) Anthracene	17.35	178	4282	0.326	ng	98
26) Fluoranthene	19.27	202	7537	0.347	ng	100
28) Pyrene	19.64	202	7770	0.384	ng	100
30) Benzo(a)anthracene	21.38	228	6738	0.327	ng	98
31) Chrysene	21.43	228	8669	0.393	ng	97
32) Bis(2-ethylhexyl)phthalate	21.29	149	12528	0.285	ng	100
33) Indeno(1,2,3-cd)pyrene	26.53	276	8798	0.378	ng	98
35) Benzo(b)fluoranthene	23.13	252	7759m	0.360	ng	
36) Benzo(k)fluoranthene	23.18	252	8277	0.367	ng	99
37) Benzo(a)pyrene	23.78	252	7663	0.371	ng	# 96
38) Dibenzo(a,h)anthracene	26.56	278	6773	0.347	ng	98
39) Benzo(g,h,i)perylene	26.53	276	8119m	0.398	ng	

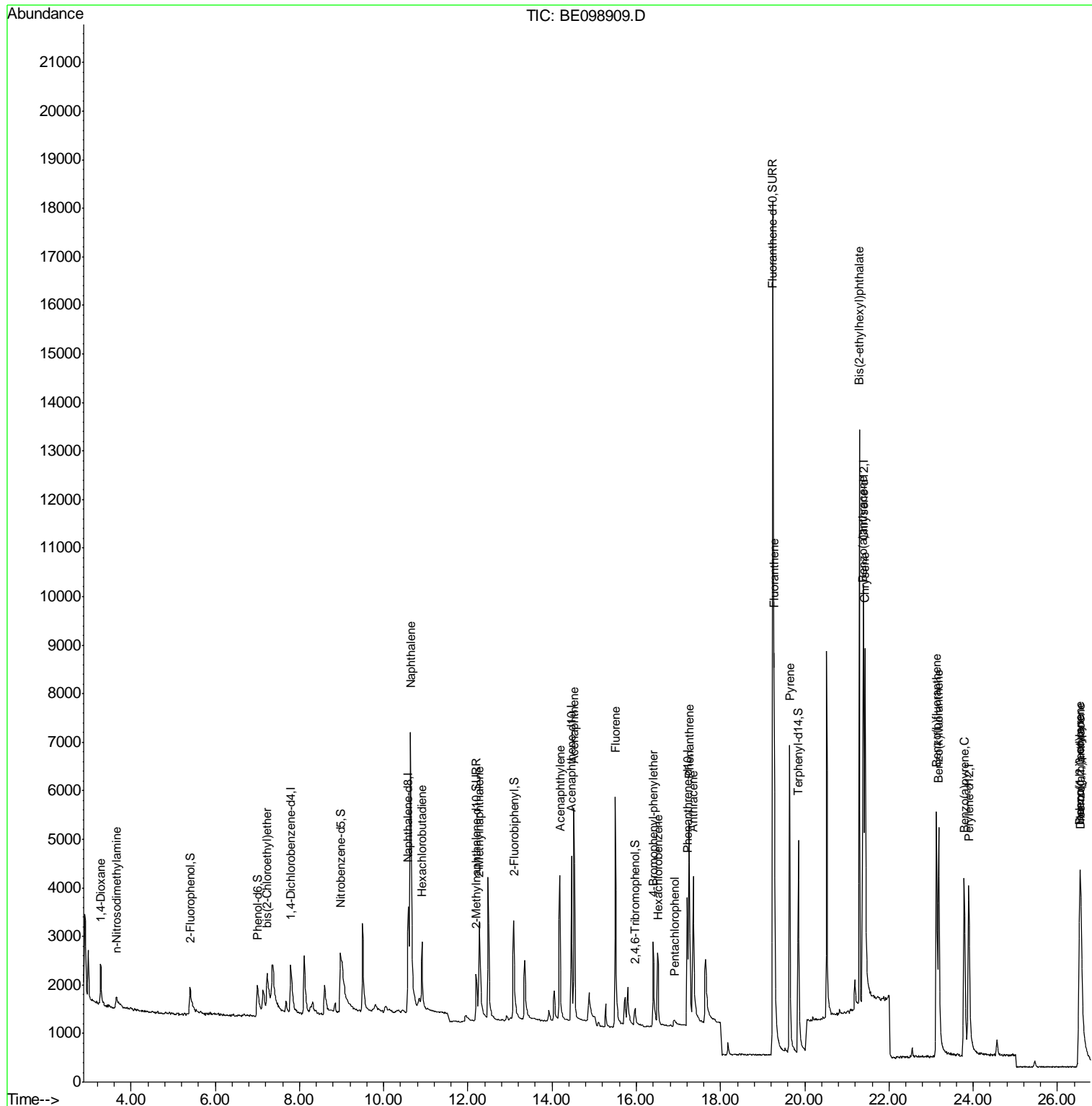
(#) = qualifier out of range (m) = manual integration (+) = signals summed

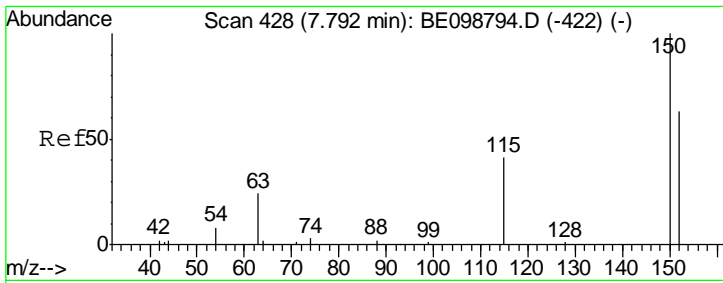
Data Path : Z:\SVOASRV\HPCHEM1\BNA E\DATA\BE031319\
 Data File : BE098909.D
 Acq On : 13 Mar 2019 13:28
 Operator : JU/SJ
 Sample : SSTDCCC0.4
 Misc :
 ALS Vial : 2 Sample Multiplier: 1

Instrument :
 BNA_E
 Client Sampled :
 SSTDCCC0.4

Manual Integrations
 APPROVED
 Sohil
 3/14/2019 11:09:11 AM

Quant Time: Mar 14 08:56:40 2019
 Quant Method : Z:\SVOASRV\HPCHEM1\BNA E\METHODS\8270-SIM-BE030619.M
 Quant Title : ASP BNA STANDARDS FOR 5 POINT CALIBRATION
 QLast Update : Wed Mar 06 15:33:24 2019
 Response via : Initial Calibration





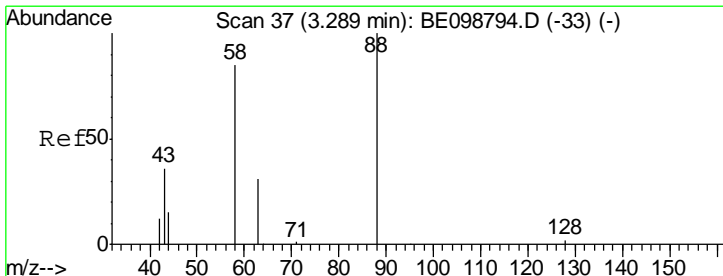
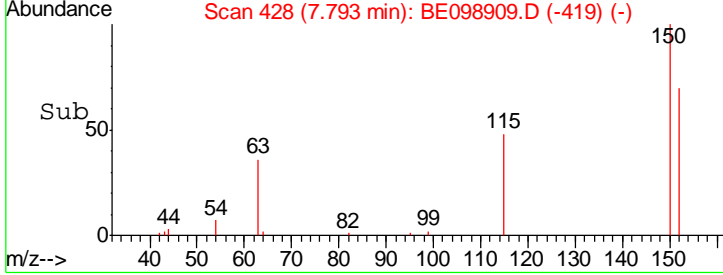
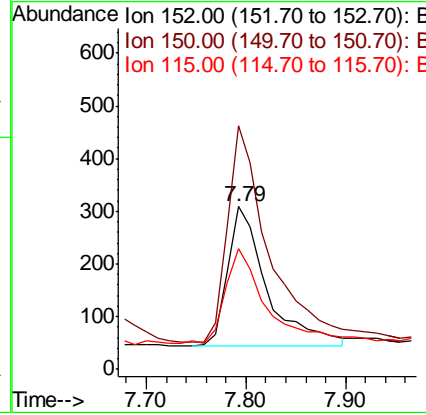
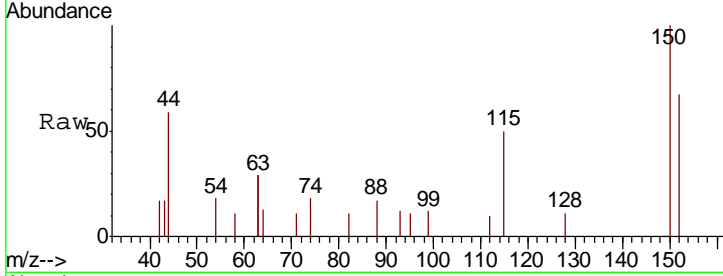
#1
 1,4-Dichlorobenzene-d4
 Concen: 0.400 ng
 RT: 7.79 min Scan# 428
 Delta R.T. 0.00 min
 Lab File: BE098909.D
 Acq: 13 Mar 2019 13:28

Instrument :
 BNA_E
ClientSampled :
 SSTDCCC0.4

Tgt Ion	Resp	Lower	Upper
152	100		
150	149.5	122.5	183.7
115	74.4	57.4	86.2

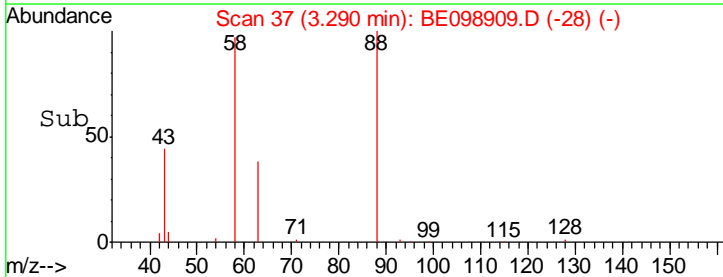
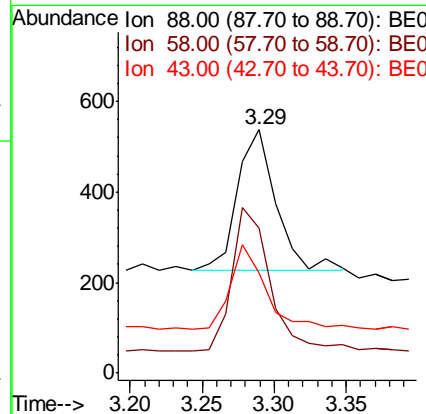
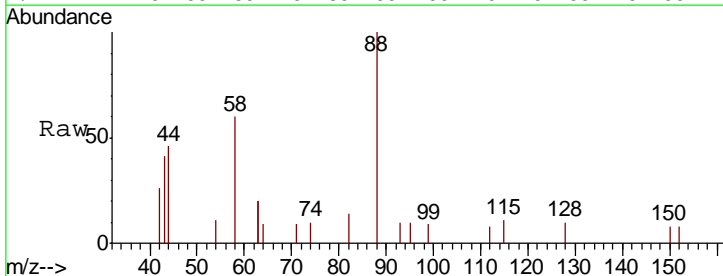
Manual Integrations
APPROVED

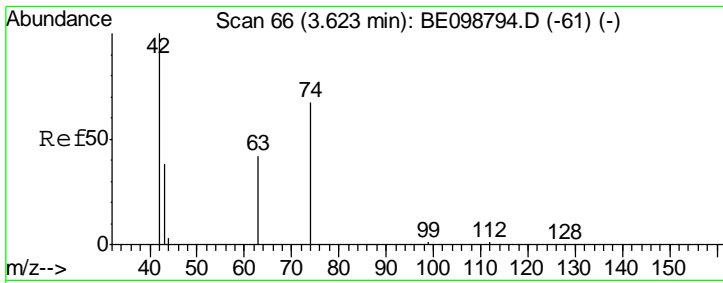
Sohil
 3/14/2019 11:09:11 AM



#2
 1,4-Dioxane
 Concen: 0.414 ng
 RT: 3.29 min Scan# 37
 Delta R.T. 0.00 min
 Lab File: BE098909.D
 Acq: 13 Mar 2019 13:28

Tgt Ion	Resp	Lower	Upper
88	100		
58	99.5	75.8	113.6
43	53.7	41.8	62.8





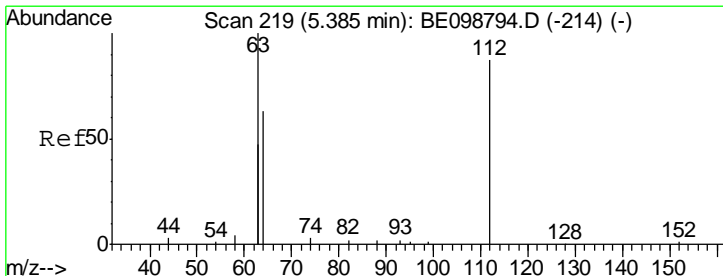
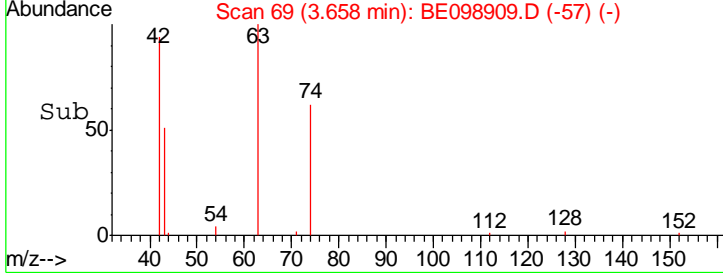
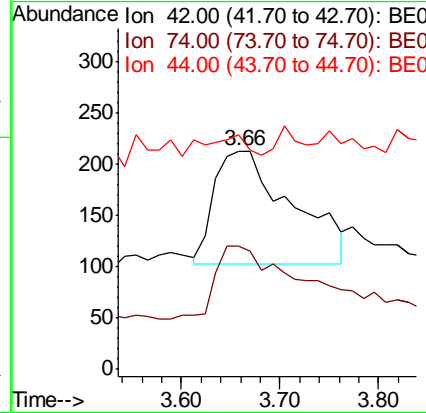
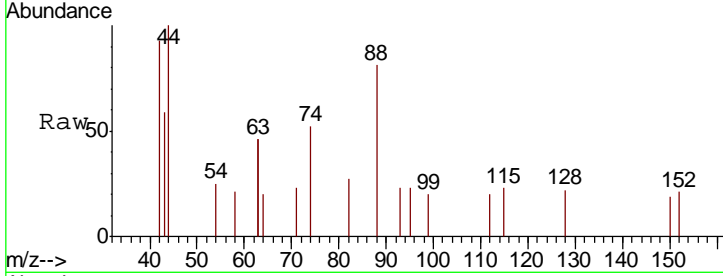
#3
 n-Nitrosodimethylamine
 Concen: 0.327 ng m
 RT: 3.66 min Scan# 69
 Delta R.T. 0.04 min
 Lab File: BE098909.D
 Acq: 13 Mar 2019 13:28

Instrument :
 BNA_E
ClientSampled :
 SSTDCCC0.4

Tgt Ion	Ratio	Lower	Upper
42	100		
74	36.0	57.0	85.4#
44	12.3	0.0	0.0#

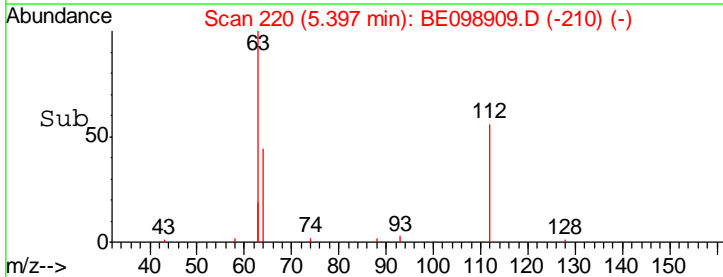
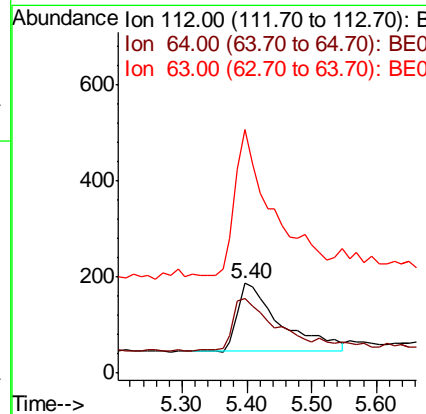
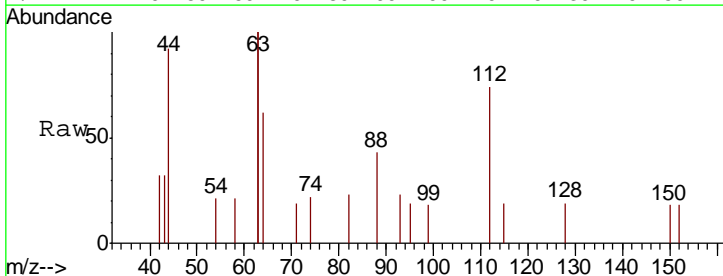
Manual Integrations
APPROVED

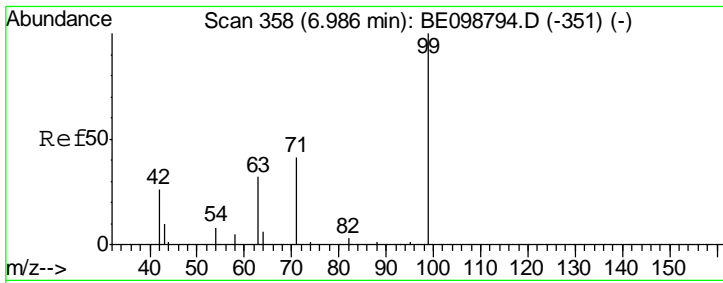
Sohil
 3/14/2019 11:09:11 AM



#4
 2-Fluorophenol
 Concen: 0.297 ng
 RT: 5.40 min Scan# 220
 Delta R.T. 0.01 min
 Lab File: BE098909.D
 Acq: 13 Mar 2019 13:28

Tgt Ion	Ratio	Lower	Upper
112	100		
64	75.6	57.9	86.9
63	191.7	158.3	237.5





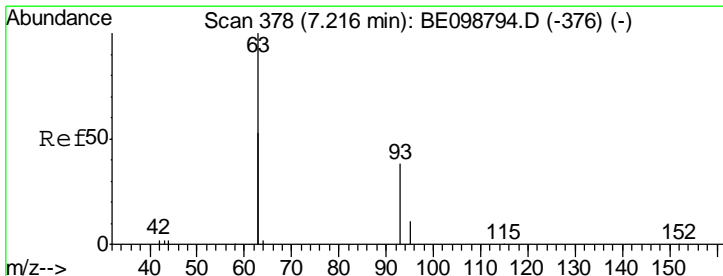
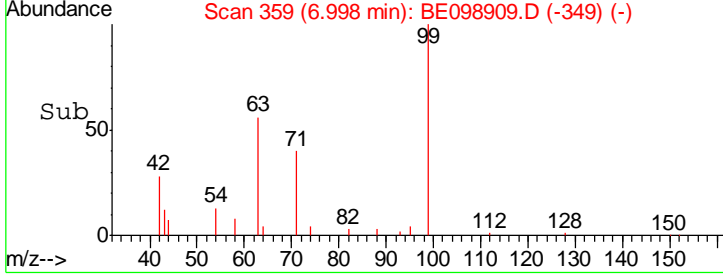
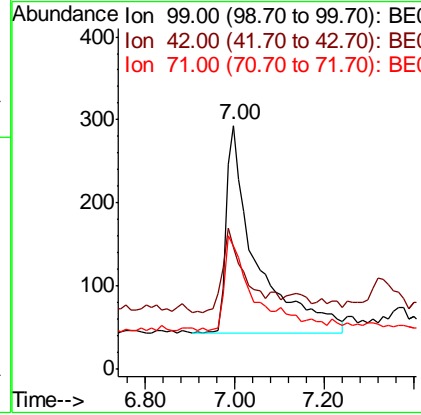
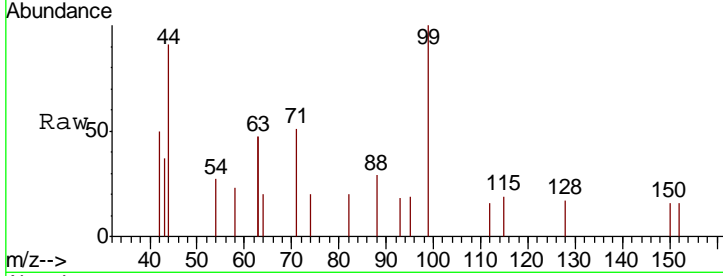
#5
 Phenol-d6
 Concen: 0.370 ng
 RT: 7.00 min Scan# 359
 Delta R.T. 0.01 min
 Lab File: BE098909.D
 Acq: 13 Mar 2019 13:28

Instrument :
 BNA_E
ClientSampled :
 SSTDCCC0.4

Tgt Ion	Resp	Lower	Upper
99	1142		
99	100		
42	28.9	24.2	36.2
71	45.1	35.7	53.5

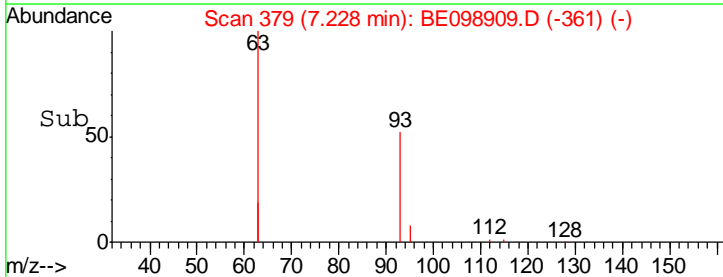
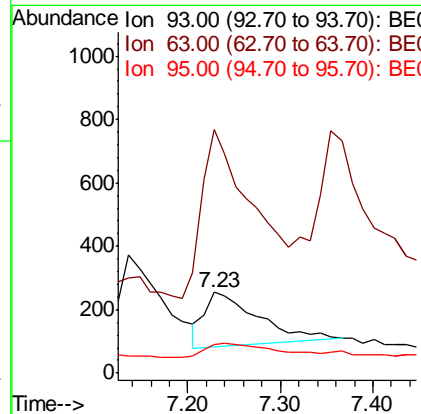
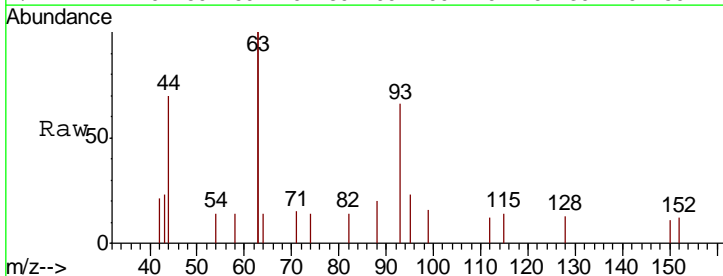
Manual Integrations
APPROVED

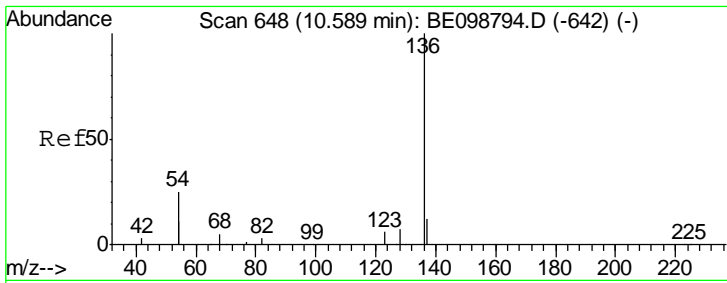
Sohil
 3/14/2019 11:09:11 AM



#6
 bis(2-Chloroethyl)ether
 Concen: 0.290 ng
 RT: 7.23 min Scan# 379
 Delta R.T. 0.01 min
 Lab File: BE098909.D
 Acq: 13 Mar 2019 13:28

Tgt Ion	Resp	Lower	Upper
93	691		
93	100		
63	293.3	247.5	371.3
95	32.6	21.8	32.8





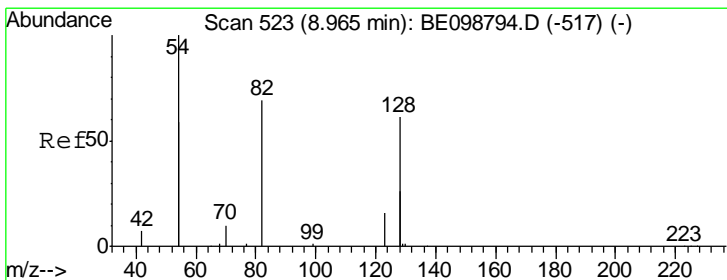
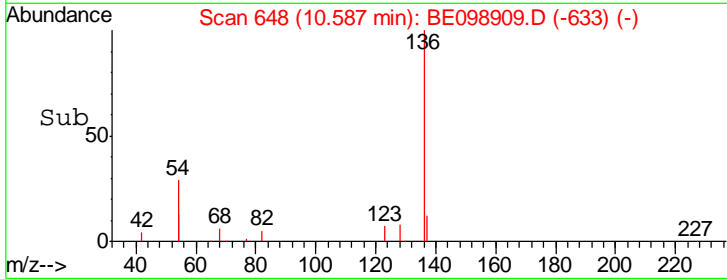
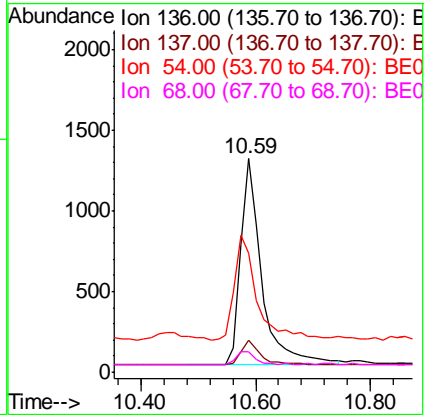
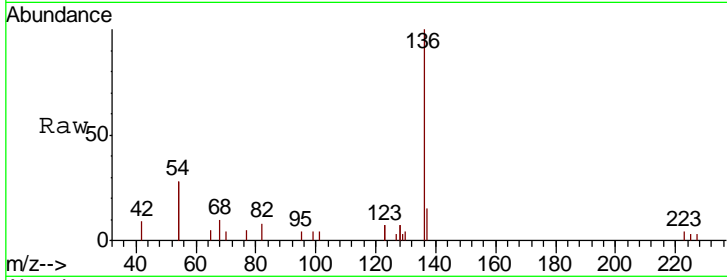
#7
 Naphthalene-d8
 Concen: 0.400 ng
 RT: 10.59 min Scan# 648
 Delta R.T. -0.00 min
 Lab File: BE098909.D
 Acq: 13 Mar 2019 13:28

Instrument :
 BNA_E
ClientSampled :
 SSTDCCC0.4

Tgt Ion	Resp	Lower	Upper
136	100		
137	15.0	11.4	17.0
54	55.9	39.3	58.9
68	9.7	6.7	10.1

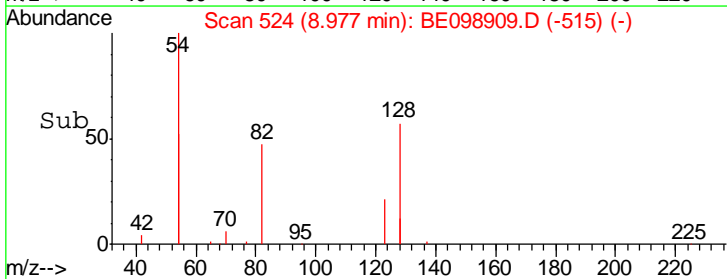
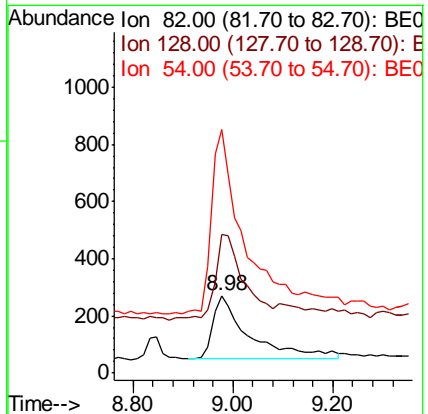
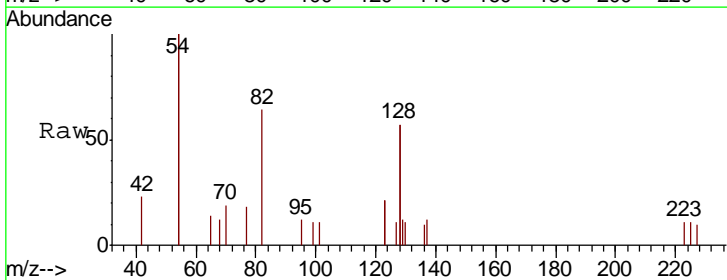
Manual Integrations
APPROVED

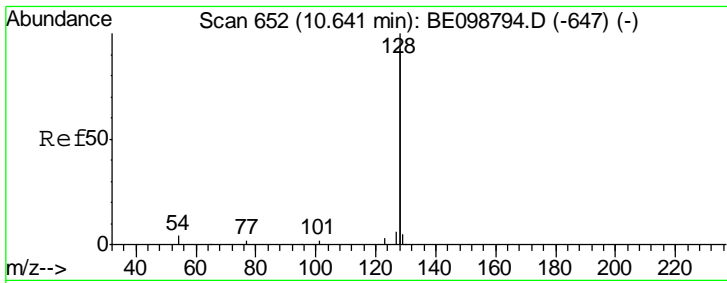
Sohil
 3/14/2019 11:09:11 AM



#8
 Nitrobenzene-d5
 Concen: 0.327 ng
 RT: 8.98 min Scan# 524
 Delta R.T. 0.01 min
 Lab File: BE098909.D
 Acq: 13 Mar 2019 13:28

Tgt Ion	Resp	Lower	Upper
82	100		
128	179.3	123.8	185.8
54	314.4	203.4	305.2#





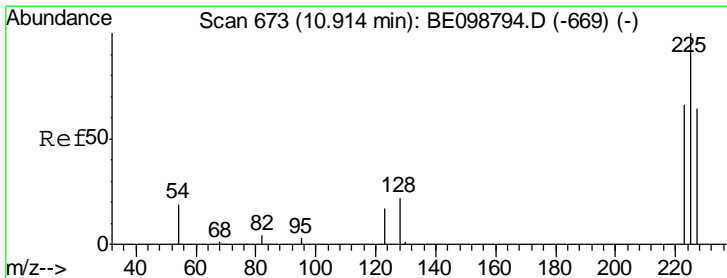
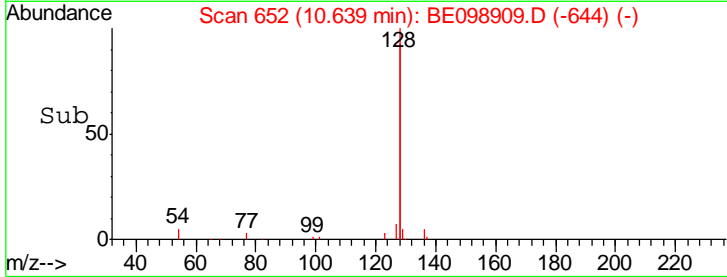
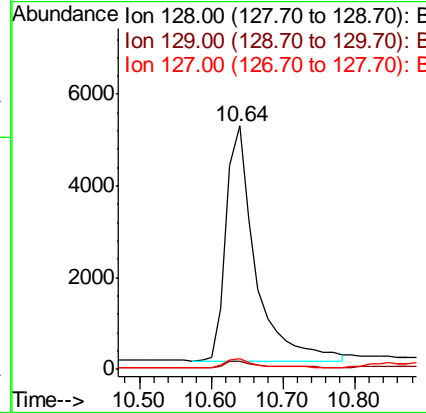
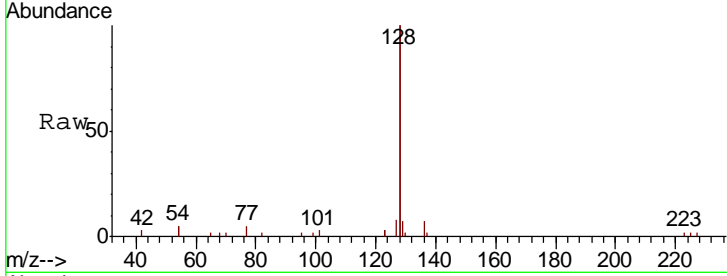
#9
 Naphthalene
 Concen: 0.388 ng
 RT: 10.64 min Scan# 652
 Delta R.T. -0.00 min
 Lab File: BE098909.D
 Acq: 13 Mar 2019 13:28

Instrument :
 BNA_E
 ClientSampled :
 SSTDCCC0.4

Tgt Ion	Resp	Lower	Upper
128	14415		
129	3.6	2.6	4.0
127	4.2	3.1	4.7

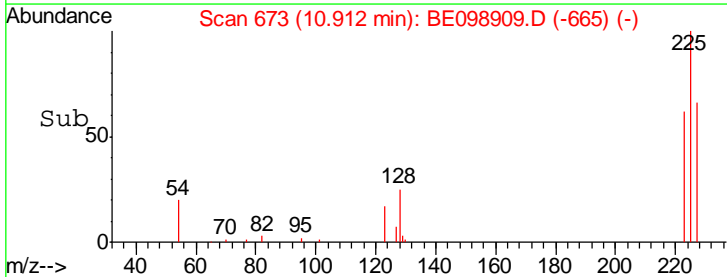
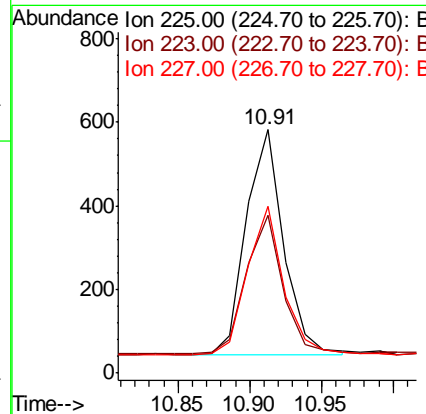
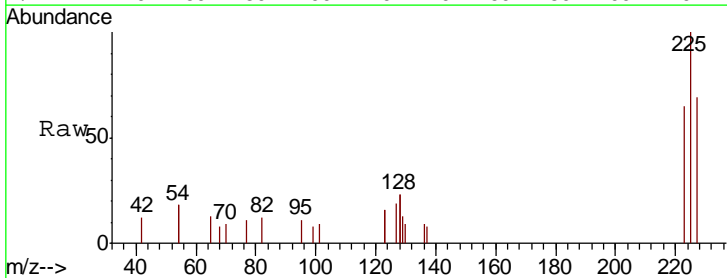
Manual Integrations
 APPROVED

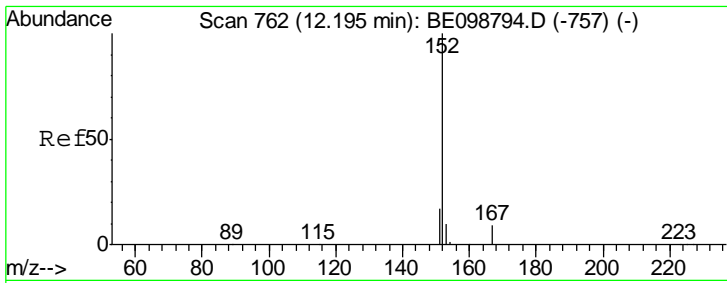
Sohil
 3/14/2019 11:09:11 AM



#10
 Hexachlorobutadiene
 Concen: 0.396 ng
 RT: 10.91 min Scan# 673
 Delta R.T. -0.00 min
 Lab File: BE098909.D
 Acq: 13 Mar 2019 13:28

Tgt Ion	Resp	Lower	Upper
225	974		
223	60.3	51.1	76.7
227	63.8	51.6	77.4





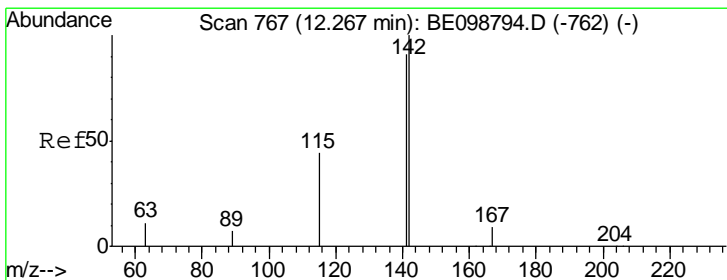
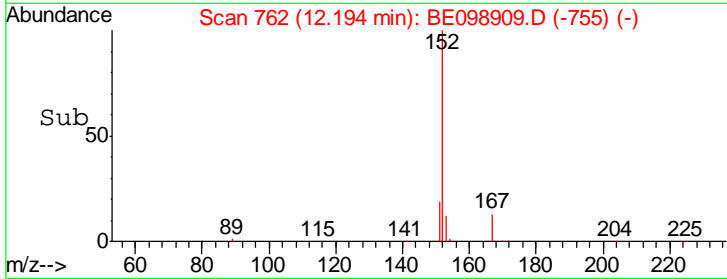
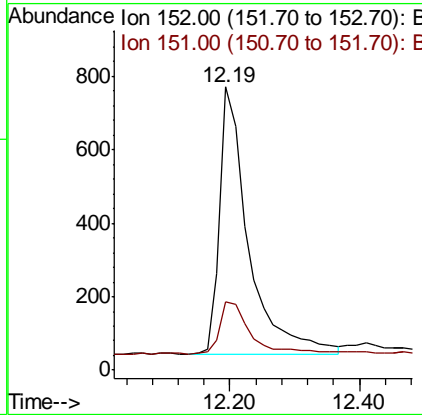
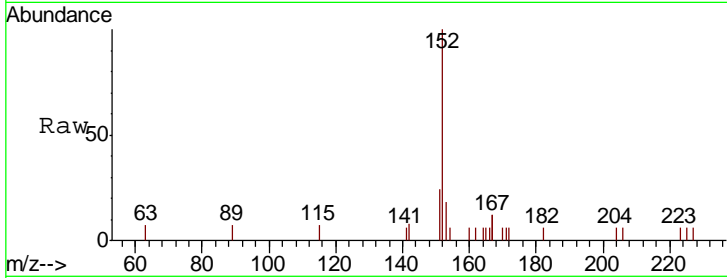
#11
 2-Methylnaphthalene-d10
 Concen: 0.375 ng
 RT: 12.19 min Scan# 762
 Delta R.T. -0.00 min
 Lab File: BE098909.D
 Acq: 13 Mar 2019 13:28

Instrument :
 BNA_E
ClientSampled :
 SSTDCCC0.4

Tgt Ion	Resp	Lower	Upper
152	100		
151	20.2	16.5	24.7

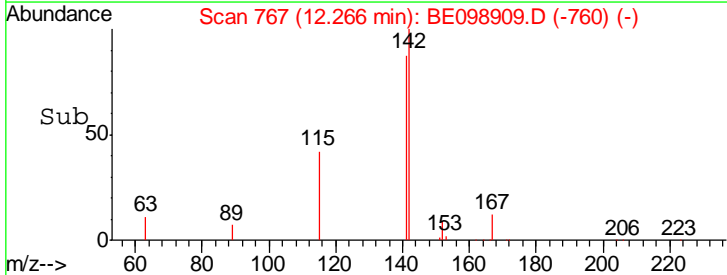
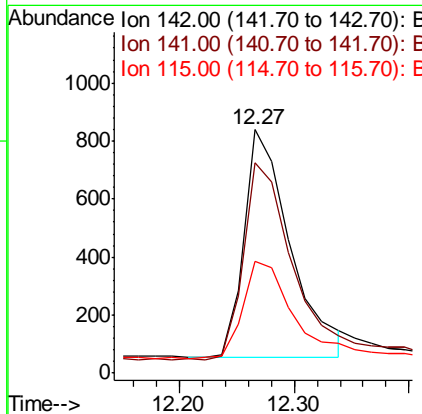
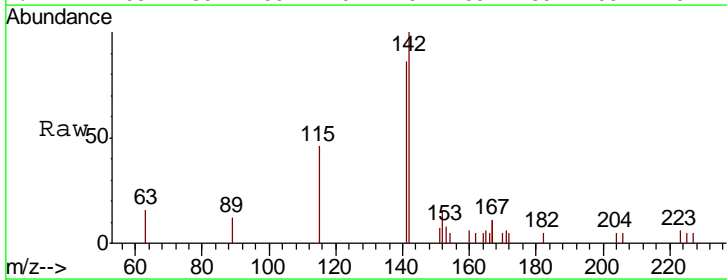
Manual Integrations
APPROVED

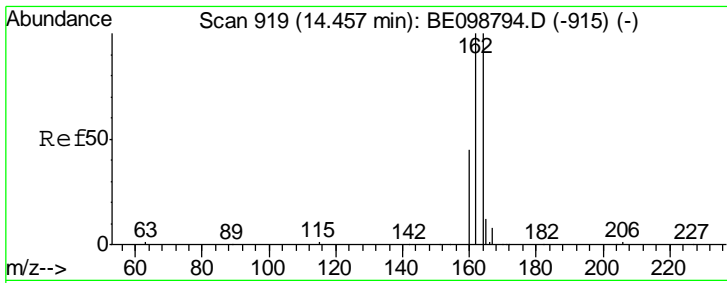
Sohil
 3/14/2019 11:09:11 AM



#12
 2-Methylnaphthalene
 Concen: 0.362 ng
 RT: 12.27 min Scan# 767
 Delta R.T. -0.00 min
 Lab File: BE098909.D
 Acq: 13 Mar 2019 13:28

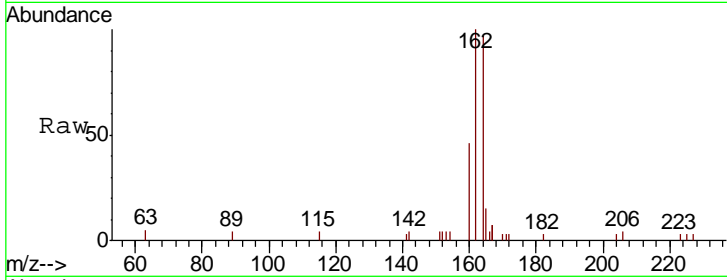
Tgt Ion	Resp	Lower	Upper
142	100		
141	86.4	72.6	108.8
115	46.0	37.4	56.2





#13
 Acenaphthene-d10
 Concen: 0.400 ng
 RT: 14.46 min Scan# 919
 Delta R.T. -0.00 min
 Lab File: BE098909.D
 Acq: 13 Mar 2019 13:28

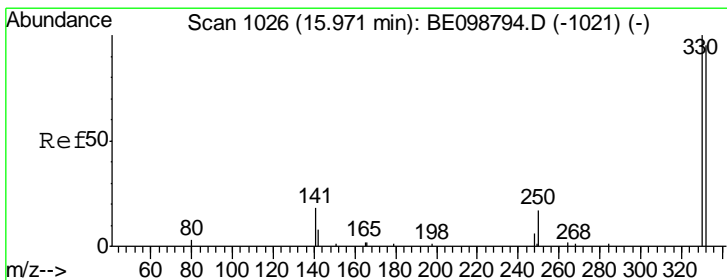
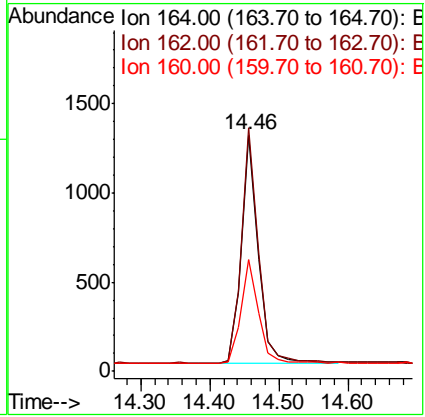
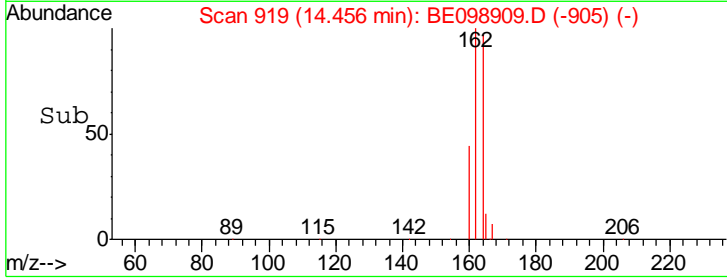
Instrument :
 BNA_E
ClientSampled :
 SSTDCCC0.4



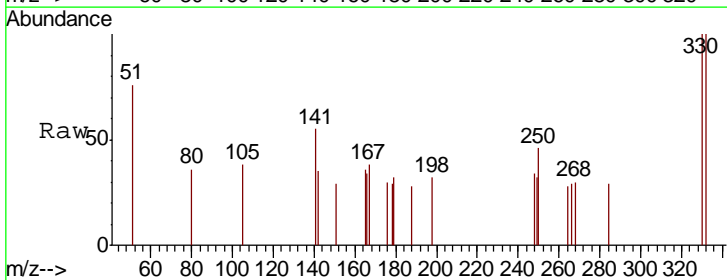
Tgt Ion: 164 Resp: 2166

Ion	Ratio	Lower	Upper
164	100		
162	103.0	80.2	120.2
160	47.2	37.8	56.8

Manual Integrations
APPROVED
 Sohil
 3/14/2019 11:09:11 AM

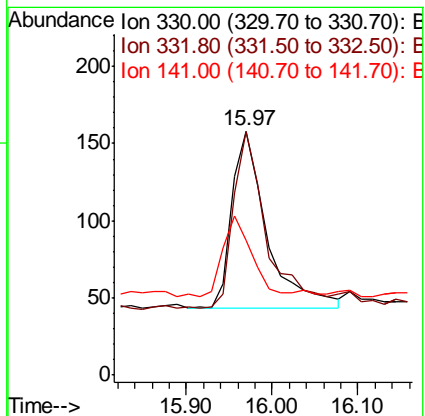
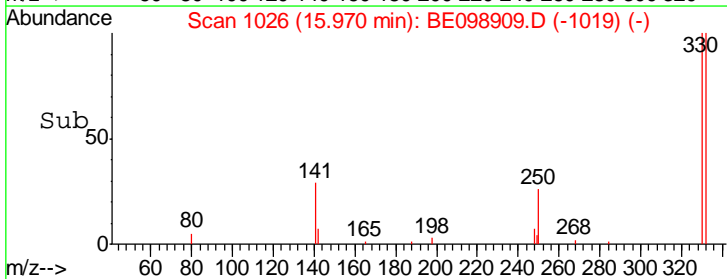


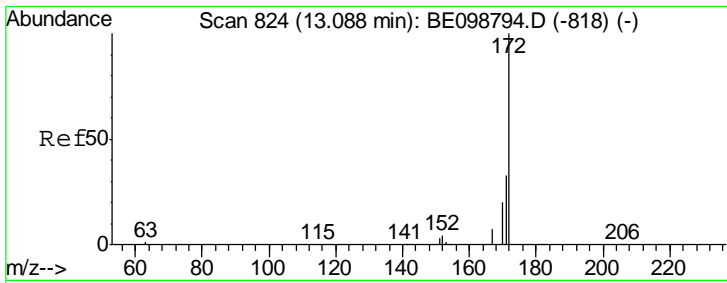
#14
 2,4,6-Tribromophenol
 Concen: 0.301 ng
 RT: 15.97 min Scan# 1026
 Delta R.T. -0.00 min
 Lab File: BE098909.D
 Acq: 13 Mar 2019 13:28



Tgt Ion: 330 Resp: 329

Ion	Ratio	Lower	Upper
330	100		
332	102.7	77.6	116.4
141	37.7	31.0	46.4





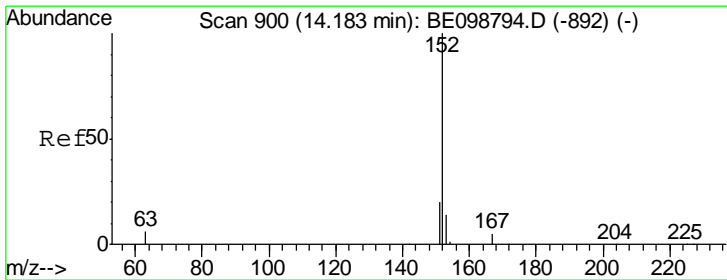
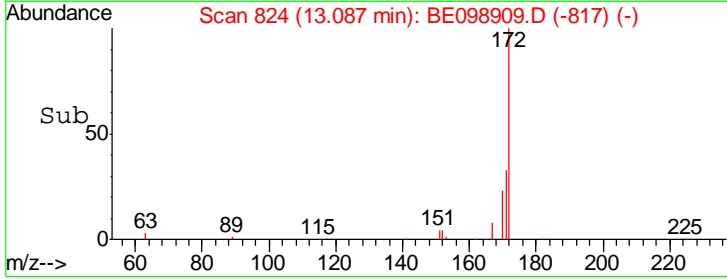
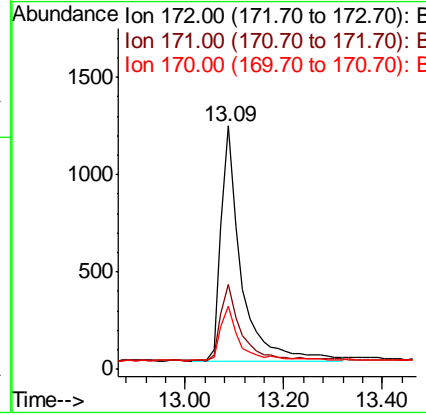
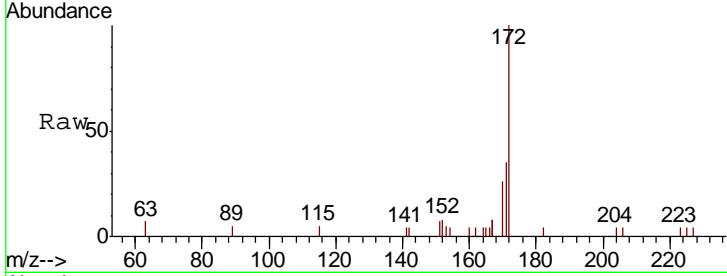
#15
 2-Fluorobiphenyl
 Concen: 0.375 ng
 RT: 13.09 min Scan# 824
 Delta R.T. -0.00 min
 Lab File: BE098909.D
 Acq: 13 Mar 2019 13:28

Instrument :
 BNA_E
 ClientSampled :
 SSTDCCC0.4

Tgt Ion	Resp	Lower	Upper
172	3361		
171	100	28.0	42.0
170	26.1	17.7	26.5

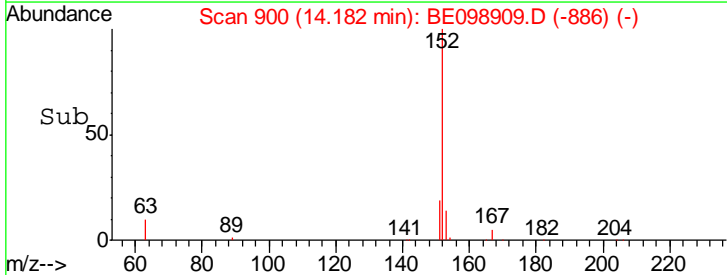
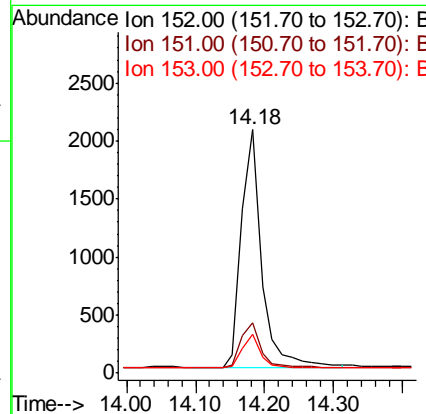
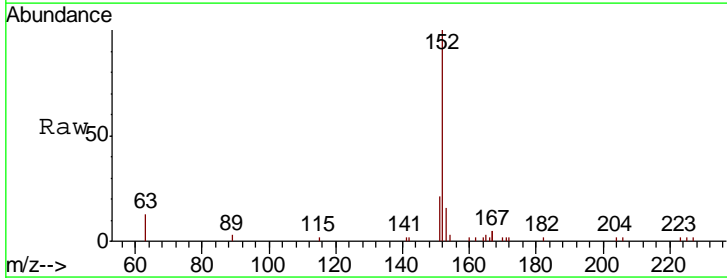
Manual Integrations
 APPROVED

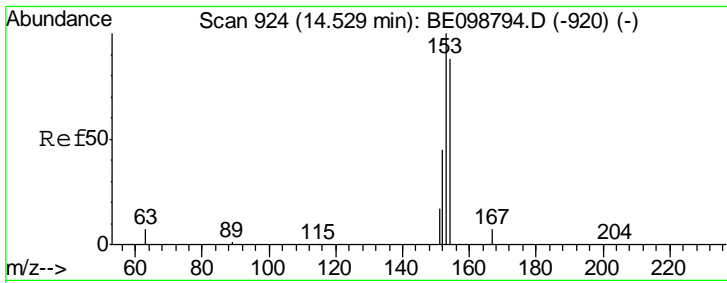
Sohil
 3/14/2019 11:09:11 AM



#16
 Acenaphthylene
 Concen: 0.375 ng
 RT: 14.18 min Scan# 900
 Delta R.T. -0.00 min
 Lab File: BE098909.D
 Acq: 13 Mar 2019 13:28

Tgt Ion	Resp	Lower	Upper
152	4176		
151	100	17.0	25.6
153	13.2	11.2	16.8





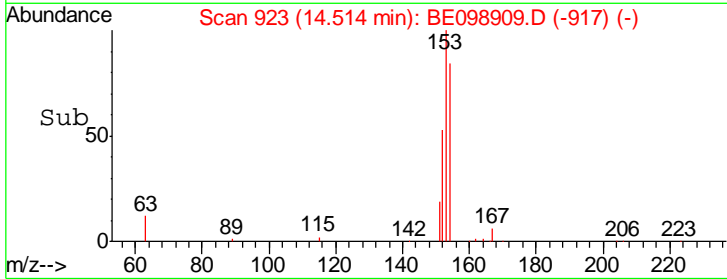
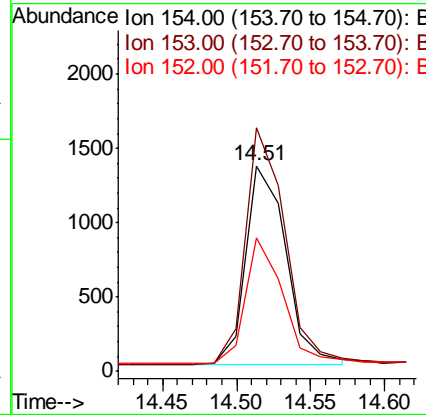
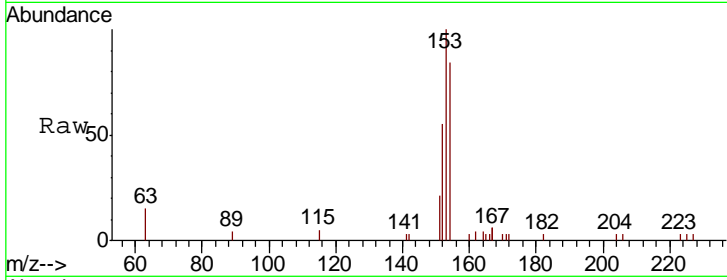
#17
 Acenaphthene
 Concen: 0.380 ng
 RT: 14.51 min Scan# 923
 Delta R.T. -0.02 min
 Lab File: BE098909.D
 Acq: 13 Mar 2019 13:28

Instrument :
 BNA_E
 ClientSampled :
 SSTDCCC0.4

Tgt Ion	Resp	Lower	Upper
154	100		
153	117.2	94.2	141.4
152	59.7	45.0	67.4

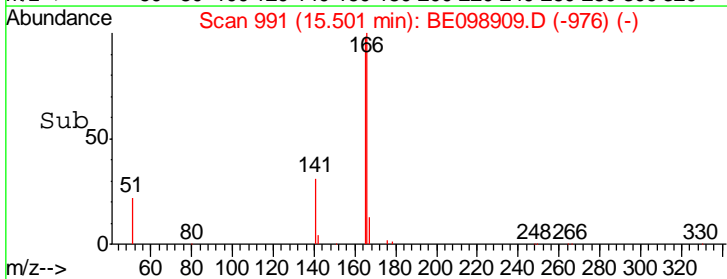
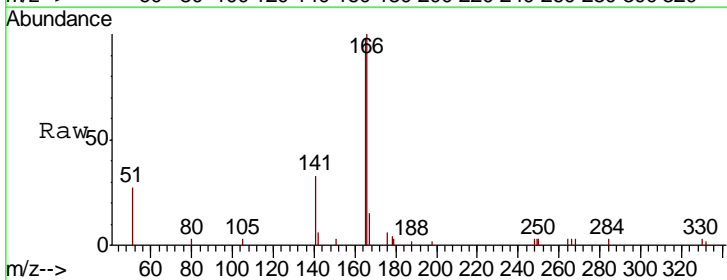
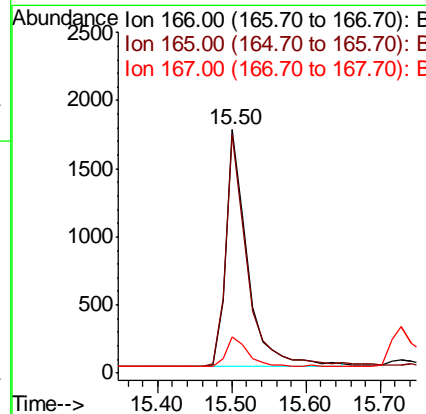
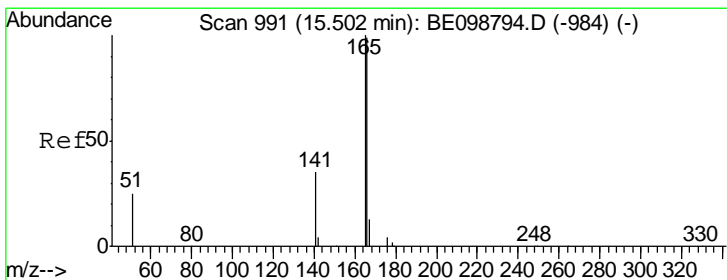
Manual Integrations
 APPROVED

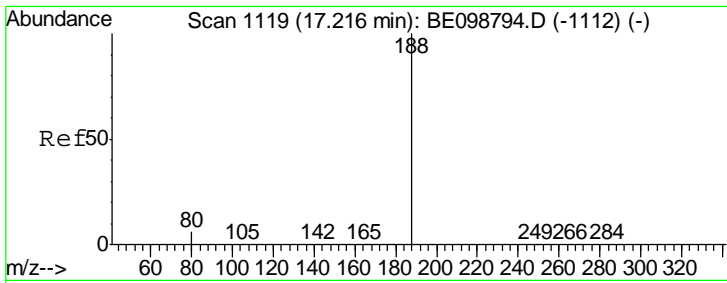
Sohil
 3/14/2019 11:09:11 AM



#18
 Fluorene
 Concen: 0.368 ng
 RT: 15.50 min Scan# 991
 Delta R.T. -0.00 min
 Lab File: BE098909.D
 Acq: 13 Mar 2019 13:28

Tgt Ion	Resp	Lower	Upper
166	100		
165	96.9	79.3	118.9
167	13.9	10.5	15.7





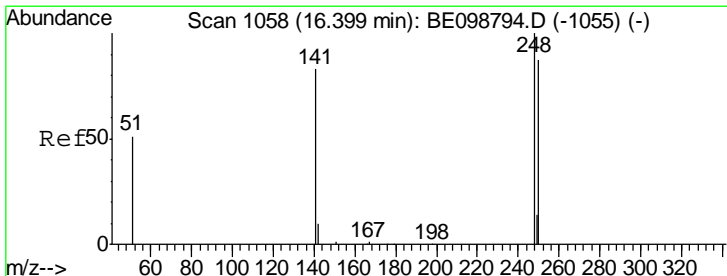
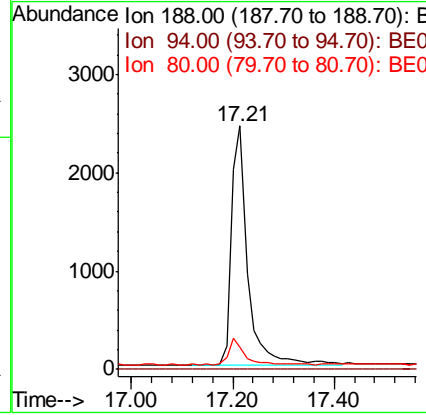
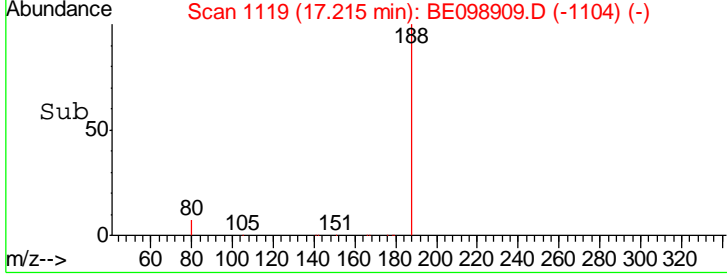
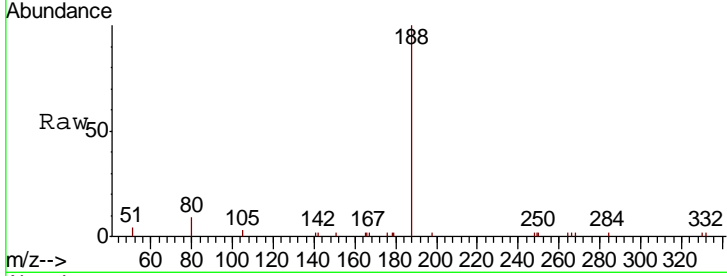
#19
 Phenanthrene-d10
 Concen: 0.400 ng
 RT: 17.21 min Scan# 1119
 Delta R.T. -0.00 min
 Lab File: BE098909.D
 Acq: 13 Mar 2019 13:28

Instrument :
 BNA_E
 ClientSampled :
 SSTDCCC0.4

Tgt Ion	Ratio	Lower	Upper
188	100		
94	0.0	0.0	0.0
80	9.0	6.3	9.5

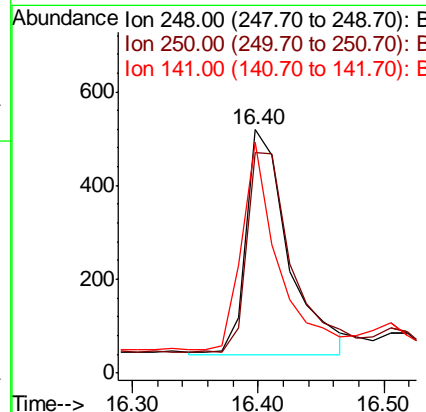
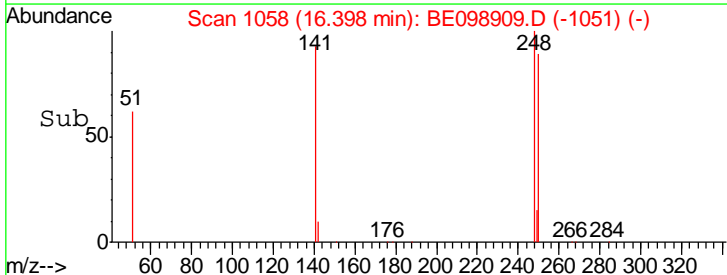
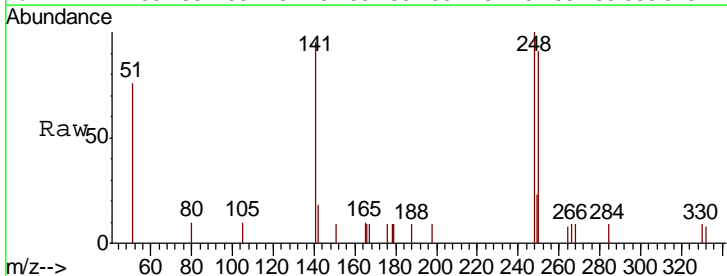
Manual Integrations
 APPROVED

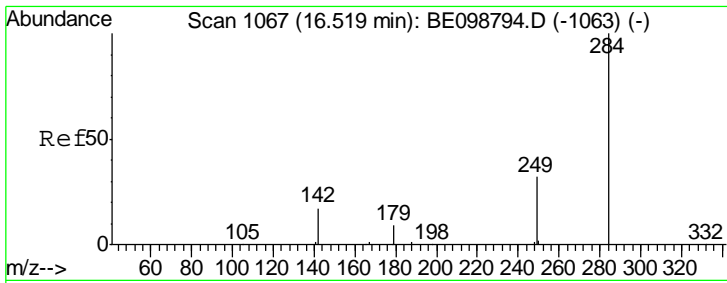
Sohil
 3/14/2019 11:09:11 AM



#20
 4-Bromophenyl-phenylether
 Concen: 0.383 ng m
 RT: 16.40 min Scan# 1058
 Delta R.T. -0.00 min
 Lab File: BE098909.D
 Acq: 13 Mar 2019 13:28

Tgt Ion	Ratio	Lower	Upper
248	100		
250	90.6	70.6	105.8
141	95.0	68.6	102.8





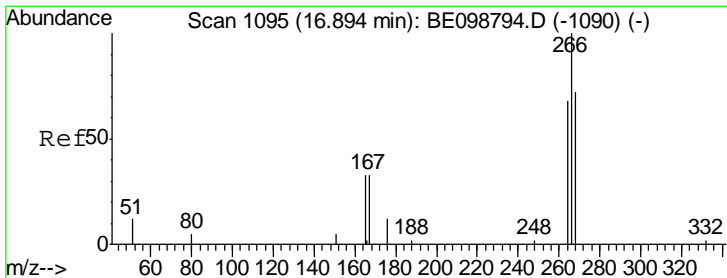
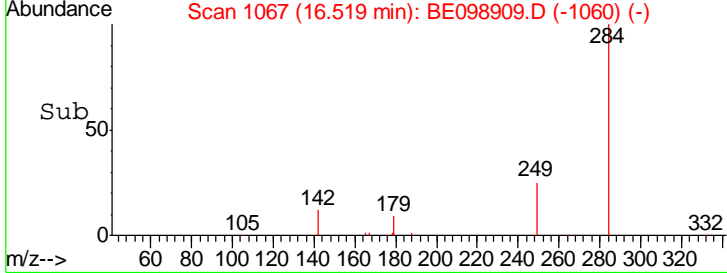
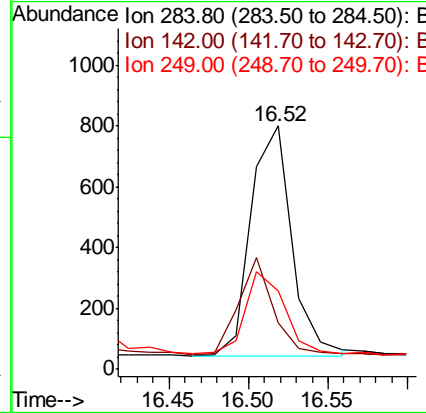
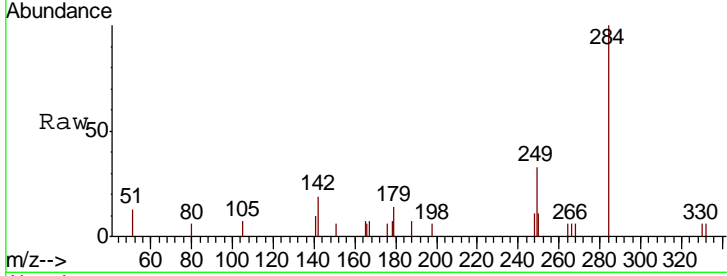
#21
 Hexachlorobenzene
 Concen: 0.390 ng
 RT: 16.52 min Scan# 1067
 Delta R.T. -0.00 min
 Lab File: BE098909.D
 Acq: 13 Mar 2019 13:28

Instrument : BNA_E
 ClientSampled : SSTDCCC0.4

Tgt Ion	Resp	Lower	Upper
284	1362		
142	36.3	28.7	43.1
249	33.6	29.6	44.4

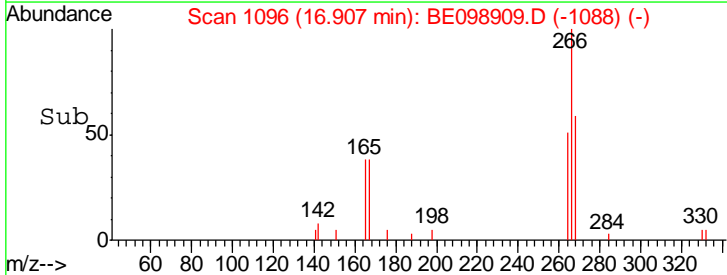
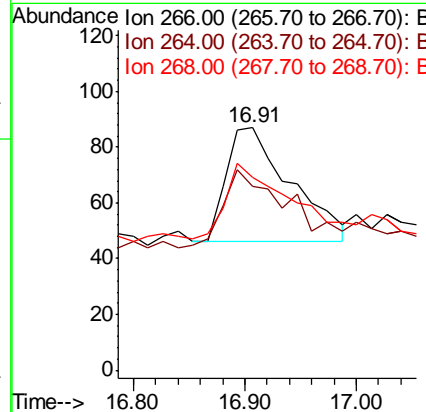
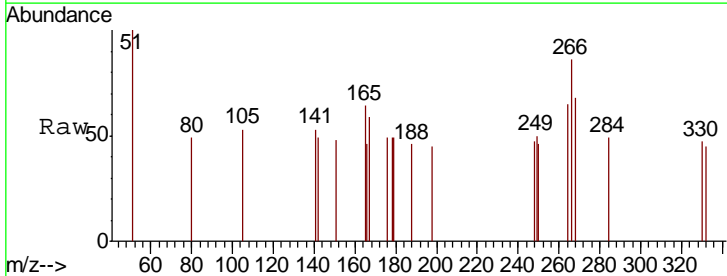
Manual Integrations
 APPROVED

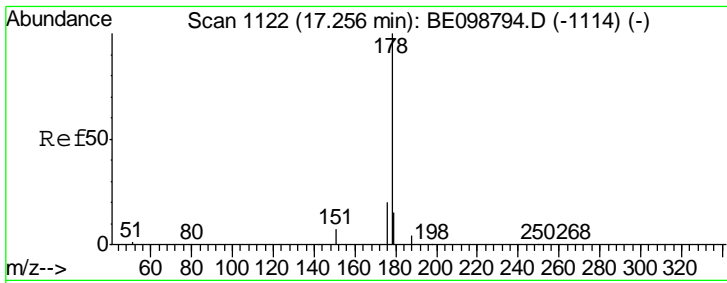
Sohil
 3/14/2019 11:09:11 AM



#22
 Pentachlorophenol
 Concen: 0.403 ng
 RT: 16.91 min Scan# 1096
 Delta R.T. 0.01 min
 Lab File: BE098909.D
 Acq: 13 Mar 2019 13:28

Tgt Ion	Resp	Lower	Upper
266	165		
264	75.9	66.6	100.0
268	79.3	69.8	104.8





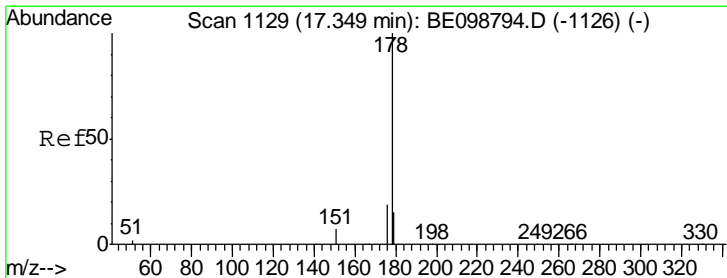
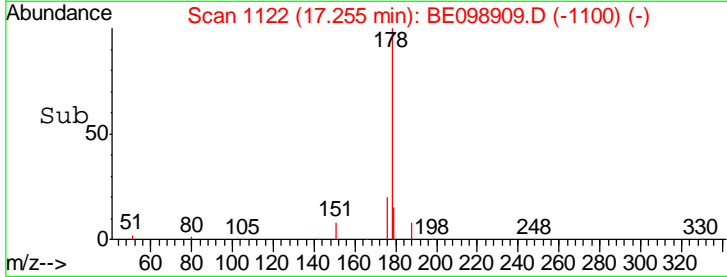
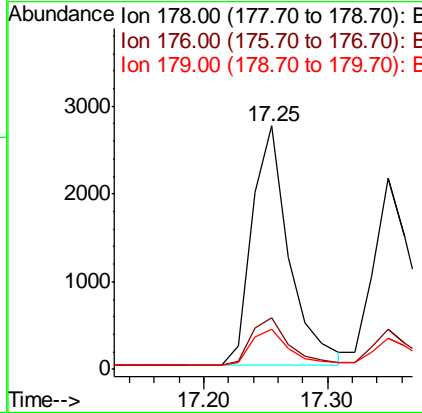
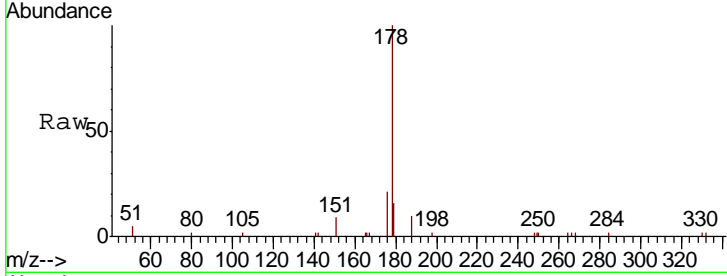
#23
 Phenanthrene
 Concen: 0.368 ng
 RT: 17.25 min Scan# 1122
 Delta R.T. -0.00 min
 Lab File: BE098909.D
 Acq: 13 Mar 2019 13:28

Instrument :
 BNA_E
 ClientSampled :
 SSTDCCC0.4

Tgt Ion	Resp	Lower	Upper
178	5661		
176	20.7	16.0	24.0
179	15.7	12.1	18.1

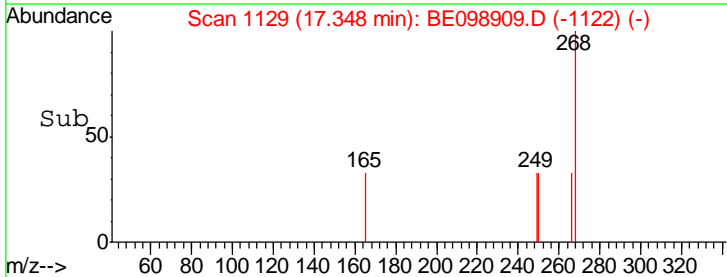
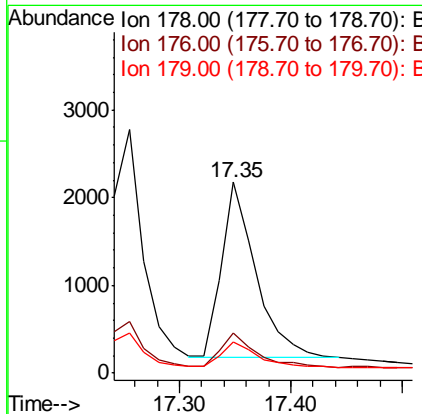
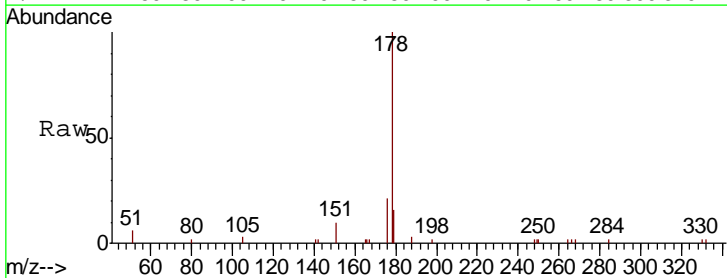
Manual Integrations
 APPROVED

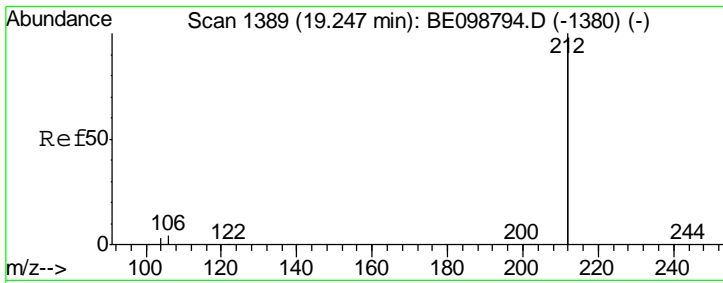
Sohil
 3/14/2019 11:09:11 AM



#24
 Anthracene
 Concen: 0.326 ng
 RT: 17.35 min Scan# 1129
 Delta R.T. -0.00 min
 Lab File: BE098909.D
 Acq: 13 Mar 2019 13:28

Tgt Ion	Resp	Lower	Upper
178	4282		
176	20.3	15.4	23.0
179	15.2	12.2	18.4



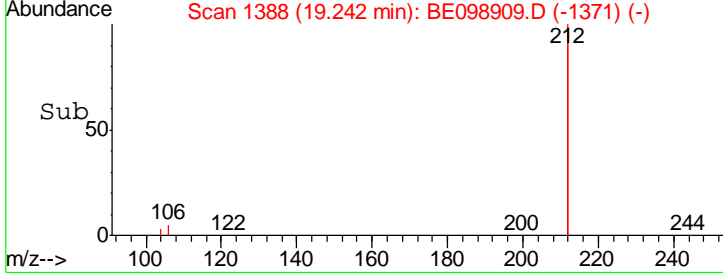
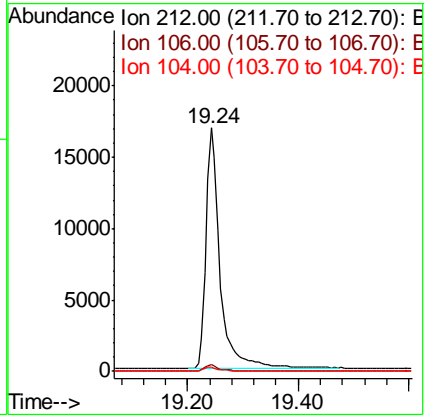
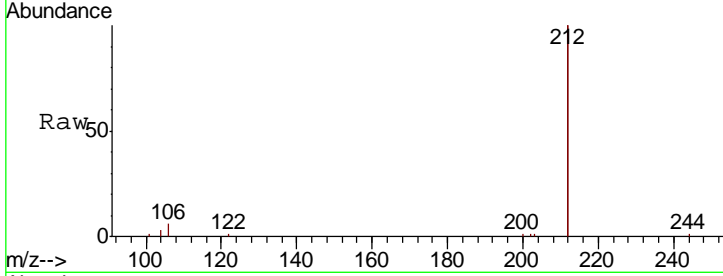


#25
 Fluoranthene-d10
 Concen: 0.350 ng
 RT: 19.24 min Scan# 1388
 Delta R.T. -0.00 min
 Lab File: BE098909.D
 Acq: 13 Mar 2019 13:28

Instrument :
 BNA_E
 ClientSampled :
 SSTDCCC0.4

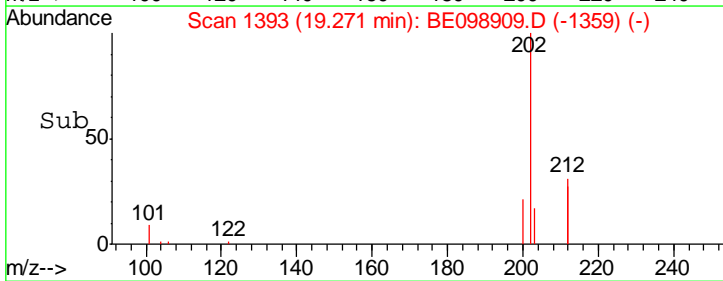
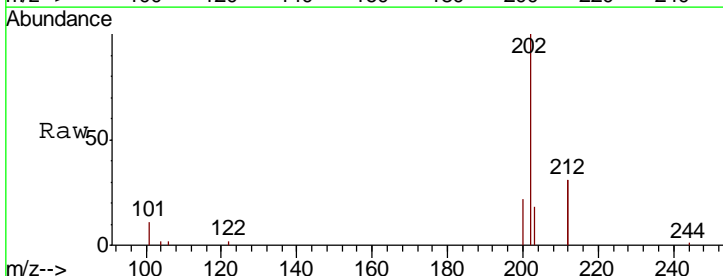
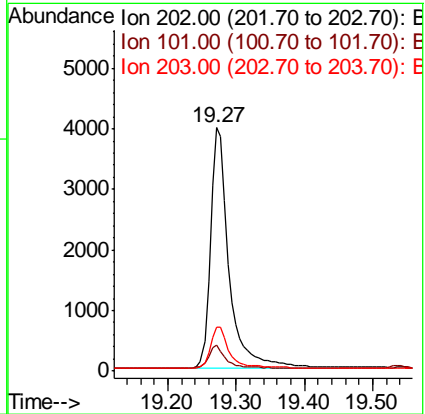
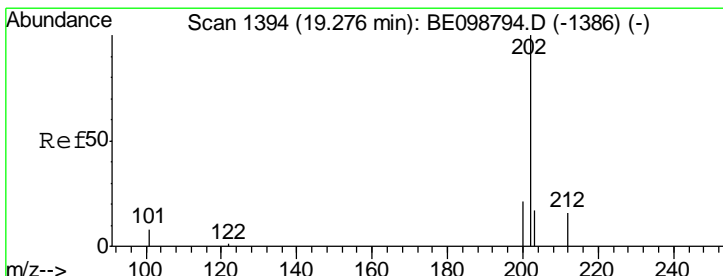
Tgt Ion	Resp	Lower	Upper
212	30217		
212	100		
106	2.2	1.8	2.8
104	1.4	1.0	1.6

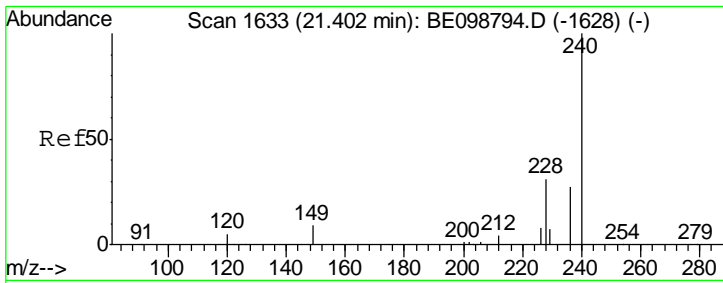
Manual Integrations
APPROVED
 Sohil
 3/14/2019 11:09:11 AM



#26
 Fluoranthene
 Concen: 0.347 ng
 RT: 19.27 min Scan# 1393
 Delta R.T. -0.00 min
 Lab File: BE098909.D
 Acq: 13 Mar 2019 13:28

Tgt Ion	Resp	Lower	Upper
202	7537		
202	100		
101	8.7	7.3	10.9
203	16.8	13.4	20.2





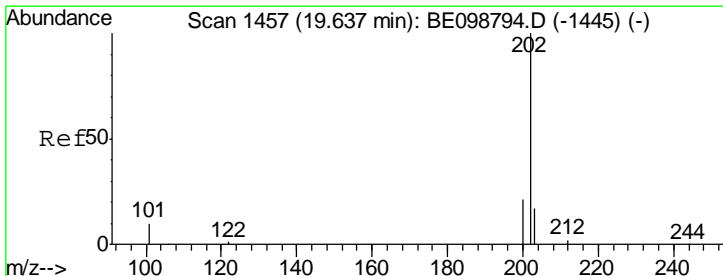
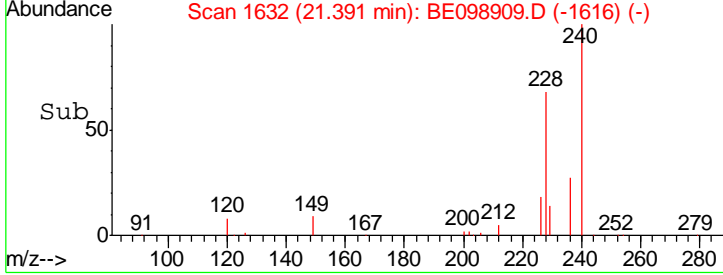
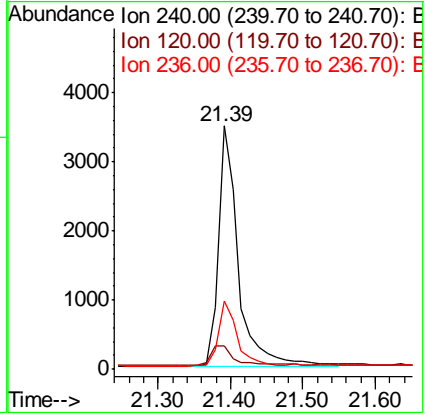
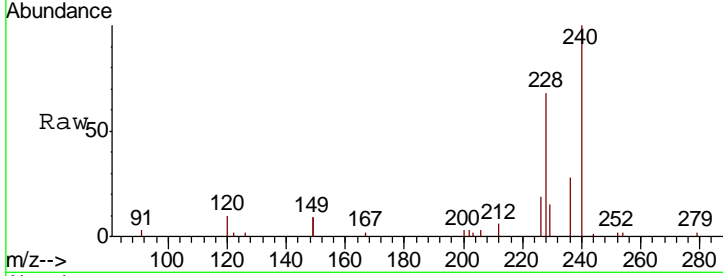
#27
 Chrysene-d12
 Concen: 0.400 ng
 RT: 21.39 min Scan# 1632
 Delta R.T. -0.01 min
 Lab File: BE098909.D
 Acq: 13 Mar 2019 13:28

Instrument :
 BNA_E
 ClientSampled :
 SSTDCCC0.4

Tgt Ion	Resp	Lower	Upper
240	6609		
240	100		
120	9.7	5.0	7.4#
236	28.1	22.7	34.1

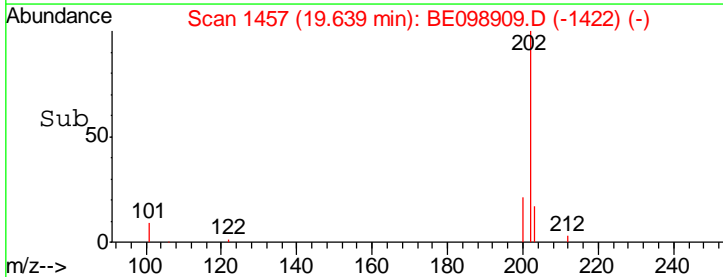
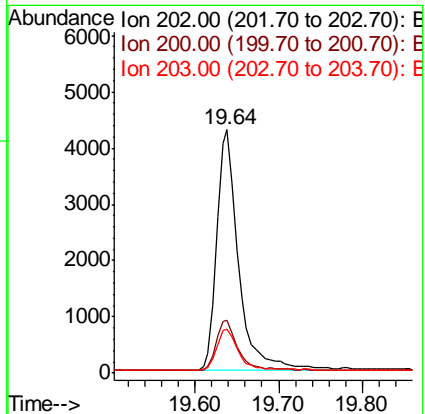
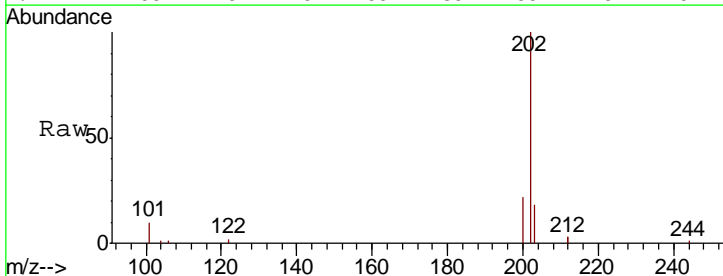
Manual Integrations
 APPROVED

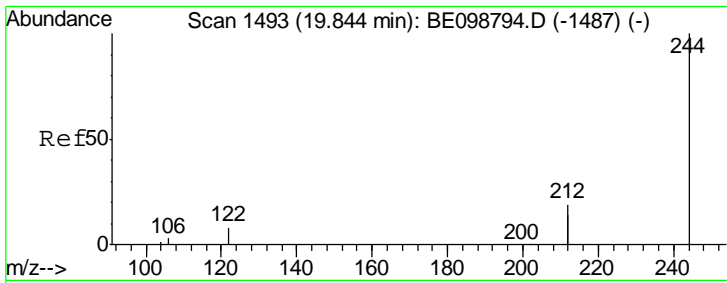
Sohil
 3/14/2019 11:09:11 AM



#28
 Pyrene
 Concen: 0.384 ng
 RT: 19.64 min Scan# 1457
 Delta R.T. 0.00 min
 Lab File: BE098909.D
 Acq: 13 Mar 2019 13:28

Tgt Ion	Resp	Lower	Upper
202	7770		
202	100		
200	21.0	17.0	25.6
203	17.7	14.2	21.2





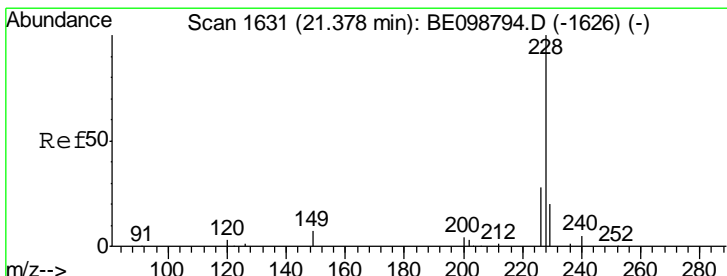
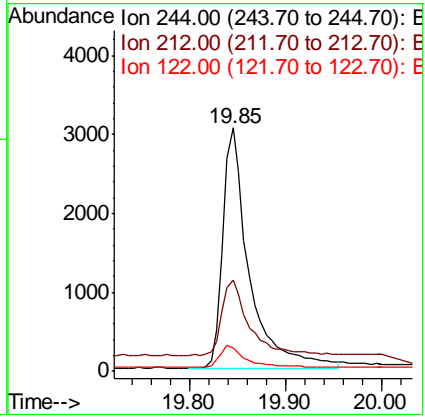
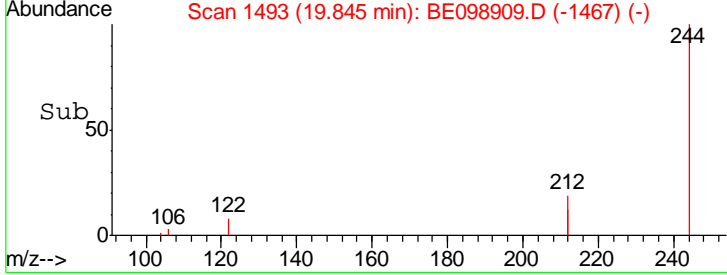
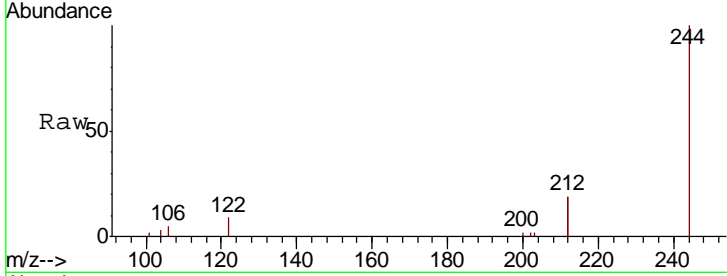
#29
 Terphenyl-d14
 Concen: 0.361 ng
 RT: 19.85 min Scan# 1493
 Delta R.T. 0.00 min
 Lab File: BE098909.D
 Acq: 13 Mar 2019 13:28

Instrument : BNA_E
 ClientSampled : SSTDCCC0.4

Tgt Ion	Ratio	Lower	Upper
244	100		
212	37.4	29.4	44.2
122	9.5	7.1	10.7

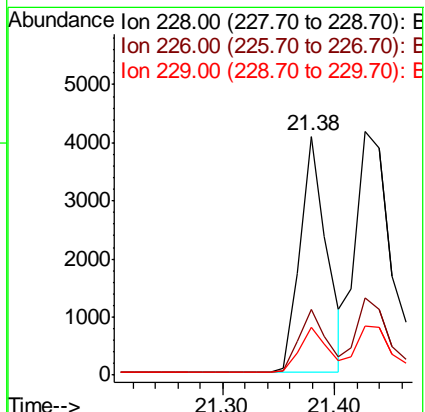
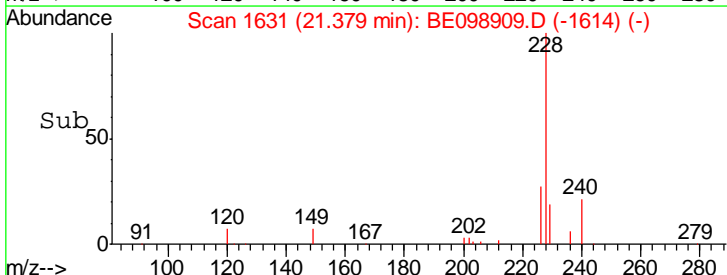
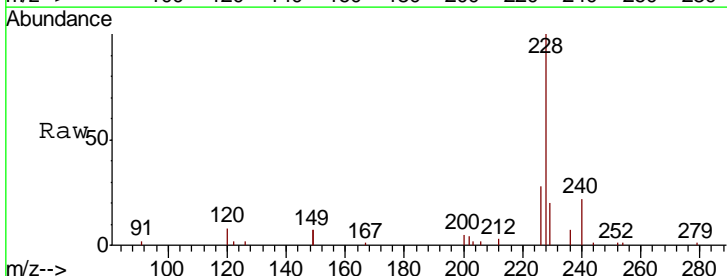
Manual Integrations
 APPROVED

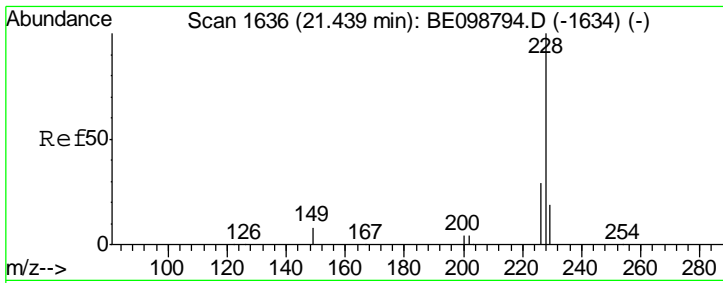
Sohil
 3/14/2019 11:09:11 AM



#30
 Benzo(a)anthracene
 Concen: 0.327 ng
 RT: 21.38 min Scan# 1631
 Delta R.T. 0.00 min
 Lab File: BE098909.D
 Acq: 13 Mar 2019 13:28

Tgt Ion	Ratio	Lower	Upper
228	100		
226	27.8	23.0	34.4
229	19.8	16.5	24.7





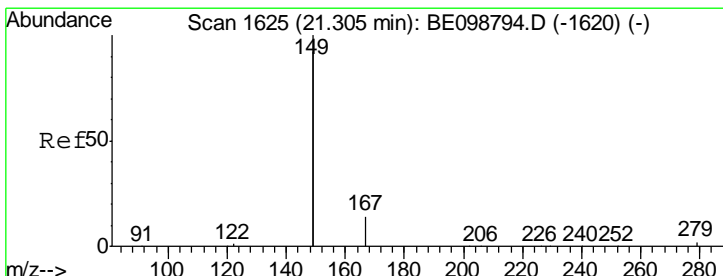
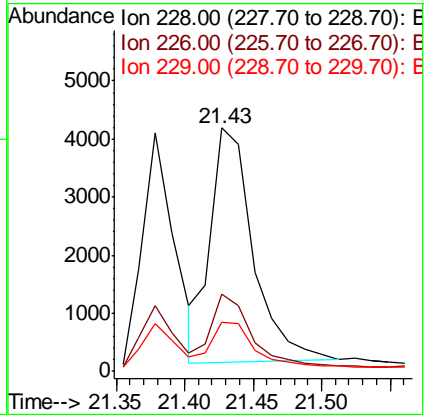
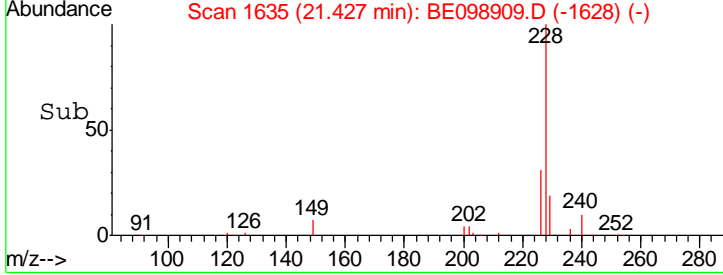
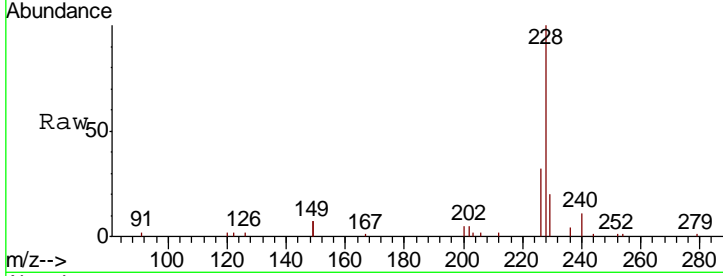
#31
 Chrysene
 Concen: 0.393 ng
 RT: 21.43 min Scan# 1635
 Delta R.T. -0.01 min
 Lab File: BE098909.D
 Acq: 13 Mar 2019 13:28

Instrument :
 BNA_E
 ClientSampled :
 SSTDCCC0.4

Tgt Ion	Resp	Lower	Upper
228	100		
226	31.9	23.7	35.5
229	20.1	16.1	24.1

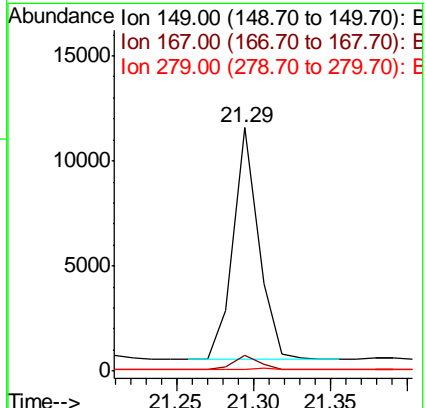
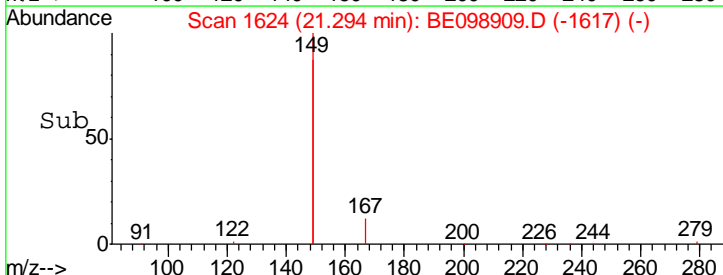
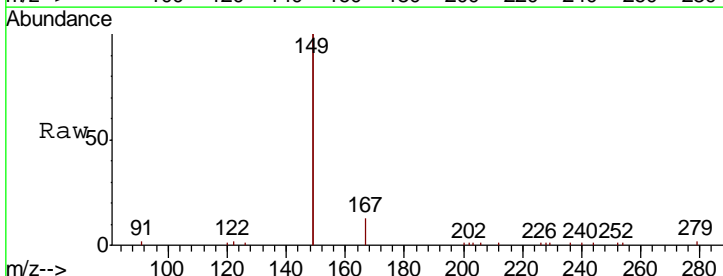
Manual Integrations
 APPROVED

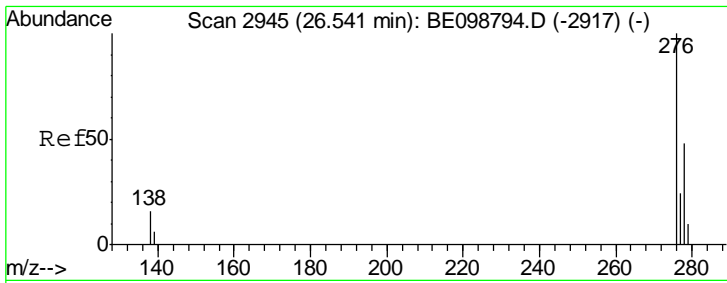
Sohil
 3/14/2019 11:09:11 AM



#32
 Bis(2-ethylhexyl)phthalate
 Concen: 0.285 ng
 RT: 21.29 min Scan# 1624
 Delta R.T. -0.01 min
 Lab File: BE098909.D
 Acq: 13 Mar 2019 13:28

Tgt Ion	Resp	Lower	Upper
149	100		
167	6.8	5.4	8.0
279	1.2	1.0	1.4





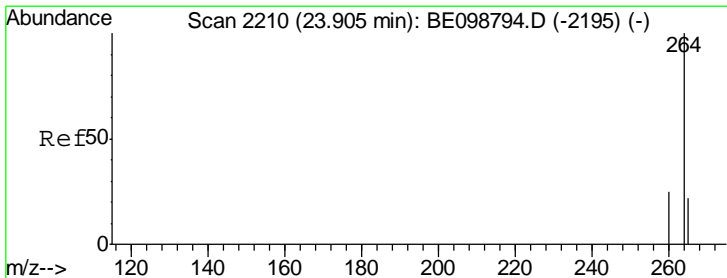
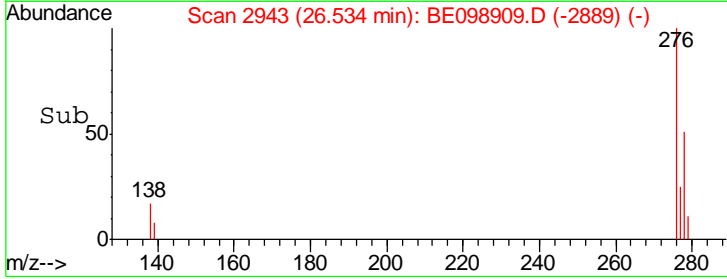
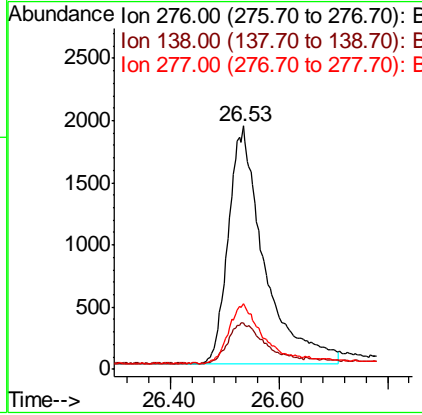
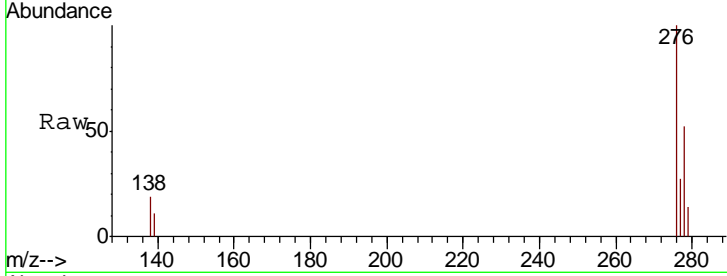
#33
 Indeno(1,2,3-cd)pyrene
 Concen: 0.378 ng
 RT: 26.53 min Scan# 2943
 Delta R.T. -0.01 min
 Lab File: BE098909.D
 Acq: 13 Mar 2019 13:28

Instrument : BNA_E
 ClientSampled : SSTDCCC0.4

Tgt Ion	Resp	Lower	Upper
276	8798		
138	17.9	13.8	20.8
277	22.8	19.5	29.3

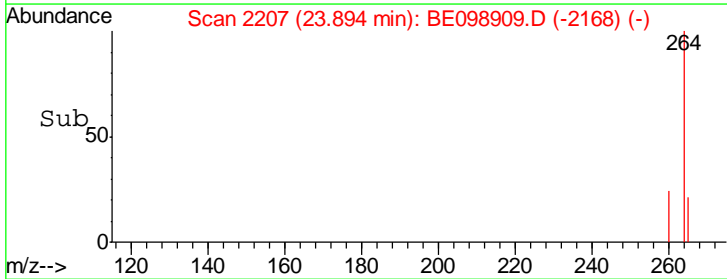
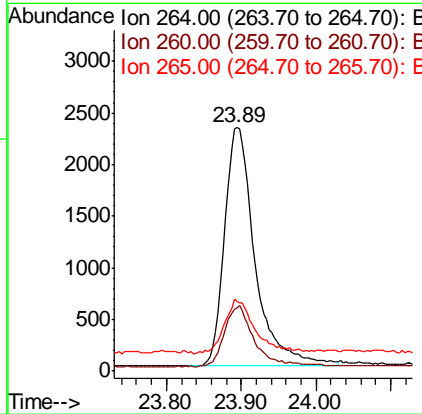
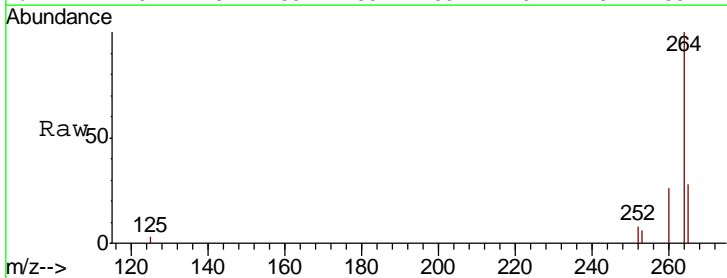
Manual Integrations
 APPROVED

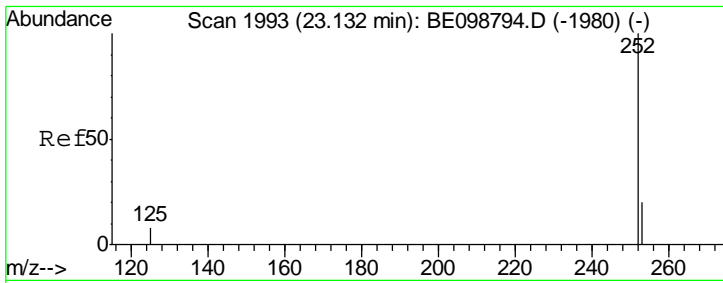
Sohil
 3/14/2019 11:09:11 AM



#34
 Perylene-d12
 Concen: 0.400 ng
 RT: 23.89 min Scan# 2207
 Delta R.T. -0.01 min
 Lab File: BE098909.D
 Acq: 13 Mar 2019 13:28

Tgt Ion	Resp	Lower	Upper
264	6546		
260	25.8	21.2	31.8
265	28.5	24.6	36.8



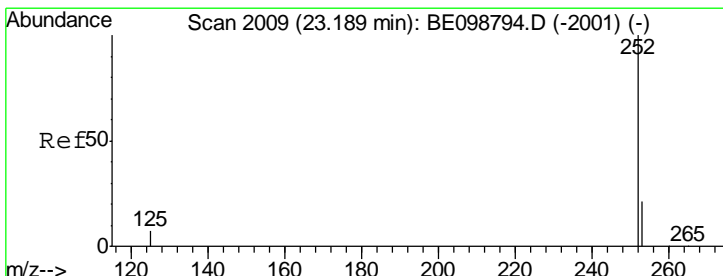
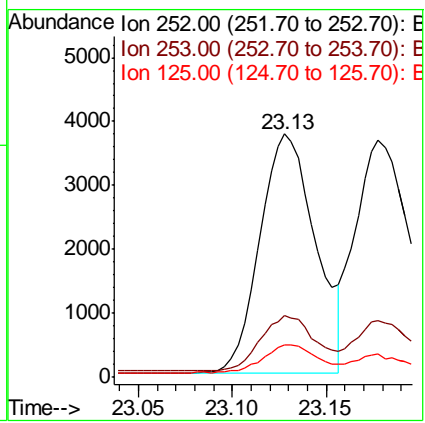
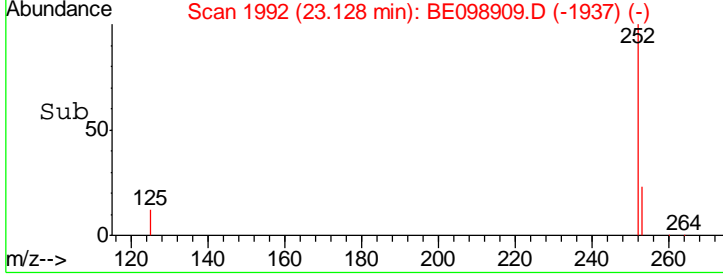
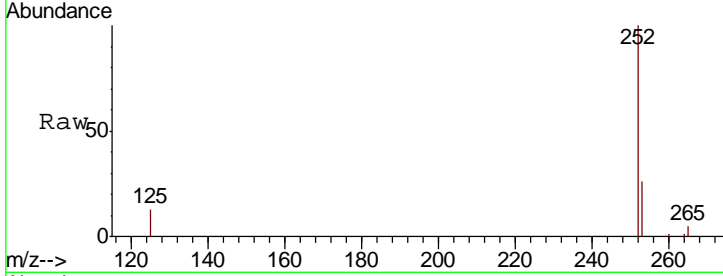


#35
 Benzo(b)fluoranthene
 Concen: 0.360 ng m
 RT: 23.13 min Scan# 1992
 Delta R.T. -0.00 min
 Lab File: BE098909.D
 Acq: 13 Mar 2019 13:28

Instrument :
 BNA_E
 ClientSampled :
 SSTDCCC0.4

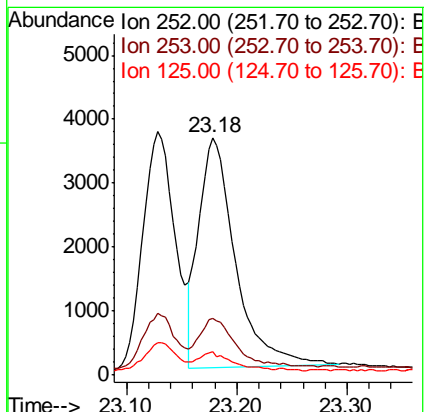
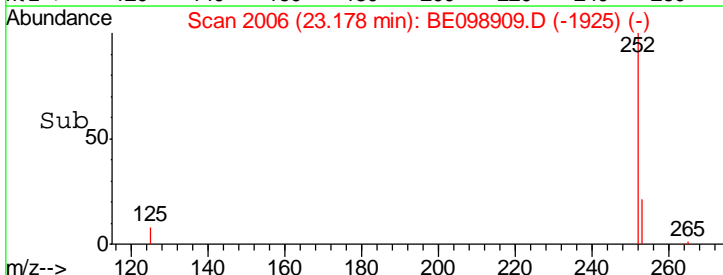
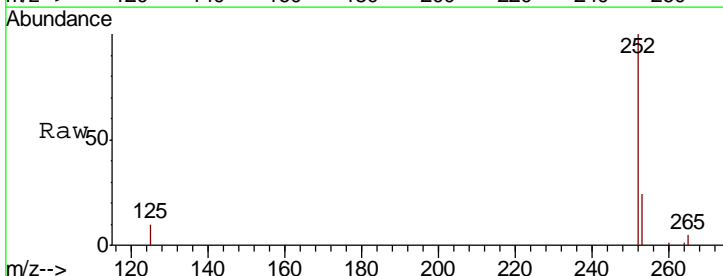
Tgt Ion	Resp	Lower	Upper
252	7759		
253	25.6	18.2	27.2
125	13.2	7.3	10.9#

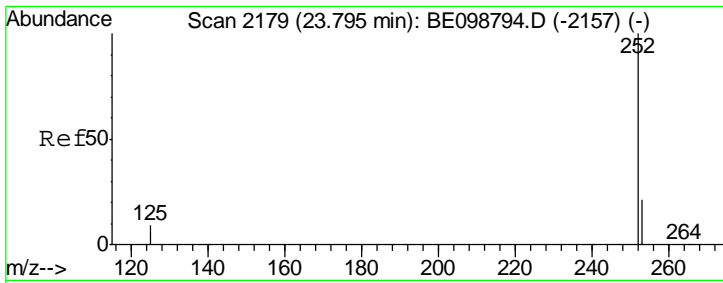
Manual Integrations
 APPROVED
 Sohil
 3/14/2019 11:09:11 AM



#36
 Benzo(k)fluoranthene
 Concen: 0.367 ng
 RT: 23.18 min Scan# 2006
 Delta R.T. -0.01 min
 Lab File: BE098909.D
 Acq: 13 Mar 2019 13:28

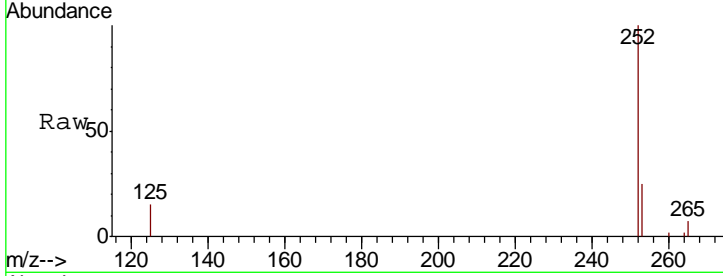
Tgt Ion	Resp	Lower	Upper
252	8277		
253	23.8	19.3	28.9
125	9.8	7.5	11.3





#37
 Benzo(a)pyrene
 Concen: 0.371 ng
 RT: 23.78 min Scan# 2176
 Delta R.T. -0.01 min
 Lab File: BE098909.D
 Acq: 13 Mar 2019 13:28

Instrument :
 BNA_E
 ClientSampled :
 SSTDCCC0.4

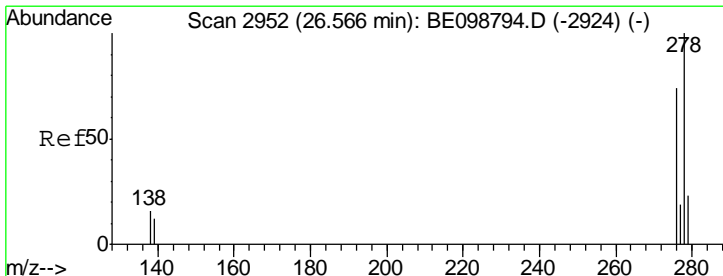
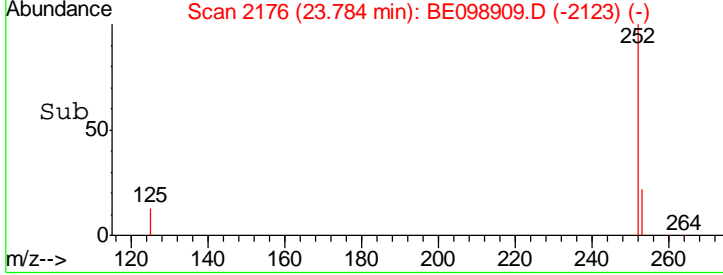
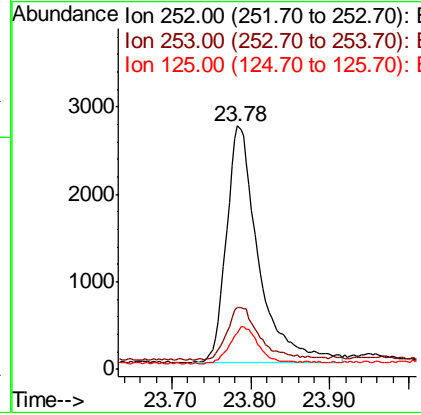


Tgt Ion: 252 Resp: 7663

Ion	Ratio	Lower	Upper
252	100		
253	25.4	19.9	29.9
125	15.0	9.0	13.4

Manual Integrations
 APPROVED

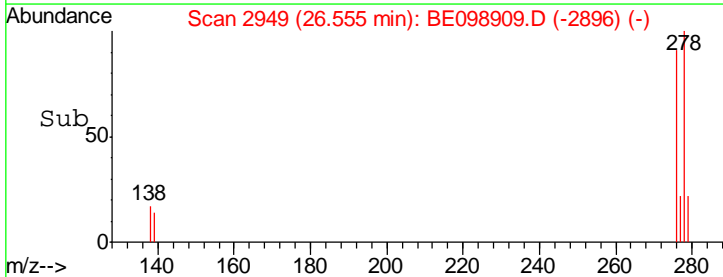
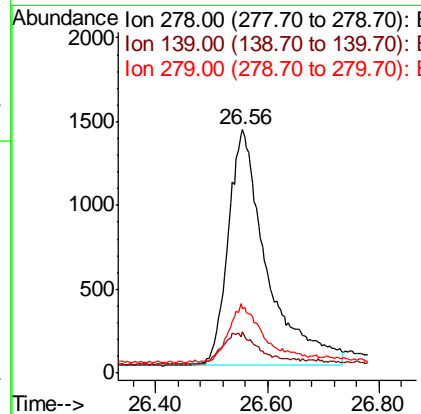
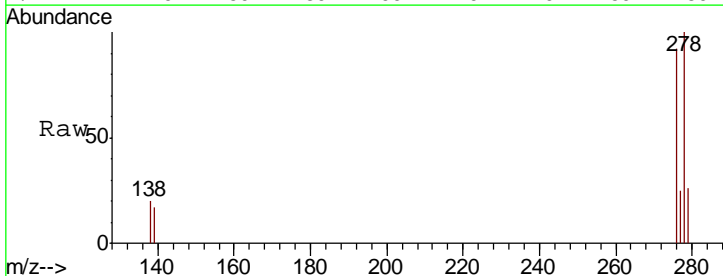
Sohil
 3/14/2019 11:09:11 AM

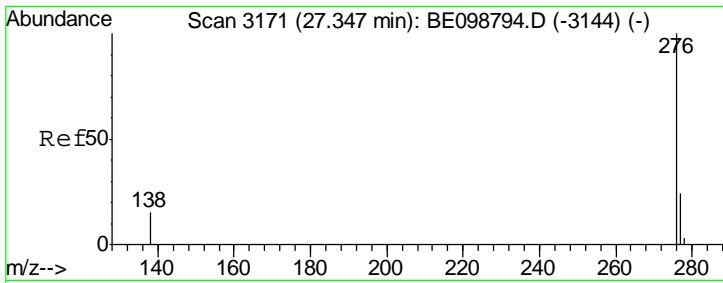


#38
 Dibenzo(a,h)anthracene
 Concen: 0.347 ng
 RT: 26.56 min Scan# 2949
 Delta R.T. -0.01 min
 Lab File: BE098909.D
 Acq: 13 Mar 2019 13:28

Tgt Ion: 278 Resp: 6773

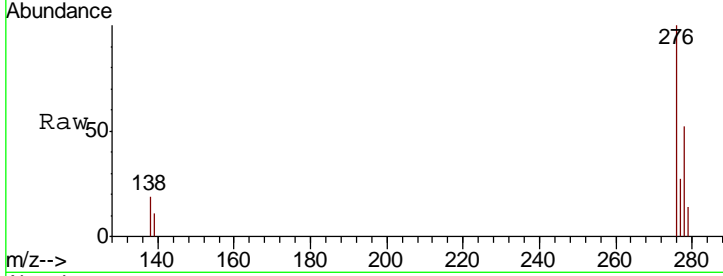
Ion	Ratio	Lower	Upper
278	100		
139	17.0	11.8	17.6
279	26.2	21.1	31.7





#39
 Benzo(a,h,i)perylene
 Concen: 0.398 ng m
 RT: 26.53 min Scan# 2943
 Delta R.T. -0.81 min
 Lab File: BE098909.D
 Acq: 13 Mar 2019 13:28

Instrument :
 BNA_E
ClientSampled :
 SSTDCCC0.4



Tot Ion: 276 Resp: 8119

Ion	Ratio	Lower	Upper
276	100		
277	26.9	20.4	30.6
138	19.1	13.6	20.4

Manual Integrations
APPROVED
 Sohil
 3/14/2019 11:09:11 AM

