

Data Path : Z:\SVOASRV\HPCHEM1\BNA_E\DATA\BE031919\
 Data File : BE099049.D
 Acq On : 20 Mar 2019 00:16
 Operator : JU/SJ
 Sample : K1965-04
 Misc :
 ALS Vial : 18 Sample Multiplier: 1

Instrument :
 BNA_E
 ClientSampleId :
 BPS1-TT-MW3111-20190314

Quant Time: Mar 20 10:16:52 2019
 Quant Method : Z:\SVOASRV\HPCHEM1\BNA_E\METHODS\8270-SIM-BE030619.M
 Quant Title : ASP BNA STANDARDS FOR 5 POINT CALIBRATION
 QLast Update : Fri Mar 15 05:31:33 2019
 Response via : Initial Calibration

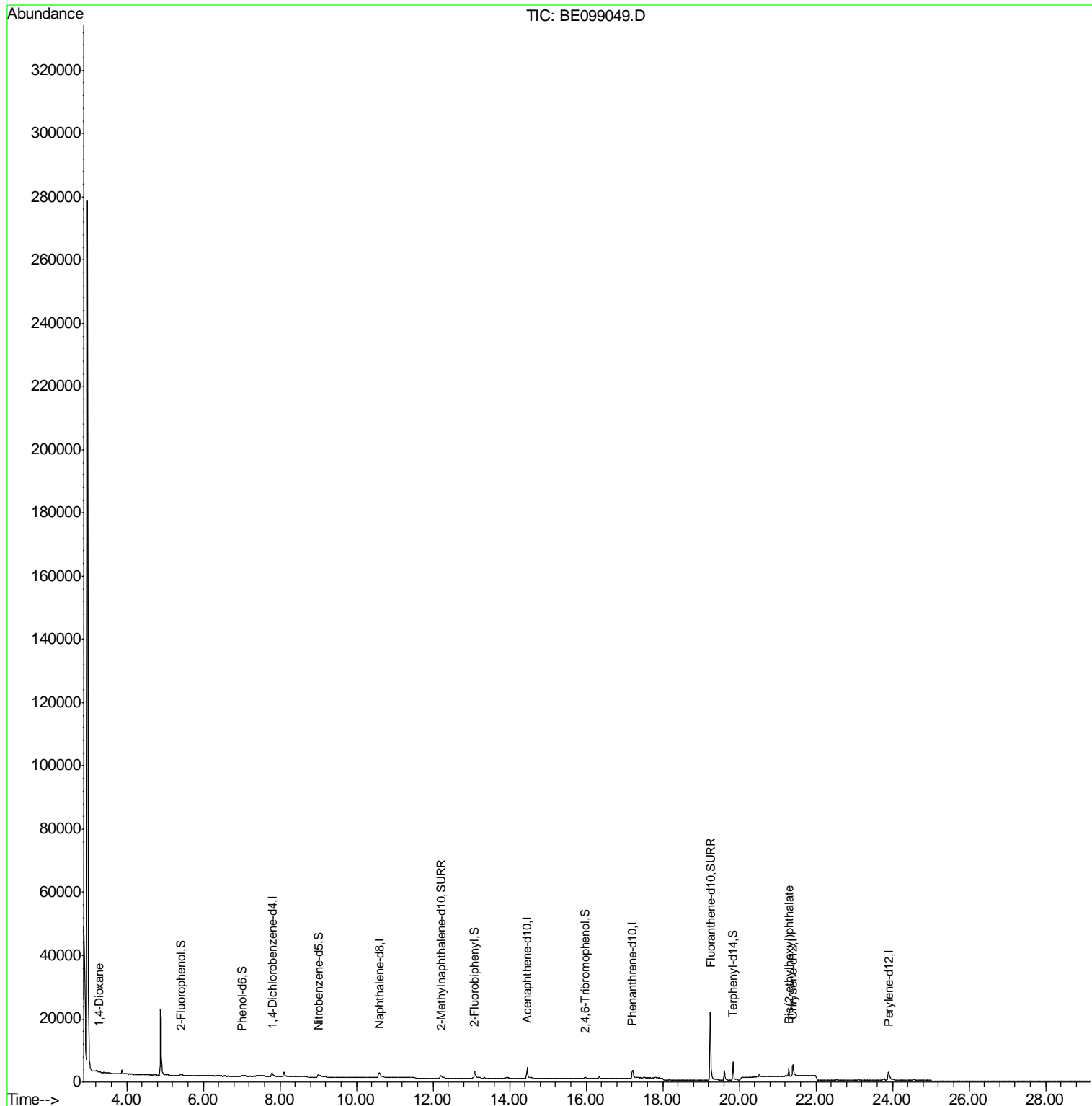
Internal Standards	R.T.	QIon	Response	Conc	Units	Dev(Min)
1) 1,4-Dichlorobenzene-d4	7.80	152	795	0.40	ng	0.00
7) Naphthalene-d8	10.60	136	3261	0.40	ng	0.01
13) Acenaphthene-d10	14.46	164	2368	0.40	ng	0.00
19) Phenanthrene-d10	17.21	188	5325	0.40	ng	0.00
27) Chrysene-d12	21.40	240	6446	0.40	ng	0.00
34) Perylene-d12	23.90	264	5923	0.40	ng	-0.01
System Monitoring Compounds						
4) 2-Fluorophenol	5.41	112	383	0.16	ng	0.03
5) Phenol-d6	7.01	99	308	0.09	ng	0.03
8) Nitrobenzene-d5	9.00	82	1357	0.40	ng	0.04
11) 2-Methylnaphthalene-d10	12.21	152	2503	0.42	ng	0.02
14) 2,4,6-Tribromophenol	15.97	330	439	0.37	ng	0.00
15) 2-Fluorobiphenyl	13.09	172	4158	0.42	ng	0.00
25) Fluoranthene-d10	19.24	212	37010	0.44	ng	0.00
29) Terphenyl-d14	19.84	244	6549	0.42	ng	0.00
Target Compounds						Qvalue
2) 1,4-Dioxane	3.28	88	238	0.090	ng	# 70
32) Bis(2-ethylhexyl)phthalate	21.29	149	3094	0.072	ng	# 99

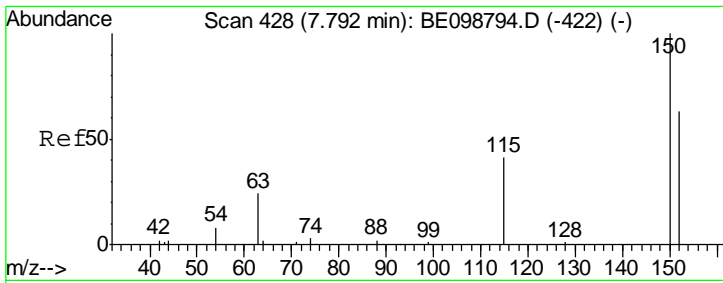
(#) = qualifier out of range (m) = manual integration (+) = signals summed

Data Path : Z:\SVOASRV\HPCHEM1\BNA_E\DATA\BE031919\
 Data File : BE099049.D
 Acq On : 20 Mar 2019 00:16
 Operator : JU/SJ
 Sample : K1965-04
 Misc :
 ALS Vial : 18 Sample Multiplier: 1

Instrument :
 BNA_E
ClientSampleId :
 BPS1-TT-MW3111-20190314

Quant Time: Mar 20 10:16:52 2019
 Quant Method : Z:\SVOASRV\HPCHEM1\BNA_E\METHODS\8270-SIM-BE030619.M
 Quant Title : ASP BNA STANDARDS FOR 5 POINT CALIBRATION
 QLast Update : Fri Mar 15 05:31:33 2019
 Response via : Initial Calibration

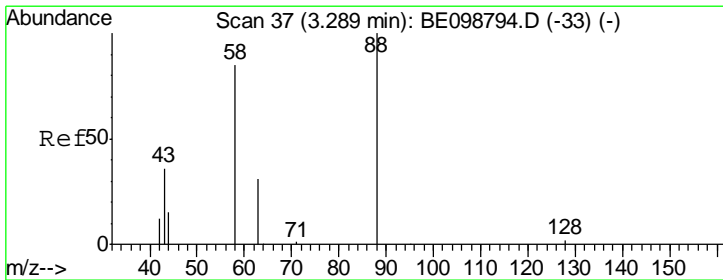
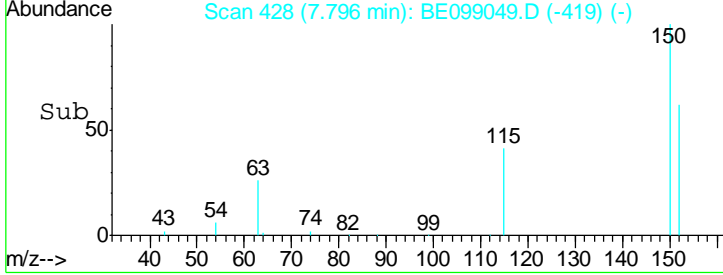
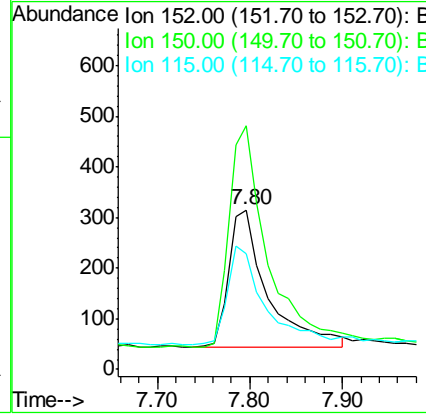
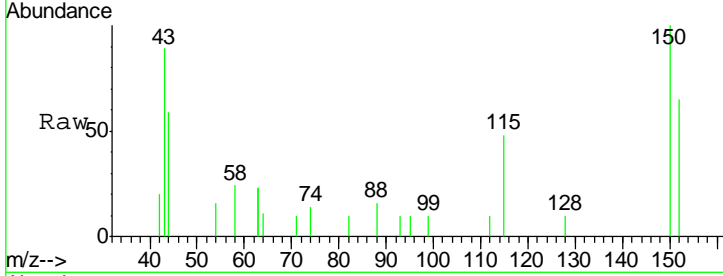




#1
 1,4-Dichlorobenzene-d4
 Concen: 0.400 ng
 RT: 7.80 min Scan# 428
 Delta R.T. 0.00 min
 Lab File: BE099049.D
 Acq: 20 Mar 2019 00:16

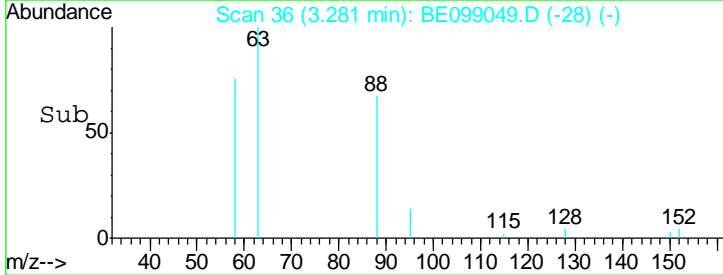
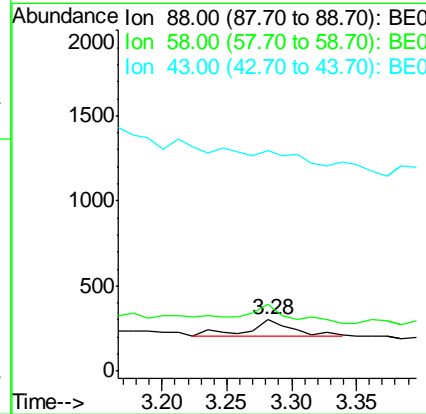
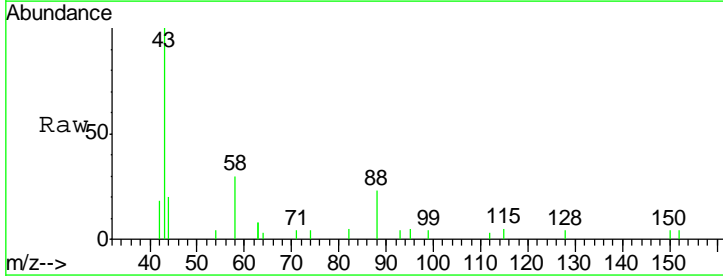
Instrument :
 BNA_E
 ClientSampleId :
 BPS1-TT-MW3111-20190314

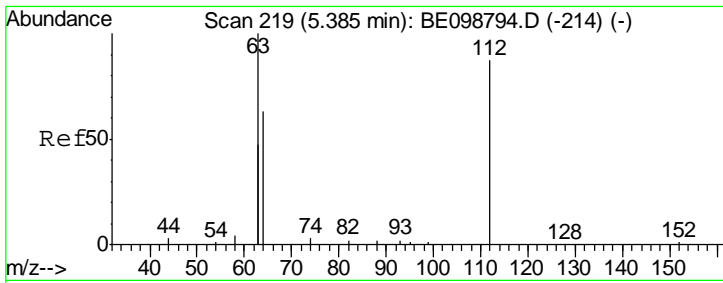
Tgt Ion	Resp	Lower	Upper
152	100		
150	152.7	122.5	183.7
115	72.7	57.4	86.2



#2
 1,4-Dioxane
 Concen: 0.090 ng
 RT: 3.28 min Scan# 36
 Delta R.T. -0.01 min
 Lab File: BE099049.D
 Acq: 20 Mar 2019 00:16

Tgt Ion	Resp	Lower	Upper
88	100		
58	100.4	75.8	113.6
43	0.0	41.8	62.8#

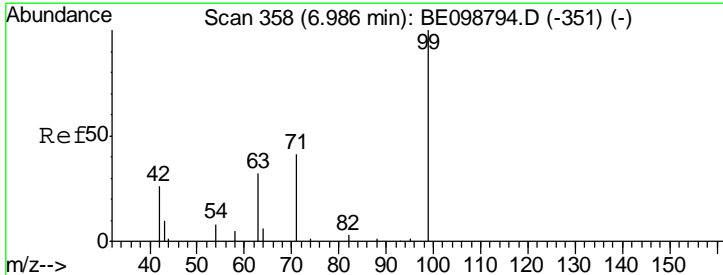
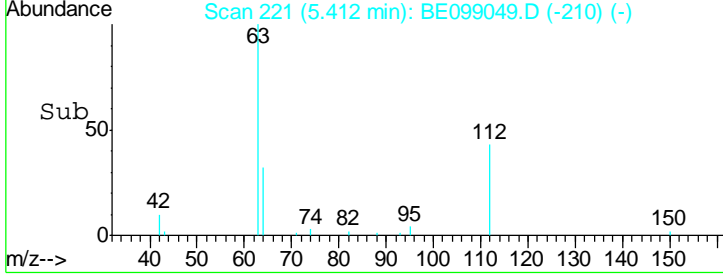
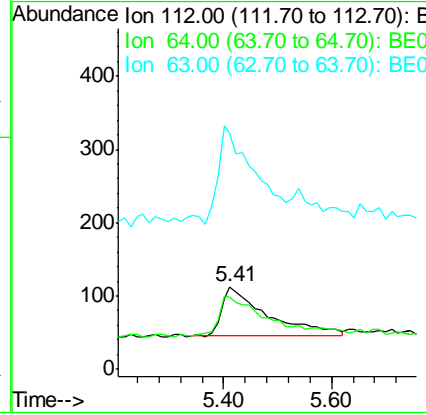
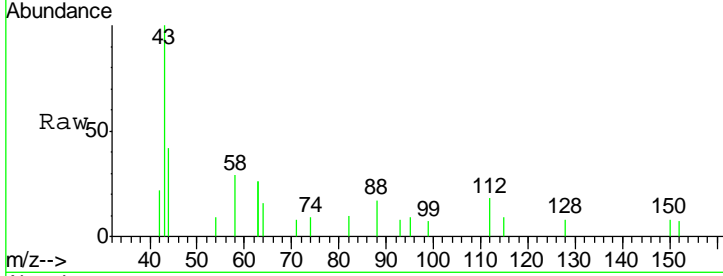




#4
 2-Fluorophenol
 Concen: 0.161 ng
 RT: 5.41 min Scan# 221
 Delta R.T. 0.03 min
 Lab File: BE099049.D
 Acq: 20 Mar 2019 00:16

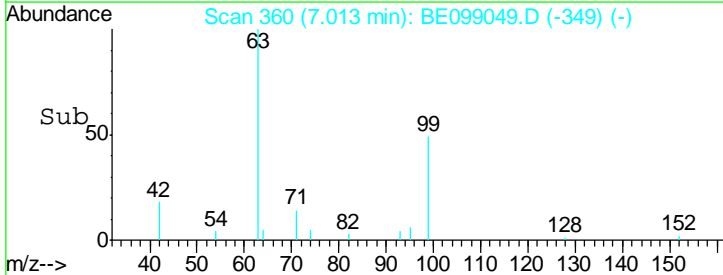
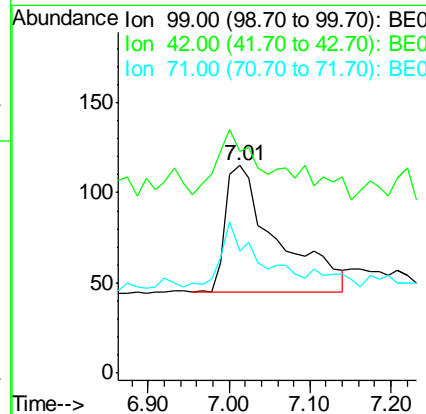
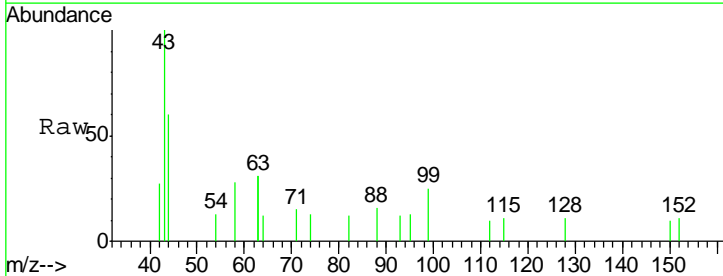
Instrument :
 BNA_E
 ClientSampleId :
 BPS1-TT-MW3111-20190314

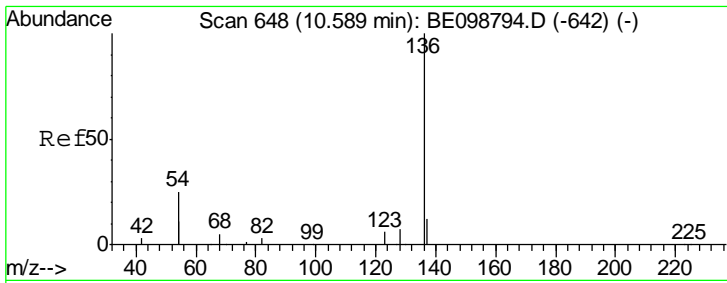
Tgt Ion	Resp	Lower	Upper
112	383		
64	94.8	57.9	86.9#
63	165.0	158.3	237.5



#5
 Phenol-d6
 Concen: 0.092 ng
 RT: 7.01 min Scan# 360
 Delta R.T. 0.03 min
 Lab File: BE099049.D
 Acq: 20 Mar 2019 00:16

Tgt Ion	Resp	Lower	Upper
99	308		
42	34.4	24.2	36.2
71	36.7	35.7	53.5

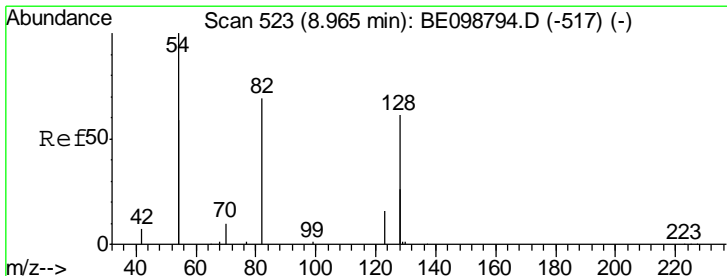
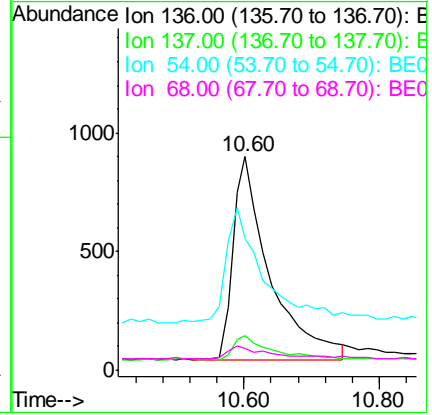
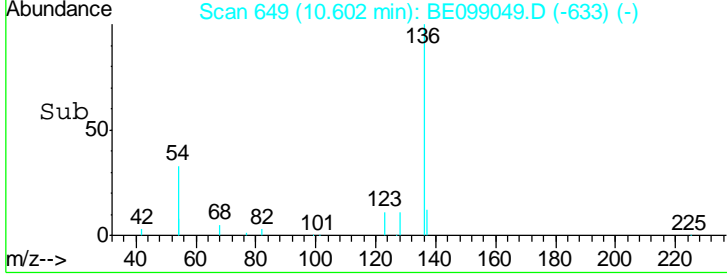
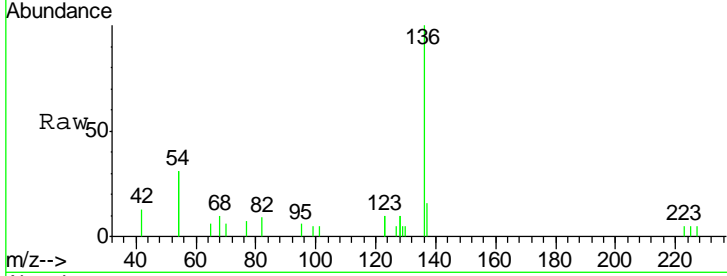




#7
 Naphthalene-d8
 Concen: 0.400 ng
 RT: 10.60 min Scan# 649
 Delta R.T. 0.01 min
 Lab File: BE099049.D
 Acq: 20 Mar 2019 00:16

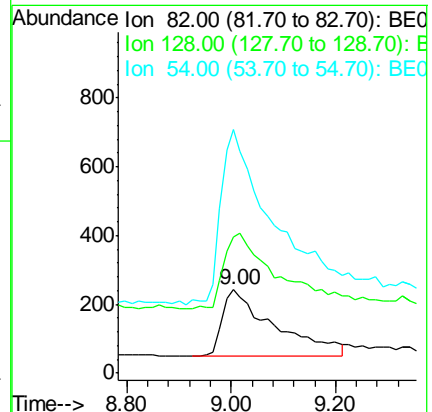
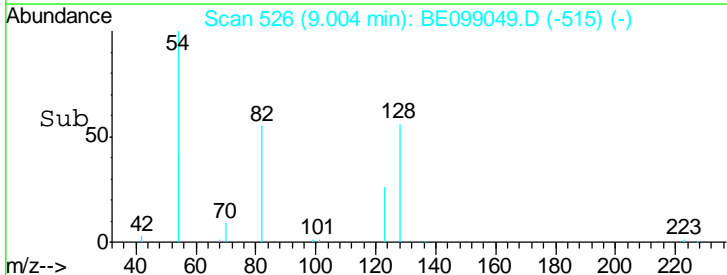
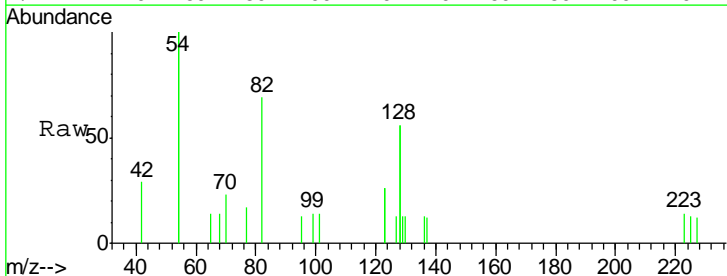
Instrument :
 BNA_E
 ClientSampleId :
 BPS1-TT-MW3111-20190314

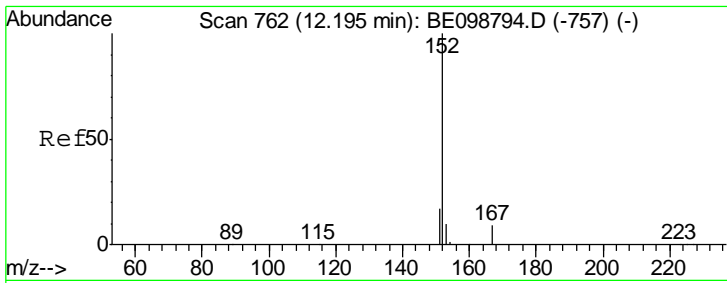
Tgt Ion	Resp	Lower	Upper
136	100		
137	16.2	11.4	17.0
54	61.8	39.3	58.9#
68	10.3	6.7	10.1#



#8
 Nitrobenzene-d5
 Concen: 0.397 ng
 RT: 9.00 min Scan# 526
 Delta R.T. 0.04 min
 Lab File: BE099049.D
 Acq: 20 Mar 2019 00:16

Tgt Ion	Resp	Lower	Upper
82	100		
128	162.1	123.8	185.8
54	291.4	203.4	305.2

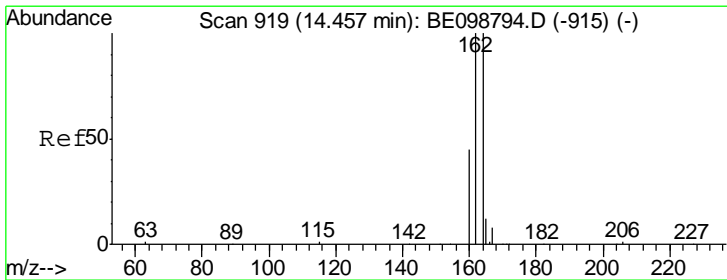
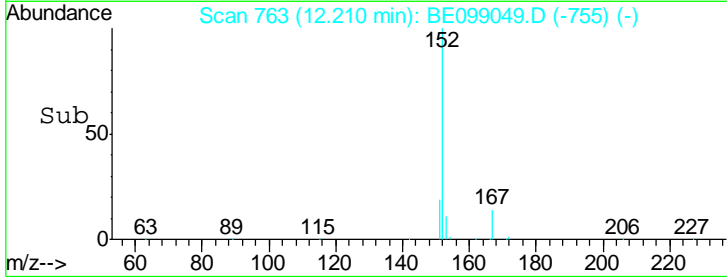
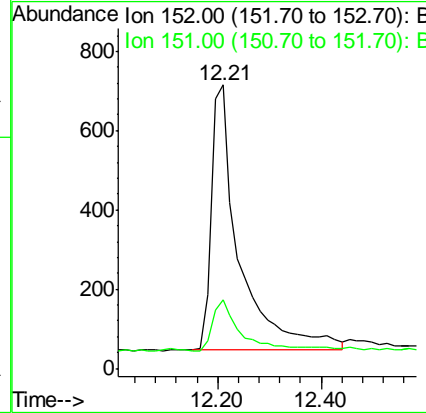
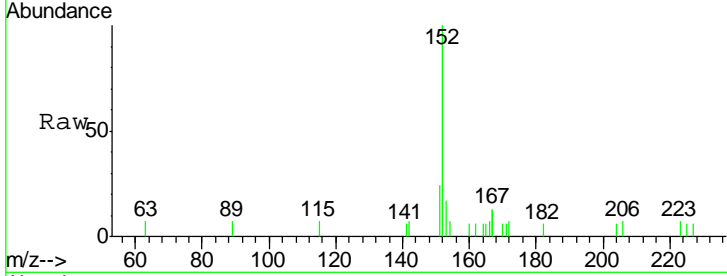




#11
 2-Methylnaphthalene-d10
 Concen: 0.415 ng
 RT: 12.21 min Scan# 763
 Delta R.T. 0.02 min
 Lab File: BE099049.D
 Acq: 20 Mar 2019 00:16

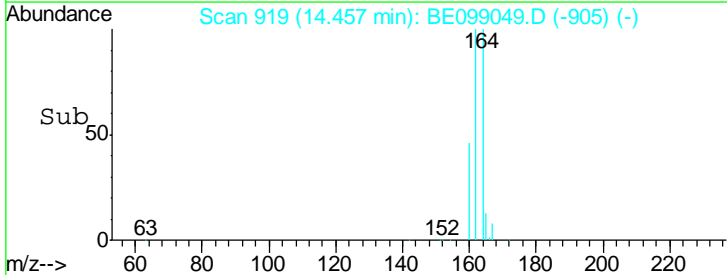
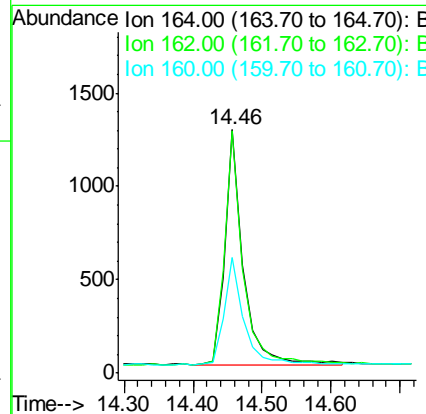
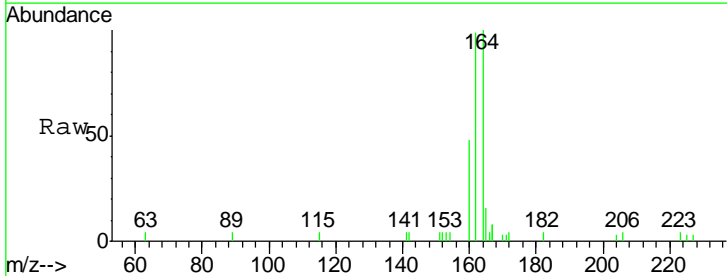
Instrument :
 BNA_E
ClientSampleId :
 BPS1-TT-MW3111-20190314

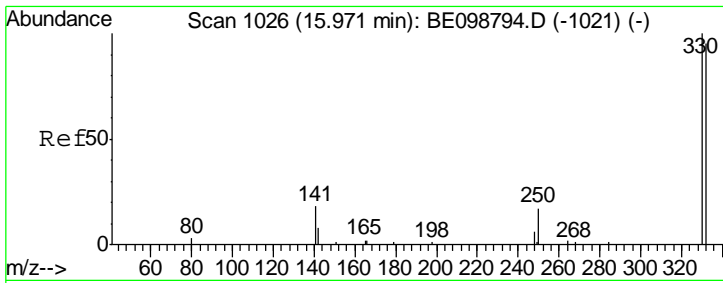
Tgt Ion:152 Resp: 2503
 Ion Ratio Lower Upper
 152 100
 151 20.0 16.5 24.7



#13
 Acenaphthene-d10
 Concen: 0.400 ng
 RT: 14.46 min Scan# 919
 Delta R.T. 0.00 min
 Lab File: BE099049.D
 Acq: 20 Mar 2019 00:16

Tgt Ion:164 Resp: 2368
 Ion Ratio Lower Upper
 164 100
 162 99.5 80.2 120.2
 160 47.6 37.8 56.8

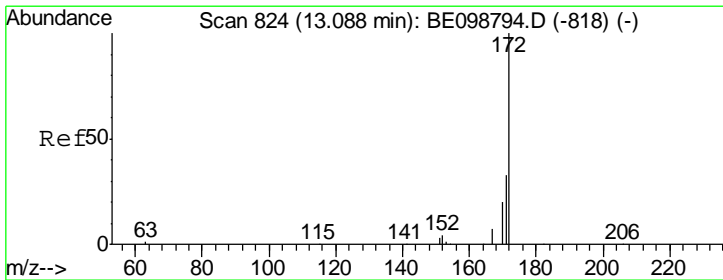
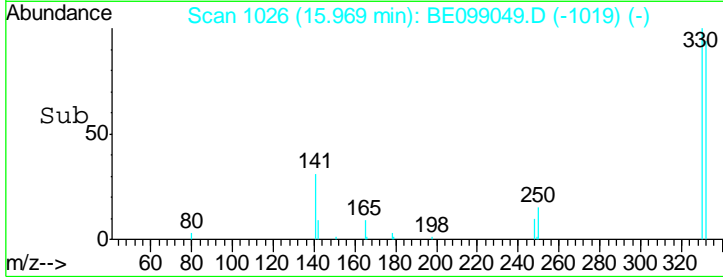
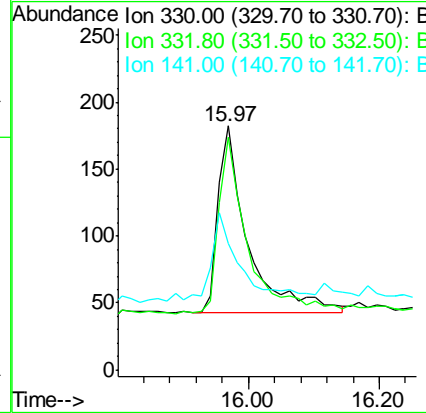
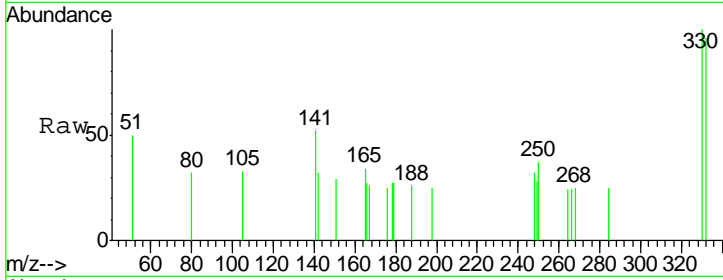




#14
 2,4,6-Tribromophenol
 Concen: 0.367 ng
 RT: 15.97 min Scan# 1026
 Delta R.T. -0.00 min
 Lab File: BE099049.D
 Acq: 20 Mar 2019 00:16

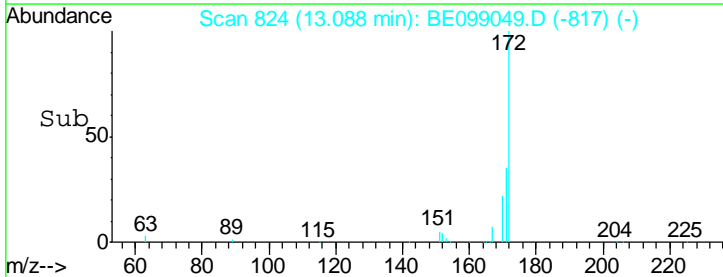
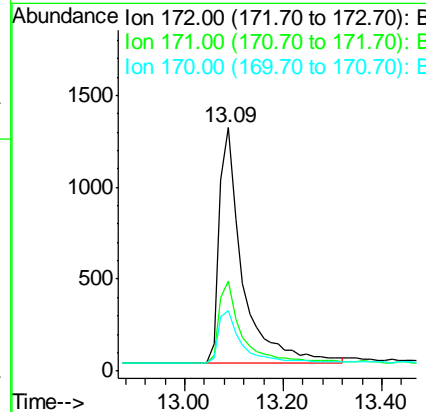
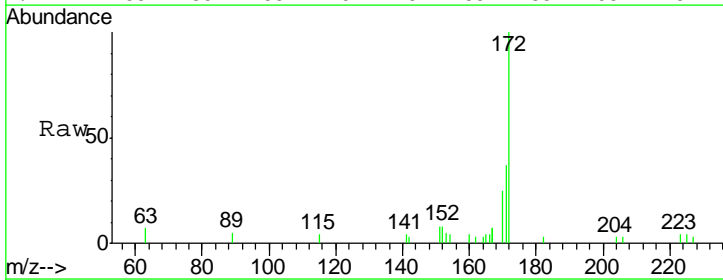
Instrument :
 BNA_E
 ClientSampleId :
 BPS1-TT-MW3111-20190314

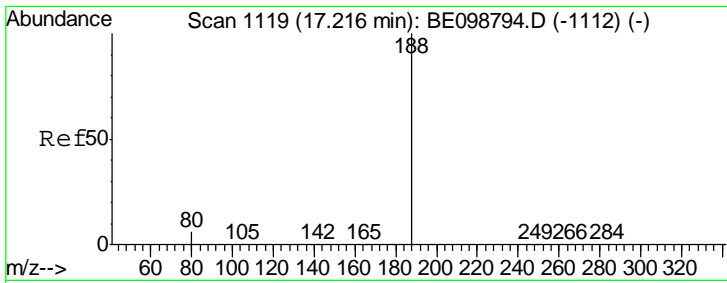
Tgt Ion	Resp	Lower	Upper
330	100		
332	90.7	77.6	116.4
141	42.8	31.0	46.4



#15
 2-Fluorobiphenyl
 Concen: 0.424 ng
 RT: 13.09 min Scan# 824
 Delta R.T. 0.00 min
 Lab File: BE099049.D
 Acq: 20 Mar 2019 00:16

Tgt Ion	Resp	Lower	Upper
172	100		
171	37.0	28.0	42.0
170	25.0	17.7	26.5

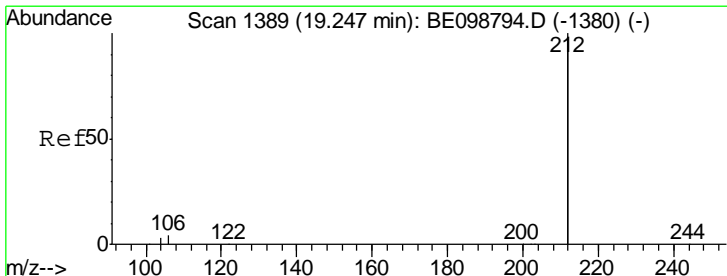
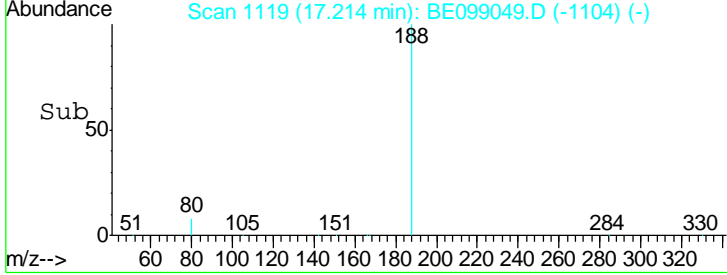
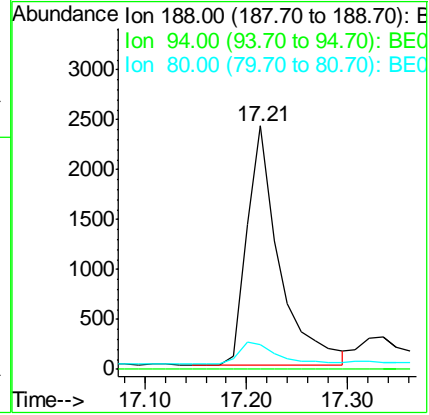
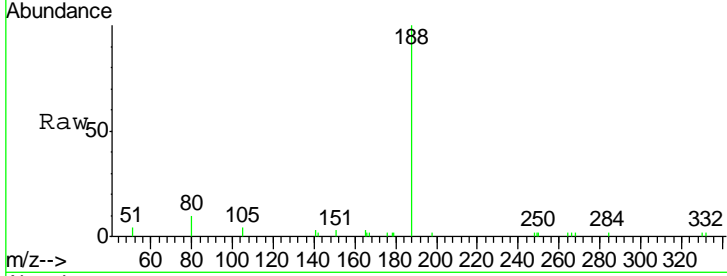




#19
 Phenanthrene-d10
 Concen: 0.400 ng
 RT: 17.21 min Scan# 1119
 Delta R.T. -0.00 min
 Lab File: BE099049.D
 Acq: 20 Mar 2019 00:16

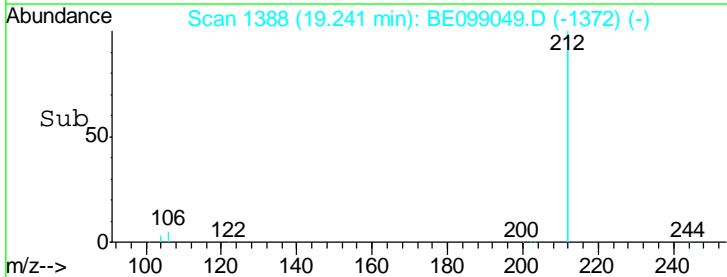
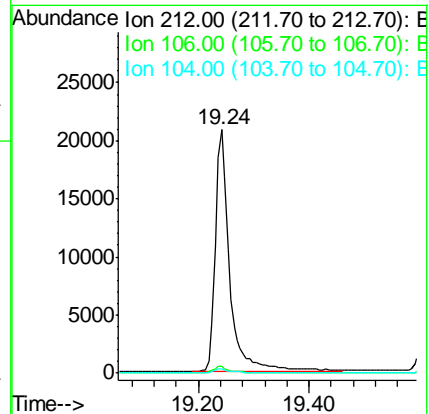
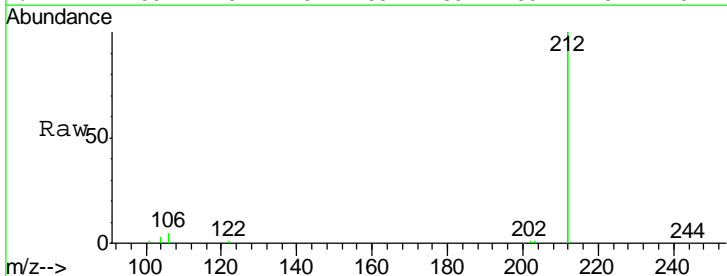
Instrument :
 BNA_E
 ClientSampleId :
 BPS1-TT-MW3111-20190314

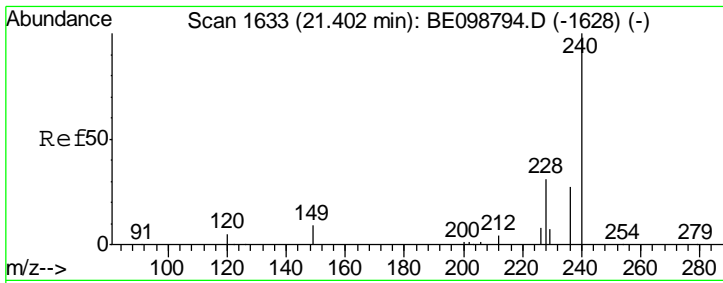
Tgt Ion	Resp	Lower	Upper
188	100		
94	0.0	0.0	0.0
80	10.4	6.3	9.5#



#25
 Fluoranthene-d10
 Concen: 0.435 ng
 RT: 19.24 min Scan# 1388
 Delta R.T. -0.01 min
 Lab File: BE099049.D
 Acq: 20 Mar 2019 00:16

Tgt Ion	Resp	Lower	Upper
212	100		
106	2.4	1.8	2.8
104	1.5	1.0	1.6

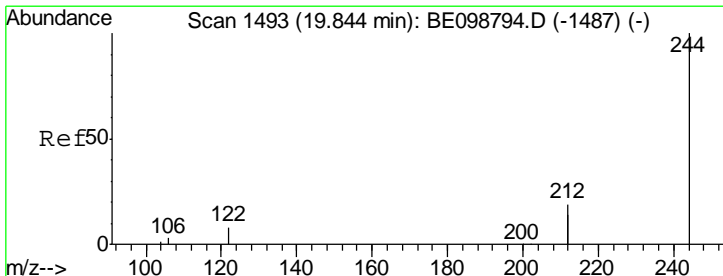
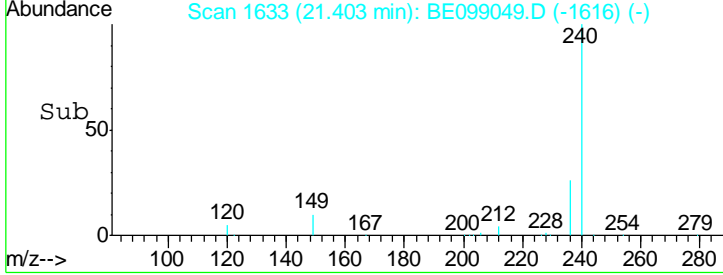
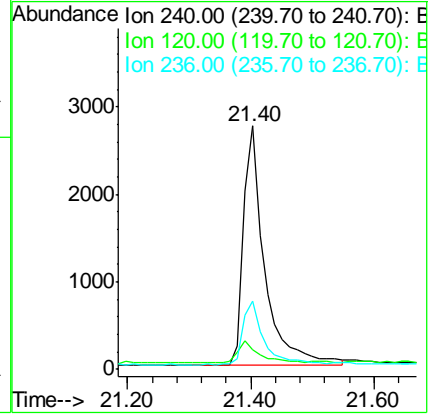
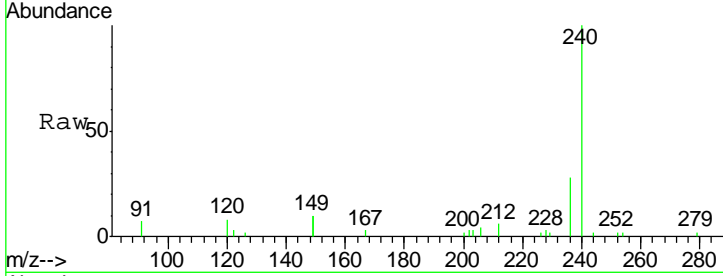




#27
 Chrysene-d12
 Concen: 0.400 ng
 RT: 21.40 min Scan# 1633
 Delta R.T. 0.00 min
 Lab File: BE099049.D
 Acq: 20 Mar 2019 00:16

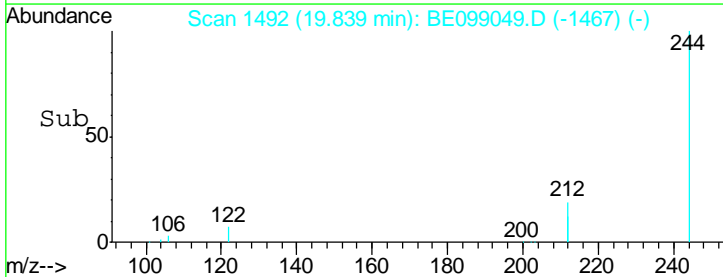
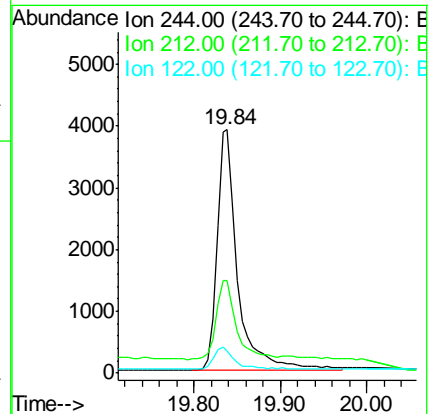
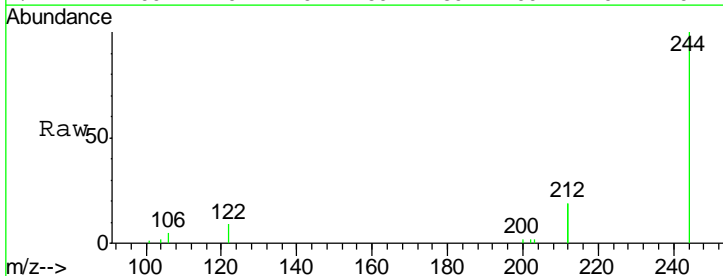
Instrument :
 BNA_E
 ClientSampleId :
 BPS1-TT-MW3111-20190314

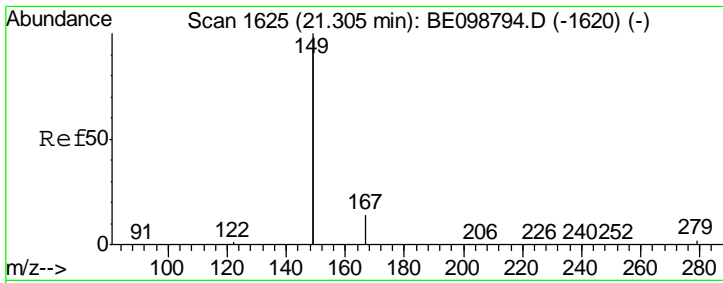
Tgt Ion	Resp	Lower	Upper
240	100		
120	8.2	5.0	7.4#
236	27.8	22.7	34.1



#29
 Terphenyl-d14
 Concen: 0.418 ng
 RT: 19.84 min Scan# 1492
 Delta R.T. -0.01 min
 Lab File: BE099049.D
 Acq: 20 Mar 2019 00:16

Tgt Ion	Resp	Lower	Upper
244	100		
212	38.0	29.4	44.2
122	9.0	7.1	10.7

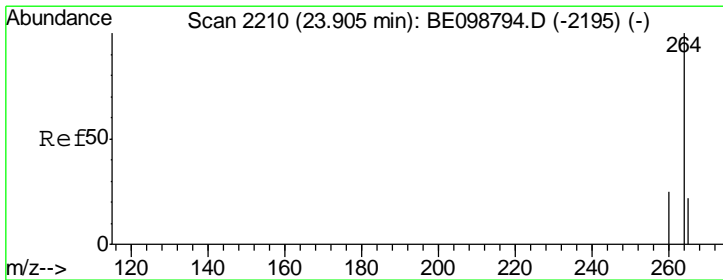
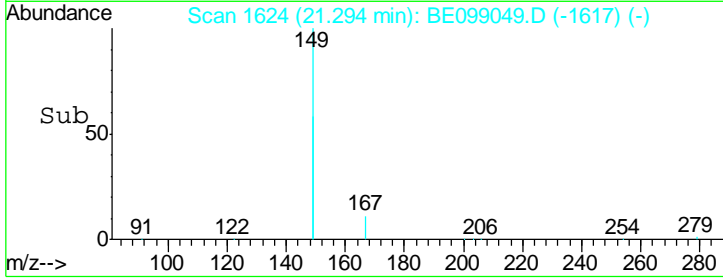
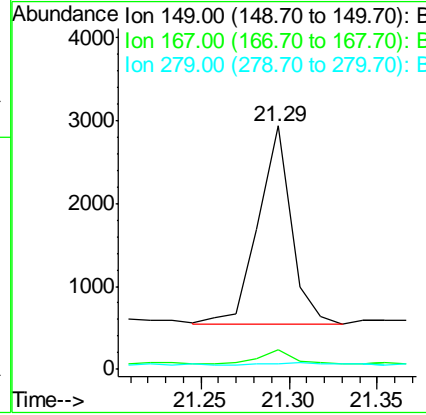
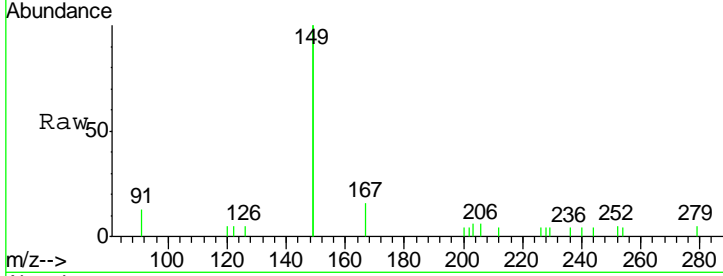




#32
 Bis(2-ethylhexyl)phthalate
 Concen: 0.072 ng
 RT: 21.29 min Scan# 1624
 Delta R.T. -0.01 min
 Lab File: BE099049.D
 Acq: 20 Mar 2019 00:16

Instrument :
 BNA_E
 ClientSampleId :
 BPS1-TT-MW3111-20190314

Tgt Ion	Resp	Lower	Upper
149	100		
167	6.6	5.4	8.0
279	2.4	1.0	1.4#



#34
 Perylene-d12
 Concen: 0.400 ng
 RT: 23.90 min Scan# 2207
 Delta R.T. -0.01 min
 Lab File: BE099049.D
 Acq: 20 Mar 2019 00:16

Tgt Ion	Resp	Lower	Upper
264	100		
260	26.4	21.2	31.8
265	31.5	24.6	36.8

