

Data Path : Z:\HPCHEM1\BNA E\DATA\BE032618\
 Data File : BE095834.D
 Acq On : 26 Mar 2018 11:27
 Operator : SJ/JU
 Sample : PB107346BL
 Misc :
 ALS Vial : 6 Sample Multiplier: 1

Instrument :
 BNA_E
 ClientSampleId :

Quant Time: Mar 27 05:39:29 2018
 Quant Method : Z:\HPCHEM1\BNA E\METHODS\8270-SIM-BE032318.M
 Quant Title : ASP BNA STANDARDS FOR 5 POINT CALIBRATION
 QLast Update : Fri Mar 23 12:41:11 2018
 Response via : Initial Calibration

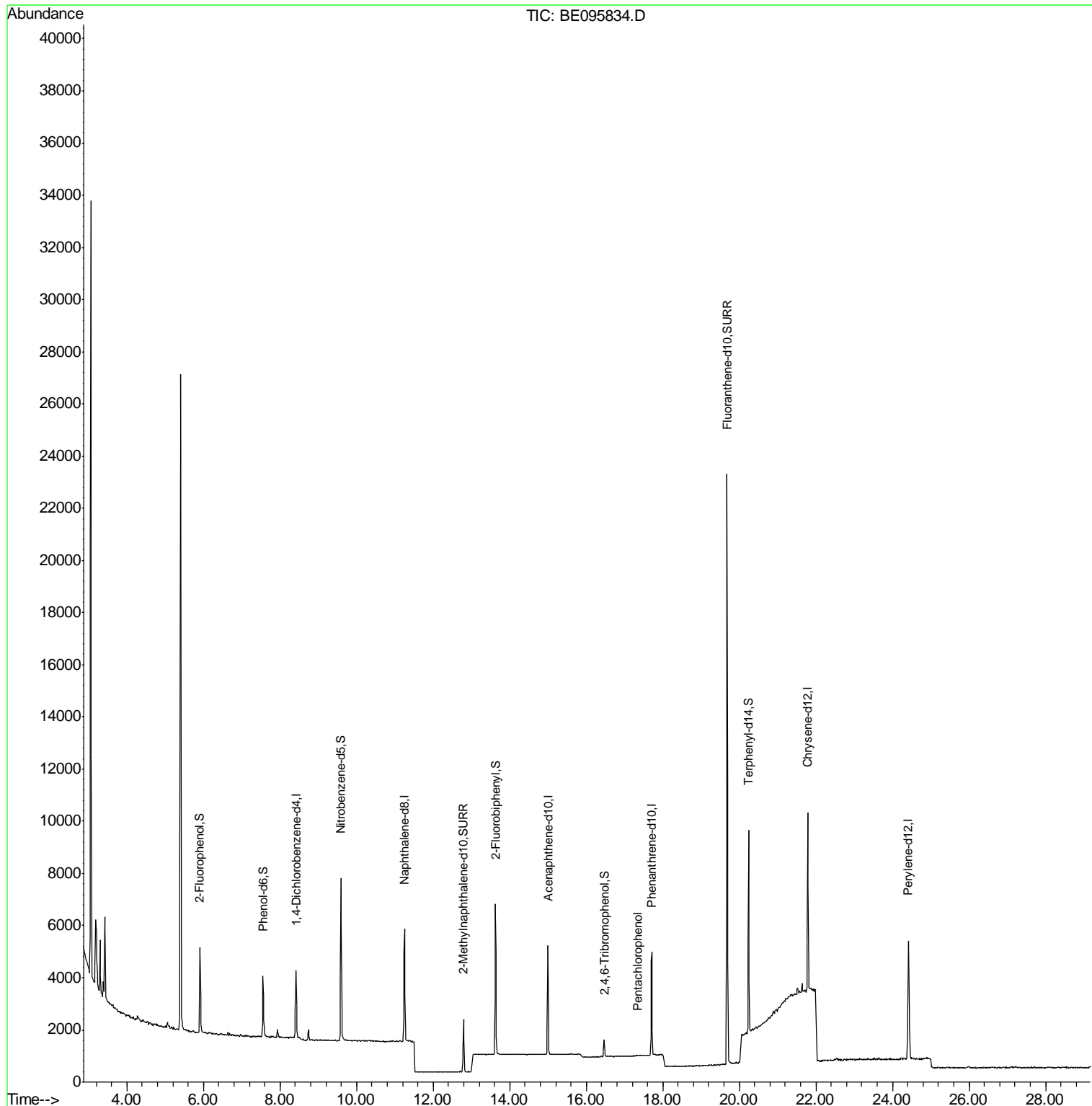
Internal Standards	R.T.	QIon	Response	Conc	Units	Dev(Min)
1) 1,4-Dichlorobenzene-d4	8.42	152	1344	0.40	ng	0.00
7) Naphthalene-d8	11.26	136	4905	0.40	ng	0.00
13) Acenaphthene-d10	15.00	164	2570	0.40	ng	0.00
19) Phenanthrene-d10	17.71	188	5918	0.40	ng	0.00
27) Chrysene-d12	21.79	240	6884	0.40	ng	-0.01
34) Perylene-d12	24.42	264	7006	0.40	ng	-0.01
System Monitoring Compounds						
4) 2-Fluorophenol	5.92	112	1670	0.38	ng	0.00
5) Phenol-d6	7.56	99	2226	0.37	ng	0.00
8) Nitrobenzene-d5	9.59	82	2476	0.43	ng	0.00
11) 2-Methylnaphthalene-d10	12.80	152	2753	0.34	ng	0.00
14) 2,4,6-Tribromophenol	16.47	330	422	0.28	ng	0.00
15) 2-Fluorobiphenyl	13.63	172	5088	0.47	ng	-0.01
25) Fluoranthene-d10	19.68	212	29273	0.33	ng	0.00
29) Terphenyl-d14	20.24	244	6929	0.47	ng	0.00
Target Compounds						Qvalue
22) Pentachlorophenol	17.33	266	10	0.138	ng	94

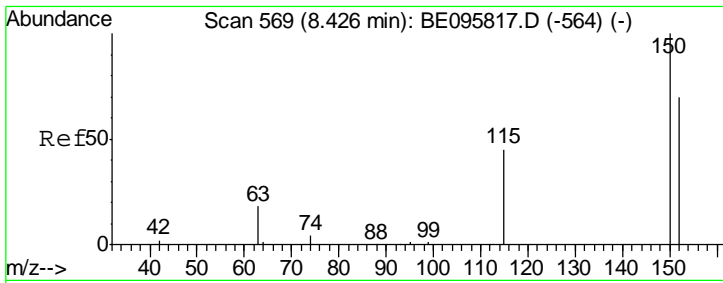
(#) = qualifier out of range (m) = manual integration (+) = signals summed

Data Path : Z:\HPCHEM1\BNA E\DATA\BE032618\
 Data File : BE095834.D
 Acq On : 26 Mar 2018 11:27
 Operator : SJ/JU
 Sample : PB107346BL
 Misc :
 ALS Vial : 6 Sample Multiplier: 1

Instrument :
 BNA_E
 ClientSampled :

Quant Time: Mar 27 05:39:29 2018
 Quant Method : Z:\HPCHEM1\BNA E\METHODS\8270-SIM-BE032318.M
 Quant Title : ASP BNA STANDARDS FOR 5 POINT CALIBRATION
 QLast Update : Fri Mar 23 12:41:11 2018
 Response via : Initial Calibration

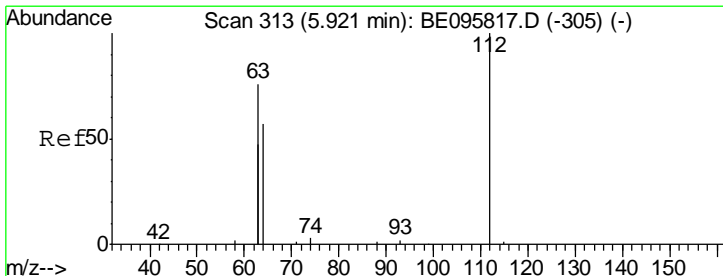
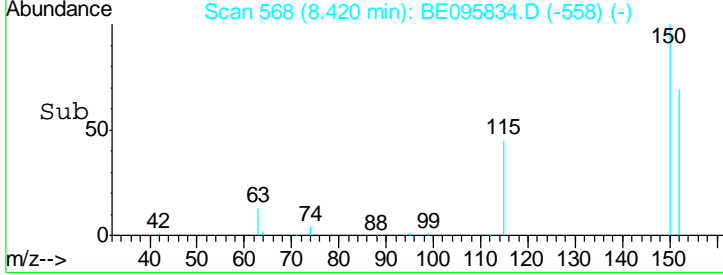
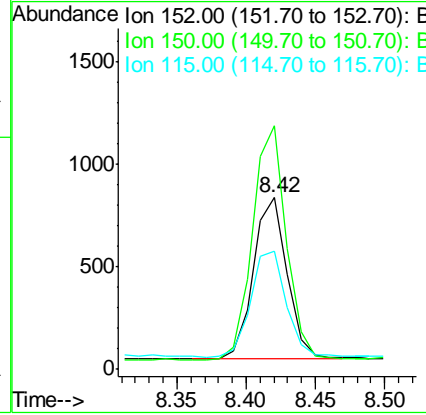
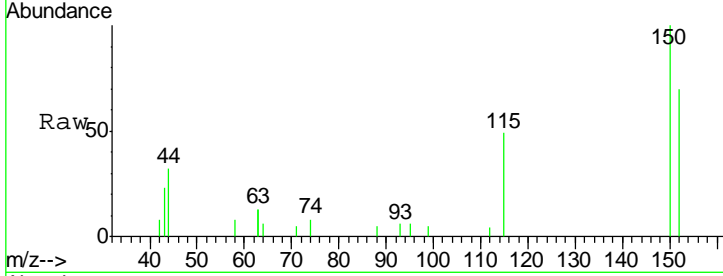




#1
 1,4-Dichlorobenzene-d4
 Concen: 0.400 ng
 RT: 8.42 min Scan# 568
 Delta R.T. -0.01 min
 Lab File: BE095834.D
 Acq: 26 Mar 2018 11:27

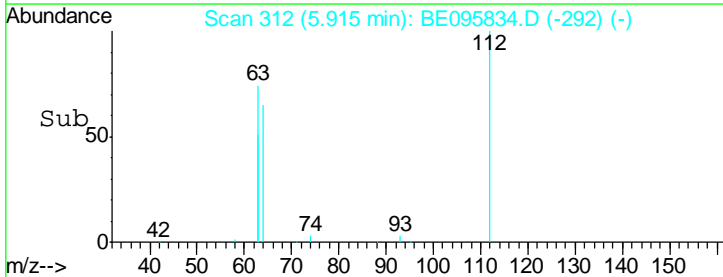
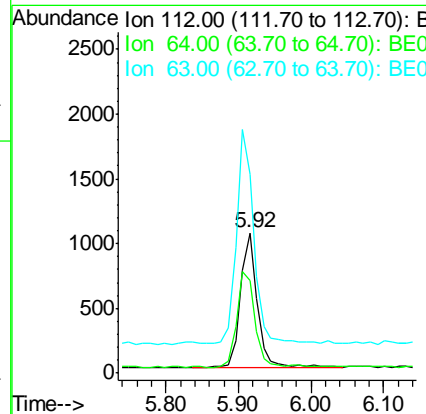
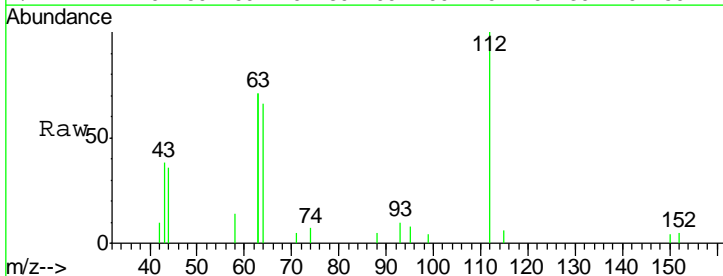
Instrument :
 BNA_E
 ClientSampled :

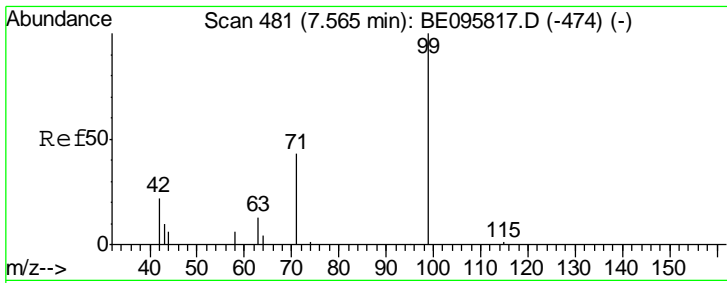
Tgt Ion	Resp	Lower	Upper
152	1344		
150	141.9	117.2	175.8
115	69.0	57.0	85.6



#4
 2-Fluorophenol
 Concen: 0.377 ng
 RT: 5.92 min Scan# 312
 Delta R.T. -0.01 min
 Lab File: BE095834.D
 Acq: 26 Mar 2018 11:27

Tgt Ion	Resp	Lower	Upper
112	1670		
64	77.4	60.1	90.1
63	162.3	116.8	175.2

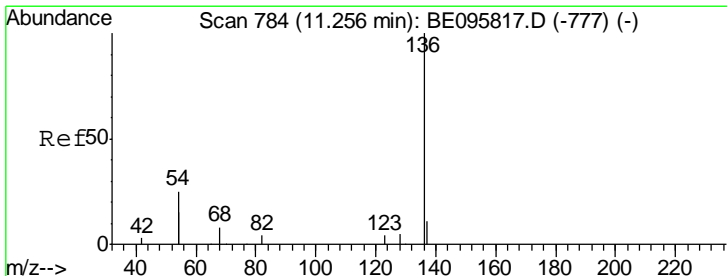
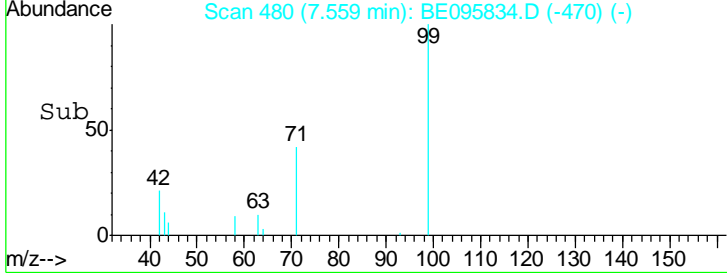
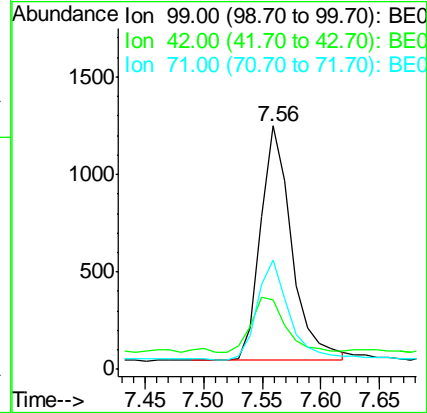
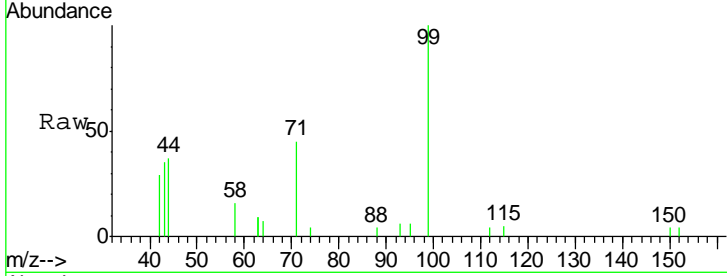




#5
 Phenol-d6
 Concen: 0.365 ng
 RT: 7.56 min Scan# 480
 Delta R.T. -0.01 min
 Lab File: BE095834.D
 Acq: 26 Mar 2018 11:27

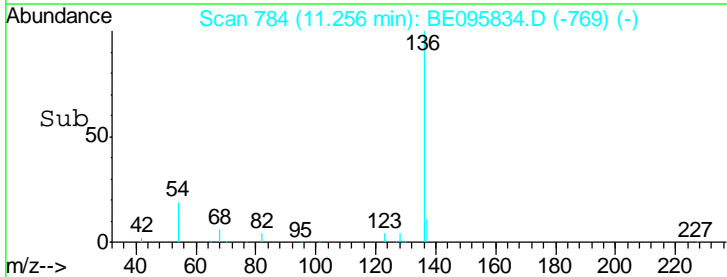
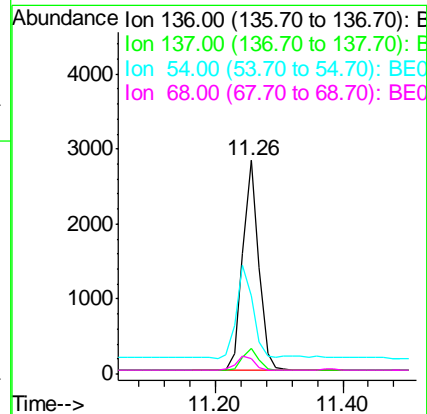
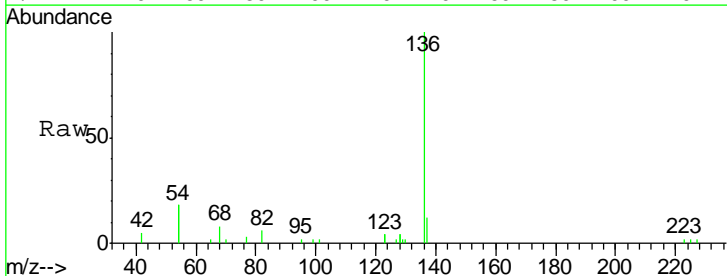
Instrument :
 BNA_E
 ClientSampled :

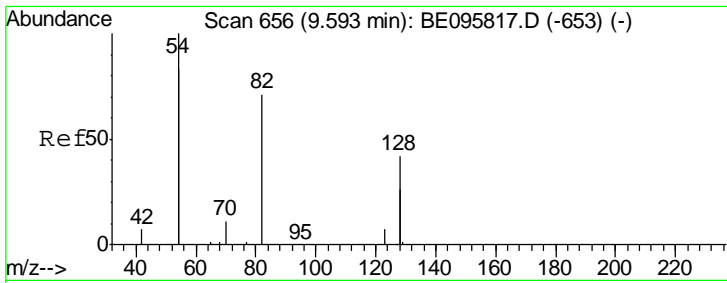
Tgt Ion	Resp	Lower	Upper
99	100		
42	25.2	20.2	30.2
71	42.5	28.4	42.6



#7
 Naphthalene-d8
 Concen: 0.400 ng
 RT: 11.26 min Scan# 784
 Delta R.T. -0.00 min
 Lab File: BE095834.D
 Acq: 26 Mar 2018 11:27

Tgt Ion	Resp	Lower	Upper
136	100		
137	12.3	9.5	14.3
54	36.4	29.1	43.7
68	7.5	6.2	9.2

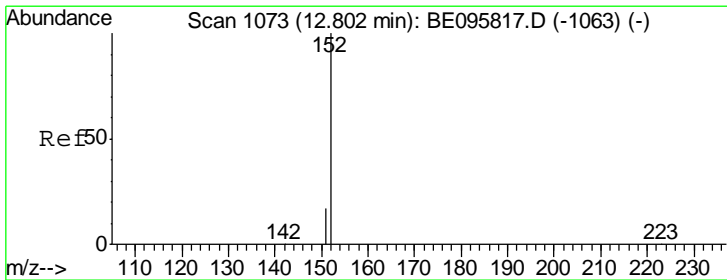
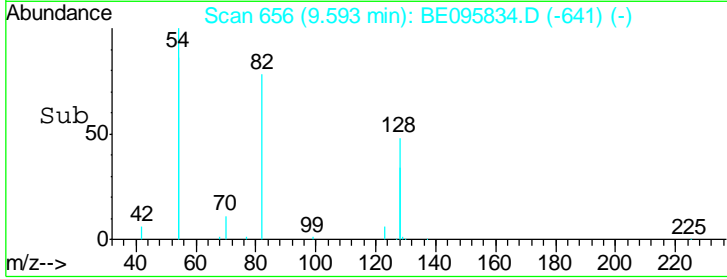
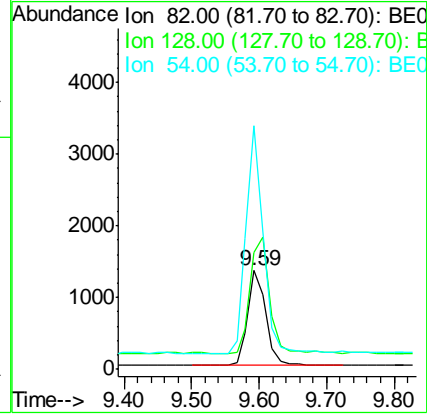
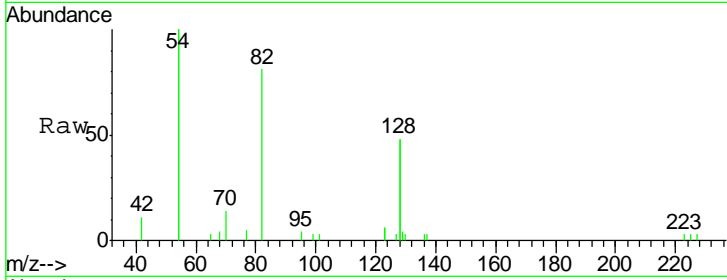




#8
 Nitrobenzene-d5
 Concen: 0.427 ng
 RT: 9.59 min Scan# 656
 Delta R.T. -0.00 min
 Lab File: BE095834.D
 Acq: 26 Mar 2018 11:27

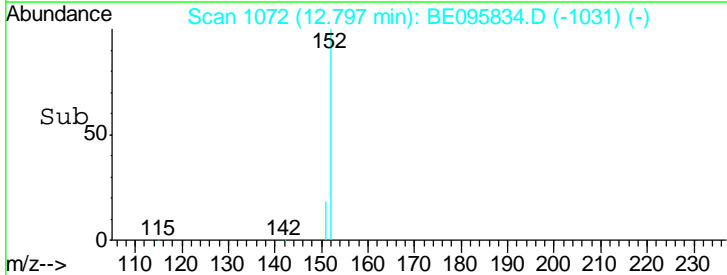
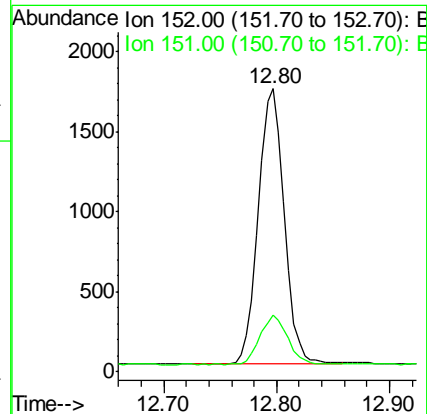
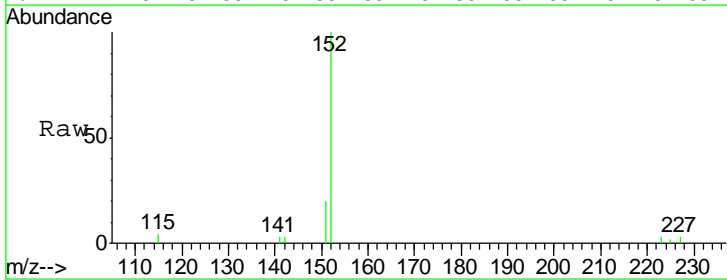
Instrument :
 BNA_E
 ClientSampled :

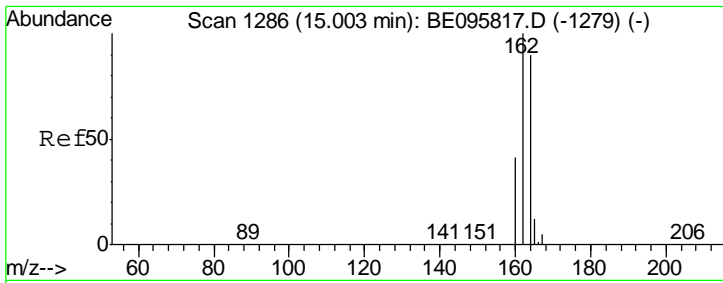
Tgt Ion	Resp	Lower	Upper
82	2476		
128	118.0	150.0	225.0#
54	246.8	154.2	231.4#



#11
 2-Methylnaphthalene-d10
 Concen: 0.336 ng
 RT: 12.80 min Scan# 1072
 Delta R.T. -0.01 min
 Lab File: BE095834.D
 Acq: 26 Mar 2018 11:27

Tgt Ion	Resp	Lower	Upper
152	2753		
151	19.1	15.4	23.0

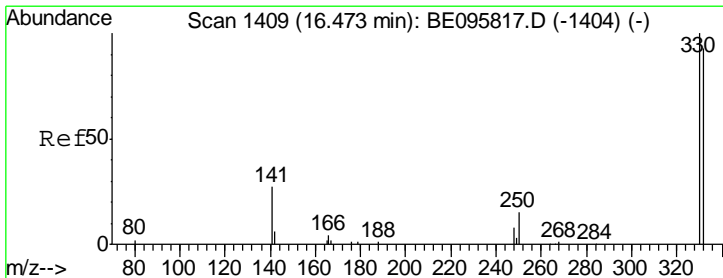
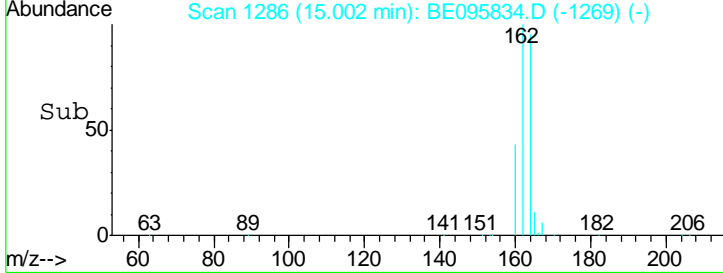
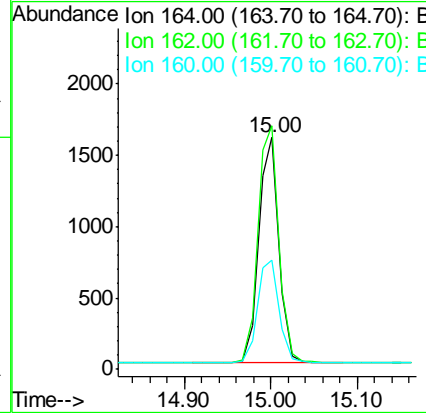
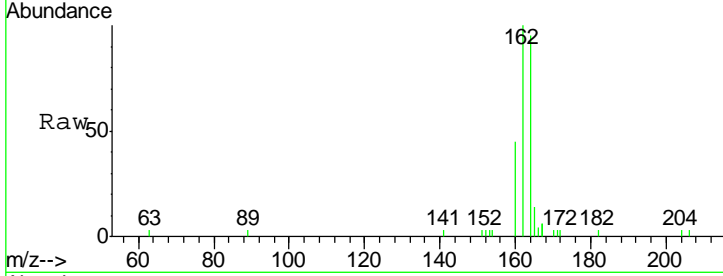




#13
 Acenaphthene-d10
 Concen: 0.400 ng
 RT: 15.00 min Scan# 1286
 Delta R.T. -0.00 min
 Lab File: BE095834.D
 Acq: 26 Mar 2018 11:27

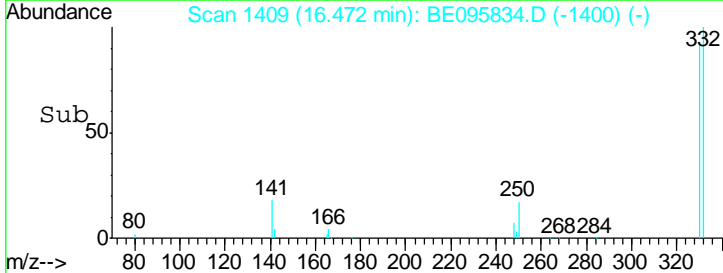
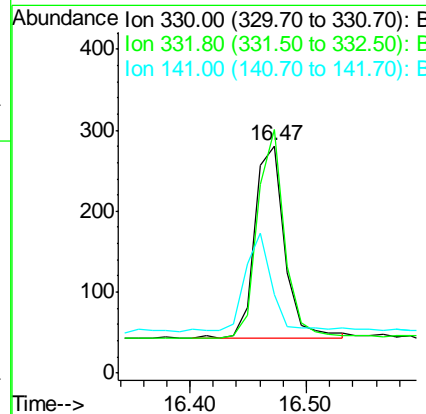
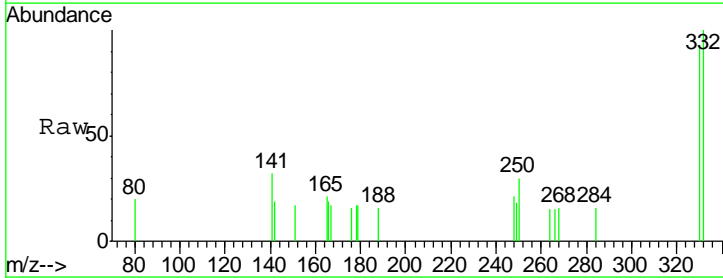
Instrument :
 BNA_E
 ClientSampled :

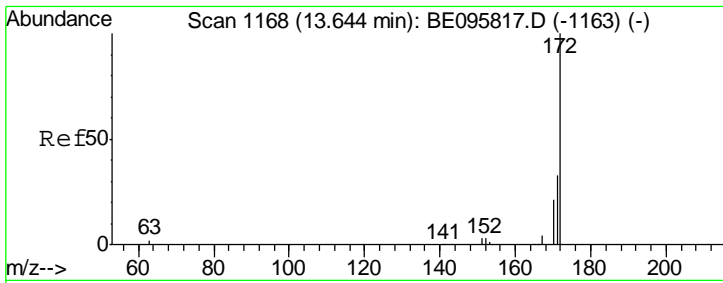
Tgt Ion	Resp	Lower	Upper
164	100		
162	105.2	83.1	124.7
160	47.1	37.1	55.7



#14
 2,4,6-Tribromophenol
 Concen: 0.285 ng
 RT: 16.47 min Scan# 1409
 Delta R.T. -0.00 min
 Lab File: BE095834.D
 Acq: 26 Mar 2018 11:27

Tgt Ion	Resp	Lower	Upper
330	100		
332	100.5	152.7	229.1#
141	47.6	33.7	50.5

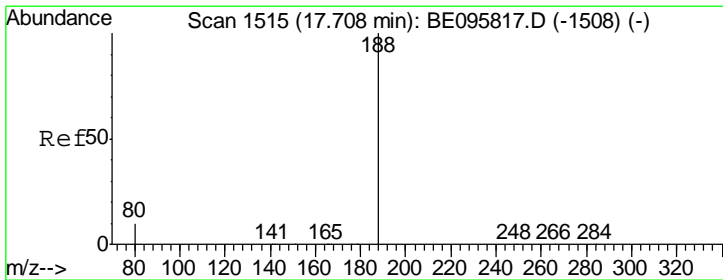
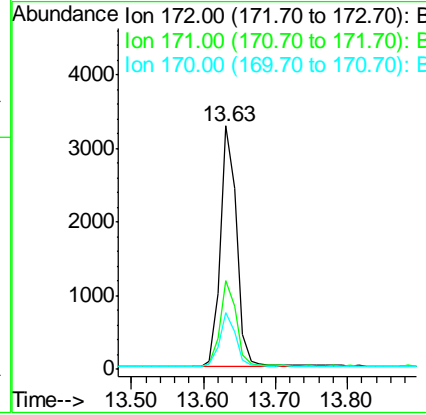
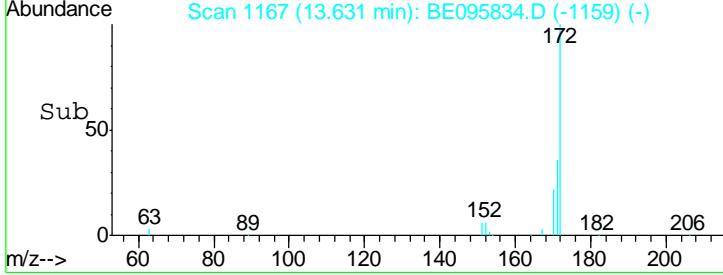
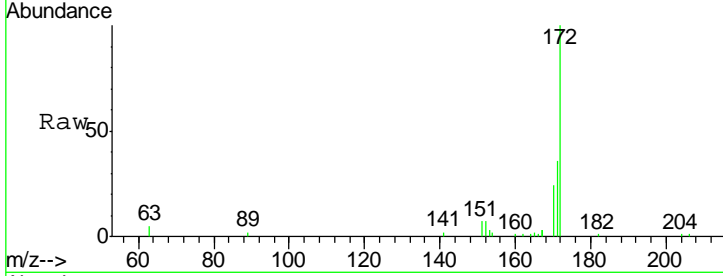




#15
 2-Fluorobiphenyl
 Concen: 0.470 ng
 RT: 13.63 min Scan# 1167
 Delta R.T. -0.01 min
 Lab File: BE095834.D
 Acq: 26 Mar 2018 11:27

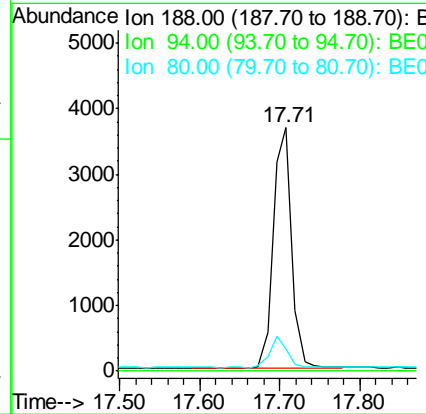
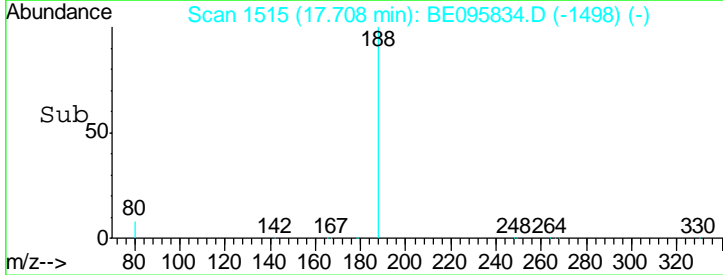
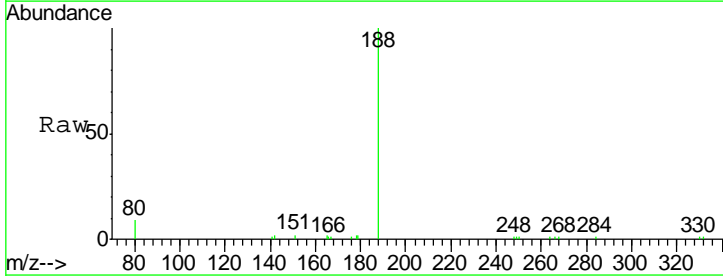
Instrument :
 BNA_E
 ClientSampled :

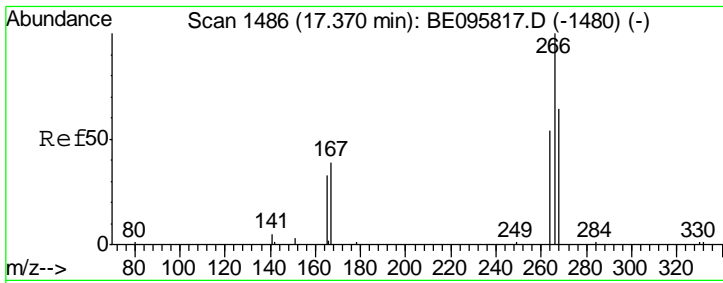
Tgt Ion	Resp	Lower	Upper
172	100		
171	36.5	29.9	44.9
170	23.6	21.8	32.8



#19
 Phenanthrene-d10
 Concen: 0.400 ng
 RT: 17.71 min Scan# 1515
 Delta R.T. -0.00 min
 Lab File: BE095834.D
 Acq: 26 Mar 2018 11:27

Tgt Ion	Resp	Lower	Upper
188	100		
94	0.0	3.9	5.9#
80	9.0	3.6	5.4#

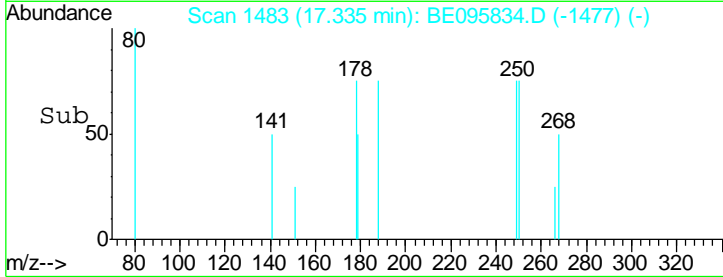
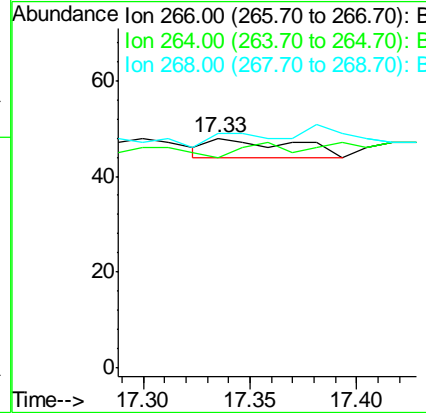
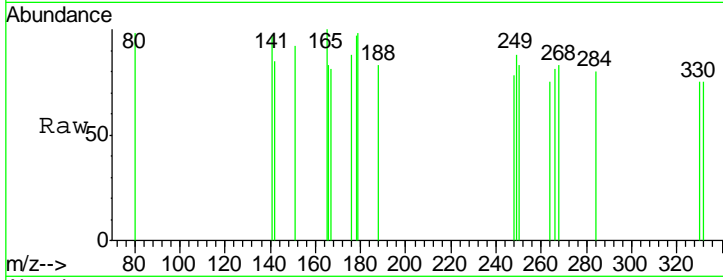




#22
 Pentachlorophenol
 Concen: 0.138 ng
 RT: 17.33 min Scan# 1483
 Delta R.T. -0.04 min
 Lab File: BE095834.D
 Acq: 26 Mar 2018 11:27

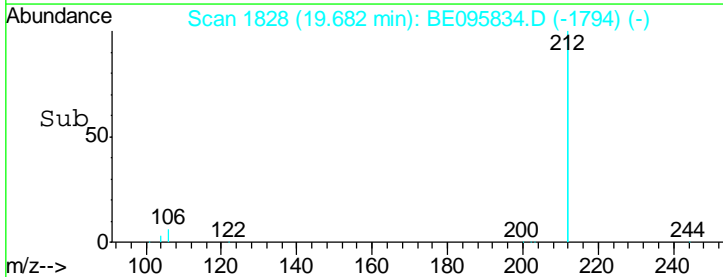
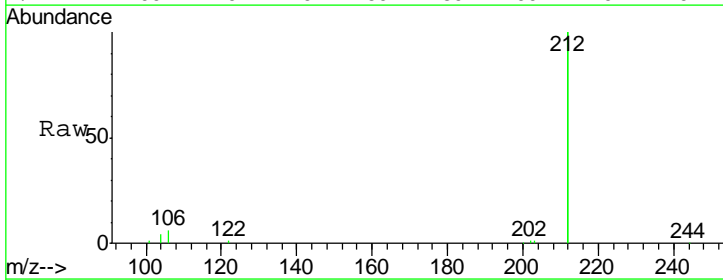
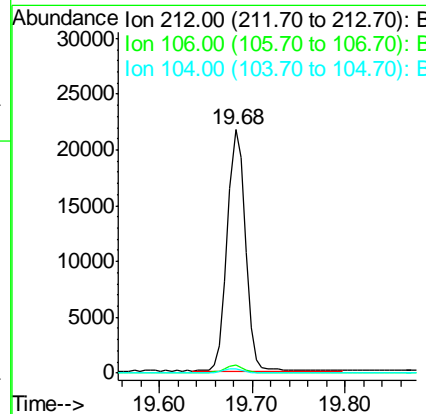
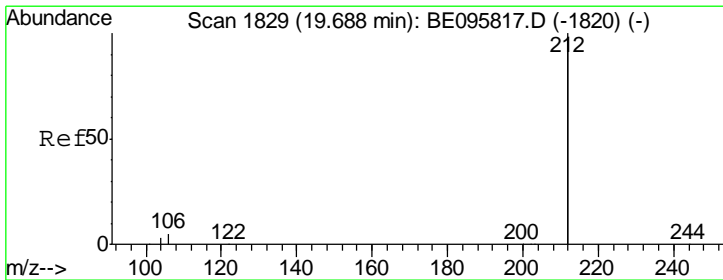
Instrument :
 BNA_E
 ClientSampled :

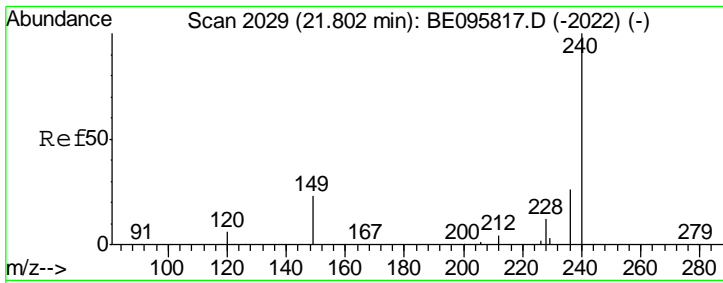
Tgt Ion	Resp	Lower	Upper
266	100		
264	91.7	72.5	108.7
268	102.1	73.8	110.6



#25
 Fluoranthene-d10
 Concen: 0.333 ng
 RT: 19.68 min Scan# 1828
 Delta R.T. -0.01 min
 Lab File: BE095834.D
 Acq: 26 Mar 2018 11:27

Tgt Ion	Resp	Lower	Upper
212	100		
106	2.8	2.8	4.2
104	1.7	1.6	2.4

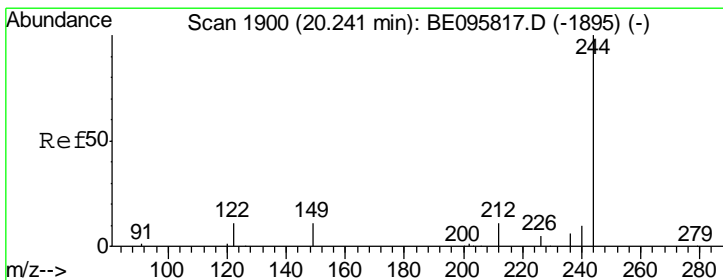
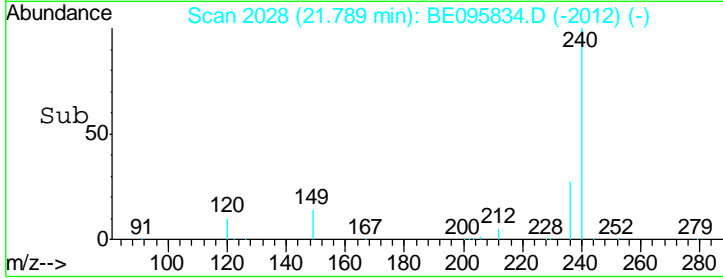
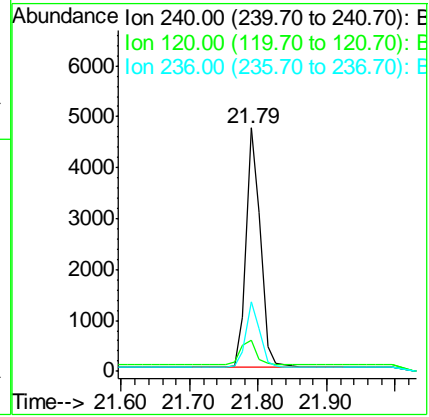
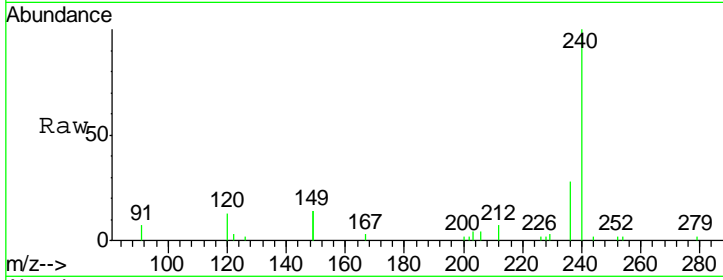




#27
 Chrysene-d12
 Concen: 0.400 ng
 RT: 21.79 min Scan# 2028
 Delta R.T. -0.01 min
 Lab File: BE095834.D
 Acq: 26 Mar 2018 11:27

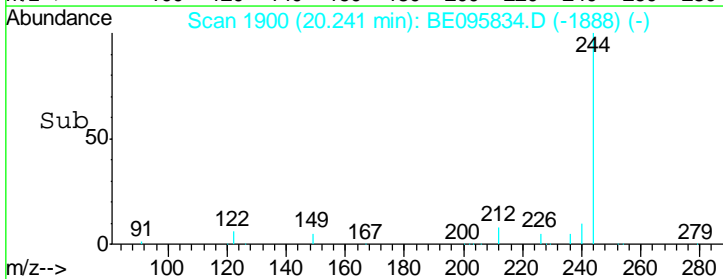
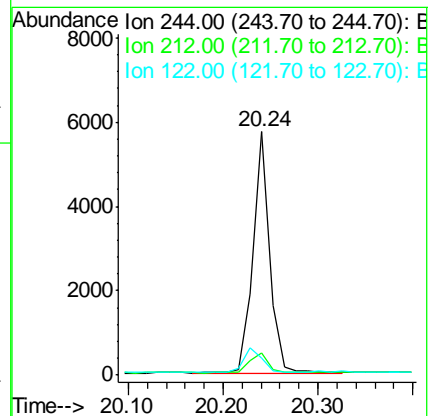
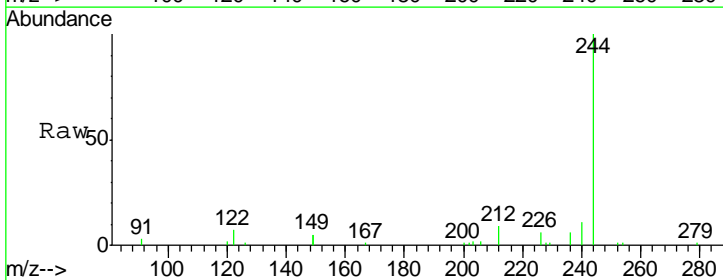
Instrument :
 BNA_E
 ClientSampled :

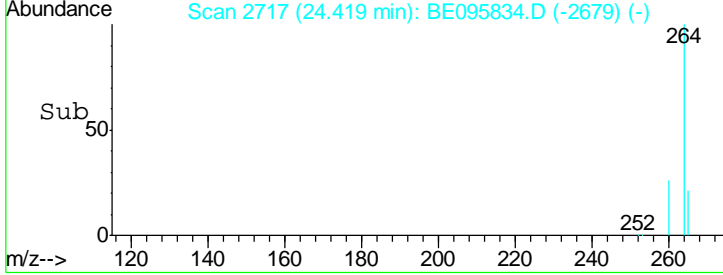
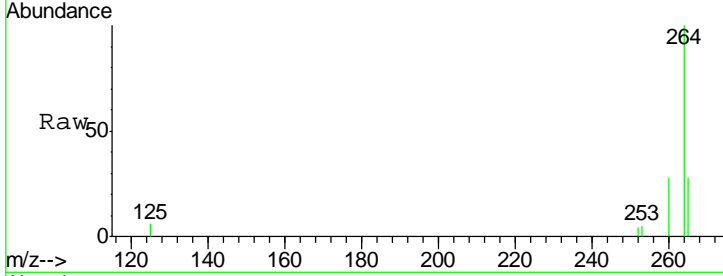
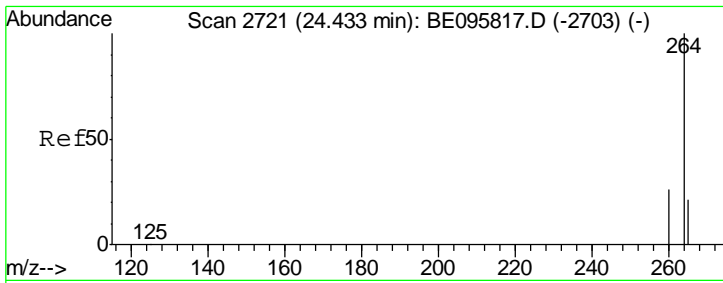
Tgt Ion	Resp	Lower	Upper
240	6884		
120	12.8	5.5	8.3#
236	28.5	20.7	31.1



#29
 Terphenyl-d14
 Concen: 0.474 ng
 RT: 20.24 min Scan# 1900
 Delta R.T. -0.00 min
 Lab File: BE095834.D
 Acq: 26 Mar 2018 11:27

Tgt Ion	Resp	Lower	Upper
244	6929		
212	9.1	25.4	38.0#
122	6.9	8.1	12.1#





#34
 Perylene-d12
 Concen: 0.400 ng
 RT: 24.42 min Scan# 2717
 Delta R.T. -0.01 min
 Lab File: BE095834.D
 Acq: 26 Mar 2018 11:27

Instrument :
 BNA_E
 ClientSampled :

Tot Ion: 264 Resp: 7006

Ion	Ratio	Lower	Upper
264	100		
260	27.9	20.5	30.7
265	28.4	22.8	34.2

