

Data Path : Z:\HPCHEM1\BNA E\DATA\BE032618\
 Data File : BE095837.D
 Acq On : 26 Mar 2018 13:15
 Operator : SJ/JU
 Sample : J1994-08
 Misc :
 ALS Vial : 9 Sample Multiplier: 1

Instrument :
 BNA_E
 ClientSampleId :

Quant Time: Mar 27 05:40:08 2018
 Quant Method : Z:\HPCHEM1\BNA E\METHODS\8270-SIM-BE032318.M
 Quant Title : ASP BNA STANDARDS FOR 5 POINT CALIBRATION
 QLast Update : Fri Mar 23 12:41:11 2018
 Response via : Initial Calibration

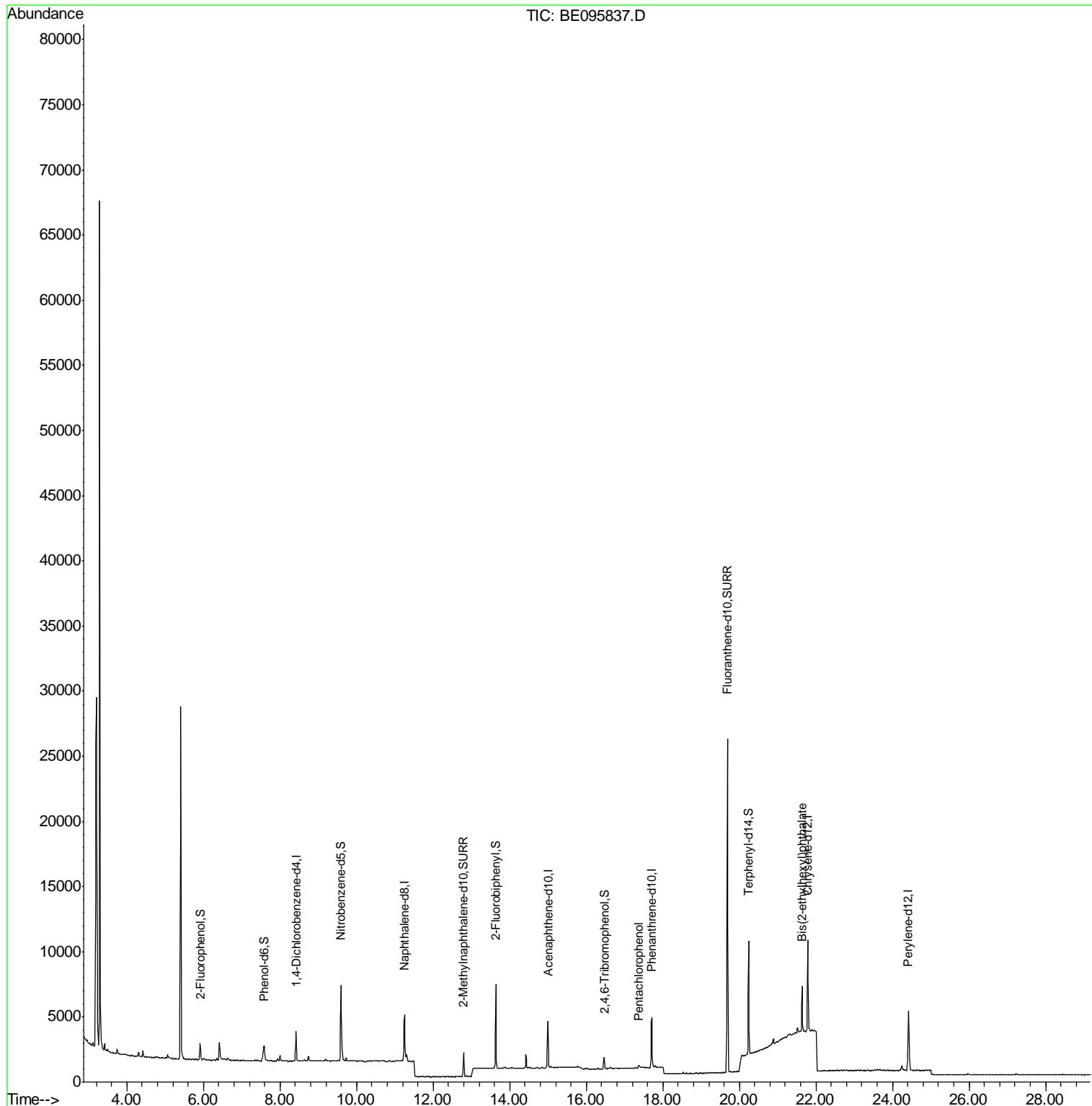
Internal Standards	R.T.	QIon	Response	Conc	Units	Dev(Min)
1) 1,4-Dichlorobenzene-d4	8.42	152	1092	0.40	ng	0.00
7) Naphthalene-d8	11.26	136	4122	0.40	ng	0.00
13) Acenaphthene-d10	15.00	164	2308	0.40	ng	0.00
19) Phenanthrene-d10	17.71	188	5714	0.40	ng	0.00
27) Chrysene-d12	21.79	240	6967	0.40	ng	-0.01
34) Perylene-d12	24.42	264	6890	0.40	ng	-0.02
System Monitoring Compounds						
4) 2-Fluorophenol	5.91	112	613	0.17	ng	0.00
5) Phenol-d6	7.57	99	568	0.11	ng	0.00
8) Nitrobenzene-d5	9.59	82	2259	0.46	ng	0.00
11) 2-Methylnaphthalene-d10	12.79	152	2546	0.37	ng	0.00
14) 2,4,6-Tribromophenol	16.47	330	557	0.42	ng	0.00
15) 2-Fluorobiphenyl	13.63	172	5519	0.57	ng	-0.01
25) Fluoranthene-d10	19.68	212	32539	0.38	ng	0.00
29) Terphenyl-d14	20.24	244	8099	0.55	ng	0.00
Target Compounds						
22) Pentachlorophenol	17.37	266	191	0.278	ng	Qvalue 86
32) Bis(2-ethylhexyl)phthalate	21.64	149	4262	0.058	ng	# 97

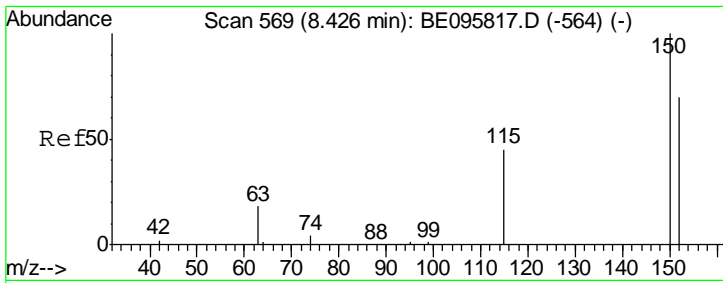
(#) = qualifier out of range (m) = manual integration (+) = signals summed

Data Path : Z:\HPCHEM1\BNA E\DATA\BE032618\
 Data File : BE095837.D
 Acq On : 26 Mar 2018 13:15
 Operator : SJ/JU
 Sample : J1994-08
 Misc :
 ALS Vial : 9 Sample Multiplier: 1

Instrument :
 BNA_E
 ClientSampleId :

Quant Time: Mar 27 05:40:08 2018
 Quant Method : Z:\HPCHEM1\BNA E\METHODS\8270-SIM-BE032318.M
 Quant Title : ASP BNA STANDARDS FOR 5 POINT CALIBRATION
 QLast Update : Fri Mar 23 12:41:11 2018
 Response via : Initial Calibration



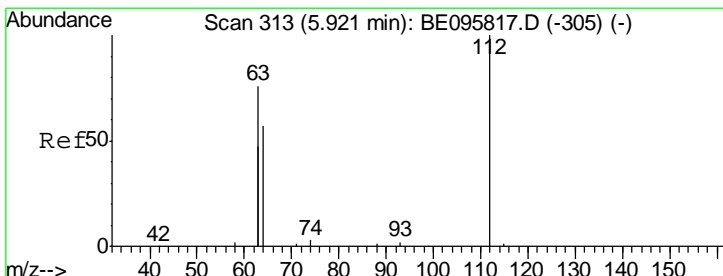
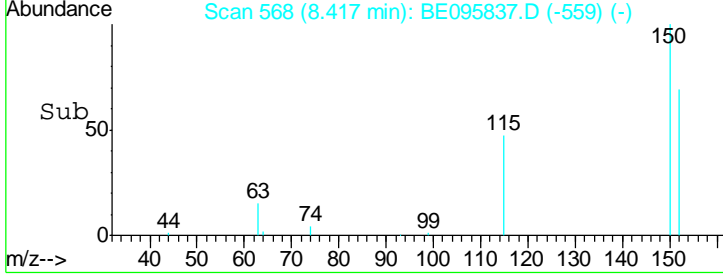
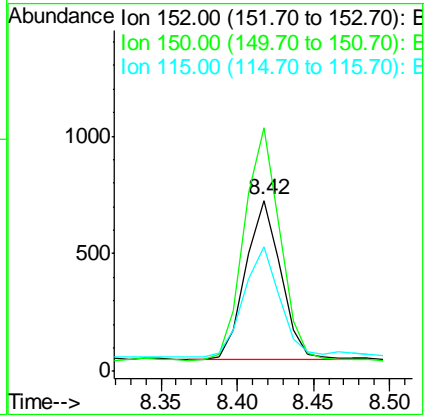
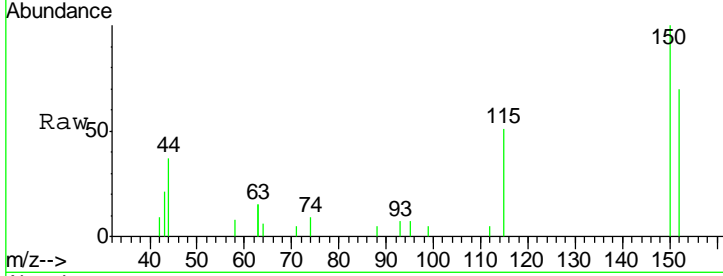


#1
 1,4-Dichlorobenzene-d4
 Concen: 0.400 ng
 RT: 8.42 min Scan# 568
 Delta R.T. -0.01 min
 Lab File: BE095837.D
 Acq: 26 Mar 2018 13:15

Instrument :
 BNA_E
 ClientSampleId :

Tgt Ion:152 Resp: 1092

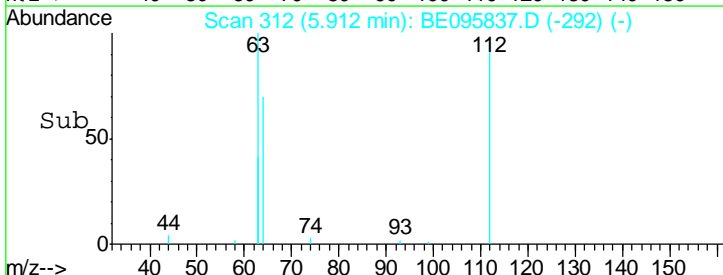
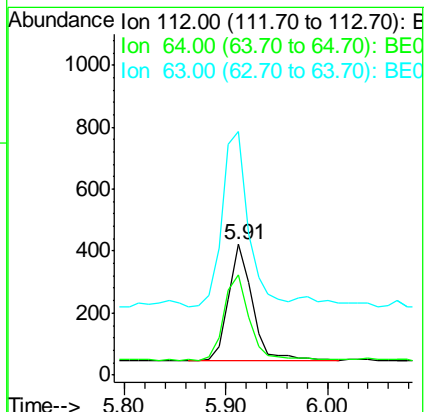
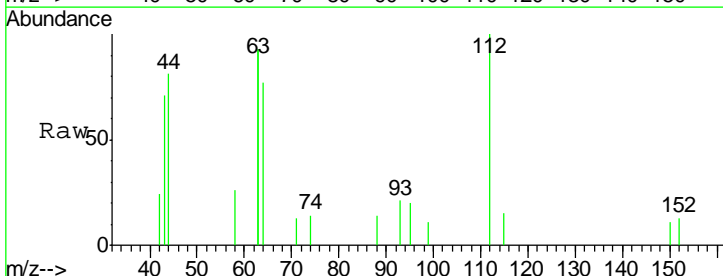
Ion	Ratio	Lower	Upper
152	100		
150	142.6	117.2	175.8
115	72.9	57.0	85.6

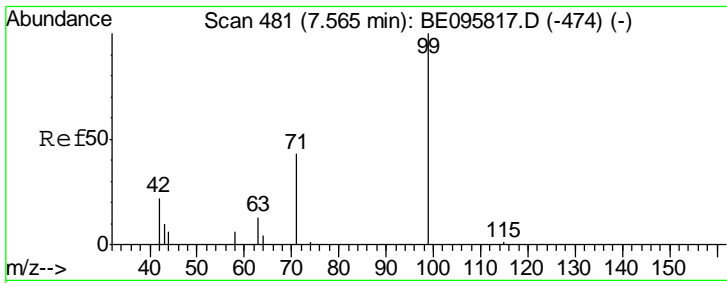


#4
 2-Fluorophenol
 Concen: 0.170 ng
 RT: 5.91 min Scan# 312
 Delta R.T. -0.01 min
 Lab File: BE095837.D
 Acq: 26 Mar 2018 13:15

Tgt Ion:112 Resp: 613

Ion	Ratio	Lower	Upper
112	100		
64	77.5	60.1	90.1
63	166.7	116.8	175.2

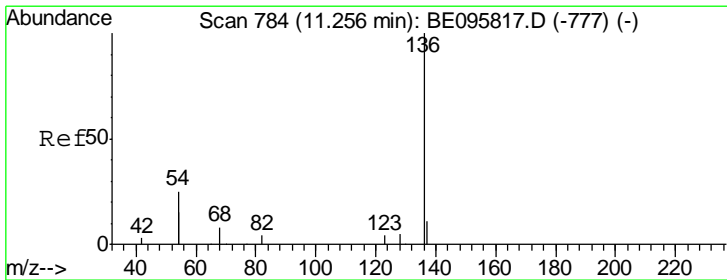
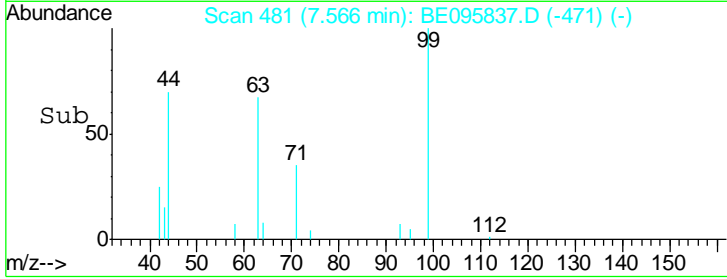
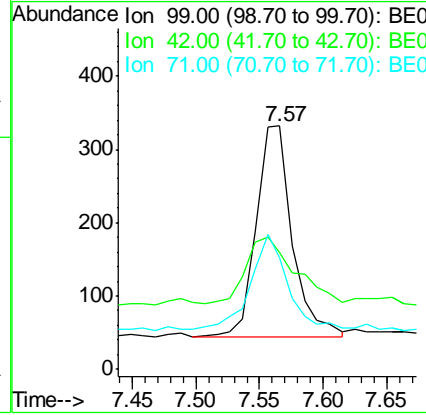
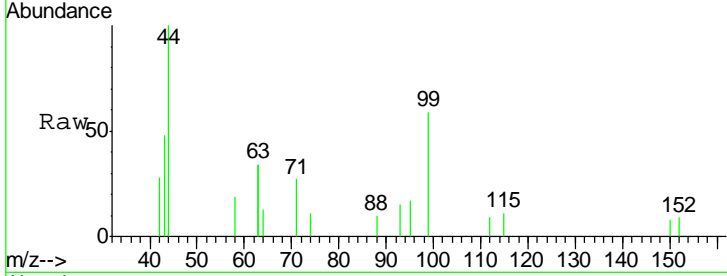




#5
 Phenol-d6
 Concen: 0.115 ng
 RT: 7.57 min Scan# 481
 Delta R.T. 0.00 min
 Lab File: BE095837.D
 Acq: 26 Mar 2018 13:15

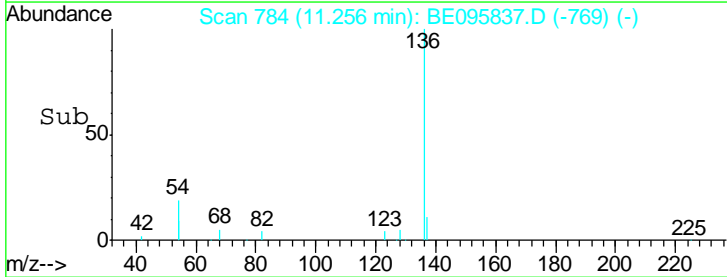
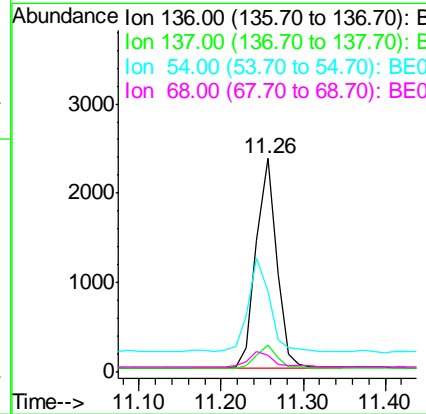
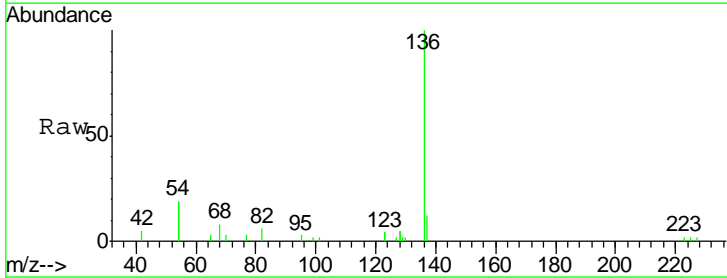
Instrument :
 BNA_E
 ClientSampled :

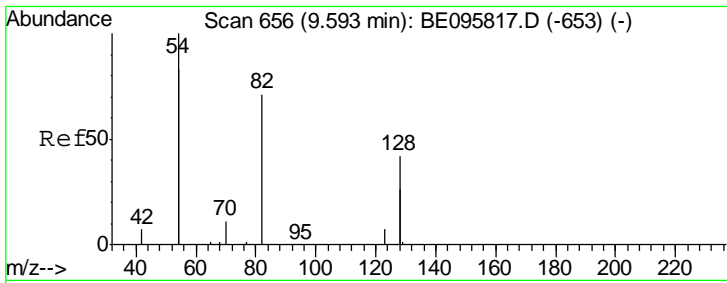
Tgt Ion	Resp	Lower	Upper
99	568		
42	41.9	20.2	30.2#
71	46.5	28.4	42.6#



#7
 Naphthalene-d8
 Concen: 0.400 ng
 RT: 11.26 min Scan# 784
 Delta R.T. -0.00 min
 Lab File: BE095837.D
 Acq: 26 Mar 2018 13:15

Tgt Ion	Resp	Lower	Upper
136	4122		
137	12.3	9.5	14.3
54	37.9	29.1	43.7
68	7.7	6.2	9.2

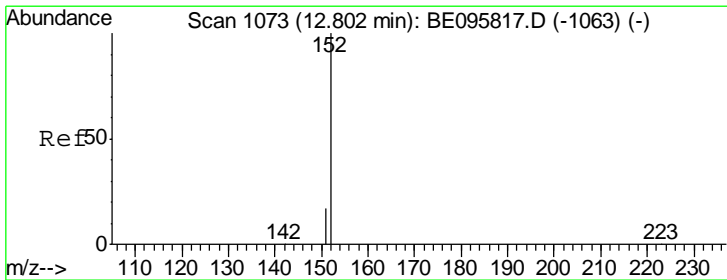
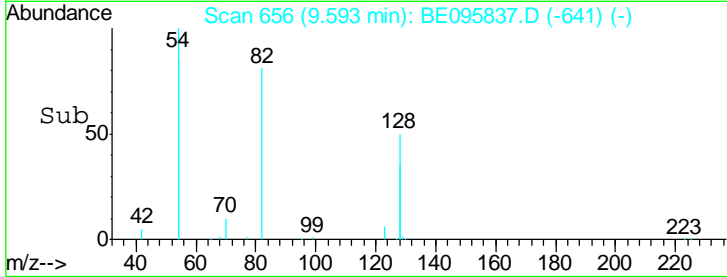
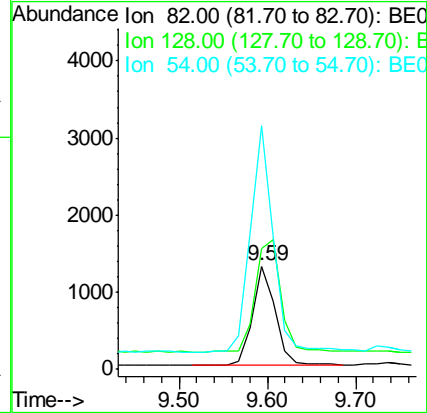
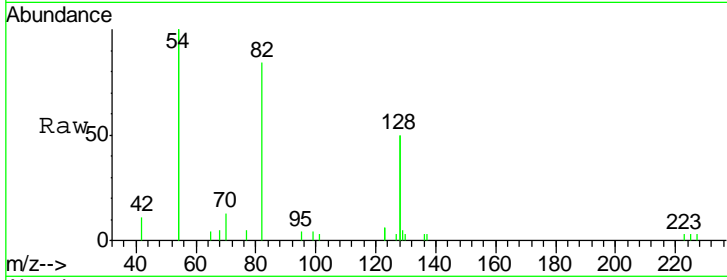




#8
 Nitrobenzene-d5
 Concen: 0.464 ng
 RT: 9.59 min Scan# 656
 Delta R.T. -0.00 min
 Lab File: BE095837.D
 Acq: 26 Mar 2018 13:15

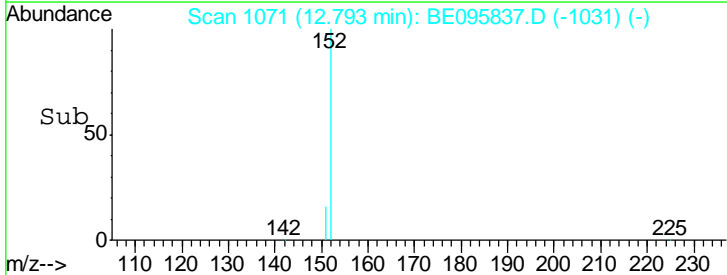
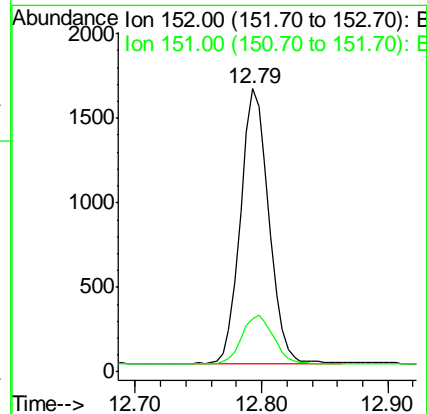
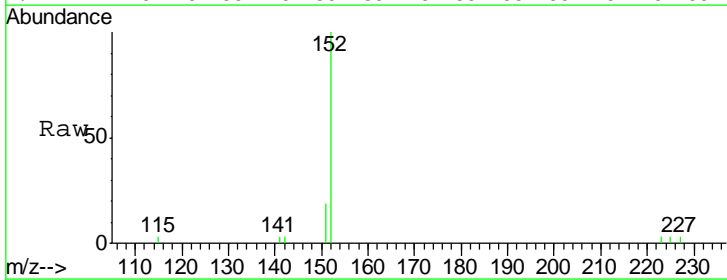
Instrument :
 BNA_E
 ClientSampled :

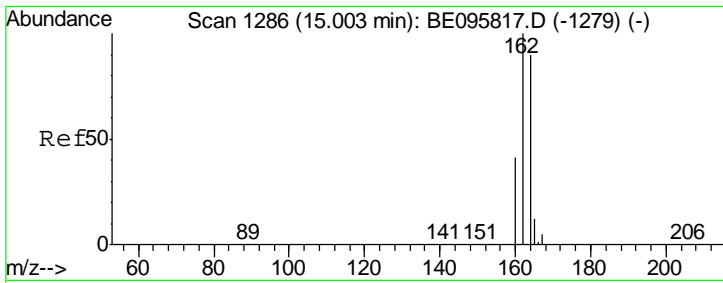
Tgt Ion	Resp	Lower	Upper
82	100		
128	117.8	150.0	225.0#
54	236.7	154.2	231.4#



#11
 2-Methylnaphthalene-d10
 Concen: 0.370 ng
 RT: 12.79 min Scan# 1071
 Delta R.T. -0.01 min
 Lab File: BE095837.D
 Acq: 26 Mar 2018 13:15

Tgt Ion	Resp	Lower	Upper
152	100		
151	19.4	15.4	23.0

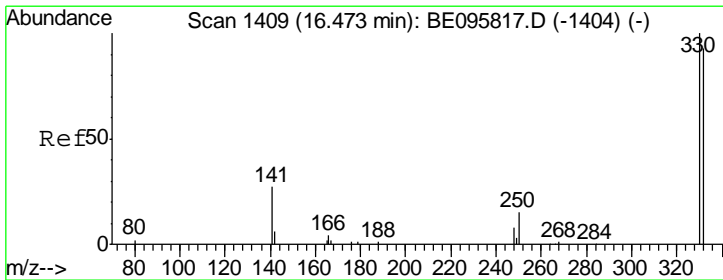
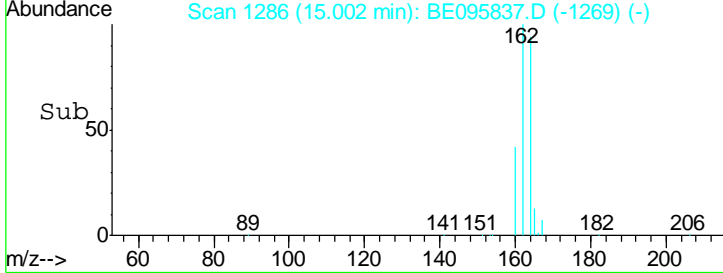
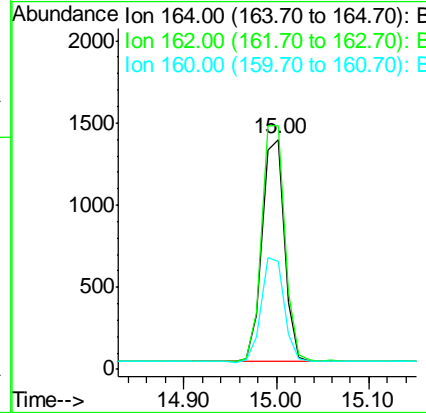
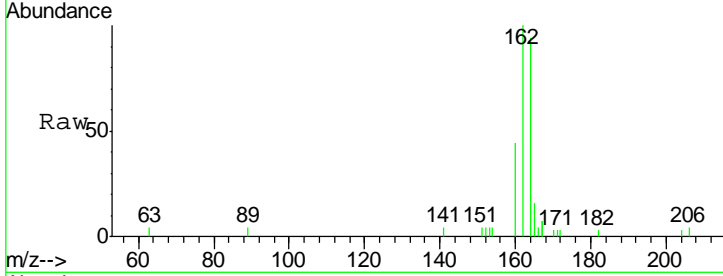




#13
 Acenaphthene-d10
 Concen: 0.400 ng
 RT: 15.00 min Scan# 1286
 Delta R.T. -0.00 min
 Lab File: BE095837.D
 Acq: 26 Mar 2018 13:15

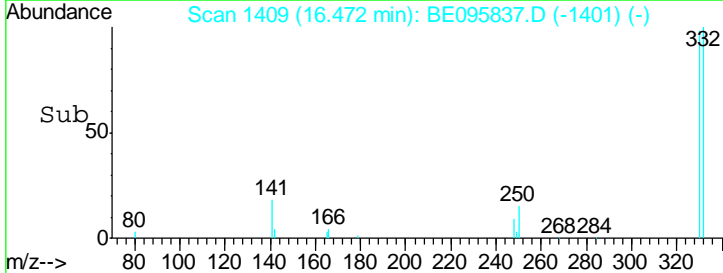
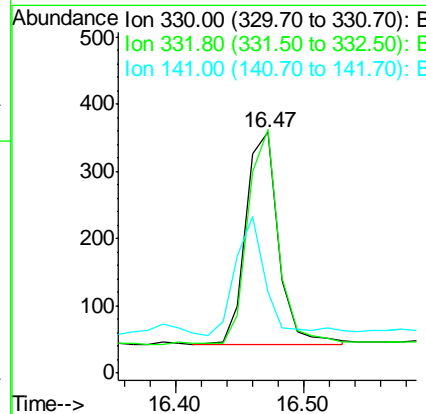
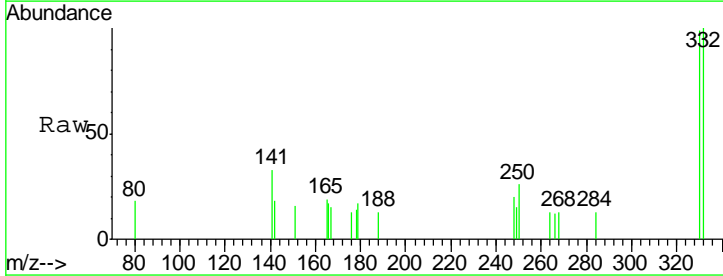
Instrument :
 BNA_E
 ClientSampled :

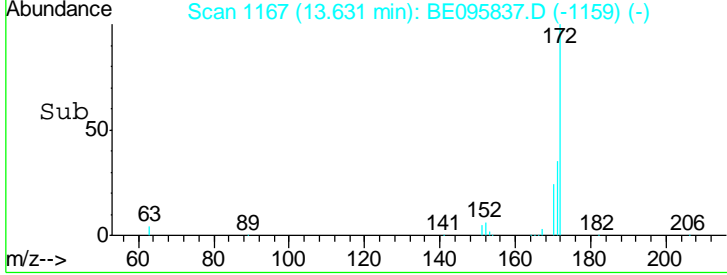
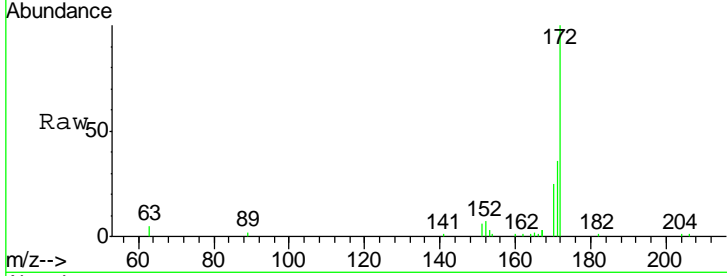
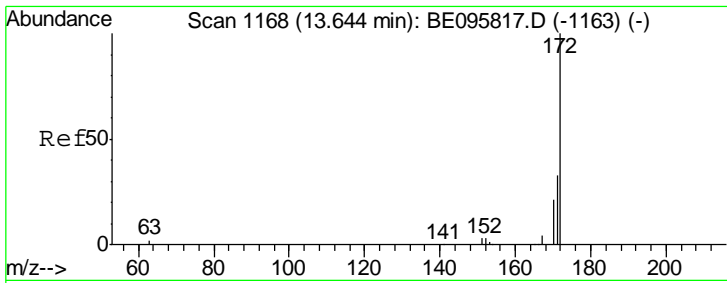
Tgt Ion	Resp	Lower	Upper
164	100		
162	106.0	83.1	124.7
160	47.0	37.1	55.7



#14
 2,4,6-Tribromophenol
 Concen: 0.418 ng
 RT: 16.47 min Scan# 1409
 Delta R.T. -0.00 min
 Lab File: BE095837.D
 Acq: 26 Mar 2018 13:15

Tgt Ion	Resp	Lower	Upper
330	100		
332	94.8	152.7	229.1#
141	53.7	33.7	50.5#

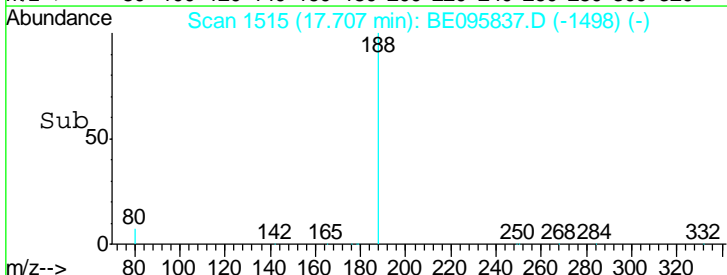
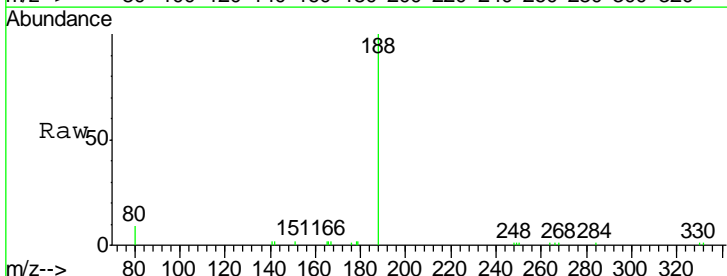
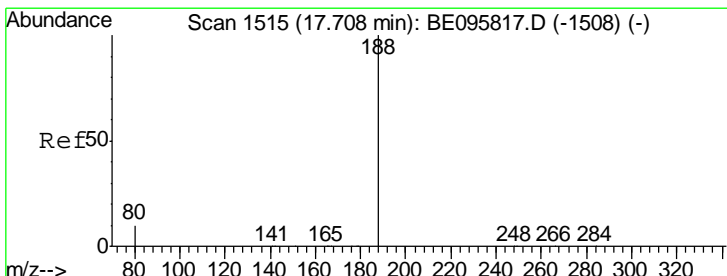
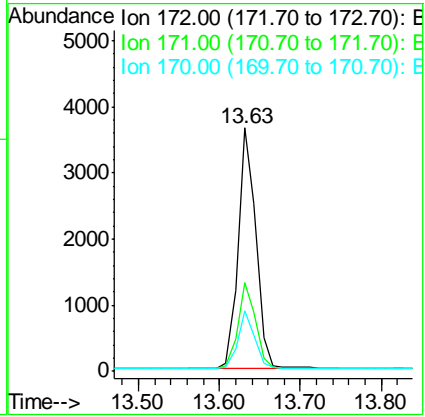




#15
 2-Fluorobiphenyl
 Concen: 0.567 ng
 RT: 13.63 min Scan# 1167
 Delta R.T. -0.01 min
 Lab File: BE095837.D
 Acq: 26 Mar 2018 13:15

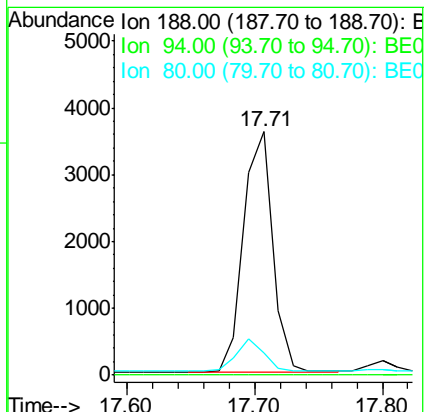
Instrument :
 BNA_E
 ClientSampled :

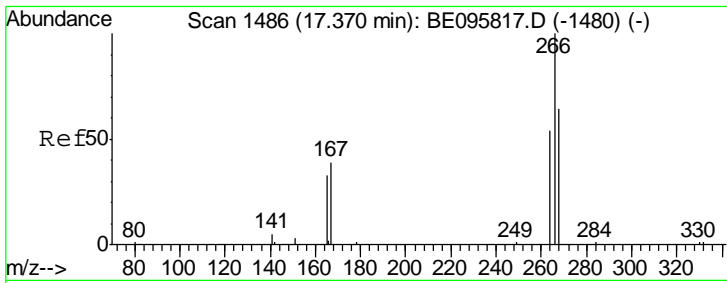
Tgt Ion	Resp	Lower	Upper
172	100		
171	36.2	29.9	44.9
170	24.7	21.8	32.8



#19
 Phenanthrene-d10
 Concen: 0.400 ng
 RT: 17.71 min Scan# 1515
 Delta R.T. -0.00 min
 Lab File: BE095837.D
 Acq: 26 Mar 2018 13:15

Tgt Ion	Resp	Lower	Upper
188	100		
94	0.0	3.9	5.9#
80	9.1	3.6	5.4#

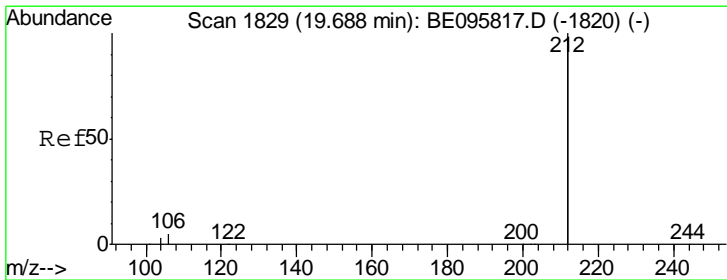
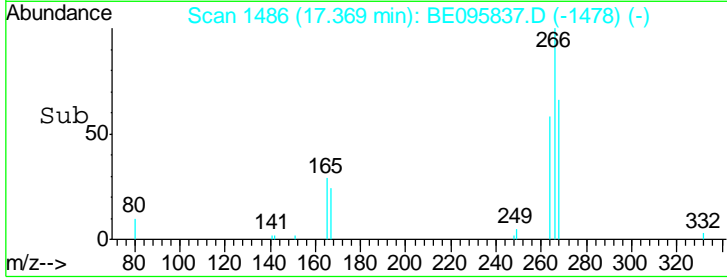
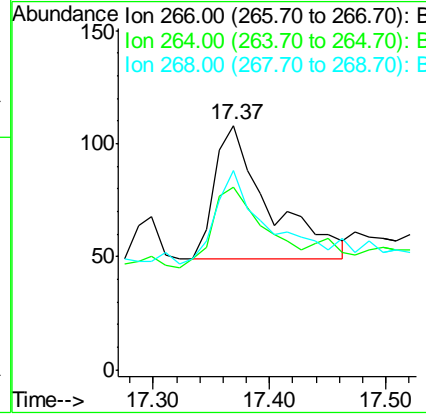
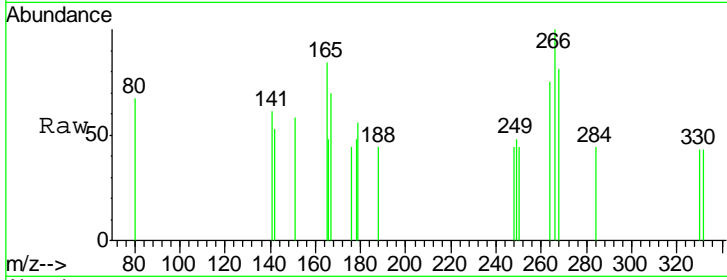




#22
 Pentachlorophenol
 Concen: 0.278 ng
 RT: 17.37 min Scan# 1486
 Delta R.T. -0.00 min
 Lab File: BE095837.D
 Acq: 26 Mar 2018 13:15

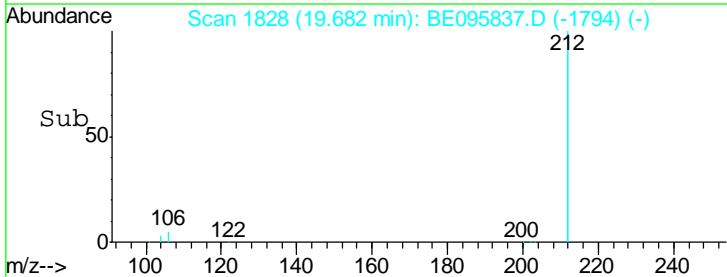
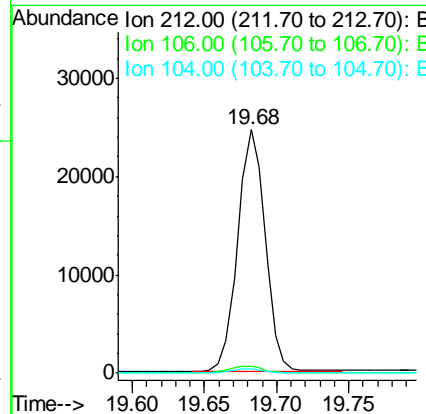
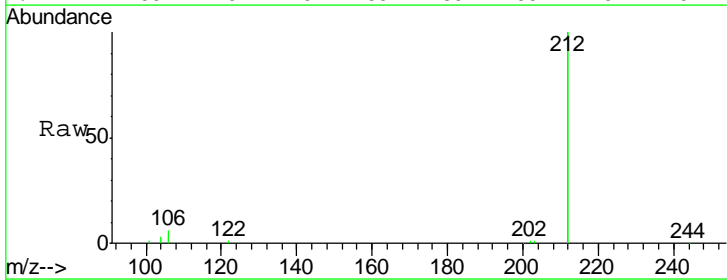
Instrument :
 BNA_E
 ClientSampled :

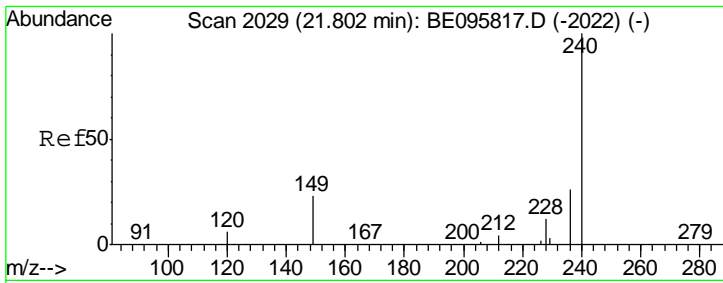
Tgt Ion	Resp	Lower	Upper
266	100		
264	75.0	72.5	108.7
268	81.5	73.8	110.6



#25
 Fluoranthene-d10
 Concen: 0.383 ng
 RT: 19.68 min Scan# 1828
 Delta R.T. -0.01 min
 Lab File: BE095837.D
 Acq: 26 Mar 2018 13:15

Tgt Ion	Resp	Lower	Upper
212	100		
106	2.9	2.8	4.2
104	1.7	1.6	2.4

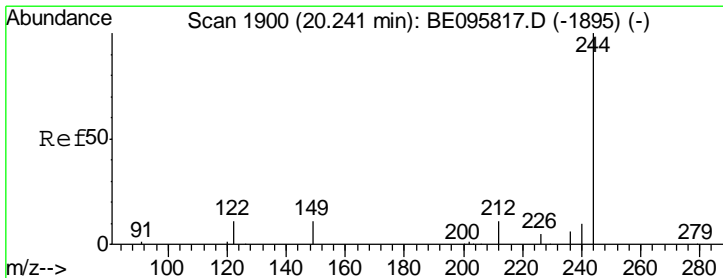
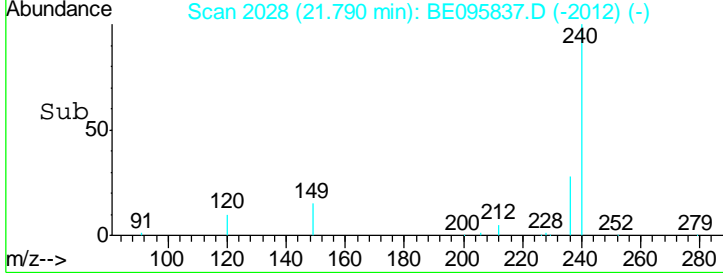
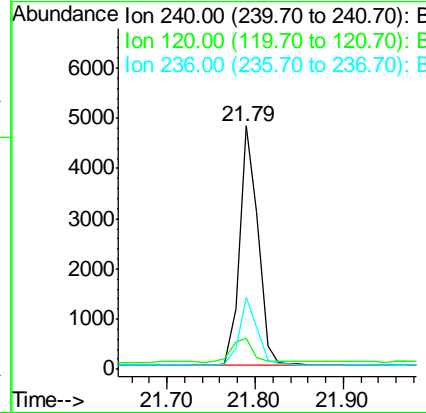
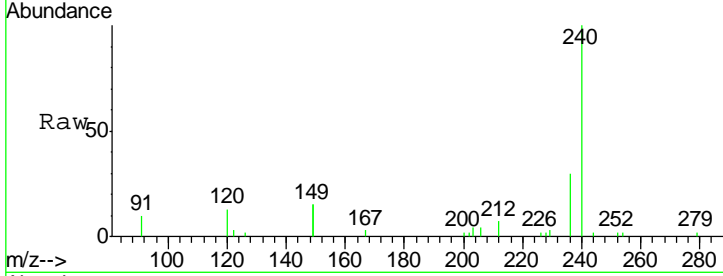




#27
 Chrysene-d12
 Concen: 0.400 ng
 RT: 21.79 min Scan# 2028
 Delta R.T. -0.01 min
 Lab File: BE095837.D
 Acq: 26 Mar 2018 13:15

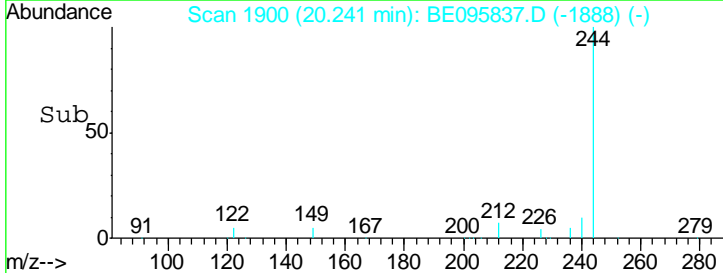
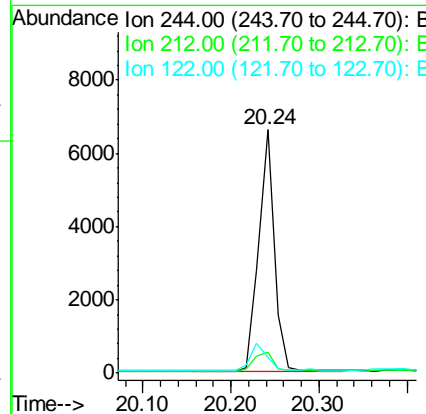
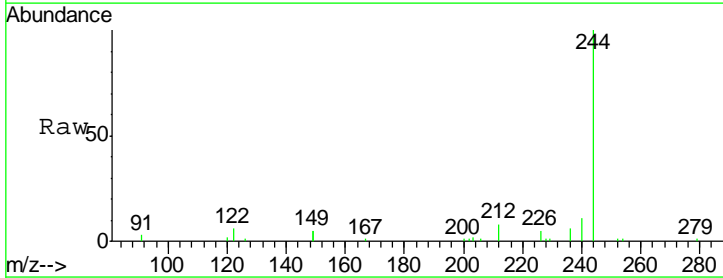
Instrument :
 BNA_E
 ClientSampled :

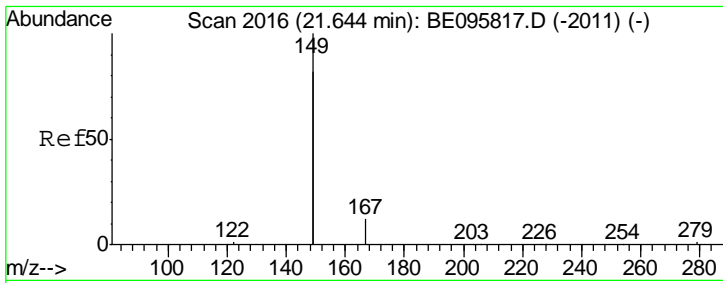
Tgt Ion	Resp	Lower	Upper
240	6967		
120	12.7	5.5	8.3#
236	29.6	20.7	31.1



#29
 Terphenyl-d14
 Concen: 0.547 ng
 RT: 20.24 min Scan# 1900
 Delta R.T. 0.00 min
 Lab File: BE095837.D
 Acq: 26 Mar 2018 13:15

Tgt Ion	Resp	Lower	Upper
244	8099		
212	8.3	25.4	38.0#
122	6.4	8.1	12.1#

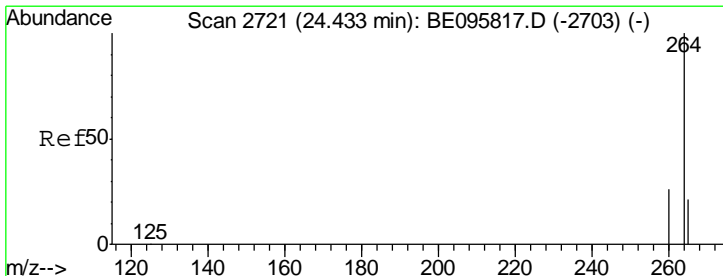
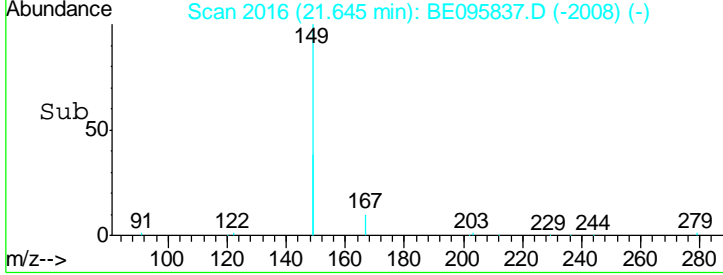
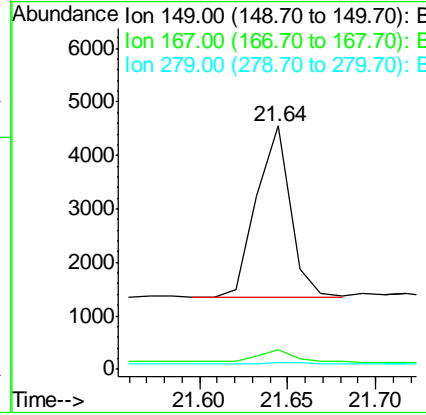
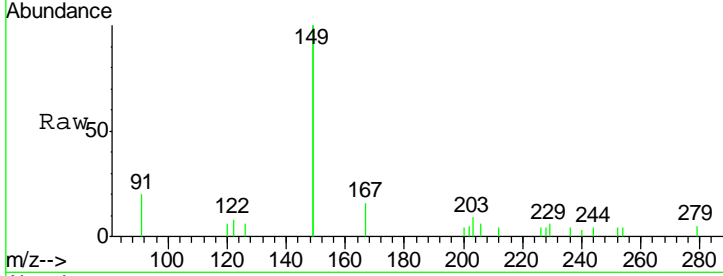




#32
 Bis(2-ethylhexyl)phthalate
 Concen: 0.058 ng
 RT: 21.64 min Scan# 2016
 Delta R.T. 0.00 min
 Lab File: BE095837.D
 Acq: 26 Mar 2018 13:15

Instrument :
 BNA_E
 ClientSampled :

Tgt Ion	Resp	Lower	Upper
149	100		
167	8.0	5.4	8.0
279	1.5	0.7	1.1#



#34
 Perylene-d12
 Concen: 0.400 ng
 RT: 24.42 min Scan# 2716
 Delta R.T. -0.02 min
 Lab File: BE095837.D
 Acq: 26 Mar 2018 13:15

Tgt Ion	Resp	Lower	Upper
264	100		
260	27.2	20.5	30.7
265	28.0	22.8	34.2

