

Data Path : Z:\HPCHEM1\BNA_E\DATA\BE040717\
 Data File : BE092893.D
 Acq On : 7 Apr 2017 13:53
 Operator : SJ/MA
 Sample : PB98124BS
 Misc :
 ALS Vial : 4 Sample Multiplier: 1

Instrument :
 BNA_E
 ClientSampleId :
 PB98124BS

Quant Time: Apr 08 01:37:05 2017
 Quant Method : Z:\HPCHEM1\BNA_E\METHODS\8270-SIM-BE040417.M
 Quant Title : ASP BNA STANDARDS FOR 5 POINT CALIBRATION
 QLast Update : Tue Apr 04 16:35:54 2017
 Response via : Initial Calibration

Internal Standards	R.T.	QIon	Response	Conc	Units	Dev(Min)
1) 1,4-Dichlorobenzene-d4	7.77	152	10315	5.00	ng	-0.02
7) Naphthalene-d8	10.54	136	41975	5.00	ng	0.00
12) Acenaphthene-d10	14.40	164	19077	5.00	ng	0.00
18) Phenanthrene-d10	17.13	188	38722	5.00	ng	-0.02
24) Chrysene-d12	21.28	240	41335	5.00	ng	-0.02
31) Perylene-d12	23.70	264	30754	5.00	ng	-0.01

System Monitoring Compounds

4) 2-Fluorophenol	5.37	112	21686	10.44	ng	0.00
5) Phenol-d6	6.95	99	29719	9.97	ng	0.00
8) Nitrobenzene-d5	8.90	82	11038	4.59	ng	-0.02
13) 2,4,6-Tribromophenol	15.88	330	3058	12.47	ng	0.00
14) 2-Fluorobiphenyl	13.02	172	28589	4.44	ng	-0.01
26) Terphenyl-d14	19.74	244	27079	4.26	ng	-0.02

Target Compounds

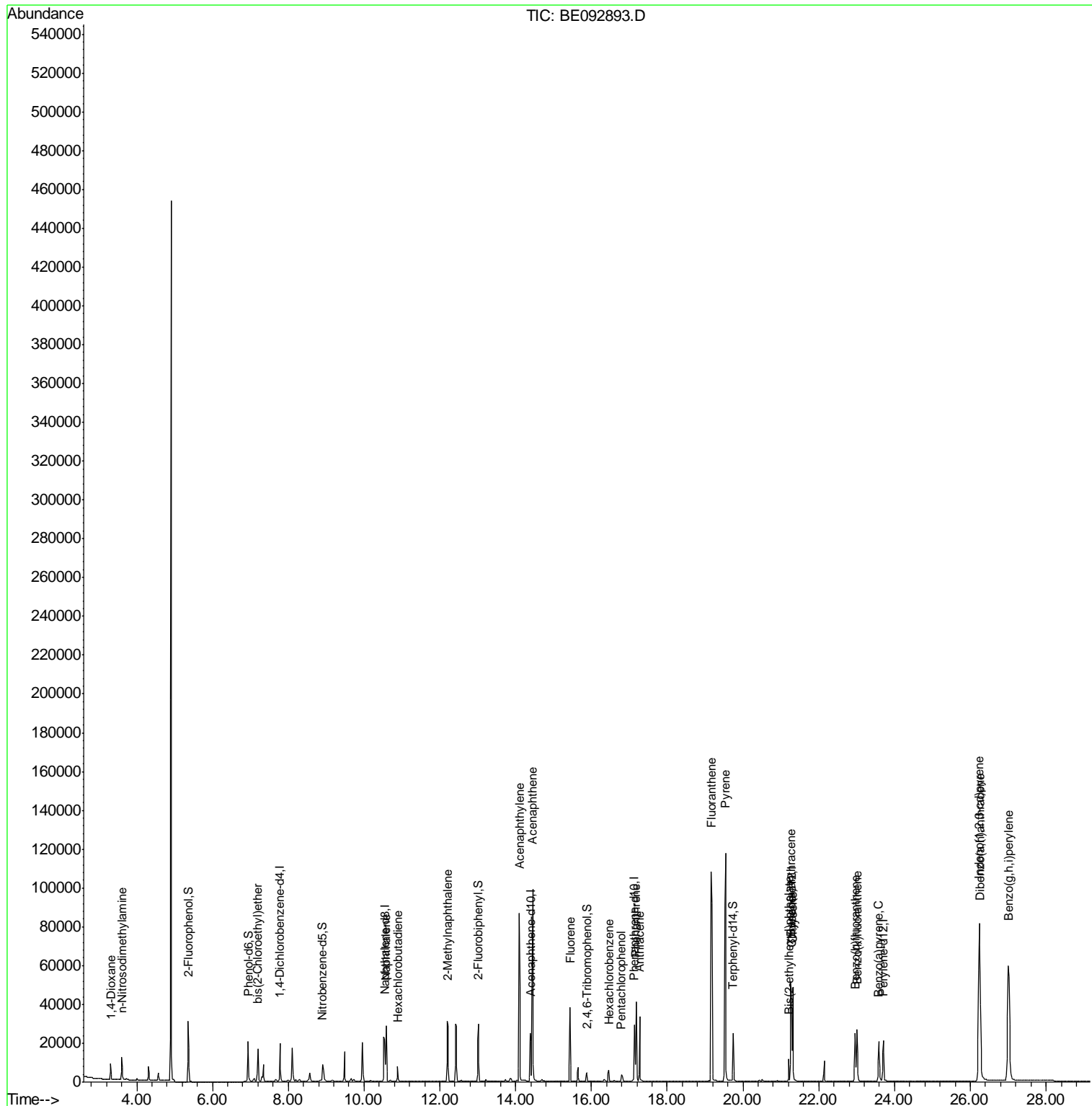
Target Compounds	R.T.	QIon	Response	Conc	Units	Qvalue
2) 1,4-Dioxane	3.32	88	4624	3.34	ng	98
3) n-Nitrosodimethylamine	3.61	42	6520	4.70	ng	86
6) bis(2-Chloroethyl)ether	7.20	93	13791	4.12	ng	# 49
9) Naphthalene	10.58	128	38379	4.14	ng	# 94
10) Hexachlorobutadiene	10.89	225	5320	4.25	ng	99
11) 2-Methylnaphthalene	12.21	142	23970	4.18	ng	# 85
15) Acenaphthylene	14.09	152	126710	4.70	ng	100
16) Acenaphthene	14.45	154	22907	4.13	ng	96
17) Fluorene	15.44	166	25890	4.22	ng	98
19) Hexachlorobenzene	16.47	284	6815	4.64	ng	# 64
20) Pentachlorophenol	16.79	266	3475	10.22	ng	# 80
21) Phenanthrene	17.18	178	46124	4.46	ng	# 94
22) Anthracene	17.27	178	39647	4.70	ng	99
23) Fluoranthene	19.16	202	169316	4.47	ng	99
25) Pyrene	19.54	202	176468	4.78	ng	99
27) Benzo(a)anthracene	21.26	228	40851	4.58	ng	# 92
28) Chrysene	21.31	228	44422m	4.29	ng	
29) Bis(2-ethylhexyl)phthalate	21.21	149	10782	3.75	ng	# 73
30) Indeno(1,2,3-cd)pyrene	26.24	276	162872	4.72	ng	# 93
32) Benzo(b)fluoranthene	22.96	252	37564	4.94	ng	98
33) Benzo(k)fluoranthene	23.01	252	34488	5.01	ng	96
34) Benzo(a)pyrene	23.59	252	32201	5.45	ng	96
35) Dibenzo(a,h)anthracene	26.25	278	35809	5.28	ng	# 91
36) Benzo(g,h,i)perylene	27.00	276	139246	5.03	ng	93

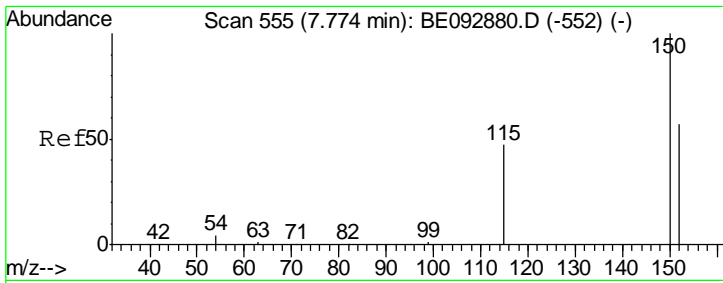
(#) = qualifier out of range (m) = manual integration (+) = signals summed

Data Path : Z:\HPCHEM1\BNA_E\DATA\BE040717\
 Data File : BE092893.D
 Acq On : 7 Apr 2017 13:53
 Operator : SJ/MA
 Sample : PB98124BS
 Misc :
 ALS Vial : 4 Sample Multiplier: 1

Instrument :
 BNA_E
 ClientSampled :
 PB98124BS

Quant Time: Apr 08 01:37:05 2017
 Quant Method : Z:\HPCHEM1\BNA_E\METHODS\8270-SIM-BE040417.M
 Quant Title : ASP BNA STANDARDS FOR 5 POINT CALIBRATION
 QLast Update : Tue Apr 04 16:35:54 2017
 Response via : Initial Calibration

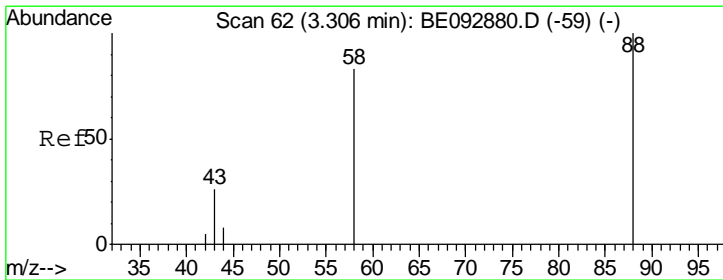
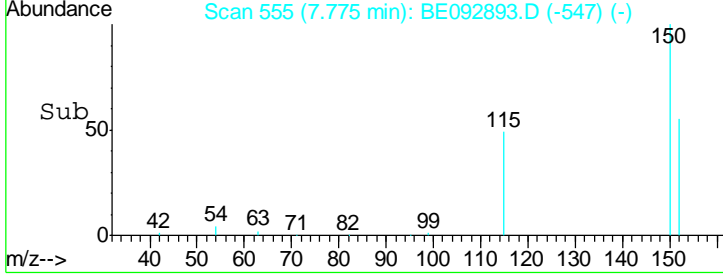
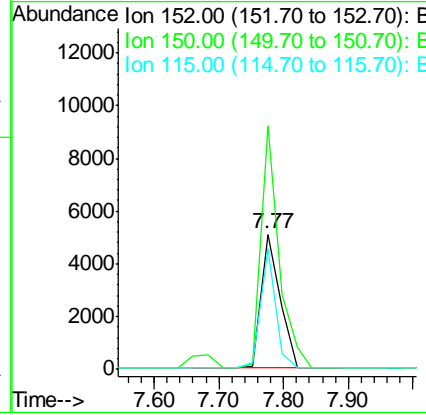
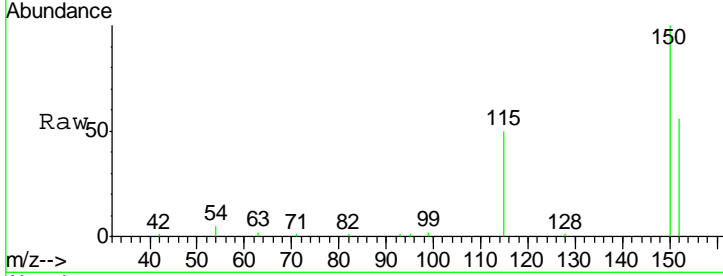




#1
 1,4-Dichlorobenzene-d4
 Concen: 5.00 ng
 RT: 7.77 min Scan# 555
 Delta R.T. -0.02 min
 Lab File: BE092893.D
 Acq: 7 Apr 2017 13:53

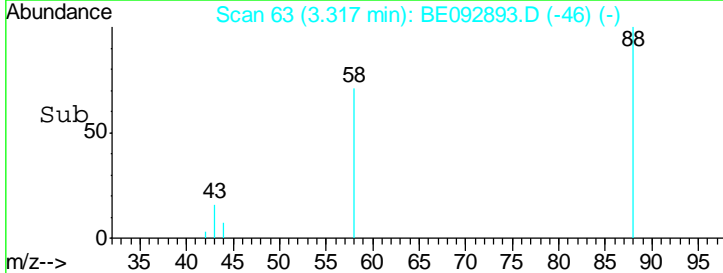
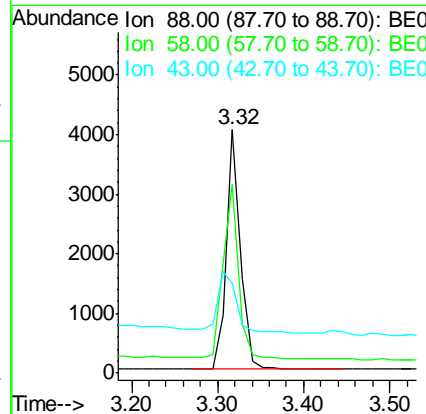
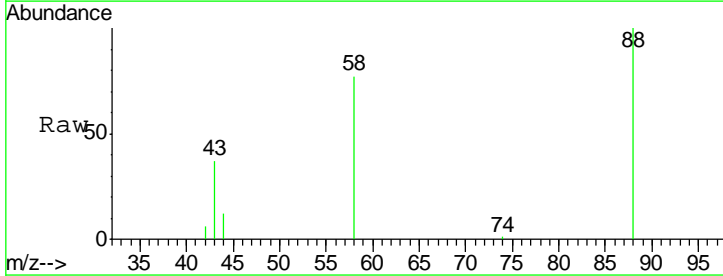
Instrument :
 BNA_E
ClientSampled :
 PB98124BS

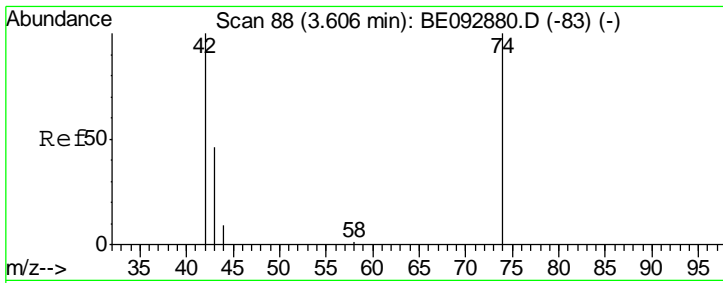
Tgt Ion	Resp	Lower	Upper
152	10315		
152	100		
150	179.8	106.0	159.0#
115	89.2	31.2	46.8#



#2
 1,4-Dioxane
 Concen: 3.34 ng
 RT: 3.32 min Scan# 63
 Delta R.T. 0.00 min
 Lab File: BE092893.D
 Acq: 7 Apr 2017 13:53

Tgt Ion	Resp	Lower	Upper
88	4624		
88	100		
58	80.7	63.6	95.4
43	33.5	28.0	42.0

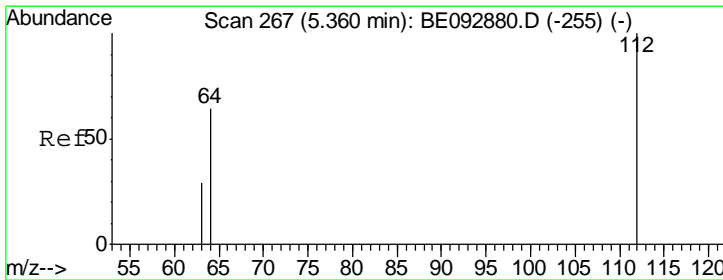
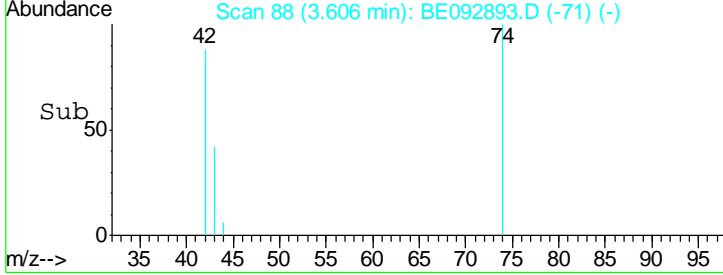
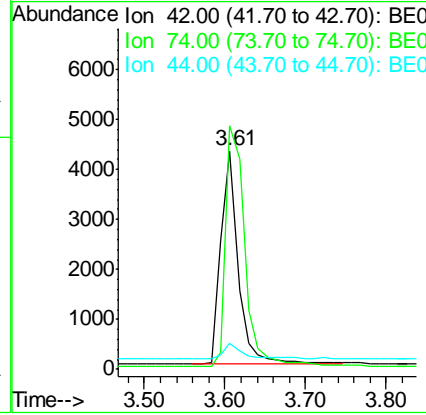
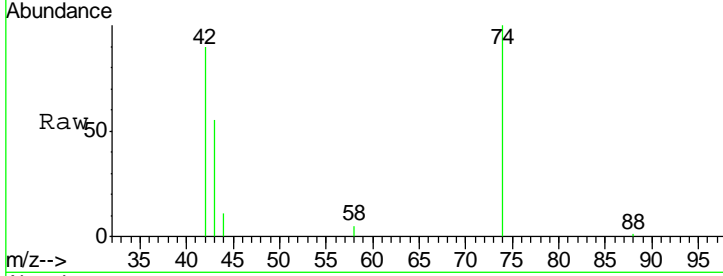




#3
 n-Nitrosodimethylamine
 Concen: 4.70 ng
 RT: 3.61 min Scan# 88
 Delta R.T. 0.00 min
 Lab File: BE092893.D
 Acq: 7 Apr 2017 13:53

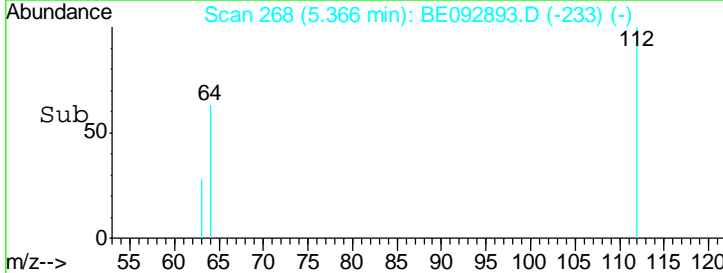
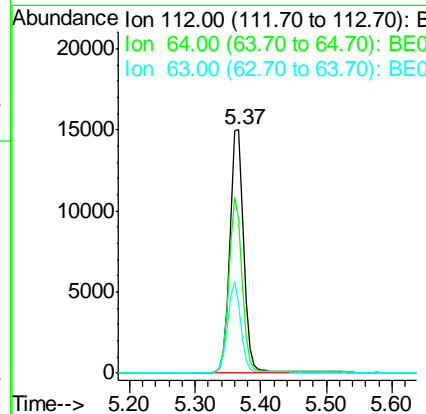
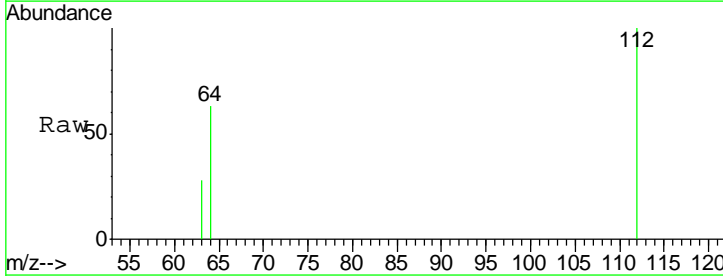
Instrument :
 BNA_E
ClientSampled :
 PB98124BS

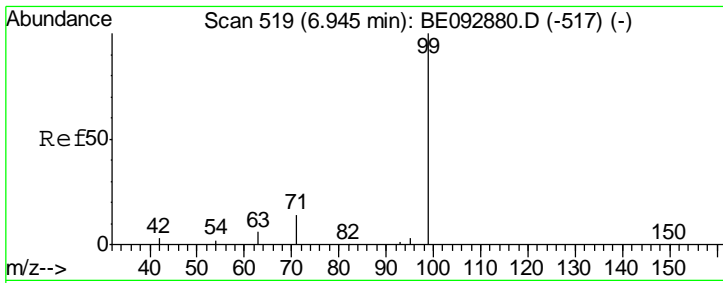
Tgt Ion	Resp	Lower	Upper
42	100		
74	123.1	86.0	129.0
44	6.7	5.1	7.7



#4
 2-Fluorophenol
 Concen: 10.44 ng
 RT: 5.37 min Scan# 268
 Delta R.T. 0.01 min
 Lab File: BE092893.D
 Acq: 7 Apr 2017 13:53

Tgt Ion	Resp	Lower	Upper
112	100		
64	69.1	53.5	80.3
63	35.5	27.9	41.9

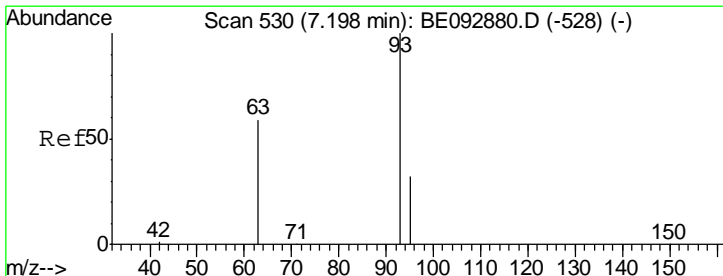
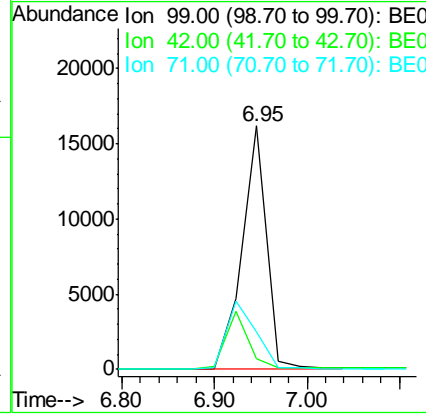
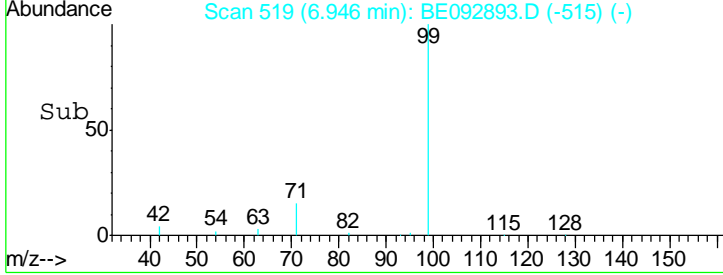
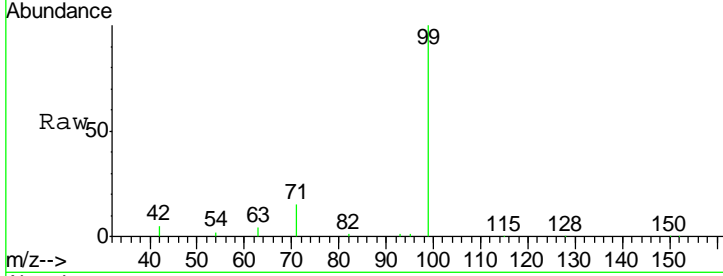




#5
 Phenol-d6
 Concen: 9.97 ng
 RT: 6.95 min Scan# 519
 Delta R.T. 0.00 min
 Lab File: BE092893.D
 Acq: 7 Apr 2017 13:53

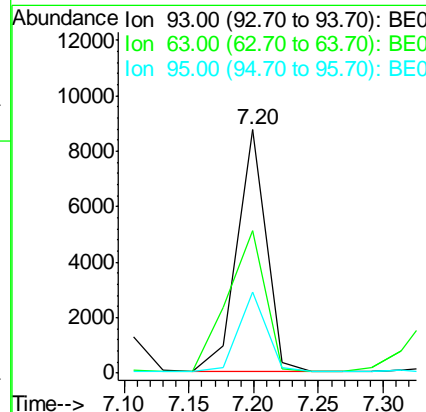
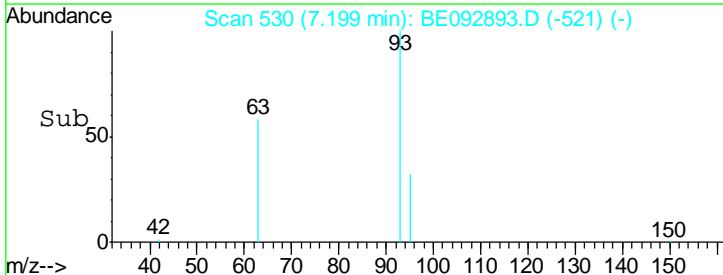
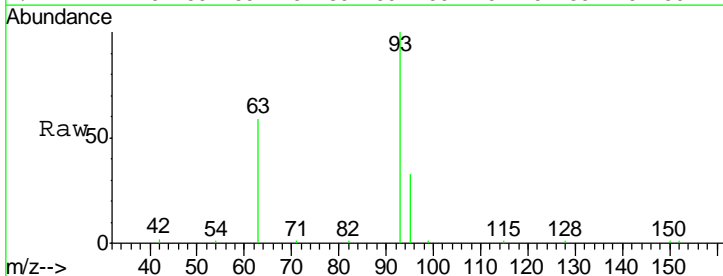
Instrument :
 BNA_E
ClientSampled :
 PB98124BS

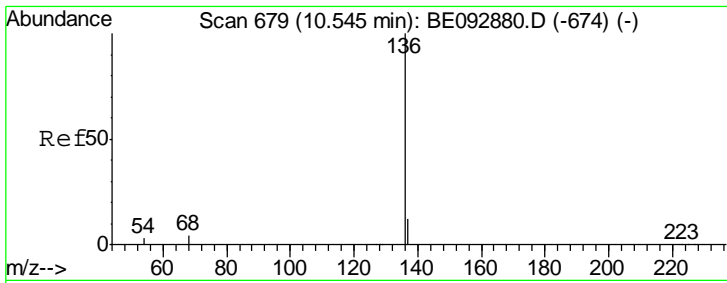
Tgt Ion	Resp	Lower	Upper
99	29719		
42	0.0	16.0	24.0#
71	0.0	30.6	45.8#



#6
 bis(2-Chloroethyl)ether
 Concen: 4.12 ng
 RT: 7.20 min Scan# 530
 Delta R.T. 0.00 min
 Lab File: BE092893.D
 Acq: 7 Apr 2017 13:53

Tgt Ion	Resp	Lower	Upper
93	13791		
63	75.5	16.0	24.0#
95	32.1	24.0	36.0

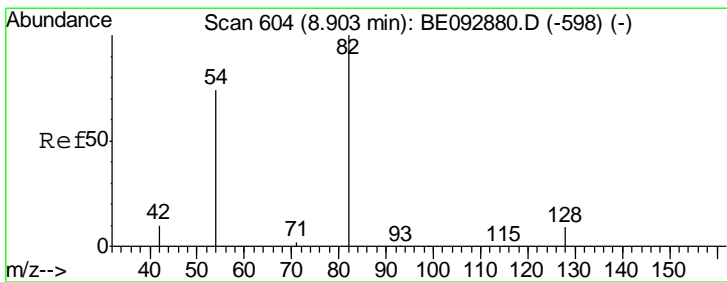
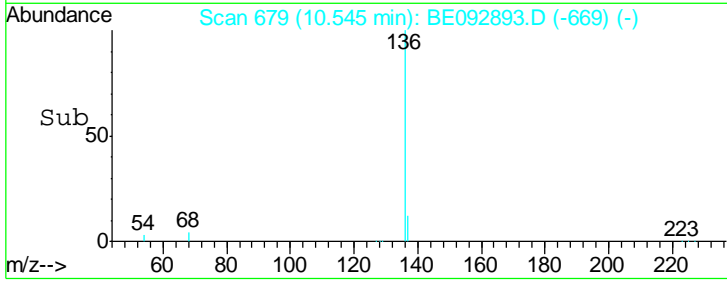
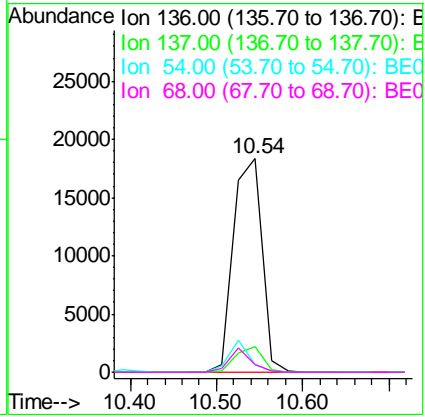
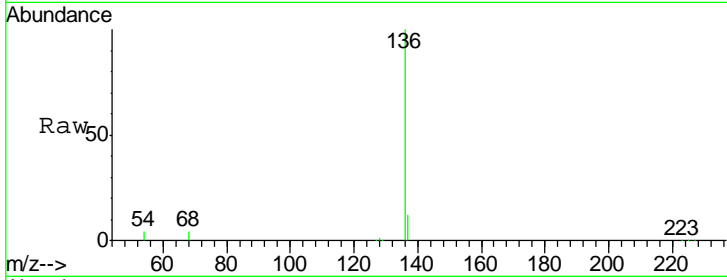




#7
 Naphthalene-d8
 Concen: 5.00 ng
 RT: 10.54 min Scan# 679
 Delta R.T. 0.00 min
 Lab File: BE092893.D
 Acq: 7 Apr 2017 13:53

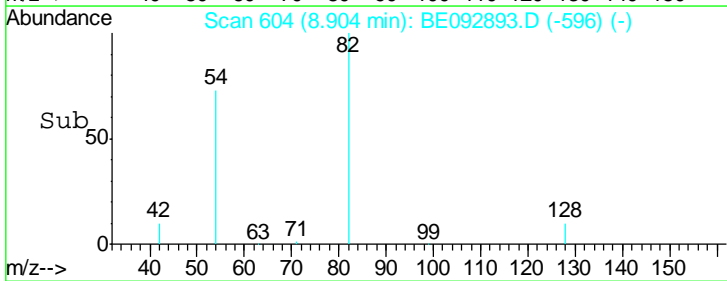
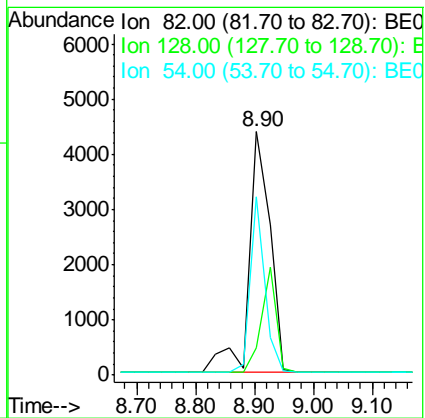
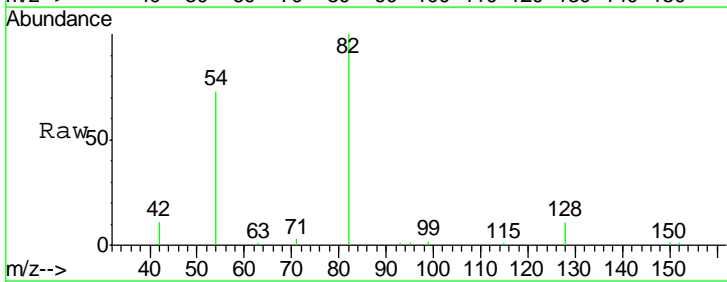
Instrument :
 BNA_E
 ClientSampleID :
 PB98124BS

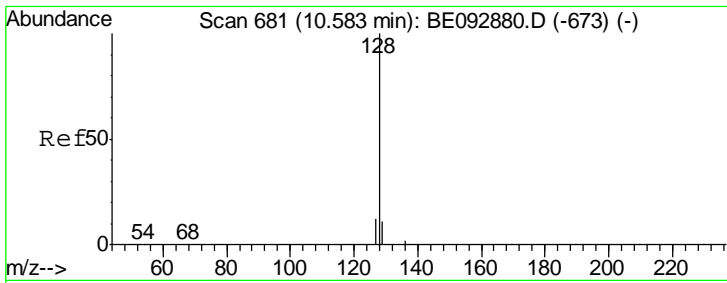
Tgt Ion	Resp	Lower	Upper
136	41975		
137	12.2	8.2	12.4
54	3.6	9.6	14.4#
68	3.9	6.7	10.1#



#8
 Nitrobenzene-d5
 Concen: 4.59 ng
 RT: 8.90 min Scan# 604
 Delta R.T. -0.02 min
 Lab File: BE092893.D
 Acq: 7 Apr 2017 13:53

Tgt Ion	Resp	Lower	Upper
82	11038		
128	11.2	39.0	58.4#
54	73.2	44.8	67.2#

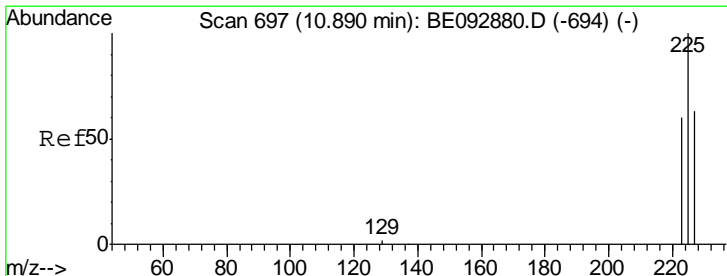
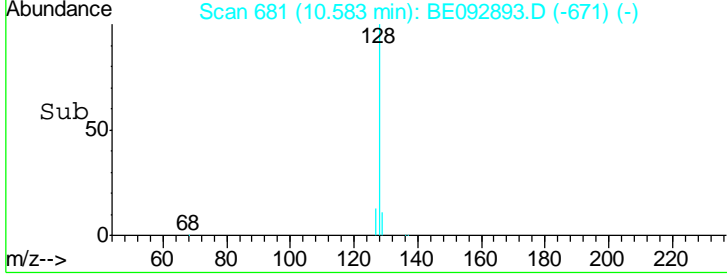
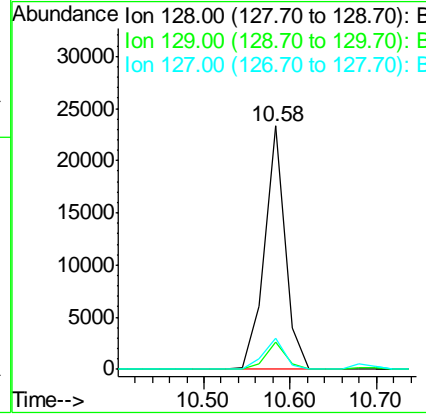
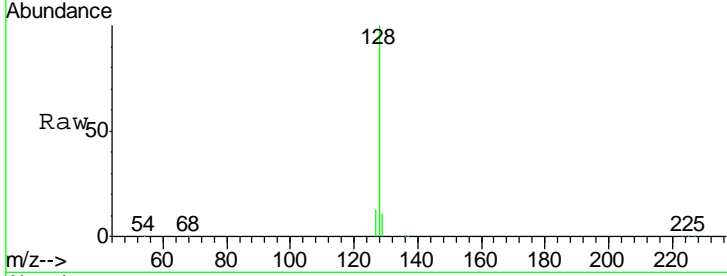




#9
 Naphthalene
 Concen: 4.14 ng
 RT: 10.58 min Scan# 681
 Delta R.T. 0.00 min
 Lab File: BE092893.D
 Acq: 7 Apr 2017 13:53

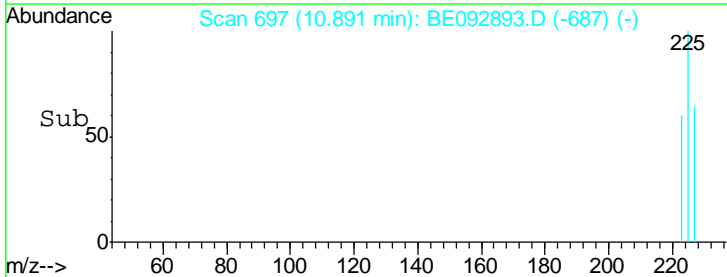
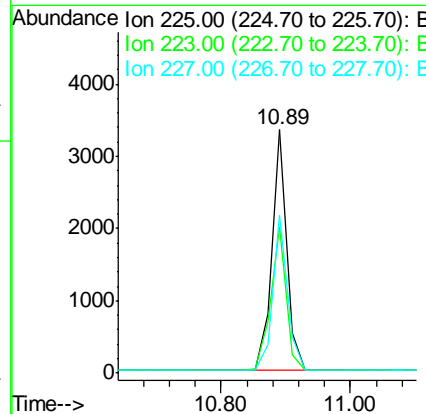
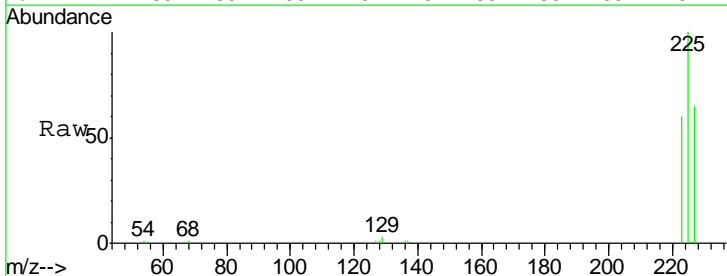
Instrument :
 BNA_E
 ClientSampleId :
 PB98124BS

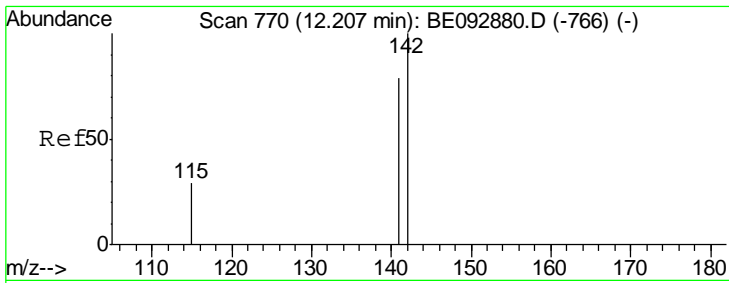
Tgt Ion	Resp	Lower	Upper
128	38379		
129	11.2	11.2	16.8#
127	12.7	11.6	17.4



#10
 Hexachlorobutadiene
 Concen: 4.25 ng
 RT: 10.89 min Scan# 697
 Delta R.T. 0.00 min
 Lab File: BE092893.D
 Acq: 7 Apr 2017 13:53

Tgt Ion	Resp	Lower	Upper
225	5320		
223	62.5	50.6	76.0
227	63.9	51.4	77.0

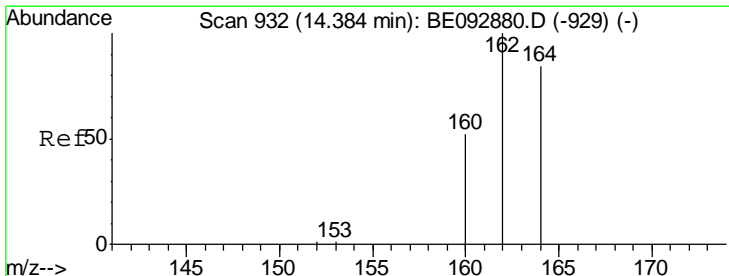
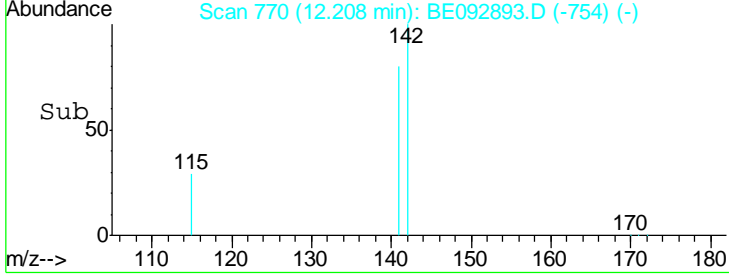
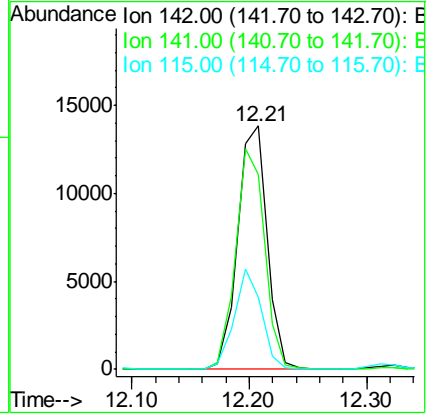
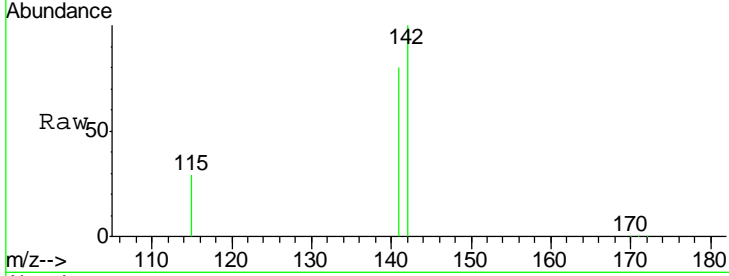




#11
 2-Methylnaphthalene
 Concen: 4.18 ng
 RT: 12.21 min Scan# 770
 Delta R.T. 0.00 min
 Lab File: BE092893.D
 Acq: 7 Apr 2017 13:53

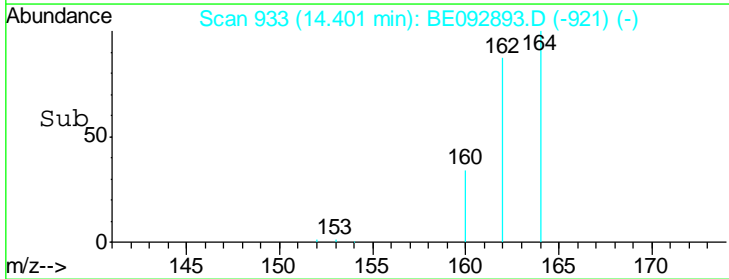
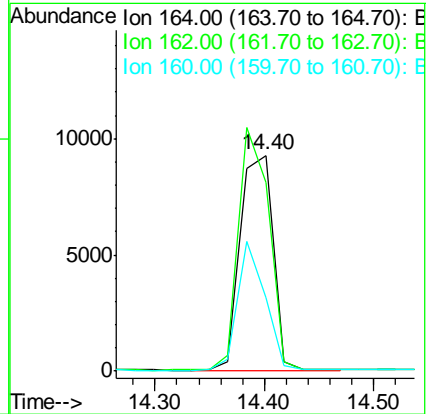
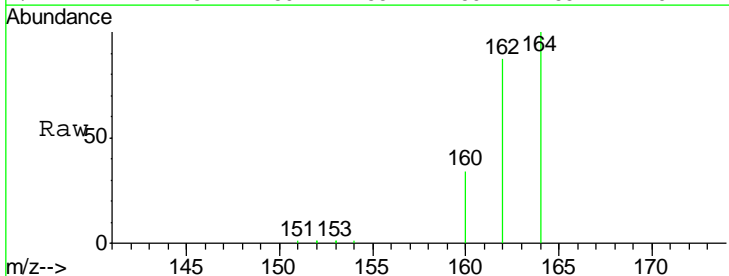
Instrument :
 BNA_E
 ClientSampled :
 PB98124BS

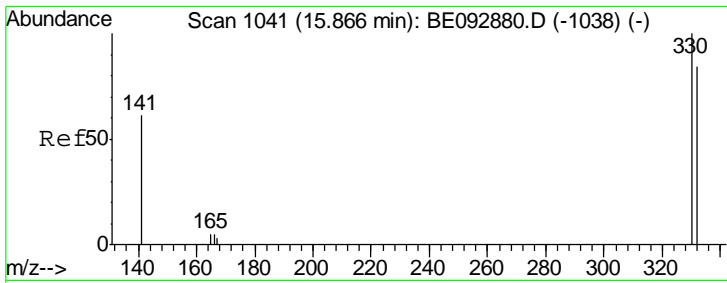
Tgt Ion	Resp	Ion Ratio	Lower	Upper
142	23970	100		
141	80.1	73.7	110.5	
115	29.4	34.0	51.0	



#12
 Acenaphthene-d10
 Concen: 5.00 ng
 RT: 14.40 min Scan# 933
 Delta R.T. 0.00 min
 Lab File: BE092893.D
 Acq: 7 Apr 2017 13:53

Tgt Ion	Resp	Ion Ratio	Lower	Upper
164	19077	100		
162	87.5	71.4	107.0	
160	34.3	27.4	41.2	

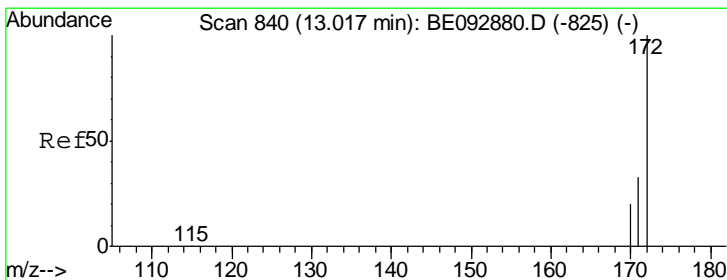
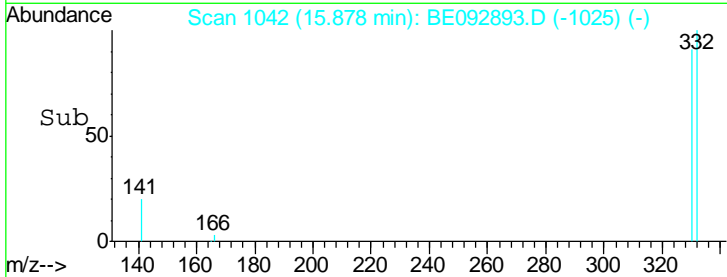
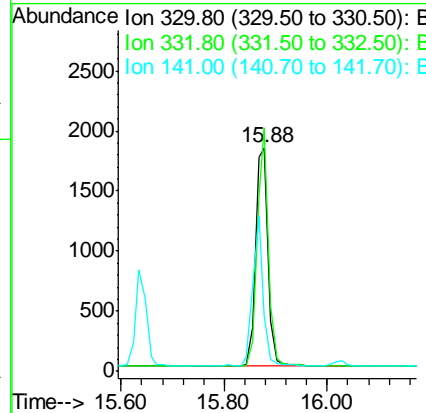
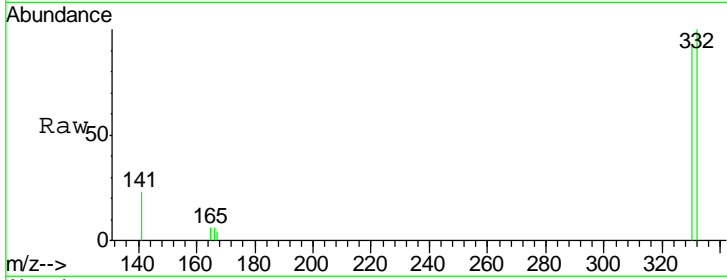




#13
 2,4,6-Tribromophenol
 Concen: 12.47 ng
 RT: 15.88 min Scan# 1042
 Delta R.T. 0.00 min
 Lab File: BE092893.D
 Acq: 7 Apr 2017 13:53

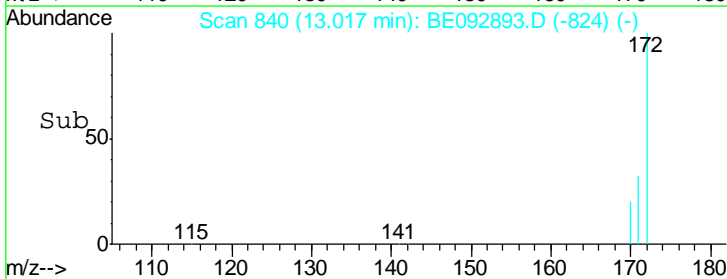
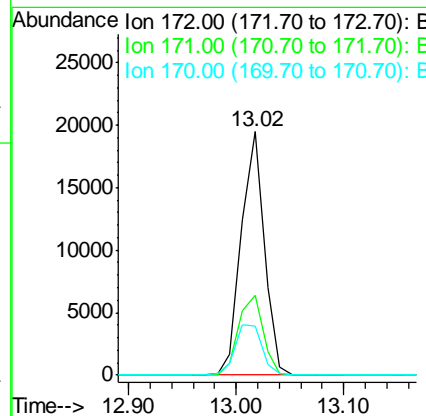
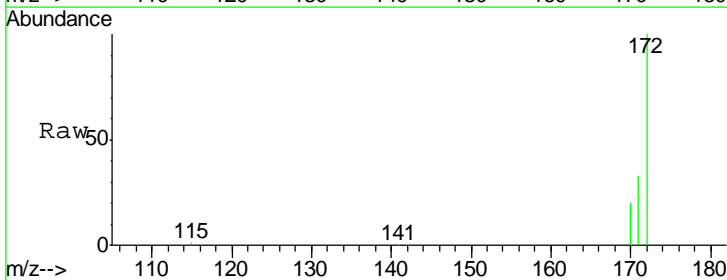
Instrument :
 BNA_E
 ClientSampled :
 PB98124BS

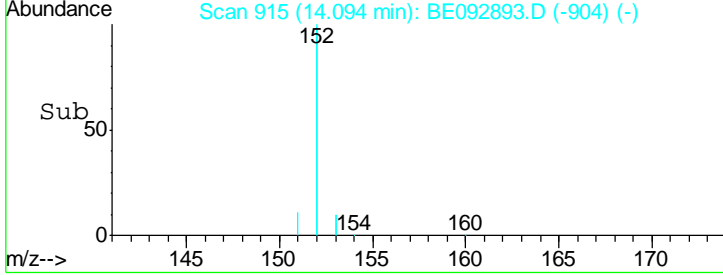
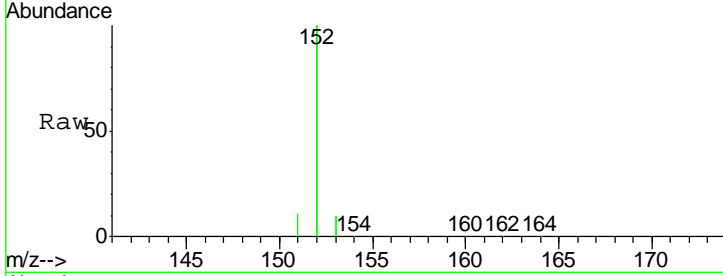
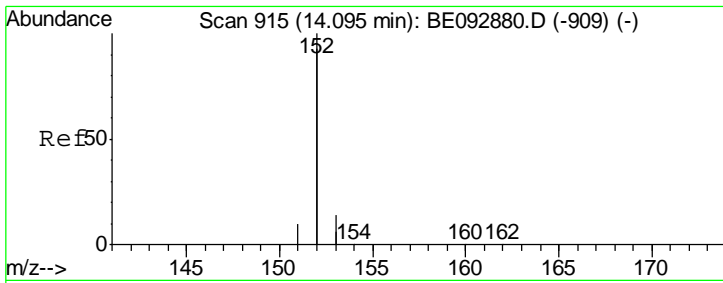
Tgt Ion	Resp	Lower	Upper
330	100		
332	96.8	75.4	113.0
141	57.1	31.0	46.6#



#14
 2-Fluorobiphenyl
 Concen: 4.44 ng
 RT: 13.02 min Scan# 840
 Delta R.T. -0.01 min
 Lab File: BE092893.D
 Acq: 7 Apr 2017 13:53

Tgt Ion	Resp	Lower	Upper
172	100		
171	32.7	30.1	45.1
170	20.0	21.8	32.6#



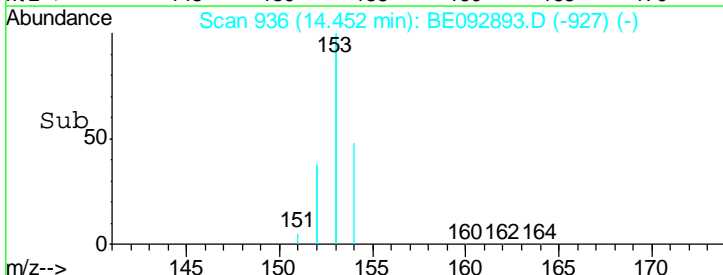
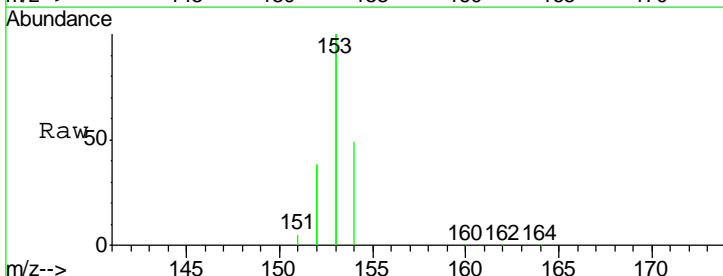
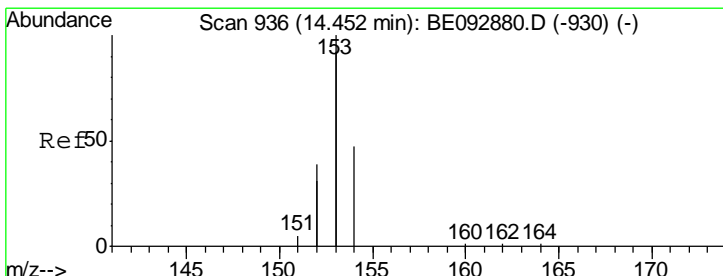
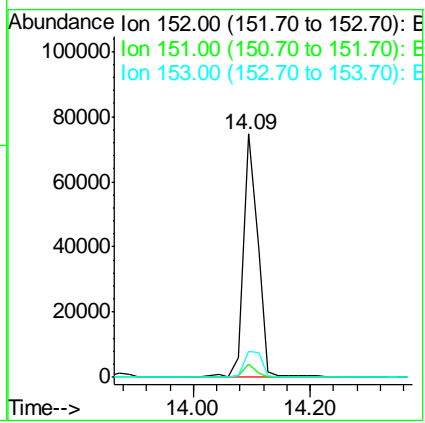


#15
 Acenaphthylene
 Concen: 4.70 ng
 RT: 14.09 min Scan# 915
 Delta R.T. -0.02 min
 Lab File: BE092893.D
 Acq: 7 Apr 2017 13:53

Instrument :
 BNA_E
 ClientSampled :
 PB98124BS

Tgt Ion:152 Resp: 126710

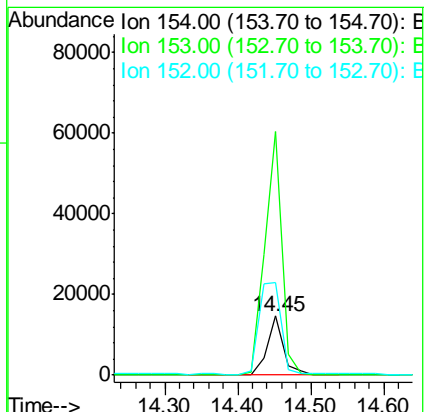
Ion	Ratio	Lower	Upper
152	100		
151	4.9	3.9	5.9
153	13.0	10.4	15.6

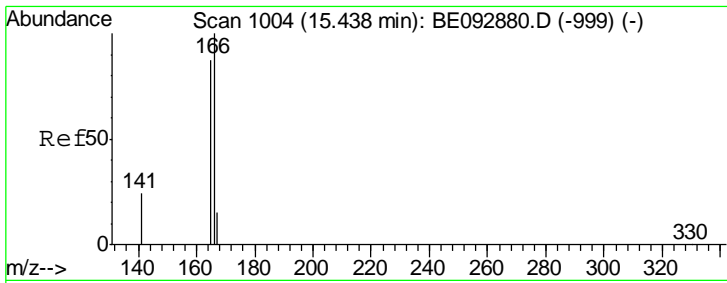


#16
 Acenaphthene
 Concen: 4.13 ng
 RT: 14.45 min Scan# 936
 Delta R.T. 0.00 min
 Lab File: BE092893.D
 Acq: 7 Apr 2017 13:53

Tgt Ion:154 Resp: 22907

Ion	Ratio	Lower	Upper
154	100		
153	427.7	350.8	526.2
152	210.3	171.1	256.7

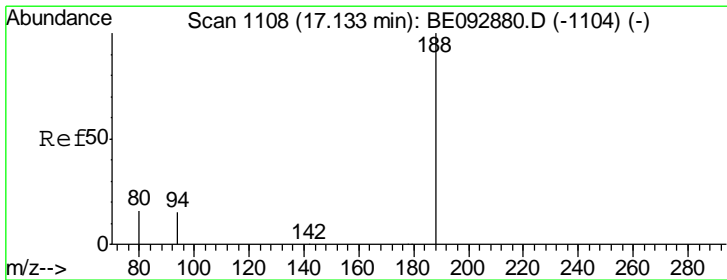
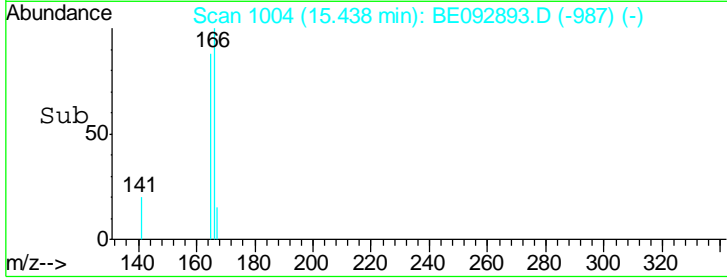
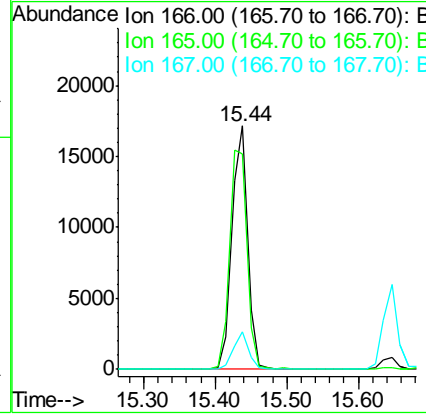
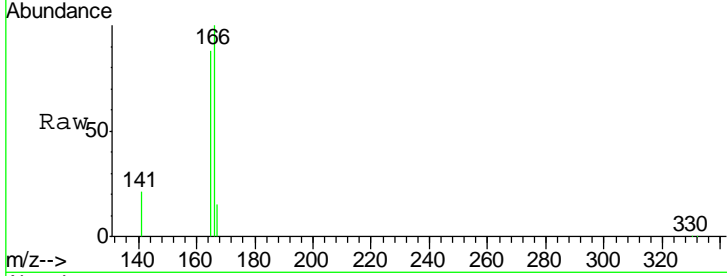




#17
 Fluorene
 Concen: 4.22 ng
 RT: 15.44 min Scan# 1004
 Delta R.T. 0.00 min
 Lab File: BE092893.D
 Acq: 7 Apr 2017 13:53

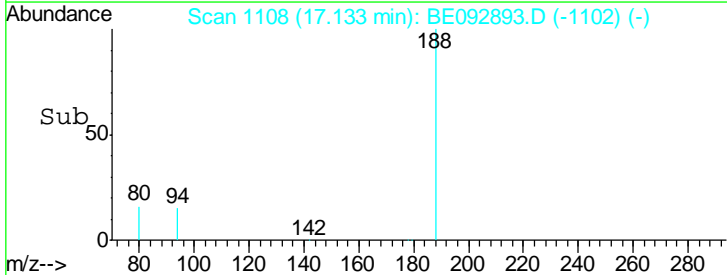
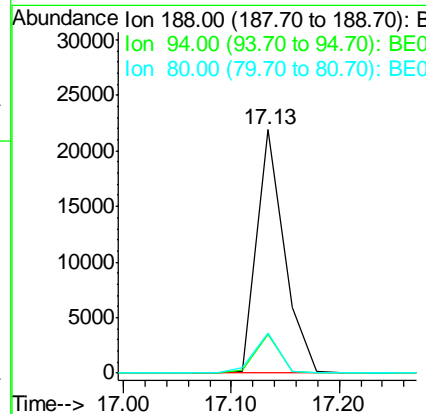
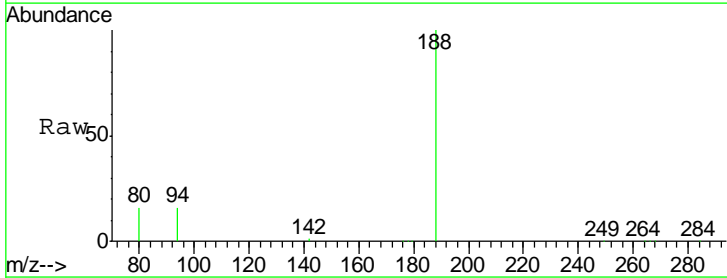
Instrument :
 BNA_E
 ClientSampleId :
 PB98124BS

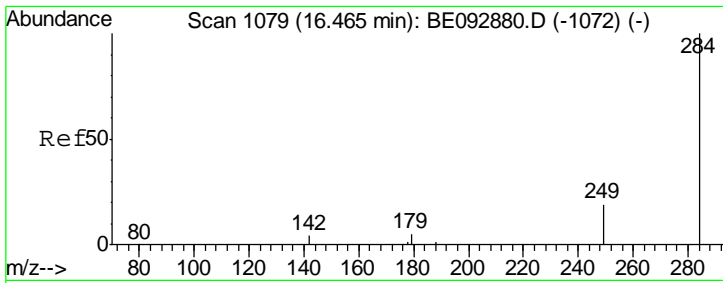
Tgt Ion	Resp	Lower	Upper
166	100		
165	99.4	78.2	117.4
167	14.2	11.0	16.4



#18
 Phenanthrene-d10
 Concen: 5.00 ng
 RT: 17.13 min Scan# 1108
 Delta R.T. -0.02 min
 Lab File: BE092893.D
 Acq: 7 Apr 2017 13:53

Tgt Ion	Resp	Lower	Upper
188	100		
94	15.7	3.2	4.8#
80	16.4	2.6	3.8#

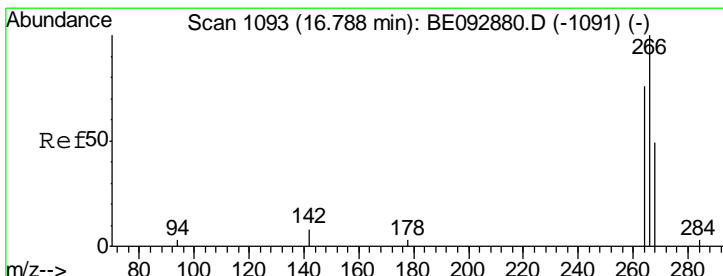
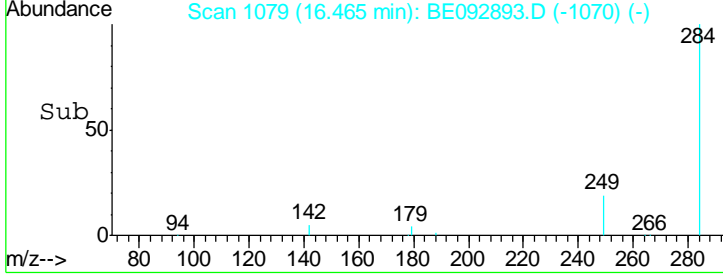
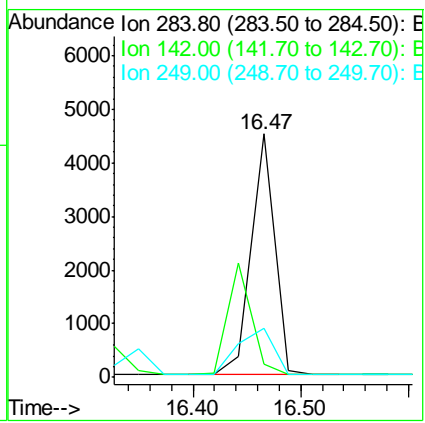
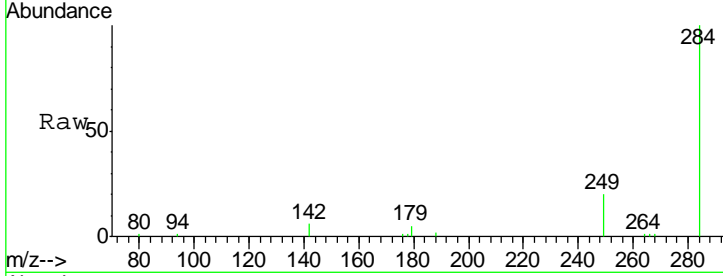




#19
 Hexachlorobenzene
 Concen: 4.64 ng
 RT: 16.47 min Scan# 1079
 Delta R.T. -0.00 min
 Lab File: BE092893.D
 Acq: 7 Apr 2017 13:53

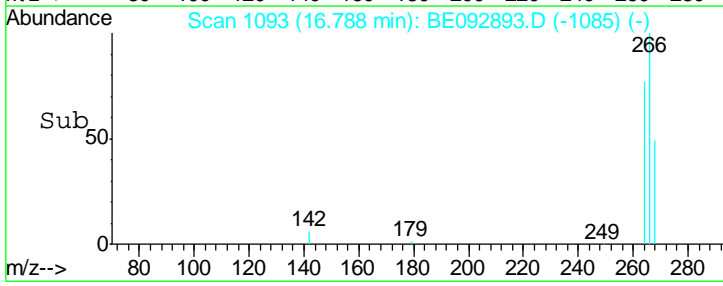
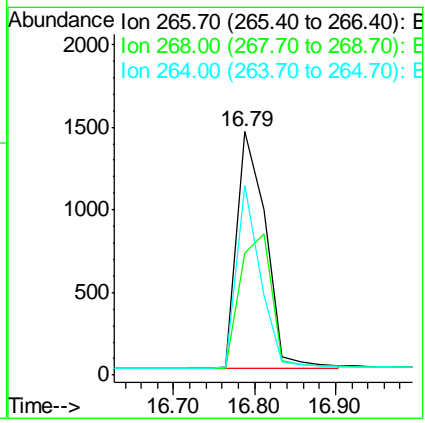
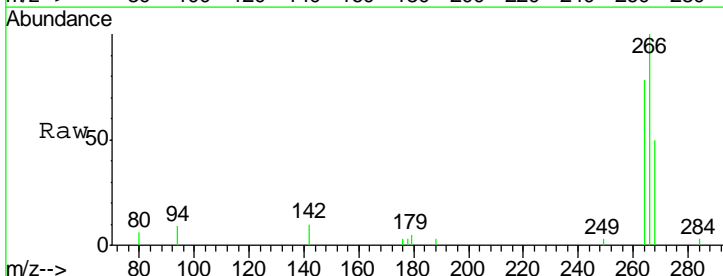
Instrument : BNA_E
 ClientSampleId : PB98124BS

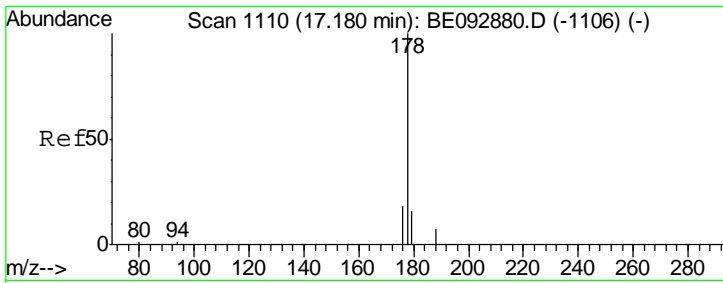
Tgt Ion	Resp	Lower	Upper
284	6815		
142	0.0	29.1	43.7#
249	29.1	27.9	41.9



#20
 Pentachlorophenol
 Concen: 10.22 ng
 RT: 16.79 min Scan# 1093
 Delta R.T. -0.02 min
 Lab File: BE092893.D
 Acq: 7 Apr 2017 13:53

Tgt Ion	Resp	Lower	Upper
266	3475		
268	50.4	62.5	93.7#
264	77.7	57.2	85.8

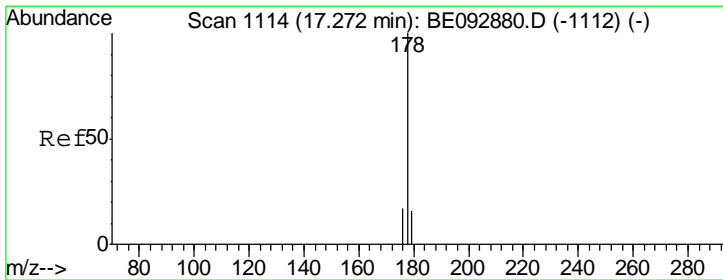
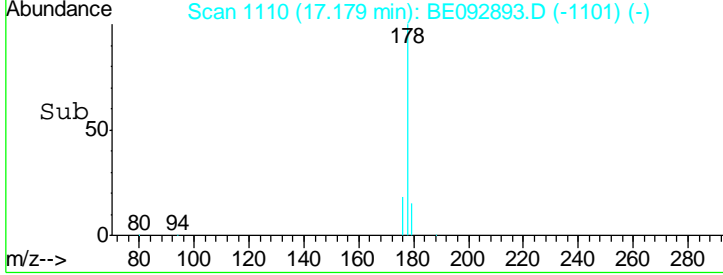
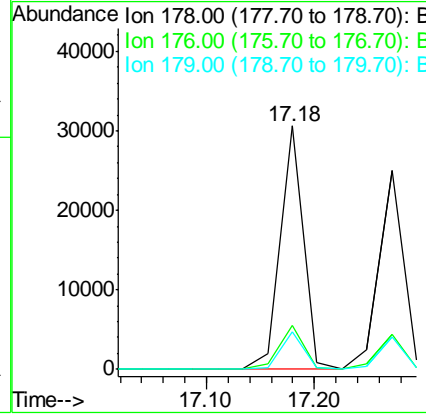
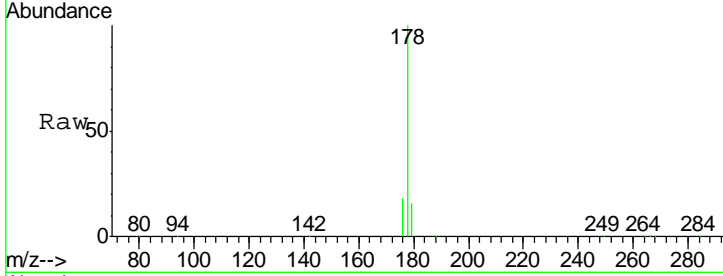




#21
 Phenanthrene
 Concen: 4.46 ng
 RT: 17.18 min Scan# 1110
 Delta R.T. -0.00 min
 Lab File: BE092893.D
 Acq: 7 Apr 2017 13:53

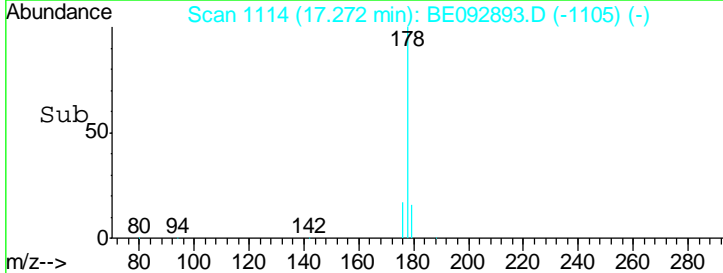
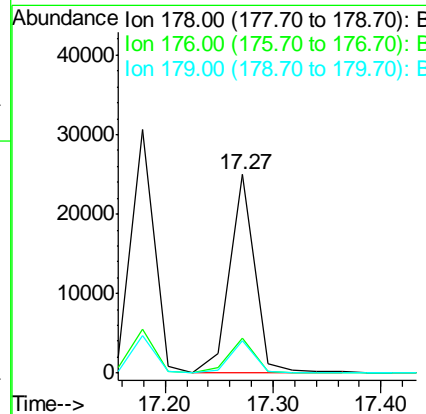
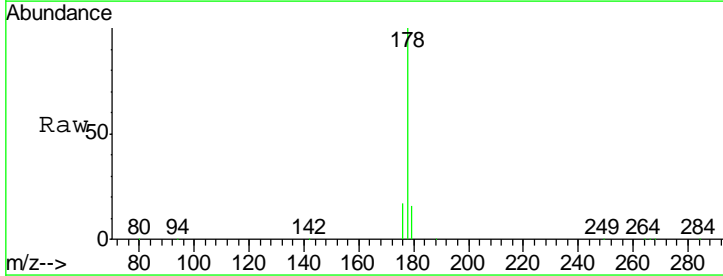
Instrument :
 BNA_E
 ClientSampled :
 PB98124BS

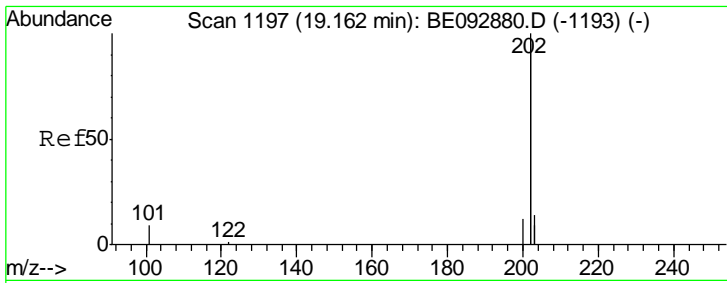
Tgt Ion	Resp	Lower	Upper
178	46124		
176	18.6	15.8	23.8
179	15.3	16.0	24.0#



#22
 Anthracene
 Concen: 4.70 ng
 RT: 17.27 min Scan# 1114
 Delta R.T. -0.00 min
 Lab File: BE092893.D
 Acq: 7 Apr 2017 13:53

Tgt Ion	Resp	Lower	Upper
178	39647		
176	18.0	15.0	22.4
179	15.7	12.2	18.2

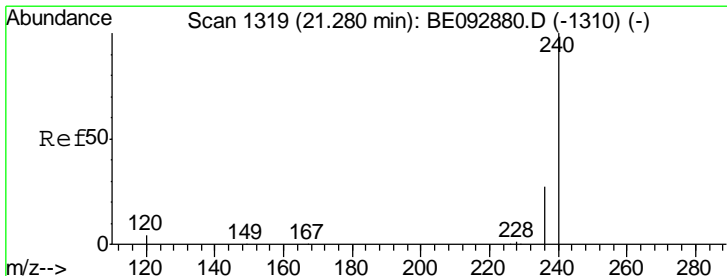
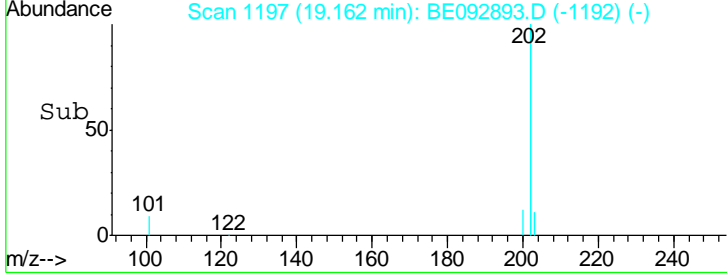
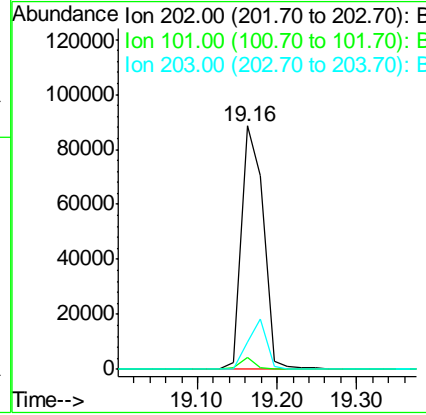
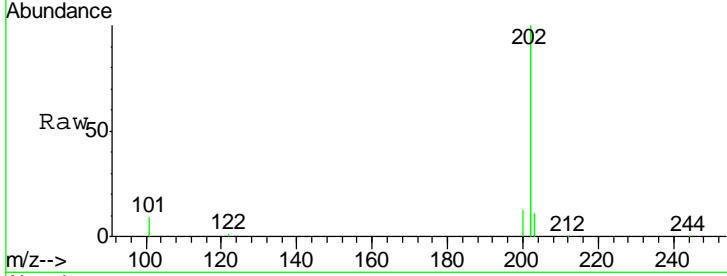




#23
 Fluoranthene
 Concen: 4.47 ng
 RT: 19.16 min Scan# 1197
 Delta R.T. -0.02 min
 Lab File: BE092893.D
 Acq: 7 Apr 2017 13:53

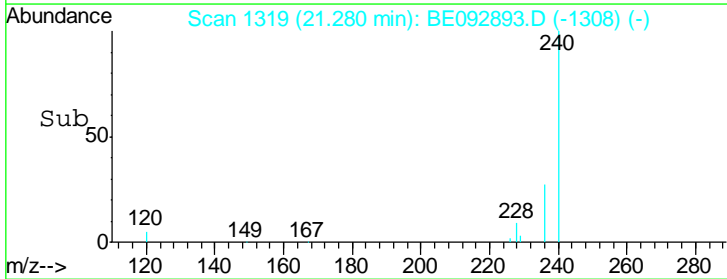
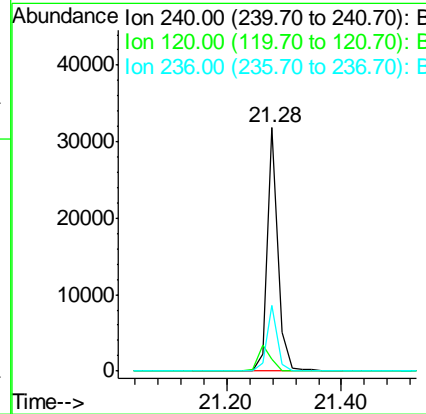
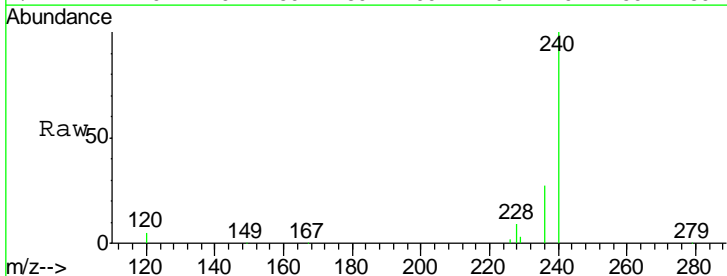
Instrument :
 BNA_E
 ClientSampled :
 PB98124BS

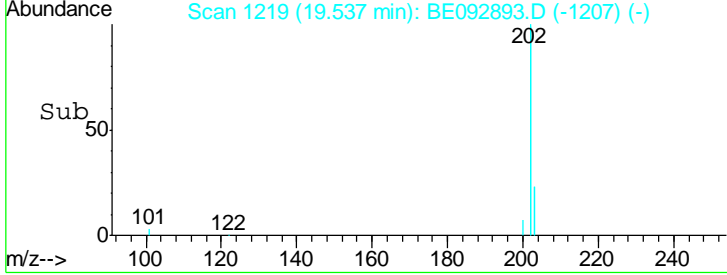
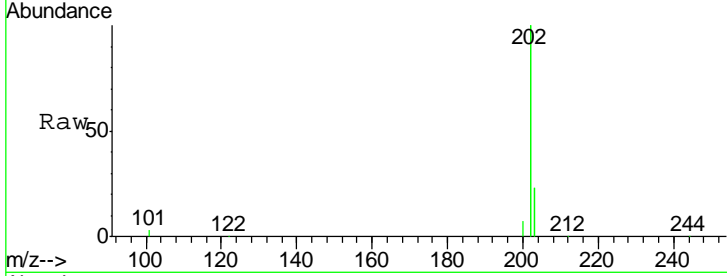
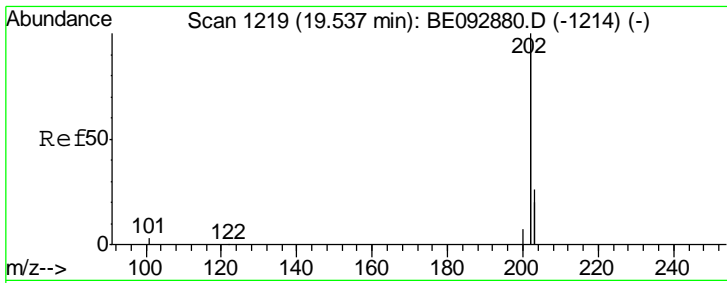
Tgt Ion	Resp	Lower	Upper
202	169316		
101	3.2	2.2	3.4
203	17.6	13.7	20.5



#24
 Chrysene-d12
 Concen: 5.00 ng
 RT: 21.28 min Scan# 1319
 Delta R.T. -0.02 min
 Lab File: BE092893.D
 Acq: 7 Apr 2017 13:53

Tgt Ion	Resp	Lower	Upper
240	41335		
120	4.8	2.6	4.0#
236	27.0	24.6	37.0

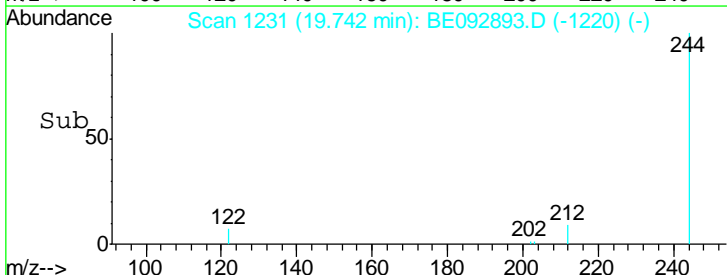
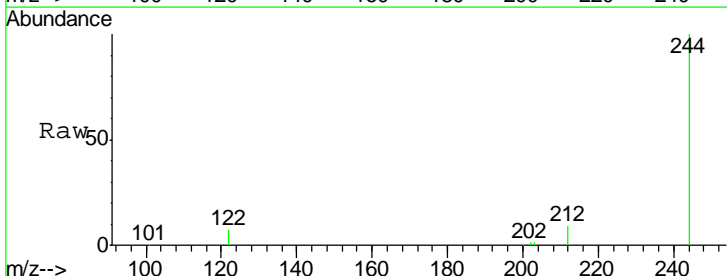
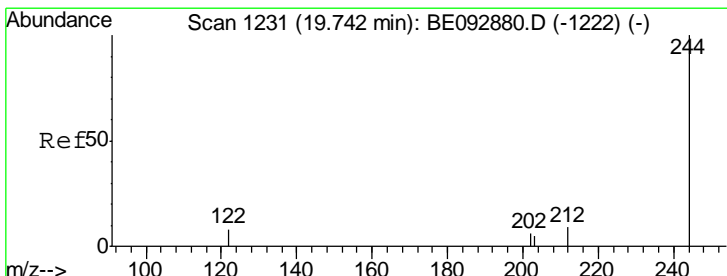
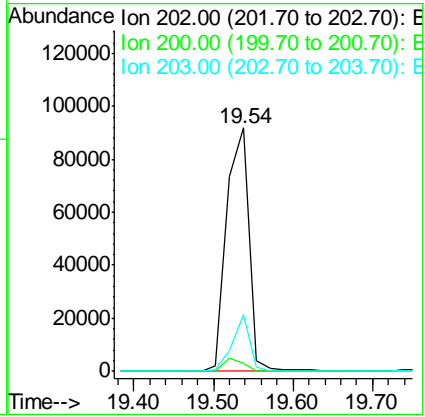




#25
 Pyrene
 Concen: 4.78 ng
 RT: 19.54 min Scan# 1219
 Delta R.T. 0.00 min
 Lab File: BE092893.D
 Acq: 7 Apr 2017 13:53

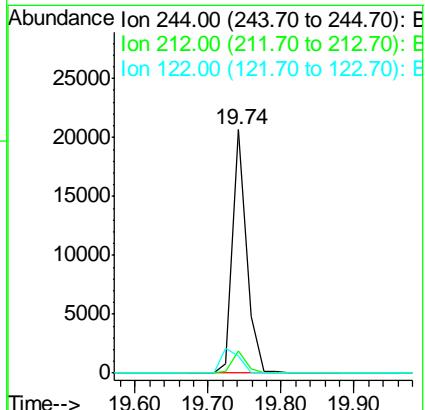
Instrument :
 BNA_E
 ClientSampled :
 PB98124BS

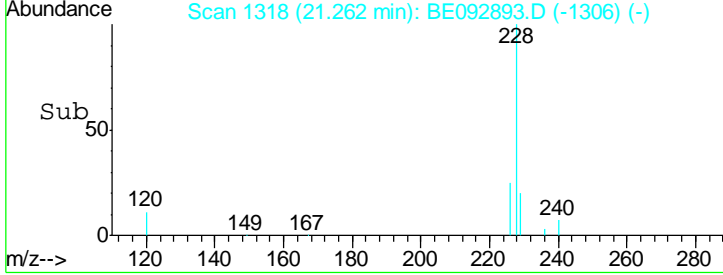
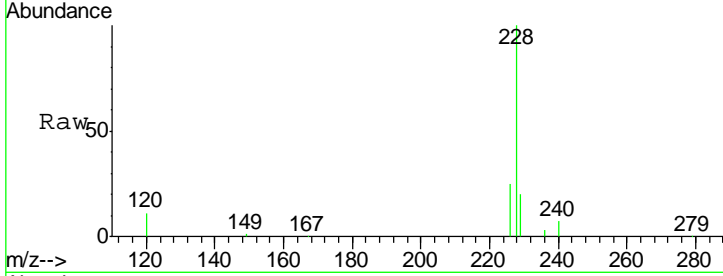
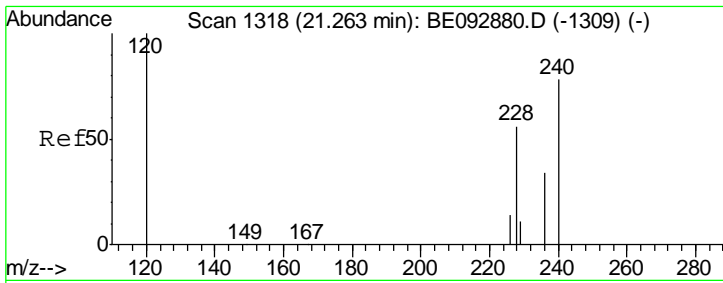
Tgt Ion	Resp	Lower	Upper
202	176468		
200	5.0	4.2	6.4
203	18.1	13.9	20.9



#26
 Terphenyl-d14
 Concen: 4.26 ng
 RT: 19.74 min Scan# 1231
 Delta R.T. -0.02 min
 Lab File: BE092893.D
 Acq: 7 Apr 2017 13:53

Tgt Ion	Resp	Lower	Upper
244	27079		
212	9.2	6.7	10.1
122	7.1	3.6	5.4#

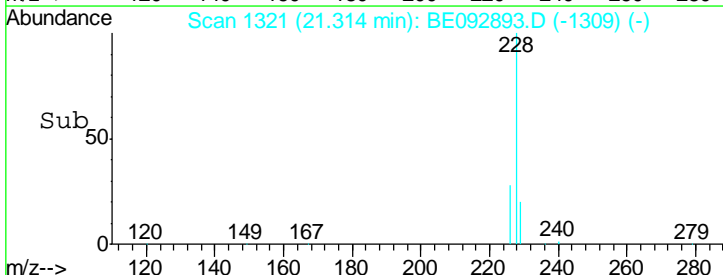
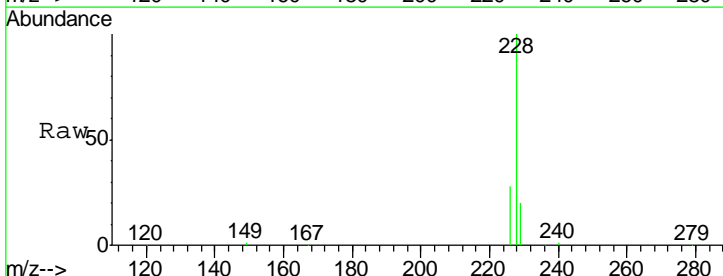
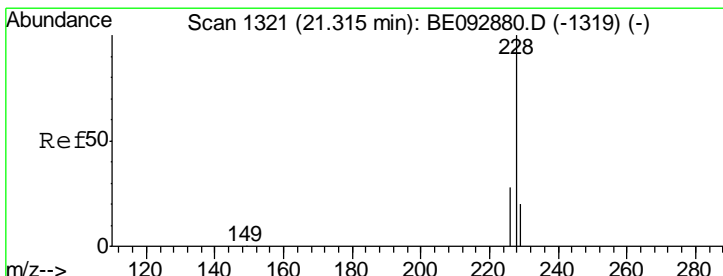
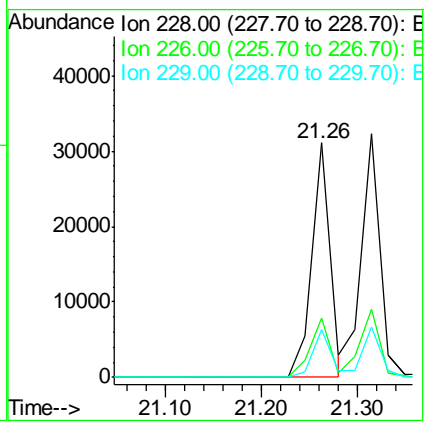




#27
 Benzo(a)anthracene
 Concen: 4.58 ng
 RT: 21.26 min Scan# 1318
 Delta R.T. -0.00 min
 Lab File: BE092893.D
 Acq: 7 Apr 2017 13:53

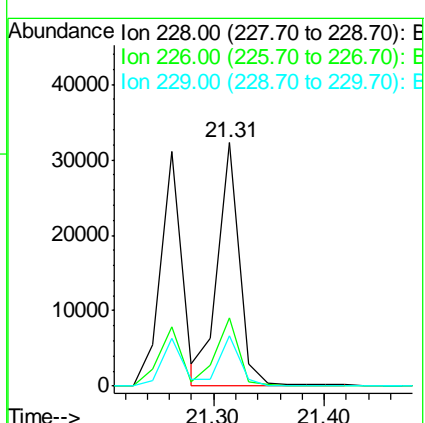
Instrument : BNA_E
 ClientSampled : PB98124BS

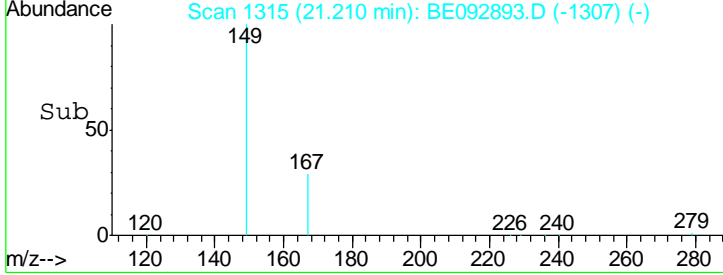
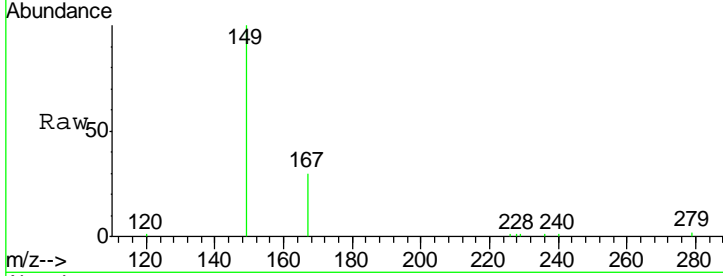
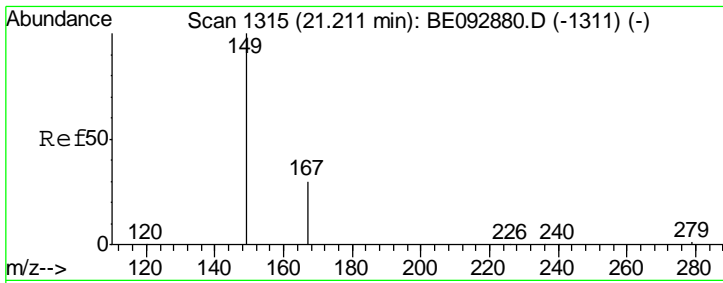
Tgt Ion	Resp	Lower	Upper
228	40851		
226	25.1	23.6	35.4
229	20.2	13.3	19.9#



#28
 Chrysene
 Concen: 4.29 ng m
 RT: 21.31 min Scan# 1321
 Delta R.T. -0.00 min
 Lab File: BE092893.D
 Acq: 7 Apr 2017 13:53

Tgt Ion	Resp	Lower	Upper
228	44422		
226	28.0	36.3	54.5#
229	20.5	10.6	16.0#

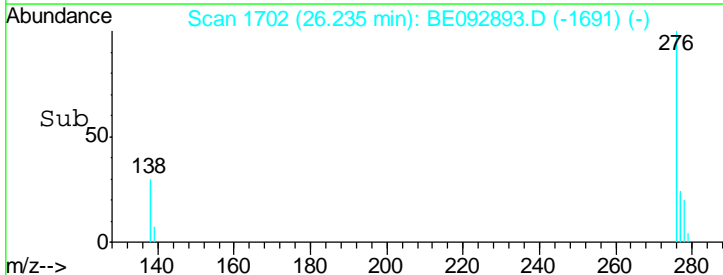
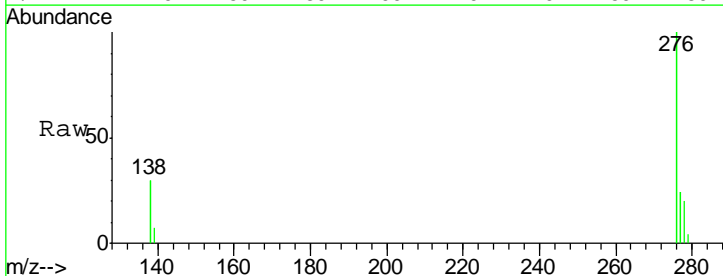
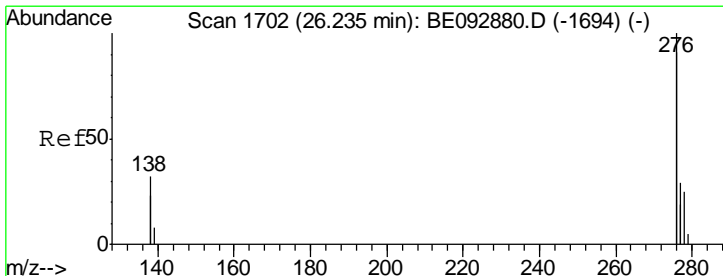
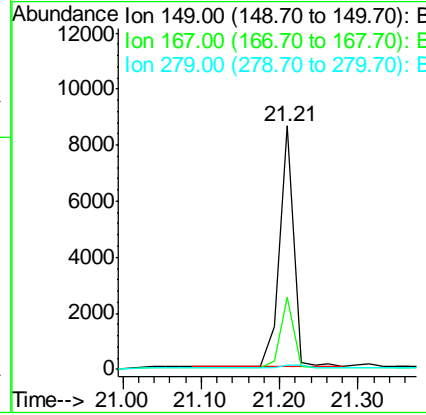




#29
 Bis(2-ethylhexyl)phthalate
 Concen: 3.75 ng
 RT: 21.21 min Scan# 1315
 Delta R.T. -0.02 min
 Lab File: BE092893.D
 Acq: 7 Apr 2017 13:53

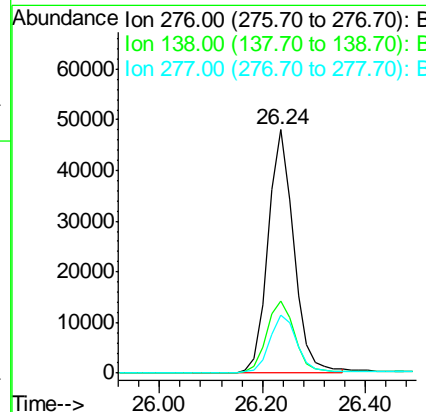
Instrument :
 BNA_E
 ClientSampleID :
 PB98124BS

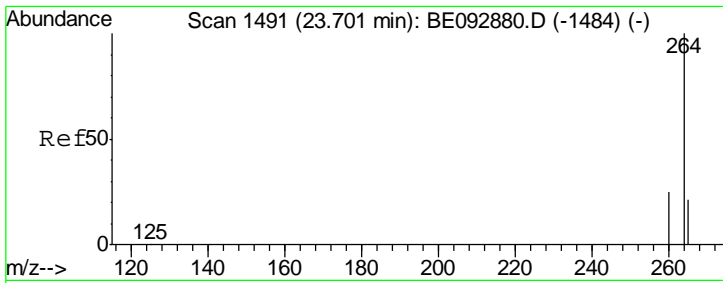
Tgt Ion	Resp	Lower	Upper
149	10782		
167	27.4	16.0	24.0#
279	2.1	16.0	24.0#



#30
 Indeno(1,2,3-cd)pyrene
 Concen: 4.72 ng
 RT: 26.24 min Scan# 1702
 Delta R.T. -0.02 min
 Lab File: BE092893.D
 Acq: 7 Apr 2017 13:53

Tgt Ion	Resp	Lower	Upper
276	162872		
138	31.7	20.3	30.5#
277	24.9	19.7	29.5



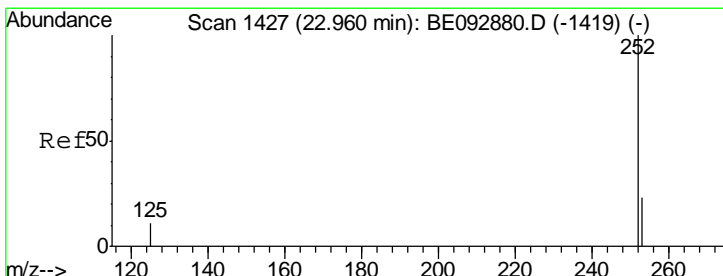
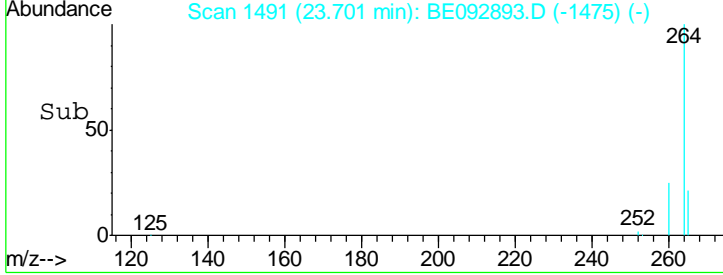
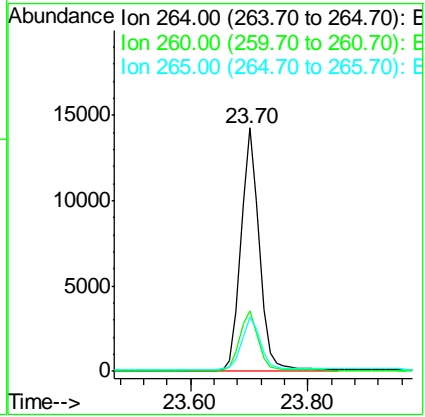
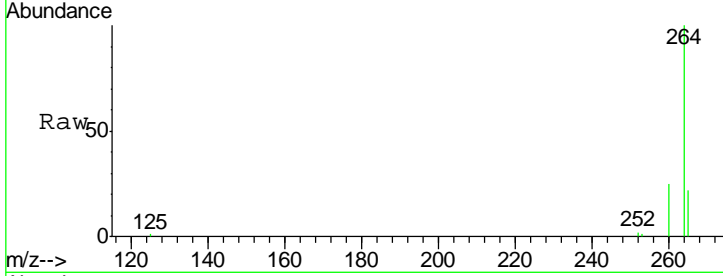


#31
 Perylene-d12
 Concen: 5.00 ng
 RT: 23.70 min Scan# 1491
 Delta R.T. -0.01 min
 Lab File: BE092893.D
 Acq: 7 Apr 2017 13:53

Instrument : BNA_E
 ClientSampled : PB98124BS

Tgt Ion: 264 Resp: 30754

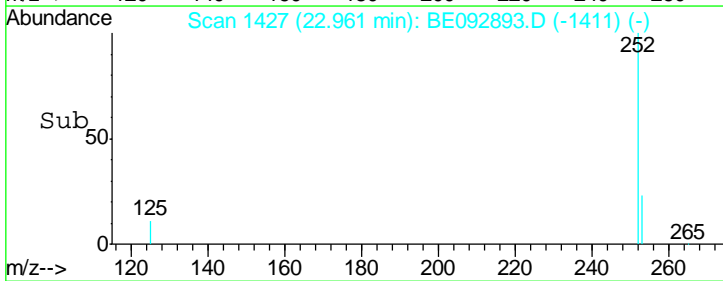
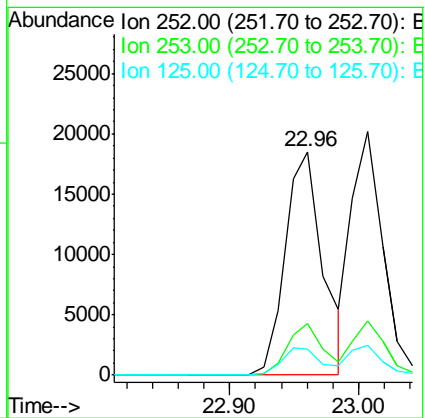
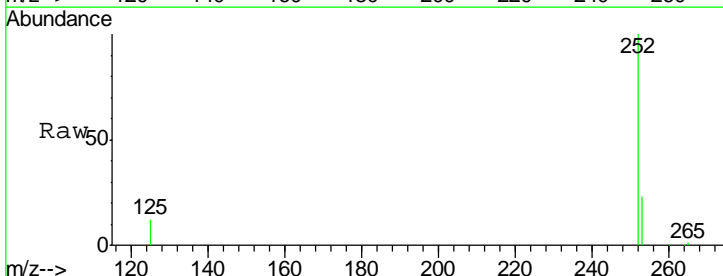
Ion	Ratio	Lower	Upper
264	100		
260	24.9	20.1	30.1
265	22.1	17.9	26.9

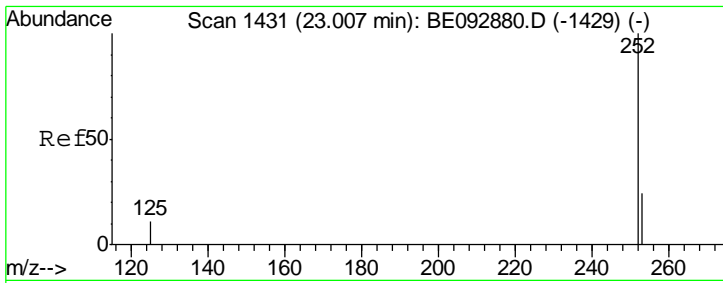


#32
 Benzo(b)fluoranthene
 Concen: 4.94 ng
 RT: 22.96 min Scan# 1427
 Delta R.T. -0.01 min
 Lab File: BE092893.D
 Acq: 7 Apr 2017 13:53

Tgt Ion: 252 Resp: 37564

Ion	Ratio	Lower	Upper
252	100		
253	22.9	18.7	28.1
125	11.8	10.5	15.7

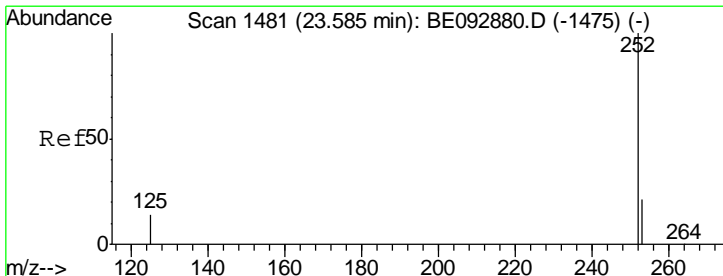
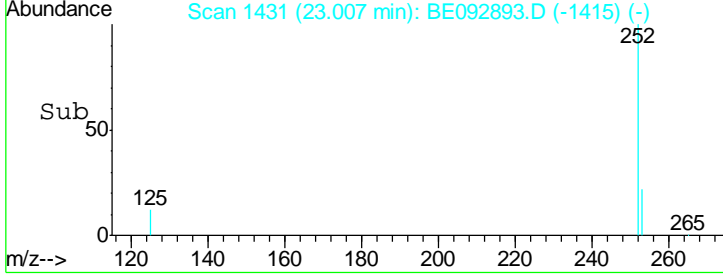
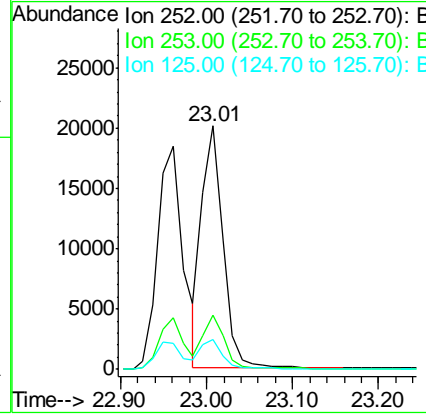
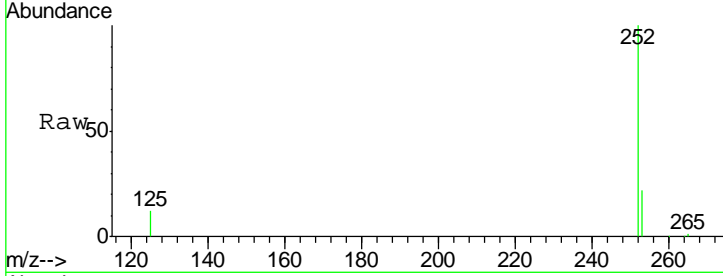




#33
 Benzo(k)fluoranthene
 Concen: 5.01 ng
 RT: 23.01 min Scan# 1431
 Delta R.T. -0.01 min
 Lab File: BE092893.D
 Acq: 7 Apr 2017 13:53

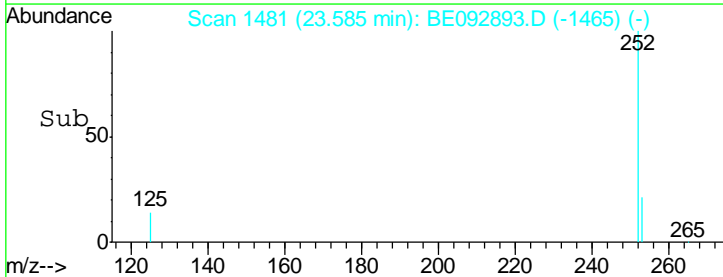
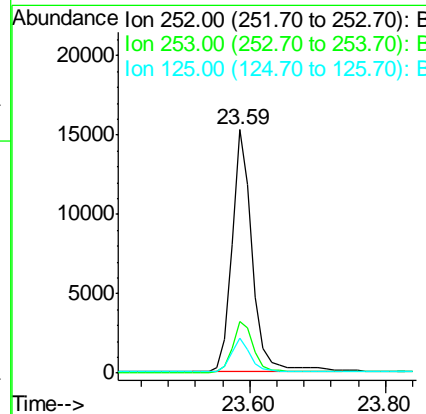
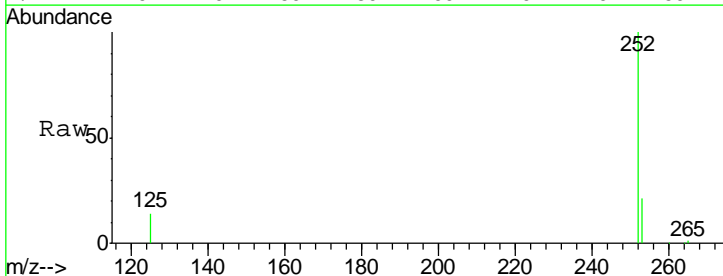
Instrument :
 BNA_E
 ClientSampled :
 PB98124BS

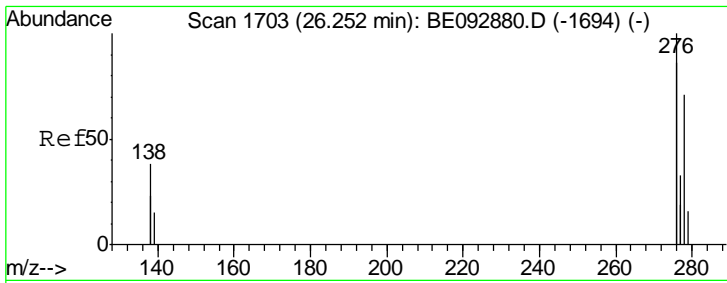
Tgt Ion	Resp	Lower	Upper
252	34488		
253	22.1	20.3	30.5
125	12.1	9.6	14.4



#34
 Benzo(a)pyrene
 Concen: 5.45 ng
 RT: 23.59 min Scan# 1481
 Delta R.T. -0.01 min
 Lab File: BE092893.D
 Acq: 7 Apr 2017 13:53

Tgt Ion	Resp	Lower	Upper
252	32201		
253	21.2	19.0	28.6
125	14.2	11.8	17.8

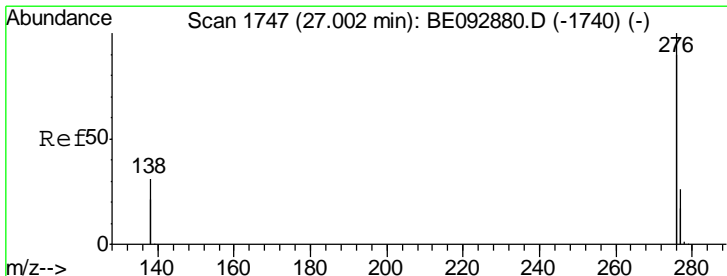
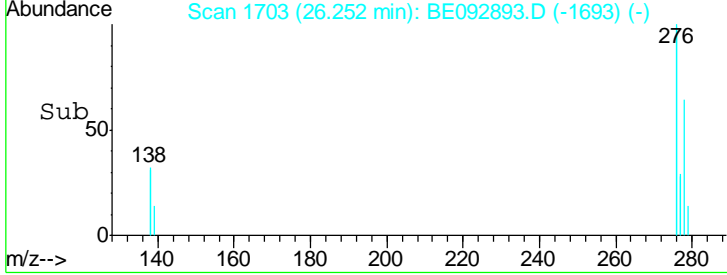
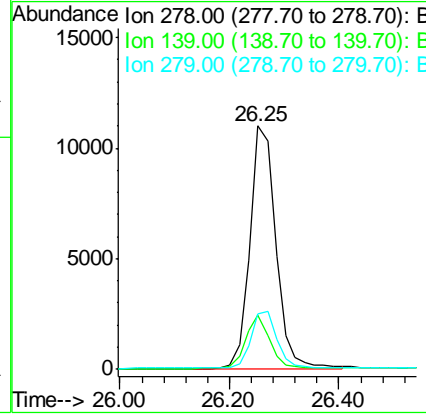
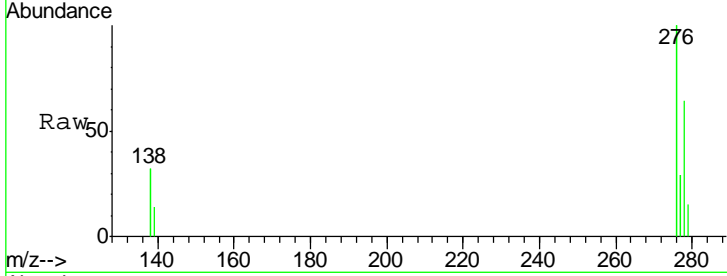




#35
 Dibenzo(a,h)anthracene
 Concen: 5.28 ng
 RT: 26.25 min Scan# 1703
 Delta R.T. -0.03 min
 Lab File: BE092893.D
 Acq: 7 Apr 2017 13:53

Instrument :
 BNA_E
 ClientSampled :
 PB98124BS

Tgt Ion	Resp	Lower	Upper
278	35809		
278	100		
139	22.1	13.8	20.8#
279	22.9	21.4	32.2



#36
 Benzo(g,h,i)perylene
 Concen: 5.03 ng
 RT: 27.00 min Scan# 1747
 Delta R.T. -0.02 min
 Lab File: BE092893.D
 Acq: 7 Apr 2017 13:53

Tgt Ion	Resp	Lower	Upper
276	139246		
276	100		
277	22.1	19.8	29.8
138	28.7	19.8	29.6

