

Data Path : Z:\HPCHEM1\BNA\_E\DATA\BE041116\  
 Data File : BE091634.D  
 Acq On : 11 Apr 2016 18:41  
 Operator : UM/SJ  
 Sample : PB89409BS  
 Misc :  
 ALS Vial : 21 Sample Multiplier: 1

Instrument :  
 BNA\_E  
 ClientSampleID :  
 PB89409BS

Quant Time: Apr 12 01:47:34 2016  
 Quant Method : Z:\HPCHEM1\BNA\_E\METHODS\8270-SIM-BE040816.M  
 Quant Title : ASP BNA STANDARDS FOR 5 POINT CALIBRATION  
 QLast Update : Fri Apr 08 16:48:14 2016  
 Response via : Initial Calibration

Internal Standards	R.T.	QIon	Response	Conc	Units	Dev(Min)
1) 1,4-Dichlorobenzene-d4	7.80	152	150164	5.00	ng	-0.02
7) Naphthalene-d8	10.57	136	769779	5.00	ng	-0.02
13) Acenaphthene-d10	14.42	164	456451	5.00	ng	0.00
19) Phenanthrene-d10	17.16	188	1139253	5.00	ng	0.00
26) Chrysene-d12	21.31	240	1282843	5.00	ng	0.00
35) Perylene-d12	23.76	264	1169088	5.00	ng	0.00

## System Monitoring Compounds

4) 2-Fluorophenol	5.41	112	184334	5.14	ng	0.00
5) Phenol-d6	6.97	99	323505	6.77	ng	0.00
8) Nitrobenzene-d5	8.96	82	164256	3.67	ng	0.00
14) 2,4,6-Tribromophenol	15.90	330	146002	8.72	ng	-0.01
15) 2-Fluorobiphenyl	13.05	172	459093	3.62	ng	0.00
29) Terphenyl-d14	19.76	244	733816	4.58	ng	0.00

## Target Compounds

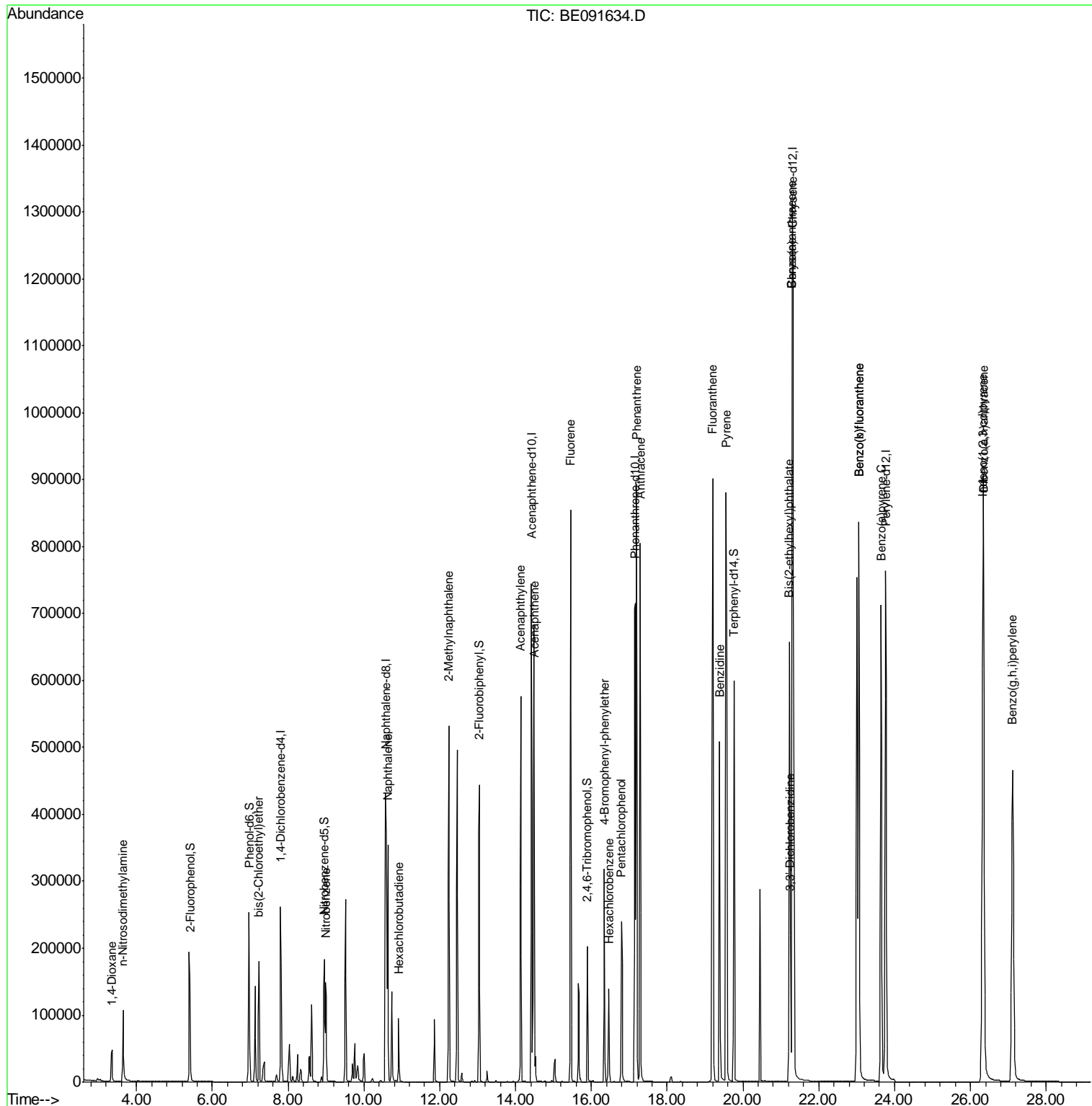
Target Compounds	R.T.	QIon	Response	Conc	Units	Qvalue
2) 1,4-Dioxane	3.35	88	40462	2.42	ng	# 92
3) n-Nitrosodimethylamine	3.64	42	76319	3.31	ng	# 95
6) bis(2-Chloroethyl)ether	7.23	93	139531	3.37	ng	# 76
9) Nitrobenzene	8.99	77	175601	3.19	ng	# 92
10) Naphthalene	10.63	128	494093	3.11	ng	99
11) Hexachlorobutadiene	10.92	225	76071	3.26	ng	99
12) 2-Methylnaphthalene	12.24	142	372609	3.68	ng	99
16) Acenaphthylene	14.14	152	704319	3.98	ng	# 86
17) Acenaphthene	14.49	154	456840	4.08	ng	99
18) Fluorene	15.46	166	536743	3.83	ng	98
20) 4-Bromophenyl-phenylether	16.34	248	156170	3.89	ng	96
21) Hexachlorobenzene	16.46	284	155415	3.73	ng	97
22) Pentachlorophenol	16.79	266	196754	9.01	ng	# 85
23) Phenanthrene	17.19	178	959620	3.69	ng	99
24) Anthracene	17.29	178	956447	4.15	ng	98
25) Fluoranthene	19.21	202	1114599	4.05	ng	97
27) Benzidine	19.38	184	578906	4.63	ng	# 76
28) Pyrene	19.55	202	1199338	4.67	ng	98
30) Benzo(a)anthracene	21.29	228	2225106	7.75	ng	97
31) 3,3'-Dichlorobenzidine	21.24	252	275971	1.45	ng	# 74
32) Chrysene	21.29	228	2234824	8.58	ng	99
33) Bis(2-ethylhexyl)phthalate	21.22	149	581884	3.04	ng	# 80
34) Indeno(1,2,3-cd)pyrene	26.33	276	1300365	4.48	ng	97
36) Benzo(b)fluoranthene	23.06	252	1092715	4.02	ng	97
37) Benzo(k)fluoranthene	23.06	252	1104943	4.13	ng	97
38) Benzo(a)pyrene	23.65	252	1139869	4.52	ng	97
39) Dibenzo(a,h)anthracene	26.35	278	1097485	4.42	ng	96
40) Benzo(g,h,i)perylene	27.11	276	1122567	4.39	ng	97

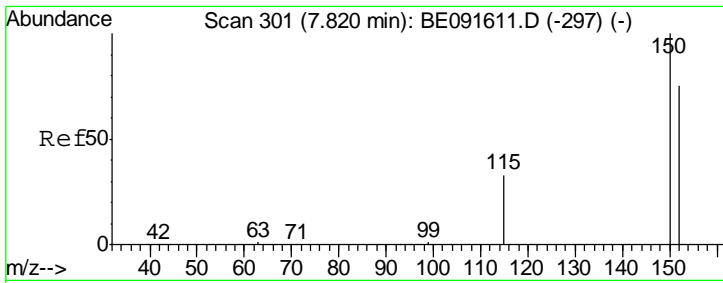
(#) = qualifier out of range (m) = manual integration (+) = signals summed

Data Path : Z:\HPCHEM1\BNA\_E\DATA\BE041116\  
 Data File : BE091634.D  
 Acq On : 11 Apr 2016 18:41  
 Operator : UM/SJ  
 Sample : PB89409BS  
 Misc :  
 ALS Vial : 21 Sample Multiplier: 1

Instrument :  
 BNA\_E  
 ClientSampled :  
 PB89409BS

Quant Time: Apr 12 01:47:34 2016  
 Quant Method : Z:\HPCHEM1\BNA\_E\METHODS\8270-SIM-BE040816.M  
 Quant Title : ASP BNA STANDARDS FOR 5 POINT CALIBRATION  
 QLast Update : Fri Apr 08 16:48:14 2016  
 Response via : Initial Calibration



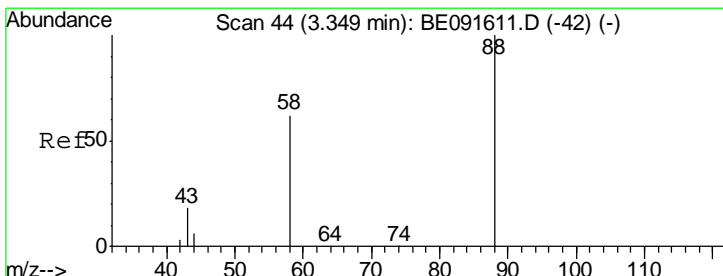
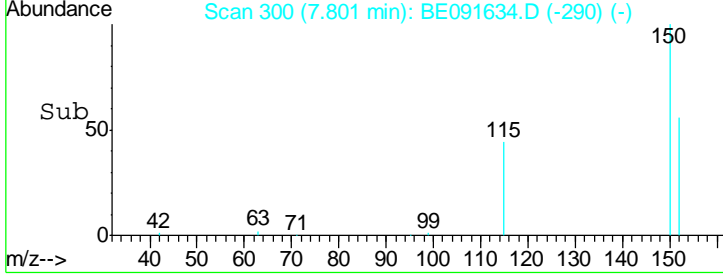
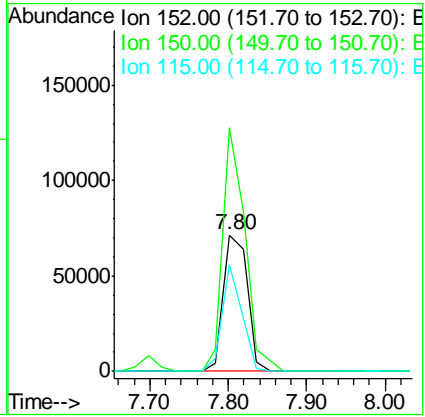
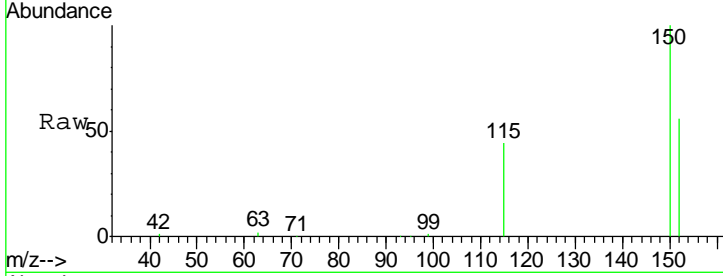


#1  
 1,4-Dichlorobenzene-d4  
 Concen: 5.00 ng  
 RT: 7.80 min Scan# 300  
 Delta R.T. -0.02 min  
 Lab File: BE091634.D  
 Acq: 11 Apr 2016 18:41

**Instrument :**  
 BNA\_E  
**ClientSampled :**  
 PB89409BS

Tgt Ion: 152 Resp: 150164

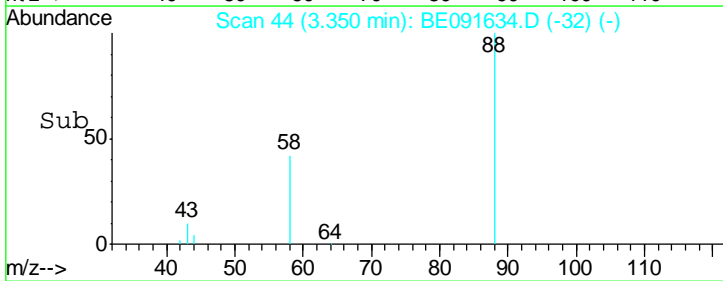
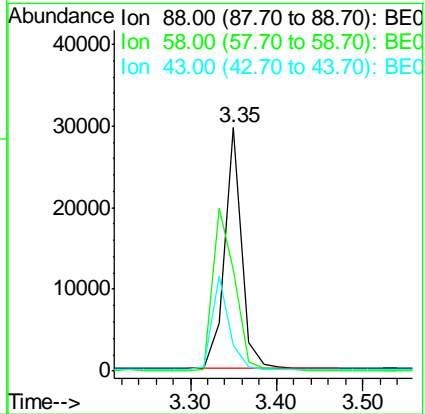
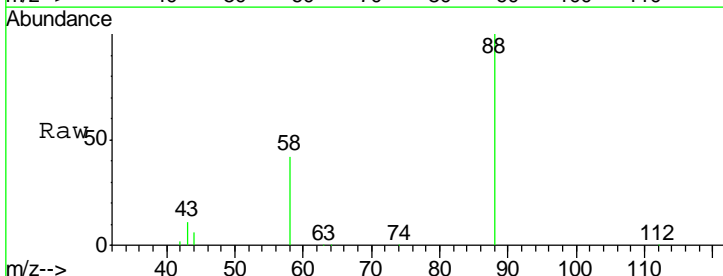
Ion	Ratio	Lower	Upper
152	100		
150	178.8	122.6	183.8
115	78.6	52.8	79.2

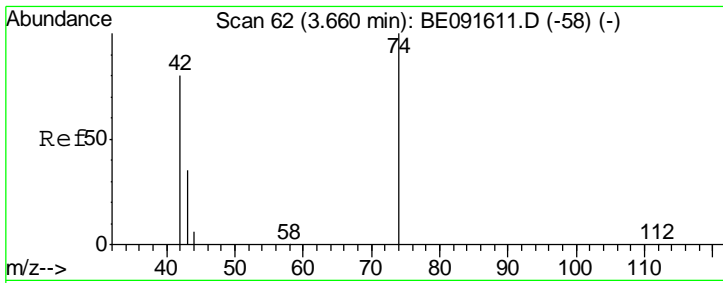


#2  
 1,4-Dioxane  
 Concen: 2.42 ng  
 RT: 3.35 min Scan# 44  
 Delta R.T. 0.00 min  
 Lab File: BE091634.D  
 Acq: 11 Apr 2016 18:41

Tgt Ion: 88 Resp: 40462

Ion	Ratio	Lower	Upper
88	100		
58	86.9	65.8	98.6
43	39.3	25.3	37.9#

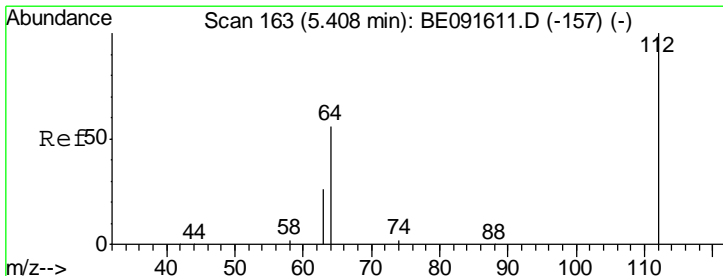
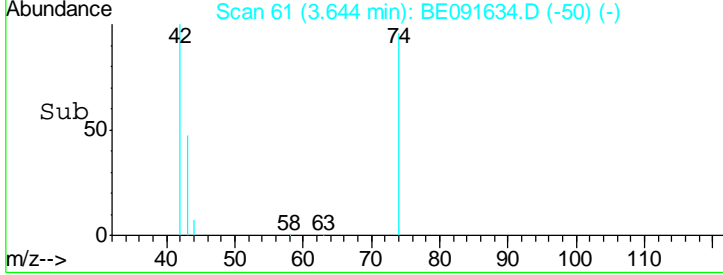
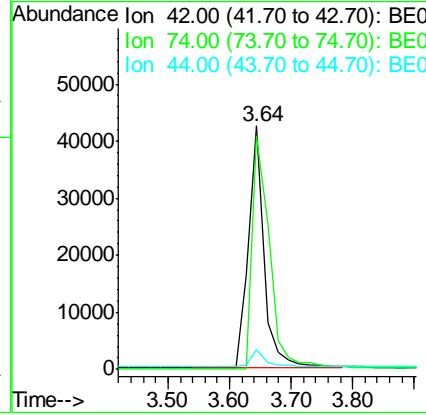
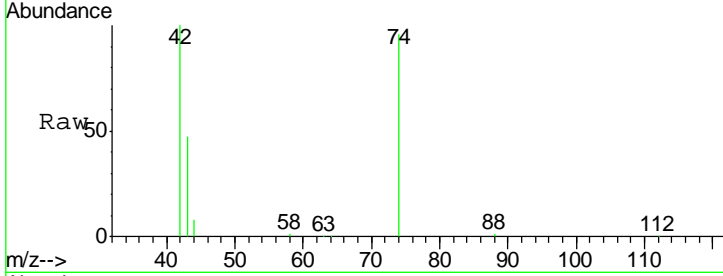




#3  
 n-Nitrosodimethylamine  
 Concen: 3.31 ng  
 RT: 3.64 min Scan# 61  
 Delta R.T. -0.02 min  
 Lab File: BE091634.D  
 Acq: 11 Apr 2016 18:41

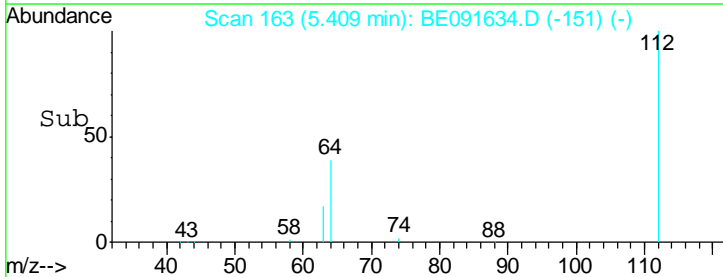
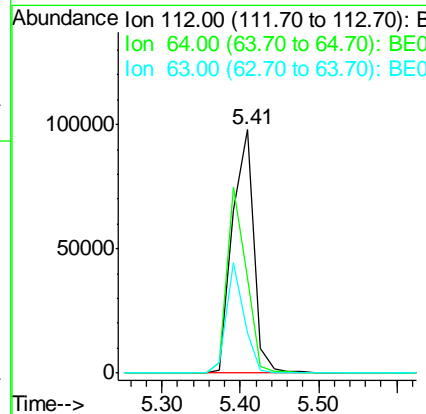
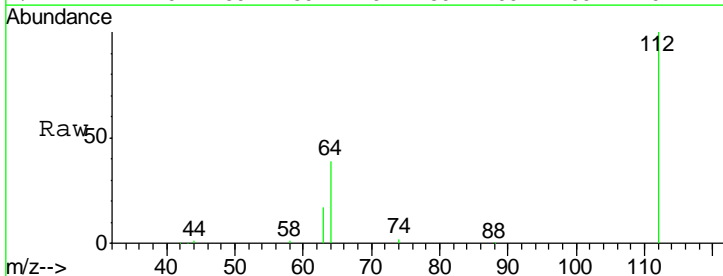
Instrument :  
 BNA\_E  
 ClientSampleID :  
 PB89409BS

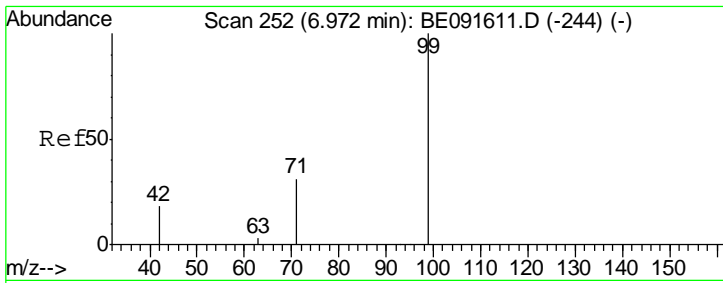
Tgt Ion	Resp	Lower	Upper
42	76319		
74	104.9	87.9	131.9
44	6.0	6.6	9.8#



#4  
 2-Fluorophenol  
 Concen: 5.14 ng  
 RT: 5.41 min Scan# 163  
 Delta R.T. 0.00 min  
 Lab File: BE091634.D  
 Acq: 11 Apr 2016 18:41

Tgt Ion	Resp	Lower	Upper
112	184334		
64	68.8	30.9	46.3#
63	37.6	16.7	25.1#

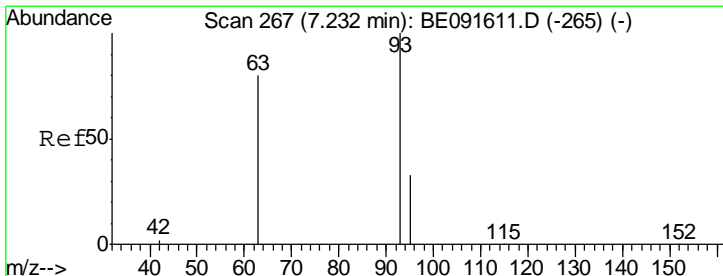
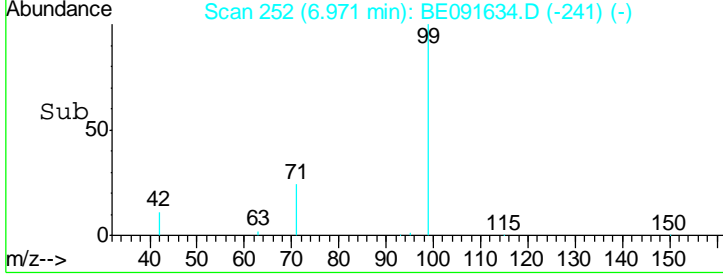
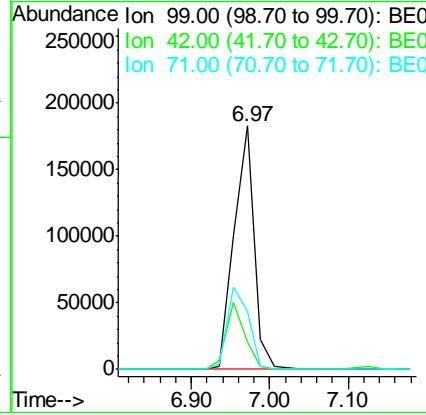
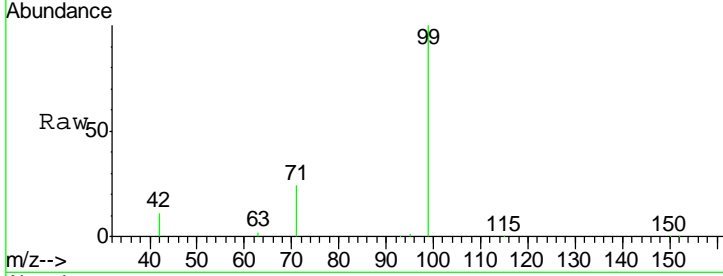




#5  
 Phenol-d6  
 Concen: 6.77 ng  
 RT: 6.97 min Scan# 252  
 Delta R.T. -0.00 min  
 Lab File: BE091634.D  
 Acq: 11 Apr 2016 18:41

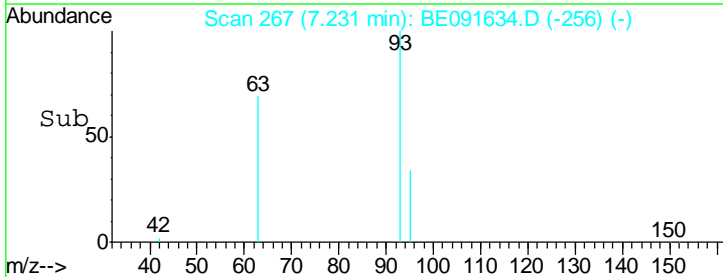
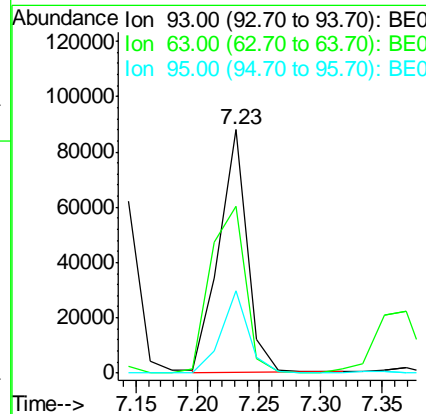
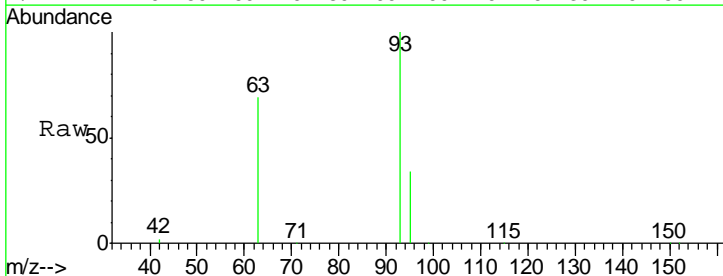
**Instrument :**  
 BNA\_E  
**ClientSampled :**  
 PB89409BS

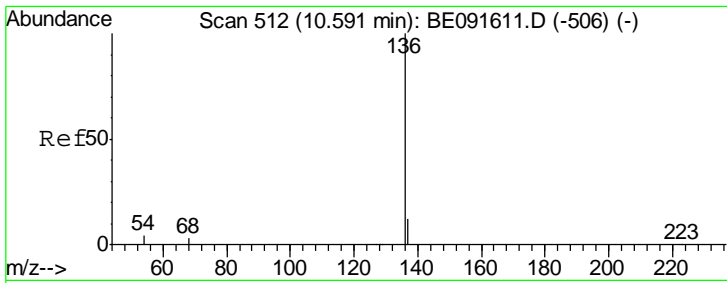
Tgt Ion	Resp	Lower	Upper
99	323505		
42	26.1	16.2	24.2#
71	36.3	29.0	43.4



#6  
 bis(2-Chloroethyl)ether  
 Concen: 3.37 ng  
 RT: 7.23 min Scan# 267  
 Delta R.T. -0.00 min  
 Lab File: BE091634.D  
 Acq: 11 Apr 2016 18:41

Tgt Ion	Resp	Lower	Upper
93	139531		
63	85.4	49.5	74.3#
95	32.5	22.2	33.4

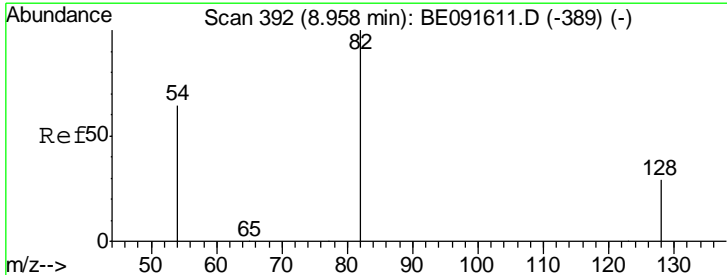
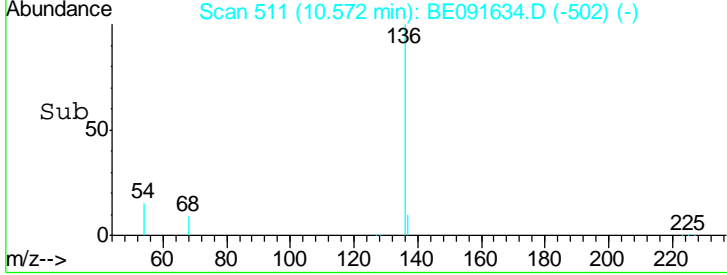
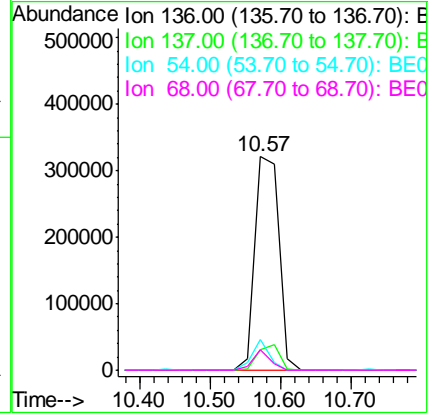
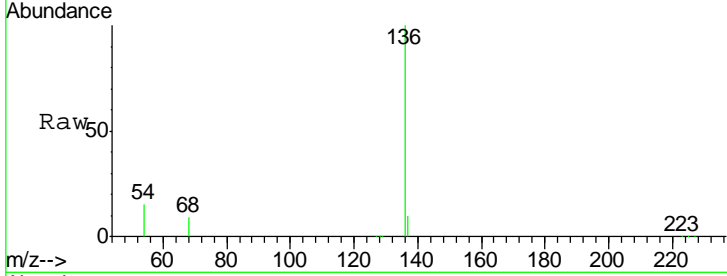




#7  
 Naphthalene-d8  
 Concen: 5.00 ng  
 RT: 10.57 min Scan# 511  
 Delta R.T. -0.02 min  
 Lab File: BE091634.D  
 Acq: 11 Apr 2016 18:41

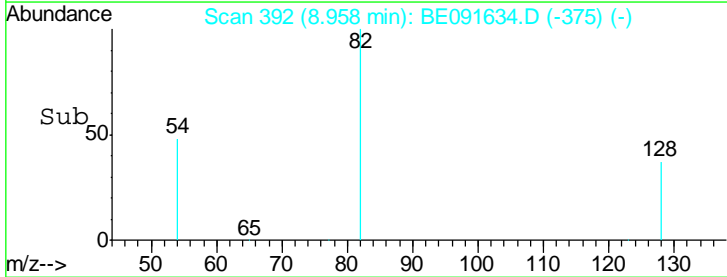
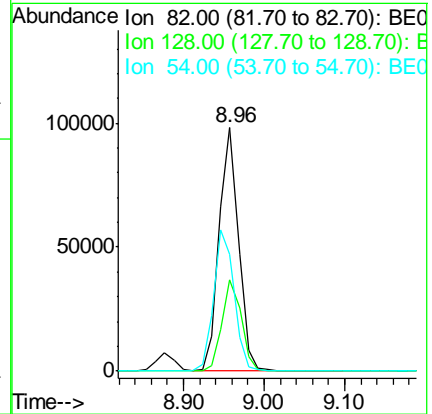
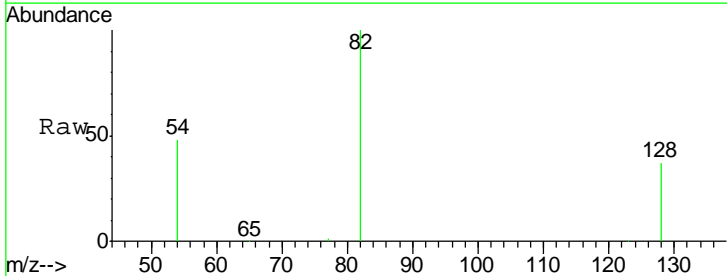
**Instrument :**  
 BNA\_E  
**ClientSampled :**  
 PB89409BS

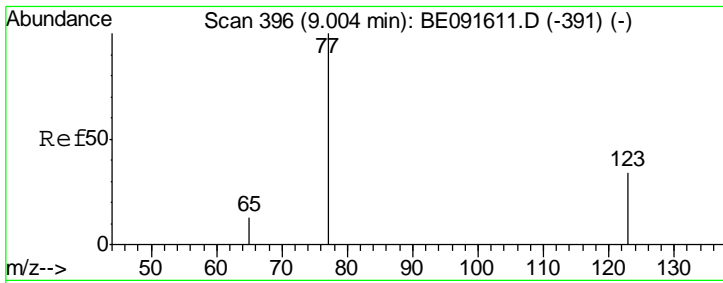
Tgt Ion	Resp	Lower	Upper
136	100		
137	9.8	8.9	13.3
54	14.6	8.2	12.4#
68	9.5	6.2	9.4#



#8  
 Nitrobenzene-d5  
 Concen: 3.67 ng  
 RT: 8.96 min Scan# 392  
 Delta R.T. -0.00 min  
 Lab File: BE091634.D  
 Acq: 11 Apr 2016 18:41

Tgt Ion	Resp	Lower	Upper
82	100		
128	37.5	25.4	38.0
54	48.0	48.4	72.6#

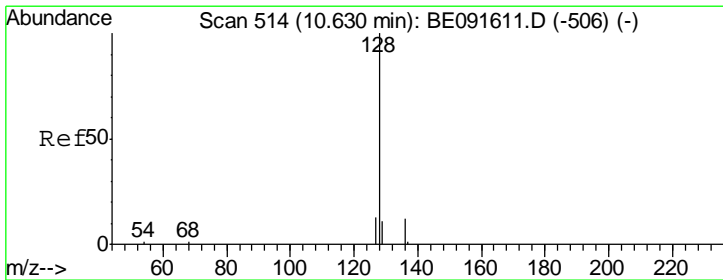
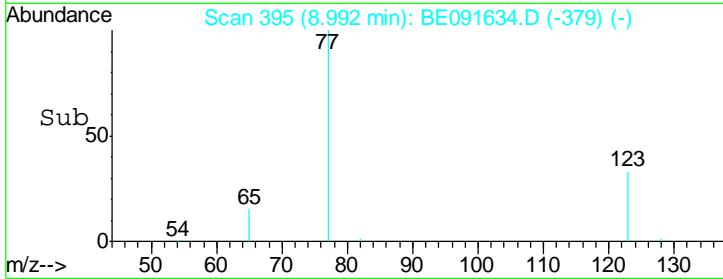
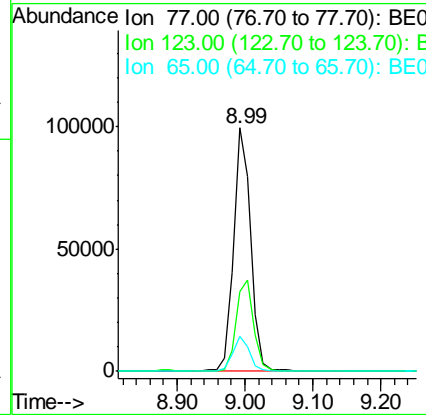
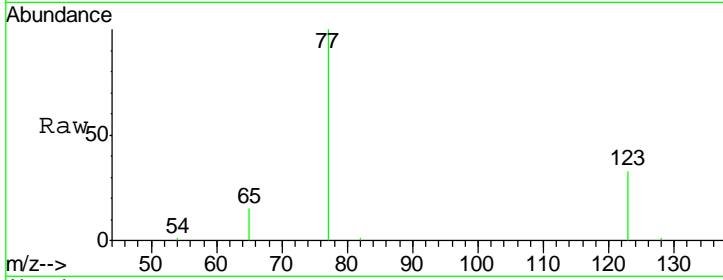




#9  
 Nitrobenzene  
 Concen: 3.19 ng  
 RT: 8.99 min Scan# 395  
 Delta R.T. -0.01 min  
 Lab File: BE091634.D  
 Acq: 11 Apr 2016 18:41

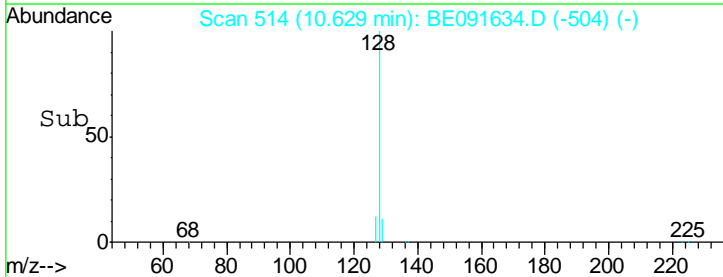
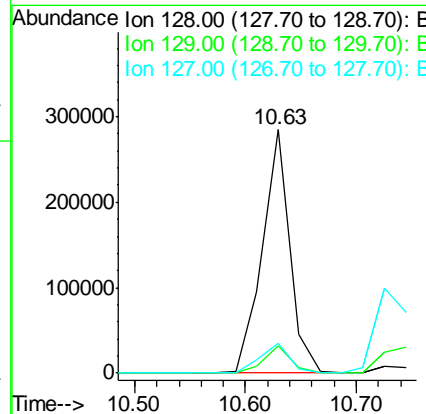
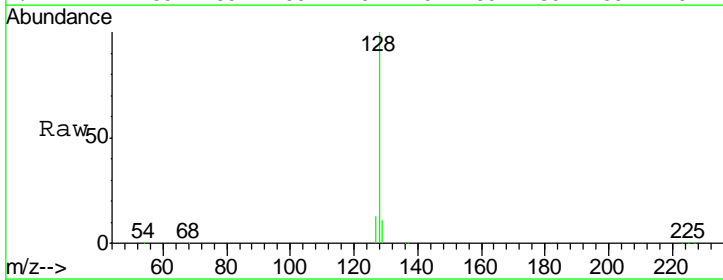
Instrument :  
 BNA\_E  
 ClientSampled :  
 PB89409BS

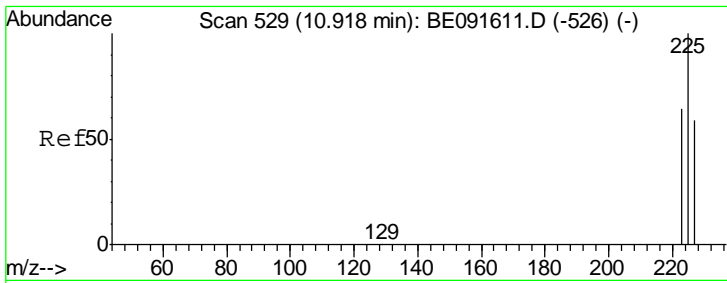
Tgt Ion	Resp	Lower	Upper
77	175601		
123	38.7	26.9	40.3
65	14.2	9.4	14.2#



#10  
 Naphthalene  
 Concen: 3.11 ng  
 RT: 10.63 min Scan# 514  
 Delta R.T. -0.00 min  
 Lab File: BE091634.D  
 Acq: 11 Apr 2016 18:41

Tgt Ion	Resp	Lower	Upper
128	494093		
129	11.4	9.3	13.9
127	12.5	10.7	16.1



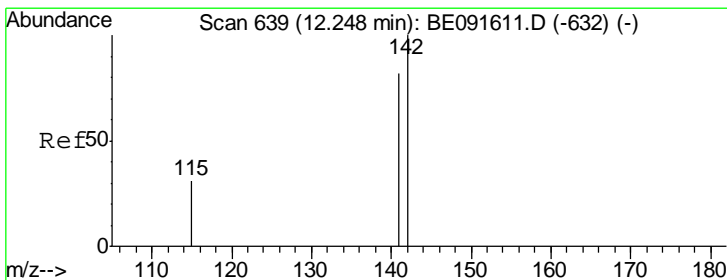
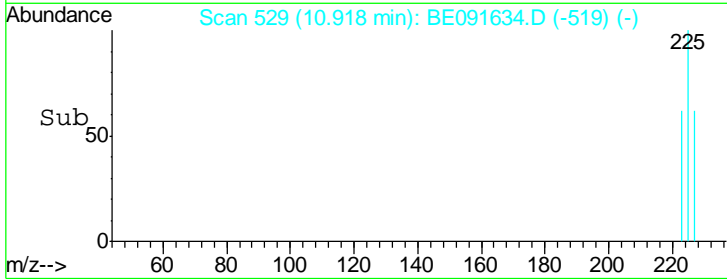
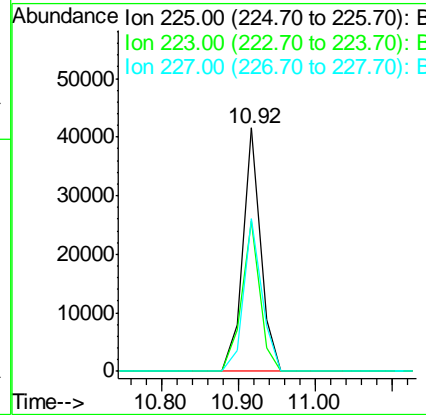
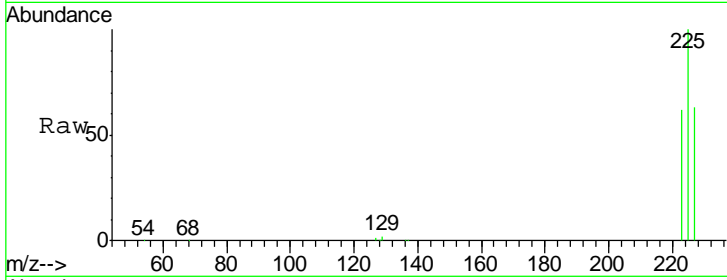


#11  
 Hexachlorobutadiene  
 Concen: 3.26 ng  
 RT: 10.92 min Scan# 529  
 Delta R.T. -0.00 min  
 Lab File: BE091634.D  
 Acq: 11 Apr 2016 18:41

Instrument :  
 BNA\_E  
 ClientSampled :  
 PB89409BS

Tgt Ion: 225 Resp: 76071

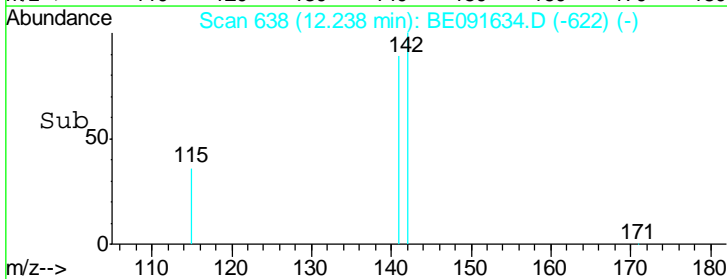
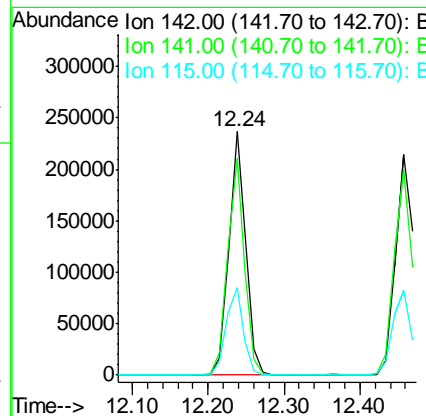
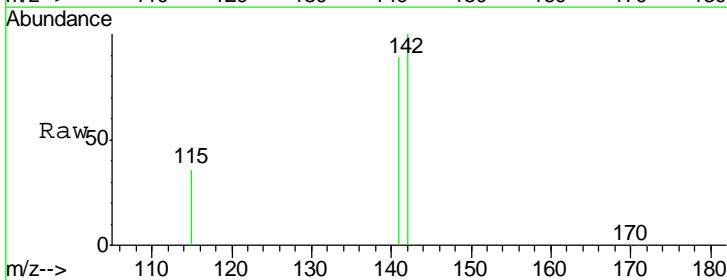
Ion	Ratio	Lower	Upper
225	100		
223	62.4	49.0	73.6
227	64.0	50.3	75.5



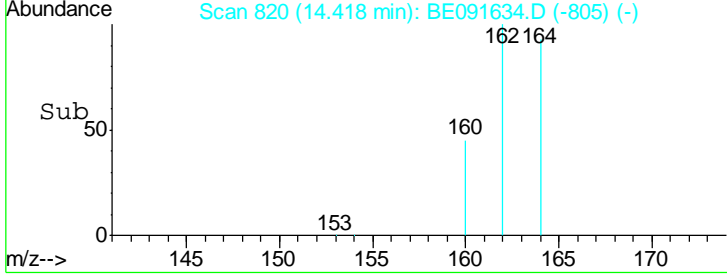
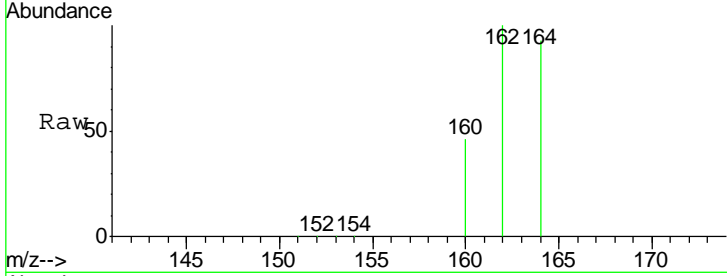
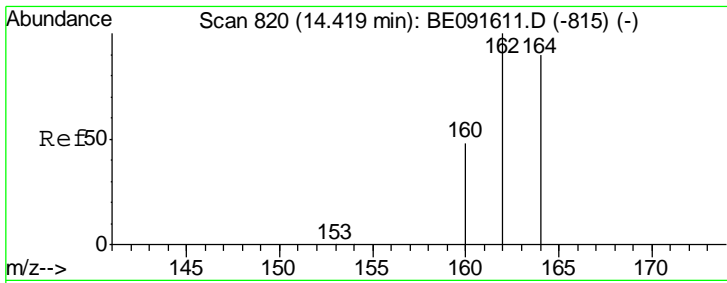
#12  
 2-Methylnaphthalene  
 Concen: 3.68 ng  
 RT: 12.24 min Scan# 638  
 Delta R.T. -0.01 min  
 Lab File: BE091634.D  
 Acq: 11 Apr 2016 18:41

Tgt Ion: 142 Resp: 372609

Ion	Ratio	Lower	Upper
142	100		
141	89.0	71.4	107.0
115	36.0	30.3	45.5



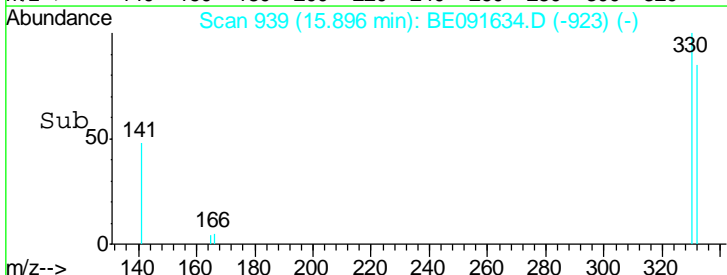
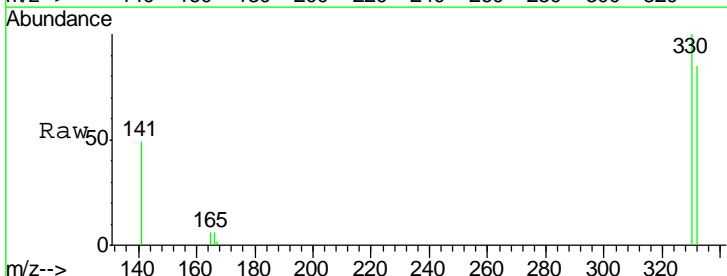
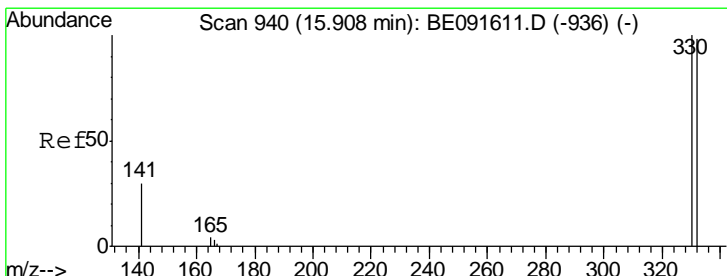
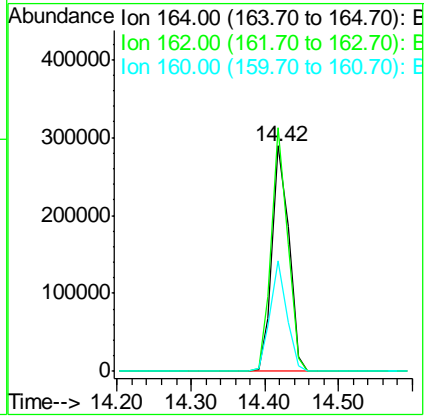




#13  
 Acenaphthene-d10  
 Concen: 5.00 ng  
 RT: 14.42 min Scan# 820  
 Delta R.T. -0.00 min  
 Lab File: BE091634.D  
 Acq: 11 Apr 2016 18:41

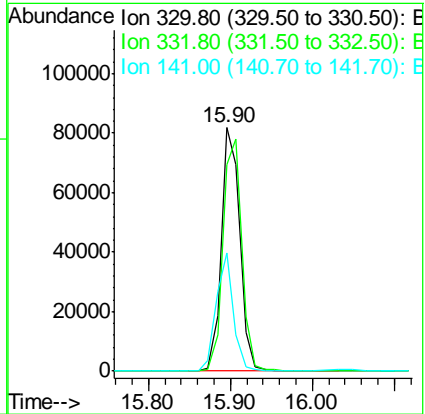
Instrument :  
 BNA\_E  
 ClientSampled :  
 PB89409BS

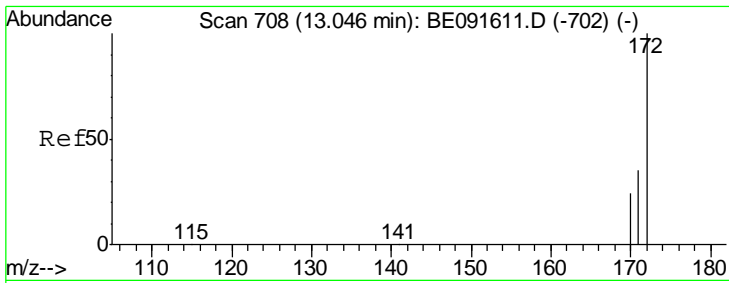
Tgt Ion	Resp	Lower	Upper
164	100		
162	108.0	85.3	127.9
160	49.1	46.2	69.2



#14  
 2,4,6-Tribromophenol  
 Concen: 8.72 ng  
 RT: 15.90 min Scan# 939  
 Delta R.T. -0.01 min  
 Lab File: BE091634.D  
 Acq: 11 Apr 2016 18:41

Tgt Ion	Resp	Lower	Upper
330	100		
332	97.1	79.1	118.7
141	40.1	125.4	188.0#

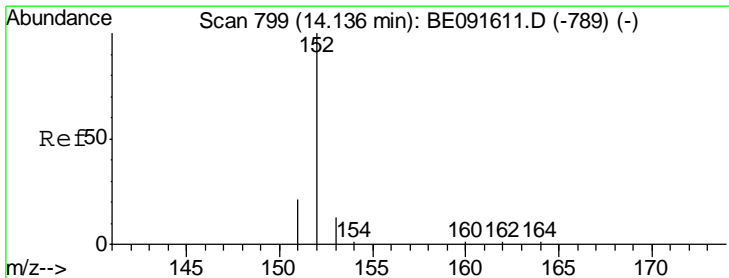
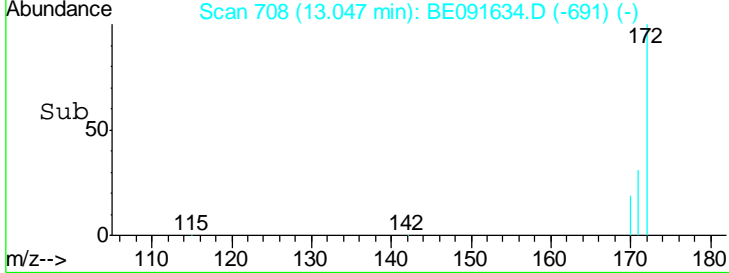
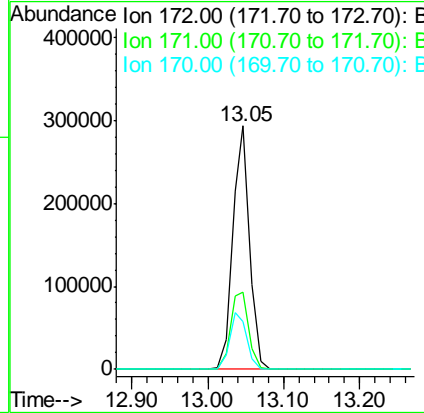
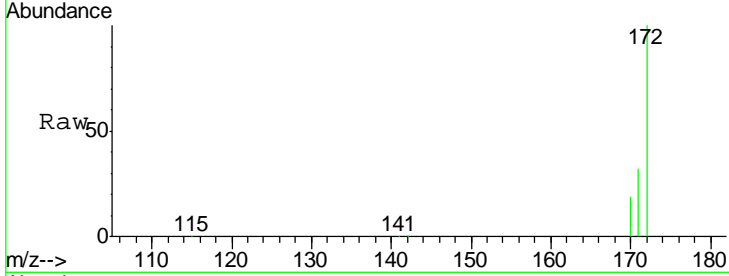




#15  
 2-Fluorobiphenyl  
 Concen: 3.62 ng  
 RT: 13.05 min Scan# 708  
 Delta R.T. 0.00 min  
 Lab File: BE091634.D  
 Acq: 11 Apr 2016 18:41

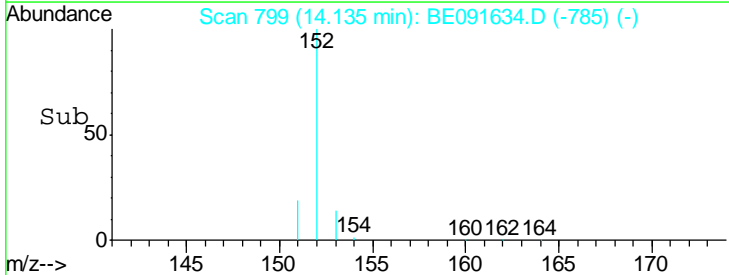
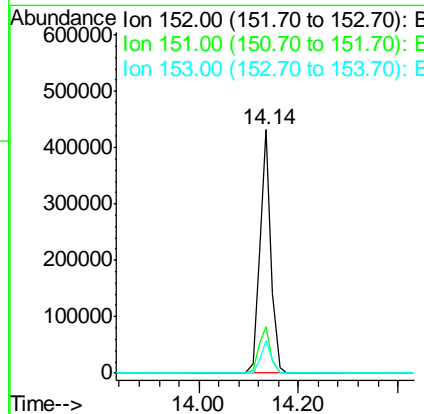
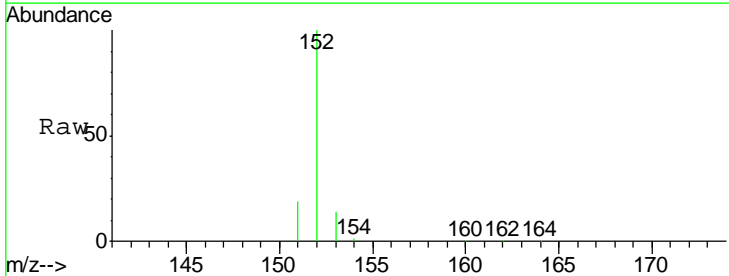
**Instrument :**  
 BNA\_E  
**ClientSampled :**  
 PB89409BS

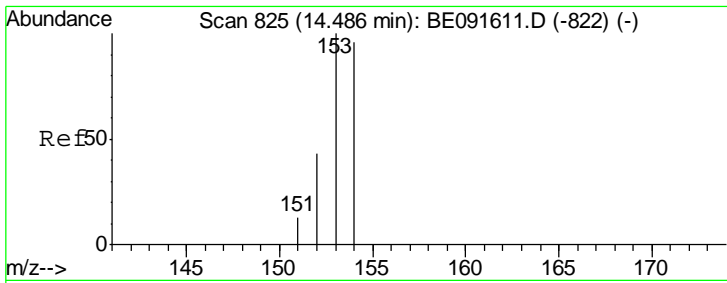
Tgt Ion	Resp	Lower	Upper
172	100		
171	31.7	28.8	43.2
170	19.4	19.3	28.9



#16  
 Acenaphthylene  
 Concen: 3.98 ng  
 RT: 14.14 min Scan# 799  
 Delta R.T. -0.00 min  
 Lab File: BE091634.D  
 Acq: 11 Apr 2016 18:41

Tgt Ion	Resp	Lower	Upper
152	100		
151	20.4	3.9	5.9#
153	13.4	10.3	15.5

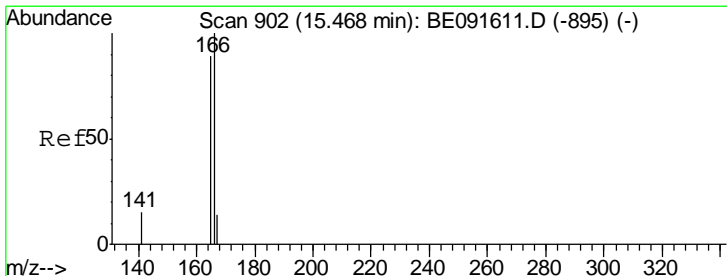
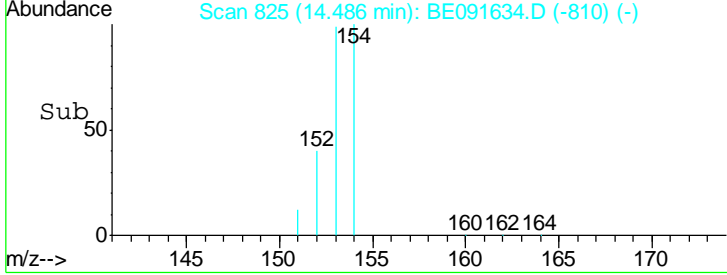
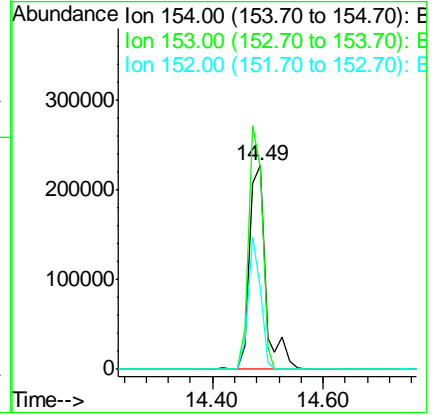
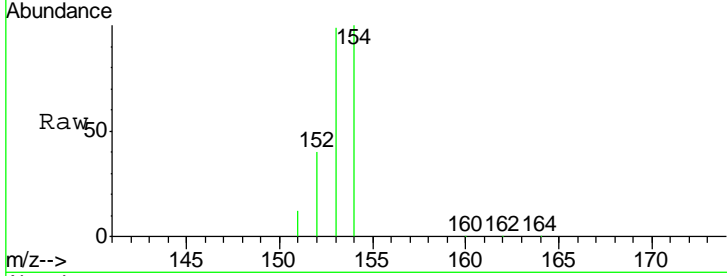




#17  
 Acenaphthene  
 Concen: 4.08 ng  
 RT: 14.49 min Scan# 825  
 Delta R.T. -0.00 min  
 Lab File: BE091634.D  
 Acq: 11 Apr 2016 18:41

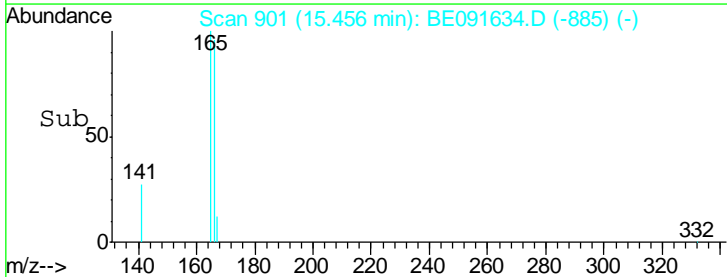
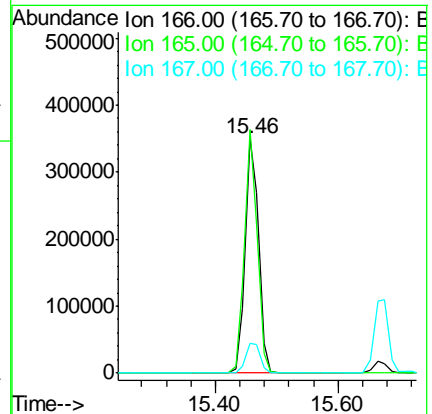
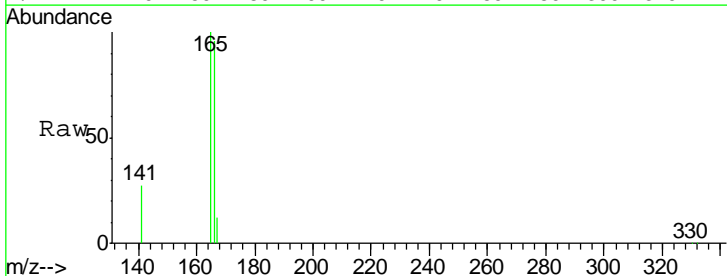
Instrument : BNA\_E  
 ClientSampled : PB89409BS

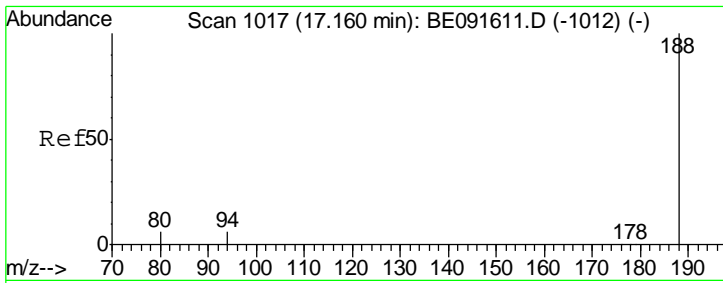
Tgt Ion	Resp	Lower	Upper
154	100		
153	100.4	80.0	120.0
152	49.3	40.0	60.0



#18  
 Fluorene  
 Concen: 3.83 ng  
 RT: 15.46 min Scan# 901  
 Delta R.T. -0.01 min  
 Lab File: BE091634.D  
 Acq: 11 Apr 2016 18:41

Tgt Ion	Resp	Lower	Upper
166	100		
165	98.3	80.8	121.2
167	13.7	10.9	16.3

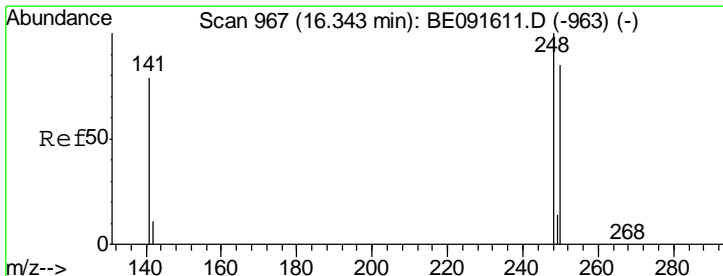
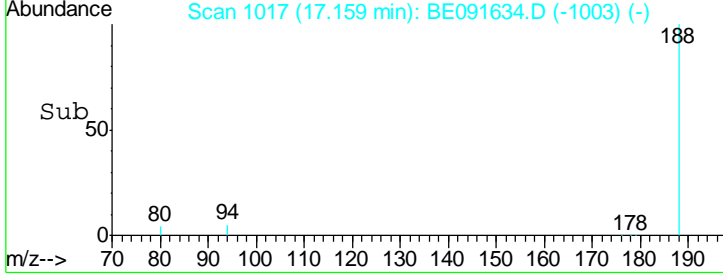
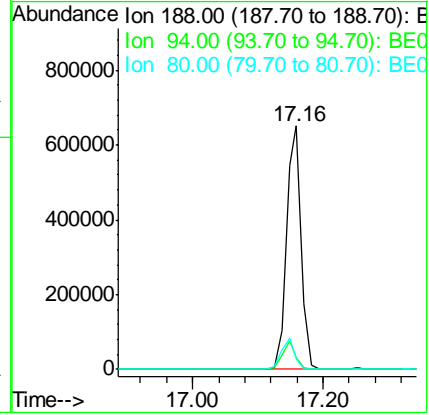
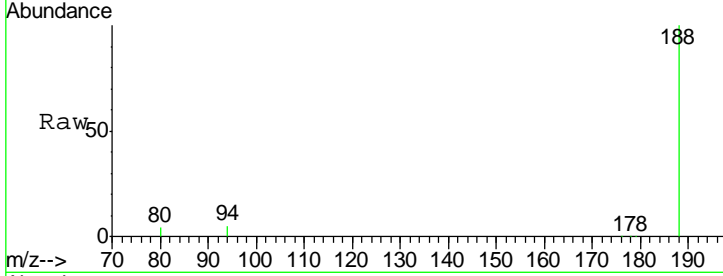




#19  
 Phenanthrene-d10  
 Concen: 5.00 ng  
 RT: 17.16 min Scan# 1017  
 Delta R.T. -0.00 min  
 Lab File: BE091634.D  
 Acq: 11 Apr 2016 18:41

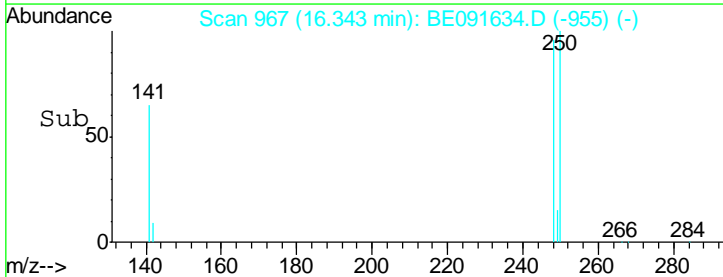
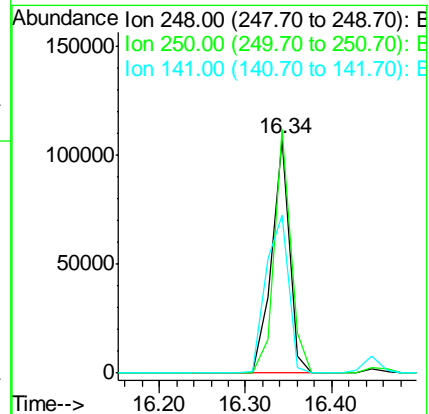
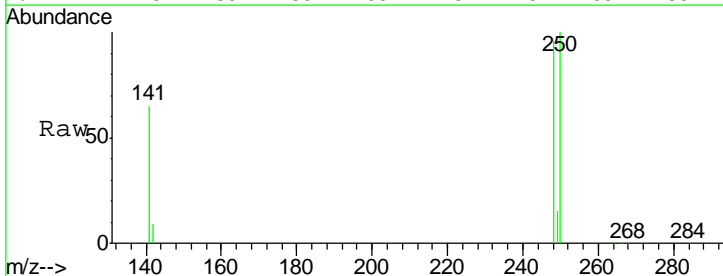
Instrument : BNA\_E  
 ClientSampled : PB89409BS

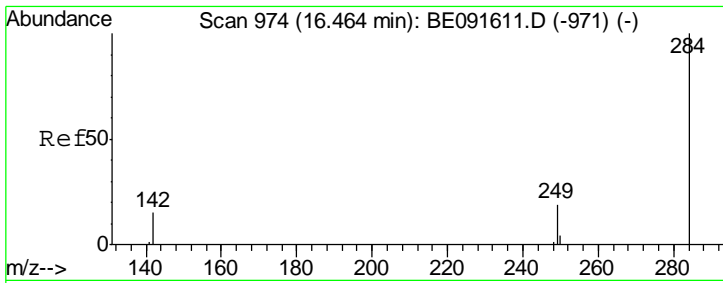
Tgt Ion	Resp	Lower	Upper
188	1139253		
94	5.2	8.7	13.1#
80	4.4	9.4	14.0#



#20  
 4-Bromophenyl-phenylether  
 Concen: 3.89 ng  
 RT: 16.34 min Scan# 967  
 Delta R.T. -0.00 min  
 Lab File: BE091634.D  
 Acq: 11 Apr 2016 18:41

Tgt Ion	Resp	Lower	Upper
248	156170		
250	97.0	80.5	120.7
141	85.0	72.0	108.0

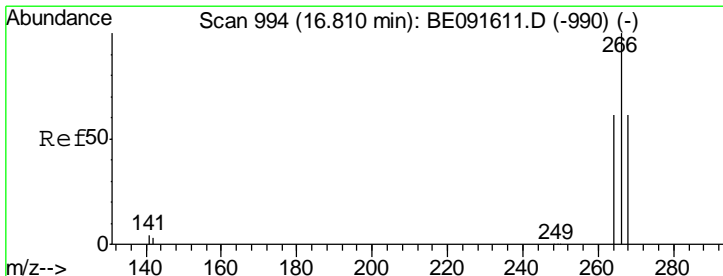
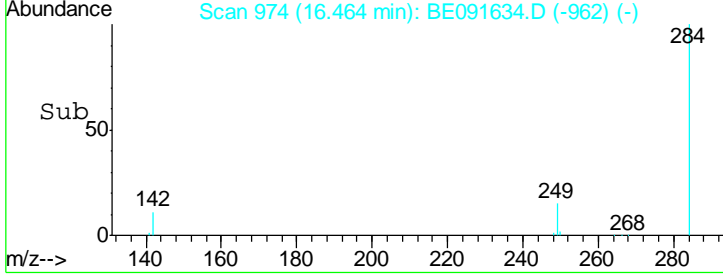
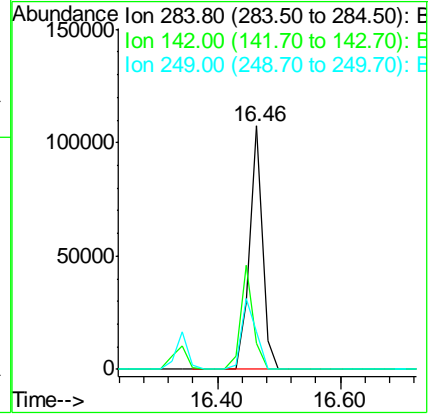
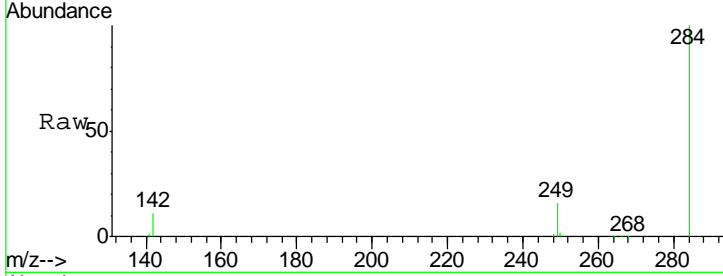




#21  
 Hexachlorobenzene  
 Concen: 3.73 ng  
 RT: 16.46 min Scan# 974  
 Delta R.T. -0.00 min  
 Lab File: BE091634.D  
 Acq: 11 Apr 2016 18:41

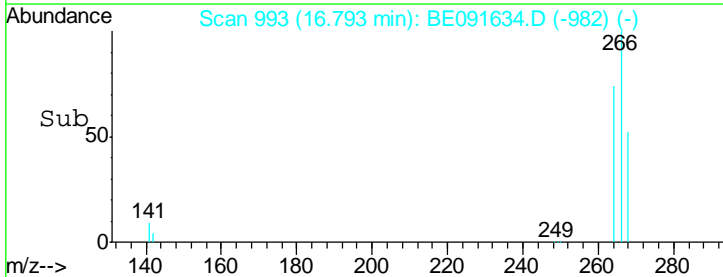
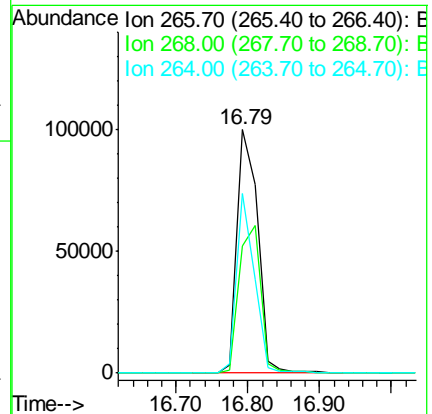
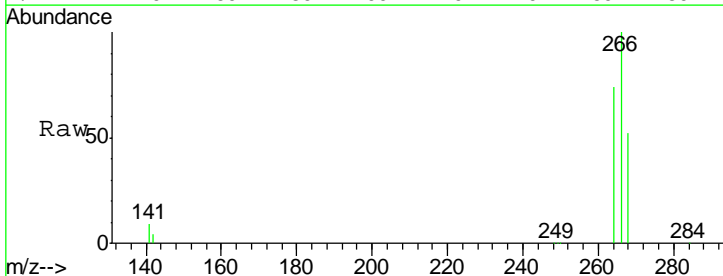
Instrument :  
 BNA\_E  
 ClientSampleID :  
 PB89409BS

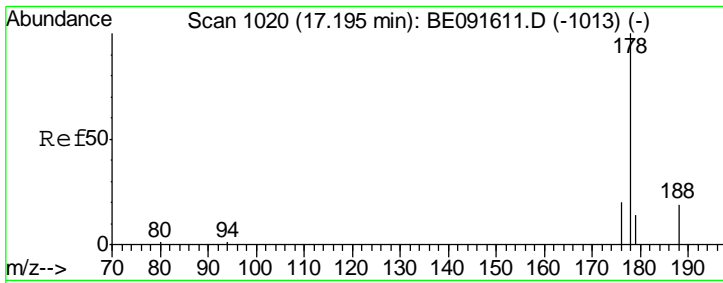
Tgt Ion	Resp	Lower	Upper
284	155415		
284	100		
142	42.1	32.2	48.2
249	33.3	25.4	38.2



#22  
 Pentachlorophenol  
 Concen: 9.01 ng  
 RT: 16.79 min Scan# 993  
 Delta R.T. -0.02 min  
 Lab File: BE091634.D  
 Acq: 11 Apr 2016 18:41

Tgt Ion	Resp	Lower	Upper
266	196754		
266	100		
268	52.0	58.2	87.2#
264	73.9	56.2	84.4

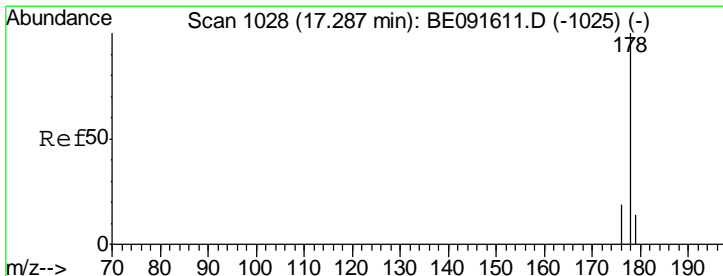
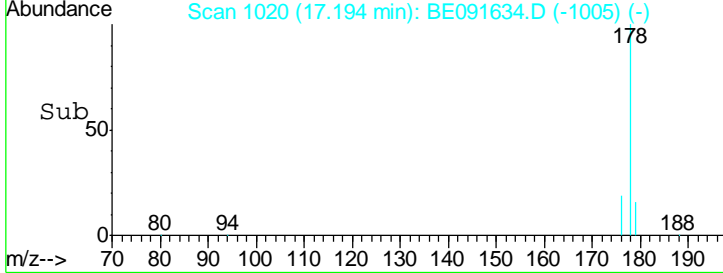
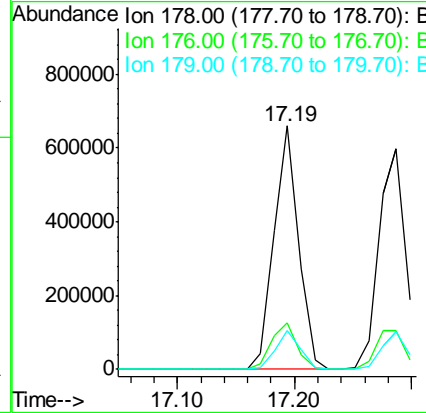
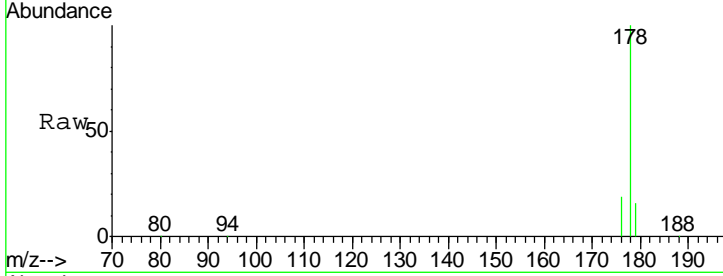




#23  
 Phenanthrene  
 Concen: 3.69 ng  
 RT: 17.19 min Scan# 1020  
 Delta R.T. -0.00 min  
 Lab File: BE091634.D  
 Acq: 11 Apr 2016 18:41

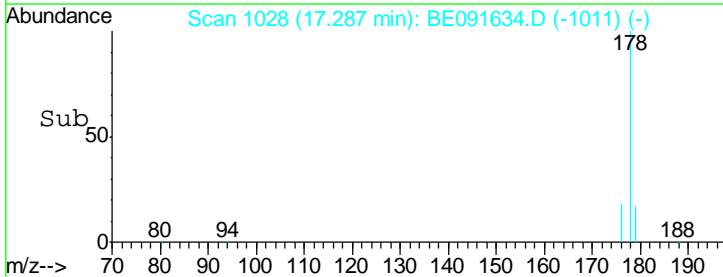
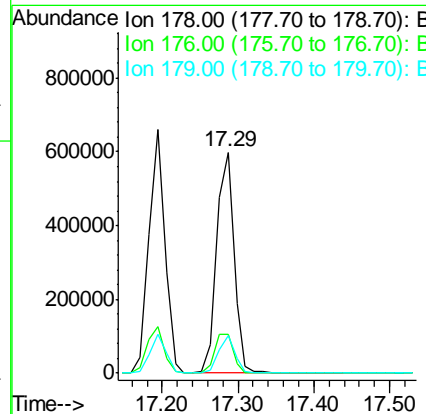
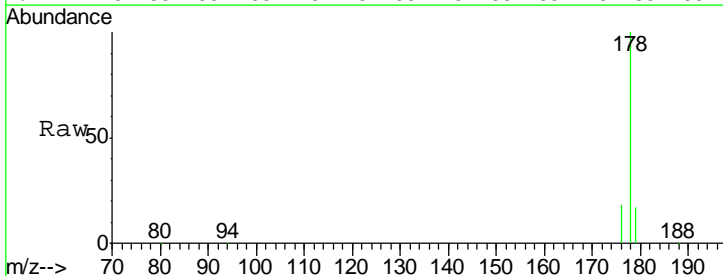
Instrument :  
 BNA\_E  
 ClientSampled :  
 PB89409BS

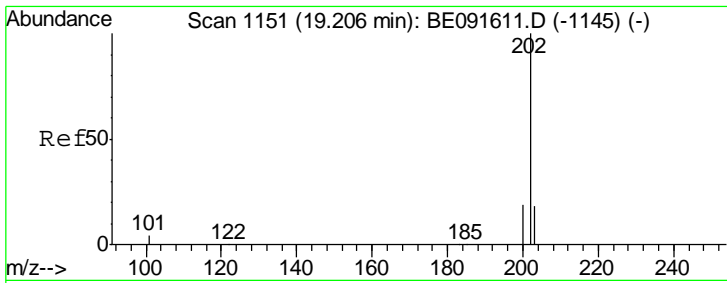
Tgt Ion	Resp	Ion Ratio	Lower	Upper
178	959620	100		
176	19.8	15.3	22.9	
179	15.7	12.6	18.8	



#24  
 Anthracene  
 Concen: 4.15 ng  
 RT: 17.29 min Scan# 1028  
 Delta R.T. -0.00 min  
 Lab File: BE091634.D  
 Acq: 11 Apr 2016 18:41

Tgt Ion	Resp	Ion Ratio	Lower	Upper
178	956447	100		
176	19.3	14.6	21.8	
179	15.7	11.8	17.6	



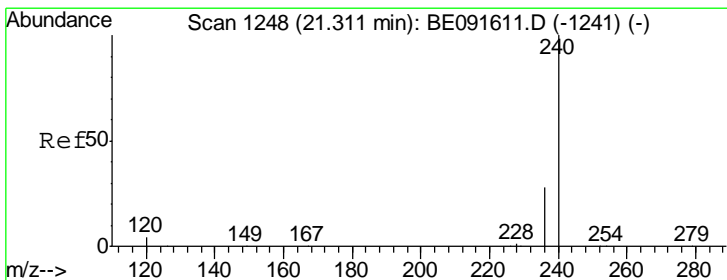
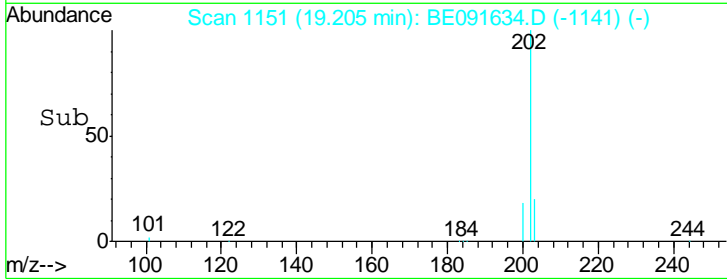
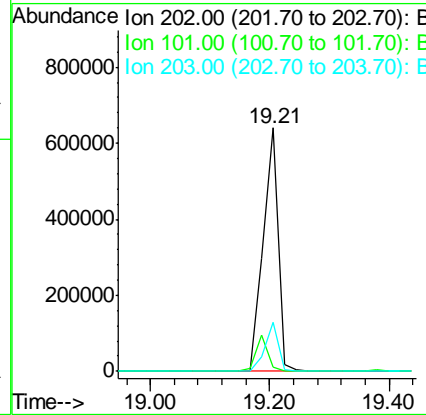
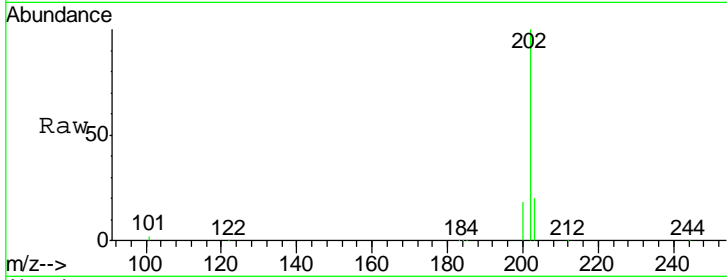


#25  
 Fluoranthene  
 Concen: 4.05 ng  
 RT: 19.21 min Scan# 1151  
 Delta R.T. -0.00 min  
 Lab File: BE091634.D  
 Acq: 11 Apr 2016 18:41

Instrument :  
 BNA\_E  
 ClientSampled :  
 PB89409BS

Tgt Ion: 202 Resp: 1114599

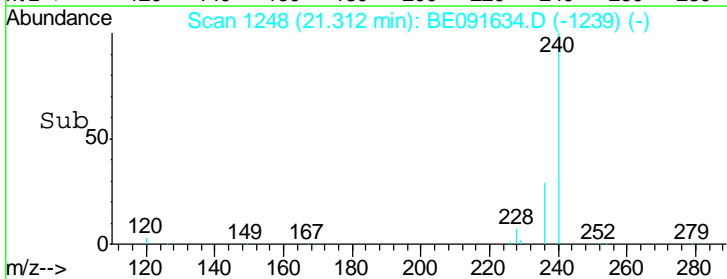
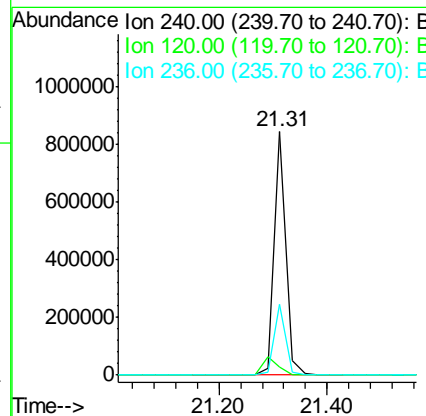
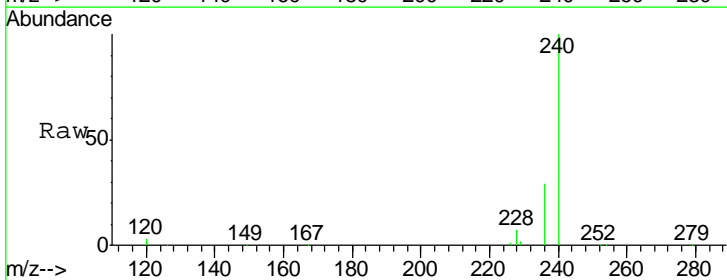
Ion	Ratio	Lower	Upper
202	100		
101	12.1	11.0	16.6
203	18.4	13.9	20.9

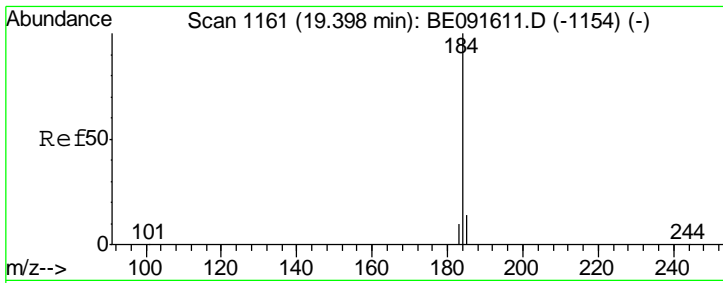


#26  
 Chrysene-d12  
 Concen: 5.00 ng  
 RT: 21.31 min Scan# 1248  
 Delta R.T. 0.00 min  
 Lab File: BE091634.D  
 Acq: 11 Apr 2016 18:41

Tgt Ion: 240 Resp: 1282843

Ion	Ratio	Lower	Upper
240	100		
120	3.5	11.0	16.4#
236	28.9	21.7	32.5



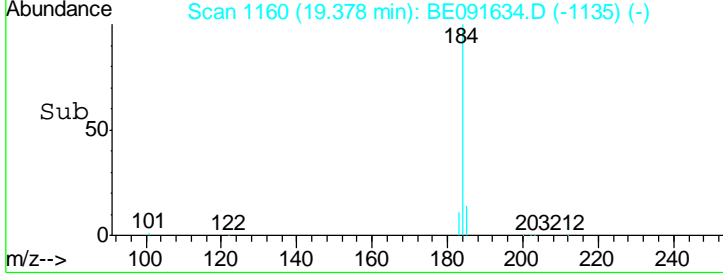
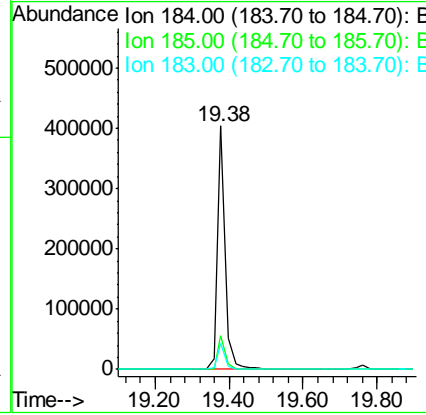
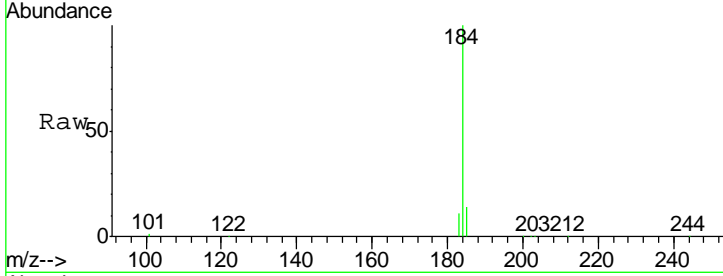


#27  
Benzidine  
Concen: 4.63 ng  
RT: 19.38 min Scan# 1160  
Delta R.T. -0.02 min  
Lab File: BE091634.D  
Acq: 11 Apr 2016 18:41

Instrument :  
BNA\_E  
ClientSampled :  
PB89409BS

Tgt Ion:184 Resp: 578906

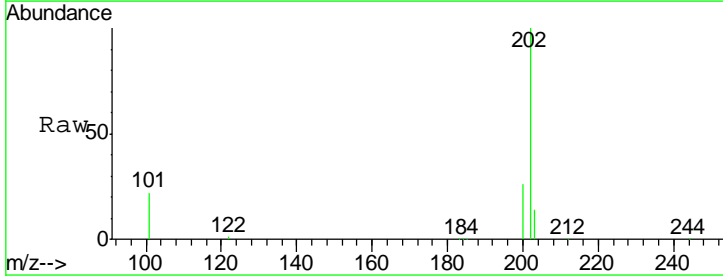
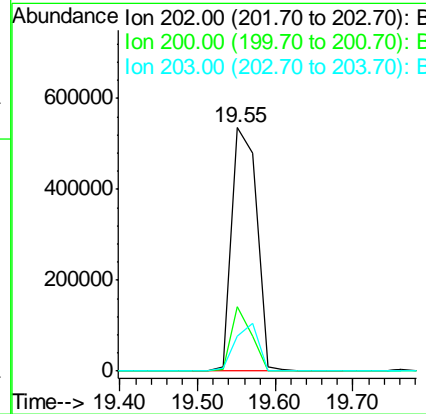
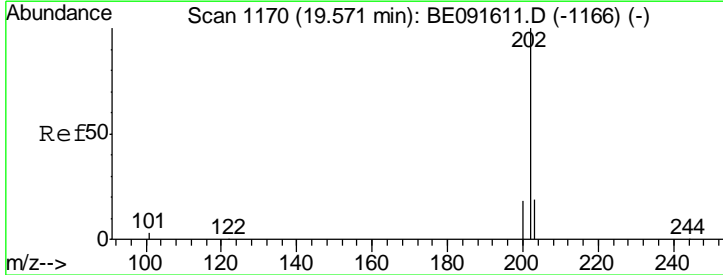
Ion	Ratio	Lower	Upper
184	100		
185	14.1	22.3	33.5#
183	10.7	16.4	24.6#



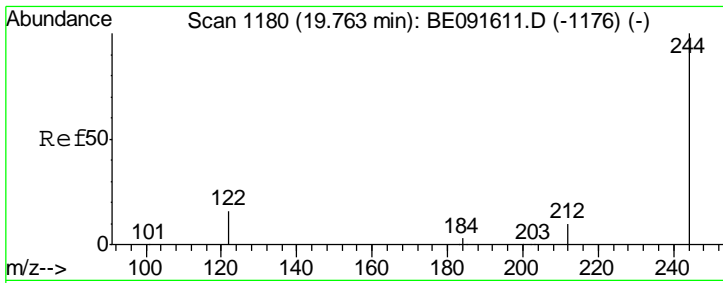
#28  
Pyrene  
Concen: 4.67 ng  
RT: 19.55 min Scan# 1169  
Delta R.T. -0.02 min  
Lab File: BE091634.D  
Acq: 11 Apr 2016 18:41

Tgt Ion:202 Resp: 1199338

Ion	Ratio	Lower	Upper
202	100		
200	21.7	16.8	25.2
203	18.5	14.0	21.0



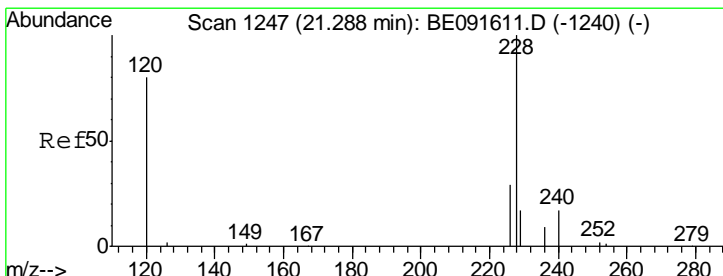
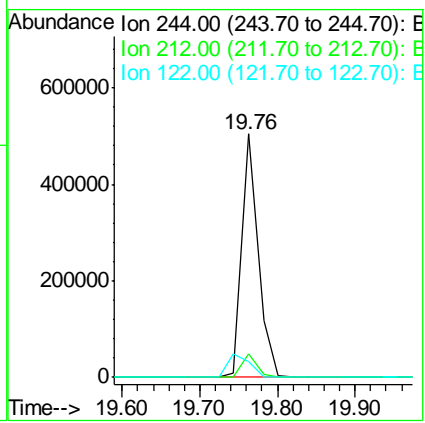
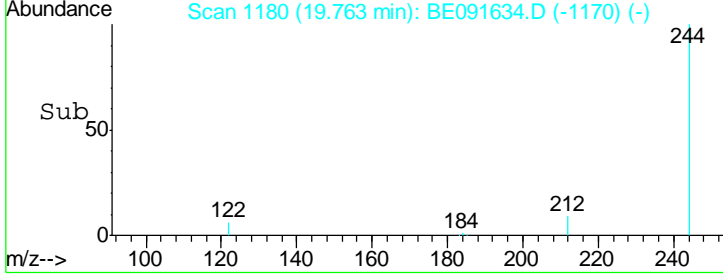
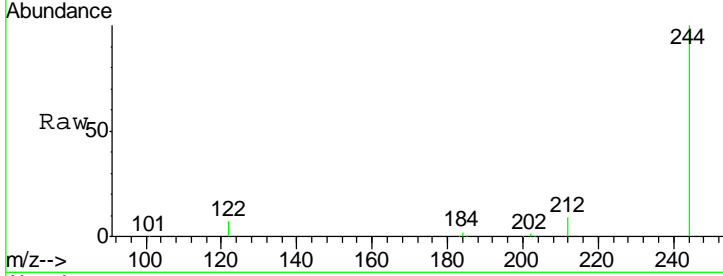




#29  
 Terphenyl-d14  
 Concen: 4.58 ng  
 RT: 19.76 min Scan# 1180  
 Delta R.T. -0.00 min  
 Lab File: BE091634.D  
 Acq: 11 Apr 2016 18:41

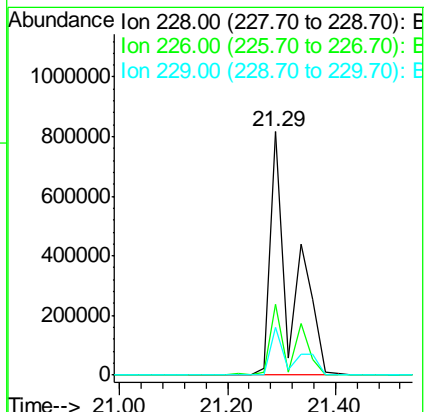
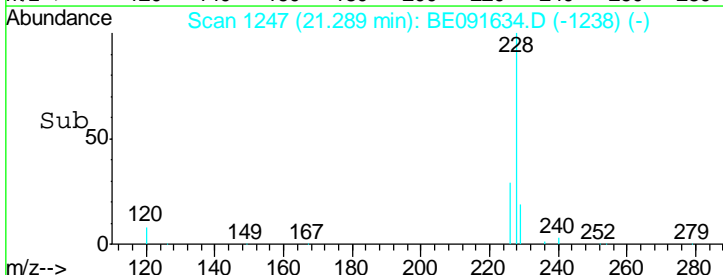
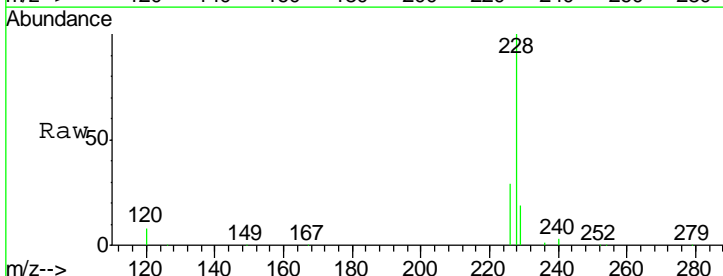
Instrument :  
 BNA\_E  
 ClientSampled :  
 PB89409BS

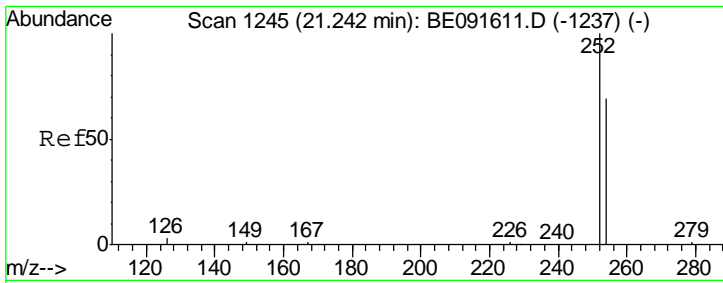
Tgt Ion	Resp	Lower	Upper
244	100		
212	9.4	6.9	10.3
122	6.5	11.0	16.4#



#30  
 Benzo(a)anthracene  
 Concen: 7.75 ng  
 RT: 21.29 min Scan# 1247  
 Delta R.T. 0.00 min  
 Lab File: BE091634.D  
 Acq: 11 Apr 2016 18:41

Tgt Ion	Resp	Lower	Upper
228	100		
226	29.0	21.0	31.4
229	19.4	15.7	23.5

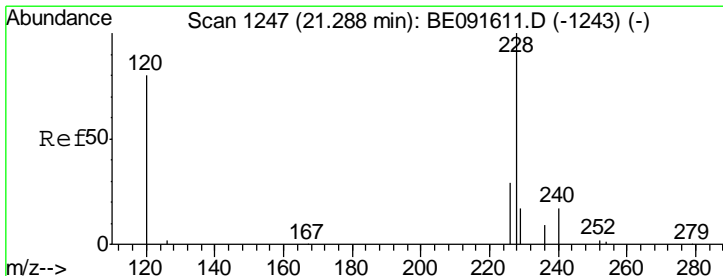
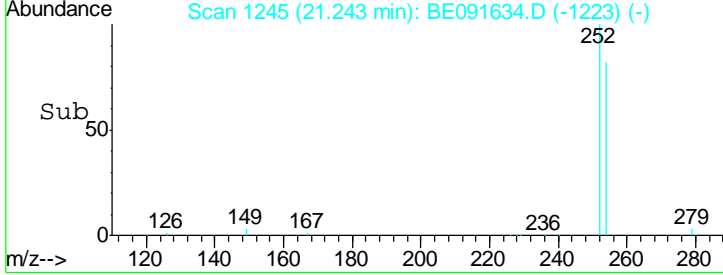
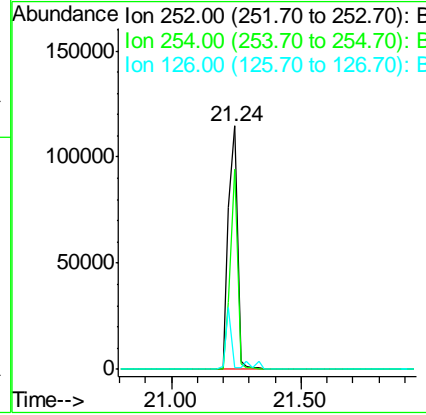
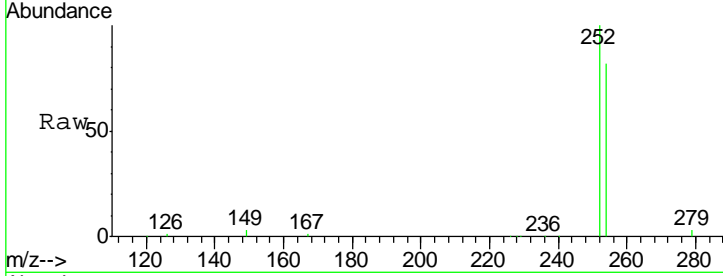




#31  
 3,3'-Dichlorobenzidine  
 Concen: 1.45 ng  
 RT: 21.24 min Scan# 1245  
 Delta R.T. 0.00 min  
 Lab File: BE091634.D  
 Acq: 11 Apr 2016 18:41

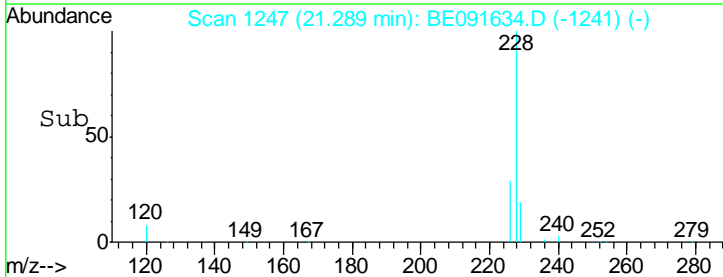
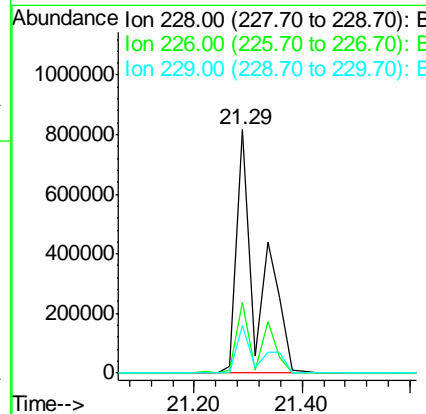
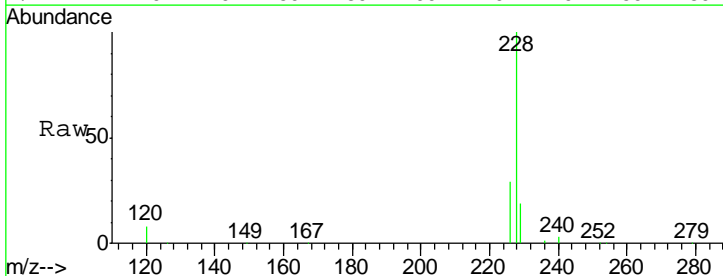
Instrument :  
 BNA\_E  
 ClientSampled :  
 PB89409BS

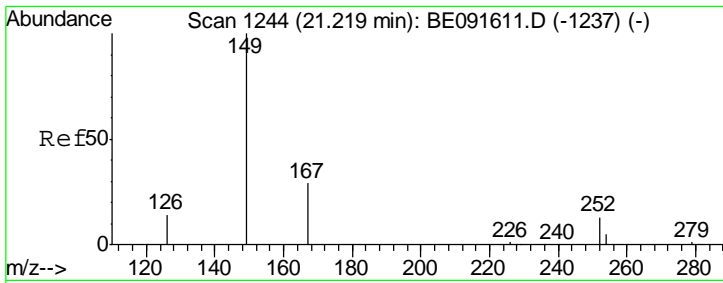
Tgt Ion	Resp	Lower	Upper
252	100		
254	82.4	51.1	76.7#
126	0.8	12.6	18.8#



#32  
 Chrysene  
 Concen: 8.58 ng  
 RT: 21.29 min Scan# 1247  
 Delta R.T. -0.07 min  
 Lab File: BE091634.D  
 Acq: 11 Apr 2016 18:41

Tgt Ion	Resp	Lower	Upper
228	100		
226	29.0	24.0	36.0
229	19.4	15.9	23.9

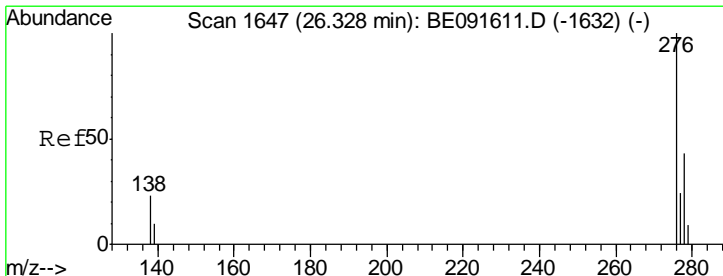
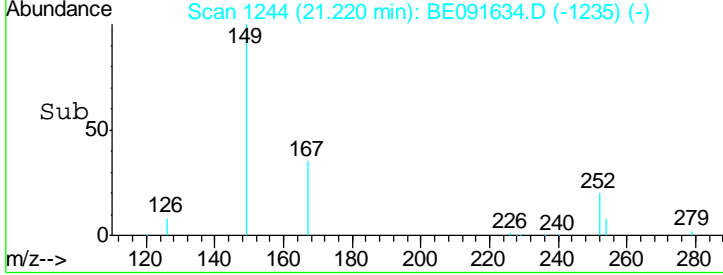
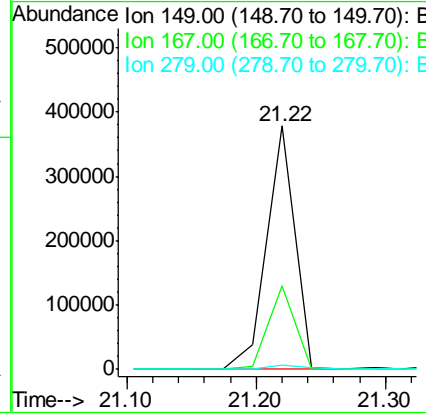
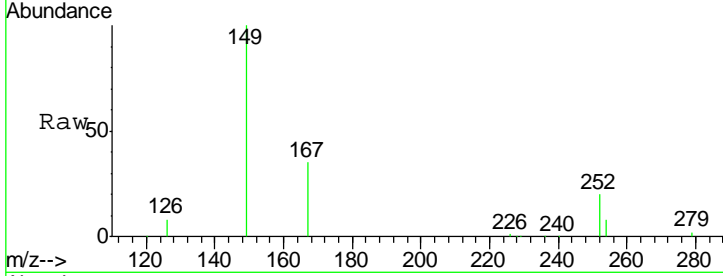




#33  
 Bis(2-ethylhexyl)phthalate  
 Concen: 3.04 ng  
 RT: 21.22 min Scan# 1244  
 Delta R.T. 0.00 min  
 Lab File: BE091634.D  
 Acq: 11 Apr 2016 18:41

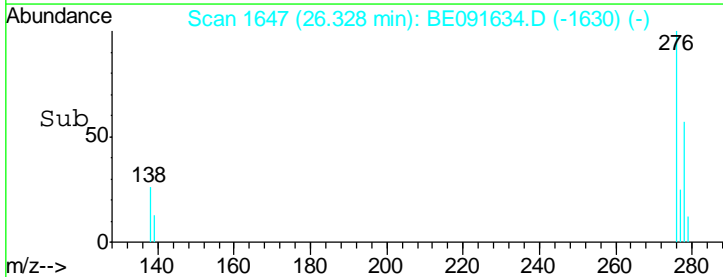
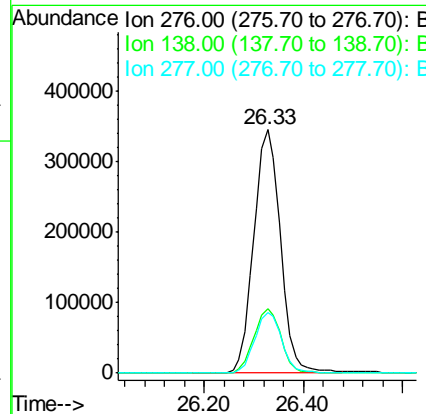
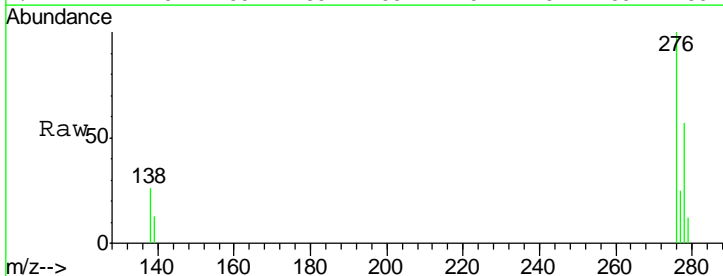
Instrument :  
 BNA\_E  
 ClientSampled :  
 PB89409BS

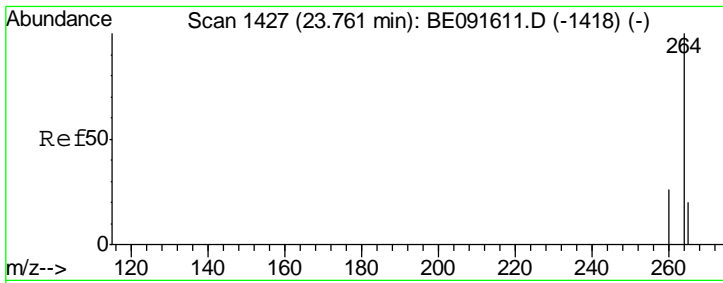
Tgt Ion	Resp	Lower	Upper
149	581884		
167	32.8	19.5	29.3#
279	2.3	10.0	15.0#



#34  
 Indeno(1,2,3-cd)pyrene  
 Concen: 4.48 ng  
 RT: 26.33 min Scan# 1647  
 Delta R.T. -0.00 min  
 Lab File: BE091634.D  
 Acq: 11 Apr 2016 18:41

Tgt Ion	Resp	Lower	Upper
276	1300365		
138	26.8	23.4	35.2
277	25.1	19.8	29.8



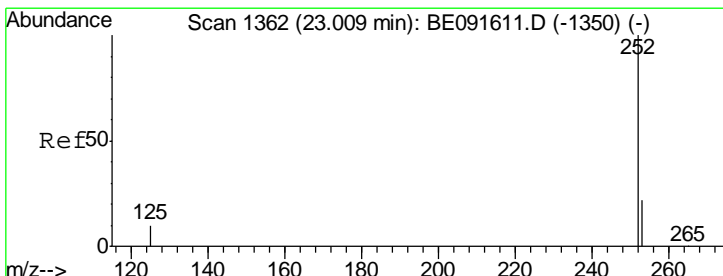
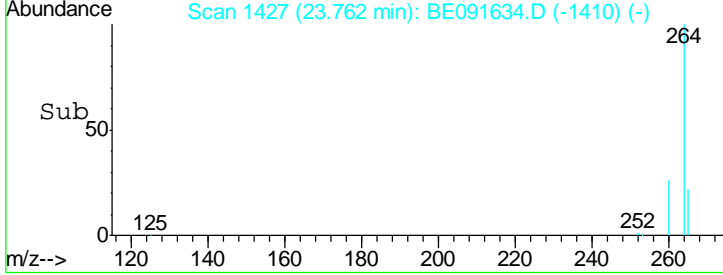
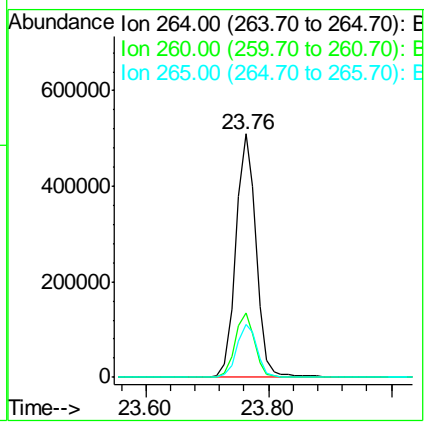
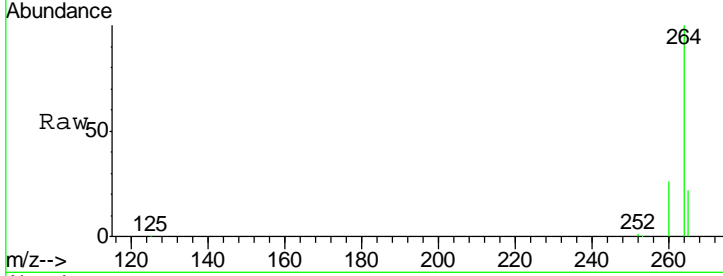


#35  
 Perylene-d12  
 Concen: 5.00 ng  
 RT: 23.76 min Scan# 1427  
 Delta R.T. 0.00 min  
 Lab File: BE091634.D  
 Acq: 11 Apr 2016 18:41

Instrument :  
 BNA\_E  
 ClientSampled :  
 PB89409BS

Tgt Ion: 264 Resp: 1169088

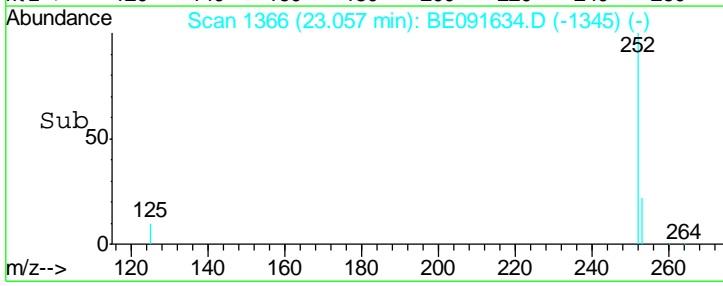
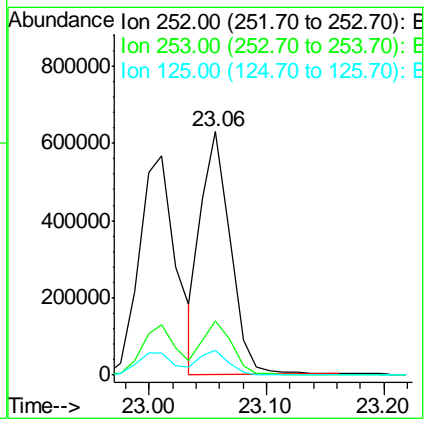
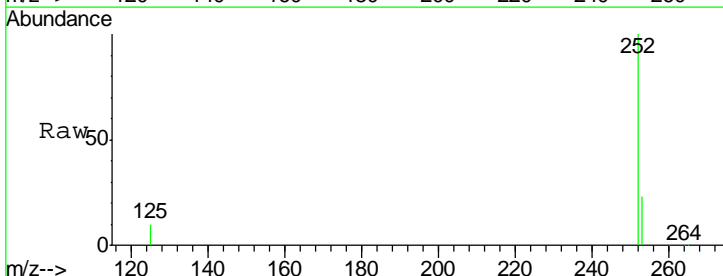
Ion	Ratio	Lower	Upper
264	100		
260	26.3	20.0	30.0
265	21.7	17.5	26.3

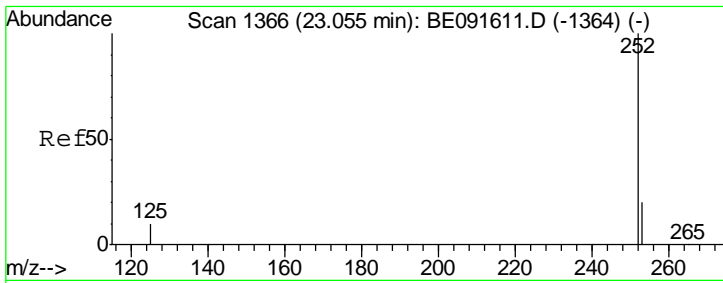


#36  
 Benzo(b)fluoranthene  
 Concen: 4.02 ng  
 RT: 23.06 min Scan# 1366  
 Delta R.T. 0.05 min  
 Lab File: BE091634.D  
 Acq: 11 Apr 2016 18:41

Tgt Ion: 252 Resp: 1092715

Ion	Ratio	Lower	Upper
252	100		
253	22.5	17.4	26.0
125	10.2	10.2	15.2



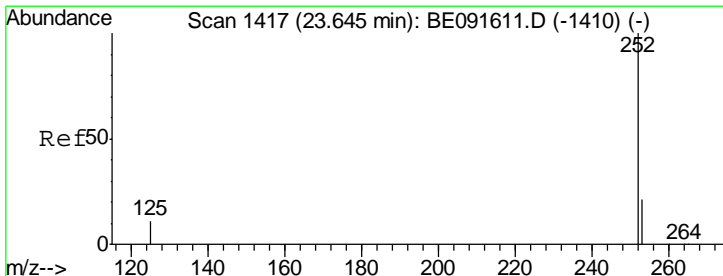
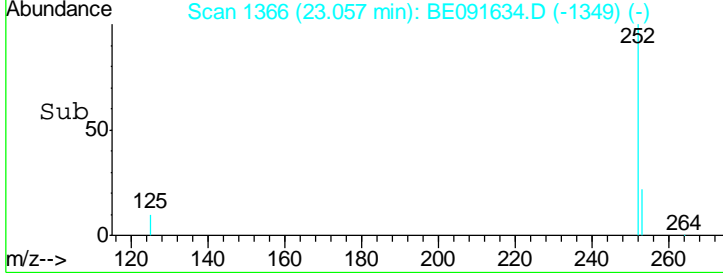
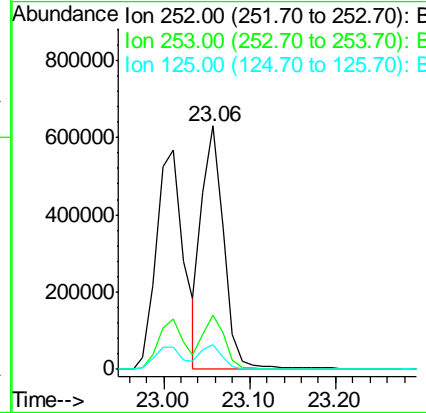
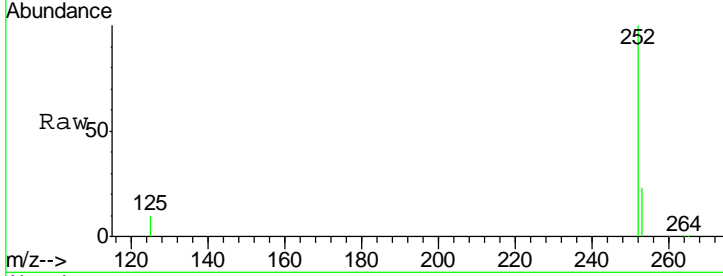


#37  
 Benzo(k)fluoranthene  
 Concen: 4.13 ng  
 RT: 23.06 min Scan# 1366  
 Delta R.T. 0.00 min  
 Lab File: BE091634.D  
 Acq: 11 Apr 2016 18:41

Instrument :  
 BNA\_E  
 ClientSampleId :  
 PB89409BS

Tgt Ion: 252 Resp: 1104943

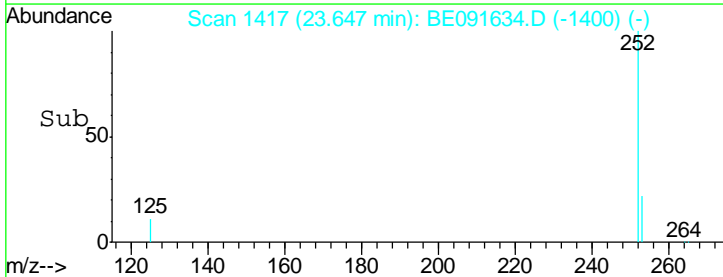
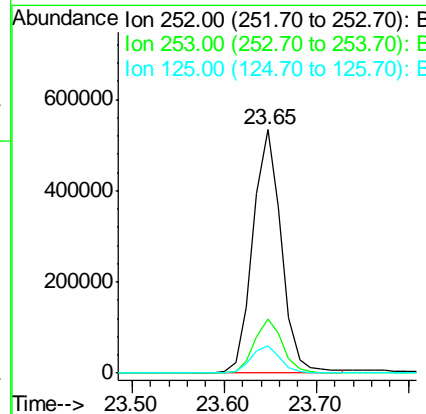
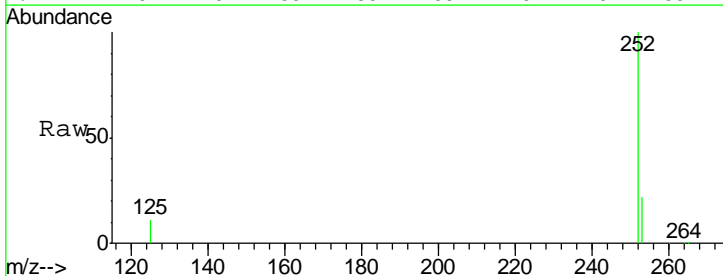
Ion	Ratio	Lower	Upper
252	100		
253	22.5	17.6	26.4
125	10.2	9.9	14.9

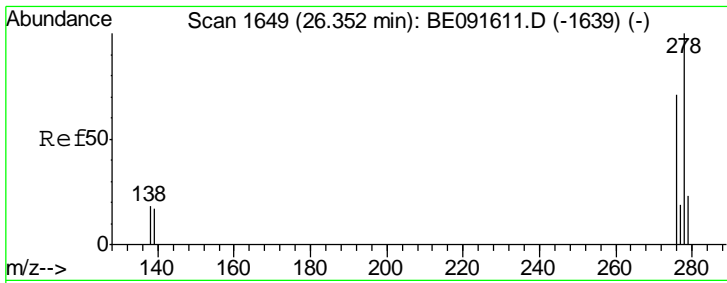


#38  
 Benzo(a)pyrene  
 Concen: 4.52 ng  
 RT: 23.65 min Scan# 1417  
 Delta R.T. 0.00 min  
 Lab File: BE091634.D  
 Acq: 11 Apr 2016 18:41

Tgt Ion: 252 Resp: 1139869

Ion	Ratio	Lower	Upper
252	100		
253	22.0	18.1	27.1
125	11.4	11.0	16.4

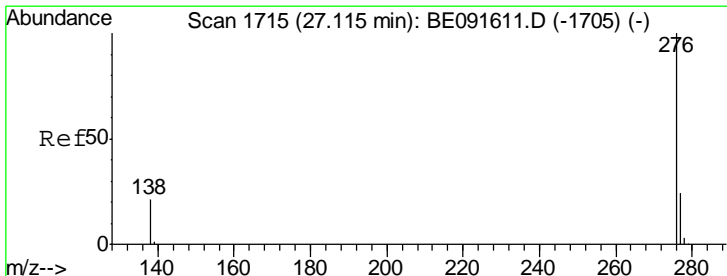
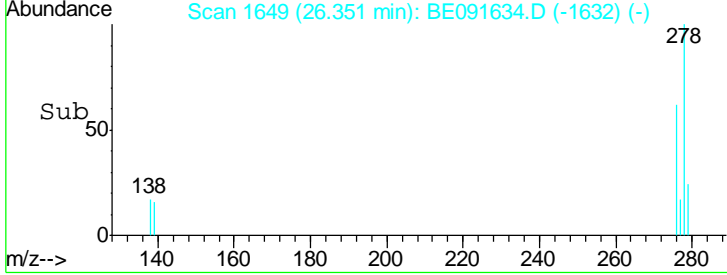
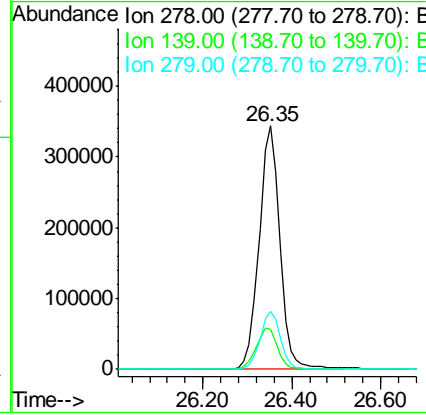
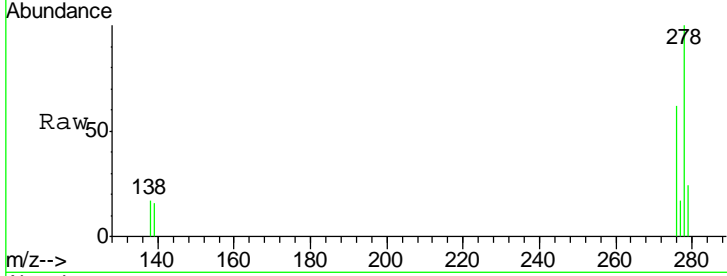




#39  
 Dibenzo(a,h)anthracene  
 Concen: 4.42 ng  
 RT: 26.35 min Scan# 1649  
 Delta R.T. -0.00 min  
 Lab File: BE091634.D  
 Acq: 11 Apr 2016 18:41

Instrument :  
 BNA\_E  
 ClientSampled :  
 PB89409BS

Tgt Ion	Resp	Lower	Upper
278	1097485		
139	16.4	16.0	24.0
279	24.0	19.4	29.2



#40  
 Benzo(g,h,i)perylene  
 Concen: 4.39 ng  
 RT: 27.11 min Scan# 1715  
 Delta R.T. -0.00 min  
 Lab File: BE091634.D  
 Acq: 11 Apr 2016 18:41

Tgt Ion	Resp	Lower	Upper
276	1122567		
277	23.8	18.6	28.0
138	23.5	20.4	30.6

