

Data Path : Z:\svoasrv\HPCHEM1\BNA_E\Data\BE041221\
 Data File : BE101280.D
 Acq On : 12 Apr 2021 14:22
 Operator : CG/JU
 Sample : SSTDICCC0.4
 Misc :
 ALS Vial : 5 Sample Multiplier: 1

Instrument :
 BNA_E
 ClientSampled :
 SSTDICCC0.4

Quant Time: Apr 12 15:40:57 2021
 Quant Method : Z:\svoasrv\HPCHEM1\BNA_E\Methods\8270-SIM-BE041221.M
 Quant Title : ASP BNA STANDARDS FOR 5 POINT CALIBRATION
 QLast Update : Mon Apr 12 15:13:20 2021
 Response via : Initial Calibration

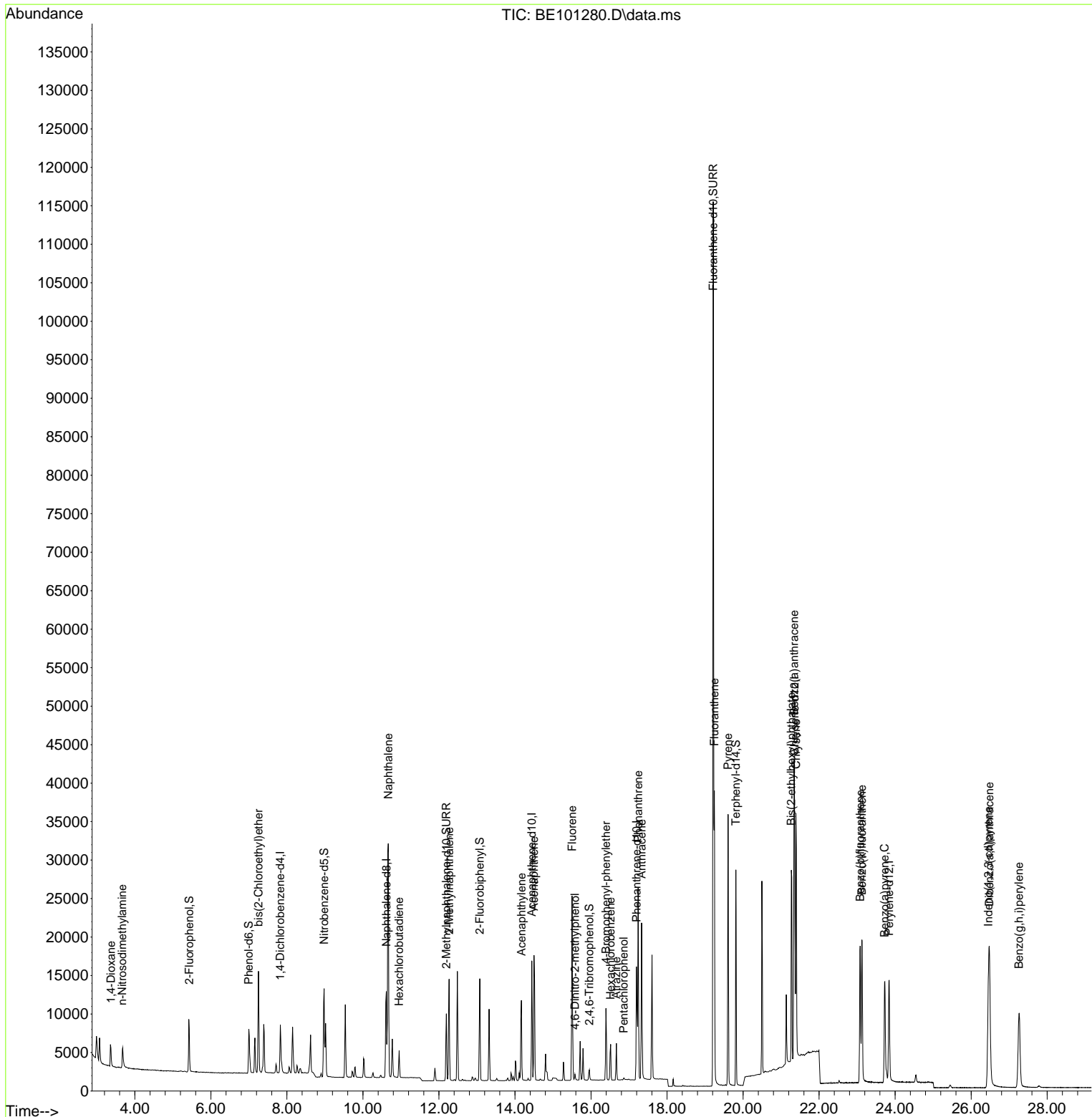
Compound	R.T.	QIon	Response	Conc	Units	Dev(Min)	
Internal Standards							
1) 1,4-Dichlorobenzene-d4	7.827	152	2862	0.40	ng	#	0.00
7) Naphthalene-d8	10.615	136	12502	0.40	ng	#	0.00
13) Acenaphthene-d10	14.443	164	8668	0.40	ng		0.00
19) Phenanthrene-d10	17.195	188	21387	0.40	ng	#	0.00
29) Chrysene-d12	21.354	240	24152	0.40	ng		0.00
36) Perylene-d12	23.842	264	19641	0.40	ng		0.00
System Monitoring Compounds							
4) 2-Fluorophenol	5.432	112	3445	0.51	ng		0.00
5) Phenol-d6	6.998	99	5151	0.49	ng		0.00
8) Nitrobenzene-d5	8.978	82	4456	0.48	ng		0.00
11) 2-Methylnaphthalene-d10	12.196	152	11513	0.40	ng		0.00
14) 2,4,6-Tribromophenol	15.956	330	855	0.37	ng		0.00
15) 2-Fluorobiphenyl	13.074	172	11978	0.38	ng		0.00
27) Fluoranthene-d10	19.214	212	148159	0.40	ng		0.00
31) Terphenyl-d14	19.812	244	24846	0.38	ng		0.00
Target Compounds							
2) 1,4-Dioxane	3.370	88	2061	0.47	ng		96
3) n-Nitrosodimethylamine	3.670	42	2375	0.52	ng	#	97
6) bis(2-Chloroethyl)ether	7.252	93	4137	0.42	ng		100
9) Naphthalene	10.667	128	54837	0.40	ng		100
10) Hexachlorobutadiene	10.953	225	2358	0.39	ng		100
12) 2-Methylnaphthalene	12.268	142	9606	0.39	ng		96
16) Acenaphthylene	14.169	152	13087	0.39	ng		99
17) Acenaphthene	14.501	154	9585	0.38	ng		97
18) Fluorene	15.502	166	12972	0.38	ng		100
20) 4,6-Dinitro-2-methylph...	15.578	198	585	0.24	ng	#	71
21) 4-Bromophenyl-phenylether	16.394	248	4306	0.41	ng	#	67
22) Hexachlorobenzene	16.515	284	4108	0.38	ng		99
23) Atrazine	16.666	200	3518	0.49	ng		95
24) Pentachlorophenol	16.863	266	244	0.06	ng		91
25) Phenanthrene	17.241	178	24636	0.39	ng		100
26) Anthracene	17.331	178	21364	0.40	ng		99
28) Fluoranthene	19.243	202	32384	0.39	ng		100
30) Pyrene	19.605	202	32538	0.37	ng		99
32) Benzo(a)anthracene	21.342	228	29074	0.43	ng		99
33) Chrysene	21.391	228	32118	0.40	ng		98
34) Bis(2-ethylhexyl)phtha...	21.270	149	35042	0.71	ng		99
35) Indeno(1,2,3-cd)pyrene	26.455	276	28562	0.48	ng		99
37) Benzo(b)fluoranthene	23.079	252	25394	0.40	ng		99
38) Benzo(k)fluoranthene	23.125	252	26191	0.37	ng		98
39) Benzo(a)pyrene	23.724	252	22823	0.42	ng		98
40) Dibenzo(a,h)anthracene	26.480	278	24528	0.46	ng		99
41) Benzo(g,h,i)perylene	27.258	276	25134	0.44	ng		100

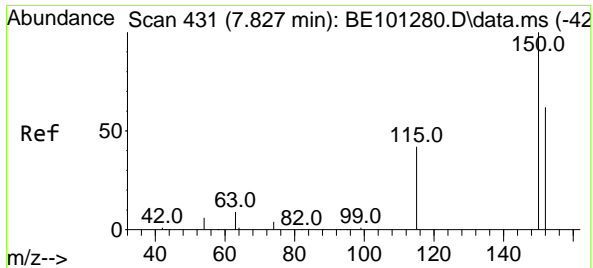
(#) = qualifier out of range (m) = manual integration (+) = signals summed

Data Path : Z:\svoasrv\HPCHEM1\BNA_E\Data\BE041221\
 Data File : BE101280.D
 Acq On : 12 Apr 2021 14:22
 Operator : CG/JU
 Sample : SSTDICCC0.4
 Misc :
 ALS Vial : 5 Sample Multiplier: 1

Instrument :
 BNA_E
 Client Sampled :
 SSTDICCC0.4

Quant Time: Apr 12 15:40:57 2021
 Quant Method : Z:\svoasrv\HPCHEM1\BNA_E\Methods\8270-SIM-BE041221.M
 Quant Title : ASP BNA STANDARDS FOR 5 POINT CALIBRATION
 QLast Update : Mon Apr 12 15:13:20 2021
 Response via : Initial Calibration

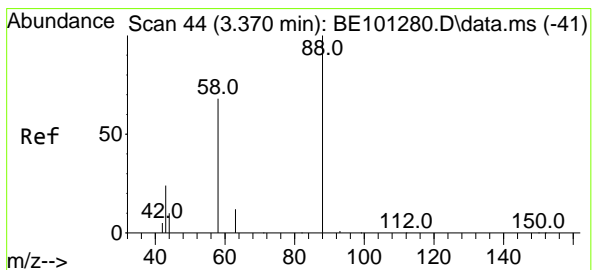
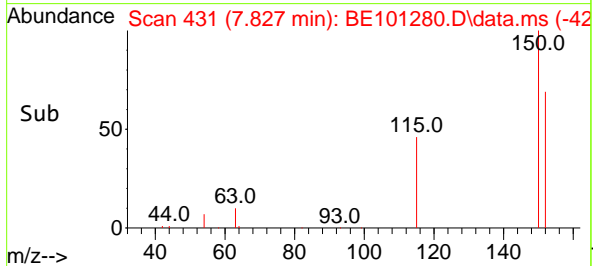
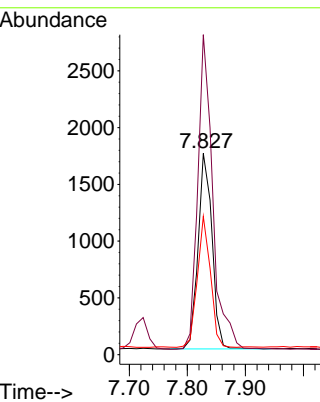
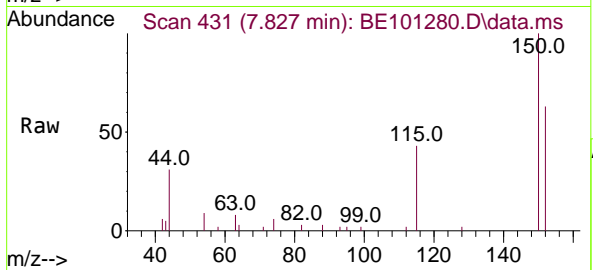




#1
 1,4-Dichlorobenzene-d4
 Concen: 0.40 ng
 RT: 7.827 min Scan# 431
 Delta R.T. 0.000 min
 Lab File: BE101280.D
 Acq: 12 Apr 2021 14:22

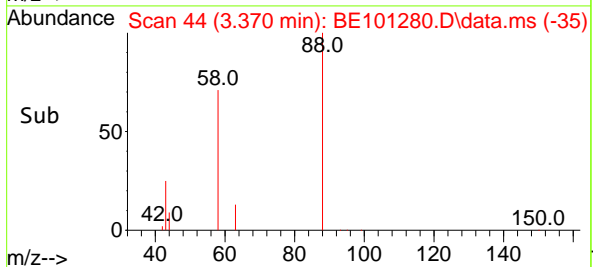
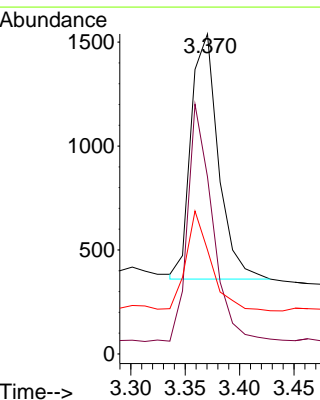
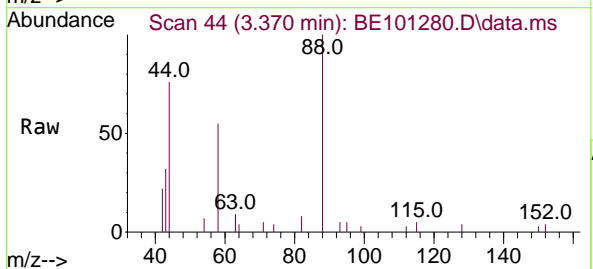
Instrument :
 BNA_E
 ClientSampled :
 SSTDICC0.4

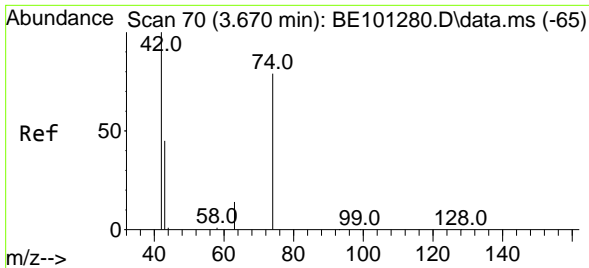
Tgt Ion:152 Resp: 2862
 Ion Ratio Lower Upper
 152 100
 150 159.0 116.9 175.3
 115 68.7 44.5 66.7#



#2
 1,4-Dioxane
 Concen: 0.47 ng
 RT: 3.370 min Scan# 44
 Delta R.T. 0.000 min
 Lab File: BE101280.D
 Acq: 12 Apr 2021 14:22

Tgt Ion: 88 Resp: 2061
 Ion Ratio Lower Upper
 88 100
 58 88.1 73.6 110.4
 43 36.9 27.6 41.4



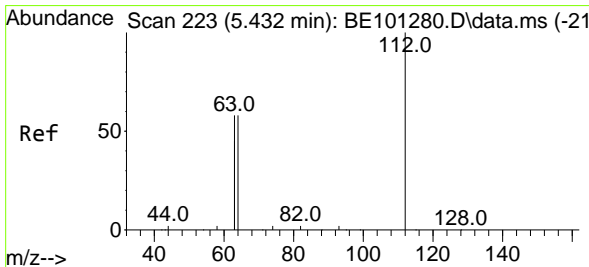
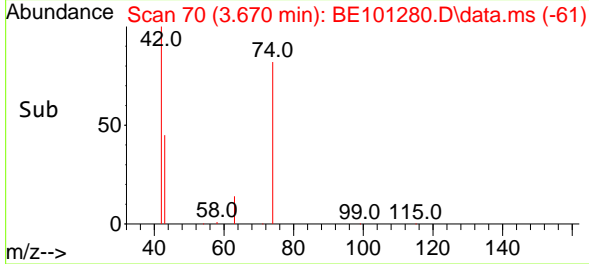
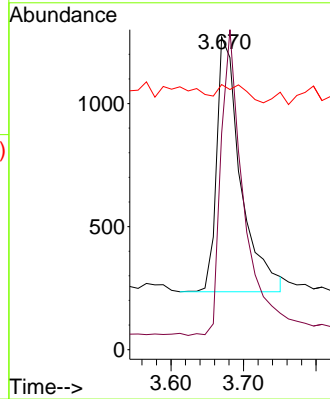
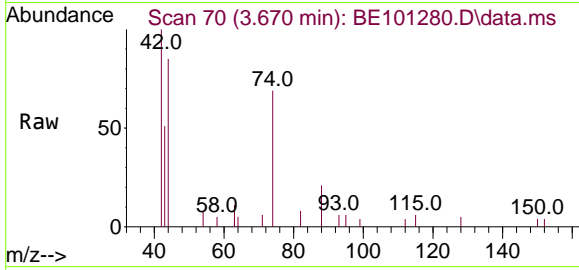


#3
 n-Nitrosodimethylamine
 Concen: 0.52 ng
 RT: 3.670 min Scan# 70
 Delta R.T. 0.000 min
 Lab File: BE101280.D
 Acq: 12 Apr 2021 14:22

Instrument :
 BNA_E
 ClientSampled :
 SSTDICC0.4

Tgt Ion: 42 Resp: 2375

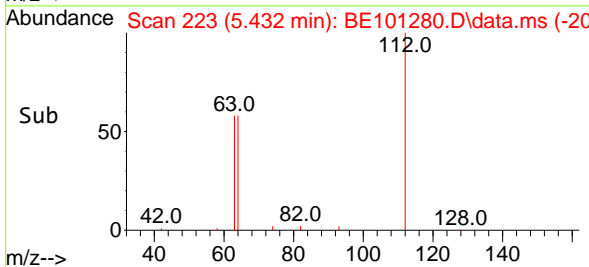
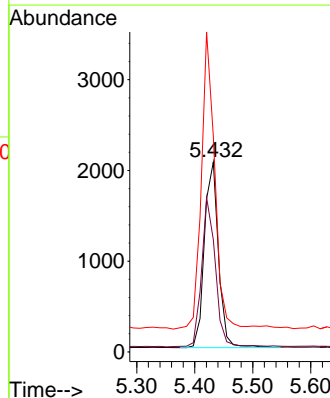
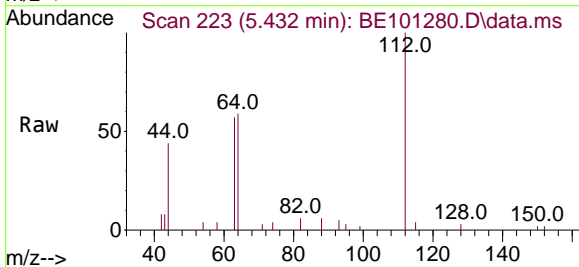
Ion	Ratio	Lower	Upper
42	100		
74	113.6	92.7	139.1
44	7.6	10.7	16.1#

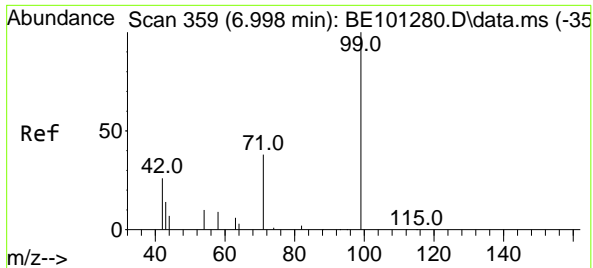


#4
 2-Fluorophenol
 Concen: 0.51 ng
 RT: 5.432 min Scan# 223
 Delta R.T. 0.000 min
 Lab File: BE101280.D
 Acq: 12 Apr 2021 14:22

Tgt Ion: 112 Resp: 3445

Ion	Ratio	Lower	Upper
112	100		
64	79.2	62.3	93.5
63	151.4	117.3	175.9

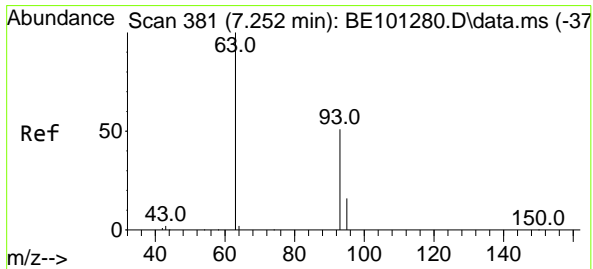
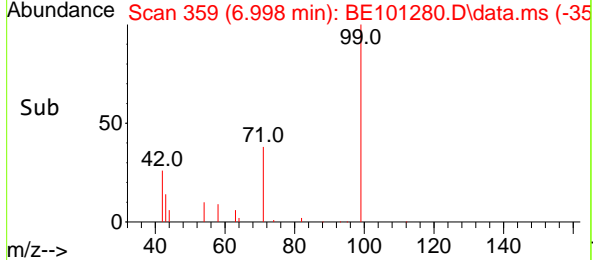
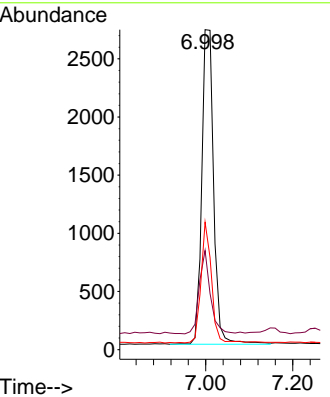
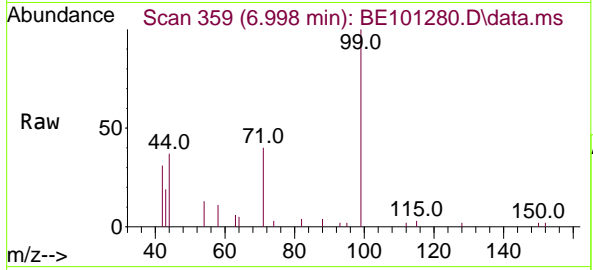




#5
 Phenol-d6
 Concen: 0.49 ng
 RT: 6.998 min Scan# 359
 Delta R.T. 0.000 min
 Lab File: BE101280.D
 Acq: 12 Apr 2021 14:22

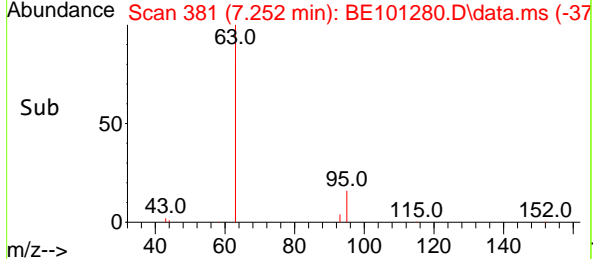
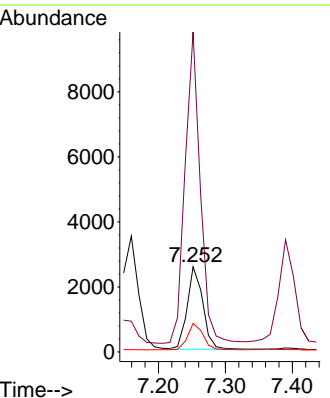
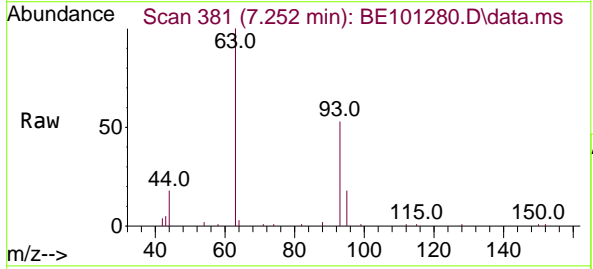
Instrument :
 BNA_E
 ClientSampled :
 SSTDICCC0.4

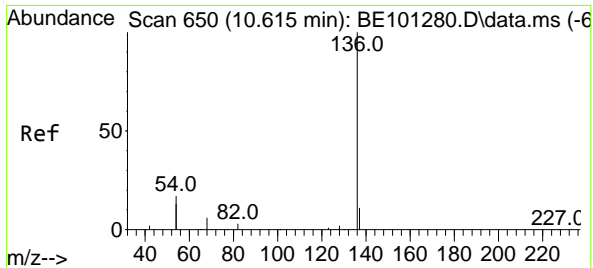
Tgt Ion	Resp	Lower	Upper
99	5151		
42	24.1	18.5	27.7
71	33.5	26.5	39.7



#6
 bis(2-Chloroethyl)ether
 Concen: 0.42 ng
 RT: 7.252 min Scan# 381
 Delta R.T. 0.000 min
 Lab File: BE101280.D
 Acq: 12 Apr 2021 14:22

Tgt Ion	Resp	Lower	Upper
93	4137		
63	366.6	292.5	438.7
95	31.9	25.7	38.5

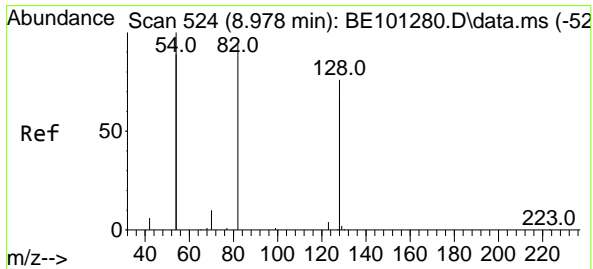
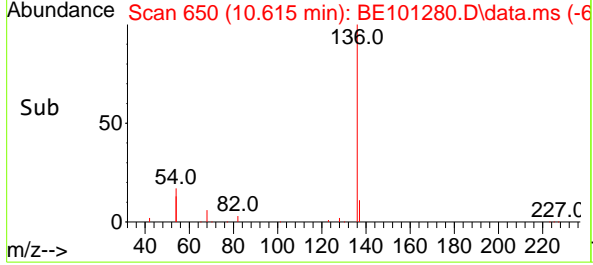
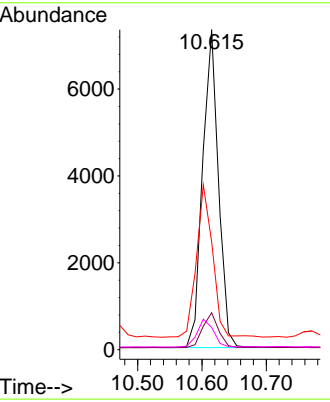
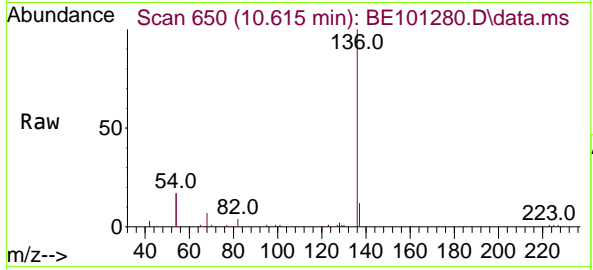




#7
 Naphthalene-d8
 Concen: 0.40 ng
 RT: 10.615 min Scan# 650
 Delta R.T. 0.000 min
 Lab File: BE101280.D
 Acq: 12 Apr 2021 14:22

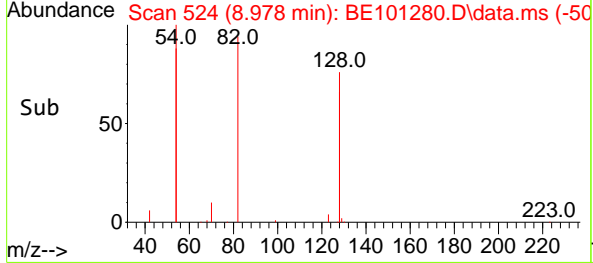
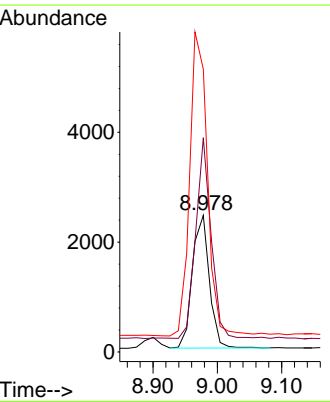
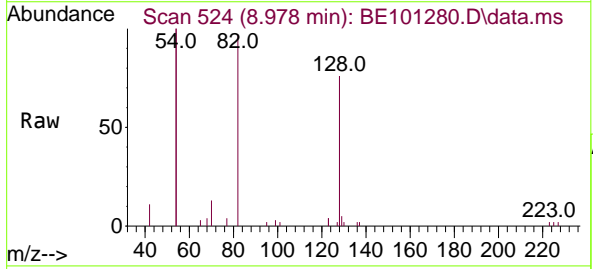
Instrument :
 BNA_E
ClientSampleId :
 SSTDICC0.4

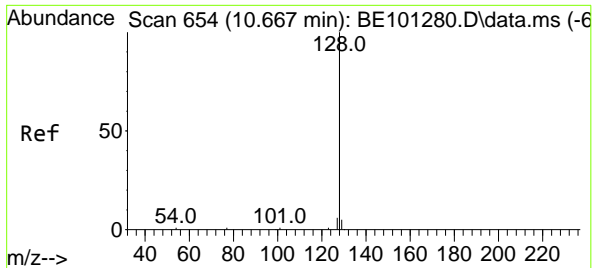
Tgt Ion	Resp	Lower	Upper
136	12502		
136	100		
137	11.6	8.6	13.0
54	33.7	34.7	52.1#
68	6.9	7.0	10.4#



#8
 Nitrobenzene-d5
 Concen: 0.48 ng
 RT: 8.978 min Scan# 524
 Delta R.T. 0.000 min
 Lab File: BE101280.D
 Acq: 12 Apr 2021 14:22

Tgt Ion	Resp	Lower	Upper
82	4456		
82	100		
128	156.7	118.7	178.1
54	206.8	164.4	246.6

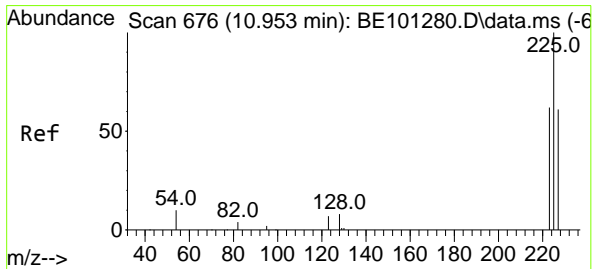
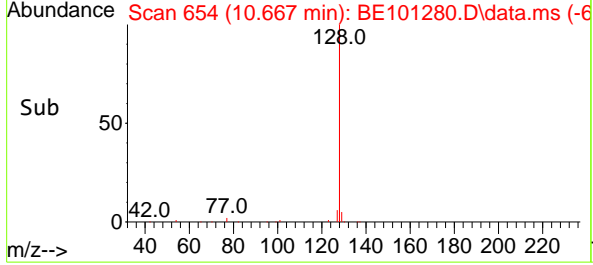
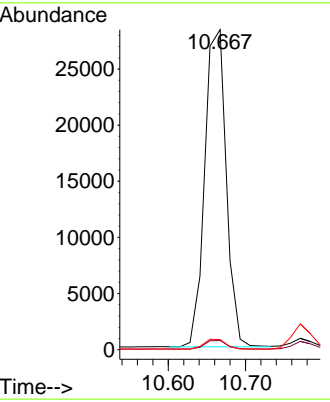
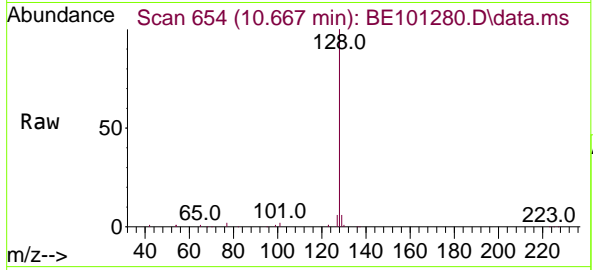




#9
Naphthalene
 Concen: 0.40 ng
 RT: 10.667 min Scan# 654
 Delta R.T. 0.000 min
 Lab File: BE101280.D
 Acq: 12 Apr 2021 14:22

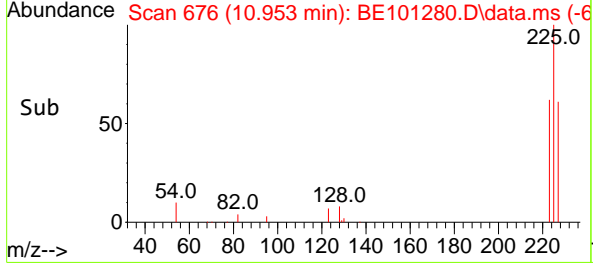
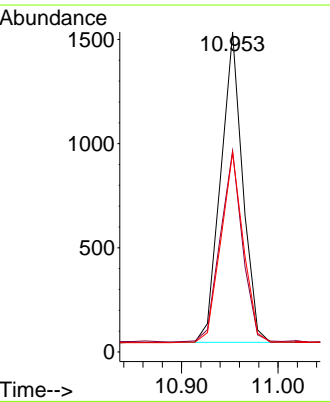
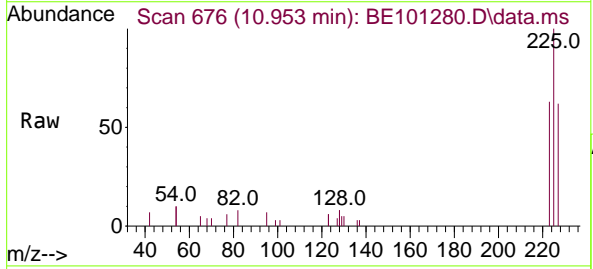
Instrument :
 BNA_E
ClientSampleId :
 SSTDICC0.4

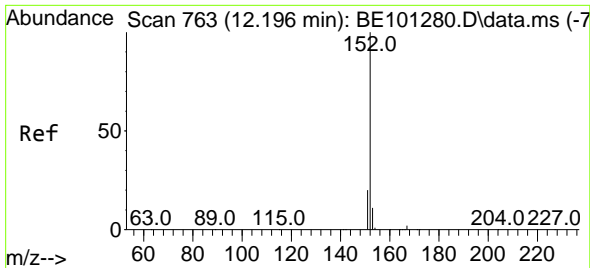
Tgt Ion	Resp	Lower	Upper
128	54837		
129	2.8	2.2	3.4
127	3.2	2.6	3.8



#10
Hexachlorobutadiene
 Concen: 0.39 ng
 RT: 10.953 min Scan# 676
 Delta R.T. 0.000 min
 Lab File: BE101280.D
 Acq: 12 Apr 2021 14:22

Tgt Ion	Resp	Lower	Upper
225	2358		
223	62.4	50.4	75.6
227	62.6	50.1	75.1

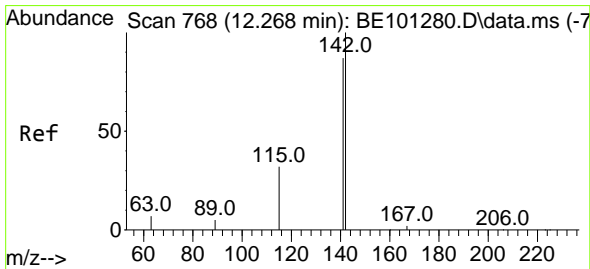
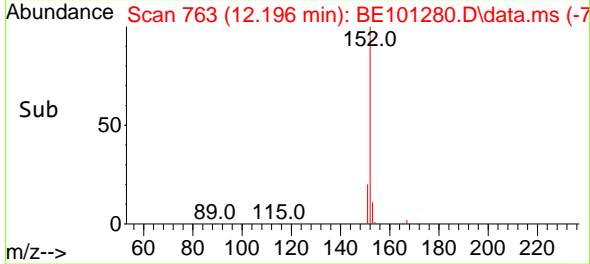
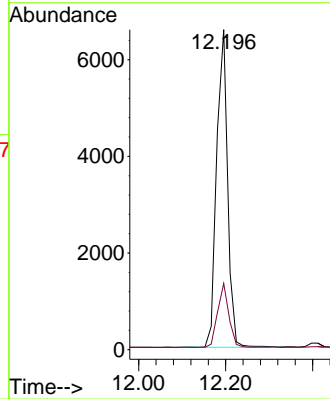
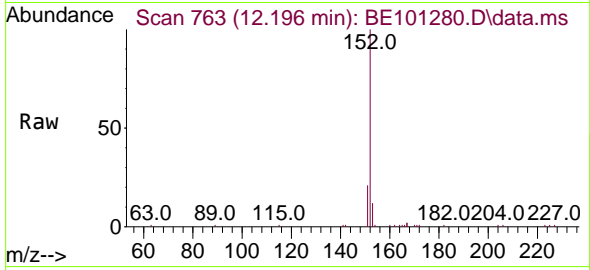




#11
 2-Methylnaphthalene-d10
 Concen: 0.40 ng
 RT: 12.196 min Scan# 763
 Delta R.T. 0.000 min
 Lab File: BE101280.D
 Acq: 12 Apr 2021 14:22

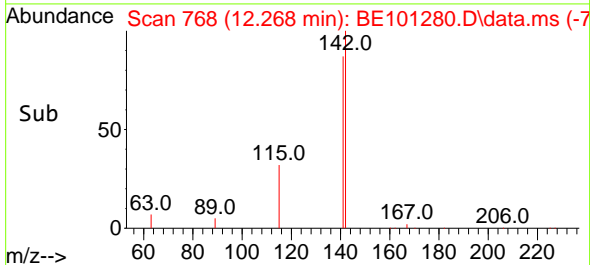
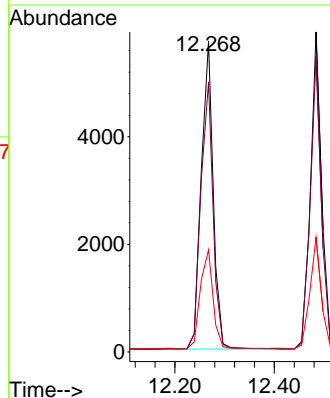
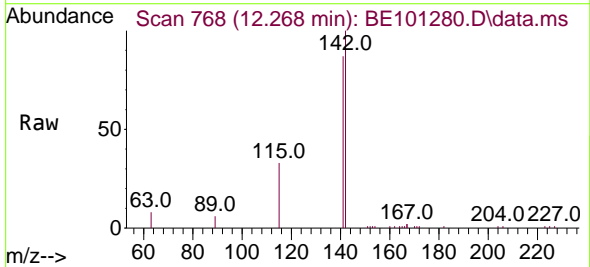
Instrument :
 BNA_E
 ClientSampleId :
 SSTDICC0.4

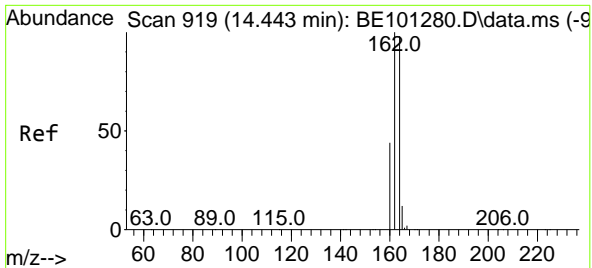
Tgt Ion:152 Resp: 11513
 Ion Ratio Lower Upper
 152 100
 151 20.6 16.5 24.7



#12
 2-Methylnaphthalene
 Concen: 0.39 ng
 RT: 12.268 min Scan# 768
 Delta R.T. 0.000 min
 Lab File: BE101280.D
 Acq: 12 Apr 2021 14:22

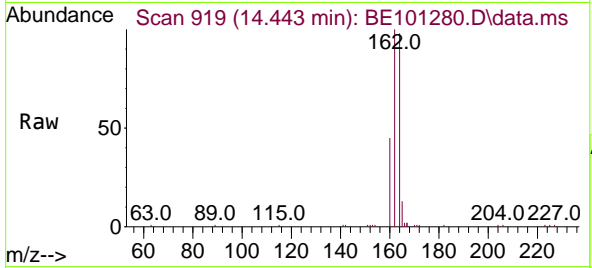
Tgt Ion:142 Resp: 9606
 Ion Ratio Lower Upper
 142 100
 141 86.9 73.0 109.6
 115 32.9 27.8 41.8





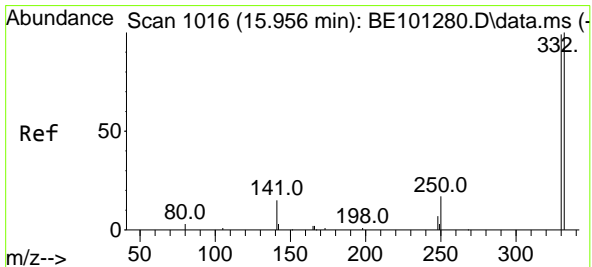
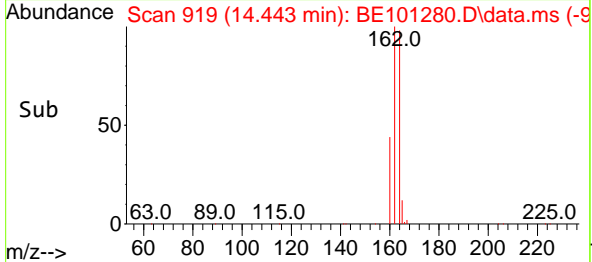
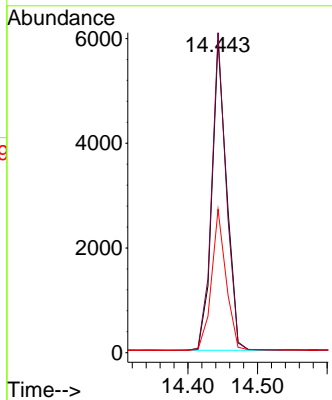
#13
 Acenaphthene-d10
 Concen: 0.40 ng
 RT: 14.443 min Scan# 919
 Delta R.T. 0.000 min
 Lab File: BE101280.D
 Acq: 12 Apr 2021 14:22

Instrument :
 BNA_E
 ClientSampleId :
 SSTDICC0.4

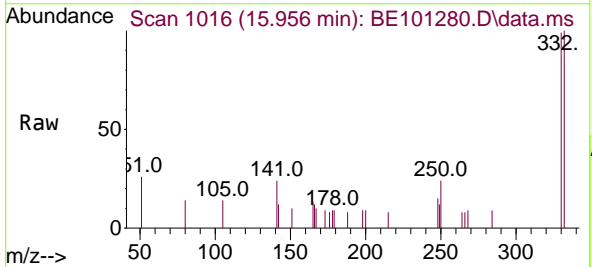


Tgt Ion:164 Resp: 8668

Ion	Ratio	Lower	Upper
164	100		
162	102.4	85.3	127.9
160	45.9	39.1	58.7

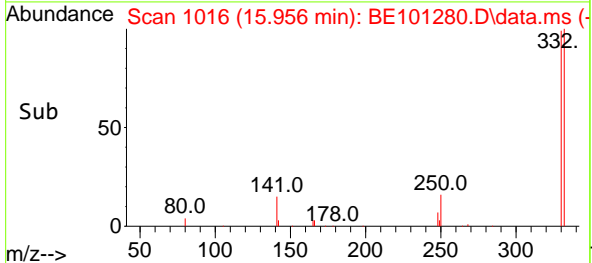
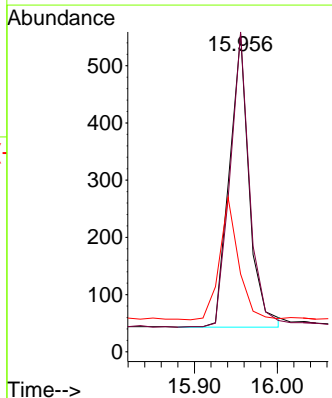


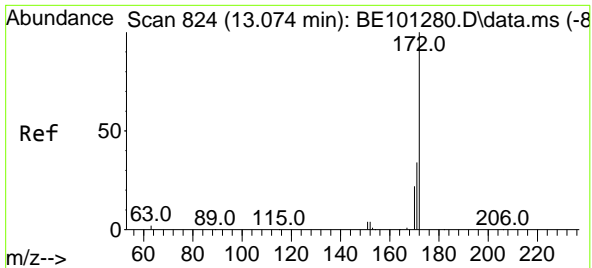
#14
 2,4,6-Tribromophenol
 Concen: 0.37 ng
 RT: 15.956 min Scan# 1016
 Delta R.T. 0.000 min
 Lab File: BE101280.D
 Acq: 12 Apr 2021 14:22



Tgt Ion:330 Resp: 855

Ion	Ratio	Lower	Upper
330	100		
332	98.8	77.8	116.6
141	40.0	30.4	45.6

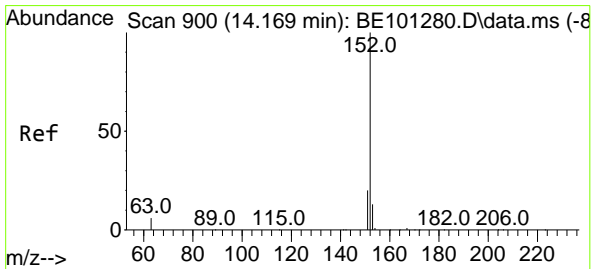
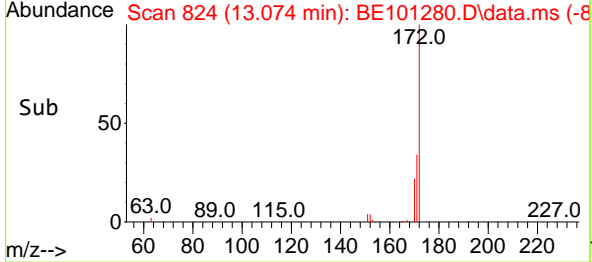
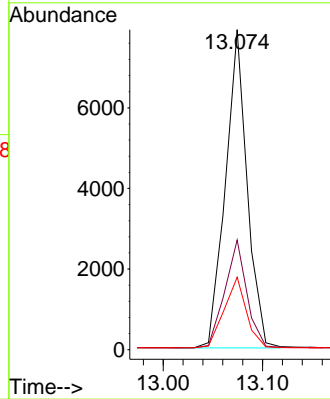
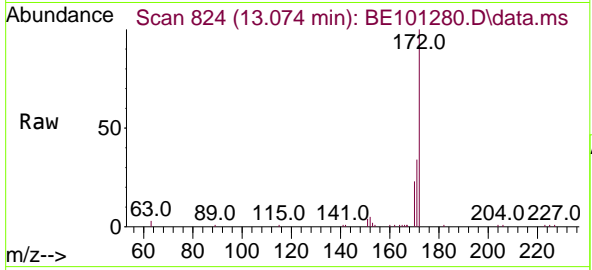




#15
 2-Fluorobiphenyl
 Concen: 0.38 ng
 RT: 13.074 min Scan# 824
 Delta R.T. 0.000 min
 Lab File: BE101280.D
 Acq: 12 Apr 2021 14:22

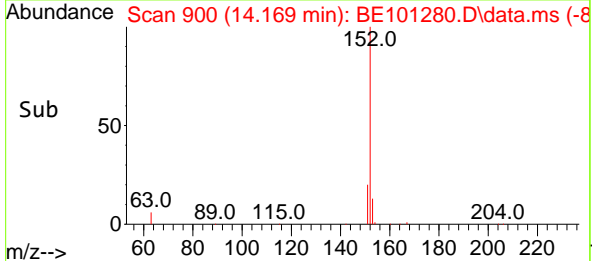
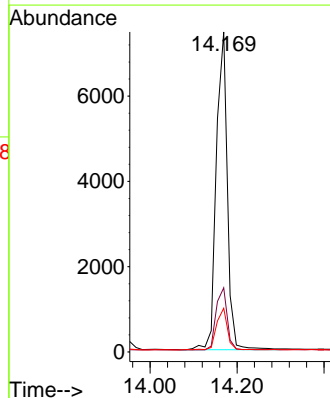
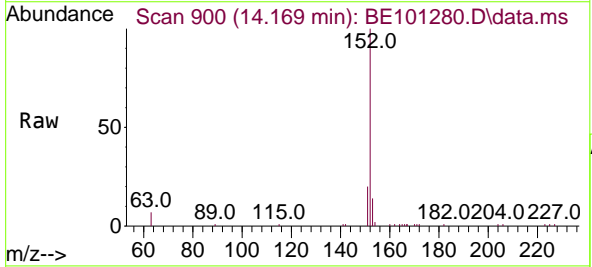
Instrument :
 BNA_E
 ClientSampleId :
 SSTDICC0.4

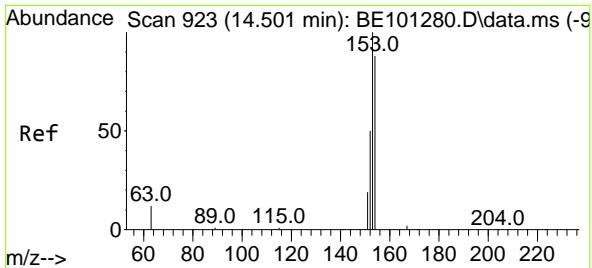
Tgt Ion	Resp	Lower	Upper
172	11978		
171	34.3	28.7	43.1
170	22.7	19.3	28.9



#16
 Acenaphthylene
 Concen: 0.39 ng
 RT: 14.169 min Scan# 900
 Delta R.T. 0.000 min
 Lab File: BE101280.D
 Acq: 12 Apr 2021 14:22

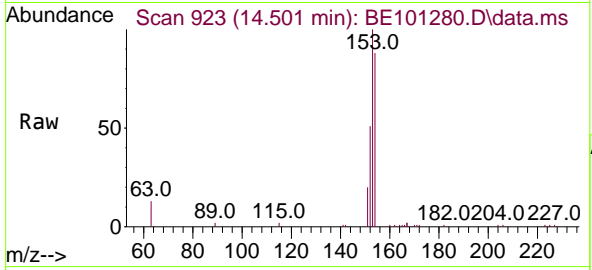
Tgt Ion	Resp	Lower	Upper
152	13087		
151	19.6	15.4	23.2
153	13.0	10.0	15.0





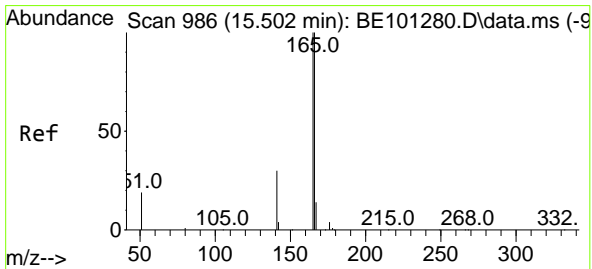
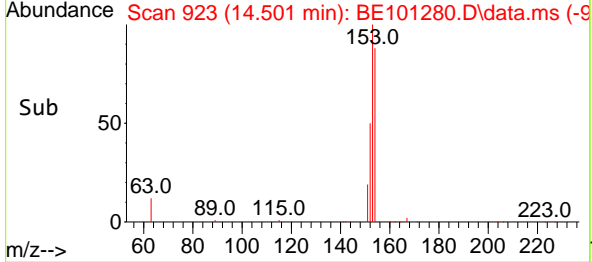
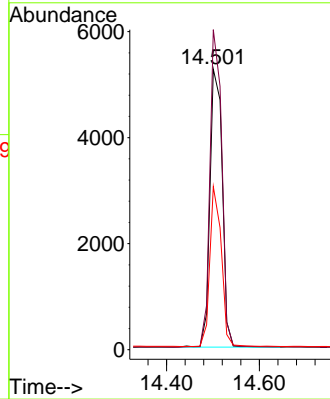
#17
 Acenaphthene
 Concen: 0.38 ng
 RT: 14.501 min Scan# 923
 Delta R.T. 0.000 min
 Lab File: BE101280.D
 Acq: 12 Apr 2021 14:22

Instrument :
 BNA_E
 ClientSampleId :
 SSTDICCC0.4

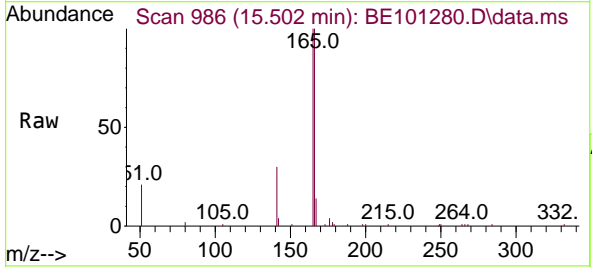


Tgt Ion:154 Resp: 9585

Ion	Ratio	Lower	Upper
154	100		
153	110.6	84.9	127.3
152	54.0	42.7	64.1

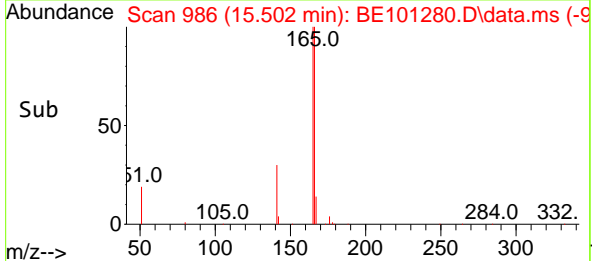
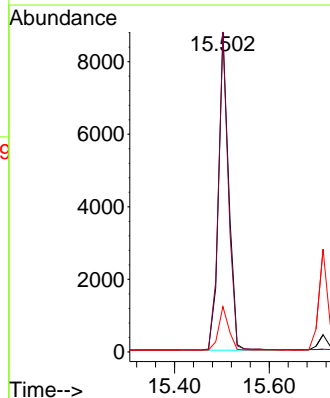


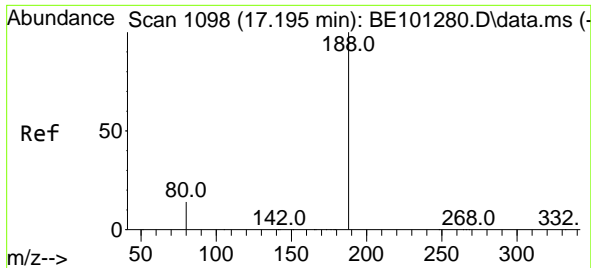
#18
 Fluorene
 Concen: 0.38 ng
 RT: 15.502 min Scan# 986
 Delta R.T. 0.000 min
 Lab File: BE101280.D
 Acq: 12 Apr 2021 14:22



Tgt Ion:166 Resp: 12972

Ion	Ratio	Lower	Upper
166	100		
165	98.5	79.0	118.4
167	13.9	11.0	16.4

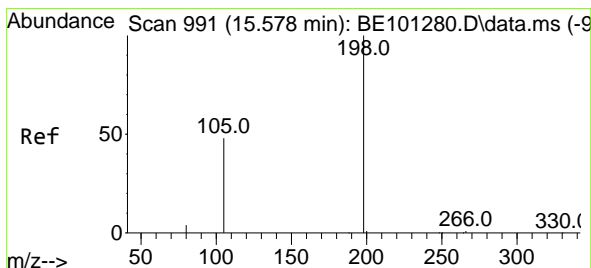
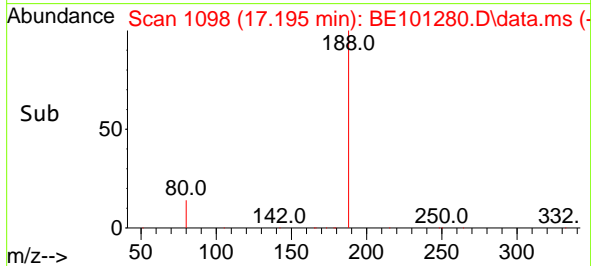
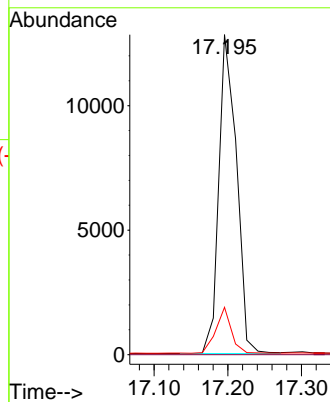
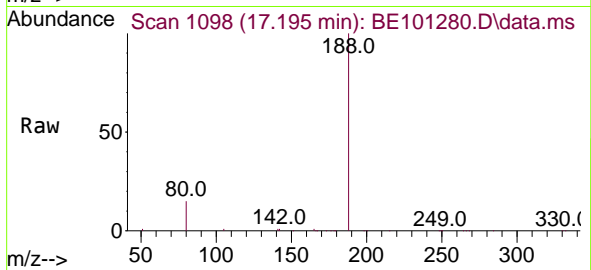




#19
 Phenanthrene-d10
 Concen: 0.40 ng
 RT: 17.195 min Scan# 1098
 Delta R.T. 0.000 min
 Lab File: BE101280.D
 Acq: 12 Apr 2021 14:22

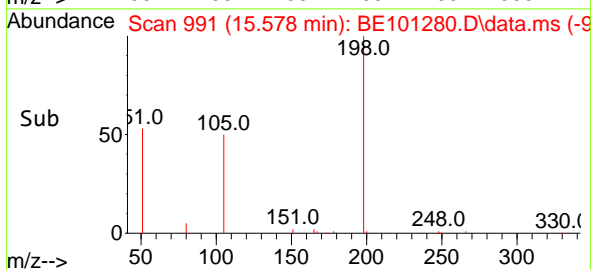
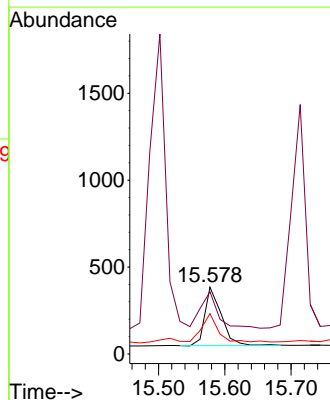
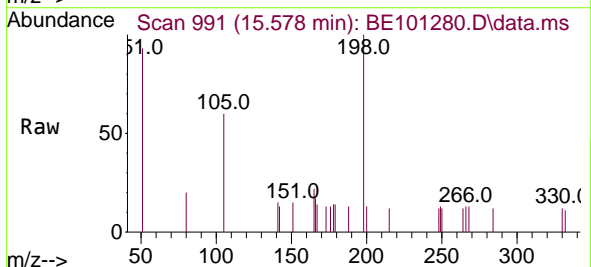
Instrument :
 BNA_E
 ClientSampleId :
 SSTDICC0.4

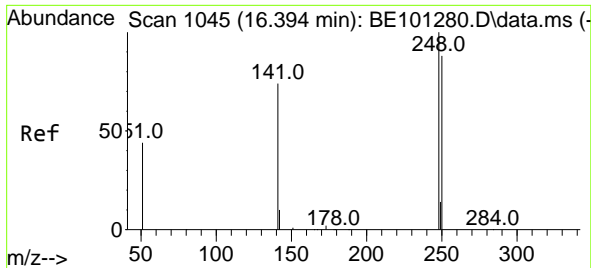
Tgt Ion	Resp	Lower	Upper
188	100		
94	0.0	0.0	0.0
80	14.8	4.6	6.8#



#20
 4,6-Dinitro-2-methylphenol
 Concen: 0.24 ng
 RT: 15.578 min Scan# 991
 Delta R.T. 0.000 min
 Lab File: BE101280.D
 Acq: 12 Apr 2021 14:22

Tgt Ion	Resp	Lower	Upper
198	100		
51	93.2	55.9	83.9#
105	60.4	33.6	50.4#

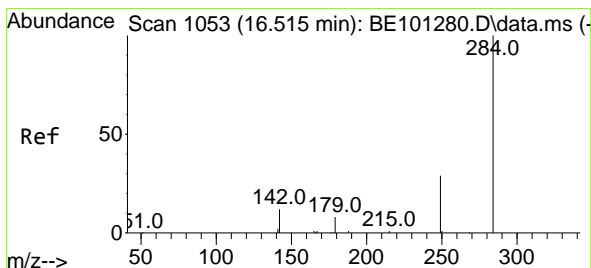
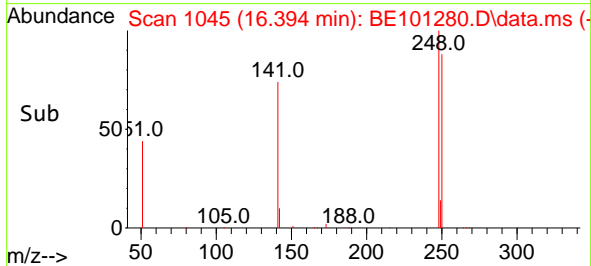
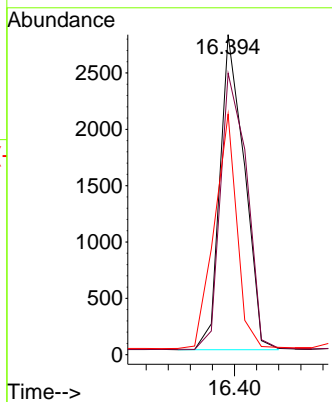
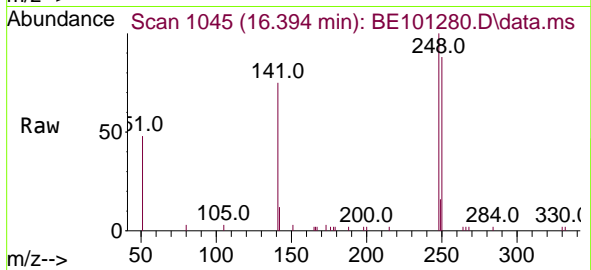




#21
 4-Bromophenyl-phenylether
 Concen: 0.41 ng
 RT: 16.394 min Scan# 1045
 Delta R.T. 0.000 min
 Lab File: BE101280.D
 Acq: 12 Apr 2021 14:22

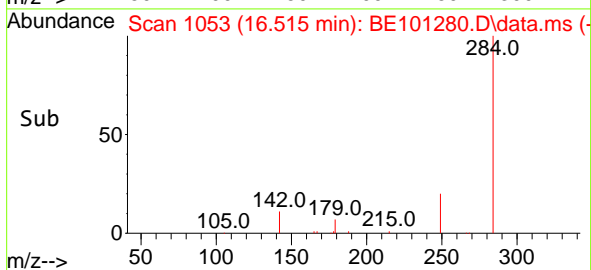
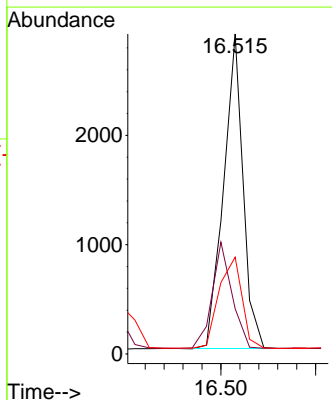
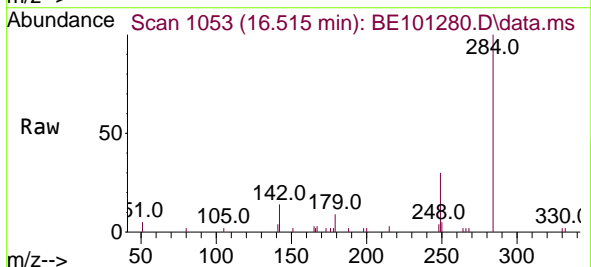
Instrument :
 BNA_E
ClientSampleId :
 SSTDICC0.4

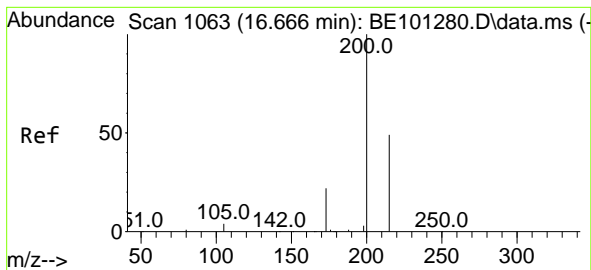
Tgt Ion	Resp	Lower	Upper
248	100		
250	88.0	84.5	126.7
141	75.2	19.8	29.8#



#22
 Hexachlorobenzene
 Concen: 0.38 ng
 RT: 16.515 min Scan# 1053
 Delta R.T. 0.000 min
 Lab File: BE101280.D
 Acq: 12 Apr 2021 14:22

Tgt Ion	Resp	Lower	Upper
284	100		
142	34.3	27.4	41.0
249	34.5	26.5	39.7



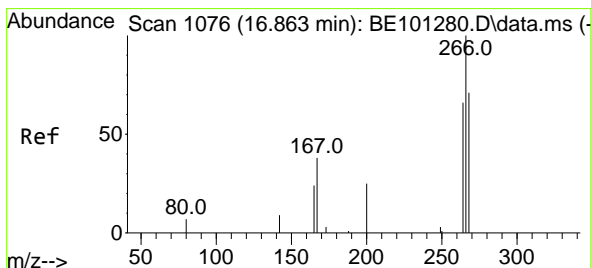
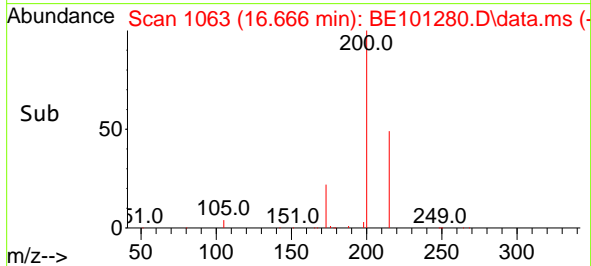
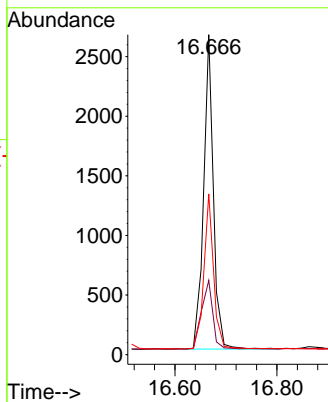
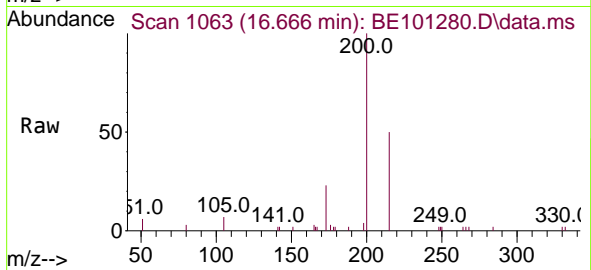


#23

Atrazine
 Concen: 0.49 ng
 RT: 16.666 min Scan# 1063
 Delta R.T. 0.000 min
 Lab File: BE101280.D
 Acq: 12 Apr 2021 14:22

Instrument :
 BNA_E
 ClientSampleId :
 SSTDICC0.4

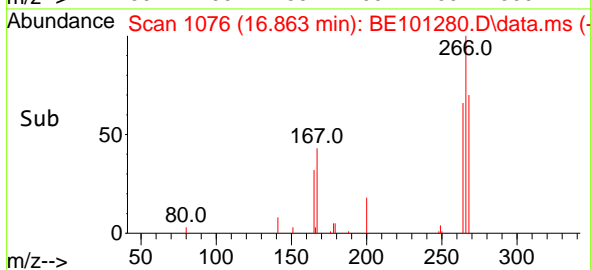
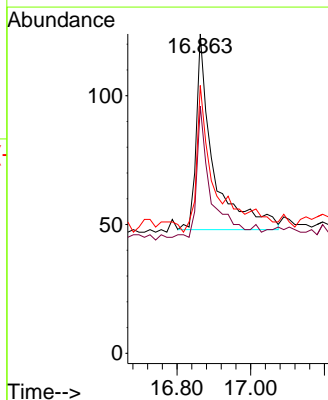
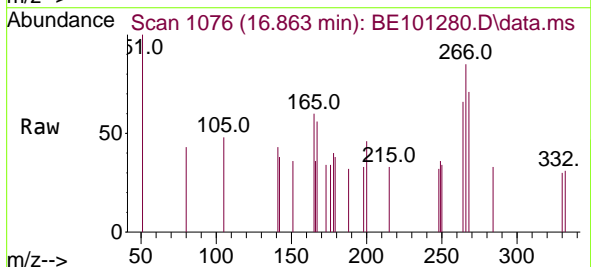
Tgt Ion	Resp	Lower	Upper
200	3518		
173	23.2	21.9	32.9
215	50.3	38.6	57.8

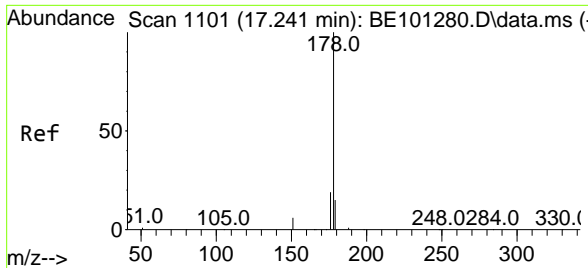


#24

Pentachlorophenol
 Concen: 0.06 ng
 RT: 16.863 min Scan# 1076
 Delta R.T. 0.000 min
 Lab File: BE101280.D
 Acq: 12 Apr 2021 14:22

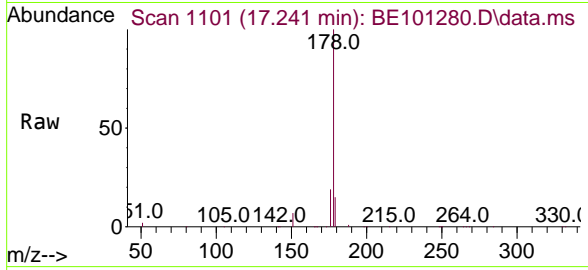
Tgt Ion	Resp	Lower	Upper
266	244		
264	55.7	49.1	73.7
268	71.3	50.6	76.0





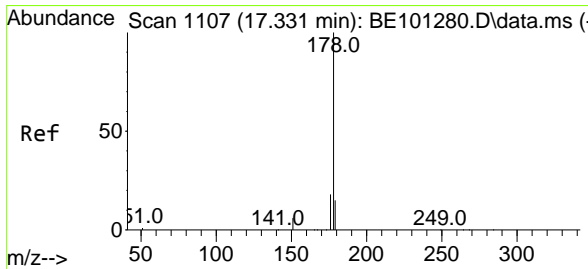
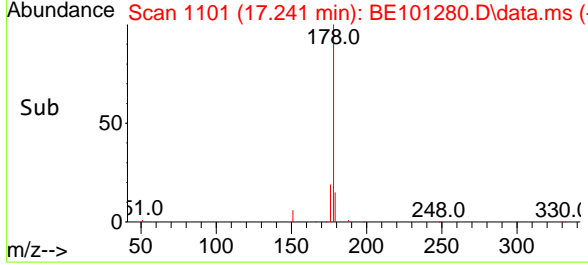
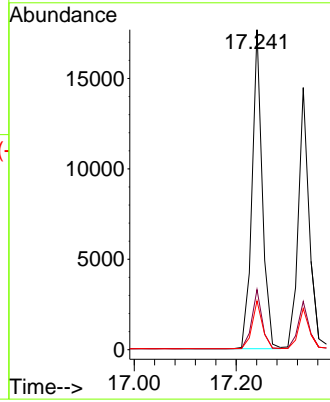
#25
 Phenanthrene
 Concen: 0.39 ng
 RT: 17.241 min Scan# 1101
 Delta R.T. 0.000 min
 Lab File: BE101280.D
 Acq: 12 Apr 2021 14:22

Instrument :
 BNA_E
 ClientSampled :
 SSTDICC0.4

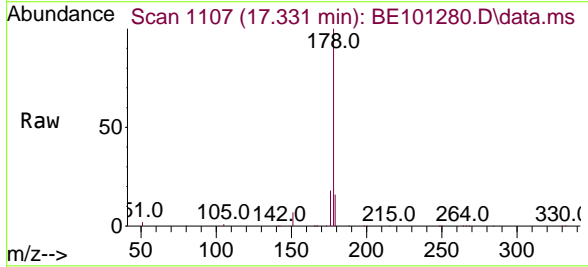


Tgt Ion:178 Resp: 24636

Ion	Ratio	Lower	Upper
178	100		
176	18.5	15.0	22.6
179	15.1	12.2	18.4

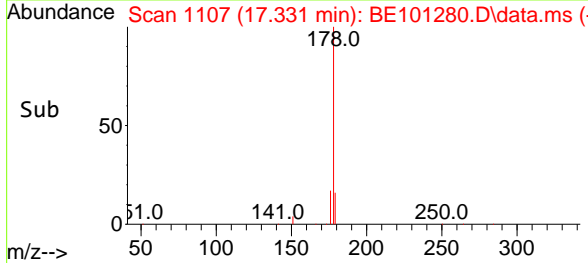
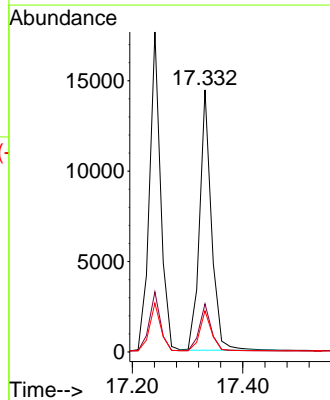


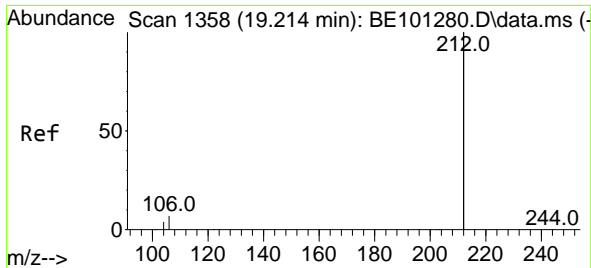
#26
 Anthracene
 Concen: 0.40 ng
 RT: 17.331 min Scan# 1107
 Delta R.T. 0.000 min
 Lab File: BE101280.D
 Acq: 12 Apr 2021 14:22



Tgt Ion:178 Resp: 21364

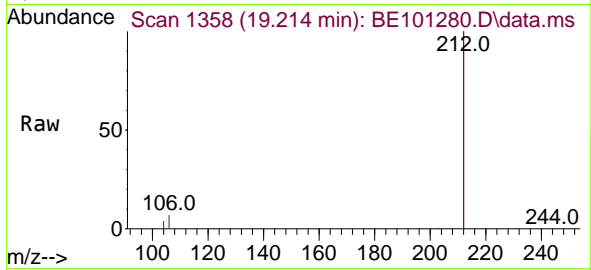
Ion	Ratio	Lower	Upper
178	100		
176	18.1	14.4	21.6
179	15.5	11.8	17.8



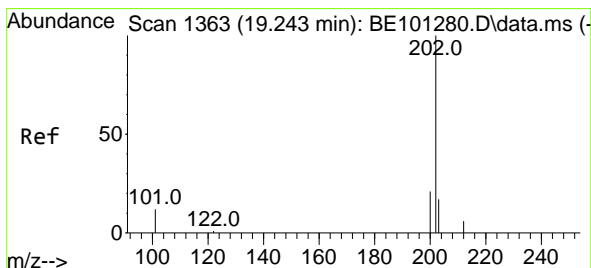
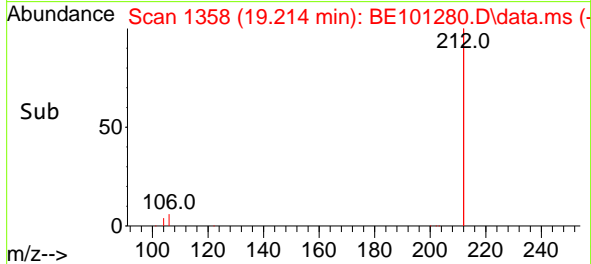
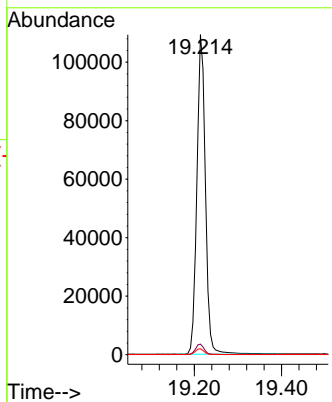


#27
 Fluoranthene-d10
 Concen: 0.40 ng
 RT: 19.214 min Scan# 1358
 Delta R.T. 0.000 min
 Lab File: BE101280.D
 Acq: 12 Apr 2021 14:22

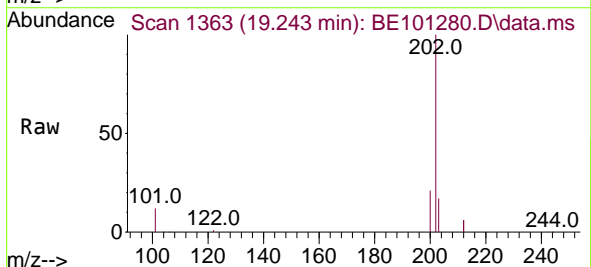
Instrument :
 BNA_E
 ClientSampleId :
 SSTDICCC0.4



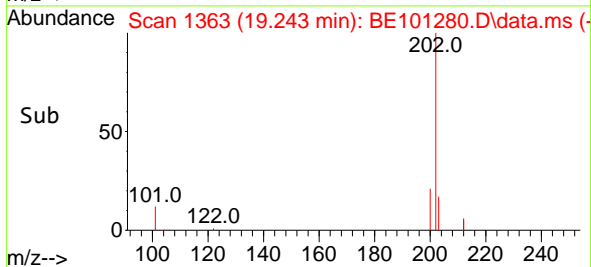
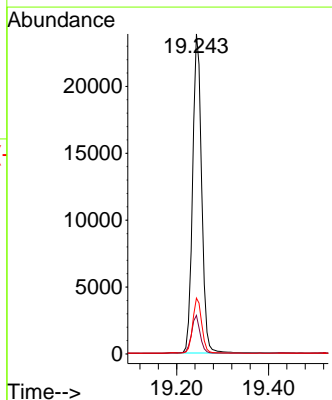
Tgt Ion:212 Resp: 148159
 Ion Ratio Lower Upper
 212 100
 106 3.3 2.6 4.0
 104 1.8 1.4 2.2

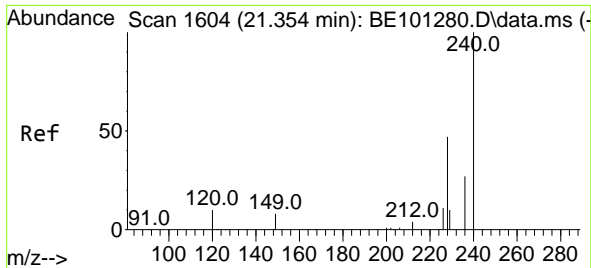


#28
 Fluoranthene
 Concen: 0.39 ng
 RT: 19.243 min Scan# 1363
 Delta R.T. 0.000 min
 Lab File: BE101280.D
 Acq: 12 Apr 2021 14:22



Tgt Ion:202 Resp: 32384
 Ion Ratio Lower Upper
 202 100
 101 11.5 9.1 13.7
 203 17.3 13.6 20.4

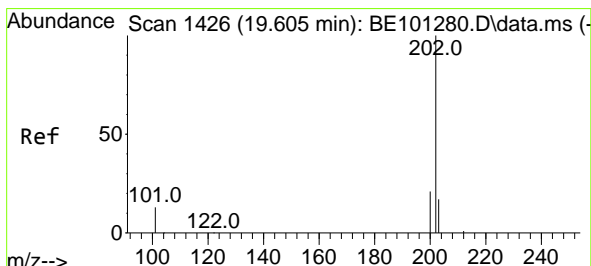
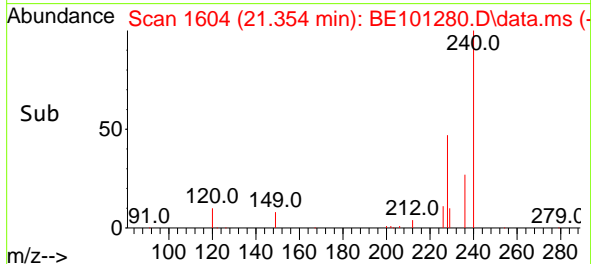
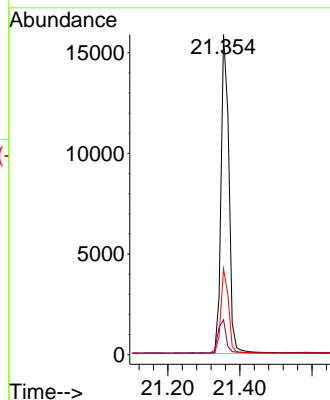
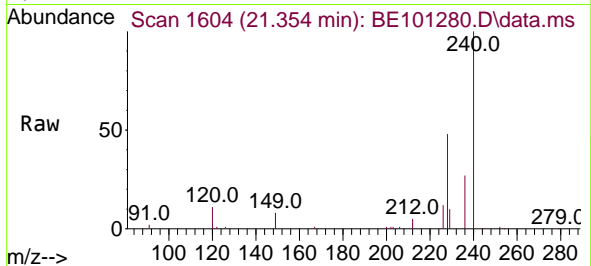




#29
 Chrysene-d12
 Concen: 0.40 ng
 RT: 21.354 min Scan# 1604
 Delta R.T. 0.000 min
 Lab File: BE101280.D
 Acq: 12 Apr 2021 14:22

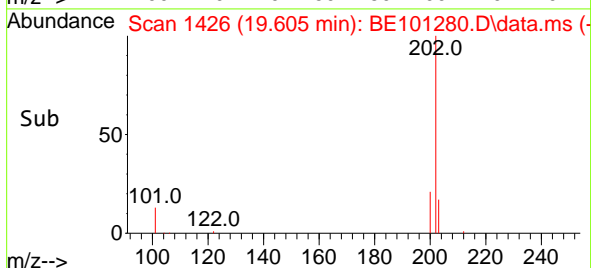
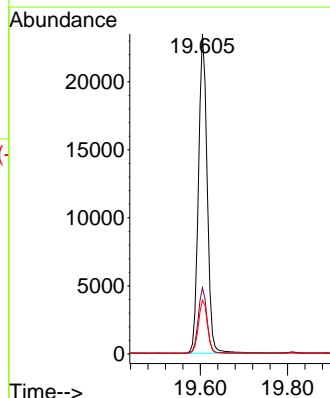
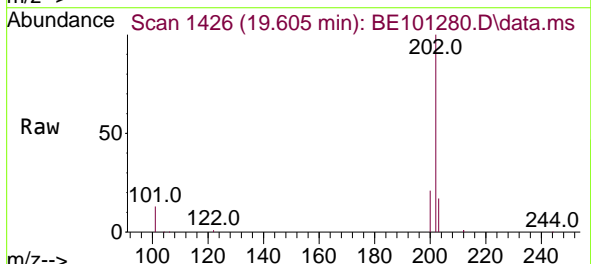
Instrument :
 BNA_E
 ClientSampleId :
 SSTDICC0.4

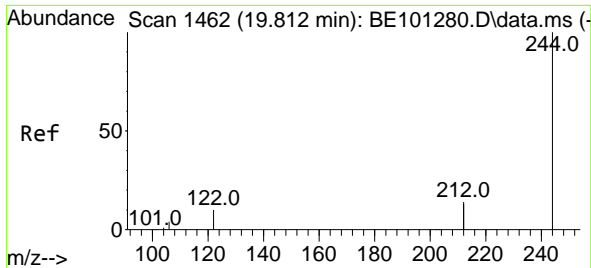
Tgt Ion	Resp	Lower	Upper
240	100		
120	10.9	10.2	15.4
236	26.8	21.7	32.5



#30
 Pyrene
 Concen: 0.37 ng
 RT: 19.605 min Scan# 1426
 Delta R.T. 0.000 min
 Lab File: BE101280.D
 Acq: 12 Apr 2021 14:22

Tgt Ion	Resp	Lower	Upper
202	100		
200	20.4	16.6	24.8
203	17.1	13.8	20.8

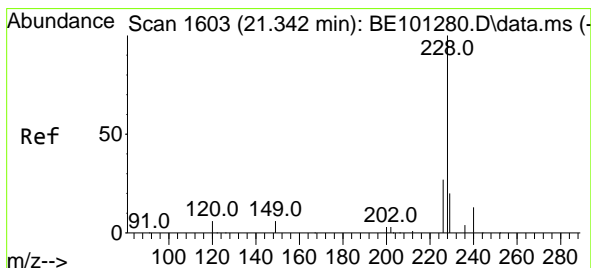
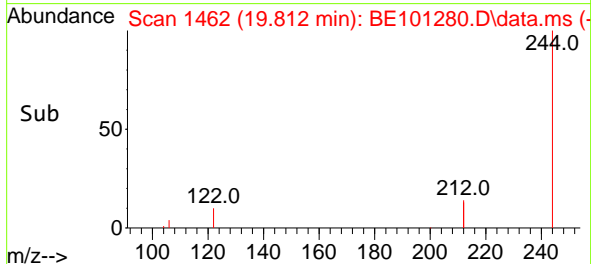
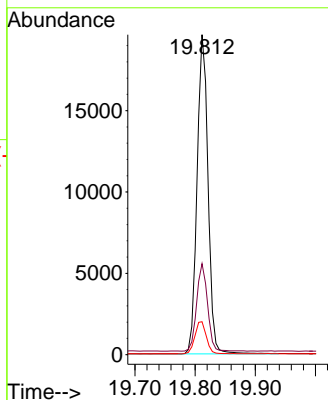
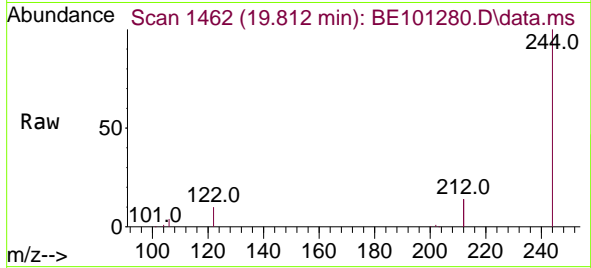




#31
 Terphenyl-d14
 Concen: 0.38 ng
 RT: 19.812 min Scan# 1462
 Delta R.T. 0.000 min
 Lab File: BE101280.D
 Acq: 12 Apr 2021 14:22

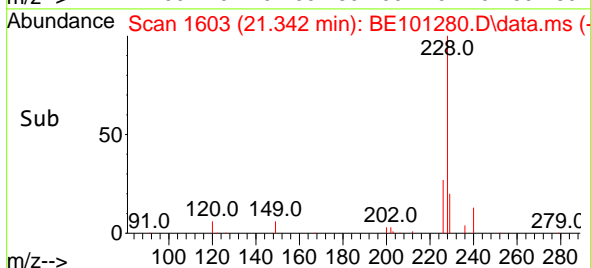
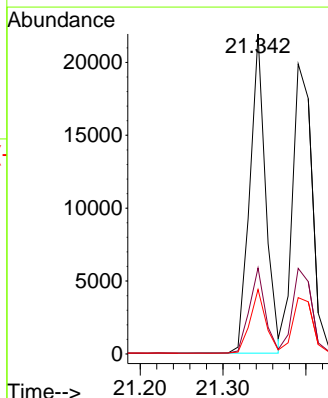
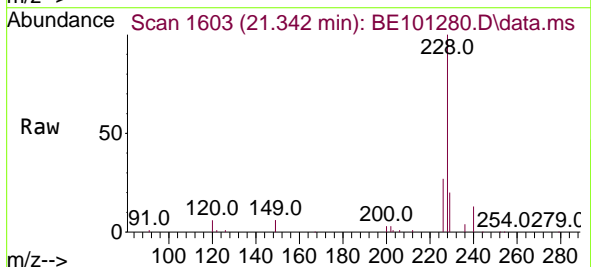
Instrument :
 BNA_E
 ClientSampleId :
 SSTDICC0.4

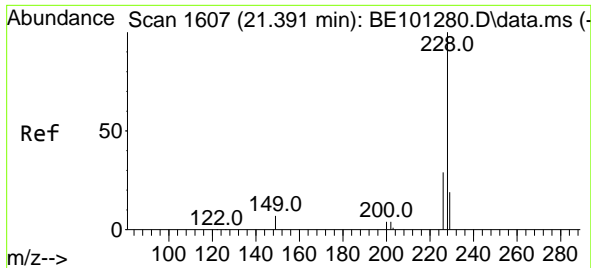
Tgt Ion	Resp	Lower	Upper
244	100		
212	28.5	21.9	32.9
122	10.3	7.3	10.9



#32
 Benzo(a)anthracene
 Concen: 0.43 ng
 RT: 21.342 min Scan# 1603
 Delta R.T. 0.000 min
 Lab File: BE101280.D
 Acq: 12 Apr 2021 14:22

Tgt Ion	Resp	Lower	Upper
228	100		
226	26.9	21.4	32.2
229	20.2	15.7	23.5



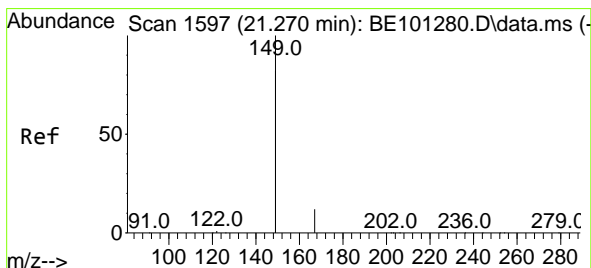
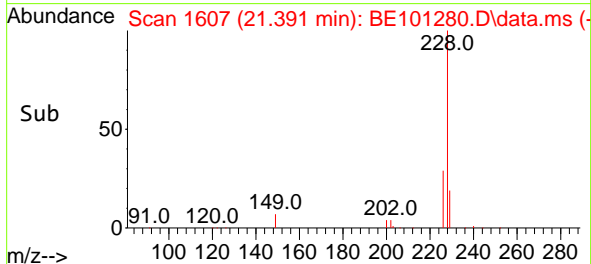
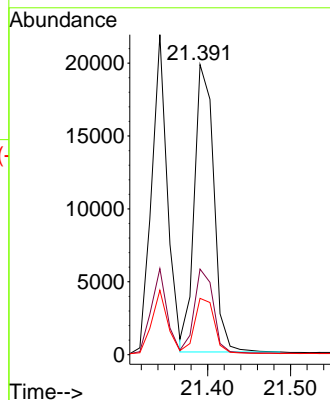
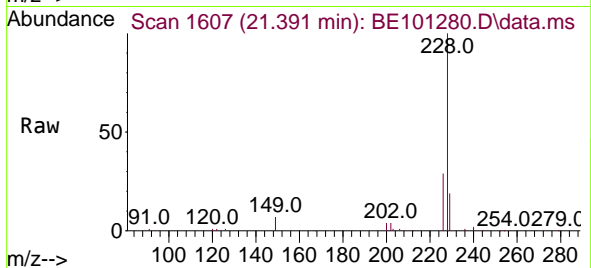


#33
 Chrysene
 Concen: 0.40 ng
 RT: 21.391 min Scan# 1607
 Delta R.T. 0.000 min
 Lab File: BE101280.D
 Acq: 12 Apr 2021 14:22

Instrument :
 BNA_E
 ClientSampleId :
 SSTDICCC0.4

Tgt Ion:228 Resp: 32118

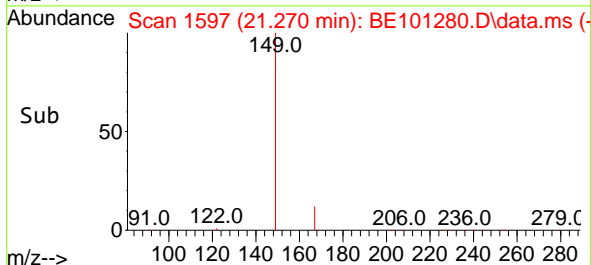
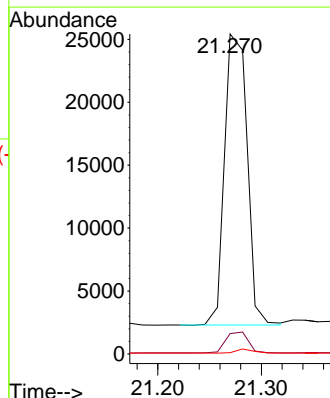
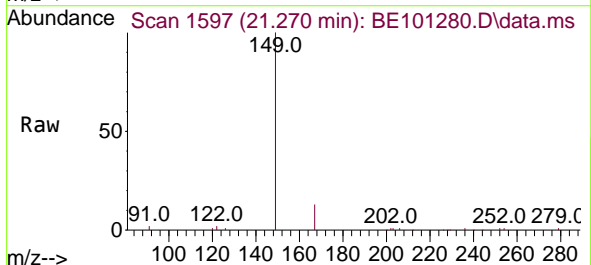
Ion	Ratio	Lower	Upper
228	100		
226	29.5	24.8	37.2
229	19.4	15.2	22.8

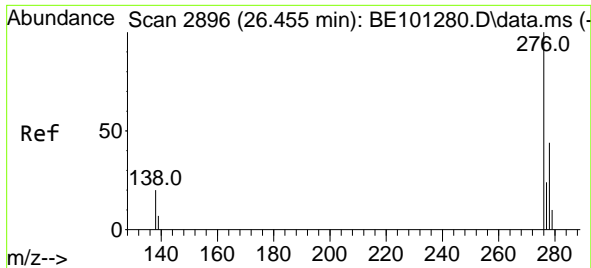


#34
 Bis(2-ethylhexyl)phthalate
 Concen: 0.71 ng
 RT: 21.270 min Scan# 1597
 Delta R.T. 0.000 min
 Lab File: BE101280.D
 Acq: 12 Apr 2021 14:22

Tgt Ion:149 Resp: 35042

Ion	Ratio	Lower	Upper
149	100		
167	7.2	5.5	8.3
279	1.2	1.0	1.4

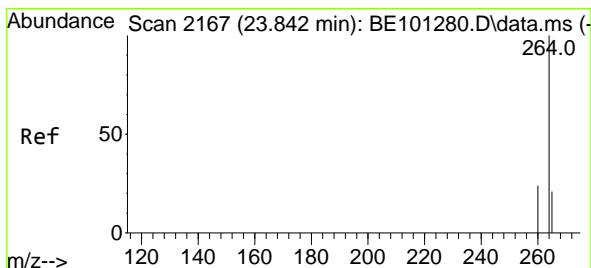
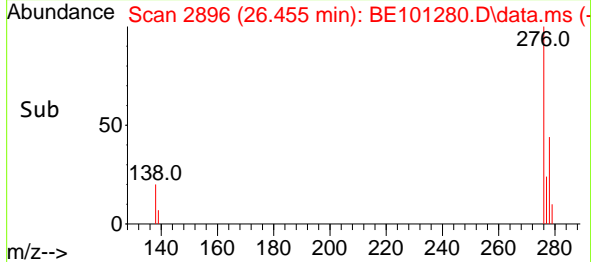
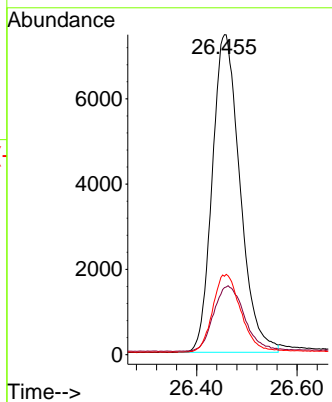
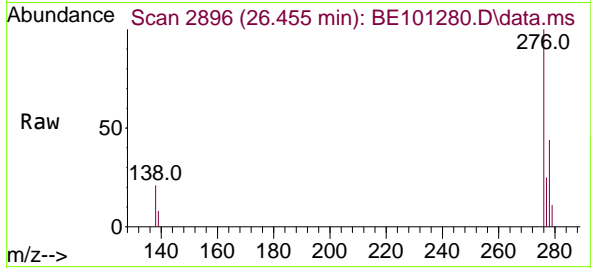




#35
 Indeno(1,2,3-cd)pyrene
 Concen: 0.48 ng
 RT: 26.455 min Scan# 2896
 Delta R.T. 0.000 min
 Lab File: BE101280.D
 Acq: 12 Apr 2021 14:22

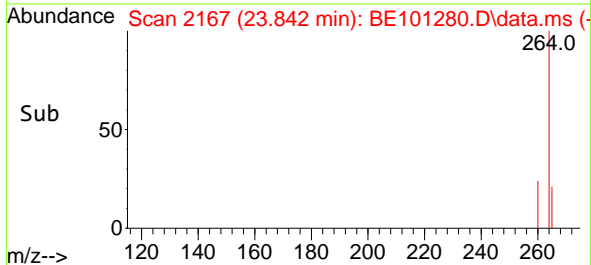
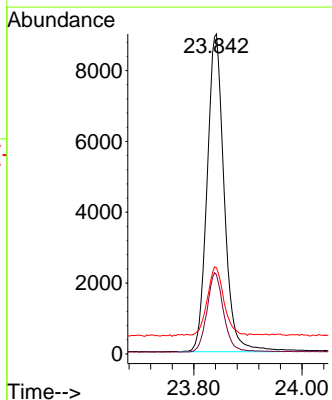
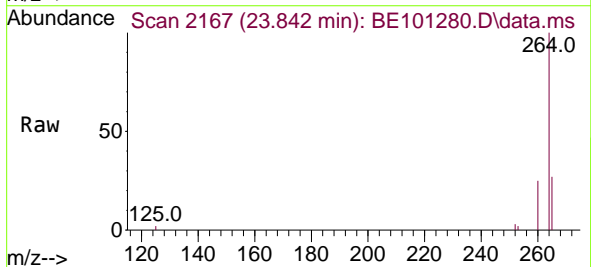
Instrument :
 BNA_E
 ClientSampled :
 SSTDICC0.4

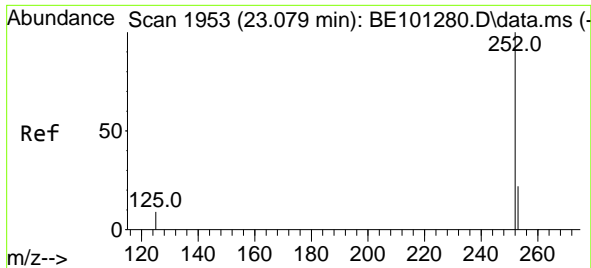
Tgt Ion	Resp	Lower	Upper
276	100		
138	22.9	17.4	26.0
277	24.9	19.8	29.8



#36
 Perylene-d12
 Concen: 0.40 ng
 RT: 23.842 min Scan# 2167
 Delta R.T. 0.000 min
 Lab File: BE101280.D
 Acq: 12 Apr 2021 14:22

Tgt Ion	Resp	Lower	Upper
264	100		
260	24.8	19.3	28.9
265	26.9	22.4	33.6

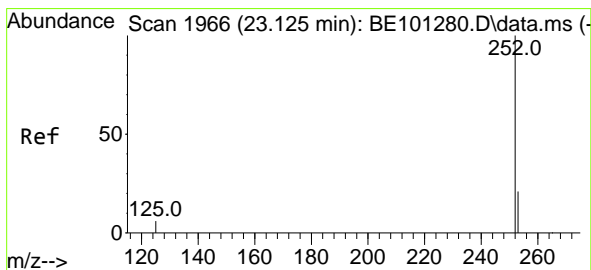
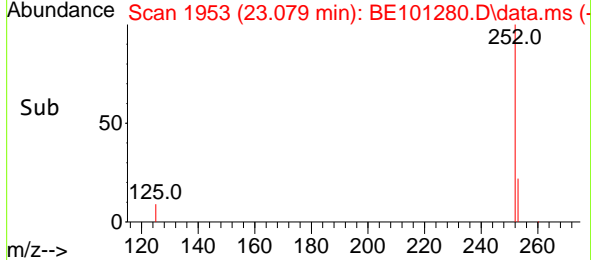
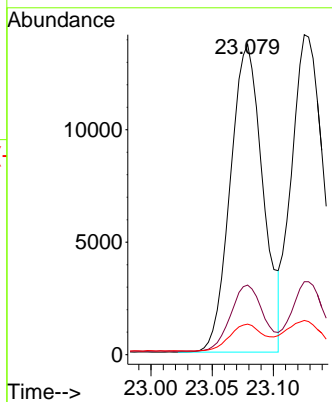
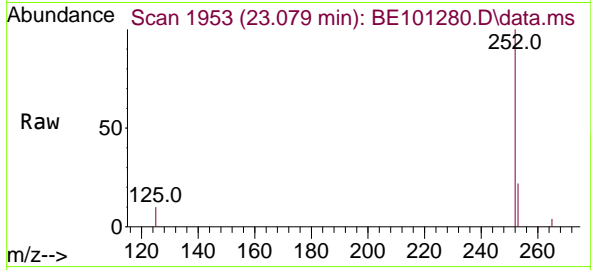




#37
 Benzo(b)fluoranthene
 Concen: 0.40 ng
 RT: 23.079 min Scan# 1953
 Delta R.T. 0.000 min
 Lab File: BE101280.D
 Acq: 12 Apr 2021 14:22

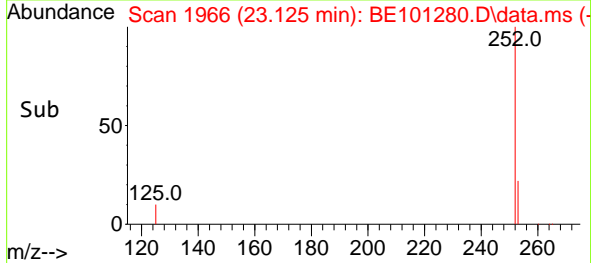
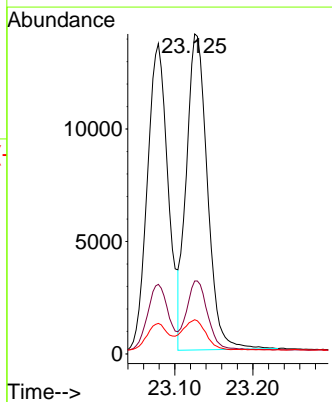
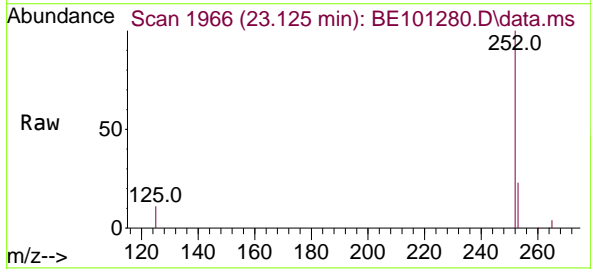
Instrument :
 BNA_E
 ClientSampleId :
 SSTDICC0.4

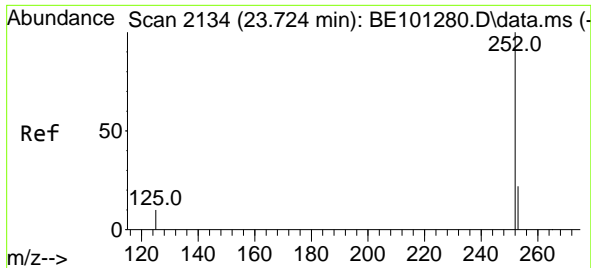
Tgt Ion	Resp	Lower	Upper
252	100		
253	22.5	18.1	27.1
125	9.9	7.6	11.4



#38
 Benzo(k)fluoranthene
 Concen: 0.37 ng
 RT: 23.125 min Scan# 1966
 Delta R.T. 0.000 min
 Lab File: BE101280.D
 Acq: 12 Apr 2021 14:22

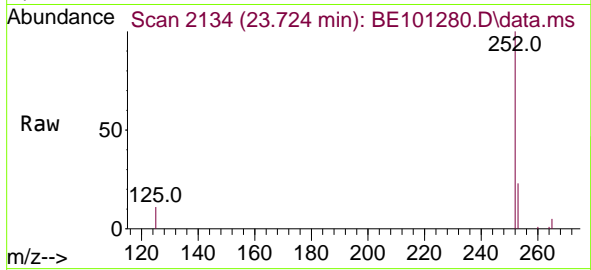
Tgt Ion	Resp	Lower	Upper
252	100		
253	22.8	17.8	26.6
125	10.7	7.6	11.4





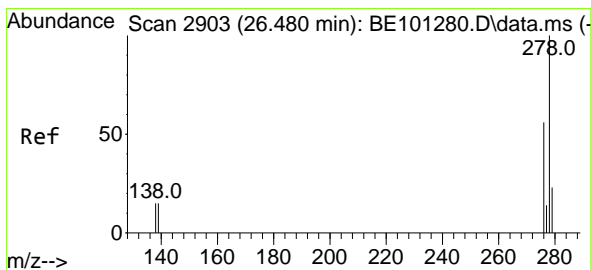
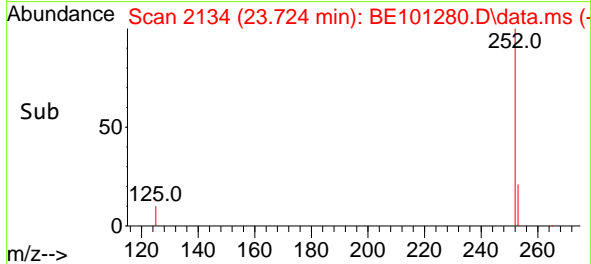
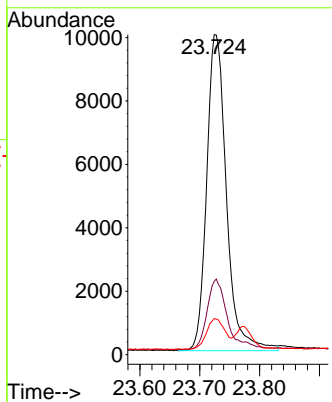
#39
 Benzo(a)pyrene
 Concen: 0.42 ng
 RT: 23.724 min Scan# 2134
 Delta R.T. 0.000 min
 Lab File: BE101280.D
 Acq: 12 Apr 2021 14:22

Instrument :
 BNA_E
 ClientSampleId :
 SSTDICC0.4

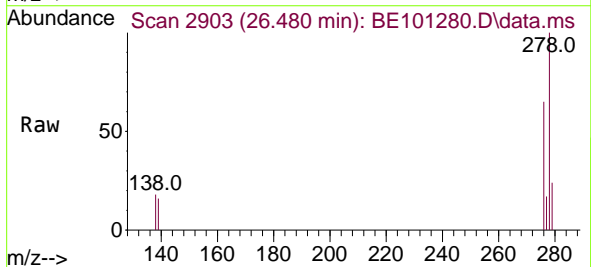


Tgt Ion:252 Resp: 22823

Ion	Ratio	Lower	Upper
252	100		
253	22.9	18.0	27.0
125	11.3	8.0	12.0

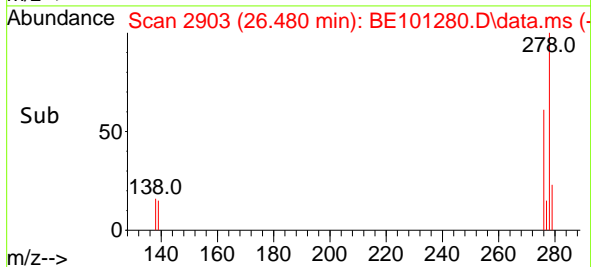
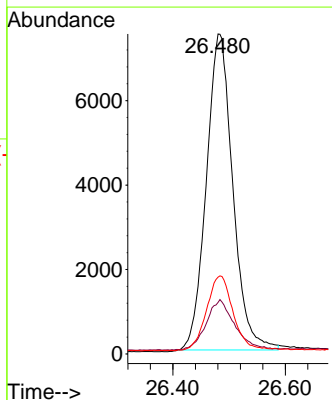


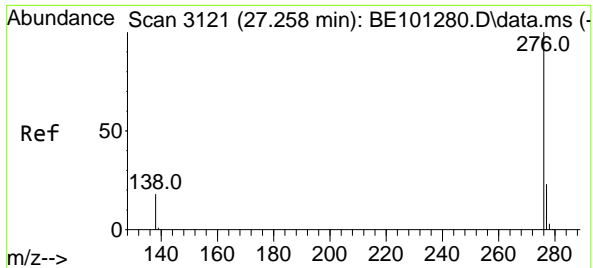
#40
 Dibenzo(a,h)anthracene
 Concen: 0.46 ng
 RT: 26.480 min Scan# 2903
 Delta R.T. 0.000 min
 Lab File: BE101280.D
 Acq: 12 Apr 2021 14:22



Tgt Ion:278 Resp: 24528

Ion	Ratio	Lower	Upper
278	100		
139	16.1	12.2	18.2
279	24.0	19.3	28.9





#41
 Benzo(g,h,i)perylene
 Concen: 0.44 ng
 RT: 27.258 min Scan# 3121
 Delta R.T. 0.000 min
 Lab File: BE101280.D
 Acq: 12 Apr 2021 14:22

Instrument :
 BNA_E
ClientSampled :
 SSTDICCC0.4

Tgt Ion: 276 Resp: 25134

Ion	Ratio	Lower	Upper
276	100		
277	24.1	19.4	29.0
138	19.2	15.2	22.8

