

Data Path : Z:\HPCHEM1\BNA E\DATA\BE042616\  
 Data File : BE091697.D  
 Acq On : 26 Apr 2016 10:04  
 Operator : UM/SJ  
 Sample : SSTDICCO.1  
 Misc :  
 ALS Vial : 3 Sample Multiplier: 1

Instrument :  
 BNA\_E  
 ClientSampleId :  
 SSTDICCO.1

Quant Time: Apr 26 13:14:51 2016  
 Quant Method : Z:\HPCHEM1\BNA E\METHODS\8270-SIM-BE042616.M  
 Quant Title : ASP BNA STANDARDS FOR 5 POINT CALIBRATION  
 QLast Update : Tue Apr 26 13:13:58 2016  
 Response via : Initial Calibration

Internal Standards	R.T.	QIon	Response	Conc	Units	Dev(Min)
1) 1,4-Dichlorobenzene-d4	7.80	152	36280	5.00	ng	0.00
7) Naphthalene-d8	10.57	136	165299	5.00	ng	0.00
13) Acenaphthene-d10	14.42	164	99540	5.00	ng	0.00
19) Phenanthrene-d10	17.15	188	261186	5.00	ng	0.00
26) Chrysene-d12	21.31	240	320793	5.00	ng	0.00
35) Perylene-d12	23.75	264	309603	5.00	ng	0.00

## System Monitoring Compounds

4) 2-Fluorophenol	5.39	112	1006	0.13	ng	0.00
5) Phenol-d6	6.95	99	1284	0.12	ng	0.00
8) Nitrobenzene-d5	8.95	82	1117	0.13	ng	0.00
14) 2,4,6-Tribromophenol	15.90	330	822	0.35	ng	0.00
15) 2-Fluorobiphenyl	13.04	172	2960	0.11	ng	0.00
29) Terphenyl-d14	19.76	244	5072	0.10	ng	0.00

## Target Compounds

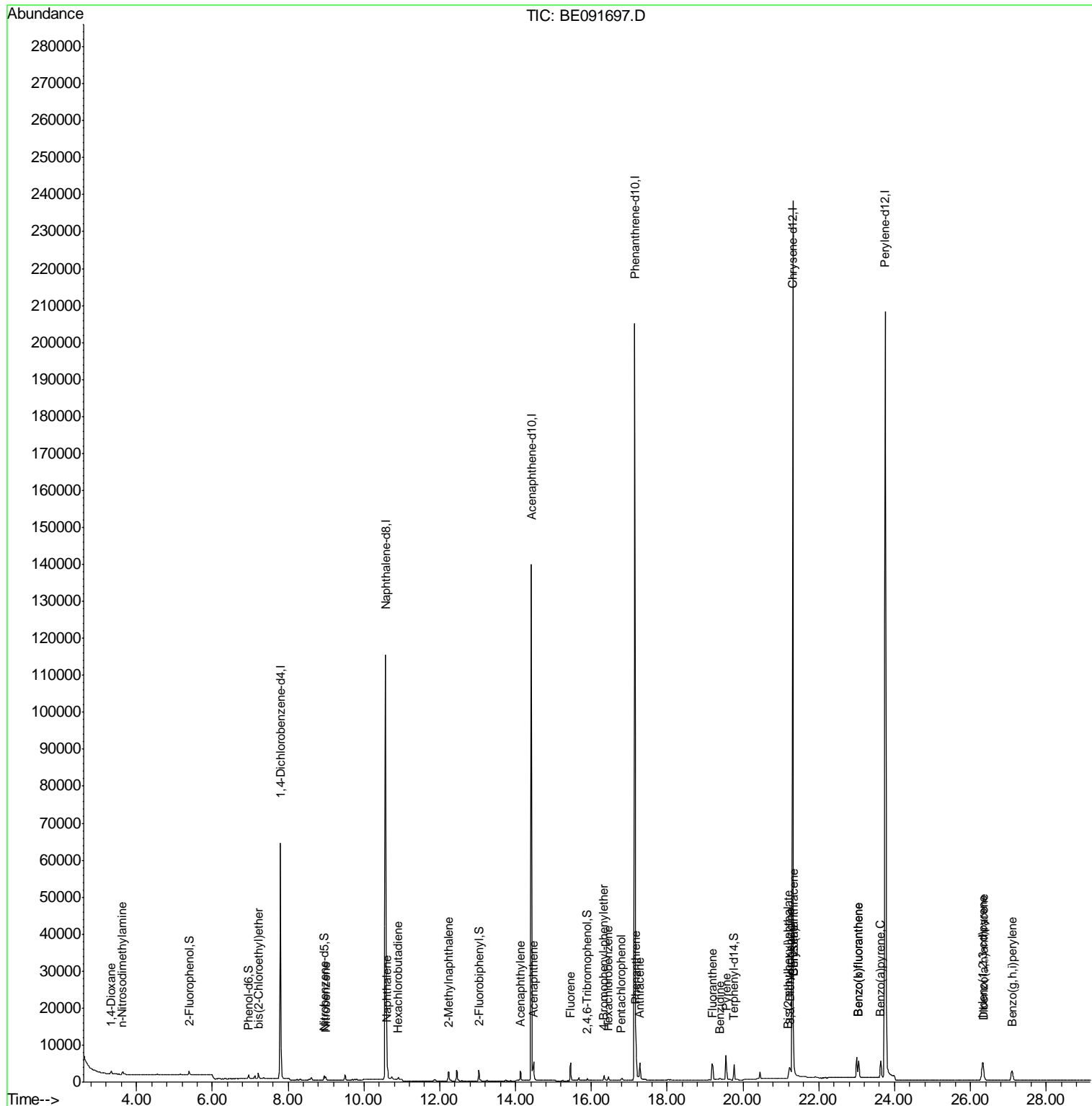
Target Compounds	R.T.	QIon	Response	Conc	Units	Qvalue
2) 1,4-Dioxane	3.33	88	687	0.15	ng	# 83
3) n-Nitrosodimethylamine	3.63	42	699	0.13	ng	# 89
6) bis(2-Chloroethyl)ether	7.21	93	1090	0.11	ng	# 73
9) Nitrobenzene	8.99	77	1108	0.13	ng	# 97
10) Naphthalene	10.61	128	3620	0.11	ng	# 93
11) Hexachlorobutadiene	10.90	225	980	0.20	ng	# 76
12) 2-Methylnaphthalene	12.24	142	2277	0.11	ng	92
16) Acenaphthylene	14.12	152	5112	0.13	ng	# 88
17) Acenaphthene	14.47	154	2526	0.10	ng	86
18) Fluorene	15.46	166	3273	0.11	ng	99
20) 4-Bromophenyl-phenylether	16.33	248	968	0.11	ng	99
21) Hexachlorobenzene	16.45	284	968	0.10	ng	96
22) Pentachlorophenol	16.79	266	508	0.16	ng	94
23) Phenanthrene	17.18	178	6611	0.11	ng	97
24) Anthracene	17.28	178	5468	0.10	ng	98
25) Fluoranthene	19.19	202	6680	0.12	ng	99
27) Benzidine	19.40	184	1142	0.06	ng	# 91
28) Pyrene	19.55	202	7276	0.10	ng	100
30) Benzo(a)anthracene	21.34	228	17996	0.23	ng	# 92
31) 3,3'-Dichlorobenzidine	21.24	252	3877	0.12	ng	# 82
32) Chrysene	21.34	228	18066	0.21	ng	96
33) Bis(2-ethylhexyl)phthalate	21.20	149	2726	0.18	ng	# 57
34) Indeno(1,2,3-cd)pyrene	26.32	276	7903	0.10	ng	98
36) Benzo(b)fluoranthene	23.04	252	7275	0.10	ng	93
37) Benzo(k)fluoranthene	23.04	252	7461	0.10	ng	# 93
38) Benzo(a)pyrene	23.63	252	7182	0.11	ng	# 80
39) Dibenzo(a,h)anthracene	26.34	278	6527	0.10	ng	96
40) Benzo(g,h,i)perylene	27.10	276	6655	0.10	ng	95

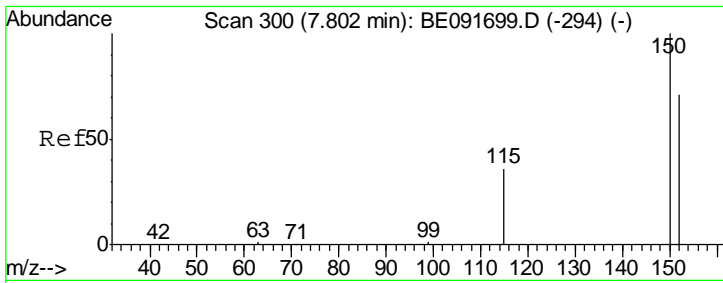
(#) = qualifier out of range (m) = manual integration (+) = signals summed

Data Path : Z:\HPCHEM1\BNA E\DATA\BE042616\  
 Data File : BE091697.D  
 Acq On : 26 Apr 2016 10:04  
 Operator : UM/SJ  
 Sample : SSTDIC0.1  
 Misc :  
 ALS Vial : 3 Sample Multiplier: 1

Instrument :  
 BNA\_E  
 ClientSampled :  
 SSTDIC0.1

Quant Time: Apr 26 13:14:51 2016  
 Quant Method : Z:\HPCHEM1\BNA E\METHODS\8270-SIM-BE042616.M  
 Quant Title : ASP BNA STANDARDS FOR 5 POINT CALIBRATION  
 QLast Update : Tue Apr 26 13:13:58 2016  
 Response via : Initial Calibration

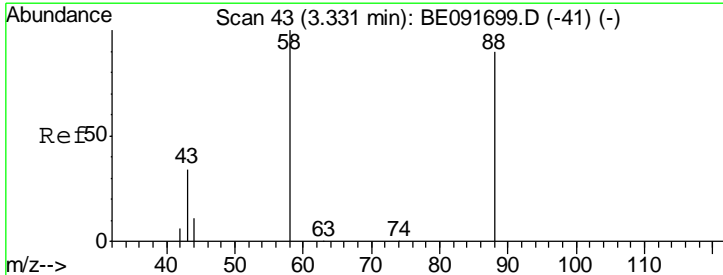
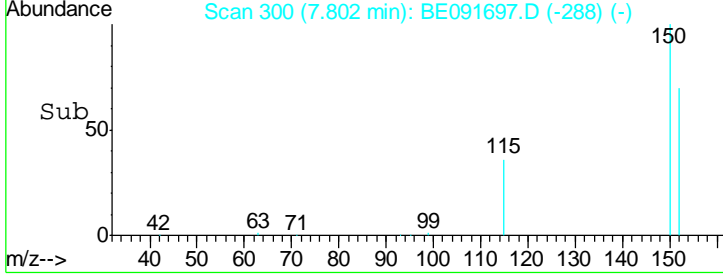
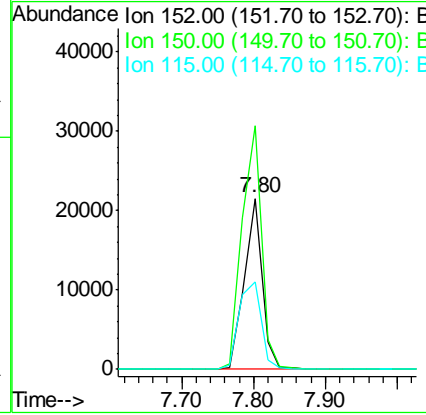
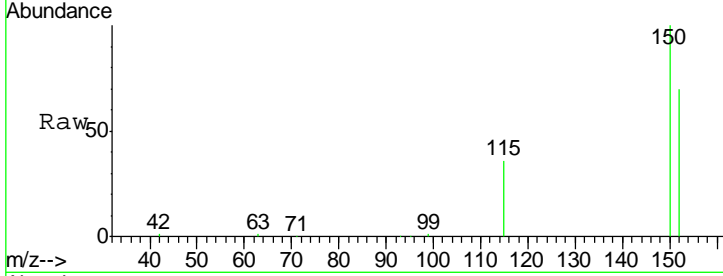




#1  
 1,4-Dichlorobenzene-d4  
 Concen: 5.00 ng  
 RT: 7.80 min Scan# 300  
 Delta R.T. -0.00 min  
 Lab File: BE091697.D  
 Acq: 26 Apr 2016 10:04

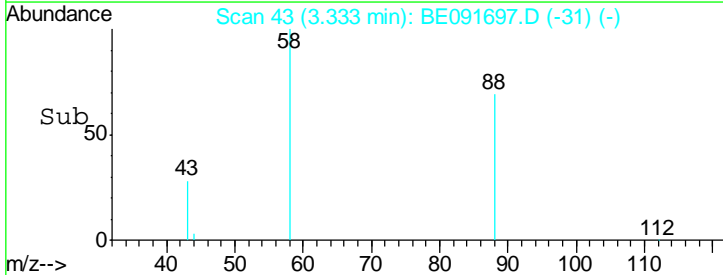
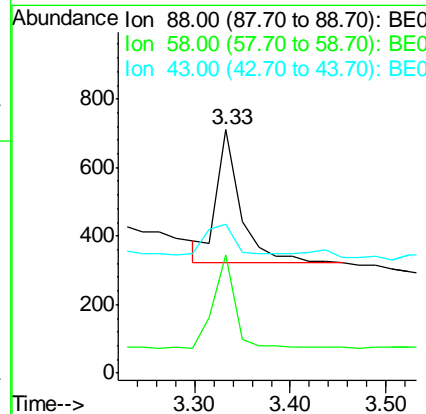
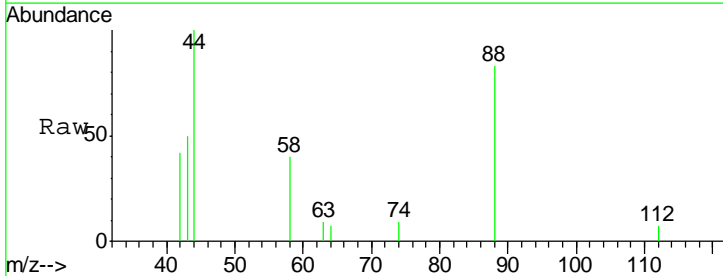
**Instrument :**  
 BNA\_E  
**ClientSampled :**  
 SSTDICC0.1

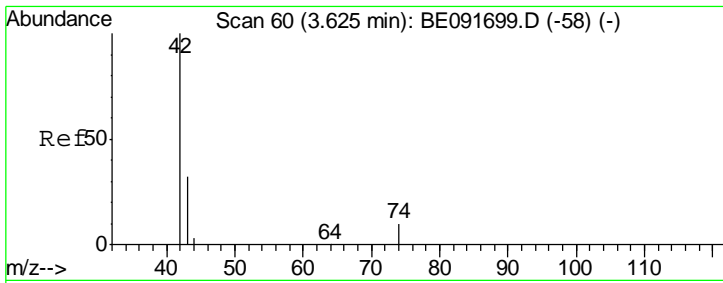
Tgt Ion	Resp	Lower	Upper
152	100		
150	142.3	122.6	183.8
115	51.4	52.8	79.2#



#2  
 1,4-Dioxane  
 Concen: 0.15 ng  
 RT: 3.33 min Scan# 43  
 Delta R.T. 0.00 min  
 Lab File: BE091697.D  
 Acq: 26 Apr 2016 10:04

Tgt Ion	Resp	Lower	Upper
88	100		
58	61.6	65.8	98.6#
43	30.0	25.3	37.9

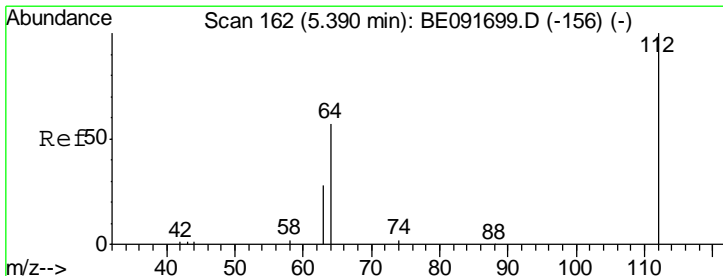
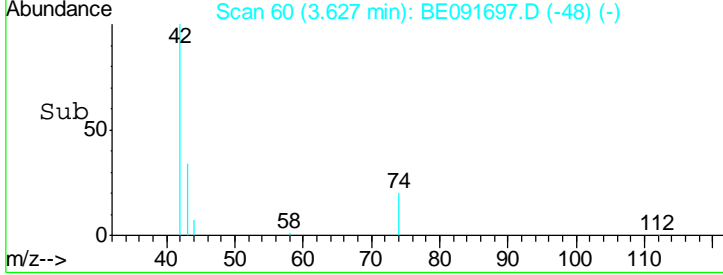
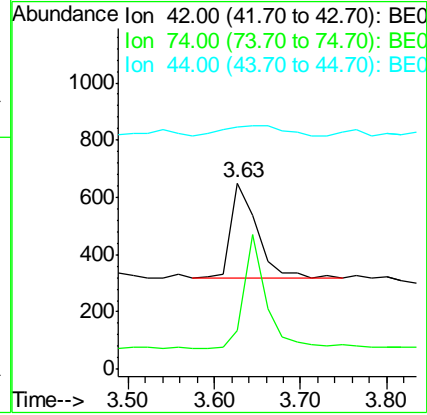
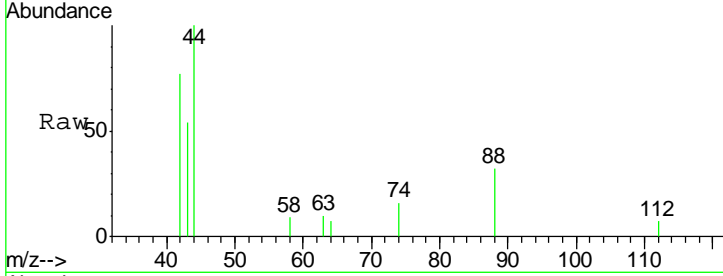




#3  
 n-Nitrosodimethylamine  
 Concen: 0.13 ng  
 RT: 3.63 min Scan# 60  
 Delta R.T. 0.00 min  
 Lab File: BE091697.D  
 Acq: 26 Apr 2016 10:04

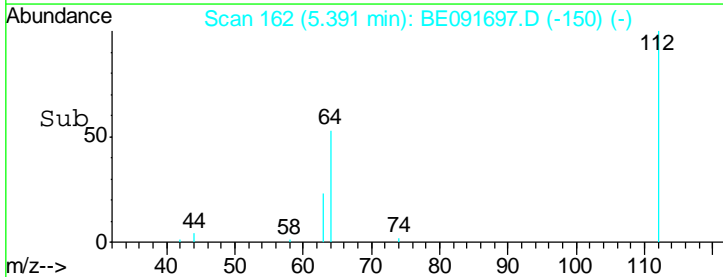
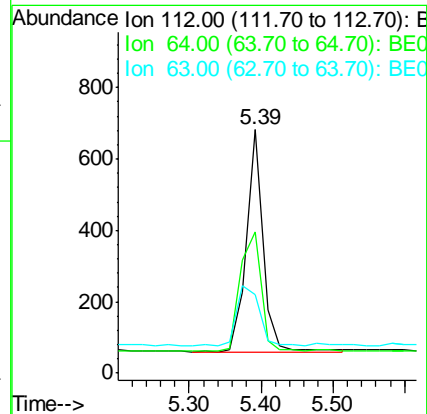
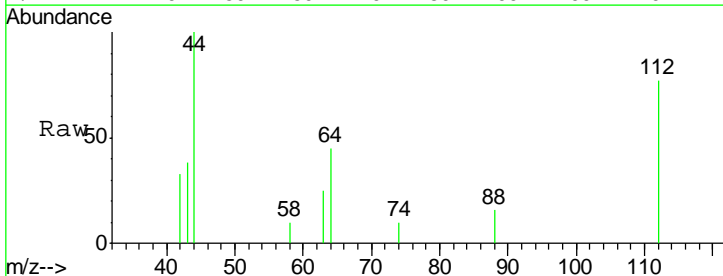
Instrument :  
 BNA\_E  
 ClientSampleId :  
 SSTDICC0.1

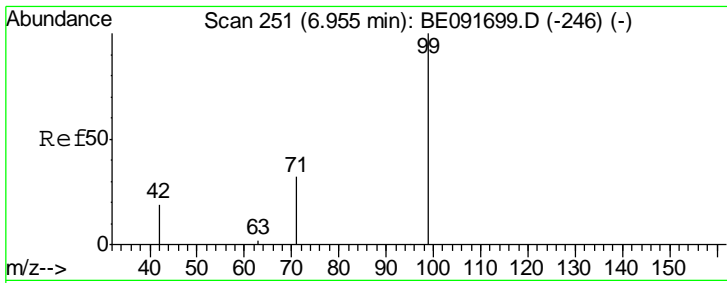
Tgt Ion	Resp	Lower	Upper
42	100		
74	101.9	87.9	131.9
44	26.9	6.6	9.8#



#4  
 2-Fluorophenol  
 Concen: 0.13 ng  
 RT: 5.39 min Scan# 162  
 Delta R.T. 0.00 min  
 Lab File: BE091697.D  
 Acq: 26 Apr 2016 10:04

Tgt Ion	Resp	Lower	Upper
112	100		
64	65.7	30.9	46.3#
63	35.1	16.7	25.1#

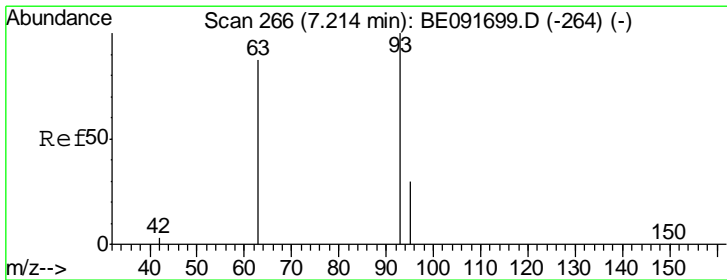
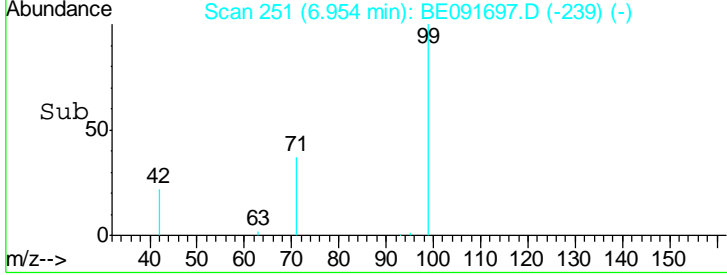
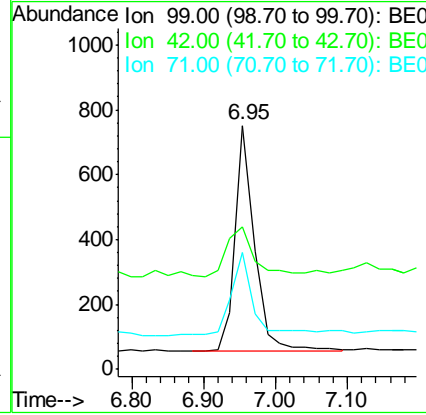
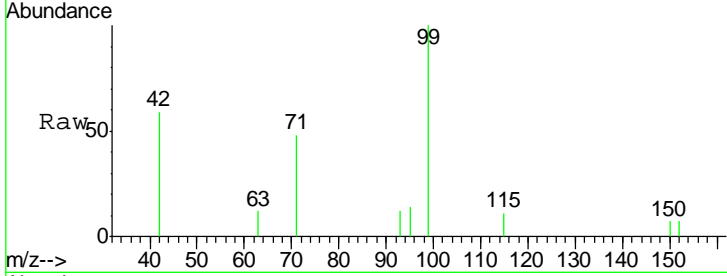




#5  
 Phenol-d6  
 Concen: 0.12 ng  
 RT: 6.95 min Scan# 251  
 Delta R.T. -0.00 min  
 Lab File: BE091697.D  
 Acq: 26 Apr 2016 10:04

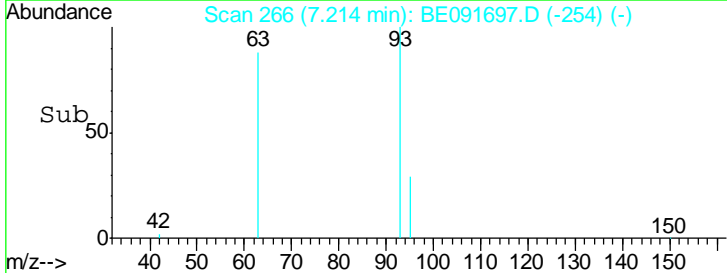
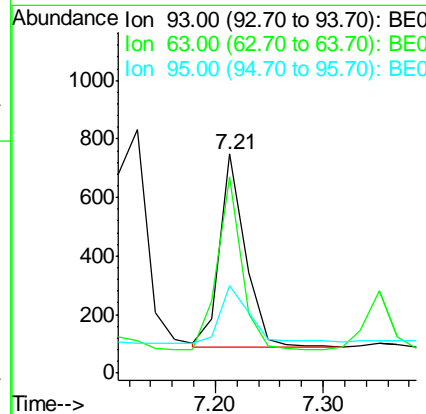
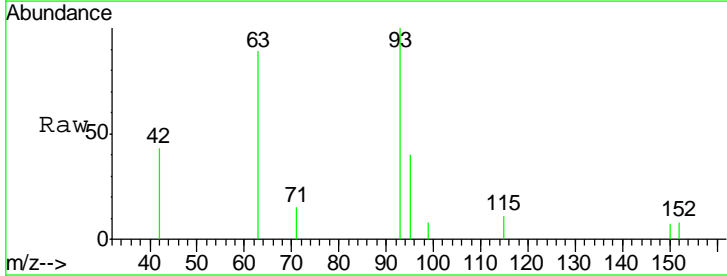
**Instrument :**  
 BNA\_E  
**ClientSampled :**  
 SSTDICC0.1

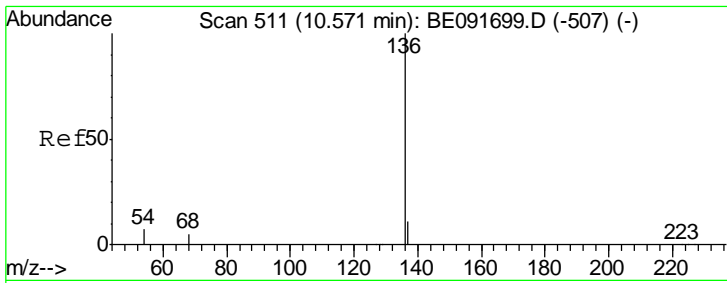
Tgt Ion	Resp	Lower	Upper
99	1284		
42	32.2	16.2	24.2#
71	43.9	29.0	43.4#



#6  
 bis(2-Chloroethyl)ether  
 Concen: 0.11 ng  
 RT: 7.21 min Scan# 266  
 Delta R.T. -0.00 min  
 Lab File: BE091697.D  
 Acq: 26 Apr 2016 10:04

Tgt Ion	Resp	Lower	Upper
93	1090		
63	87.2	49.5	74.3#
95	34.7	22.2	33.4#

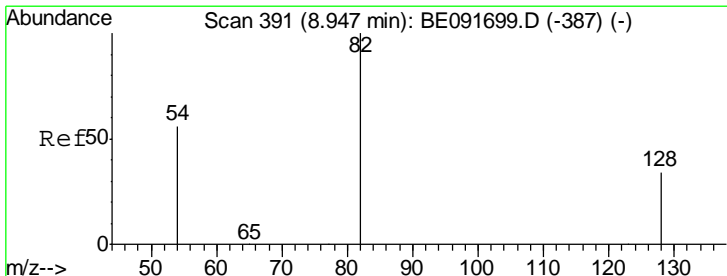
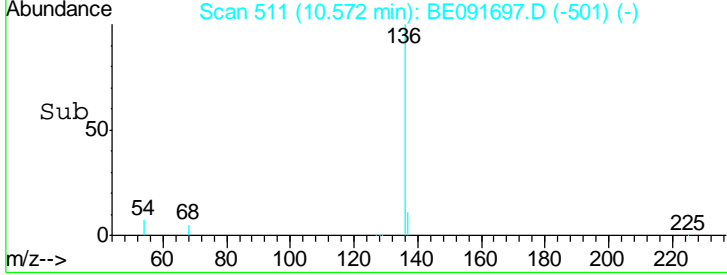
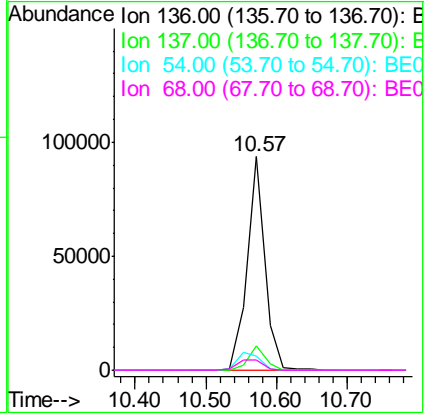
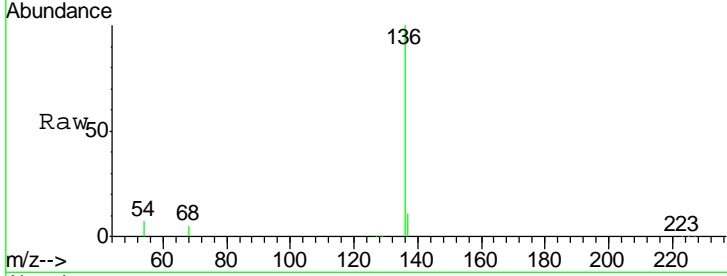




#7  
 Naphthalene-d8  
 Concen: 5.00 ng  
 RT: 10.57 min Scan# 511  
 Delta R.T. 0.00 min  
 Lab File: BE091697.D  
 Acq: 26 Apr 2016 10:04

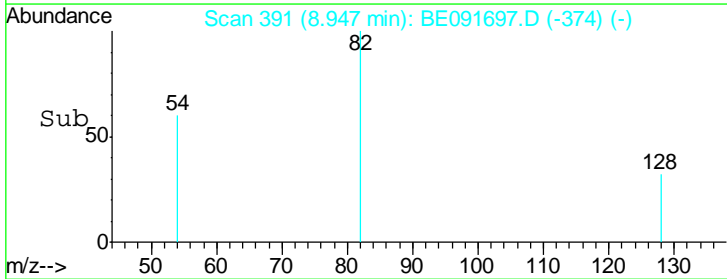
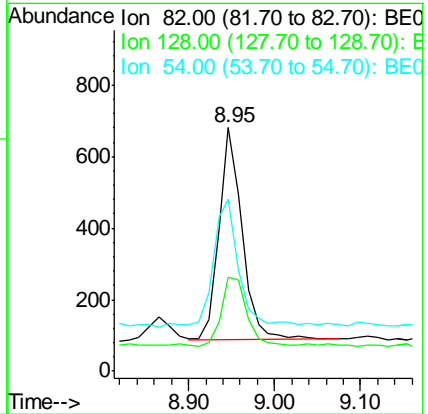
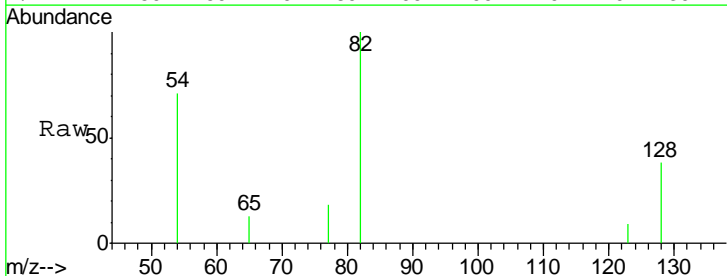
**Instrument :**  
 BNA\_E  
**ClientSampled :**  
 SSTDICC0.1

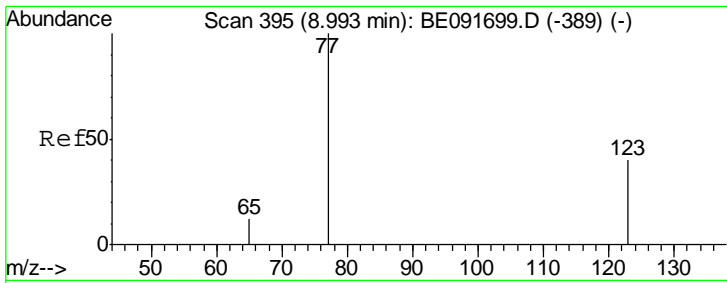
Tgt Ion	Resp	Lower	Upper
136	165299		
137	11.2	8.9	13.3
54	6.8	8.2	12.4#
68	5.1	6.2	9.4#



#8  
 Nitrobenzene-d5  
 Concen: 0.13 ng  
 RT: 8.95 min Scan# 391  
 Delta R.T. -0.00 min  
 Lab File: BE091697.D  
 Acq: 26 Apr 2016 10:04

Tgt Ion	Resp	Lower	Upper
82	1117		
128	38.3	25.4	38.0#
54	70.8	48.4	72.6

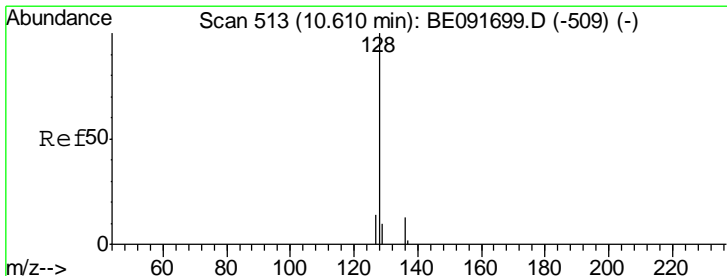
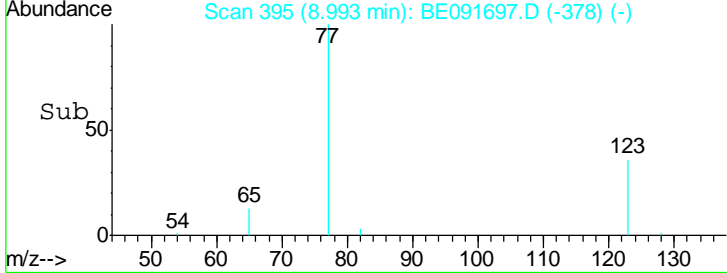
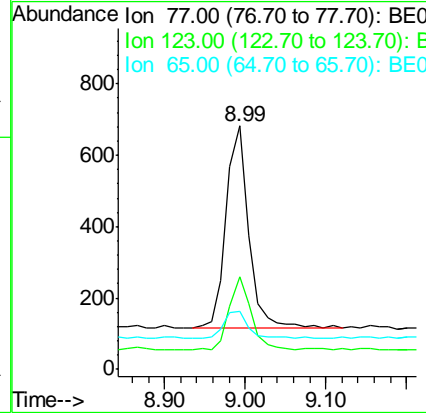
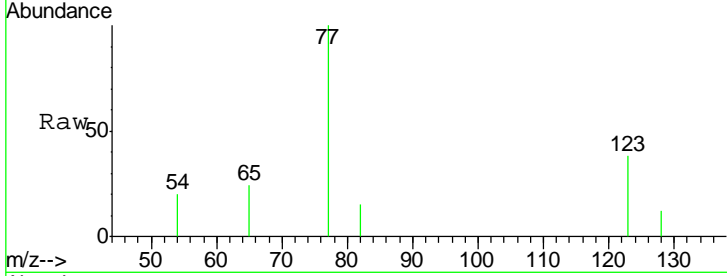




#9  
 Nitrobenzene  
 Concen: 0.13 ng  
 RT: 8.99 min Scan# 395  
 Delta R.T. -0.00 min  
 Lab File: BE091697.D  
 Acq: 26 Apr 2016 10:04

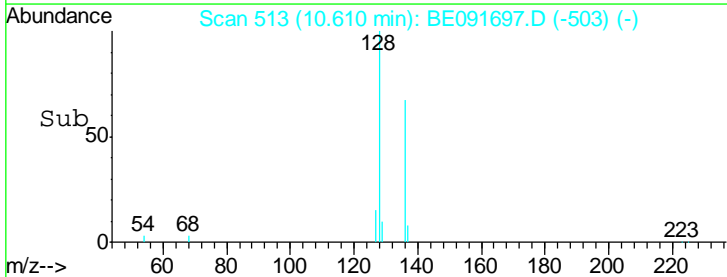
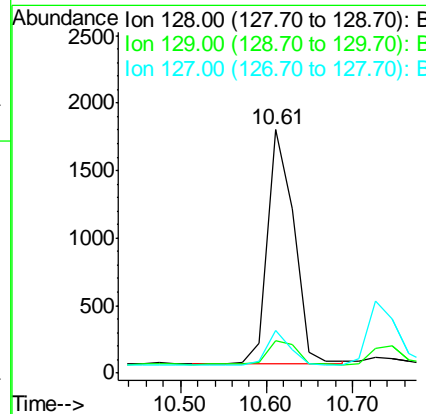
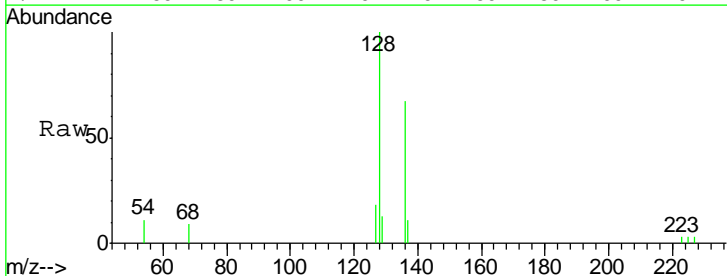
Instrument :  
 BNA\_E  
 ClientSampled :  
 SSTDICC0.1

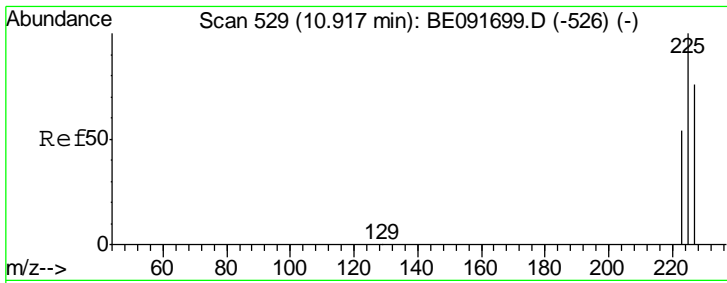
Tgt Ion	Resp	Lower	Upper
77	1108		
123	34.7	26.9	40.3
65	14.5	9.4	14.2



#10  
 Naphthalene  
 Concen: 0.11 ng  
 RT: 10.61 min Scan# 513  
 Delta R.T. 0.00 min  
 Lab File: BE091697.D  
 Acq: 26 Apr 2016 10:04

Tgt Ion	Resp	Lower	Upper
128	3620		
129	13.1	9.3	13.9
127	17.5	10.7	16.1

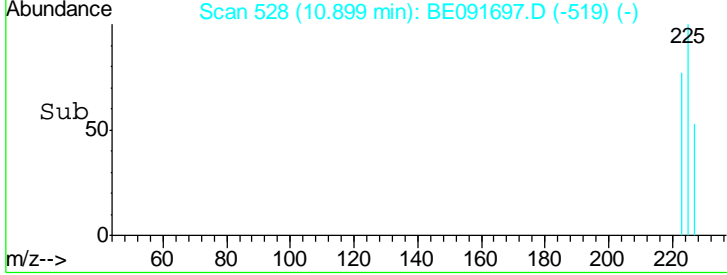
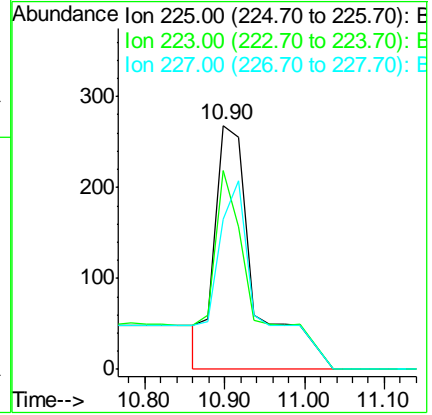
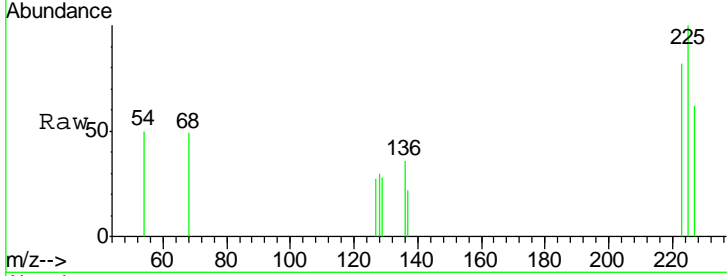




#11  
 Hexachlorobutadiene  
 Concen: 0.20 ng  
 RT: 10.90 min Scan# 528  
 Delta R.T. -0.02 min  
 Lab File: BE091697.D  
 Acq: 26 Apr 2016 10:04

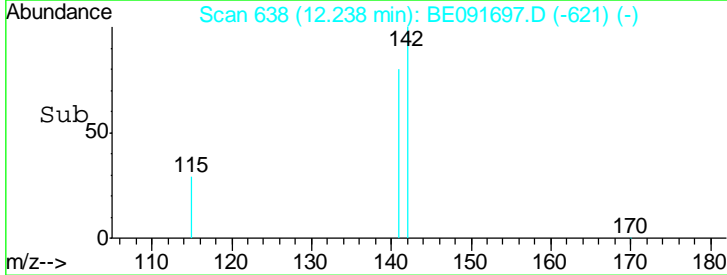
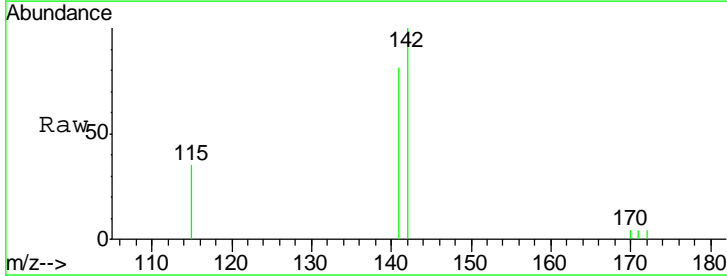
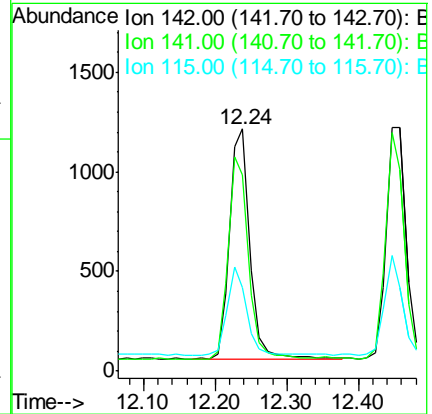
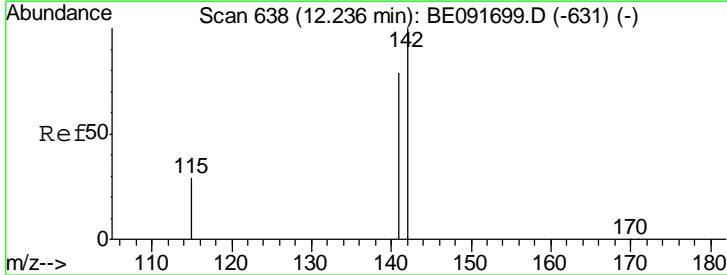
Instrument :  
 BNA\_E  
 ClientSampled :  
 SSTDICC0.1

Tgt Ion	Resp	Lower	Upper
225	100		
223	81.1	49.0	73.6#
227	80.0	50.3	75.5#

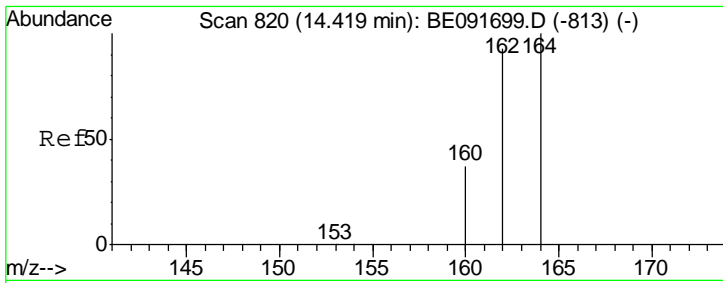


#12  
 2-Methylnaphthalene  
 Concen: 0.11 ng  
 RT: 12.24 min Scan# 638  
 Delta R.T. 0.00 min  
 Lab File: BE091697.D  
 Acq: 26 Apr 2016 10:04

Tgt Ion	Resp	Lower	Upper
142	100		
141	81.2	71.4	107.0
115	34.8	30.3	45.5



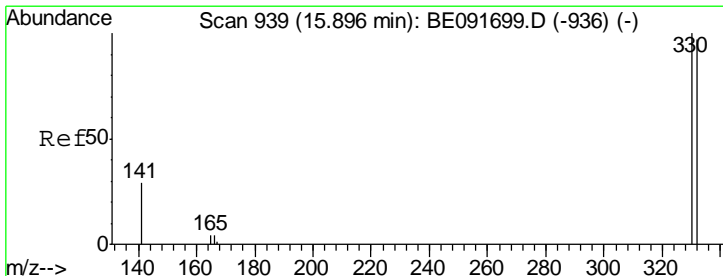
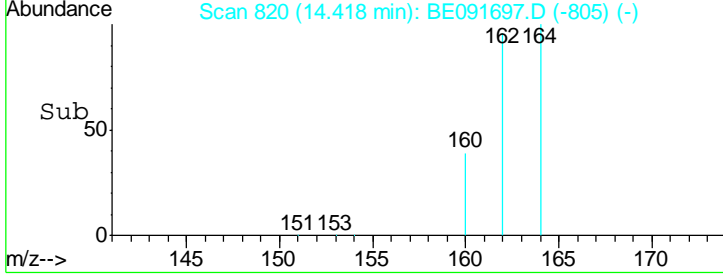
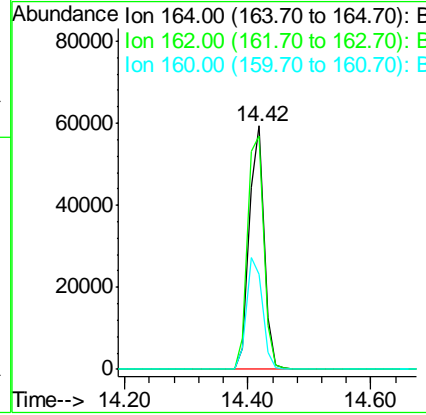
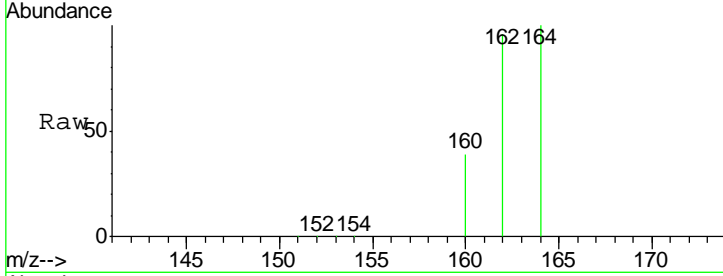




#13  
 Acenaphthene-d10  
 Concen: 5.00 ng  
 RT: 14.42 min Scan# 820  
 Delta R.T. -0.00 min  
 Lab File: BE091697.D  
 Acq: 26 Apr 2016 10:04

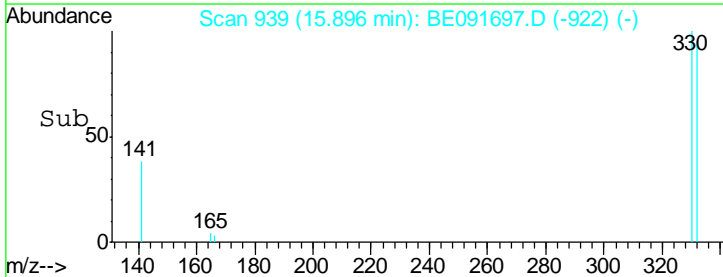
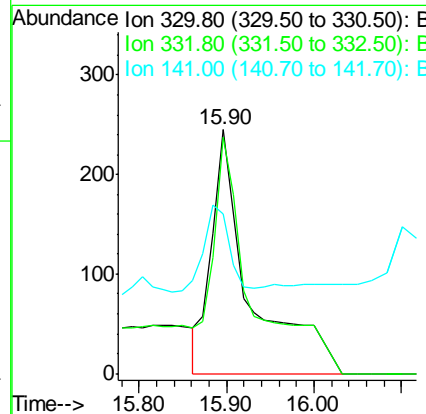
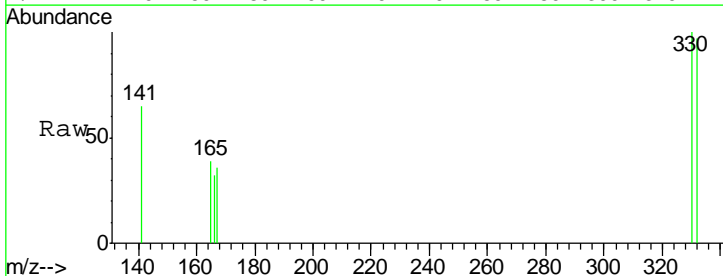
**Instrument :**  
 BNA\_E  
**ClientSampled :**  
 SSTDICC0.1

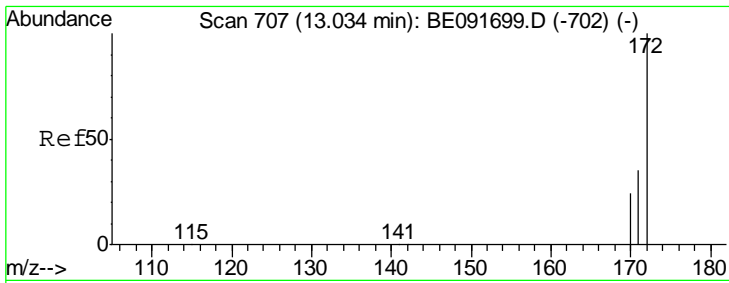
Tgt Ion	Resp	Lower	Upper
164	100		
162	95.8	85.3	127.9
160	39.3	46.2	69.2#



#14  
 2,4,6-Tribromophenol  
 Concen: 0.35 ng  
 RT: 15.90 min Scan# 939  
 Delta R.T. 0.00 min  
 Lab File: BE091697.D  
 Acq: 26 Apr 2016 10:04

Tgt Ion	Resp	Lower	Upper
330	100		
332	98.4	79.1	118.7
141	21.3	125.4	188.0#

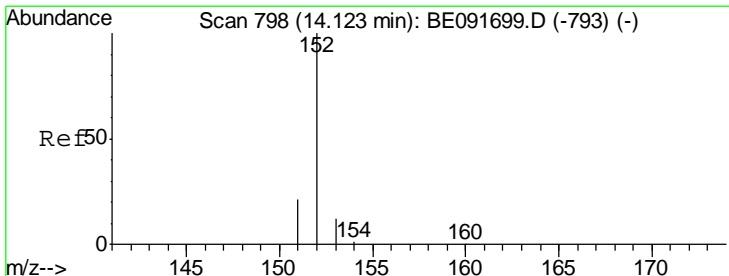
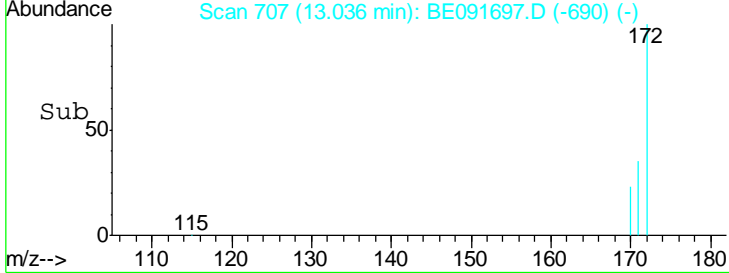
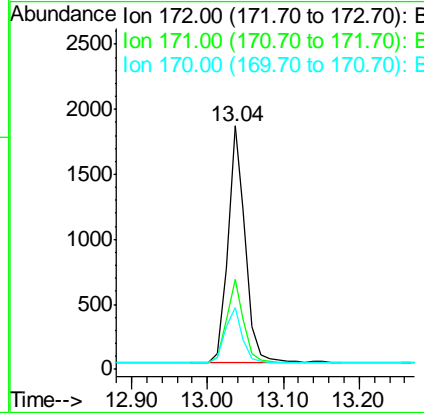
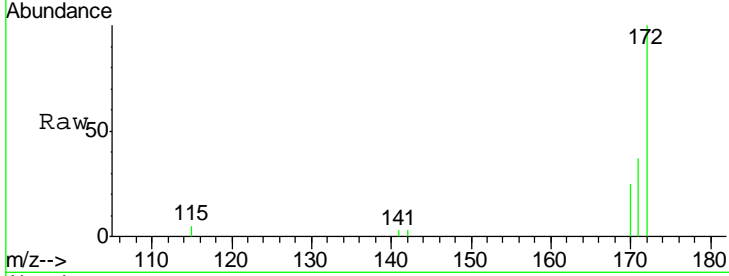




#15  
 2-Fluorobiphenyl  
 Concen: 0.11 ng  
 RT: 13.04 min Scan# 707  
 Delta R.T. 0.00 min  
 Lab File: BE091697.D  
 Acq: 26 Apr 2016 10:04

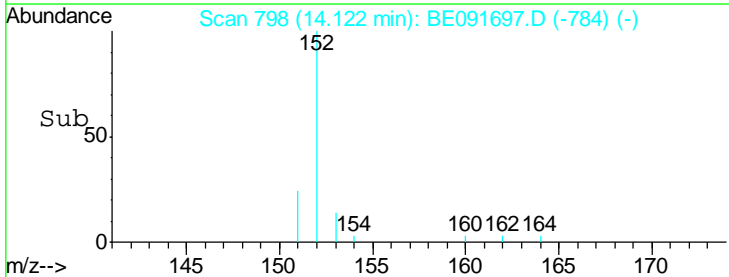
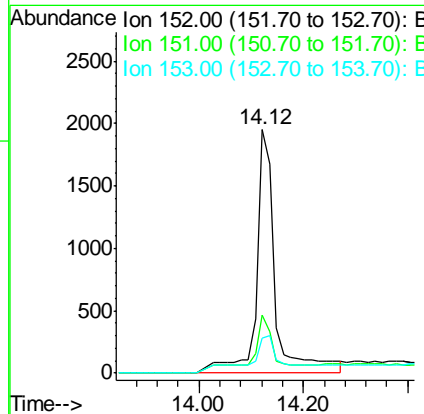
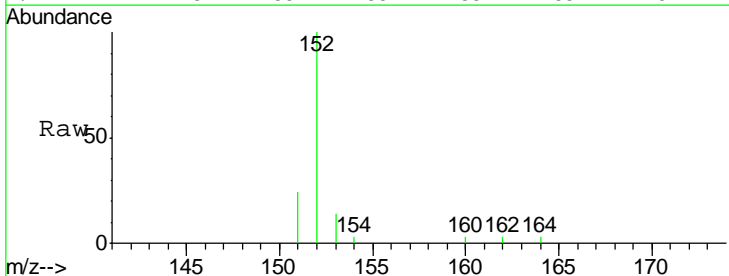
Instrument :  
 BNA\_E  
 ClientSampled :  
 SSTDICC0.1

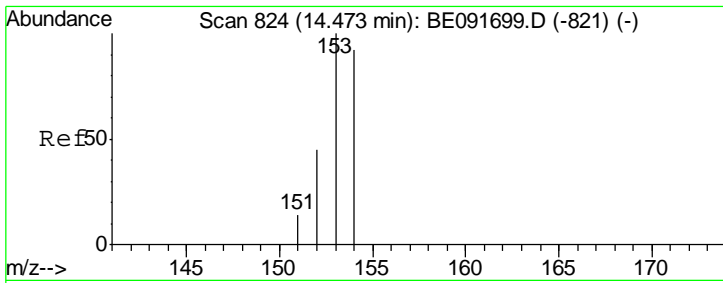
Tgt Ion	Resp	Lower	Upper
172	100		
171	36.8	28.8	43.2
170	25.3	19.3	28.9



#16  
 Acenaphthylene  
 Concen: 0.13 ng  
 RT: 14.12 min Scan# 798  
 Delta R.T. -0.00 min  
 Lab File: BE091697.D  
 Acq: 26 Apr 2016 10:04

Tgt Ion	Resp	Lower	Upper
152	100		
151	16.9	3.9	5.9#
153	12.0	10.3	15.5

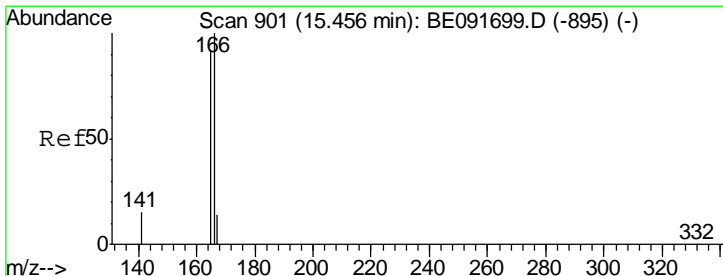
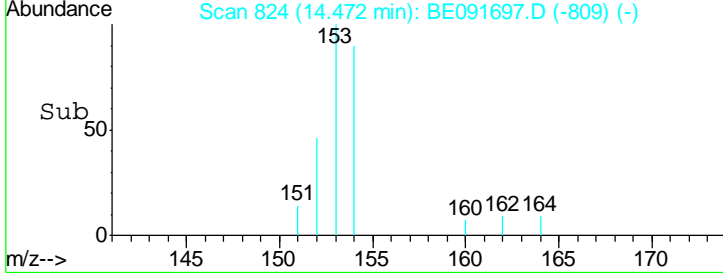
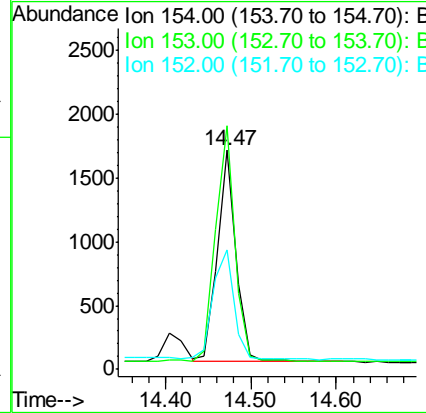
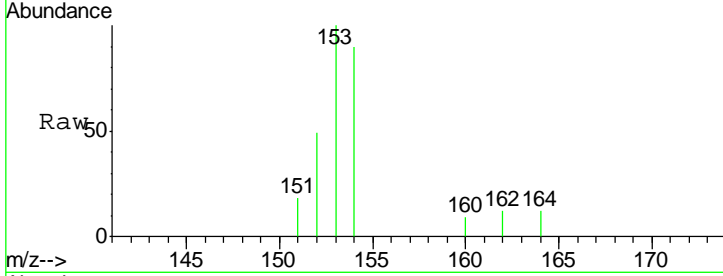




#17  
 Acenaphthene  
 Concen: 0.10 ng  
 RT: 14.47 min Scan# 824  
 Delta R.T. -0.00 min  
 Lab File: BE091697.D  
 Acq: 26 Apr 2016 10:04

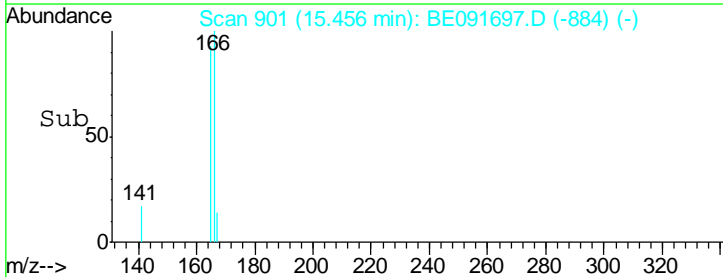
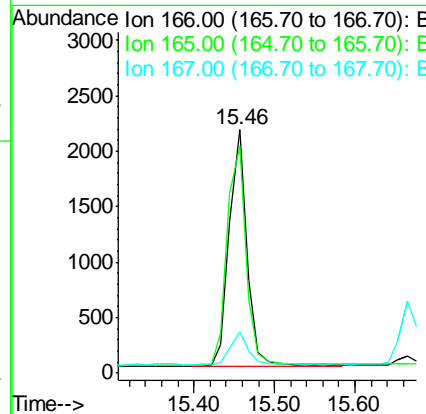
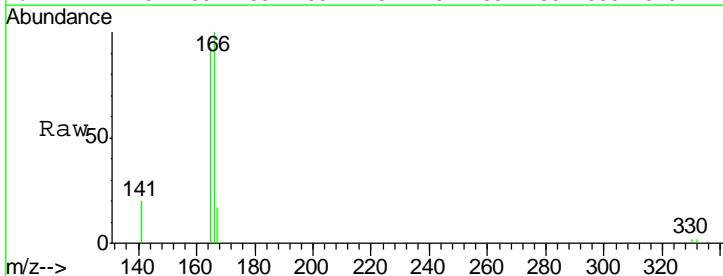
Instrument :  
 BNA\_E  
 ClientSampleId :  
 SSTDICC0.1

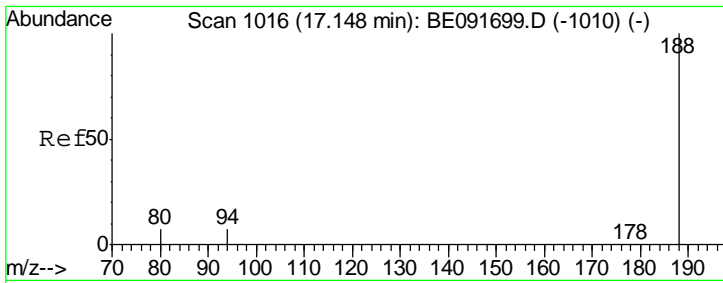
Tgt Ion	Resp	Lower	Upper
154	100		
153	115.1	80.0	120.0
152	58.6	40.0	60.0



#18  
 Fluorene  
 Concen: 0.11 ng  
 RT: 15.46 min Scan# 901  
 Delta R.T. 0.00 min  
 Lab File: BE091697.D  
 Acq: 26 Apr 2016 10:04

Tgt Ion	Resp	Lower	Upper
166	100		
165	100.3	80.8	121.2
167	13.7	10.9	16.3

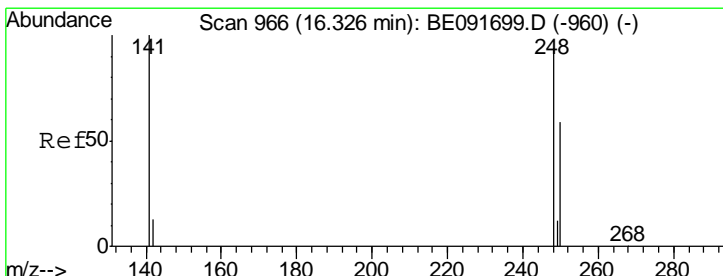
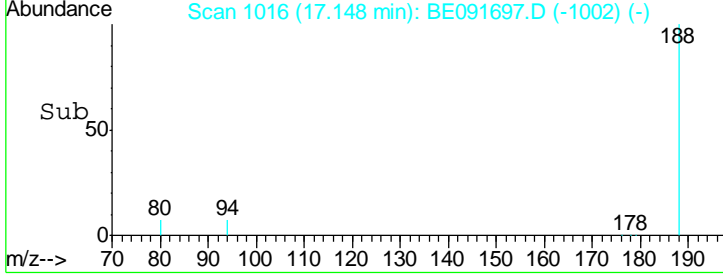
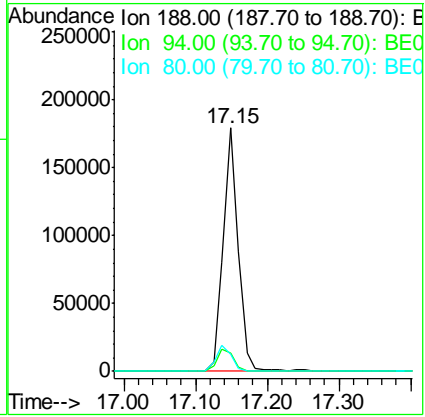
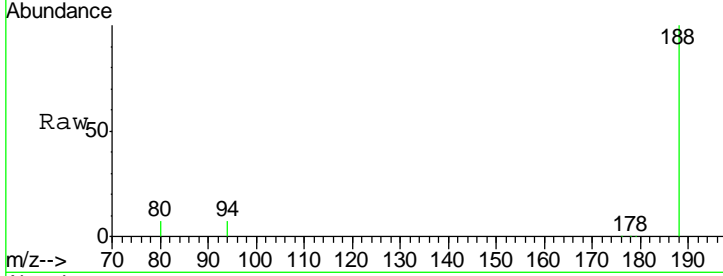




#19  
 Phenanthrene-d10  
 Concen: 5.00 ng  
 RT: 17.15 min Scan# 1016  
 Delta R.T. -0.00 min  
 Lab File: BE091697.D  
 Acq: 26 Apr 2016 10:04

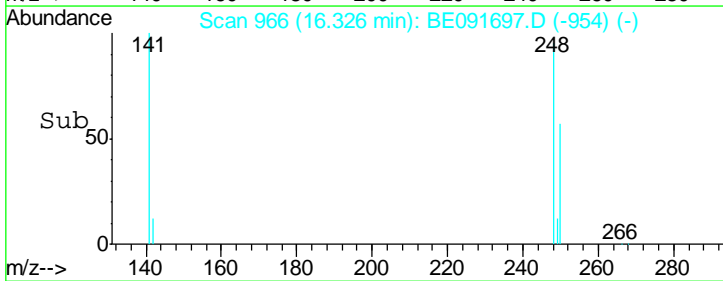
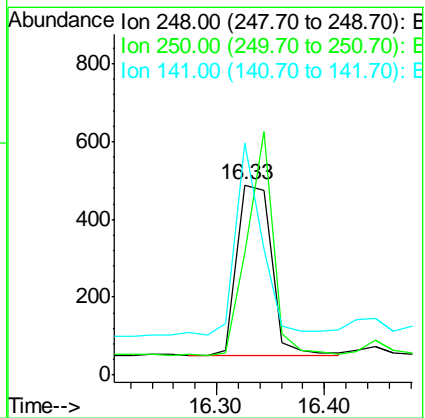
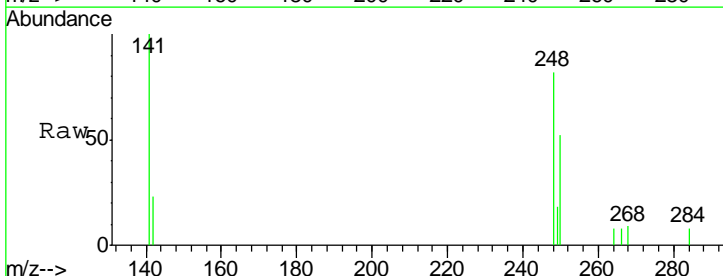
Instrument : BNA\_E  
 ClientSampled : SSTDICC0.1

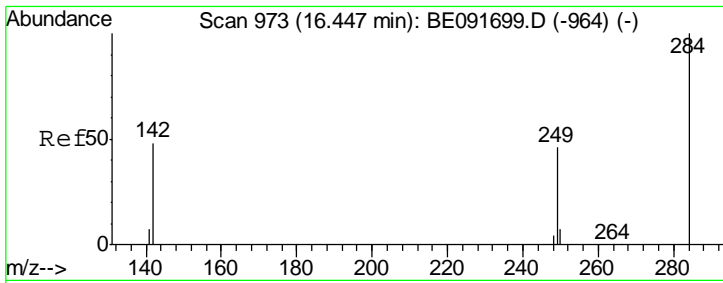
Tgt Ion	Resp	Lower	Upper
188	100		
94	7.3	8.7	13.1#
80	6.8	9.4	14.0#



#20  
 4-Bromophenyl-phenylether  
 Concen: 0.11 ng  
 RT: 16.33 min Scan# 966  
 Delta R.T. -0.00 min  
 Lab File: BE091697.D  
 Acq: 26 Apr 2016 10:04

Tgt Ion	Resp	Lower	Upper
248	100		
250	99.0	80.5	120.7
141	90.4	72.0	108.0

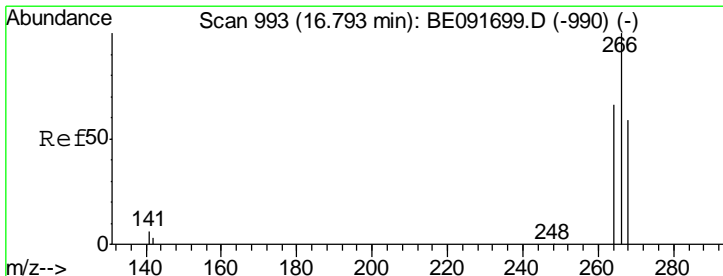
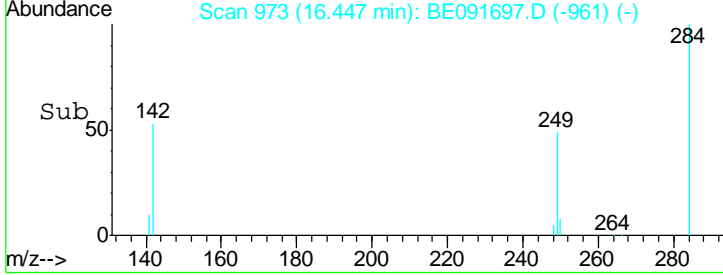
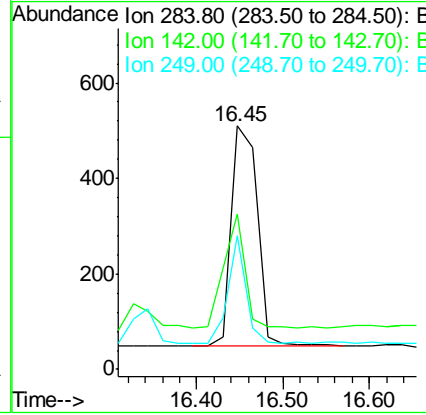
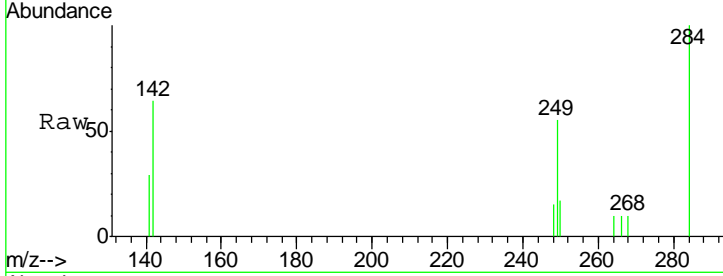




#21  
 Hexachlorobenzene  
 Concen: 0.10 ng  
 RT: 16.45 min Scan# 973  
 Delta R.T. -0.00 min  
 Lab File: BE091697.D  
 Acq: 26 Apr 2016 10:04

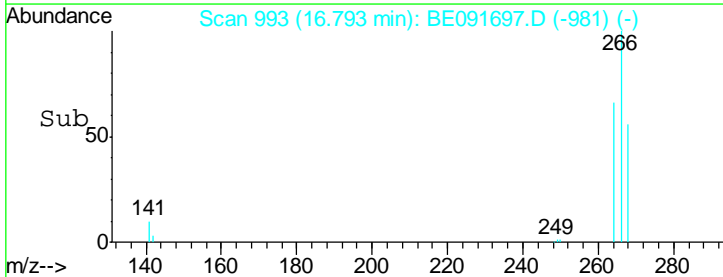
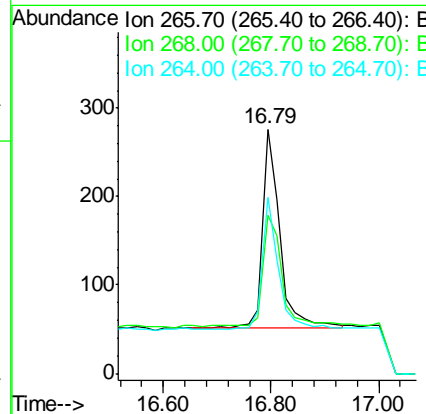
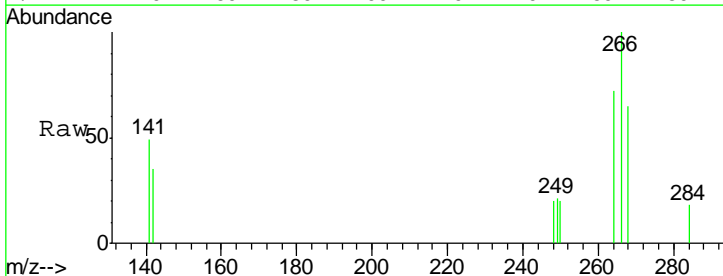
Instrument :  
 BNA\_E  
 ClientSampled :  
 SSTDICC0.1

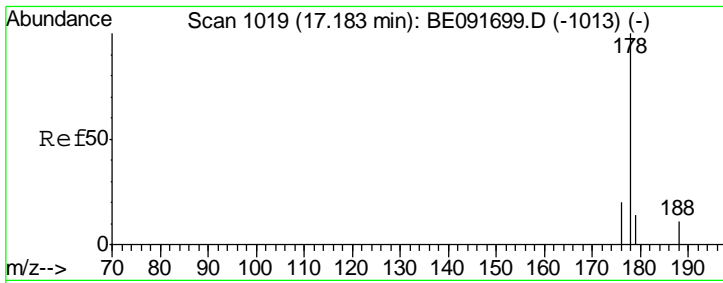
Tgt Ion	Resp	Lower	Upper
284	968		
142	42.8	32.2	48.2
249	33.7	25.4	38.2



#22  
 Pentachlorophenol  
 Concen: 0.16 ng  
 RT: 16.79 min Scan# 993  
 Delta R.T. -0.00 min  
 Lab File: BE091697.D  
 Acq: 26 Apr 2016 10:04

Tgt Ion	Resp	Lower	Upper
266	508		
268	64.9	58.2	87.2
264	72.1	56.2	84.4

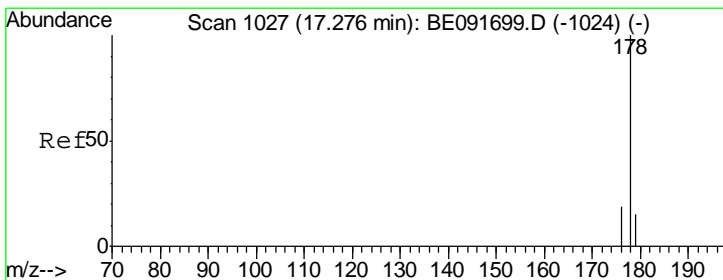
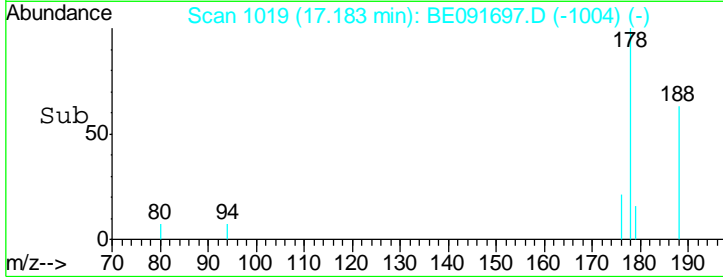
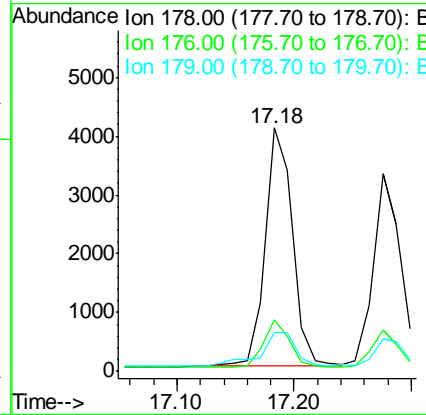
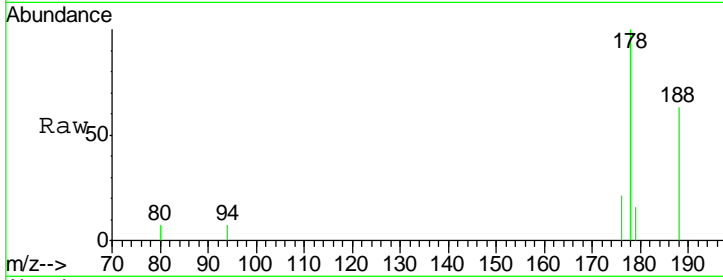




#23  
 Phenanthrene  
 Concen: 0.11 ng  
 RT: 17.18 min Scan# 1019  
 Delta R.T. -0.00 min  
 Lab File: BE091697.D  
 Acq: 26 Apr 2016 10:04

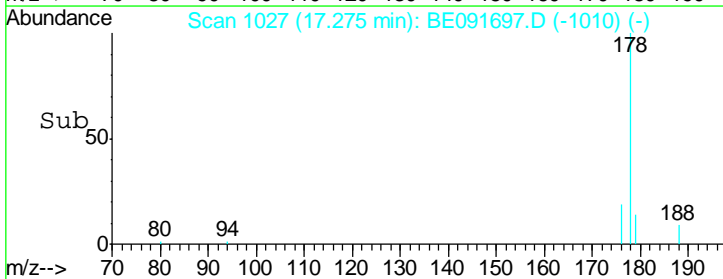
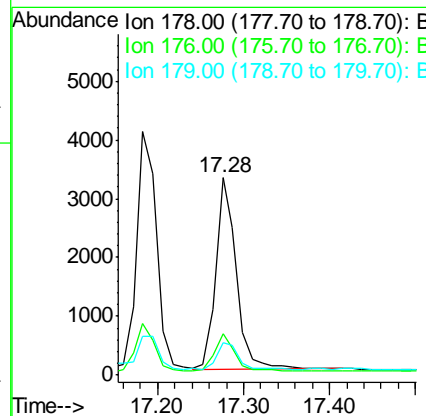
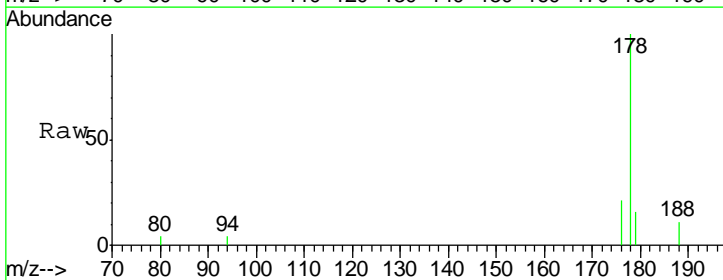
Instrument :  
 BNA\_E  
 ClientSampled :  
 SSTDICC0.1

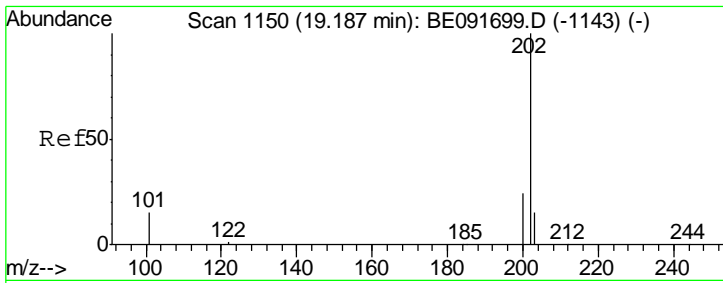
Tgt Ion	Resp	Lower	Upper
178	6611		
176	18.8	15.3	22.9
179	18.5	12.6	18.8



#24  
 Anthracene  
 Concen: 0.10 ng  
 RT: 17.28 min Scan# 1027  
 Delta R.T. -0.00 min  
 Lab File: BE091697.D  
 Acq: 26 Apr 2016 10:04

Tgt Ion	Resp	Lower	Upper
178	5468		
176	18.8	14.6	21.8
179	15.5	11.8	17.6

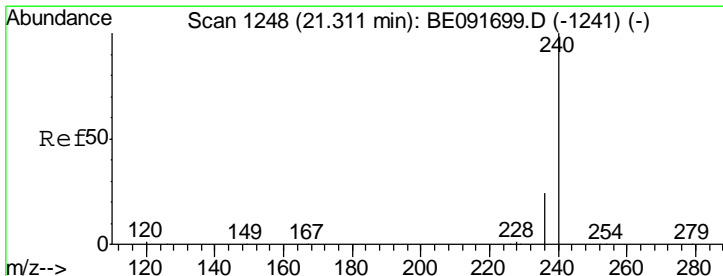
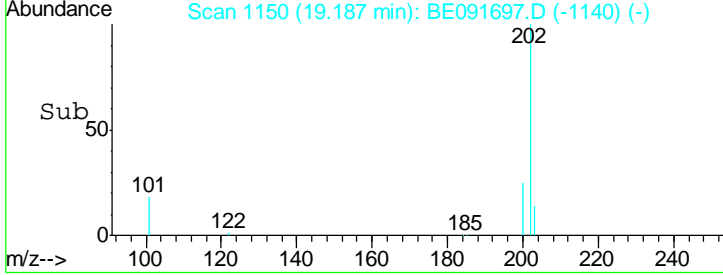
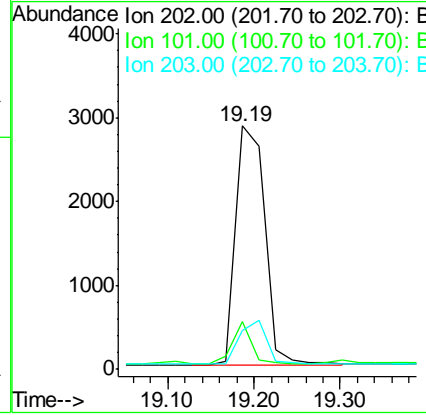
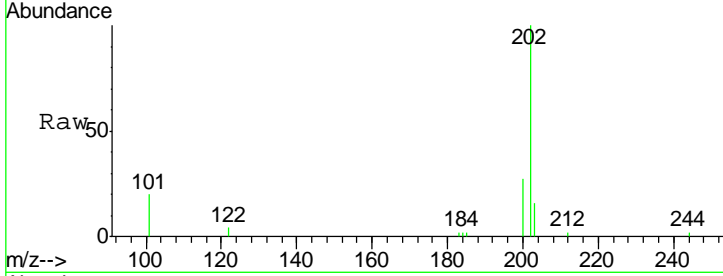




#25  
 Fluoranthene  
 Concen: 0.12 ng  
 RT: 19.19 min Scan# 1150  
 Delta R.T. -0.00 min  
 Lab File: BE091697.D  
 Acq: 26 Apr 2016 10:04

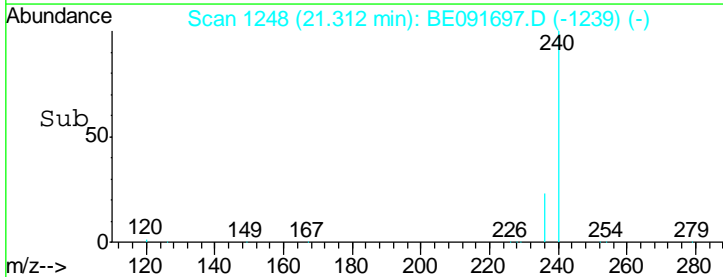
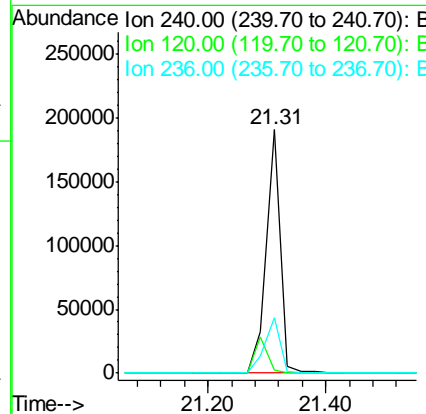
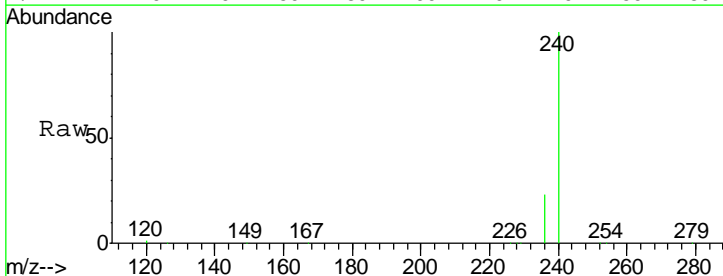
Instrument : BNA\_E  
 ClientSampleId : SSTDICC0.1

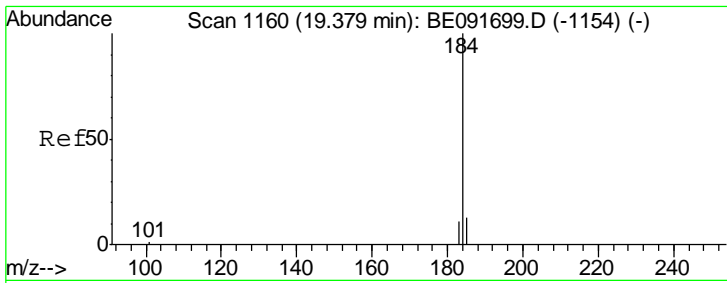
Tgt Ion	Resp	Lower	Upper
202	6680		
101	12.9	11.0	16.6
203	17.7	13.9	20.9



#26  
 Chrysene-d12  
 Concen: 5.00 ng  
 RT: 21.31 min Scan# 1248  
 Delta R.T. 0.00 min  
 Lab File: BE091697.D  
 Acq: 26 Apr 2016 10:04

Tgt Ion	Resp	Lower	Upper
240	320793		
120	1.1	11.0	16.4#
236	22.8	21.7	32.5



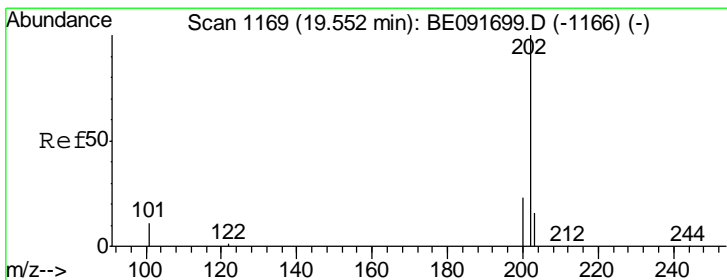
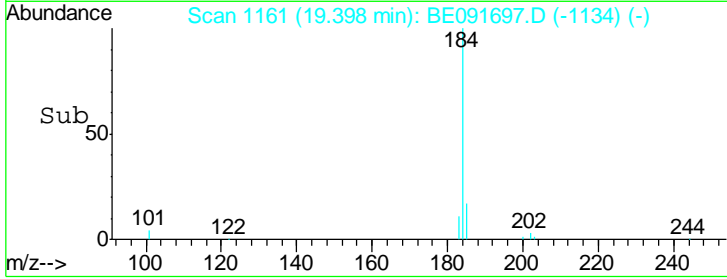
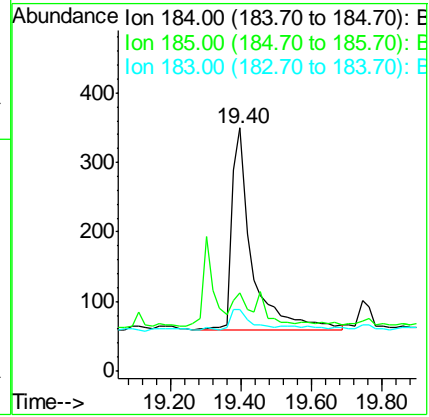
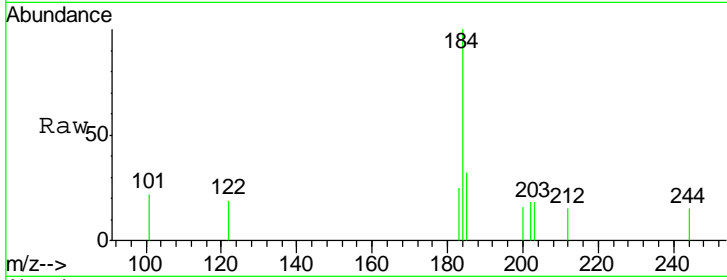


#27  
Benzidine  
Concen: 0.06 ng  
RT: 19.40 min Scan# 1161  
Delta R.T. 0.02 min  
Lab File: BE091697.D  
Acq: 26 Apr 2016 10:04

Instrument :  
BNA\_E  
ClientSampled :  
SSTDIC0.1

Tgt Ion:184 Resp: 1142

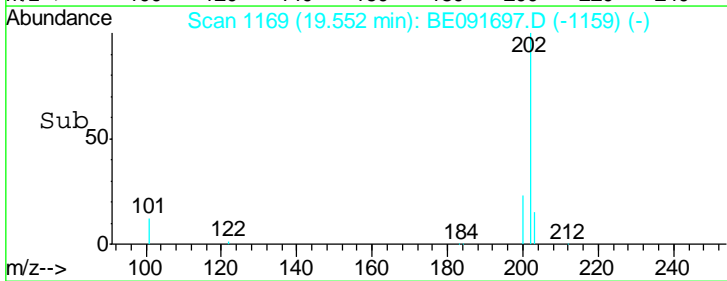
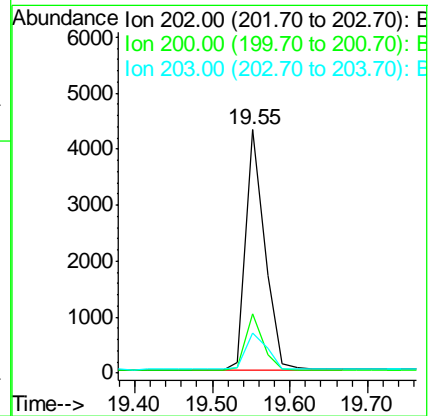
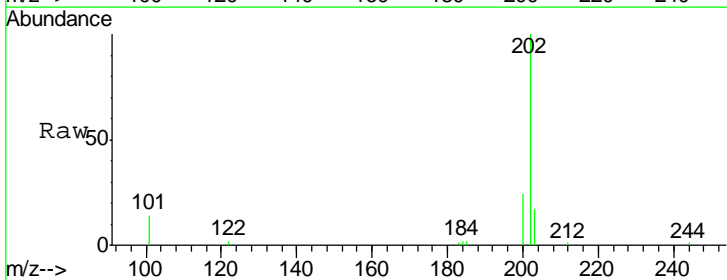
Ion	Ratio	Lower	Upper
184	100		
185	32.3	22.3	33.5
183	25.4	16.4	24.6



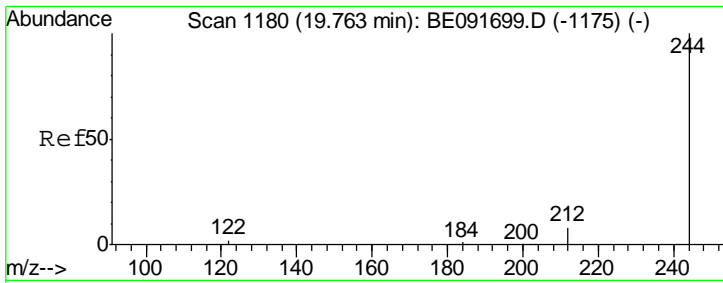
#28  
Pyrene  
Concen: 0.10 ng  
RT: 19.55 min Scan# 1169  
Delta R.T. -0.00 min  
Lab File: BE091697.D  
Acq: 26 Apr 2016 10:04

Tgt Ion:202 Resp: 7276

Ion	Ratio	Lower	Upper
202	100		
200	21.2	16.8	25.2
203	17.7	14.0	21.0



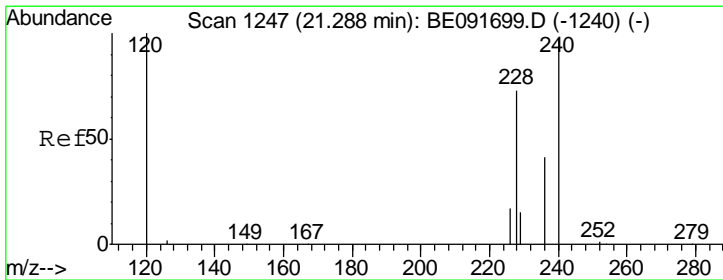
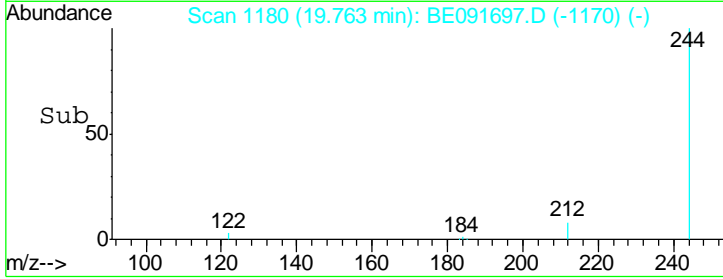
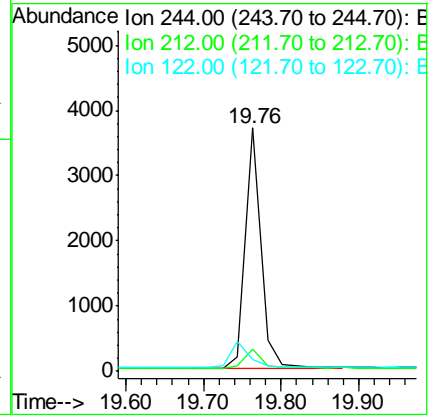
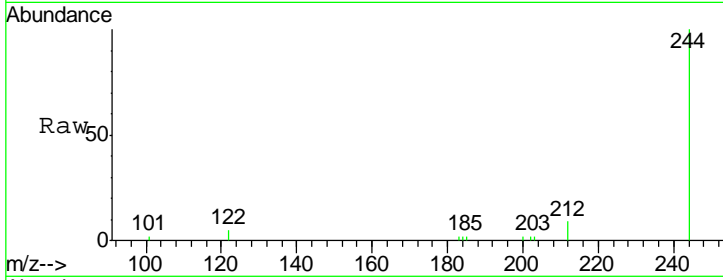




#29  
 Terphenyl-d14  
 Concen: 0.10 ng  
 RT: 19.76 min Scan# 1180  
 Delta R.T. -0.00 min  
 Lab File: BE091697.D  
 Acq: 26 Apr 2016 10:04

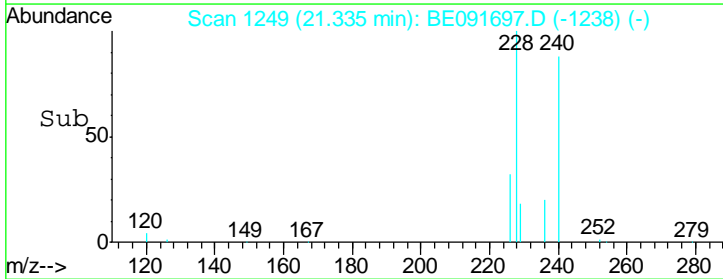
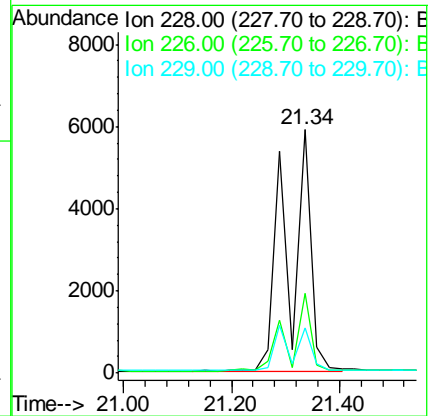
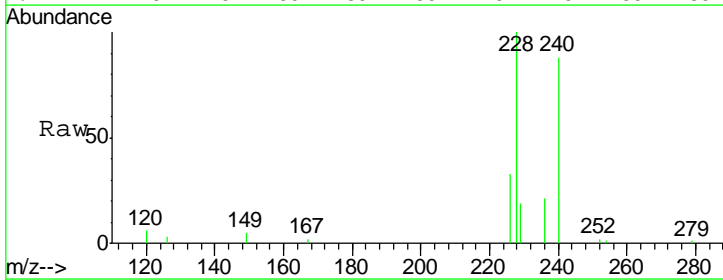
**Instrument :**  
 BNA\_E  
**ClientSampled :**  
 SSTDICC0.1

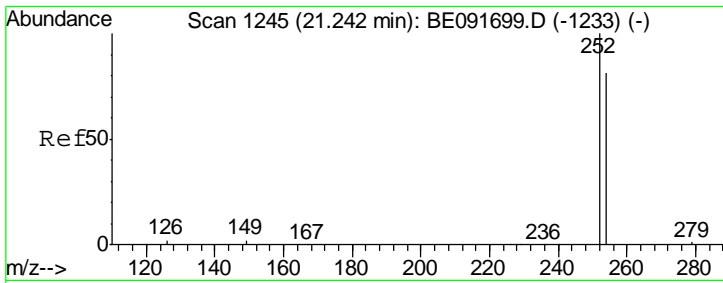
Tgt Ion	Ratio	Lower	Upper
244	100		
212	9.1	6.9	10.3
122	4.8	11.0	16.4#



#30  
 Benzo(a)anthracene  
 Concen: 0.23 ng  
 RT: 21.34 min Scan# 1249  
 Delta R.T. 0.05 min  
 Lab File: BE091697.D  
 Acq: 26 Apr 2016 10:04

Tgt Ion	Ratio	Lower	Upper
228	100		
226	32.7	21.0	31.4#
229	18.8	15.7	23.5

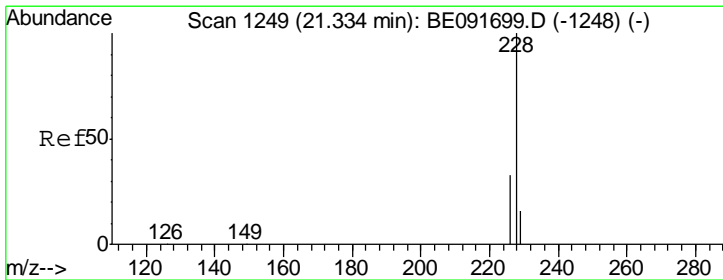
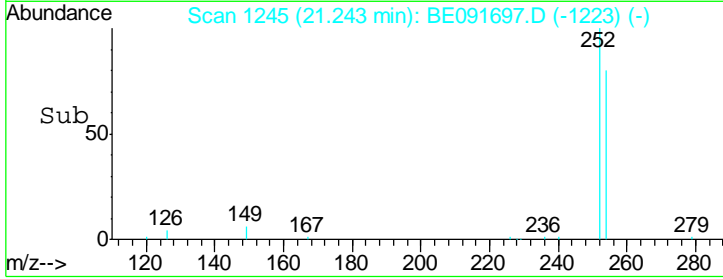
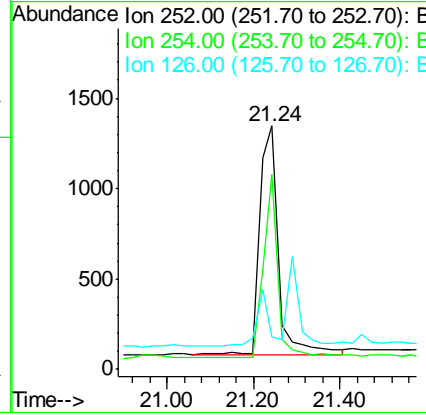
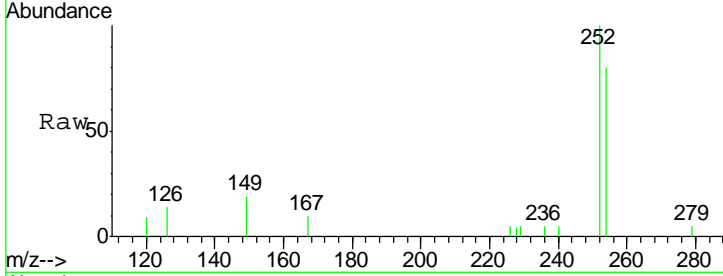




#31  
 3,3'-Dichlorobenzidine  
 Concen: 0.12 ng  
 RT: 21.24 min Scan# 1245  
 Delta R.T. 0.00 min  
 Lab File: BE091697.D  
 Acq: 26 Apr 2016 10:04

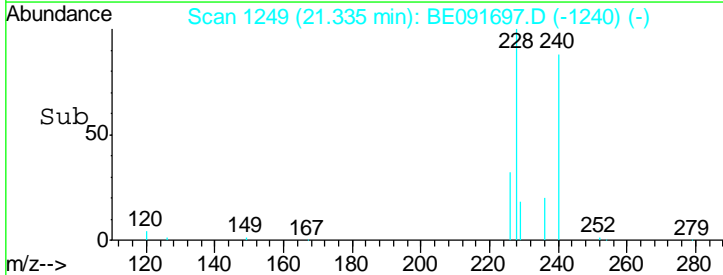
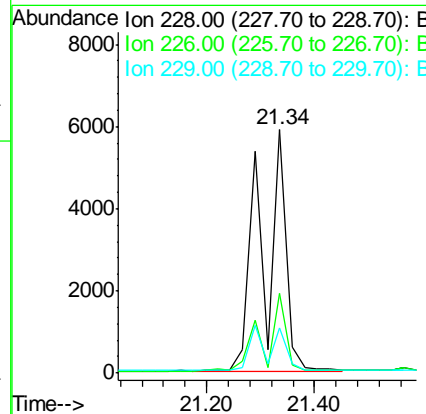
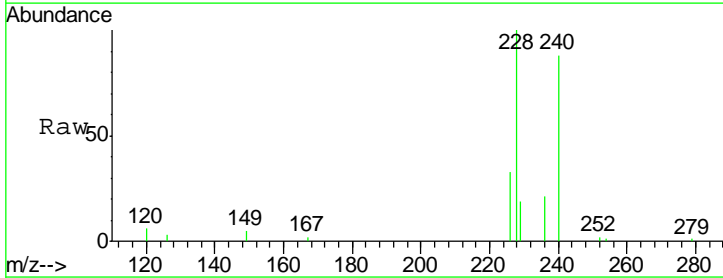
Instrument :  
 BNA\_E  
 ClientSampled :  
 SSTDICC0.1

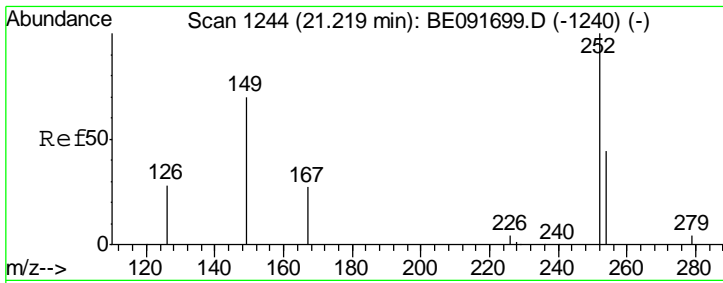
Tgt Ion	Resp	Lower	Upper
252	3877		
254	80.3	51.1	76.7#
126	13.5	12.6	18.8



#32  
 Chrysene  
 Concen: 0.21 ng  
 RT: 21.34 min Scan# 1249  
 Delta R.T. 0.00 min  
 Lab File: BE091697.D  
 Acq: 26 Apr 2016 10:04

Tgt Ion	Resp	Lower	Upper
228	18066		
226	32.7	24.0	36.0
229	18.8	15.9	23.9

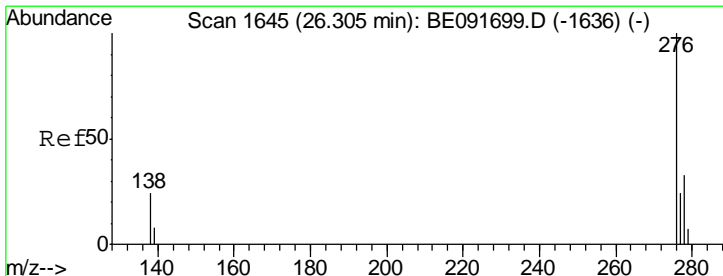
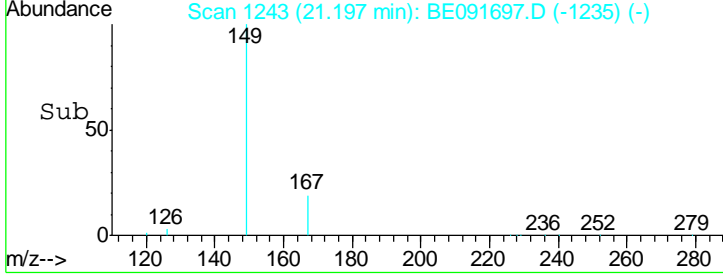
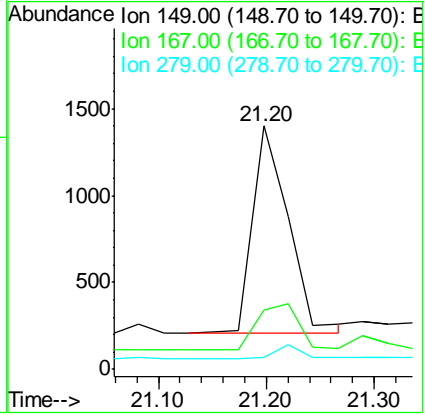
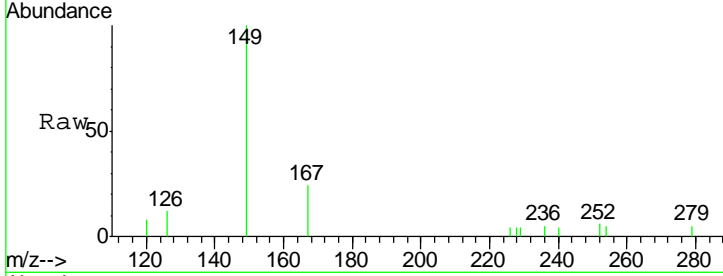




#33  
 Bis(2-ethylhexyl)phthalate  
 Concen: 0.18 ng  
 RT: 21.20 min Scan# 1243  
 Delta R.T. -0.02 min  
 Lab File: BE091697.D  
 Acq: 26 Apr 2016 10:04

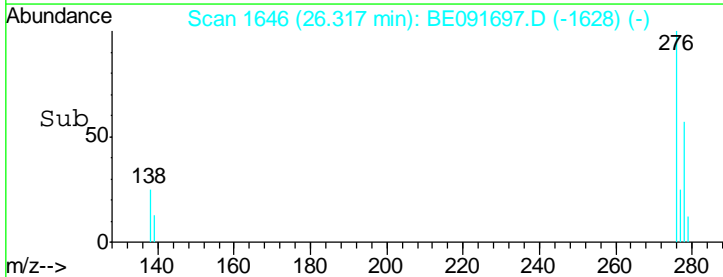
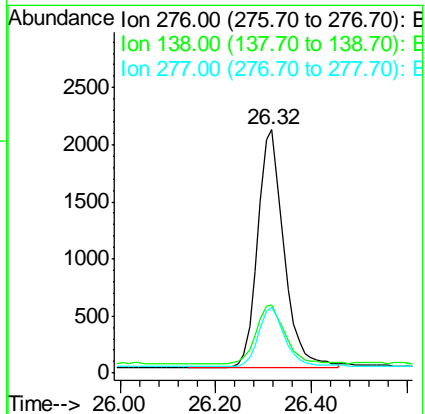
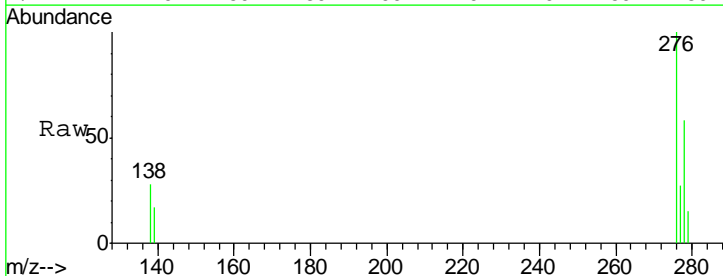
Instrument :  
 BNA\_E  
 ClientSampled :  
 SSTDICC0.1

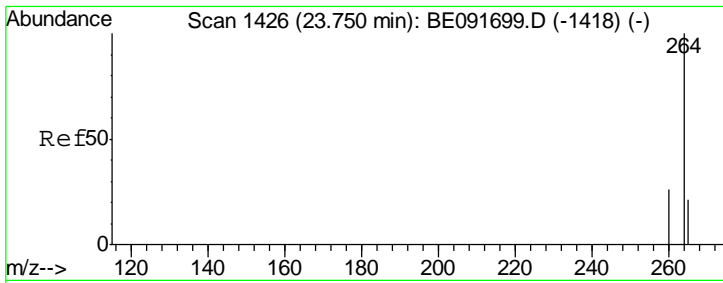
Tgt Ion	Resp	Lower	Upper
149	100		
167	0.0	19.5	29.3#
279	0.0	10.0	15.0#



#34  
 Indeno(1,2,3-cd)pyrene  
 Concen: 0.10 ng  
 RT: 26.32 min Scan# 1646  
 Delta R.T. 0.01 min  
 Lab File: BE091697.D  
 Acq: 26 Apr 2016 10:04

Tgt Ion	Resp	Lower	Upper
276	100		
138	27.7	23.4	35.2
277	25.0	19.8	29.8

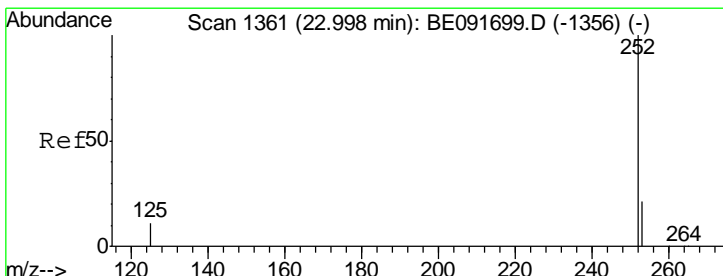
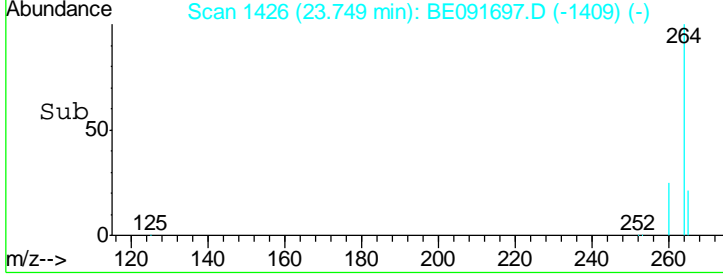
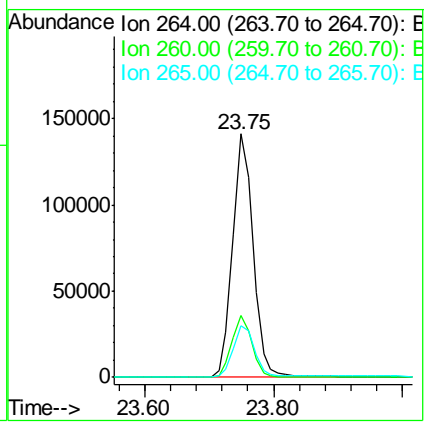
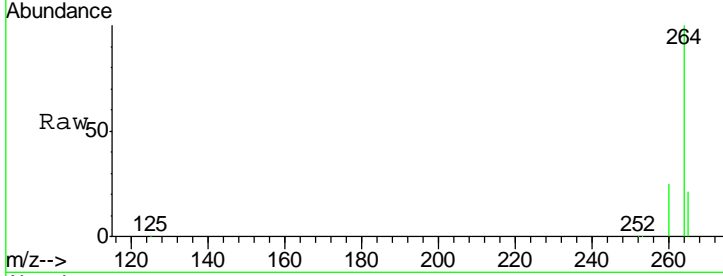




#35  
 Perylene-d12  
 Concen: 5.00 ng  
 RT: 23.75 min Scan# 1426  
 Delta R.T. -0.00 min  
 Lab File: BE091697.D  
 Acq: 26 Apr 2016 10:04

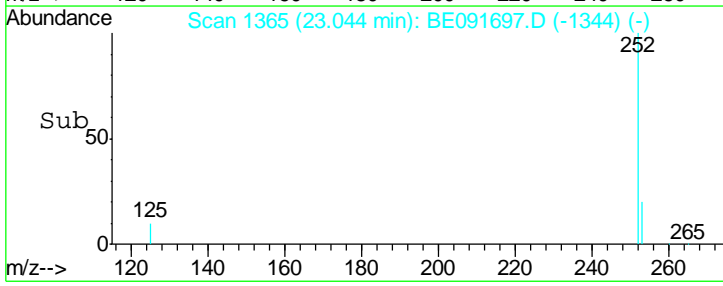
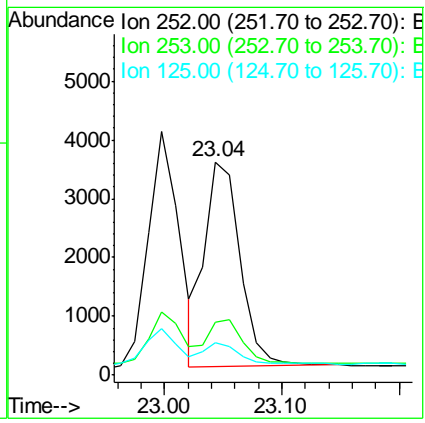
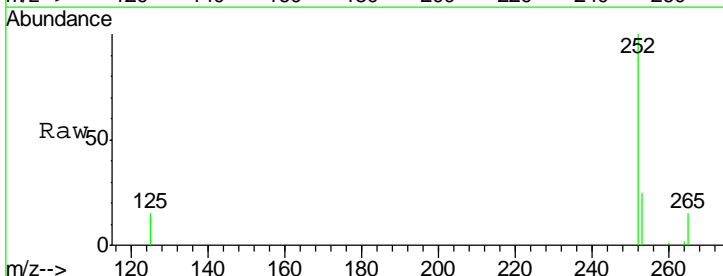
Instrument : BNA\_E  
 ClientSampled : SSTDICC0.1

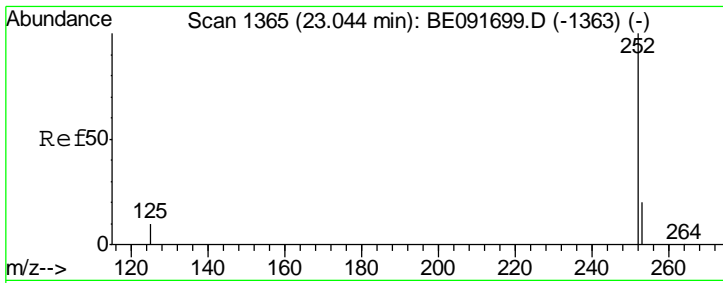
Tgt Ion	Resp	Lower	Upper
264	309603		
260	25.2	20.0	30.0
265	21.4	17.5	26.3



#36  
 Benzo(b)fluoranthene  
 Concen: 0.10 ng  
 RT: 23.04 min Scan# 1365  
 Delta R.T. 0.05 min  
 Lab File: BE091697.D  
 Acq: 26 Apr 2016 10:04

Tgt Ion	Resp	Lower	Upper
252	7275		
253	24.9	17.4	26.0
125	15.2	10.2	15.2



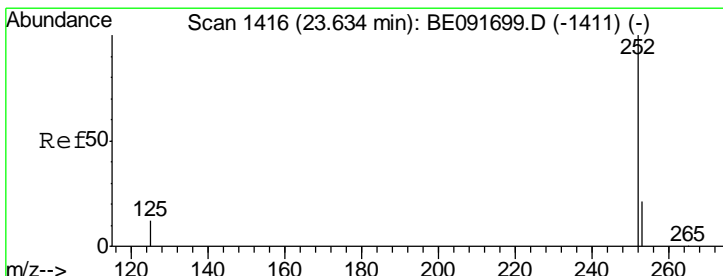
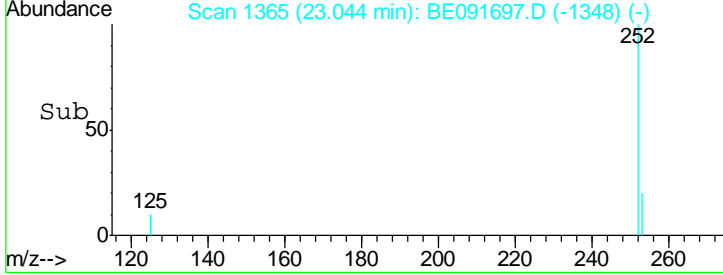
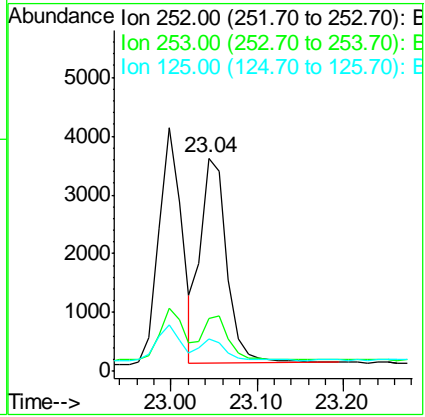
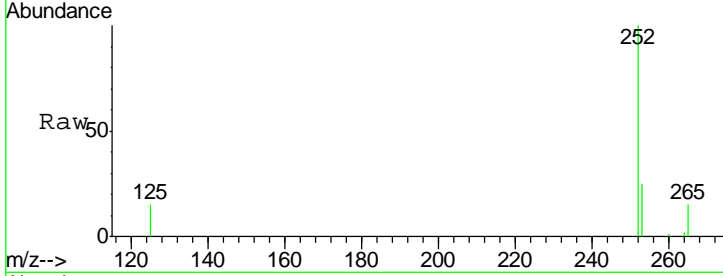


#37  
 Benzo(k)fluoranthene  
 Concen: 0.10 ng  
 RT: 23.04 min Scan# 1365  
 Delta R.T. -0.00 min  
 Lab File: BE091697.D  
 Acq: 26 Apr 2016 10:04

Instrument :  
 BNA\_E  
 ClientSampled :  
 SSTDICC0.1

Tgt Ion: 252 Resp: 7461

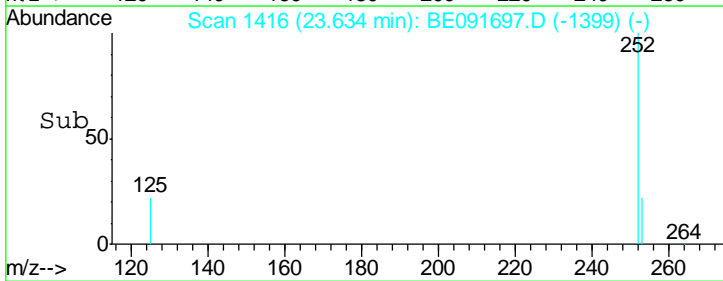
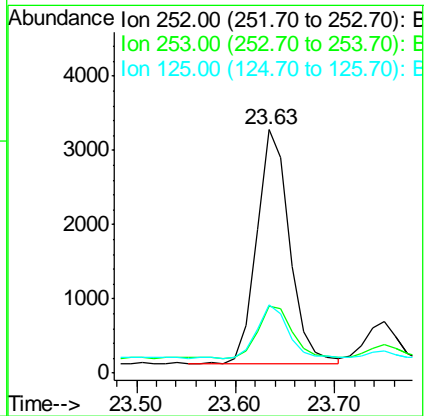
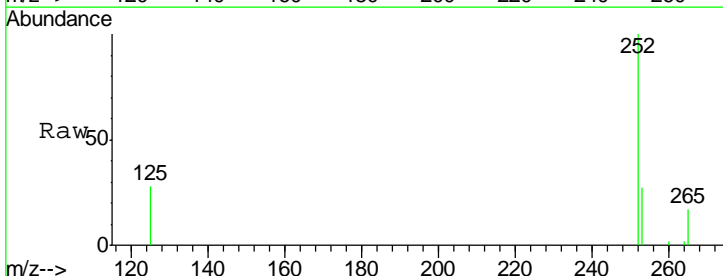
Ion	Ratio	Lower	Upper
252	100		
253	24.9	17.6	26.4
125	15.2	9.9	14.9#

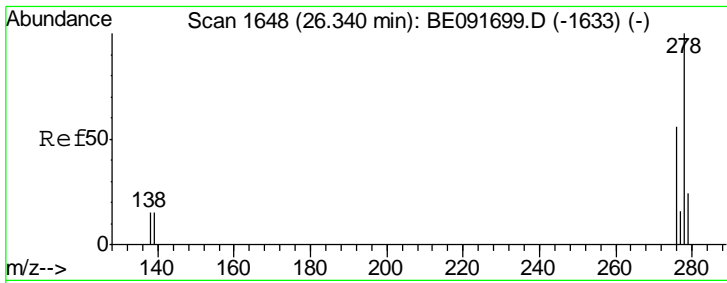


#38  
 Benzo(a)pyrene  
 Concen: 0.11 ng  
 RT: 23.63 min Scan# 1416  
 Delta R.T. -0.00 min  
 Lab File: BE091697.D  
 Acq: 26 Apr 2016 10:04

Tgt Ion: 252 Resp: 7182

Ion	Ratio	Lower	Upper
252	100		
253	27.5	18.1	27.1#
125	28.0	11.0	16.4#

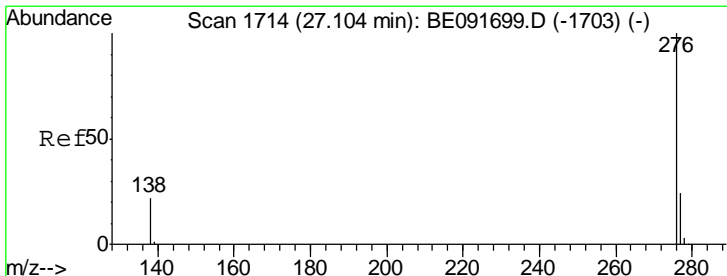
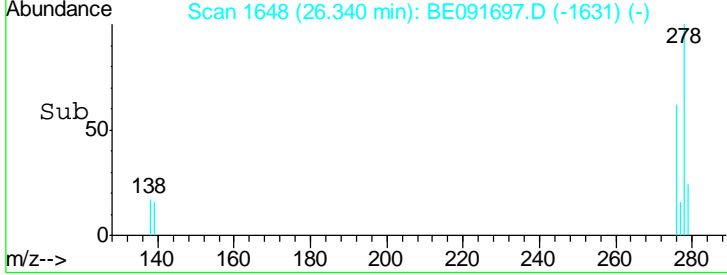
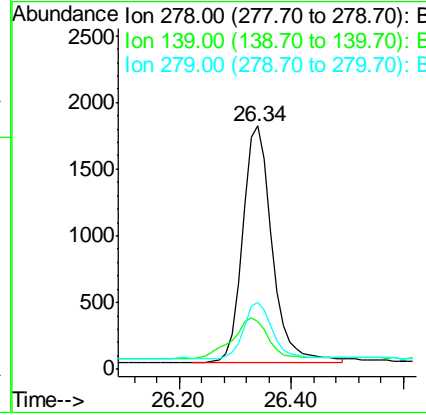
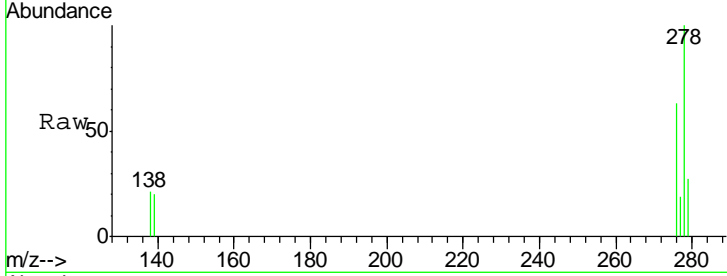




#39  
 Dibenzo(a,h)anthracene  
 Concen: 0.10 ng  
 RT: 26.34 min Scan# 1648  
 Delta R.T. -0.00 min  
 Lab File: BE091697.D  
 Acq: 26 Apr 2016 10:04

Instrument :  
 BNA\_E  
 ClientSampled :  
 SSTDICC0.1

Tgt Ion	Resp	Lower	Upper
278	6527		
139	19.7	16.0	24.0
279	27.3	19.4	29.2



#40  
 Benzo(g,h,i)perylene  
 Concen: 0.10 ng  
 RT: 27.10 min Scan# 1714  
 Delta R.T. -0.00 min  
 Lab File: BE091697.D  
 Acq: 26 Apr 2016 10:04

Tgt Ion	Resp	Lower	Upper
276	6655		
277	26.5	18.6	28.0
138	24.1	20.4	30.6

