

Data Path : Z:\HPCHEM1\BNA E\DATA\BE042616\  
 Data File : BE091700.D  
 Acq On : 26 Apr 2016 12:09  
 Operator : UM/SJ  
 Sample : SSTDIC0.8  
 Misc :  
 ALS Vial : 6 Sample Multiplier: 1

Instrument :  
 BNA\_E  
 ClientSampled :  
 SSTDIC0.8

Manual Integrations  
 APPROVED

sohil  
 4/27/2016 7:02:24 PM

Quant Time: Apr 26 15:36:53 2016  
 Quant Method : Z:\HPCHEM1\BNA E\METHODS\8270-SIM-BE042616.M  
 Quant Title : ASP BNA STANDARDS FOR 5 POINT CALIBRATION  
 QLast Update : Tue Apr 26 13:13:58 2016  
 Response via : Initial Calibration

Internal Standards	R.T.	QIon	Response	Conc	Units	Dev(Min)	
1) 1,4-Dichlorobenzene-d4	7.80	152	36848	5.00	ng	0.00	
7) Naphthalene-d8	10.57	136	168191	5.00	ng	0.00	
13) Acenaphthene-d10	14.42	164	97668	5.00	ng	0.00	
19) Phenanthrene-d10	17.15	188	265845	5.00	ng	0.00	
26) Chrysene-d12	21.31	240	300717	5.00	ng	0.00	
35) Perylene-d12	23.75	264	280257	5.00	ng	0.00	
System Monitoring Compounds							
4) 2-Fluorophenol	5.39	112	7197	0.88	ng	0.00	
5) Phenol-d6	6.95	99	9312	0.84	ng	0.00	
8) Nitrobenzene-d5	8.95	82	8531	0.95	ng	0.00	
14) 2,4,6-Tribromophenol	15.90	330	2356m	1.03	ng	0.00	
15) 2-Fluorobiphenyl	13.03	172	22852	0.85	ng	0.00	
29) Terphenyl-d14	19.76	244	39102	0.82	ng	0.00	
Target Compounds							
2) 1,4-Dioxane	3.33	88	3768	0.83	ng		95
3) n-Nitrosodimethylamine	3.64	42	5347	1.01	ng		92
6) bis(2-Chloroethyl)ether	7.21	93	8717	0.88	ng	#	78
9) Nitrobenzene	8.99	77	8884	0.99	ng		96
10) Naphthalene	10.61	128	28269	0.82	ng		97
11) Hexachlorobutadiene	10.92	225	4138m	0.84	ng		
12) 2-Methylnaphthalene	12.24	142	17798	0.81	ng		91
16) Acenaphthylene	14.12	152	28547m	0.73	ng		
17) Acenaphthene	14.47	154	19909	0.83	ng		88
18) Fluorene	15.46	166	25188	0.84	ng		98
20) 4-Bromophenyl-phenylether	16.33	248	7313	0.81	ng		95
21) Hexachlorobenzene	16.45	284	7463	0.77	ng		98
22) Pentachlorophenol	16.79	266	3182	1.00	ng		90
23) Phenanthrene	17.18	178	47057	0.79	ng		99
24) Anthracene	17.28	178	41306	0.78	ng		98
25) Fluoranthene	19.19	202	49213	0.83	ng		97
27) Benzidine	19.38	184	14198m	0.81	ng		
28) Pyrene	19.55	202	54544	0.79	ng		99
30) Benzo(a)anthracene	21.29	228	62483m	0.85	ng		
31) 3,3'-Dichlorobenzidine	21.22	252	28202	0.92	ng	#	77
32) Chrysene	21.33	228	63795m	0.80	ng		
33) Bis(2-ethylhexyl)phthalate	21.22	149	15184	1.08	ng	#	87
34) Indeno(1,2,3-cd)pyrene	26.31	276	57780	0.81	ng		96
36) Benzo(b)fluoranthene	23.00	252	53659	0.80	ng		98
37) Benzo(k)fluoranthene	23.04	252	53137	0.80	ng		98
38) Benzo(a)pyrene	23.63	252	48967	0.84	ng		98
39) Dibenzo(a,h)anthracene	26.33	278	47828	0.80	ng		96
40) Benzo(g,h,i)perylene	27.09	276	47854	0.78	ng		97

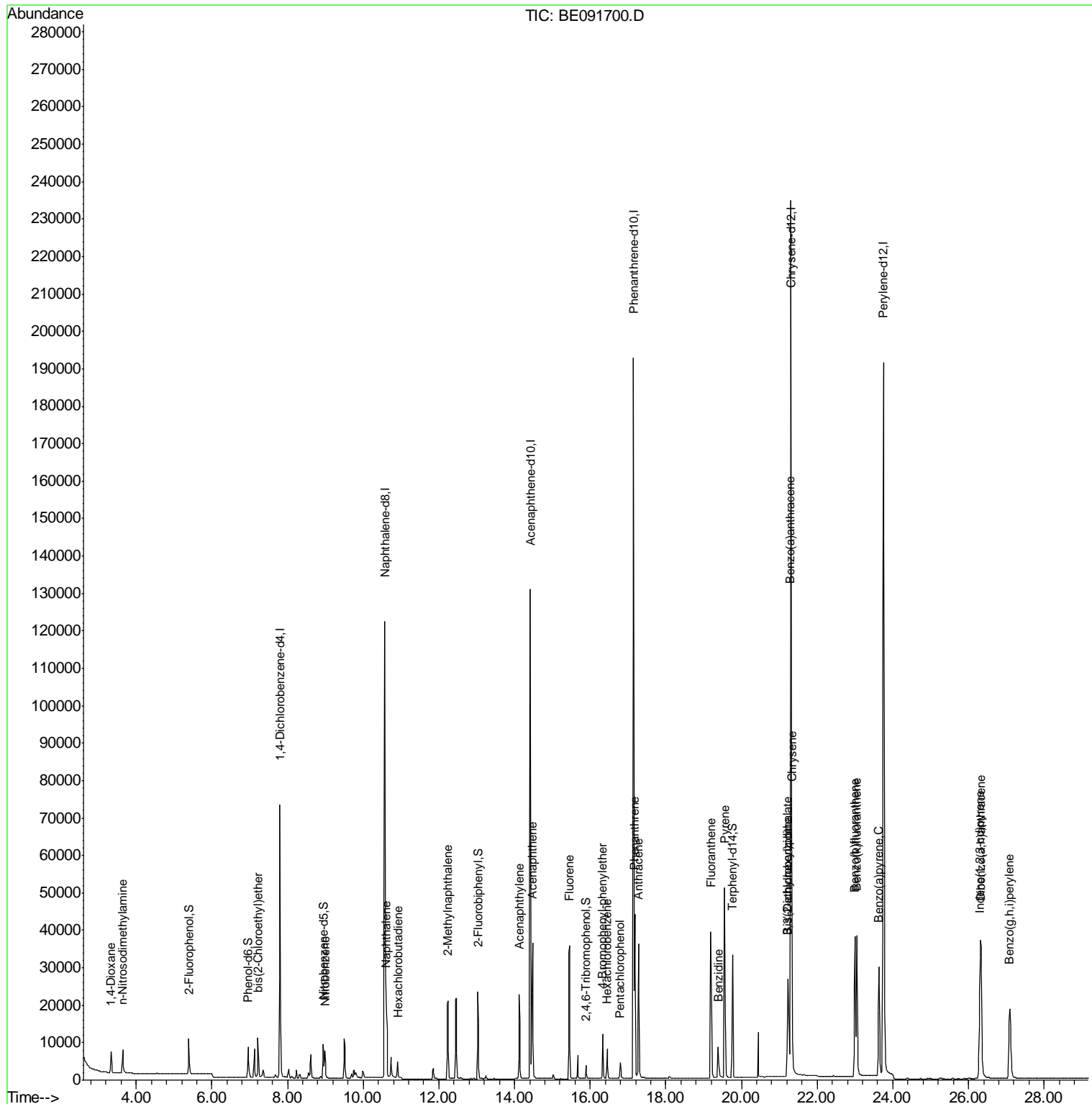
(#) = qualifier out of range (m) = manual integration (+) = signals summed

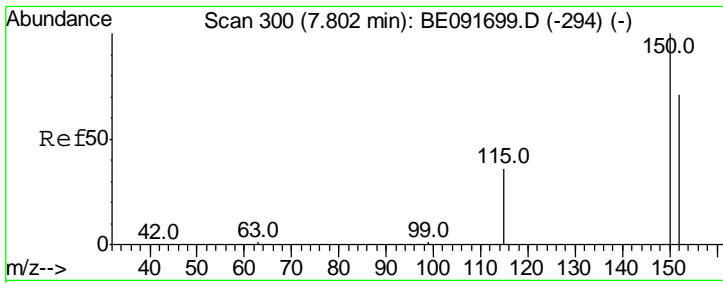
Data Path : Z:\HPCHEM1\BNA E\DATA\BE042616\  
 Data File : BE091700.D  
 Acq On : 26 Apr 2016 12:09  
 Operator : UM/SJ  
 Sample : SSTDICC0.8  
 Misc :  
 ALS Vial : 6 Sample Multiplier: 1

Instrument :  
 BNA\_E  
 Client Sampled :  
 SSTDICC0.8

Manual Integrations  
 APPROVED  
 sohil  
 4/27/2016 7:02:24 PM

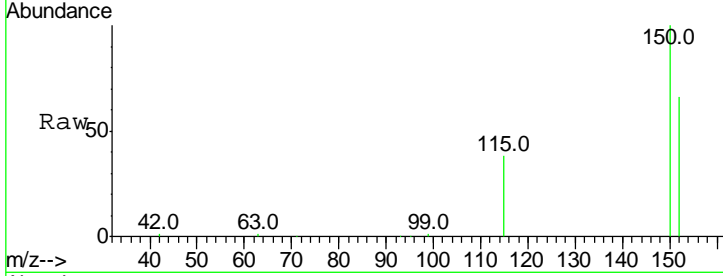
Quant Time: Apr 26 15:36:53 2016  
 Quant Method : Z:\HPCHEM1\BNA E\METHODS\8270-SIM-BE042616.M  
 Quant Title : ASP BNA STANDARDS FOR 5 POINT CALIBRATION  
 QLast Update : Tue Apr 26 13:13:58 2016  
 Response via : Initial Calibration





#1  
 1,4-Dichlorobenzene-d4  
 Concen: 5.00 ng  
 RT: 7.80 min Scan# 300  
 Delta R.T. -0.00 min  
 Lab File: BE091700.D  
 Acq: 26 Apr 2016 12:09

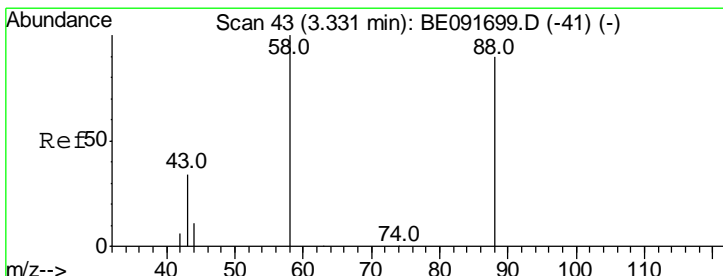
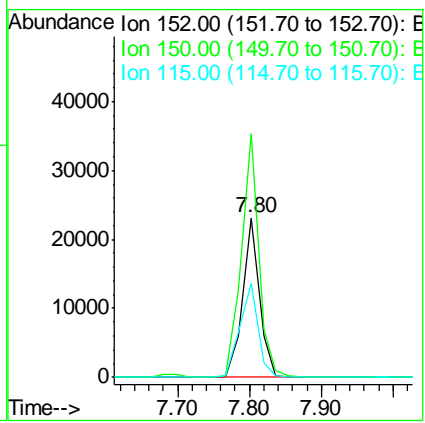
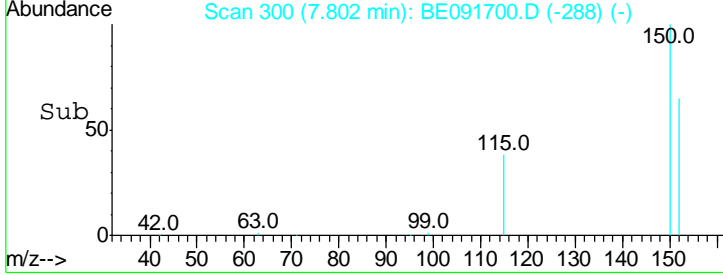
**Instrument :**  
 BNA\_E  
**ClientSampled :**  
 SSTDICC0.8



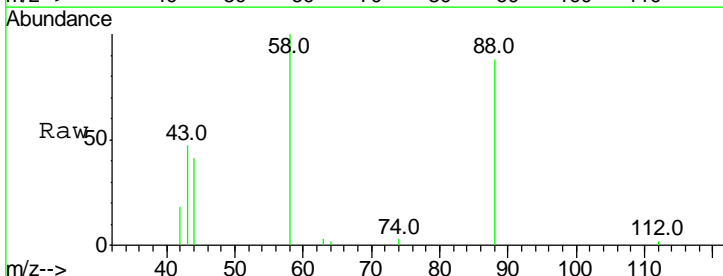
Tgt Ion: 152 Resp: 36848

Ion	Ratio	Lower	Upper
152	100		
150	152.6	122.6	183.8
115	58.5	52.8	79.2

**Manual Integrations**  
**APPROVED**  
 sohil  
 4/27/2016 7:02:24 PM

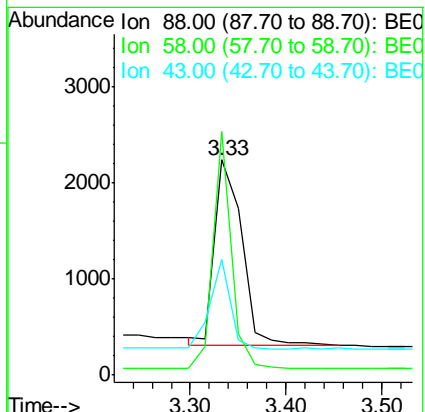
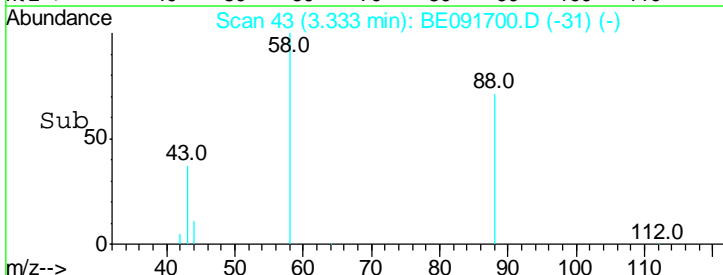


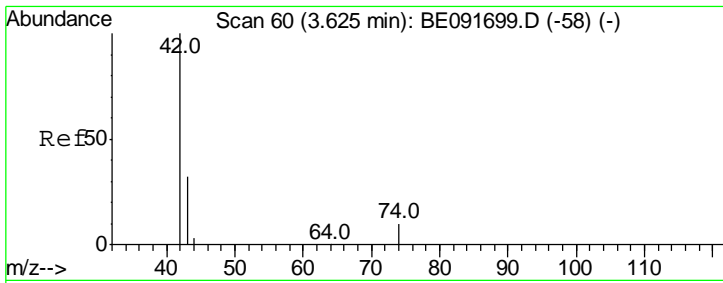
#2  
 1,4-Dioxane  
 Concen: 0.83 ng  
 RT: 3.33 min Scan# 43  
 Delta R.T. 0.00 min  
 Lab File: BE091700.D  
 Acq: 26 Apr 2016 12:09



Tgt Ion: 88 Resp: 3768

Ion	Ratio	Lower	Upper
88	100		
58	85.6	65.8	98.6
43	35.9	25.3	37.9



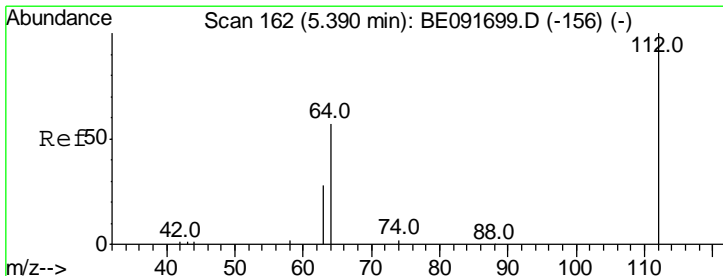
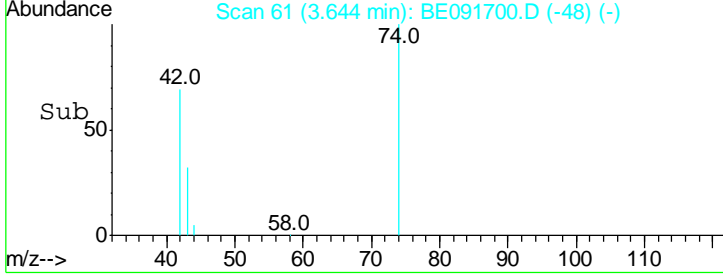
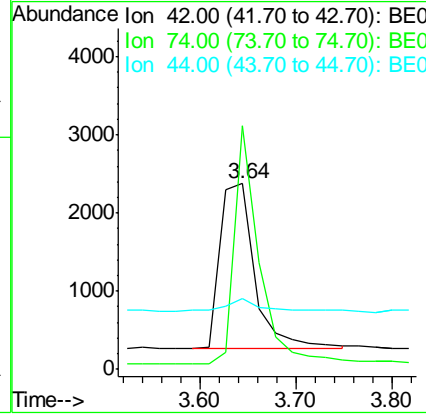
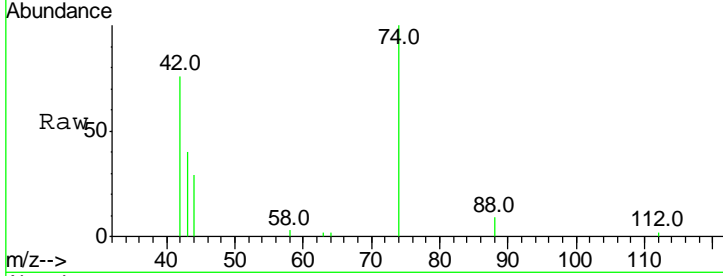


#3  
 n-Nitrosodimethylamine  
 Concen: 1.01 ng  
 RT: 3.64 min Scan# 61  
 Delta R.T. 0.02 min  
 Lab File: BE091700.D  
 Acq: 26 Apr 2016 12:09

**Instrument :**  
 BNA\_E  
**ClientSampled :**  
 SSTDICC0.8

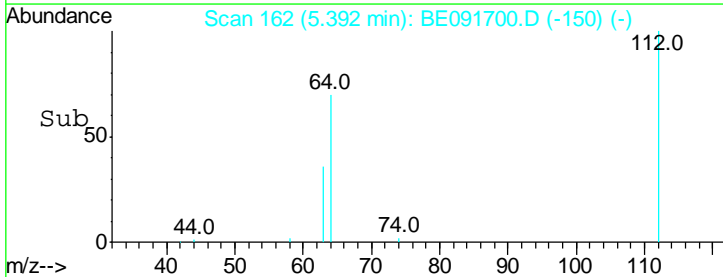
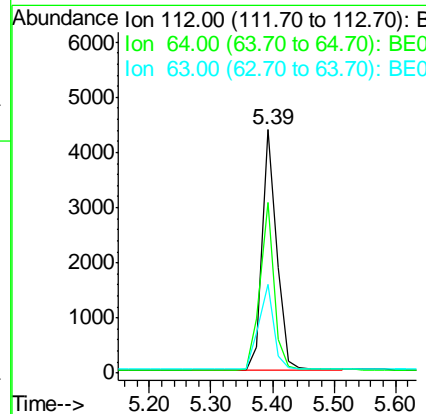
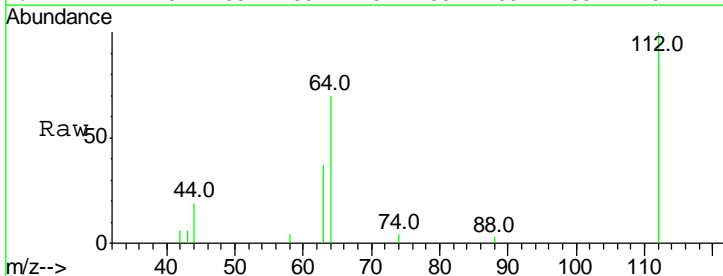
Tgt Ion	Resp	Lower	Upper
42	100		
74	101.3	87.9	131.9
44	7.0	6.6	9.8

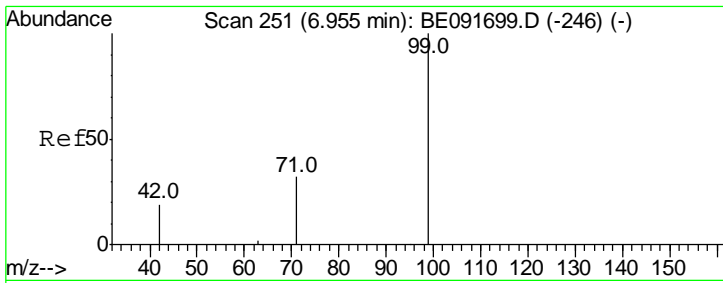
**Manual Integrations**  
**APPROVED**  
 sohil  
 4/27/2016 7:02:24 PM



#4  
 2-Fluorophenol  
 Concen: 0.88 ng  
 RT: 5.39 min Scan# 162  
 Delta R.T. 0.00 min  
 Lab File: BE091700.D  
 Acq: 26 Apr 2016 12:09

Tgt Ion	Resp	Lower	Upper
112	100		
64	67.4	30.9	46.3#
63	36.4	16.7	25.1#



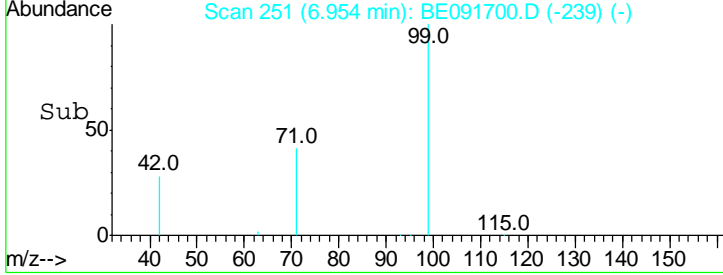
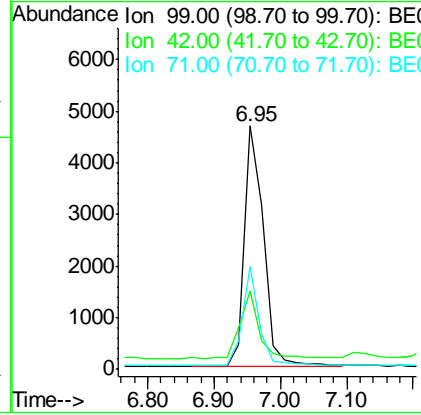
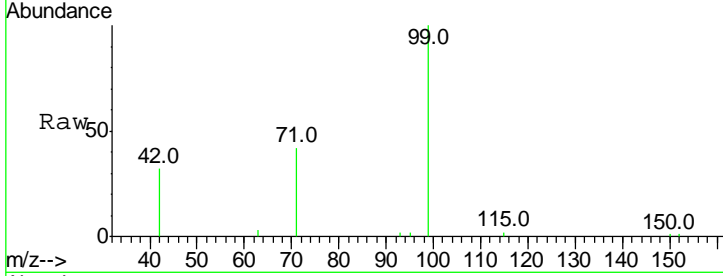


#5  
 Phenol-d6  
 Concen: 0.84 ng  
 RT: 6.95 min Scan# 251  
 Delta R.T. -0.00 min  
 Lab File: BE091700.D  
 Acq: 26 Apr 2016 12:09

**Instrument :**  
 BNA\_E  
**ClientSampled :**  
 SSTDICC0.8

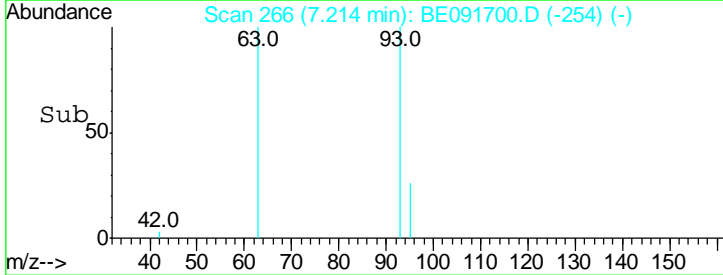
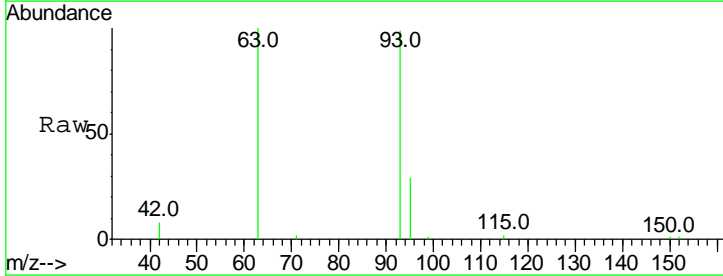
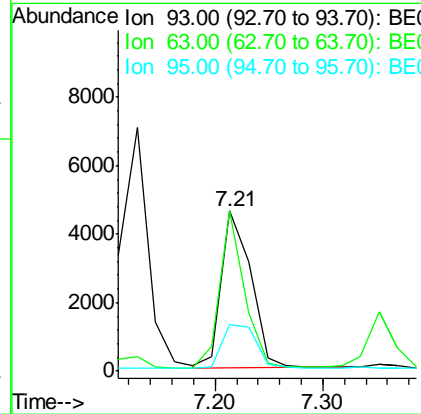
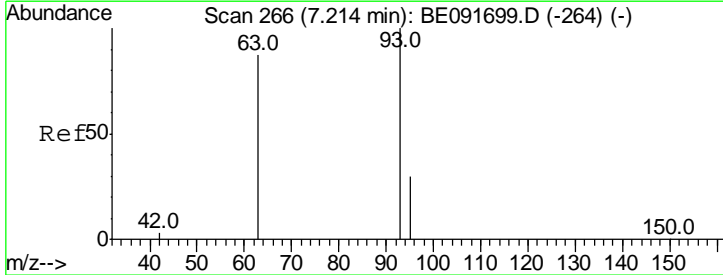
Tgt Ion	Resp	Lower	Upper
99	100		
42	27.3	16.2	24.2#
71	36.3	29.0	43.4

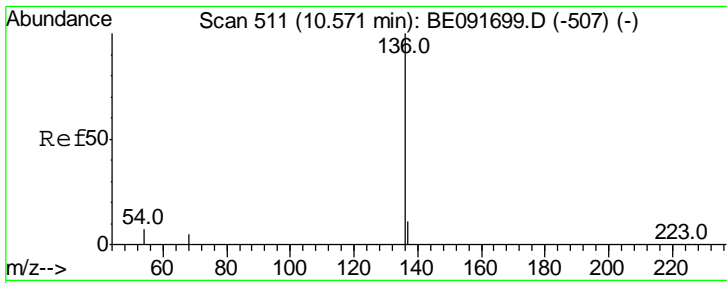
**Manual Integrations**  
**APPROVED**  
 sohil  
 4/27/2016 7:02:24 PM



#6  
 bis(2-Chloroethyl)ether  
 Concen: 0.88 ng  
 RT: 7.21 min Scan# 266  
 Delta R.T. -0.00 min  
 Lab File: BE091700.D  
 Acq: 26 Apr 2016 12:09

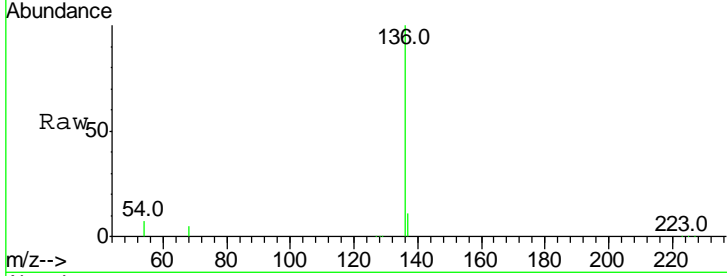
Tgt Ion	Resp	Lower	Upper
93	100		
63	84.0	49.5	74.3#
95	31.8	22.2	33.4





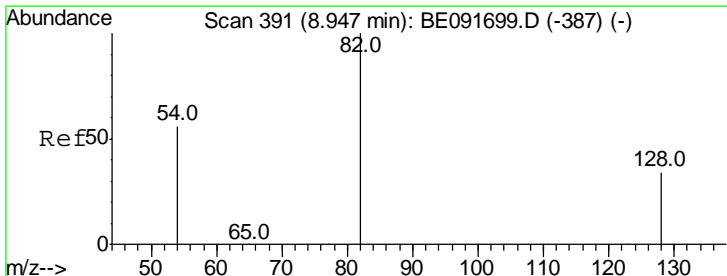
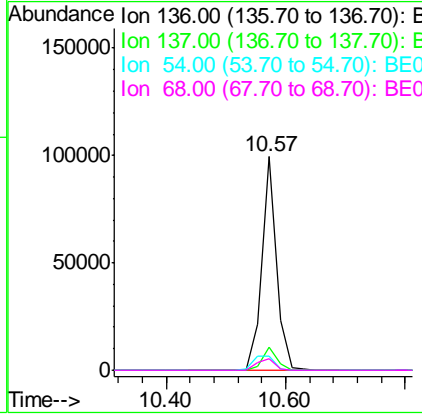
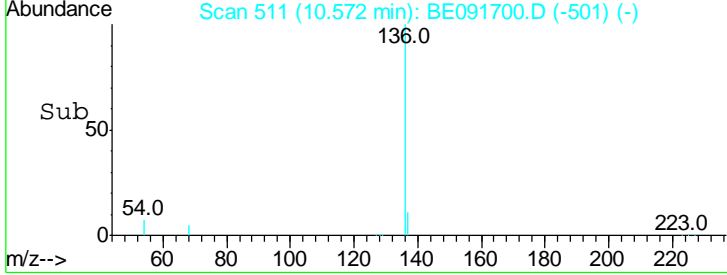
#7  
 Naphthalene-d8  
 Concen: 5.00 ng  
 RT: 10.57 min Scan# 511  
 Delta R.T. 0.00 min  
 Lab File: BE091700.D  
 Acq: 26 Apr 2016 12:09

**Instrument :**  
 BNA\_E  
**ClientSampled :**  
 SSTDICC0.8

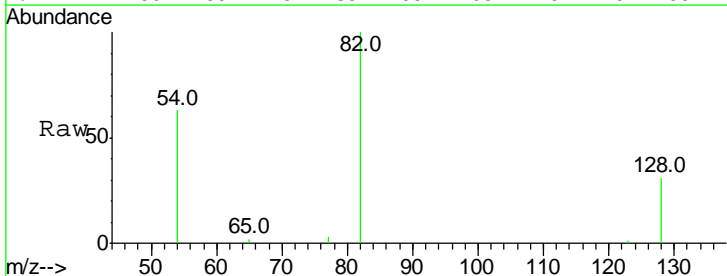


Tgt Ion	Resp	Lower	Upper
136	100		
137	10.7	8.9	13.3
54	6.9	8.2	12.4#
68	5.2	6.2	9.4#

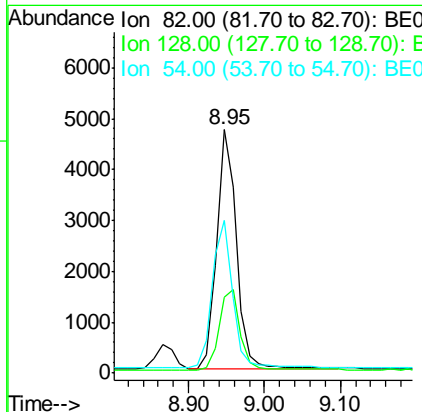
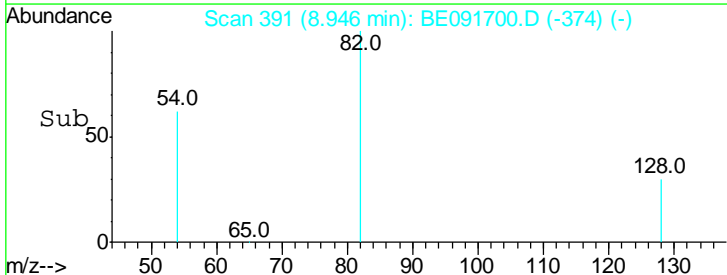
**Manual Integrations**  
**APPROVED**  
 sohil  
 4/27/2016 7:02:24 PM

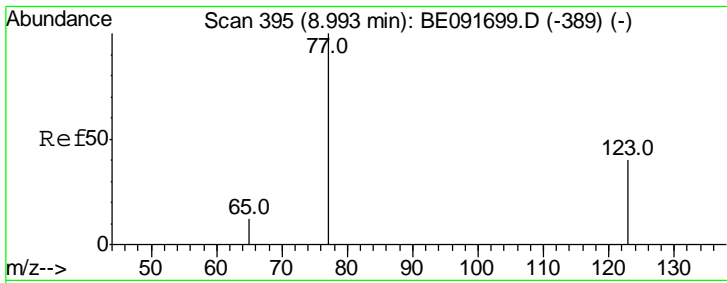


#8  
 Nitrobenzene-d5  
 Concen: 0.95 ng  
 RT: 8.95 min Scan# 391  
 Delta R.T. -0.00 min  
 Lab File: BE091700.D  
 Acq: 26 Apr 2016 12:09



Tgt Ion	Resp	Lower	Upper
82	100		
128	31.4	25.4	38.0
54	62.9	48.4	72.6



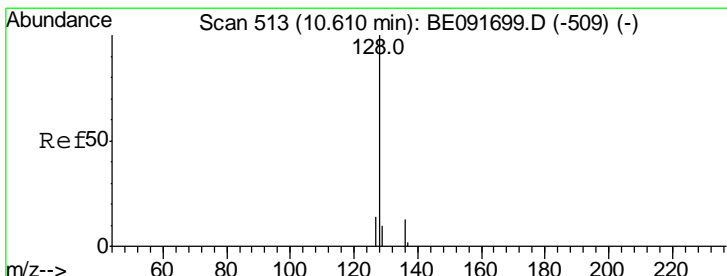
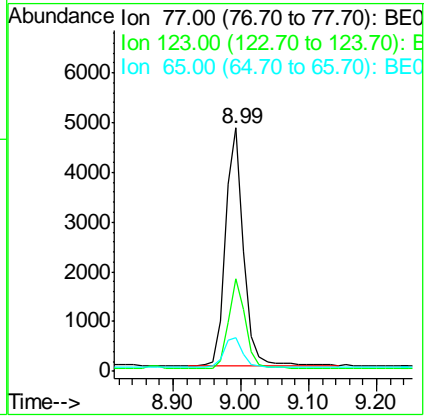
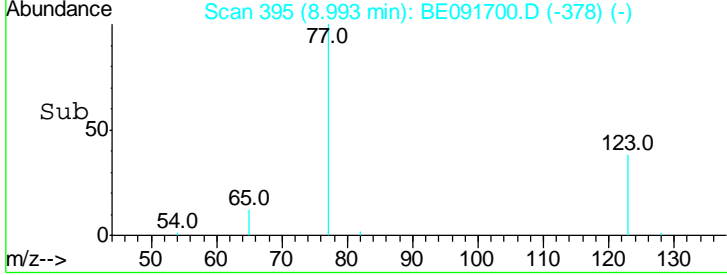
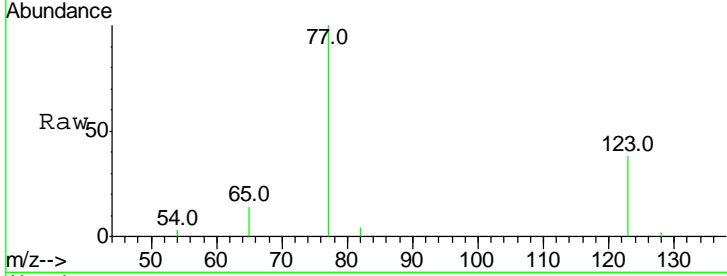


#9  
 Nitrobenzene  
 Concen: 0.99 ng  
 RT: 8.99 min Scan# 395  
 Delta R.T. -0.00 min  
 Lab File: BE091700.D  
 Acq: 26 Apr 2016 12:09

**Instrument :**  
 BNA\_E  
**ClientSampled :**  
 SSTDICC0.8

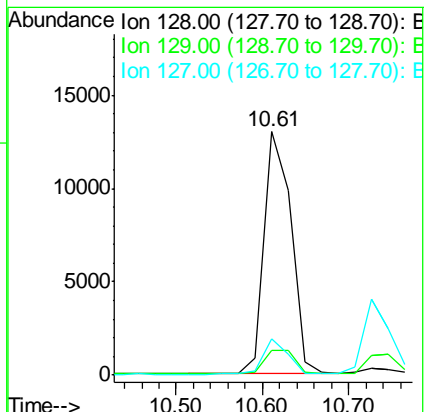
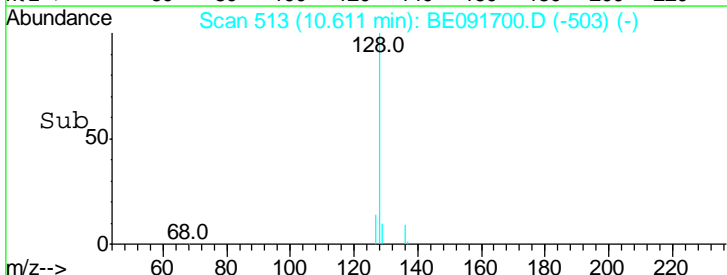
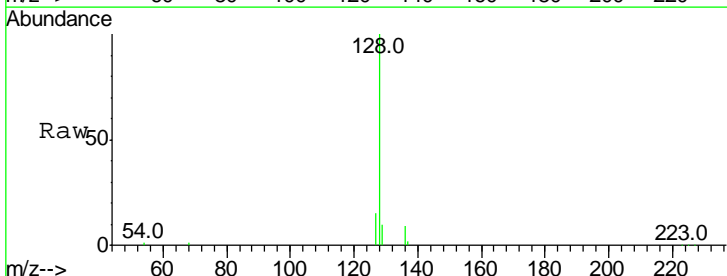
Tgt Ion	Resp	Lower	Upper
77	100		
123	36.1	26.9	40.3
65	13.4	9.4	14.2

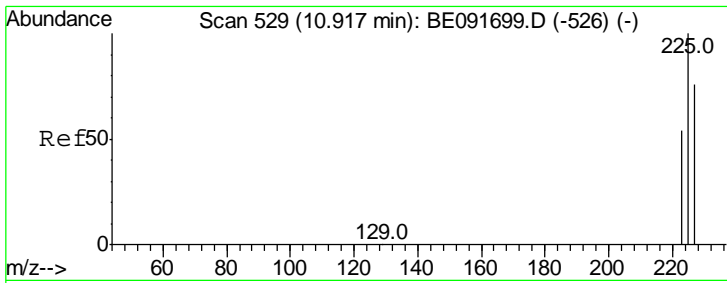
**Manual Integrations**  
**APPROVED**  
 sohil  
 4/27/2016 7:02:24 PM



#10  
 Naphthalene  
 Concen: 0.82 ng  
 RT: 10.61 min Scan# 513  
 Delta R.T. 0.00 min  
 Lab File: BE091700.D  
 Acq: 26 Apr 2016 12:09

Tgt Ion	Resp	Lower	Upper
128	100		
129	10.4	9.3	13.9
127	14.7	10.7	16.1



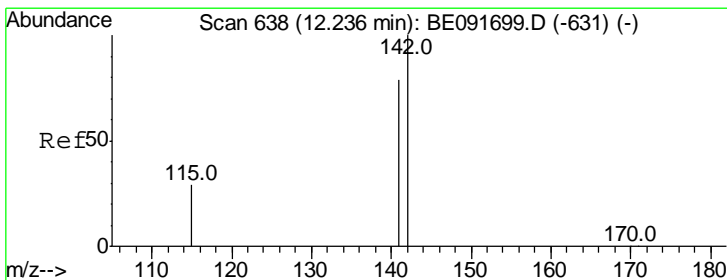
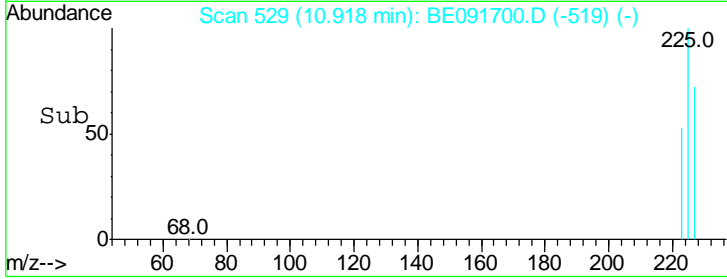
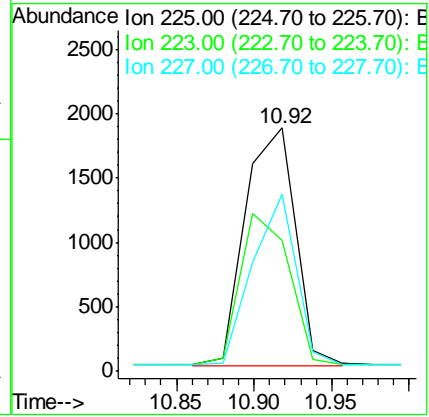
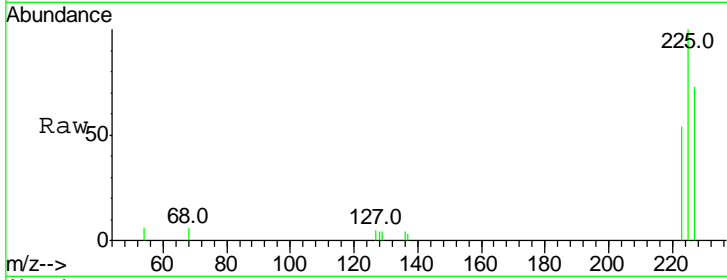


#11  
 Hexachlorobutadiene  
 Concen: 0.84 ng m  
 RT: 10.92 min Scan# 529  
 Delta R.T. 0.00 min  
 Lab File: BE091700.D  
 Acq: 26 Apr 2016 12:09

Instrument :  
 BNA\_E  
 ClientSampled :  
 SSTDICC0.8

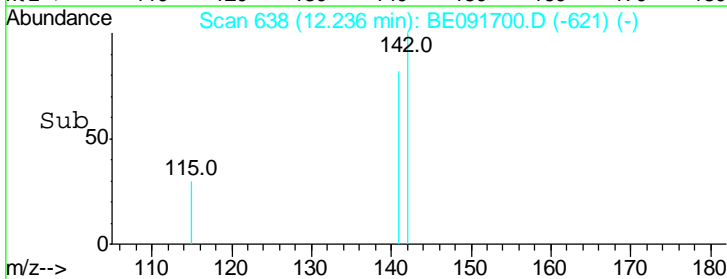
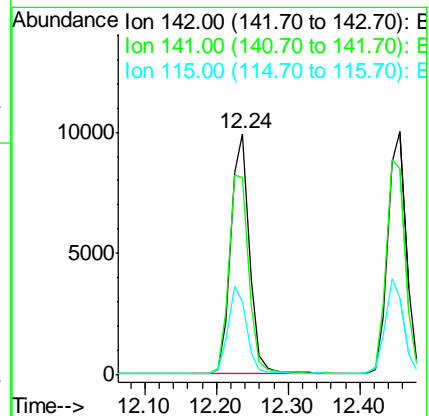
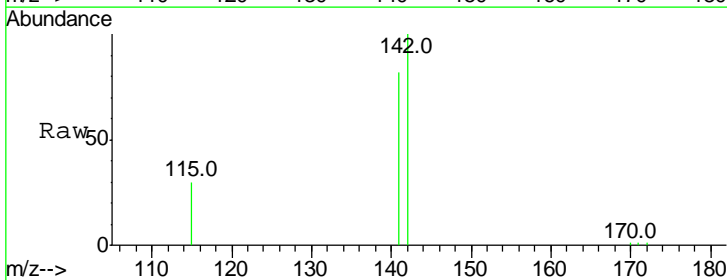
Tgt Ion	Resp	Lower	Upper
225	100		
223	79.5	49.0	73.6#
227	77.1	50.3	75.5#

Manual Integrations  
 APPROVED  
 sohil  
 4/27/2016 7:02:24 PM

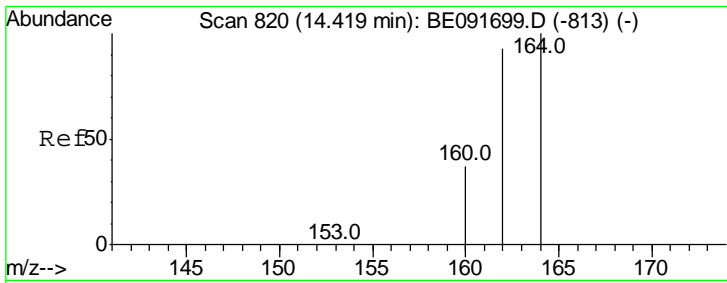


#12  
 2-Methylnaphthalene  
 Concen: 0.81 ng  
 RT: 12.24 min Scan# 638  
 Delta R.T. 0.00 min  
 Lab File: BE091700.D  
 Acq: 26 Apr 2016 12:09

Tgt Ion	Resp	Lower	Upper
142	100		
141	82.0	71.4	107.0
115	30.5	30.3	45.5

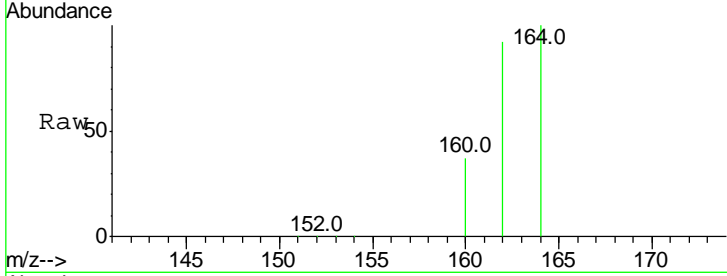






#13  
 Acenaphthene-d10  
 Concen: 5.00 ng  
 RT: 14.42 min Scan# 820  
 Delta R.T. -0.00 min  
 Lab File: BE091700.D  
 Acq: 26 Apr 2016 12:09

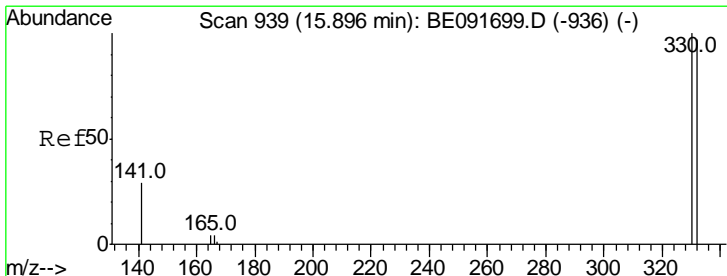
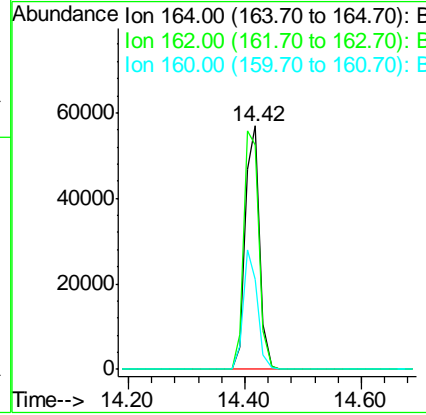
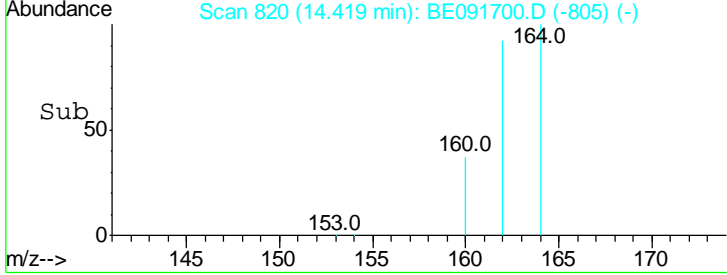
**Instrument :**  
 BNA\_E  
**ClientSampled :**  
 SSTDICC0.8



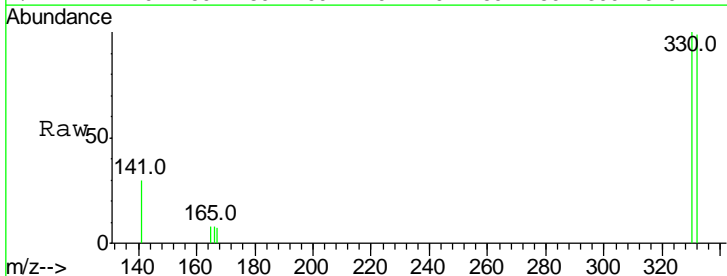
Tgt Ion:164 Resp: 97668

Ion	Ratio	Lower	Upper
164	100		
162	92.0	85.3	127.9
160	36.9	46.2	69.2#

**Manual Integrations**  
**APPROVED**  
 sohil  
 4/27/2016 7:02:24 PM

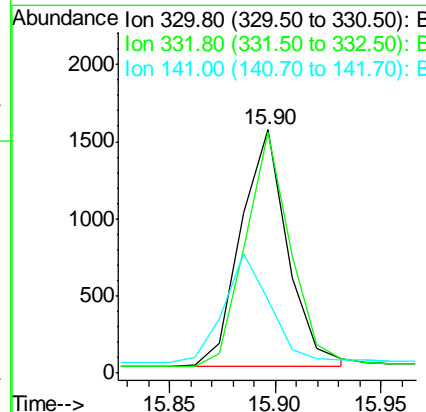
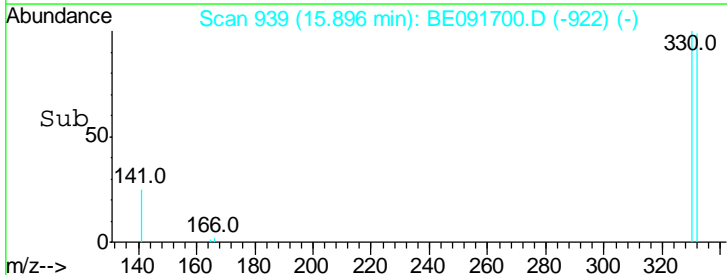


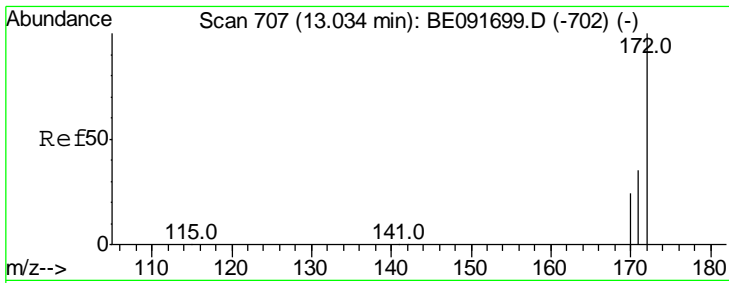
#14  
 2,4,6-Tribromophenol  
 Concen: 1.03 ng m  
 RT: 15.90 min Scan# 939  
 Delta R.T. 0.00 min  
 Lab File: BE091700.D  
 Acq: 26 Apr 2016 12:09



Tgt Ion:330 Resp: 2356

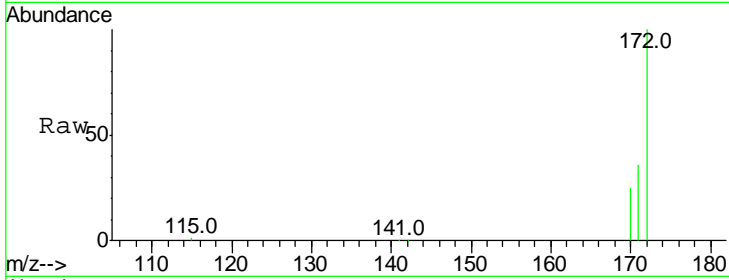
Ion	Ratio	Lower	Upper
330	100		
332	130.6	79.1	118.7#
141	46.3	125.4	188.0#





#15  
 2-Fluorobiphenyl  
 Concen: 0.85 ng  
 RT: 13.03 min Scan# 707  
 Delta R.T. 0.00 min  
 Lab File: BE091700.D  
 Acq: 26 Apr 2016 12:09

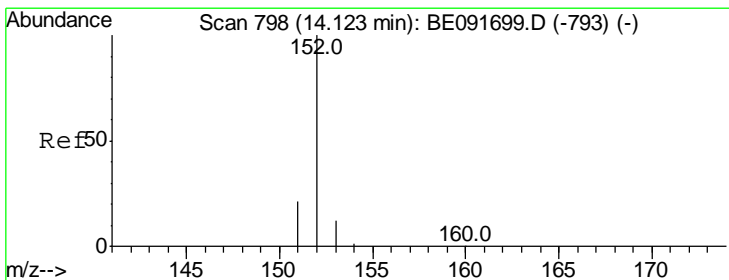
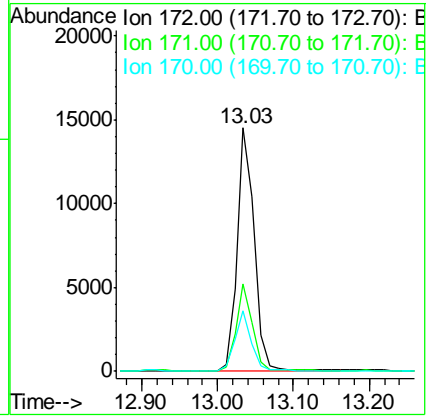
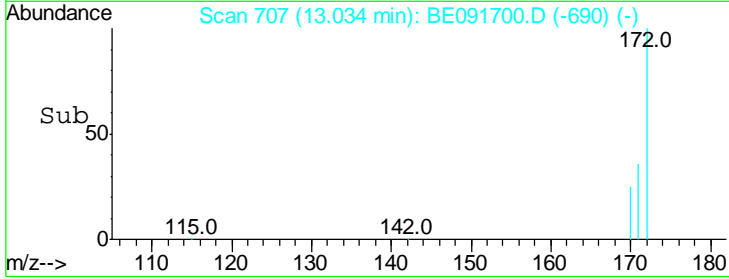
**Instrument :**  
 BNA\_E  
**ClientSampled :**  
 SSTDICC0.8



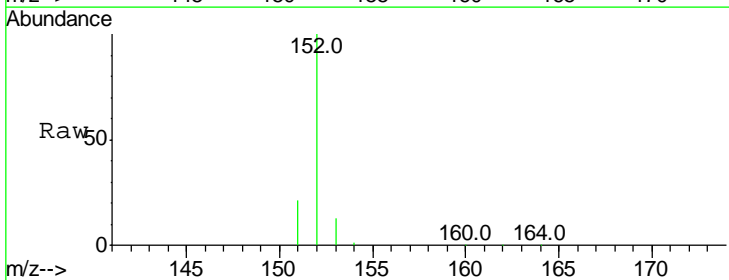
Tgt Ion: 172 Resp: 22852

Ion	Ratio	Lower	Upper
172	100		
171	36.1	28.8	43.2
170	24.9	19.3	28.9

**Manual Integrations**  
**APPROVED**  
 sohil  
 4/27/2016 7:02:24 PM

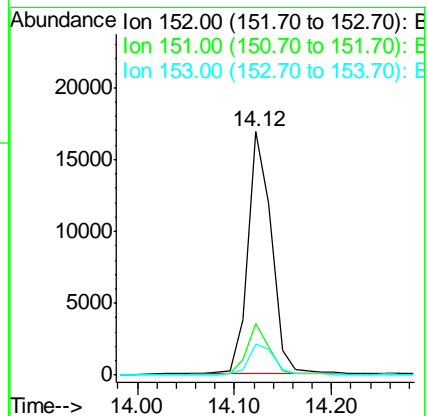
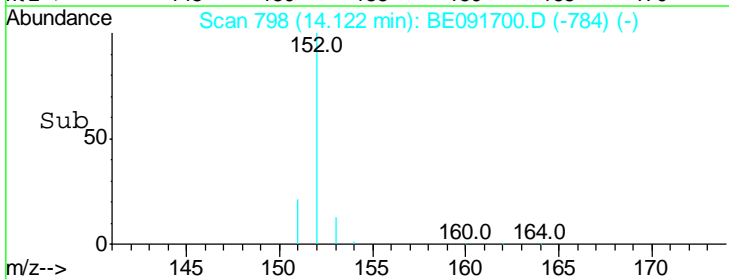


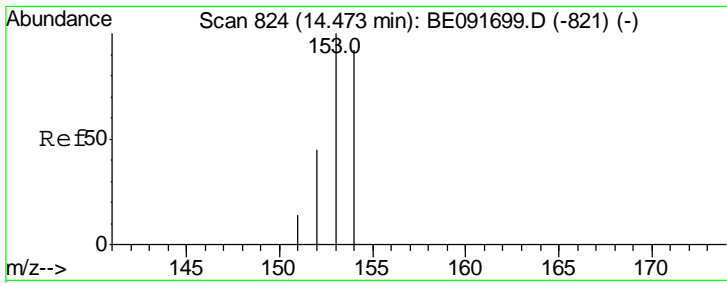
#16  
 Acenaphthylene  
 Concen: 0.73 ng m  
 RT: 14.12 min Scan# 798  
 Delta R.T. -0.00 min  
 Lab File: BE091700.D  
 Acq: 26 Apr 2016 12:09



Tgt Ion: 152 Resp: 28547

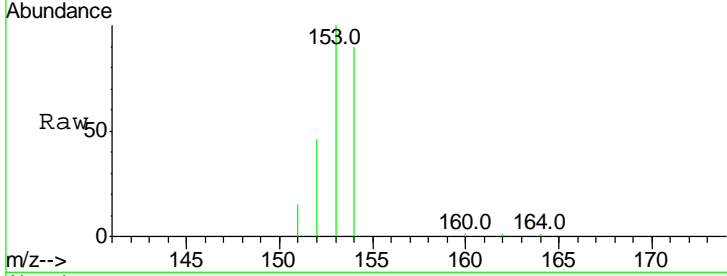
Ion	Ratio	Lower	Upper
152	100		
151	20.2	3.9	5.9#
153	17.5	10.3	15.5#





#17  
 Acenaphthene  
 Concen: 0.83 ng  
 RT: 14.47 min Scan# 824  
 Delta R.T. -0.00 min  
 Lab File: BE091700.D  
 Acq: 26 Apr 2016 12:09

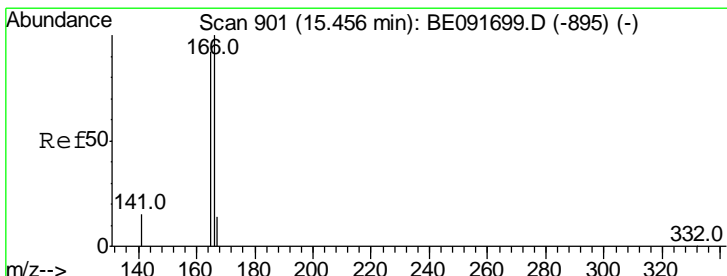
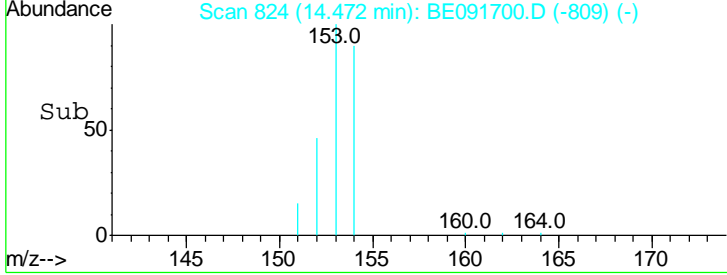
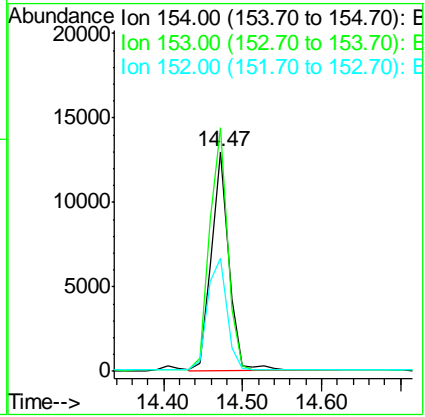
Instrument :  
 BNA\_E  
 ClientSampled :  
 SSTDICC0.8



Tgt Ion:154 Resp: 19909

Ion	Ratio	Lower	Upper
154	100		
153	113.4	80.0	120.0
152	56.6	40.0	60.0

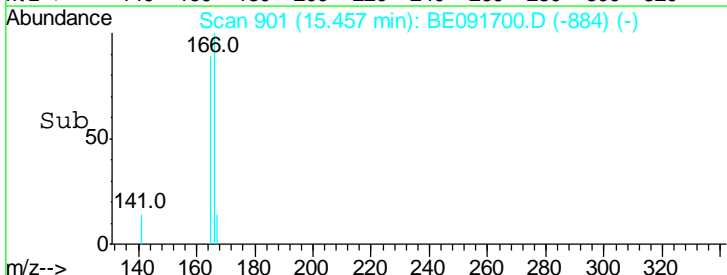
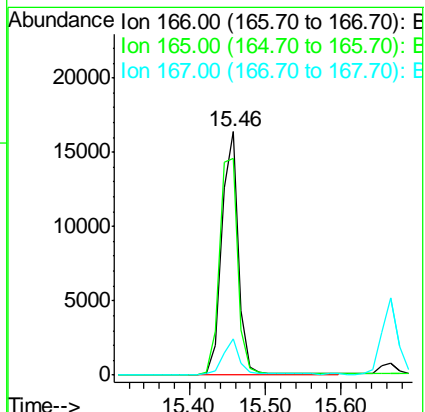
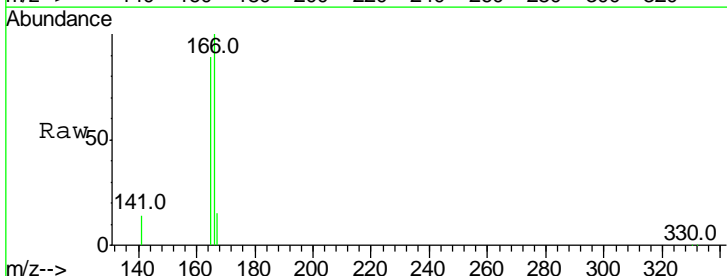
Manual Integrations  
 APPROVED  
 sohil  
 4/27/2016 7:02:24 PM

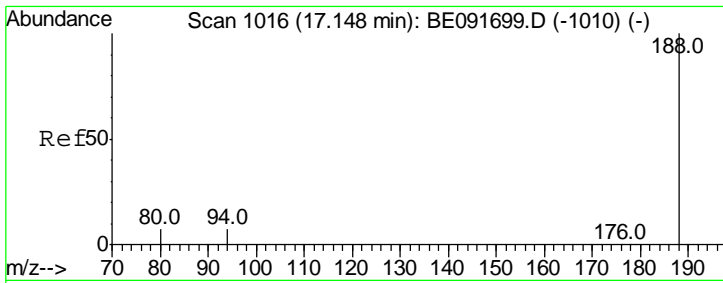


#18  
 Fluorene  
 Concen: 0.84 ng  
 RT: 15.46 min Scan# 901  
 Delta R.T. 0.00 min  
 Lab File: BE091700.D  
 Acq: 26 Apr 2016 12:09

Tgt Ion:166 Resp: 25188

Ion	Ratio	Lower	Upper
166	100		
165	98.6	80.8	121.2
167	13.5	10.9	16.3



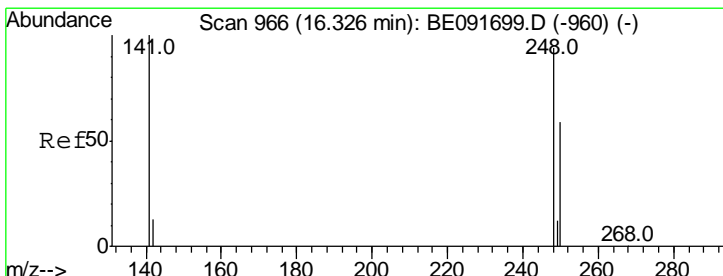
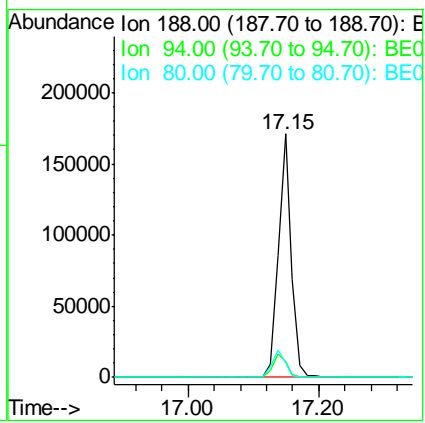
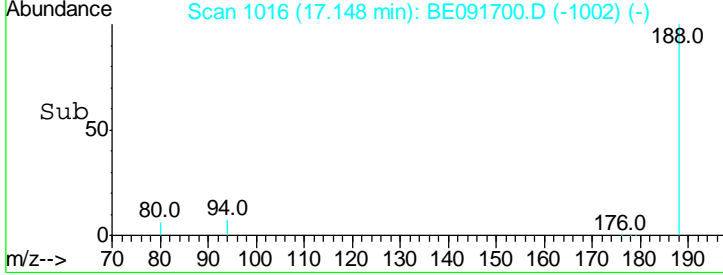
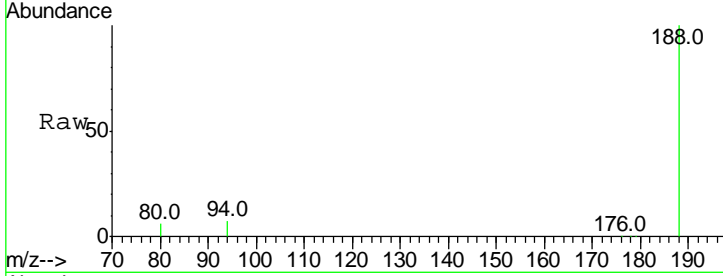


#19  
 Phenanthrene-d10  
 Concen: 5.00 ng  
 RT: 17.15 min Scan# 1016  
 Delta R.T. 0.00 min  
 Lab File: BE091700.D  
 Acq: 26 Apr 2016 12:09

**Instrument :**  
 BNA\_E  
**ClientSampled :**  
 SSTDICC0.8

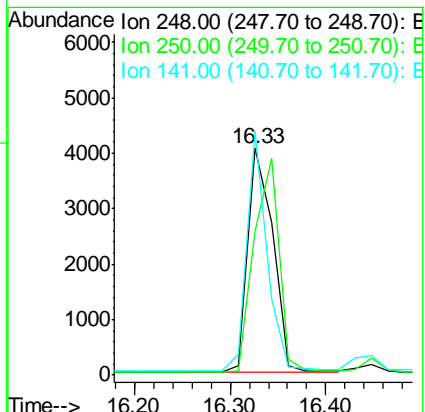
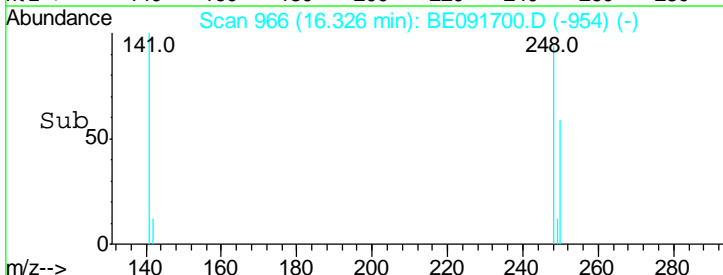
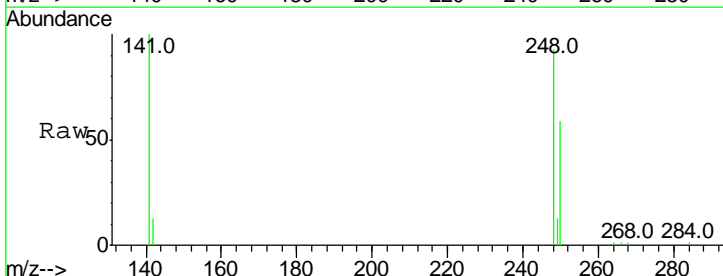
Tgt Ion	Ratio	Lower	Upper
188	100		
94	6.6	8.7	13.1#
80	5.9	9.4	14.0#

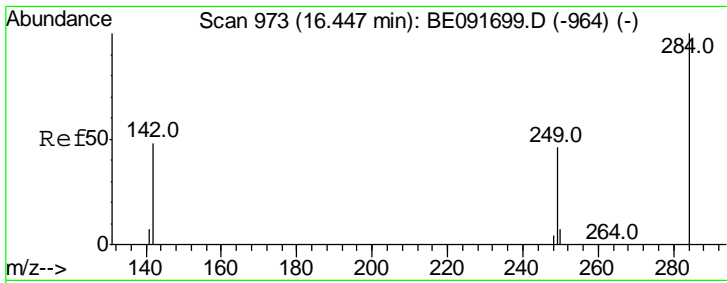
**Manual Integrations**  
**APPROVED**  
 sohil  
 4/27/2016 7:02:24 PM



#20  
 4-Bromophenyl-phenylether  
 Concen: 0.81 ng  
 RT: 16.33 min Scan# 966  
 Delta R.T. -0.00 min  
 Lab File: BE091700.D  
 Acq: 26 Apr 2016 12:09

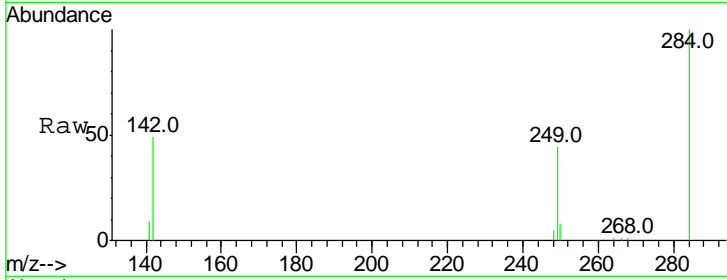
Tgt Ion	Ratio	Lower	Upper
248	100		
250	95.6	80.5	120.7
141	85.3	72.0	108.0





#21  
 Hexachlorobenzene  
 Concen: 0.77 ng  
 RT: 16.45 min Scan# 973  
 Delta R.T. -0.00 min  
 Lab File: BE091700.D  
 Acq: 26 Apr 2016 12:09

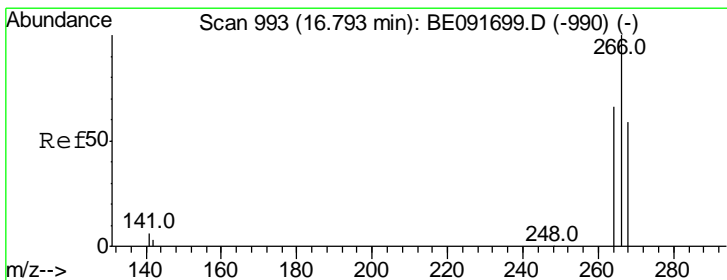
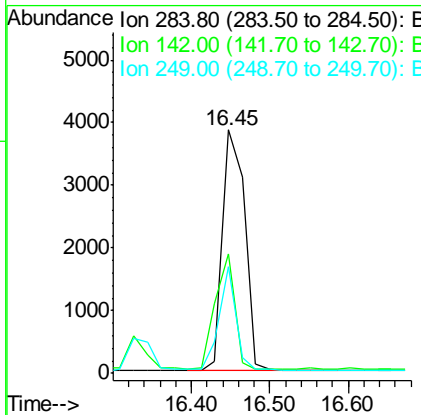
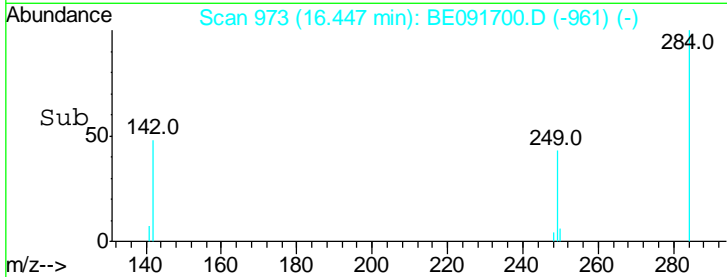
**Instrument :**  
 BNA\_E  
**ClientSampled :**  
 SSTDICC0.8



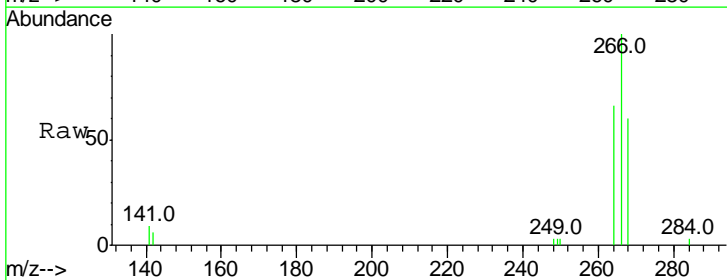
Tgt Ion: 284 Resp: 7463

Ion	Ratio	Lower	Upper
284	100		
142	41.8	32.2	48.2
249	32.3	25.4	38.2

**Manual Integrations**  
**APPROVED**  
 sohil  
 4/27/2016 7:02:24 PM

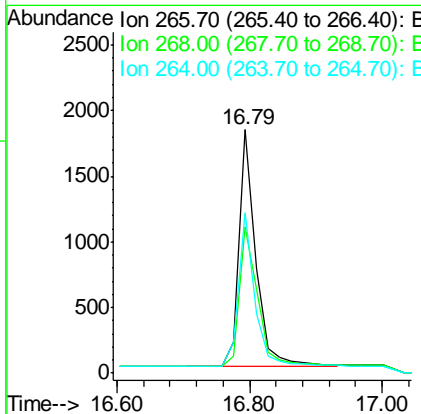
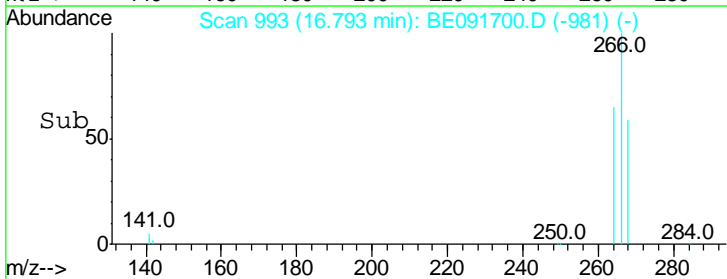


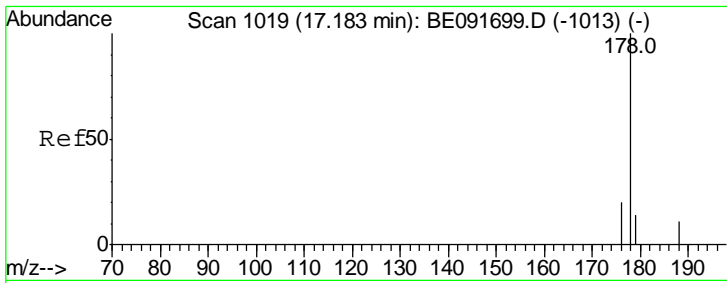
#22  
 Pentachlorophenol  
 Concen: 1.00 ng  
 RT: 16.79 min Scan# 993  
 Delta R.T. -0.00 min  
 Lab File: BE091700.D  
 Acq: 26 Apr 2016 12:09



Tgt Ion: 266 Resp: 3182

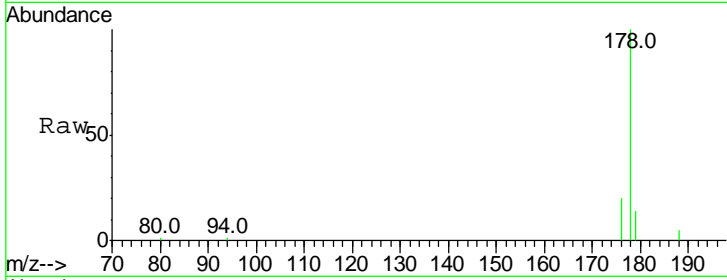
Ion	Ratio	Lower	Upper
266	100		
268	60.2	58.2	87.2
264	66.1	56.2	84.4





#23  
 Phenanthrene  
 Concen: 0.79 ng  
 RT: 17.18 min Scan# 1019  
 Delta R.T. 0.00 min  
 Lab File: BE091700.D  
 Acq: 26 Apr 2016 12:09

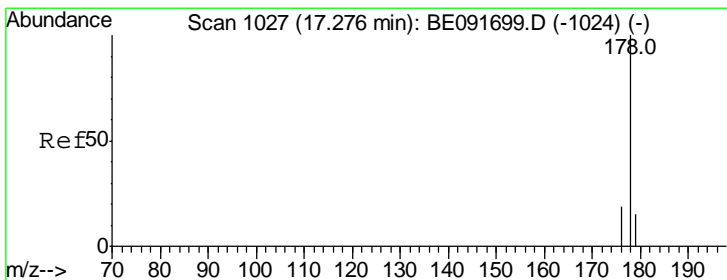
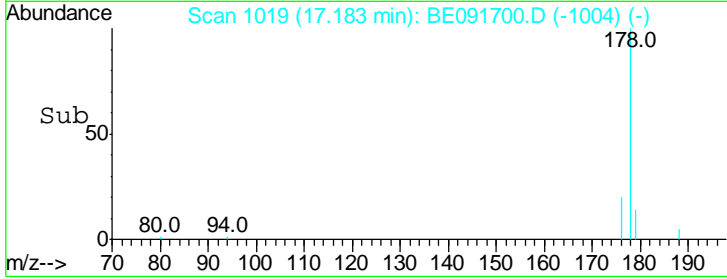
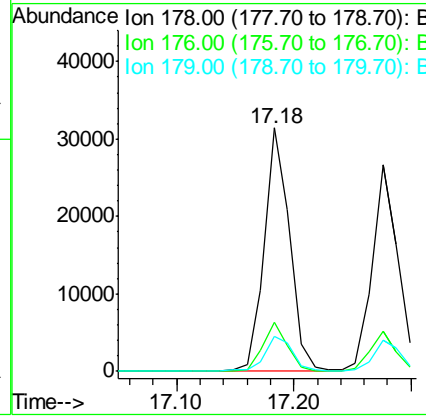
Instrument :  
 BNA\_E  
 ClientSampled :  
 SSTDICC0.8



Tgt Ion:178 Resp: 47057

Ion	Ratio	Lower	Upper
178	100		
176	19.4	15.3	22.9
179	15.5	12.6	18.8

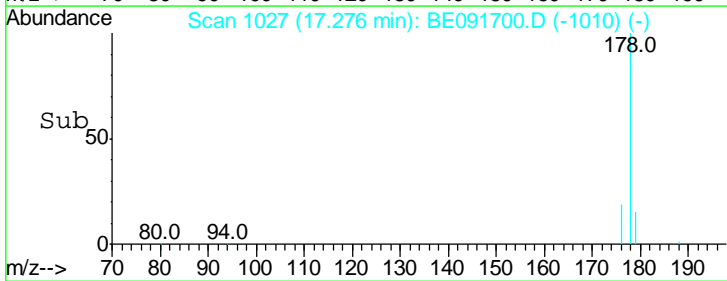
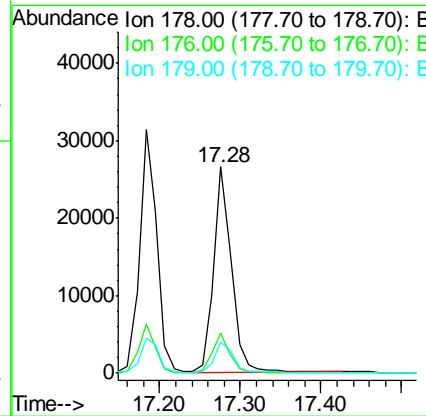
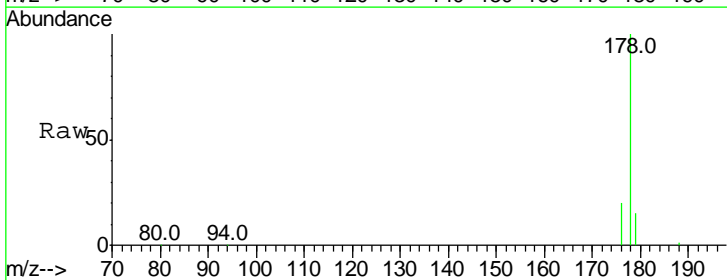
Manual Integrations  
 APPROVED  
 sohil  
 4/27/2016 7:02:24 PM

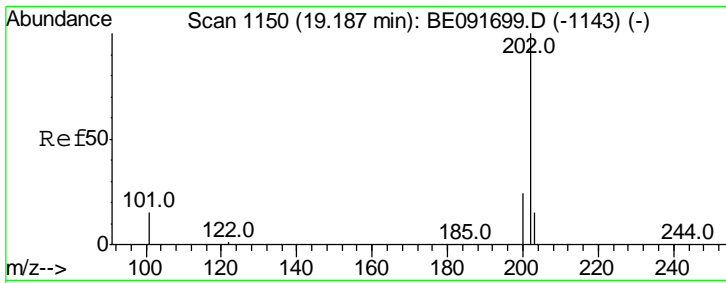


#24  
 Anthracene  
 Concen: 0.78 ng  
 RT: 17.28 min Scan# 1027  
 Delta R.T. 0.00 min  
 Lab File: BE091700.D  
 Acq: 26 Apr 2016 12:09

Tgt Ion:178 Resp: 41306

Ion	Ratio	Lower	Upper
178	100		
176	19.0	14.6	21.8
179	15.3	11.8	17.6



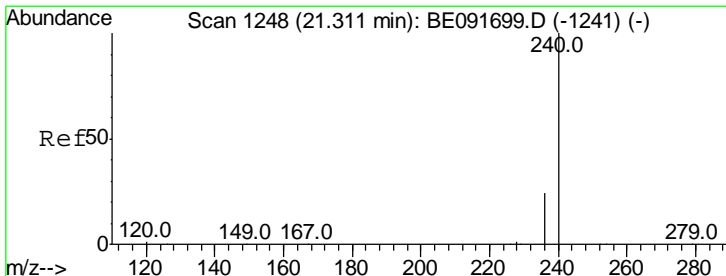
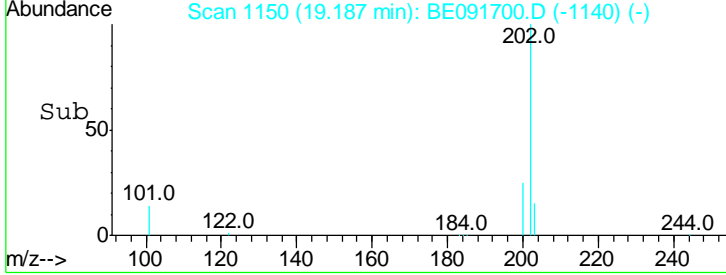
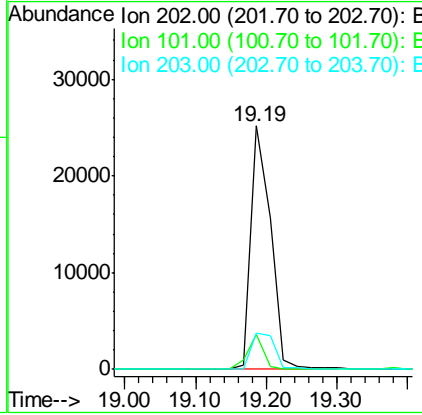
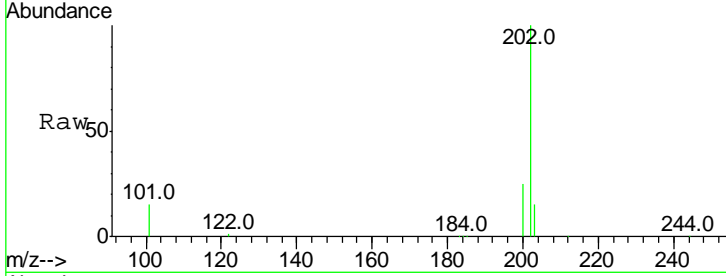


#25  
 Fluoranthene  
 Concen: 0.83 ng  
 RT: 19.19 min Scan# 1150  
 Delta R.T. -0.00 min  
 Lab File: BE091700.D  
 Acq: 26 Apr 2016 12:09

Instrument :  
 BNA\_E  
 ClientSampled :  
 SSTDICC0.8

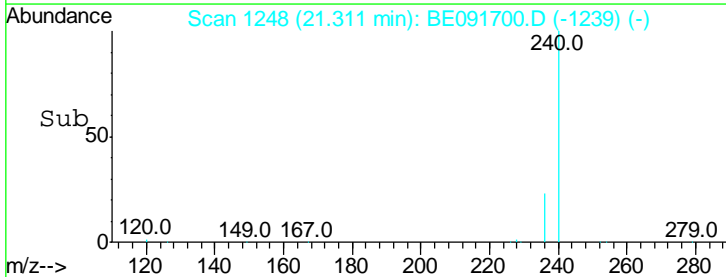
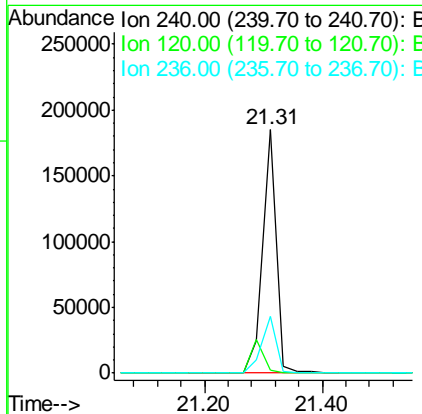
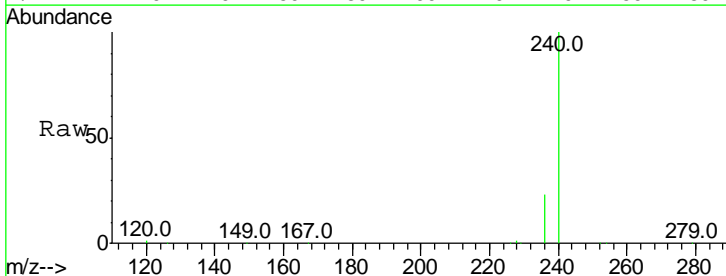
Tgt Ion	Resp	Lower	Upper
202	49213		
202	100		
101	11.4	11.0	16.6
203	17.3	13.9	20.9

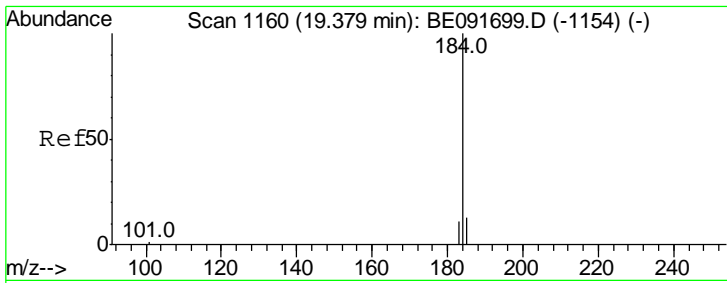
Manual Integrations  
 APPROVED  
 sohil  
 4/27/2016 7:02:24 PM



#26  
 Chrysene-d12  
 Concen: 5.00 ng  
 RT: 21.31 min Scan# 1248  
 Delta R.T. 0.00 min  
 Lab File: BE091700.D  
 Acq: 26 Apr 2016 12:09

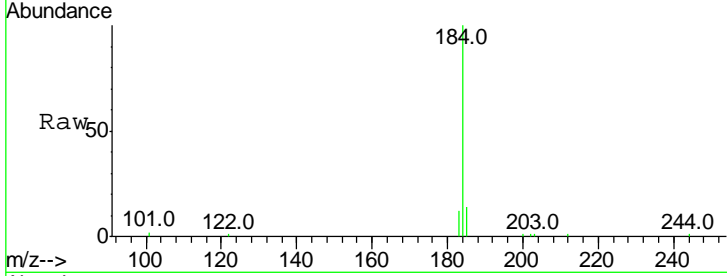
Tgt Ion	Resp	Lower	Upper
240	300717		
240	100		
120	1.2	11.0	16.4#
236	23.4	21.7	32.5





#27  
Benzidine  
Concen: 0.81 ng m  
RT: 19.38 min Scan# 1160  
Delta R.T. -0.00 min  
Lab File: BE091700.D  
Acq: 26 Apr 2016 12:09

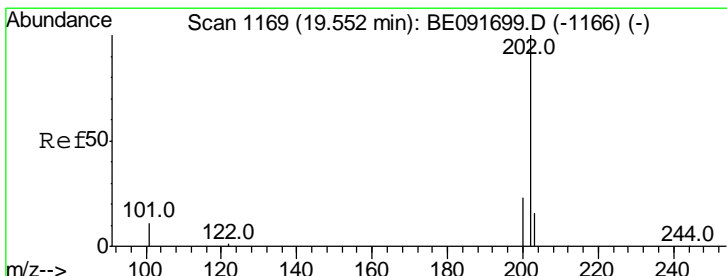
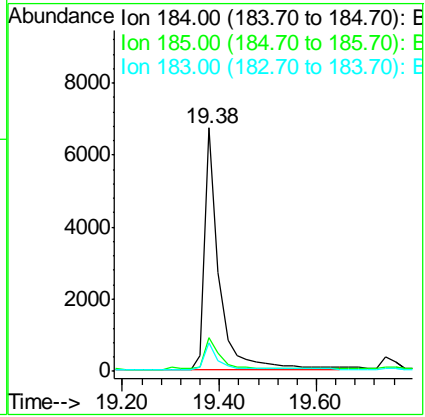
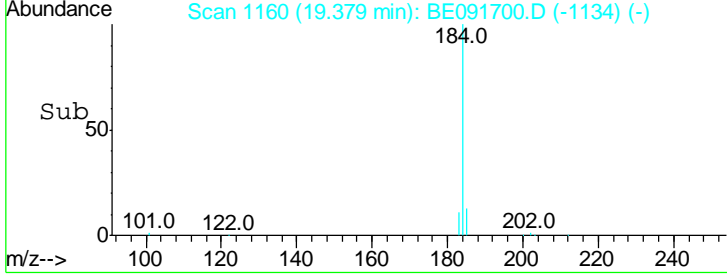
Instrument : BNA\_E  
ClientSampled : SSTDICC0.8



Tgt Ion:184 Resp: 14198

Ion	Ratio	Lower	Upper
184	100		
185	13.6	22.3	33.5#
183	11.8	16.4	24.6#

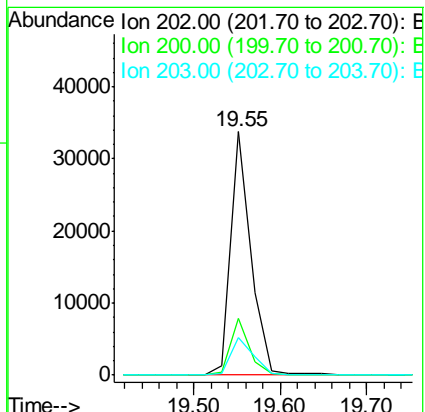
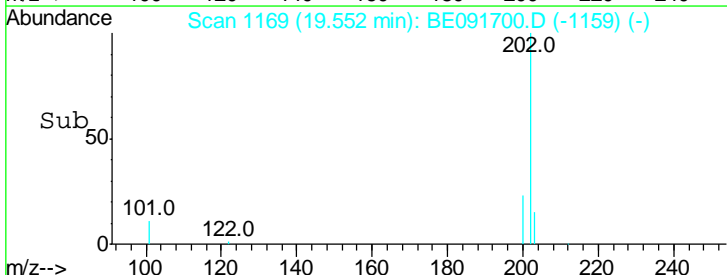
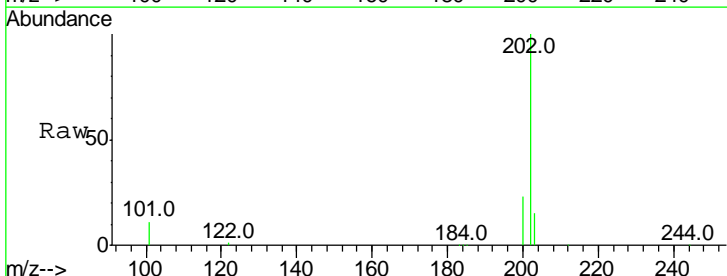
Manual Integrations  
APPROVED  
sohil  
4/27/2016 7:02:24 PM



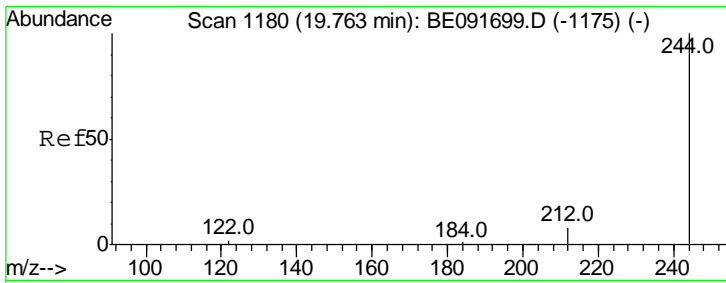
#28  
Pyrene  
Concen: 0.79 ng  
RT: 19.55 min Scan# 1169  
Delta R.T. -0.00 min  
Lab File: BE091700.D  
Acq: 26 Apr 2016 12:09

Tgt Ion:202 Resp: 54544

Ion	Ratio	Lower	Upper
202	100		
200	21.7	16.8	25.2
203	17.2	14.0	21.0

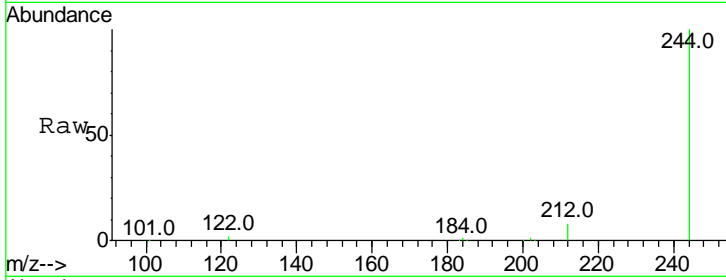






#29  
 Terphenyl-d14  
 Concen: 0.82 ng  
 RT: 19.76 min Scan# 1180  
 Delta R.T. -0.00 min  
 Lab File: BE091700.D  
 Acq: 26 Apr 2016 12:09

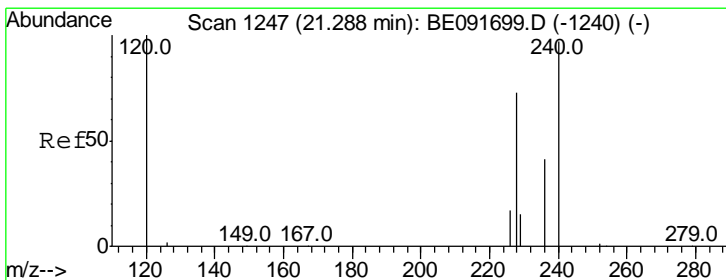
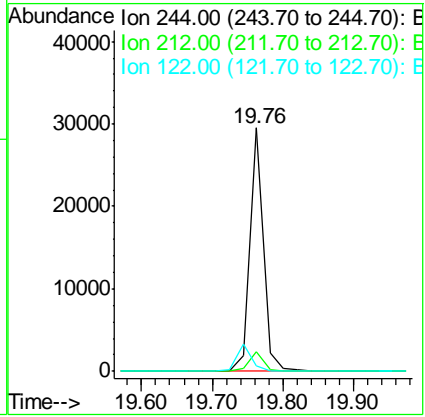
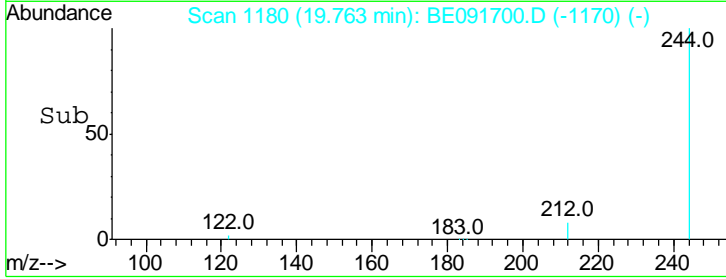
**Instrument :**  
 BNA\_E  
**ClientSampled :**  
 SSTDICC0.8



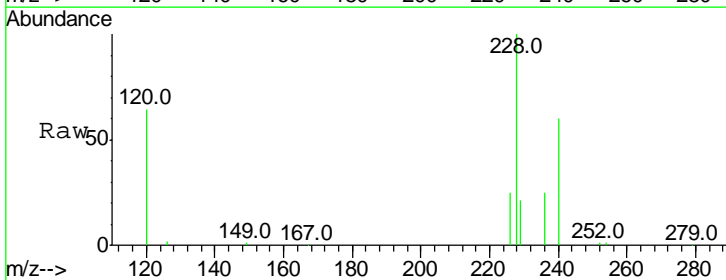
Tgt Ion: 244 Resp: 39102

Ion	Ratio	Lower	Upper
244	100		
212	7.9	6.9	10.3
122	2.2	11.0	16.4

**Manual Integrations**  
**APPROVED**  
 sohil  
 4/27/2016 7:02:24 PM

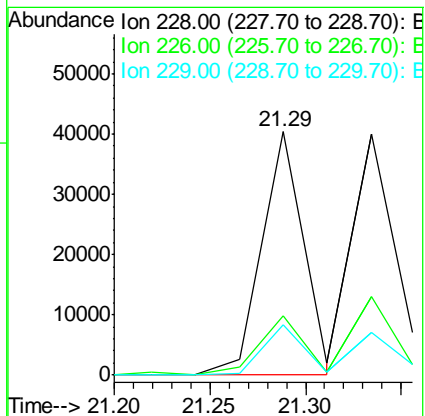
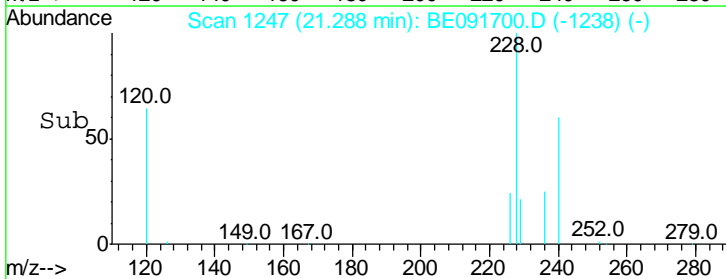


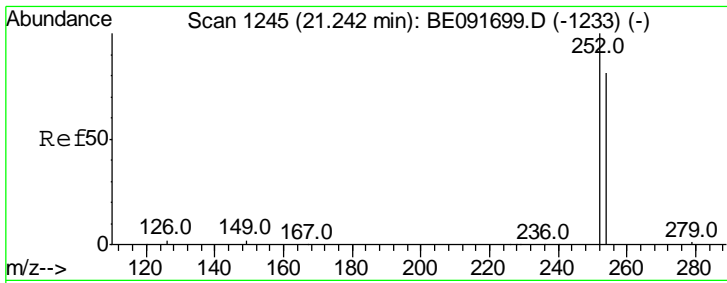
#30  
 Benzo(a)anthracene  
 Concen: 0.85 ng m  
 RT: 21.29 min Scan# 1247  
 Delta R.T. 0.00 min  
 Lab File: BE091700.D  
 Acq: 26 Apr 2016 12:09



Tgt Ion: 228 Resp: 62483

Ion	Ratio	Lower	Upper
228	100		
226	24.5	21.0	31.4
229	20.8	15.7	23.5



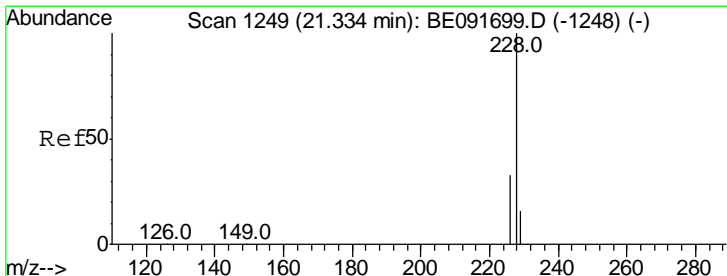
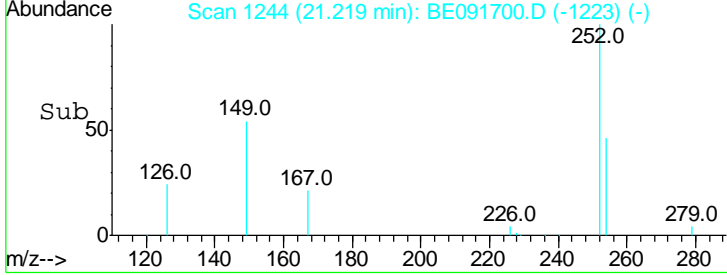
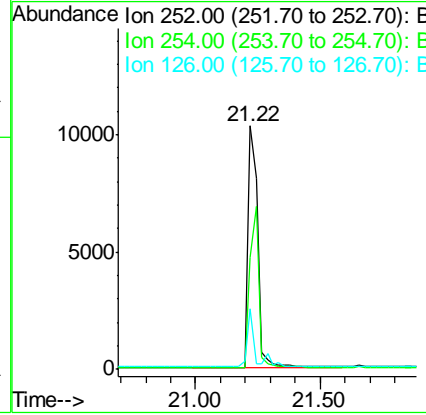
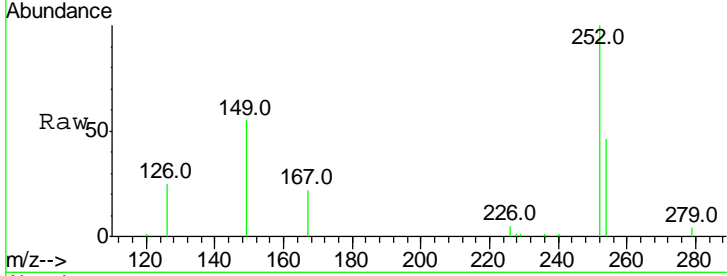


#31  
 3,3'-Dichlorobenzidine  
 Concen: 0.92 ng  
 RT: 21.22 min Scan# 1244  
 Delta R.T. -0.02 min  
 Lab File: BE091700.D  
 Acq: 26 Apr 2016 12:09

Instrument :  
 BNA\_E  
 ClientSampled :  
 SSTDICC0.8

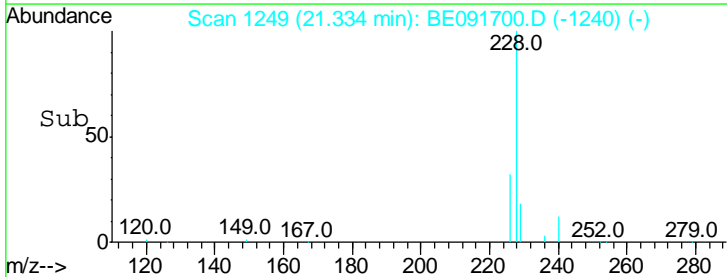
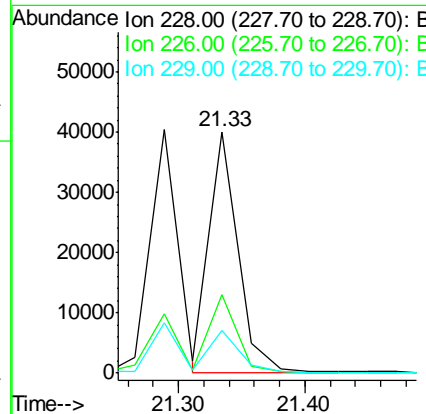
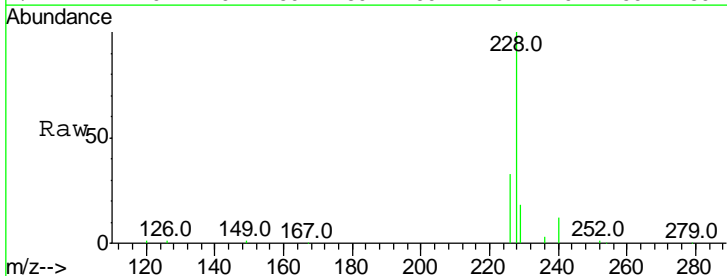
Tgt Ion	Resp	Lower	Upper
252	100		
254	46.1	51.1	76.7#
126	24.7	12.6	18.8#

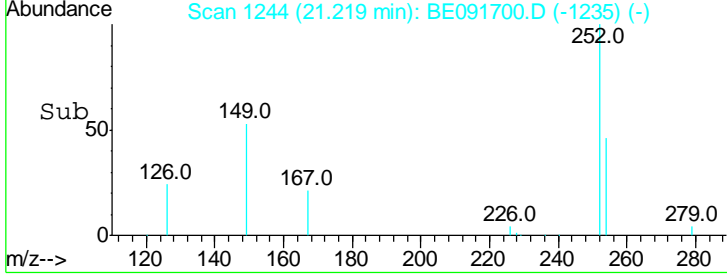
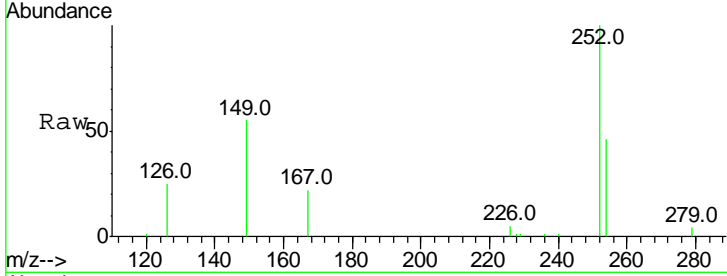
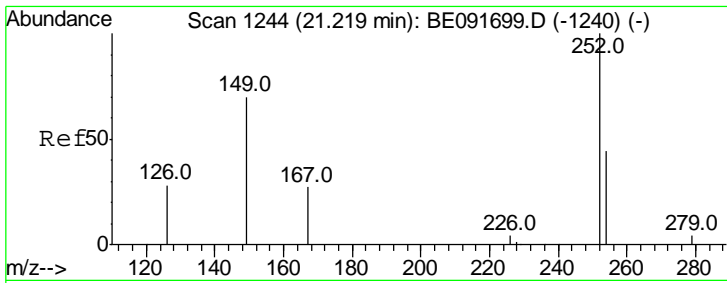
Manual Integrations  
 APPROVED  
 sohil  
 4/27/2016 7:02:24 PM



#32  
 Chrysene  
 Concen: 0.80 ng m  
 RT: 21.33 min Scan# 1249  
 Delta R.T. 0.00 min  
 Lab File: BE091700.D  
 Acq: 26 Apr 2016 12:09

Tgt Ion	Resp	Lower	Upper
228	100		
226	32.5	24.0	36.0
229	17.8	15.9	23.9



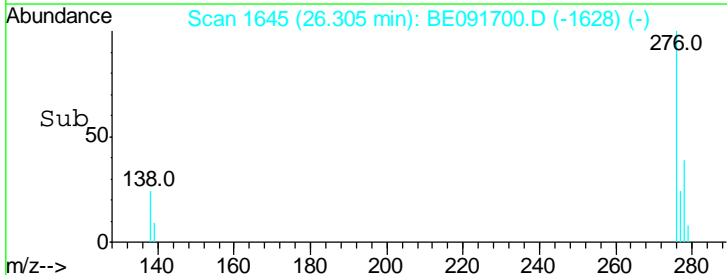
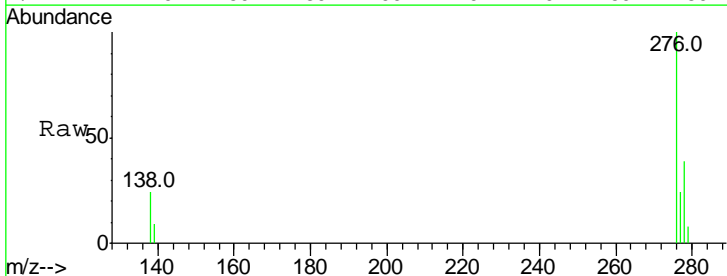
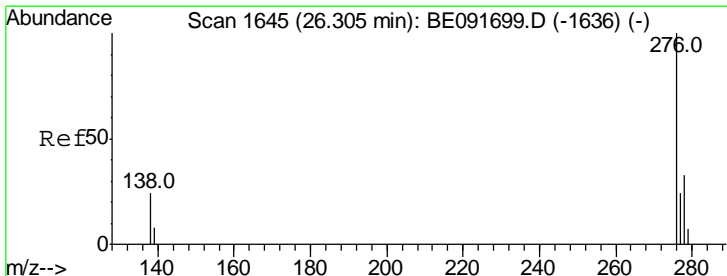
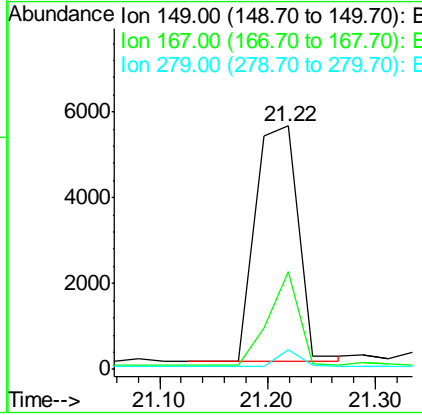


#33  
 Bis(2-ethylhexyl)phthalate  
 Concen: 1.08 ng  
 RT: 21.22 min Scan# 1244  
 Delta R.T. 0.00 min  
 Lab File: BE091700.D  
 Acq: 26 Apr 2016 12:09

Tgt Ion	Resp	Lower	Upper
149	15184		
149	100		
167	28.6	19.5	29.3
279	4.1	10.0	15.0#

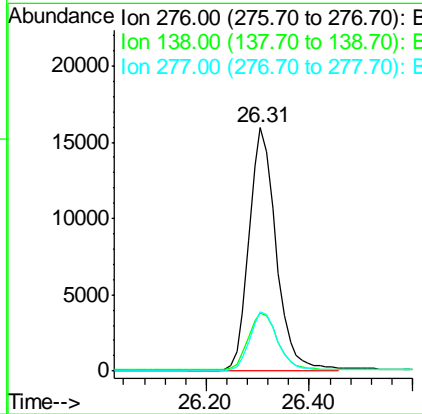
Instrument : BNA\_E  
 ClientSampled : SSTDICC0.8

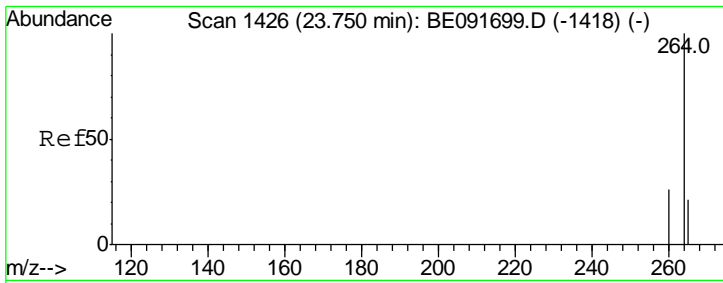
Manual Integrations  
 APPROVED  
 sohil  
 4/27/2016 7:02:24 PM



#34  
 Indeno(1,2,3-cd)pyrene  
 Concen: 0.81 ng  
 RT: 26.31 min Scan# 1645  
 Delta R.T. -0.00 min  
 Lab File: BE091700.D  
 Acq: 26 Apr 2016 12:09

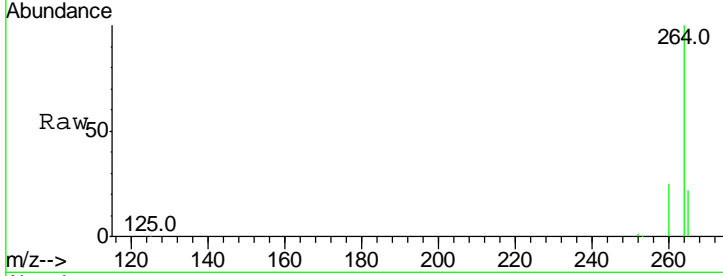
Tgt Ion	Resp	Lower	Upper
276	57780		
276	100		
138	25.7	23.4	35.2
277	24.8	19.8	29.8





#35  
 Perylene-d12  
 Concen: 5.00 ng  
 RT: 23.75 min Scan# 1426  
 Delta R.T. 0.00 min  
 Lab File: BE091700.D  
 Acq: 26 Apr 2016 12:09

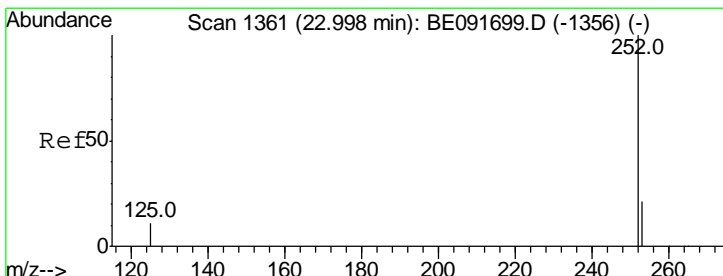
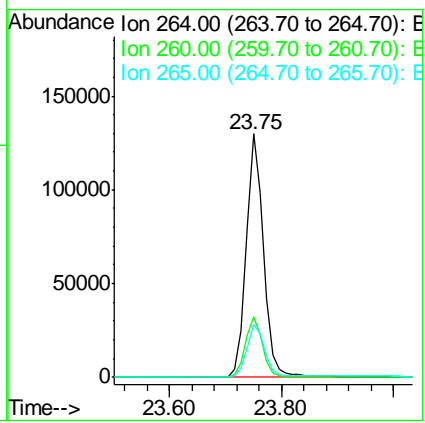
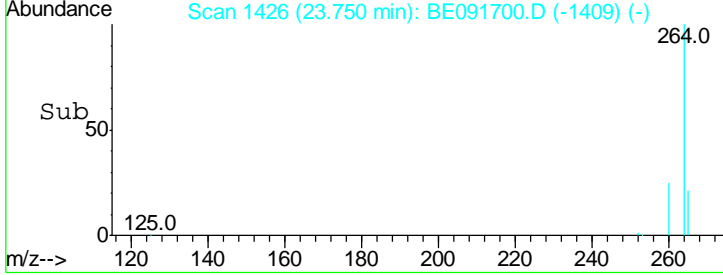
Instrument :  
 BNA\_E  
 ClientSampled :  
 SSTDICC0.8



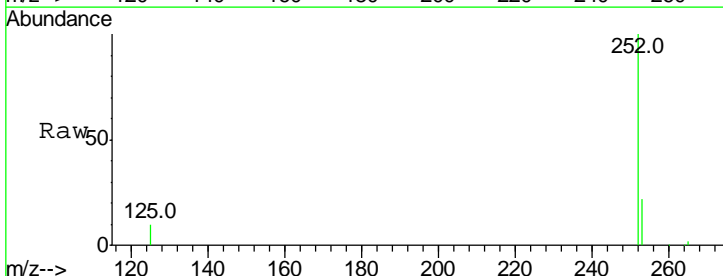
Tgt Ion: 264 Resp: 280257

Ion	Ratio	Lower	Upper
264	100		
260	24.8	20.0	30.0
265	21.6	17.5	26.3

Manual Integrations  
 APPROVED  
 sohil  
 4/27/2016 7:02:24 PM

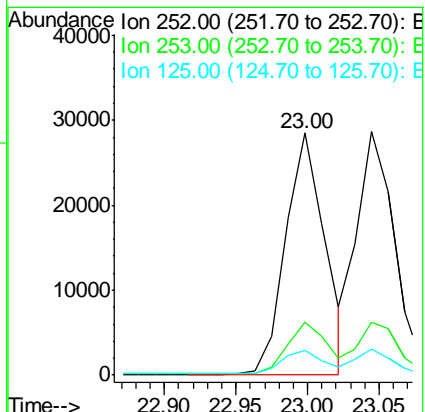
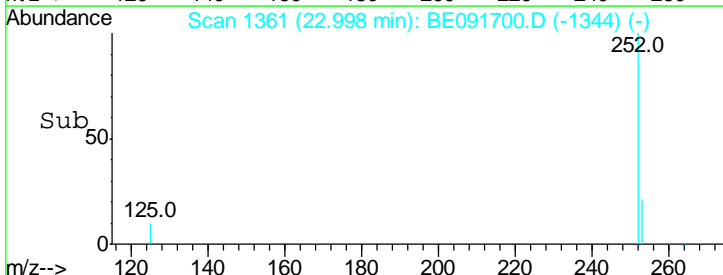


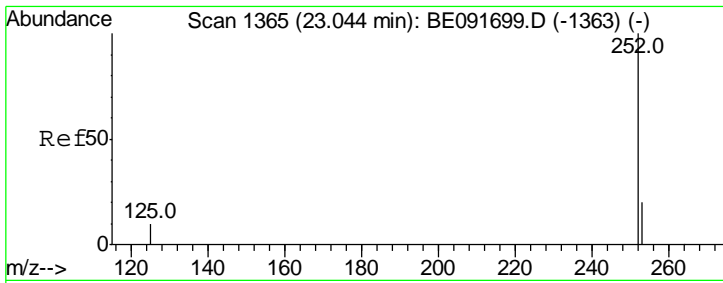
#36  
 Benzo(b)fluoranthene  
 Concen: 0.80 ng  
 RT: 23.00 min Scan# 1361  
 Delta R.T. 0.00 min  
 Lab File: BE091700.D  
 Acq: 26 Apr 2016 12:09



Tgt Ion: 252 Resp: 53659

Ion	Ratio	Lower	Upper
252	100		
253	21.9	17.4	26.0
125	10.5	10.2	15.2



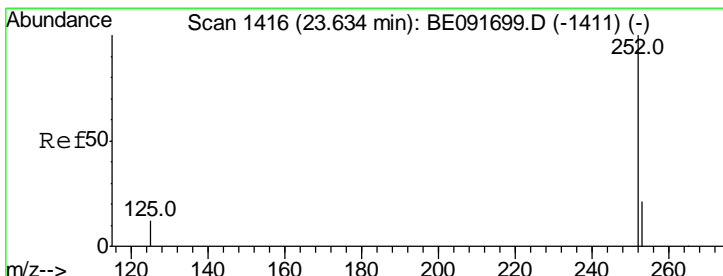
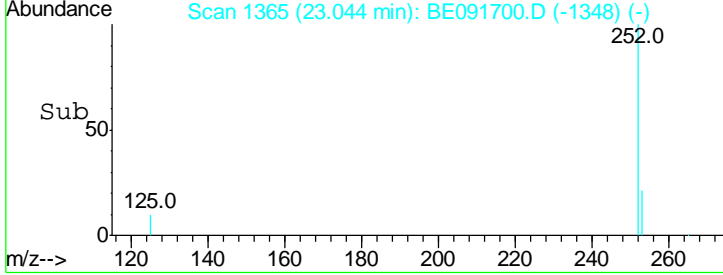
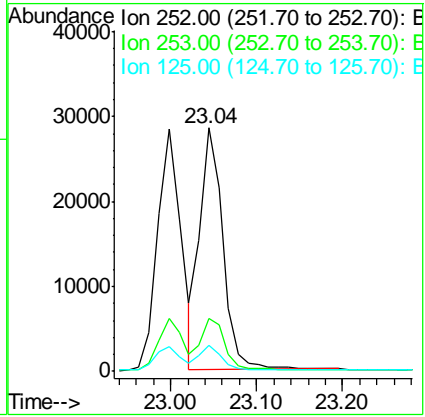
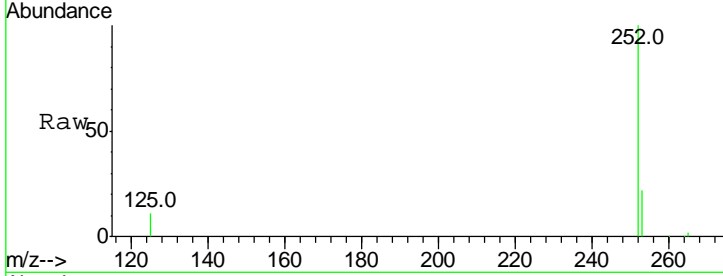


#37  
 Benzo(k)fluoranthene  
 Concen: 0.80 ng  
 RT: 23.04 min Scan# 1365  
 Delta R.T. 0.00 min  
 Lab File: BE091700.D  
 Acq: 26 Apr 2016 12:09

Instrument :  
 BNA\_E  
 ClientSampled :  
 SSTDICC0.8

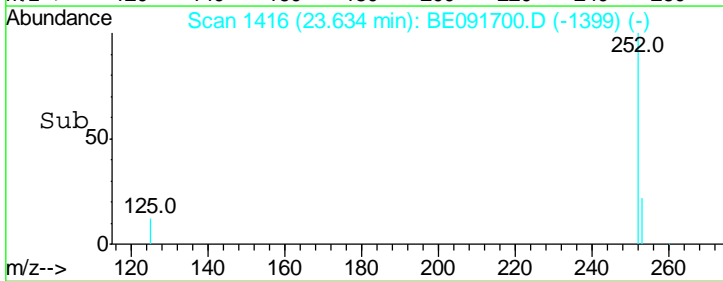
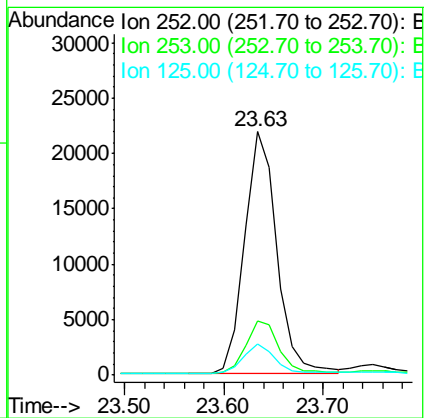
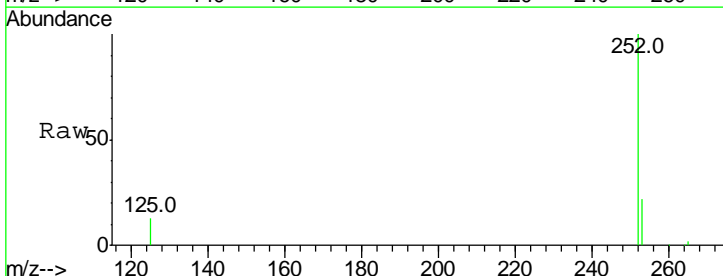
Tgt Ion	Resp	Lower	Upper
252	53137		
252	100		
253	21.6	17.6	26.4
125	10.7	9.9	14.9

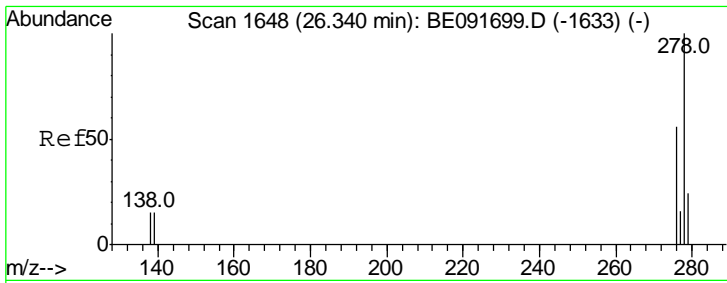
Manual Integrations  
 APPROVED  
 sohil  
 4/27/2016 7:02:24 PM



#38  
 Benzo(a)pyrene  
 Concen: 0.84 ng  
 RT: 23.63 min Scan# 1416  
 Delta R.T. 0.00 min  
 Lab File: BE091700.D  
 Acq: 26 Apr 2016 12:09

Tgt Ion	Resp	Lower	Upper
252	48967		
252	100		
253	22.2	18.1	27.1
125	12.6	11.0	16.4



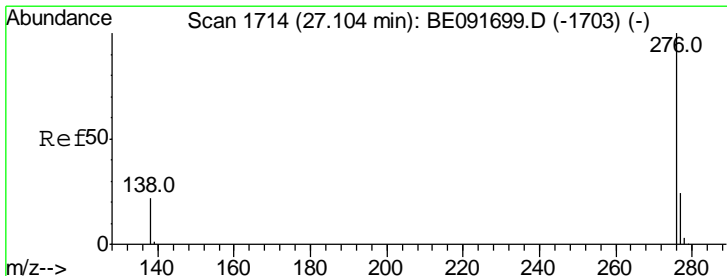
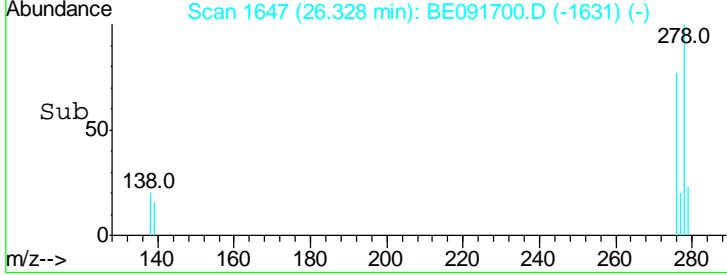
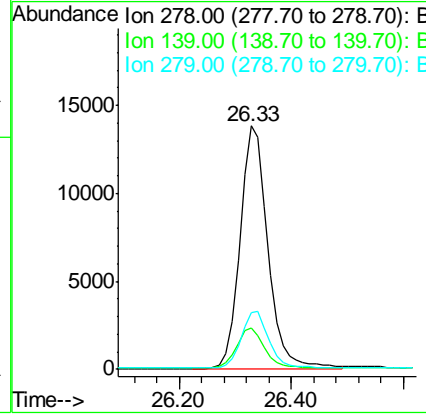
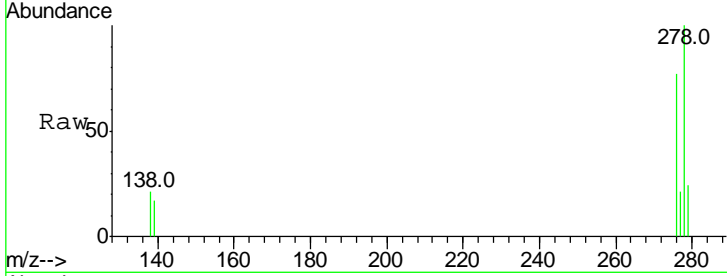


#39  
 Dibenzo(a,h)anthracene  
 Concen: 0.80 ng  
 RT: 26.33 min Scan# 1647  
 Delta R.T. -0.01 min  
 Lab File: BE091700.D  
 Acq: 26 Apr 2016 12:09

**Instrument :**  
 BNA\_E  
**ClientSampled :**  
 SSTDICC0.8

Tgt Ion	Resp	Lower	Upper
278	47828		
278	100		
139	16.8	16.0	24.0
279	23.6	19.4	29.2

**Manual Integrations**  
**APPROVED**  
 sohil  
 4/27/2016 7:02:24 PM



#40  
 Benzo(g,h,i)perylene  
 Concen: 0.78 ng  
 RT: 27.09 min Scan# 1713  
 Delta R.T. -0.01 min  
 Lab File: BE091700.D  
 Acq: 26 Apr 2016 12:09

Tgt Ion	Resp	Lower	Upper
276	47854		
276	100		
277	23.5	18.6	28.0
138	22.9	20.4	30.6

