

Data Path : Z:\HPCHEM1\BNA E\DATA\BE043018\
 Data File : BE096215.D
 Acq On : 30 Apr 2018 11:11
 Operator : SJ/JU
 Sample : PB108420BL
 Misc :
 ALS Vial : 4 Sample Multiplier: 1

Instrument :
 BNA_E
 ClientSampleId :

Quant Time: Apr 30 14:28:31 2018
 Quant Method : Z:\HPCHEM1\BNA E\METHODS\8270-SIM-BE041118.M
 Quant Title : ASP BNA STANDARDS FOR 5 POINT CALIBRATION
 QLast Update : Mon Apr 30 14:27:29 2018
 Response via : Initial Calibration

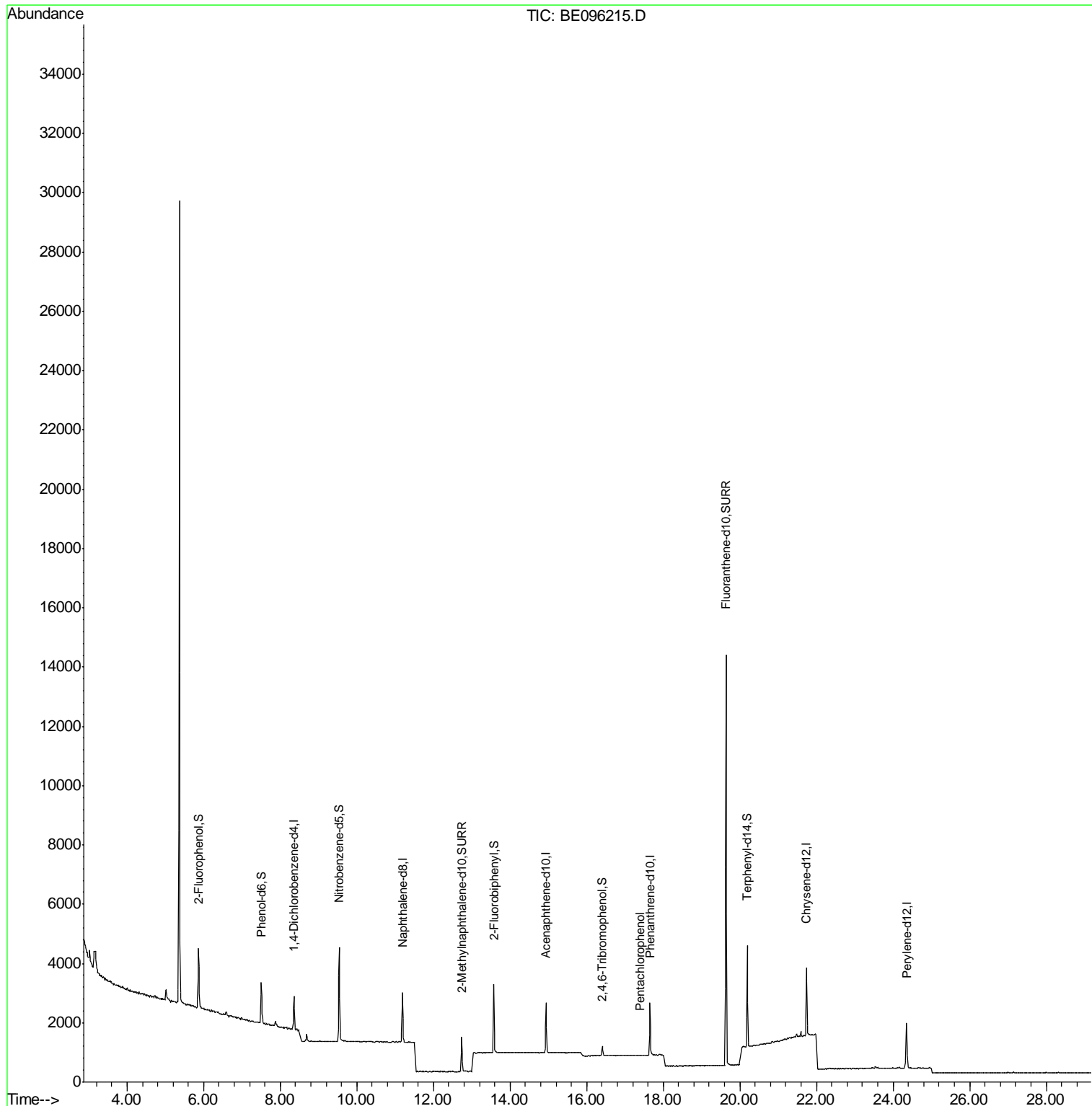
Internal Standards	R.T.	QIon	Response	Conc	Units	Dev(Min)
1) 1,4-Dichlorobenzene-d4	8.36	152	545	0.40	ng	0.00
7) Naphthalene-d8	11.19	136	1904	0.40	ng	0.00
13) Acenaphthene-d10	14.94	164	931	0.40	ng	0.00
19) Phenanthrene-d10	17.65	188	2286	0.40	ng	0.00
27) Chrysene-d12	21.74	240	2497	0.40	ng	0.00
34) Perylene-d12	24.35	264	2339	0.40	ng	0.00
System Monitoring Compounds						
4) 2-Fluorophenol	5.87	112	919	0.55	ng	0.00
5) Phenol-d6	7.51	99	1227	0.53	ng	0.00
8) Nitrobenzene-d5	9.54	82	1283	0.57	ng	0.00
11) 2-Methylnaphthalene-d10	12.73	152	1610	0.53	ng	0.00
14) 2,4,6-Tribromophenol	16.41	330	175	0.39	ng	0.00
15) 2-Fluorobiphenyl	13.58	172	2361	0.59	ng	0.00
25) Fluoranthene-d10	19.64	212	17776	0.57	ng	0.00
29) Terphenyl-d14	20.19	244	3078	0.56	ng	0.00
Target Compounds						Qvalue
22) Pentachlorophenol	17.40	266	3	0.140	ng	93

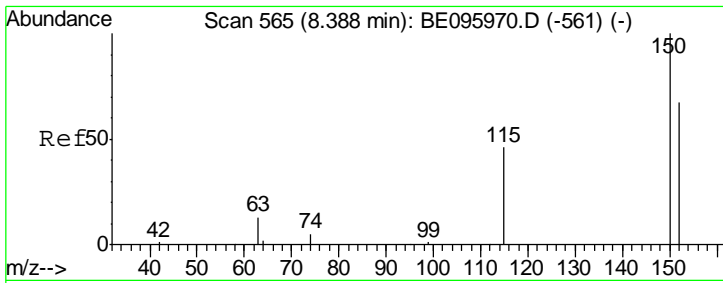
(#) = qualifier out of range (m) = manual integration (+) = signals summed

Data Path : Z:\HPCHEM1\BNA E\DATA\BE043018\
Data File : BE096215.D
Acq On : 30 Apr 2018 11:11
Operator : SJ/JU
Sample : PB108420BL
Misc :
ALS Vial : 4 Sample Multiplier: 1

Instrument :
BNA_E
ClientSampleId :

Quant Time: Apr 30 14:28:31 2018
Quant Method : Z:\HPCHEM1\BNA E\METHODS\8270-SIM-BE041118.M
Quant Title : ASP BNA STANDARDS FOR 5 POINT CALIBRATION
QLast Update : Mon Apr 30 14:27:29 2018
Response via : Initial Calibration

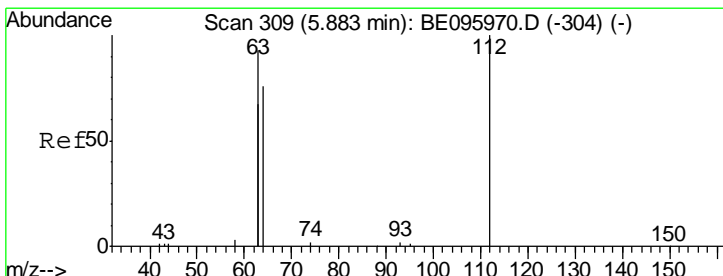
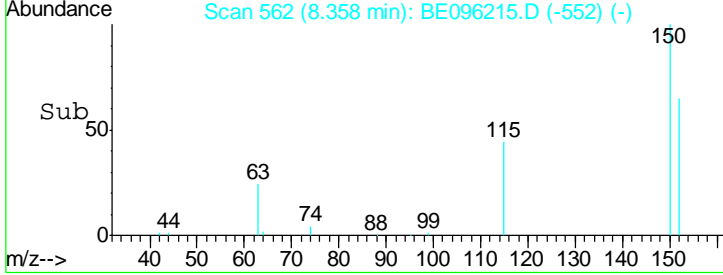
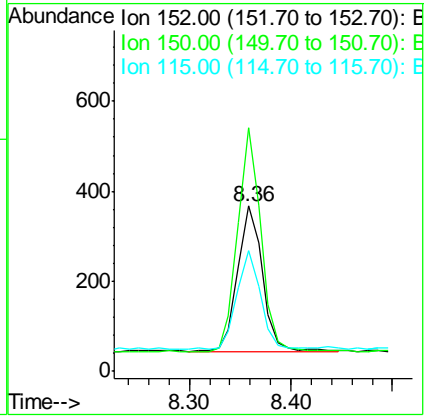
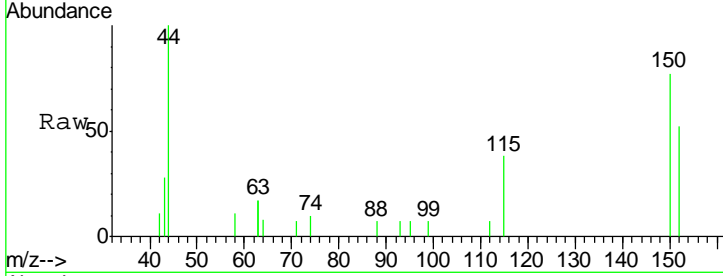




#1
 1,4-Dichlorobenzene-d4
 Concen: 0.400 ng
 RT: 8.36 min Scan# 562
 Delta R.T. -0.00 min
 Lab File: BE096215.D
 Acq: 30 Apr 2018 11:11

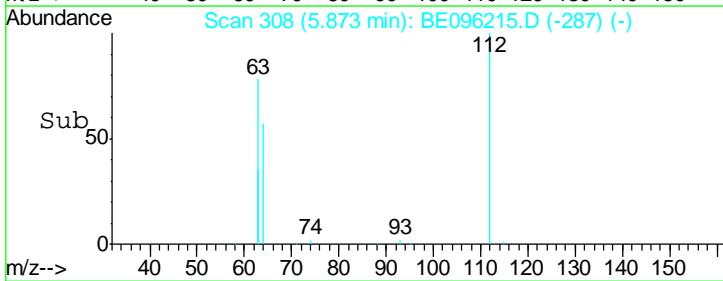
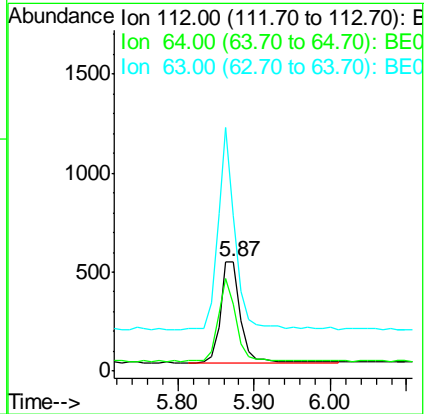
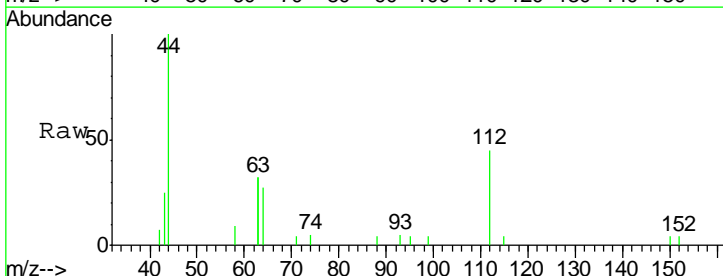
Instrument :
 BNA_E
 ClientSampled :

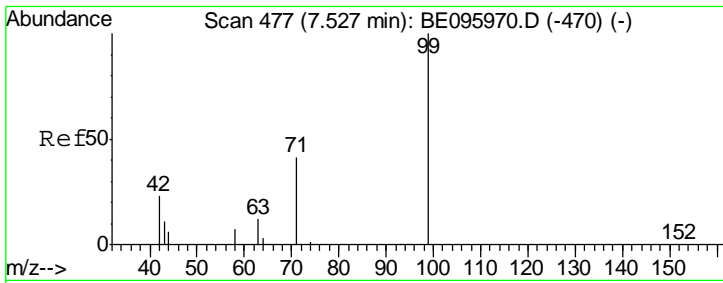
Tgt Ion	Resp	Lower	Upper
152	100		
150	147.4	117.2	175.8
115	73.0	57.0	85.6



#4
 2-Fluorophenol
 Concen: 0.545 ng
 RT: 5.87 min Scan# 308
 Delta R.T. 0.01 min
 Lab File: BE096215.D
 Acq: 30 Apr 2018 11:11

Tgt Ion	Resp	Lower	Upper
112	100		
64	75.0	60.1	90.1
63	172.3	116.8	175.2

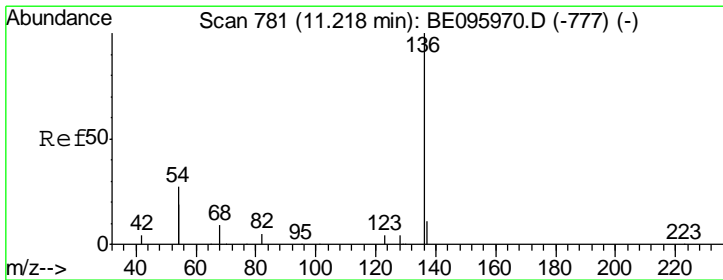
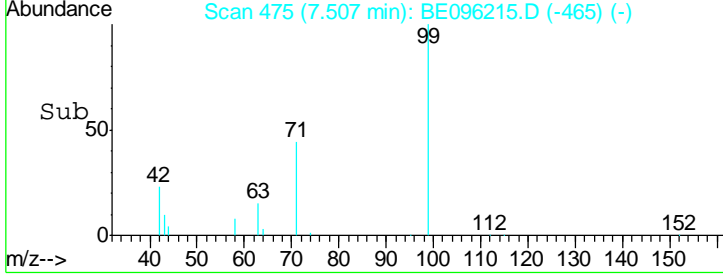
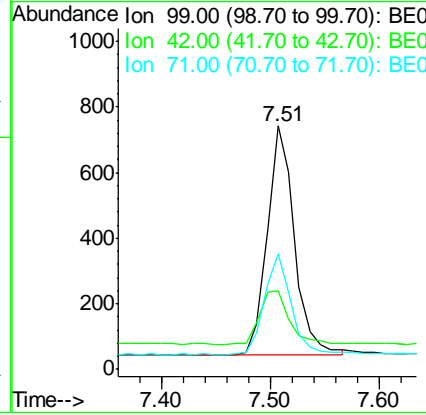
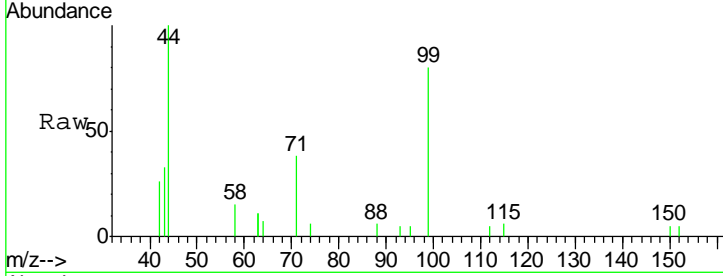




#5
 Phenol-d6
 Concen: 0.528 ng
 RT: 7.51 min Scan# 475
 Delta R.T. -0.00 min
 Lab File: BE096215.D
 Acq: 30 Apr 2018 11:11

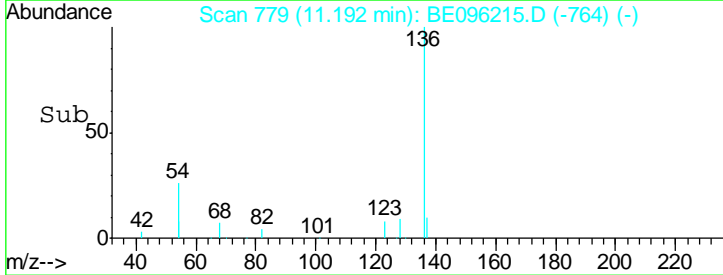
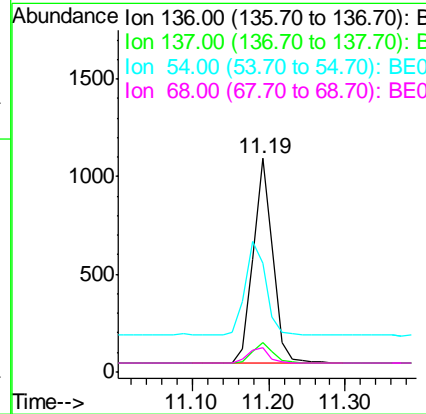
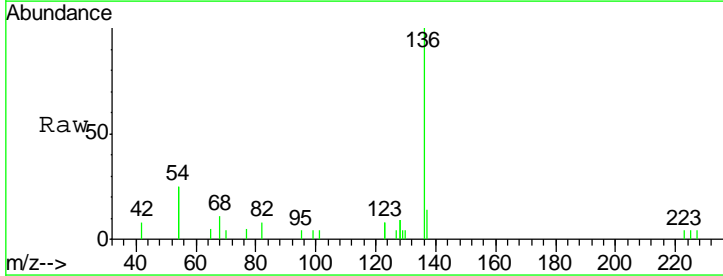
Instrument :
 BNA_E
 ClientSampled :

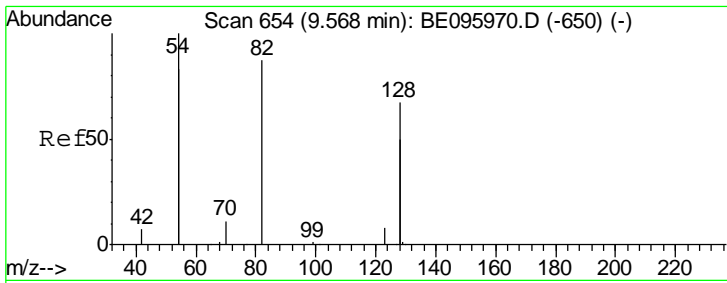
Tgt Ion	Resp	Lower	Upper
99	1227		
42	25.4	20.2	30.2
71	42.4	28.4	42.6



#7
 Naphthalene-d8
 Concen: 0.400 ng
 RT: 11.19 min Scan# 779
 Delta R.T. 0.00 min
 Lab File: BE096215.D
 Acq: 30 Apr 2018 11:11

Tgt Ion	Resp	Lower	Upper
136	1904		
137	14.0	9.5	14.3
54	50.6	29.1	43.7#
68	11.3	6.2	9.2#

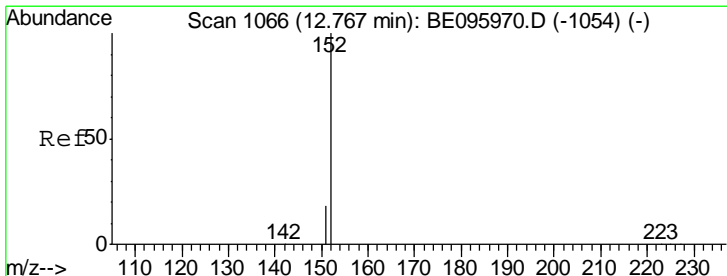
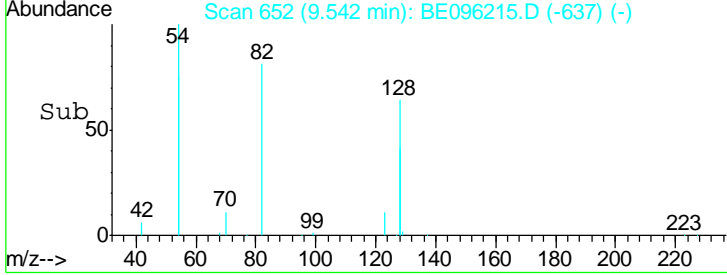
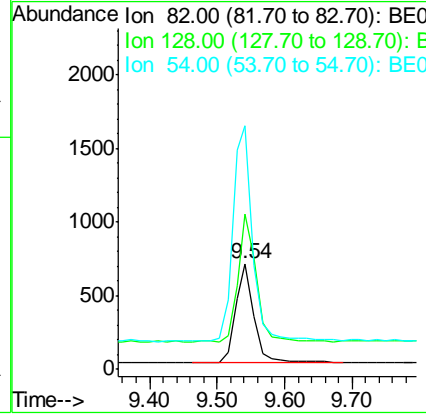
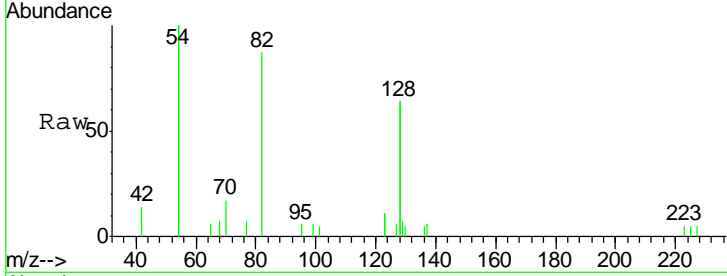




#8
 Nitrobenzene-d5
 Concen: 0.575 ng
 RT: 9.54 min Scan# 652
 Delta R.T. 0.00 min
 Lab File: BE096215.D
 Acq: 30 Apr 2018 11:11

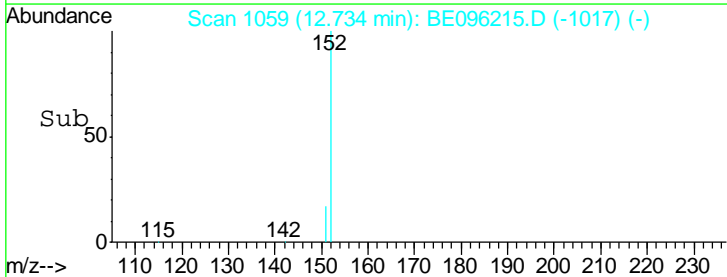
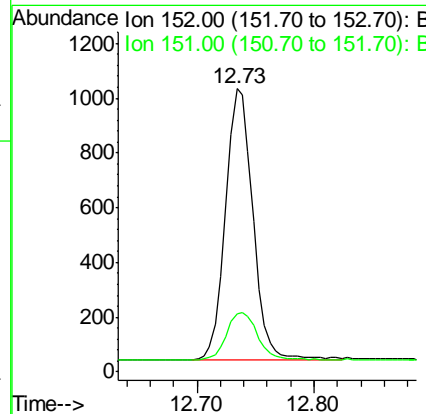
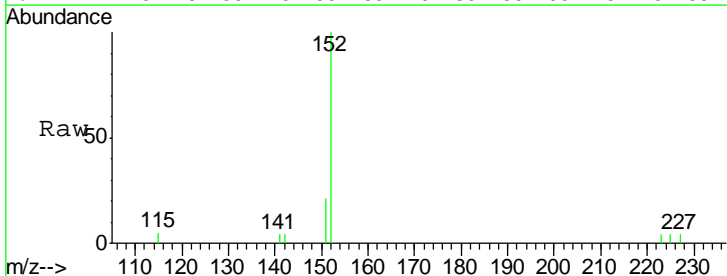
Instrument :
 BNA_E
 ClientSampled :

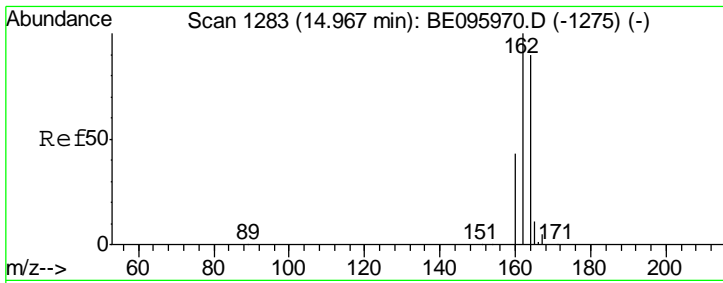
Tgt Ion	Resp	Lower	Upper
82	100		
128	146.9	150.0	225.0#
54	229.7	154.2	231.4



#11
 2-Methylnaphthalene-d10
 Concen: 0.534 ng
 RT: 12.73 min Scan# 1059
 Delta R.T. -0.00 min
 Lab File: BE096215.D
 Acq: 30 Apr 2018 11:11

Tgt Ion	Resp	Lower	Upper
152	100		
151	19.5	15.4	23.0



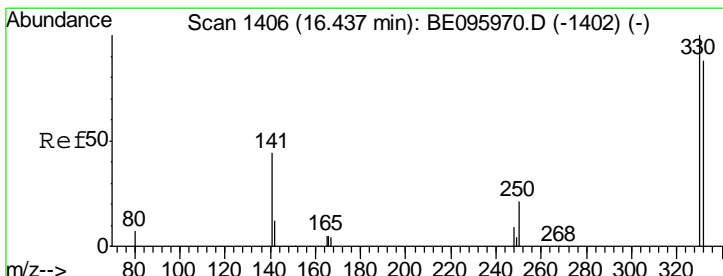
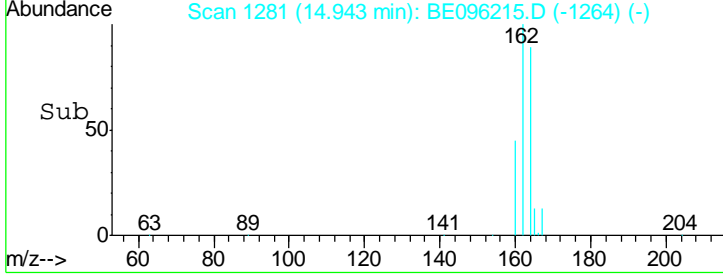
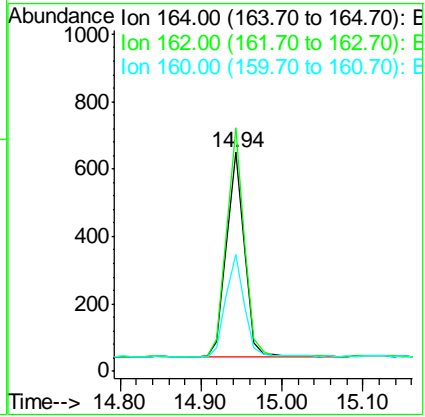
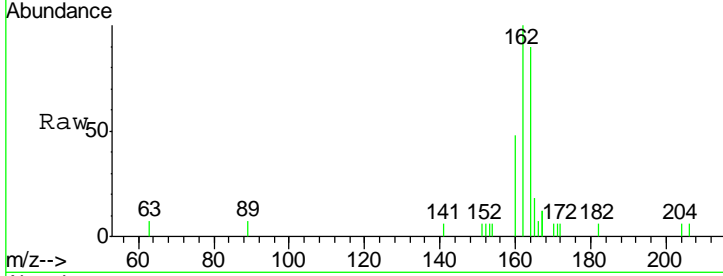


#13
 Acenaphthene-d10
 Concen: 0.400 ng
 RT: 14.94 min Scan# 1281
 Delta R.T. -0.00 min
 Lab File: BE096215.D
 Acq: 30 Apr 2018 11:11

Instrument :
 BNA_E
 ClientSampled :

Tot Ion:164 Resp: 931

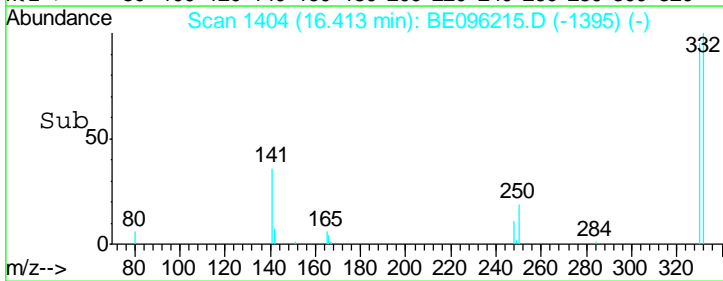
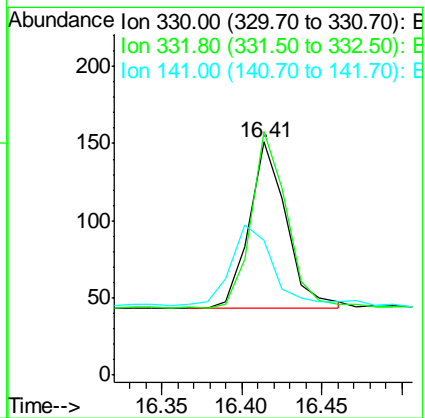
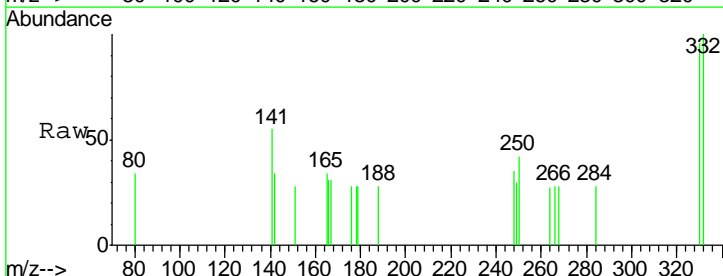
Ion	Ratio	Lower	Upper
164	100		
162	111.2	83.1	124.7
160	53.6	37.1	55.7

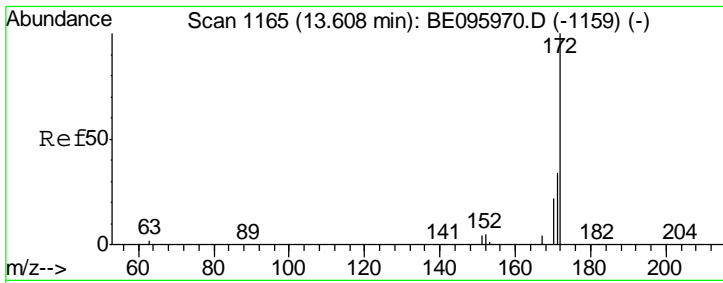


#14
 2,4,6-Tribromophenol
 Concen: 0.389 ng
 RT: 16.41 min Scan# 1404
 Delta R.T. 0.00 min
 Lab File: BE096215.D
 Acq: 30 Apr 2018 11:11

Tgt Ion:330 Resp: 175

Ion	Ratio	Lower	Upper
330	100		
332	101.7	152.7	229.1#
141	52.6	33.7	50.5#

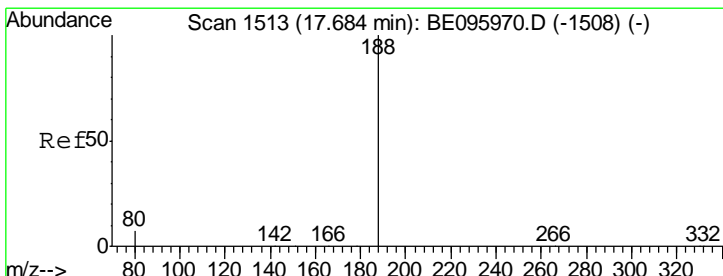
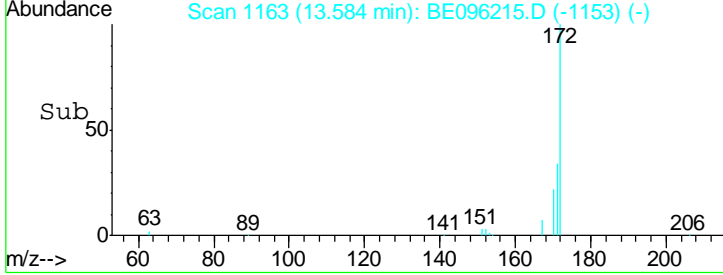
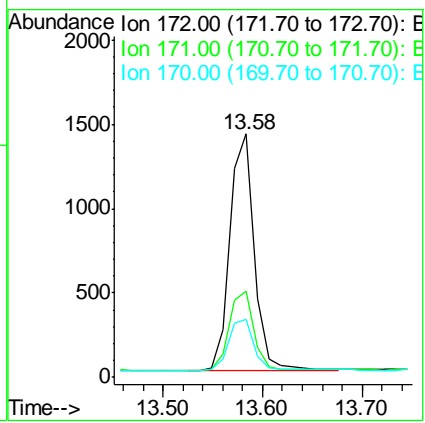
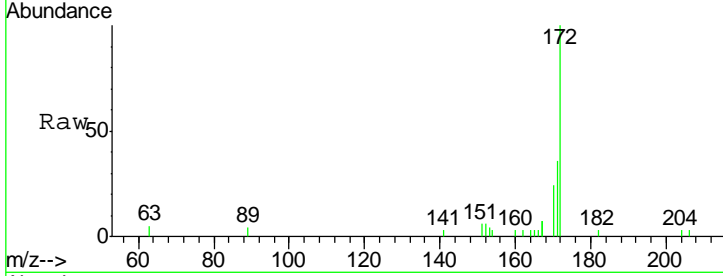




#15
 2-Fluorobiphenyl
 Concen: 0.593 ng
 RT: 13.58 min Scan# 1163
 Delta R.T. 0.01 min
 Lab File: BE096215.D
 Acq: 30 Apr 2018 11:11

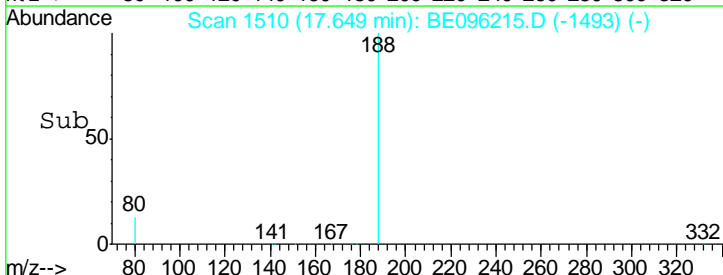
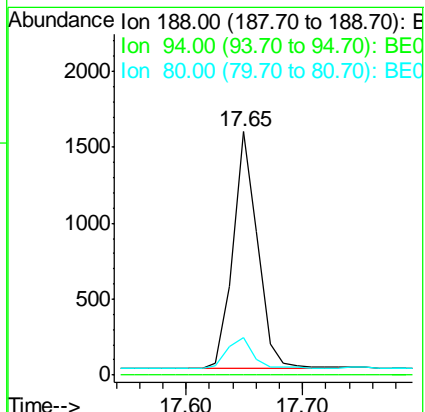
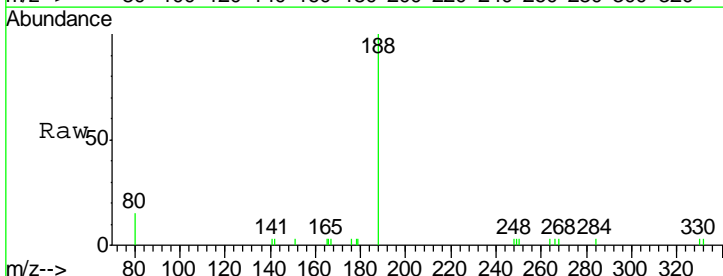
Instrument :
 BNA_E
 ClientSampled :

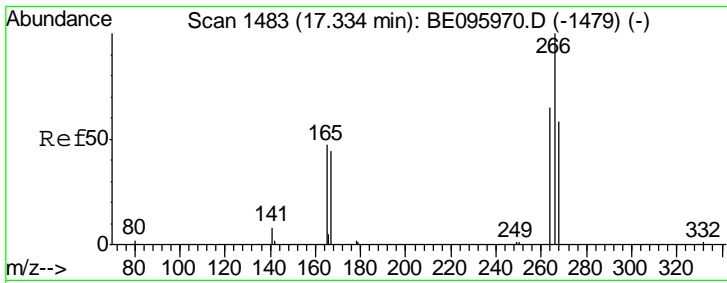
Tgt Ion	Resp	Lower	Upper
172	100		
171	35.6	29.9	44.9
170	23.9	21.8	32.8



#19
 Phenanthrene-d10
 Concen: 0.400 ng
 RT: 17.65 min Scan# 1510
 Delta R.T. 0.00 min
 Lab File: BE096215.D
 Acq: 30 Apr 2018 11:11

Tgt Ion	Resp	Lower	Upper
188	100		
94	0.0	3.9	5.9#
80	15.5	3.6	5.4#

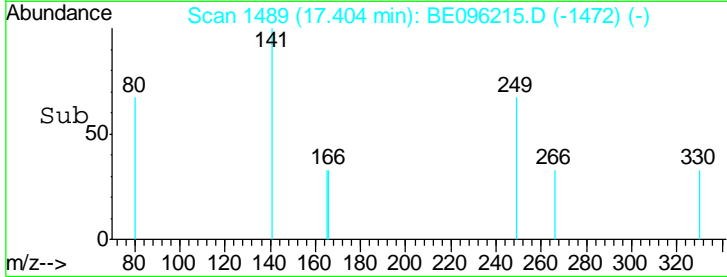
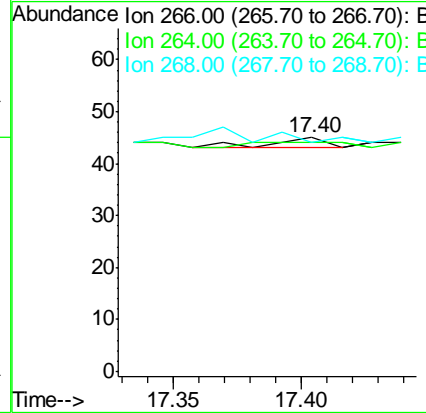
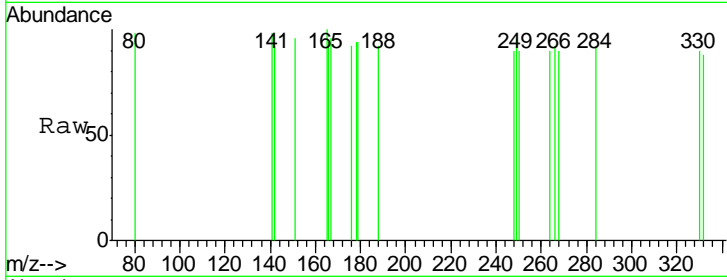




#22
 Pentachlorophenol
 Concen: 0.140 ng
 RT: 17.40 min Scan# 1489
 Delta R.T. 0.09 min
 Lab File: BE096215.D
 Acq: 30 Apr 2018 11:11

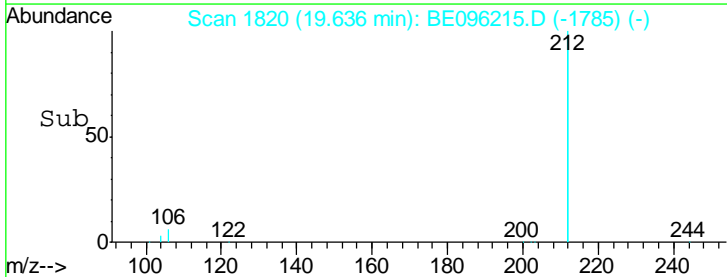
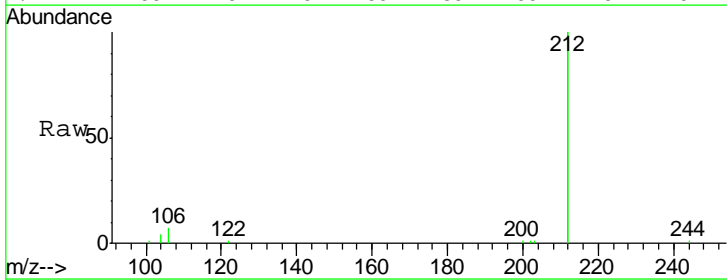
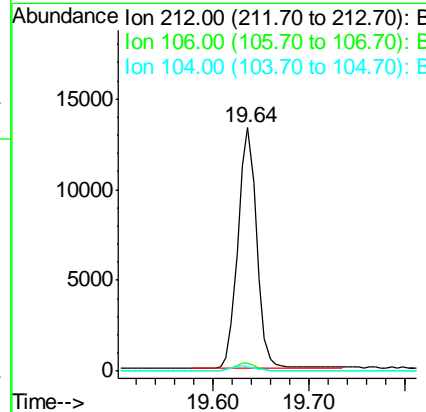
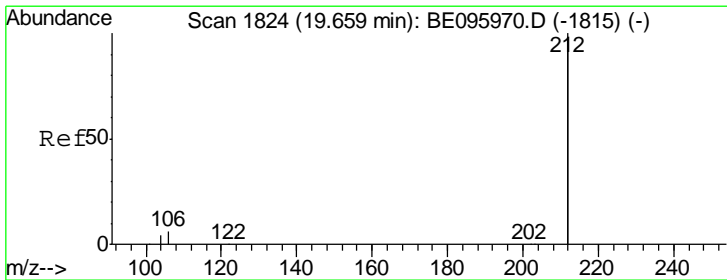
Instrument :
 BNA_E
 ClientSampled :

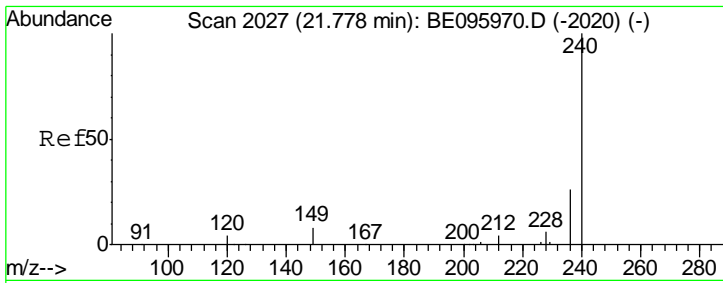
Tgt Ion	Resp	Lower	Upper
266	100		
264	97.8	72.5	108.7
268	97.8	73.8	110.6



#25
 Fluoranthene-d10
 Concen: 0.573 ng
 RT: 19.64 min Scan# 1820
 Delta R.T. 0.00 min
 Lab File: BE096215.D
 Acq: 30 Apr 2018 11:11

Tgt Ion	Resp	Lower	Upper
212	100		
106	3.2	2.8	4.2
104	1.8	1.6	2.4

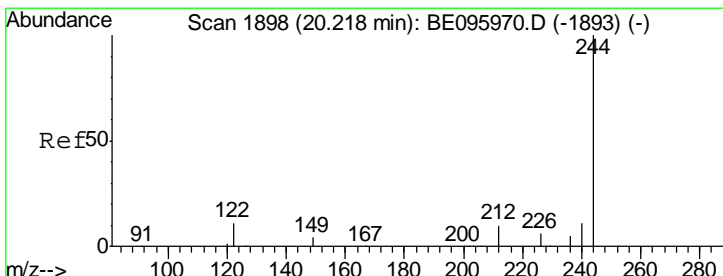
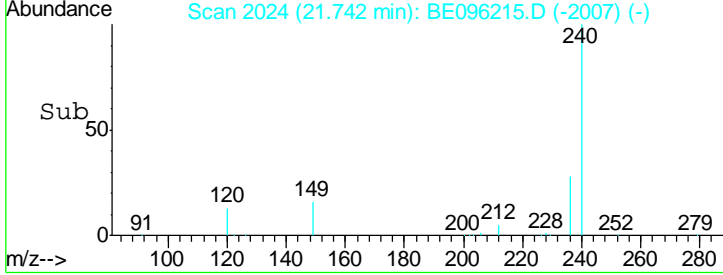
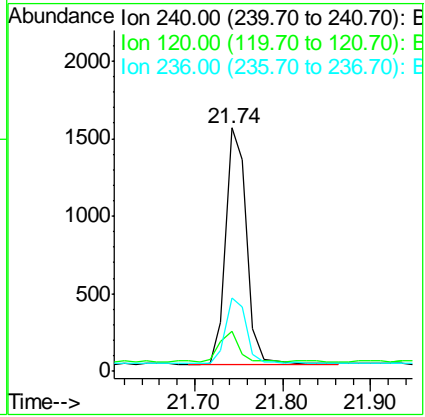
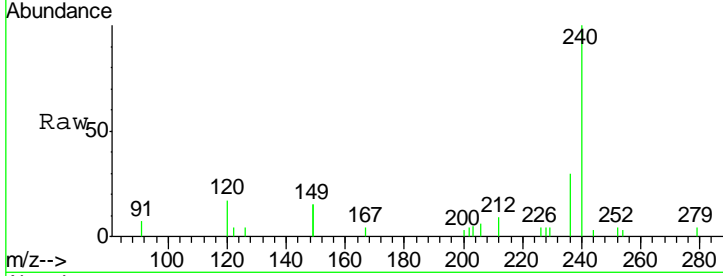




#27
 Chrysene-d12
 Concen: 0.400 ng
 RT: 21.74 min Scan# 2024
 Delta R.T. -0.00 min
 Lab File: BE096215.D
 Acq: 30 Apr 2018 11:11

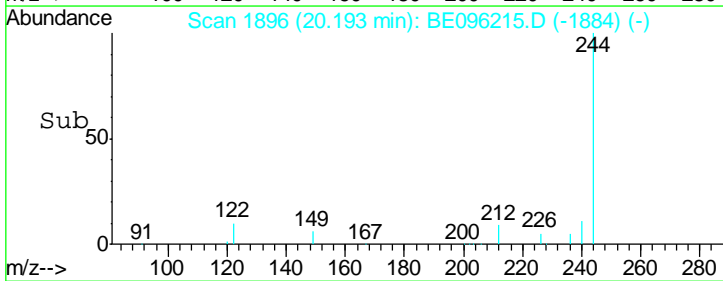
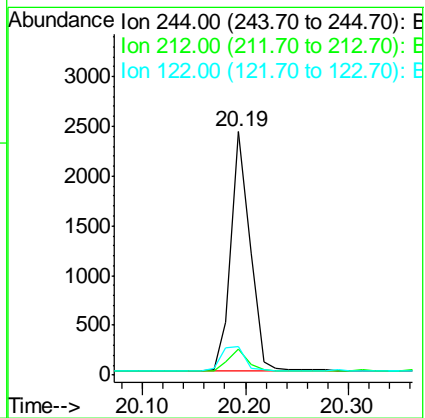
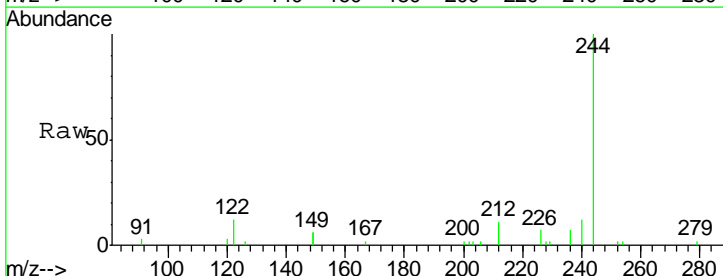
Instrument :
 BNA_E
 ClientSampled :

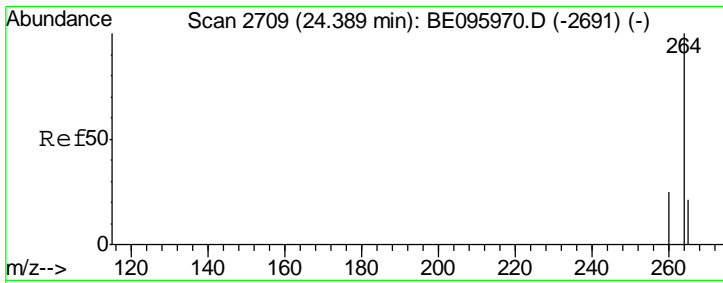
Tgt Ion	Resp	Lower	Upper
240	2497		
120	16.7	5.5	8.3#
236	29.9	20.7	31.1



#29
 Terphenyl-d14
 Concen: 0.558 ng
 RT: 20.19 min Scan# 1896
 Delta R.T. -0.00 min
 Lab File: BE096215.D
 Acq: 30 Apr 2018 11:11

Tgt Ion	Resp	Lower	Upper
244	3078		
212	11.0	25.4	38.0#
122	11.7	8.1	12.1





#34
 Perylene-d12
 Concen: 0.400 ng
 RT: 24.35 min Scan# 2698
 Delta R.T. -0.00 min
 Lab File: BE096215.D
 Acq: 30 Apr 2018 11:11

Instrument :
 BNA_E
 ClientSampled :

Tot Ion: 264 Resp: 2339

Ion	Ratio	Lower	Upper
264	100		
260	26.6	20.5	30.7
265	32.9	22.8	34.2

