

Data Path : Z:\HPCHEM1\BNA E\DATA\BE050218\
 Data File : BE096309.D
 Acq On : 3 May 2018 00:26
 Operator : SJ/JU
 Sample : J2662-06
 Misc :
 ALS Vial : 19 Sample Multiplier: 1

Instrument :
 BNA_E
 ClientSampleId :

Quant Time: May 03 01:55:55 2018
 Quant Method : Z:\HPCHEM1\BNA E\METHODS\8270-SIM-BE041118.M
 Quant Title : ASP BNA STANDARDS FOR 5 POINT CALIBRATION
 QLast Update : Mon Apr 30 14:27:29 2018
 Response via : Initial Calibration

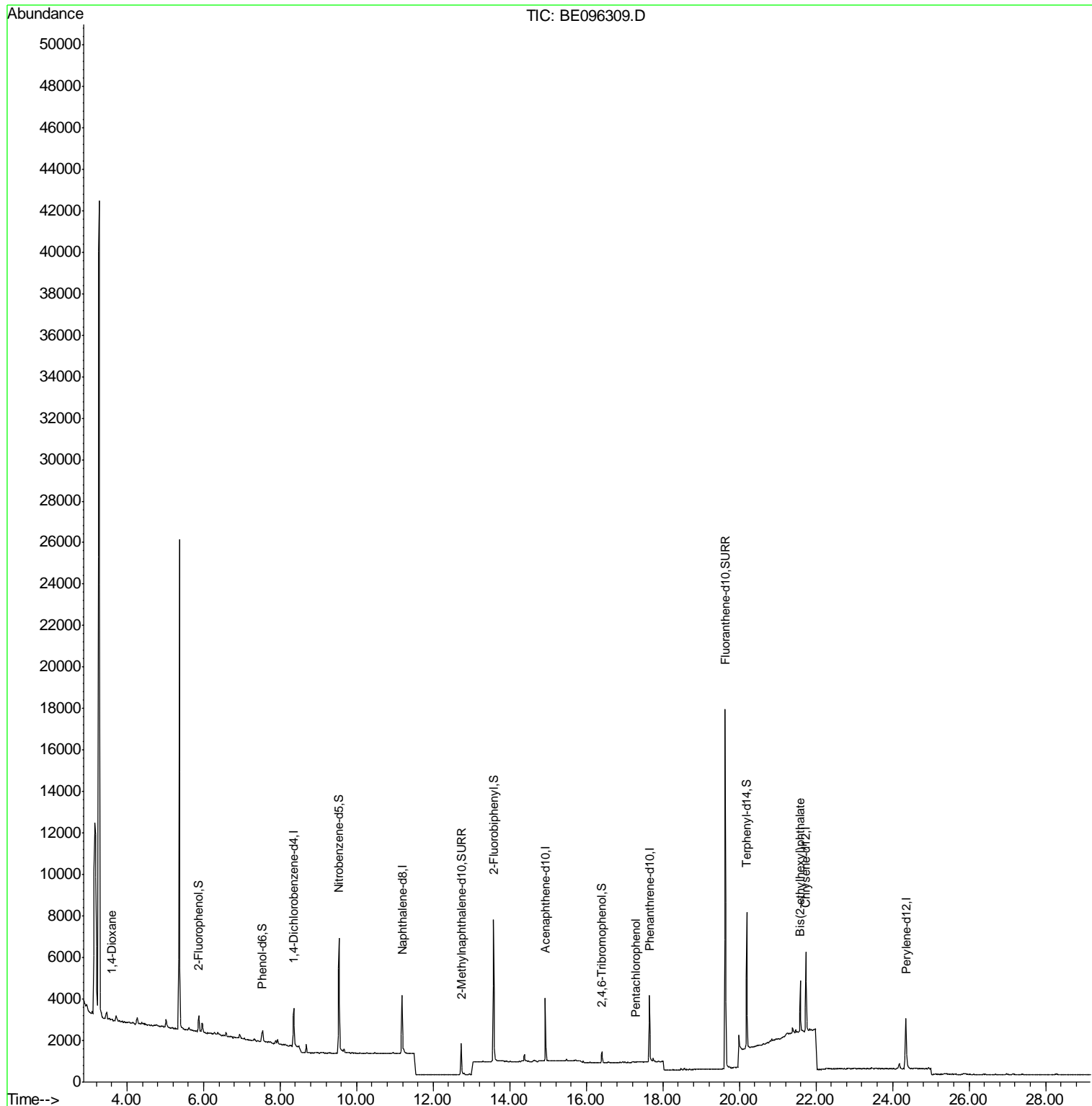
Internal Standards	R.T.	QIon	Response	Conc	Units	Dev(Min)
1) 1,4-Dichlorobenzene-d4	8.36	152	890	0.40	ng	0.00
7) Naphthalene-d8	11.19	136	3493	0.40	ng	0.00
13) Acenaphthene-d10	14.93	164	1881	0.40	ng	-0.01
19) Phenanthrene-d10	17.65	188	4317	0.40	ng	0.00
27) Chrysene-d12	21.74	240	4132	0.40	ng	0.00
34) Perylene-d12	24.35	264	3977	0.40	ng	0.00
System Monitoring Compounds						
4) 2-Fluorophenol	5.88	112	412	0.15	ng	0.02
5) Phenol-d6	7.52	99	345	0.09	ng	0.00
8) Nitrobenzene-d5	9.54	82	2245	0.55	ng	0.00
11) 2-Methylnaphthalene-d10	12.73	152	1983	0.36	ng	0.00
14) 2,4,6-Tribromophenol	16.41	330	310	0.34	ng	0.00
15) 2-Fluorobiphenyl	13.57	172	6241	0.78	ng	0.00
25) Fluoranthene-d10	19.63	212	22244	0.38	ng	0.00
29) Terphenyl-d14	20.19	244	6019	0.66	ng	0.00
Target Compounds						
2) 1,4-Dioxane	3.61	88	60	0.044	ng	# 50
22) Pentachlorophenol	17.30	266	14	0.147	ng	94
32) Bis(2-ethylhexyl)phthalate	21.60	149	2800	0.082	ng	# 98

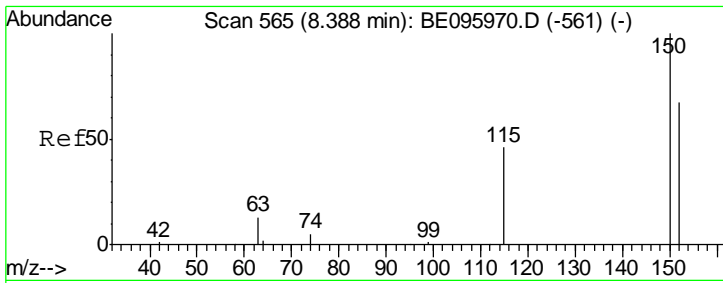
(#) = qualifier out of range (m) = manual integration (+) = signals summed

Data Path : Z:\HPCHEM1\BNA E\DATA\BE050218\
 Data File : BE096309.D
 Acq On : 3 May 2018 00:26
 Operator : SJ/JU
 Sample : J2662-06
 Misc :
 ALS Vial : 19 Sample Multiplier: 1

Instrument :
 BNA_E
 ClientSampleId :

Quant Time: May 03 01:55:55 2018
 Quant Method : Z:\HPCHEM1\BNA E\METHODS\8270-SIM-BE041118.M
 Quant Title : ASP BNA STANDARDS FOR 5 POINT CALIBRATION
 QLast Update : Mon Apr 30 14:27:29 2018
 Response via : Initial Calibration

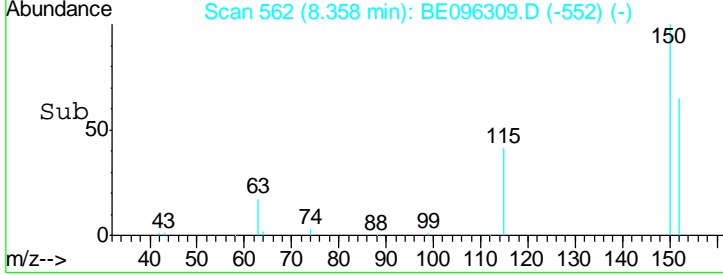
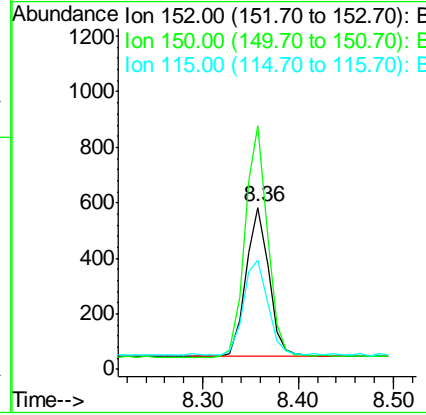
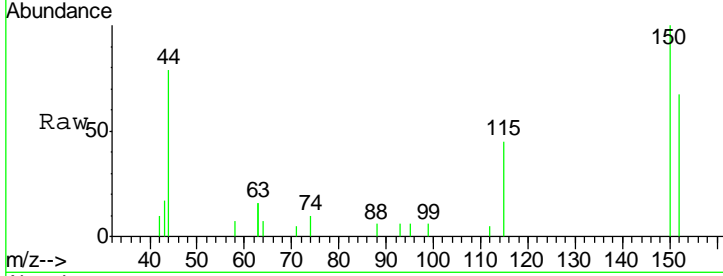




#1
 1,4-Dichlorobenzene-d4
 Concen: 0.400 ng
 RT: 8.36 min Scan# 562
 Delta R.T. -0.00 min
 Lab File: BE096309.D
 Acq: 3 May 2018 00:26

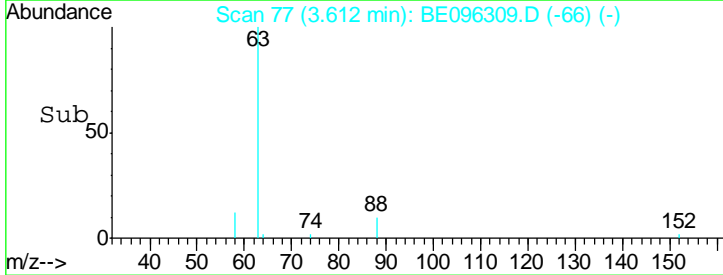
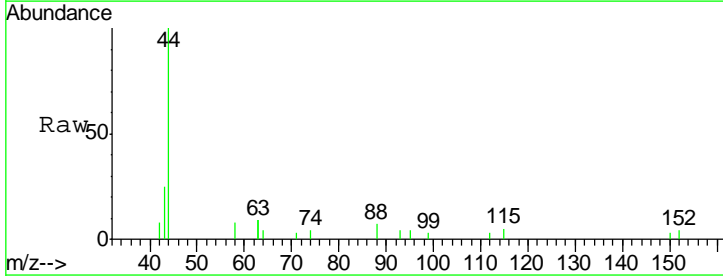
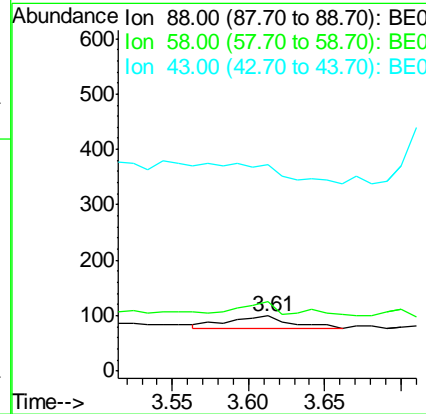
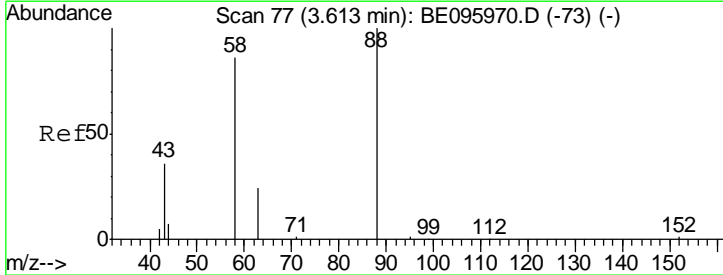
Instrument :
 BNA_E
 ClientSampled :

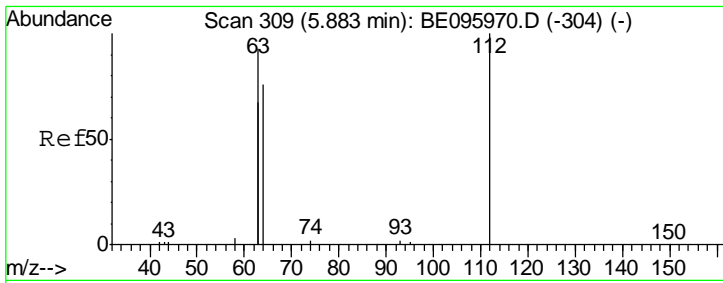
Tgt Ion	Resp	Lower	Upper
152	100		
150	149.9	117.2	175.8
115	67.0	57.0	85.6



#2
 1,4-Dioxane
 Concen: 0.044 ng
 RT: 3.61 min Scan# 77
 Delta R.T. 0.01 min
 Lab File: BE096309.D
 Acq: 3 May 2018 00:26

Tgt Ion	Resp	Lower	Upper
88	100		
58	48.3	63.2	94.8#
43	0.0	41.2	61.8#

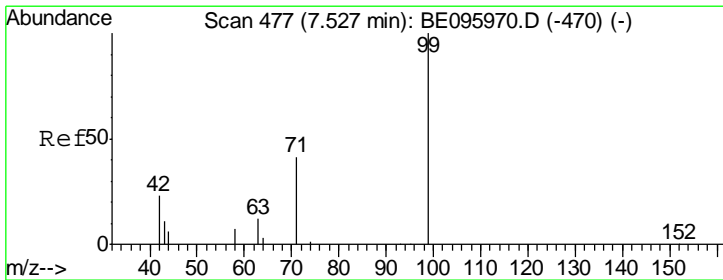
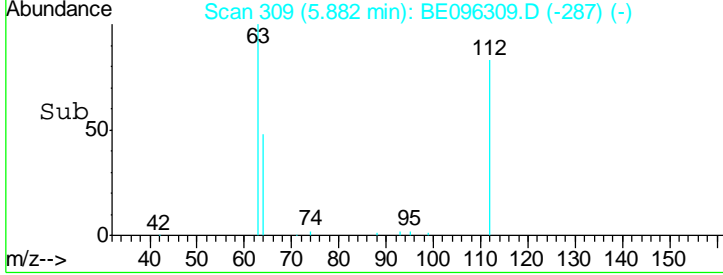
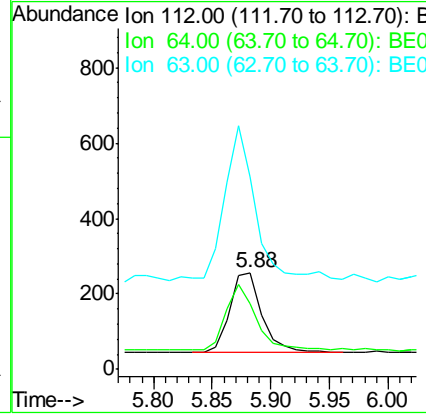
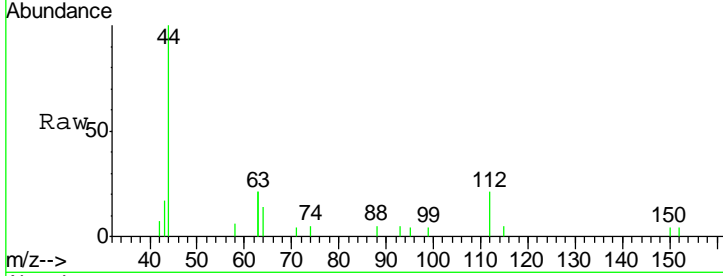




#4
 2-Fluorophenol
 Concen: 0.150 ng
 RT: 5.88 min Scan# 309
 Delta R.T. 0.02 min
 Lab File: BE096309.D
 Acq: 3 May 2018 00:26

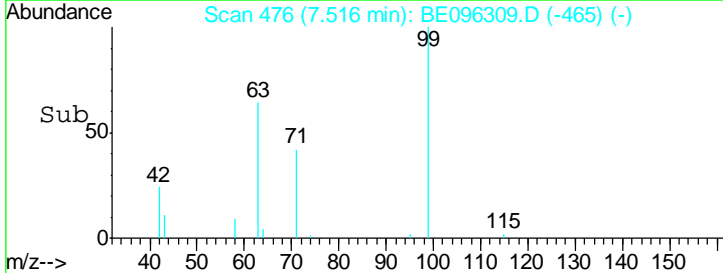
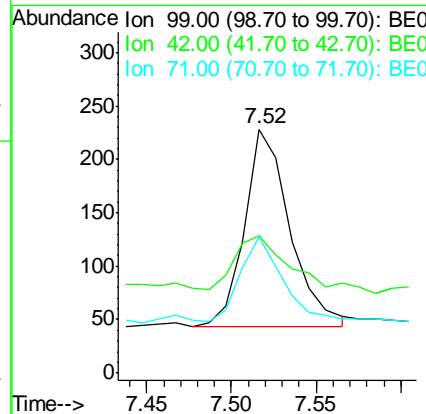
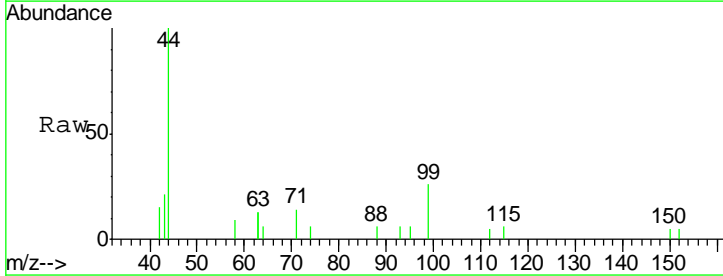
Instrument :
 BNA_E
 ClientSampled :

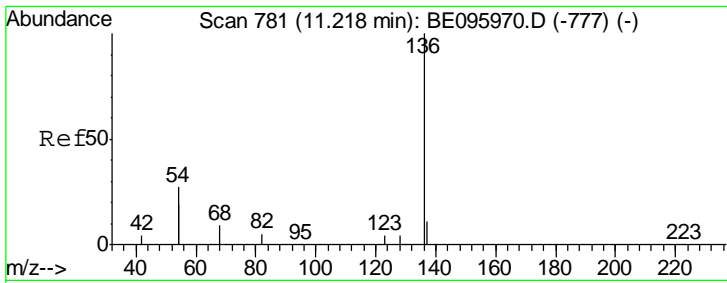
Tgt Ion	Resp	Lower	Upper
112	412		
64	78.4	60.1	90.1
63	181.8	116.8	175.2#



#5
 Phenol-d6
 Concen: 0.091 ng
 RT: 7.52 min Scan# 476
 Delta R.T. 0.01 min
 Lab File: BE096309.D
 Acq: 3 May 2018 00:26

Tgt Ion	Resp	Lower	Upper
99	345		
42	30.1	20.2	30.2
71	40.0	28.4	42.6

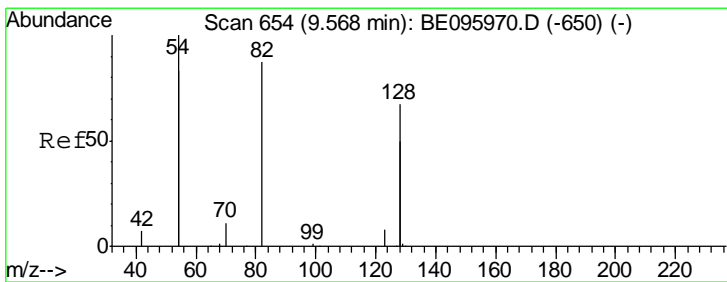
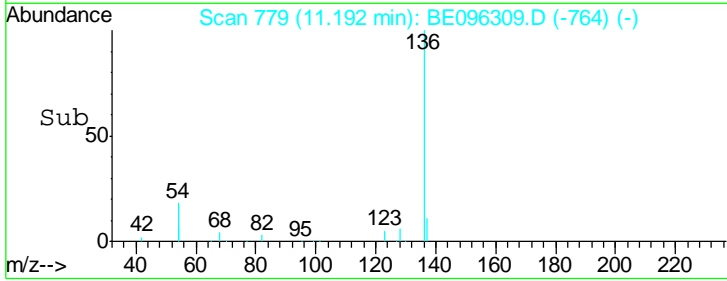
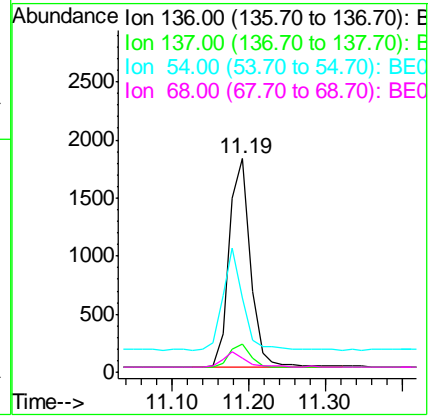
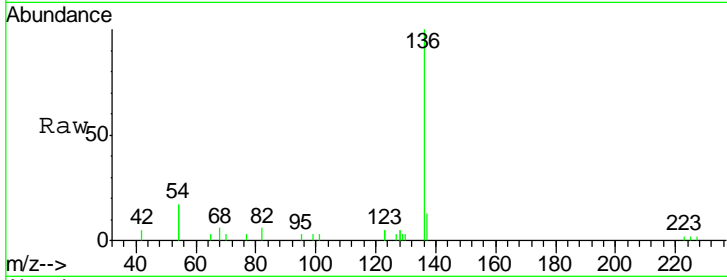




#7
 Naphthalene-d8
 Concen: 0.400 ng
 RT: 11.19 min Scan# 779
 Delta R.T. 0.00 min
 Lab File: BE096309.D
 Acq: 3 May 2018 00:26

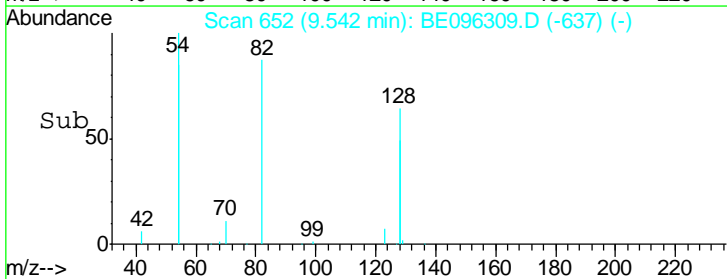
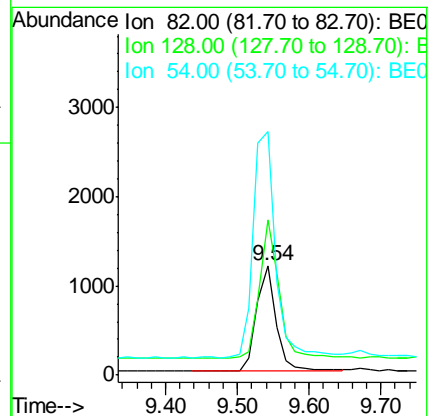
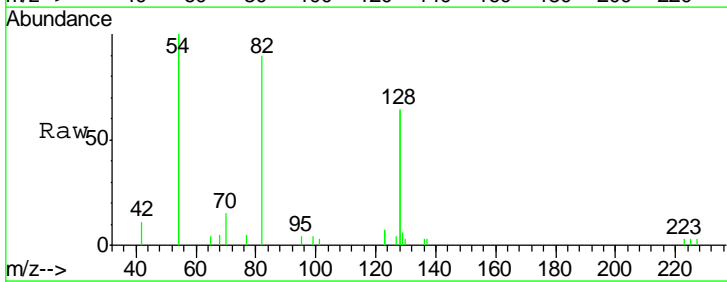
Instrument :
 BNA_E
 ClientSampled :

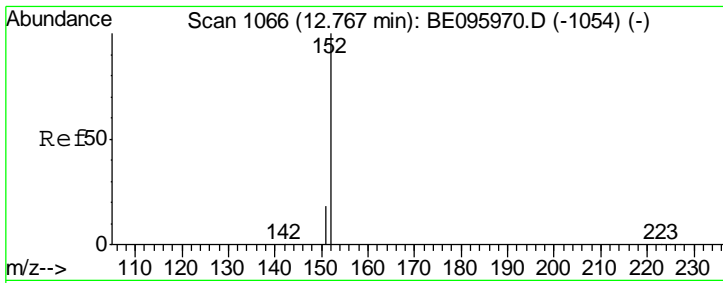
Tgt Ion	Resp	Lower	Upper
136	100		
137	13.0	9.5	14.3
54	34.7	29.1	43.7
68	6.4	6.2	9.2



#8
 Nitrobenzene-d5
 Concen: 0.548 ng
 RT: 9.54 min Scan# 652
 Delta R.T. 0.00 min
 Lab File: BE096309.D
 Acq: 3 May 2018 00:26

Tgt Ion	Resp	Lower	Upper
82	100		
128	141.1	150.0	225.0#
54	222.0	154.2	231.4

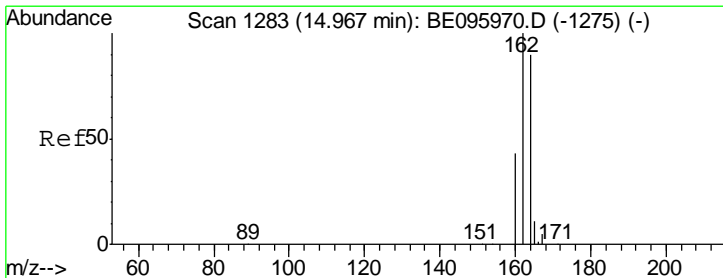
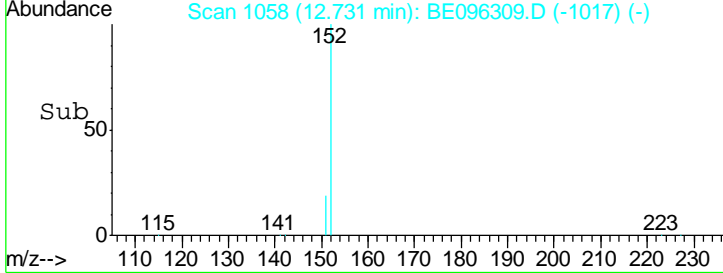
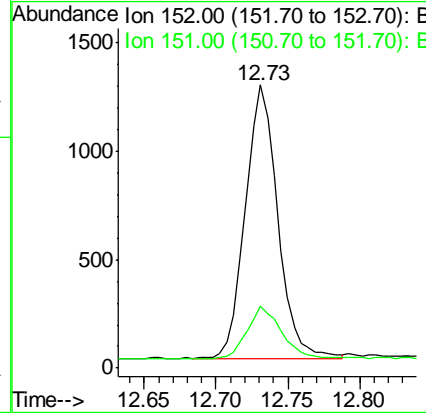
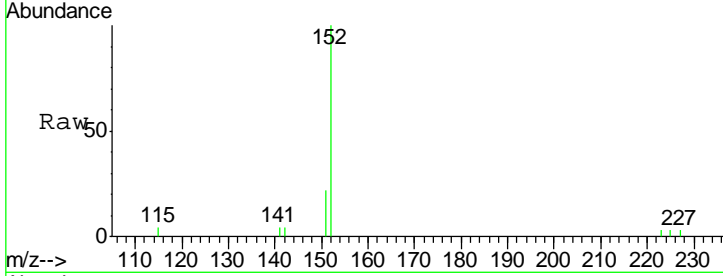




#11
 2-Methylnaphthalene-d10
 Concen: 0.358 ng
 RT: 12.73 min Scan# 1058
 Delta R.T. -0.00 min
 Lab File: BE096309.D
 Acq: 3 May 2018 00:26

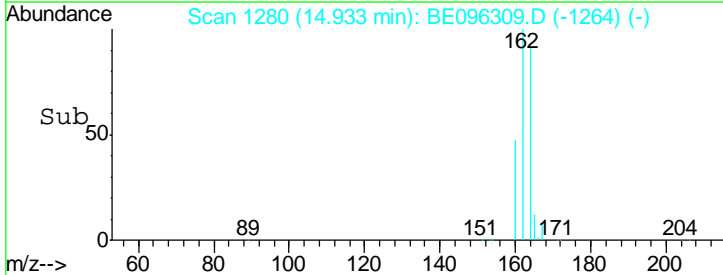
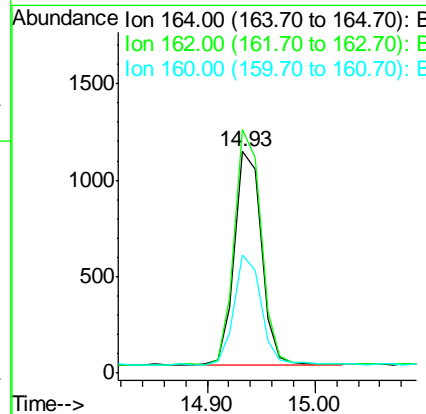
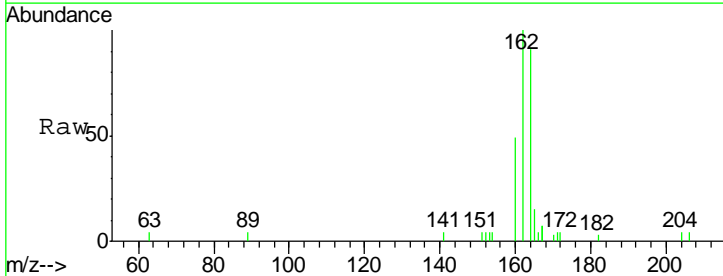
Instrument :
 BNA_E
 ClientSampled :

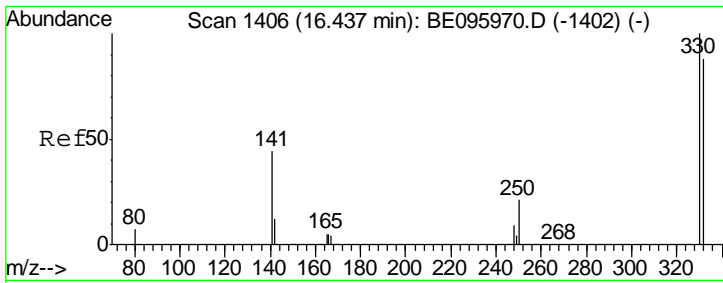
Tgt Ion	Resp	Lower	Upper
152	1983		
151	20.5	15.4	23.0



#13
 Acenaphthene-d10
 Concen: 0.400 ng
 RT: 14.93 min Scan# 1280
 Delta R.T. -0.01 min
 Lab File: BE096309.D
 Acq: 3 May 2018 00:26

Tgt Ion	Resp	Lower	Upper
164	1881		
162	109.9	83.1	124.7
160	53.6	37.1	55.7

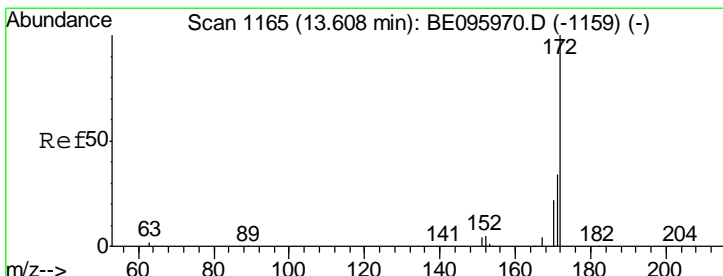
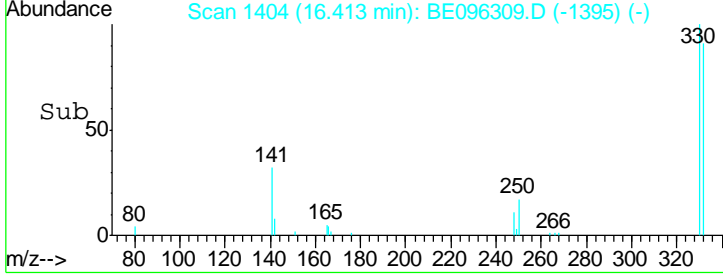
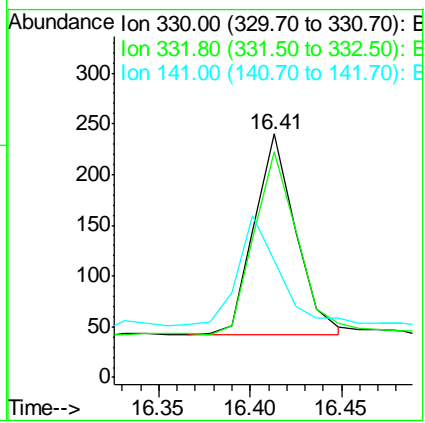
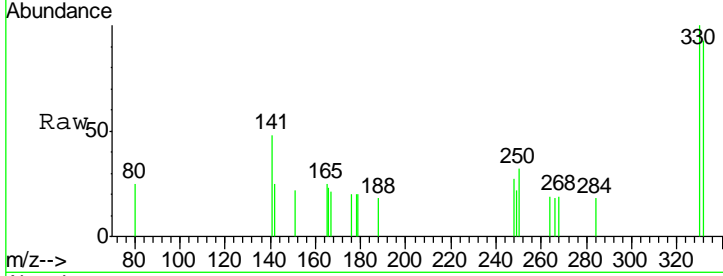




#14
 2,4,6-Tribromophenol
 Concen: 0.341 ng
 RT: 16.41 min Scan# 1404
 Delta R.T. 0.00 min
 Lab File: BE096309.D
 Acq: 3 May 2018 00:26

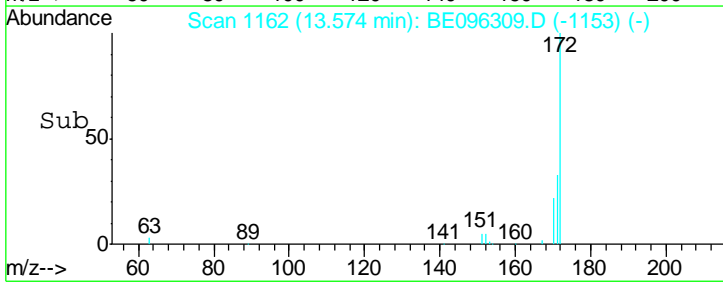
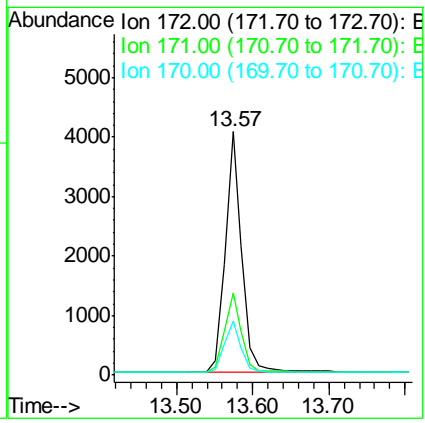
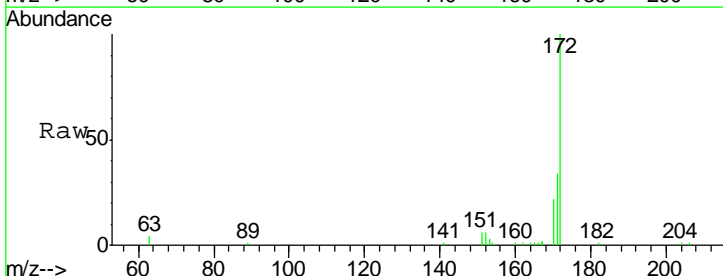
Instrument :
 BNA_E
 ClientSampled :

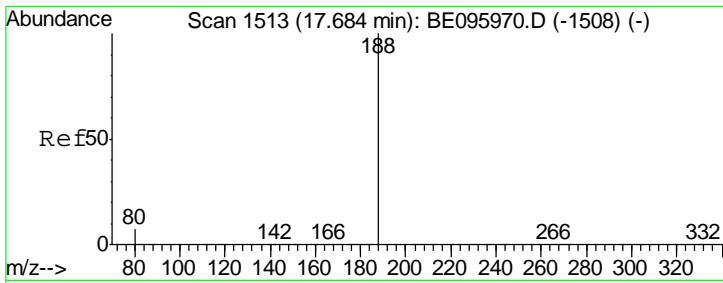
Tgt Ion	Resp	Lower	Upper
330	100		
332	96.5	152.7	229.1#
141	53.2	33.7	50.5#



#15
 2-Fluorobiphenyl
 Concen: 0.776 ng
 RT: 13.57 min Scan# 1162
 Delta R.T. 0.00 min
 Lab File: BE096309.D
 Acq: 3 May 2018 00:26

Tgt Ion	Resp	Lower	Upper
172	100		
171	33.9	29.9	44.9
170	22.4	21.8	32.8

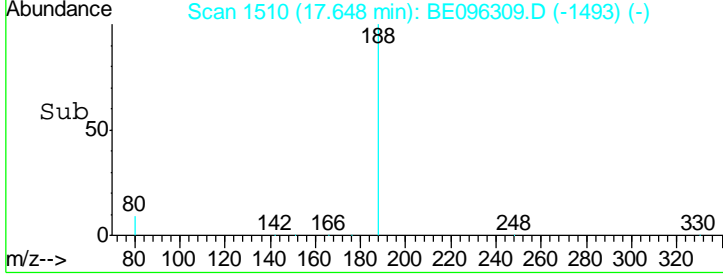
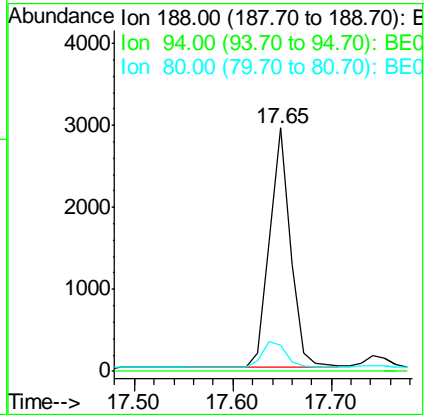
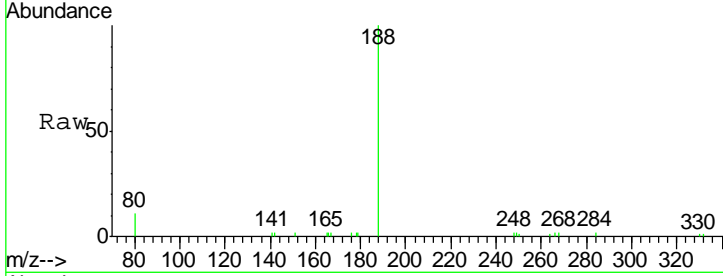




#19
 Phenanthrene-d10
 Concen: 0.400 ng
 RT: 17.65 min Scan# 1510
 Delta R.T. 0.00 min
 Lab File: BE096309.D
 Acq: 3 May 2018 00:26

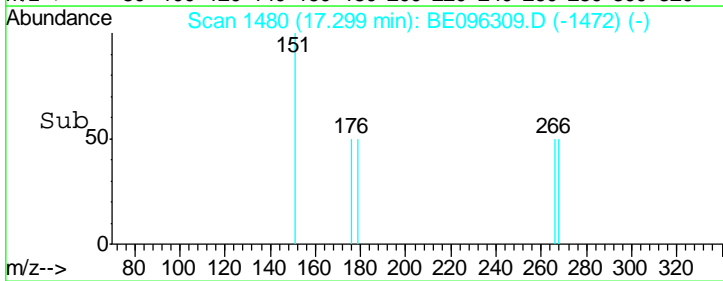
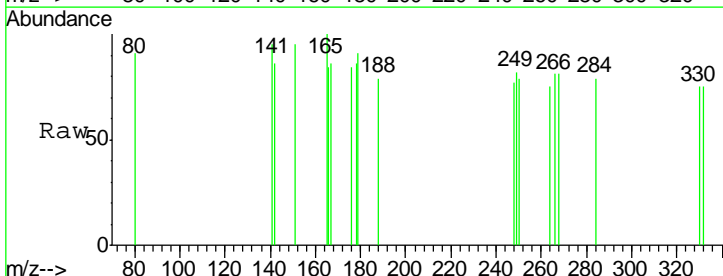
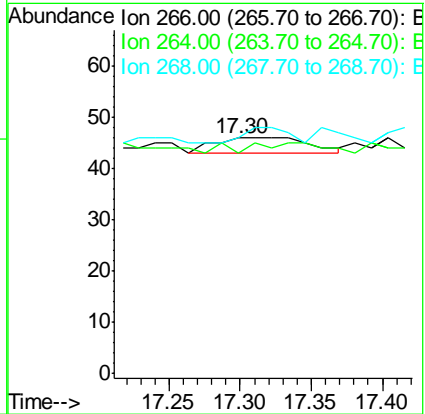
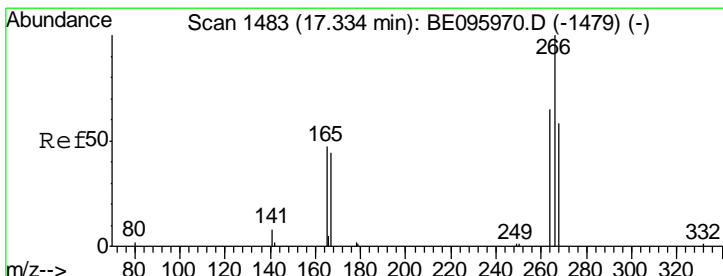
Instrument :
 BNA_E
 ClientSampled :

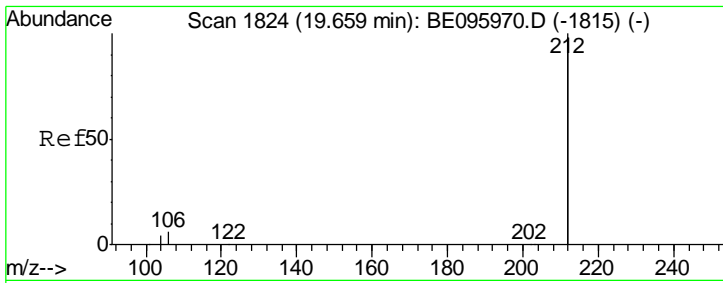
Tgt Ion	Resp	Lower	Upper
188	100		
94	0.0	3.9	5.9#
80	10.8	3.6	5.4#



#22
 Pentachlorophenol
 Concen: 0.147 ng
 RT: 17.30 min Scan# 1480
 Delta R.T. -0.01 min
 Lab File: BE096309.D
 Acq: 3 May 2018 00:26

Tgt Ion	Resp	Lower	Upper
266	100		
264	93.5	72.5	108.7
268	100.0	73.8	110.6

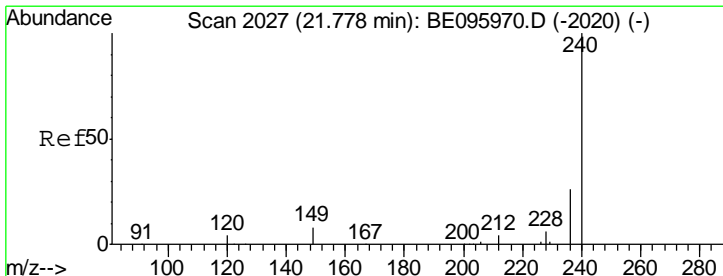
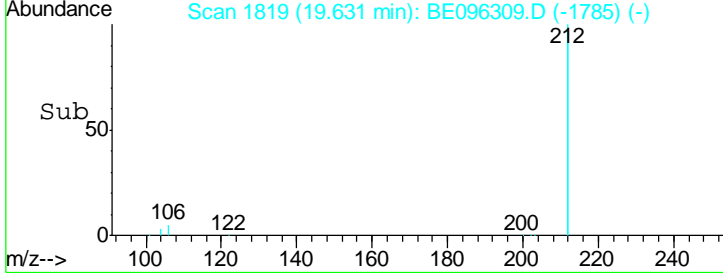
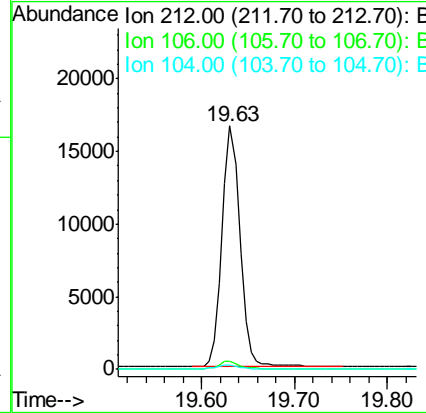
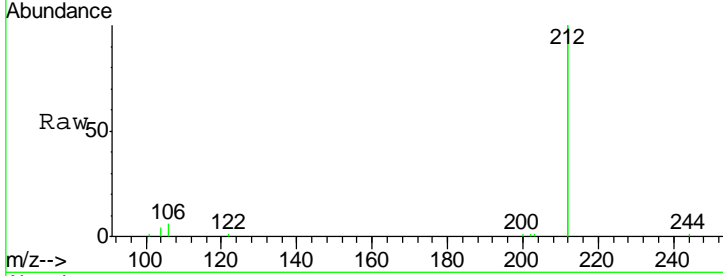




#25
 Fluoranthene-d10
 Concen: 0.380 ng
 RT: 19.63 min Scan# 1819
 Delta R.T. -0.01 min
 Lab File: BE096309.D
 Acq: 3 May 2018 00:26

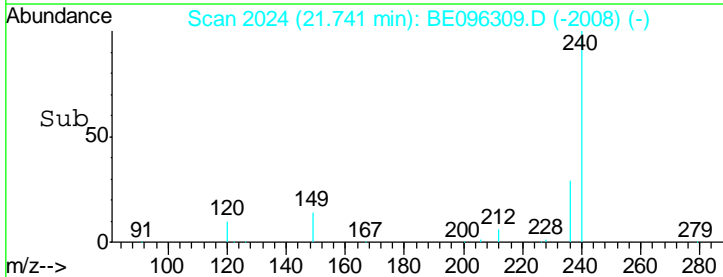
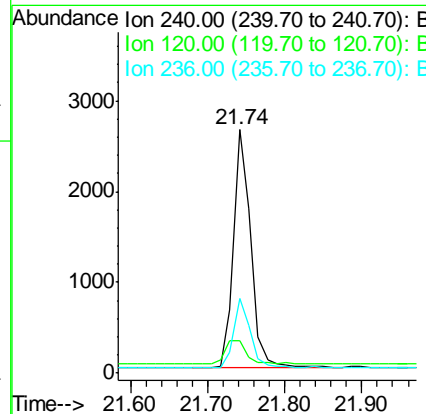
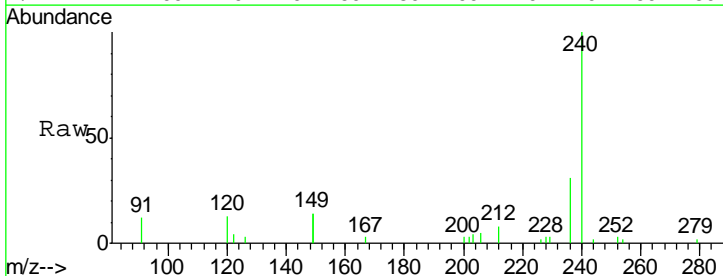
Instrument :
 BNA_E
 ClientSampled :

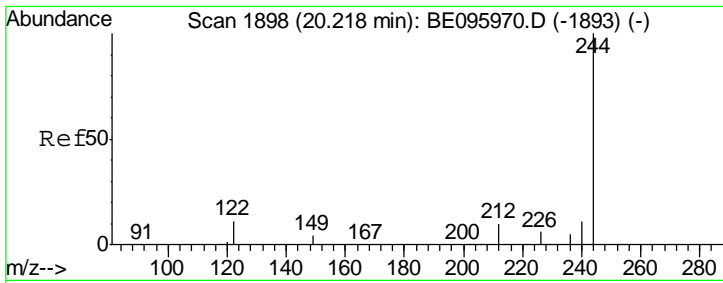
Tgt Ion	Resp	Lower	Upper
212	100		
106	2.9	2.8	4.2
104	1.8	1.6	2.4



#27
 Chrysene-d12
 Concen: 0.400 ng
 RT: 21.74 min Scan# 2024
 Delta R.T. -0.00 min
 Lab File: BE096309.D
 Acq: 3 May 2018 00:26

Tgt Ion	Resp	Lower	Upper
240	100		
120	13.3	5.5	8.3#
236	30.5	20.7	31.1

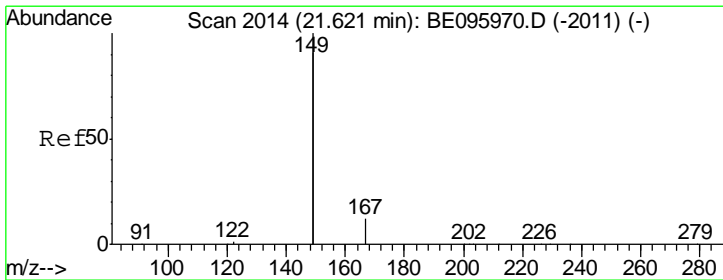
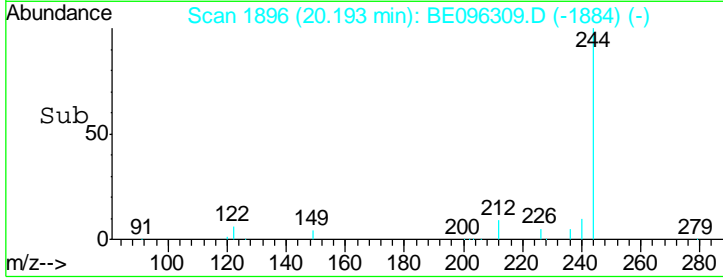
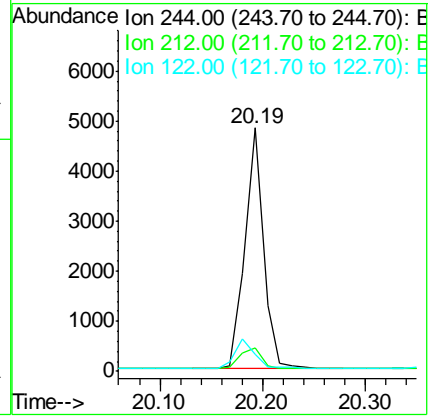
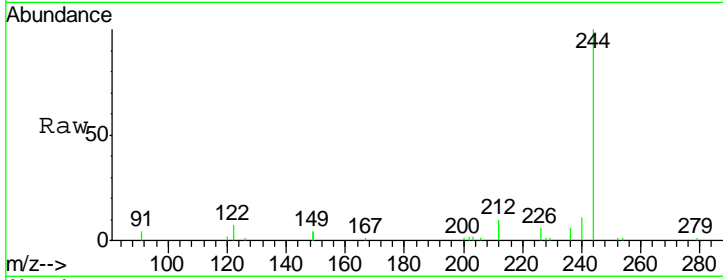




#29
 Terphenyl-d14
 Concen: 0.659 ng
 RT: 20.19 min Scan# 1896
 Delta R.T. -0.00 min
 Lab File: BE096309.D
 Acq: 3 May 2018 00:26

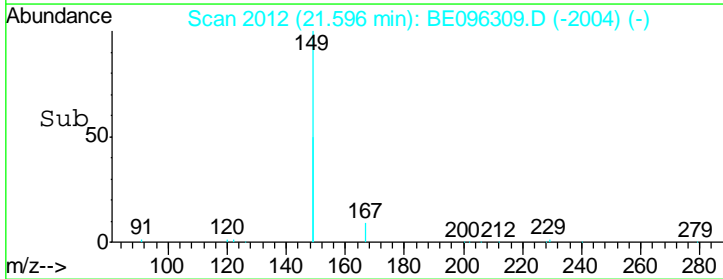
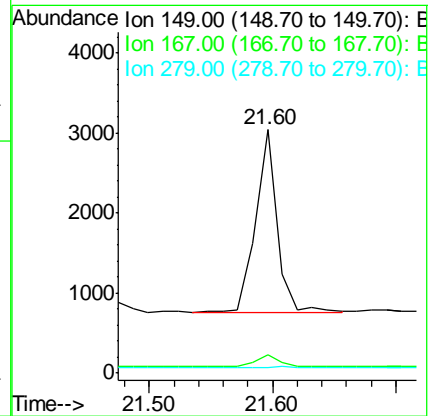
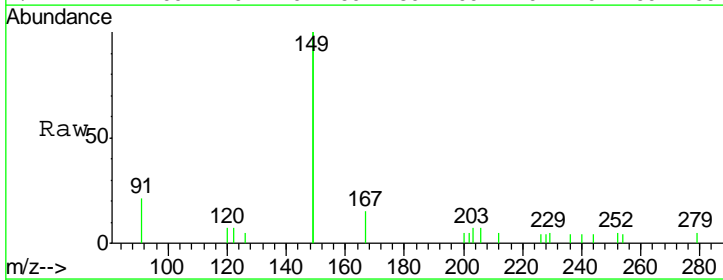
Instrument :
 BNA_E
 ClientSampled :

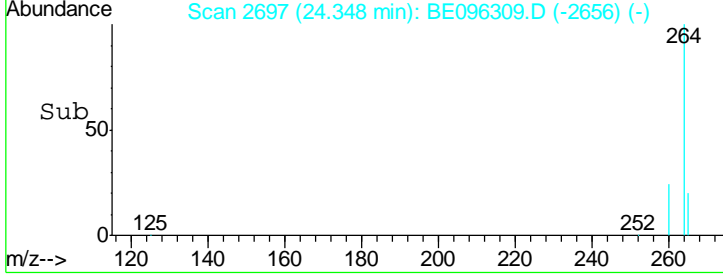
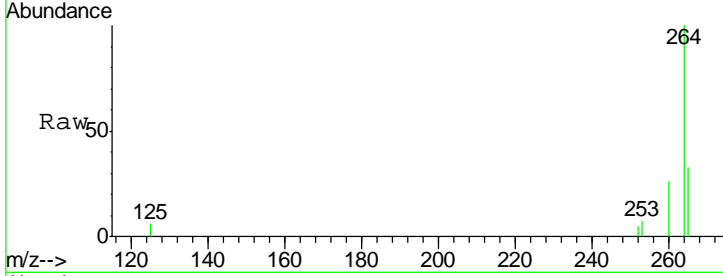
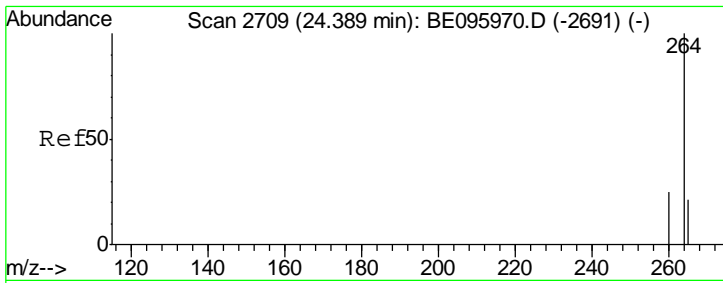
Tgt Ion	Resp	Lower	Upper
244	100		
212	9.8	25.4	38.0#
122	7.3	8.1	12.1#



#32
 Bis(2-ethylhexyl)phthalate
 Concen: 0.082 ng
 RT: 21.60 min Scan# 2012
 Delta R.T. -0.00 min
 Lab File: BE096309.D
 Acq: 3 May 2018 00:26

Tgt Ion	Resp	Lower	Upper
149	100		
167	7.5	5.4	8.0
279	1.6	0.7	1.1#





#34
 Perylene-d12
 Concen: 0.400 ng
 RT: 24.35 min Scan# 2697
 Delta R.T. -0.00 min
 Lab File: BE096309.D
 Acq: 3 May 2018 00:26

Instrument :
 BNA_E
 ClientSampleId :

Tot Ion: 264 Resp: 3977

Ion	Ratio	Lower	Upper
264	100		
260	26.4	20.5	30.7
265	33.0	22.8	34.2

