

Data Path : Z:\HPCHEM1\BNA E\DATA\BE050318\  
 Data File : BE096331.D  
 Acq On : 3 May 2018 20:03  
 Operator : SJ/JU  
 Sample : J2440-12  
 Misc :  
 ALS Vial : 7 Sample Multiplier: 1

**Instrument :**  
 BNA\_E  
**ClientSampled :**  
 A3Y21

**Manual Integrations**  
**APPROVED**  
 Sohil  
 5/4/2018 1:35:00 PM

Quant Time: May 04 02:24:37 2018  
 Quant Method : Z:\HPCHEM1\BNA E\METHODS\SOM-EPA-SIM-BE050318.M  
 Quant Title : ASP BNA STANDARDS FOR 5 POINT CALIBRATION  
 QLast Update : Fri May 04 01:53:25 2018  
 Response via : Initial Calibration

Internal Standards	R.T.	QIon	Response	Conc	Units	Dev(Min)
1) 1,4-Dichlorobenzene-d4	8.35	152	640	0.40	ng/ul	0.00
2) Naphthalene-d8	11.17	136	2723	0.40	ng/ul	0.00
6) Acenaphthene-d10	14.94	164	1773	0.40	ng/ul	0.00
10) Phenanthrene-d10	17.65	188	4546m	0.40	ng/ul	0.00
16) Chrysene-d12	21.74	240	5123m	0.40	ng/ul	0.00
20) Perylene-d12	24.34	264	4073m	0.40	ng/ul	0.00
<b>System Monitoring Compounds</b>						
4) 2-Methylnaphthalene-d10	12.73	152	1442	0.29	ng/ul	0.00
14) Fluoranthene-d10	19.63	212	5193m	0.27	ng/ul	0.00
<b>Target Compounds</b>						
					Ovalue	
12) Phenanthrene	17.69	178	295m	0.022	ng/ul	
15) Fluoranthene	19.66	202	577m	0.030	ng/ul	
17) Pyrene	20.00	202	305m	0.053	ng/ul	
18) Benzo(a)anthracene	21.73	228	171m	0.021	ng/ul	
19) Chrysene	21.78	228	321m	0.021	ng/ul	

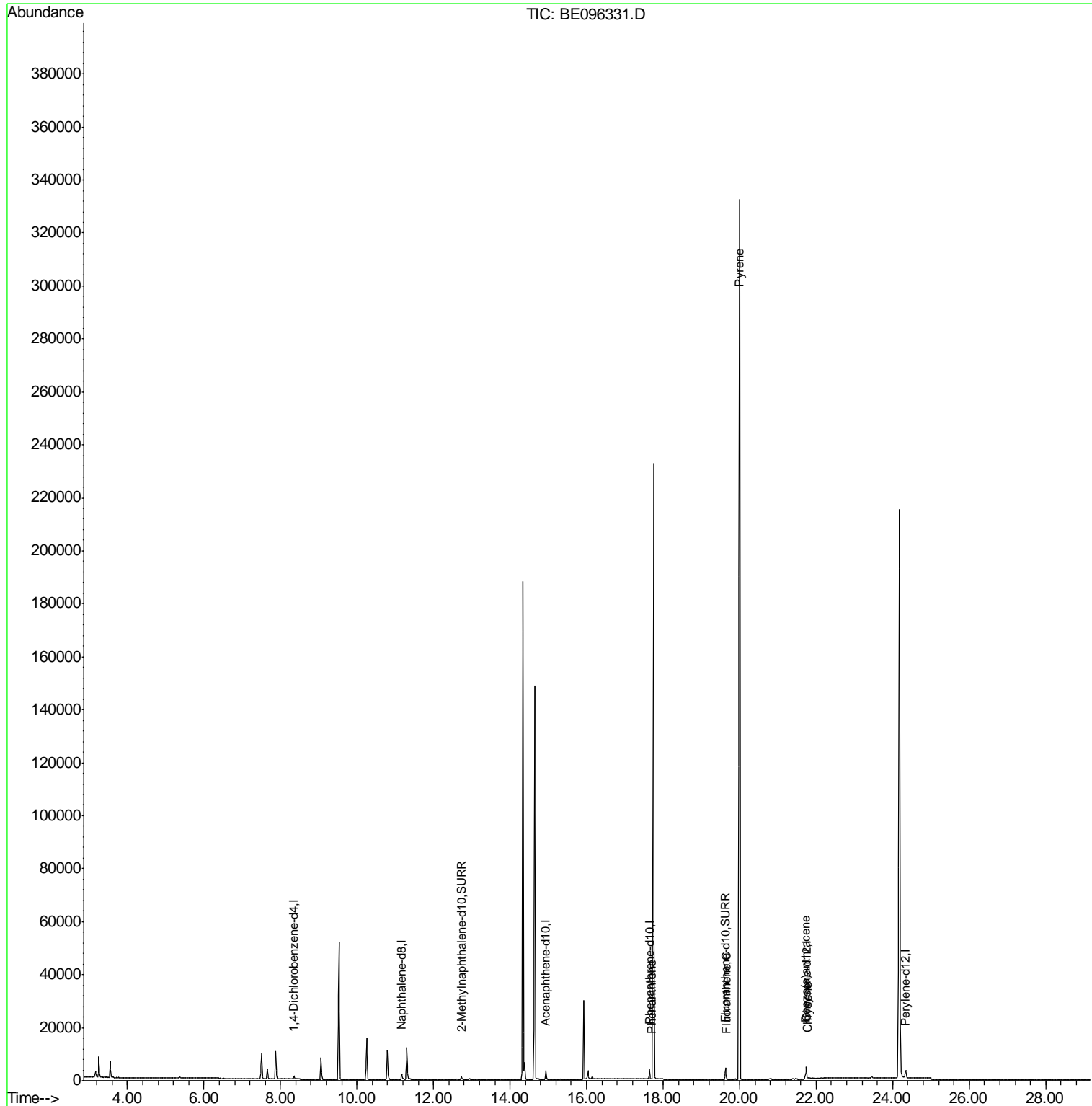
(#) = qualifier out of range (m) = manual integration (+) = signals summed

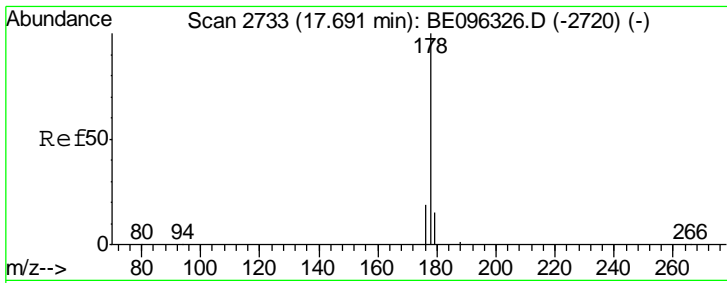
Data Path : Z:\HPCHEM1\BNA E\DATA\BE050318\  
 Data File : BE096331.D  
 Acq On : 3 May 2018 20:03  
 Operator : SJ/JU  
 Sample : J2440-12  
 Misc :  
 ALS Vial : 7 Sample Multiplier: 1

Instrument :  
 BNA\_E  
 ClientSampled :  
 A3Y21

Manual Integrations  
 APPROVED  
 Sohil  
 5/4/2018 1:35:00 PM

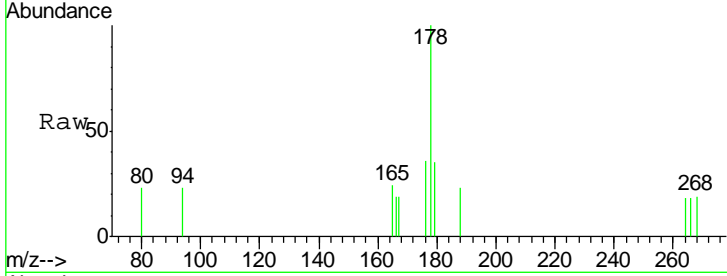
Quant Time: May 04 02:24:37 2018  
 Quant Method : Z:\HPCHEM1\BNA E\METHODS\SOM-EPA-SIM-BE050318.M  
 Quant Title : ASP BNA STANDARDS FOR 5 POINT CALIBRATION  
 QLast Update : Fri May 04 01:53:25 2018  
 Response via : Initial Calibration





#12  
 Phenanthrene  
 Concen: 0.022 ng/ul m  
 RT: 17.69 min Scan# 2733  
 Delta R.T. -0.00 min  
 Lab File: BE096331.D  
 Acq: 3 May 2018 20:03

Instrument :  
 BNA\_E  
 ClientSampled :  
 A3Y21

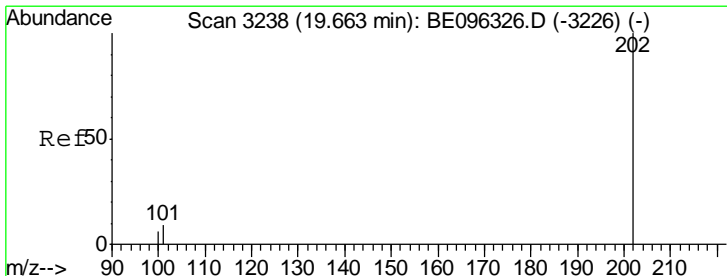
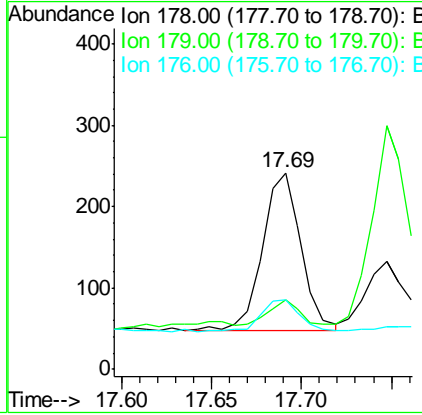
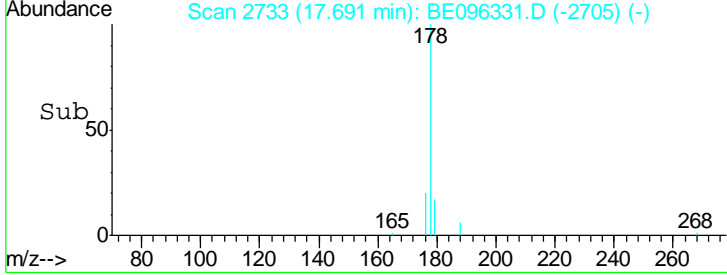


Tgt Ion: 178 Resp: 295

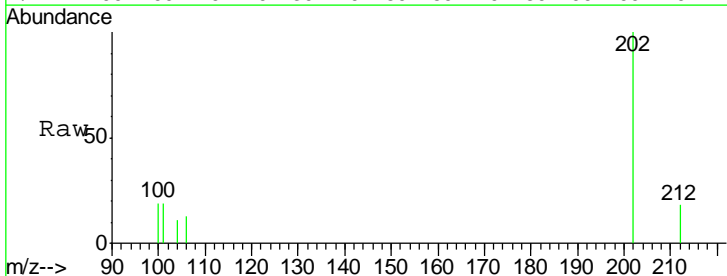
Ion	Ratio	Lower	Upper
178	100		
179	35.1	18.4	27.6#
176	35.5	13.6	20.4#

Manual Integrations  
 APPROVED

Sohil  
 5/4/2018 1:35:00 PM

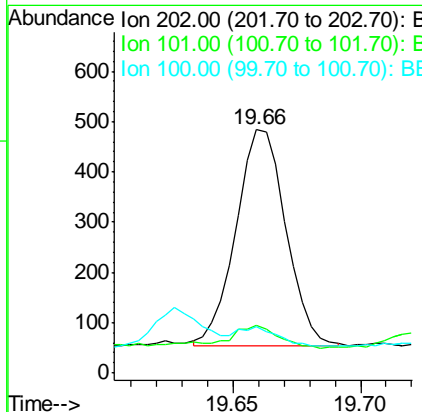
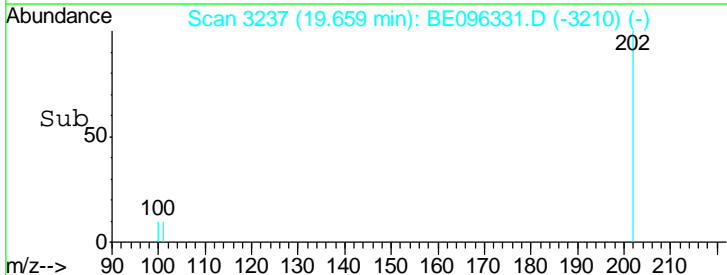


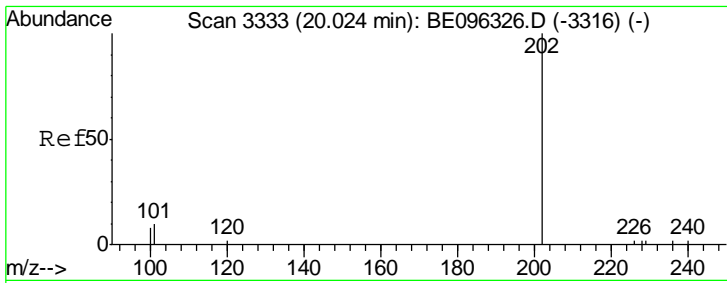
#15  
 Fluoranthene  
 Concen: 0.030 ng/ul m  
 RT: 19.66 min Scan# 3237  
 Delta R.T. -0.00 min  
 Lab File: BE096331.D  
 Acq: 3 May 2018 20:03



Tgt Ion: 202 Resp: 577

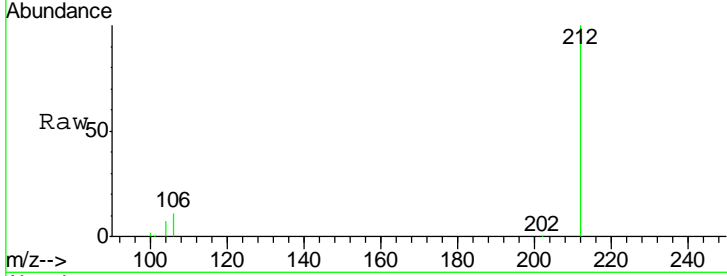
Ion	Ratio	Lower	Upper
202	100		
101	19.4	0.0	30.3
100	19.0	0.0	39.5





#17  
 Pyrene  
 Concen: 0.053 ng/ul m  
 RT: 20.00 min Scan# 3332  
 Delta R.T. -0.03 min  
 Lab File: BE096331.D  
 Acq: 3 May 2018 20:03

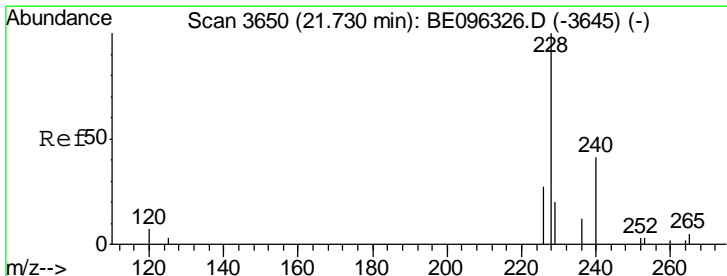
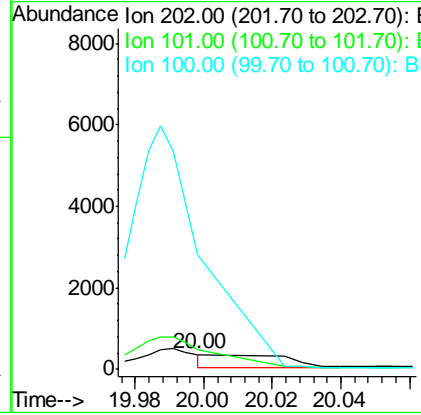
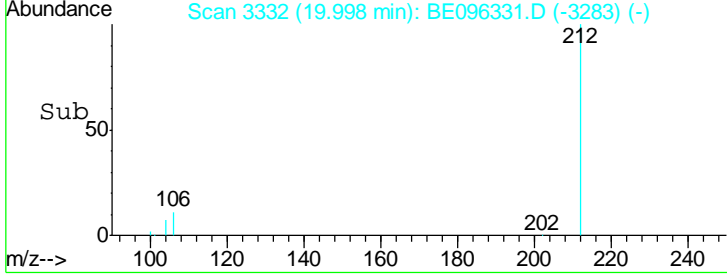
Instrument :  
 BNA\_E  
 ClientSampled :  
 A3Y21



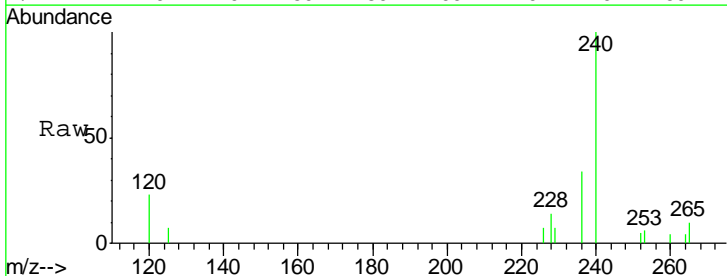
Tgt Ion: 202 Resp: 305

Ion	Ratio	Lower	Upper
202	100		
101	134.4	18.2	27.4#
100	773.6	15.6	23.4#

Manual Integrations  
 APPROVED  
 Sohil  
 5/4/2018 1:35:00 PM

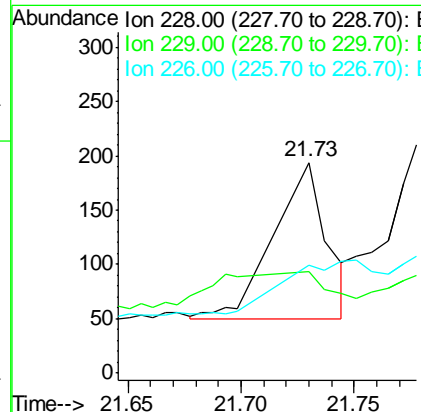
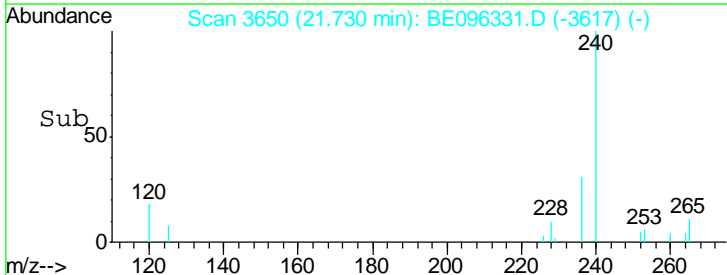


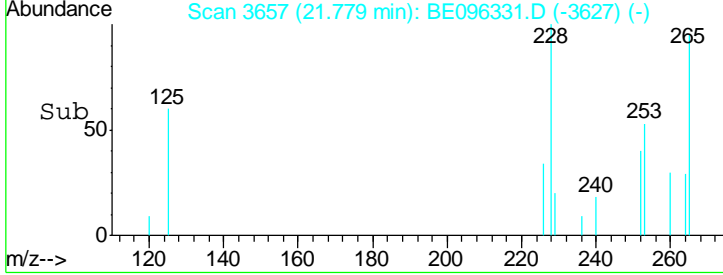
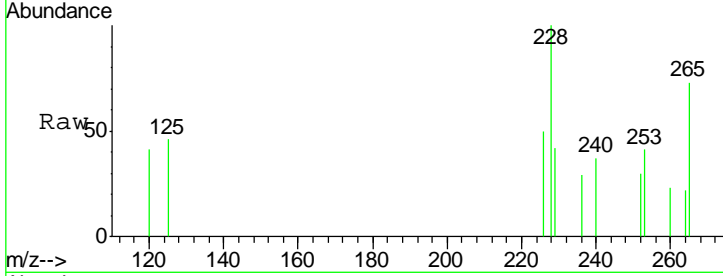
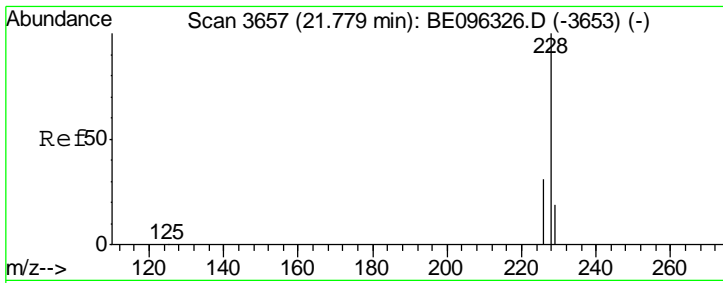
#18  
 Benzo(a)anthracene  
 Concen: 0.021 ng/ul m  
 RT: 21.73 min Scan# 3650  
 Delta R.T. -0.00 min  
 Lab File: BE096331.D  
 Acq: 3 May 2018 20:03



Tgt Ion: 228 Resp: 171

Ion	Ratio	Lower	Upper
228	100		
229	47.9	22.8	34.2#
226	51.0	17.0	25.6#





#19  
 Chrysene  
 Concen: 0.021 ng/ul m  
 RT: 21.78 min Scan# 3657  
 Delta R.T. -0.00 min  
 Lab File: BE096331.D  
 Acq: 3 May 2018 20:03

Tot Ion	Ratio	Lower	Upper
228	100		
226	50.4	23.4	35.0#
229	41.5	17.7	26.5#

Instrument :  
 BNA\_E  
 ClientSampled :  
 A3Y21

Manual Integrations  
 APPROVED  
 Sohil  
 5/4/2018 1:35:00 PM

