

Data Path : Z:\HPCHEM1\BNA\_E\DATA\BE051916\  
 Data File : BE091833.D  
 Acq On : 20 May 2016 6:39  
 Operator : UM/SJ  
 Sample : H3115-01MS  
 Misc :  
 ALS Vial : 29 Sample Multiplier: 1

Instrument :  
 BNA\_E  
 ClientSampleId :  
 NC-TS-002MS

Quant Time: May 20 08:43:53 2016  
 Quant Method : Z:\HPCHEM1\BNA\_E\METHODS\8270-SIM-BE051916.M  
 Quant Title : ASP BNA STANDARDS FOR 5 POINT CALIBRATION  
 QLast Update : Thu May 19 15:36:49 2016  
 Response via : Initial Calibration

Internal Standards	R.T.	QIon	Response	Conc	Units	Dev(Min)
1) 1,4-Dichlorobenzene-d4	7.78	152	32835	5.00	ng	-0.02
7) Naphthalene-d8	10.57	136	165180	5.00	ng	0.00
13) Acenaphthene-d10	14.41	164	98389	5.00	ng	-0.01
19) Phenanthrene-d10	17.14	188	257404	5.00	ng	-0.01
26) Chrysene-d12	21.29	240	238148	5.00	ng	-0.02
35) Perylene-d12	23.74	264	255908	5.00	ng	-0.01

## System Monitoring Compounds

4) 2-Fluorophenol	5.39	112	69809	8.14	ng	0.00
5) Phenol-d6	6.97	99	111809	9.25	ng	0.02
8) Nitrobenzene-d5	8.93	82	51898	4.74	ng	-0.01
14) 2,4,6-Tribromophenol	15.88	330	34395	9.00	ng	-0.01
15) 2-Fluorobiphenyl	13.02	172	123619	4.44	ng	-0.01
29) Terphenyl-d14	19.74	244	176476	5.23	ng	-0.02

## Target Compounds

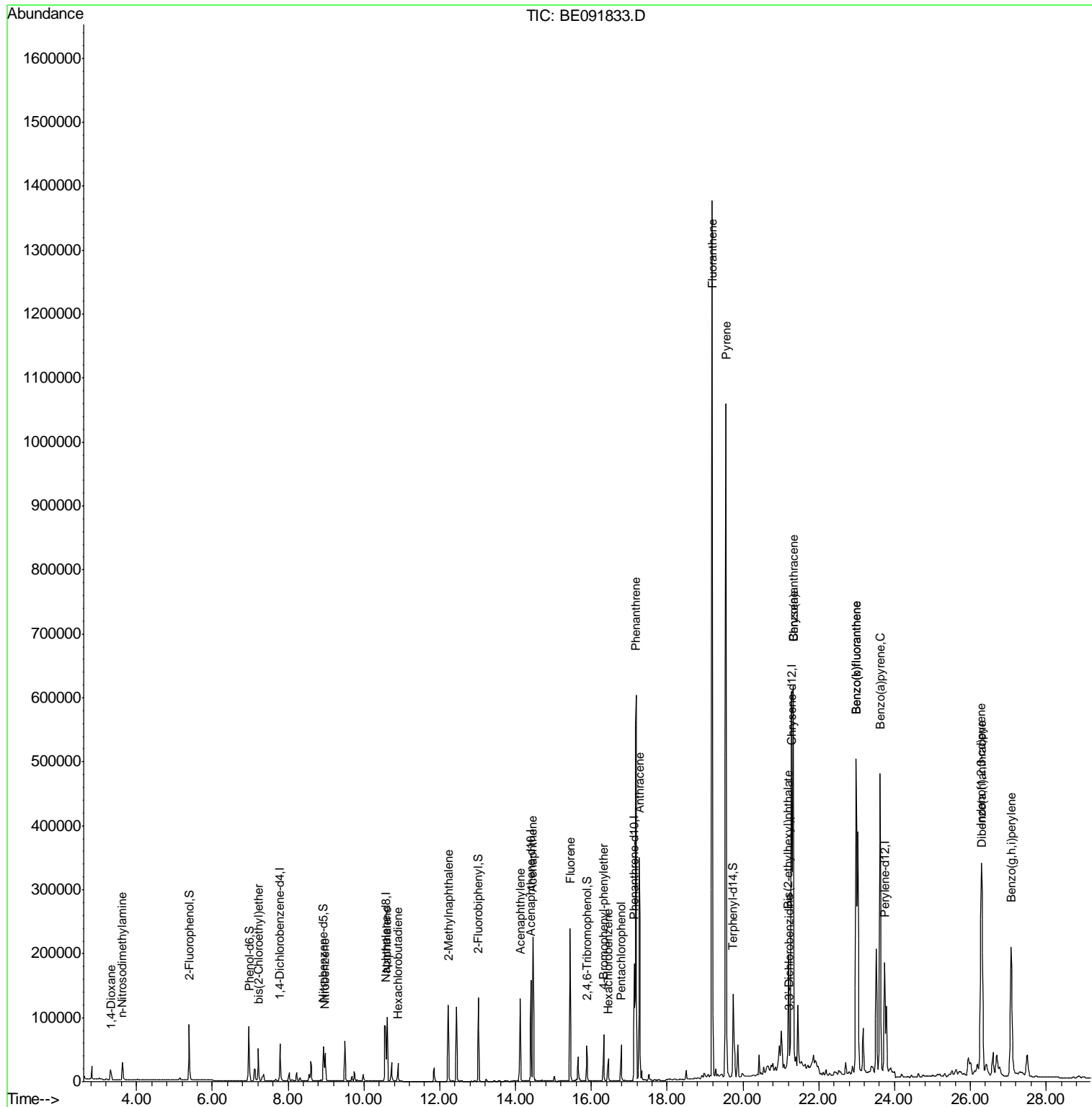
Target Compounds	R.T.	QIon	Response	Conc	Units	Qvalue
2) 1,4-Dioxane	3.33	88	10945	3.04	ng	# 86
3) n-Nitrosodimethylamine	3.63	42	19550	3.73	ng	96
6) bis(2-Chloroethyl)ether	7.21	93	39121	4.03	ng	# 81
9) Nitrobenzene	8.98	77	48849	4.34	ng	# 92
10) Naphthalene	10.61	128	137094	3.75	ng	98
11) Hexachlorobutadiene	10.90	225	22107	4.08	ng	97
12) 2-Methylnaphthalene	12.23	142	99501	4.05	ng	# 89
16) Acenaphthylene	14.12	152	182671	4.16	ng	# 85
17) Acenaphthene	14.46	154	117532	4.46	ng	89
18) Fluorene	15.44	166	154524	4.52	ng	97
20) 4-Bromophenyl-phenylether	16.33	248	37118	3.86	ng	93
21) Hexachlorobenzene	16.45	284	36186	3.61	ng	99
22) Pentachlorophenol	16.79	266	41485	10.01	ng	# 89
23) Phenanthrene	17.18	178	730934	14.66	ng	99
24) Anthracene	17.26	178	386335	6.90	ng	96
25) Fluoranthene	19.19	202	1360109	19.88	ng	# 96
27) Benzidine	19.36	184	580	Below Cal		# 1
28) Pyrene	19.55	202	1221171	23.37	ng	# 92
30) Benzo(a)anthracene	21.34	228	1541519	26.83	ng	# 93
31) 3,3'-Dichlorobenzidine	21.22	252	7661	0.21	ng	# 61
32) Chrysene	21.34	228	1541519	31.06	ng	# 90
33) Bis(2-ethylhexyl)phthalate	21.20	149	227279	6.84	ng	# 88
34) Indeno(1,2,3-cd)pyrene	26.28	276	540594	9.18	ng	94
36) Benzo(b)fluoranthene	22.99	252	858815	13.41	ng	96
37) Benzo(k)fluoranthene	22.99	252	858815	13.10	ng	97
38) Benzo(a)pyrene	23.62	252	715184	11.70	ng	98
39) Dibenzo(a,h)anthracene	26.31	278	298875	5.01	ng	97
40) Benzo(g,h,i)perylene	27.08	276	506753	8.23	ng	96

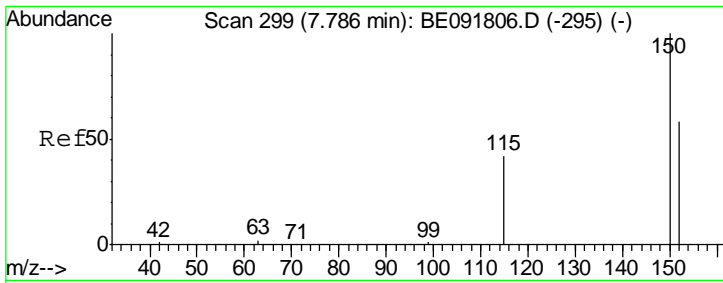
(#) = qualifier out of range (m) = manual integration (+) = signals summed

Data Path : Z:\HPCHEM1\BNA\_E\DATA\BE051916\  
 Data File : BE091833.D  
 Acq On : 20 May 2016 6:39  
 Operator : UM/SJ  
 Sample : H3115-01MS  
 Misc :  
 ALS Vial : 29 Sample Multiplier: 1

Instrument :  
 BNA\_E  
 Client Sampled :  
 NC-TS-002MS

Quant Time: May 20 08:43:53 2016  
 Quant Method : Z:\HPCHEM1\BNA\_E\METHODS\8270-SIM-BE051916.M  
 Quant Title : ASP BNA STANDARDS FOR 5 POINT CALIBRATION  
 QLast Update : Thu May 19 15:36:49 2016  
 Response via : Initial Calibration



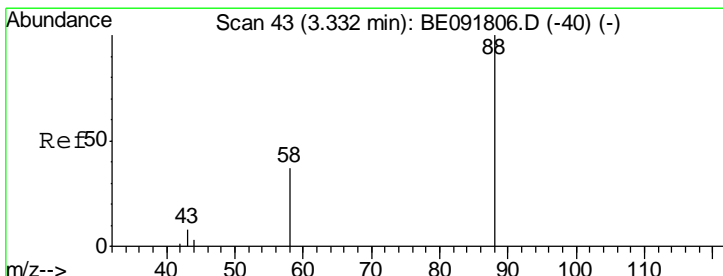
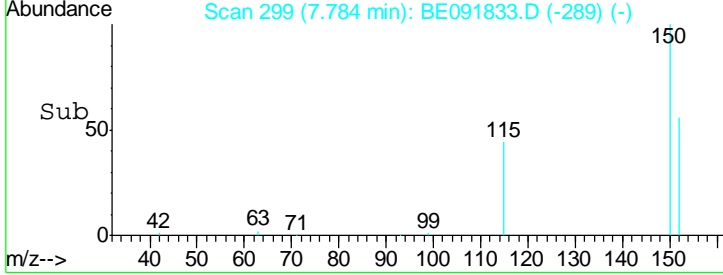
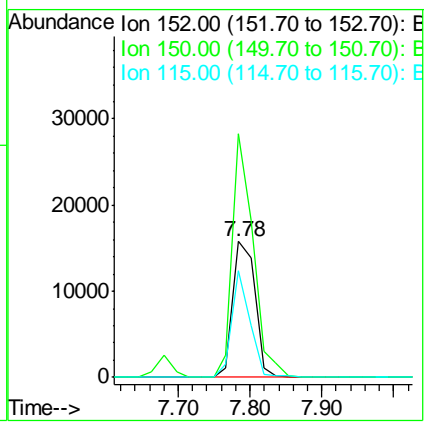
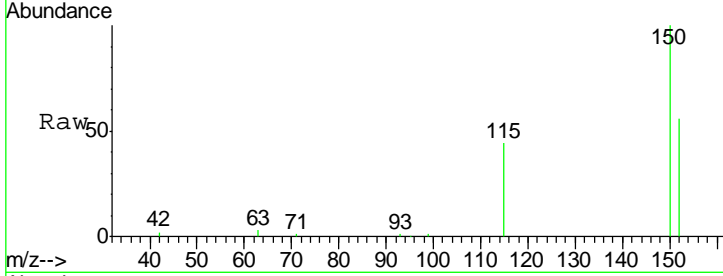


#1  
 1,4-Dichlorobenzene-d4  
 Concen: 5.00 ng  
 RT: 7.78 min Scan# 299  
 Delta R.T. -0.02 min  
 Lab File: BE091833.D  
 Acq: 20 May 2016 6:39

**Instrument :**  
 BNA\_E  
**ClientSampled :**  
 NC-TS-002MS

Tgt Ion: 152 Resp: 32835

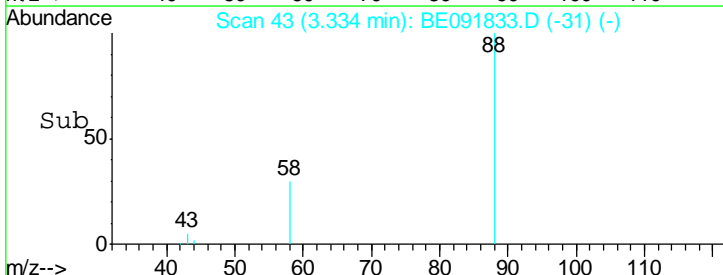
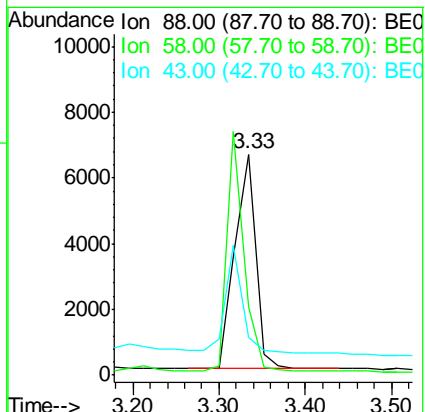
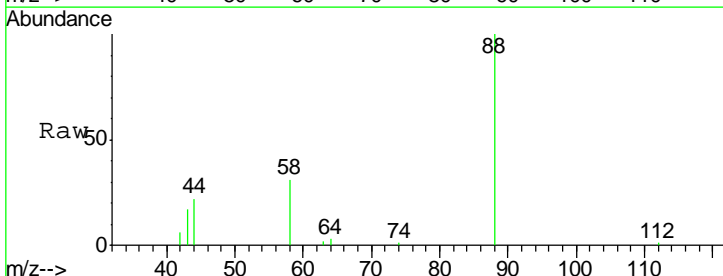
Ion	Ratio	Lower	Upper
152	100		
150	179.5	122.6	183.8
115	78.9	52.8	79.2

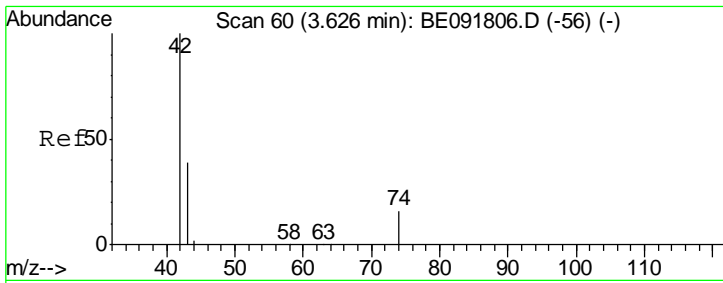


#2  
 1,4-Dioxane  
 Concen: 3.04 ng  
 RT: 3.33 min Scan# 43  
 Delta R.T. 0.00 min  
 Lab File: BE091833.D  
 Acq: 20 May 2016 6:39

Tgt Ion: 88 Resp: 10945

Ion	Ratio	Lower	Upper
88	100		
58	91.8	65.8	98.6
43	44.3	25.3	37.9#

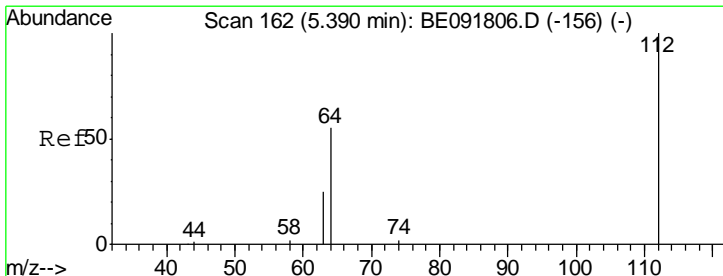
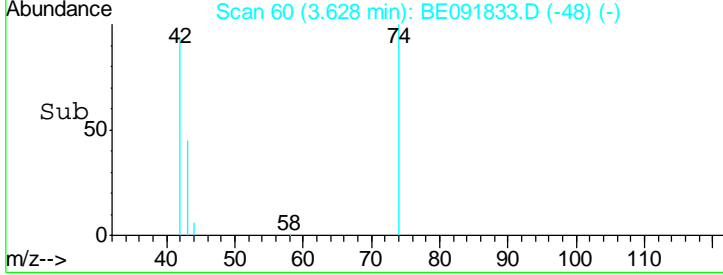
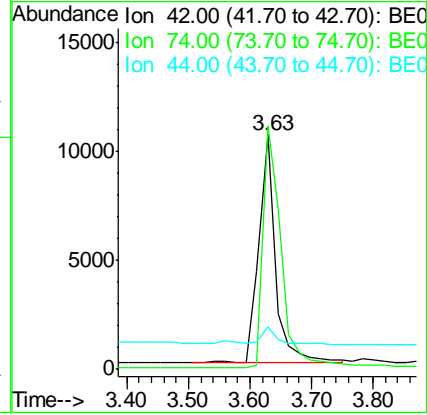
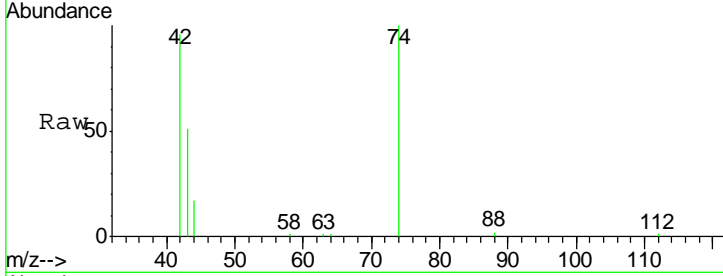




#3  
 n-Nitrosodimethylamine  
 Concen: 3.73 ng  
 RT: 3.63 min Scan# 60  
 Delta R.T. 0.00 min  
 Lab File: BE091833.D  
 Acq: 20 May 2016 6:39

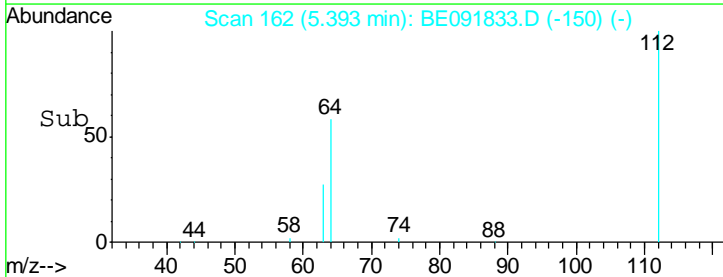
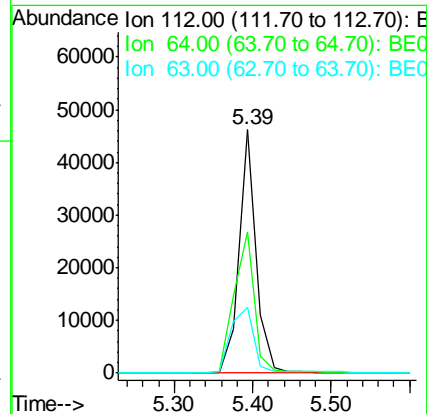
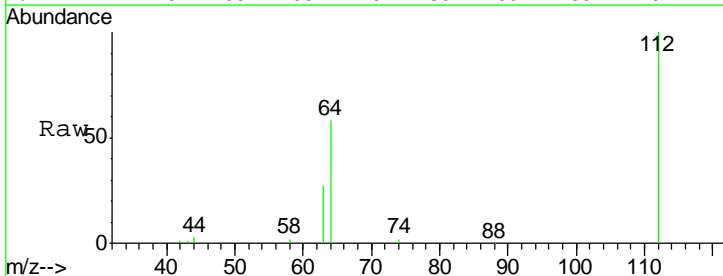
Instrument :  
 BNA\_E  
 ClientSampleID :  
 NC-TS-002MS

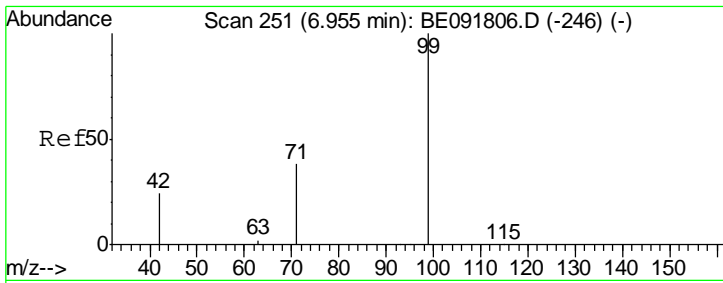
Tgt Ion	Resp	Lower	Upper
42	19550		
74	114.7	87.9	131.9
44	7.4	6.6	9.8



#4  
 2-Fluorophenol  
 Concen: 8.14 ng  
 RT: 5.39 min Scan# 162  
 Delta R.T. 0.00 min  
 Lab File: BE091833.D  
 Acq: 20 May 2016 6:39

Tgt Ion	Resp	Lower	Upper
112	69809		
64	67.8	30.9	46.3#
63	35.8	16.7	25.1#

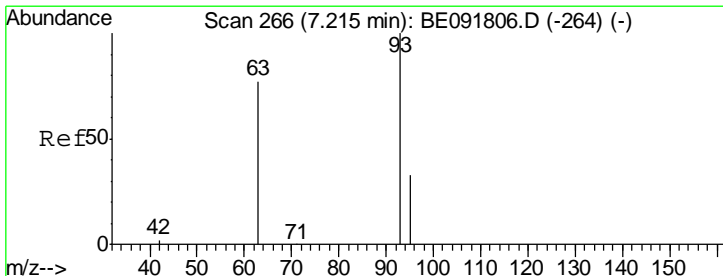
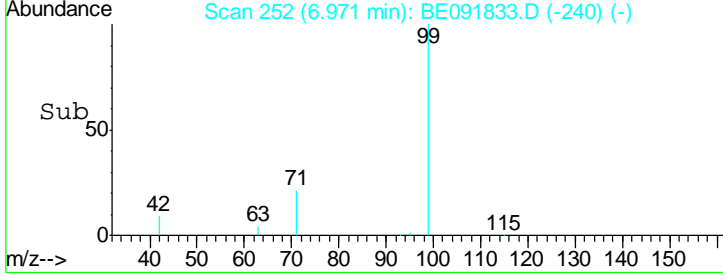
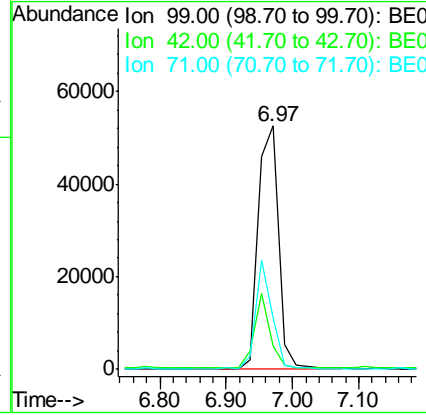
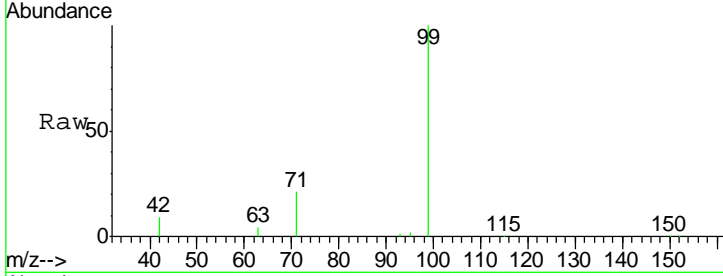




#5  
 Phenol-d6  
 Concen: 9.25 ng  
 RT: 6.97 min Scan# 252  
 Delta R.T. 0.02 min  
 Lab File: BE091833.D  
 Acq: 20 May 2016 6:39

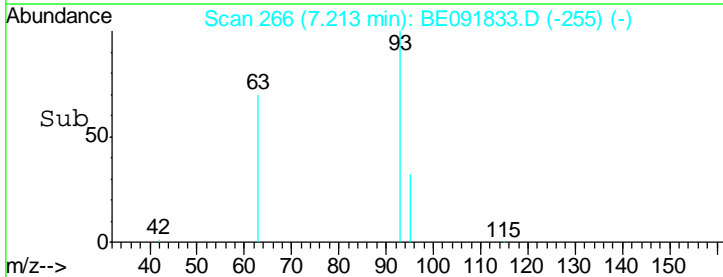
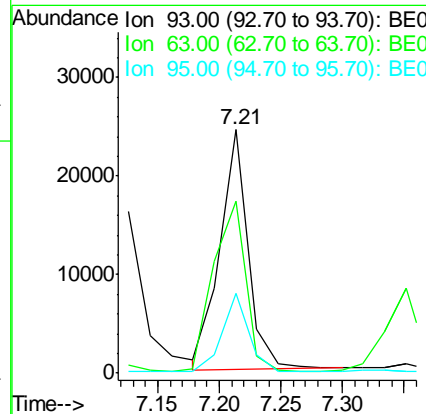
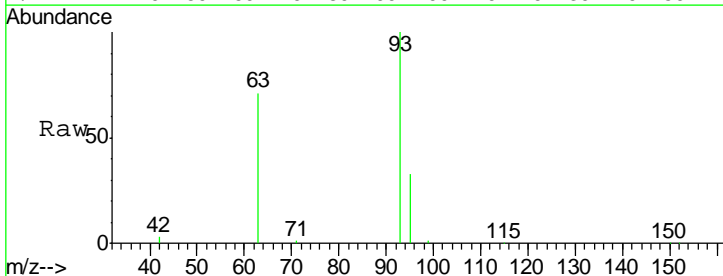
Instrument :  
 BNA\_E  
 ClientSampleId :  
 NC-TS-002MS

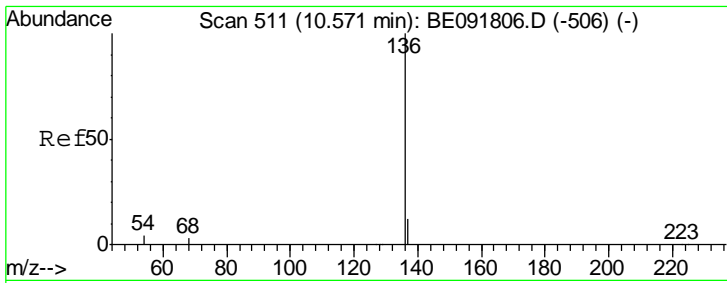
Tgt Ion	Resp	Lower	Upper
99	111809		
42	23.8	16.2	24.2
71	36.0	29.0	43.4



#6  
 bis(2-Chloroethyl)ether  
 Concen: 4.03 ng  
 RT: 7.21 min Scan# 266  
 Delta R.T. -0.00 min  
 Lab File: BE091833.D  
 Acq: 20 May 2016 6:39

Tgt Ion	Resp	Lower	Upper
93	39121		
63	81.0	49.5	74.3#
95	31.1	22.2	33.4

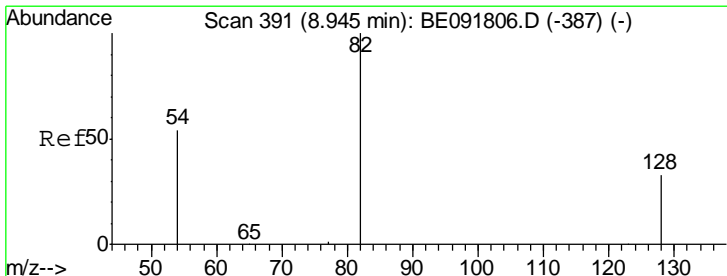
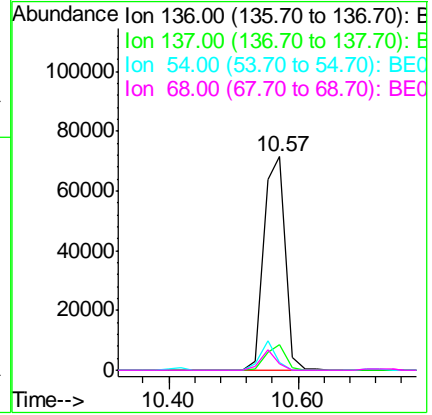
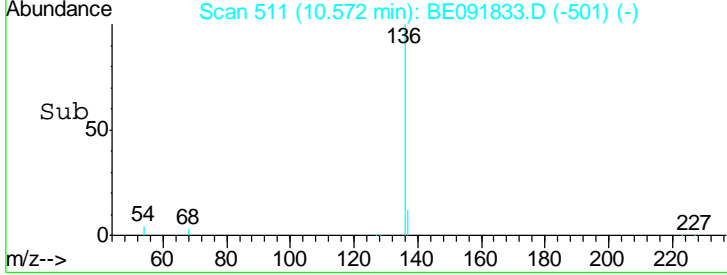
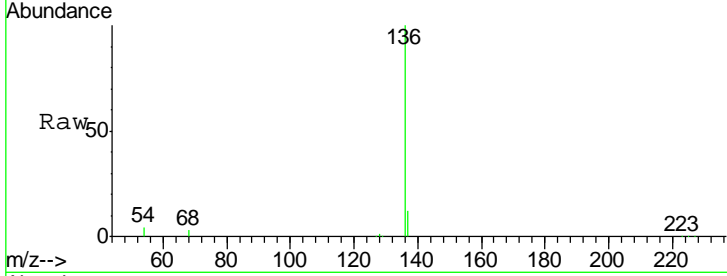




#7  
 Naphthalene-d8  
 Concen: 5.00 ng  
 RT: 10.57 min Scan# 511  
 Delta R.T. 0.00 min  
 Lab File: BE091833.D  
 Acq: 20 May 2016 6:39

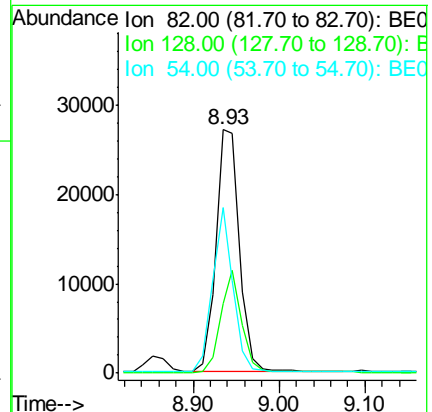
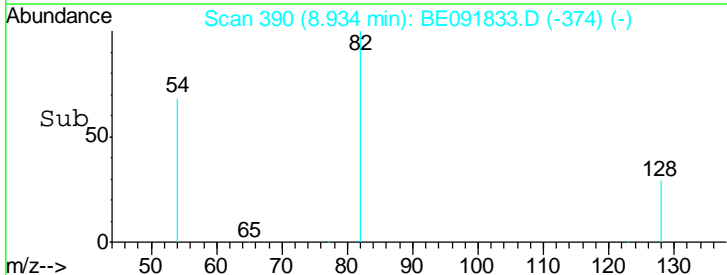
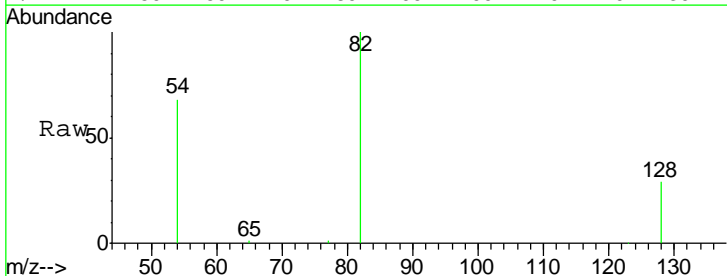
Instrument :  
 BNA\_E  
 ClientSampleId :  
 NC-TS-002MS

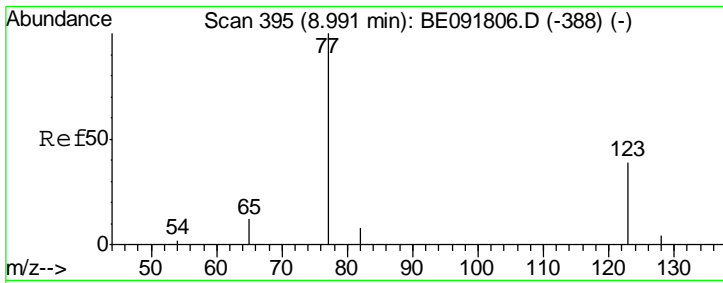
Tgt Ion	Resp	Lower	Upper
136	165180		
137	12.1	8.9	13.3
54	3.7	8.2	12.4#
68	3.3	6.2	9.4#



#8  
 Nitrobenzene-d5  
 Concen: 4.74 ng  
 RT: 8.93 min Scan# 390  
 Delta R.T. -0.01 min  
 Lab File: BE091833.D  
 Acq: 20 May 2016 6:39

Tgt Ion	Resp	Lower	Upper
82	51898		
128	28.8	25.4	38.0
54	68.1	48.4	72.6

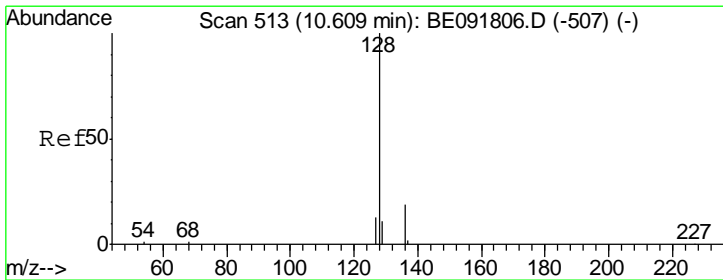
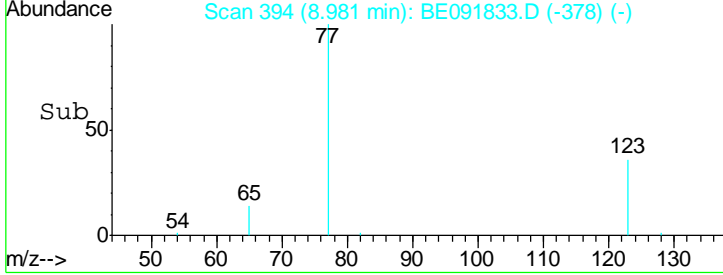
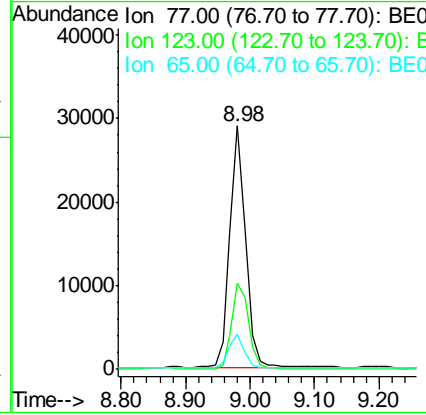
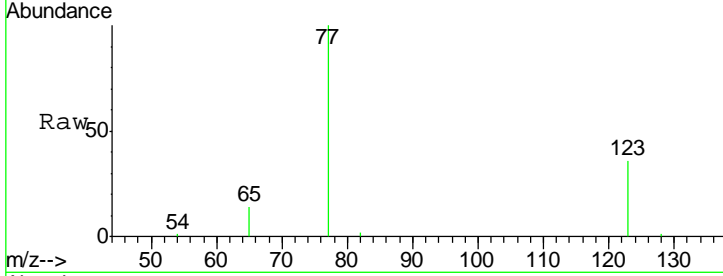




#9  
 Nitrobenzene  
 Concen: 4.34 ng  
 RT: 8.98 min Scan# 394  
 Delta R.T. -0.01 min  
 Lab File: BE091833.D  
 Acq: 20 May 2016 6:39

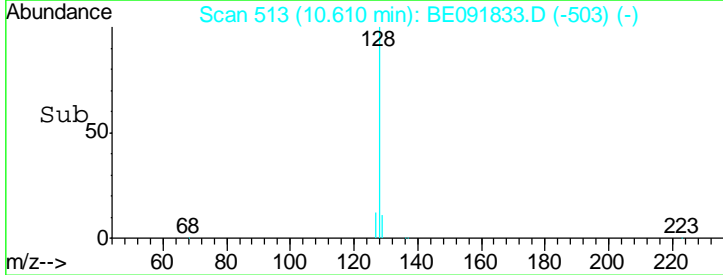
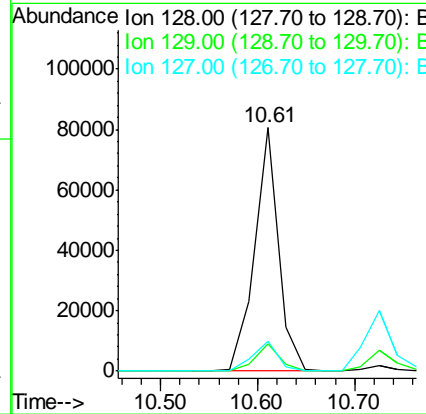
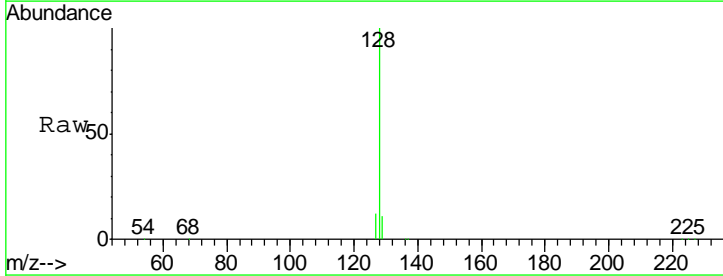
**Instrument :**  
 BNA\_E  
**ClientSampleId :**  
 NC-TS-002MS

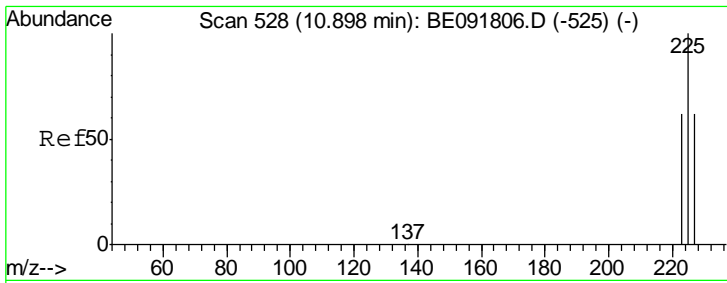
Tgt Ion	Resp	Lower	Upper
77	48849		
123	38.3	26.9	40.3
65	14.3	9.4	14.2#



#10  
 Naphthalene  
 Concen: 3.75 ng  
 RT: 10.61 min Scan# 513  
 Delta R.T. 0.00 min  
 Lab File: BE091833.D  
 Acq: 20 May 2016 6:39

Tgt Ion	Resp	Lower	Upper
128	137094		
129	11.3	9.3	13.9
127	12.5	10.7	16.1

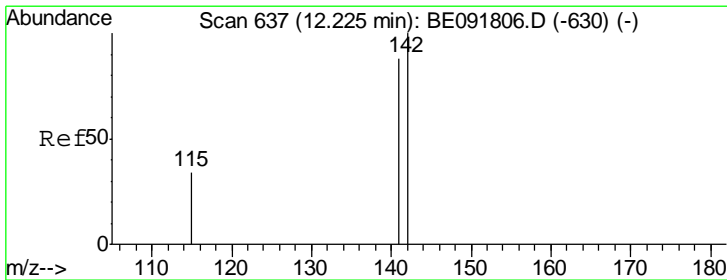
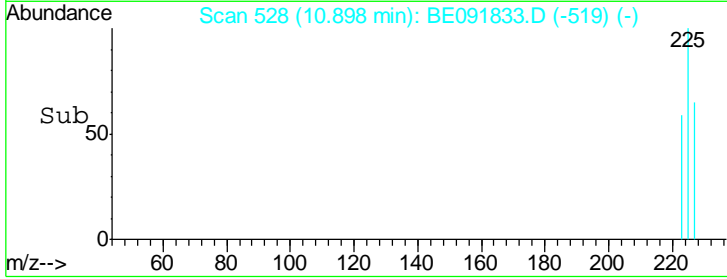
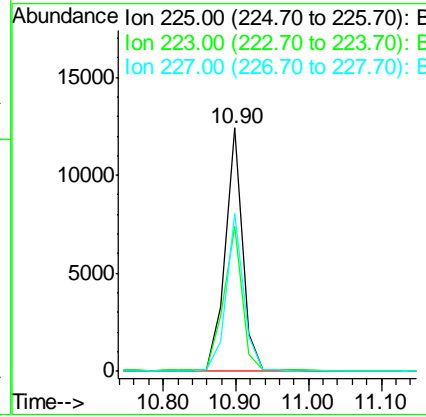
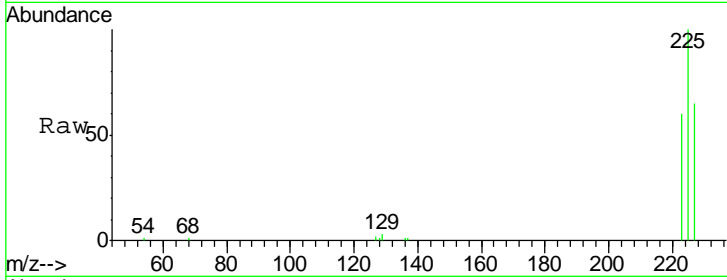




#11  
 Hexachlorobutadiene  
 Concen: 4.08 ng  
 RT: 10.90 min Scan# 528  
 Delta R.T. -0.02 min  
 Lab File: BE091833.D  
 Acq: 20 May 2016 6:39

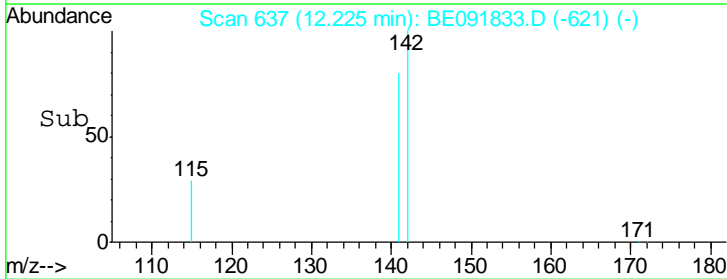
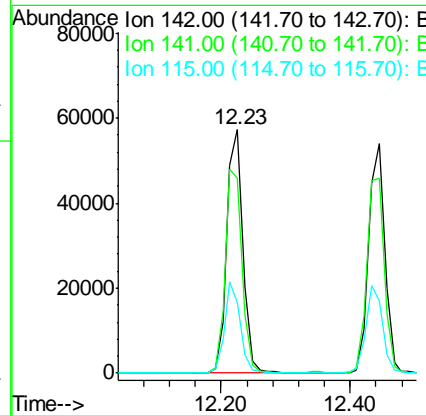
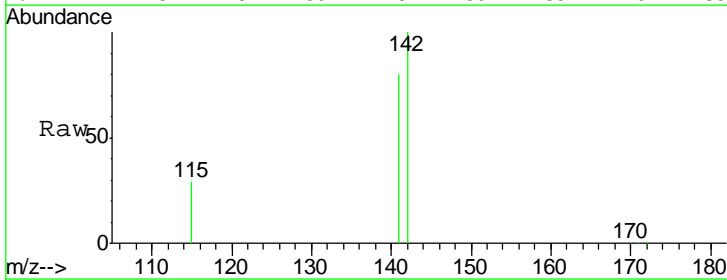
Instrument :  
 BNA\_E  
 ClientSampled :  
 NC-TS-002MS

Tgt Ion	Resp	Lower	Upper
225	22107		
223	63.5	49.0	73.6
227	64.6	50.3	75.5

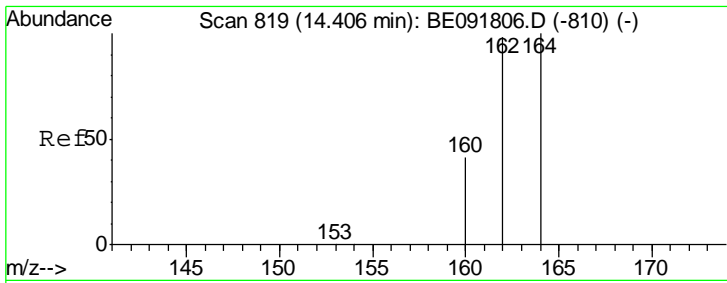


#12  
 2-Methylnaphthalene  
 Concen: 4.05 ng  
 RT: 12.23 min Scan# 637  
 Delta R.T. -0.01 min  
 Lab File: BE091833.D  
 Acq: 20 May 2016 6:39

Tgt Ion	Resp	Lower	Upper
142	99501		
141	80.2	71.4	107.0
115	29.1	30.3	45.5#



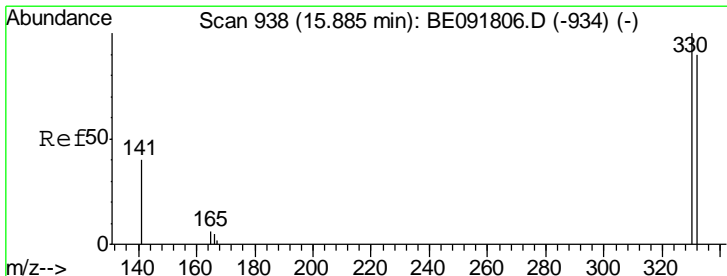
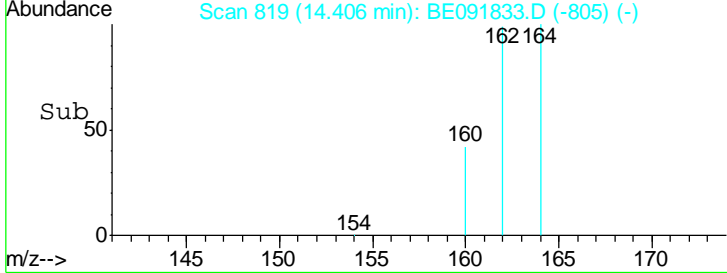
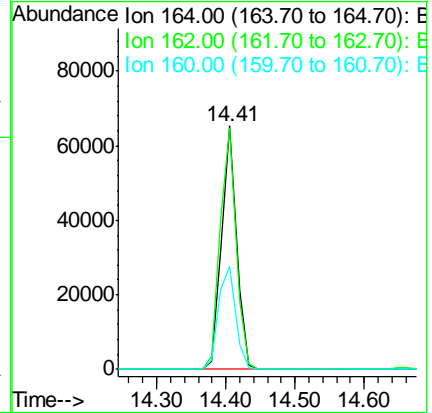
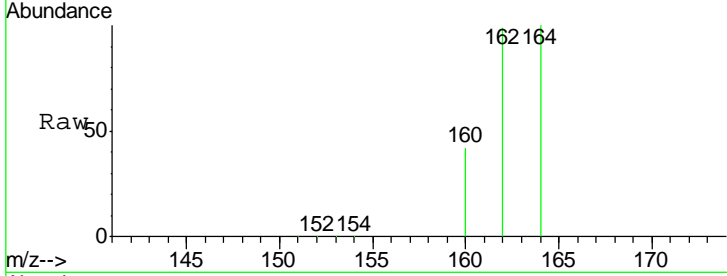




#13  
 Acenaphthene-d10  
 Concen: 5.00 ng  
 RT: 14.41 min Scan# 819  
 Delta R.T. -0.01 min  
 Lab File: BE091833.D  
 Acq: 20 May 2016 6:39

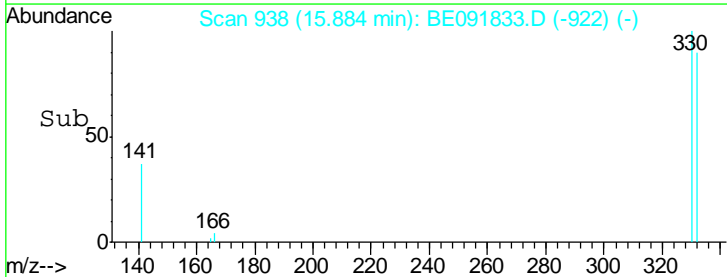
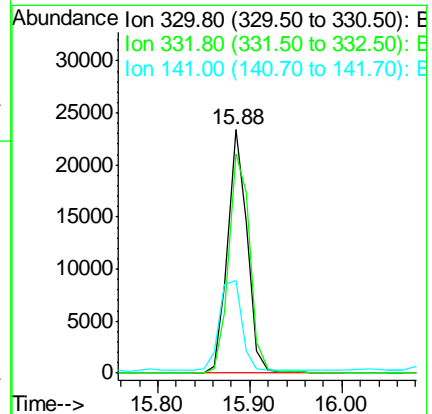
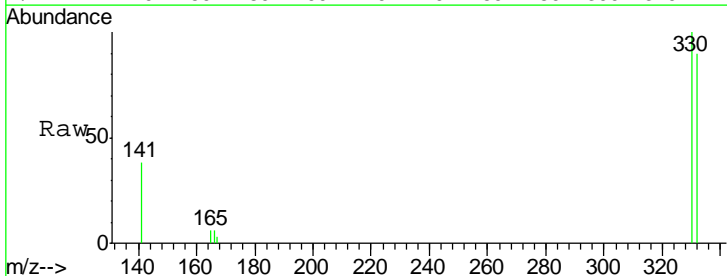
Instrument :  
 BNA\_E  
 ClientSampleId :  
 NC-TS-002MS

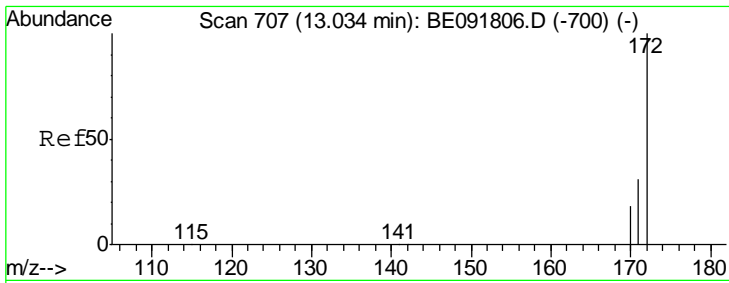
Tgt Ion	Resp	Ion Ratio	Lower	Upper
164	98389	100		
162	98.8	85.3	127.9	
160	42.3	46.2	69.2#	



#14  
 2,4,6-Tribromophenol  
 Concen: 9.00 ng  
 RT: 15.88 min Scan# 938  
 Delta R.T. -0.01 min  
 Lab File: BE091833.D  
 Acq: 20 May 2016 6:39

Tgt Ion	Resp	Ion Ratio	Lower	Upper
330	34395	100		
332	97.3	79.1	118.7	
141	42.4	125.4	188.0#	

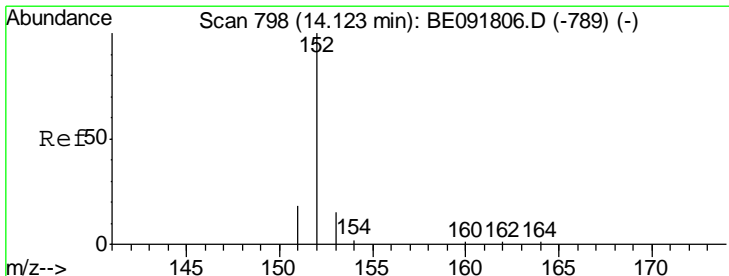
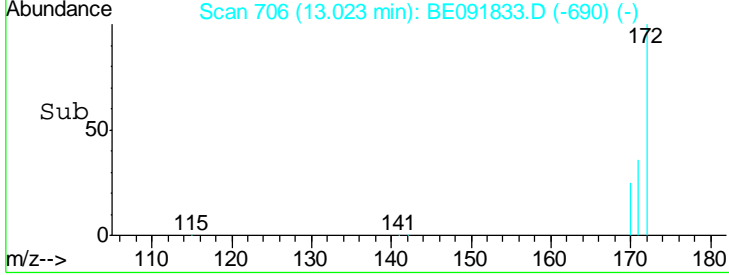
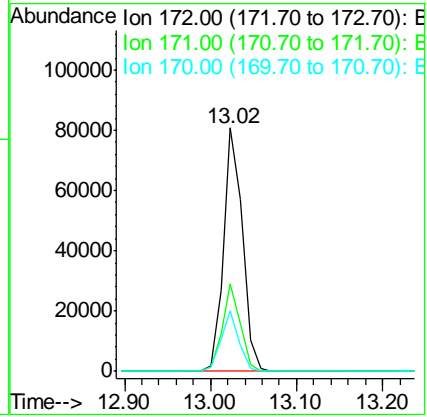
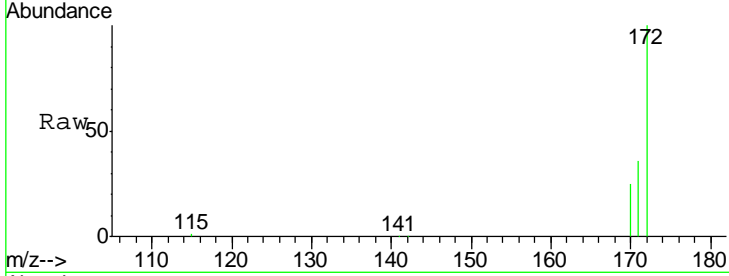




#15  
 2-Fluorobiphenyl  
 Concen: 4.44 ng  
 RT: 13.02 min Scan# 706  
 Delta R.T. -0.01 min  
 Lab File: BE091833.D  
 Acq: 20 May 2016 6:39

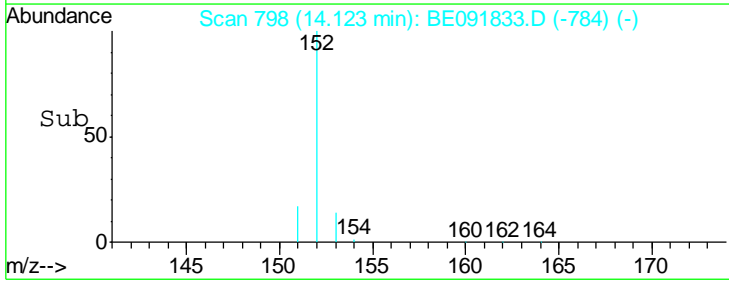
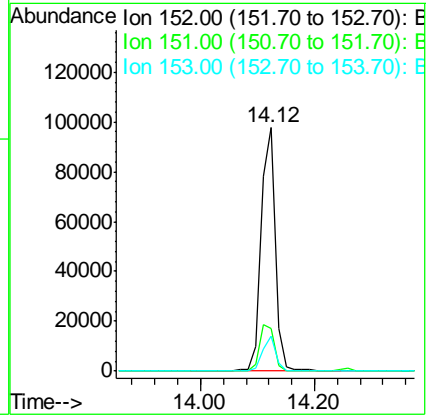
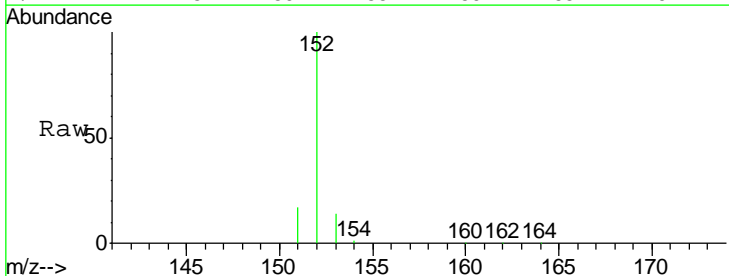
**Instrument :**  
 BNA\_E  
**ClientSampled :**  
 NC-TS-002MS

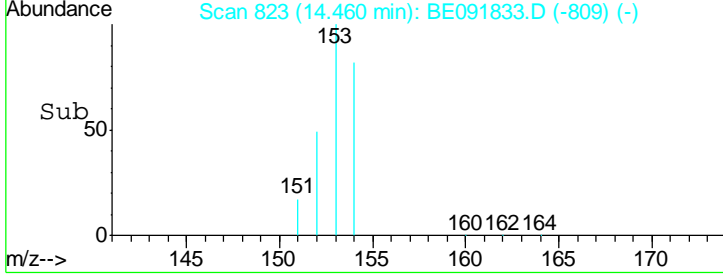
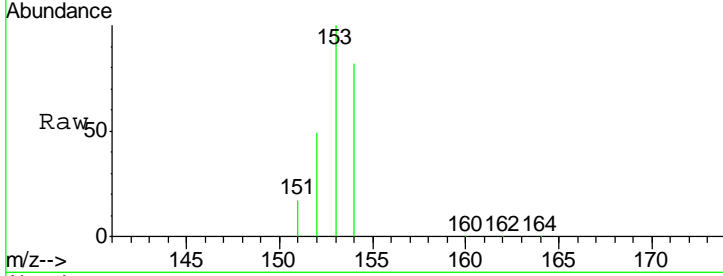
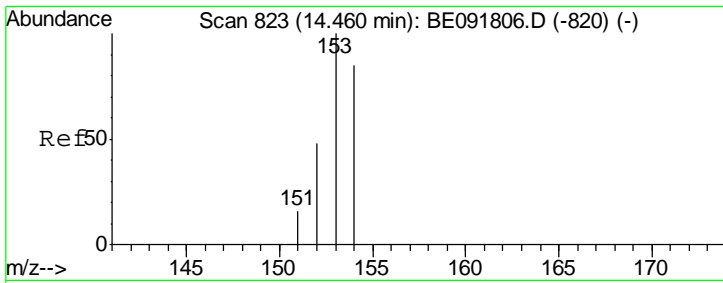
Tgt Ion	Resp	Lower	Upper
172	123619		
171	36.0	28.8	43.2
170	25.1	19.3	28.9



#16  
 Acenaphthylene  
 Concen: 4.16 ng  
 RT: 14.12 min Scan# 798  
 Delta R.T. 0.00 min  
 Lab File: BE091833.D  
 Acq: 20 May 2016 6:39

Tgt Ion	Resp	Lower	Upper
152	182671		
151	20.6	3.9	5.9#
153	13.8	10.3	15.5

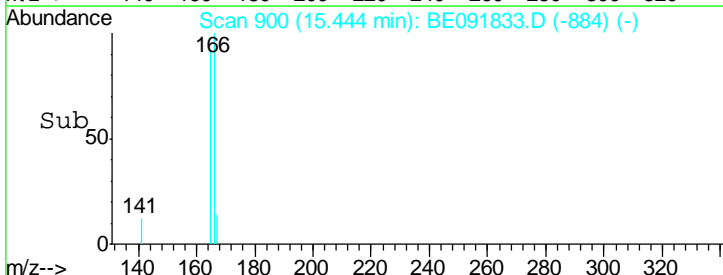
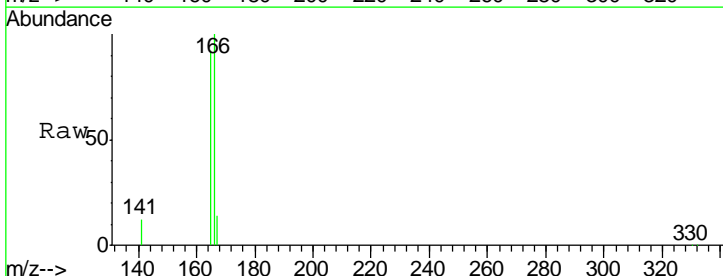
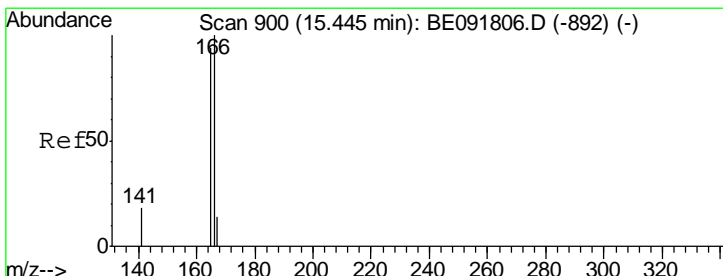
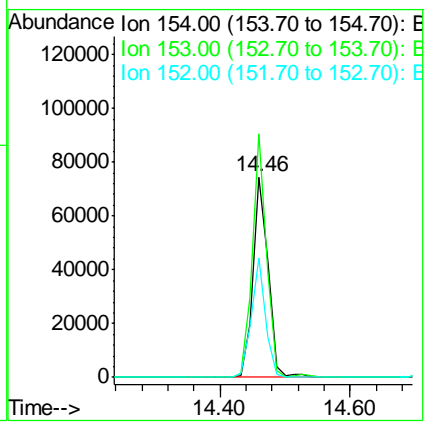




#17  
 Acenaphthene  
 Concen: 4.46 ng  
 RT: 14.46 min Scan# 823  
 Delta R.T. -0.01 min  
 Lab File: BE091833.D  
 Acq: 20 May 2016 6:39

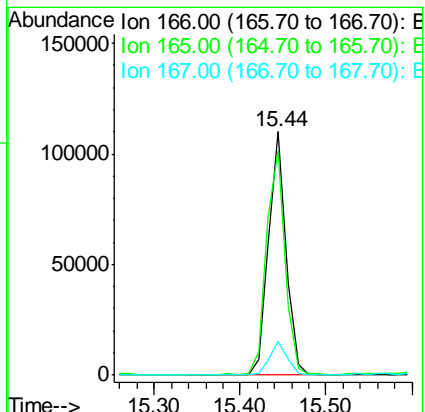
Instrument :  
 BNA\_E  
 ClientSampleId :  
 NC-TS-002MS

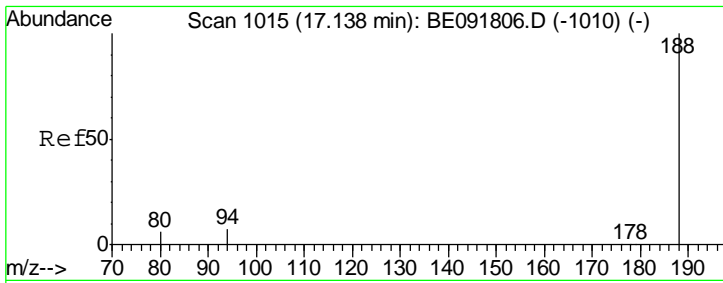
Tgt Ion	Resp	Lower	Upper
154	100		
153	112.5	80.0	120.0
152	55.0	40.0	60.0



#18  
 Fluorene  
 Concen: 4.52 ng  
 RT: 15.44 min Scan# 900  
 Delta R.T. -0.01 min  
 Lab File: BE091833.D  
 Acq: 20 May 2016 6:39

Tgt Ion	Resp	Lower	Upper
166	100		
165	98.1	80.8	121.2
167	13.6	10.9	16.3

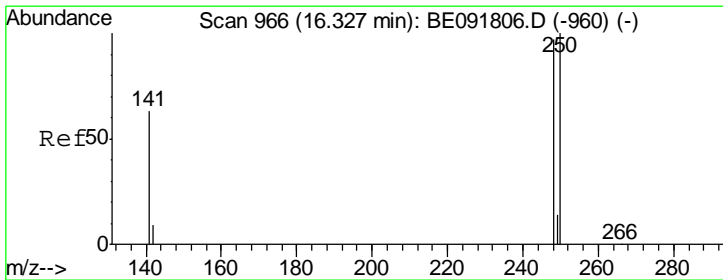
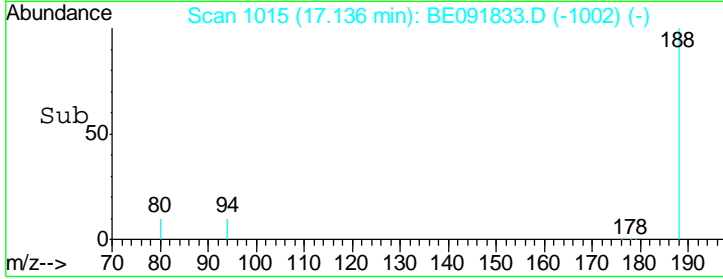
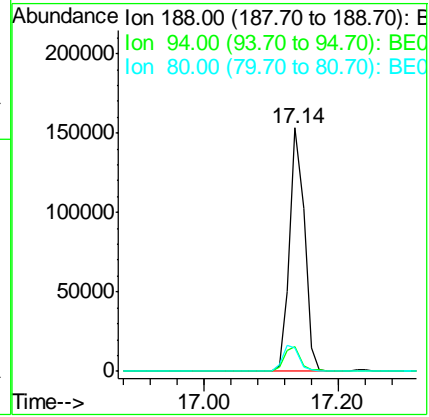
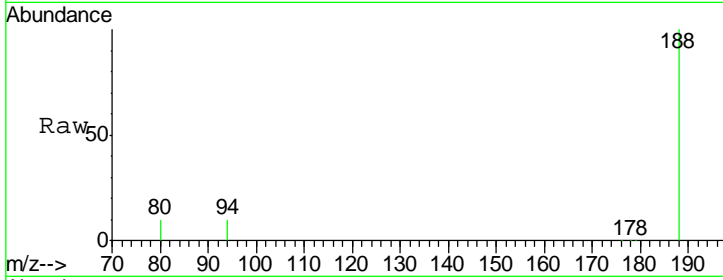




#19  
 Phenanthrene-d10  
 Concen: 5.00 ng  
 RT: 17.14 min Scan# 1015  
 Delta R.T. -0.01 min  
 Lab File: BE091833.D  
 Acq: 20 May 2016 6:39

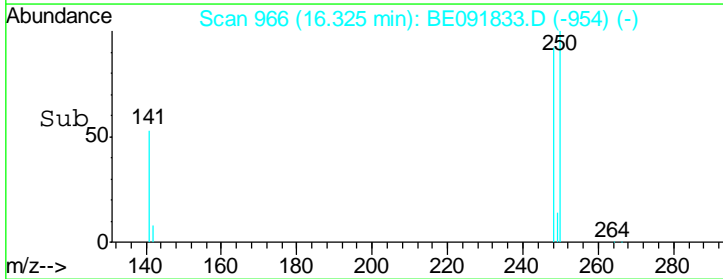
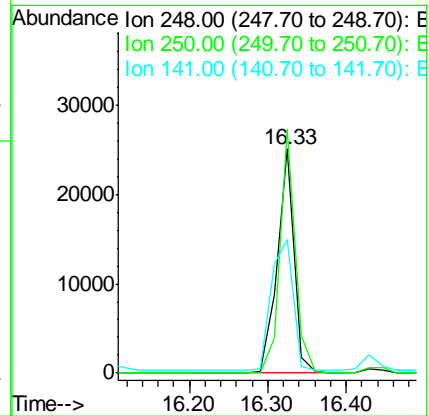
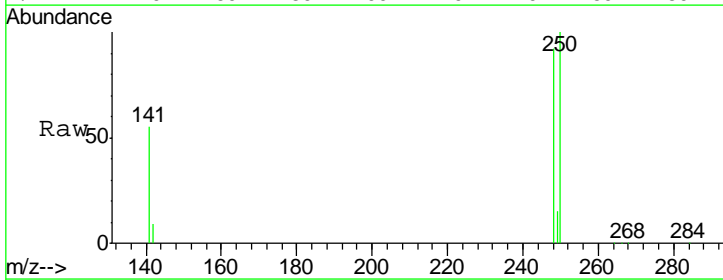
Instrument :  
 BNA\_E  
 ClientSampled :  
 NC-TS-002MS

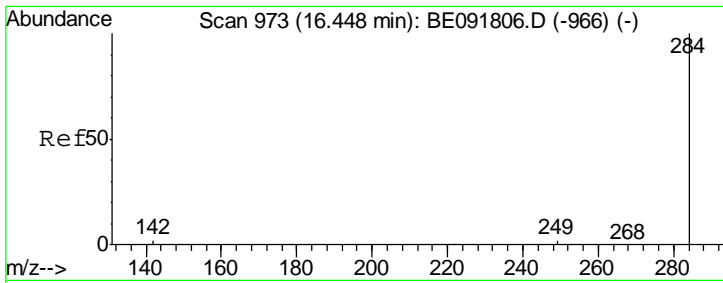
Tgt Ion	Resp	Lower	Upper
188	257404		
94	100	8.7	13.1
80	100	9.4	14.0



#20  
 4-Bromophenyl-phenylether  
 Concen: 3.86 ng  
 RT: 16.33 min Scan# 966  
 Delta R.T. -0.00 min  
 Lab File: BE091833.D  
 Acq: 20 May 2016 6:39

Tgt Ion	Resp	Lower	Upper
248	37118		
250	100	80.5	120.7
141	100	72.0	108.0

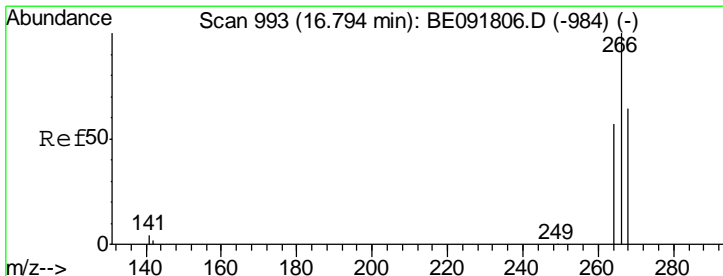
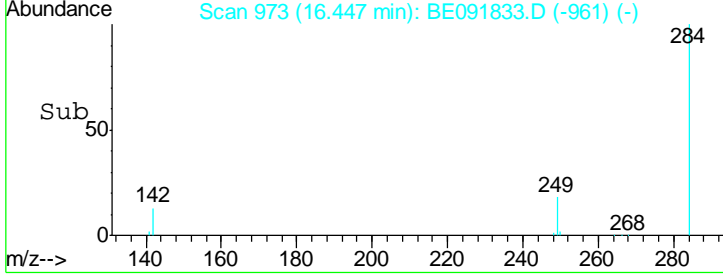
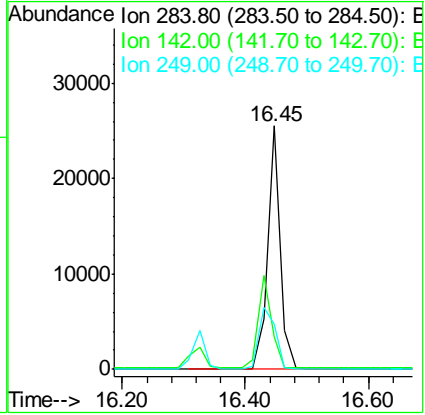
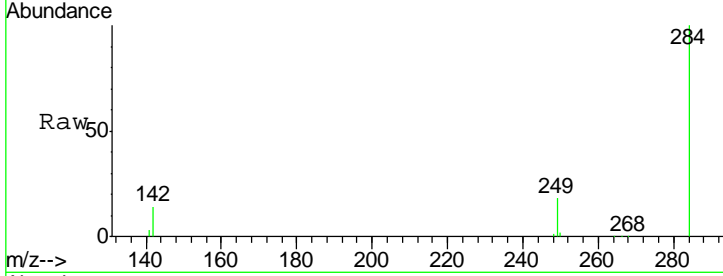




#21  
 Hexachlorobenzene  
 Concen: 3.61 ng  
 RT: 16.45 min Scan# 973  
 Delta R.T. -0.00 min  
 Lab File: BE091833.D  
 Acq: 20 May 2016 6:39

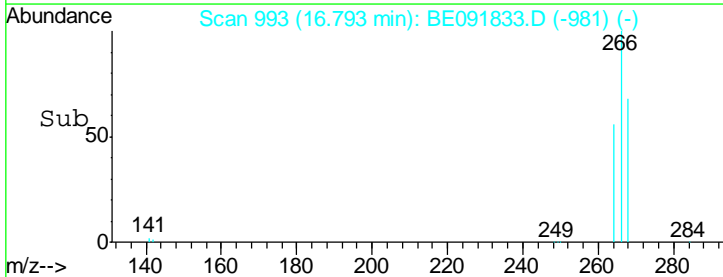
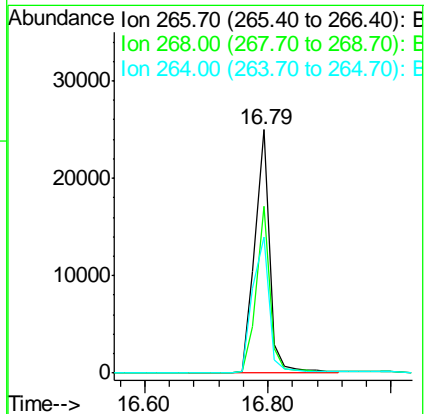
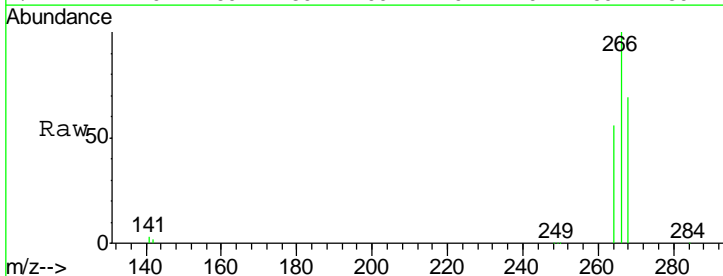
Instrument :  
 BNA\_E  
 ClientSampleId :  
 NC-TS-002MS

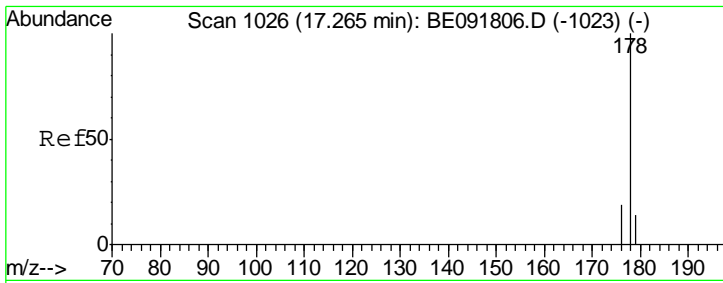
Tgt Ion	Resp	Lower	Upper
284	36186		
284	100		
142	39.6	32.2	48.2
249	32.6	25.4	38.2



#22  
 Pentachlorophenol  
 Concen: 10.01 ng  
 RT: 16.79 min Scan# 993  
 Delta R.T. -0.00 min  
 Lab File: BE091833.D  
 Acq: 20 May 2016 6:39

Tgt Ion	Resp	Lower	Upper
266	41485		
266	100		
268	68.6	58.2	87.2
264	56.1	56.2	84.4#



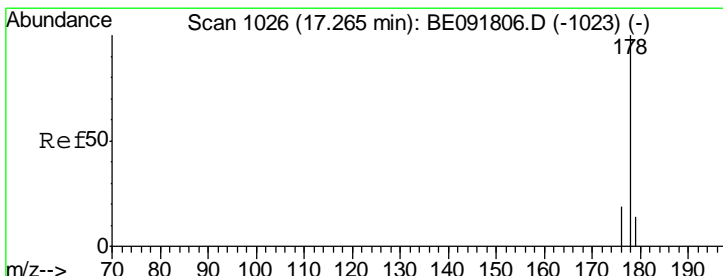
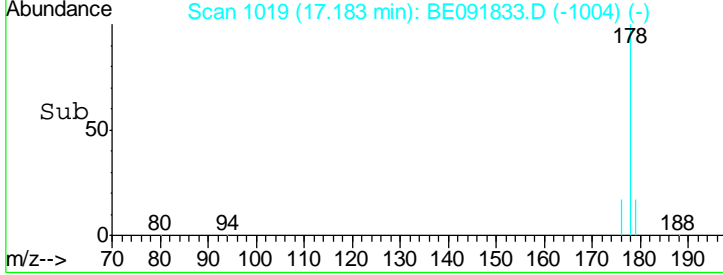
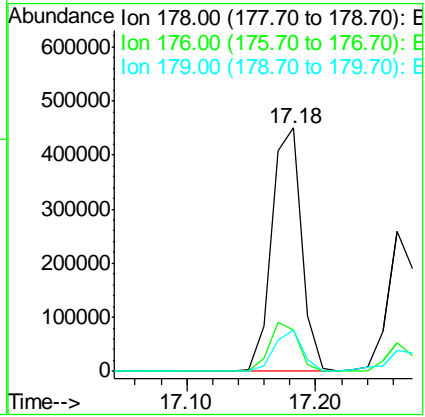
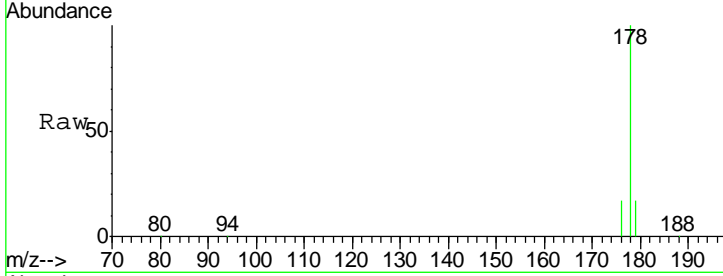


#23  
 Phenanthrene  
 Concen: 14.66 ng  
 RT: 17.18 min Scan# 1019  
 Delta R.T. -0.00 min  
 Lab File: BE091833.D  
 Acq: 20 May 2016 6:39

Instrument :  
 BNA\_E  
 ClientSampled :  
 NC-TS-002MS

Tgt Ion:178 Resp: 730934

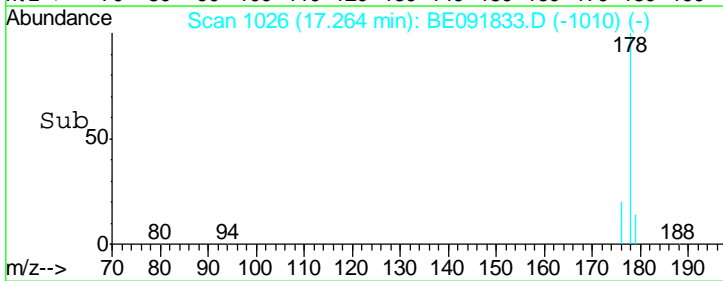
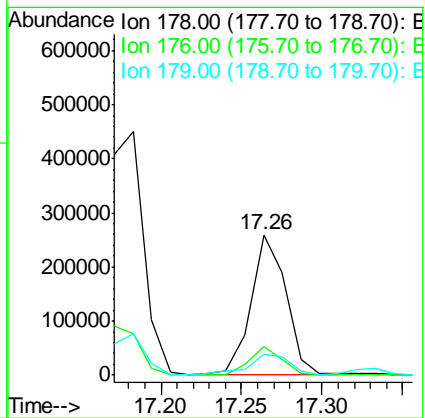
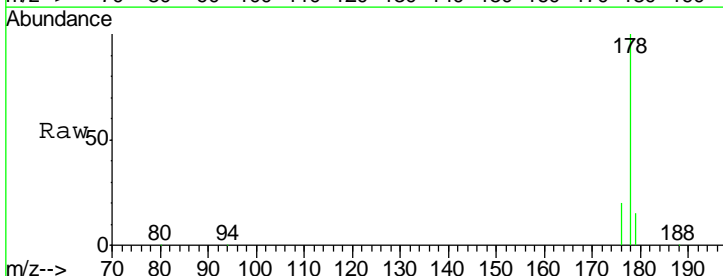
Ion	Ratio	Lower	Upper
178	100		
176	19.6	15.3	22.9
179	15.7	12.6	18.8

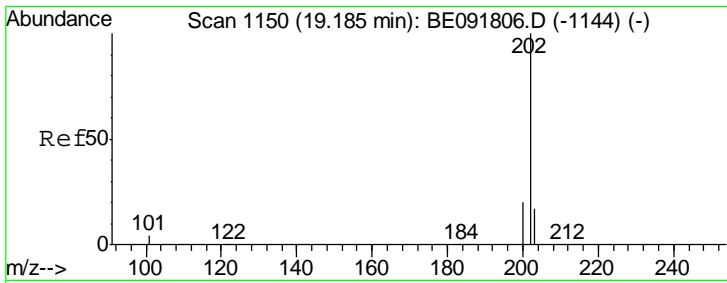


#24  
 Anthracene  
 Concen: 6.90 ng  
 RT: 17.26 min Scan# 1026  
 Delta R.T. -0.01 min  
 Lab File: BE091833.D  
 Acq: 20 May 2016 6:39

Tgt Ion:178 Resp: 386335

Ion	Ratio	Lower	Upper
178	100		
176	19.2	14.6	21.8
179	17.3	11.8	17.6

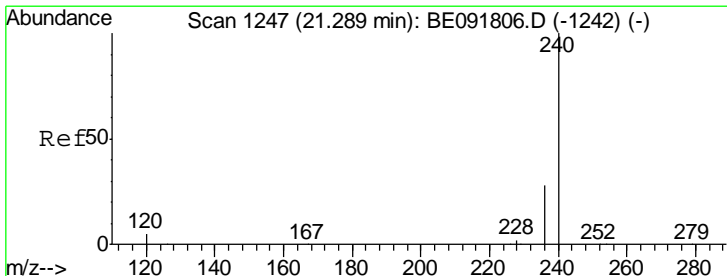
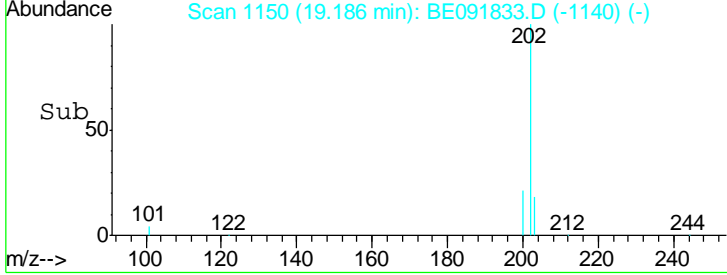
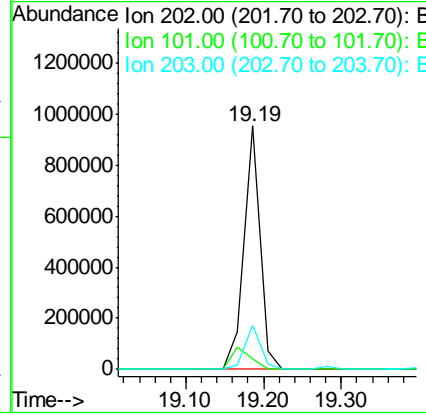
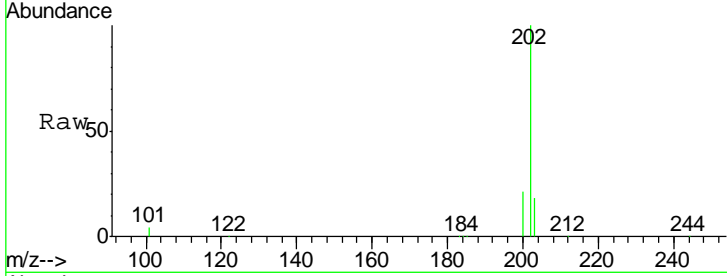




#25  
 Fluoranthene  
 Concen: 19.88 ng  
 RT: 19.19 min Scan# 1150  
 Delta R.T. -0.00 min  
 Lab File: BE091833.D  
 Acq: 20 May 2016 6:39

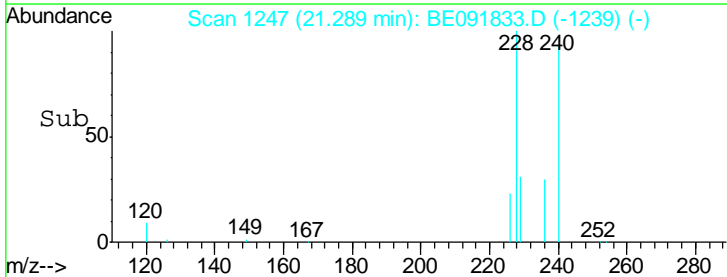
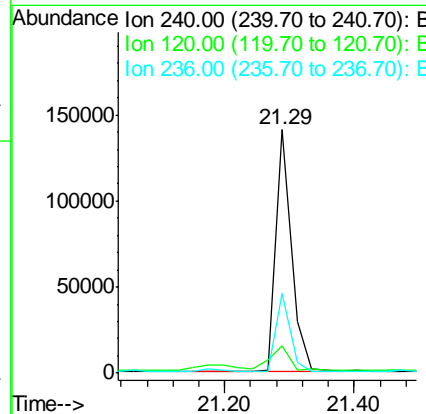
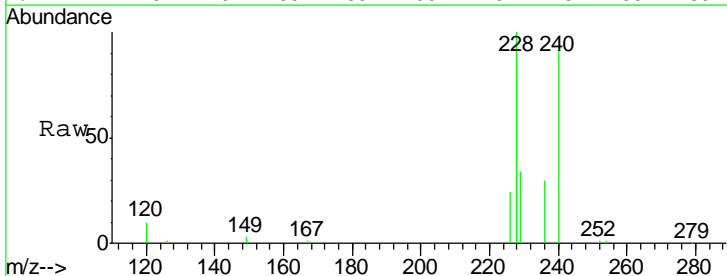
Instrument :  
 BNA\_E  
 ClientSampleId :  
 NC-TS-002MS

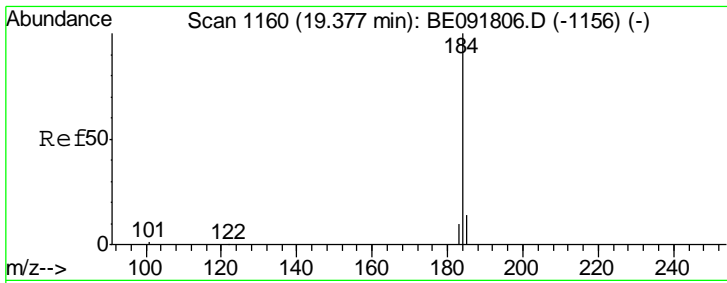
Tgt Ion	Resp	Lower	Upper
202	1360109		
101	10.9	11.0	16.6#
203	17.8	13.9	20.9



#26  
 Chrysene-d12  
 Concen: 5.00 ng  
 RT: 21.29 min Scan# 1247  
 Delta R.T. -0.02 min  
 Lab File: BE091833.D  
 Acq: 20 May 2016 6:39

Tgt Ion	Resp	Lower	Upper
240	238148		
120	11.1	11.0	16.4
236	32.8	21.7	32.5#

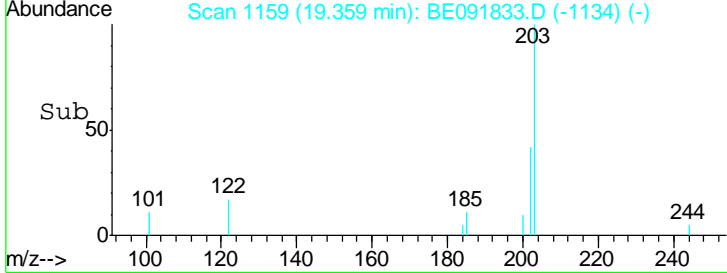
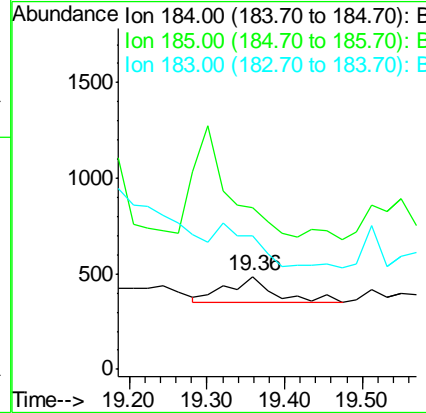
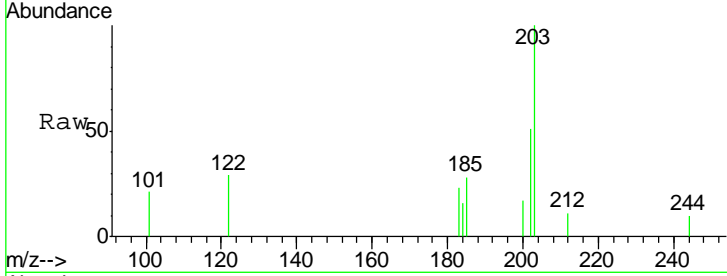




#27  
Benzidine  
Concen: Below Cal  
RT: 19.36 min Scan# 1159  
Delta R.T. -0.02 min  
Lab File: BE091833.D  
Acq: 20 May 2016 6:39

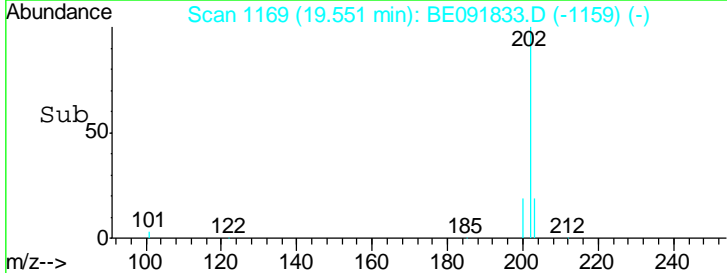
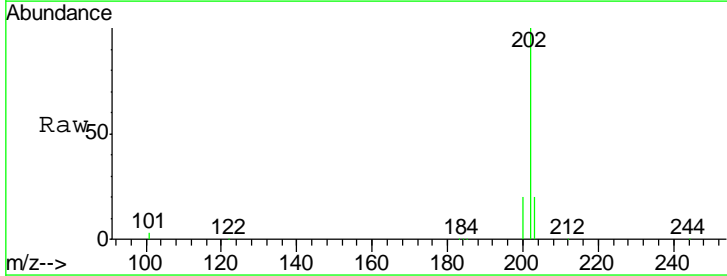
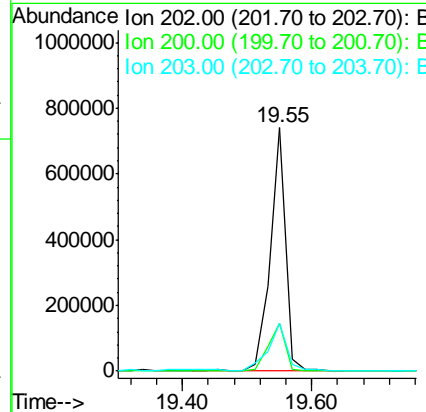
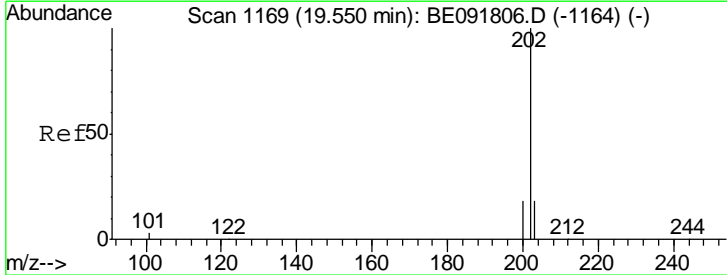
Instrument : BNA\_E  
ClientSampled : NC-TS-002MS

Tgt Ion	Resp	Lower	Upper
184	100		
185	173.9	22.3	33.5#
183	143.4	16.4	24.6#

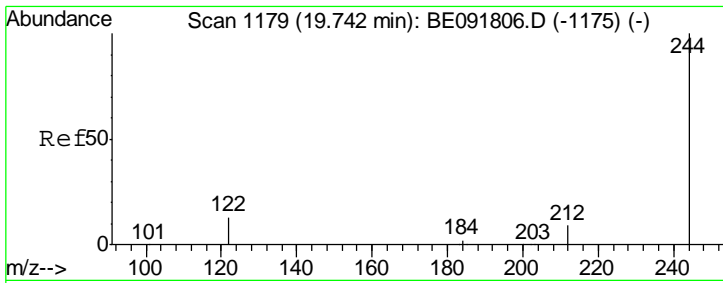


#28  
Pyrene  
Concen: 23.37 ng  
RT: 19.55 min Scan# 1169  
Delta R.T. -0.00 min  
Lab File: BE091833.D  
Acq: 20 May 2016 6:39

Tgt Ion	Resp	Lower	Upper
202	100		
200	21.9	16.8	25.2
203	24.5	14.0	21.0#



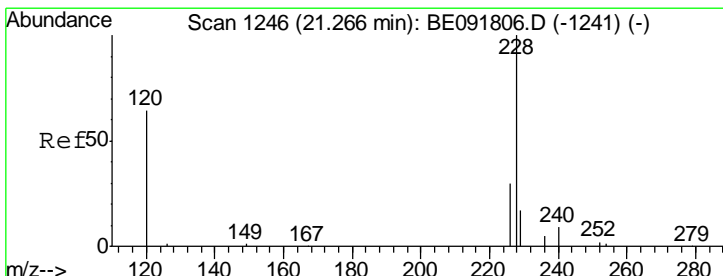
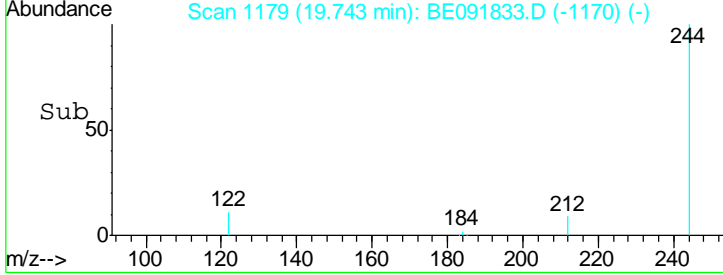
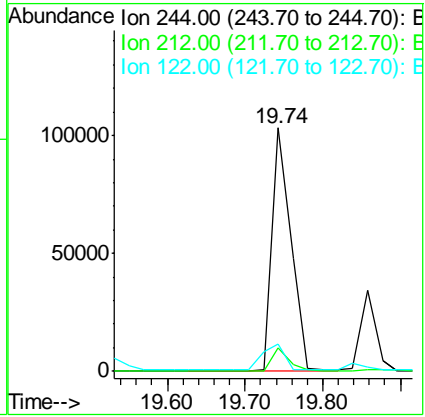
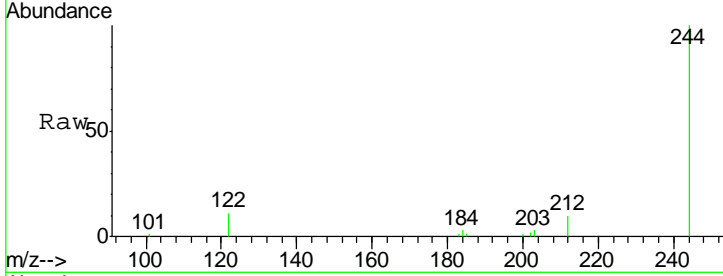




#29  
 Terphenyl-d14  
 Concen: 5.23 ng  
 RT: 19.74 min Scan# 1179  
 Delta R.T. -0.02 min  
 Lab File: BE091833.D  
 Acq: 20 May 2016 6:39

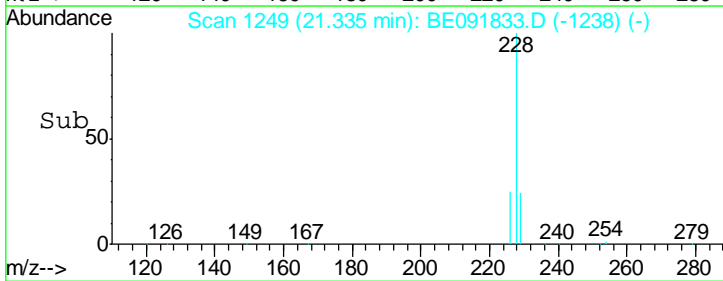
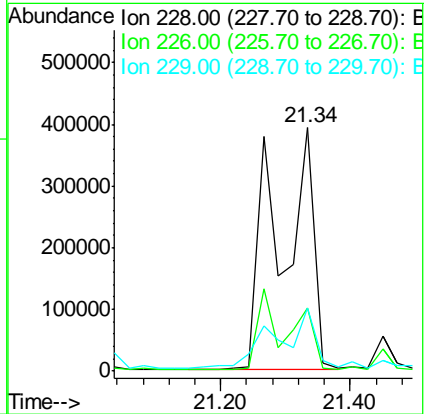
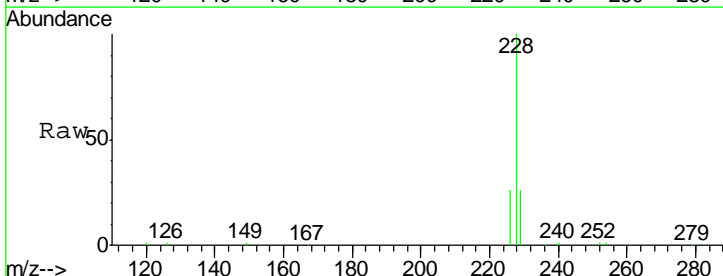
**Instrument :**  
 BNA\_E  
**ClientSampled :**  
 NC-TS-002MS

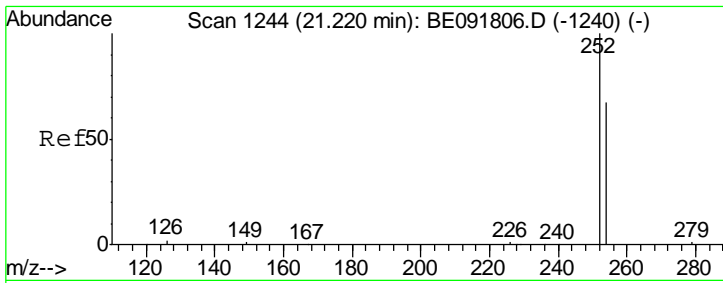
Tgt Ion	Resp	Lower	Upper
244	176476		
212	9.8	6.9	10.3
122	11.4	11.0	16.4



#30  
 Benzo(a)anthracene  
 Concen: 26.83 ng  
 RT: 21.34 min Scan# 1249  
 Delta R.T. 0.05 min  
 Lab File: BE091833.D  
 Acq: 20 May 2016 6:39

Tgt Ion	Resp	Lower	Upper
228	1541519		
226	25.8	21.0	31.4
229	26.1	15.7	23.5#

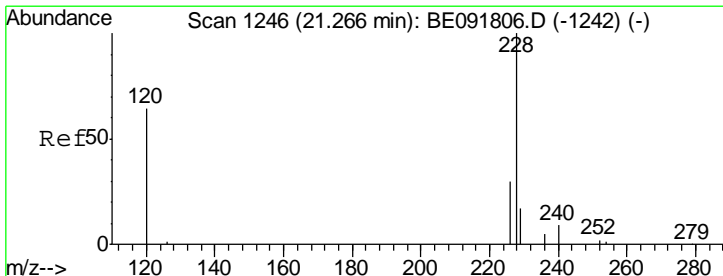
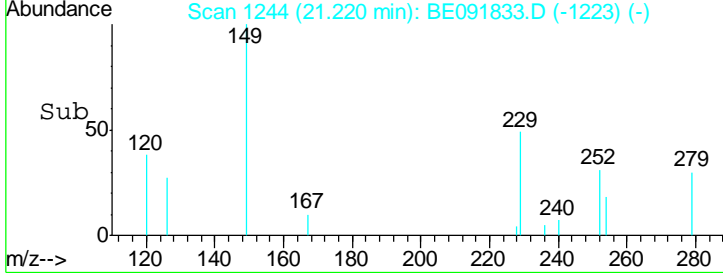
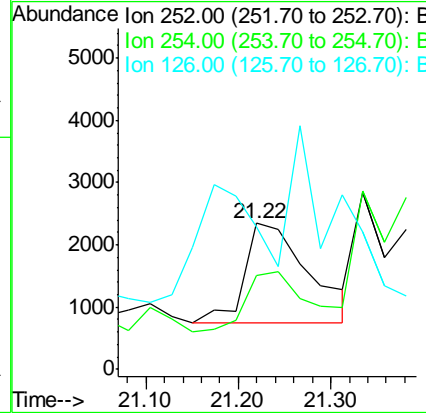
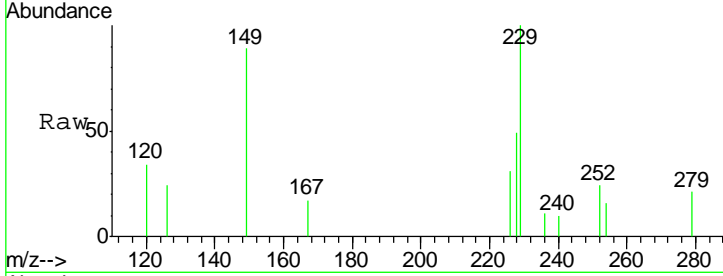




#31  
 3,3'-Dichlorobenzidine  
 Concen: 0.21 ng  
 RT: 21.22 min Scan# 1244  
 Delta R.T. -0.02 min  
 Lab File: BE091833.D  
 Acq: 20 May 2016 6:39

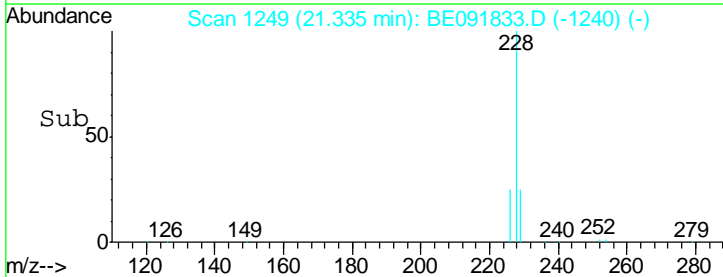
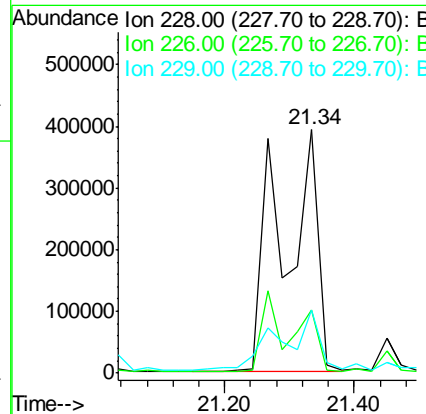
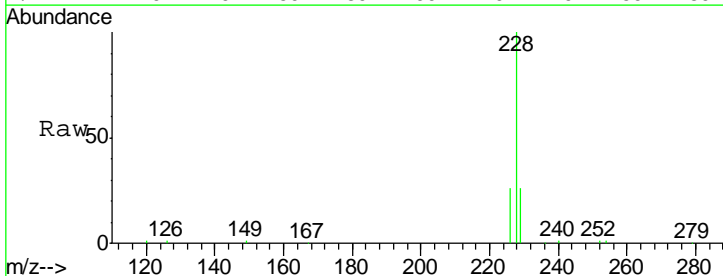
Instrument :  
 BNA\_E  
 ClientSampleId :  
 NC-TS-002MS

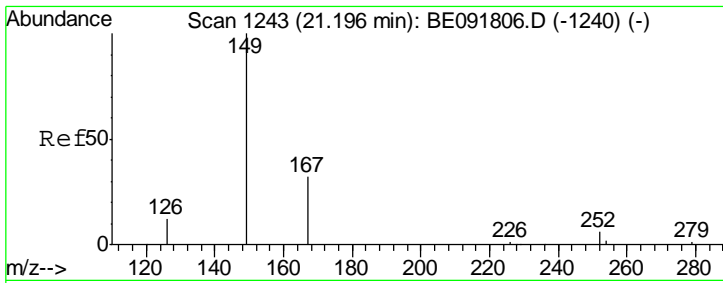
Tgt Ion	Resp	Lower	Upper
252	100		
254	64.5	51.1	76.7
126	98.0	12.6	18.8#



#32  
 Chrysene  
 Concen: 31.06 ng  
 RT: 21.34 min Scan# 1249  
 Delta R.T. 0.00 min  
 Lab File: BE091833.D  
 Acq: 20 May 2016 6:39

Tgt Ion	Resp	Lower	Upper
228	100		
226	25.8	24.0	36.0
229	26.1	15.9	23.9#

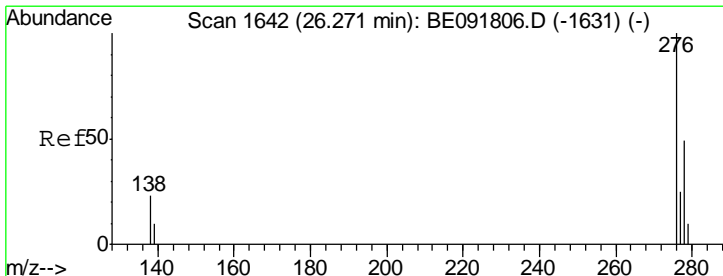
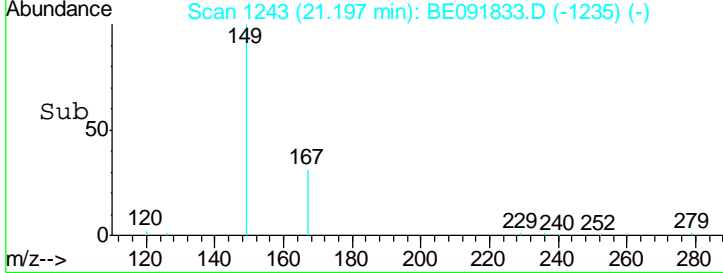
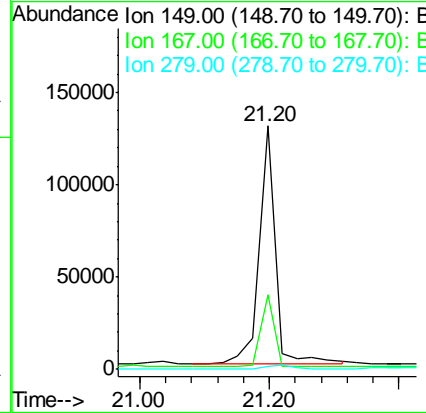
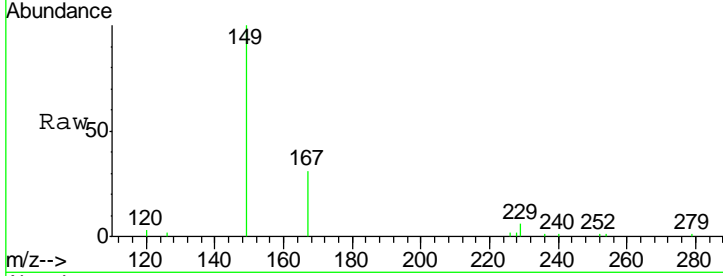




#33  
 Bis(2-ethylhexyl)phthalate  
 Concen: 6.84 ng  
 RT: 21.20 min Scan# 1243  
 Delta R.T. -0.02 min  
 Lab File: BE091833.D  
 Acq: 20 May 2016 6:39

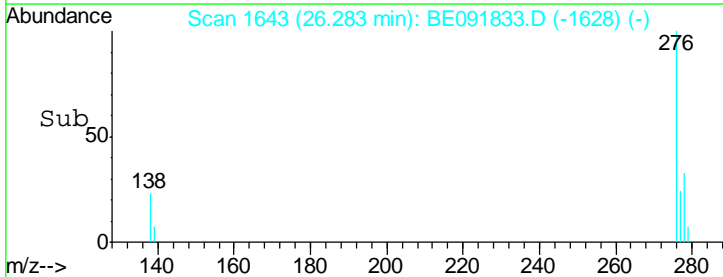
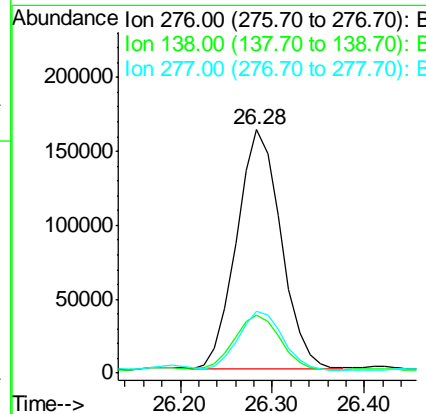
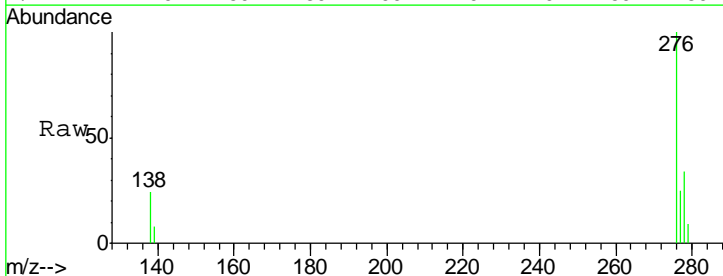
Instrument :  
 BNA\_E  
 ClientSampleId :  
 NC-TS-002MS

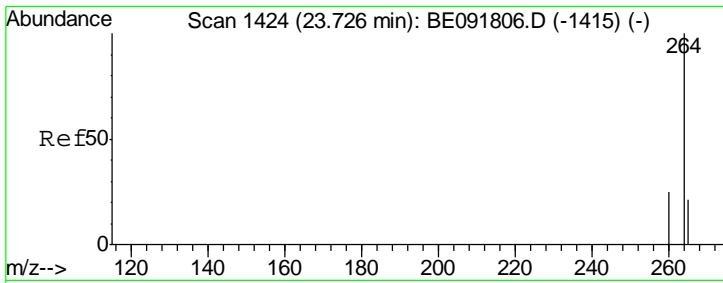
Tgt Ion	Resp	Lower	Upper
149	100		
167	25.1	19.5	29.3
279	0.0	10.0	15.0#



#34  
 Indeno(1,2,3-cd)pyrene  
 Concen: 9.18 ng  
 RT: 26.28 min Scan# 1643  
 Delta R.T. -0.02 min  
 Lab File: BE091833.D  
 Acq: 20 May 2016 6:39

Tgt Ion	Resp	Lower	Upper
276	100		
138	23.7	23.4	35.2
277	24.8	19.8	29.8



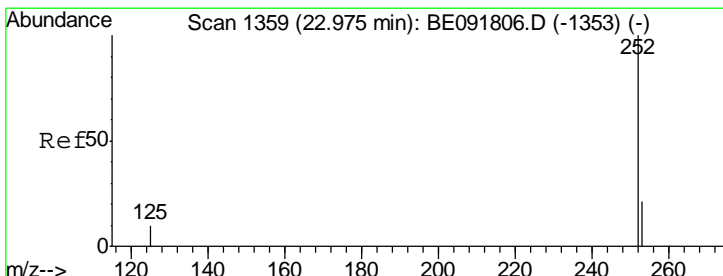
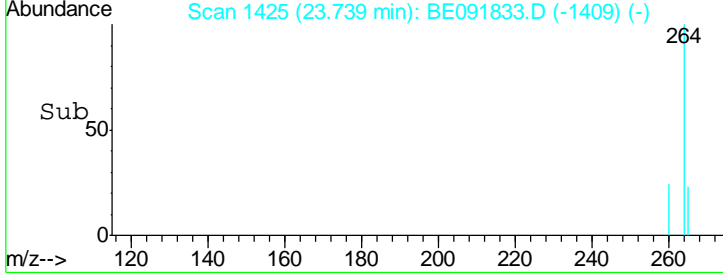
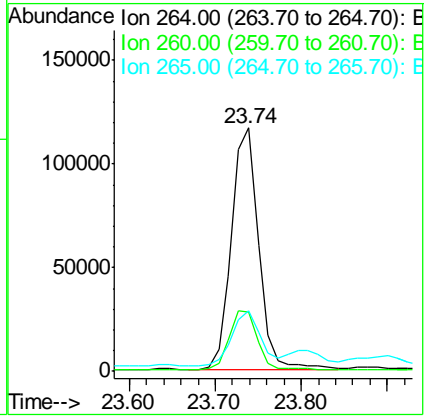
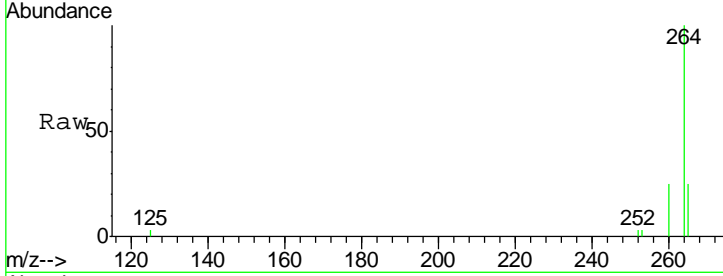


#35  
 Perylene-d12  
 Concen: 5.00 ng  
 RT: 23.74 min Scan# 1425  
 Delta R.T. -0.01 min  
 Lab File: BE091833.D  
 Acq: 20 May 2016 6:39

Instrument :  
 BNA\_E  
 ClientSampleId :  
 NC-TS-002MS

Tgt Ion: 264 Resp: 255908

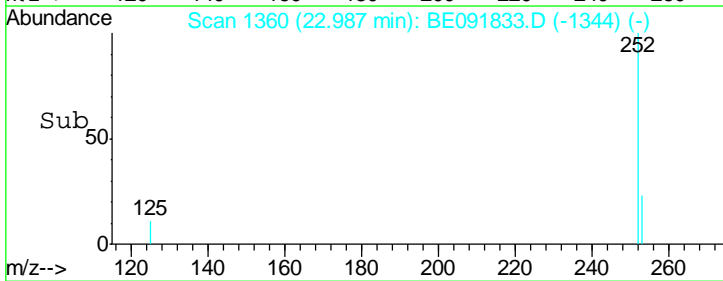
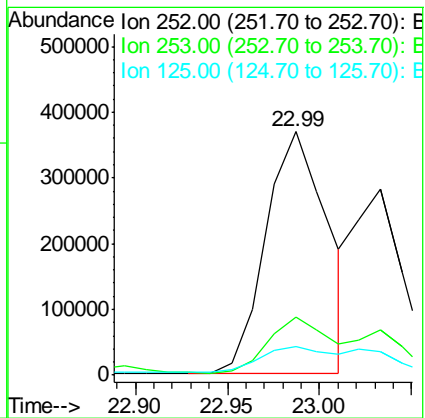
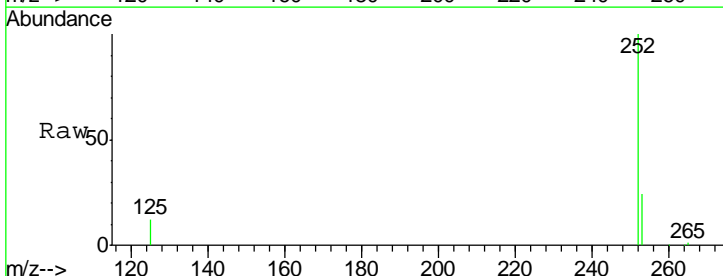
Ion	Ratio	Lower	Upper
264	100		
260	24.5	20.0	30.0
265	24.7	17.5	26.3

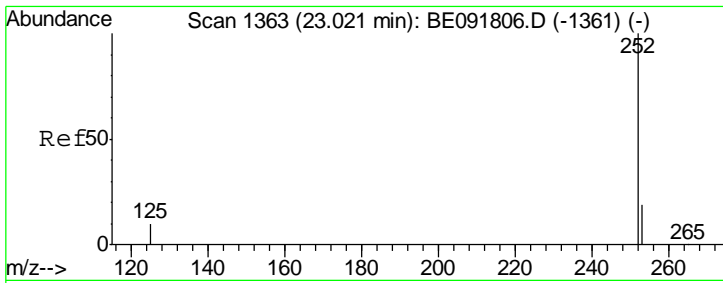


#36  
 Benzo(b)fluoranthene  
 Concen: 13.41 ng  
 RT: 22.99 min Scan# 1360  
 Delta R.T. -0.01 min  
 Lab File: BE091833.D  
 Acq: 20 May 2016 6:39

Tgt Ion: 252 Resp: 858815

Ion	Ratio	Lower	Upper
252	100		
253	23.8	17.4	26.0
125	11.5	10.2	15.2

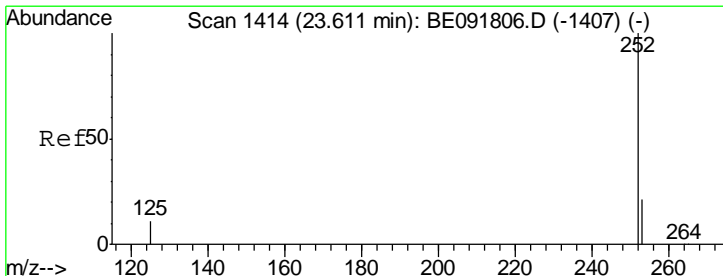
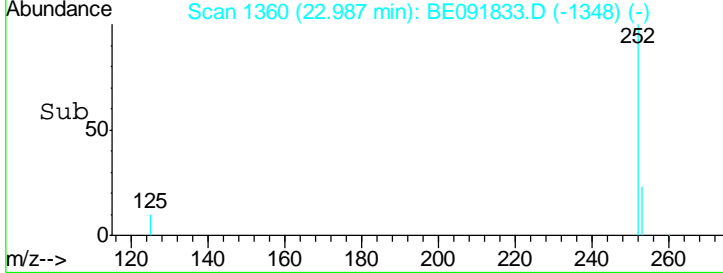
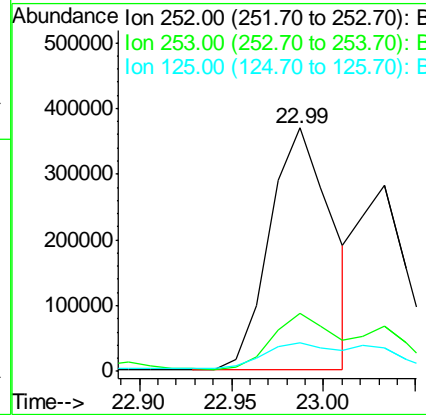
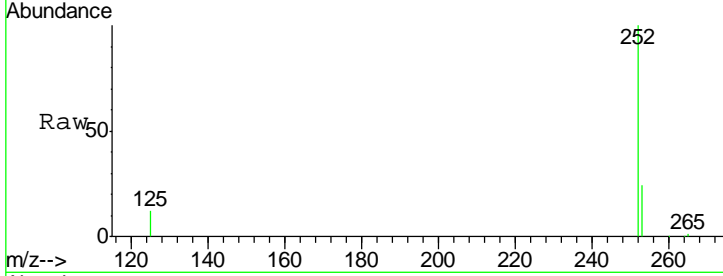




#37  
 Benzo(k)fluoranthene  
 Concen: 13.10 ng  
 RT: 22.99 min Scan# 1360  
 Delta R.T. -0.06 min  
 Lab File: BE091833.D  
 Acq: 20 May 2016 6:39

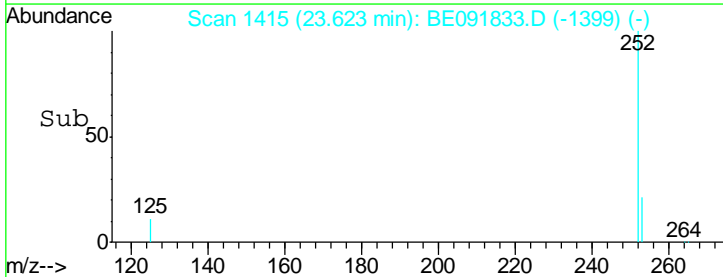
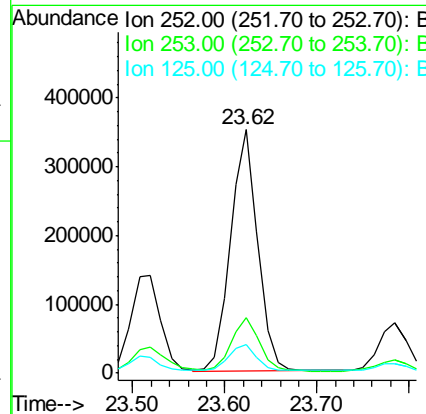
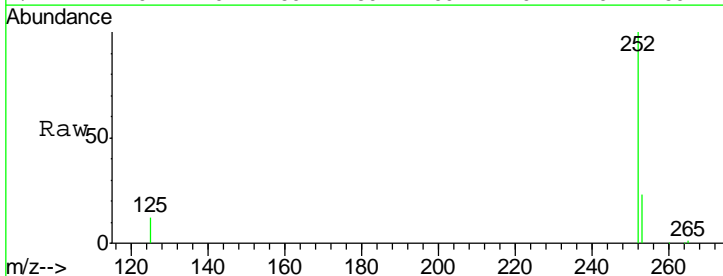
Instrument :  
 BNA\_E  
 ClientSampleId :  
 NC-TS-002MS

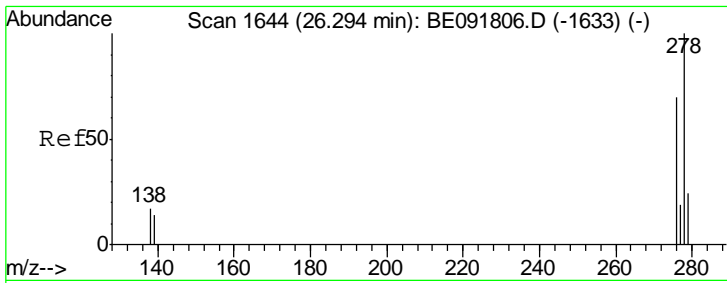
Tgt Ion	Resp	Lower	Upper
252	858815		
253	23.8	17.6	26.4
125	11.5	9.9	14.9



#38  
 Benzo(a)pyrene  
 Concen: 11.70 ng  
 RT: 23.62 min Scan# 1415  
 Delta R.T. -0.01 min  
 Lab File: BE091833.D  
 Acq: 20 May 2016 6:39

Tgt Ion	Resp	Lower	Upper
252	715184		
253	23.0	18.1	27.1
125	11.6	11.0	16.4

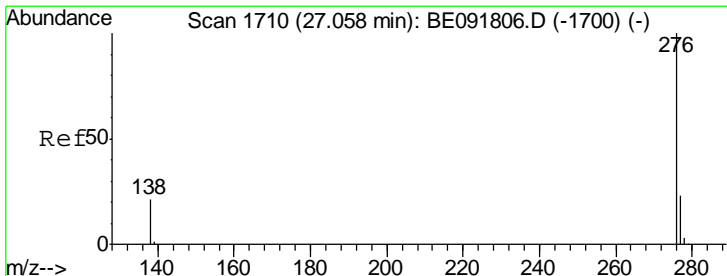
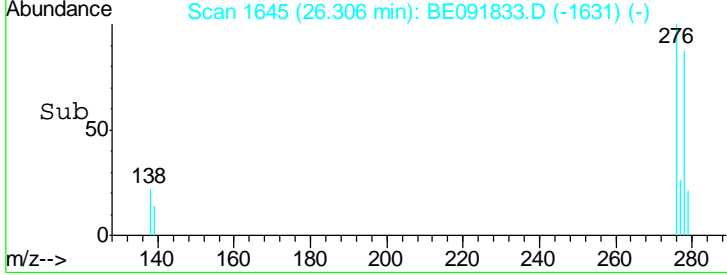
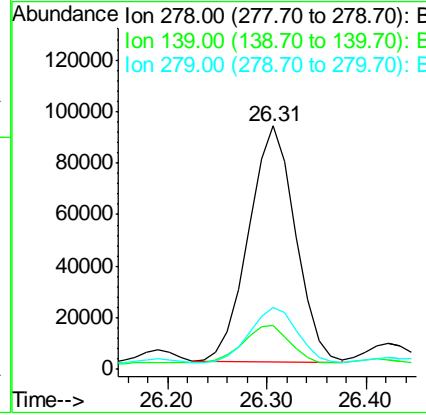
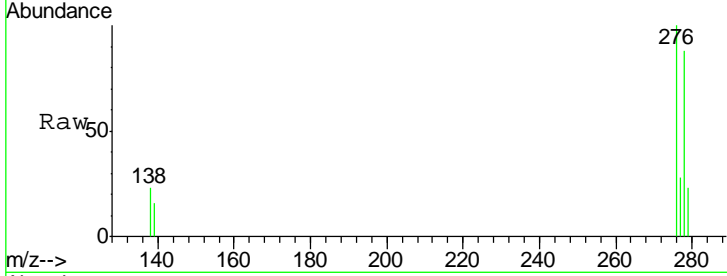




#39  
 Dibenzo(a,h)anthracene  
 Concen: 5.01 ng  
 RT: 26.31 min Scan# 1645  
 Delta R.T. -0.03 min  
 Lab File: BE091833.D  
 Acq: 20 May 2016 6:39

Instrument :  
 BNA\_E  
 ClientSampled :  
 NC-TS-002MS

Tgt Ion	Resp	Lower	Upper
278	298875		
139	18.0	16.0	24.0
279	25.6	19.4	29.2



#40  
 Benzo(g,h,i)perylene  
 Concen: 8.23 ng  
 RT: 27.08 min Scan# 1712  
 Delta R.T. -0.02 min  
 Lab File: BE091833.D  
 Acq: 20 May 2016 6:39

Tgt Ion	Resp	Lower	Upper
276	506753		
277	24.0	18.6	28.0
138	22.0	20.4	30.6

