

Data Path : Z:\HPCHEM1\BNA_E\DATA\BE052316\
 Data File : BE091850.D
 Acq On : 23 May 2016 16:52
 Operator : UM/SJ
 Sample : H3156-01MS
 Misc :
 ALS Vial : 10 Sample Multiplier: 1

Instrument :
 BNA_E
 ClientSampleId :
 SP-001-160517MS

Manual Integrations
 APPROVED

umangi
 5/24/2016 7:35:34 PM

Quant Time: May 24 05:18:19 2016
 Quant Method : Z:\HPCHEM1\BNA_E\METHODS\8270-SIM-BE051916.M
 Quant Title : ASP BNA STANDARDS FOR 5 POINT CALIBRATION
 QLast Update : Thu May 19 15:36:49 2016
 Response via : Initial Calibration

Internal Standards	R.T.	QIon	Response	Conc	Units	Dev(Min)
1) 1,4-Dichlorobenzene-d4	7.79	152	23400	5.00	ng	-0.02
7) Naphthalene-d8	10.55	136	128221	5.00	ng	-0.02
13) Acenaphthene-d10	14.39	164	87947	5.00	ng	-0.03
19) Phenanthrene-d10	17.14	188	239361	5.00	ng	-0.01
26) Chrysene-d12	21.29	240	273520	5.00	ng	-0.02
35) Perylene-d12	23.73	264	236314	5.00	ng	-0.02

System Monitoring Compounds

4) 2-Fluorophenol	5.39	112	51045	8.35	ng	0.00
5) Phenol-d6	6.96	99	87535	10.16	ng	0.00
8) Nitrobenzene-d5	8.93	82	43412	5.11	ng	-0.01
14) 2,4,6-Tribromophenol	15.89	330	35389	10.36	ng	-0.01
15) 2-Fluorobiphenyl	13.02	172	122568	4.93	ng	-0.01
29) Terphenyl-d14	19.74	244	200137	5.17	ng	-0.02

Target Compounds

Target Compounds	R.T.	QIon	Response	Conc	Units	Qvalue
2) 1,4-Dioxane	3.32	88	9690	3.79	ng	95
3) n-Nitrosodimethylamine	3.61	42	16152	4.32	ng	98
6) bis(2-Chloroethyl)ether	7.20	93	30556	4.42	ng	# 78
9) Nitrobenzene	8.98	77	41072	4.70	ng	93
10) Naphthalene	10.61	128	114864	4.05	ng	97
11) Hexachlorobutadiene	10.90	225	19285	4.59	ng	97
12) 2-Methylnaphthalene	12.21	142	90354	4.73	ng	98
16) Acenaphthylene	14.11	152	173209	4.42	ng	# 86
17) Acenaphthene	14.46	154	100780	4.27	ng	91
18) Fluorene	15.43	166	133862	4.38	ng	98
20) 4-Bromophenyl-phenylether	16.31	248	38774	4.33	ng	92
21) Hexachlorobenzene	16.45	284	38335	4.12	ng	98
22) Pentachlorophenol	16.77	266	40865	10.61	ng	# 85
23) Phenanthrene	17.17	178	350738	7.51	ng	99
24) Anthracene	17.26	178	233191	4.48	ng	97
25) Fluoranthene	19.19	202	725196	11.40	ng	97
27) Benzidine	19.36	184	6264	0.39	ng	# 83
28) Pyrene	19.53	202	666841	11.11	ng	96
30) Benzo(a)anthracene	21.27	228	539715m	8.18	ng	
31) 3,3'-Dichlorobenzidine	21.22	252	45327	1.08	ng	# 76
32) Chrysene	21.31	228	462252m	8.14	ng	
33) Bis(2-ethylhexyl)phthalate	21.20	149	144481	3.90	ng	# 83
34) Indeno(1,2,3-cd)pyrene	26.27	276	501784	7.42	ng	# 92
36) Benzo(b)fluoranthene	22.98	252	635687	10.75	ng	# 97
37) Benzo(k)fluoranthene	23.02	252	430635m	7.12	ng	
38) Benzo(a)pyrene	23.61	252	503607m	8.92	ng	
39) Dibenzo(a,h)anthracene	26.29	278	284661	5.17	ng	# 94
40) Benzo(g,h,i)perylene	27.06	276	455409	8.01	ng	95

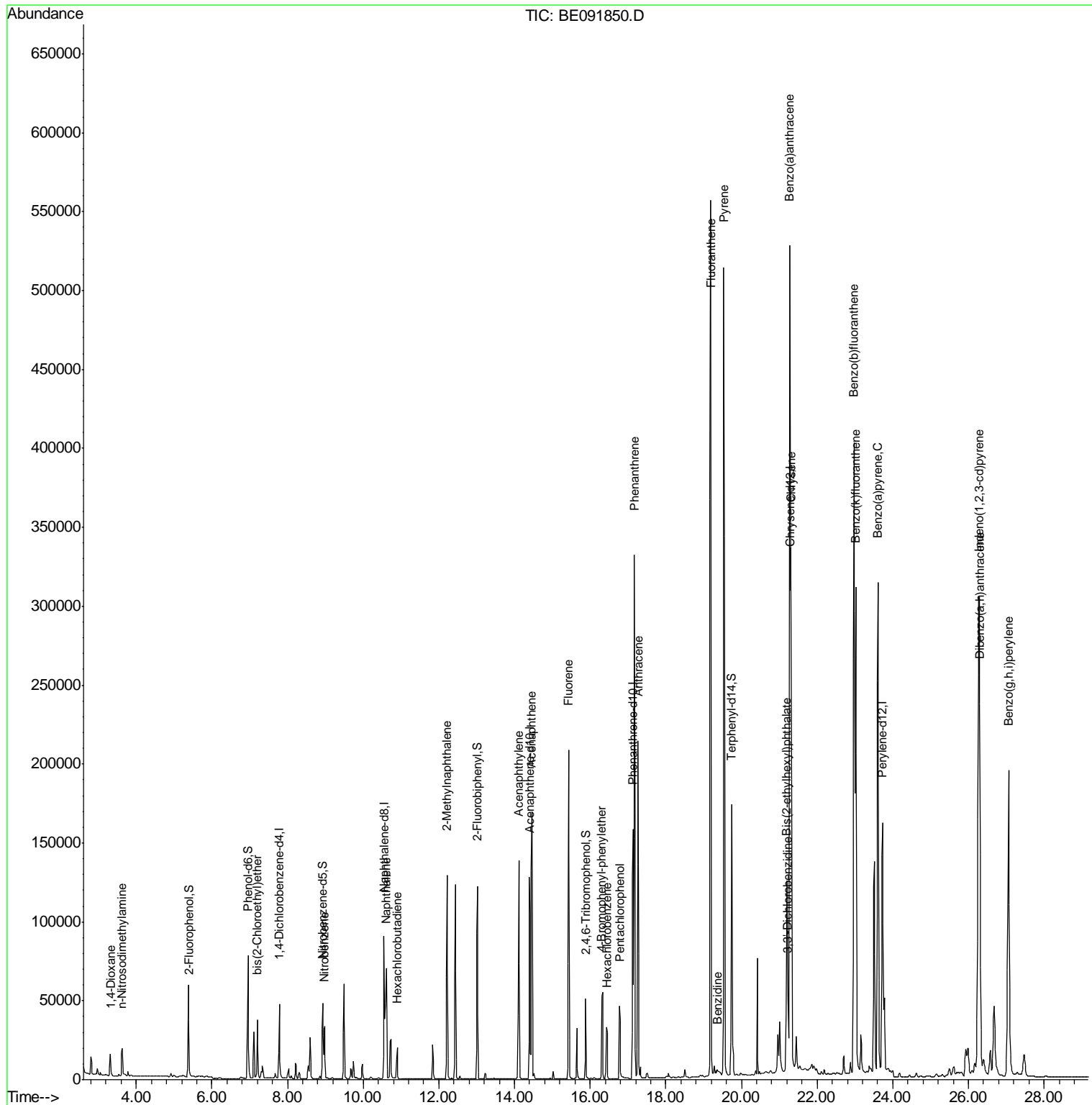
(#) = qualifier out of range (m) = manual integration (+) = signals summed

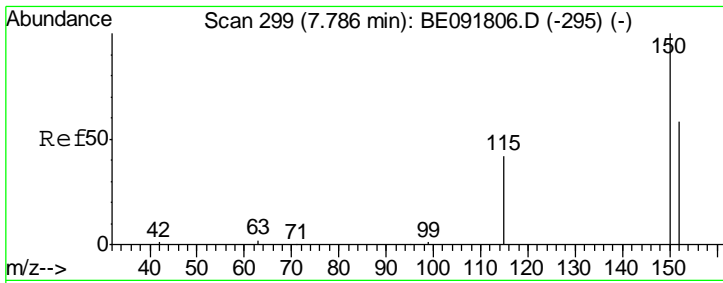
Data Path : Z:\HPCHEM1\BNA_E\DATA\BE052316\
 Data File : BE091850.D
 Acq On : 23 May 2016 16:52
 Operator : UM/SJ
 Sample : H3156-01MS
 Misc :
 ALS Vial : 10 Sample Multiplier: 1

Instrument :
 BNA_E
 Client Sampled :
 SP-001-160517MS

Manual Integrations
 APPROVED
 umangi
 5/24/2016 7:35:34 PM

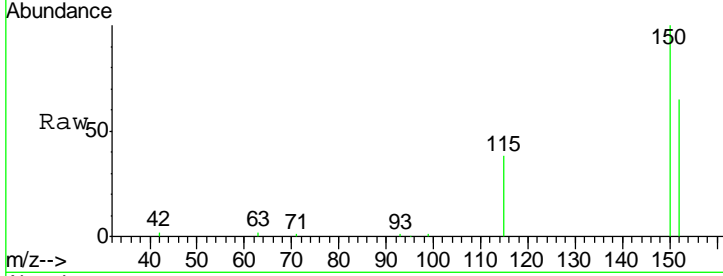
Quant Time: May 24 05:18:19 2016
 Quant Method : Z:\HPCHEM1\BNA_E\METHODS\8270-SIM-BE051916.M
 Quant Title : ASP BNA STANDARDS FOR 5 POINT CALIBRATION
 QLast Update : Thu May 19 15:36:49 2016
 Response via : Initial Calibration





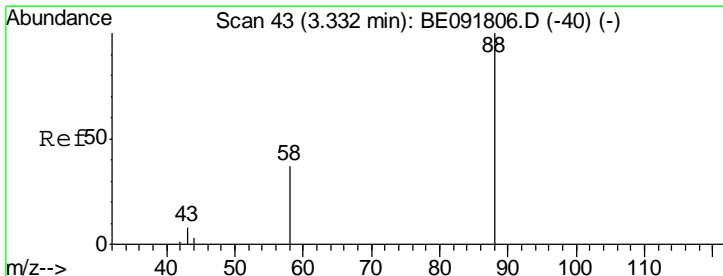
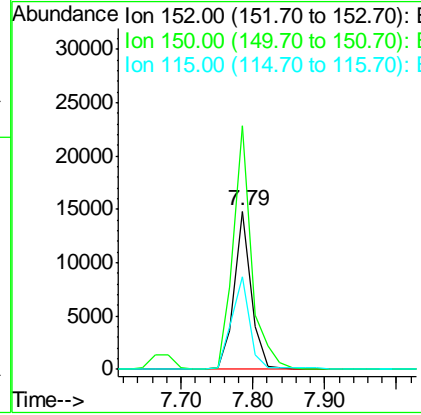
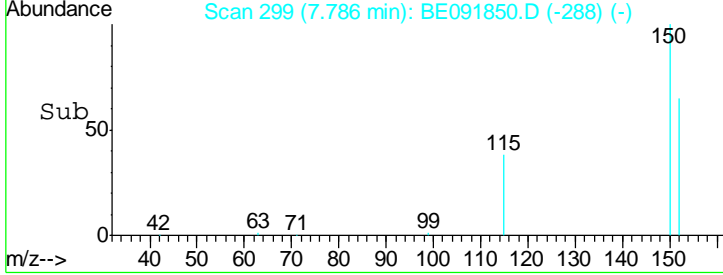
#1
 1,4-Dichlorobenzene-d4
 Concen: 5.00 ng
 RT: 7.79 min Scan# 299
 Delta R.T. -0.02 min
 Lab File: BE091850.D
 Acq: 23 May 2016 16:52

Instrument :
 BNA_E
ClientSampled :
 SP-001-160517MS

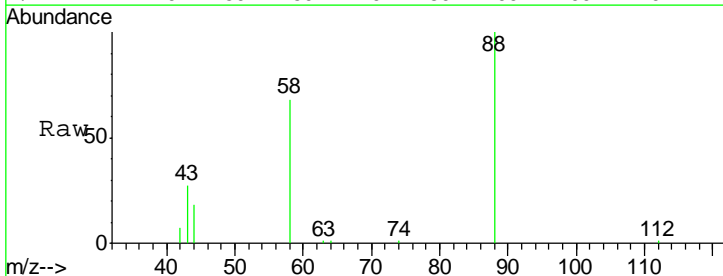


Tgt Ion	Resp	Lower	Upper
152	23400		
152	100		
150	154.2	122.6	183.8
115	58.9	52.8	79.2

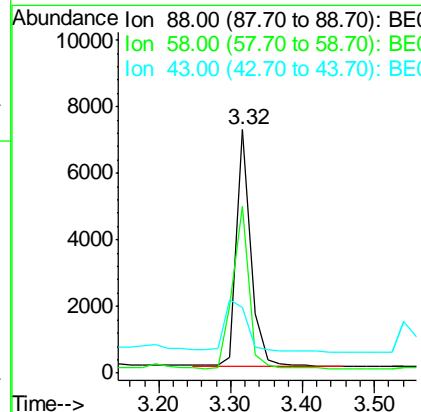
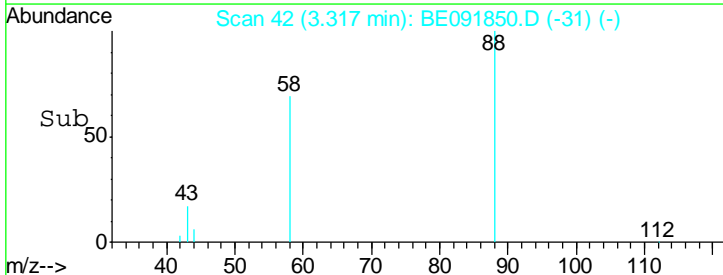
Manual Integrations
APPROVED
 umangi
 5/24/2016 7:35:34 PM

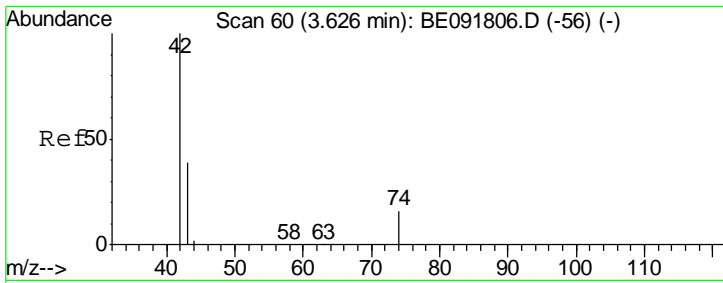


#2
 1,4-Dioxane
 Concen: 3.79 ng
 RT: 3.32 min Scan# 42
 Delta R.T. -0.01 min
 Lab File: BE091850.D
 Acq: 23 May 2016 16:52



Tgt Ion	Resp	Lower	Upper
88	9690		
88	100		
58	78.3	65.8	98.6
43	35.6	25.3	37.9



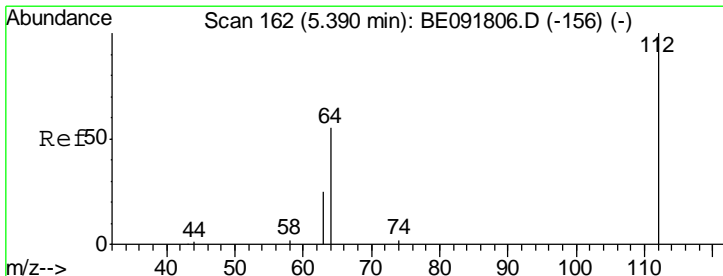
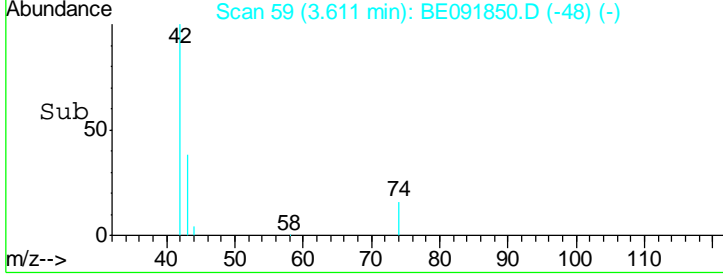
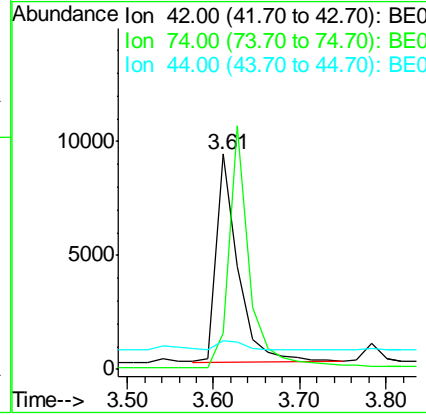
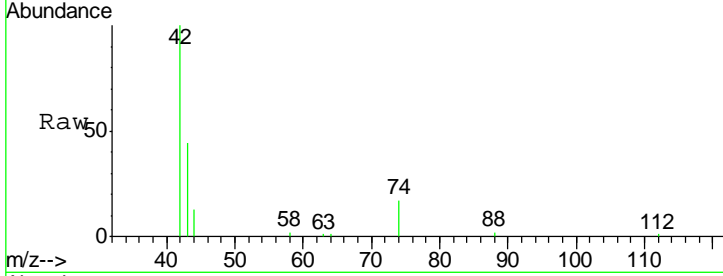


#3
 n-Nitrosodimethylamine
 Concen: 4.32 ng
 RT: 3.61 min Scan# 59
 Delta R.T. -0.01 min
 Lab File: BE091850.D
 Acq: 23 May 2016 16:52

Instrument :
 BNA_E
ClientSampled :
 SP-001-160517MS

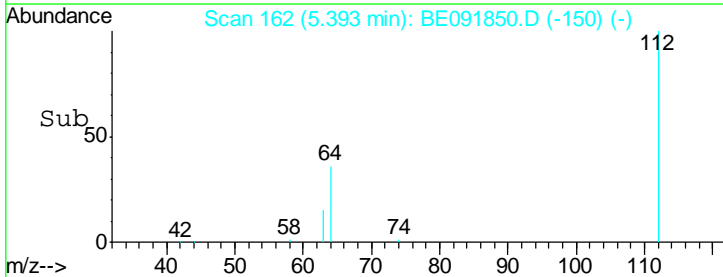
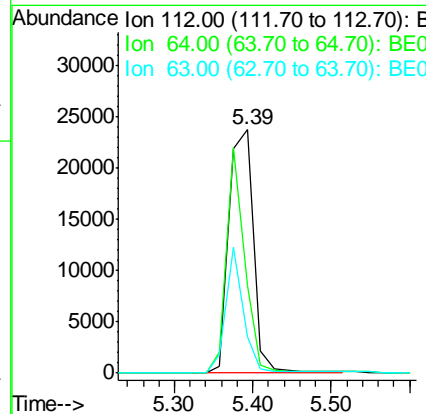
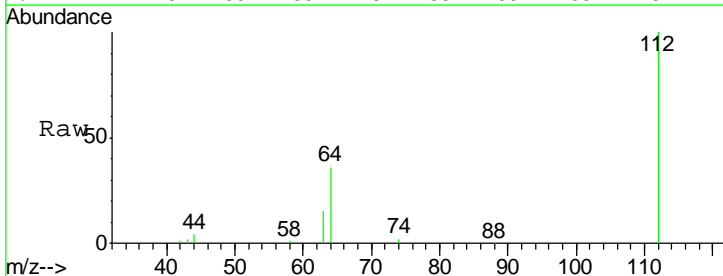
Tgt Ion	Resp	Lower	Upper
42	16152		
42	100		
74	108.2	87.9	131.9
44	6.8	6.6	9.8

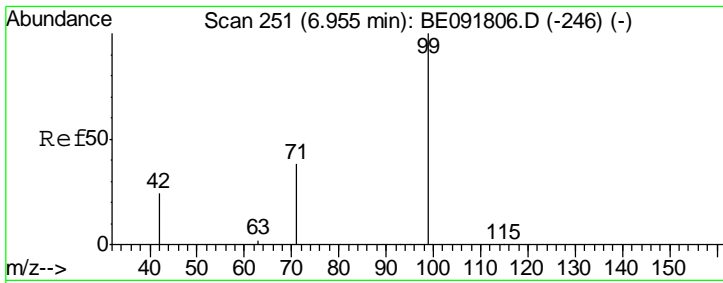
Manual Integrations
APPROVED
 umangi
 5/24/2016 7:35:34 PM



#4
 2-Fluorophenol
 Concen: 8.35 ng
 RT: 5.39 min Scan# 162
 Delta R.T. 0.00 min
 Lab File: BE091850.D
 Acq: 23 May 2016 16:52

Tgt Ion	Resp	Lower	Upper
112	51045		
112	100		
64	68.5	30.9	46.3#
63	36.6	16.7	25.1#



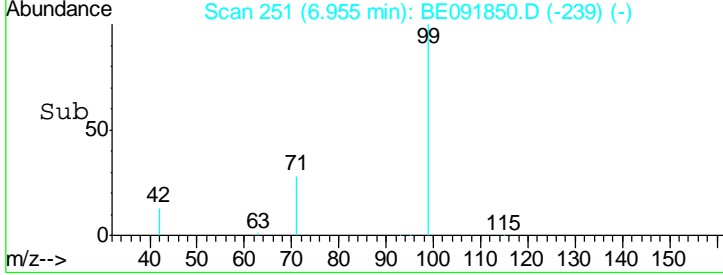
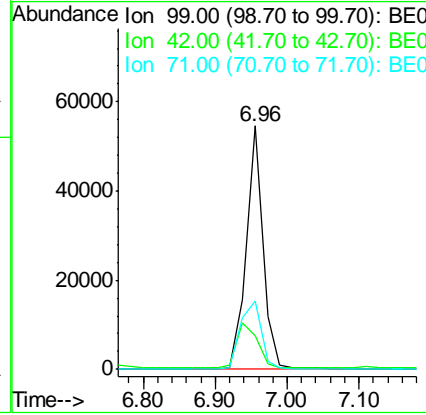
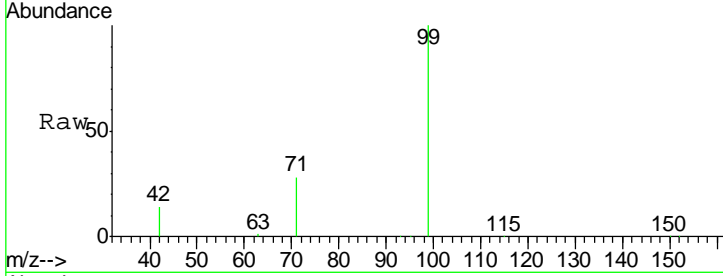


#5
 Phenol-d6
 Concen: 10.16 ng
 RT: 6.96 min Scan# 251
 Delta R.T. 0.00 min
 Lab File: BE091850.D
 Acq: 23 May 2016 16:52

Instrument :
 BNA_E
ClientSampled :
 SP-001-160517MS

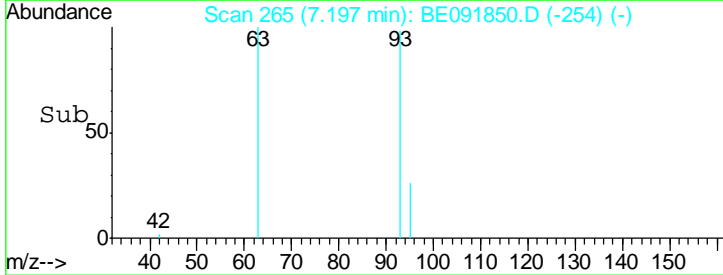
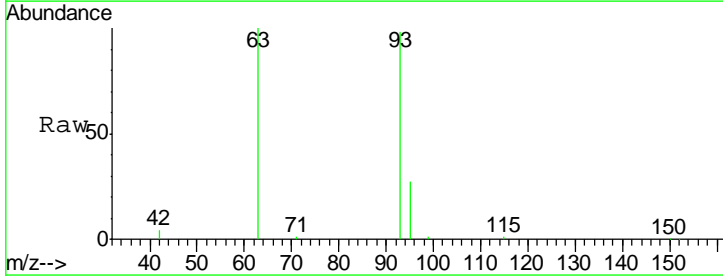
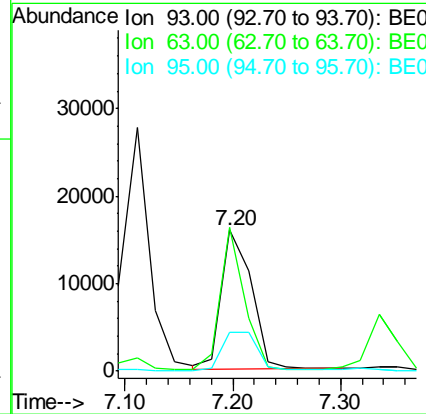
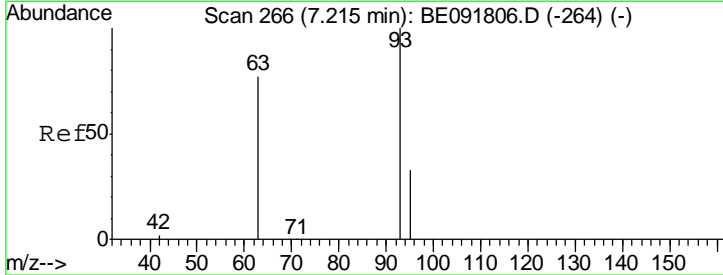
Tgt Ion	Resp	Lower	Upper
99	87535		
99	100		
42	23.2	16.2	24.2
71	35.1	29.0	43.4

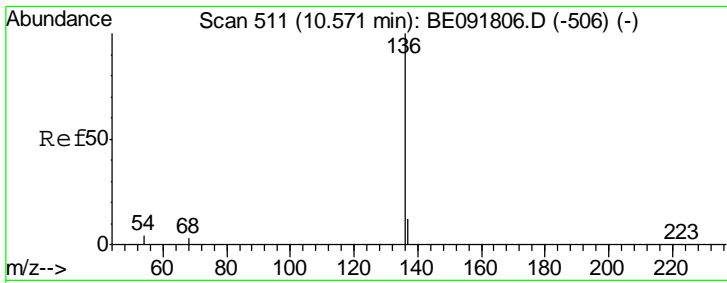
Manual Integrations
APPROVED
 umangi
 5/24/2016 7:35:34 PM



#6
 bis(2-Chloroethyl)ether
 Concen: 4.42 ng
 RT: 7.20 min Scan# 265
 Delta R.T. -0.02 min
 Lab File: BE091850.D
 Acq: 23 May 2016 16:52

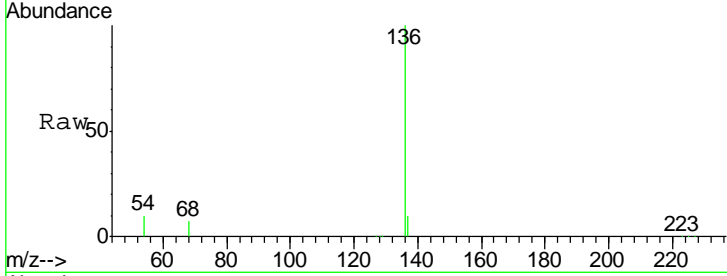
Tgt Ion	Resp	Lower	Upper
93	30556		
93	100		
63	83.8	49.5	74.3#
95	31.6	22.2	33.4





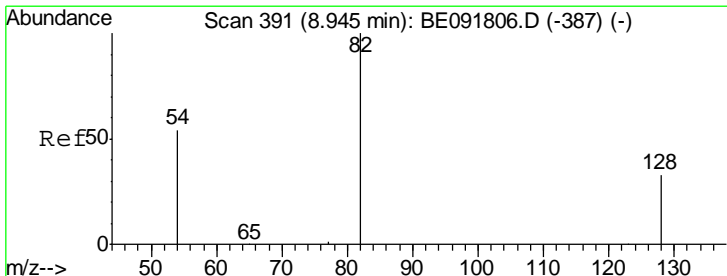
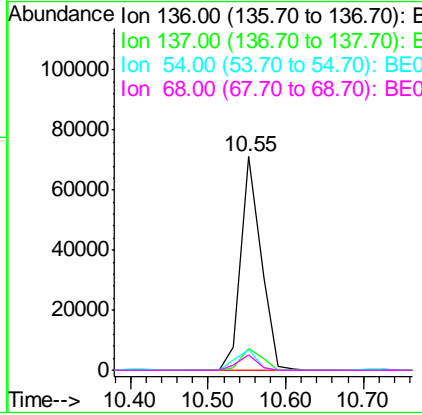
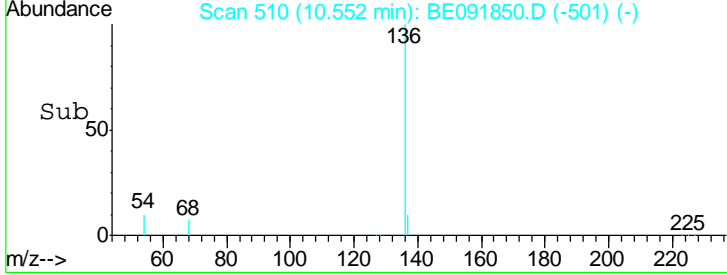
#7
 Naphthalene-d8
 Concen: 5.00 ng
 RT: 10.55 min Scan# 510
 Delta R.T. -0.02 min
 Lab File: BE091850.D
 Acq: 23 May 2016 16:52

Instrument :
 BNA_E
ClientSampled :
 SP-001-160517MS

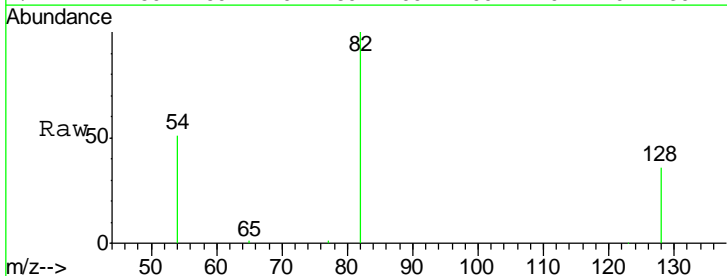


Tgt Ion	Resp	Lower	Upper
136	128221		
137	10.4	8.9	13.3
54	9.7	8.2	12.4
68	7.2	6.2	9.4

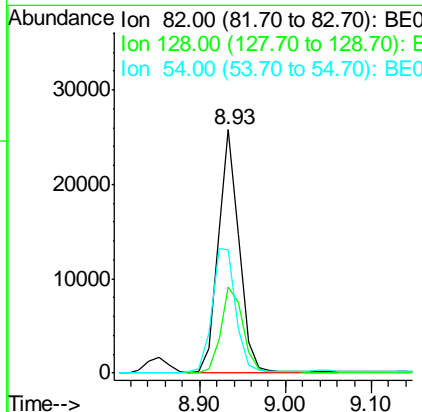
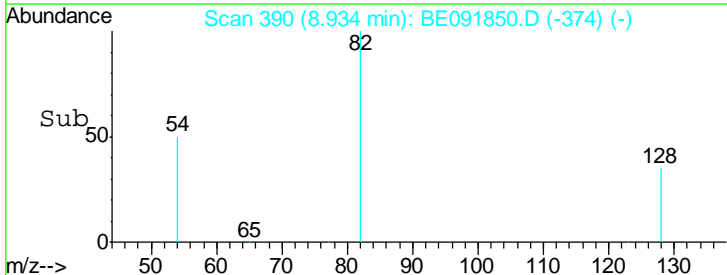
Manual Integrations
APPROVED
 umangi
 5/24/2016 7:35:34 PM

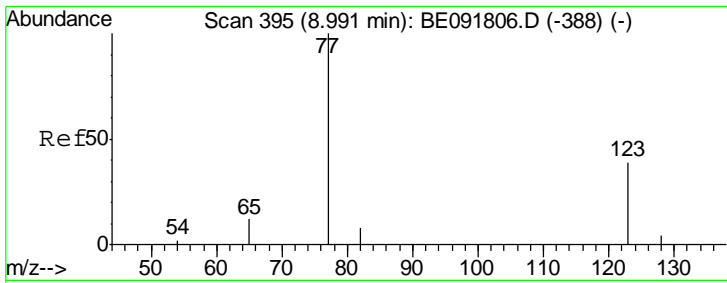


#8
 Nitrobenzene-d5
 Concen: 5.11 ng
 RT: 8.93 min Scan# 390
 Delta R.T. -0.01 min
 Lab File: BE091850.D
 Acq: 23 May 2016 16:52



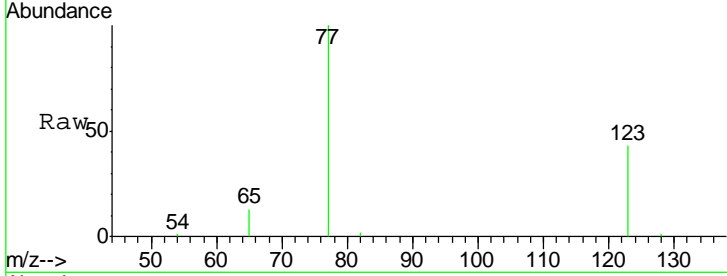
Tgt Ion	Resp	Lower	Upper
82	43412		
128	35.5	25.4	38.0
54	50.7	48.4	72.6





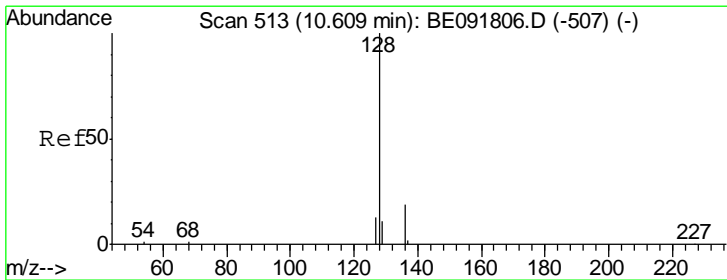
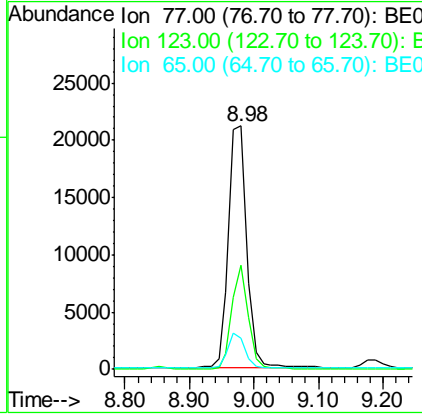
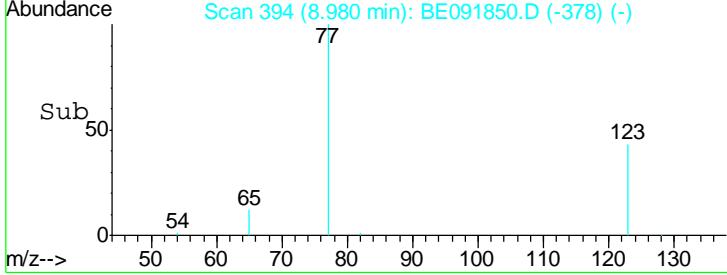
#9
 Nitrobenzene
 Concen: 4.70 ng
 RT: 8.98 min Scan# 394
 Delta R.T. -0.01 min
 Lab File: BE091850.D
 Acq: 23 May 2016 16:52

Instrument :
 BNA_E
ClientSampled :
 SP-001-160517MS



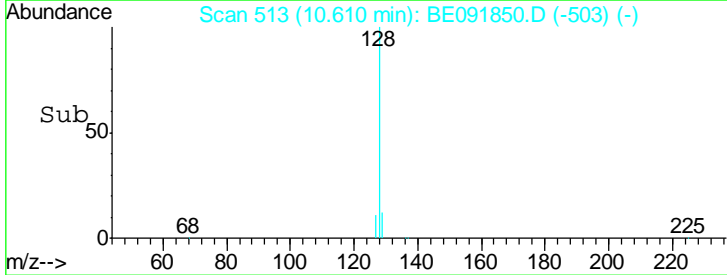
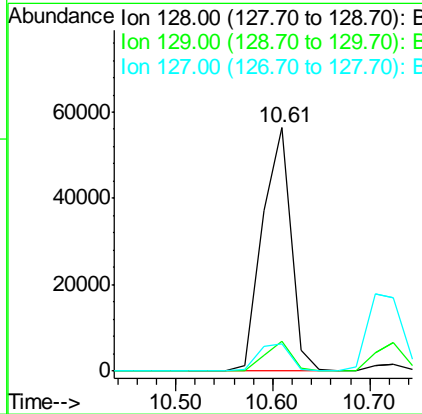
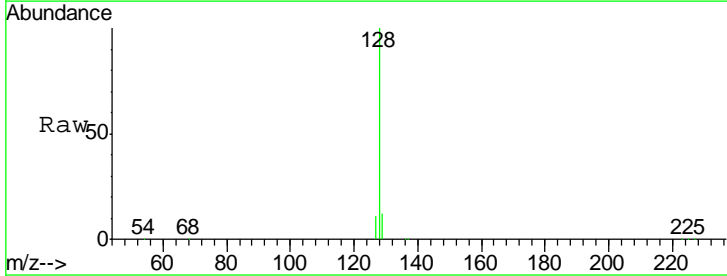
Tgt Ion	Resp	Lower	Upper
77	41072		
123	38.1	26.9	40.3
65	13.7	9.4	14.2

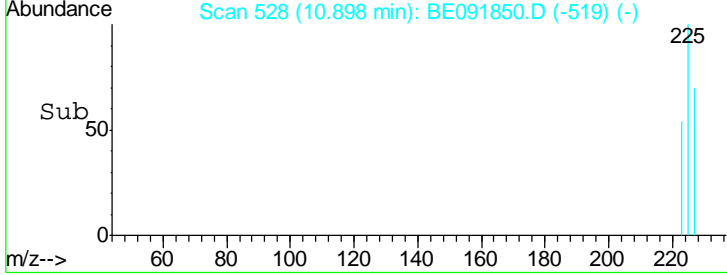
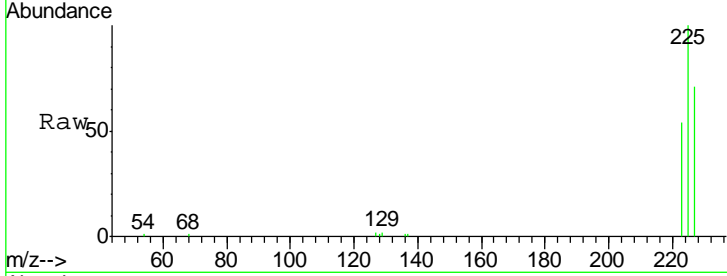
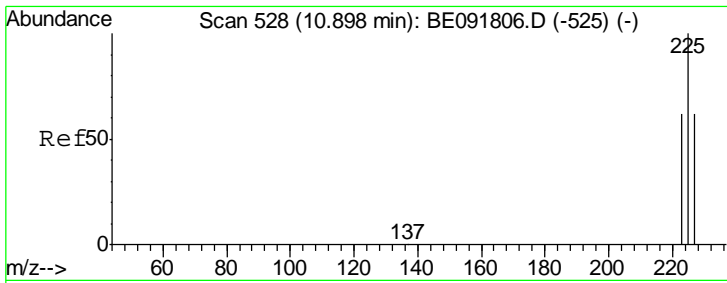
Manual Integrations
APPROVED
 umangi
 5/24/2016 7:35:34 PM



#10
 Naphthalene
 Concen: 4.05 ng
 RT: 10.61 min Scan# 513
 Delta R.T. -0.00 min
 Lab File: BE091850.D
 Acq: 23 May 2016 16:52

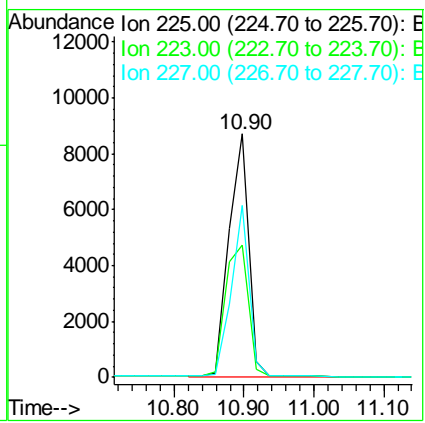
Tgt Ion	Resp	Lower	Upper
128	114864		
129	12.1	9.3	13.9
127	11.5	10.7	16.1





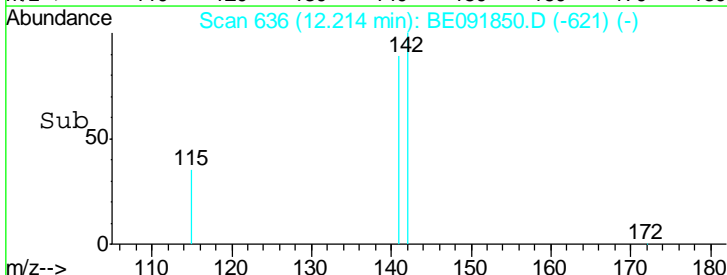
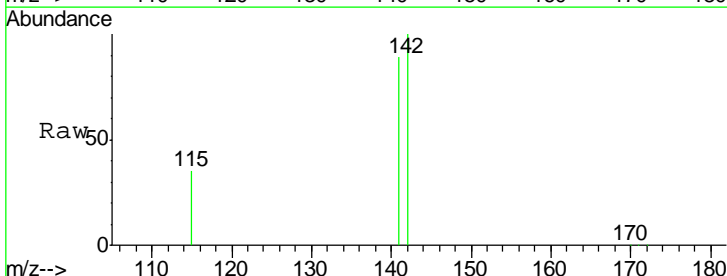
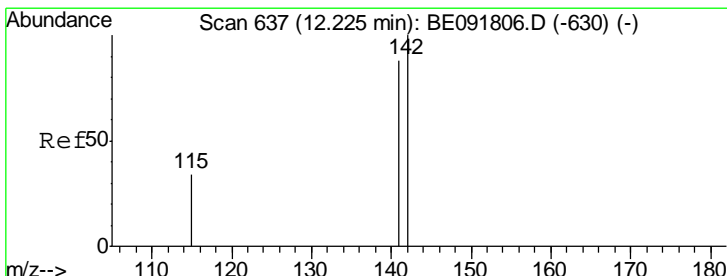
#11
 Hexachlorobutadiene
 Concen: 4.59 ng
 RT: 10.90 min Scan# 528
 Delta R.T. -0.02 min
 Lab File: BE091850.D
 Acq: 23 May 2016 16:52

Tgt Ion	Resp	Lower	Upper
225	100		
223	63.7	49.0	73.6
227	64.5	50.3	75.5



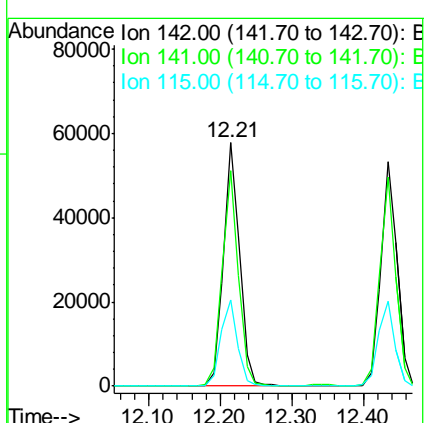
Instrument :
 BNA_E
 ClientSampleId :
 SP-001-160517MS

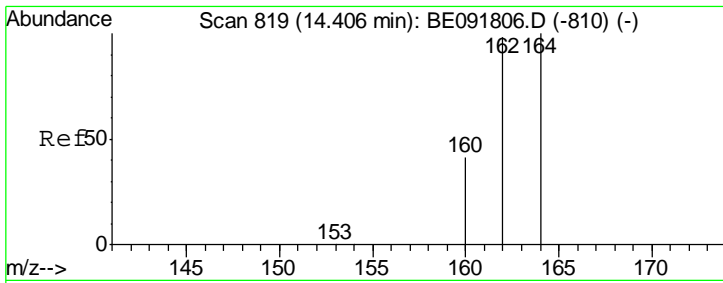
Manual Integrations
 APPROVED
 umangi
 5/24/2016 7:35:34 PM



#12
 2-Methylnaphthalene
 Concen: 4.73 ng
 RT: 12.21 min Scan# 636
 Delta R.T. -0.02 min
 Lab File: BE091850.D
 Acq: 23 May 2016 16:52

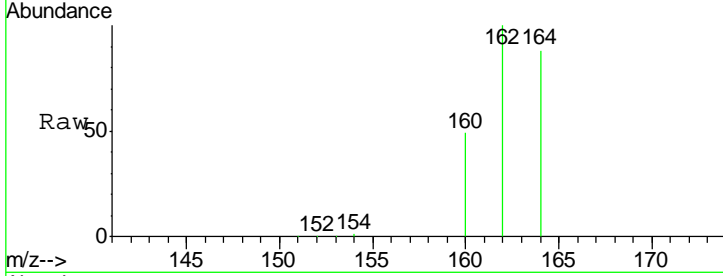
Tgt Ion	Resp	Lower	Upper
142	100		
141	88.7	71.4	107.0
115	35.3	30.3	45.5





#13
 Acenaphthene-d10
 Concen: 5.00 ng
 RT: 14.39 min Scan# 818
 Delta R.T. -0.03 min
 Lab File: BE091850.D
 Acq: 23 May 2016 16:52

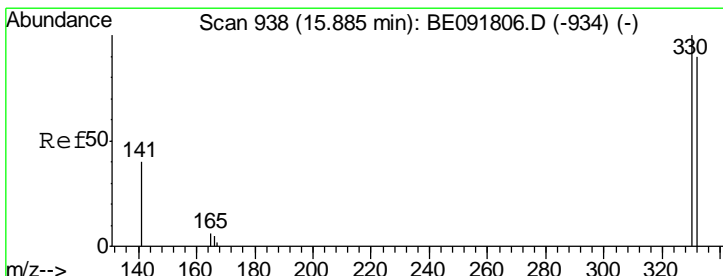
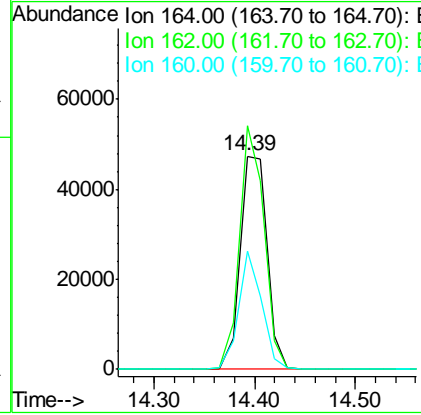
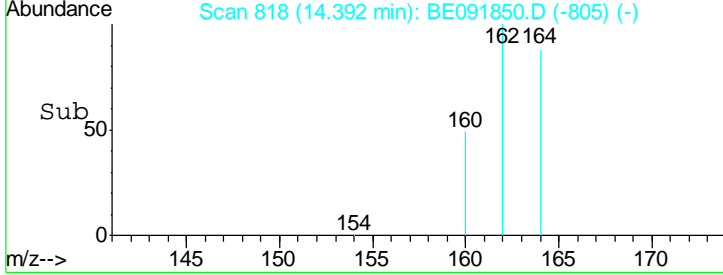
Instrument :
 BNA_E
ClientSampled :
 SP-001-160517MS



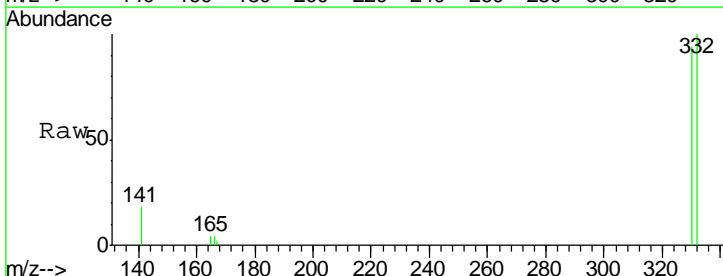
Tgt Ion:164 Resp: 87947

Ion	Ratio	Lower	Upper
164	100		
162	114.1	85.3	127.9
160	55.4	46.2	69.2

Manual Integrations
APPROVED
 umangi
 5/24/2016 7:35:34 PM

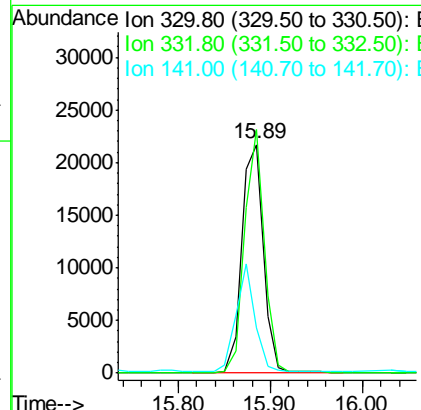
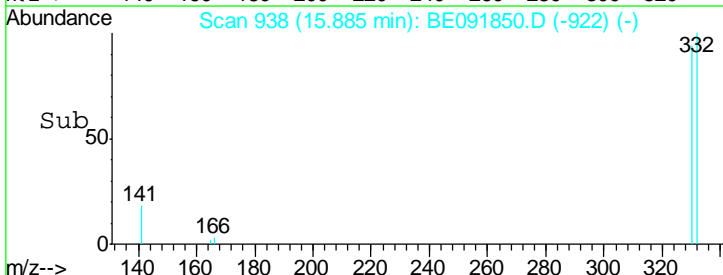


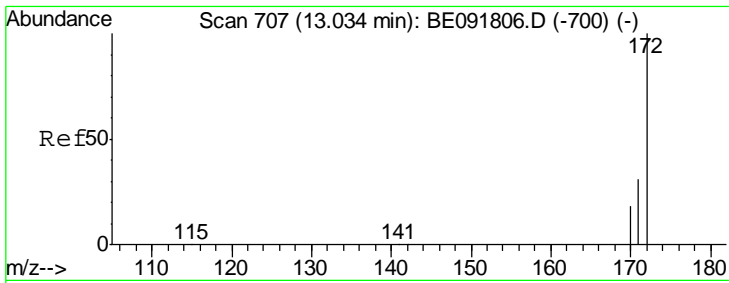
#14
 2,4,6-Tribromophenol
 Concen: 10.36 ng
 RT: 15.89 min Scan# 938
 Delta R.T. -0.01 min
 Lab File: BE091850.D
 Acq: 23 May 2016 16:52



Tgt Ion:330 Resp: 35389

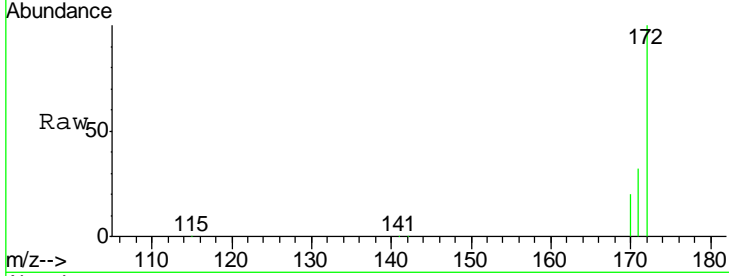
Ion	Ratio	Lower	Upper
330	100		
332	97.0	79.1	118.7
141	41.5	125.4	188.0#





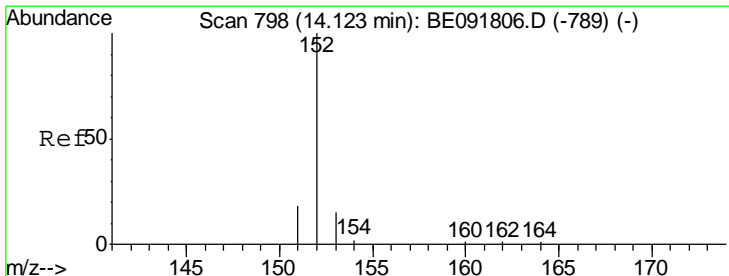
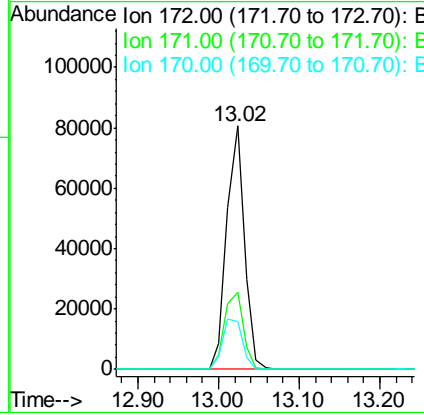
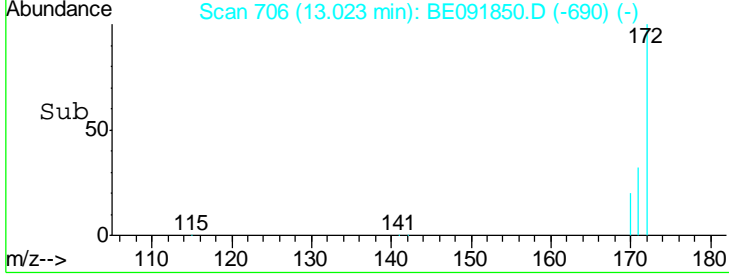
#15
 2-Fluorobiphenyl
 Concen: 4.93 ng
 RT: 13.02 min Scan# 706
 Delta R.T. -0.01 min
 Lab File: BE091850.D
 Acq: 23 May 2016 16:52

Instrument :
 BNA_E
ClientSampled :
 SP-001-160517MS

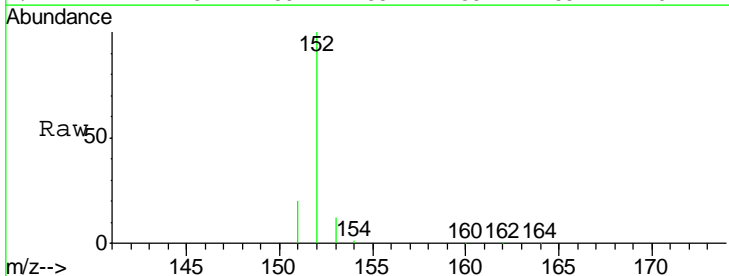


Tgt Ion	Resp	Lower	Upper
172	100		
171	32.0	28.8	43.2
170	19.7	19.3	28.9

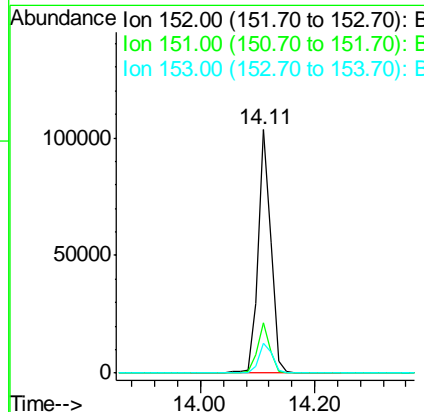
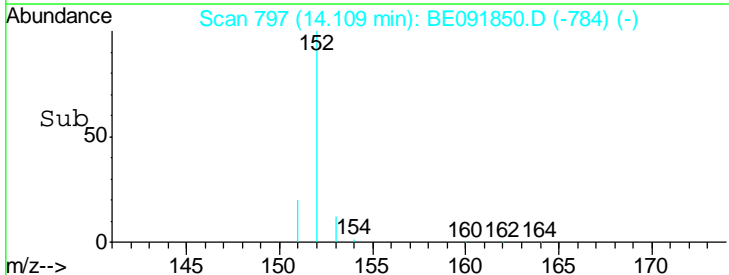
Manual Integrations
APPROVED
 umangi
 5/24/2016 7:35:34 PM

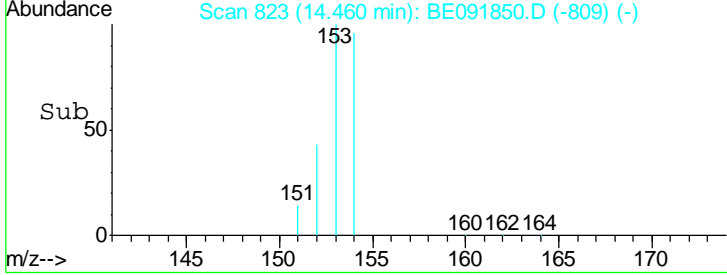
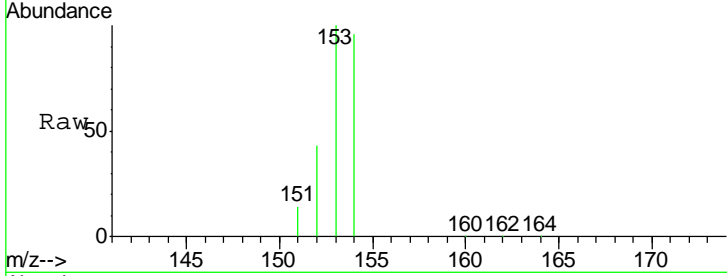
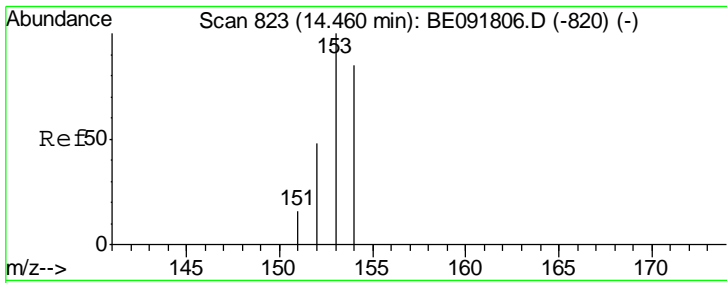


#16
 Acenaphthylene
 Concen: 4.42 ng
 RT: 14.11 min Scan# 797
 Delta R.T. -0.01 min
 Lab File: BE091850.D
 Acq: 23 May 2016 16:52



Tgt Ion	Resp	Lower	Upper
152	100		
151	20.4	3.9	5.9#
153	13.6	10.3	15.5



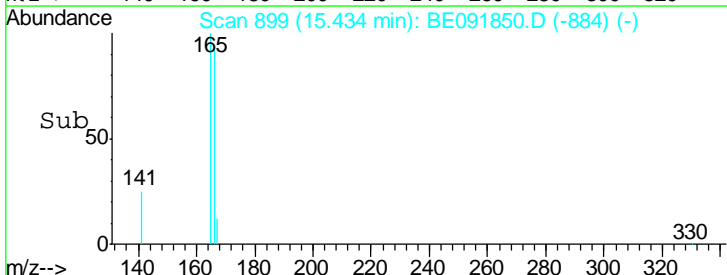
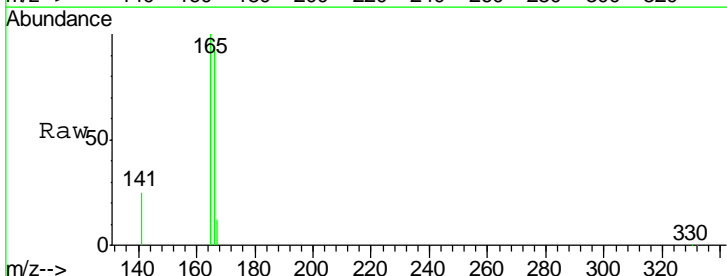
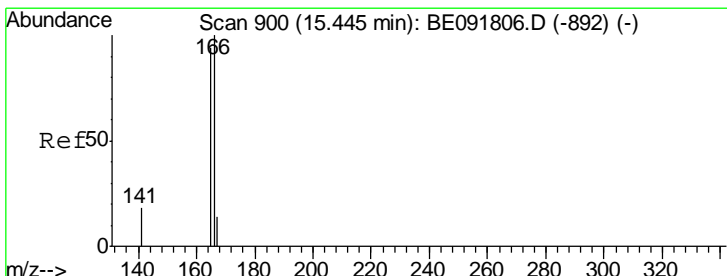
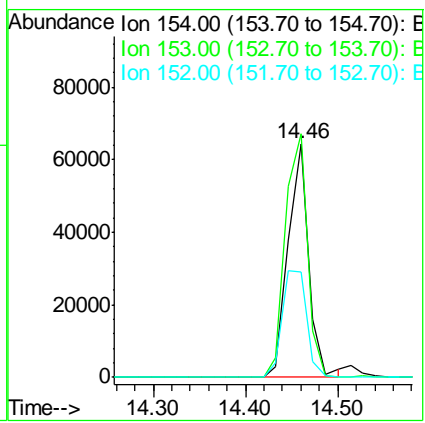


#17
 Acenaphthene
 Concen: 4.27 ng
 RT: 14.46 min Scan# 823
 Delta R.T. -0.01 min
 Lab File: BE091850.D
 Acq: 23 May 2016 16:52

Tgt Ion	Resp	Lower	Upper
154	100		
153	111.3	80.0	120.0
152	53.9	40.0	60.0

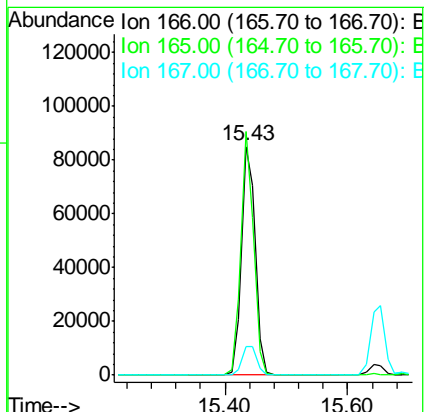
Instrument :
 BNA_E
 ClientSampled :
 SP-001-160517MS

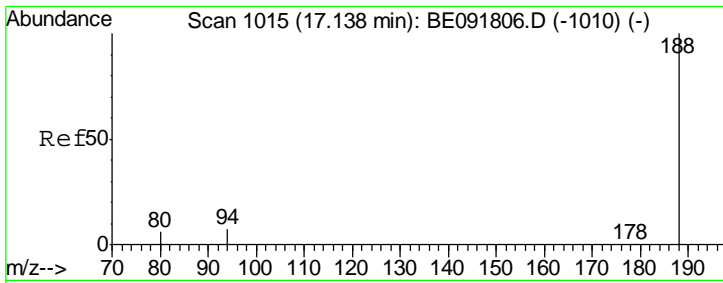
Manual Integrations
 APPROVED
 umangi
 5/24/2016 7:35:34 PM



#18
 Fluorene
 Concen: 4.38 ng
 RT: 15.43 min Scan# 899
 Delta R.T. -0.02 min
 Lab File: BE091850.D
 Acq: 23 May 2016 16:52

Tgt Ion	Resp	Lower	Upper
166	100		
165	98.7	80.8	121.2
167	13.6	10.9	16.3



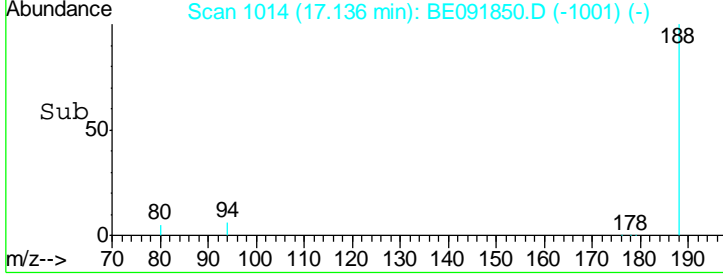
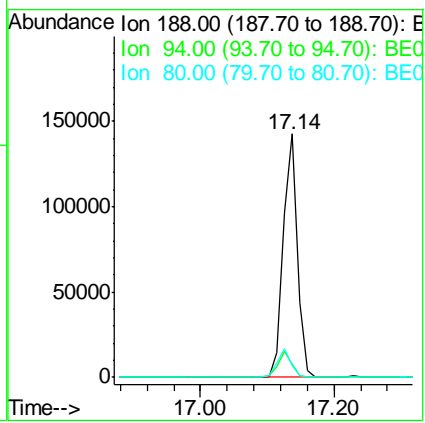
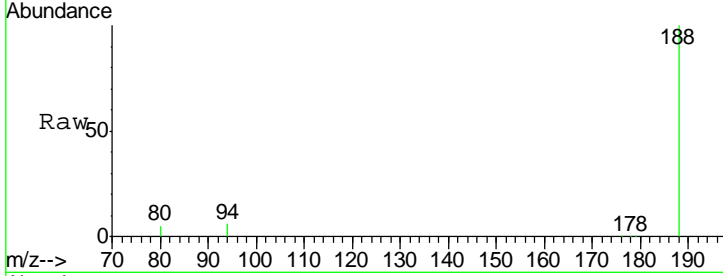


#19
 Phenanthrene-d10
 Concen: 5.00 ng
 RT: 17.14 min Scan# 1014
 Delta R.T. -0.01 min
 Lab File: BE091850.D
 Acq: 23 May 2016 16:52

Instrument :
 BNA_E
ClientSampled :
 SP-001-160517MS

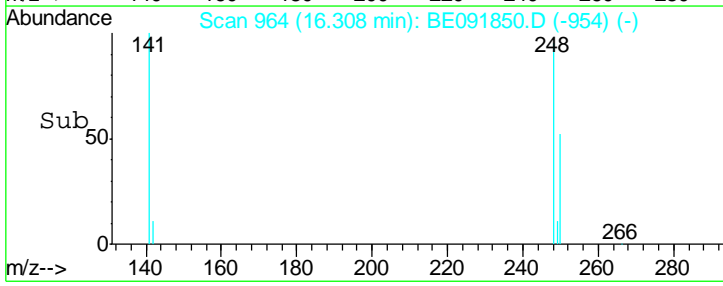
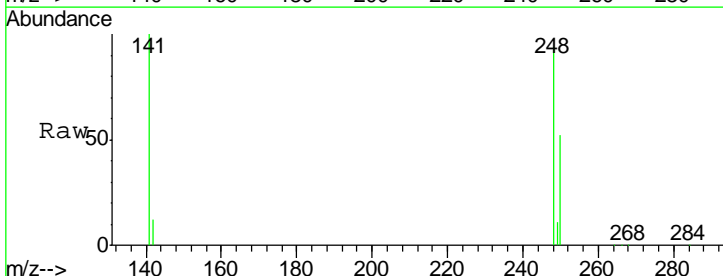
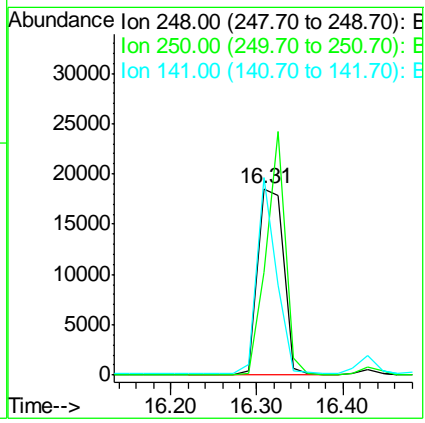
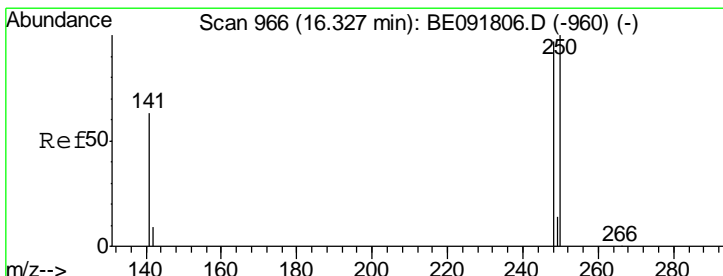
Tgt Ion	Resp	Lower	Upper
188	100		
94	5.7	8.7	13.1#
80	4.8	9.4	14.0#

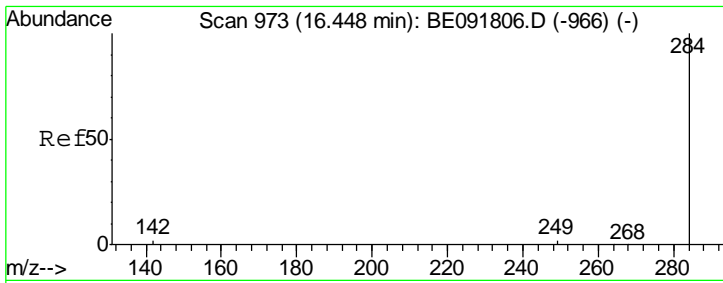
Manual Integrations
APPROVED
 umangi
 5/24/2016 7:35:34 PM



#20
 4-Bromophenyl-phenylether
 Concen: 4.33 ng
 RT: 16.31 min Scan# 964
 Delta R.T. -0.02 min
 Lab File: BE091850.D
 Acq: 23 May 2016 16:52

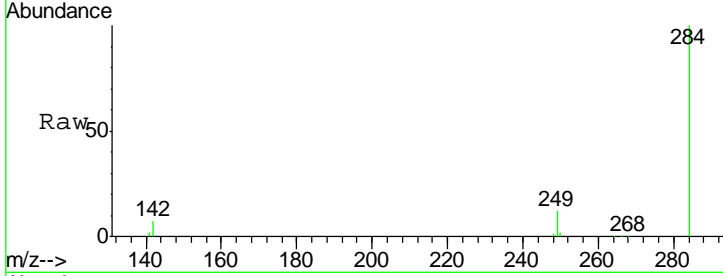
Tgt Ion	Resp	Lower	Upper
248	100		
250	96.9	80.5	120.7
141	78.9	72.0	108.0





#21
 Hexachlorobenzene
 Concen: 4.12 ng
 RT: 16.45 min Scan# 972
 Delta R.T. -0.00 min
 Lab File: BE091850.D
 Acq: 23 May 2016 16:52

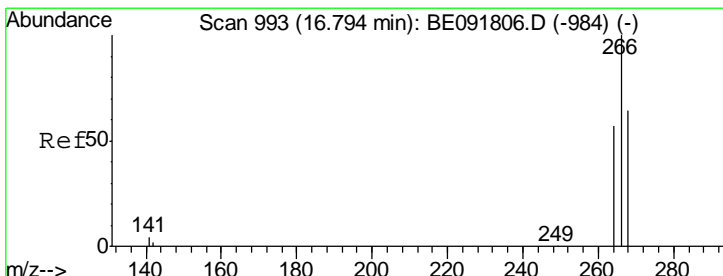
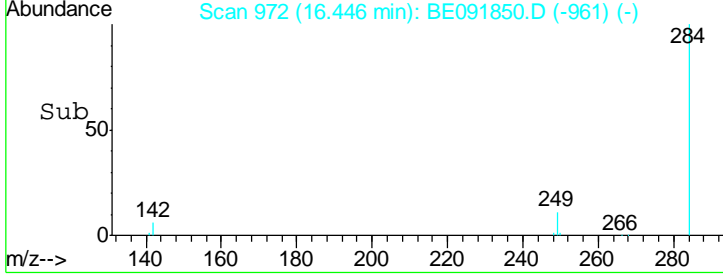
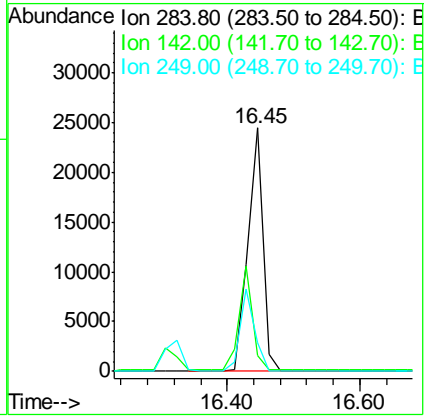
Instrument :
 BNA_E
ClientSampled :
 SP-001-160517MS



Tgt Ion: 284 Resp: 38335

Ion	Ratio	Lower	Upper
284	100		
142	38.5	32.2	48.2
249	32.2	25.4	38.2

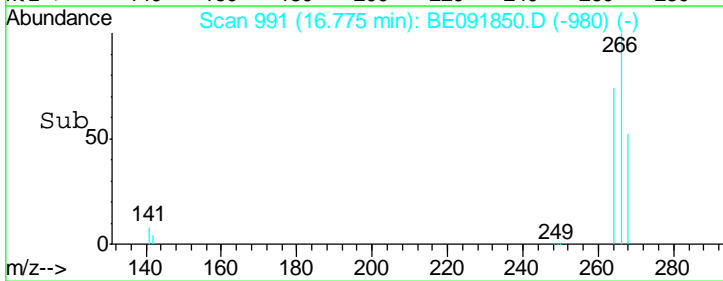
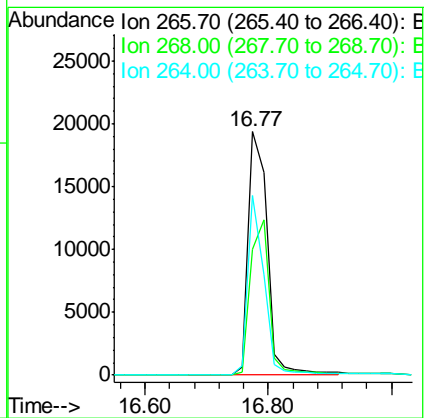
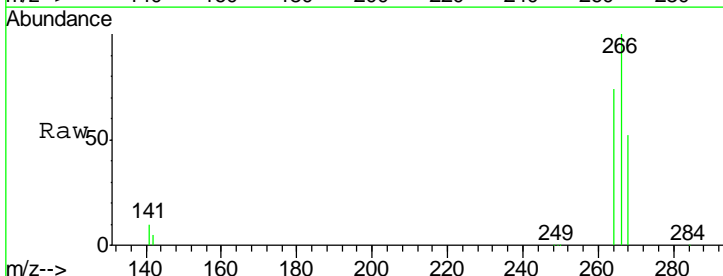
Manual Integrations
APPROVED
 umangi
 5/24/2016 7:35:34 PM

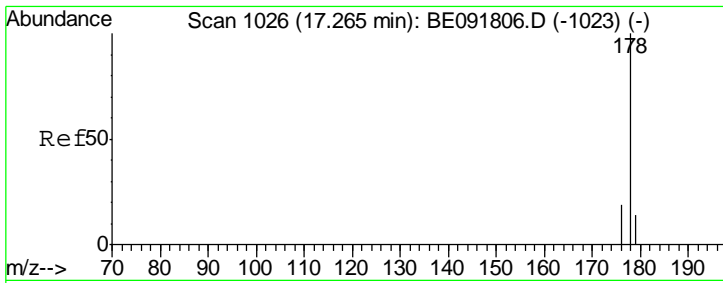


#22
 Pentachlorophenol
 Concen: 10.61 ng
 RT: 16.77 min Scan# 991
 Delta R.T. -0.02 min
 Lab File: BE091850.D
 Acq: 23 May 2016 16:52

Tgt Ion: 266 Resp: 40865

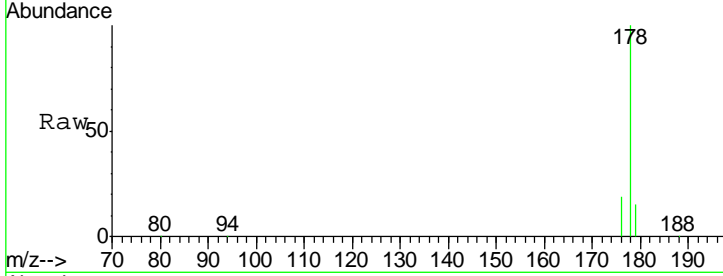
Ion	Ratio	Lower	Upper
266	100		
268	51.7	58.2	87.2#
264	74.0	56.2	84.4





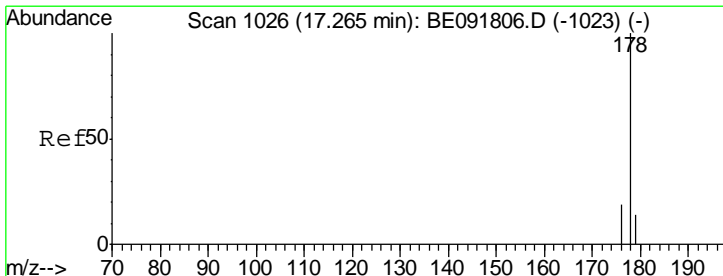
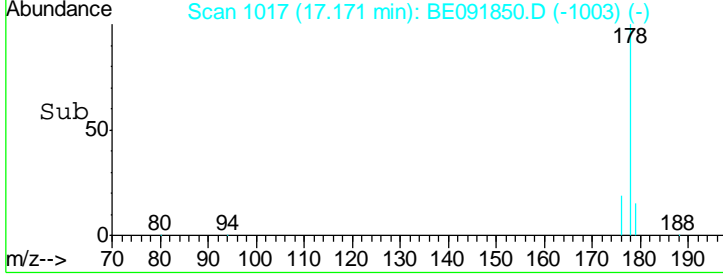
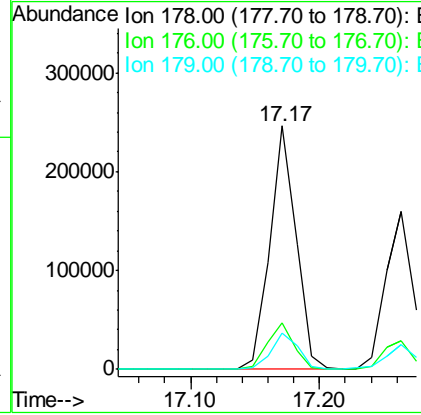
#23
 Phenanthrene
 Concen: 7.51 ng
 RT: 17.17 min Scan# 1017
 Delta R.T. -0.01 min
 Lab File: BE091850.D
 Acq: 23 May 2016 16:52

Instrument :
 BNA_E
 ClientSampled :
 SP-001-160517MS



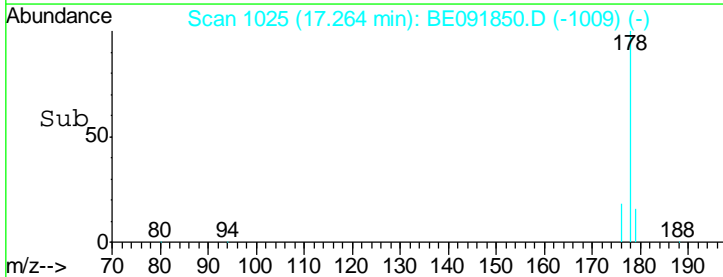
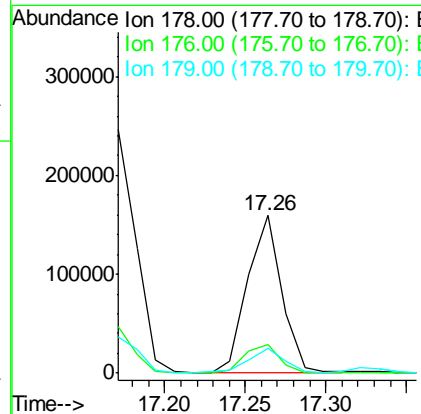
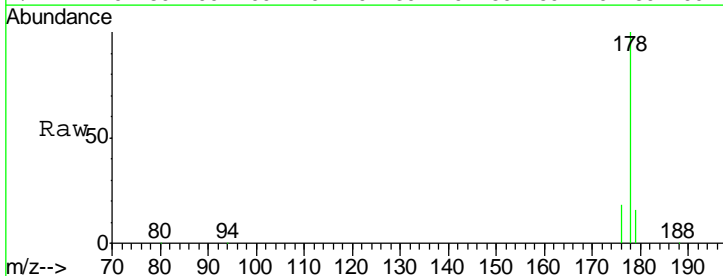
Tgt Ion	Resp	Lower	Upper
178	350738		
176	19.4	15.3	22.9
179	15.6	12.6	18.8

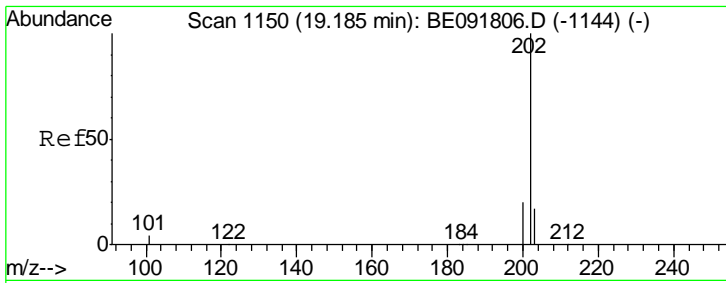
Manual Integrations
 APPROVED
 umangi
 5/24/2016 7:35:34 PM



#24
 Anthracene
 Concen: 4.48 ng
 RT: 17.26 min Scan# 1025
 Delta R.T. -0.01 min
 Lab File: BE091850.D
 Acq: 23 May 2016 16:52

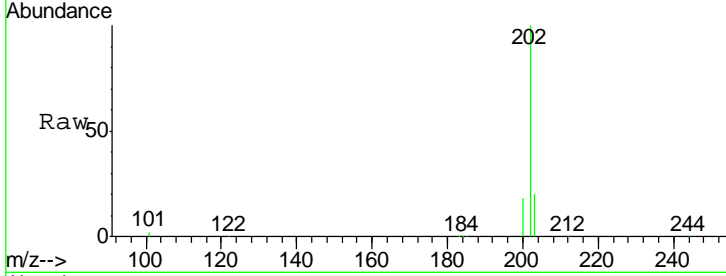
Tgt Ion	Resp	Lower	Upper
178	233191		
176	19.3	14.6	21.8
179	16.1	11.8	17.6





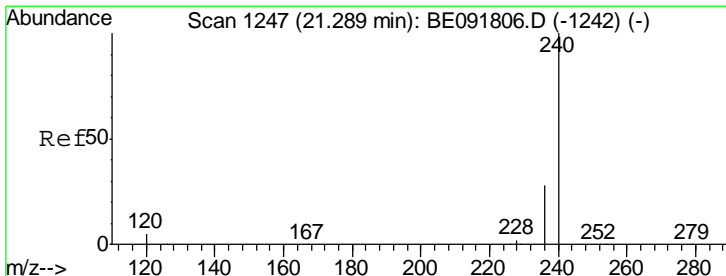
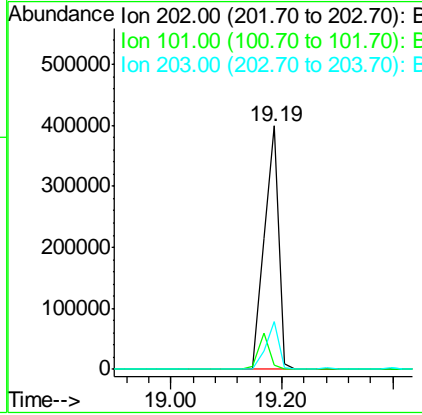
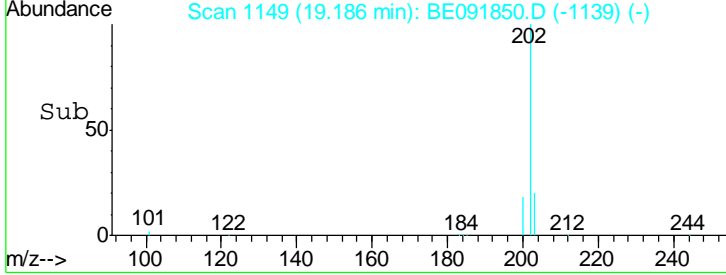
#25
 Fluoranthene
 Concen: 11.40 ng
 RT: 19.19 min Scan# 1149
 Delta R.T. -0.00 min
 Lab File: BE091850.D
 Acq: 23 May 2016 16:52

Instrument :
 BNA_E
 ClientSampled :
 SP-001-160517MS

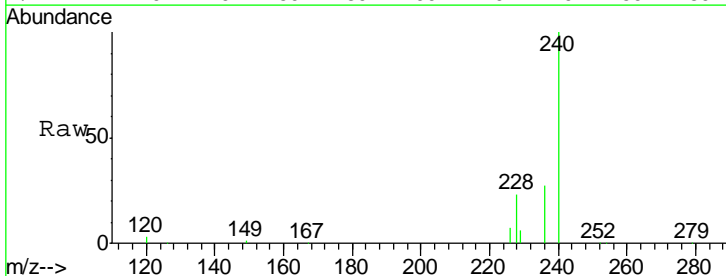


Tgt Ion	Resp	Lower	Upper
202	100		
101	11.3	11.0	16.6
203	17.8	13.9	20.9

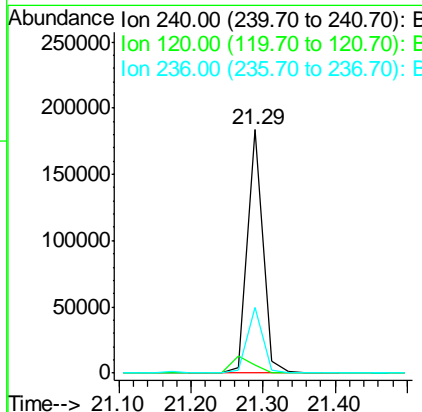
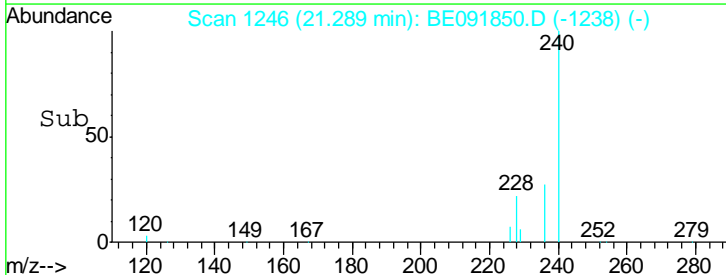
Manual Integrations
 APPROVED
 umangi
 5/24/2016 7:35:34 PM

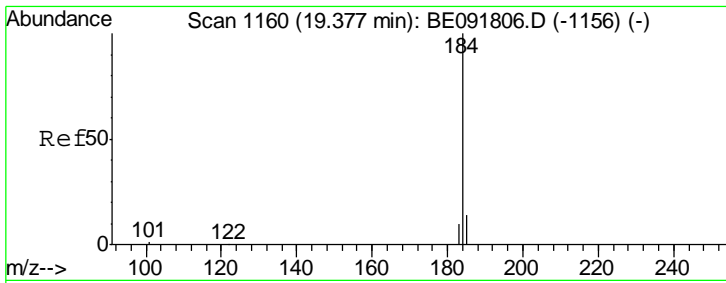


#26
 Chrysene-d12
 Concen: 5.00 ng
 RT: 21.29 min Scan# 1246
 Delta R.T. -0.02 min
 Lab File: BE091850.D
 Acq: 23 May 2016 16:52



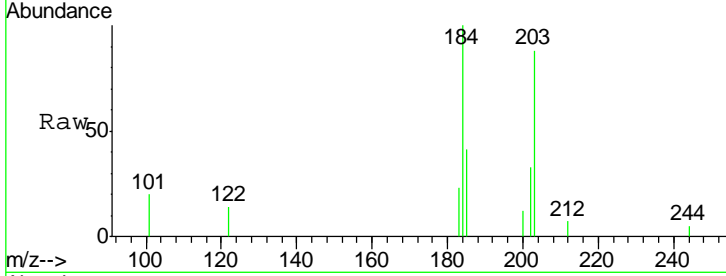
Tgt Ion	Resp	Lower	Upper
240	100		
120	3.2	11.0	16.4#
236	27.2	21.7	32.5





#27
Benzidine
Concen: 0.39 ng
RT: 19.36 min Scan# 1158
Delta R.T. -0.02 min
Lab File: BE091850.D
Acq: 23 May 2016 16:52

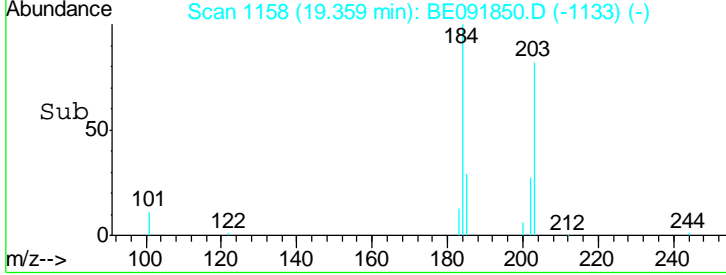
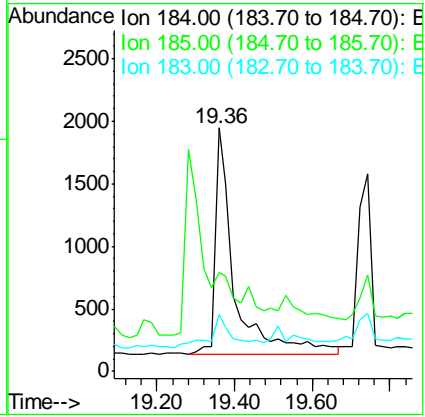
Instrument :
BNA_E
ClientSampled :
SP-001-160517MS



Tgt Ion: 184 Resp: 6264

Ion	Ratio	Lower	Upper
184	100		
185	40.7	22.3	33.5#
183	23.3	16.4	24.6

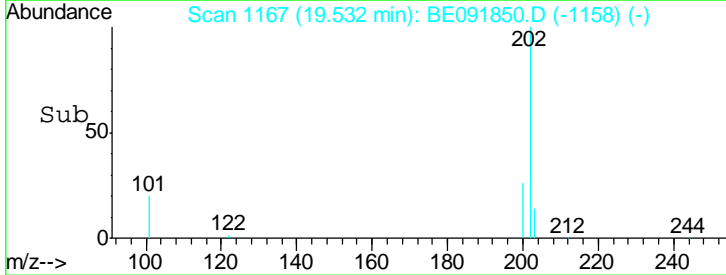
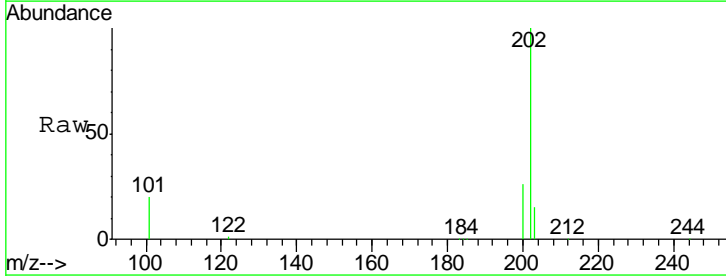
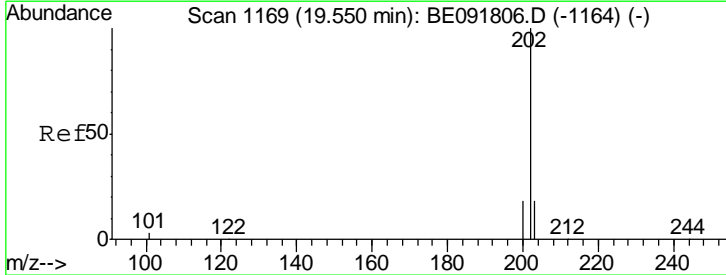
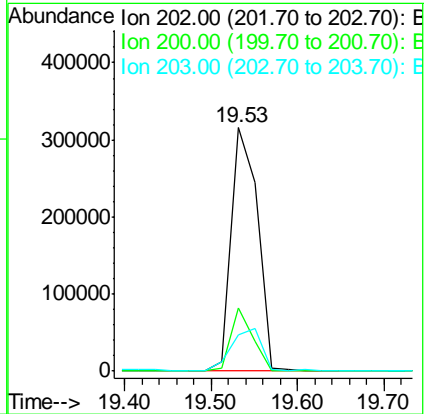
Manual Integrations
APPROVED
umangi
5/24/2016 7:35:34 PM

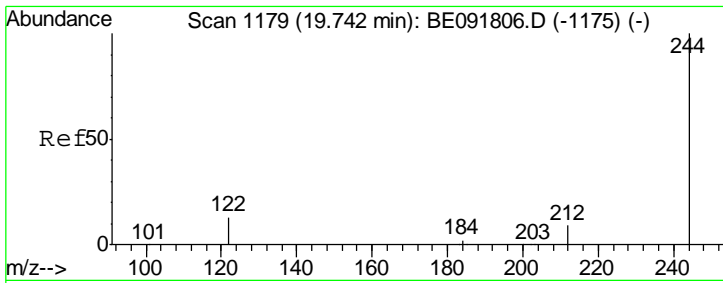


#28
Pyrene
Concen: 11.11 ng
RT: 19.53 min Scan# 1167
Delta R.T. -0.02 min
Lab File: BE091850.D
Acq: 23 May 2016 16:52

Tgt Ion: 202 Resp: 666841

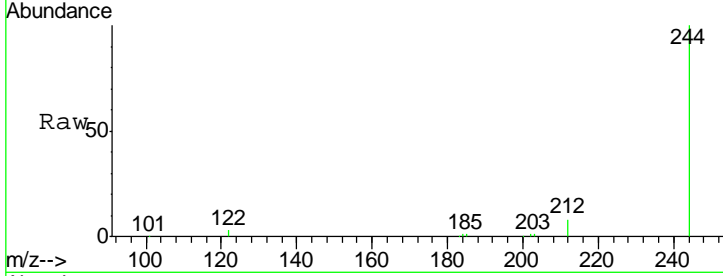
Ion	Ratio	Lower	Upper
202	100		
200	21.8	16.8	25.2
203	20.1	14.0	21.0





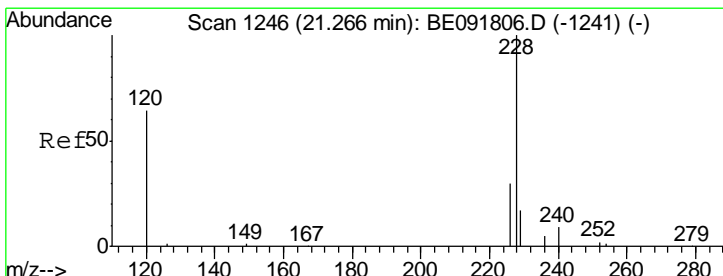
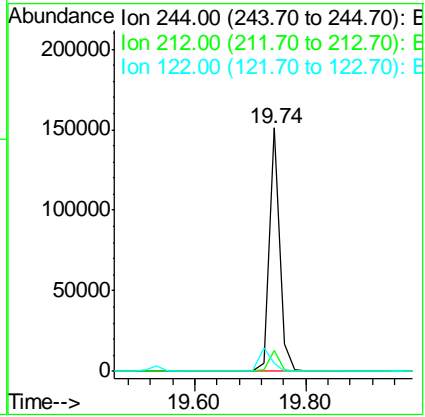
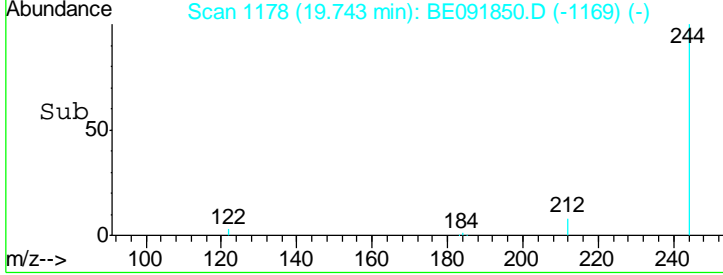
#29
 Terphenyl-d14
 Concen: 5.17 ng
 RT: 19.74 min Scan# 1178
 Delta R.T. -0.02 min
 Lab File: BE091850.D
 Acq: 23 May 2016 16:52

Instrument :
 BNA_E
 ClientSampled :
 SP-001-160517MS



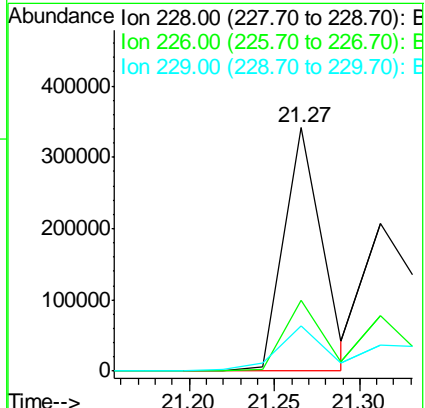
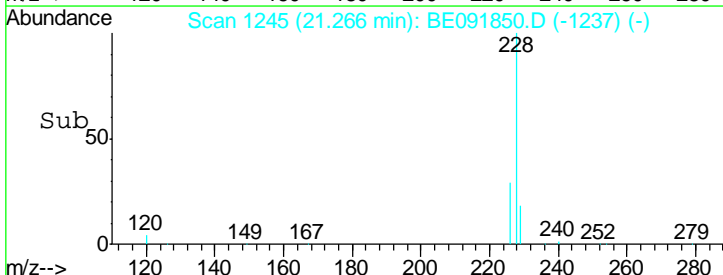
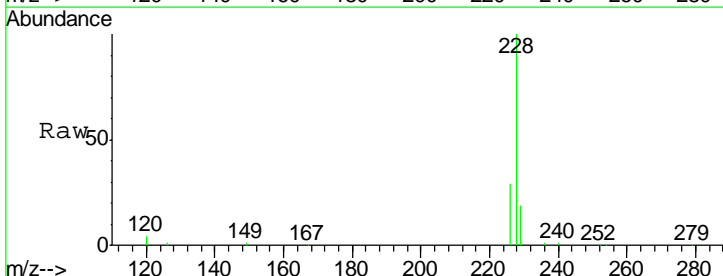
Tgt Ion	Resp	Lower	Upper
244	100		
212	8.4	6.9	10.3
122	3.5	11.0	16.4#

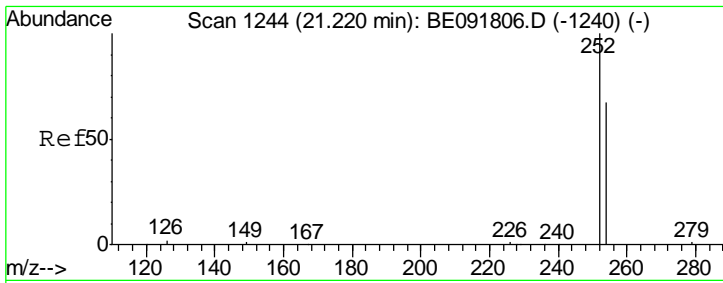
Manual Integrations
 APPROVED
 umangi
 5/24/2016 7:35:34 PM



#30
 Benzo(a)anthracene
 Concen: 8.18 ng m
 RT: 21.27 min Scan# 1245
 Delta R.T. -0.02 min
 Lab File: BE091850.D
 Acq: 23 May 2016 16:52

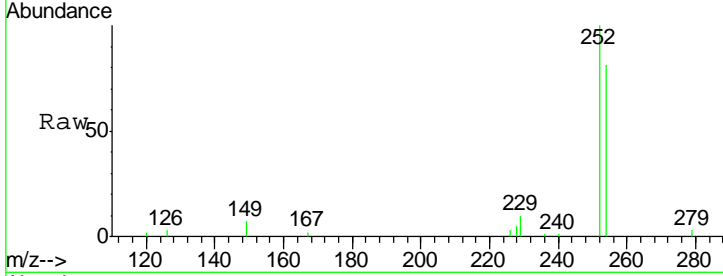
Tgt Ion	Resp	Lower	Upper
228	100		
226	28.8	21.0	31.4
229	18.5	15.7	23.5





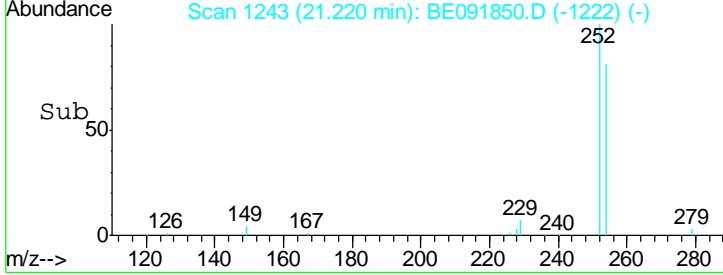
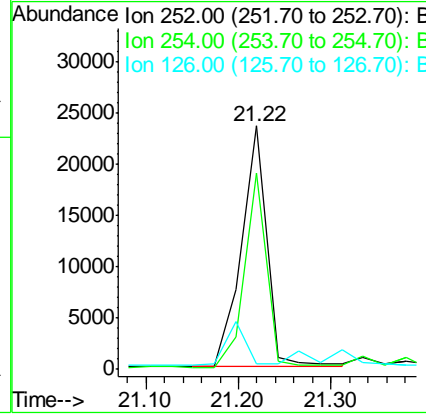
#31
 3,3'-Dichlorobenzidine
 Concen: 1.08 ng
 RT: 21.22 min Scan# 1243
 Delta R.T. -0.02 min
 Lab File: BE091850.D
 Acq: 23 May 2016 16:52

Instrument :
 BNA_E
ClientSampled :
 SP-001-160517MS



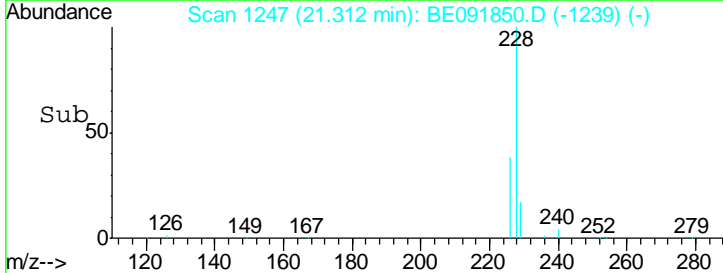
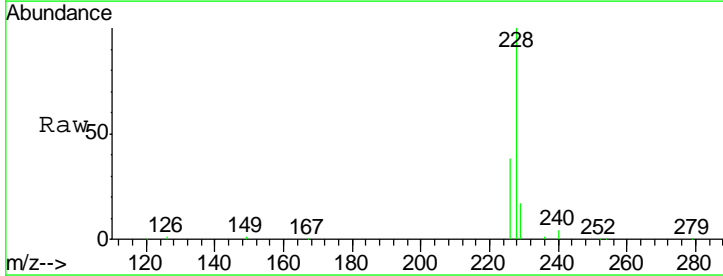
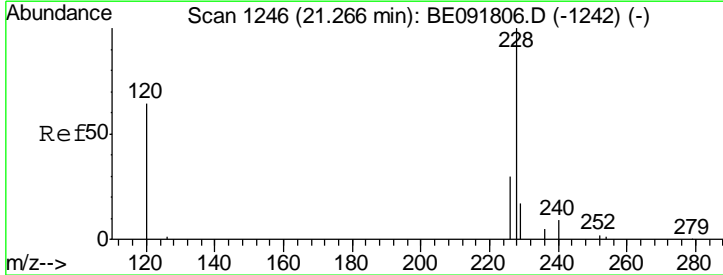
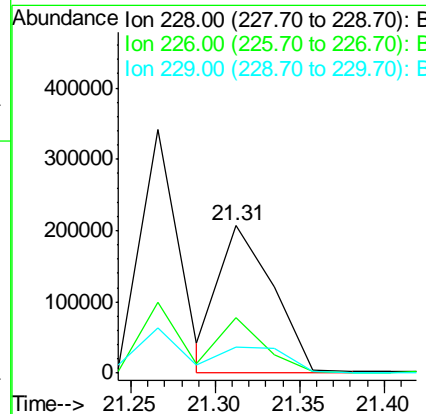
Tgt Ion	Resp	Lower	Upper
252	100		
254	80.9	51.1	76.7#
126	2.5	12.6	18.8#

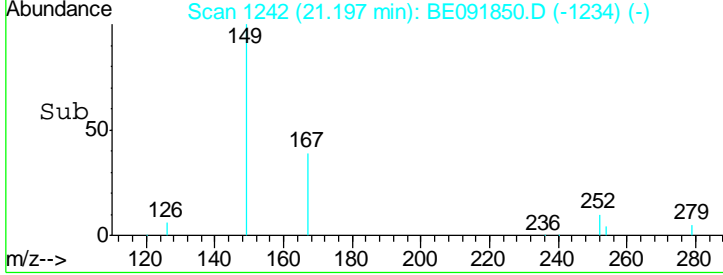
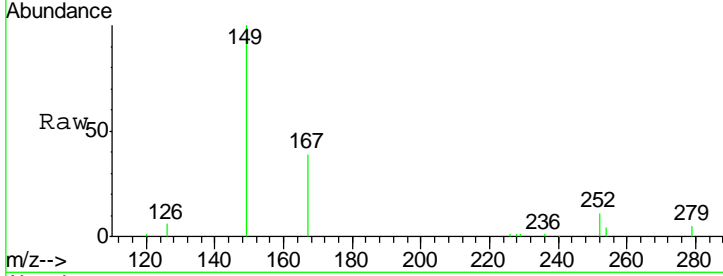
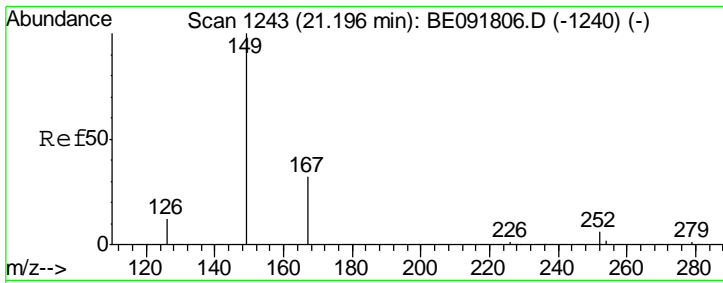
Manual Integrations
APPROVED
 umangi
 5/24/2016 7:35:34 PM



#32
 Chrysene
 Concen: 8.14 ng m
 RT: 21.31 min Scan# 1247
 Delta R.T. -0.02 min
 Lab File: BE091850.D
 Acq: 23 May 2016 16:52

Tgt Ion	Resp	Lower	Upper
228	100		
226	37.7	24.0	36.0#
229	17.3	15.9	23.9



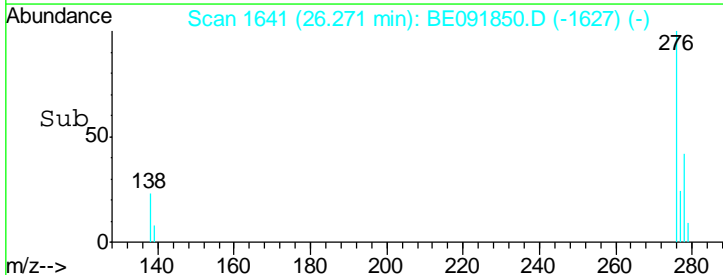
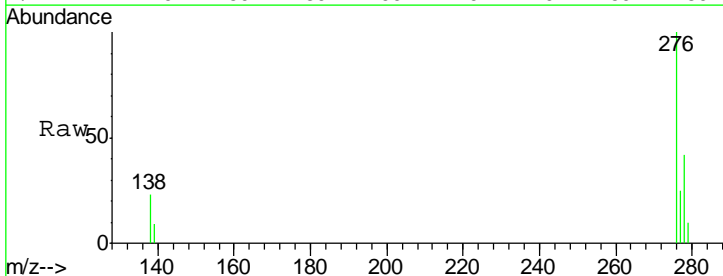
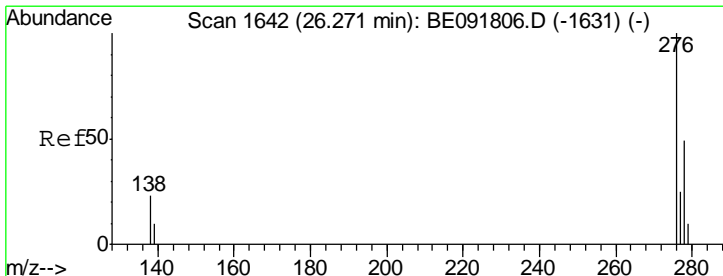
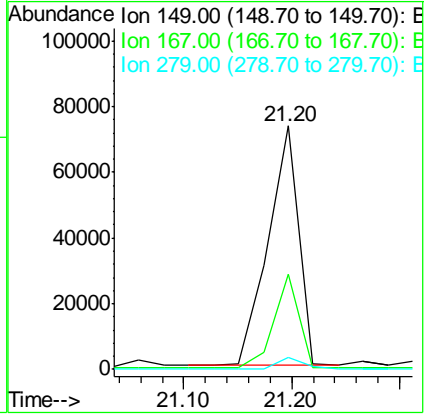


#33
 Bis(2-ethylhexyl)phthalate
 Concen: 3.90 ng
 RT: 21.20 min Scan# 1242
 Delta R.T. -0.02 min
 Lab File: BE091850.D
 Acq: 23 May 2016 16:52

Tgt Ion	Resp	Lower	Upper
149	144481		
167	31.8	19.5	29.3#
279	3.8	10.0	15.0#

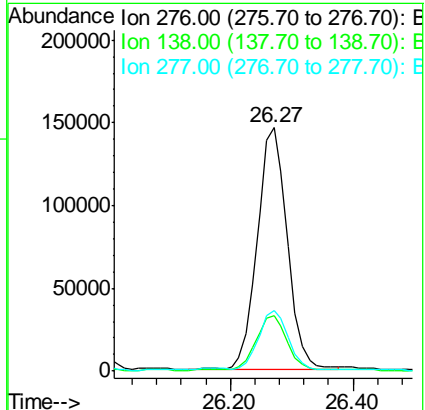
Instrument :
 BNA_E
 ClientSampled :
 SP-001-160517MS

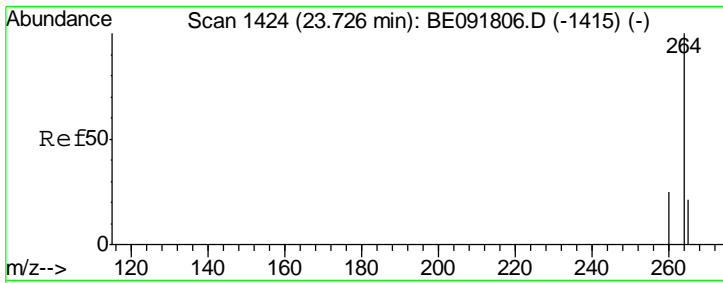
Manual Integrations
 APPROVED
 umangi
 5/24/2016 7:35:34 PM



#34
 Indeno(1,2,3-cd)pyrene
 Concen: 7.42 ng
 RT: 26.27 min Scan# 1641
 Delta R.T. -0.03 min
 Lab File: BE091850.D
 Acq: 23 May 2016 16:52

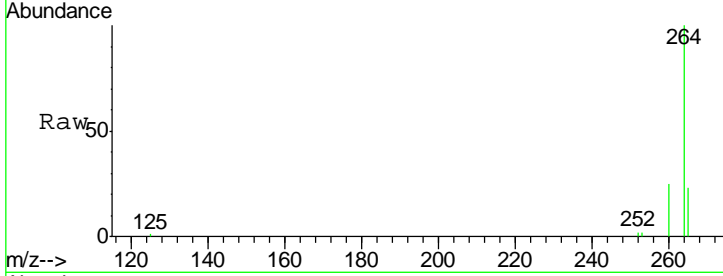
Tgt Ion	Resp	Lower	Upper
276	501784		
138	22.7	23.4	35.2#
277	23.7	19.8	29.8





#35
 Perylene-d12
 Concen: 5.00 ng
 RT: 23.73 min Scan# 1423
 Delta R.T. -0.02 min
 Lab File: BE091850.D
 Acq: 23 May 2016 16:52

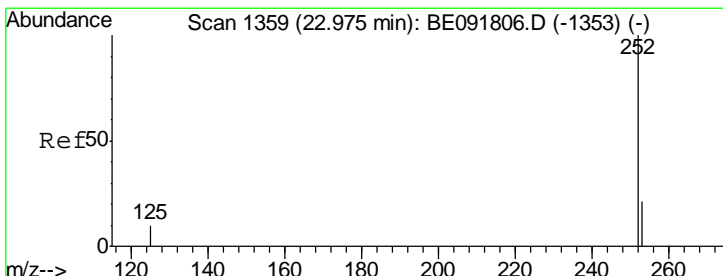
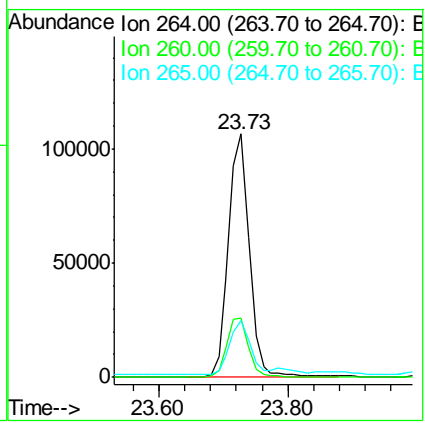
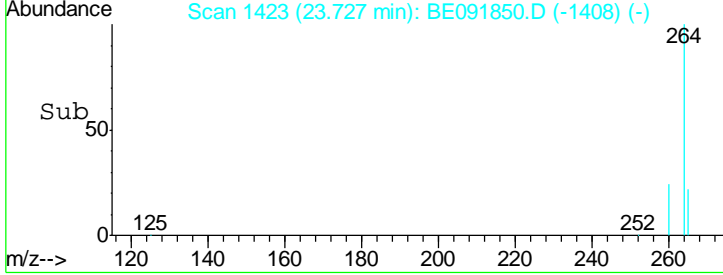
Instrument :
 BNA_E
ClientSampled :
 SP-001-160517MS



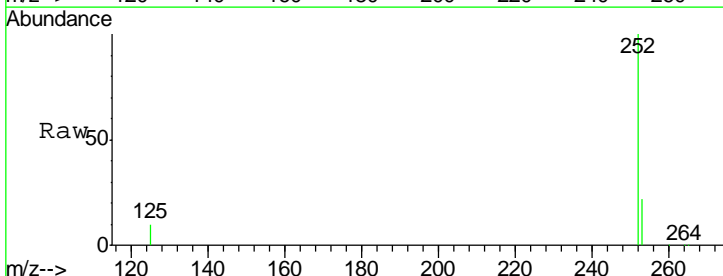
Tgt Ion: 264 Resp: 236314

Ion	Ratio	Lower	Upper
264	100		
260	24.6	20.0	30.0
265	23.5	17.5	26.3

Manual Integrations
APPROVED
 umangi
 5/24/2016 7:35:34 PM

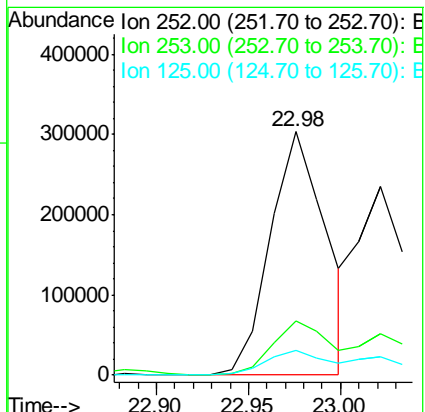
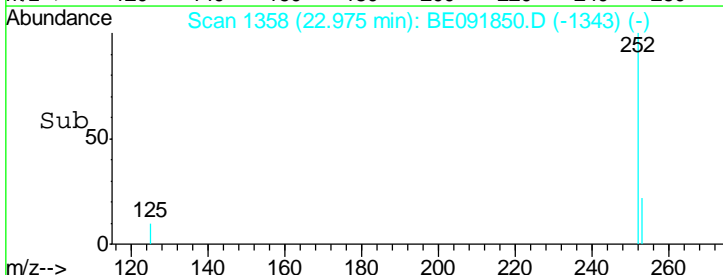


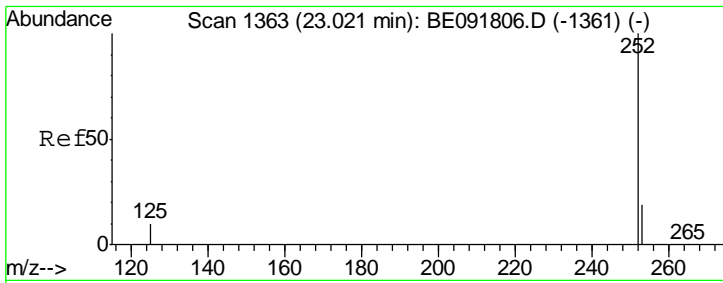
#36
 Benzo(b)fluoranthene
 Concen: 10.75 ng
 RT: 22.98 min Scan# 1358
 Delta R.T. -0.02 min
 Lab File: BE091850.D
 Acq: 23 May 2016 16:52



Tgt Ion: 252 Resp: 635687

Ion	Ratio	Lower	Upper
252	100		
253	22.4	17.4	26.0
125	10.1	10.2	15.2#



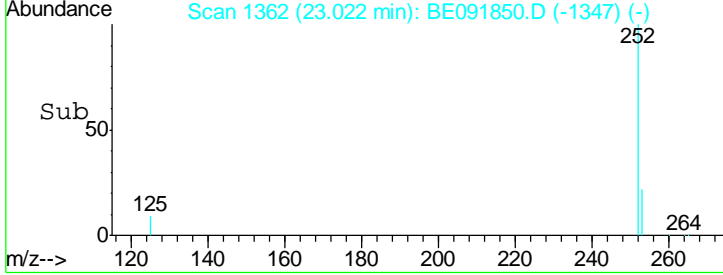
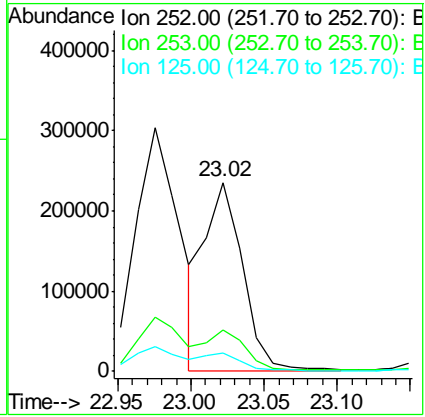
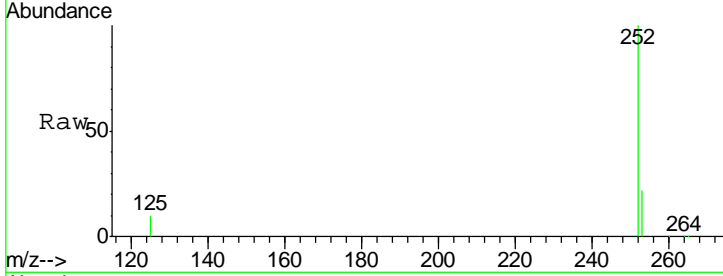


#37
 Benzo(k)fluoranthene
 Concen: 7.12 ng m
 RT: 23.02 min Scan# 1362
 Delta R.T. -0.02 min
 Lab File: BE091850.D
 Acq: 23 May 2016 16:52

Instrument :
 BNA_E
 ClientSampled :
 SP-001-160517MS

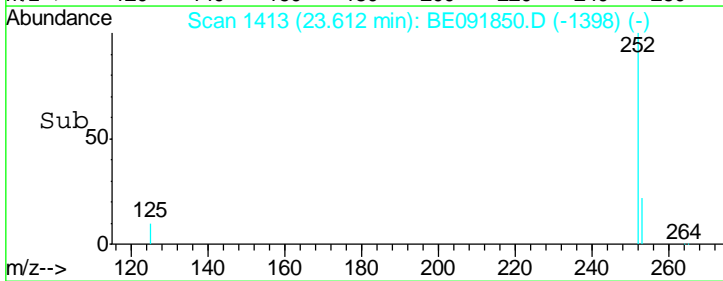
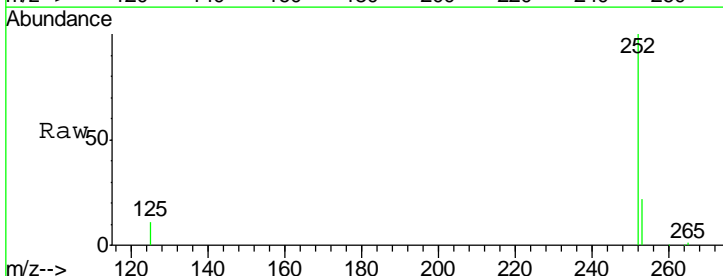
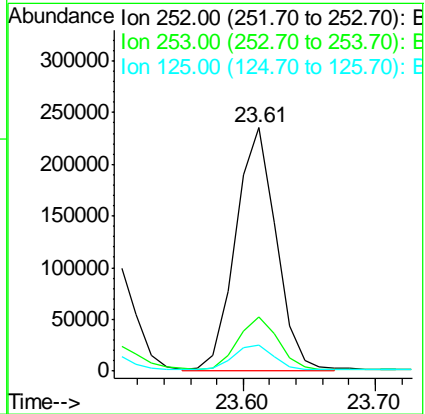
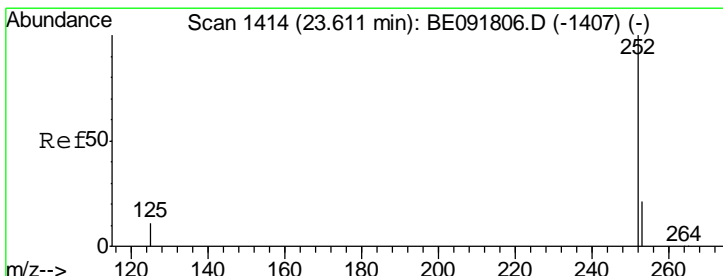
Tgt Ion	Resp	Lower	Upper
252	430635		
252	100		
253	22.1	17.6	26.4
125	9.9	9.9	14.9#

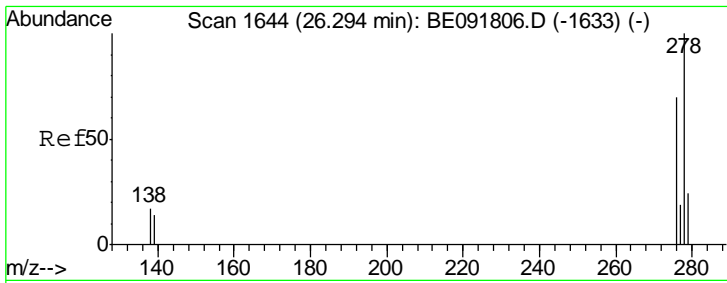
Manual Integrations
 APPROVED
 umangi
 5/24/2016 7:35:34 PM



#38
 Benzo(a)pyrene
 Concen: 8.92 ng m
 RT: 23.61 min Scan# 1413
 Delta R.T. -0.02 min
 Lab File: BE091850.D
 Acq: 23 May 2016 16:52

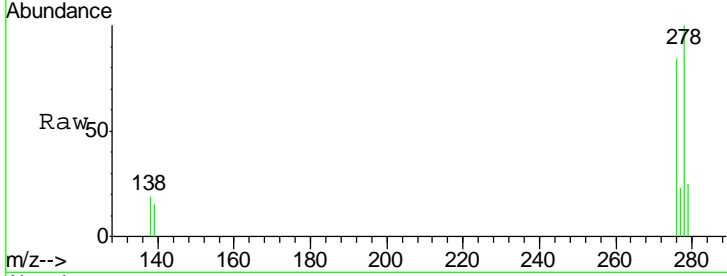
Tgt Ion	Resp	Lower	Upper
252	503607		
252	100		
253	22.4	18.1	27.1
125	10.6	11.0	16.4#





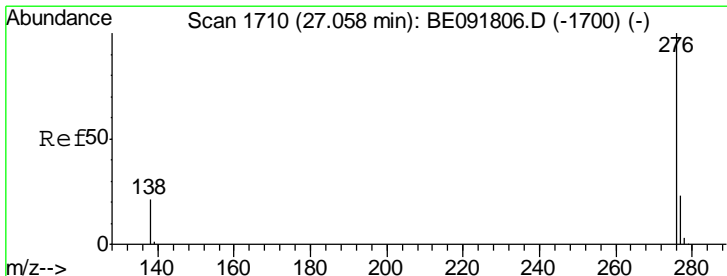
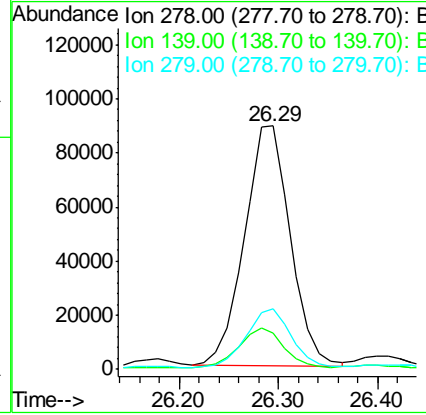
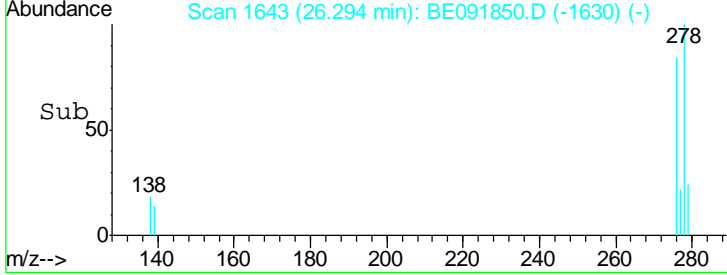
#39
 Dibenzo(a,h)anthracene
 Concen: 5.17 ng
 RT: 26.29 min Scan# 1643
 Delta R.T. -0.05 min
 Lab File: BE091850.D
 Acq: 23 May 2016 16:52

Instrument :
 BNA_E
ClientSampled :
 SP-001-160517MS

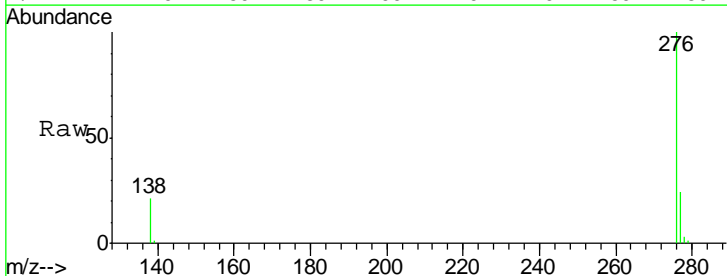


Tgt Ion	Resp	Lower	Upper
278	284661		
278	100		
139	14.7	16.0	24.0#
279	24.7	19.4	29.2

Manual Integrations
APPROVED
 umangi
 5/24/2016 7:35:34 PM



#40
 Benzo(g,h,i)perylene
 Concen: 8.01 ng
 RT: 27.06 min Scan# 1709
 Delta R.T. -0.05 min
 Lab File: BE091850.D
 Acq: 23 May 2016 16:52



Tgt Ion	Resp	Lower	Upper
276	455409		
276	100		
277	24.2	18.6	28.0
138	21.2	20.4	30.6

