

Data Path : Z:\SVOASRV\HPCHEM1\BNA E\DATA\BE052819\
 Data File : BE099767.D
 Acq On : 28 May 2019 21:19
 Operator : JU/SJ
 Sample : K3037-11
 Misc :
 ALS Vial : 14 Sample Multiplier: 1

Instrument :
 BNA_E
 ClientSampleId :
 DUP-20190523

Quant Time: Jun 06 09:39:38 2019
 Quant Method : Z:\SVOASRV\HPCHEM1\BNA E\METHODS\8270-SIM-BE052019.M
 Quant Title : ASP BNA STANDARDS FOR 5 POINT CALIBRATION
 QLast Update : Mon May 20 19:29:40 2019
 Response via : Initial Calibration

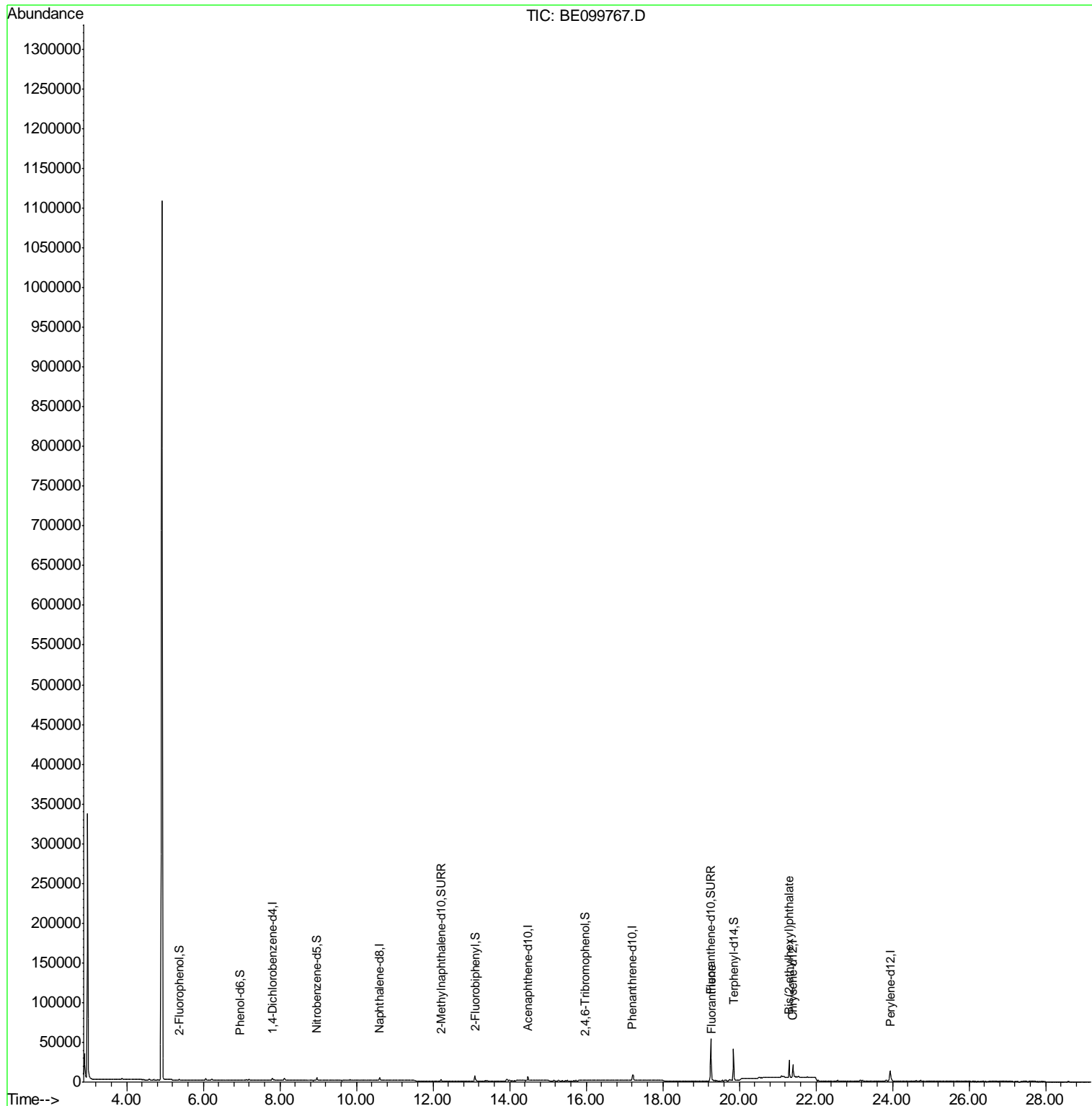
Internal Standards	R.T.	QIon	Response	Conc	Units	Dev(Min)
1) 1,4-Dichlorobenzene-d4	7.81	152	1336	0.40	ng	0.00
7) Naphthalene-d8	10.60	136	5042	0.40	ng	-0.01
13) Acenaphthene-d10	14.47	164	3784	0.40	ng	-0.01
19) Phenanthrene-d10	17.21	188	11670	0.40	ng	-0.01
27) Chrysene-d12	21.40	240	16775	0.40	ng	-0.01
34) Perylene-d12	23.94	264	19591	0.40	ng	-0.02
System Monitoring Compounds						
4) 2-Fluorophenol	5.38	112	290	0.09	ng	0.00
5) Phenol-d6	6.97	99	190	0.04	ng	0.00
8) Nitrobenzene-d5	8.96	82	1758	0.40	ng	-0.01
11) 2-Methylnaphthalene-d10	12.21	152	3632	0.42	ng	-0.01
14) 2,4,6-Tribromophenol	15.97	330	631	0.35	ng	-0.01
15) 2-Fluorobiphenyl	13.10	172	7556	0.53	ng	0.00
25) Fluoranthene-d10	19.25	212	73474	0.46	ng	-0.01
29) Terphenyl-d14	19.85	244	36046	1.20	ng	-0.02
Target Compounds						
26) Fluoranthene	19.29	202	958	0.021	ng	# 91
32) Bis(2-ethylhexyl)phthalate	21.31	149	22252	0.405	ng	99

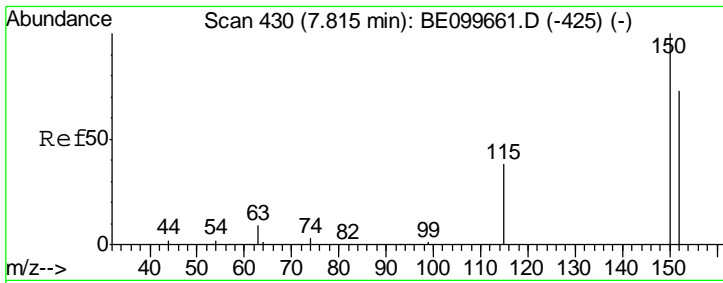
(#) = qualifier out of range (m) = manual integration (+) = signals summed

Data Path : Z:\SVOASRV\HPCHEM1\BNA E\DATA\BE052819\
 Data File : BE099767.D
 Acq On : 28 May 2019 21:19
 Operator : JU/SJ
 Sample : K3037-11
 Misc :
 ALS Vial : 14 Sample Multiplier: 1

Instrument :
 BNA_E
 ClientSampleId :
 DUP-20190523

Quant Time: Jun 06 09:39:38 2019
 Quant Method : Z:\SVOASRV\HPCHEM1\BNA E\METHODS\8270-SIM-BE052019.M
 Quant Title : ASP BNA STANDARDS FOR 5 POINT CALIBRATION
 QLast Update : Mon May 20 19:29:40 2019
 Response via : Initial Calibration

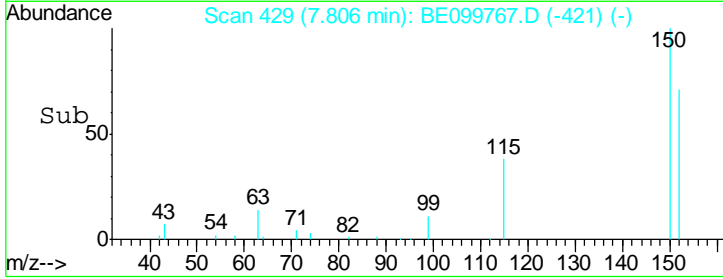
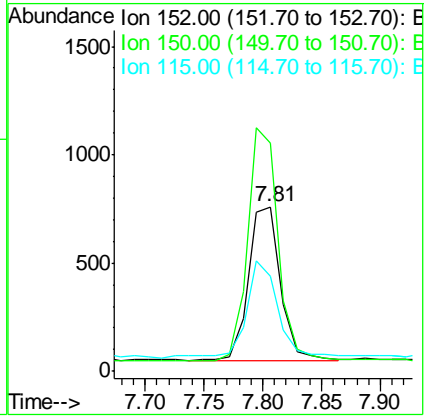
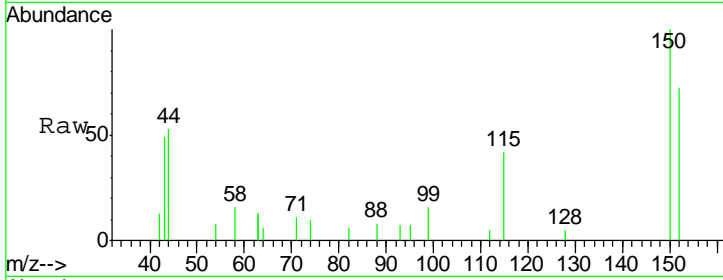




#1
 1,4-Dichlorobenzene-d4
 Concen: 0.400 ng
 RT: 7.81 min Scan# 429
 Delta R.T. -0.01 min
 Lab File: BE099767.D
 Acq: 28 May 2019 21:19

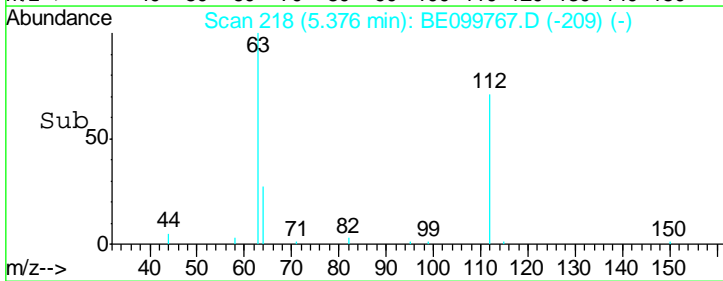
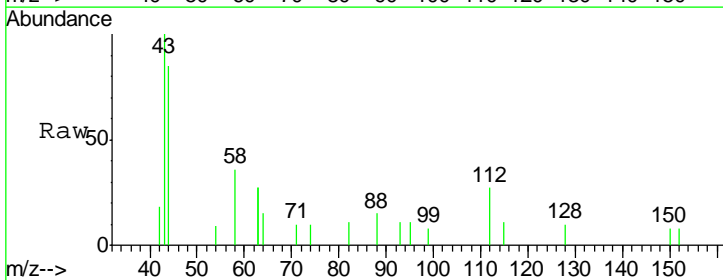
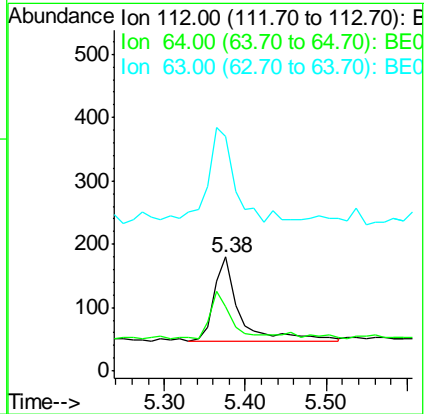
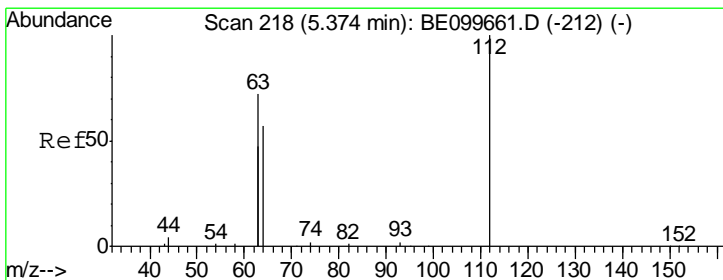
Instrument :
 BNA_E
ClientSampleId :
 DUP-20190523

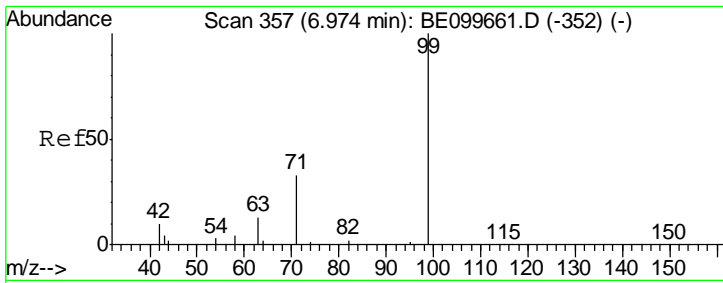
Tgt Ion	Resp	Lower	Upper
152	100		
150	138.1	109.2	163.8
115	58.1	43.7	65.5



#4
 2-Fluorophenol
 Concen: 0.086 ng
 RT: 5.38 min Scan# 218
 Delta R.T. 0.00 min
 Lab File: BE099767.D
 Acq: 28 May 2019 21:19

Tgt Ion	Resp	Lower	Upper
112	100		
64	42.8	43.4	65.2#
63	112.4	96.9	145.3

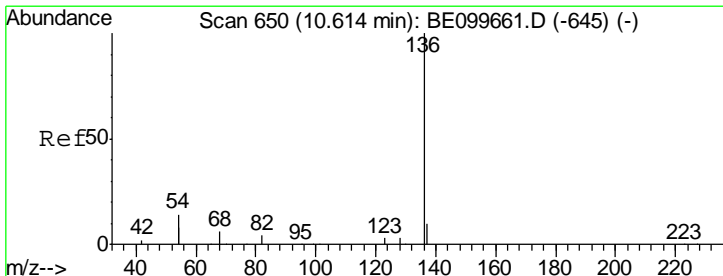
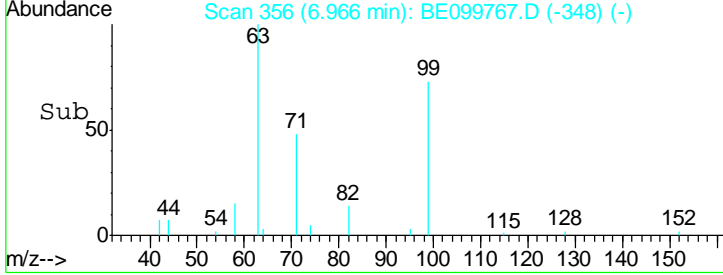
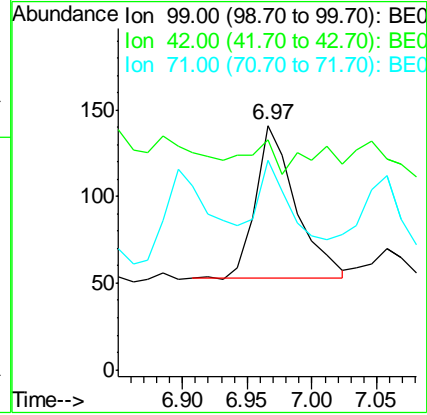
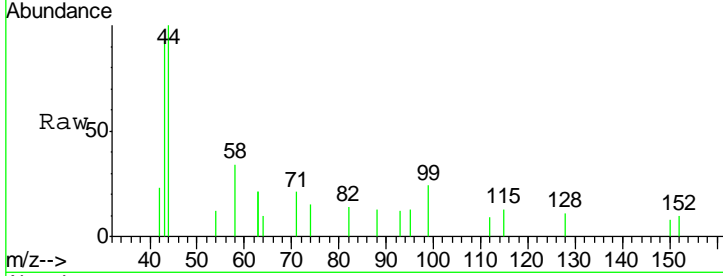




#5
 Phenol-d6
 Concen: 0.043 ng
 RT: 6.97 min Scan# 356
 Delta R.T. -0.01 min
 Lab File: BE099767.D
 Acq: 28 May 2019 21:19

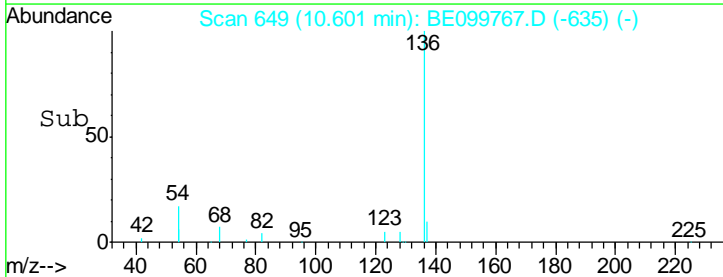
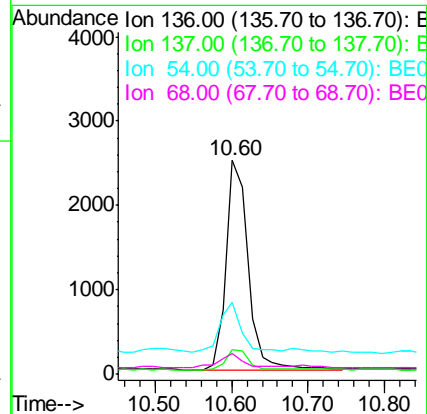
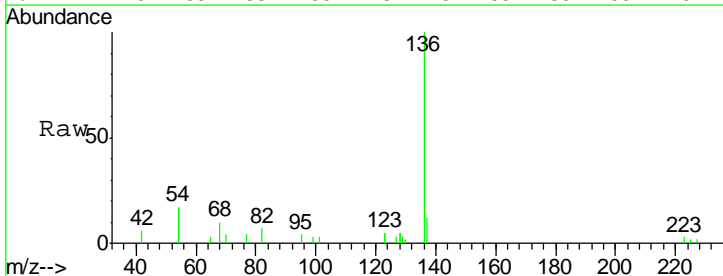
Instrument :
 BNA_E
 ClientSampled :
 DUP-20190523

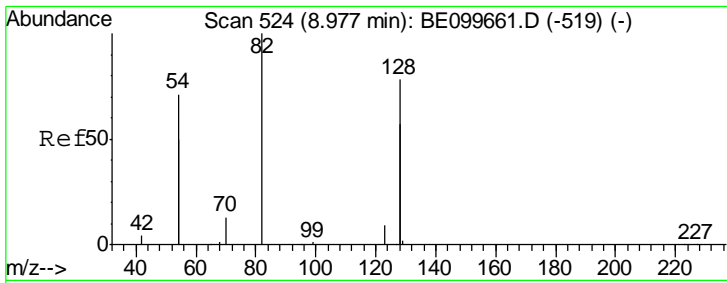
Tgt Ion	Resp	Lower	Upper
99	190		
42	15.3	12.2	18.2
71	35.8	28.9	43.3



#7
 Naphthalene-d8
 Concen: 0.400 ng
 RT: 10.60 min Scan# 649
 Delta R.T. -0.01 min
 Lab File: BE099767.D
 Acq: 28 May 2019 21:19

Tgt Ion	Resp	Lower	Upper
136	5042		
137	11.7	9.0	13.6
54	33.7	22.3	33.5#
68	9.8	6.0	9.0#

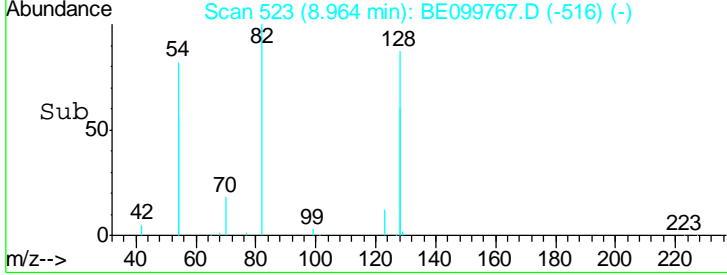
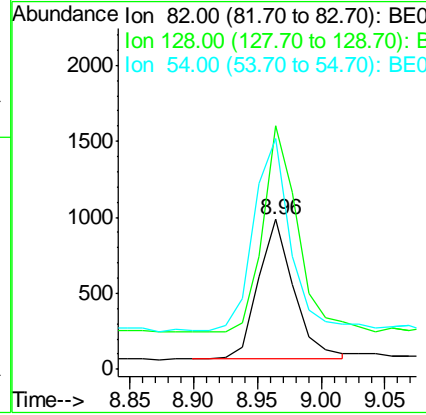
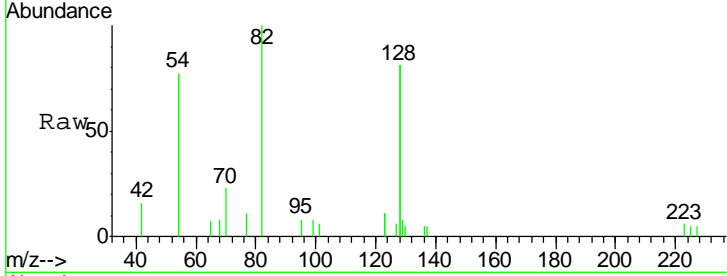




#8
 Nitrobenzene-d5
 Concen: 0.403 ng
 RT: 8.96 min Scan# 523
 Delta R.T. -0.01 min
 Lab File: BE099767.D
 Acq: 28 May 2019 21:19

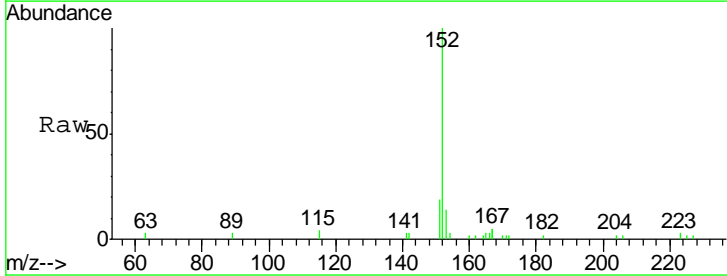
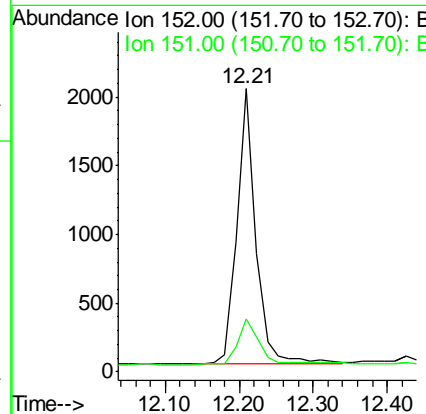
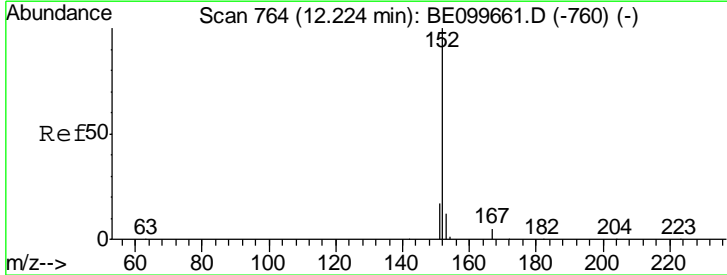
Instrument :
 BNA_E
ClientSampleId :
 DUP-20190523

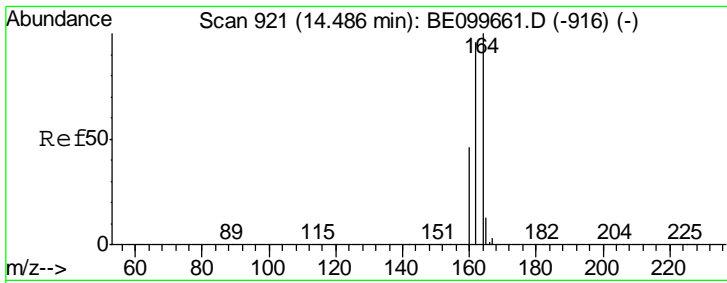
Tgt Ion	Resp	Lower	Upper
82	1758		
128	162.5	117.7	176.5
54	154.2	106.6	160.0



#11
 2-Methylnaphthalene-d10
 Concen: 0.417 ng
 RT: 12.21 min Scan# 763
 Delta R.T. -0.01 min
 Lab File: BE099767.D
 Acq: 28 May 2019 21:19

Tgt Ion	Resp	Lower	Upper
152	3632		
151	18.9	15.0	22.4



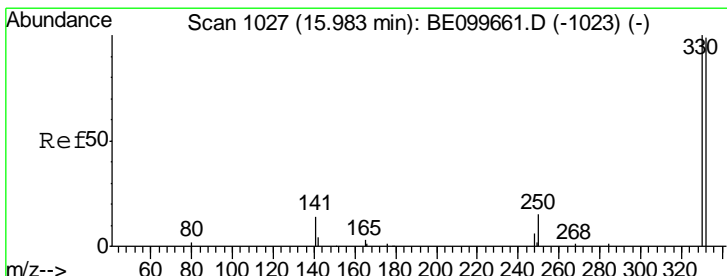
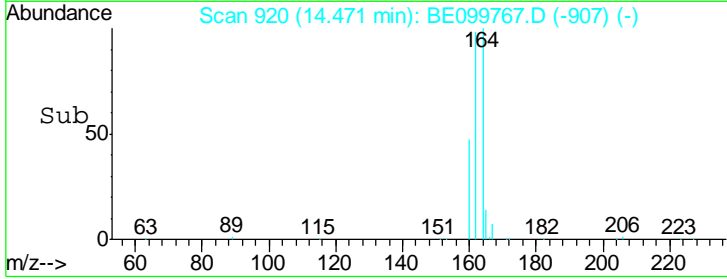
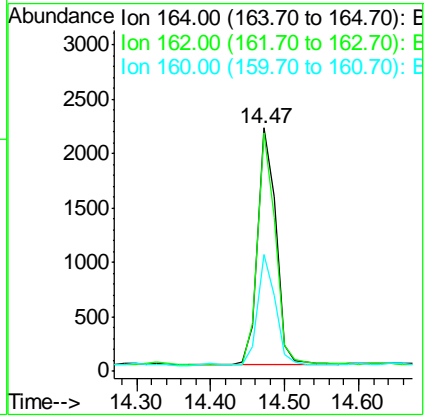
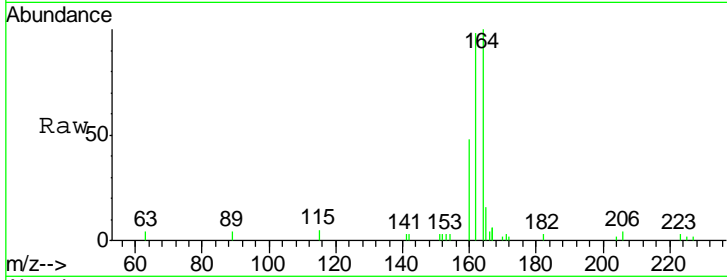


#13
 Acenaphthene-d10
 Concen: 0.400 ng
 RT: 14.47 min Scan# 920
 Delta R.T. -0.01 min
 Lab File: BE099767.D
 Acq: 28 May 2019 21:19

Instrument :
 BNA_E
 ClientSampleId :
 DUP-20190523

Tgt Ion: 164 Resp: 3784

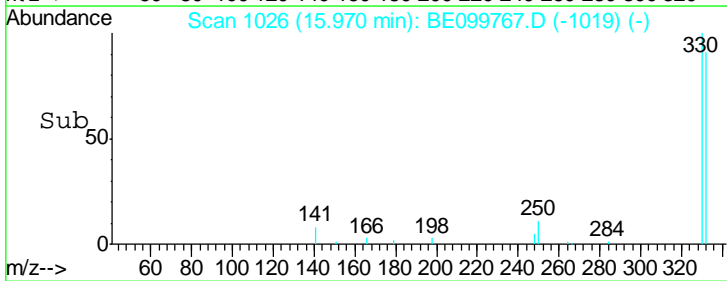
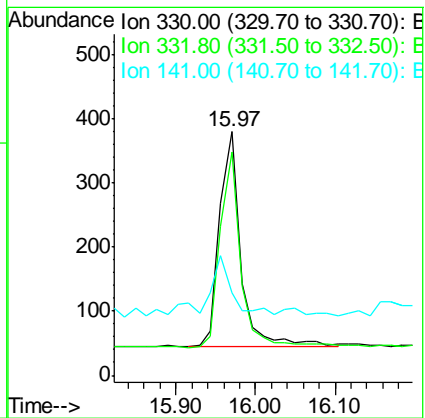
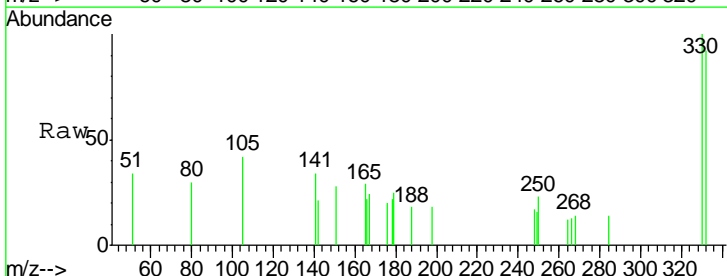
Ion	Ratio	Lower	Upper
164	100		
162	98.0	76.5	114.7
160	48.0	37.4	56.2

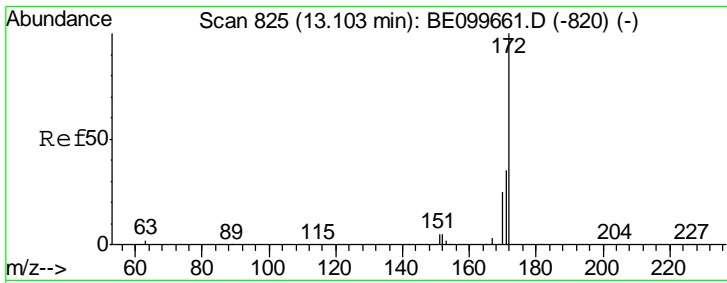


#14
 2,4,6-Tribromophenol
 Concen: 0.353 ng
 RT: 15.97 min Scan# 1026
 Delta R.T. -0.01 min
 Lab File: BE099767.D
 Acq: 28 May 2019 21:19

Tgt Ion: 330 Resp: 631

Ion	Ratio	Lower	Upper
330	100		
332	89.1	77.3	115.9
141	26.8	18.9	28.3

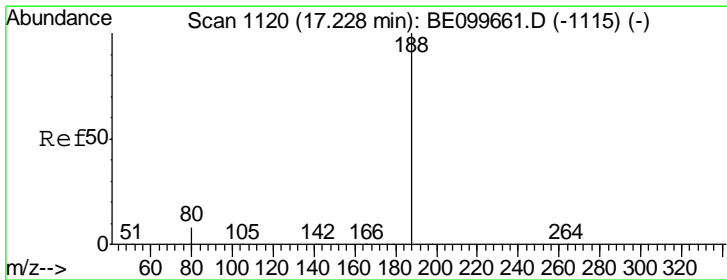
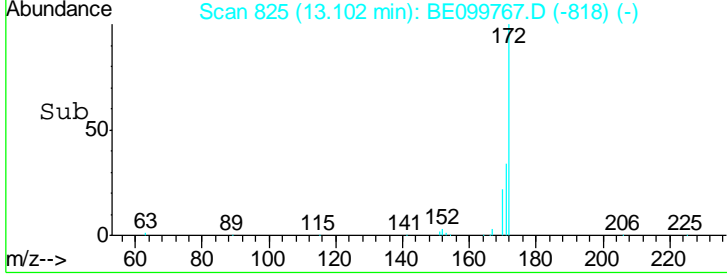
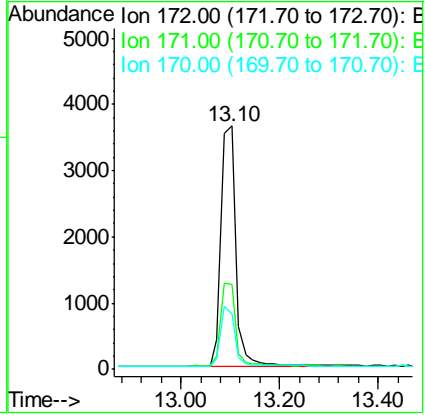
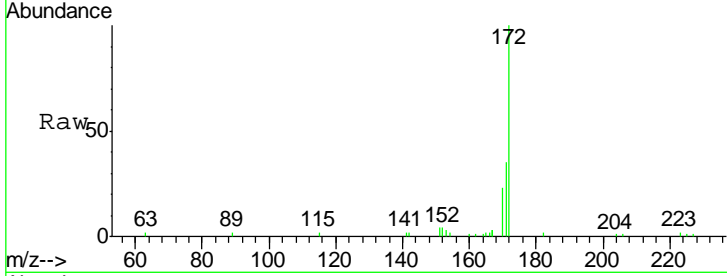




#15
 2-Fluorobiphenyl
 Concen: 0.526 ng
 RT: 13.10 min Scan# 825
 Delta R.T. -0.00 min
 Lab File: BE099767.D
 Acq: 28 May 2019 21:19

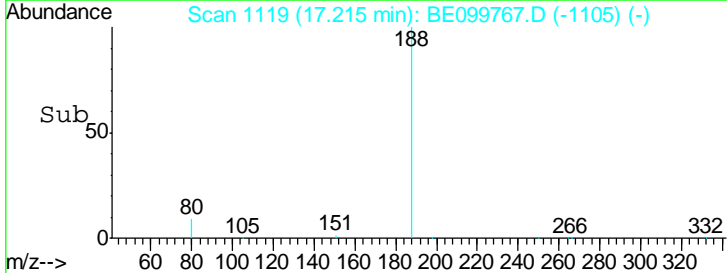
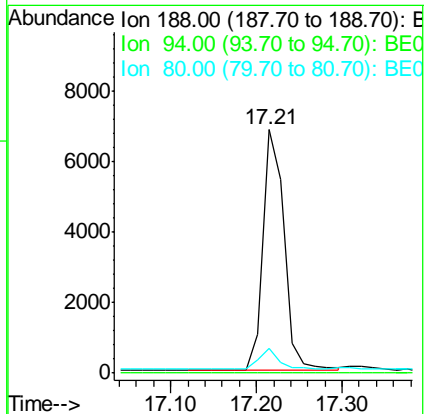
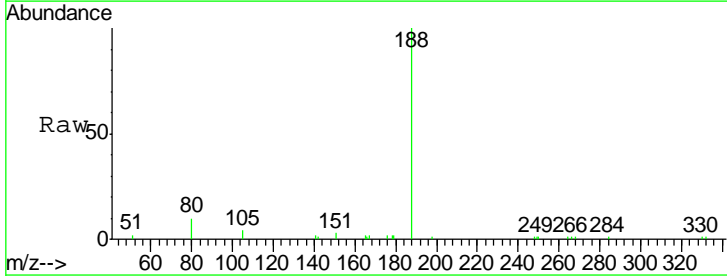
Instrument :
 BNA_E
ClientSampleId :
 DUP-20190523

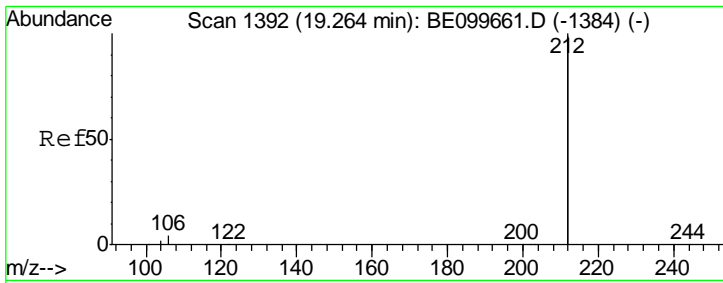
Tgt Ion	Resp	Lower	Upper
172	100		
171	35.1	28.7	43.1
170	22.6	20.9	31.3



#19
 Phenanthrene-d10
 Concen: 0.400 ng
 RT: 17.21 min Scan# 1119
 Delta R.T. -0.01 min
 Lab File: BE099767.D
 Acq: 28 May 2019 21:19

Tgt Ion	Resp	Lower	Upper
188	100		
94	0.0	0.0	0.0
80	10.4	6.7	10.1#

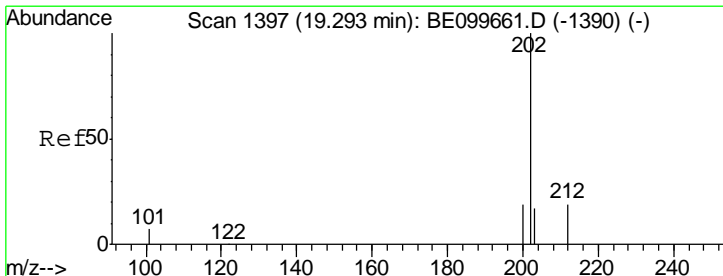
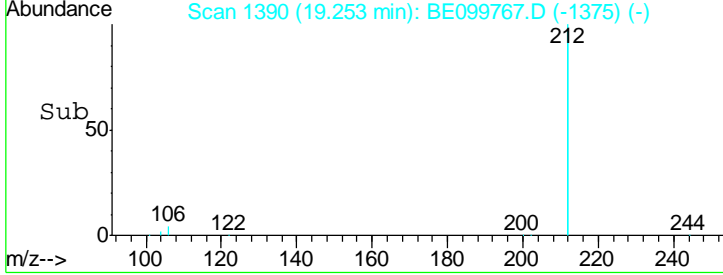
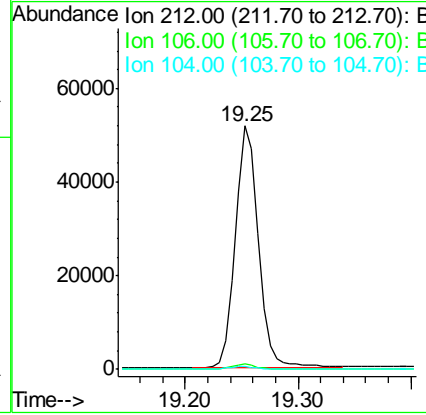
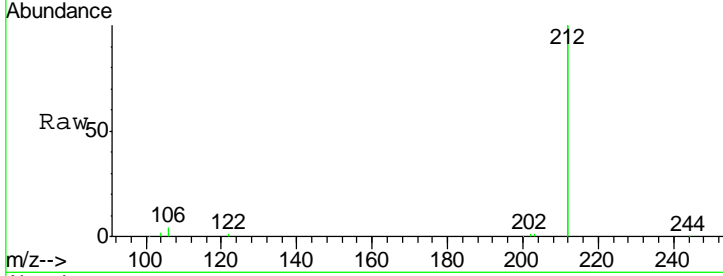




#25
 Fluoranthene-d10
 Concen: 0.461 ng
 RT: 19.25 min Scan# 1390
 Delta R.T. -0.01 min
 Lab File: BE099767.D
 Acq: 28 May 2019 21:19

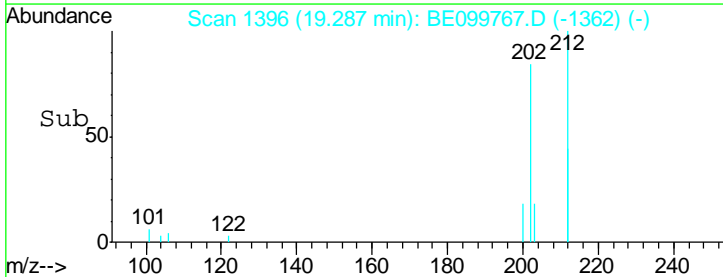
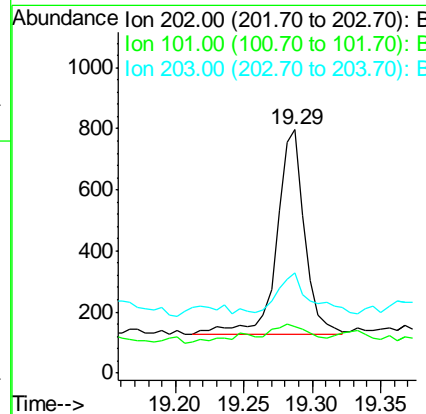
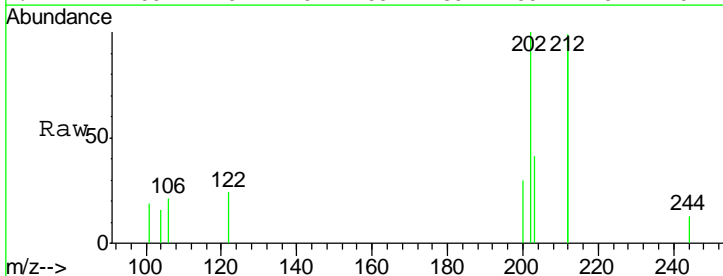
Instrument :
 BNA_E
ClientSampled :
 DUP-20190523

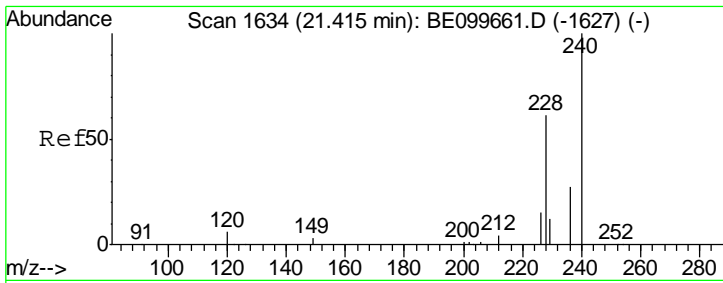
Tgt Ion	Resp	Lower	Upper
212	100		
106	2.0	1.4	2.2
104	1.1	0.8	1.2



#26
 Fluoranthene
 Concen: 0.021 ng
 RT: 19.29 min Scan# 1396
 Delta R.T. -0.01 min
 Lab File: BE099767.D
 Acq: 28 May 2019 21:19

Tgt Ion	Resp	Lower	Upper
202	100		
101	7.4	5.2	7.8
203	22.1	13.8	20.6#

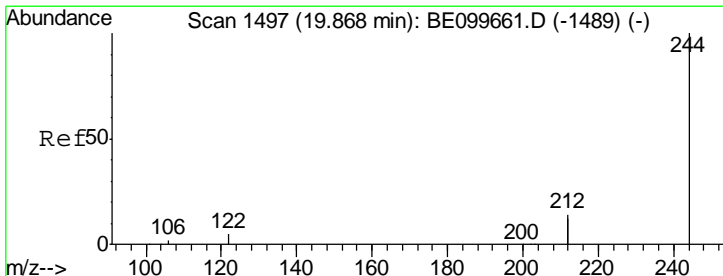
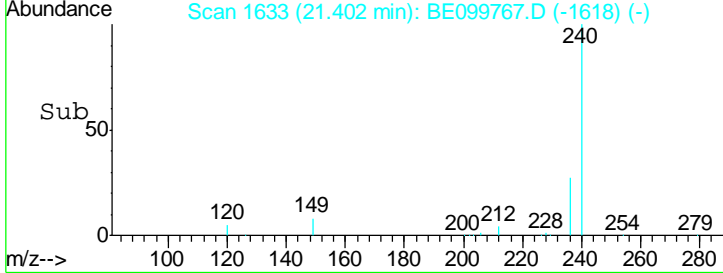
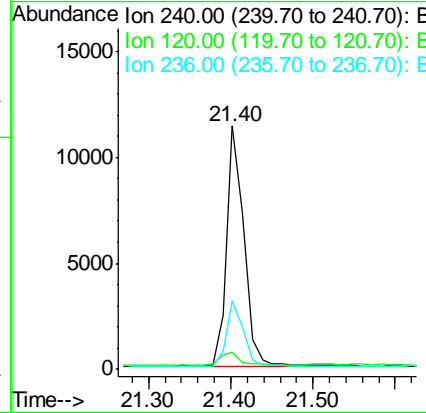
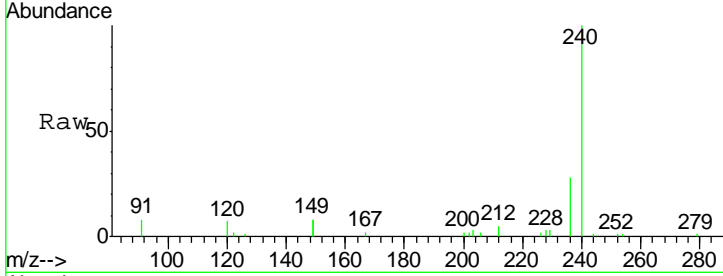




#27
 Chrysene-d12
 Concen: 0.400 ng
 RT: 21.40 min Scan# 1633
 Delta R.T. -0.01 min
 Lab File: BE099767.D
 Acq: 28 May 2019 21:19

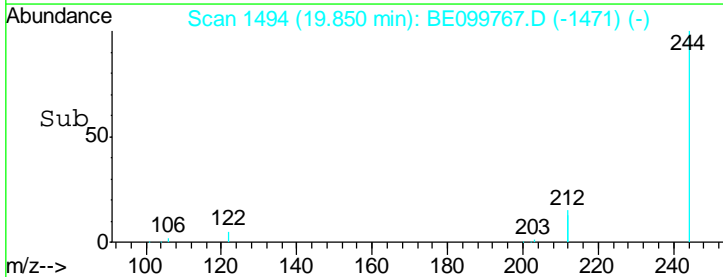
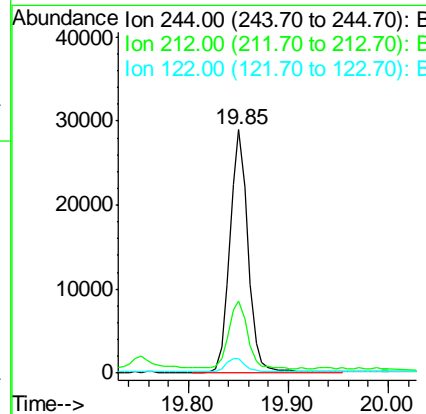
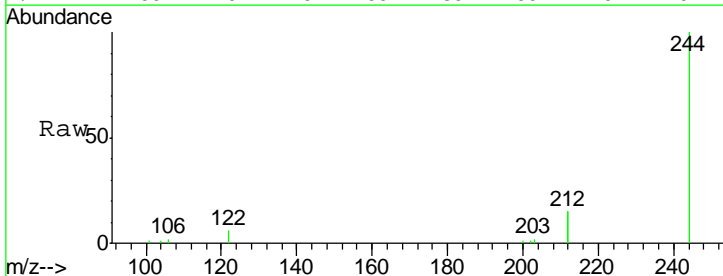
Instrument :
 BNA_E
 ClientSampleId :
 DUP-20190523

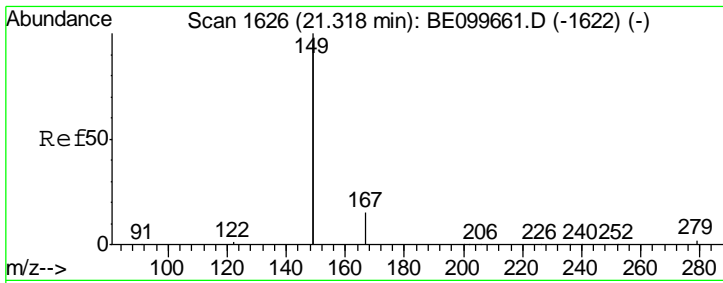
Tgt Ion	Resp	Lower	Upper
240	16775		
120	6.8	5.4	8.0
236	28.1	21.7	32.5



#29
 Terphenyl-d14
 Concen: 1.204 ng
 RT: 19.85 min Scan# 1494
 Delta R.T. -0.02 min
 Lab File: BE099767.D
 Acq: 28 May 2019 21:19

Tgt Ion	Resp	Lower	Upper
244	36046		
212	29.6	22.5	33.7
122	5.9	4.3	6.5

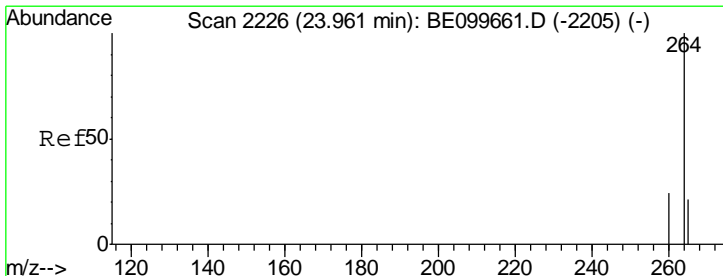
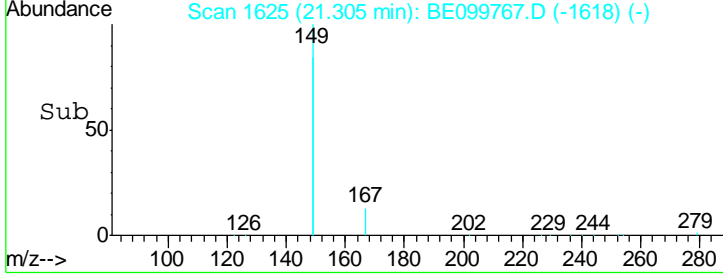
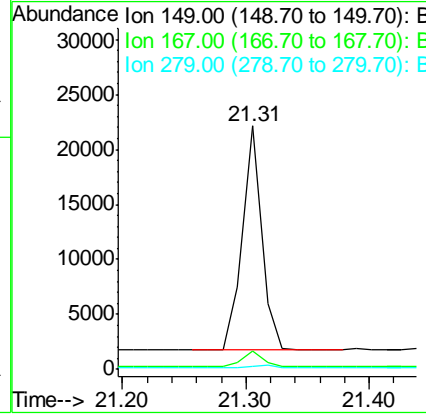
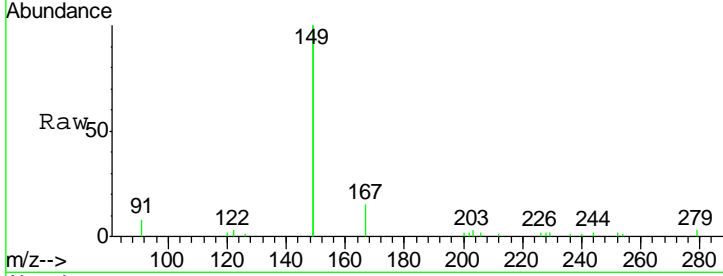




#32
 Bis(2-ethylhexyl)phthalate
 Concen: 0.405 ng
 RT: 21.31 min Scan# 1625
 Delta R.T. -0.01 min
 Lab File: BE099767.D
 Acq: 28 May 2019 21:19

Instrument :
 BNA_E
 ClientSampleId :
 DUP-20190523

Tgt Ion	Resp	Lower	Upper
149	100		
167	7.4	6.2	9.4
279	1.5	1.2	1.8



#34
 Perylene-d12
 Concen: 0.400 ng
 RT: 23.94 min Scan# 2220
 Delta R.T. -0.02 min
 Lab File: BE099767.D
 Acq: 28 May 2019 21:19

Tgt Ion	Resp	Lower	Upper
264	100		
260	25.6	19.6	29.4
265	28.1	19.1	28.7

