

Data Path : Z:\HPCHEM1\BNA E\DATA\BE062416\
 Data File : BE091946.D
 Acq On : 24 Jun 2016 14:48
 Operator : UM/SJ
 Sample : H3676-04
 Misc :
 ALS Vial : 6 Sample Multiplier: 1

Instrument :
 BNA_E
 ClientSampled :

Quant Time: Jun 24 16:11:40 2016
 Quant Method : Z:\HPCHEM1\BNA E\METHODS\8270-SIM-BE061416.M
 Quant Title : ASP BNA STANDARDS FOR 5 POINT CALIBRATION
 QLast Update : Wed Jun 15 12:00:38 2016
 Response via : Initial Calibration

Internal Standards	R.T.	QIon	Response	Conc	Units	Dev(Min)
1) 1,4-Dichlorobenzene-d4	8.20	152	32977	5.00	ng	0.00
8) Naphthalene-d8	11.02	136	156914	5.00	ng	0.03
15) Acenaphthene-d10	14.86	164	106284	5.00	ng	0.00
24) Phenanthrene-d10	17.61	188	200781	5.00	ng	0.00
31) Chrysene-d12	21.76	240	246851	5.00	ng	0.00
40) Perylene-d12	24.17	264	199435	5.00	ng	0.00

System Monitoring Compounds

4) 2-Fluorophenol	5.72	112	57051	8.85	ng	0.00
5) Phenol-d6	7.37	99	89519	8.45	ng	0.02
9) Nitrobenzene-d5	9.37	82	49048	4.53	ng	0.00
16) 2,4,6-Tribromophenol	16.35	330	23675	8.55	ng	0.00
17) 2-Fluorobiphenyl	13.49	172	116369	4.31	ng	0.00
34) Terphenyl-d14	20.22	244	150121	4.97	ng	0.00

Target Compounds

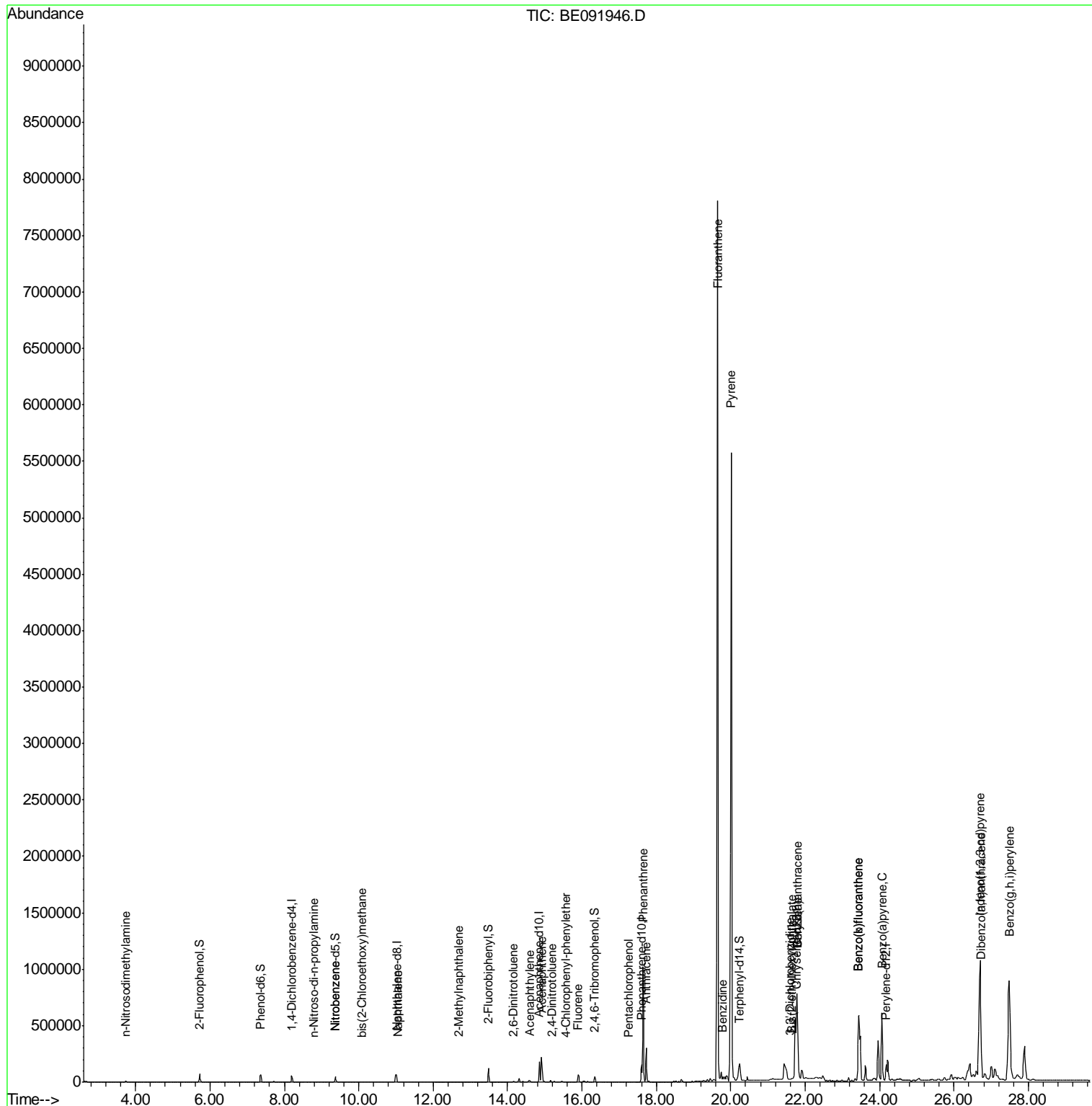
Target Compounds	R.T.	QIon	Response	Conc	Units	Qvalue
3) n-Nitrosodimethylamine	3.73	42	1088	0.21	ng	# 1
7) n-Nitroso-di-n-propylamine	8.79	70	407	0.17	ng	# 19
10) Nitrobenzene	9.37	77	181	0.07	ng	# 8
11) bis(2-Chloroethoxy)methane	10.07	93	999	0.07	ng	# 1
12) Naphthalene	11.04	128	1656	0.05	ng	# 80
14) 2-Methylnaphthalene	12.68	142	1923	0.08	ng	# 92
18) Acenaphthylene	14.59	152	37479	0.35	ng	# 75
19) 2,6-Dinitrotoluene	14.16	165	6292	0.50	ng	84
20) Acenaphthene	14.92	154	51831	1.74	ng	# 1
21) 2,4-Dinitrotoluene	15.19	165	2307	0.23	ng	# 1
22) Fluorene	15.90	166	60825	2.06	ng	99
23) 4-Chlorophenyl-phenylether	15.57	204	1186	0.08	ng	# 1
27) Pentachlorophenol	17.26	266	219	0.17	ng	91
28) Phenanthrene	17.64	178	1109874	22.12	ng	99
29) Anthracene	17.73	178	320790	7.22	ng	97
30) Fluoranthene	19.65	202	9825256	45.70	ng	# 88
32) Benzidine	19.79	184	168	0.11	ng	# 1
33) Pyrene	20.02	202	7961875	47.41	ng	# 71
35) Benzo(a)anthracene	21.79	228	1706862	44.01	ng	# 89
36) 3,3'-Dichlorobenzidine	21.59	252	1153	0.18	ng	# 86
37) Chrysene	21.79	228	1716830	30.31	ng	95
38) Bis(2-ethylhexyl)phthalate	21.64	149	23272	0.99	ng	# 100
39) Indeno(1,2,3-cd)pyrene	26.70	276	2276709	11.75	ng	98
41) Benzo(b)fluoranthene	23.43	252	1645071	32.13	ng	99
42) Benzo(k)fluoranthene	23.43	252	1645071	35.11	ng	96
43) Benzo(a)pyrene	24.07	252	917503	20.51	ng	98
44) Dibenzo(a,h)anthracene	26.72	278	127511	2.93	ng	94
45) Benzo(g,h,i)perylene	27.48	276	2220214	12.35	ng	99

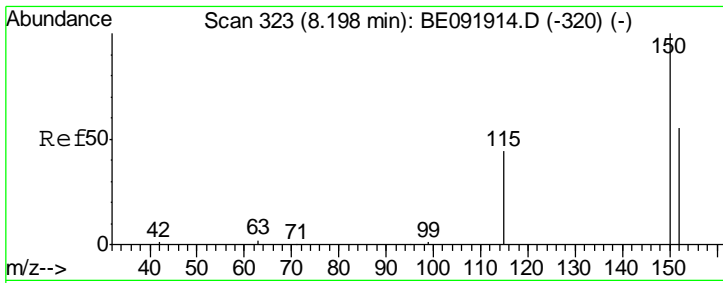
(#) = qualifier out of range (m) = manual integration (+) = signals summed

Data Path : Z:\HPCHEM1\BNA E\DATA\BE062416\
 Data File : BE091946.D
 Acq On : 24 Jun 2016 14:48
 Operator : UM/SJ
 Sample : H3676-04
 Misc :
 ALS Vial : 6 Sample Multiplier: 1

Instrument :
 BNA_E
 ClientSampled :

Quant Time: Jun 24 16:11:40 2016
 Quant Method : Z:\HPCHEM1\BNA E\METHODS\8270-SIM-BE061416.M
 Quant Title : ASP BNA STANDARDS FOR 5 POINT CALIBRATION
 QLast Update : Wed Jun 15 12:00:38 2016
 Response via : Initial Calibration

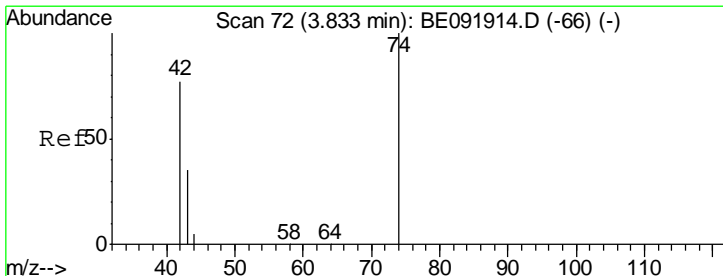
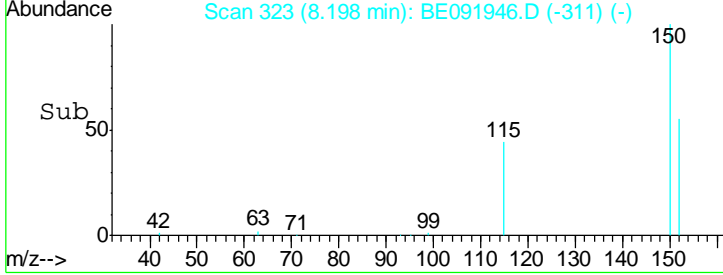
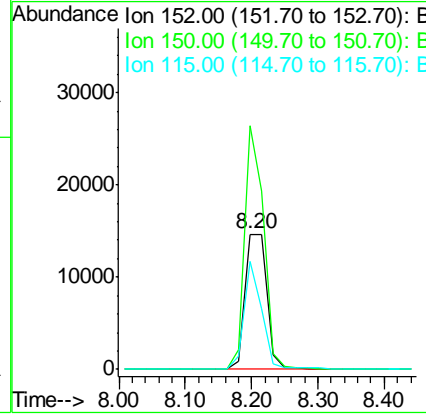
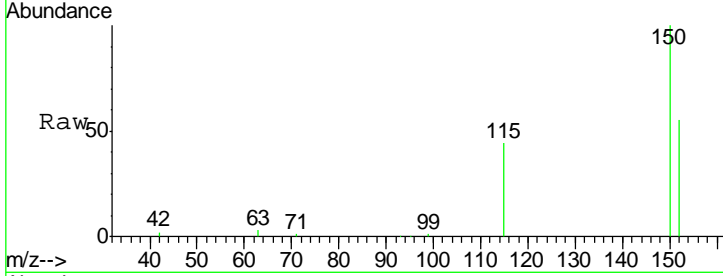




#1
 1,4-Dichlorobenzene-d4
 Concen: 5.00 ng
 RT: 8.20 min Scan# 323
 Delta R.T. -0.00 min
 Lab File: BE091946.D
 Acq: 24 Jun 2016 14:48

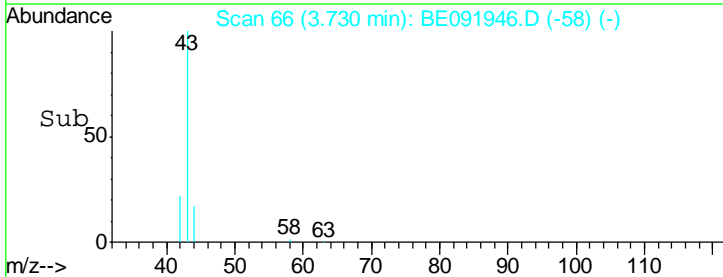
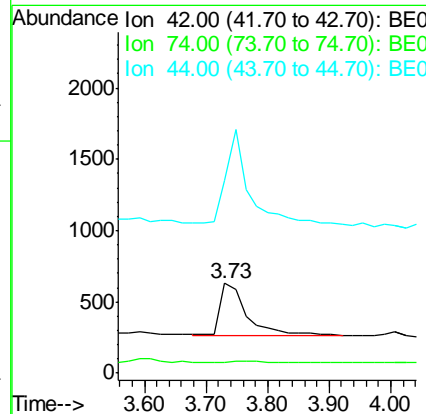
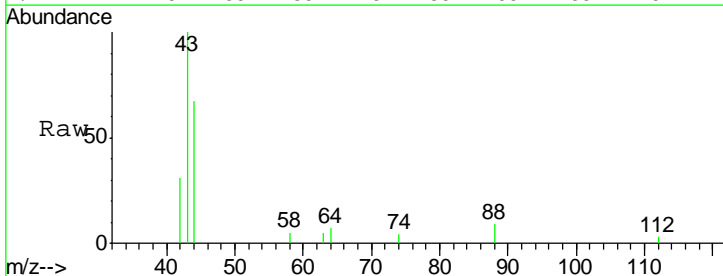
Instrument :
 BNA_E
 ClientSampled :

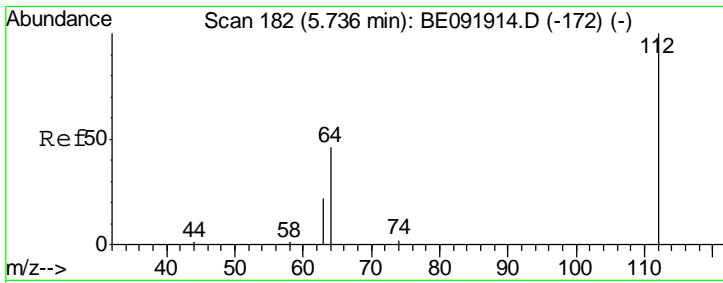
Tgt Ion	Resp	Lower	Upper
152	100		
150	180.4	123.9	185.9
115	79.8	48.3	72.5#



#3
 n-Nitrosodimethylamine
 Concen: 0.21 ng
 RT: 3.73 min Scan# 66
 Delta R.T. -0.07 min
 Lab File: BE091946.D
 Acq: 24 Jun 2016 14:48

Tgt Ion	Resp	Lower	Upper
42	100		
74	2.8	93.4	140.0#
44	151.3	5.0	7.6#

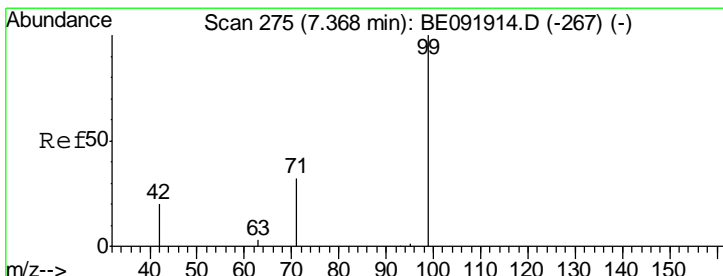
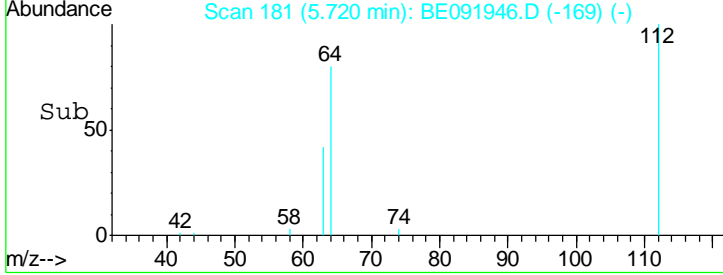
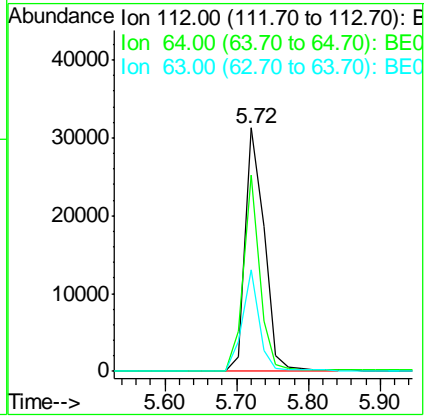
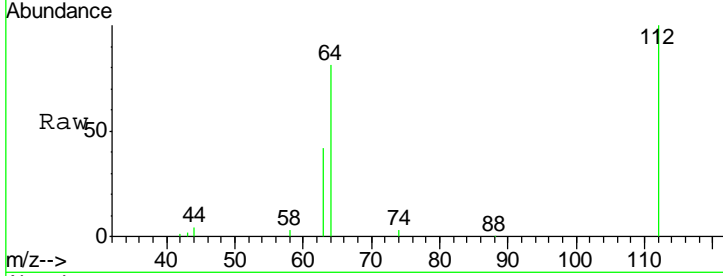




#4
 2-Fluorophenol
 Concen: 8.85 ng
 RT: 5.72 min Scan# 181
 Delta R.T. 0.00 min
 Lab File: BE091946.D
 Acq: 24 Jun 2016 14:48

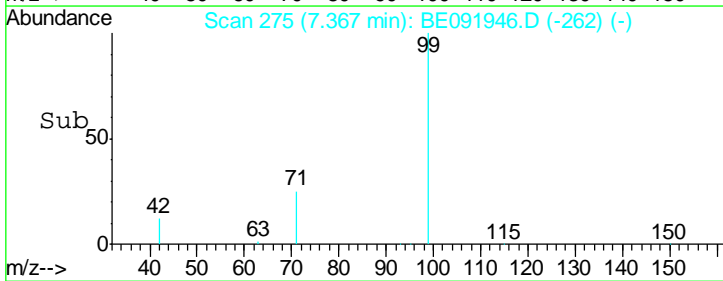
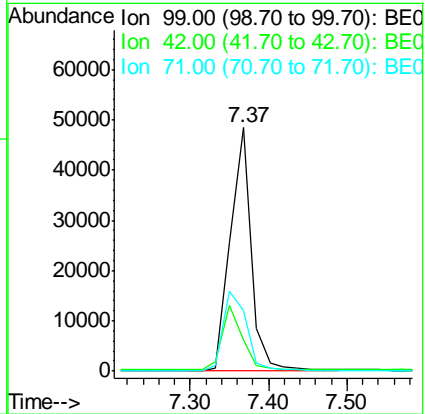
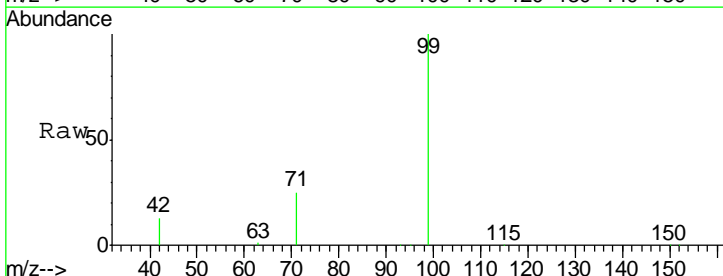
Instrument :
 BNA_E
 ClientSampled :

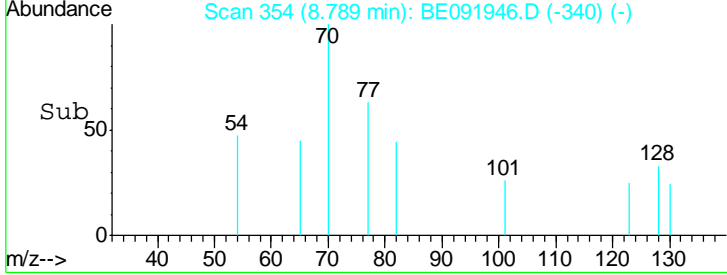
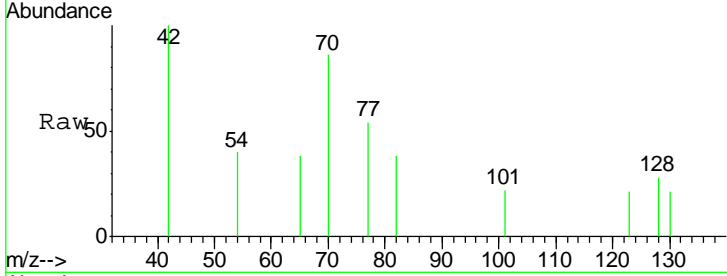
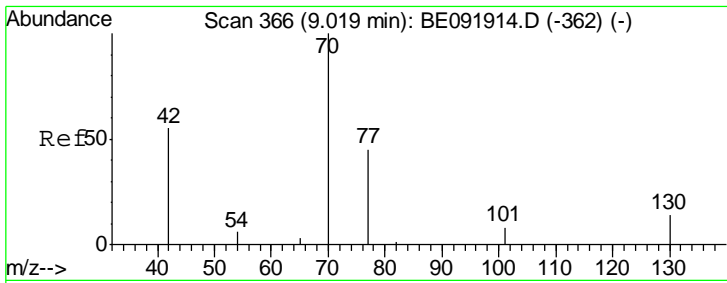
Tgt Ion	Resp	Lower	Upper
112	57051		
112	100		
64	69.5	53.7	80.5
63	36.9	29.5	44.3



#5
 Phenol-d6
 Concen: 8.45 ng
 RT: 7.37 min Scan# 275
 Delta R.T. 0.02 min
 Lab File: BE091946.D
 Acq: 24 Jun 2016 14:48

Tgt Ion	Resp	Lower	Upper
99	89519		
99	100		
42	25.4	19.6	29.4
71	36.3	28.1	42.1

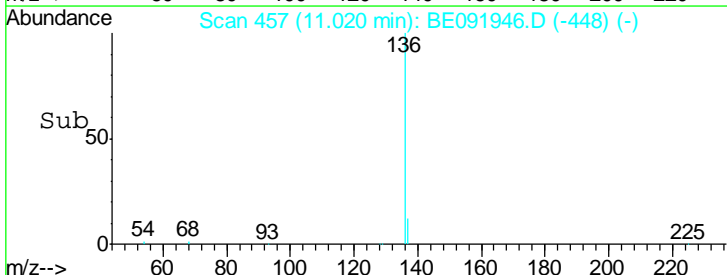
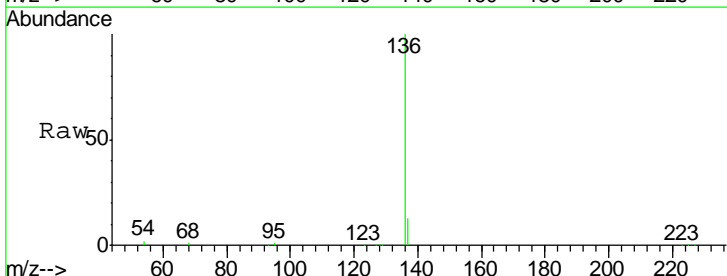
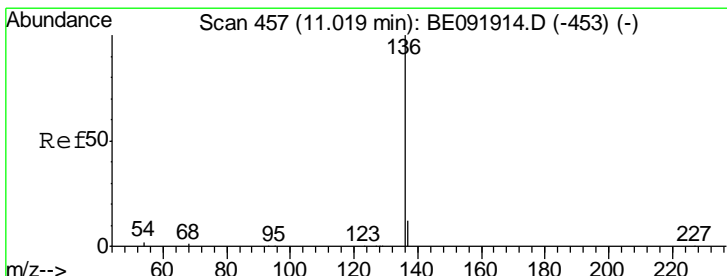
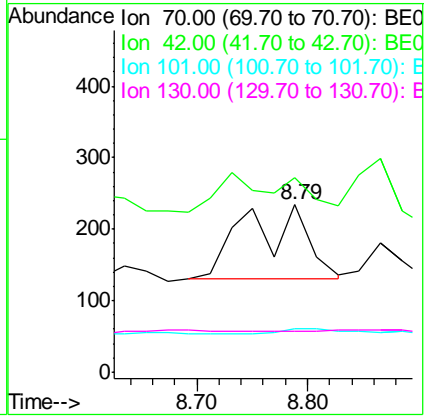




#7
 n-Nitroso-di-n-propylamine
 Concen: 0.17 ng
 RT: 8.79 min Scan# 354
 Delta R.T. -0.21 min
 Lab File: BE091946.D
 Acq: 24 Jun 2016 14:48

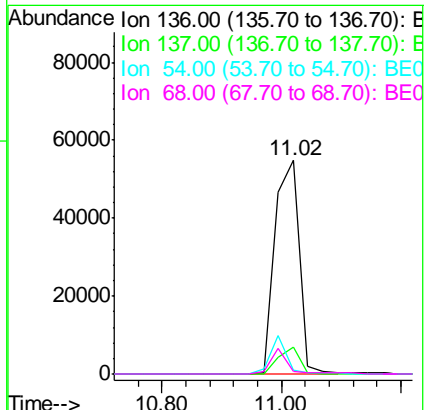
Instrument :
 BNA_E
 ClientSampleID :

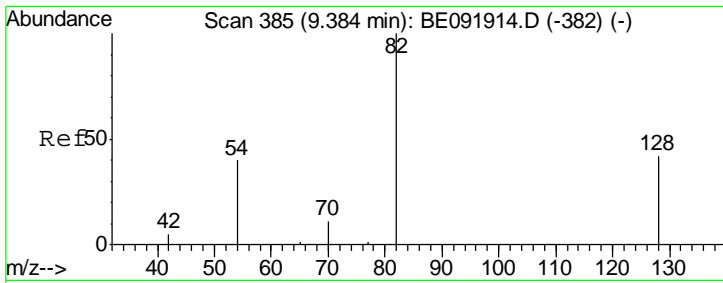
Tgt Ion	Resp	Lower	Upper
70	100		
42	0.0	58.4	87.6#
101	0.0	6.4	9.6#
130	0.0	0.0	0.0



#8
 Naphthalene-d8
 Concen: 5.00 ng
 RT: 11.02 min Scan# 457
 Delta R.T. 0.03 min
 Lab File: BE091946.D
 Acq: 24 Jun 2016 14:48

Tgt Ion	Resp	Lower	Upper
136	100		
137	12.5	8.3	12.5#
54	1.7	8.2	12.4#
68	1.5	5.9	8.9#

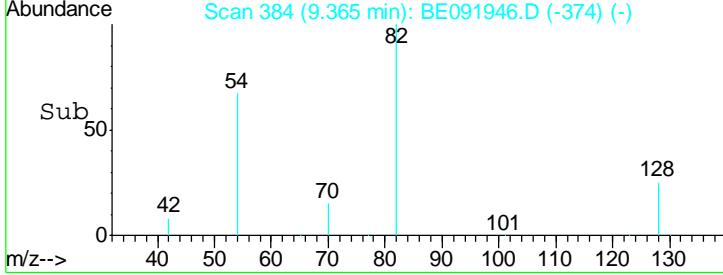
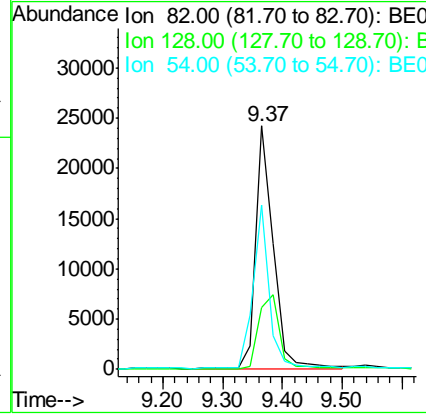
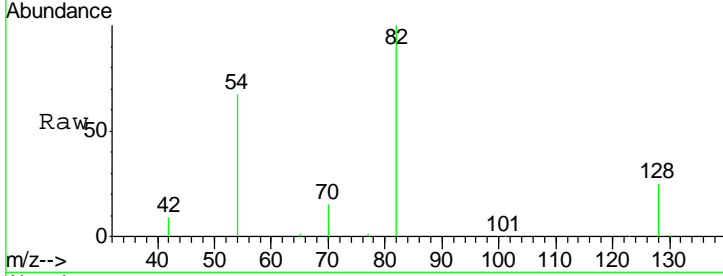




#9
 Nitrobenzene-d5
 Concen: 4.53 ng
 RT: 9.37 min Scan# 384
 Delta R.T. -0.00 min
 Lab File: BE091946.D
 Acq: 24 Jun 2016 14:48

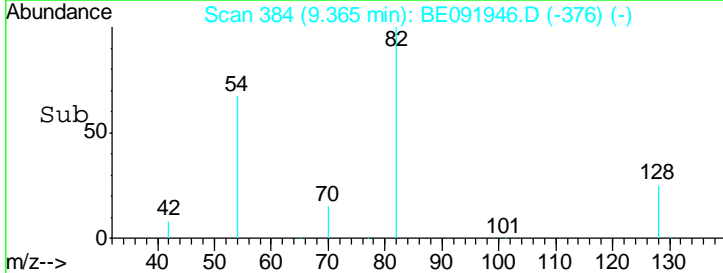
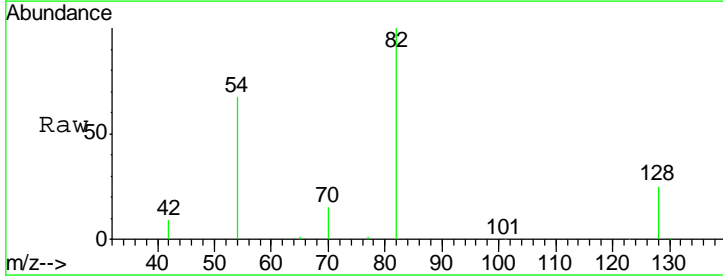
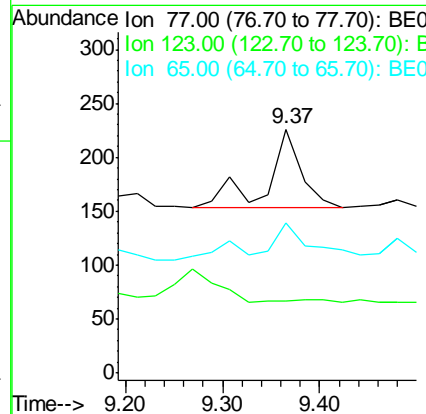
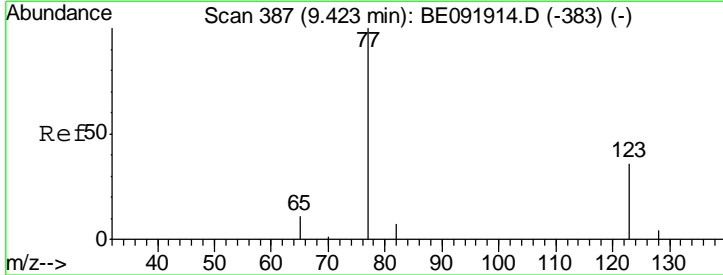
Instrument :
 BNA_E
 ClientSampled :

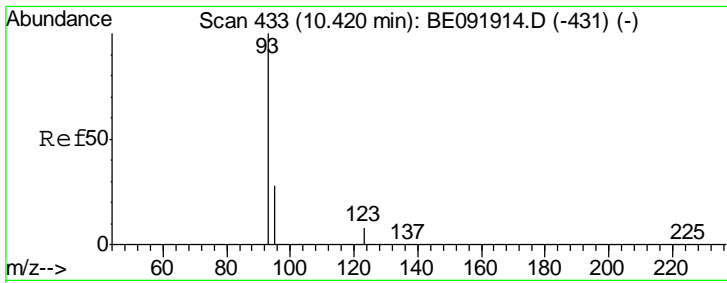
Tgt Ion	Resp	Lower	Upper
82	49048		
128	25.4	39.5	59.3#
54	67.3	30.3	45.5#



#10
 Nitrobenzene
 Concen: 0.07 ng
 RT: 9.37 min Scan# 384
 Delta R.T. -0.04 min
 Lab File: BE091946.D
 Acq: 24 Jun 2016 14:48

Tgt Ion	Resp	Lower	Upper
77	181		
123	7.2	0.0	0.0#
65	51.4	11.1	16.7#

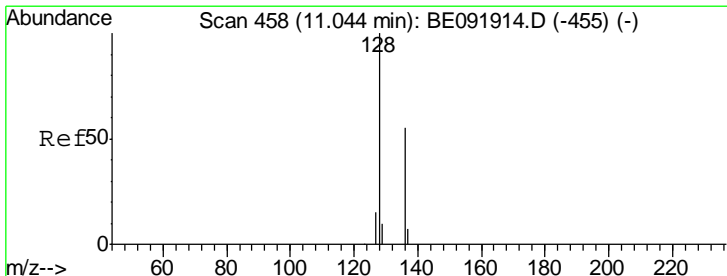
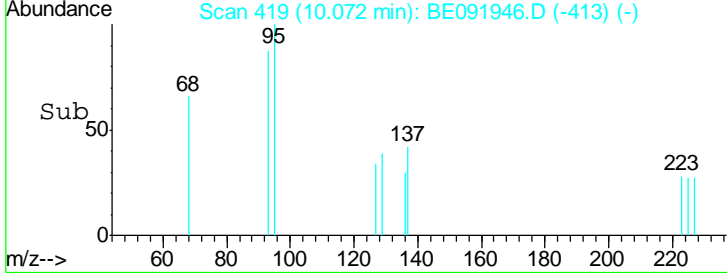
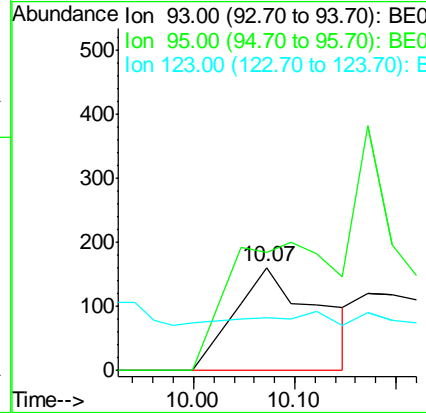
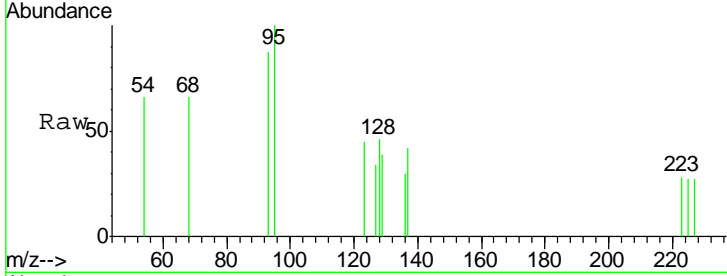




#11
 bis(2-Chloroethoxy)methane
 Concen: 0.07 ng
 RT: 10.07 min Scan# 419
 Delta R.T. -0.35 min
 Lab File: BE091946.D
 Acq: 24 Jun 2016 14:48

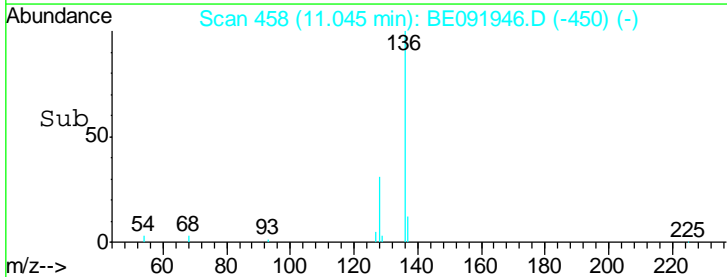
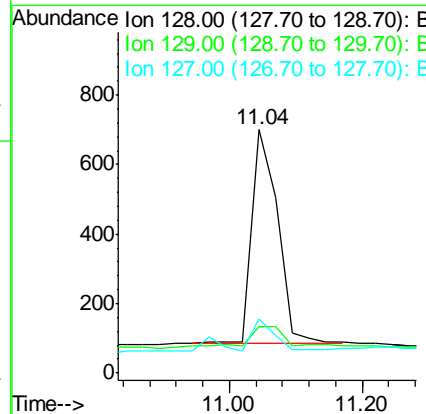
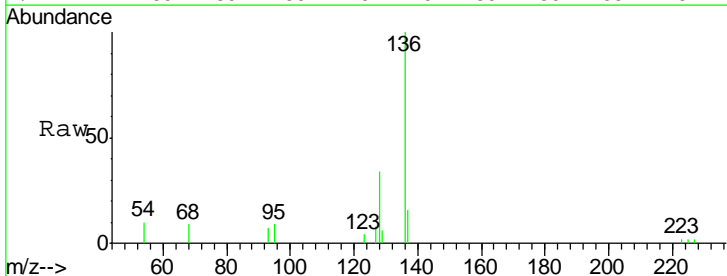
Instrument :
 BNA_E
 ClientSampled :

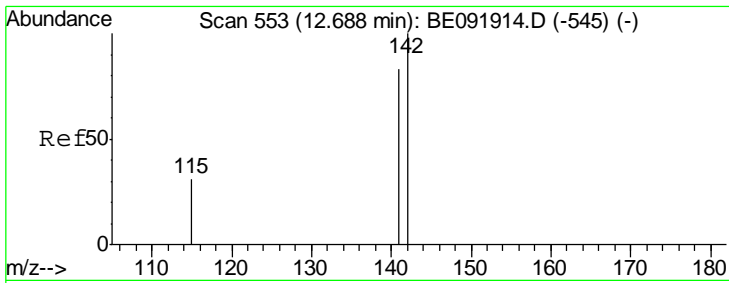
Tgt Ion	Resp	Lower	Upper
93	100		
95	0.0	57.6	86.4#
123	0.0	100.2	150.4#



#12
 Naphthalene
 Concen: 0.05 ng
 RT: 11.04 min Scan# 458
 Delta R.T. 0.00 min
 Lab File: BE091946.D
 Acq: 24 Jun 2016 14:48

Tgt Ion	Resp	Lower	Upper
128	100		
129	19.0	10.4	15.6#
127	22.4	10.2	15.2#

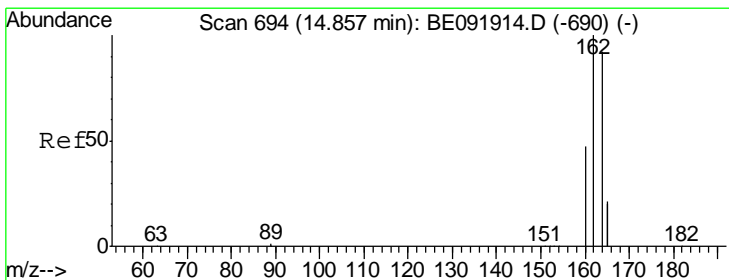
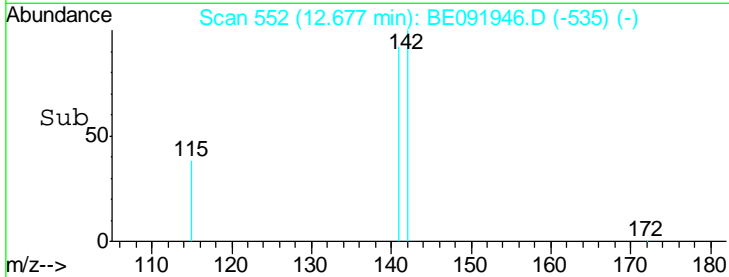
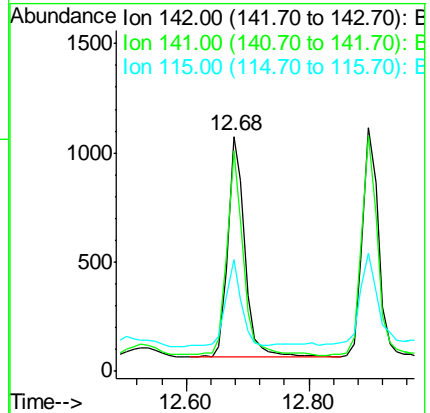
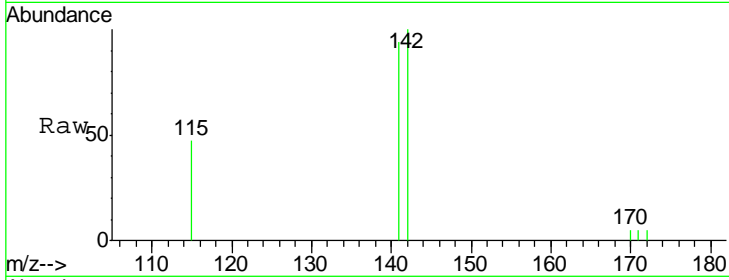




#14
 2-Methylnaphthalene
 Concen: 0.08 ng
 RT: 12.68 min Scan# 552
 Delta R.T. 0.00 min
 Lab File: BE091946.D
 Acq: 24 Jun 2016 14:48

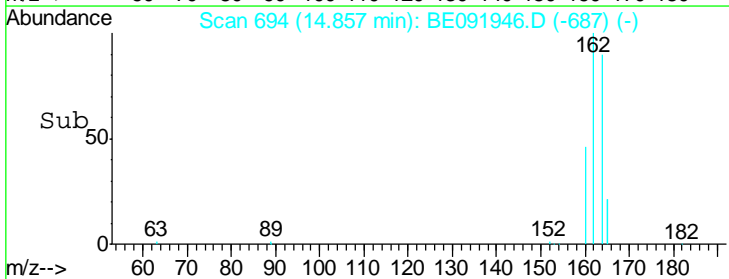
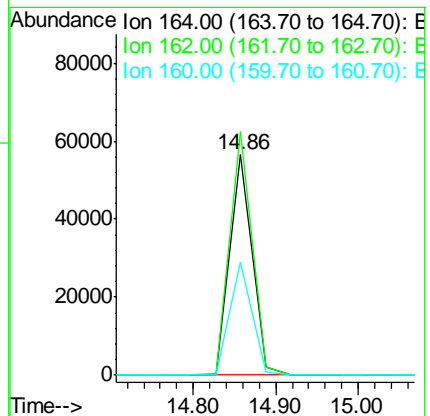
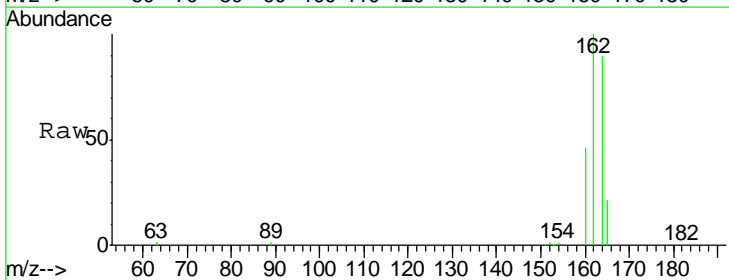
Instrument :
 BNA_E
 ClientSampled :

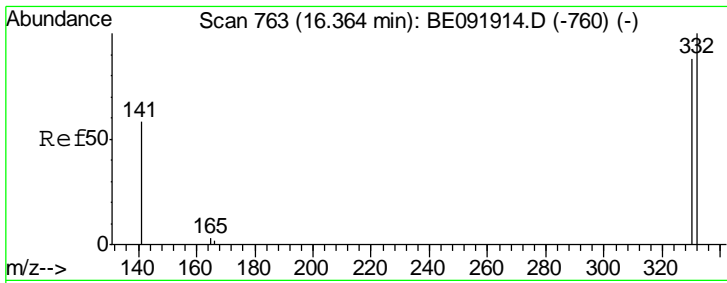
Tgt Ion	Resp	Lower	Upper
142	1923		
141	93.5	71.9	107.9
115	47.4	29.9	44.9#



#15
 Acenaphthene-d10
 Concen: 5.00 ng
 RT: 14.86 min Scan# 694
 Delta R.T. -0.00 min
 Lab File: BE091946.D
 Acq: 24 Jun 2016 14:48

Tgt Ion	Resp	Lower	Upper
164	106284		
162	110.7	71.8	107.8#
160	51.3	28.0	42.0#

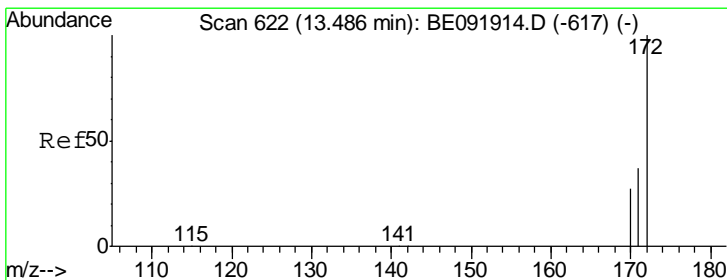
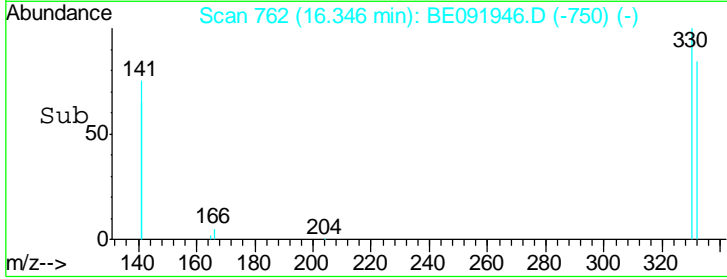
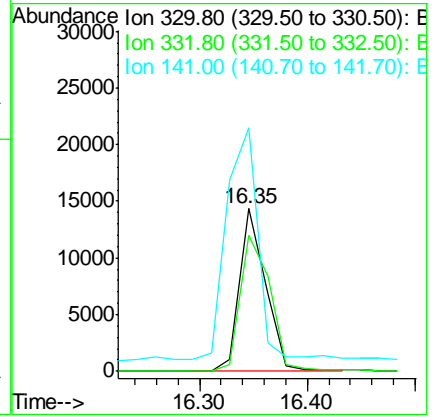
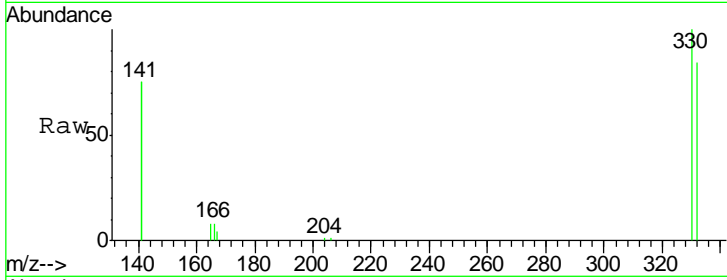




#16
 2,4,6-Tribromophenol
 Concen: 8.55 ng
 RT: 16.35 min Scan# 762
 Delta R.T. -0.00 min
 Lab File: BE091946.D
 Acq: 24 Jun 2016 14:48

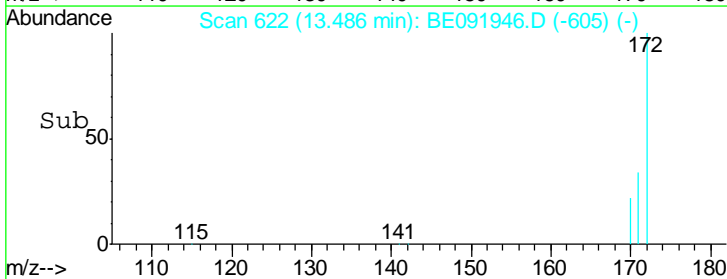
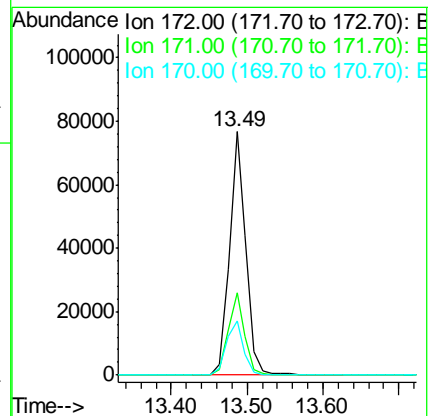
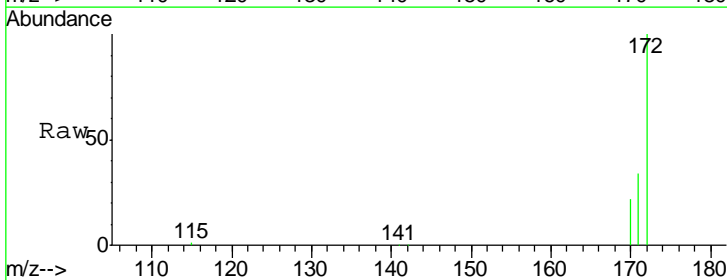
Instrument :
 BNA_E
 ClientSampled :

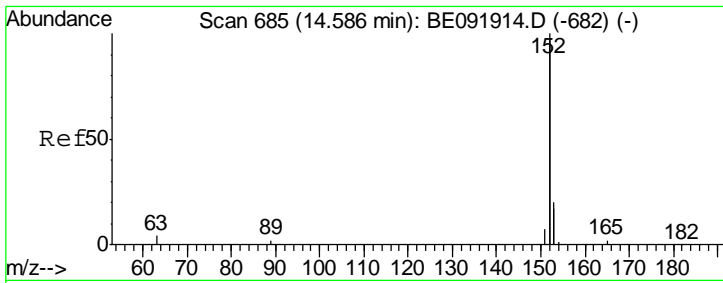
Tgt Ion	Resp	Lower	Upper
330	100		
332	95.4	77.0	115.6
141	174.1	138.4	207.6



#17
 2-Fluorobiphenyl
 Concen: 4.31 ng
 RT: 13.49 min Scan# 622
 Delta R.T. 0.00 min
 Lab File: BE091946.D
 Acq: 24 Jun 2016 14:48

Tgt Ion	Resp	Lower	Upper
172	100		
171	33.7	24.3	36.5
170	22.2	14.9	22.3

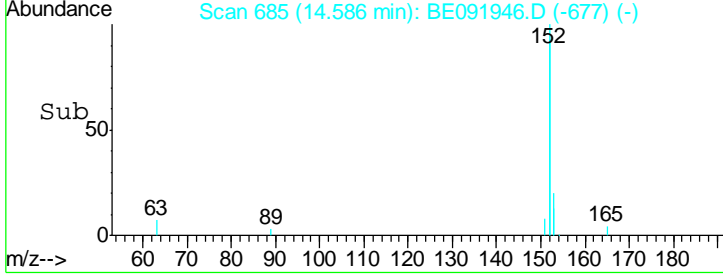
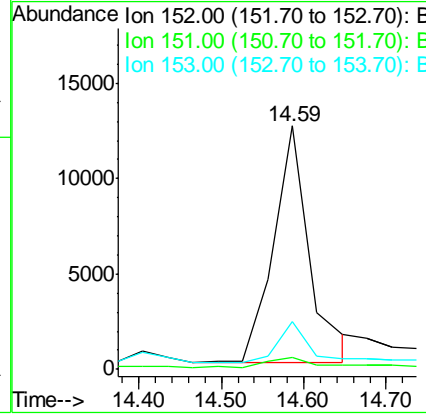
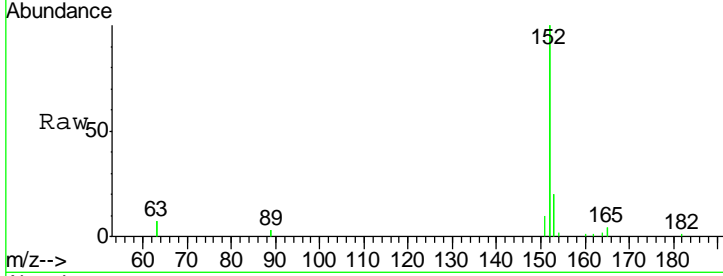




#18
 Acenaphthylene
 Concen: 0.35 ng
 RT: 14.59 min Scan# 685
 Delta R.T. 0.03 min
 Lab File: BE091946.D
 Acq: 24 Jun 2016 14:48

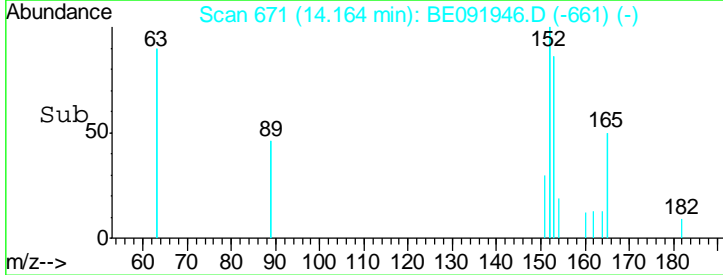
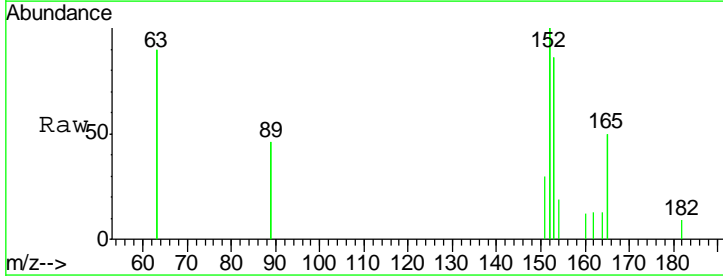
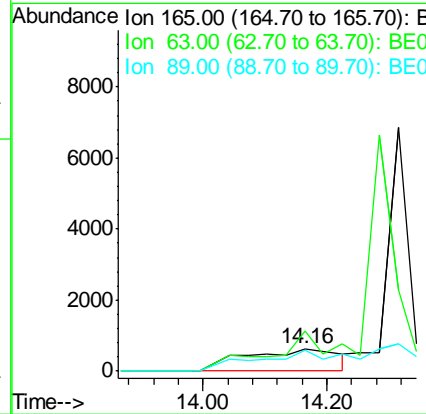
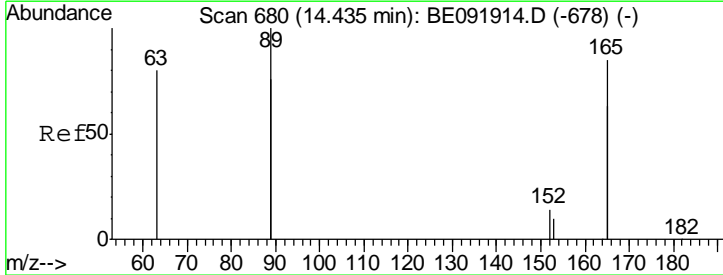
Instrument :
 BNA_E
 ClientSampled :

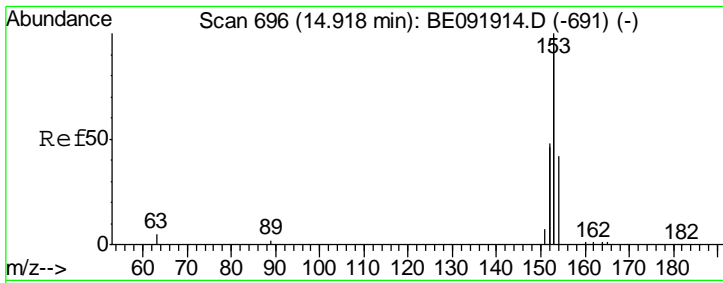
Tgt Ion	Resp	Lower	Upper
152	37479		
151	5.4	19.4	29.2#
153	15.0	14.4	21.6



#19
 2,6-Dinitrotoluene
 Concen: 0.50 ng
 RT: 14.16 min Scan# 671
 Delta R.T. -0.27 min
 Lab File: BE091946.D
 Acq: 24 Jun 2016 14:48

Tgt Ion	Resp	Lower	Upper
165	6292		
165	100		
63	96.7	65.9	98.9
89	87.0	59.1	88.7

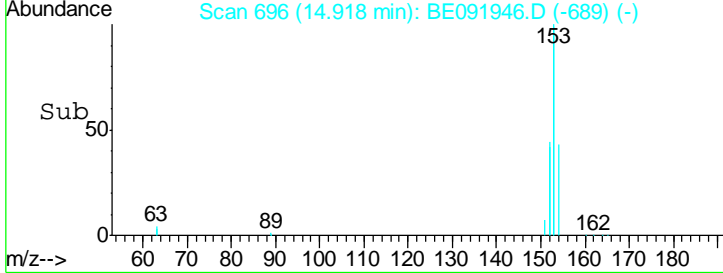
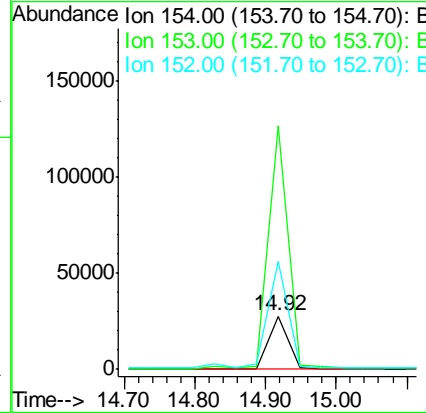
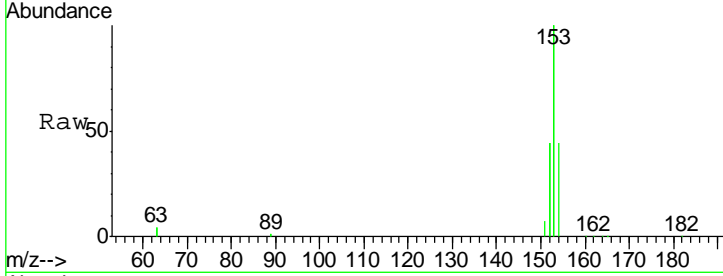




#20
 Acenaphthene
 Concen: 1.74 ng
 RT: 14.92 min Scan# 696
 Delta R.T. -0.00 min
 Lab File: BE091946.D
 Acq: 24 Jun 2016 14:48

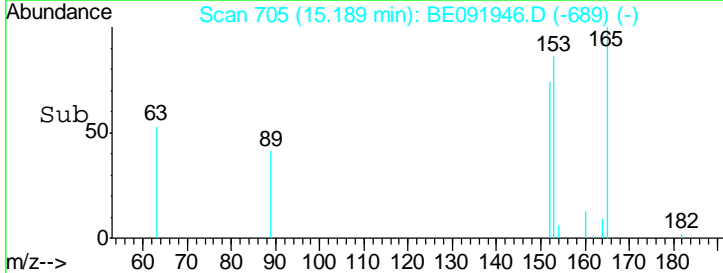
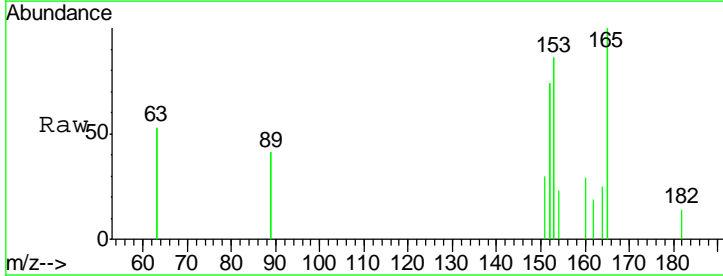
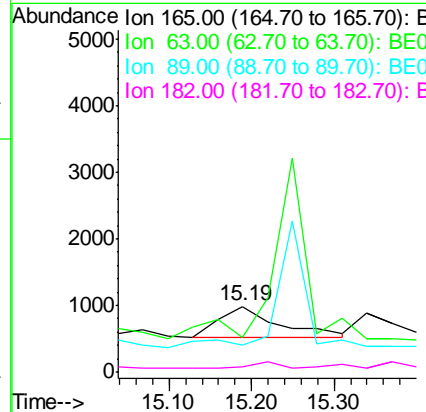
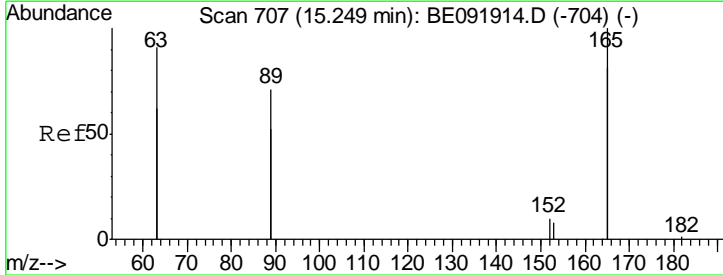
Instrument :
 BNA_E
 ClientSampled :

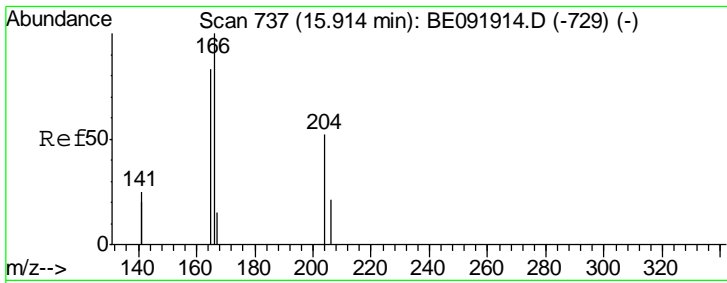
Tgt Ion	Resp	Lower	Upper
154	100		
153	463.7	88.1	132.1#
152	208.6	44.2	66.2#



#21
 2,4-Dinitrotoluene
 Concen: 0.23 ng
 RT: 15.19 min Scan# 705
 Delta R.T. -0.03 min
 Lab File: BE091946.D
 Acq: 24 Jun 2016 14:48

Tgt Ion	Resp	Lower	Upper
165	100		
63	0.0	0.0	0.0
89	0.0	99.8	149.8#
182	0.0	0.0	0.0

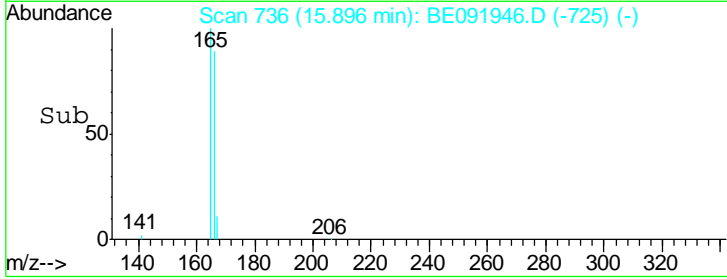
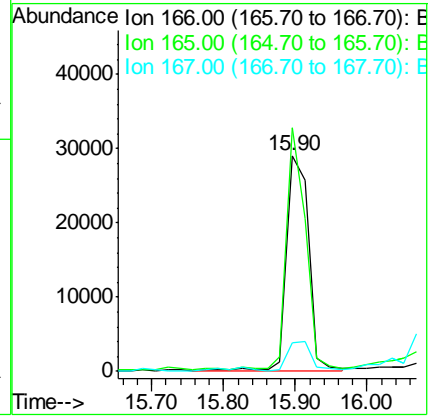
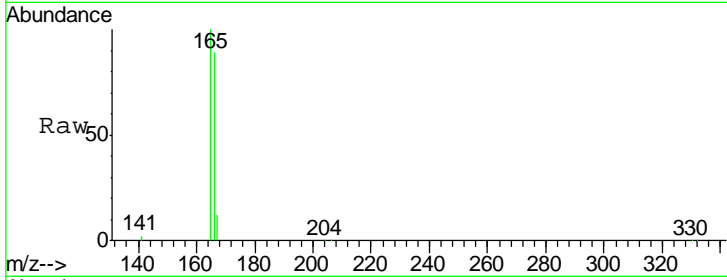




#22
 Fluorene
 Concen: 2.06 ng
 RT: 15.90 min Scan# 736
 Delta R.T. -0.00 min
 Lab File: BE091946.D
 Acq: 24 Jun 2016 14:48

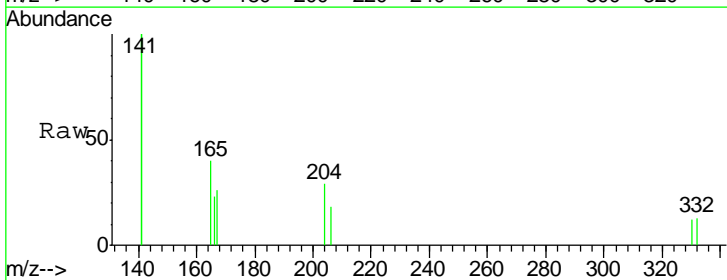
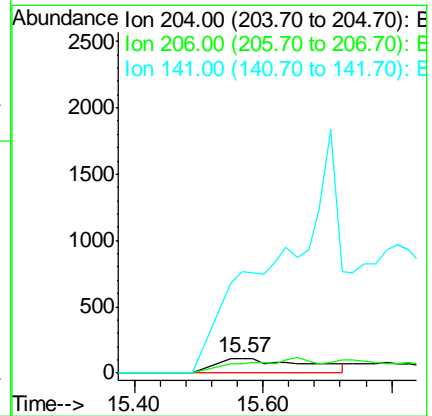
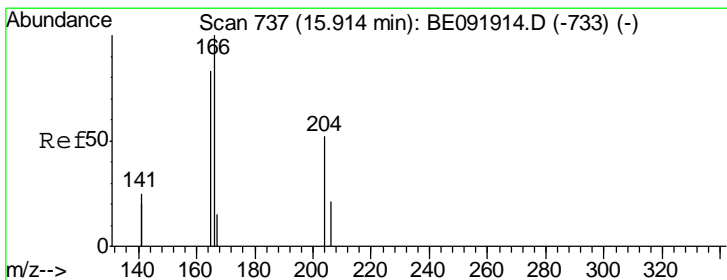
Instrument :
 BNA_E
 ClientSampled :

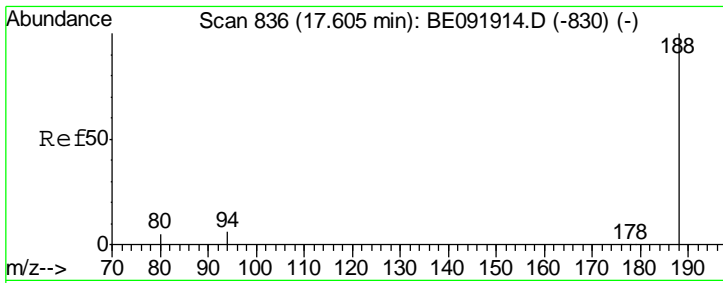
Tgt Ion	Resp	Lower	Upper
166	60825		
165	100	78.6	117.8
167	14.8	10.8	16.2



#23
 4-Chlorophenyl-phenylether
 Concen: 0.08 ng
 RT: 15.57 min Scan# 717
 Delta R.T. -0.33 min
 Lab File: BE091946.D
 Acq: 24 Jun 2016 14:48

Tgt Ion	Resp	Lower	Upper
204	1186		
206	100	27.8	41.6#
141	0.0	197.6	296.4#

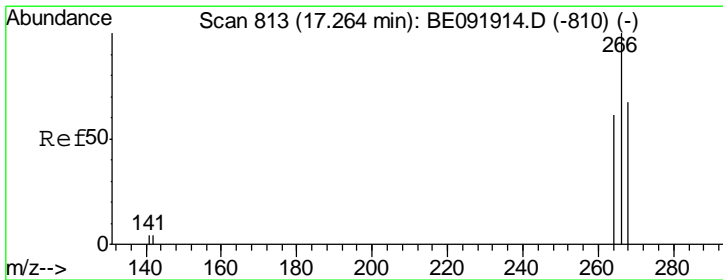
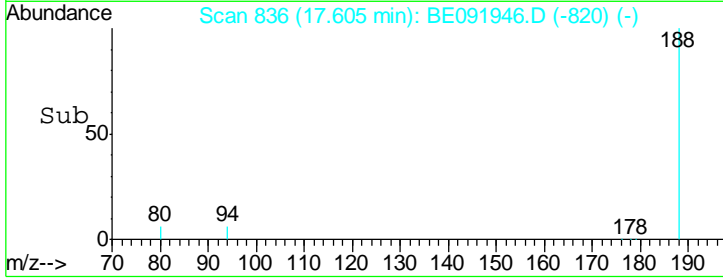
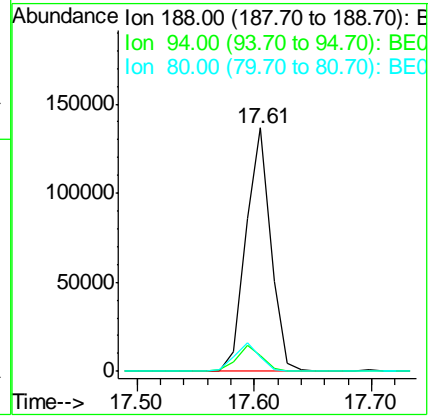
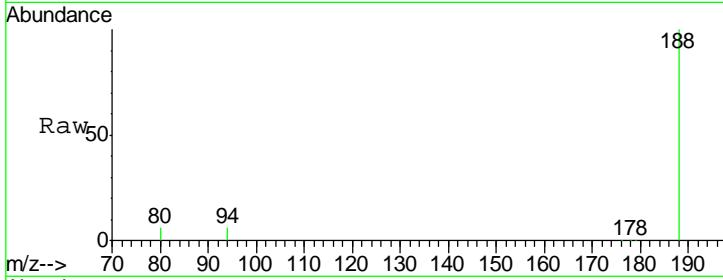




#24
 Phenanthrene-d10
 Concen: 5.00 ng
 RT: 17.61 min Scan# 836
 Delta R.T. -0.00 min
 Lab File: BE091946.D
 Acq: 24 Jun 2016 14:48

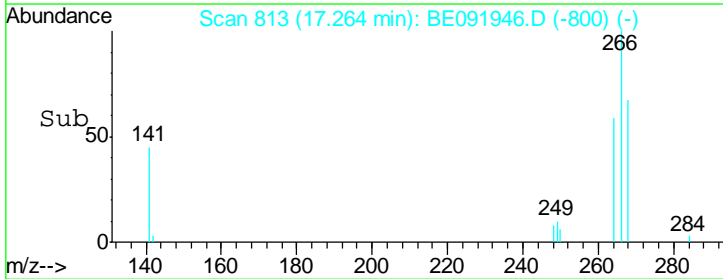
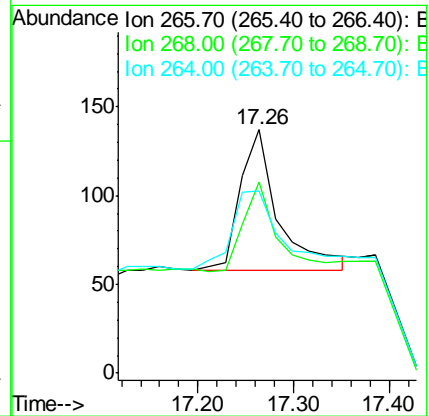
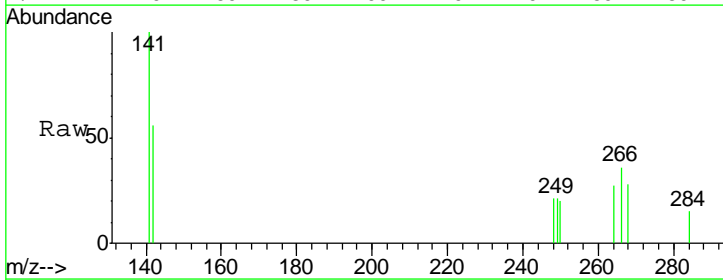
Instrument :
 BNA_E
 ClientSampled :

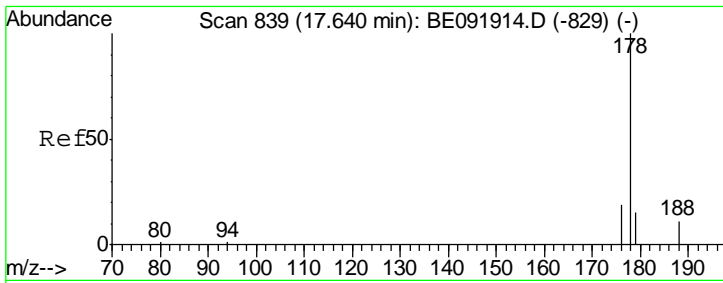
Tgt Ion	Resp	Lower	Upper
188	100		
94	6.4	4.1	6.1#
80	5.7	3.4	5.2#



#27
 Pentachlorophenol
 Concen: 0.17 ng
 RT: 17.26 min Scan# 813
 Delta R.T. 0.02 min
 Lab File: BE091946.D
 Acq: 24 Jun 2016 14:48

Tgt Ion	Resp	Lower	Upper
266	100		
268	78.8	60.5	90.7
264	75.2	51.0	76.4



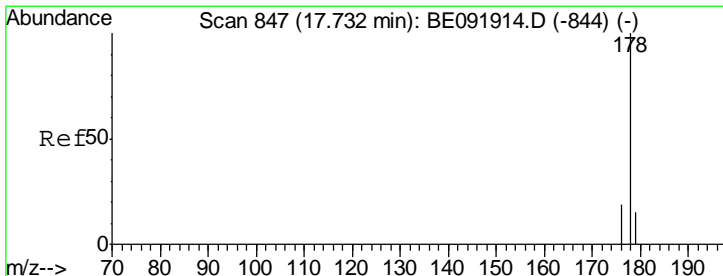
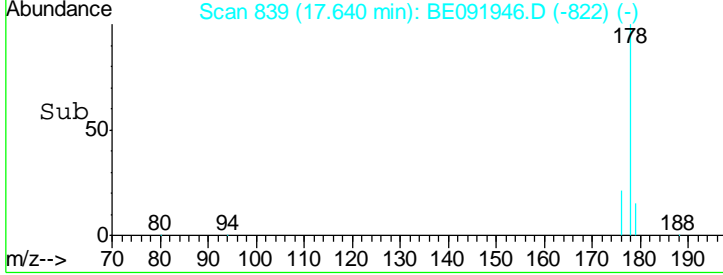
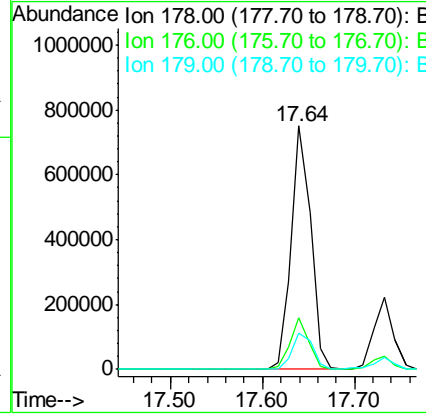
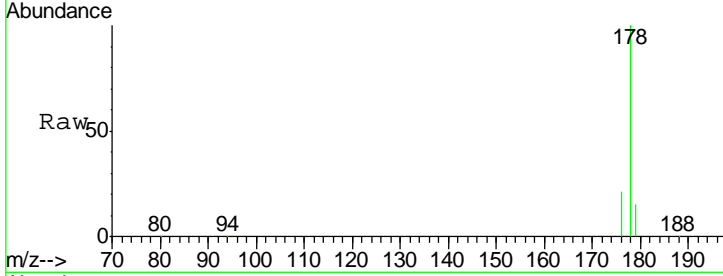


#28
 Phenanthrene
 Concen: 22.12 ng
 RT: 17.64 min Scan# 839
 Delta R.T. -0.00 min
 Lab File: BE091946.D
 Acq: 24 Jun 2016 14:48

Instrument :
 BNA_E
 ClientSampled :

Tgt Ion:178 Resp: 1109874

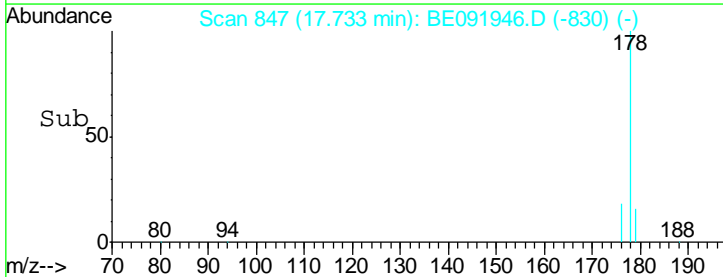
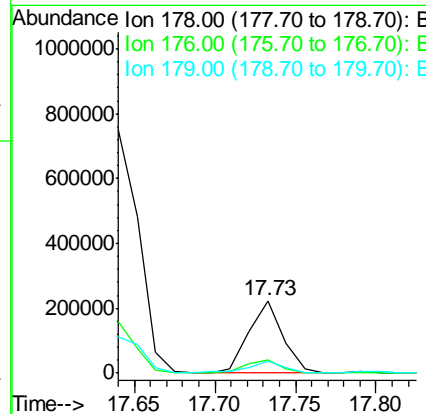
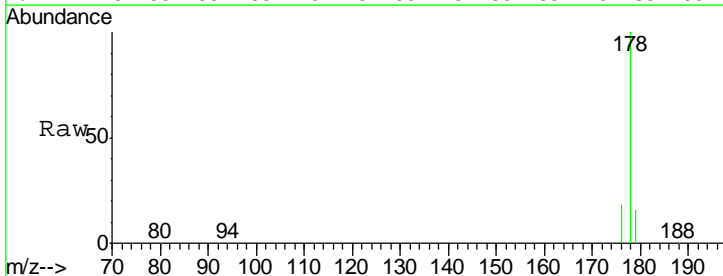
Ion	Ratio	Lower	Upper
178	100		
176	20.1	15.4	23.2
179	15.8	12.9	19.3

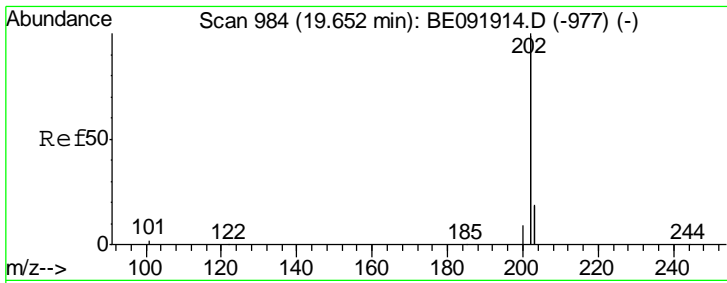


#29
 Anthracene
 Concen: 7.22 ng
 RT: 17.73 min Scan# 847
 Delta R.T. -0.00 min
 Lab File: BE091946.D
 Acq: 24 Jun 2016 14:48

Tgt Ion:178 Resp: 320790

Ion	Ratio	Lower	Upper
178	100		
176	19.5	15.1	22.7
179	16.8	12.1	18.1

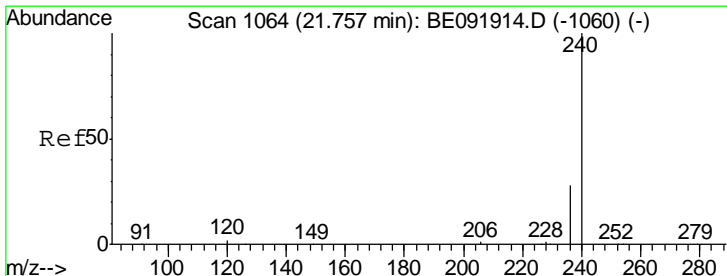
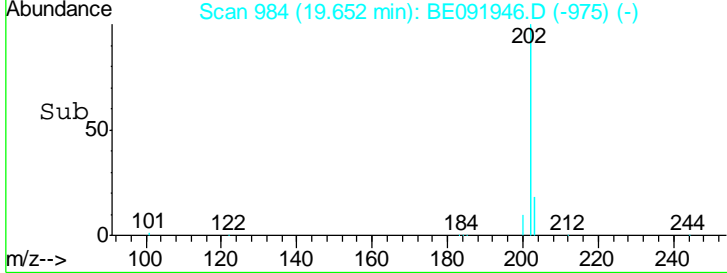
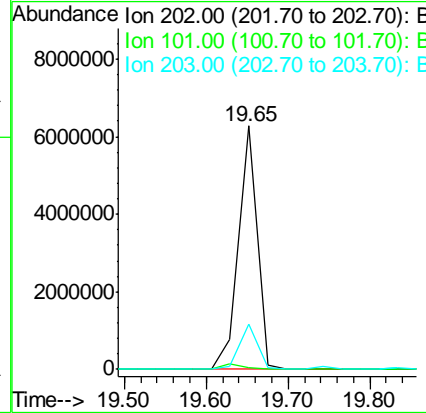
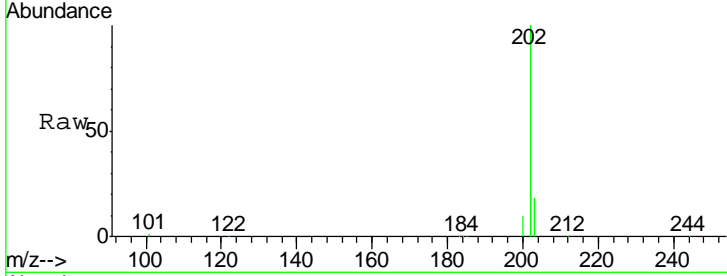




#30
 Fluoranthene
 Concen: 45.70 ng
 RT: 19.65 min Scan# 984
 Delta R.T. 0.00 min
 Lab File: BE091946.D
 Acq: 24 Jun 2016 14:48

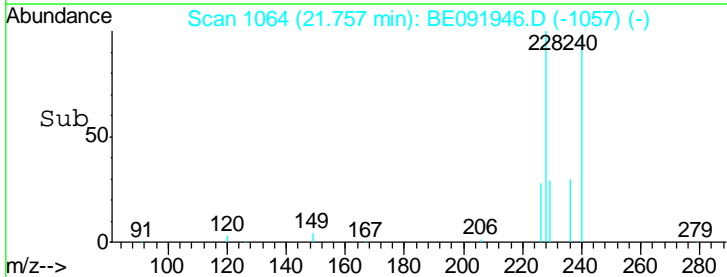
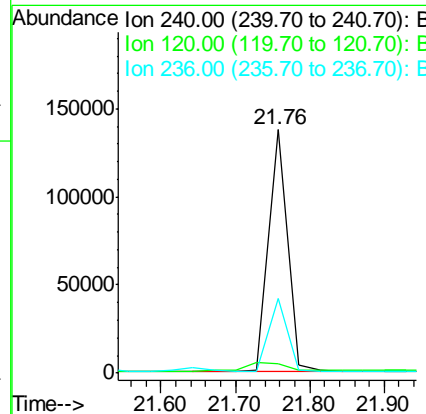
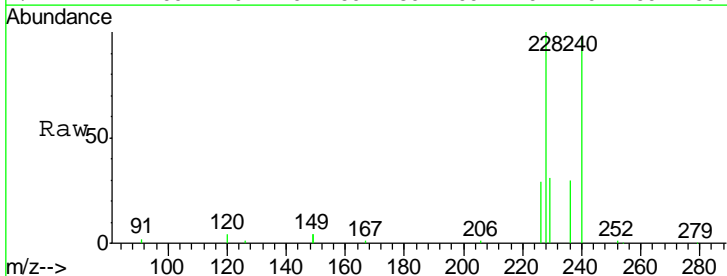
Instrument :
 BNA_E
 ClientSampled :

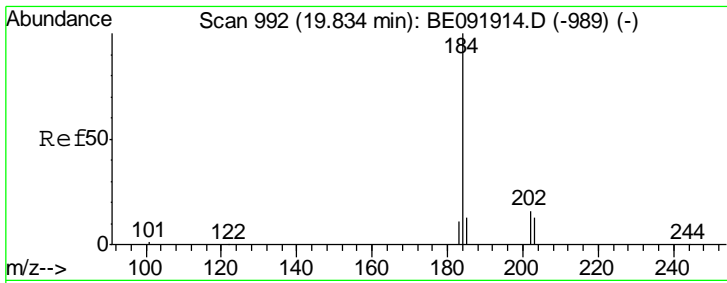
Tgt Ion	Resp	Lower	Upper
202	100		
101	0.0	9.4	14.0#
203	17.9	14.3	21.5



#31
 Chrysene-d12
 Concen: 5.00 ng
 RT: 21.76 min Scan# 1064
 Delta R.T. 0.00 min
 Lab File: BE091946.D
 Acq: 24 Jun 2016 14:48

Tgt Ion	Resp	Lower	Upper
240	100		
120	3.6	1.2	1.8#
236	30.6	19.8	29.8#

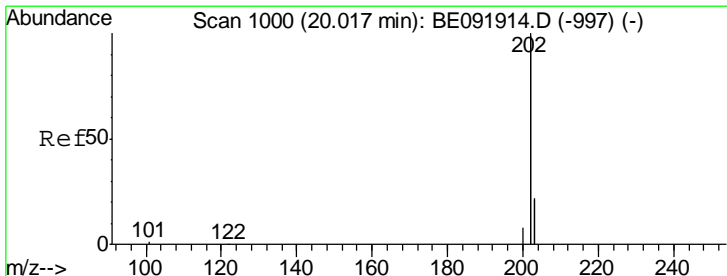
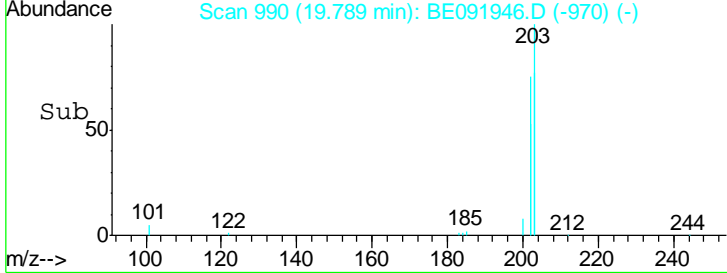
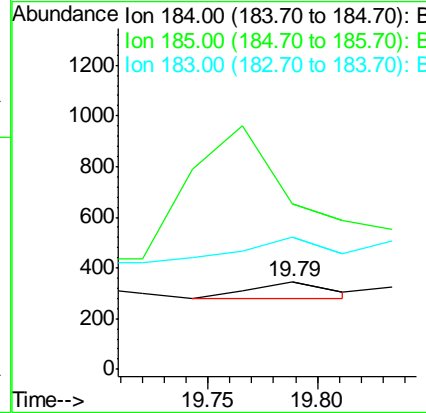
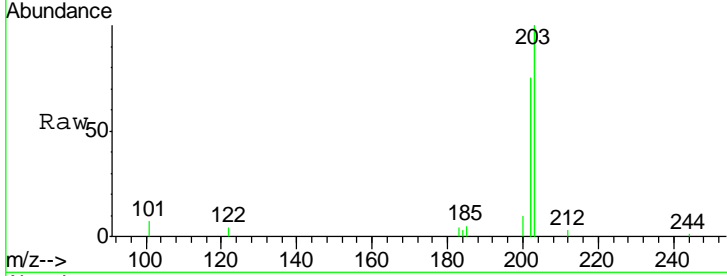




#32
Benzidine
Concen: 0.11 ng
RT: 19.79 min Scan# 990
Delta R.T. -0.04 min
Lab File: BE091946.D
Acq: 24 Jun 2016 14:48

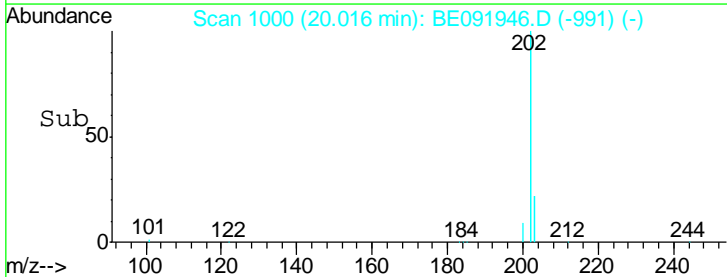
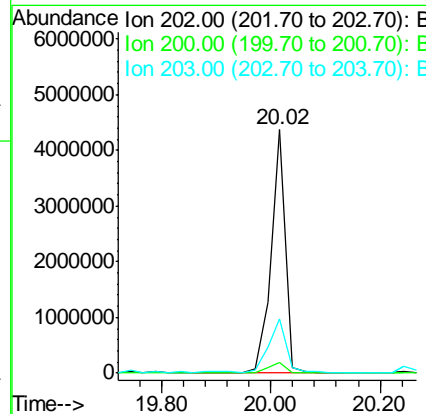
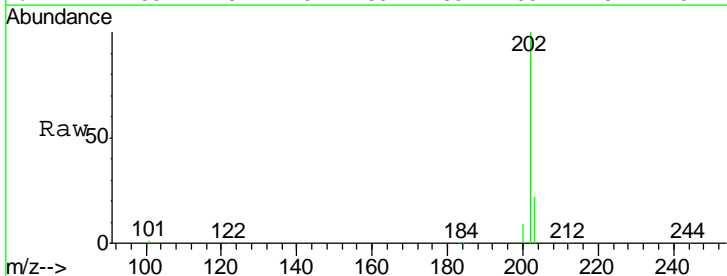
Instrument :
BNA_E
ClientSampleId :

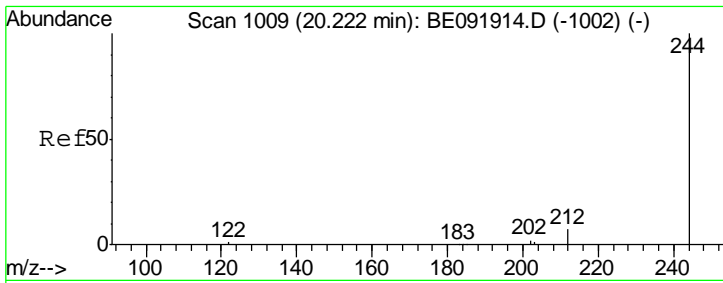
Tgt Ion	Resp	Lower	Upper
184	100		
185	189.3	11.4	17.2#
183	150.3	11.8	17.6#



#33
Pyrene
Concen: 47.41 ng
RT: 20.02 min Scan# 1000
Delta R.T. 0.00 min
Lab File: BE091946.D
Acq: 24 Jun 2016 14:48

Tgt Ion	Resp	Lower	Upper
202	100		
200	5.3	16.9	25.3#
203	27.5	14.1	21.1#

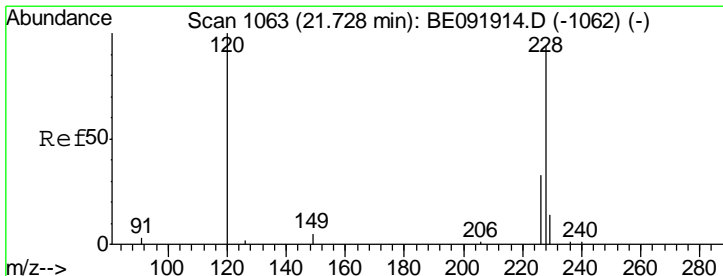
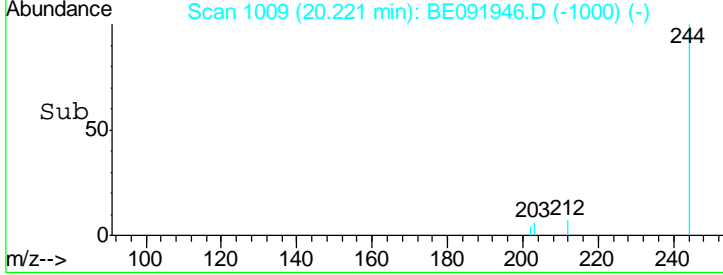
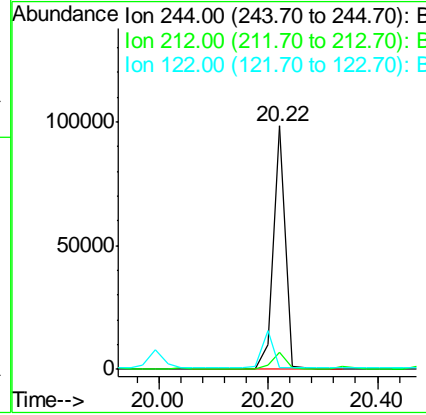
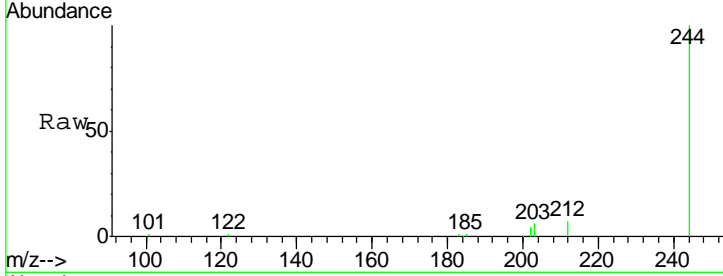




#34
 Terphenyl-d14
 Concen: 4.97 ng
 RT: 20.22 min Scan# 1009
 Delta R.T. 0.00 min
 Lab File: BE091946.D
 Acq: 24 Jun 2016 14:48

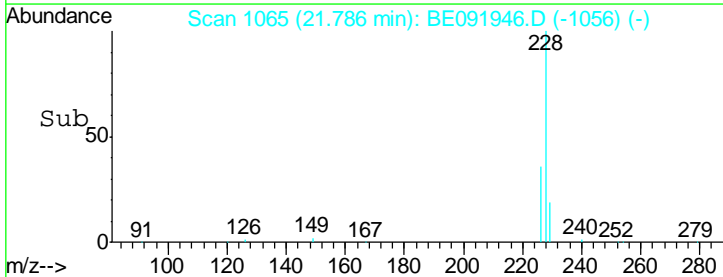
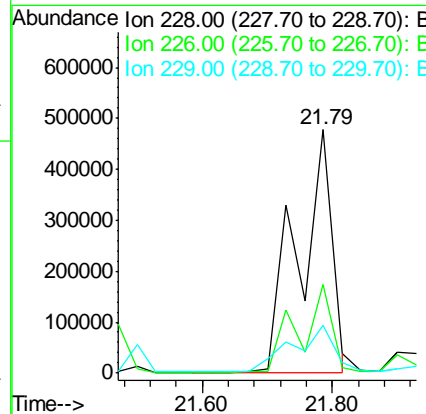
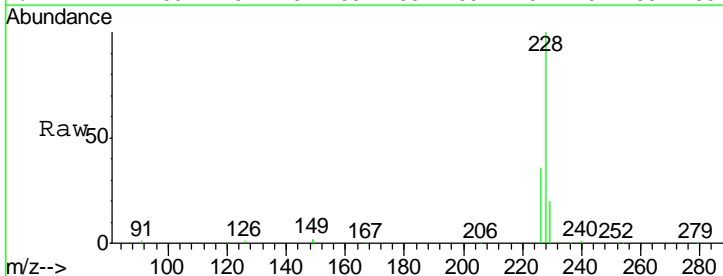
Instrument :
 BNA_E
 ClientSampled :

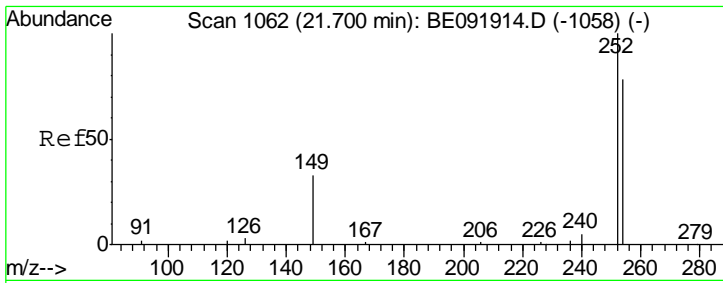
Tgt Ion	Resp	Lower	Upper
244	150121		
212	7.0	6.5	9.7
122	0.8	2.9	4.3



#35
 Benzo(a)anthracene
 Concen: 44.01 ng
 RT: 21.79 min Scan# 1065
 Delta R.T. 0.06 min
 Lab File: BE091946.D
 Acq: 24 Jun 2016 14:48

Tgt Ion	Resp	Lower	Upper
228	1706862		
226	36.2	21.0	31.4
229	19.9	15.8	23.8

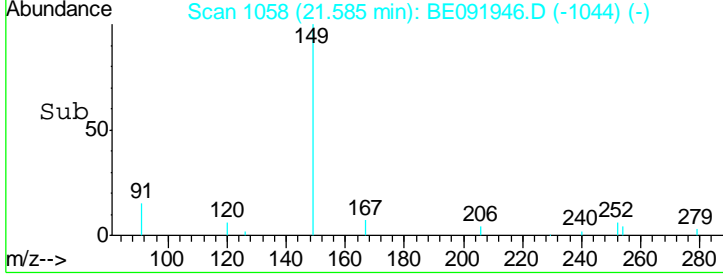
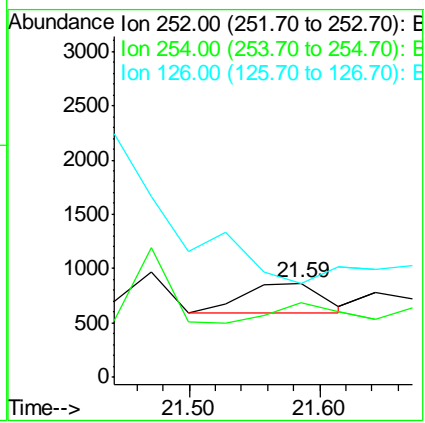
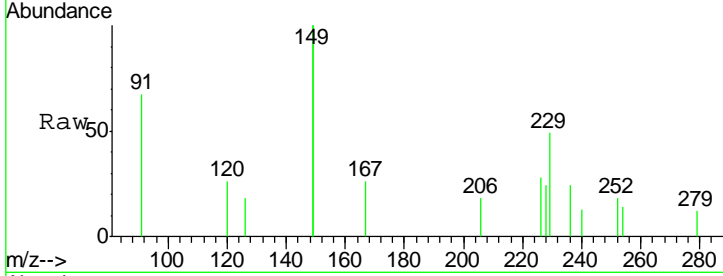




#36
 3,3'-Dichlorobenzidine
 Concen: 0.18 ng
 RT: 21.59 min Scan# 1058
 Delta R.T. -0.08 min
 Lab File: BE091946.D
 Acq: 24 Jun 2016 14:48

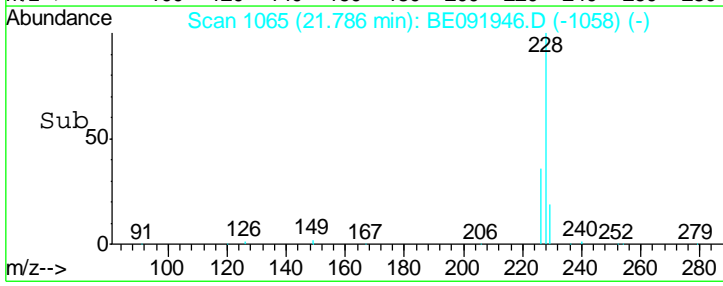
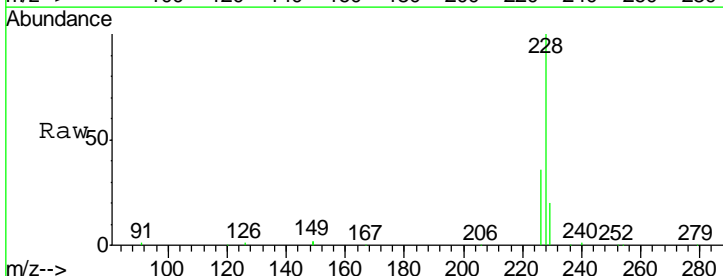
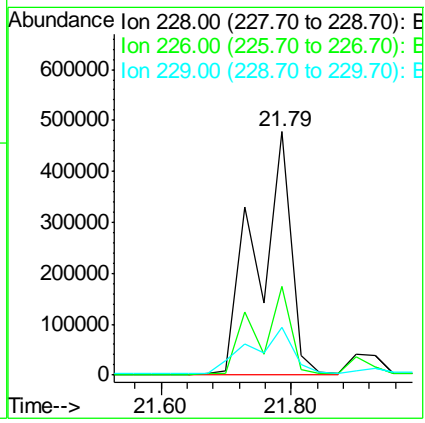
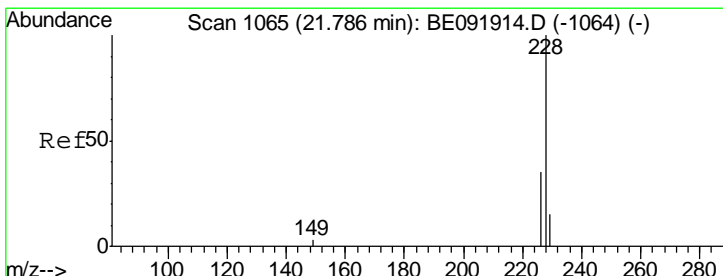
Instrument :
 BNA_E
 ClientSampled :

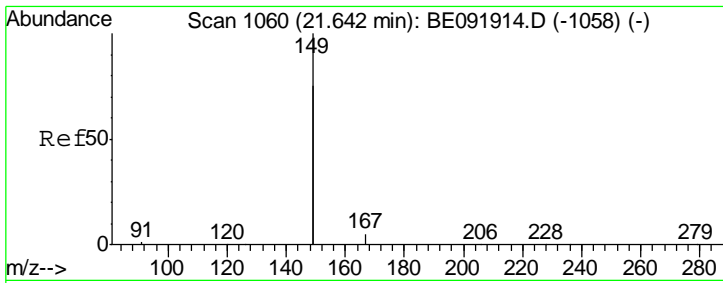
Tgt Ion	Resp	Lower	Upper
252	1153		
254	79.0	61.5	92.3
126	99.0	2.5	3.7#



#37
 Chrysene
 Concen: 30.31 ng
 RT: 21.79 min Scan# 1065
 Delta R.T. 0.00 min
 Lab File: BE091946.D
 Acq: 24 Jun 2016 14:48

Tgt Ion	Resp	Lower	Upper
228	1716830		
226	36.2	27.0	40.6
229	19.9	13.8	20.8

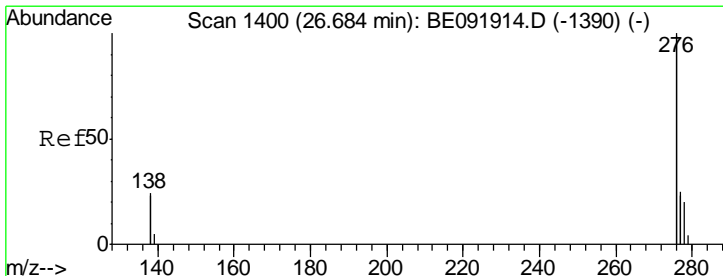
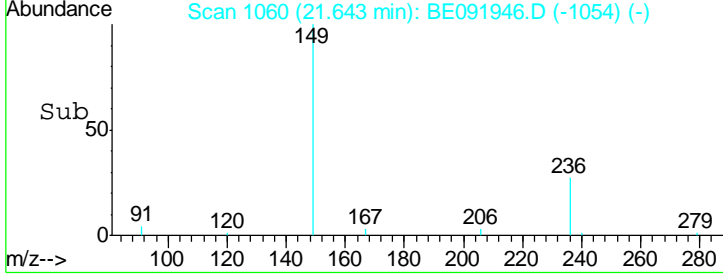
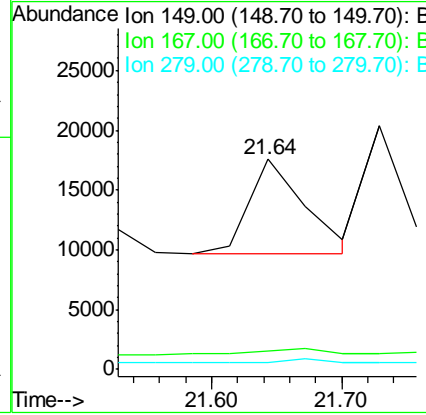
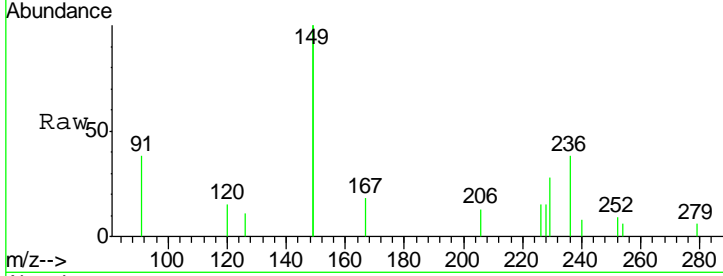




#38
 Bis(2-ethylhexyl)phthalate
 Concen: 0.99 ng
 RT: 21.64 min Scan# 1060
 Delta R.T. -0.03 min
 Lab File: BE091946.D
 Acq: 24 Jun 2016 14:48

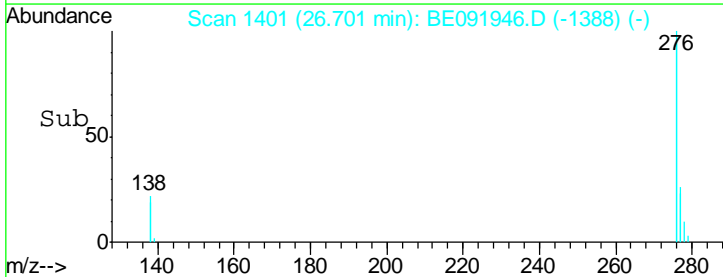
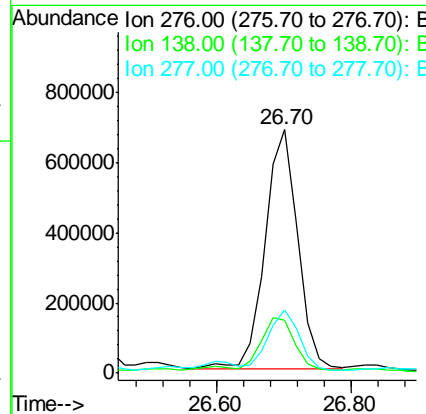
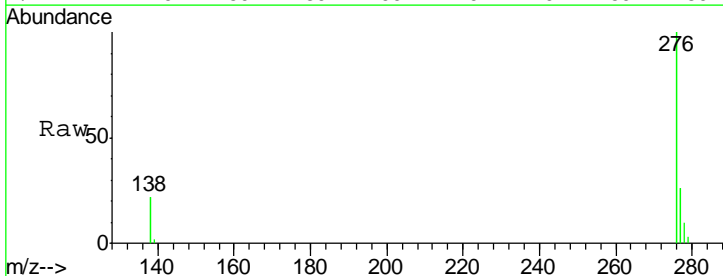
Instrument :
 BNA_E
 ClientSampled :

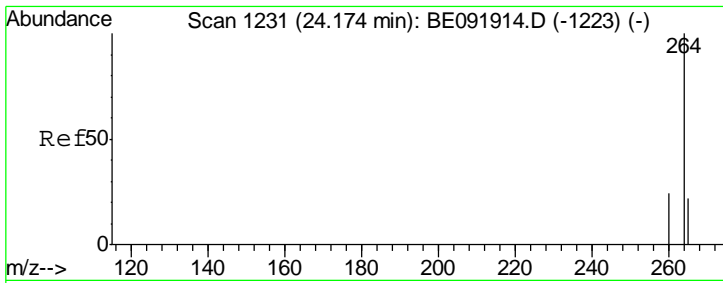
Tgt Ion	Resp	Lower	Upper
149	23272		
167	0.0	0.0	0.0
279	0.0	0.0	0.0



#39
 Indeno(1,2,3-cd)pyrene
 Concen: 11.75 ng
 RT: 26.70 min Scan# 1401
 Delta R.T. 0.02 min
 Lab File: BE091946.D
 Acq: 24 Jun 2016 14:48

Tgt Ion	Resp	Lower	Upper
276	2276709		
138	23.7	19.7	29.5
277	24.2	20.1	30.1

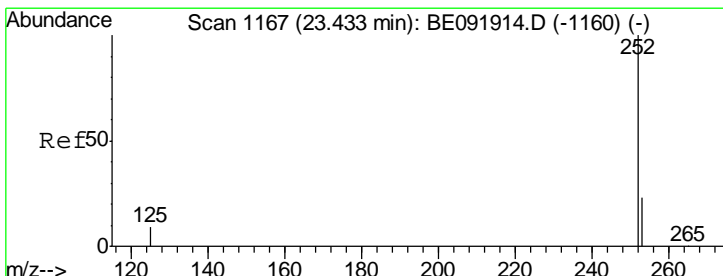
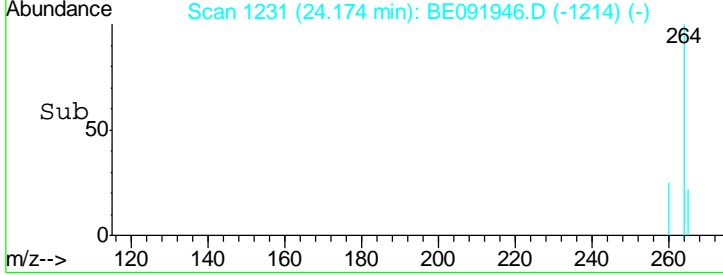
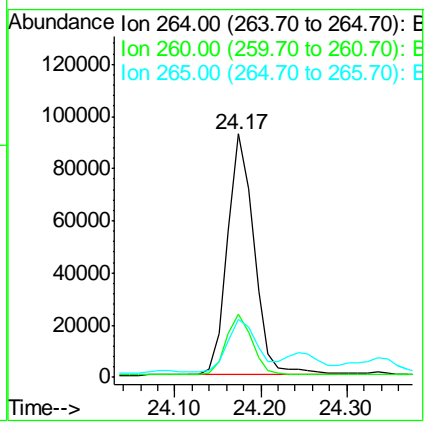
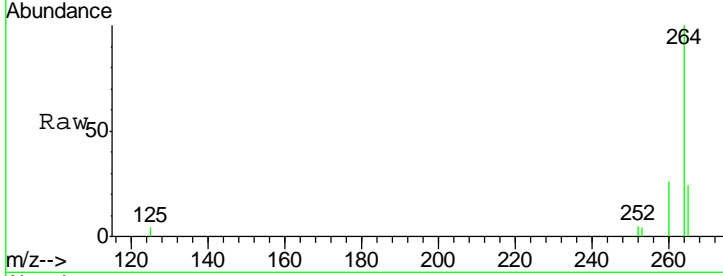




#40
 Perylene-d12
 Concen: 5.00 ng
 RT: 24.17 min Scan# 1231
 Delta R.T. -0.00 min
 Lab File: BE091946.D
 Acq: 24 Jun 2016 14:48

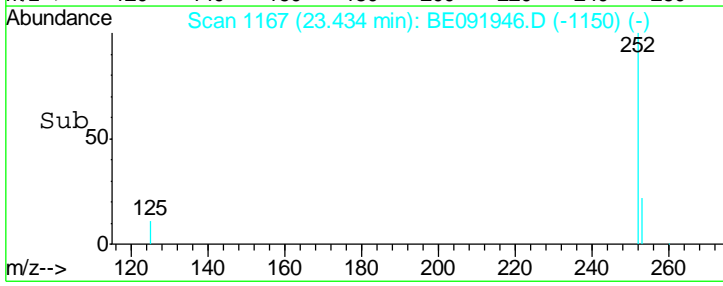
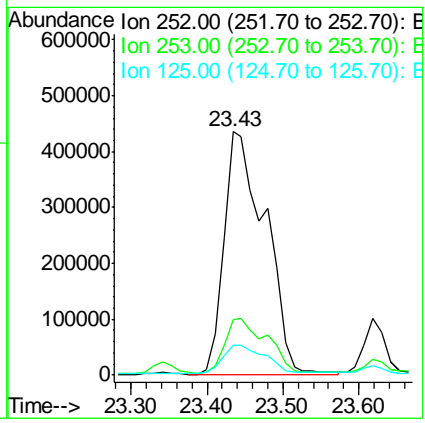
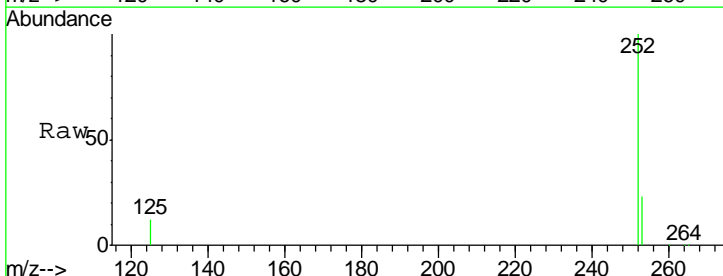
Instrument :
 BNA_E
 ClientSampled :

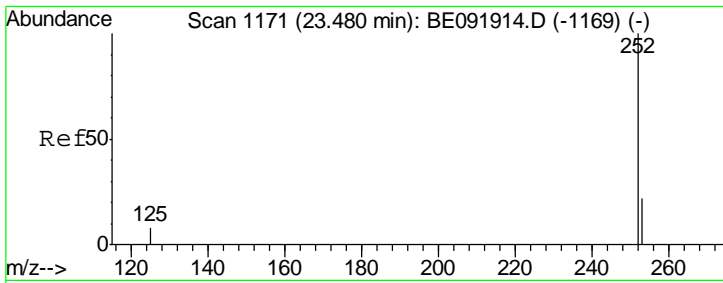
Tgt Ion	Resp	Lower	Upper
264	100		
260	25.9	20.3	30.5
265	23.9	17.6	26.4



#41
 Benzo(b)fluoranthene
 Concen: 32.13 ng
 RT: 23.43 min Scan# 1167
 Delta R.T. -0.00 min
 Lab File: BE091946.D
 Acq: 24 Jun 2016 14:48

Tgt Ion	Resp	Lower	Upper
252	100		
253	22.7	17.8	26.6
125	12.0	9.4	14.2



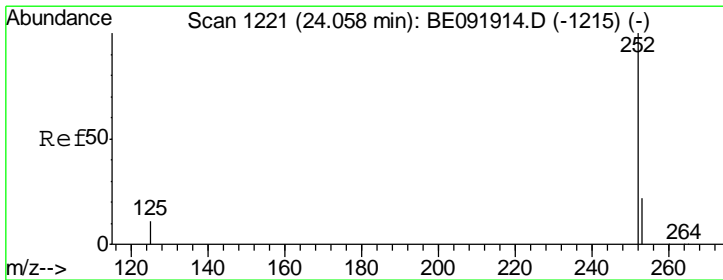
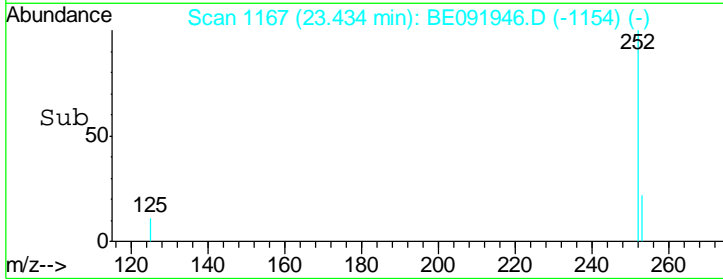
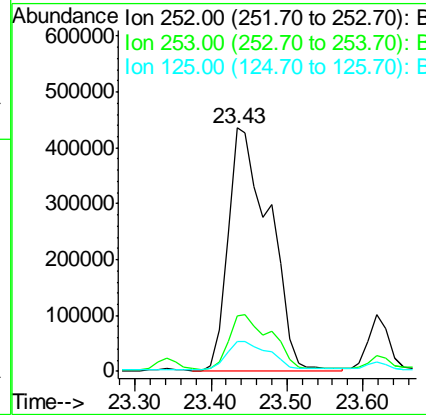
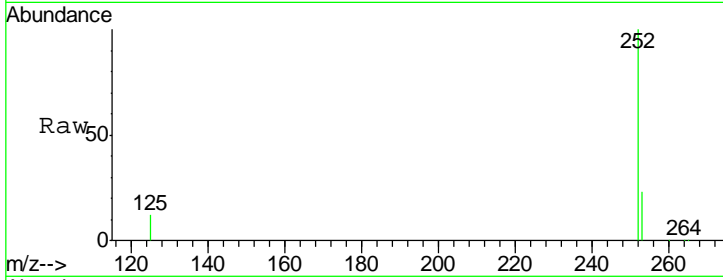


#42
 Benzo(k)fluoranthene
 Concen: 35.11 ng
 RT: 23.43 min Scan# 1167
 Delta R.T. -0.05 min
 Lab File: BE091946.D
 Acq: 24 Jun 2016 14:48

Instrument :
 BNA_E
 ClientSampled :

Tgt Ion: 252 Resp: 1645071

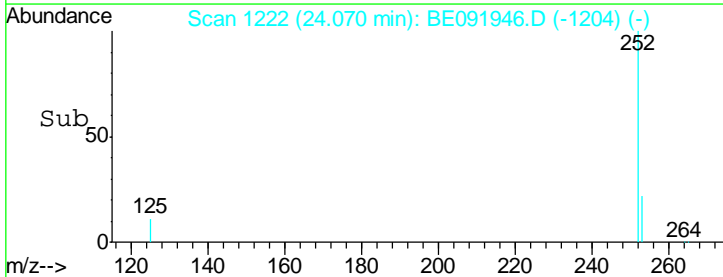
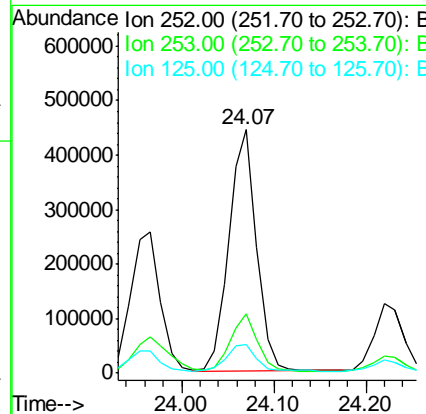
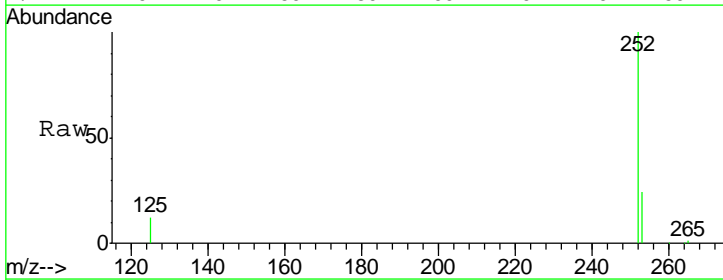
Ion	Ratio	Lower	Upper
252	100		
253	22.7	19.4	29.2
125	12.0	8.3	12.5

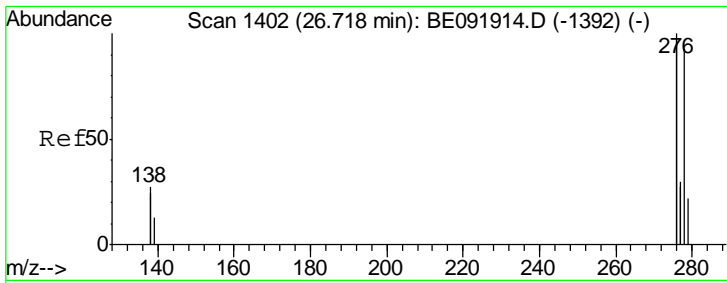


#43
 Benzo(a)pyrene
 Concen: 20.51 ng
 RT: 24.07 min Scan# 1222
 Delta R.T. 0.01 min
 Lab File: BE091946.D
 Acq: 24 Jun 2016 14:48

Tgt Ion: 252 Resp: 917503

Ion	Ratio	Lower	Upper
252	100		
253	24.2	18.9	28.3
125	11.7	10.5	15.7

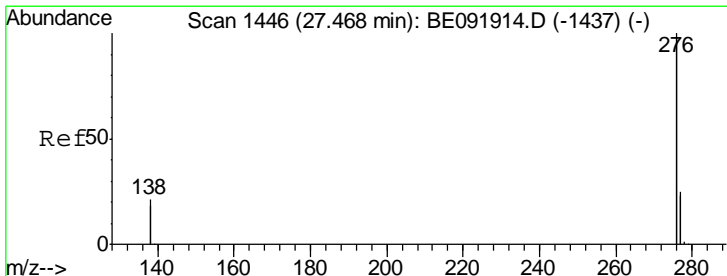
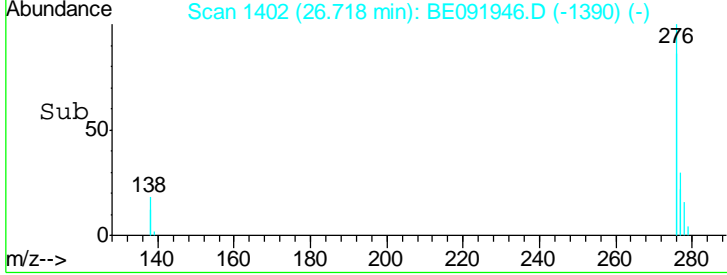
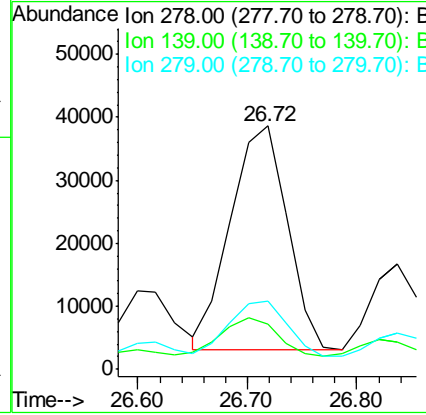
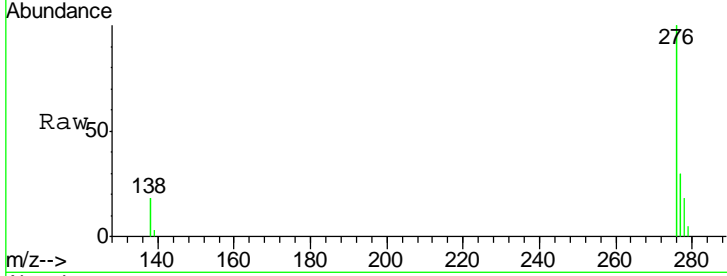




#44
 Dibenzo(a,h)anthracene
 Concen: 2.93 ng
 RT: 26.72 min Scan# 1402
 Delta R.T. -0.00 min
 Lab File: BE091946.D
 Acq: 24 Jun 2016 14:48

Instrument :
 BNA_E
 ClientSampleId :

Tgt Ion	Resp	Lower	Upper
278	127511		
278	100		
139	18.4	12.6	18.8
279	27.9	20.0	30.0



#45
 Benzo(g,h,i)perylene
 Concen: 12.35 ng
 RT: 27.48 min Scan# 1447
 Delta R.T. 0.02 min
 Lab File: BE091946.D
 Acq: 24 Jun 2016 14:48

Tgt Ion	Resp	Lower	Upper
276	2220214		
276	100		
277	24.8	19.5	29.3
138	22.5	17.7	26.5

