

Data Path : Z:\HPCHEM1\BNA_E\DATA\BE070215\
 Data File : BE090051.D
 Acq On : 2 Jul 2015 13:01
 Operator : TP/IZ
 Sample : SSTDCCC001
 Misc :
 ALS Vial : 2 Sample Multiplier: 1

Instrument :
 BNA_E
 ClientSampleId :
 SSTDCCC001

Quant Time: Jul 03 01:26:54 2015
 Quant Method : Z:\HPCHEM1\BNA_M\METHODS\8270-SIM-BE062915.M
 Quant Title : ASP BNA STANDARDS FOR 5 POINT CALIBRATION
 QLast Update : Tue Jun 30 07:01:01 2015
 Response via : Initial Calibration

Internal Standards	R.T.	QIon	Response	Conc	Units	Dev(Min)
1) 1,4-Dichlorobenzene-d4	7.61	152	16666	5.00	ng	-0.02
6) Naphthalene-d8	10.37	136	74887	5.00	ng	-0.01
12) Acenaphthene-d10	14.23	164	41534	5.00	ng	0.00
18) Phenanthrene-d10	16.96	188	93267	5.00	ng	-0.02
25) Chrysene-d12	21.12	240	110092	5.00	ng	-0.01
32) Perylene-d12	23.44	264	101514	5.00	ng	-0.02

System Monitoring Compounds

4) 2-Fluorophenol	5.24	112	3506	0.92	ng	-0.01
5) Phenol-d6	6.79	99	5161	0.96	ng	-0.01
7) Nitrobenzene-d5	8.75	82	5027	0.85	ng	-0.01
13) 2,4,6-Tribromophenol	15.73	330	792	0.65	ng	0.00
14) 2-Fluorobiphenyl	12.85	172	11409	0.91	ng	-0.01
27) Terphenyl-d14	19.58	244	16468	0.90	ng	-0.01

Target Compounds

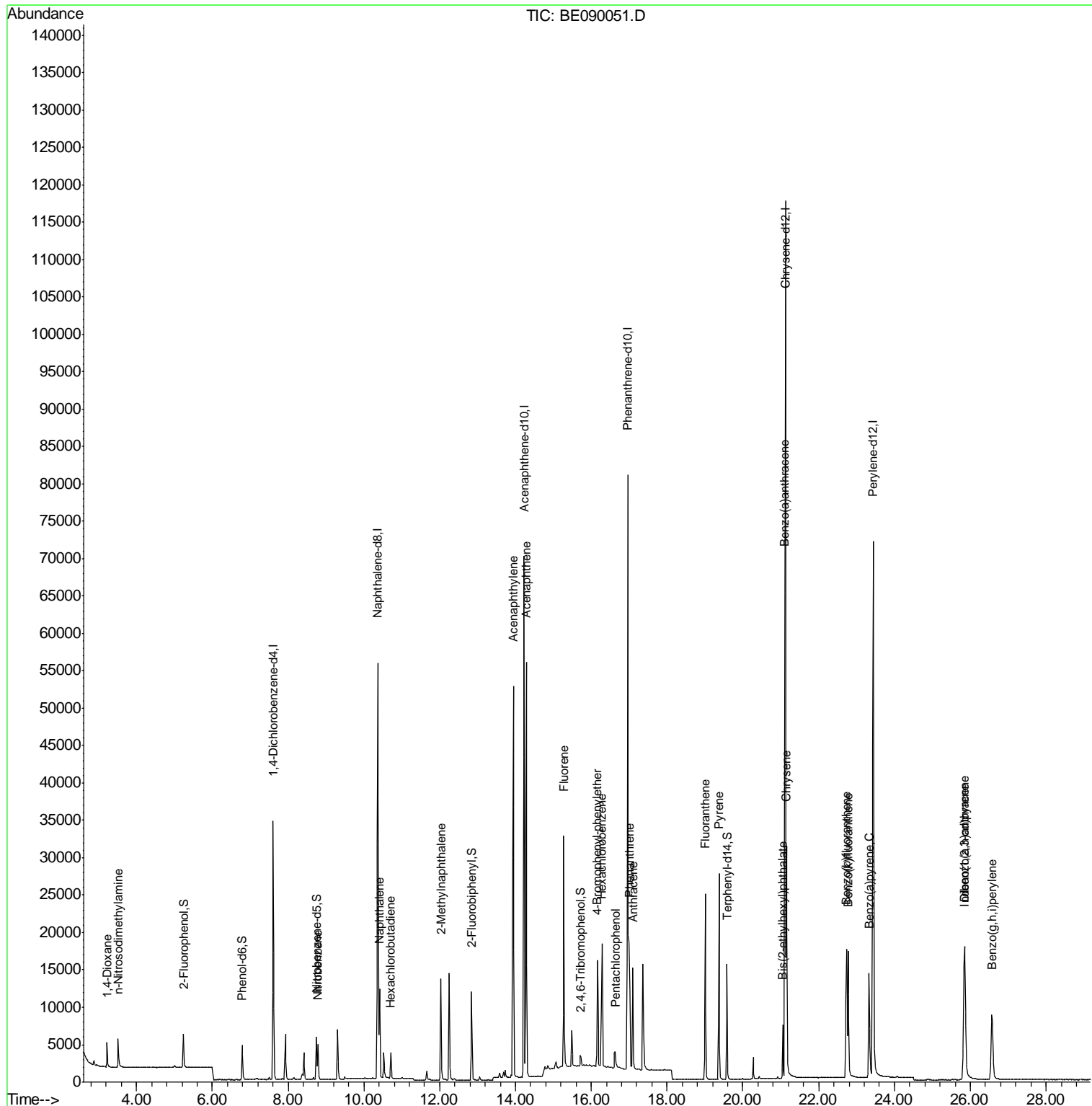
Target Compounds	R.T.	QIon	Response	Conc	Units	Qvalue
2) 1,4-Dioxane	3.22	88	2035	0.89	ng	92
3) n-Nitrosodimethylamine	3.51	42	2582	0.83	ng	97
8) Nitrobenzene	8.79	77	5321	0.84	ng	99
9) Naphthalene	10.41	128	15469	0.91	ng	99
10) Hexachlorobutadiene	10.71	225	2480	0.93	ng	100
11) 2-Methylnaphthalene	12.03	142	10005	0.88	ng	99
15) Acenaphthylene	13.94	152	68502	0.91	ng	100
16) Acenaphthene	14.28	154	10046	0.93	ng	97
17) Fluorene	15.27	166	13054	0.89	ng	99
19) 4-Bromophenyl-phenylether	16.16	248	3523	0.89	ng	95
20) Hexachlorobenzene	16.28	284	14987	0.91	ng	99
21) Pentachlorophenol	16.63	266	1745	1.06	ng	96
22) Phenanthrene	17.00	178	21449	0.90	ng	100
23) Anthracene	17.10	178	19465	0.89	ng	100
24) Fluoranthene	19.01	202	23690	0.89	ng	100
26) Pyrene	19.37	202	24758	0.94	ng	100
28) Benzo(a)anthracene	21.10	228	25007	0.91	ng	99
29) Chrysene	21.16	228	25706	0.90	ng	99
30) Bis(2-ethylhexyl)phthalate	21.05	149	6171	0.76	ng	100
31) Indeno(1,2,3-cd)pyrene	25.84	276	25708	0.94	ng	99
33) Benzo(b)fluoranthene	22.73	252	22511	1.01	ng	99
34) Benzo(k)fluoranthene	22.77	252	25381	1.01	ng	100
35) Benzo(a)pyrene	23.33	252	20760	1.00	ng	99
36) Dibenzo(a,h)anthracene	25.86	278	20359	0.96	ng	99
37) Benzo(g,h,i)perylene	26.57	276	20699	0.96	ng	97

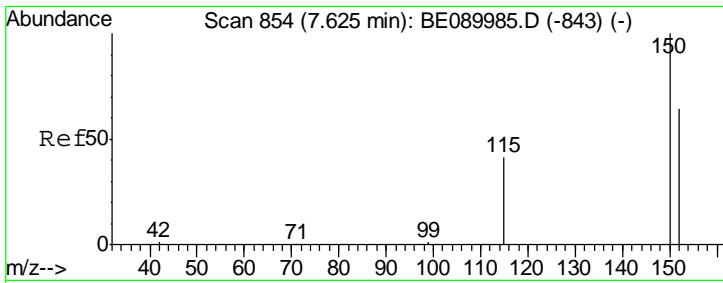
(#) = qualifier out of range (m) = manual integration (+) = signals summed

Data Path : Z:\HPCHEM1\BNA_E\DATA\BE070215\
 Data File : BE090051.D
 Acq On : 2 Jul 2015 13:01
 Operator : TP/IZ
 Sample : SSTDCCC001
 Misc :
 ALS Vial : 2 Sample Multiplier: 1

Instrument :
 BNA_E
 ClientSampleId :
 SSTDCCC001

Quant Time: Jul 03 01:26:54 2015
 Quant Method : Z:\HPCHEM1\BNA_M\METHODS\8270-SIM-BE062915.M
 Quant Title : ASP BNA STANDARDS FOR 5 POINT CALIBRATION
 QLast Update : Tue Jun 30 07:01:01 2015
 Response via : Initial Calibration

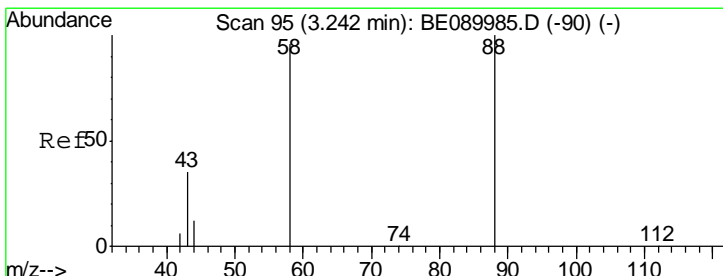
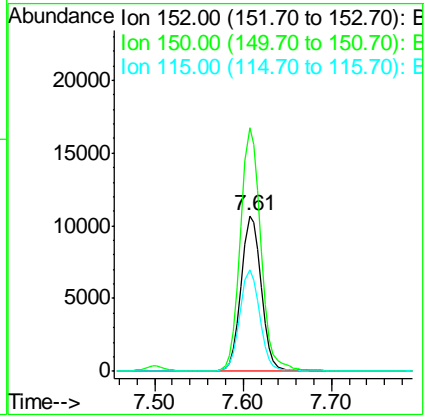
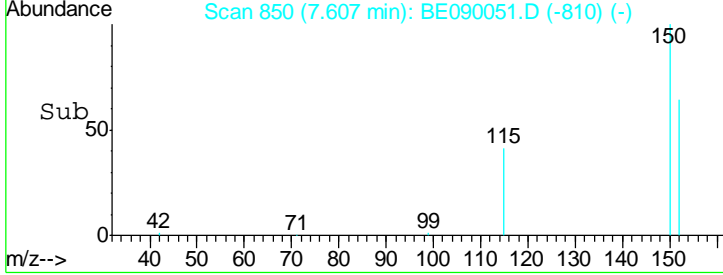
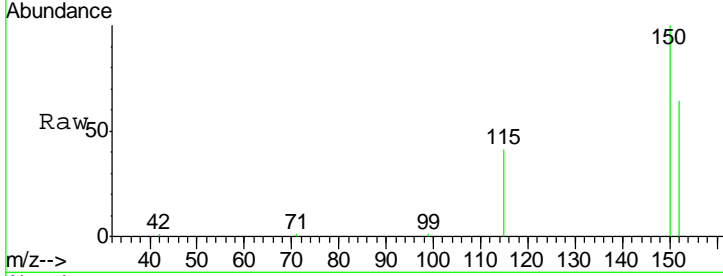




#1
 1,4-Dichlorobenzene-d4
 Concen: 5.00 ng
 RT: 7.61 min Scan# 850
 Delta R.T. -0.02 min
 Lab File: BE090051.D
 Acq: 2 Jul 2015 13:01

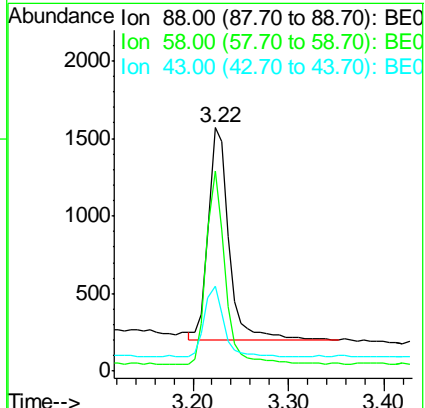
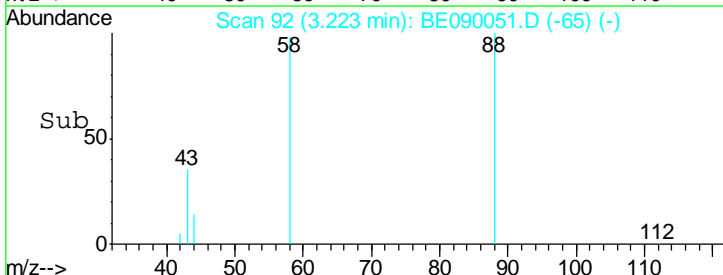
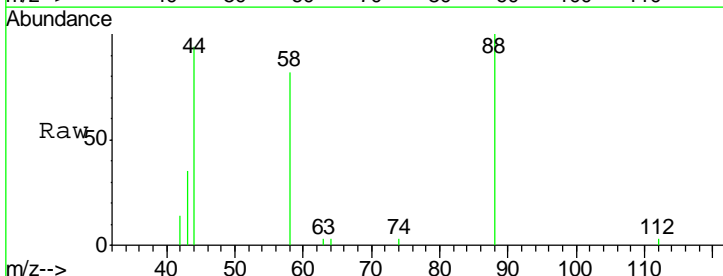
Instrument :
 BNA_E
ClientSampled :
 SSTDCCC001

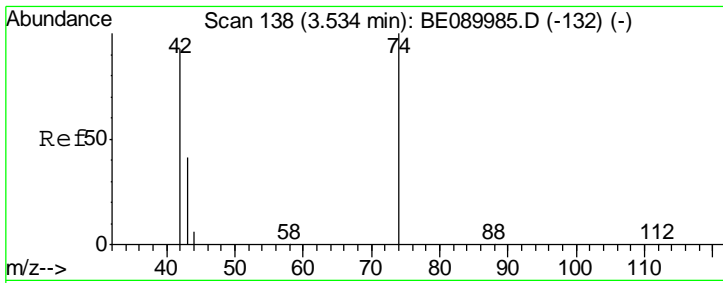
Tgt Ion	Resp	Lower	Upper
152	16666		
150	156.7	123.9	185.9
115	65.0	50.6	76.0



#2
 1,4-Dioxane
 Concen: 0.89 ng
 RT: 3.22 min Scan# 92
 Delta R.T. -0.02 min
 Lab File: BE090051.D
 Acq: 2 Jul 2015 13:01

Tgt Ion	Resp	Lower	Upper
88	2035		
88	100		
58	80.6	70.9	106.3
43	31.0	27.6	41.4



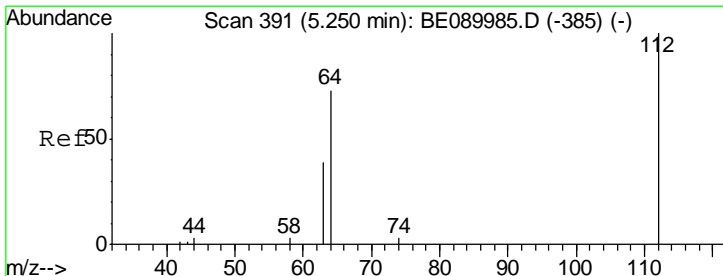
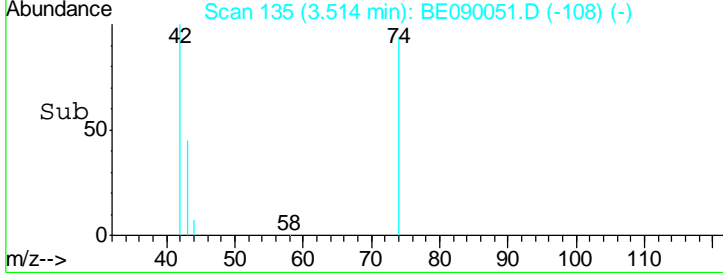
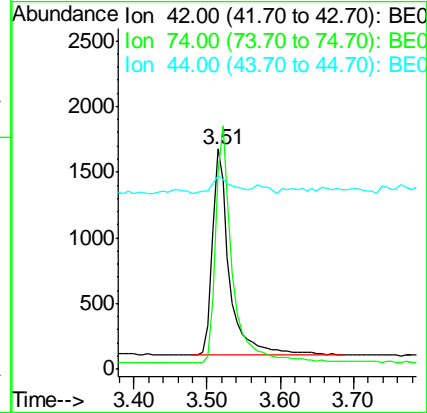
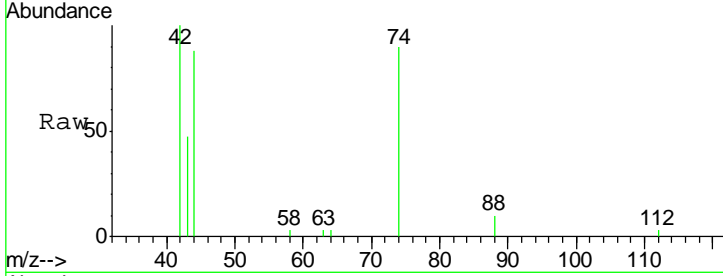


#3
 n-Nitrosodimethylamine
 Concen: 0.83 ng
 RT: 3.51 min Scan# 135
 Delta R.T. -0.02 min
 Lab File: BE090051.D
 Acq: 2 Jul 2015 13:01

Instrument :
 BNA_E
 ClientSampleId :
 SSTDCCC001

Tgt Ion: 42 Resp: 2582

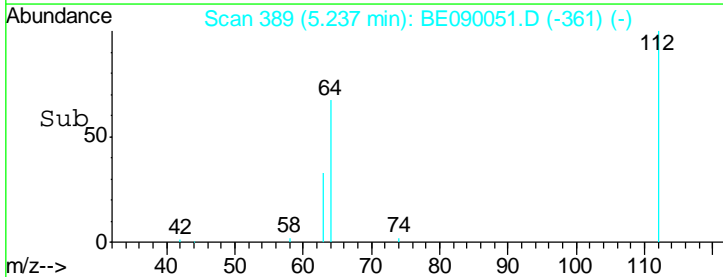
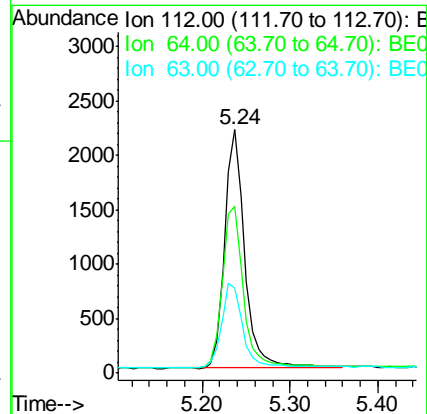
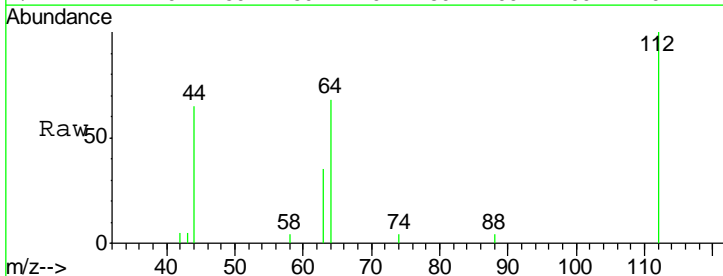
Ion	Ratio	Lower	Upper
42	100		
74	114.7	89.4	134.2
44	9.7	6.9	10.3

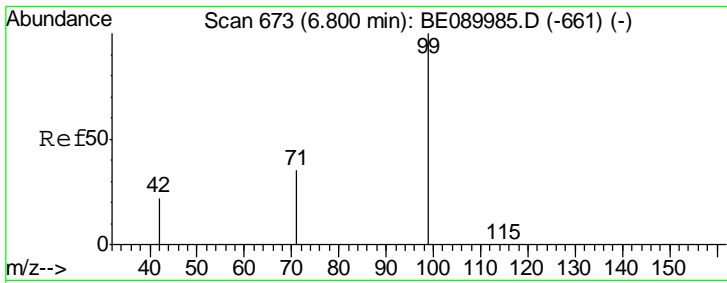


#4
 2-Fluorophenol
 Concen: 0.92 ng
 RT: 5.24 min Scan# 389
 Delta R.T. -0.01 min
 Lab File: BE090051.D
 Acq: 2 Jul 2015 13:01

Tgt Ion: 112 Resp: 3506

Ion	Ratio	Lower	Upper
112	100		
64	71.1	56.3	84.5
63	36.7	29.8	44.6

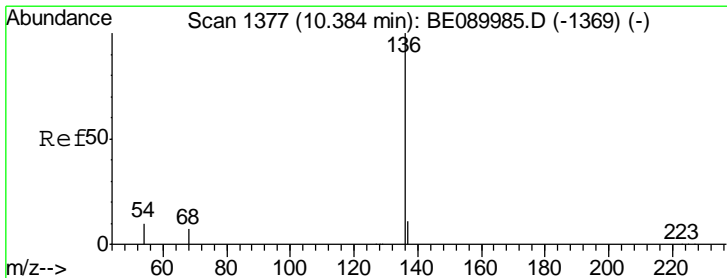
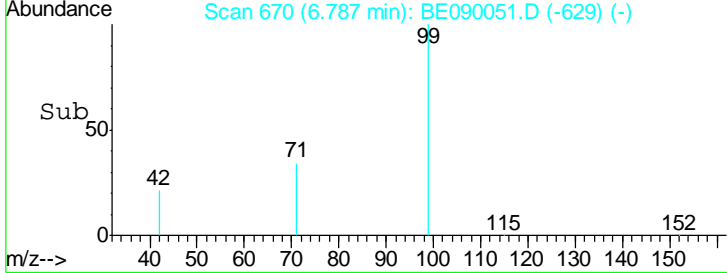
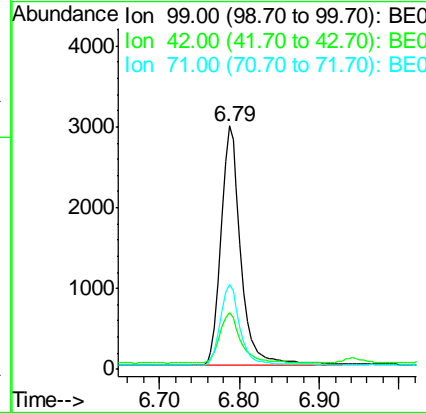
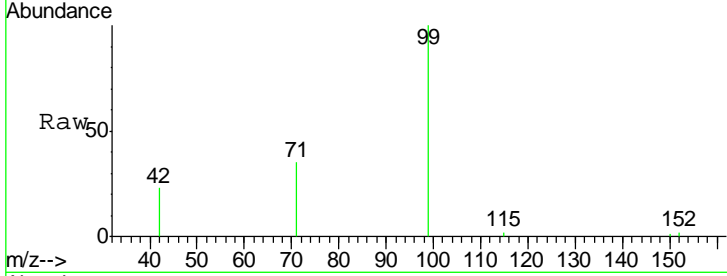




#5
 Phenol-d6
 Concen: 0.96 ng
 RT: 6.79 min Scan# 670
 Delta R.T. -0.01 min
 Lab File: BE090051.D
 Acq: 2 Jul 2015 13:01

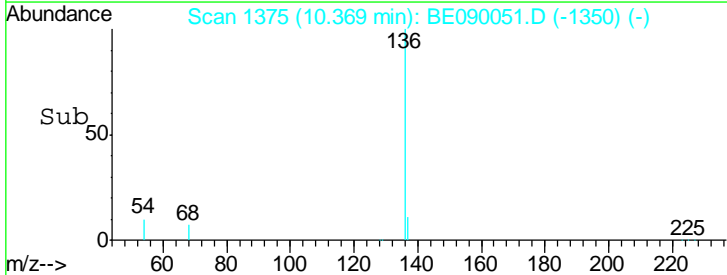
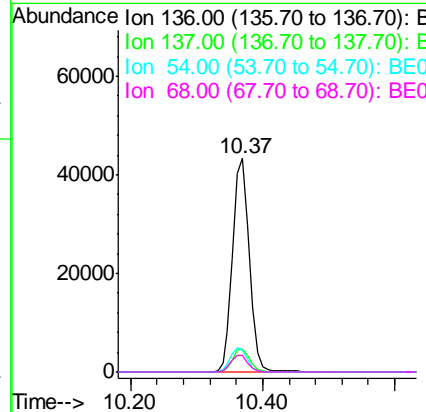
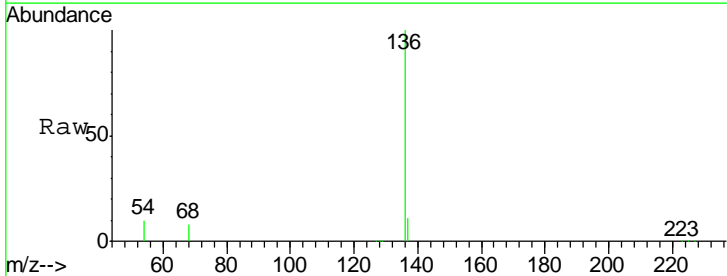
Instrument :
 BNA_E
 ClientSampleId :
 SSTDCCC001

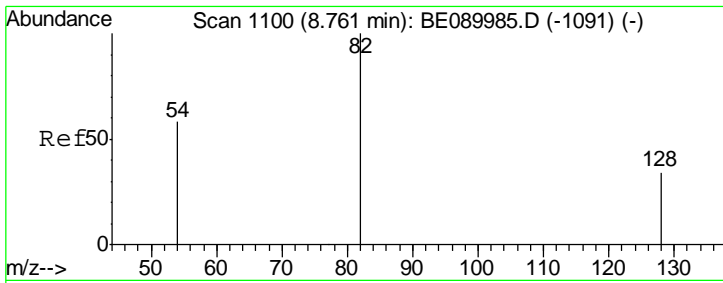
Tgt Ion	Resp	Lower	Upper
99	5161		
42	22.0	18.7	28.1
71	34.0	27.5	41.3



#6
 Naphthalene-d8
 Concen: 5.00 ng
 RT: 10.37 min Scan# 1375
 Delta R.T. -0.01 min
 Lab File: BE090051.D
 Acq: 2 Jul 2015 13:01

Tgt Ion	Resp	Lower	Upper
136	74887		
137	11.0	8.9	13.3
54	10.2	8.2	12.4
68	7.5	5.8	8.8

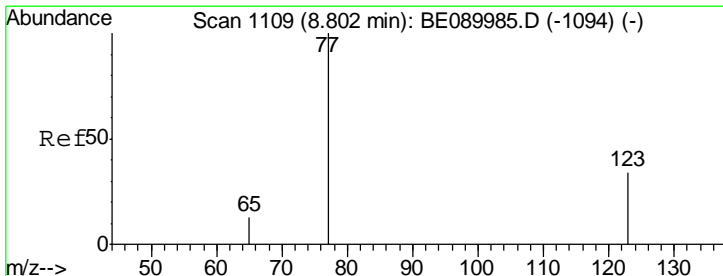
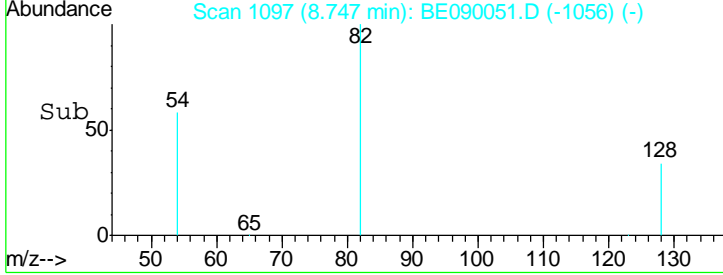
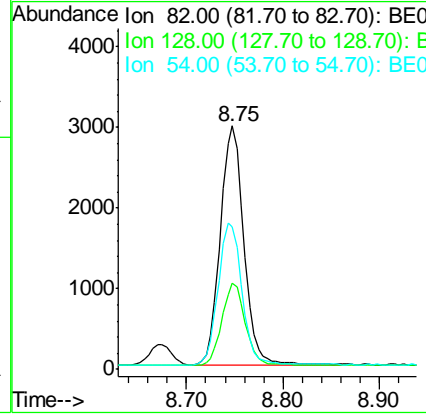
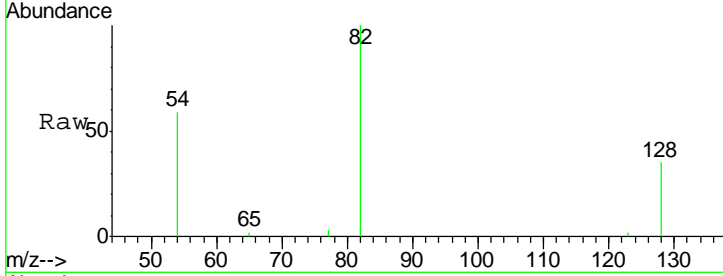




#7
 Nitrobenzene-d5
 Concen: 0.85 ng
 RT: 8.75 min Scan# 1097
 Delta R.T. -0.01 min
 Lab File: BE090051.D
 Acq: 2 Jul 2015 13:01

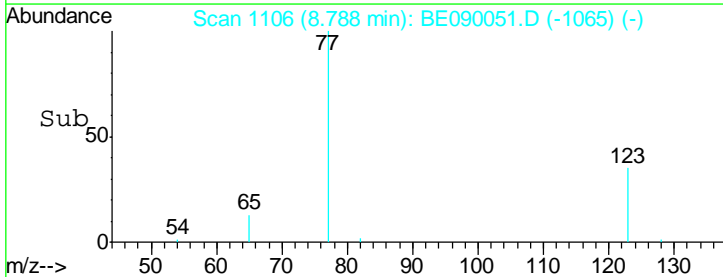
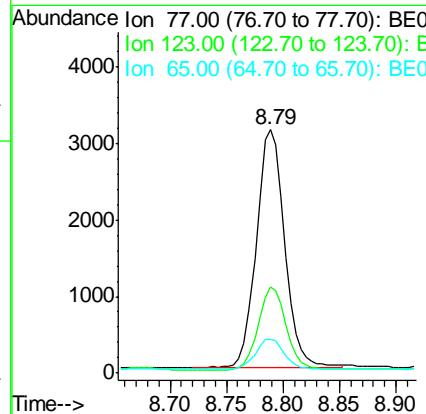
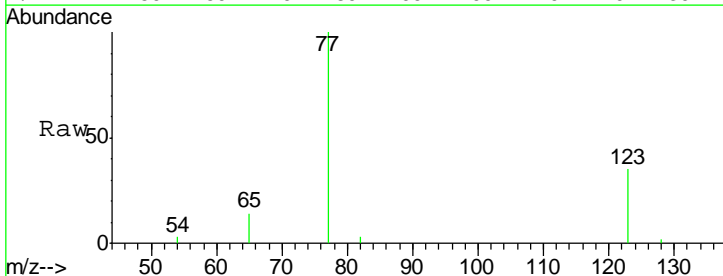
Instrument :
 BNA_E
 ClientSampleId :
 SSTDCCC001

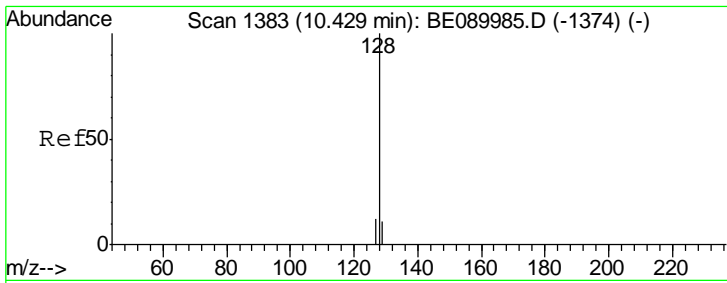
Tgt Ion	Resp	Lower	Upper
82	100		
128	35.2	28.0	42.0
54	58.6	47.6	71.4



#8
 Nitrobenzene
 Concen: 0.84 ng
 RT: 8.79 min Scan# 1106
 Delta R.T. -0.01 min
 Lab File: BE090051.D
 Acq: 2 Jul 2015 13:01

Tgt Ion	Resp	Lower	Upper
77	100		
123	34.7	27.4	41.0
65	12.5	10.6	15.8



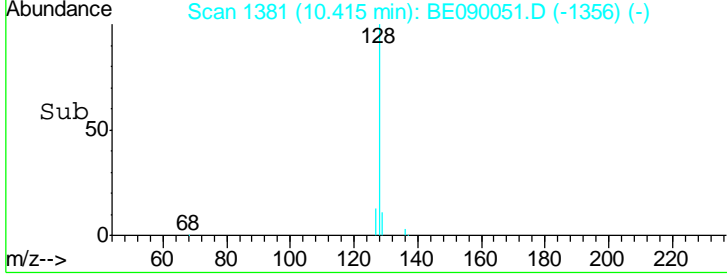
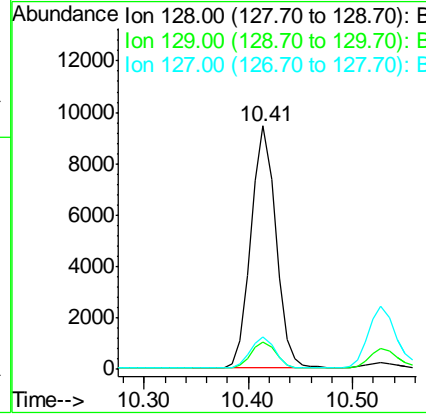
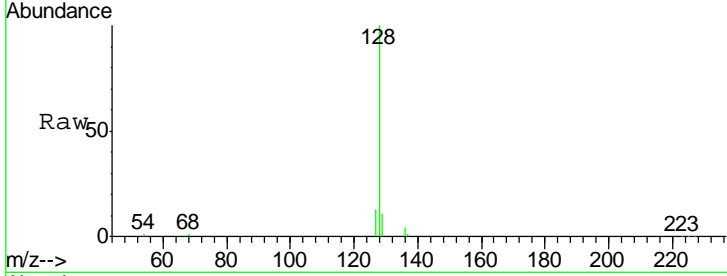


#9
 Naphthalene
 Concen: 0.91 ng
 RT: 10.41 min Scan# 1381
 Delta R.T. -0.01 min
 Lab File: BE090051.D
 Acq: 2 Jul 2015 13:01

Instrument : BNA_E
 ClientSampleId : SSTDCCC001

Tgt Ion: 128 Resp: 15469

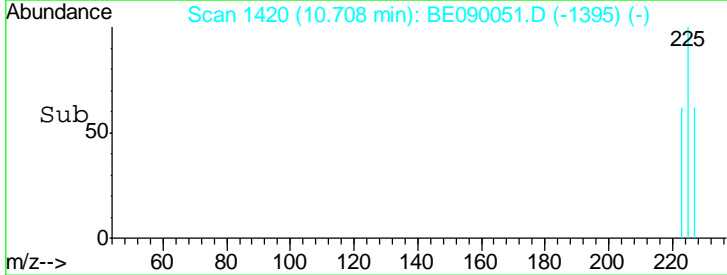
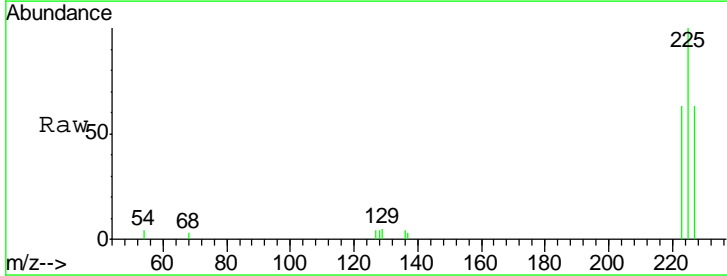
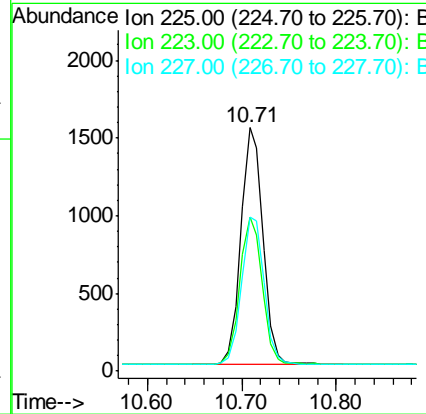
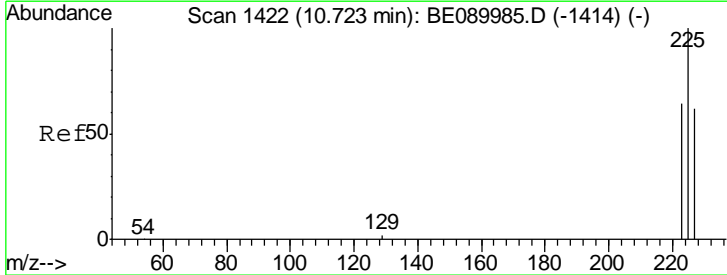
Ion	Ratio	Lower	Upper
128	100		
129	11.4	9.3	13.9
127	13.2	10.2	15.4

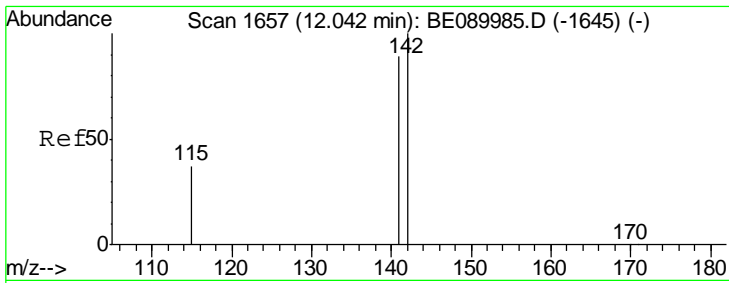


#10
 Hexachlorobutadiene
 Concen: 0.93 ng
 RT: 10.71 min Scan# 1420
 Delta R.T. -0.01 min
 Lab File: BE090051.D
 Acq: 2 Jul 2015 13:01

Tgt Ion: 225 Resp: 2480

Ion	Ratio	Lower	Upper
225	100		
223	63.1	50.1	75.1
227	63.7	50.9	76.3

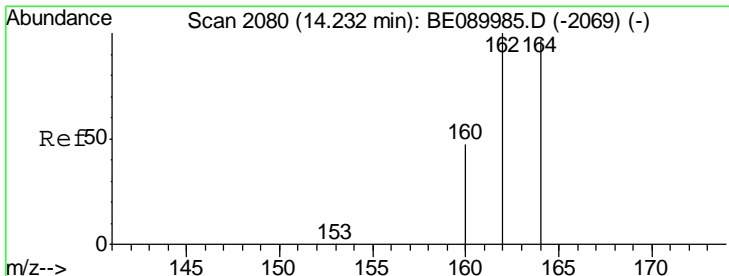
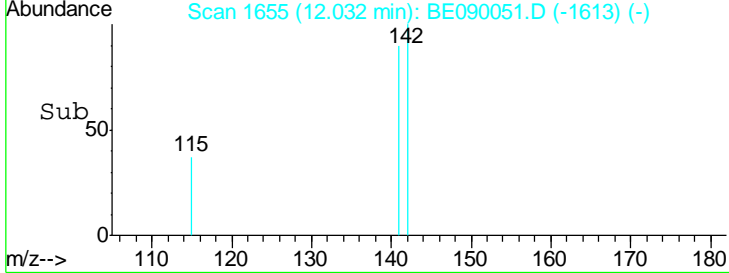
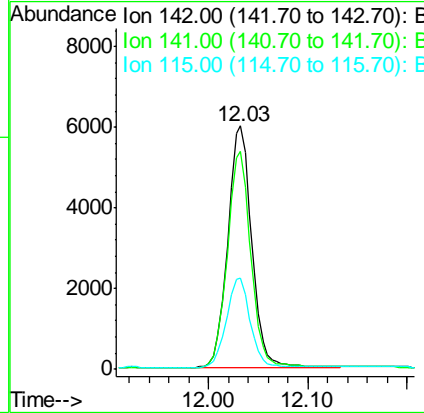
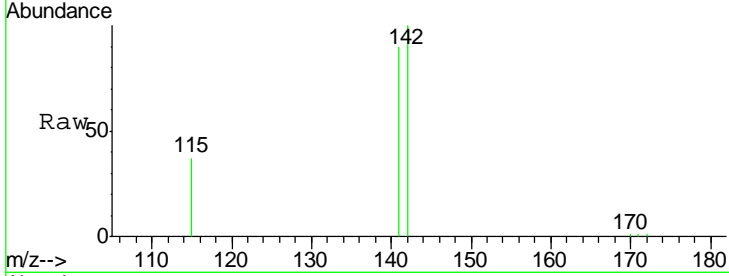




#11
 2-Methylnaphthalene
 Concen: 0.88 ng
 RT: 12.03 min Scan# 1655
 Delta R.T. -0.01 min
 Lab File: BE090051.D
 Acq: 2 Jul 2015 13:01

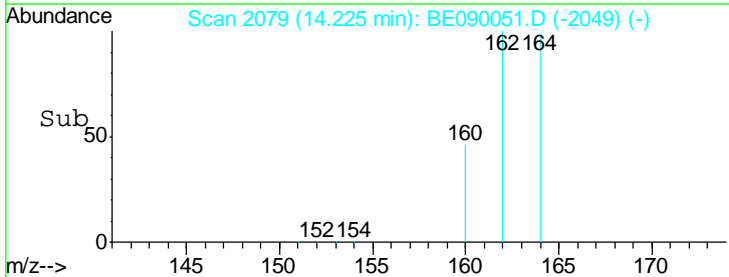
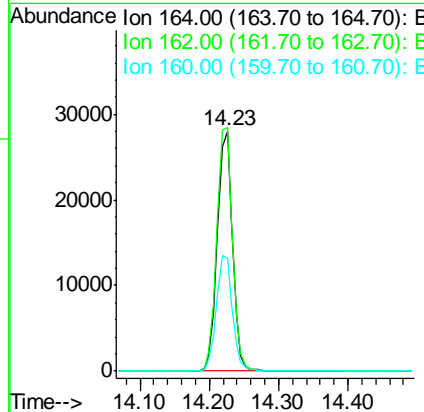
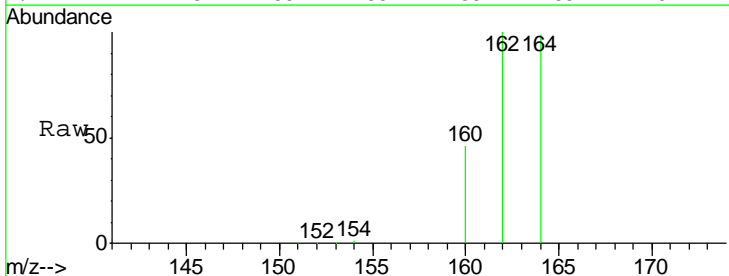
Instrument :
 BNA_E
 ClientSampleId :
 SSTDCCC001

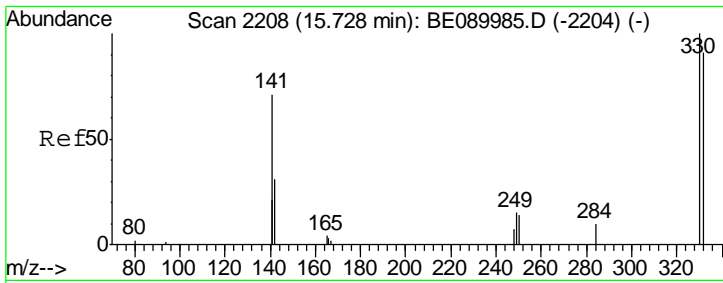
Tgt Ion	Resp	Lower	Upper
142	10005		
141	89.8	71.3	106.9
115	37.4	30.4	45.6



#12
 Acenaphthene-d10
 Concen: 5.00 ng
 RT: 14.23 min Scan# 2079
 Delta R.T. -0.01 min
 Lab File: BE090051.D
 Acq: 2 Jul 2015 13:01

Tgt Ion	Resp	Lower	Upper
164	41534		
162	101.3	82.2	123.4
160	46.8	39.0	58.6

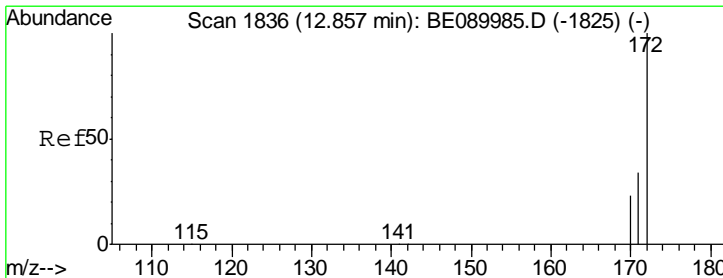
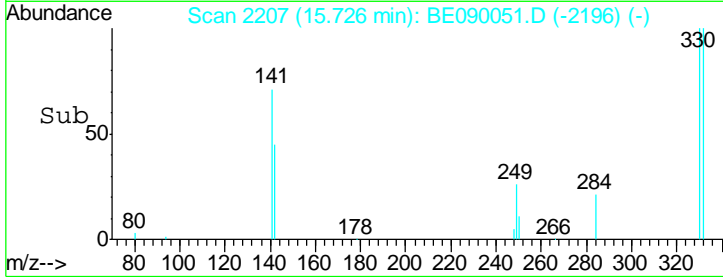
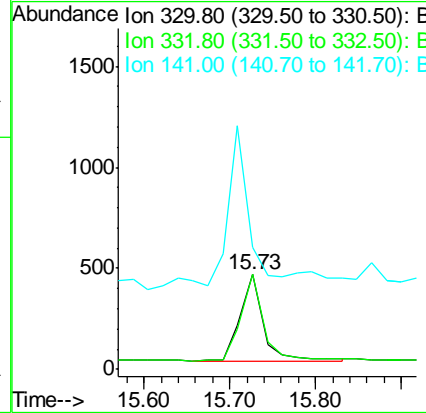
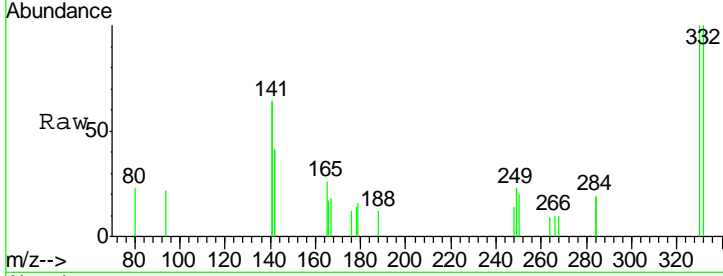




#13
 2,4,6-Tribromophenol
 Concen: 0.65 ng
 RT: 15.73 min Scan# 2207
 Delta R.T. -0.00 min
 Lab File: BE090051.D
 Acq: 2 Jul 2015 13:01

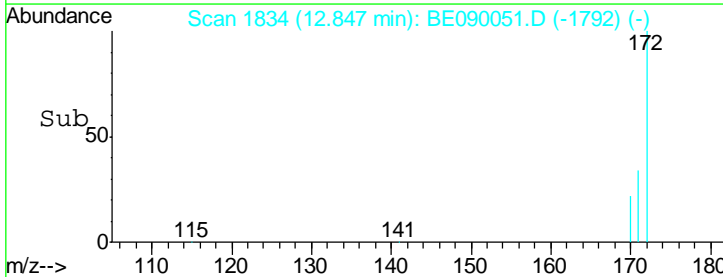
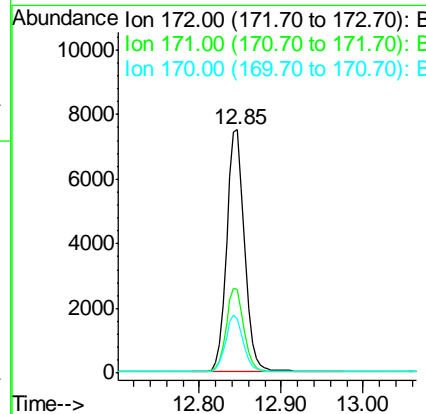
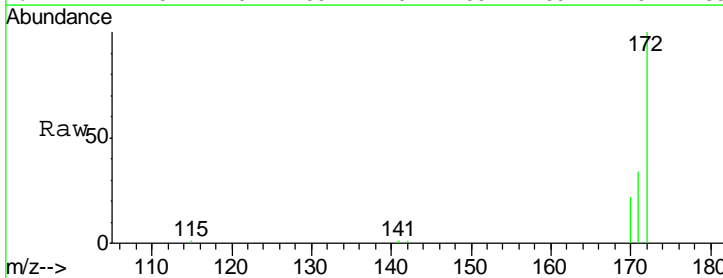
Instrument :
 BNA_E
 ClientSampled :
 SSTDCCC001

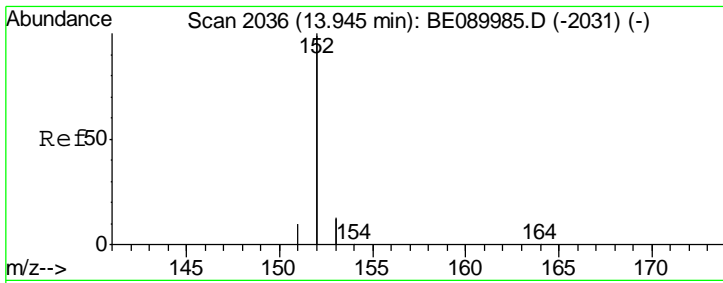
Tgt Ion	Resp	Lower	Upper
330	100		
332	98.4	76.4	114.6
141	192.7	130.3	195.5



#14
 2-Fluorobiphenyl
 Concen: 0.91 ng
 RT: 12.85 min Scan# 1834
 Delta R.T. -0.01 min
 Lab File: BE090051.D
 Acq: 2 Jul 2015 13:01

Tgt Ion	Resp	Lower	Upper
172	100		
171	34.3	27.8	41.6
170	22.2	18.3	27.5

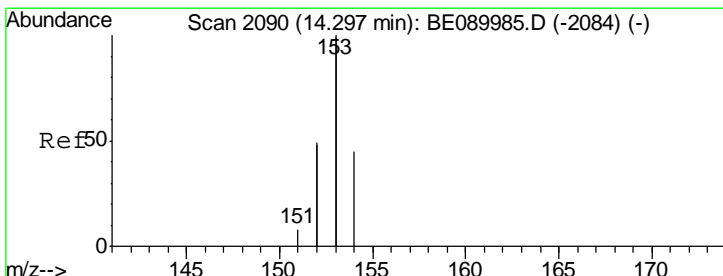
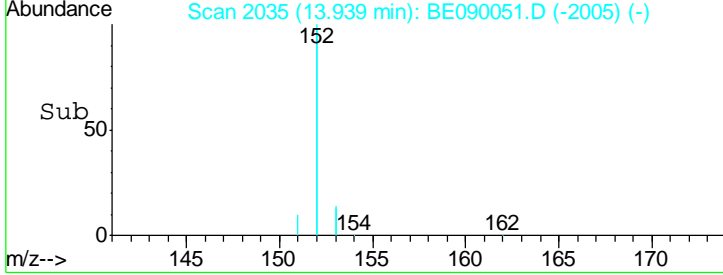
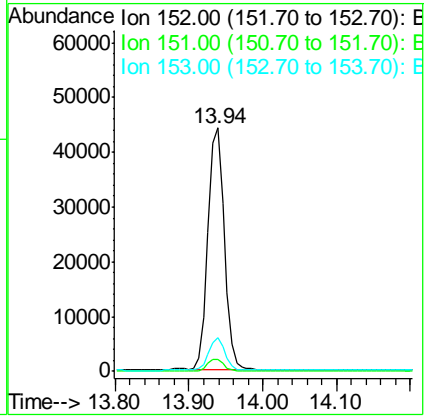
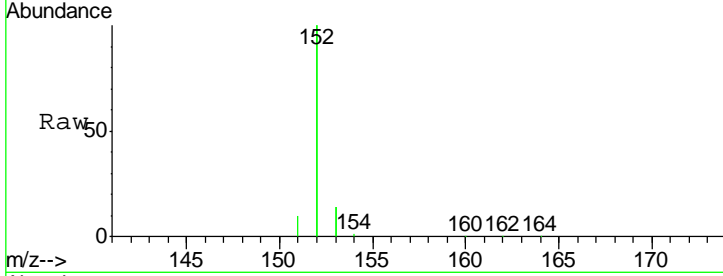




#15
 Acenaphthylene
 Concen: 0.91 ng
 RT: 13.94 min Scan# 2035
 Delta R.T. -0.01 min
 Lab File: BE090051.D
 Acq: 2 Jul 2015 13:01

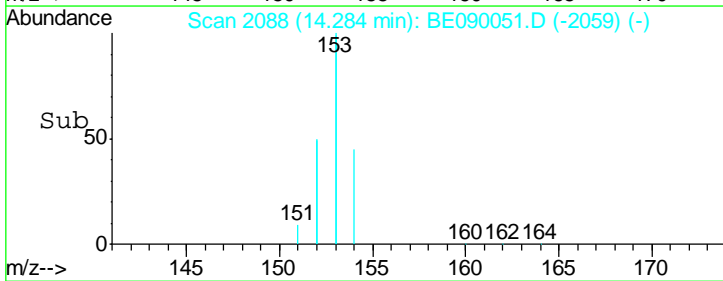
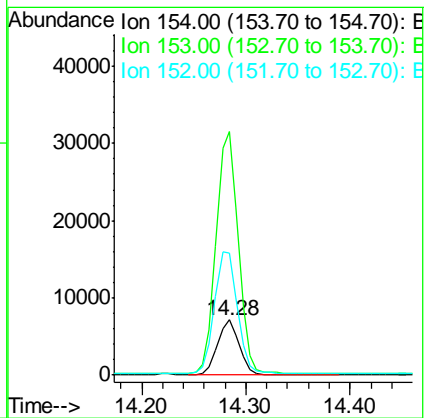
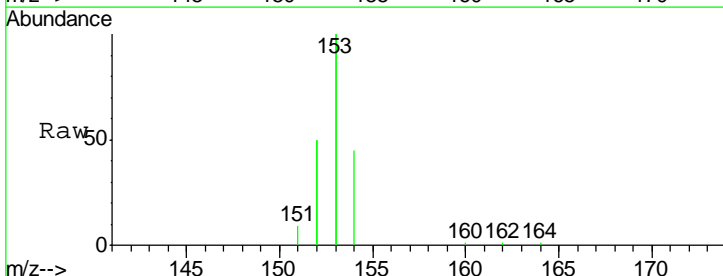
Instrument :
 BNA_E
 ClientSampleId :
 SSTDCCC001

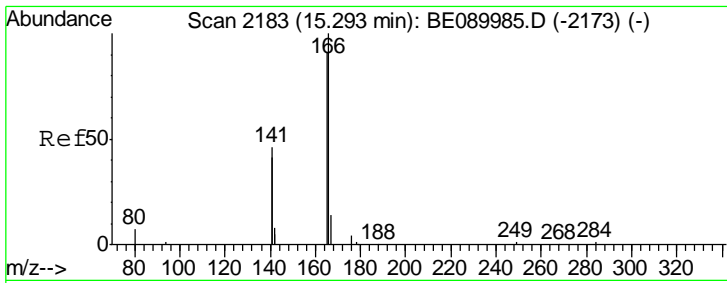
Tgt Ion	Resp	Lower	Upper
152	100		
151	4.9	3.9	5.9
153	13.0	10.4	15.6



#16
 Acenaphthene
 Concen: 0.93 ng
 RT: 14.28 min Scan# 2088
 Delta R.T. -0.01 min
 Lab File: BE090051.D
 Acq: 2 Jul 2015 13:01

Tgt Ion	Resp	Lower	Upper
154	100		
153	457.1	358.6	538.0
152	239.4	189.6	284.4

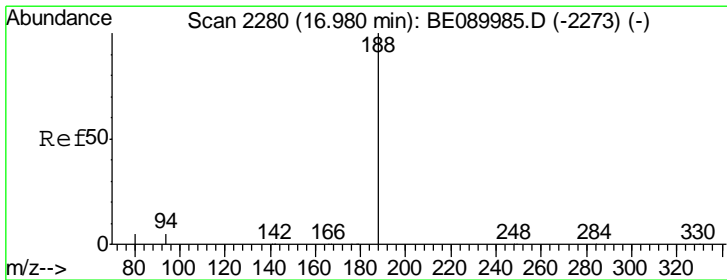
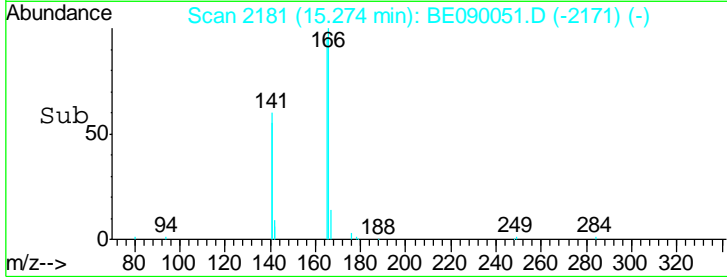
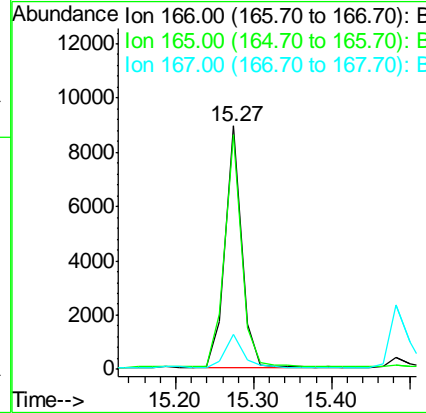
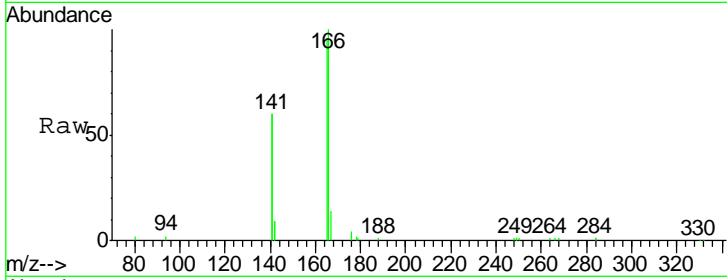




#17
 Fluorene
 Concen: 0.89 ng
 RT: 15.27 min Scan# 2181
 Delta R.T. -0.02 min
 Lab File: BE090051.D
 Acq: 2 Jul 2015 13:01

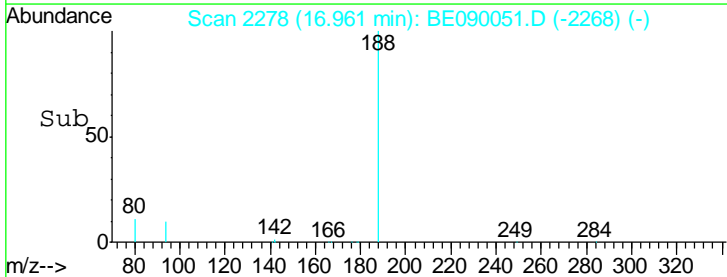
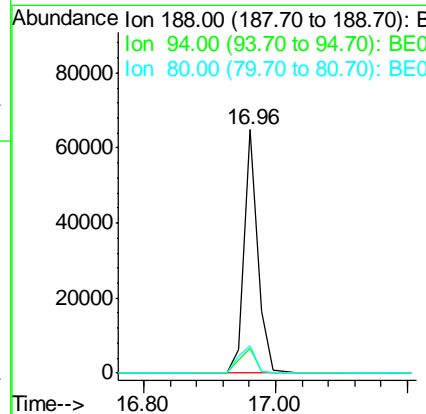
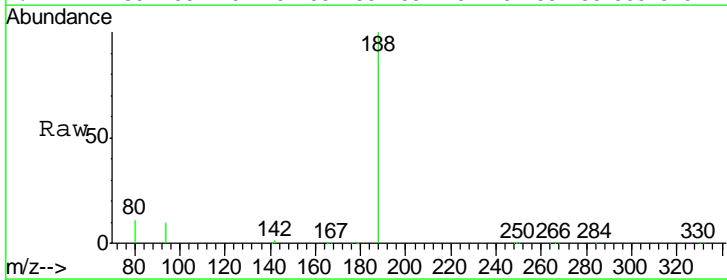
Instrument :
 BNA_E
 ClientSampleID :
 SSTDCCC001

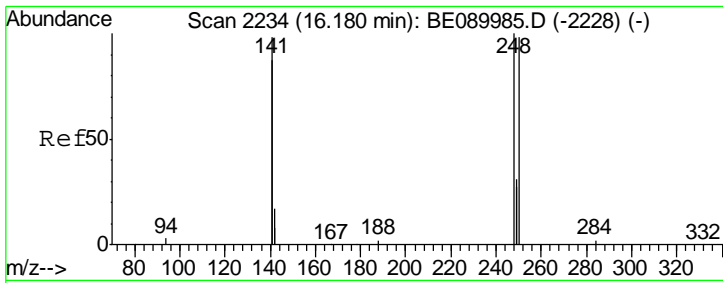
Tgt Ion	Resp	Lower	Upper
166	13054		
165	98.0	79.0	118.6
167	14.6	11.8	17.8



#18
 Phenanthrene-d10
 Concen: 5.00 ng
 RT: 16.96 min Scan# 2278
 Delta R.T. -0.02 min
 Lab File: BE090051.D
 Acq: 2 Jul 2015 13:01

Tgt Ion	Resp	Lower	Upper
188	93267		
94	10.2	4.1	6.1#
80	11.3	4.2	6.2#

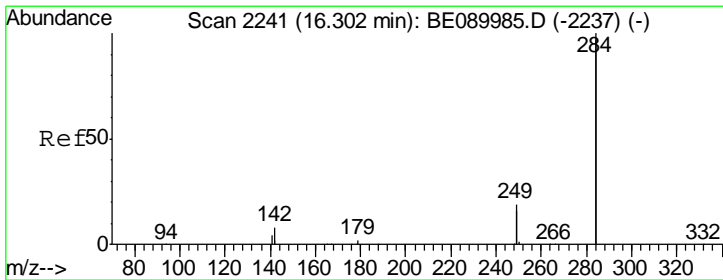
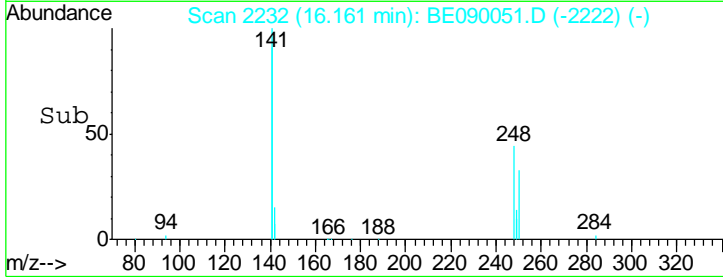
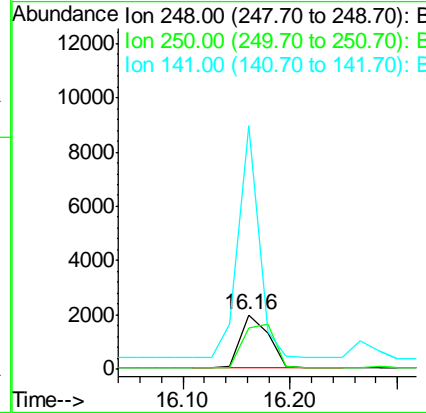
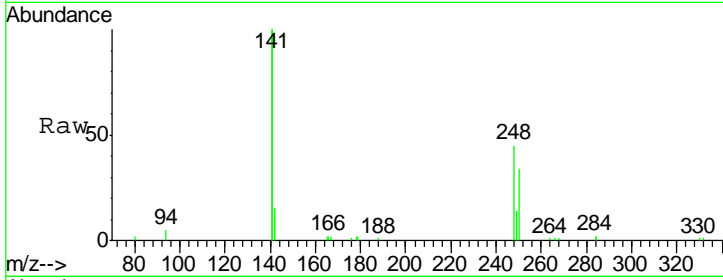




#19
 4-Bromophenyl-phenylether
 Concen: 0.89 ng
 RT: 16.16 min Scan# 2232
 Delta R.T. -0.02 min
 Lab File: BE090051.D
 Acq: 2 Jul 2015 13:01

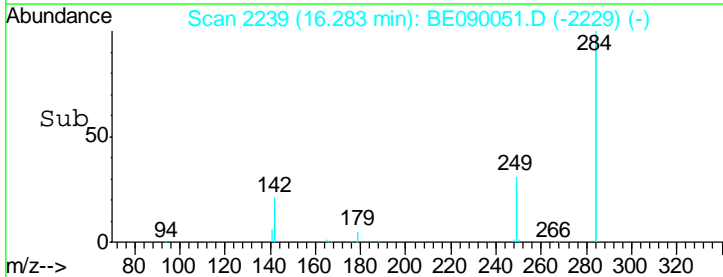
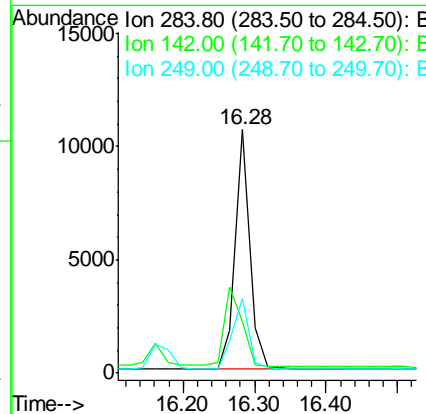
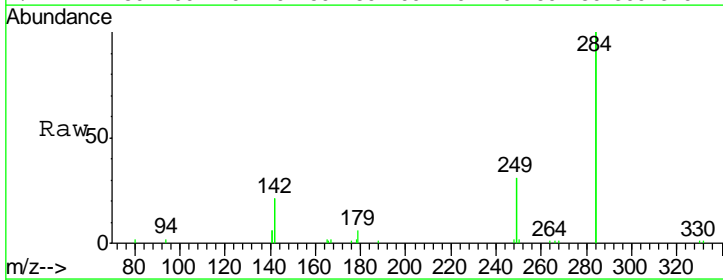
Instrument :
 BNA_E
 ClientSampleId :
 SSTDCCC001

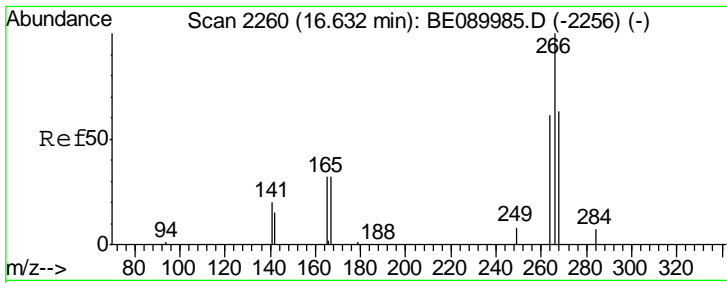
Tgt Ion	Resp	Lower	Upper
248	3523		
248	100		
250	95.6	78.3	117.5
141	322.3	248.1	372.1



#20
 Hexachlorobenzene
 Concen: 0.91 ng
 RT: 16.28 min Scan# 2239
 Delta R.T. -0.02 min
 Lab File: BE090051.D
 Acq: 2 Jul 2015 13:01

Tgt Ion	Resp	Lower	Upper
284	14987		
284	100		
142	40.5	32.6	49.0
249	32.8	25.5	38.3

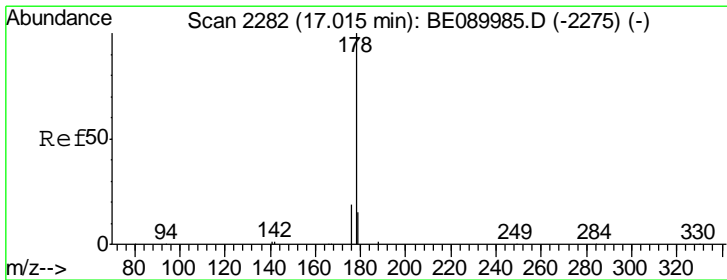
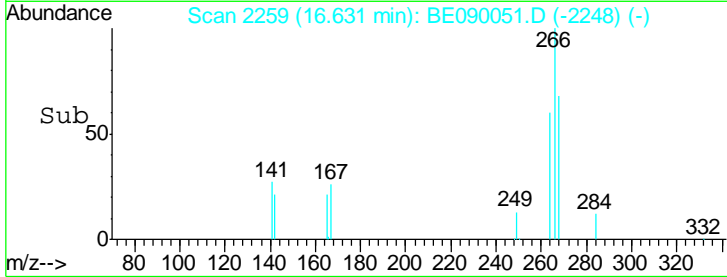
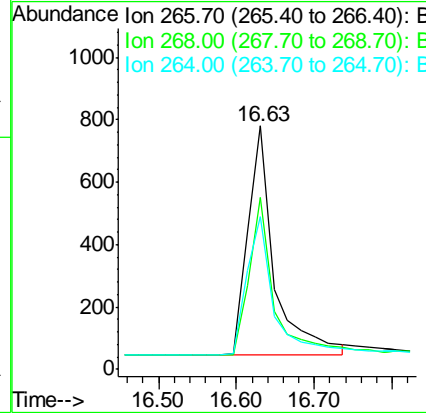
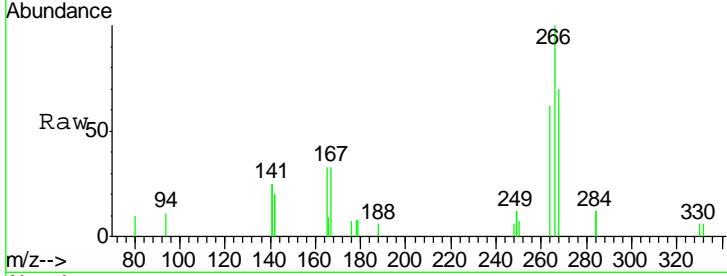




#21
 Pentachlorophenol
 Concen: 1.06 ng
 RT: 16.63 min Scan# 2259
 Delta R.T. -0.00 min
 Lab File: BE090051.D
 Acq: 2 Jul 2015 13:01

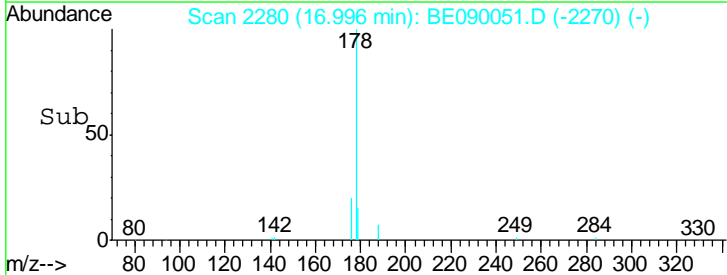
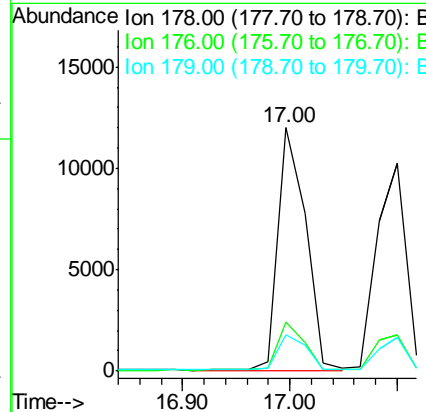
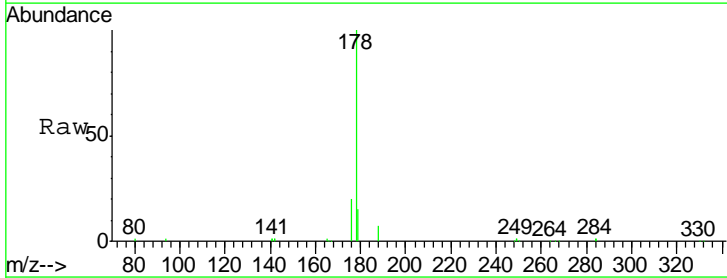
Instrument :
 BNA_E
 ClientSampleId :
 SSTDCCC001

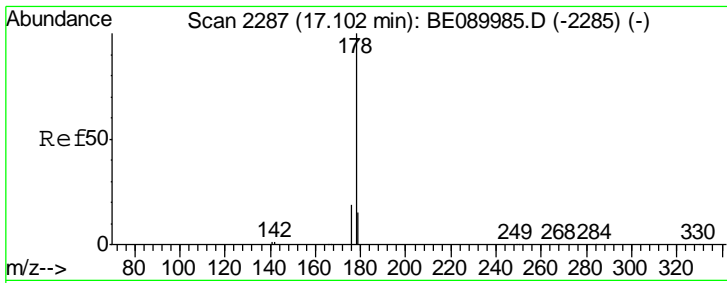
Tgt Ion	Resp	Lower	Upper
266	100		
268	70.4	51.8	77.8
264	62.5	50.2	75.2



#22
 Phenanthrene
 Concen: 0.90 ng
 RT: 17.00 min Scan# 2280
 Delta R.T. -0.02 min
 Lab File: BE090051.D
 Acq: 2 Jul 2015 13:01

Tgt Ion	Resp	Lower	Upper
178	100		
176	19.0	15.3	22.9
179	15.4	12.4	18.6

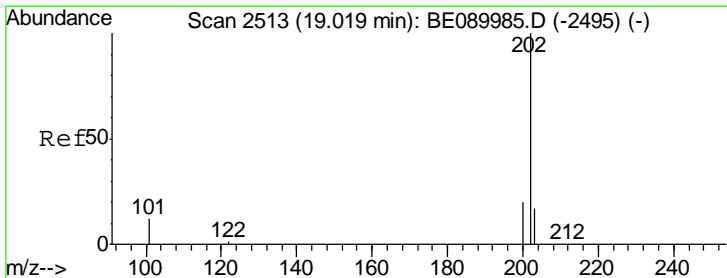
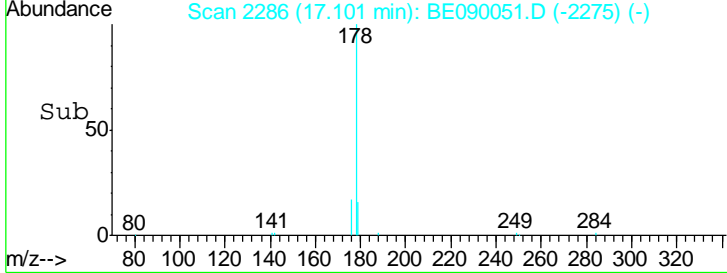
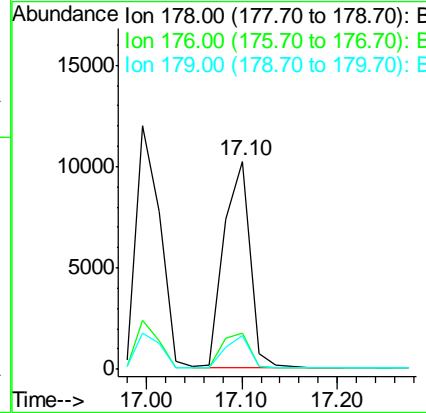
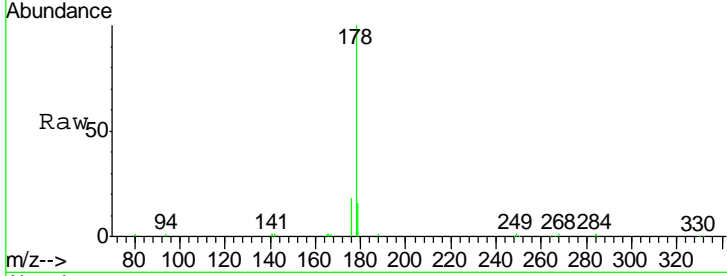




#23
 Anthracene
 Concen: 0.89 ng
 RT: 17.10 min Scan# 2286
 Delta R.T. -0.00 min
 Lab File: BE090051.D
 Acq: 2 Jul 2015 13:01

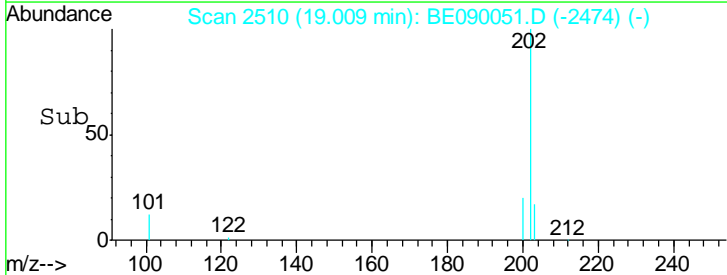
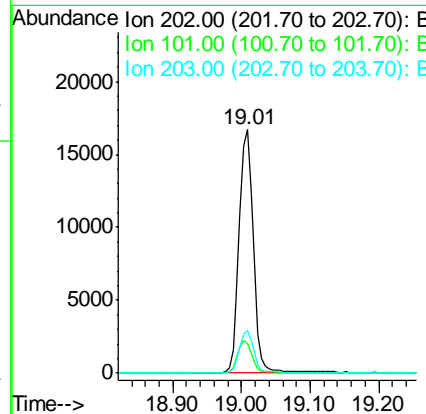
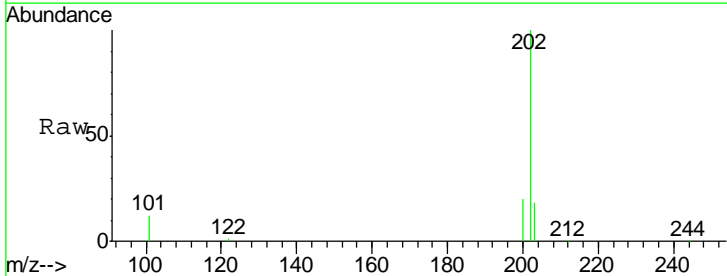
Instrument : BNA_E
 ClientSampleId : SSTDCCC001

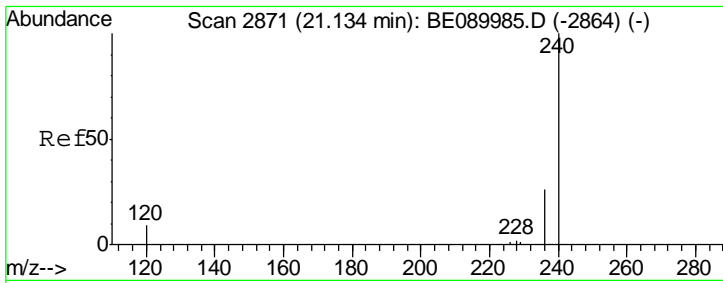
Tgt Ion	Resp	Ion Ratio	Lower	Upper
178	19465	100		
176		18.5	14.7	22.1
179		15.2	12.1	18.1



#24
 Fluoranthene
 Concen: 0.89 ng
 RT: 19.01 min Scan# 2510
 Delta R.T. -0.01 min
 Lab File: BE090051.D
 Acq: 2 Jul 2015 13:01

Tgt Ion	Resp	Ion Ratio	Lower	Upper
202	23690	100		
101		13.1	10.6	15.8
203		17.1	13.8	20.6

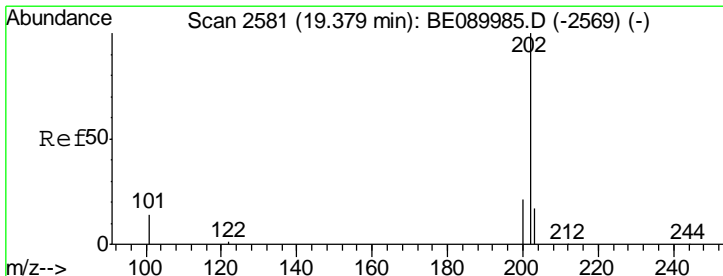
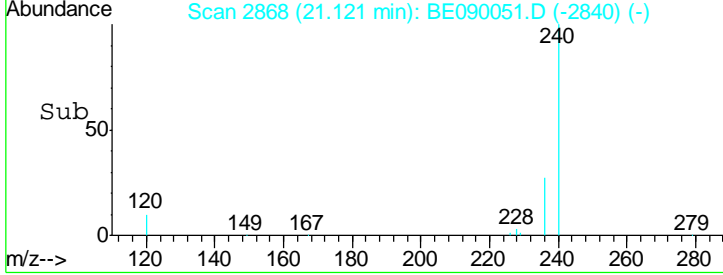
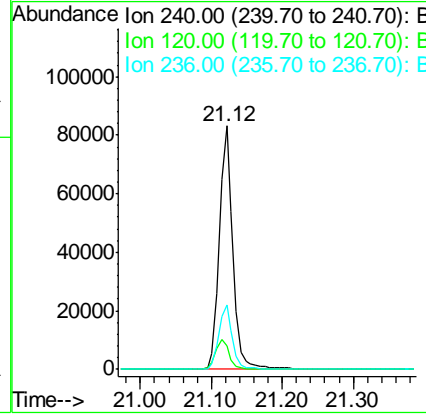
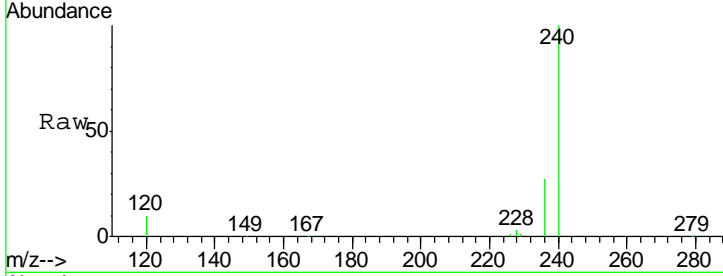




#25
 Chrysene-d12
 Concen: 5.00 ng
 RT: 21.12 min Scan# 2868
 Delta R.T. -0.01 min
 Lab File: BE090051.D
 Acq: 2 Jul 2015 13:01

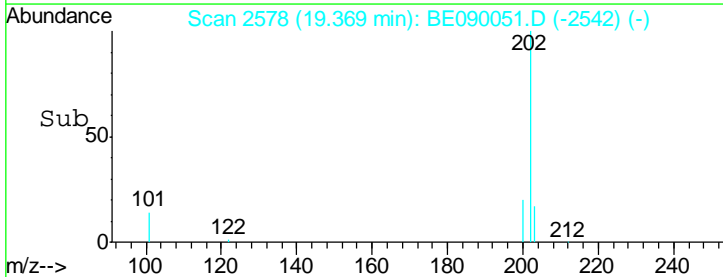
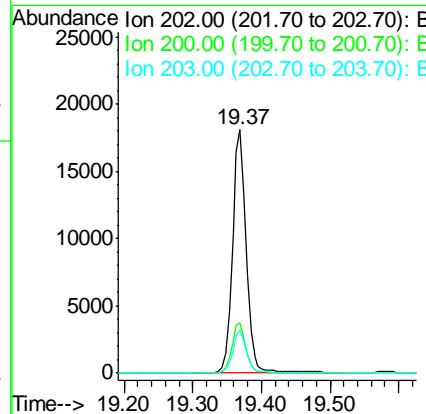
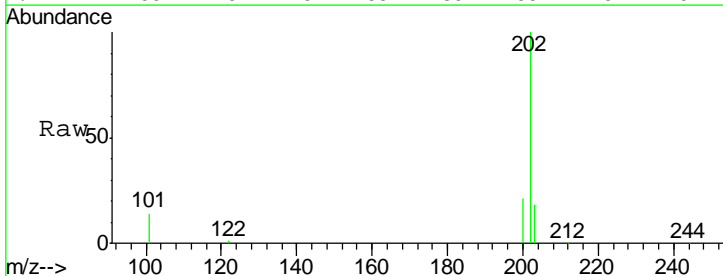
Instrument : BNA_E
 ClientSampleId : SSTDCCC001

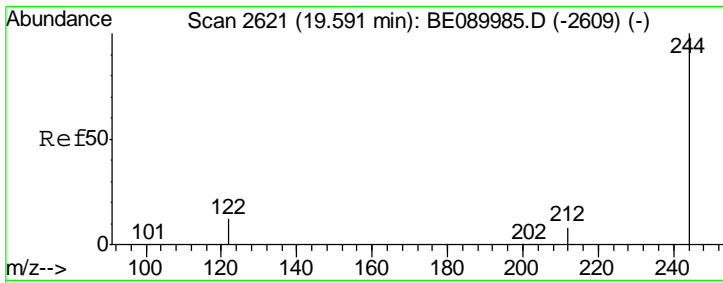
Tgt Ion	Resp	Lower	Upper
240	110092		
120	9.7	6.9	10.3
236	26.6	20.8	31.2



#26
 Pyrene
 Concen: 0.94 ng
 RT: 19.37 min Scan# 2578
 Delta R.T. -0.01 min
 Lab File: BE090051.D
 Acq: 2 Jul 2015 13:01

Tgt Ion	Resp	Lower	Upper
202	24758		
200	20.6	16.8	25.2
203	17.4	13.9	20.9

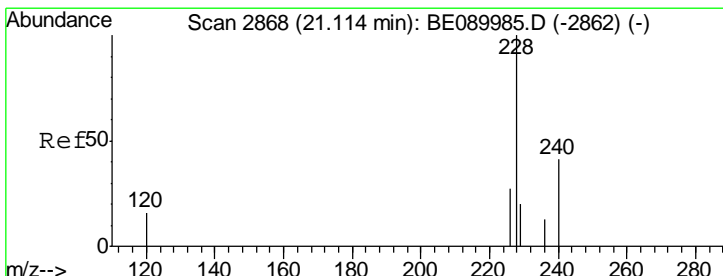
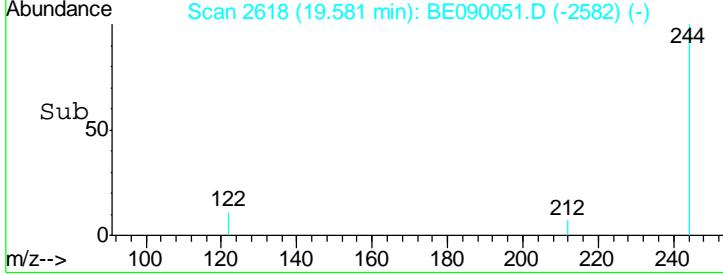
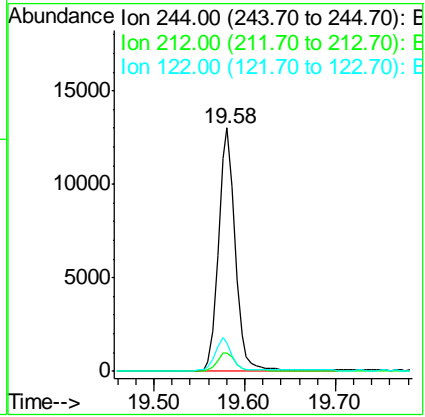
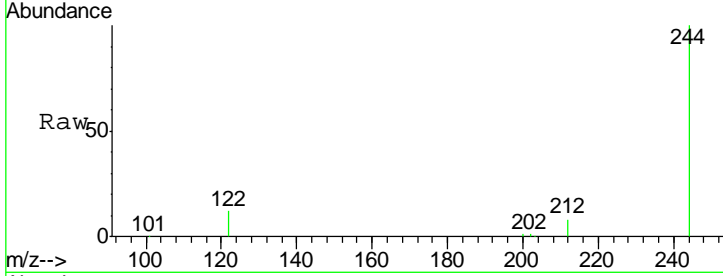




#27
 Terphenyl-d14
 Concen: 0.90 ng
 RT: 19.58 min Scan# 2618
 Delta R.T. -0.01 min
 Lab File: BE090051.D
 Acq: 2 Jul 2015 13:01

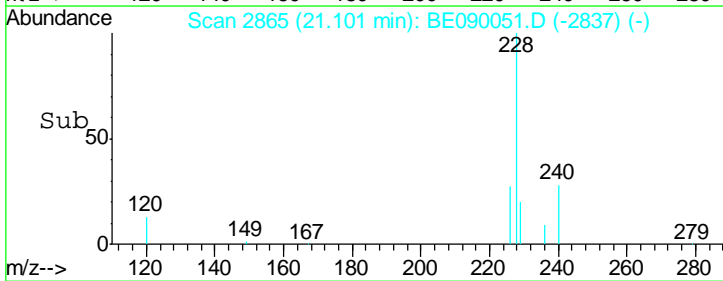
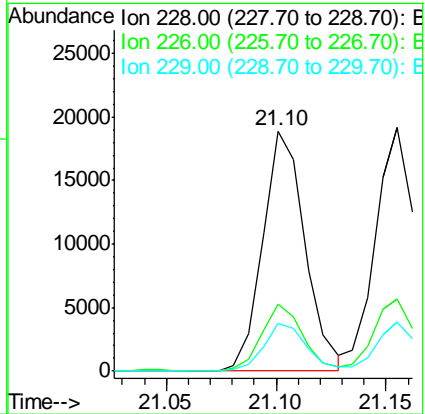
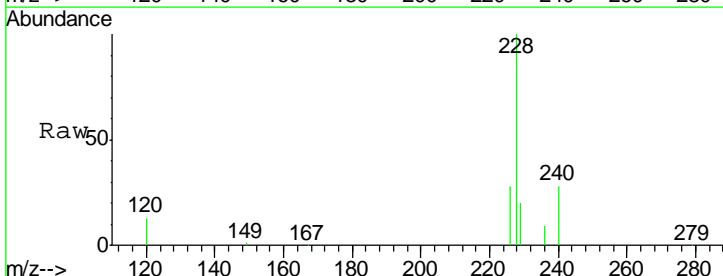
Instrument : BNA_E
 ClientSampleId : SSTDCCC001

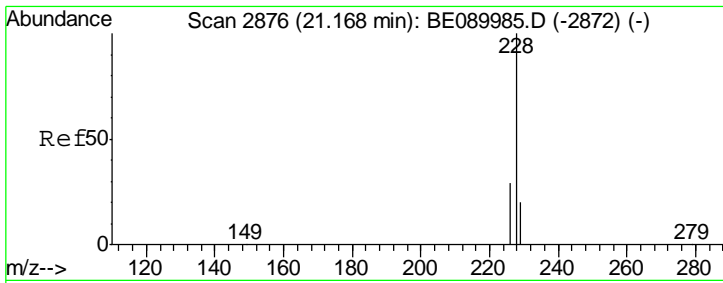
Tgt Ion	Resp	Lower	Upper
244	16468		
212	7.7	6.6	9.8
122	11.6	9.8	14.8



#28
 Benzo(a)anthracene
 Concen: 0.91 ng
 RT: 21.10 min Scan# 2865
 Delta R.T. -0.01 min
 Lab File: BE090051.D
 Acq: 2 Jul 2015 13:01

Tgt Ion	Resp	Lower	Upper
228	25007		
226	27.7	21.8	32.6
229	19.7	15.8	23.6

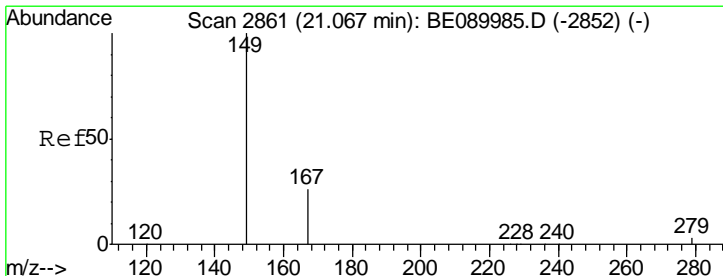
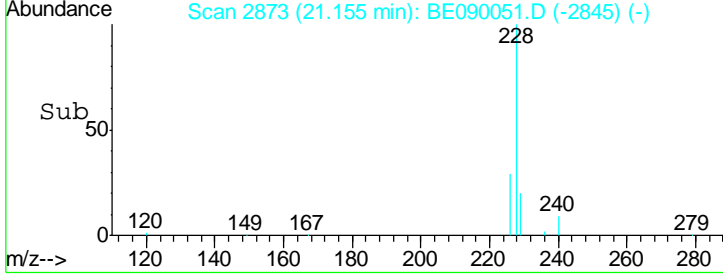
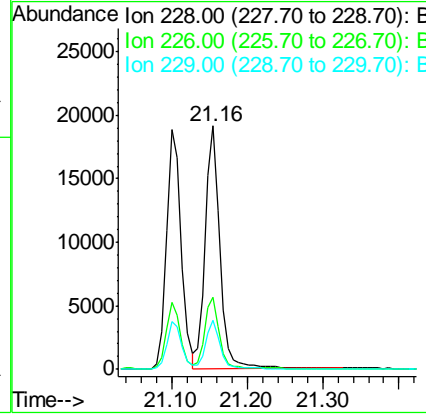
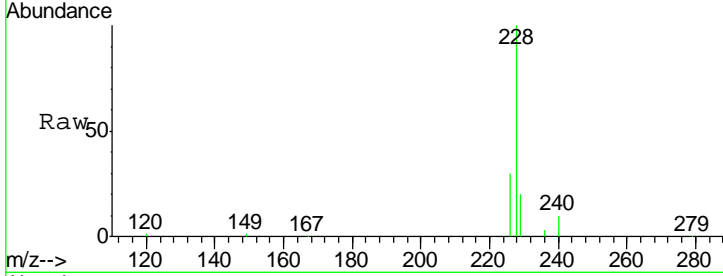




#29
 Chrysene
 Concen: 0.90 ng
 RT: 21.16 min Scan# 2873
 Delta R.T. -0.01 min
 Lab File: BE090051.D
 Acq: 2 Jul 2015 13:01

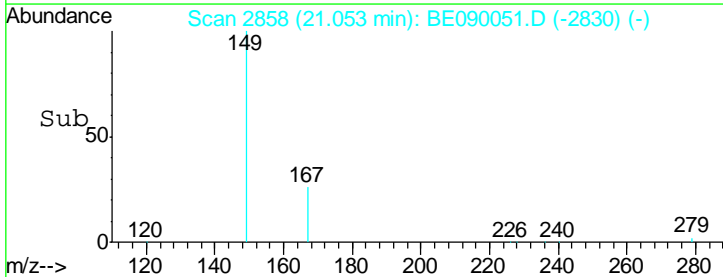
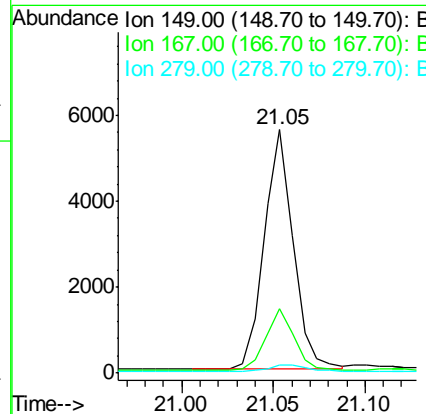
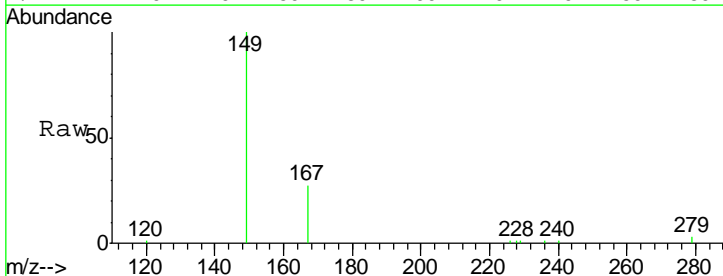
Instrument :
 BNA_E
 ClientSampleId :
 SSTDCCC001

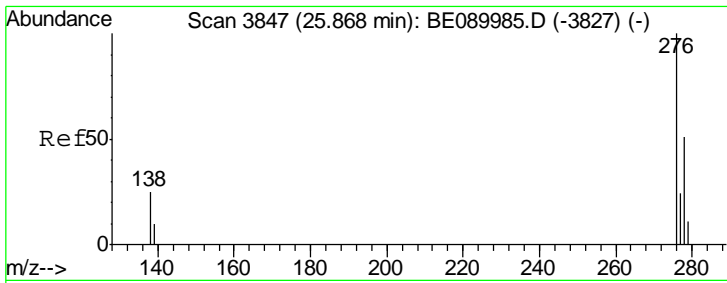
Tgt Ion	Resp	Lower	Upper
228	100		
226	29.6	23.4	35.0
229	20.1	16.2	24.2



#30
 Bis(2-ethylhexyl)phthalate
 Concen: 0.76 ng
 RT: 21.05 min Scan# 2858
 Delta R.T. -0.01 min
 Lab File: BE090051.D
 Acq: 2 Jul 2015 13:01

Tgt Ion	Resp	Lower	Upper
149	100		
167	25.4	20.3	30.5
279	2.9	2.6	3.8

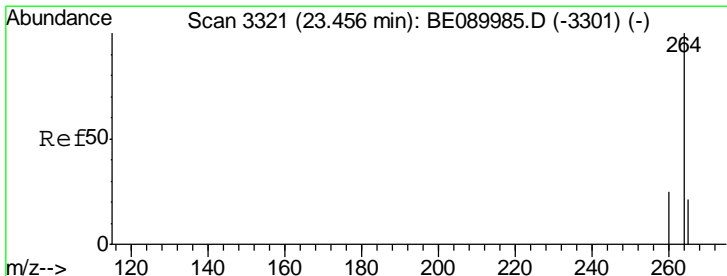
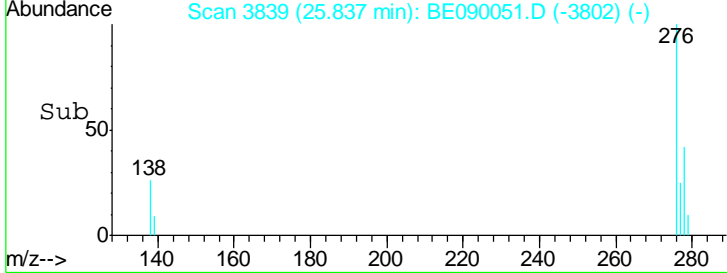
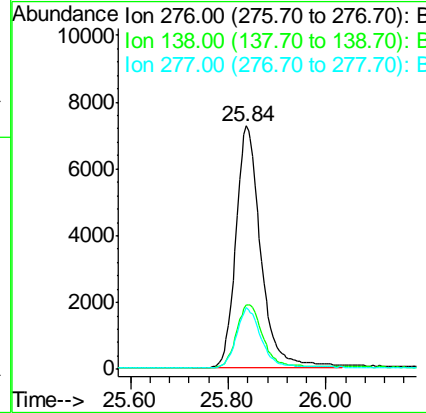
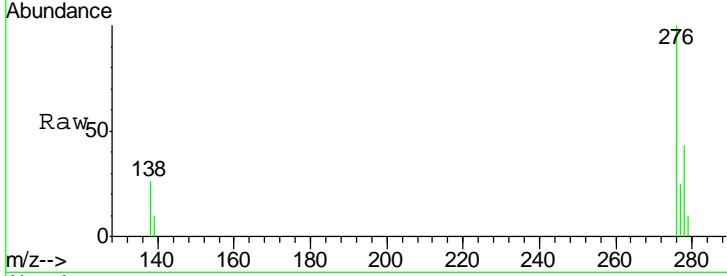




#31
 Indeno(1,2,3-cd)pyrene
 Concen: 0.94 ng
 RT: 25.84 min Scan# 3839
 Delta R.T. -0.03 min
 Lab File: BE090051.D
 Acq: 2 Jul 2015 13:01

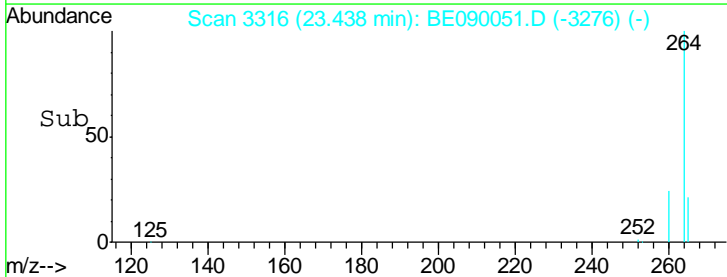
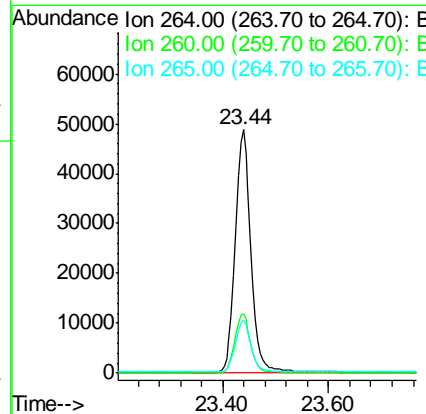
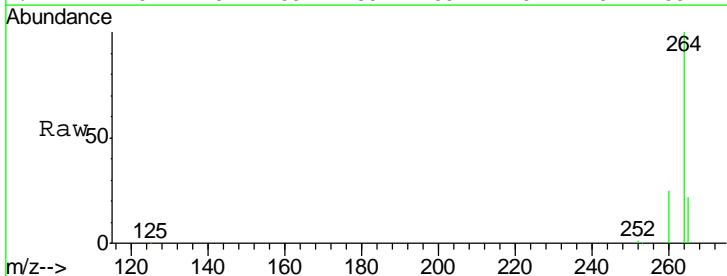
Instrument :
 BNA_E
 ClientSampleId :
 SSTDCCC001

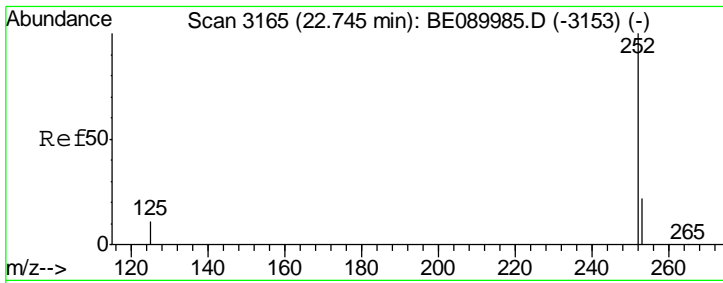
Tgt Ion	Resp	Lower	Upper
276	25708		
138	27.4	21.3	31.9
277	24.7	19.7	29.5



#32
 Perylene-d12
 Concen: 5.00 ng
 RT: 23.44 min Scan# 3316
 Delta R.T. -0.02 min
 Lab File: BE090051.D
 Acq: 2 Jul 2015 13:01

Tgt Ion	Resp	Lower	Upper
264	101514		
260	24.5	20.2	30.2
265	21.9	17.1	25.7

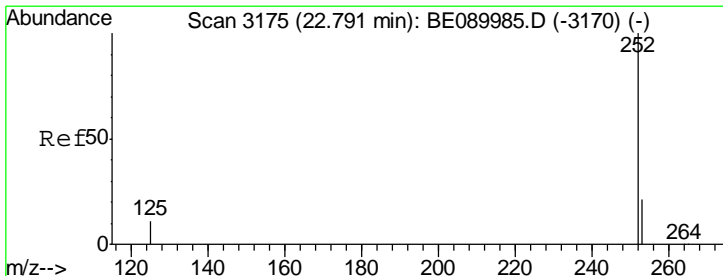
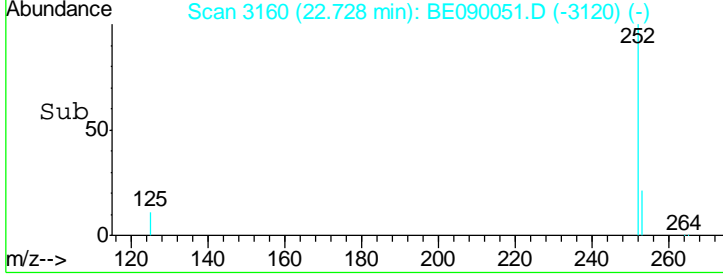
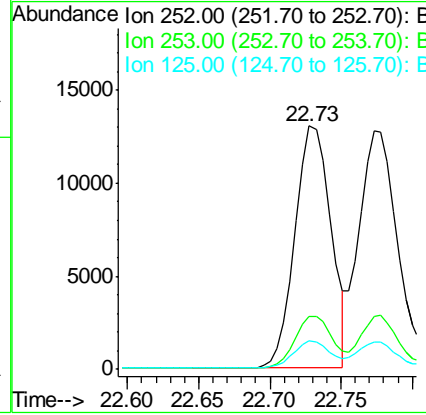
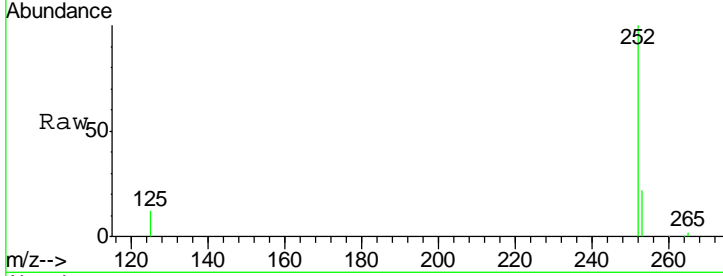




#33
 Benzo(b)fluoranthene
 Concen: 1.01 ng
 RT: 22.73 min Scan# 3160
 Delta R.T. -0.02 min
 Lab File: BE090051.D
 Acq: 2 Jul 2015 13:01

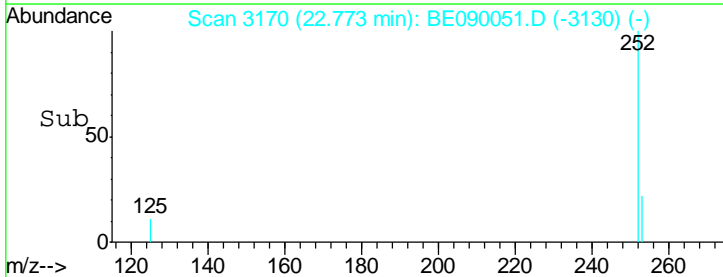
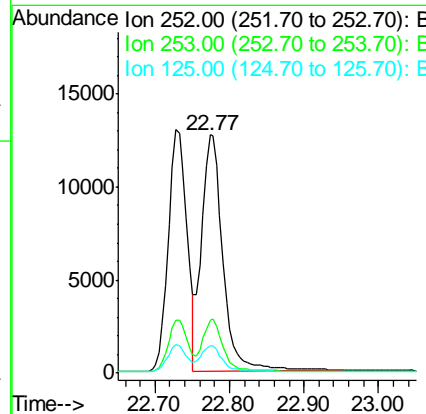
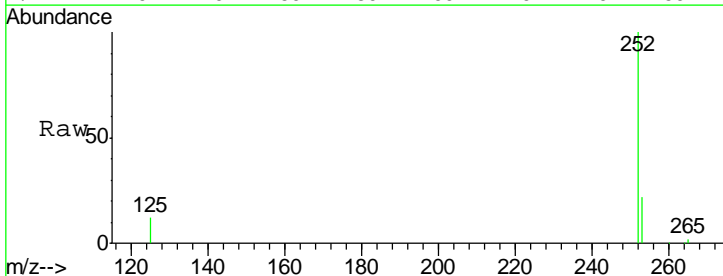
Instrument :
 BNA_E
 ClientSampleId :
 SSTDCCC001

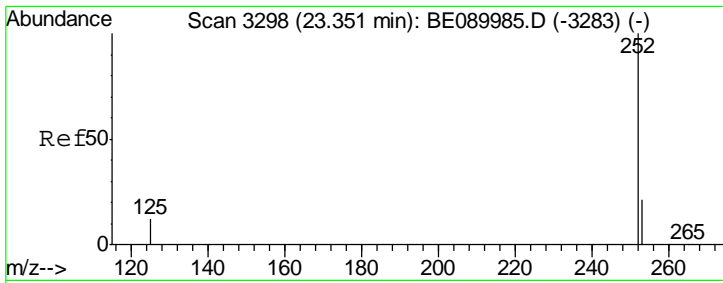
Tgt Ion	Resp	Lower	Upper
252	22511		
253	21.8	17.8	26.8
125	11.6	9.0	13.4



#34
 Benzo(k)fluoranthene
 Concen: 1.01 ng
 RT: 22.77 min Scan# 3170
 Delta R.T. -0.02 min
 Lab File: BE090051.D
 Acq: 2 Jul 2015 13:01

Tgt Ion	Resp	Lower	Upper
252	25381		
253	22.1	17.5	26.3
125	11.7	9.5	14.3

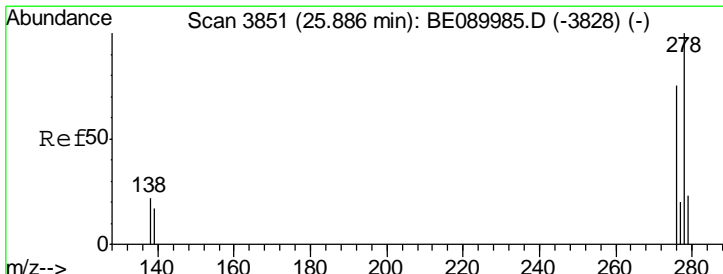
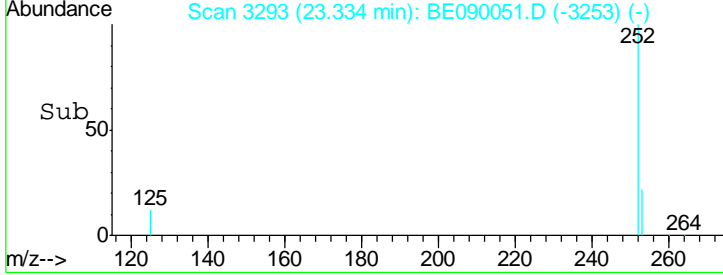
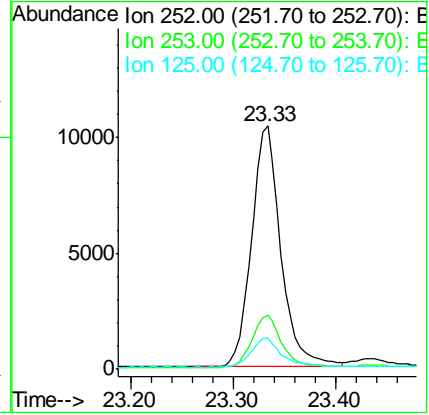
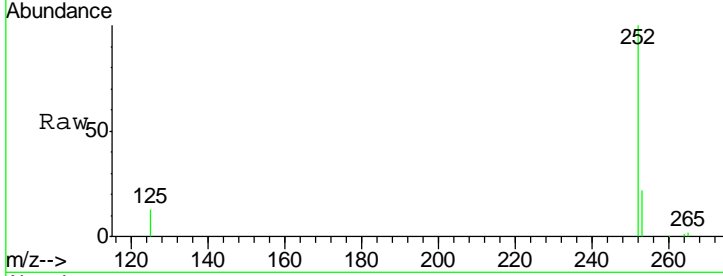




#35
 Benzo(a)pyrene
 Concen: 1.00 ng
 RT: 23.33 min Scan# 3293
 Delta R.T. -0.02 min
 Lab File: BE090051.D
 Acq: 2 Jul 2015 13:01

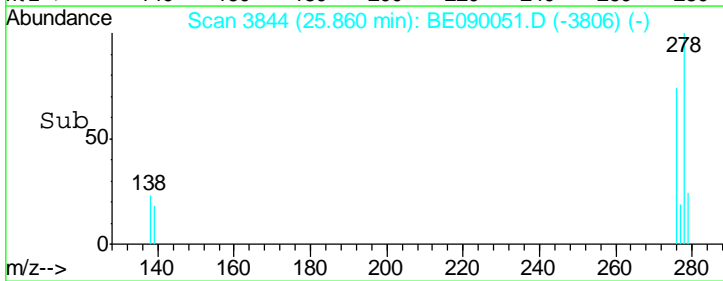
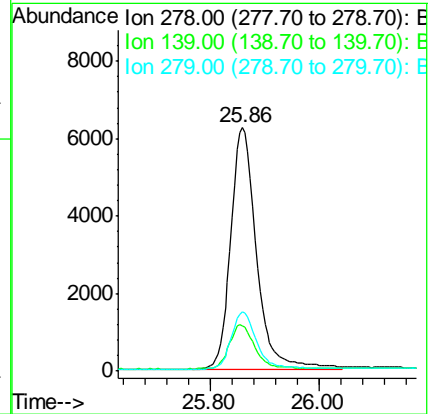
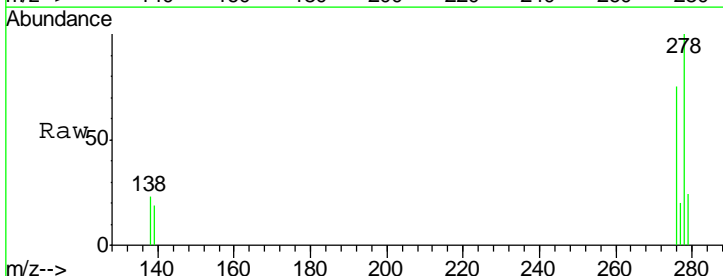
Instrument :
 BNA_E
 ClientSampleId :
 SSTDCCC001

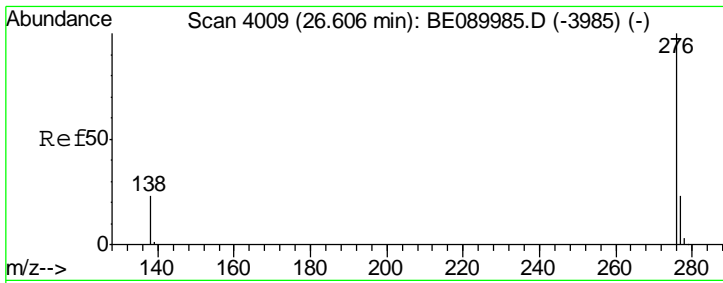
Tgt Ion	Resp	Lower	Upper
252	20760		
253	22.3	17.4	26.2
125	12.8	10.5	15.7



#36
 Dibenzo(a,h)anthracene
 Concen: 0.96 ng
 RT: 25.86 min Scan# 3844
 Delta R.T. -0.03 min
 Lab File: BE090051.D
 Acq: 2 Jul 2015 13:01

Tgt Ion	Resp	Lower	Upper
278	20359		
139	18.6	14.4	21.6
279	24.2	19.0	28.6





#37
 Benzo(g,h,i)perylene
 Concen: 0.96 ng
 RT: 26.57 min Scan# 4000
 Delta R.T. -0.04 min
 Lab File: BE090051.D
 Acq: 2 Jul 2015 13:01

Instrument :
 BNA_E
 ClientSampleId :
 SSTDCCC001

Tgt Ion	Resp	Lower	Upper
276	20699		
277	24.6	18.8	28.2
138	24.8	18.6	27.8

