

Data Path : Z:\HPCHEM1\BNA_E\DATA\BE070217\
 Data File : BE093418.D
 Acq On : 2 Jul 2017 17:44
 Operator : SJ/JU
 Sample : SSTDCCC0.4
 Misc :
 ALS Vial : 4 Sample Multiplier: 1

Instrument :
 BNA_E
 ClientSampled :
 SSTDCCC0.4

Manual Integrations
 APPROVED

mohammad
 7/3/2017 4:42:13 PM

Quant Time: Jul 03 06:49:13 2017
 Quant Method : Z:\HPCHEM1\BNA_E\METHODS\8270-SIM-BE070217.M
 Quant Title : ASP BNA STANDARDS FOR 5 POINT CALIBRATION
 QLast Update : Sun Jul 02 13:43:38 2017
 Response via : Initial Calibration

Internal Standards	R.T.	QIon	Response	Conc	Units	Dev(Min)
1) 1,4-Dichlorobenzene-d4	7.94	152	3239	0.40	ng	0.00
7) Naphthalene-d8	10.72	136	15700	0.40	ng	0.00
13) Acenaphthene-d10	14.54	164	10251	0.40	ng	0.00
19) Phenanthrene-d10	17.27	188	29134	0.40	ng	0.00
27) Chrysene-d12	21.43	240	36091	0.40	ng	0.00
34) Perylene-d12	23.94	264	29449	0.40	ng	0.00

System Monitoring Compounds

4) 2-Fluorophenol	5.53	112	3694	0.38	ng	0.00
5) Phenol-d6	7.10	99	5540	0.38	ng	0.00
8) Nitrobenzene-d5	9.08	82	3844	0.38	ng	0.00
11) 2-Methylnaphthalene-d10	12.31	152	9758	0.39	ng	0.00
14) 2,4,6-Tribromophenol	16.03	330	1044	0.32	ng	0.00
15) 2-Fluorobiphenyl	13.18	172	15330	0.39	ng	0.00
25) Fluoranthene-d10	19.29	212	136380	0.39	ng	0.00
29) Terphenyl-d14	19.87	244	25290	0.39	ng	0.00

Target Compounds

Target Compounds	R.T.	QIon	Response	Conc	Units	Qvalue
2) 1,4-Dioxane	3.45	88	2623	0.383	ng	94
3) n-Nitrosodimethylamine	3.76	42	1274	0.379	ng	# 84
6) bis(2-Chloroethyl)ether	7.36	93	4203	0.387	ng	# 97
9) Naphthalene	10.77	128	64063	0.390	ng	# 73
10) Hexachlorobutadiene	11.08	225	2453	0.393	ng	99
12) 2-Methylnaphthalene	12.38	142	10749	0.389	ng	98
16) Acenaphthylene	14.26	152	15470	0.362	ng	# 88
17) Acenaphthene	14.60	154	11909	0.381	ng	99
18) Fluorene	15.59	166	16471	0.384	ng	# 87
20) 4-Bromophenyl-phenylether	16.45	248	6467	0.405	ng	# 26
21) Hexachlorobenzene	16.58	284	6748	0.391	ng	# 100
22) Pentachlorophenol	16.91	266	755	0.332	ng	# 78
23) Phenanthrene	17.30	178	42375	0.400	ng	99
24) Anthracene	17.40	178	25347m	0.390	ng	
26) Fluoranthene	19.32	202	39306	0.395	ng	98
28) Pyrene	19.67	202	39839	0.393	ng	# 99
30) Benzo(a)anthracene	21.40	228	37262	0.382	ng	93
31) Chrysene	21.46	228	39499	0.388	ng	94
32) Bis(2-ethylhexyl)phthalate	21.33	149	46596	0.332	ng	# 66
33) Indeno(1,2,3-cd)pyrene	26.58	276	34924	0.390	ng	95
35) Benzo(b)fluoranthene	23.16	252	36241	0.381	ng	97
36) Benzo(k)fluoranthene	23.21	252	37561	0.399	ng	95
37) Benzo(a)pyrene	23.82	252	31472	0.378	ng	# 96
38) Dibenzo(a,h)anthracene	26.60	278	31578	0.390	ng	# 91
39) Benzo(g,h,i)perylene	27.40	276	31889	0.390	ng	93

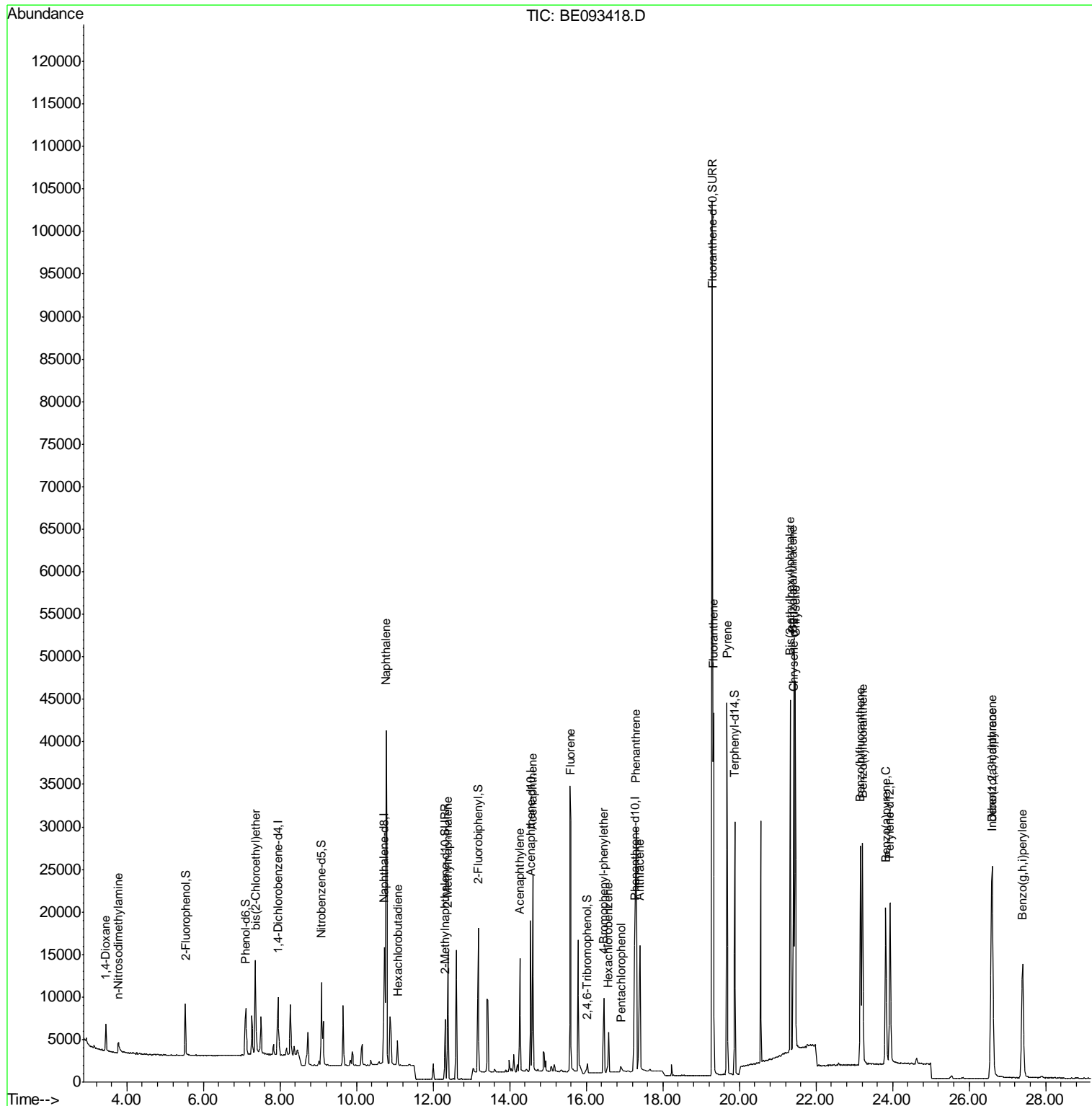
(#) = qualifier out of range (m) = manual integration (+) = signals summed

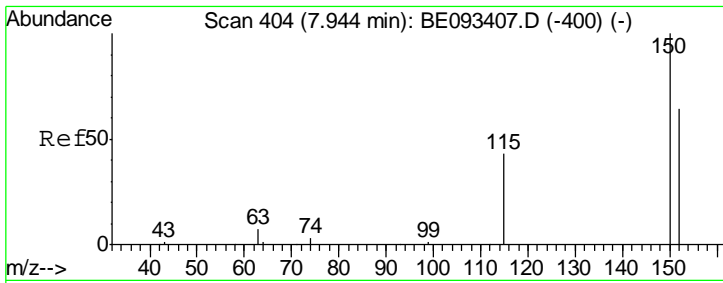
Data Path : Z:\HPCHEM1\BNA_E\DATA\BE070217\
 Data File : BE093418.D
 Acq On : 2 Jul 2017 17:44
 Operator : SJ/JU
 Sample : SSTDCCC0.4
 Misc :
 ALS Vial : 4 Sample Multiplier: 1

Instrument :
 BNA_E
 Client Sampled :
 SSTDCCC0.4

Manual Integrations
 APPROVED
 mohammad
 7/3/2017 4:42:13 PM

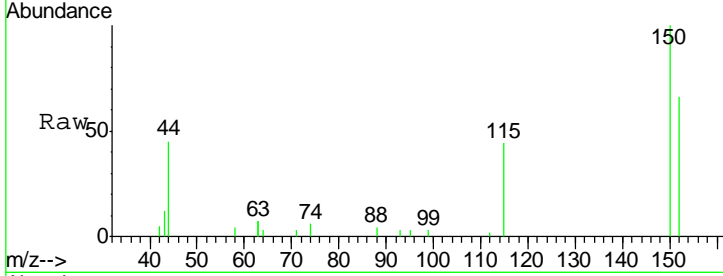
Quant Time: Jul 03 06:49:13 2017
 Quant Method : Z:\HPCHEM1\BNA_E\METHODS\8270-SIM-BE070217.M
 Quant Title : ASP BNA STANDARDS FOR 5 POINT CALIBRATION
 QLast Update : Sun Jul 02 13:43:38 2017
 Response via : Initial Calibration





#1
 1,4-Dichlorobenzene-d4
 Concen: 0.400 ng
 RT: 7.94 min Scan# 404
 Delta R.T. -0.00 min
 Lab File: BE093418.D
 Acq: 2 Jul 2017 17:44

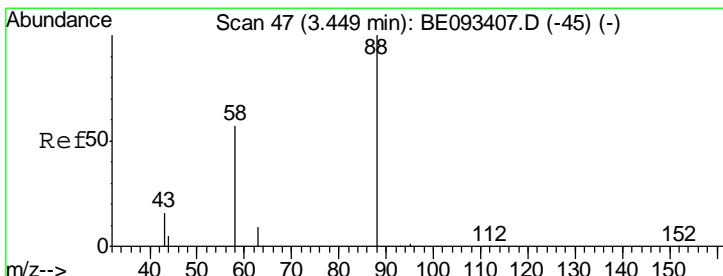
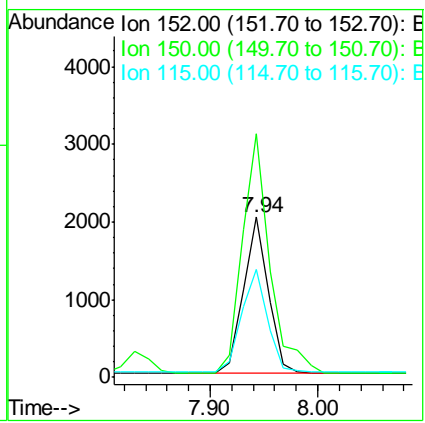
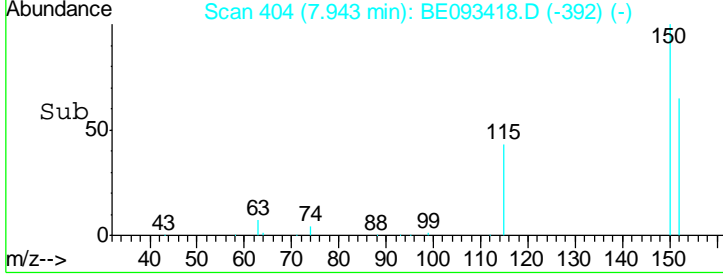
Instrument :
 BNA_E
 ClientSampled :
 SSTDCCC0.4



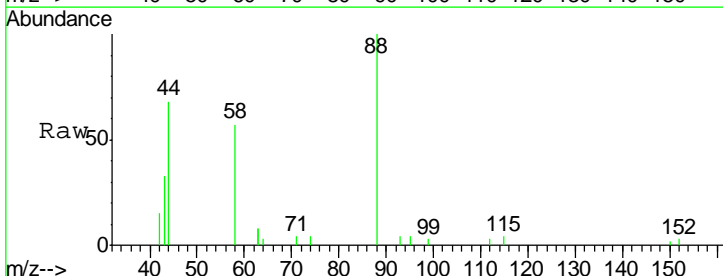
Tgt Ion: 152 Resp: 3239

Ion	Ratio	Lower	Upper
152	100		
150	152.3	125.1	187.7
115	67.7	55.7	83.5

Manual Integrations
APPROVED
 mohammad
 7/3/2017 4:42:13 PM

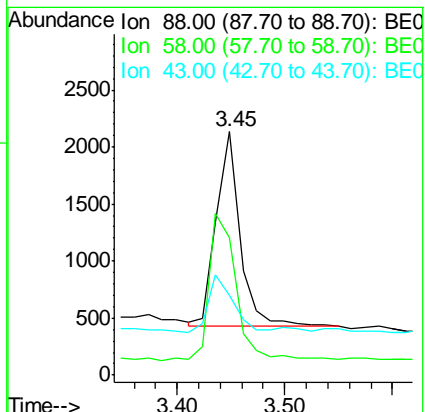
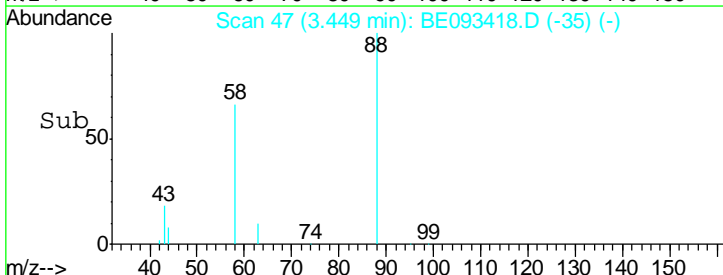


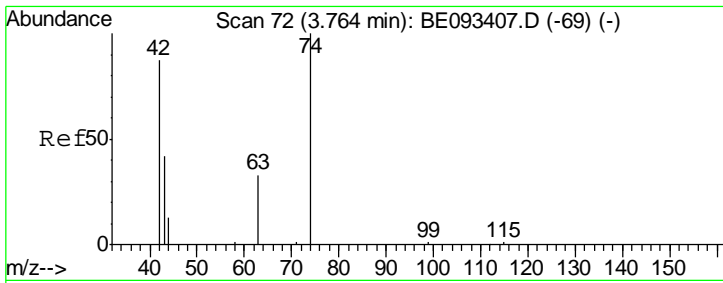
#2
 1,4-Dioxane
 Concen: 0.383 ng
 RT: 3.45 min Scan# 47
 Delta R.T. -0.00 min
 Lab File: BE093418.D
 Acq: 2 Jul 2017 17:44



Tgt Ion: 88 Resp: 2623

Ion	Ratio	Lower	Upper
88	100		
58	85.1	62.2	93.4
43	28.3	23.2	34.8





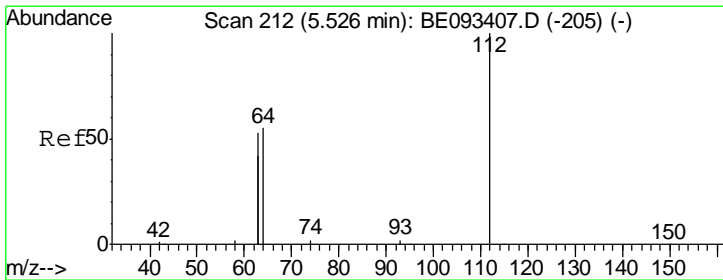
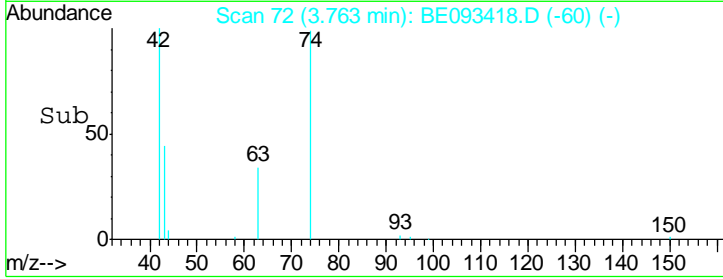
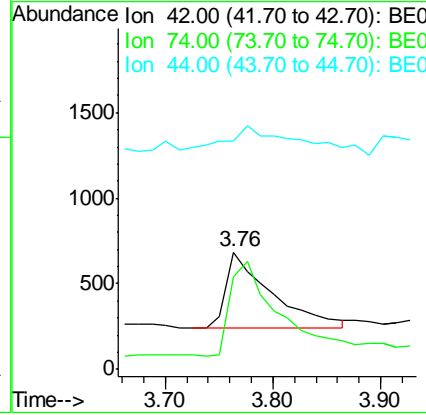
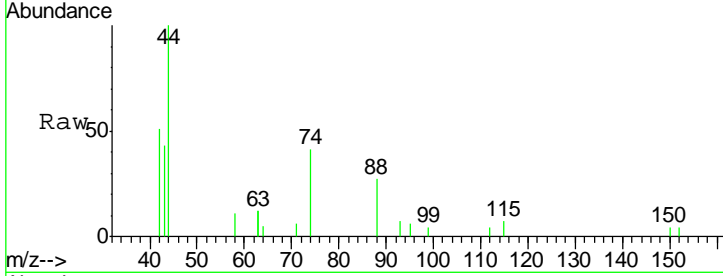
#3
 n-Nitrosodimethylamine
 Concen: 0.379 ng
 RT: 3.76 min Scan# 72
 Delta R.T. 0.00 min
 Lab File: BE093418.D
 Acq: 2 Jul 2017 17:44

Instrument :
 BNA_E
ClientSampled :
 SSTDCCC0.4

Tgt Ion	Resp	Lower	Upper
42	100		
74	137.4	99.1	148.7
44	35.8	7.4	11.2#

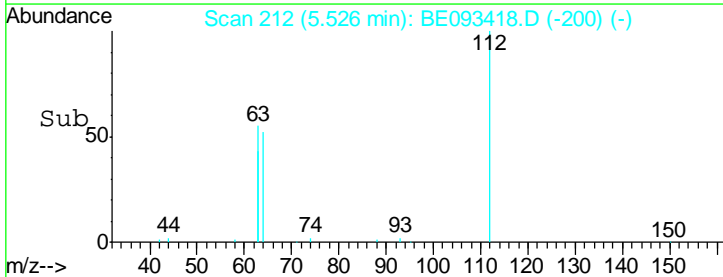
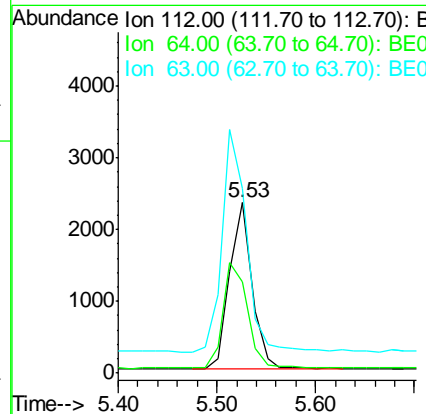
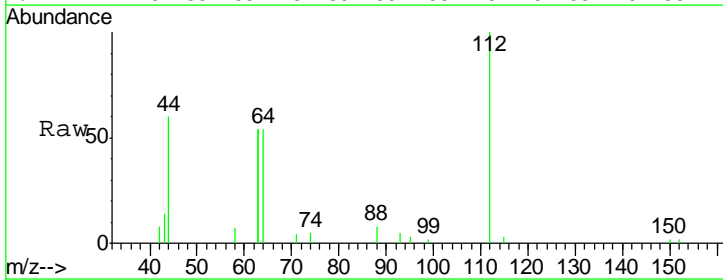
Manual Integrations
APPROVED

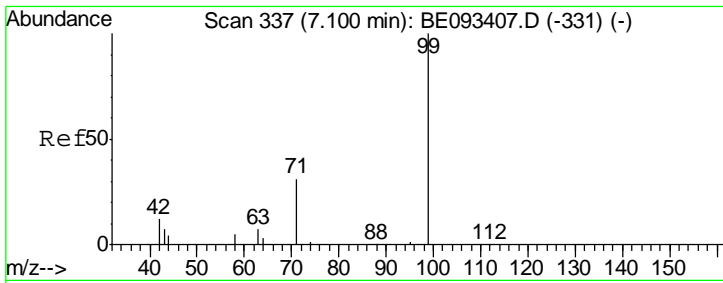
mohammad
 7/3/2017 4:42:13 PM



#4
 2-Fluorophenol
 Concen: 0.378 ng
 RT: 5.53 min Scan# 212
 Delta R.T. -0.00 min
 Lab File: BE093418.D
 Acq: 2 Jul 2017 17:44

Tgt Ion	Resp	Lower	Upper
112	100		
64	69.4	56.4	84.6
63	144.2	29.3	43.9#





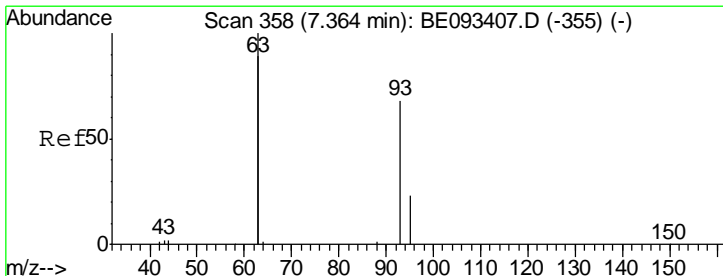
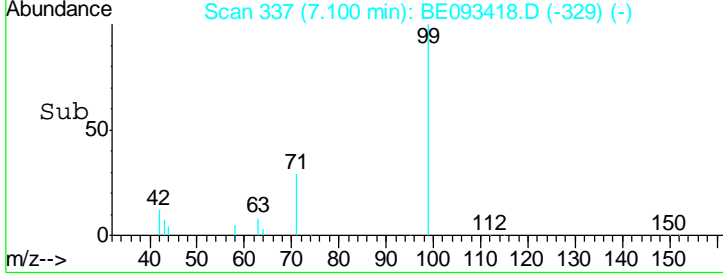
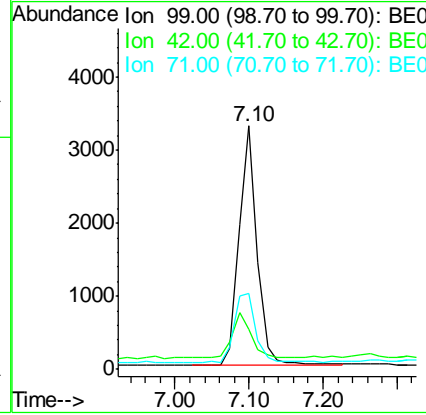
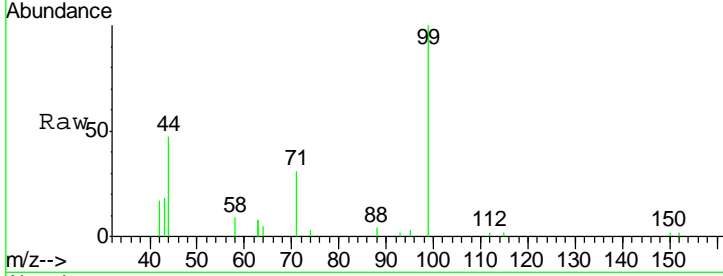
#5
 Phenol-d6
 Concen: 0.384 ng
 RT: 7.10 min Scan# 337
 Delta R.T. -0.00 min
 Lab File: BE093418.D
 Acq: 2 Jul 2017 17:44

Instrument :
 BNA_E
ClientSampled :
 SSTDCCC0.4

Tgt Ion	Resp	Lower	Upper
99	100		
42	19.3	0.0	0.0#
71	34.1	0.0	0.0#

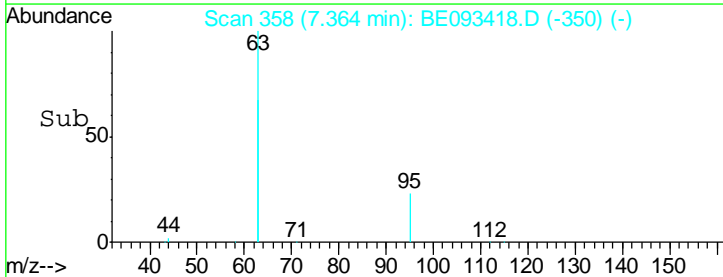
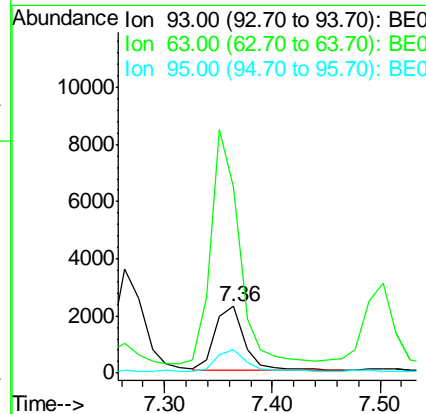
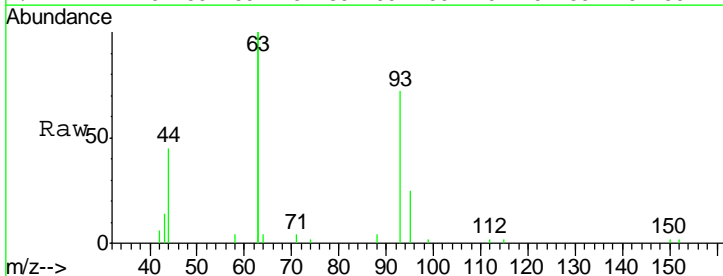
Manual Integrations
APPROVED

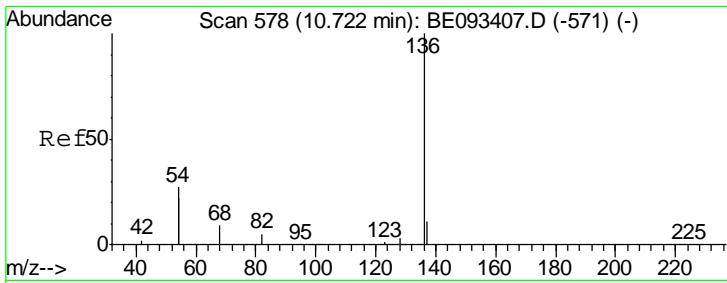
mohammad
 7/3/2017 4:42:13 PM



#6
 bis(2-Chloroethyl)ether
 Concen: 0.387 ng
 RT: 7.36 min Scan# 358
 Delta R.T. -0.00 min
 Lab File: BE093418.D
 Acq: 2 Jul 2017 17:44

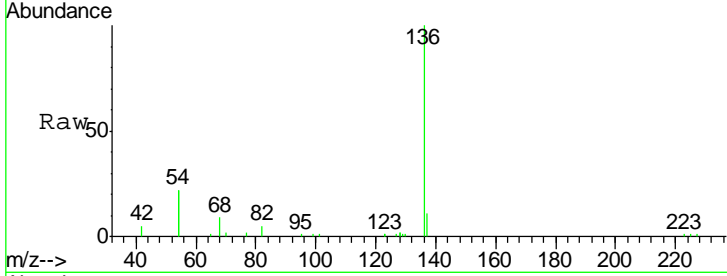
Tgt Ion	Resp	Lower	Upper
93	100		
63	350.2	0.0	0.0#
95	33.2	25.4	38.0





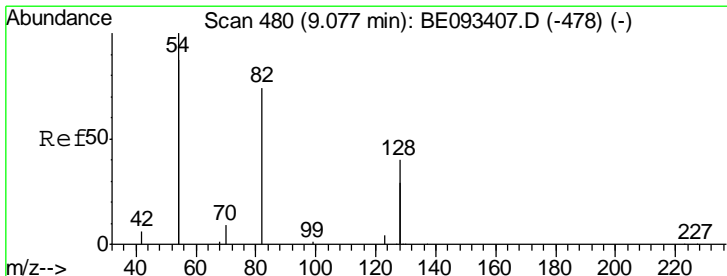
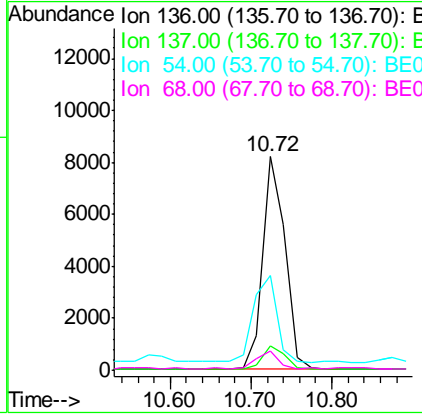
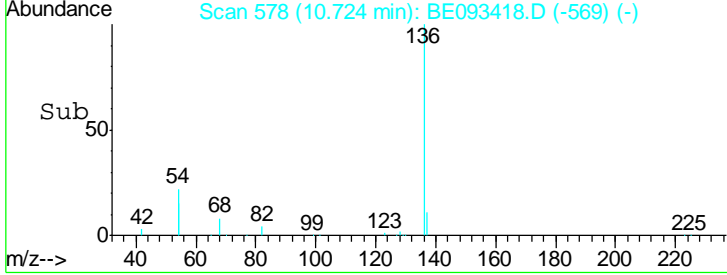
#7
 Naphthalene-d8
 Concen: 0.400 ng
 RT: 10.72 min Scan# 578
 Delta R.T. 0.00 min
 Lab File: BE093418.D
 Acq: 2 Jul 2017 17:44

Instrument :
 BNA_E
ClientSampled :
 SSTDCCC0.4

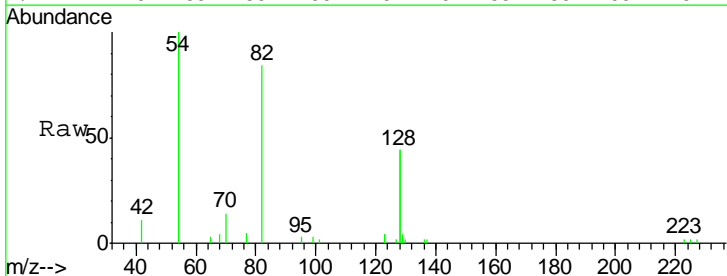


Tgt Ion	Resp	Lower	Upper
136	15700		
137	11.3	9.8	14.8
54	44.1	10.3	15.5#
68	8.7	9.0	13.4#

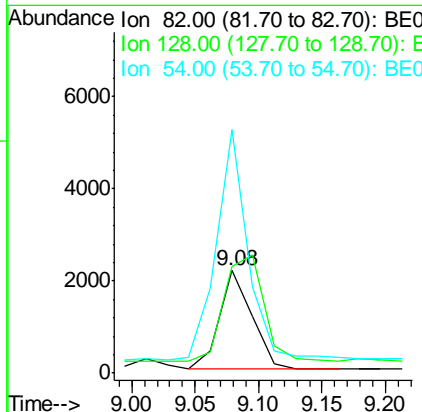
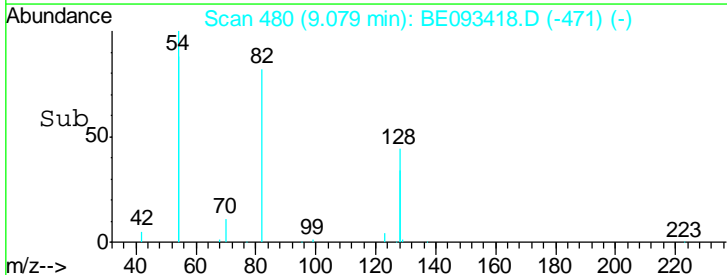
Manual Integrations
APPROVED
 mohammad
 7/3/2017 4:42:13 PM

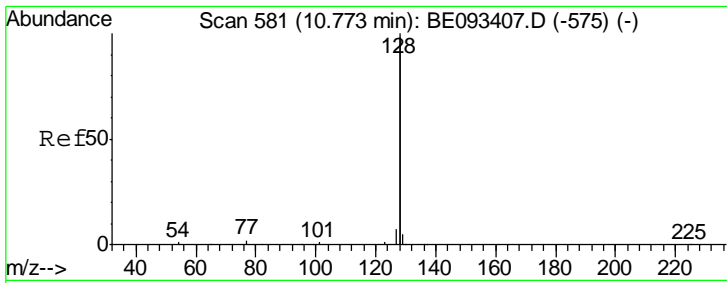


#8
 Nitrobenzene-d5
 Concen: 0.383 ng
 RT: 9.08 min Scan# 480
 Delta R.T. 0.00 min
 Lab File: BE093418.D
 Acq: 2 Jul 2017 17:44



Tgt Ion	Resp	Lower	Upper
82	3844		
82	100		
128	103.5	17.0	25.4#
54	237.1	53.8	80.6#





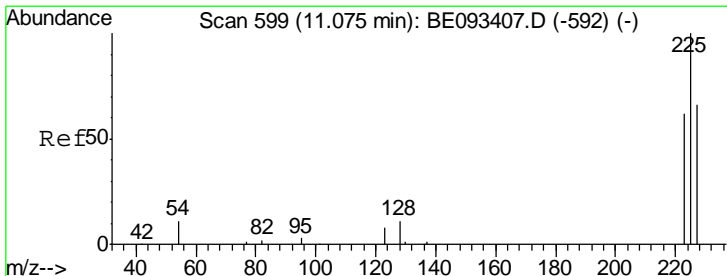
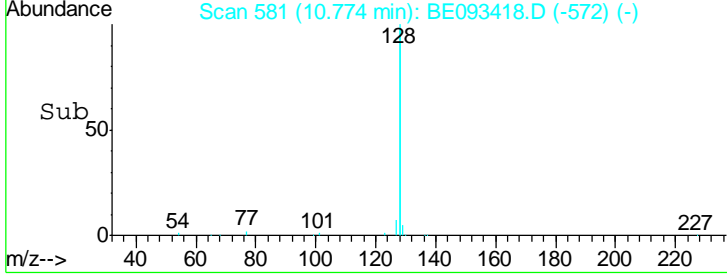
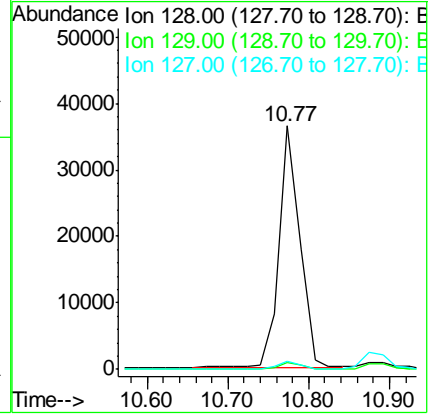
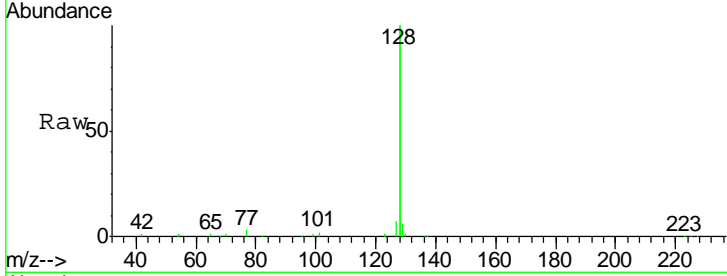
#9
 Naphthalene
 Concen: 0.390 ng
 RT: 10.77 min Scan# 581
 Delta R.T. 0.00 min
 Lab File: BE093418.D
 Acq: 2 Jul 2017 17:44

Instrument :
 BNA_E
 ClientSampled :
 SSTDCCC0.4

Tgt Ion	Resp	Lower	Upper
128	64063		
129	2.8	11.4	17.0#
127	3.5	11.2	16.8#

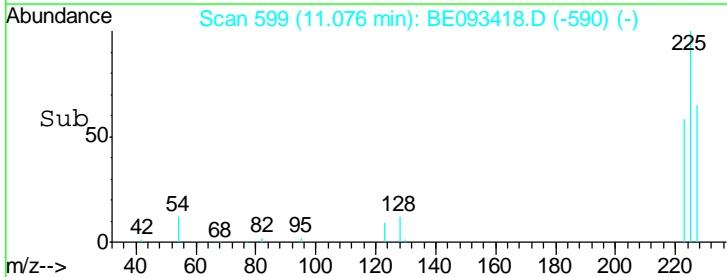
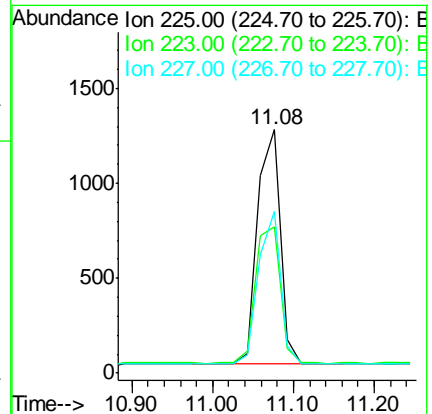
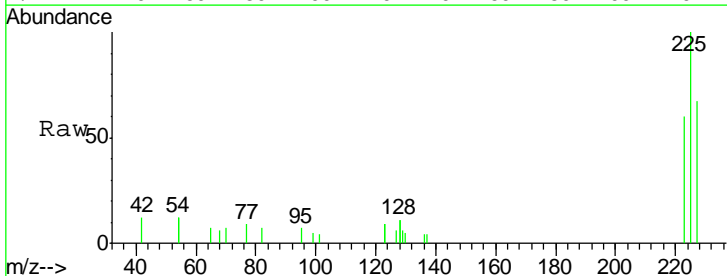
Manual Integrations
 APPROVED

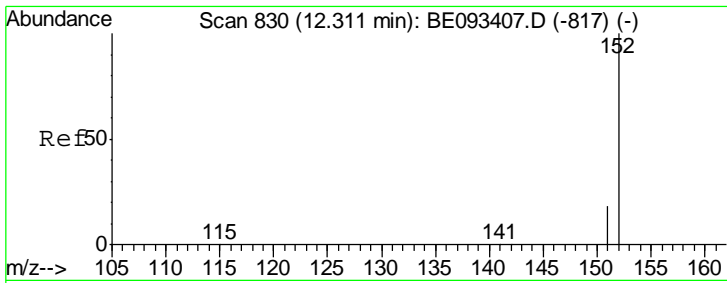
mohammad
 7/3/2017 4:42:13 PM



#10
 Hexachlorobutadiene
 Concen: 0.393 ng
 RT: 11.08 min Scan# 599
 Delta R.T. 0.00 min
 Lab File: BE093418.D
 Acq: 2 Jul 2017 17:44

Tgt Ion	Resp	Lower	Upper
225	2453		
223	63.5	49.7	74.5
227	62.6	50.3	75.5



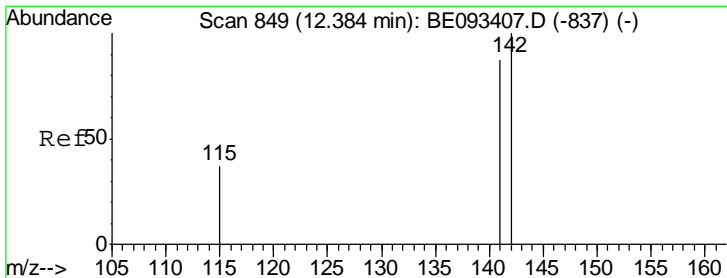
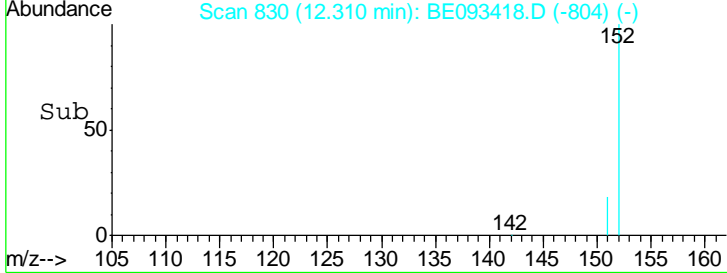
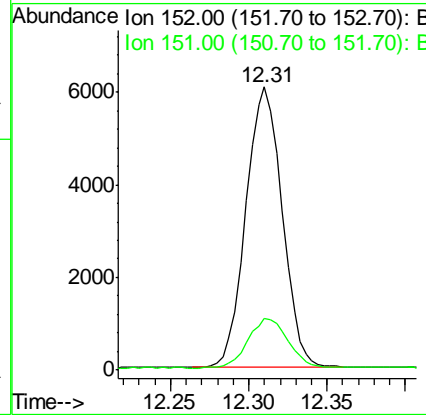
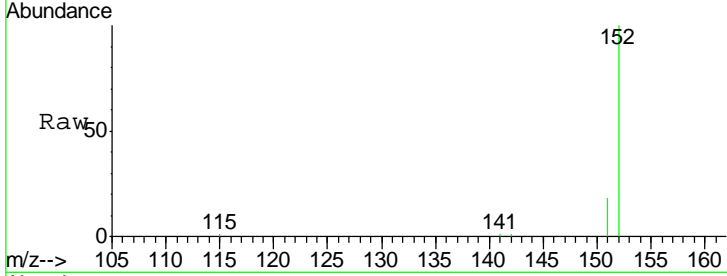


#11
 2-Methylnaphthalene-d10
 Concen: 0.390 ng
 RT: 12.31 min Scan# 830
 Delta R.T. -0.00 min
 Lab File: BE093418.D
 Acq: 2 Jul 2017 17:44

Tgt Ion	Resp	Lower	Upper
152	100		
151	19.3	15.1	22.7

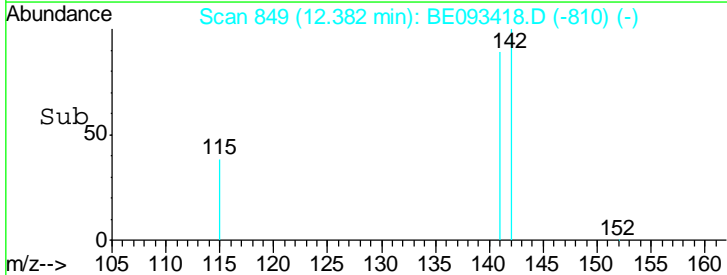
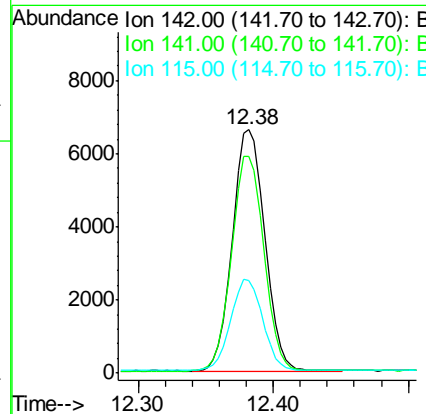
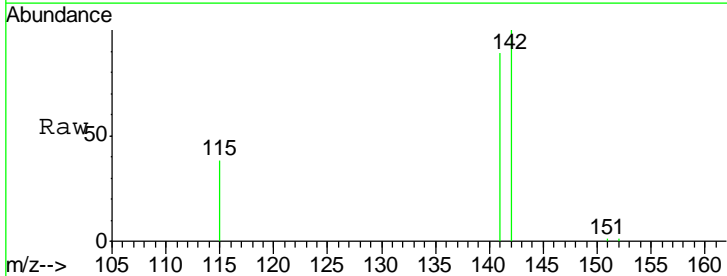
Instrument :
 BNA_E
 ClientSampled :
 SSTDCCC0.4

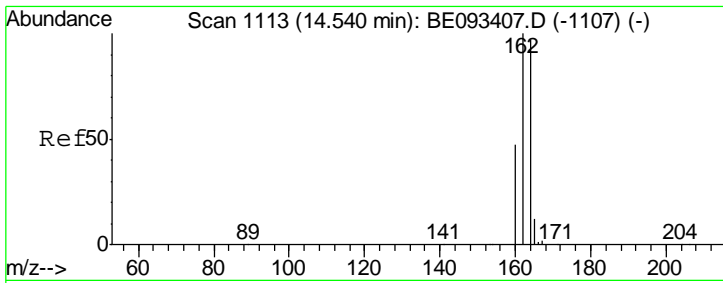
Manual Integrations
APPROVED
 mohammad
 7/3/2017 4:42:13 PM



#12
 2-Methylnaphthalene
 Concen: 0.389 ng
 RT: 12.38 min Scan# 849
 Delta R.T. -0.00 min
 Lab File: BE093418.D
 Acq: 2 Jul 2017 17:44

Tgt Ion	Resp	Lower	Upper
142	100		
141	89.2	72.6	108.8
115	38.2	32.2	48.2



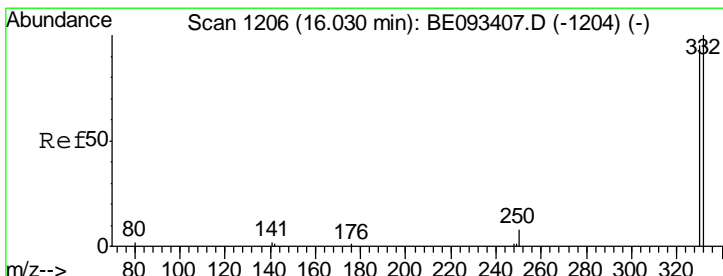
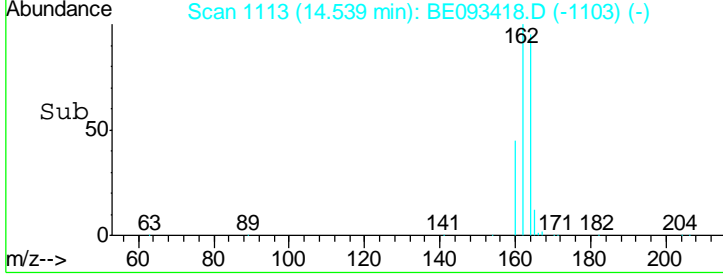
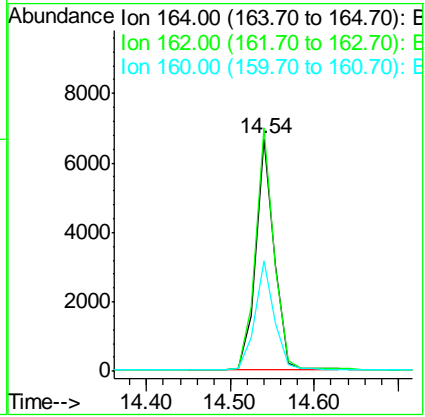
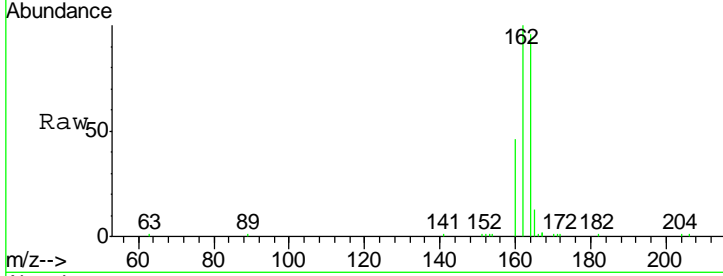


#13
 Acenaphthene-d10
 Concen: 0.400 ng
 RT: 14.54 min Scan# 1113
 Delta R.T. -0.00 min
 Lab File: BE093418.D
 Acq: 2 Jul 2017 17:44

Instrument :
 BNA_E
ClientSampled :
 SSTDCCC0.4

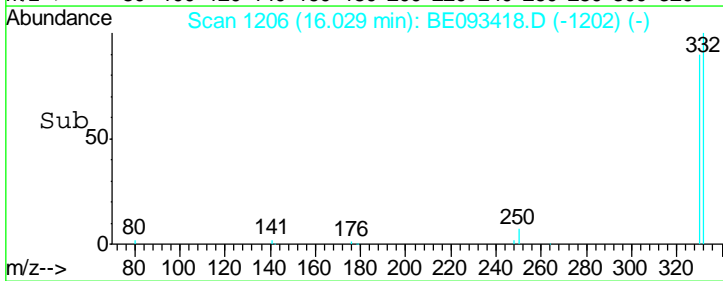
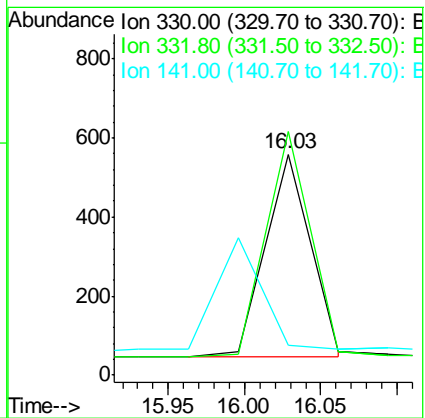
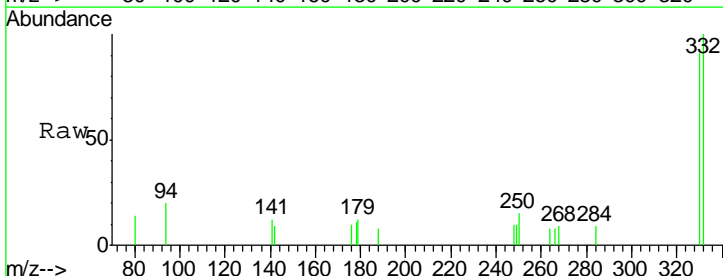
Tgt Ion	Resp	Lower	Upper
164	10251		
162	104.7	84.6	127.0
160	47.7	41.8	62.6

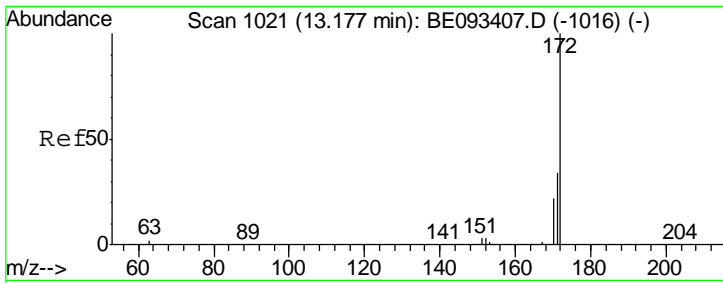
Manual Integrations
APPROVED
 mohammad
 7/3/2017 4:42:13 PM



#14
 2,4,6-Tribromophenol
 Concen: 0.324 ng
 RT: 16.03 min Scan# 1206
 Delta R.T. -0.00 min
 Lab File: BE093418.D
 Acq: 2 Jul 2017 17:44

Tgt Ion	Resp	Lower	Upper
330	1044		
332	111.1	77.7	116.5
141	0.0	56.2	84.4#



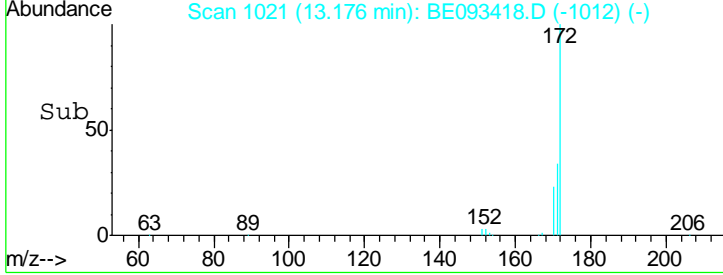
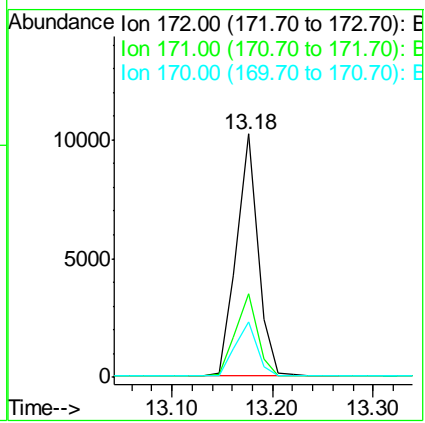
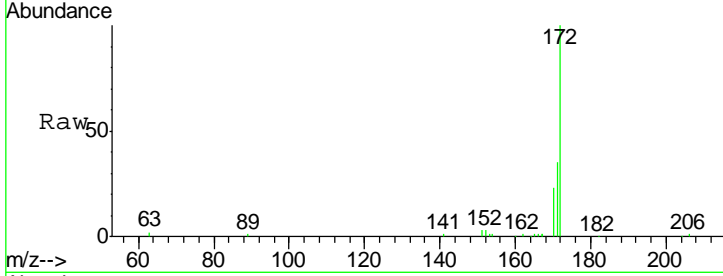


#15
 2-Fluorobiphenyl
 Concen: 0.385 ng
 RT: 13.18 min Scan# 1021
 Delta R.T. -0.00 min
 Lab File: BE093418.D
 Acq: 2 Jul 2017 17:44

Instrument :
 BNA_E
ClientSampled :
 SSTDCCC0.4

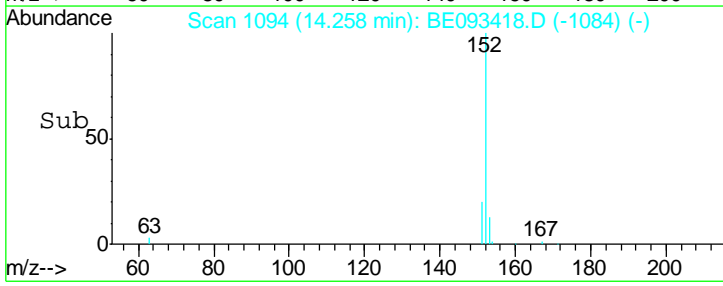
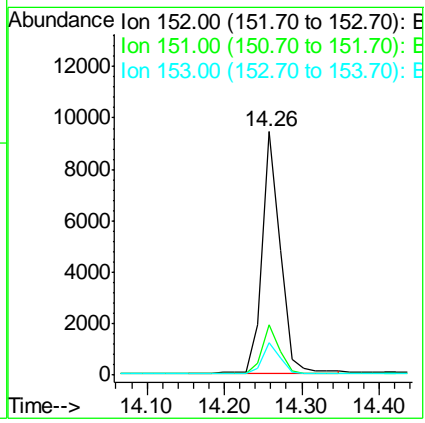
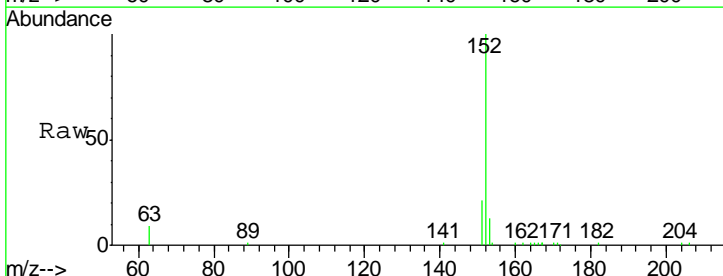
Tgt Ion	Resp	Lower	Upper
172	15330		
171	34.6	29.8	44.6
170	23.0	20.7	31.1

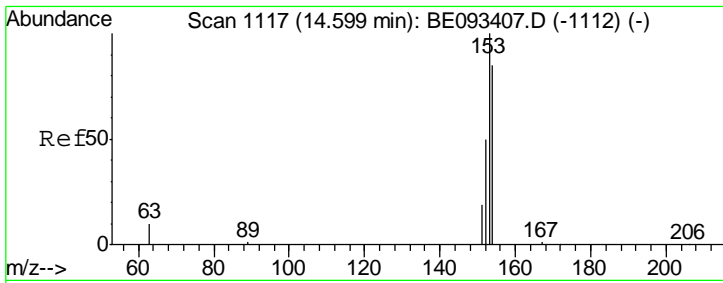
Manual Integrations
APPROVED
 mohammad
 7/3/2017 4:42:13 PM



#16
 Acenaphthylene
 Concen: 0.362 ng
 RT: 14.26 min Scan# 1094
 Delta R.T. -0.00 min
 Lab File: BE093418.D
 Acq: 2 Jul 2017 17:44

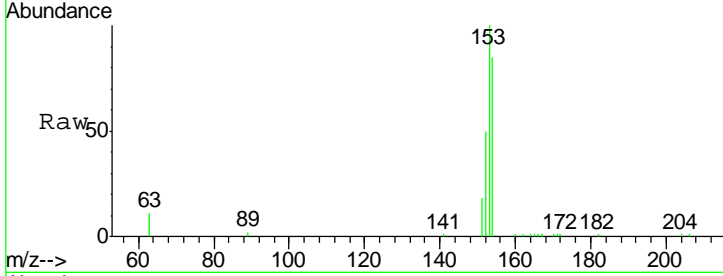
Tgt Ion	Resp	Lower	Upper
152	15470		
151	19.4	4.0	6.0#
153	12.9	10.3	15.5





#17
 Acenaphthene
 Concen: 0.381 ng
 RT: 14.60 min Scan# 1117
 Delta R.T. -0.00 min
 Lab File: BE093418.D
 Acq: 2 Jul 2017 17:44

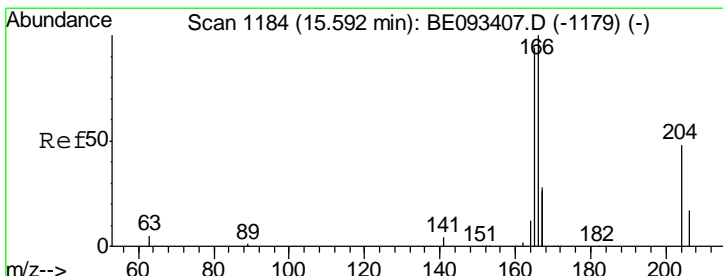
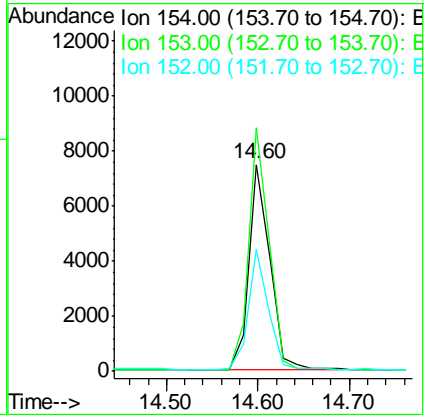
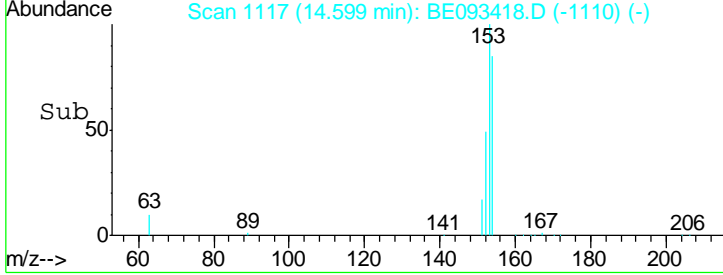
Instrument :
 BNA_E
 ClientSampled :
 SSTDCCC0.4



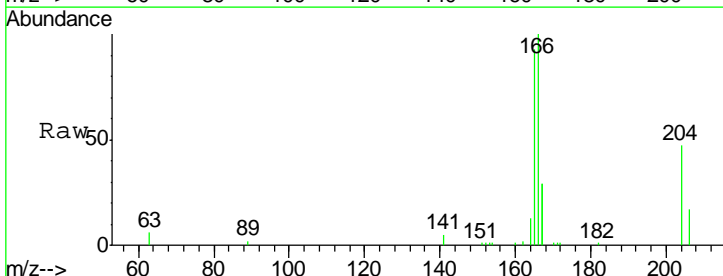
Tgt Ion: 154 Resp: 11909

Ion	Ratio	Lower	Upper
154	100		
153	114.4	91.2	136.8
152	55.2	44.8	67.2

Manual Integrations
 APPROVED
 mohammad
 7/3/2017 4:42:13 PM

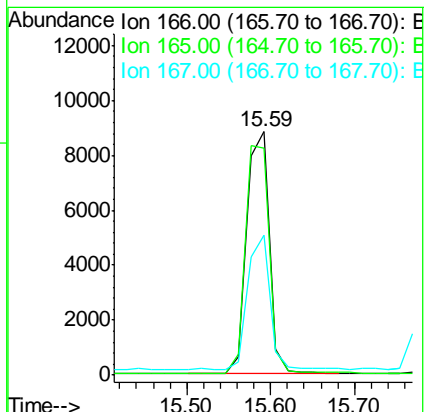
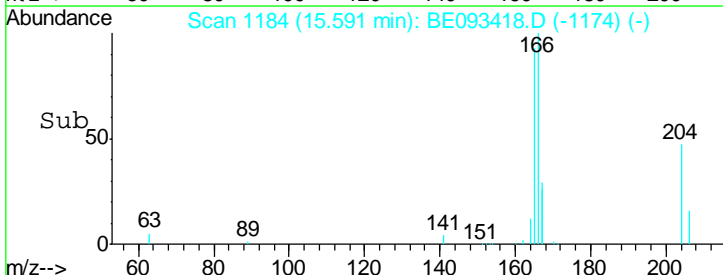


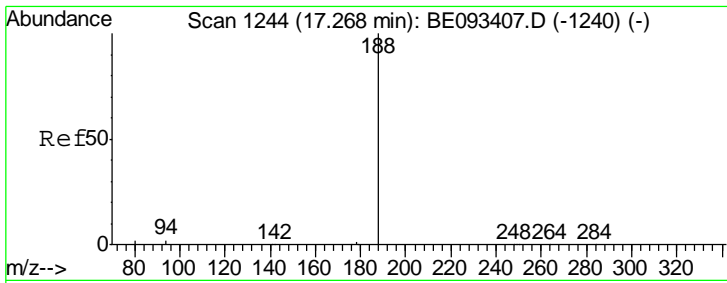
#18
 Fluorene
 Concen: 0.384 ng
 RT: 15.59 min Scan# 1184
 Delta R.T. -0.00 min
 Lab File: BE093418.D
 Acq: 2 Jul 2017 17:44



Tgt Ion: 166 Resp: 16471

Ion	Ratio	Lower	Upper
166	100		
165	98.9	78.6	117.8
167	54.9	11.1	16.7#





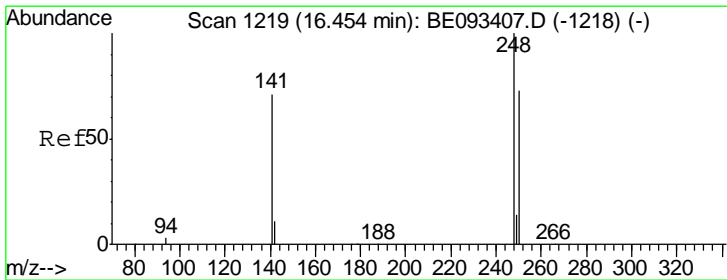
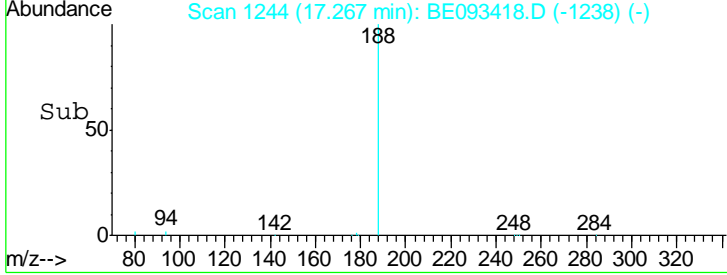
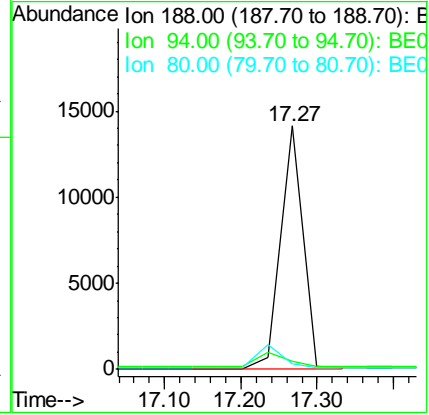
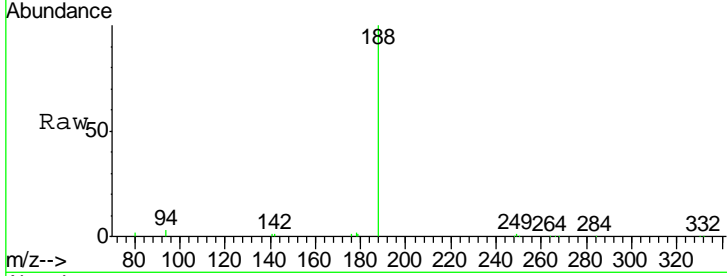
#19
 Phenanthrene-d10
 Concen: 0.400 ng
 RT: 17.27 min Scan# 1244
 Delta R.T. -0.00 min
 Lab File: BE093418.D
 Acq: 2 Jul 2017 17:44

Instrument :
 BNA_E
 ClientSampled :
 SSTCCCC0.4

Tgt Ion	Resp	Lower	Upper
188	100		
94	3.3	11.3	16.9#
80	2.2	11.7	17.5#

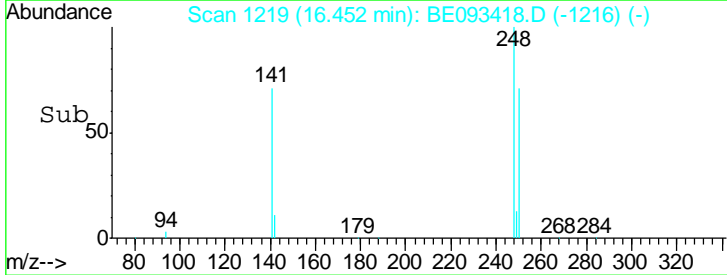
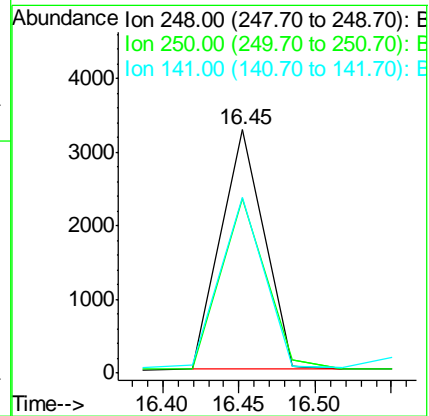
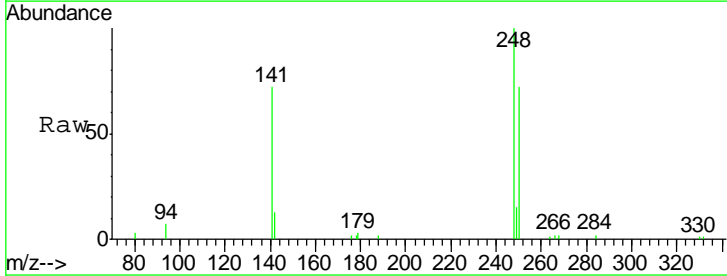
Manual Integrations
 APPROVED

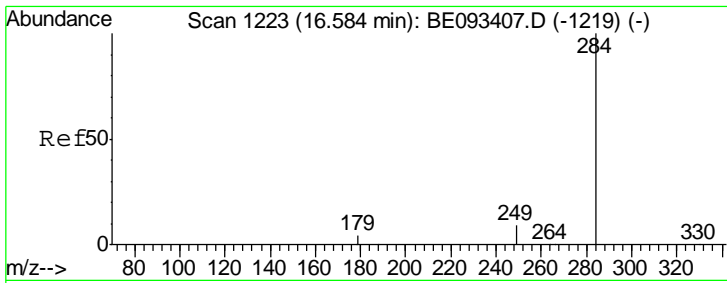
mohammad
 7/3/2017 4:42:13 PM



#20
 4-Bromophenyl-phenylether
 Concen: 0.405 ng
 RT: 16.45 min Scan# 1219
 Delta R.T. -0.00 min
 Lab File: BE093418.D
 Acq: 2 Jul 2017 17:44

Tgt Ion	Resp	Lower	Upper
248	100		
250	71.6	40.8	61.2#
141	72.3	161.6	242.4#



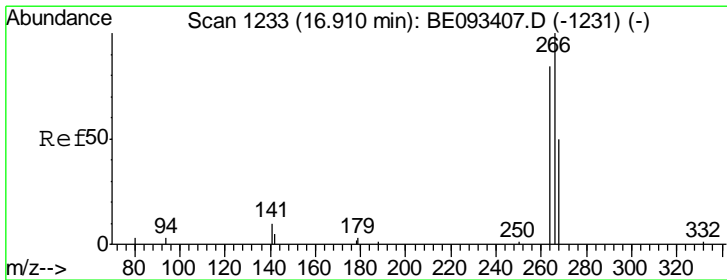
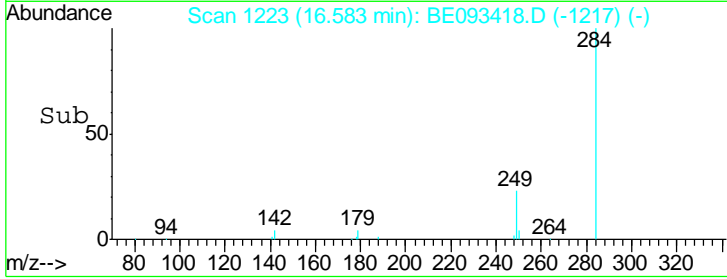
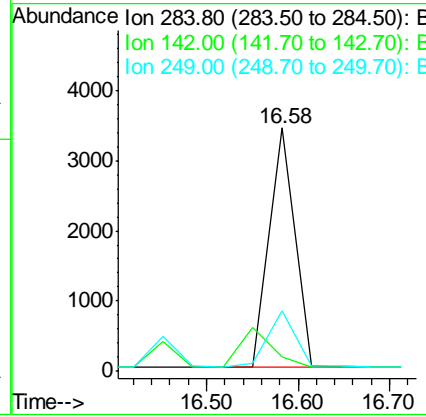
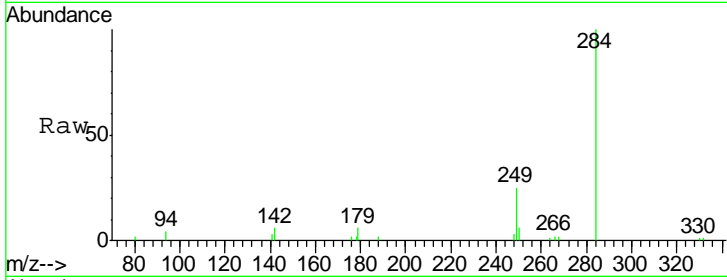


#21
 Hexachlorobenzene
 Concen: 0.391 ng
 RT: 16.58 min Scan# 1223
 Delta R.T. -0.00 min
 Lab File: BE093418.D
 Acq: 2 Jul 2017 17:44

Instrument : BNA_E
 ClientSampled : SSTDCCC0.4

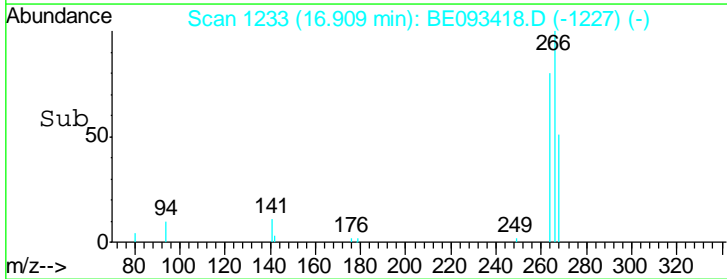
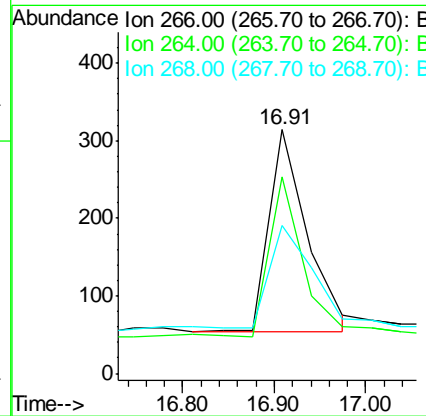
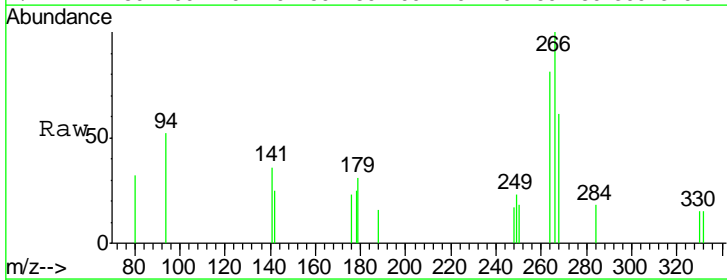
Tgt Ion	Resp	Lower	Upper
284	100		
142	0.0	0.0	0.0
249	24.3	0.0	0.0#

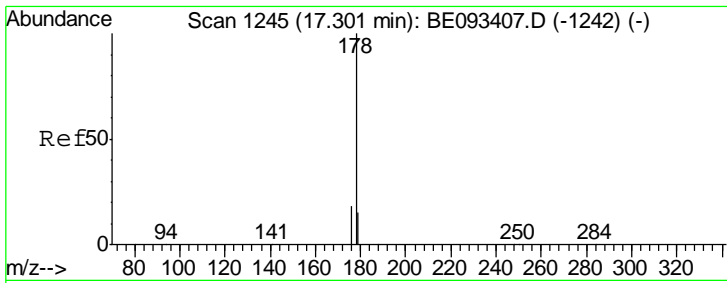
Manual Integrations
APPROVED
 mohammad
 7/3/2017 4:42:13 PM



#22
 Pentachlorophenol
 Concen: 0.332 ng
 RT: 16.91 min Scan# 1233
 Delta R.T. -0.00 min
 Lab File: BE093418.D
 Acq: 2 Jul 2017 17:44

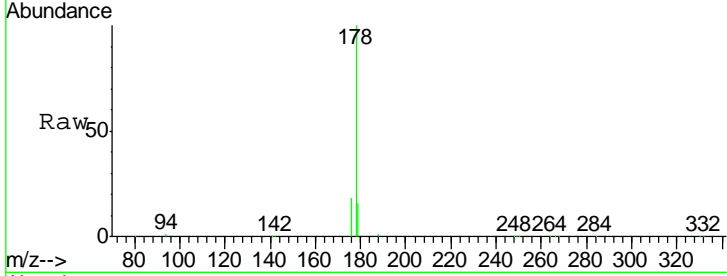
Tgt Ion	Resp	Lower	Upper
266	100		
264	80.9	58.2	87.2
268	60.5	71.9	107.9#





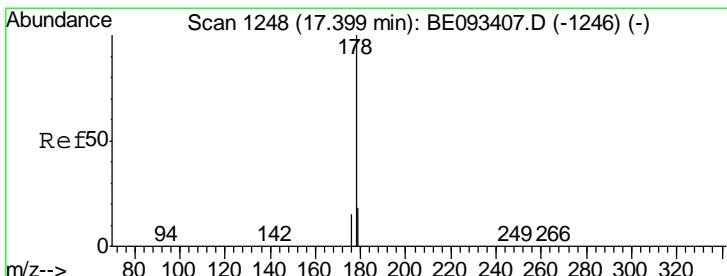
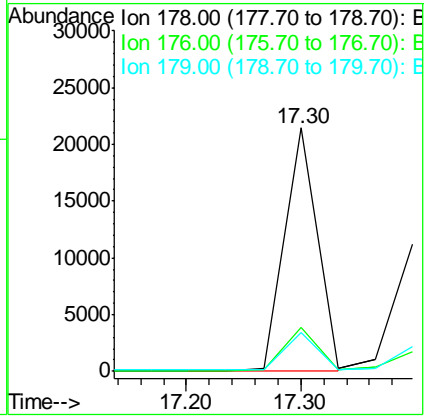
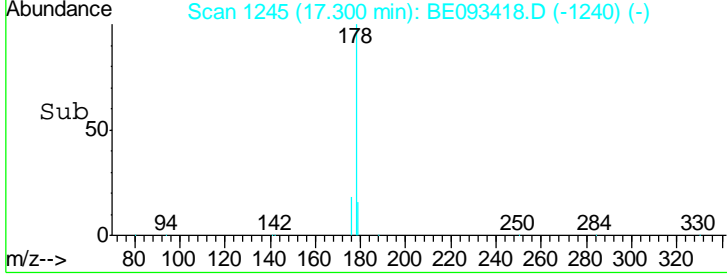
#23
 Phenanthrene
 Concen: 0.400 ng
 RT: 17.30 min Scan# 1245
 Delta R.T. -0.00 min
 Lab File: BE093418.D
 Acq: 2 Jul 2017 17:44

Instrument : BNA_E
 ClientSampled : SSTDCCC0.4

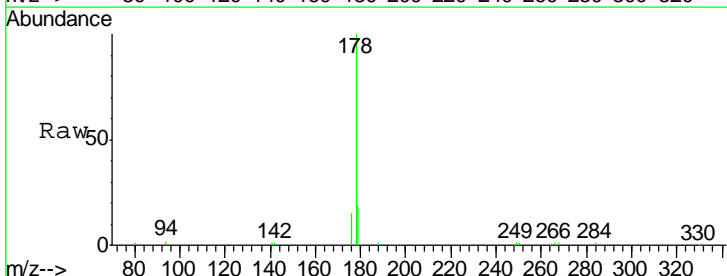


Tgt Ion	Resp	Lower	Upper
178	100		
176	17.9	15.0	22.4
179	15.8	12.7	19.1

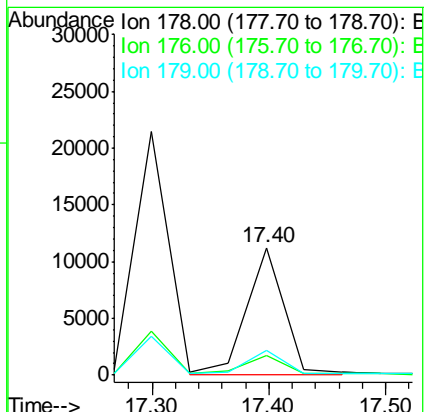
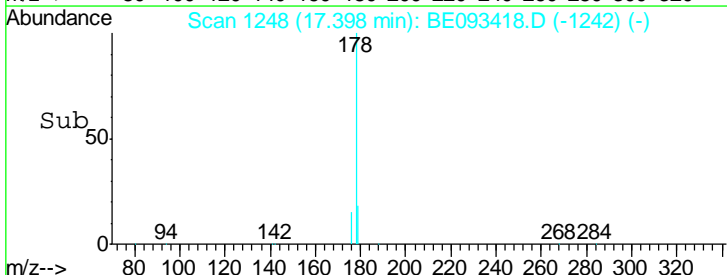
Manual Integrations
APPROVED
 mohammad
 7/3/2017 4:42:13 PM

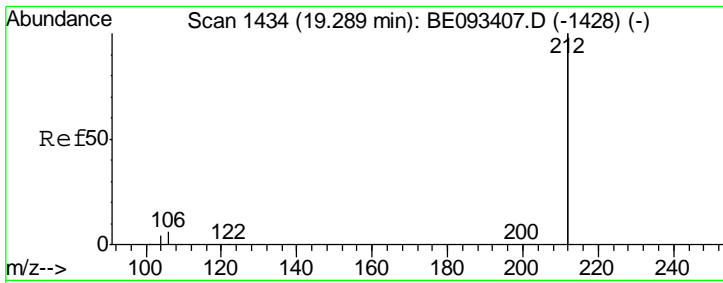


#24
 Anthracene
 Concen: 0.390 ng m
 RT: 17.40 min Scan# 1248
 Delta R.T. -0.00 min
 Lab File: BE093418.D
 Acq: 2 Jul 2017 17:44



Tgt Ion	Resp	Lower	Upper
178	100		
176	30.8	14.6	22.0#
179	26.1	12.0	18.0#



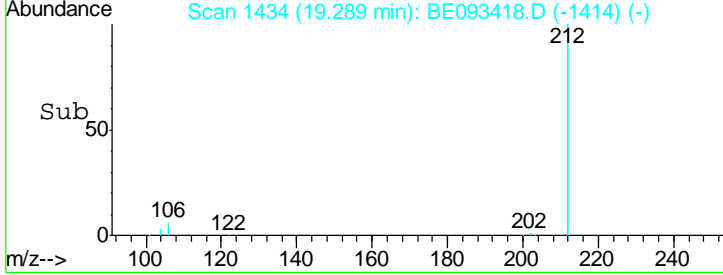
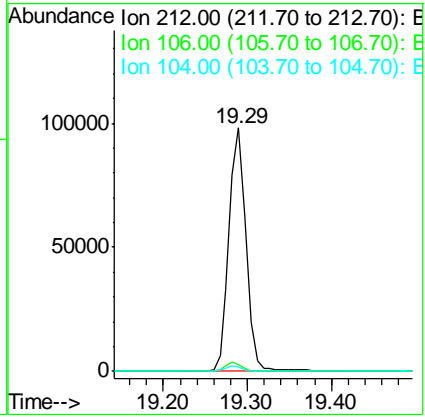
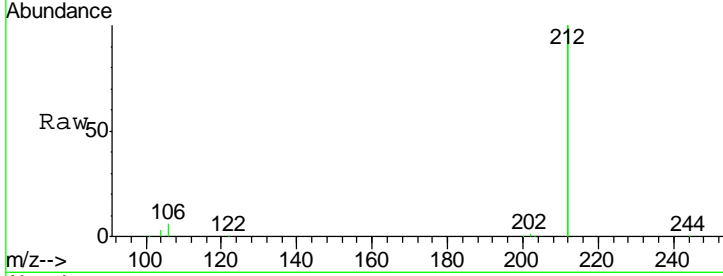


#25
 Fluoranthene-d10
 Concen: 0.388 ng
 RT: 19.29 min Scan# 1434
 Delta R.T. 0.00 min
 Lab File: BE093418.D
 Acq: 2 Jul 2017 17:44

Instrument :
 BNA_E
ClientSampled :
 SSTDCCC0.4

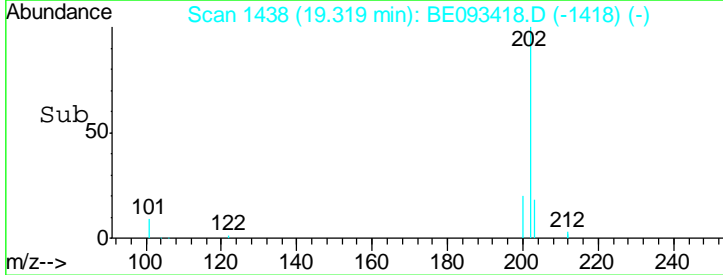
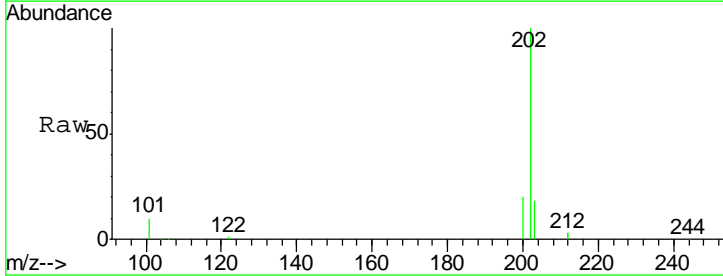
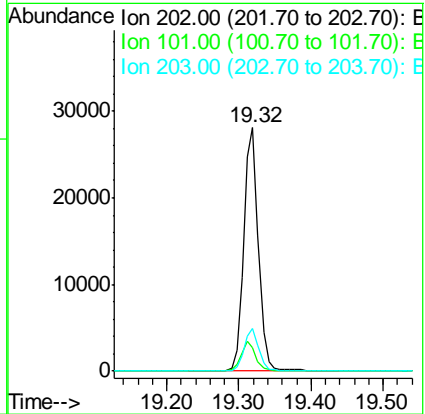
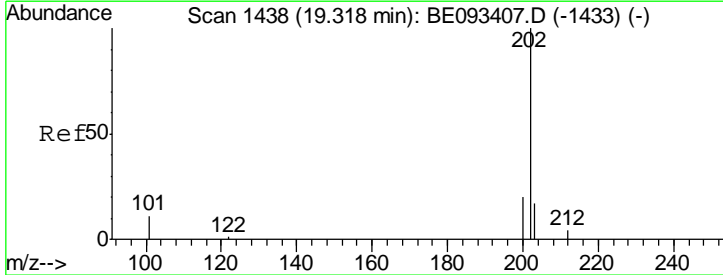
Tgt Ion	Resp	Lower	Upper
212	136380		
106	3.5	2.4	3.6
104	2.0	1.6	2.4

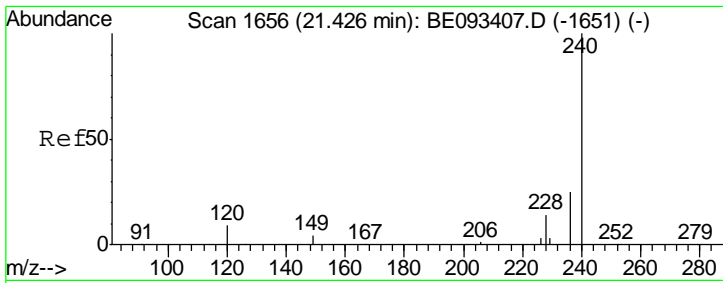
Manual Integrations
APPROVED
 mohammad
 7/3/2017 4:42:13 PM



#26
 Fluoranthene
 Concen: 0.395 ng
 RT: 19.32 min Scan# 1438
 Delta R.T. 0.00 min
 Lab File: BE093418.D
 Acq: 2 Jul 2017 17:44

Tgt Ion	Resp	Lower	Upper
202	39306		
101	12.0	9.6	14.4
203	16.8	14.4	21.6





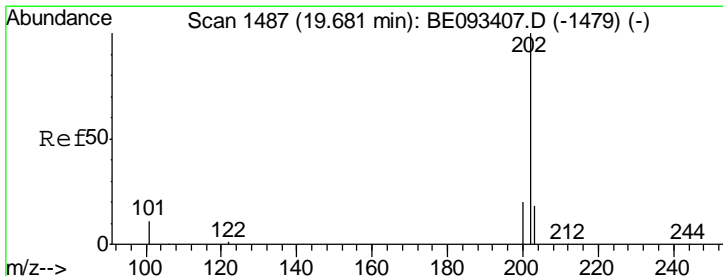
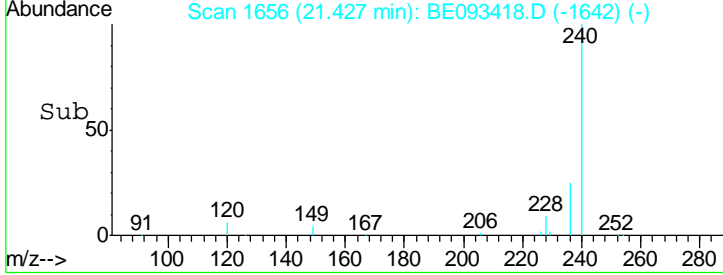
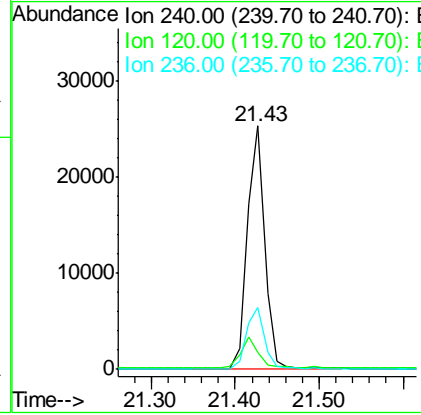
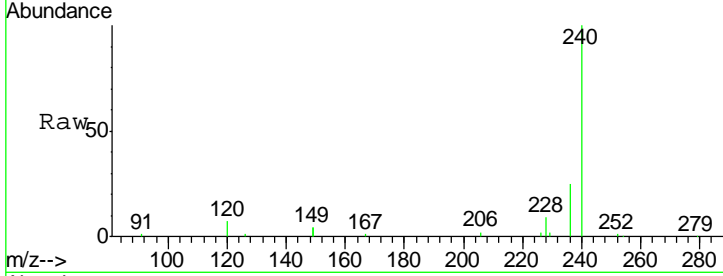
#27
 Chrysene-d12
 Concen: 0.400 ng
 RT: 21.43 min Scan# 1656
 Delta R.T. 0.00 min
 Lab File: BE093418.D
 Acq: 2 Jul 2017 17:44

Instrument :
 BNA_E
 ClientSampled :
 SSTDCCC0.4

Tgt Ion	Resp	Lower	Upper
240	36091		
240	100		
120	7.3	4.6	7.0#
236	25.3	20.8	31.2

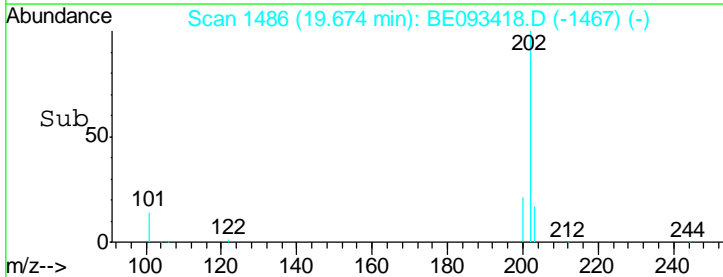
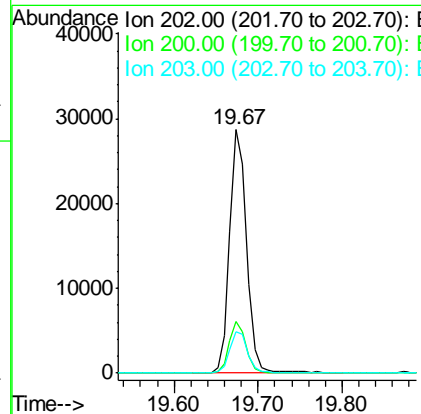
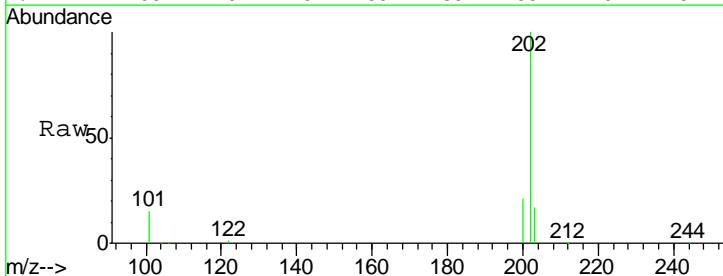
Manual Integrations
 APPROVED

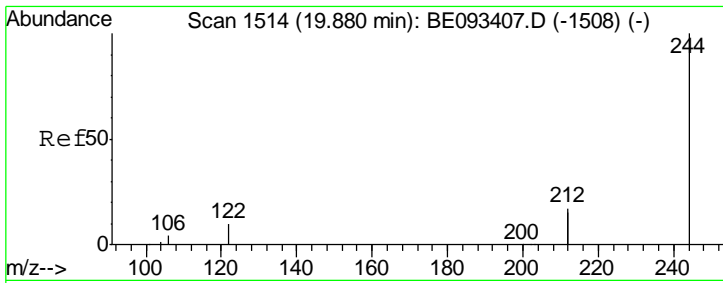
mohammad
 7/3/2017 4:42:13 PM



#28
 Pyrene
 Concen: 0.393 ng
 RT: 19.67 min Scan# 1486
 Delta R.T. -0.01 min
 Lab File: BE093418.D
 Acq: 2 Jul 2017 17:44

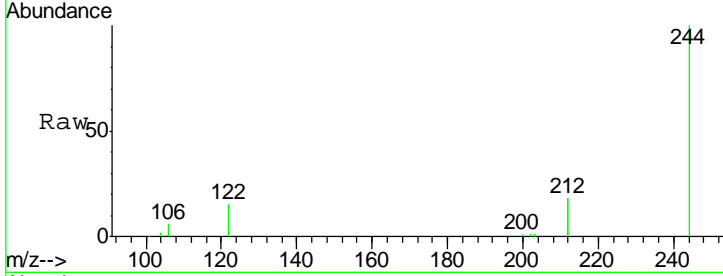
Tgt Ion	Resp	Lower	Upper
202	39839		
202	100		
200	20.7	0.0	0.0#
203	17.7	13.7	20.5





#29
 Terphenyl-d14
 Concen: 0.392 ng
 RT: 19.87 min Scan# 1513
 Delta R.T. -0.01 min
 Lab File: BE093418.D
 Acq: 2 Jul 2017 17:44

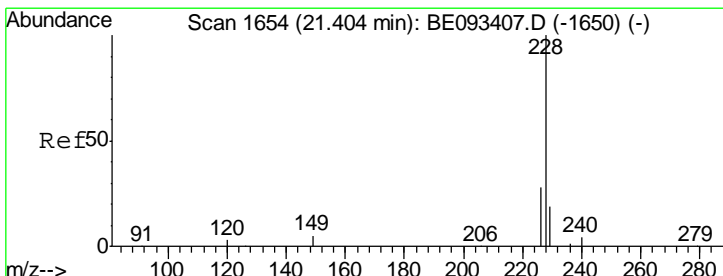
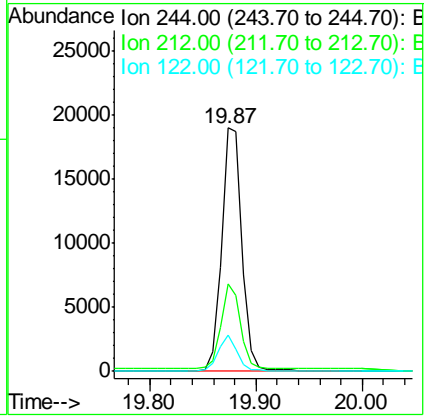
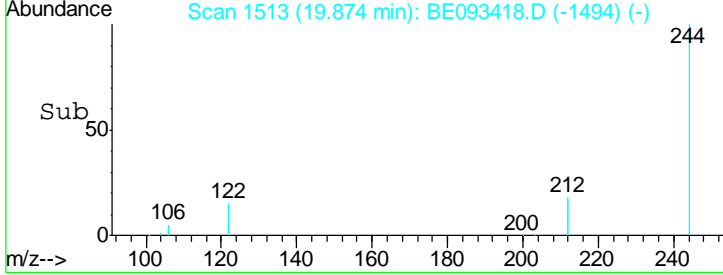
Instrument :
 BNA_E
 ClientSampled :
 SSTDCCC0.4



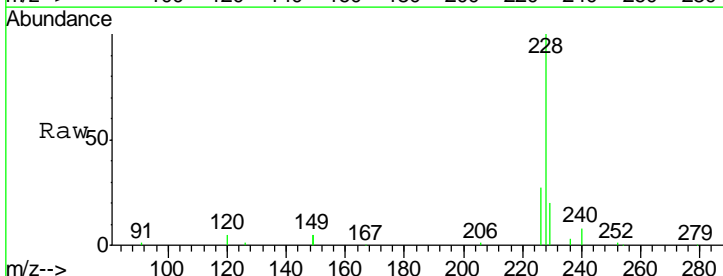
Tgt Ion: 244 Resp: 25290

Ion	Ratio	Lower	Upper
244	100		
212	35.8	10.6	16.0#
122	15.0	15.4	23.0#

Manual Integrations
 APPROVED
 mohammad
 7/3/2017 4:42:13 PM

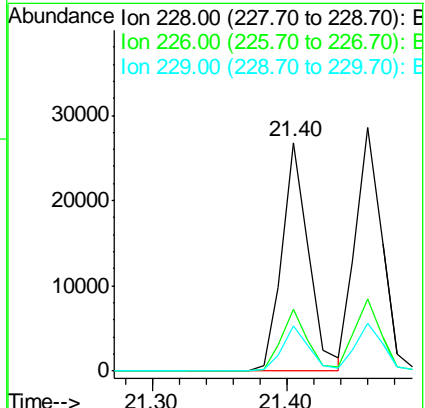
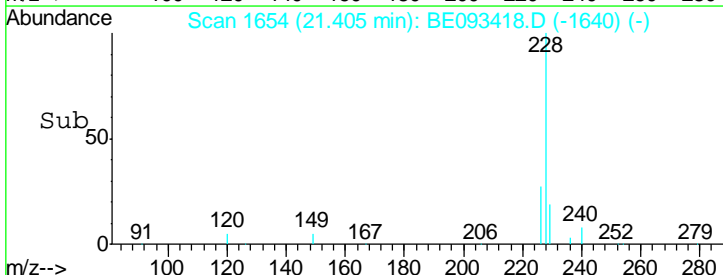


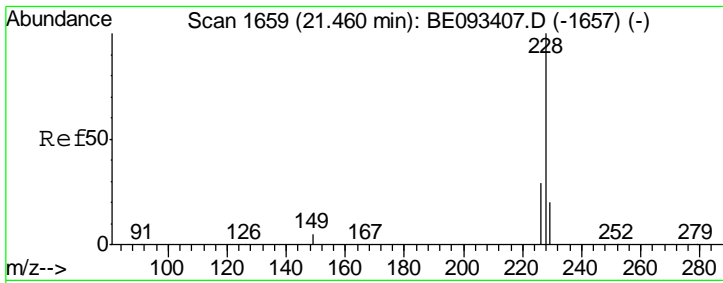
#30
 Benzo(a)anthracene
 Concen: 0.382 ng
 RT: 21.40 min Scan# 1654
 Delta R.T. 0.00 min
 Lab File: BE093418.D
 Acq: 2 Jul 2017 17:44



Tgt Ion: 228 Resp: 37262

Ion	Ratio	Lower	Upper
228	100		
226	27.0	19.7	29.5
229	19.5	19.2	28.8





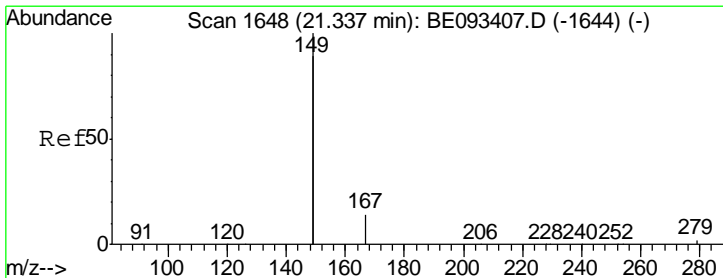
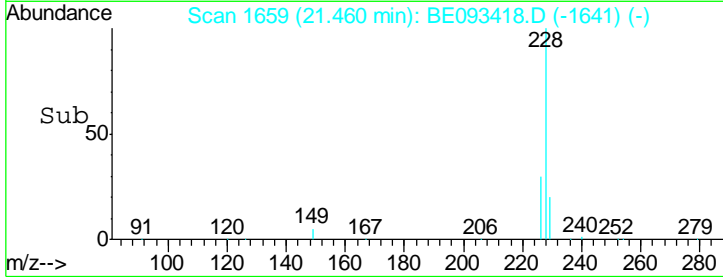
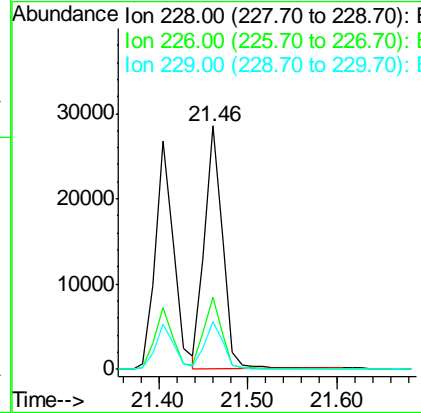
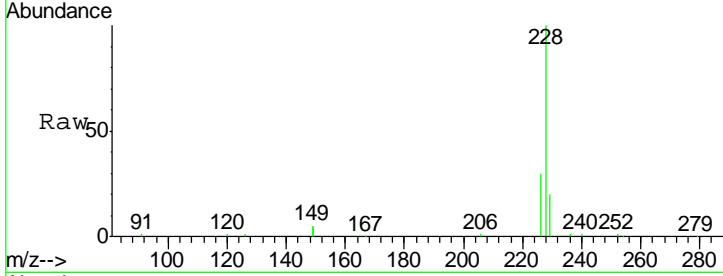
#31
 Chrysene
 Concen: 0.388 ng
 RT: 21.46 min Scan# 1659
 Delta R.T. 0.00 min
 Lab File: BE093418.D
 Acq: 2 Jul 2017 17:44

Instrument :
 BNA_E
 ClientSampled :
 SSTDCCC0.4

Tgt Ion	Resp	Lower	Upper
228	100		
226	29.7	21.5	32.3
229	19.7	18.6	28.0

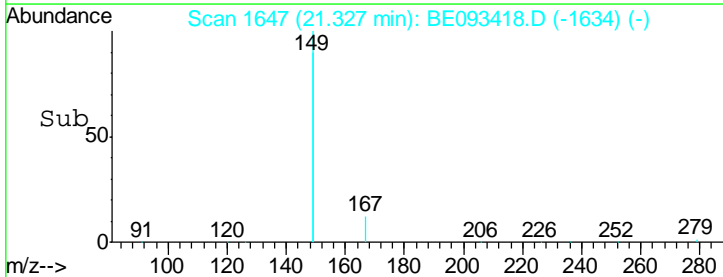
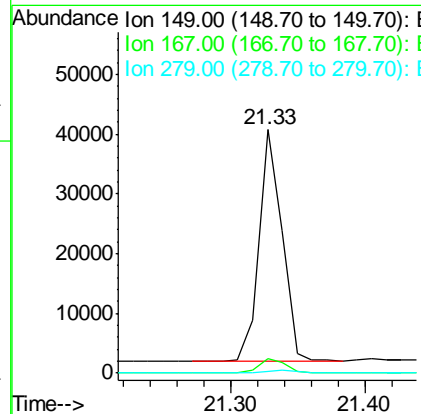
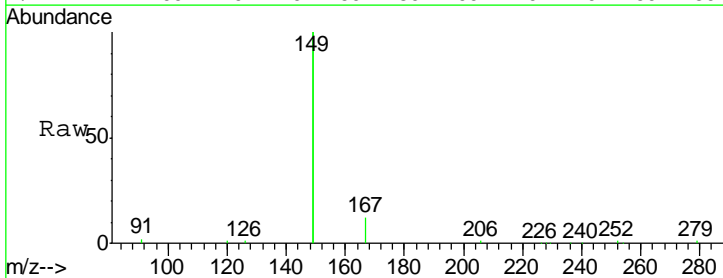
Manual Integrations
 APPROVED

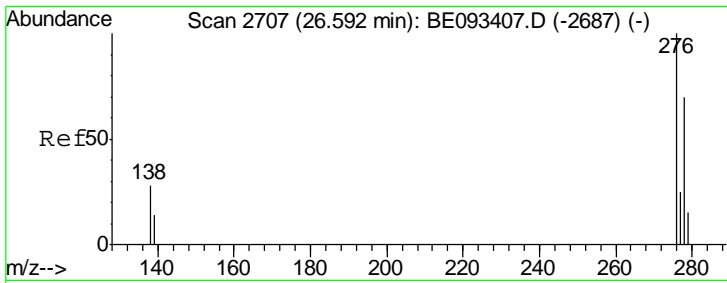
mohammad
 7/3/2017 4:42:13 PM



#32
 Bis(2-ethylhexyl)phthalate
 Concen: 0.332 ng
 RT: 21.33 min Scan# 1647
 Delta R.T. -0.01 min
 Lab File: BE093418.D
 Acq: 2 Jul 2017 17:44

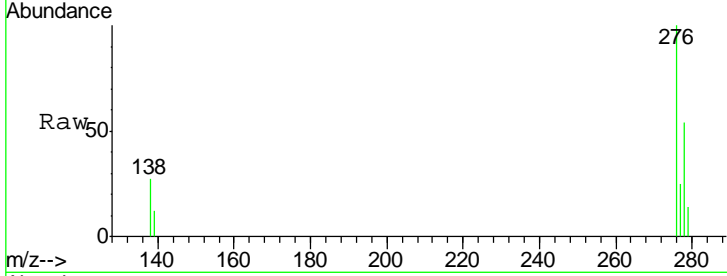
Tgt Ion	Resp	Lower	Upper
149	100		
167	6.7	20.1	30.1#
279	1.0	2.2	3.4#





#33
 Indeno(1,2,3-cd)pyrene
 Concen: 0.390 ng
 RT: 26.58 min Scan# 2705
 Delta R.T. -0.01 min
 Lab File: BE093418.D
 Acq: 2 Jul 2017 17:44

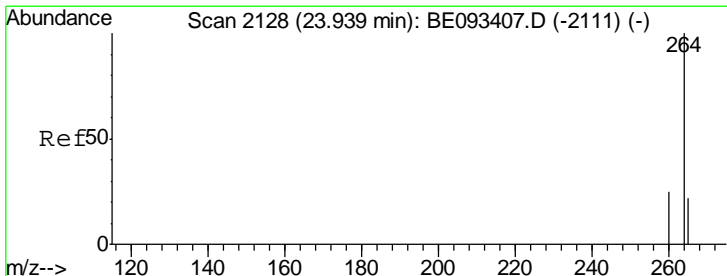
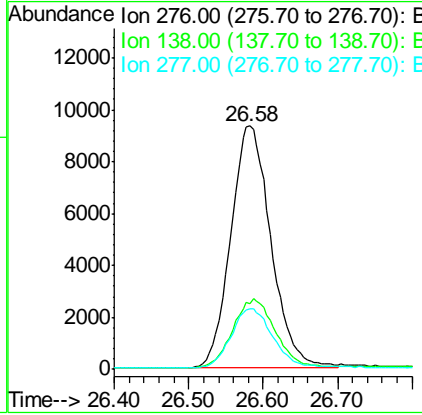
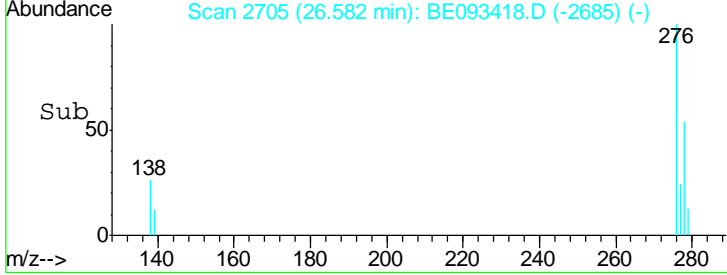
Instrument :
 BNA_E
ClientSampled :
 SSTDCCC0.4



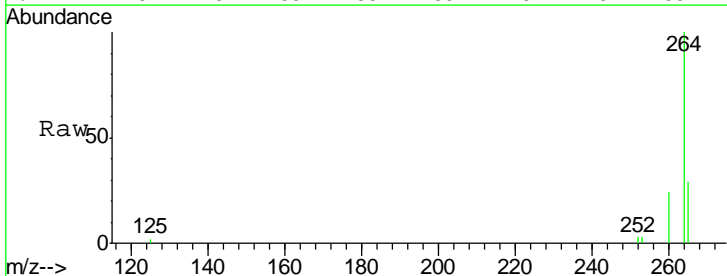
Tgt Ion: 276 Resp: 34924

Ion	Ratio	Lower	Upper
276	100		
138	29.6	27.4	41.2
277	25.1	20.1	30.1

Manual Integrations
APPROVED
 mohammad
 7/3/2017 4:42:13 PM

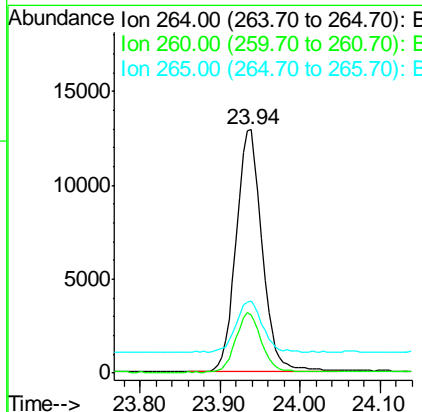
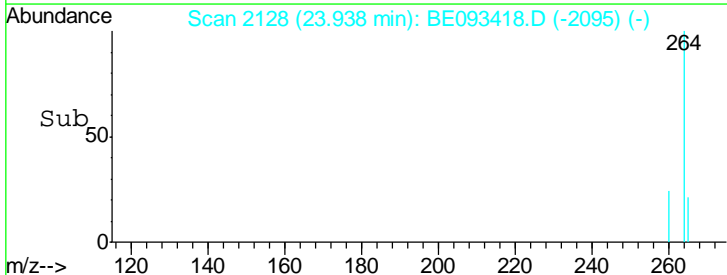


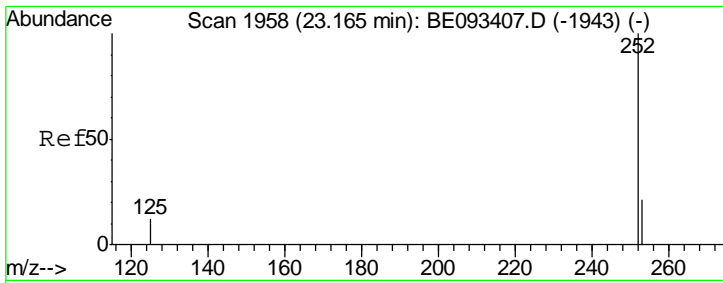
#34
 Perylene-d12
 Concen: 0.400 ng
 RT: 23.94 min Scan# 2128
 Delta R.T. -0.00 min
 Lab File: BE093418.D
 Acq: 2 Jul 2017 17:44



Tgt Ion: 264 Resp: 29449

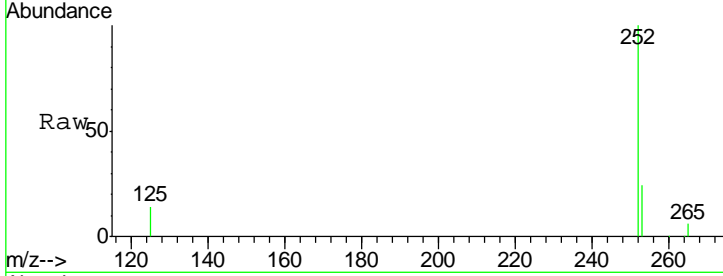
Ion	Ratio	Lower	Upper
264	100		
260	24.0	21.0	31.4
265	29.4	24.6	36.8





#35
 Benzo(b)fluoranthene
 Concen: 0.381 ng
 RT: 23.16 min Scan# 1958
 Delta R.T. -0.00 min
 Lab File: BE093418.D
 Acq: 2 Jul 2017 17:44

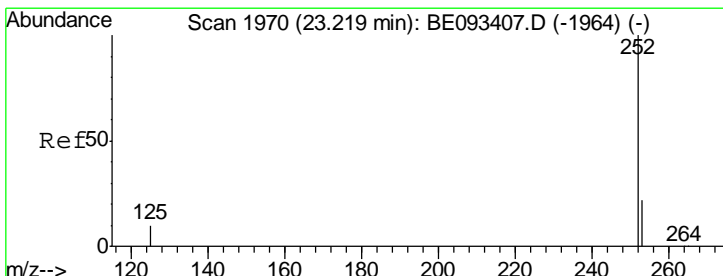
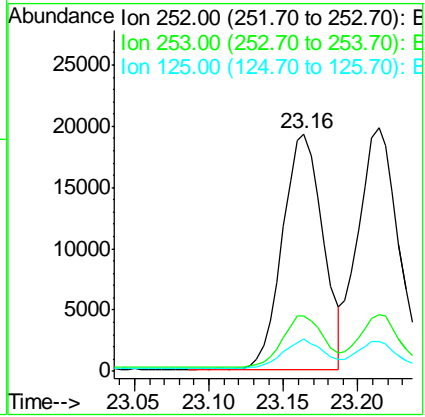
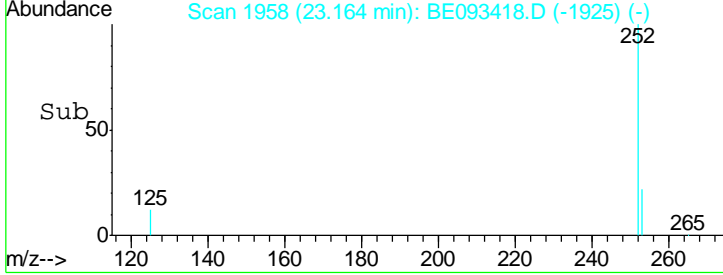
Instrument :
 BNA_E
 ClientSampled :
 SSTDCCC0.4



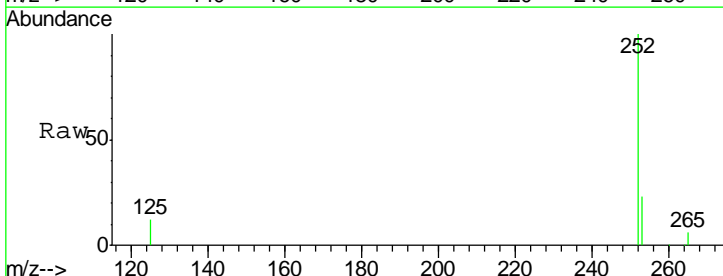
Tgt Ion: 252 Resp: 36241

Ion	Ratio	Lower	Upper
252	100		
253	23.5	18.5	27.7
125	13.6	13.4	20.0

Manual Integrations
 APPROVED
 mohammad
 7/3/2017 4:42:13 PM

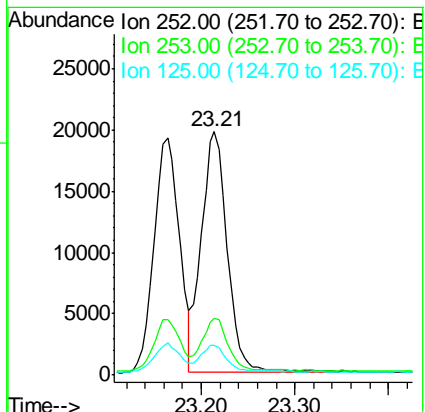
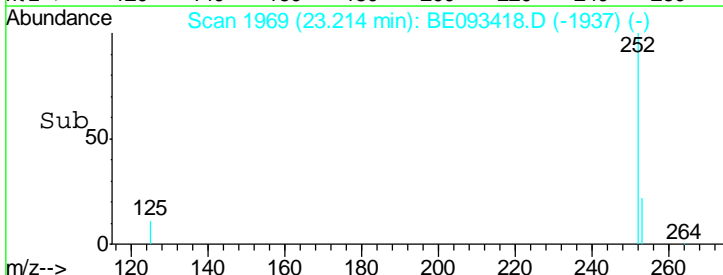


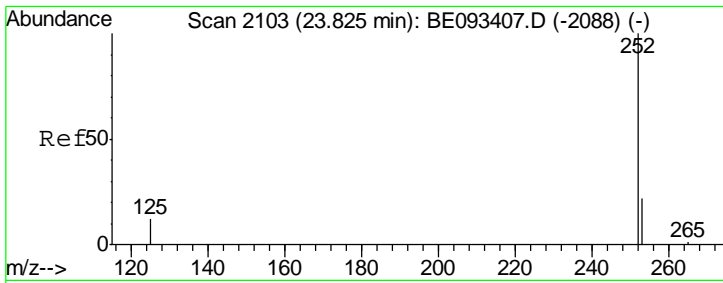
#36
 Benzo(k)fluoranthene
 Concen: 0.399 ng
 RT: 23.21 min Scan# 1969
 Delta R.T. -0.01 min
 Lab File: BE093418.D
 Acq: 2 Jul 2017 17:44



Tgt Ion: 252 Resp: 37561

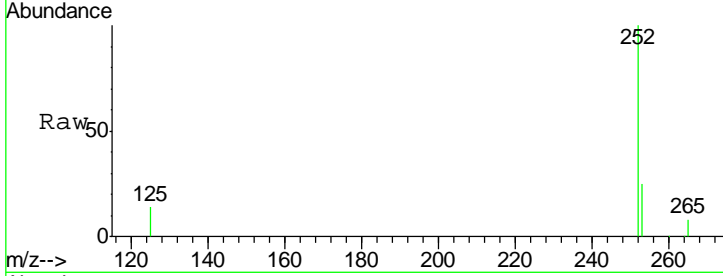
Ion	Ratio	Lower	Upper
252	100		
253	23.4	20.3	30.5
125	12.3	12.2	18.4





#37
 Benzo(a)pyrene
 Concen: 0.378 ng
 RT: 23.82 min Scan# 2102
 Delta R.T. -0.01 min
 Lab File: BE093418.D
 Acq: 2 Jul 2017 17:44

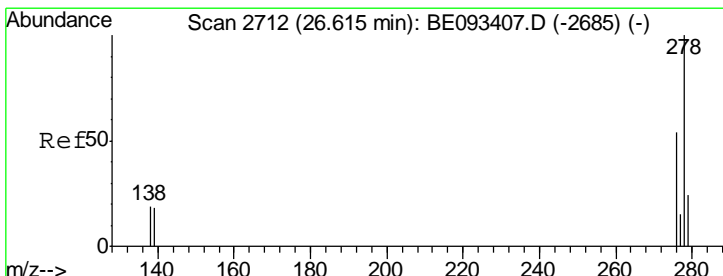
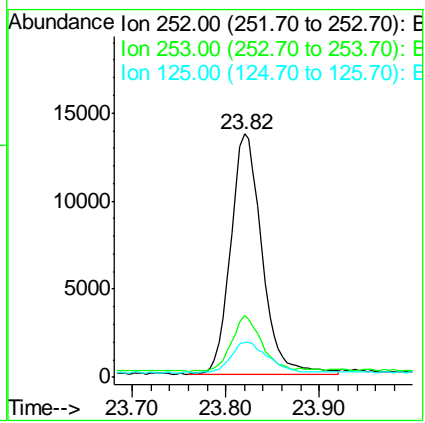
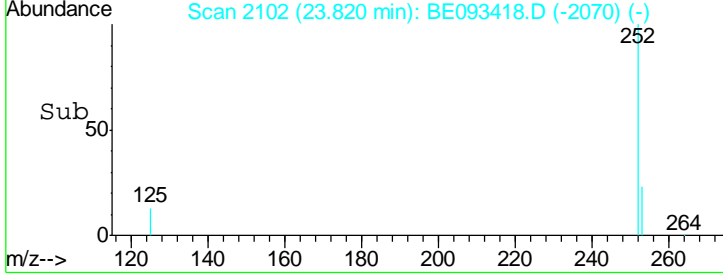
Instrument :
 BNA_E
 ClientSampled :
 SSTDCCC0.4



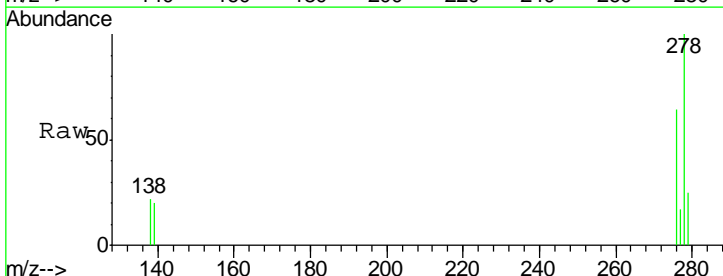
Tgt Ion: 252 Resp: 31472

Ion	Ratio	Lower	Upper
252	100		
253	25.3	19.9	29.9
125	14.5	14.6	21.8#

Manual Integrations
 APPROVED
 mohammad
 7/3/2017 4:42:13 PM

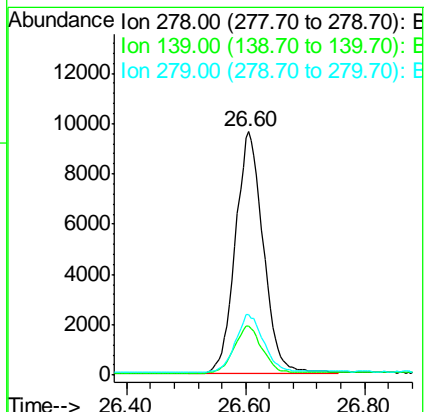
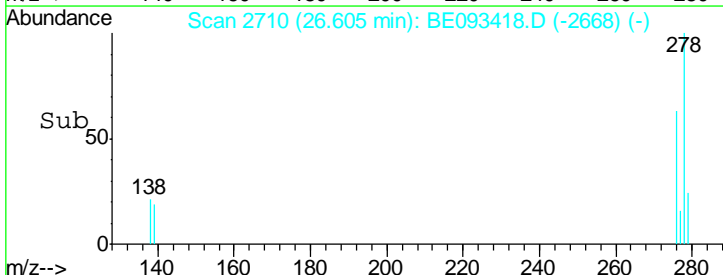


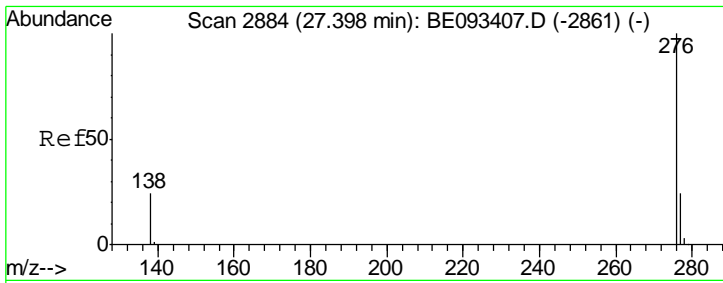
#38
 Dibenzo(a,h)anthracene
 Concen: 0.390 ng
 RT: 26.60 min Scan# 2710
 Delta R.T. -0.01 min
 Lab File: BE093418.D
 Acq: 2 Jul 2017 17:44



Tgt Ion: 278 Resp: 31578

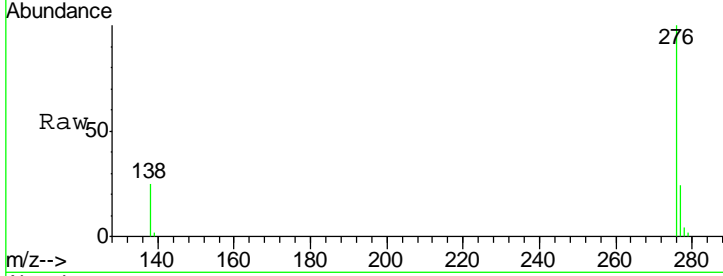
Ion	Ratio	Lower	Upper
278	100		
139	19.9	21.4	32.0#
279	24.7	22.2	33.2





#39
 Benzo(g,h,i)perylene
 Concen: 0.390 ng
 RT: 27.40 min Scan# 2884
 Delta R.T. -0.00 min
 Lab File: BE093418.D
 Acq: 2 Jul 2017 17:44

Instrument :
 BNA_E
ClientSampleId :
 SSTDCCC0.4



Tgt Ion: 276 Resp: 31889

Ion	Ratio	Lower	Upper
276	100		
277	24.3	21.2	31.8
138	25.1	24.5	36.7

Manual Integrations
APPROVED
 mohammad
 7/3/2017 4:42:13 PM

