

Data Path : Z:\HPCHEM1\BNA_E\DATA\BE071715\
 Data File : BE090151.D
 Acq On : 17 Jul 2015 18:35
 Operator : TP/IZ
 Sample : SSTDIC010
 Misc :
 ALS Vial : 2 Sample Multiplier: 1

Instrument :
 BNA_E
 ClientSampleId :
 SSTDIC010

Quant Time: Jul 18 00:02:02 2015
 Quant Method : Z:\HPCHEM1\BNA_E\METHODS\8270-SIM-BE071715.M
 Quant Title : ASP BNA STANDARDS FOR 5 POINT CALIBRATION
 QLast Update : Fri Jul 17 23:58:28 2015
 Response via : Initial Calibration

Internal Standards	R.T.	QIon	Response	Conc	Units	Dev(Min)
1) 1,4-Dichlorobenzene-d4	7.61	152	10643	5.00	ng	0.00
6) Naphthalene-d8	10.36	136	53386	5.00	ng	0.00
12) Acenaphthene-d10	14.22	164	30807	5.00	ng	0.00
18) Phenanthrene-d10	16.96	188	76564	5.00	ng	0.00
25) Chrysene-d12	21.12	240	97099	5.00	ng	0.00
32) Perylene-d12	23.43	264	94504	5.00	ng	0.00

System Monitoring Compounds

4) 2-Fluorophenol	5.24	112	25233	10.84	ng	0.00
5) Phenol-d6	6.79	99	35222	10.83	ng	0.00
7) Nitrobenzene-d5	8.74	82	36944	9.46	ng	0.00
13) 2,4,6-Tribromophenol	15.73	330	9042	15.98	ng	0.00
14) 2-Fluorobiphenyl	12.84	172	87055	9.23	ng	0.00
27) Terphenyl-d14	19.58	244	161653	9.96	ng	0.00

Target Compounds

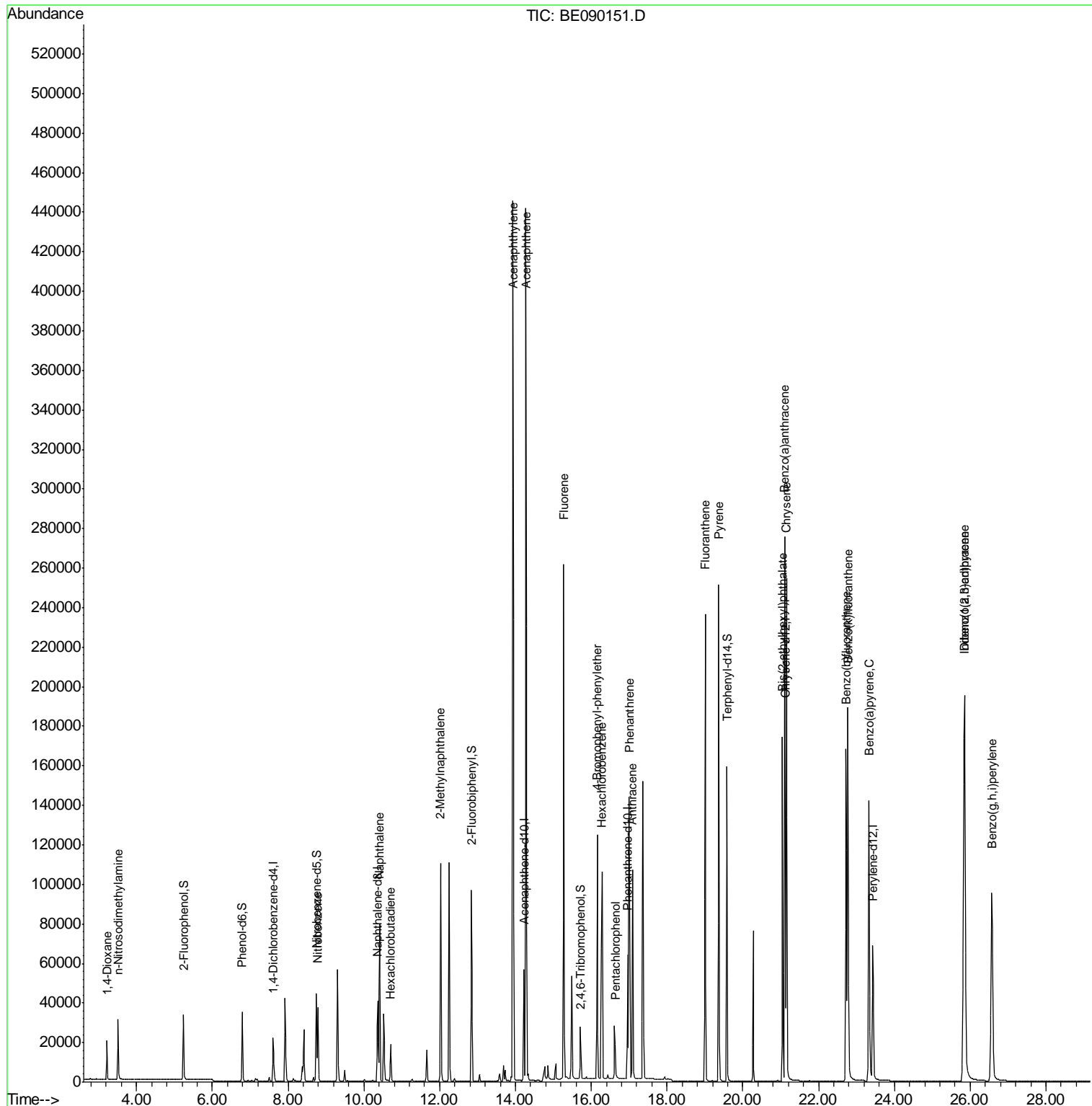
					Qvalue	
2) 1,4-Dioxane	3.22	88	10954	7.75	ng	98
3) n-Nitrosodimethylamine	3.51	42	18213	10.64	ng	# 95
8) Nitrobenzene	8.79	77	37965	9.29	ng	95
9) Naphthalene	10.41	128	107513	8.95	ng	98
10) Hexachlorobutadiene	10.71	225	13003	6.65	ng	99
11) 2-Methylnaphthalene	12.03	142	76918	9.93	ng	99
15) Acenaphthylene	13.93	152	553426	10.08	ng	100
16) Acenaphthene	14.28	154	76900	9.72	ng	98
17) Fluorene	15.27	166	107676	10.36	ng	99
19) 4-Bromophenyl-phenylether	16.16	248	28332	8.80	ng	93
20) Hexachlorobenzene	16.28	284	94540	6.94	ng	99
21) Pentachlorophenol	16.63	266	13559	20.97	ng	90
22) Phenanthrene	17.00	178	165379	8.70	ng	99
23) Anthracene	17.08	178	165583	9.78	ng	99
24) Fluoranthene	19.00	202	202587	10.63	ng	100
26) Pyrene	19.36	202	213945	8.33	ng	99
28) Benzo(a)anthracene	21.10	228	217293	12.57	ng	100
29) Chrysene	21.16	228	217737	7.65	ng	100
30) Bis(2-ethylhexyl)phthalate	21.05	149	136869	29.09	ng	98
31) Indeno(1,2,3-cd)pyrene	25.83	276	268983	31.64	ng	99
33) Benzo(b)fluoranthene	22.73	252	213226	23.83	ng	99
34) Benzo(k)fluoranthene	22.77	252	233511	11.65	ng	98
35) Benzo(a)pyrene	23.33	252	205355	18.13	ng	99
36) Dibenzo(a,h)anthracene	25.85	278	224325	31.41	ng	98
37) Benzo(g,h,i)perylene	26.57	276	213879	17.94	ng	99

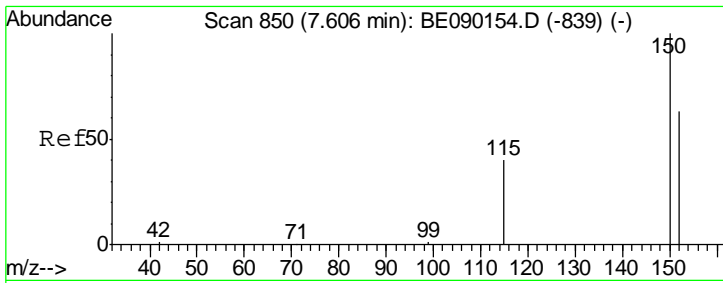
(#) = qualifier out of range (m) = manual integration (+) = signals summed

Data Path : Z:\HPCHEM1\BNA_E\DATA\BE071715\
 Data File : BE090151.D
 Acq On : 17 Jul 2015 18:35
 Operator : TP/IZ
 Sample : SSTDIC010
 Misc :
 ALS Vial : 2 Sample Multiplier: 1

Instrument :
 BNA_E
 ClientSampled :
 SSTDIC010

Quant Time: Jul 18 00:02:02 2015
 Quant Method : Z:\HPCHEM1\BNA_E\METHODS\8270-SIM-BE071715.M
 Quant Title : ASP BNA STANDARDS FOR 5 POINT CALIBRATION
 QLast Update : Fri Jul 17 23:58:28 2015
 Response via : Initial Calibration

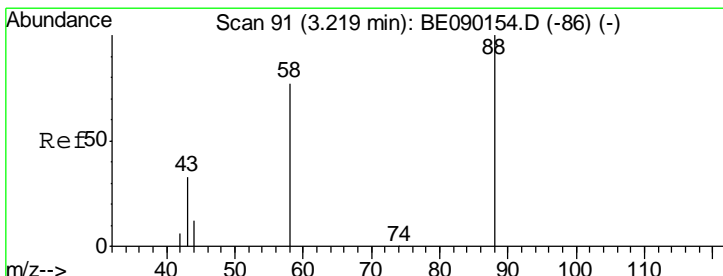
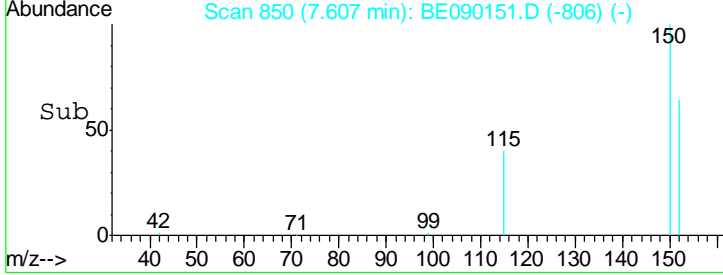
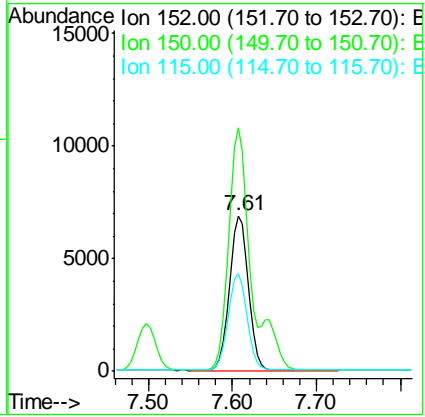
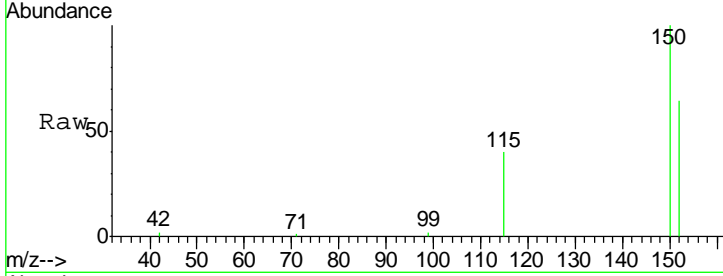




#1
 1,4-Dichlorobenzene-d4
 Concen: 5.00 ng
 RT: 7.61 min Scan# 850
 Delta R.T. 0.00 min
 Lab File: BE090151.D
 Acq: 17 Jul 2015 18:35

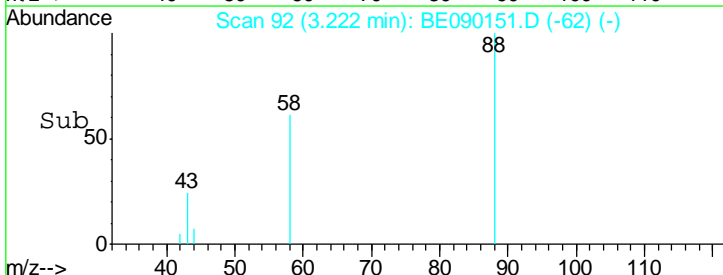
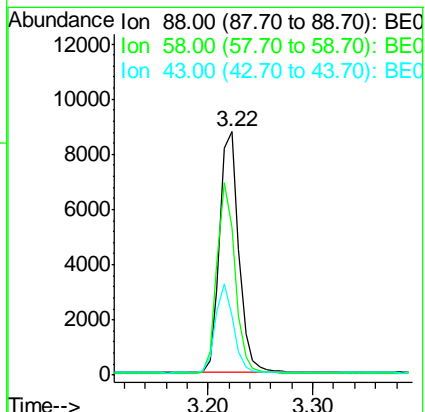
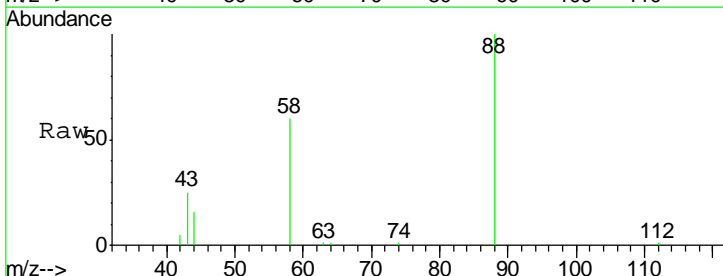
Instrument :
 BNA_E
ClientSampleId :
 SSTDICC010

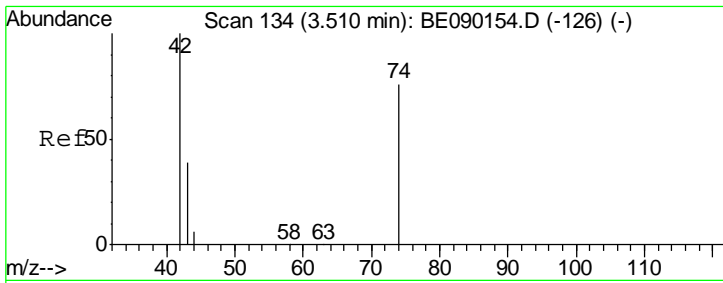
Tgt Ion	Resp	Lower	Upper
152	10643		
150	156.8	127.2	190.8
115	62.6	51.6	77.4



#2
 1,4-Dioxane
 Concen: 7.75 ng
 RT: 3.22 min Scan# 92
 Delta R.T. 0.00 min
 Lab File: BE090151.D
 Acq: 17 Jul 2015 18:35

Tgt Ion	Resp	Lower	Upper
88	10954		
58	75.1	58.2	87.2
43	34.7	27.7	41.5

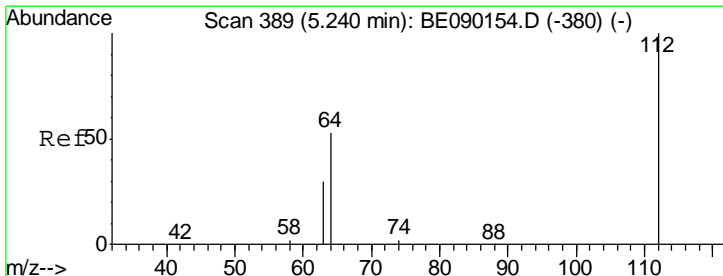
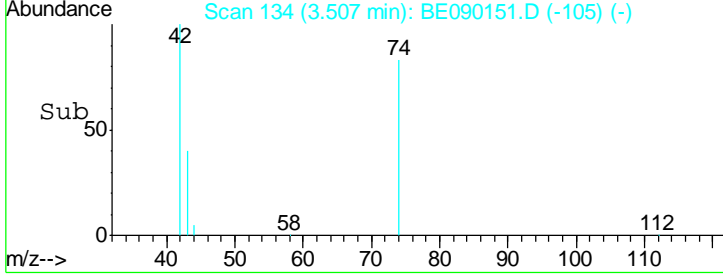
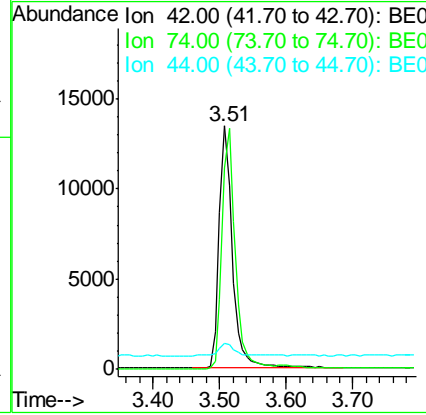
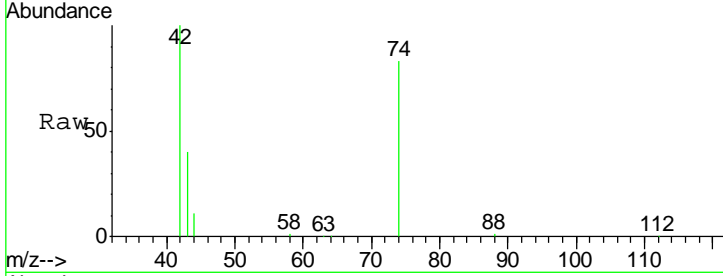




#3
 n-Nitrosodimethylamine
 Concen: 10.64 ng
 RT: 3.51 min Scan# 134
 Delta R.T. -0.00 min
 Lab File: BE090151.D
 Acq: 17 Jul 2015 18:35

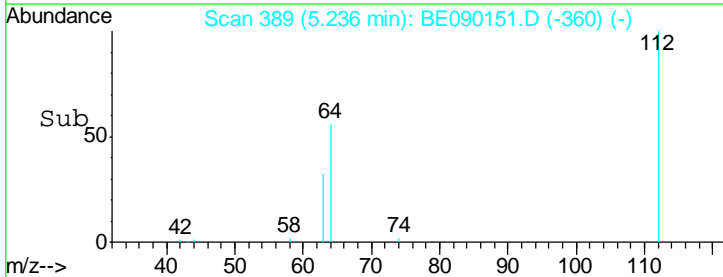
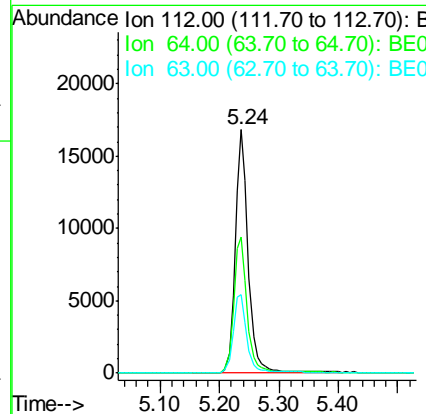
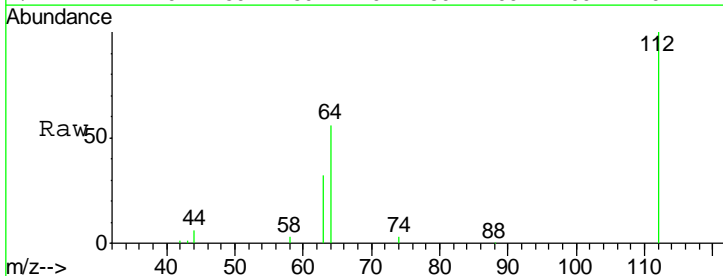
Instrument :
 BNA_E
ClientSampled :
 SSTDICC010

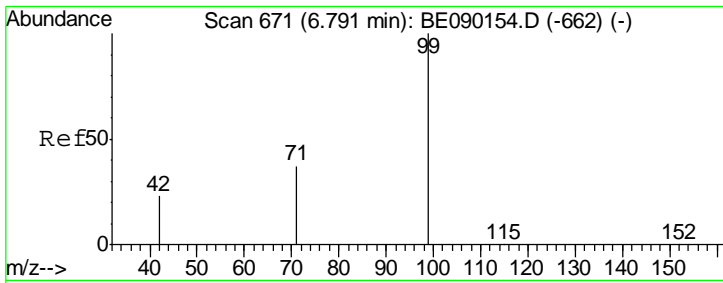
Tgt Ion	Resp	Lower	Upper
42	18213		
74	98.5	82.2	123.4
44	6.3	7.5	11.3#



#4
 2-Fluorophenol
 Concen: 10.84 ng
 RT: 5.24 min Scan# 389
 Delta R.T. -0.00 min
 Lab File: BE090151.D
 Acq: 17 Jul 2015 18:35

Tgt Ion	Resp	Lower	Upper
112	25233		
64	57.9	46.7	70.1
63	33.8	27.3	40.9



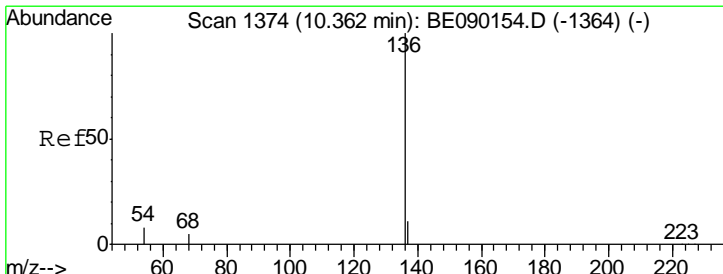
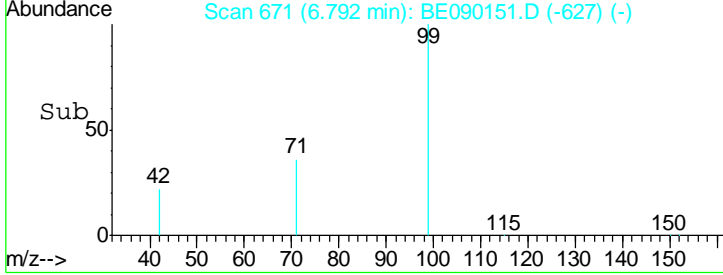
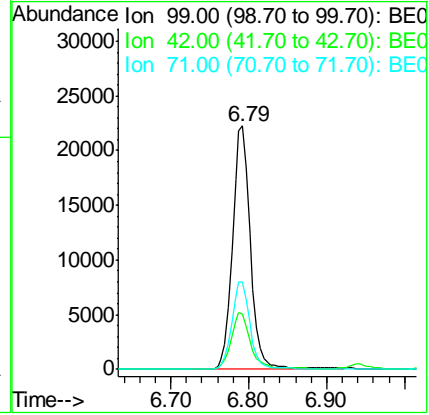
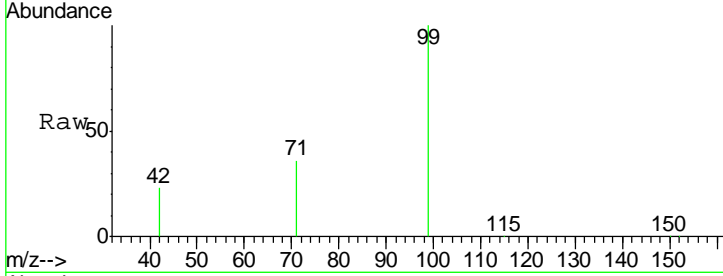


#5
 Phenol-d6
 Concen: 10.83 ng
 RT: 6.79 min Scan# 671
 Delta R.T. 0.00 min
 Lab File: BE090151.D
 Acq: 17 Jul 2015 18:35

Instrument :
 BNA_E
ClientSampled :
 SSTDICC010

Tgt Ion: 99 Resp: 35222

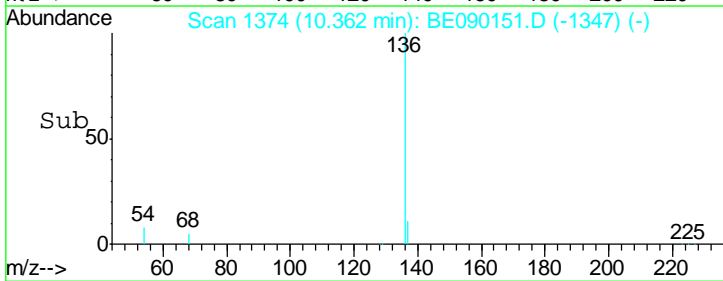
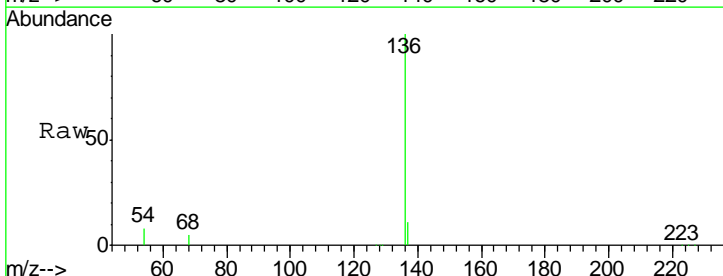
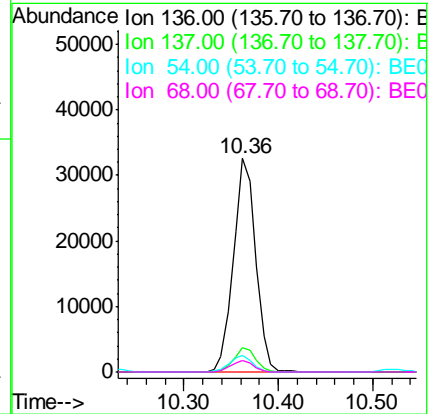
Ion	Ratio	Lower	Upper
99	100		
42	24.4	19.1	28.7
71	36.5	29.4	44.2

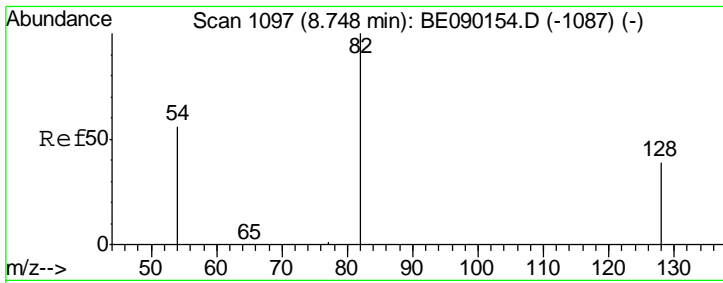


#6
 Naphthalene-d8
 Concen: 5.00 ng
 RT: 10.36 min Scan# 1374
 Delta R.T. -0.00 min
 Lab File: BE090151.D
 Acq: 17 Jul 2015 18:35

Tgt Ion: 136 Resp: 53386

Ion	Ratio	Lower	Upper
136	100		
137	11.1	8.9	13.3
54	7.7	6.3	9.5
68	5.3	4.3	6.5

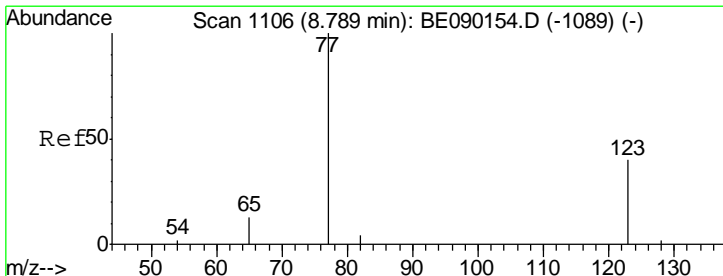
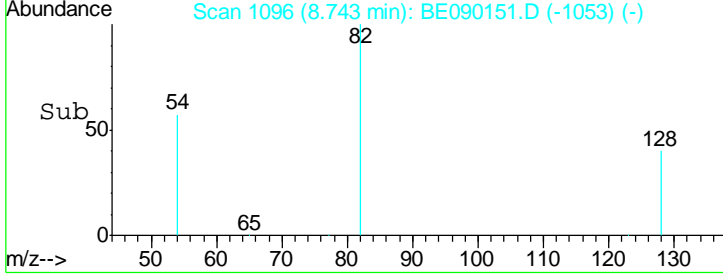
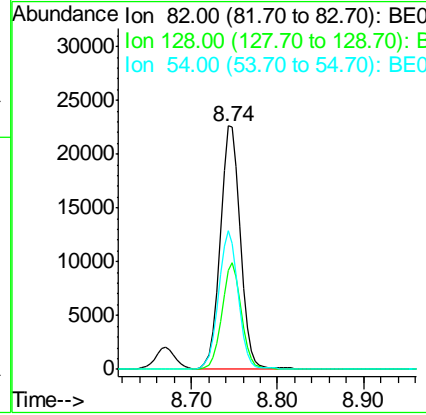
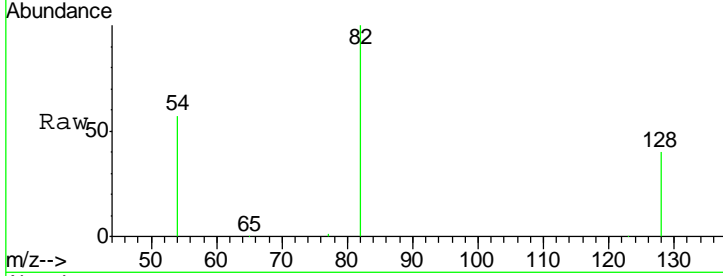




#7
 Nitrobenzene-d5
 Concen: 9.46 ng
 RT: 8.74 min Scan# 1096
 Delta R.T. -0.01 min
 Lab File: BE090151.D
 Acq: 17 Jul 2015 18:35

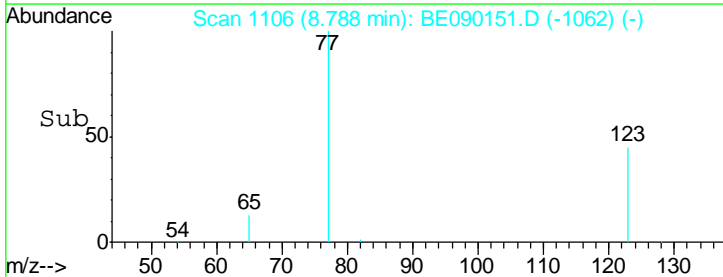
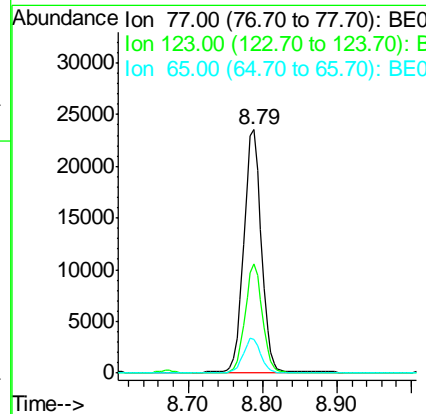
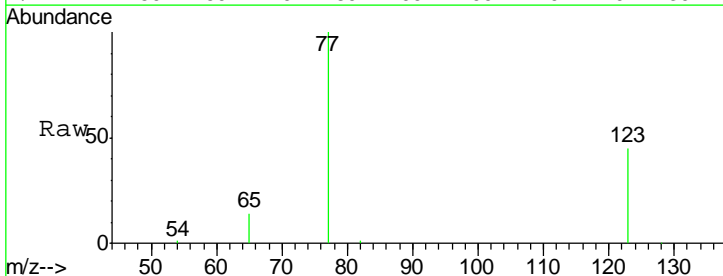
Instrument :
 BNA_E
ClientSampleId :
 SSTDICC010

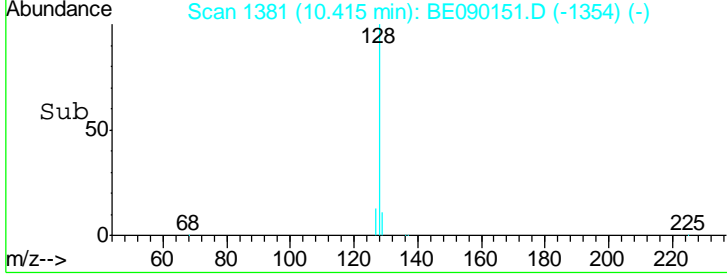
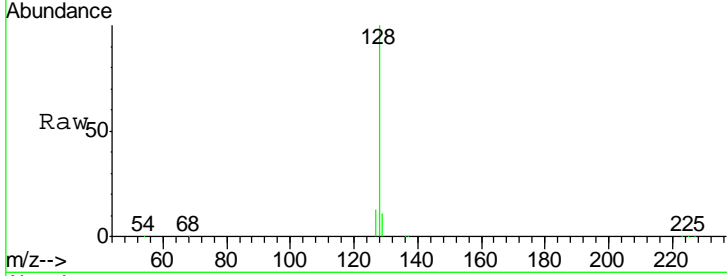
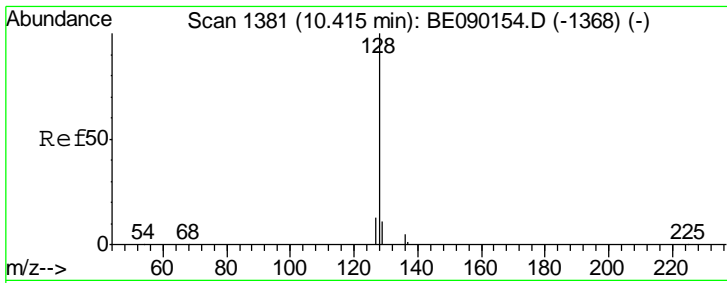
Tgt Ion	Resp	Lower	Upper
82	36944		
128	40.5	32.7	49.1
54	56.9	45.9	68.9



#8
 Nitrobenzene
 Concen: 9.29 ng
 RT: 8.79 min Scan# 1106
 Delta R.T. -0.00 min
 Lab File: BE090151.D
 Acq: 17 Jul 2015 18:35

Tgt Ion	Resp	Lower	Upper
77	37965		
123	44.1	32.3	48.5
65	14.0	10.4	15.6

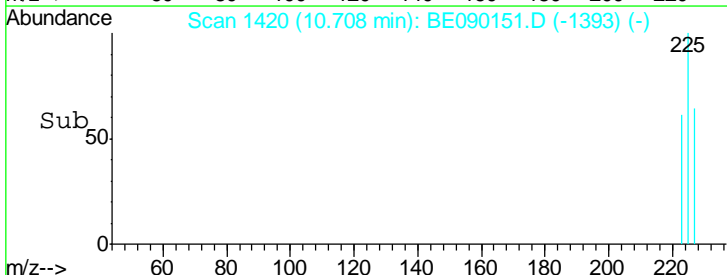
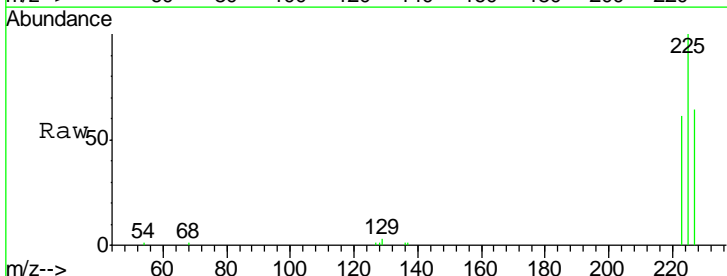
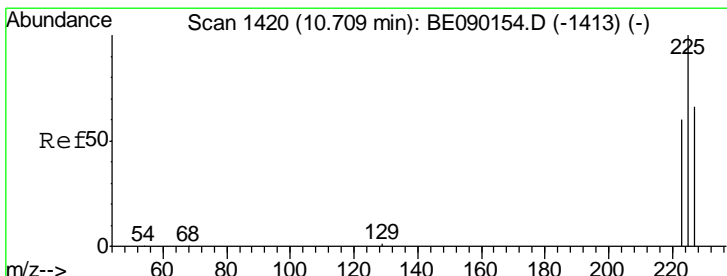
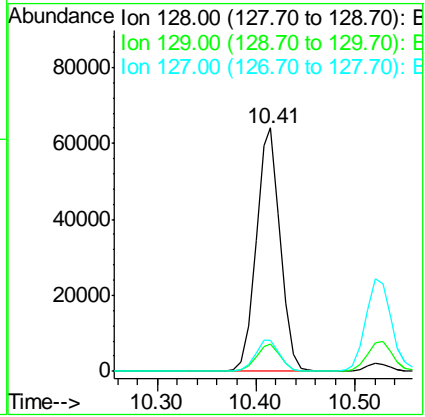




#9
 Naphthalene
 Concen: 8.95 ng
 RT: 10.41 min Scan# 1381
 Delta R.T. -0.00 min
 Lab File: BE090151.D
 Acq: 17 Jul 2015 18:35

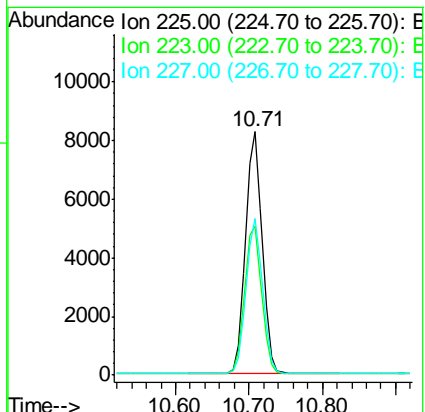
Instrument :
 BNA_E
 ClientSampled :
 SSTDICC010

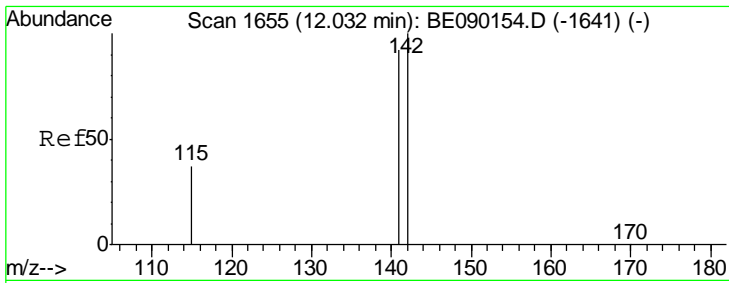
Tgt Ion	Resp	Lower	Upper
128	107513		
129	11.4	9.8	14.6
127	12.9	10.7	16.1



#10
 Hexachlorobutadiene
 Concen: 6.65 ng
 RT: 10.71 min Scan# 1420
 Delta R.T. -0.00 min
 Lab File: BE090151.D
 Acq: 17 Jul 2015 18:35

Tgt Ion	Resp	Lower	Upper
225	13003		
223	62.4	50.3	75.5
227	63.6	51.3	76.9

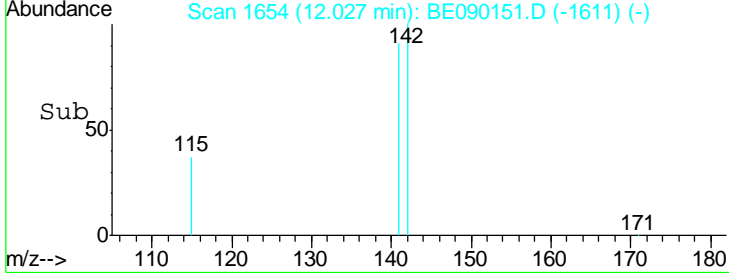
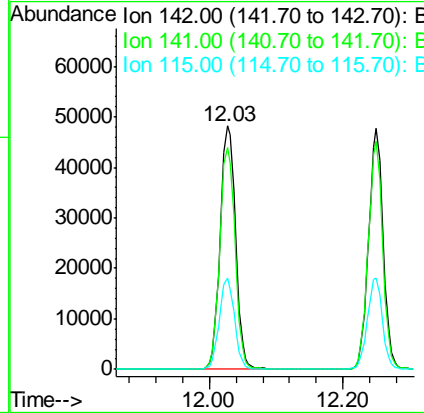
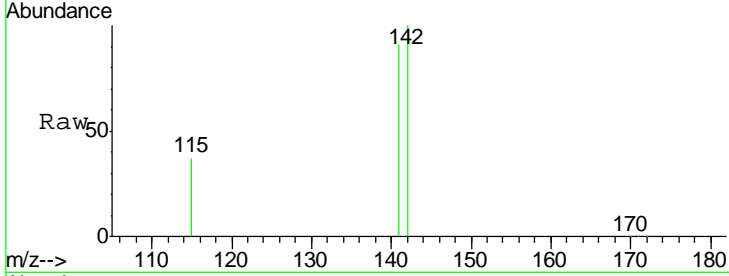




#11
 2-Methylnaphthalene
 Concen: 9.93 ng
 RT: 12.03 min Scan# 1654
 Delta R.T. -0.01 min
 Lab File: BE090151.D
 Acq: 17 Jul 2015 18:35

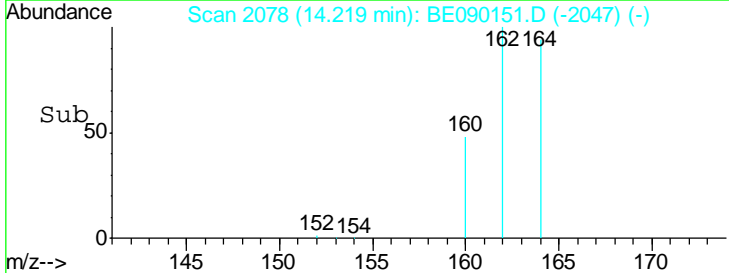
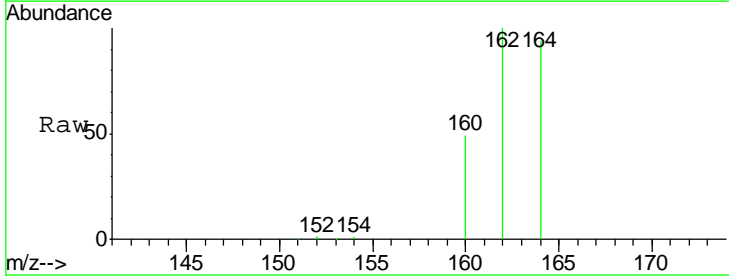
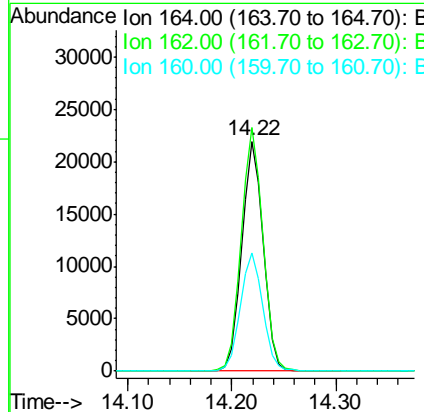
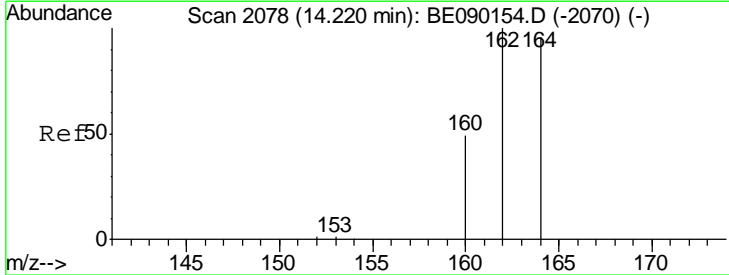
Instrument :
 BNA_E
ClientSampled :
 SSTDICC010

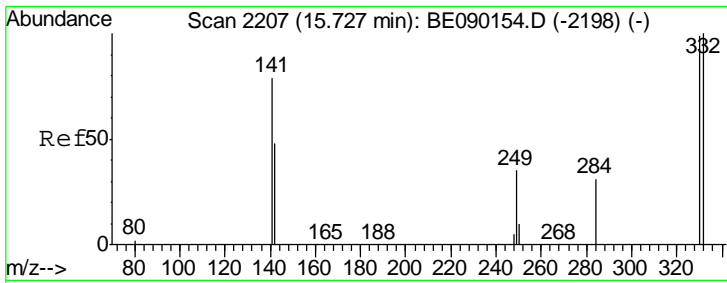
Tgt Ion	Resp	Lower	Upper
142	100		
141	91.4	73.9	110.9
115	37.3	30.0	45.0



#12
 Acenaphthene-d10
 Concen: 5.00 ng
 RT: 14.22 min Scan# 2078
 Delta R.T. -0.00 min
 Lab File: BE090151.D
 Acq: 17 Jul 2015 18:35

Tgt Ion	Resp	Lower	Upper
164	100		
162	106.0	83.3	124.9
160	51.4	40.9	61.3

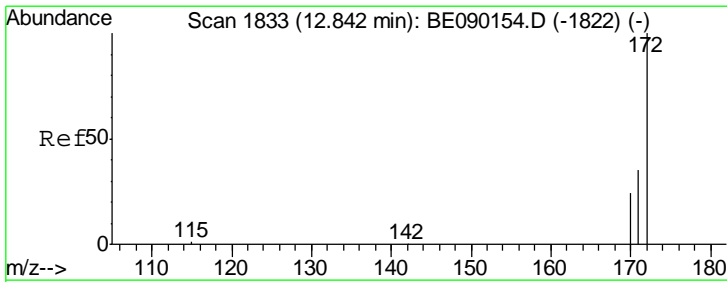
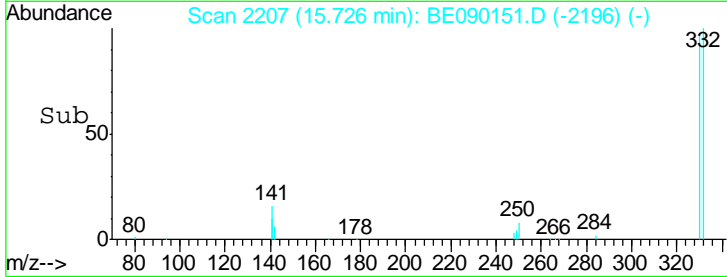
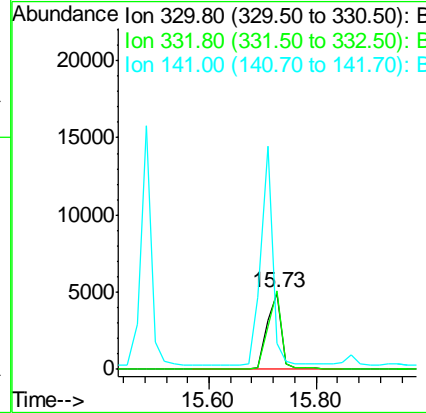
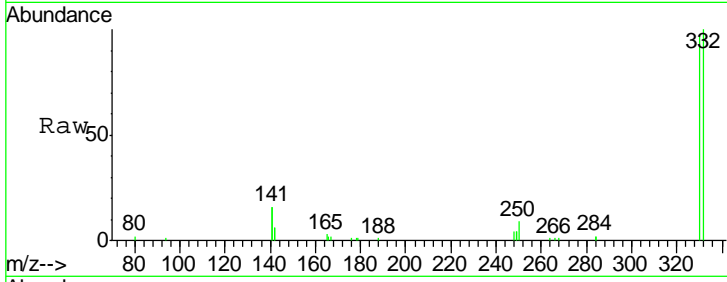




#13
 2,4,6-Tribromophenol
 Concen: 15.98 ng
 RT: 15.73 min Scan# 2207
 Delta R.T. -0.00 min
 Lab File: BE090151.D
 Acq: 17 Jul 2015 18:35

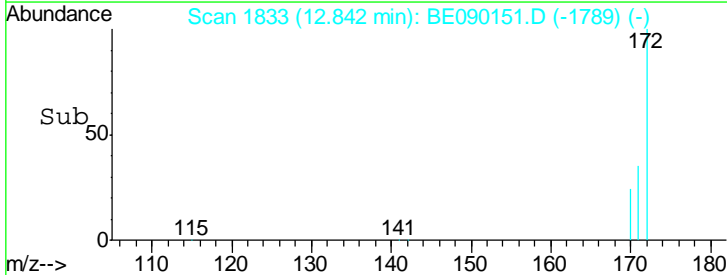
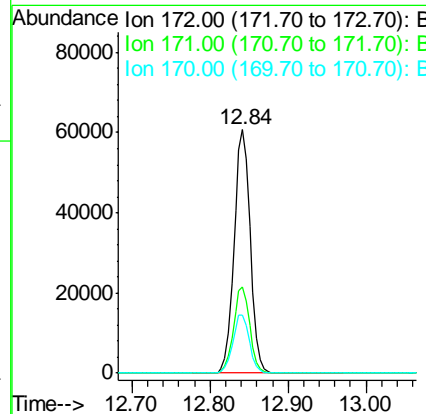
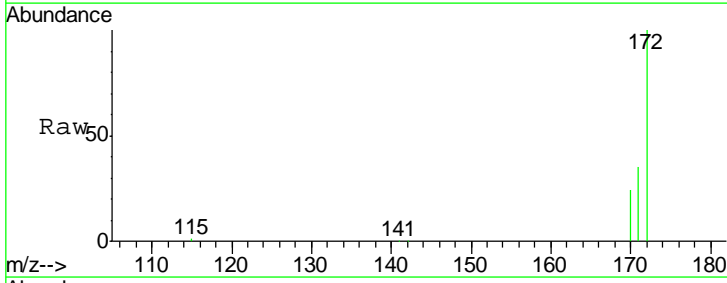
Instrument :
 BNA_E
 ClientSampleId :
 SSTDICC010

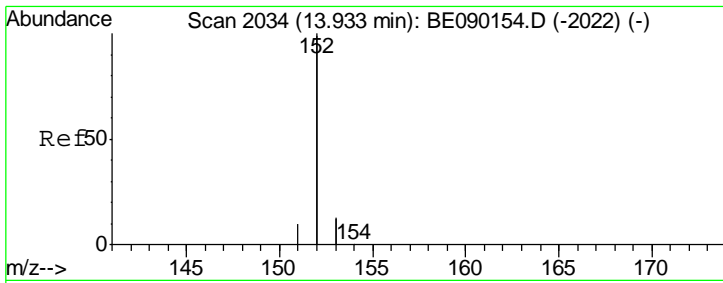
Tgt Ion	Resp	Lower	Upper
330	100		
332	96.3	78.2	117.2
141	238.3	215.8	323.6



#14
 2-Fluorobiphenyl
 Concen: 9.23 ng
 RT: 12.84 min Scan# 1833
 Delta R.T. -0.00 min
 Lab File: BE090151.D
 Acq: 17 Jul 2015 18:35

Tgt Ion	Resp	Lower	Upper
172	100		
171	35.3	28.5	42.7
170	24.0	19.7	29.5

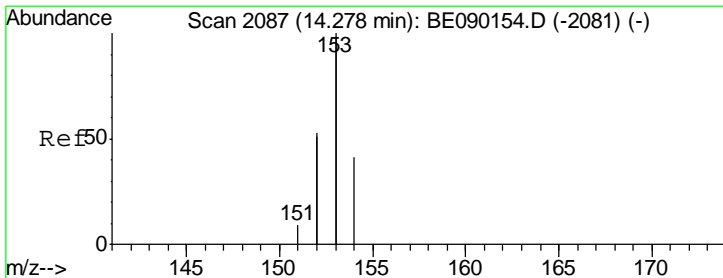
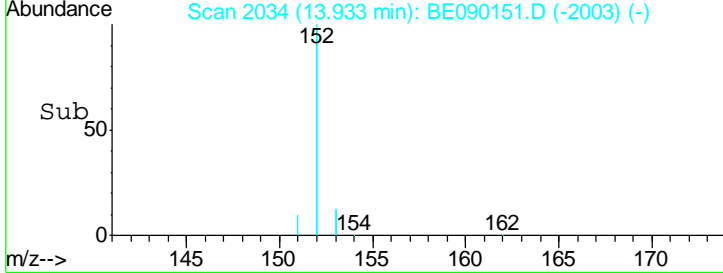
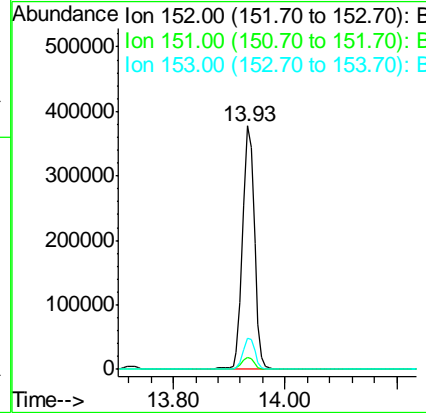
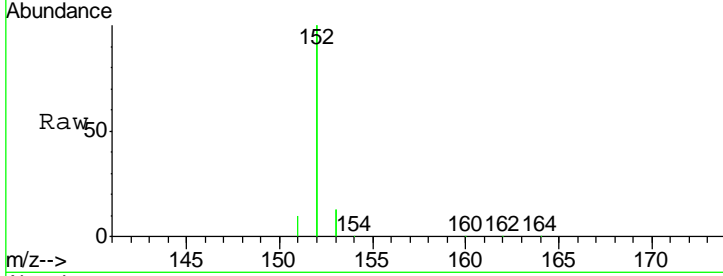




#15
 Acenaphthylene
 Concen: 10.08 ng
 RT: 13.93 min Scan# 2034
 Delta R.T. -0.00 min
 Lab File: BE090151.D
 Acq: 17 Jul 2015 18:35

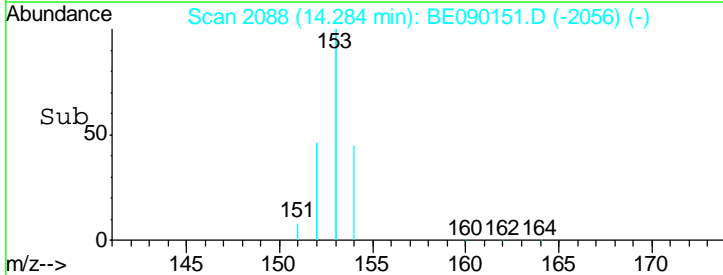
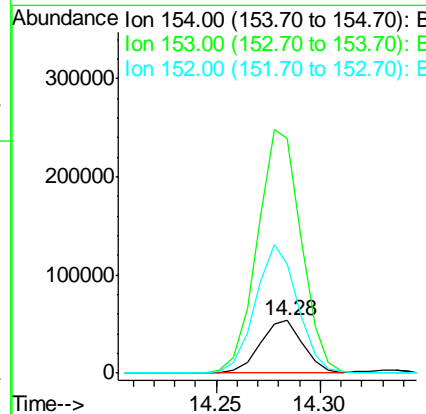
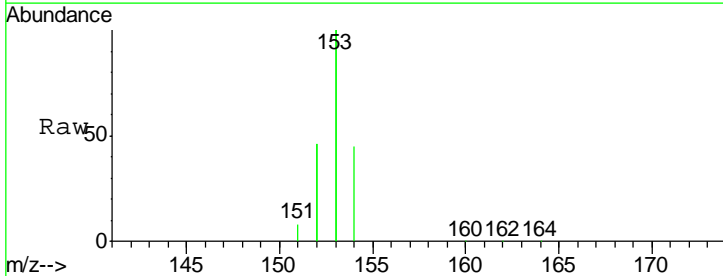
Instrument : BNA_E
 ClientSampled : SSTDICC010

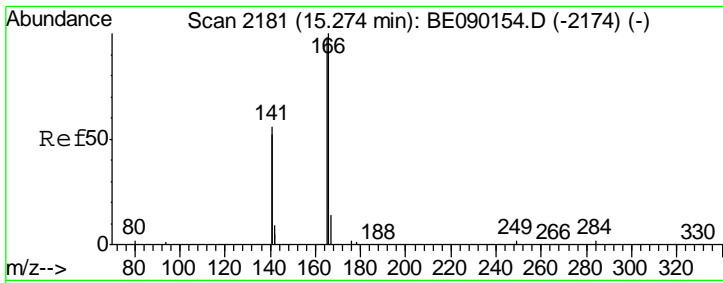
Tgt Ion	Resp	Lower	Upper
152	100		
151	5.1	4.0	6.0
153	13.1	10.4	15.6



#16
 Acenaphthene
 Concen: 9.72 ng
 RT: 14.28 min Scan# 2088
 Delta R.T. 0.01 min
 Lab File: BE090151.D
 Acq: 17 Jul 2015 18:35

Tgt Ion	Resp	Lower	Upper
154	100		
153	470.9	376.9	565.3
152	240.2	199.0	298.6

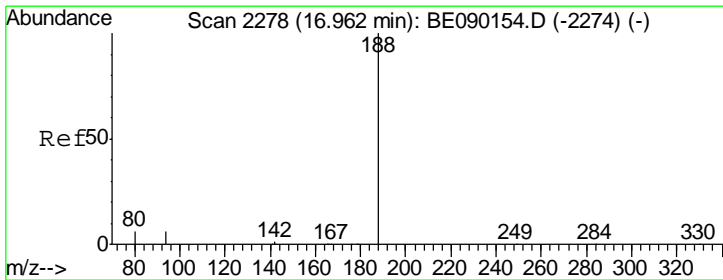
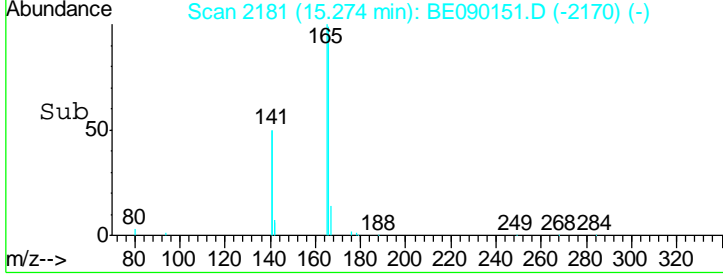
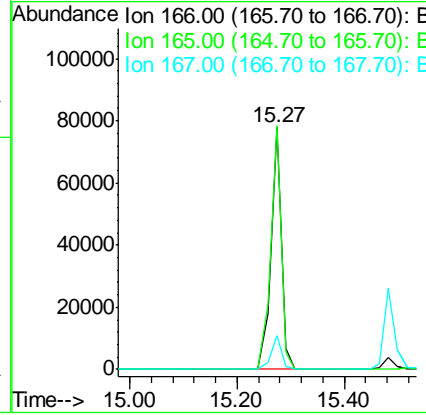
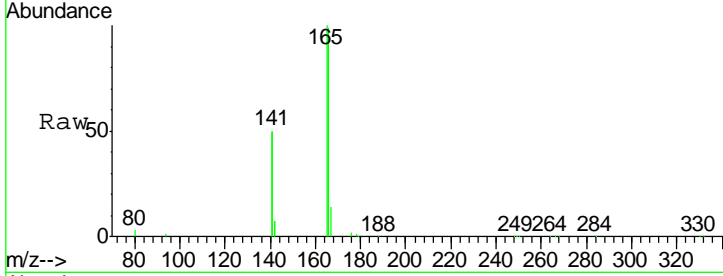




#17
 Fluorene
 Concen: 10.36 ng
 RT: 15.27 min Scan# 2181
 Delta R.T. -0.00 min
 Lab File: BE090151.D
 Acq: 17 Jul 2015 18:35

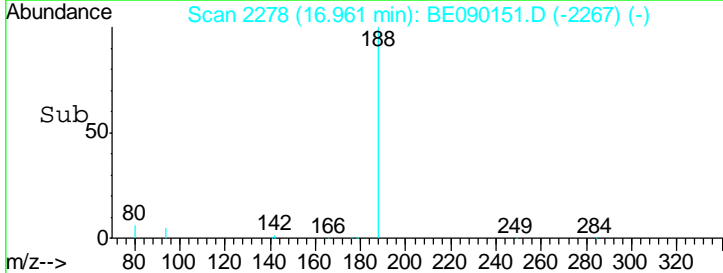
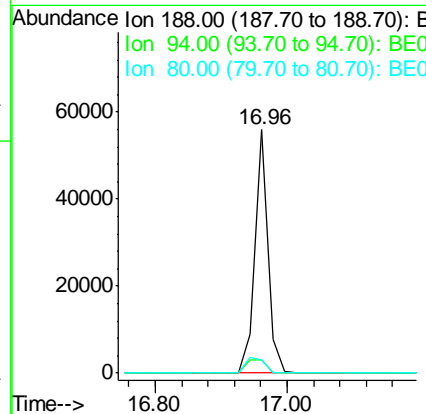
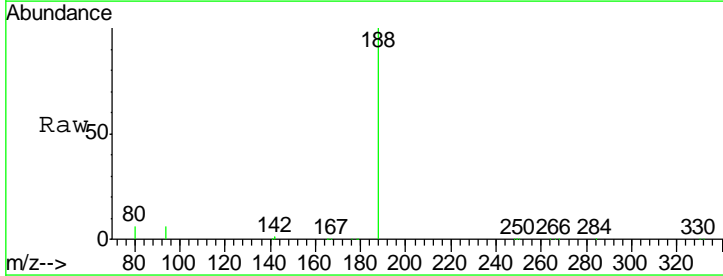
Instrument : BNA_E
 ClientSampled : SSTDICC010

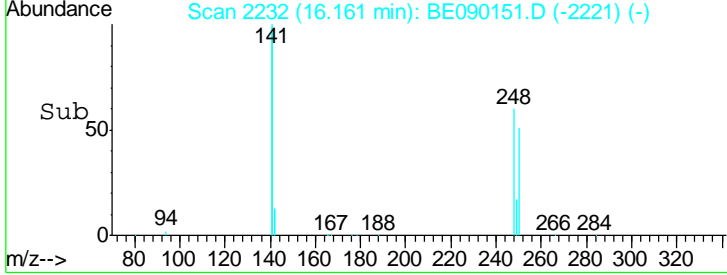
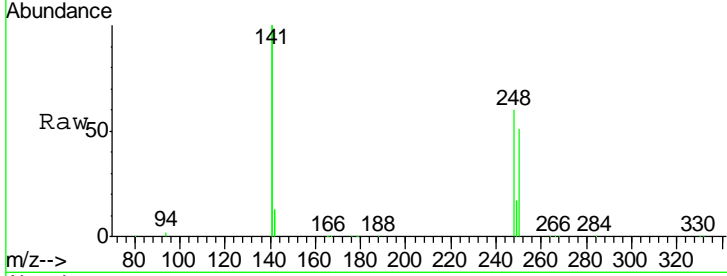
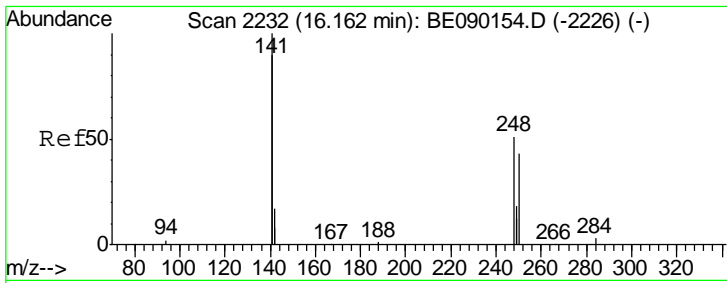
Tgt Ion	Resp	Lower	Upper
166	107676		
165	102.0	81.5	122.3
167	13.5	11.9	17.9



#18
 Phenanthrene-d10
 Concen: 5.00 ng
 RT: 16.96 min Scan# 2278
 Delta R.T. -0.00 min
 Lab File: BE090151.D
 Acq: 17 Jul 2015 18:35

Tgt Ion	Resp	Lower	Upper
188	76564		
94	5.5	4.6	7.0
80	5.6	4.6	6.8

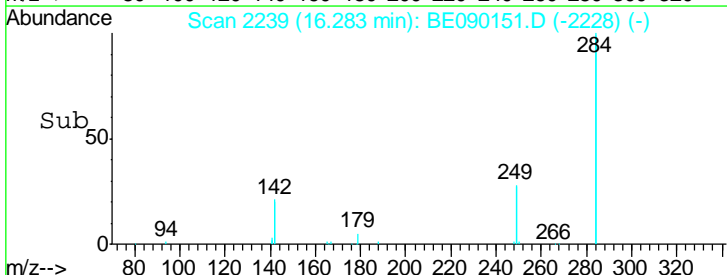
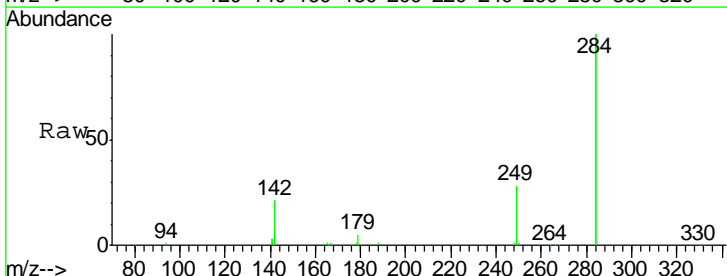
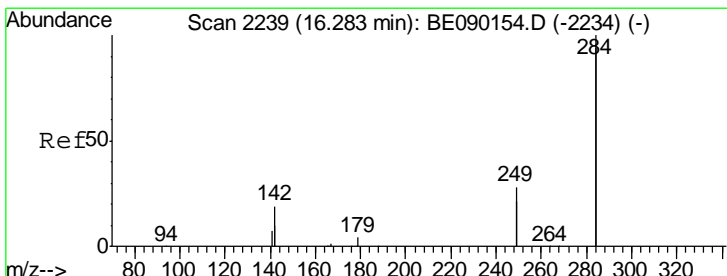
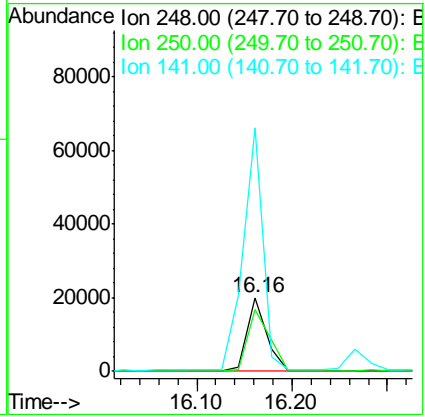




#19
 4-Bromophenyl-phenylether
 Concen: 8.80 ng
 RT: 16.16 min Scan# 2232
 Delta R.T. -0.00 min
 Lab File: BE090151.D
 Acq: 17 Jul 2015 18:35

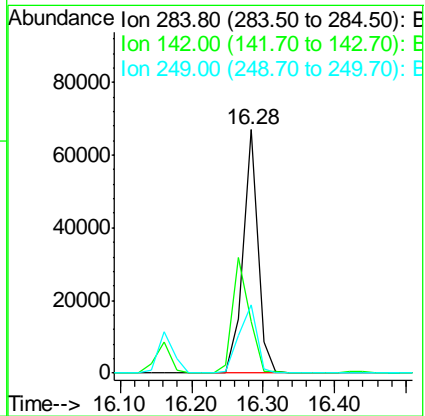
Instrument :
 BNA_E
 ClientSampled :
 SSTDICC010

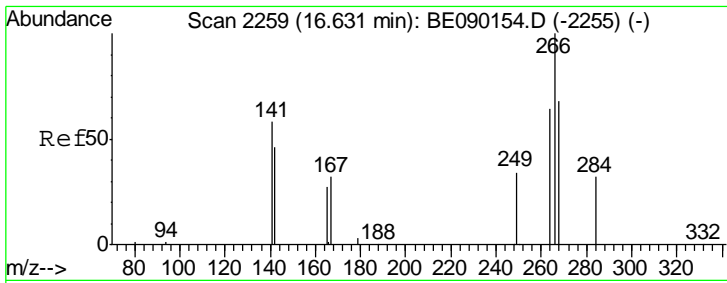
Tgt Ion	Resp	Lower	Upper
248	28332		
248	100		
250	95.7	77.4	116.0
141	333.9	281.3	421.9



#20
 Hexachlorobenzene
 Concen: 6.94 ng
 RT: 16.28 min Scan# 2239
 Delta R.T. -0.00 min
 Lab File: BE090151.D
 Acq: 17 Jul 2015 18:35

Tgt Ion	Resp	Lower	Upper
284	94540		
284	100		
142	52.8	42.2	63.2
249	33.1	25.5	38.3

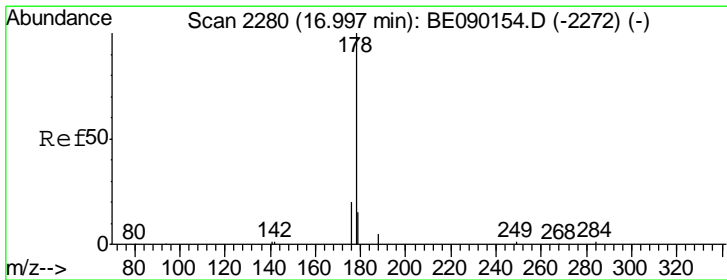
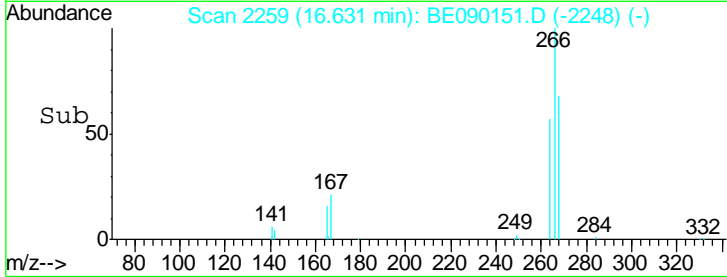
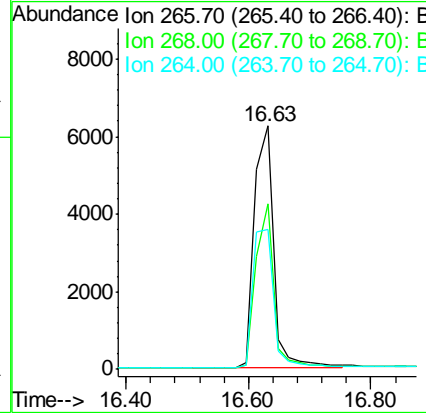
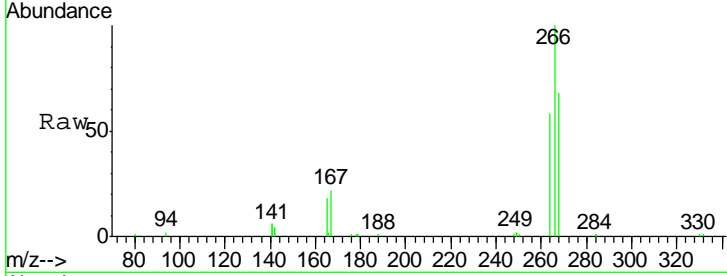




#21
 Pentachlorophenol
 Concen: 20.97 ng
 RT: 16.63 min Scan# 2259
 Delta R.T. -0.00 min
 Lab File: BE090151.D
 Acq: 17 Jul 2015 18:35

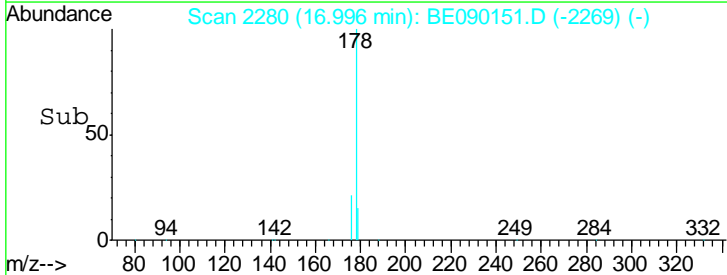
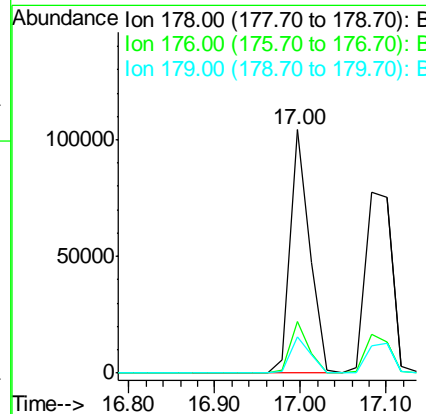
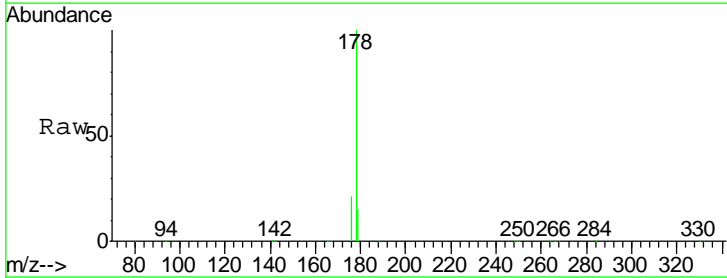
Instrument :
 BNA_E
 ClientSampleId :
 SSTDIC010

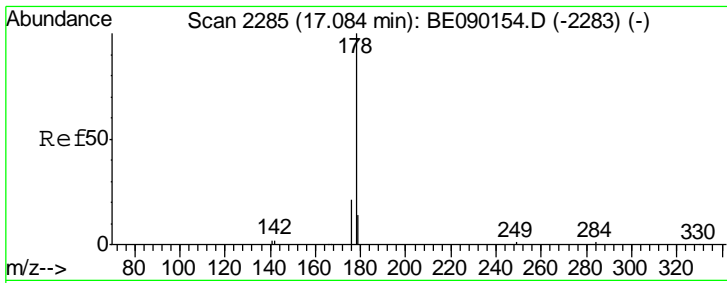
Tgt Ion	Resp	Lower	Upper
266	13559		
268	68.2	58.2	87.4
264	57.5	55.0	82.4



#22
 Phenanthrene
 Concen: 8.70 ng
 RT: 17.00 min Scan# 2280
 Delta R.T. -0.00 min
 Lab File: BE090151.D
 Acq: 17 Jul 2015 18:35

Tgt Ion	Resp	Lower	Upper
178	165379		
176	20.2	15.9	23.9
179	15.4	12.5	18.7

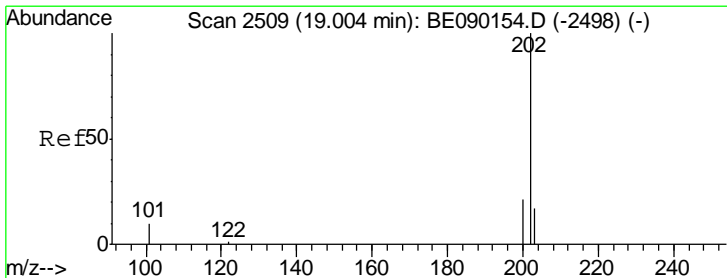
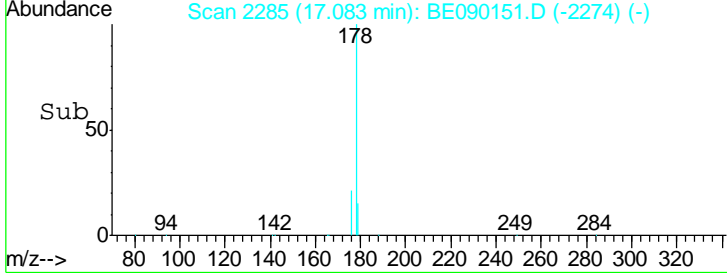
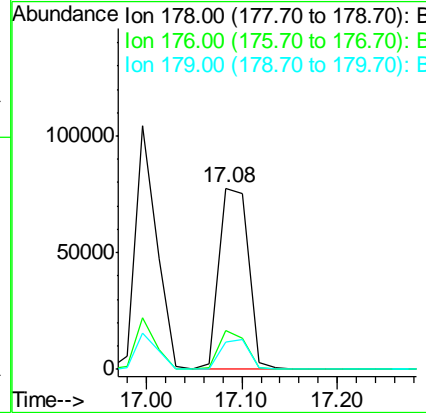
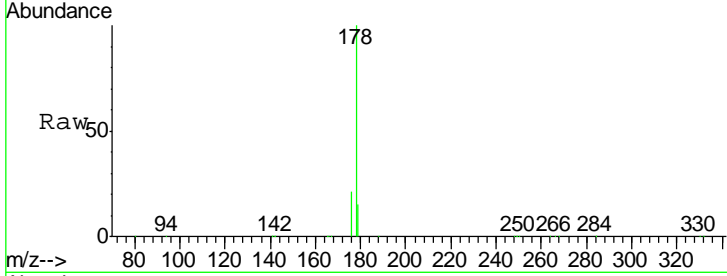




#23
 Anthracene
 Concen: 9.78 ng
 RT: 17.08 min Scan# 2285
 Delta R.T. -0.00 min
 Lab File: BE090151.D
 Acq: 17 Jul 2015 18:35

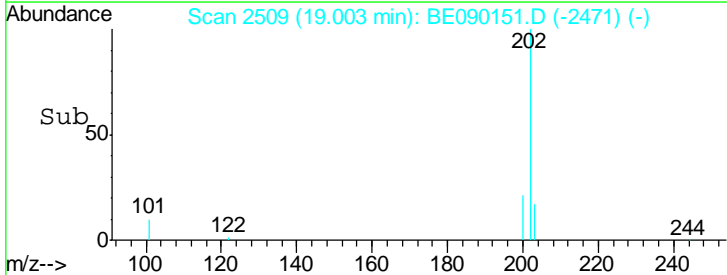
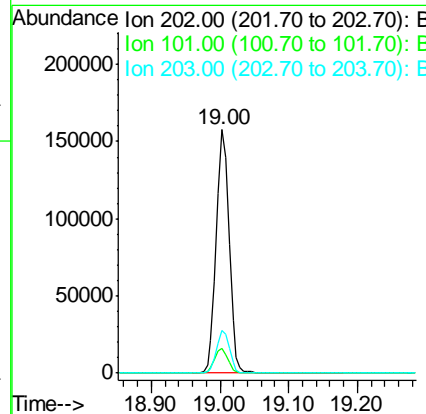
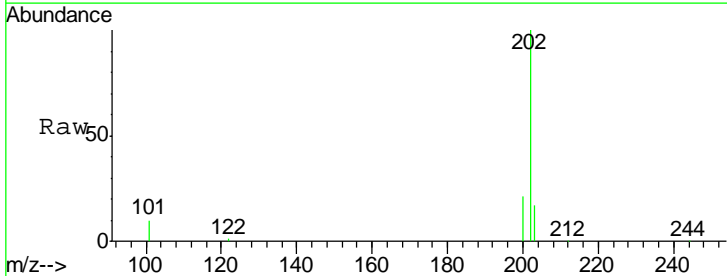
Instrument : BNA_E
 ClientSampled : SSTDICC010

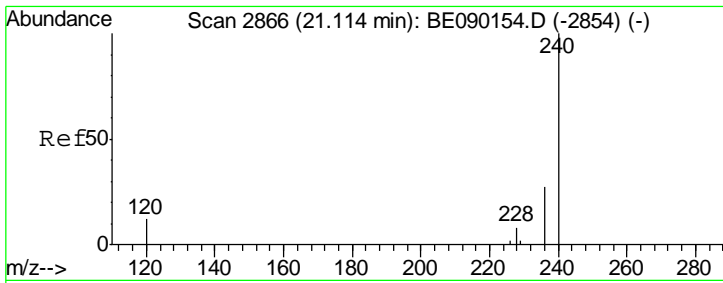
Tgt Ion	Resp	Lower	Upper
178	165583		
176	19.6	15.4	23.2
179	15.7	12.2	18.2



#24
 Fluoranthene
 Concen: 10.63 ng
 RT: 19.00 min Scan# 2509
 Delta R.T. -0.00 min
 Lab File: BE090151.D
 Acq: 17 Jul 2015 18:35

Tgt Ion	Resp	Lower	Upper
202	202587		
101	10.5	8.5	12.7
203	17.4	13.9	20.9

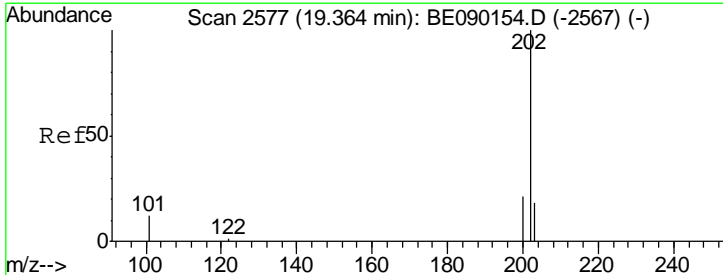
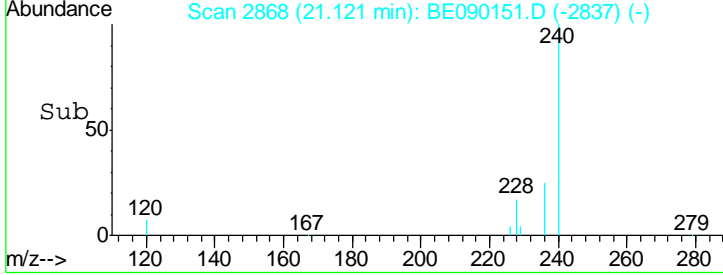
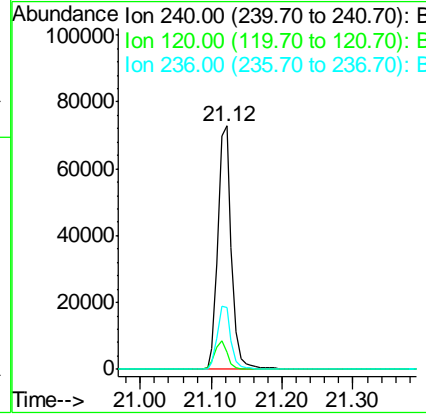
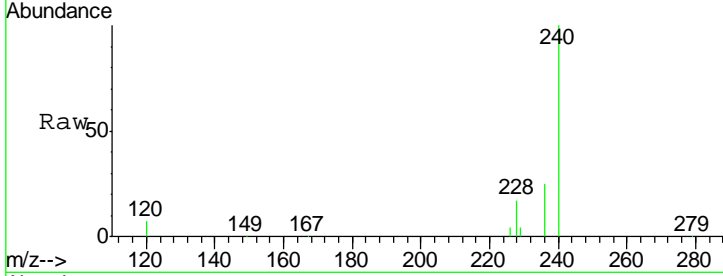




#25
 Chrysene-d12
 Concen: 5.00 ng
 RT: 21.12 min Scan# 2868
 Delta R.T. 0.01 min
 Lab File: BE090151.D
 Acq: 17 Jul 2015 18:35

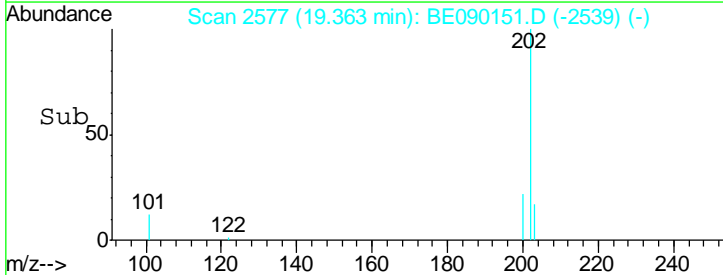
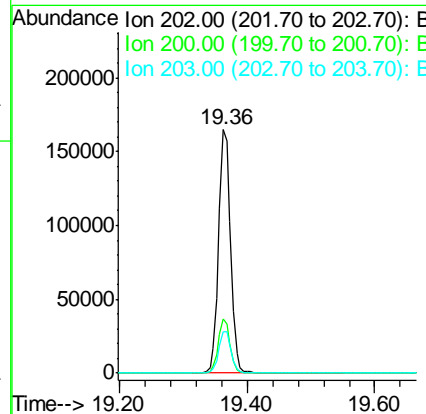
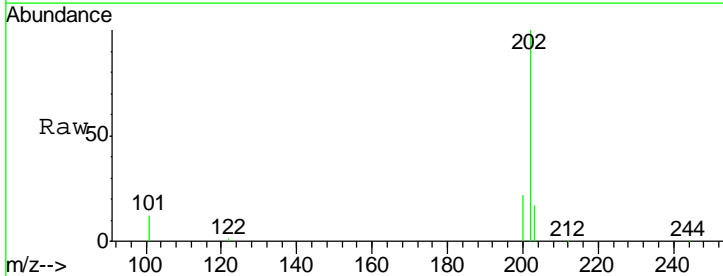
Instrument : BNA_E
 ClientSampled : SSTDIC010

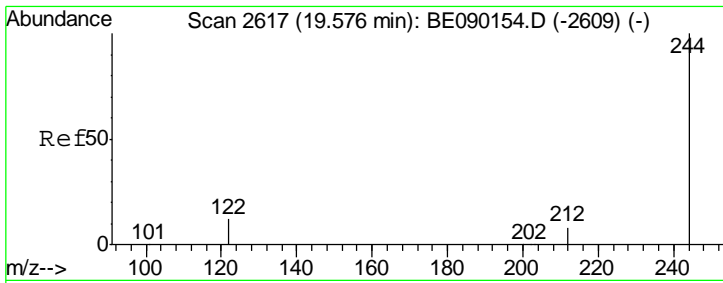
Tgt Ion	Resp	Lower	Upper
240	97099		
120	6.9	9.4	14.0#
236	25.4	21.8	32.8



#26
 Pyrene
 Concen: 8.33 ng
 RT: 19.36 min Scan# 2577
 Delta R.T. -0.00 min
 Lab File: BE090151.D
 Acq: 17 Jul 2015 18:35

Tgt Ion	Resp	Lower	Upper
202	213945		
200	21.7	17.0	25.6
203	17.7	14.1	21.1

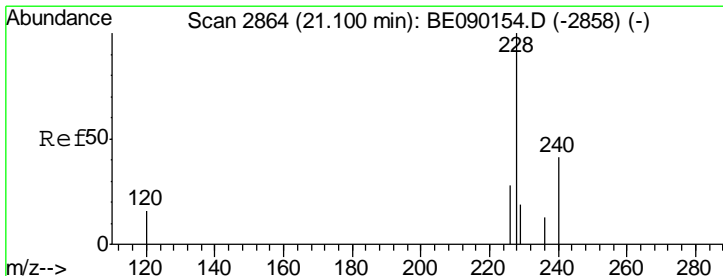
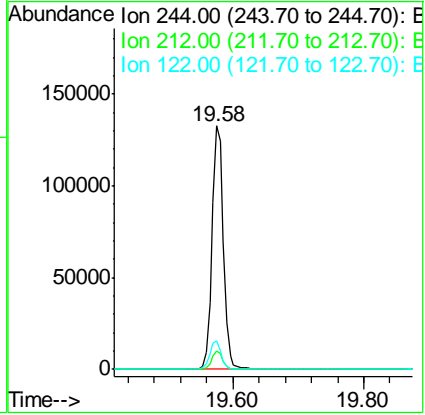
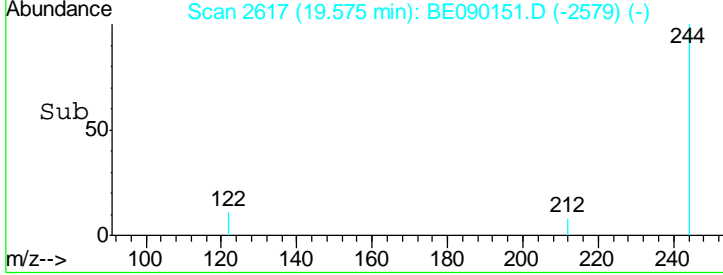
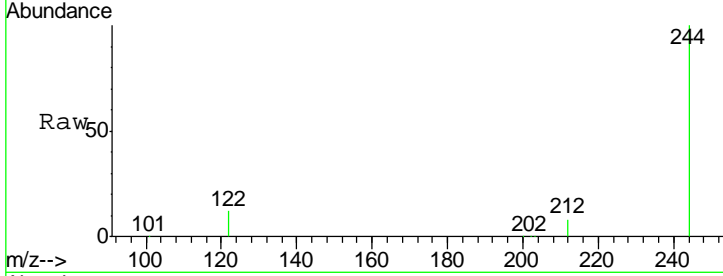




#27
 Terphenyl-d14
 Concen: 9.96 ng
 RT: 19.58 min Scan# 2617
 Delta R.T. -0.00 min
 Lab File: BE090151.D
 Acq: 17 Jul 2015 18:35

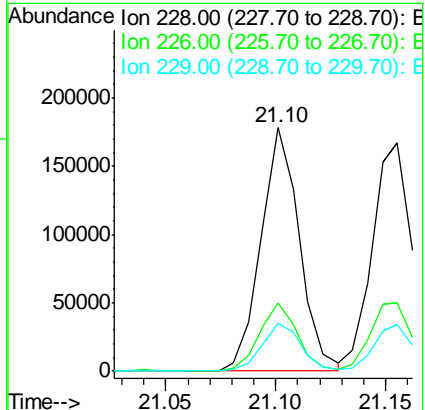
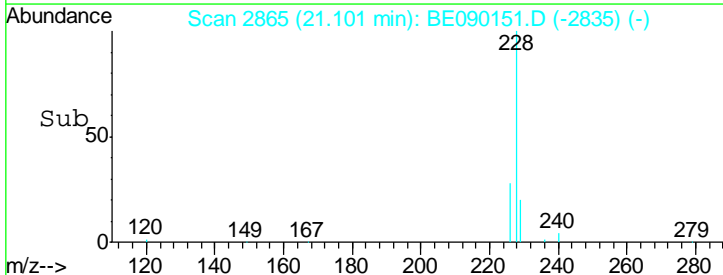
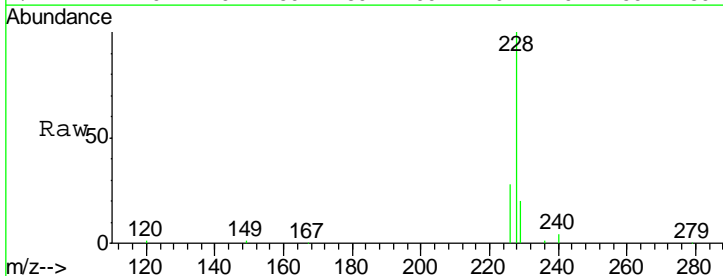
Instrument :
 BNA_E
 ClientSampleId :
 SSTDICC010

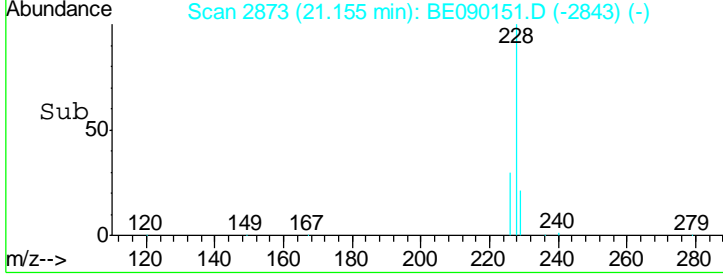
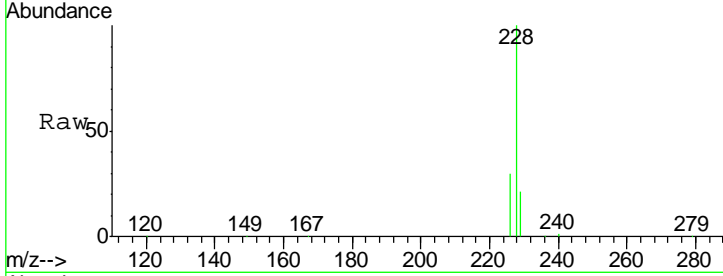
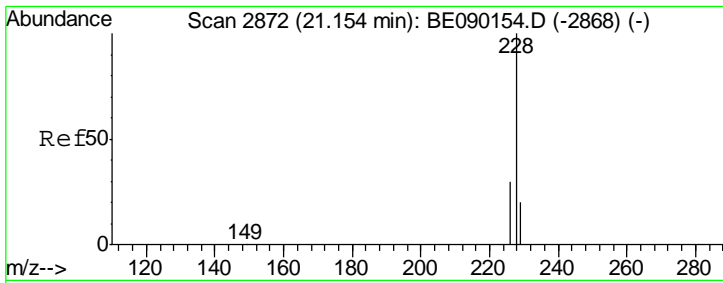
Tgt Ion	Resp	Lower	Upper
244	161653		
212	7.7	6.5	9.7
122	11.9	9.8	14.6



#28
 Benzo(a)anthracene
 Concen: 12.57 ng
 RT: 21.10 min Scan# 2865
 Delta R.T. 0.00 min
 Lab File: BE090151.D
 Acq: 17 Jul 2015 18:35

Tgt Ion	Resp	Lower	Upper
228	217293		
226	27.9	22.2	33.4
229	19.9	15.7	23.5



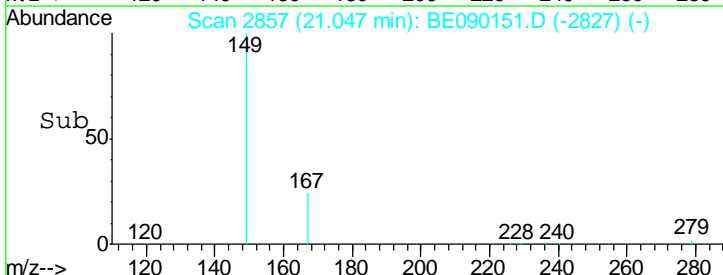
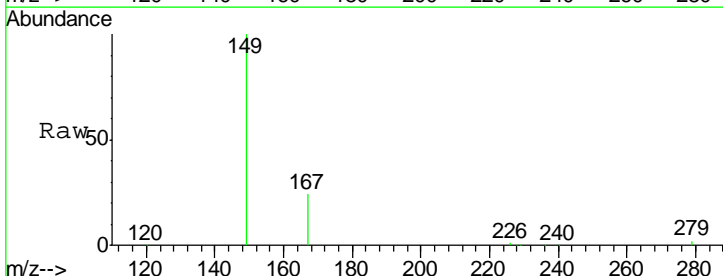
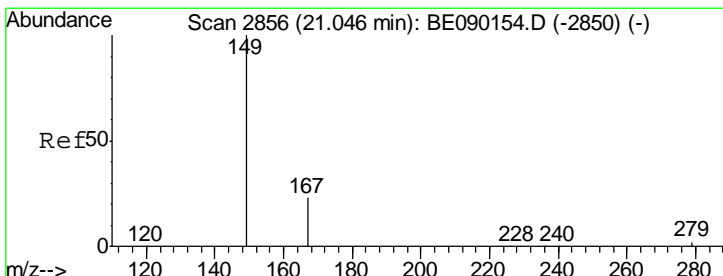
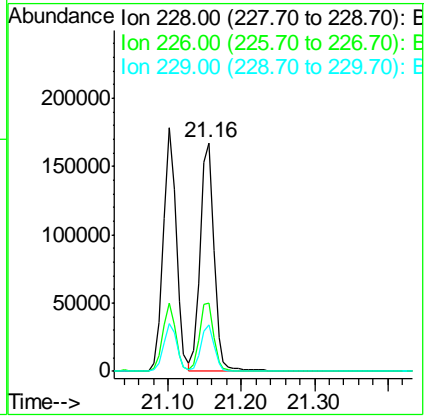


#29
 Chrysene
 Concen: 7.65 ng
 RT: 21.16 min Scan# 2873
 Delta R.T. 0.00 min
 Lab File: BE090151.D
 Acq: 17 Jul 2015 18:35

Instrument :
 BNA_E
 ClientSampled :
 SSTDICC010

Tgt Ion: 228 Resp: 217737

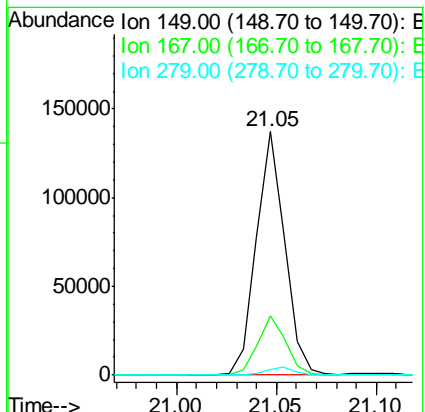
Ion	Ratio	Lower	Upper
228	100		
226	30.0	23.8	35.8
229	20.6	16.5	24.7

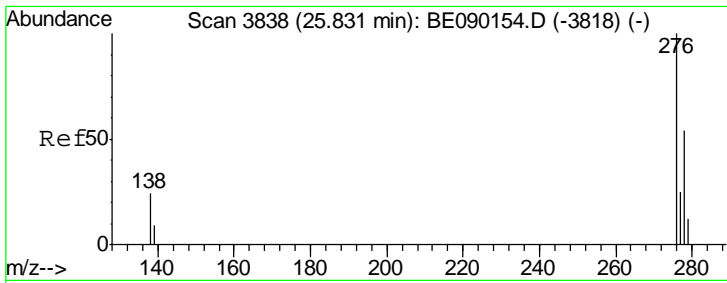


#30
 Bis(2-ethylhexyl)phthalate
 Concen: 29.09 ng
 RT: 21.05 min Scan# 2857
 Delta R.T. 0.00 min
 Lab File: BE090151.D
 Acq: 17 Jul 2015 18:35

Tgt Ion: 149 Resp: 136869

Ion	Ratio	Lower	Upper
149	100		
167	24.1	18.6	28.0
279	3.0	2.2	3.4

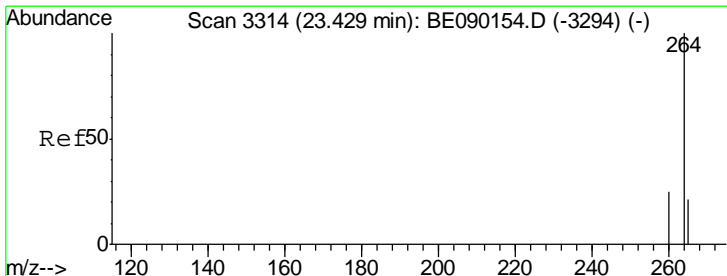
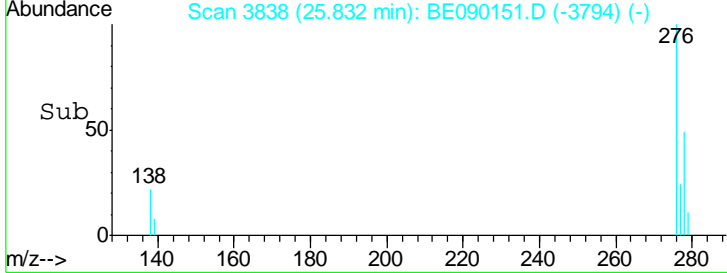
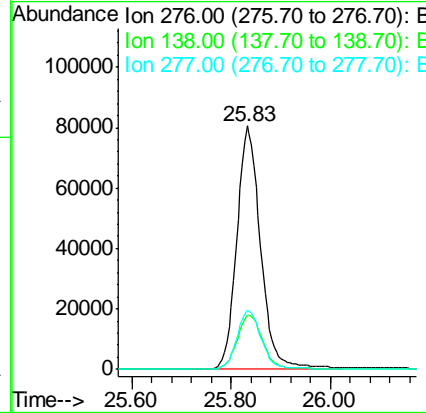
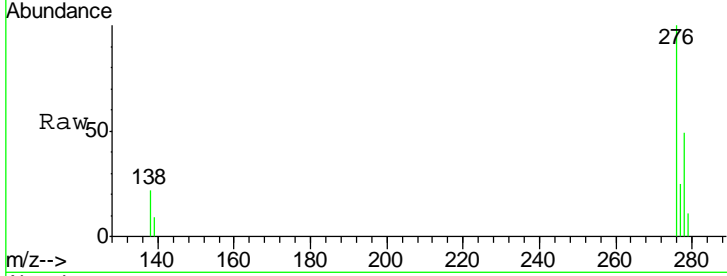




#31
 Indeno(1,2,3-cd)pyrene
 Concen: 31.64 ng
 RT: 25.83 min Scan# 3838
 Delta R.T. 0.00 min
 Lab File: BE090151.D
 Acq: 17 Jul 2015 18:35

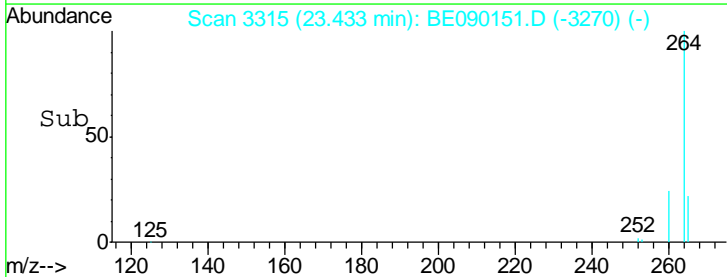
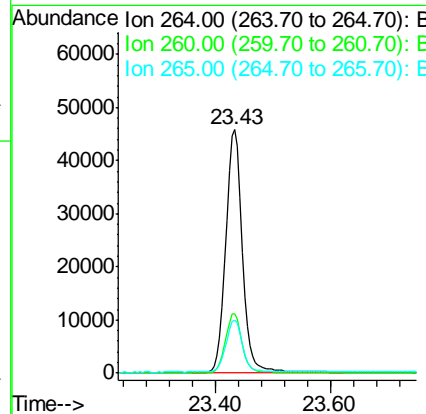
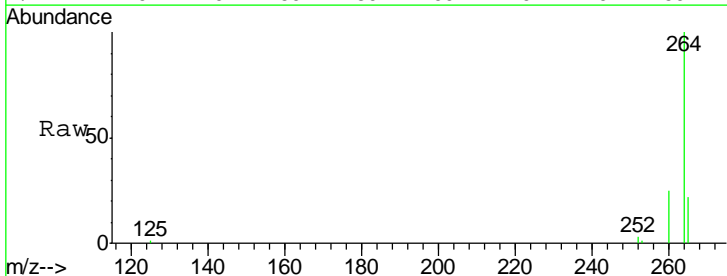
Instrument :
 BNA_E
 ClientSampleId :
 SSTDICC010

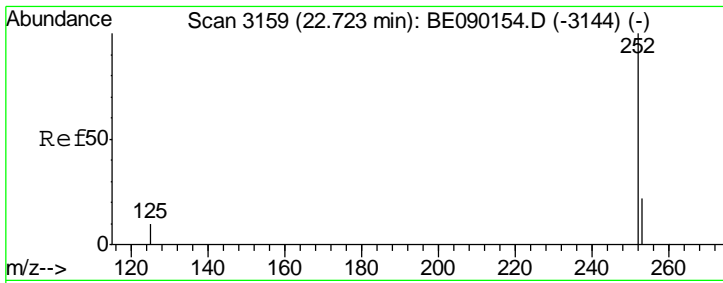
Tgt Ion	Resp	Lower	Upper
276	268983		
138	24.0	19.5	29.3
277	25.0	19.8	29.6



#32
 Perylene-d12
 Concen: 5.00 ng
 RT: 23.43 min Scan# 3315
 Delta R.T. 0.00 min
 Lab File: BE090151.D
 Acq: 17 Jul 2015 18:35

Tgt Ion	Resp	Lower	Upper
264	94504		
260	24.5	19.8	29.8
265	22.0	17.4	26.2



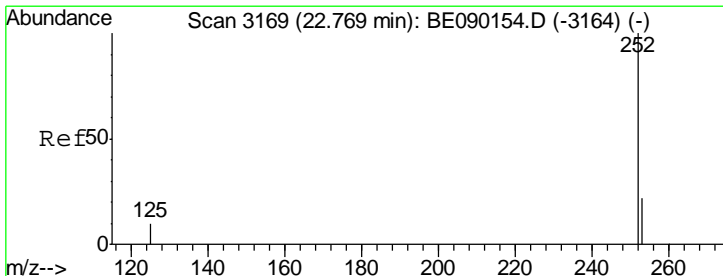
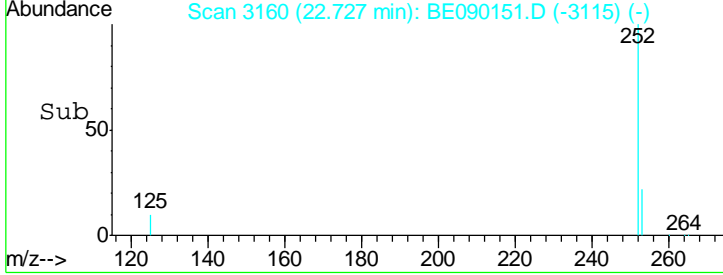
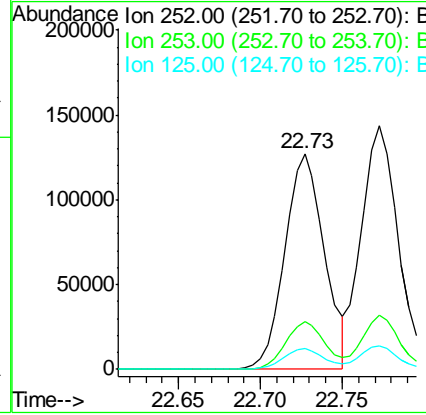
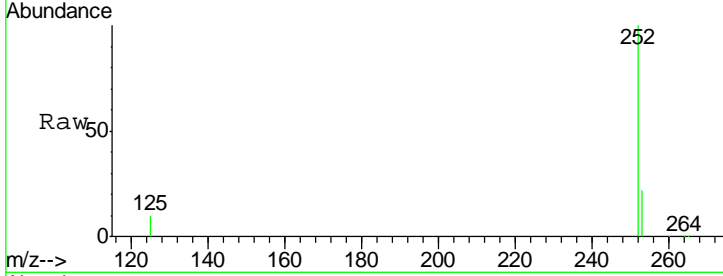


#33
 Benzo(b)fluoranthene
 Concen: 23.83 ng
 RT: 22.73 min Scan# 3160
 Delta R.T. 0.00 min
 Lab File: BE090151.D
 Acq: 17 Jul 2015 18:35

Instrument :
 BNA_E
 ClientSampled :
 SSTDICC010

Tgt Ion: 252 Resp: 213226

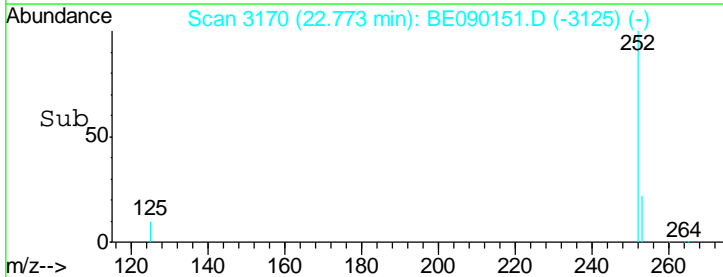
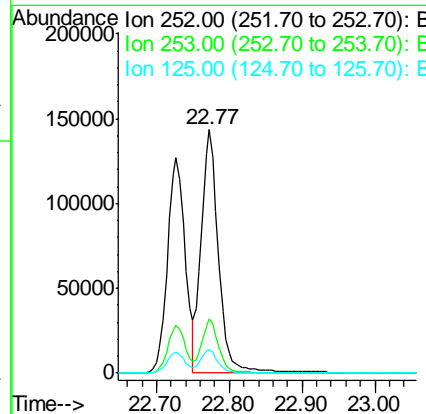
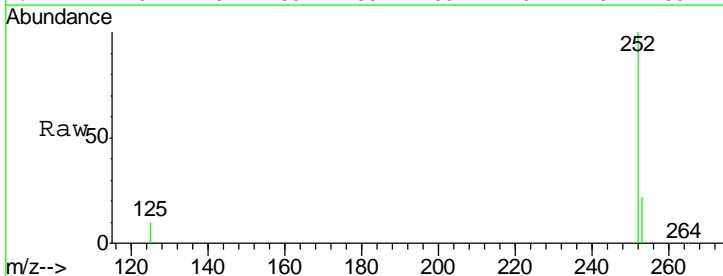
Ion	Ratio	Lower	Upper
252	100		
253	22.1	17.9	26.9
125	9.9	8.7	13.1

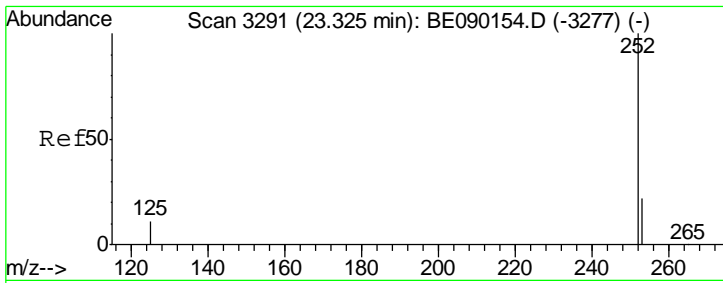


#34
 Benzo(k)fluoranthene
 Concen: 11.65 ng
 RT: 22.77 min Scan# 3170
 Delta R.T. 0.00 min
 Lab File: BE090151.D
 Acq: 17 Jul 2015 18:35

Tgt Ion: 252 Resp: 233511

Ion	Ratio	Lower	Upper
252	100		
253	22.1	18.1	27.1
125	9.7	8.7	13.1

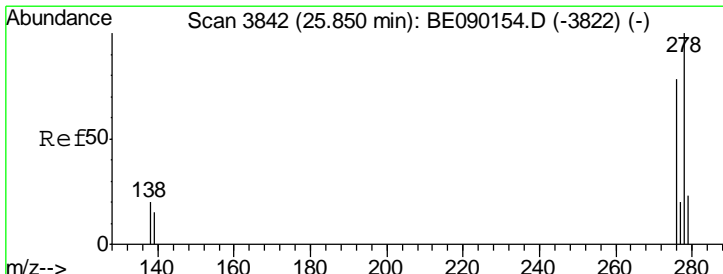
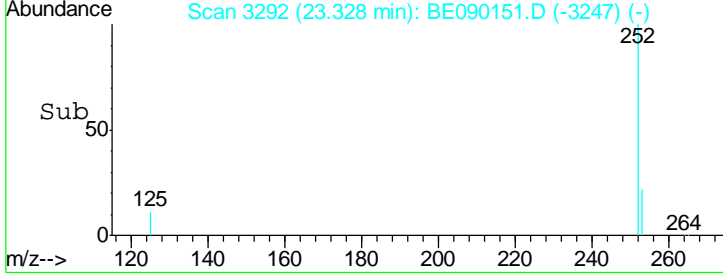
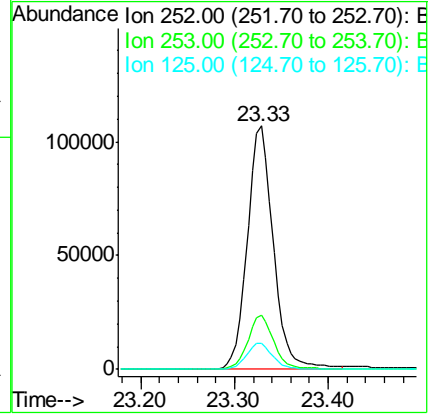
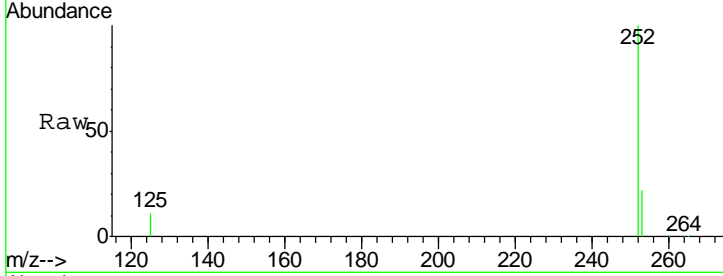




#35
 Benzo(a)pyrene
 Concen: 18.13 ng
 RT: 23.33 min Scan# 3292
 Delta R.T. 0.00 min
 Lab File: BE090151.D
 Acq: 17 Jul 2015 18:35

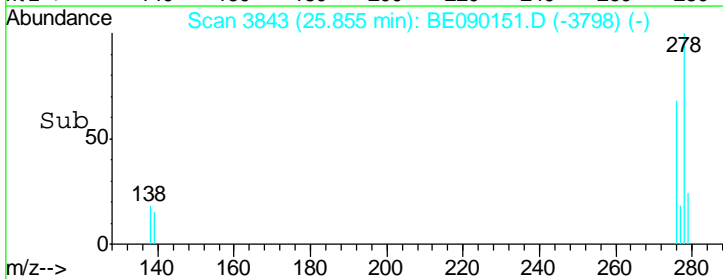
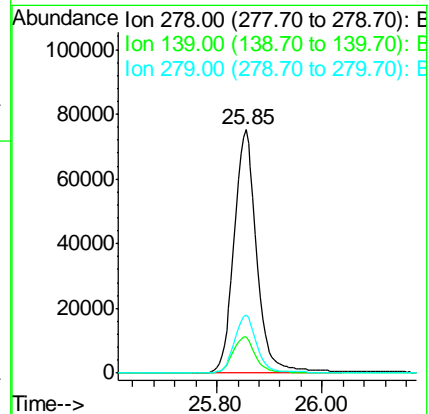
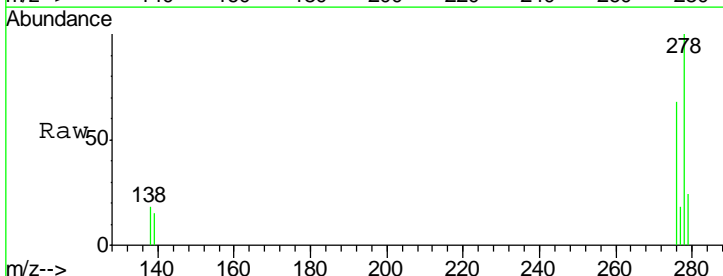
Instrument :
 BNA_E
 ClientSampled :
 SSTDICC010

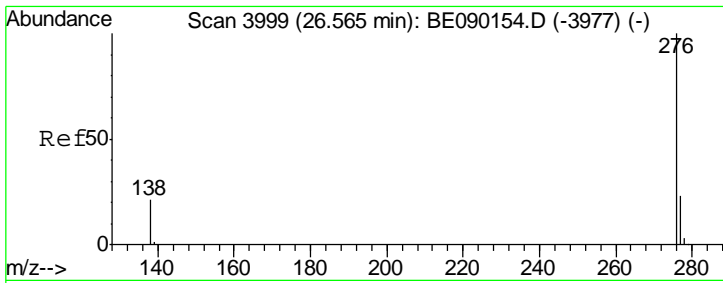
Tgt Ion	Resp	Lower	Upper
252	100		
253	22.1	18.0	27.0
125	10.8	9.4	14.0



#36
 Dibenzo(a,h)anthracene
 Concen: 31.41 ng
 RT: 25.85 min Scan# 3843
 Delta R.T. 0.01 min
 Lab File: BE090151.D
 Acq: 17 Jul 2015 18:35

Tgt Ion	Resp	Lower	Upper
278	100		
139	14.7	12.9	19.3
279	23.9	19.3	28.9





#37
 Benzo(g,h,i)perylene
 Concen: 17.94 ng
 RT: 26.57 min Scan# 4000
 Delta R.T. 0.01 min
 Lab File: BE090151.D
 Acq: 17 Jul 2015 18:35

Instrument :
 BNA_E
ClientSampleId :
 SSTDICC010

Tgt Ion: 276 Resp: 213879

Ion	Ratio	Lower	Upper
276	100		
277	23.9	19.0	28.6
138	21.0	17.2	25.8

