

Data Path : Z:\SVOASRV\HPCHEM1\BNA E\DATA\BE072418\  
 Data File : BE097090.D  
 Acq On : 25 Jul 2018 3:12  
 Operator : SJ/JU  
 Sample : J4073-11DL 2X  
 Misc :  
 ALS Vial : 17 Sample Multiplier: 1

Instrument :  
 BNA\_E  
 ClientSampleId :  
 RE108D2-071718DL

Quant Time: Jul 25 08:06:27 2018  
 Quant Method : Z:\SVOASRV\HPCHEM1\BNA E\METHODS\8270-SIM-BE072418.M  
 Quant Title : ASP BNA STANDARDS FOR 5 POINT CALIBRATION  
 QLast Update : Tue Jul 24 13:24:10 2018  
 Response via : Initial Calibration

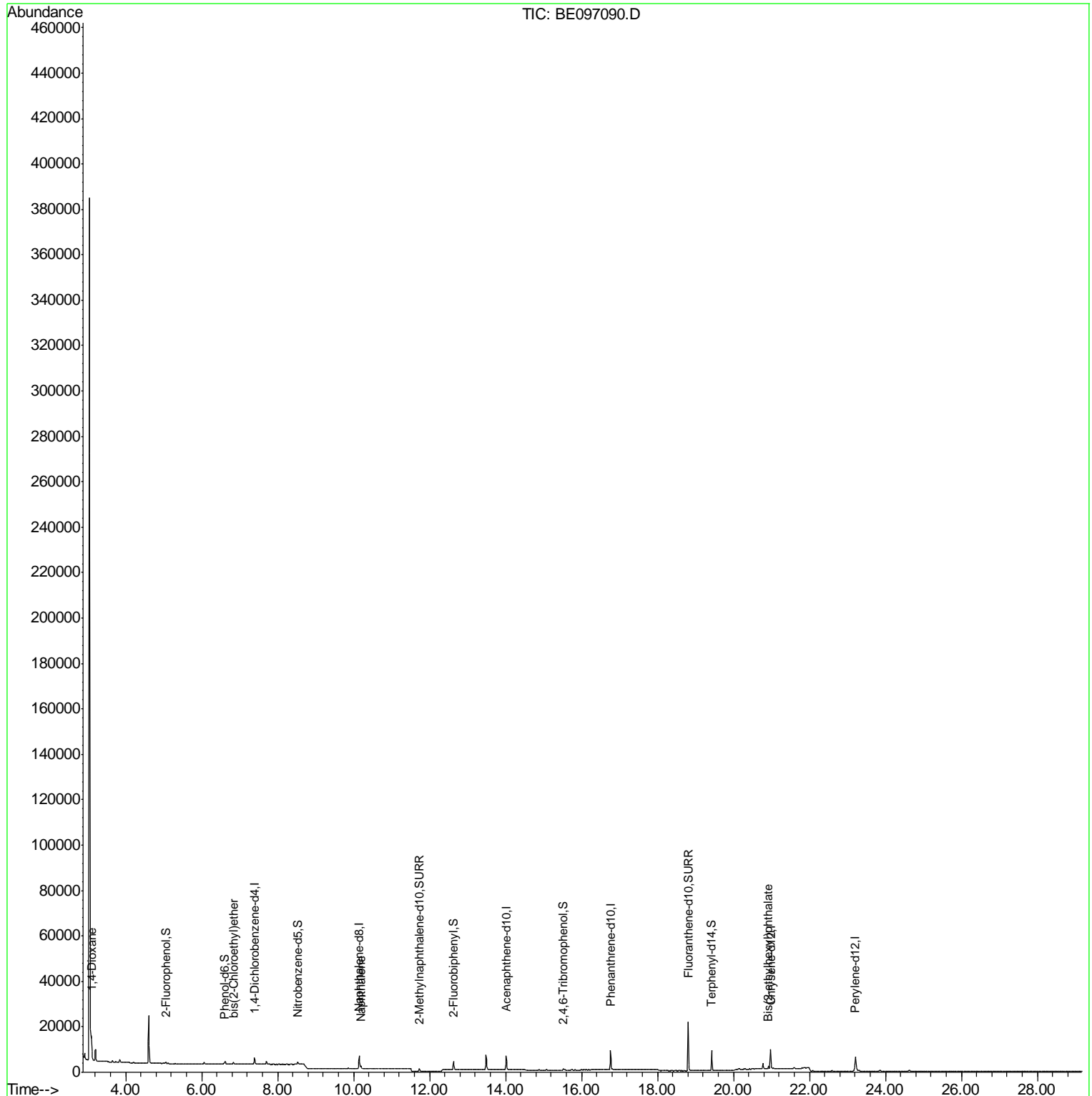
Internal Standards	R.T.	QIon	Response	Conc	Units	Dev(Min)
1) 1,4-Dichlorobenzene-d4	7.39	152	1231	0.40	ng	0.00
7) Naphthalene-d8	10.15	136	5949	0.40	ng	0.00
13) Acenaphthene-d10	14.02	164	3583	0.40	ng	0.00
19) Phenanthrene-d10	16.77	188	11094	0.40	ng	0.00
27) Chrysene-d12	20.98	240	10024	0.40	ng	0.00
34) Perylene-d12	23.21	264	9761	0.40	ng	0.00
System Monitoring Compounds						
4) 2-Fluorophenol	5.05	112	379	0.11	ng	0.00
5) Phenol-d6	6.60	99	354	0.07	ng	0.00
8) Nitrobenzene-d5	8.53	82	1222	0.24	ng	0.00
11) 2-Methylnaphthalene-d10	11.73	152	2039	0.23	ng	0.00
14) 2,4,6-Tribromophenol	15.52	330	313	0.27	ng	0.00
15) 2-Fluorobiphenyl	12.63	172	3430	0.28	ng	0.00
25) Fluoranthene-d10	18.81	212	29300	0.26	ng	0.00
29) Terphenyl-d14	19.42	244	8090	0.42	ng	0.00
Target Compounds						
2) 1,4-Dioxane	3.09	88	4199	2.147	ng	91
6) bis(2-Chloroethyl)ether	6.84	93	408	0.088	ng	# 62
9) Naphthalene	10.20	128	2059	0.039	ng	# 89
32) Bis(2-ethylhexyl)phthalate	20.92	149	1309	0.040	ng	# 96

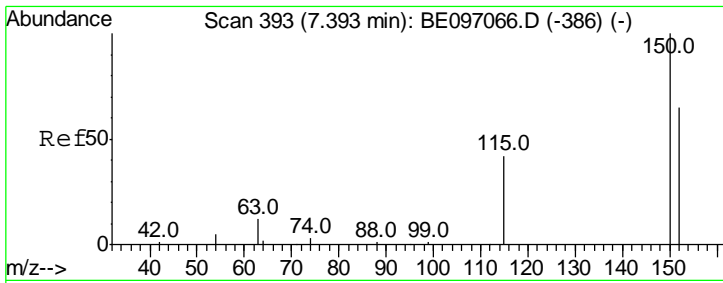
(#) = qualifier out of range (m) = manual integration (+) = signals summed

Data Path : Z:\SVOASRV\HPCHEM1\BNA E\DATA\BE072418\  
Data File : BE097090.D  
Acq On : 25 Jul 2018 3:12  
Operator : SJ/JU  
Sample : J4073-11DL 2X  
Misc :  
ALS Vial : 17 Sample Multiplier: 1

Instrument :  
BNA\_E  
ClientSampleId :  
RE108D2-071718DL

Quant Time: Jul 25 08:06:27 2018  
Quant Method : Z:\SVOASRV\HPCHEM1\BNA E\METHODS\8270-SIM-BE072418.M  
Quant Title : ASP BNA STANDARDS FOR 5 POINT CALIBRATION  
QLast Update : Tue Jul 24 13:24:10 2018  
Response via : Initial Calibration



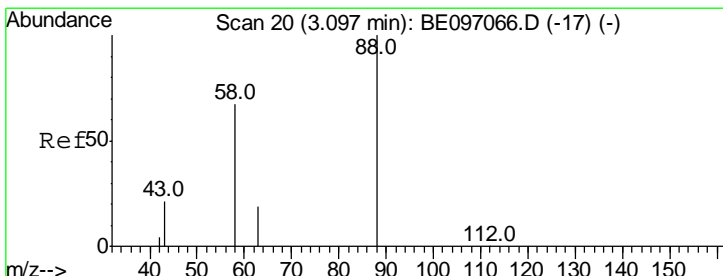
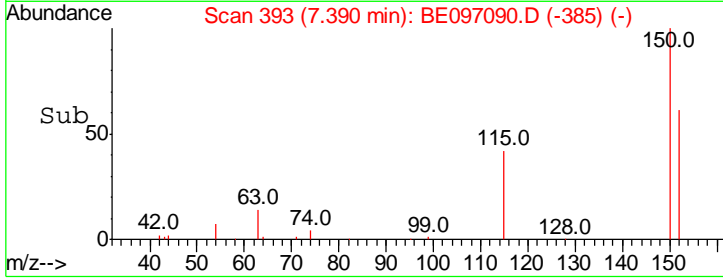
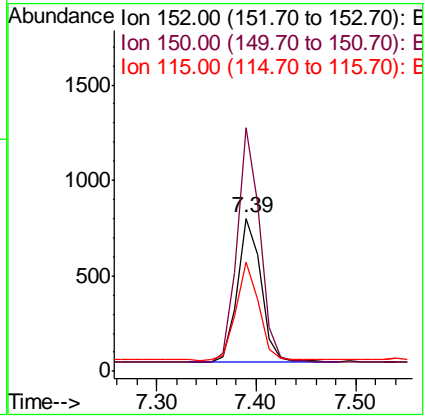
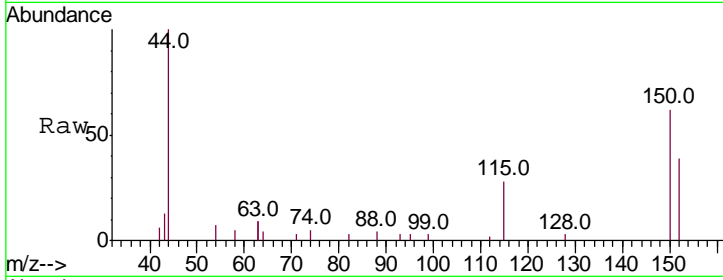


#1  
 1,4-Dichlorobenzene-d4  
 Concen: 0.400 ng  
 RT: 7.39 min Scan# 393  
 Delta R.T. -0.00 min  
 Lab File: BE097090.D  
 Acq: 25 Jul 2018 3:12

**Instrument :**  
 BNA\_E  
**ClientSampleId :**  
 RE108D2-071718DL

Tgt Ion: 152 Resp: 1231

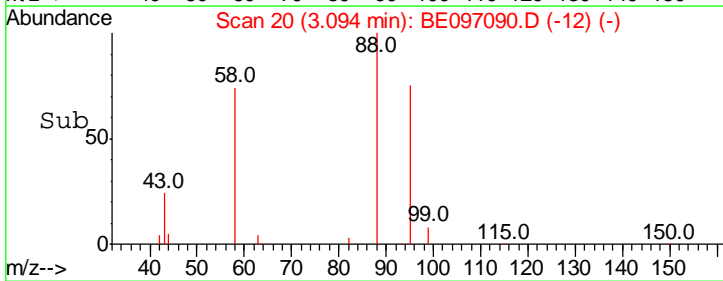
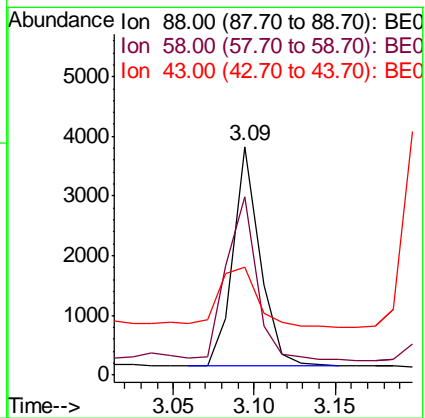
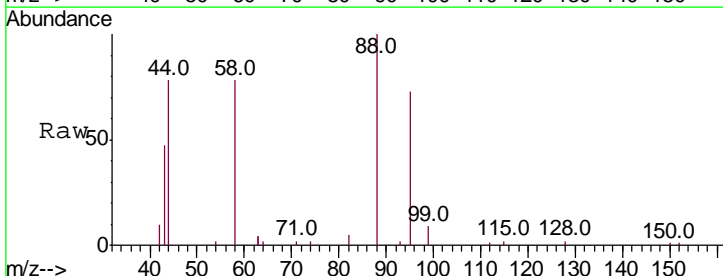
Ion	Ratio	Lower	Upper
152	100		
150	159.4	117.2	175.8
115	71.8	57.0	85.6

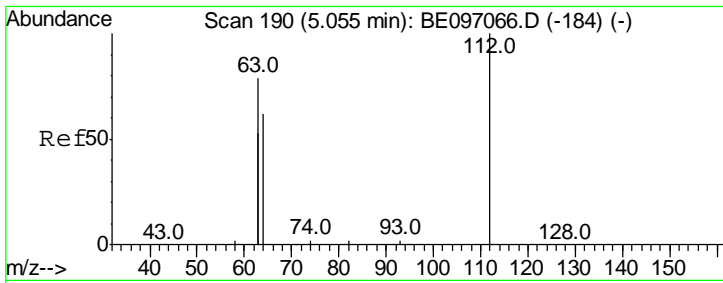


#2  
 1,4-Dioxane  
 Concen: 2.147 ng  
 RT: 3.09 min Scan# 20  
 Delta R.T. -0.00 min  
 Lab File: BE097090.D  
 Acq: 25 Jul 2018 3:12

Tgt Ion: 88 Resp: 4199

Ion	Ratio	Lower	Upper
88	100		
58	83.6	63.2	94.8
43	41.4	41.2	61.8

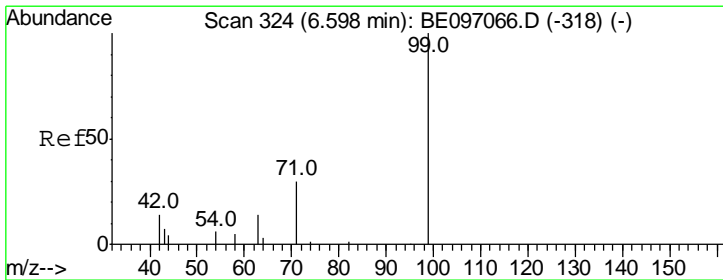
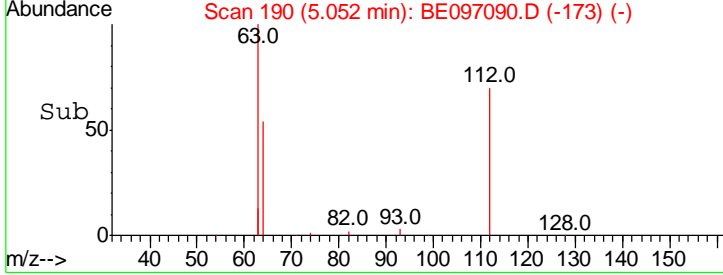
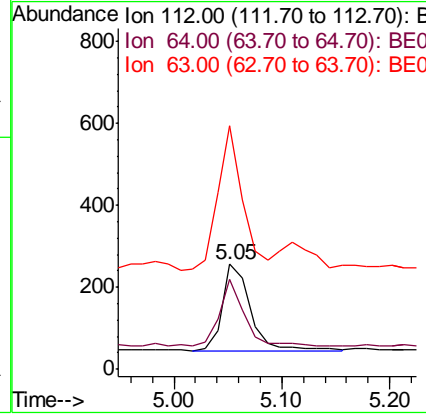
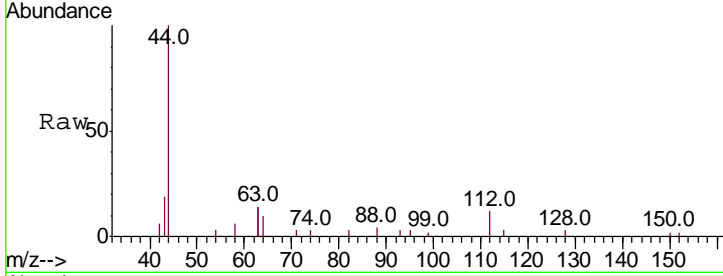




#4  
 2-Fluorophenol  
 Concen: 0.110 ng  
 RT: 5.05 min Scan# 190  
 Delta R.T. -0.00 min  
 Lab File: BE097090.D  
 Acq: 25 Jul 2018 3:12

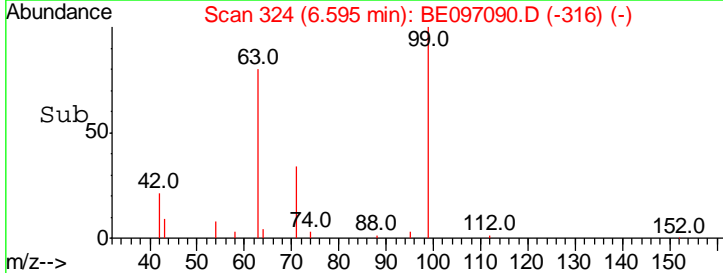
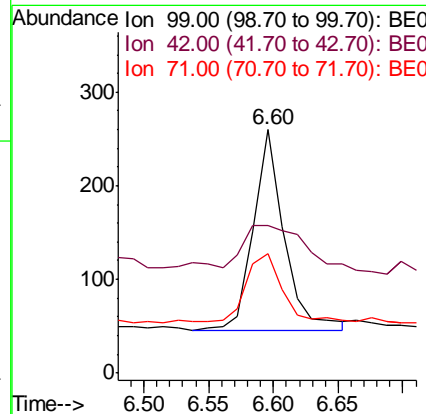
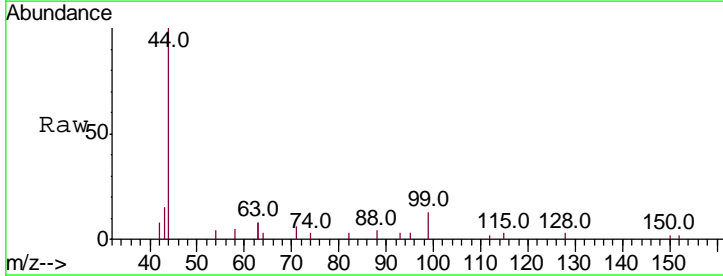
Instrument :  
 BNA\_E  
 ClientSampleID :  
 RE108D2-071718DL

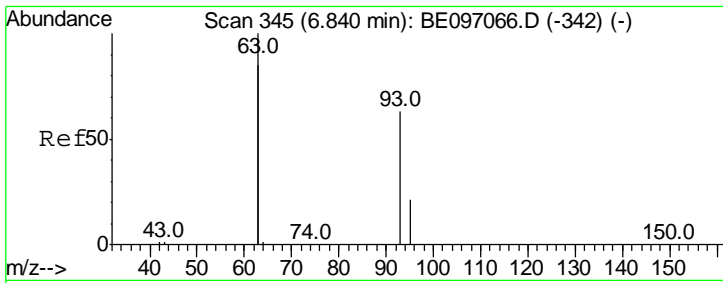
Tgt Ion	Resp	Lower	Upper
112	100		
64	70.2	60.1	90.1
63	148.0	116.8	175.2



#5  
 Phenol-d6  
 Concen: 0.070 ng  
 RT: 6.60 min Scan# 324  
 Delta R.T. -0.00 min  
 Lab File: BE097090.D  
 Acq: 25 Jul 2018 3:12

Tgt Ion	Resp	Lower	Upper
99	100		
42	39.5	20.2	30.2#
71	39.0	28.4	42.6

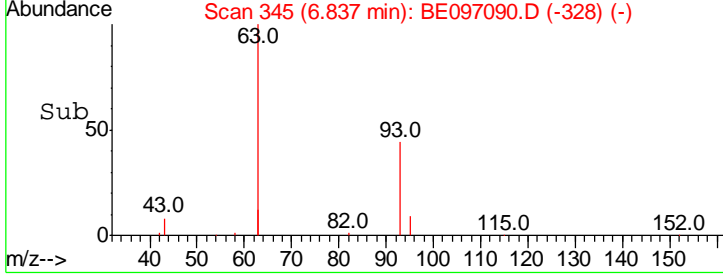
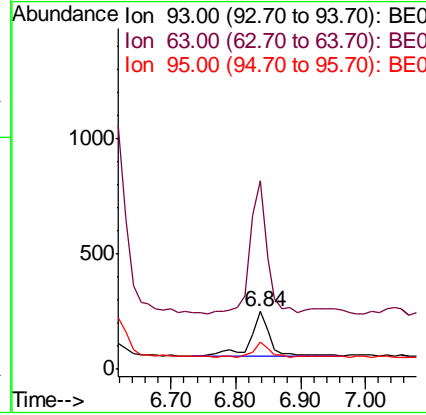
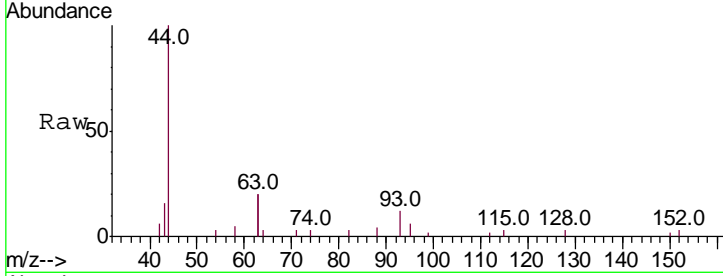




#6  
 bis(2-Chloroethyl)ether  
 Concen: 0.088 ng  
 RT: 6.84 min Scan# 345  
 Delta R.T. -0.00 min  
 Lab File: BE097090.D  
 Acq: 25 Jul 2018 3:12

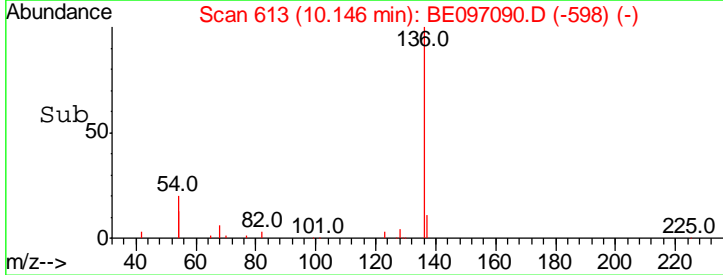
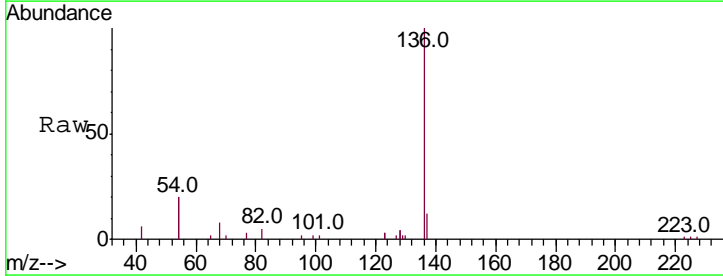
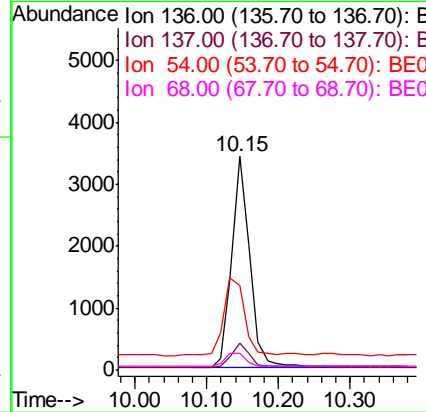
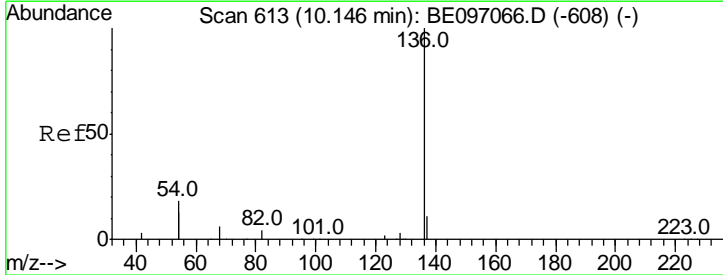
**Instrument :**  
 BNA\_E  
**ClientSampled :**  
 RE108D2-071718DL

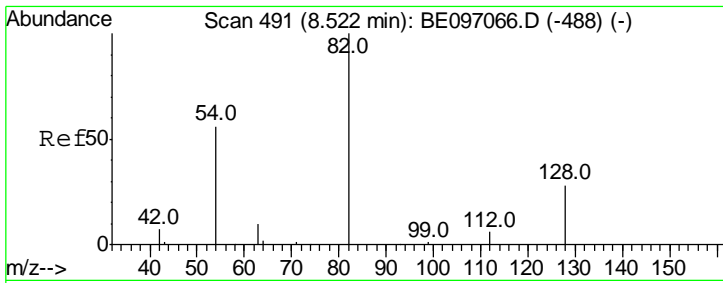
Tgt Ion	Resp	Lower	Upper
93	408		
93	100		
63	257.8	275.3	412.9#
95	25.0	25.2	37.8#



#7  
 Naphthalene-d8  
 Concen: 0.400 ng  
 RT: 10.15 min Scan# 613  
 Delta R.T. -0.00 min  
 Lab File: BE097090.D  
 Acq: 25 Jul 2018 3:12

Tgt Ion	Resp	Lower	Upper
136	5949		
136	100		
137	12.3	9.5	14.3
54	39.7	29.1	43.7
68	7.8	6.2	9.2

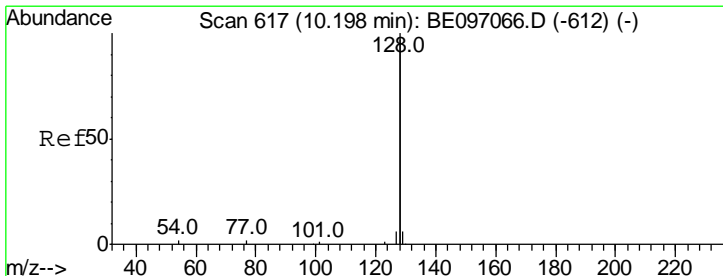
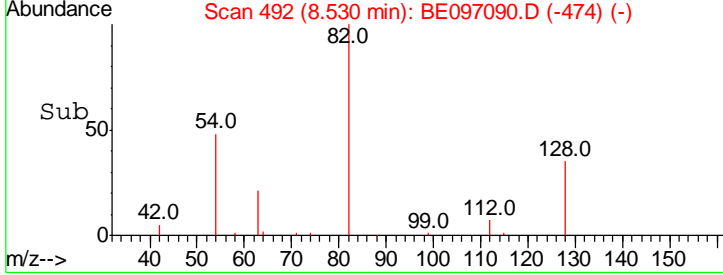
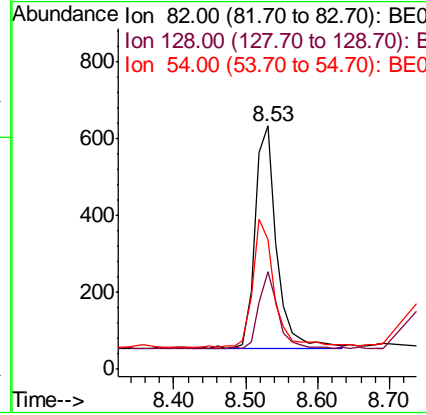
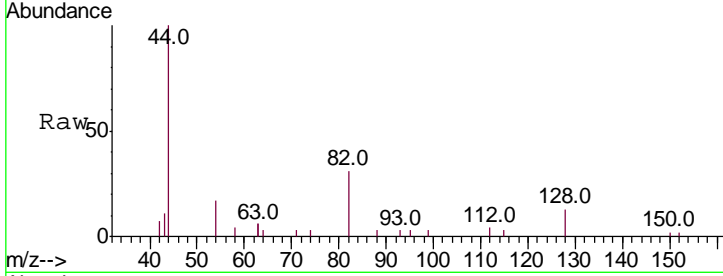




#8  
 Nitrobenzene-d5  
 Concen: 0.236 ng  
 RT: 8.53 min Scan# 492  
 Delta R.T. 0.01 min  
 Lab File: BE097090.D  
 Acq: 25 Jul 2018 3:12

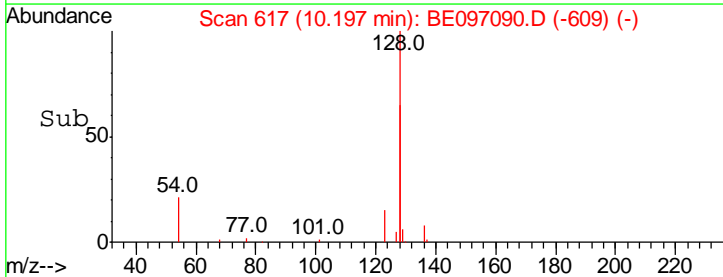
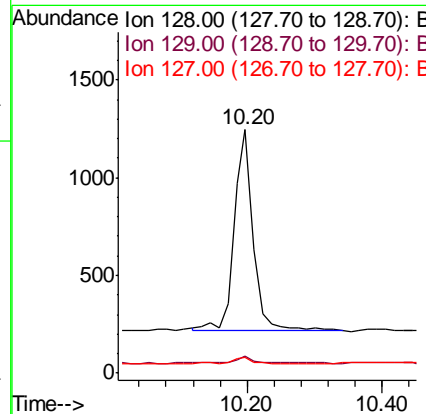
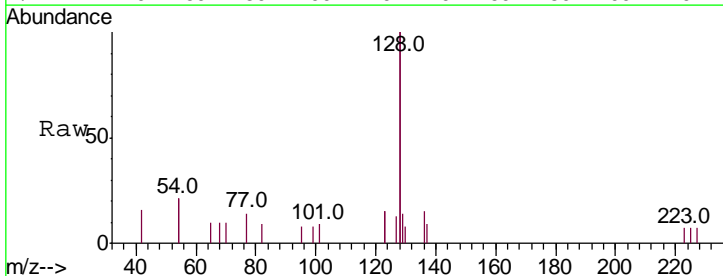
**Instrument :**  
 BNA\_E  
**ClientSampleId :**  
 RE108D2-071718DL

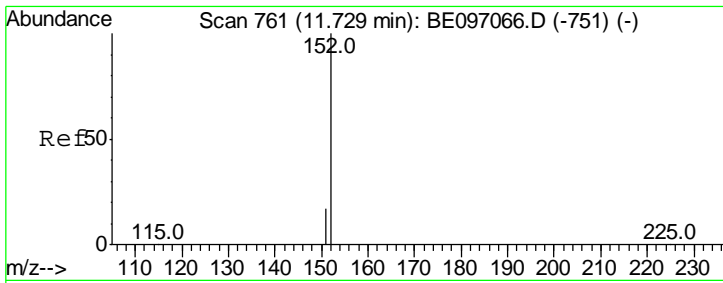
Tgt Ion	Resp	Lower	Upper
82	100		
128	40.2	24.0	36.0#
54	53.2	40.0	60.0



#9  
 Naphthalene  
 Concen: 0.039 ng  
 RT: 10.20 min Scan# 617  
 Delta R.T. -0.00 min  
 Lab File: BE097090.D  
 Acq: 25 Jul 2018 3:12

Tgt Ion	Resp	Lower	Upper
128	100		
129	7.1	2.6	3.8#
127	6.6	2.8	4.2#

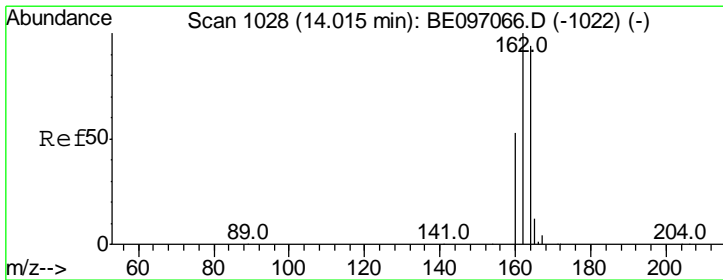
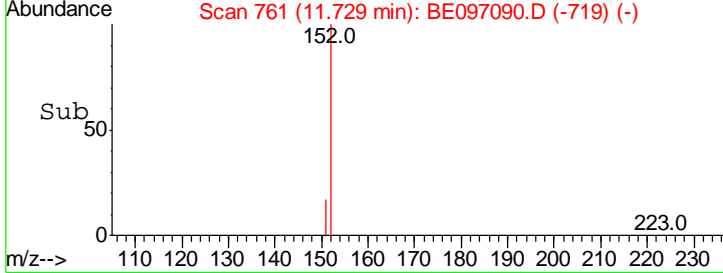
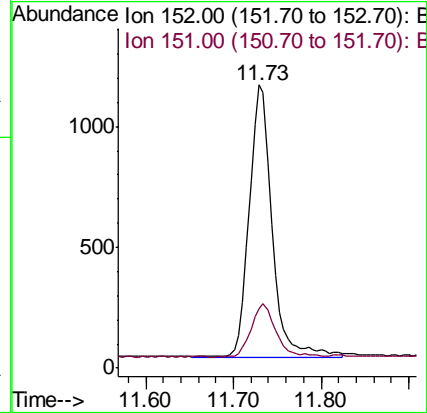
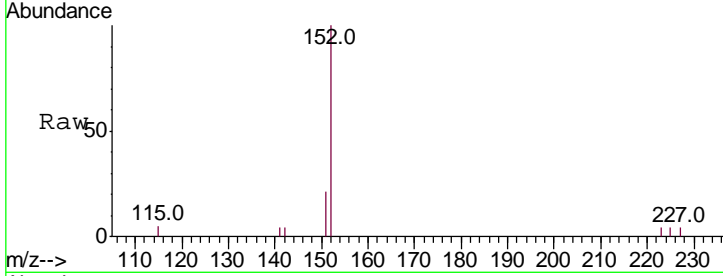




#11  
 2-Methylnaphthalene-d10  
 Concen: 0.229 ng  
 RT: 11.73 min Scan# 761  
 Delta R.T. 0.00 min  
 Lab File: BE097090.D  
 Acq: 25 Jul 2018 3:12

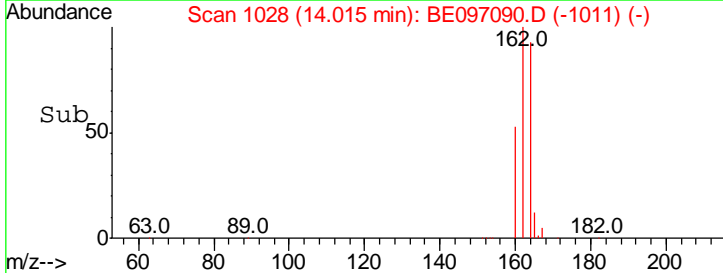
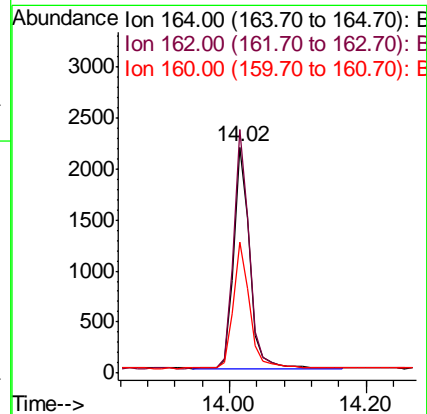
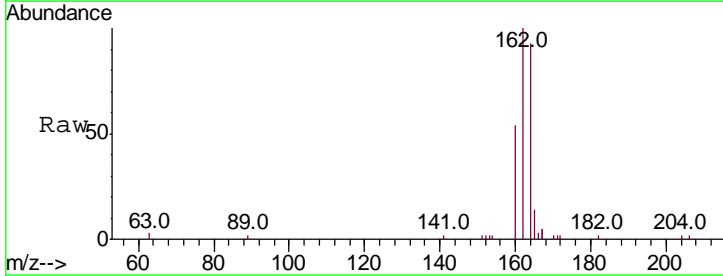
**Instrument :**  
 BNA\_E  
**ClientSampled :**  
 RE108D2-071718DL

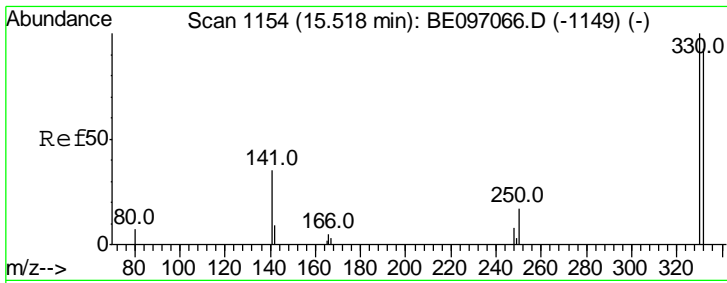
Tgt Ion	Resp	Lower	Upper
152	100		
151	21.0	15.4	23.0



#13  
 Acenaphthene-d10  
 Concen: 0.400 ng  
 RT: 14.02 min Scan# 1028  
 Delta R.T. 0.00 min  
 Lab File: BE097090.D  
 Acq: 25 Jul 2018 3:12

Tgt Ion	Resp	Lower	Upper
164	100		
162	107.7	83.1	124.7
160	57.7	37.1	55.7#

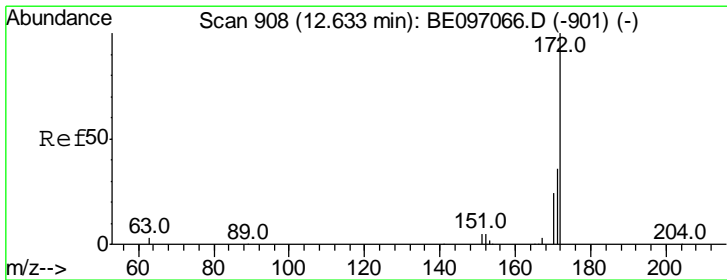
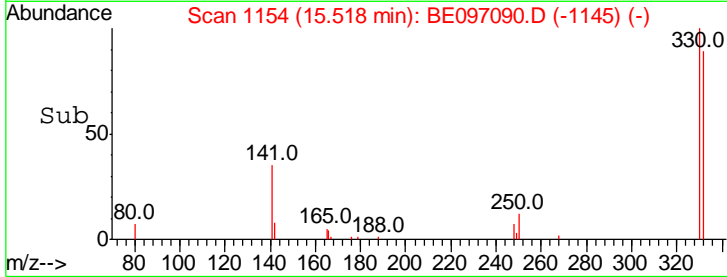
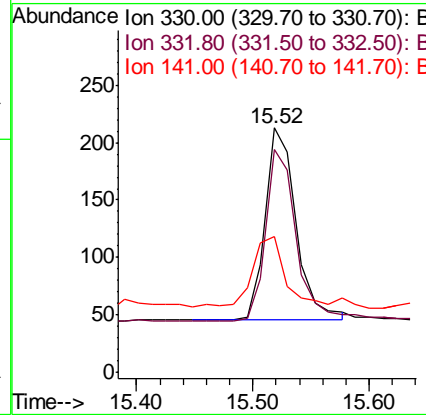
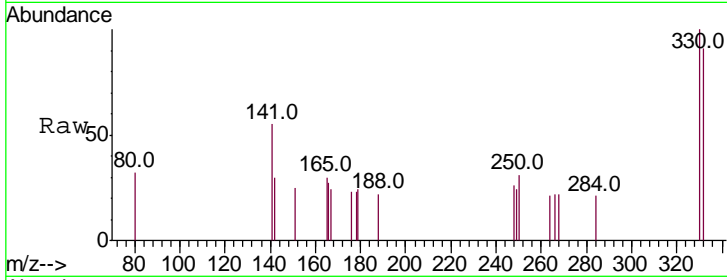




#14  
 2,4,6-Tribromophenol  
 Concen: 0.265 ng  
 RT: 15.52 min Scan# 1154  
 Delta R.T. 0.00 min  
 Lab File: BE097090.D  
 Acq: 25 Jul 2018 3:12

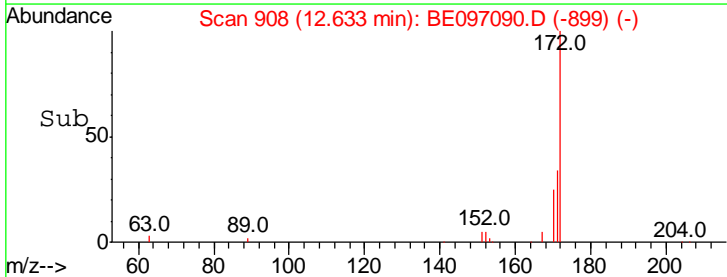
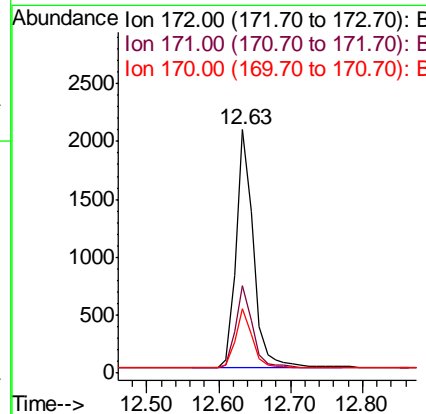
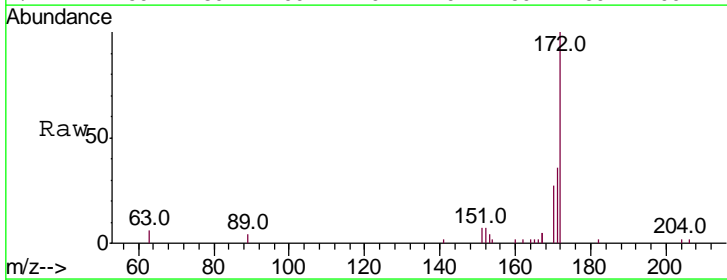
Instrument : BNA\_E  
 ClientSampleId : RE108D2-071718DL

Tgt Ion	Resp	Lower	Upper
330	100		
332	87.9	152.7	229.1#
141	37.7	33.7	50.5

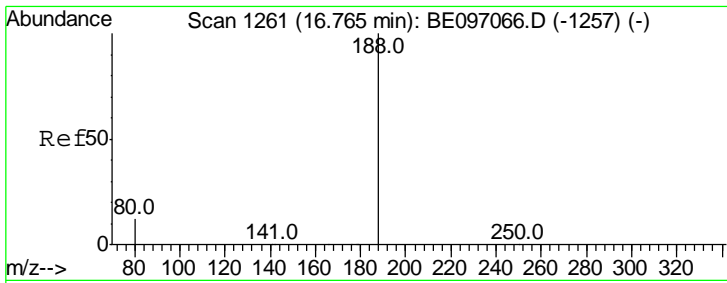


#15  
 2-Fluorobiphenyl  
 Concen: 0.277 ng  
 RT: 12.63 min Scan# 908  
 Delta R.T. 0.00 min  
 Lab File: BE097090.D  
 Acq: 25 Jul 2018 3:12

Tgt Ion	Resp	Lower	Upper
172	100		
171	36.1	29.9	44.9
170	26.5	21.8	32.8



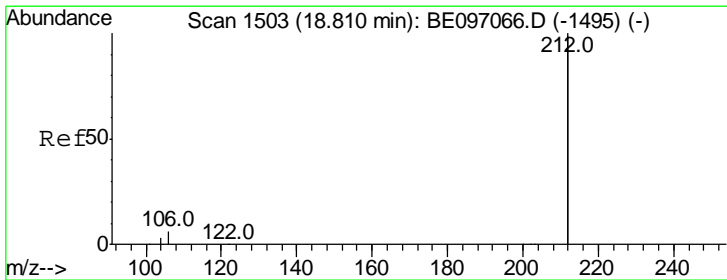
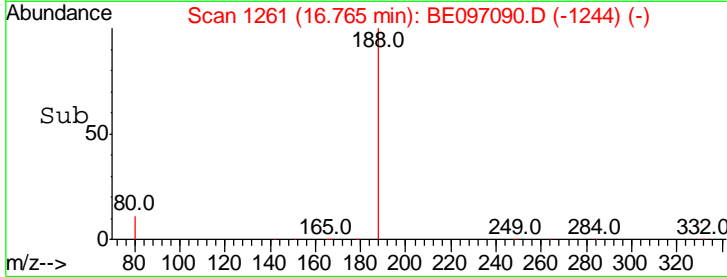
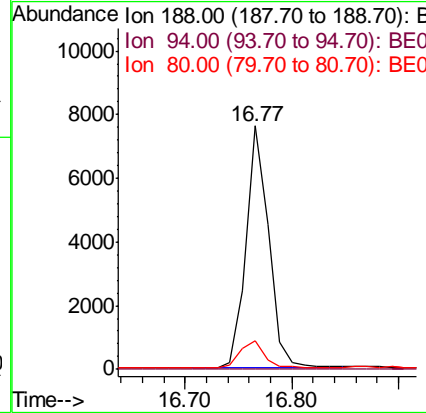
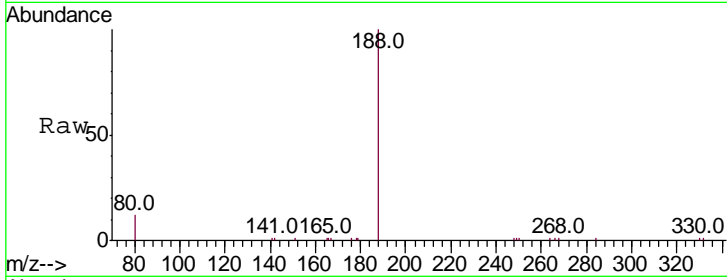




#19  
 Phenanthrene-d10  
 Concen: 0.400 ng  
 RT: 16.77 min Scan# 1261  
 Delta R.T. 0.00 min  
 Lab File: BE097090.D  
 Acq: 25 Jul 2018 3:12

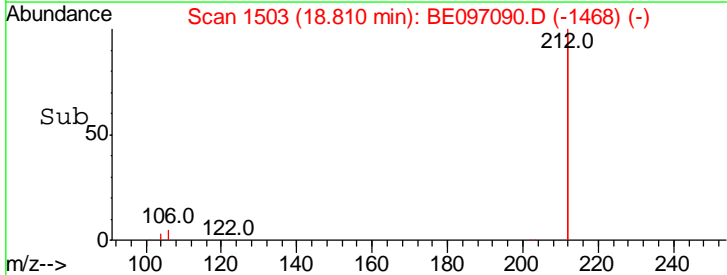
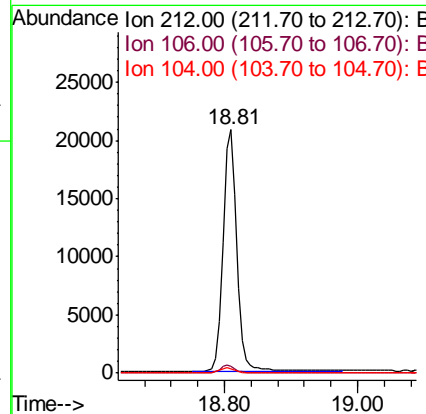
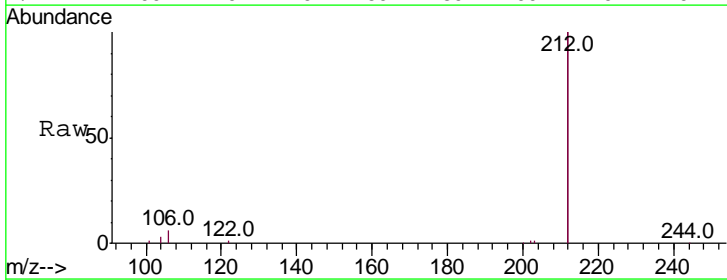
Instrument :  
 BNA\_E  
 ClientSampleId :  
 RE108D2-071718DL

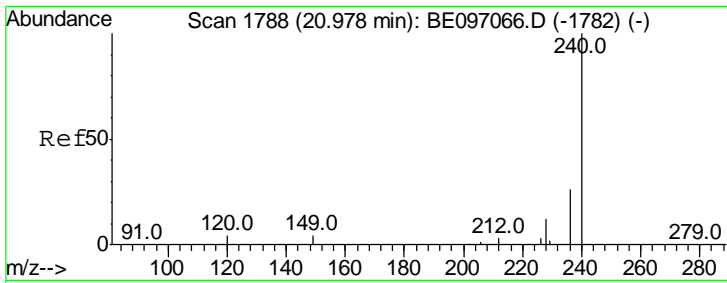
Tgt Ion	Resp	Lower	Upper
188	11094		
94	0.0	3.9	5.9#
80	11.6	3.6	5.4#



#25  
 Fluoranthene-d10  
 Concen: 0.264 ng  
 RT: 18.81 min Scan# 1503  
 Delta R.T. -0.00 min  
 Lab File: BE097090.D  
 Acq: 25 Jul 2018 3:12

Tgt Ion	Resp	Lower	Upper
212	29300		
106	3.1	2.8	4.2
104	1.8	1.6	2.4

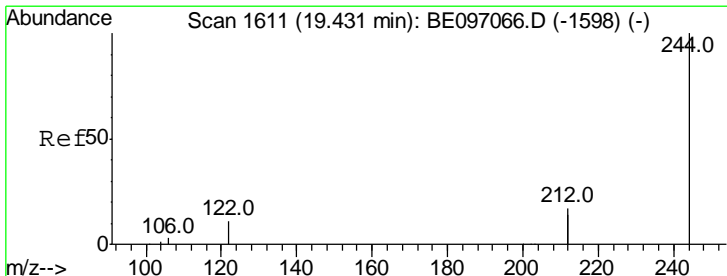
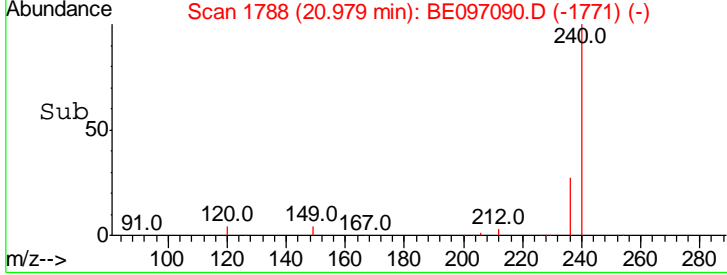
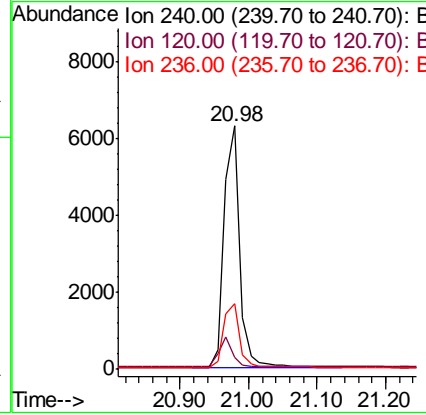
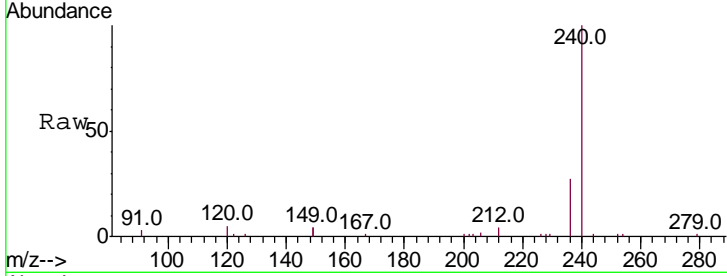




#27  
 Chrysene-d12  
 Concen: 0.400 ng  
 RT: 20.98 min Scan# 1788  
 Delta R.T. 0.00 min  
 Lab File: BE097090.D  
 Acq: 25 Jul 2018 3:12

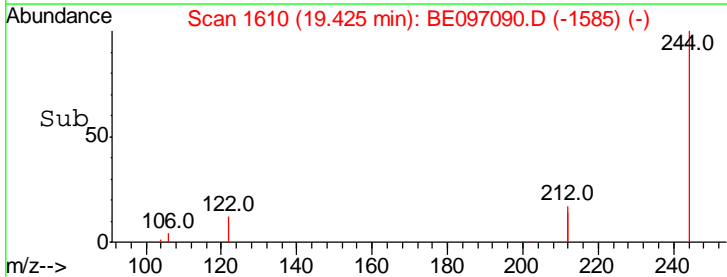
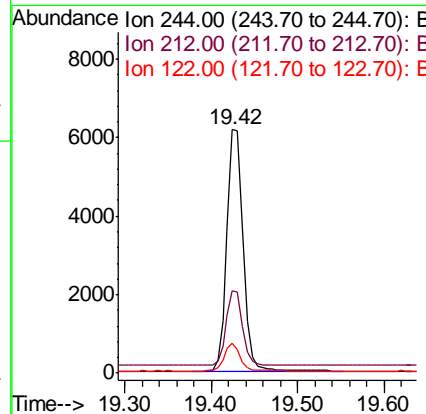
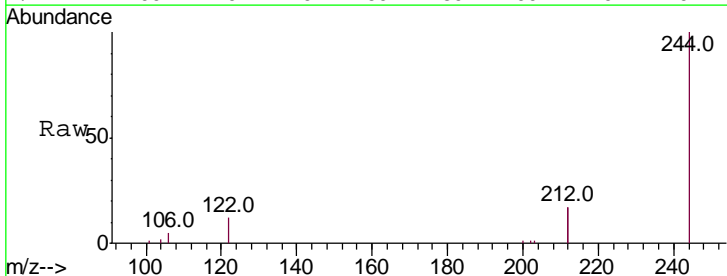
Instrument : BNA\_E  
 ClientSampleID : RE108D2-071718DL

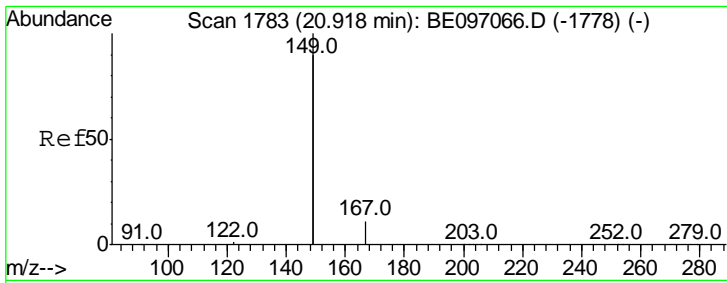
Tgt Ion	Resp	Lower	Upper
240	100		
120	4.9	5.5	8.3#
236	27.2	20.7	31.1



#29  
 Terphenyl-d14  
 Concen: 0.420 ng  
 RT: 19.42 min Scan# 1610  
 Delta R.T. -0.01 min  
 Lab File: BE097090.D  
 Acq: 25 Jul 2018 3:12

Tgt Ion	Resp	Lower	Upper
244	100		
212	33.8	25.4	38.0
122	12.4	8.1	12.1#

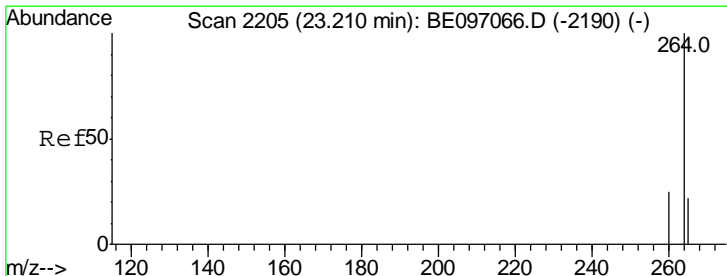
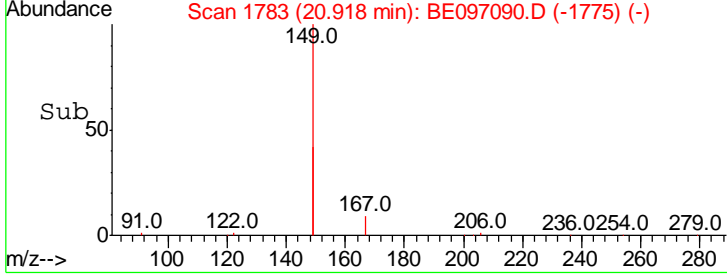
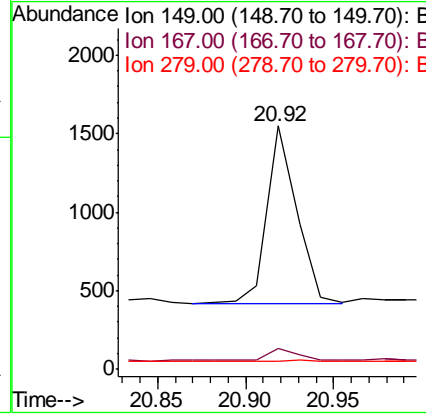
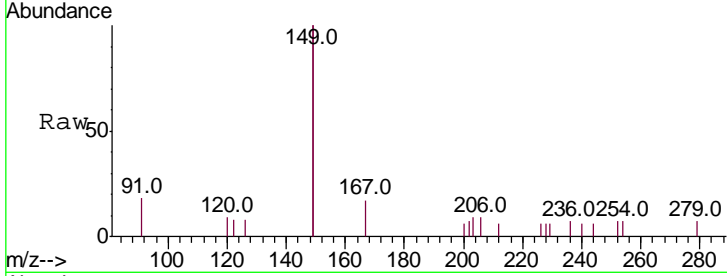




#32  
 Bis(2-ethylhexyl)phthalate  
 Concen: 0.040 ng  
 RT: 20.92 min Scan# 1783  
 Delta R.T. 0.00 min  
 Lab File: BE097090.D  
 Acq: 25 Jul 2018 3:12

Instrument :  
 BNA\_E  
 ClientSampleID :  
 RE108D2-071718DL

Tgt Ion	Resp	Lower	Upper
149	100		
167	8.2	5.4	8.0#
279	1.3	0.7	1.1#



#34  
 Perylene-d12  
 Concen: 0.400 ng  
 RT: 23.21 min Scan# 2205  
 Delta R.T. 0.00 min  
 Lab File: BE097090.D  
 Acq: 25 Jul 2018 3:12

Tgt Ion	Resp	Lower	Upper
264	100		
260	26.3	20.5	30.7
265	25.4	22.8	34.2

