

Data Path : Z:\HPCHEM1\BNA_E\DATA\BE081016\
 Data File : BE092245.D
 Acq On : 10 Aug 2016 9:04
 Operator : UM/SJ
 Sample : SSTDCCC0.4
 Misc :
 ALS Vial : 5 Sample Multiplier: 1

Instrument :
 BNA_E
 ClientSampled :
 SSTDCCC0.4

Manual Integrations
 APPROVED

sohil
 8/11/2016 8:33:05 AM

Quant Time: Aug 10 18:51:38 2016
 Quant Method : Z:\HPCHEM1\BNA_E\METHODS\8270-SIM-BE080916.M
 Quant Title : ASP BNA STANDARDS FOR 5 POINT CALIBRATION
 QLast Update : Wed Aug 10 11:12:32 2016
 Response via : Initial Calibration

Internal Standards	R.T.	QIon	Response	Conc	Units	Dev(Min)
1) 1,4-Dichlorobenzene-d4	8.17	152	9549	5.00	ng	0.00
7) Naphthalene-d8	10.97	136	45107	5.00	ng	0.00
12) Acenaphthene-d10	14.83	164	25909	5.00	ng	0.00
18) Phenanthrene-d10	17.56	188	63484	5.00	ng	0.00
24) Chrysene-d12	21.75	240	56792	5.00	ng	0.00
31) Perylene-d12	24.13	264	59560	5.00	ng	0.00

System Monitoring Compounds

4) 2-Fluorophenol	5.70	112	731	0.35	ng	0.00
5) Phenol-d6	7.36	99	1129m	0.38	ng	0.00
8) Nitrobenzene-d5	9.34	82	1255m	0.39	ng	-0.02
13) 2,4,6-Tribromophenol	16.33	330	237	0.47	ng	0.00
14) 2-Fluorobiphenyl	13.47	172	3158	0.39	ng	0.00
26) Terphenyl-d14	20.21	244	3616	0.38	ng	0.02

Target Compounds

Target Compounds	R.T.	QIon	Response	Conc	Units	Qvalue
2) 1,4-Dioxane	3.44	88	532	0.42	ng	93
3) n-Nitrosodimethylamine	3.81	42	518	0.44	ng	97
6) bis(2-Chloroethyl)ether	7.59	93	860	0.35	ng	99
9) Naphthalene	11.03	128	3987	0.39	ng	99
10) Hexachlorobutadiene	11.32	225	605	0.41	ng	97
11) 2-Methylnaphthalene	12.66	142	2475	0.39	ng	99
15) Acenaphthylene	14.54	152	17274	0.39	ng	99
16) Acenaphthene	14.90	154	2886	0.40	ng	99
17) Fluorene	15.88	166	3394	0.39	ng	100
19) Hexachlorobenzene	16.89	284	1020	0.40	ng	# 100
20) Pentachlorophenol	17.26	266	163	0.36	ng	93
21) Phenanthrene	17.60	178	6332	0.39	ng	99
22) Anthracene	17.70	178	5332	0.36	ng	100
23) Fluoranthene	19.63	202	24330	0.37	ng	99
25) Pyrene	19.99	202	25520	0.38	ng	100
27) Benzo(a)anthracene	21.73	228	26347m	0.39	ng	
28) Chrysene	21.77	228	28029m	0.44	ng	
29) Bis(2-ethylhexyl)phthalate	21.64	149	2649	0.46	ng	# 97
30) Indeno(1,2,3-cd)pyrene	26.65	276	24316	0.36	ng	99
32) Benzo(b)fluoranthene	23.39	252	6307	0.40	ng	98
33) Benzo(k)fluoranthene	23.45	252	5577	0.35	ng	97
34) Benzo(a)pyrene	24.02	252	5319	0.36	ng	98
35) Dibenzo(a,h)anthracene	26.67	278	4851	0.35	ng	99
36) Benzo(g,h,i)perylene	27.42	276	21823	0.37	ng	99

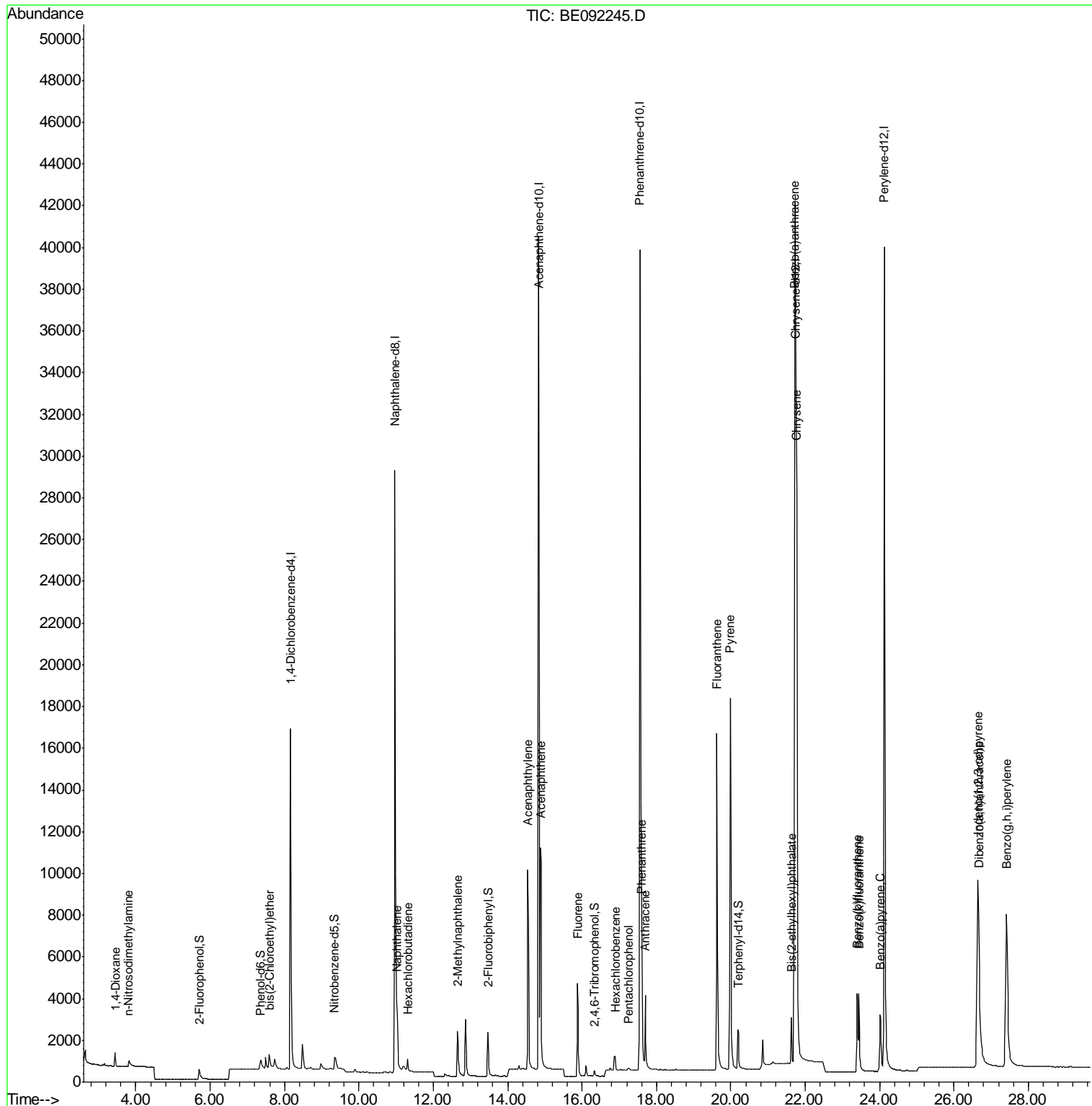
(#) = qualifier out of range (m) = manual integration (+) = signals summed

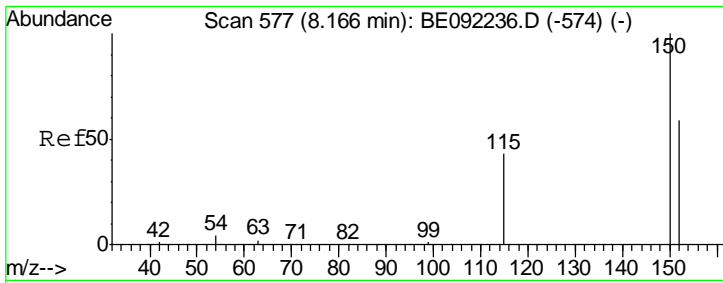
Data Path : Z:\HPCHEM1\BNA_E\DATA\BE081016\
 Data File : BE092245.D
 Acq On : 10 Aug 2016 9:04
 Operator : UM/SJ
 Sample : SSTDCCC0.4
 Misc :
 ALS Vial : 5 Sample Multiplier: 1

Instrument :
 BNA_E
ClientSampled :
 SSTDCCC0.4

Manual Integrations
APPROVED
 sohil
 8/11/2016 8:33:05 AM

Quant Time: Aug 10 18:51:38 2016
 Quant Method : Z:\HPCHEM1\BNA_E\METHODS\8270-SIM-BE080916.M
 Quant Title : ASP BNA STANDARDS FOR 5 POINT CALIBRATION
 QLast Update : Wed Aug 10 11:12:32 2016
 Response via : Initial Calibration





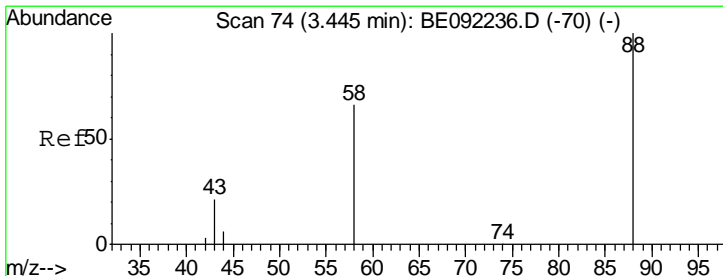
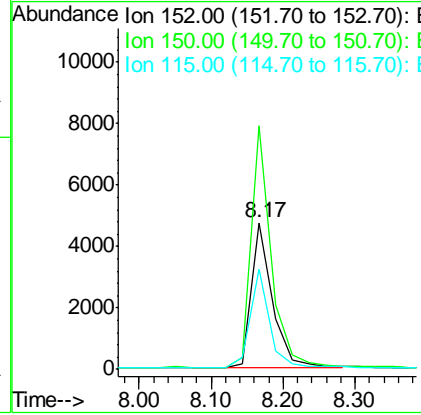
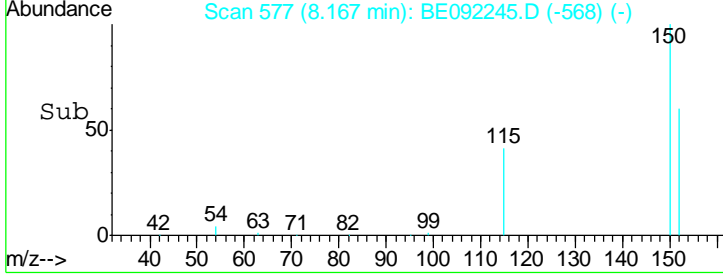
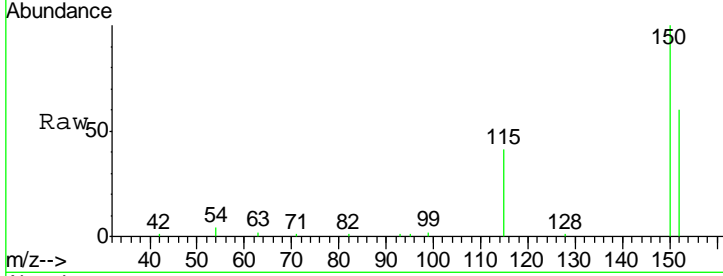
#1
 1,4-Dichlorobenzene-d4
 Concen: 5.00 ng
 RT: 8.17 min Scan# 577
 Delta R.T. 0.00 min
 Lab File: BE092245.D
 Acq: 10 Aug 2016 9:04

Instrument :
 BNA_E
ClientSampled :
 SSTDCCC0.4

Tgt Ion	Resp	Lower	Upper
152	9549		
152	100		
150	166.0	135.6	203.4
115	68.3	59.4	89.0

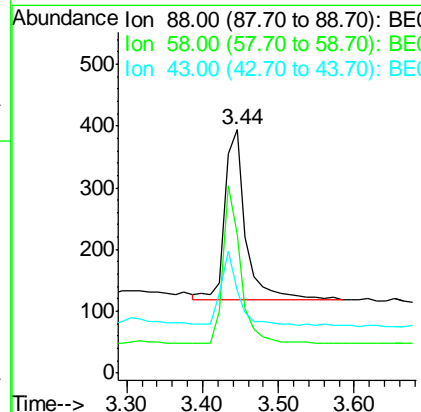
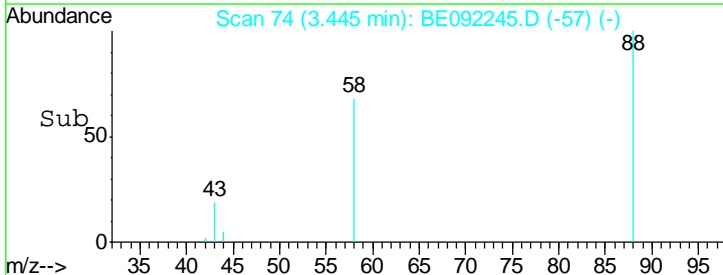
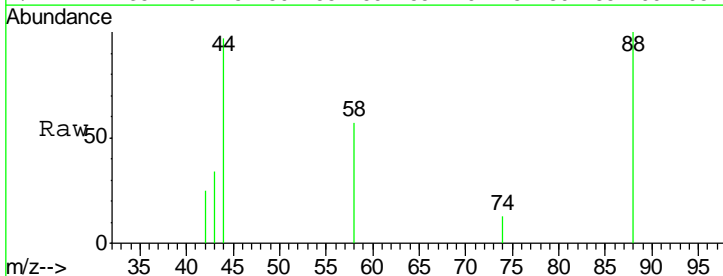
Manual Integrations
APPROVED

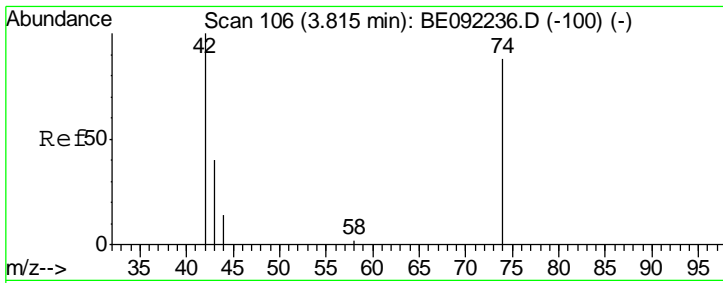
sohil
 8/11/2016 8:33:05 AM



#2
 1,4-Dioxane
 Concen: 0.42 ng
 RT: 3.44 min Scan# 74
 Delta R.T. 0.00 min
 Lab File: BE092245.D
 Acq: 10 Aug 2016 9:04

Tgt Ion	Resp	Lower	Upper
88	532		
88	100		
58	77.1	64.4	96.6
43	34.4	33.4	50.2



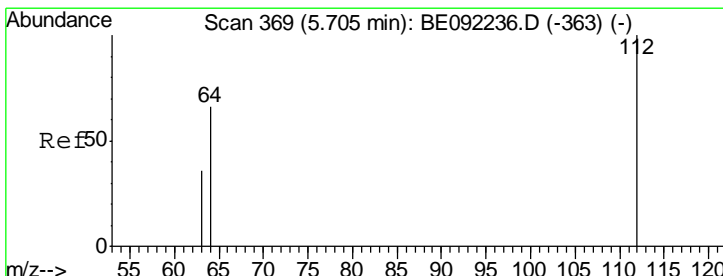
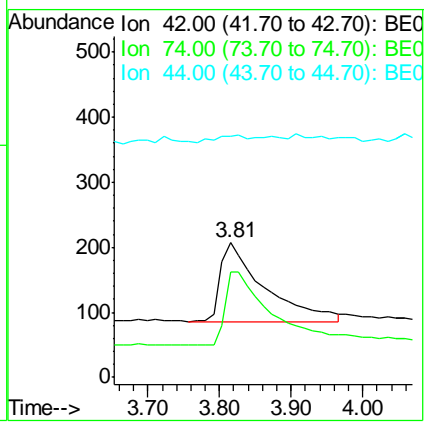
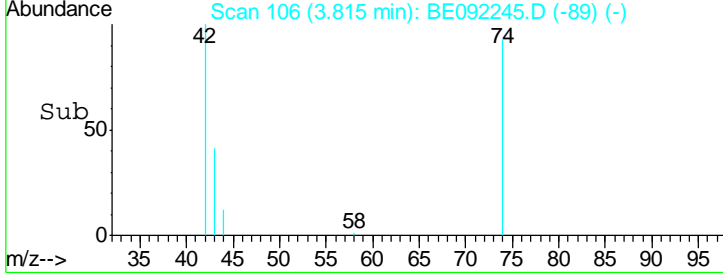
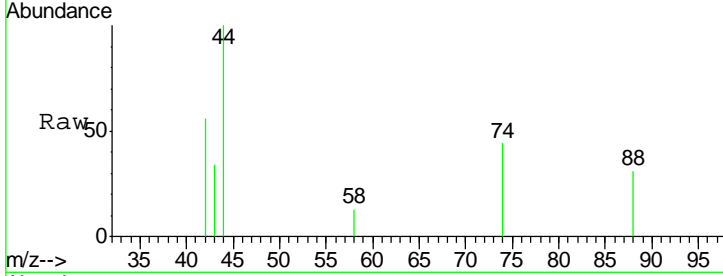


#3
 n-Nitrosodimethylamine
 Concen: 0.44 ng
 RT: 3.81 min Scan# 106
 Delta R.T. 0.00 min
 Lab File: BE092245.D
 Acq: 10 Aug 2016 9:04

Instrument :
 BNA_E
ClientSampled :
 SSTDCCC0.4

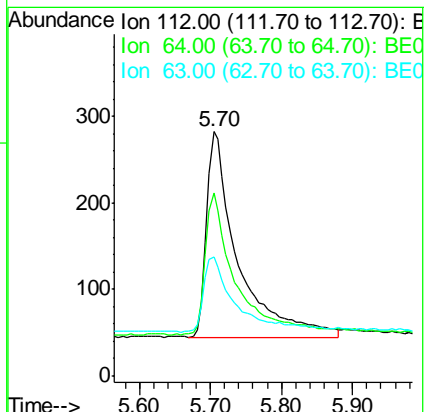
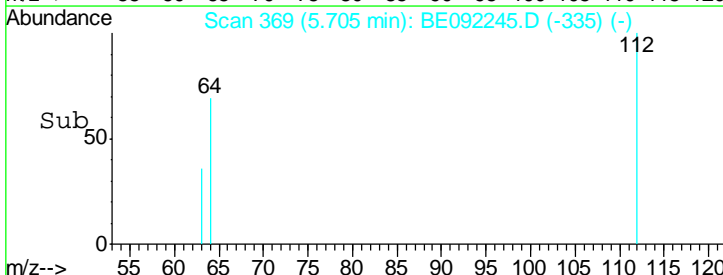
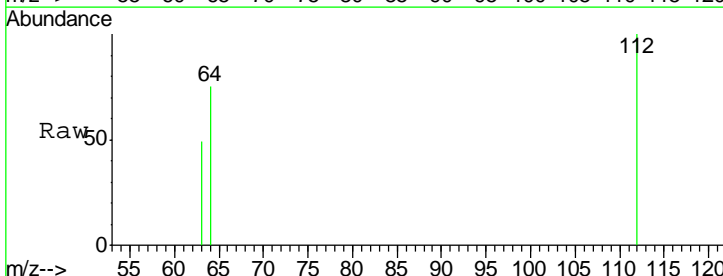
Tgt Ion	Resp	Lower	Upper
42	100		
74	93.4	77.2	115.8
44	6.0	5.0	7.4

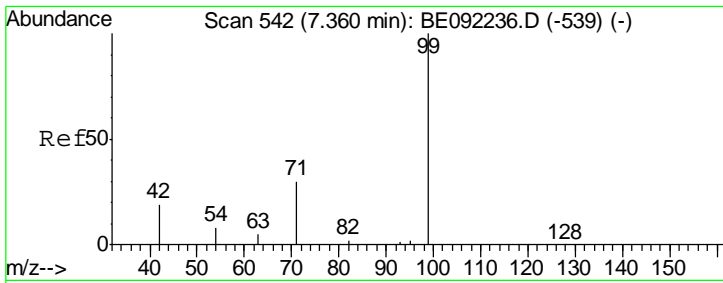
Manual Integrations
APPROVED
 sohil
 8/11/2016 8:33:05 AM



#4
 2-Fluorophenol
 Concen: 0.35 ng
 RT: 5.70 min Scan# 369
 Delta R.T. -0.00 min
 Lab File: BE092245.D
 Acq: 10 Aug 2016 9:04

Tgt Ion	Resp	Lower	Upper
112	100		
64	67.7	53.2	79.8
63	38.3	27.4	41.2





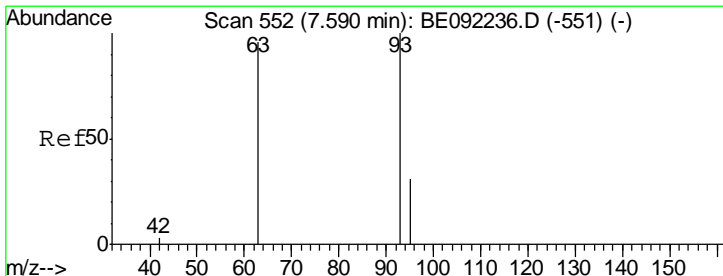
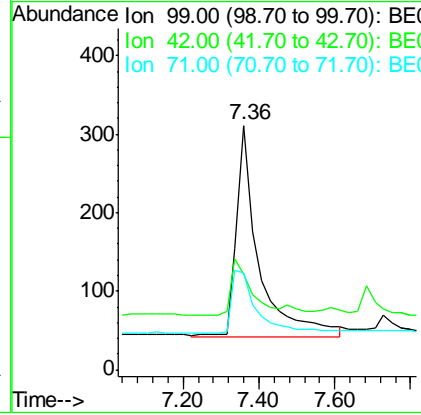
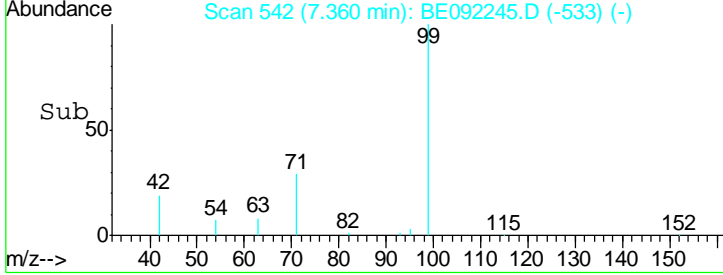
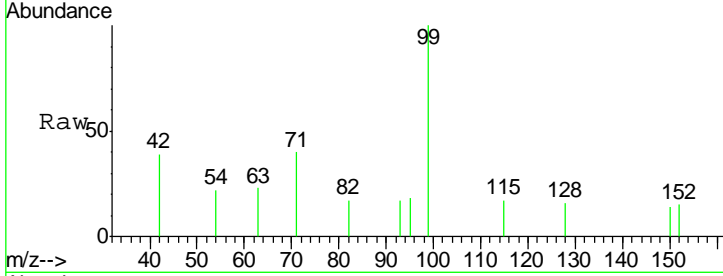
#5
 Phenol-d6
 Concen: 0.38 ng m
 RT: 7.36 min Scan# 542
 Delta R.T. 0.00 min
 Lab File: BE092245.D
 Acq: 10 Aug 2016 9:04

Instrument :
 BNA_E
ClientSampled :
 SSTDCCC0.4

Tgt Ion	Resp	Lower	Upper
99	1129		
99	100		
42	0.0	0.0	0.0
71	0.0	29.8	44.8#

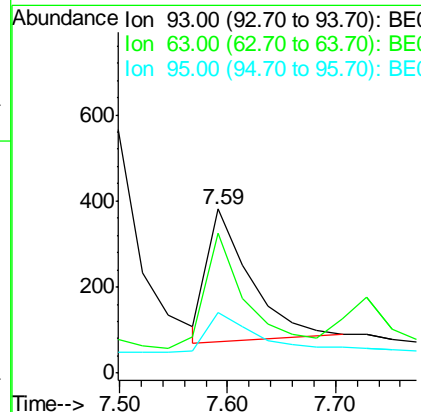
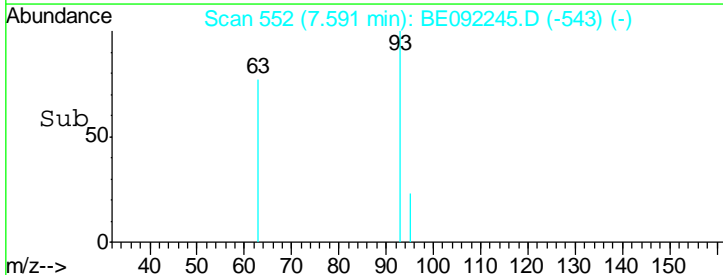
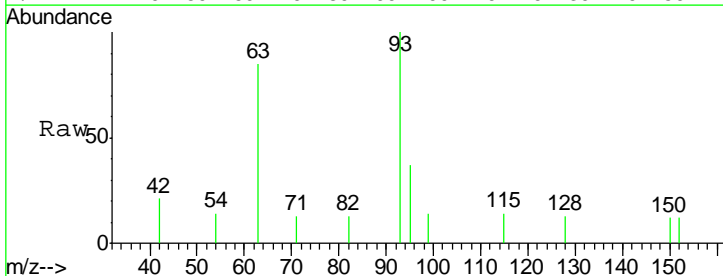
Manual Integrations
APPROVED

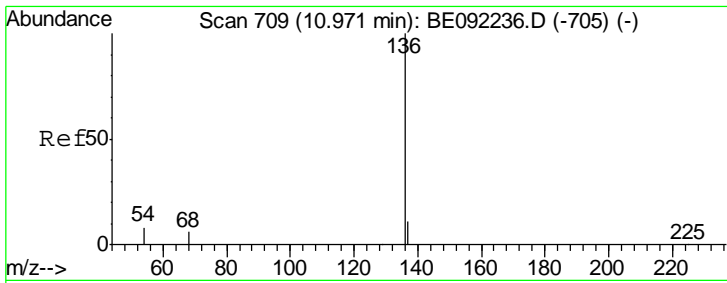
sohil
 8/11/2016 8:33:05 AM



#6
 bis(2-Chloroethyl)ether
 Concen: 0.35 ng
 RT: 7.59 min Scan# 552
 Delta R.T. 0.00 min
 Lab File: BE092245.D
 Acq: 10 Aug 2016 9:04

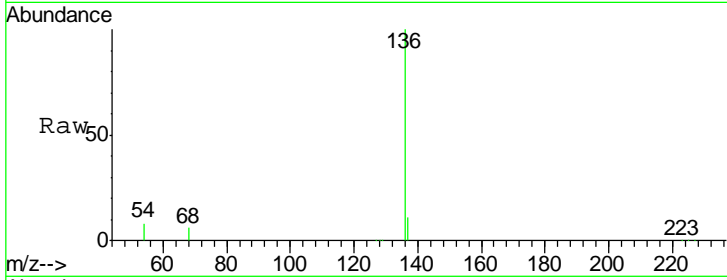
Tgt Ion	Resp	Lower	Upper
93	860		
93	100		
63	84.9	68.5	102.7
95	33.7	27.2	40.8





#7
 Naphthalene-d8
 Concen: 5.00 ng
 RT: 10.97 min Scan# 709
 Delta R.T. -0.00 min
 Lab File: BE092245.D
 Acq: 10 Aug 2016 9:04

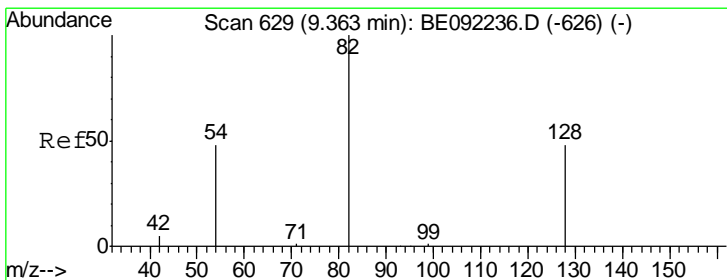
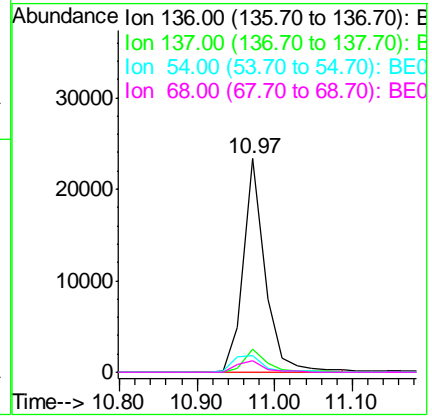
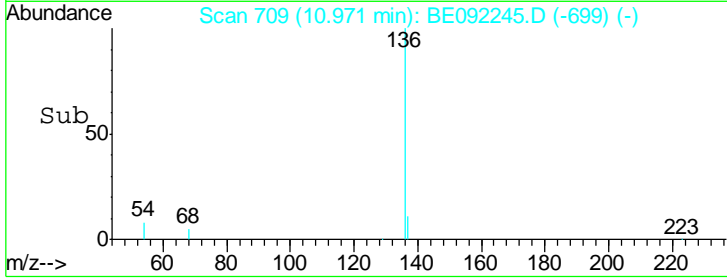
Instrument :
 BNA_E
ClientSampled :
 SSTDCCC0.4



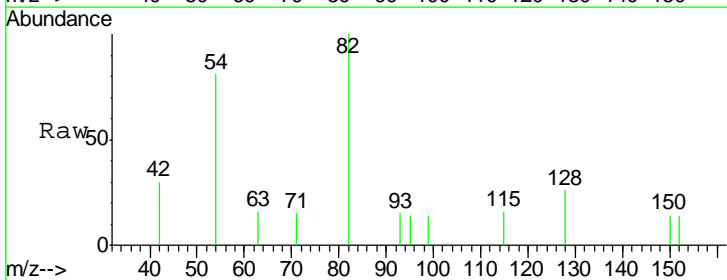
Tgt Ion: 136 Resp: 45107

Ion	Ratio	Lower	Upper
136	100		
137	11.1	8.8	13.2
54	7.8	6.2	9.4
68	5.6	4.6	6.8

Manual Integrations
APPROVED
 sohil
 8/11/2016 8:33:05 AM

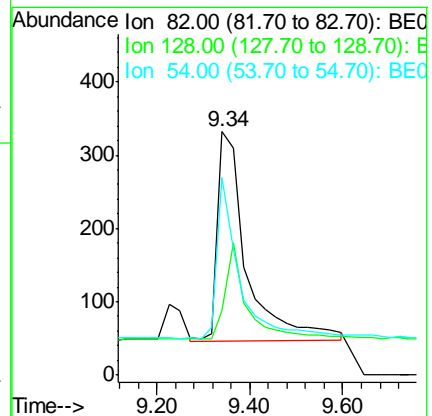
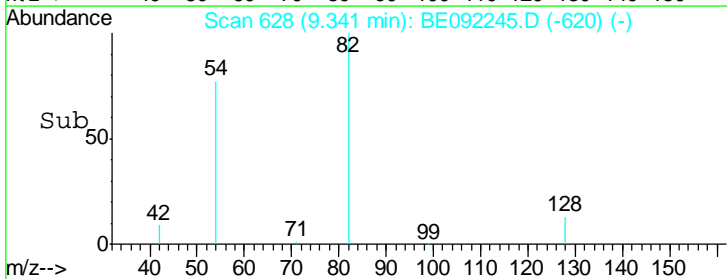


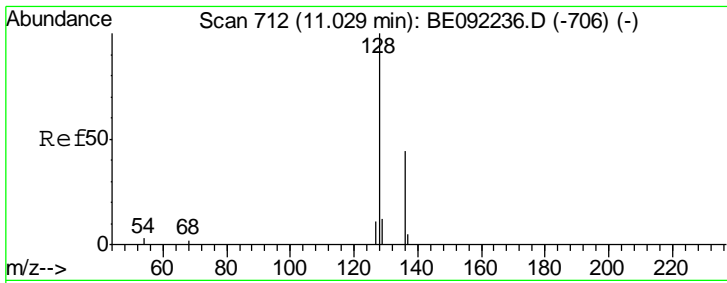
#8
 Nitrobenzene-d5
 Concen: 0.39 ng m
 RT: 9.34 min Scan# 628
 Delta R.T. -0.02 min
 Lab File: BE092245.D
 Acq: 10 Aug 2016 9:04



Tgt Ion: 82 Resp: 1255

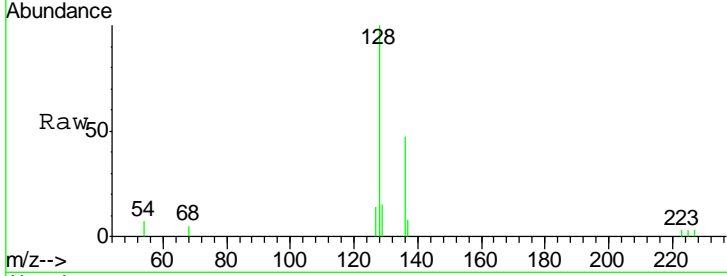
Ion	Ratio	Lower	Upper
82	100		
128	26.2	45.0	67.4#
54	81.0	45.4	68.2#





#9
 Naphthalene
 Concen: 0.39 ng
 RT: 11.03 min Scan# 712
 Delta R.T. -0.00 min
 Lab File: BE092245.D
 Acq: 10 Aug 2016 9:04

Instrument :
 BNA_E
 ClientSampled :
 SSTDCCC0.4

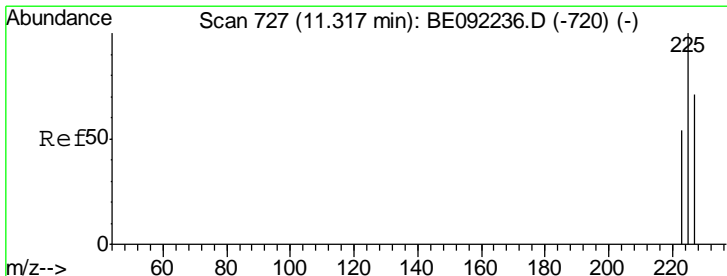
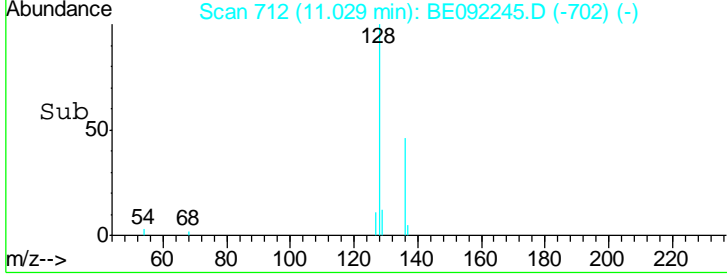
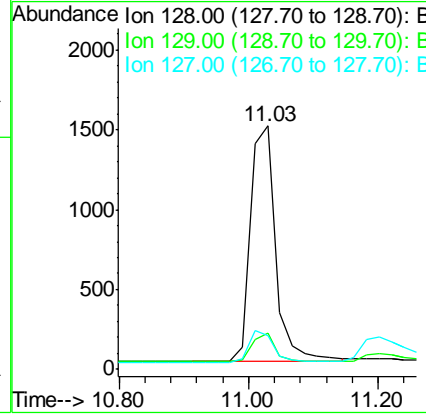


Tgt Ion: 128 Resp: 3987

Ion	Ratio	Lower	Upper
128	100		
129	14.8	11.5	17.3
127	14.0	11.0	16.6

Manual Integrations
 APPROVED

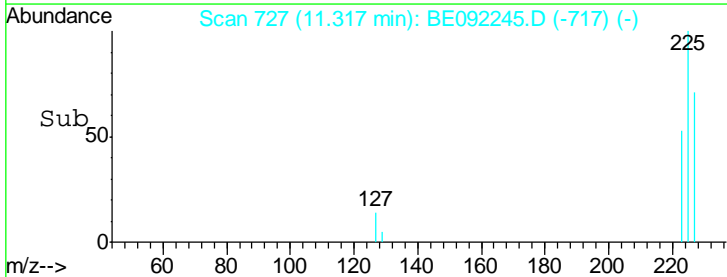
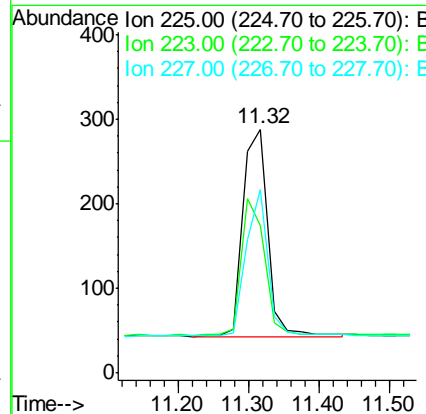
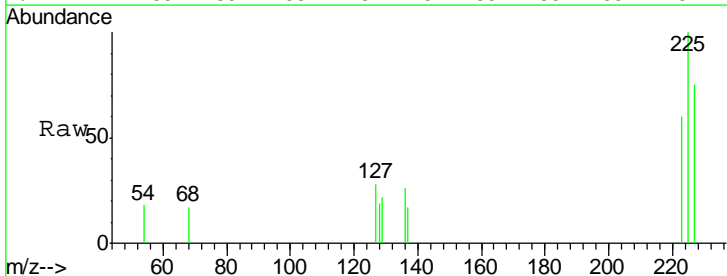
sohil
 8/11/2016 8:33:05 AM

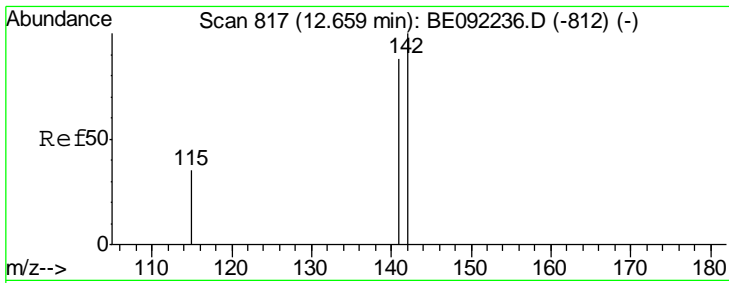


#10
 Hexachlorobutadiene
 Concen: 0.41 ng
 RT: 11.32 min Scan# 727
 Delta R.T. -0.00 min
 Lab File: BE092245.D
 Acq: 10 Aug 2016 9:04

Tgt Ion: 225 Resp: 605

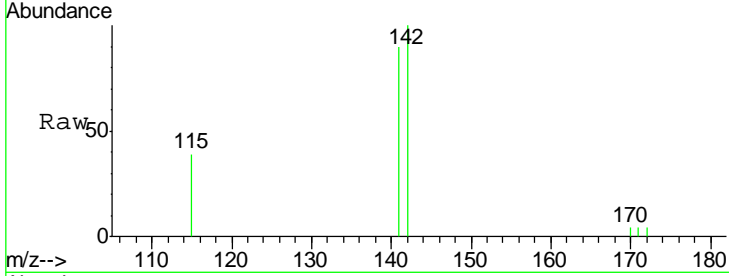
Ion	Ratio	Lower	Upper
225	100		
223	62.6	52.2	78.4
227	61.2	51.0	76.6





#11
 2-Methylnaphthalene
 Concen: 0.39 ng
 RT: 12.66 min Scan# 817
 Delta R.T. 0.00 min
 Lab File: BE092245.D
 Acq: 10 Aug 2016 9:04

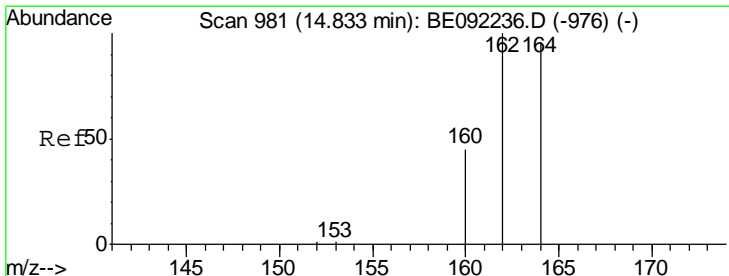
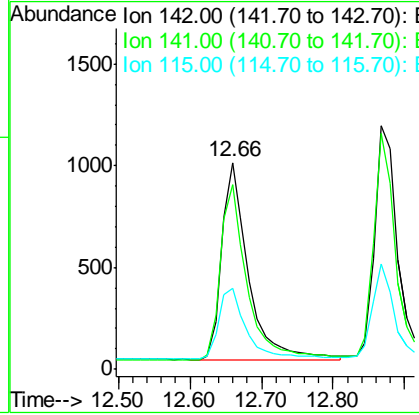
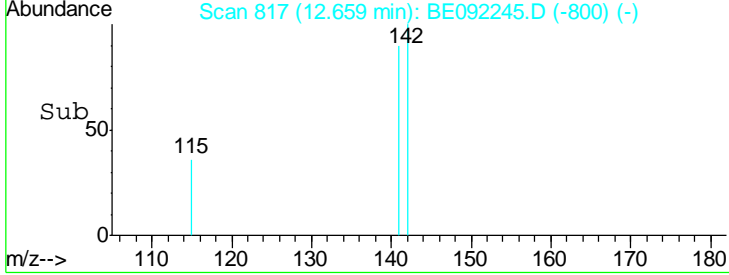
Instrument :
 BNA_E
 ClientSampled :
 SSTDCCC0.4



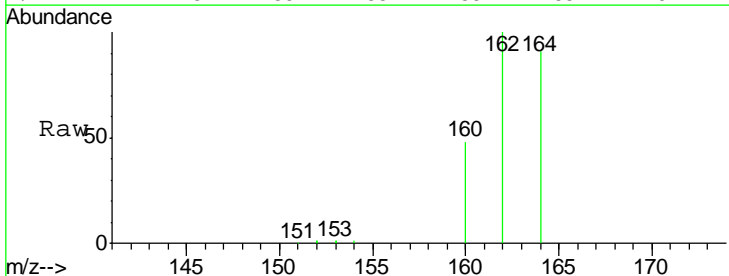
Tgt Ion:142 Resp: 2475

Ion	Ratio	Lower	Upper
142	100		
141	89.7	70.6	105.8
115	39.1	31.0	46.4

Manual Integrations
 APPROVED
 sohil
 8/11/2016 8:33:05 AM

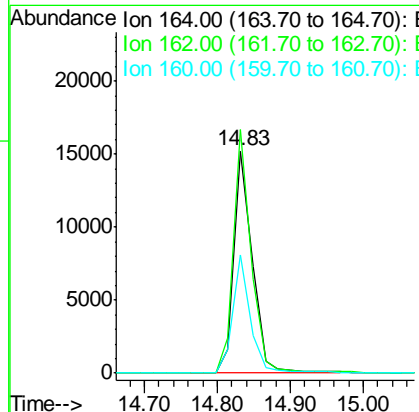
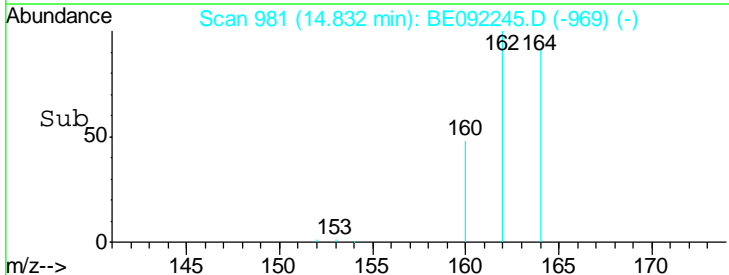


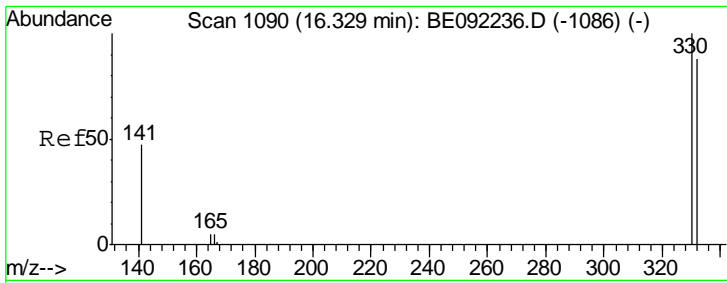
#12
 Acenaphthene-d10
 Concen: 5.00 ng
 RT: 14.83 min Scan# 981
 Delta R.T. -0.00 min
 Lab File: BE092245.D
 Acq: 10 Aug 2016 9:04



Tgt Ion:164 Resp: 25909

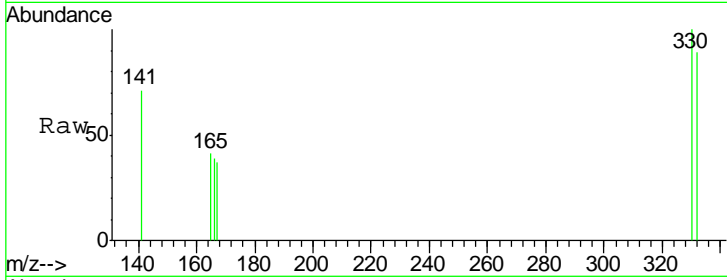
Ion	Ratio	Lower	Upper
164	100		
162	109.7	83.3	124.9
160	53.0	38.0	57.0





#13
 2,4,6-Tribromophenol
 Concen: 0.47 ng
 RT: 16.33 min Scan# 1090
 Delta R.T. 0.00 min
 Lab File: BE092245.D
 Acq: 10 Aug 2016 9:04

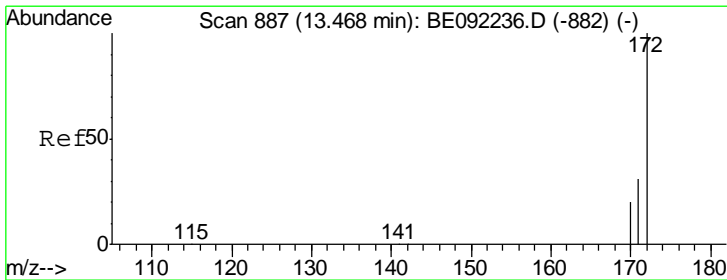
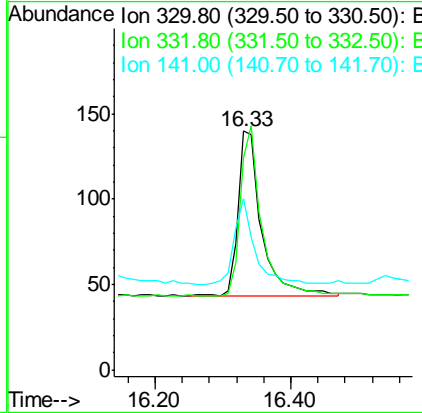
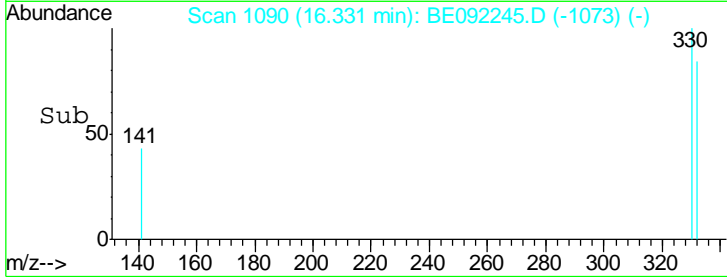
Instrument :
 BNA_E
 ClientSampled :
 SSTDCCC0.4



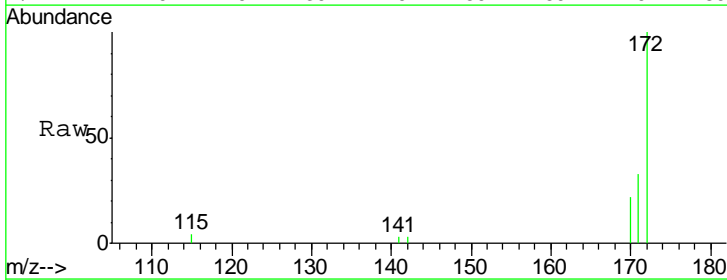
Tgt Ion	Resp	Lower	Upper
330	100		
332	93.2	75.4	113.0
141	44.7	37.7	56.5

Manual Integrations
 APPROVED

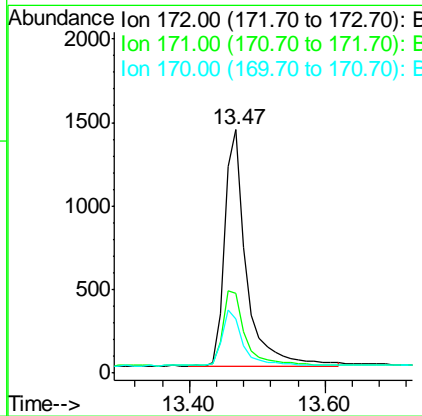
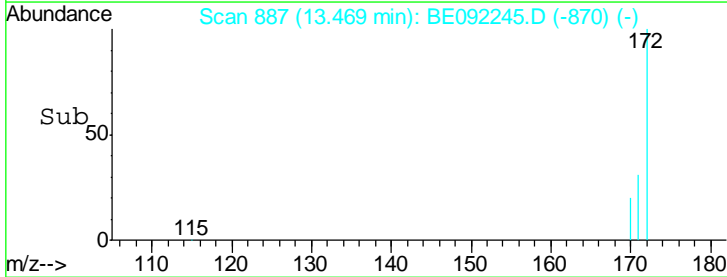
sohil
 8/11/2016 8:33:05 AM

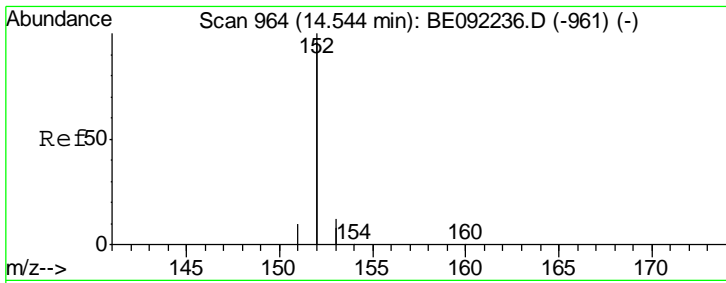


#14
 2-Fluorobiphenyl
 Concen: 0.39 ng
 RT: 13.47 min Scan# 887
 Delta R.T. 0.00 min
 Lab File: BE092245.D
 Acq: 10 Aug 2016 9:04



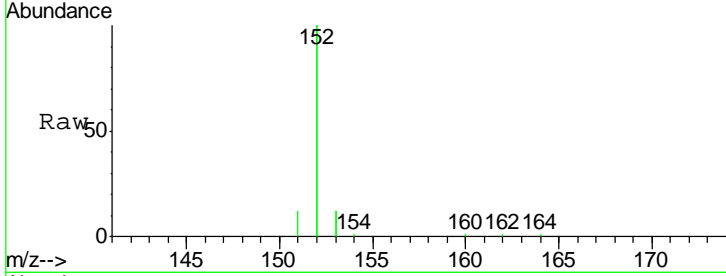
Tgt Ion	Resp	Lower	Upper
172	100		
171	32.7	26.8	40.2
170	22.0	17.8	26.6





#15
 Acenaphthylene
 Concen: 0.39 ng
 RT: 14.54 min Scan# 964
 Delta R.T. -0.00 min
 Lab File: BE092245.D
 Acq: 10 Aug 2016 9:04

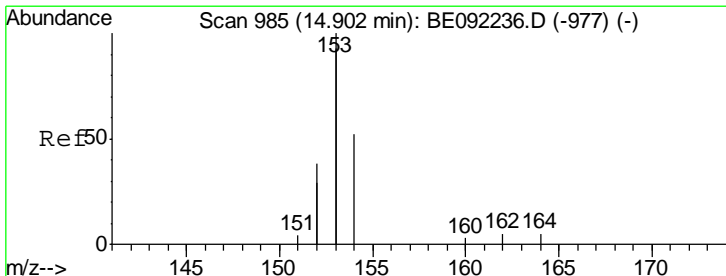
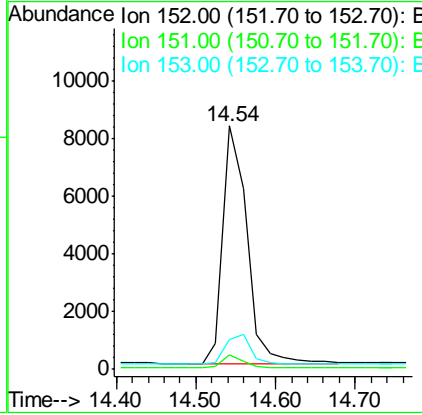
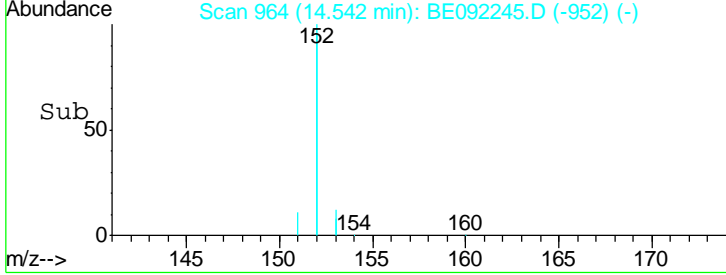
Instrument :
 BNA_E
 ClientSampled :
 SSTCCCC0.4



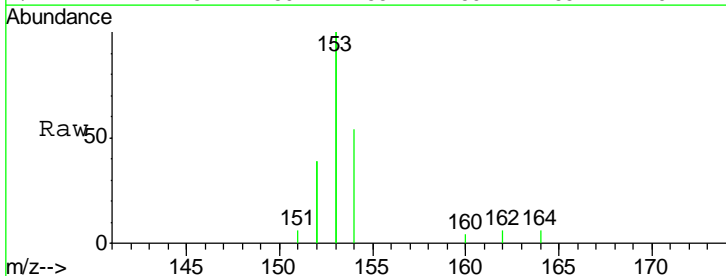
Tgt Ion: 152 Resp: 17274

Ion	Ratio	Lower	Upper
152	100		
151	5.0	3.8	5.8
153	13.0	10.2	15.2

Manual Integrations
 APPROVED
 sohil
 8/11/2016 8:33:05 AM

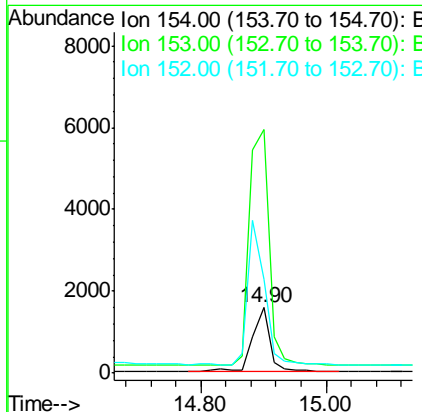
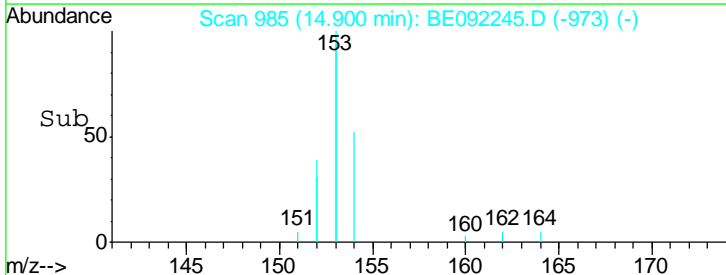


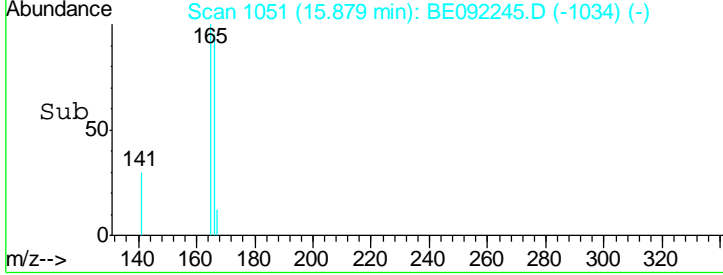
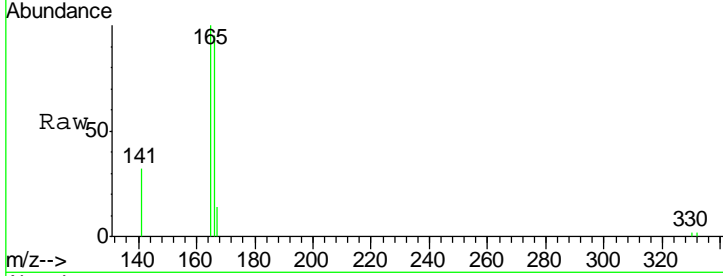
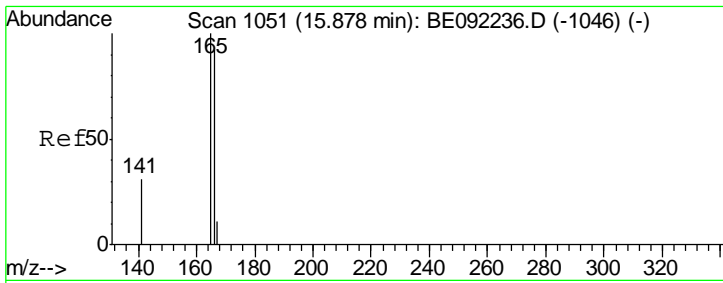
#16
 Acenaphthene
 Concen: 0.40 ng
 RT: 14.90 min Scan# 985
 Delta R.T. -0.00 min
 Lab File: BE092245.D
 Acq: 10 Aug 2016 9:04



Tgt Ion: 154 Resp: 2886

Ion	Ratio	Lower	Upper
154	100		
153	438.6	355.0	532.4
152	224.6	179.7	269.5



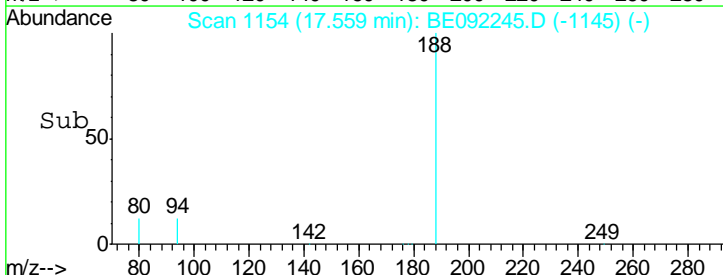
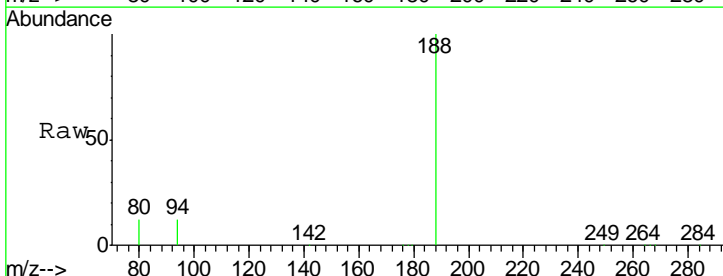
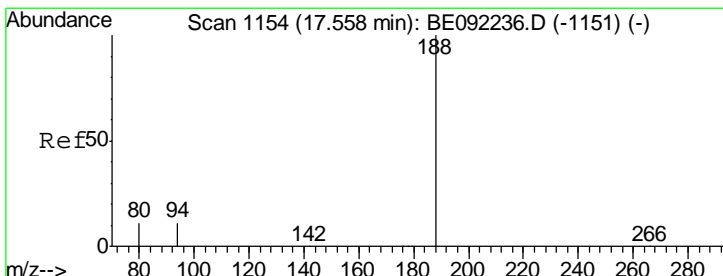
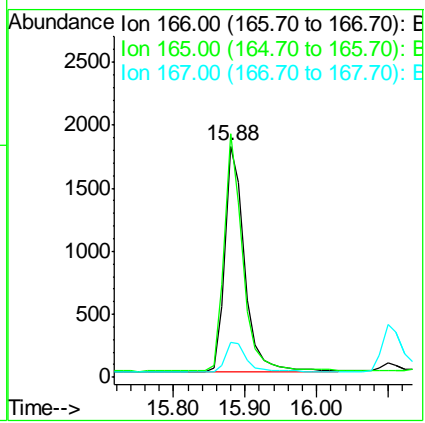


#17
 Fluorene
 Concen: 0.39 ng
 RT: 15.88 min Scan# 1051
 Delta R.T. 0.00 min
 Lab File: BE092245.D
 Acq: 10 Aug 2016 9:04

Tgt Ion	Resp	Lower	Upper
166	100		
165	100.1	80.1	120.1
167	13.9	10.6	16.0

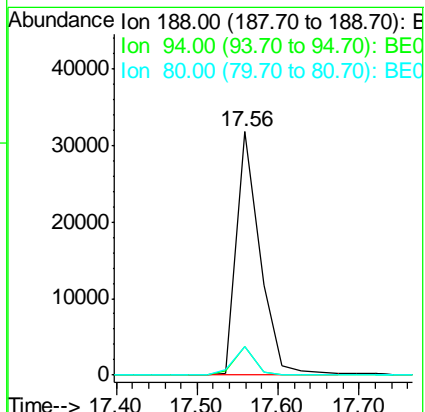
Instrument :
 BNA_E
 ClientSampled :
 SSTDCCC0.4

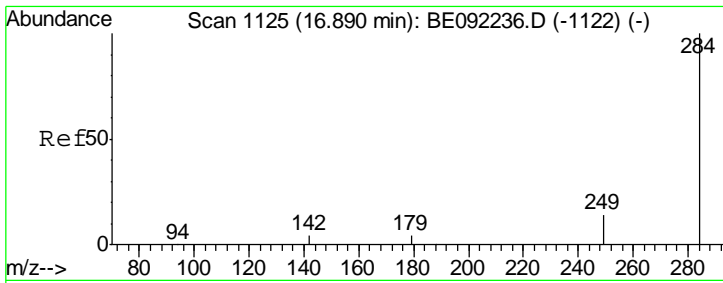
Manual Integrations
 APPROVED
 sohil
 8/11/2016 8:33:05 AM



#18
 Phenanthrene-d10
 Concen: 5.00 ng
 RT: 17.56 min Scan# 1154
 Delta R.T. 0.00 min
 Lab File: BE092245.D
 Acq: 10 Aug 2016 9:04

Tgt Ion	Resp	Lower	Upper
188	100		
94	11.8	9.2	13.8
80	11.9	9.1	13.7



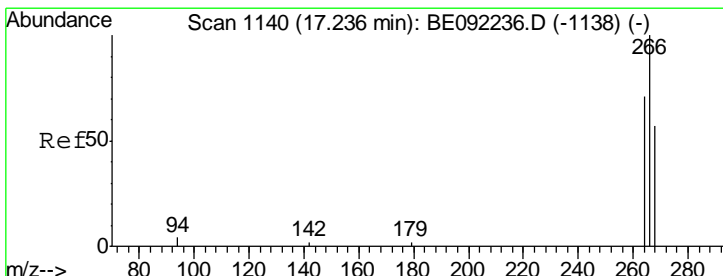
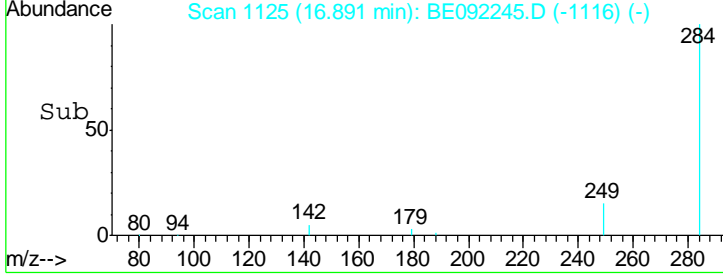
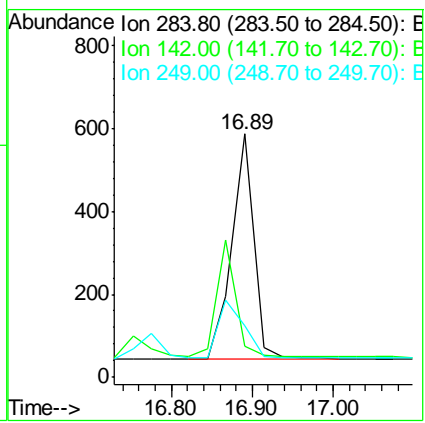
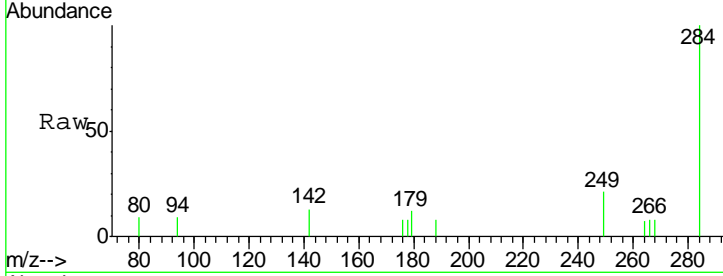


#19
 Hexachlorobenzene
 Concen: 0.40 ng
 RT: 16.89 min Scan# 1125
 Delta R.T. 0.00 min
 Lab File: BE092245.D
 Acq: 10 Aug 2016 9:04

Instrument :
 BNA_E
 ClientSampled :
 SSTDCCC0.4

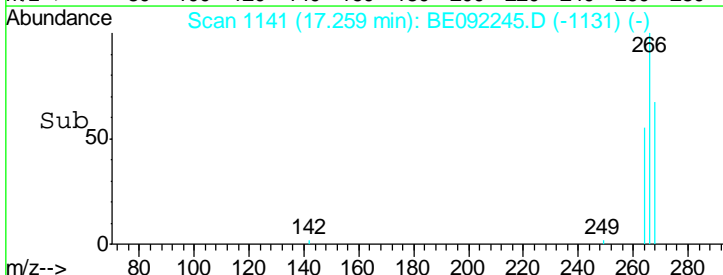
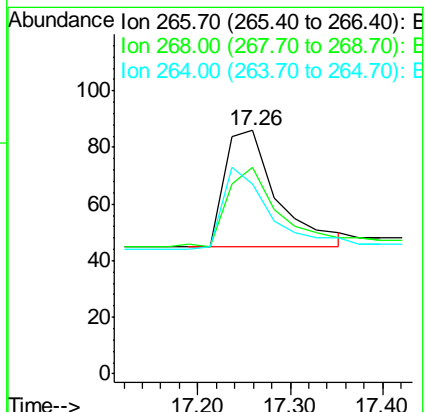
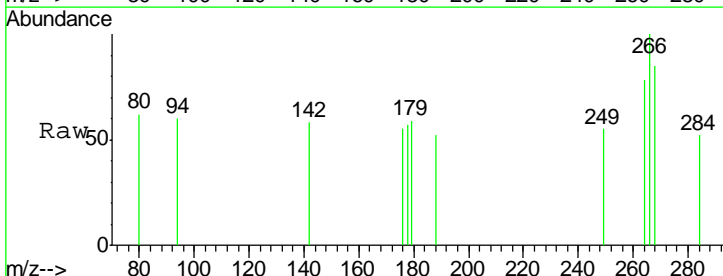
Tgt Ion	Resp	Lower	Upper
284	1020		
284	100		
142	0.0	0.0	0.0
249	0.0	0.0	0.0

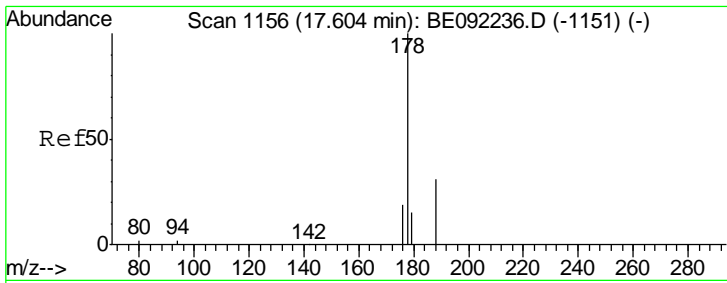
Manual Integrations
APPROVED
 sohil
 8/11/2016 8:33:05 AM



#20
 Pentachlorophenol
 Concen: 0.36 ng
 RT: 17.26 min Scan# 1141
 Delta R.T. 0.02 min
 Lab File: BE092245.D
 Acq: 10 Aug 2016 9:04

Tgt Ion	Resp	Lower	Upper
266	163		
266	100		
268	84.9	62.3	93.5
264	77.9	67.4	101.0





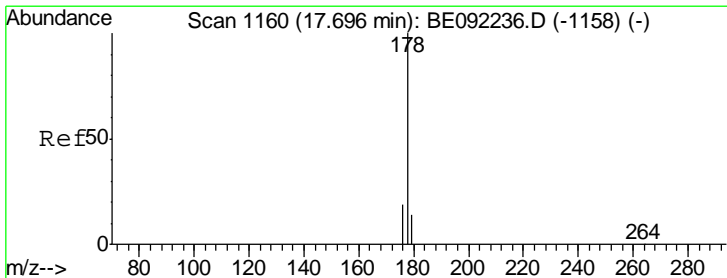
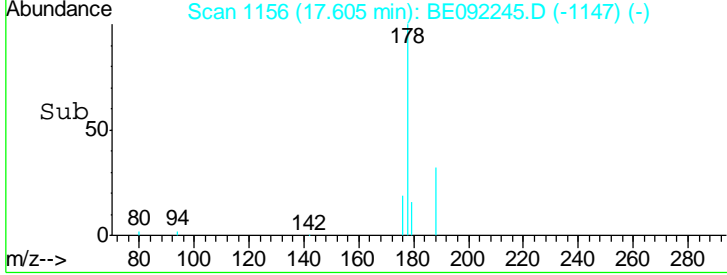
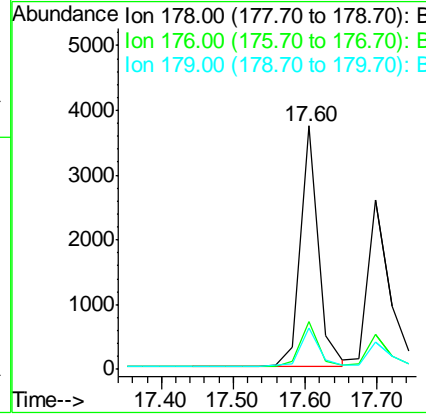
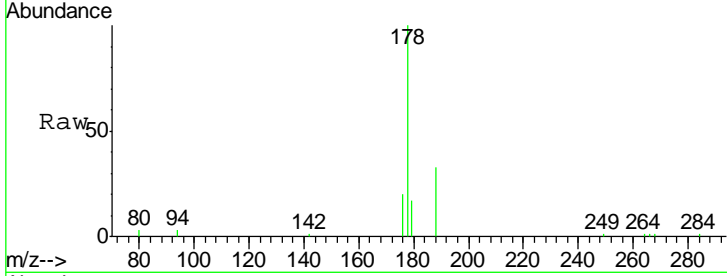
#21
 Phenanthrene
 Concen: 0.39 ng
 RT: 17.60 min Scan# 1156
 Delta R.T. 0.00 min
 Lab File: BE092245.D
 Acq: 10 Aug 2016 9:04

Instrument :
 BNA_E
 ClientSampled :
 SSTDCCC0.4

Tgt Ion	Resp	Lower	Upper
178	100		
176	19.1	15.1	22.7
179	16.7	12.9	19.3

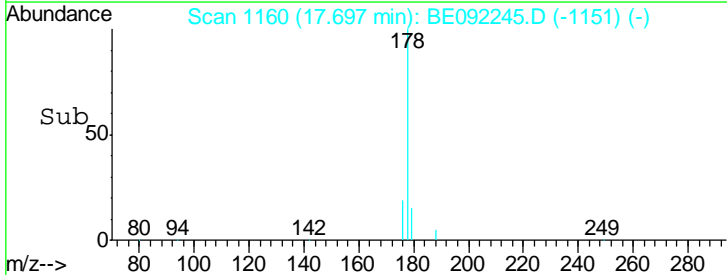
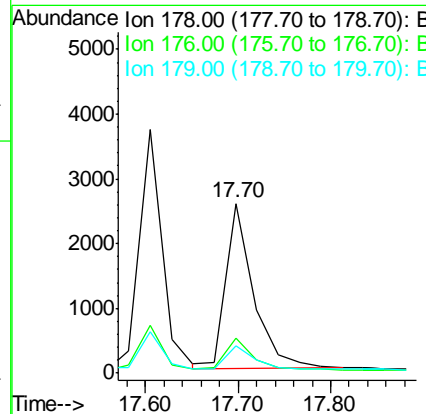
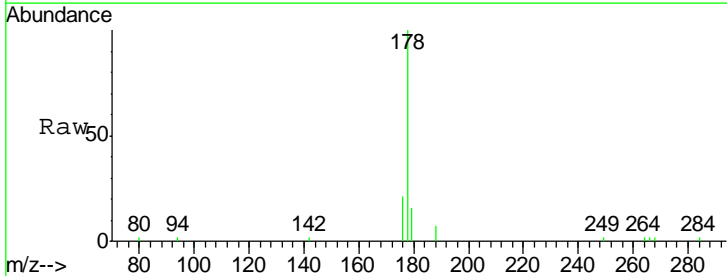
Manual Integrations
 APPROVED

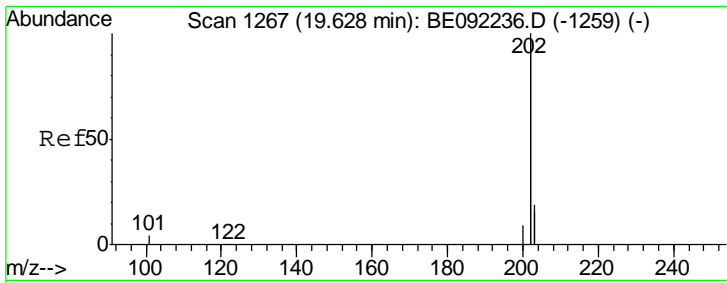
sohil
 8/11/2016 8:33:05 AM



#22
 Anthracene
 Concen: 0.36 ng
 RT: 17.70 min Scan# 1160
 Delta R.T. 0.00 min
 Lab File: BE092245.D
 Acq: 10 Aug 2016 9:04

Tgt Ion	Resp	Lower	Upper
178	100		
176	18.9	15.0	22.4
179	14.9	12.0	18.0



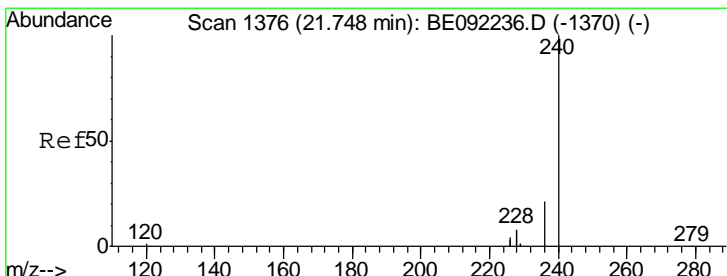
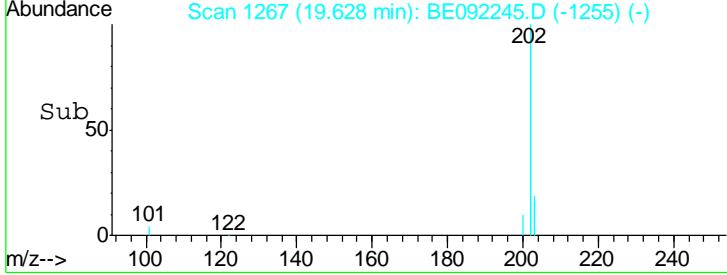
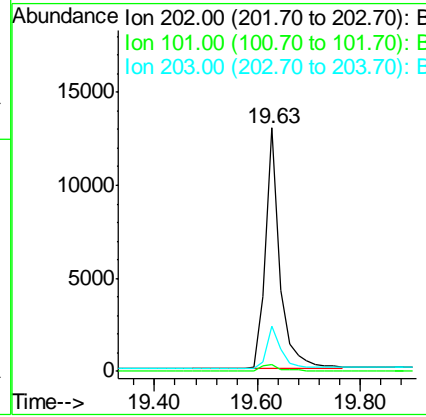
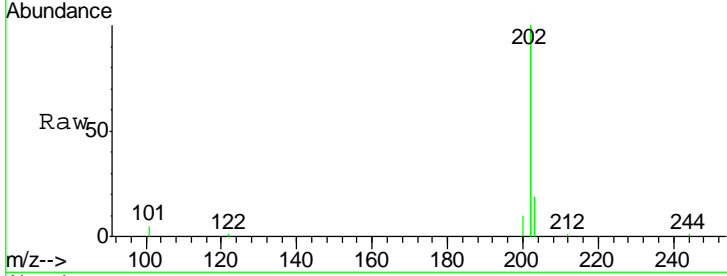


#23
 Fluoranthene
 Concen: 0.37 ng
 RT: 19.63 min Scan# 1267
 Delta R.T. 0.00 min
 Lab File: BE092245.D
 Acq: 10 Aug 2016 9:04

Instrument :
 BNA_E
 ClientSampled :
 SSTDCCC0.4

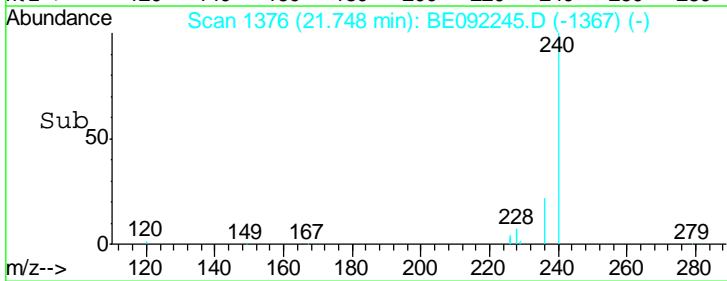
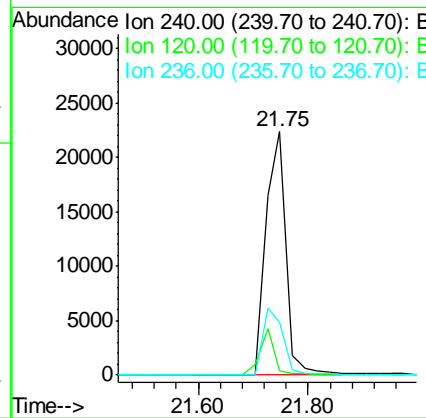
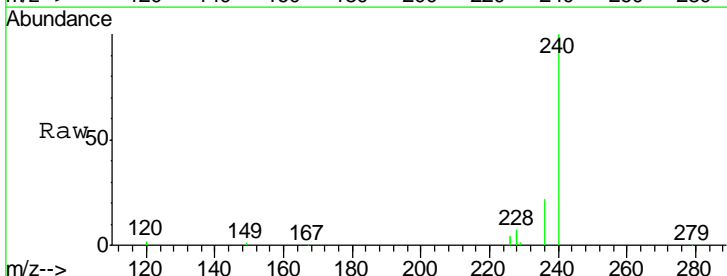
Tgt Ion	Ratio	Lower	Upper
202	100		
101	2.9	2.2	3.4
203	17.7	13.7	20.5

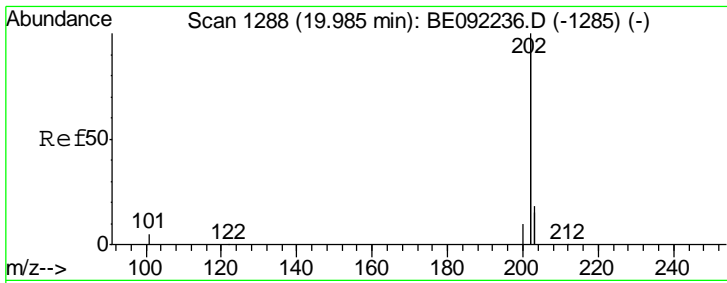
Manual Integrations
APPROVED
 sohil
 8/11/2016 8:33:05 AM



#24
 Chrysene-d12
 Concen: 5.00 ng
 RT: 21.75 min Scan# 1376
 Delta R.T. 0.00 min
 Lab File: BE092245.D
 Acq: 10 Aug 2016 9:04

Tgt Ion	Ratio	Lower	Upper
240	100		
120	1.5	1.2	1.8
236	21.8	17.1	25.7





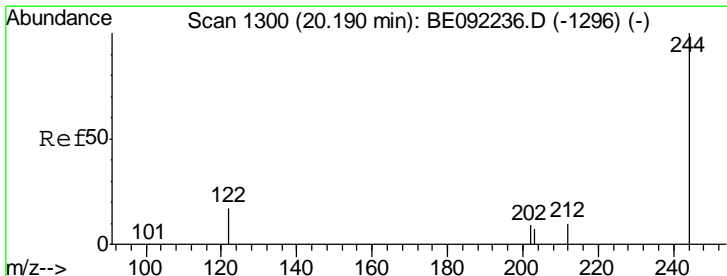
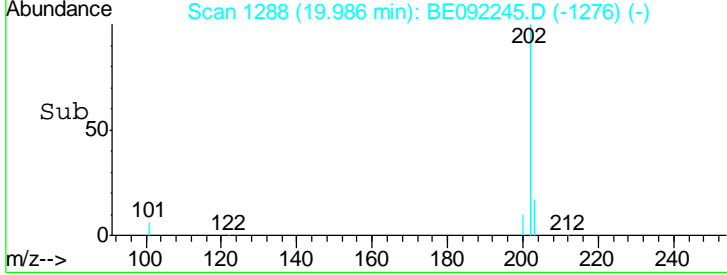
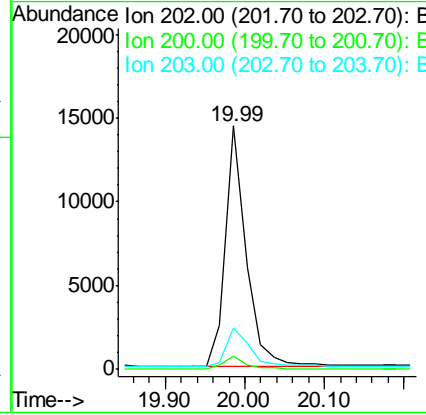
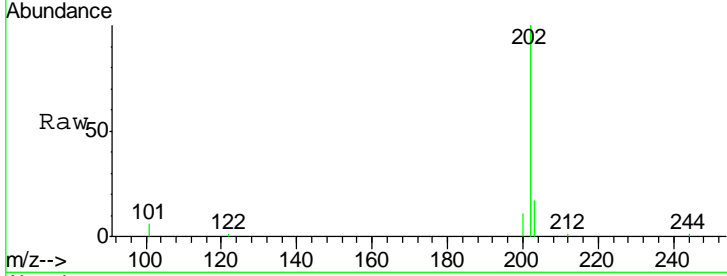
#25
 Pyrene
 Concen: 0.38 ng
 RT: 19.99 min Scan# 1288
 Delta R.T. 0.00 min
 Lab File: BE092245.D
 Acq: 10 Aug 2016 9:04

Instrument :
 BNA_E
ClientSampled :
 SSTDCCC0.4

Tgt Ion	Resp	Lower	Upper
202	100		
200	5.3	4.2	6.4
203	17.4	14.0	21.0

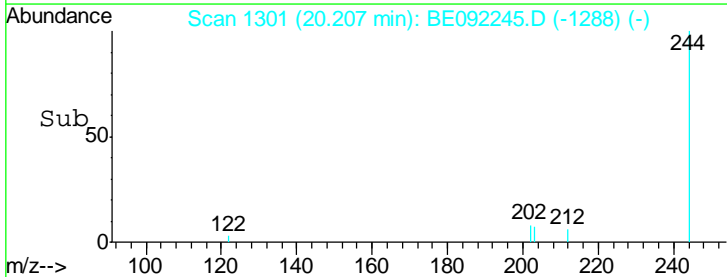
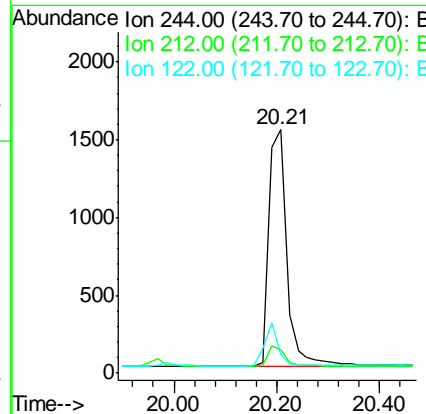
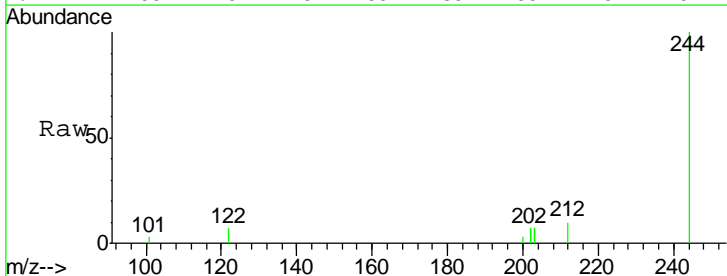
Manual Integrations
APPROVED

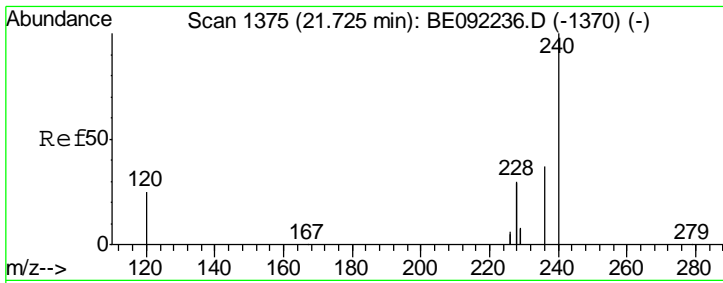
sohil
 8/11/2016 8:33:05 AM



#26
 Terphenyl-d14
 Concen: 0.38 ng
 RT: 20.21 min Scan# 1301
 Delta R.T. 0.02 min
 Lab File: BE092245.D
 Acq: 10 Aug 2016 9:04

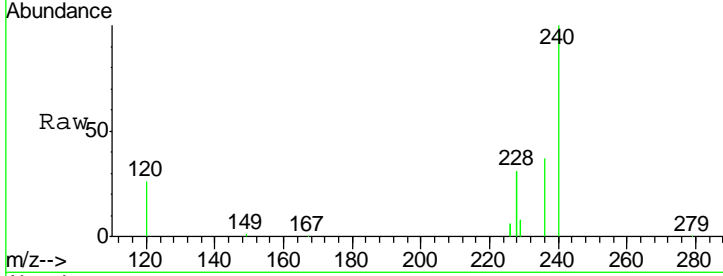
Tgt Ion	Resp	Lower	Upper
244	100		
212	9.8	10.2	15.2#
122	7.3	15.9	23.9#





#27
 Benzo(a)anthracene
 Concen: 0.39 ng m
 RT: 21.73 min Scan# 1375
 Delta R.T. 0.00 min
 Lab File: BE092245.D
 Acq: 10 Aug 2016 9:04

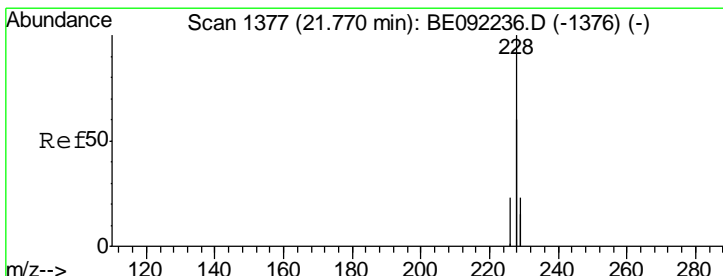
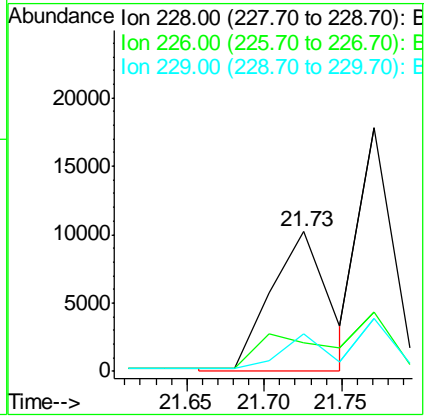
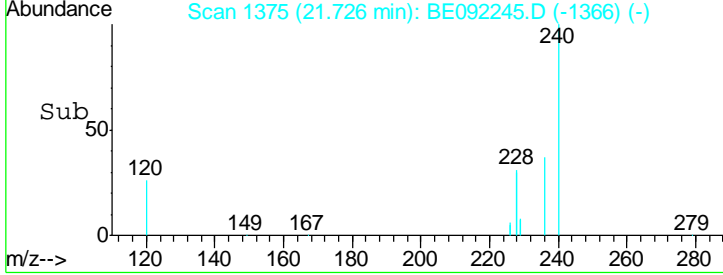
Instrument :
 BNA_E
 ClientSampled :
 SSTDCCC0.4



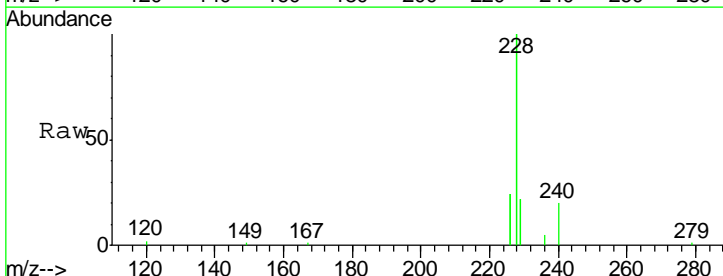
Tgt Ion: 228 Resp: 26347

Ion	Ratio	Lower	Upper
228	100		
226	20.1	15.9	23.9
229	26.9	22.4	33.6

Manual Integrations
APPROVED
 sohil
 8/11/2016 8:33:05 AM

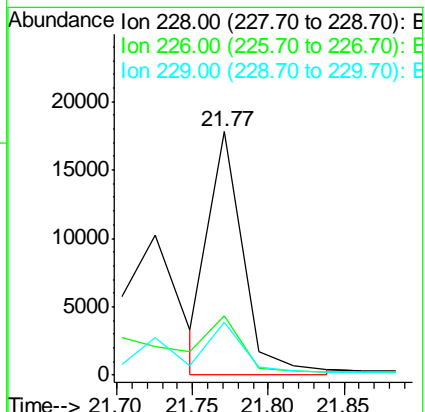
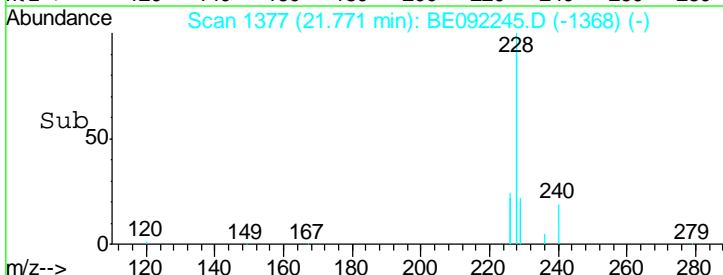


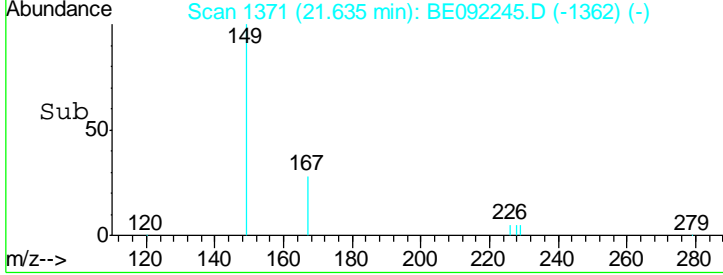
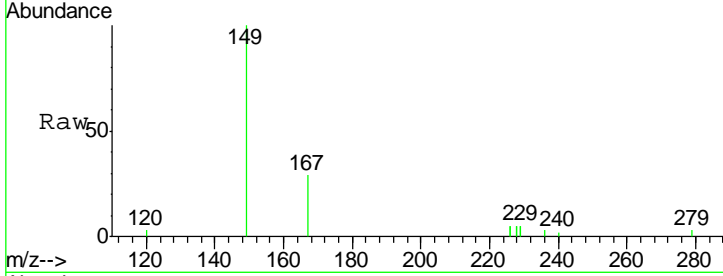
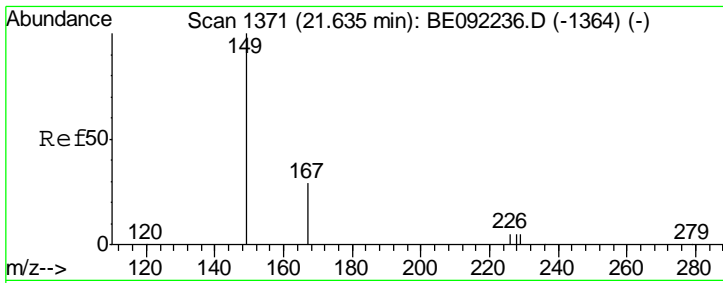
#28
 Chrysene
 Concen: 0.44 ng m
 RT: 21.77 min Scan# 1377
 Delta R.T. 0.00 min
 Lab File: BE092245.D
 Acq: 10 Aug 2016 9:04



Tgt Ion: 228 Resp: 28029

Ion	Ratio	Lower	Upper
228	100		
226	24.3	18.3	27.5
229	21.7	18.6	27.8



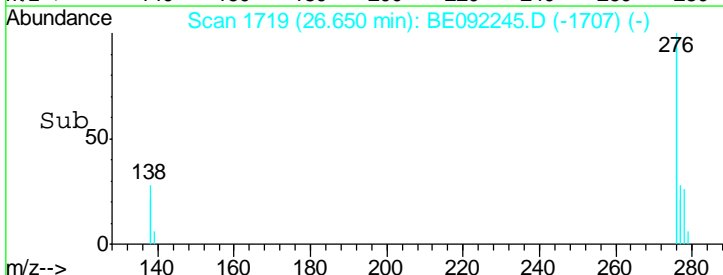
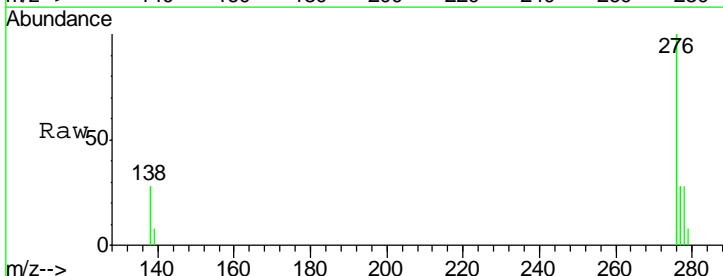
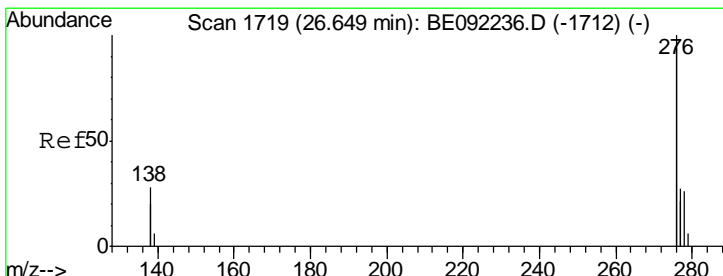
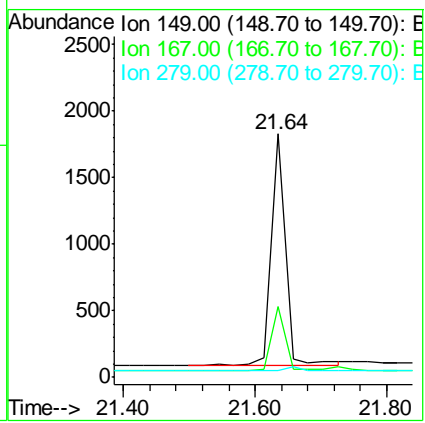


#29
 Bis(2-ethylhexyl)phthalate
 Concen: 0.46 ng
 RT: 21.64 min Scan# 1371
 Delta R.T. 0.00 min
 Lab File: BE092245.D
 Acq: 10 Aug 2016 9:04

Tgt Ion	Resp	Lower	Upper
149	100		
167	25.9	22.1	33.1
279	0.0	0.0	0.0

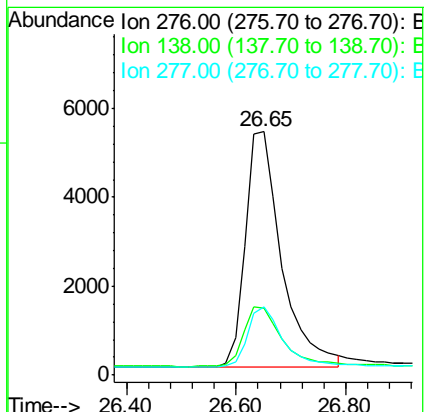
Instrument :
 BNA_E
ClientSampled :
 SSTDCCC0.4

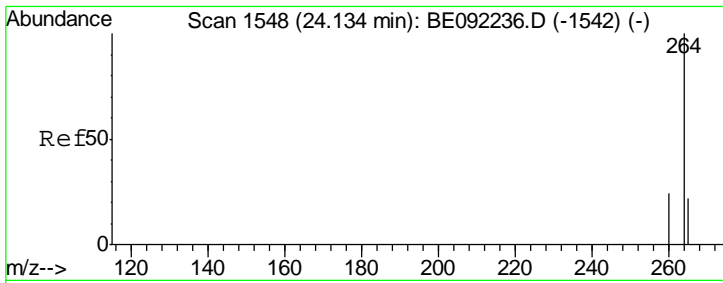
Manual Integrations
APPROVED
 sohil
 8/11/2016 8:33:05 AM



#30
 Indeno(1,2,3-cd)pyrene
 Concen: 0.36 ng
 RT: 26.65 min Scan# 1719
 Delta R.T. 0.00 min
 Lab File: BE092245.D
 Acq: 10 Aug 2016 9:04

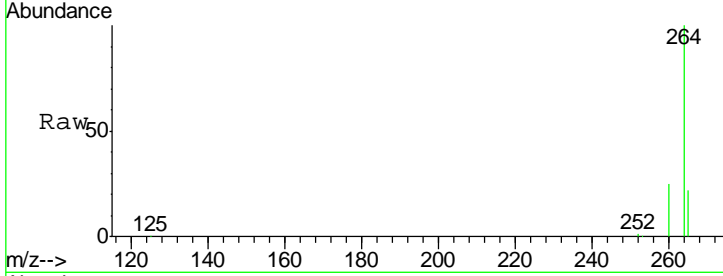
Tgt Ion	Resp	Lower	Upper
276	100		
138	27.0	21.3	31.9
277	24.9	19.7	29.5





#31
 Perylene-d12
 Concen: 5.00 ng
 RT: 24.13 min Scan# 1548
 Delta R.T. -0.00 min
 Lab File: BE092245.D
 Acq: 10 Aug 2016 9:04

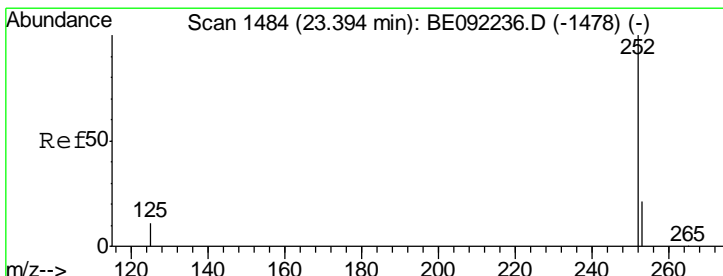
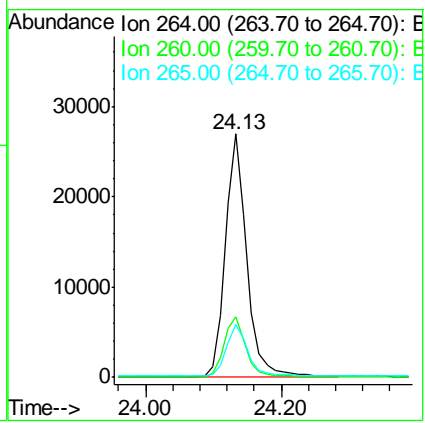
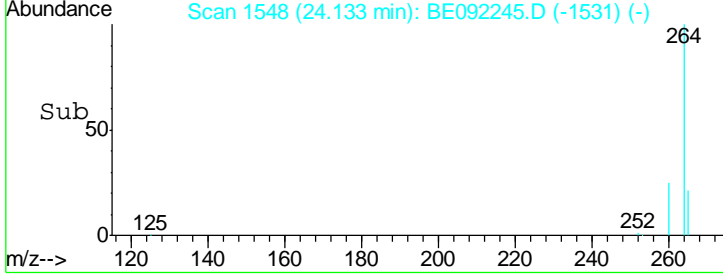
Instrument : BNA_E
 ClientSampled : SSTDCCC0.4



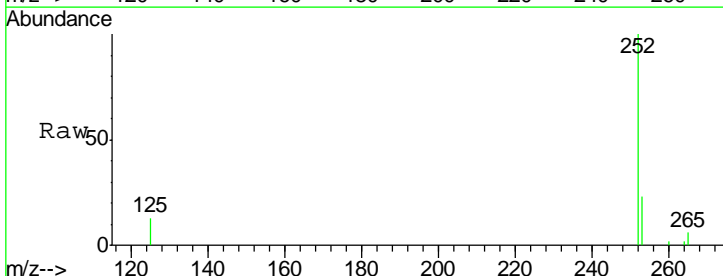
Tgt Ion: 264 Resp: 59560

Ion	Ratio	Lower	Upper
264	100		
260	24.9	19.5	29.3
265	21.8	18.2	27.4

Manual Integrations APPROVED
 sohil
 8/11/2016 8:33:05 AM

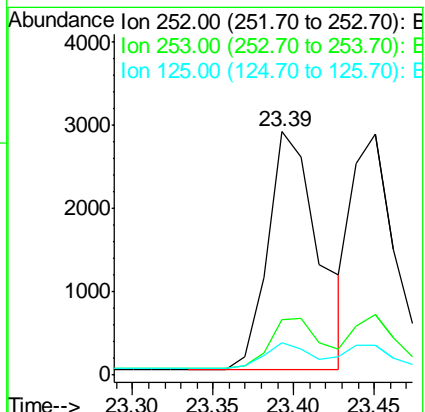
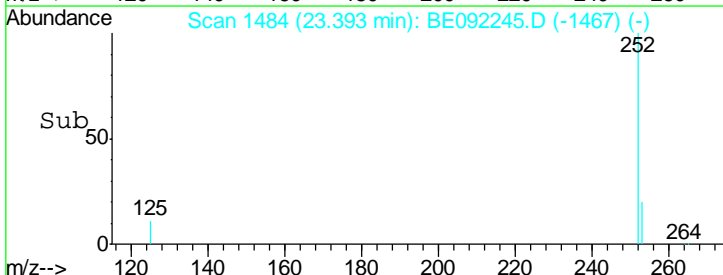


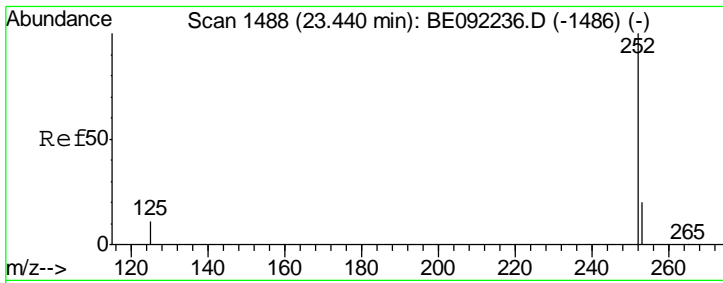
#32
 Benzo(b)fluoranthene
 Concen: 0.40 ng
 RT: 23.39 min Scan# 1484
 Delta R.T. -0.00 min
 Lab File: BE092245.D
 Acq: 10 Aug 2016 9:04



Tgt Ion: 252 Resp: 6307

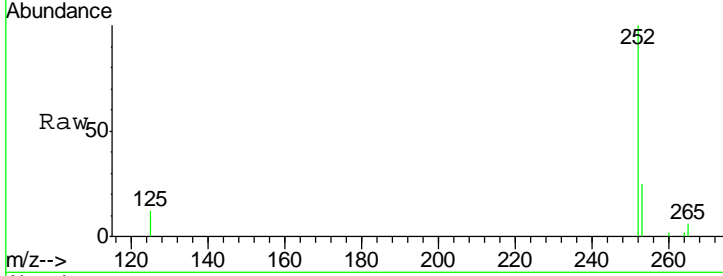
Ion	Ratio	Lower	Upper
252	100		
253	22.7	19.0	28.4
125	13.5	10.3	15.5





#33
 Benzo(k)fluoranthene
 Concen: 0.35 ng
 RT: 23.45 min Scan# 1489
 Delta R.T. 0.01 min
 Lab File: BE092245.D
 Acq: 10 Aug 2016 9:04

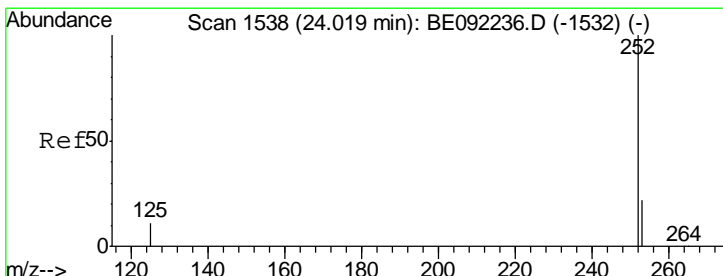
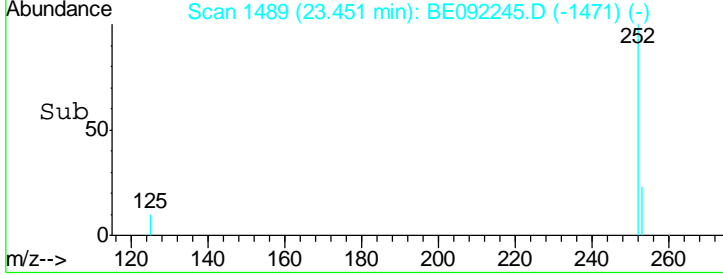
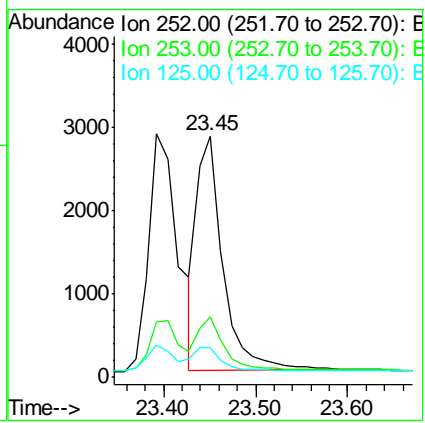
Instrument :
 BNA_E
ClientSampled :
 SSTDCCC0.4



Tgt Ion: 252 Resp: 5577

Ion	Ratio	Lower	Upper
252	100		
253	25.0	19.0	28.6
125	12.1	10.6	15.8

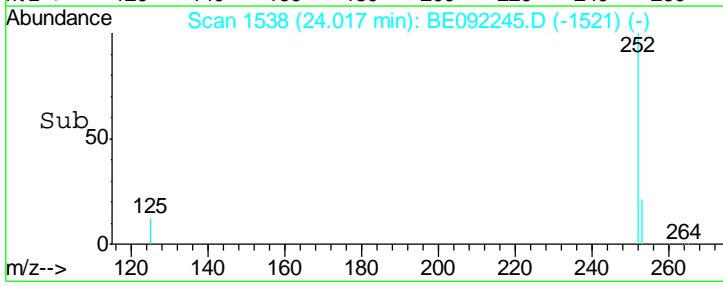
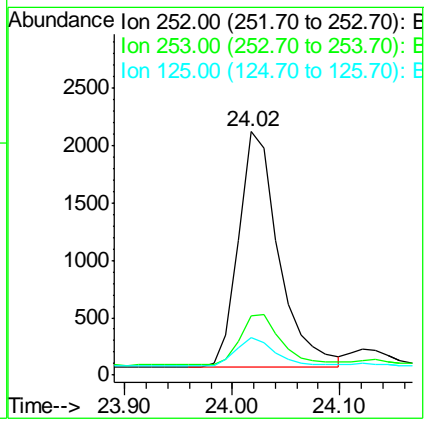
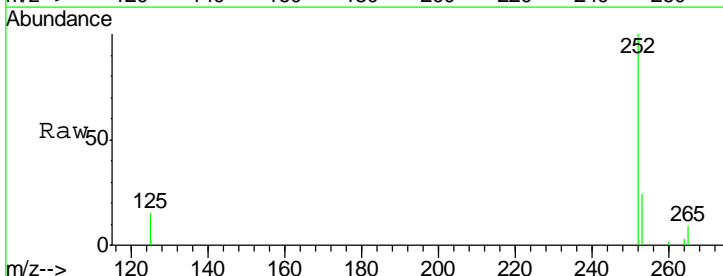
Manual Integrations
APPROVED
 sohil
 8/11/2016 8:33:05 AM

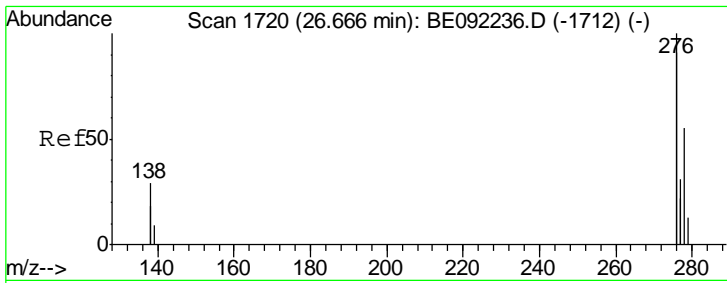


#34
 Benzo(a)pyrene
 Concen: 0.36 ng
 RT: 24.02 min Scan# 1538
 Delta R.T. -0.00 min
 Lab File: BE092245.D
 Acq: 10 Aug 2016 9:04

Tgt Ion: 252 Resp: 5319

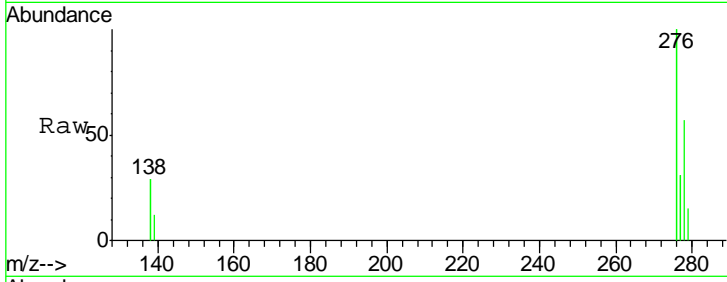
Ion	Ratio	Lower	Upper
252	100		
253	24.2	20.3	30.5
125	15.4	11.8	17.6





#35
 Dibenzo(a,h)anthracene
 Concen: 0.35 ng
 RT: 26.67 min Scan# 1720
 Delta R.T. 0.00 min
 Lab File: BE092245.D
 Acq: 10 Aug 2016 9:04

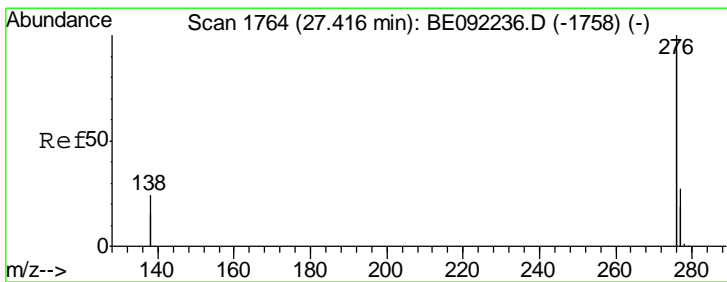
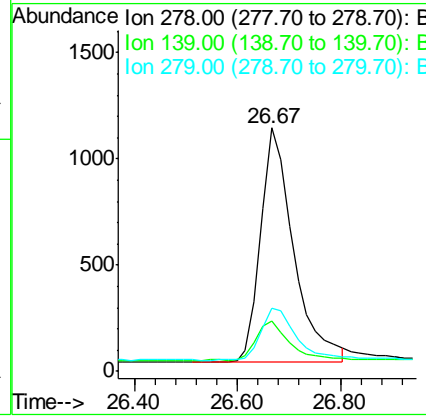
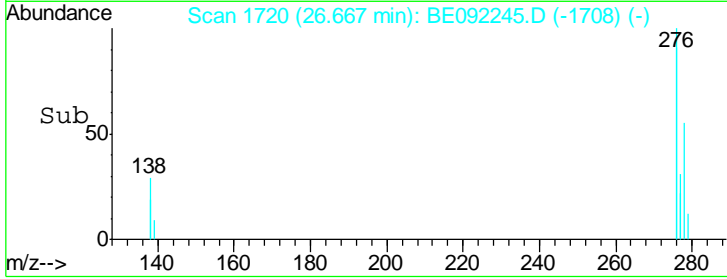
Instrument :
 BNA_E
 ClientSampled :
 SSTDCCC0.4



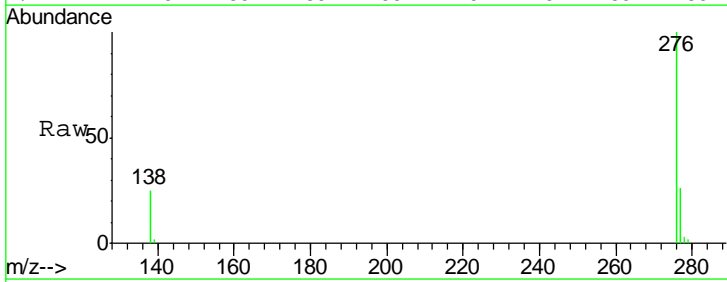
Tgt Ion: 278 Resp: 4851

Ion	Ratio	Lower	Upper
278	100		
139	20.5	16.2	24.2
279	26.2	21.4	32.2

Manual Integrations
APPROVED
 sohil
 8/11/2016 8:33:05 AM



#36
 Benzo(g,h,i)perylene
 Concen: 0.37 ng
 RT: 27.42 min Scan# 1764
 Delta R.T. 0.00 min
 Lab File: BE092245.D
 Acq: 10 Aug 2016 9:04



Tgt Ion: 276 Resp: 21823

Ion	Ratio	Lower	Upper
276	100		
277	26.2	21.4	32.2
138	24.9	19.4	29.2

