

Data Path : Z:\HPCHEM1\BNA_E\DATA\BE090115\
 Data File : BE090681.D
 Acq On : 2 Sep 2015 00:12
 Operator : UM/IZ
 Sample : G3462-04
 Misc :
 ALS Vial : 14 Sample Multiplier: 1

Instrument :
 BNA_E
 ClientSampleId :
 FB082715

Quant Time: Sep 02 12:14:39 2015
 Quant Method : Z:\HPCHEM1\BNA_E\METHODS\8270-SIM-BE090115.M
 Quant Title : ASP BNA STANDARDS FOR 5 POINT CALIBRATION
 QLast Update : Wed Sep 02 11:40:50 2015
 Response via : Initial Calibration

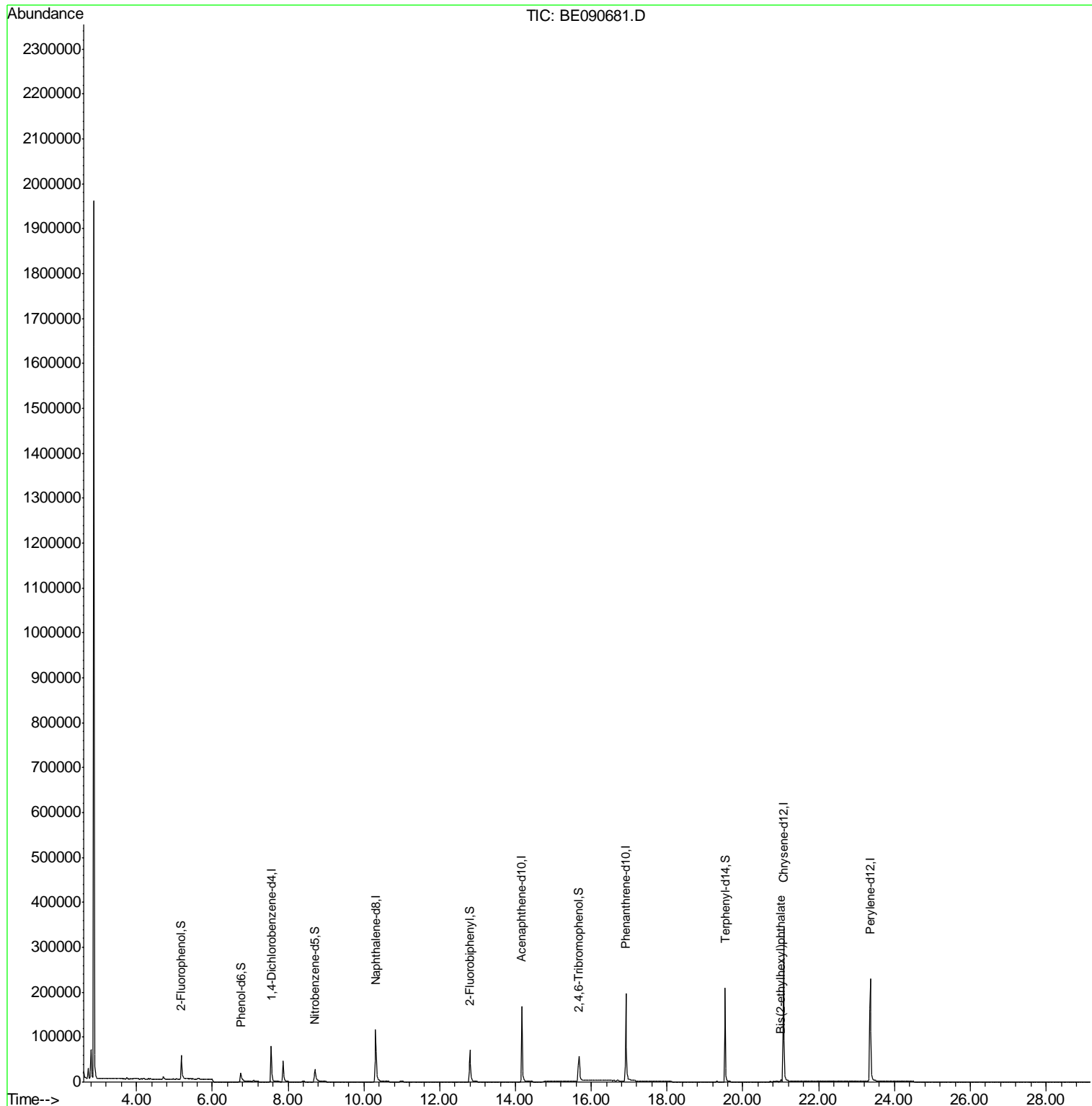
Internal Standards	R.T.	QIon	Response	Conc	Units	Dev(Min)
1) 1,4-Dichlorobenzene-d4	7.55	152	45749	5.00	ng	0.00
6) Naphthalene-d8	10.31	136	203819	5.00	ng	0.00
12) Acenaphthene-d10	14.17	164	107329	5.00	ng	0.00
18) Phenanthrene-d10	16.91	188	268137	5.00	ng	0.00
25) Chrysene-d12	21.07	240	349418	5.00	ng	0.00
32) Perylene-d12	23.36	264	338627	5.00	ng	0.00
System Monitoring Compounds						
4) 2-Fluorophenol	5.18	112	48412	5.43	ng	0.00
5) Phenol-d6	6.75	99	41893	3.29	ng	0.00
7) Nitrobenzene-d5	8.71	82	47417	3.52	ng	0.00
13) 2,4,6-Tribromophenol	15.67	330	31230	9.87	ng	0.00
14) 2-Fluorobiphenyl	12.80	172	101927	3.43	ng	0.00
27) Terphenyl-d14	19.53	244	228193	5.90	ng	0.00
Target Compounds						Qvalue
30) Bis(2-ethylhexyl)phthalate	21.01	149	5273	0.32	ng	# 99

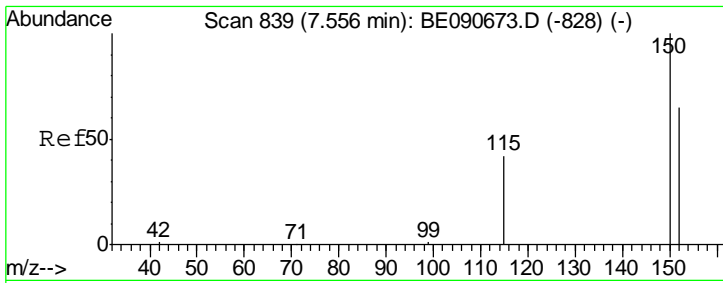
(#) = qualifier out of range (m) = manual integration (+) = signals summed

Data Path : Z:\HPCHEM1\BNA_E\DATA\BE090115\
 Data File : BE090681.D
 Acq On : 2 Sep 2015 00:12
 Operator : UM/IZ
 Sample : G3462-04
 Misc :
 ALS Vial : 14 Sample Multiplier: 1

Instrument :
 BNA_E
 ClientSampleId :
 FB082715

Quant Time: Sep 02 12:14:39 2015
 Quant Method : Z:\HPCHEM1\BNA_E\METHODS\8270-SIM-BE090115.M
 Quant Title : ASP BNA STANDARDS FOR 5 POINT CALIBRATION
 QLast Update : Wed Sep 02 11:40:50 2015
 Response via : Initial Calibration

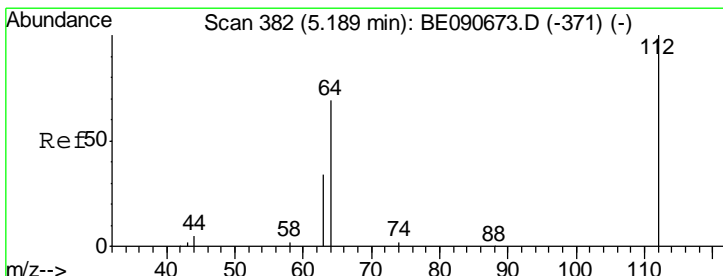
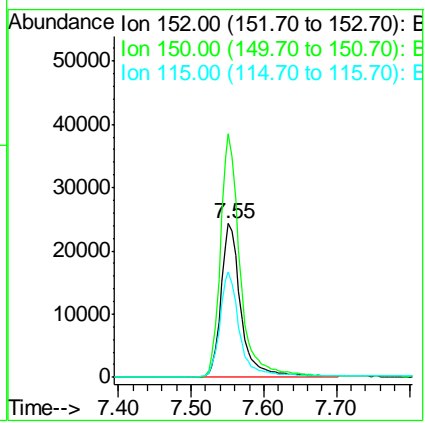
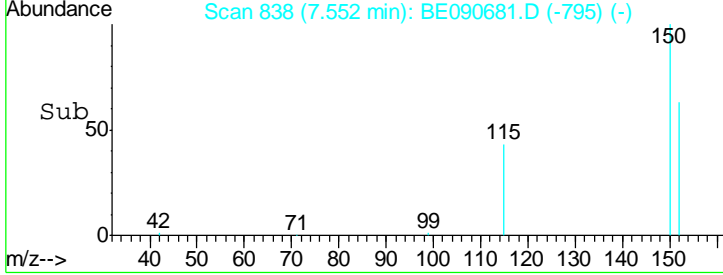
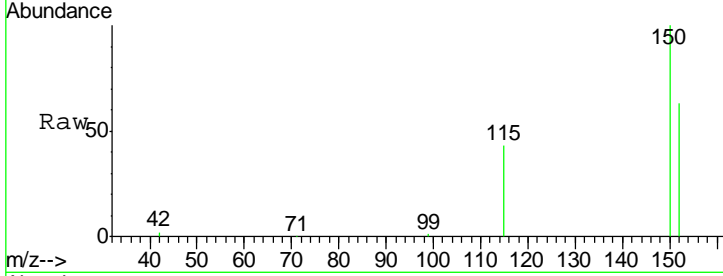




#1
 1,4-Dichlorobenzene-d4
 Concen: 5.00 ng
 RT: 7.55 min Scan# 838
 Delta R.T. -0.00 min
 Lab File: BE090681.D
 Acq: 2 Sep 2015 00:12

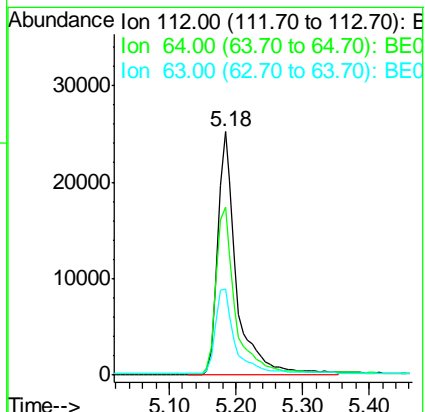
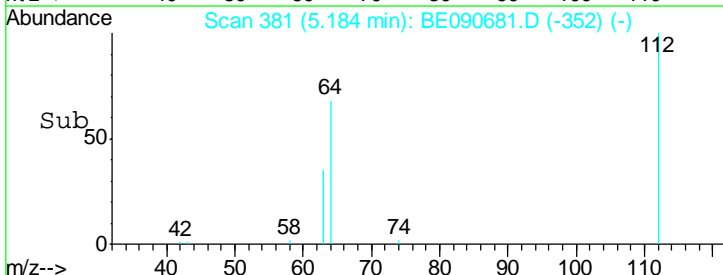
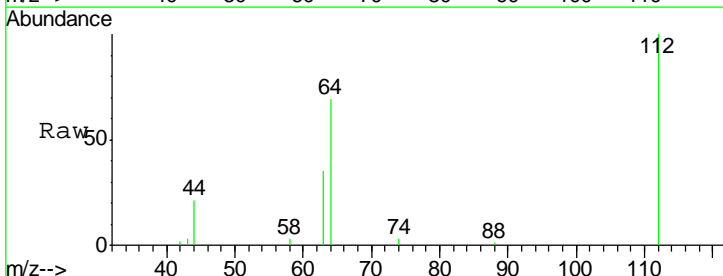
Instrument :
 BNA_E
ClientSampled :
 FB082715

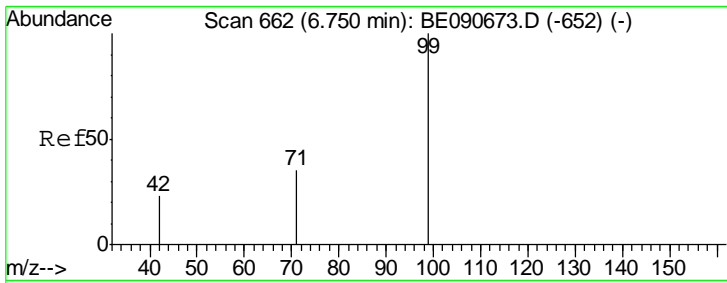
Tgt Ion	Resp	Lower	Upper
152	45749		
150	158.7	122.2	183.4
115	68.4	51.0	76.4



#4
 2-Fluorophenol
 Concen: 5.43 ng
 RT: 5.18 min Scan# 381
 Delta R.T. -0.00 min
 Lab File: BE090681.D
 Acq: 2 Sep 2015 00:12

Tgt Ion	Resp	Lower	Upper
112	48412		
64	71.5	57.3	85.9
63	37.2	29.2	43.8

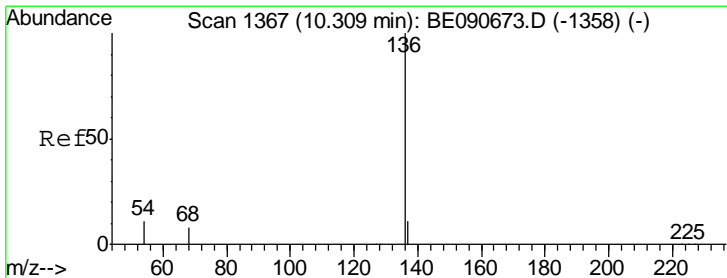
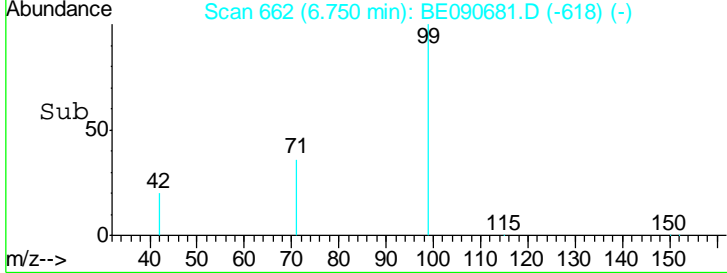
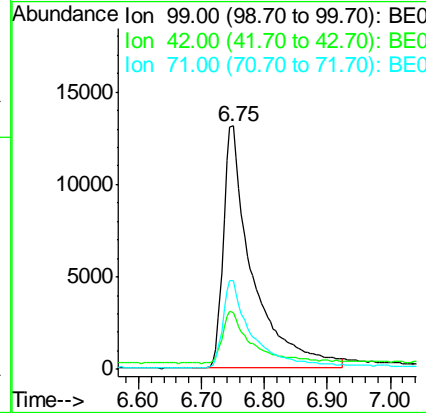
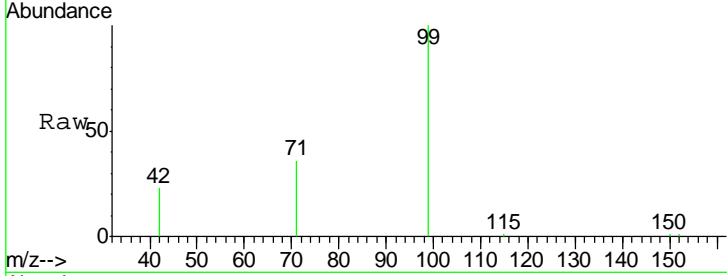




#5
 Phenol-d6
 Concen: 3.29 ng
 RT: 6.75 min Scan# 662
 Delta R.T. -0.00 min
 Lab File: BE090681.D
 Acq: 2 Sep 2015 00:12

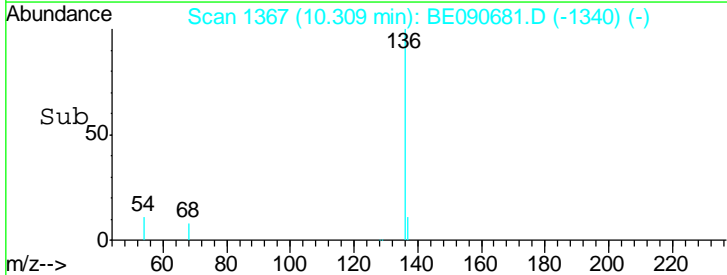
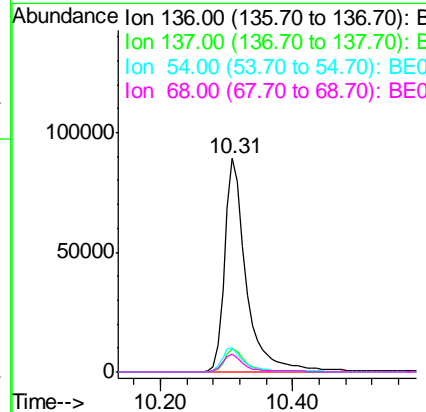
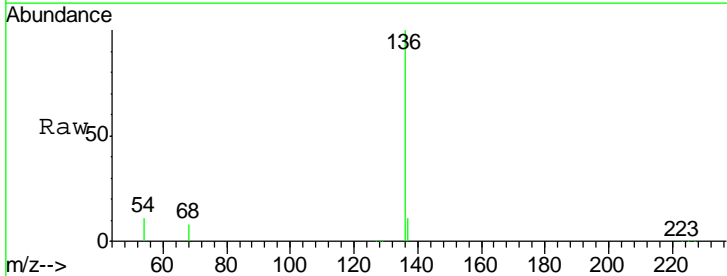
Instrument :
 BNA_E
 ClientSampled :
 FB082715

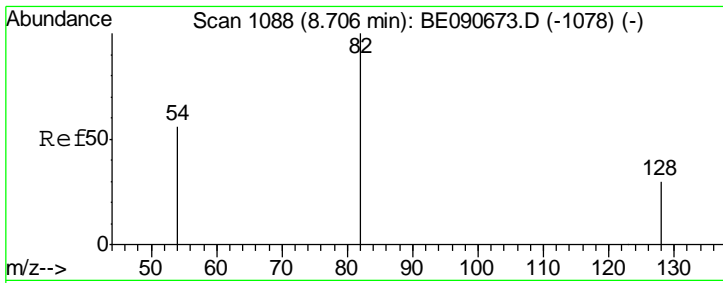
Tgt Ion	Resp	Lower	Upper
99	41893		
42	22.0	16.8	25.2
71	36.3	28.3	42.5



#6
 Naphthalene-d8
 Concen: 5.00 ng
 RT: 10.31 min Scan# 1367
 Delta R.T. 0.00 min
 Lab File: BE090681.D
 Acq: 2 Sep 2015 00:12

Tgt Ion	Resp	Lower	Upper
136	203819		
137	11.0	8.7	13.1
54	11.4	9.0	13.6
68	8.4	6.3	9.5

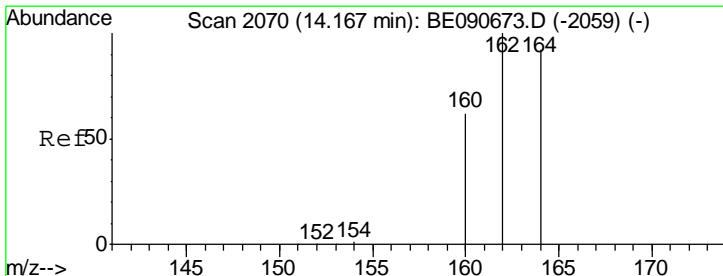
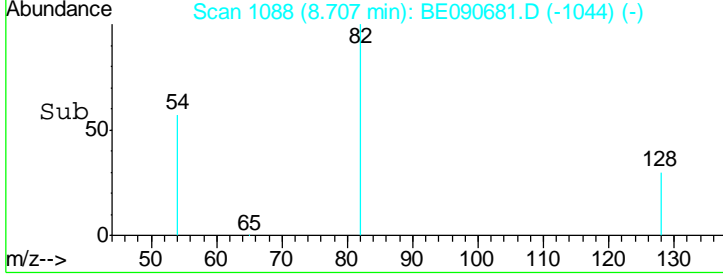
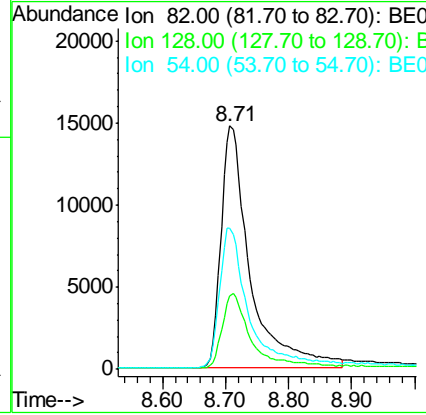
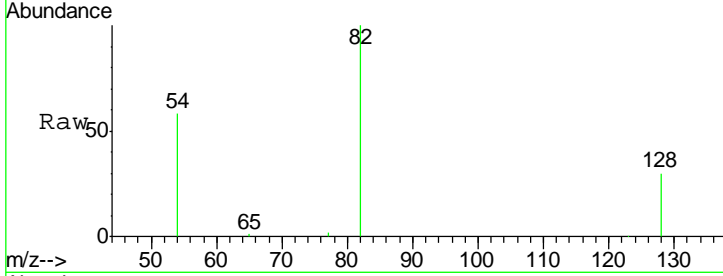




#7
 Nitrobenzene-d5
 Concen: 3.52 ng
 RT: 8.71 min Scan# 1088
 Delta R.T. 0.00 min
 Lab File: BE090681.D
 Acq: 2 Sep 2015 00:12

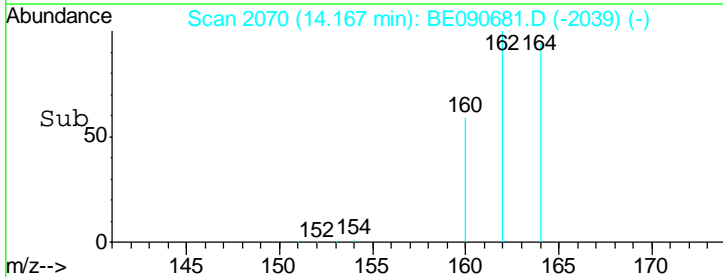
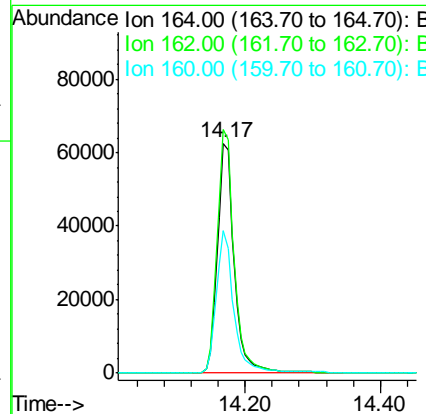
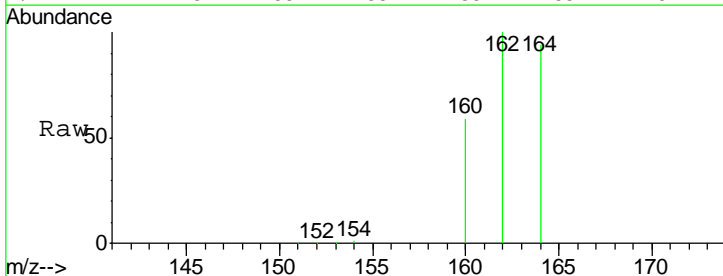
Instrument :
 BNA_E
ClientSampled :
 FB082715

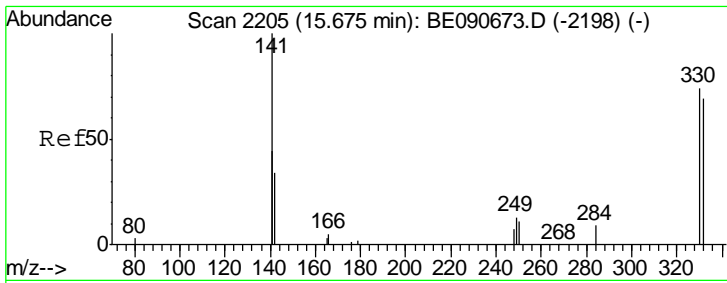
Tgt Ion	Resp	Lower	Upper
82	47417		
128	30.2	25.0	37.4
54	57.9	46.3	69.5



#12
 Acenaphthene-d10
 Concen: 5.00 ng
 RT: 14.17 min Scan# 2070
 Delta R.T. 0.00 min
 Lab File: BE090681.D
 Acq: 2 Sep 2015 00:12

Tgt Ion	Resp	Lower	Upper
164	107329		
162	106.1	86.8	130.2
160	62.1	53.9	80.9

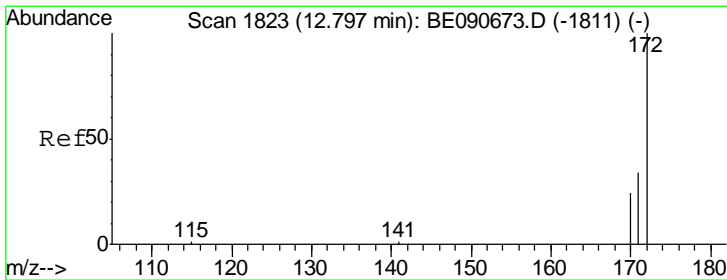
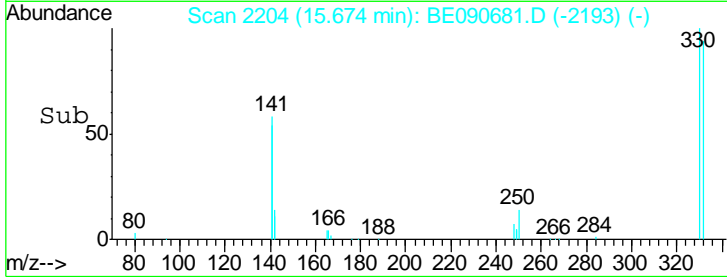
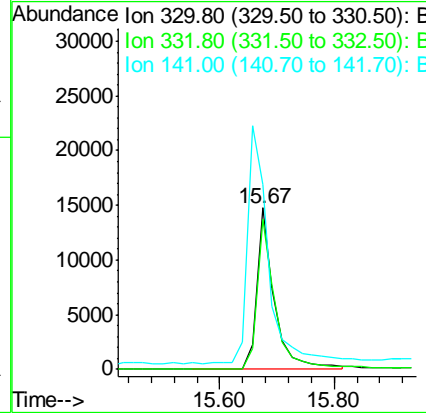
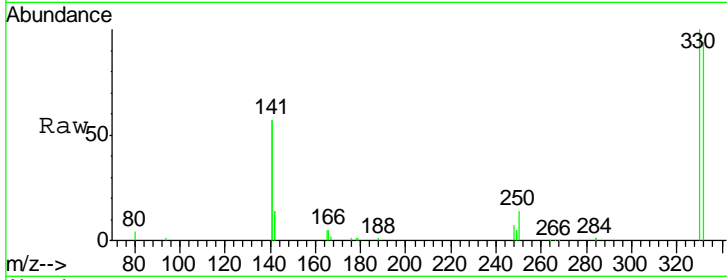




#13
 2,4,6-Tribromophenol
 Concen: 9.87 ng
 RT: 15.67 min Scan# 2204
 Delta R.T. -0.00 min
 Lab File: BE090681.D
 Acq: 2 Sep 2015 00:12

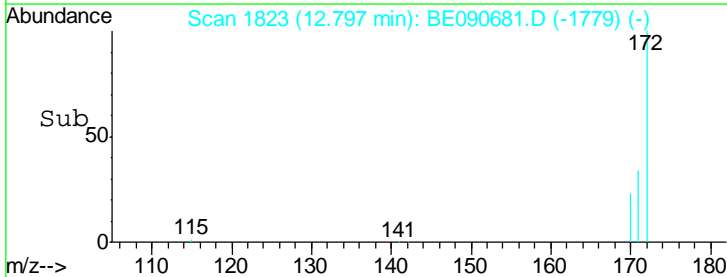
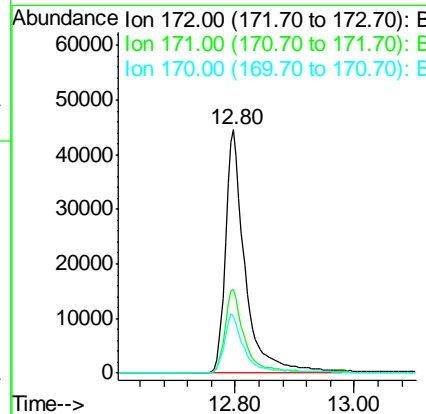
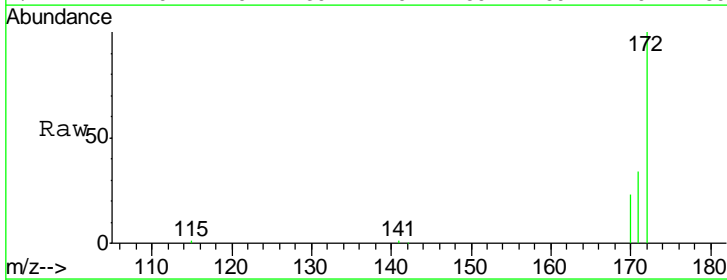
Instrument :
 BNA_E
 ClientSampleID :
 FB082715

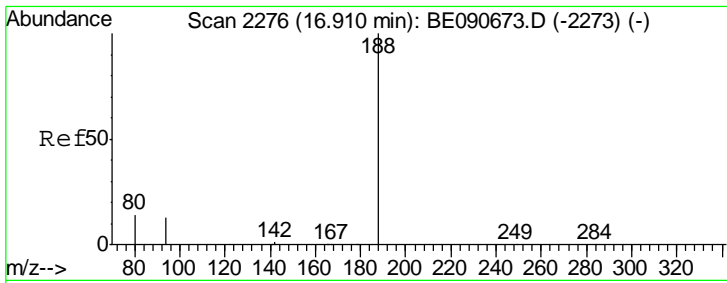
Tgt Ion	Resp	Lower	Upper
330	100		
332	96.2	74.9	112.3
141	175.3	145.2	217.8



#14
 2-Fluorobiphenyl
 Concen: 3.43 ng
 RT: 12.80 min Scan# 1823
 Delta R.T. -0.00 min
 Lab File: BE090681.D
 Acq: 2 Sep 2015 00:12

Tgt Ion	Resp	Lower	Upper
172	100		
171	34.4	27.8	41.8
170	23.5	19.8	29.6

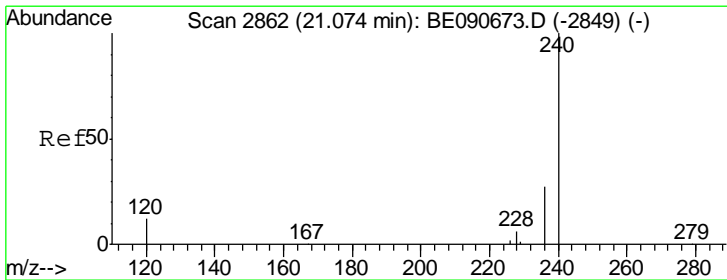
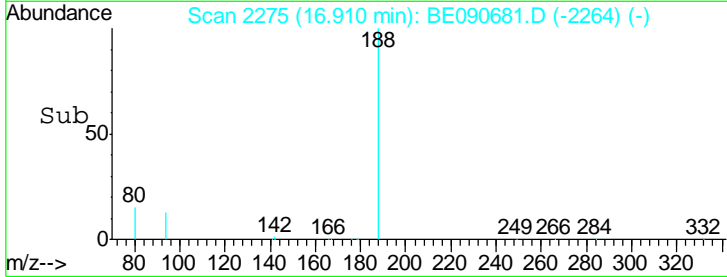
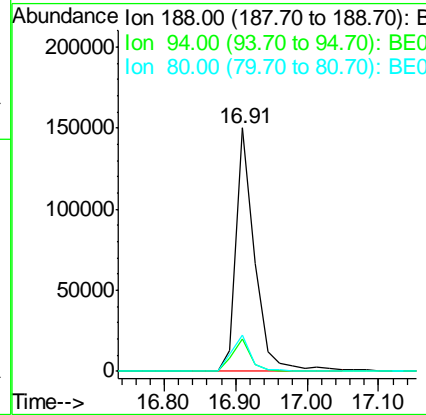
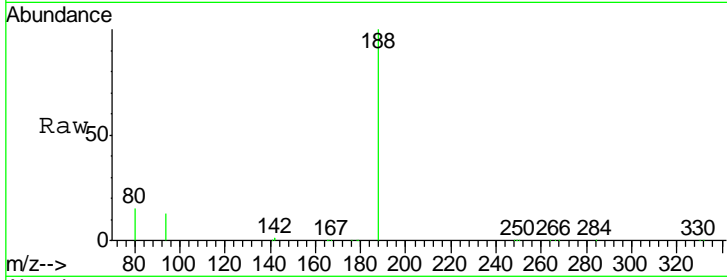




#18
 Phenanthrene-d10
 Concen: 5.00 ng
 RT: 16.91 min Scan# 2275
 Delta R.T. -0.00 min
 Lab File: BE090681.D
 Acq: 2 Sep 2015 00:12

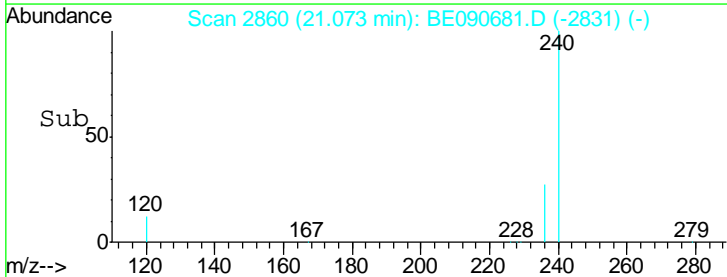
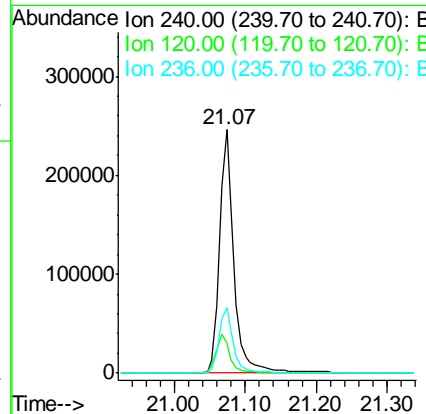
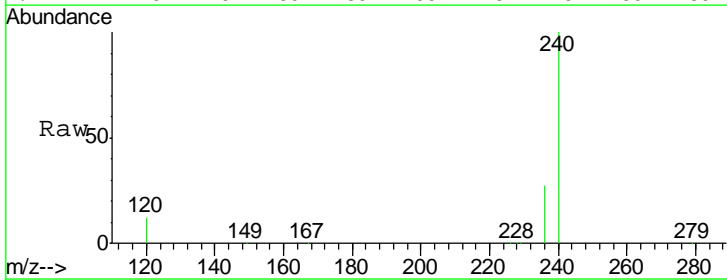
Instrument :
 BNA_E
 ClientSampled :
 FB082715

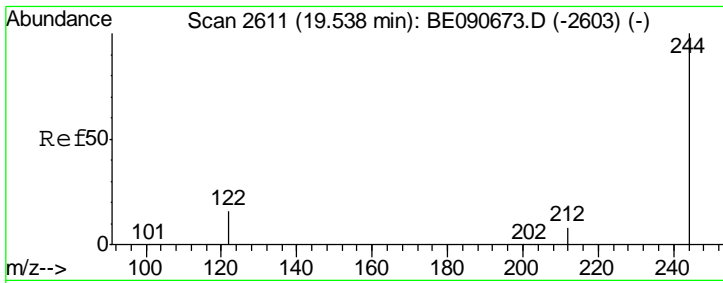
Tgt Ion	Resp	Lower	Upper
188	100		
94	13.2	10.3	15.5
80	14.6	11.0	16.6



#25
 Chrysene-d12
 Concen: 5.00 ng
 RT: 21.07 min Scan# 2860
 Delta R.T. -0.00 min
 Lab File: BE090681.D
 Acq: 2 Sep 2015 00:12

Tgt Ion	Resp	Lower	Upper
240	100		
120	12.0	10.1	15.1
236	27.1	21.9	32.9

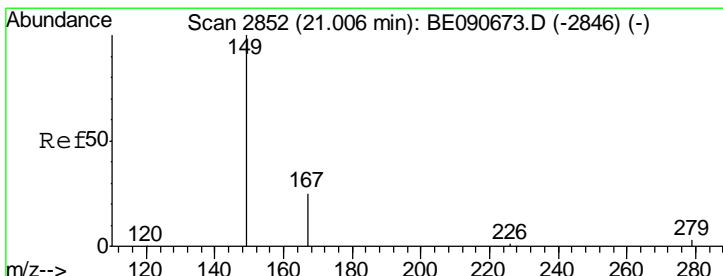
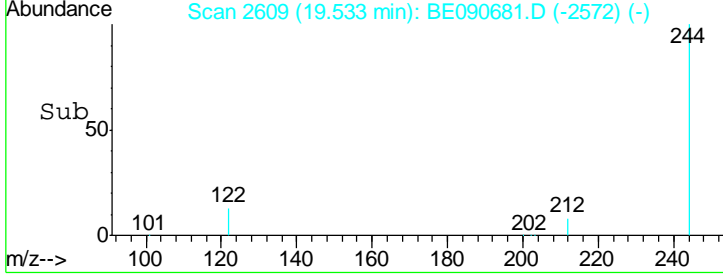
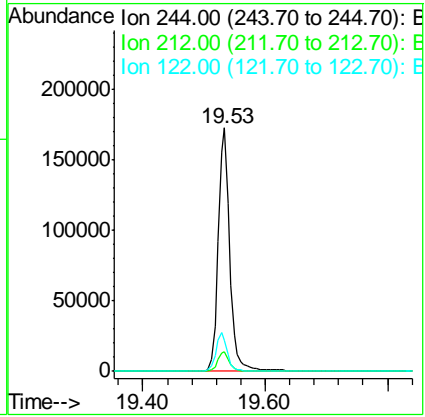
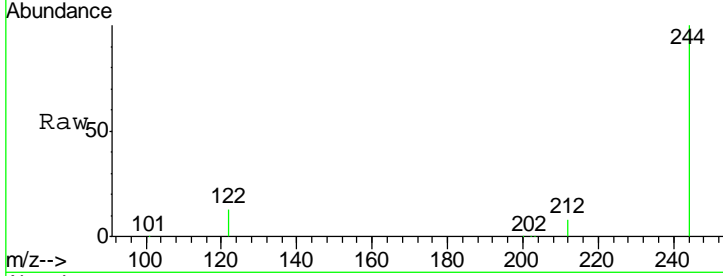




#27
 Terphenyl-d14
 Concen: 5.90 ng
 RT: 19.53 min Scan# 2609
 Delta R.T. -0.01 min
 Lab File: BE090681.D
 Acq: 2 Sep 2015 00:12

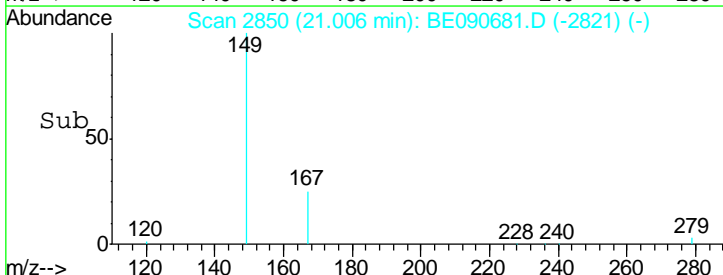
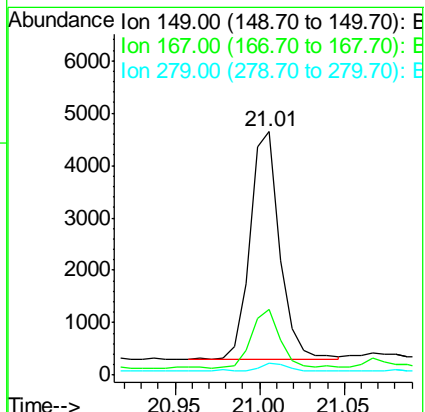
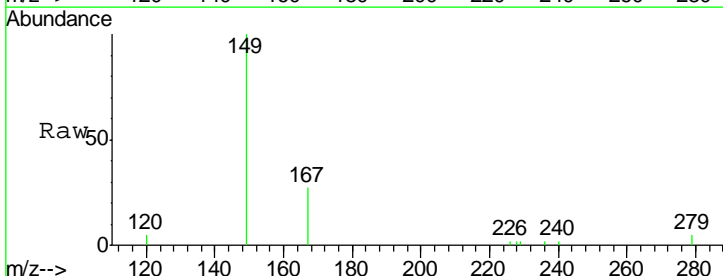
Instrument :
 BNA_E
ClientSampled :
 FB082715

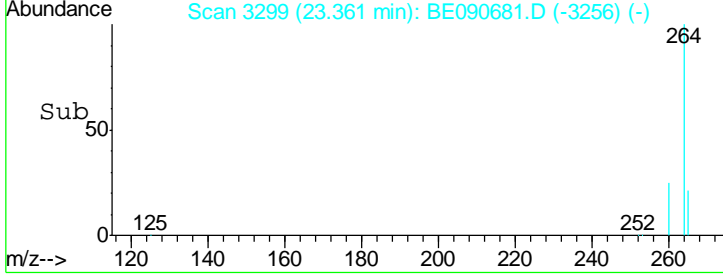
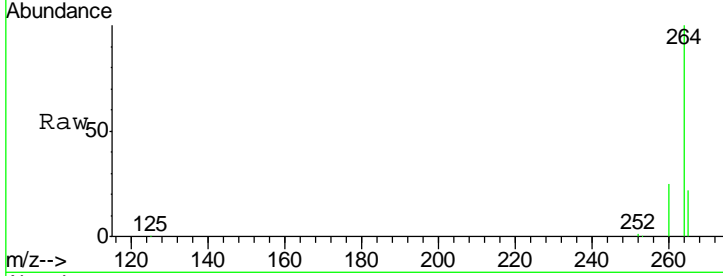
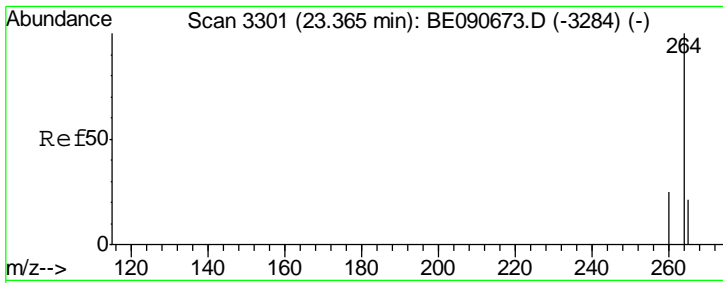
Tgt Ion	Resp	Lower	Upper
244	100		
212	8.1	6.9	10.3
122	12.9	12.9	19.3



#30
 Bis(2-ethylhexyl)phthalate
 Concen: 0.32 ng
 RT: 21.01 min Scan# 2850
 Delta R.T. -0.00 min
 Lab File: BE090681.D
 Acq: 2 Sep 2015 00:12

Tgt Ion	Resp	Lower	Upper
149	100		
167	24.9	20.1	30.1
279	4.0	2.3	3.5#





#32
 Perylene-d12
 Concen: 5.00 ng
 RT: 23.36 min Scan# 3299
 Delta R.T. -0.00 min
 Lab File: BE090681.D
 Acq: 2 Sep 2015 00:12

Instrument :
 BNA_E
 ClientSampled :
 FB082715

Tgt Ion: 264 Resp: 338627

Ion	Ratio	Lower	Upper
264	100		
260	25.1	19.7	29.5
265	21.9	17.5	26.3

