

Data Path : Z:\HPCHEM1\BNA_E\DATA\BE090916\
 Data File : BE092360.D
 Acq On : 9 Sep 2016 18:26
 Operator : UM/SJ
 Sample : H4722-02
 Misc :
 ALS Vial : 6 Sample Multiplier: 1

Instrument :
 BNA_E
 ClientSampleID :
 OUTFALL001-160906

Manual Integrations
 APPROVED

sohil
 9/12/2016 1:42:23 PM

Quant Time: Sep 09 19:05:49 2016
 Quant Method : Z:\HPCHEM1\BNA_E\METHODS\8270-SIM-BE090216.M
 Quant Title : ASP BNA STANDARDS FOR 5 POINT CALIBRATION
 QLast Update : Fri Sep 02 19:34:51 2016
 Response via : Initial Calibration

Internal Standards	R.T.	QIon	Response	Conc	Units	Dev(Min)
1) 1,4-Dichlorobenzene-d4	8.17	152	7977	5.00	ng	-0.02
7) Naphthalene-d8	10.95	136	35192	5.00	ng	0.00
12) Acenaphthene-d10	14.81	164	21766	5.00	ng	0.00
18) Phenanthrene-d10	17.58	188	52727	5.00	ng	0.02
24) Chrysene-d12	21.75	240	78766	5.00	ng	0.00
31) Perylene-d12	24.10	264	73651	5.00	ng	0.01

System Monitoring Compounds

4) 2-Fluorophenol	5.68	112	6658	3.51	ng	-0.01
5) Phenol-d6	7.34	99	4834	1.91	ng	-0.02
8) Nitrobenzene-d5	9.34	82	8421	3.33	ng	-0.02
13) 2,4,6-Tribromophenol	16.31	330	5584	8.28	ng	-0.01
14) 2-Fluorobiphenyl	13.44	172	23121	3.46	ng	0.00
26) Terphenyl-d14	20.17	244	50286	4.32	ng	0.00

Target Compounds

Target Compounds	R.T.	QIon	Response	Conc	Units	Qvalue
11) 2-Methylnaphthalene	12.66	142	106	0.02	ng	# 80
15) Acenaphthylene	14.54	152	799	0.02	ng	# 94
16) Acenaphthene	14.88	154	135	0.02	ng	86
17) Fluorene	15.88	166	181	0.02	ng	# 96
21) Phenanthrene	17.60	178	480	0.03	ng	# 93
22) Anthracene	17.72	178	289	0.02	ng	96
23) Fluoranthene	19.61	202	1973	0.03	ng	98
25) Pyrene	19.97	202	2086	0.03	ng	96
27) Benzo(a)anthracene	21.72	228	2828m	0.03	ng	
29) Bis(2-ethylhexyl)phthalate	21.63	149	2832	0.27	ng	# 75
30) Indeno(1,2,3-cd)pyrene	26.62	276	2378m	0.03	ng	
32) Benzo(b)fluoranthene	23.38	252	545	0.03	ng	# 46
33) Benzo(k)fluoranthene	23.43	252	523	0.03	ng	# 47
34) Benzo(a)pyrene	23.99	252	467	0.03	ng	# 35
35) Dibenzo(a,h)anthracene	26.65	278	466m	0.03	ng	
36) Benzo(g,h,i)perylene	27.38	276	2020	0.03	ng	# 51

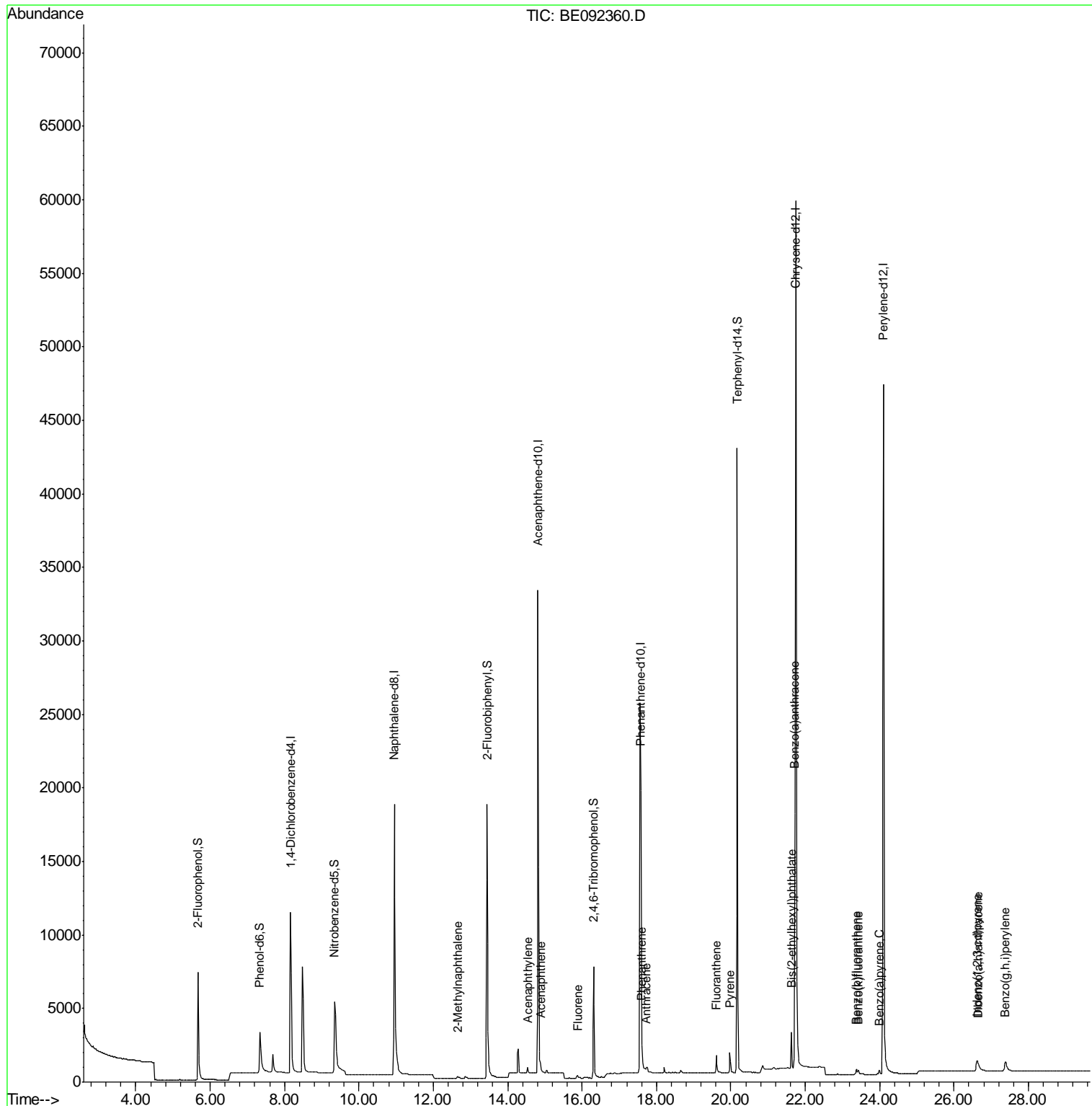
(#) = qualifier out of range (m) = manual integration (+) = signals summed

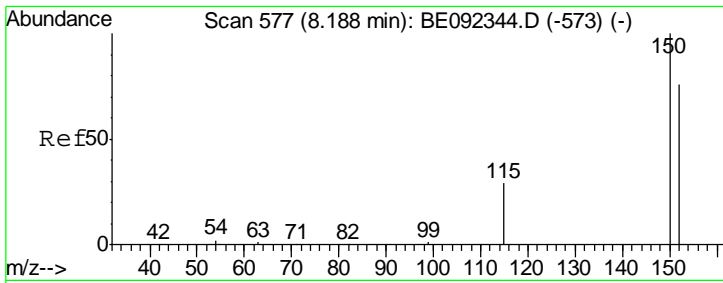
Data Path : Z:\HPCHEM1\BNA_E\DATA\BE090916\
 Data File : BE092360.D
 Acq On : 9 Sep 2016 18:26
 Operator : UM/SJ
 Sample : H4722-02
 Misc :
 ALS Vial : 6 Sample Multiplier: 1

Instrument :
 BNA_E
 ClientSampled :
 OUTFALL001-160906

Manual Integrations
 APPROVED
 sohil
 9/12/2016 1:42:23 PM

Quant Time: Sep 09 19:05:49 2016
 Quant Method : Z:\HPCHEM1\BNA_E\METHODS\8270-SIM-BE090216.M
 Quant Title : ASP BNA STANDARDS FOR 5 POINT CALIBRATION
 QLast Update : Fri Sep 02 19:34:51 2016
 Response via : Initial Calibration





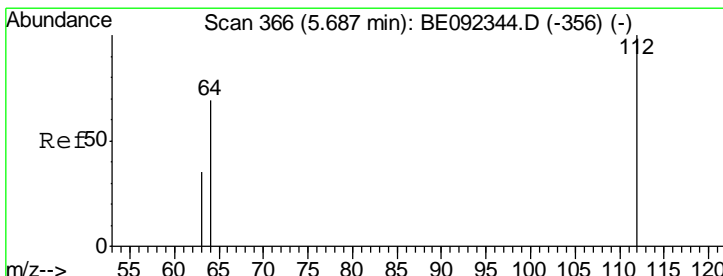
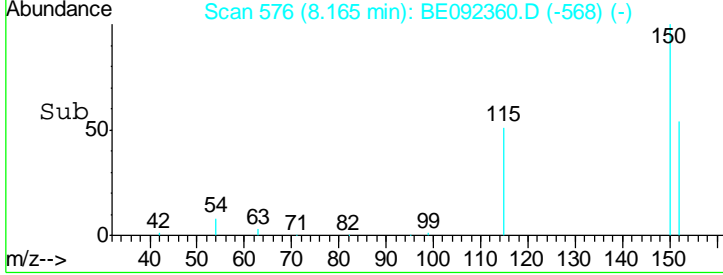
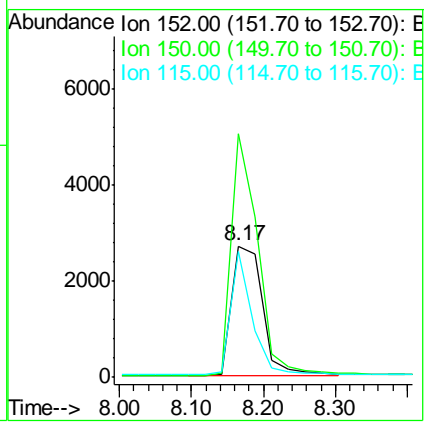
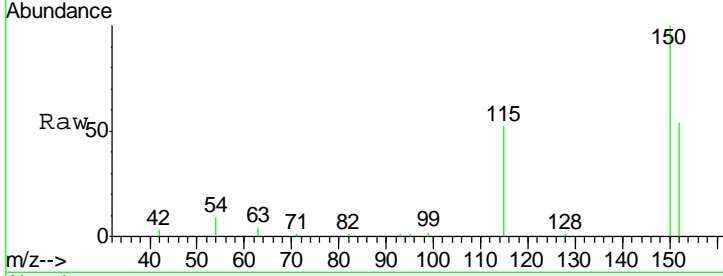
#1
 1,4-Dichlorobenzene-d4
 Concen: 5.00 ng
 RT: 8.17 min Scan# 576
 Delta R.T. -0.02 min
 Lab File: BE092360.D
 Acq: 9 Sep 2016 18:26

Instrument :
 BNA_E
ClientSampled :
 OUTFALL001-160906

Tgt Ion: 152 Resp: 7977

Ion	Ratio	Lower	Upper
152	100		
150	185.1	106.0	159.0#
115	95.4	31.2	46.8#

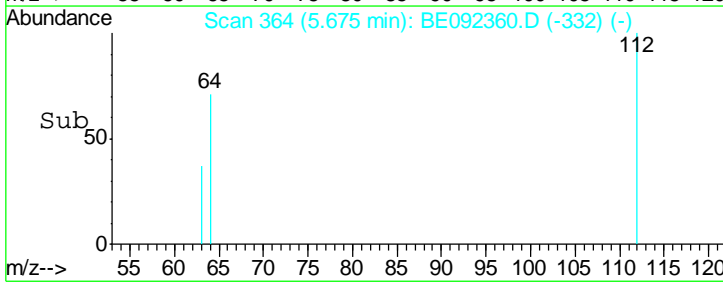
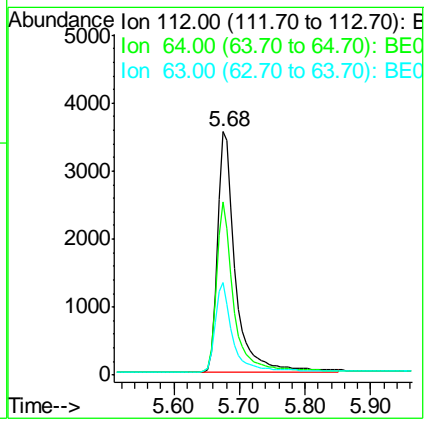
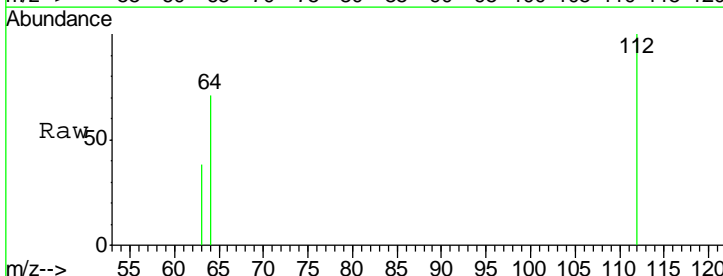
Manual Integrations
APPROVED
 sohil
 9/12/2016 1:42:23 PM

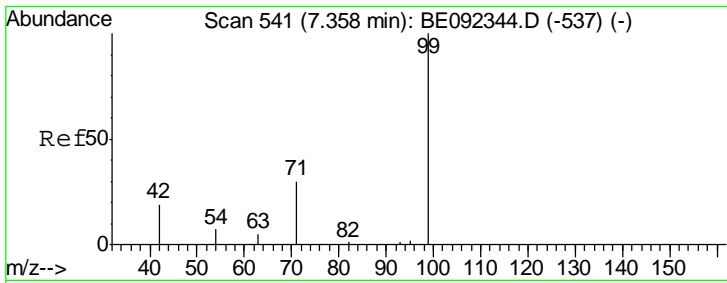


#4
 2-Fluorophenol
 Concen: 3.51 ng
 RT: 5.68 min Scan# 364
 Delta R.T. -0.01 min
 Lab File: BE092360.D
 Acq: 9 Sep 2016 18:26

Tgt Ion: 112 Resp: 6658

Ion	Ratio	Lower	Upper
112	100		
64	67.8	53.5	80.3
63	36.0	27.9	41.9





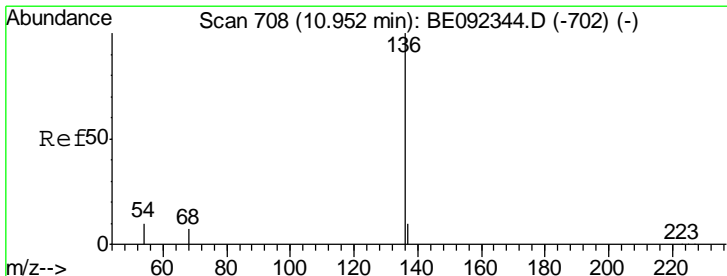
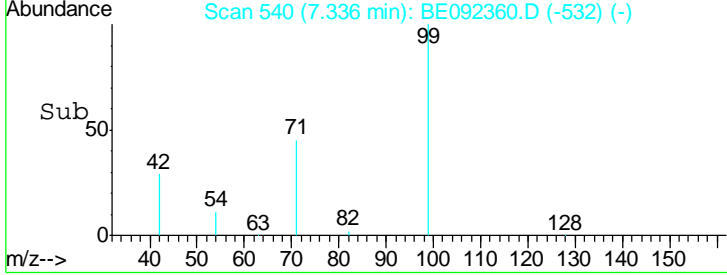
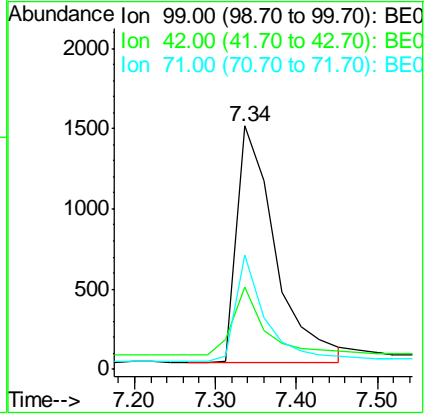
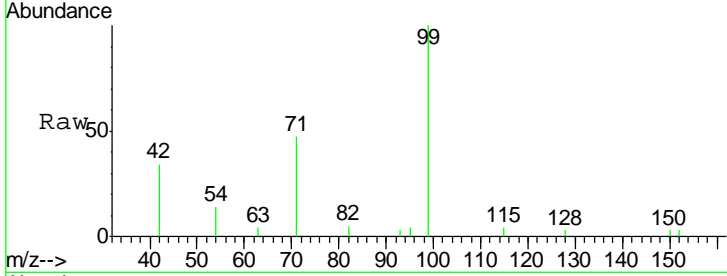
#5
 Phenol-d6
 Concen: 1.91 ng
 RT: 7.34 min Scan# 540
 Delta R.T. -0.02 min
 Lab File: BE092360.D
 Acq: 9 Sep 2016 18:26

Instrument :
 BNA_E
ClientSampled :
 OUTFALL001-160906

Tgt Ion	Resp	Lower	Upper
99	4834		
99	100		
42	24.5	16.0	24.0#
71	35.5	30.6	45.8

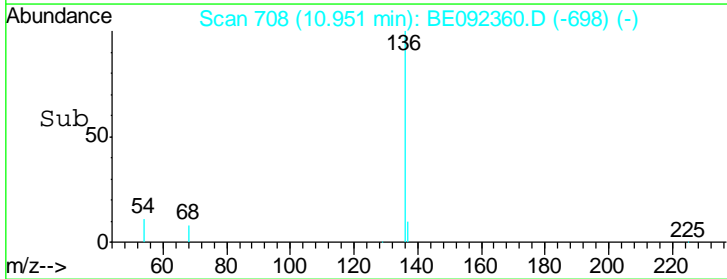
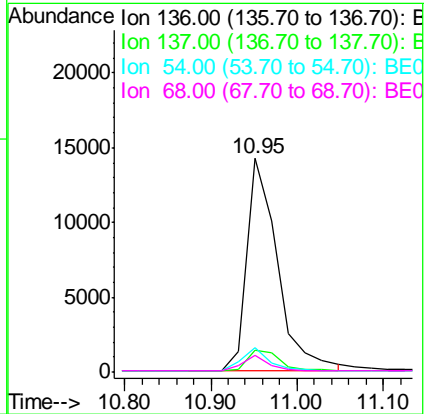
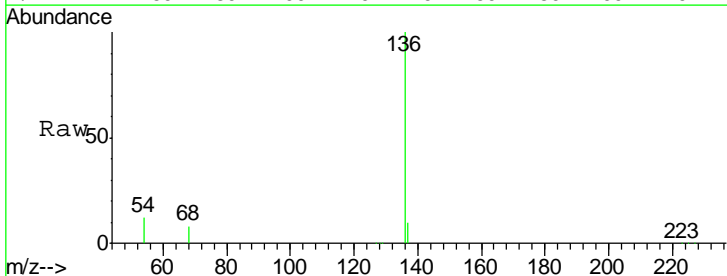
Manual Integrations
APPROVED

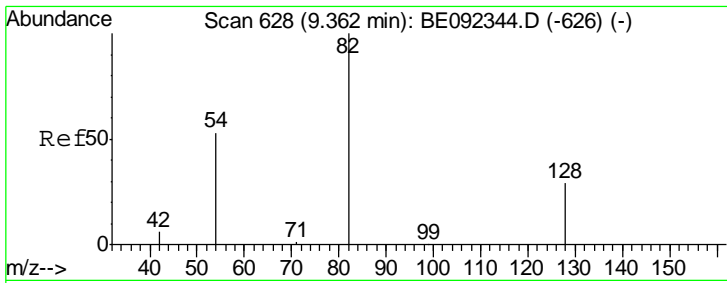
sohil
 9/12/2016 1:42:23 PM



#7
 Naphthalene-d8
 Concen: 5.00 ng
 RT: 10.95 min Scan# 708
 Delta R.T. -0.00 min
 Lab File: BE092360.D
 Acq: 9 Sep 2016 18:26

Tgt Ion	Resp	Lower	Upper
136	35192		
136	100		
137	10.4	8.2	12.4
54	11.5	9.6	14.4
68	8.1	6.7	10.1





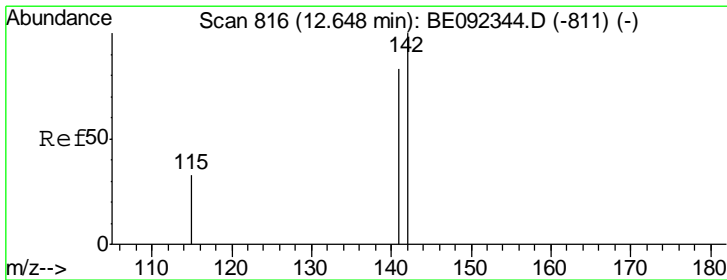
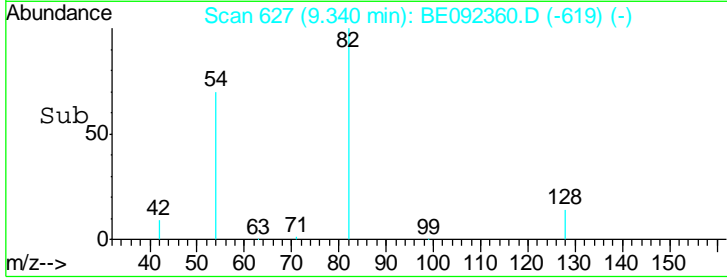
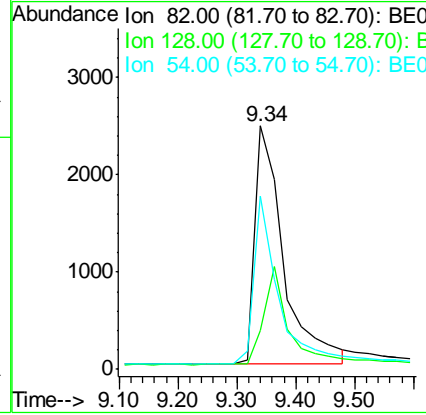
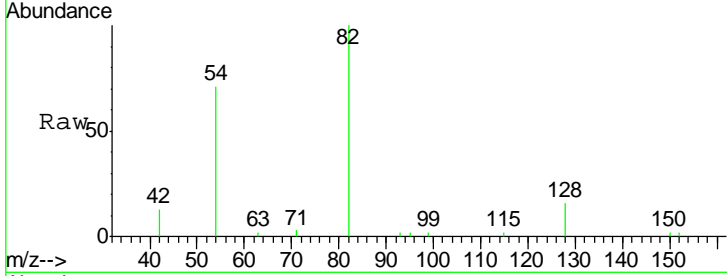
#8
 Nitrobenzene-d5
 Concen: 3.33 ng
 RT: 9.34 min Scan# 627
 Delta R.T. -0.02 min
 Lab File: BE092360.D
 Acq: 9 Sep 2016 18:26

Instrument :
 BNA_E
ClientSampled :
 OUTFALL001-160906

Tgt Ion	Resp	Lower	Upper
82	100		
128	16.1	39.0	58.4#
54	71.1	44.8	67.2#

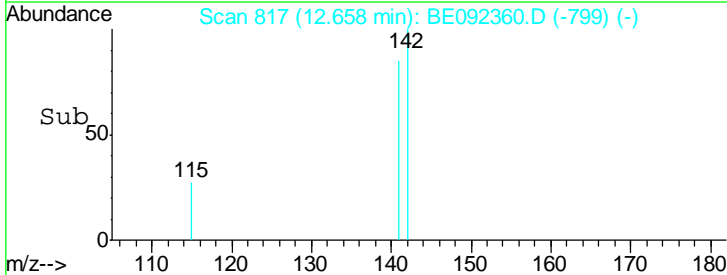
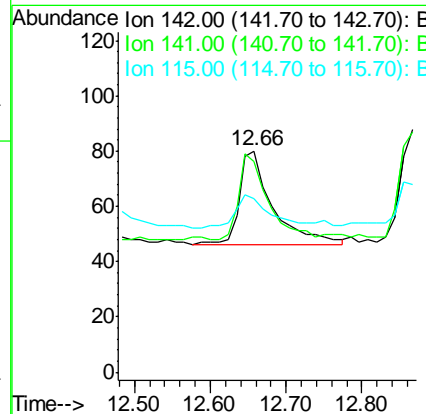
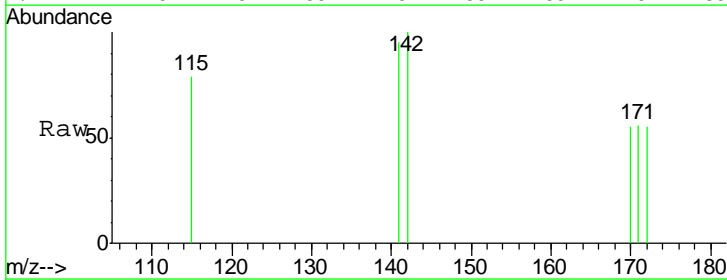
Manual Integrations
APPROVED

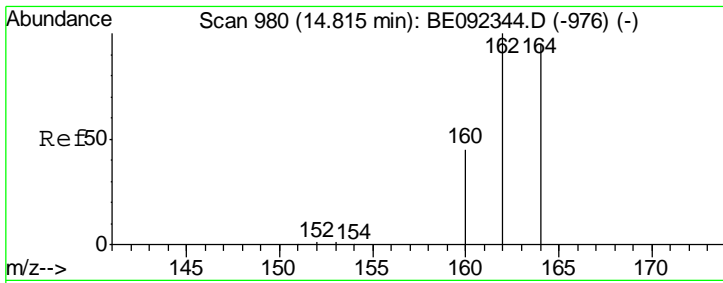
sohil
 9/12/2016 1:42:23 PM



#11
 2-Methylnaphthalene
 Concen: 0.02 ng
 RT: 12.66 min Scan# 817
 Delta R.T. 0.01 min
 Lab File: BE092360.D
 Acq: 9 Sep 2016 18:26

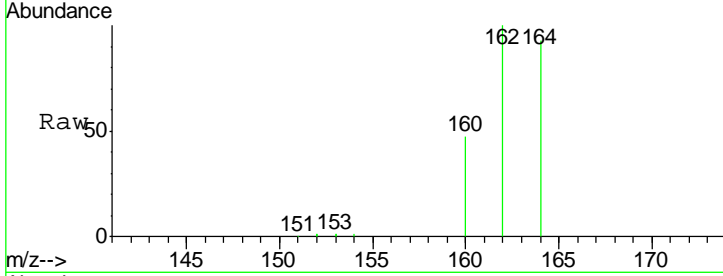
Tgt Ion	Resp	Lower	Upper
142	100		
141	95.0	73.7	110.5
115	78.8	34.0	51.0#





#12
 Acenaphthene-d10
 Concen: 5.00 ng
 RT: 14.81 min Scan# 980
 Delta R.T. -0.00 min
 Lab File: BE092360.D
 Acq: 9 Sep 2016 18:26

Instrument :
 BNA_E
ClientSampled :
 OUTFALL001-160906

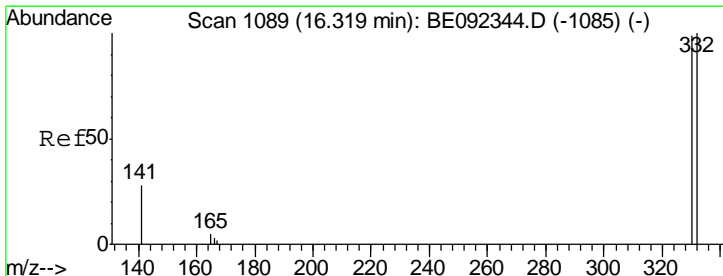
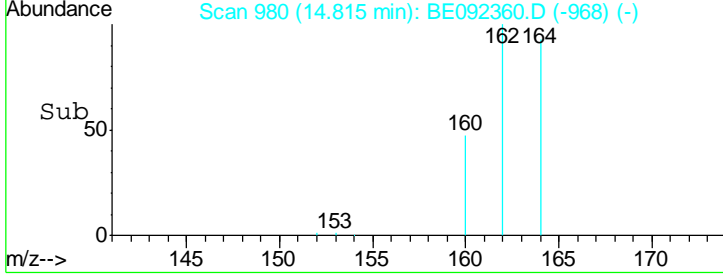
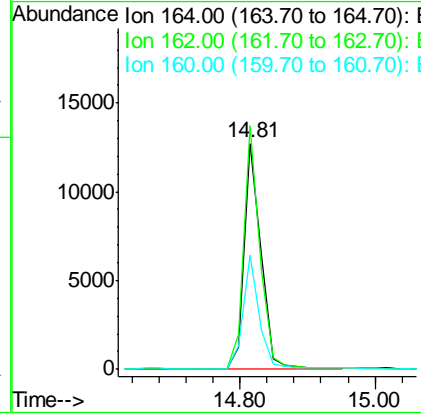


Tgt Ion:164 Resp: 21766

Ion	Ratio	Lower	Upper
164	100		
162	107.7	71.4	107.0#
160	50.7	27.4	41.2#

Manual Integrations
APPROVED

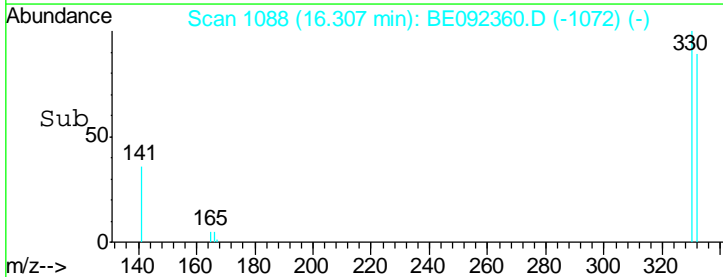
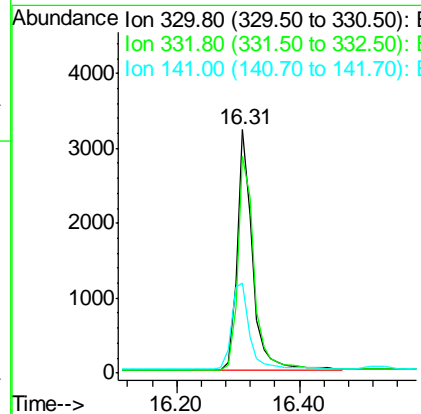
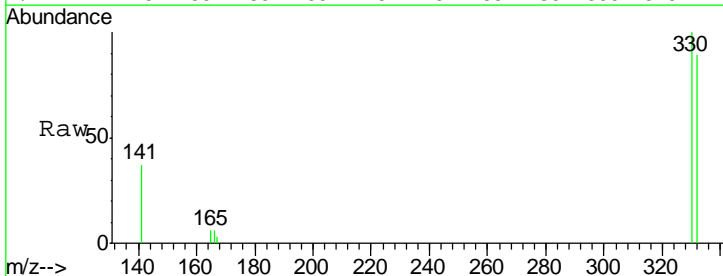
sohil
 9/12/2016 1:42:23 PM

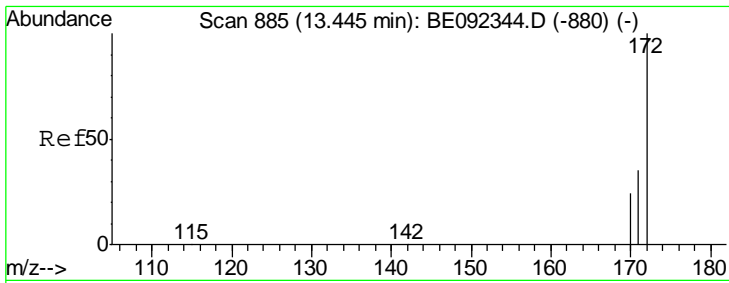


#13
 2,4,6-Tribromophenol
 Concen: 8.28 ng
 RT: 16.31 min Scan# 1088
 Delta R.T. -0.01 min
 Lab File: BE092360.D
 Acq: 9 Sep 2016 18:26

Tgt Ion:330 Resp: 5584

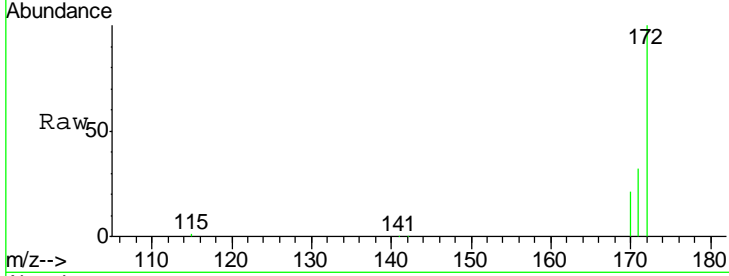
Ion	Ratio	Lower	Upper
330	100		
332	96.0	75.4	113.0
141	42.0	31.0	46.6





#14
 2-Fluorobiphenyl
 Concen: 3.46 ng
 RT: 13.44 min Scan# 885
 Delta R.T. -0.00 min
 Lab File: BE092360.D
 Acq: 9 Sep 2016 18:26

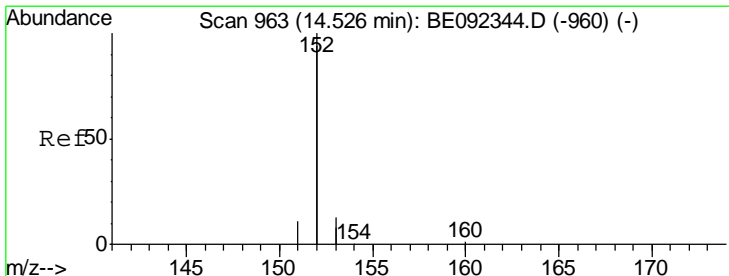
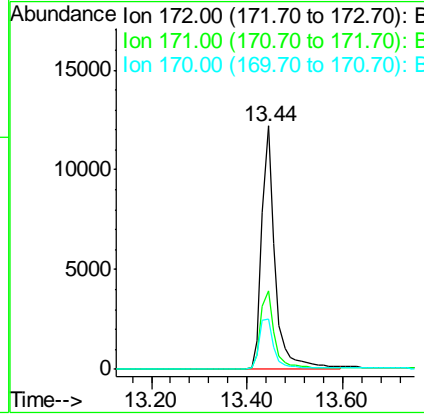
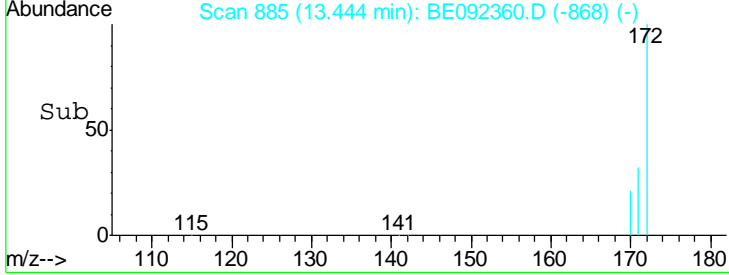
Instrument :
 BNA_E
 ClientSampled :
 OUTFALL001-160906



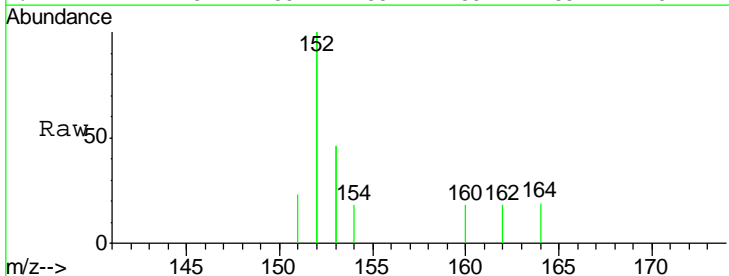
Tgt Ion	Resp	Lower	Upper
172	100		
171	32.3	30.1	45.1
170	20.8	21.8	32.6#

Manual Integrations
 APPROVED

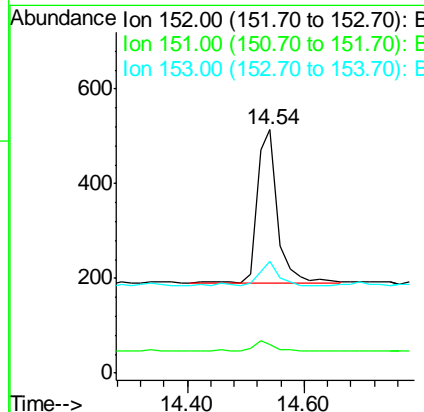
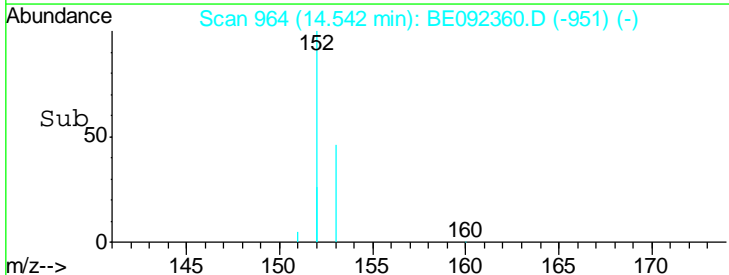
sohil
 9/12/2016 1:42:23 PM

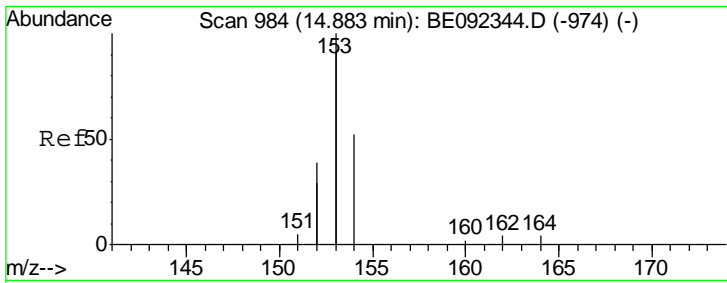


#15
 Acenaphthylene
 Concen: 0.02 ng
 RT: 14.54 min Scan# 964
 Delta R.T. 0.02 min
 Lab File: BE092360.D
 Acq: 9 Sep 2016 18:26



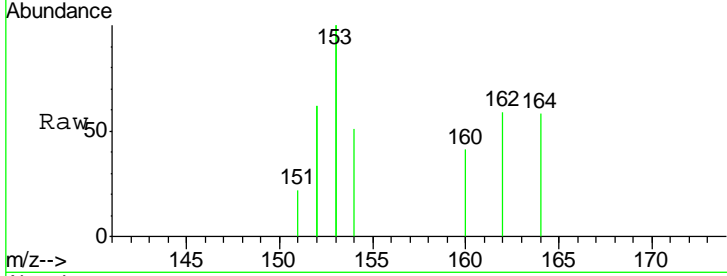
Tgt Ion	Resp	Lower	Upper
152	100		
151	7.0	3.9	5.9#
153	15.4	10.4	15.6





#16
 Acenaphthene
 Concen: 0.02 ng
 RT: 14.88 min Scan# 984
 Delta R.T. -0.00 min
 Lab File: BE092360.D
 Acq: 9 Sep 2016 18:26

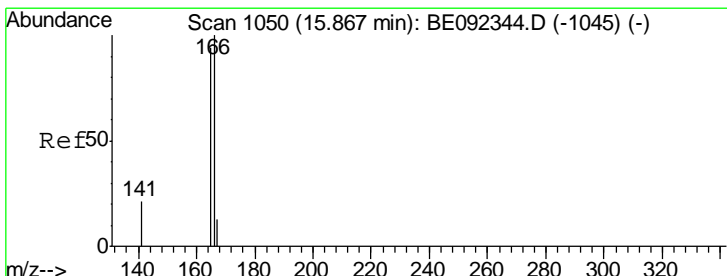
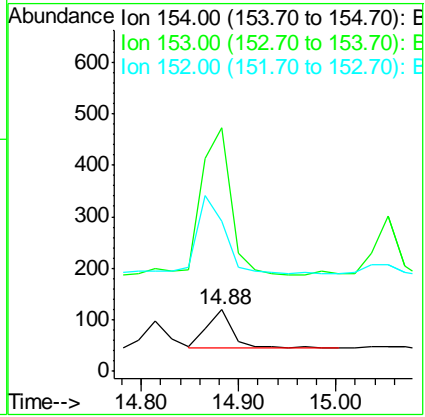
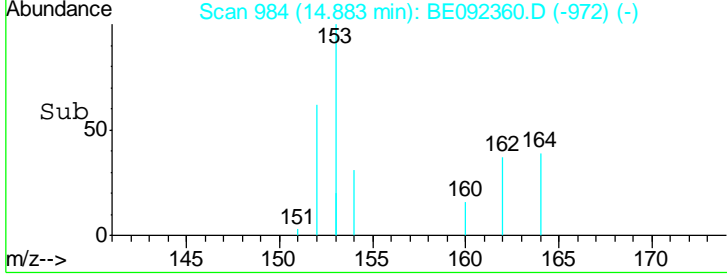
Instrument :
 BNA_E
 ClientSampled :
 OUTFALL001-160906



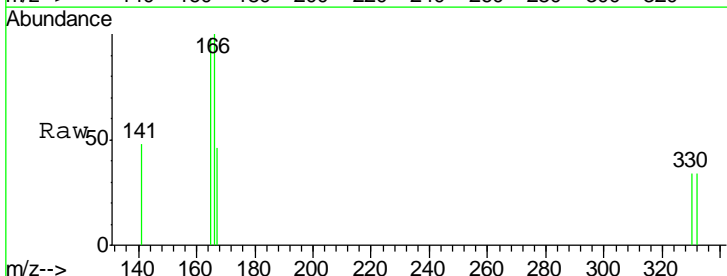
Tgt Ion:154 Resp: 135

Ion	Ratio	Lower	Upper
154	100		
153	466.7	350.8	526.2
152	246.7	171.1	256.7

Manual Integrations
 APPROVED
 sohil
 9/12/2016 1:42:23 PM

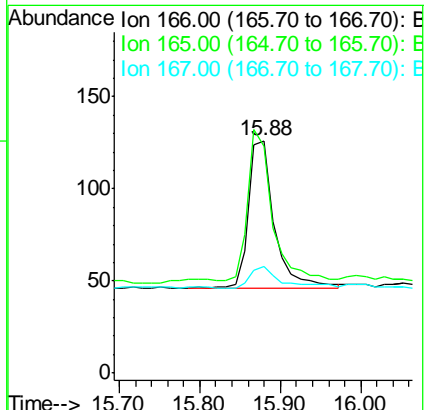
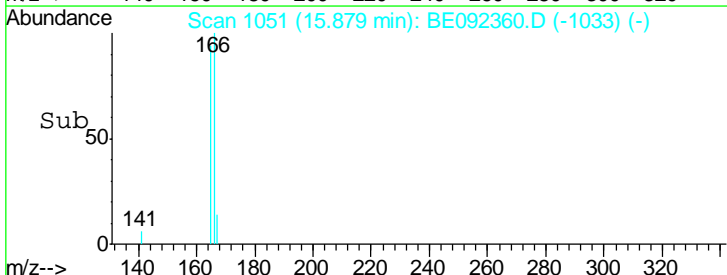


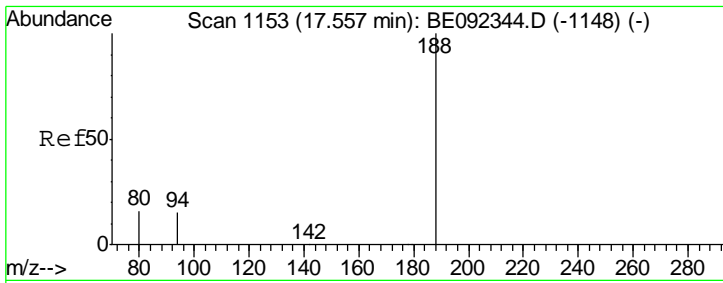
#17
 Fluorene
 Concen: 0.02 ng
 RT: 15.88 min Scan# 1051
 Delta R.T. 0.01 min
 Lab File: BE092360.D
 Acq: 9 Sep 2016 18:26



Tgt Ion:166 Resp: 181

Ion	Ratio	Lower	Upper
166	100		
165	95.0	78.2	117.4
167	18.2	11.0	16.4#



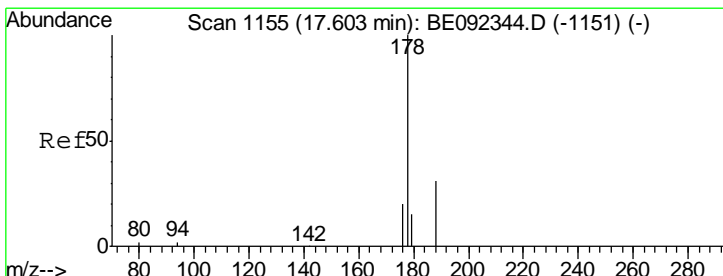
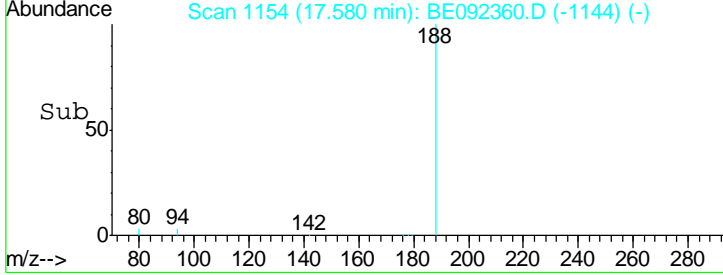
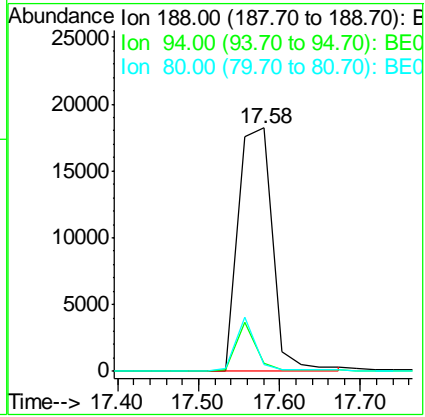
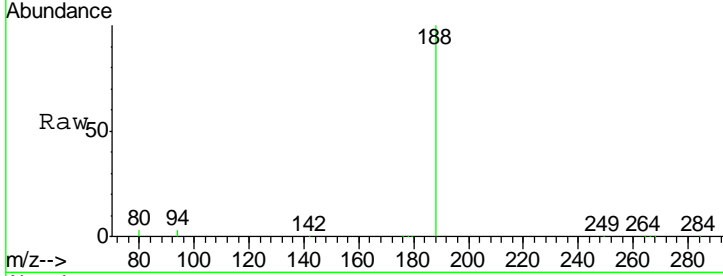


#18
 Phenanthrene-d10
 Concen: 5.00 ng
 RT: 17.58 min Scan# 1154
 Delta R.T. 0.02 min
 Lab File: BE092360.D
 Acq: 9 Sep 2016 18:26

Instrument :
 BNA_E
ClientSampleId :
 OUTFALL001-160906

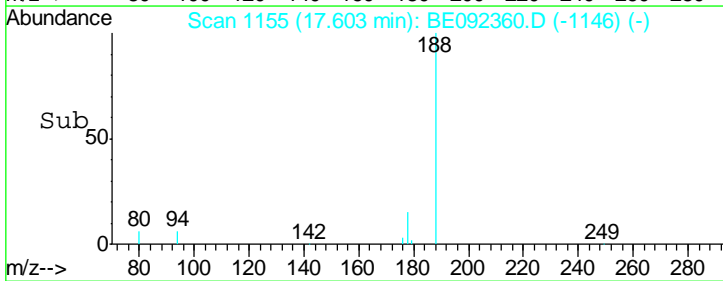
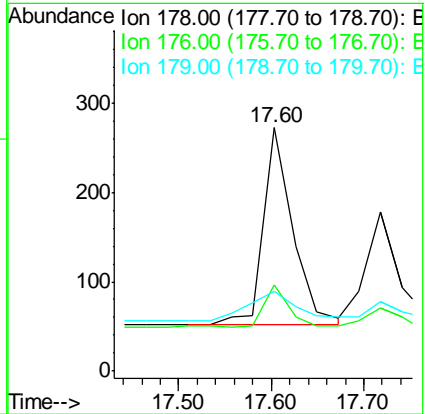
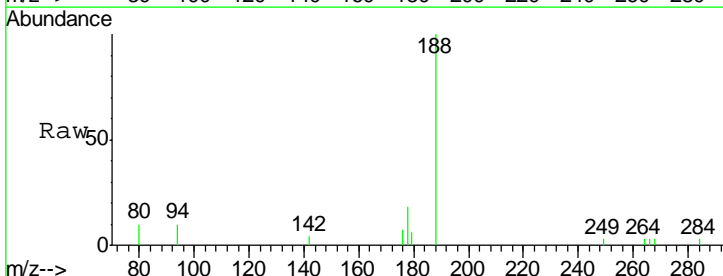
Tgt Ion	Resp	Lower	Upper
188	52727		
188	100		
94	3.3	3.2	4.8
80	2.9	2.6	3.8

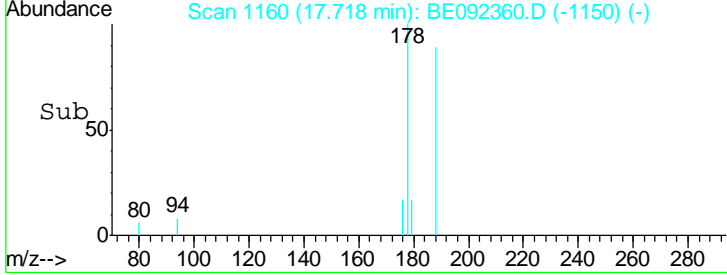
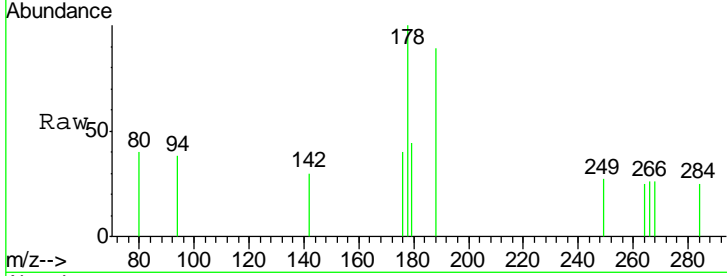
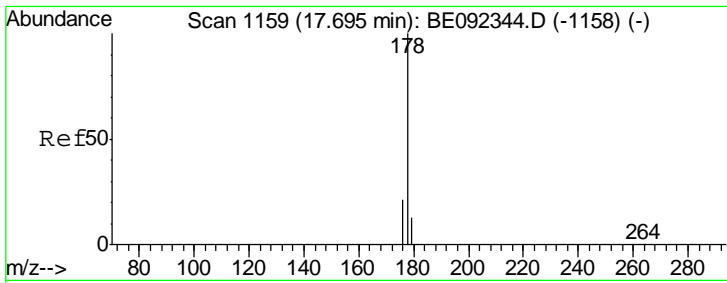
Manual Integrations
APPROVED
 sohil
 9/12/2016 1:42:23 PM



#21
 Phenanthrene
 Concen: 0.03 ng
 RT: 17.60 min Scan# 1155
 Delta R.T. 0.00 min
 Lab File: BE092360.D
 Acq: 9 Sep 2016 18:26

Tgt Ion	Resp	Lower	Upper
178	480		
178	100		
176	19.4	15.8	23.8
179	26.3	16.0	24.0#



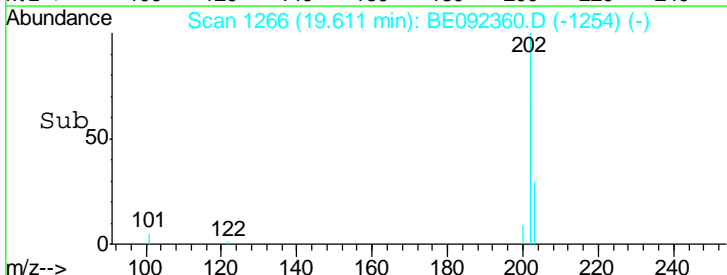
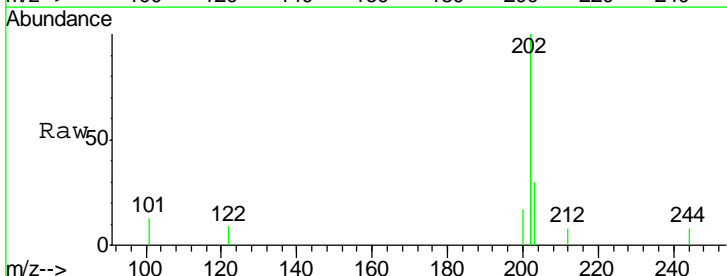
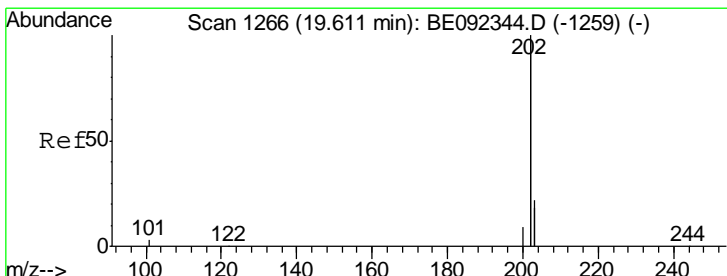
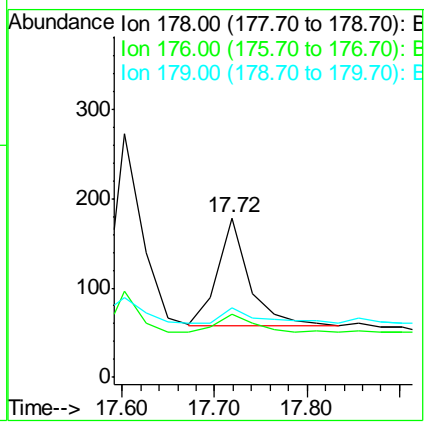


#22
 Anthracene
 Concen: 0.02 ng
 RT: 17.72 min Scan# 1160
 Delta R.T. 0.02 min
 Lab File: BE092360.D
 Acq: 9 Sep 2016 18:26

Tgt Ion	Resp	Lower	Upper
178	100		
176	21.5	15.0	22.4
179	14.9	12.2	18.2

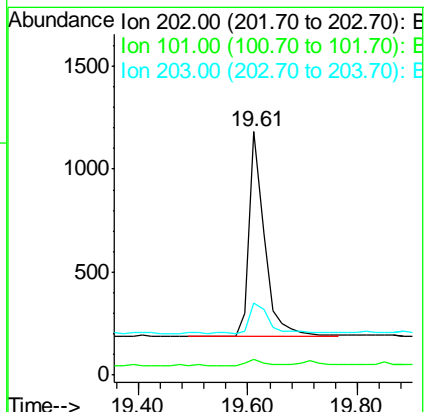
Instrument : BNA_E
 ClientSampled : OUTFALL001-160906

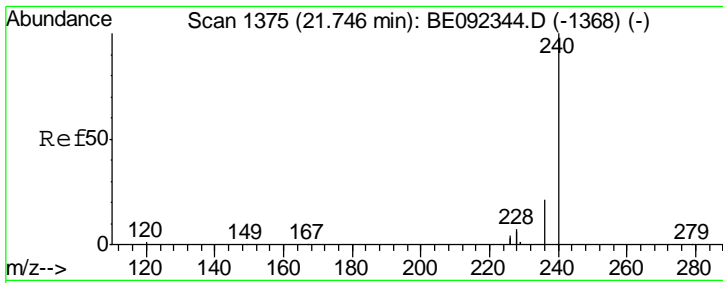
Manual Integrations APPROVED
 sohil
 9/12/2016 1:42:23 PM



#23
 Fluoranthene
 Concen: 0.03 ng
 RT: 19.61 min Scan# 1266
 Delta R.T. 0.00 min
 Lab File: BE092360.D
 Acq: 9 Sep 2016 18:26

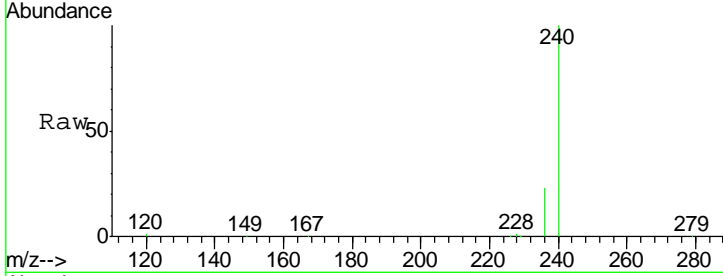
Tgt Ion	Resp	Lower	Upper
202	100		
101	3.1	2.2	3.4
203	18.1	13.7	20.5





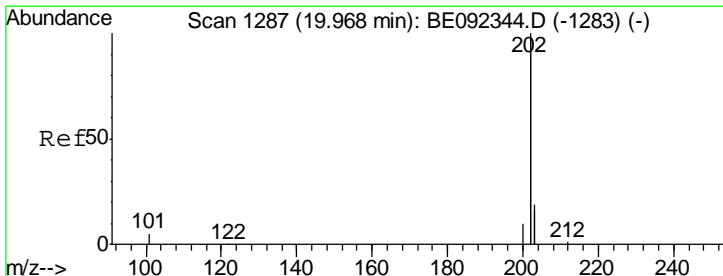
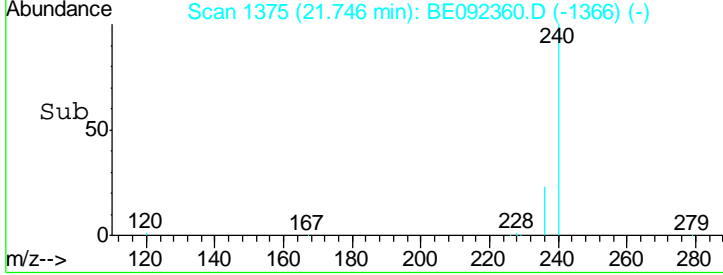
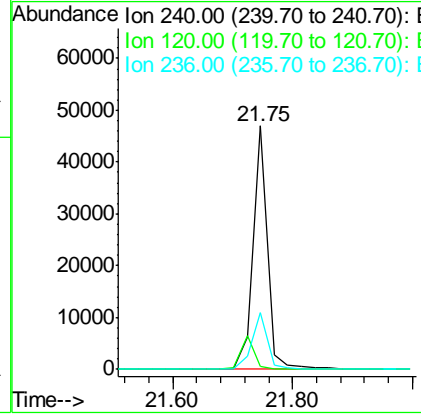
#24
 Chrysene-d12
 Concen: 5.00 ng
 RT: 21.75 min Scan# 1375
 Delta R.T. 0.00 min
 Lab File: BE092360.D
 Acq: 9 Sep 2016 18:26

Instrument :
 BNA_E
ClientSampled :
 OUTFALL001-160906



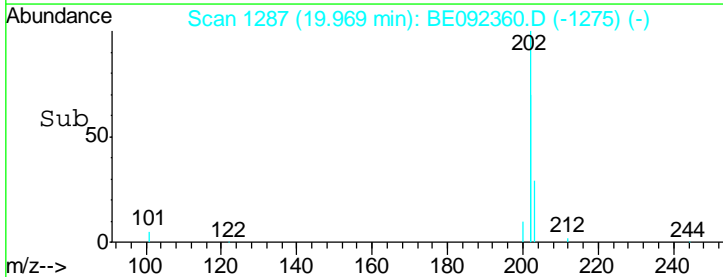
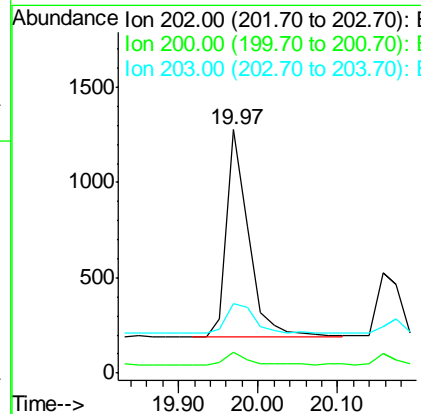
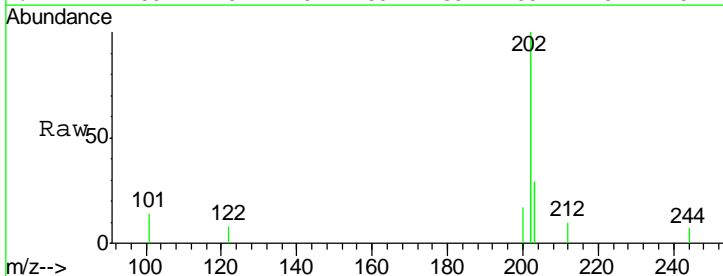
Tgt Ion	Resp	Lower	Upper
240	100		
120	1.2	2.6	4.0#
236	23.5	24.6	37.0#

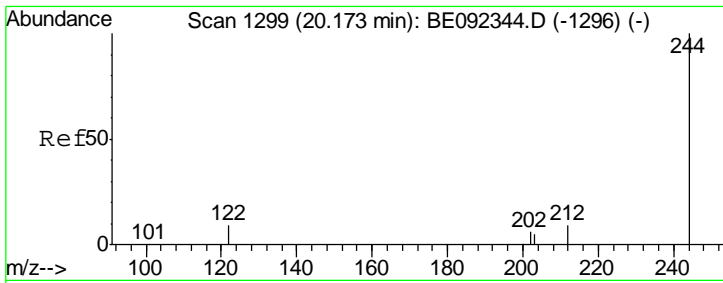
Manual Integrations
APPROVED
 sohil
 9/12/2016 1:42:23 PM



#25
 Pyrene
 Concen: 0.03 ng
 RT: 19.97 min Scan# 1287
 Delta R.T. 0.00 min
 Lab File: BE092360.D
 Acq: 9 Sep 2016 18:26

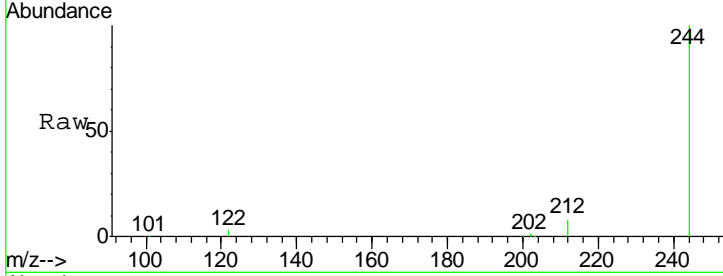
Tgt Ion	Resp	Lower	Upper
202	100		
200	5.6	4.2	6.4
203	19.6	13.9	20.9





#26
 Terphenyl-d14
 Concen: 4.32 ng
 RT: 20.17 min Scan# 1299
 Delta R.T. 0.00 min
 Lab File: BE092360.D
 Acq: 9 Sep 2016 18:26

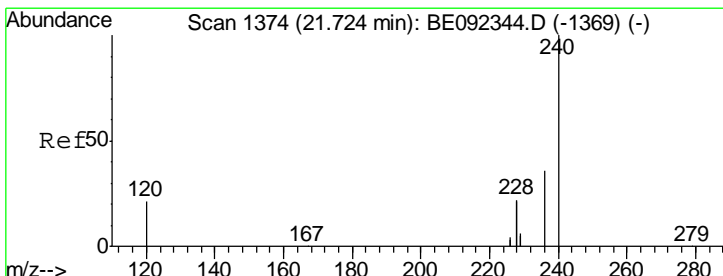
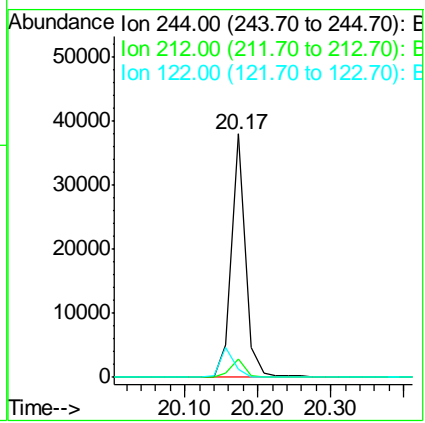
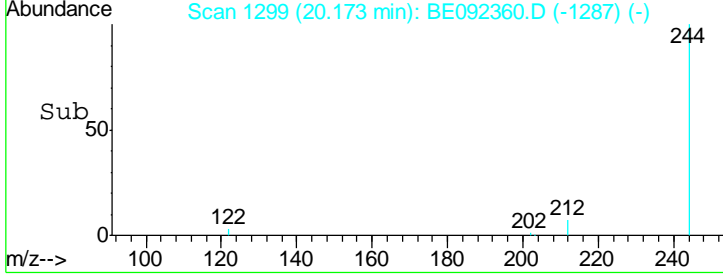
Instrument :
 BNA_E
ClientSampled :
 OUTFALL001-160906



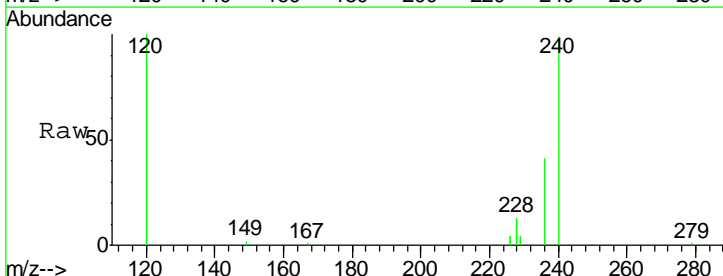
Tgt Ion: 244 Resp: 50286

Ion	Ratio	Lower	Upper
244	100		
212	7.6	6.7	10.1
122	3.4	3.6	5.4#

Manual Integrations
APPROVED
 sohil
 9/12/2016 1:42:23 PM

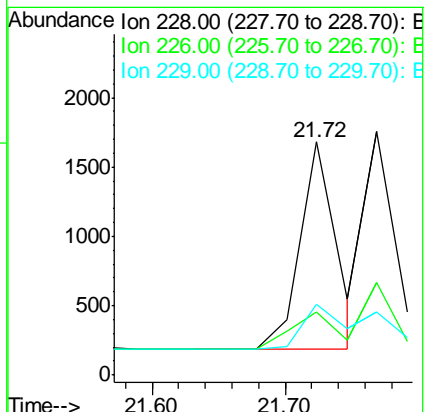
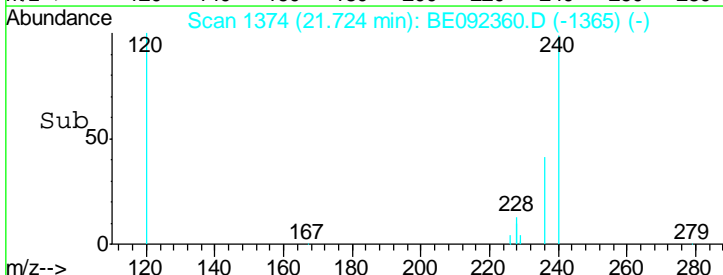


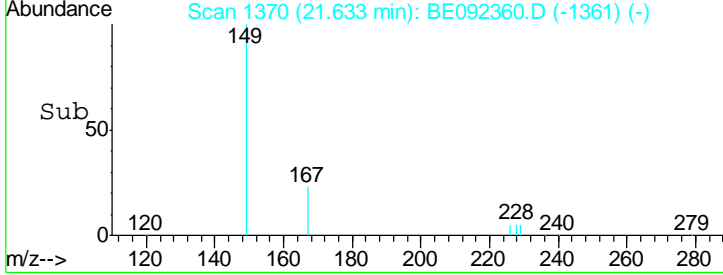
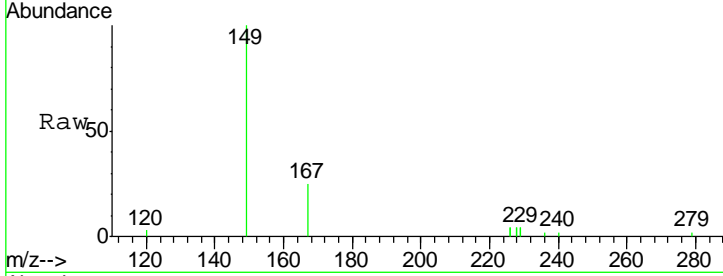
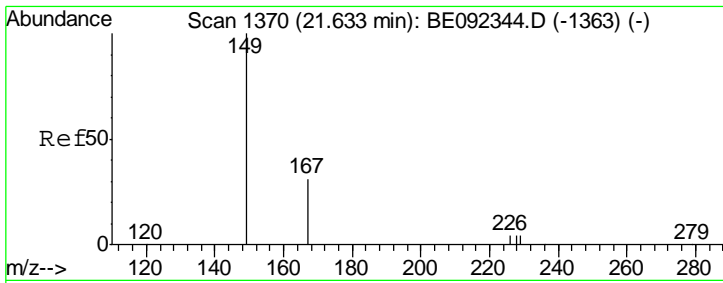
#27
 Benzo(a)anthracene
 Concen: 0.03 ng m
 RT: 21.72 min Scan# 1374
 Delta R.T. 0.00 min
 Lab File: BE092360.D
 Acq: 9 Sep 2016 18:26



Tgt Ion: 228 Resp: 2828

Ion	Ratio	Lower	Upper
228	100		
226	27.0	23.6	35.4
229	30.1	13.3	19.9#



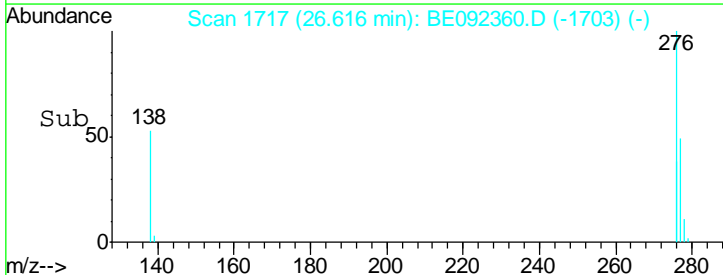
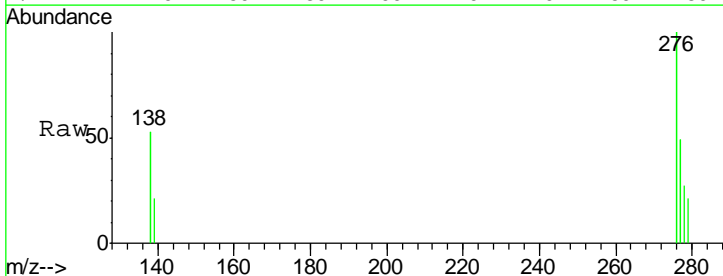
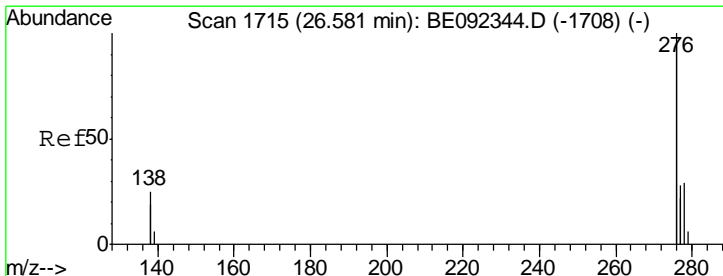
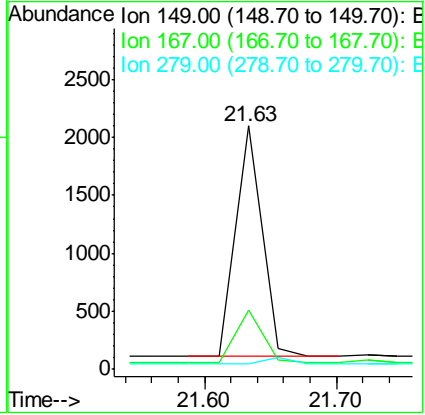


#29
 Bis(2-ethylhexyl)phthalate
 Concen: 0.27 ng
 RT: 21.63 min Scan# 1370
 Delta R.T. 0.00 min
 Lab File: BE092360.D
 Acq: 9 Sep 2016 18:26

Tgt Ion	Resp	Lower	Upper
149	100		
167	23.0	16.0	24.0
279	0.0	16.0	24.0

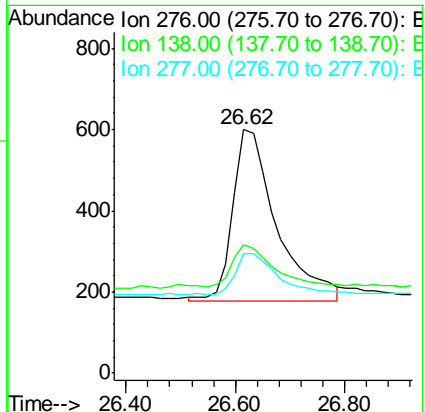
Instrument :
 BNA_E
 ClientSampleId :
 OUTFALL001-160906

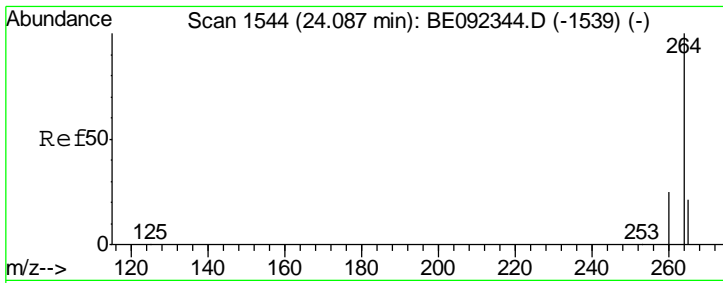
Manual Integrations
 APPROVED
 sohil
 9/12/2016 1:42:23 PM



#30
 Indeno(1,2,3-cd)pyrene
 Concen: 0.03 ng m
 RT: 26.62 min Scan# 1717
 Delta R.T. 0.03 min
 Lab File: BE092360.D
 Acq: 9 Sep 2016 18:26

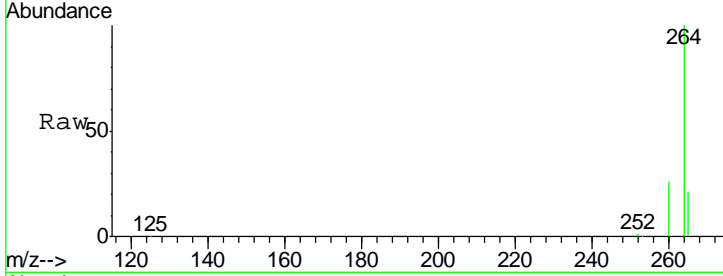
Tgt Ion	Resp	Lower	Upper
276	100		
138	21.8	20.3	30.5
277	21.0	19.7	29.5





#31
 Perylene-d12
 Concen: 5.00 ng
 RT: 24.10 min Scan# 1545
 Delta R.T. 0.01 min
 Lab File: BE092360.D
 Acq: 9 Sep 2016 18:26

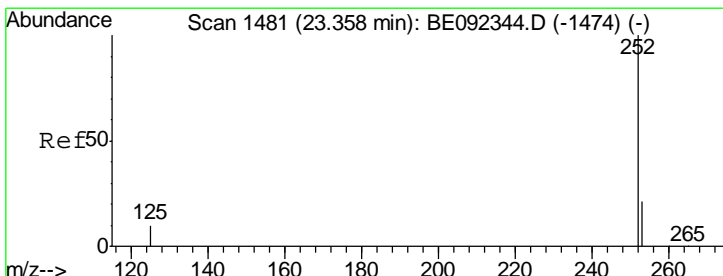
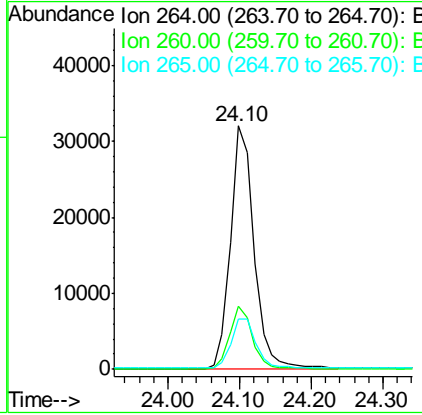
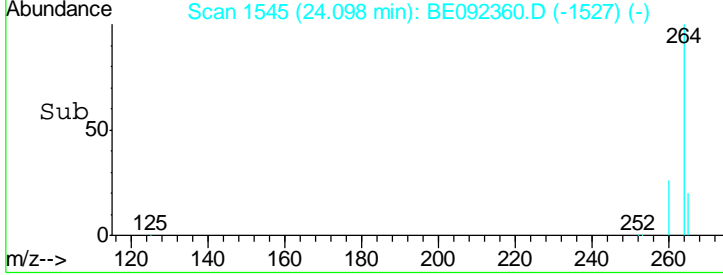
Instrument :
 BNA_E
 ClientSampleId :
 OUTFALL001-160906



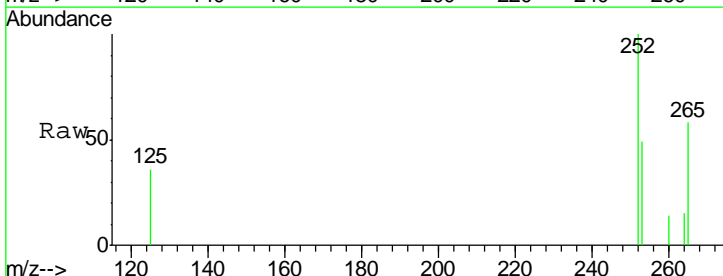
Tgt Ion: 264 Resp: 73651

Ion	Ratio	Lower	Upper
264	100		
260	25.8	20.1	30.1
265	20.9	17.9	26.9

Manual Integrations
 APPROVED
 sohil
 9/12/2016 1:42:23 PM

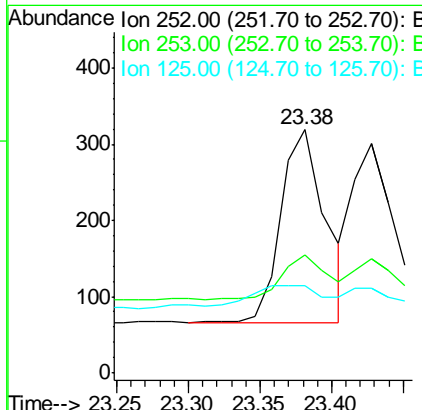
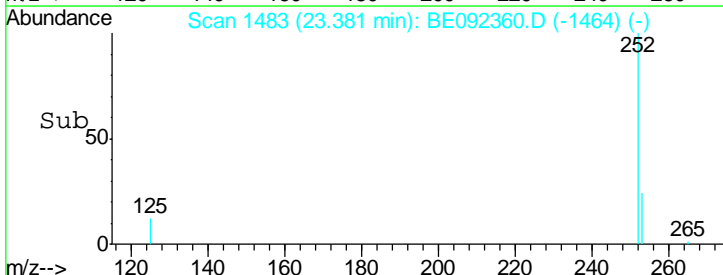


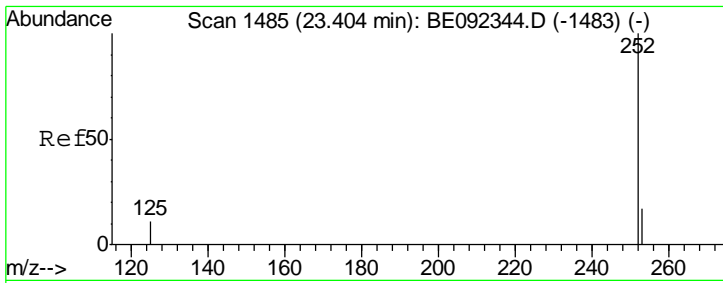
#32
 Benzo(b)fluoranthene
 Concen: 0.03 ng
 RT: 23.38 min Scan# 1483
 Delta R.T. 0.02 min
 Lab File: BE092360.D
 Acq: 9 Sep 2016 18:26



Tgt Ion: 252 Resp: 545

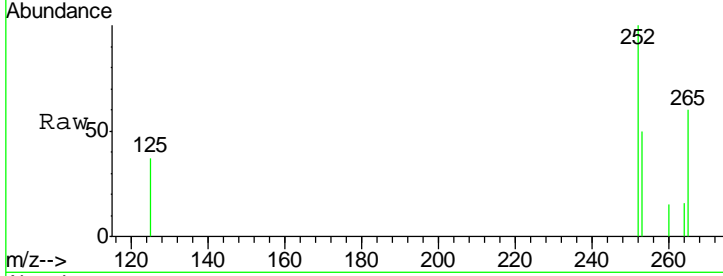
Ion	Ratio	Lower	Upper
252	100		
253	48.6	18.7	28.1#
125	36.1	10.5	15.7#





#33
 Benzo(k)fluoranthene
 Concen: 0.03 ng
 RT: 23.43 min Scan# 1487
 Delta R.T. 0.02 min
 Lab File: BE092360.D
 Acq: 9 Sep 2016 18:26

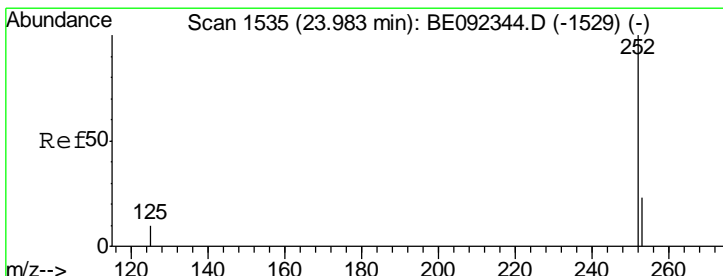
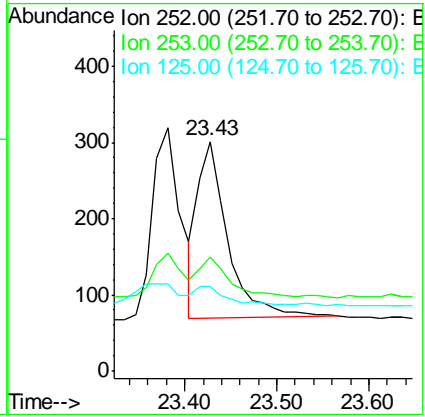
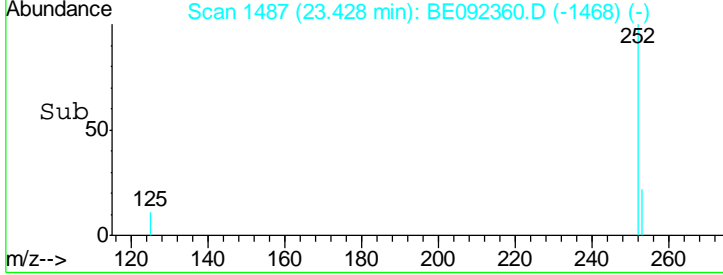
Instrument :
 BNA_E
ClientSampled :
 OUTFALL001-160906



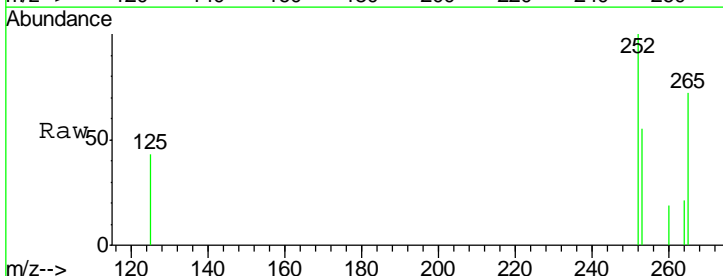
Tgt Ion: 252 Resp: 523

Ion	Ratio	Lower	Upper
252	100		
253	49.5	20.3	30.5#
125	36.9	9.6	14.4#

Manual Integrations
APPROVED
 sohil
 9/12/2016 1:42:23 PM

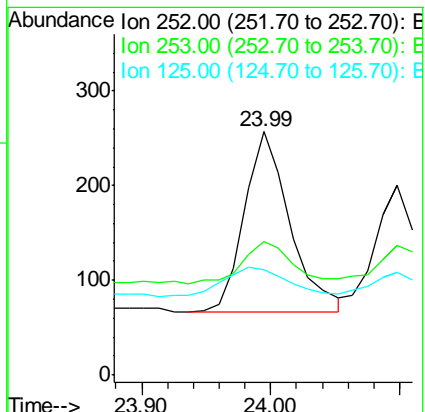
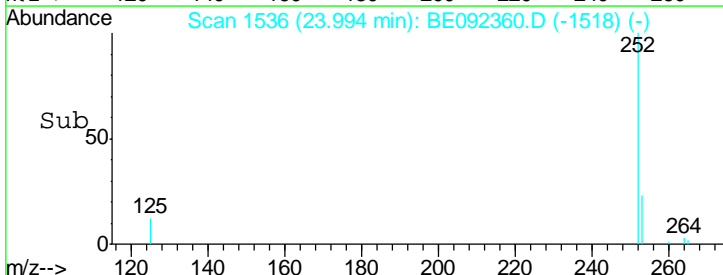


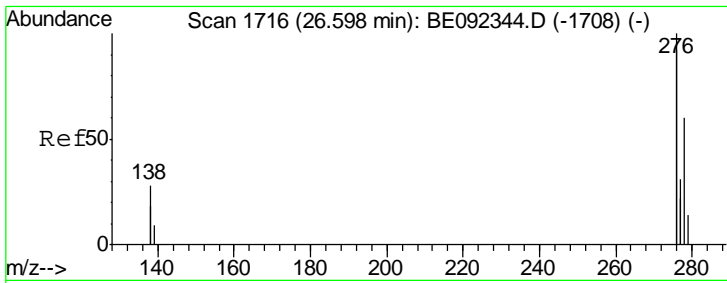
#34
 Benzo(a)pyrene
 Concen: 0.03 ng
 RT: 23.99 min Scan# 1536
 Delta R.T. 0.01 min
 Lab File: BE092360.D
 Acq: 9 Sep 2016 18:26



Tgt Ion: 252 Resp: 467

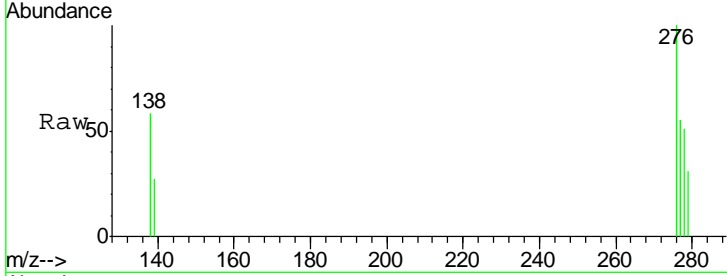
Ion	Ratio	Lower	Upper
252	100		
253	54.9	19.0	28.6#
125	43.2	11.8	17.8#





#35
 Dibenzo(a,h)anthracene
 Concen: 0.03 ng m
 RT: 26.65 min Scan# 1719
 Delta R.T. 0.05 min
 Lab File: BE092360.D
 Acq: 9 Sep 2016 18:26

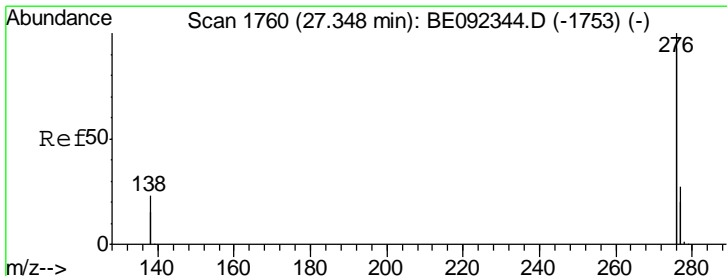
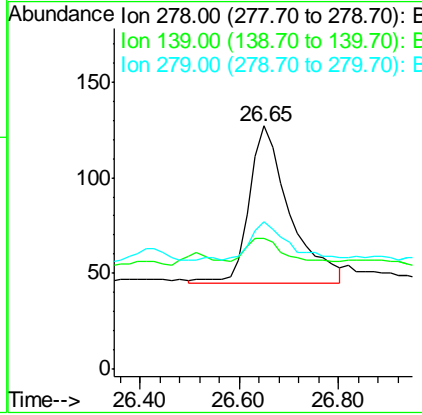
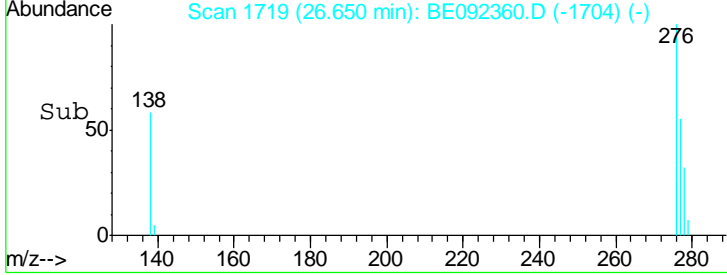
Instrument :
 BNA_E
ClientSampled :
 OUTFALL001-160906



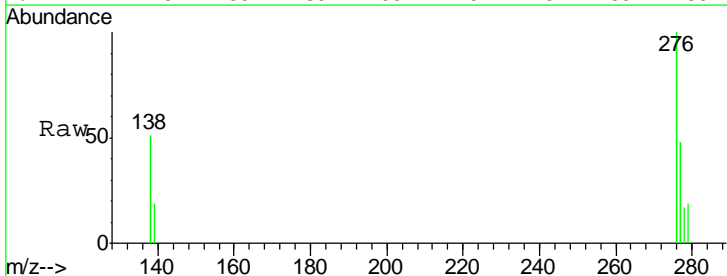
Tgt Ion: 278 Resp: 466
 Ion Ratio Lower Upper
 278 100
 139 53.5 13.8 20.8#
 279 60.6 21.4 32.2#

Manual Integrations
APPROVED

sohil
 9/12/2016 1:42:23 PM



#36
 Benzo(g,h,i)perylene
 Concen: 0.03 ng
 RT: 27.38 min Scan# 1762
 Delta R.T. 0.03 min
 Lab File: BE092360.D
 Acq: 9 Sep 2016 18:26



Tgt Ion: 276 Resp: 2020
 Ion Ratio Lower Upper
 276 100
 277 47.5 19.8 29.8#
 138 50.8 19.8 29.6#

