

Data Path : Z:\HPCHEM1\BNA_E\DATA\BE091115\
 Data File : BE090792.D
 Acq On : 11 Sep 2015 19:44
 Operator : UM/IZ
 Sample : G3639-02
 Misc :
 ALS Vial : 11 Sample Multiplier: 1

Instrument :
 BNA_E
 ClientSampleId :
 SC-2

Quant Time: Sep 12 00:26:24 2015
 Quant Method : Z:\HPCHEM1\BNA_E\METHODS\8270-SIM-BE090115.M
 Quant Title : ASP BNA STANDARDS FOR 5 POINT CALIBRATION
 QLast Update : Wed Sep 02 11:40:50 2015
 Response via : Initial Calibration

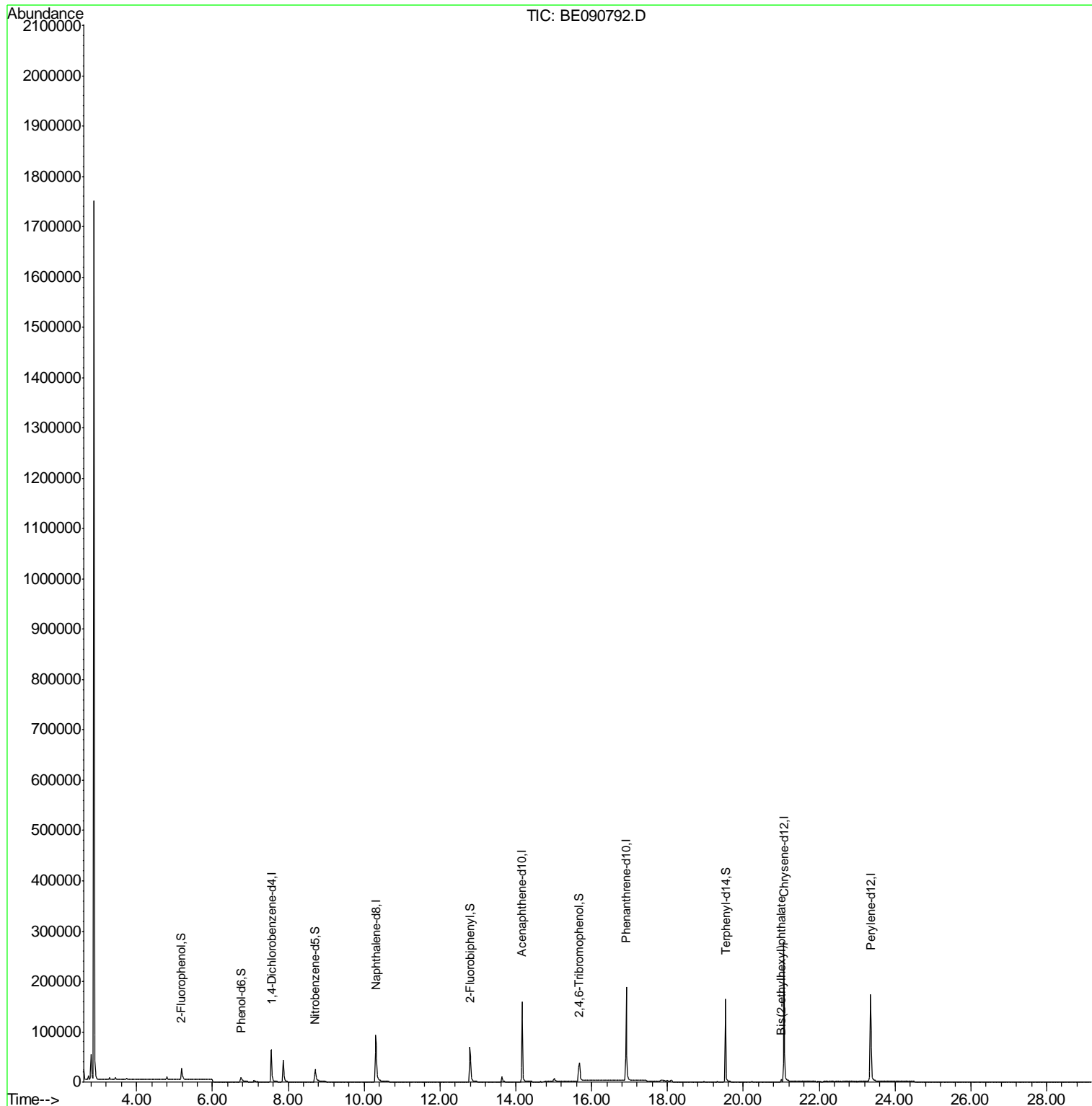
Internal Standards	R.T.	QIon	Response	Conc	Units	Dev(Min)
1) 1,4-Dichlorobenzene-d4	7.55	152	39088	5.00	ng	0.00
6) Naphthalene-d8	10.31	136	178073	5.00	ng	0.00
12) Acenaphthene-d10	14.17	164	97125	5.00	ng	0.00
18) Phenanthrene-d10	16.91	188	245409	5.00	ng	0.00
25) Chrysene-d12	21.07	240	291008	5.00	ng	0.00
32) Perylene-d12	23.36	264	259093	5.00	ng	0.00
System Monitoring Compounds						
4) 2-Fluorophenol	5.18	112	25365	3.34	ng	0.00
5) Phenol-d6	6.75	99	20076	1.84	ng	0.00
7) Nitrobenzene-d5	8.71	82	43147	3.67	ng	0.00
13) 2,4,6-Tribromophenol	15.67	330	21615	7.59	ng	0.00
14) 2-Fluorobiphenyl	12.79	172	101493	3.77	ng	0.00
27) Terphenyl-d14	19.53	244	180242	5.60	ng	-0.01
Target Compounds						Qvalue
30) Bis(2-ethylhexyl)phthalate	21.00	149	3876	0.29	ng	99

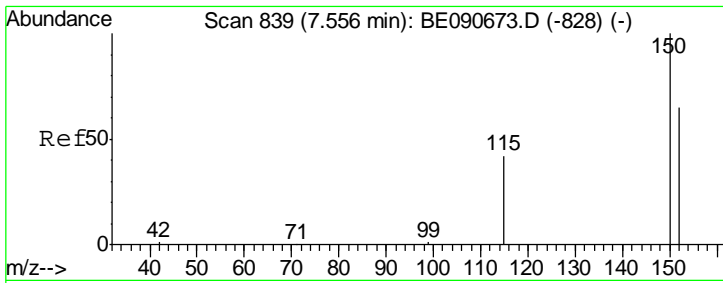
(#) = qualifier out of range (m) = manual integration (+) = signals summed

Data Path : Z:\HPCHEM1\BNA_E\DATA\BE091115\
Data File : BE090792.D
Acq On : 11 Sep 2015 19:44
Operator : UM/IZ
Sample : G3639-02
Misc :
ALS Vial : 11 Sample Multiplier: 1

Instrument :
BNA_E
ClientSampleId :
SC-2

Quant Time: Sep 12 00:26:24 2015
Quant Method : Z:\HPCHEM1\BNA_E\METHODS\8270-SIM-BE090115.M
Quant Title : ASP BNA STANDARDS FOR 5 POINT CALIBRATION
QLast Update : Wed Sep 02 11:40:50 2015
Response via : Initial Calibration

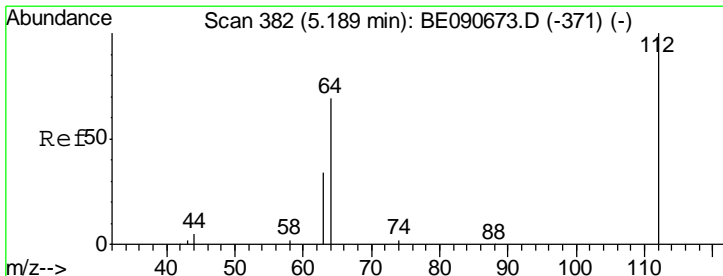
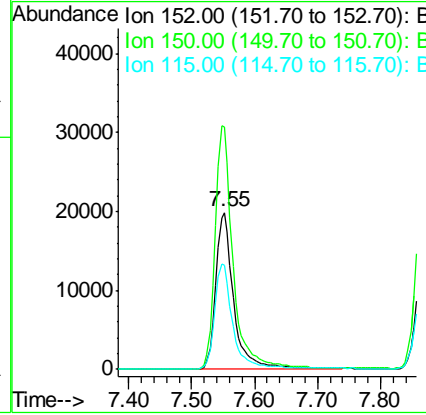
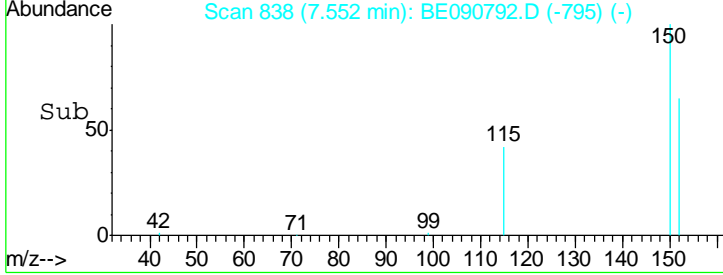
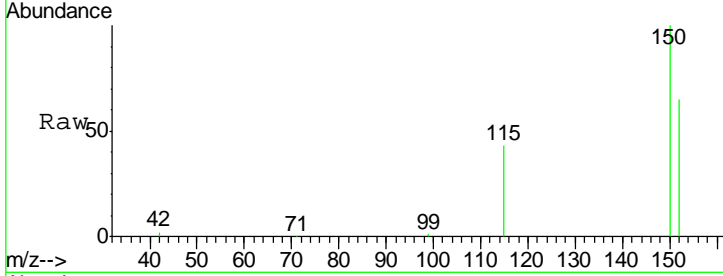




#1
 1,4-Dichlorobenzene-d4
 Concen: 5.00 ng
 RT: 7.55 min Scan# 838
 Delta R.T. -0.00 min
 Lab File: BE090792.D
 Acq: 11 Sep 2015 19:44

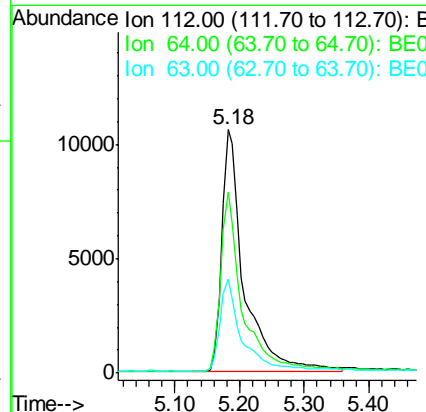
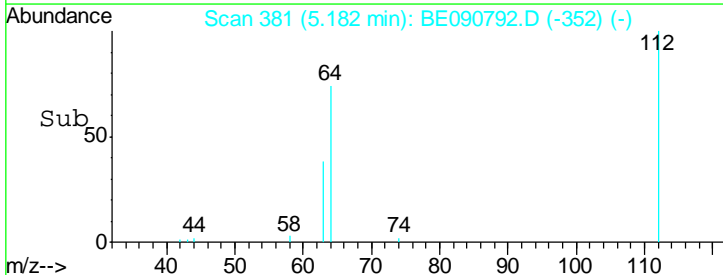
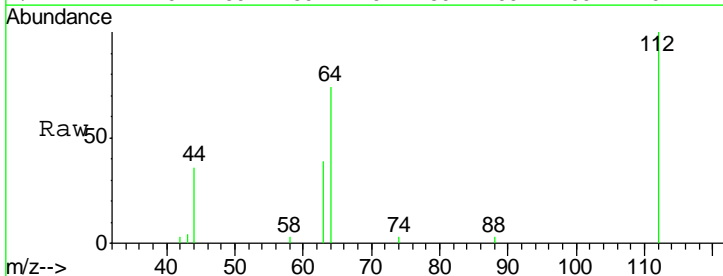
Instrument :
 BNA_E
 ClientSampled :
 SC-2

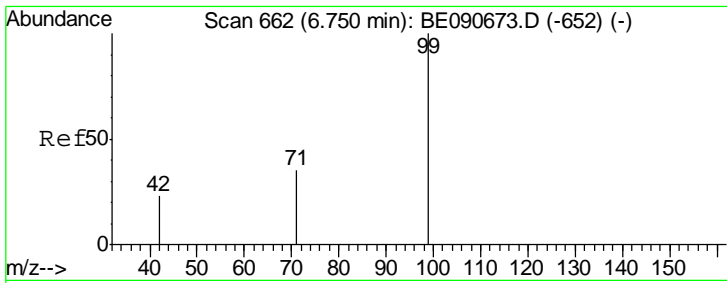
Tgt Ion	Resp	Lower	Upper
152	39088		
150	154.7	122.2	183.4
115	65.9	51.0	76.4



#4
 2-Fluorophenol
 Concen: 3.34 ng
 RT: 5.18 min Scan# 381
 Delta R.T. -0.01 min
 Lab File: BE090792.D
 Acq: 11 Sep 2015 19:44

Tgt Ion	Resp	Lower	Upper
112	25365		
64	72.2	57.3	85.9
63	37.2	29.2	43.8

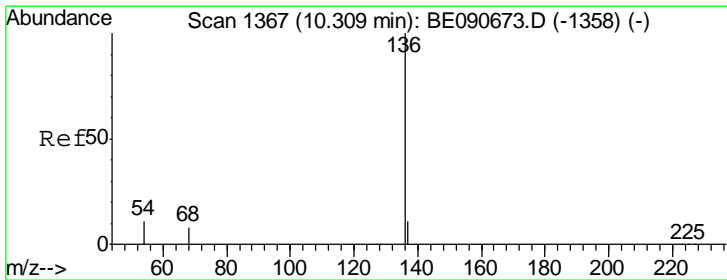
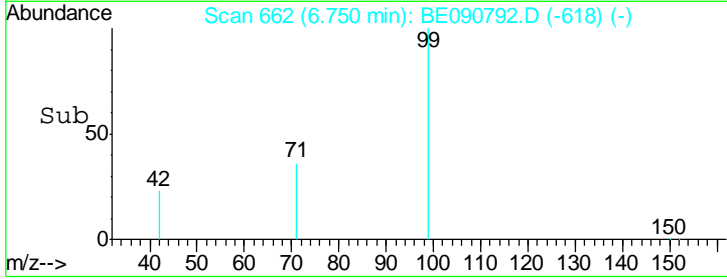
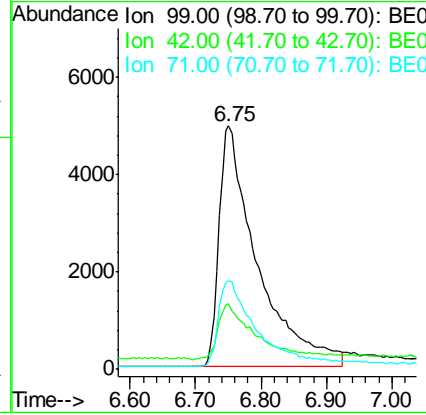
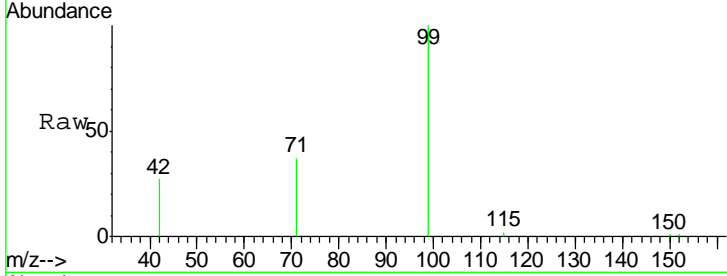




#5
 Phenol-d6
 Concen: 1.84 ng
 RT: 6.75 min Scan# 662
 Delta R.T. 0.00 min
 Lab File: BE090792.D
 Acq: 11 Sep 2015 19:44

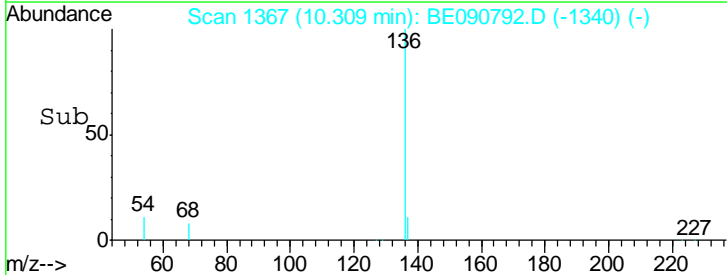
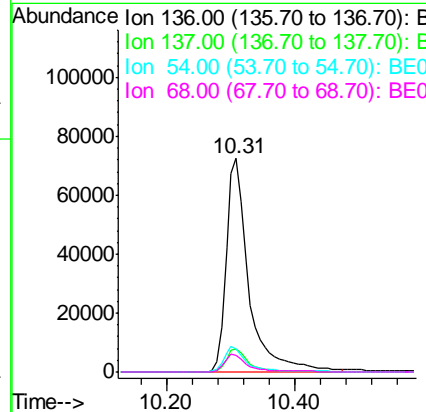
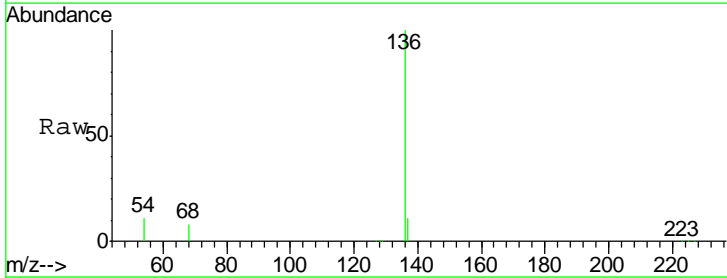
Instrument :
 BNA_E
 ClientSampled :
 SC-2

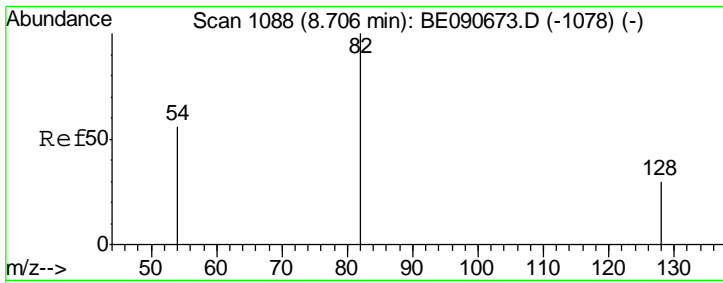
Tgt Ion	Resp	Lower	Upper
99	20076		
42	22.1	16.8	25.2
71	34.9	28.3	42.5



#6
 Naphthalene-d8
 Concen: 5.00 ng
 RT: 10.31 min Scan# 1367
 Delta R.T. 0.00 min
 Lab File: BE090792.D
 Acq: 11 Sep 2015 19:44

Tgt Ion	Resp	Lower	Upper
136	178073		
137	11.1	8.7	13.1
54	11.0	9.0	13.6
68	7.9	6.3	9.5

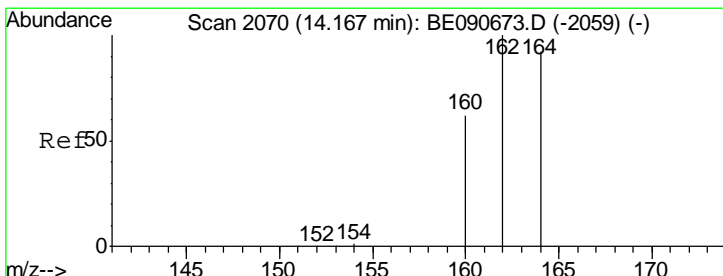
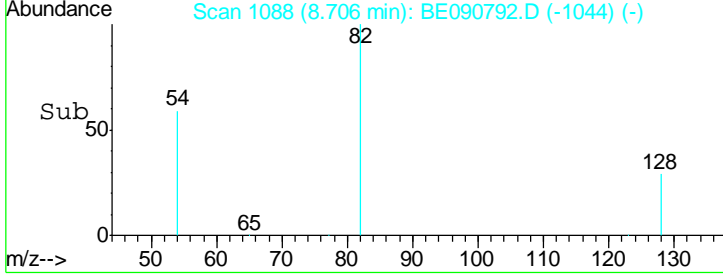
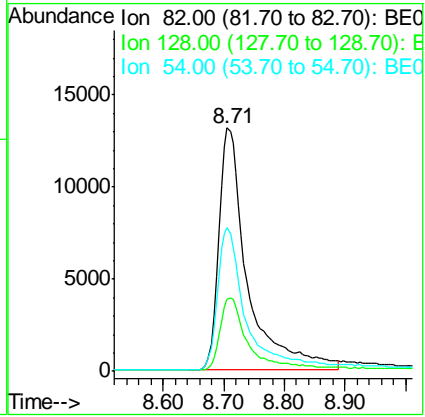
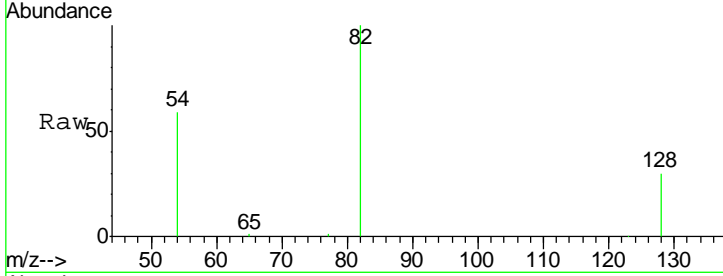




#7
 Nitrobenzene-d5
 Concen: 3.67 ng
 RT: 8.71 min Scan# 1088
 Delta R.T. -0.00 min
 Lab File: BE090792.D
 Acq: 11 Sep 2015 19:44

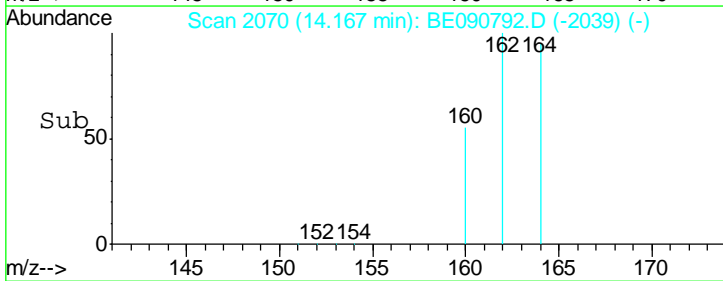
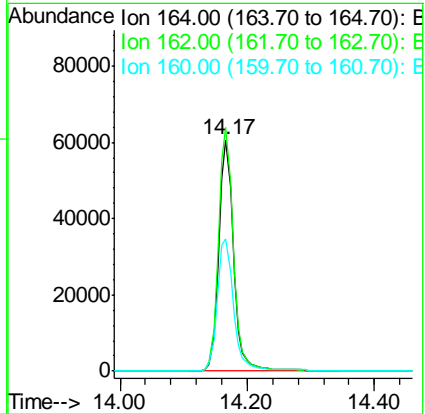
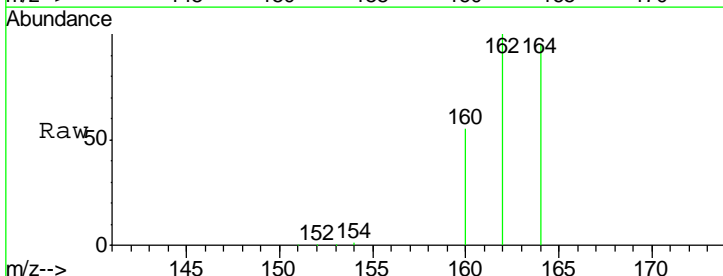
Instrument :
 BNA_E
ClientSampled :
 SC-2

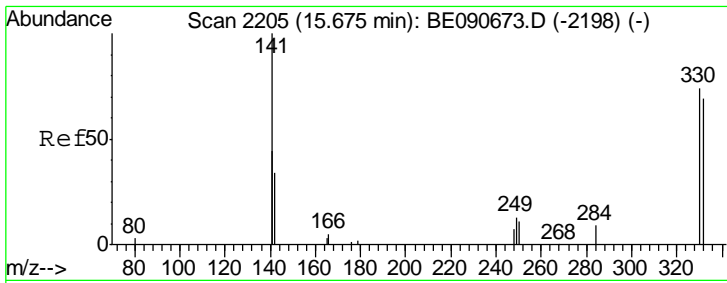
Tgt Ion	Resp	Lower	Upper
82	43147		
128	29.7	25.0	37.4
54	58.8	46.3	69.5



#12
 Acenaphthene-d10
 Concen: 5.00 ng
 RT: 14.17 min Scan# 2070
 Delta R.T. 0.00 min
 Lab File: BE090792.D
 Acq: 11 Sep 2015 19:44

Tgt Ion	Resp	Lower	Upper
164	97125		
162	105.3	86.8	130.2
160	57.5	53.9	80.9

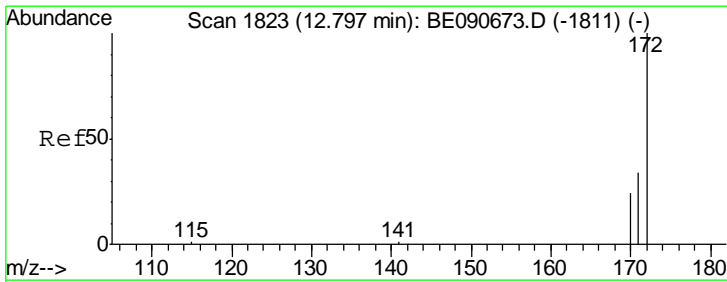
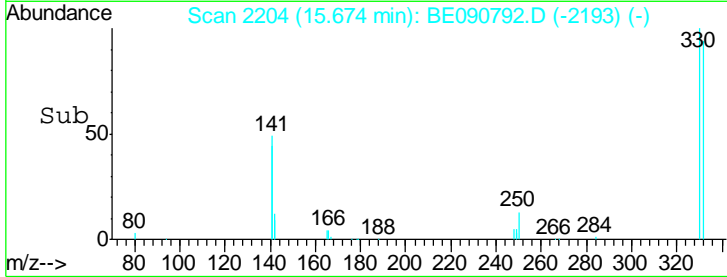
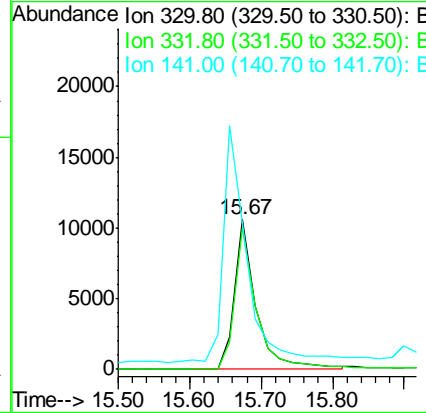
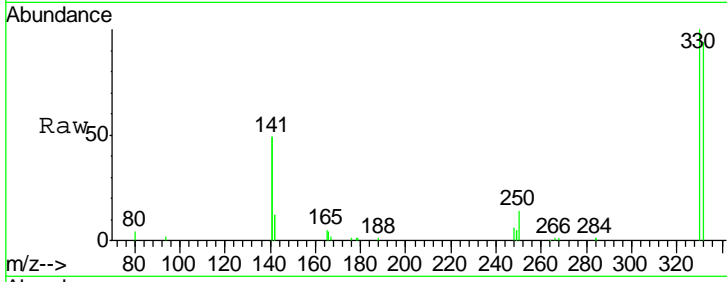




#13
 2,4,6-Tribromophenol
 Concen: 7.59 ng
 RT: 15.67 min Scan# 2204
 Delta R.T. -0.00 min
 Lab File: BE090792.D
 Acq: 11 Sep 2015 19:44

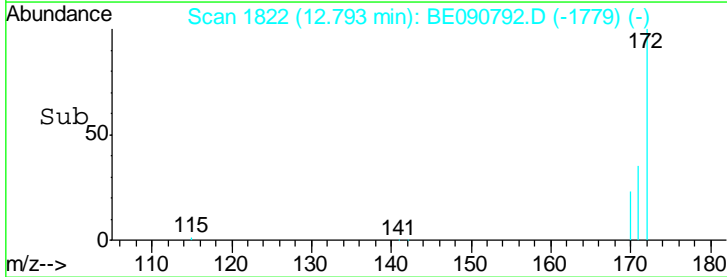
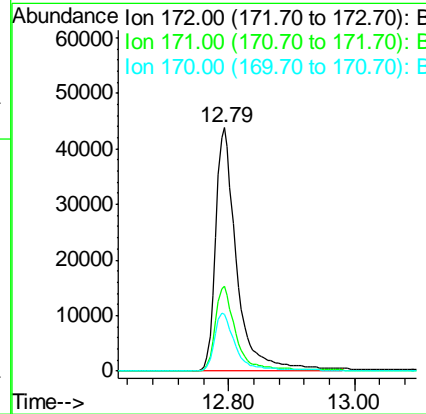
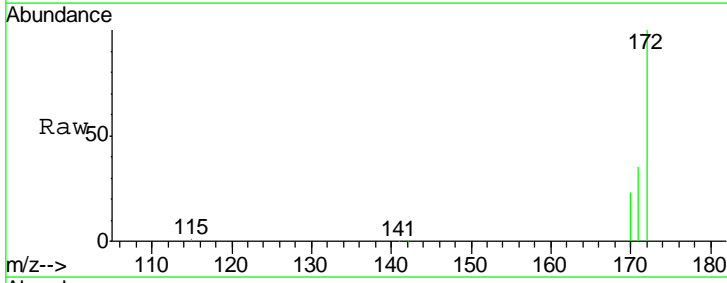
Instrument :
 BNA_E
 ClientSampled :
 SC-2

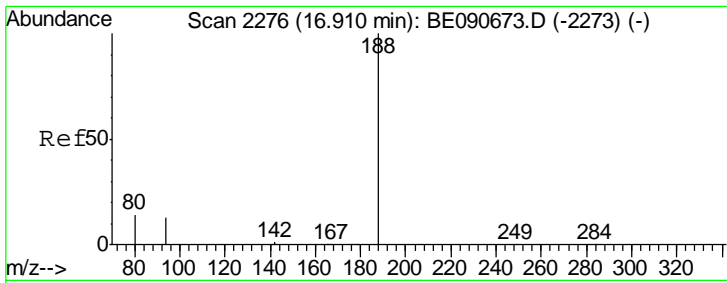
Tgt Ion: 330 Resp: 21615
 Ion Ratio Lower Upper
 330 100
 332 95.0 74.9 112.3
 141 178.0 145.2 217.8



#14
 2-Fluorobiphenyl
 Concen: 3.77 ng
 RT: 12.79 min Scan# 1822
 Delta R.T. -0.00 min
 Lab File: BE090792.D
 Acq: 11 Sep 2015 19:44

Tgt Ion: 172 Resp: 101493
 Ion Ratio Lower Upper
 172 100
 171 35.0 27.8 41.8
 170 23.5 19.8 29.6

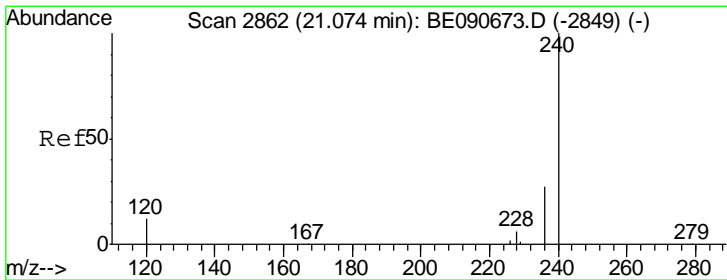
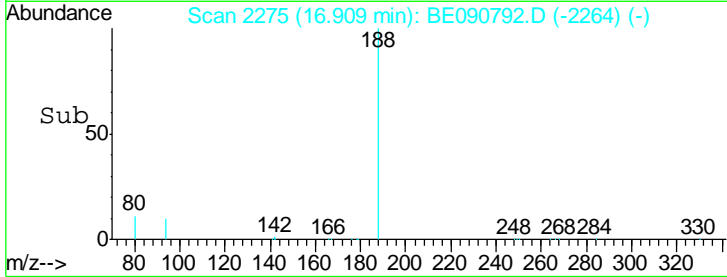
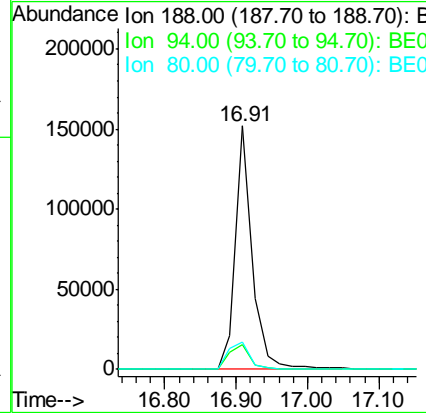
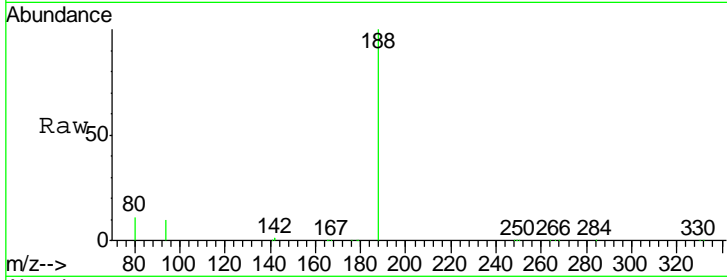




#18
 Phenanthrene-d10
 Concen: 5.00 ng
 RT: 16.91 min Scan# 2275
 Delta R.T. -0.00 min
 Lab File: BE090792.D
 Acq: 11 Sep 2015 19:44

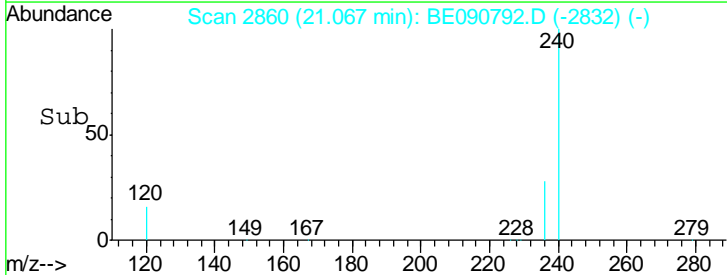
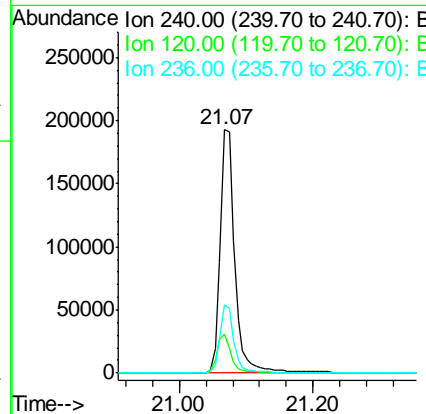
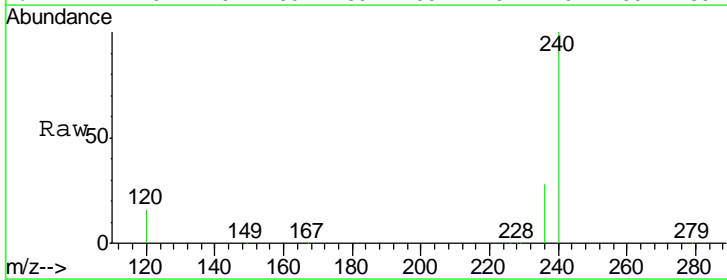
Instrument :
 BNA_E
 ClientSampled :
 SC-2

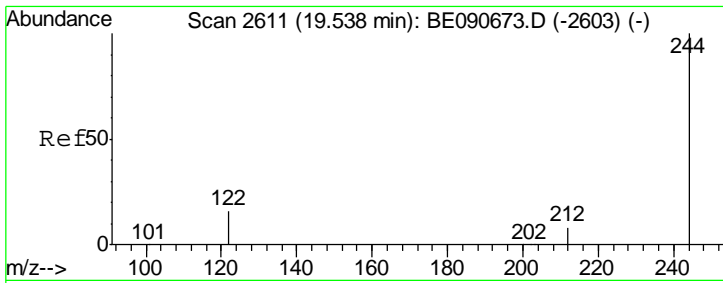
Tgt Ion	Resp	Lower	Upper
188	100		
94	10.2	10.3	15.5#
80	11.2	11.0	16.6



#25
 Chrysene-d12
 Concen: 5.00 ng
 RT: 21.07 min Scan# 2860
 Delta R.T. -0.01 min
 Lab File: BE090792.D
 Acq: 11 Sep 2015 19:44

Tgt Ion	Resp	Lower	Upper
240	100		
120	16.0	10.1	15.1#
236	28.0	21.9	32.9

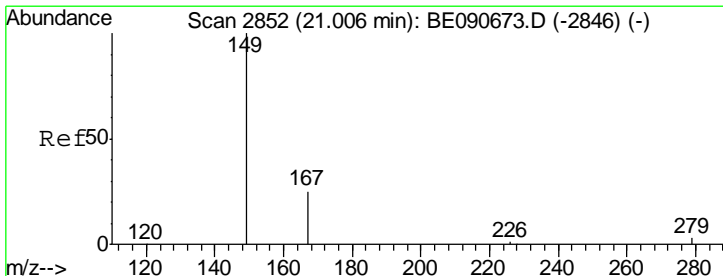
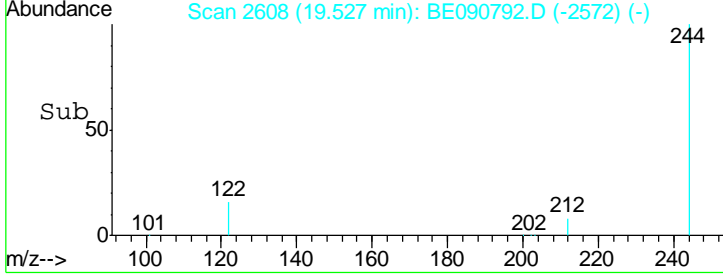
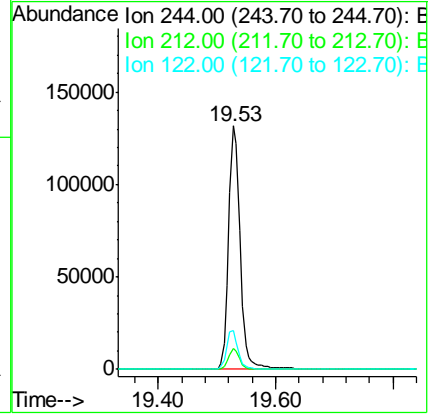
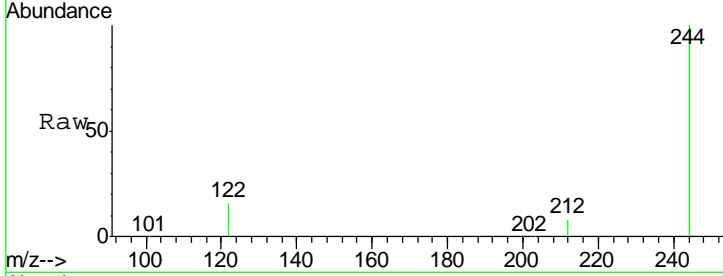




#27
 Terphenyl-d14
 Concen: 5.60 ng
 RT: 19.53 min Scan# 2608
 Delta R.T. -0.01 min
 Lab File: BE090792.D
 Acq: 11 Sep 2015 19:44

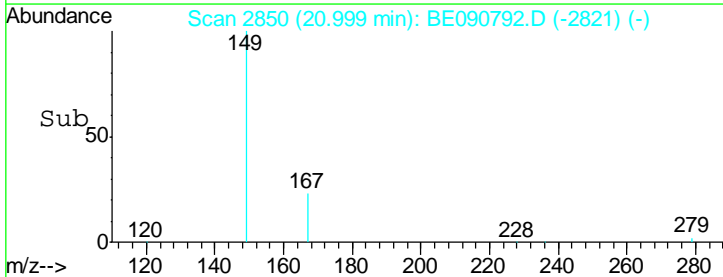
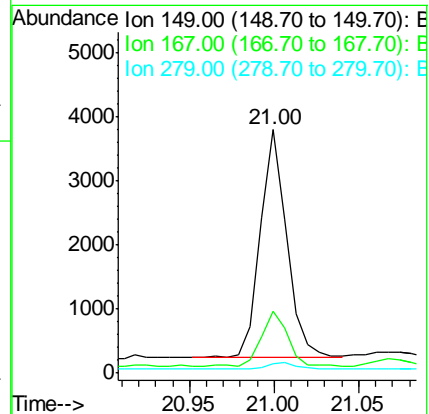
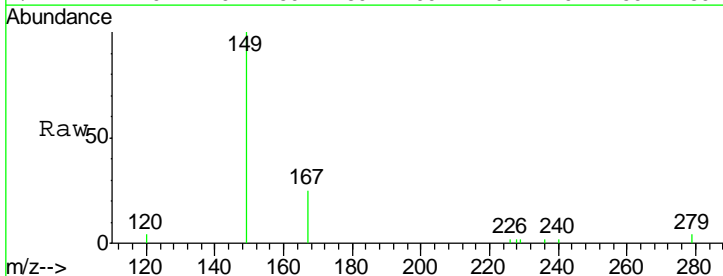
Instrument :
 BNA_E
 ClientSampled :
 SC-2

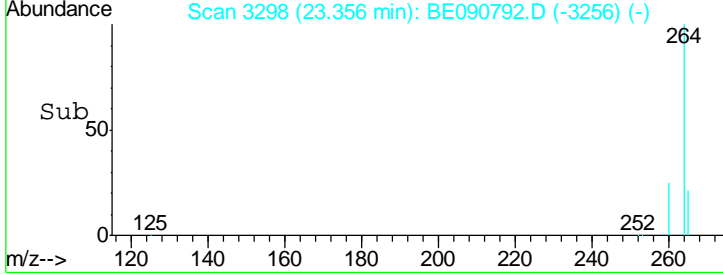
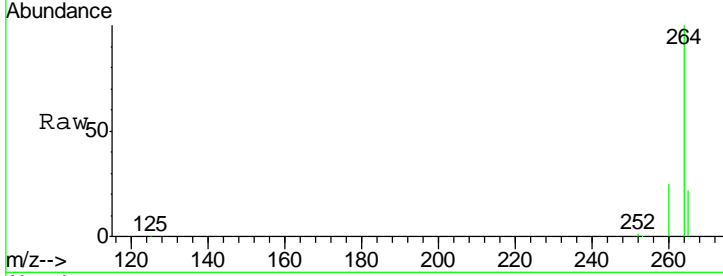
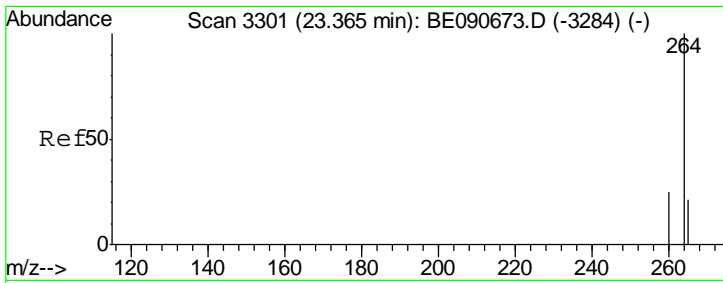
Tgt Ion	Resp	Lower	Upper
244	180242		
212	8.4	6.9	10.3
122	16.2	12.9	19.3



#30
 Bis(2-ethylhexyl)phthalate
 Concen: 0.29 ng
 RT: 21.00 min Scan# 2850
 Delta R.T. -0.01 min
 Lab File: BE090792.D
 Acq: 11 Sep 2015 19:44

Tgt Ion	Resp	Lower	Upper
149	3876		
167	24.5	20.1	30.1
279	3.0	2.3	3.5





#32
 Perylene-d12
 Concen: 5.00 ng
 RT: 23.36 min Scan# 3298
 Delta R.T. -0.01 min
 Lab File: BE090792.D
 Acq: 11 Sep 2015 19:44

Instrument :
 BNA_E
 ClientSampled :
 SC-2

Tgt Ion: 264 Resp: 259093

Ion	Ratio	Lower	Upper
264	100		
260	24.9	19.7	29.5
265	21.6	17.5	26.3

