

Data Path : Z:\HPCHEM1\BNA\_E\DATA\BE091515\  
 Data File : BE090832.D  
 Acq On : 15 Sep 2015 14:36  
 Operator : UM/IZ  
 Sample : G3658-04  
 Misc :  
 ALS Vial : 6 Sample Multiplier: 1

Instrument :  
 BNA\_E  
 ClientSampleId :  
 091215-D534-E-U-B

Quant Time: Sep 15 15:17:40 2015  
 Quant Method : Z:\HPCHEM1\BNA\_E\METHODS\8270-SIM-BE090115.M  
 Quant Title : ASP BNA STANDARDS FOR 5 POINT CALIBRATION  
 QLast Update : Wed Sep 02 11:40:50 2015  
 Response via : Initial Calibration

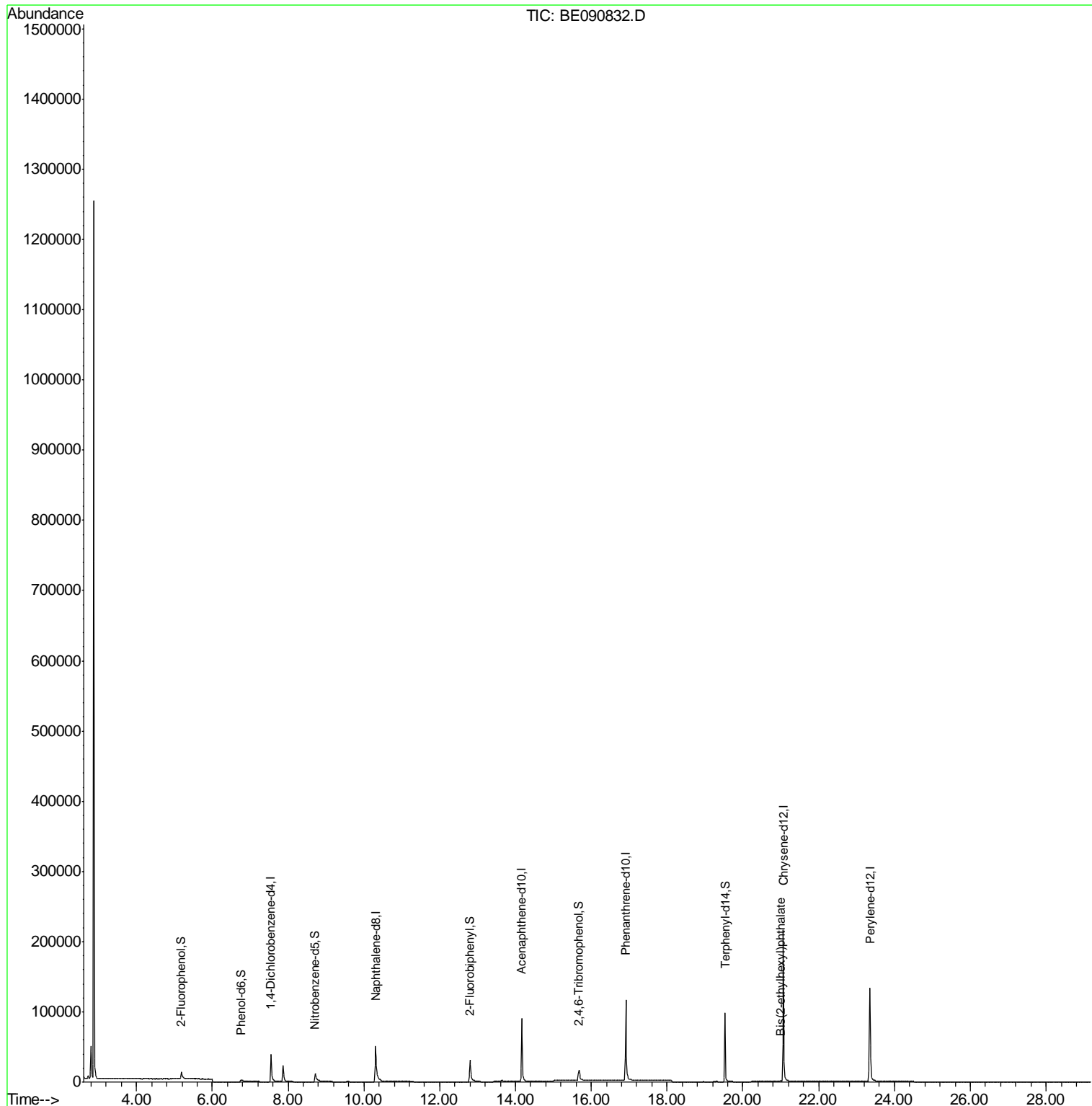
Internal Standards	R.T.	QIon	Response	Conc	Units	Dev(Min)
1) 1,4-Dichlorobenzene-d4	7.55	152	25704	5.00	ng	0.00
6) Naphthalene-d8	10.31	136	112536	5.00	ng	0.00
12) Acenaphthene-d10	14.17	164	60612	5.00	ng	0.00
18) Phenanthrene-d10	16.91	188	164556	5.00	ng	0.00
25) Chrysene-d12	21.07	240	211831	5.00	ng	0.00
32) Perylene-d12	23.35	264	195874	5.00	ng	-0.01
System Monitoring Compounds						
4) 2-Fluorophenol	5.18	112	12071	2.42	ng	0.00
5) Phenol-d6	6.76	99	9119	1.27	ng	0.00
7) Nitrobenzene-d5	8.72	82	22528	3.03	ng	0.00
13) 2,4,6-Tribromophenol	15.67	330	9635	5.47	ng	0.00
14) 2-Fluorobiphenyl	12.80	172	54728	3.26	ng	0.00
27) Terphenyl-d14	19.53	244	111502	4.76	ng	-0.01
Target Compounds						Qvalue
30) Bis(2-ethylhexyl)phthalate	21.00	149	1523	0.19	ng	95

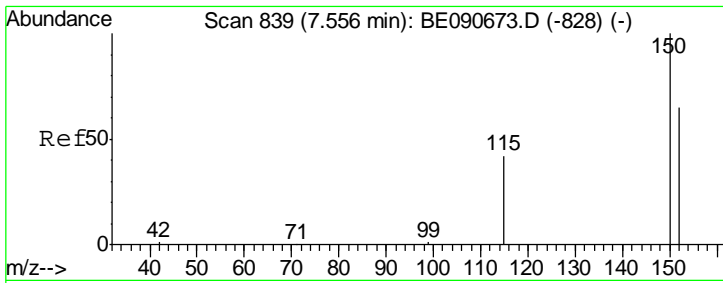
(#) = qualifier out of range (m) = manual integration (+) = signals summed

Data Path : Z:\HPCHEM1\BNA\_E\DATA\BE091515\  
 Data File : BE090832.D  
 Acq On : 15 Sep 2015 14:36  
 Operator : UM/IZ  
 Sample : G3658-04  
 Misc :  
 ALS Vial : 6 Sample Multiplier: 1

Instrument :  
 BNA\_E  
 ClientSampleId :  
 091215-D534-E-U-B

Quant Time: Sep 15 15:17:40 2015  
 Quant Method : Z:\HPCHEM1\BNA\_E\METHODS\8270-SIM-BE090115.M  
 Quant Title : ASP BNA STANDARDS FOR 5 POINT CALIBRATION  
 QLast Update : Wed Sep 02 11:40:50 2015  
 Response via : Initial Calibration

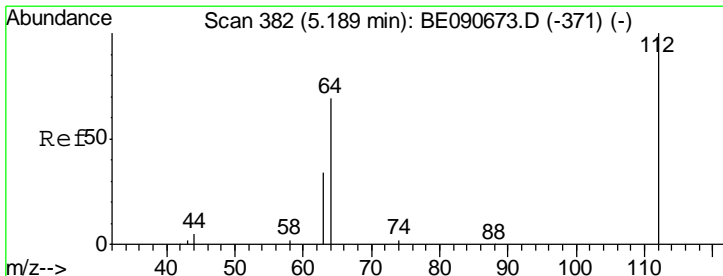
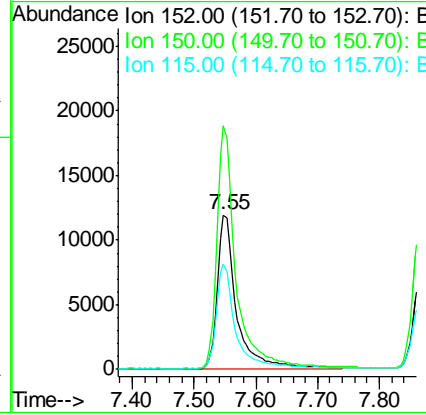
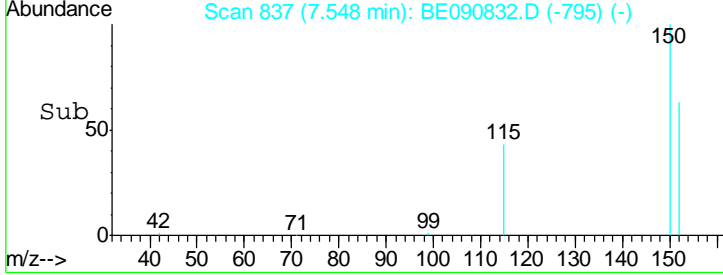
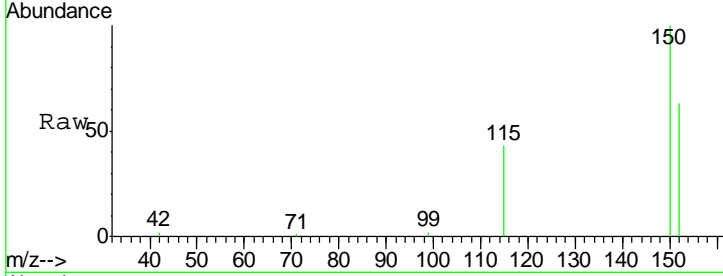




#1  
 1,4-Dichlorobenzene-d4  
 Concen: 5.00 ng  
 RT: 7.55 min Scan# 837  
 Delta R.T. -0.01 min  
 Lab File: BE090832.D  
 Acq: 15 Sep 2015 14:36

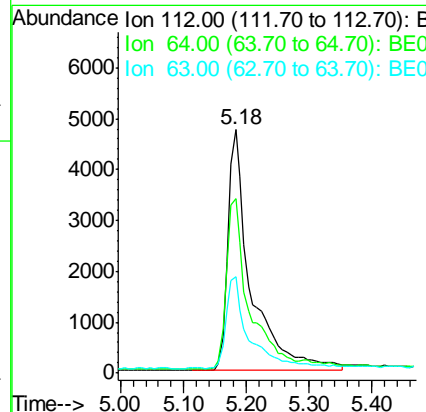
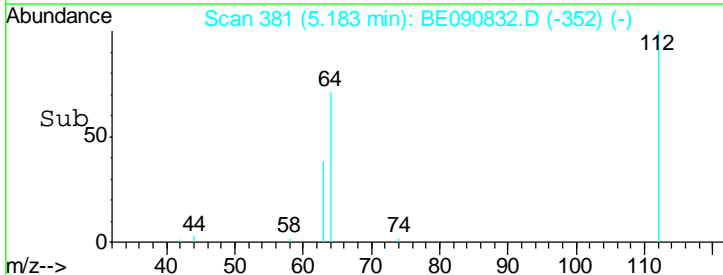
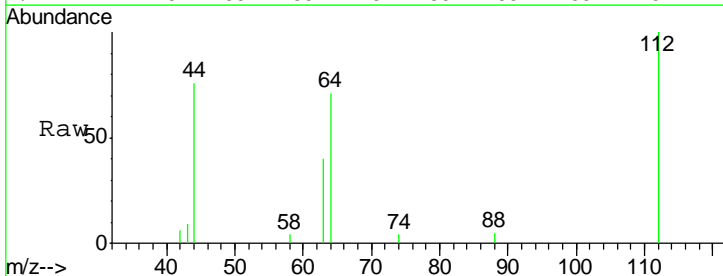
**Instrument :**  
 BNA\_E  
**ClientSampleId :**  
 091215-D534-E-U-B

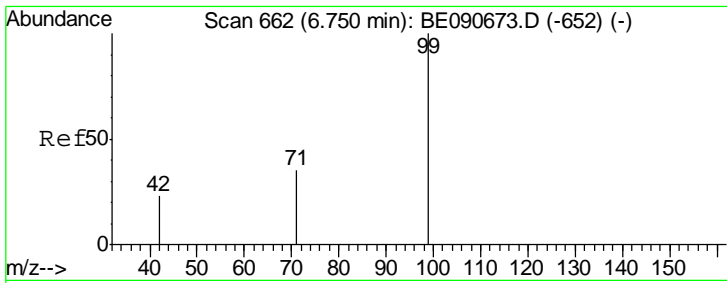
Tgt Ion	Resp	Lower	Upper
152	25704		
150	157.8	122.2	183.4
115	68.4	51.0	76.4



#4  
 2-Fluorophenol  
 Concen: 2.42 ng  
 RT: 5.18 min Scan# 381  
 Delta R.T. -0.01 min  
 Lab File: BE090832.D  
 Acq: 15 Sep 2015 14:36

Tgt Ion	Resp	Lower	Upper
112	12071		
64	68.9	57.3	85.9
63	37.1	29.2	43.8

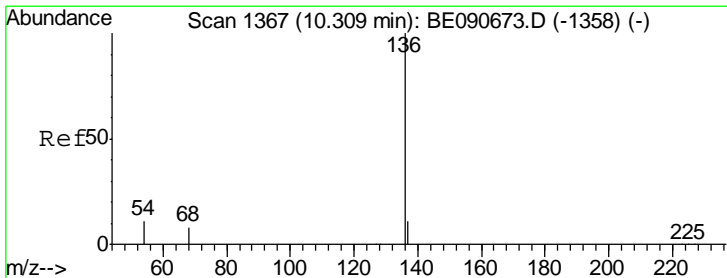
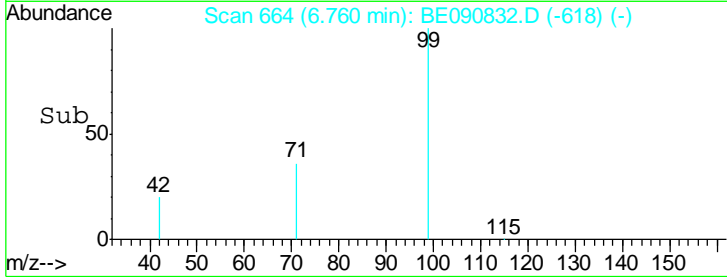
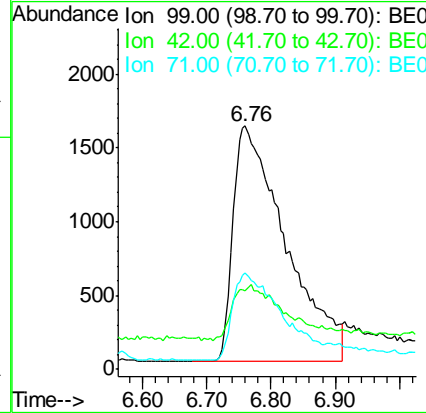
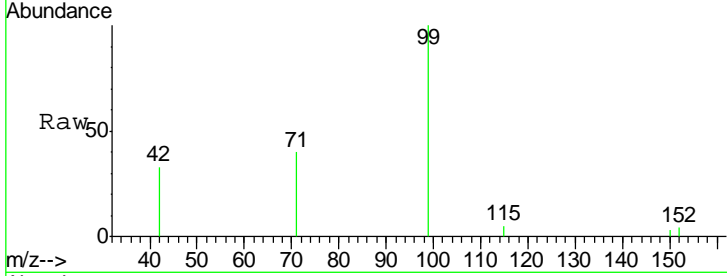




#5  
 Phenol-d6  
 Concen: 1.27 ng  
 RT: 6.76 min Scan# 664  
 Delta R.T. 0.01 min  
 Lab File: BE090832.D  
 Acq: 15 Sep 2015 14:36

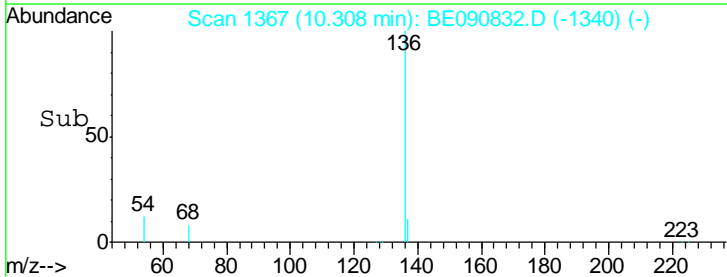
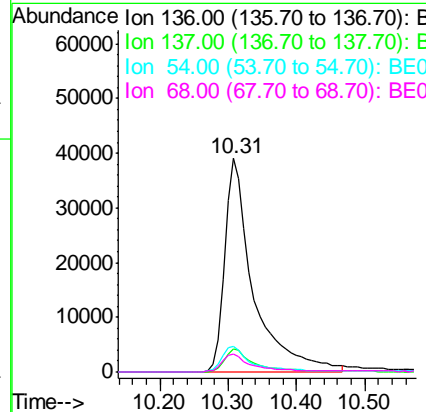
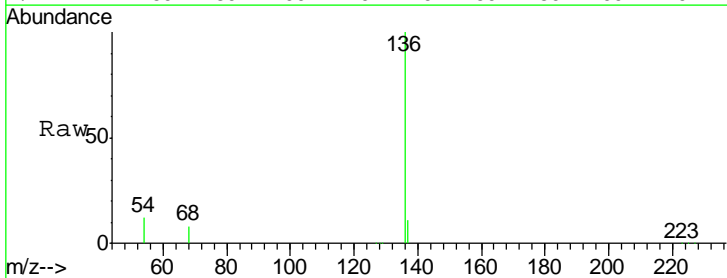
Instrument :  
 BNA\_E  
 ClientSampleId :  
 091215-D534-E-U-B

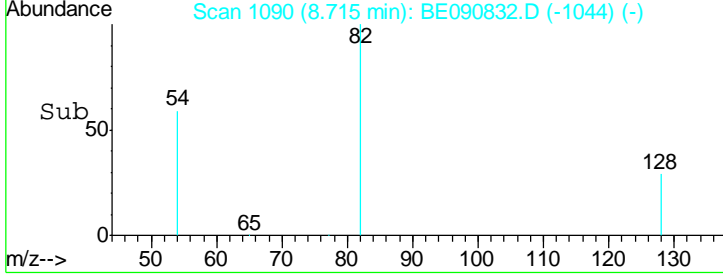
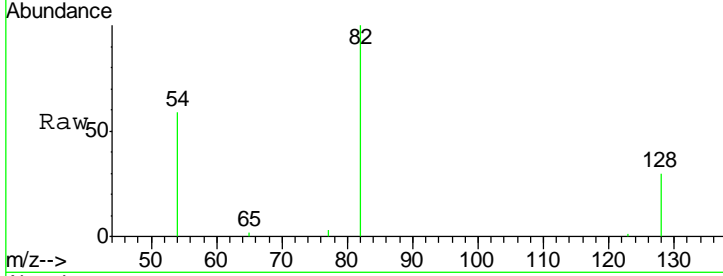
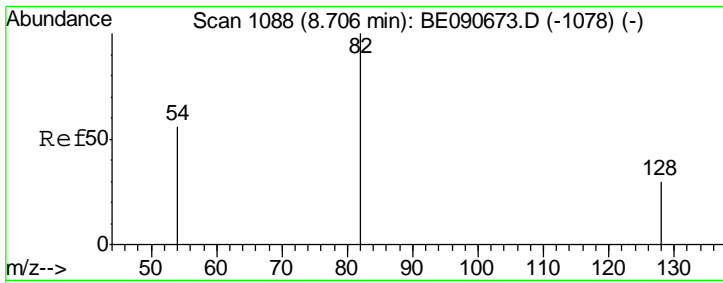
Tgt Ion	Resp	Lower	Upper
99	100		
42	22.6	16.8	25.2
71	34.4	28.3	42.5



#6  
 Naphthalene-d8  
 Concen: 5.00 ng  
 RT: 10.31 min Scan# 1367  
 Delta R.T. -0.00 min  
 Lab File: BE090832.D  
 Acq: 15 Sep 2015 14:36

Tgt Ion	Resp	Lower	Upper
136	100		
137	10.8	8.7	13.1
54	12.2	9.0	13.6
68	8.4	6.3	9.5

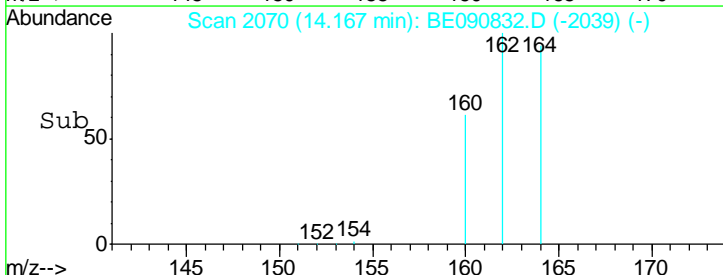
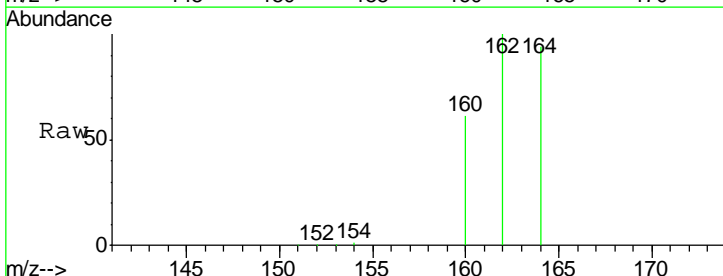
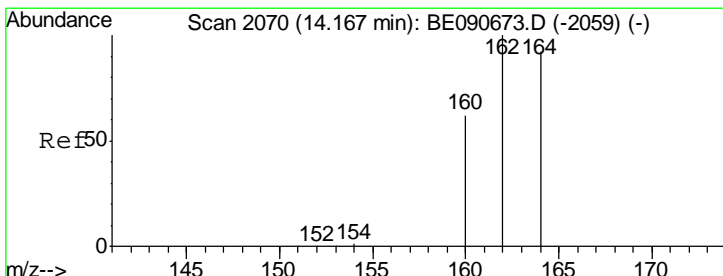
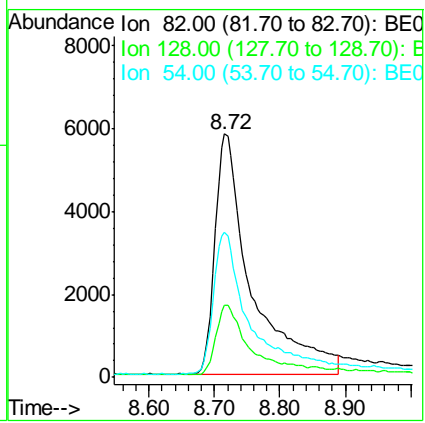




#7  
 Nitrobenzene-d5  
 Concen: 3.03 ng  
 RT: 8.72 min Scan# 1090  
 Delta R.T. 0.01 min  
 Lab File: BE090832.D  
 Acq: 15 Sep 2015 14:36

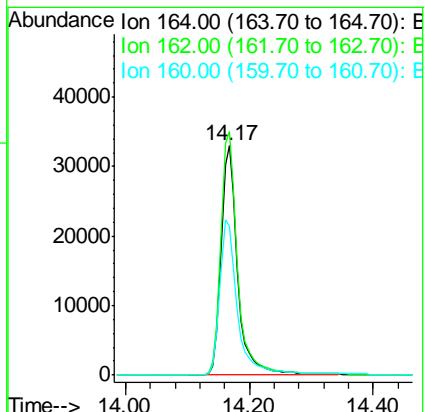
Instrument :  
 BNA\_E  
 ClientSampleId :  
 091215-D534-E-U-B

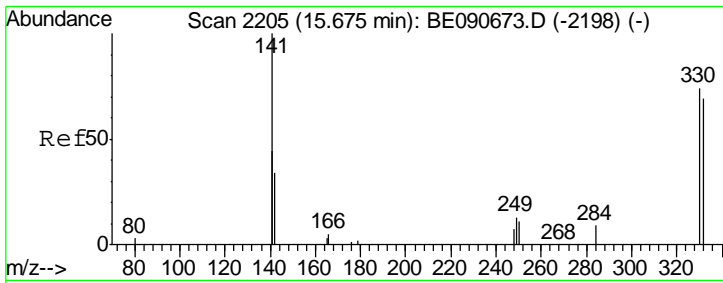
Tgt Ion	Resp	Lower	Upper
82	22528		
128	29.7	25.0	37.4
54	59.3	46.3	69.5



#12  
 Acenaphthene-d10  
 Concen: 5.00 ng  
 RT: 14.17 min Scan# 2070  
 Delta R.T. 0.00 min  
 Lab File: BE090832.D  
 Acq: 15 Sep 2015 14:36

Tgt Ion	Resp	Lower	Upper
164	60612		
162	106.3	86.8	130.2
160	64.8	53.9	80.9

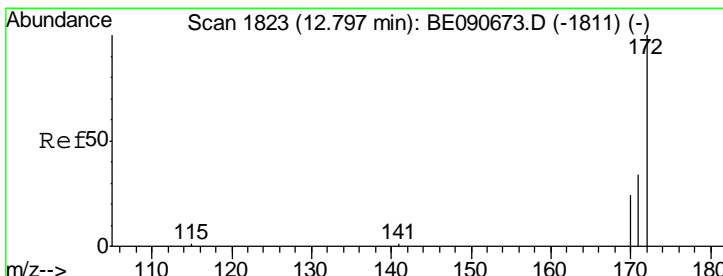
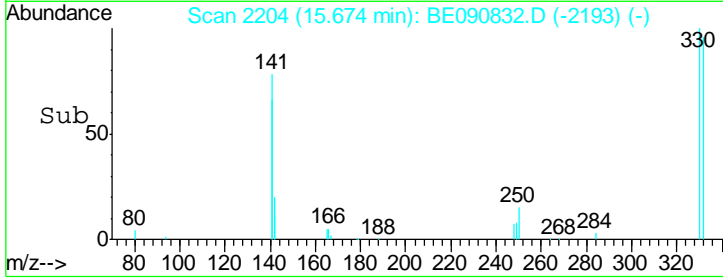
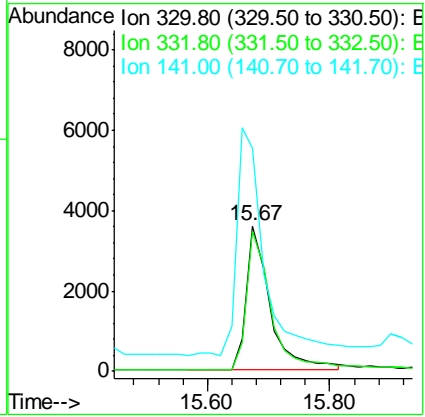
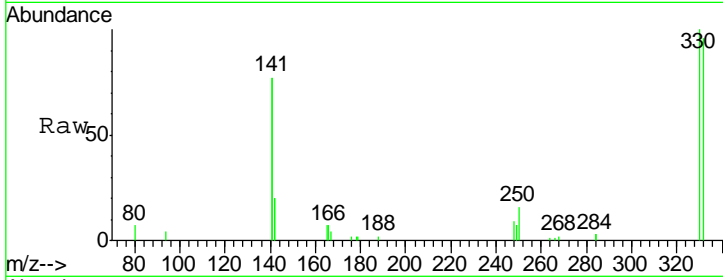




#13  
 2,4,6-Tribromophenol  
 Concen: 5.47 ng  
 RT: 15.67 min Scan# 2204  
 Delta R.T. -0.00 min  
 Lab File: BE090832.D  
 Acq: 15 Sep 2015 14:36

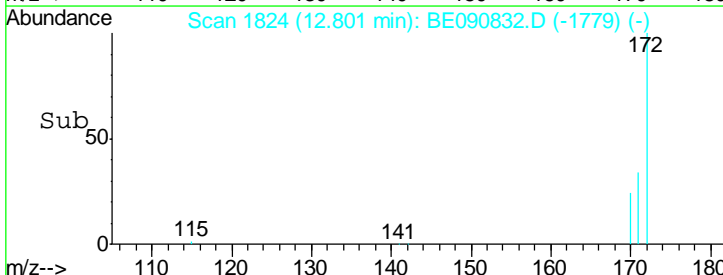
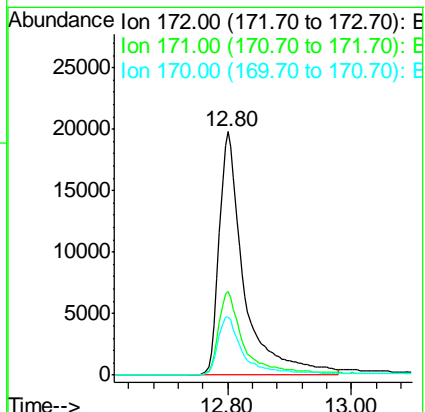
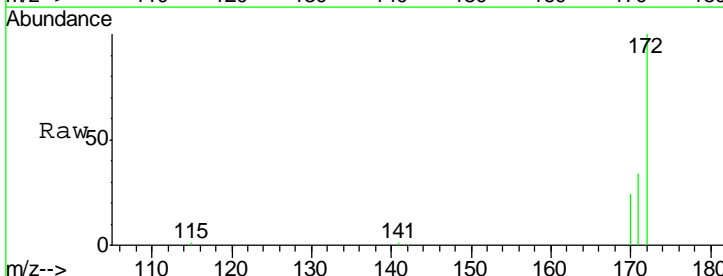
Instrument :  
 BNA\_E  
 ClientSampleId :  
 091215-D534-E-U-B

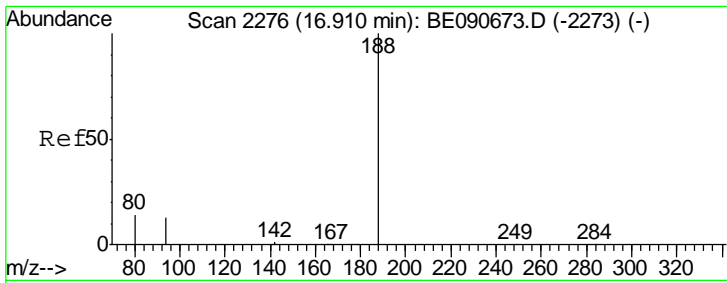
Tgt Ion	Resp	Ion Ratio	Lower	Upper
330	100			
332	97.8	74.9	112.3	
141	183.3	145.2	217.8	



#14  
 2-Fluorobiphenyl  
 Concen: 3.26 ng  
 RT: 12.80 min Scan# 1824  
 Delta R.T. 0.00 min  
 Lab File: BE090832.D  
 Acq: 15 Sep 2015 14:36

Tgt Ion	Resp	Ion Ratio	Lower	Upper
172	100			
171	34.2	27.8	41.8	
170	23.9	19.8	29.6	

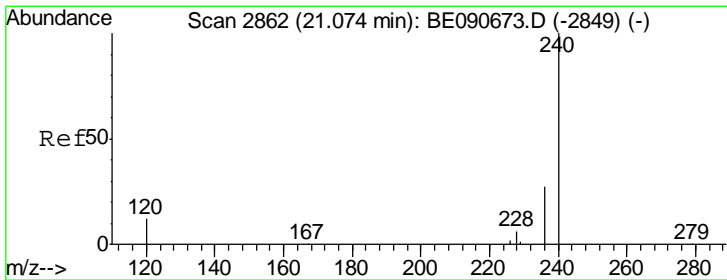
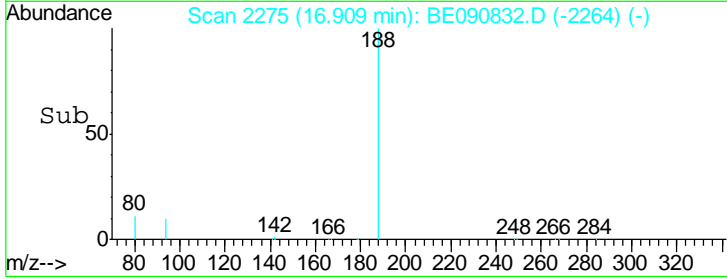
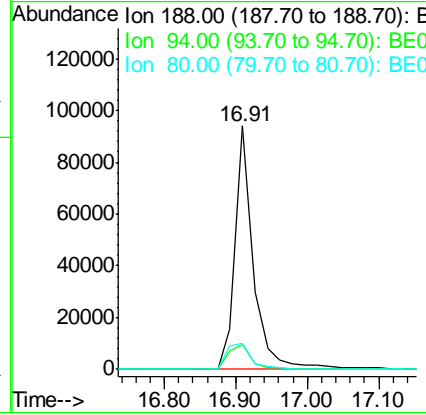
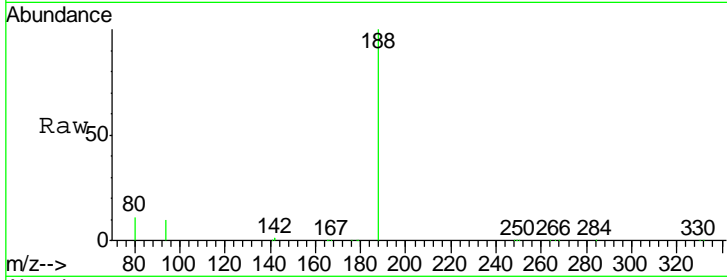




#18  
 Phenanthrene-d10  
 Concen: 5.00 ng  
 RT: 16.91 min Scan# 2275  
 Delta R.T. -0.00 min  
 Lab File: BE090832.D  
 Acq: 15 Sep 2015 14:36

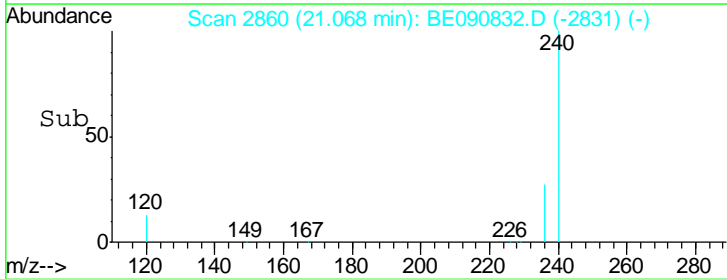
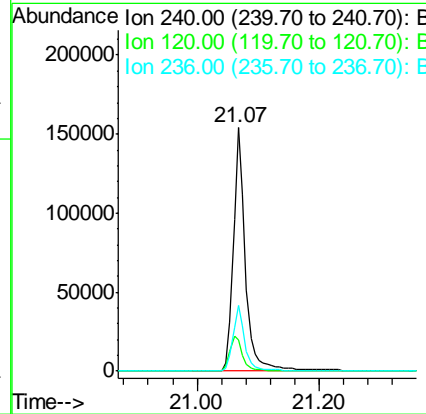
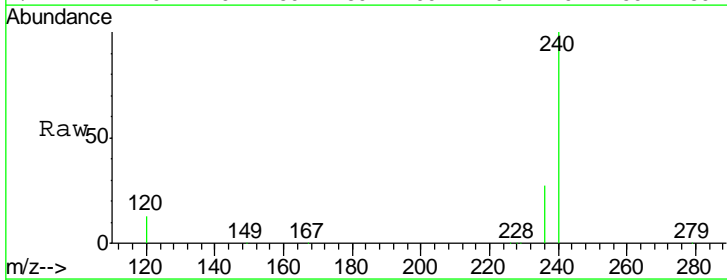
Instrument :  
 BNA\_E  
 ClientSampleId :  
 091215-D534-E-U-B

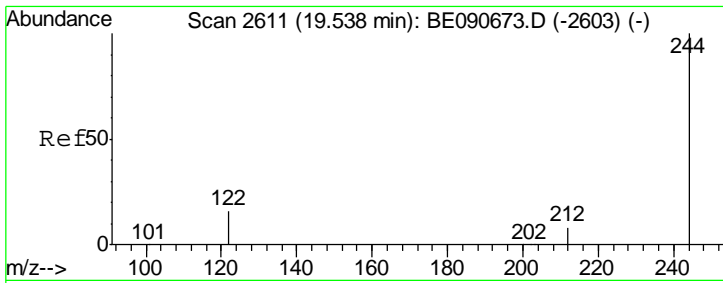
Tgt Ion	Resp	Lower	Upper
188	100		
94	9.9	10.3	15.5#
80	10.8	11.0	16.6#



#25  
 Chrysene-d12  
 Concen: 5.00 ng  
 RT: 21.07 min Scan# 2860  
 Delta R.T. -0.01 min  
 Lab File: BE090832.D  
 Acq: 15 Sep 2015 14:36

Tgt Ion	Resp	Lower	Upper
240	100		
120	12.8	10.1	15.1
236	27.2	21.9	32.9

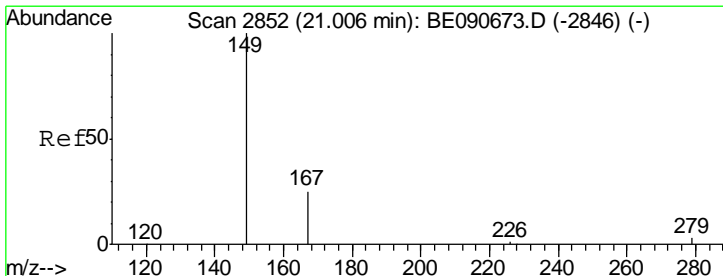
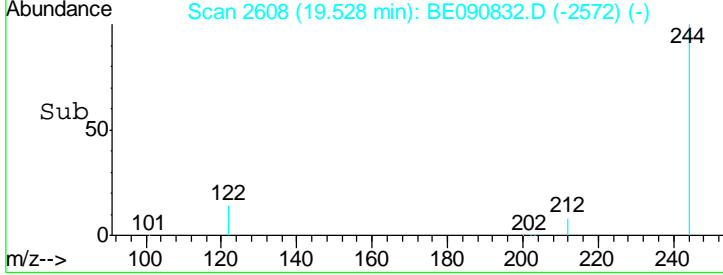
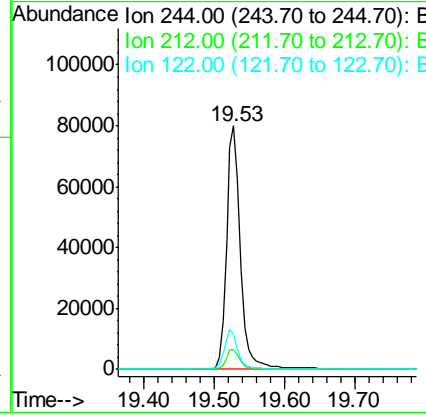
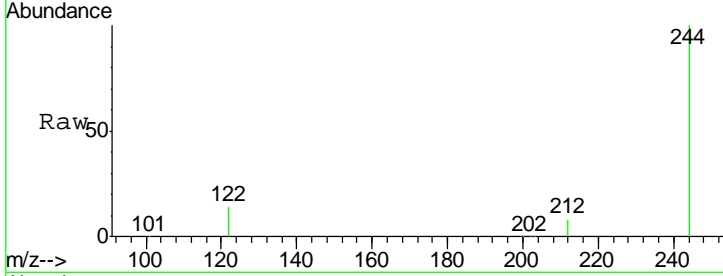




#27  
 Terphenyl-d14  
 Concen: 4.76 ng  
 RT: 19.53 min Scan# 2608  
 Delta R.T. -0.01 min  
 Lab File: BE090832.D  
 Acq: 15 Sep 2015 14:36

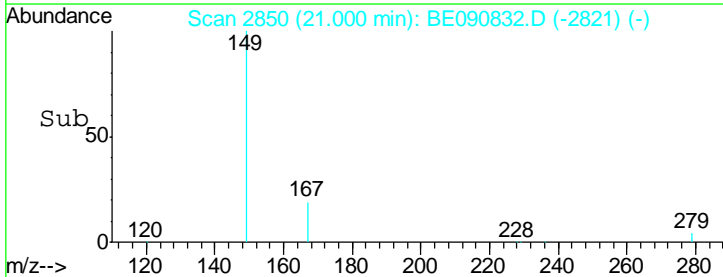
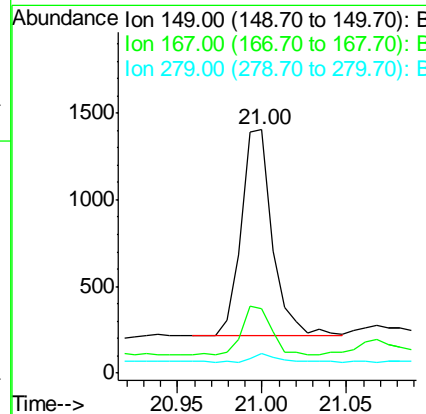
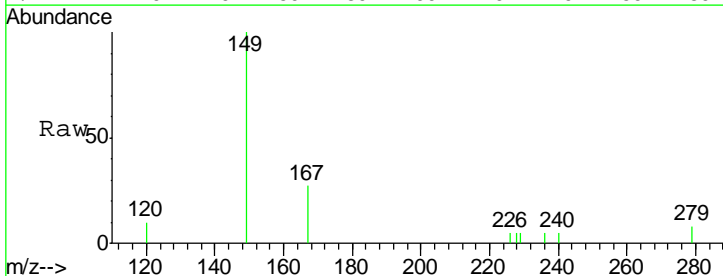
Instrument :  
 BNA\_E  
 ClientSampled :  
 091215-D534-E-U-B

Tgt Ion	Resp	Lower	Upper
244	111502		
212	8.3	6.9	10.3
122	14.3	12.9	19.3

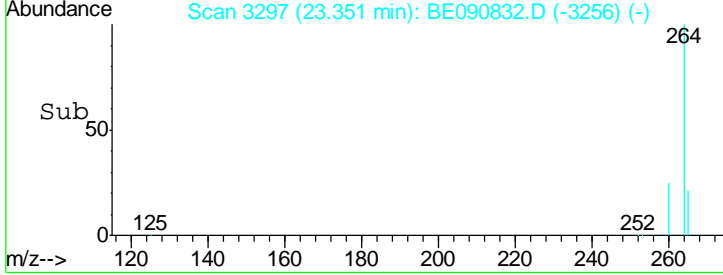
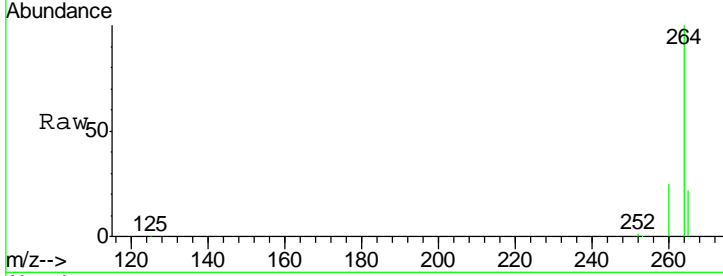
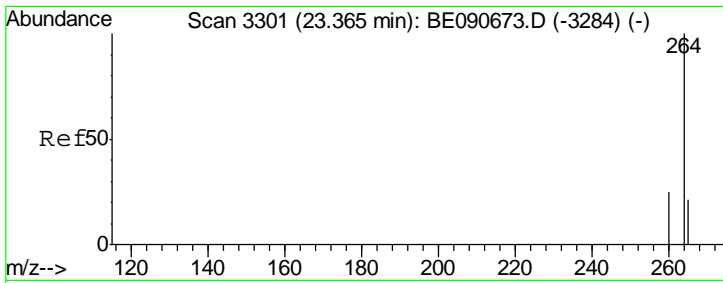


#30  
 Bis(2-ethylhexyl)phthalate  
 Concen: 0.19 ng  
 RT: 21.00 min Scan# 2850  
 Delta R.T. -0.01 min  
 Lab File: BE090832.D  
 Acq: 15 Sep 2015 14:36

Tgt Ion	Resp	Lower	Upper
149	1523		
167	22.5	20.1	30.1
279	3.5	2.3	3.5







#32  
 Perylene-d12  
 Concen: 5.00 ng  
 RT: 23.35 min Scan# 3297  
 Delta R.T. -0.01 min  
 Lab File: BE090832.D  
 Acq: 15 Sep 2015 14:36

Instrument :  
 BNA\_E  
 ClientSampleId :  
 091215-D534-E-U-B

Tgt Ion: 264 Resp: 195874

Ion	Ratio	Lower	Upper
264	100		
260	25.0	19.7	29.5
265	21.7	17.5	26.3

