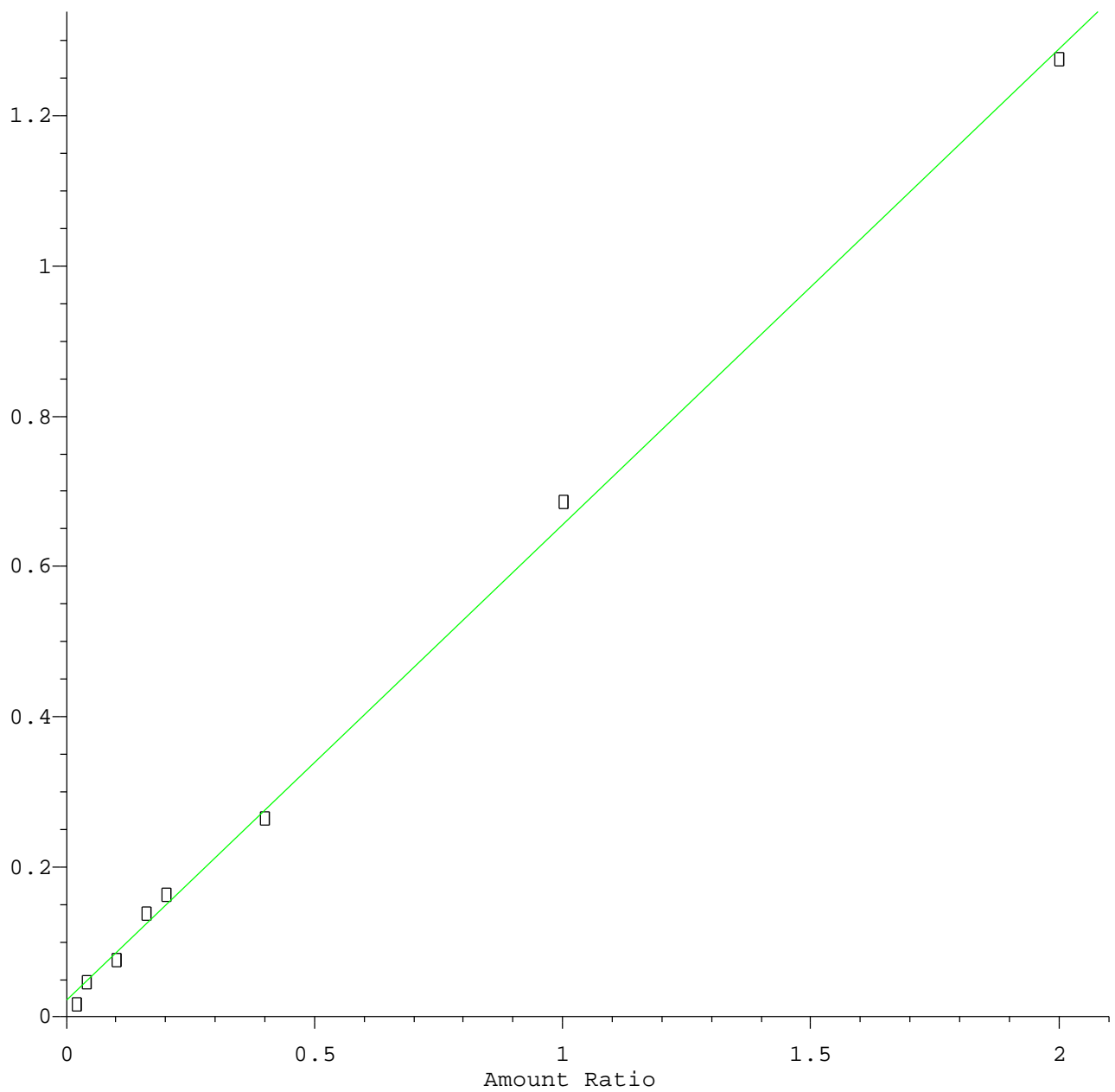


1,4-Dioxane

Response Ratio

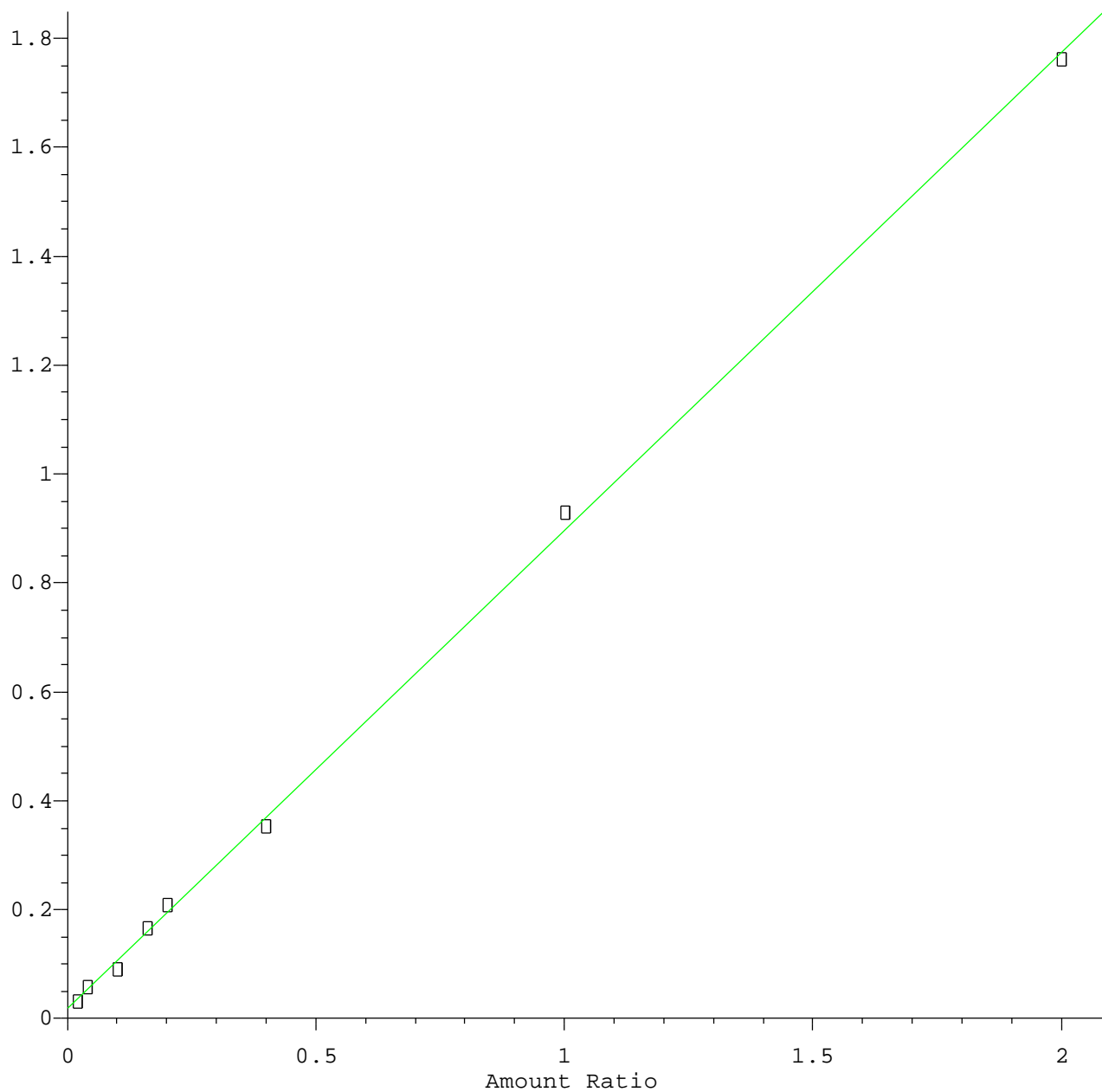


Resp Ratio = $6.33 \times 10^{-1} \times \text{Amt} + 2.21 \times 10^{-2}$
Coef of Det (r^2) = 0.998 Curve Fit: Linear

Method Name: Z:\HPCHEM1\BNA_E\METHODS\8270-SIM-BE091815.M
Calibration Table Last Updated: Fri Sep 18 17:44:10 2015

n-Nitrosodimethylamine

Response Ratio

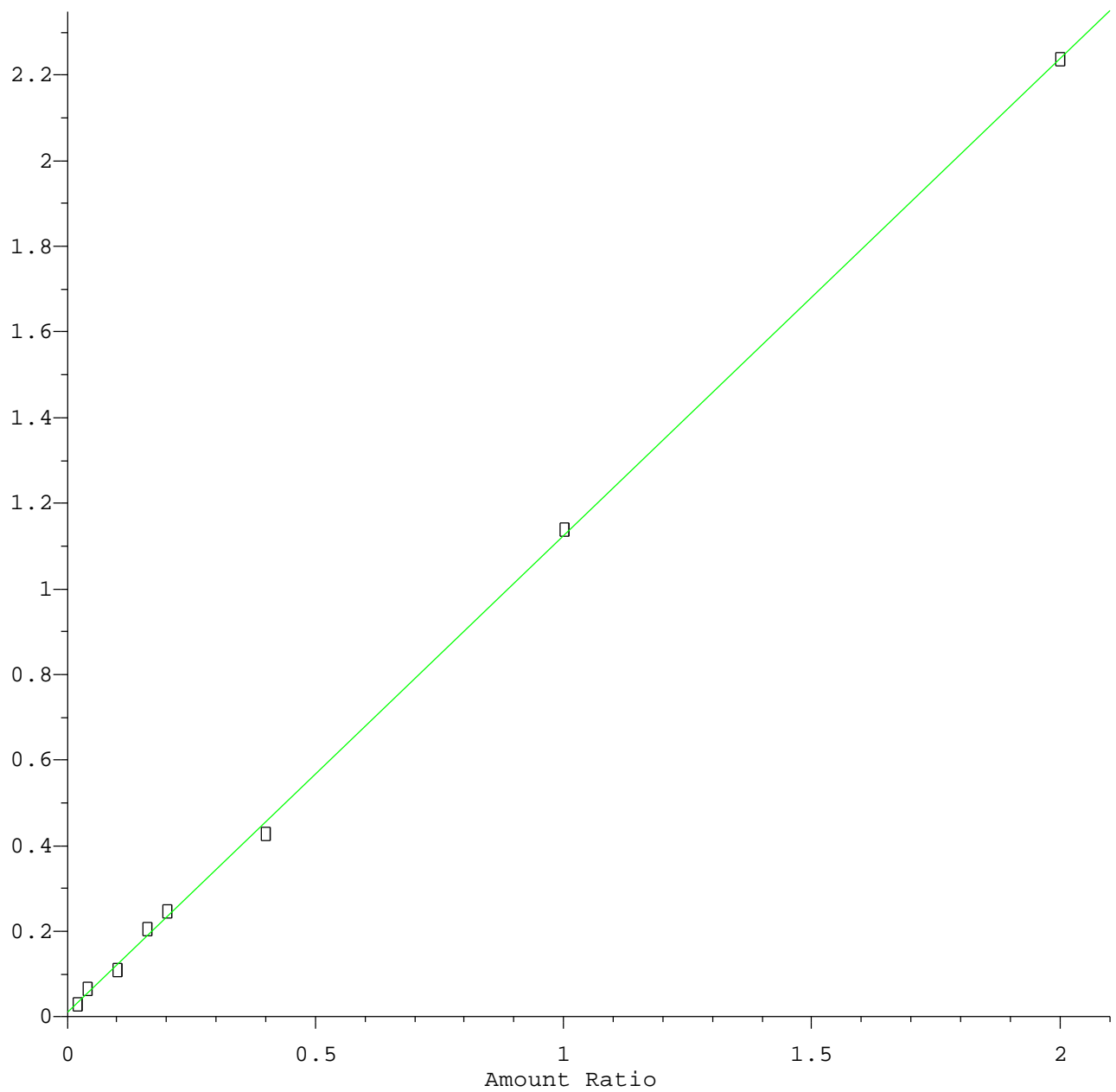


Resp Ratio = $8.78 \times 10^{-1} \times \text{Amt} + 1.84 \times 10^{-2}$
Coef of Det (r^2) = 0.999 Curve Fit: Linear

Method Name: Z:\HPCHEM1\BNA_E\METHODS\8270-SIM-BE091815.M
Calibration Table Last Updated: Fri Sep 18 17:46:48 2015

2-Fluorophenol

Response Ratio

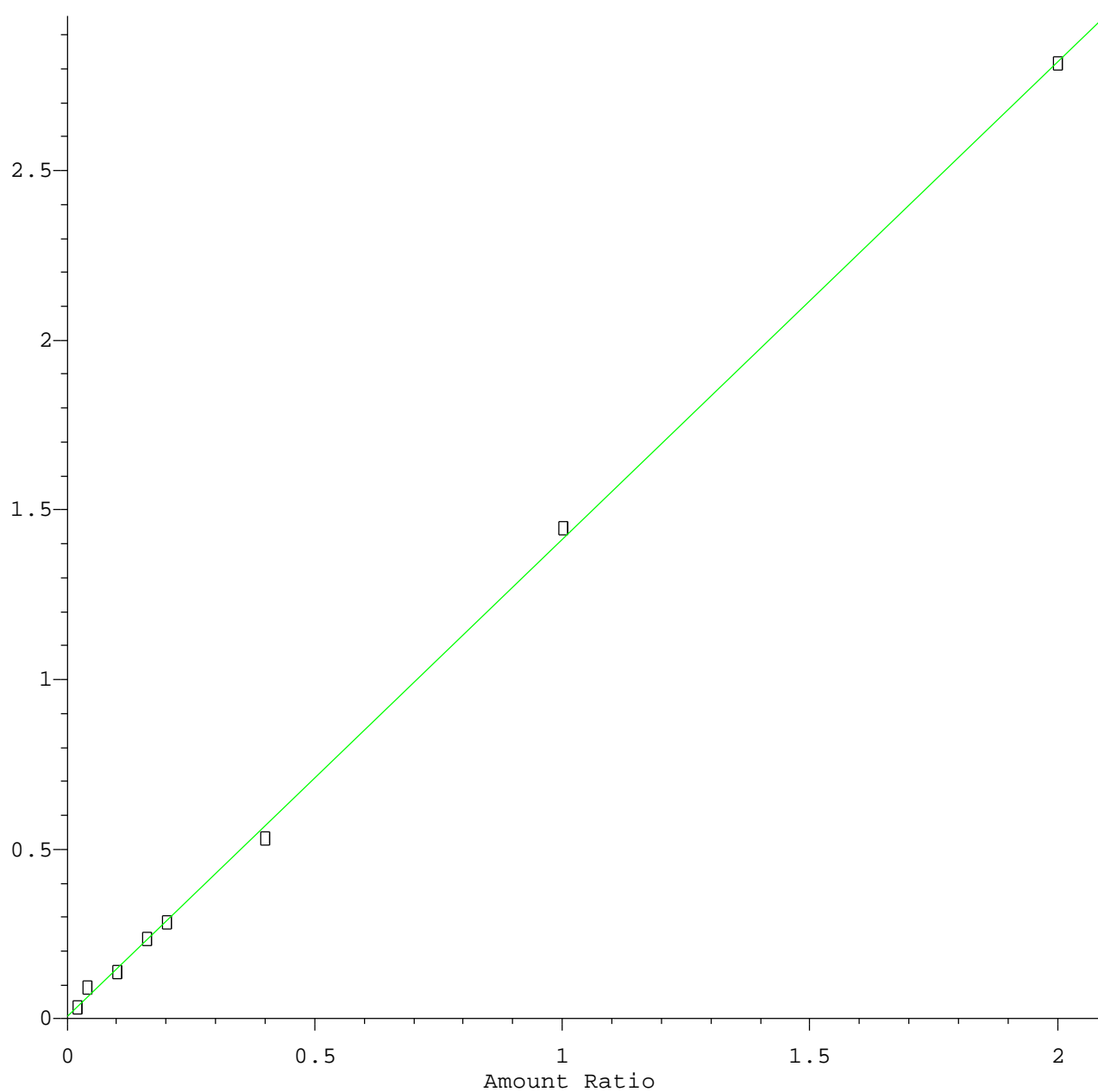


Resp Ratio = 1.11e+000 * Amt + 1.02e-002
Coef of Det (r^2) = 1.000 Curve Fit: Linear

Method Name: Z:\HPCHEM1\BNA_E\METHODS\8270-SIM-BE091815.M
Calibration Table Last Updated: Fri Sep 18 17:47:03 2015

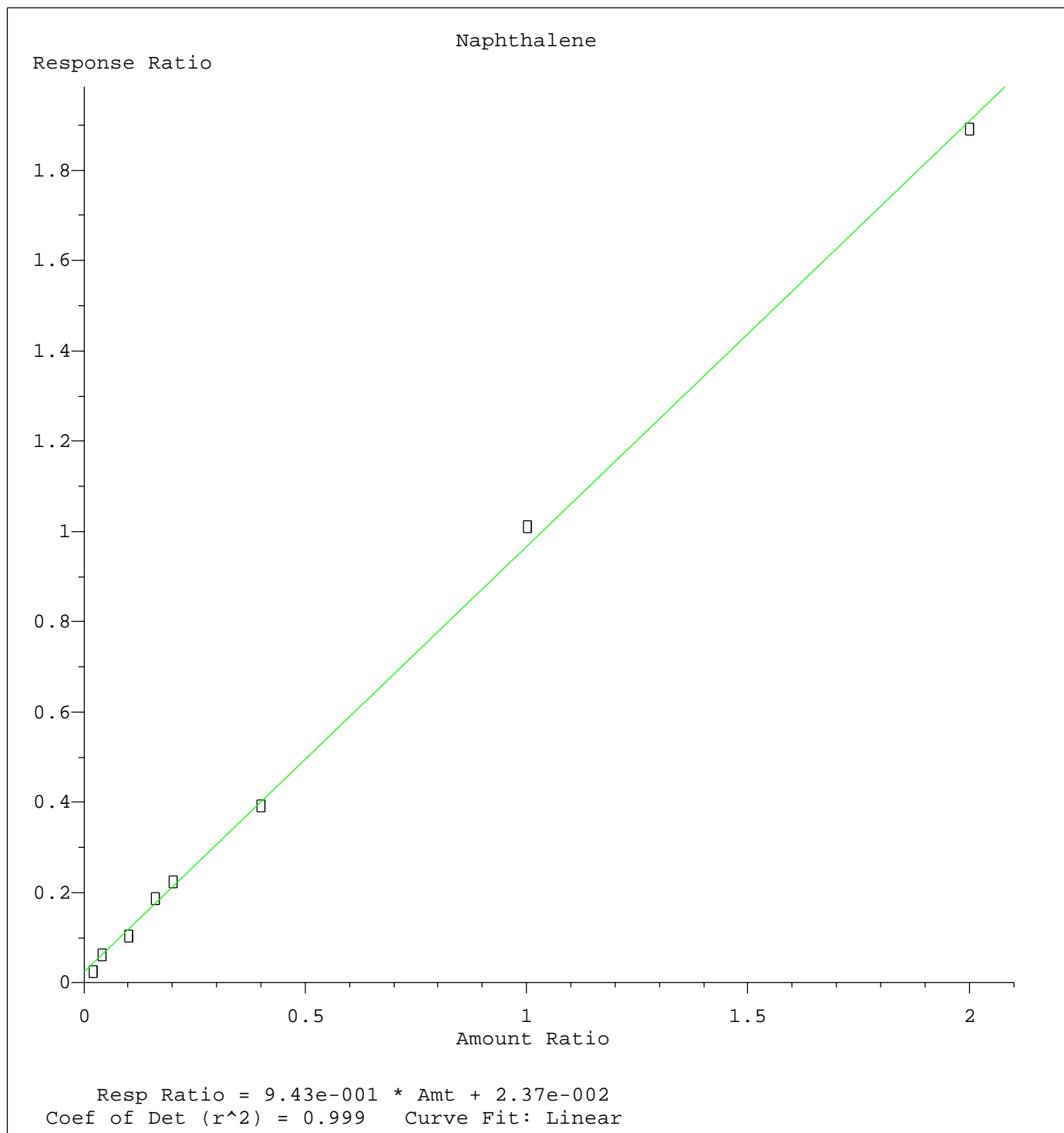
bis(2-Chloroethyl)ether

Response Ratio

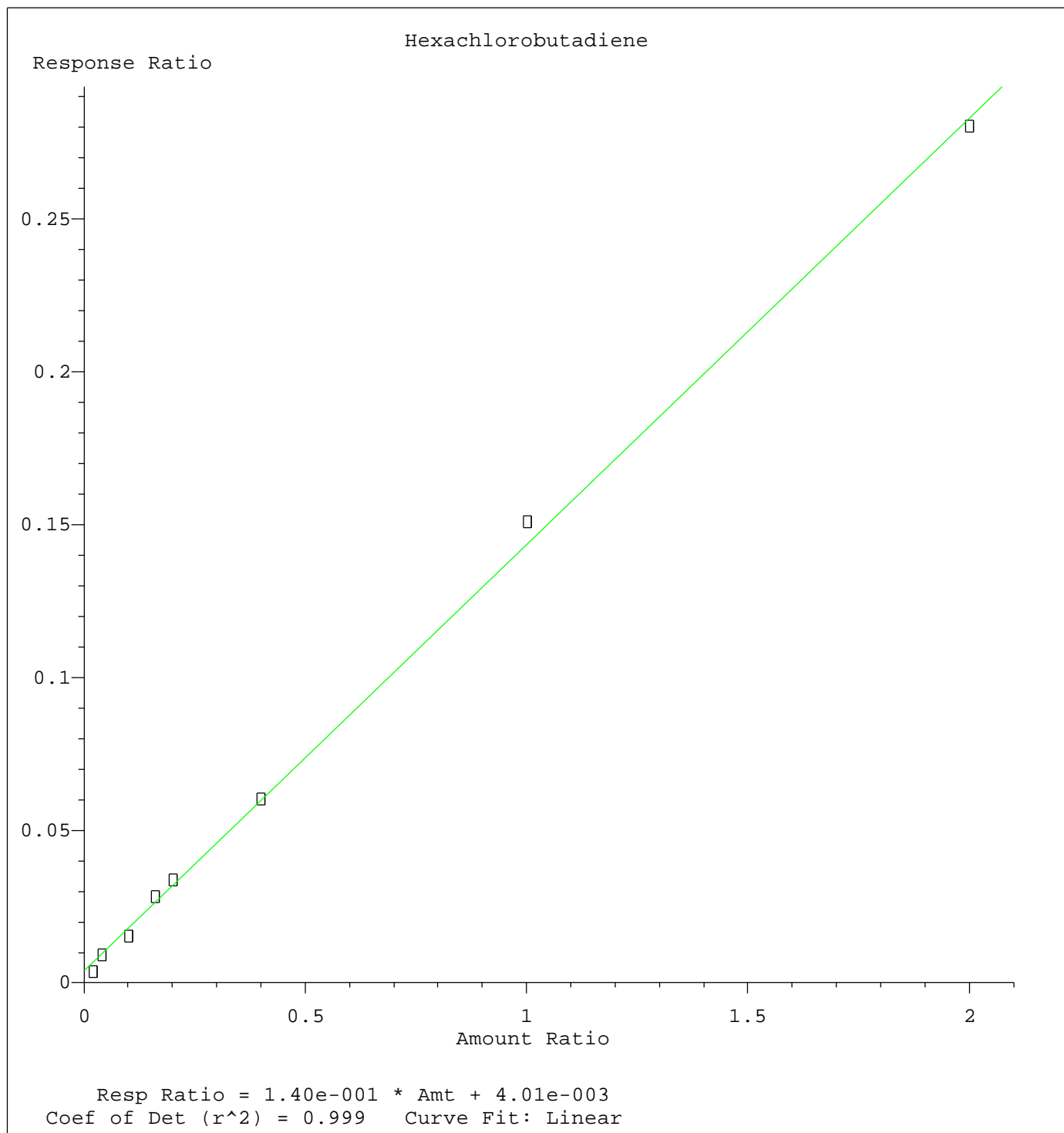


Resp Ratio = 1.41e+000 * Amt + 6.10e-003
Coef of Det (r^2) = 0.999 Curve Fit: Linear

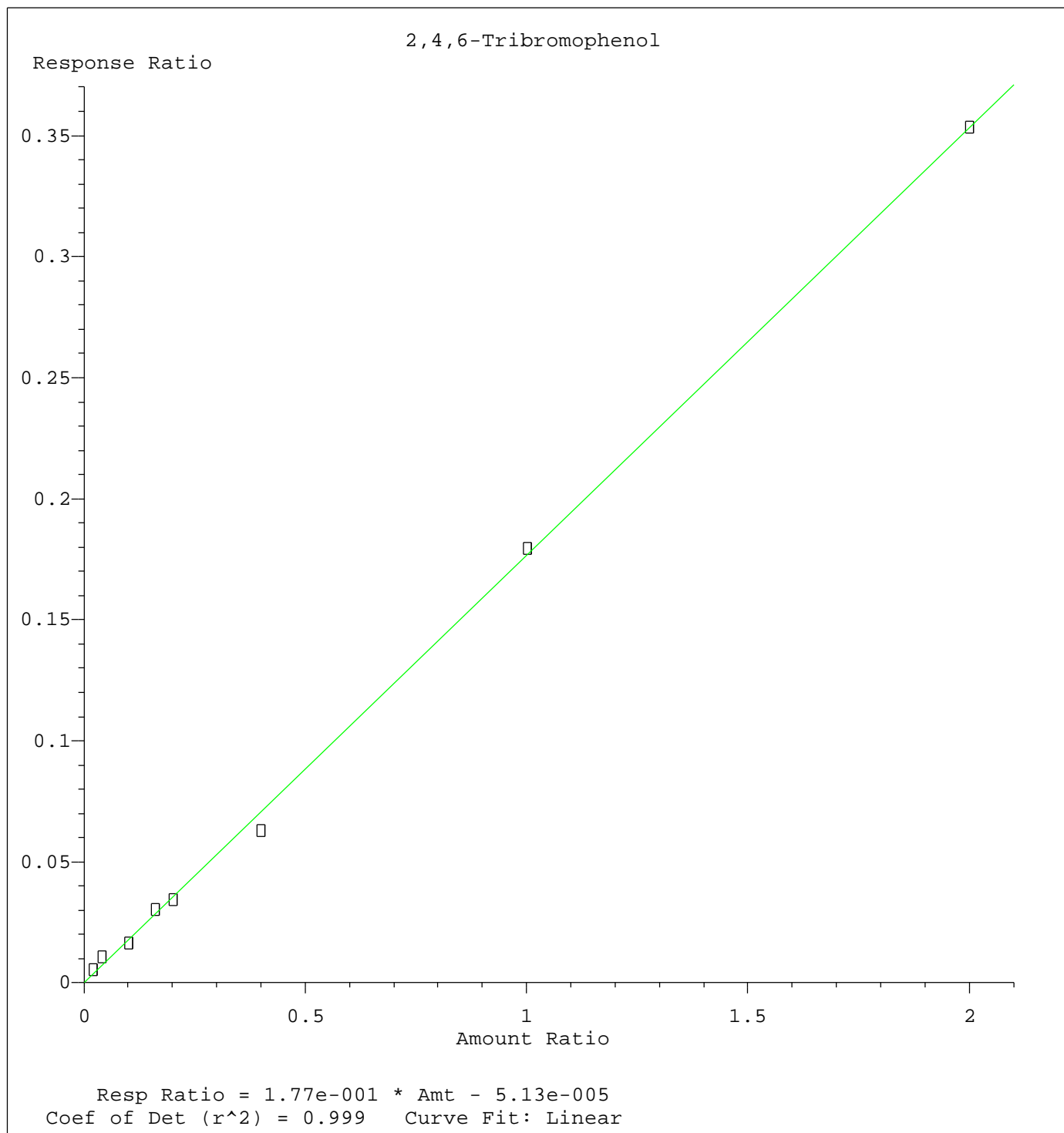
Method Name: Z:\HPCHEM1\BNA_E\METHODS\8270-SIM-BE091815.M
Calibration Table Last Updated: Fri Sep 18 18:17:34 2015



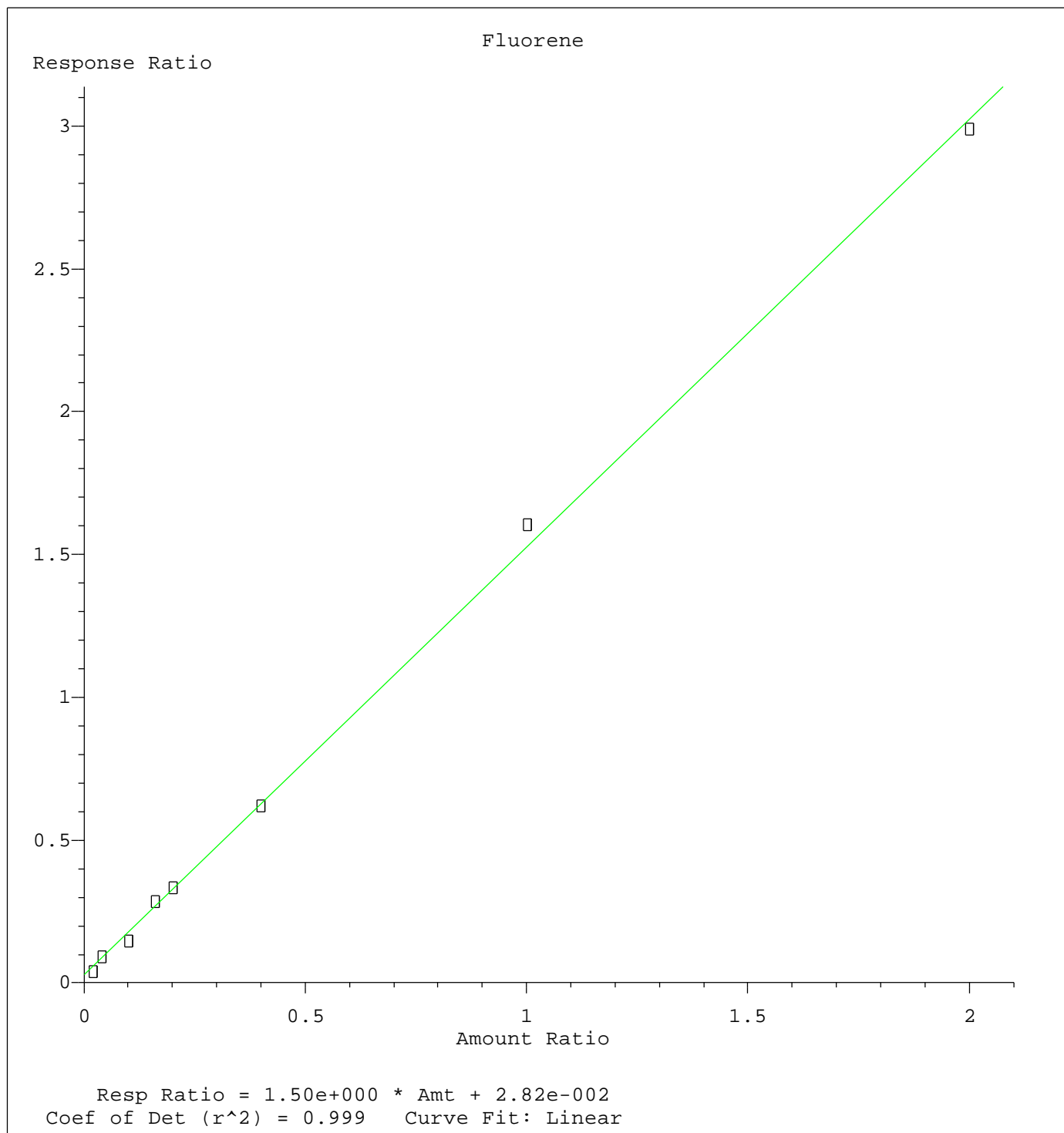
Method Name: Z:\HPCHEM1\BNA_E\METHODS\8270-SIM-BE091815.M
Calibration Table Last Updated: Fri Sep 18 18:17:34 2015



Method Name: Z:\HPCHEM1\BNA_E\METHODS\8270-SIM-BE091815.M
Calibration Table Last Updated: Fri Sep 18 18:17:34 2015



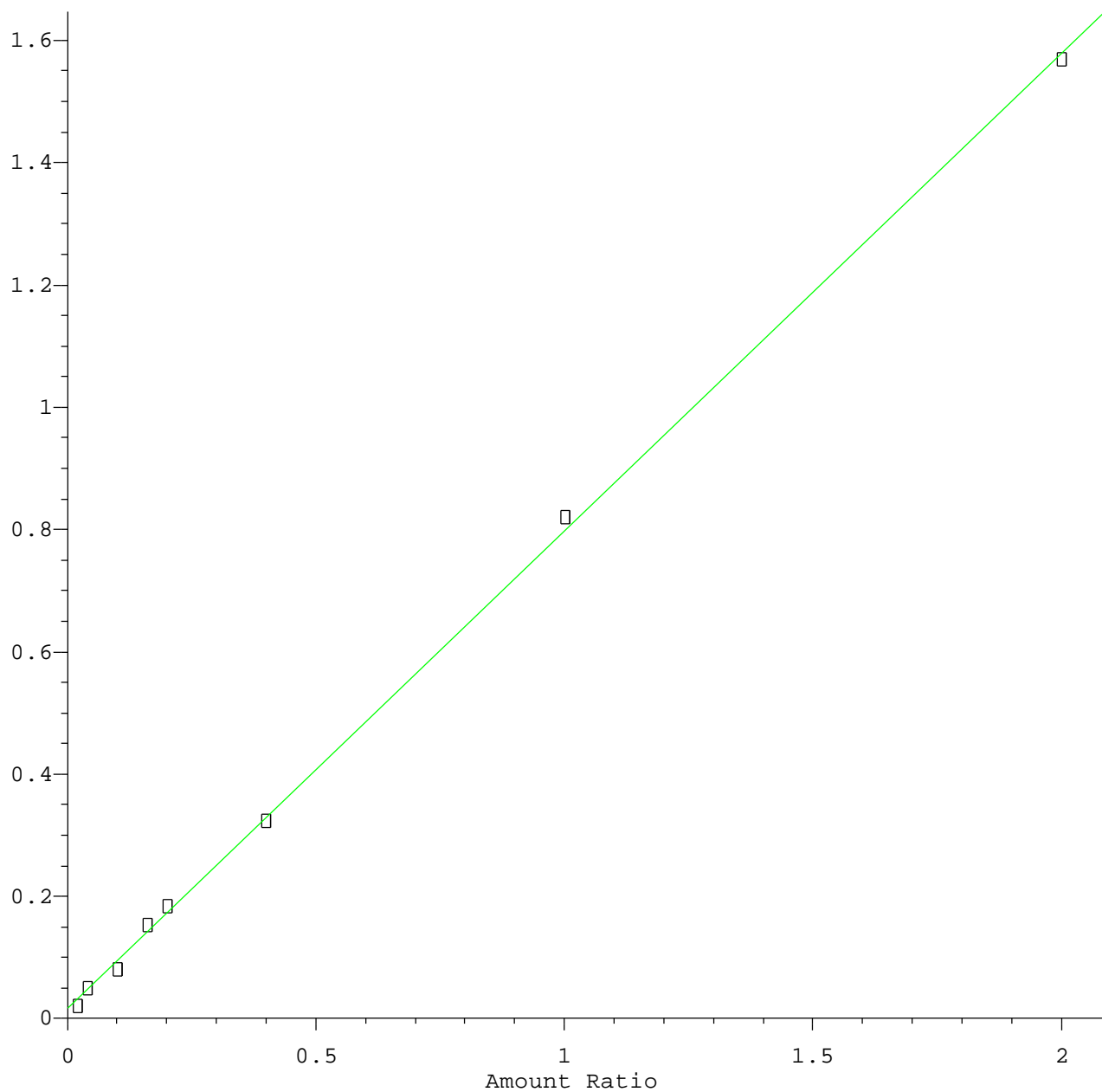
Method Name: Z:\HPCHEM1\BNA_E\METHODS\8270-SIM-BE091815.M
Calibration Table Last Updated: Fri Sep 18 18:17:34 2015



Method Name: Z:\HPCHEM1\BNA_E\METHODS\8270-SIM-BE091815.M
Calibration Table Last Updated: Fri Sep 18 18:17:34 2015

Hexachlorobenzene

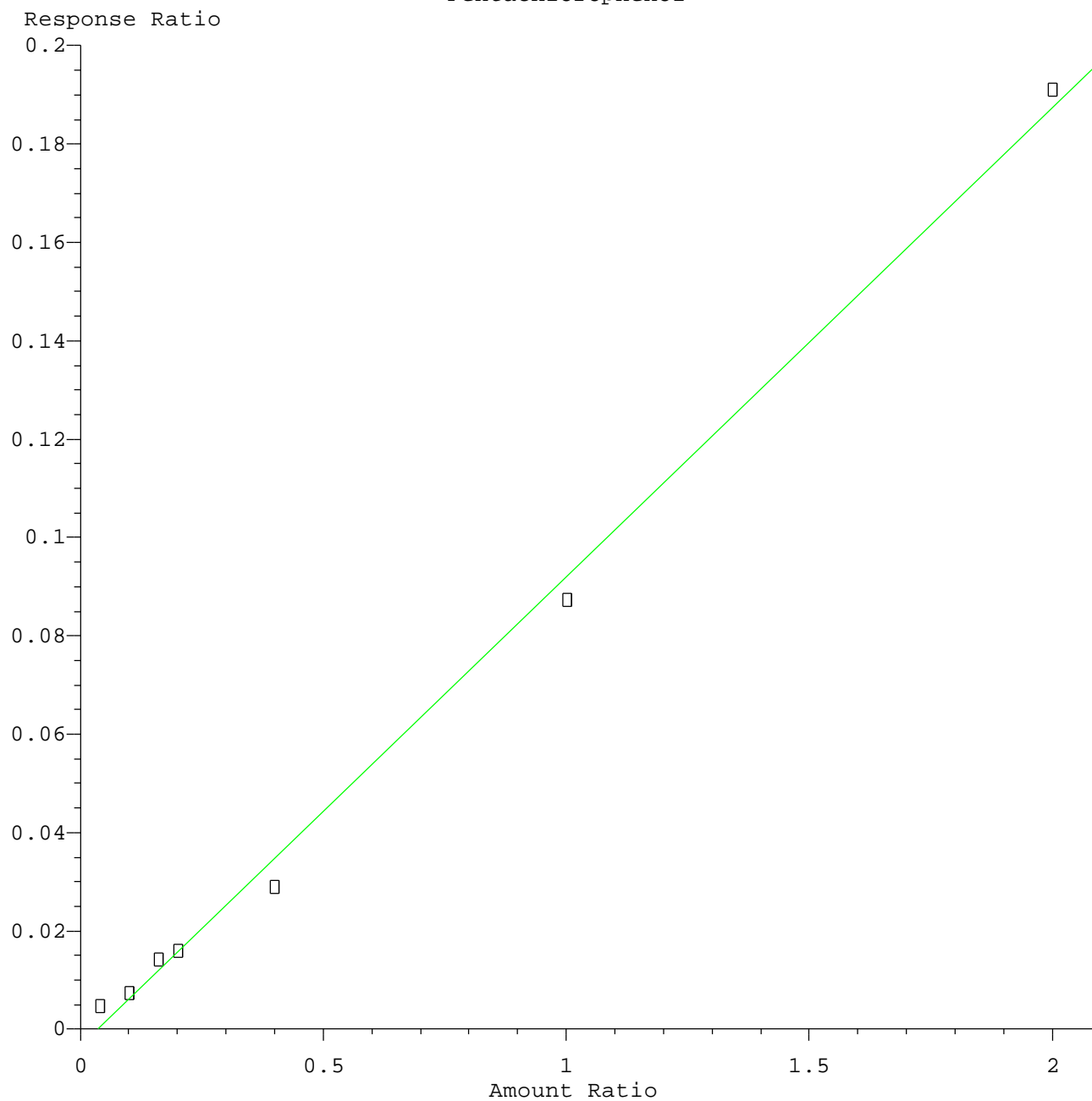
Response Ratio



Resp Ratio = $7.81 \times 10^{-1} \times \text{Amt} + 1.65 \times 10^{-2}$
Coef of Det (r^2) = 0.999 Curve Fit: Linear

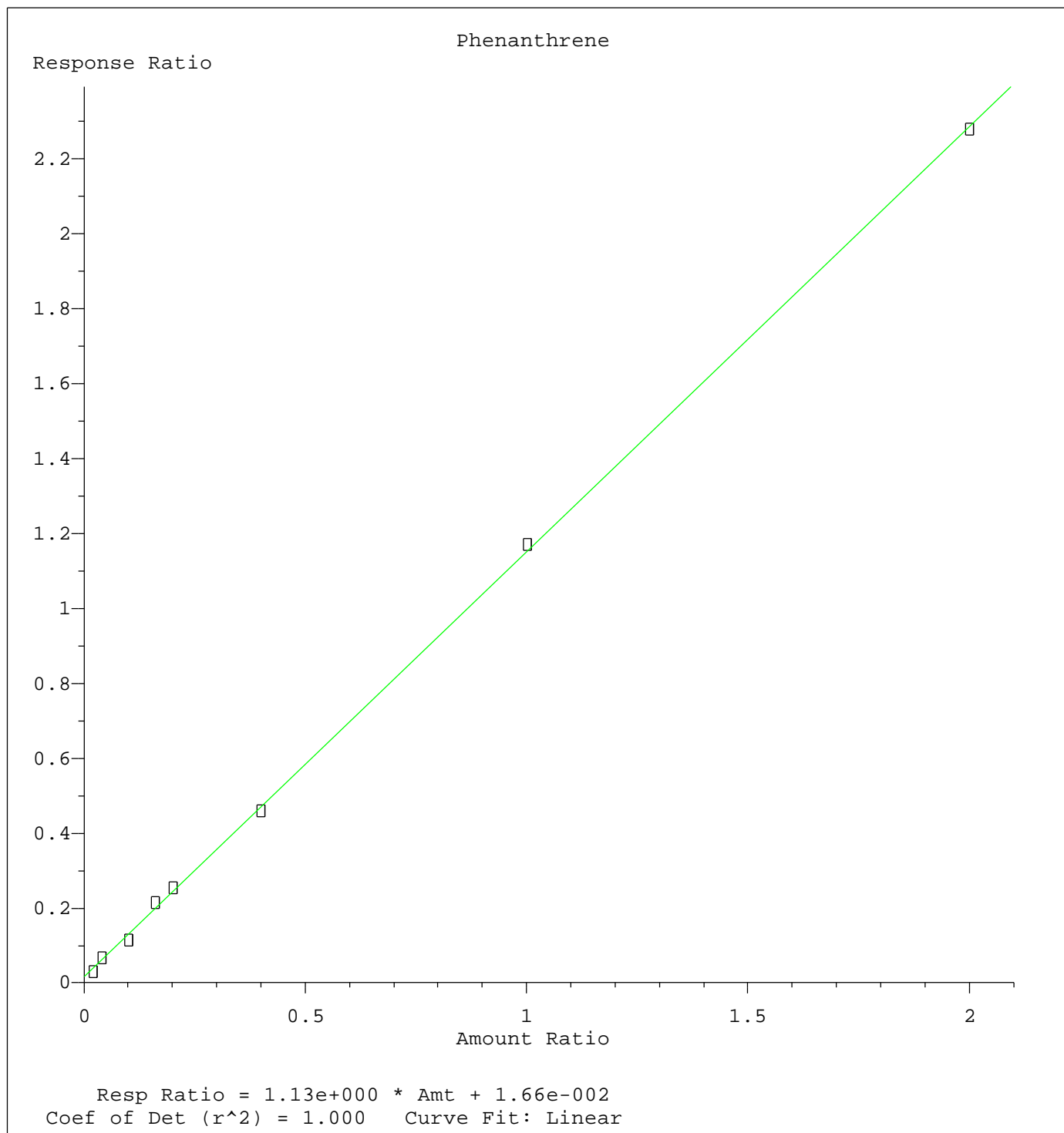
Method Name: Z:\HPCHEM1\BNA_E\METHODS\8270-SIM-BE091815.M
Calibration Table Last Updated: Fri Sep 18 18:17:34 2015

Pentachlorophenol

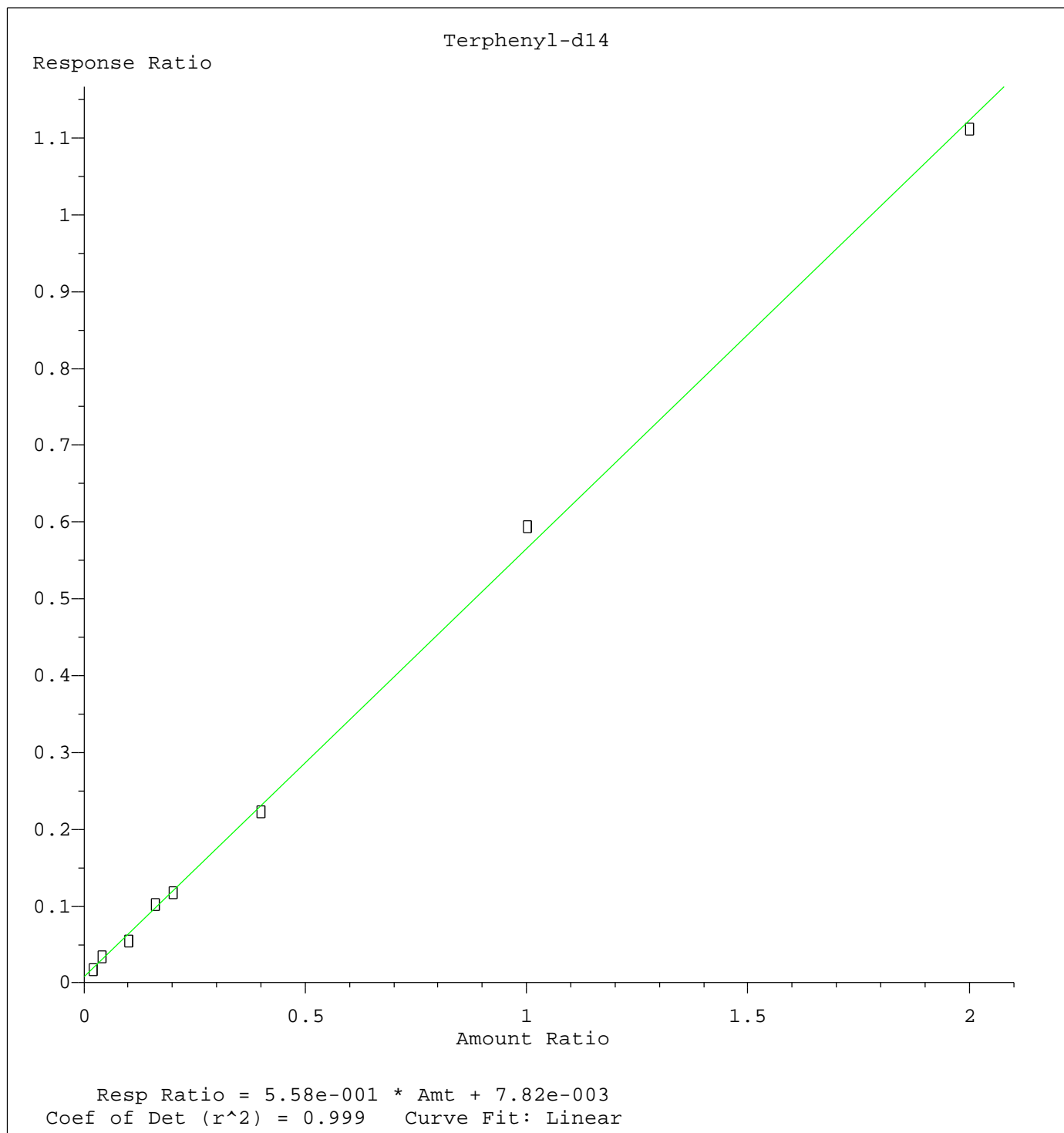


Resp Ratio = $9.55 \times 10^{-2} \times \text{Amt} - 3.39 \times 10^{-3}$
Coef of Det (r^2) = 0.997 Curve Fit: Linear

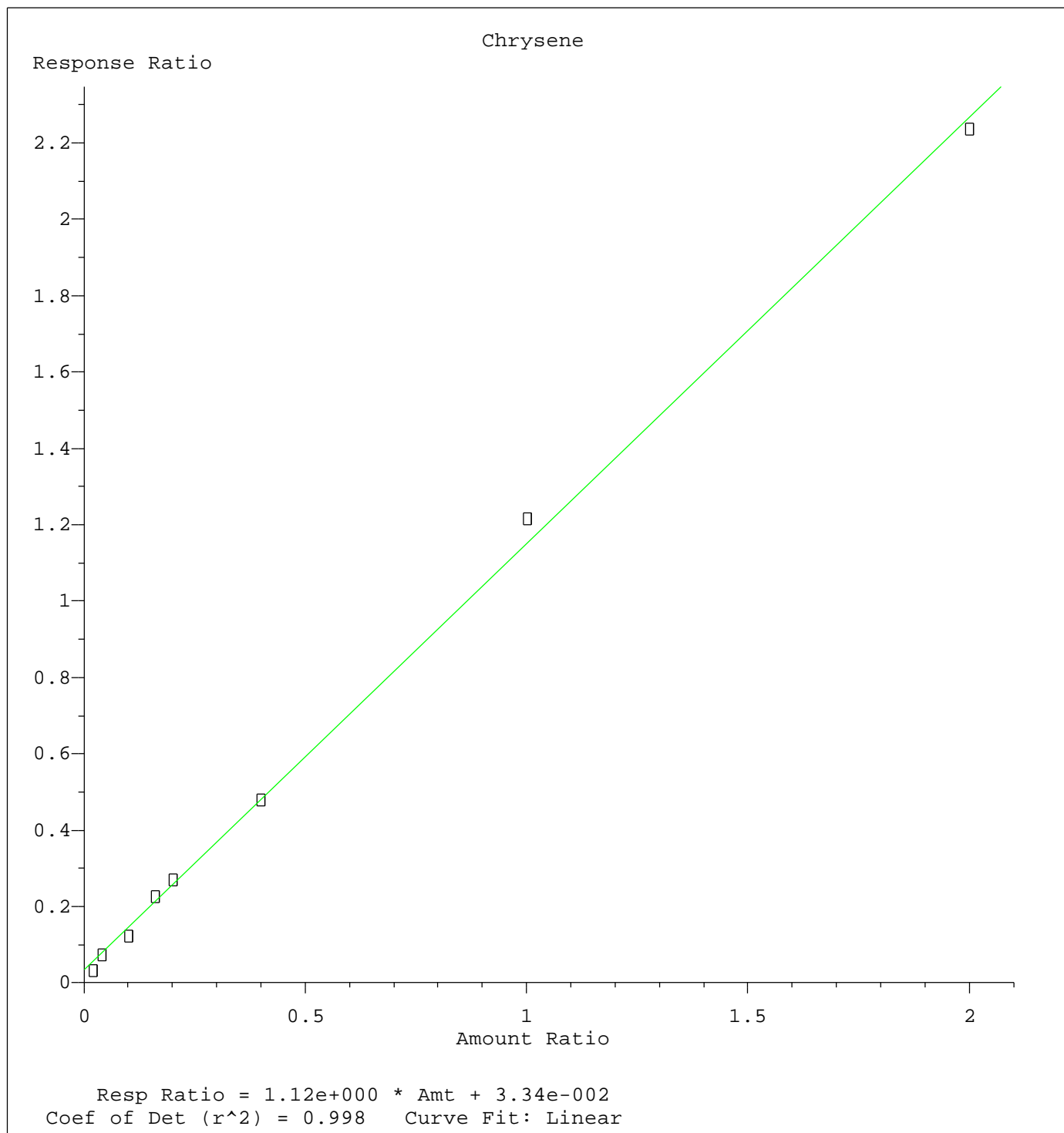
Method Name: Z:\HPCHEM1\BNA_E\METHODS\8270-SIM-BE091815.M
Calibration Table Last Updated: Fri Sep 18 18:17:34 2015



Method Name: Z:\HPCHEM1\BNA_E\METHODS\8270-SIM-BE091815.M
Calibration Table Last Updated: Fri Sep 18 18:17:34 2015



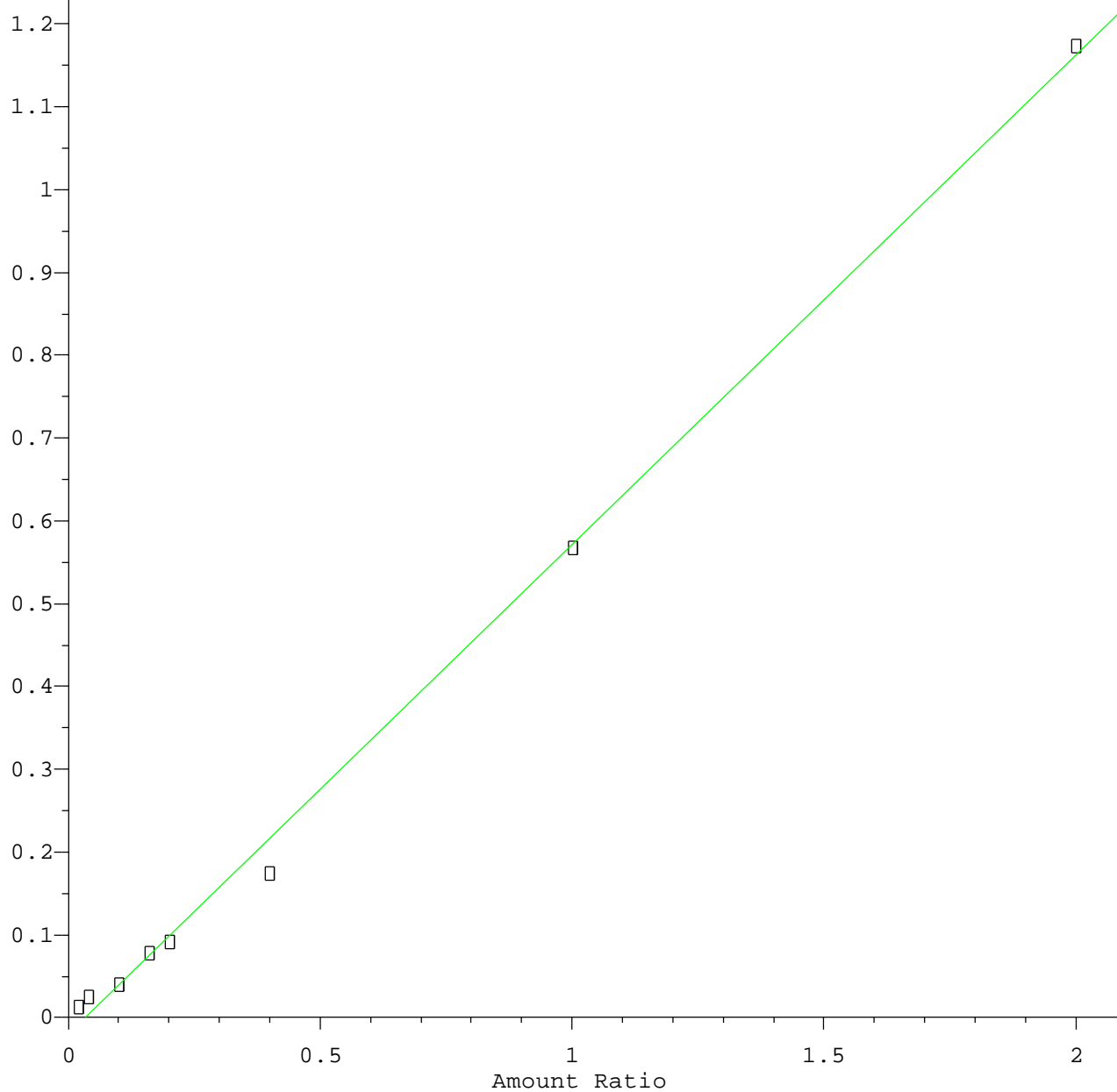
Method Name: Z:\HPCHEM1\BNA_E\METHODS\8270-SIM-BE091815.M
Calibration Table Last Updated: Fri Sep 18 18:17:34 2015



Method Name: Z:\HPCHEM1\BNA_E\METHODS\8270-SIM-BE091815.M
Calibration Table Last Updated: Fri Sep 18 18:17:34 2015

Bis(2-ethylhexyl)phthalate

Response Ratio



Resp Ratio = $5.91 \times 10^{-1} \times \text{Amt} - 2.02 \times 10^{-2}$
Coef of Det (r^2) = 0.998 Curve Fit: Linear

Method Name: Z:\HPCHEM1\BNA_E\METHODS\8270-SIM-BE091815.M
Calibration Table Last Updated: Fri Sep 18 18:17:34 2015