

Data Path : Z:\HPCHEM1\BNA\_E\DATA\BE091815\  
 Data File : BE090889.D  
 Acq On : 18 Sep 2015 17:07  
 Operator : UM/IZ  
 Sample : SSTDIC010  
 Misc :  
 ALS Vial : 9 Sample Multiplier: 1

Instrument :  
 BNA\_E  
 ClientSampleId :  
 SSTDIC010

Quant Time: Sep 18 17:38:05 2015  
 Quant Method : Z:\HPCHEM1\BNA\_E\METHODS\8270-SIM-BE091815.M  
 Quant Title : ASP BNA STANDARDS FOR 5 POINT CALIBRATION  
 QLast Update : Fri Sep 18 17:00:23 2015  
 Response via : Initial Calibration

Internal Standards	R.T.	QIon	Response	Conc	Units	Dev(Min)
1) 1,4-Dichlorobenzene-d4	7.55	152	26240	5.00	ng	0.00
7) Naphthalene-d8	10.29	136	118001	5.00	ng	0.00
13) Acenaphthene-d10	14.16	164	62092	5.00	ng	0.00
19) Phenanthrene-d10	16.91	188	144407	5.00	ng	0.00
26) Chrysene-d12	21.07	240	204728	5.00	ng	0.00
33) Perylene-d12	23.35	264	197275	5.00	ng	0.00

## System Monitoring Compounds

4) 2-Fluorophenol	5.17	112	58656	8.91	ng	0.00
5) Phenol-d6	6.73	99	82868	10.15	ng	-0.02
8) Nitrobenzene-d5	8.68	82	84343	10.43	ng	-0.02
14) 2,4,6-Tribromophenol	15.66	330	21925	8.91	ng	-0.03
15) 2-Fluorobiphenyl	12.78	172	158669	8.89	ng	-0.02
28) Terphenyl-d14	19.52	244	227470	8.55	ng	0.00

## Target Compounds

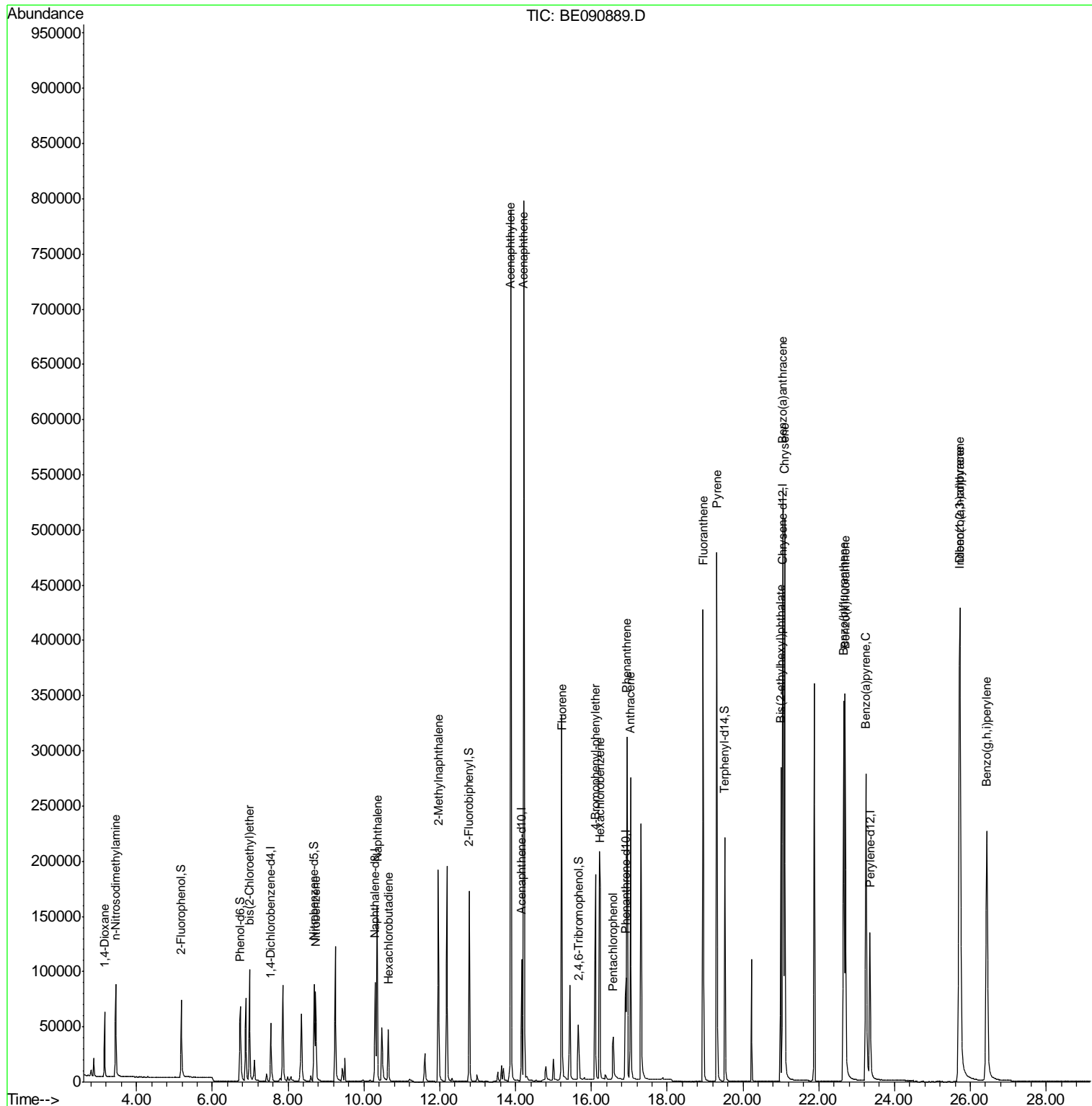
Target Compounds	R.T.	QIon	Response	Conc	Units	Qvalue
2) 1,4-Dioxane	3.15	88	33445	7.79	ng	98
3) n-Nitrosodimethylamine	3.45	42	46185	8.05	ng	# 89
6) bis(2-Chloroethyl)ether	6.98	93	73825	8.98	ng	98
9) Nitrobenzene	8.73	77	97374	10.90	ng	96
10) Naphthalene	10.35	128	223030	8.21	ng	98
11) Hexachlorobutadiene	10.64	225	33034	8.23	ng	100
12) 2-Methylnaphthalene	11.96	142	147332	9.19	ng	99
16) Acenaphthylene	13.87	152	1011551	9.27	ng	100
17) Acenaphthene	14.22	154	150037	8.88	ng	# 86
18) Fluorene	15.22	166	185503	8.61	ng	97
20) 4-Bromophenyl-phenylether	16.11	248	50563	8.93	ng	96
21) Hexachlorobenzene	16.23	284	226381	8.49	ng	99
22) Pentachlorophenol	16.58	266	27582	9.73	ng	94
23) Phenanthrene	16.94	178	328826	8.67	ng	99
24) Anthracene	17.03	178	320981	9.68	ng	100
25) Fluoranthene	18.95	202	400534	8.98	ng	99
27) Pyrene	19.31	202	427748	9.04	ng	99
29) Benzo(a)anthracene	21.05	228	453553	8.84	ng	100
30) Chrysene	21.10	228	457604	8.07	ng	99
31) Bis(2-ethylhexyl)phthalate	21.00	149	240052	11.62	ng	98
32) Indeno(1,2,3-cd)pyrene	25.71	276	582800	9.75	ng	98
34) Benzo(b)fluoranthene	22.66	252	443088	9.54	ng	99
35) Benzo(k)fluoranthene	22.70	252	488776	9.09	ng	100
36) Benzo(a)pyrene	23.25	252	441251	10.05	ng	# 91
37) Dibenzo(a,h)anthracene	25.73	278	475213	10.46	ng	100
38) Benzo(g,h,i)perylene	26.44	276	481112	9.81	ng	99

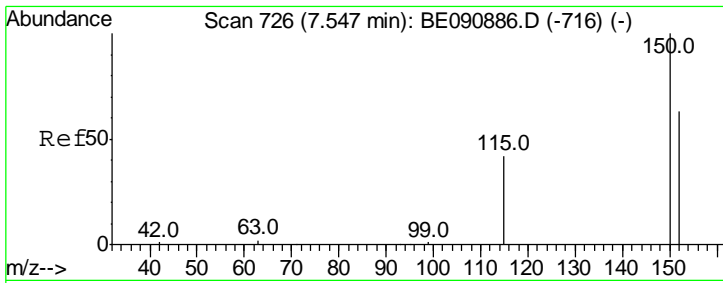
(#) = qualifier out of range (m) = manual integration (+) = signals summed

Data Path : Z:\HPCHEM1\BNA\_E\DATA\BE091815\  
 Data File : BE090889.D  
 Acq On : 18 Sep 2015 17:07  
 Operator : UM/IZ  
 Sample : SSTDIC010  
 Misc :  
 ALS Vial : 9 Sample Multiplier: 1

Instrument :  
 BNA\_E  
 Client Sampled :  
 SSTDIC010

Quant Time: Sep 18 17:38:05 2015  
 Quant Method : Z:\HPCHEM1\BNA\_E\METHODS\8270-SIM-BE091815.M  
 Quant Title : ASP BNA STANDARDS FOR 5 POINT CALIBRATION  
 QLast Update : Fri Sep 18 17:00:23 2015  
 Response via : Initial Calibration



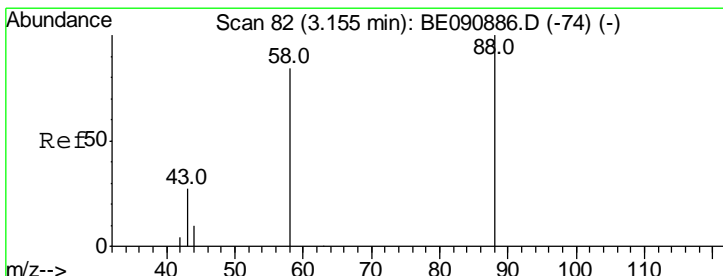
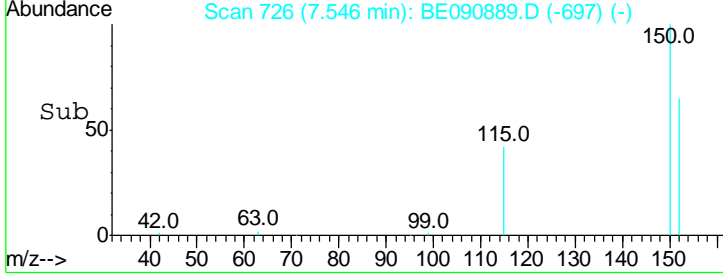
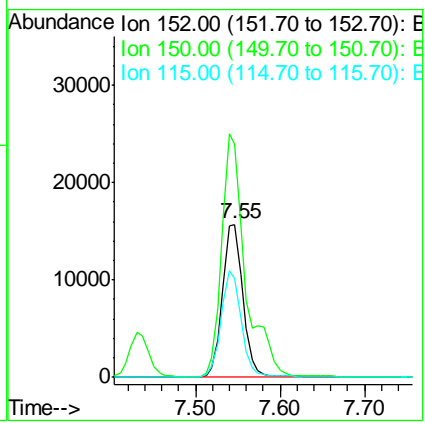
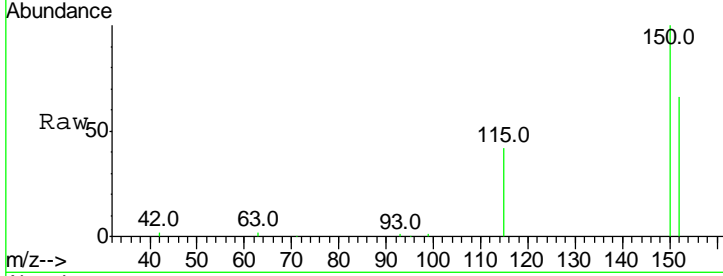


#1  
 1,4-Dichlorobenzene-d4  
 Concen: 5.00 ng  
 RT: 7.55 min Scan# 726  
 Delta R.T. -0.00 min  
 Lab File: BE090889.D  
 Acq: 18 Sep 2015 17:07

**Instrument :**  
 BNA\_E  
**ClientSampled :**  
 SSTDICC010

Tgt Ion:152 Resp: 26240

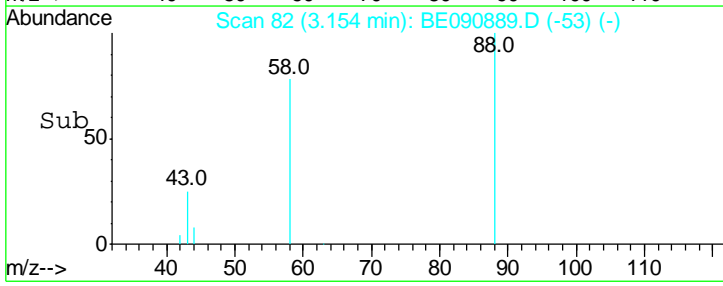
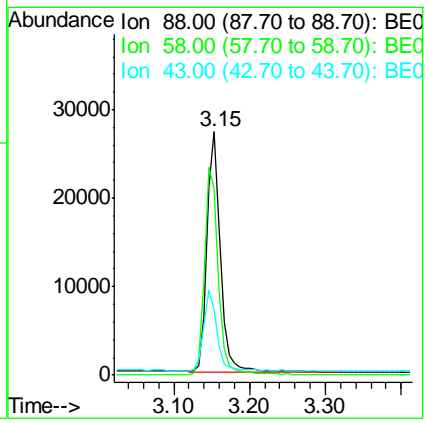
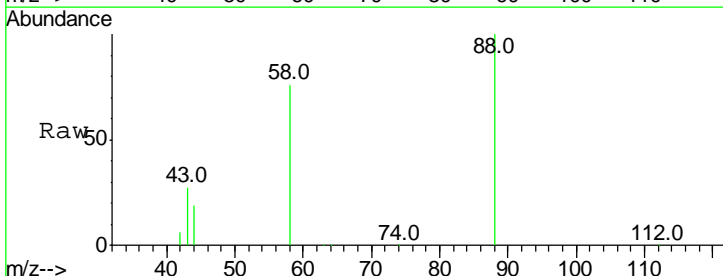
Ion	Ratio	Lower	Upper
152	100		
150	152.6	122.2	183.4
115	64.4	51.0	76.4

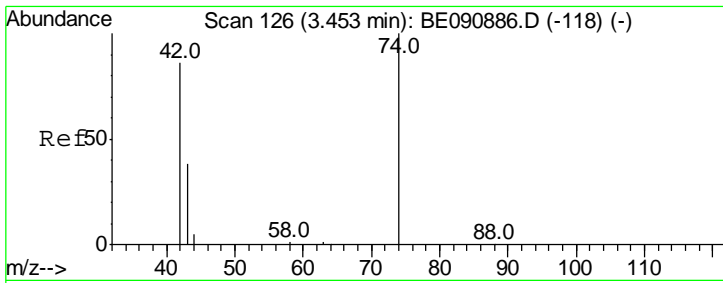


#2  
 1,4-Dioxane  
 Concen: 7.79 ng  
 RT: 3.15 min Scan# 82  
 Delta R.T. -0.00 min  
 Lab File: BE090889.D  
 Acq: 18 Sep 2015 17:07

Tgt Ion: 88 Resp: 33445

Ion	Ratio	Lower	Upper
88	100		
58	87.4	68.4	102.6
43	32.5	26.9	40.3

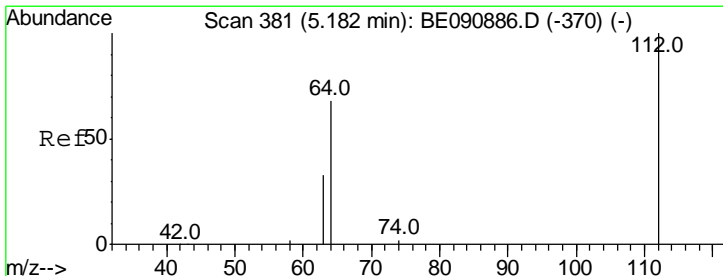
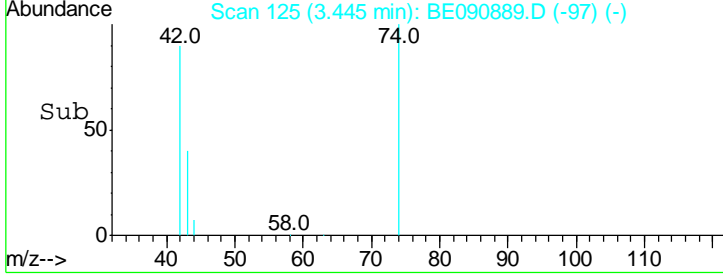
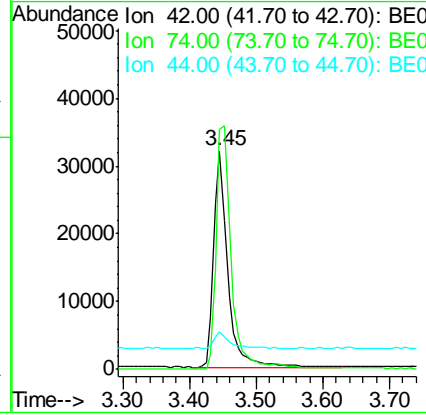
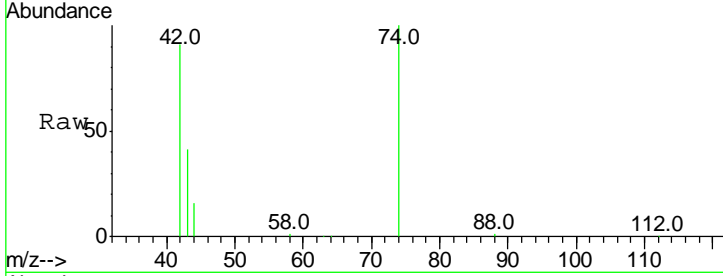




#3  
 n-Nitrosodimethylamine  
 Concen: 8.05 ng  
 RT: 3.45 min Scan# 125  
 Delta R.T. -0.01 min  
 Lab File: BE090889.D  
 Acq: 18 Sep 2015 17:07

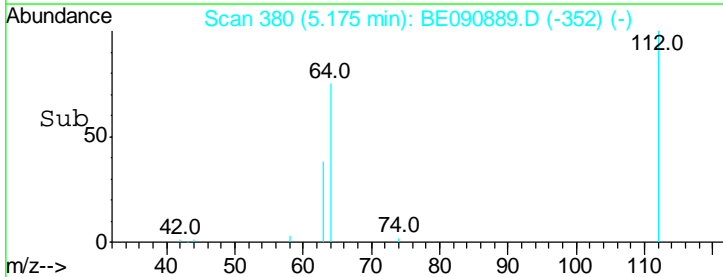
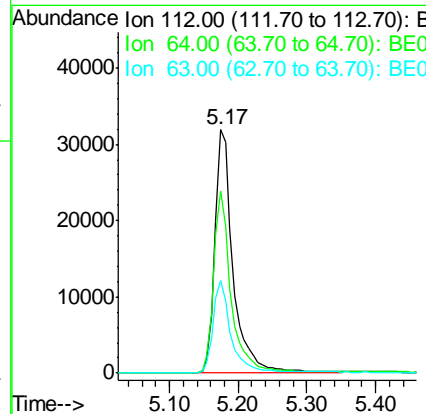
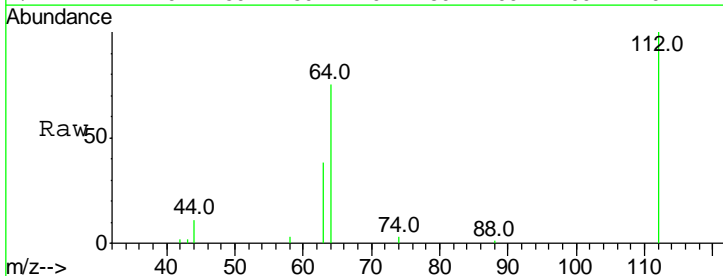
**Instrument :**  
 BNA\_E  
**ClientSampled :**  
 SSTDICC010

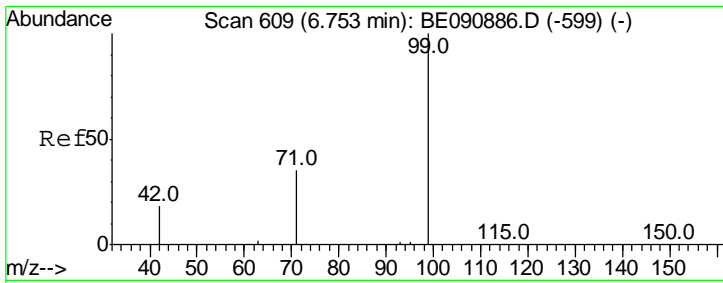
Tgt Ion	Resp	Lower	Upper
42	46185		
74	116.4	83.7	125.5
44	8.4	10.0	15.0#



#4  
 2-Fluorophenol  
 Concen: 8.91 ng  
 RT: 5.17 min Scan# 380  
 Delta R.T. -0.01 min  
 Lab File: BE090889.D  
 Acq: 18 Sep 2015 17:07

Tgt Ion	Resp	Lower	Upper
112	58656		
64	72.0	57.3	85.9
63	36.7	29.2	43.8

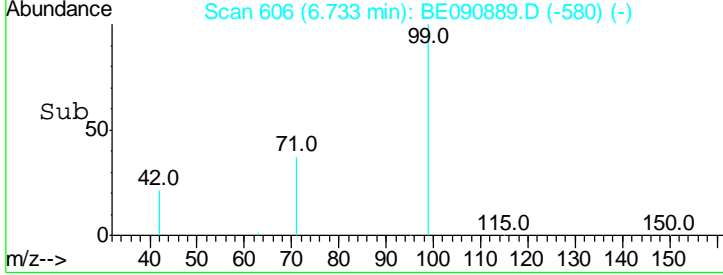
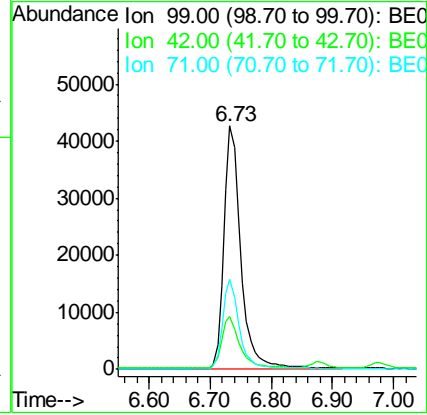
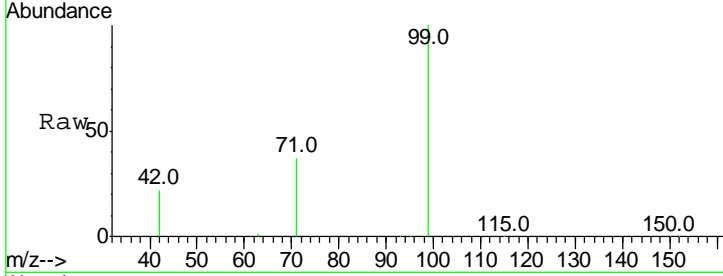




#5  
 Phenol-d6  
 Concen: 10.15 ng  
 RT: 6.73 min Scan# 606  
 Delta R.T. -0.02 min  
 Lab File: BE090889.D  
 Acq: 18 Sep 2015 17:07

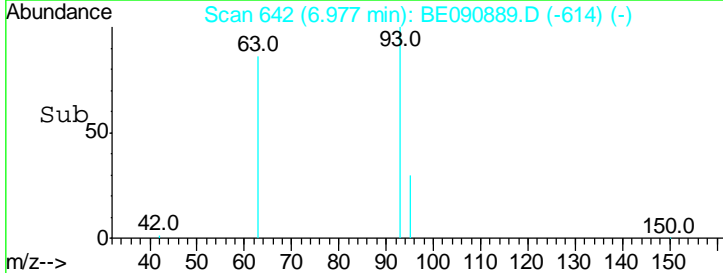
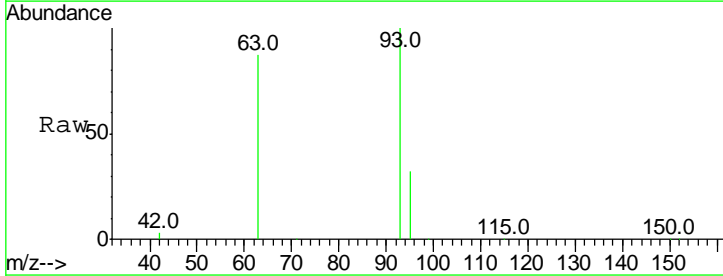
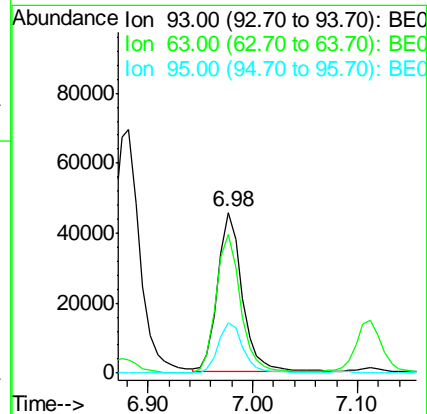
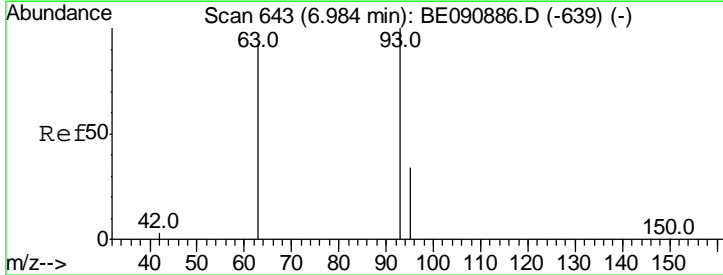
**Instrument :**  
 BNA\_E  
**ClientSampled :**  
 SSTDICC010

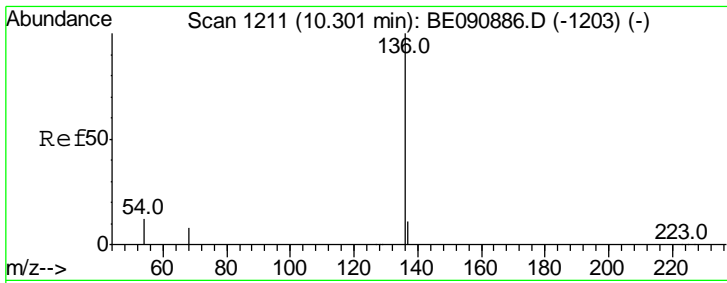
Tgt Ion	Resp	Lower	Upper
99	100		
42	22.0	16.8	25.2
71	36.3	28.3	42.5



#6  
 bis(2-Chloroethyl)ether  
 Concen: 8.98 ng  
 RT: 6.98 min Scan# 642  
 Delta R.T. -0.01 min  
 Lab File: BE090889.D  
 Acq: 18 Sep 2015 17:07

Tgt Ion	Resp	Lower	Upper
93	100		
63	86.9	68.5	102.7
95	32.1	26.9	40.3



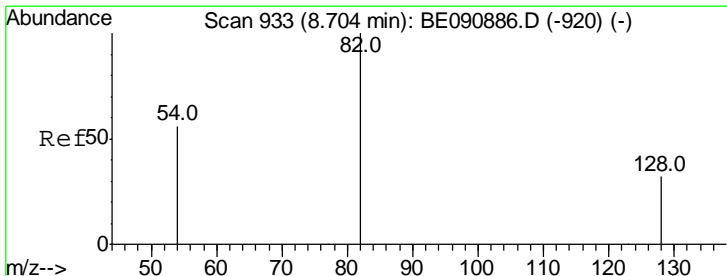
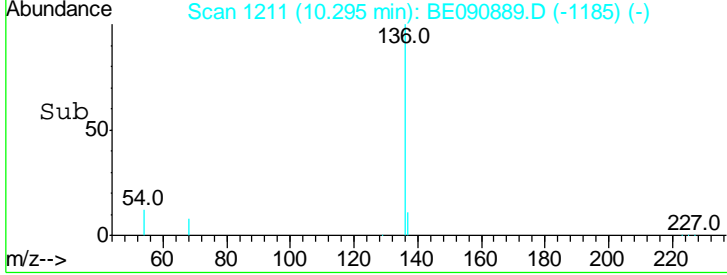
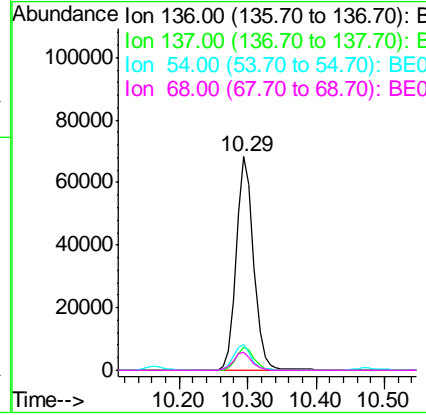
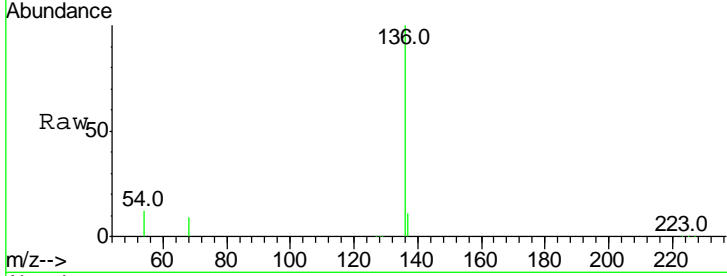


#7  
 Naphthalene-d8  
 Concen: 5.00 ng  
 RT: 10.29 min Scan# 1211  
 Delta R.T. -0.01 min  
 Lab File: BE090889.D  
 Acq: 18 Sep 2015 17:07

**Instrument :**  
 BNA\_E  
**ClientSampled :**  
 SSTDICC010

Tgt Ion: 136 Resp: 118001

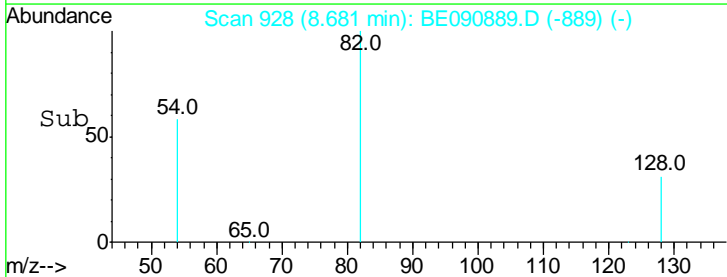
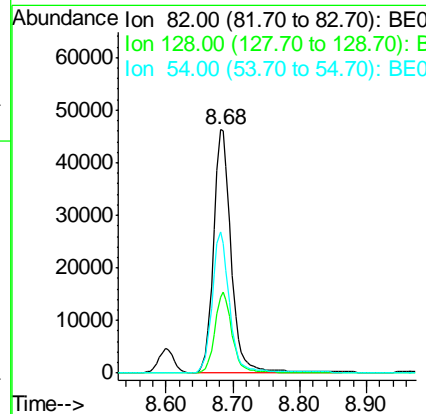
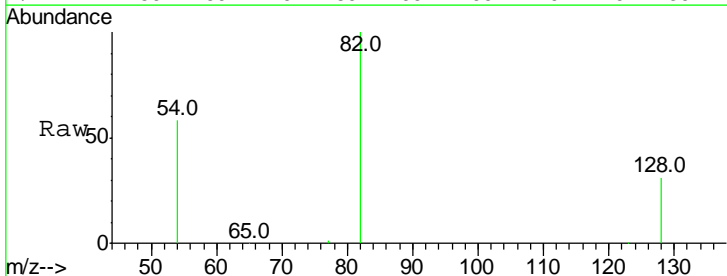
Ion	Ratio	Lower	Upper
136	100		
137	10.9	8.7	13.1
54	12.0	9.0	13.6
68	8.6	6.3	9.5

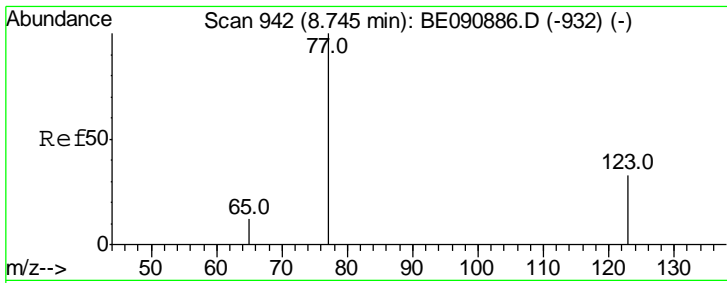


#8  
 Nitrobenzene-d5  
 Concen: 10.43 ng  
 RT: 8.68 min Scan# 928  
 Delta R.T. -0.02 min  
 Lab File: BE090889.D  
 Acq: 18 Sep 2015 17:07

Tgt Ion: 82 Resp: 84343

Ion	Ratio	Lower	Upper
82	100		
128	31.1	25.0	37.4
54	58.1	46.3	69.5

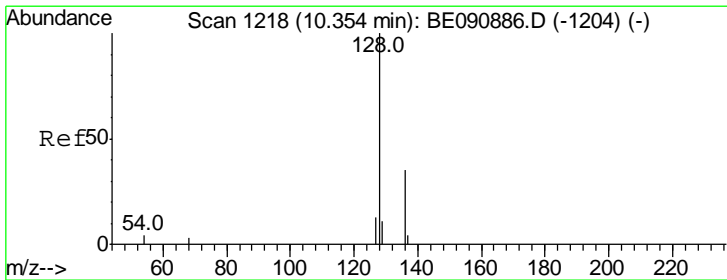
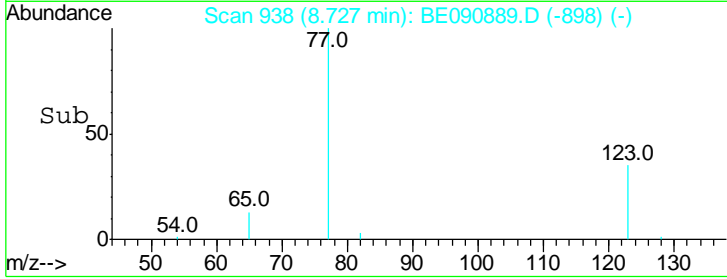
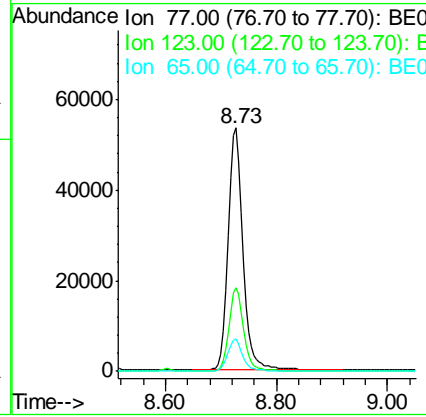
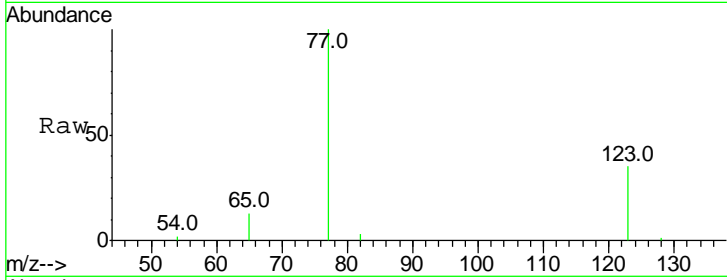




#9  
 Nitrobenzene  
 Concen: 10.90 ng  
 RT: 8.73 min Scan# 938  
 Delta R.T. -0.02 min  
 Lab File: BE090889.D  
 Acq: 18 Sep 2015 17:07

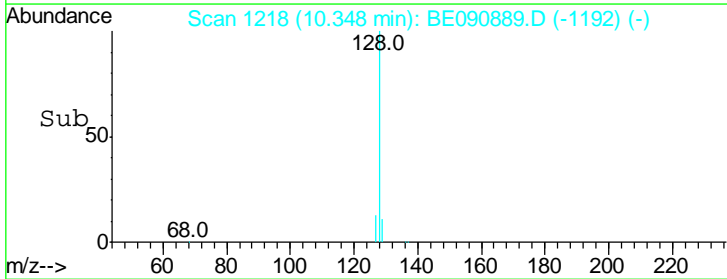
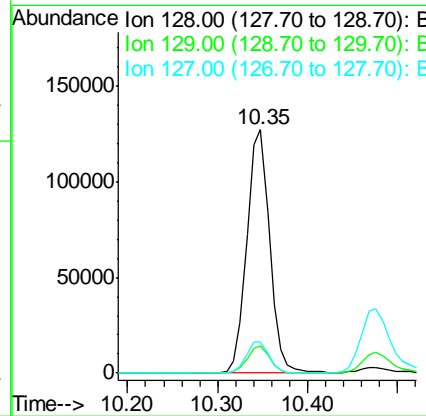
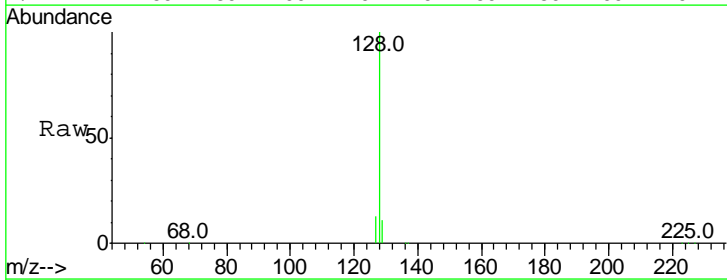
**Instrument :**  
 BNA\_E  
**ClientSampled :**  
 SSTDICC010

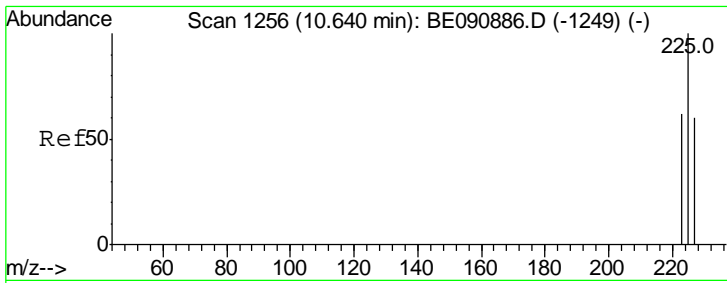
Tgt Ion	Resp	Lower	Upper
77	100		
123	34.1	25.1	37.7
65	13.2	9.9	14.9



#10  
 Naphthalene  
 Concen: 8.21 ng  
 RT: 10.35 min Scan# 1218  
 Delta R.T. -0.01 min  
 Lab File: BE090889.D  
 Acq: 18 Sep 2015 17:07

Tgt Ion	Resp	Lower	Upper
128	100		
129	11.3	8.4	12.6
127	12.9	9.9	14.9

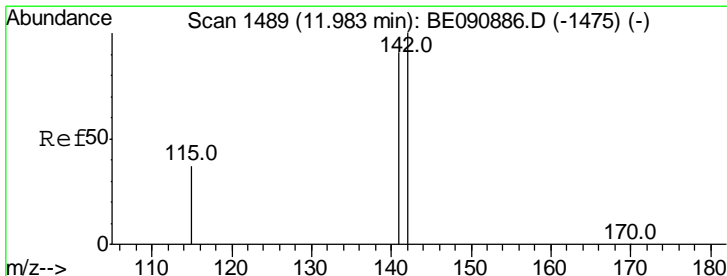
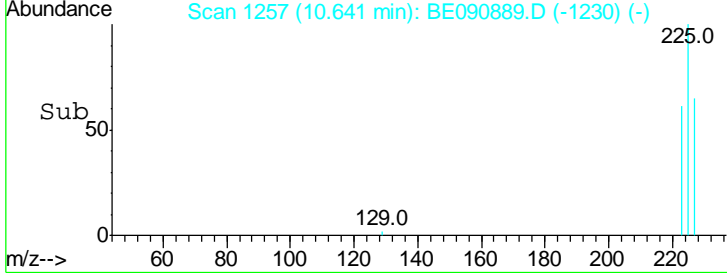
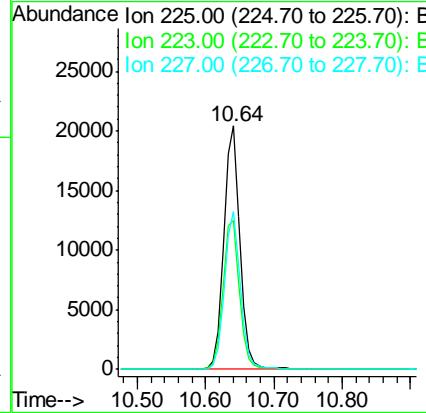
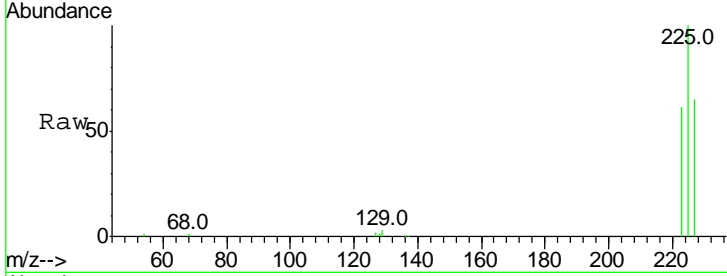




#11  
 Hexachlorobutadiene  
 Concen: 8.23 ng  
 RT: 10.64 min Scan# 1257  
 Delta R.T. 0.00 min  
 Lab File: BE090889.D  
 Acq: 18 Sep 2015 17:07

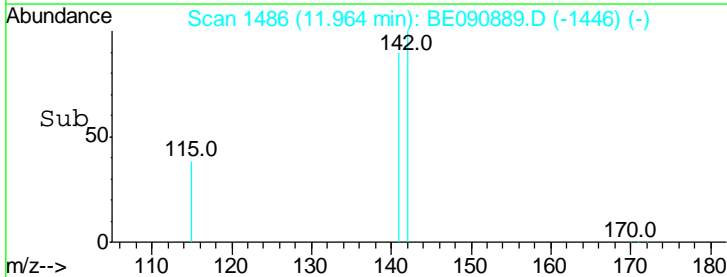
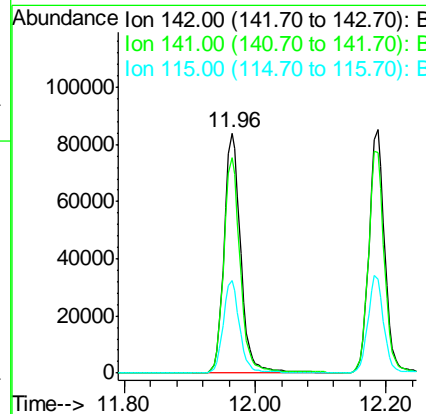
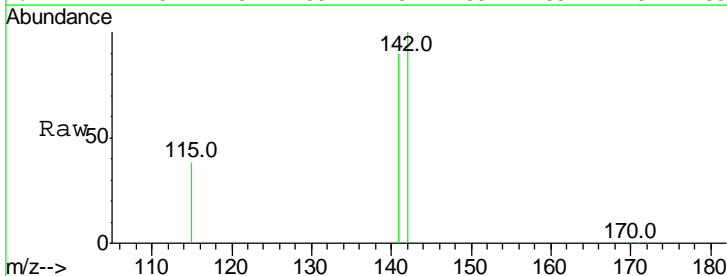
Instrument :  
 BNA\_E  
 ClientSampled :  
 SSTDICC010

Tgt Ion	Resp	Lower	Upper
225	100		
223	63.1	50.6	76.0
227	63.9	51.0	76.6

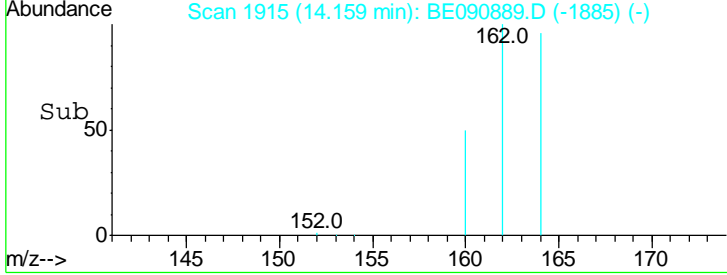
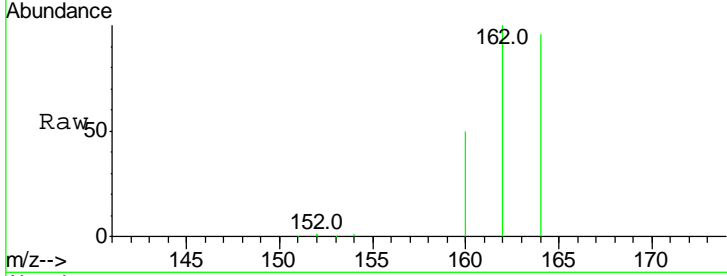
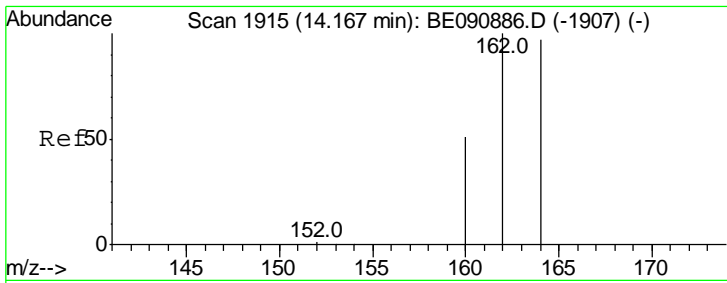


#12  
 2-Methylnaphthalene  
 Concen: 9.19 ng  
 RT: 11.96 min Scan# 1486  
 Delta R.T. -0.02 min  
 Lab File: BE090889.D  
 Acq: 18 Sep 2015 17:07

Tgt Ion	Resp	Lower	Upper
142	100		
141	89.8	71.4	107.2
115	38.4	31.0	46.4



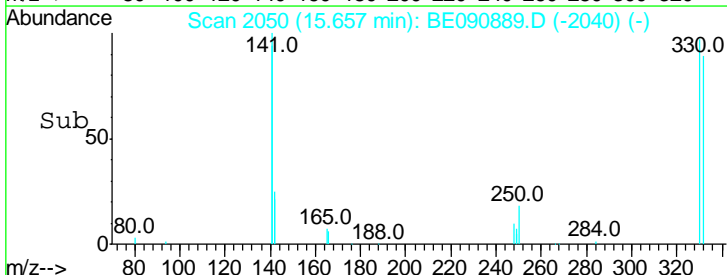
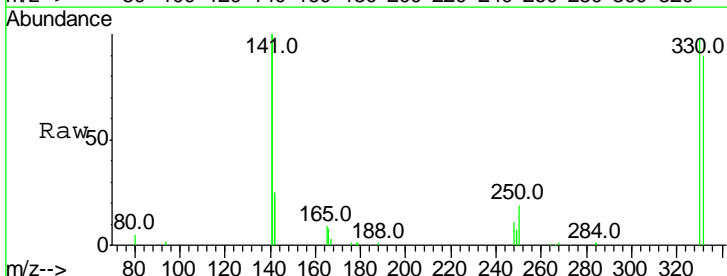
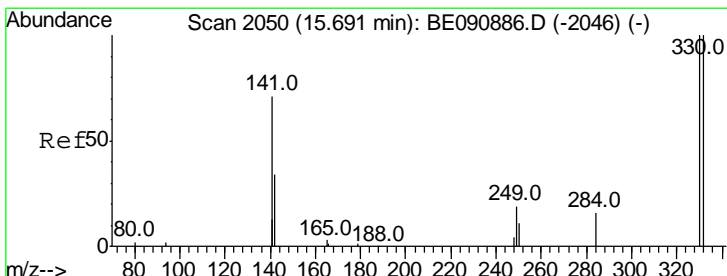
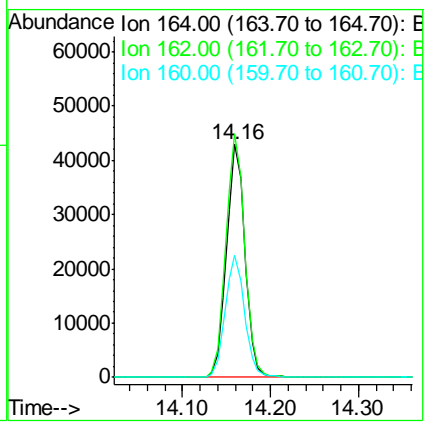




#13  
 Acenaphthene-d10  
 Concen: 5.00 ng  
 RT: 14.16 min Scan# 1915  
 Delta R.T. -0.01 min  
 Lab File: BE090889.D  
 Acq: 18 Sep 2015 17:07

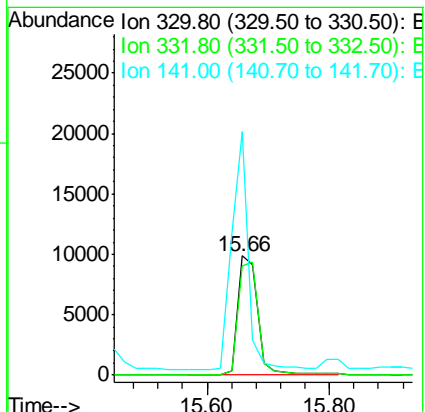
Instrument :  
 BNA\_E  
 ClientSampleId :  
 SSTDICC010

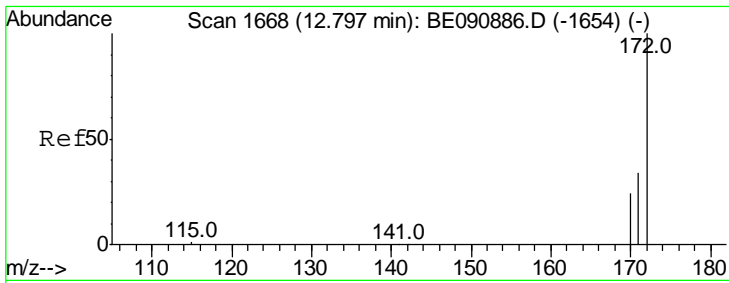
Tgt Ion	Resp	Lower	Upper
164	100		
162	104.4	86.8	130.2
160	52.2	53.9	80.9#



#14  
 2,4,6-Tribromophenol  
 Concen: 8.91 ng  
 RT: 15.66 min Scan# 2050  
 Delta R.T. -0.03 min  
 Lab File: BE090889.D  
 Acq: 18 Sep 2015 17:07

Tgt Ion	Resp	Lower	Upper
330	100		
332	97.0	74.9	112.3
141	166.6	145.2	217.8

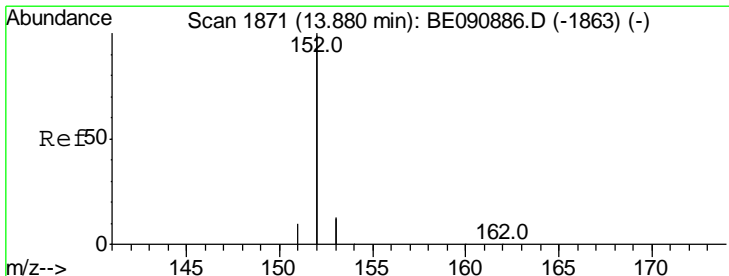
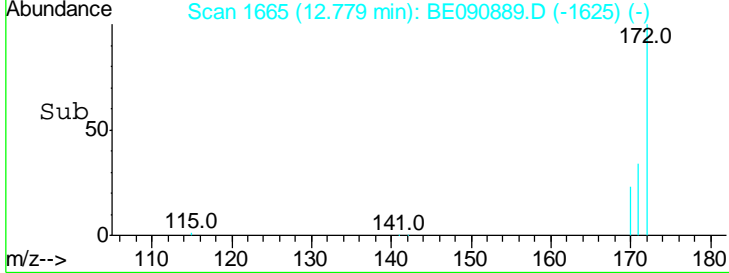
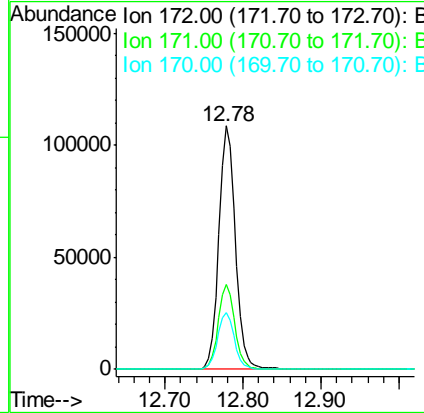
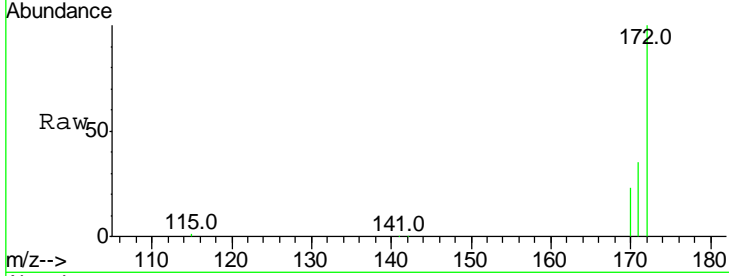




#15  
 2-Fluorobiphenyl  
 Concen: 8.89 ng  
 RT: 12.78 min Scan# 1665  
 Delta R.T. -0.02 min  
 Lab File: BE090889.D  
 Acq: 18 Sep 2015 17:07

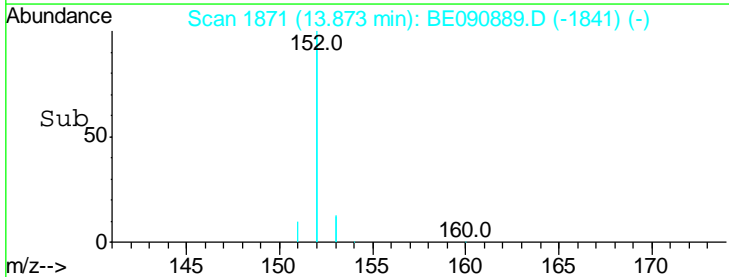
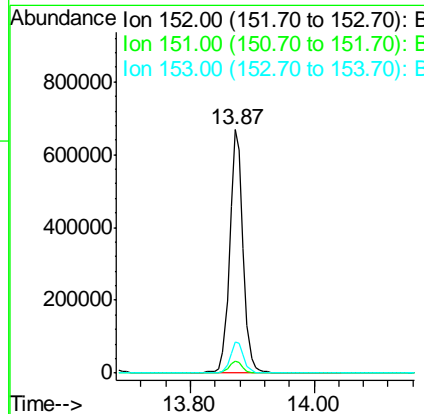
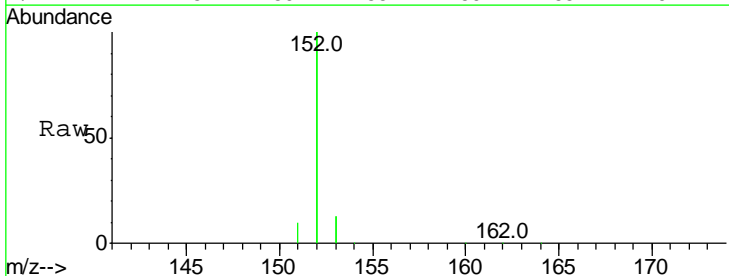
Instrument :  
 BNA\_E  
 ClientSampleId :  
 SSTDICC010

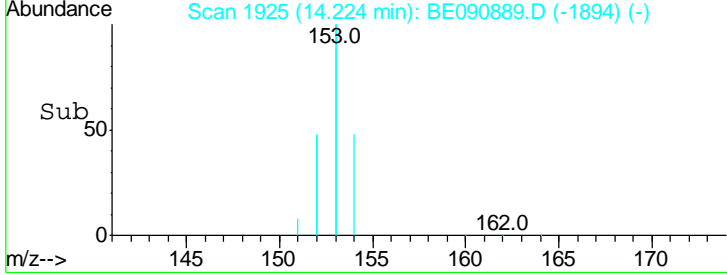
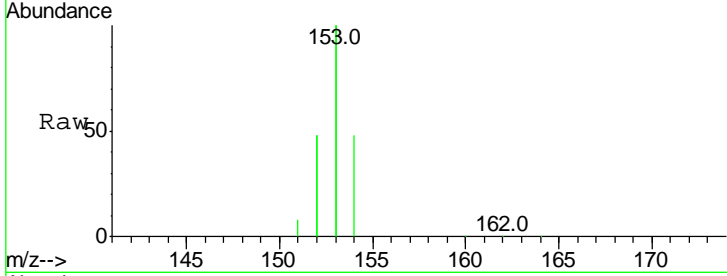
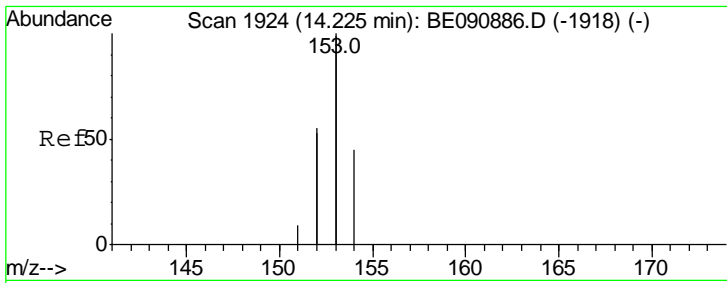
Tgt Ion	Resp	Lower	Upper
172	158669		
171	34.7	27.8	41.8
170	23.4	19.8	29.6



#16  
 Acenaphthylene  
 Concen: 9.27 ng  
 RT: 13.87 min Scan# 1871  
 Delta R.T. -0.01 min  
 Lab File: BE090889.D  
 Acq: 18 Sep 2015 17:07

Tgt Ion	Resp	Lower	Upper
152	1011551		
151	4.9	3.9	5.9
153	13.0	10.3	15.5

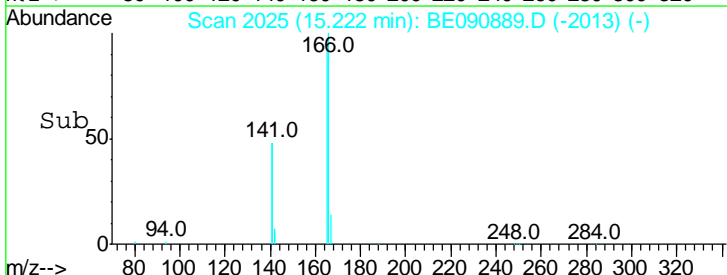
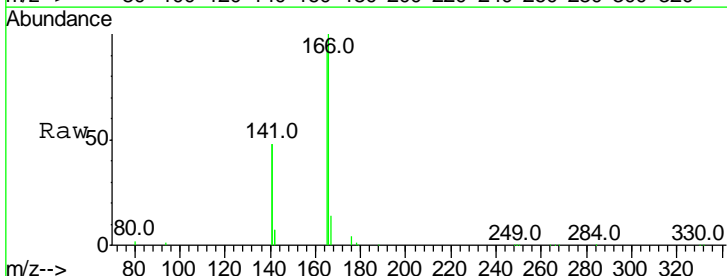
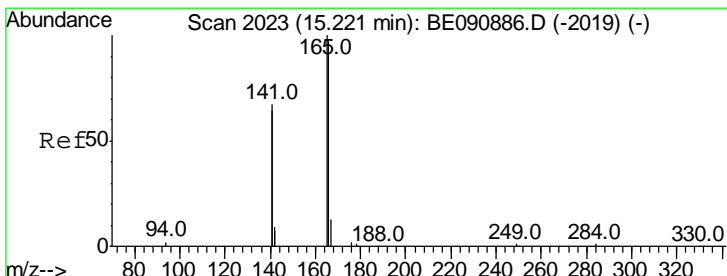
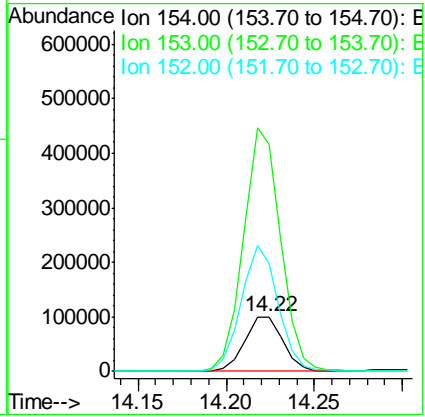




#17  
 Acenaphthene  
 Concen: 8.88 ng  
 RT: 14.22 min Scan# 1925  
 Delta R.T. -0.00 min  
 Lab File: BE090889.D  
 Acq: 18 Sep 2015 17:07

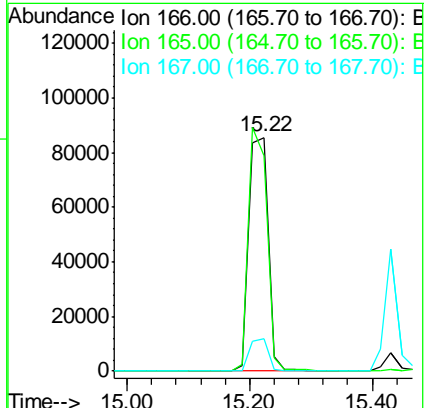
Instrument : BNA\_E  
 ClientSampleID : SSTDICC010

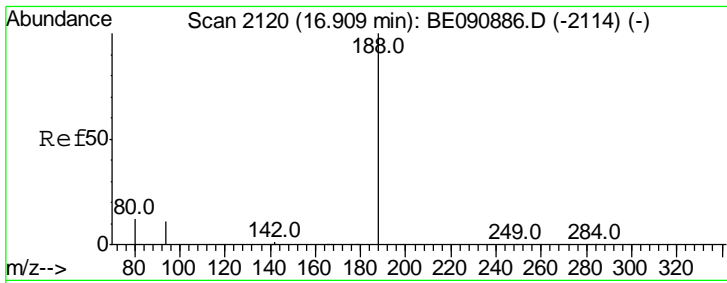
Tgt Ion	Resp	Lower	Upper
154	100		
153	436.2	354.5	531.7
152	224.7	227.8	341.6#



#18  
 Fluorene  
 Concen: 8.61 ng  
 RT: 15.22 min Scan# 2025  
 Delta R.T. 0.00 min  
 Lab File: BE090889.D  
 Acq: 18 Sep 2015 17:07

Tgt Ion	Resp	Lower	Upper
166	100		
165	99.6	82.7	124.1
167	13.5	10.7	16.1

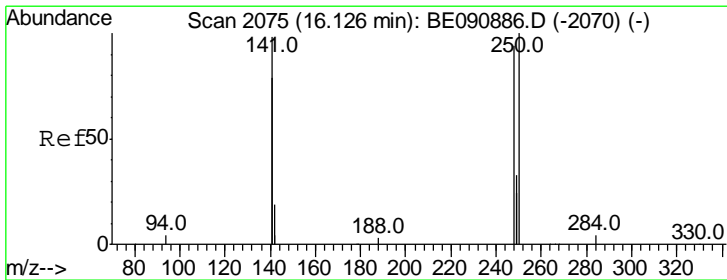
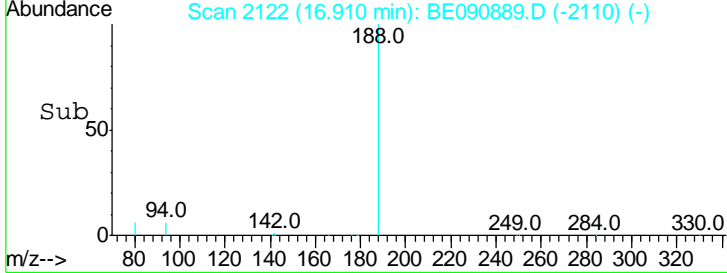
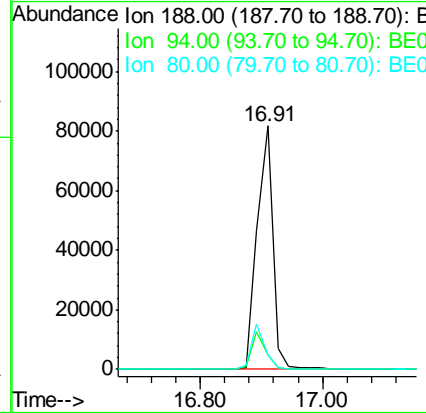
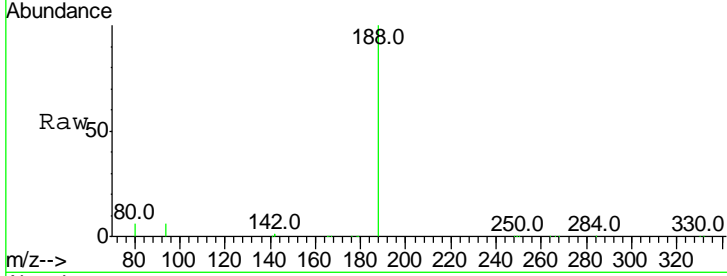




#19  
 Phenanthrene-d10  
 Concen: 5.00 ng  
 RT: 16.91 min Scan# 2122  
 Delta R.T. 0.00 min  
 Lab File: BE090889.D  
 Acq: 18 Sep 2015 17:07

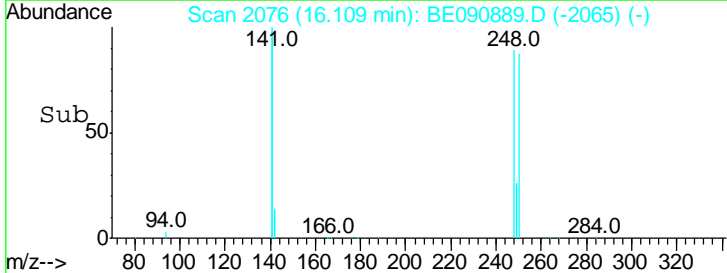
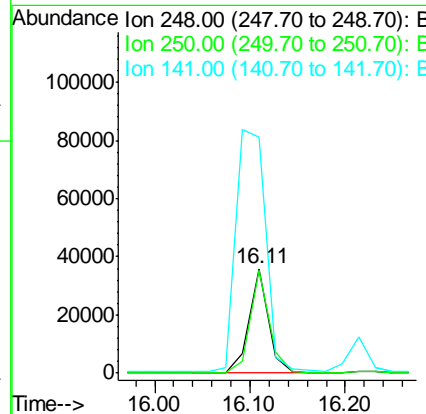
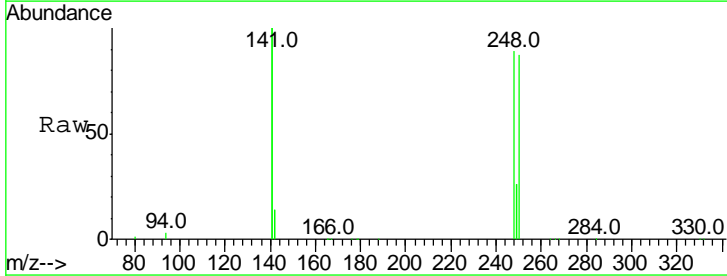
Instrument : BNA\_E  
 ClientSampled : SSTDICC010

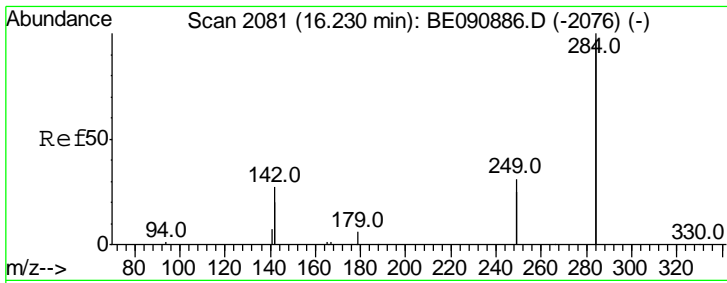
Tgt Ion	Resp	Lower	Upper
188	100		
94	5.8	10.3	15.5#
80	5.9	11.0	16.6#



#20  
 4-Bromophenyl-phenylether  
 Concen: 8.93 ng  
 RT: 16.11 min Scan# 2076  
 Delta R.T. -0.02 min  
 Lab File: BE090889.D  
 Acq: 18 Sep 2015 17:07

Tgt Ion	Resp	Lower	Upper
248	100		
250	97.6	76.7	115.1
141	355.3	292.6	439.0

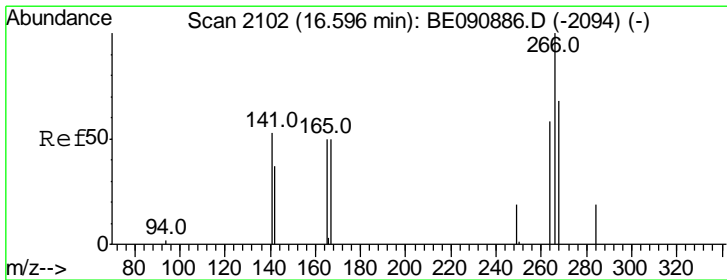
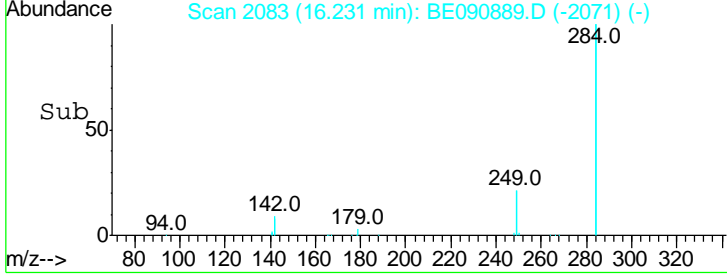
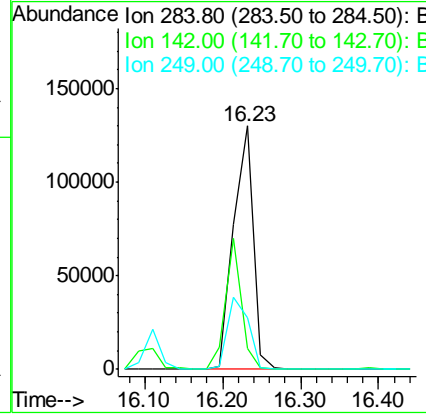
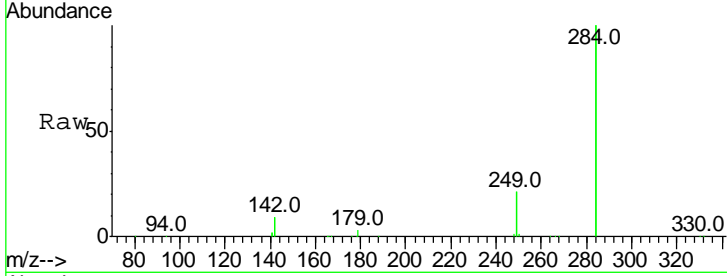




#21  
 Hexachlorobenzene  
 Concen: 8.49 ng  
 RT: 16.23 min Scan# 2083  
 Delta R.T. 0.00 min  
 Lab File: BE090889.D  
 Acq: 18 Sep 2015 17:07

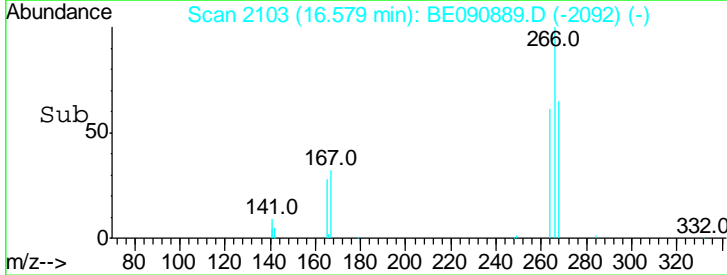
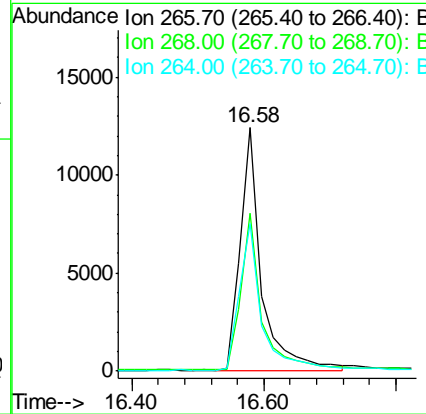
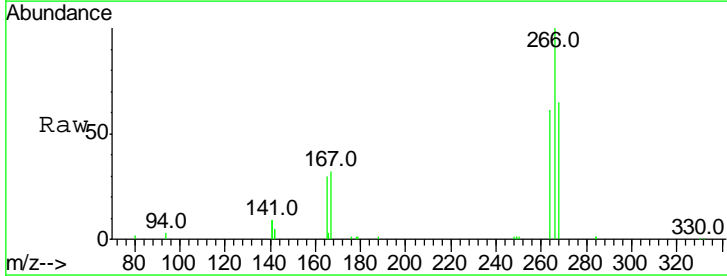
Instrument : BNA\_E  
 ClientSampleId : SSTDICC010

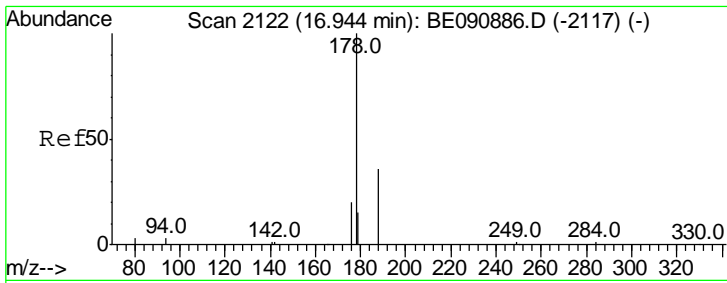
Tgt Ion	Resp	Lower	Upper
284	100		
142	42.8	35.0	52.4
249	31.6	25.5	38.3



#22  
 Pentachlorophenol  
 Concen: 9.73 ng  
 RT: 16.58 min Scan# 2103  
 Delta R.T. -0.02 min  
 Lab File: BE090889.D  
 Acq: 18 Sep 2015 17:07

Tgt Ion	Resp	Lower	Upper
266	100		
268	64.8	49.6	74.4
264	60.7	53.9	80.9

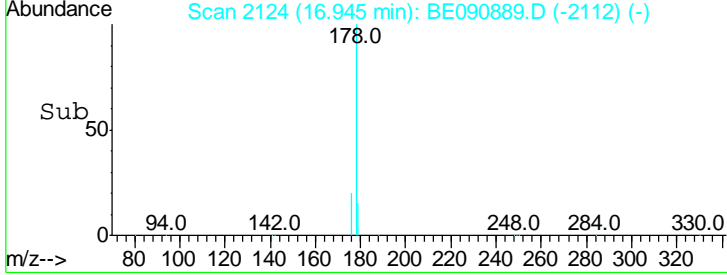
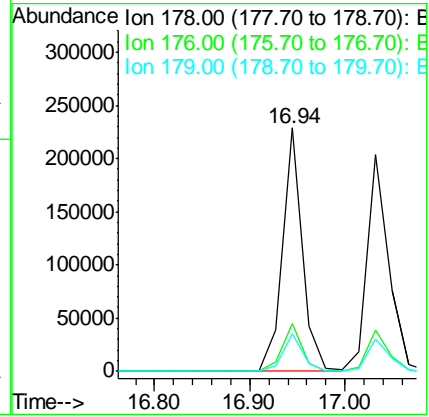
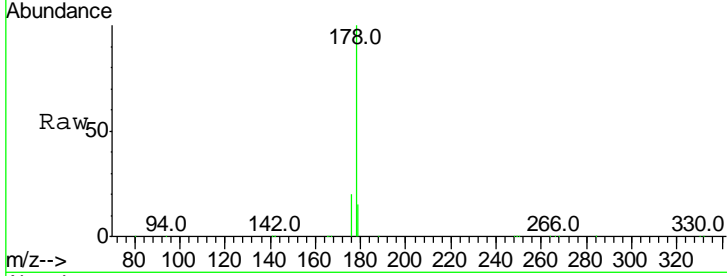




#23  
 Phenanthrene  
 Concen: 8.67 ng  
 RT: 16.94 min Scan# 2124  
 Delta R.T. 0.00 min  
 Lab File: BE090889.D  
 Acq: 18 Sep 2015 17:07

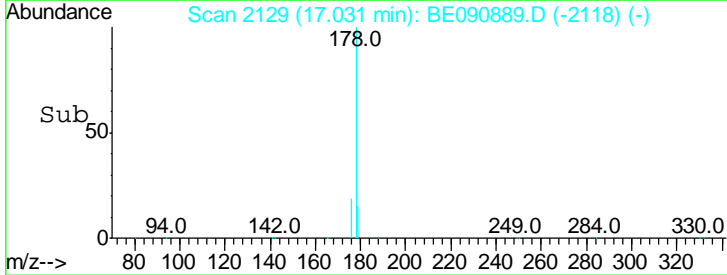
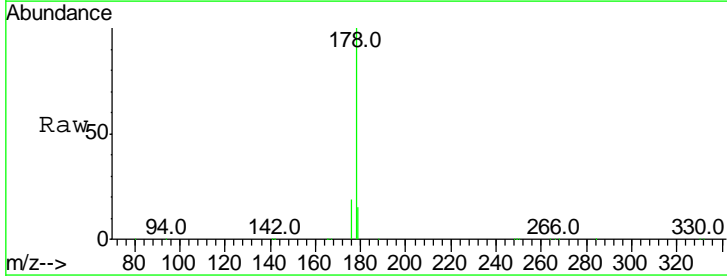
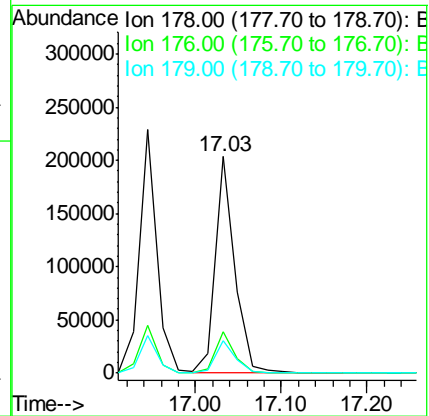
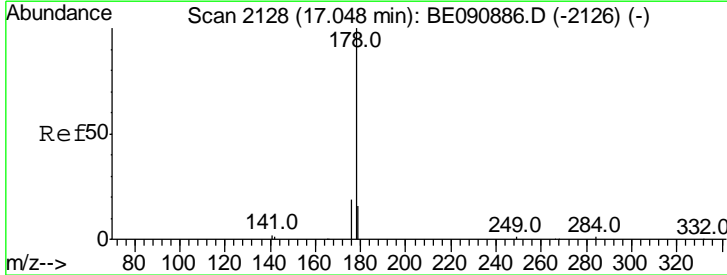
Instrument : BNA\_E  
 ClientSampleId : SSTDICC010

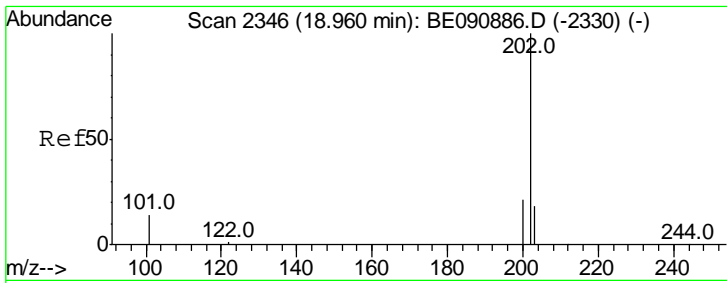
Tgt Ion	Resp	Lower	Upper
178	100		
176	19.6	15.6	23.4
179	15.2	12.8	19.2



#24  
 Anthracene  
 Concen: 9.68 ng  
 RT: 17.03 min Scan# 2129  
 Delta R.T. -0.02 min  
 Lab File: BE090889.D  
 Acq: 18 Sep 2015 17:07

Tgt Ion	Resp	Lower	Upper
178	100		
176	18.9	15.0	22.6
179	15.3	12.3	18.5

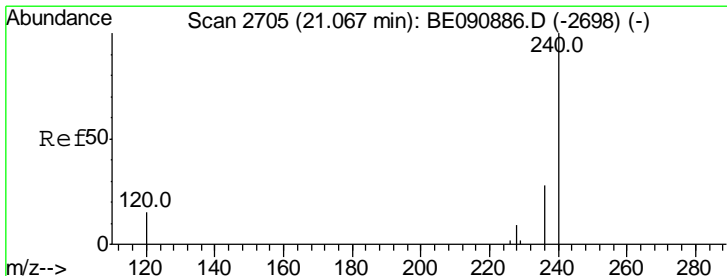
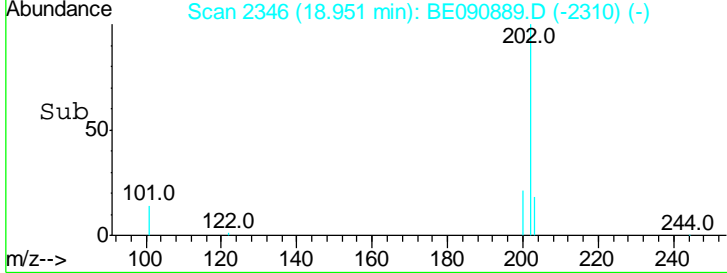
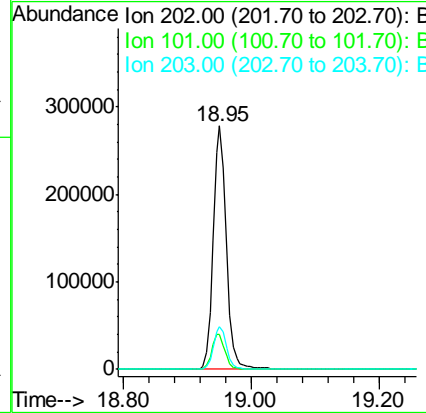
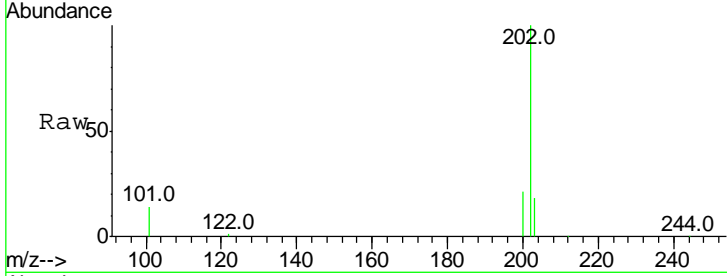




#25  
 Fluoranthene  
 Concen: 8.98 ng  
 RT: 18.95 min Scan# 2346  
 Delta R.T. -0.01 min  
 Lab File: BE090889.D  
 Acq: 18 Sep 2015 17:07

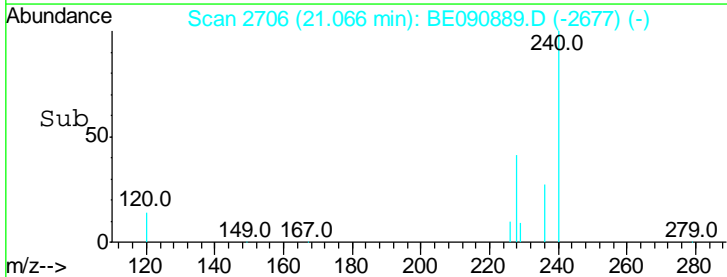
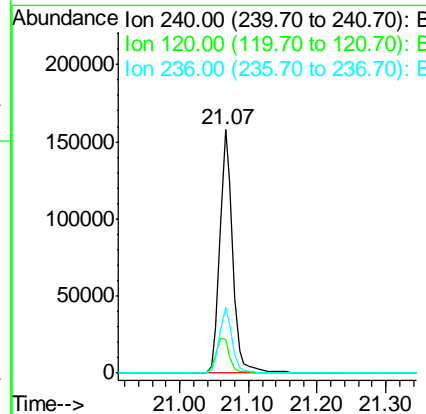
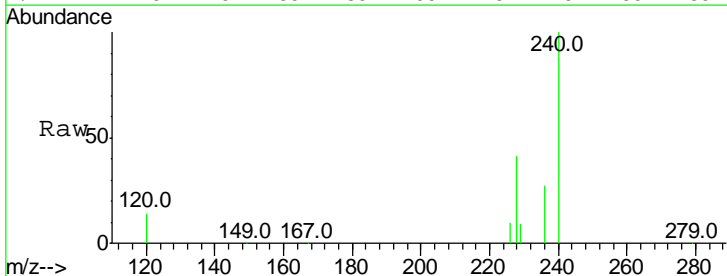
Instrument :  
 BNA\_E  
 ClientSampled :  
 SSTDICC010

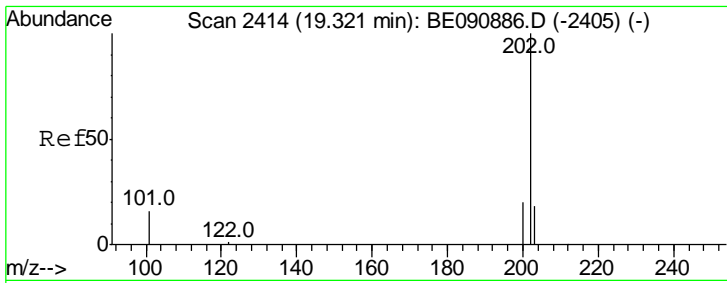
Tgt Ion	Resp	Lower	Upper
202	400534		
101	14.6	11.0	16.6
203	17.5	13.9	20.9



#26  
 Chrysene-d12  
 Concen: 5.00 ng  
 RT: 21.07 min Scan# 2706  
 Delta R.T. -0.00 min  
 Lab File: BE090889.D  
 Acq: 18 Sep 2015 17:07

Tgt Ion	Resp	Lower	Upper
240	204728		
120	13.9	10.1	15.1
236	27.1	21.9	32.9

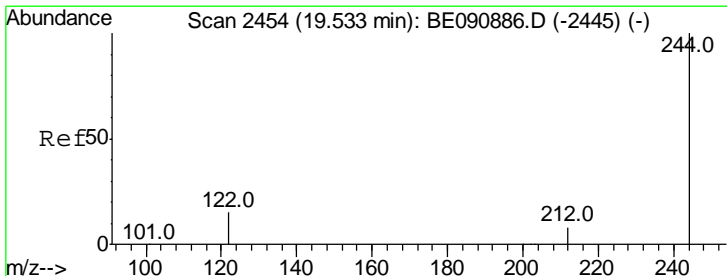
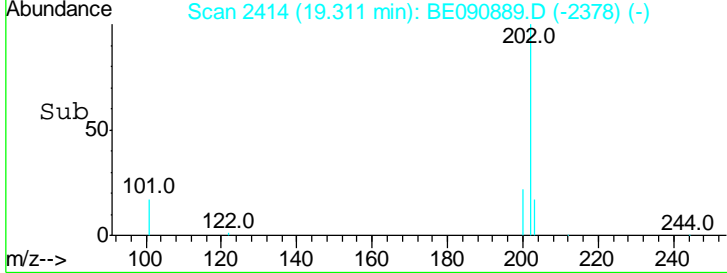
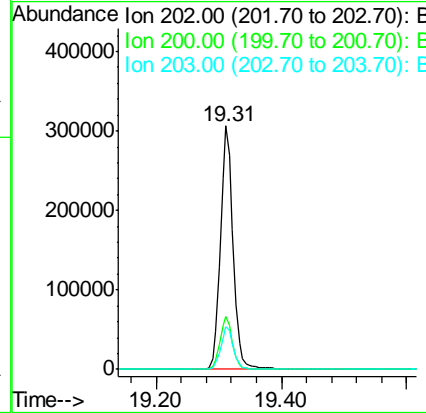
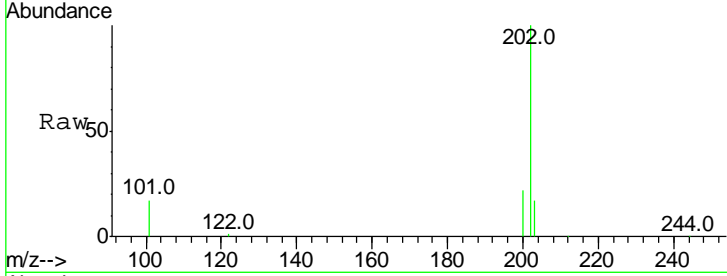




#27  
 Pyrene  
 Concen: 9.04 ng  
 RT: 19.31 min Scan# 2414  
 Delta R.T. -0.01 min  
 Lab File: BE090889.D  
 Acq: 18 Sep 2015 17:07

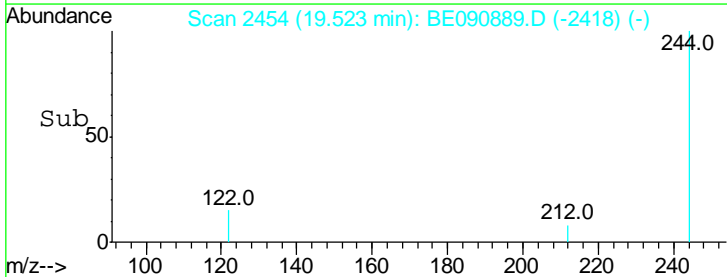
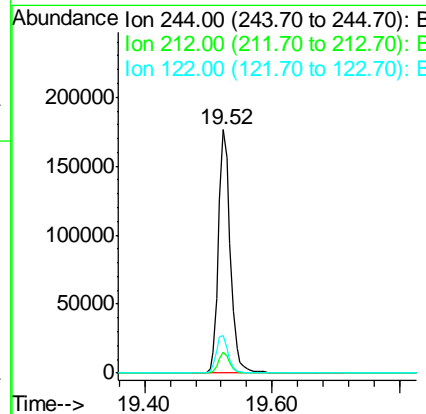
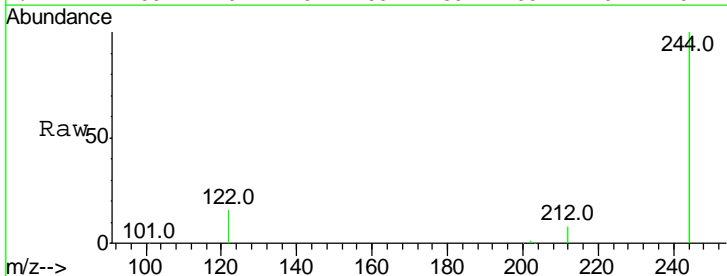
Instrument : BNA\_E  
 ClientSampled : SSTDICC010

Tgt Ion	Resp	Lower	Upper
202	427748		
200	21.4	16.7	25.1
203	17.5	13.8	20.6

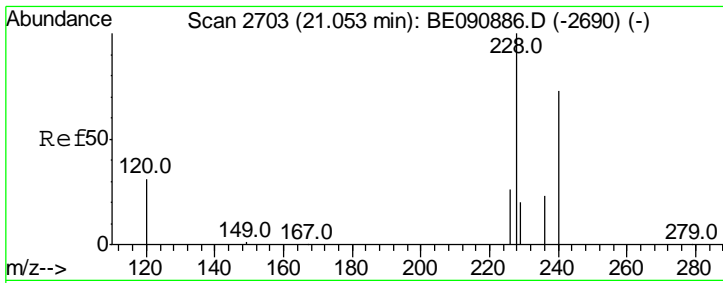


#28  
 Terphenyl-d14  
 Concen: 8.55 ng  
 RT: 19.52 min Scan# 2454  
 Delta R.T. -0.01 min  
 Lab File: BE090889.D  
 Acq: 18 Sep 2015 17:07

Tgt Ion	Resp	Lower	Upper
244	227470		
212	8.5	6.9	10.3
122	15.6	12.9	19.3



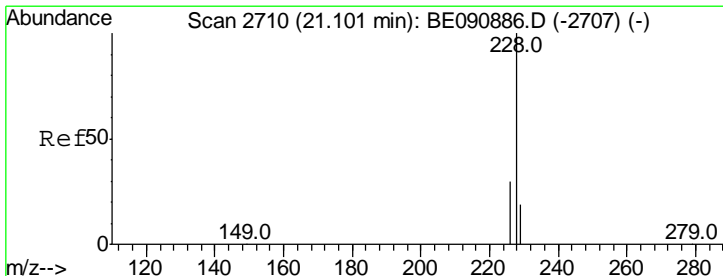
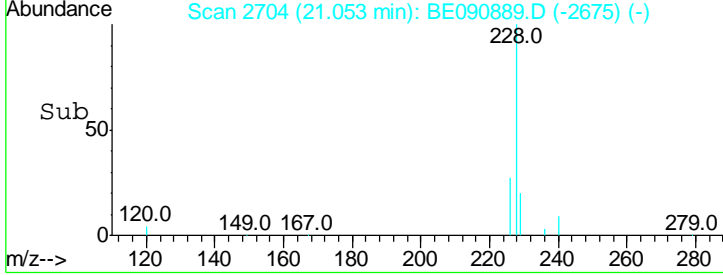
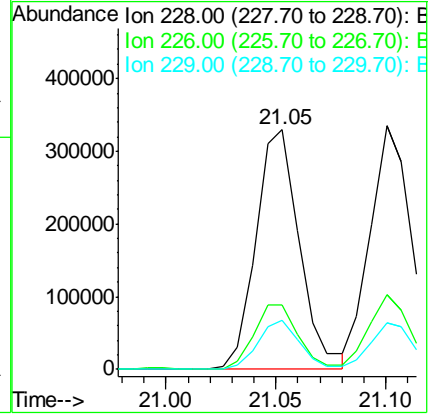
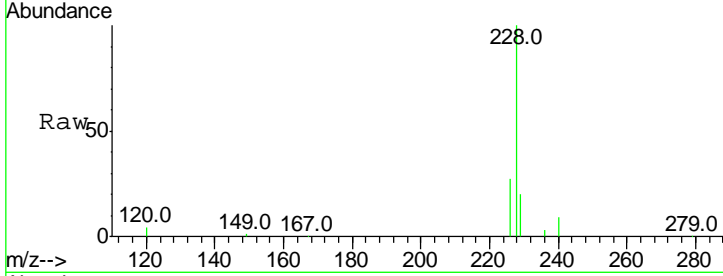




#29  
 Benzo(a)anthracene  
 Concen: 8.84 ng  
 RT: 21.05 min Scan# 2704  
 Delta R.T. -0.00 min  
 Lab File: BE090889.D  
 Acq: 18 Sep 2015 17:07

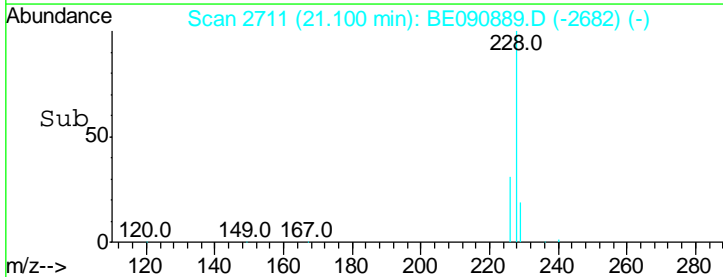
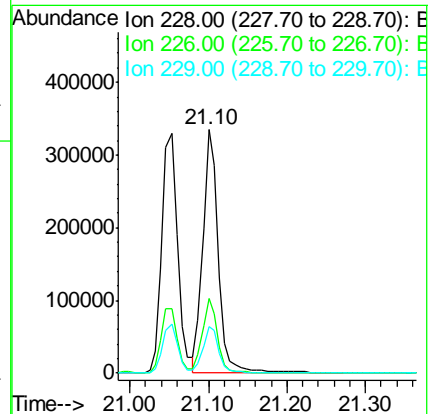
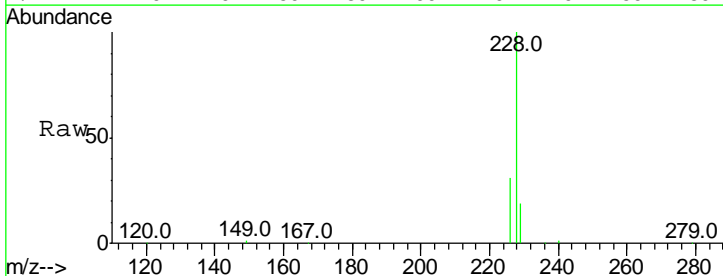
Instrument : BNA\_E  
 ClientSampleId : SSTDICC010

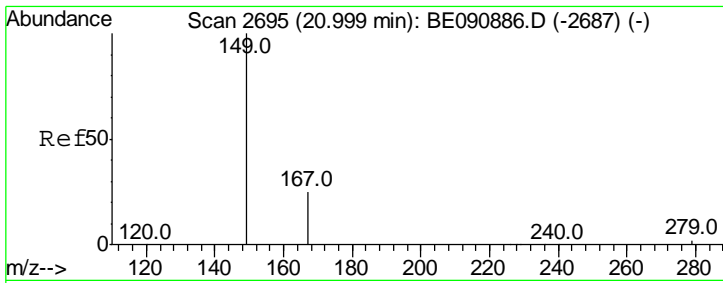
Tgt Ion	Resp	Lower	Upper
228	100		
226	27.0	21.6	32.4
229	20.3	15.9	23.9



#30  
 Chrysene  
 Concen: 8.07 ng  
 RT: 21.10 min Scan# 2711  
 Delta R.T. -0.00 min  
 Lab File: BE090889.D  
 Acq: 18 Sep 2015 17:07

Tgt Ion	Resp	Lower	Upper
228	100		
226	30.8	24.2	36.4
229	19.1	15.3	22.9

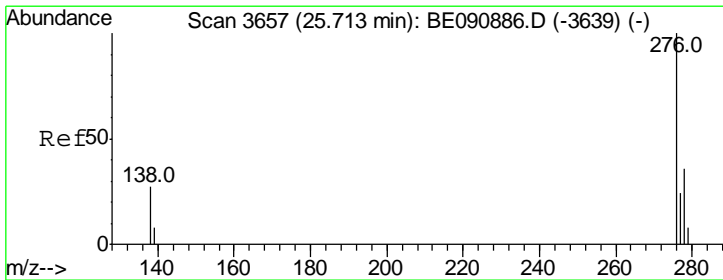
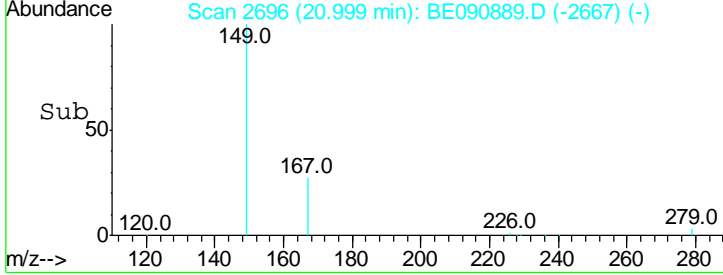
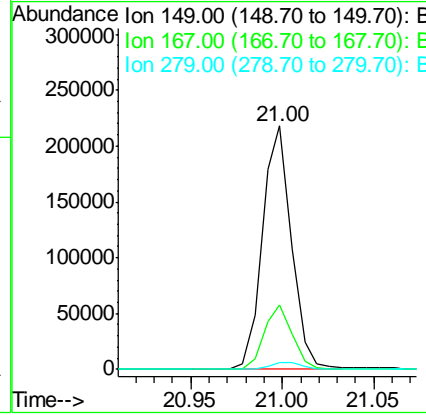
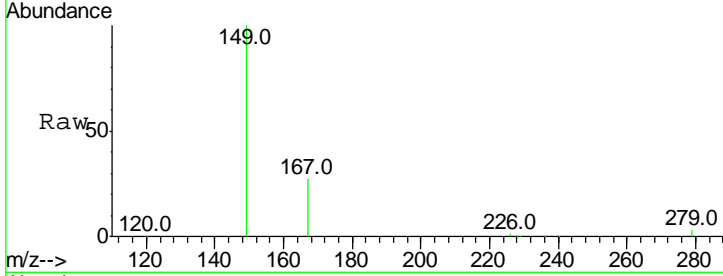




#31  
 Bis(2-ethylhexyl)phthalate  
 Concen: 11.62 ng  
 RT: 21.00 min Scan# 2696  
 Delta R.T. -0.00 min  
 Lab File: BE090889.D  
 Acq: 18 Sep 2015 17:07

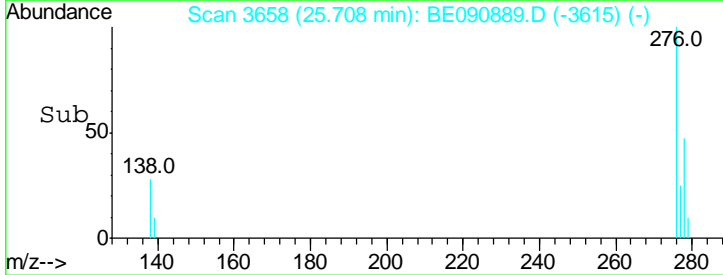
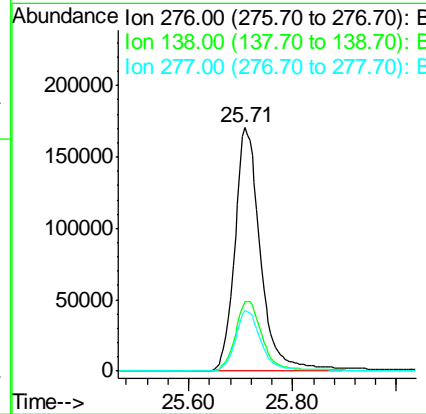
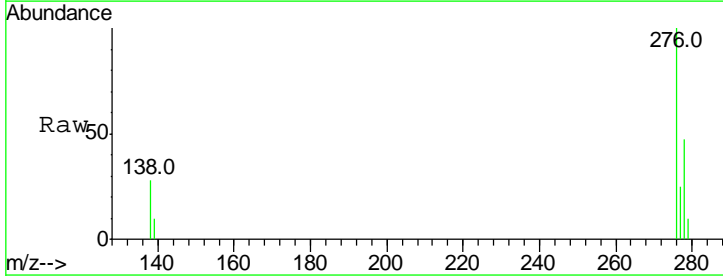
Instrument :  
 BNA\_E  
 ClientSampleID :  
 SSTDICC010

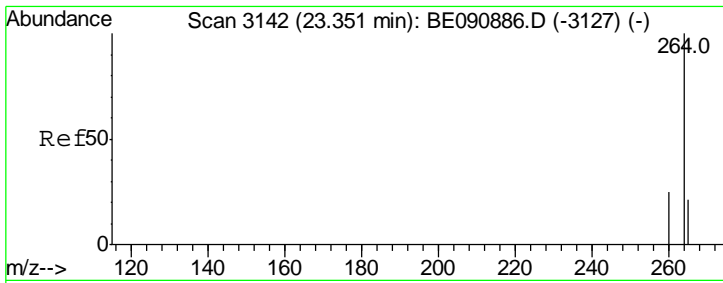
Tgt Ion	Resp	Lower	Upper
149	100		
167	26.2	20.1	30.1
279	3.0	2.3	3.5



#32  
 Indeno(1,2,3-cd)pyrene  
 Concen: 9.75 ng  
 RT: 25.71 min Scan# 3658  
 Delta R.T. -0.01 min  
 Lab File: BE090889.D  
 Acq: 18 Sep 2015 17:07

Tgt Ion	Resp	Lower	Upper
276	100		
138	30.3	23.3	34.9
277	25.1	19.8	29.6



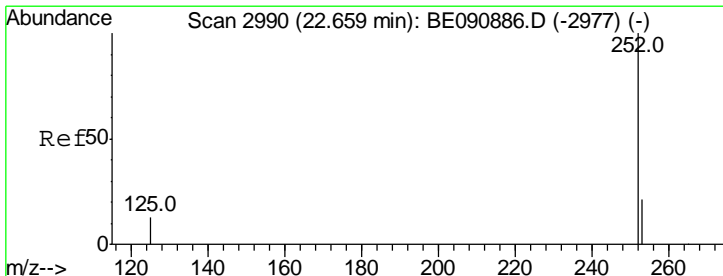
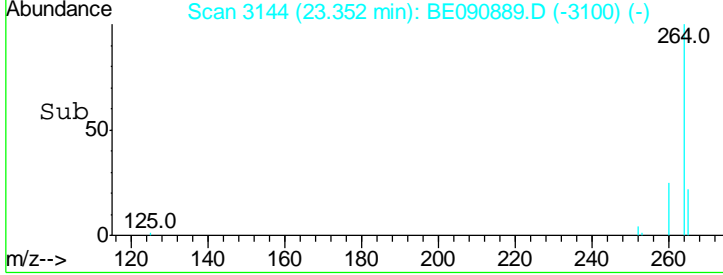
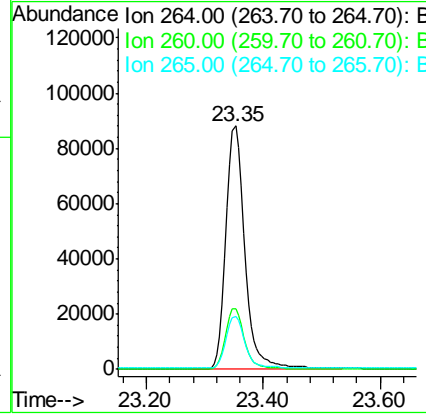
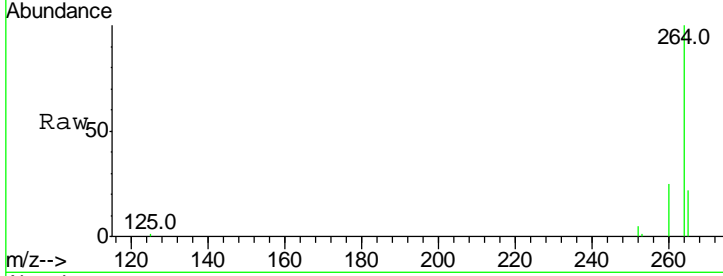


#33  
 Perylene-d12  
 Concen: 5.00 ng  
 RT: 23.35 min Scan# 3144  
 Delta R.T. 0.00 min  
 Lab File: BE090889.D  
 Acq: 18 Sep 2015 17:07

Instrument :  
 BNA\_E  
 ClientSampleId :  
 SSTDICC010

Tgt Ion: 264 Resp: 197275

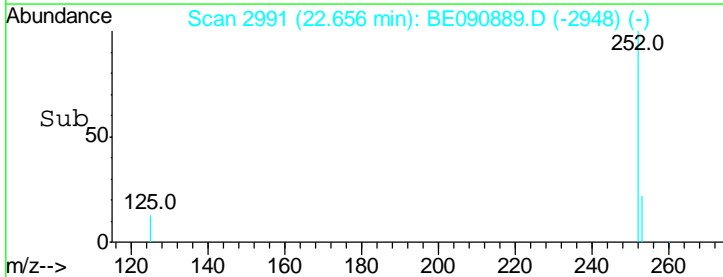
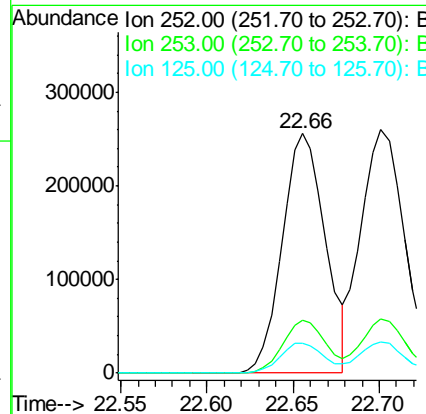
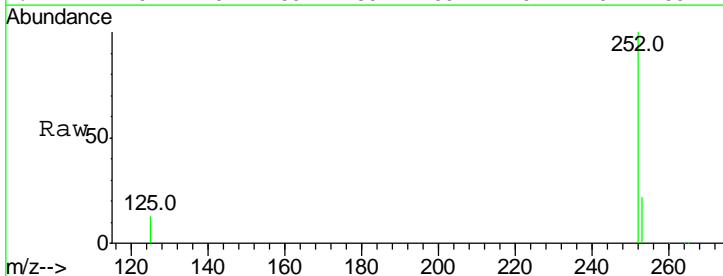
Ion	Ratio	Lower	Upper
264	100		
260	25.1	19.7	29.5
265	21.9	17.5	26.3

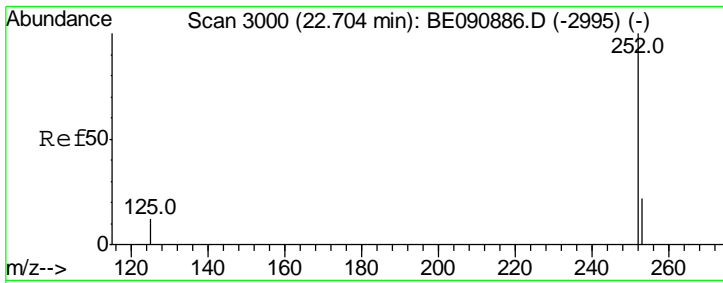


#34  
 Benzo(b)fluoranthene  
 Concen: 9.54 ng  
 RT: 22.66 min Scan# 2991  
 Delta R.T. -0.00 min  
 Lab File: BE090889.D  
 Acq: 18 Sep 2015 17:07

Tgt Ion: 252 Resp: 443088

Ion	Ratio	Lower	Upper
252	100		
253	22.2	17.9	26.9
125	12.7	10.6	16.0

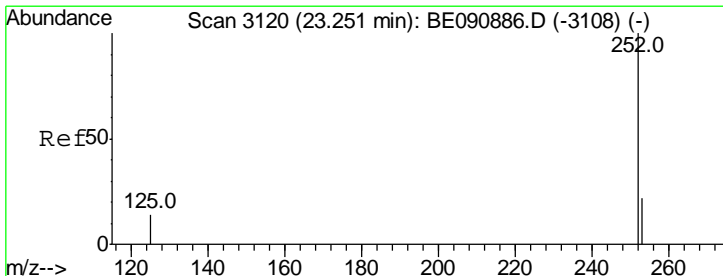
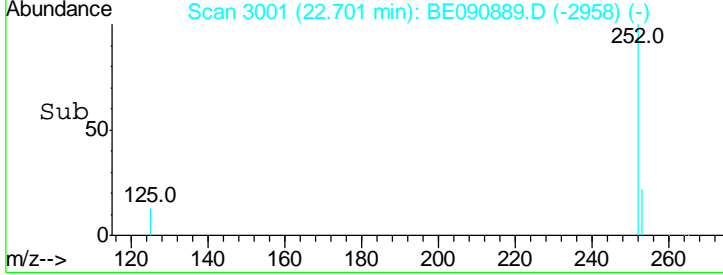
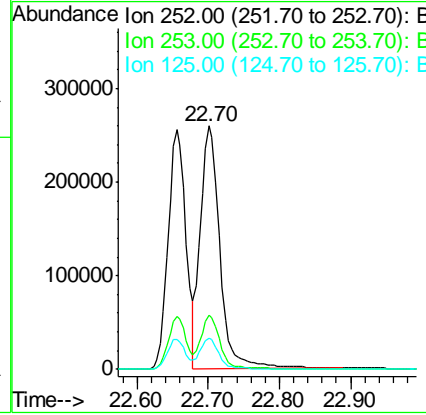
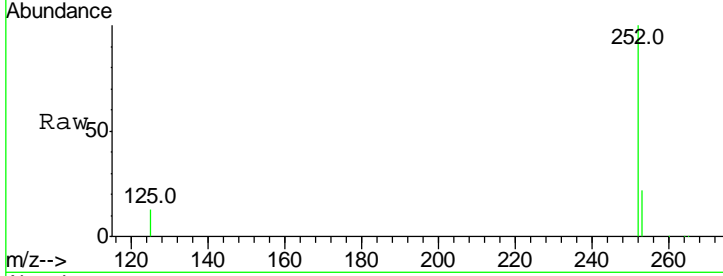




#35  
 Benzo(k)fluoranthene  
 Concen: 9.09 ng  
 RT: 22.70 min Scan# 3001  
 Delta R.T. -0.00 min  
 Lab File: BE090889.D  
 Acq: 18 Sep 2015 17:07

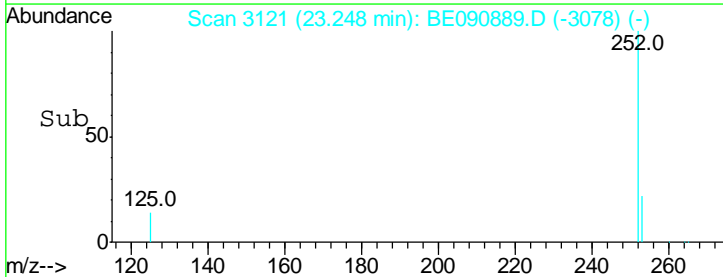
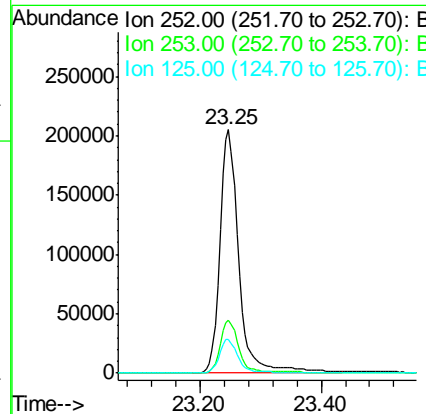
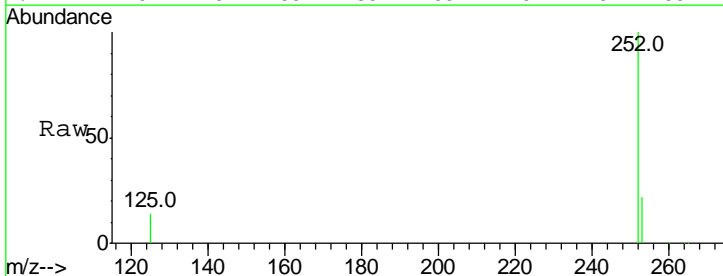
Instrument :  
 BNA\_E  
 ClientSampled :  
 SSTDICC010

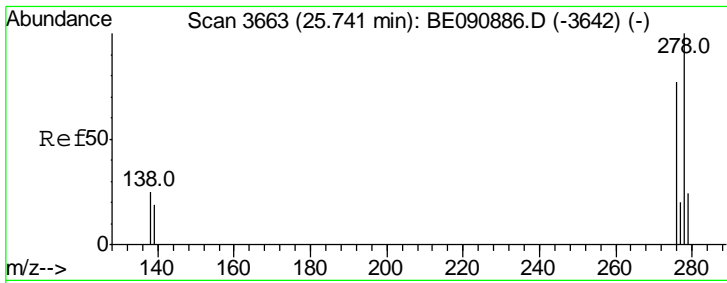
Tgt Ion	Resp	Lower	Upper
252	100		
253	22.4	17.9	26.9
125	12.7	10.1	15.1



#36  
 Benzo(a)pyrene  
 Concen: 10.05 ng  
 RT: 23.25 min Scan# 3121  
 Delta R.T. -0.00 min  
 Lab File: BE090889.D  
 Acq: 18 Sep 2015 17:07

Tgt Ion	Resp	Lower	Upper
252	100		
253	21.9	17.2	25.8
125	14.0	18.0	27.0#

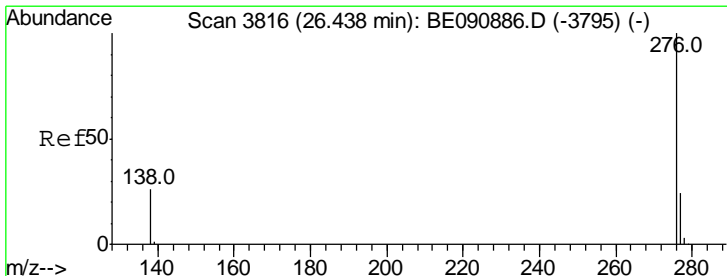
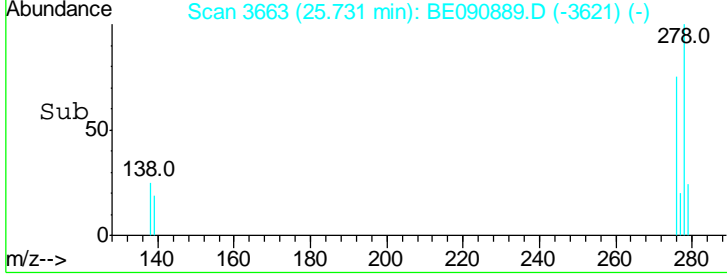
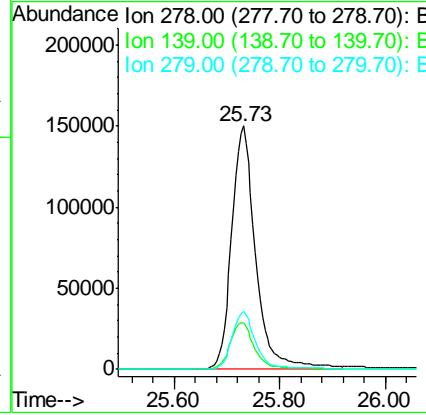
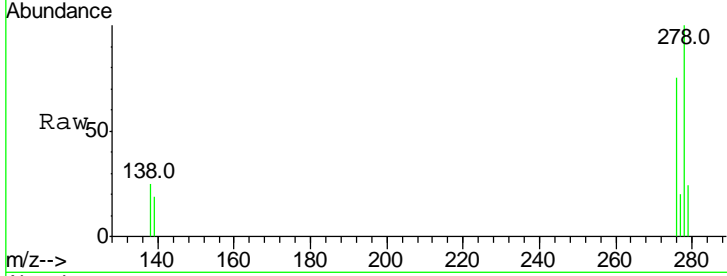




#37  
 Dibenzo(a,h)anthracene  
 Concen: 10.46 ng  
 RT: 25.73 min Scan# 3663  
 Delta R.T. -0.01 min  
 Lab File: BE090889.D  
 Acq: 18 Sep 2015 17:07

Instrument :  
 BNA\_E  
 ClientSampled :  
 SSTDICC010

Tgt Ion	Resp	Lower	Upper
278	475213		
139	19.1	15.4	23.0
279	23.7	18.8	28.2



#38  
 Benzo(g,h,i)perylene  
 Concen: 9.81 ng  
 RT: 26.44 min Scan# 3818  
 Delta R.T. -0.00 min  
 Lab File: BE090889.D  
 Acq: 18 Sep 2015 17:07

Tgt Ion	Resp	Lower	Upper
276	481112		
277	23.7	18.5	27.7
138	25.7	20.1	30.1

