

Data Path : Z:\SVOASRV\HPCHEM1\BNA E\DATA\BE092619\
 Data File : BE100566.D
 Acq On : 26 Sep 2019 13:37
 Operator : JU
 Sample : K4995-15DL 5X
 Misc :
 ALS Vial : 3 Sample Multiplier: 1

Instrument :
 BNA_E
 ClientSampleID :
 EXT-SW162-091819-1DL

Manual Integrations
 APPROVED

mohammad
 9/27/2019 1:46:12 PM

Quant Time: Sep 26 15:33:03 2019
 Quant Method : Z:\SVOASRV\HPCHEM1\BNA E\METHODS\8270-SIM-BE092019.M
 Quant Title : ASP BNA STANDARDS FOR 5 POINT CALIBRATION
 QLast Update : Fri Sep 20 18:26:17 2019
 Response via : Initial Calibration

Internal Standards	R.T.	QIon	Response	Conc	Units	Dev(Min)
1) 1,4-Dichlorobenzene-d4	7.86	152	7669	0.40	ng	0.00
7) Naphthalene-d8	10.65	136	35145	0.40	ng	0.00
13) Acenaphthene-d10	14.48	164	19103	0.40	ng	0.00
19) Phenanthrene-d10	17.20	188	37093	0.40	ng	0.00
27) Chrysene-d12	21.37	240	40194	0.40	ng	0.00
34) Perylene-d12	23.84	264	45096	0.40	ng	0.00

System Monitoring Compounds

4) 2-Fluorophenol	5.45	112	1356	0.08	ng	0.02
5) Phenol-d6	7.03	99	1851	0.08	ng	0.00
8) Nitrobenzene-d5	9.00	82	1281	0.06	ng	0.00
11) 2-Methylnaphthalene-d10	12.24	152	2695	0.05	ng	0.00
14) 2,4,6-Tribromophenol	15.96	330	328	0.11	ng	0.00
15) 2-Fluorobiphenyl	13.12	172	3444	0.05	ng	0.00
25) Fluoranthene-d10	19.23	212	23607	0.05	ng	0.00
29) Terphenyl-d14	19.82	244	5821	0.06	ng	0.00

Target Compounds

Target Compounds	R.T.	QIon	Response	Conc	Units	Qvalue
9) Naphthalene	10.69	128	32482	0.089	ng	99
12) 2-Methylnaphthalene	12.31	142	4289	0.074	ng	98
16) Acenaphthylene	14.21	152	35914	0.457	ng	100
17) Acenaphthene	14.54	154	5307	0.100	ng	98
18) Fluorene	15.51	166	9200	0.138	ng	# 86
23) Phenanthrene	17.24	178	268465	2.597	ng	100
24) Anthracene	17.34	178	62950	0.724	ng	97
26) Fluoranthene	19.26	202	517431	4.152	ng	98
28) Pyrene	19.62	202	482540	4.172	ng	# 94
30) Benzo(a)anthracene	21.35	228	391773	3.649	ng	96
31) Chrysene	21.40	228	294696	2.409	ng	97
32) Bis(2-ethylhexyl)phthalate	21.28	149	57607	0.498	ng	100
33) Indeno(1,2,3-cd)pyrene	26.46	276	161241	1.186	ng	98
35) Benzo(b)fluoranthene	23.08	252	397934	3.261	ng	99
36) Benzo(k)fluoranthene	23.13	252	155523m	1.102	ng	
37) Benzo(a)pyrene	23.73	252	278185	2.444	ng	99
38) Dibenzo(a,h)anthracene	26.47	278	52676	0.444	ng	91
39) Benzo(a,h,i)perylene	27.26	276	145358	1.174	ng	99

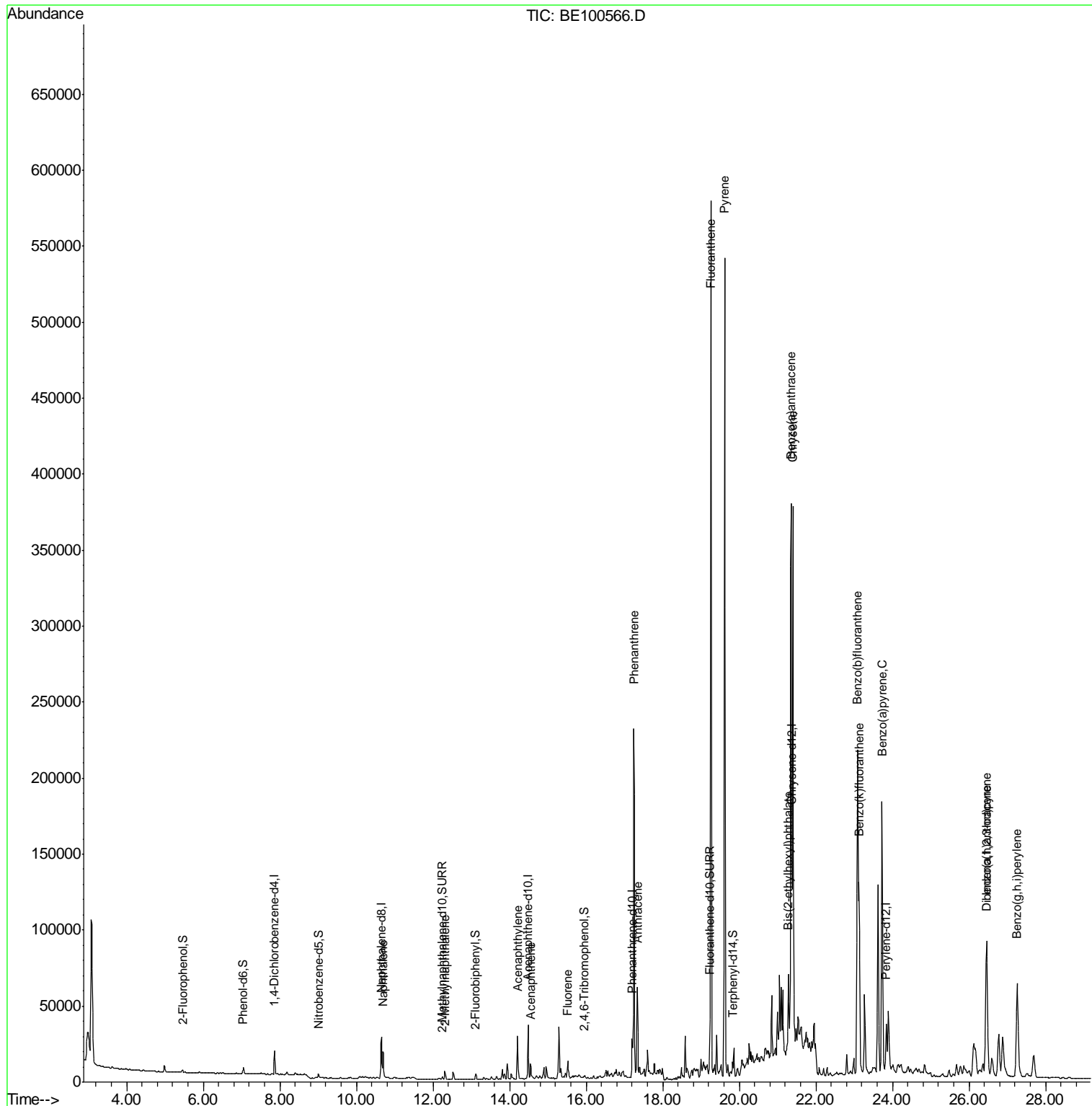
(#) = qualifier out of range (m) = manual integration (+) = signals summed

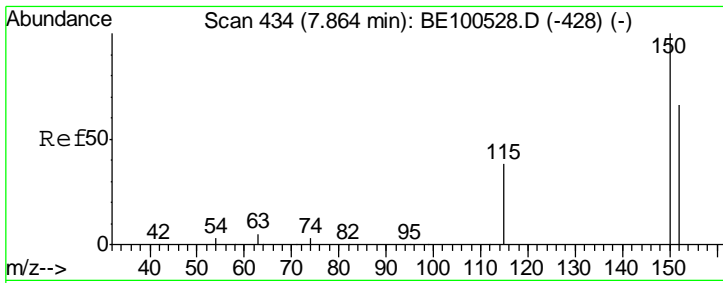
Data Path : Z:\SVOASRV\HPCHEM1\BNA E\DATA\BE092619\
 Data File : BE100566.D
 Acq On : 26 Sep 2019 13:37
 Operator : JU
 Sample : K4995-15DL 5X
 Misc :
 ALS Vial : 3 Sample Multiplier: 1

Instrument :
 BNA_E
 ClientSampled :
 EXT-SW162-091819-1DL

Manual Integrations
 APPROVED
 mohammad
 9/27/2019 1:46:12 PM

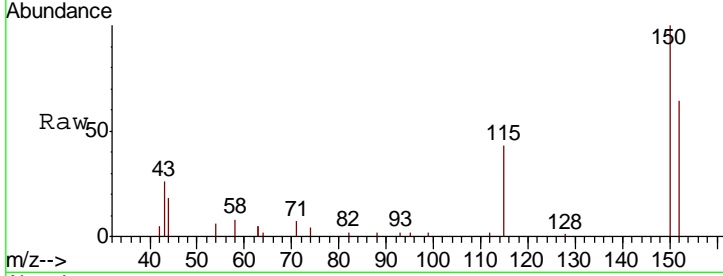
Quant Time: Sep 26 15:33:03 2019
 Quant Method : Z:\SVOASRV\HPCHEM1\BNA E\METHODS\8270-SIM-BE092019.M
 Quant Title : ASP BNA STANDARDS FOR 5 POINT CALIBRATION
 QLast Update : Fri Sep 20 18:26:17 2019
 Response via : Initial Calibration





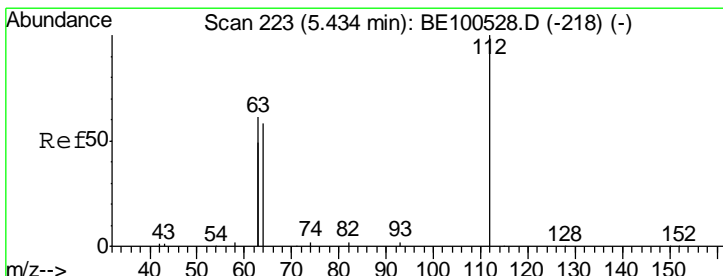
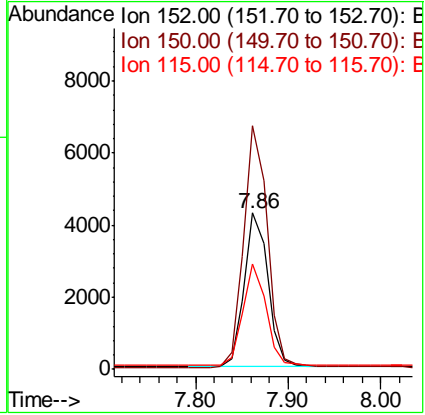
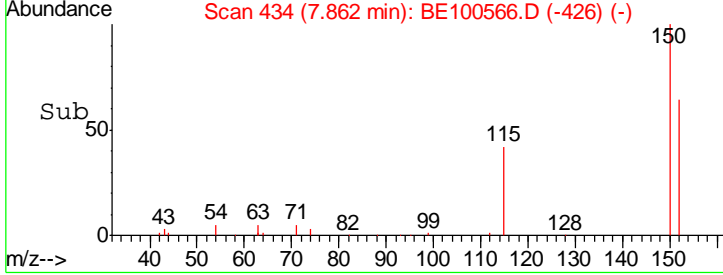
#1
 1,4-Dichlorobenzene-d4
 Concen: 0.400 ng
 RT: 7.86 min Scan# 434
 Delta R.T. -0.00 min
 Lab File: BE100566.D
 Acq: 26 Sep 2019 13:37

Instrument :
 BNA_E
ClientSampled :
 EXT-SW162-091819-1DL

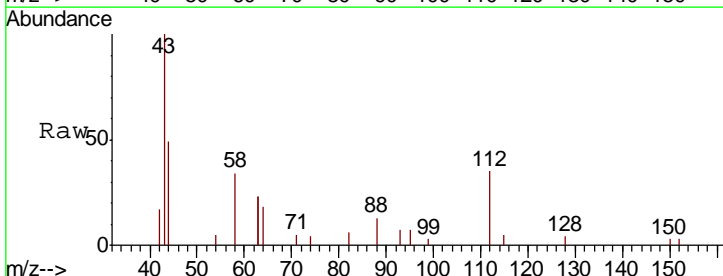


Tgt Ion	Resp	Lower	Upper
152	100		
150	155.7	121.6	182.4
115	67.3	48.2	72.4

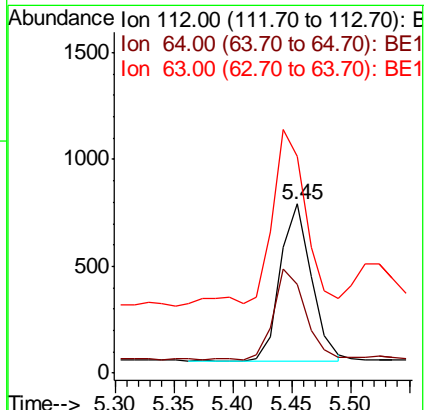
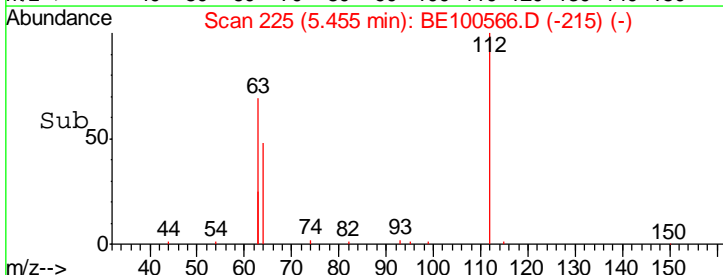
Manual Integrations
APPROVED
 mohammad
 9/27/2019 1:46:12 PM

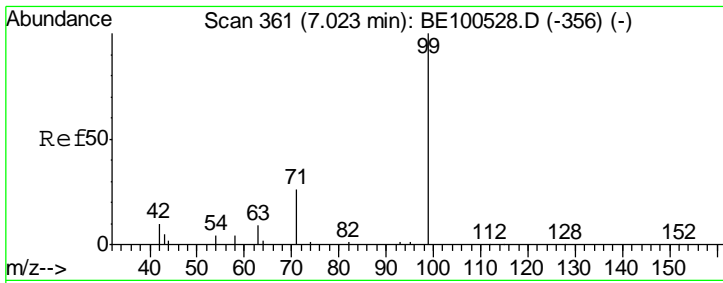


#4
 2-Fluorophenol
 Concen: 0.076 ng
 RT: 5.45 min Scan# 225
 Delta R.T. 0.02 min
 Lab File: BE100566.D
 Acq: 26 Sep 2019 13:37



Tgt Ion	Resp	Lower	Upper
112	100		
64	56.3	44.1	66.1
63	112.5	86.5	129.7





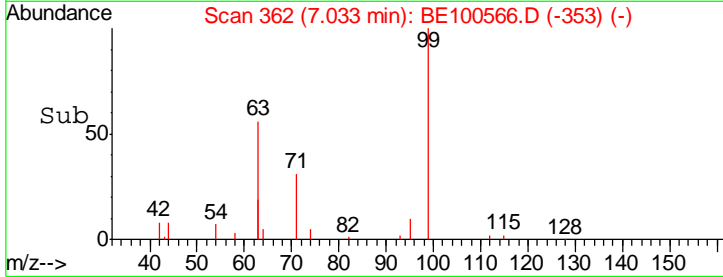
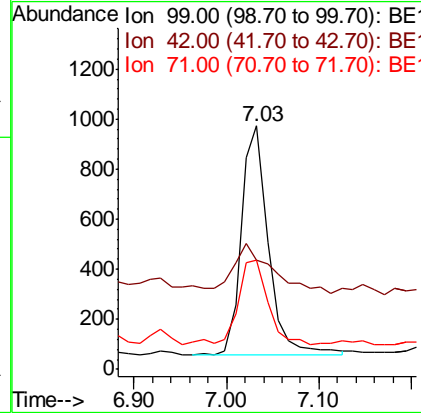
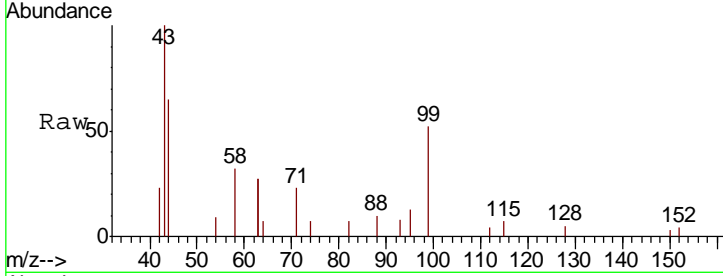
#5
 Phenol-d6
 Concen: 0.075 ng
 RT: 7.03 min Scan# 362
 Delta R.T. 0.01 min
 Lab File: BE100566.D
 Acq: 26 Sep 2019 13:37

Instrument :
 BNA_E
ClientSampled :
 EXT-SW162-091819-1DL

Tgt Ion	Resp	Lower	Upper
99	1851		
42	31.4	13.0	19.6#
71	41.4	23.4	35.0#

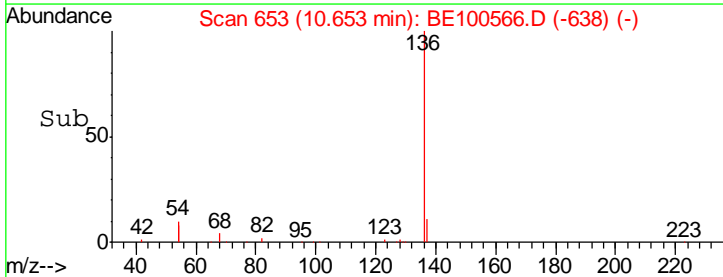
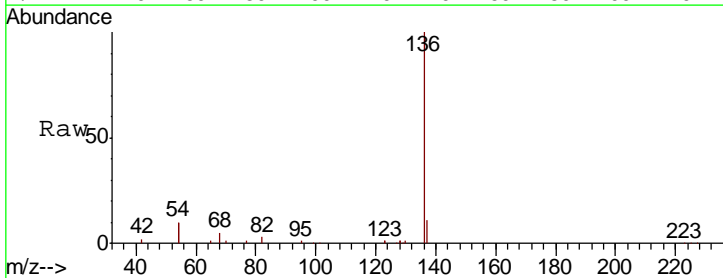
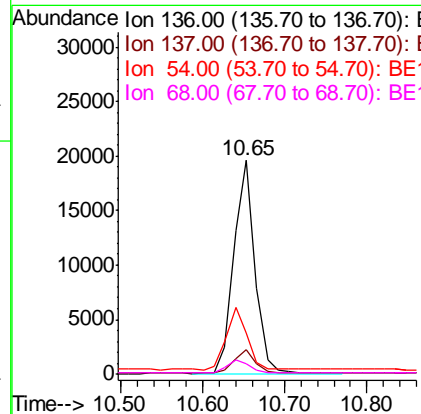
Manual Integrations
APPROVED

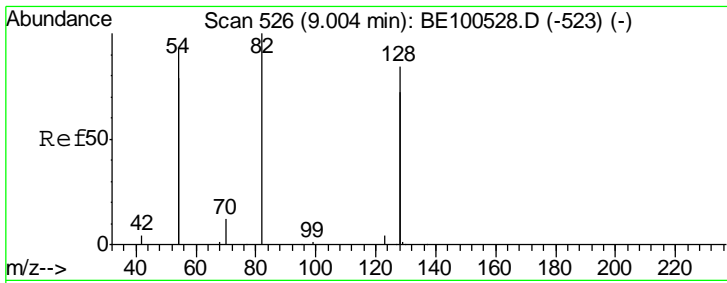
mohammad
 9/27/2019 1:46:12 PM



#7
 Naphthalene-d8
 Concen: 0.400 ng
 RT: 10.65 min Scan# 653
 Delta R.T. -0.00 min
 Lab File: BE100566.D
 Acq: 26 Sep 2019 13:37

Tgt Ion	Resp	Lower	Upper
136	35145		
137	11.2	8.6	13.0
54	19.2	12.4	18.6#
68	4.6	3.3	4.9





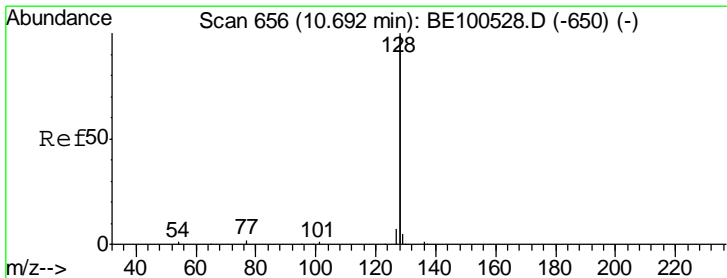
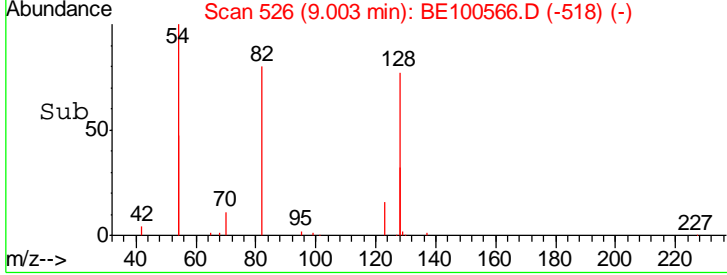
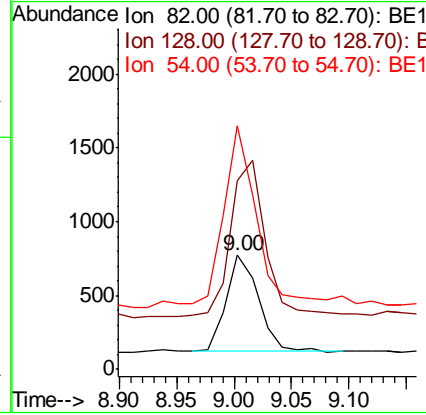
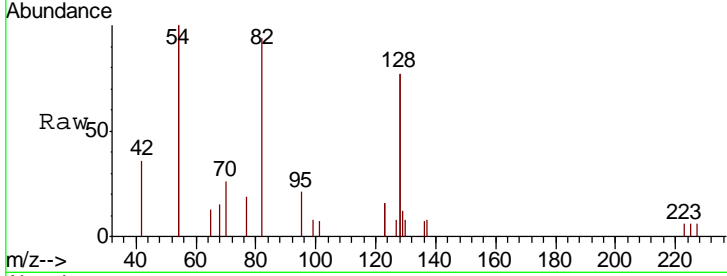
#8
 Nitrobenzene-d5
 Concen: 0.063 ng
 RT: 9.00 min Scan# 526
 Delta R.T. -0.00 min
 Lab File: BE100566.D
 Acq: 26 Sep 2019 13:37

Instrument :
 BNA_E
ClientSampled :
 EXT-SW162-091819-1DL

Tgt Ion	Resp	Lower	Upper
82	1281		
82	100		
128	164.6	129.4	194.2
54	213.2	143.3	214.9

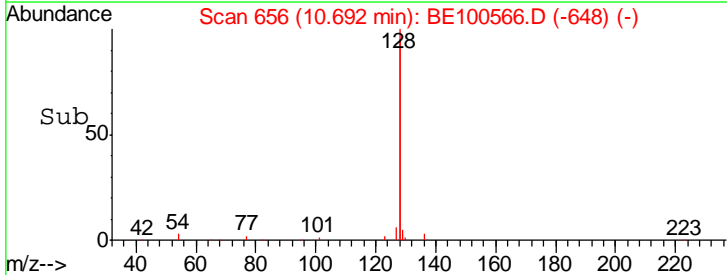
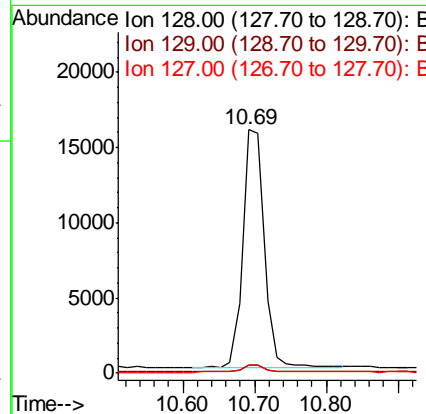
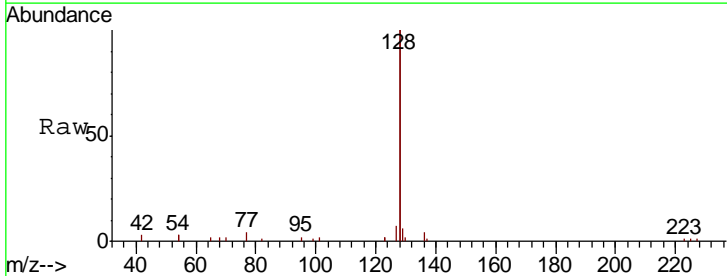
Manual Integrations
APPROVED

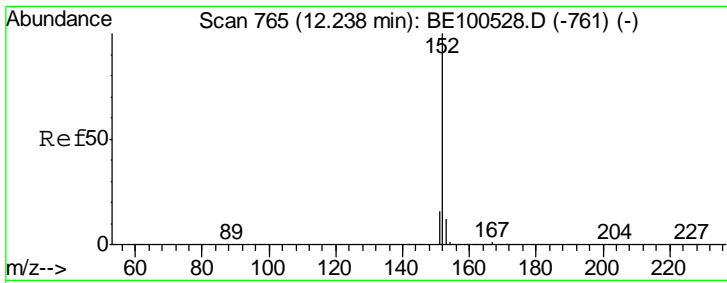
mohammad
 9/27/2019 1:46:12 PM



#9
 Naphthalene
 Concen: 0.089 ng
 RT: 10.69 min Scan# 656
 Delta R.T. -0.00 min
 Lab File: BE100566.D
 Acq: 26 Sep 2019 13:37

Tgt Ion	Resp	Lower	Upper
128	32482		
128	100		
129	3.1	2.2	3.4
127	3.6	2.7	4.1





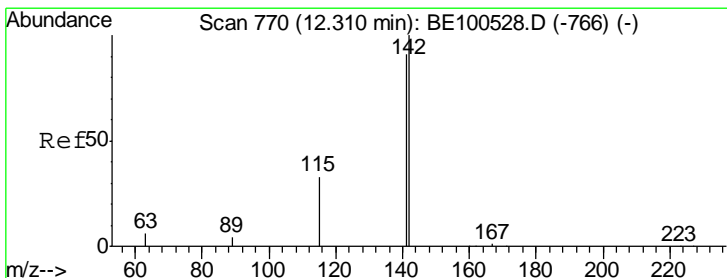
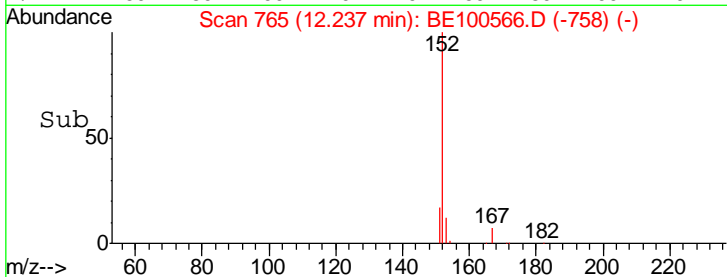
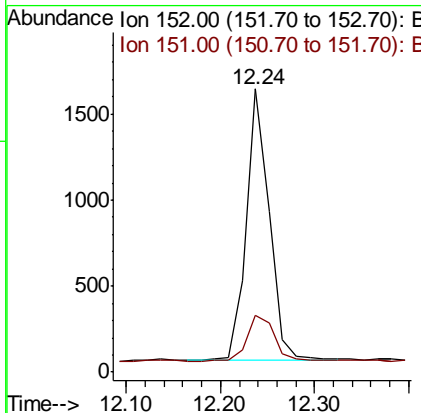
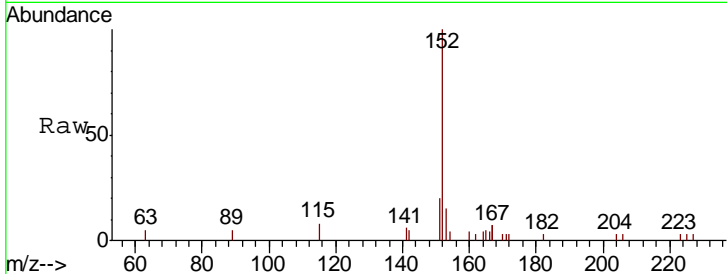
#11
 2-Methylnaphthalene-d10
 Concen: 0.051 ng
 RT: 12.24 min Scan# 765
 Delta R.T. -0.00 min
 Lab File: BE100566.D
 Acq: 26 Sep 2019 13:37

Instrument :
 BNA_E
ClientSampled :
 EXT-SW162-091819-1DL

Tgt Ion	Resp	Lower	Upper
152	100		
151	21.0	15.3	22.9

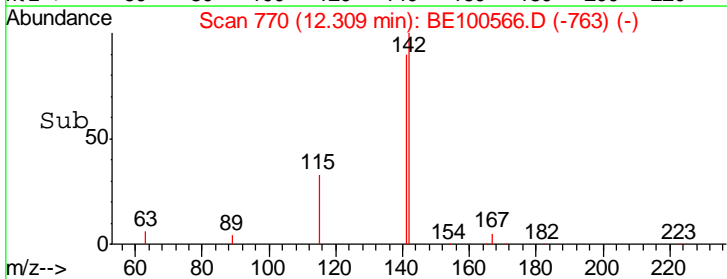
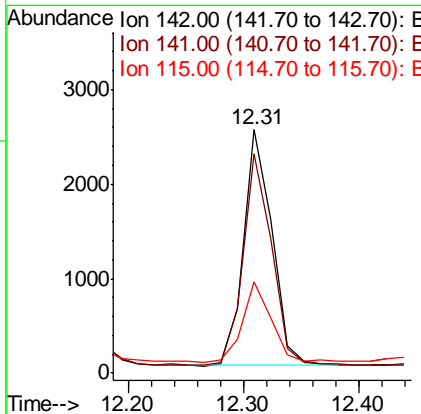
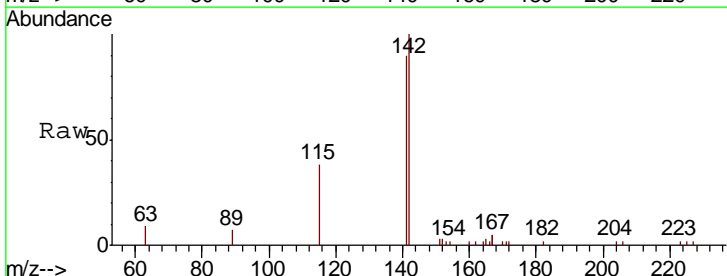
Manual Integrations
APPROVED

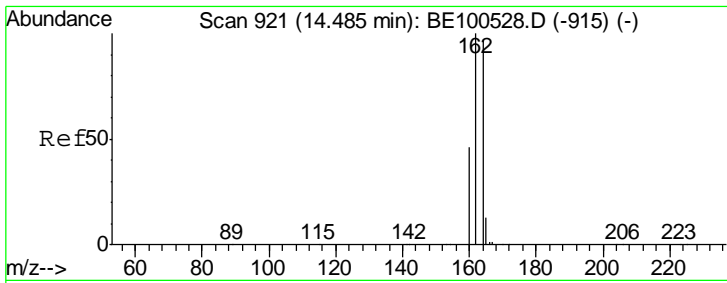
mohammad
 9/27/2019 1:46:12 PM



#12
 2-Methylnaphthalene
 Concen: 0.074 ng
 RT: 12.31 min Scan# 770
 Delta R.T. -0.00 min
 Lab File: BE100566.D
 Acq: 26 Sep 2019 13:37

Tgt Ion	Resp	Lower	Upper
142	100		
141	90.2	72.5	108.7
115	37.7	27.2	40.8





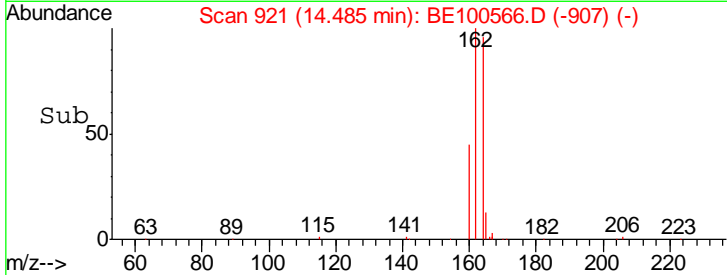
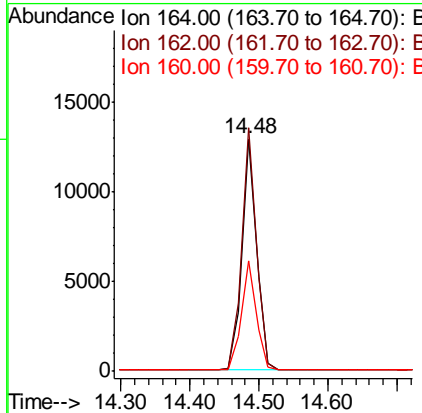
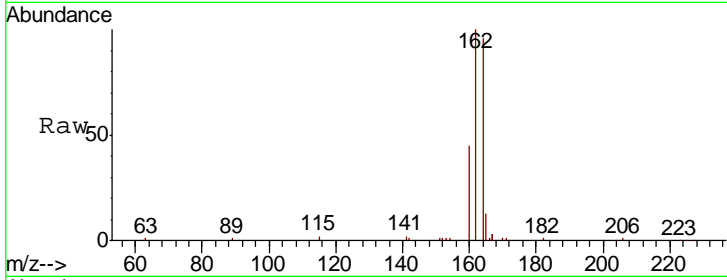
#13
 Acenaphthene-d10
 Concen: 0.400 ng
 RT: 14.48 min Scan# 921
 Delta R.T. -0.00 min
 Lab File: BE100566.D
 Acq: 26 Sep 2019 13:37

Instrument :
 BNA_E
ClientSampled :
 EXT-SW162-091819-1DL

Tgt Ion	Resp	Lower	Upper
164	19103		
164	100		
162	104.7	82.1	123.1
160	47.4	37.6	56.4

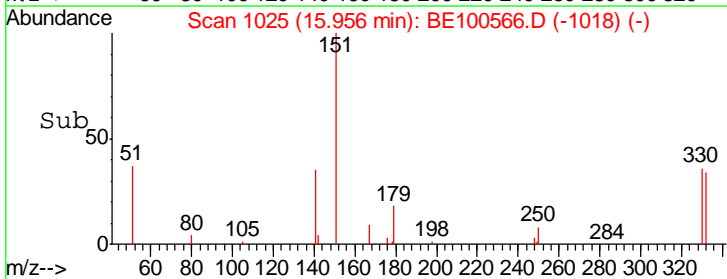
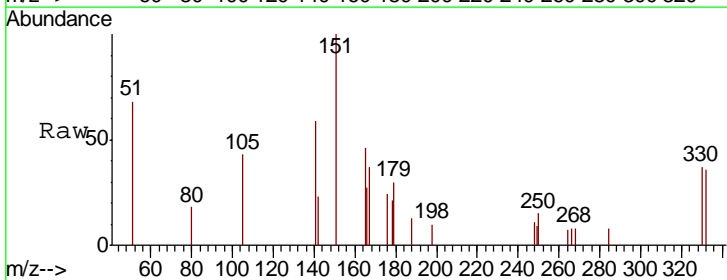
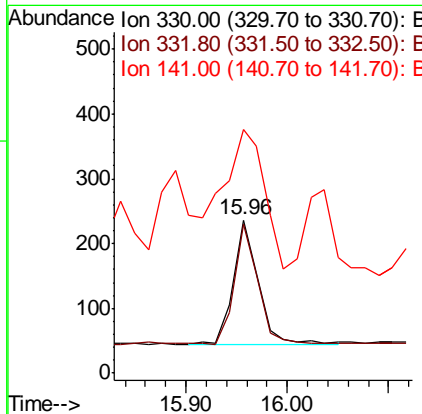
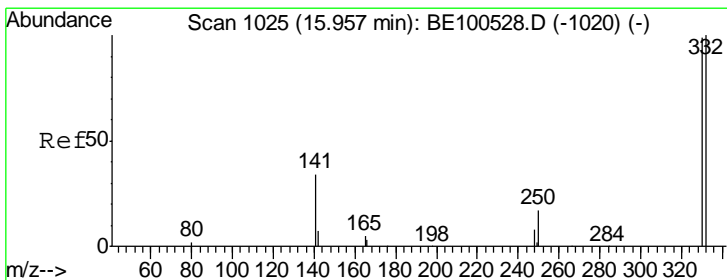
Manual Integrations
APPROVED

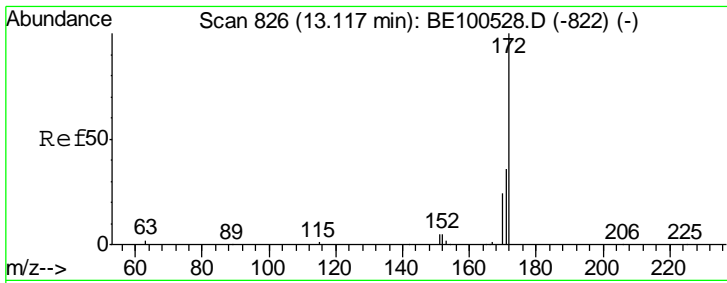
mohammad
 9/27/2019 1:46:12 PM



#14
 2,4,6-Tribromophenol
 Concen: 0.106 ng
 RT: 15.96 min Scan# 1025
 Delta R.T. -0.00 min
 Lab File: BE100566.D
 Acq: 26 Sep 2019 13:37

Tgt Ion	Resp	Lower	Upper
330	328		
330	100		
332	90.2	75.5	113.3
141	182.6	42.3	63.5#





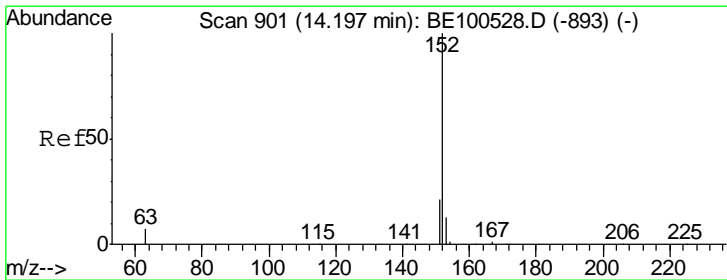
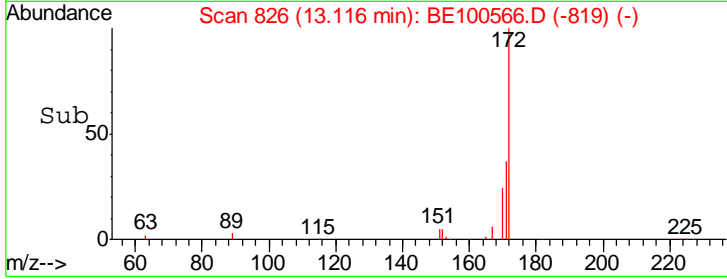
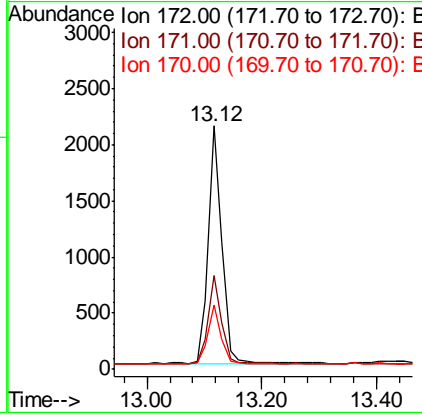
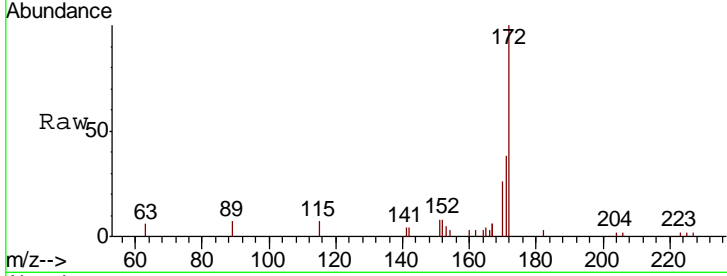
#15
 2-Fluorobiphenyl
 Concen: 0.051 ng
 RT: 13.12 min Scan# 826
 Delta R.T. -0.00 min
 Lab File: BE100566.D
 Acq: 26 Sep 2019 13:37

Instrument :
 BNA_E
ClientSampleId :
 EXT-SW162-091819-1DL

Tgt Ion	Resp	Lower	Upper
172	3444		
171	100	28.8	43.2
170	38.3	19.4	29.0

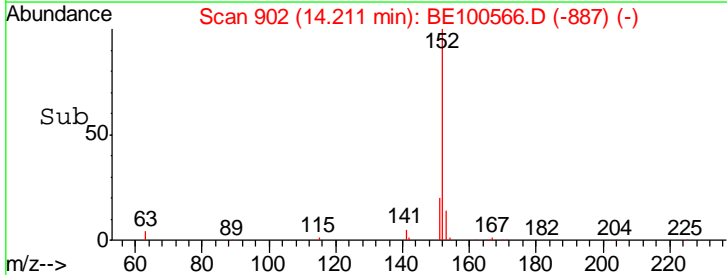
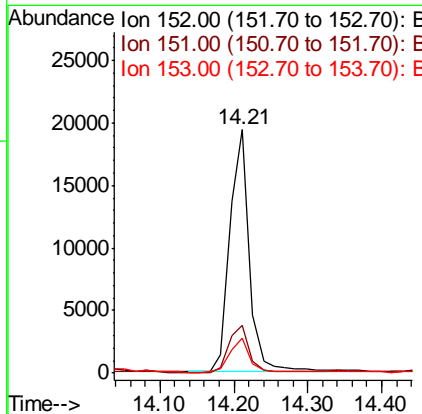
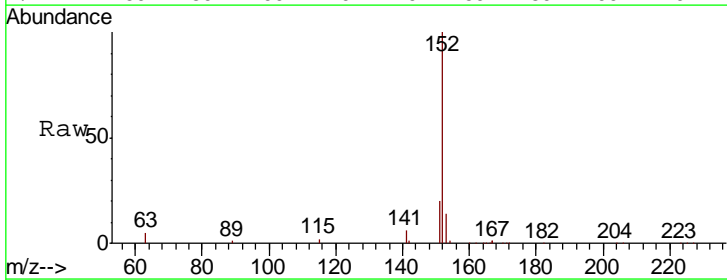
Manual Integrations
APPROVED

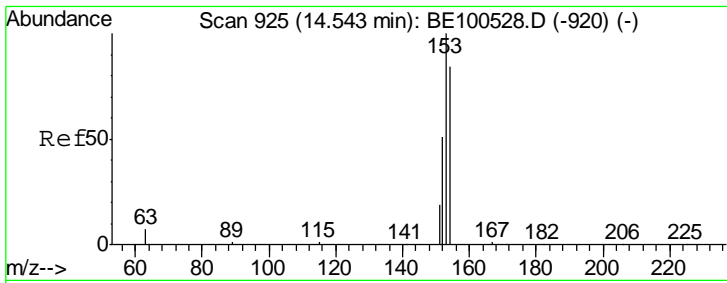
mohammad
 9/27/2019 1:46:12 PM



#16
 Acenaphthylene
 Concen: 0.457 ng
 RT: 14.21 min Scan# 902
 Delta R.T. 0.01 min
 Lab File: BE100566.D
 Acq: 26 Sep 2019 13:37

Tgt Ion	Resp	Lower	Upper
152	35914		
151	100	15.9	23.9
153	20.0	10.7	16.1





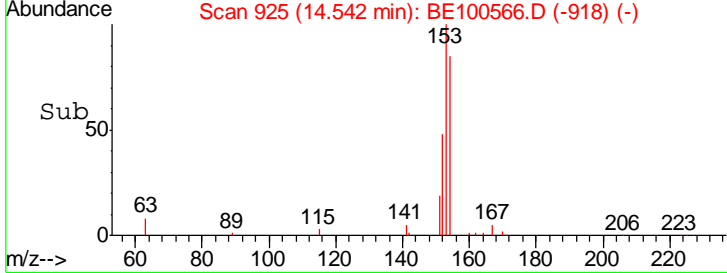
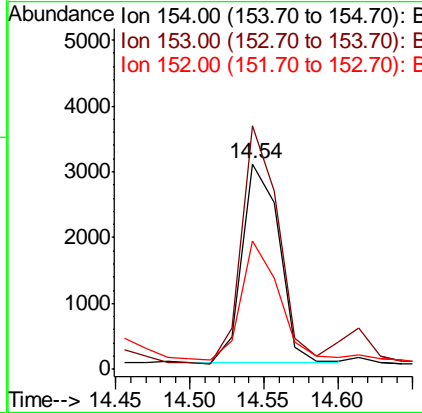
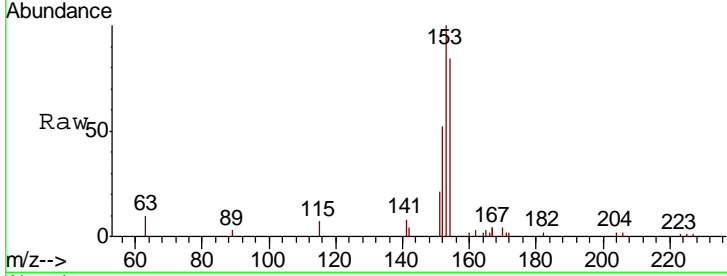
#17
 Acenaphthene
 Concen: 0.100 ng
 RT: 14.54 min Scan# 925
 Delta R.T. -0.00 min
 Lab File: BE100566.D
 Acq: 26 Sep 2019 13:37

Instrument :
 BNA_E
ClientSampled :
 EXT-SW162-091819-1DL

Tgt Ion	Resp	Lower	Upper
154	100		
153	117.7	93.7	140.5
152	61.7	47.3	70.9

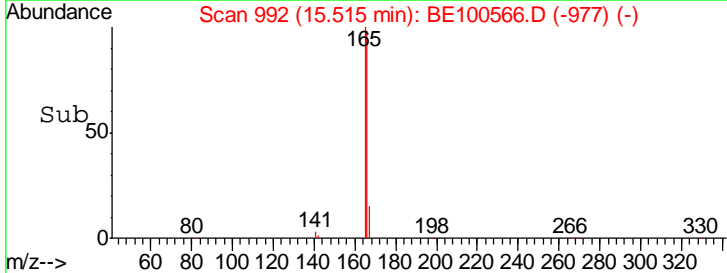
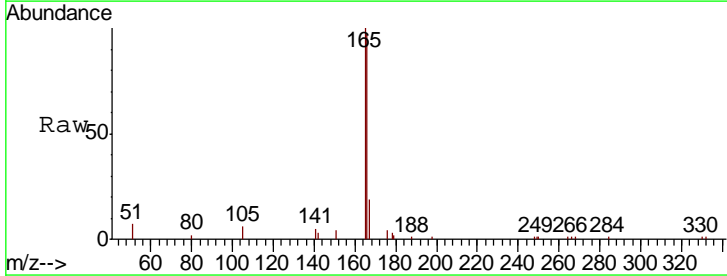
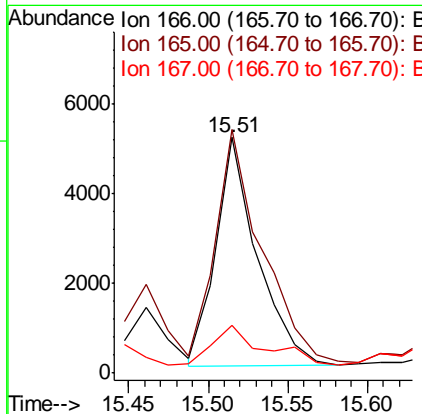
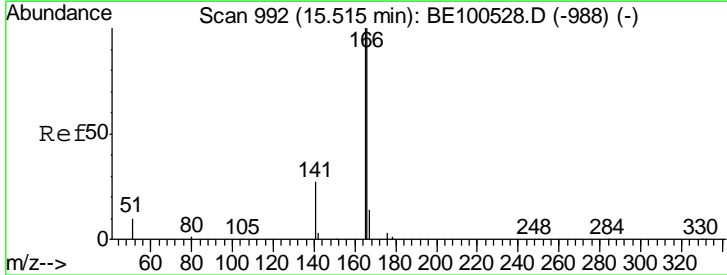
Manual Integrations
APPROVED

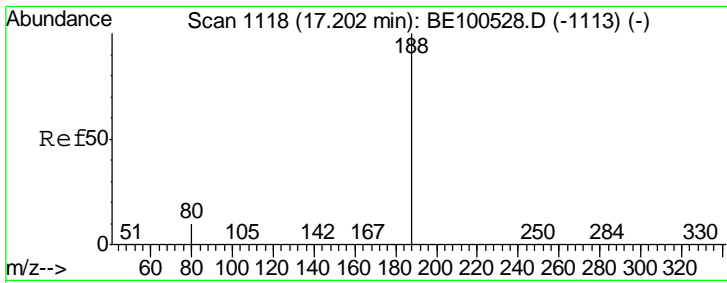
mohammad
 9/27/2019 1:46:12 PM



#18
 Fluorene
 Concen: 0.138 ng
 RT: 15.51 min Scan# 992
 Delta R.T. -0.00 min
 Lab File: BE100566.D
 Acq: 26 Sep 2019 13:37

Tgt Ion	Resp	Lower	Upper
166	100		
165	112.7	80.1	120.1
167	22.5	10.9	16.3#



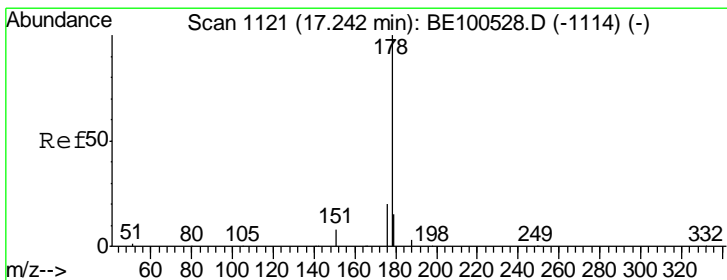
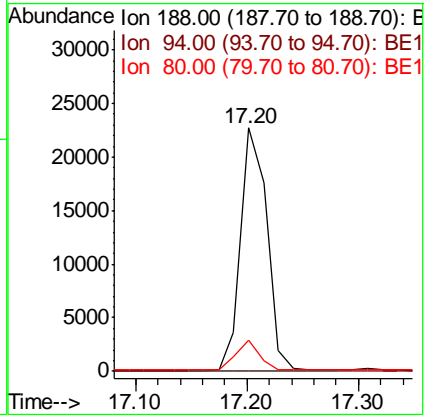
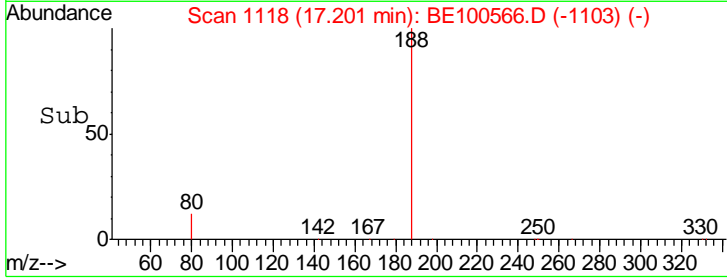
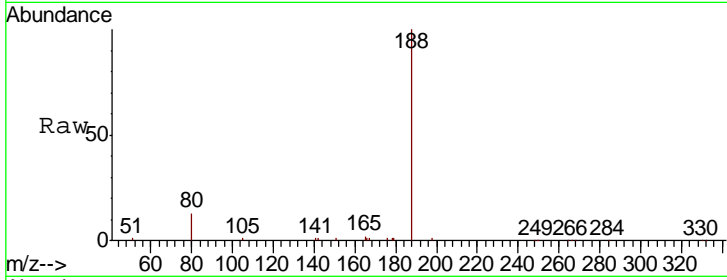


#19
 Phenanthrene-d10
 Concen: 0.400 ng
 RT: 17.20 min Scan# 1118
 Delta R.T. -0.00 min
 Lab File: BE100566.D
 Acq: 26 Sep 2019 13:37

Instrument :
 BNA_E
ClientSampled :
 EXT-SW162-091819-1DL

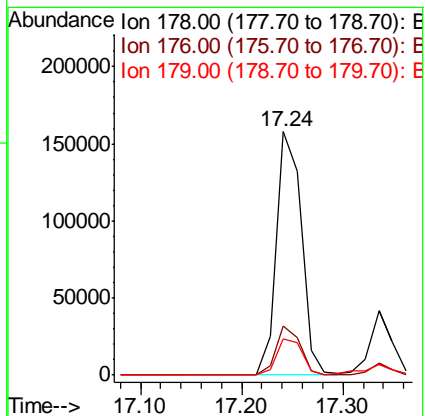
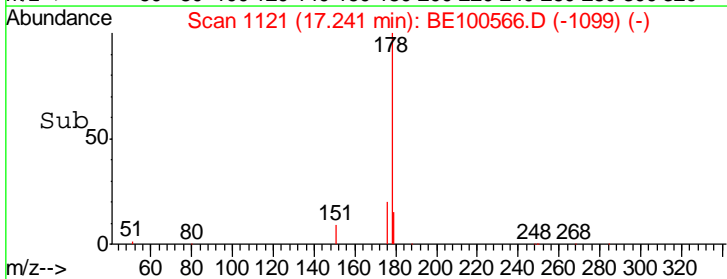
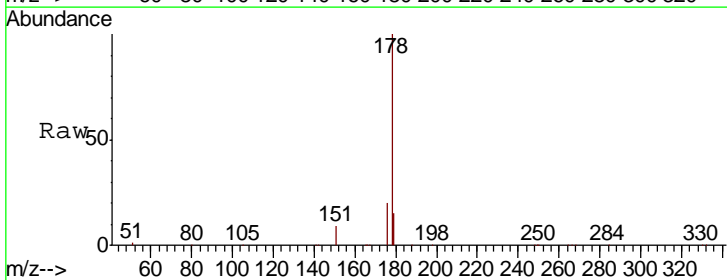
Tgt Ion	Resp	Lower	Upper
188	37093		
94	0.0	0.0	0.0
80	12.7	8.0	12.0#

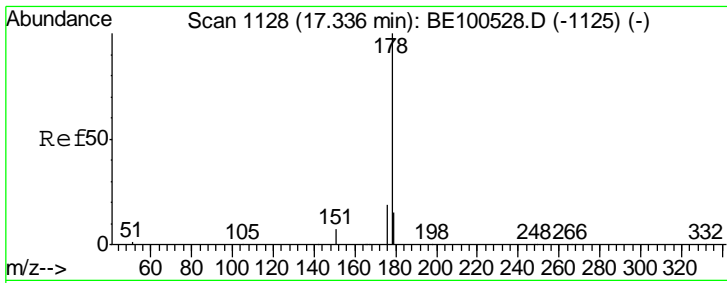
Manual Integrations
APPROVED
 mohammad
 9/27/2019 1:46:12 PM



#23
 Phenanthrene
 Concen: 2.597 ng
 RT: 17.24 min Scan# 1121
 Delta R.T. -0.00 min
 Lab File: BE100566.D
 Acq: 26 Sep 2019 13:37

Tgt Ion	Resp	Lower	Upper
178	268465		
176	19.4	15.4	23.2
179	15.5	12.6	18.8





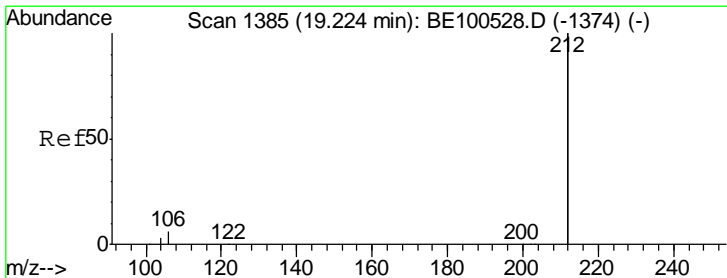
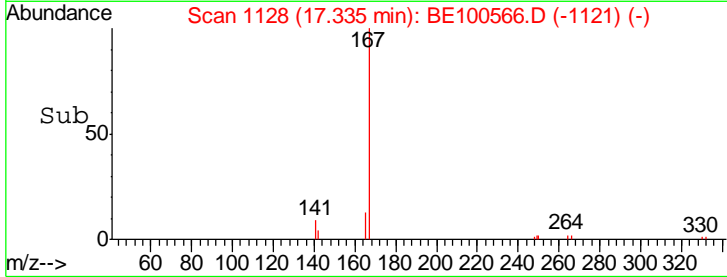
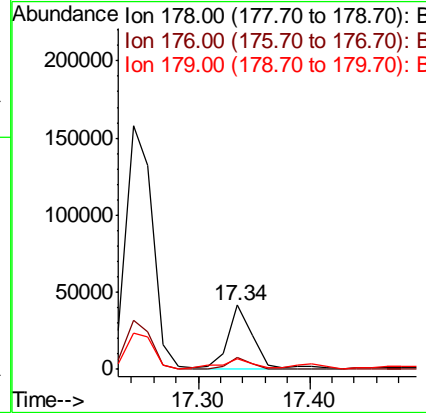
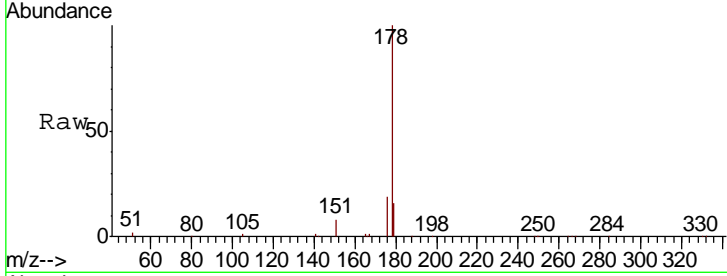
#24
 Anthracene
 Concen: 0.724 ng
 RT: 17.34 min Scan# 1128
 Delta R.T. -0.00 min
 Lab File: BE100566.D
 Acq: 26 Sep 2019 13:37

Instrument :
 BNA_E
 ClientSampled :
 EXT-SW162-091819-1DL

Tgt Ion	Resp	Lower	Upper
178	100		
176	18.5	15.2	22.8
179	17.4	12.2	18.4

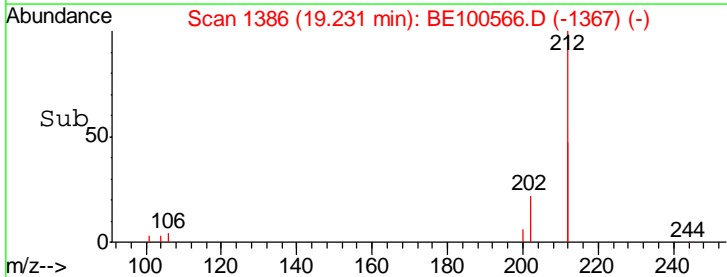
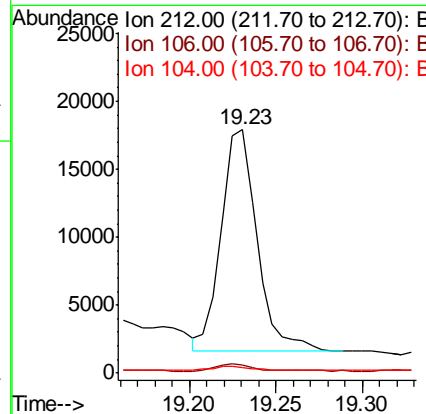
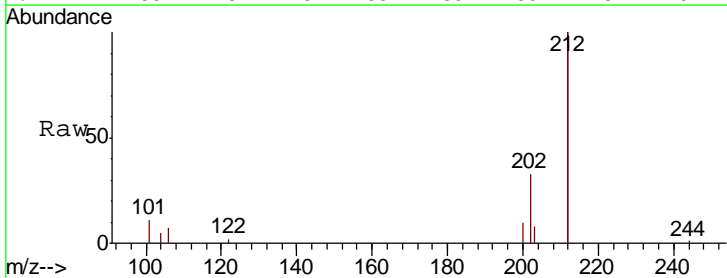
Manual Integrations
 APPROVED

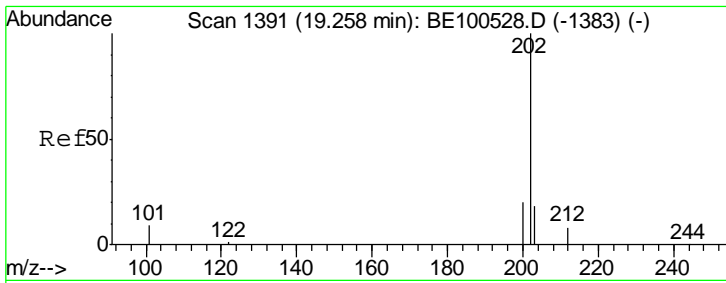
mohammad
 9/27/2019 1:46:12 PM



#25
 Fluoranthene-d10
 Concen: 0.054 ng
 RT: 19.23 min Scan# 1386
 Delta R.T. 0.01 min
 Lab File: BE100566.D
 Acq: 26 Sep 2019 13:37

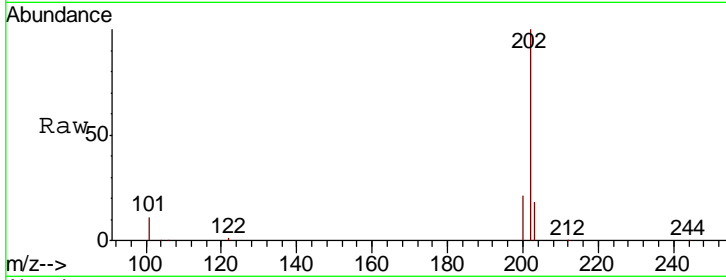
Tgt Ion	Resp	Lower	Upper
212	100		
106	3.1	2.3	3.5
104	2.4	1.3	1.9#





#26
 Fluoranthene
 Concen: 4.152 ng
 RT: 19.26 min Scan# 1391
 Delta R.T. 0.00 min
 Lab File: BE100566.D
 Acq: 26 Sep 2019 13:37

Instrument :
 BNA_E
 ClientSampled :
 EXT-SW162-091819-1DL

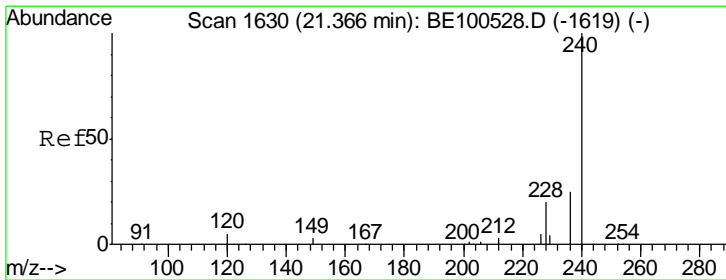
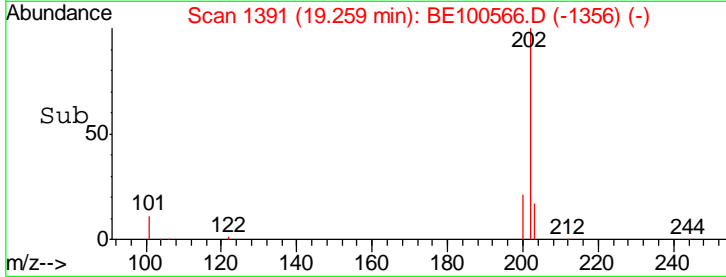
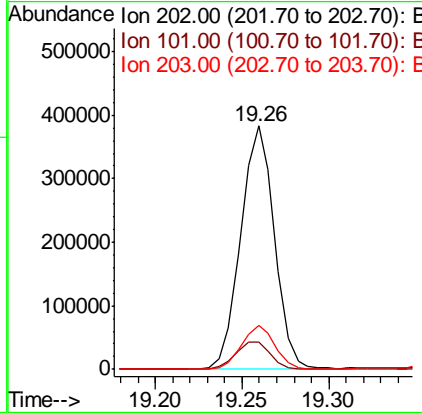


Tgt Ion: 202 Resp: 517431

Ion	Ratio	Lower	Upper
202	100		
101	11.7	8.8	13.2
203	17.8	13.7	20.5

Manual Integrations
 APPROVED

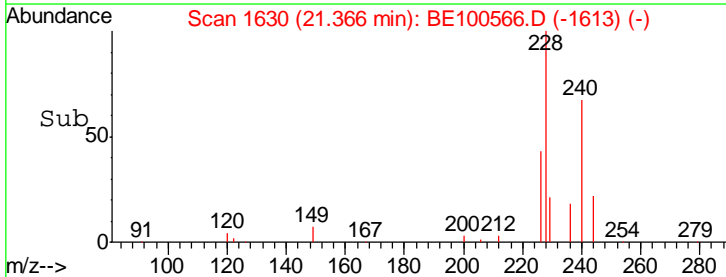
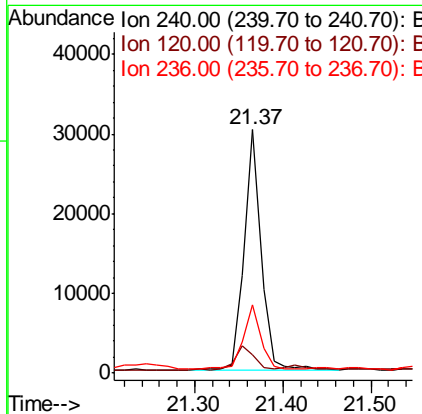
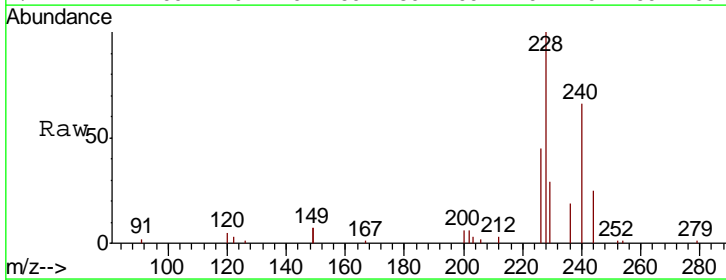
mohammad
 9/27/2019 1:46:12 PM

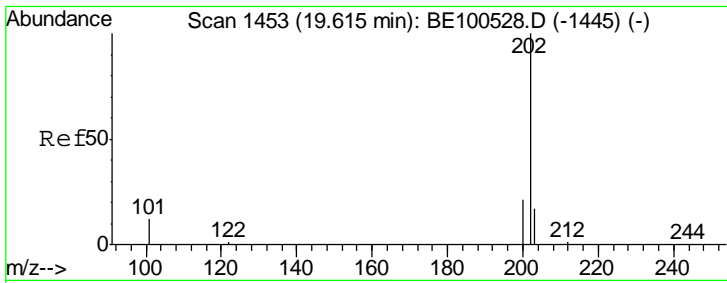


#27
 Chrysene-d12
 Concen: 0.400 ng
 RT: 21.37 min Scan# 1630
 Delta R.T. -0.00 min
 Lab File: BE100566.D
 Acq: 26 Sep 2019 13:37

Tgt Ion: 240 Resp: 40194

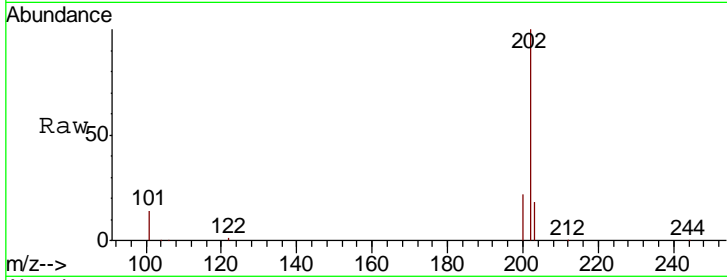
Ion	Ratio	Lower	Upper
240	100		
120	7.6	4.5	6.7#
236	28.3	20.6	30.8





#28
 Pyrene
 Concen: 4.172 ng
 RT: 19.62 min Scan# 1453
 Delta R.T. 0.00 min
 Lab File: BE100566.D
 Acq: 26 Sep 2019 13:37

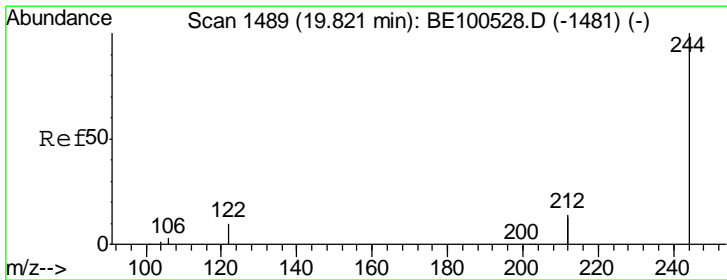
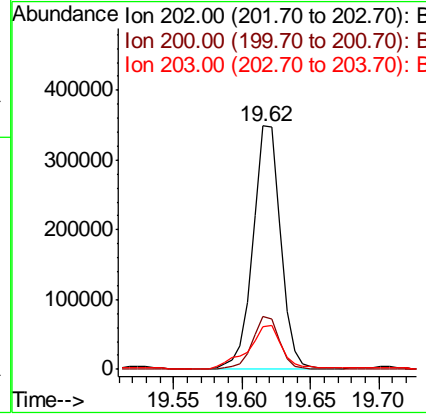
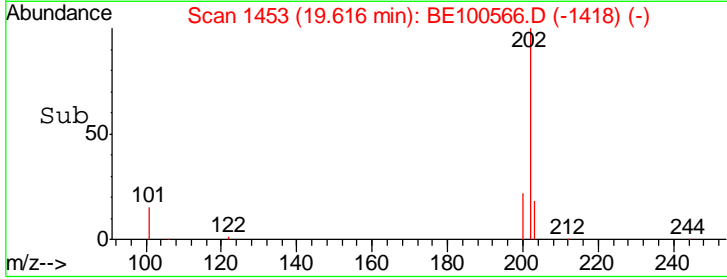
Instrument :
 BNA_E
ClientSampled :
 EXT-SW162-091819-1DL



Tgt Ion	Resp	Lower	Upper
202	100		
200	21.4	16.6	25.0
203	22.2	14.0	21.0

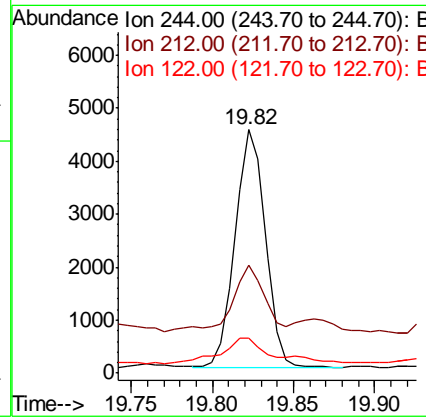
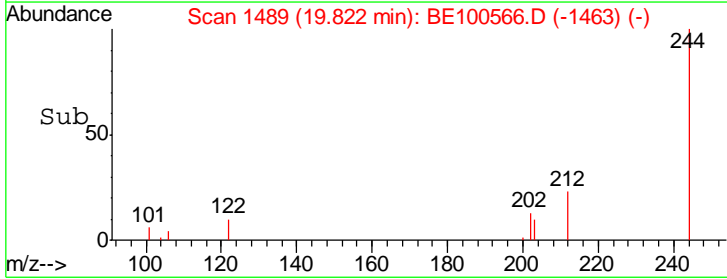
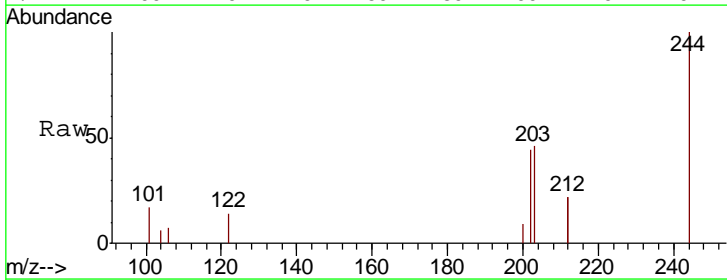
Manual Integrations
APPROVED

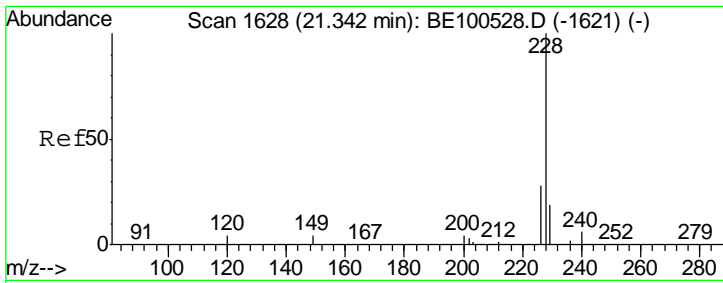
mohammad
 9/27/2019 1:46:12 PM



#29
 Terphenyl-d14
 Concen: 0.061 ng
 RT: 19.82 min Scan# 1489
 Delta R.T. 0.00 min
 Lab File: BE100566.D
 Acq: 26 Sep 2019 13:37

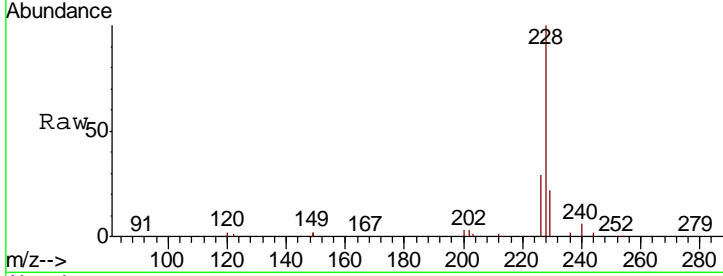
Tgt Ion	Resp	Lower	Upper
244	100		
212	44.4	22.2	33.2
122	14.2	8.3	12.5





#30
 Benzo(a)anthracene
 Concen: 3.649 ng
 RT: 21.35 min Scan# 1629
 Delta R.T. 0.01 min
 Lab File: BE100566.D
 Acq: 26 Sep 2019 13:37

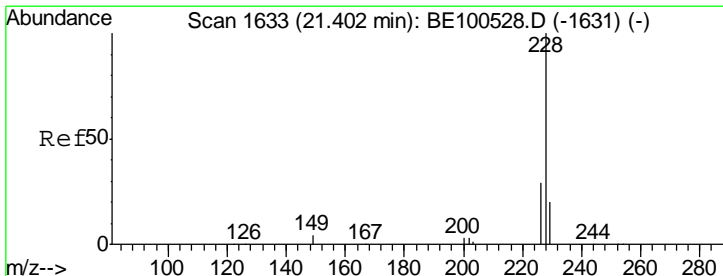
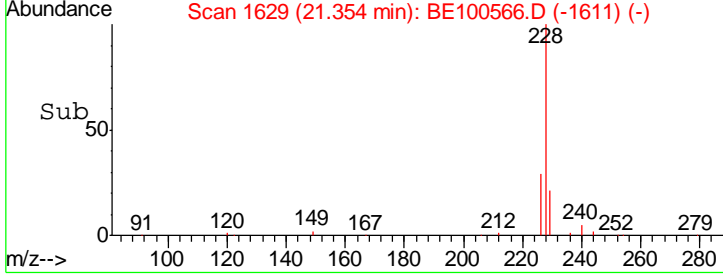
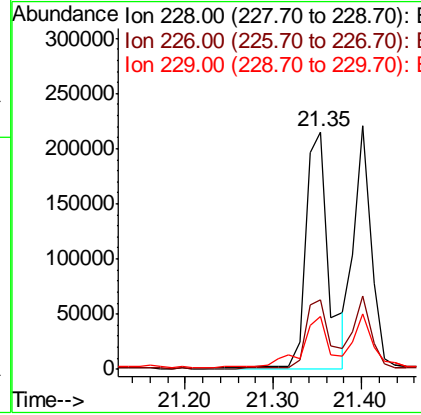
Instrument :
 BNA_E
 ClientSampled :
 EXT-SW162-091819-1DL



Tgt Ion	Resp	Lower	Upper
228	100		
226	29.3	22.5	33.7
229	22.4	15.4	23.2

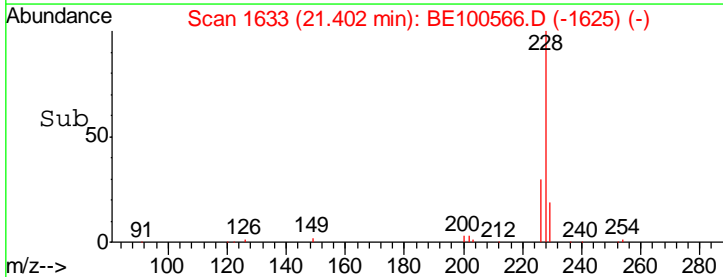
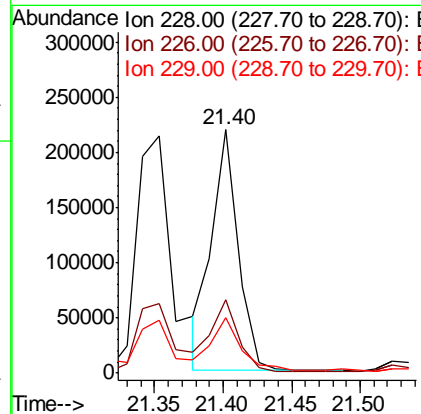
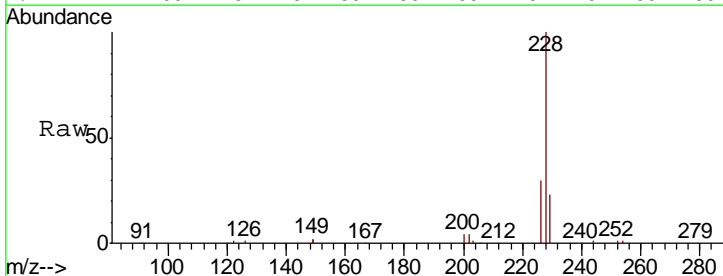
Manual Integrations
 APPROVED

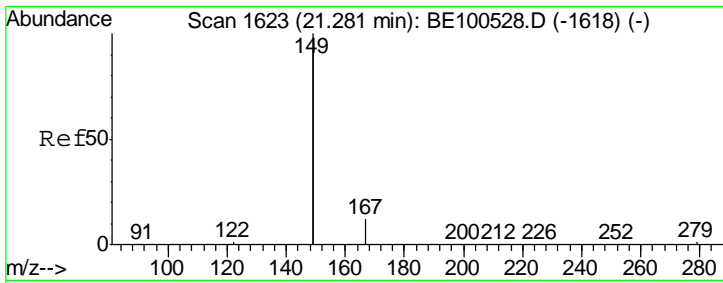
mohammad
 9/27/2019 1:46:12 PM



#31
 Chrysene
 Concen: 2.409 ng
 RT: 21.40 min Scan# 1633
 Delta R.T. -0.00 min
 Lab File: BE100566.D
 Acq: 26 Sep 2019 13:37

Tgt Ion	Resp	Lower	Upper
228	100		
226	30.1	23.3	34.9
229	23.0	16.3	24.5





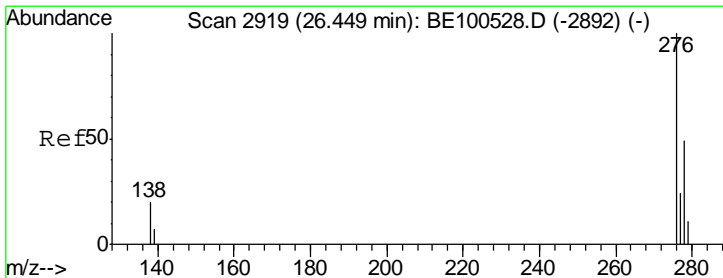
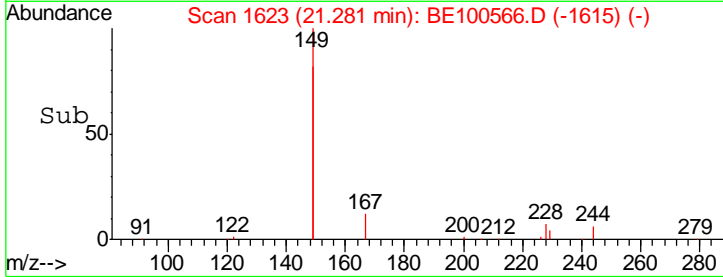
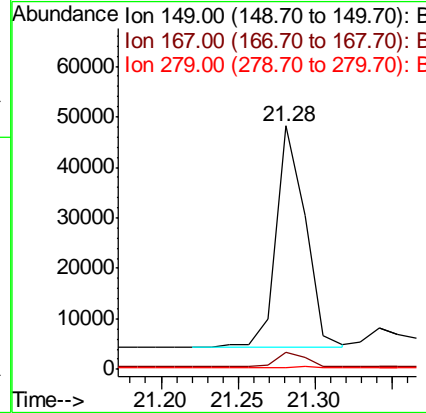
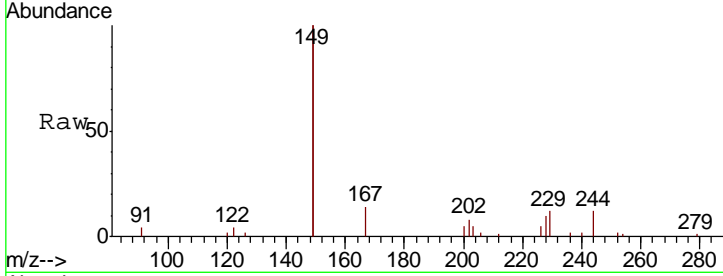
#32
 Bis(2-ethylhexyl)phthalate
 Concen: 0.498 ng
 RT: 21.28 min Scan# 1623
 Delta R.T. -0.00 min
 Lab File: BE100566.D
 Acq: 26 Sep 2019 13:37

Instrument :
 BNA_E
 ClientSampleId :
 EXT-SW162-091819-1DL

Tgt Ion	Resp	Lower	Upper
149	100		
167	6.6	5.2	7.8
279	1.1	1.0	1.4

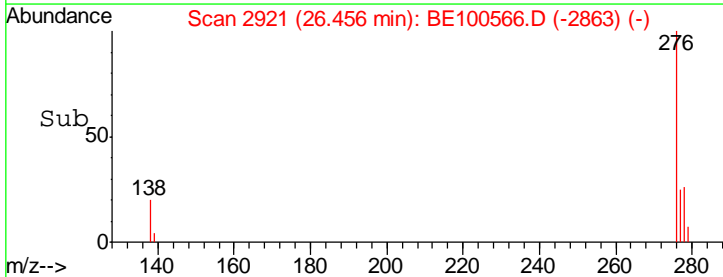
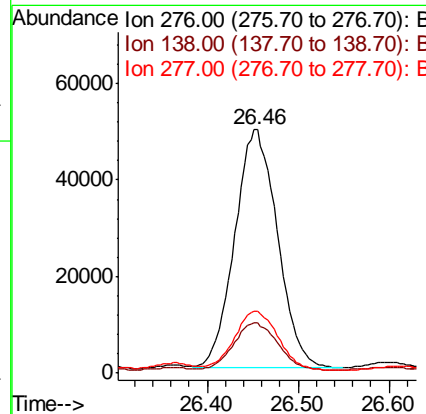
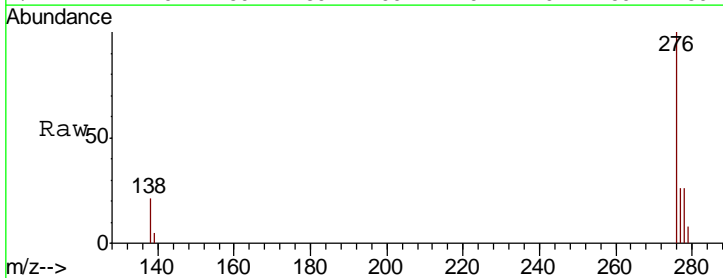
Manual Integrations
 APPROVED

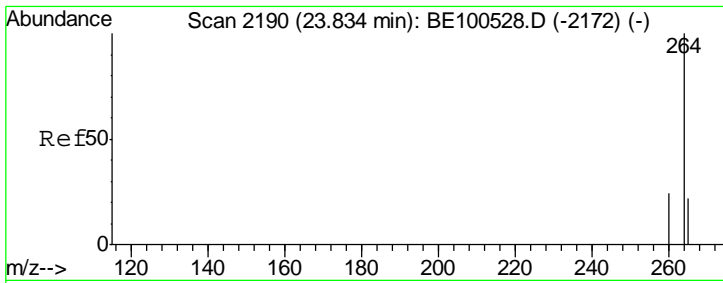
mohammad
 9/27/2019 1:46:12 PM



#33
 Indeno(1,2,3-cd)pyrene
 Concen: 1.186 ng
 RT: 26.46 min Scan# 2921
 Delta R.T. 0.01 min
 Lab File: BE100566.D
 Acq: 26 Sep 2019 13:37

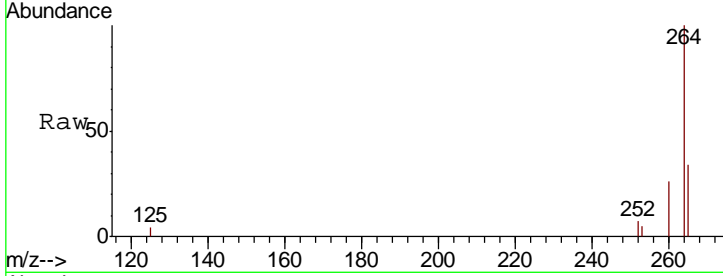
Tgt Ion	Resp	Lower	Upper
276	100		
138	20.4	17.7	26.5
277	25.2	19.9	29.9





#34
 Perylene-d12
 Concen: 0.400 ng
 RT: 23.84 min Scan# 2192
 Delta R.T. 0.01 min
 Lab File: BE100566.D
 Acq: 26 Sep 2019 13:37

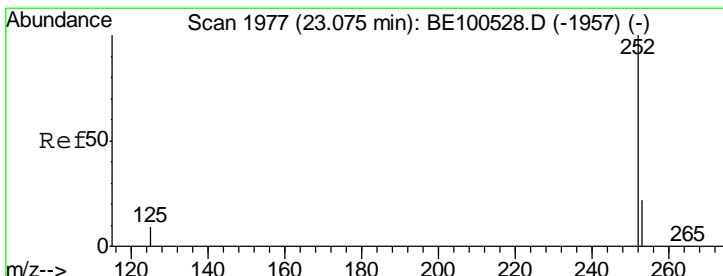
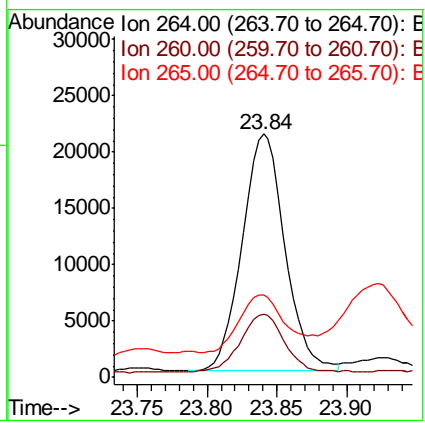
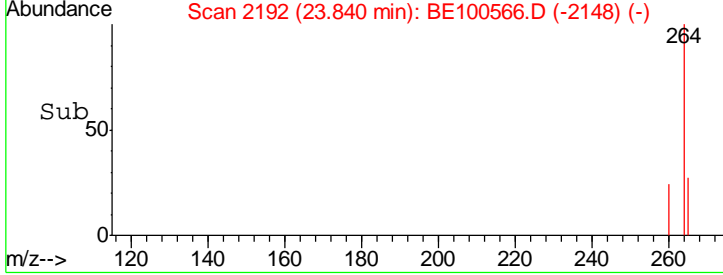
Instrument :
 BNA_E
 ClientSampleId :
 EXT-SW162-091819-1DL



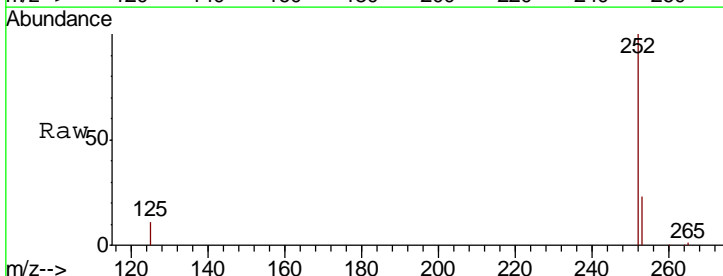
Tgt Ion: 264 Resp: 45096

Ion	Ratio	Lower	Upper
264	100		
260	26.0	19.6	29.4
265	33.7	21.8	32.8#

Manual Integrations
 APPROVED
 mohammad
 9/27/2019 1:46:12 PM

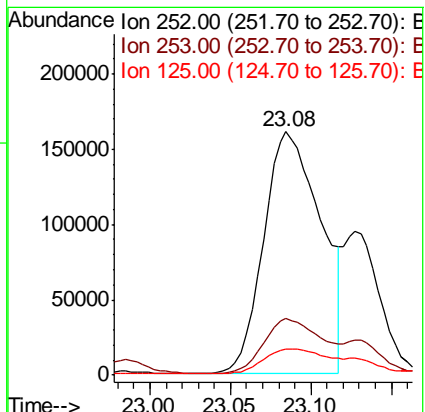
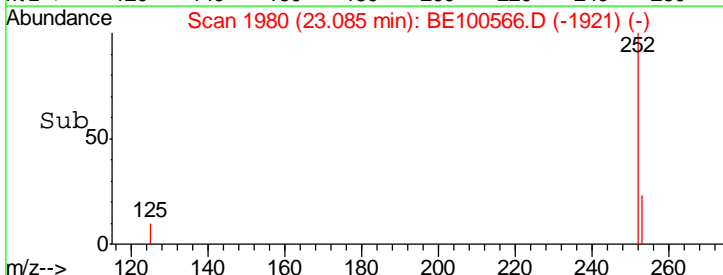


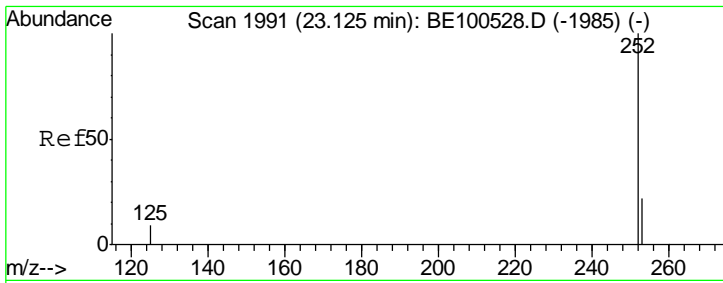
#35
 Benzo(b)fluoranthene
 Concen: 3.261 ng
 RT: 23.08 min Scan# 1980
 Delta R.T. 0.01 min
 Lab File: BE100566.D
 Acq: 26 Sep 2019 13:37



Tgt Ion: 252 Resp: 397934

Ion	Ratio	Lower	Upper
252	100		
253	23.1	18.1	27.1
125	10.7	8.0	12.0





#36
 Benzo(k)fluoranthene
 Concen: 1.102 ng m
 RT: 23.13 min Scan# 1992
 Delta R.T. 0.00 min
 Lab File: BE100566.D
 Acq: 26 Sep 2019 13:37

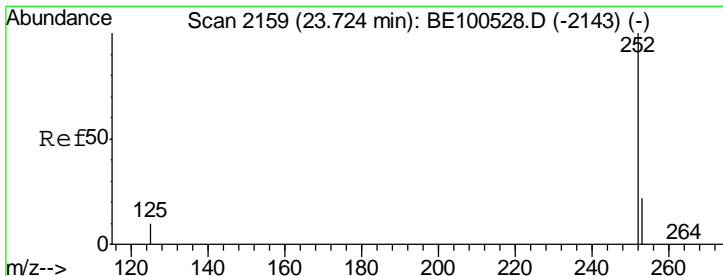
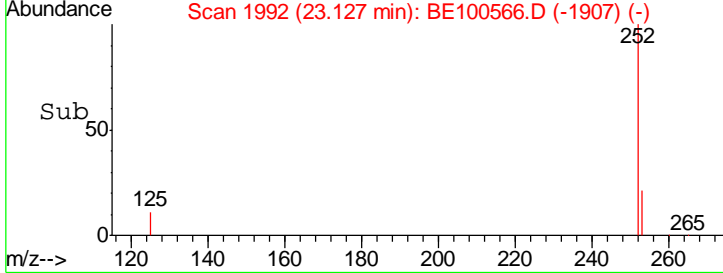
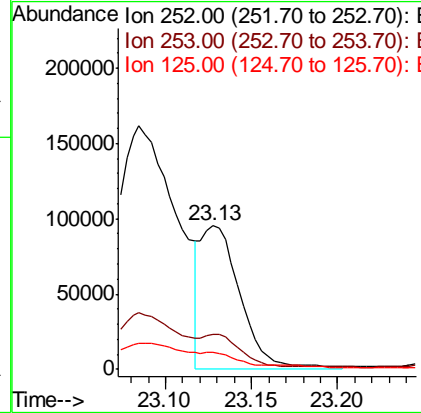
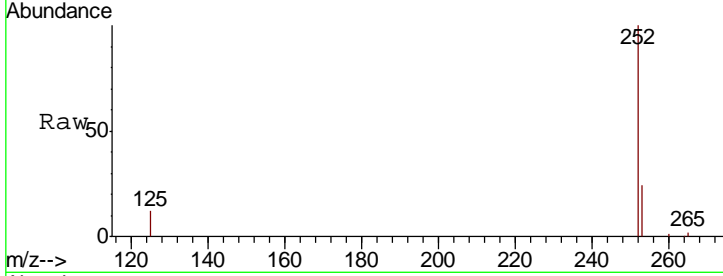
Instrument :
 BNA_E
ClientSampled :
 EXT-SW162-091819-1DL

Tgt Ion: 252 Resp: 155523

Ion	Ratio	Lower	Upper
252	100		
253	24.2	17.9	26.9
125	11.7	8.5	12.7

Manual Integrations
APPROVED

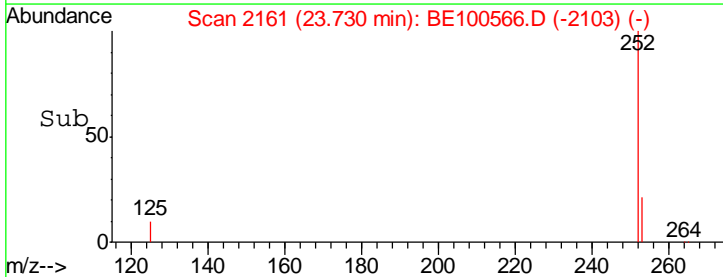
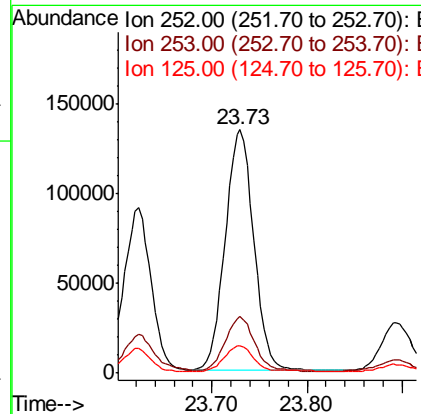
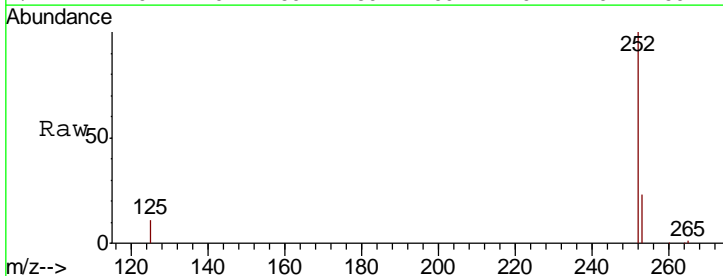
mohammad
 9/27/2019 1:46:12 PM

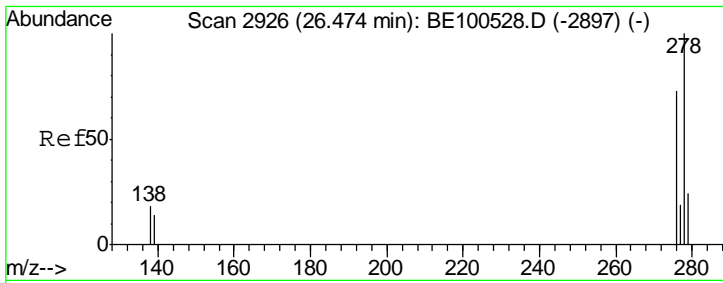


#37
 Benzo(a)pyrene
 Concen: 2.444 ng
 RT: 23.73 min Scan# 2161
 Delta R.T. 0.01 min
 Lab File: BE100566.D
 Acq: 26 Sep 2019 13:37

Tgt Ion: 252 Resp: 278185

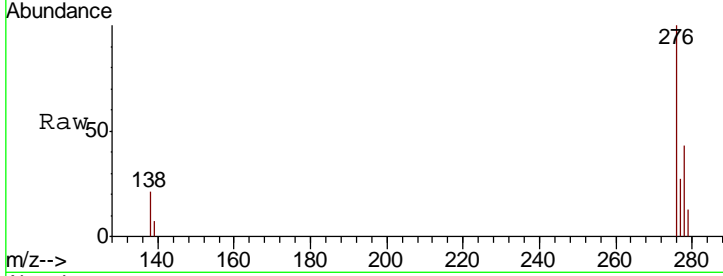
Ion	Ratio	Lower	Upper
252	100		
253	23.2	18.1	27.1
125	11.2	9.2	13.8





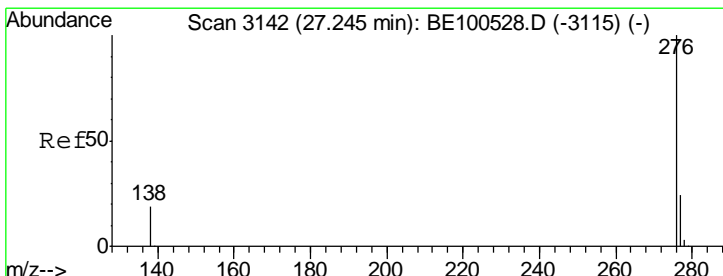
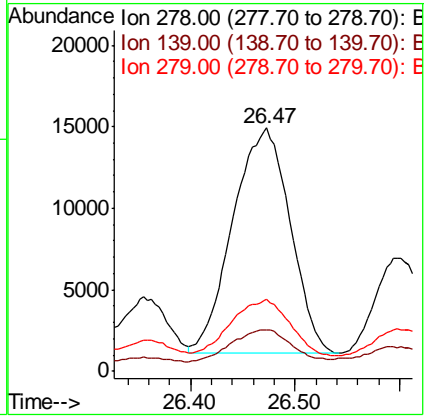
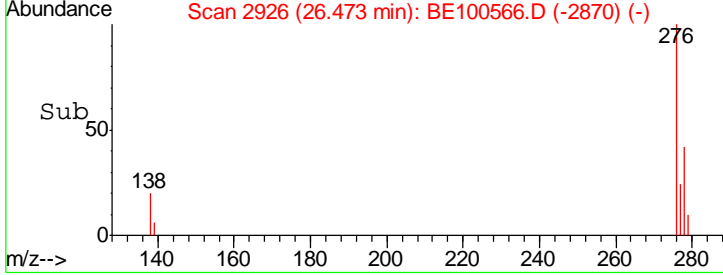
#38
 Dibenzo(a,h)anthracene
 Concen: 0.444 ng
 RT: 26.47 min Scan# 2926
 Delta R.T. -0.00 min
 Lab File: BE100566.D
 Acq: 26 Sep 2019 13:37

Instrument :
 BNA_E
ClientSampled :
 EXT-SW162-091819-1DL

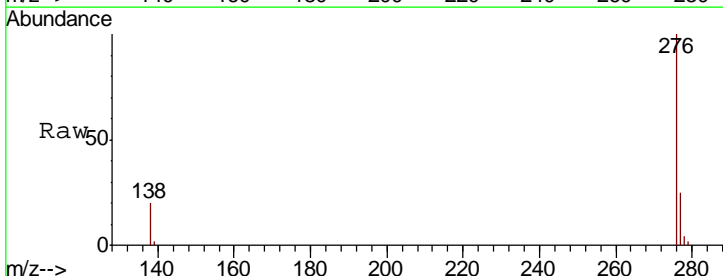


Tgt Ion	Resp	Lower	Upper
278	100		
139	17.2	11.6	17.4
279	29.4	19.7	29.5

Manual Integrations
APPROVED
 mohammad
 9/27/2019 1:46:12 PM



#39
 Benzo(g,h,i)perylene
 Concen: 1.174 ng
 RT: 27.26 min Scan# 3146
 Delta R.T. 0.01 min
 Lab File: BE100566.D
 Acq: 26 Sep 2019 13:37



Tgt Ion	Resp	Lower	Upper
276	100		
277	24.8	19.2	28.8
138	20.2	15.7	23.5

