

Data Path : Z:\HPCHEM1\BNA\_E\DATA\BE100716\  
 Data File : BE092452.D  
 Acq On : 7 Oct 2016 18:24  
 Operator : UM/SJ  
 Sample : PB93405BL  
 Misc :  
 ALS Vial : 11 Sample Multiplier: 1

Instrument :  
 BNA\_E  
 ClientSampleId :  
 PB93405BL

Quant Time: Oct 07 22:58:39 2016  
 Quant Method : Z:\HPCHEM1\BNA\_E\METHODS\8270-SIM-BE092216.M  
 Quant Title : ASP BNA STANDARDS FOR 5 POINT CALIBRATION  
 QLast Update : Thu Sep 22 18:25:56 2016  
 Response via : Initial Calibration

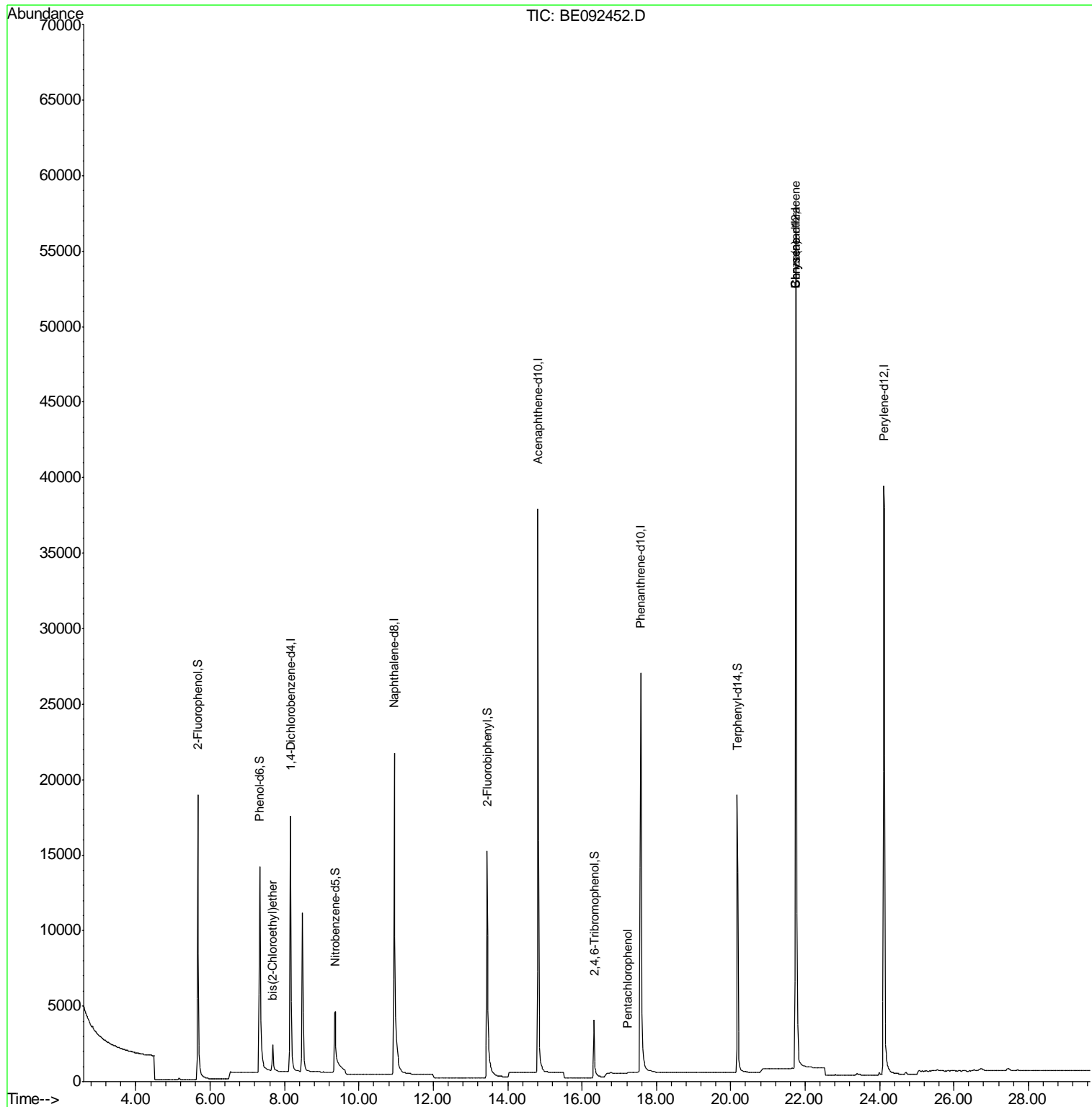
Internal Standards	R.T.	QIon	Response	Conc	Units	Dev(Min)
1) 1,4-Dichlorobenzene-d4	8.16	152	10141	5.00	ng	-0.02
7) Naphthalene-d8	10.95	136	41269	5.00	ng	0.00
12) Acenaphthene-d10	14.82	164	27423	5.00	ng	0.00
18) Phenanthrene-d10	17.58	188	53058	5.00	ng	0.02
24) Chrysene-d12	21.75	240	75535	5.00	ng	0.00
31) Perylene-d12	24.11	264	66706	5.00	ng	0.02
System Monitoring Compounds						
4) 2-Fluorophenol	5.67	112	17195	7.20	ng	-0.02
5) Phenol-d6	7.33	99	20831	6.12	ng	-0.02
8) Nitrobenzene-d5	9.36	82	8333	2.87	ng	0.00
13) 2,4,6-Tribromophenol	16.32	330	3708	3.90	ng	0.00
14) 2-Fluorobiphenyl	13.45	172	23062	3.55	ng	0.00
26) Terphenyl-d14	20.17	244	31282	3.34	ng	0.00
Target Compounds						
6) bis(2-Chloroethyl)ether	7.68	93	25	0.10	ng	# 1
20) Pentachlorophenol	17.23	266	4	0.18	ng	# 72
27) Benzo(a)anthracene	21.75	228	1866	0.03	ng	# 63
28) Chrysene	21.75	228	1896	0.03	ng	# 66

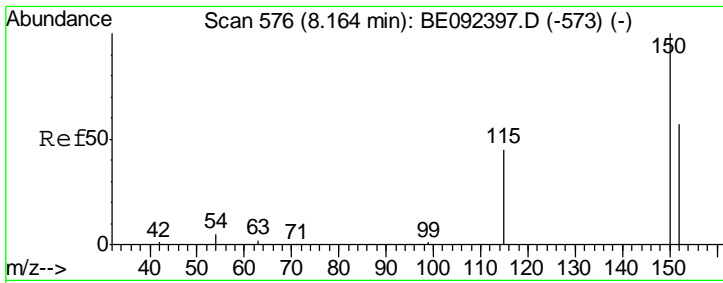
(#) = qualifier out of range (m) = manual integration (+) = signals summed

Data Path : Z:\HPCHEM1\BNA\_E\DATA\BE100716\  
 Data File : BE092452.D  
 Acq On : 7 Oct 2016 18:24  
 Operator : UM/SJ  
 Sample : PB93405BL  
 Misc :  
 ALS Vial : 11 Sample Multiplier: 1

Instrument :  
 BNA\_E  
 ClientSampleId :  
 PB93405BL

Quant Time: Oct 07 22:58:39 2016  
 Quant Method : Z:\HPCHEM1\BNA\_E\METHODS\8270-SIM-BE092216.M  
 Quant Title : ASP BNA STANDARDS FOR 5 POINT CALIBRATION  
 QLast Update : Thu Sep 22 18:25:56 2016  
 Response via : Initial Calibration

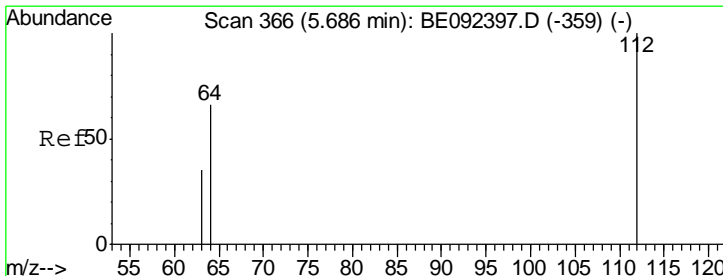
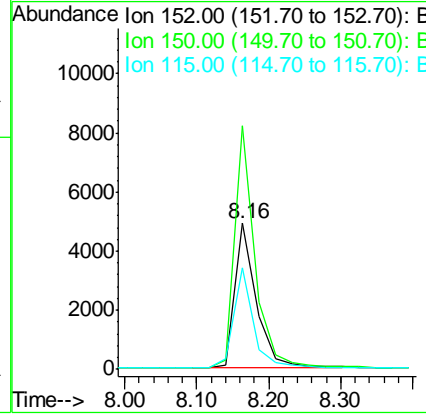
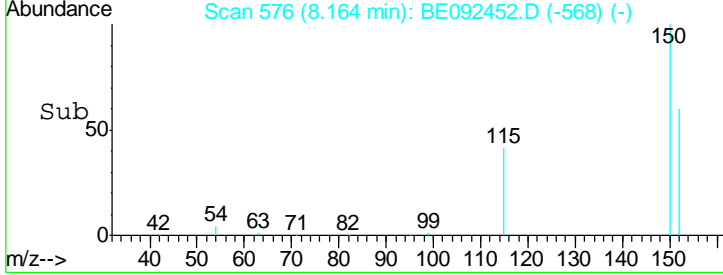
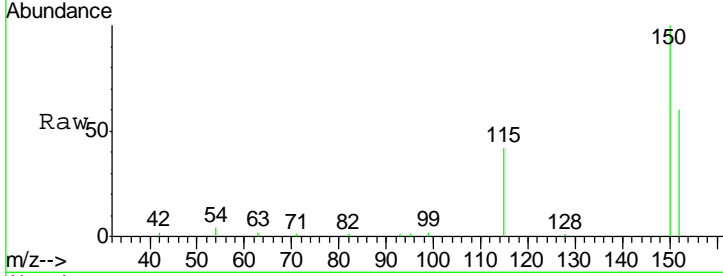




#1  
 1,4-Dichlorobenzene-d4  
 Concen: 5.00 ng  
 RT: 8.16 min Scan# 576  
 Delta R.T. -0.02 min  
 Lab File: BE092452.D  
 Acq: 7 Oct 2016 18:24

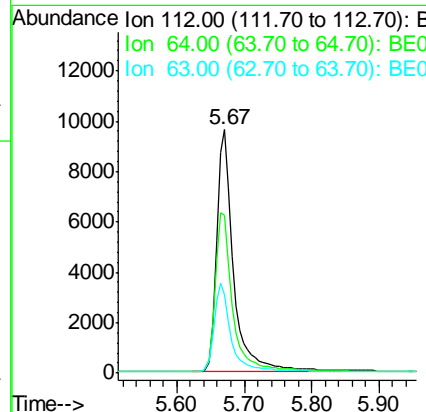
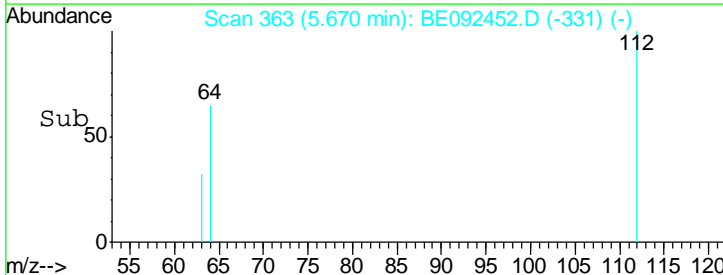
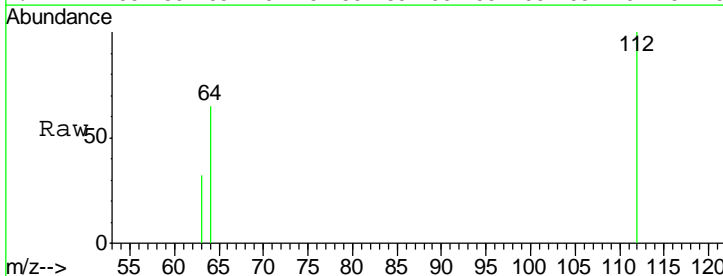
**Instrument :**  
 BNA\_E  
**ClientSampled :**  
 PB93405BL

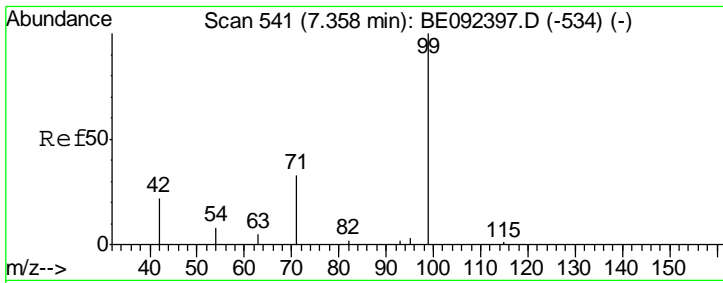
Tgt Ion	Resp	Lower	Upper
152	10141		
150	167.1	106.0	159.0#
115	69.3	31.2	46.8#



#4  
 2-Fluorophenol  
 Concen: 7.20 ng  
 RT: 5.67 min Scan# 363  
 Delta R.T. -0.02 min  
 Lab File: BE092452.D  
 Acq: 7 Oct 2016 18:24

Tgt Ion	Resp	Lower	Upper
112	17195		
64	68.0	53.5	80.3
63	36.5	27.9	41.9

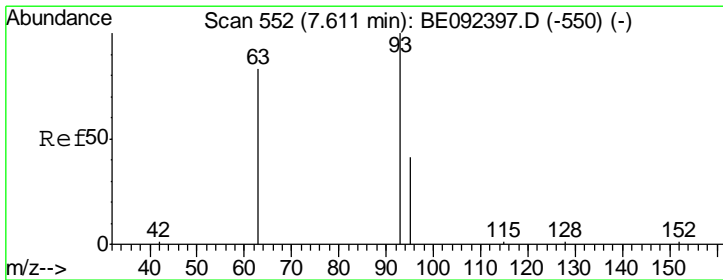
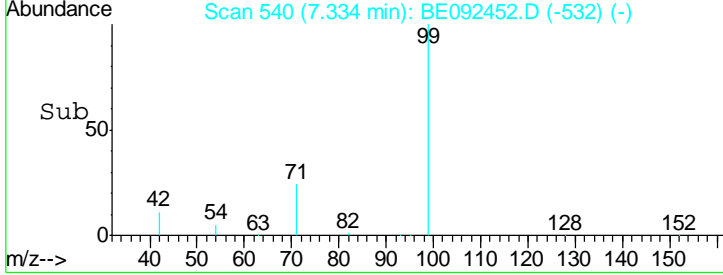
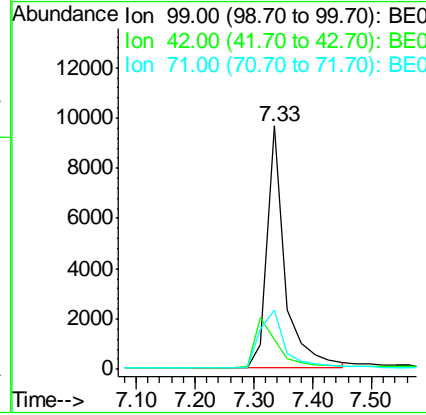
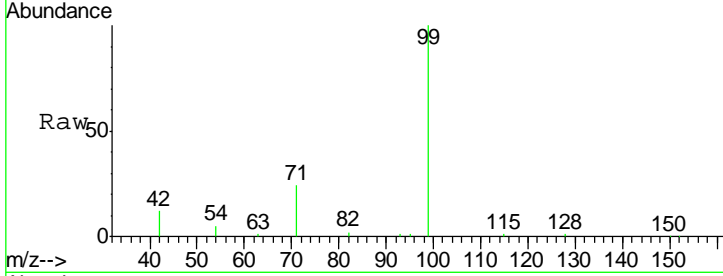




#5  
 Phenol-d6  
 Concen: 6.12 ng  
 RT: 7.33 min Scan# 540  
 Delta R.T. -0.02 min  
 Lab File: BE092452.D  
 Acq: 7 Oct 2016 18:24

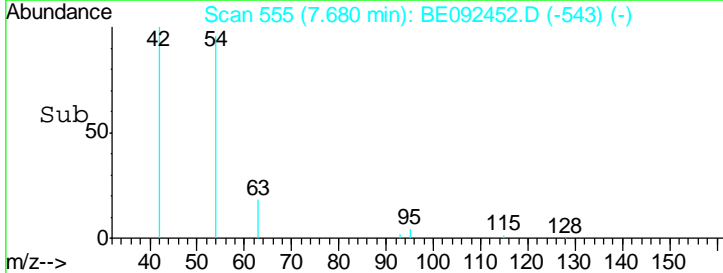
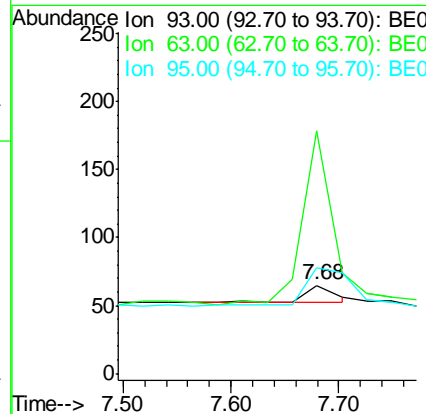
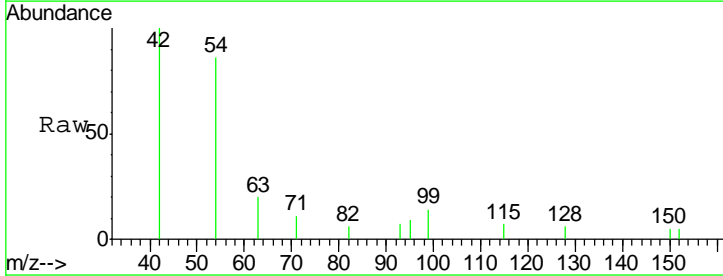
Instrument :  
 BNA\_E  
 ClientSampled :  
 PB93405BL

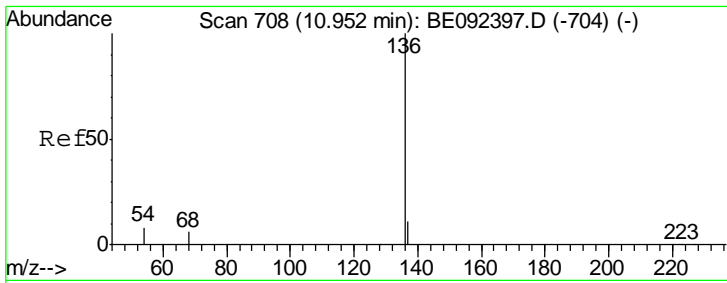
Tgt Ion	Resp	Lower	Upper
99	100		
42	0.0	16.0	24.0#
71	33.6	30.6	45.8



#6  
 bis(2-Chloroethyl)ether  
 Concen: 0.10 ng  
 RT: 7.68 min Scan# 555  
 Delta R.T. 0.07 min  
 Lab File: BE092452.D  
 Acq: 7 Oct 2016 18:24

Tgt Ion	Resp	Lower	Upper
93	100		
63	952.0	71.6	107.4#
95	316.0	24.0	36.0#

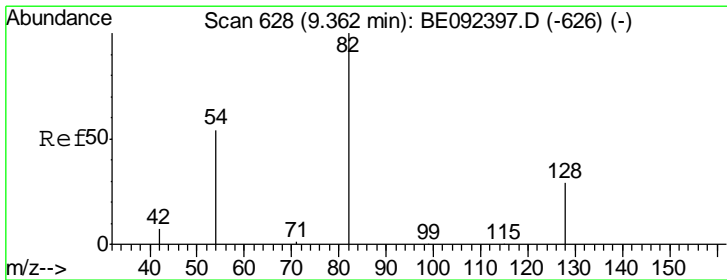
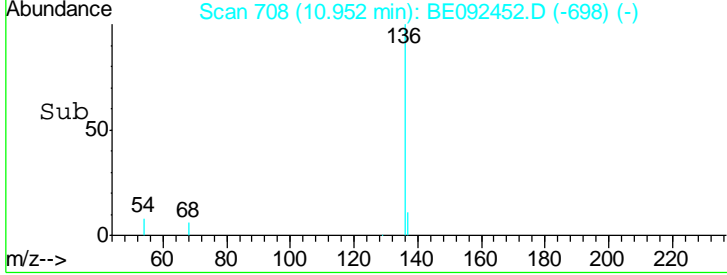
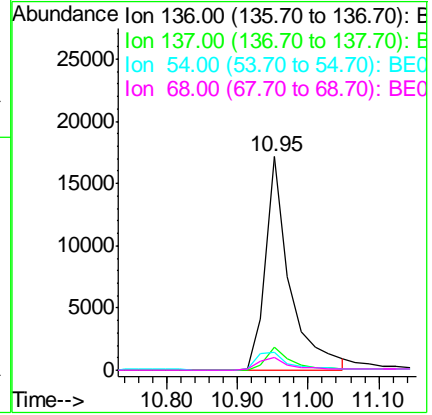
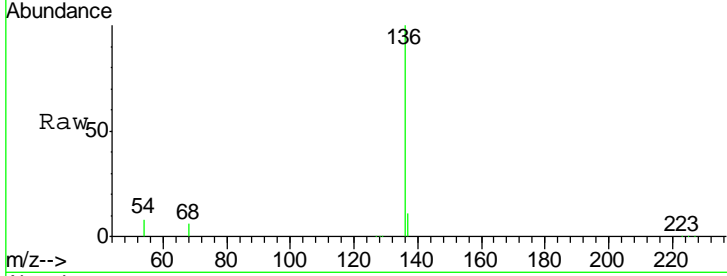




#7  
 Naphthalene-d8  
 Concen: 5.00 ng  
 RT: 10.95 min Scan# 708  
 Delta R.T. -0.00 min  
 Lab File: BE092452.D  
 Acq: 7 Oct 2016 18:24

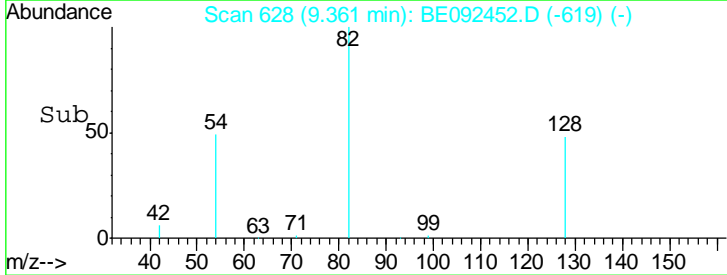
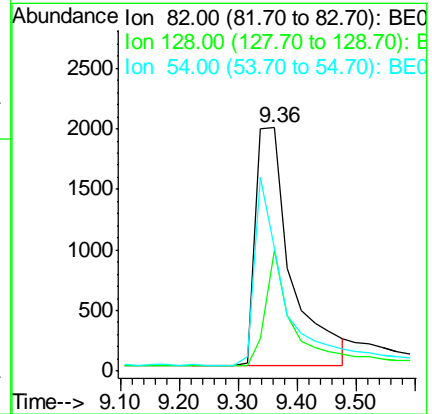
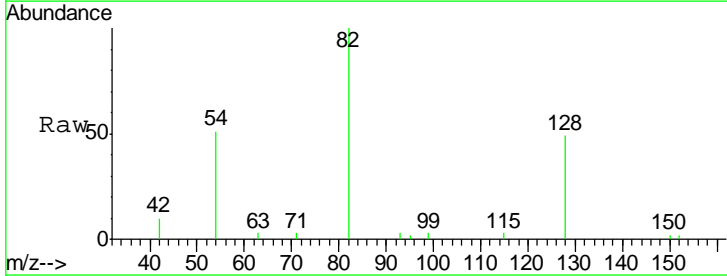
Instrument :  
 BNA\_E  
 ClientSampled :  
 PB93405BL

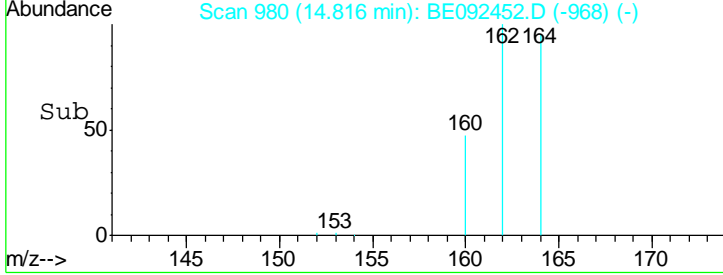
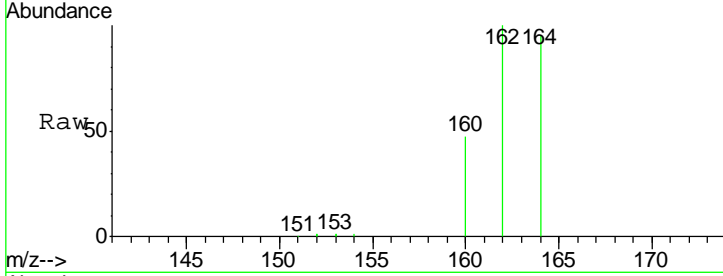
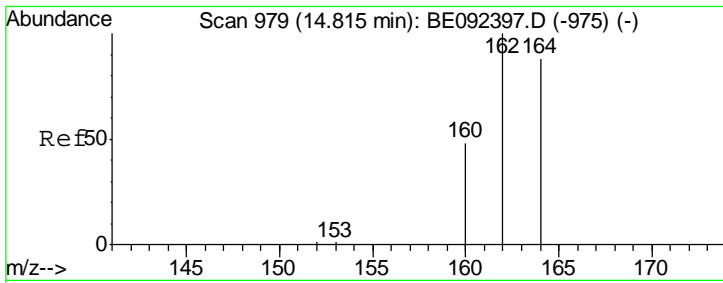
Tgt Ion	Resp	Lower	Upper
136	41269		
137	11.1	8.2	12.4
54	8.3	9.6	14.4#
68	6.0	6.7	10.1#



#8  
 Nitrobenzene-d5  
 Concen: 2.87 ng  
 RT: 9.36 min Scan# 628  
 Delta R.T. -0.00 min  
 Lab File: BE092452.D  
 Acq: 7 Oct 2016 18:24

Tgt Ion	Resp	Lower	Upper
82	8333		
128	49.4	39.0	58.4
54	50.8	44.8	67.2

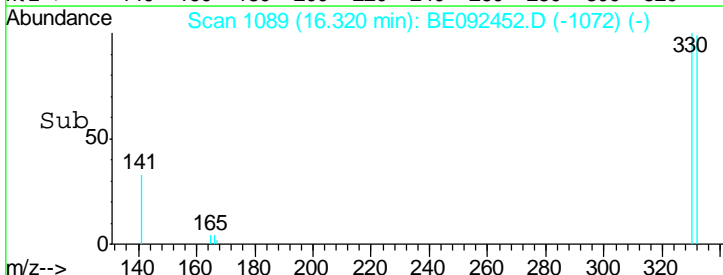
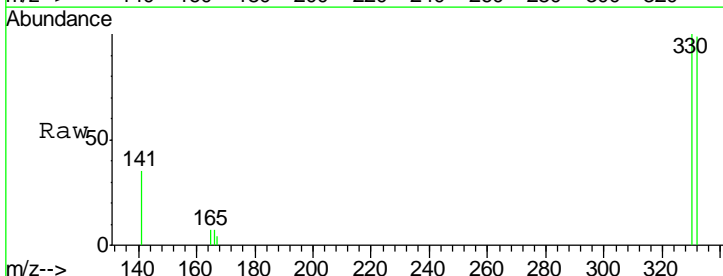
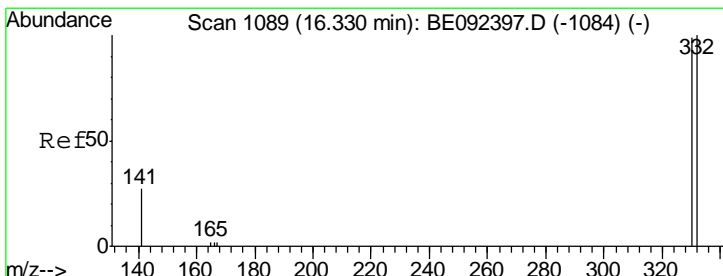
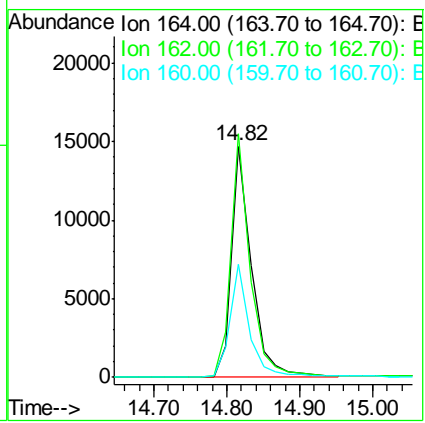




#12  
 Acenaphthene-d10  
 Concen: 5.00 ng  
 RT: 14.82 min Scan# 980  
 Delta R.T. 0.00 min  
 Lab File: BE092452.D  
 Acq: 7 Oct 2016 18:24

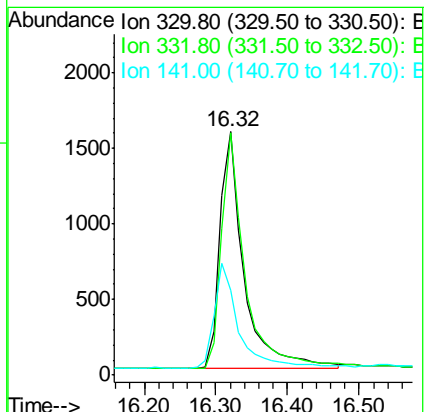
Instrument :  
 BNA\_E  
 ClientSampled :  
 PB93405BL

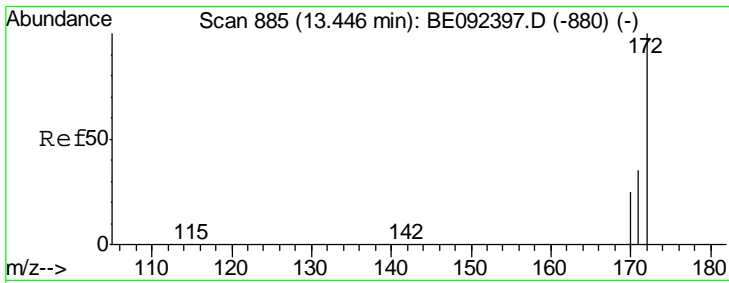
Tgt Ion	Resp	Lower	Upper
164	100		
162	105.4	71.4	107.0
160	49.2	27.4	41.2#



#13  
 2,4,6-Tribromophenol  
 Concen: 3.90 ng  
 RT: 16.32 min Scan# 1089  
 Delta R.T. 0.00 min  
 Lab File: BE092452.D  
 Acq: 7 Oct 2016 18:24

Tgt Ion	Resp	Lower	Upper
330	100		
332	96.4	75.4	113.0
141	44.1	31.0	46.6



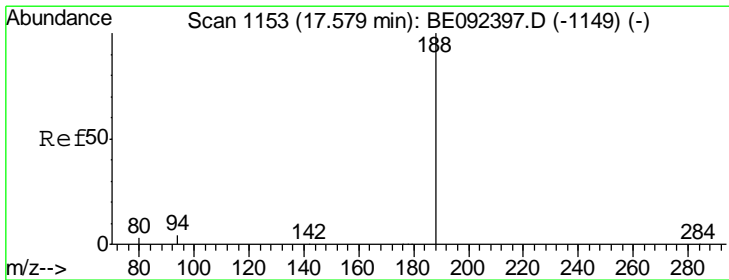
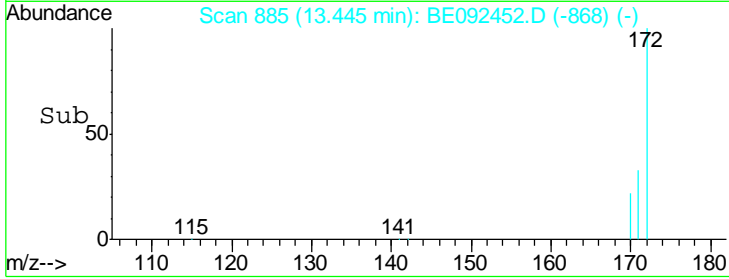
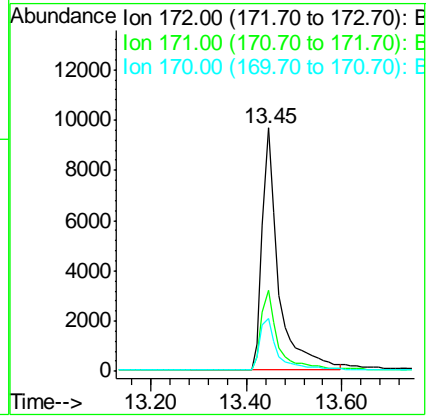
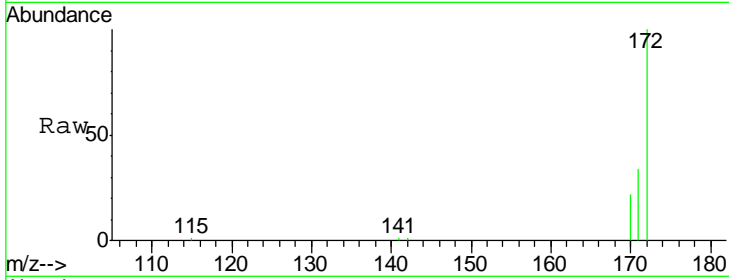


#14  
 2-Fluorobiphenyl  
 Concen: 3.55 ng  
 RT: 13.45 min Scan# 885  
 Delta R.T. 0.00 min  
 Lab File: BE092452.D  
 Acq: 7 Oct 2016 18:24

Instrument :  
 BNA\_E  
 ClientSampled :  
 PB93405BL

Tgt Ion:172 Resp: 23062

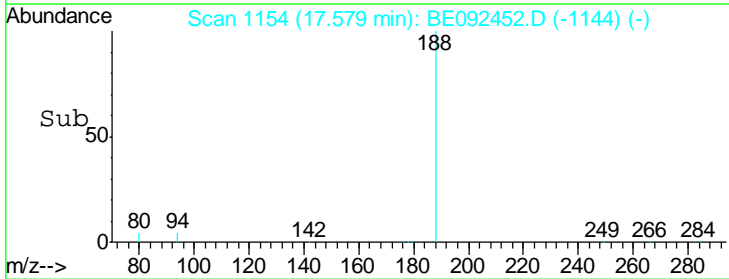
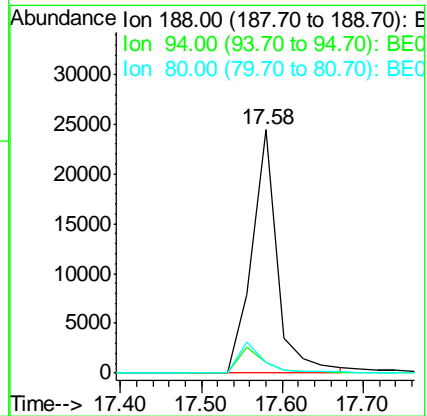
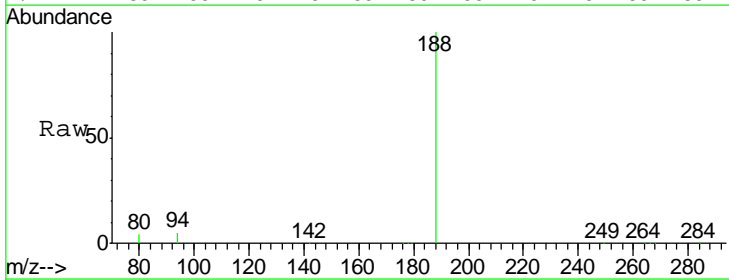
Ion	Ratio	Lower	Upper
172	100		
171	33.5	30.1	45.1
170	21.9	21.8	32.6

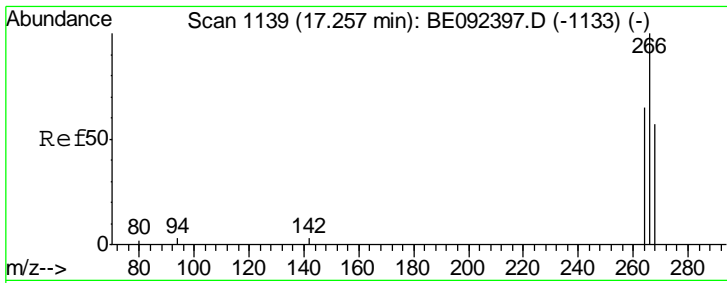


#18  
 Phenanthrene-d10  
 Concen: 5.00 ng  
 RT: 17.58 min Scan# 1154  
 Delta R.T. 0.02 min  
 Lab File: BE092452.D  
 Acq: 7 Oct 2016 18:24

Tgt Ion:188 Resp: 53058

Ion	Ratio	Lower	Upper
188	100		
94	4.5	3.2	4.8
80	4.1	2.6	3.8#

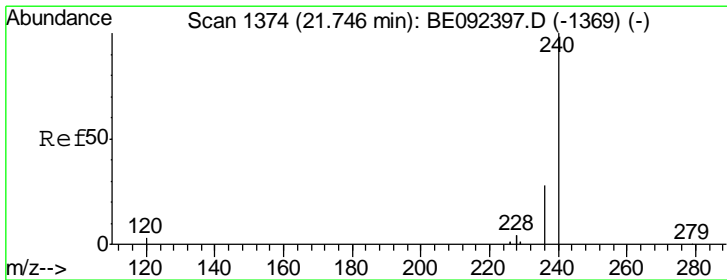
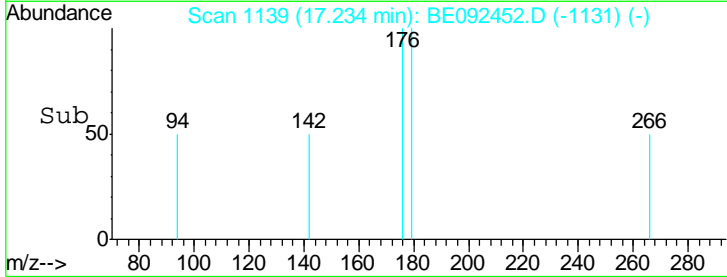
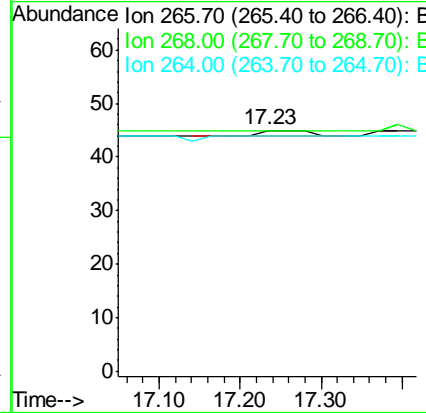
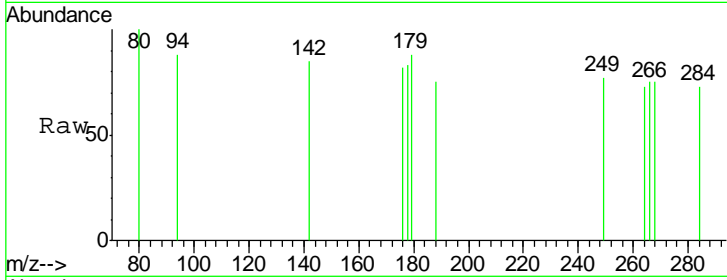




#20  
 Pentachlorophenol  
 Concen: 0.18 ng  
 RT: 17.23 min Scan# 1139  
 Delta R.T. -0.02 min  
 Lab File: BE092452.D  
 Acq: 7 Oct 2016 18:24

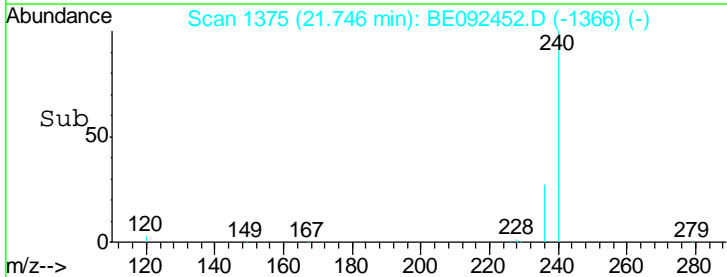
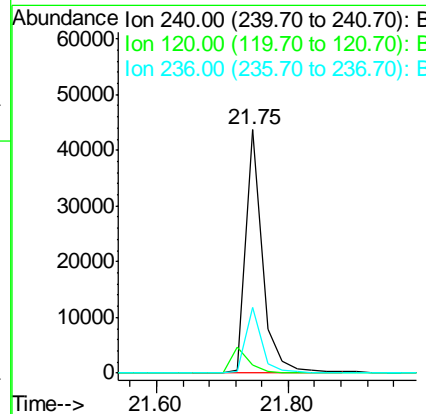
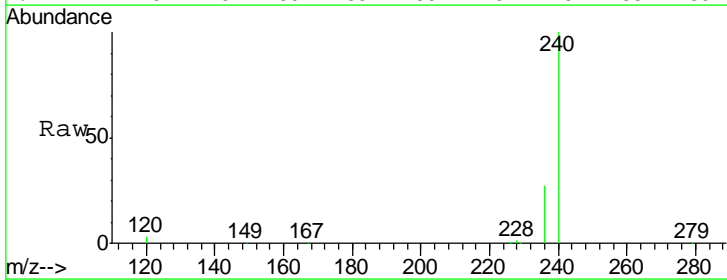
Instrument :  
 BNA\_E  
 ClientSampleID :  
 PB93405BL

Tgt Ion	Resp	Lower	Upper
266	100		
268	100.0	62.5	93.7#
264	97.8	57.2	85.8#

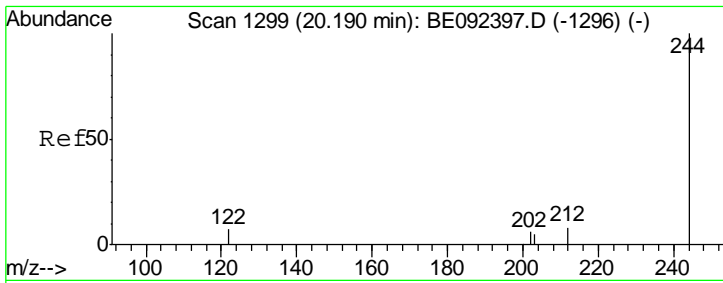


#24  
 Chrysene-d12  
 Concen: 5.00 ng  
 RT: 21.75 min Scan# 1375  
 Delta R.T. -0.00 min  
 Lab File: BE092452.D  
 Acq: 7 Oct 2016 18:24

Tgt Ion	Resp	Lower	Upper
240	100		
120	3.3	2.6	4.0
236	27.1	24.6	37.0



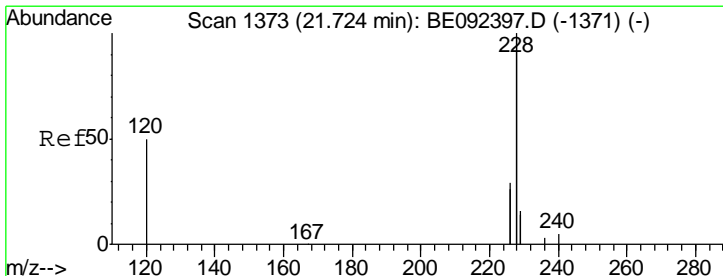
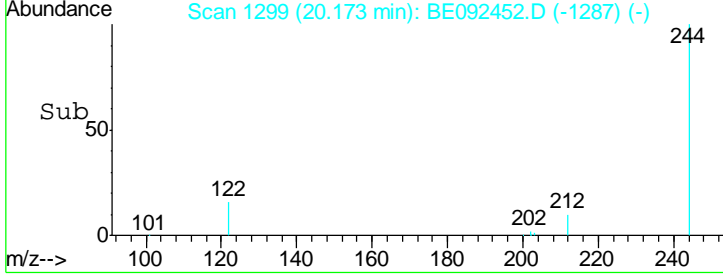
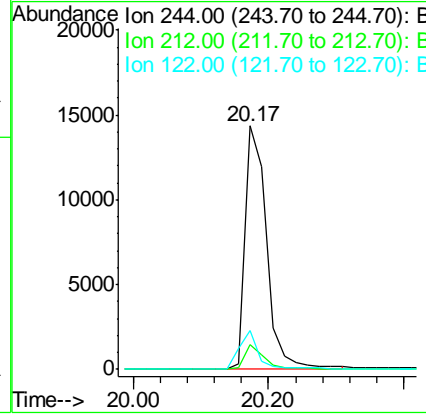
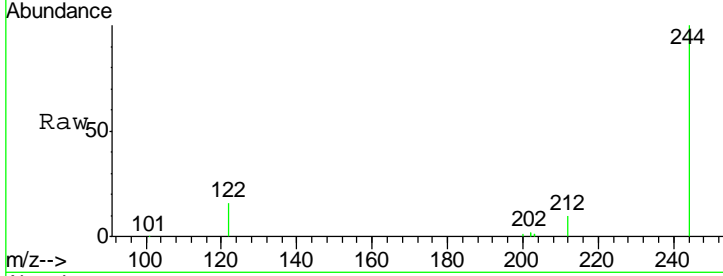




#26  
 Terphenyl-d14  
 Concen: 3.34 ng  
 RT: 20.17 min Scan# 1299  
 Delta R.T. -0.00 min  
 Lab File: BE092452.D  
 Acq: 7 Oct 2016 18:24

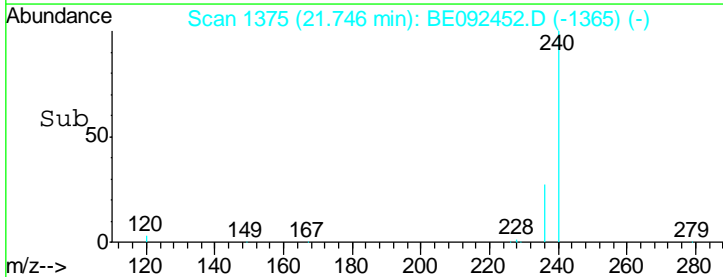
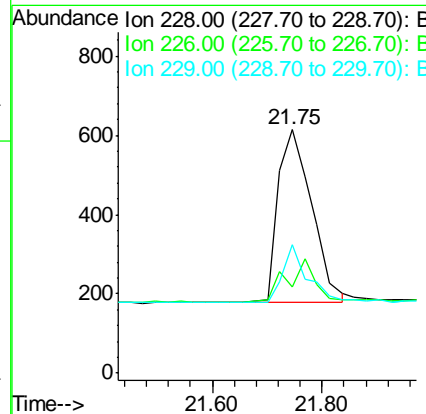
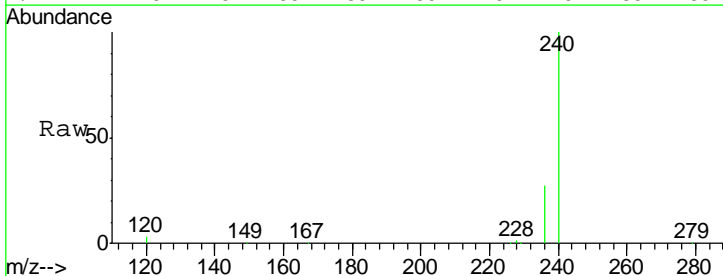
Instrument :  
 BNA\_E  
 ClientSampled :  
 PB93405BL

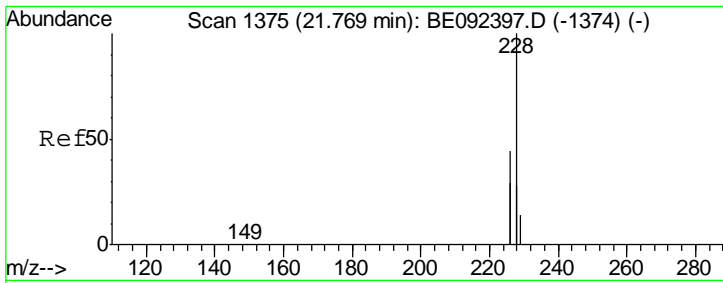
Tgt Ion	Resp	Lower	Upper
244	31282		
212	10.1	6.7	10.1
122	16.2	3.6	5.4#



#27  
 Benzo(a)anthracene  
 Concen: 0.03 ng  
 RT: 21.75 min Scan# 1375  
 Delta R.T. 0.02 min  
 Lab File: BE092452.D  
 Acq: 7 Oct 2016 18:24

Tgt Ion	Resp	Lower	Upper
228	1866		
226	35.5	23.6	35.4#
229	52.8	13.3	19.9#



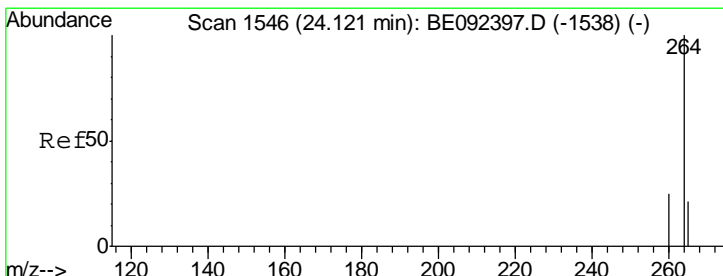
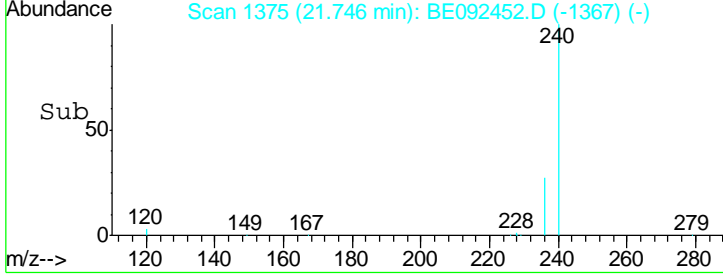
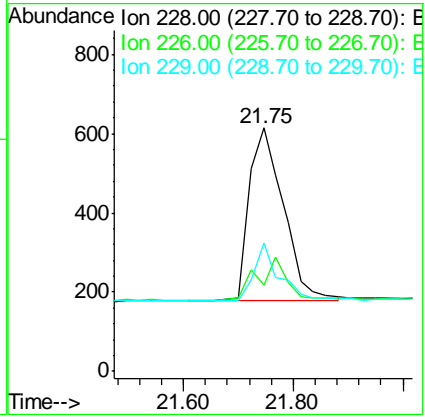
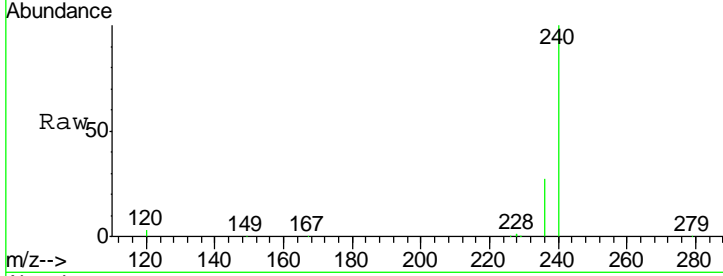


#28  
 Chrysene  
 Concen: 0.03 ng  
 RT: 21.75 min Scan# 1375  
 Delta R.T. -0.02 min  
 Lab File: BE092452.D  
 Acq: 7 Oct 2016 18:24

Instrument :  
 BNA\_E  
 ClientSampleId :  
 PB93405BL

Tgt Ion: 228 Resp: 1896

Ion	Ratio	Lower	Upper
228	100		
226	35.5	36.3	54.5#
229	52.8	10.6	16.0#



#31  
 Perylene-d12  
 Concen: 5.00 ng  
 RT: 24.11 min Scan# 1546  
 Delta R.T. 0.02 min  
 Lab File: BE092452.D  
 Acq: 7 Oct 2016 18:24

Tgt Ion: 264 Resp: 66706

Ion	Ratio	Lower	Upper
264	100		
260	26.1	20.1	30.1
265	20.8	17.9	26.9

