

Data Path : Z:\HPCHEM1\BNA E\DATA\BE100917\
 Data File : BE094226.D
 Acq On : 9 Oct 2017 18:21
 Operator : SJ/JU
 Sample : I5522-07
 Misc :
 ALS Vial : 12 Sample Multiplier: 1

Instrument :
 BNA_E
ClientSampled :
 C0AD6

Manual Integrations
APPROVED
 Sohil
 10/11/2017 9:24:12 AM

Quant Time: Oct 10 17:04:38 2017
 Quant Method : Z:\HPCHEM1\BNA E\METHODS\SOM-EPA-SIM-BE092017.M
 Quant Title : ASP BNA STANDARDS FOR 5 POINT CALIBRATION
 QLast Update : Tue Oct 10 09:18:40 2017
 Response via : Initial Calibration

Internal Standards	R.T.	QIon	Response	Conc	Units	Dev(Min)
1) 1,4-Dichlorobenzene-d4	7.90	152	2402	0.40	ng/ul	0.00
2) Naphthalene-d8	10.69	136	12744	0.40	ng/ul	0.00
6) Acenaphthene-d10	14.52	164	7664	0.40	ng/ul	0.00
10) Phenanthrene-d10	17.24	188	16425	0.40	ng/ul	-0.02
16) Chrysene-d12	21.41	240	16368	0.40	ng/ul	0.00
20) Perylene-d12	23.92	264	15134m	0.40	ng/ul	-0.02

System Monitoring Compounds	R.T.	QIon	Response	Conc	Units	Dev(Min)
4) 2-Methylnaphthalene-d10	12.28	152	4476	0.23	ng/ul	0.00
14) Fluoranthene-d10	19.27	212	12246	0.22	ng/ul	0.00

Target Compounds	R.T.	QIon	Response	Conc	Units	Ovalue
12) Phenanthrene	17.29	178	4547	0.106	ng/ul	95
15) Fluoranthene	19.30	202	13270	0.235	ng/ul	84
17) Pyrene	19.66	202	13598	0.299	ng/ul#	87
18) Benzo(a)anthracene	21.39	228	5627	0.130	ng/ul#	89
19) Chrysene	21.45	228	7526	0.150	ng/ul#	87
21) Benzo(b)fluoranthene	23.15	252	9781m	0.238	ng/ul	
22) Benzo(k)fluoranthene	23.19	252	3651m	0.077	ng/ul	
23) Benzo(a)pyrene	23.81	252	6050m	0.142	ng/ul	
24) Indeno(1,2,3-cd)pyrene	26.58	276	4865m	0.111	ng/ul	
26) Benzo(g,h,i)perylene	27.40	276	4878m	0.129	ng/ul	

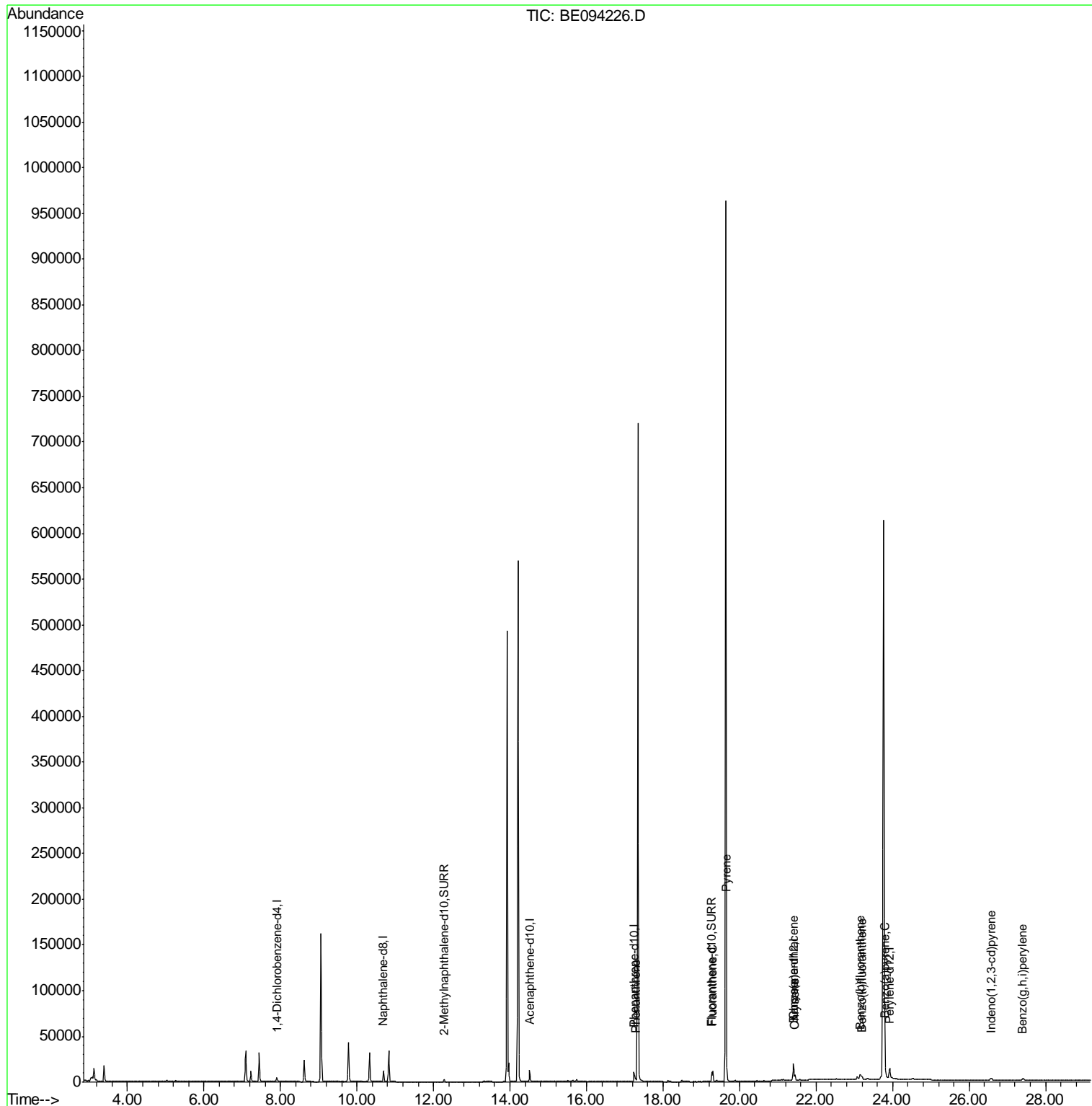
(#) = qualifier out of range (m) = manual integration (+) = signals summed

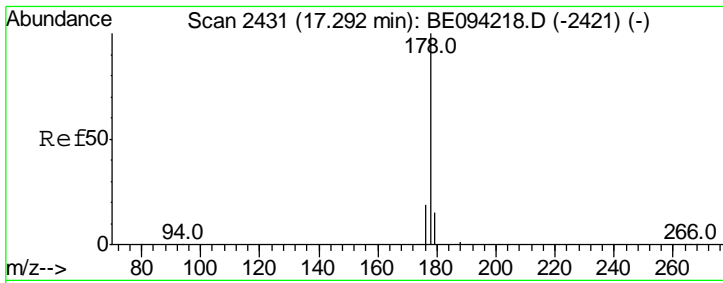
Data Path : Z:\HPCHEM1\BNA E\DATA\BE100917\
 Data File : BE094226.D
 Acq On : 9 Oct 2017 18:21
 Operator : SJ/JU
 Sample : I5522-07
 Misc :
 ALS Vial : 12 Sample Multiplier: 1

Instrument :
 BNA_E
ClientSampled :
 C0AD6

Manual Integrations
APPROVED
 Sohil
 10/11/2017 9:24:12 AM

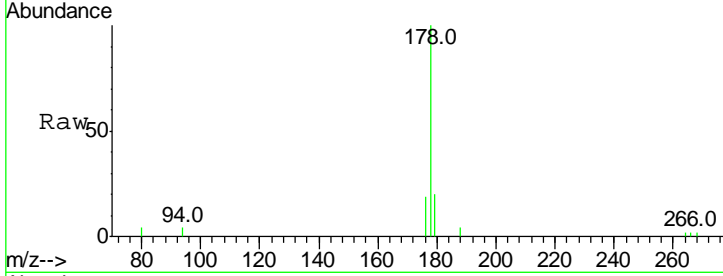
Quant Time: Oct 10 17:04:38 2017
 Quant Method : Z:\HPCHEM1\BNA E\METHODS\SOM-EPA-SIM-BE092017.M
 Quant Title : ASP BNA STANDARDS FOR 5 POINT CALIBRATION
 QLast Update : Tue Oct 10 09:18:40 2017
 Response via : Initial Calibration





#12
 Phenanthrene
 Concen: 0.106 ng/ul
 RT: 17.29 min Scan# 2431
 Delta R.T. 0.00 min
 Lab File: BE094226.D
 Acq: 9 Oct 2017 18:21

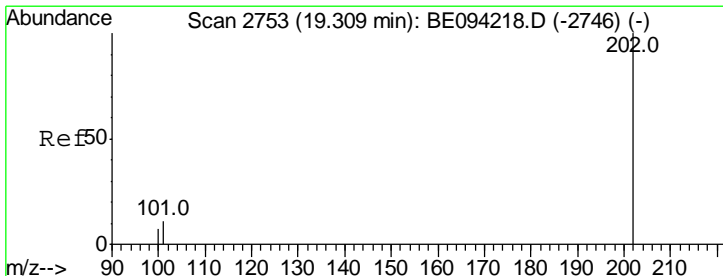
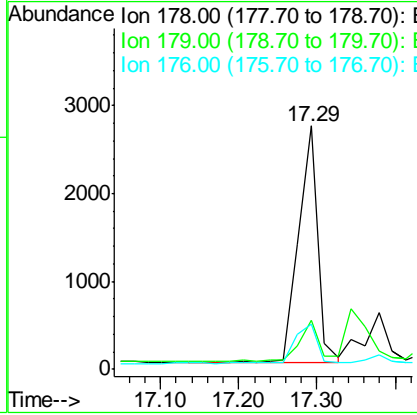
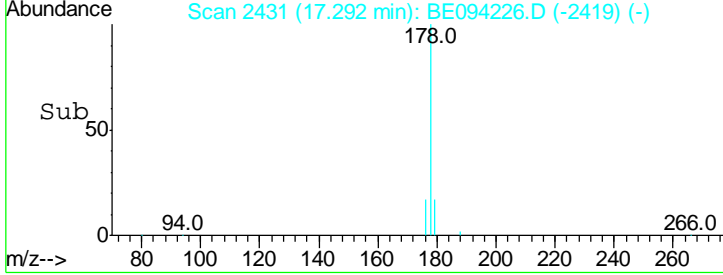
Instrument :
 BNA_E
ClientSampled :
 C0AD6



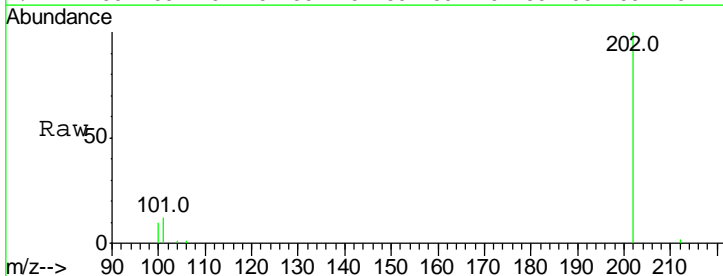
Tgt Ion: 178 Resp: 4547

Ion	Ratio	Lower	Upper
178	100		
179	20.1	18.4	27.6
176	18.6	13.6	20.4

Manual Integrations
APPROVED
 Sohil
 10/11/2017 9:24:12 AM

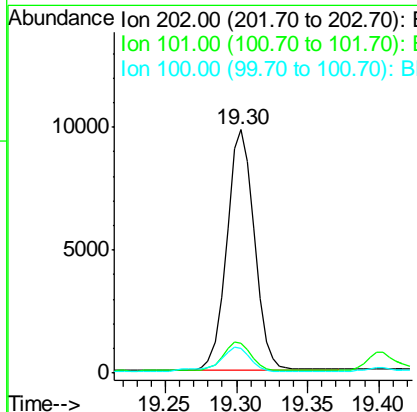
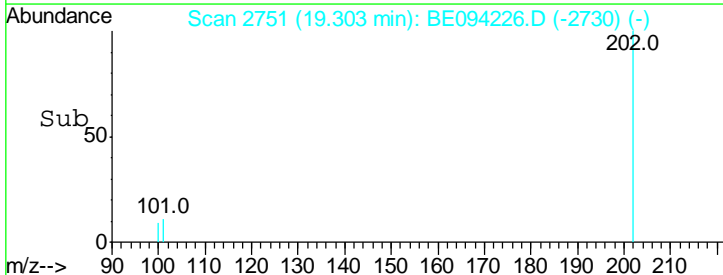


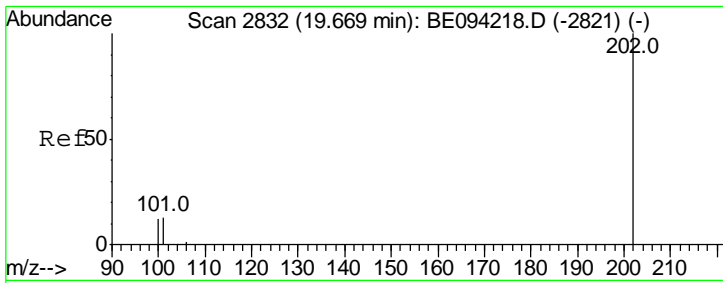
#15
 Fluoranthene
 Concen: 0.235 ng/ul
 RT: 19.30 min Scan# 2751
 Delta R.T. -0.01 min
 Lab File: BE094226.D
 Acq: 9 Oct 2017 18:21



Tgt Ion: 202 Resp: 13270

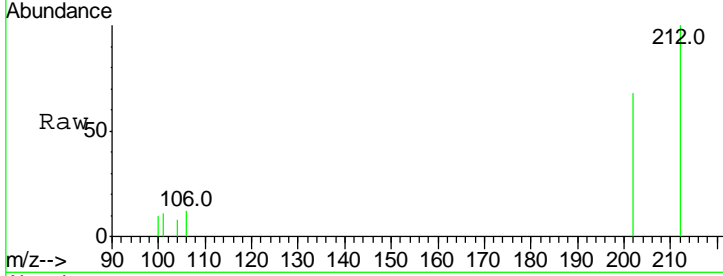
Ion	Ratio	Lower	Upper
202	100		
101	12.3	0.0	30.3
100	9.9	0.0	39.5





#17
 Pyrene
 Concen: 0.299 ng/ul
 RT: 19.66 min Scan# 2830
 Delta R.T. -0.01 min
 Lab File: BE094226.D
 Acq: 9 Oct 2017 18:21

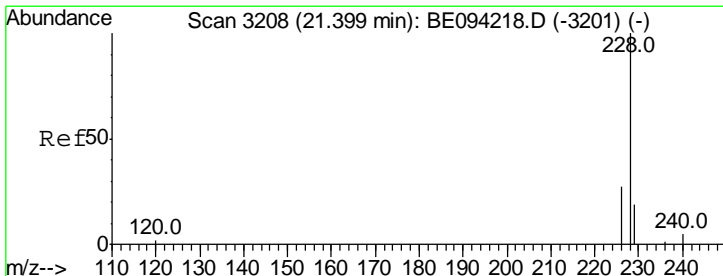
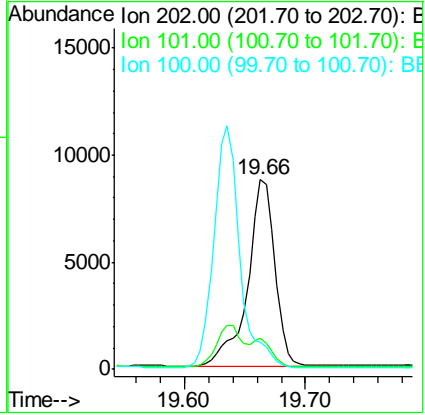
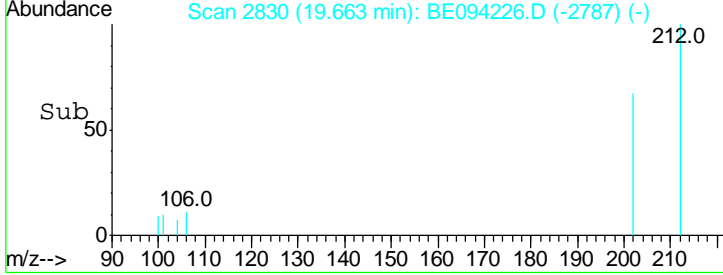
Instrument :
 BNA_E
ClientSampled :
 C0AD6



Tgt Ion	Resp	Lower	Upper
202	13598		
101	16.1	18.2	27.4#
100	14.2	15.6	23.4#

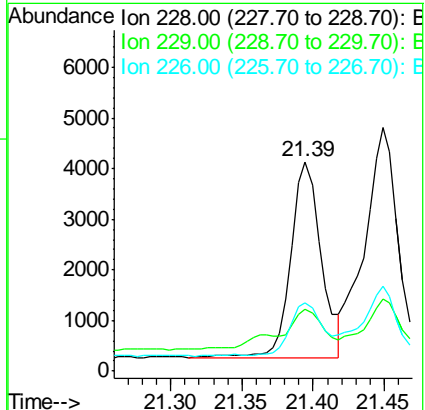
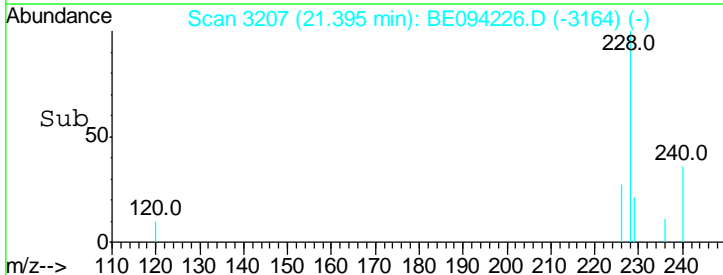
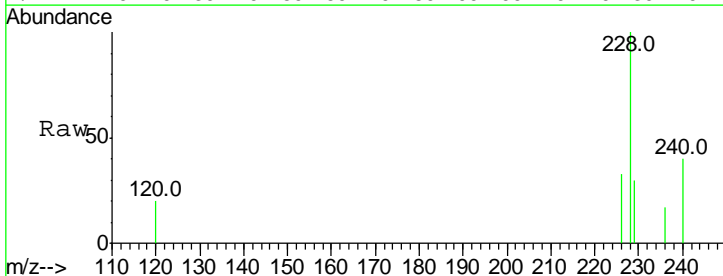
Manual Integrations
APPROVED

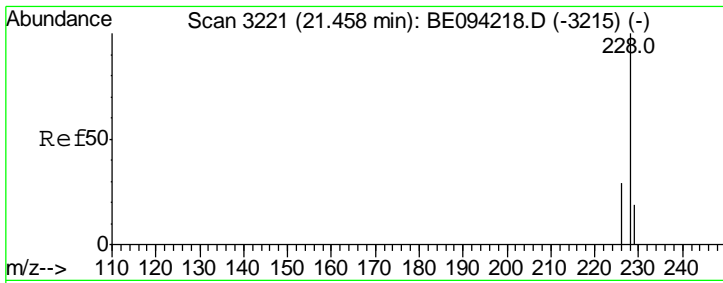
Sohil
 10/11/2017 9:24:12 AM



#18
 Benzo(a)anthracene
 Concen: 0.130 ng/ul
 RT: 21.39 min Scan# 3207
 Delta R.T. -0.00 min
 Lab File: BE094226.D
 Acq: 9 Oct 2017 18:21

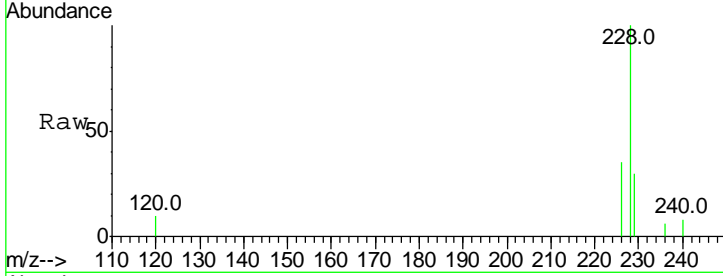
Tgt Ion	Resp	Lower	Upper
228	5627		
229	29.7	22.8	34.2
226	32.5	17.0	25.6#





#19
 Chrysene
 Concen: 0.150 ng/ul
 RT: 21.45 min Scan# 3219
 Delta R.T. -0.01 min
 Lab File: BE094226.D
 Acq: 9 Oct 2017 18:21

Instrument : BNA_E
 ClientSampled : C0AD6

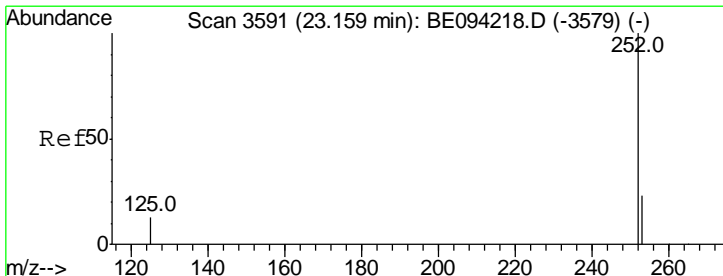
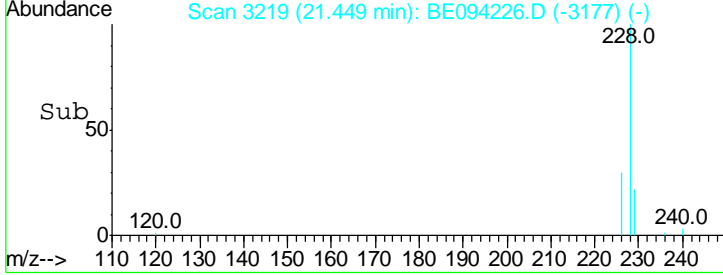
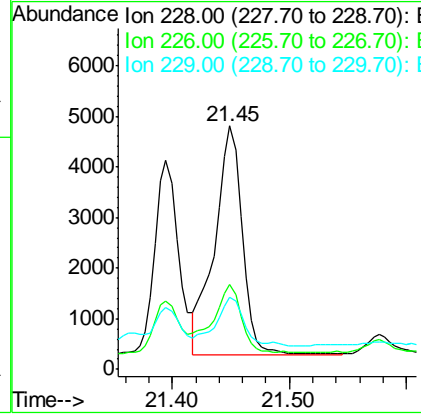


Tgt Ion: 228 Resp: 7526

Ion	Ratio	Lower	Upper
228	100		
226	34.8	23.4	35.0
229	29.8	17.7	26.5

Manual Integrations APPROVED

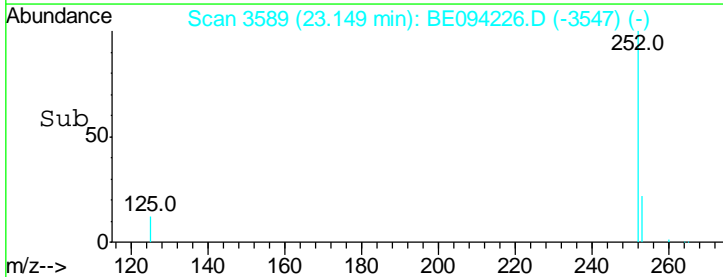
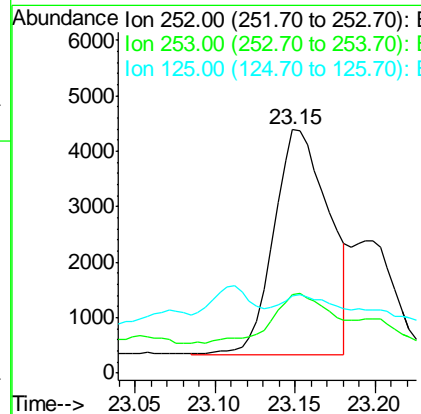
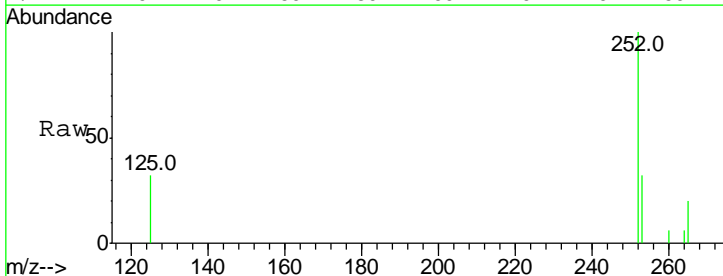
Sohil
 10/11/2017 9:24:12 AM

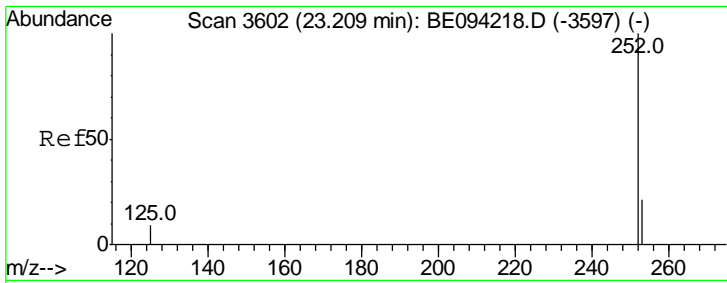


#21
 Benzo(b)fluoranthene
 Concen: 0.238 ng/ul m
 RT: 23.15 min Scan# 3589
 Delta R.T. -0.01 min
 Lab File: BE094226.D
 Acq: 9 Oct 2017 18:21

Tgt Ion: 252 Resp: 9781

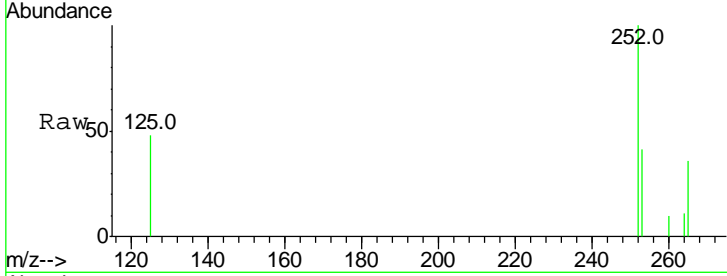
Ion	Ratio	Lower	Upper
252	100		
253	32.3	0.0	64.2
125	31.9	0.0	35.0





#22
 Benzo(k)fluoranthene
 Concen: 0.077 ng/ul m
 RT: 23.19 min Scan# 3599
 Delta R.T. -0.02 min
 Lab File: BE094226.D
 Acq: 9 Oct 2017 18:21

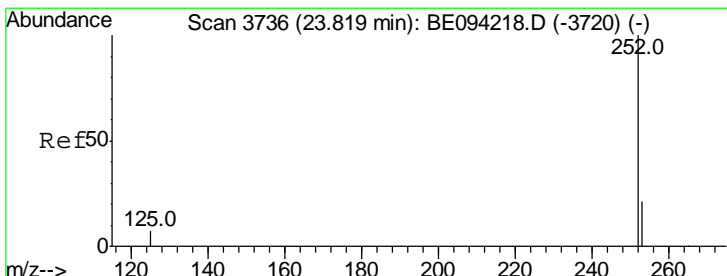
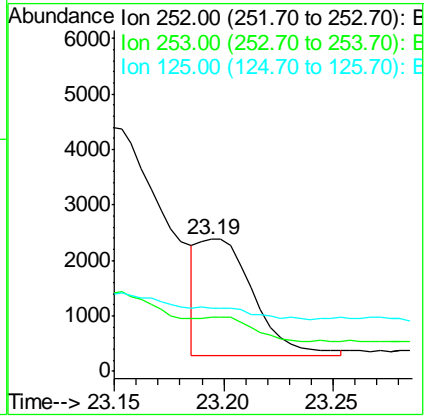
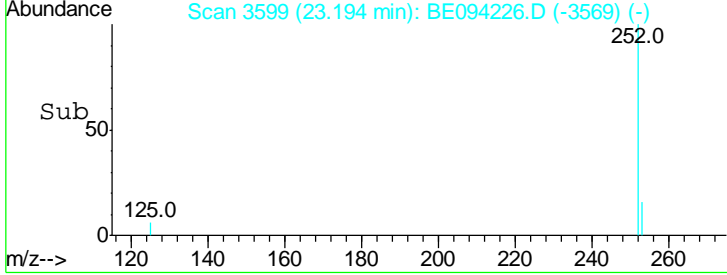
Instrument :
 BNA_E
 ClientSampled :
 C0AD6



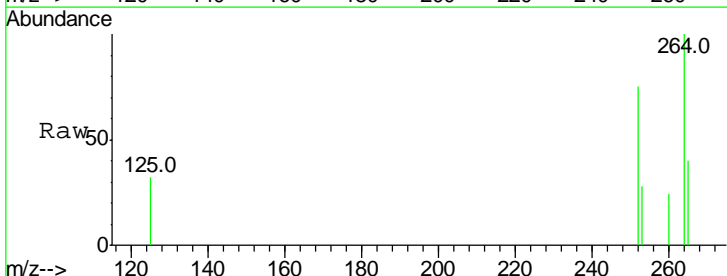
Tgt Ion: 252 Resp: 3651

Ion	Ratio	Lower	Upper
252	100		
253	41.2	24.5	36.7#
125	47.5	13.7	20.5#

Manual Integrations
 APPROVED
 Sohil
 10/11/2017 9:24:12 AM

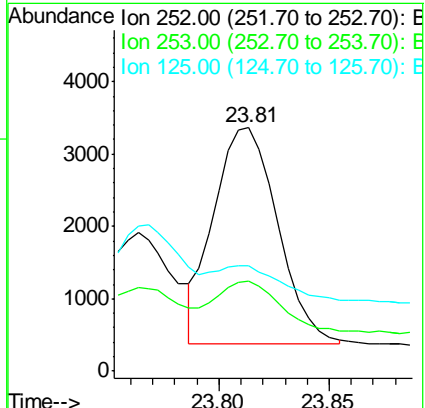
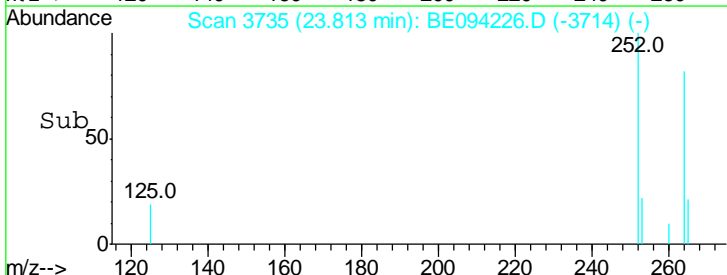


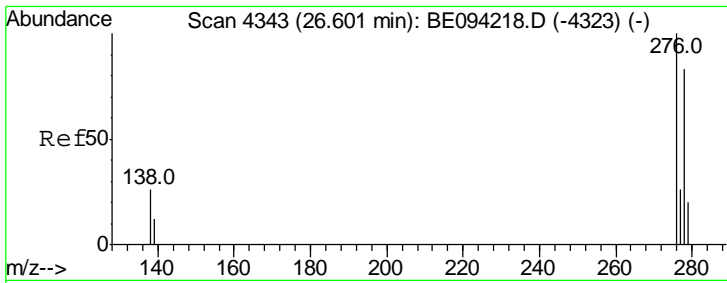
#23
 Benzo(a)pyrene
 Concen: 0.142 ng/ul m
 RT: 23.81 min Scan# 3735
 Delta R.T. -0.01 min
 Lab File: BE094226.D
 Acq: 9 Oct 2017 18:21



Tgt Ion: 252 Resp: 6050

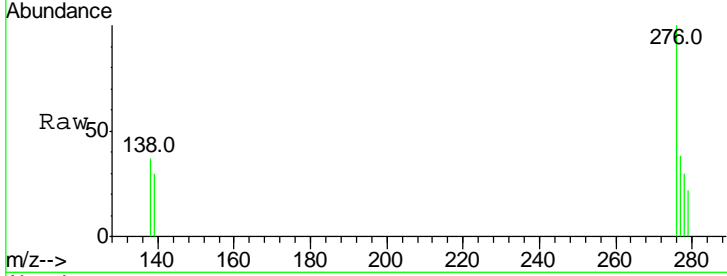
Ion	Ratio	Lower	Upper
252	100		
253	37.2	28.5	42.7
125	43.2	18.1	27.1#





#24
 Indeno(1,2,3-cd)pyrene
 Concen: 0.111 ng/ul m
 RT: 26.58 min Scan# 4338
 Delta R.T. -0.02 min
 Lab File: BE094226.D
 Acq: 9 Oct 2017 18:21

Instrument :
 BNA_E
ClientSampled :
 C0AD6

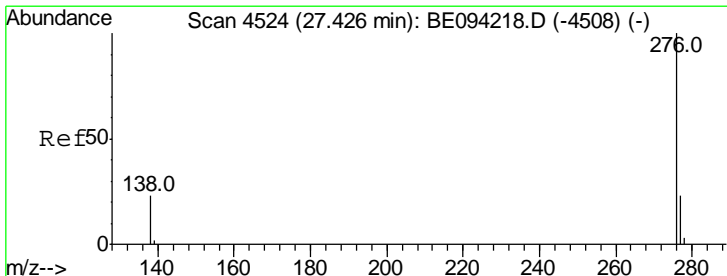
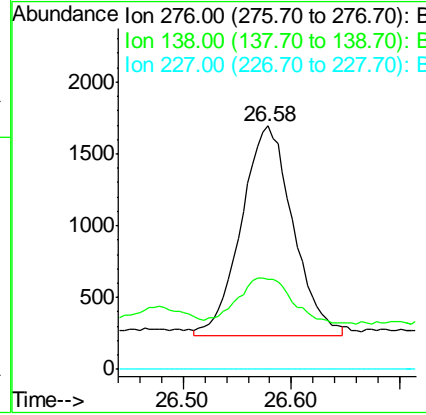
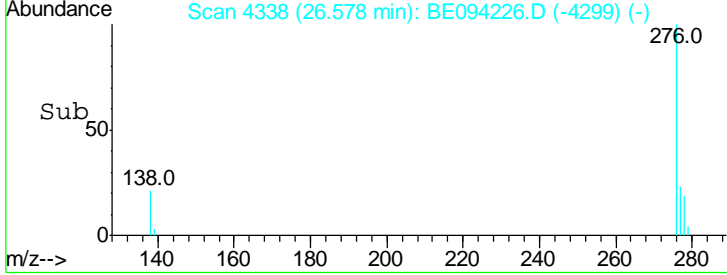


Tgt Ion: 276 Resp: 4865

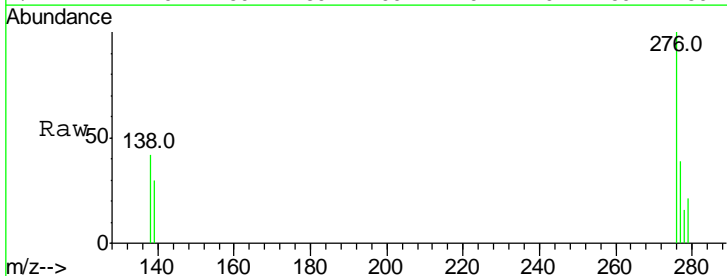
Ion	Ratio	Lower	Upper
276	100		
138	0.9	28.0	42.0#
227	0.0	8.0	12.0#

Manual Integrations
APPROVED

Sohil
 10/11/2017 9:24:12 AM



#26
 Benzo(g,h,i)perylene
 Concen: 0.129 ng/ul m
 RT: 27.40 min Scan# 4518
 Delta R.T. -0.03 min
 Lab File: BE094226.D
 Acq: 9 Oct 2017 18:21



Tgt Ion: 276 Resp: 4878

Ion	Ratio	Lower	Upper
276	100		
138	41.8	21.8	32.8#
277	38.9	20.5	30.7#

