

Data Path : Z:\HPCHEM1\BNA_E\DATA\BE101317\
 Data File : BE094339.D
 Acq On : 14 Oct 2017 00:55
 Operator : SJ/JU
 Sample : I5649-04MS
 Misc :
 ALS Vial : 20 Sample Multiplier: 1

Instrument :
 BNA_E
 ClientSampleId :
 B-59(FILL)-100317MS

Manual Integrations
 APPROVED

Sohil
 10/16/2017 8:23:06 PM

Quant Time: Oct 14 04:47:11 2017
 Quant Method : Z:\HPCHEM1\BNA_E\METHODS\SOM-EPA-SIM-BE092017.M
 Quant Title : ASP BNA STANDARDS FOR 5 POINT CALIBRATION
 QLast Update : Sat Oct 14 03:57:24 2017
 Response via : Initial Calibration

Internal Standards	R.T.	QIon	Response	Conc	Units	Dev(Min)
1) 1,4-Dichlorobenzene-d4	7.92	152	1685	0.40	ng/ul	-0.01
2) Naphthalene-d8	10.71	136	8748	0.40	ng/ul	0.00
6) Acenaphthene-d10	14.53	164	5176	0.40	ng/ul	0.00
10) Phenanthrene-d10	17.27	188	10307	0.40	ng/ul	0.00
16) Chrysene-d12	21.44	240	9932	0.40	ng/ul	0.00
20) Perylene-d12	23.97	264	10212m	0.40	ng/ul	0.00

System Monitoring Compounds	R.T.	QIon	Response	Conc	Units	Dev(Min)
4) 2-Methylnaphthalene-d10	12.29	152	4074	0.30	ng/ul	-0.01
14) Fluoranthene-d10	19.29	212	9007	0.26	ng/ul	0.00

Target Compounds	R.T.	QIon	Response	Conc	Units	Qvalue
3) Naphthalene	10.75	128	27625	1.29	ng/ul#	92
5) 2-Methylnaphthalene	12.36	142	8042	0.58	ng/ul	98
7) Acenaphthylene	14.26	152	20354	1.01	ng/ul	97
8) Acenaphthene	14.60	153	11053	0.67	ng/ul	98
9) Fluorene	15.58	166	8750	0.45	ng/ul	94
11) Pentachlorophenol	16.96	266	211	0.17	ng/ul	90
12) Phenanthrene	17.31	178	209568	7.78	ng/ul#	91
13) Anthracene	17.39	178	54337	2.07	ng/ul#	90
15) Fluoranthene	19.32	202	494510	13.97	ng/ul	84
17) Pyrene	19.69	202	469572	16.99	ng/ul#	82
18) Benzo(a)anthracene	21.42	228	263182	9.99	ng/ul#	87
19) Chrysene	21.47	228	262928	8.64	ng/ul	98
21) Benzo(b)fluoranthene	23.20	252	338298	12.19	ng/ul	89
22) Benzo(k)fluoranthene	23.24	252	114917m	3.58	ng/ul	
23) Benzo(a)pyrene	23.86	252	231264m	8.02	ng/ul	
24) Indeno(1,2,3-cd)pyrene	26.67	276	173763m	5.89	ng/ul	
25) Dibenzo(a,h)anthracene	26.67	278	47702m	1.93	ng/ul	
26) Benzo(g,h,i)perylene	27.52	276	152230m	5.98	ng/ul	

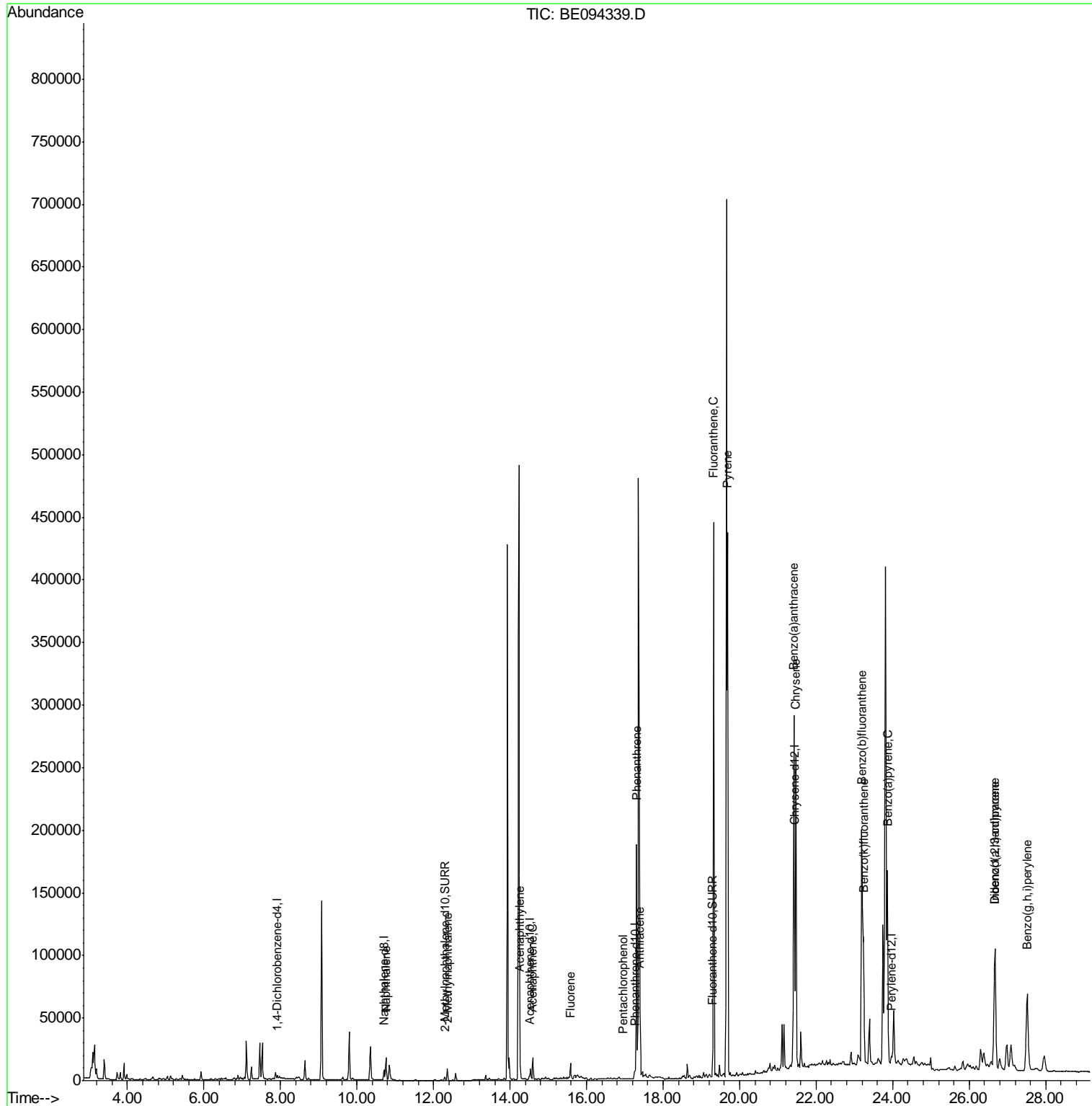
(#) = qualifier out of range (m) = manual integration (+) = signals summed

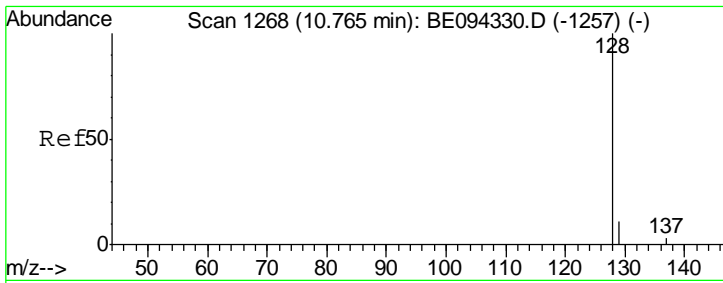
Data Path : Z:\HPCHEM1\BNA_E\DATA\BE101317\
 Data File : BE094339.D
 Acq On : 14 Oct 2017 00:55
 Operator : SJ/JU
 Sample : I5649-04MS
 Misc :
 ALS Vial : 20 Sample Multiplier: 1

Instrument :
 BNA_E
ClientSampleId :
 B-59(FILL)-100317MS

Manual Integrations
APPROVED
 Sohil
 10/16/2017 8:23:06 PM

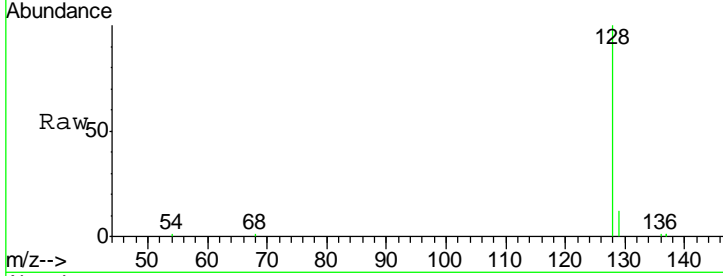
Quant Time: Oct 14 04:47:11 2017
 Quant Method : Z:\HPCHEM1\BNA_E\METHODS\SOM-EPA-SIM-BE092017.M
 Quant Title : ASP BNA STANDARDS FOR 5 POINT CALIBRATION
 QLast Update : Sat Oct 14 03:57:24 2017
 Response via : Initial Calibration





#3
 Naphthalene
 Concen: 1.29 ng/ul
 RT: 10.75 min Scan# 1266
 Delta R.T. -0.01 min
 Lab File: BE094339.D
 Acq: 14 Oct 2017 00:55

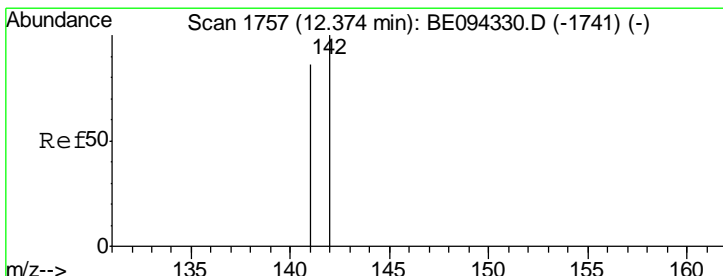
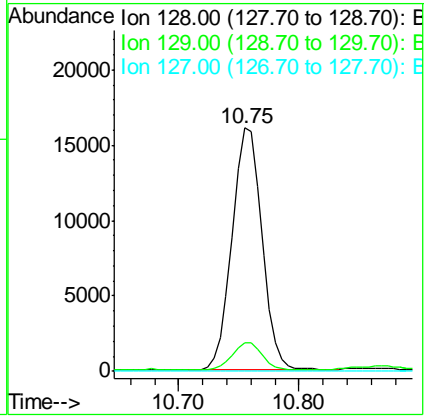
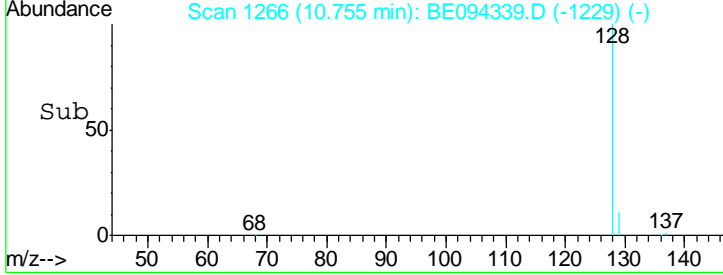
Instrument :
 BNA_E
ClientSampled :
 B-59(FILL)-100317MS



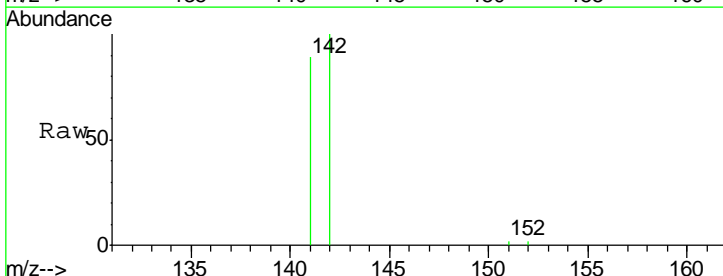
Tgt Ion:128 Resp: 27625

Ion	Ratio	Lower	Upper
128	100		
129	11.6	11.3	16.9
127	0.0	4.0	6.0#

Manual Integrations
APPROVED
 Sohil
 10/16/2017 8:23:06 PM

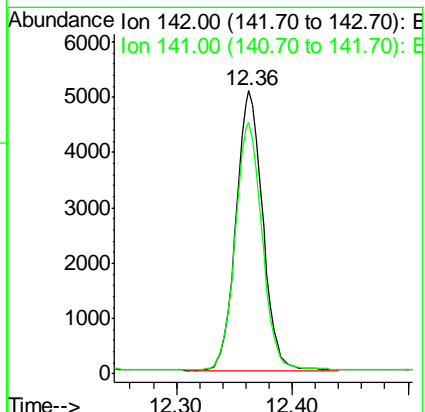
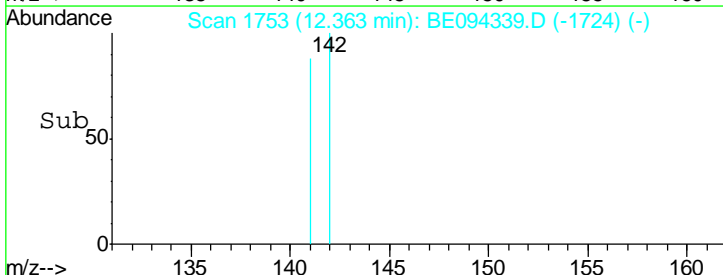


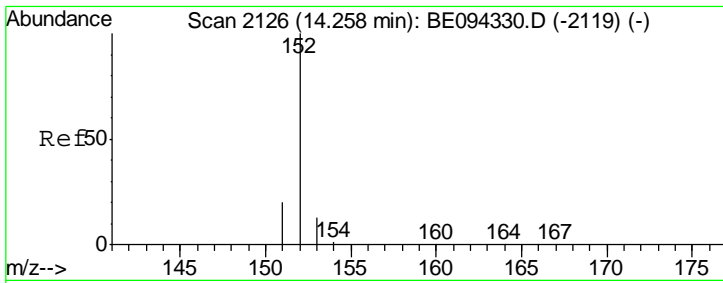
#5
 2-Methylnaphthalene
 Concen: 0.58 ng/ul
 RT: 12.36 min Scan# 1753
 Delta R.T. -0.01 min
 Lab File: BE094339.D
 Acq: 14 Oct 2017 00:55



Tgt Ion:142 Resp: 8042

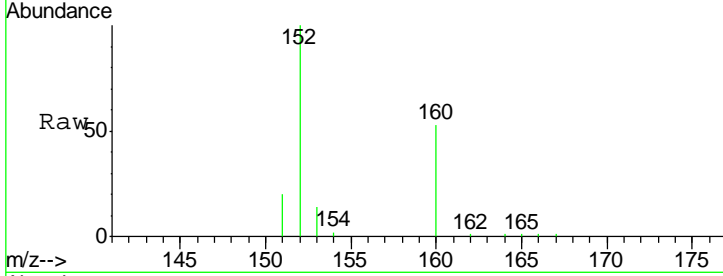
Ion	Ratio	Lower	Upper
142	100		
141	89.1	72.6	108.8





#7
 Acenaphthylene
 Concen: 1.01 ng/ul
 RT: 14.26 min Scan# 2126
 Delta R.T. -0.00 min
 Lab File: BE094339.D
 Acq: 14 Oct 2017 00:55

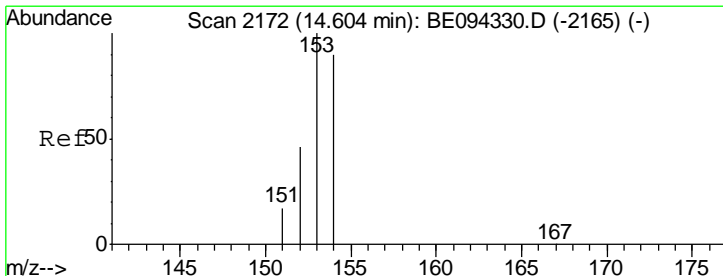
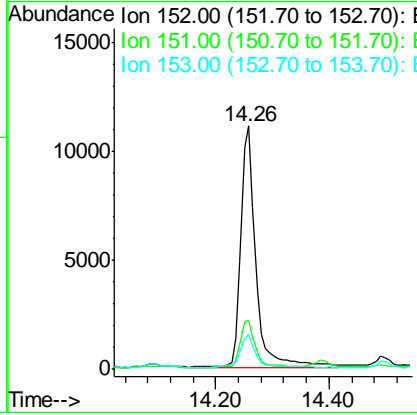
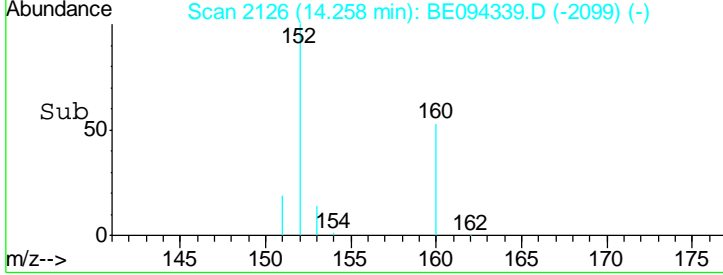
Instrument :
 BNA_E
 ClientSampleId :
 B-59(FILL)-100317MS



Tgt Ion: 152 Resp: 20354

Ion	Ratio	Lower	Upper
152	100		
151	19.9	17.1	25.7
153	14.5	12.8	19.2

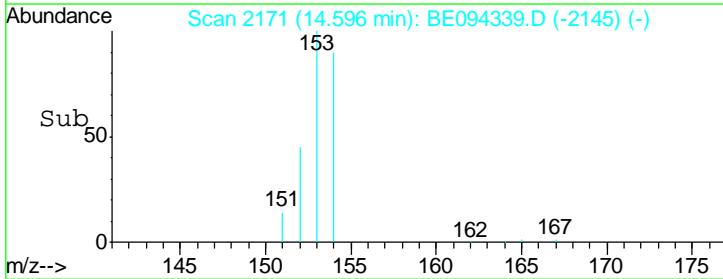
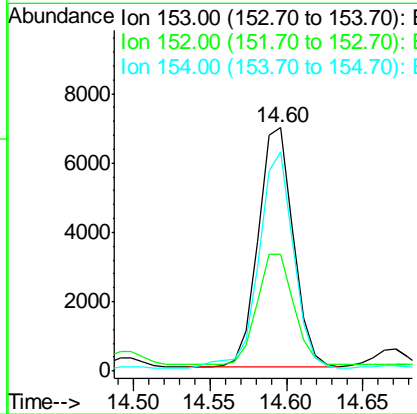
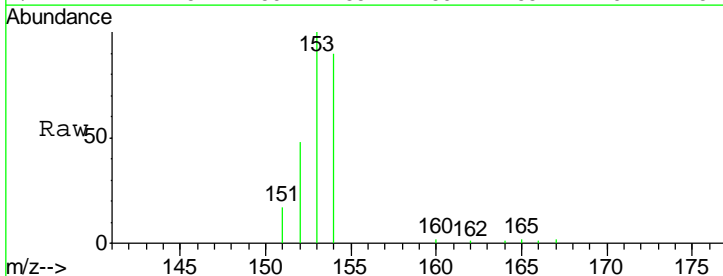
Manual Integrations
APPROVED
 Sohil
 10/16/2017 8:23:06 PM

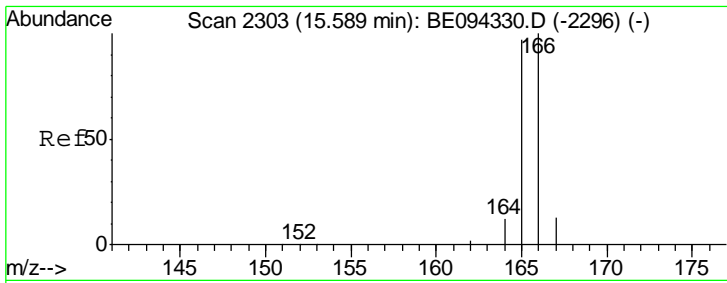


#8
 Acenaphthene
 Concen: 0.67 ng/ul
 RT: 14.60 min Scan# 2171
 Delta R.T. -0.01 min
 Lab File: BE094339.D
 Acq: 14 Oct 2017 00:55

Tgt Ion: 153 Resp: 11053

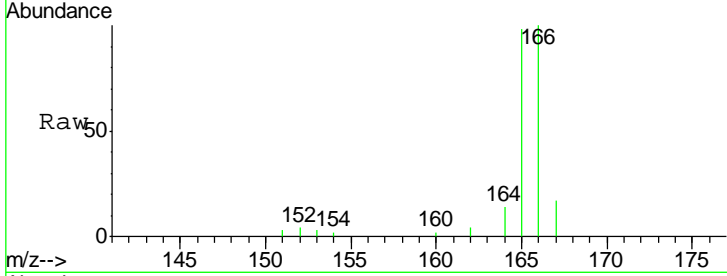
Ion	Ratio	Lower	Upper
153	100		
152	48.2	40.3	60.5
154	90.2	71.4	107.2





#9
 Fluorene
 Concen: 0.45 ng/ul
 RT: 15.58 min Scan# 2302
 Delta R.T. -0.01 min
 Lab File: BE094339.D
 Acq: 14 Oct 2017 00:55

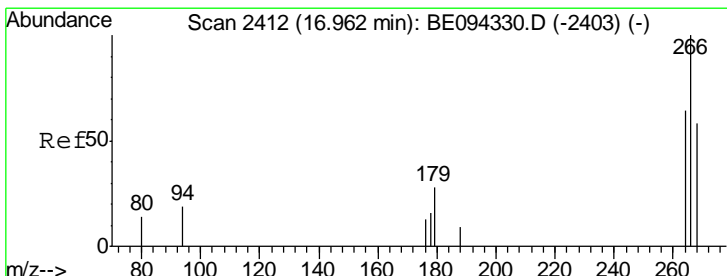
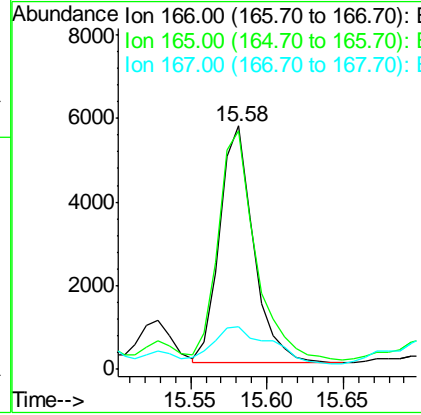
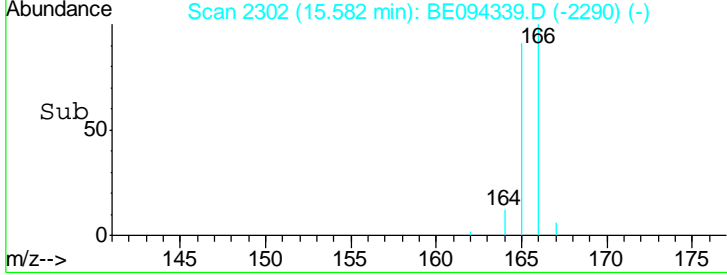
Instrument :
 BNA_E
Client Sampled :
 B-59(FILL)-100317MS



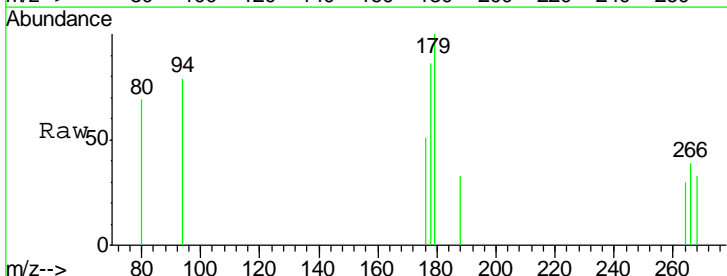
Tgt Ion: 166 Resp: 8750

Ion	Ratio	Lower	Upper
166	100		
165	97.8	73.4	110.2
167	17.4	14.6	22.0

Manual Integrations
APPROVED
 Sohil
 10/16/2017 8:23:06 PM

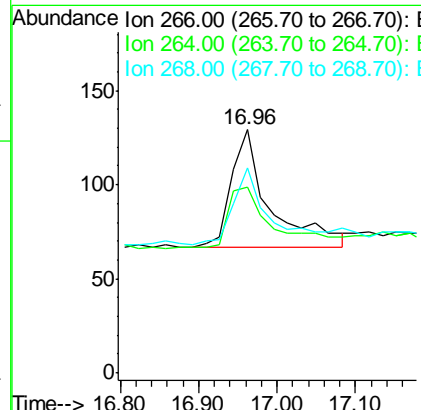
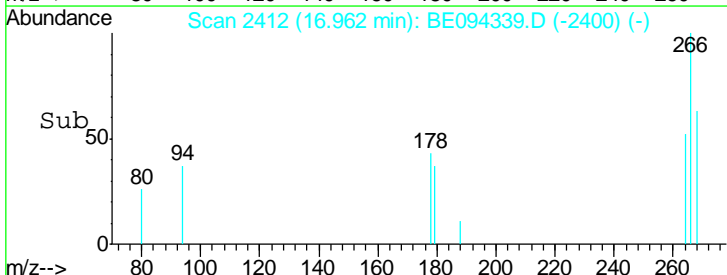


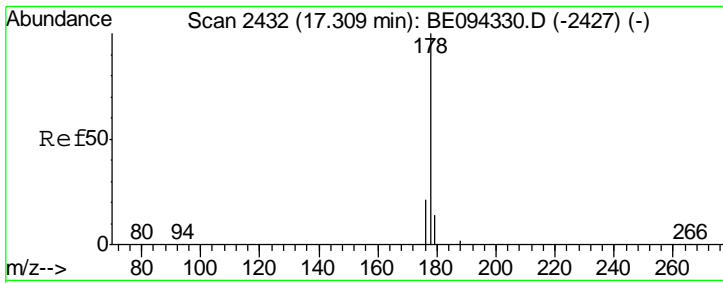
#11
 Pentachlorophenol
 Concen: 0.17 ng/ul
 RT: 16.96 min Scan# 2412
 Delta R.T. -0.00 min
 Lab File: BE094339.D
 Acq: 14 Oct 2017 00:55



Tgt Ion: 266 Resp: 211

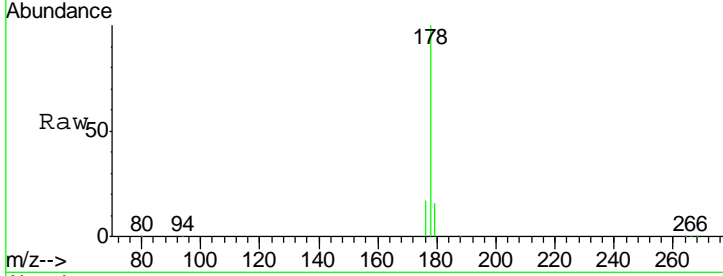
Ion	Ratio	Lower	Upper
266	100		
264	65.4	47.9	71.9
268	72.5	49.8	74.8





#12
 Phenanthrene
 Concen: 7.78 ng/ul
 RT: 17.31 min Scan# 2432
 Delta R.T. -0.00 min
 Lab File: BE094339.D
 Acq: 14 Oct 2017 00:55

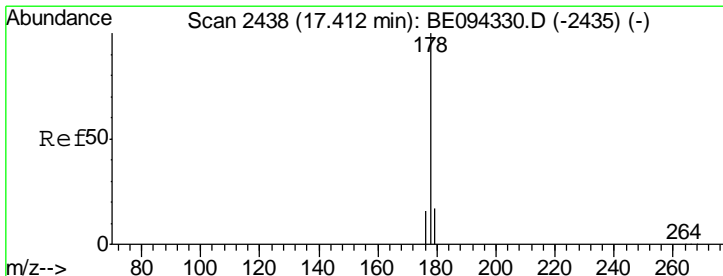
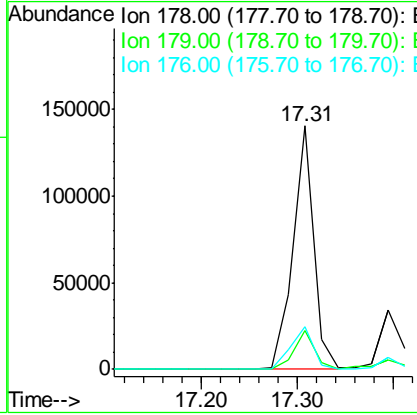
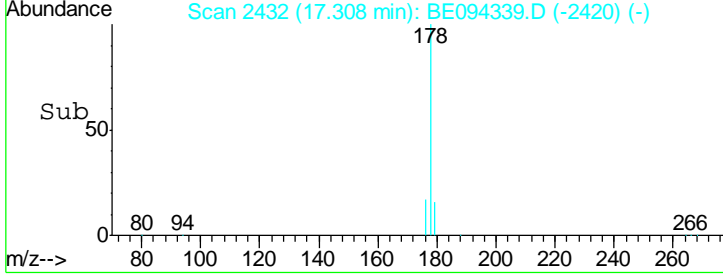
Instrument :
 BNA_E
 ClientSampled :
 B-59(FILL)-100317MS



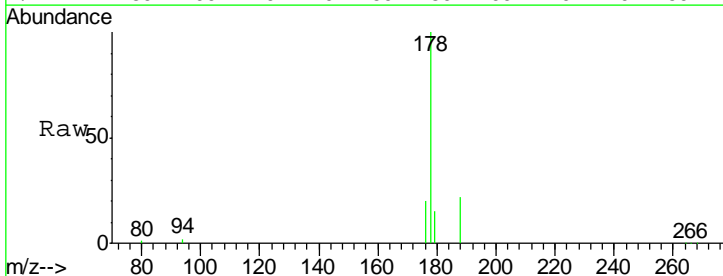
Tgt Ion:178 Resp: 209568

Ion	Ratio	Lower	Upper
178	100		
179	16.2	18.4	27.6#
176	17.5	13.6	20.4

Manual Integrations
APPROVED
 Sohil
 10/16/2017 8:23:06 PM

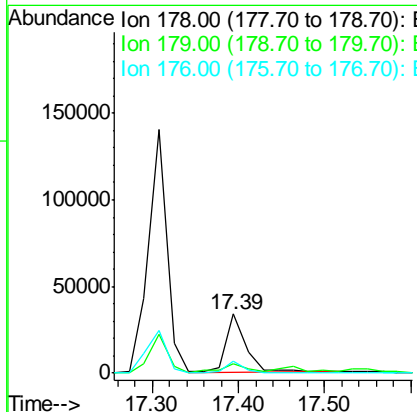
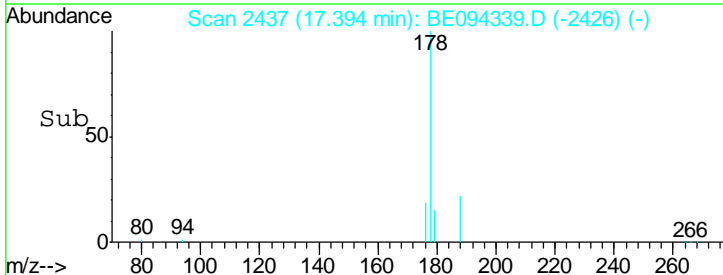


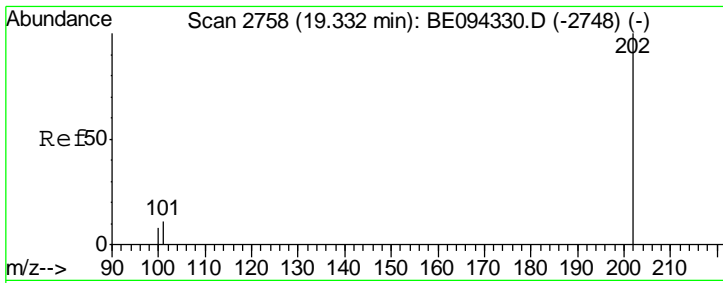
#13
 Anthracene
 Concen: 2.07 ng/ul
 RT: 17.39 min Scan# 2437
 Delta R.T. -0.02 min
 Lab File: BE094339.D
 Acq: 14 Oct 2017 00:55



Tgt Ion:178 Resp: 54337

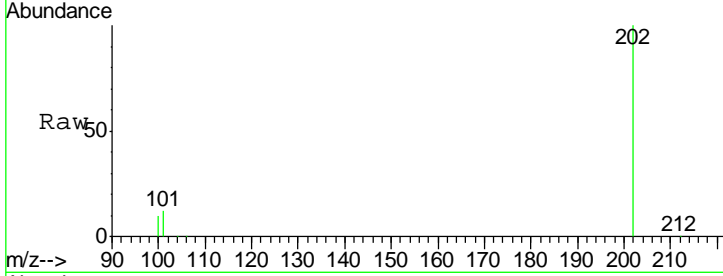
Ion	Ratio	Lower	Upper
178	100		
179	15.3	18.1	27.1#
176	19.9	14.7	22.1





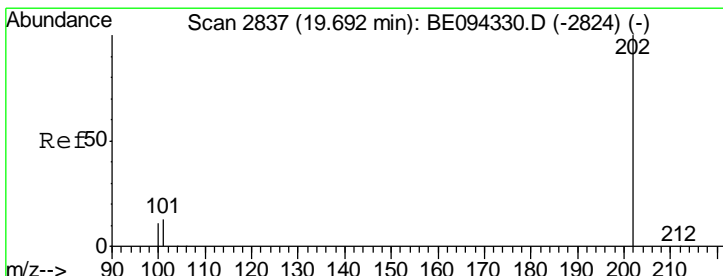
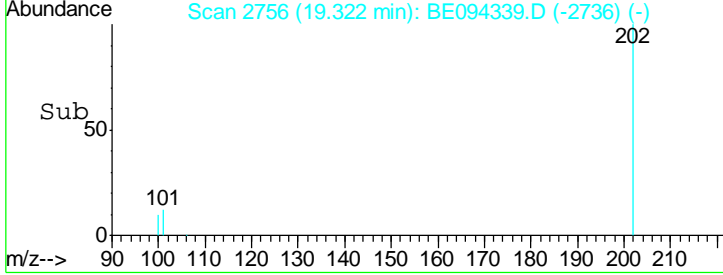
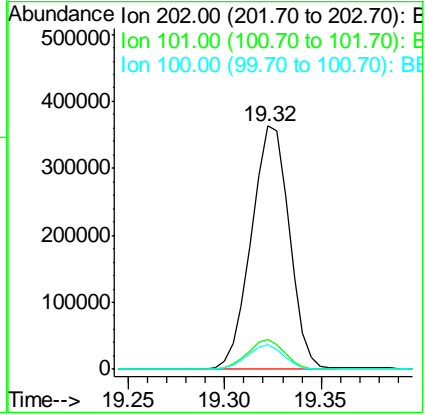
#15
 Fluoranthene
 Concen: 13.97 ng/ul
 RT: 19.32 min Scan# 2756
 Delta R.T. -0.01 min
 Lab File: BE094339.D
 Acq: 14 Oct 2017 00:55

Instrument :
 BNA_E
Client Sampled :
 B-59(FILL)-100317MS



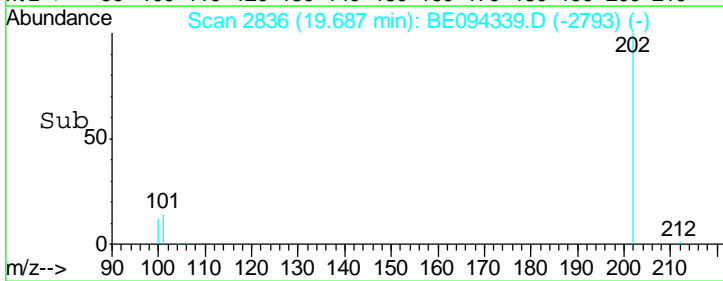
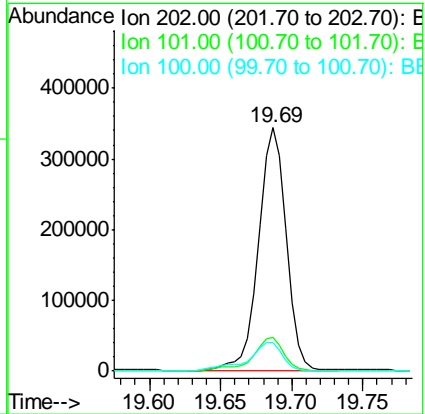
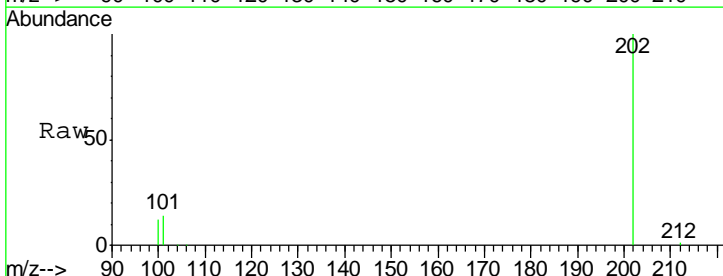
Tgt Ion	Ratio	Lower	Upper
202	100		
101	12.4	0.0	30.3
100	10.0	0.0	39.5

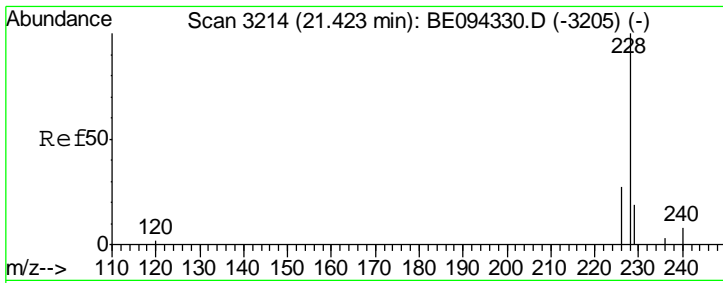
Manual Integrations
APPROVED
 Sohil
 10/16/2017 8:23:06 PM



#17
 Pyrene
 Concen: 16.99 ng/ul
 RT: 19.69 min Scan# 2836
 Delta R.T. -0.00 min
 Lab File: BE094339.D
 Acq: 14 Oct 2017 00:55

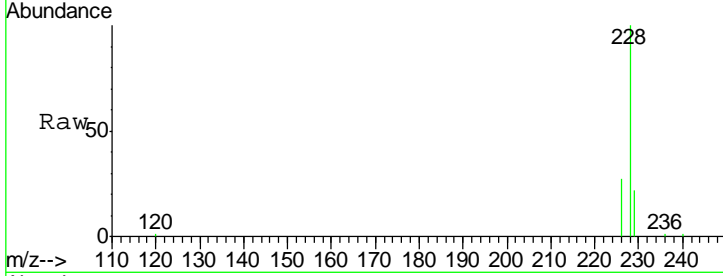
Tgt Ion	Ratio	Lower	Upper
202	100		
101	13.6	18.2	27.4#
100	11.8	15.6	23.4#





#18
 Benzo(a)anthracene
 Concen: 9.99 ng/ul
 RT: 21.42 min Scan# 3213
 Delta R.T. -0.00 min
 Lab File: BE094339.D
 Acq: 14 Oct 2017 00:55

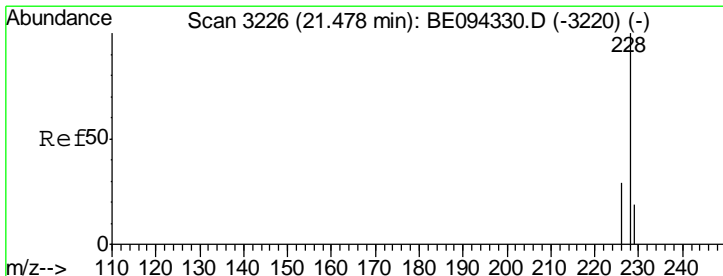
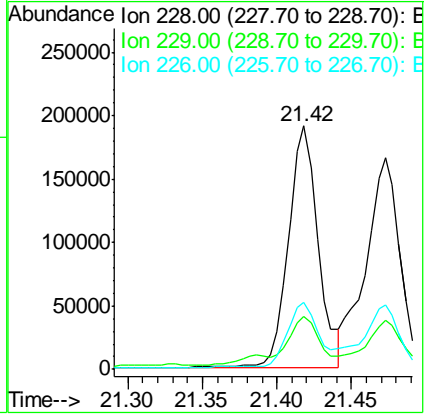
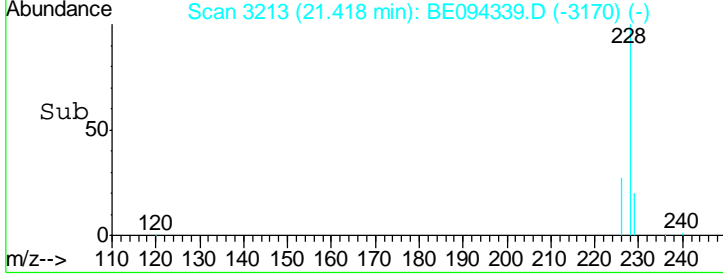
Instrument :
 BNA_E
ClientSampled :
 B-59(FILL)-100317MS



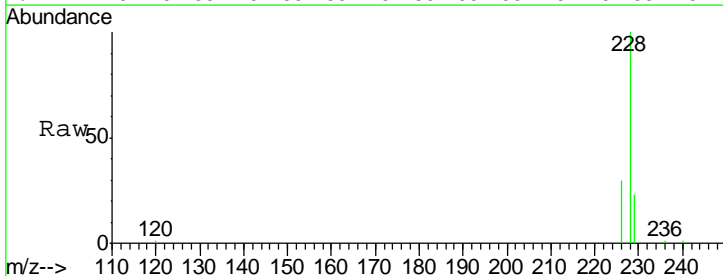
Tgt Ion	Resp	Lower	Upper
228	100		
229	21.7	22.8	34.2#
226	27.5	17.0	25.6#

Manual Integrations
APPROVED

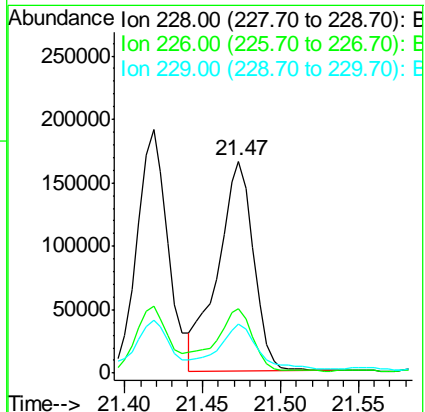
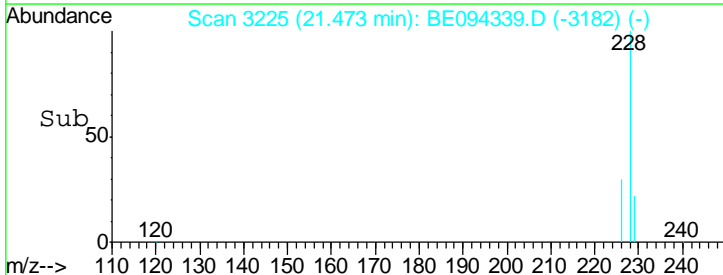
Sohil
 10/16/2017 8:23:06 PM

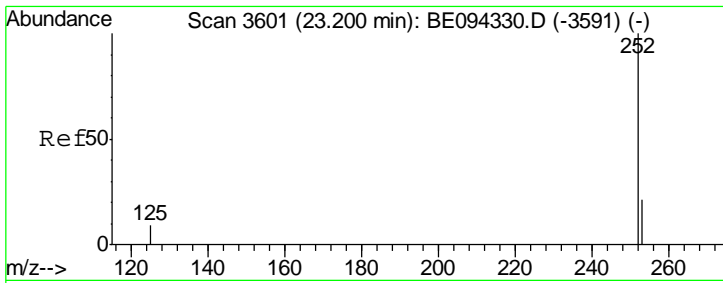


#19
 Chrysene
 Concen: 8.64 ng/ul
 RT: 21.47 min Scan# 3225
 Delta R.T. -0.00 min
 Lab File: BE094339.D
 Acq: 14 Oct 2017 00:55



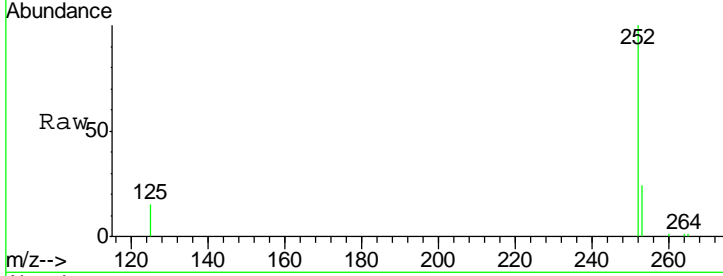
Tgt Ion	Resp	Lower	Upper
228	100		
226	30.4	23.4	35.0
229	22.9	17.7	26.5





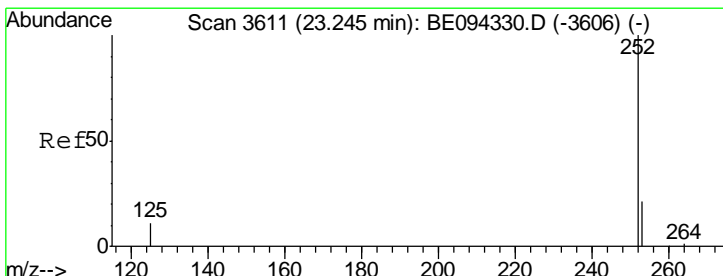
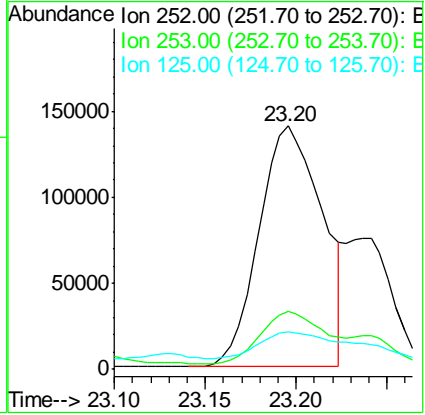
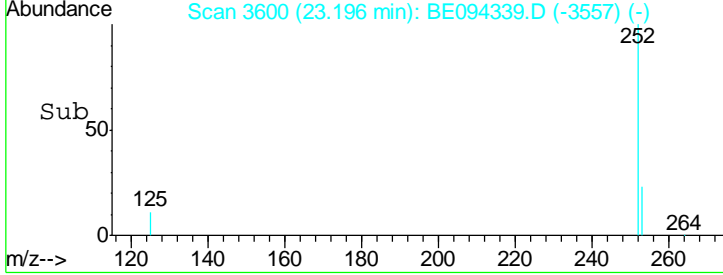
#21
 Benzo(b)fluoranthene
 Concen: 12.19 ng/ul
 RT: 23.20 min Scan# 3600
 Delta R.T. -0.00 min
 Lab File: BE094339.D
 Acq: 14 Oct 2017 00:55

Instrument :
 BNA_E
 ClientSampled :
 B-59(FILL)-100317MS

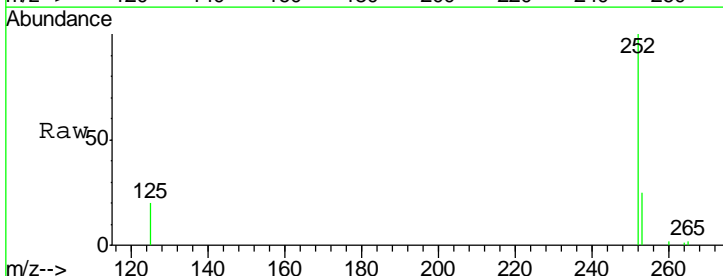


Tgt Ion	Resp	Lower	Upper
252	338298		
253	23.8	0.0	64.2
125	15.3	0.0	35.0

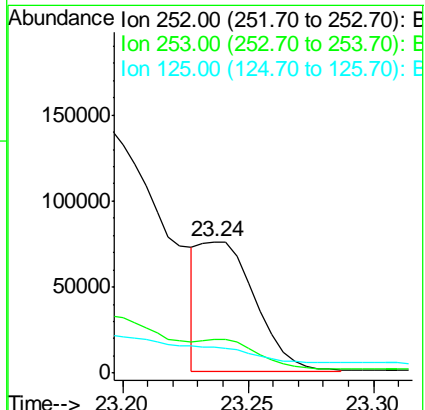
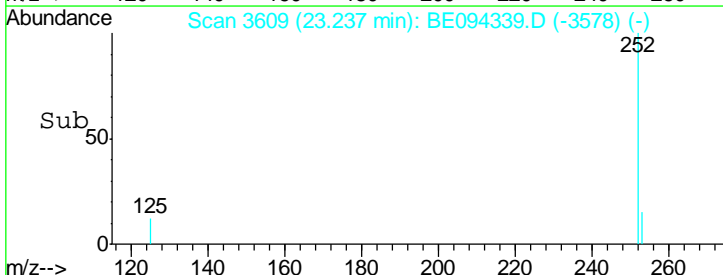
Manual Integrations
 APPROVED
 Sohil
 10/16/2017 8:23:06 PM

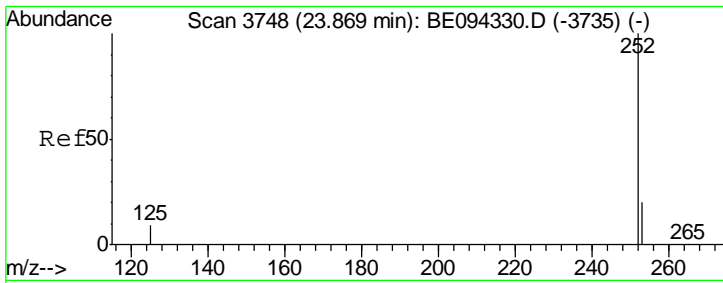


#22
 Benzo(k)fluoranthene
 Concen: 3.58 ng/ul m
 RT: 23.24 min Scan# 3609
 Delta R.T. -0.01 min
 Lab File: BE094339.D
 Acq: 14 Oct 2017 00:55



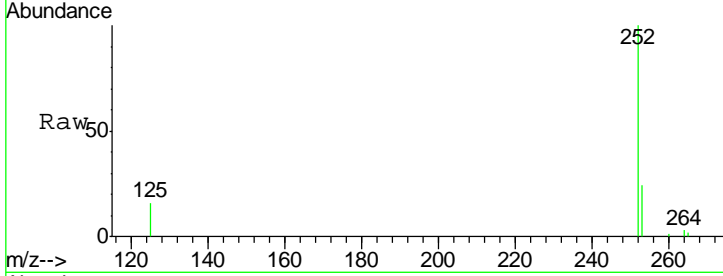
Tgt Ion	Resp	Lower	Upper
252	114917		
253	25.4	24.5	36.7
125	20.0	13.7	20.5





#23
 Benzo(a)pyrene
 Concen: 8.02 ng/ul m
 RT: 23.86 min Scan# 3746
 Delta R.T. -0.01 min
 Lab File: BE094339.D
 Acq: 14 Oct 2017 00:55

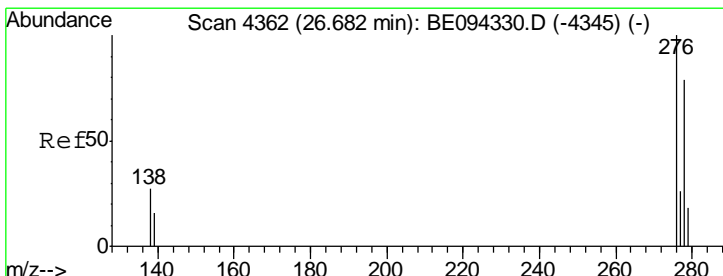
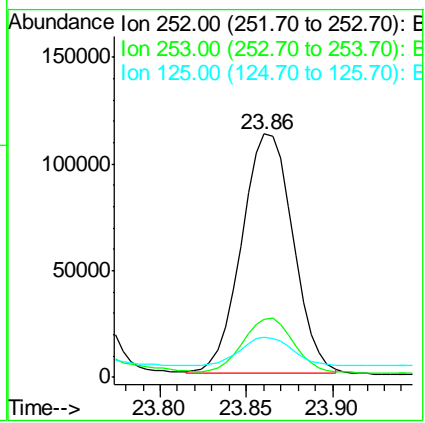
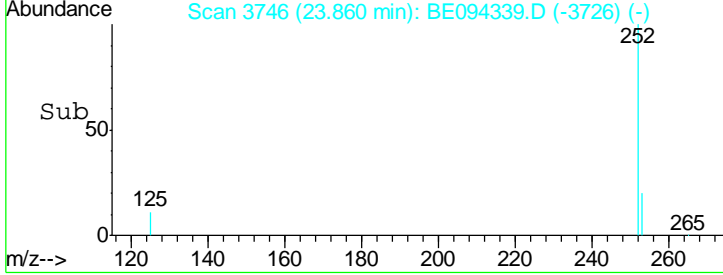
Instrument :
 BNA_E
ClientSampleId :
 B-59(FILL)-100317MS



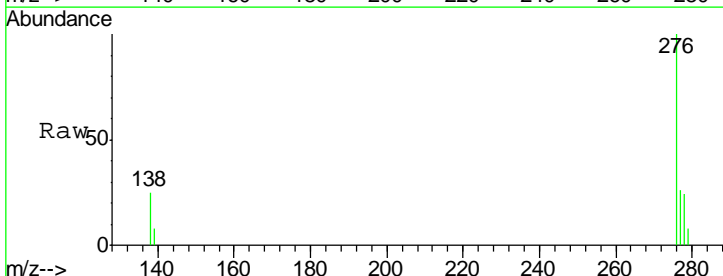
Tgt Ion: 252 Resp: 231264

Ion	Ratio	Lower	Upper
252	100		
253	23.9	28.5	42.7#
125	16.4	18.1	27.1#

Manual Integrations
APPROVED
 Sohil
 10/16/2017 8:23:06 PM

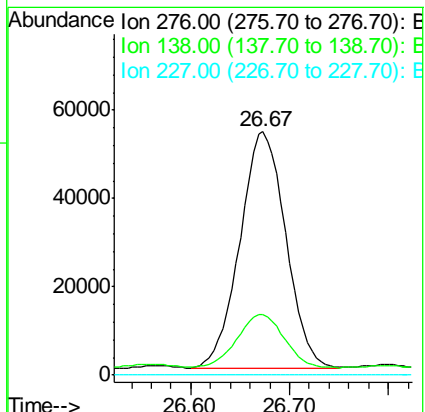
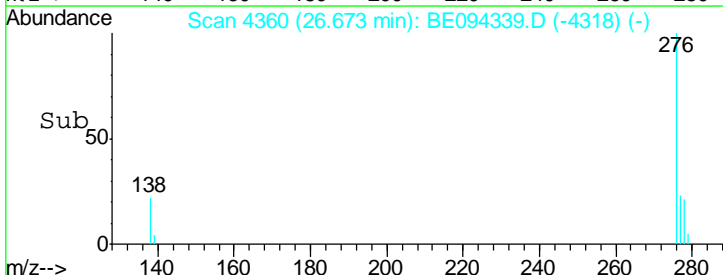


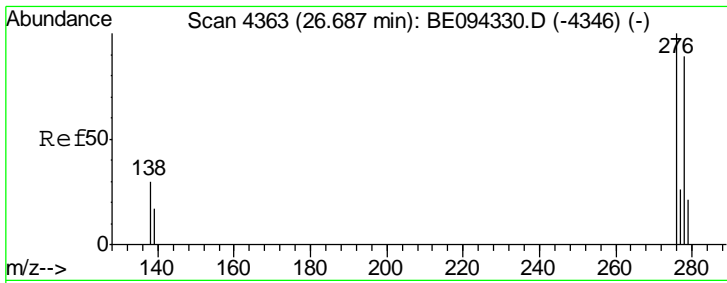
#24
 Indeno(1,2,3-cd)pyrene
 Concen: 5.89 ng/ul m
 RT: 26.67 min Scan# 4360
 Delta R.T. -0.01 min
 Lab File: BE094339.D
 Acq: 14 Oct 2017 00:55



Tgt Ion: 276 Resp: 173763

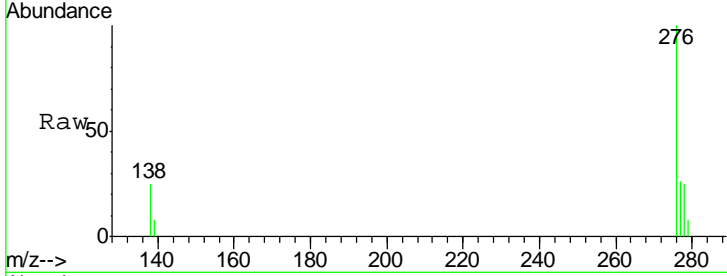
Ion	Ratio	Lower	Upper
276	100		
138	0.5	28.0	42.0#
227	0.0	8.0	12.0#





#25
 Dibenzo(a,h)anthracene
 Concen: 1.93 ng/ul m
 RT: 26.67 min Scan# 4359
 Delta R.T. -0.02 min
 Lab File: BE094339.D
 Acq: 14 Oct 2017 00:55

Instrument :
 BNA_E
 ClientSampled :
 B-59(FILL)-100317MS

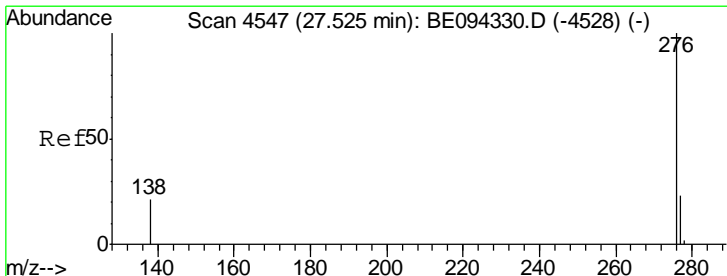
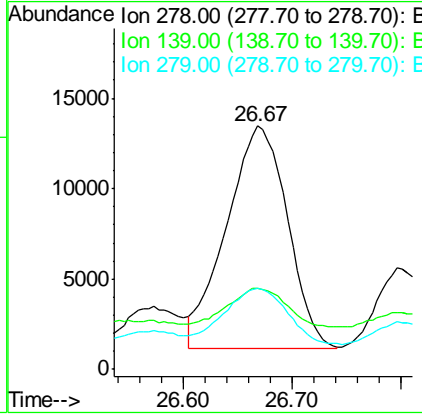
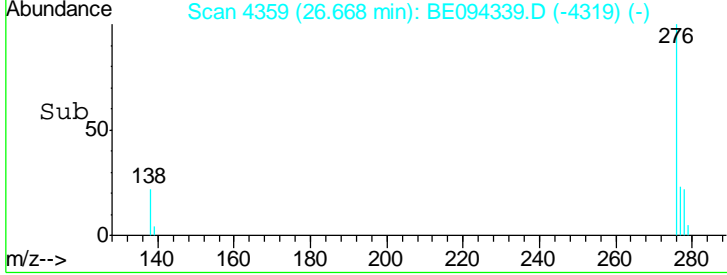


Tgt Ion: 278 Resp: 47702

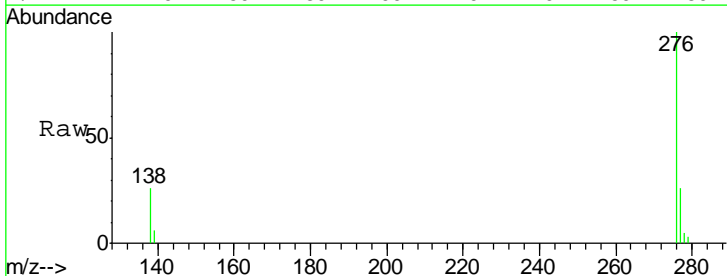
Ion	Ratio	Lower	Upper
278	100		
139	33.2	17.4	26.0#
279	33.5	25.9	38.9

Manual Integrations
 APPROVED

Sohil
 10/16/2017 8:23:06 PM



#26
 Benzo(g,h,i)perylene
 Concen: 5.98 ng/ul m
 RT: 27.52 min Scan# 4545
 Delta R.T. -0.01 min
 Lab File: BE094339.D
 Acq: 14 Oct 2017 00:55



Tgt Ion: 276 Resp: 152230

Ion	Ratio	Lower	Upper
276	100		
138	26.3	21.8	32.8
277	26.2	20.5	30.7

