

Data Path : Z:\SVOASRV\HPCHEM1\BNA E\DATA\BE101918\
 Data File : BE097986.D
 Acq On : 19 Oct 2018 10:20
 Operator : SJ/JU
 Sample : PB113752BS
 Misc :
 ALS Vial : 3 Sample Multiplier: 1

Instrument :
 BNA_E
 ClientSampled :
 PB113752BS

Manual Integrations
 APPROVED

Sohil
 10/22/2018 5:05:59 PM

Quant Time: Oct 19 23:37:15 2018
 Quant Method : Z:\SVOASRV\HPCHEM1\BNA E\METHODS\8270-SIM-BE101618.M
 Quant Title : ASP BNA STANDARDS FOR 5 POINT CALIBRATION
 QLast Update : Tue Oct 16 15:36:44 2018
 Response via : Initial Calibration

Internal Standards	R.T.	QIon	Response	Conc	Units	Dev(Min)
1) 1,4-Dichlorobenzene-d4	7.88	152	2601	0.40	ng	0.00
7) Naphthalene-d8	10.68	136	10763	0.40	ng	-0.01
13) Acenaphthene-d10	14.54	164	6353	0.40	ng	-0.01
19) Phenanthrene-d10	17.29	188	15792	0.40	ng	-0.01
27) Chrysene-d12	21.48	240	24563	0.40	ng	-0.01
34) Perylene-d12	24.03	264	24094	0.40	ng	-0.01

System Monitoring Compounds

4) 2-Fluorophenol	5.47	112	2253	0.27	ng	0.00
5) Phenol-d6	7.06	99	3265	0.27	ng	0.00
8) Nitrobenzene-d5	9.03	82	2574	0.25	ng	-0.01
11) 2-Methylnaphthalene-d10	12.28	152	4481m	0.25	ng	-0.01
14) 2,4,6-Tribromophenol	16.03	330	826	0.24	ng	-0.01
15) 2-Fluorobiphenyl	13.16	172	6394	0.25	ng	-0.01
25) Fluoranthene-d10	19.32	212	61766	0.29	ng	-0.01
29) Terphenyl-d14	19.92	244	17632	0.31	ng	-0.01

Target Compounds

Target Compounds	R.T.	QIon	Response	Conc	Units	Qvalue
2) 1,4-Dioxane	3.38	88	1242	0.274	ng	# 77
3) n-Nitrosodimethylamine	3.69	42	1339	0.264	ng	# 97
6) bis(2-Chloroethyl)ether	7.30	93	2207	0.214	ng	92
9) Naphthalene	10.73	128	28748	0.268	ng	100
10) Hexachlorobutadiene	11.02	225	1455	0.252	ng	99
12) 2-Methylnaphthalene	12.35	142	4863	0.265	ng	97
16) Acenaphthylene	14.27	152	7568	0.258	ng	98
17) Acenaphthene	14.62	154	4415	0.246	ng	99
18) Fluorene	15.59	166	5997	0.243	ng	99
20) 4-Bromophenyl-phenylether	16.49	248	1993	0.231	ng	# 79
21) Hexachlorobenzene	16.60	284	2078	0.245	ng	97
22) Pentachlorophenol	16.95	266	1271	0.579	ng	96
23) Phenanthrene	17.34	178	10261	0.256	ng	100
24) Anthracene	17.42	178	9911	0.261	ng	99
26) Fluoranthene	19.35	202	15743	0.299	ng	97
28) Pyrene	19.71	202	16766	0.237	ng	99
30) Benzo(a)anthracene	21.46	228	19986	0.265	ng	97
31) Chrysene	21.51	228	18825	0.264	ng	98
32) Bis(2-ethylhexyl)phthalate	21.38	149	44094	0.193	ng	99
33) Indeno(1,2,3-cd)pyrene	26.72	276	20869	0.210	ng	99
35) Benzo(b)fluoranthene	23.25	252	18562	0.268	ng	96
36) Benzo(k)fluoranthene	23.30	252	18916	0.262	ng	97
37) Benzo(a)pyrene	23.91	252	18311	0.271	ng	98
38) Dibenzo(a,h)anthracene	26.75	278	17278	0.261	ng	99
39) Benzo(g,h,i)perylene	27.55	276	17606	0.260	ng	97

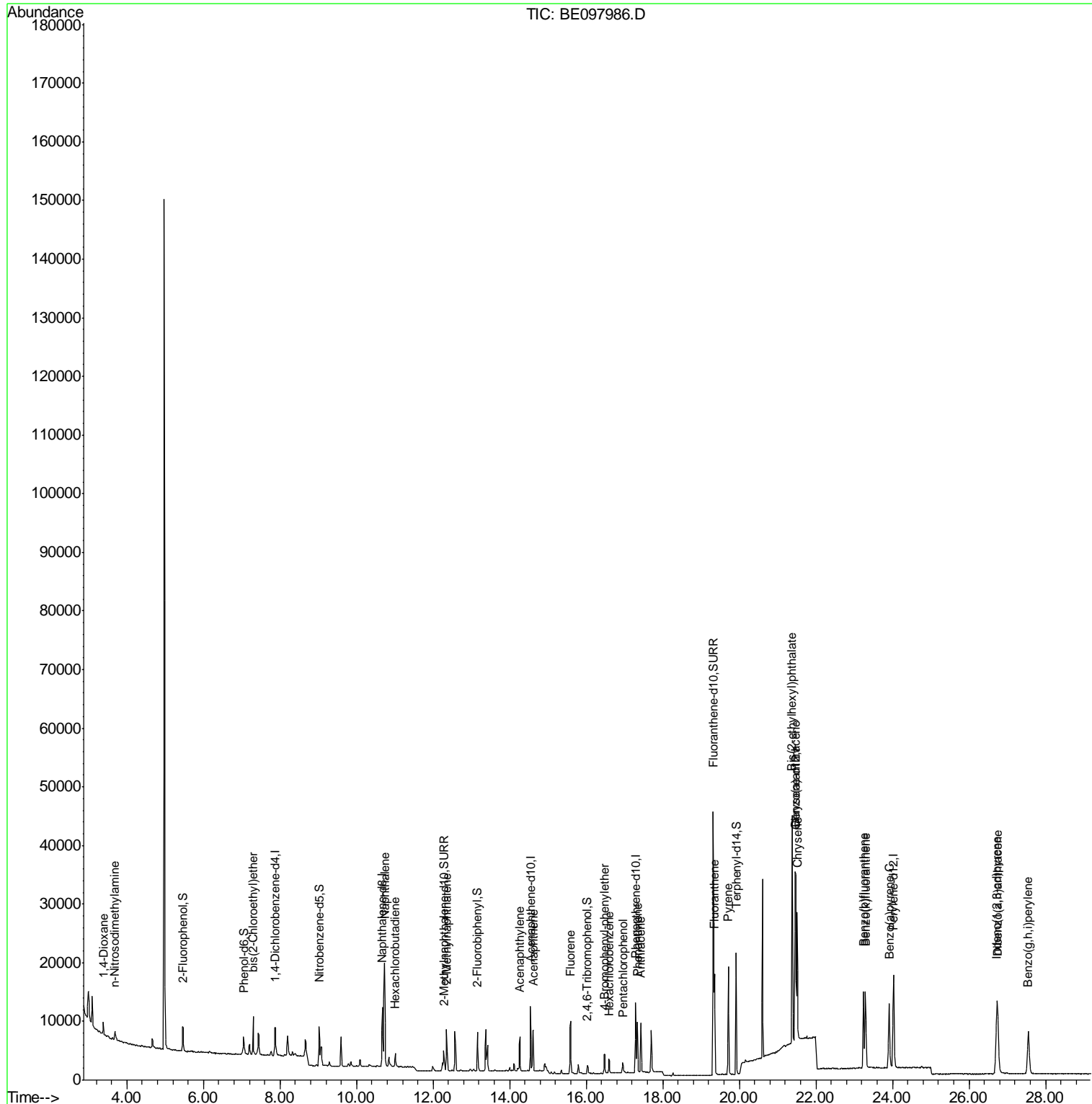
(#) = qualifier out of range (m) = manual integration (+) = signals summed

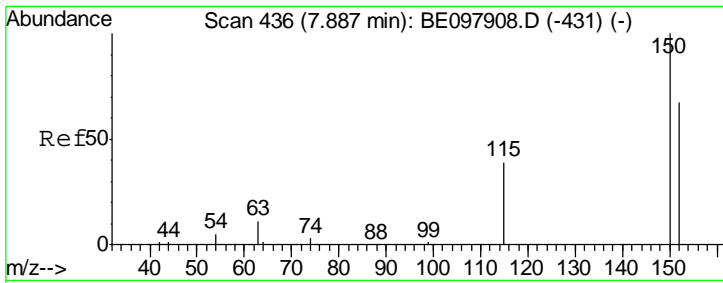
Data Path : Z:\SVOASRV\HPCHEM1\BNA E\DATA\BE101918\
 Data File : BE097986.D
 Acq On : 19 Oct 2018 10:20
 Operator : SJ/JU
 Sample : PB113752BS
 Misc :
 ALS Vial : 3 Sample Multiplier: 1

Instrument :
 BNA_E
 ClientSampled :
 PB113752BS

Manual Integrations
 APPROVED
 Sohil
 10/22/2018 5:05:59 PM

Quant Time: Oct 19 23:37:15 2018
 Quant Method : Z:\SVOASRV\HPCHEM1\BNA E\METHODS\8270-SIM-BE101618.M
 Quant Title : ASP BNA STANDARDS FOR 5 POINT CALIBRATION
 QLast Update : Tue Oct 16 15:36:44 2018
 Response via : Initial Calibration





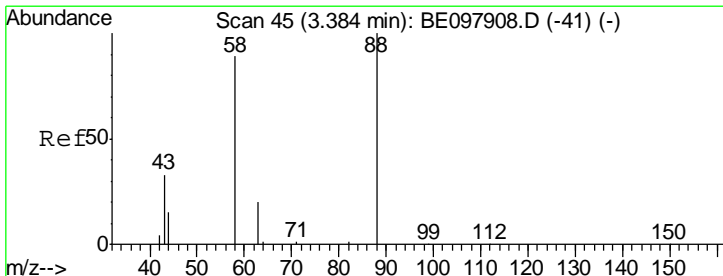
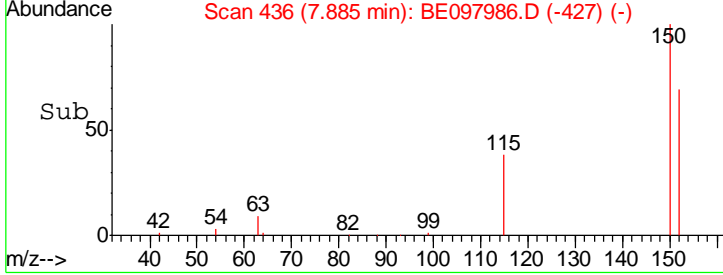
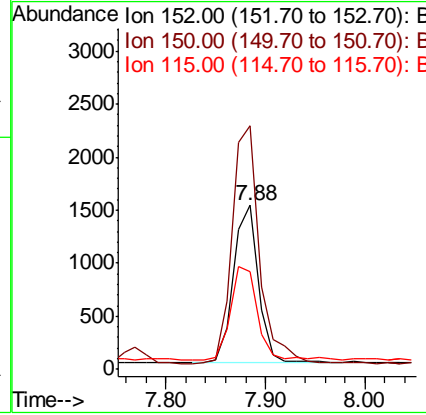
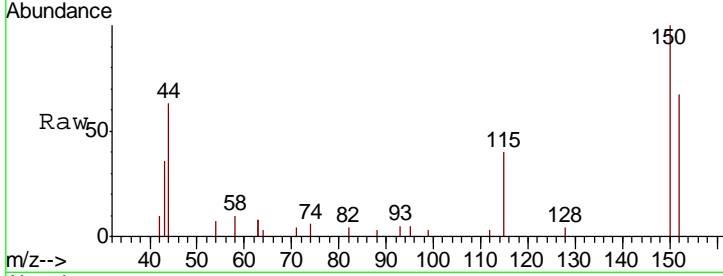
#1
 1,4-Dichlorobenzene-d4
 Concen: 0.400 ng
 RT: 7.88 min Scan# 436
 Delta R.T. -0.00 min
 Lab File: BE097986.D
 Acq: 19 Oct 2018 10:20

Instrument :
 BNA_E
 ClientSampleId :
 PB113752BS

Tgt Ion	Resp	Lower	Upper
152	2601		
152	100		
150	148.5	118.2	177.4
115	59.8	50.9	76.3

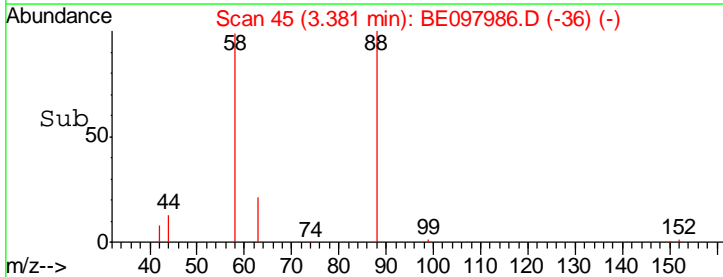
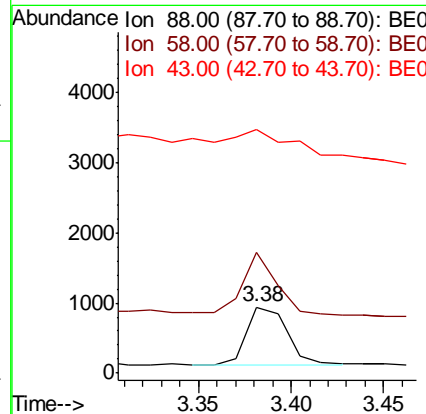
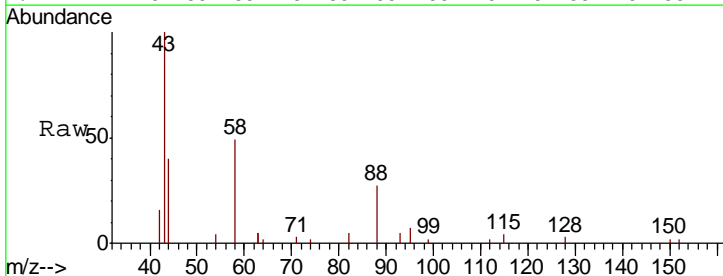
Manual Integrations
 APPROVED

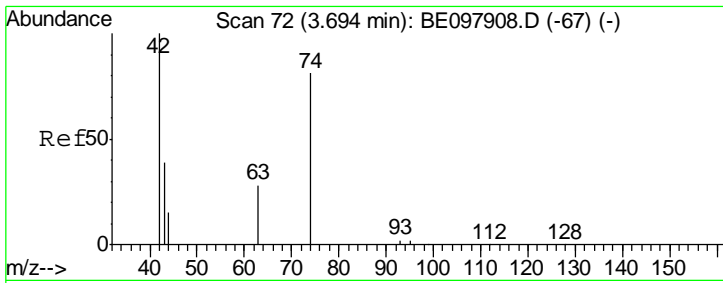
Sohil
 10/22/2018 5:05:59 PM



#2
 1,4-Dioxane
 Concen: 0.274 ng
 RT: 3.38 min Scan# 45
 Delta R.T. -0.00 min
 Lab File: BE097986.D
 Acq: 19 Oct 2018 10:20

Tgt Ion	Resp	Lower	Upper
88	1242		
88	100		
58	91.7	73.2	109.8
43	0.0	36.9	55.3#





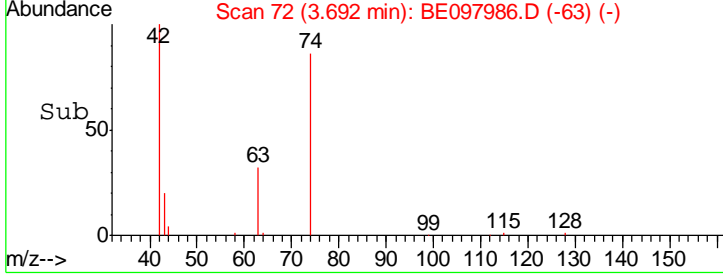
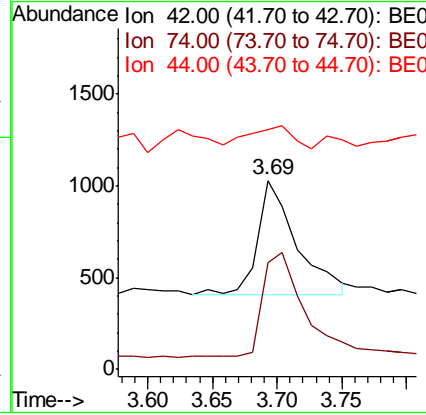
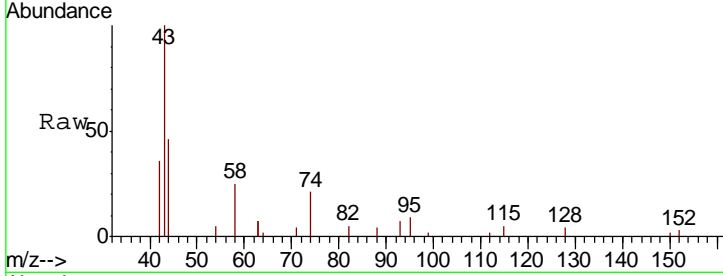
#3
 n-Nitrosodimethylamine
 Concen: 0.264 ng
 RT: 3.69 min Scan# 72
 Delta R.T. -0.00 min
 Lab File: BE097986.D
 Acq: 19 Oct 2018 10:20

Instrument :
 BNA_E
ClientSampled :
 PB113752BS

Tgt Ion	Resp	Lower	Upper
42	1339		
42	100		
74	96.8	77.6	116.4
44	21.3	7.6	11.4#

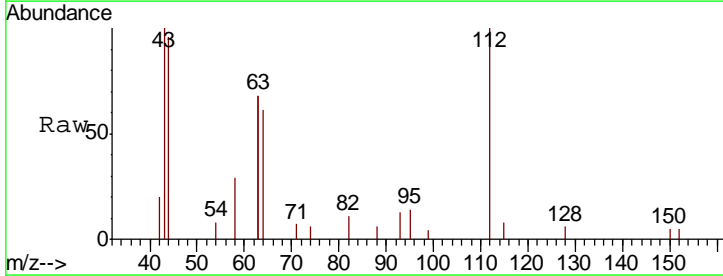
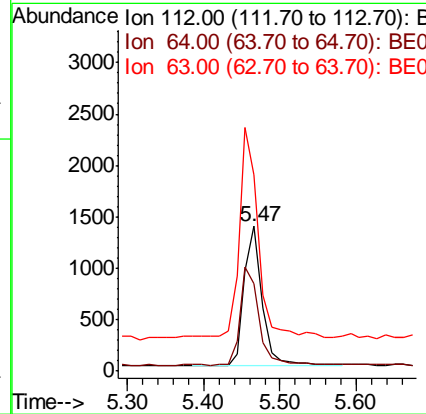
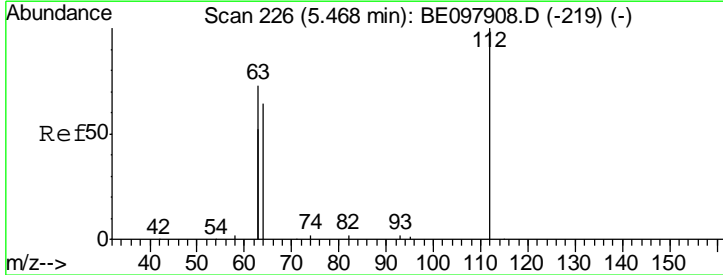
Manual Integrations
APPROVED

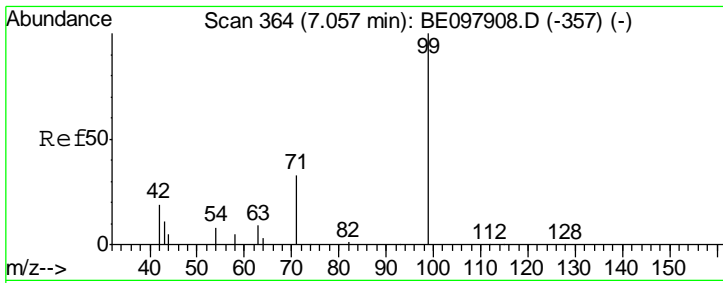
Sohil
 10/22/2018 5:05:59 PM



#4
 2-Fluorophenol
 Concen: 0.275 ng
 RT: 5.47 min Scan# 226
 Delta R.T. -0.00 min
 Lab File: BE097986.D
 Acq: 19 Oct 2018 10:20

Tgt Ion	Resp	Lower	Upper
112	2253		
112	100		
64	74.7	58.9	88.3
63	155.6	120.3	180.5





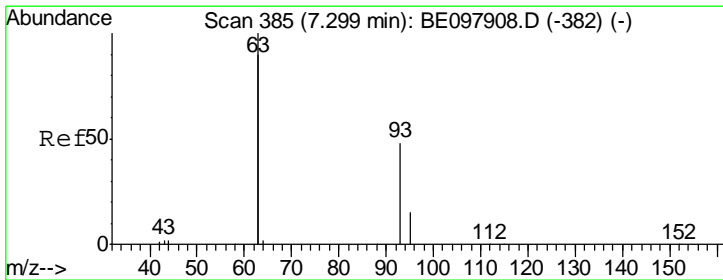
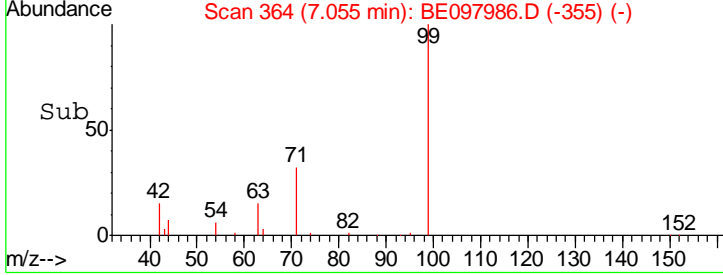
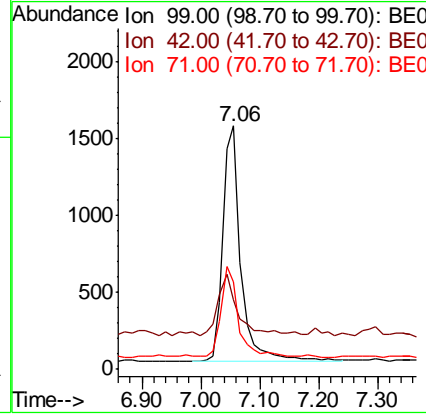
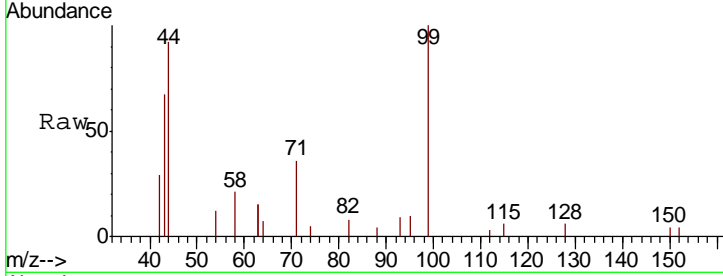
#5
 Phenol-d6
 Concen: 0.269 ng
 RT: 7.06 min Scan# 364
 Delta R.T. -0.00 min
 Lab File: BE097986.D
 Acq: 19 Oct 2018 10:20

Instrument :
 BNA_E
ClientSampled :
 PB113752BS

Tgt Ion	Resp	Lower	Upper
99	3265		
99	100		
42	29.0	19.9	29.9
71	36.1	27.8	41.8

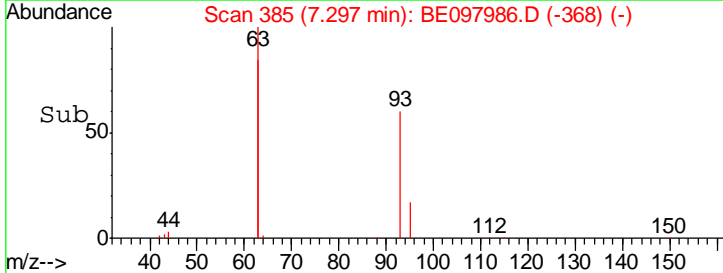
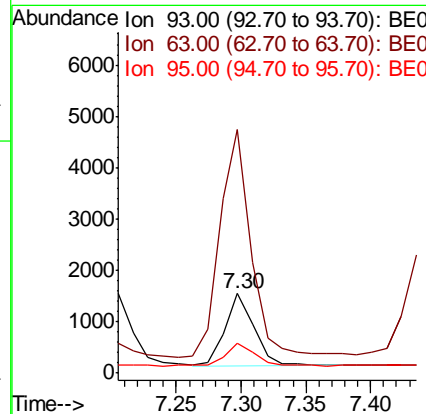
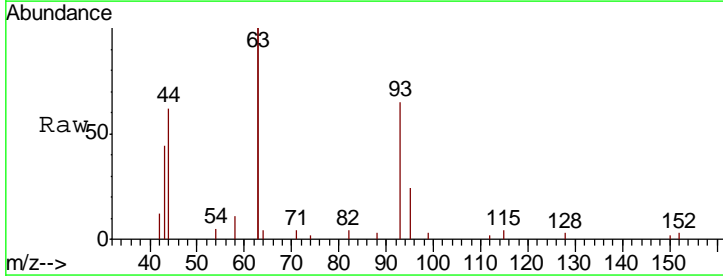
Manual Integrations
APPROVED

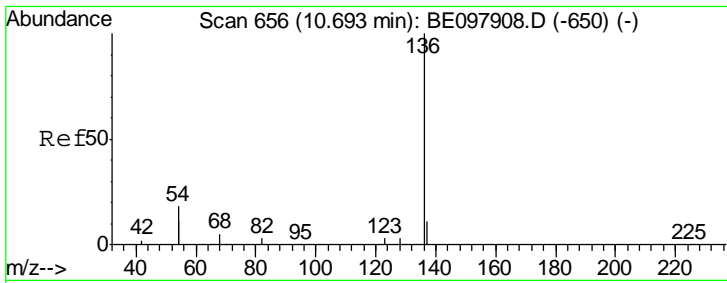
Sohil
 10/22/2018 5:05:59 PM



#6
 bis(2-Chloroethyl)ether
 Concen: 0.214 ng
 RT: 7.30 min Scan# 385
 Delta R.T. -0.00 min
 Lab File: BE097986.D
 Acq: 19 Oct 2018 10:20

Tgt Ion	Resp	Lower	Upper
93	2207		
93	100		
63	340.5	259.0	388.4
95	32.1	27.8	41.8





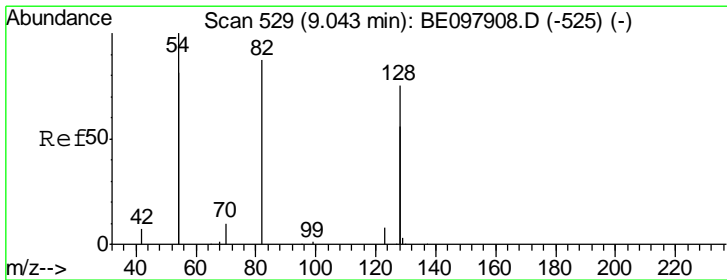
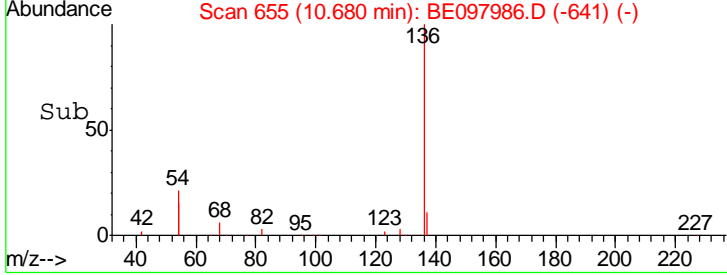
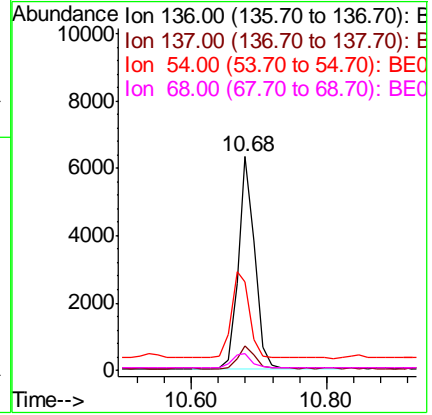
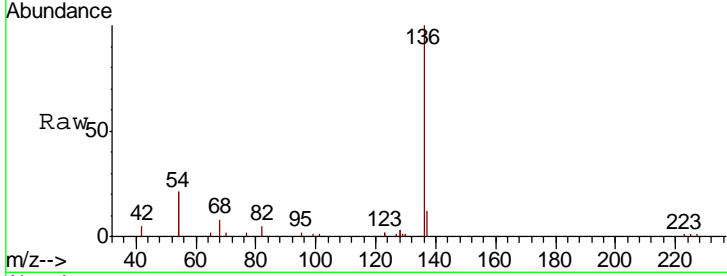
#7
 Naphthalene-d8
 Concen: 0.400 ng
 RT: 10.68 min Scan# 655
 Delta R.T. -0.01 min
 Lab File: BE097986.D
 Acq: 19 Oct 2018 10:20

Instrument :
 BNA_E
ClientSampled :
 PB113752BS

Tgt Ion	Resp	Lower	Upper
136	10763		
137	11.7	9.6	14.4
54	41.4	27.7	41.5
68	7.7	5.3	7.9

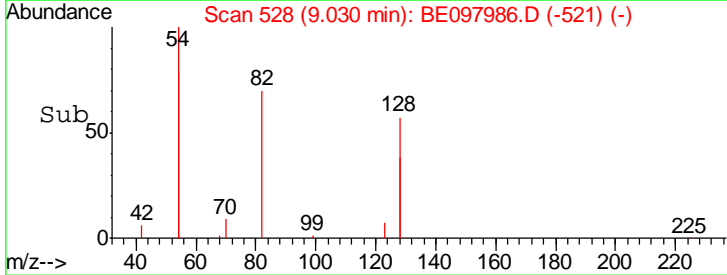
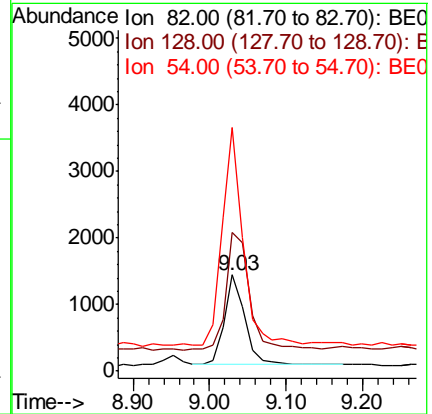
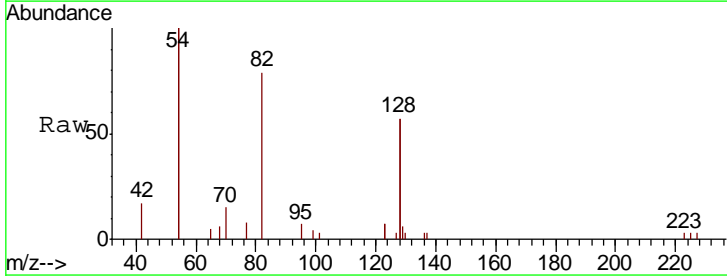
Manual Integrations
APPROVED

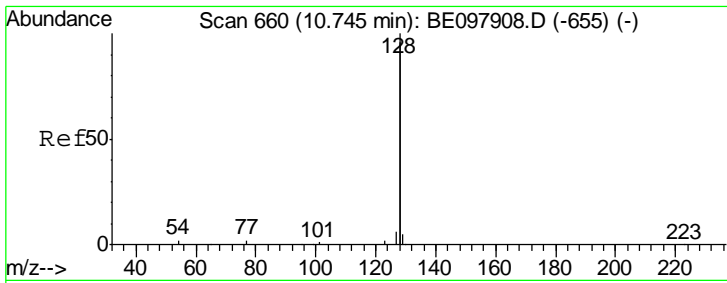
Sohil
 10/22/2018 5:05:59 PM



#8
 Nitrobenzene-d5
 Concen: 0.253 ng
 RT: 9.03 min Scan# 528
 Delta R.T. -0.01 min
 Lab File: BE097986.D
 Acq: 19 Oct 2018 10:20

Tgt Ion	Resp	Lower	Upper
82	2574		
82	100		
128	144.3	129.9	194.9
54	254.2	174.0	261.0



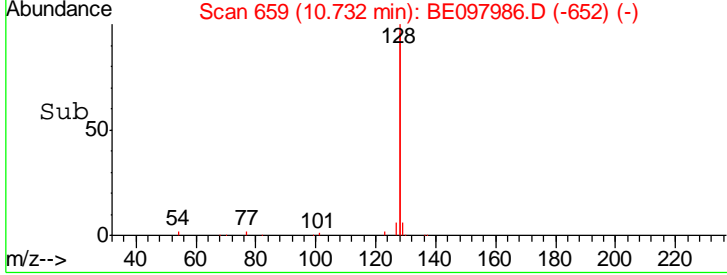
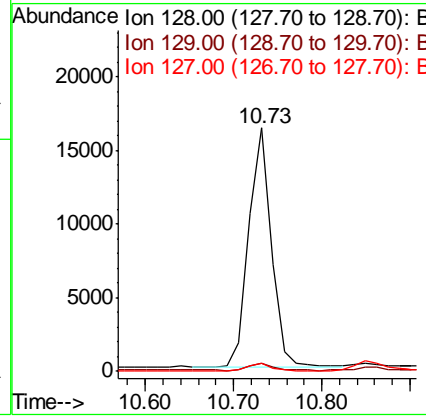
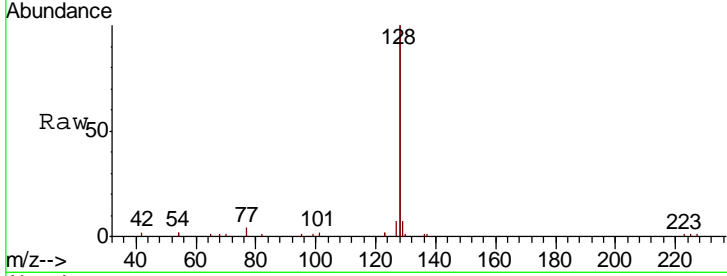


#9
 Naphthalene
 Concen: 0.268 ng
 RT: 10.73 min Scan# 659
 Delta R.T. -0.01 min
 Lab File: BE097986.D
 Acq: 19 Oct 2018 10:20

Instrument :
 BNA_E
ClientSampled :
 PB113752BS

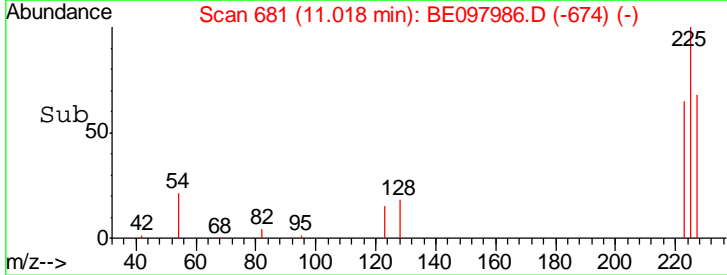
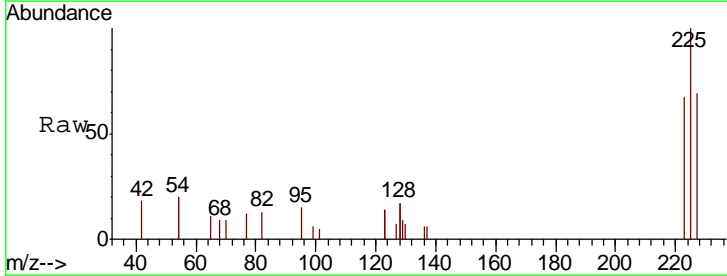
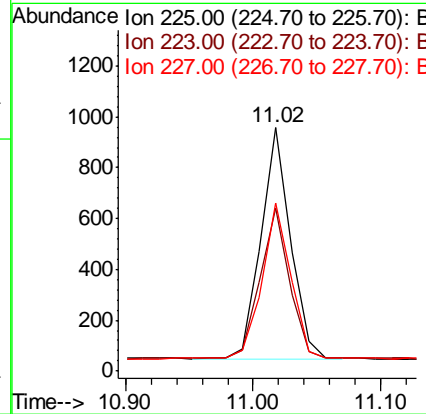
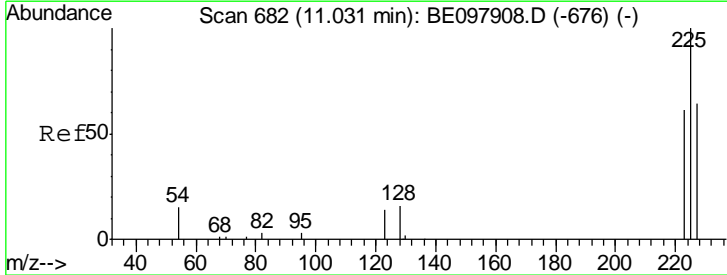
Tgt Ion	Resp	Lower	Upper
128	100		
129	3.3	2.5	3.7
127	3.5	2.8	4.2

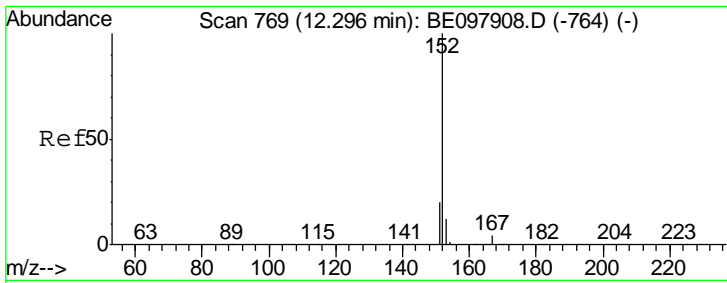
Manual Integrations
APPROVED
 Sohil
 10/22/2018 5:05:59 PM



#10
 Hexachlorobutadiene
 Concen: 0.252 ng
 RT: 11.02 min Scan# 681
 Delta R.T. -0.01 min
 Lab File: BE097986.D
 Acq: 19 Oct 2018 10:20

Tgt Ion	Resp	Lower	Upper
225	100		
223	64.5	51.8	77.8
227	65.2	53.0	79.6





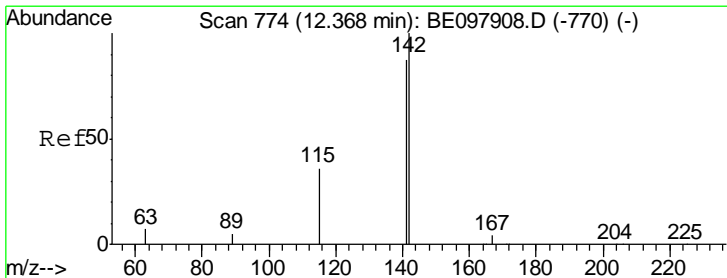
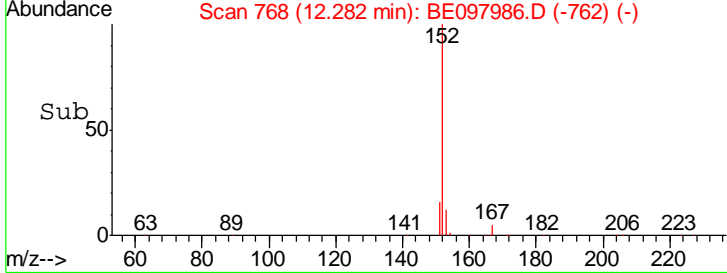
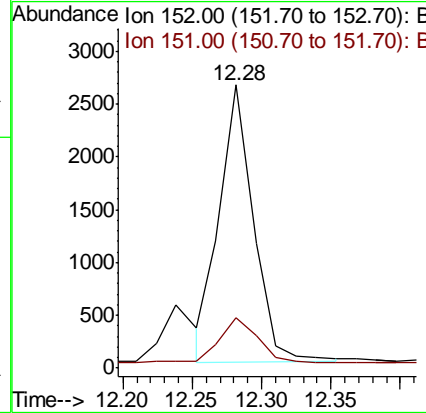
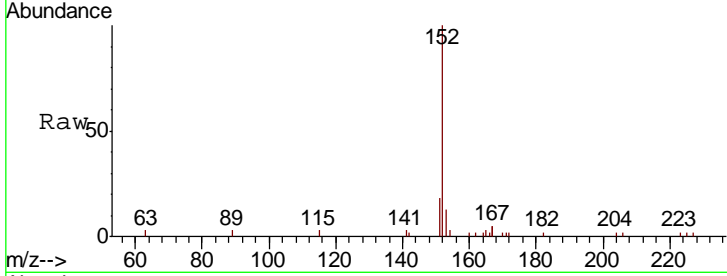
#11
 2-Methylnaphthalene-d10
 Concen: 0.250 ng m
 RT: 12.28 min Scan# 768
 Delta R.T. -0.01 min
 Lab File: BE097986.D
 Acq: 19 Oct 2018 10:20

Instrument :
 BNA_E
 ClientSampleId :
 PB113752BS

Tgt Ion:152 Resp: 4481

Ion	Ratio	Lower	Upper
152	100		
151	17.9	16.2	24.4

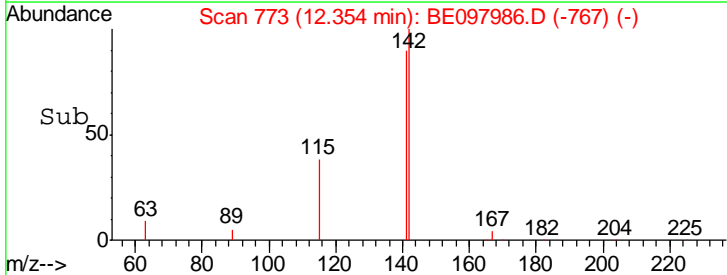
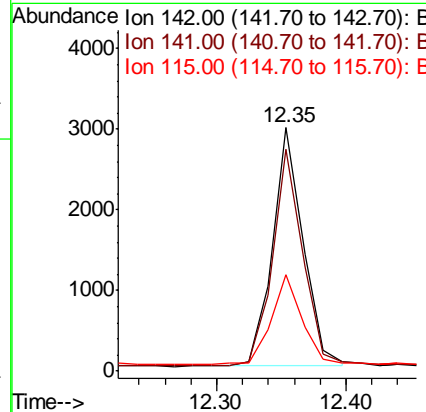
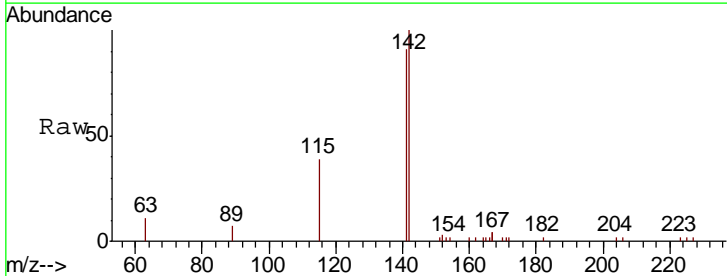
Manual Integrations
APPROVED
 Sohil
 10/22/2018 5:05:59 PM

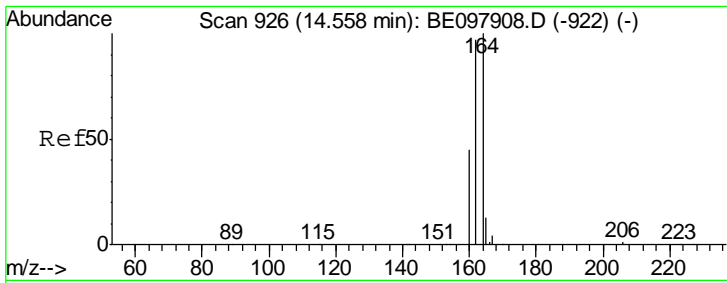


#12
 2-Methylnaphthalene
 Concen: 0.265 ng
 RT: 12.35 min Scan# 773
 Delta R.T. -0.01 min
 Lab File: BE097986.D
 Acq: 19 Oct 2018 10:20

Tgt Ion:142 Resp: 4863

Ion	Ratio	Lower	Upper
142	100		
141	90.9	69.8	104.6
115	39.4	30.5	45.7





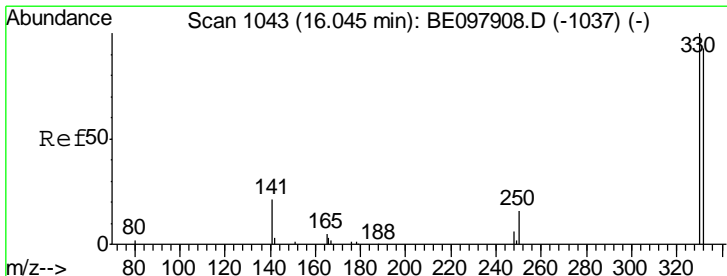
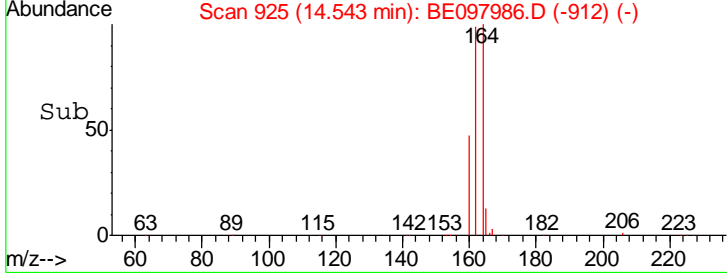
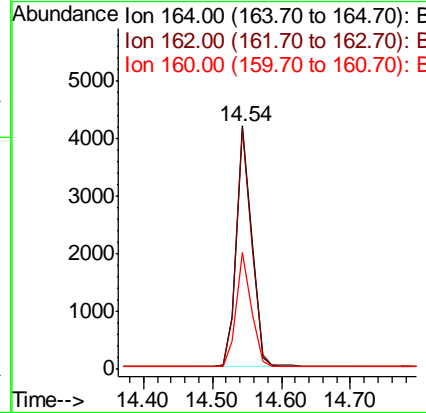
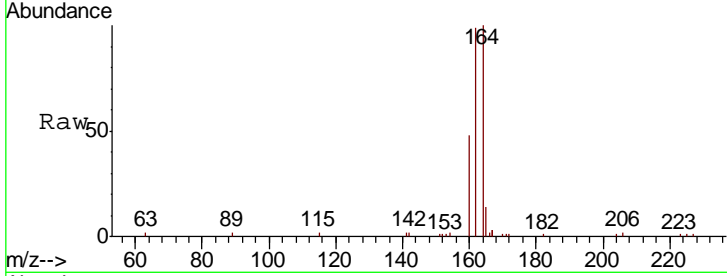
#13
 Acenaphthene-d10
 Concen: 0.400 ng
 RT: 14.54 min Scan# 925
 Delta R.T. -0.01 min
 Lab File: BE097986.D
 Acq: 19 Oct 2018 10:20

Instrument :
 BNA_E
ClientSampled :
 PB113752BS

Tgt Ion	Resp	Lower	Upper
164	100		
162	98.9	77.4	116.2
160	48.2	36.5	54.7

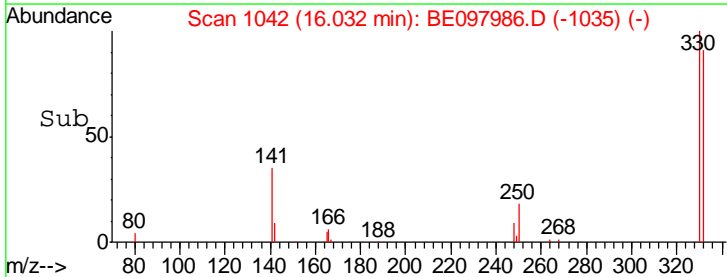
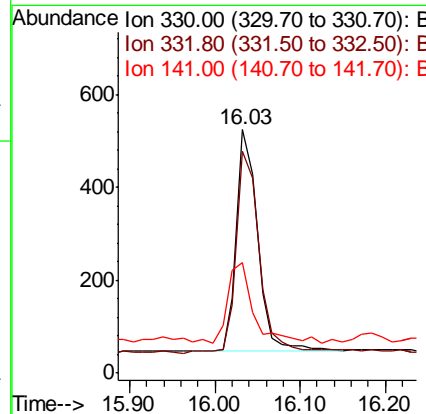
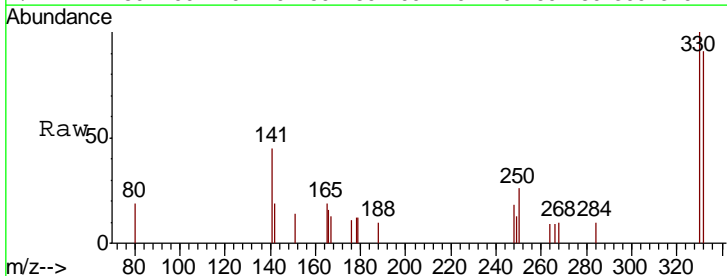
Manual Integrations
APPROVED

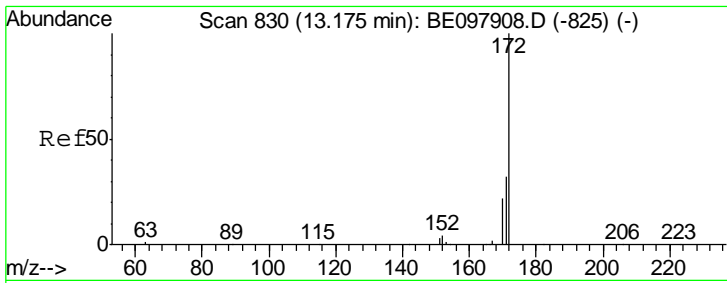
Sohil
 10/22/2018 5:05:59 PM



#14
 2,4,6-Tribromophenol
 Concen: 0.242 ng
 RT: 16.03 min Scan# 1042
 Delta R.T. -0.01 min
 Lab File: BE097986.D
 Acq: 19 Oct 2018 10:20

Tgt Ion	Resp	Lower	Upper
330	100		
332	98.7	76.5	114.7
141	44.9	31.8	47.6





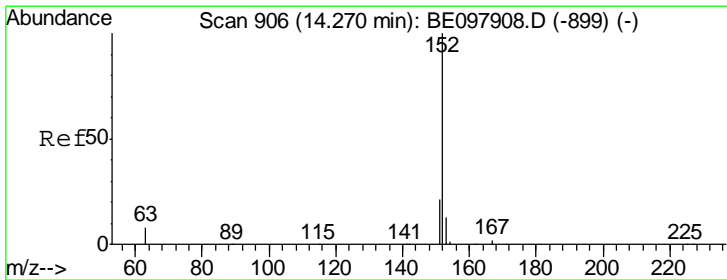
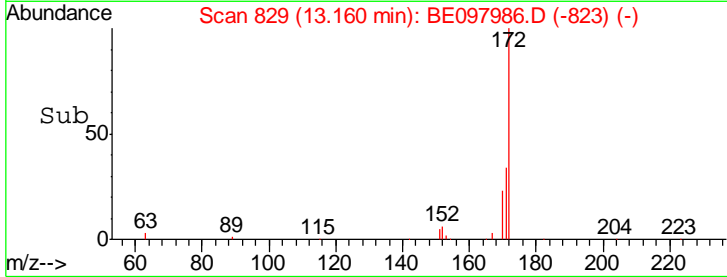
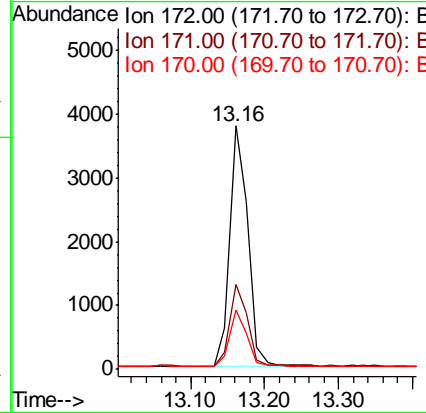
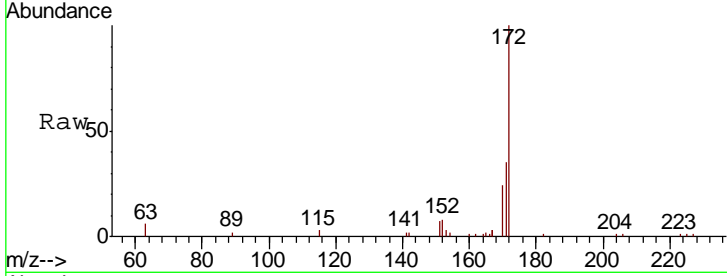
#15
 2-Fluorobiphenyl
 Concen: 0.246 ng
 RT: 13.16 min Scan# 829
 Delta R.T. -0.01 min
 Lab File: BE097986.D
 Acq: 19 Oct 2018 10:20

Instrument :
 BNA_E
ClientSampled :
 PB113752BS

Tgt Ion	Resp	Lower	Upper
172	100		
171	34.9	26.0	39.0
170	24.4	18.0	27.0

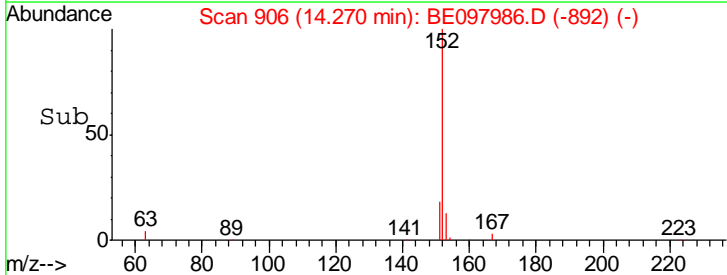
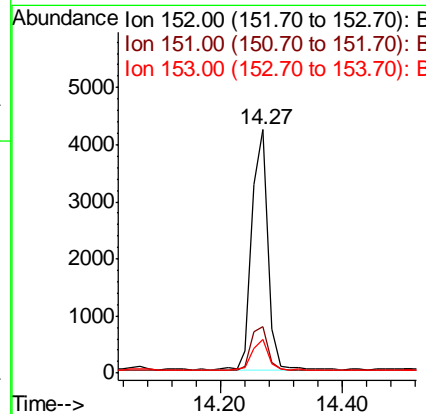
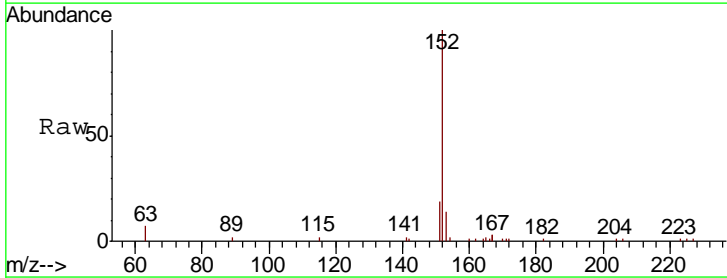
Manual Integrations
APPROVED

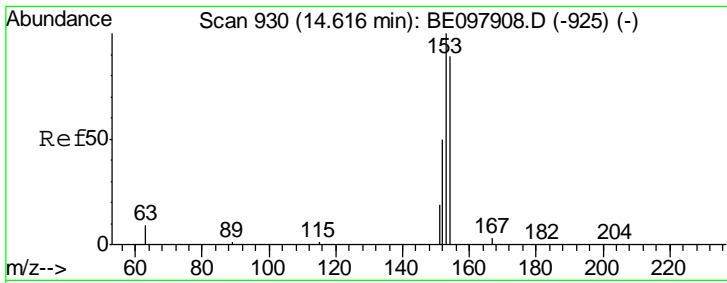
Sohil
 10/22/2018 5:05:59 PM



#16
 Acenaphthylene
 Concen: 0.258 ng
 RT: 14.27 min Scan# 906
 Delta R.T. -0.00 min
 Lab File: BE097986.D
 Acq: 19 Oct 2018 10:20

Tgt Ion	Resp	Lower	Upper
152	100		
151	19.2	16.1	24.1
153	12.6	10.9	16.3





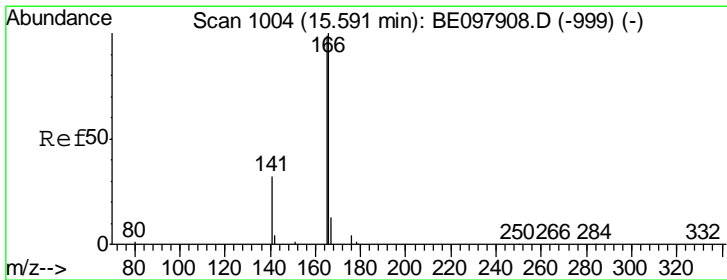
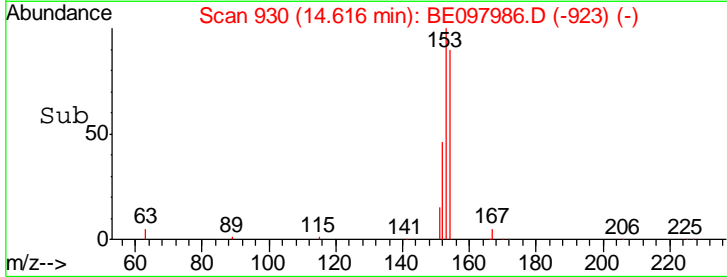
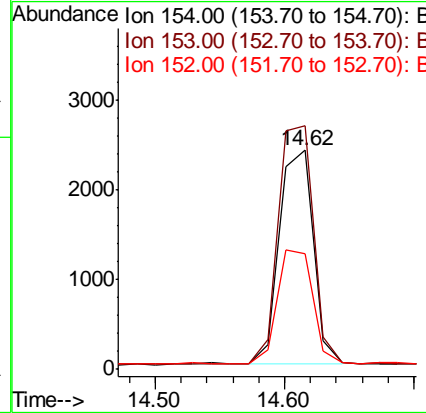
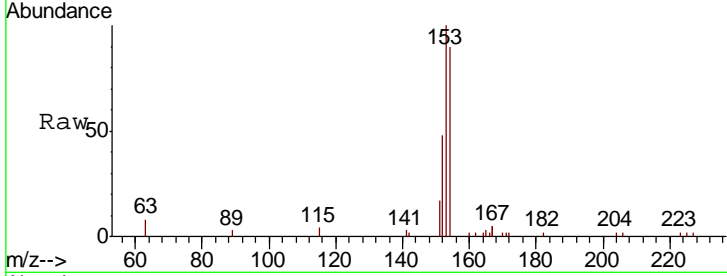
#17
 Acenaphthene
 Concen: 0.246 ng
 RT: 14.62 min Scan# 930
 Delta R.T. -0.00 min
 Lab File: BE097986.D
 Acq: 19 Oct 2018 10:20

Instrument :
 BNA_E
 ClientSampled :
 PB113752BS

Tgt Ion	Resp	Lower	Upper
154	100		
153	114.7	92.6	139.0
152	55.4	45.5	68.3

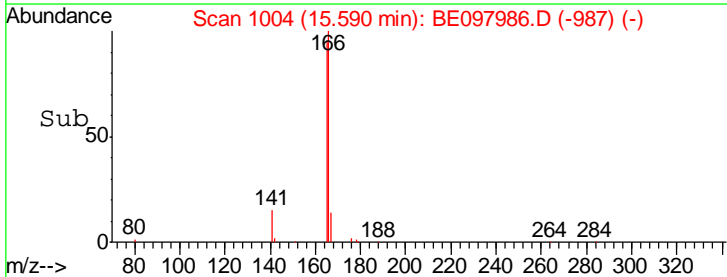
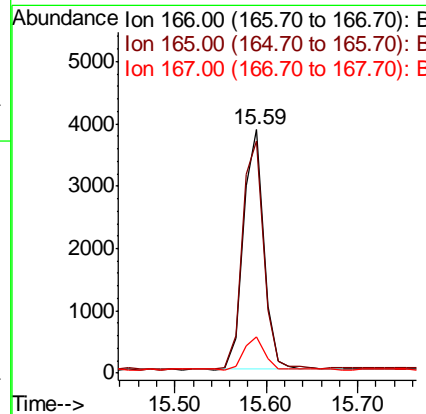
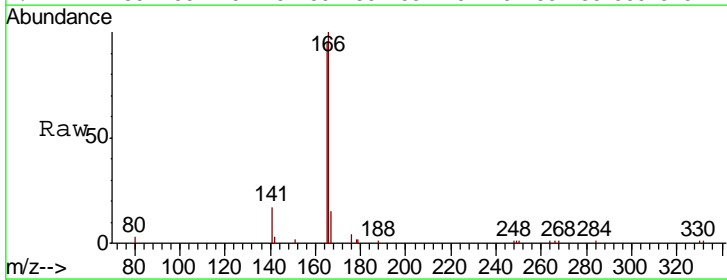
Manual Integrations
 APPROVED

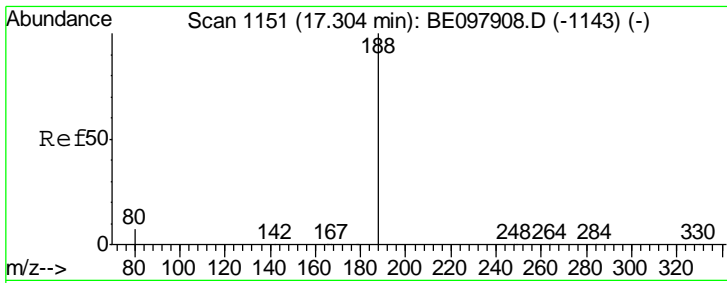
Sohil
 10/22/2018 5:05:59 PM



#18
 Fluorene
 Concen: 0.243 ng
 RT: 15.59 min Scan# 1004
 Delta R.T. -0.00 min
 Lab File: BE097986.D
 Acq: 19 Oct 2018 10:20

Tgt Ion	Resp	Lower	Upper
166	100		
165	98.3	78.2	117.4
167	13.5	11.0	16.6



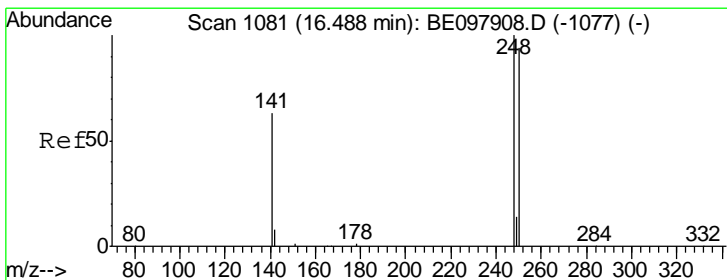
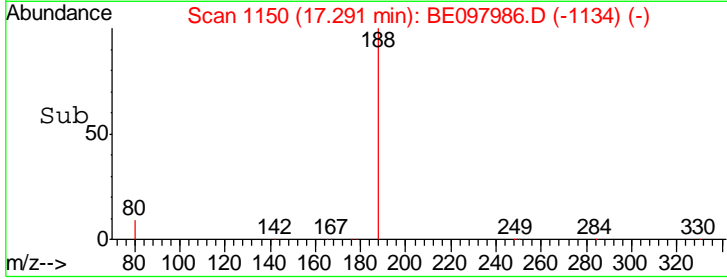
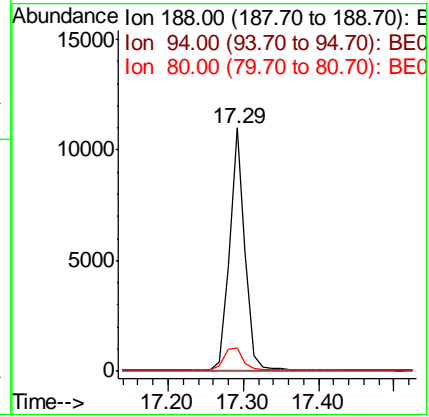
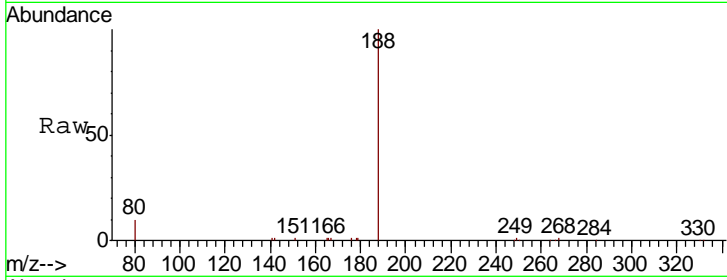


#19
 Phenanthrene-d10
 Concen: 0.400 ng
 RT: 17.29 min Scan# 1150
 Delta R.T. -0.01 min
 Lab File: BE097986.D
 Acq: 19 Oct 2018 10:20

Instrument :
 BNA_E
 ClientSampled :
 PB113752BS

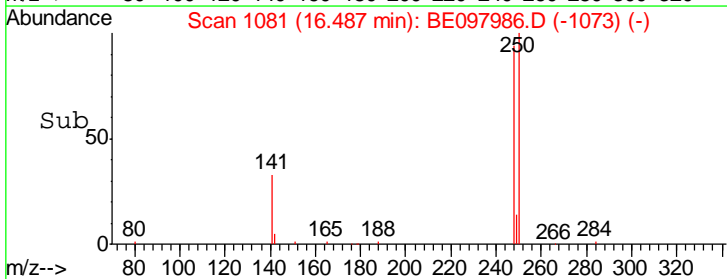
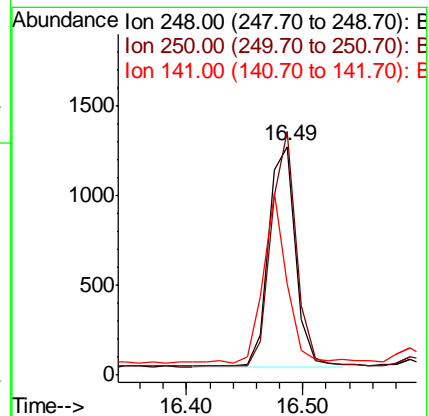
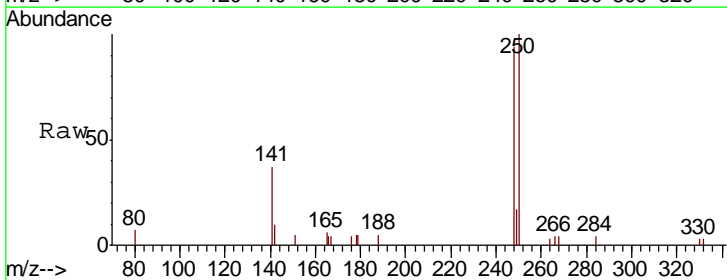
Tgt Ion	Ratio	Lower	Upper
188	100		
94	0.0	0.0	0.0
80	9.9	6.3	9.5#

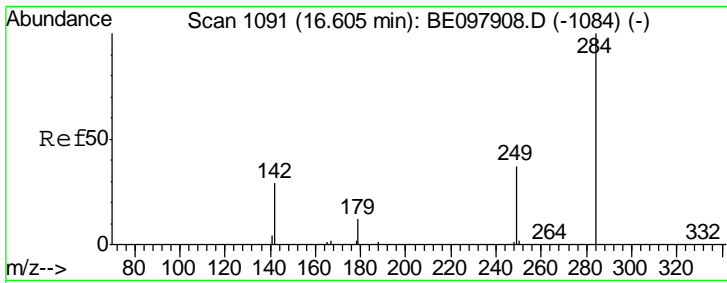
Manual Integrations
APPROVED
 Sohil
 10/22/2018 5:05:59 PM



#20
 4-Bromophenyl-phenylether
 Concen: 0.231 ng
 RT: 16.49 min Scan# 1081
 Delta R.T. -0.00 min
 Lab File: BE097986.D
 Acq: 19 Oct 2018 10:20

Tgt Ion	Ratio	Lower	Upper
248	100		
250	106.4	75.1	112.7
141	39.7	51.8	77.8#





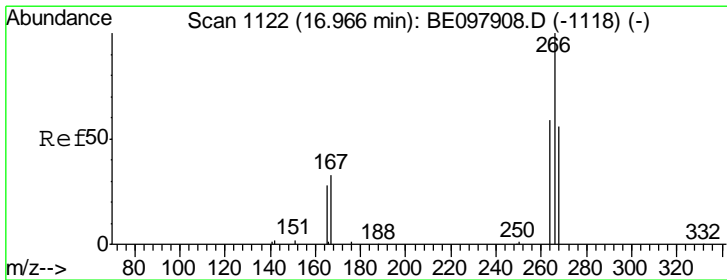
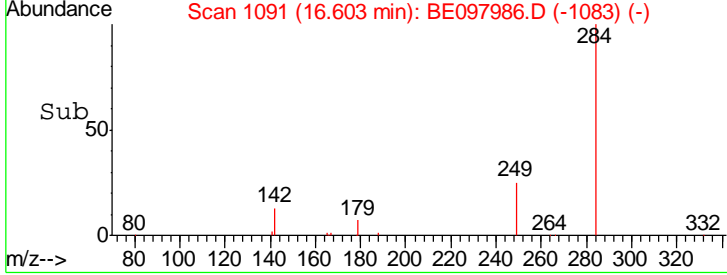
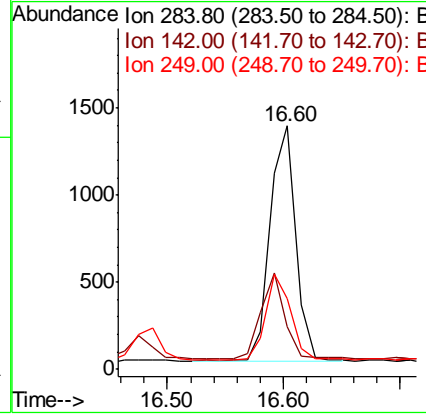
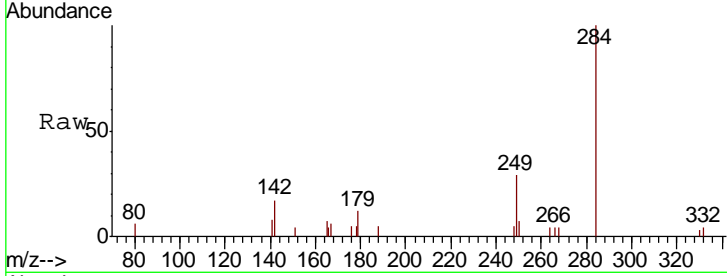
#21
Hexachlorobenzene
Concen: 0.245 ng
RT: 16.60 min Scan# 1091
Delta R.T. -0.00 min
Lab File: BE097986.D
Acq: 19 Oct 2018 10:20

Instrument : BNA_E
Client Sampled : PB113752BS

Tgt Ion	Ratio	Lower	Upper
284	100		
142	34.5	25.9	38.9
249	34.8	26.6	40.0

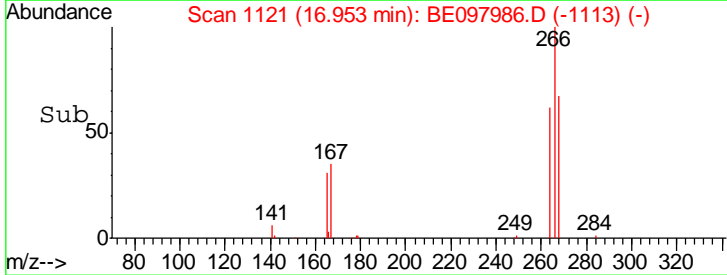
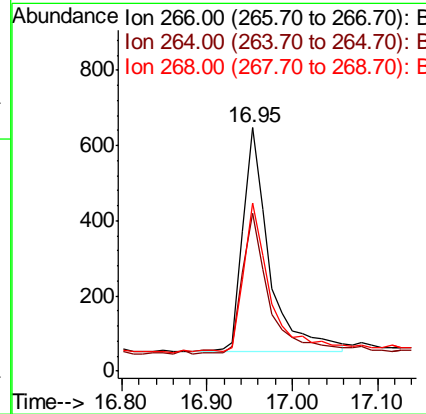
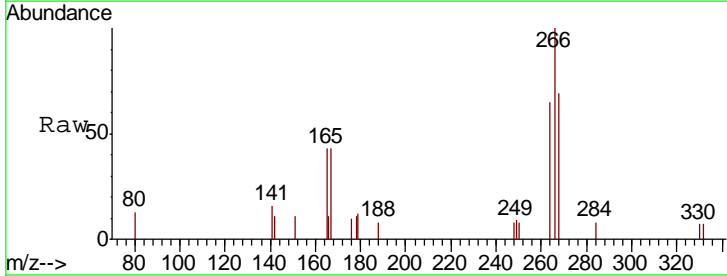
Manual Integrations
APPROVED

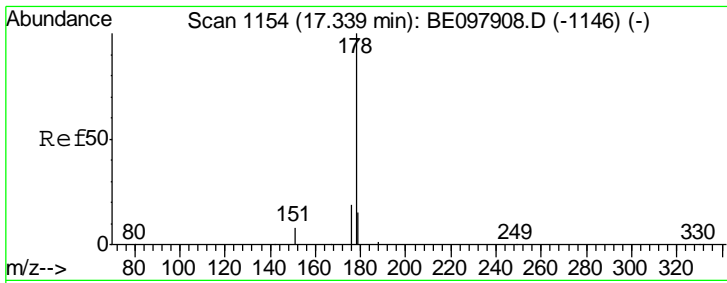
Sohil
10/22/2018 5:05:59 PM



#22
Pentachlorophenol
Concen: 0.579 ng
RT: 16.95 min Scan# 1121
Delta R.T. -0.01 min
Lab File: BE097986.D
Acq: 19 Oct 2018 10:20

Tgt Ion	Ratio	Lower	Upper
266	100		
264	64.7	51.3	76.9
268	69.0	50.1	75.1





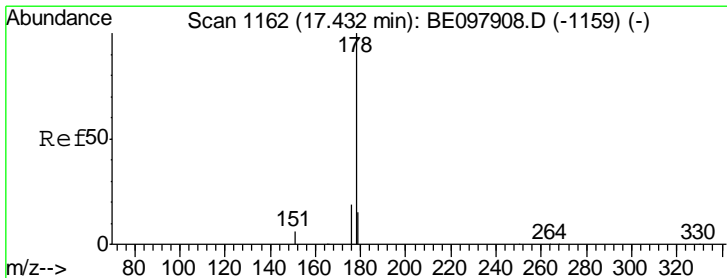
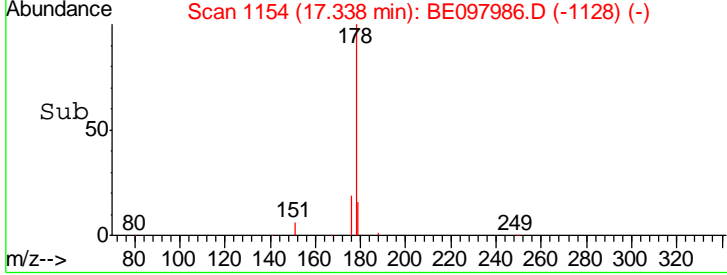
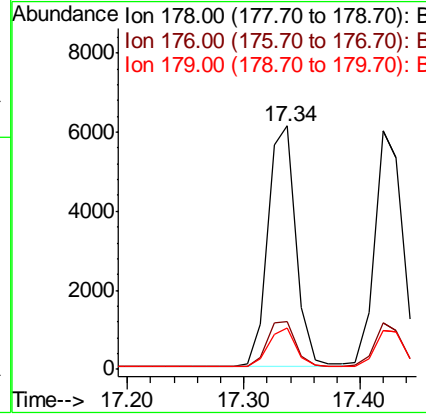
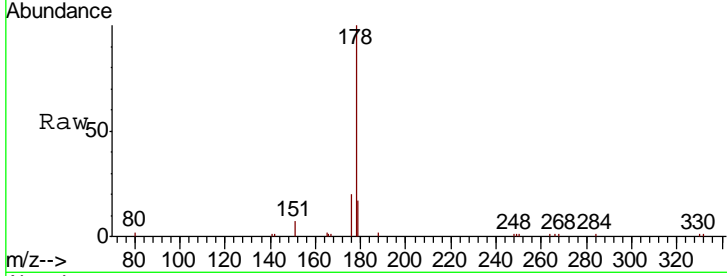
#23
 Phenanthrene
 Concen: 0.256 ng
 RT: 17.34 min Scan# 1154
 Delta R.T. -0.00 min
 Lab File: BE097986.D
 Acq: 19 Oct 2018 10:20

Instrument :
 BNA_E
ClientSampled :
 PB113752BS

Tgt Ion	Ratio	Lower	Upper
178	100		
176	19.3	15.5	23.3
179	15.6	12.2	18.4

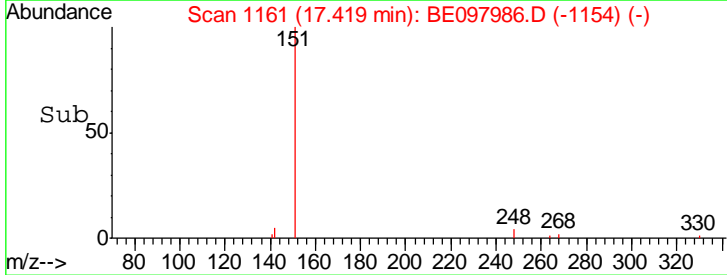
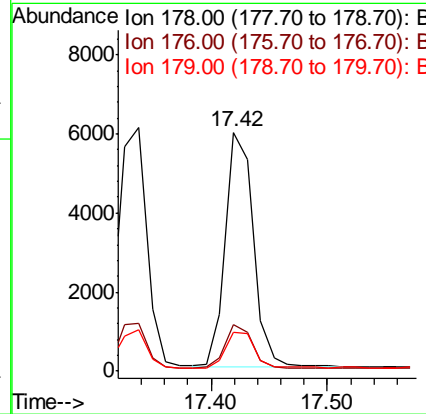
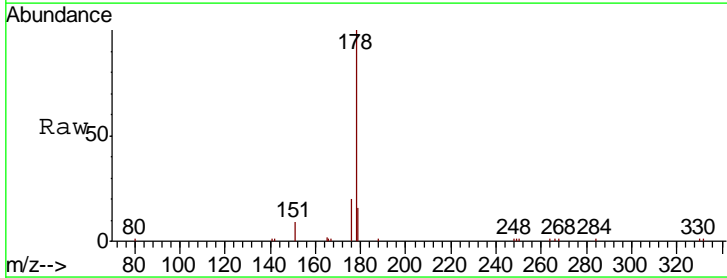
Manual Integrations
APPROVED

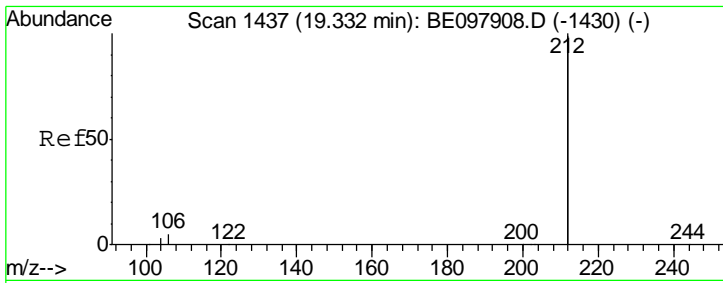
Sohil
 10/22/2018 5:05:59 PM



#24
 Anthracene
 Concen: 0.261 ng
 RT: 17.42 min Scan# 1161
 Delta R.T. -0.01 min
 Lab File: BE097986.D
 Acq: 19 Oct 2018 10:20

Tgt Ion	Ratio	Lower	Upper
178	100		
176	18.4	14.9	22.3
179	15.3	11.9	17.9



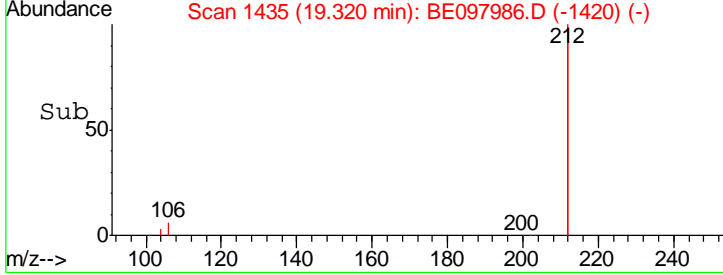
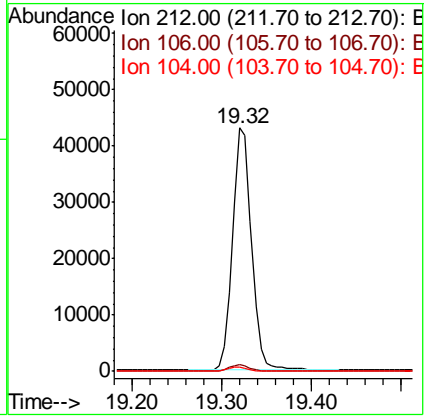
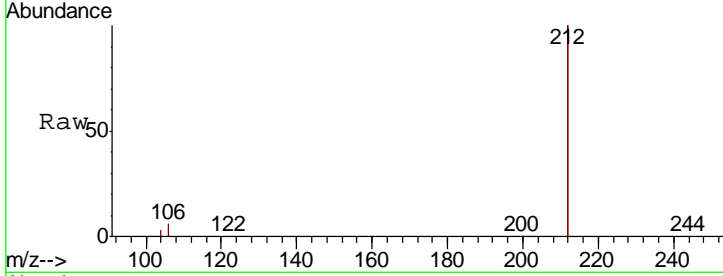


#25
 Fluoranthene-d10
 Concen: 0.289 ng
 RT: 19.32 min Scan# 1435
 Delta R.T. -0.01 min
 Lab File: BE097986.D
 Acq: 19 Oct 2018 10:20

Instrument :
 BNA_E
ClientSampled :
 PB113752BS

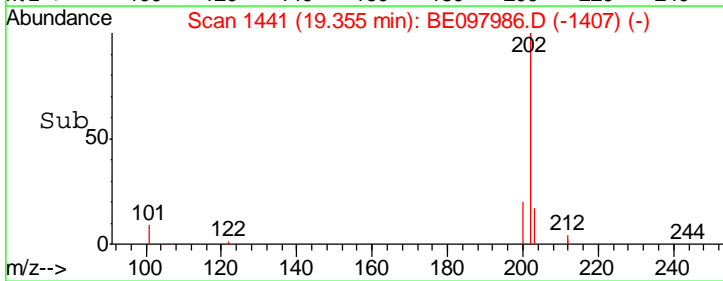
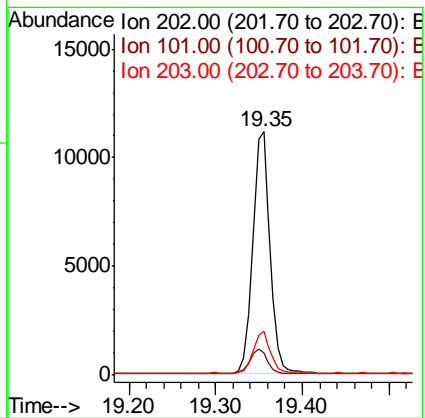
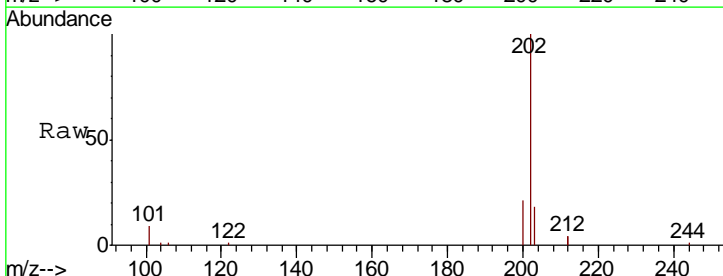
Tgt Ion	Resp	Lower	Upper
212	100		
106	2.7	2.3	3.5
104	1.5	1.3	1.9

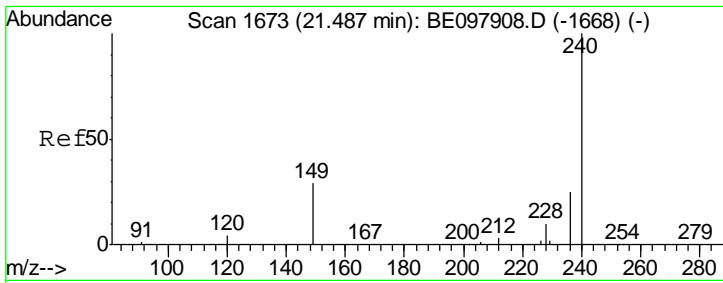
Manual Integrations
APPROVED
 Sohil
 10/22/2018 5:05:59 PM



#26
 Fluoranthene
 Concen: 0.299 ng
 RT: 19.35 min Scan# 1441
 Delta R.T. -0.01 min
 Lab File: BE097986.D
 Acq: 19 Oct 2018 10:20

Tgt Ion	Resp	Lower	Upper
202	100		
101	10.4	8.2	12.2
203	17.0	15.0	22.4



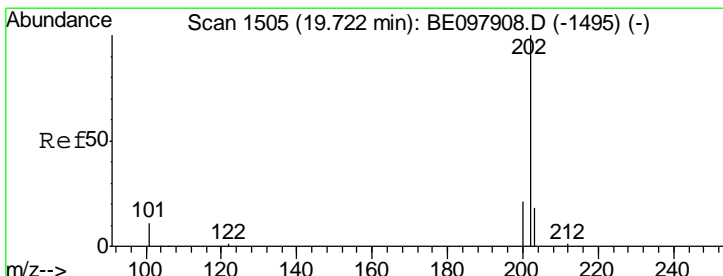
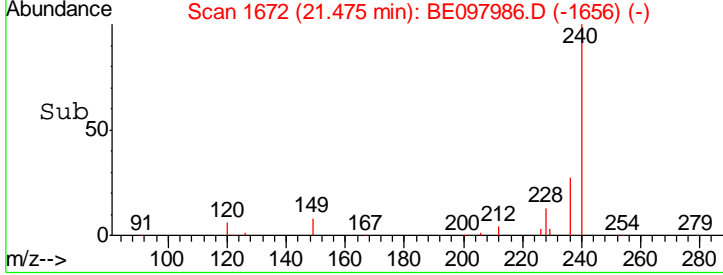
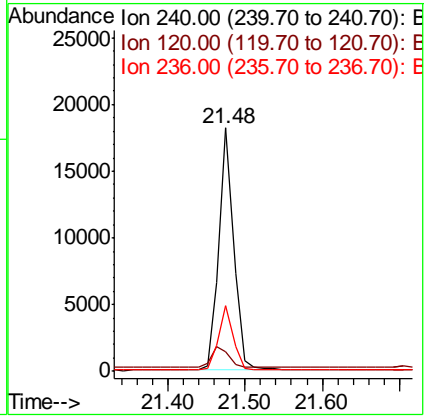
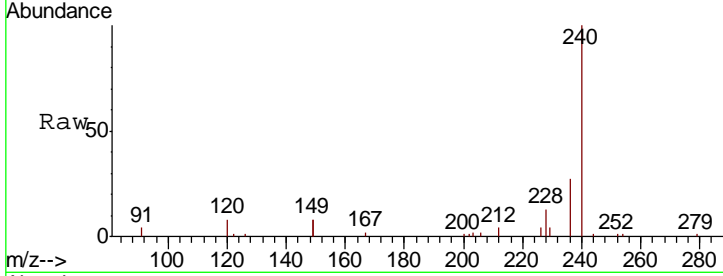


#27
 Chrysene-d12
 Concen: 0.400 ng
 RT: 21.48 min Scan# 1672
 Delta R.T. -0.01 min
 Lab File: BE097986.D
 Acq: 19 Oct 2018 10:20

Instrument :
 BNA_E
 ClientSampled :
 PB113752BS

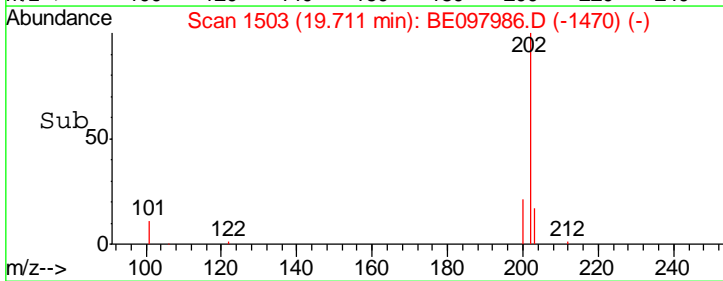
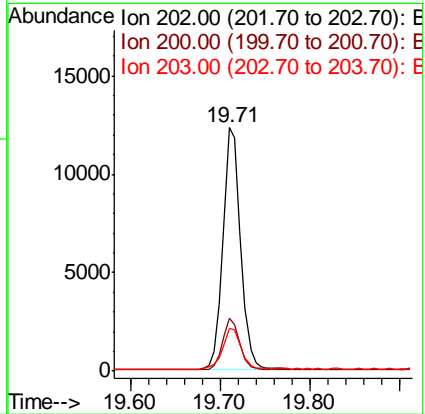
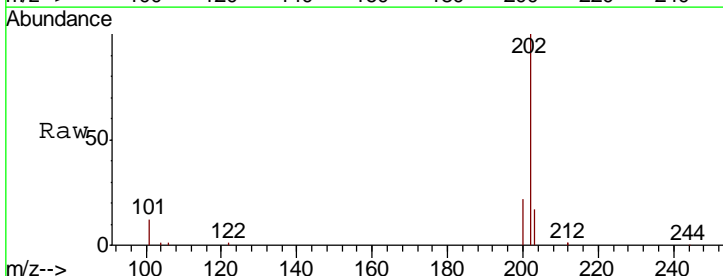
Tgt Ion	Resp	Lower	Upper
240	24563		
240	100		
120	7.8	7.1	10.7
236	27.1	21.3	31.9

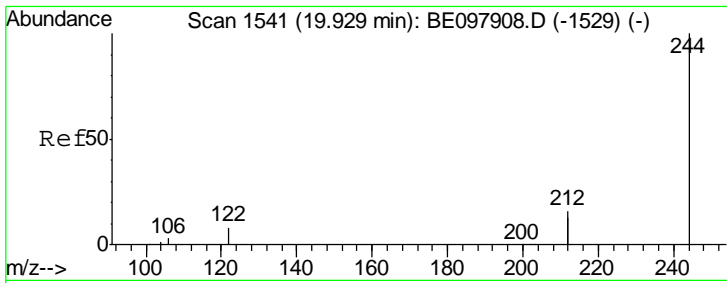
Manual Integrations
APPROVED
 Sohil
 10/22/2018 5:05:59 PM



#28
 Pyrene
 Concen: 0.237 ng
 RT: 19.71 min Scan# 1503
 Delta R.T. -0.01 min
 Lab File: BE097986.D
 Acq: 19 Oct 2018 10:20

Tgt Ion	Resp	Lower	Upper
202	16766		
202	100		
200	20.9	17.0	25.4
203	18.0	14.2	21.4





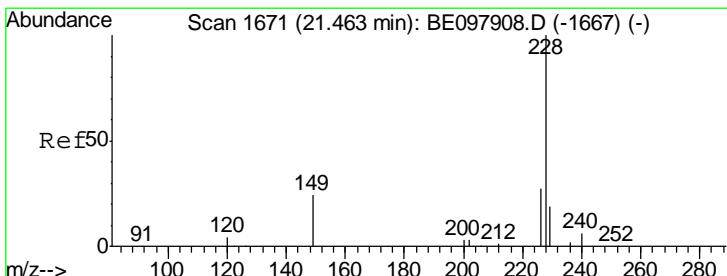
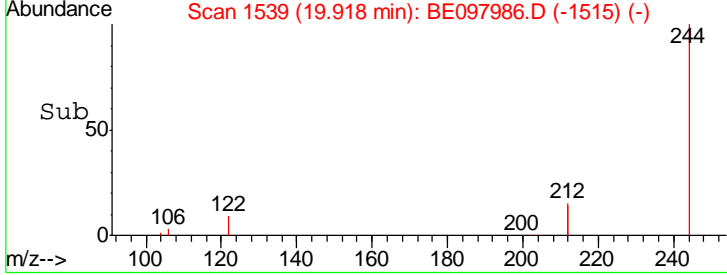
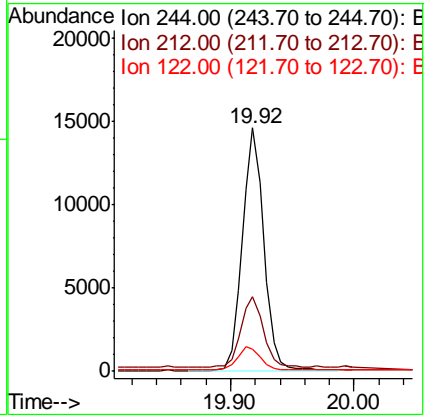
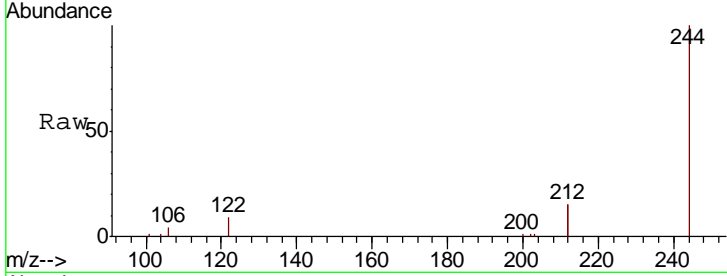
#29
 Terphenyl-d14
 Concen: 0.313 ng
 RT: 19.92 min Scan# 1539
 Delta R.T. -0.01 min
 Lab File: BE097986.D
 Acq: 19 Oct 2018 10:20

Instrument :
 BNA_E
 ClientSampled :
 PB113752BS

Tgt Ion	Ratio	Lower	Upper
244	100		
212	30.9	26.2	39.2
122	9.2	7.7	11.5

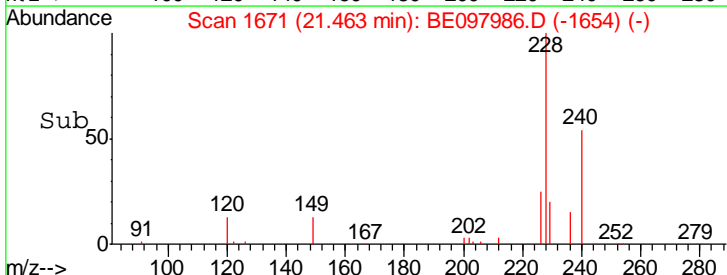
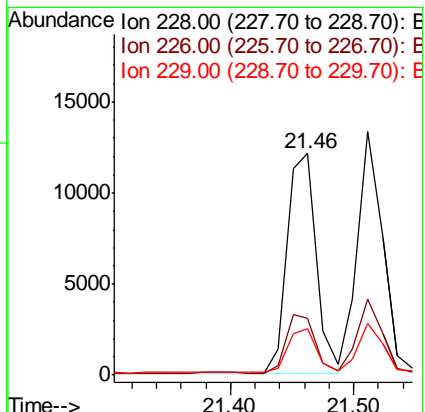
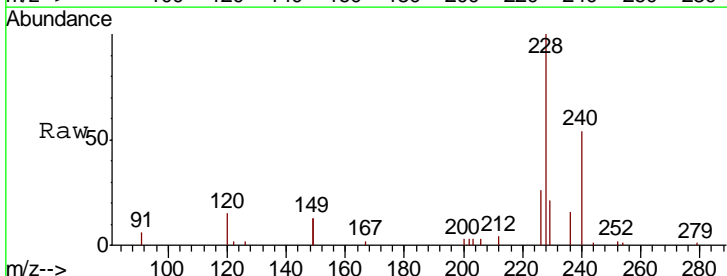
Manual Integrations
 APPROVED

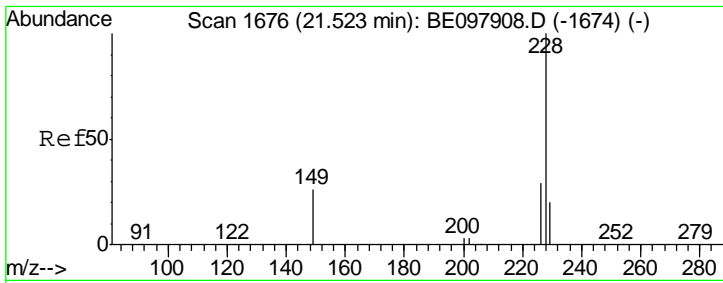
Sohil
 10/22/2018 5:05:59 PM



#30
 Benzo(a)anthracene
 Concen: 0.265 ng
 RT: 21.46 min Scan# 1671
 Delta R.T. 0.00 min
 Lab File: BE097986.D
 Acq: 19 Oct 2018 10:20

Tgt Ion	Ratio	Lower	Upper
228	100		
226	25.9	22.6	33.8
229	20.7	16.9	25.3





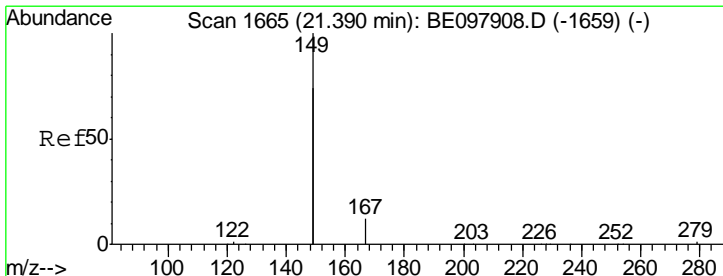
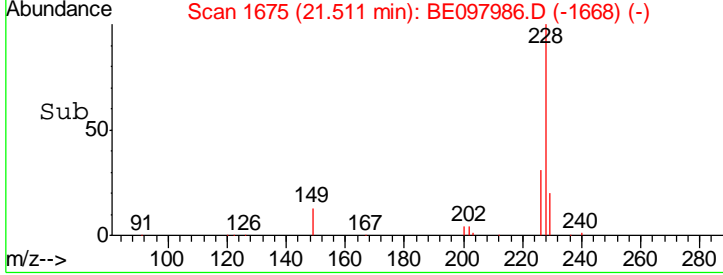
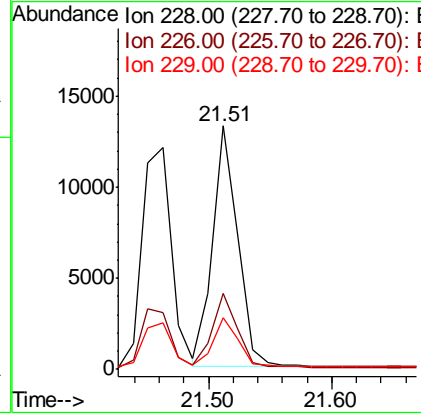
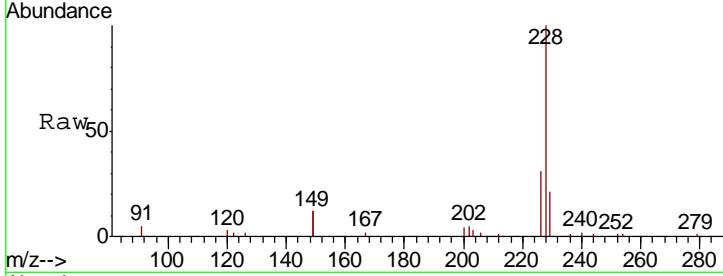
#31
 Chrysene
 Concen: 0.264 ng
 RT: 21.51 min Scan# 1675
 Delta R.T. -0.01 min
 Lab File: BE097986.D
 Acq: 19 Oct 2018 10:20

Instrument :
 BNA_E
 ClientSampled :
 PB113752BS

Tgt Ion	Resp	Lower	Upper
228	18825		
226	31.4	24.3	36.5
229	21.0	17.3	25.9

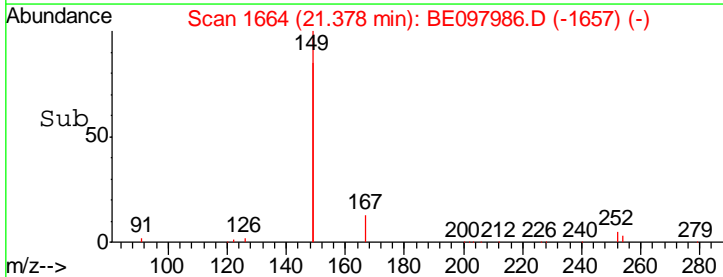
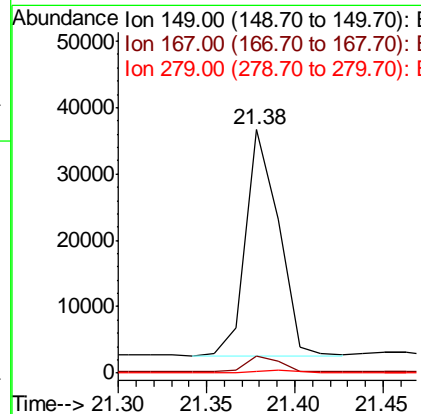
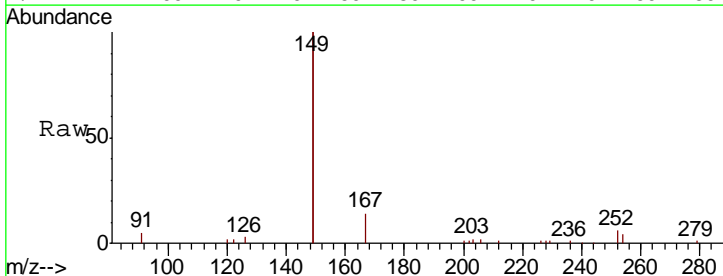
Manual Integrations
 APPROVED

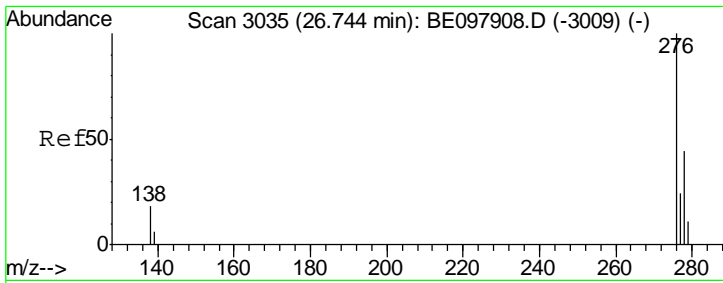
Sohil
 10/22/2018 5:05:59 PM



#32
 Bis(2-ethylhexyl)phthalate
 Concen: 0.193 ng
 RT: 21.38 min Scan# 1664
 Delta R.T. -0.01 min
 Lab File: BE097986.D
 Acq: 19 Oct 2018 10:20

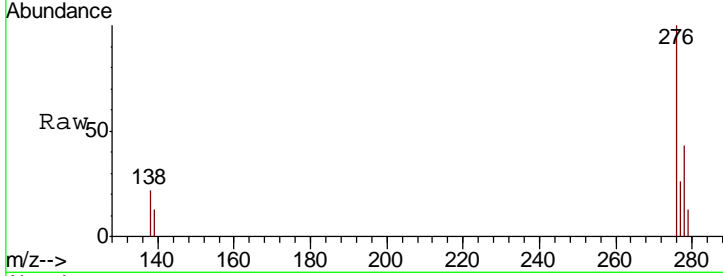
Tgt Ion	Resp	Lower	Upper
149	44094		
167	7.2	5.6	8.4
279	1.2	0.9	1.3





#33
 Indeno(1,2,3-cd)pyrene
 Concen: 0.210 ng
 RT: 26.72 min Scan# 3029
 Delta R.T. -0.02 min
 Lab File: BE097986.D
 Acq: 19 Oct 2018 10:20

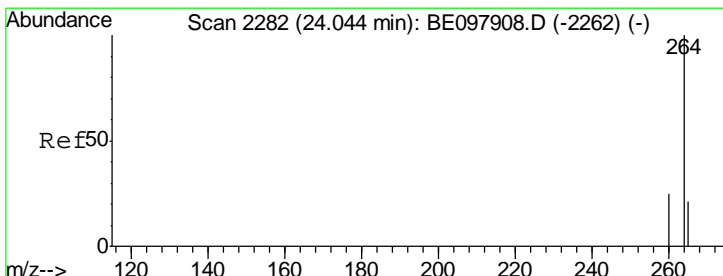
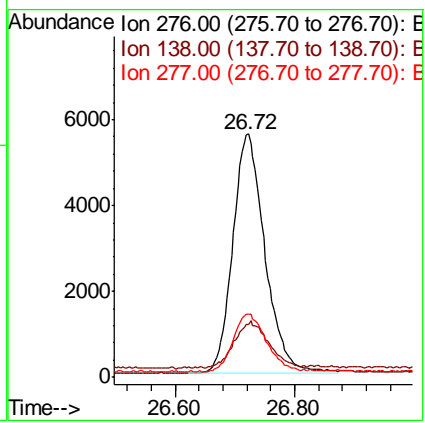
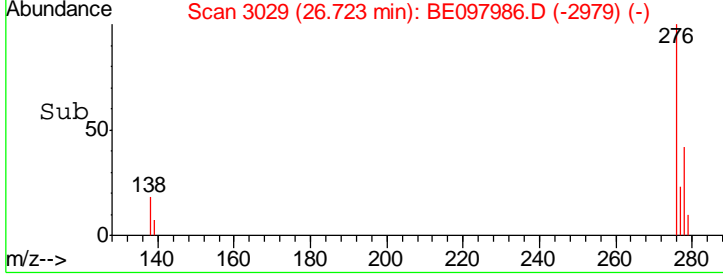
Instrument :
 BNA_E
 ClientSampled :
 PB113752BS



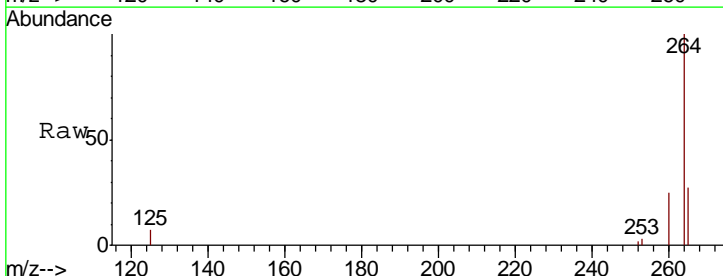
Tgt Ion: 276 Resp: 20869

Ion	Ratio	Lower	Upper
276	100		
138	20.7	17.0	25.6
277	24.9	20.5	30.7

Manual Integrations
APPROVED
 Sohil
 10/22/2018 5:05:59 PM

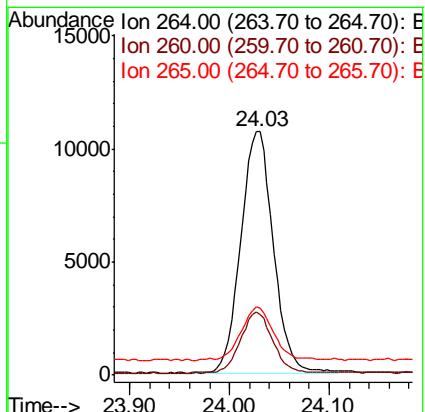
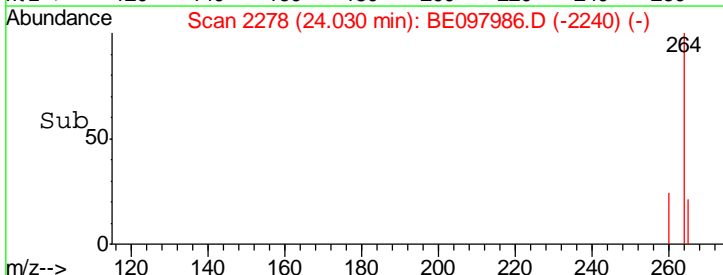


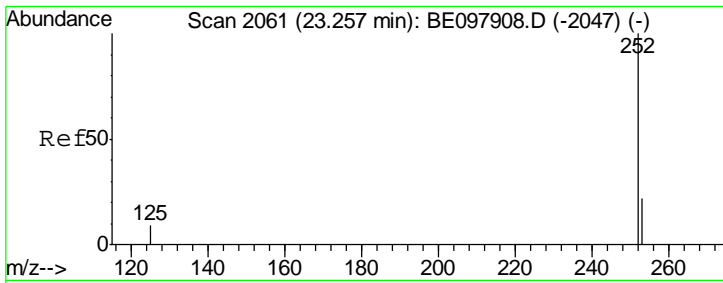
#34
 Perylene-d12
 Concen: 0.400 ng
 RT: 24.03 min Scan# 2278
 Delta R.T. -0.01 min
 Lab File: BE097986.D
 Acq: 19 Oct 2018 10:20



Tgt Ion: 264 Resp: 24094

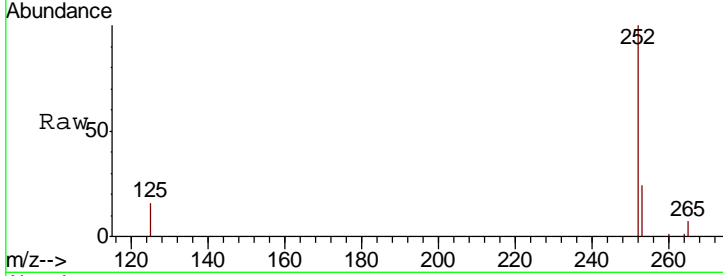
Ion	Ratio	Lower	Upper
264	100		
260	25.1	21.1	31.7
265	27.4	29.2	43.8#





#35
 Benzo(b)fluoranthene
 Concen: 0.268 ng
 RT: 23.25 min Scan# 2058
 Delta R.T. -0.01 min
 Lab File: BE097986.D
 Acq: 19 Oct 2018 10:20

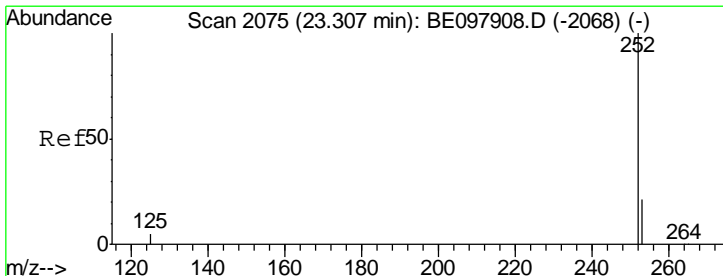
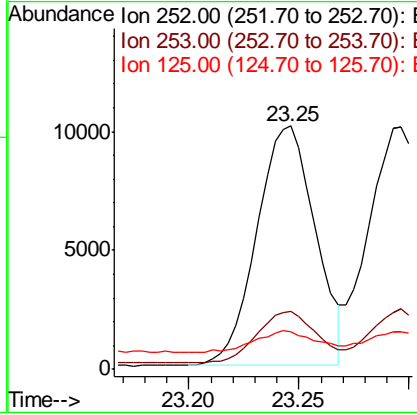
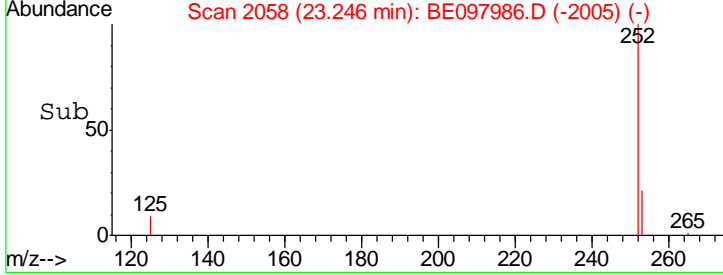
Instrument :
 BNA_E
 ClientSampled :
 PB113752BS



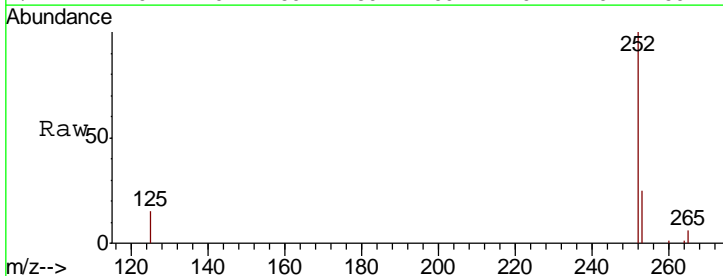
Tgt Ion: 252 Resp: 18562

Ion	Ratio	Lower	Upper
252	100		
253	23.8	20.6	31.0
125	15.6	14.3	21.5

Manual Integrations
 APPROVED
 Sohil
 10/22/2018 5:05:59 PM

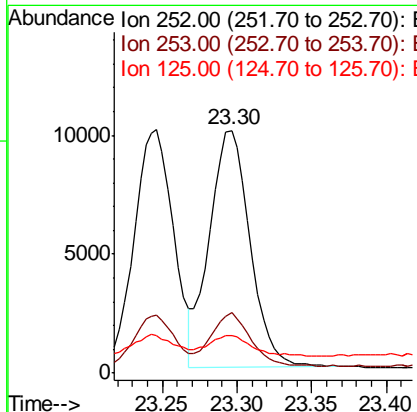
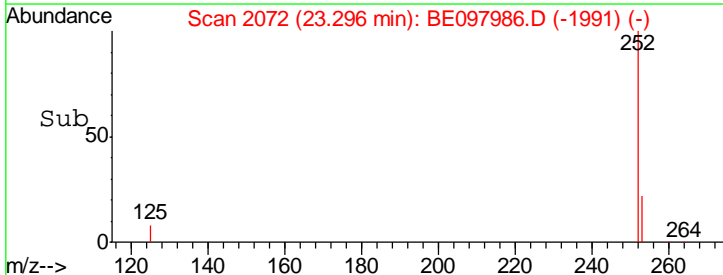


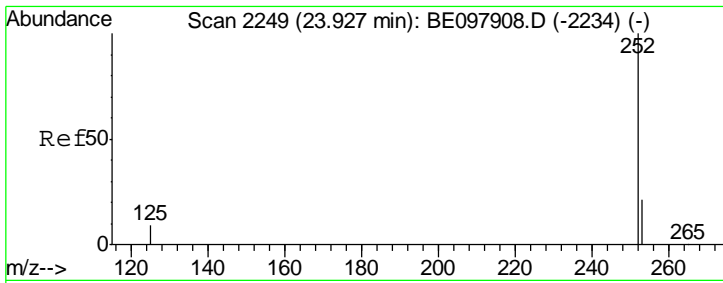
#36
 Benzo(k)fluoranthene
 Concen: 0.262 ng
 RT: 23.30 min Scan# 2072
 Delta R.T. -0.01 min
 Lab File: BE097986.D
 Acq: 19 Oct 2018 10:20



Tgt Ion: 252 Resp: 18916

Ion	Ratio	Lower	Upper
252	100		
253	24.8	20.4	30.6
125	15.5	14.6	21.8





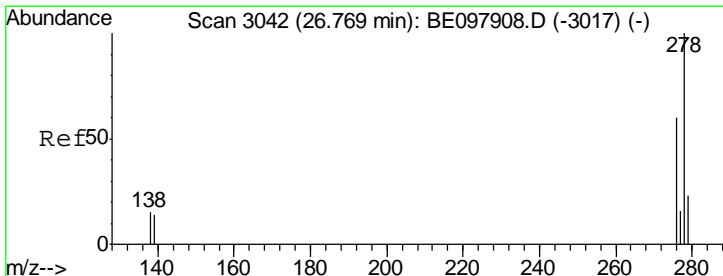
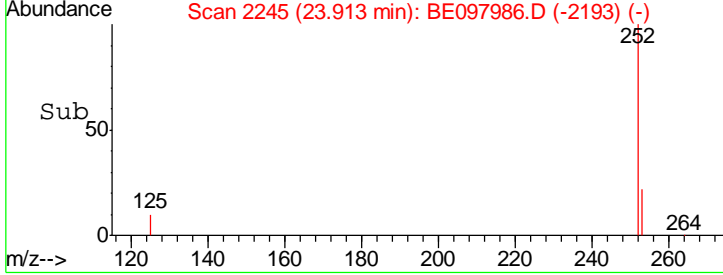
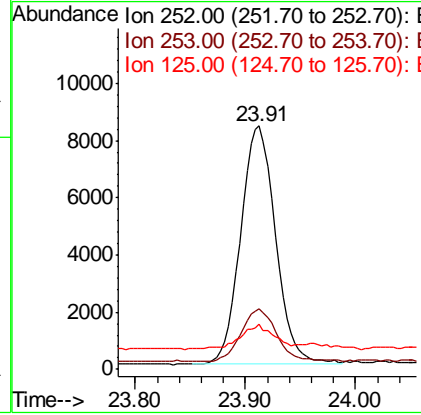
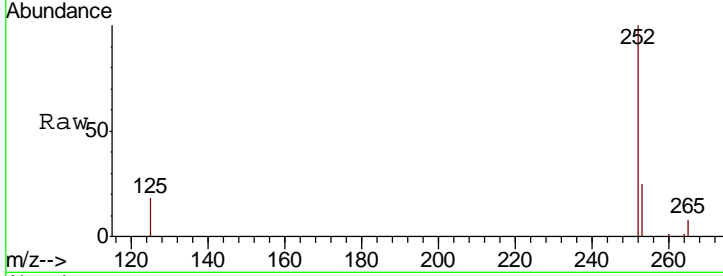
#37
 Benzo(a)pyrene
 Concen: 0.271 ng
 RT: 23.91 min Scan# 2245
 Delta R.T. -0.01 min
 Lab File: BE097986.D
 Acq: 19 Oct 2018 10:20

Instrument :
 BNA_E
 ClientSampled :
 PB113752BS

Tgt Ion	Resp	Lower	Upper
252	18311		
253	25.1	20.6	31.0
125	18.3	15.6	23.4

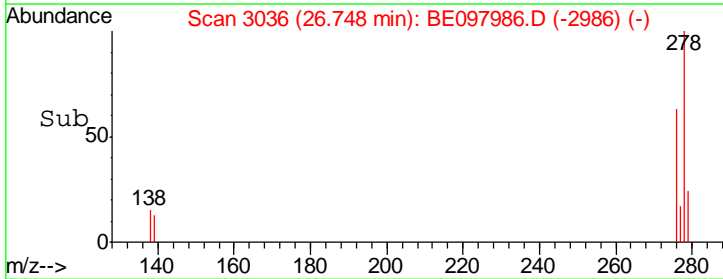
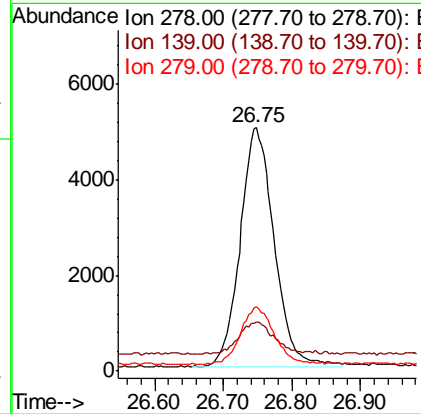
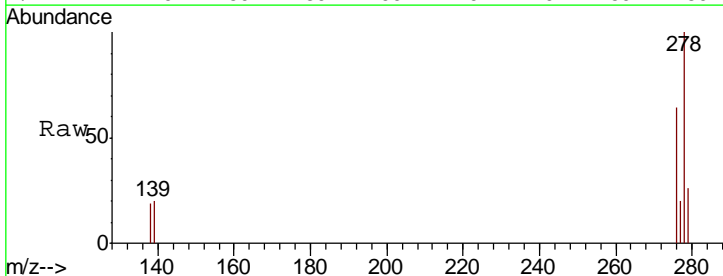
Manual Integrations
 APPROVED

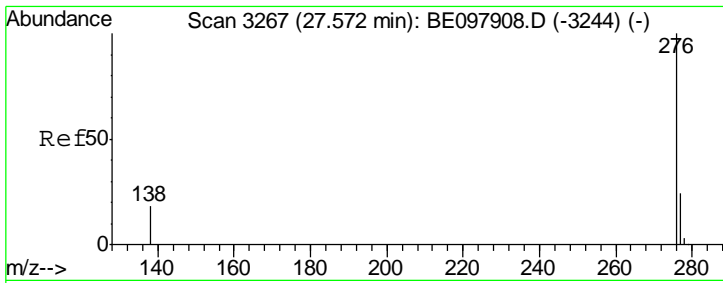
Sohil
 10/22/2018 5:05:59 PM



#38
 Dibenzo(a,h)anthracene
 Concen: 0.261 ng
 RT: 26.75 min Scan# 3036
 Delta R.T. -0.02 min
 Lab File: BE097986.D
 Acq: 19 Oct 2018 10:20

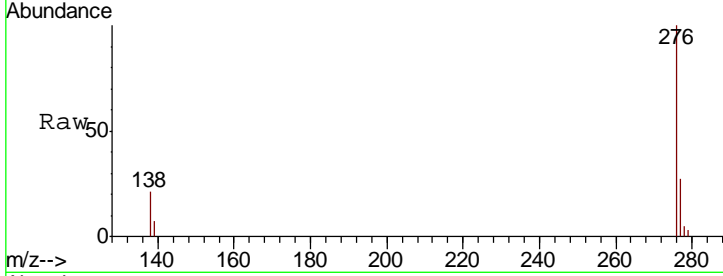
Tgt Ion	Resp	Lower	Upper
278	17278		
139	20.4	16.3	24.5
279	26.3	21.4	32.2





#39
 Benzo(a,h,i)perylene
 Concen: 0.260 ng
 RT: 27.55 min Scan# 3260
 Delta R.T. -0.02 min
 Lab File: BE097986.D
 Acq: 19 Oct 2018 10:20

Instrument :
 BNA_E
ClientSampled :
 PB113752BS



Tot Ion: 276 Resp: 17606

Ion	Ratio	Lower	Upper
276	100		
277	26.8	22.1	33.1
138	21.4	19.3	28.9

Manual Integrations
APPROVED
 Sohil
 10/22/2018 5:05:59 PM

