

Data Path : Z:\SVOASRV\HPCHEM1\BNA E\DATA\BE102819\
 Data File : BE100675.D
 Acq On : 28 Oct 2019 16:02
 Operator : JU
 Sample : SSTDCCC0.4
 Misc :
 ALS Vial : 2 Sample Multiplier: 1

Instrument :
 BNA_E
 ClientSampleId :
 SSTDCCC0.4

Quant Time: Oct 29 11:52:15 2019
 Quant Method : Z:\SVOASRV\HPCHEM1\BNA E\METHODS\8270-SIM-BE101019.M
 Quant Title : ASP BNA STANDARDS FOR 5 POINT CALIBRATION
 QLast Update : Wed Oct 23 16:49:33 2019
 Response via : Initial Calibration

Internal Standards	R.T.	QIon	Response	Conc	Units	Dev(Min)
1) 1,4-Dichlorobenzene-d4	7.85	152	3037	0.40	ng	0.00
7) Naphthalene-d8	10.63	136	12952	0.40	ng	0.00
13) Acenaphthene-d10	14.47	164	8038	0.40	ng	0.00
19) Phenanthrene-d10	17.19	188	18976	0.40	ng	-0.01
27) Chrysene-d12	21.35	240	25222	0.40	ng	0.00
34) Perylene-d12	23.83	264	30557	0.40	ng	0.00

System Monitoring Compounds

4) 2-Fluorophenol	5.44	112	3872	0.41	ng	0.00
5) Phenol-d6	7.01	99	5340	0.40	ng	0.00
8) Nitrobenzene-d5	8.99	82	4164	0.52	ng	0.00
11) 2-Methylnaphthalene-d10	12.22	152	8842	0.43	ng	0.00
14) 2,4,6-Tribromophenol	15.94	330	929	0.44	ng	0.00
15) 2-Fluorobiphenyl	13.10	172	12657	0.43	ng	0.00
25) Fluoranthene-d10	19.22	212	109278	0.45	ng	0.00
29) Terphenyl-d14	19.82	244	24437	0.44	ng	0.00

Target Compounds

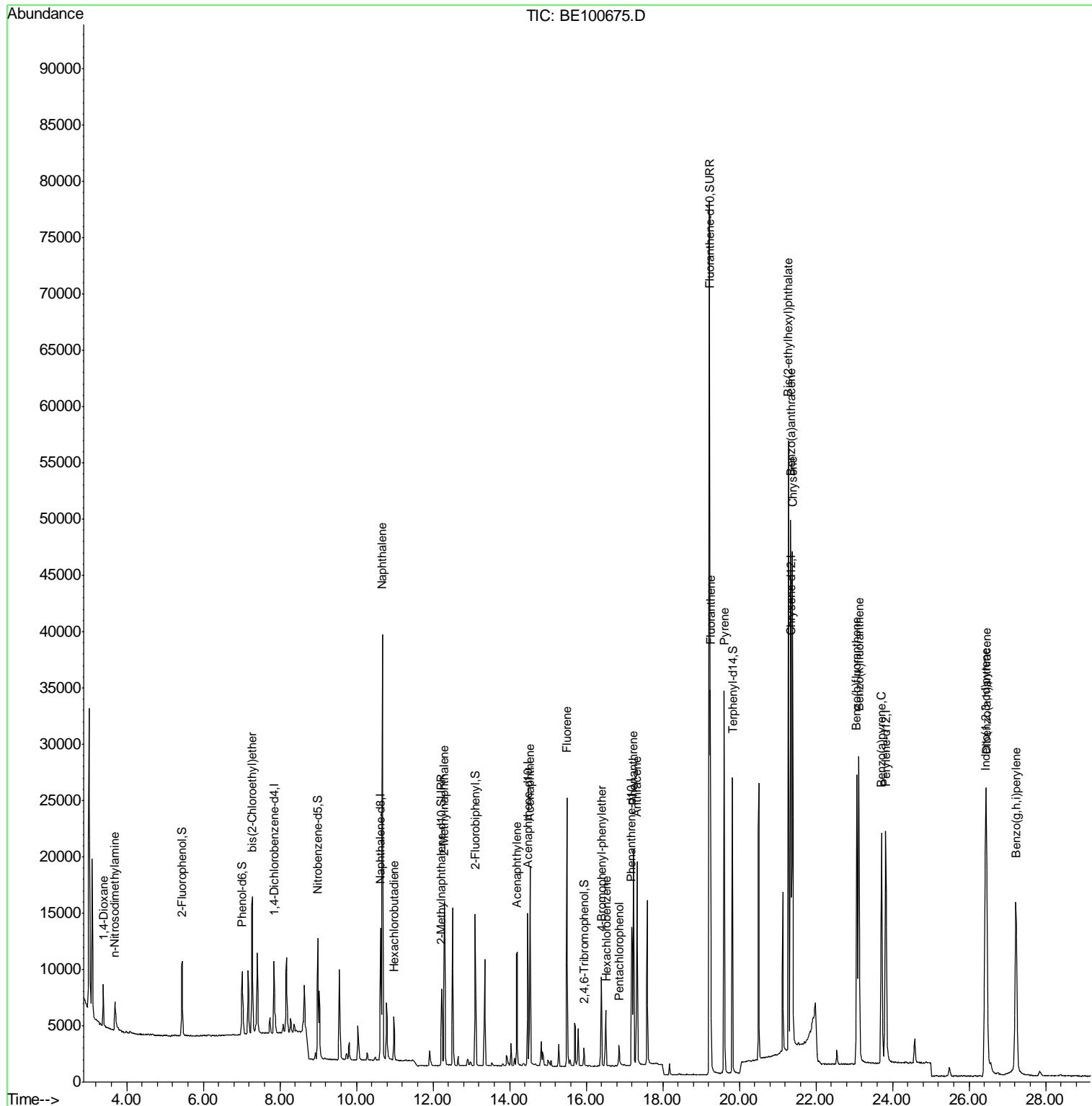
Target Compounds	R.T.	QIon	Response	Conc	Units	Qvalue
2) 1,4-Dioxane	3.38	88	2599	0.480	ng	96
3) n-Nitrosodimethylamine	3.69	42	2402	0.419	ng	99
6) bis(2-Chloroethyl)ether	7.27	93	4959	0.457	ng	99
9) Naphthalene	10.68	128	60748	0.446	ng	100
10) Hexachlorobutadiene	10.98	225	2716	0.459	ng	98
12) 2-Methylnaphthalene	12.30	142	10328	0.445	ng	99
16) Acenaphthylene	14.20	152	14661	0.424	ng	100
17) Acenaphthene	14.53	154	9782	0.438	ng	99
18) Fluorene	15.50	166	12927	0.435	ng	98
20) 4-Bromophenyl-phenylether	16.40	248	4247	0.440	ng	96
21) Hexachlorobenzene	16.52	284	4102	0.446	ng	98
22) Pentachlorophenol	16.85	266	1129	0.381	ng	98
23) Phenanthrene	17.23	178	23247	0.445	ng	99
24) Anthracene	17.32	178	20045	0.414	ng	99
26) Fluoranthene	19.25	202	30925	0.454	ng	100
28) Pyrene	19.60	202	31752	0.451	ng	100
30) Benzo(a)anthracene	21.34	228	36216	0.440	ng	99
31) Chrysene	21.39	228	37605	0.457	ng	99
32) Bis(2-ethylhexyl)phthalate	21.28	149	61994	0.360	ng	100
33) Indeno(1,2,3-cd)pyrene	26.42	276	44429	0.440	ng	99
35) Benzo(b)fluoranthene	23.07	252	38222	0.429	ng	98
36) Benzo(k)fluoranthene	23.12	252	39745	0.434	ng	98
37) Benzo(a)pyrene	23.72	252	34862	0.420	ng	99
38) Dibenzo(a,h)anthracene	26.46	278	36939	0.431	ng	99
39) Benzo(g,h,i)perylene	27.22	276	38186	0.443	ng	99

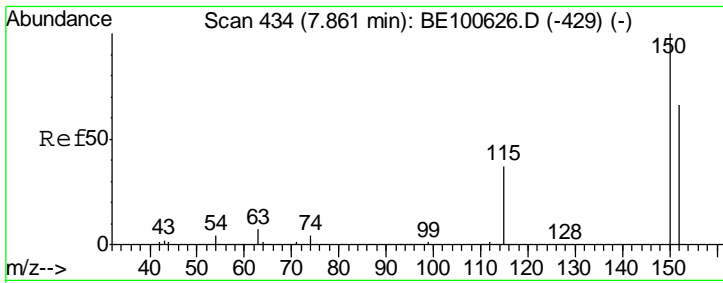
(#) = qualifier out of range (m) = manual integration (+) = signals summed

Data Path : Z:\SVOASRV\HPCHEM1\BNA E\DATA\BE102819\
 Data File : BE100675.D
 Acq On : 28 Oct 2019 16:02
 Operator : JU
 Sample : SSTDCCC0.4
 Misc :
 ALS Vial : 2 Sample Multiplier: 1

Instrument :
 BNA_E
 Client Sampled :
 SSTDCCC0.4

Quant Time: Oct 29 11:52:15 2019
 Quant Method : Z:\SVOASRV\HPCHEM1\BNA E\METHODS\8270-SIM-BE101019.M
 Quant Title : ASP BNA STANDARDS FOR 5 POINT CALIBRATION
 QLast Update : Wed Oct 23 16:49:33 2019
 Response via : Initial Calibration



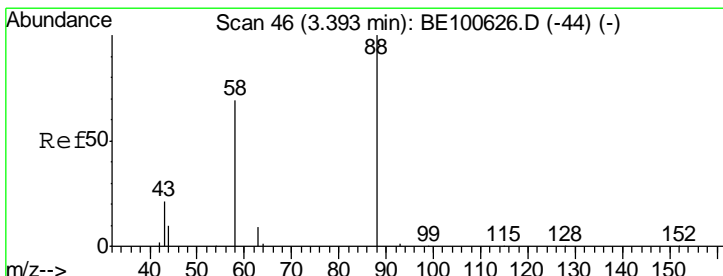
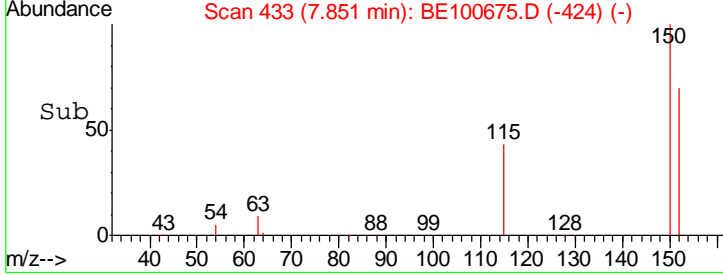
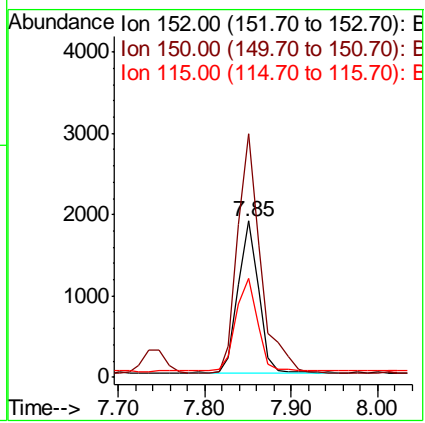
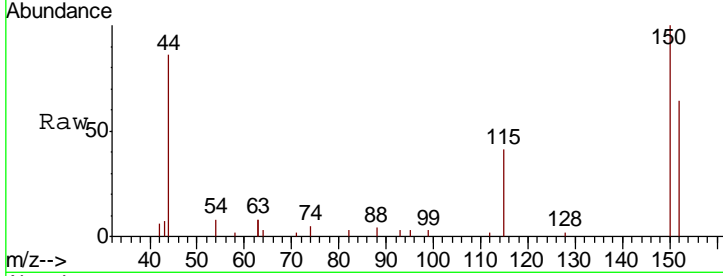


#1
 1,4-Dichlorobenzene-d4
 Concen: 0.400 ng
 RT: 7.85 min Scan# 433
 Delta R.T. 0.00 min
 Lab File: BE100675.D
 Acq: 28 Oct 2019 16:02

Instrument :
 BNA_E
ClientSampleId :
 SSTDCCC0.4

Tgt Ion: 152 Resp: 3037

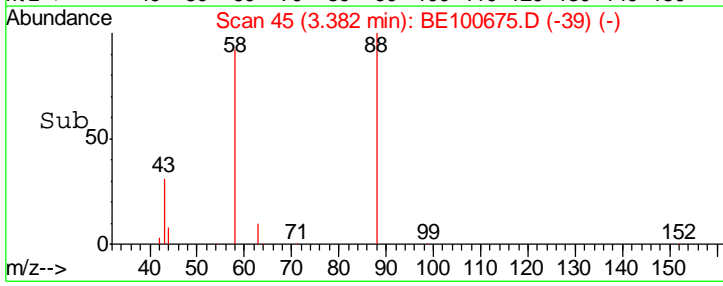
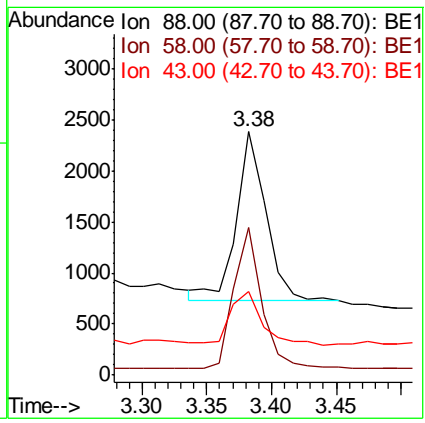
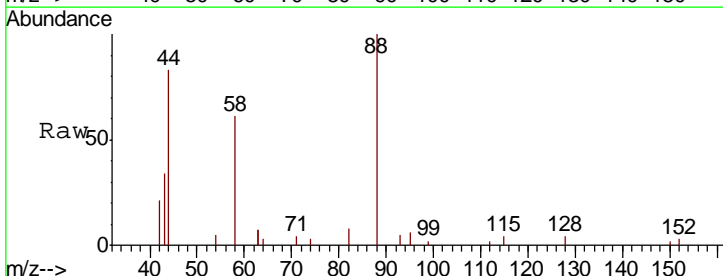
Ion	Ratio	Lower	Upper
152	100		
150	155.7	123.3	184.9
115	63.4	51.9	77.9

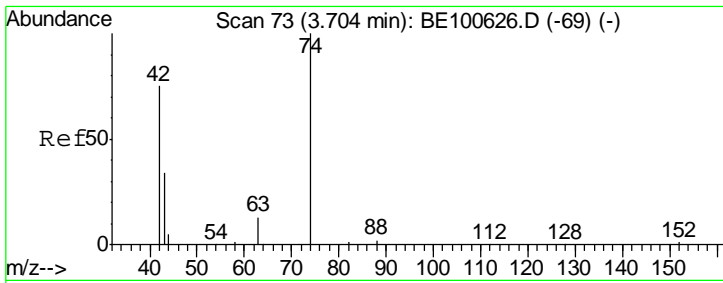


#2
 1,4-Dioxane
 Concen: 0.480 ng
 RT: 3.38 min Scan# 45
 Delta R.T. 0.00 min
 Lab File: BE100675.D
 Acq: 28 Oct 2019 16:02

Tgt Ion: 88 Resp: 2599

Ion	Ratio	Lower	Upper
88	100		
58	78.3	59.8	89.6
43	33.4	24.6	36.8

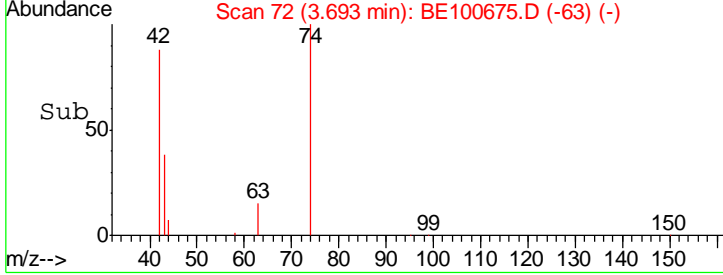
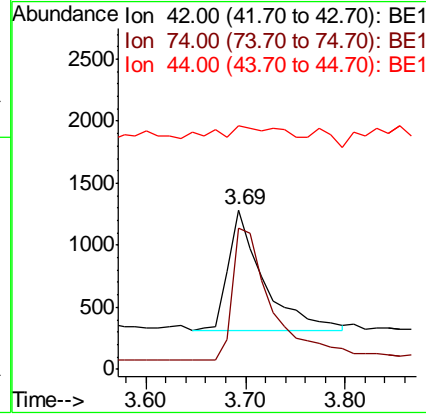
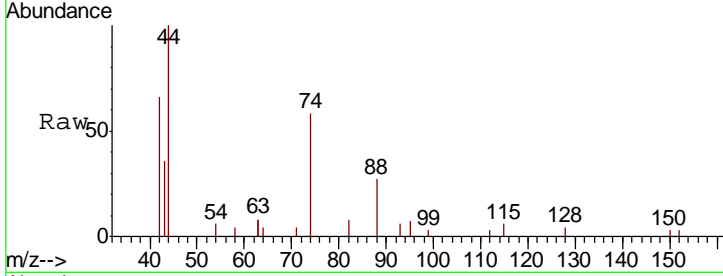




#3
 n-Nitrosodimethylamine
 Concen: 0.419 ng
 RT: 3.69 min Scan# 72
 Delta R.T. 0.00 min
 Lab File: BE100675.D
 Acq: 28 Oct 2019 16:02

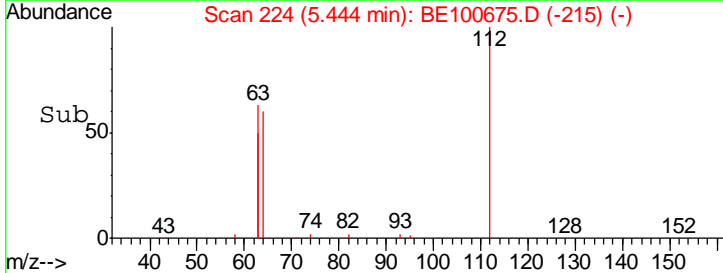
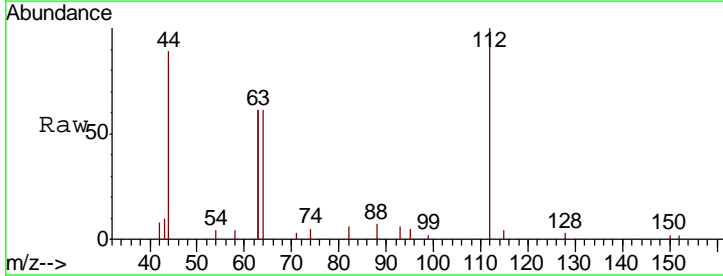
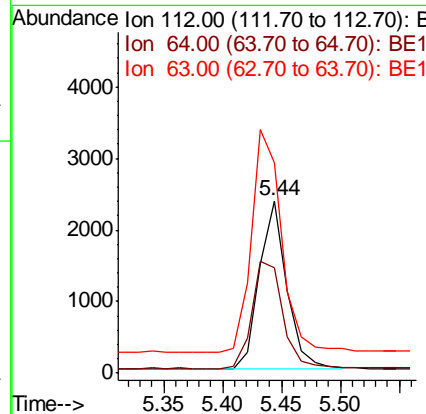
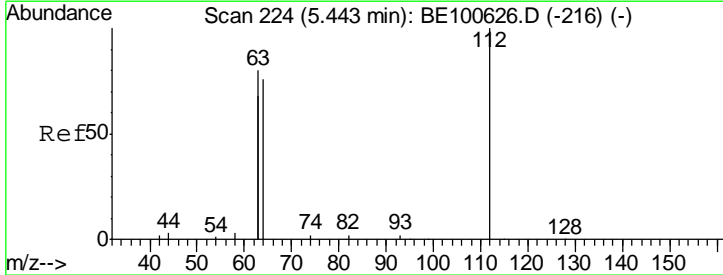
Instrument :
 BNA_E
ClientSampled :
 SSTDCCC0.4

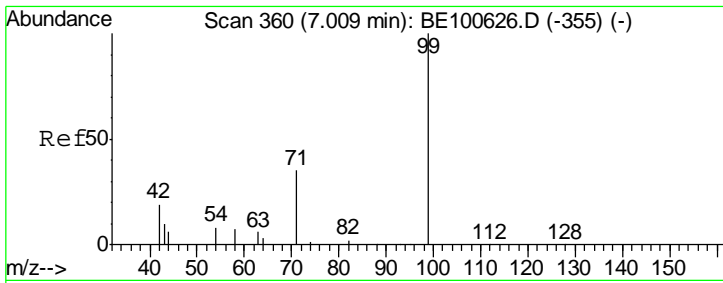
Tgt Ion	Resp	Lower	Upper
42	100		
74	121.7	97.2	145.8
44	16.7	16.6	24.8



#4
 2-Fluorophenol
 Concen: 0.413 ng
 RT: 5.44 min Scan# 224
 Delta R.T. 0.00 min
 Lab File: BE100675.D
 Acq: 28 Oct 2019 16:02

Tgt Ion	Resp	Lower	Upper
112	100		
64	71.4	55.4	83.2
63	143.5	114.2	171.4

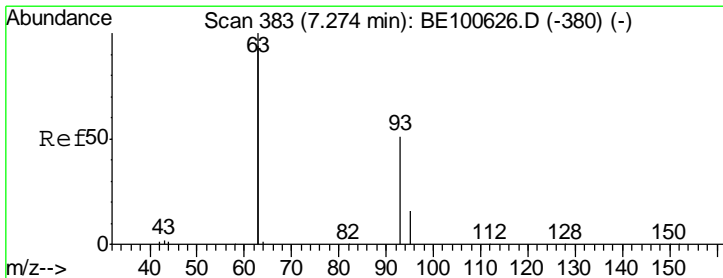
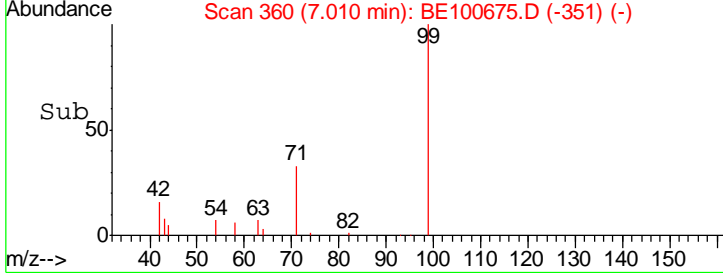
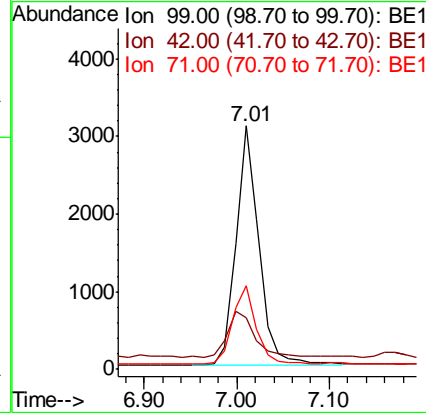
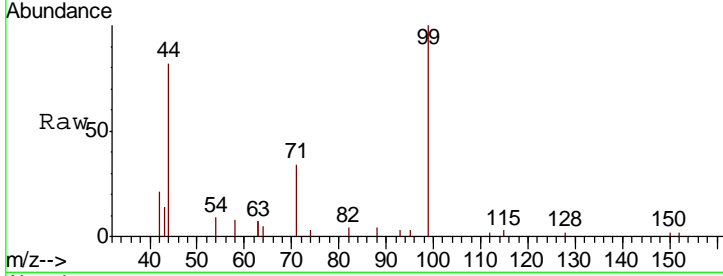




#5
 Phenol-d6
 Concen: 0.404 ng
 RT: 7.01 min Scan# 360
 Delta R.T. 0.00 min
 Lab File: BE100675.D
 Acq: 28 Oct 2019 16:02

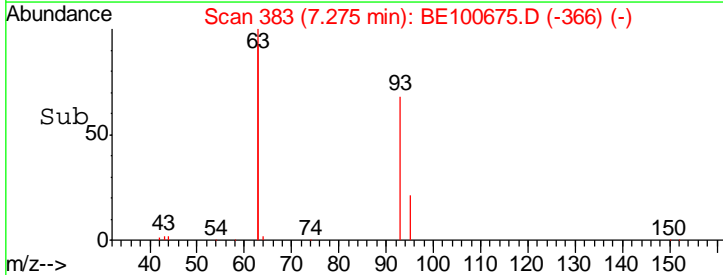
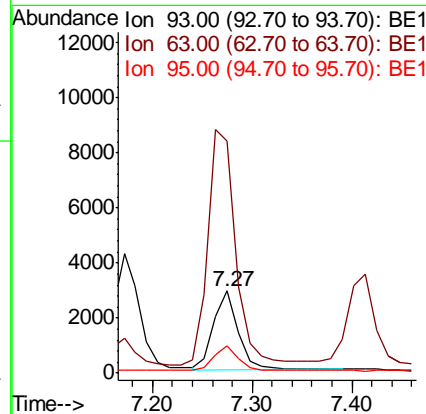
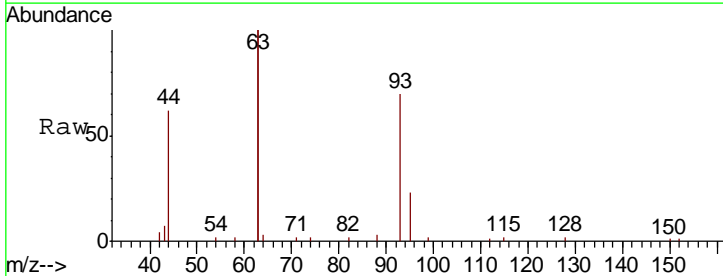
Instrument :
 BNA_E
ClientSampleId :
 SSTDCCC0.4

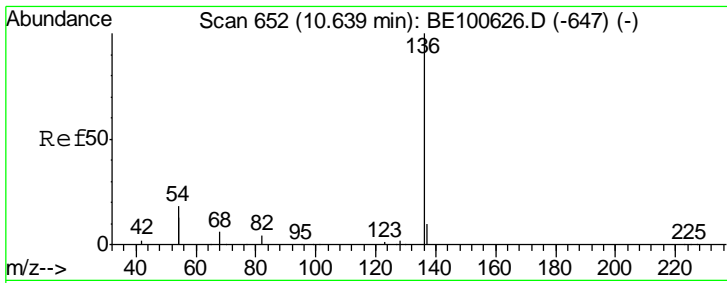
Tgt Ion	Resp	Lower	Upper
99	5340		
42	23.2	17.7	26.5
71	33.4	27.4	41.0



#6
 bis(2-Chloroethyl)ether
 Concen: 0.457 ng
 RT: 7.27 min Scan# 383
 Delta R.T. 0.00 min
 Lab File: BE100675.D
 Acq: 28 Oct 2019 16:02

Tgt Ion	Resp	Lower	Upper
93	4959		
63	334.8	268.8	403.2
95	30.6	25.6	38.4

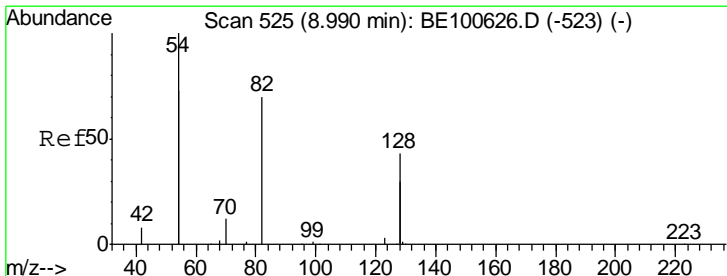
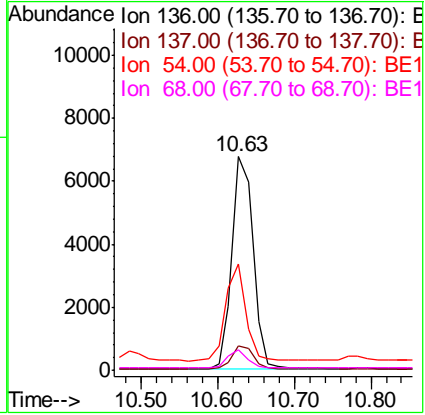
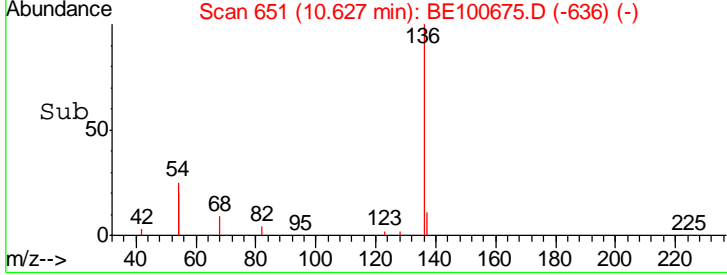
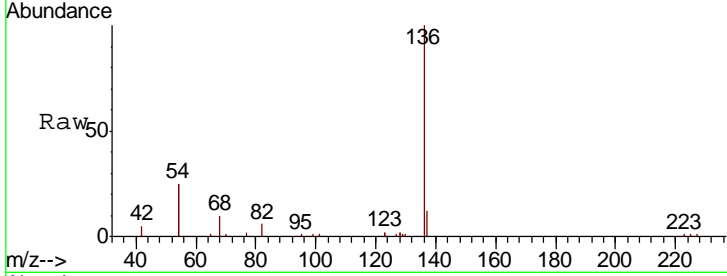




#7
 Naphthalene-d8
 Concen: 0.400 ng
 RT: 10.63 min Scan# 651
 Delta R.T. -0.00 min
 Lab File: BE100675.D
 Acq: 28 Oct 2019 16:02

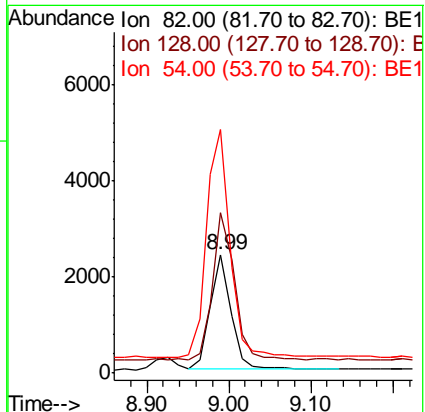
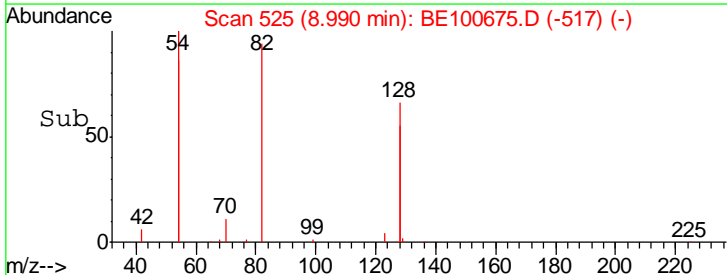
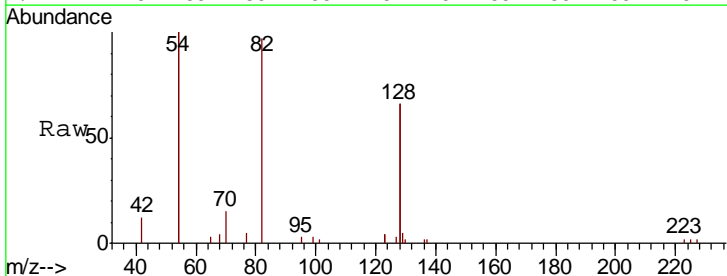
Instrument :
 BNA_E
ClientSampleId :
 SSTDCCC0.4

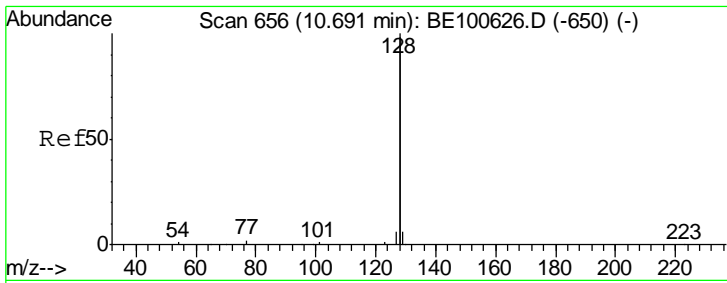
Tgt Ion	Resp	Lower	Upper
136	12952		
137	11.6	9.2	13.8
54	49.5	39.4	59.2
68	9.6	8.0	12.0



#8
 Nitrobenzene-d5
 Concen: 0.519 ng
 RT: 8.99 min Scan# 525
 Delta R.T. -0.00 min
 Lab File: BE100675.D
 Acq: 28 Oct 2019 16:02

Tgt Ion	Resp	Lower	Upper
82	4164		
82	100		
128	135.5	107.8	161.8
54	205.7	166.1	249.1



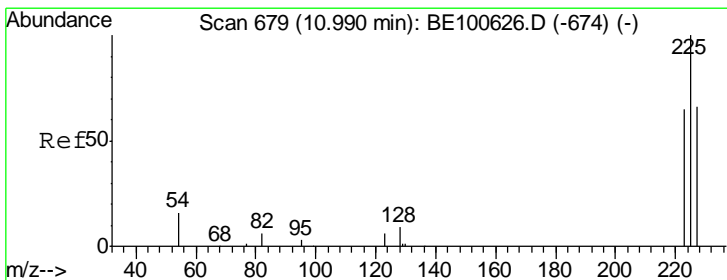
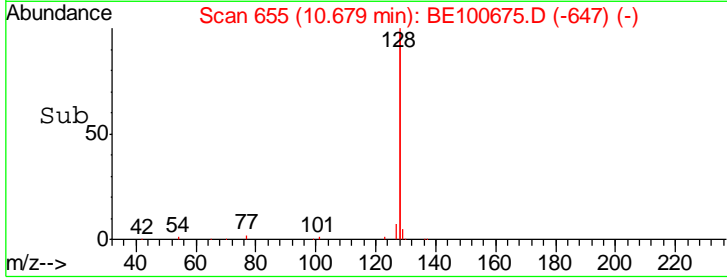
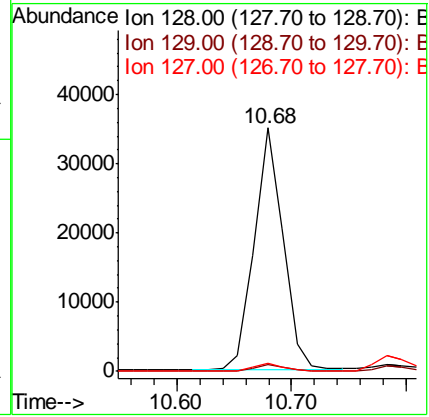
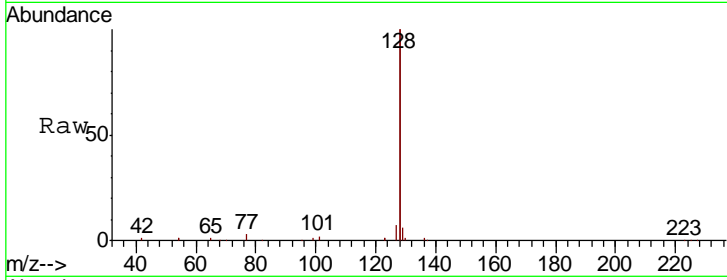


#9
 Naphthalene
 Concen: 0.446 ng
 RT: 10.68 min Scan# 655
 Delta R.T. -0.00 min
 Lab File: BE100675.D
 Acq: 28 Oct 2019 16:02

Instrument :
 BNA_E
 ClientSampleId :
 SSTDCCC0.4

Tgt Ion: 128 Resp: 60748

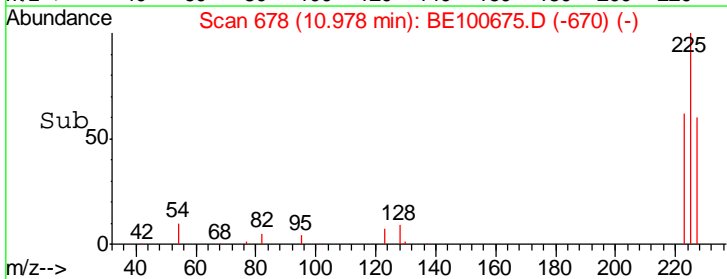
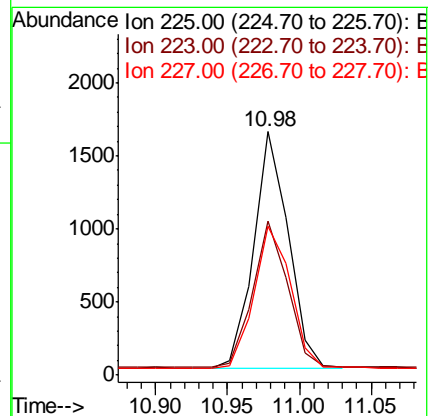
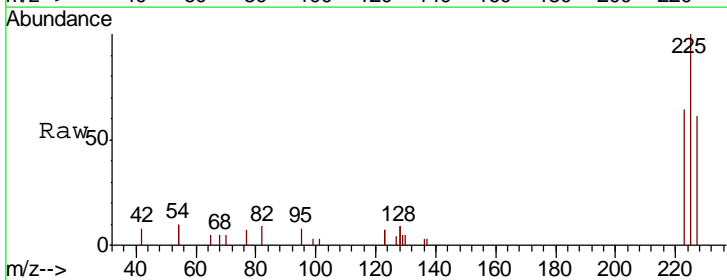
Ion	Ratio	Lower	Upper
128	100		
129	2.8	2.3	3.5
127	3.4	2.7	4.1

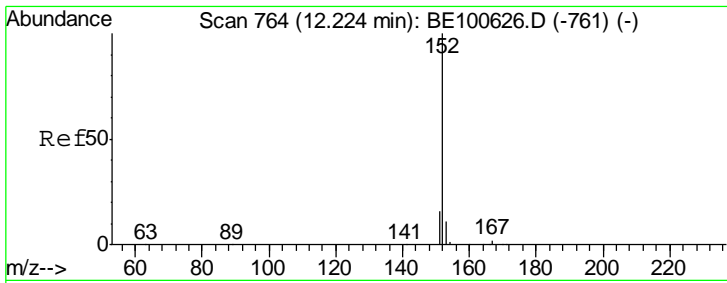


#10
 Hexachlorobutadiene
 Concen: 0.459 ng
 RT: 10.98 min Scan# 678
 Delta R.T. -0.00 min
 Lab File: BE100675.D
 Acq: 28 Oct 2019 16:02

Tgt Ion: 225 Resp: 2716

Ion	Ratio	Lower	Upper
225	100		
223	62.5	48.6	72.8
227	63.2	51.6	77.4

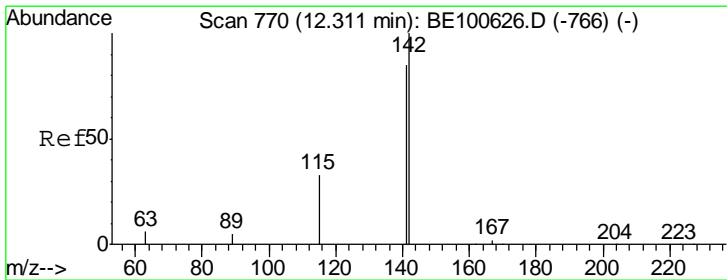
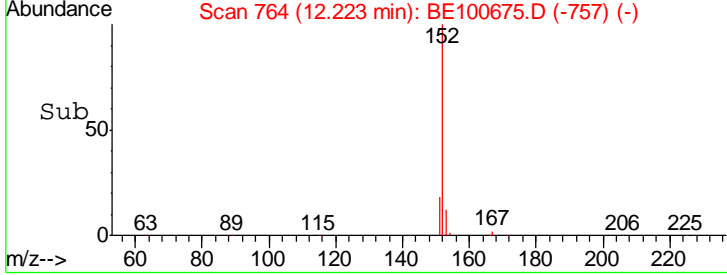
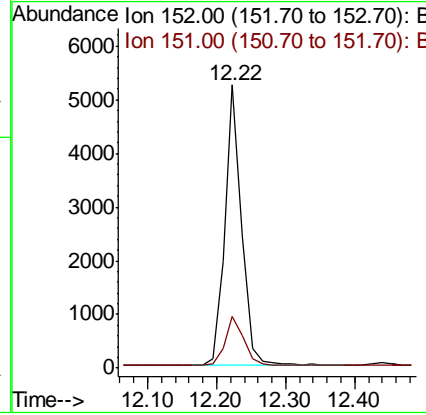
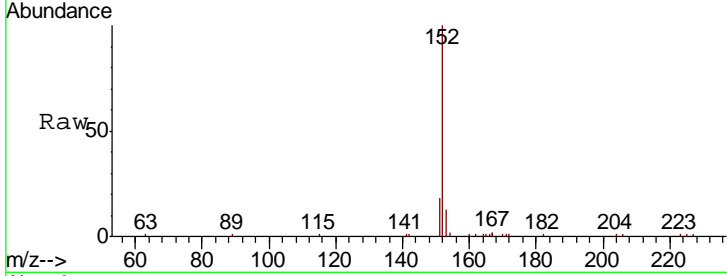




#11
 2-Methylnaphthalene-d10
 Concen: 0.433 ng
 RT: 12.22 min Scan# 764
 Delta R.T. -0.00 min
 Lab File: BE100675.D
 Acq: 28 Oct 2019 16:02

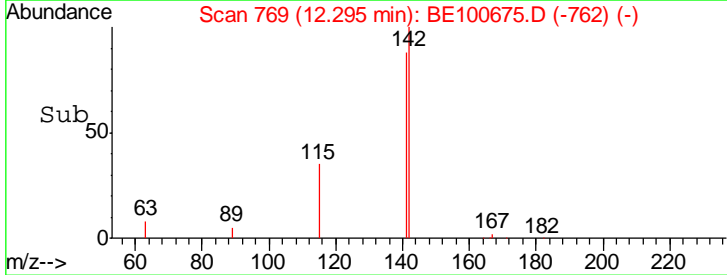
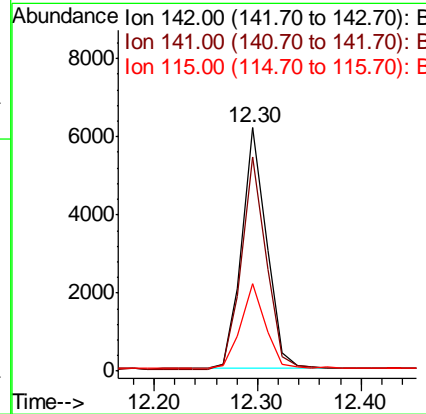
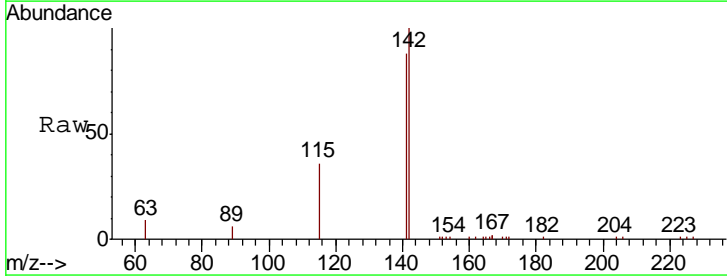
Instrument :
 BNA_E
 ClientSampleId :
 SSTDCCC0.4

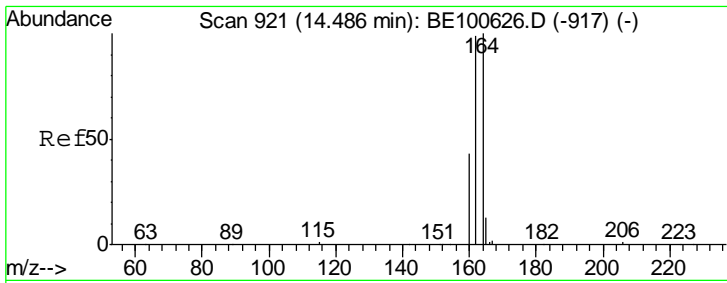
Tgt Ion	Resp	Lower	Upper
152	100		
151	19.4	14.7	22.1



#12
 2-Methylnaphthalene
 Concen: 0.445 ng
 RT: 12.30 min Scan# 769
 Delta R.T. -0.00 min
 Lab File: BE100675.D
 Acq: 28 Oct 2019 16:02

Tgt Ion	Resp	Lower	Upper
142	100		
141	88.2	70.1	105.1
115	36.1	28.3	42.5

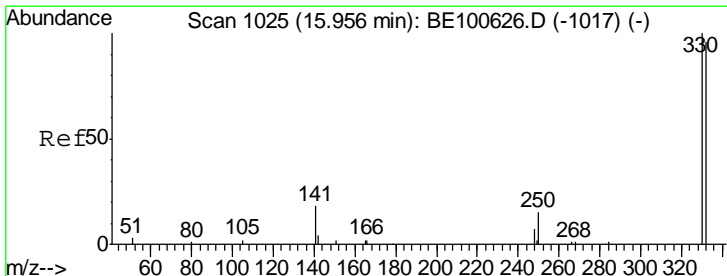
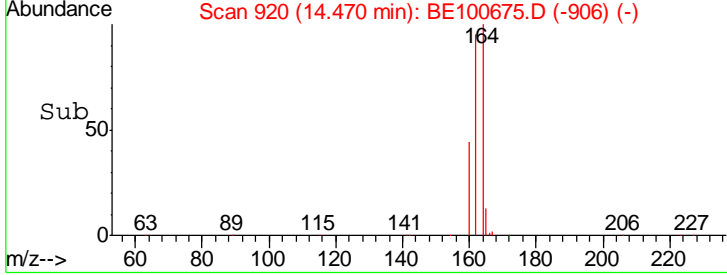
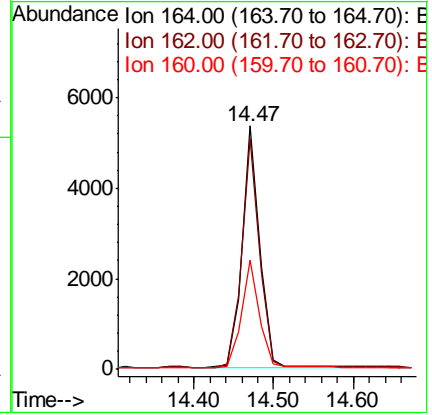
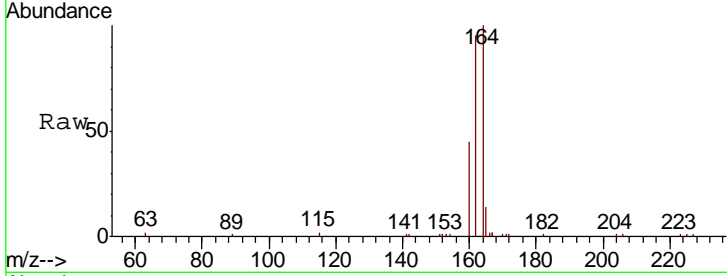




#13
 Acenaphthene-d10
 Concen: 0.400 ng
 RT: 14.47 min Scan# 920
 Delta R.T. -0.00 min
 Lab File: BE100675.D
 Acq: 28 Oct 2019 16:02

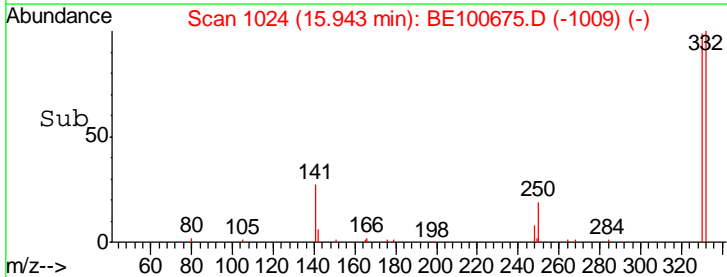
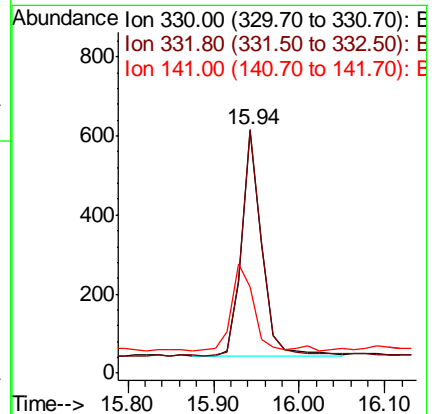
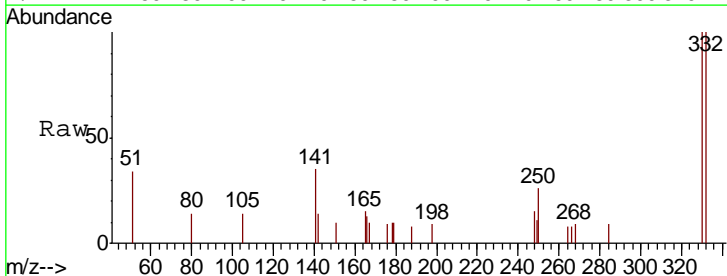
Instrument :
 BNA_E
 ClientSampleId :
 SSTDCCC0.4

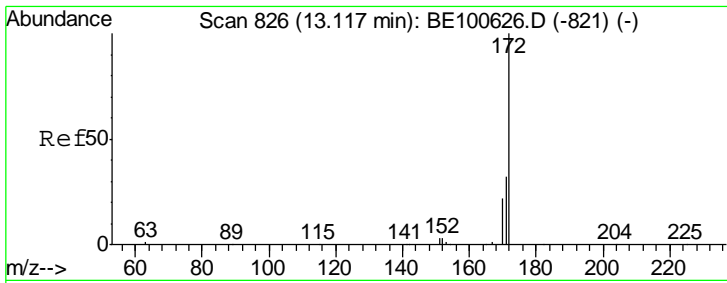
Tgt Ion	Resp	Lower	Upper
164	100		
162	95.0	82.0	123.0
160	44.7	37.5	56.3



#14
 2,4,6-Tribromophenol
 Concen: 0.437 ng
 RT: 15.94 min Scan# 1024
 Delta R.T. 0.00 min
 Lab File: BE100675.D
 Acq: 28 Oct 2019 16:02

Tgt Ion	Resp	Lower	Upper
330	100		
332	98.7	77.9	116.9
141	41.9	33.0	49.6

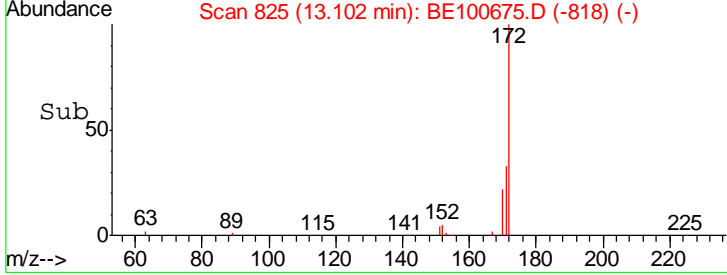
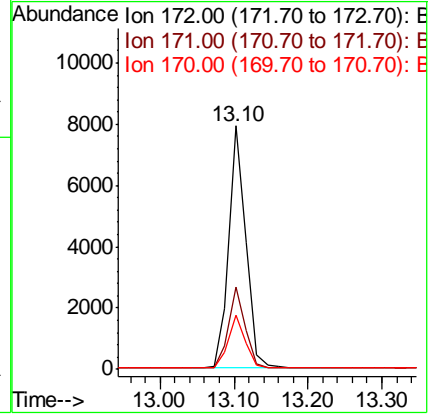
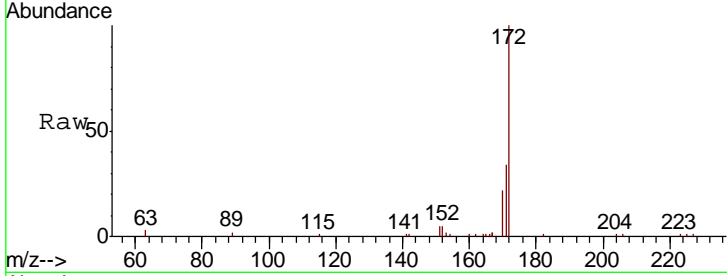




#15
 2-Fluorobiphenyl
 Concen: 0.432 ng
 RT: 13.10 min Scan# 825
 Delta R.T. -0.00 min
 Lab File: BE100675.D
 Acq: 28 Oct 2019 16:02

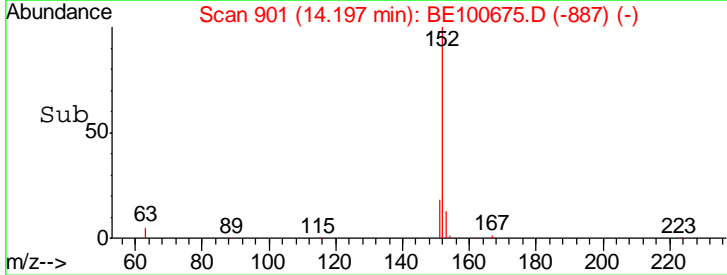
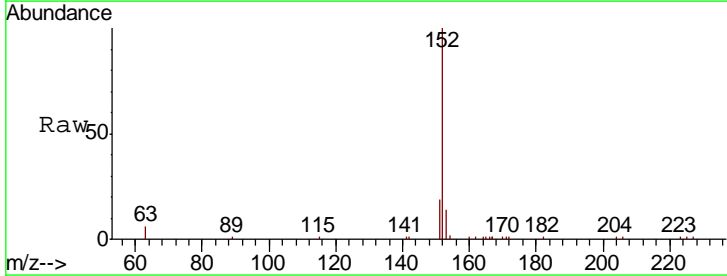
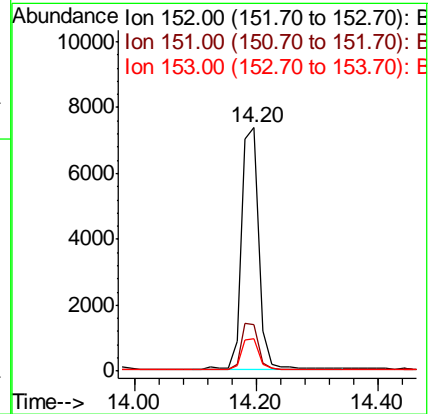
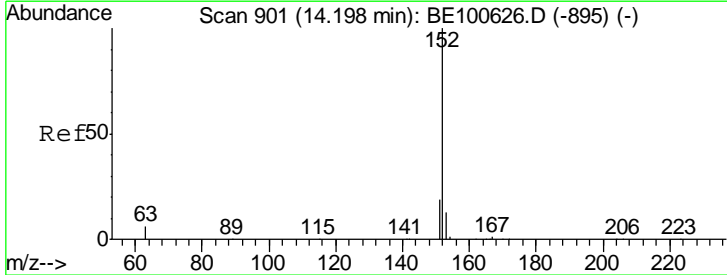
Instrument :
 BNA_E
ClientSampleId :
 SSTDCCC0.4

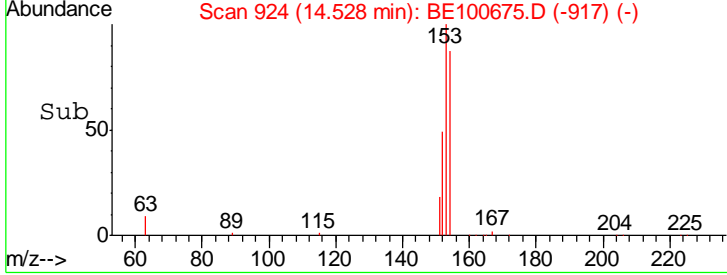
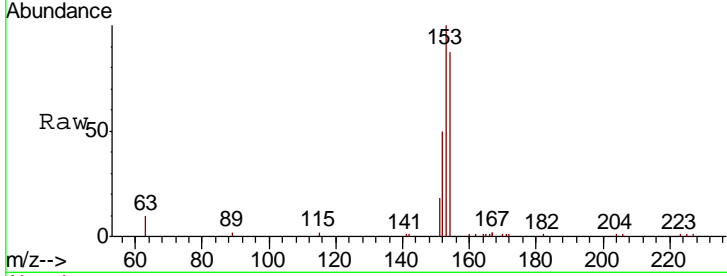
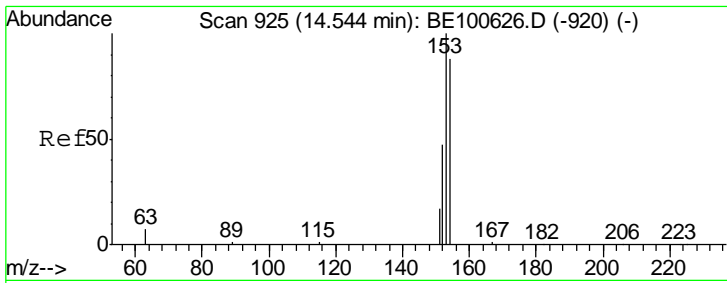
Tgt Ion	Resp	Lower	Upper
172	12657		
171	33.6	26.5	39.7
170	22.3	19.0	28.4



#16
 Acenaphthylene
 Concen: 0.424 ng
 RT: 14.20 min Scan# 901
 Delta R.T. -0.00 min
 Lab File: BE100675.D
 Acq: 28 Oct 2019 16:02

Tgt Ion	Resp	Lower	Upper
152	14661		
151	19.1	15.2	22.8
153	13.0	10.3	15.5

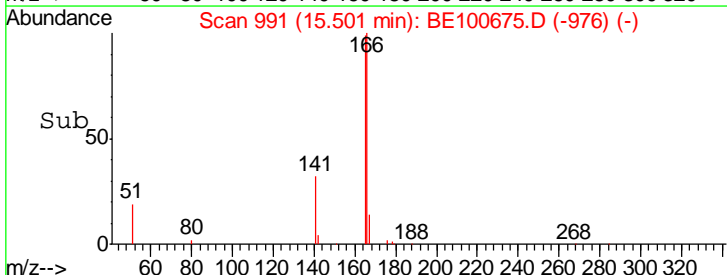
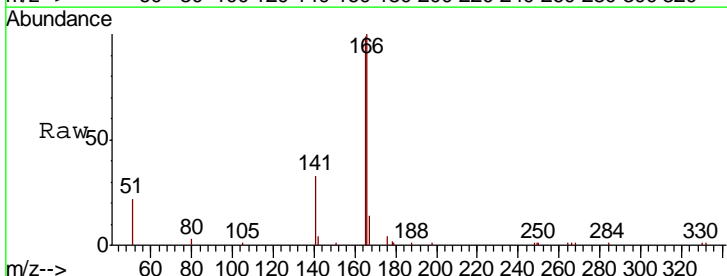
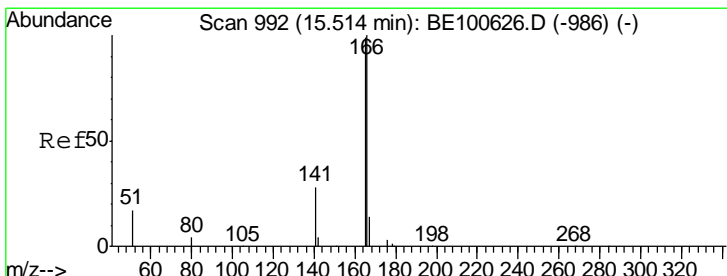
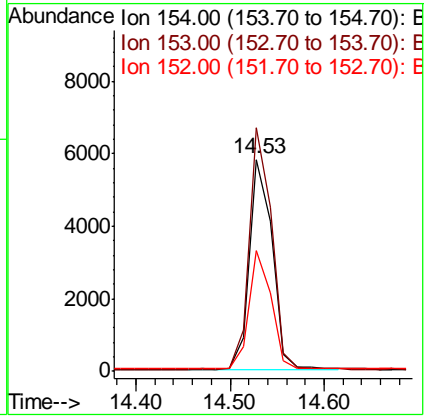




#17
 Acenaphthene
 Concen: 0.438 ng
 RT: 14.53 min Scan# 924
 Delta R.T. -0.00 min
 Lab File: BE100675.D
 Acq: 28 Oct 2019 16:02

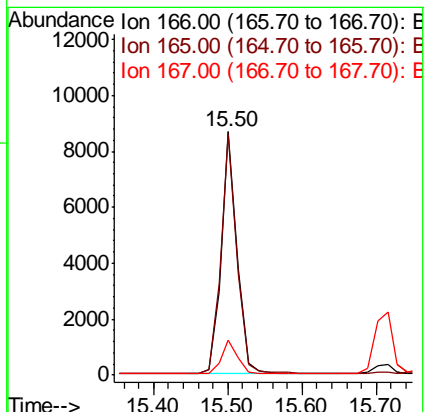
Instrument :
 BNA_E
 ClientSampleId :
 SSTDCCC0.4

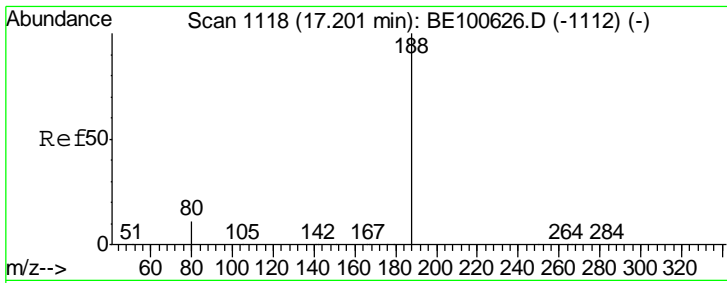
Tgt Ion	Resp	Lower	Upper
154	100		
153	113.4	89.4	134.2
152	55.6	44.1	66.1



#18
 Fluorene
 Concen: 0.435 ng
 RT: 15.50 min Scan# 991
 Delta R.T. 0.00 min
 Lab File: BE100675.D
 Acq: 28 Oct 2019 16:02

Tgt Ion	Resp	Lower	Upper
166	100		
165	100.1	78.6	117.8
167	13.9	10.9	16.3

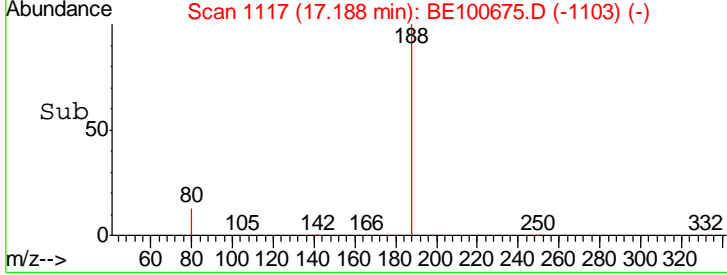
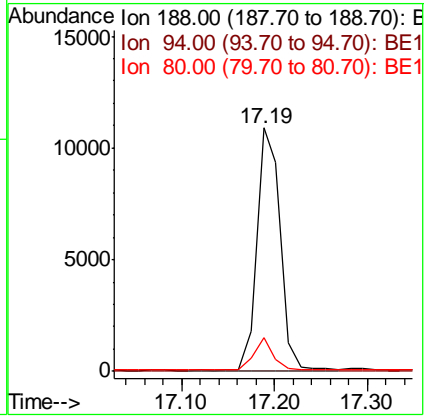
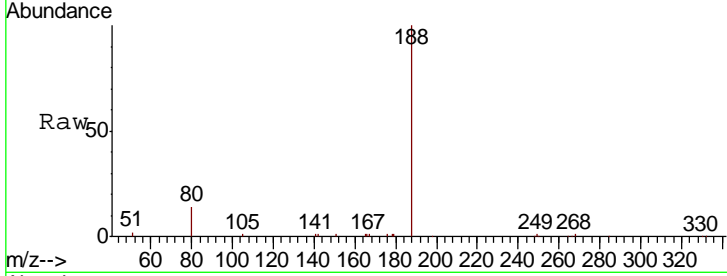




#19
 Phenanthrene-d10
 Concen: 0.400 ng
 RT: 17.19 min Scan# 1117
 Delta R.T. -0.01 min
 Lab File: BE100675.D
 Acq: 28 Oct 2019 16:02

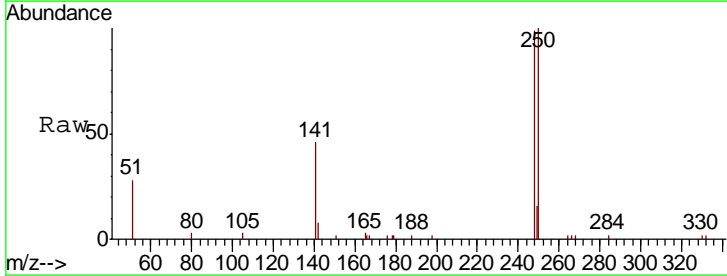
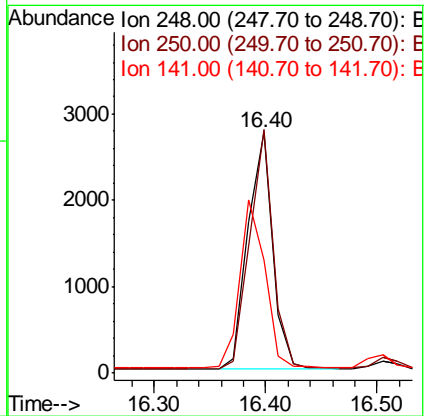
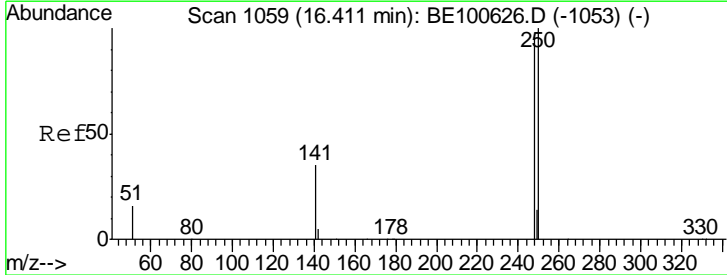
Instrument :
 BNA_E
 ClientSampleId :
 SSTDCCC0.4

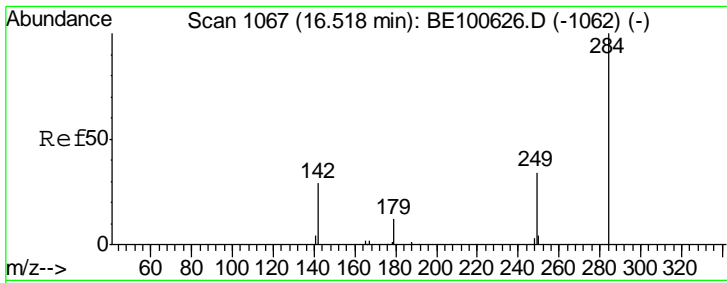
Tgt Ion	Resp	Lower	Upper
188	18976		
94	0.0	0.0	0.0
80	13.7	5.4	8.0#



#20
 4-Bromophenyl-phenylether
 Concen: 0.440 ng
 RT: 16.40 min Scan# 1058
 Delta R.T. 0.00 min
 Lab File: BE100675.D
 Acq: 28 Oct 2019 16:02

Tgt Ion	Resp	Lower	Upper
248	4247		
250	101.2	76.3	114.5
141	46.7	37.3	55.9

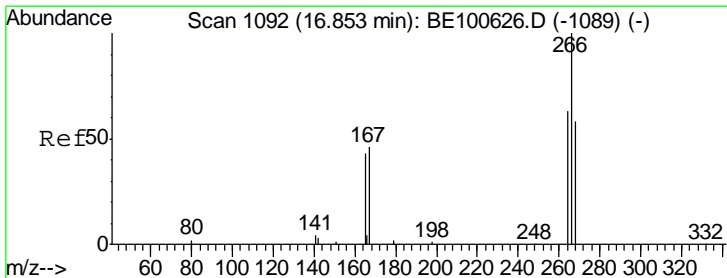
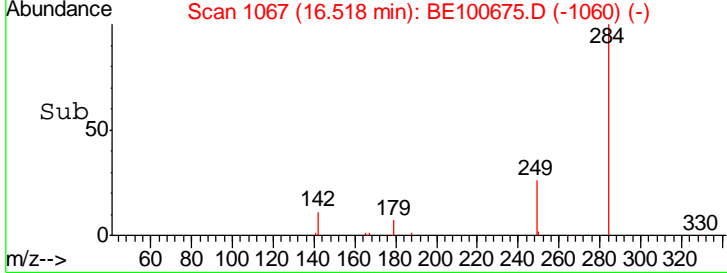
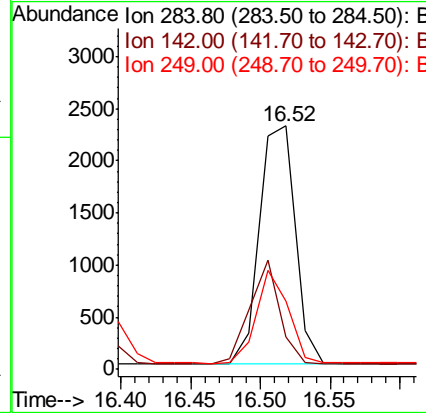
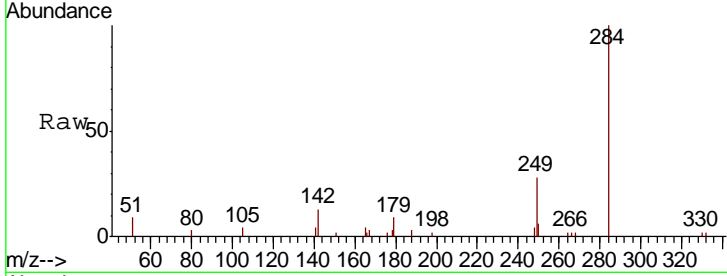




#21
 Hexachlorobenzene
 Concen: 0.446 ng
 RT: 16.52 min Scan# 1067
 Delta R.T. 0.00 min
 Lab File: BE100675.D
 Acq: 28 Oct 2019 16:02

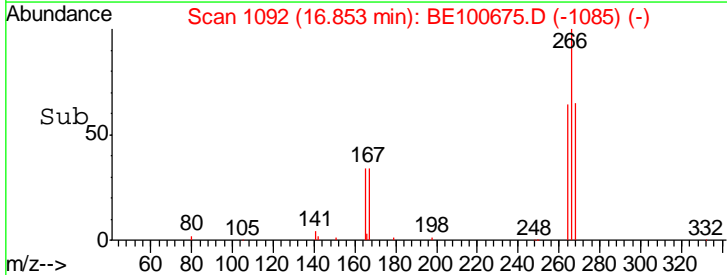
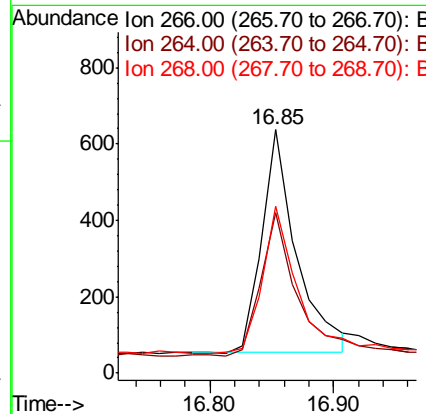
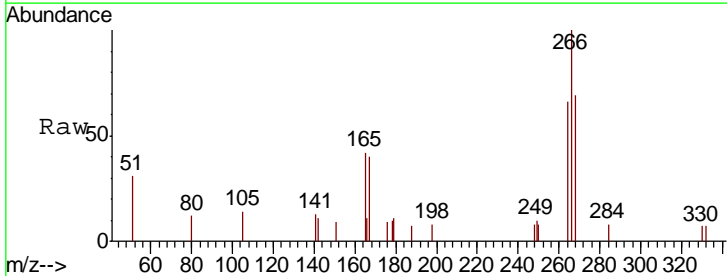
Instrument : BNA_E
 ClientSampleId : SSTDCCC0.4

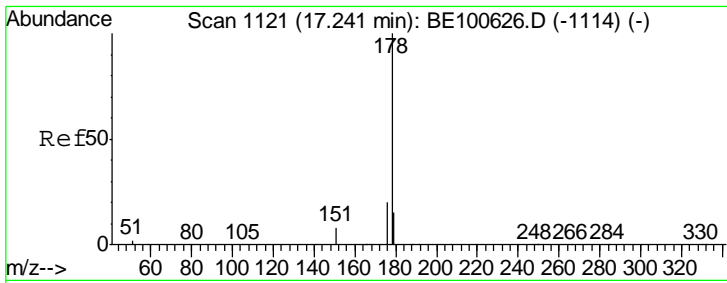
Tgt Ion	Resp	Lower	Upper
284	4102		
142	35.5	28.6	42.8
249	34.6	26.3	39.5



#22
 Pentachlorophenol
 Concen: 0.381 ng
 RT: 16.85 min Scan# 1092
 Delta R.T. 0.00 min
 Lab File: BE100675.D
 Acq: 28 Oct 2019 16:02

Tgt Ion	Resp	Lower	Upper
266	1129		
264	65.8	52.2	78.4
268	68.7	53.1	79.7

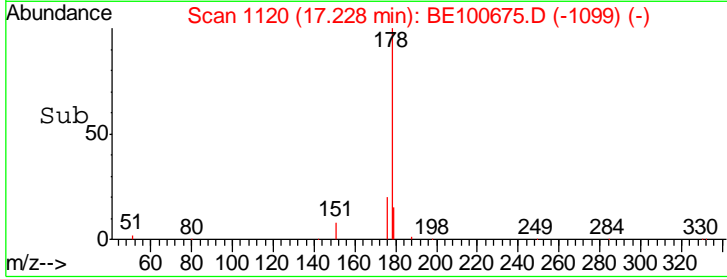
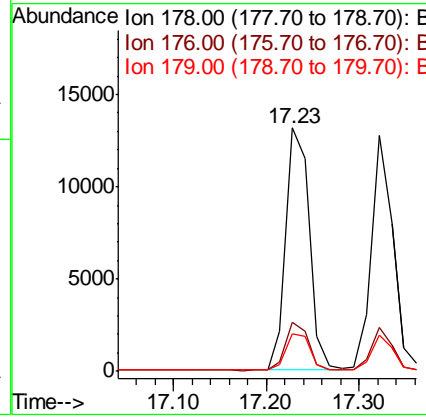
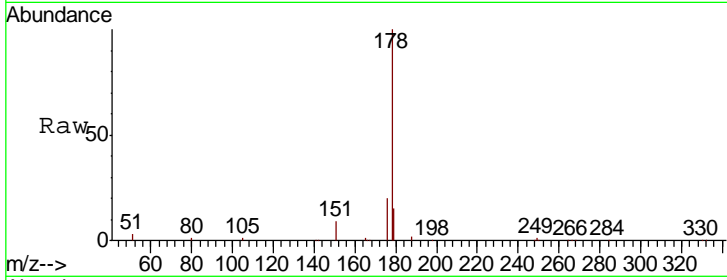




#23
 Phenanthrene
 Concen: 0.445 ng
 RT: 17.23 min Scan# 1120
 Delta R.T. -0.01 min
 Lab File: BE100675.D
 Acq: 28 Oct 2019 16:02

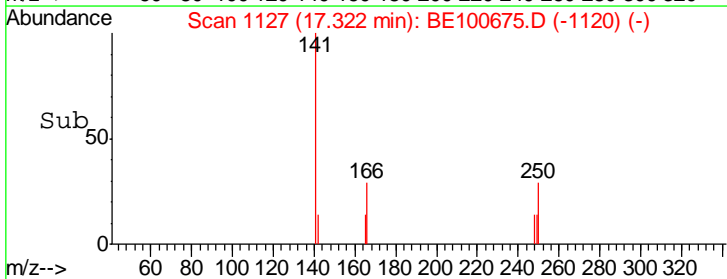
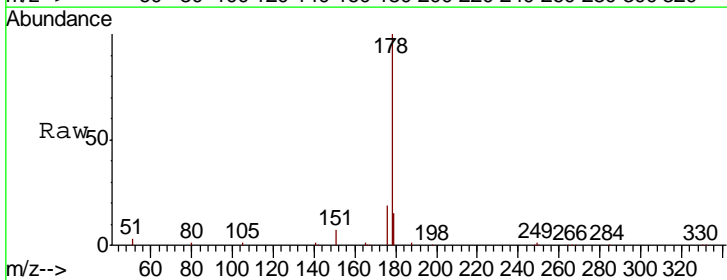
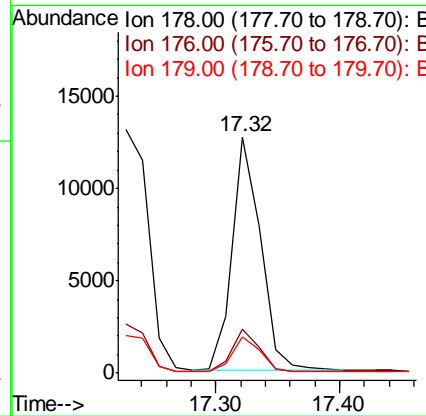
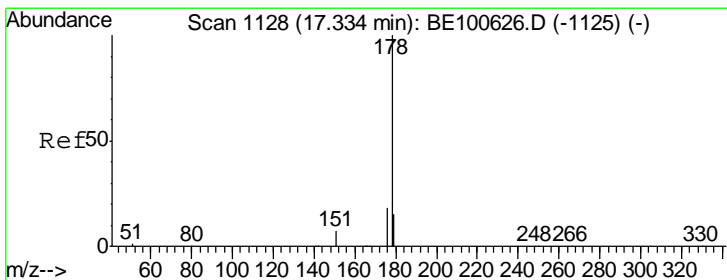
Instrument :
 BNA_E
 ClientSampleId :
 SSTDCCC0.4

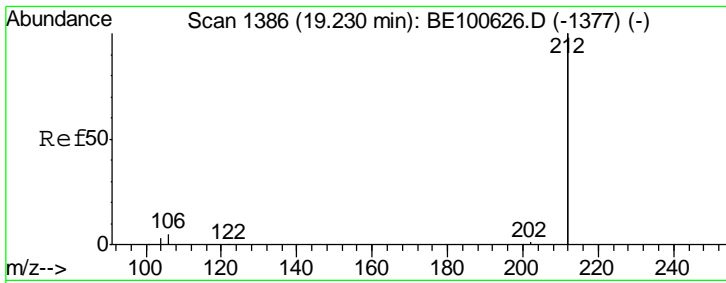
Tgt Ion	Resp	Lower	Upper
178	23247		
176	19.2	15.2	22.8
179	15.4	12.1	18.1



#24
 Anthracene
 Concen: 0.414 ng
 RT: 17.32 min Scan# 1127
 Delta R.T. 0.00 min
 Lab File: BE100675.D
 Acq: 28 Oct 2019 16:02

Tgt Ion	Resp	Lower	Upper
178	20045		
176	18.1	15.0	22.4
179	15.1	12.5	18.7

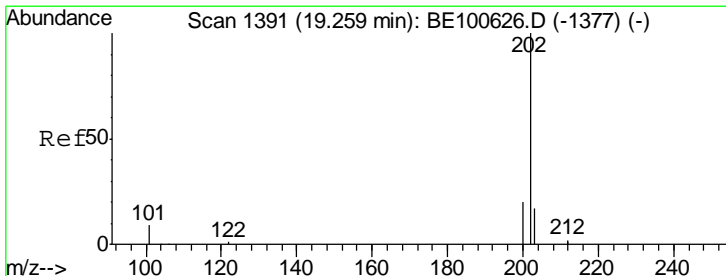
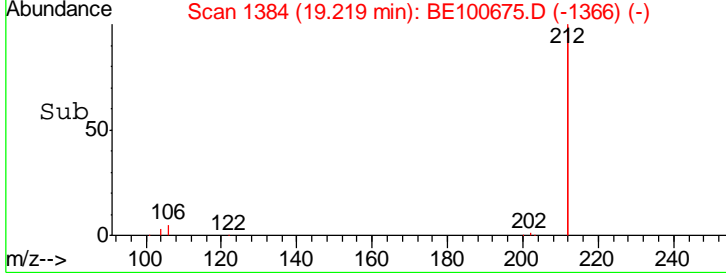
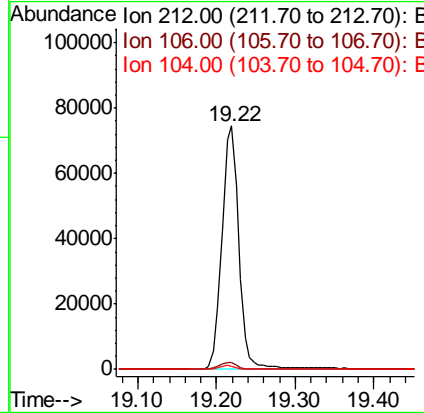
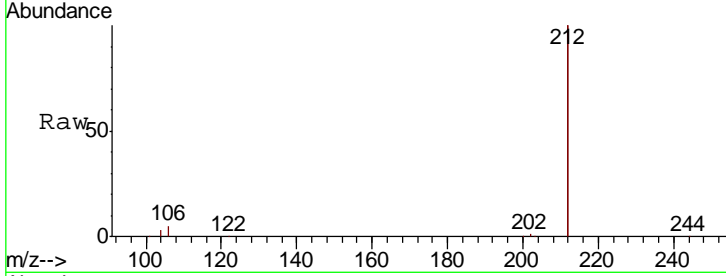




#25
 Fluoranthene-d10
 Concen: 0.446 ng
 RT: 19.22 min Scan# 1384
 Delta R.T. 0.00 min
 Lab File: BE100675.D
 Acq: 28 Oct 2019 16:02

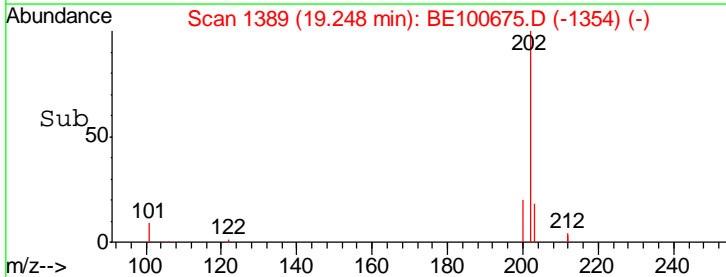
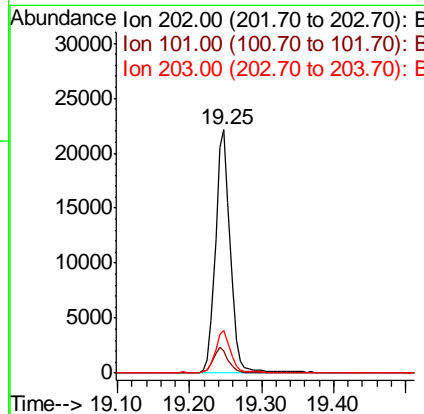
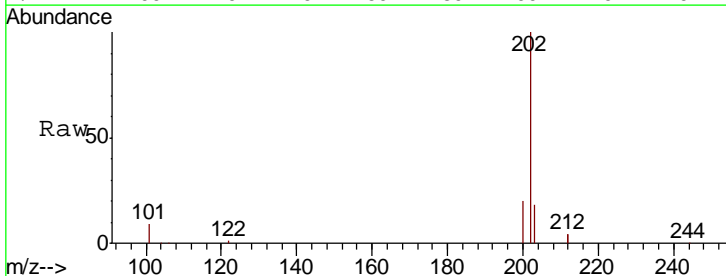
Instrument :
 BNA_E
 ClientSampleId :
 SSTDCCC0.4

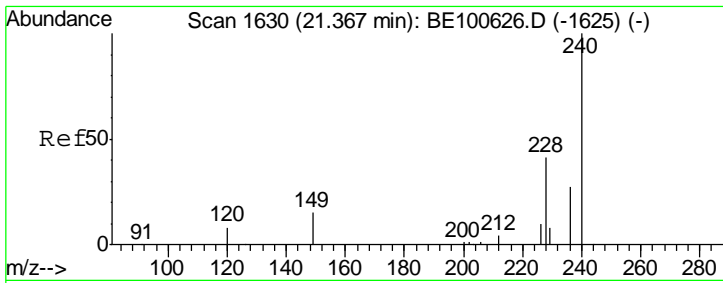
Tgt Ion	Resp	Lower	Upper
212	109278		
106	2.8	2.3	3.5
104	1.5	1.3	1.9



#26
 Fluoranthene
 Concen: 0.454 ng
 RT: 19.25 min Scan# 1389
 Delta R.T. 0.00 min
 Lab File: BE100675.D
 Acq: 28 Oct 2019 16:02

Tgt Ion	Resp	Lower	Upper
202	30925		
101	10.5	8.5	12.7
203	17.3	13.8	20.8

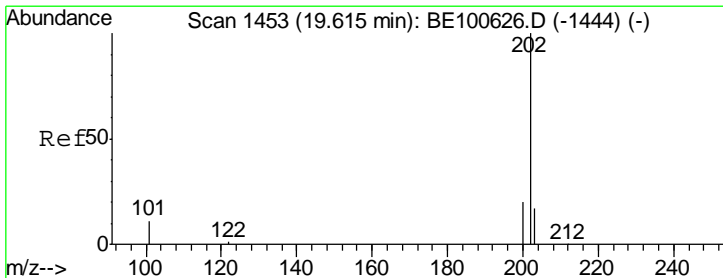
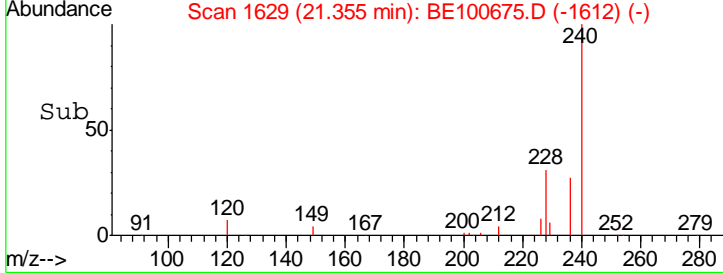
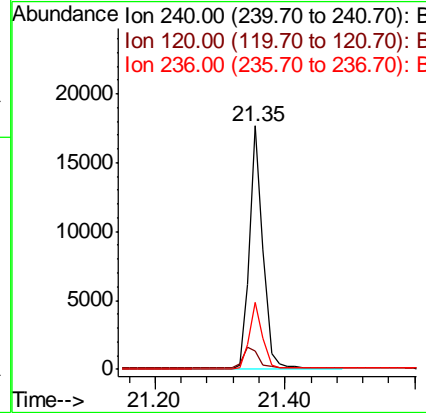
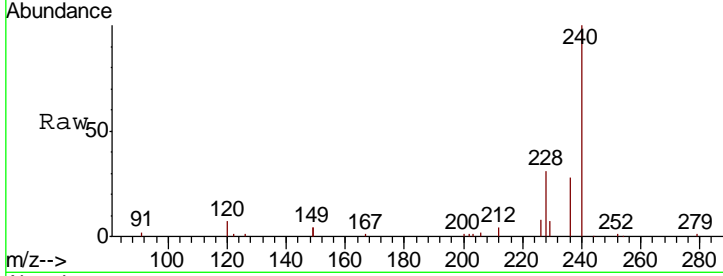




#27
 Chrysene-d12
 Concen: 0.400 ng
 RT: 21.35 min Scan# 1629
 Delta R.T. 0.00 min
 Lab File: BE100675.D
 Acq: 28 Oct 2019 16:02

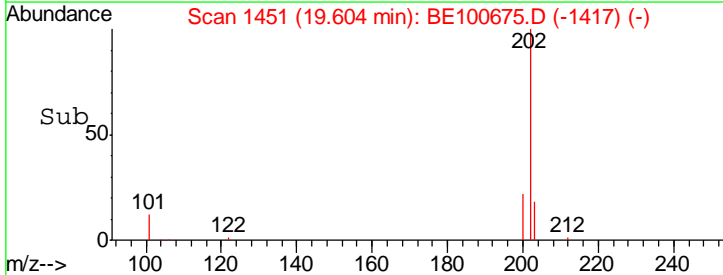
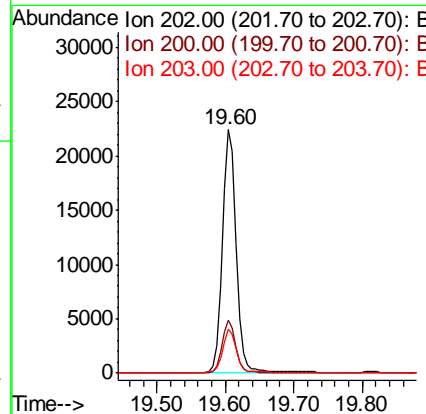
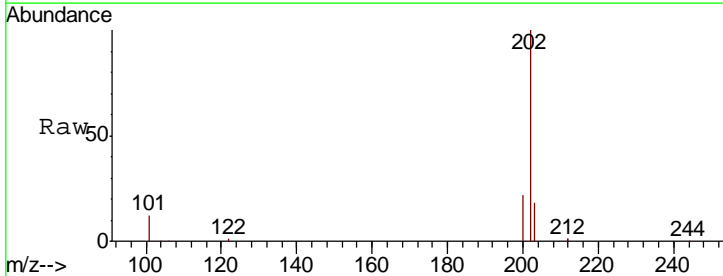
Instrument :
 BNA_E
 ClientSampleId :
 SSTDCCC0.4

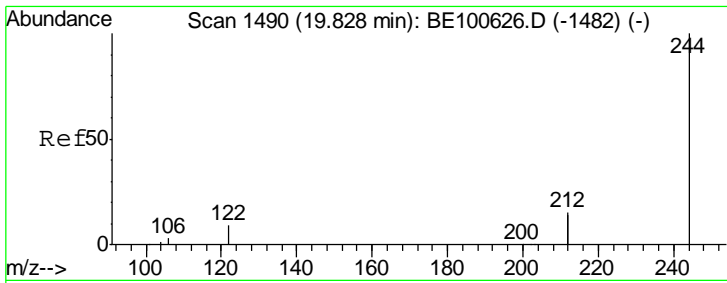
Tgt Ion	Resp	Lower	Upper
240	25222		
120	7.4	7.6	11.4#
236	27.5	22.1	33.1



#28
 Pyrene
 Concen: 0.451 ng
 RT: 19.60 min Scan# 1451
 Delta R.T. -0.01 min
 Lab File: BE100675.D
 Acq: 28 Oct 2019 16:02

Tgt Ion	Resp	Lower	Upper
202	31752		
200	21.1	16.7	25.1
203	17.4	14.0	21.0





#29

Terphenyl-d14

Concen: 0.443 ng

RT: 19.82 min Scan# 1488

Delta R.T. 0.00 min

Lab File: BE100675.D

Acq: 28 Oct 2019 16:02

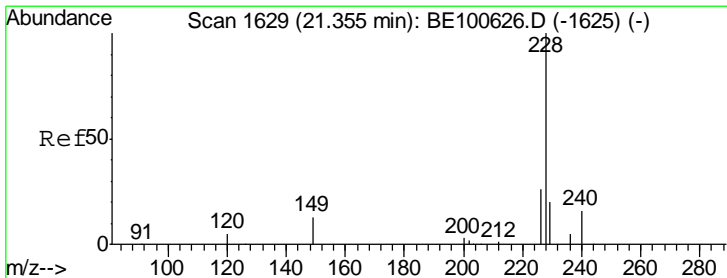
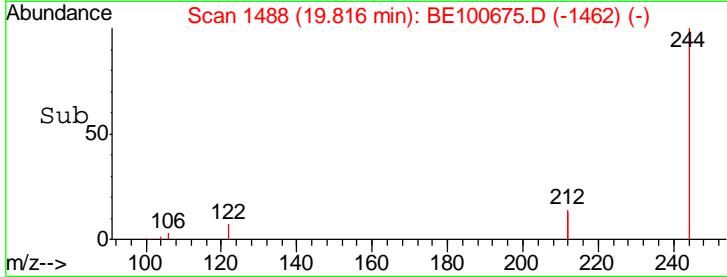
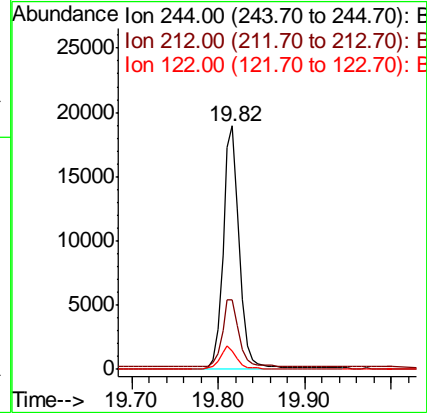
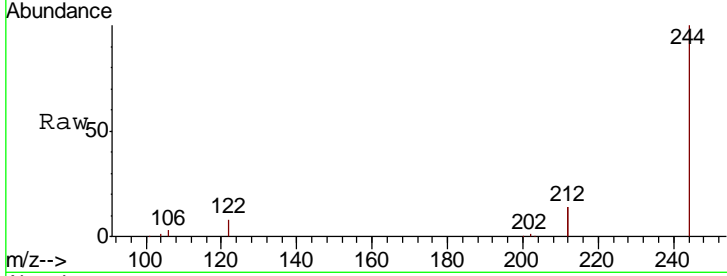
Instrument :

BNA_E

ClientSampleId :

SSTDCCC0.4

Tgt Ion	Resp	Lower	Upper
244	24437		
212	28.7	23.7	35.5
122	7.7	7.9	11.9#



#30

Benzo(a)anthracene

Concen: 0.440 ng

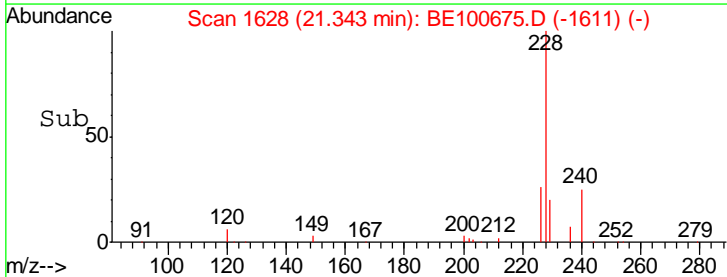
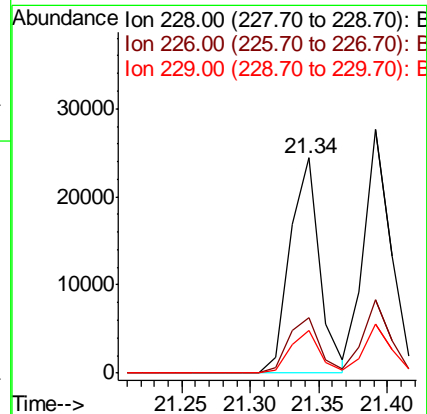
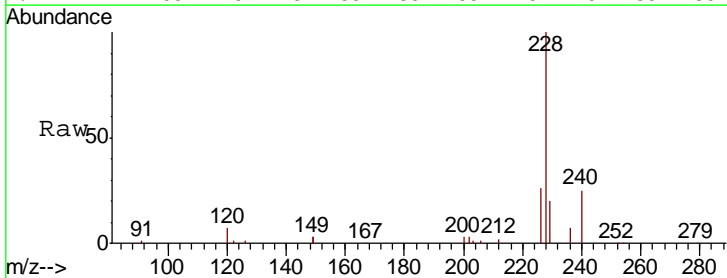
RT: 21.34 min Scan# 1628

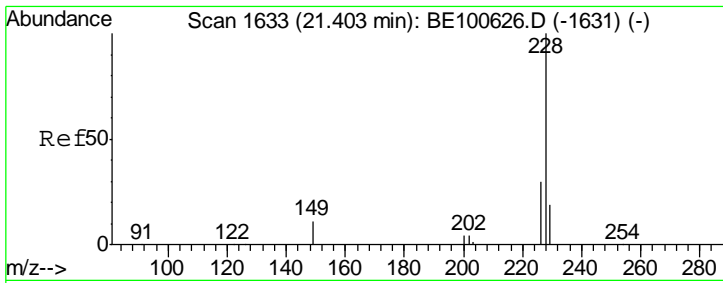
Delta R.T. 0.00 min

Lab File: BE100675.D

Acq: 28 Oct 2019 16:02

Tgt Ion	Resp	Lower	Upper
228	36216		
226	26.0	21.4	32.0
229	20.1	16.0	24.0

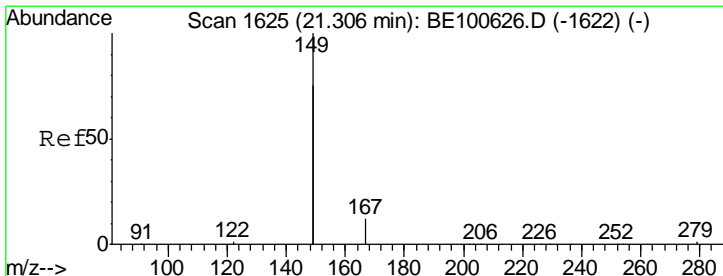
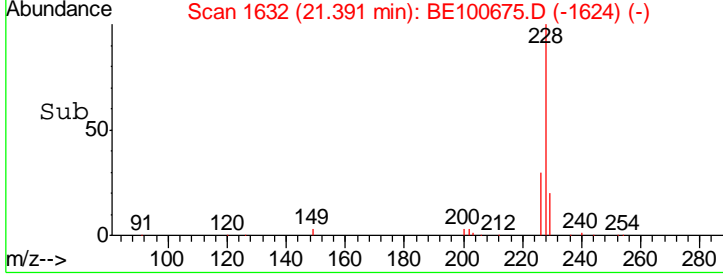
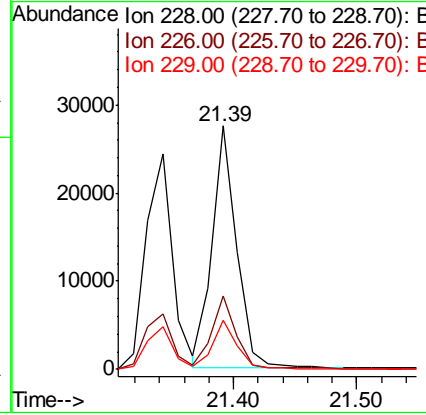
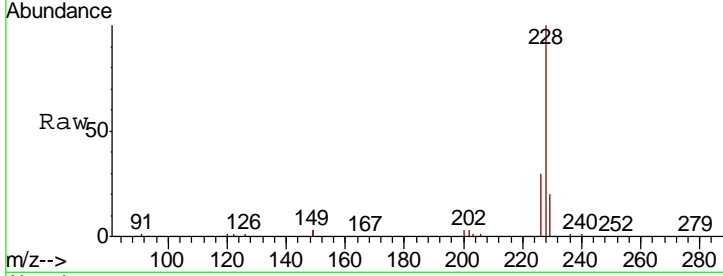




#31
 Chrysene
 Concen: 0.457 ng
 RT: 21.39 min Scan# 1632
 Delta R.T. 0.00 min
 Lab File: BE100675.D
 Acq: 28 Oct 2019 16:02

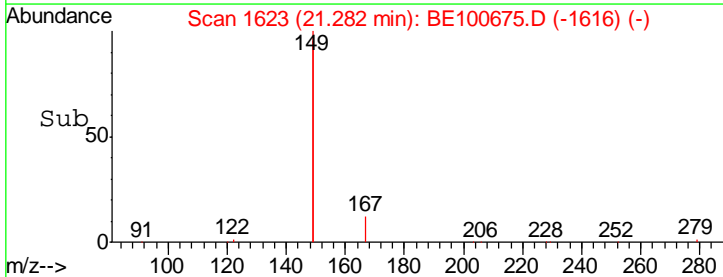
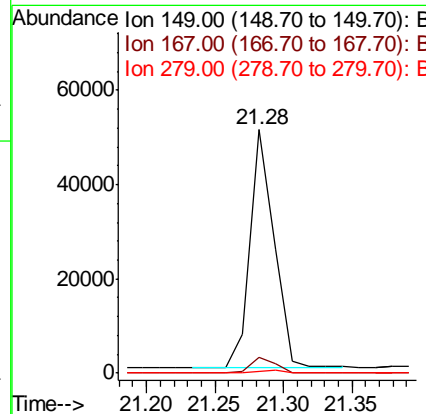
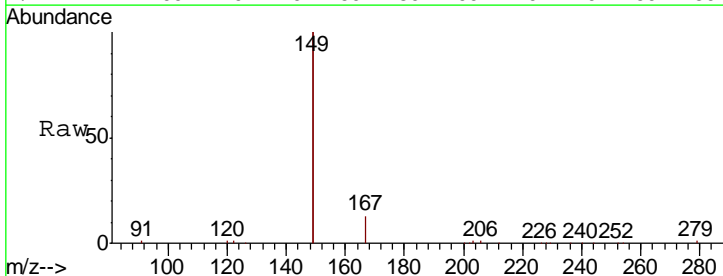
Instrument : BNA_E
 ClientSampleId : SSTDCCC0.4

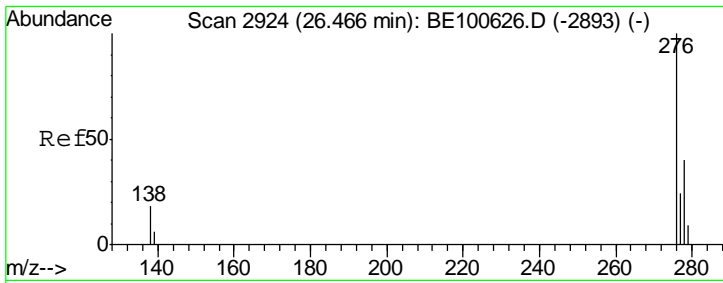
Tgt Ion	Resp	Lower	Upper
228	37605		
226	30.0	24.6	37.0
229	20.1	15.8	23.8



#32
 Bis(2-ethylhexyl)phthalate
 Concen: 0.360 ng
 RT: 21.28 min Scan# 1623
 Delta R.T. -0.01 min
 Lab File: BE100675.D
 Acq: 28 Oct 2019 16:02

Tgt Ion	Resp	Lower	Upper
149	61994		
167	6.7	5.5	8.3
279	1.1	0.9	1.3

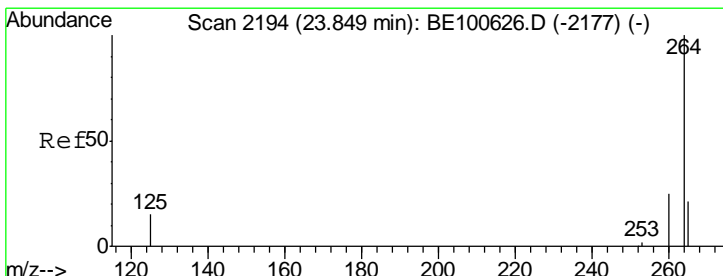
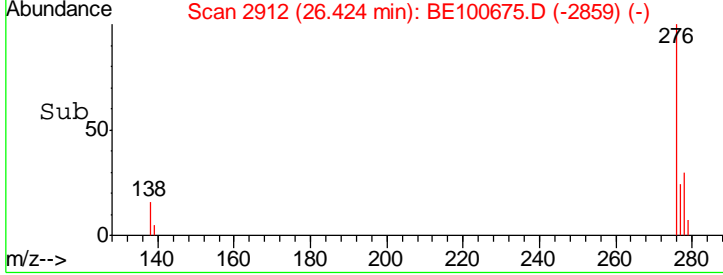
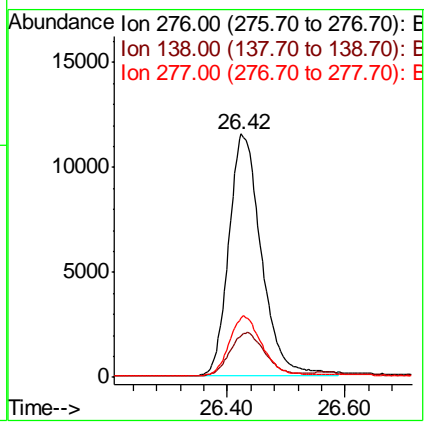
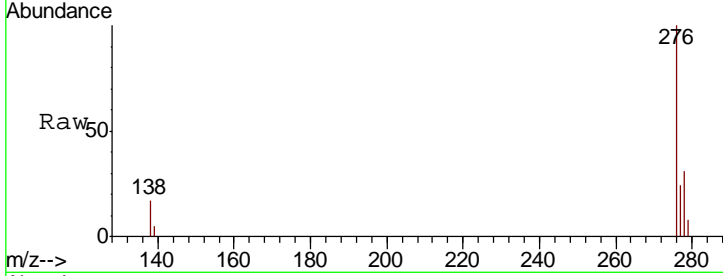




#33
 Indeno(1,2,3-cd)pyrene
 Concen: 0.440 ng
 RT: 26.42 min Scan# 2912
 Delta R.T. -0.01 min
 Lab File: BE100675.D
 Acq: 28 Oct 2019 16:02

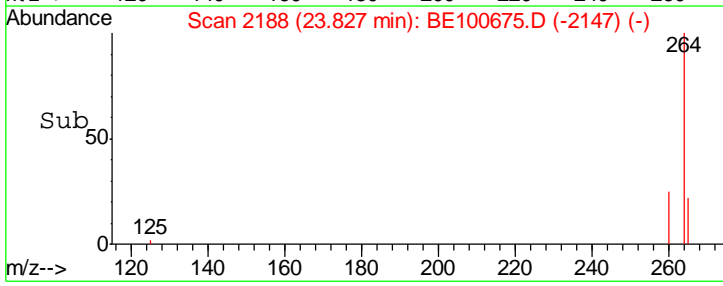
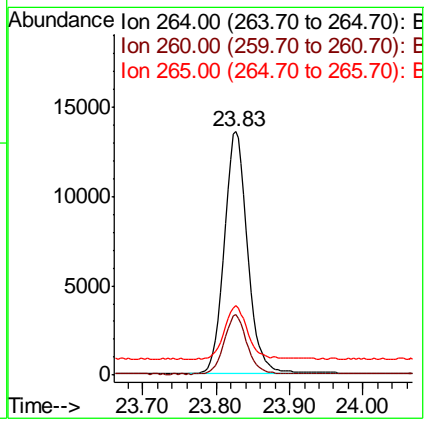
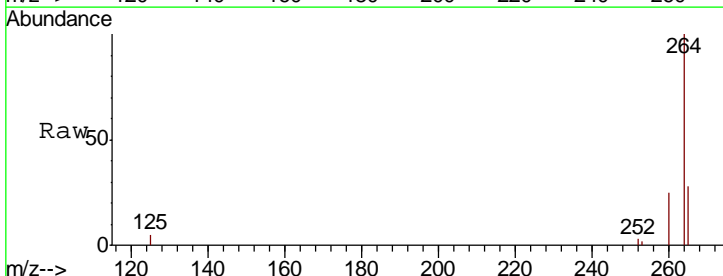
Instrument :
 BNA_E
 ClientSampleId :
 SSTDCCC0.4

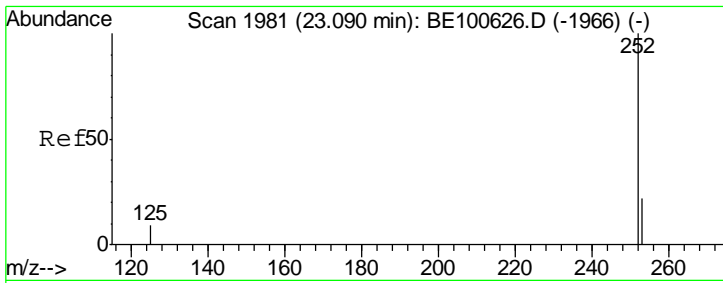
Tgt Ion	Resp	Lower	Upper
276	44429		
138	18.9	15.3	22.9
277	24.6	19.4	29.2



#34
 Perylene-d12
 Concen: 0.400 ng
 RT: 23.83 min Scan# 2188
 Delta R.T. -0.00 min
 Lab File: BE100675.D
 Acq: 28 Oct 2019 16:02

Tgt Ion	Resp	Lower	Upper
264	30557		
260	24.9	19.4	29.2
265	28.3	21.7	32.5

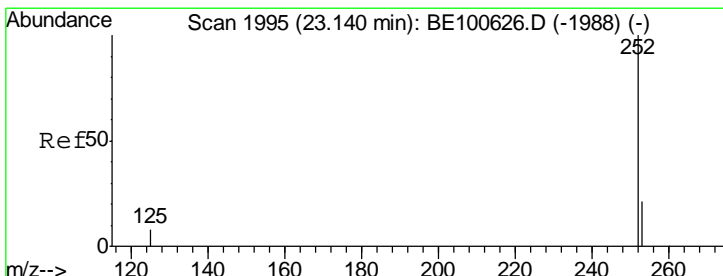
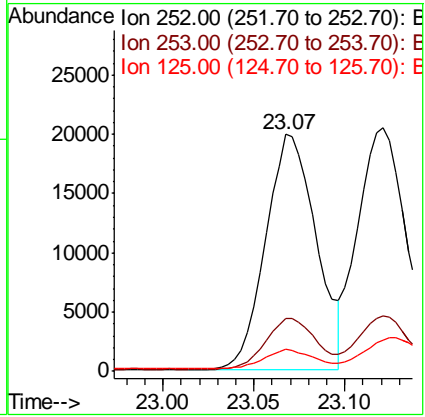
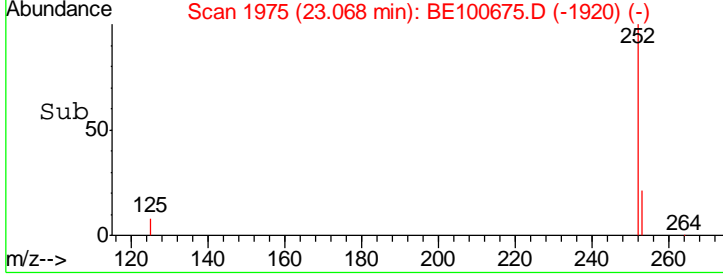
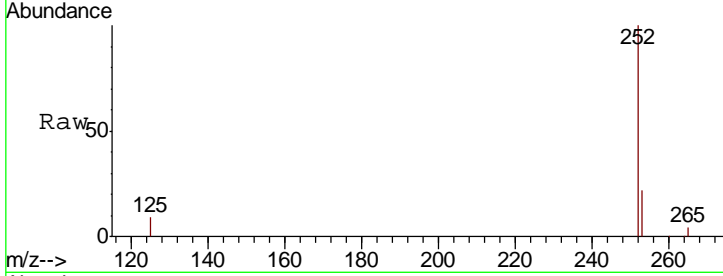




#35
 Benzo(b)fluoranthene
 Concen: 0.429 ng
 RT: 23.07 min Scan# 1975
 Delta R.T. -0.00 min
 Lab File: BE100675.D
 Acq: 28 Oct 2019 16:02

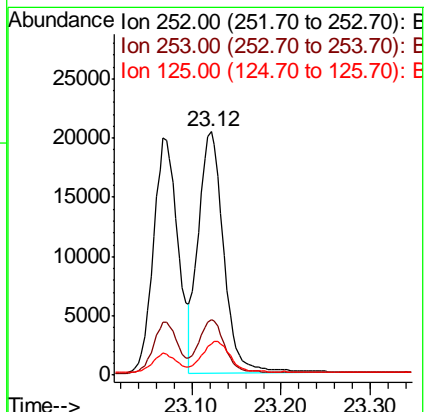
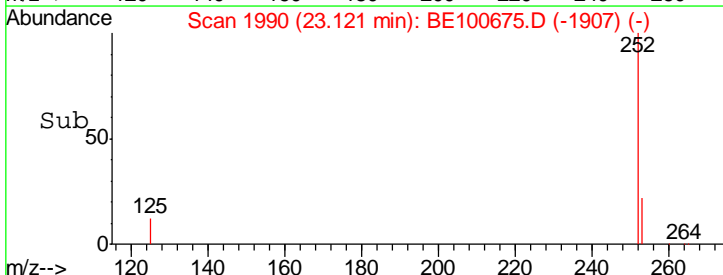
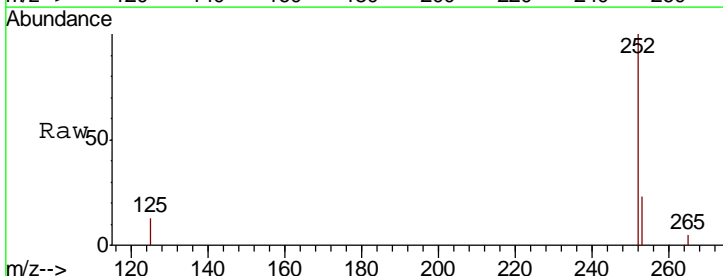
Instrument : BNA_E
 ClientSampleId : SSTDCCC0.4

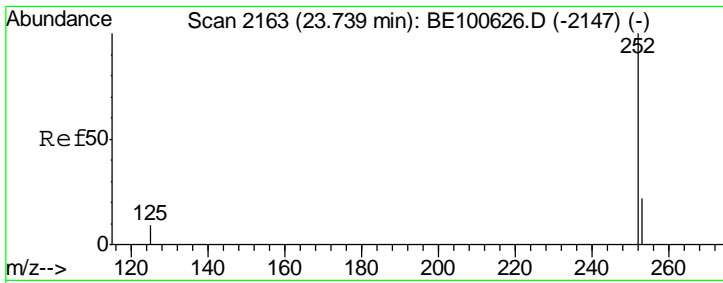
Tgt Ion	Resp	Lower	Upper
252	38222		
253	22.0	18.4	27.6
125	9.2	7.6	11.4



#36
 Benzo(k)fluoranthene
 Concen: 0.434 ng
 RT: 23.12 min Scan# 1990
 Delta R.T. -0.00 min
 Lab File: BE100675.D
 Acq: 28 Oct 2019 16:02

Tgt Ion	Resp	Lower	Upper
252	39745		
253	22.8	18.4	27.6
125	13.0	11.6	17.4

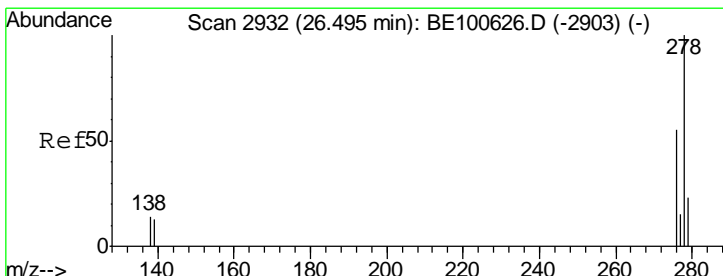
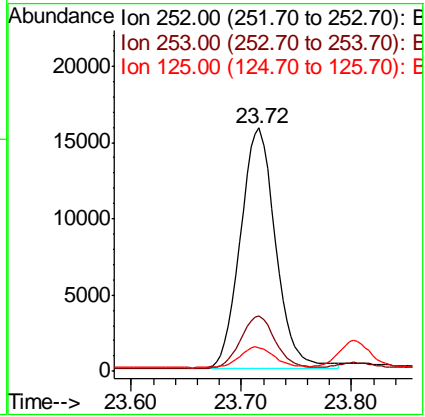
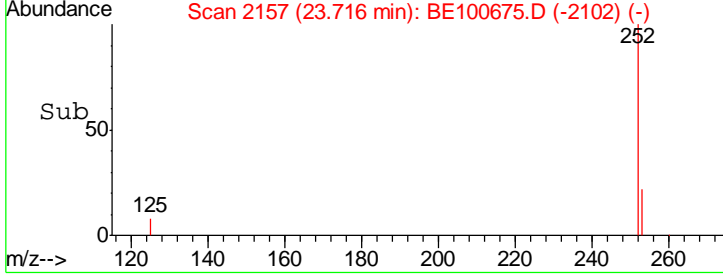
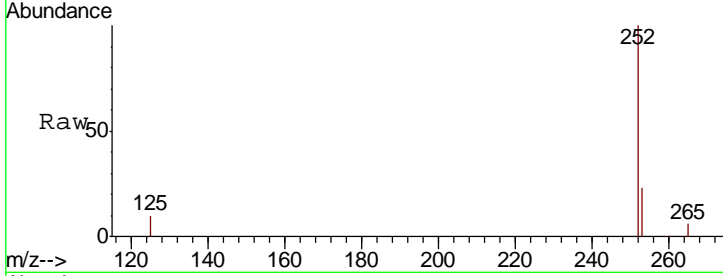




#37
 Benzo(a)pyrene
 Concen: 0.420 ng
 RT: 23.72 min Scan# 2157
 Delta R.T. -0.00 min
 Lab File: BE100675.D
 Acq: 28 Oct 2019 16:02

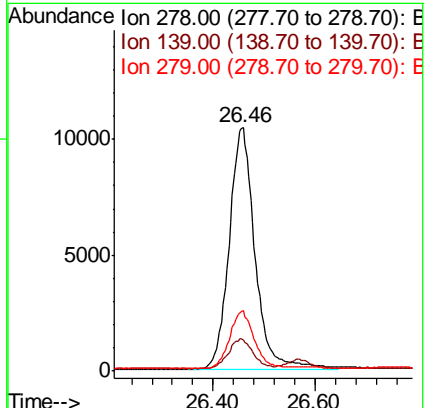
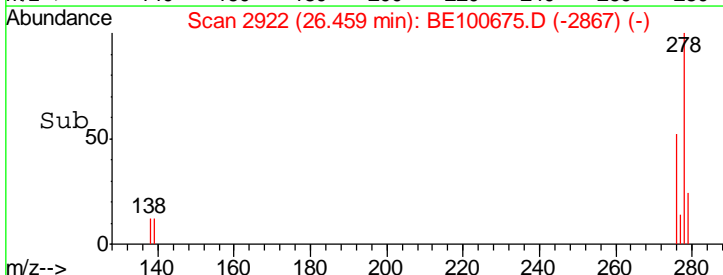
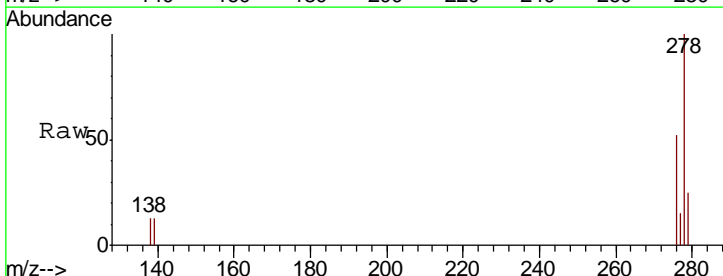
Instrument :
 BNA_E
 ClientSampleId :
 SSTDCCC0.4

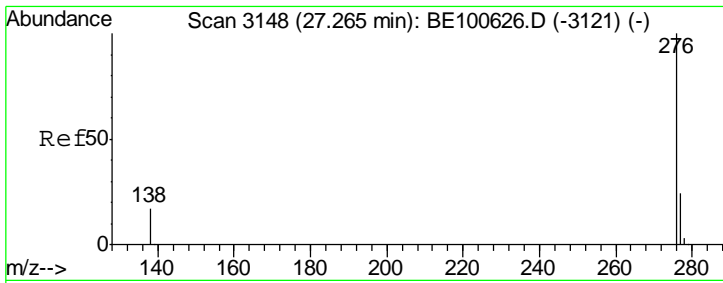
Tgt Ion	Resp	Lower	Upper
252	34862		
253	22.7	18.4	27.6
125	9.8	8.2	12.4



#38
 Dibenzo(a,h)anthracene
 Concen: 0.431 ng
 RT: 26.46 min Scan# 2922
 Delta R.T. -0.00 min
 Lab File: BE100675.D
 Acq: 28 Oct 2019 16:02

Tgt Ion	Resp	Lower	Upper
278	36939		
139	13.0	10.9	16.3
279	24.9	19.4	29.2





#39
 Benzo(a,h,i)perylene
 Concen: 0.443 ng
 RT: 27.22 min Scan# 3136
 Delta R.T. -0.01 min
 Lab File: BE100675.D
 Acq: 28 Oct 2019 16:02

Instrument :
 BNA_E
ClientSampleId :
 SSTDCCC0.4

Tot Ion	Ion	Ratio	Lower	Upper
38186	276	100		
	277	23.9	19.4	29.0
	138	17.7	13.6	20.4

