

Data Path : Z:\HPCHEM1\BNA E\DATA\BE110117\
 Data File : BE094692.D
 Acq On : 1 Nov 2017 15:44
 Operator : SJ/JU
 Sample : PB103273BS
 Misc :
 ALS Vial : 7 Sample Multiplier: 1

Instrument :
 BNA_E
 ClientSampled :

Quant Time: Nov 01 16:31:07 2017
 Quant Method : Z:\HPCHEM1\BNA E\METHODS\8270-SIM-BE102317.M
 Quant Title : ASP BNA STANDARDS FOR 5 POINT CALIBRATION
 QLast Update : Mon Oct 23 22:40:47 2017
 Response via : Initial Calibration

Internal Standards	R.T.	QIon	Response	Conc	Units	Dev(Min)
1) 1,4-Dichlorobenzene-d4	7.91	152	946	0.40	ng	0.00
7) Naphthalene-d8	10.72	136	5466	0.40	ng	0.02
13) Acenaphthene-d10	14.52	164	3270	0.40	ng	0.01
19) Phenanthrene-d10	17.27	188	7529	0.40	ng	0.03
27) Chrysene-d12	21.44	240	8023	0.40	ng	0.01
34) Perylene-d12	23.97	264	7385	0.40	ng	0.02

System Monitoring Compounds

4) 2-Fluorophenol	5.55	112	721	0.22	ng	0.03
5) Phenol-d6	7.21	99	1203	0.25	ng	0.08
8) Nitrobenzene-d5	9.13	82	1048	0.24	ng	0.05
11) 2-Methylnaphthalene-d10	12.31	152	3095	0.35	ng	0.02
14) 2,4,6-Tribromophenol	16.06	330	180	0.20	ng	0.03
15) 2-Fluorobiphenyl	13.16	172	3186	0.28	ng	0.01
25) Fluoranthene-d10	19.30	212	25317	0.24	ng	0.02
29) Terphenyl-d14	19.87	244	3871	0.26	ng	0.00

Target Compounds

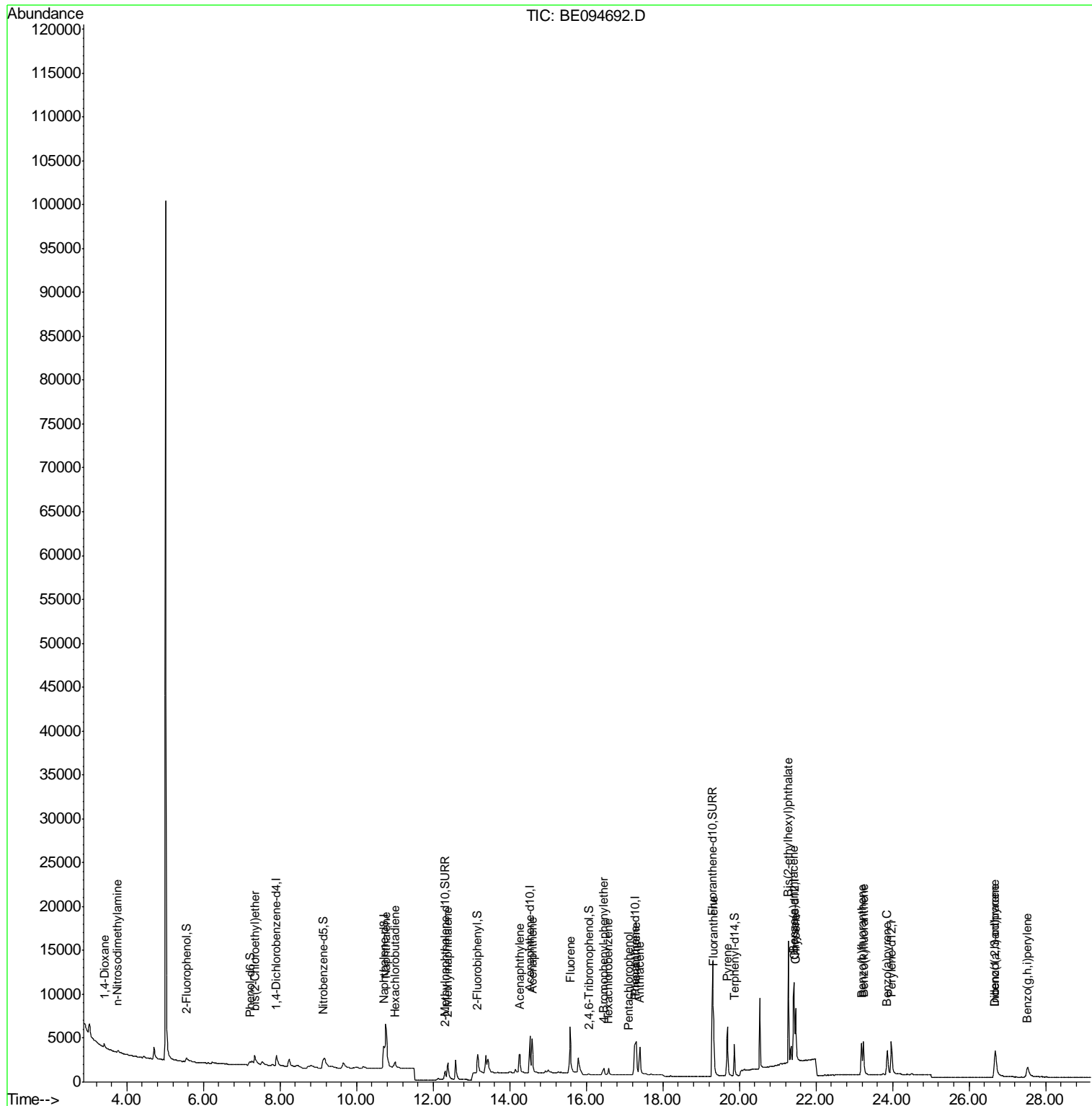
Target Compounds	R.T.	QIon	Response	Conc	Units	Qvalue
2) 1,4-Dioxane	3.41	88	390	0.244	ng	# 43
3) n-Nitrosodimethylamine	3.75	42	338	0.221	ng	# 82
6) bis(2-Chloroethyl)ether	7.34	93	857	0.226	ng	# 68
9) Naphthalene	10.76	128	14344	0.232	ng	98
10) Hexachlorobutadiene	11.01	225	554	0.247	ng	99
12) 2-Methylnaphthalene	12.38	142	2590	0.247	ng	97
16) Acenaphthylene	14.26	152	4164	0.241	ng	98
17) Acenaphthene	14.58	154	2622	0.237	ng	98
18) Fluorene	15.58	166	3375	0.238	ng	98
20) 4-Bromophenyl-phenylether	16.45	248	790	0.193	ng	# 71
21) Hexachlorobenzene	16.58	284	1127	0.313	ng	# 63
22) Pentachlorophenol	17.10	266	45	0.098	ng	96
23) Phenanthrene	17.30	178	6164	0.291	ng	99
24) Anthracene	17.40	178	5791	0.262	ng	98
26) Fluoranthene	19.33	202	6639	0.199	ng	99
28) Pyrene	19.68	202	6805	0.242	ng	98
30) Benzo(a)anthracene	21.42	228	6650	0.255	ng	# 63
31) Chrysene	21.47	228	6334	0.239	ng	# 65
32) Bis(2-ethylhexyl)phthalate	21.28	149	16032	0.250	ng	# 99
33) Indeno(1,2,3-cd)pyrene	26.68	276	5196	0.212	ng	99
35) Benzo(b)fluoranthene	23.19	252	5839	0.244	ng	# 44
36) Benzo(k)fluoranthene	23.24	252	6576	0.258	ng	# 44
37) Benzo(a)pyrene	23.86	252	5958	0.257	ng	# 39
38) Dibenzo(a,h)anthracene	26.68	278	4665	0.224	ng	# 52
39) Benzo(g,h,i)perylene	27.52	276	3697	0.190	ng	# 63

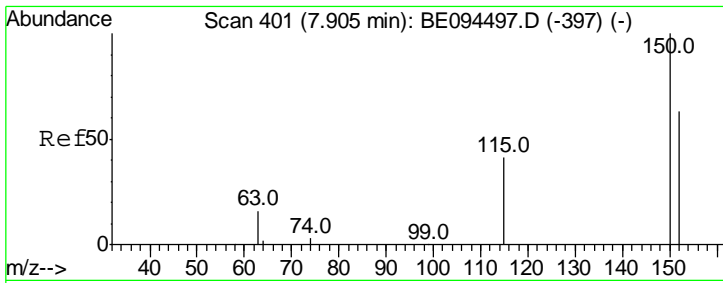
(#) = qualifier out of range (m) = manual integration (+) = signals summed

Data Path : Z:\HPCHEM1\BNA E\DATA\BE110117\
 Data File : BE094692.D
 Acq On : 1 Nov 2017 15:44
 Operator : SJ/JU
 Sample : PB103273BS
 Misc :
 ALS Vial : 7 Sample Multiplier: 1

Instrument :
 BNA_E
 ClientSampled :

Quant Time: Nov 01 16:31:07 2017
 Quant Method : Z:\HPCHEM1\BNA E\METHODS\8270-SIM-BE102317.M
 Quant Title : ASP BNA STANDARDS FOR 5 POINT CALIBRATION
 QLast Update : Mon Oct 23 22:40:47 2017
 Response via : Initial Calibration

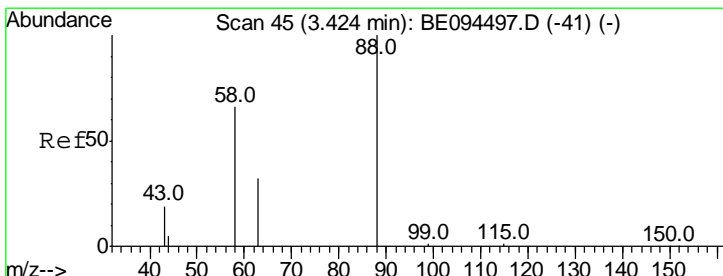
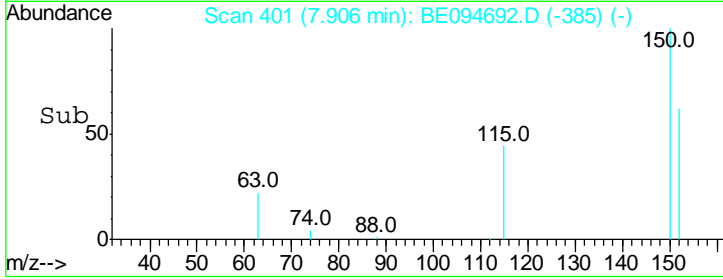
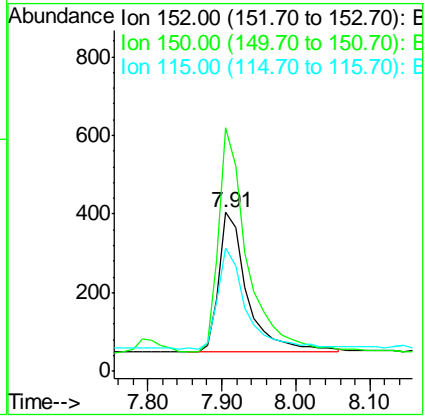
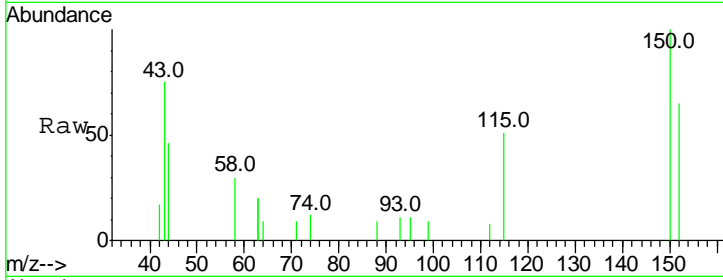




#1
 1,4-Dichlorobenzene-d4
 Concen: 0.400 ng
 RT: 7.91 min Scan# 401
 Delta R.T. 0.00 min
 Lab File: BE094692.D
 Acq: 1 Nov 2017 15:44

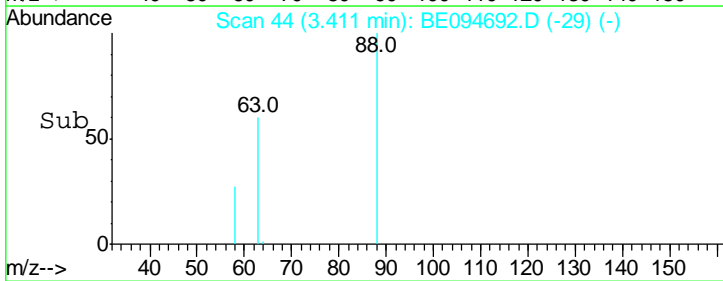
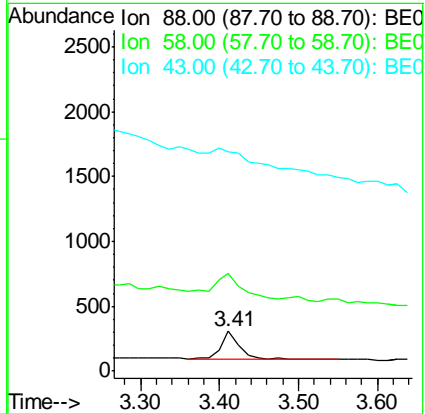
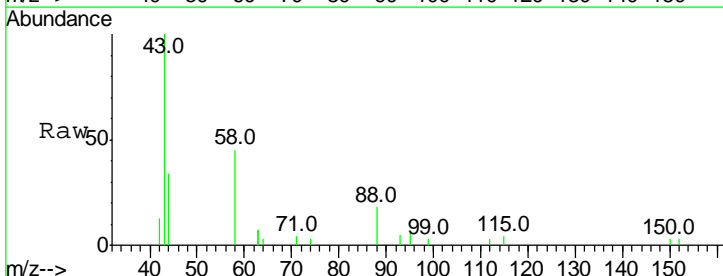
Instrument :
 BNA_E
 ClientSampled :

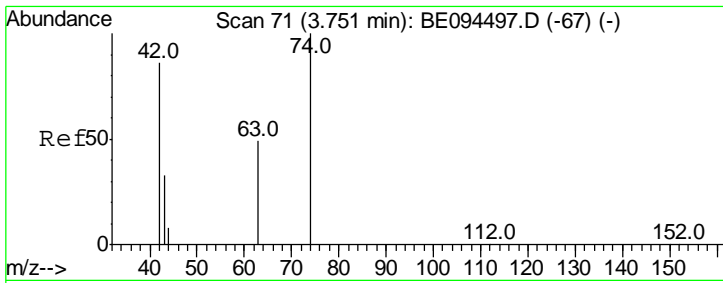
Tgt Ion	Resp	Lower	Upper
152	946		
150	100		
150	153.2	117.2	175.8
115	77.7	57.0	85.6



#2
 1,4-Dioxane
 Concen: 0.244 ng
 RT: 3.41 min Scan# 44
 Delta R.T. -0.01 min
 Lab File: BE094692.D
 Acq: 1 Nov 2017 15:44

Tgt Ion	Resp	Lower	Upper
88	390		
88	100		
58	119.2	63.2	94.8#
43	0.0	41.2	61.8#

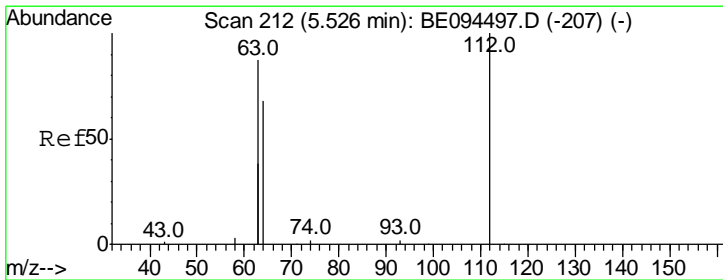
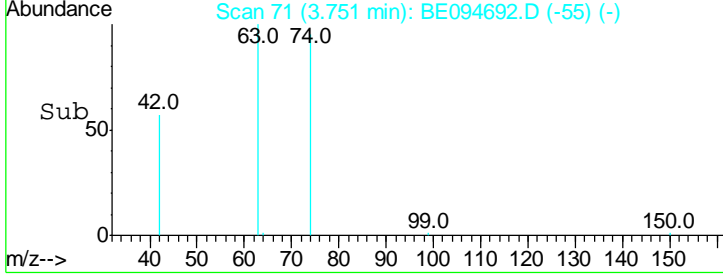
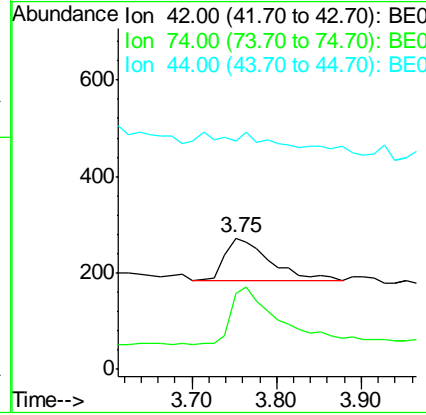
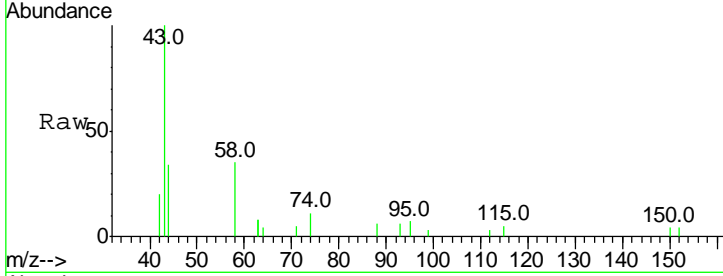




#3
 n-Nitrosodimethylamine
 Concen: 0.221 ng
 RT: 3.75 min Scan# 71
 Delta R.T. 0.00 min
 Lab File: BE094692.D
 Acq: 1 Nov 2017 15:44

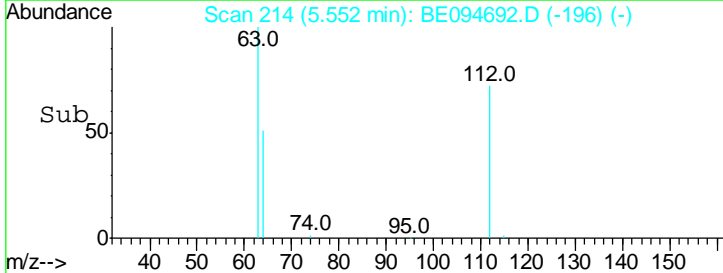
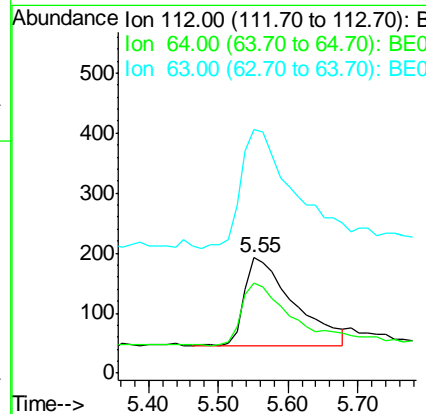
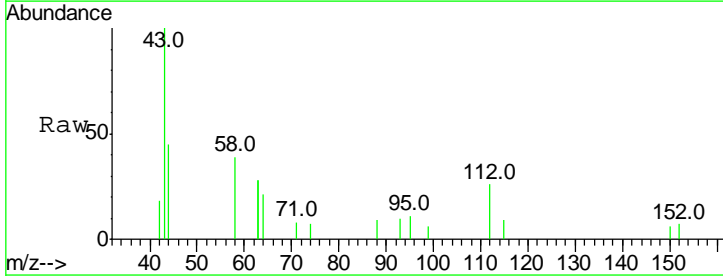
Instrument :
 BNA_E
 ClientSampled :

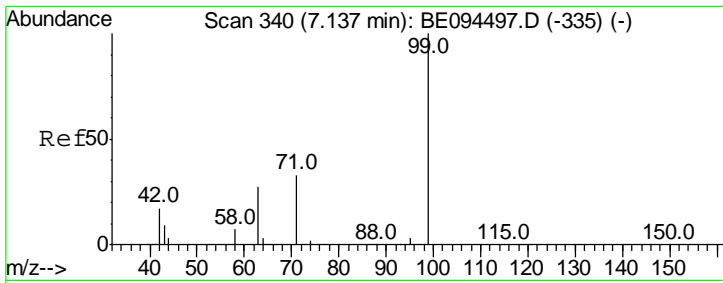
Tgt Ion	Resp	Lower	Upper
42	100		
74	141.1	100.3	150.5
44	0.0	17.0	25.4#



#4
 2-Fluorophenol
 Concen: 0.222 ng
 RT: 5.55 min Scan# 214
 Delta R.T. 0.03 min
 Lab File: BE094692.D
 Acq: 1 Nov 2017 15:44

Tgt Ion	Resp	Lower	Upper
112	100		
64	71.7	60.1	90.1
63	146.5	116.8	175.2

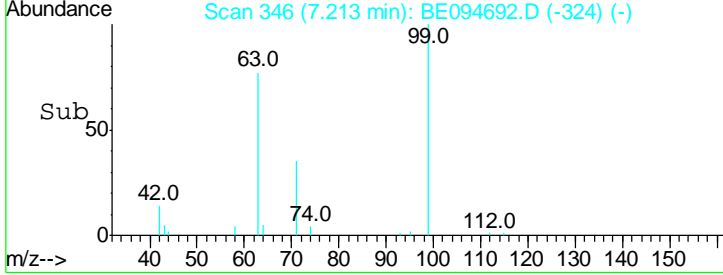
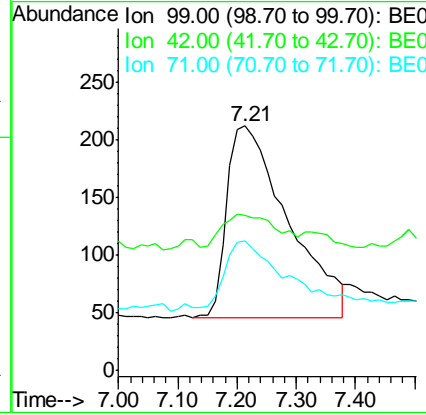
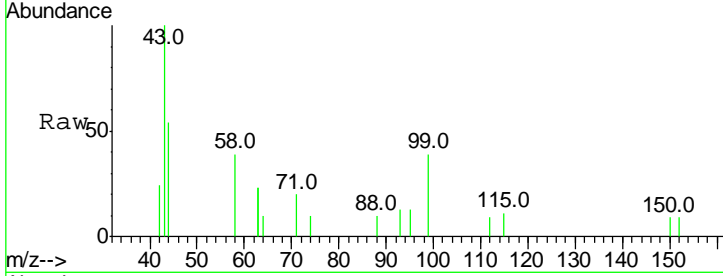




#5
 Phenol-d6
 Concen: 0.246 ng
 RT: 7.21 min Scan# 346
 Delta R.T. 0.08 min
 Lab File: BE094692.D
 Acq: 1 Nov 2017 15:44

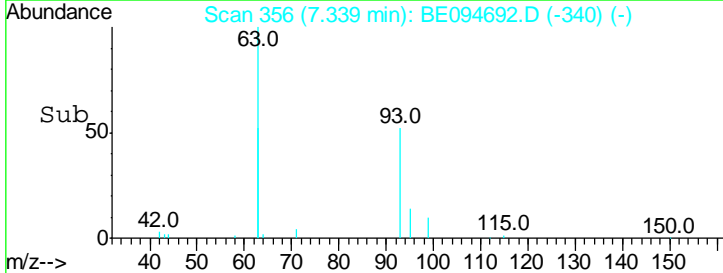
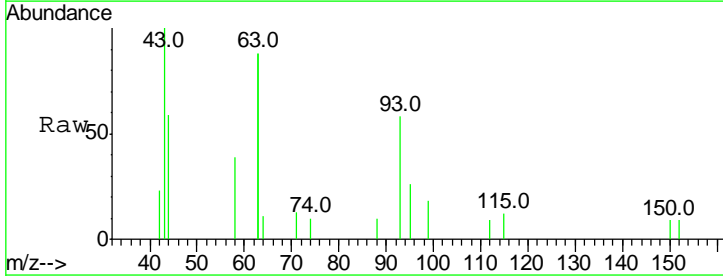
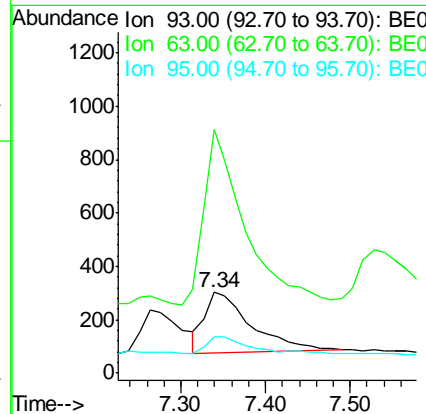
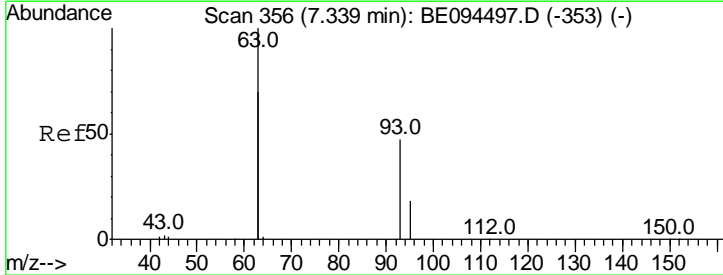
Instrument :
 BNA_E
 ClientSampled :

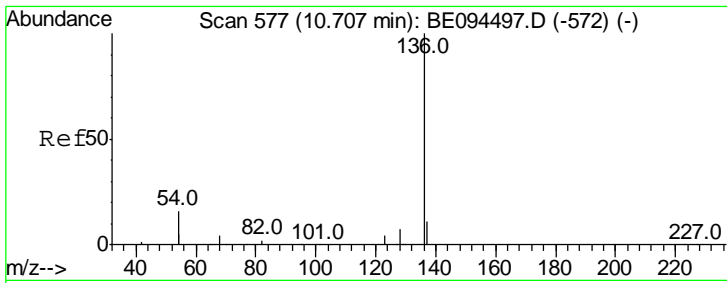
Tgt Ion	Resp	Lower	Upper
99	1203		
99	100		
42	15.5	20.2	30.2#
71	33.7	28.4	42.6



#6
 bis(2-Chloroethyl)ether
 Concen: 0.226 ng
 RT: 7.34 min Scan# 356
 Delta R.T. 0.00 min
 Lab File: BE094692.D
 Acq: 1 Nov 2017 15:44

Tgt Ion	Resp	Lower	Upper
93	857		
93	100		
63	269.4	275.3	412.9#
95	29.1	25.2	37.8

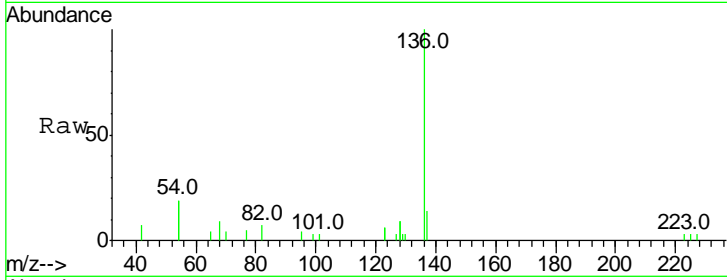




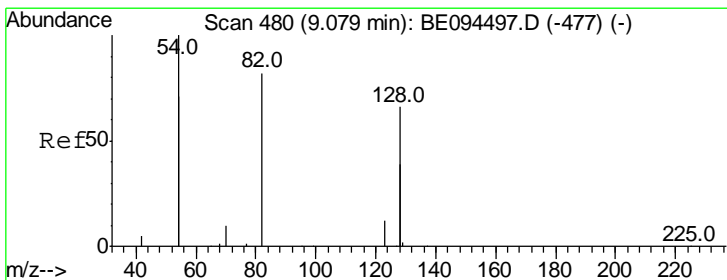
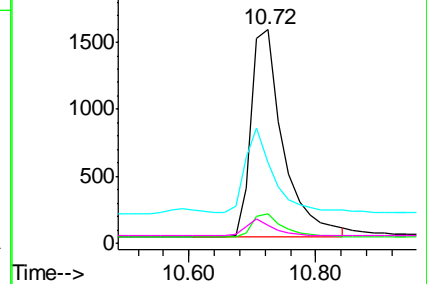
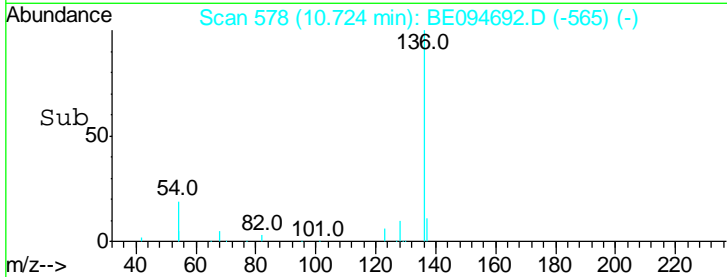
#7
 Naphthalene-d8
 Concen: 0.400 ng
 RT: 10.72 min Scan# 578
 Delta R.T. 0.02 min
 Lab File: BE094692.D
 Acq: 1 Nov 2017 15:44

Instrument :
 BNA_E
 ClientSampled :

Tgt Ion	Resp	Lower	Upper
136	100		
137	13.6	9.5	14.3
54	37.6	29.1	43.7
68	8.6	6.2	9.2

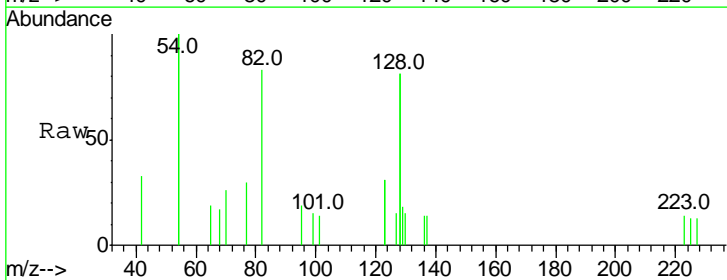


Abundance Ion 136.00 (135.70 to 136.70): E
 Ion 137.00 (136.70 to 137.70): E
 Ion 54.00 (53.70 to 54.70): BE0
 Ion 68.00 (67.70 to 68.70): BE0

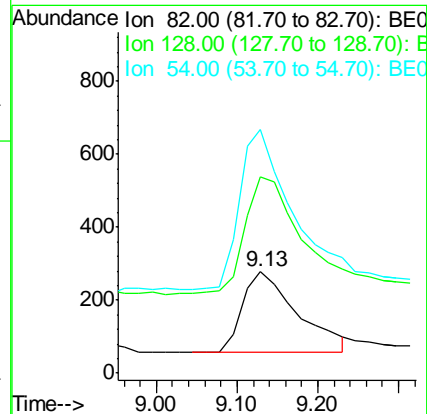
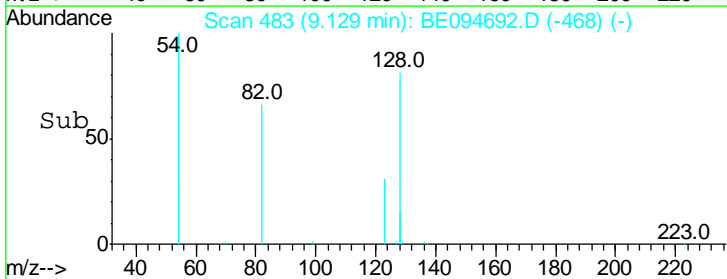


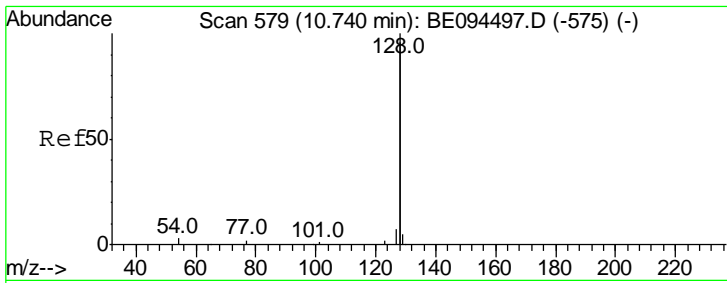
#8
 Nitrobenzene-d5
 Concen: 0.240 ng
 RT: 9.13 min Scan# 483
 Delta R.T. 0.05 min
 Lab File: BE094692.D
 Acq: 1 Nov 2017 15:44

Tgt Ion	Resp	Lower	Upper
82	100		
128	193.5	150.0	225.0
54	240.3	154.2	231.4#



Abundance Ion 82.00 (81.70 to 82.70): BE0
 Ion 128.00 (127.70 to 128.70): E
 Ion 54.00 (53.70 to 54.70): BE0

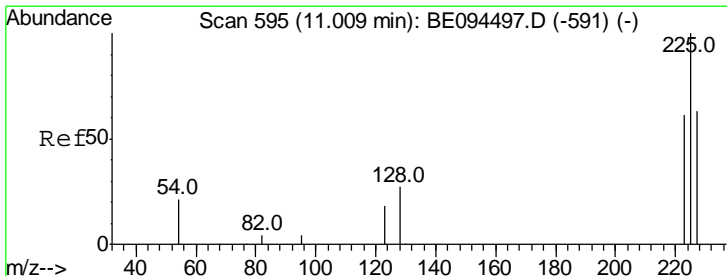
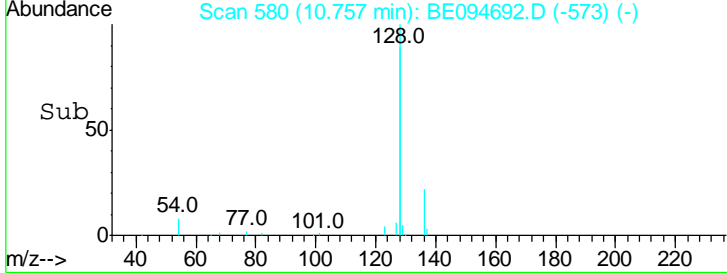
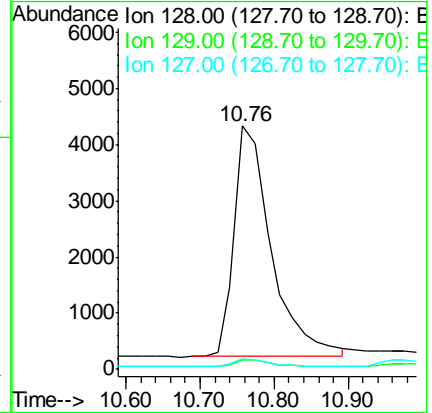
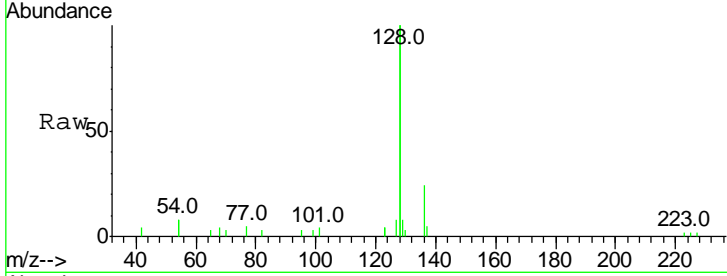




#9
 Naphthalene
 Concen: 0.232 ng
 RT: 10.76 min Scan# 580
 Delta R.T. 0.02 min
 Lab File: BE094692.D
 Acq: 1 Nov 2017 15:44

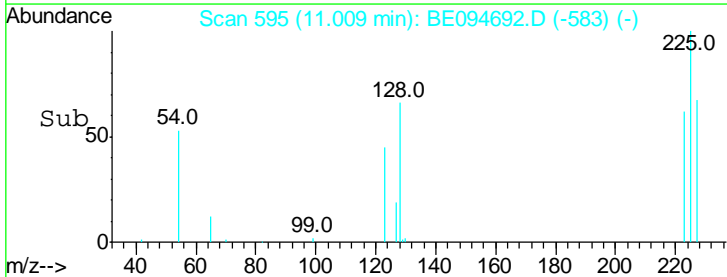
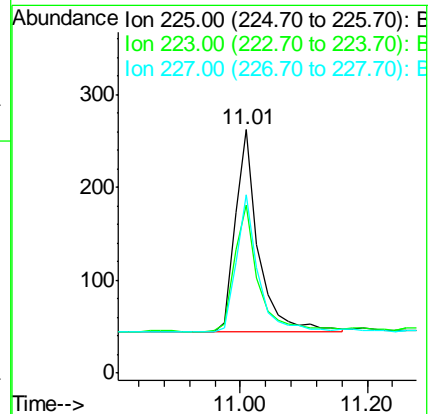
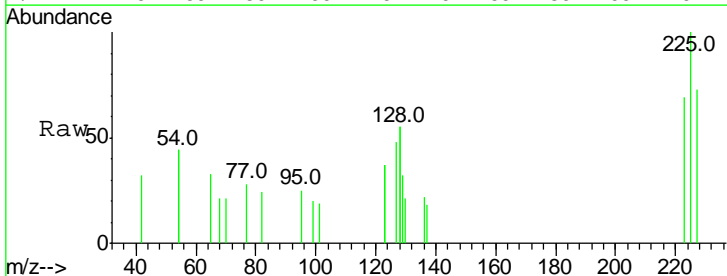
Instrument :
 BNA_E
 ClientSampled :

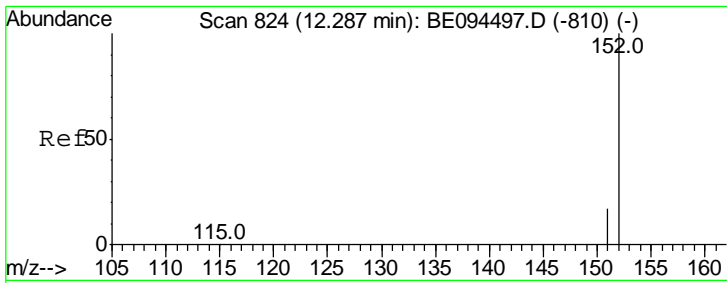
Tgt Ion	Resp	Lower	Upper
128	14344		
129	3.8	2.6	3.8
127	4.2	2.8	4.2



#10
 Hexachlorobutadiene
 Concen: 0.247 ng
 RT: 11.01 min Scan# 595
 Delta R.T. 0.00 min
 Lab File: BE094692.D
 Acq: 1 Nov 2017 15:44

Tgt Ion	Resp	Lower	Upper
225	554		
223	64.1	53.0	79.6
227	64.3	51.4	77.2

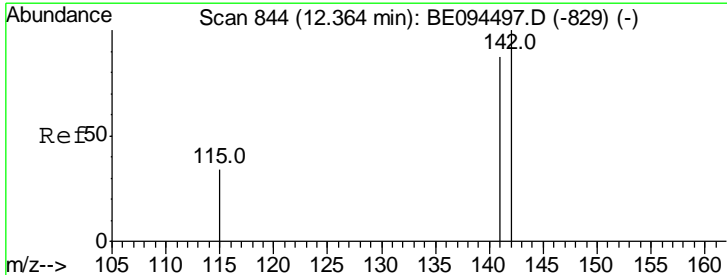
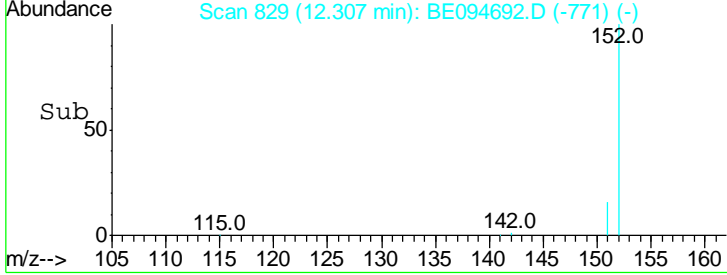
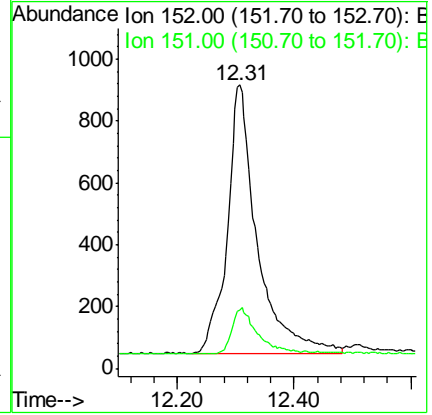
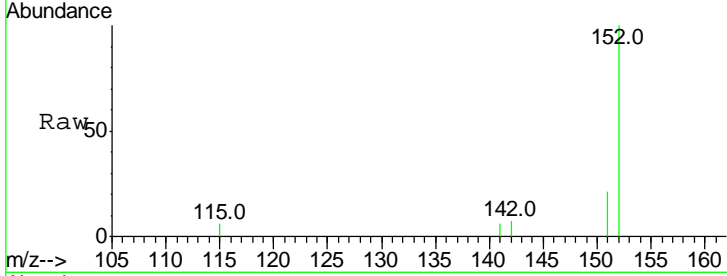




#11
 2-Methylnaphthalene-d10
 Concen: 0.353 ng
 RT: 12.31 min Scan# 829
 Delta R.T. 0.02 min
 Lab File: BE094692.D
 Acq: 1 Nov 2017 15:44

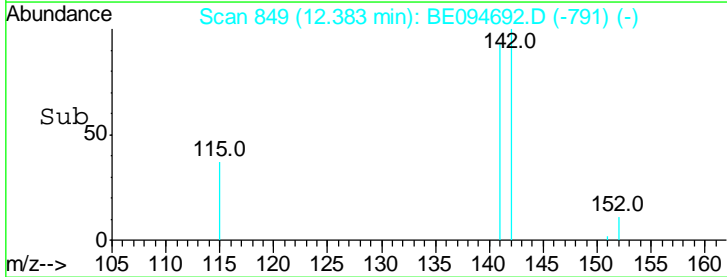
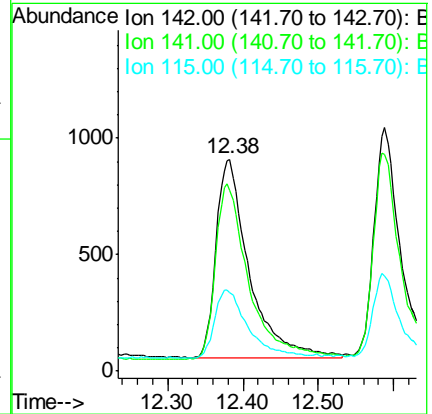
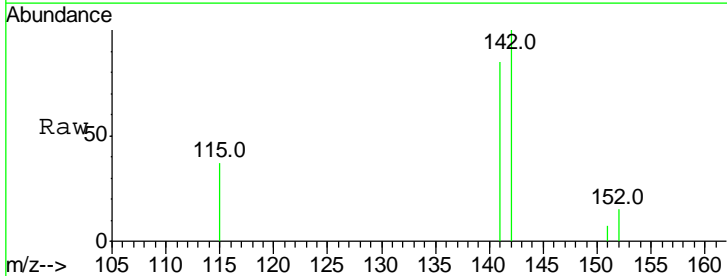
Instrument :
 BNA_E
 ClientSampled :

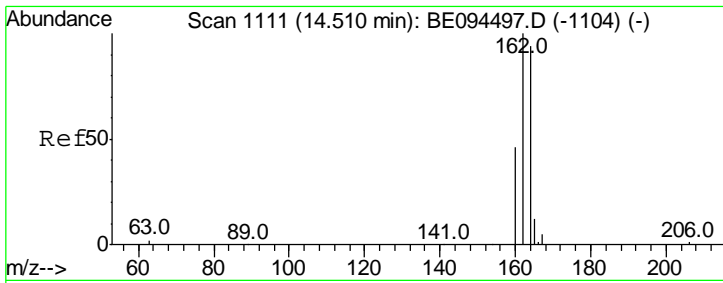
Tgt Ion:152 Resp: 3095
 Ion Ratio Lower Upper
 152 100
 151 14.2 15.4 23.0#



#12
 2-Methylnaphthalene
 Concen: 0.247 ng
 RT: 12.38 min Scan# 849
 Delta R.T. 0.02 min
 Lab File: BE094692.D
 Acq: 1 Nov 2017 15:44

Tgt Ion:142 Resp: 2590
 Ion Ratio Lower Upper
 142 100
 141 85.2 70.4 105.6
 115 37.1 31.7 47.5



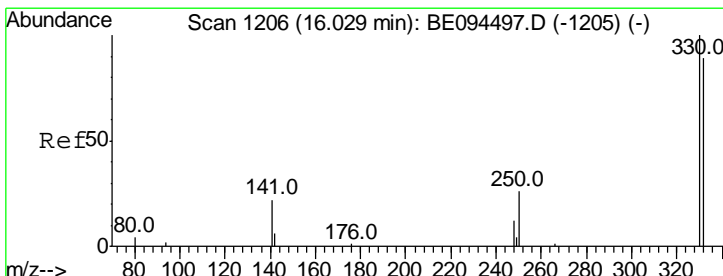
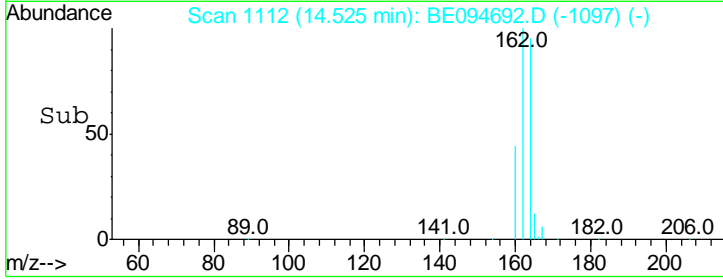
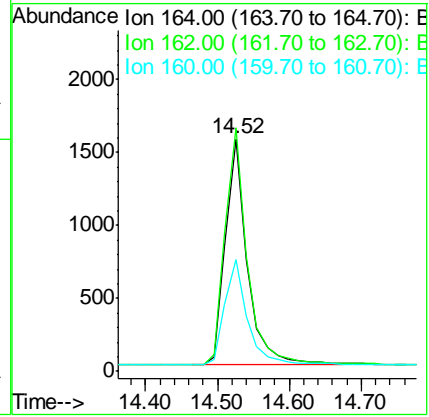
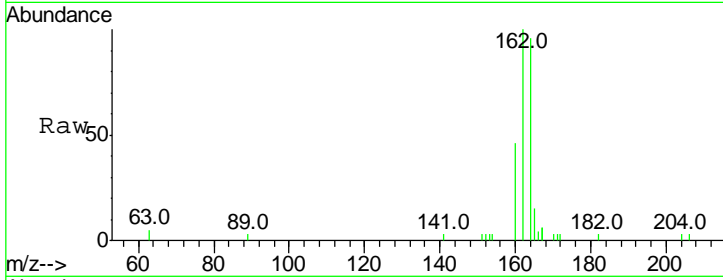


#13
 Acenaphthene-d10
 Concen: 0.400 ng
 RT: 14.52 min Scan# 1112
 Delta R.T. 0.01 min
 Lab File: BE094692.D
 Acq: 1 Nov 2017 15:44

Instrument :
 BNA_E
 ClientSampled :

Tot Ion:164 Resp: 3270

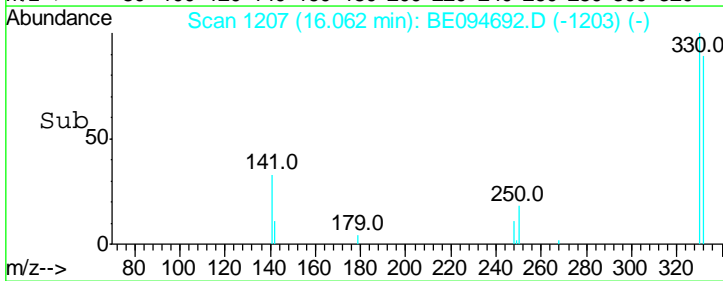
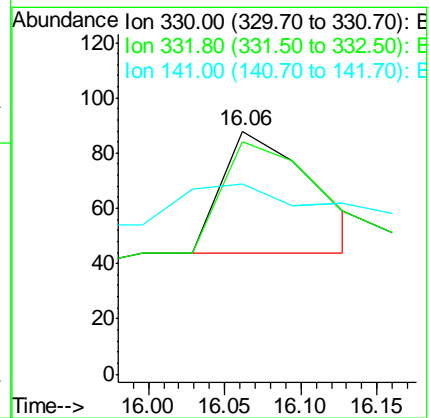
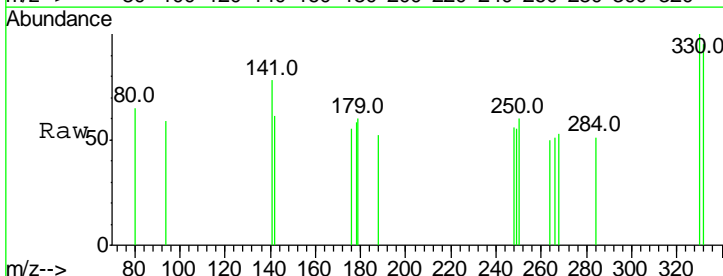
Ion	Ratio	Lower	Upper
164	100		
162	104.6	83.1	124.7
160	48.2	37.1	55.7

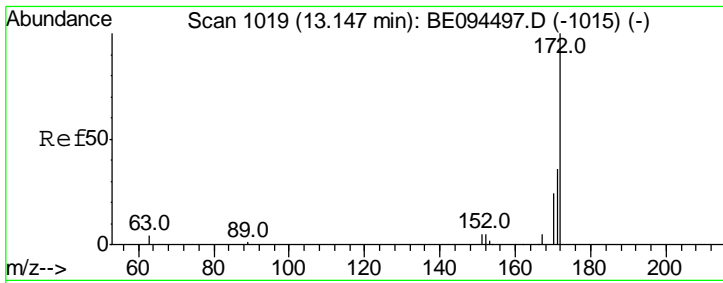


#14
 2,4,6-Tribromophenol
 Concen: 0.200 ng
 RT: 16.06 min Scan# 1207
 Delta R.T. 0.03 min
 Lab File: BE094692.D
 Acq: 1 Nov 2017 15:44

Tgt Ion:330 Resp: 180

Ion	Ratio	Lower	Upper
330	100		
332	95.6	152.7	229.1#
141	37.8	33.7	50.5

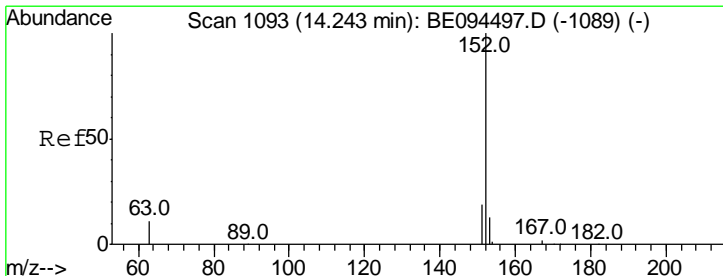
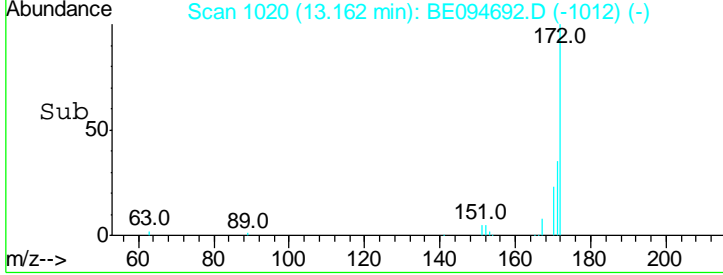
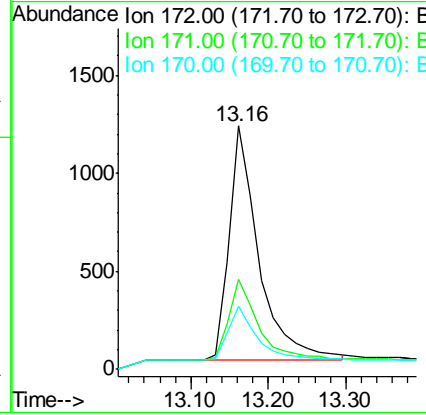
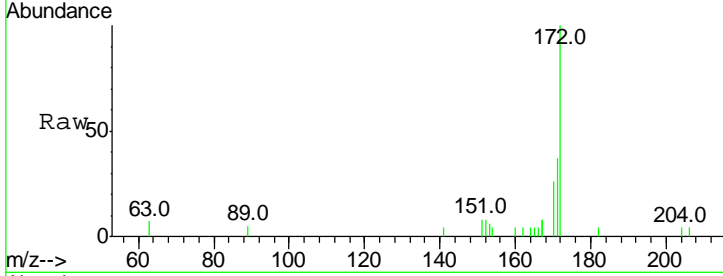




#15
 2-Fluorobiphenyl
 Concen: 0.276 ng
 RT: 13.16 min Scan# 1020
 Delta R.T. 0.01 min
 Lab File: BE094692.D
 Acq: 1 Nov 2017 15:44

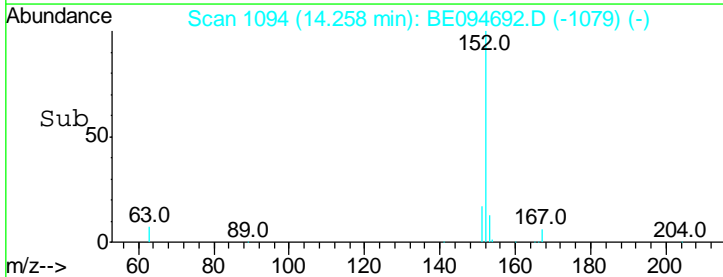
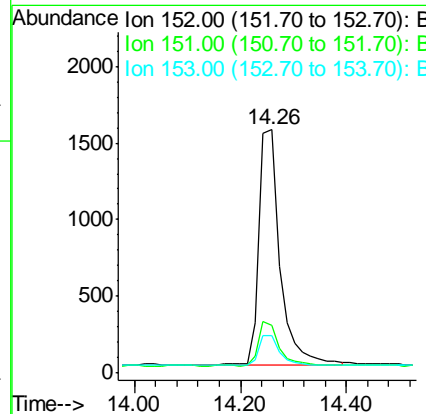
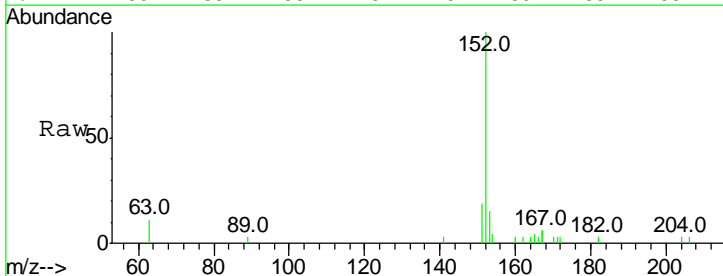
Instrument :
 BNA_E
 ClientSampled :

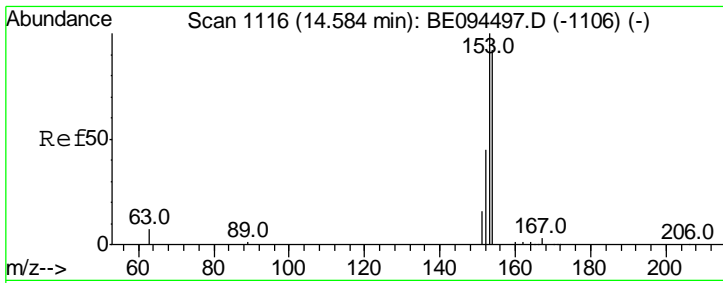
Tgt Ion	Resp	Lower	Upper
172	100		
171	37.0	29.9	44.9
170	26.0	21.8	32.8



#16
 Acenaphthylene
 Concen: 0.241 ng
 RT: 14.26 min Scan# 1094
 Delta R.T. 0.01 min
 Lab File: BE094692.D
 Acq: 1 Nov 2017 15:44

Tgt Ion	Resp	Lower	Upper
152	100		
151	18.2	15.7	23.5
153	13.0	10.5	15.7

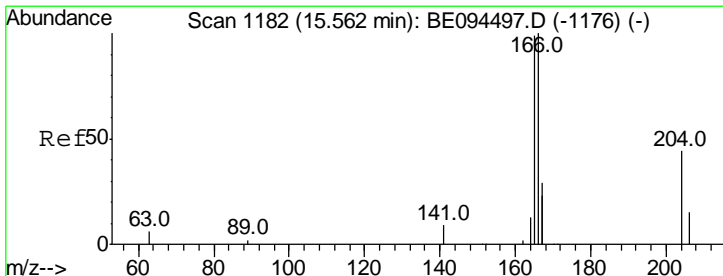
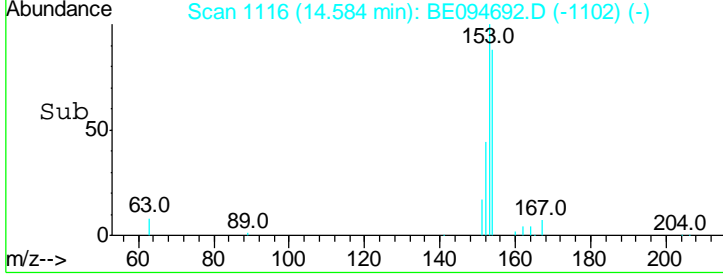
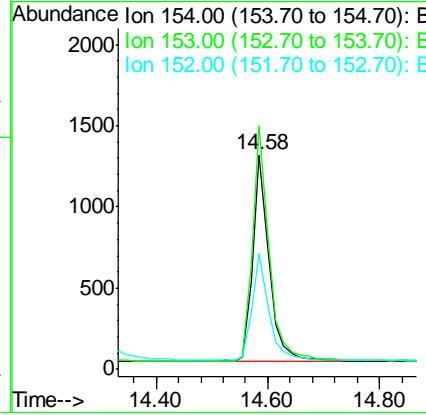
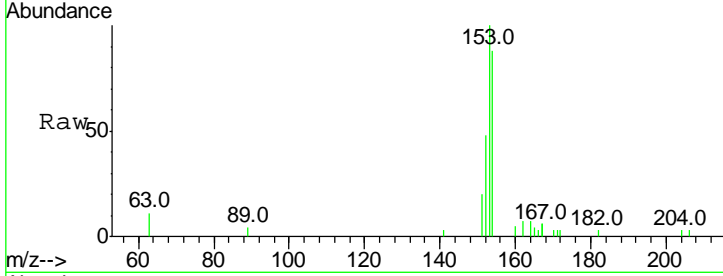




#17
 Acenaphthene
 Concen: 0.237 ng
 RT: 14.58 min Scan# 1116
 Delta R.T. 0.00 min
 Lab File: BE094692.D
 Acq: 1 Nov 2017 15:44

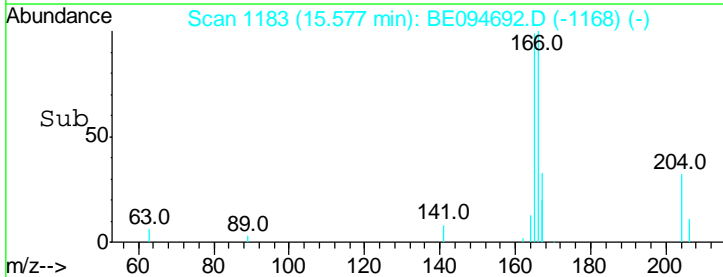
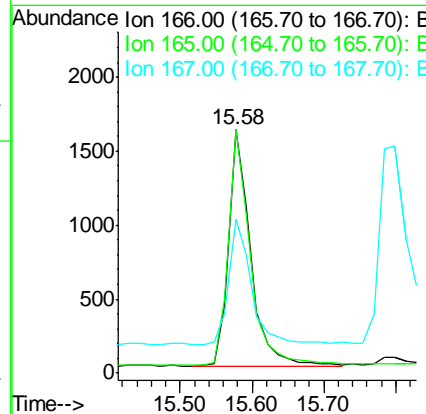
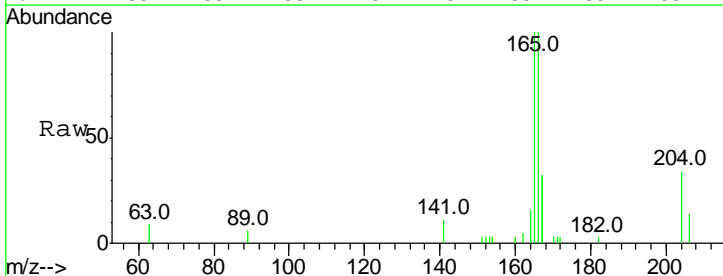
Instrument :
 BNA_E
 ClientSampled :

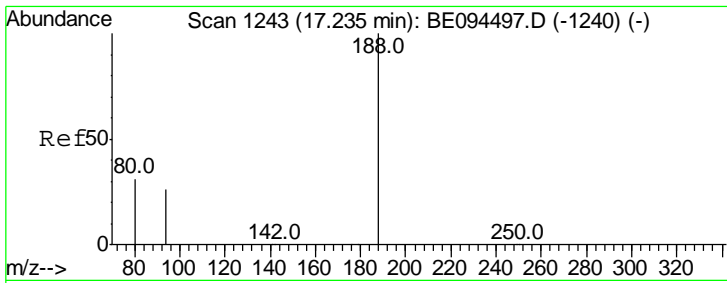
Tgt Ion	Resp	Lower	Upper
154	100		
153	115.0	89.2	133.8
152	52.1	42.0	63.0



#18
 Fluorene
 Concen: 0.238 ng
 RT: 15.58 min Scan# 1183
 Delta R.T. 0.01 min
 Lab File: BE094692.D
 Acq: 1 Nov 2017 15:44

Tgt Ion	Resp	Lower	Upper
166	100		
165	99.1	77.8	116.6
167	55.5	42.4	63.6

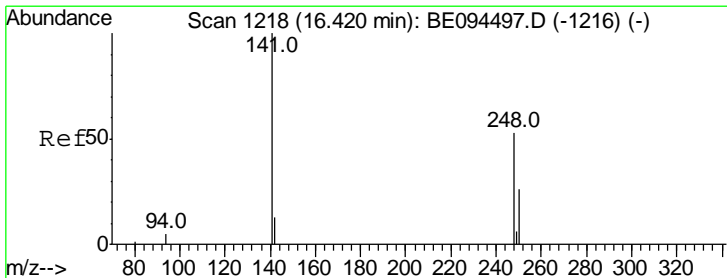
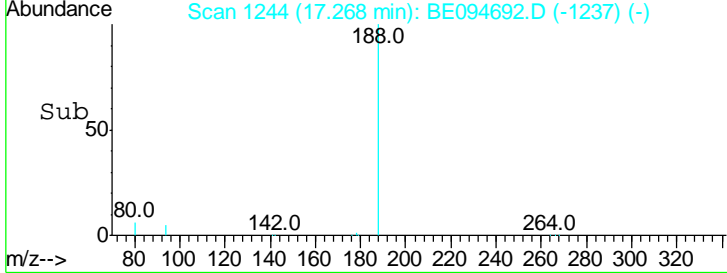
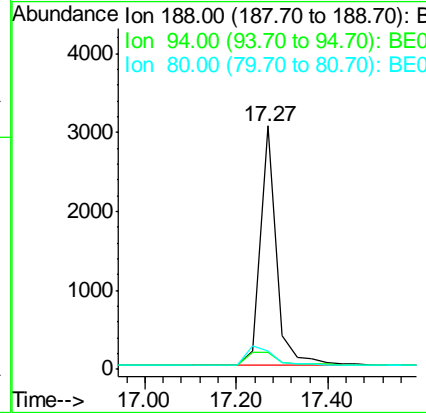
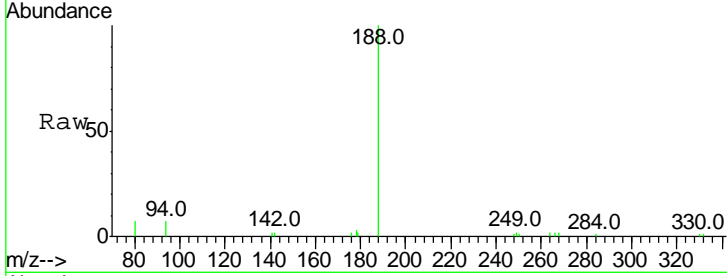




#19
 Phenanthrene-d10
 Concen: 0.400 ng
 RT: 17.27 min Scan# 1244
 Delta R.T. 0.03 min
 Lab File: BE094692.D
 Acq: 1 Nov 2017 15:44

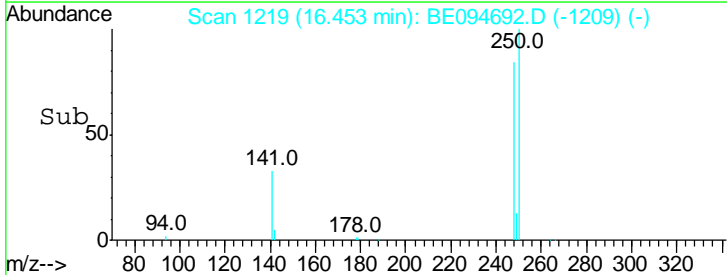
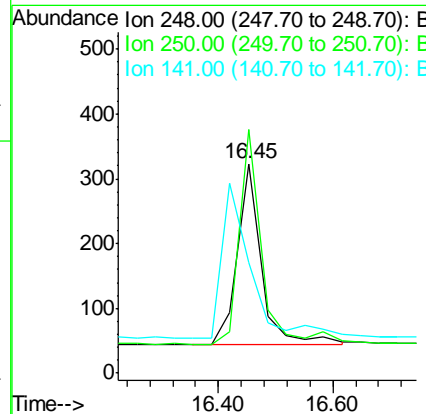
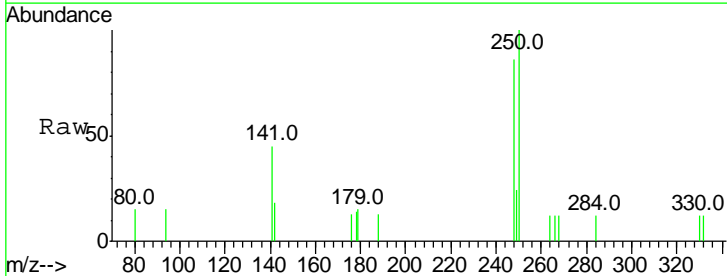
Instrument :
 BNA_E
 ClientSampled :

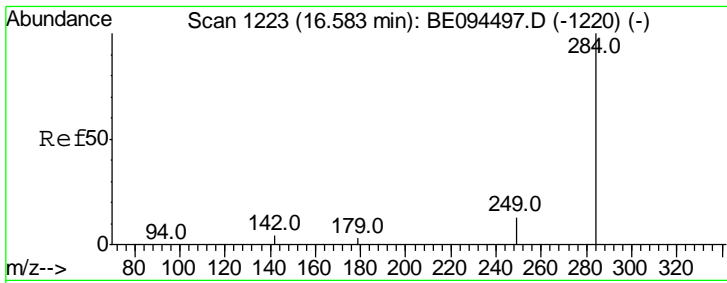
Tgt Ion	Resp	Lower	Upper
188	100		
94	6.8	3.9	5.9#
80	7.3	3.6	5.4#



#20
 4-Bromophenyl-phenylether
 Concen: 0.193 ng
 RT: 16.45 min Scan# 1219
 Delta R.T. 0.03 min
 Lab File: BE094692.D
 Acq: 1 Nov 2017 15:44

Tgt Ion	Resp	Lower	Upper
248	100		
250	116.4	62.7	94.1#
141	52.9	48.2	72.2

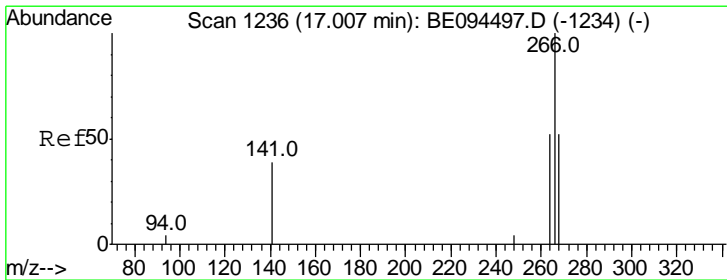
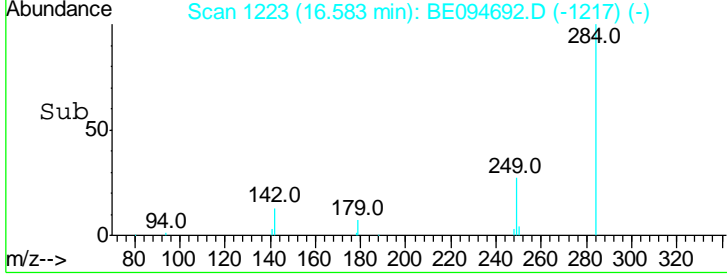
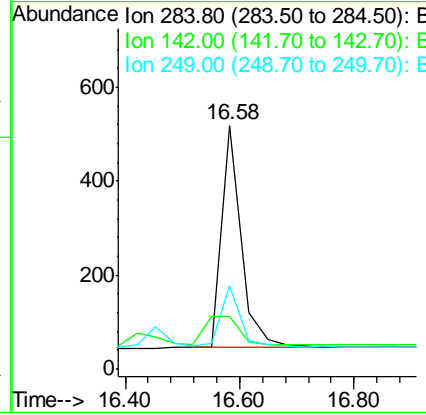
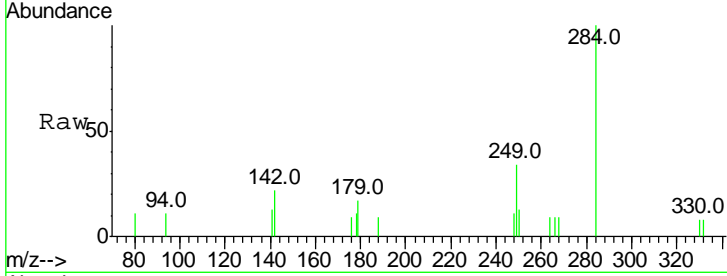




#21
 Hexachlorobenzene
 Concen: 0.313 ng
 RT: 16.58 min Scan# 1223
 Delta R.T. 0.00 min
 Lab File: BE094692.D
 Acq: 1 Nov 2017 15:44

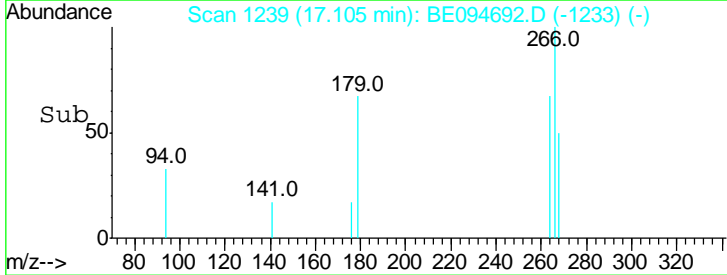
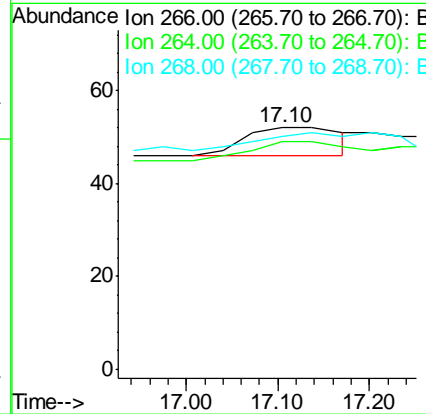
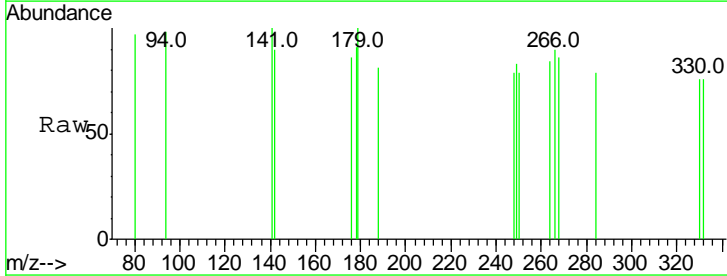
Instrument :
 BNA_E
 ClientSampled :

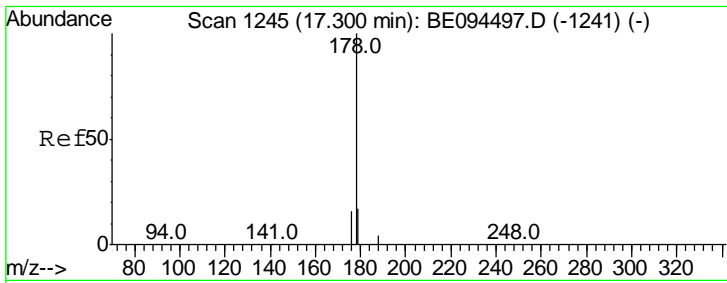
Tgt Ion	Resp	Lower	Upper
284	100		
142	0.0	22.1	33.1#
249	26.4	34.8	52.2#



#22
 Pentachlorophenol
 Concen: 0.098 ng
 RT: 17.10 min Scan# 1239
 Delta R.T. 0.10 min
 Lab File: BE094692.D
 Acq: 1 Nov 2017 15:44

Tgt Ion	Resp	Lower	Upper
266	100		
264	94.2	72.5	108.7
268	96.2	73.8	110.6

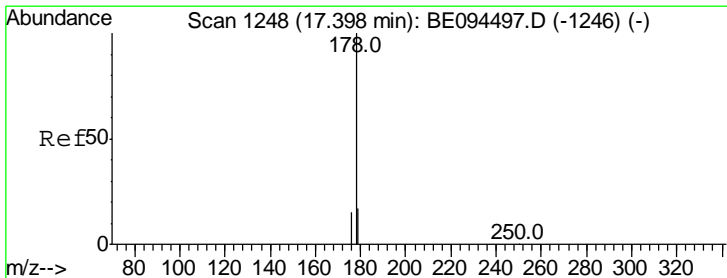
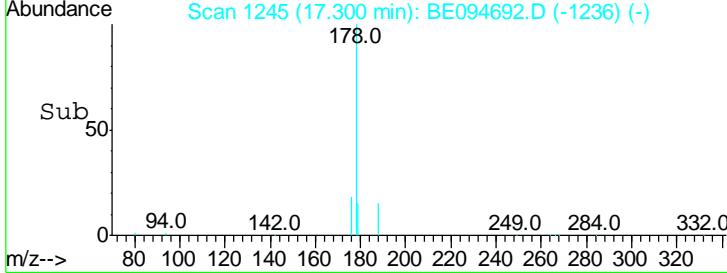
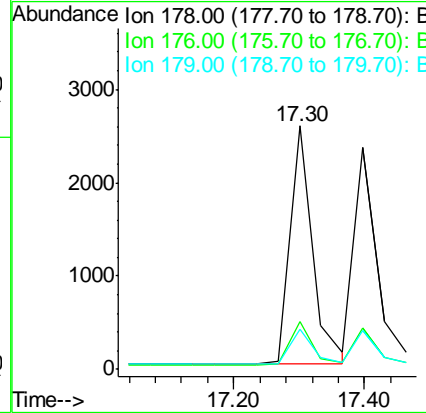
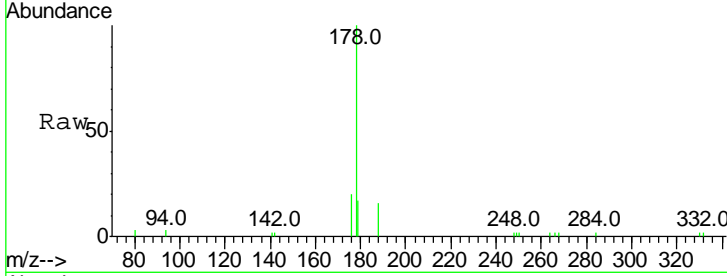




#23
 Phenanthrene
 Concen: 0.291 ng
 RT: 17.30 min Scan# 1245
 Delta R.T. 0.00 min
 Lab File: BE094692.D
 Acq: 1 Nov 2017 15:44

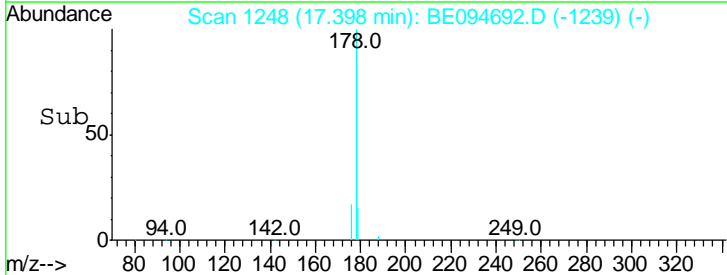
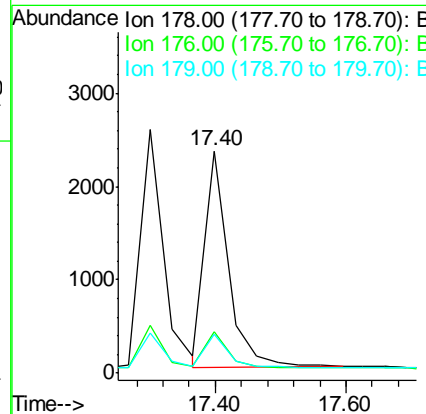
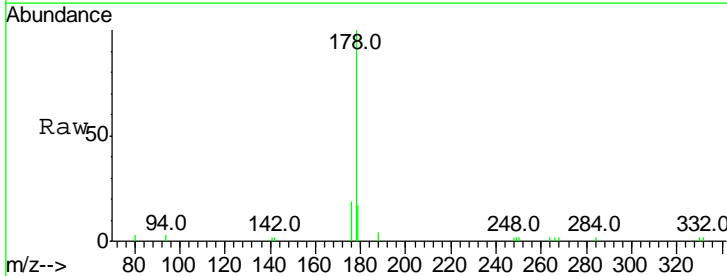
Instrument :
 BNA_E
 ClientSampled :

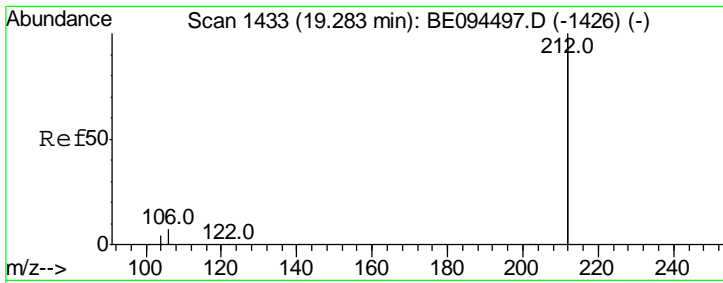
Tgt Ion	Resp	Lower	Upper
178	100		
176	18.3	15.1	22.7
179	15.2	11.8	17.6



#24
 Anthracene
 Concen: 0.262 ng
 RT: 17.40 min Scan# 1248
 Delta R.T. 0.00 min
 Lab File: BE094692.D
 Acq: 1 Nov 2017 15:44

Tgt Ion	Resp	Lower	Upper
178	100		
176	16.9	12.8	19.2
179	15.3	13.0	19.6



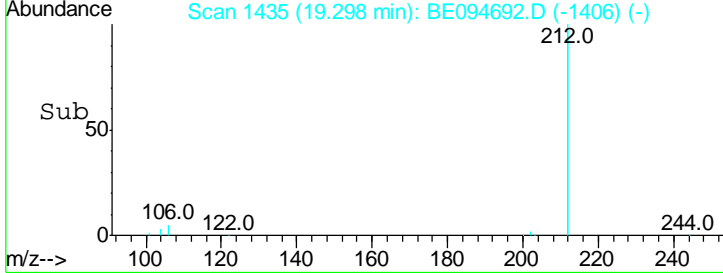
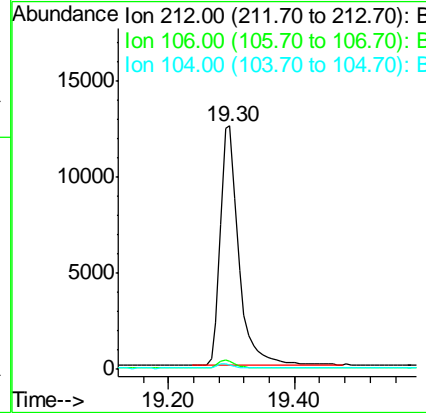
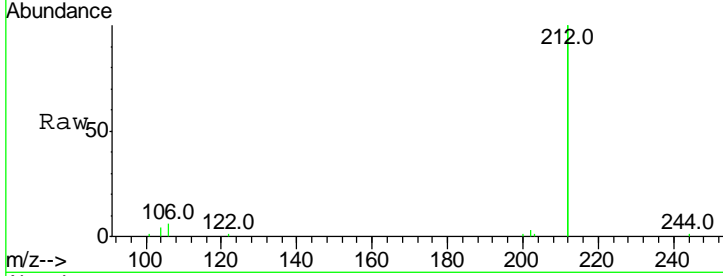


#25
 Fluoranthene-d10
 Concen: 0.243 ng
 RT: 19.30 min Scan# 1435
 Delta R.T. 0.02 min
 Lab File: BE094692.D
 Acq: 1 Nov 2017 15:44

Instrument :
 BNA_E
 ClientSampled :

Tgt Ion: 212 Resp: 25317

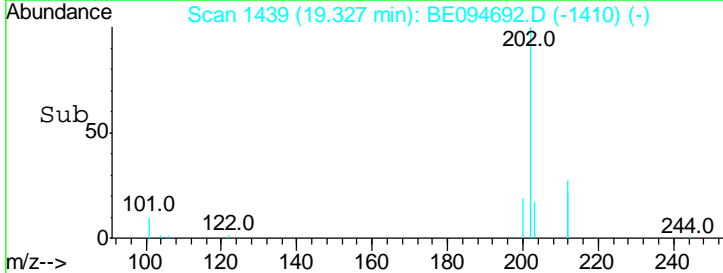
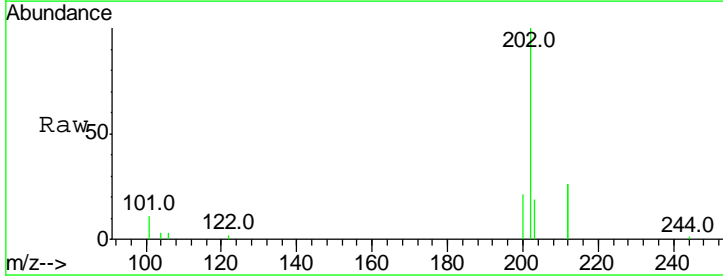
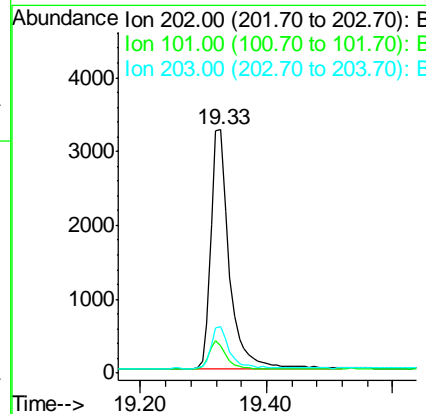
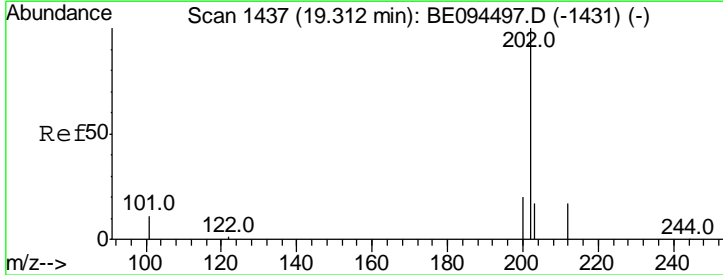
Ion	Ratio	Lower	Upper
212	100		
106	3.3	2.8	4.2
104	1.8	1.6	2.4

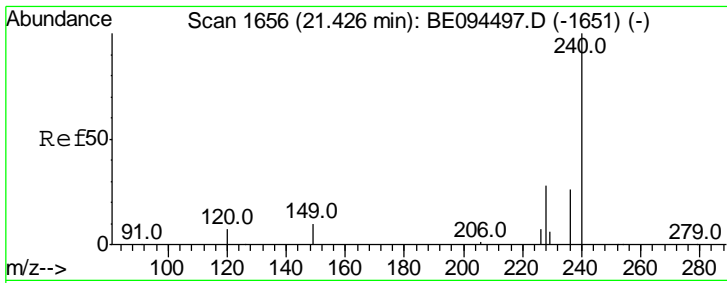


#26
 Fluoranthene
 Concen: 0.199 ng
 RT: 19.33 min Scan# 1439
 Delta R.T. 0.02 min
 Lab File: BE094692.D
 Acq: 1 Nov 2017 15:44

Tgt Ion: 202 Resp: 6639

Ion	Ratio	Lower	Upper
202	100		
101	11.3	9.8	14.8
203	16.9	13.7	20.5



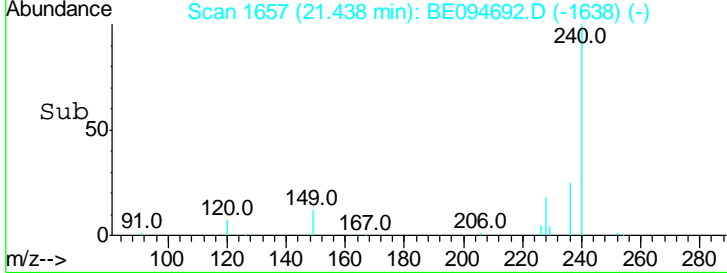
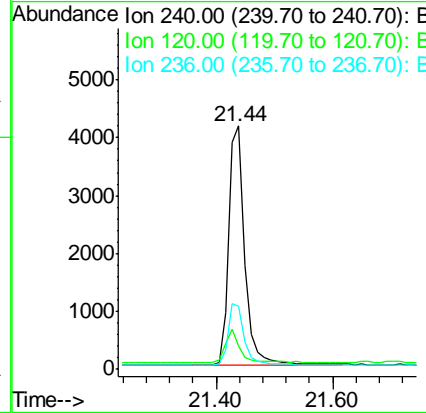
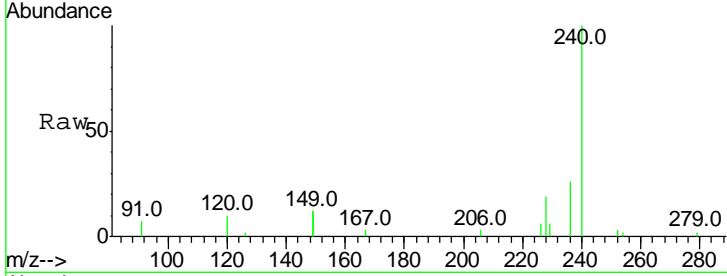


#27
 Chrysene-d12
 Concen: 0.400 ng
 RT: 21.44 min Scan# 1657
 Delta R.T. 0.01 min
 Lab File: BE094692.D
 Acq: 1 Nov 2017 15:44

Instrument :
 BNA_E
 ClientSampled :

Tgt Ion: 240 Resp: 8023

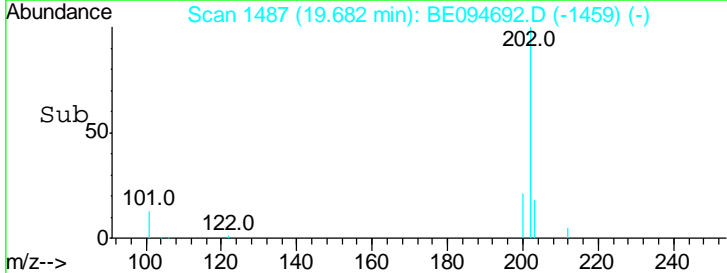
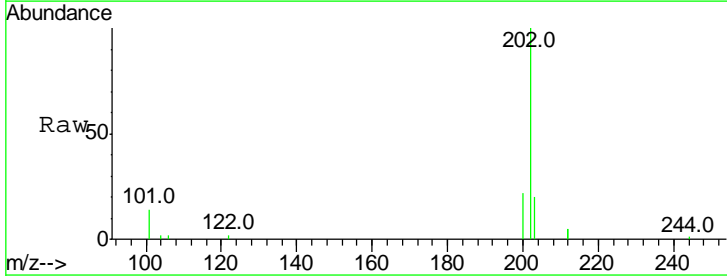
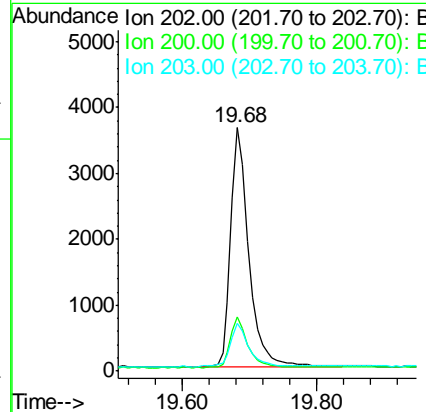
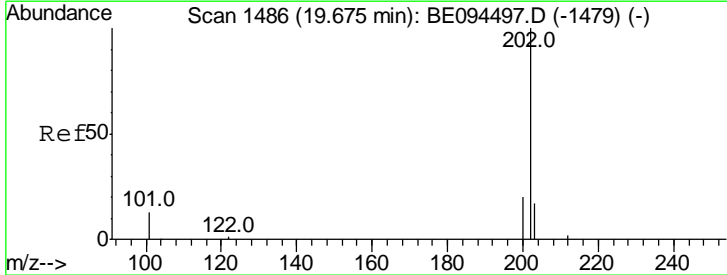
Ion	Ratio	Lower	Upper
240	100		
120	9.7	5.5	8.3#
236	26.0	20.7	31.1

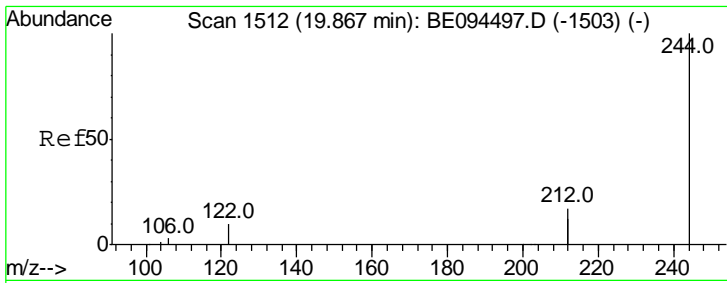


#28
 Pyrene
 Concen: 0.242 ng
 RT: 19.68 min Scan# 1487
 Delta R.T. 0.01 min
 Lab File: BE094692.D
 Acq: 1 Nov 2017 15:44

Tgt Ion: 202 Resp: 6805

Ion	Ratio	Lower	Upper
202	100		
200	20.4	16.6	25.0
203	18.4	13.8	20.8

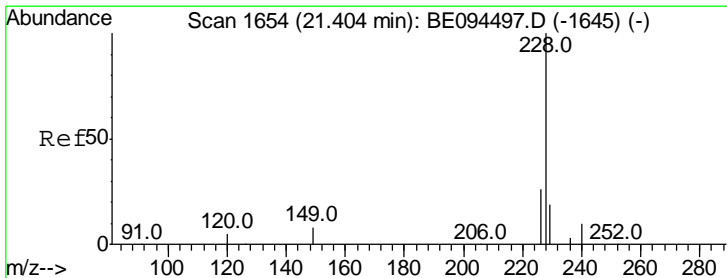
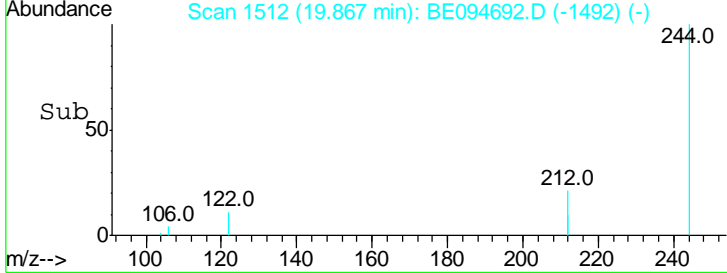
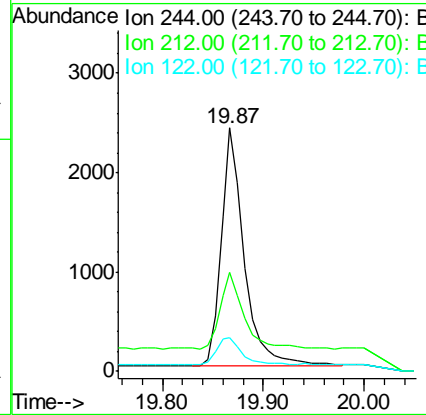
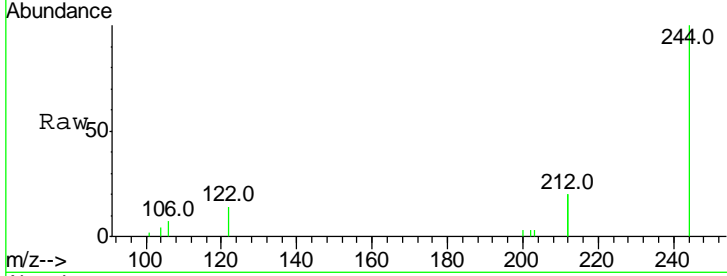




#29
 Terphenyl-d14
 Concen: 0.256 ng
 RT: 19.87 min Scan# 1512
 Delta R.T. 0.00 min
 Lab File: BE094692.D
 Acq: 1 Nov 2017 15:44

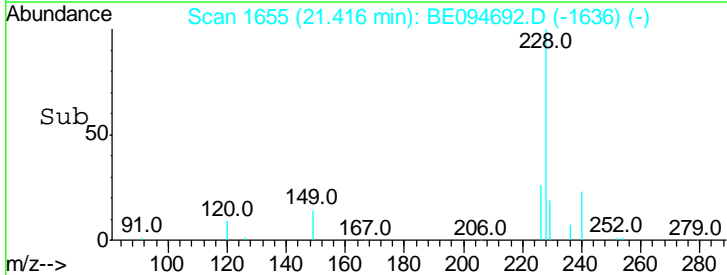
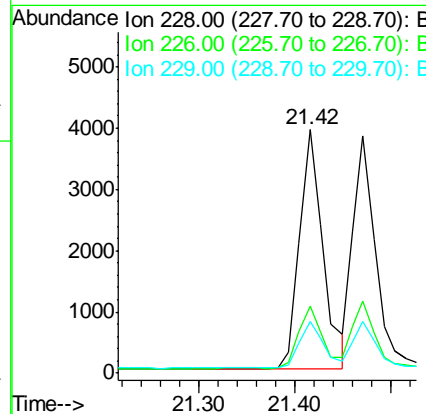
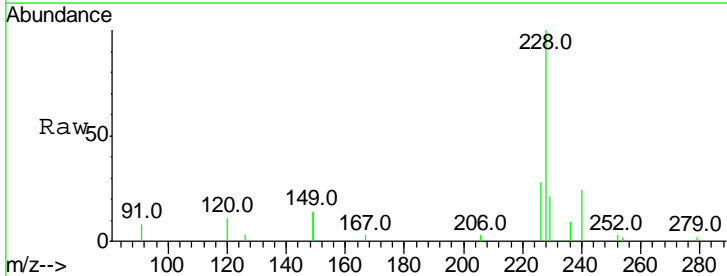
Instrument :
 BNA_E
 ClientSampled :

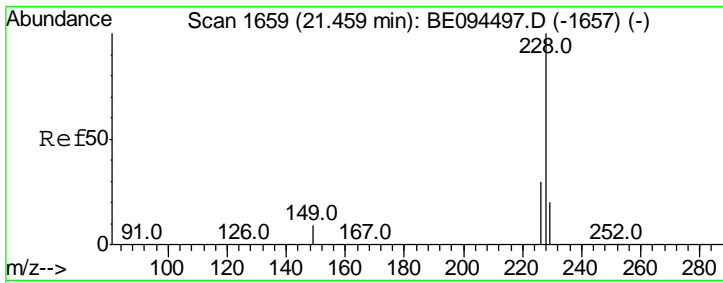
Tgt Ion	Resp	Lower	Upper
244	100		
212	40.8	25.4	38.0#
122	13.8	8.1	12.1#



#30
 Benzo(a)anthracene
 Concen: 0.255 ng
 RT: 21.42 min Scan# 1655
 Delta R.T. 0.01 min
 Lab File: BE094692.D
 Acq: 1 Nov 2017 15:44

Tgt Ion	Resp	Lower	Upper
228	100		
226	27.6	40.0	60.0#
229	21.2	40.0	60.0#

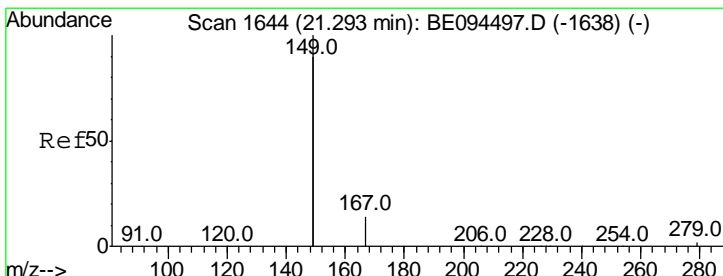
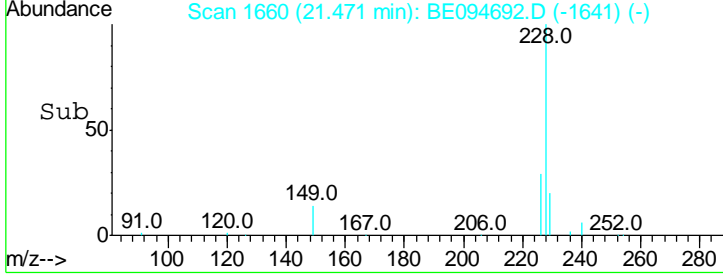
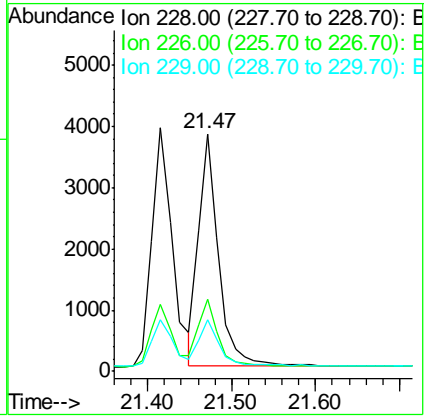
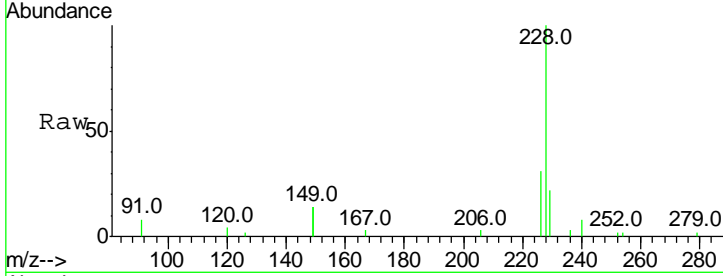




#31
 Chrysene
 Concen: 0.239 ng
 RT: 21.47 min Scan# 1660
 Delta R.T. 0.01 min
 Lab File: BE094692.D
 Acq: 1 Nov 2017 15:44

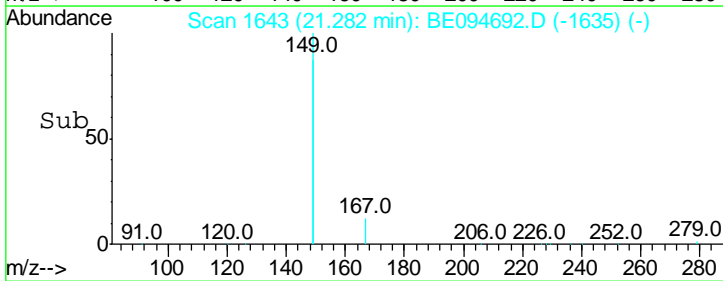
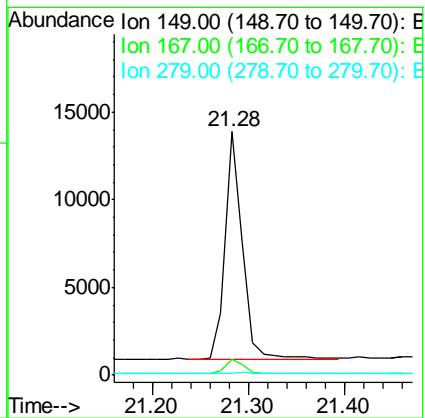
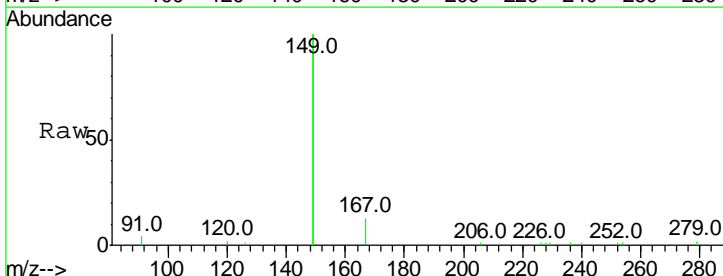
Instrument :
 BNA_E
 ClientSampled :

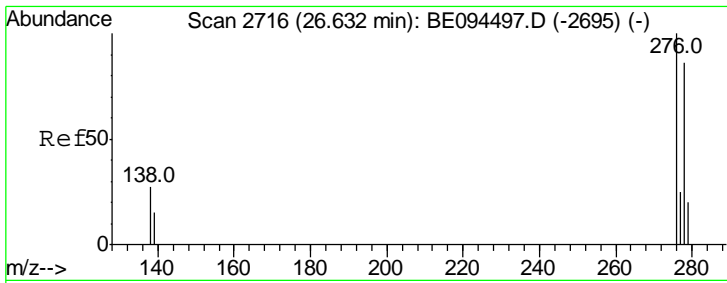
Tgt Ion	Resp	Lower	Upper
228	100		
226	30.5	40.0	60.0#
229	21.6	40.0	60.0#



#32
 Bis(2-ethylhexyl)phthalate
 Concen: 0.250 ng
 RT: 21.28 min Scan# 1643
 Delta R.T. -0.01 min
 Lab File: BE094692.D
 Acq: 1 Nov 2017 15:44

Tgt Ion	Resp	Lower	Upper
149	100		
167	7.1	5.4	8.0
279	1.1	0.7	1.1#

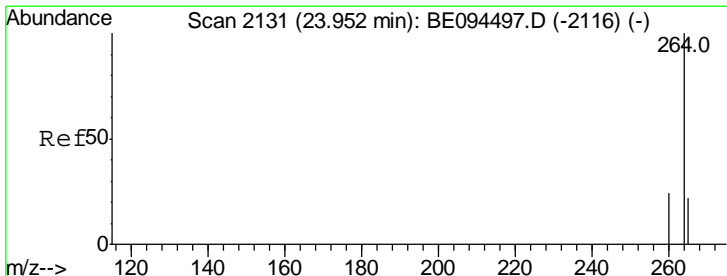
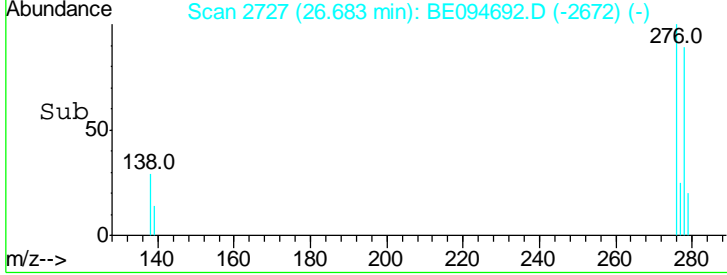
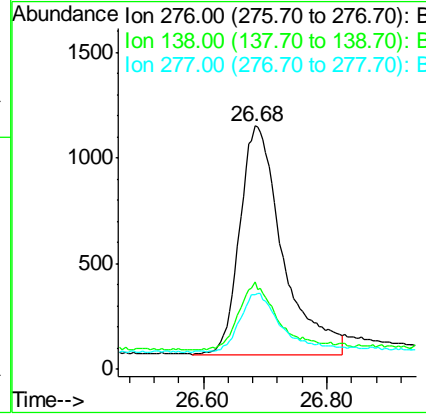
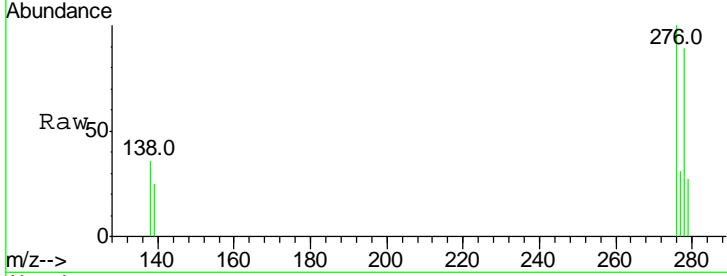




#33
 Indeno(1,2,3-cd)pyrene
 Concen: 0.212 ng
 RT: 26.68 min Scan# 2727
 Delta R.T. 0.05 min
 Lab File: BE094692.D
 Acq: 1 Nov 2017 15:44

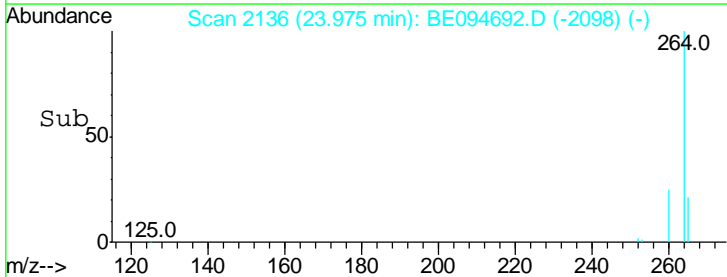
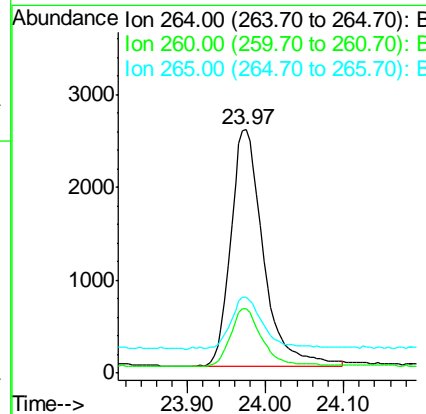
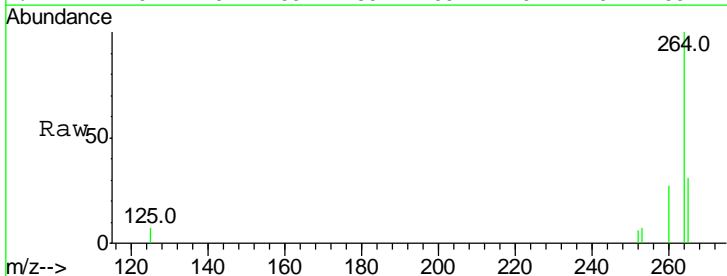
Instrument :
 BNA_E
 ClientSampled :

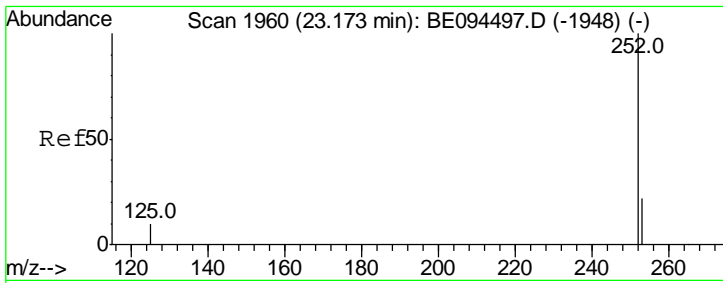
Tgt Ion	Resp	Lower	Upper
276	100		
138	27.0	22.5	33.7
277	24.8	19.9	29.9



#34
 Perylene-d12
 Concen: 0.400 ng
 RT: 23.97 min Scan# 2136
 Delta R.T. 0.02 min
 Lab File: BE094692.D
 Acq: 1 Nov 2017 15:44

Tgt Ion	Resp	Lower	Upper
264	100		
260	26.7	20.5	30.7
265	31.0	22.8	34.2

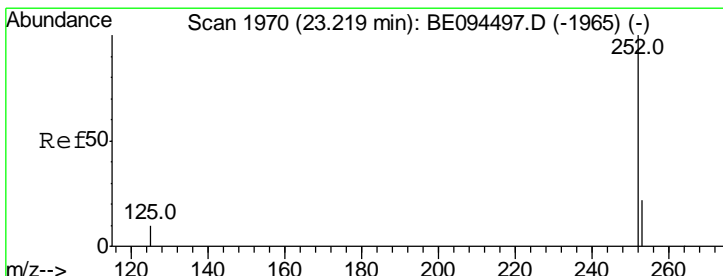
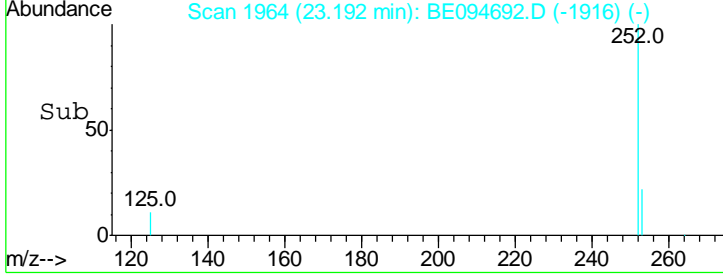
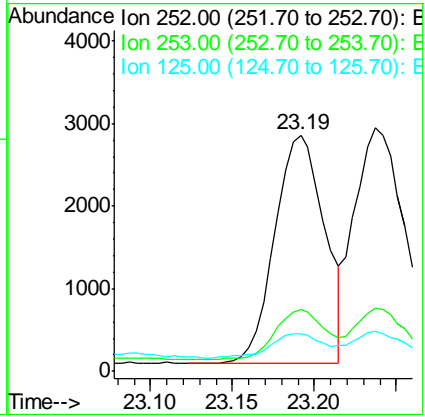
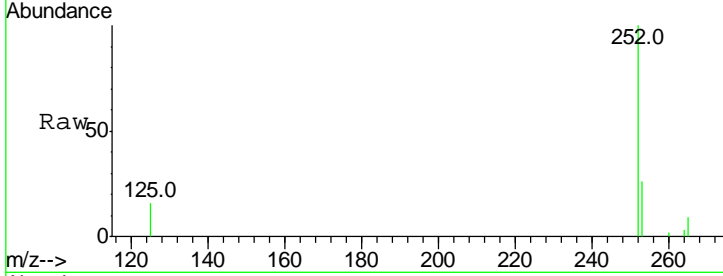




#35
 Benzo(b)fluoranthene
 Concen: 0.244 ng
 RT: 23.19 min Scan# 1964
 Delta R.T. 0.02 min
 Lab File: BE094692.D
 Acq: 1 Nov 2017 15:44

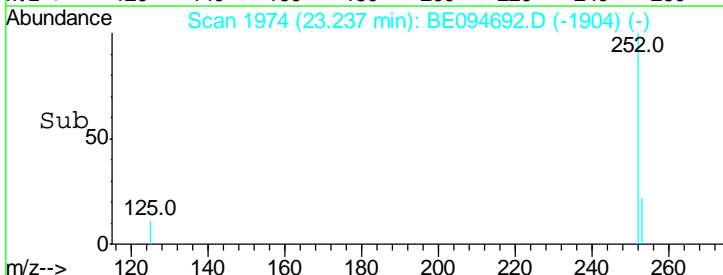
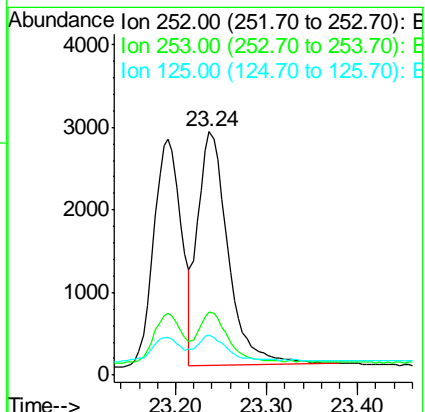
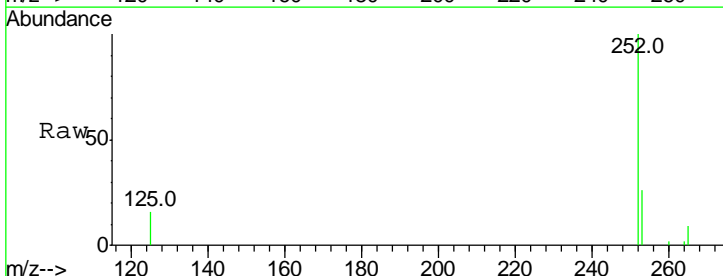
Instrument : BNA_E
 ClientSampled :

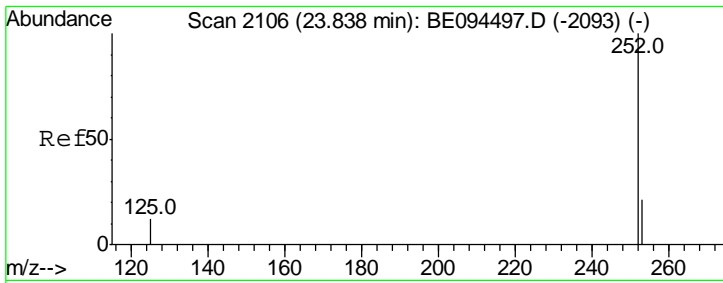
Tgt Ion	Resp	Lower	Upper
252	100		
253	26.1	48.0	72.0#
125	16.2	56.0	84.0#



#36
 Benzo(k)fluoranthene
 Concen: 0.258 ng
 RT: 23.24 min Scan# 1974
 Delta R.T. 0.02 min
 Lab File: BE094692.D
 Acq: 1 Nov 2017 15:44

Tgt Ion	Resp	Lower	Upper
252	100		
253	25.9	48.0	72.0#
125	16.2	56.0	84.0#



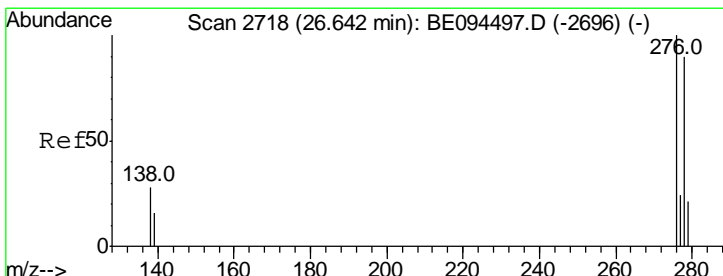
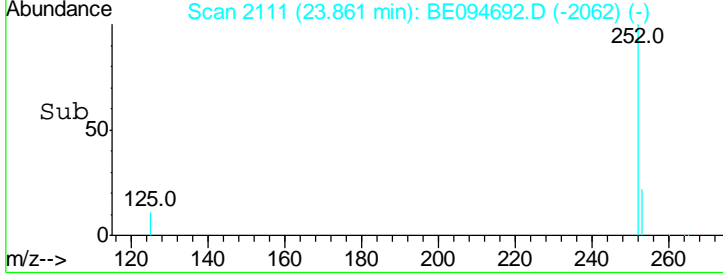
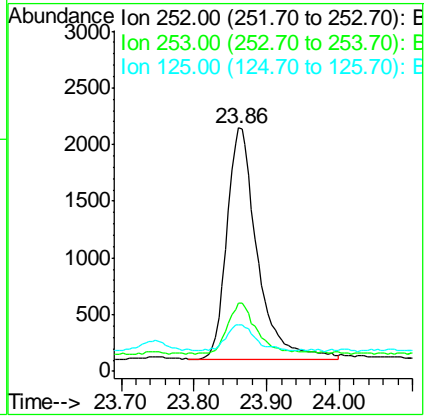
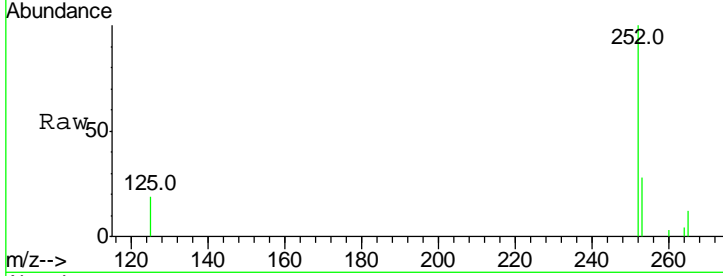


#37
 Benzo(a)pyrene
 Concen: 0.257 ng
 RT: 23.86 min Scan# 2111
 Delta R.T. 0.02 min
 Lab File: BE094692.D
 Acq: 1 Nov 2017 15:44

Instrument :
 BNA_E
 ClientSampled :

Tgt Ion: 252 Resp: 5958

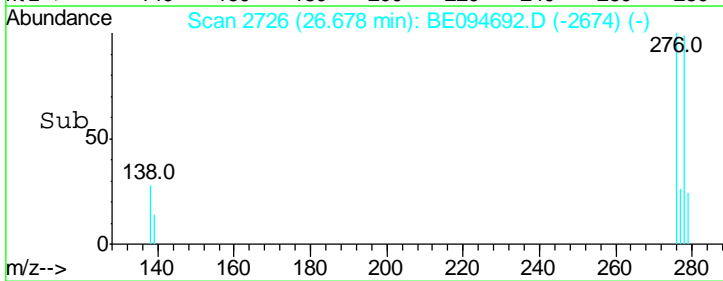
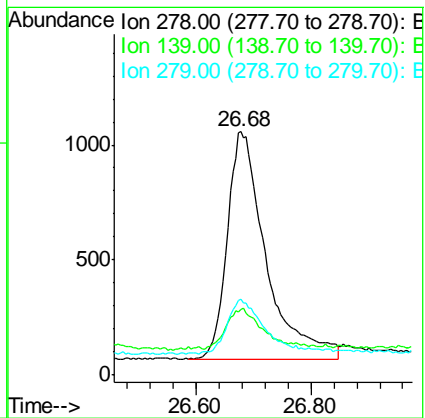
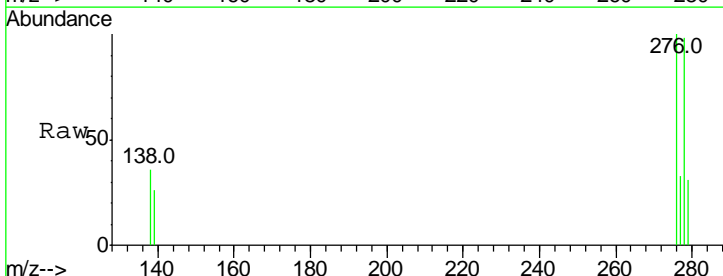
Ion	Ratio	Lower	Upper
252	100		
253	28.3	52.0	78.0#
125	19.3	68.0	102.0#

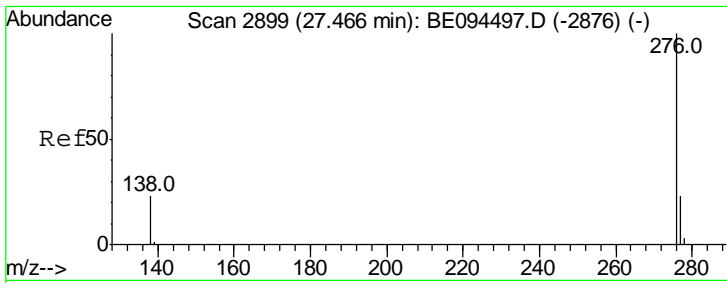


#38
 Dibenzo(a,h)anthracene
 Concen: 0.224 ng
 RT: 26.68 min Scan# 2726
 Delta R.T. 0.04 min
 Lab File: BE094692.D
 Acq: 1 Nov 2017 15:44

Tgt Ion: 278 Resp: 4665

Ion	Ratio	Lower	Upper
278	100		
139	26.7	56.0	84.0#
279	31.3	52.0	78.0#





#39
 Benzo(a,h,i)perylene
 Concen: 0.190 ng
 RT: 27.52 min Scan# 2911
 Delta R.T. 0.06 min
 Lab File: BE094692.D
 Acq: 1 Nov 2017 15:44

Instrument :
 BNA_E
 ClientSampled :

Tot Ion	Ion	Ratio	Lower	Upper
276	276	100		
277	277	31.0	52.0	78.0#
138	138	33.3	44.0	66.0#

