

Data Path : Z:\svoasrv\HPCHEM1\BNA_E\Data\BE110424\
 Data File : BE101454.D
 Acq On : 4 Nov 2024 13:25
 Operator : RC/JU
 Sample : PB164593BL
 Misc :
 ALS Vial : 3 Sample Multiplier: 1

Instrument :
 BNA_E
 ClientSampleId :
 PB164593BL

Quant Time: Nov 04 13:19:19 2024
 Quant Method : Z:\svoasrv\HPCHEM1\BNA_E\Methods\8270-BE102824.M
 Quant Title : ASP BNA STANDARDS FOR 5 POINT CALIBRATION
 QLast Update : Tue Oct 29 01:26:30 2024
 Response via : Initial Calibration

Compound	R.T.	QIon	Response	Conc	Units	Dev(Min)
Internal Standards						
1) 1,4-Dichlorobenzene-d4	7.573	152	83697	20.000	ng	0.00
21) Naphthalene-d8	10.341	136	332383	20.000	ng	0.00
39) Acenaphthene-d10	14.177	164	209474	20.000	ng	0.00
64) Phenanthrene-d10	16.915	188	478774	20.000	ng	0.00
76) Chrysene-d12	21.075	240	637683	20.000	ng	0.00
86) Perylene-d12	23.372	264	926419	20.000	ng	0.00
System Monitoring Compounds						
5) 2-Fluorophenol	5.323	112	599545	125.548	ng	0.00
7) Phenol-d6	6.951	99	740437	111.822	ng	0.00
23) Nitrobenzene-d5	8.784	82	428697	81.009	ng	0.00
42) 2,4,6-Tribromophenol	15.687	330	459560	125.173	ng	0.00
45) 2-Fluorobiphenyl	12.802	172	1067682	86.319	ng	0.00
79) Terphenyl-d14	19.512	244	2218492	80.071	ng	0.00

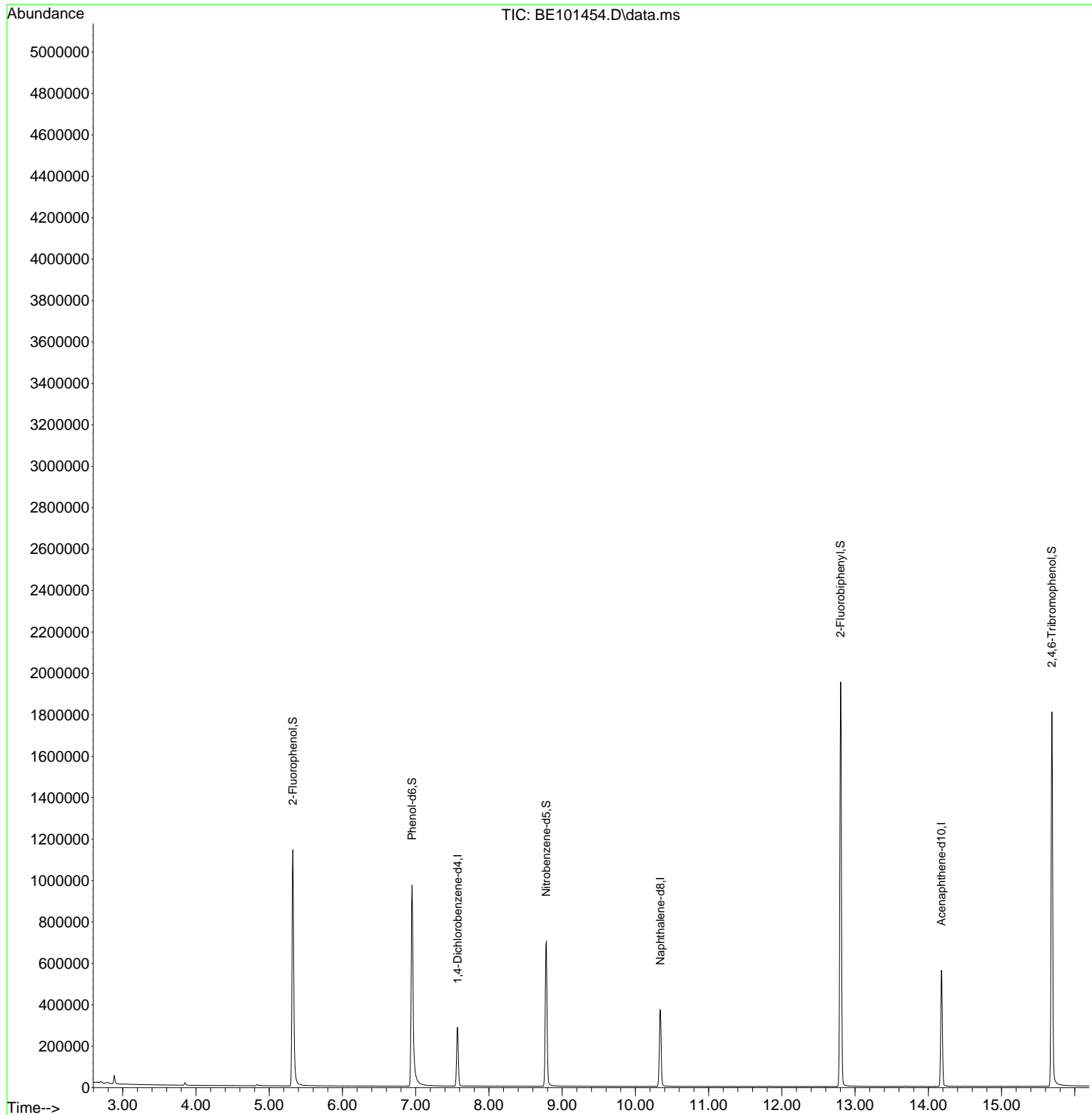
Target Compounds Qvalue

(#) = qualifier out of range (m) = manual integration (+) = signals summed

Data Path : Z:\svoasrv\HPCHEM1\BNA_E\Data\BE110424\
 Data File : BE101454.D
 Acq On : 4 Nov 2024 13:25
 Operator : RC/JU
 Sample : PB164593BL
 Misc :
 ALS Vial : 3 Sample Multiplier: 1

Instrument :
 BNA_E
 ClientSampleId :
 PB164593BL

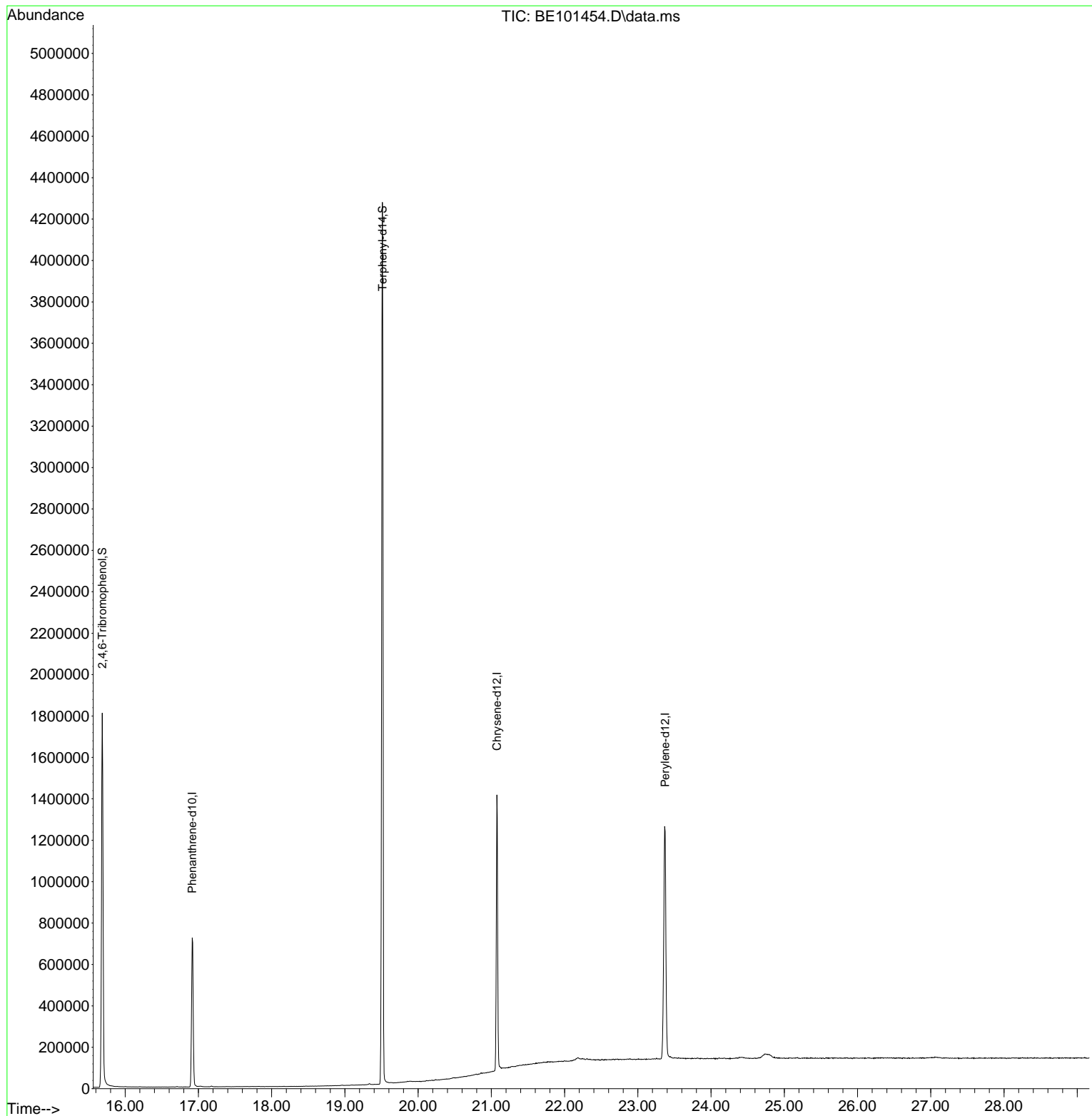
Quant Time: Nov 04 13:19:19 2024
 Quant Method : Z:\svoasrv\HPCHEM1\BNA_E\Methods\8270-BE102824.M
 Quant Title : ASP BNA STANDARDS FOR 5 POINT CALIBRATION
 QLast Update : Tue Oct 29 01:26:30 2024
 Response via : Initial Calibration

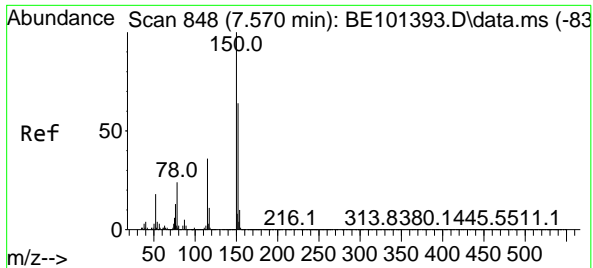


Data Path : Z:\svoasrv\HPCHEM1\BNA_E\Data\BE110424\
 Data File : BE101454.D
 Acq On : 4 Nov 2024 13:25
 Operator : RC/JU
 Sample : PB164593BL
 Misc :
 ALS Vial : 3 Sample Multiplier: 1

Instrument :
 BNA_E
 ClientSampleId :
 PB164593BL

Quant Time: Nov 04 13:19:19 2024
 Quant Method : Z:\svoasrv\HPCHEM1\BNA_E\Methods\8270-BE102824.M
 Quant Title : ASP BNA STANDARDS FOR 5 POINT CALIBRATION
 QLast Update : Tue Oct 29 01:26:30 2024
 Response via : Initial Calibration





#1
 1,4-Dichlorobenzene-d4
 Concen: 20.000 ng
 RT: 7.573 min Scan# 84
 Delta R.T. 0.003 min
 Lab File: BE101454.D
 Acq: 4 Nov 2024 13:25

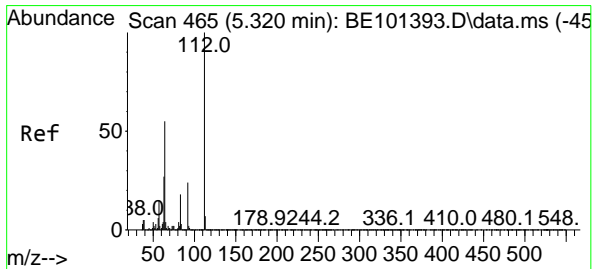
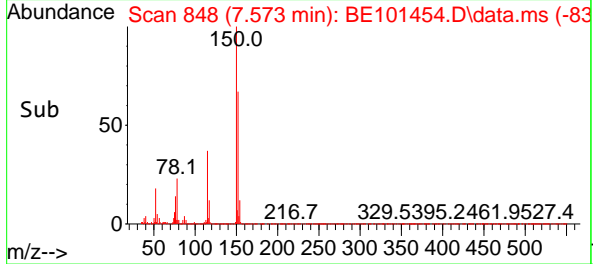
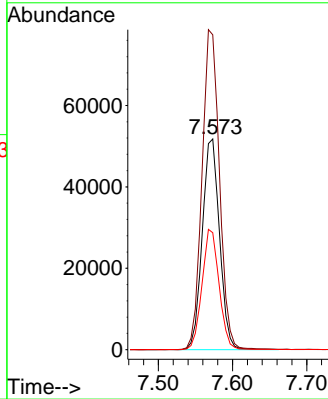
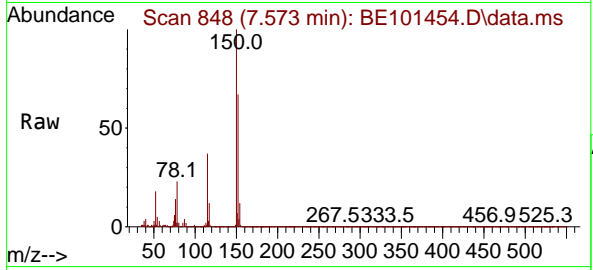
Instrument :

BNA_E

ClientSampleId :

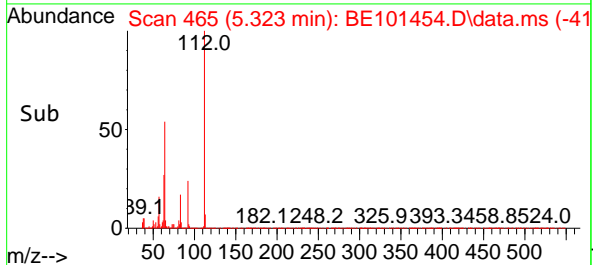
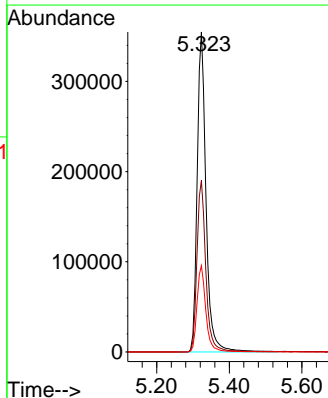
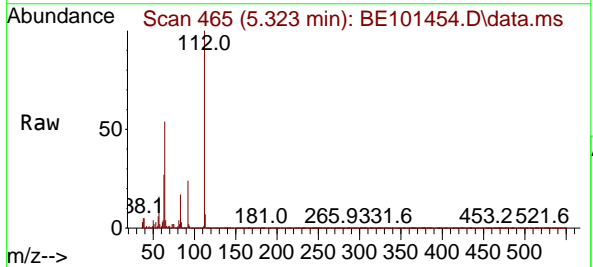
PB164593BL

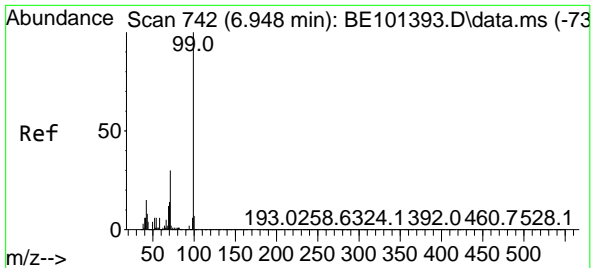
Tgt Ion:152 Resp: 83697
 Ion Ratio Lower Upper
 152 100
 150 149.4 124.2 186.4
 115 55.5 45.3 67.9



#5
 2-Fluorophenol
 Concen: 125.548 ng
 RT: 5.323 min Scan# 465
 Delta R.T. 0.003 min
 Lab File: BE101454.D
 Acq: 4 Nov 2024 13:25

Tgt Ion:112 Resp: 599545
 Ion Ratio Lower Upper
 112 100
 64 53.6 43.7 65.5
 63 26.9 21.4 32.2



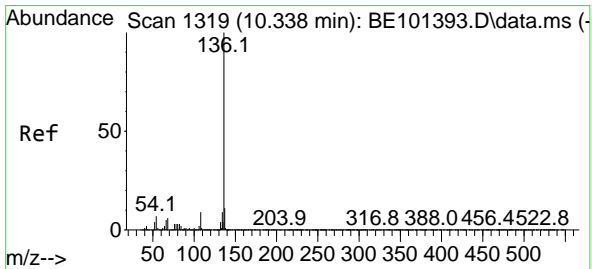
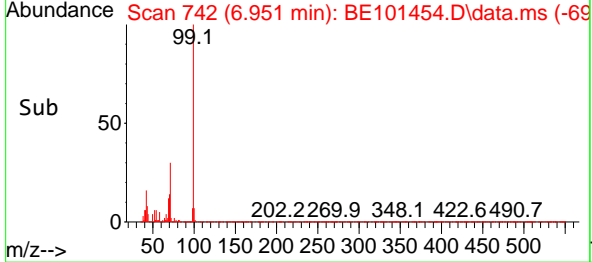
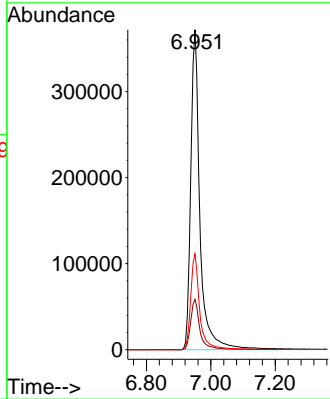
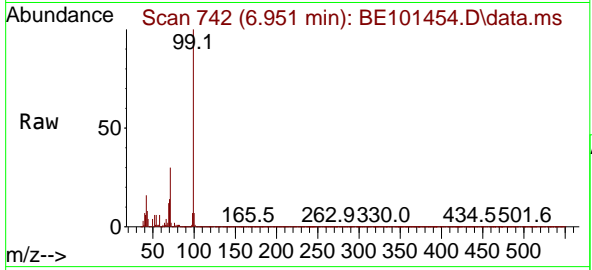


#7
 Phenol-d6
 Concen: 111.822 ng
 RT: 6.951 min Scan# 742
 Delta R.T. 0.003 min
 Lab File: BE101454.D
 Acq: 4 Nov 2024 13:25

Instrument : BNA_E
 ClientSampleId : PB164593BL

Tgt Ion: 99 Resp: 740437

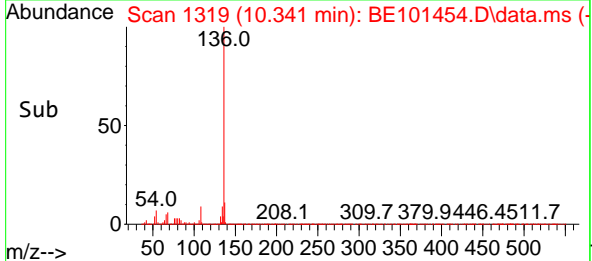
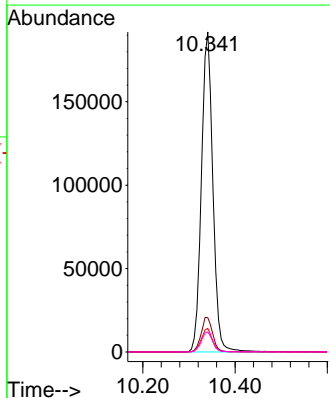
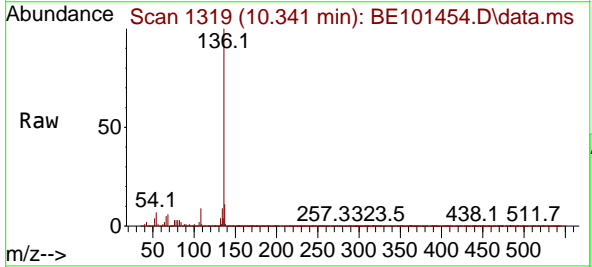
Ion	Ratio	Lower	Upper
99	100		
42	15.7	12.3	18.5
71	30.0	23.8	35.8

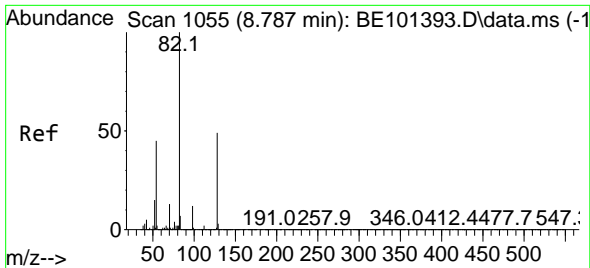


#21
 Naphthalene-d8
 Concen: 20.000 ng
 RT: 10.341 min Scan# 1319
 Delta R.T. 0.003 min
 Lab File: BE101454.D
 Acq: 4 Nov 2024 13:25

Tgt Ion: 136 Resp: 332383

Ion	Ratio	Lower	Upper
136	100		
137	10.7	9.0	13.6
54	7.3	5.9	8.9
68	6.3	4.8	7.2



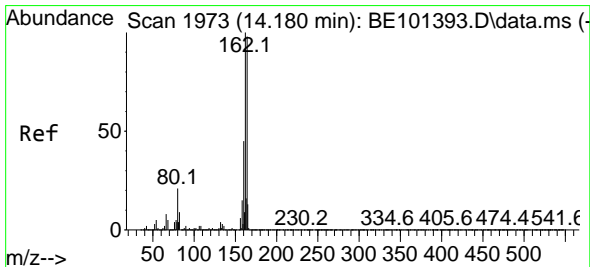
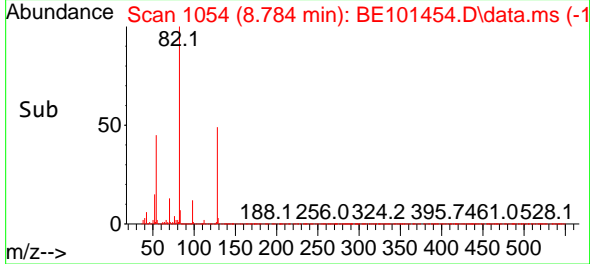
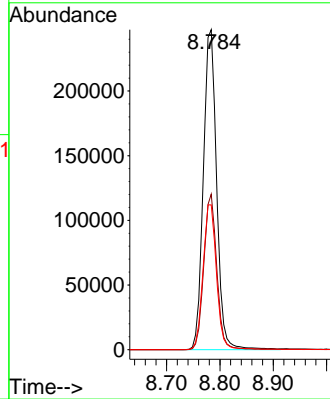
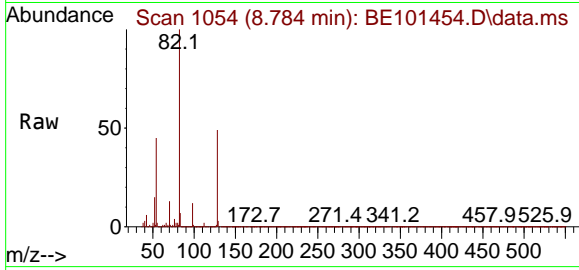


#23
 Nitrobenzene-d5
 Concen: 81.009 ng
 RT: 8.784 min Scan# 1054
 Delta R.T. -0.003 min
 Lab File: BE101454.D
 Acq: 4 Nov 2024 13:25

Instrument : BNA_E
 ClientSampleId : PB164593BL

Tgt Ion: 82 Resp: 428697

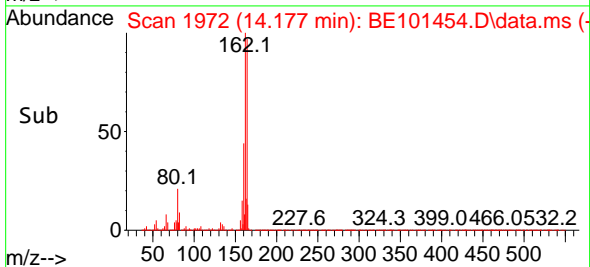
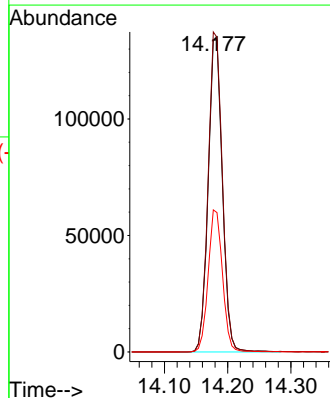
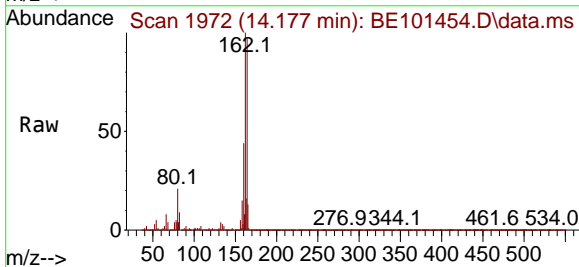
Ion	Ratio	Lower	Upper
82	100		
128	48.6	38.9	58.3
54	45.3	36.2	54.4

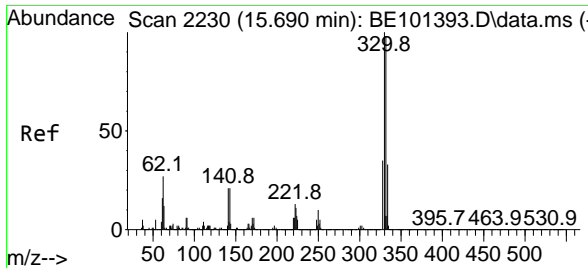


#39
 Acenaphthene-d10
 Concen: 20.000 ng
 RT: 14.177 min Scan# 1972
 Delta R.T. -0.003 min
 Lab File: BE101454.D
 Acq: 4 Nov 2024 13:25

Tgt Ion: 164 Resp: 209474

Ion	Ratio	Lower	Upper
164	100		
162	102.6	81.3	121.9
160	45.5	36.4	54.6



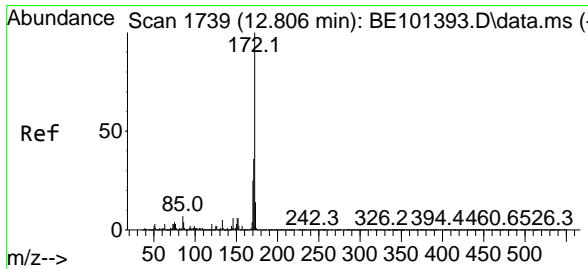
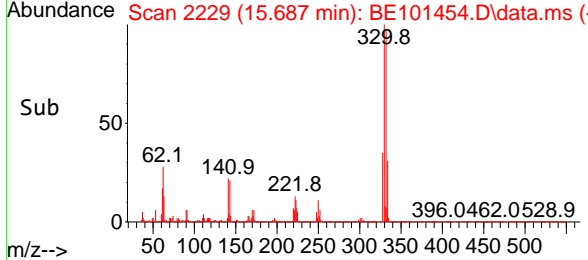
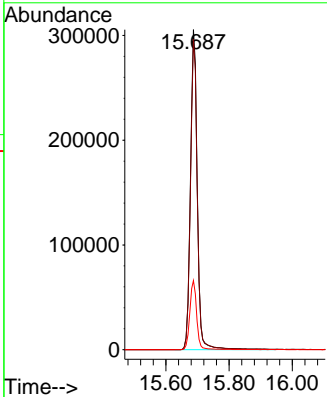
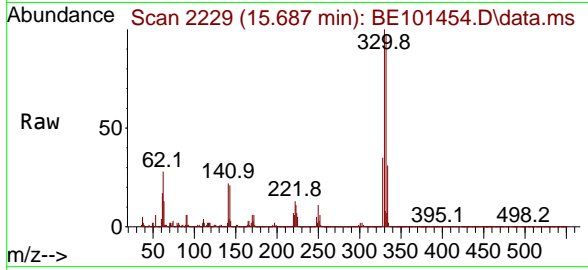


#42
 2,4,6-Tribromophenol
 Concen: 125.173 ng
 RT: 15.687 min Scan# 21
 Delta R.T. -0.003 min
 Lab File: BE101454.D
 Acq: 4 Nov 2024 13:25

Instrument : BNA_E
 ClientSampleId : PB164593BL

Tgt Ion: 330 Resp: 459560

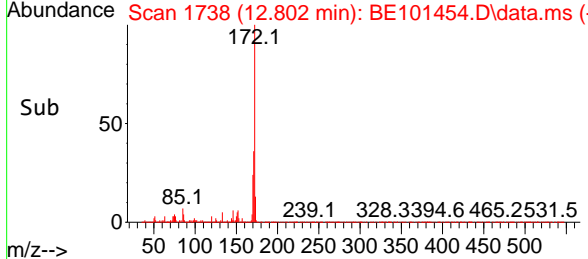
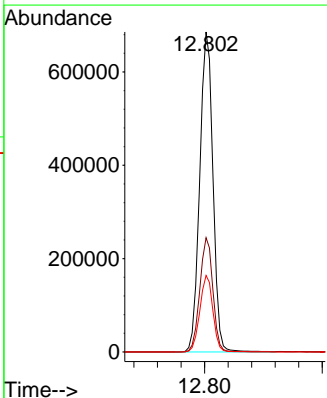
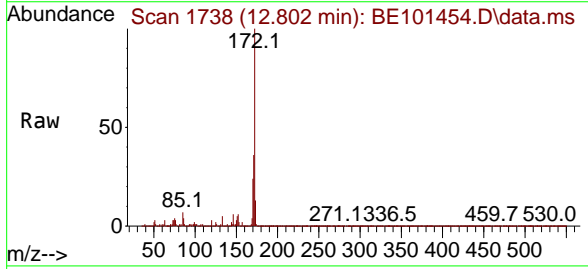
Ion	Ratio	Lower	Upper
330	100		
332	96.6	78.2	117.2
141	21.8	18.3	27.5

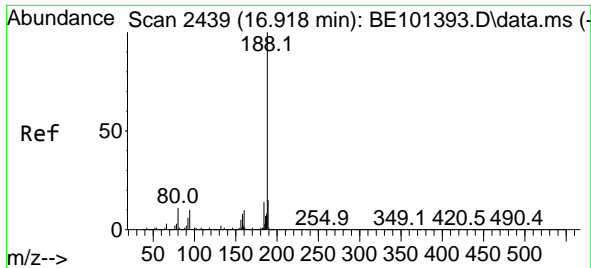


#45
 2-Fluorobiphenyl
 Concen: 86.319 ng
 RT: 12.802 min Scan# 1738
 Delta R.T. -0.003 min
 Lab File: BE101454.D
 Acq: 4 Nov 2024 13:25

Tgt Ion: 172 Resp: 1067682

Ion	Ratio	Lower	Upper
172	100		
171	35.7	29.2	43.8
170	23.9	19.8	29.6

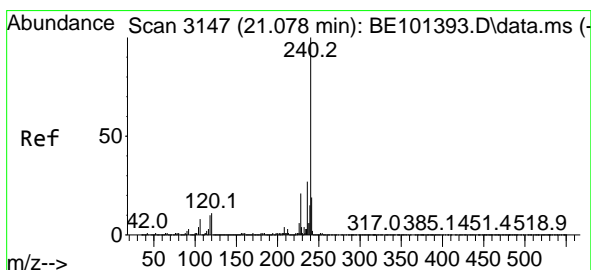
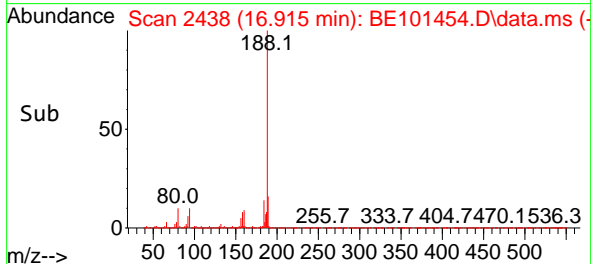
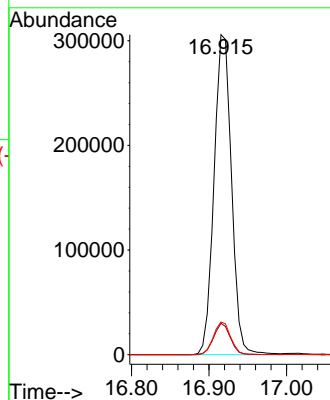
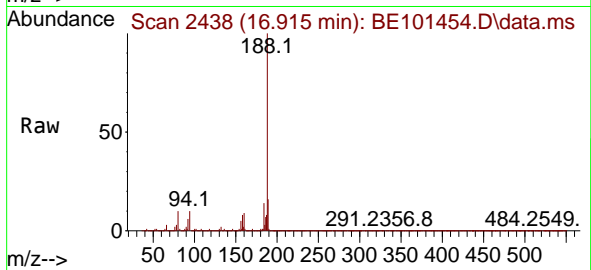




#64
 Phenanthrene-d10
 Concen: 20.000 ng
 RT: 16.915 min Scan# 2439
 Delta R.T. -0.003 min
 Lab File: BE101454.D
 Acq: 4 Nov 2024 13:25

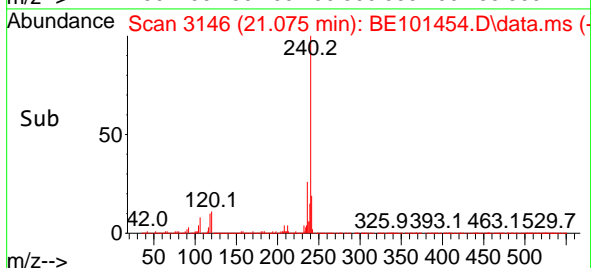
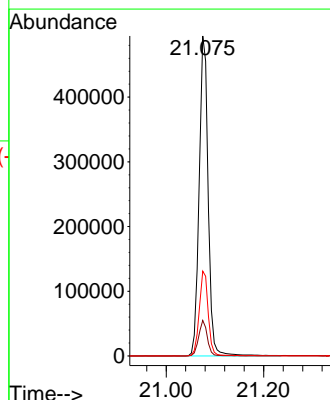
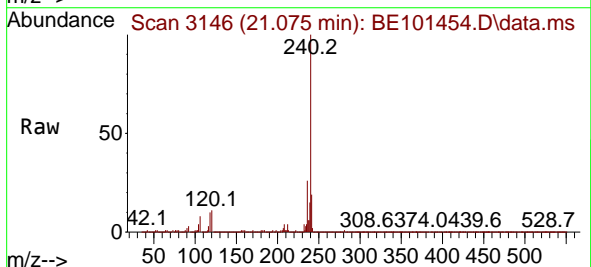
Instrument :
 BNA_E
 ClientSampleId :
 PB164593BL

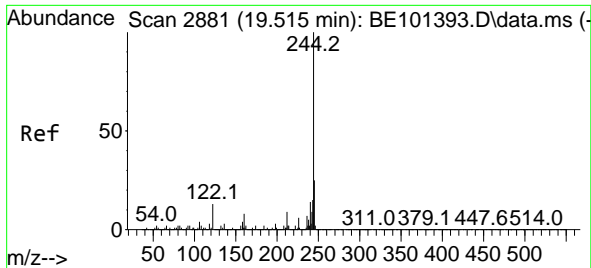
Tgt Ion:188 Resp: 478774
 Ion Ratio Lower Upper
 188 100
 94 9.8 7.8 11.8
 80 10.2 8.6 12.8



#76
 Chrysene-d12
 Concen: 20.000 ng
 RT: 21.075 min Scan# 3146
 Delta R.T. -0.003 min
 Lab File: BE101454.D
 Acq: 4 Nov 2024 13:25

Tgt Ion:240 Resp: 637683
 Ion Ratio Lower Upper
 240 100
 120 11.1 9.0 13.4
 236 26.5 21.4 32.0



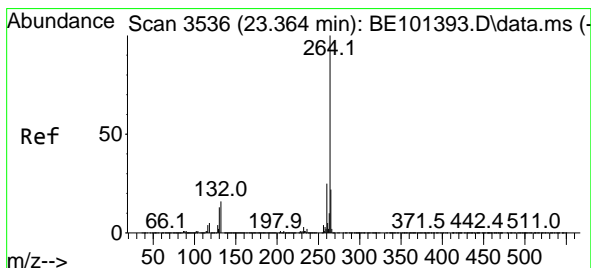
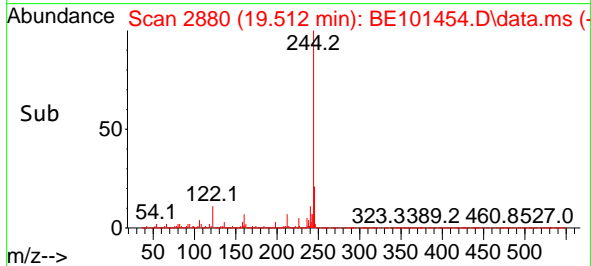
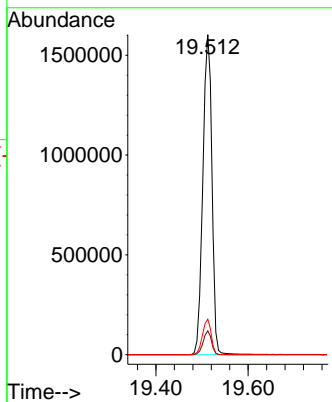
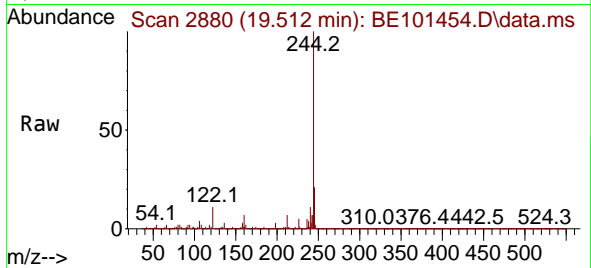


#79
 Terphenyl-d14
 Concen: 80.071 ng
 RT: 19.512 min Scan# 21
 Delta R.T. -0.003 min
 Lab File: BE101454.D
 Acq: 4 Nov 2024 13:25

Instrument :
 BNA_E
 ClientSampleId :
 PB164593BL

Tgt Ion:244 Resp: 2218492

Ion	Ratio	Lower	Upper
244	100		
212	7.4	7.2	10.8
122	11.1	10.4	15.6



#86
 Perylene-d12
 Concen: 20.000 ng
 RT: 23.372 min Scan# 3537
 Delta R.T. 0.009 min
 Lab File: BE101454.D
 Acq: 4 Nov 2024 13:25

Tgt Ion:264 Resp: 926419

Ion	Ratio	Lower	Upper
264	100		
260	24.4	19.8	29.8
265	20.9	17.6	26.4

